

# Demographic Overview

## Racial Breakdown in Wilkinson County



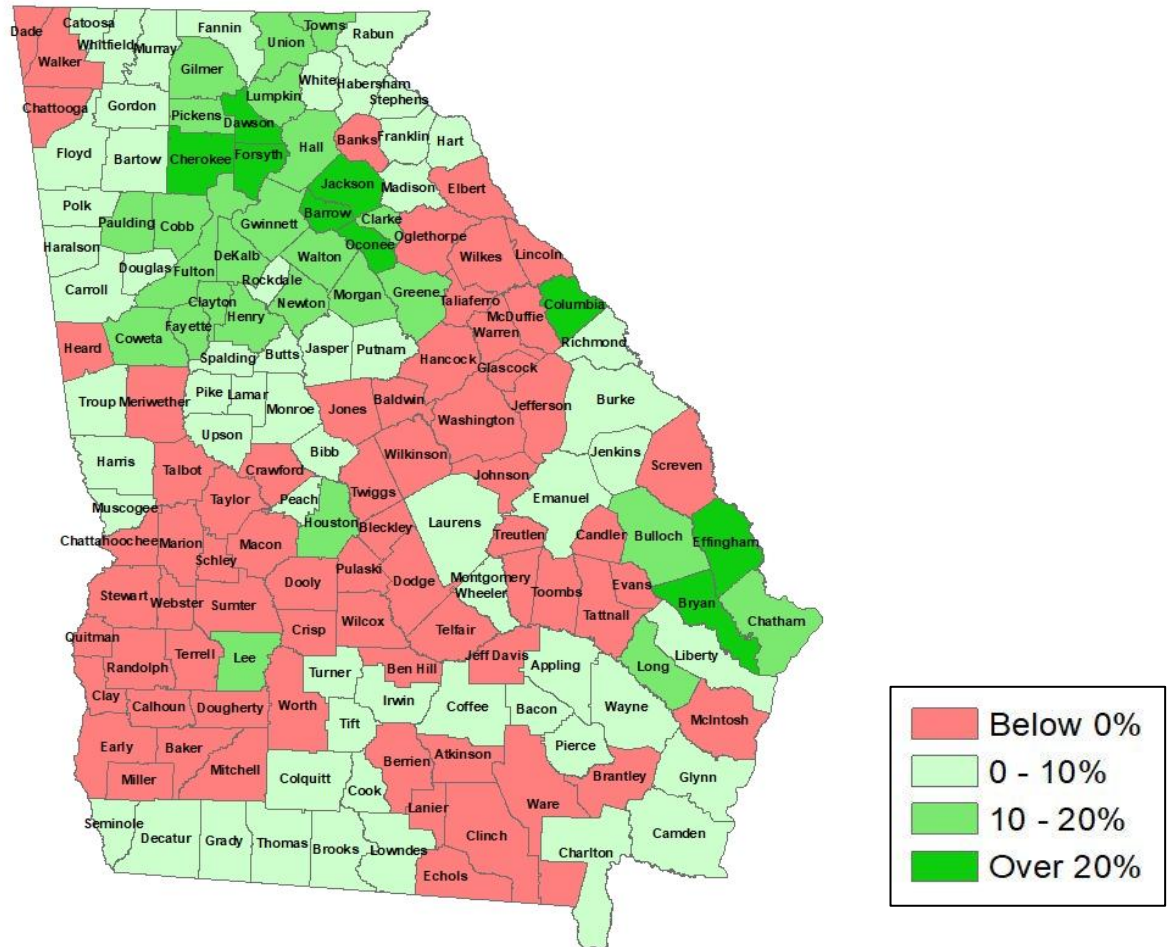
Wilkinson County	2010	2020	% Change
Total Population	9,563	8,877	-7%
AAPI	32	25	-22%
Black	3,664	3,163	-14%
Latino	214	239	12%
Other/Mixed Race	124	340	174%
POC	4,034	3,767	-7%
White	5,529	5,110	-8%





# Population Gain

## Change in Population in Georgia by County

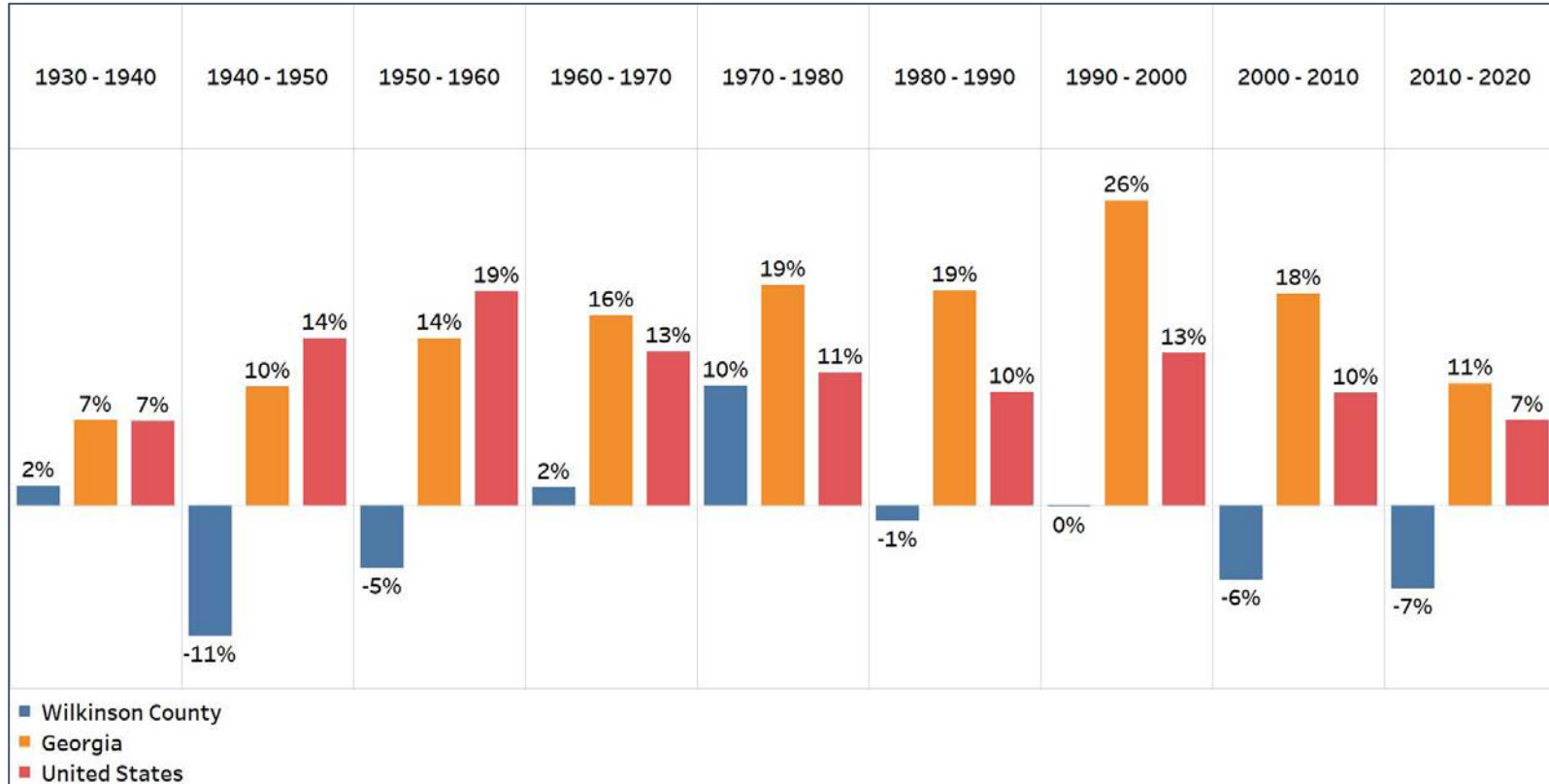


- Georgia is experience rapid population growth in the Atlanta, Augusta, and Savannah regions of the state



# Population Gain

## Change in Population by Decade



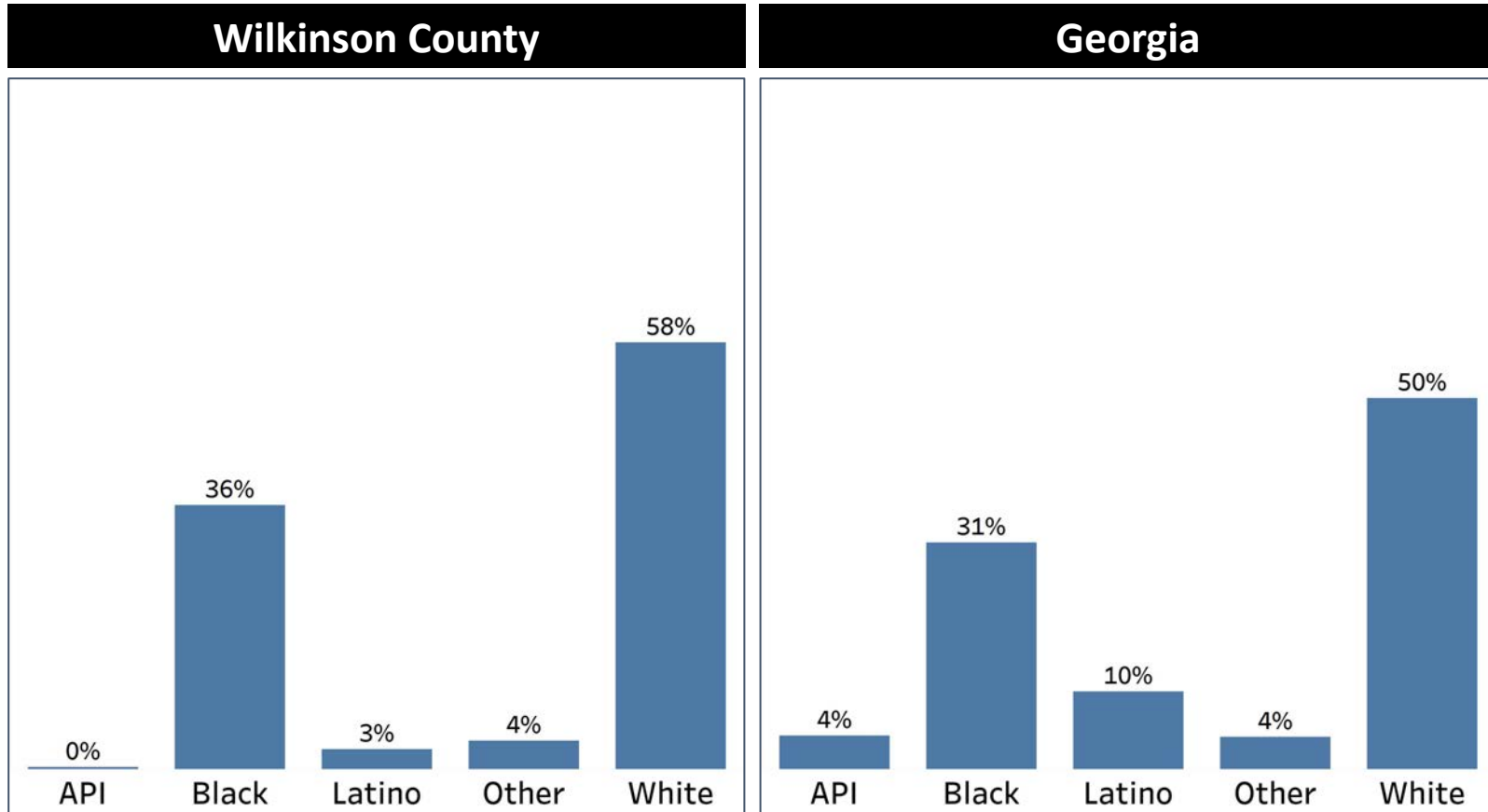
- Wilkinson County has had population decline or very little growth for almost all decades in the past 90 years, except for the 1970s
- The last decade's decline was the highest decline since 1950





# Demographics

## Comparison between Wilkinson County and Georgia



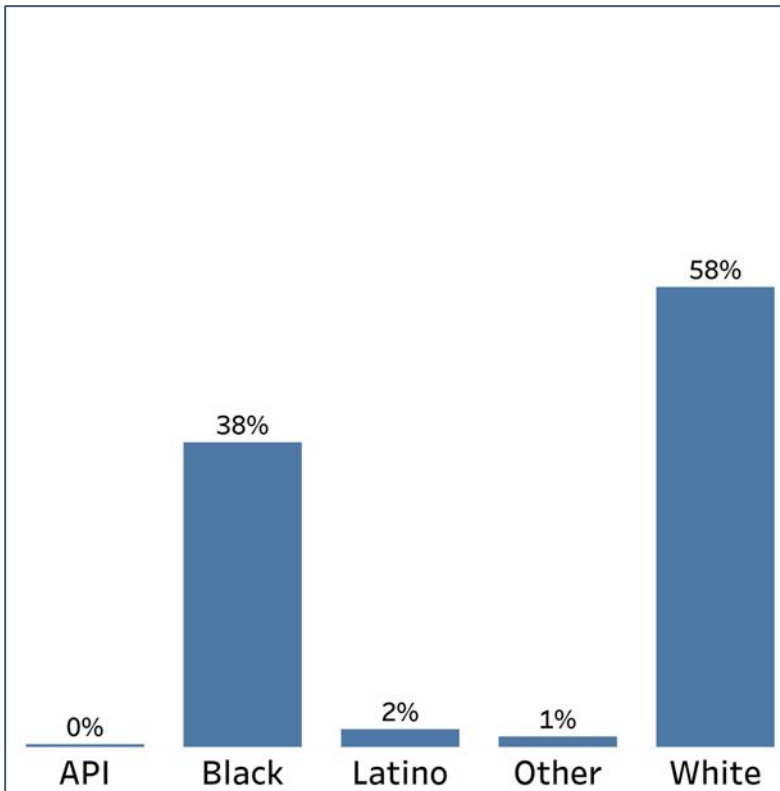
- Wilkinson County has a higher share of both Black and White populations than Georgia does overall
- The Other population also matches their share of the population in the county as they do in Georgia

# Demographics

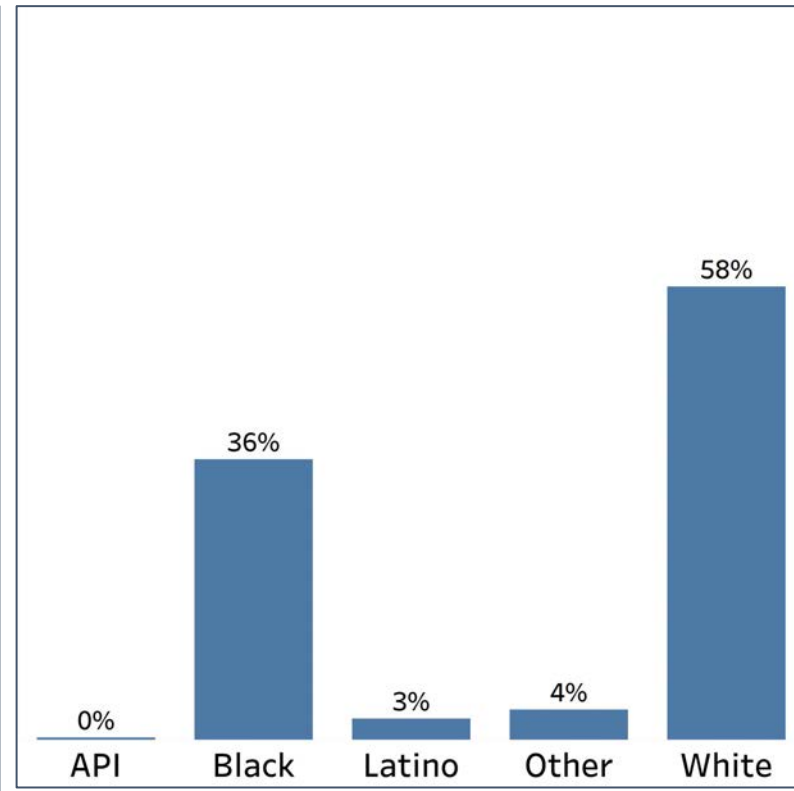
## 2010 vs 2020 Demographics in Wilkinson County



Wilkinson County 2010



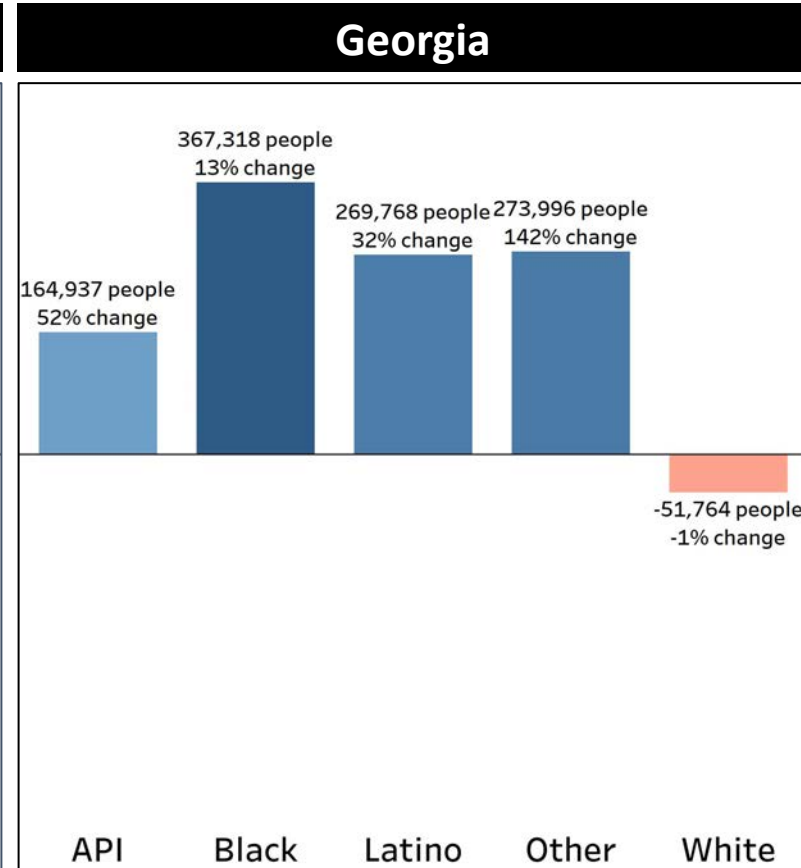
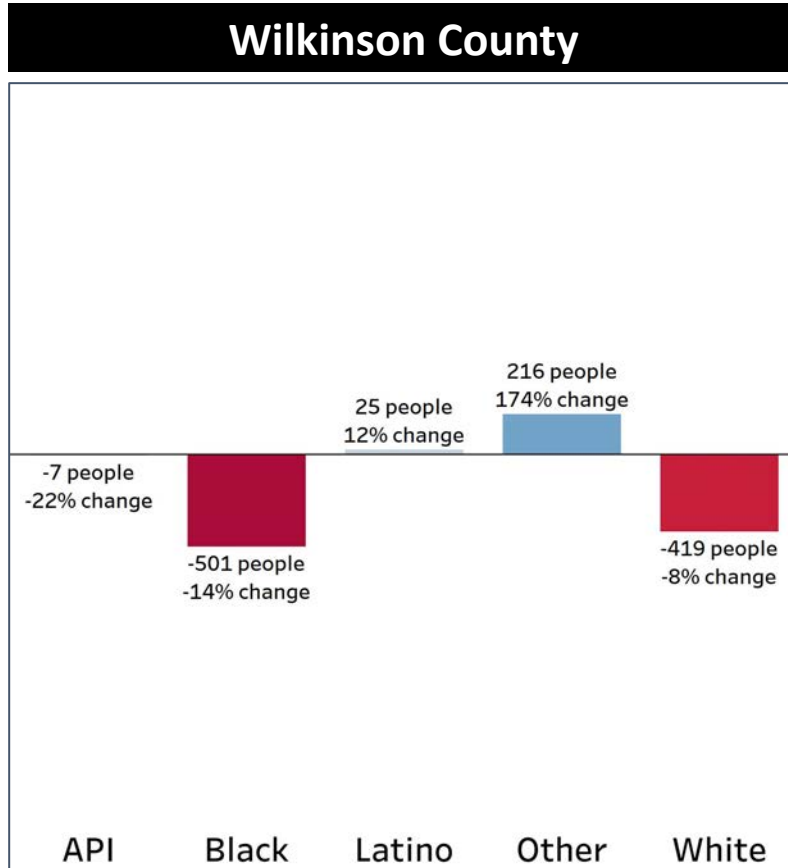
Wilkinson County 2020



- Wilkinson County had a decline in its share of the Black population, while the share of the White population stayed the same
- The Latino and Other populations grew their shares of the population, with the latter quadrupling their share

# Demographics

## Population Change by Race (2020 - 2010)



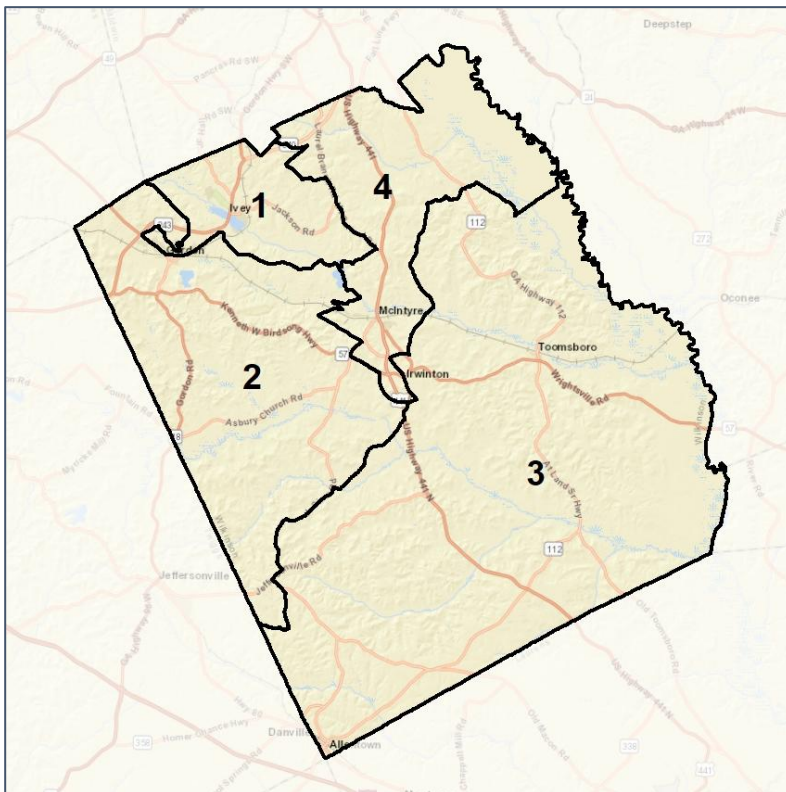
- Wilkinson County had significant declines in the Black and White populations, and the White population's decline rate in the county was higher than the decline rate in Georgia overall
- The only other group with a major shift in population was the Other population, which had a higher growth rate than in Georgia overall

# Wilkinson Co. Commission & School Board

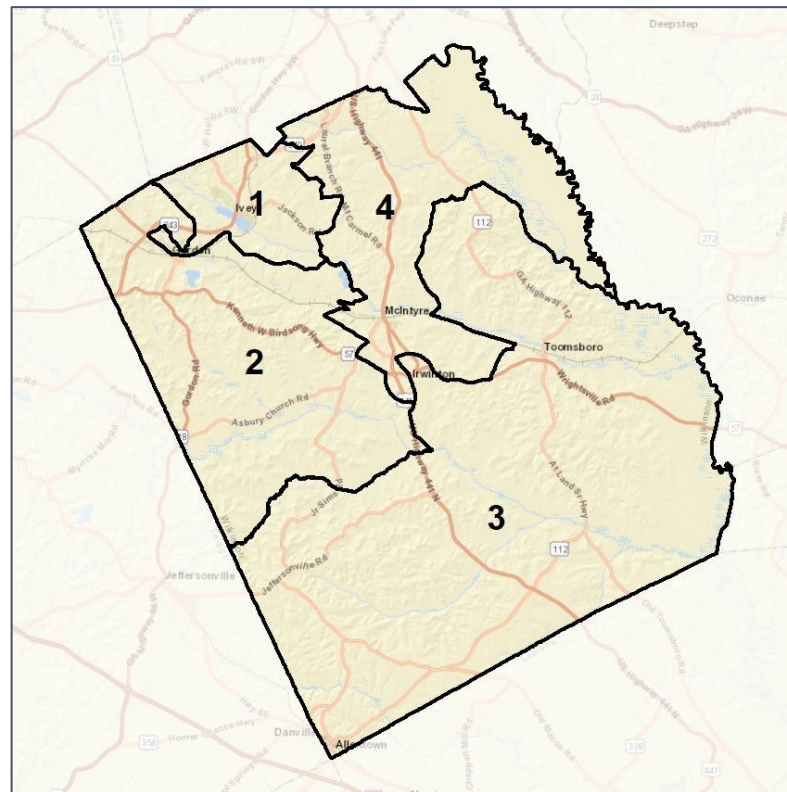
## Context



2012 Map



2022 Map\*



	1	2	3	4	1*	2*	3*	4*	County
Population	2,310	2,259	2,230	2,078	2,238	2,210	2,234	2,195	8,877
API	1%	0%	0%	0%	1%	0%	0%	0%	0%
Black	13%	54%	24%	53%	13%	54%	23%	53%	36%
Latino	2%	2%	2%	5%	2%	2%	2%	5%	3%
Other	5%	3%	4%	3%	5%	3%	4%	3%	4%
White	79%	42%	69%	39%	80%	41%	70%	39%	58%
Population Gain	-129	-115	-113	-329	-72	-49	4	117	*
Population % Gain	-5%	-5%	-5%	-14%	-3%	-2%	0%	6%	*
Net POC Gain	121	-86	-50	-252	-24	-24	-22	70	*
Net POC % Gain	34%	-6%	-7%	-17%	-5%	-2%	-3%	6%	*

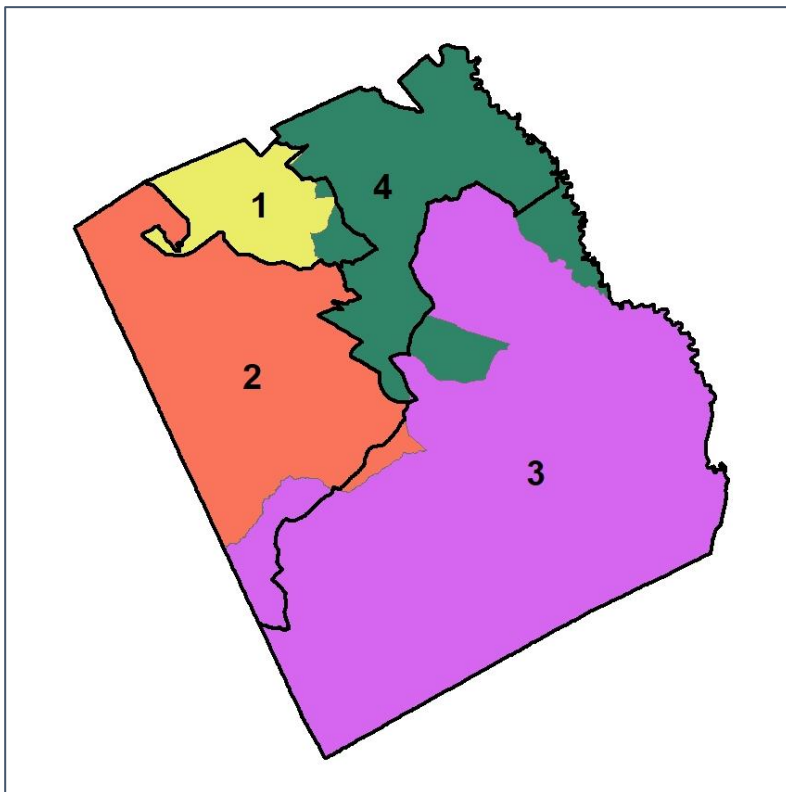


# Wilkinson Co. Commission & School Board

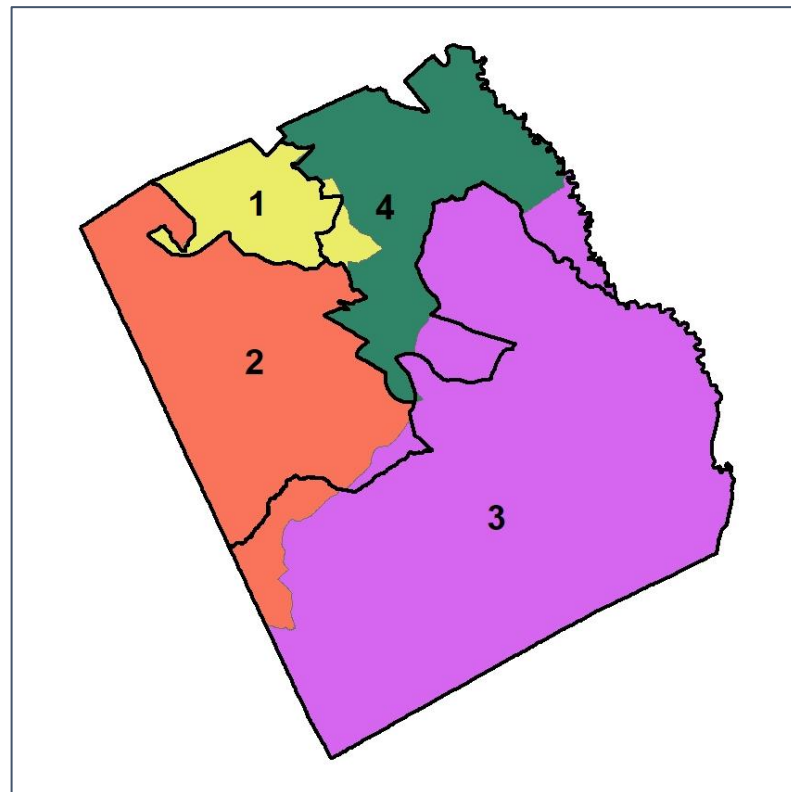
## Changes in Redistricting



**2012 Map (2022 in Colors)**



**2022 Map\* (2012 in Colors)**



	1	2	3	4	1*	2*	3*	4*	County
Population	2,310	2,259	2,230	2,078	2,238	2,210	2,234	2,195	8,877
API	1%	0%	0%	0%	1%	0%	0%	0%	0%
Black	13%	54%	24%	53%	13%	54%	23%	53%	36%
Latino	2%	2%	2%	5%	2%	2%	2%	5%	3%
Other	5%	3%	4%	3%	5%	3%	4%	3%	4%
White	79%	42%	69%	39%	80%	41%	70%	39%	58%
Population Gain	-129	-115	-113	-329	-72	-49	4	117	*
Population % Gain	-5%	-5%	-5%	-14%	-3%	-2%	0%	6%	*
Net POC Gain	121	-86	-50	-252	-24	-24	-22	70	*
Net POC % Gain	34%	-6%	-7%	-17%	-5%	-2%	-3%	6%	*



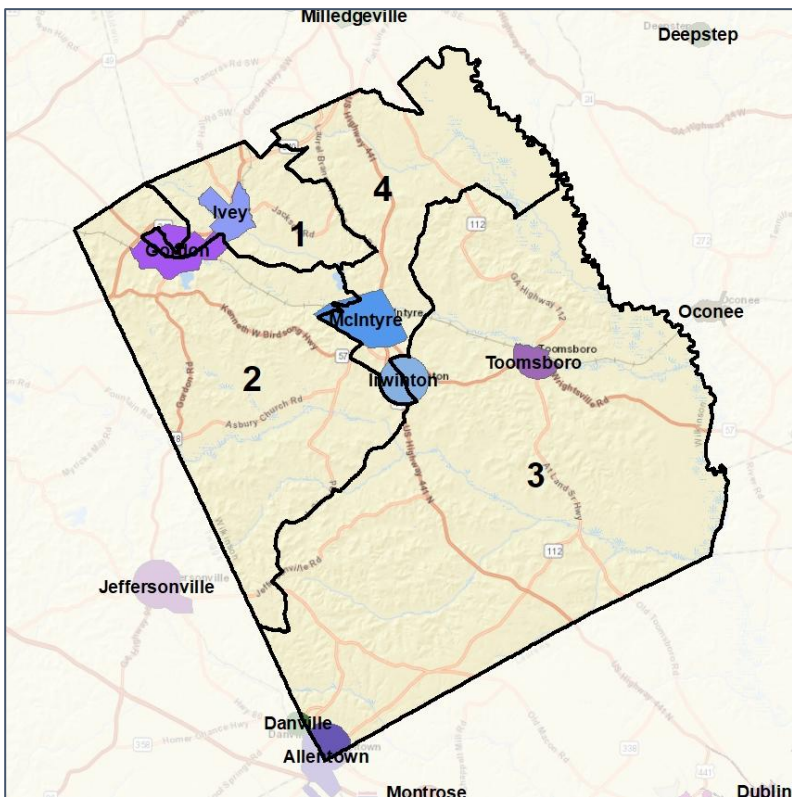


# Wilkinson Co. Commission & School Board

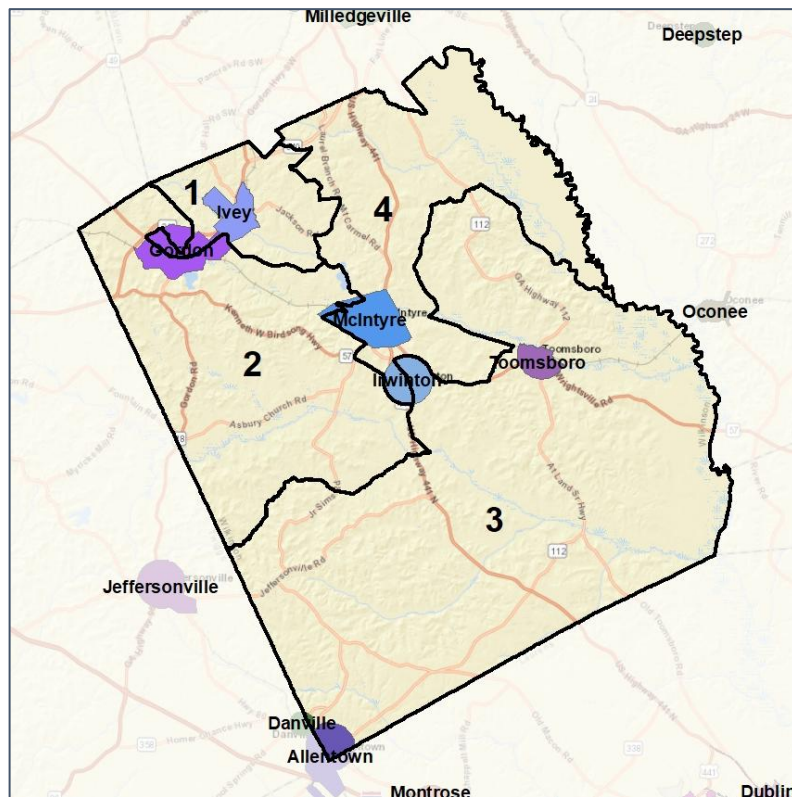
## Cities and Places



### 2012 Map



### 2022 Map\*



	1	2	3	4	1*	2*	3*	4*	County
Population	2,310	2,259	2,230	2,078	2,238	2,210	2,234	2,195	8,877
API	1%	0%	0%	0%	1%	0%	0%	0%	0%
Black	13%	54%	24%	53%	13%	54%	23%	53%	36%
Latino	2%	2%	2%	5%	2%	2%	2%	5%	3%
Other	5%	3%	4%	3%	5%	3%	4%	3%	4%
White	79%	42%	69%	39%	80%	41%	70%	39%	58%
Population Gain	-129	-115	-113	-329	-72	-49	4	117	*
Population % Gain	-5%	-5%	-5%	-14%	-3%	-2%	0%	6%	*
Net POC Gain	121	-86	-50	-252	-24	-24	-22	70	*
Net POC % Gain	34%	-6%	-7%	-17%	-5%	-2%	-3%	6%	*

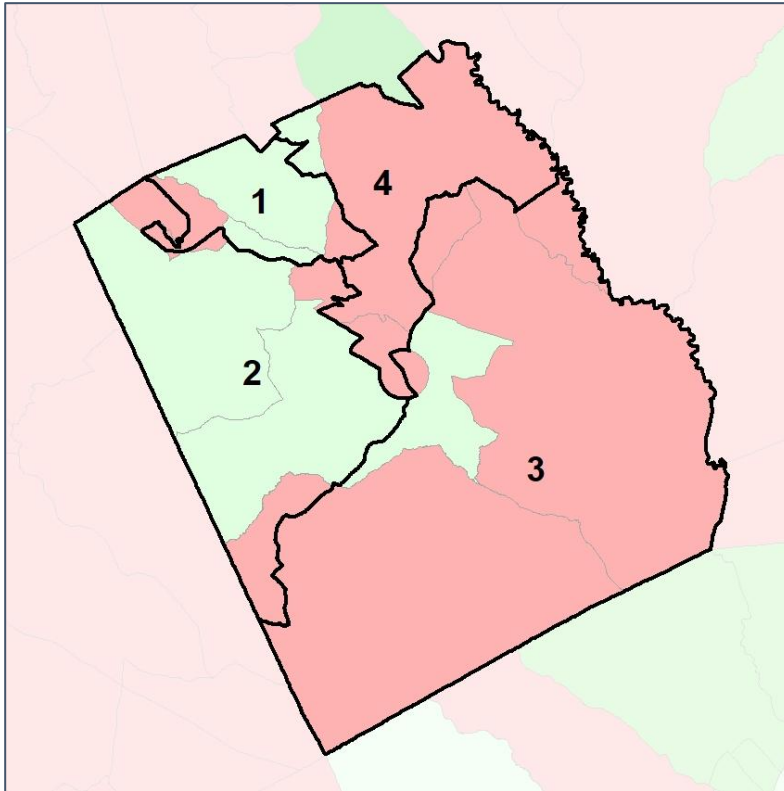


# Wilkinson Co. Commission & School Board

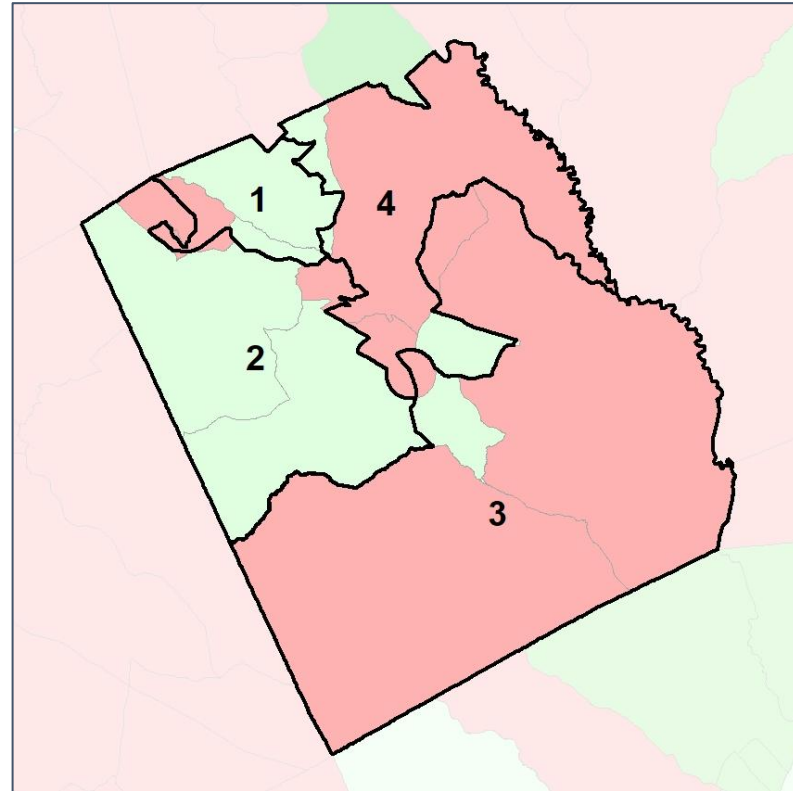
## Net Gain in Population (2010 - 2020) by Census Block Group



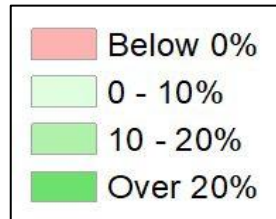
2012 Map



2022 Map\*



	1	2	3	4	1*	2*	3*	4*	County
Population	2,310	2,259	2,230	2,078	2,238	2,210	2,234	2,195	8,877
API	1%	0%	0%	0%	1%	0%	0%	0%	0%
Black	13%	54%	24%	53%	13%	54%	23%	53%	36%
Latino	2%	2%	2%	5%	2%	2%	2%	5%	3%
Other	5%	3%	4%	3%	5%	3%	4%	3%	4%
White	79%	42%	69%	39%	80%	41%	70%	39%	58%
Population Gain	-129	-115	-113	-329	-72	-49	4	117	*
Population % Gain	-5%	-5%	-5%	-14%	-3%	-2%	0%	6%	*
Net POC Gain	121	-86	-50	-252	-24	-24	-22	70	*
Net POC % Gain	34%	-6%	-7%	-17%	-5%	-2%	-3%	6%	*

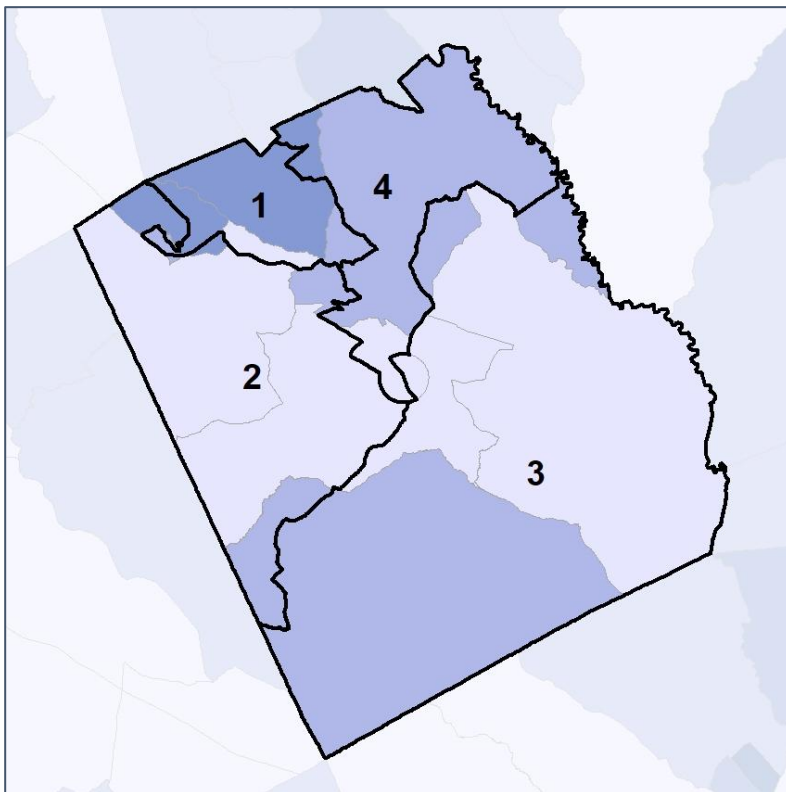


# Wilkinson Co. Commission & School Board

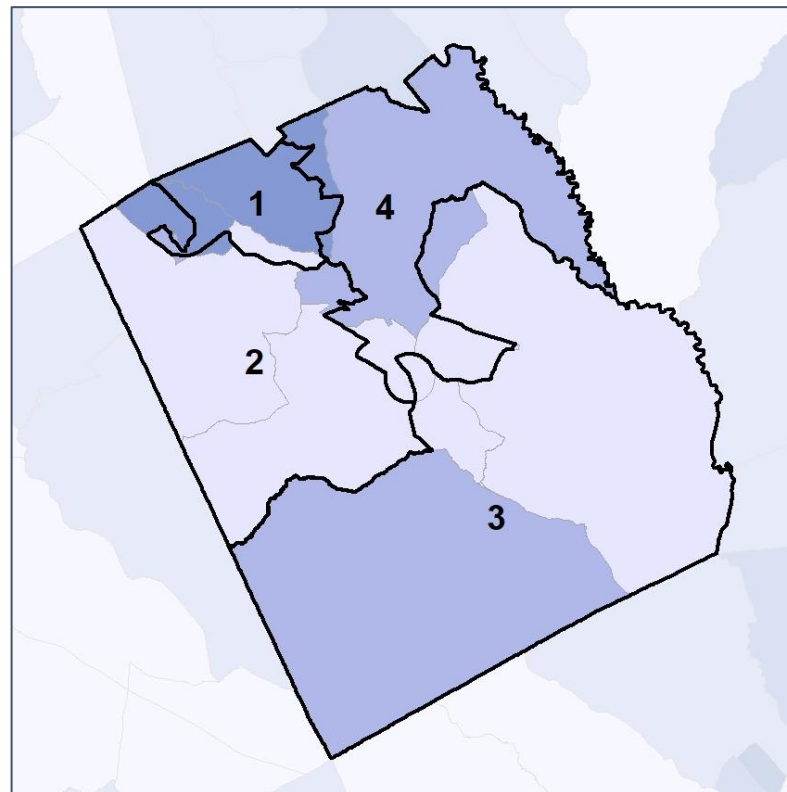
## Net Gain in % POC (2020 - 2010) by Census Block Group



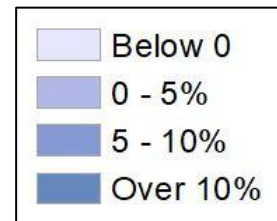
2012 Map



2022 Map\*



	1	2	3	4	1*	2*	3*	4*	County
Population	2,310	2,259	2,230	2,078	2,238	2,210	2,234	2,195	8,877
API	1%	0%	0%	0%	1%	0%	0%	0%	0%
Black	13%	54%	24%	53%	13%	54%	23%	53%	36%
Latino	2%	2%	2%	5%	2%	2%	2%	5%	3%
Other	5%	3%	4%	3%	5%	3%	4%	3%	4%
White	79%	42%	69%	39%	80%	41%	70%	39%	58%
Population Gain	-129	-115	-113	-329	-72	-49	4	117	*
Population % Gain	-5%	-5%	-5%	-14%	-3%	-2%	0%	6%	*
Net POC Gain	121	-86	-50	-252	-24	-24	-22	70	*
Net POC % Gain	34%	-6%	-7%	-17%	-5%	-2%	-3%	6%	*

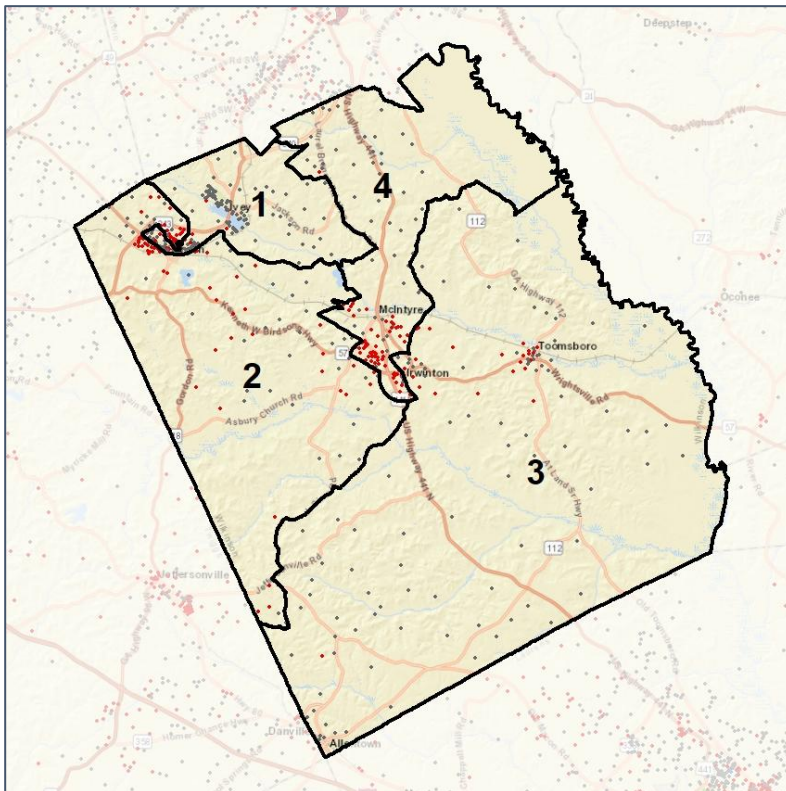


# Wilkinson Co. Commission & School Board

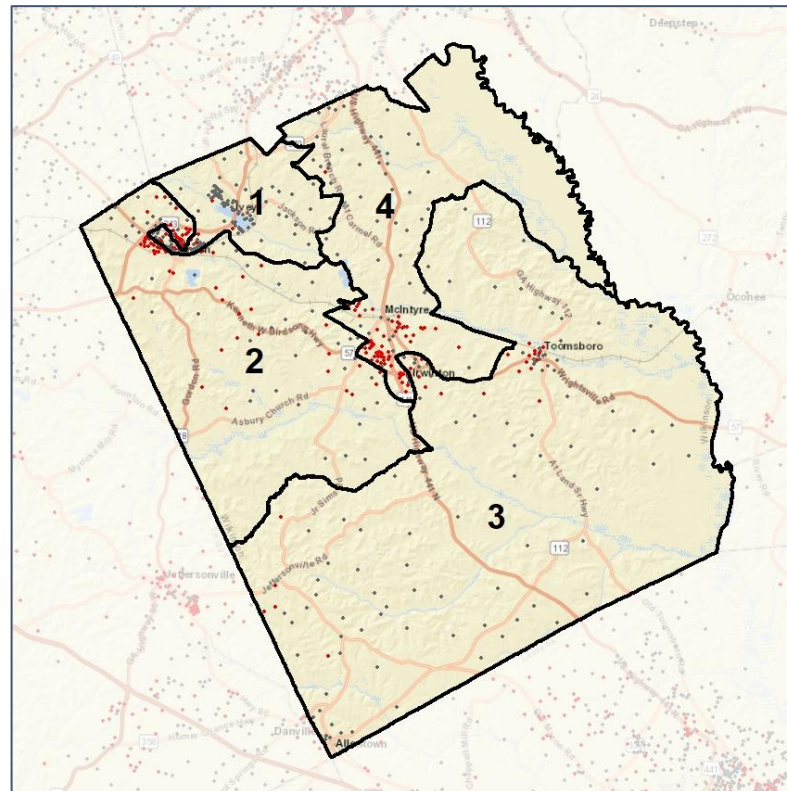
## Population Density by Race



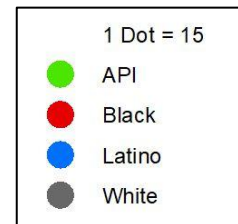
### 2012 Map



### 2022 Map\*



	1	2	3	4	1*	2*	3*	4*	County
Population	2,310	2,259	2,230	2,078	2,238	2,210	2,234	2,195	8,877
API	14	1	5	5	12	1	5	7	25
% API	1%	0%	0%	0%	1%	0%	0%	0%	0%
Black	306	1,221	545	1,091	287	1,193	521	1,162	3,163
% Black	13%	54%	24%	53%	13%	54%	23%	53%	36%
Latino	42	34	54	109	39	40	54	106	239
% Latino	2%	2%	2%	5%	2%	2%	2%	5%	3%
Other	113	62	98	67	113	60	100	67	340
% Other	5%	3%	4%	3%	5%	3%	4%	3%	4%
White	1,835	941	1,528	806	1,787	916	1,554	853	5,110
% White	79%	42%	69%	39%	80%	41%	70%	39%	58%

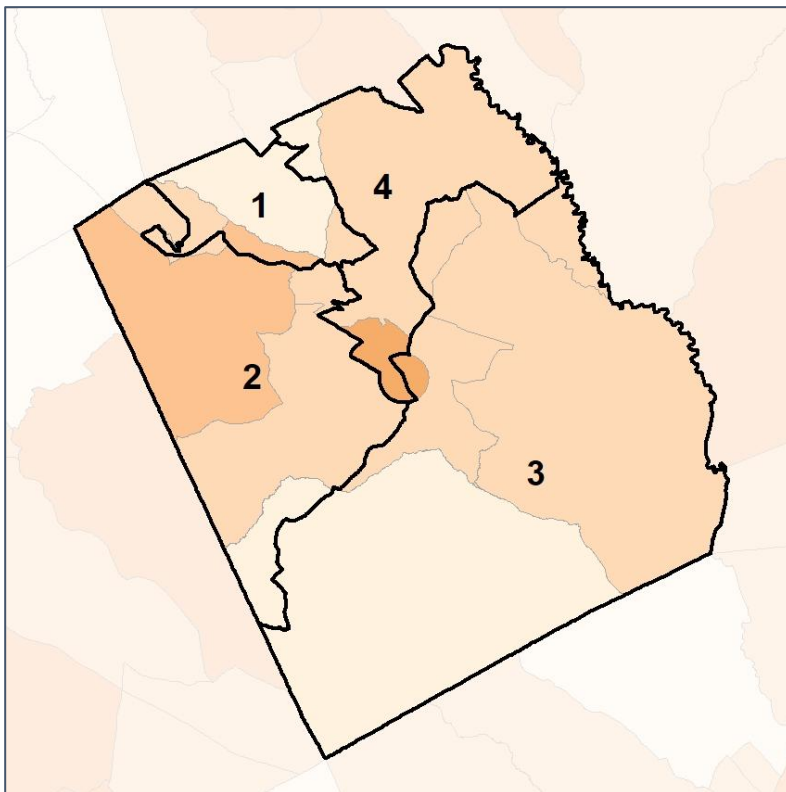


# Wilkinson Co. Commission & School Board

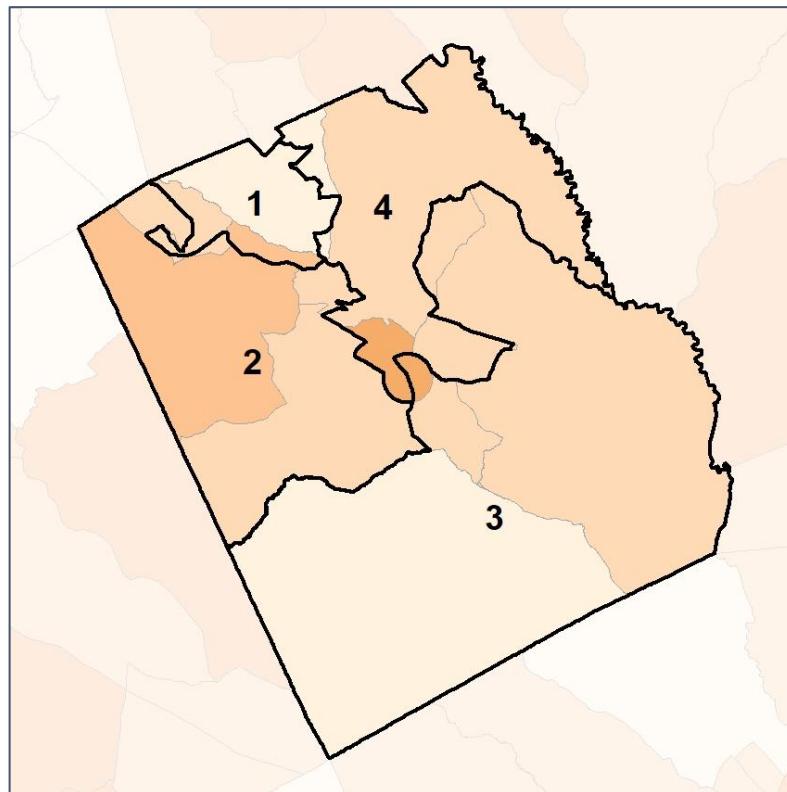
## % People of Color by Census Block Group



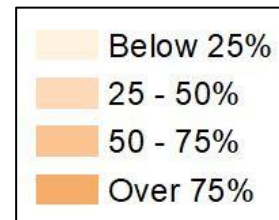
### 2012 Map



### 2022 Map\*



	1	2	3	4	1*	2*	3*	4*	County
Population	2,310	2,259	2,230	2,078	2,238	2,210	2,234	2,195	8,877
API	14	1	5	5	12	1	5	7	25
% API	1%	0%	0%	0%	1%	0%	0%	0%	0%
Black	306	1,221	545	1,091	287	1,193	521	1,162	3,163
% Black	13%	54%	24%	53%	13%	54%	23%	53%	36%
Latino	42	34	54	109	39	40	54	106	239
% Latino	2%	2%	2%	5%	2%	2%	2%	5%	3%
Other	113	62	98	67	113	60	100	67	340
% Other	5%	3%	4%	3%	5%	3%	4%	3%	4%
White	1,835	941	1,528	806	1,787	916	1,554	853	5,110
% White	79%	42%	69%	39%	80%	41%	70%	39%	58%

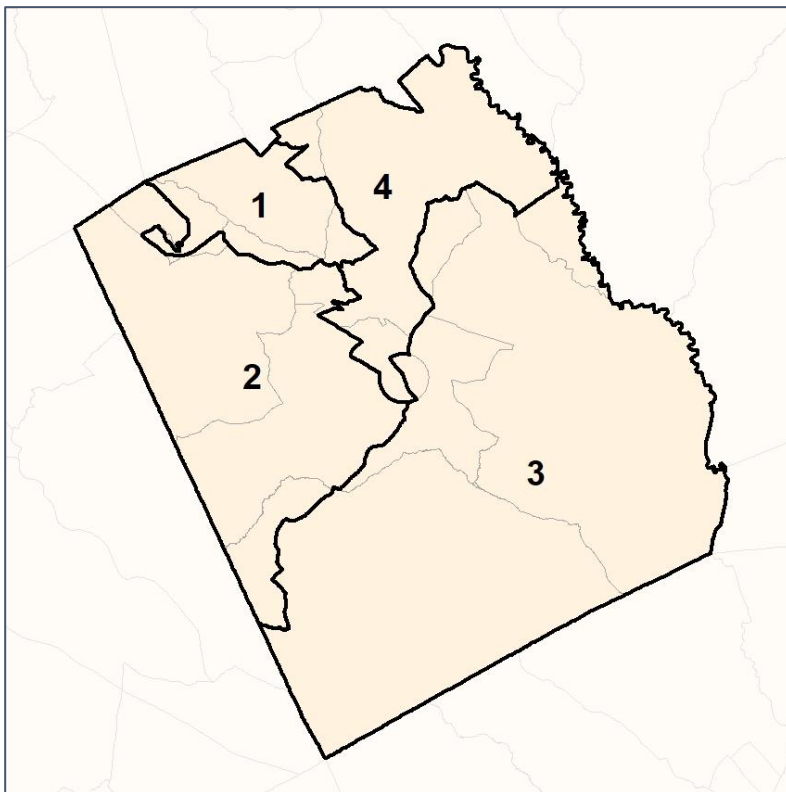


# Wilkinson Co. Commission & School Board

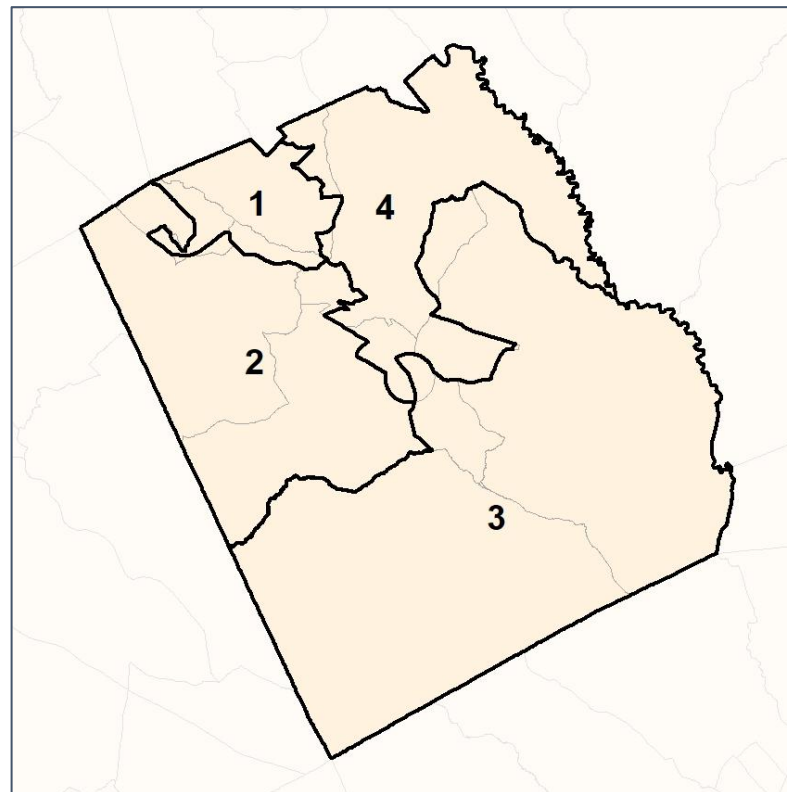
## % API by Census Block Group



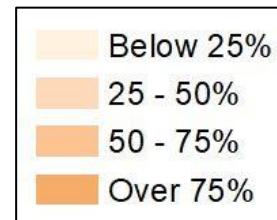
2012 Map



2022 Map\*



	1	2	3	4	1*	2*	3*	4*	County
Population	2,310	2,259	2,230	2,078	2,238	2,210	2,234	2,195	8,877
API	14	1	5	5	12	1	5	7	25
% API	1%	0%	0%	0%	1%	0%	0%	0%	0%
Black	306	1,221	545	1,091	287	1,193	521	1,162	3,163
% Black	13%	54%	24%	53%	13%	54%	23%	53%	36%
Latino	42	34	54	109	39	40	54	106	239
% Latino	2%	2%	2%	5%	2%	2%	2%	5%	3%
Other	113	62	98	67	113	60	100	67	340
% Other	5%	3%	4%	3%	5%	3%	4%	3%	4%
White	1,835	941	1,528	806	1,787	916	1,554	853	5,110
% White	79%	42%	69%	39%	80%	41%	70%	39%	58%

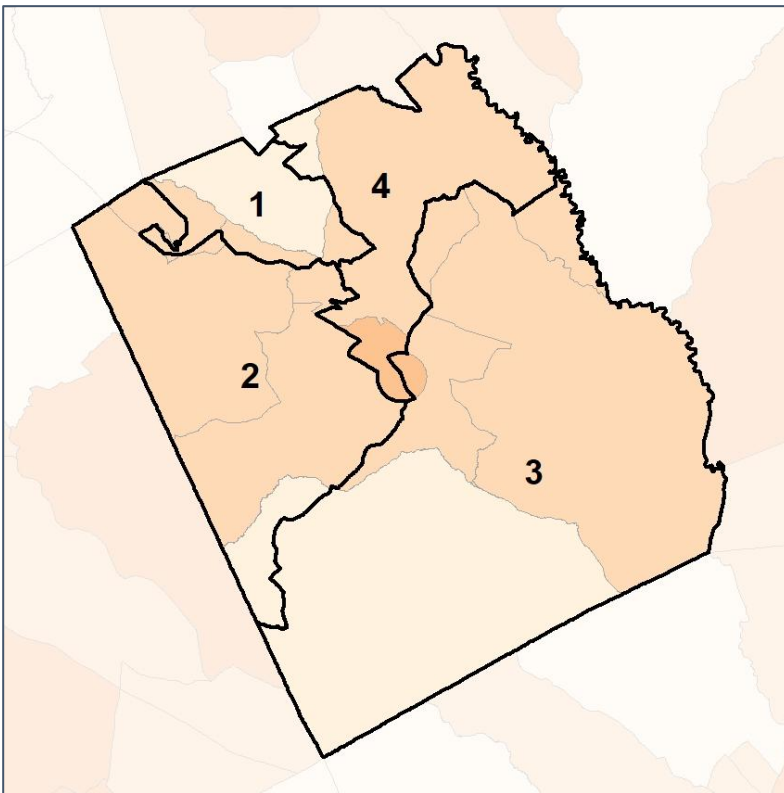


# Wilkinson Co. Commission & School Board

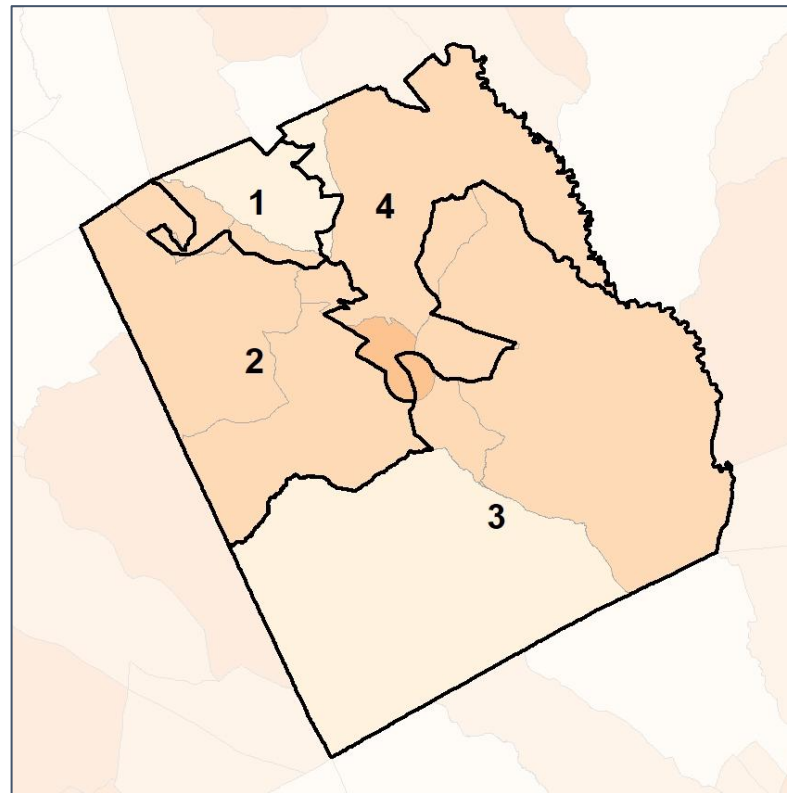
## % Black by Census Block Group



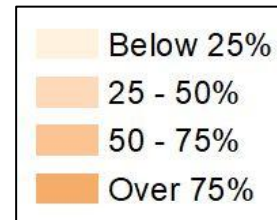
### 2012 Map



### 2022 Map\*



	1	2	3	4	1*	2*	3*	4*	County
Population	2,310	2,259	2,230	2,078	2,238	2,210	2,234	2,195	8,877
API	14	1	5	5	12	1	5	7	25
% API	1%	0%	0%	0%	1%	0%	0%	0%	0%
Black	306	1,221	545	1,091	287	1,193	521	1,162	3,163
% Black	13%	54%	24%	53%	13%	54%	23%	53%	36%
Latino	42	34	54	109	39	40	54	106	239
% Latino	2%	2%	2%	5%	2%	2%	2%	5%	3%
Other	113	62	98	67	113	60	100	67	340
% Other	5%	3%	4%	3%	5%	3%	4%	3%	4%
White	1,835	941	1,528	806	1,787	916	1,554	853	5,110
% White	79%	42%	69%	39%	80%	41%	70%	39%	58%

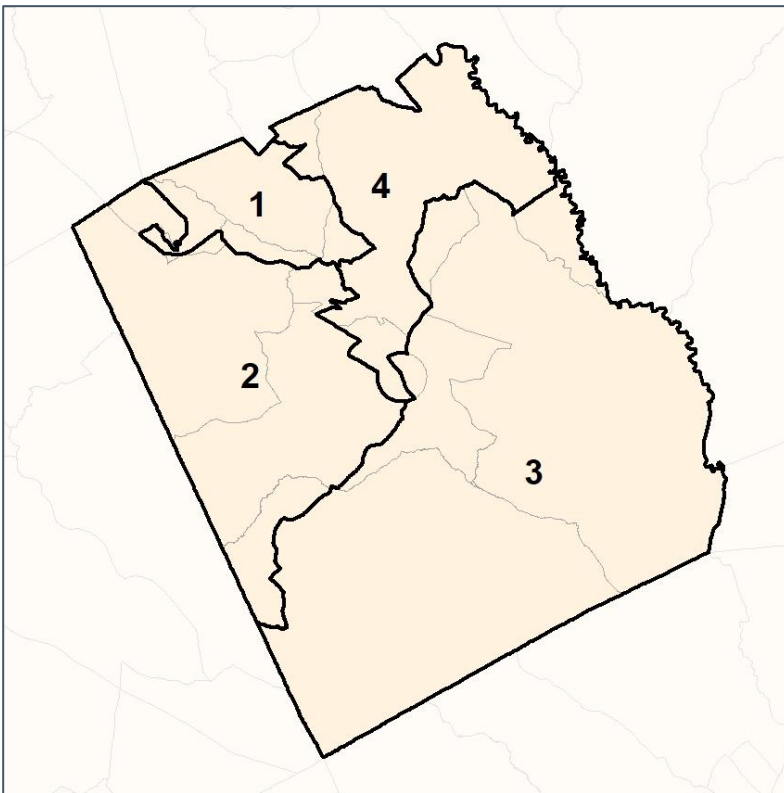


# Wilkinson Co. Commission & School Board

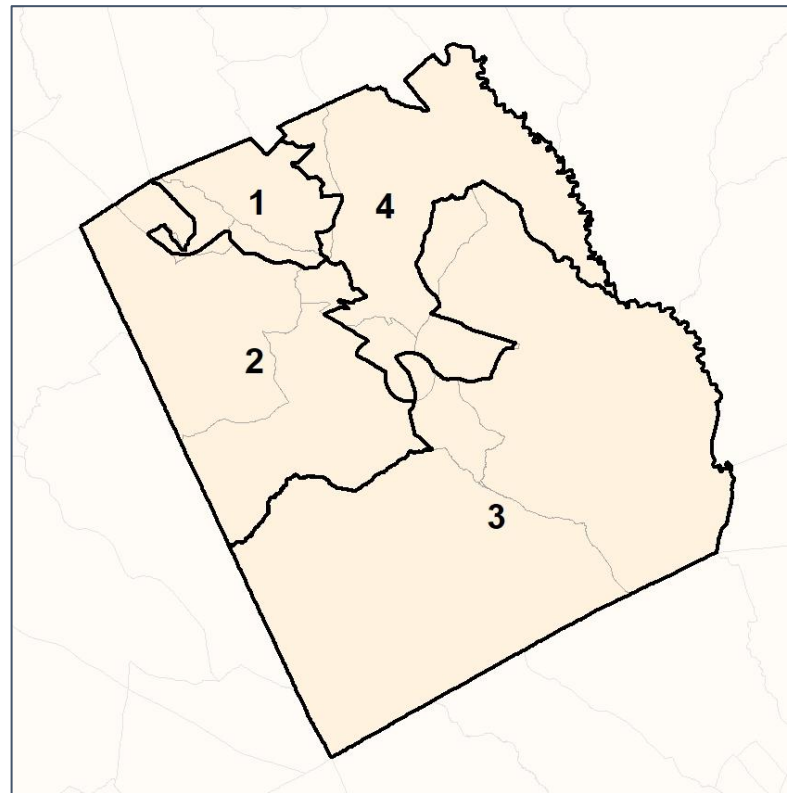
## % Latino by Census Block Group



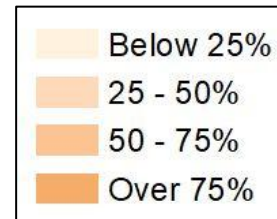
2012 Map



2022 Map\*



	1	2	3	4	1*	2*	3*	4*	County
Population	2,310	2,259	2,230	2,078	2,238	2,210	2,234	2,195	8,877
API	14	1	5	5	12	1	5	7	25
% API	1%	0%	0%	0%	1%	0%	0%	0%	0%
Black	306	1,221	545	1,091	287	1,193	521	1,162	3,163
% Black	13%	54%	24%	53%	13%	54%	23%	53%	36%
Latino	42	34	54	109	39	40	54	106	239
% Latino	2%	2%	2%	5%	2%	2%	2%	5%	3%
Other	113	62	98	67	113	60	100	67	340
% Other	5%	3%	4%	3%	5%	3%	4%	3%	4%
White	1,835	941	1,528	806	1,787	916	1,554	853	5,110
% White	79%	42%	69%	39%	80%	41%	70%	39%	58%



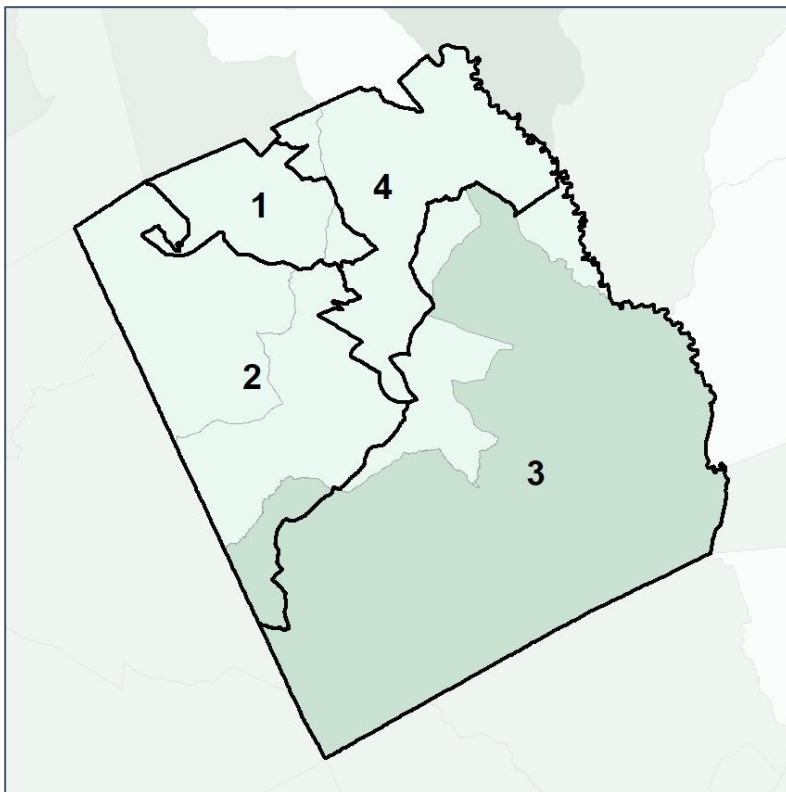


# Wilkinson Co. Commission & School Board

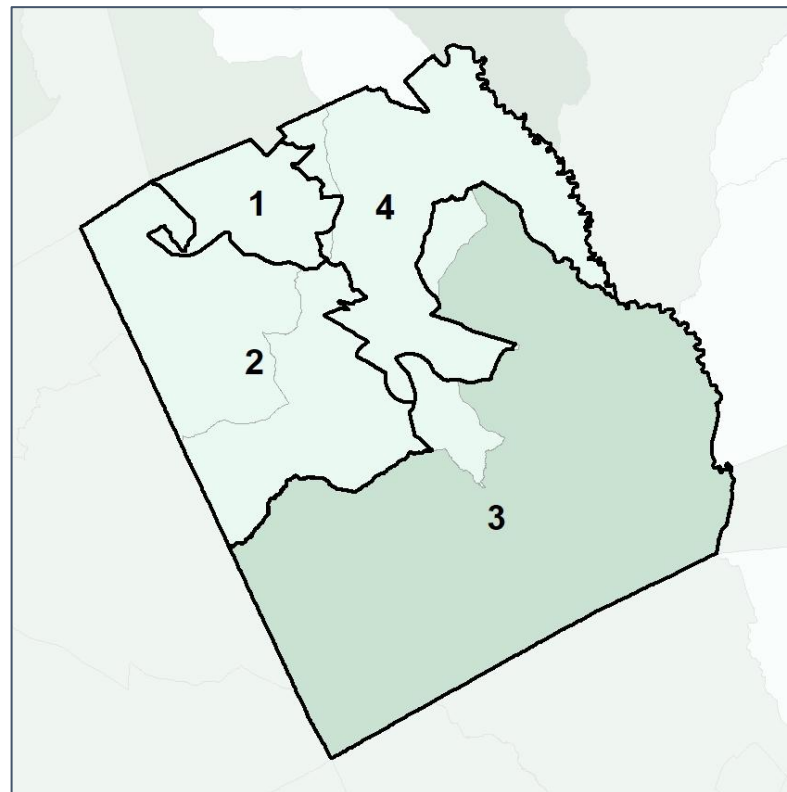
## Median Household Income by Census Tract



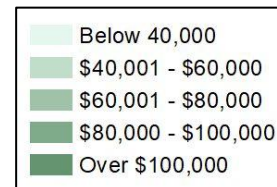
2012 Map



2022 Map\*



	1	2	3	4	1*	2*	3*	4*	County
Population	2,310	2,259	2,230	2,078	2,238	2,210	2,234	2,195	8,877
% API	1%	0%	0%	0%	1%	0%	0%	0%	0%
% Black	13%	54%	24%	53%	13%	54%	23%	53%	36%
% Latino	2%	2%	2%	5%	2%	2%	2%	5%	3%
% Other	5%	3%	4%	3%	5%	3%	4%	3%	4%
% White	79%	42%	69%	39%	80%	41%	70%	39%	58%
Median Income	\$47,000	\$32,000	\$38,000	\$38,000	\$47,000	\$32,000	\$38,000	\$38,000	\$37,000
% Renter	23%	26%	24%	17%	23%	26%	24%	17%	23%
% Youth	17%	18%	12%	25%	17%	18%	12%	25%	18%

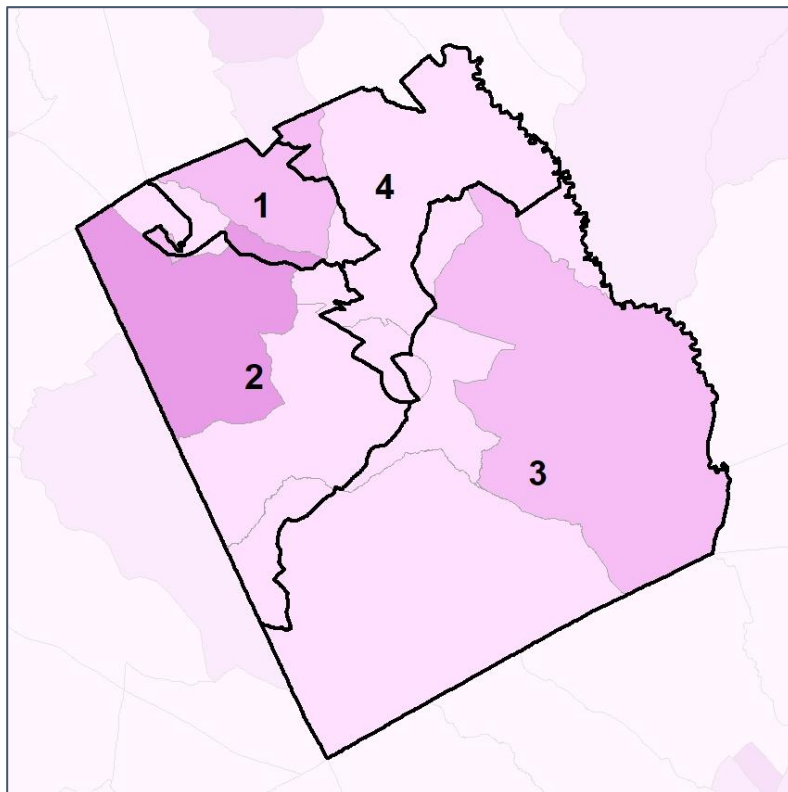


# Wilkinson Co. Commission & School Board

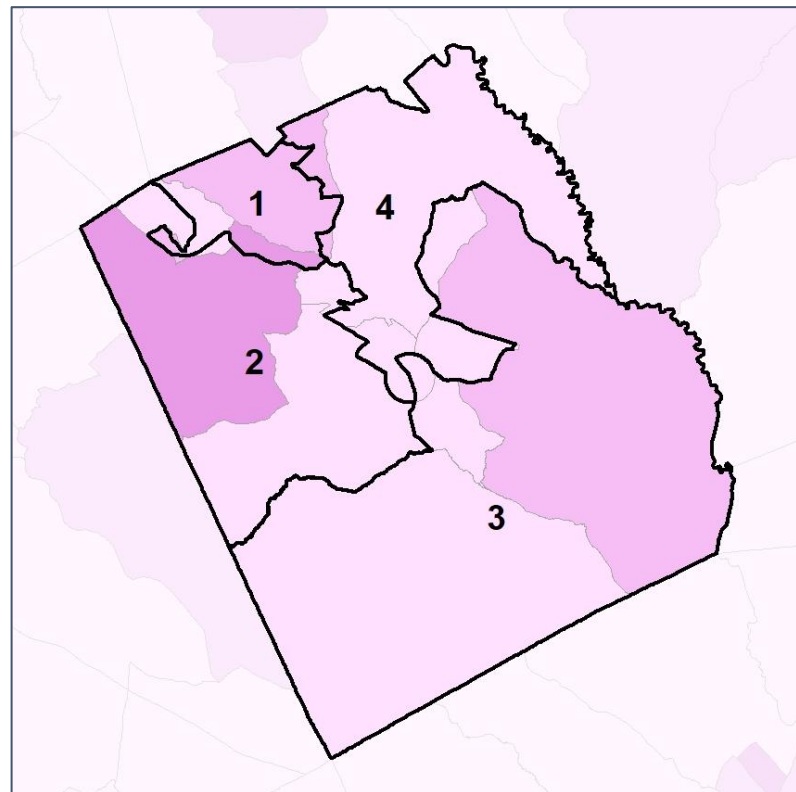
## % Renter by Census Block Group



### 2012 Map



### 2022 Map\*



	1	2	3	4	1*	2*	3*	4*	County
Population	2,310	2,259	2,230	2,078	2,238	2,210	2,234	2,195	8,877
% API	1%	0%	0%	0%	1%	0%	0%	0%	0%
% Black	13%	54%	24%	53%	13%	54%	23%	53%	36%
% Latino	2%	2%	2%	5%	2%	2%	2%	5%	3%
% Other	5%	3%	4%	3%	5%	3%	4%	3%	4%
% White	79%	42%	69%	39%	80%	41%	70%	39%	58%
Median Income	\$47,000	\$32,000	\$38,000	\$38,000	\$47,000	\$32,000	\$38,000	\$38,000	\$37,000
<b>% Renter</b>	<b>23%</b>	<b>26%</b>	<b>24%</b>	<b>17%</b>	<b>23%</b>	<b>26%</b>	<b>24%</b>	<b>17%</b>	<b>23%</b>
% Youth	17%	18%	12%	25%	17%	18%	12%	25%	18%



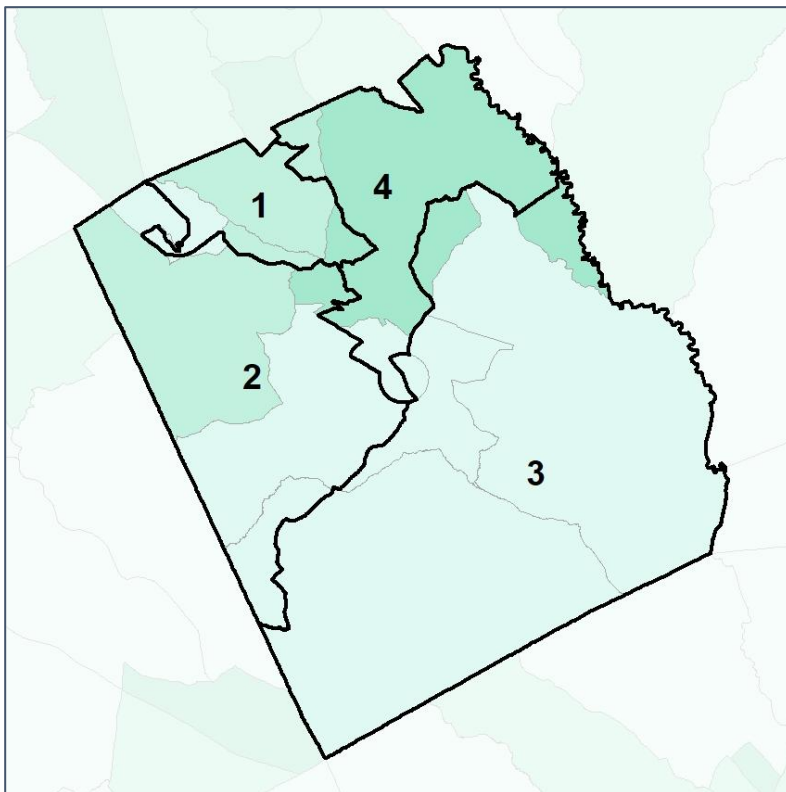
Source:  
2020 Decennial Census  
2020 ACS 5-Year Dataset

# Wilkinson Co. Commission & School Board

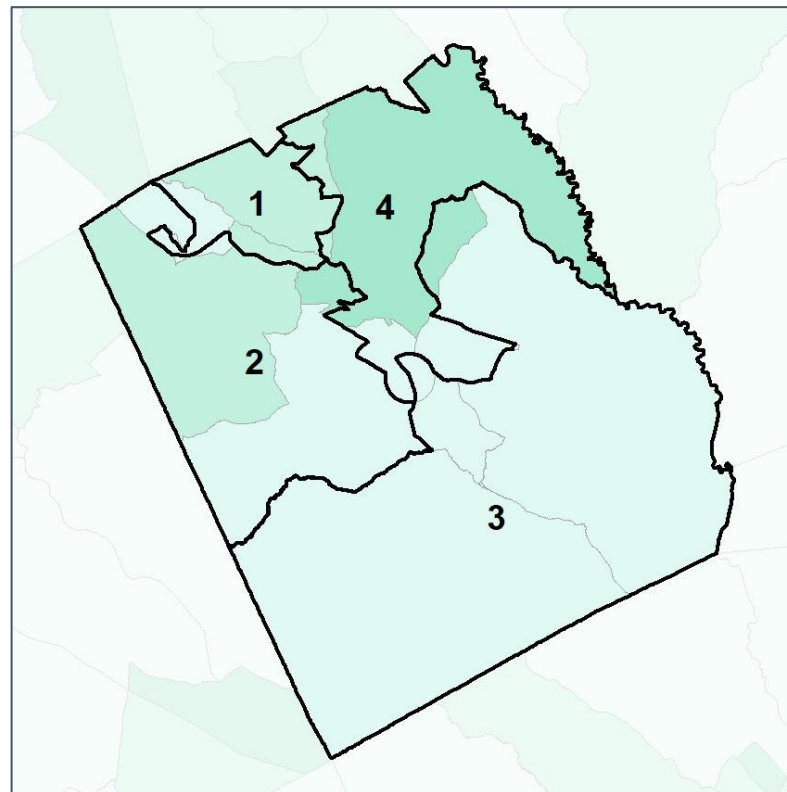
## % Youth (18-34) by Census Block Group



2012 Map



2022 Map\*



	1	2	3	4	1*	2*	3*	4*	County
Population	2,310	2,259	2,230	2,078	2,238	2,210	2,234	2,195	8,877
% API	1%	0%	0%	0%	1%	0%	0%	0%	0%
% Black	13%	54%	24%	53%	13%	54%	23%	53%	36%
% Latino	2%	2%	2%	5%	2%	2%	2%	5%	3%
% Other	5%	3%	4%	3%	5%	3%	4%	3%	4%
% White	79%	42%	69%	39%	80%	41%	70%	39%	58%
Median Income	\$47,000	\$32,000	\$38,000	\$38,000	\$47,000	\$32,000	\$38,000	\$38,000	\$37,000
% Renter	23%	26%	24%	17%	23%	26%	24%	17%	23%
% Youth	17%	18%	12%	25%	17%	18%	12%	25%	18%

