



Demographic Overview

Racial Breakdown in Whitfield County

Whitfield County	2010	2020	% Change
Total Population	102,599	102,864	0%
AAPI	1,321	1,413	7%
Black	3,631	3,553	-2%
Latino	32,471	36,916	14%
Other/Mixed Race	1,358	3,107	129%
POC	38,781	44,989	16%
White	63,818	57,875	-9%

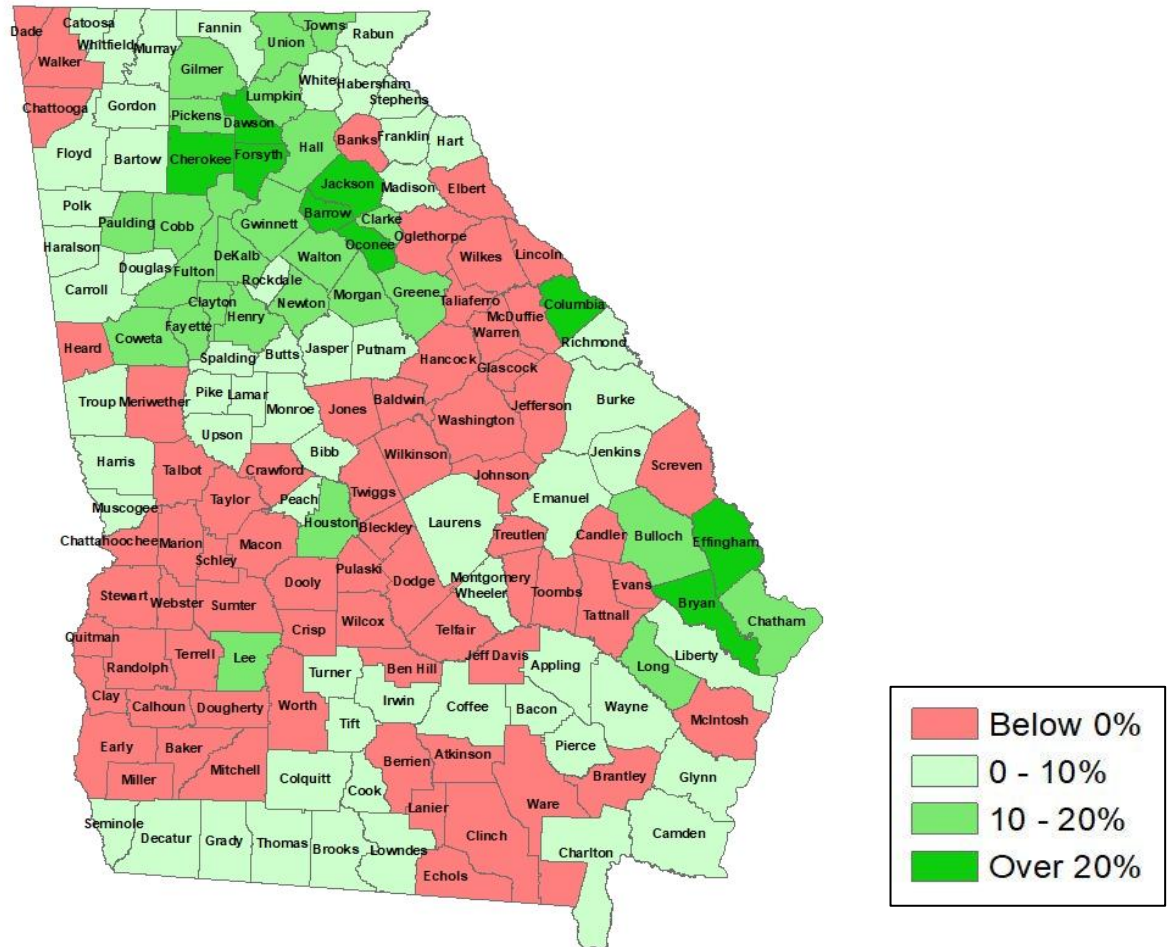
*Note: The use of "Other" in these statistics combines those who identify as Native American, Mixed Race, and "Other" race





Population Gain

Change in Population in Georgia by County



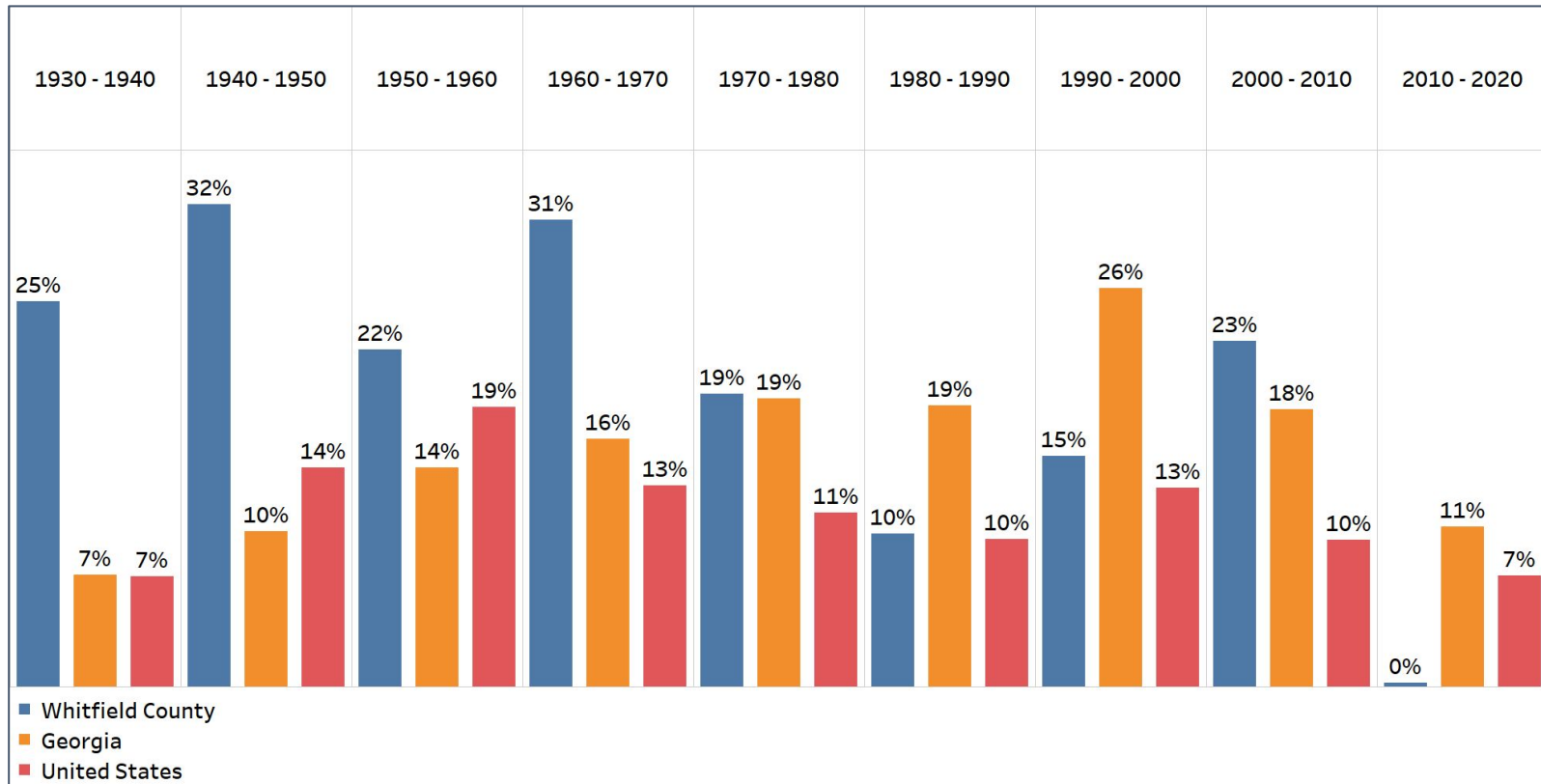
- Georgia is experiencing rapid population growth in the Atlanta, Augusta, and Savannah regions of the state





Population Gain

Change in Population by Decade



- Since 1930 Whitfield County has experienced a population growth until the last census report
- Whitfield County population growth rate has been at least 10%

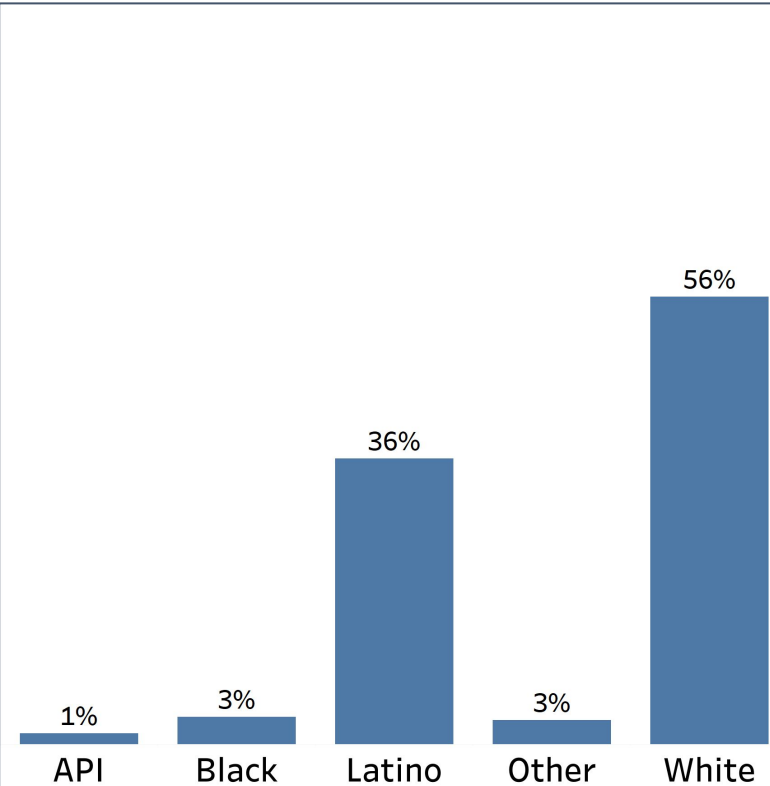


Demographics

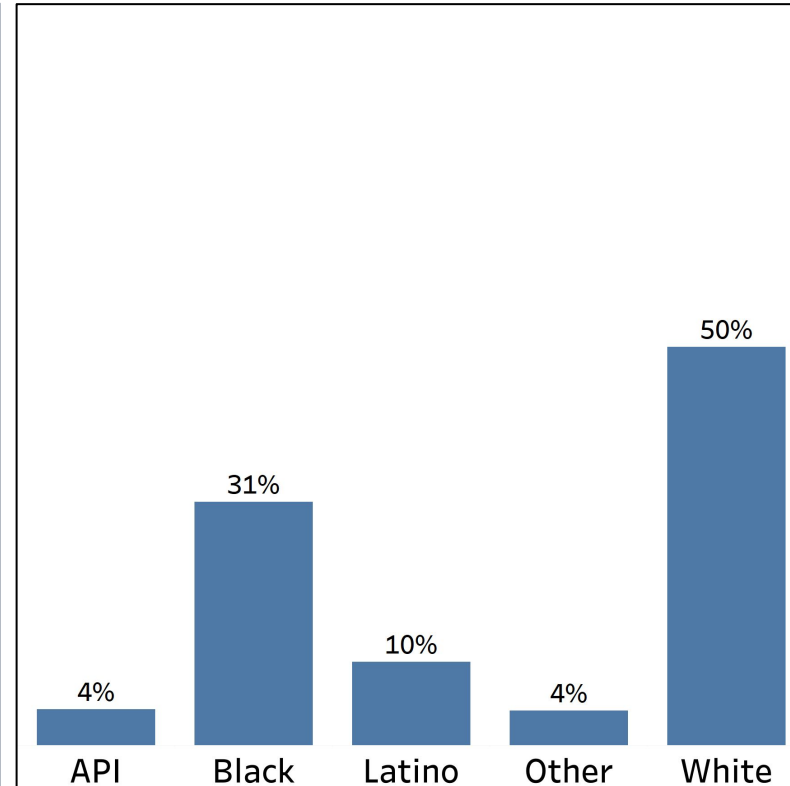
Comparison between Whitfield County and Georgia



Whitfield County



Georgia



- In contrast to the statewide average, Whitfield County Latino population is the second largest demographic group
- The Black population of Whitfield County is drastically below the statewide average

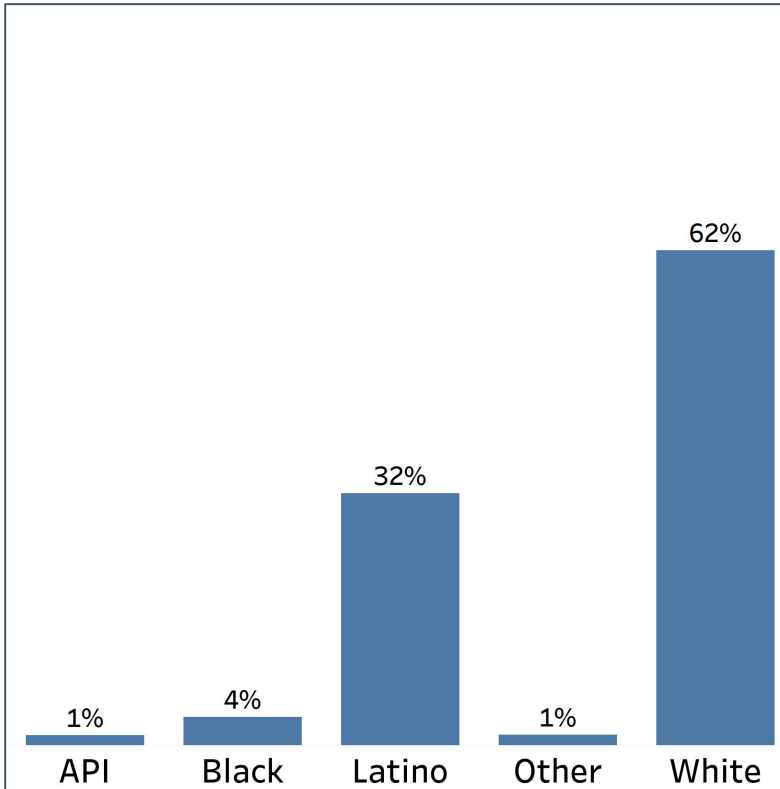


Demographics

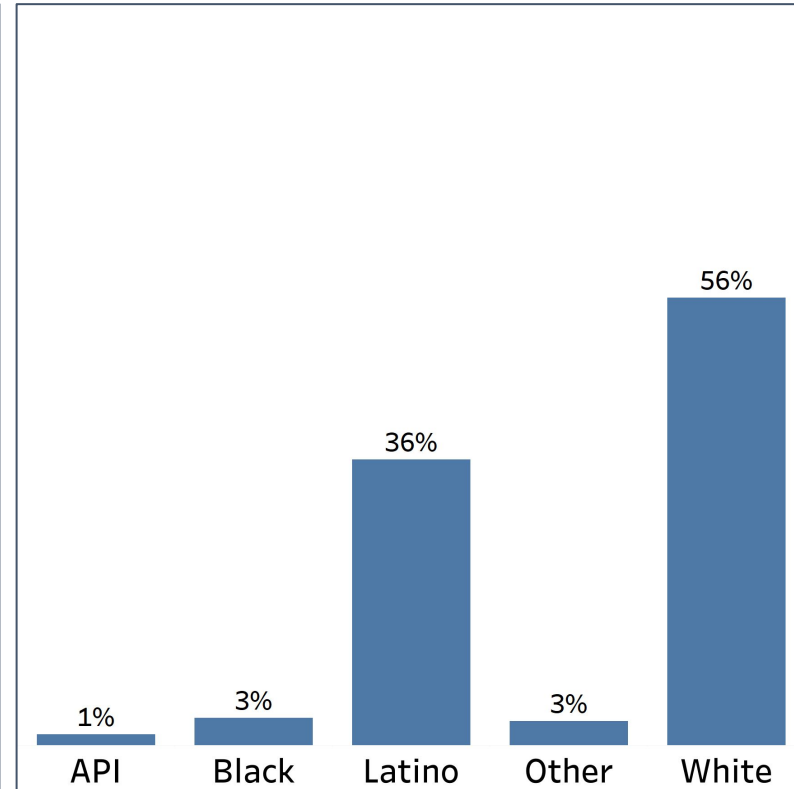
2010 vs 2020 Demographics in Whitfield County



Whitfield County 2010



Whitfield County 2020



- Whitfield County Black and White population declined, but the White population had a higher percentage rate
- The Latino and “other” population both had a population growth

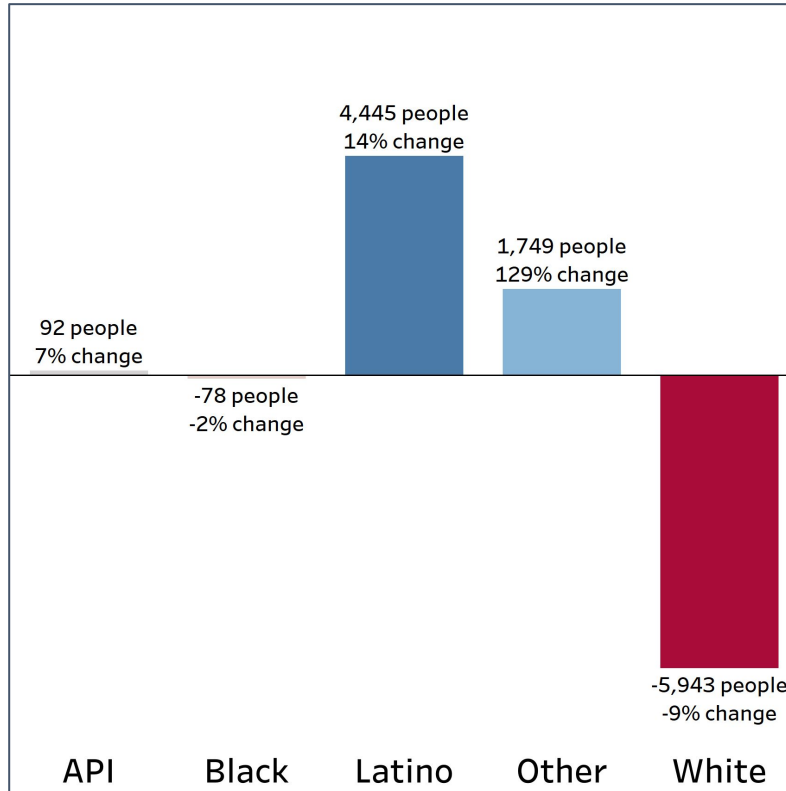


Demographics

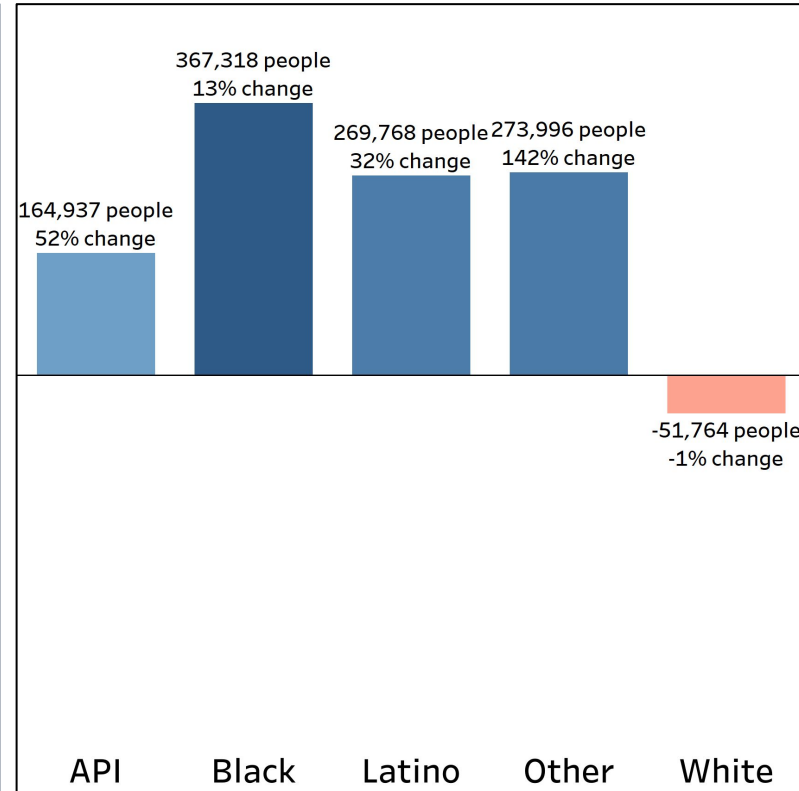
Population Change by Race (2020 - 2010)



Whitfield County



Georgia



- Whitfield County Black and White population experienced a decline with the White population having the higher percentage rate
- The API, Latino, and “Other” had a lower percentage growth rate than their statewide average

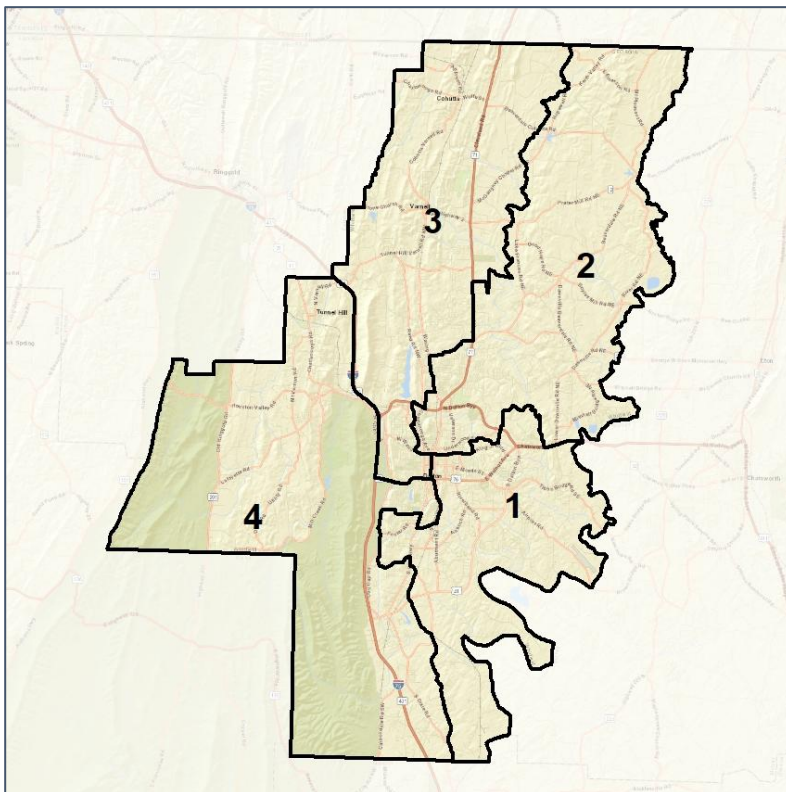


Whitfield County Commission

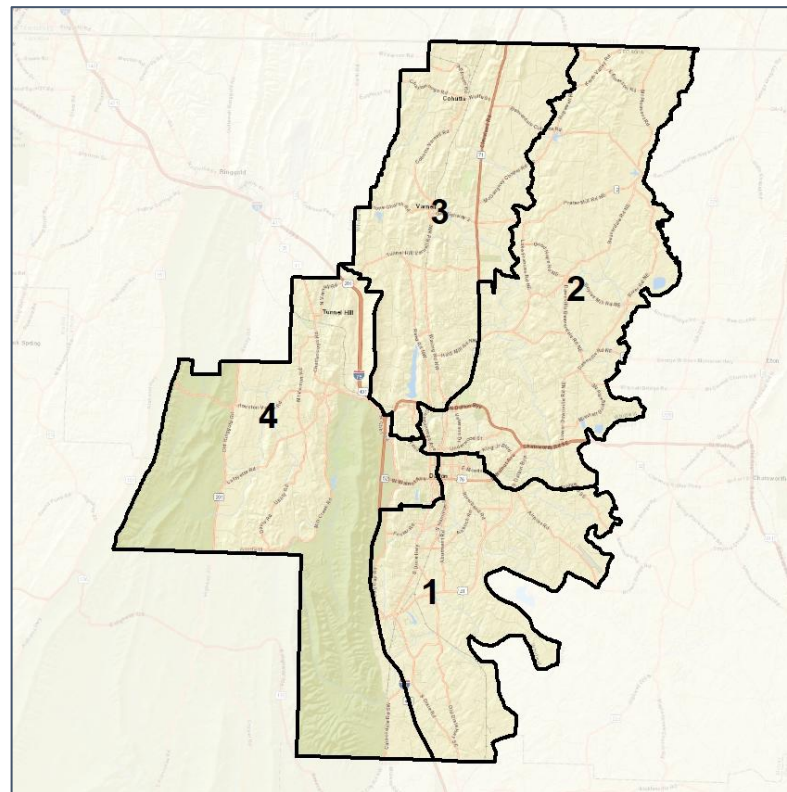
Context



2012 Map



2022 Map*



	1	2	3	4	1*	2*	3*	4*	County
Population	24,746	26,097	26,768	25,253	25,958	25,714	25,695	25,497	102,864
API	0%	1%	2%	2%	1%	1%	2%	2%	1%
Black	4%	3%	4%	2%	4%	3%	4%	3%	3%
Latino	57%	46%	22%	19%	53%	49%	22%	19%	36%
Other	2%	3%	4%	3%	2%	2%	4%	4%	3%
White	37%	47%	68%	73%	40%	45%	68%	72%	56%
Population Gain	*	*	*	*	1,212	-383	-1,073	244	*
Population % Gain	*	*	*	*	5%	-1%	-4%	1%	*
Net POC Gain	*	*	*	*	-165	335	-494	324	*
Net POC % Gain	*	*	*	*	-1%	2%	-6%	5%	*

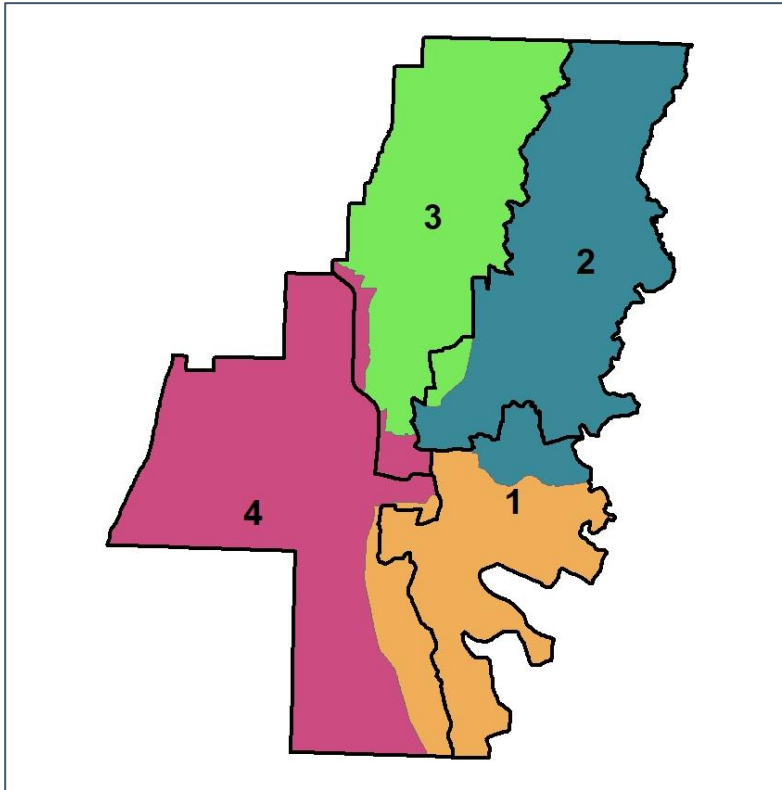


Whitfield County Commission

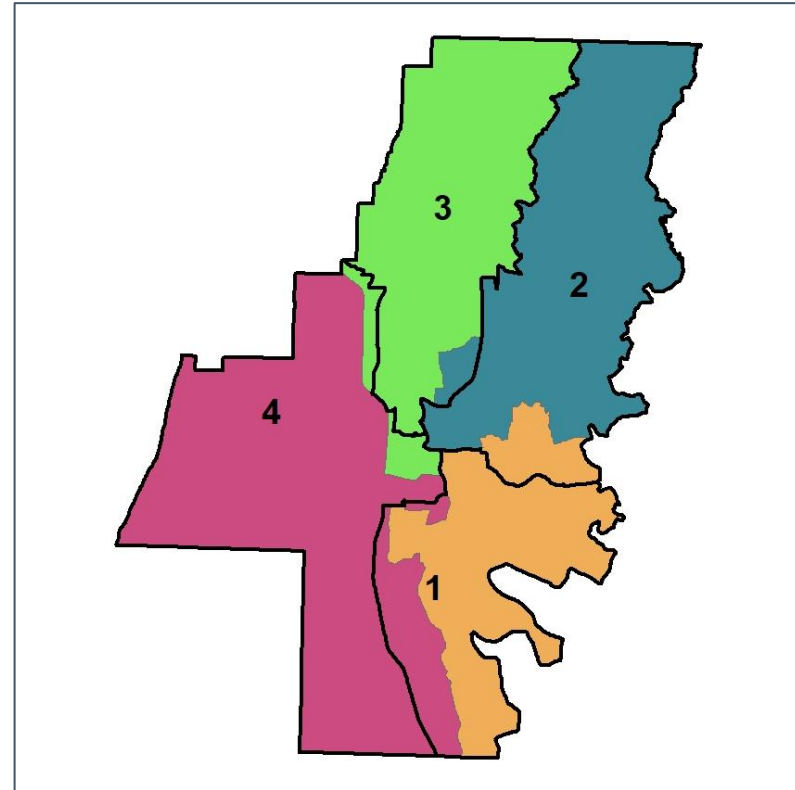
Changes in Redistricting



2012 Map (2022 in Colors)



2022 Map* (2012 in Colors)



	1	2	3	4	1*	2*	3*	4*	County
Population	24,746	26,097	26,768	25,253	25,958	25,714	25,695	25,497	102,864
API	0%	1%	2%	2%	1%	1%	2%	2%	1%
Black	4%	3%	4%	2%	4%	3%	4%	3%	3%
Latino	57%	46%	22%	19%	53%	49%	22%	19%	36%
Other	2%	3%	4%	3%	2%	2%	4%	4%	3%
White	37%	47%	68%	73%	40%	45%	68%	72%	56%
Population Gain	*	*	*	*	1,212	-383	-1,073	244	*
Population % Gain	*	*	*	*	5%	-1%	-4%	1%	*
Net POC Gain	*	*	*	*	-165	335	-494	324	*
Net POC % Gain	*	*	*	*	-1%	2%	-6%	5%	*

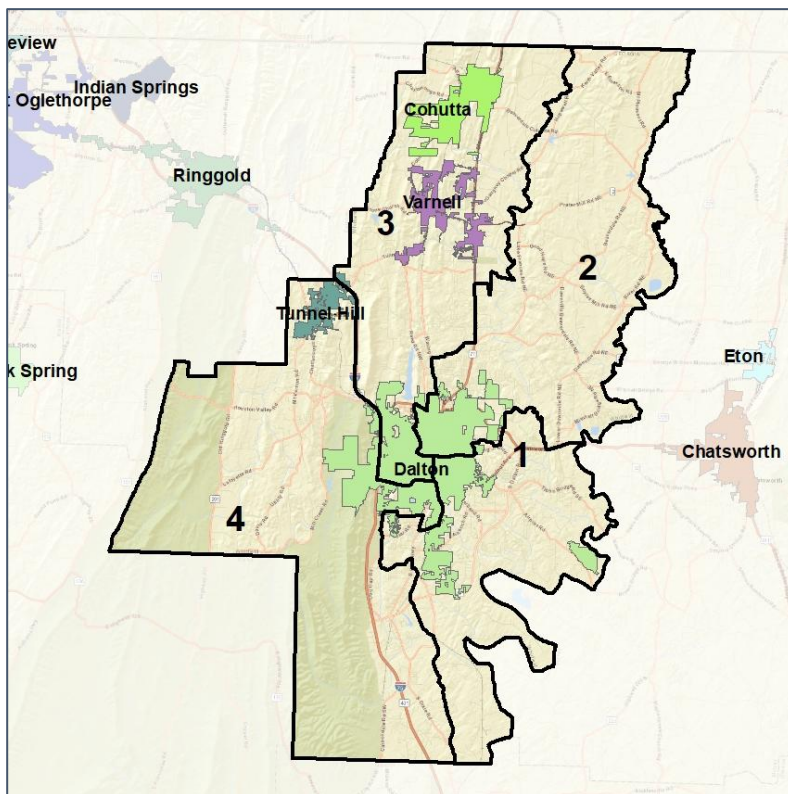


Whitfield County Commission

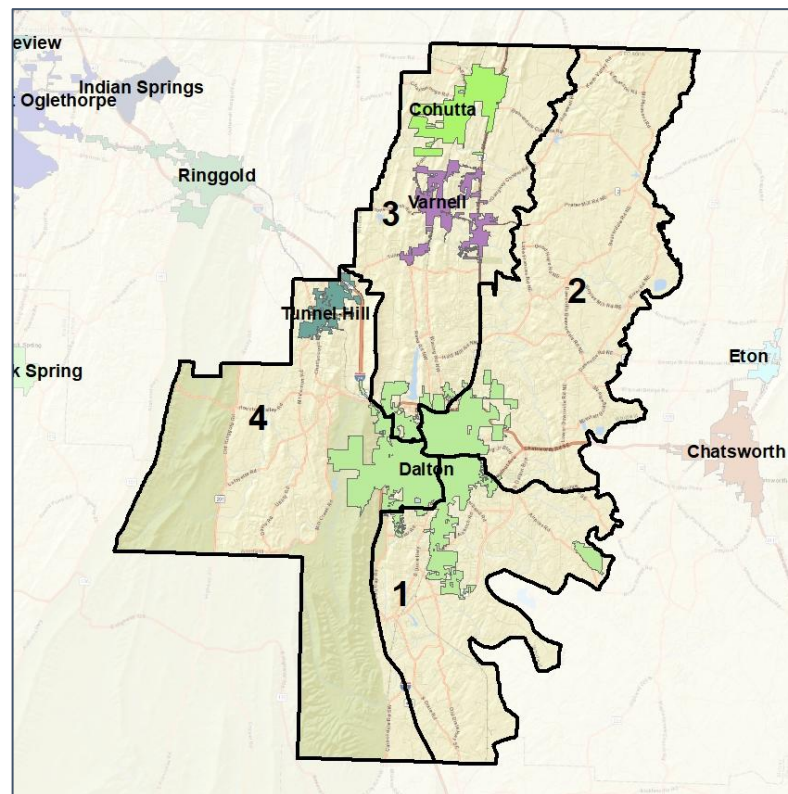
Cities and Places



2012 Map



2022 Map*



	1	2	3	4	1*	2*	3*	4*	County
Population	24,746	26,097	26,768	25,253	25,958	25,714	25,695	25,497	102,864
API	0%	1%	2%	2%	1%	1%	2%	2%	1%
Black	4%	3%	4%	2%	4%	3%	4%	3%	3%
Latino	57%	46%	22%	19%	53%	49%	22%	19%	36%
Other	2%	3%	4%	3%	2%	2%	4%	4%	3%
White	37%	47%	68%	73%	40%	45%	68%	72%	56%
Population Gain	*	*	*	*	1,212	-383	-1,073	244	*
Population % Gain	*	*	*	*	5%	-1%	-4%	1%	*
Net POC Gain	*	*	*	*	-165	335	-494	324	*
Net POC % Gain	*	*	*	*	-1%	2%	-6%	5%	*

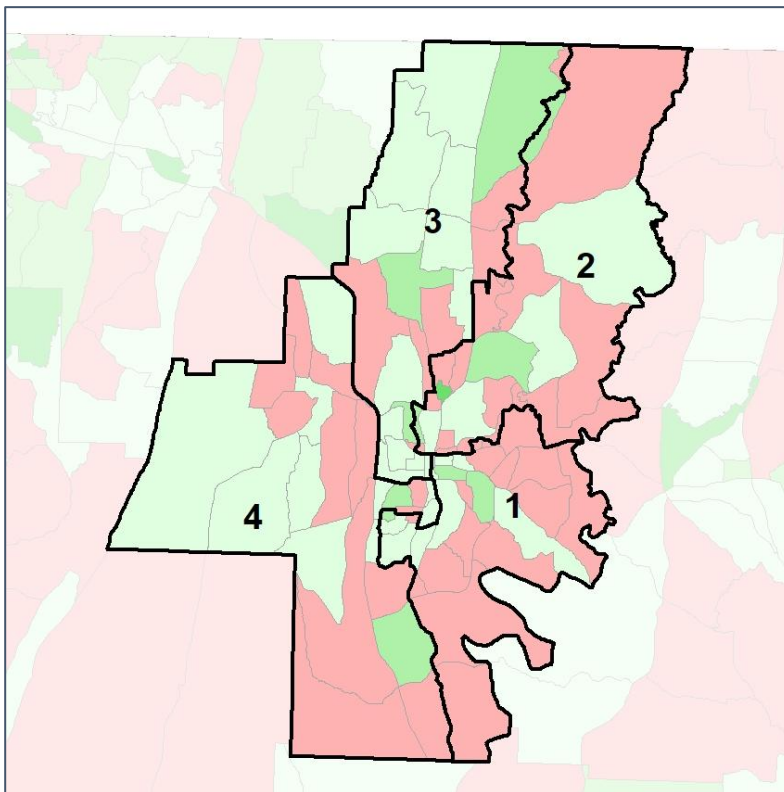


Whitfield County Commission

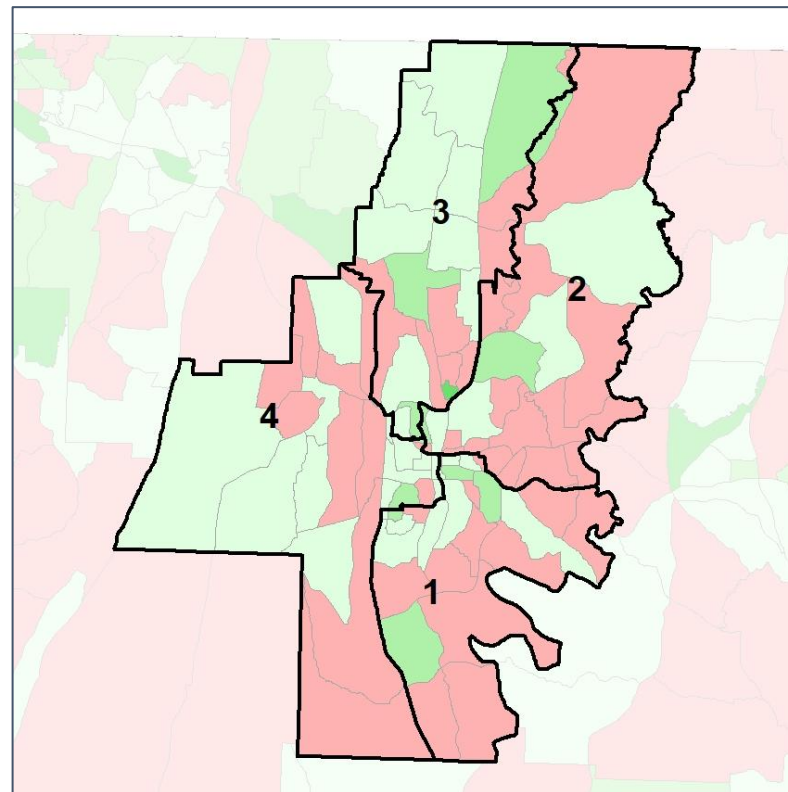
Net Gain in Population (2010 - 2020)



2012 Map



2022 Map*



	1	2	3	4	1*	2*	3*	4*	County
Population	24,746	26,097	26,768	25,253	25,958	25,714	25,695	25,497	102,864
API	0%	1%	2%	2%	1%	1%	2%	2%	1%
Black	4%	3%	4%	2%	4%	3%	4%	3%	3%
Latino	57%	46%	22%	19%	53%	49%	22%	19%	36%
Other	2%	3%	4%	3%	2%	2%	4%	4%	3%
White	37%	47%	68%	73%	40%	45%	68%	72%	56%
Population Gain	*	*	*	*	1,212	-383	-1,073	244	*
Population % Gain	*	*	*	*	5%	-1%	-4%	1%	*
Net POC Gain	*	*	*	*	-165	335	-494	324	*
Net POC % Gain	*	*	*	*	-1%	2%	-6%	5%	*

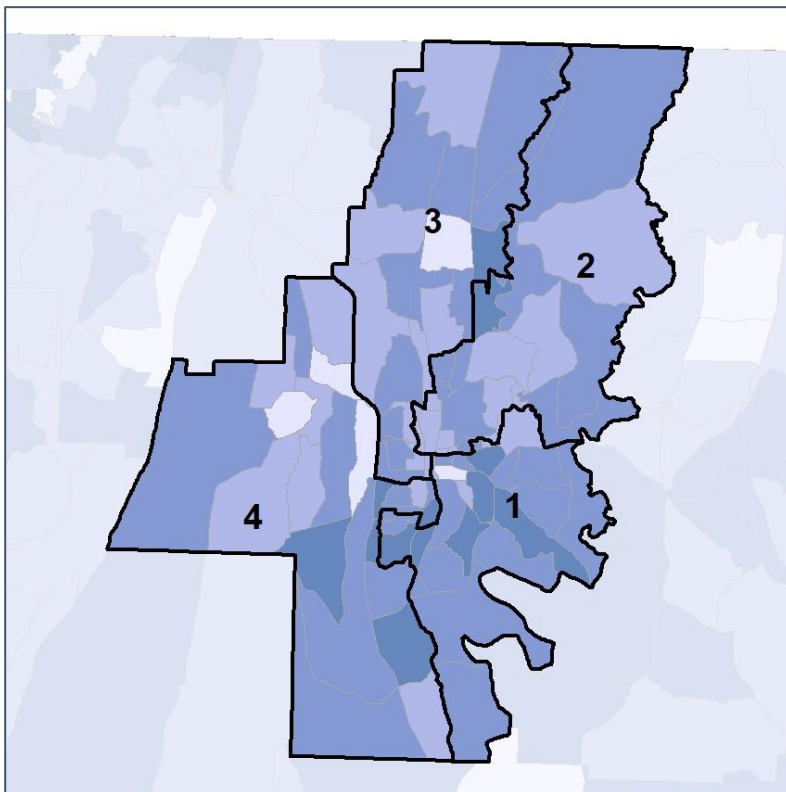


Whitfield County Commission

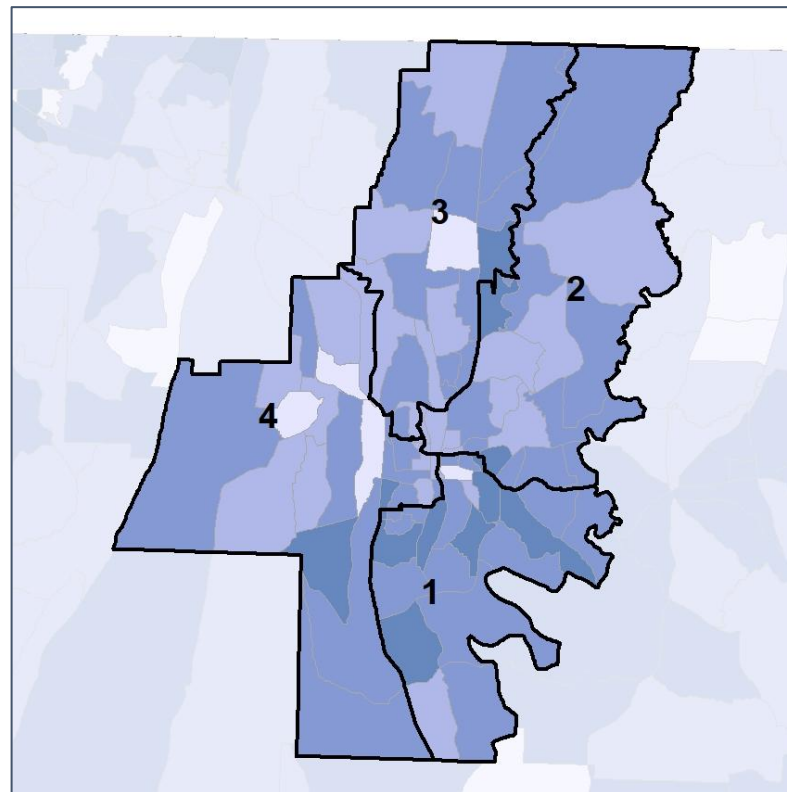
Net Gain in % POC (2020 - 2010) by Census Block Group



2012 Map



2022 Map*



	1	2	3	4	1*	2*	3*	4*	County
Population	24,746	26,097	26,768	25,253	25,958	25,714	25,695	25,497	102,864
API	0%	1%	2%	2%	1%	1%	2%	2%	1%
Black	4%	3%	4%	2%	4%	3%	4%	3%	3%
Latino	57%	46%	22%	19%	53%	49%	22%	19%	36%
Other	2%	3%	4%	3%	2%	2%	4%	4%	3%
White	37%	47%	68%	73%	40%	45%	68%	72%	56%
Population Gain	*	*	*	*	1,212	-383	-1,073	244	*
Population % Gain	*	*	*	*	5%	-1%	-4%	1%	*
Net POC Gain	*	*	*	*	-165	335	-494	324	*
Net POC % Gain	*	*	*	*	-1%	2%	-6%	5%	*

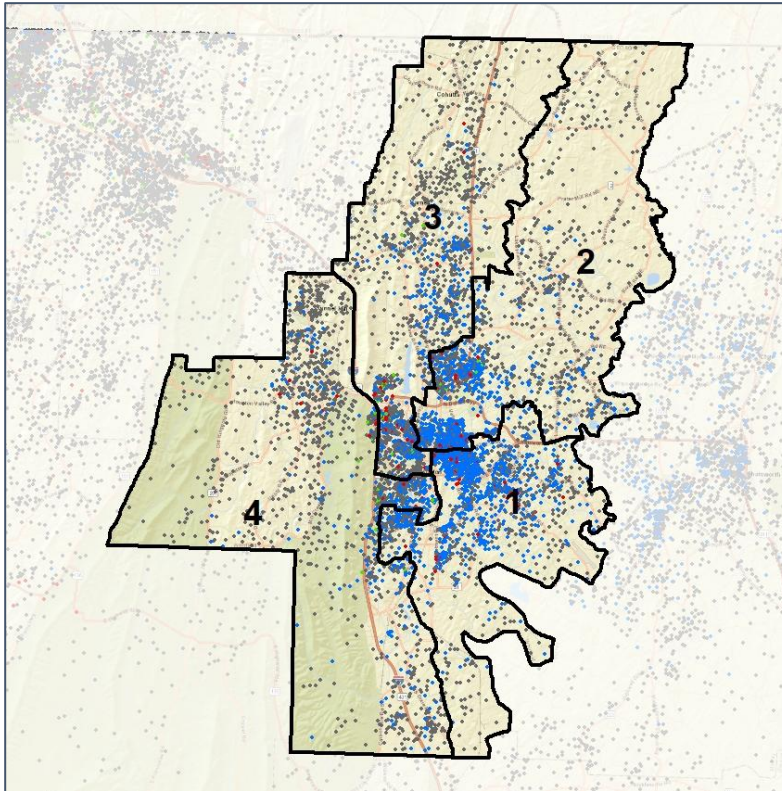


Whitfield County Commission

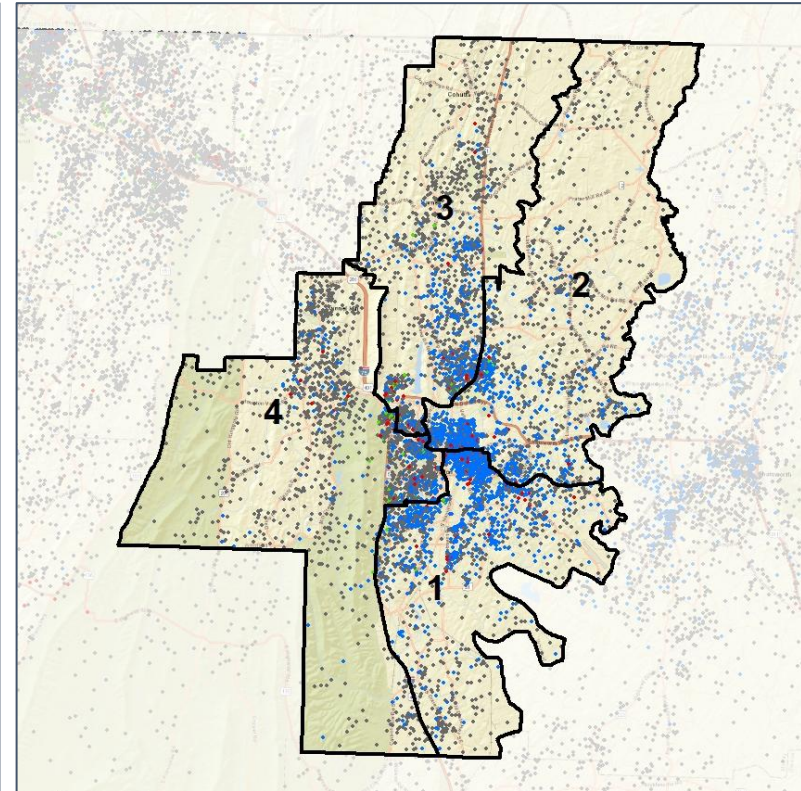
Population Density by Race



2012 Map



2022 Map*



	1	2	3	4	1*	2*	3*	4*	County
Population	24,746	26,097	26,768	25,253	25,958	25,714	25,695	25,497	102,864
API	99	211	526	577	209	143	477	584	1,413
% API	0%	1%	2%	2%	1%	1%	2%	2%	1%
Black	943	884	1,144	582	962	799	1,016	776	3,553
% Black	4%	3%	4%	2%	4%	3%	4%	3%	3%
Latino	14,091	12,026	5,951	4,848	13,700	12,567	5,716	4,933	36,916
% Latino	57%	46%	22%	19%	53%	49%	22%	19%	36%
Other	534	681	1,009	883	631	628	927	921	3,107
% Other	2%	3%	4%	3%	2%	2%	4%	4%	3%
White	9,079	12,295	18,138	18,363	10,456	11,577	17,559	18,283	57,875
% White	37%	47%	68%	73%	40%	45%	68%	72%	56%

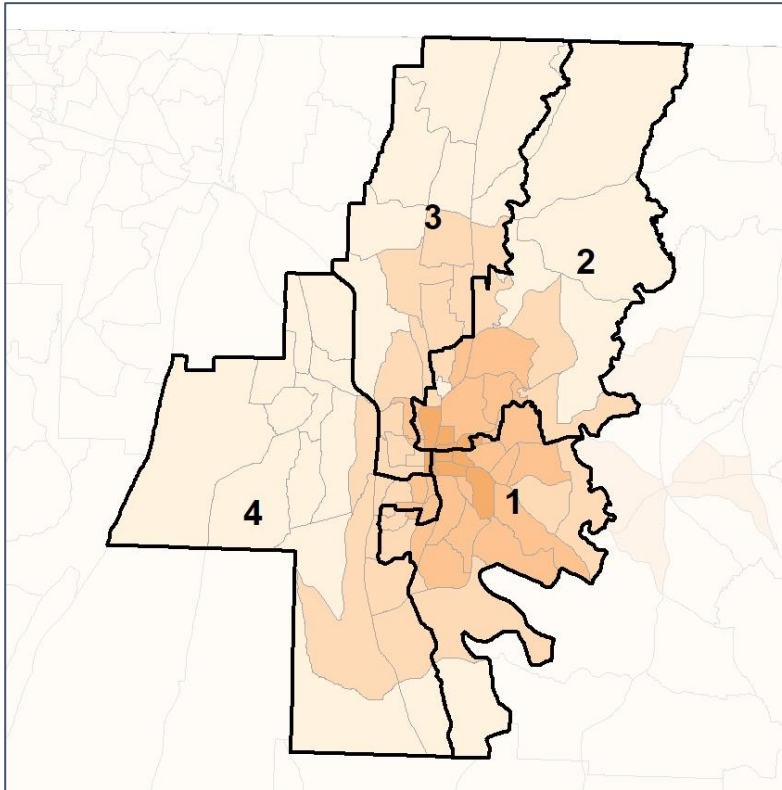


Whitfield County Commission

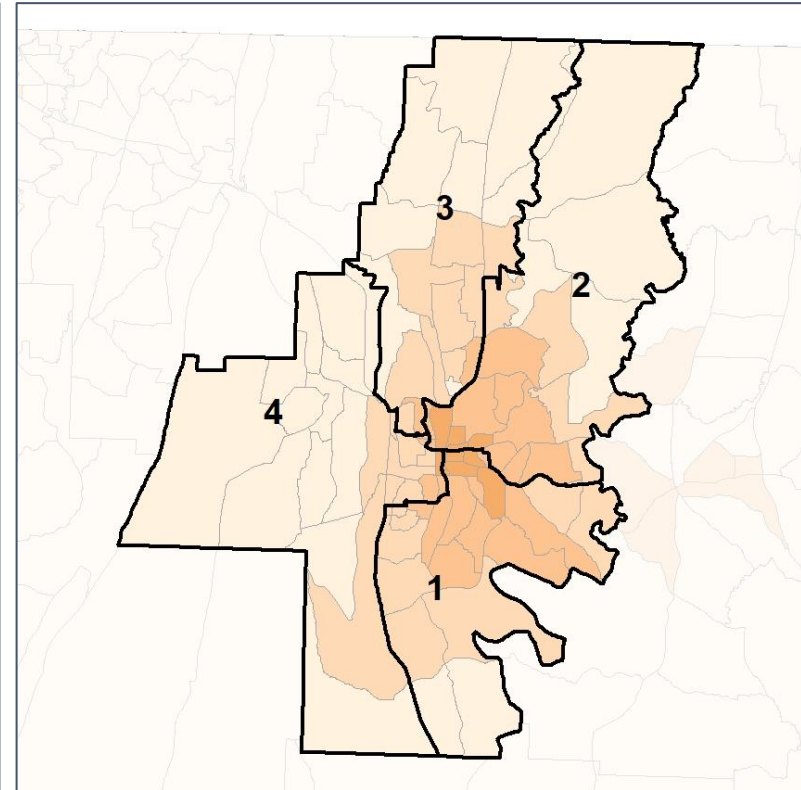
% People of Color by Census Block Group



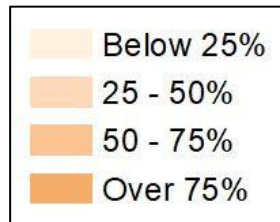
2012 Map



2022 Map*



	1	2	3	4	1*	2*	3*	4*	County
Population	24,746	26,097	26,768	25,253	25,958	25,714	25,695	25,497	102,864
API	99	211	526	577	209	143	477	584	1,413
% API	0%	1%	2%	2%	1%	1%	2%	2%	1%
Black	943	884	1,144	582	962	799	1,016	776	3,553
% Black	4%	3%	4%	2%	4%	3%	4%	3%	3%
Latino	14,091	12,026	5,951	4,848	13,700	12,567	5,716	4,933	36,916
% Latino	57%	46%	22%	19%	53%	49%	22%	19%	36%
Other	534	681	1,009	883	631	628	927	921	3,107
% Other	2%	3%	4%	3%	2%	2%	4%	4%	3%
White	9,079	12,295	18,138	18,363	10,456	11,577	17,559	18,283	57,875
% White	37%	47%	68%	73%	40%	45%	68%	72%	56%



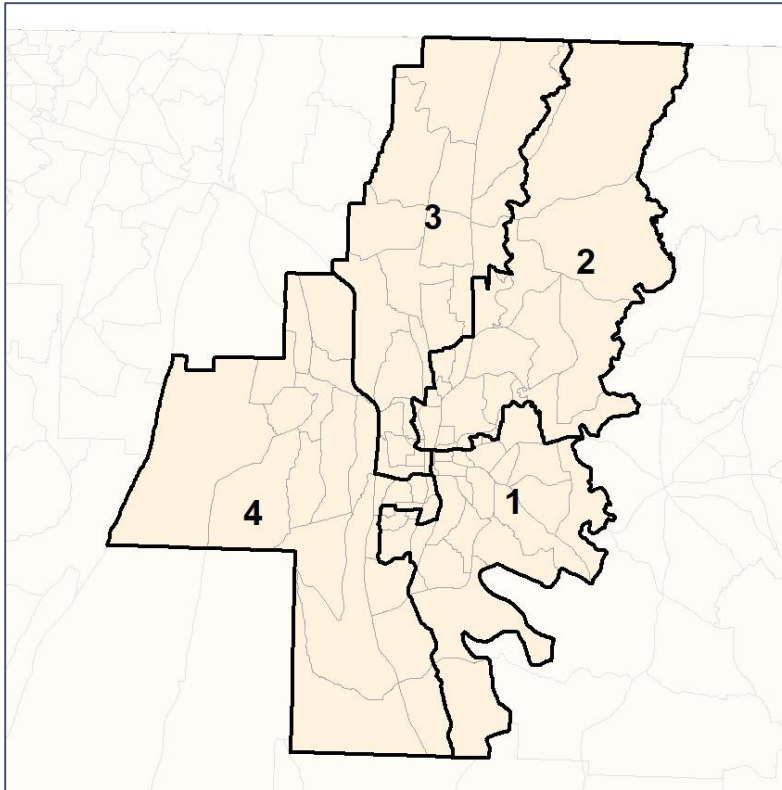
Source:
2020 Decennial Census
2020 ACS 5-Year Dataset

Whitfield County Commission

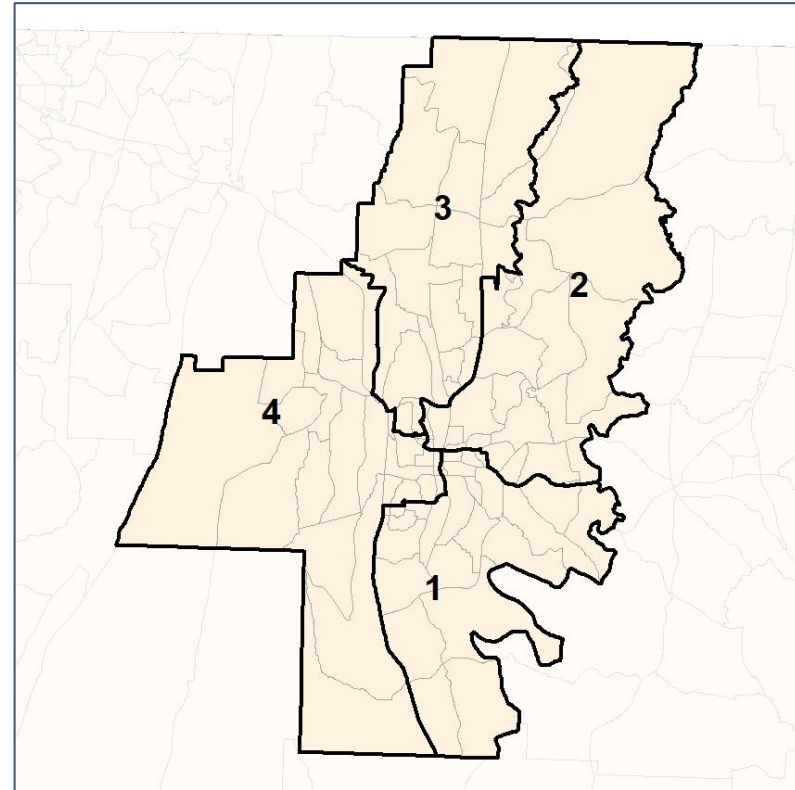
% API by Census Block Group



2012 Map



2022 Map*



	1	2	3	4	1*	2*	3*	4*	County
Population	24,746	26,097	26,768	25,253	25,958	25,714	25,695	25,497	102,864
API	99	211	526	577	209	143	477	584	1,413
% API	0%	1%	2%	2%	1%	1%	2%	2%	1%
Black	943	884	1,144	582	962	799	1,016	776	3,553
% Black	4%	3%	4%	2%	4%	3%	4%	3%	3%
Latino	14,091	12,026	5,951	4,848	13,700	12,567	5,716	4,933	36,916
% Latino	57%	46%	22%	19%	53%	49%	22%	19%	36%
Other	534	681	1,009	883	631	628	927	921	3,107
% Other	2%	3%	4%	3%	2%	2%	4%	4%	3%
White	9,079	12,295	18,138	18,363	10,456	11,577	17,559	18,283	57,875
% White	37%	47%	68%	73%	40%	45%	68%	72%	56%

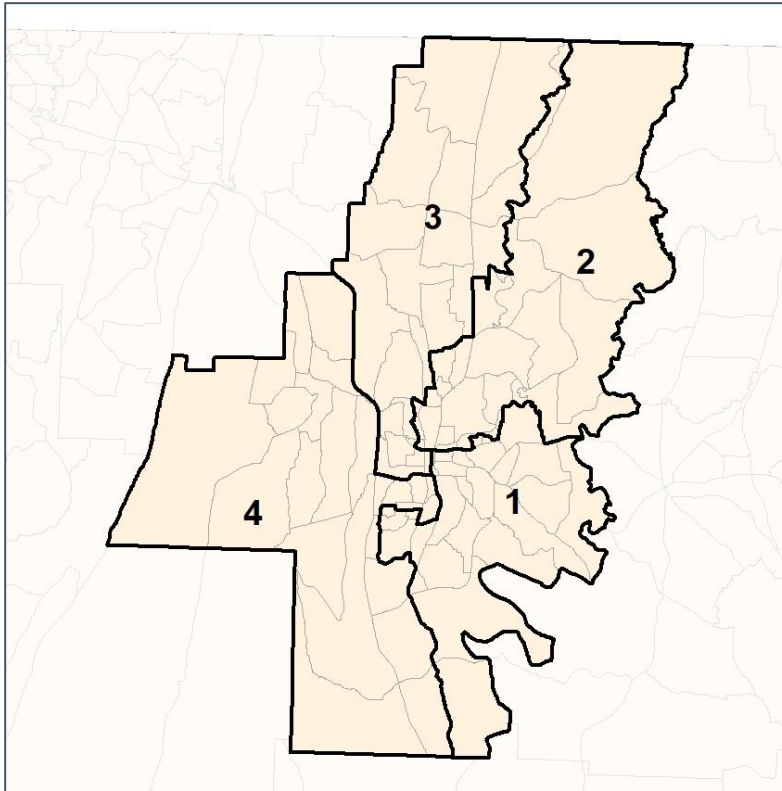


Whitfield County Commission

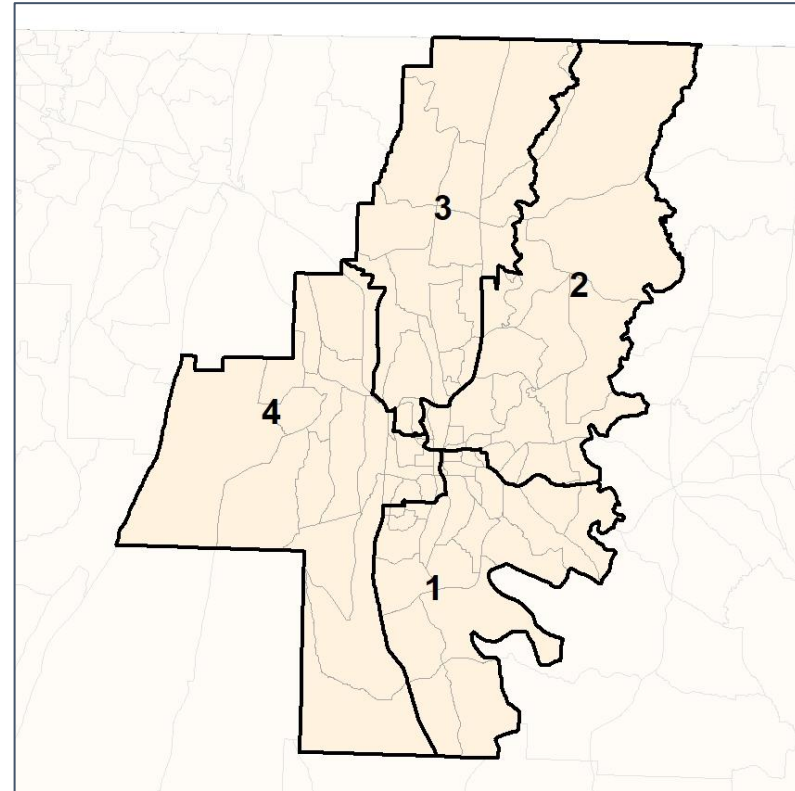
% Black by Census Block Group



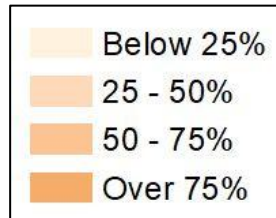
2012 Map



2022 Map*



	1	2	3	4	1*	2*	3*	4*	County
Population	24,746	26,097	26,768	25,253	25,958	25,714	25,695	25,497	102,864
API	99	211	526	577	209	143	477	584	1,413
% API	0%	1%	2%	2%	1%	1%	2%	2%	1%
Black	943	884	1,144	582	962	799	1,016	776	3,553
% Black	4%	3%	4%	2%	4%	3%	4%	3%	3%
Latino	14,091	12,026	5,951	4,848	13,700	12,567	5,716	4,933	36,916
% Latino	57%	46%	22%	19%	53%	49%	22%	19%	36%
Other	534	681	1,009	883	631	628	927	921	3,107
% Other	2%	3%	4%	3%	2%	2%	4%	4%	3%
White	9,079	12,295	18,138	18,363	10,456	11,577	17,559	18,283	57,875
% White	37%	47%	68%	73%	40%	45%	68%	72%	56%



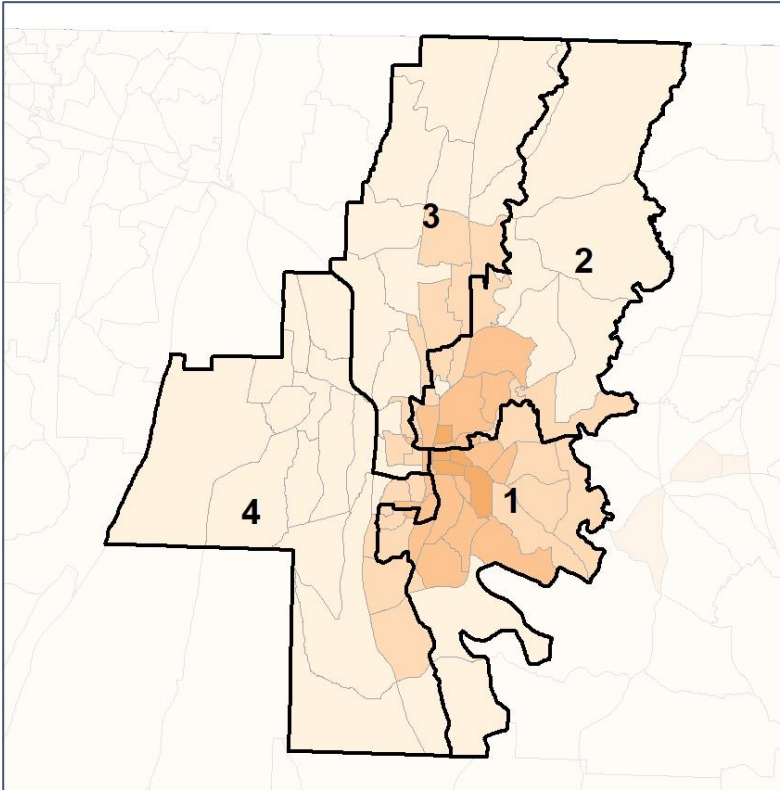
Source:
2020 Decennial Census
2020 ACS 5-Year Dataset

Whitfield County Commission

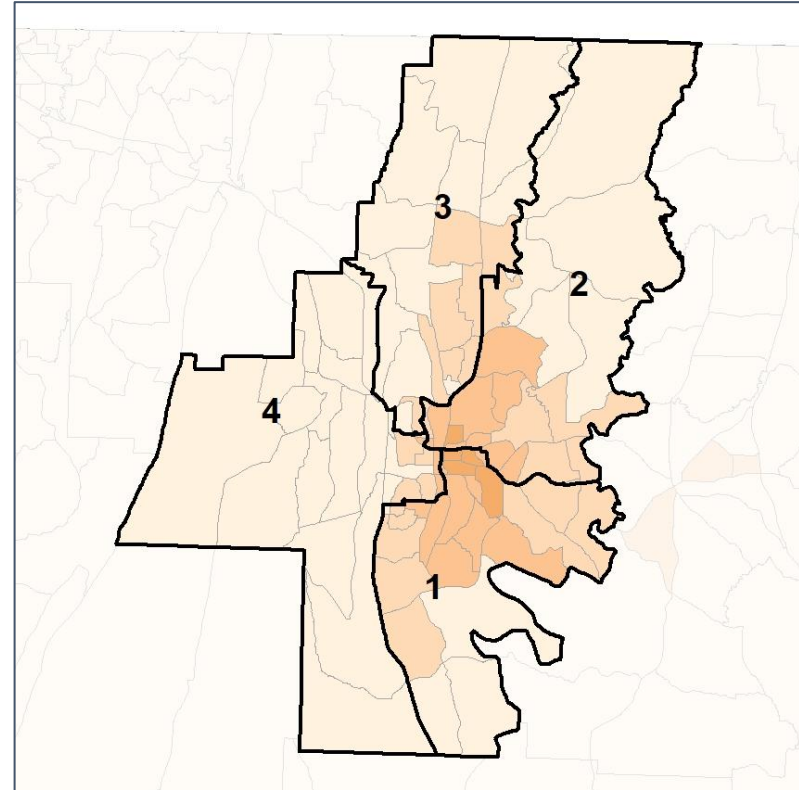
% Latino by Census Block Group



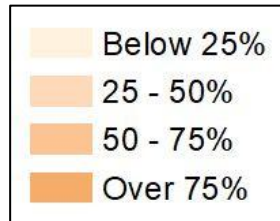
2012 Map



2022 Map*



	1	2	3	4	1*	2*	3*	4*	County
Population	24,746	26,097	26,768	25,253	25,958	25,714	25,695	25,497	102,864
API	99	211	526	577	209	143	477	584	1,413
% API	0%	1%	2%	2%	1%	1%	2%	2%	1%
Black	943	884	1,144	582	962	799	1,016	776	3,553
% Black	4%	3%	4%	2%	4%	3%	4%	3%	3%
Latino	14,091	12,026	5,951	4,848	13,700	12,567	5,716	4,933	36,916
% Latino	57%	46%	22%	19%	53%	49%	22%	19%	36%
Other	534	681	1,009	883	631	628	927	921	3,107
% Other	2%	3%	4%	3%	2%	2%	4%	4%	3%
White	9,079	12,295	18,138	18,363	10,456	11,577	17,559	18,283	57,875
% White	37%	47%	68%	73%	40%	45%	68%	72%	56%



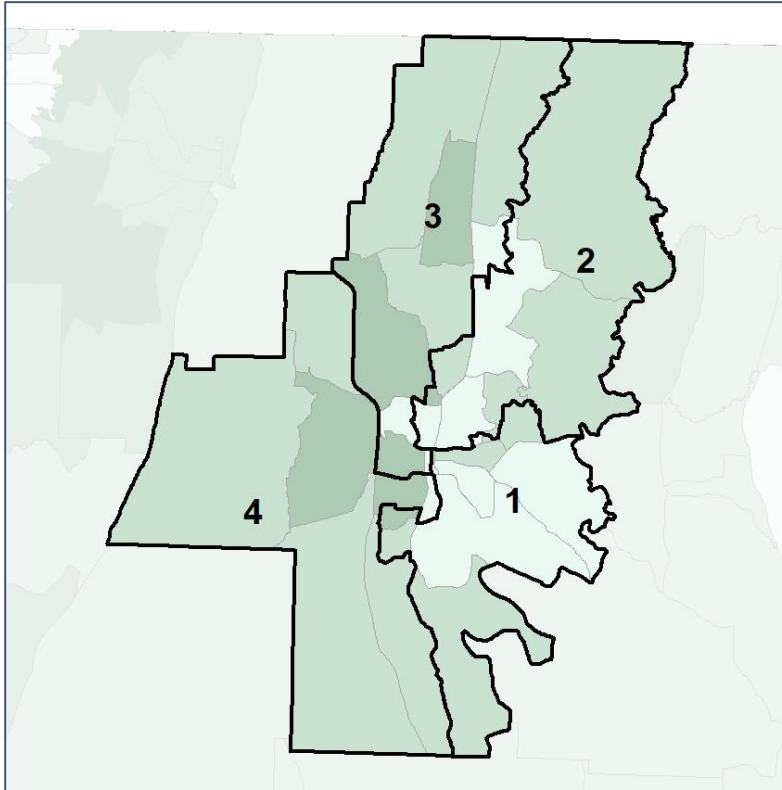
Source:
2020 Decennial Census
2020 ACS 5-Year Dataset

Whitfield County Commission

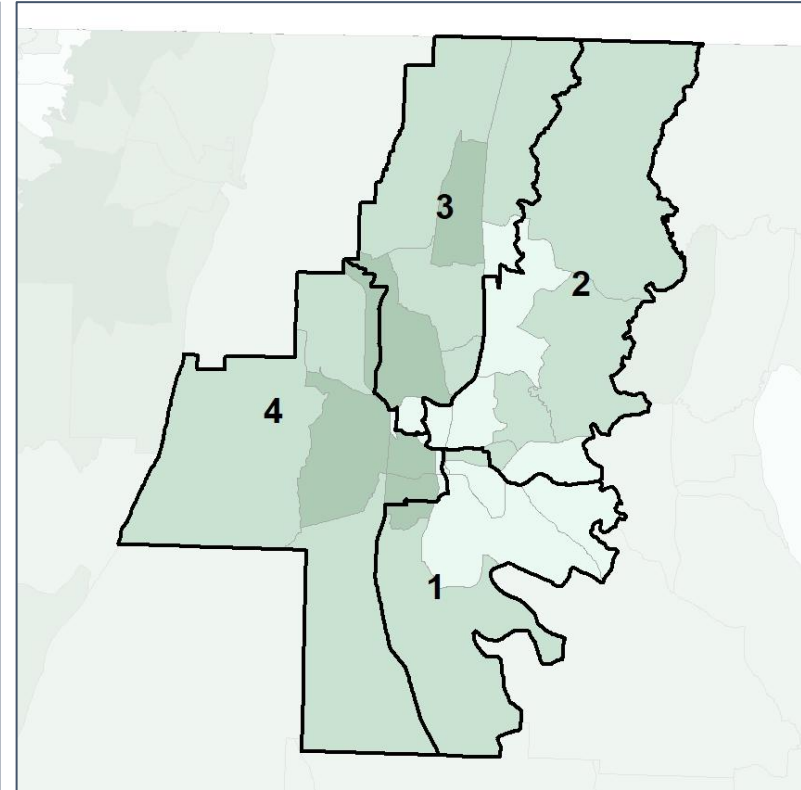
Median Household Income by Census Tract



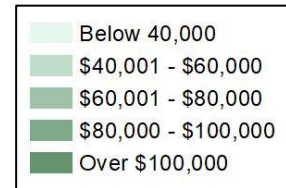
2012 Map



2022 Map*



	1	2	3	4	1*	2*	3*	4*	County
Population	24,746	26,097	26,768	25,253	25,958	25,714	25,695	25,497	102,864
% API	0%	1%	2%	2%	1%	1%	2%	2%	1%
% Black	4%	3%	4%	2%	4%	3%	4%	3%	3%
% Latino	57%	46%	22%	19%	53%	49%	22%	19%	36%
% Other	2%	3%	4%	3%	2%	2%	4%	4%	3%
% White	37%	47%	68%	73%	40%	45%	68%	72%	56%
Median Income	\$43,000	\$46,000	\$58,000	\$63,000	\$47,000	\$43,000	\$54,000	\$68,000	\$50,000
% Renter	44%	38%	34%	23%	44%	40%	33%	21%	34%
% Youth	25%	22%	23%	21%	25%	23%	22%	21%	23%

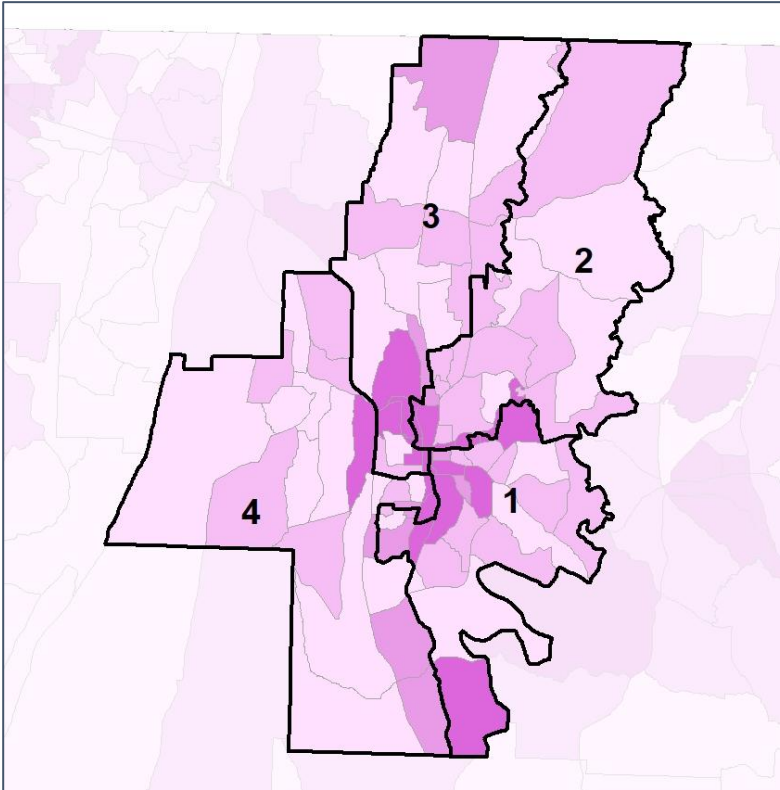


Whitfield County Commission

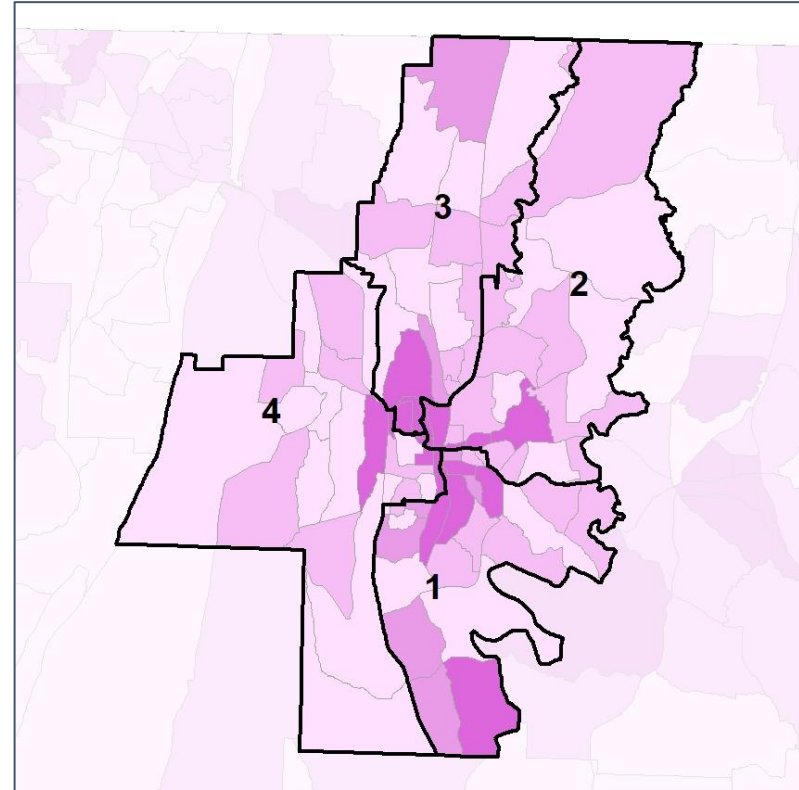
% Renter by Census Block Group



2012 Map



2022 Map*



	1	2	3	4	1*	2*	3*	4*	County
Population	24,746	26,097	26,768	25,253	25,958	25,714	25,695	25,497	102,864
% API	0%	1%	2%	2%	1%	1%	2%	2%	1%
% Black	4%	3%	4%	2%	4%	3%	4%	3%	3%
% Latino	57%	46%	22%	19%	53%	49%	22%	19%	36%
% Other	2%	3%	4%	3%	2%	2%	4%	4%	3%
% White	37%	47%	68%	73%	40%	45%	68%	72%	56%
Median Income	\$43,000	\$46,000	\$58,000	\$63,000	\$47,000	\$43,000	\$54,000	\$68,000	\$50,000
% Renter	44%	38%	34%	23%	44%	40%	33%	21%	34%
% Youth	25%	22%	23%	21%	25%	23%	22%	21%	23%

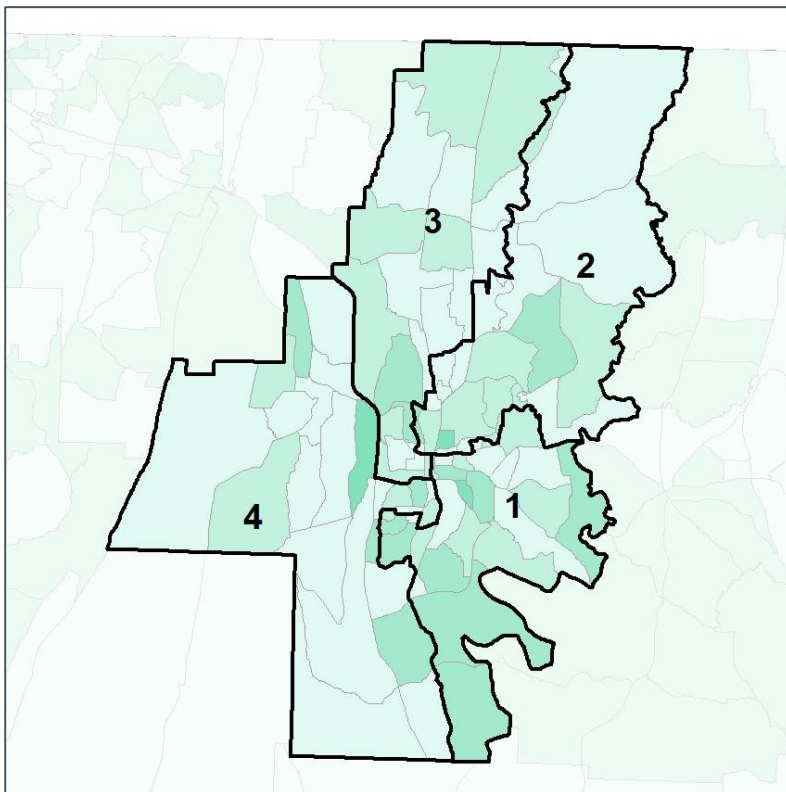


Whitfield County Commission

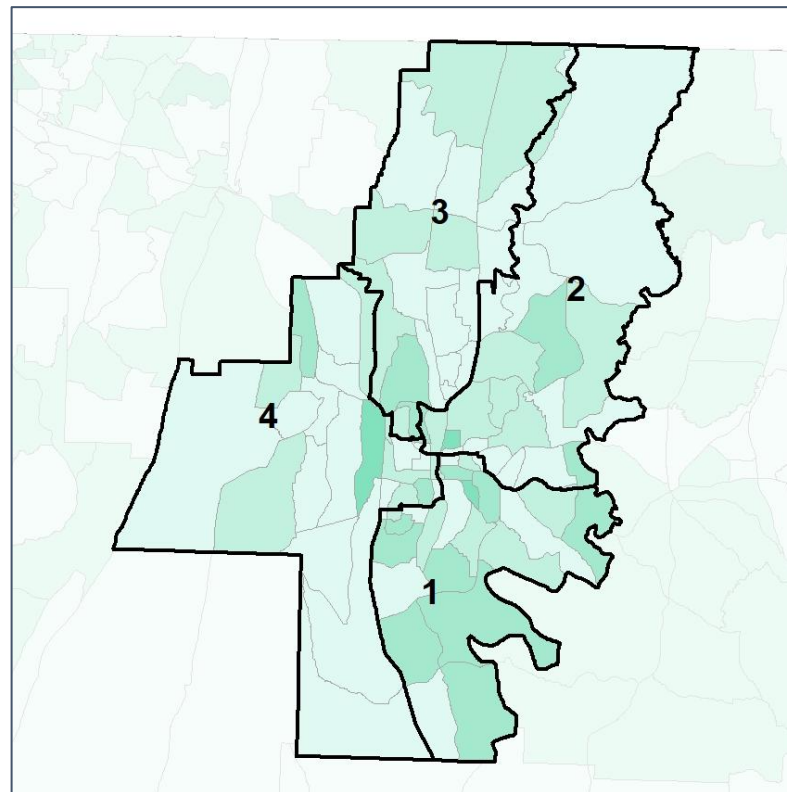
% Youth (18-34) by Census Block Group



2012 Map



2022 Map*



	1	2	3	4	1*	2*	3*	4*	County
Population	24,746	26,097	26,768	25,253	25,958	25,714	25,695	25,497	102,864
% API	0%	1%	2%	2%	1%	1%	2%	2%	1%
% Black	4%	3%	4%	2%	4%	3%	4%	3%	3%
% Latino	57%	46%	22%	19%	53%	49%	22%	19%	36%
% Other	2%	3%	4%	3%	2%	2%	4%	4%	3%
% White	37%	47%	68%	73%	40%	45%	68%	72%	56%
Median Income	\$43,000	\$46,000	\$58,000	\$63,000	\$47,000	\$43,000	\$54,000	\$68,000	\$50,000
% Renter	44%	38%	34%	23%	44%	40%	33%	21%	34%
% Youth	25%	22%	23%	21%	25%	23%	22%	21%	23%

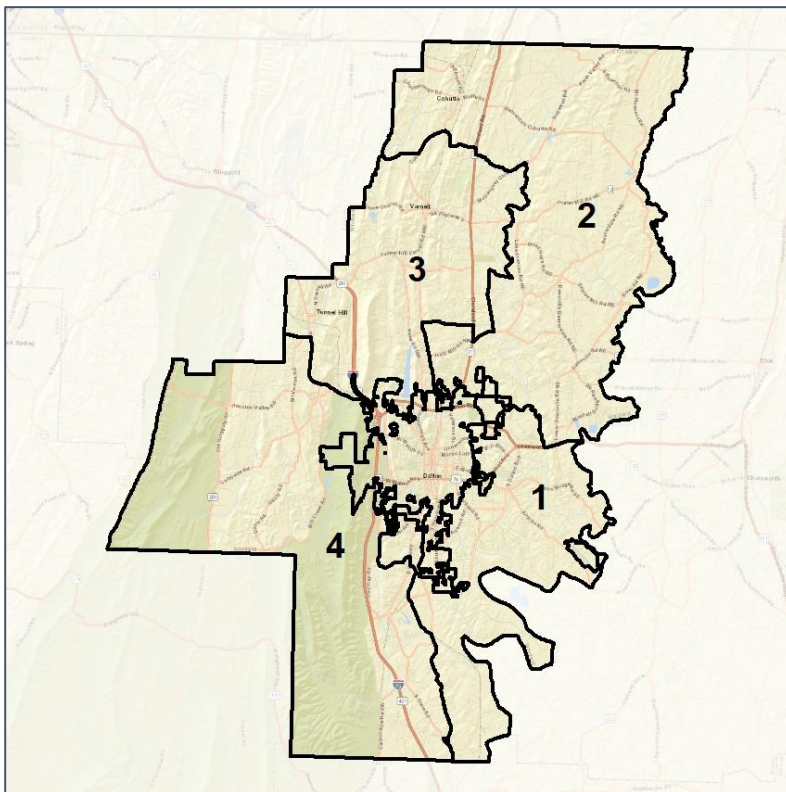


Whitfield County School Board

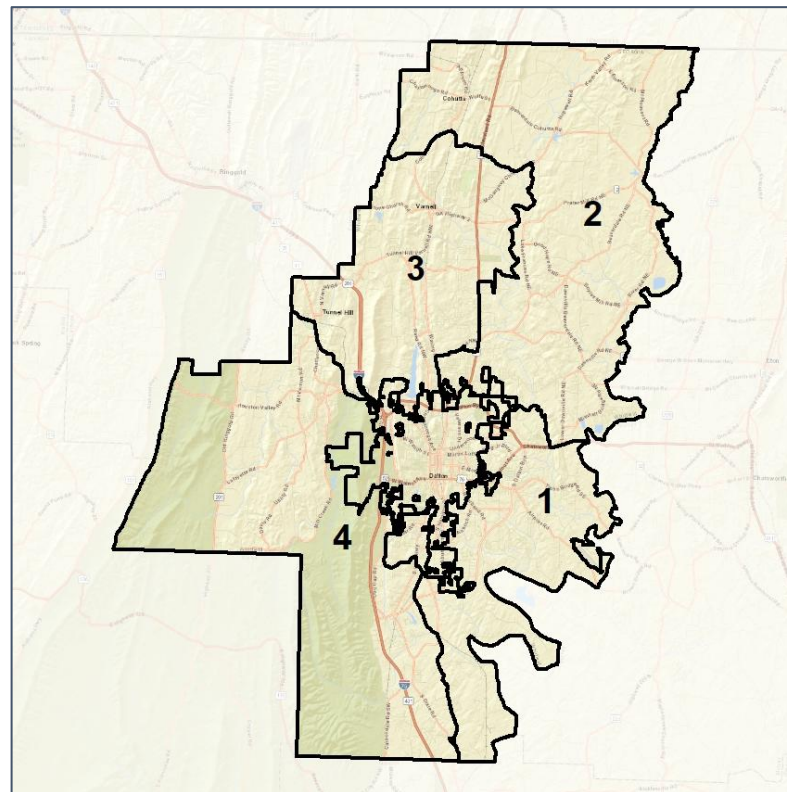
Context



2012 Map



2022 Map*



	1	2	3	4	1*	2*	3*	4*	County
Population	16,386	17,516	17,686	16,684	17,247	17,233	16,949	17,018	102,864
API	0%	1%	1%	1%	0%	1%	1%	1%	1%
Black	3%	2%	2%	2%	3%	2%	2%	2%	3%
Latino	48%	27%	20%	19%	49%	27%	19%	17%	36%
Other	3%	3%	4%	4%	3%	3%	4%	4%	3%
White	46%	67%	74%	75%	45%	67%	74%	77%	56%
Population Gain	*	*	*	*	861	-283	-737	334	*
Population % Gain	*	*	*	*	5%	-2%	-4%	2%	*
Net POC Gain	*	*	*	*	655	-30	-193	-259	*
Net POC % Gain	*	*	*	*	7%	-1%	-4%	-6%	*

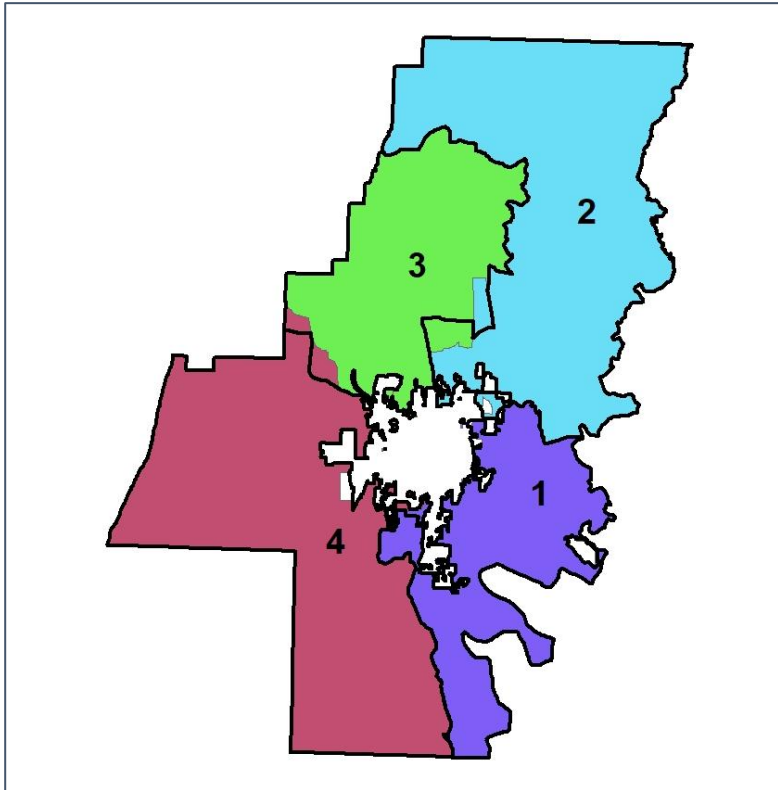


Whitfield County School Board

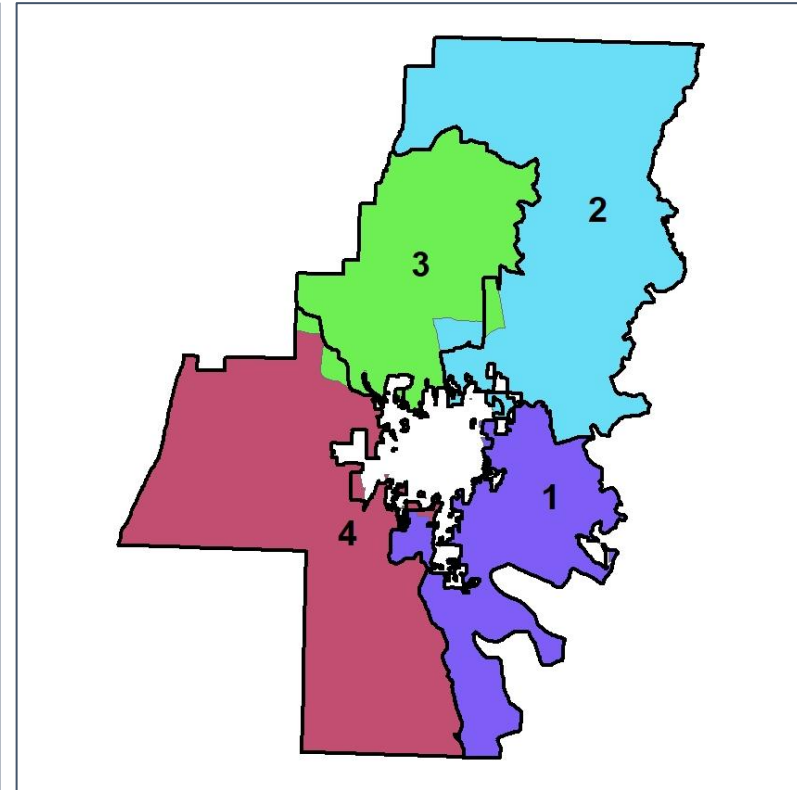
Changes in Redistricting



2012 Map (2022 in Colors)



2022 Map* (2012 in Colors)



	1	2	3	4	1*	2*	3*	4*	County
Population	16,386	17,516	17,686	16,684	17,247	17,233	16,949	17,018	102,864
API	0%	1%	1%	1%	0%	1%	1%	1%	1%
Black	3%	2%	2%	2%	3%	2%	2%	2%	3%
Latino	48%	27%	20%	19%	49%	27%	19%	17%	36%
Other	3%	3%	4%	4%	3%	3%	4%	4%	3%
White	46%	67%	74%	75%	45%	67%	74%	77%	56%
Population Gain	*	*	*	*	861	-283	-737	334	*
Population % Gain	*	*	*	*	5%	-2%	-4%	2%	*
Net POC Gain	*	*	*	*	655	-30	-193	-259	*
Net POC % Gain	*	*	*	*	7%	-1%	-4%	-6%	*

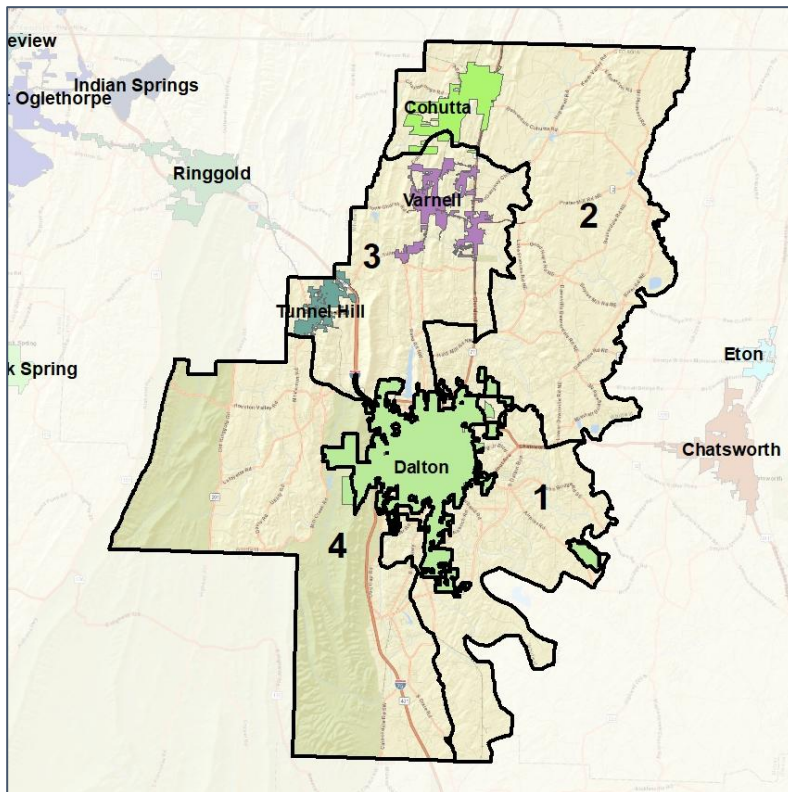


Whitfield County School Board

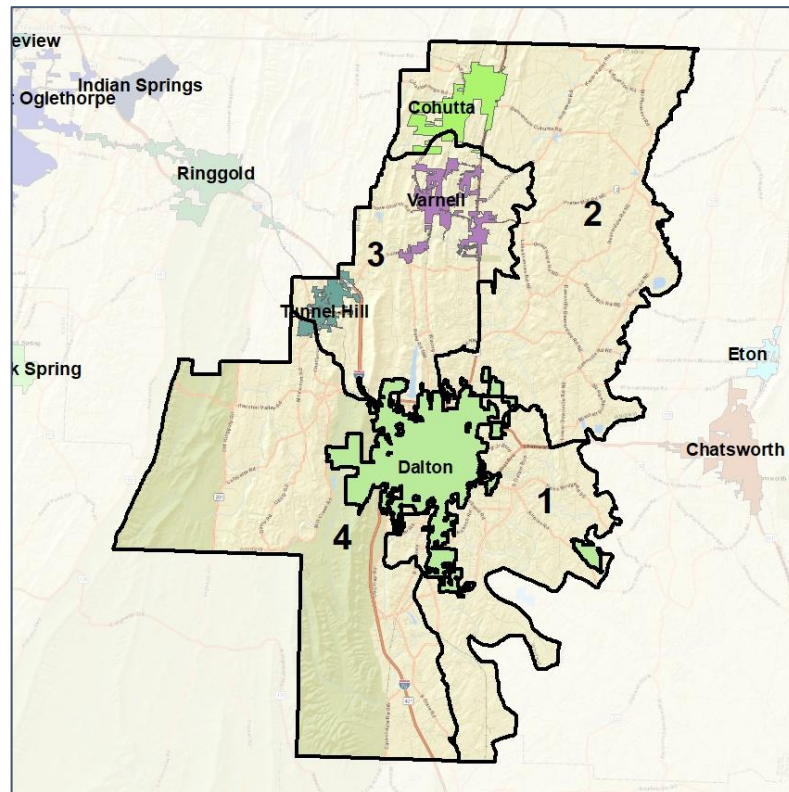
Cities and Places



2012 Map



2022 Map*



	1	2	3	4	1*	2*	3*	4*	County
Population	16,386	17,516	17,686	16,684	17,247	17,233	16,949	17,018	102,864
API	0%	1%	1%	1%	0%	1%	1%	1%	1%
Black	3%	2%	2%	2%	3%	2%	2%	2%	3%
Latino	48%	27%	20%	19%	49%	27%	19%	17%	36%
Other	3%	3%	4%	4%	3%	3%	4%	4%	3%
White	46%	67%	74%	75%	45%	67%	74%	77%	56%
Population Gain	*	*	*	*	861	-283	-737	334	*
Population % Gain	*	*	*	*	5%	-2%	-4%	2%	*
Net POC Gain	*	*	*	*	655	-30	-193	-259	*
Net POC % Gain	*	*	*	*	7%	-1%	-4%	-6%	*

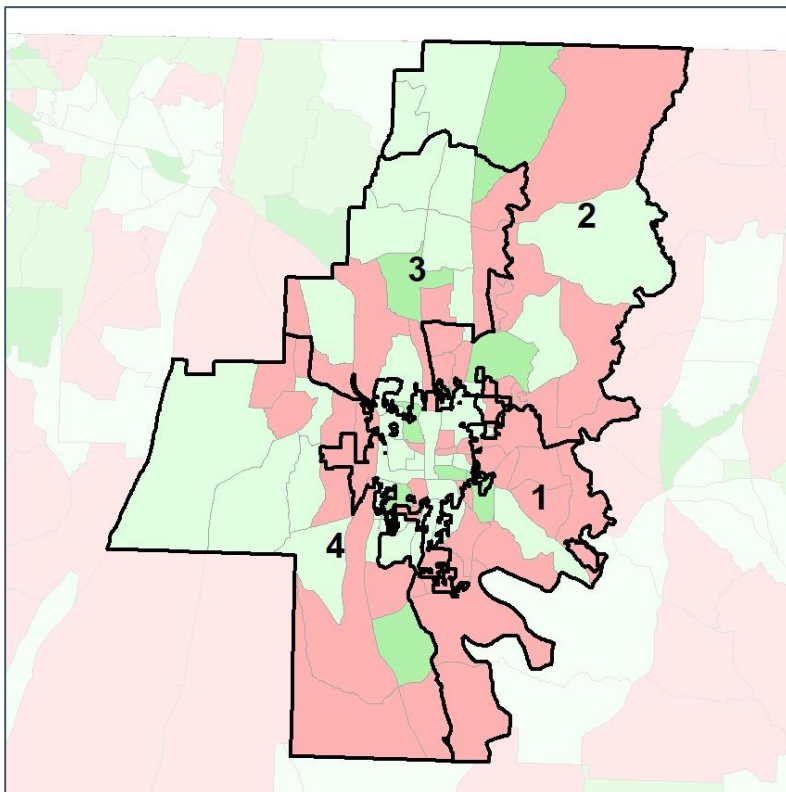


Whitfield County School Board

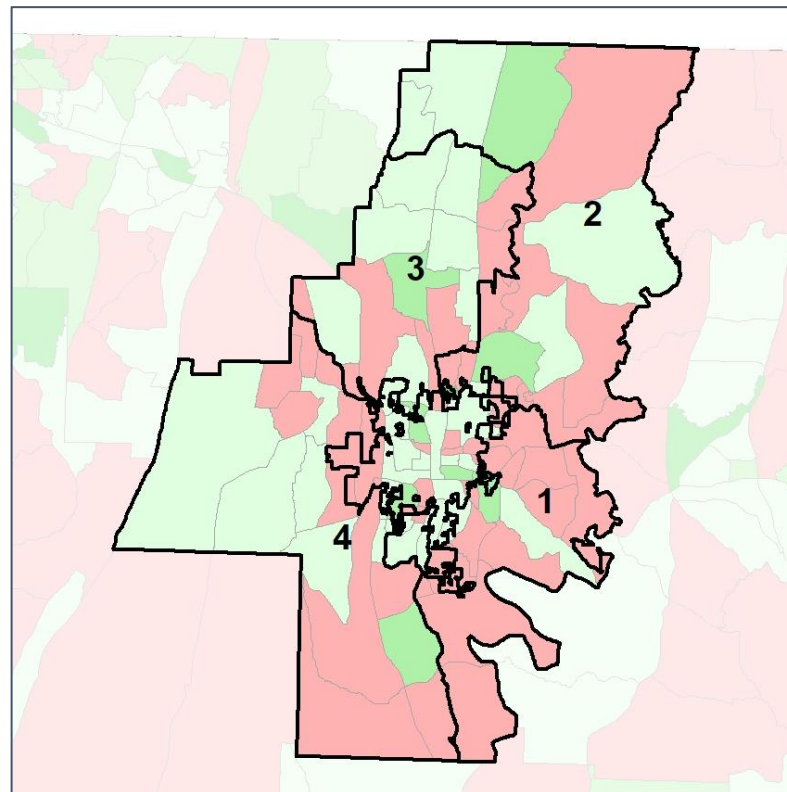
Net Gain in Population (2010 - 2020)



2012 Map



2022 Map*



	1	2	3	4	1*	2*	3*	4*	County
Population	16,386	17,516	17,686	16,684	17,247	17,233	16,949	17,018	102,864
API	0%	1%	1%	1%	0%	1%	1%	1%	1%
Black	3%	2%	2%	2%	3%	2%	2%	2%	3%
Latino	48%	27%	20%	19%	49%	27%	19%	17%	36%
Other	3%	3%	4%	4%	3%	3%	4%	4%	3%
White	46%	67%	74%	75%	45%	67%	74%	77%	56%
Population Gain	*	*	*	*	861	-283	-737	334	*
Population % Gain	*	*	*	*	5%	-2%	-4%	2%	*
Net POC Gain	*	*	*	*	655	-30	-193	-259	*
Net POC % Gain	*	*	*	*	7%	-1%	-4%	-6%	*

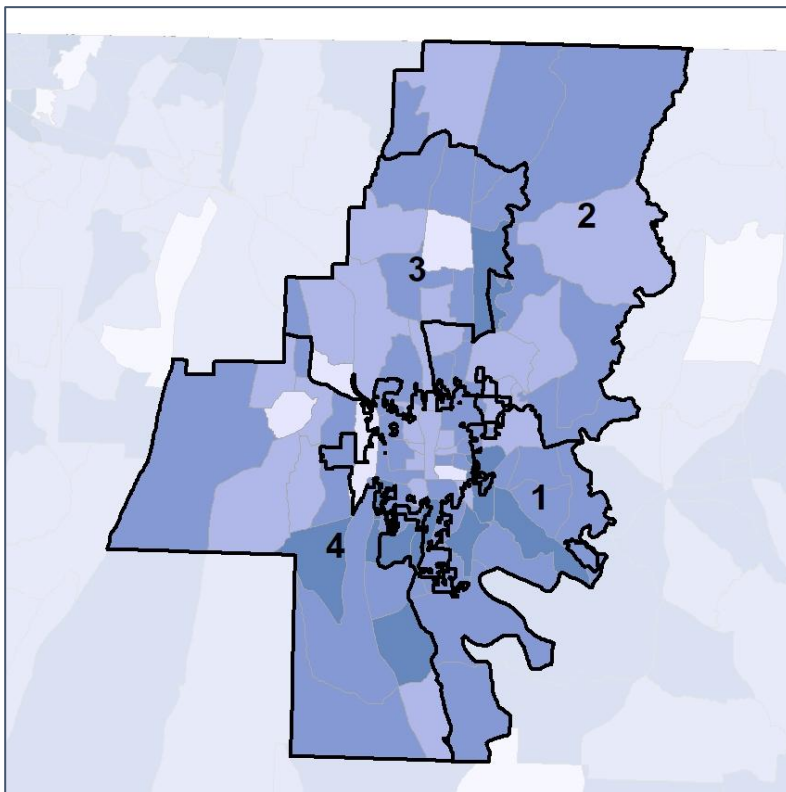


Whitfield County School Board

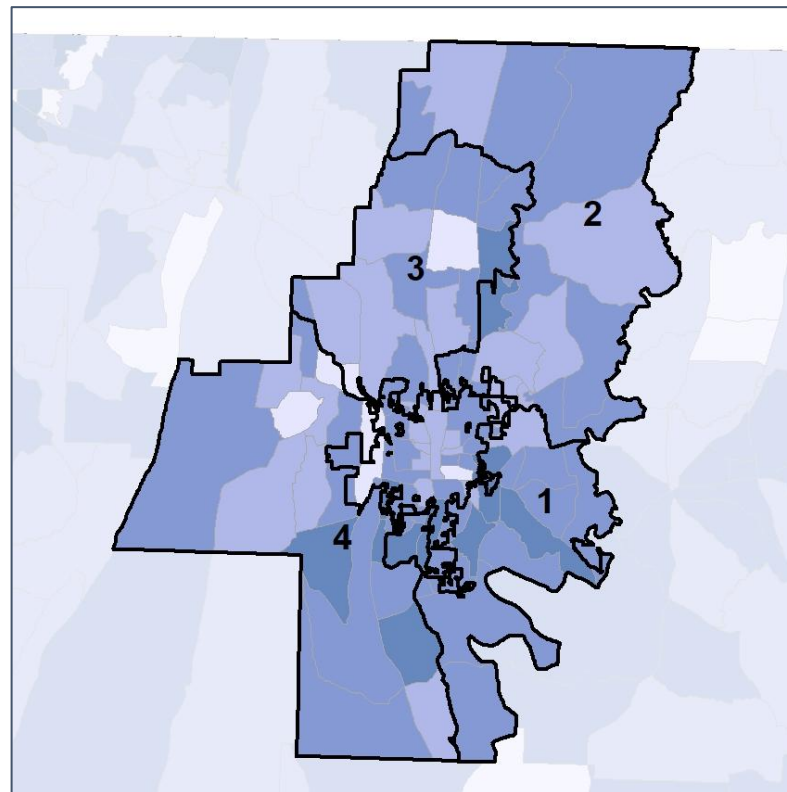
Net Gain in % POC (2020 - 2010) by Census Block Group



2012 Map



2022 Map*



	1	2	3	4	1*	2*	3*	4*	County
Population	16,386	17,516	17,686	16,684	17,247	17,233	16,949	17,018	102,864
API	0%	1%	1%	1%	0%	1%	1%	1%	1%
Black	3%	2%	2%	2%	3%	2%	2%	2%	3%
Latino	48%	27%	20%	19%	49%	27%	19%	17%	36%
Other	3%	3%	4%	4%	3%	3%	4%	4%	3%
White	46%	67%	74%	75%	45%	67%	74%	77%	56%
Population Gain	*	*	*	*	861	-283	-737	334	*
Population % Gain	*	*	*	*	5%	-2%	-4%	2%	*
Net POC Gain	*	*	*	*	655	-30	-193	-259	*
Net POC % Gain	*	*	*	*	7%	-1%	-4%	-6%	*

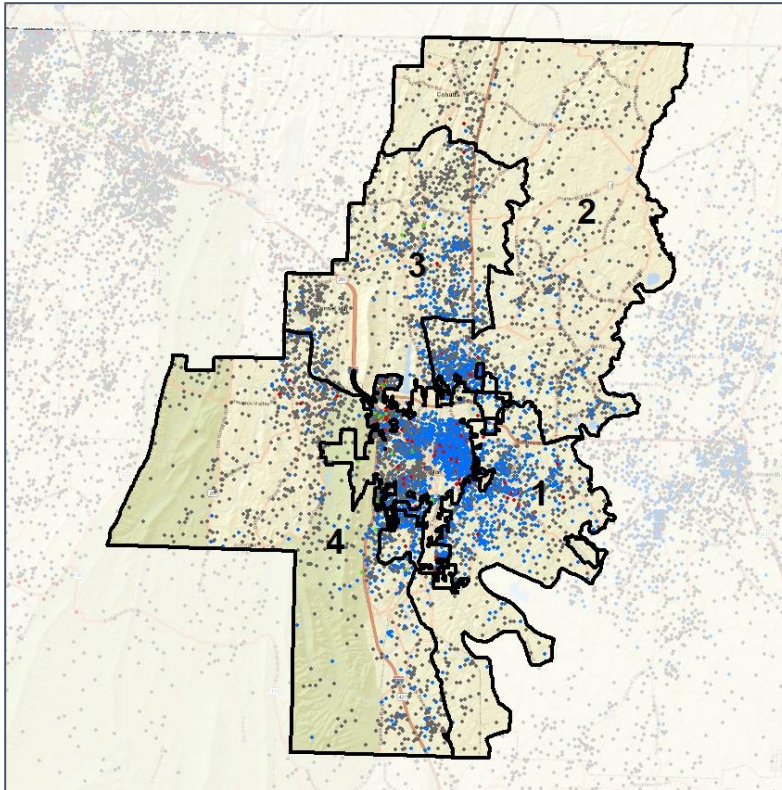


Whitfield County School Board

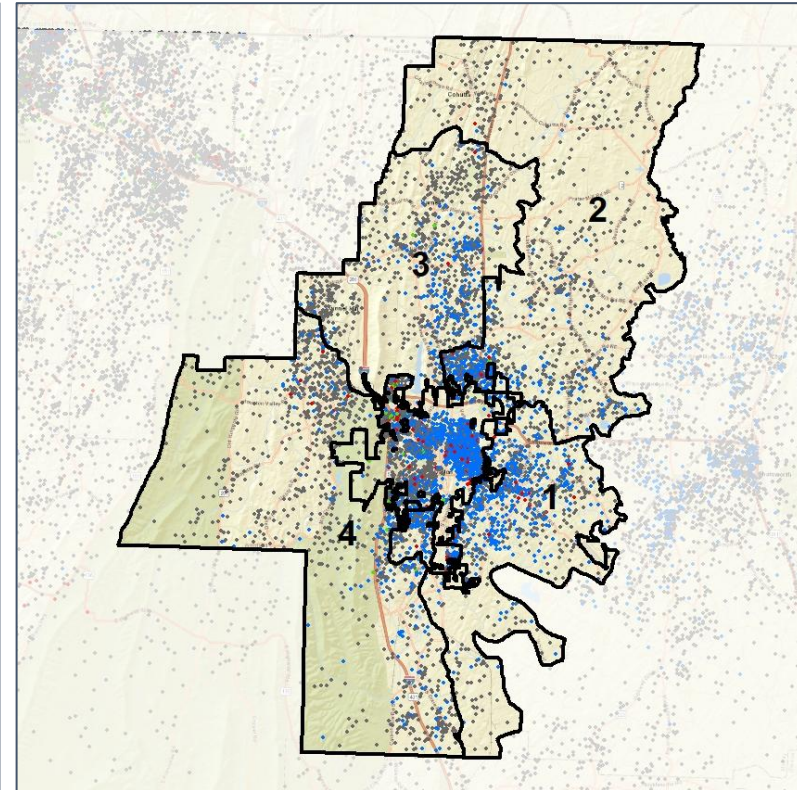
Population Density by Race



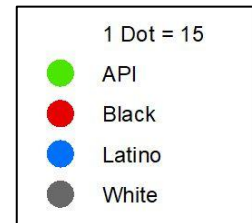
2012 Map



2022 Map*



	1	2	3	4	1*	2*	3*	4*	County
Population	16,386	17,516	17,686	16,684	17,247	17,233	16,949	17,018	102,864
API	59	102	222	161	62	111	207	167	1,413
% API	0%	1%	1%	1%	0%	1%	1%	1%	1%
Black	430	351	371	291	442	339	365	299	3,553
% Black	3%	2%	2%	2%	3%	2%	2%	2%	3%
Latino	7,902	4,749	3,450	3,151	8,521	4,730	3,304	2,861	36,916
% Latino	48%	27%	20%	19%	49%	27%	19%	17%	36%
Other	412	570	620	587	433	562	594	604	3,107
% Other	3%	3%	4%	4%	3%	3%	4%	4%	3%
White	7,583	11,744	13,023	12,494	7,789	11,491	12,479	13,087	57,875
% White	46%	67%	74%	75%	45%	67%	74%	77%	56%



Source:
2020 Decennial Census
2020 ACS 5-Year Dataset

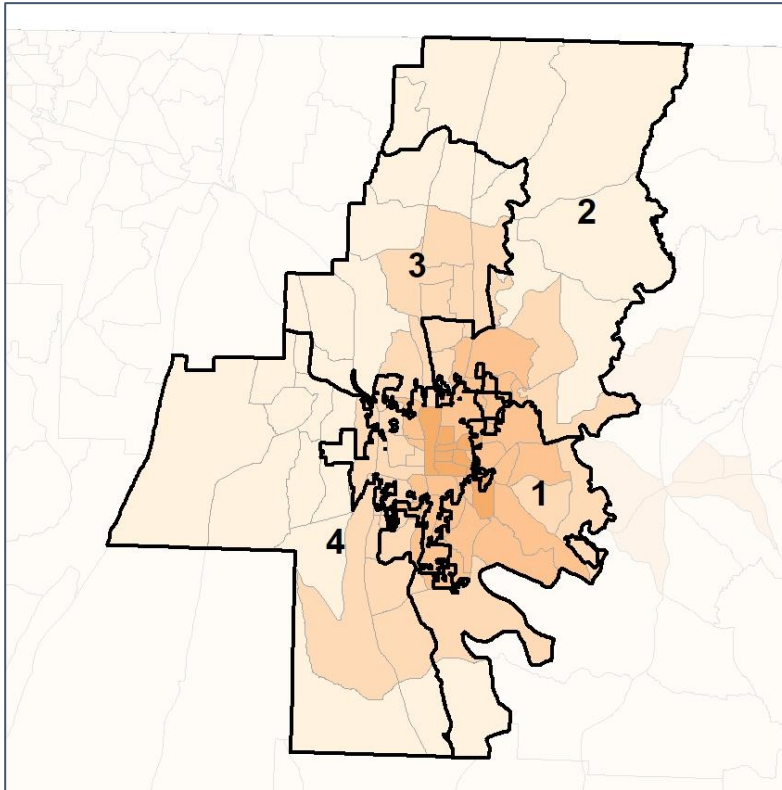


Whitfield County School Board

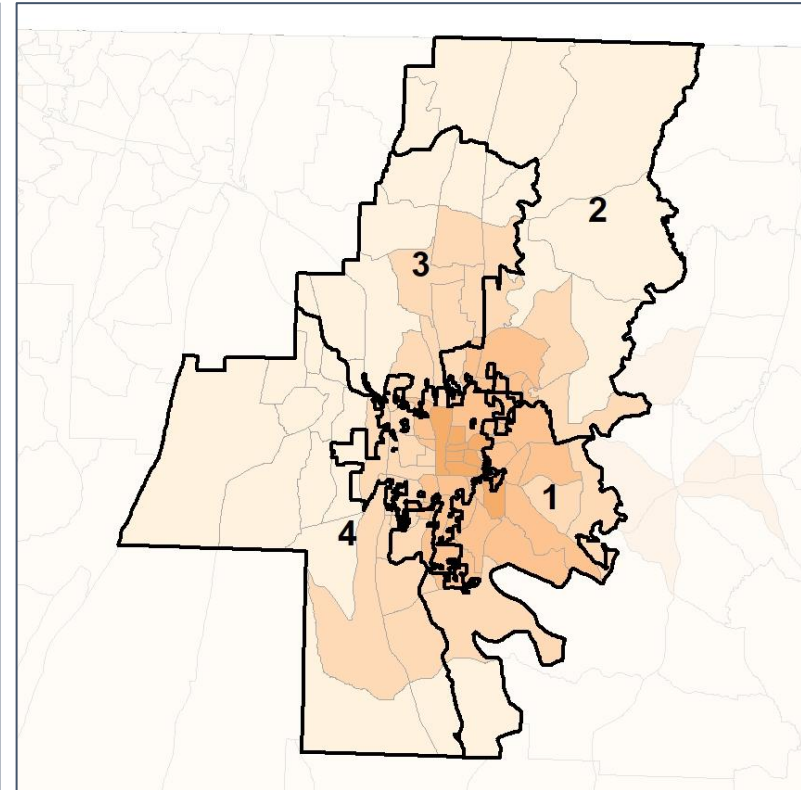
% People of Color by Census Block Group



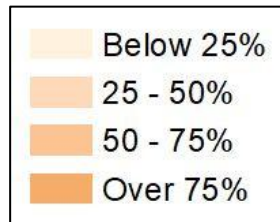
2012 Map



2022 Map*



	1	2	3	4	1*	2*	3*	4*	County
Population	16,386	17,516	17,686	16,684	17,247	17,233	16,949	17,018	102,864
API	59	102	222	161	62	111	207	167	1,413
% API	0%	1%	1%	1%	0%	1%	1%	1%	1%
Black	430	351	371	291	442	339	365	299	3,553
% Black	3%	2%	2%	2%	3%	2%	2%	2%	3%
Latino	7,902	4,749	3,450	3,151	8,521	4,730	3,304	2,861	36,916
% Latino	48%	27%	20%	19%	49%	27%	19%	17%	36%
Other	412	570	620	587	433	562	594	604	3,107
% Other	3%	3%	4%	4%	3%	3%	4%	4%	3%
White	7,583	11,744	13,023	12,494	7,789	11,491	12,479	13,087	57,875
% White	46%	67%	74%	75%	45%	67%	74%	77%	56%

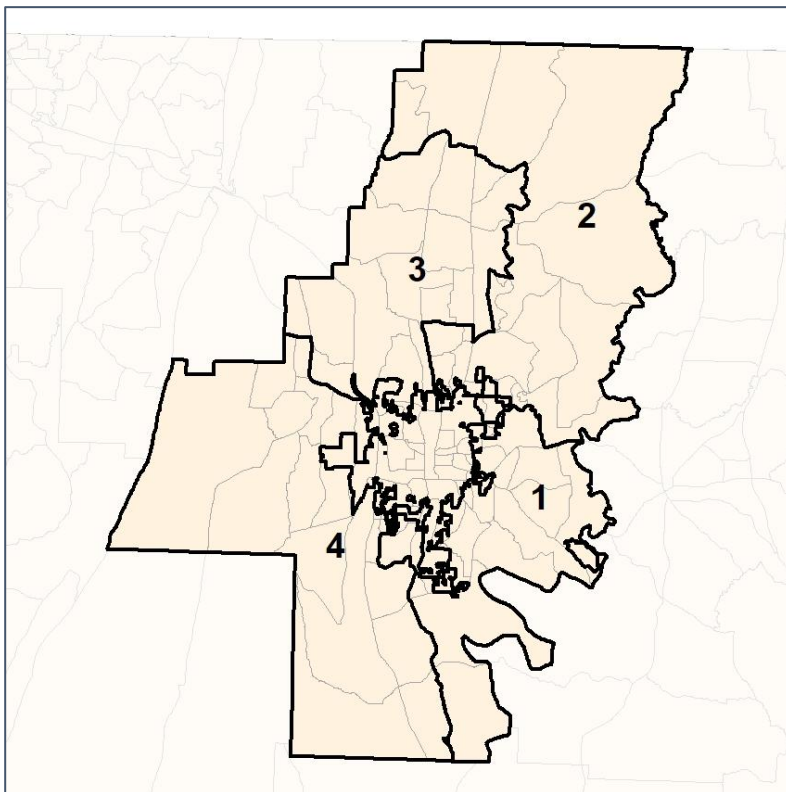


Whitfield County School Board

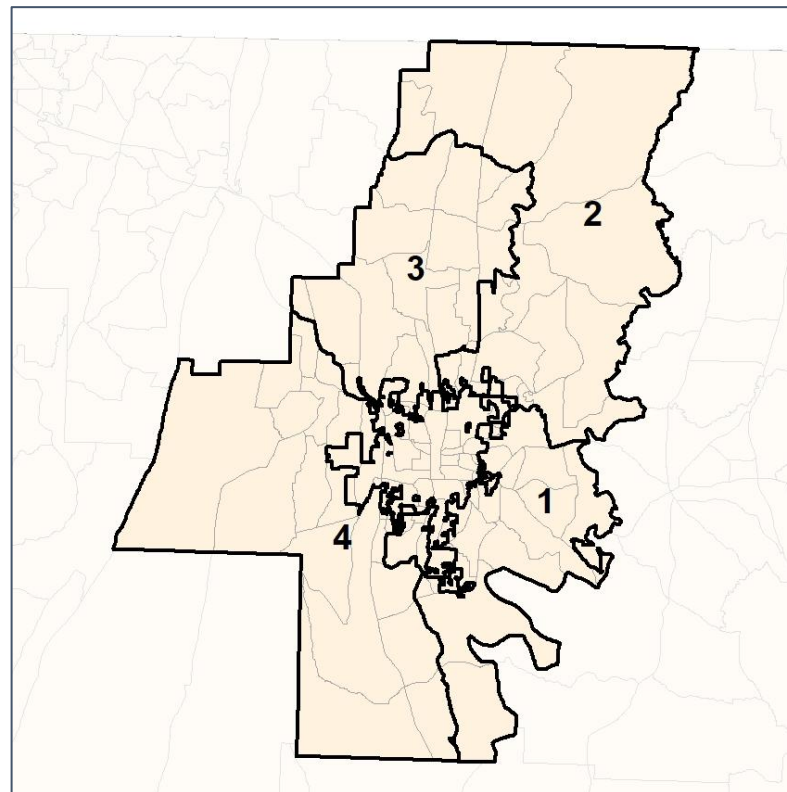
% API by Census Block Group



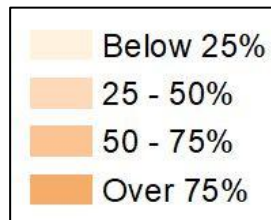
2012 Map



2022 Map*



	1	2	3	4	1*	2*	3*	4*	County
Population	16,386	17,516	17,686	16,684	17,247	17,233	16,949	17,018	102,864
API	59	102	222	161	62	111	207	167	1,413
% API	0%	1%	1%	1%	0%	1%	1%	1%	1%
Black	430	351	371	291	442	339	365	299	3,553
% Black	3%	2%	2%	2%	3%	2%	2%	2%	3%
Latino	7,902	4,749	3,450	3,151	8,521	4,730	3,304	2,861	36,916
% Latino	48%	27%	20%	19%	49%	27%	19%	17%	36%
Other	412	570	620	587	433	562	594	604	3,107
% Other	3%	3%	4%	4%	3%	3%	4%	4%	3%
White	7,583	11,744	13,023	12,494	7,789	11,491	12,479	13,087	57,875
% White	46%	67%	74%	75%	45%	67%	74%	77%	56%

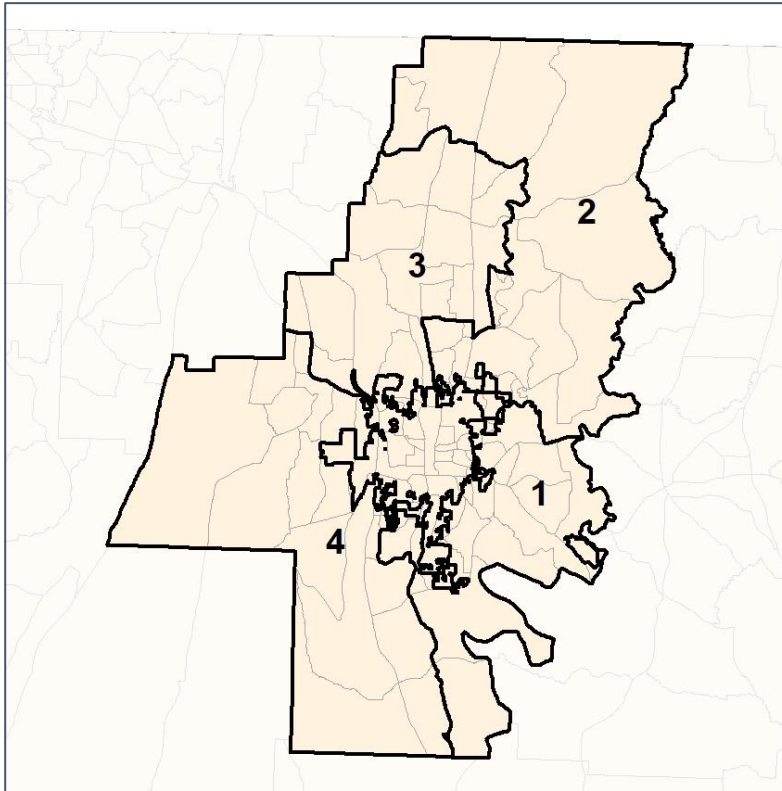


Whitfield County School Board

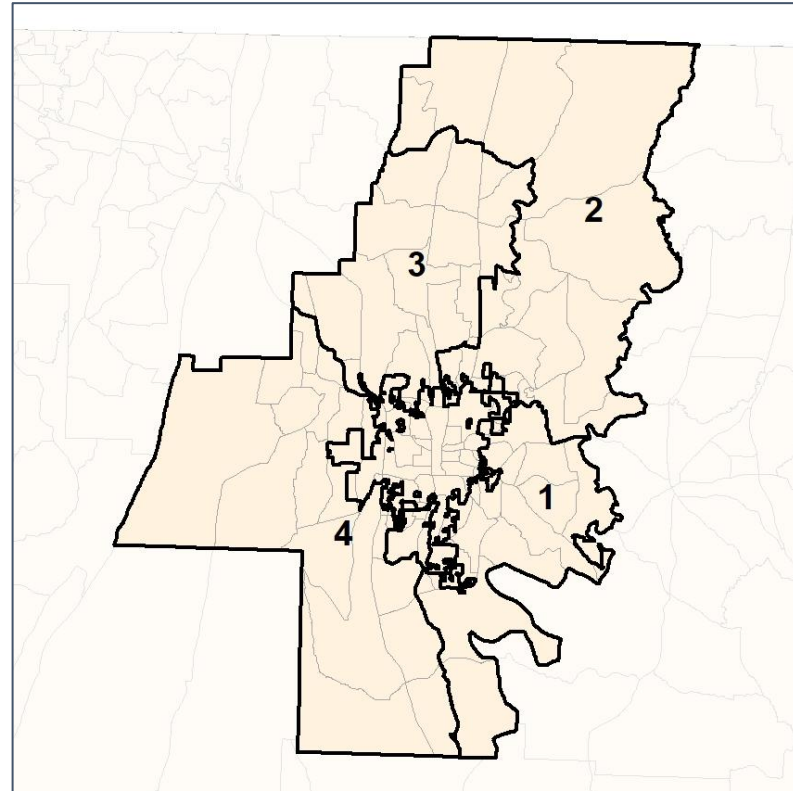
% Black by Census Block Group



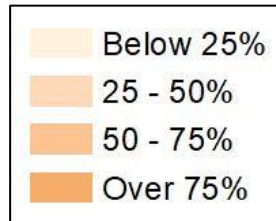
2012 Map



2022 Map*



	1	2	3	4	1*	2*	3*	4*	County
Population	16,386	17,516	17,686	16,684	17,247	17,233	16,949	17,018	102,864
API	59	102	222	161	62	111	207	167	1,413
% API	0%	1%	1%	1%	0%	1%	1%	1%	1%
Black	430	351	371	291	442	339	365	299	3,553
% Black	3%	2%	2%	2%	3%	2%	2%	2%	3%
Latino	7,902	4,749	3,450	3,151	8,521	4,730	3,304	2,861	36,916
% Latino	48%	27%	20%	19%	49%	27%	19%	17%	36%
Other	412	570	620	587	433	562	594	604	3,107
% Other	3%	3%	4%	4%	3%	3%	4%	4%	3%
White	7,583	11,744	13,023	12,494	7,789	11,491	12,479	13,087	57,875
% White	46%	67%	74%	75%	45%	67%	74%	77%	56%



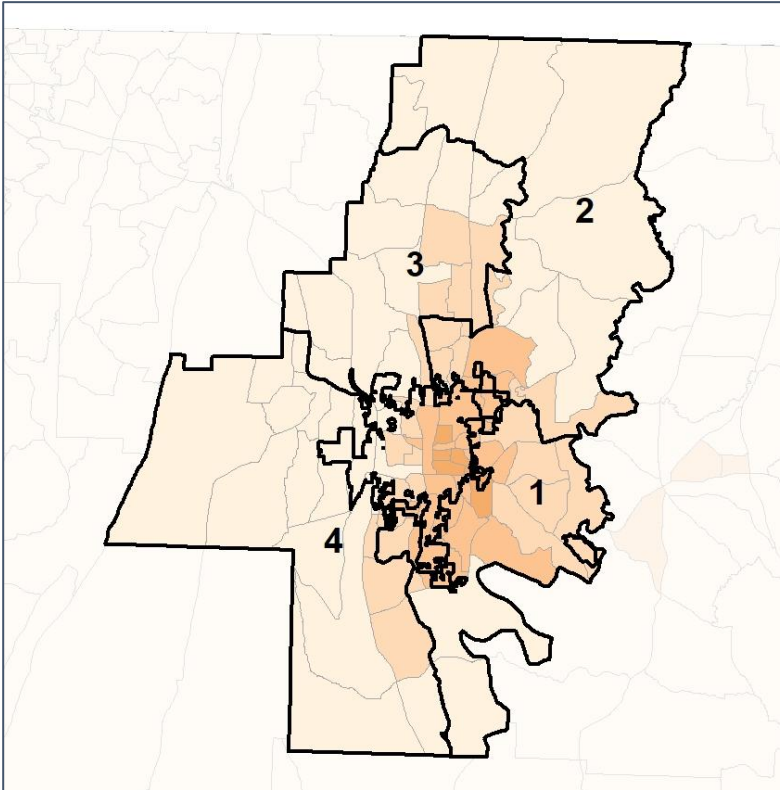
Source:
2020 Decennial Census
2020 ACS 5-Year Dataset

Whitfield County School Board

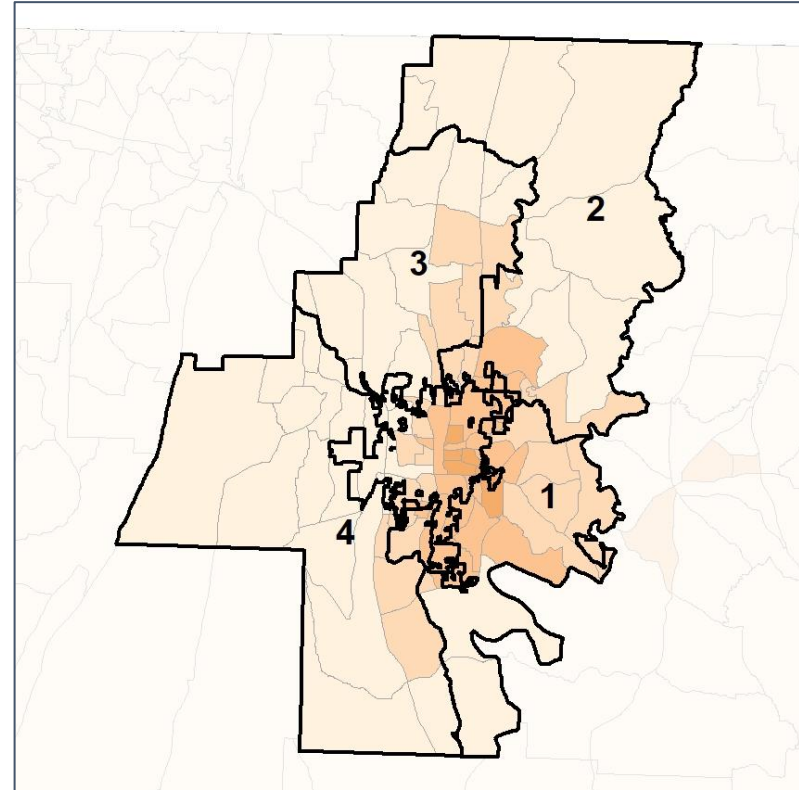
% Latino by Census Block Group



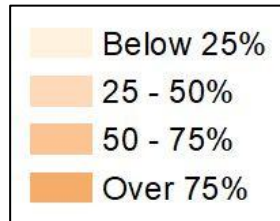
2012 Map



2022 Map*



	1	2	3	4	1*	2*	3*	4*	County
Population	16,386	17,516	17,686	16,684	17,247	17,233	16,949	17,018	102,864
API	59	102	222	161	62	111	207	167	1,413
% API	0%	1%	1%	1%	0%	1%	1%	1%	1%
Black	430	351	371	291	442	339	365	299	3,553
% Black	3%	2%	2%	2%	3%	2%	2%	2%	3%
Latino	7,902	4,749	3,450	3,151	8,521	4,730	3,304	2,861	36,916
% Latino	48%	27%	20%	19%	49%	27%	19%	17%	36%
Other	412	570	620	587	433	562	594	604	3,107
% Other	3%	3%	4%	4%	3%	3%	4%	4%	3%
White	7,583	11,744	13,023	12,494	7,789	11,491	12,479	13,087	57,875
% White	46%	67%	74%	75%	45%	67%	74%	77%	56%

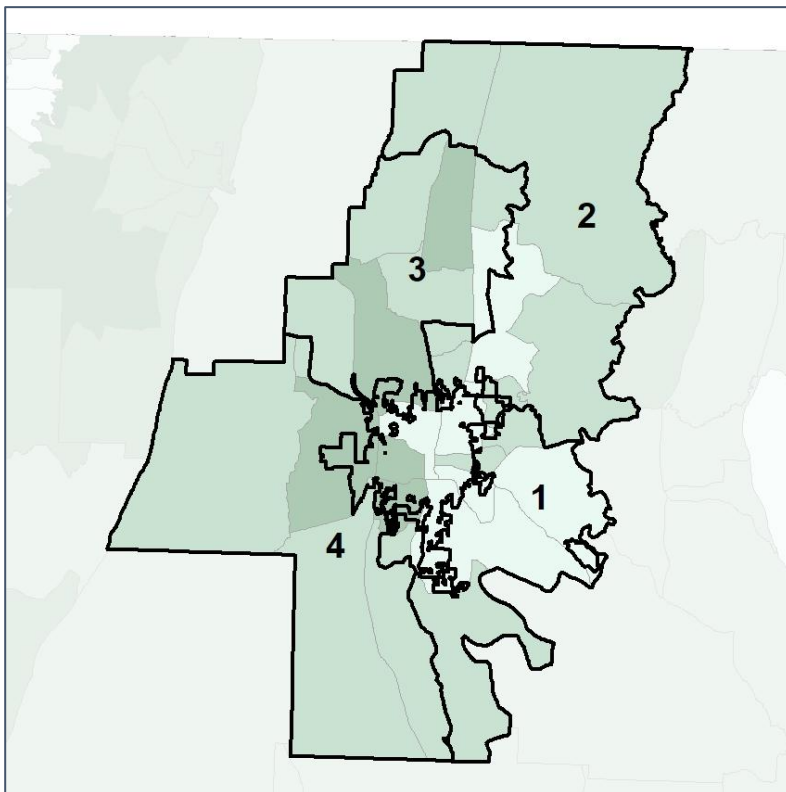


Whitfield County School Board

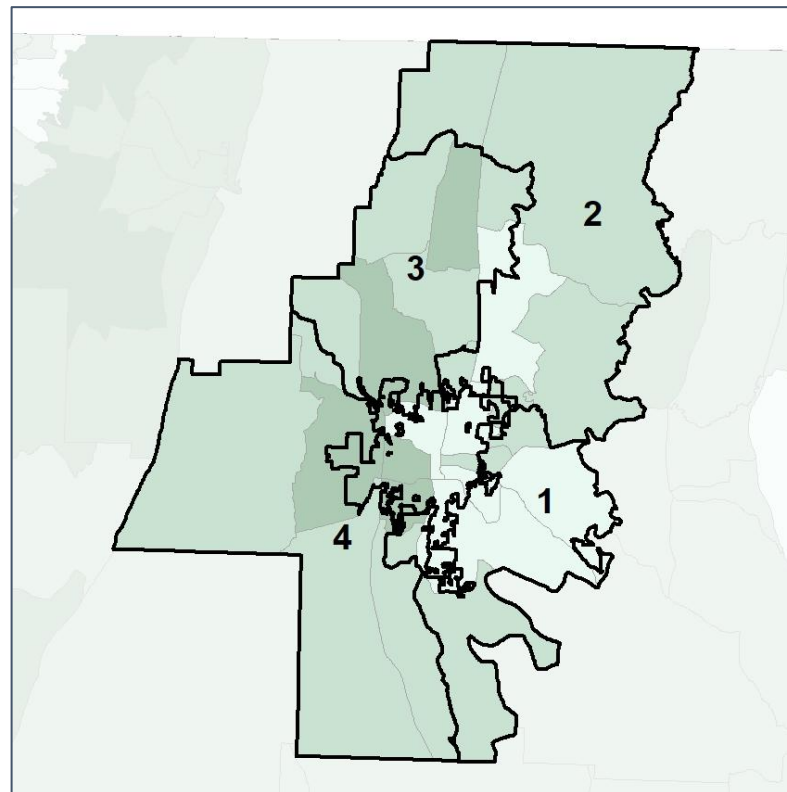
Median Household Income by Census Tract



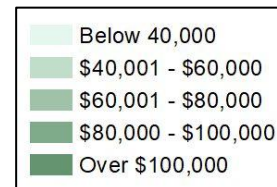
2012 Map



2022 Map*



	1	2	3	4	1*	2*	3*	4*	County
Population	16,386	17,516	17,686	16,684	17,247	17,233	16,949	17,018	102,864
% API	0%	1%	1%	1%	0%	1%	1%	1%	1%
% Black	3%	2%	2%	2%	3%	2%	2%	2%	3%
% Latino	48%	27%	20%	19%	49%	27%	19%	17%	36%
% Other	3%	3%	4%	4%	3%	3%	4%	4%	3%
% White	46%	67%	74%	75%	45%	67%	74%	77%	56%
Median Income	\$42,000	\$48,000	\$61,000	\$61,000	\$42,000	\$48,000	\$61,000	\$61,000	\$50,000
% Renter	38%	25%	24%	21%	38%	25%	25%	21%	34%
% Youth	25%	22%	22%	18%	25%	22%	22%	19%	23%

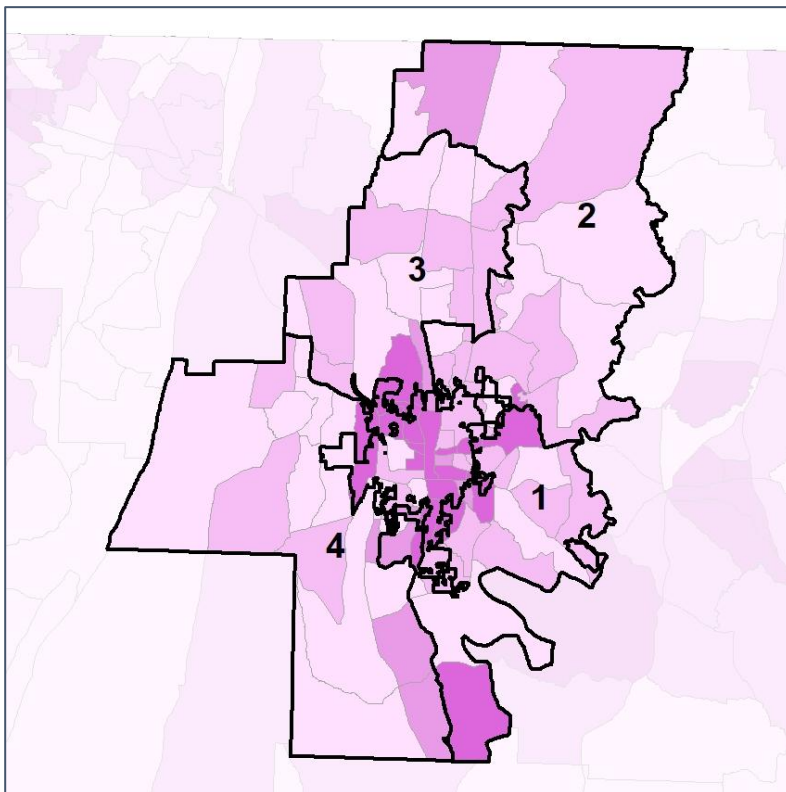


Whitfield County School Board

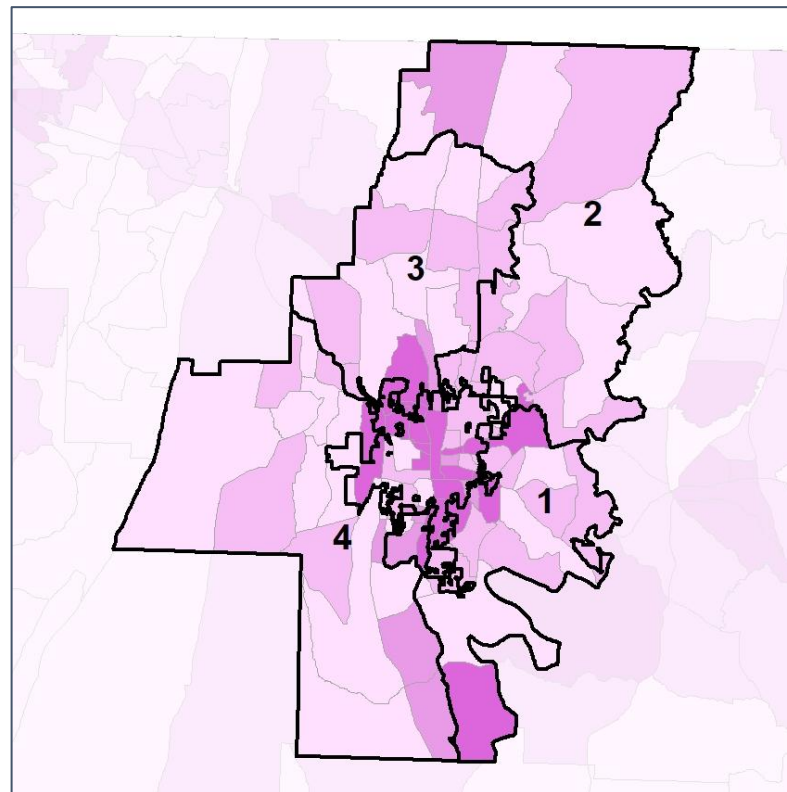
% Renter by Census Block Group



2012 Map



2022 Map*



	1	2	3	4	1*	2*	3*	4*	County
Population	16,386	17,516	17,686	16,684	17,247	17,233	16,949	17,018	102,864
% API	0%	1%	1%	1%	0%	1%	1%	1%	1%
% Black	3%	2%	2%	2%	3%	2%	2%	2%	3%
% Latino	48%	27%	20%	19%	49%	27%	19%	17%	36%
% Other	3%	3%	4%	4%	3%	3%	4%	4%	3%
% White	46%	67%	74%	75%	45%	67%	74%	77%	56%
Median Income	\$42,000	\$48,000	\$61,000	\$61,000	\$42,000	\$48,000	\$61,000	\$61,000	\$50,000
% Renter	38%	25%	24%	21%	38%	25%	25%	21%	34%
% Youth	25%	22%	22%	18%	25%	22%	22%	19%	23%

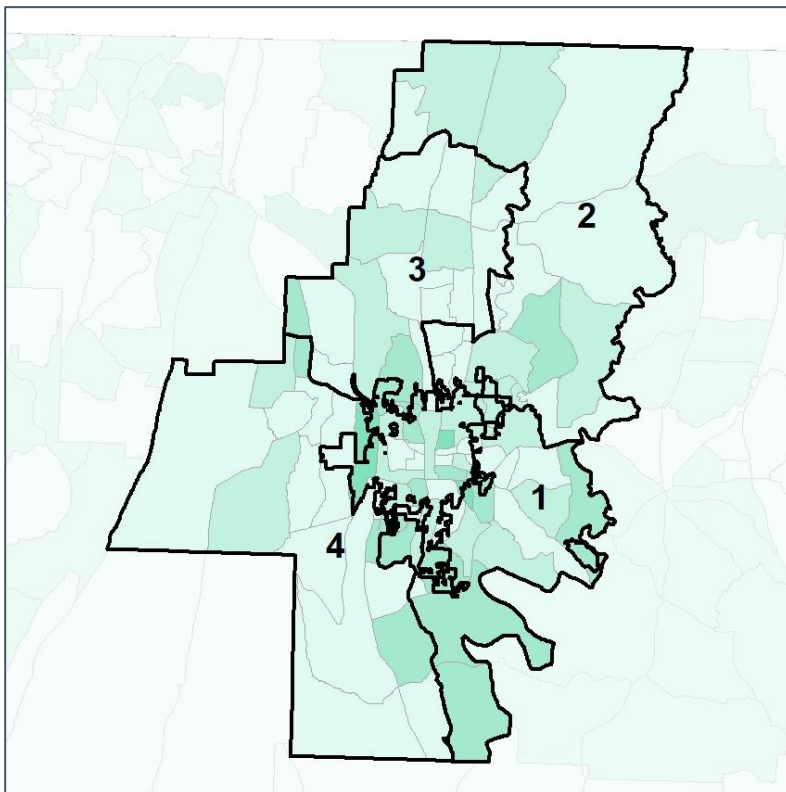


Whitfield County School Board

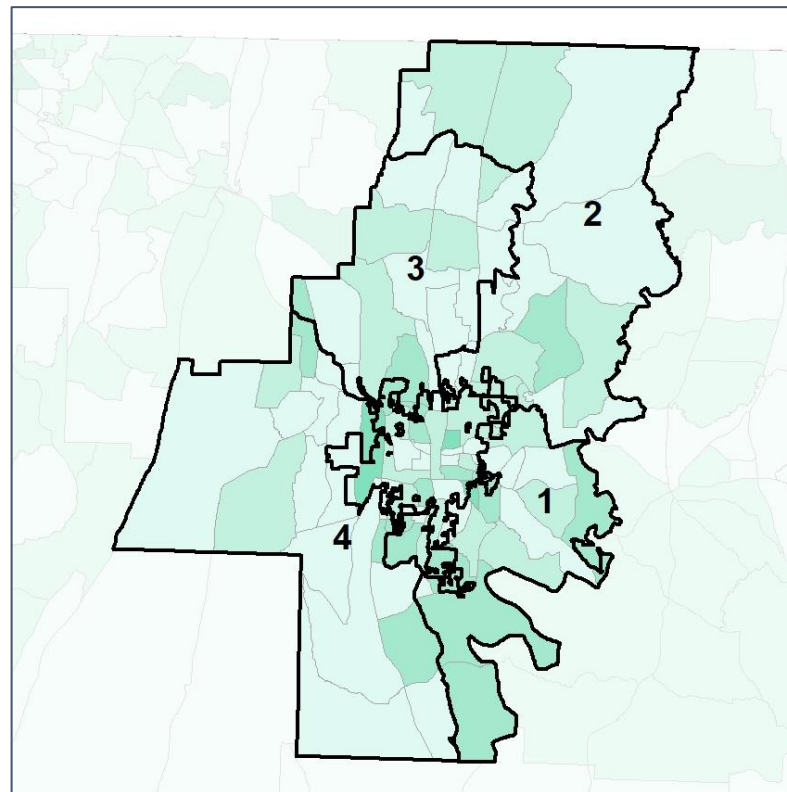
% Youth (18-34) by Census Block Group



2012 Map



2022 Map*



	1	2	3	4	1*	2*	3*	4*	County
Population	16,386	17,516	17,686	16,684	17,247	17,233	16,949	17,018	102,864
% API	0%	1%	1%	1%	0%	1%	1%	1%	1%
% Black	3%	2%	2%	2%	3%	2%	2%	2%	3%
% Latino	48%	27%	20%	19%	49%	27%	19%	17%	36%
% Other	3%	3%	4%	4%	3%	3%	4%	4%	3%
% White	46%	67%	74%	75%	45%	67%	74%	77%	56%
Median Income	\$42,000	\$48,000	\$61,000	\$61,000	\$42,000	\$48,000	\$61,000	\$61,000	\$50,000
% Renter	38%	25%	24%	21%	38%	25%	25%	21%	34%
% Youth	25%	22%	22%	18%	25%	22%	22%	19%	23%

