



Demographic Overview

Racial Breakdown in White County

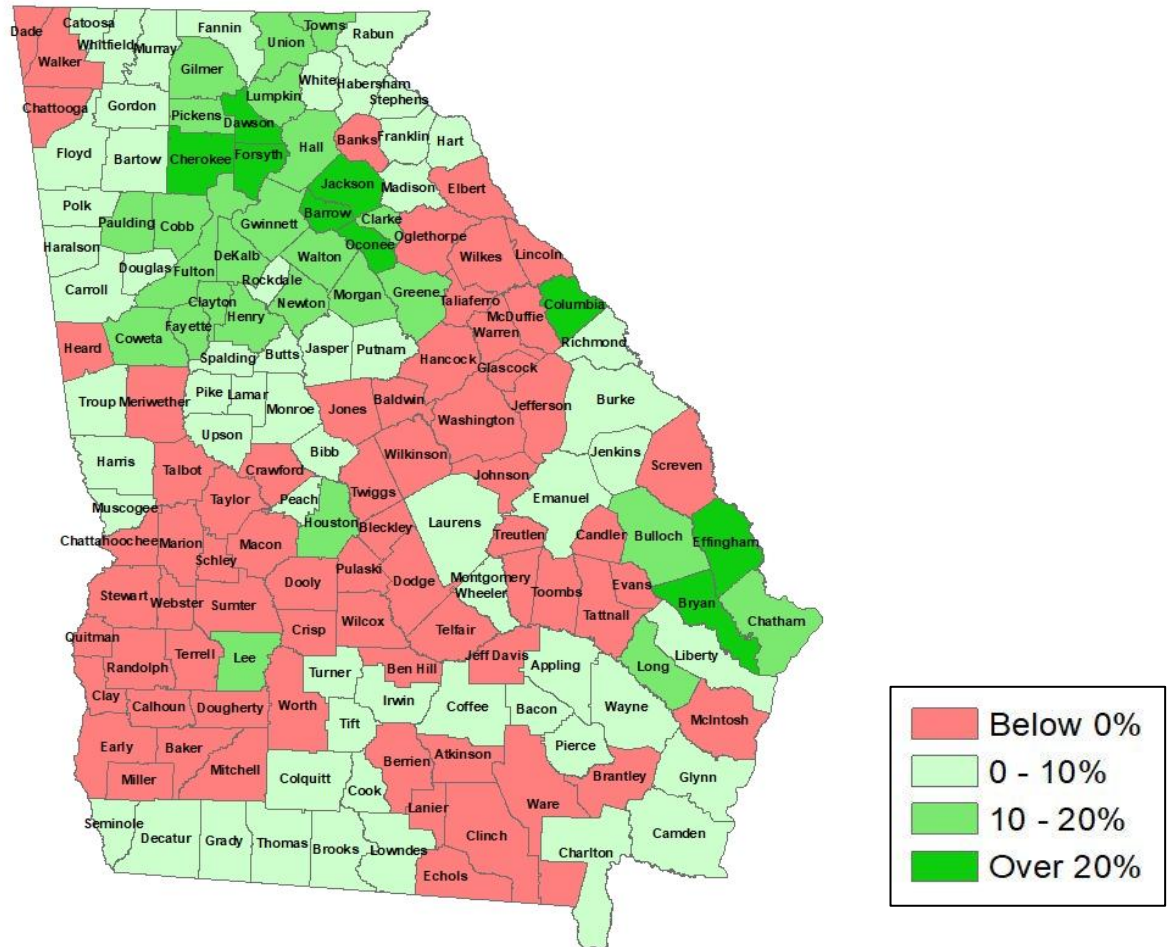
White County	2010	2020	% Change
Total Population	27,144	28,003	3%
AAPI	133	159	20%
Black	454	467	3%
Latino	647	913	41%
Other/Mixed Race	457	1,505	229%
POC	1,691	3,044	80%
White	25,453	24,959	-2%





Population Gain

Change in Population in Georgia by County

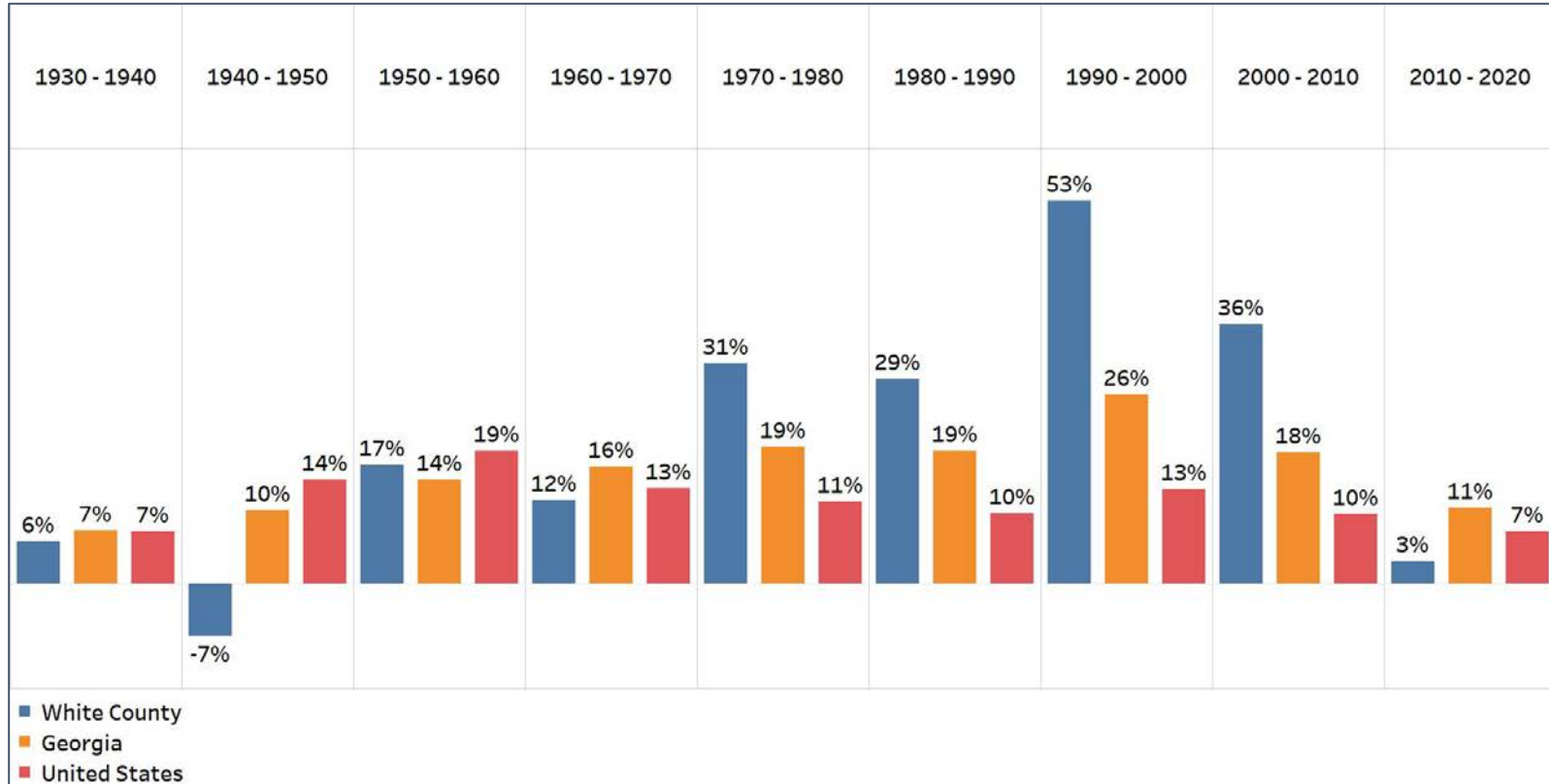


- Georgia is experiencing rapid population growth in the Atlanta, Augusta, and Savannah regions of the state



Population Gain

Change in Population by Decade

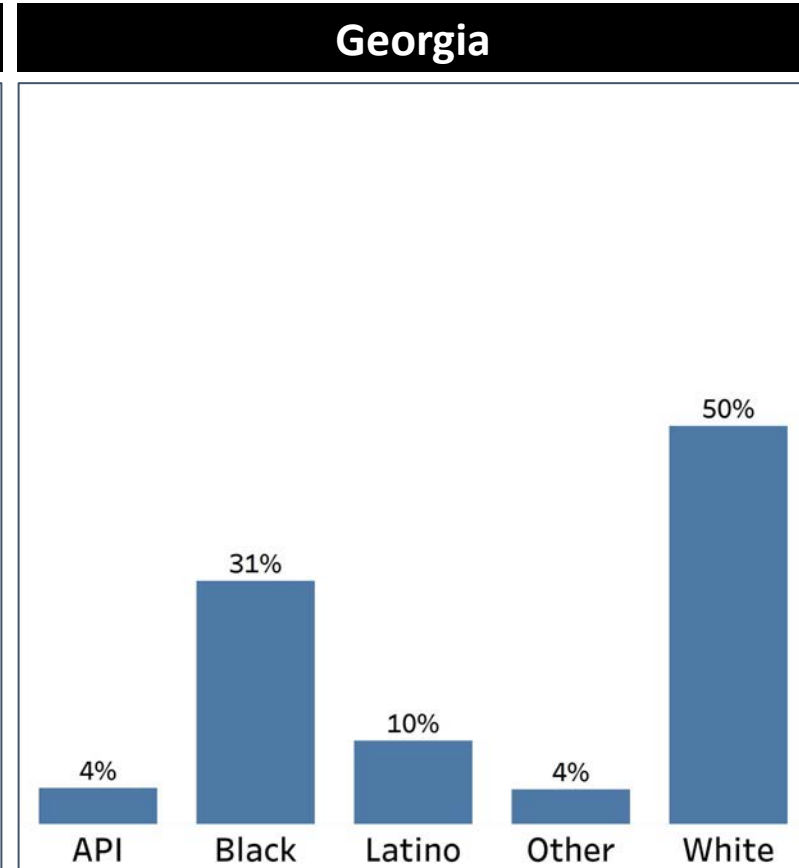
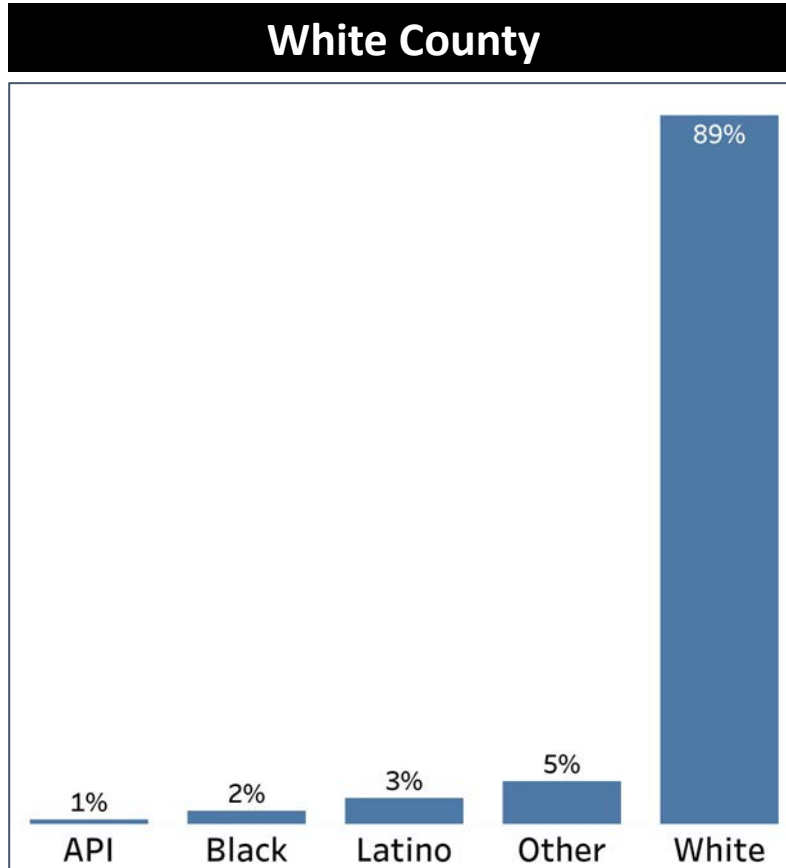


- White County had a population boom from 1970-2010, and had been growing in population since 1950
- In the last decade, White County saw its slowest growth since 1930



Demographics

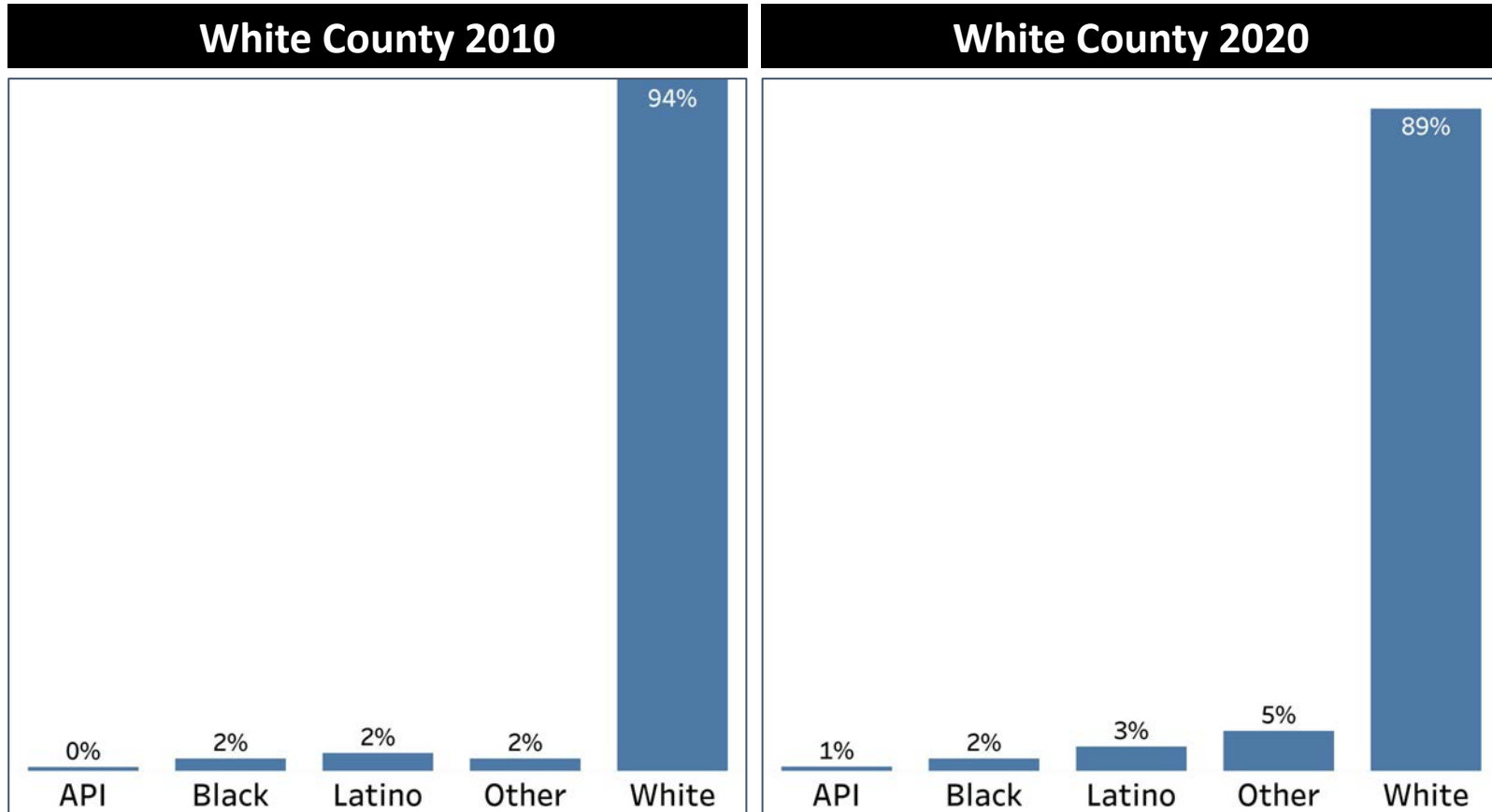
Comparison between White County and Georgia



- White County is almost exclusively White, with only about 11% of the population being people of color
- The Other population also has a slightly higher share of the population in the county than it does in Georgia overall

Demographics

2010 vs 2020 Demographics in White County



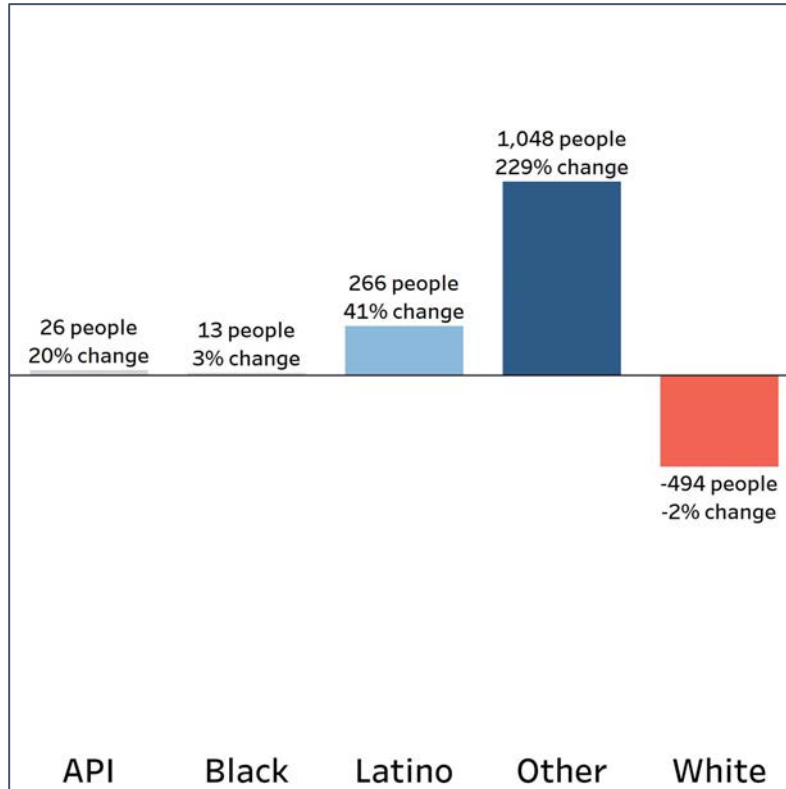
- Despite its large White population, the share of the White population did decline in the past decade
- The API, Latino, and especially the Other populations grew their share of the population in the past decade

Demographics

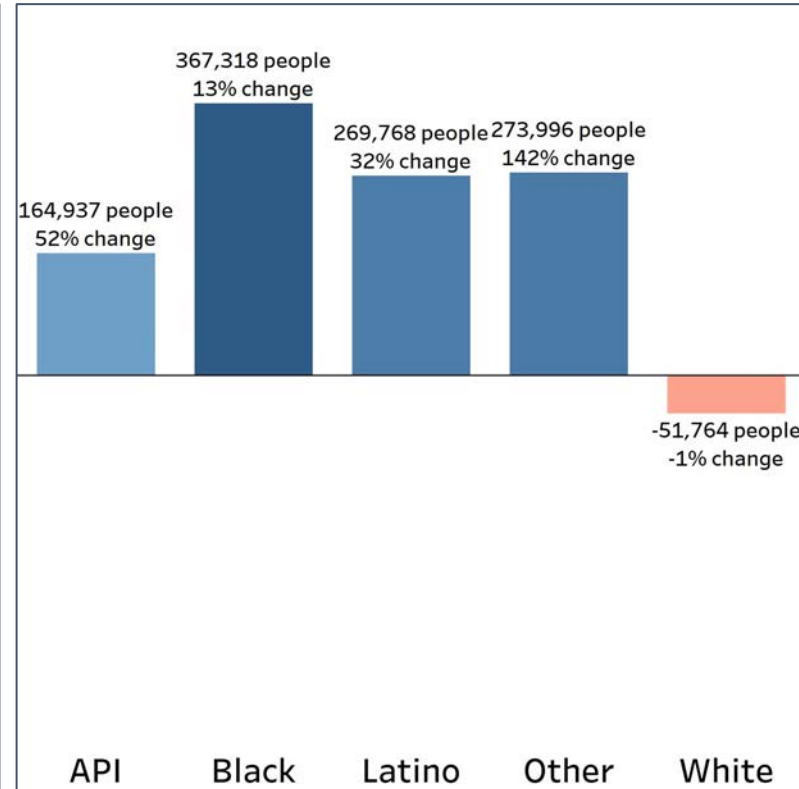
Population Change by Race (2020 - 2010)



White County



Georgia



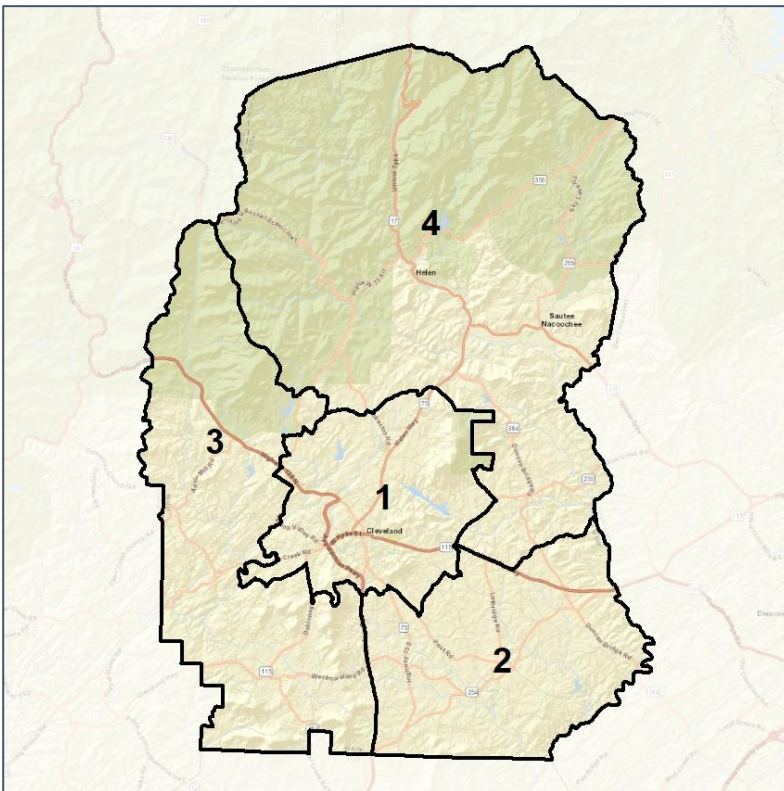
- White County had at least some increase in population in all demographics except for the White demographic
- The decrease in the White population was at a higher rate than in Georgia overall, while both the Latino and Other populations grew at higher rates than in Georgia overall

White Co. Commission & School Board

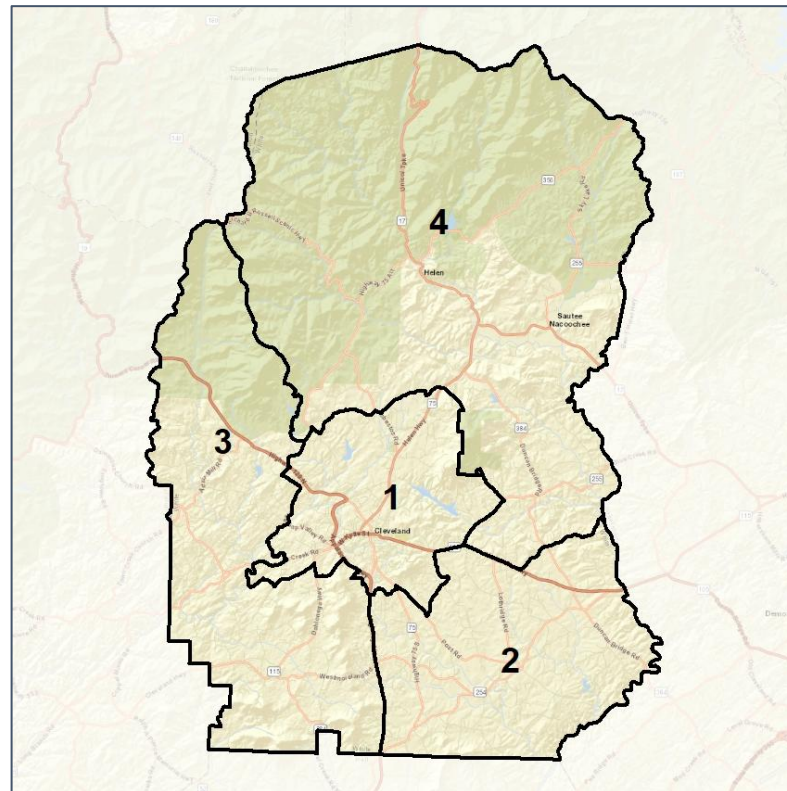
Context



2012 Map



2022 Map*



	1	2	3	4	1*	2*	3*	4*	County
Population	7,241	6,870	7,193	6,699	6,958	6,986	7,030	7,029	28,003
API	1%	0%	0%	1%	1%	0%	0%	1%	1%
Black	4%	1%	1%	1%	4%	1%	1%	1%	2%
Latino	4%	3%	4%	2%	4%	3%	4%	2%	3%
Other	6%	5%	5%	5%	6%	5%	5%	5%	5%
White	85%	91%	90%	90%	85%	91%	90%	90%	89%
Population Gain	290	131	311	127	-283	116	-163	330	*
Population % Gain	4%	2%	5%	2%	-4%	2%	-2%	5%	*
Net POC Gain	415	273	355	310	-30	10	-7	27	*
Net POC % Gain	64%	85%	92%	92%	-3%	2%	-1%	4%	*

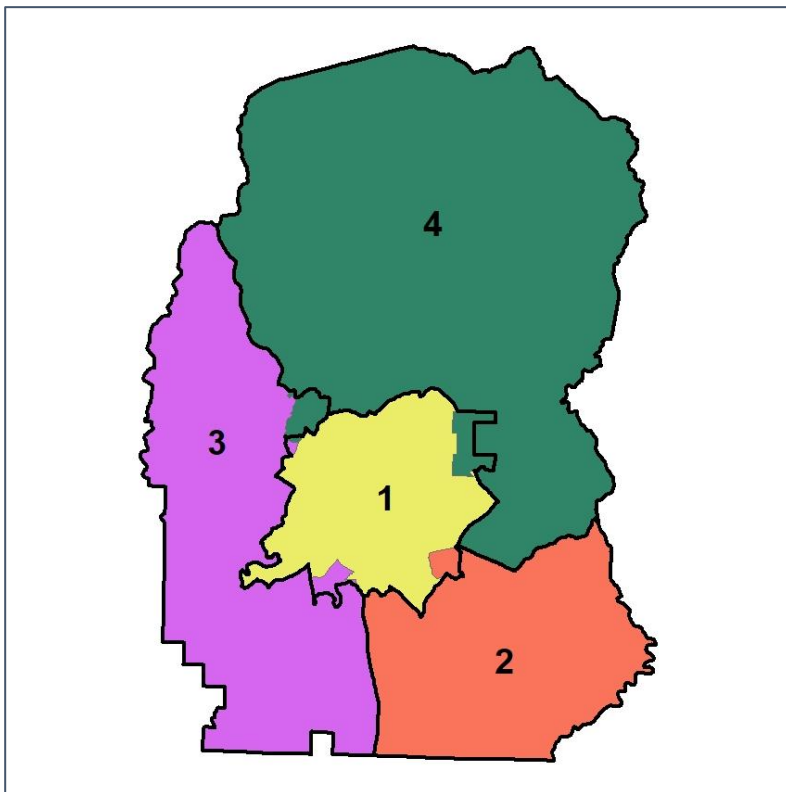


White Co. Commission & School Board

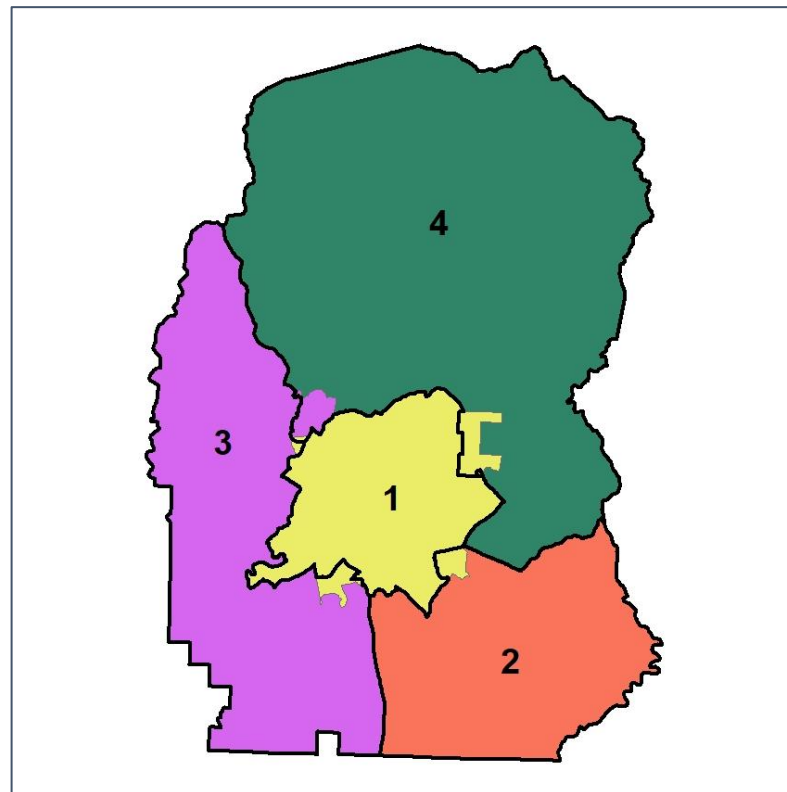
Changes in Redistricting



2012 Map (2022 in Colors)



2022 Map* (2012 in Colors)



	1	2	3	4	1*	2*	3*	4*	County
Population	7,241	6,870	7,193	6,699	6,958	6,986	7,030	7,029	28,003
API	1%	0%	0%	1%	1%	0%	0%	1%	1%
Black	4%	1%	1%	1%	4%	1%	1%	1%	2%
Latino	4%	3%	4%	2%	4%	3%	4%	2%	3%
Other	6%	5%	5%	5%	6%	5%	5%	5%	5%
White	85%	91%	90%	90%	85%	91%	90%	90%	89%
Population Gain	290	131	311	127	-283	116	-163	330	*
Population % Gain	4%	2%	5%	2%	-4%	2%	-2%	5%	*
Net POC Gain	415	273	355	310	-30	10	-7	27	*
Net POC % Gain	64%	85%	92%	92%	-3%	2%	-1%	4%	*

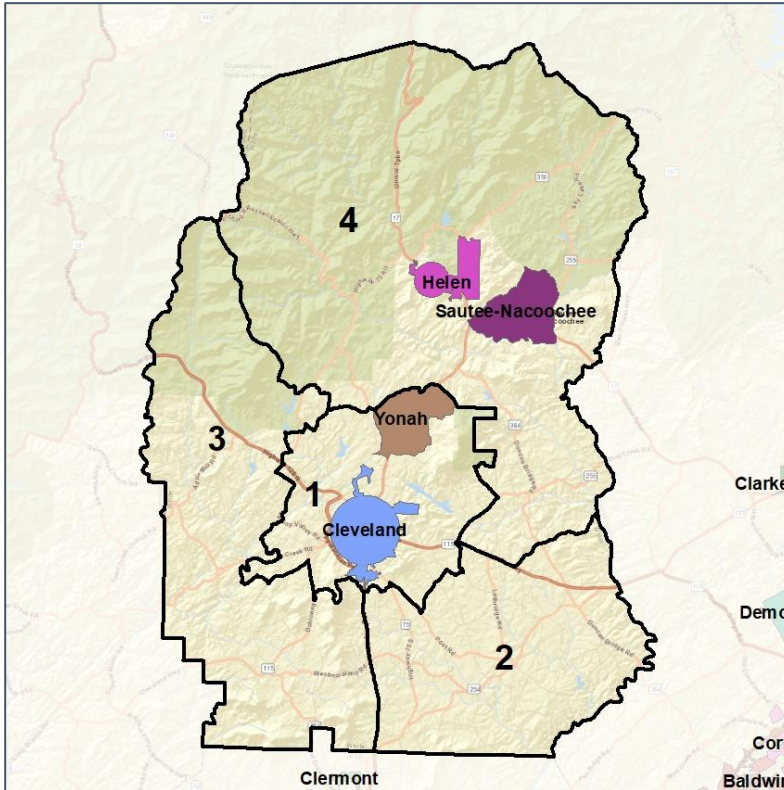


White Co. Commission & School Board

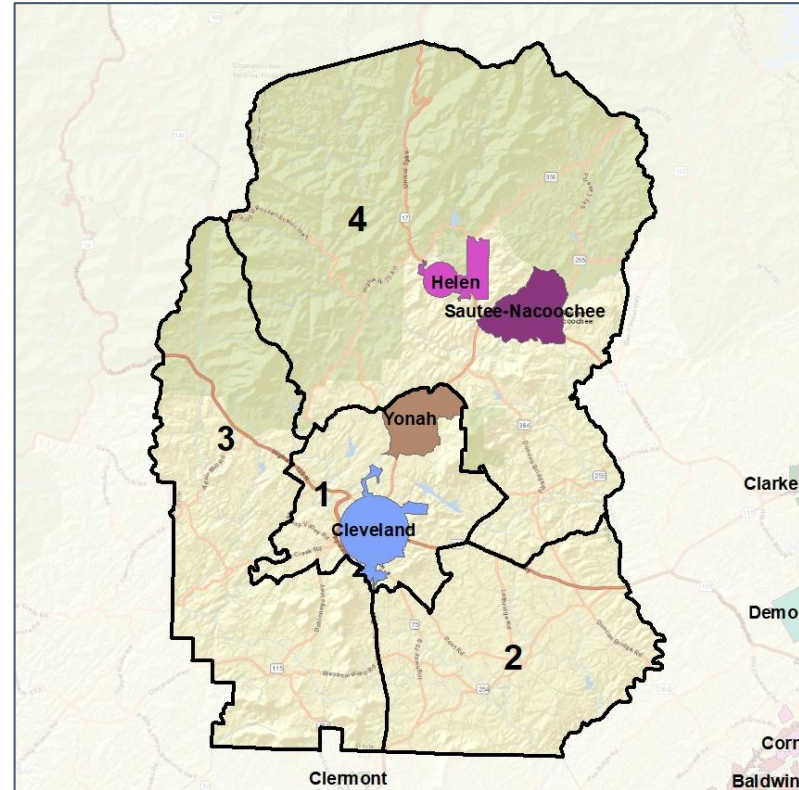
Cities and Places



2012 Map



2022 Map*



	1	2	3	4	1*	2*	3*	4*	County
Population	7,241	6,870	7,193	6,699	6,958	6,986	7,030	7,029	28,003
API	1%	0%	0%	1%	1%	0%	0%	1%	1%
Black	4%	1%	1%	1%	4%	1%	1%	1%	2%
Latino	4%	3%	4%	2%	4%	3%	4%	2%	3%
Other	6%	5%	5%	5%	6%	5%	5%	5%	5%
White	85%	91%	90%	90%	85%	91%	90%	90%	89%
Population Gain	290	131	311	127	-283	116	-163	330	*
Population % Gain	4%	2%	5%	2%	-4%	2%	-2%	5%	*
Net POC Gain	415	273	355	310	-30	10	-7	27	*
Net POC % Gain	64%	85%	92%	92%	-3%	2%	-1%	4%	*

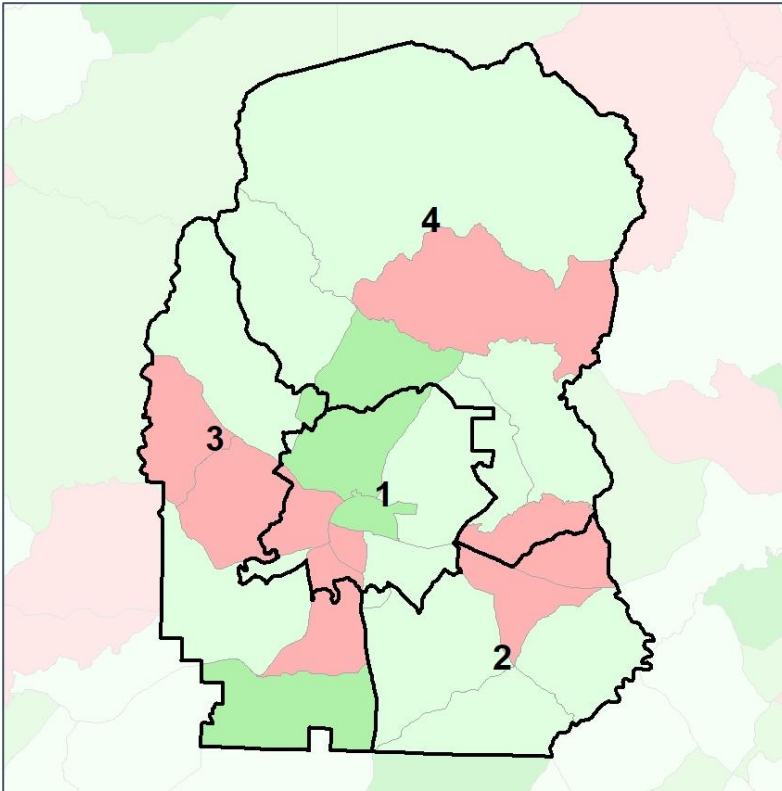


White Co. Commission & School Board

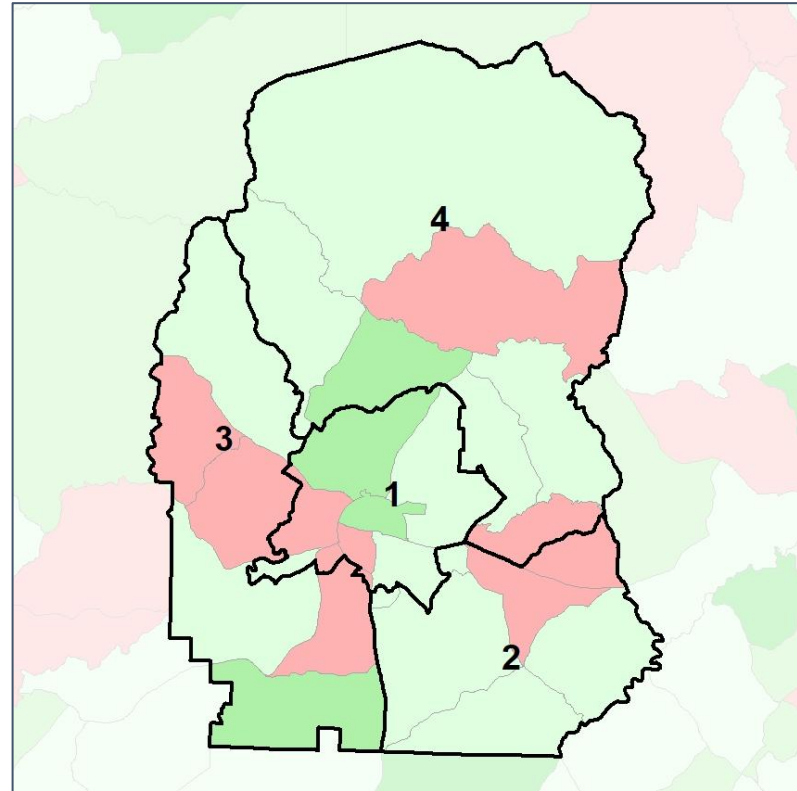
Net Gain in Population (2010 - 2020) by Census Block Group



2012 Map



2022 Map*



	1	2	3	4	1*	2*	3*	4*	County
Population	7,241	6,870	7,193	6,699	6,958	6,986	7,030	7,029	28,003
API	1%	0%	0%	1%	1%	0%	0%	1%	1%
Black	4%	1%	1%	1%	4%	1%	1%	1%	2%
Latino	4%	3%	4%	2%	4%	3%	4%	2%	3%
Other	6%	5%	5%	5%	6%	5%	5%	5%	5%
White	85%	91%	90%	90%	85%	91%	90%	90%	89%
Population Gain	290	131	311	127	-283	116	-163	330	*
Population % Gain	4%	2%	5%	2%	-4%	2%	-2%	5%	*
Net POC Gain	415	273	355	310	-30	10	-7	27	*
Net POC % Gain	64%	85%	92%	92%	-3%	2%	-1%	4%	*

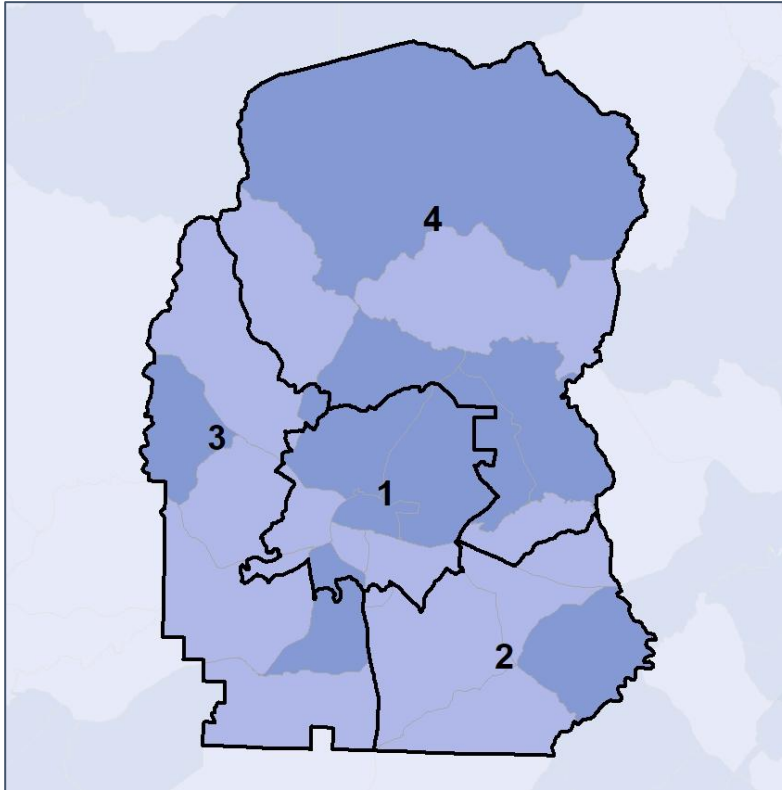


White Co. Commission & School Board

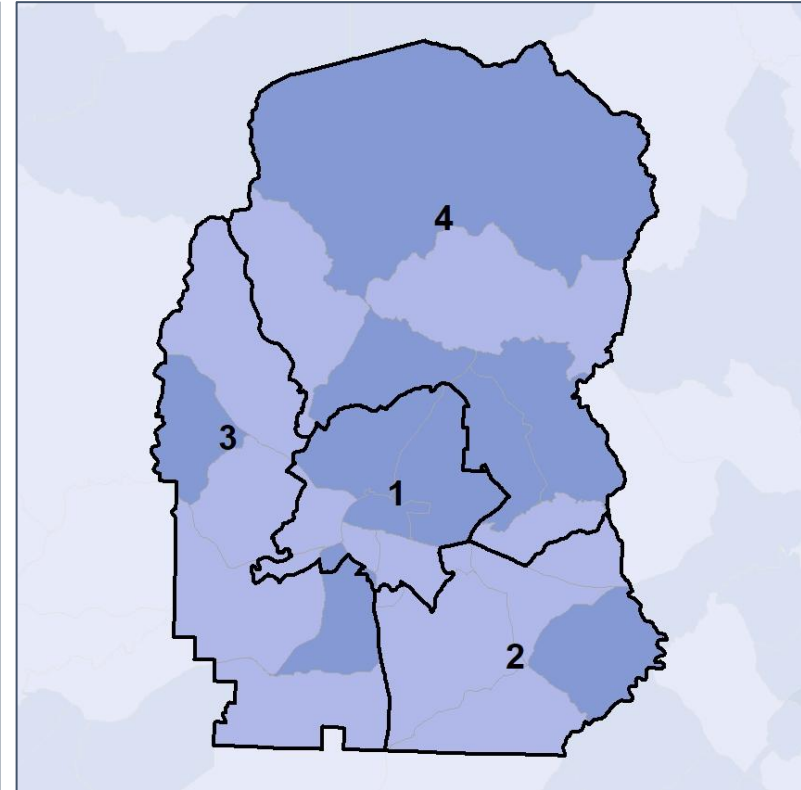
Net Gain in % POC (2020 - 2010) by Census Block Group



2012 Map



2022 Map*



	1	2	3	4	1*	2*	3*	4*	County
Population	7,241	6,870	7,193	6,699	6,958	6,986	7,030	7,029	28,003
API	1%	0%	0%	1%	1%	0%	0%	1%	1%
Black	4%	1%	1%	1%	4%	1%	1%	1%	2%
Latino	4%	3%	4%	2%	4%	3%	4%	2%	3%
Other	6%	5%	5%	5%	6%	5%	5%	5%	5%
White	85%	91%	90%	90%	85%	91%	90%	90%	89%
Population Gain	290	131	311	127	-283	116	-163	330	*
Population % Gain	4%	2%	5%	2%	-4%	2%	-2%	5%	*
Net POC Gain	415	273	355	310	-30	10	-7	27	*
Net POC % Gain	64%	85%	92%	92%	-3%	2%	-1%	4%	*

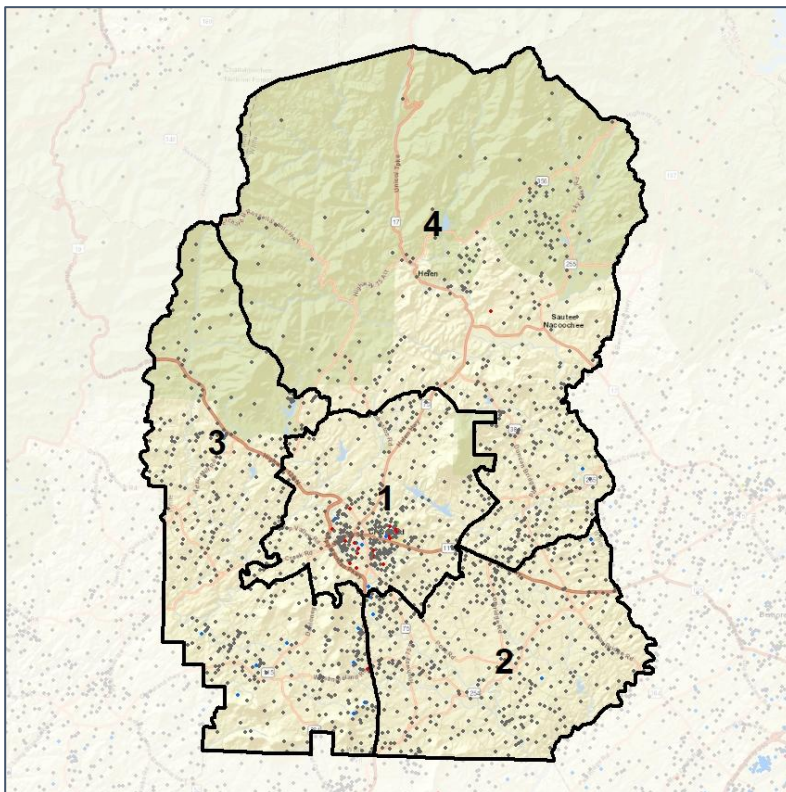


White Co. Commission & School Board

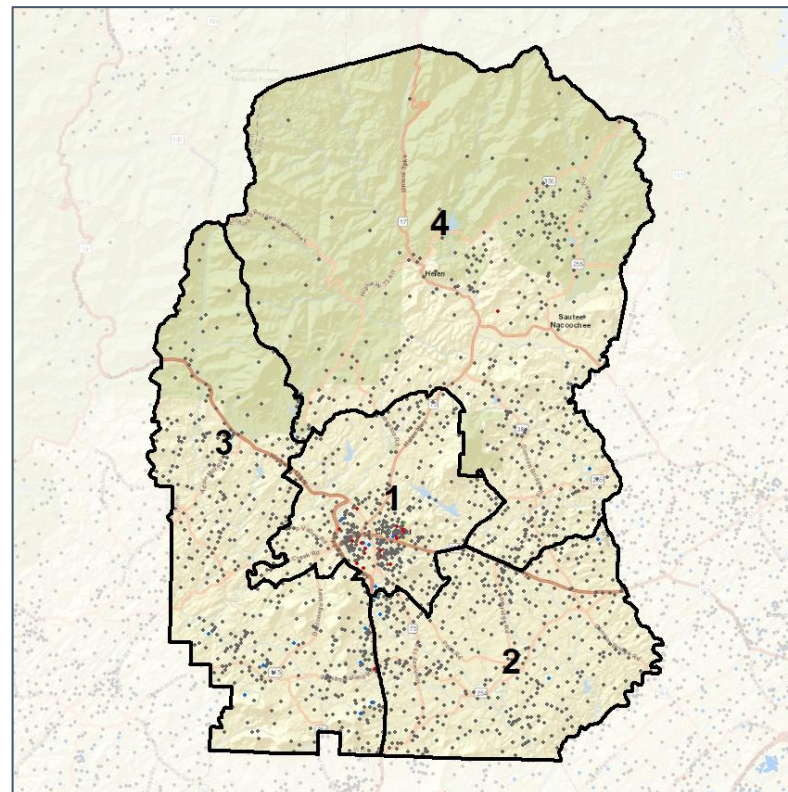
Population Density by Race



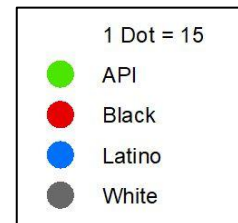
2012 Map



2022 Map*



	1	2	3	4	1*	2*	3*	4*	County
Population	7,241	6,870	7,193	6,699	6,958	6,986	7,030	7,029	28,003
API	51	22	29	57	49	22	31	57	159
% API	1%	0%	0%	1%	1%	0%	0%	1%	1%
Black	300	37	54	76	297	37	52	81	467
% Black	4%	1%	1%	1%	4%	1%	1%	1%	2%
Latino	278	203	266	166	268	207	266	172	913
% Latino	4%	3%	4%	2%	4%	3%	4%	2%	3%
Other	433	333	390	349	418	339	383	365	1,505
% Other	6%	5%	5%	5%	6%	5%	5%	5%	5%
White	6,179	6,275	6,454	6,051	5,926	6,381	6,298	6,354	24,959
% White	85%	91%	90%	90%	85%	91%	90%	90%	89%



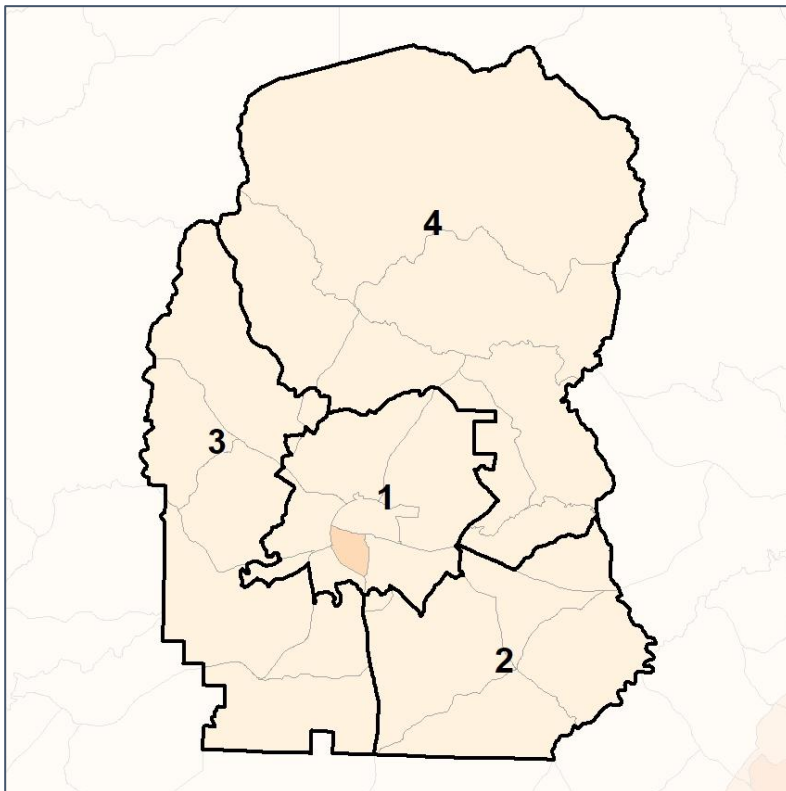
Source:
2020 Decennial Census
2020 ACS 5-Year Dataset

White Co. Commission & School Board

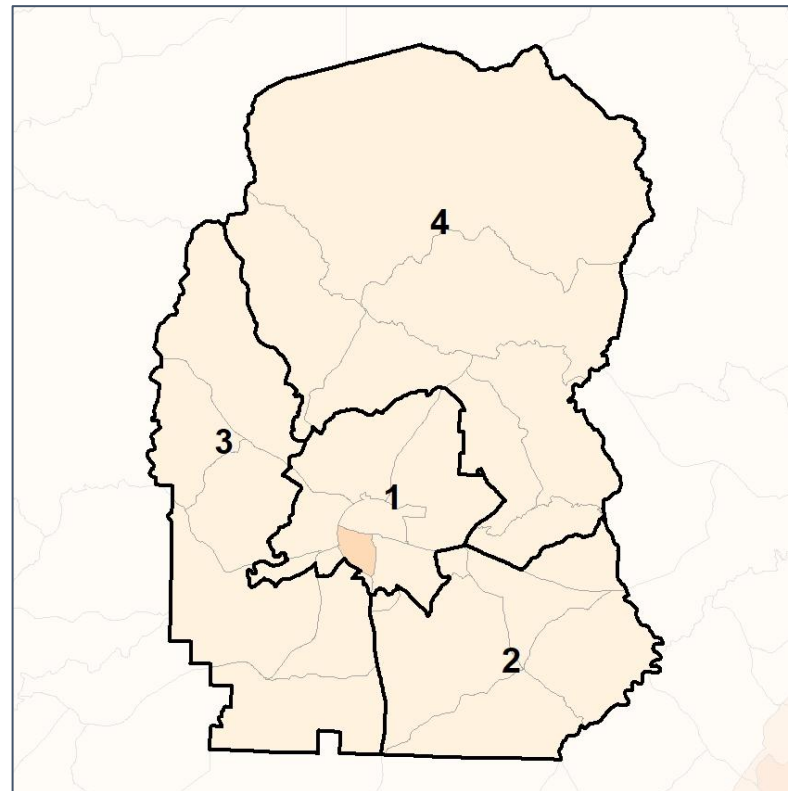
% People of Color by Census Block Group



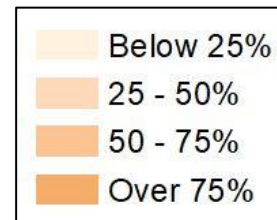
2012 Map



2022 Map*



	1	2	3	4	1*	2*	3*	4*	County
Population	7,241	6,870	7,193	6,699	6,958	6,986	7,030	7,029	28,003
API	51	22	29	57	49	22	31	57	159
% API	1%	0%	0%	1%	1%	0%	0%	1%	1%
Black	300	37	54	76	297	37	52	81	467
% Black	4%	1%	1%	1%	4%	1%	1%	1%	2%
Latino	278	203	266	166	268	207	266	172	913
% Latino	4%	3%	4%	2%	4%	3%	4%	2%	3%
Other	433	333	390	349	418	339	383	365	1,505
% Other	6%	5%	5%	5%	6%	5%	5%	5%	5%
White	6,179	6,275	6,454	6,051	5,926	6,381	6,298	6,354	24,959
% White	85%	91%	90%	90%	85%	91%	90%	90%	89%

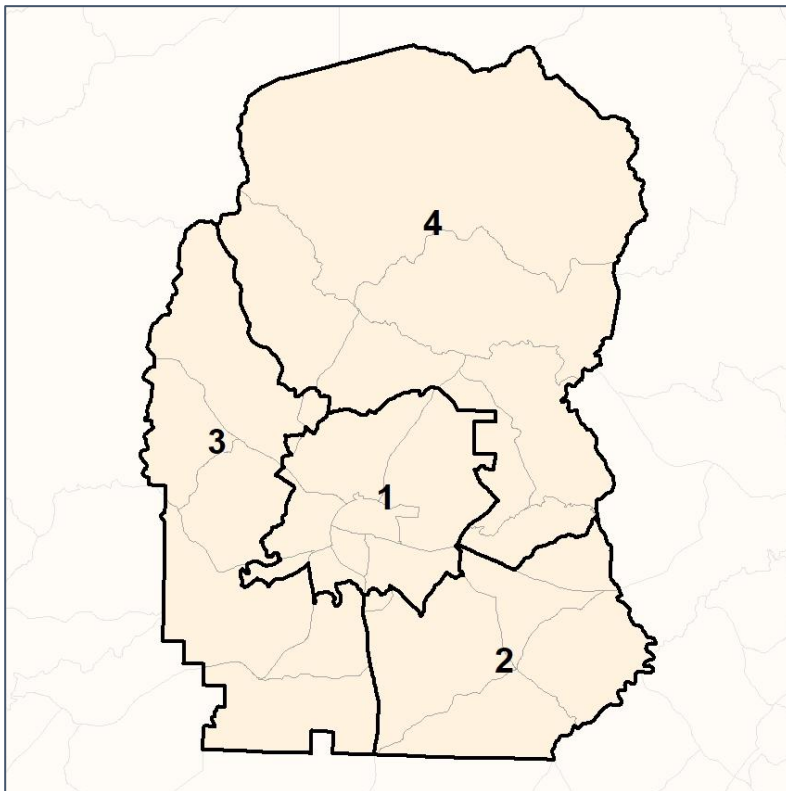


White Co. Commission & School Board

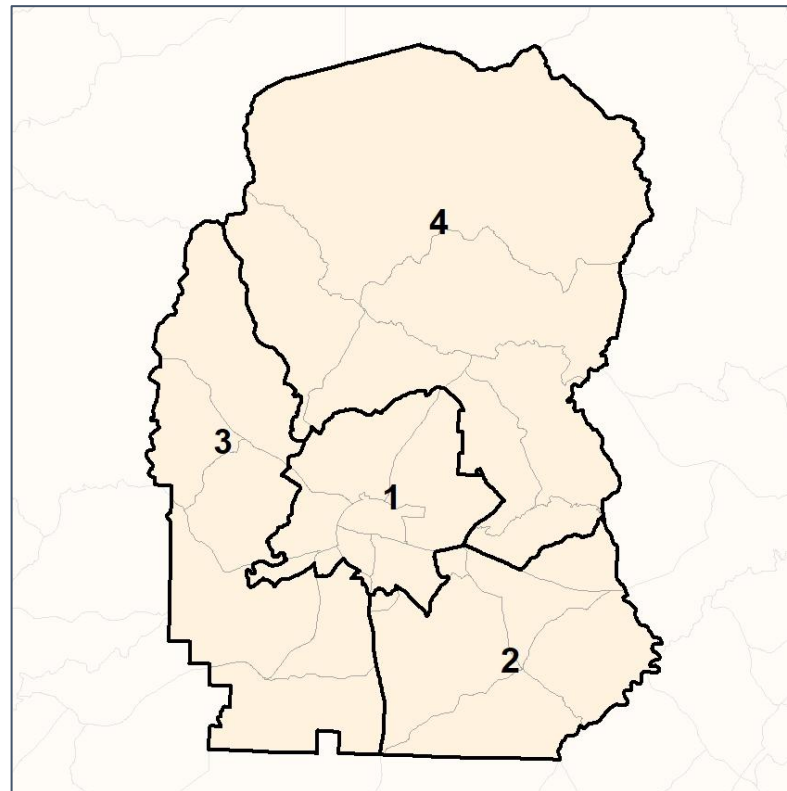
% API by Census Block Group



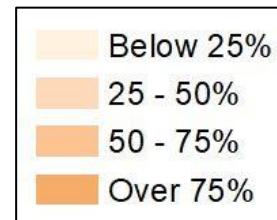
2012 Map



2022 Map*



	1	2	3	4	1*	2*	3*	4*	County
Population	7,241	6,870	7,193	6,699	6,958	6,986	7,030	7,029	28,003
API	51	22	29	57	49	22	31	57	159
% API	1%	0%	0%	1%	1%	0%	0%	1%	1%
Black	300	37	54	76	297	37	52	81	467
% Black	4%	1%	1%	1%	4%	1%	1%	1%	2%
Latino	278	203	266	166	268	207	266	172	913
% Latino	4%	3%	4%	2%	4%	3%	4%	2%	3%
Other	433	333	390	349	418	339	383	365	1,505
% Other	6%	5%	5%	5%	6%	5%	5%	5%	5%
White	6,179	6,275	6,454	6,051	5,926	6,381	6,298	6,354	24,959
% White	85%	91%	90%	90%	85%	91%	90%	90%	89%

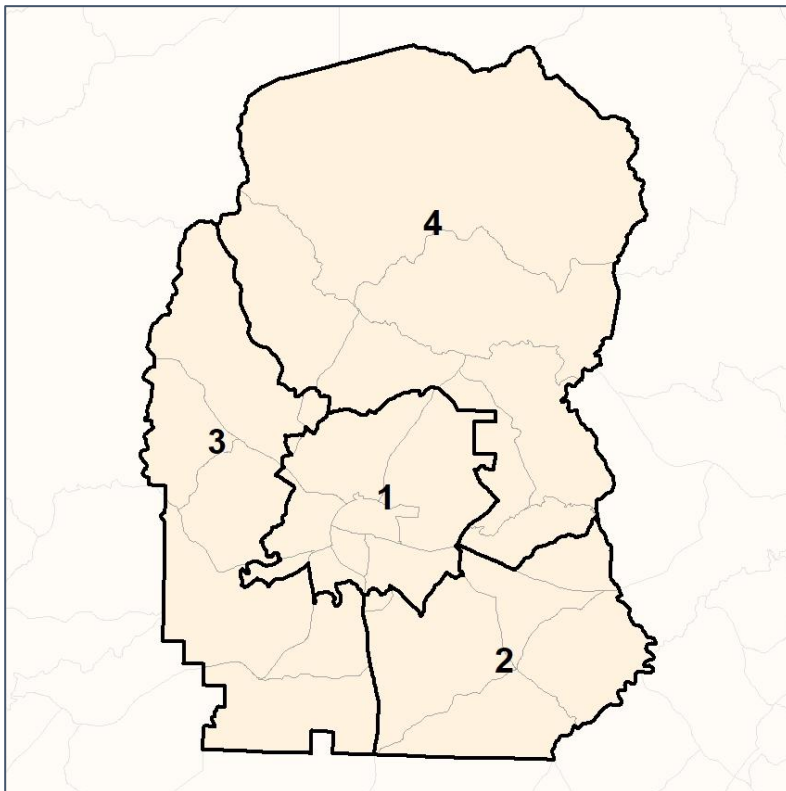


White Co. Commission & School Board

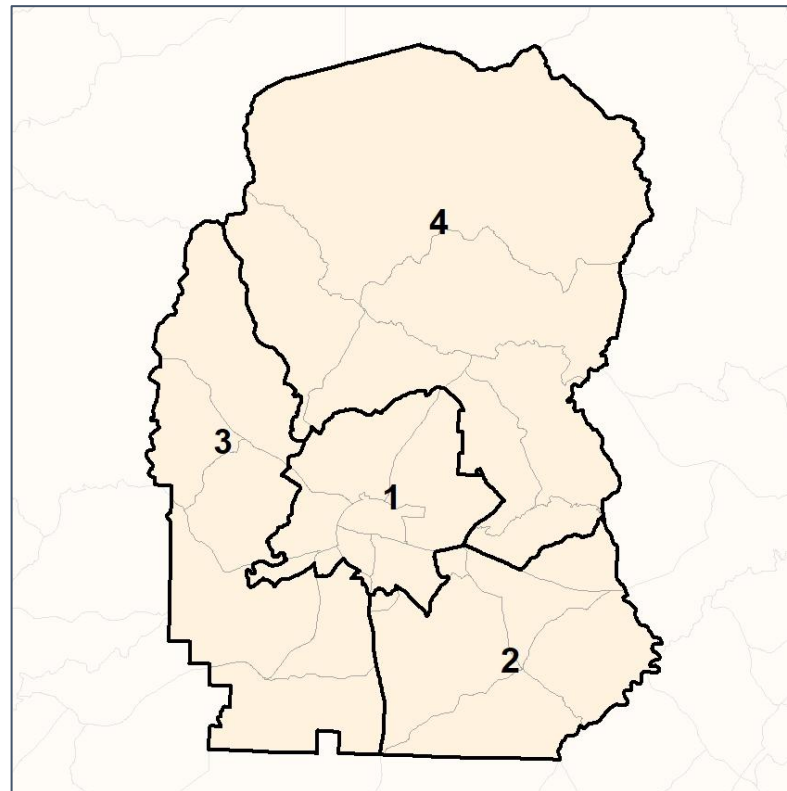
% Black by Census Block Group



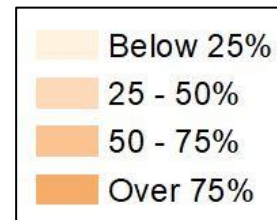
2012 Map



2022 Map*



	1	2	3	4	1*	2*	3*	4*	County
Population	7,241	6,870	7,193	6,699	6,958	6,986	7,030	7,029	28,003
API	51	22	29	57	49	22	31	57	159
% API	1%	0%	0%	1%	1%	0%	0%	1%	1%
Black	300	37	54	76	297	37	52	81	467
% Black	4%	1%	1%	1%	4%	1%	1%	1%	2%
Latino	278	203	266	166	268	207	266	172	913
% Latino	4%	3%	4%	2%	4%	3%	4%	2%	3%
Other	433	333	390	349	418	339	383	365	1,505
% Other	6%	5%	5%	5%	6%	5%	5%	5%	5%
White	6,179	6,275	6,454	6,051	5,926	6,381	6,298	6,354	24,959
% White	85%	91%	90%	90%	85%	91%	90%	90%	89%

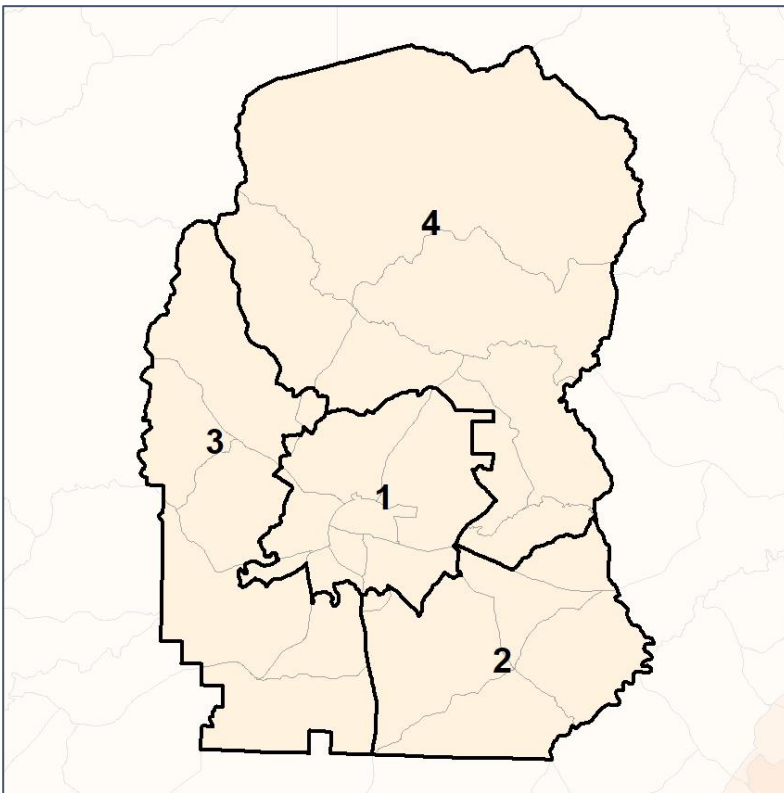


White Co. Commission & School Board

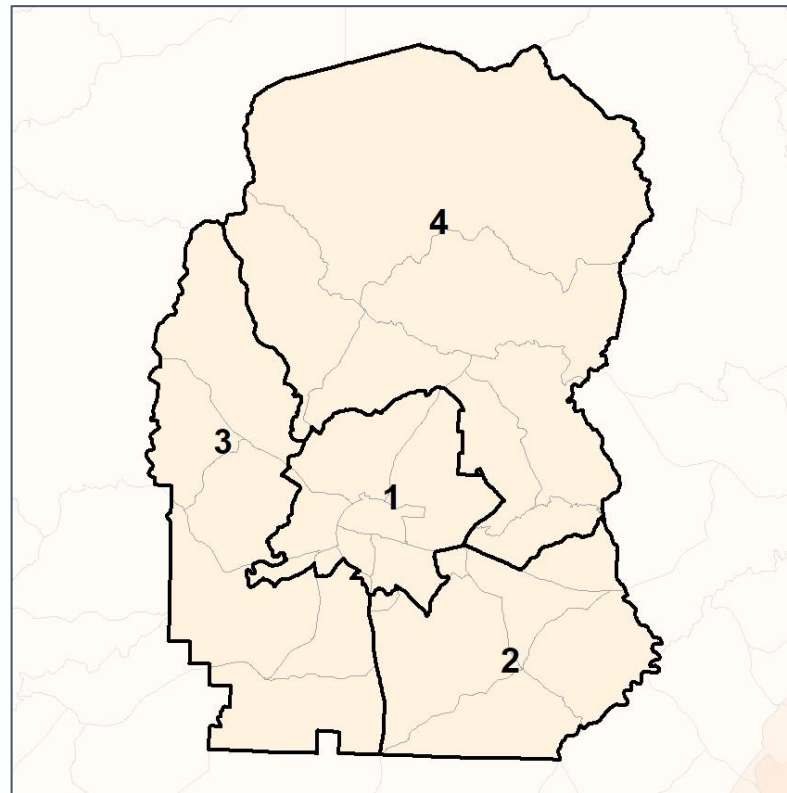
% Latino by Census Block Group



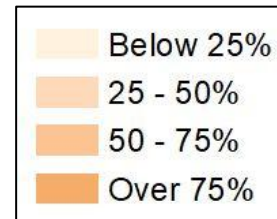
2012 Map



2022 Map*



	1	2	3	4	1*	2*	3*	4*	County
Population	7,241	6,870	7,193	6,699	6,958	6,986	7,030	7,029	28,003
API	51	22	29	57	49	22	31	57	159
% API	1%	0%	0%	1%	1%	0%	0%	1%	1%
Black	300	37	54	76	297	37	52	81	467
% Black	4%	1%	1%	1%	4%	1%	1%	1%	2%
Latino	278	203	266	166	268	207	266	172	913
% Latino	4%	3%	4%	2%	4%	3%	4%	2%	3%
Other	433	333	390	349	418	339	383	365	1,505
% Other	6%	5%	5%	5%	6%	5%	5%	5%	5%
White	6,179	6,275	6,454	6,051	5,926	6,381	6,298	6,354	24,959
% White	85%	91%	90%	90%	85%	91%	90%	90%	89%

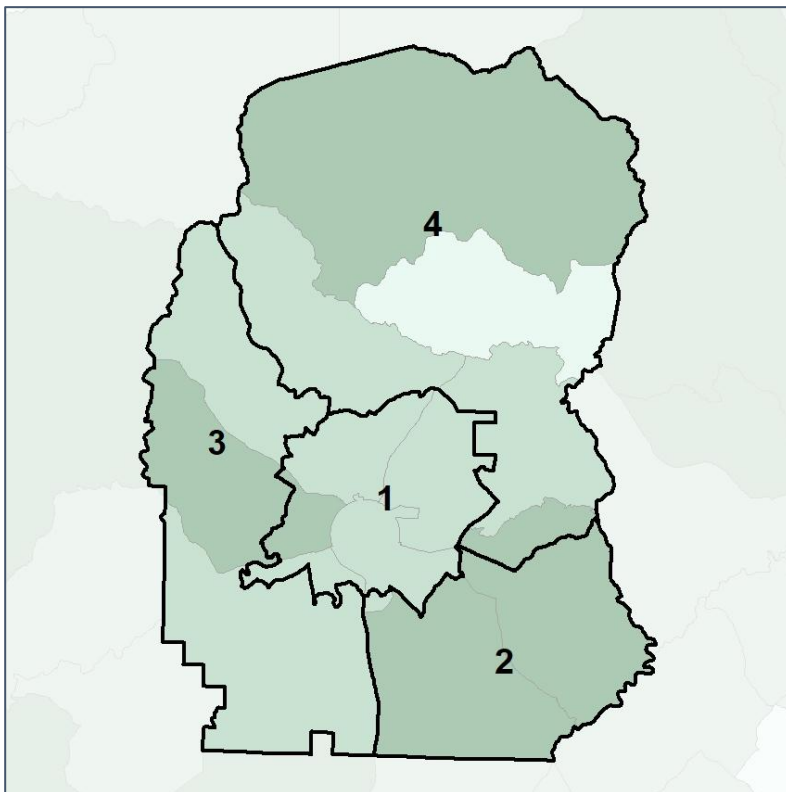


White Co. Commission & School Board

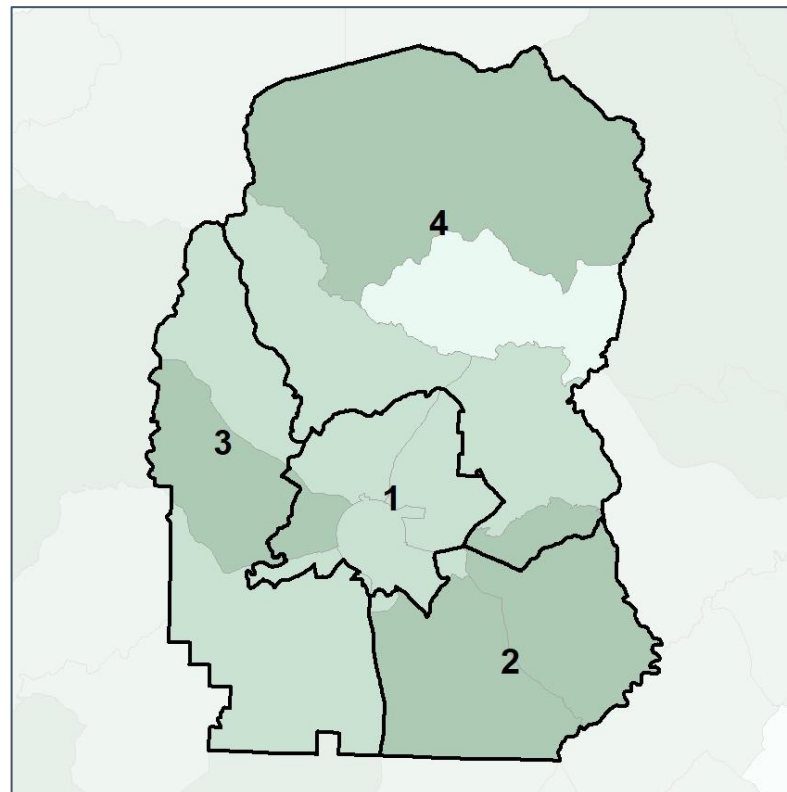
Median Household Income by Census Tract



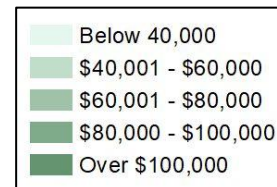
2012 Map



2022 Map*



	1	2	3	4	1*	2*	3*	4*	County
Population	7,241	6,870	7,193	6,699	6,958	6,986	7,030	7,029	28,003
% API	1%	0%	0%	1%	1%	0%	0%	1%	1%
% Black	4%	1%	1%	1%	4%	1%	1%	1%	2%
% Latino	4%	3%	4%	2%	4%	3%	4%	2%	3%
% Other	6%	5%	5%	5%	6%	5%	5%	5%	5%
% White	85%	91%	90%	90%	85%	91%	90%	90%	89%
Median Income	\$51,000	\$67,000	\$63,000	\$55,000	\$53,000	\$67,000	\$63,000	\$53,000	\$56,000
% Renter	39%	23%	22%	14%	43%	23%	22%	17%	24%
% Youth	29%	20%	19%	11%	30%	20%	19%	14%	19%

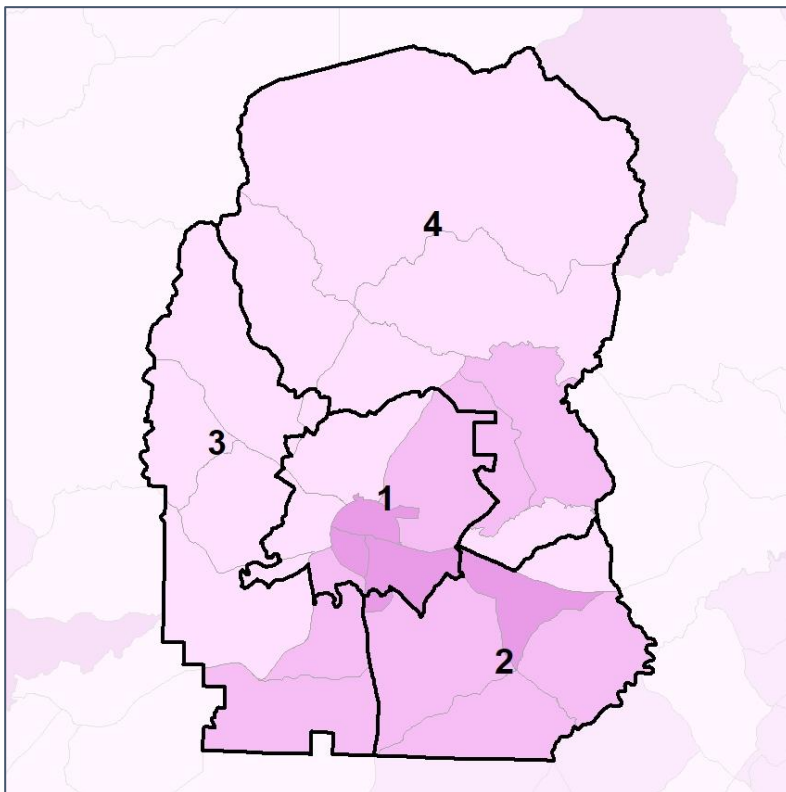


White Co. Commission & School Board

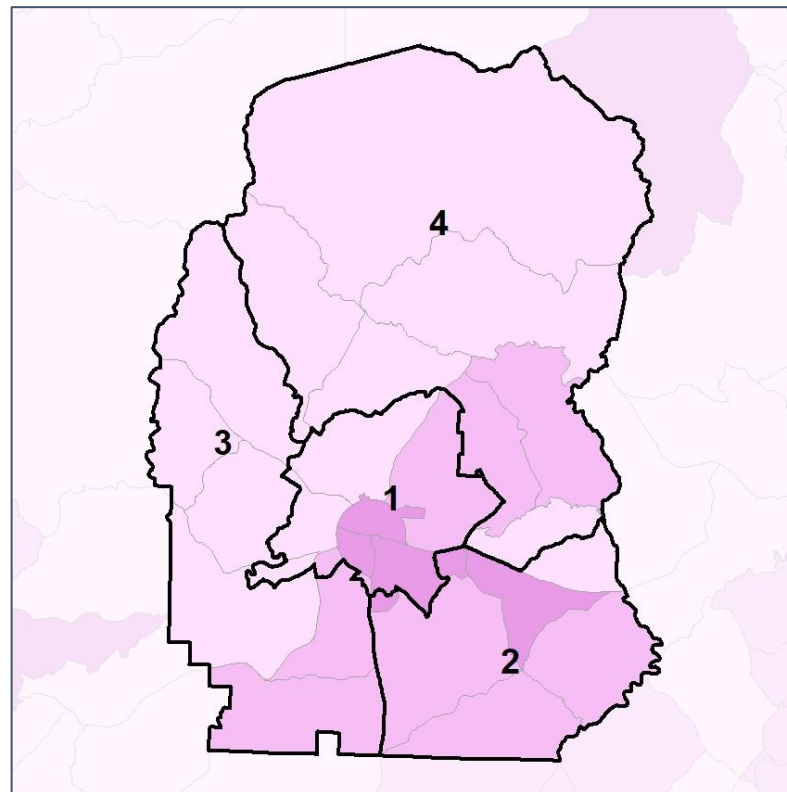
% Renter by Census Block Group



2012 Map



2022 Map*



	1	2	3	4	1*	2*	3*	4*	County
Population	7,241	6,870	7,193	6,699	6,958	6,986	7,030	7,029	28,003
% API	1%	0%	0%	1%	1%	0%	0%	1%	1%
% Black	4%	1%	1%	1%	4%	1%	1%	1%	2%
% Latino	4%	3%	4%	2%	4%	3%	4%	2%	3%
% Other	6%	5%	5%	5%	6%	5%	5%	5%	5%
% White	85%	91%	90%	90%	85%	91%	90%	90%	89%
Median Income	\$51,000	\$67,000	\$63,000	\$55,000	\$53,000	\$67,000	\$63,000	\$53,000	\$56,000
% Renter	39%	23%	22%	14%	43%	23%	22%	17%	24%
% Youth	29%	20%	19%	11%	30%	20%	19%	14%	19%

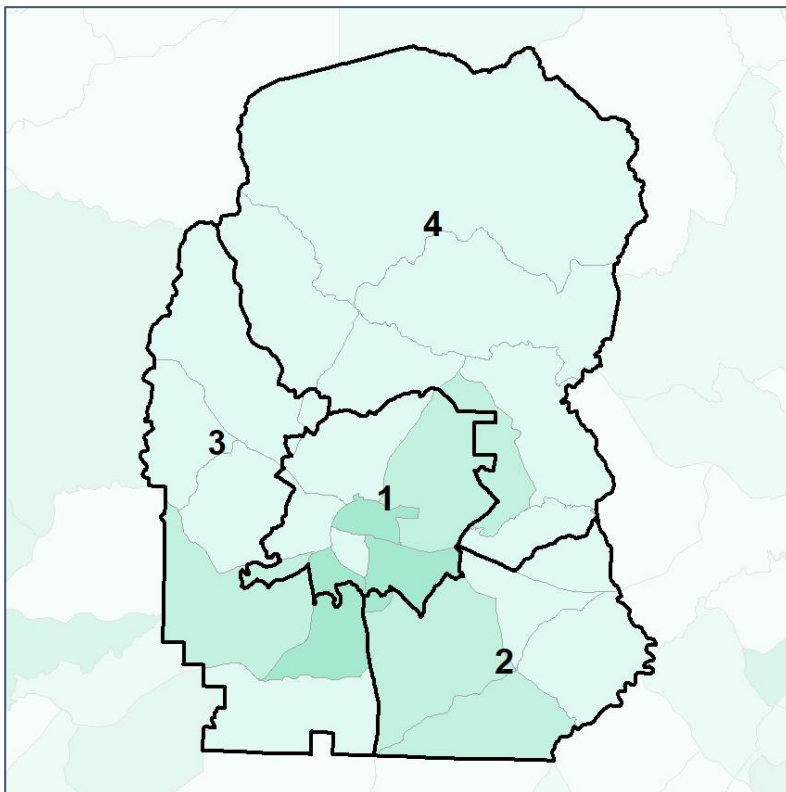


White Co. Commission & School Board

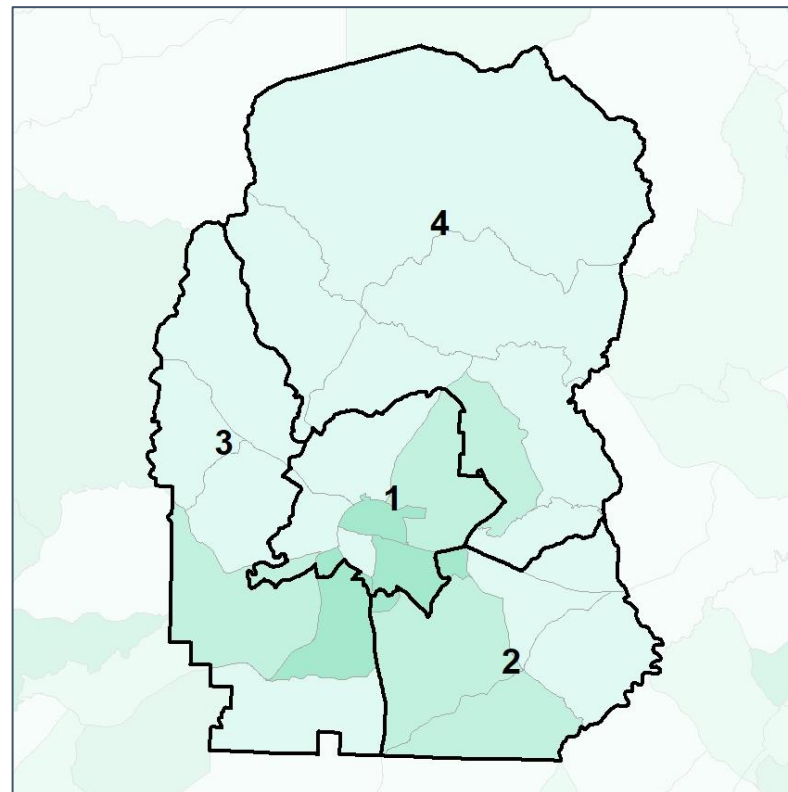
% Youth (18-34) by Census Block Group



2012 Map



2022 Map*



	1	2	3	4	1*	2*	3*	4*	County
Population	7,241	6,870	7,193	6,699	6,958	6,986	7,030	7,029	28,003
% API	1%	0%	0%	1%	1%	0%	0%	1%	1%
% Black	4%	1%	1%	1%	4%	1%	1%	1%	2%
% Latino	4%	3%	4%	2%	4%	3%	4%	2%	3%
% Other	6%	5%	5%	5%	6%	5%	5%	5%	5%
% White	85%	91%	90%	90%	85%	91%	90%	90%	89%
Median Income	\$51,000	\$67,000	\$63,000	\$55,000	\$53,000	\$67,000	\$63,000	\$53,000	\$56,000
% Renter	39%	23%	22%	14%	43%	23%	22%	17%	24%
% Youth	29%	20%	19%	11%	30%	20%	19%	14%	19%

