

Demographic Overview

Racial Breakdown in Wayne County



Wayne County	2010	2020	% Change
Total Population	30,099	30,144	0%
AAPI	166	176	6%
Black	5,928	5,877	-1%
Latino	1,719	1,732	1%
Other/Mixed Race	537	1,058	97%
POC	8,350	8,843	6%
White	21,749	21,301	-2%





Population Gain

Change in Population in Georgia by County



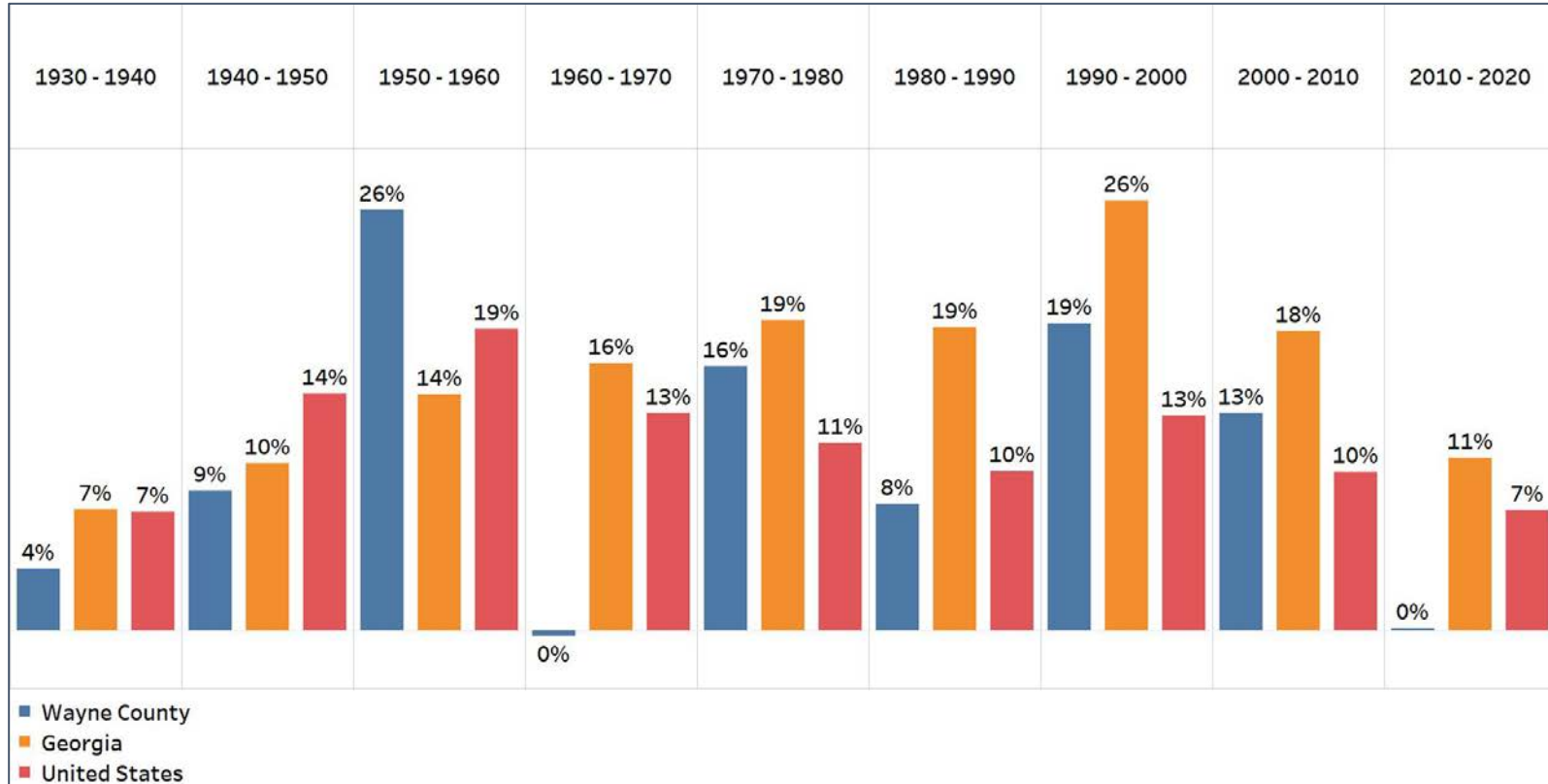
- Georgia is experiencing rapid population growth in the Atlanta, Augusta, and Savannah regions of the state





Population Gain

Change in Population by Decade

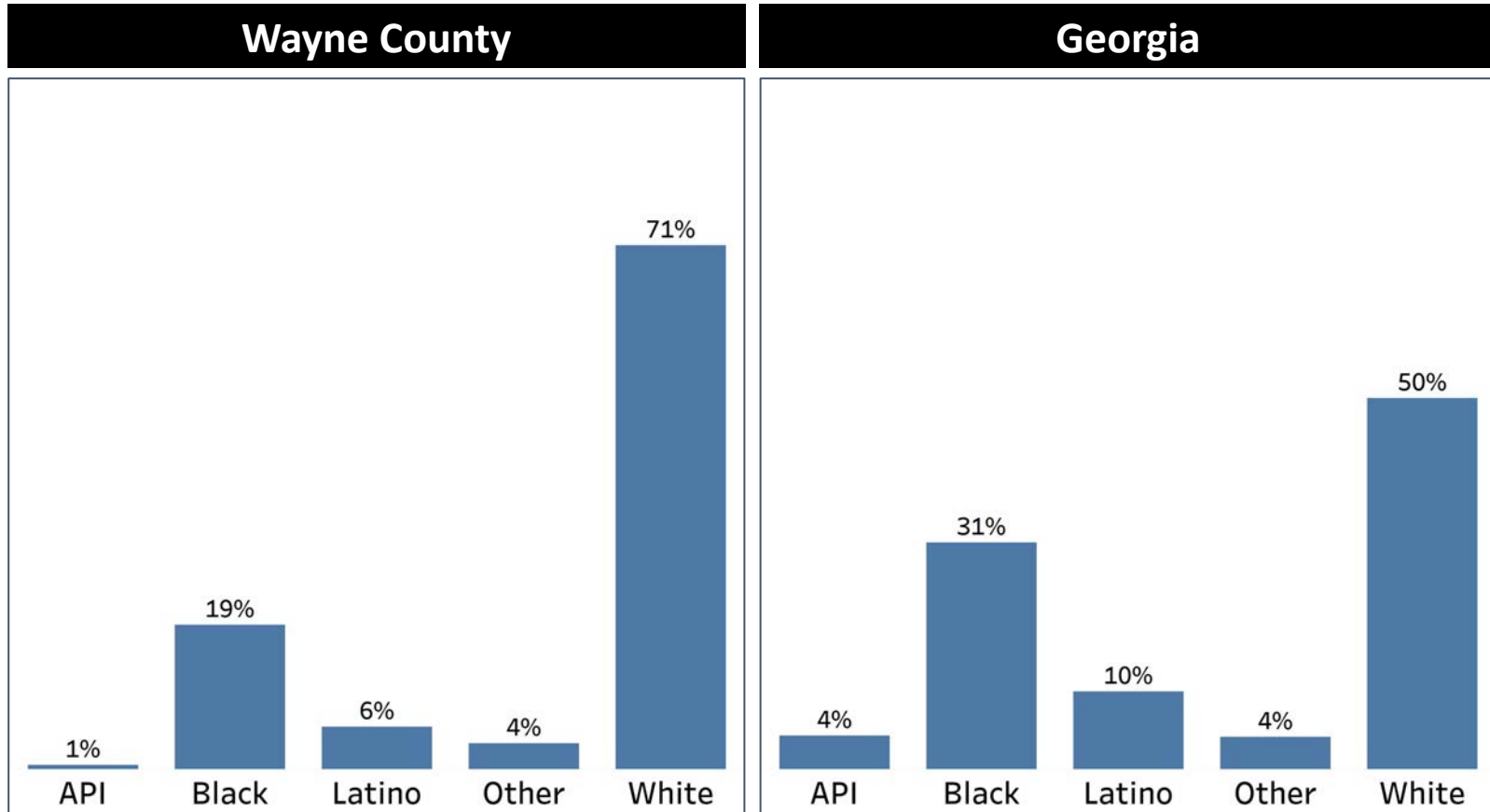


- Wayne County has had somewhat significant population growth in almost every decade since 1930, with the exception of the 1960s and the past decade
- Its most significant growth periods were in the 1950s and 1990s



Demographics

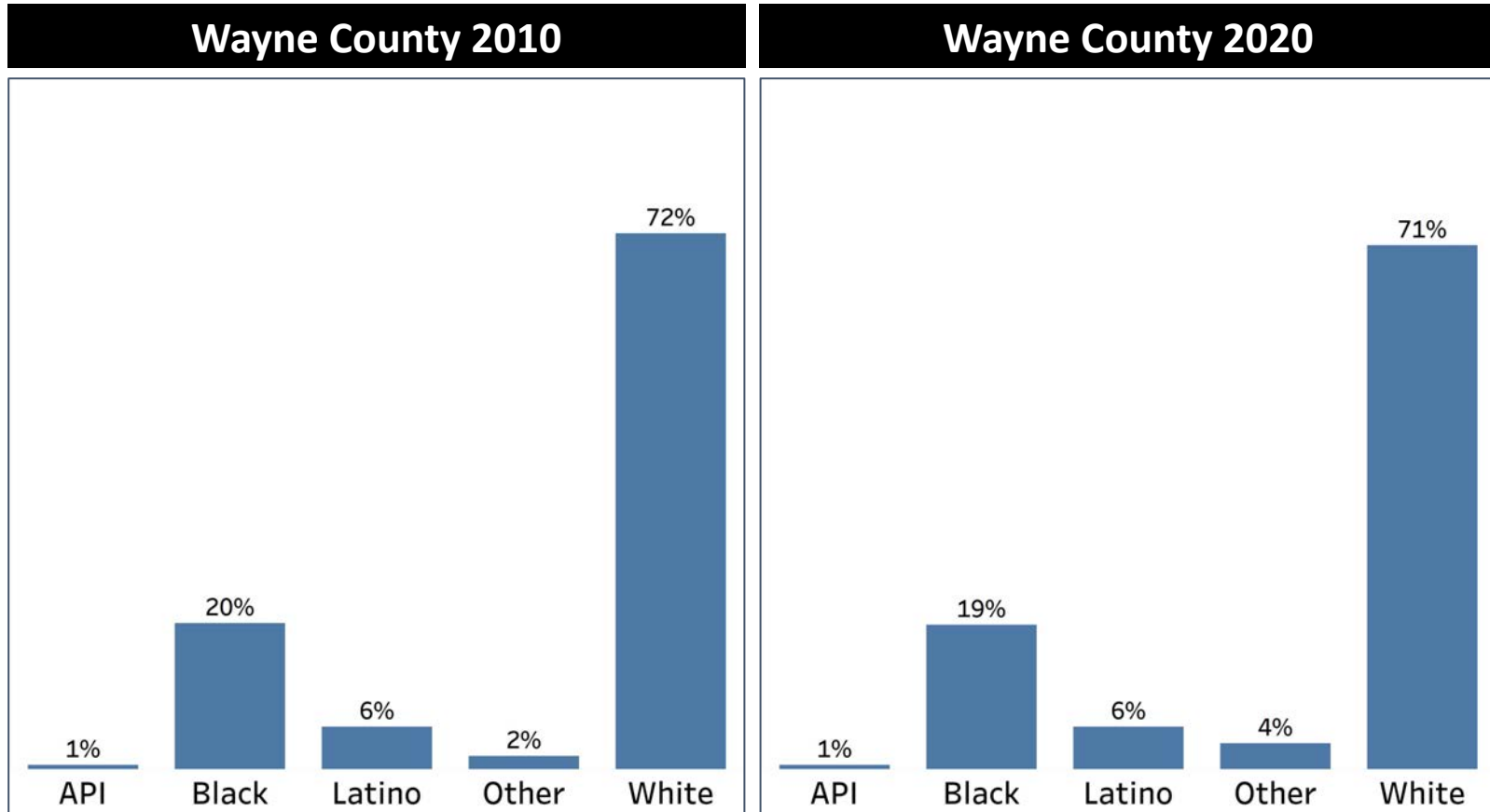
Comparison between Wayne County and Georgia



- Wayne County is disproportionately White, but the Other population also has the same share of the population in the county as in Georgia
- Overall, people of color make up a bit less than a $\frac{1}{3}$ of the population of Wayne County

Demographics

2010 vs 2020 Demographics in Wayne County



- Wayne County had a decline in the share of both the Black and White populations
- The only demographic group that grew their share of the population si the Other population, which doubled its share in the past decade

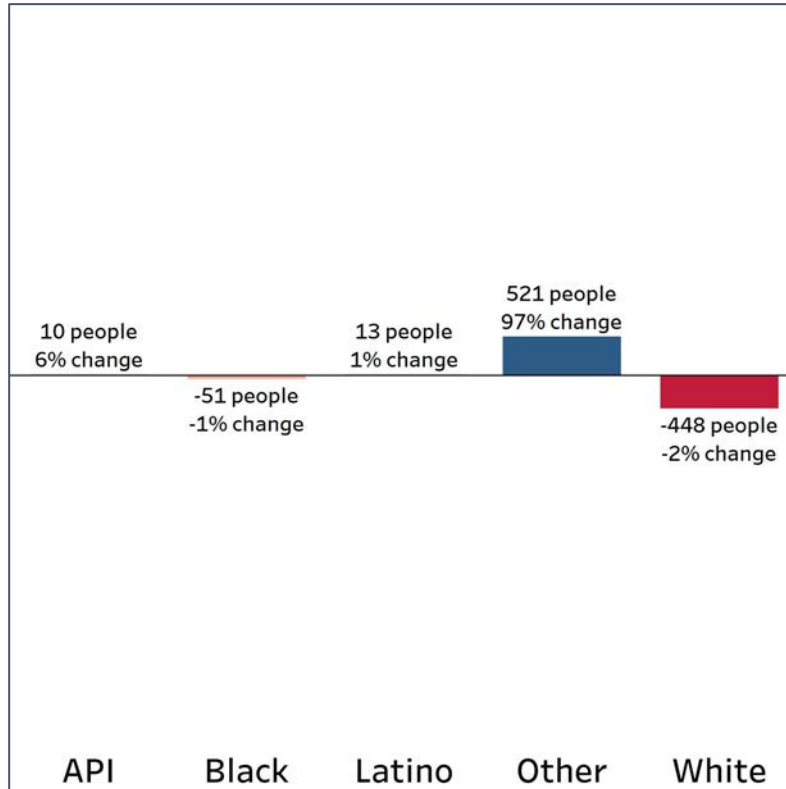


Demographics

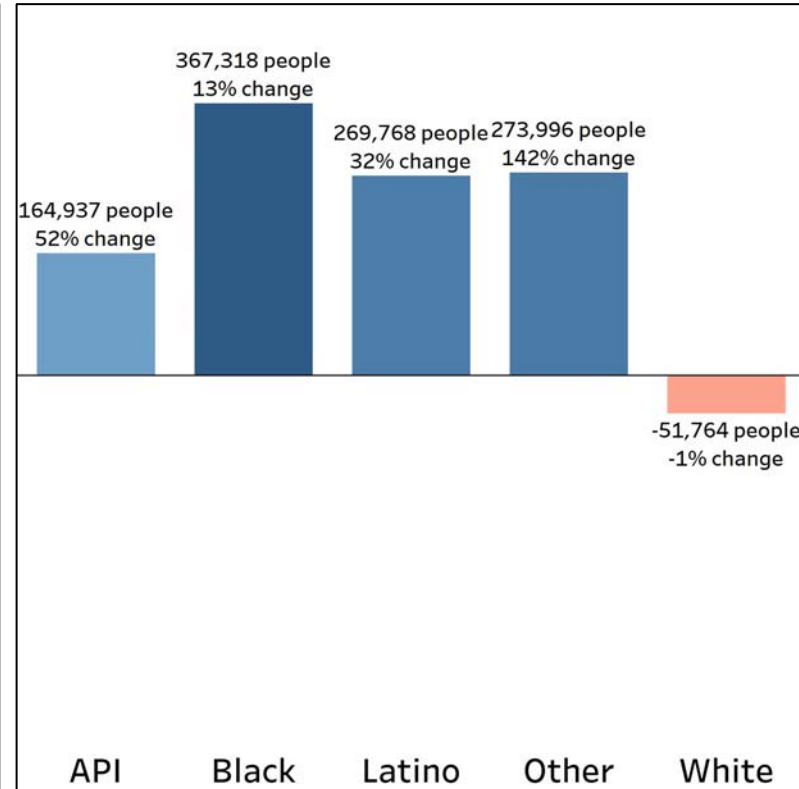
Population Change by Race (2020 - 2010)



Wayne County



Georgia



- Wayne County had very little change in most demographic groups, with the exception of the Other and White populations
- The White population decline at a higher rate than in Georgia overall, while the Other population grew at a slower rate

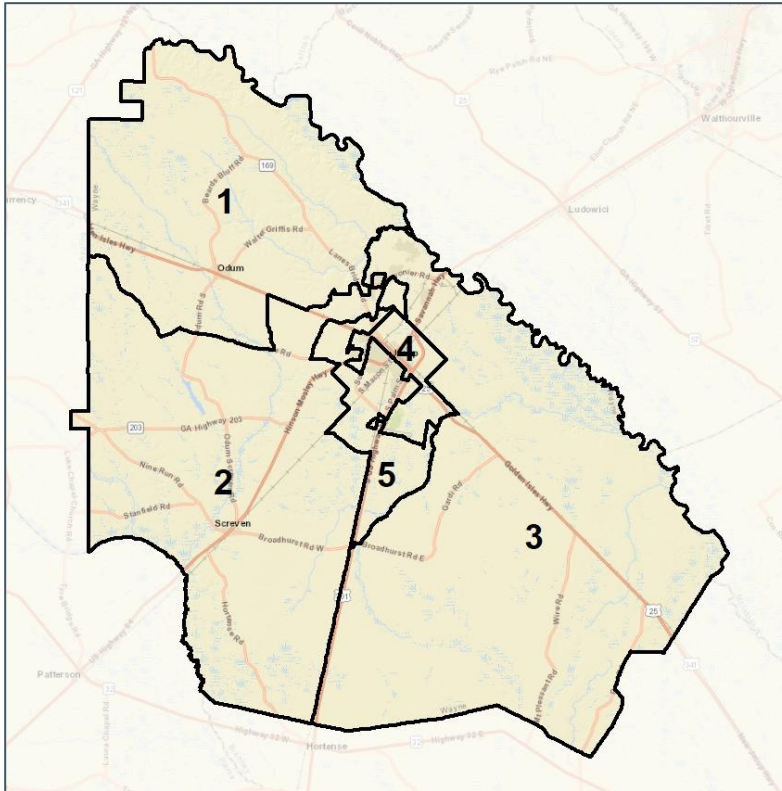


Wayne Co. Commission & School Board

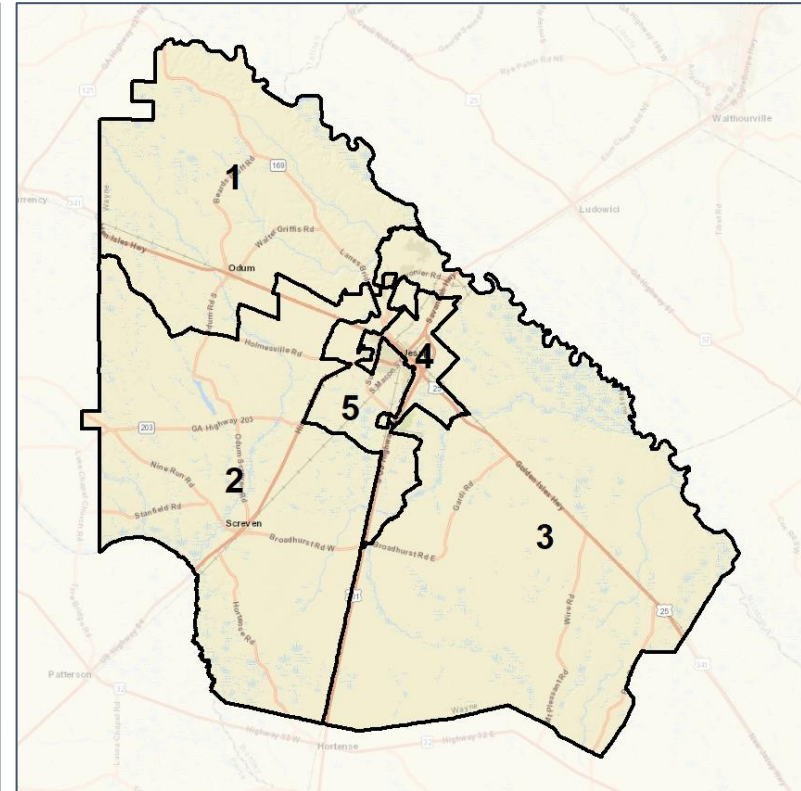
Context



2012 Map



2022 Map*



	1	2	3	4	5	1*	2*	3*	4*	5*	County
Population	6,117	6,142	6,514	4,311	7,060	5,881	5,777	5,877	5,766	5,749	30,144
API	0%	0%	1%	1%	1%	0%	0%	0%	1%	1%	1%
Black	6%	9%	14%	54%	25%	6%	8%	11%	49%	17%	19%
Latino	4%	5%	6%	6%	8%	4%	5%	5%	6%	7%	6%
Other	3%	3%	4%	5%	3%	3%	3%	4%	4%	3%	4%
White	86%	83%	76%	35%	63%	86%	84%	80%	39%	72%	71%
Population Gain	-23	168	356	-1,634	1,178	-236	-365	-637	1,455	-1,311	*
Population % Gain	0%	3%	6%	-27%	20%	-4%	-6%	-10%	34%	-19%	*
Net POC Gain	167	203	285	-1,340	1,178	-13	-134	-374	686	-992	*
Net POC % Gain	25%	24%	22%	-32%	83%	-2%	-13%	-24%	24%	-38%	*



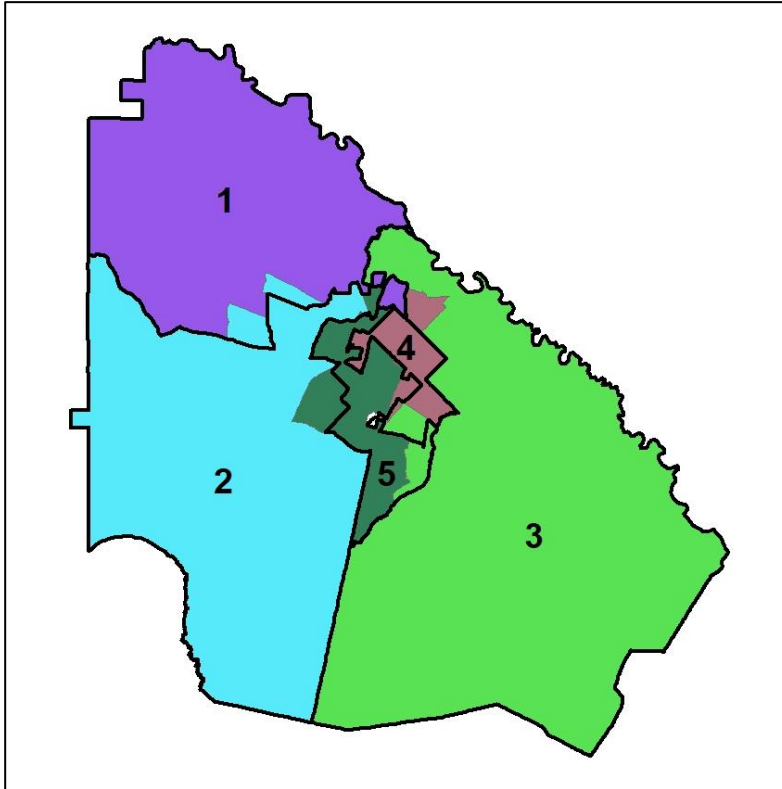
Source:
2020 Decennial Census
2020 ACS 5-Year Dataset

Wayne Co. Commission & School Board

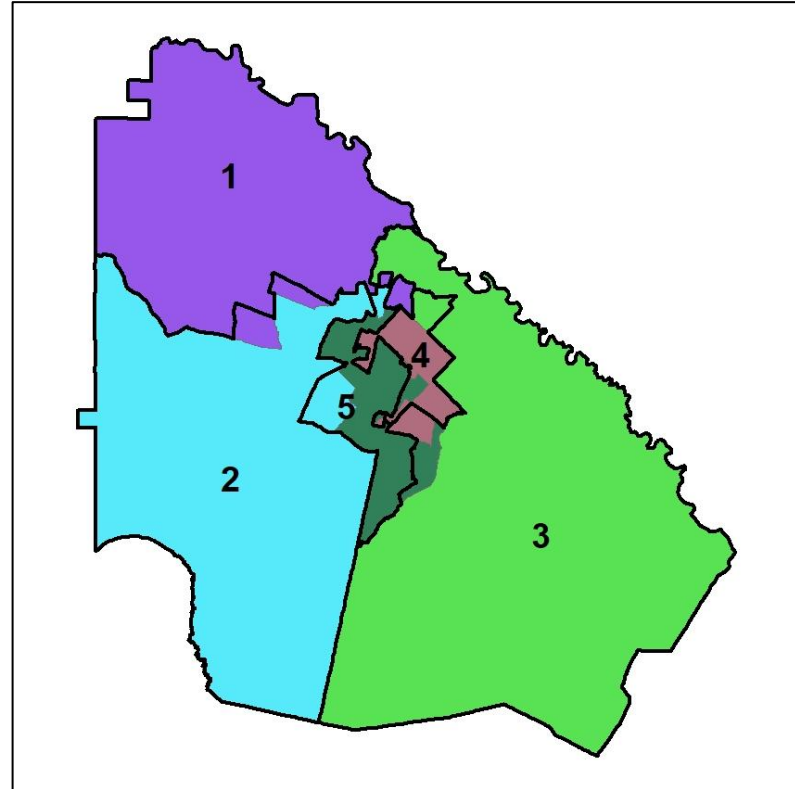
Changes in Redistricting



2012 Map (2022 in Colors)



2022 Map* (2012 in Colors)



	1	2	3	4	5	1*	2*	3*	4*	5*	County
Population	6,117	6,142	6,514	4,311	7,060	5,881	5,777	5,877	5,766	5,749	30,144
API	0%	0%	1%	1%	1%	0%	0%	0%	1%	1%	1%
Black	6%	9%	14%	54%	25%	6%	8%	11%	49%	17%	19%
Latino	4%	5%	6%	6%	8%	4%	5%	5%	6%	7%	6%
Other	3%	3%	4%	5%	3%	3%	3%	4%	4%	3%	4%
White	86%	83%	76%	35%	63%	86%	84%	80%	39%	72%	71%
Population Gain	-23	168	356	-1,634	1,178	-236	-365	-637	1,455	-1,311	*
Population % Gain	0%	3%	6%	-27%	20%	-4%	-6%	-10%	34%	-19%	*
Net POC Gain	167	203	285	-1,340	1,178	-13	-134	-374	686	-992	*
Net POC % Gain	25%	24%	22%	-32%	83%	-2%	-13%	-24%	24%	-38%	*

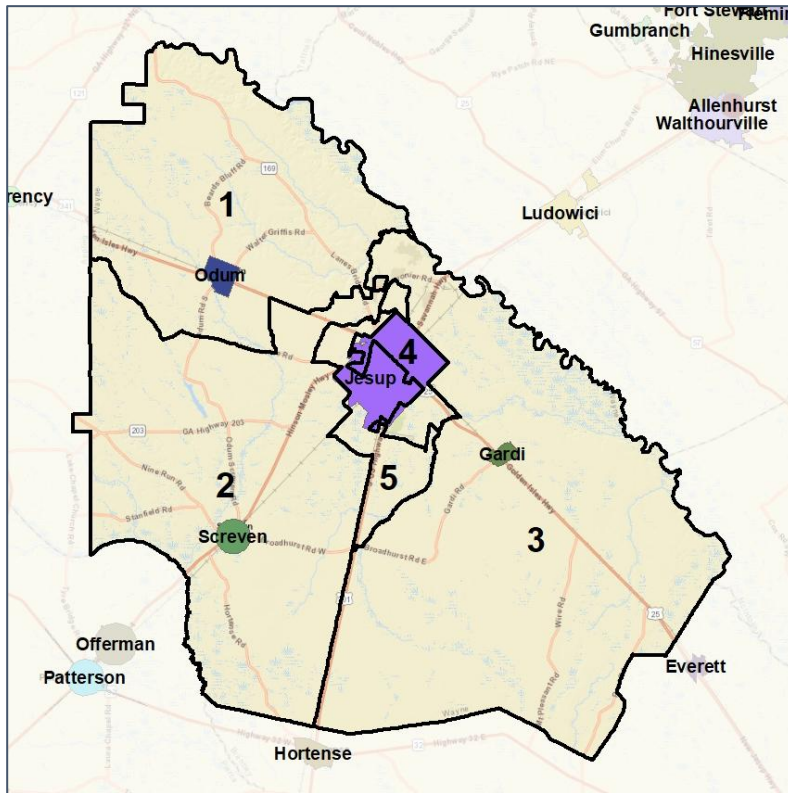


Wayne Co. Commission & School Board

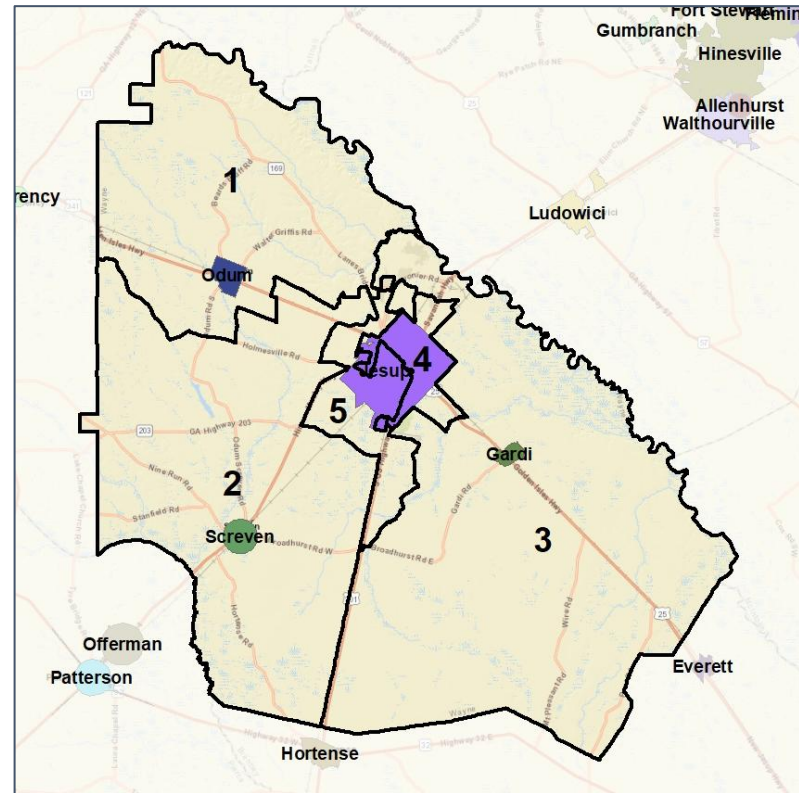
Cities and Places



2012 Map



2022 Map*



	1	2	3	4	5	1*	2*	3*	4*	5*	County
Population	6,117	6,142	6,514	4,311	7,060	5,881	5,777	5,877	5,766	5,749	30,144
API	0%	0%	1%	1%	1%	0%	0%	0%	1%	1%	1%
Black	6%	9%	14%	54%	25%	6%	8%	11%	49%	17%	19%
Latino	4%	5%	6%	6%	8%	4%	5%	5%	6%	7%	6%
Other	3%	3%	4%	5%	3%	3%	3%	4%	4%	3%	4%
White	86%	83%	76%	35%	63%	86%	84%	80%	39%	72%	71%
Population Gain	-23	168	356	-1,634	1,178	-236	-365	-637	1,455	-1,311	*
Population % Gain	0%	3%	6%	-27%	20%	-4%	-6%	-10%	34%	-19%	*
Net POC Gain	167	203	285	-1,340	1,178	-13	-134	-374	686	-992	*
Net POC % Gain	25%	24%	22%	-32%	83%	-2%	-13%	-24%	24%	-38%	*



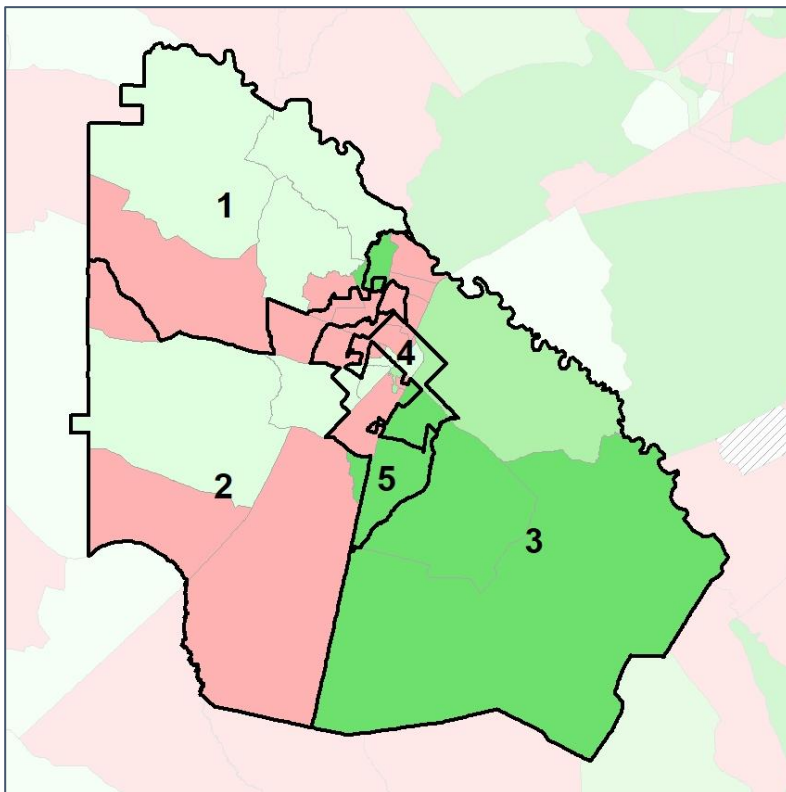
Source:
2020 Decennial Census
2020 ACS 5-Year Dataset

Wayne Co. Commission & School Board

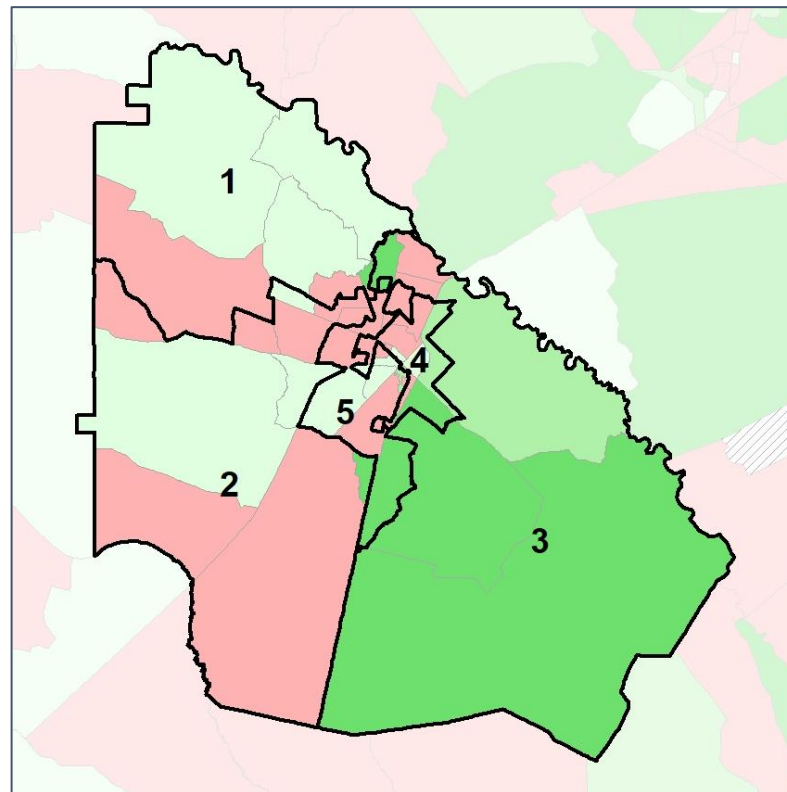
Net Gain in Population (2010 - 2020) by Census Block Group



2012 Map



2022 Map*



	1	2	3	4	5	1*	2*	3*	4*	5*	County
Population	6,117	6,142	6,514	4,311	7,060	5,881	5,777	5,877	5,766	5,749	30,144
API	0%	0%	1%	1%	1%	0%	0%	0%	1%	1%	1%
Black	6%	9%	14%	54%	25%	6%	8%	11%	49%	17%	19%
Latino	4%	5%	6%	6%	8%	4%	5%	5%	6%	7%	6%
Other	3%	3%	4%	5%	3%	3%	3%	4%	4%	3%	4%
White	86%	83%	76%	35%	63%	86%	84%	80%	39%	72%	71%
Population Gain	-23	168	356	-1,634	1,178	-236	-365	-637	1,455	-1,311	*
Population % Gain	0%	3%	6%	-27%	20%	-4%	-6%	-10%	34%	-19%	*
Net POC Gain	167	203	285	-1,340	1,178	-13	-134	-374	686	-992	*
Net POC % Gain	25%	24%	22%	-32%	83%	-2%	-13%	-24%	24%	-38%	*

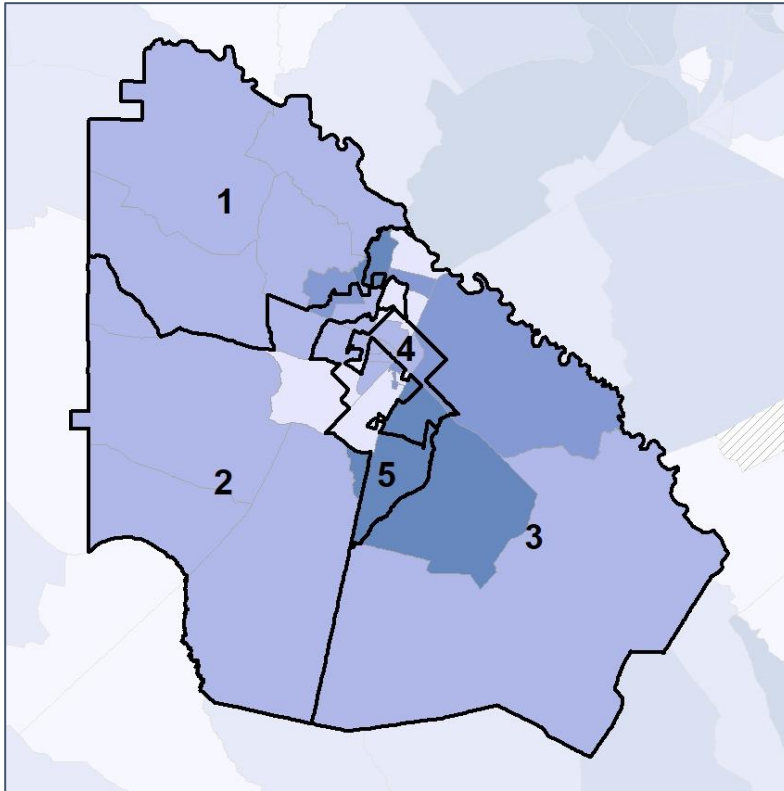


Wayne Co. Commission & School Board

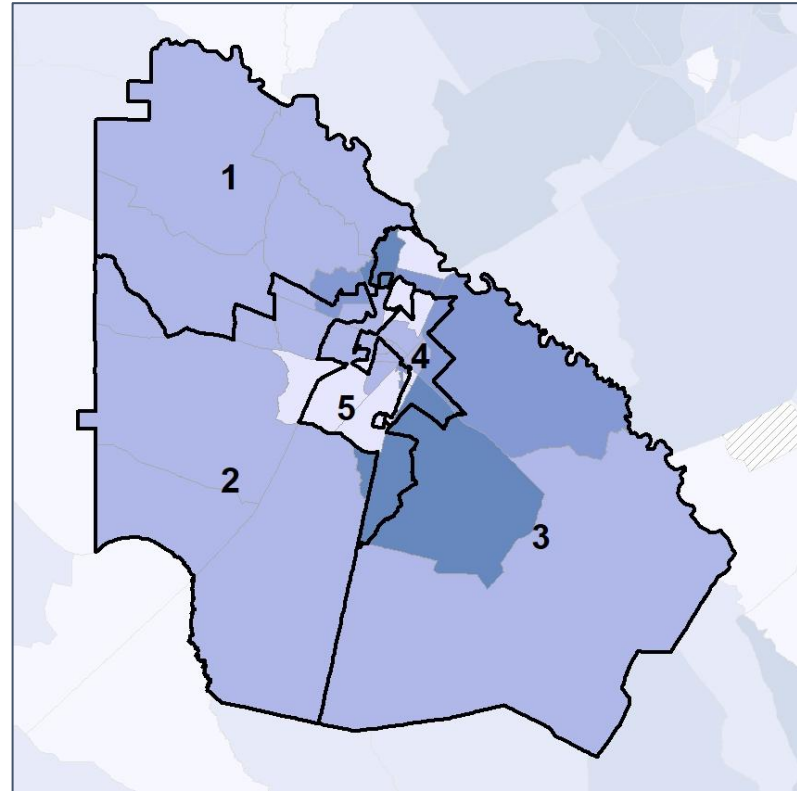
Net Gain in % POC (2020 - 2010) by Census Block Group



2012 Map



2022 Map*



	1	2	3	4	5	1*	2*	3*	4*	5*	County
Population	6,117	6,142	6,514	4,311	7,060	5,881	5,777	5,877	5,766	5,749	30,144
API	0%	0%	1%	1%	1%	0%	0%	0%	1%	1%	1%
Black	6%	9%	14%	54%	25%	6%	8%	11%	49%	17%	19%
Latino	4%	5%	6%	6%	8%	4%	5%	5%	6%	7%	6%
Other	3%	3%	4%	5%	3%	3%	3%	4%	4%	3%	4%
White	86%	83%	76%	35%	63%	86%	84%	80%	39%	72%	71%
Population Gain	-23	168	356	-1,634	1,178	-236	-365	-637	1,455	-1,311	*
Population % Gain	0%	3%	6%	-27%	20%	-4%	-6%	-10%	34%	-19%	*
Net POC Gain	167	203	285	-1,340	1,178	-13	-134	-374	686	-992	*
Net POC % Gain	25%	24%	22%	-32%	83%	-2%	-13%	-24%	24%	-38%	*



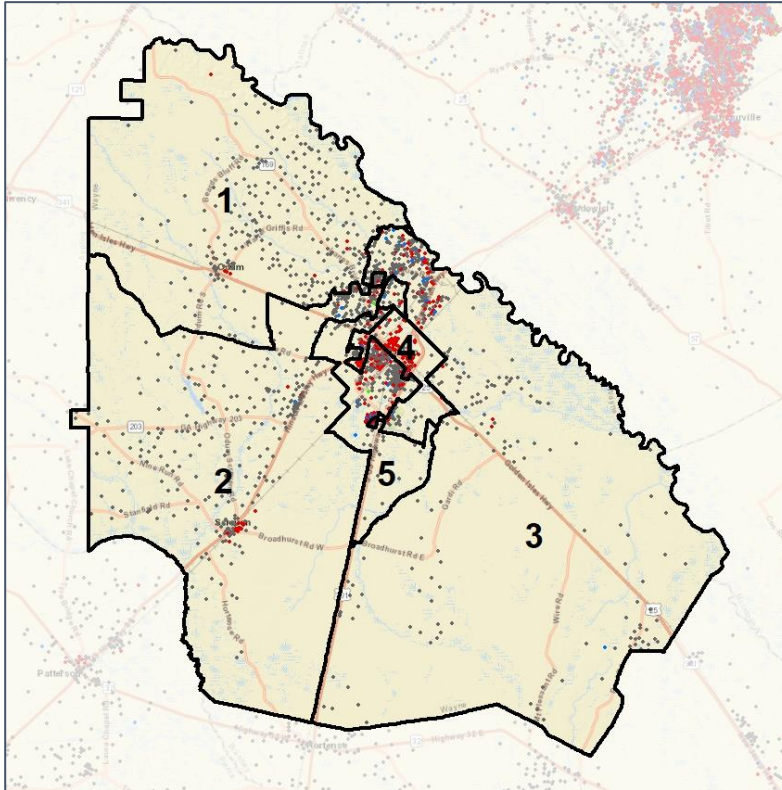
Source:
2020 Decennial Census
2020 ACS 5-Year Dataset

Wayne Co. Commission & School Board

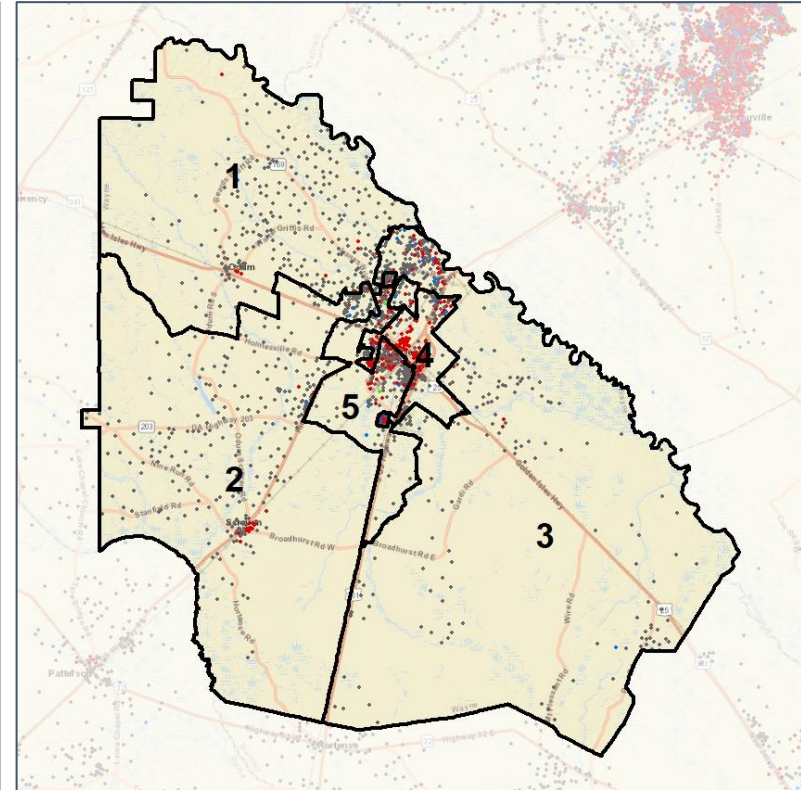
Population Density by Race



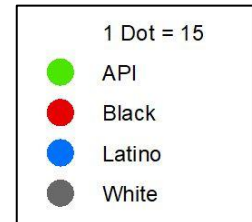
2012 Map



2022 Map*



	1	2	3	4	5	1*	2*	3*	4*	5*	County
Population	6,117	6,142	6,514	4,311	7,060	5,881	5,777	5,877	5,766	5,749	30,144
API	24	21	34	53	44	24	10	28	62	52	176
% API	0%	0%	1%	1%	1%	0%	0%	0%	1%	1%	1%
Black	344	526	901	2,313	1,793	340	449	626	2,827	979	5,877
% Black	6%	9%	14%	54%	25%	6%	8%	11%	49%	17%	19%
Latino	257	294	374	241	566	252	265	312	350	390	1,732
% Latino	4%	5%	6%	6%	8%	4%	5%	5%	6%	7%	6%
Other	209	191	259	200	199	205	174	228	254	189	1,058
% Other	3%	3%	4%	5%	3%	3%	3%	4%	4%	3%	4%
White	5,283	5,110	4,946	1,504	4,458	5,060	4,879	4,683	2,273	4,139	21,301
% White	86%	83%	76%	35%	63%	86%	84%	80%	39%	72%	71%

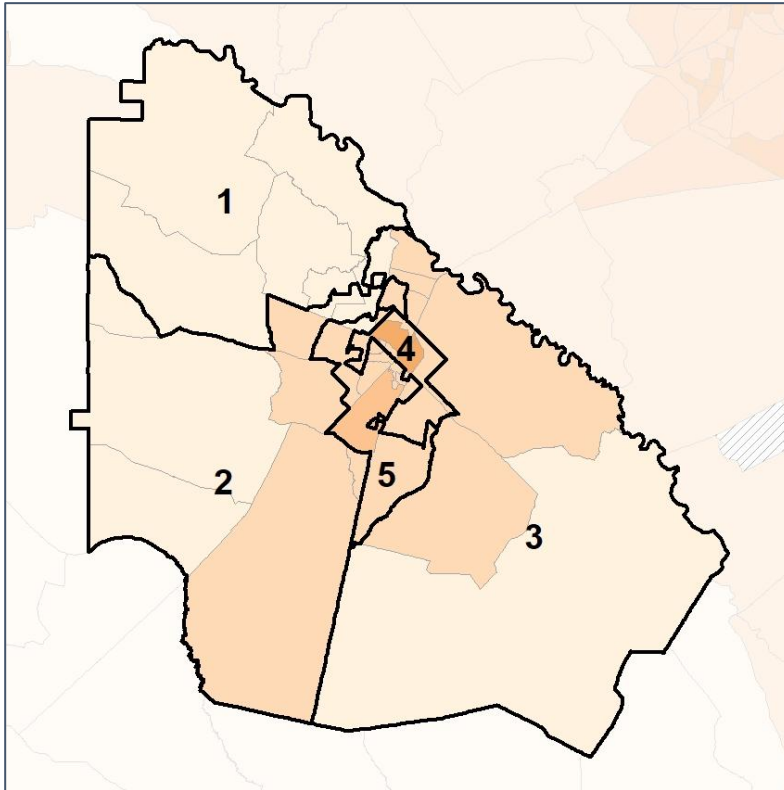


Wayne Co. Commission & School Board

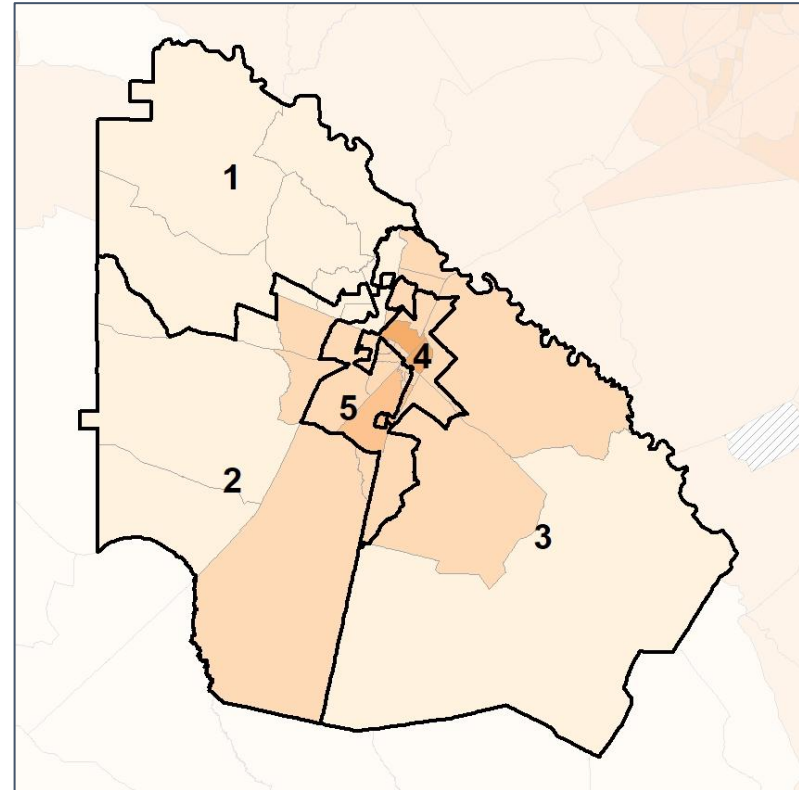
% People of Color by Census Block Group



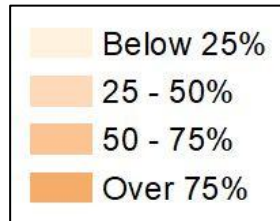
2012 Map



2022 Map*



	1	2	3	4	5	1*	2*	3*	4*	5*	County
Population	6,117	6,142	6,514	4,311	7,060	5,881	5,777	5,877	5,766	5,749	30,144
API	24	21	34	53	44	24	10	28	62	52	176
% API	0%	0%	1%	1%	1%	0%	0%	0%	1%	1%	1%
Black	344	526	901	2,313	1,793	340	449	626	2,827	979	5,877
% Black	6%	9%	14%	54%	25%	6%	8%	11%	49%	17%	19%
Latino	257	294	374	241	566	252	265	312	350	390	1,732
% Latino	4%	5%	6%	6%	8%	4%	5%	5%	6%	7%	6%
Other	209	191	259	200	199	205	174	228	254	189	1,058
% Other	3%	3%	4%	5%	3%	3%	3%	4%	4%	3%	4%
White	5,283	5,110	4,946	1,504	4,458	5,060	4,879	4,683	2,273	4,139	21,301
% White	86%	83%	76%	35%	63%	86%	84%	80%	39%	72%	71%

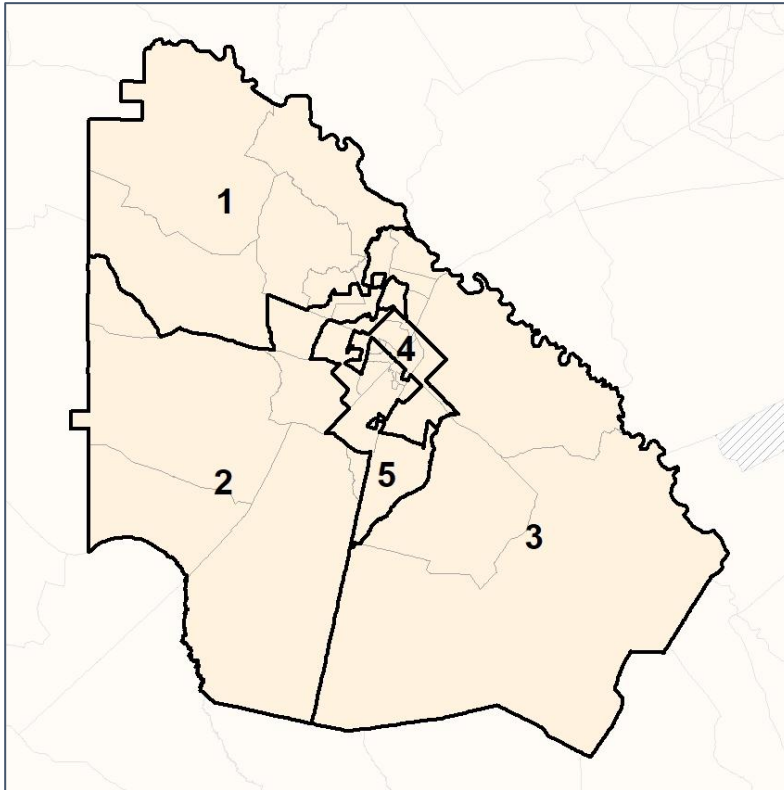


Wayne Co. Commission & School Board

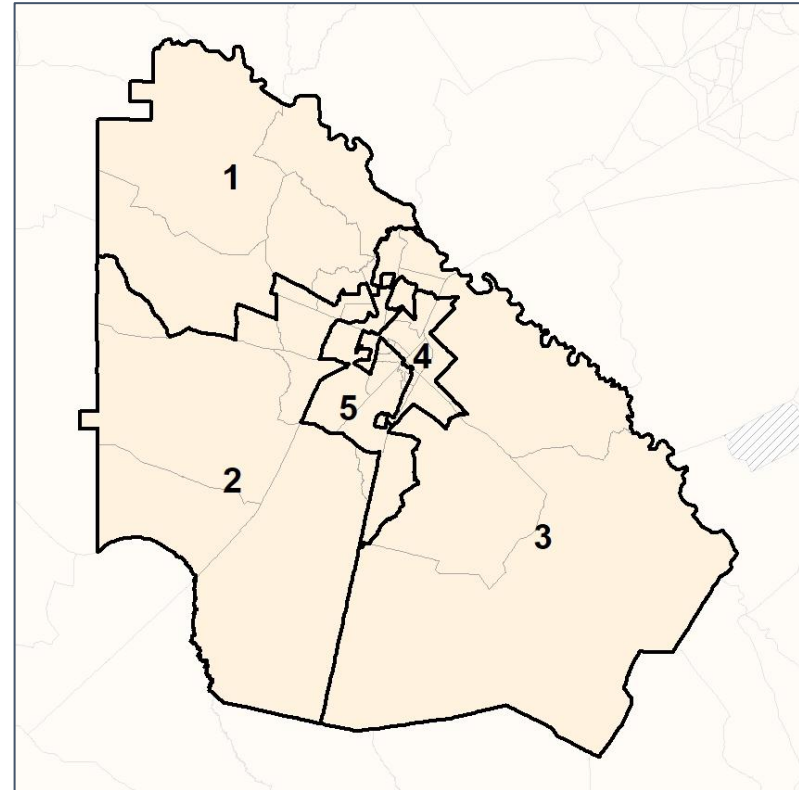
% API by Census Block Group



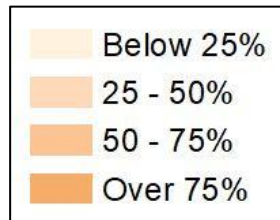
2012 Map



2022 Map*



	1	2	3	4	5	1*	2*	3*	4*	5*	County
Population	6,117	6,142	6,514	4,311	7,060	5,881	5,777	5,877	5,766	5,749	30,144
API	24	21	34	53	44	24	10	28	62	52	176
% API	0%	0%	1%	1%	1%	0%	0%	0%	1%	1%	1%
Black	344	526	901	2,313	1,793	340	449	626	2,827	979	5,877
% Black	6%	9%	14%	54%	25%	6%	8%	11%	49%	17%	19%
Latino	257	294	374	241	566	252	265	312	350	390	1,732
% Latino	4%	5%	6%	6%	8%	4%	5%	5%	6%	7%	6%
Other	209	191	259	200	199	205	174	228	254	189	1,058
% Other	3%	3%	4%	5%	3%	3%	3%	4%	4%	3%	4%
White	5,283	5,110	4,946	1,504	4,458	5,060	4,879	4,683	2,273	4,139	21,301
% White	86%	83%	76%	35%	63%	86%	84%	80%	39%	72%	71%

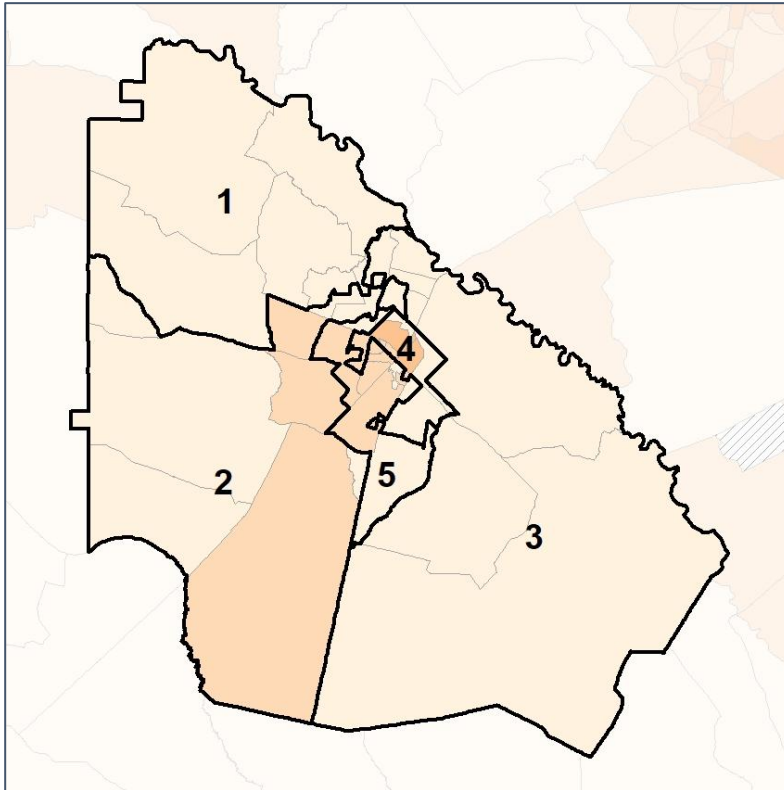


Wayne Co. Commission & School Board

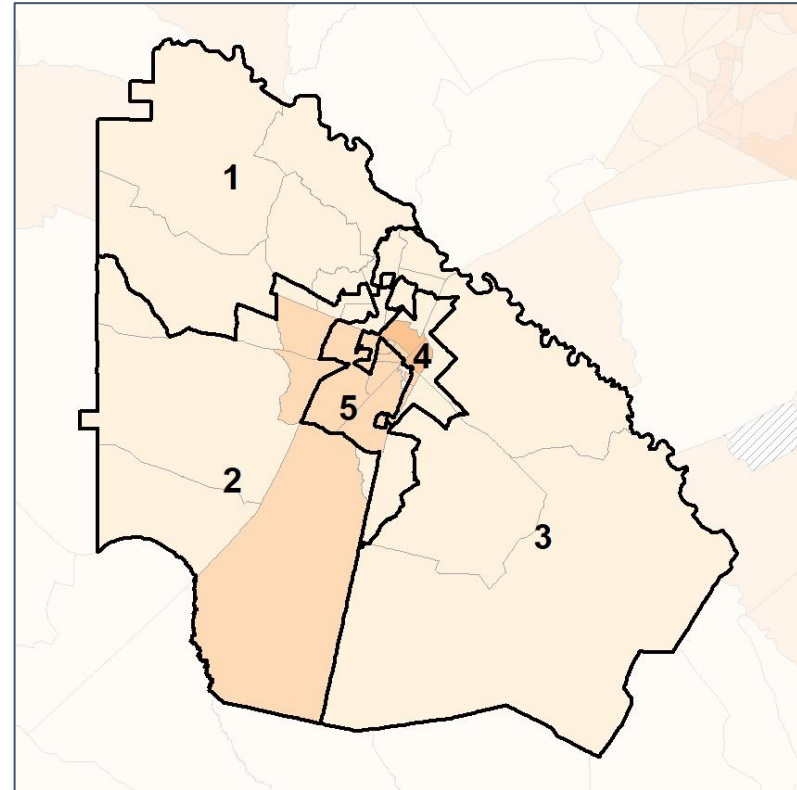
% Black by Census Block Group



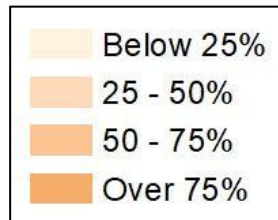
2012 Map



2022 Map*



	1	2	3	4	5	1*	2*	3*	4*	5*	County
Population	6,117	6,142	6,514	4,311	7,060	5,881	5,777	5,877	5,766	5,749	30,144
API	24	21	34	53	44	24	10	28	62	52	176
% API	0%	0%	1%	1%	1%	0%	0%	0%	1%	1%	1%
Black	344	526	901	2,313	1,793	340	449	626	2,827	979	5,877
% Black	6%	9%	14%	54%	25%	6%	8%	11%	49%	17%	19%
Latino	257	294	374	241	566	252	265	312	350	390	1,732
% Latino	4%	5%	6%	6%	8%	4%	5%	5%	6%	7%	6%
Other	209	191	259	200	199	205	174	228	254	189	1,058
% Other	3%	3%	4%	5%	3%	3%	3%	4%	4%	3%	4%
White	5,283	5,110	4,946	1,504	4,458	5,060	4,879	4,683	2,273	4,139	21,301
% White	86%	83%	76%	35%	63%	86%	84%	80%	39%	72%	71%

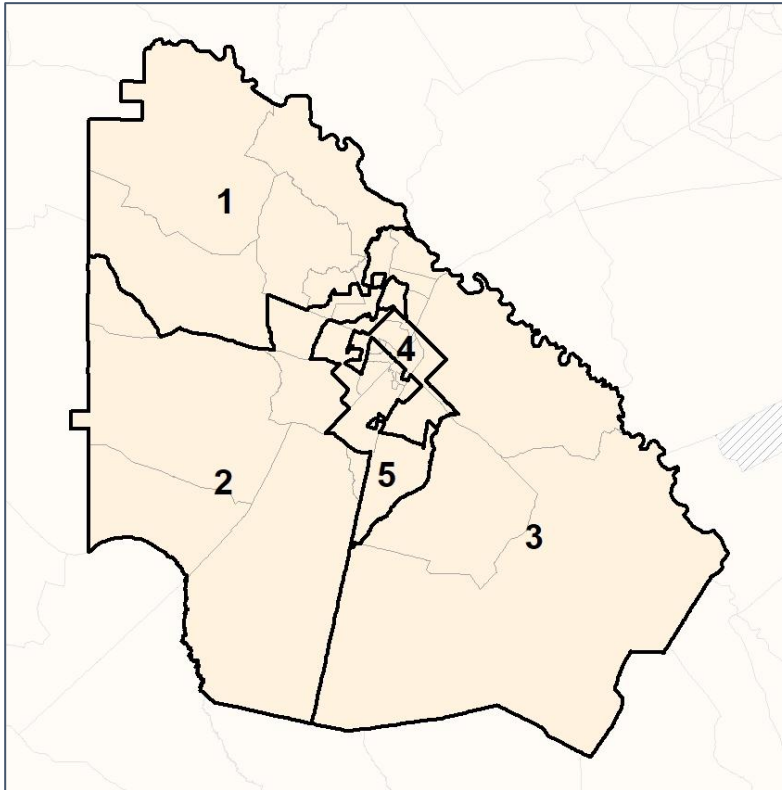


Wayne Co. Commission & School Board

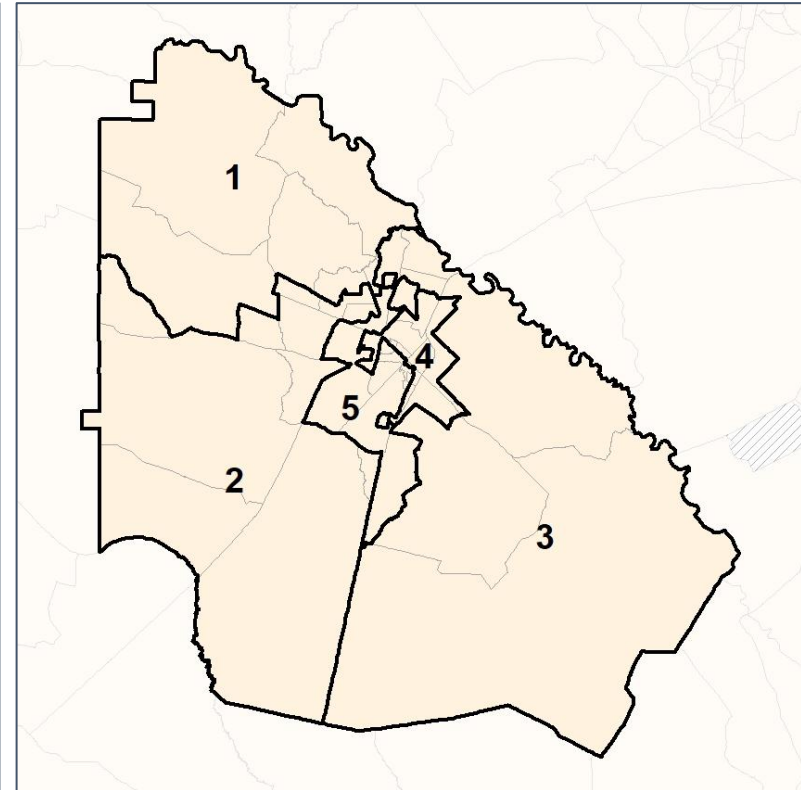
% Latino by Census Block Group



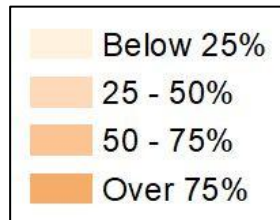
2012 Map



2022 Map*



	1	2	3	4	5	1*	2*	3*	4*	5*	County
Population	6,117	6,142	6,514	4,311	7,060	5,881	5,777	5,877	5,766	5,749	30,144
API	24	21	34	53	44	24	10	28	62	52	176
% API	0%	0%	1%	1%	1%	0%	0%	0%	1%	1%	1%
Black	344	526	901	2,313	1,793	340	449	626	2,827	979	5,877
% Black	6%	9%	14%	54%	25%	6%	8%	11%	49%	17%	19%
Latino	257	294	374	241	566	252	265	312	350	390	1,732
% Latino	4%	5%	6%	6%	8%	4%	5%	5%	6%	7%	6%
Other	209	191	259	200	199	205	174	228	254	189	1,058
% Other	3%	3%	4%	5%	3%	3%	3%	4%	4%	3%	4%
White	5,283	5,110	4,946	1,504	4,458	5,060	4,879	4,683	2,273	4,139	21,301
% White	86%	83%	76%	35%	63%	86%	84%	80%	39%	72%	71%

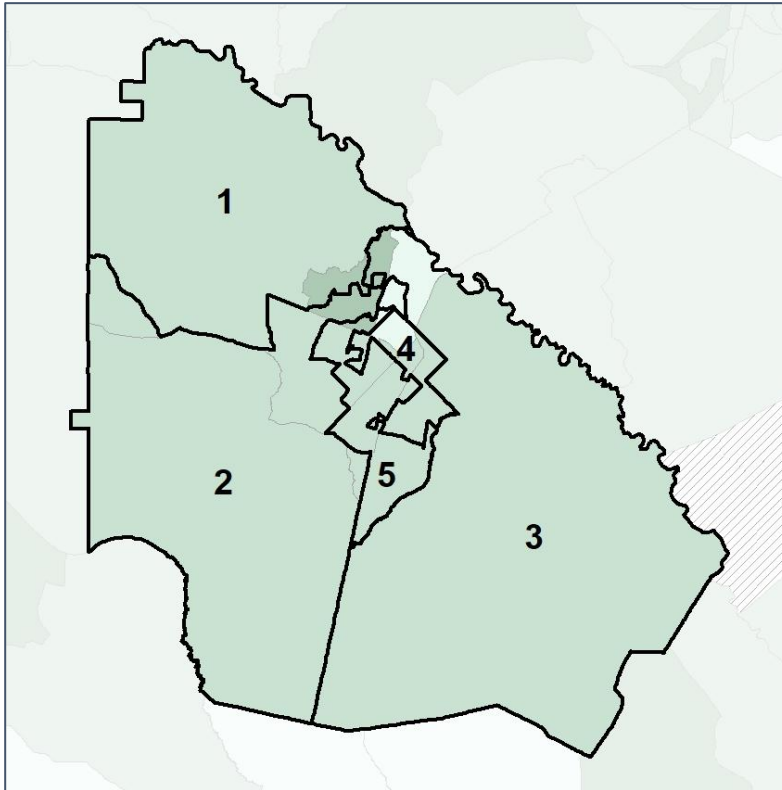


Wayne Co. Commission & School Board

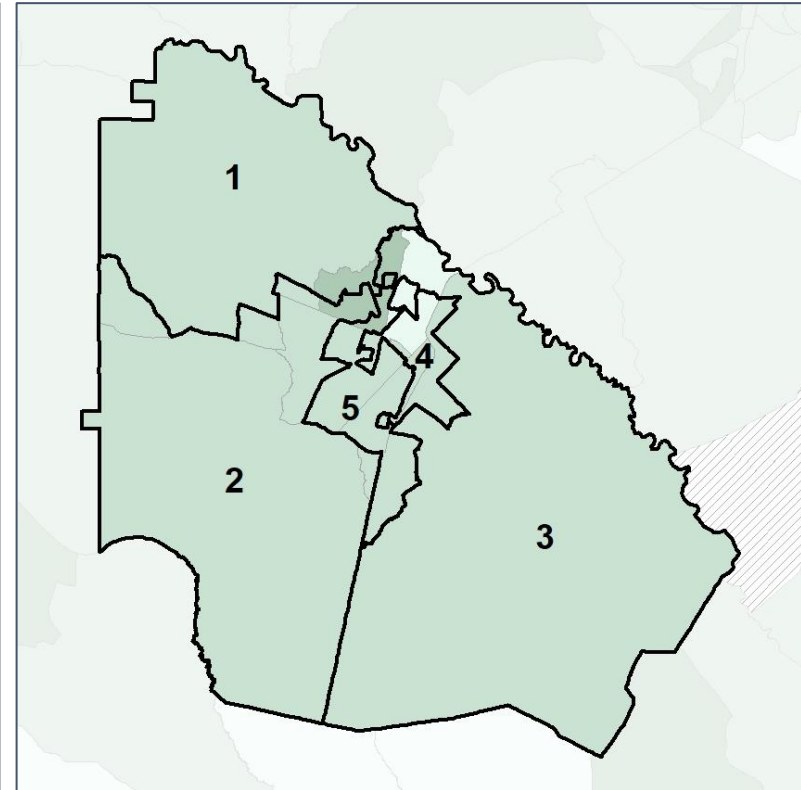
Median Household Income by Census Tract



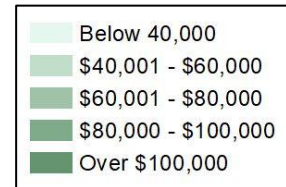
2012 Map



2022 Map*



	1	2	3	4	5	1*	2*	3*	4*	5*	County
Population	6,117	6,142	6,514	4,311	7,060	5,881	5,777	5,877	5,766	5,749	30,144
% API	0%	0%	1%	1%	1%	0%	0%	0%	1%	1%	1%
% Black	6%	9%	14%	54%	25%	6%	8%	11%	49%	17%	19%
% Latino	4%	5%	6%	6%	8%	4%	5%	5%	6%	7%	6%
% Other	3%	3%	4%	5%	3%	3%	3%	4%	4%	3%	4%
% White	86%	83%	76%	35%	63%	86%	84%	80%	39%	72%	71%
Median Income	\$54,000	\$42,000	\$49,000	\$42,000	\$62,000	\$54,000	\$47,000	\$49,000	\$42,000	\$51,000	\$46,000
% Renter	33%	38%	37%	53%	34%	33%	34%	37%	53%	39%	37%
% Youth	19%	18%	21%	25%	23%	19%	19%	21%	25%	21%	20%

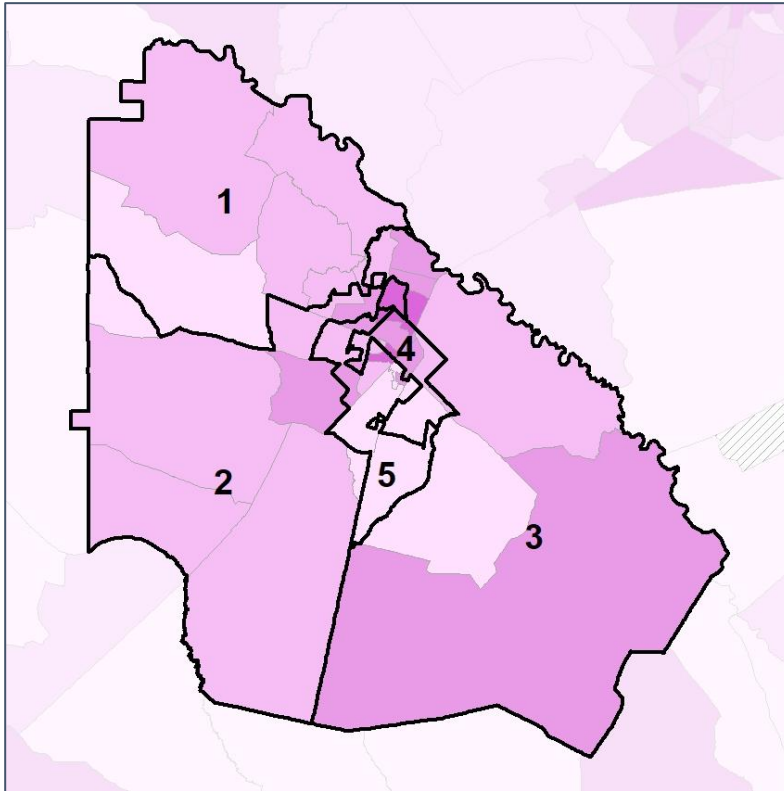


Wayne Co. Commission & School Board

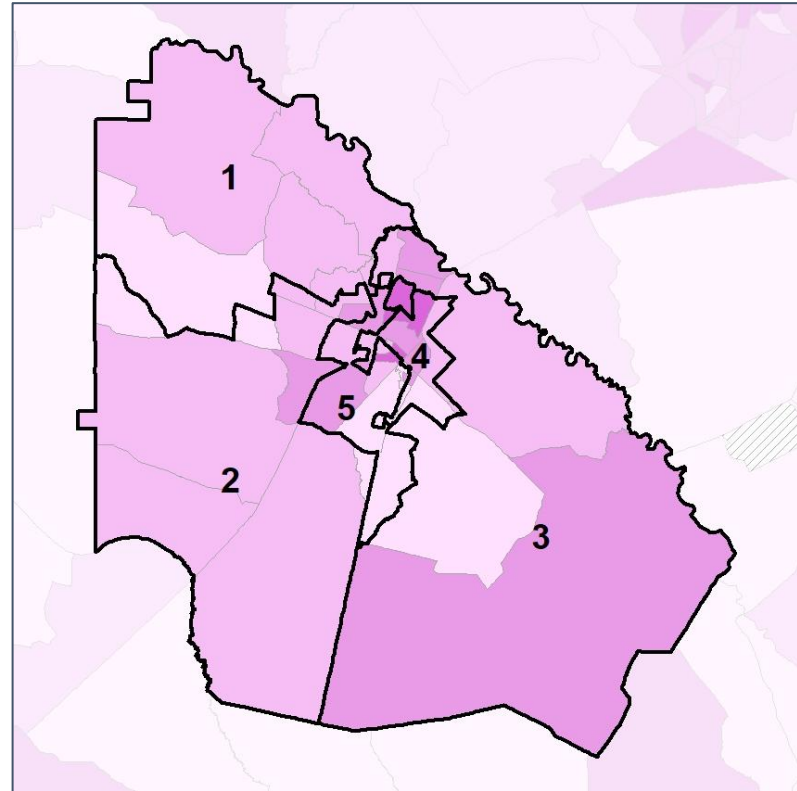
% Renter by Census Block Group



2012 Map



2022 Map*



	1	2	3	4	5	1*	2*	3*	4*	5*	County
Population	6,117	6,142	6,514	4,311	7,060	5,881	5,777	5,877	5,766	5,749	30,144
% API	0%	0%	1%	1%	1%	0%	0%	0%	1%	1%	1%
% Black	6%	9%	14%	54%	25%	6%	8%	11%	49%	17%	19%
% Latino	4%	5%	6%	6%	8%	4%	5%	5%	6%	7%	6%
% Other	3%	3%	4%	5%	3%	3%	3%	4%	4%	3%	4%
% White	86%	83%	76%	35%	63%	86%	84%	80%	39%	72%	71%
Median Income	\$54,000	\$42,000	\$49,000	\$42,000	\$62,000	\$54,000	\$47,000	\$49,000	\$42,000	\$51,000	\$46,000
% Renter	33%	38%	37%	53%	34%	33%	34%	37%	53%	39%	37%
% Youth	19%	18%	21%	25%	23%	19%	19%	21%	25%	21%	20%

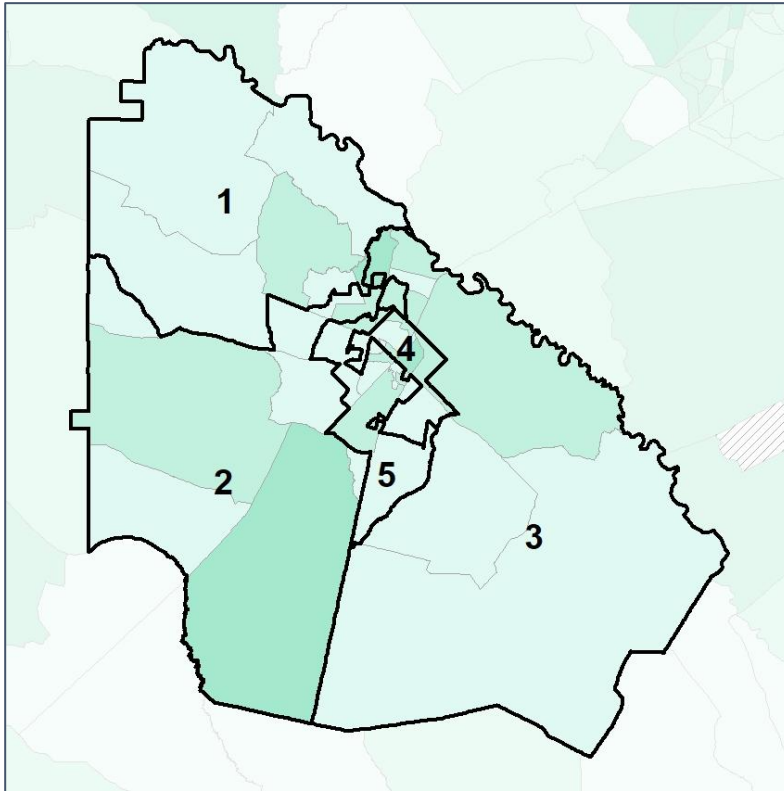


Wayne Co. Commission & School Board

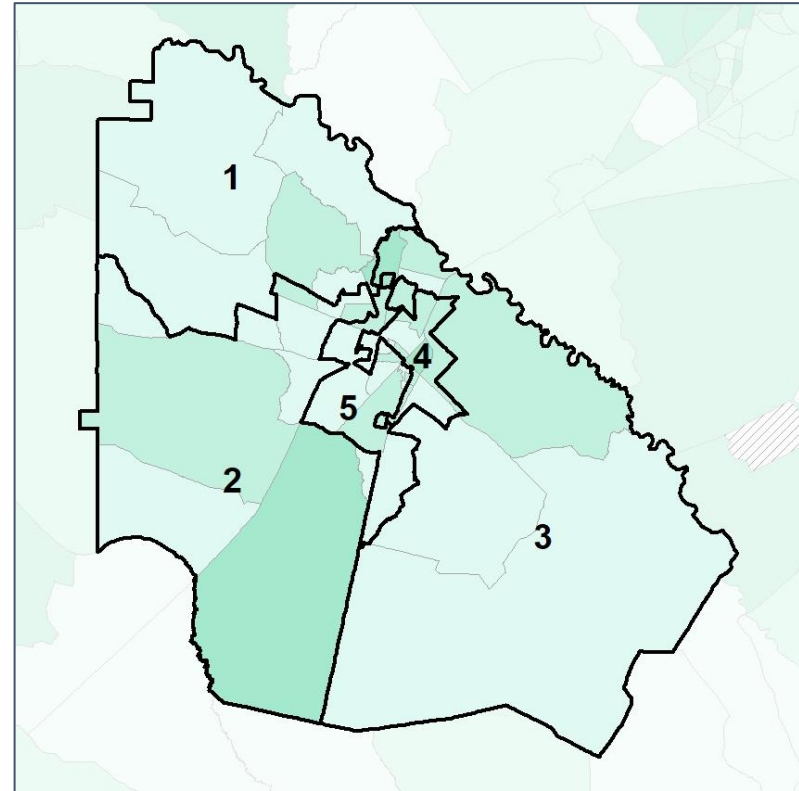
% Youth (18-34) by Census Block Group



2012 Map



2022 Map*



	1	2	3	4	5	1*	2*	3*	4*	5*	County
Population	6,117	6,142	6,514	4,311	7,060	5,881	5,777	5,877	5,766	5,749	30,144
% API	0%	0%	1%	1%	1%	0%	0%	0%	1%	1%	1%
% Black	6%	9%	14%	54%	25%	6%	8%	11%	49%	17%	19%
% Latino	4%	5%	6%	6%	8%	4%	5%	5%	6%	7%	6%
% Other	3%	3%	4%	5%	3%	3%	3%	4%	4%	3%	4%
% White	86%	83%	76%	35%	63%	86%	84%	80%	39%	72%	71%
Median Income	\$54,000	\$42,000	\$49,000	\$42,000	\$62,000	\$54,000	\$47,000	\$49,000	\$42,000	\$51,000	\$46,000
% Renter	33%	38%	37%	53%	34%	33%	34%	37%	53%	39%	37%
% Youth	19%	18%	21%	25%	23%	19%	19%	21%	25%	21%	20%

