

Demographic Overview

Racial Breakdown in Warren County



Warren County	2010	2020	% Change
Total Population	5,834	5,215	-11%
AAPI	21	16	-24%
Black	3,584	3,047	-15%
Latino	54	53	-2%
Other/Mixed Race	42	125	198%
POC	3,701	3,241	-12%
White	2,133	1,974	-7%

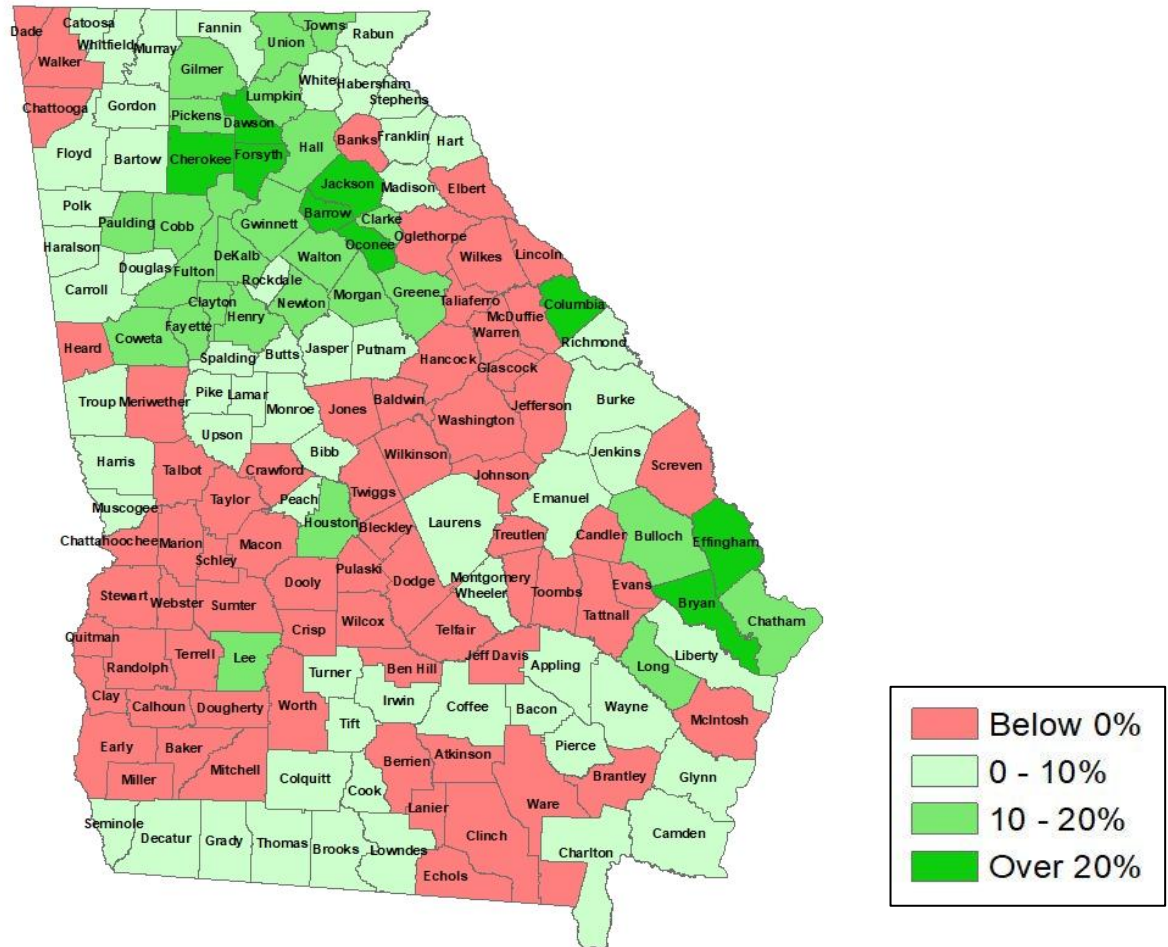
*Note: The use of "Other" in these statistics combines those who identify as Native American, Mixed Race, and "Other" race





Population Gain

Change in Population in Georgia by County



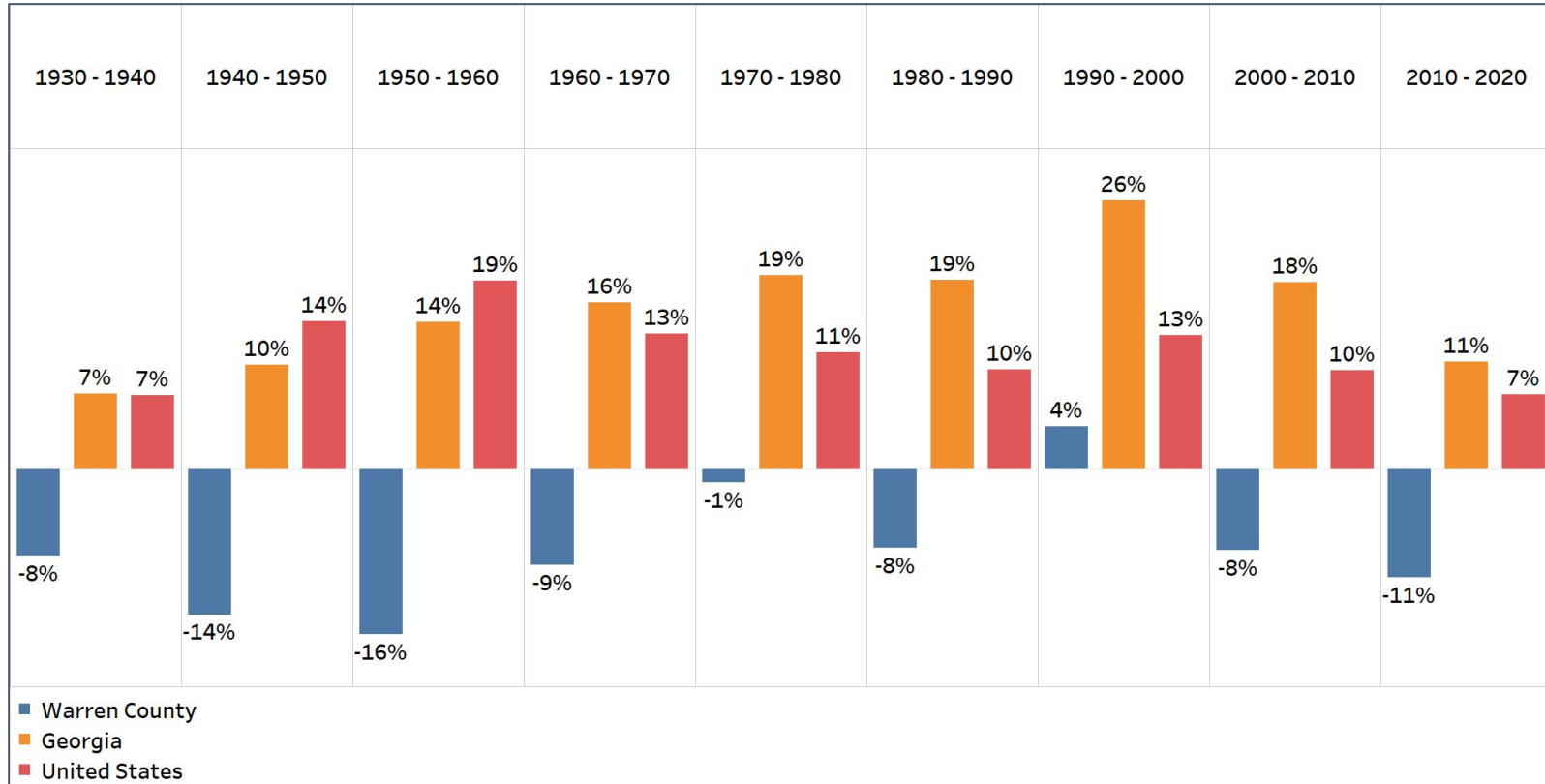
- Georgia is experiencing rapid population growth in the Atlanta, Augusta, and Savannah regions of the state





Population Gain

Change in Population by Decade



- Since 1930, Warren County has been experiencing a population decline with the exception being 1990 to 2000
- While the statewide average has experienced a population increase every decade Warren county has experienced mostly population decline

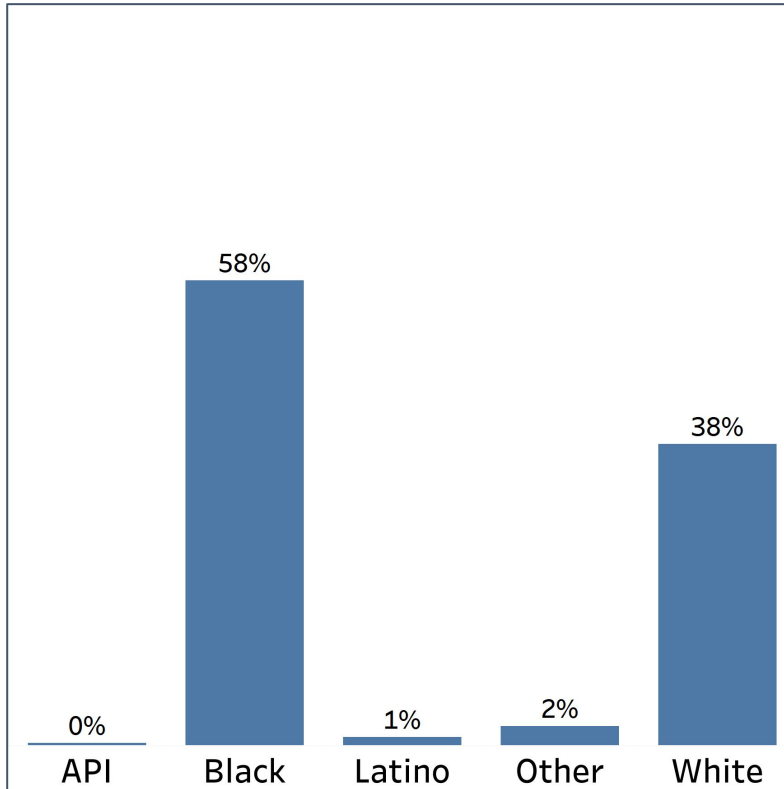


Demographics

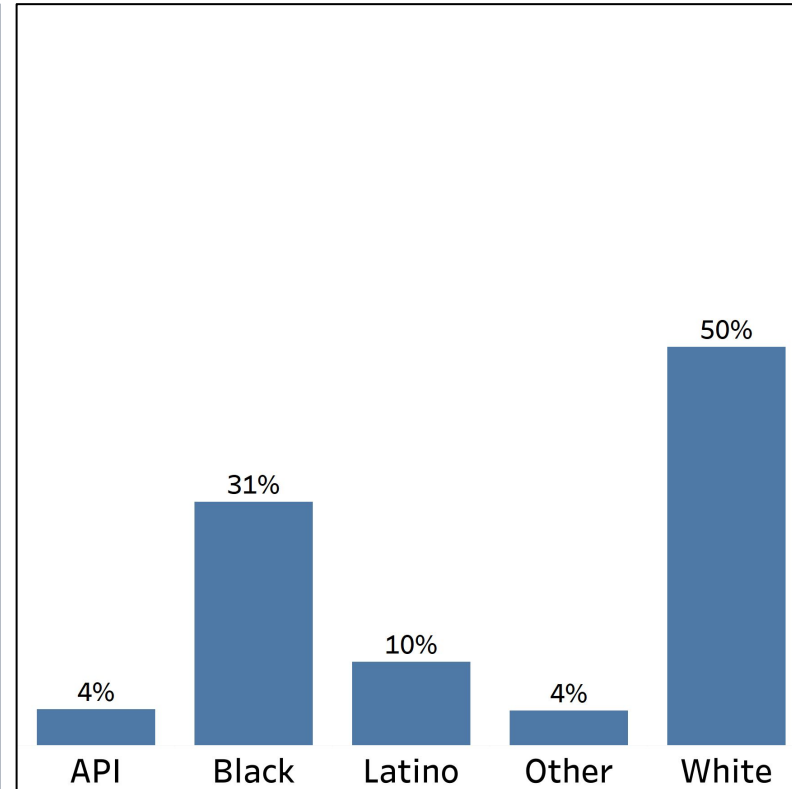
Comparison between Warren County and Georgia



Warren County



Georgia

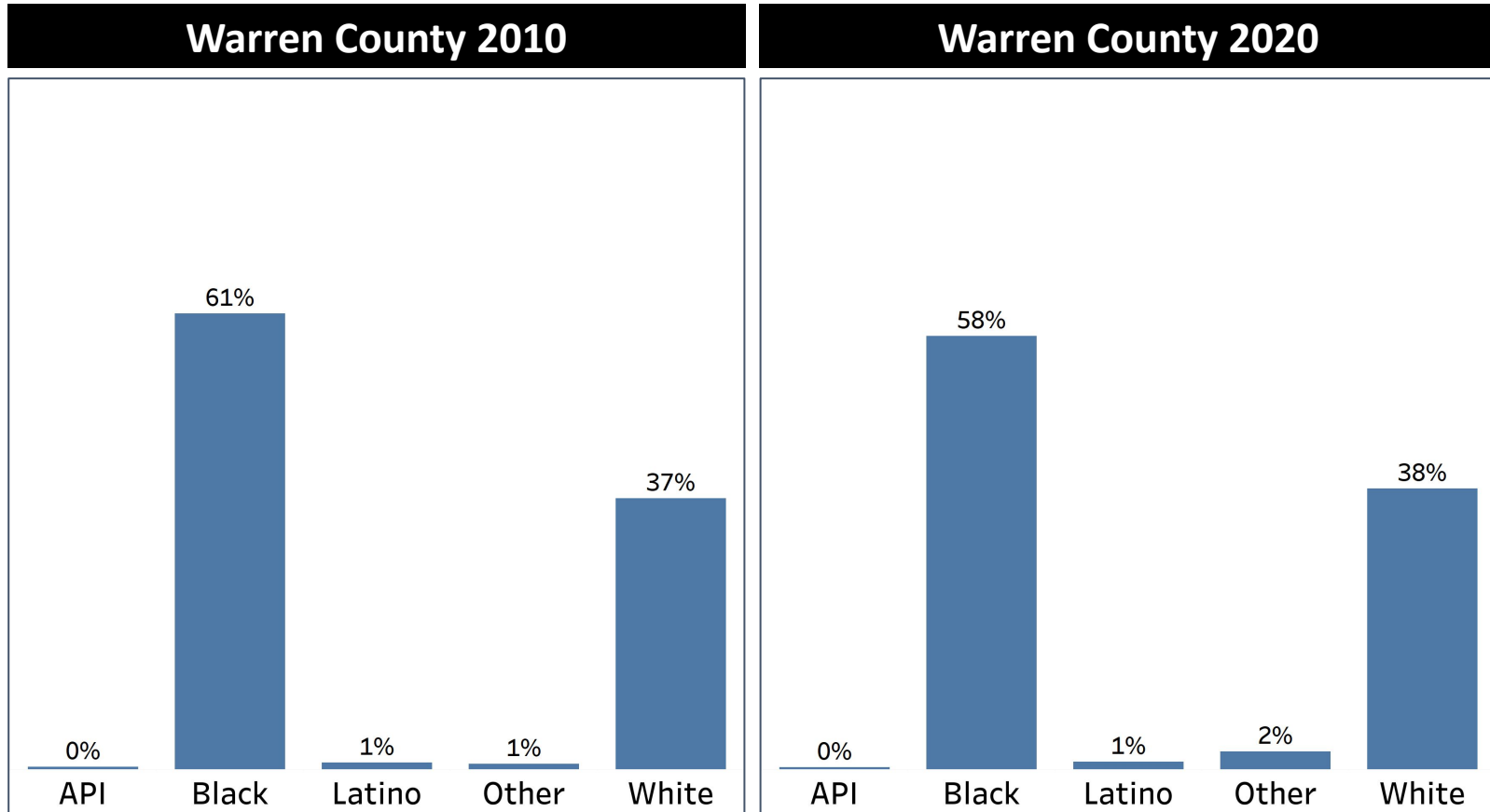


- Warren county's White population is below the statewide White demographic average.
- Warren County is composed of a majority Black population which exceed the state's average by 27%



Demographics

2010 vs 2020 Demographics in Warren County

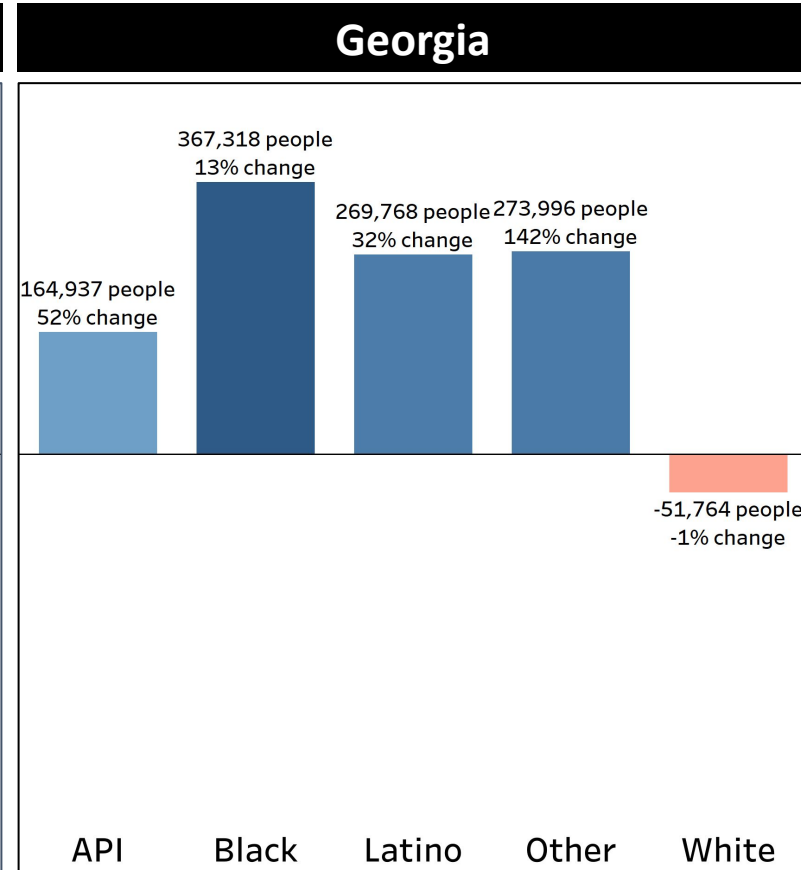
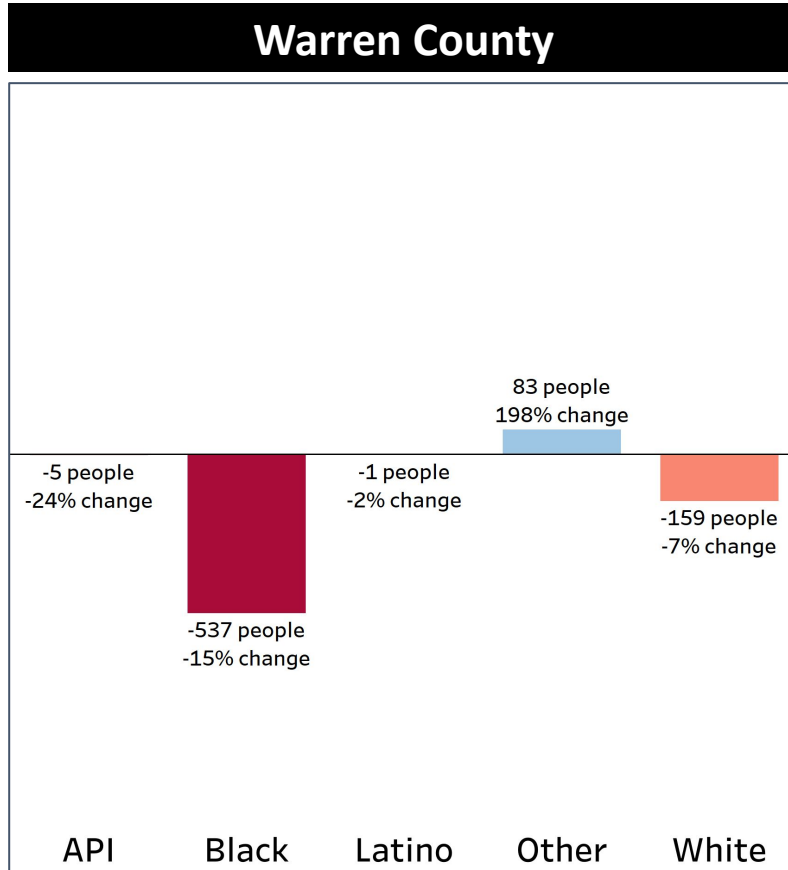


- Despite having a majority Black population, Warren county Black population experienced a 3% decline
- Since 2010, Warren County's White population increased by 1%



Demographics

Population Change by Race (2020 - 2010)



- Warren County is experiencing a population decline across all demographics with the Black population declining by 15%
- Warren county is experiencing a population decline across all demographics with the exception being the population that falls under the category of “other.”

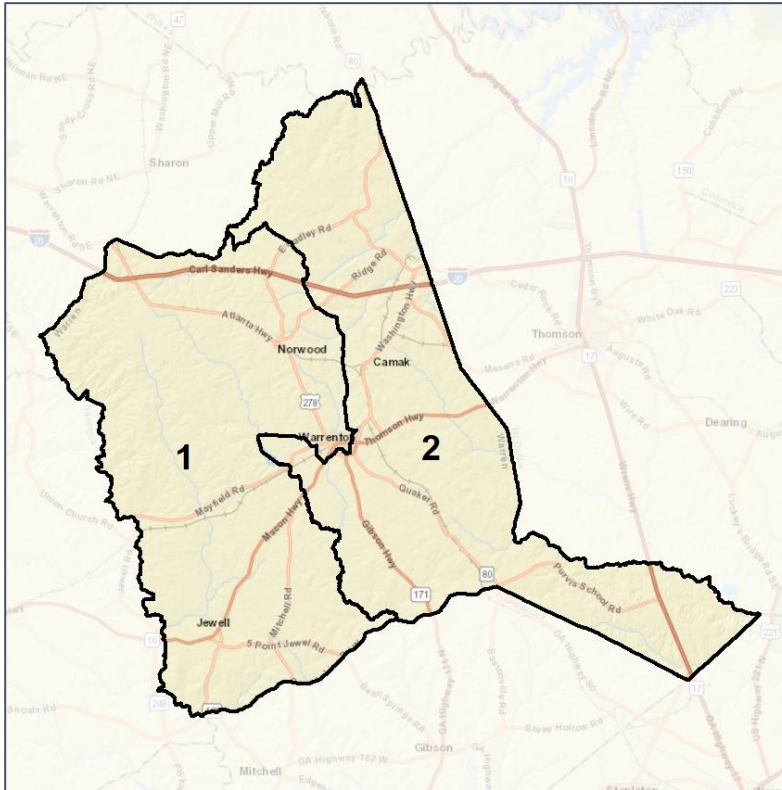


Warren County Commission

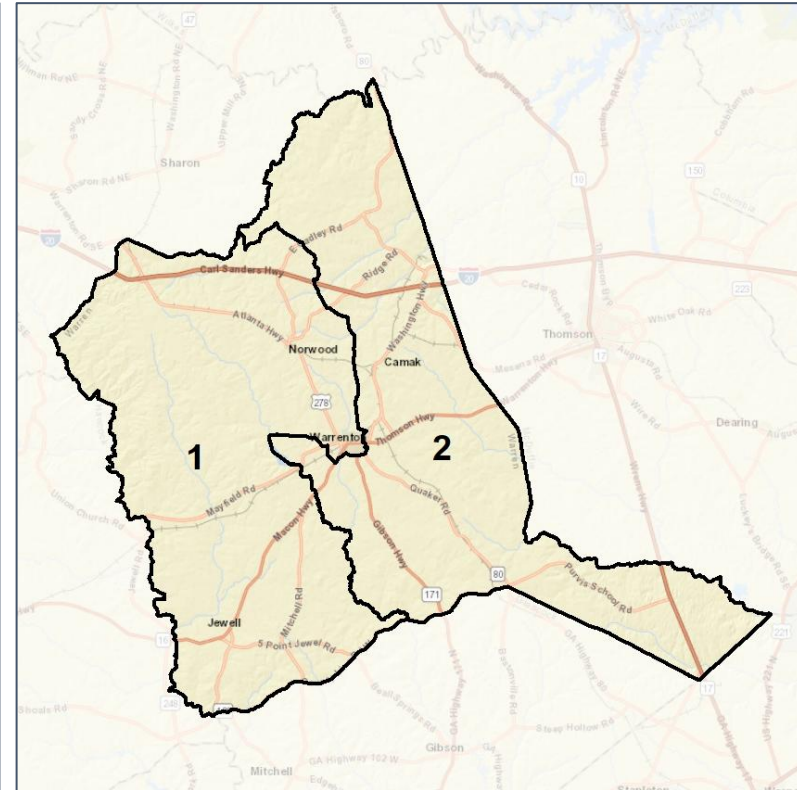
Context



2012 Map



2022 Map*



	1	2	1*	2*	County
Population	2,417	2,798	2,612	2,603	5,215
API	0%	0%	0%	0%	0%
Black	65%	53%	63%	54%	58%
Latino	1%	1%	1%	1%	1%
Other	2%	3%	2%	3%	2%
White	33%	42%	34%	42%	38%
Population Gain	*	*	195	-195	*
Population % Gain	*	*	8%	-7%	*
Net POC Gain	*	*	92	-92	*
Population	*	*	6%	-6%	*

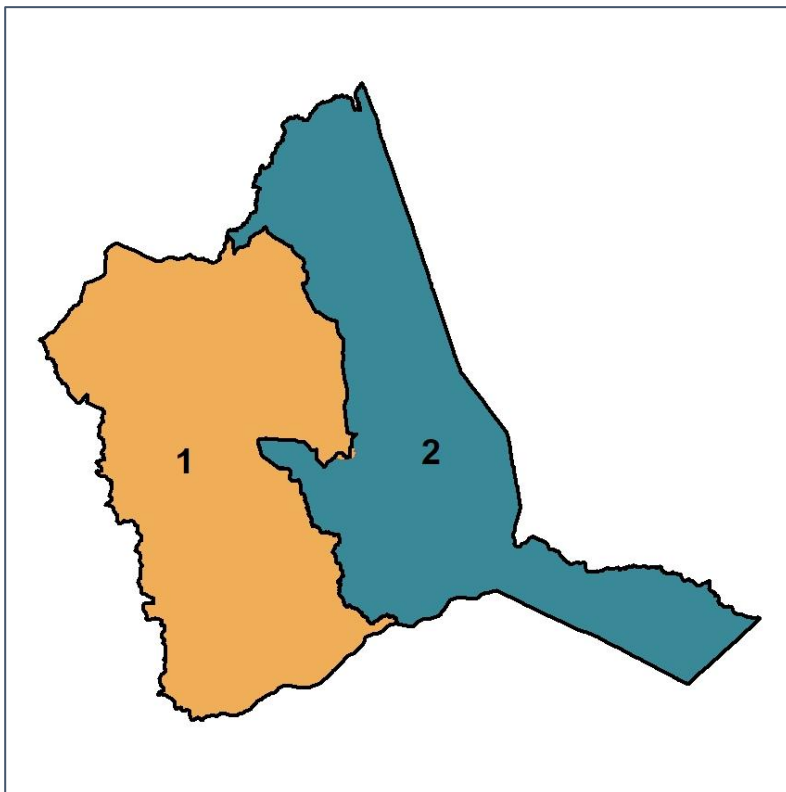


Warren County Commission

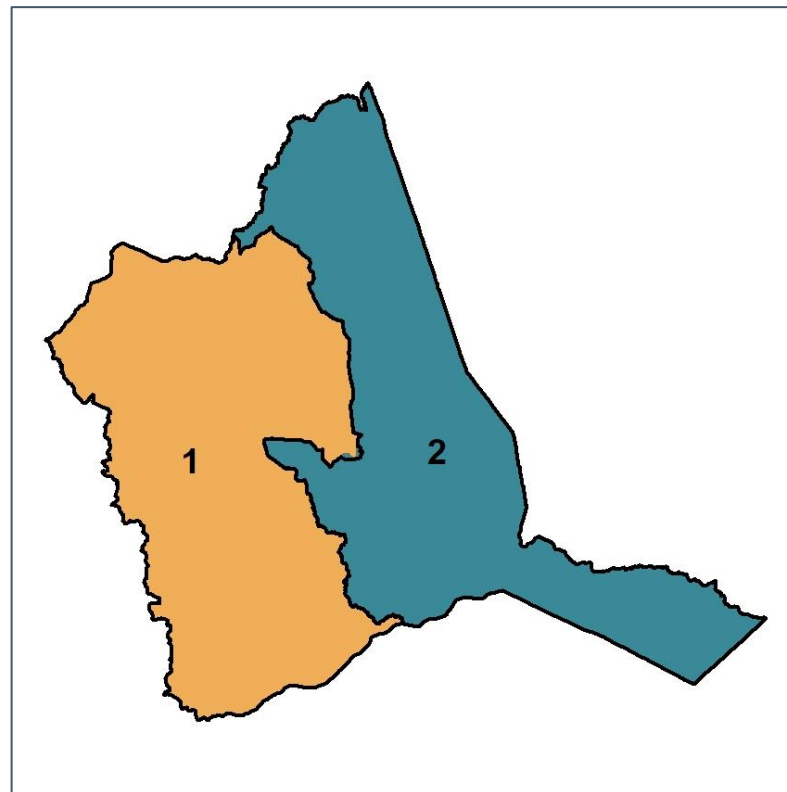
Changes in Redistricting



2012 Map (2022 in Colors)



2022 Map* (2012 in Colors)



	1	2	1*	2*	County
Population	2,417	2,798	2,612	2,603	5,215
API	0%	0%	0%	0%	0%
Black	65%	53%	63%	54%	58%
Latino	1%	1%	1%	1%	1%
Other	2%	3%	2%	3%	2%
White	33%	42%	34%	42%	38%
Population Gain	*	*	195	-195	*
Population % Gain	*	*	8%	-7%	*
Net POC Gain	*	*	92	-92	*
Population	*	*	6%	-6%	*

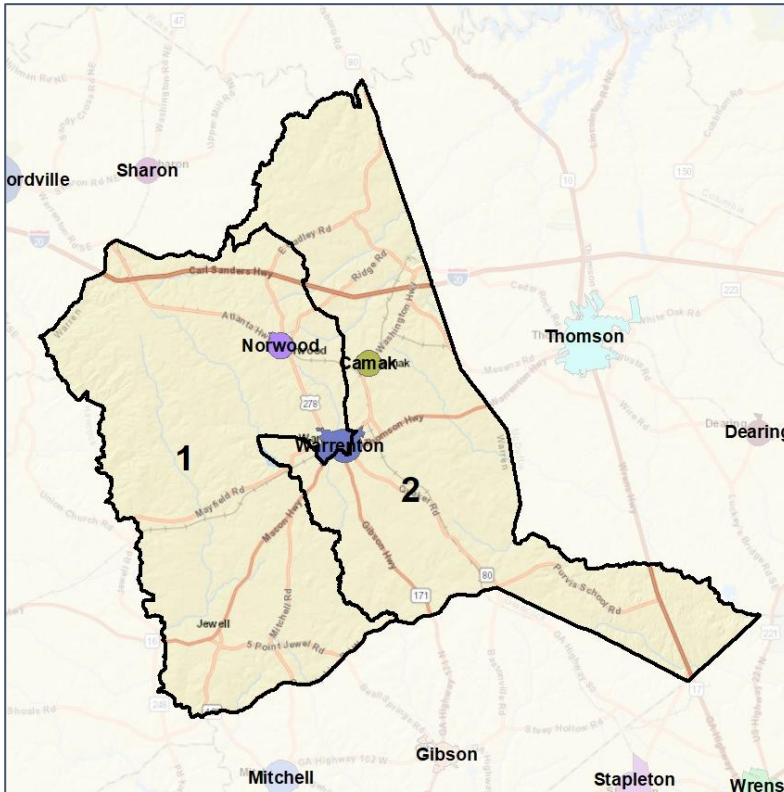


Warren County Commission

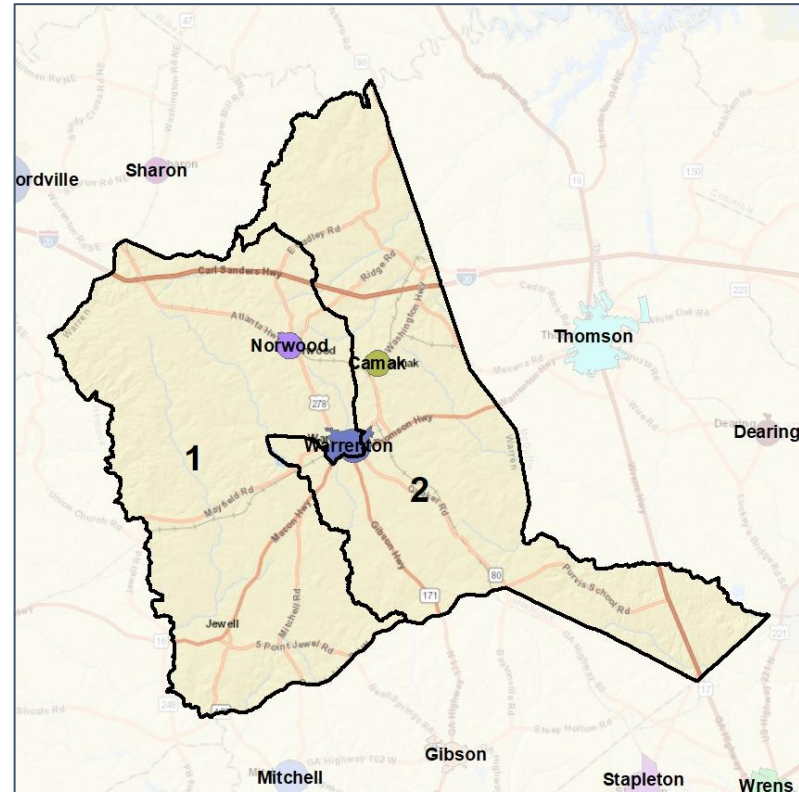
Cities and Places



2012 Map



2022 Map*



	1	2	1*	2*	County
Population	2,417	2,798	2,612	2,603	5,215
API	0%	0%	0%	0%	0%
Black	65%	53%	63%	54%	58%
Latino	1%	1%	1%	1%	1%
Other	2%	3%	2%	3%	2%
White	33%	42%	34%	42%	38%
Population Gain	*	*	195	-195	*
Population % Gain	*	*	8%	-7%	*
Net POC Gain	*	*	92	-92	*
Population	*	*	6%	-6%	*



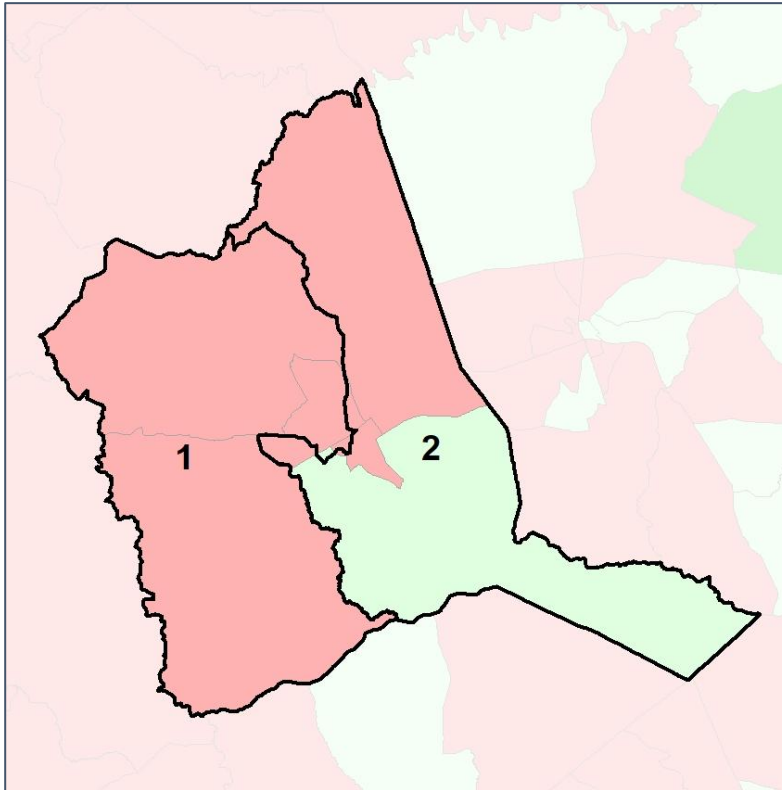
Source:
2020 Decennial Census
2020 ACS 5-Year Dataset

Warren County Commission

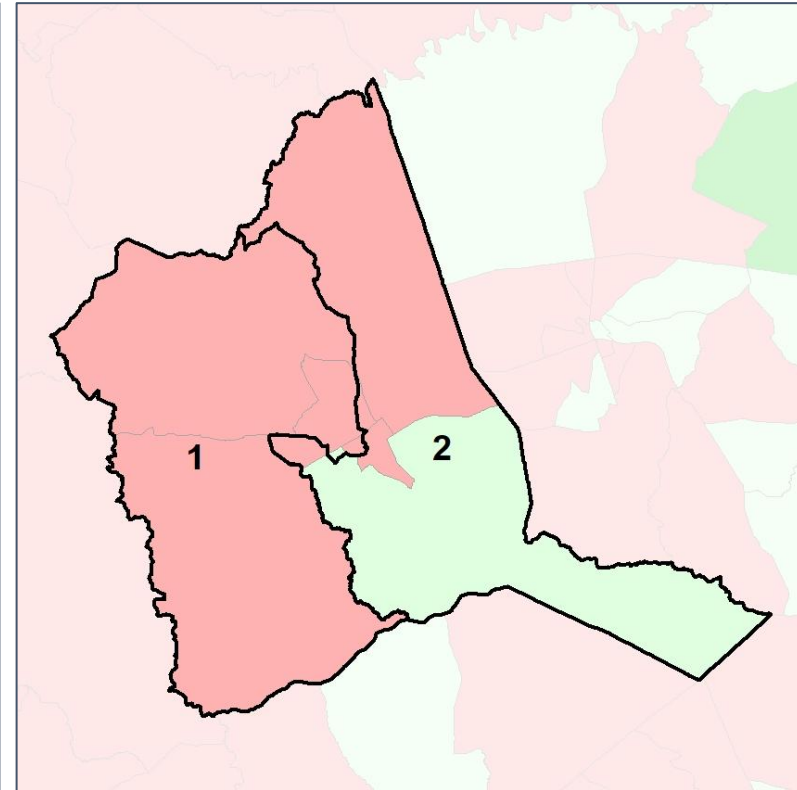
Net Gain in Population (2010 - 2020)



2012 Map



2022 Map*



	1	2	1*	2*	County
Population	2,417	2,798	2,612	2,603	5,215
API	0%	0%	0%	0%	0%
Black	65%	53%	63%	54%	58%
Latino	1%	1%	1%	1%	1%
Other	2%	3%	2%	3%	2%
White	33%	42%	34%	42%	38%
Population Gain	*	*	195	-195	*
Population % Gain	*	*	8%	-7%	*
Net POC Gain	*	*	92	-92	*
Population	*	*	6%	-6%	*

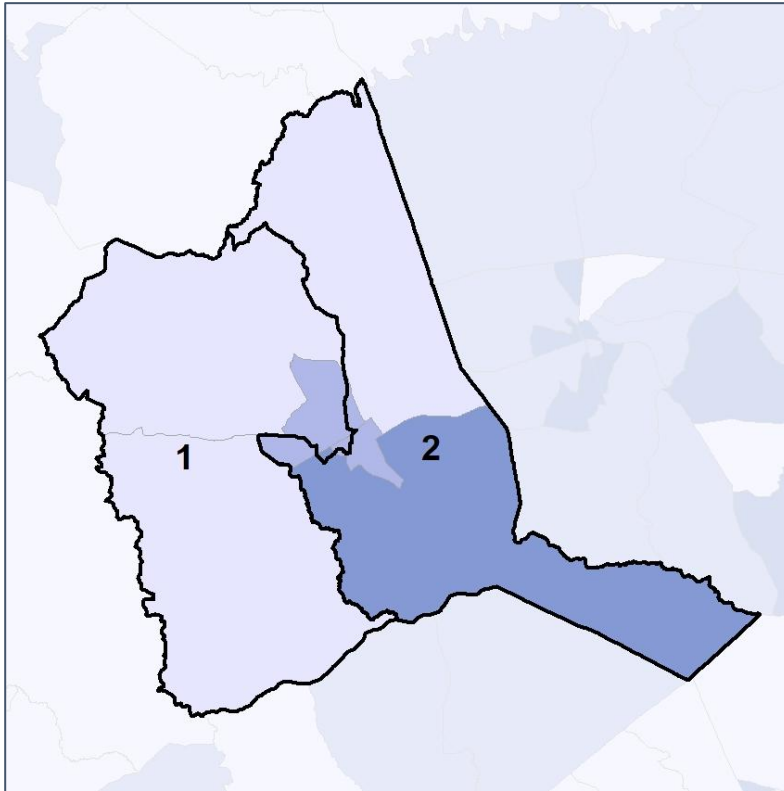


Warren County Commission

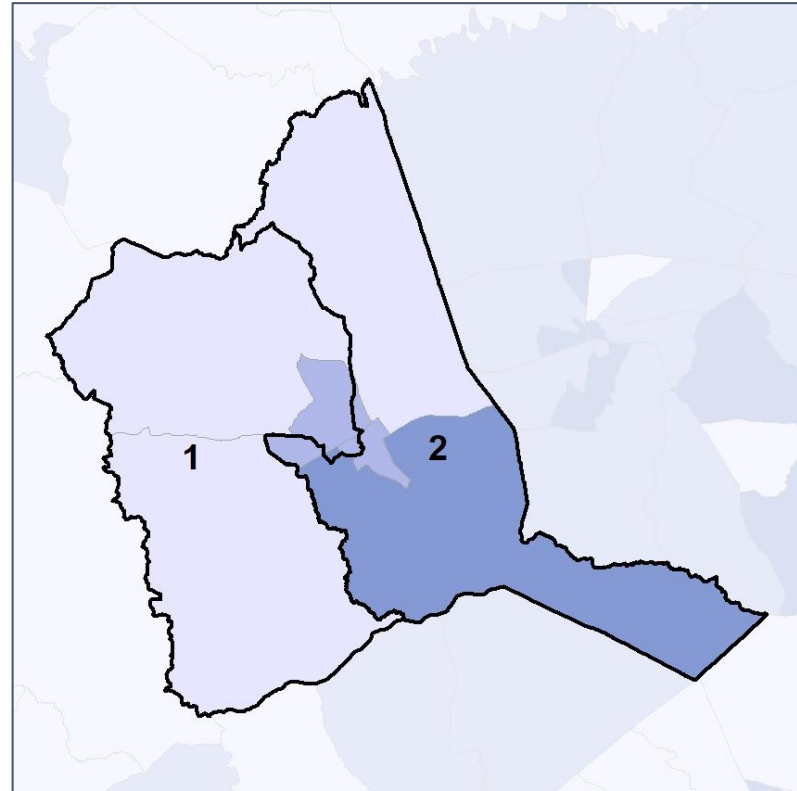
Net Gain in % POC (2020 - 2010) by Census Block Group



2012 Map



2022 Map*



	1	2	1*	2*	County
Population	2,417	2,798	2,612	2,603	5,215
API	0%	0%	0%	0%	0%
Black	65%	53%	63%	54%	58%
Latino	1%	1%	1%	1%	1%
Other	2%	3%	2%	3%	2%
White	33%	42%	34%	42%	38%
Population Gain	*	*	195	-195	*
Population % Gain	*	*	8%	-7%	*
Net POC Gain	*	*	92	-92	*
Population	*	*	6%	-6%	*

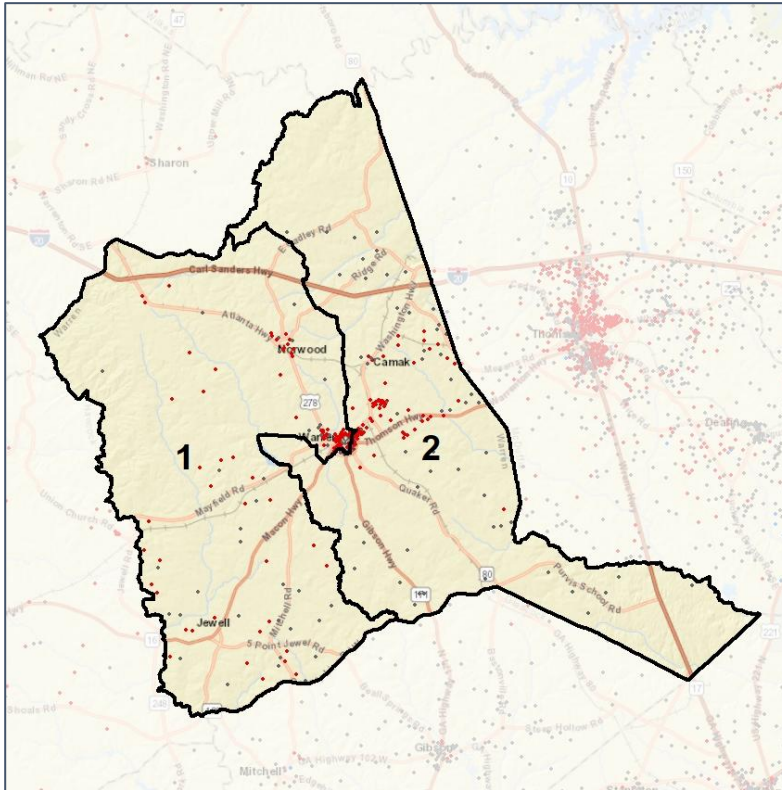


Warren County Commission

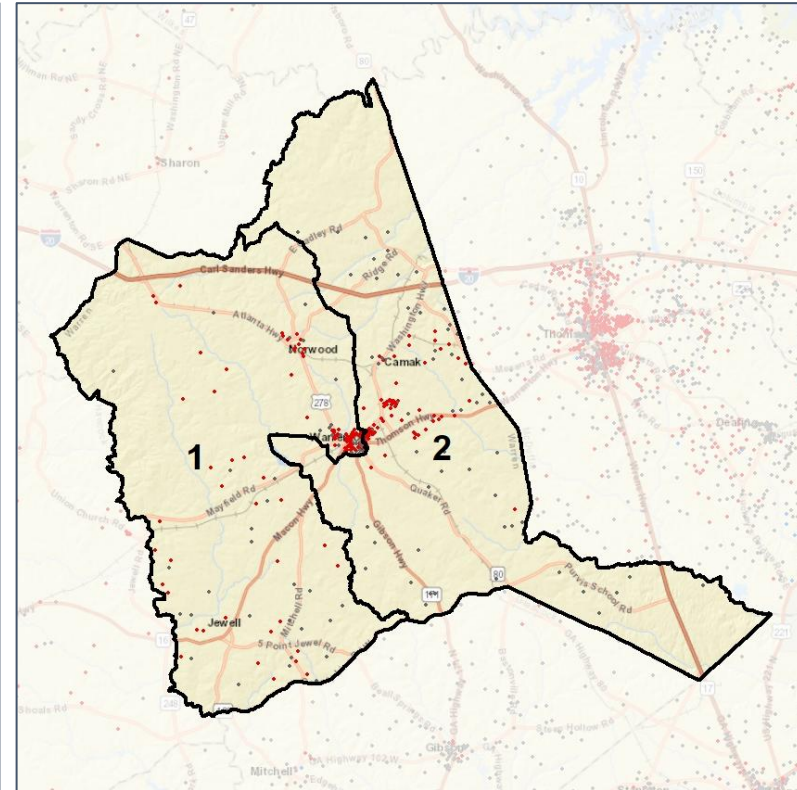
Population Density by Race



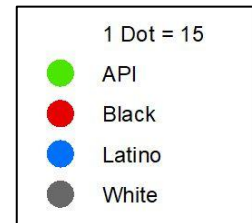
2012 Map



2022 Map*



	1	2	1*	2*	County
Population	2,417	2,798	2,612	2,603	5,215
API	5	11	11	5	16
% API	0%	0%	0%	0%	0%
Black	1,559	1,488	1,642	1,405	3,047
% Black	65%	53%	63%	54%	58%
Latino	19	34	21	32	53
% Latino	1%	1%	1%	1%	1%
Other	46	79	47	78	125
% Other	2%	3%	2%	3%	2%
White	788	1,186	891	1,083	1,974
% White	33%	42%	34%	42%	38%

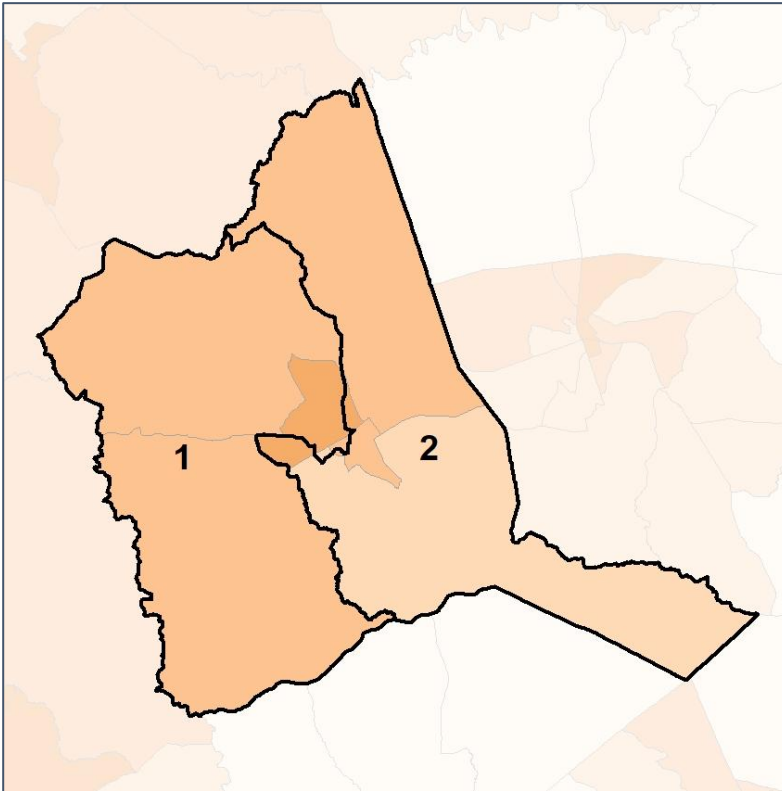


Warren County Commission

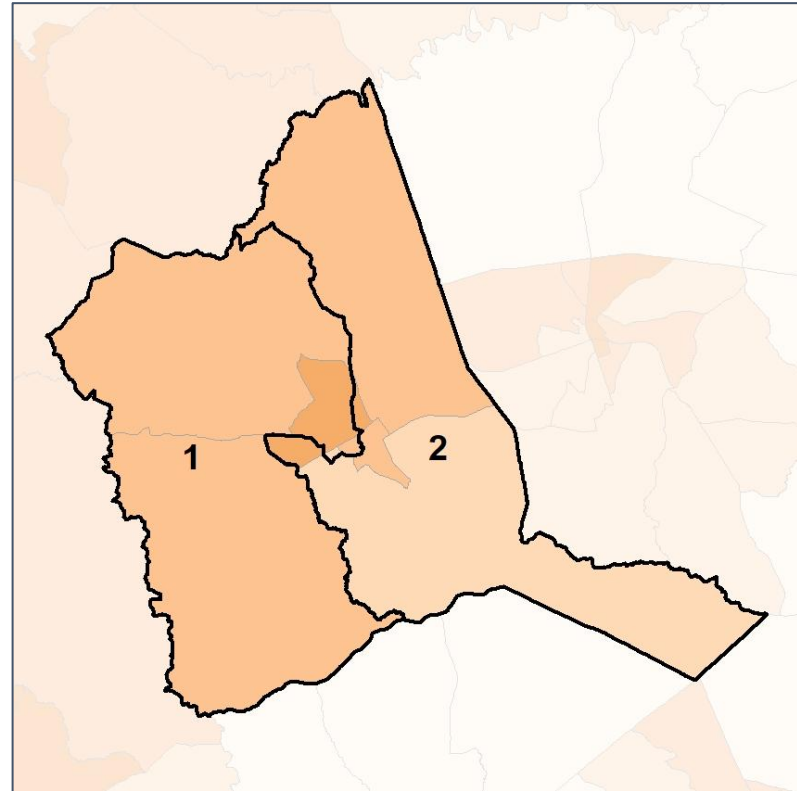
% People of Color by Census Block Group



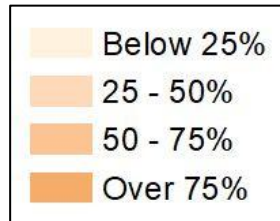
2012 Map



2022 Map*



	1	2	1*	2*	County
Population	2,417	2,798	2,612	2,603	5,215
API	5	11	11	5	16
% API	0%	0%	0%	0%	0%
Black	1,559	1,488	1,642	1,405	3,047
% Black	65%	53%	63%	54%	58%
Latino	19	34	21	32	53
% Latino	1%	1%	1%	1%	1%
Other	46	79	47	78	125
% Other	2%	3%	2%	3%	2%
White	788	1,186	891	1,083	1,974
% White	33%	42%	34%	42%	38%

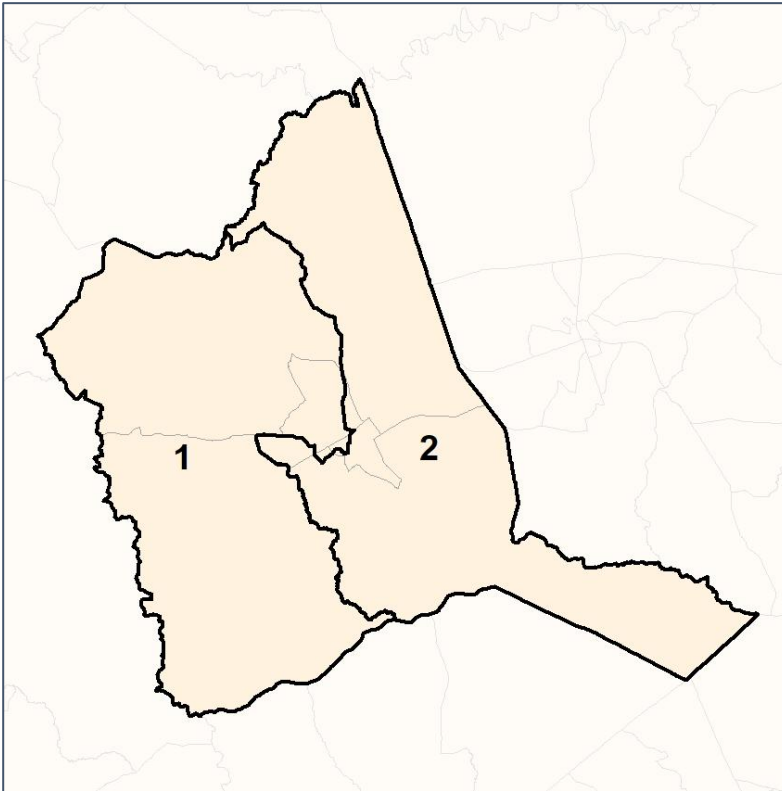


Warren County Commission

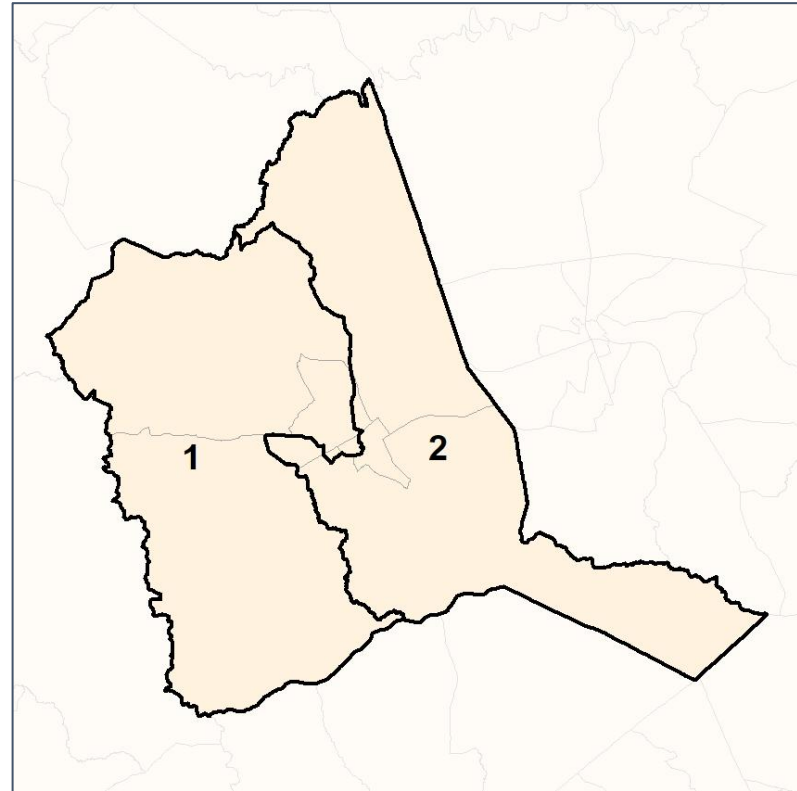
% API by Census Block Group



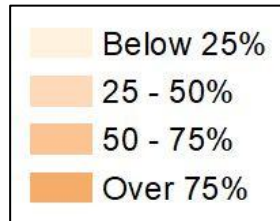
2012 Map



2022 Map*



	1	2	1*	2*	County
Population	2,417	2,798	2,612	2,603	5,215
API	5	11	11	5	16
% API	0%	0%	0%	0%	0%
Black	1,559	1,488	1,642	1,405	3,047
% Black	65%	53%	63%	54%	58%
Latino	19	34	21	32	53
% Latino	1%	1%	1%	1%	1%
Other	46	79	47	78	125
% Other	2%	3%	2%	3%	2%
White	788	1,186	891	1,083	1,974
% White	33%	42%	34%	42%	38%

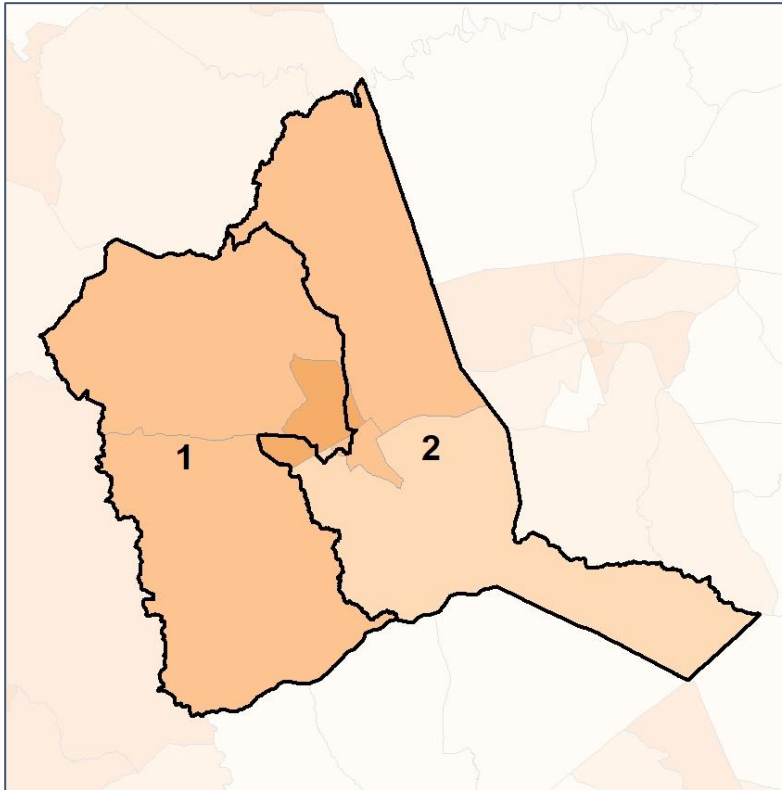


Warren County Commission

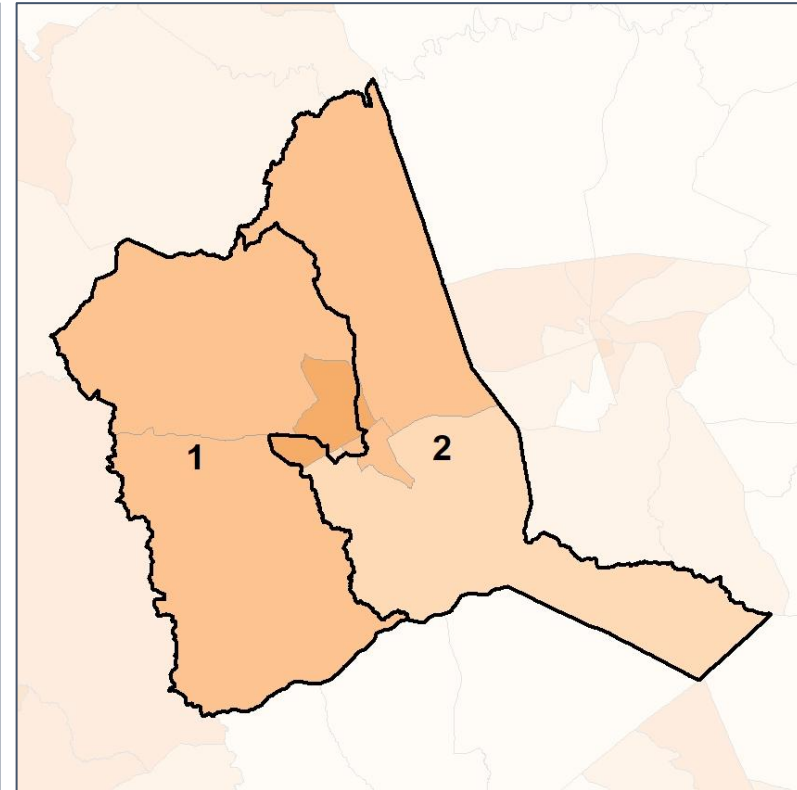
% Black by Census Block Group



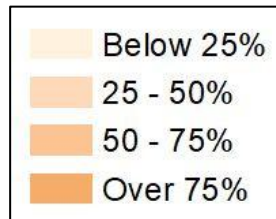
2012 Map



2022 Map*



	1	2	1*	2*	County
Population	2,417	2,798	2,612	2,603	5,215
API	5	11	11	5	16
% API	0%	0%	0%	0%	0%
Black	1,559	1,488	1,642	1,405	3,047
% Black	65%	53%	63%	54%	58%
Latino	19	34	21	32	53
% Latino	1%	1%	1%	1%	1%
Other	46	79	47	78	125
% Other	2%	3%	2%	3%	2%
White	788	1,186	891	1,083	1,974
% White	33%	42%	34%	42%	38%

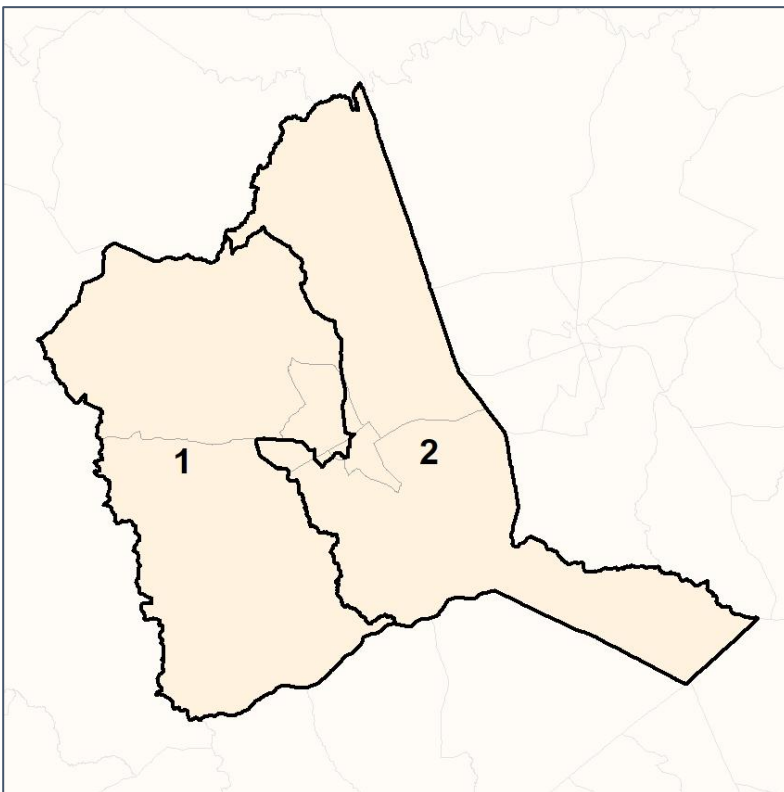


Warren County Commission

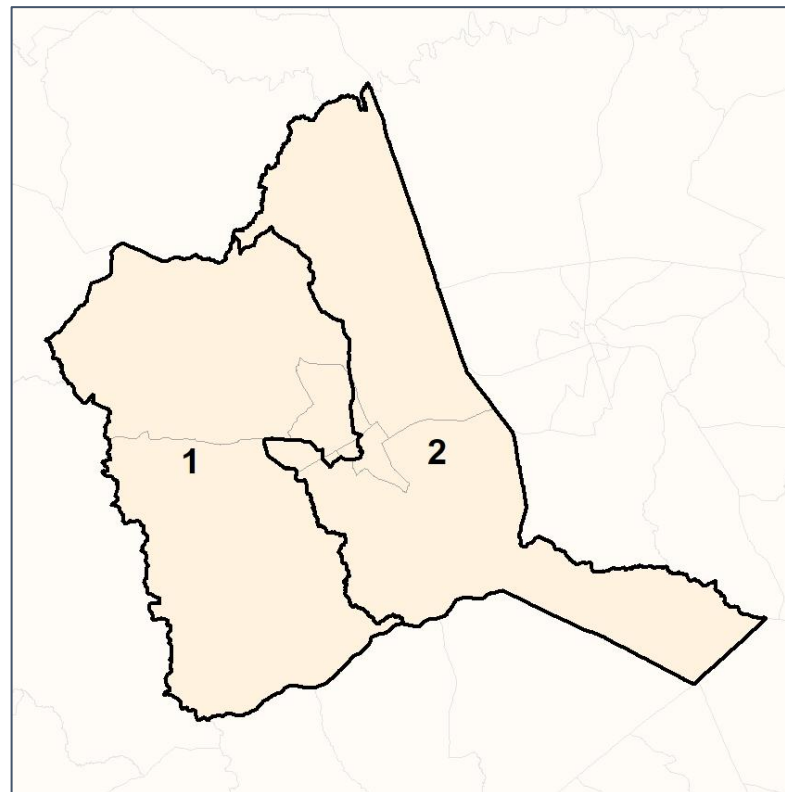
% Latino by Census Block Group



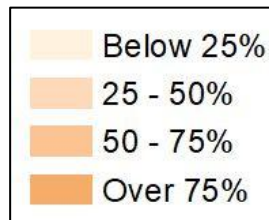
2012 Map



2022 Map*



	1	2	1*	2*	County
Population	2,417	2,798	2,612	2,603	5,215
API	5	11	11	5	16
% API	0%	0%	0%	0%	0%
Black	1,559	1,488	1,642	1,405	3,047
% Black	65%	53%	63%	54%	58%
Latino	19	34	21	32	53
% Latino	1%	1%	1%	1%	1%
Other	46	79	47	78	125
% Other	2%	3%	2%	3%	2%
White	788	1,186	891	1,083	1,974
% White	33%	42%	34%	42%	38%

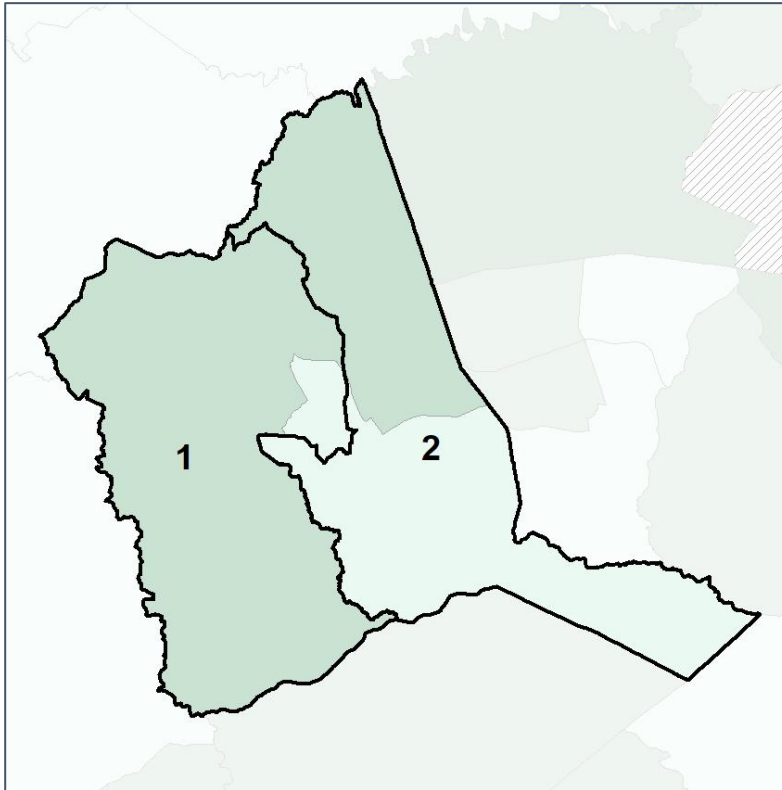


Warren County Commission

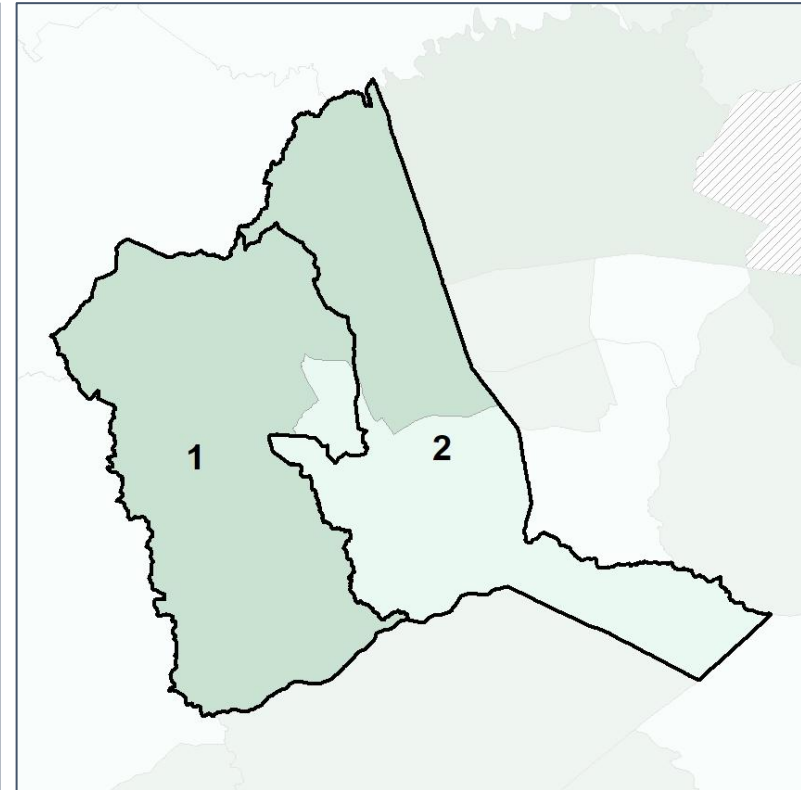
Median Household Income by Census Tract



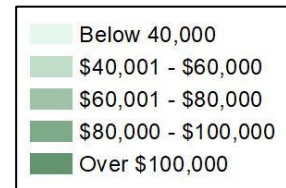
2012 Map



2022 Map*



	1	2	1*	2*	County
Population	2,417	2,798	2,612	2,603	5,215
% API	0%	0%	0%	0%	0%
% Black	65%	53%	63%	54%	58%
% Latino	1%	1%	1%	1%	1%
% Other	2%	3%	2%	3%	2%
% White	33%	42%	34%	42%	38%
Median Income	\$33,000	\$40,000	\$33,000	\$40,000	\$38,000
% Renter	35%	32%	35%	32%	34%
% Youth	20%	16%	20%	16%	18%

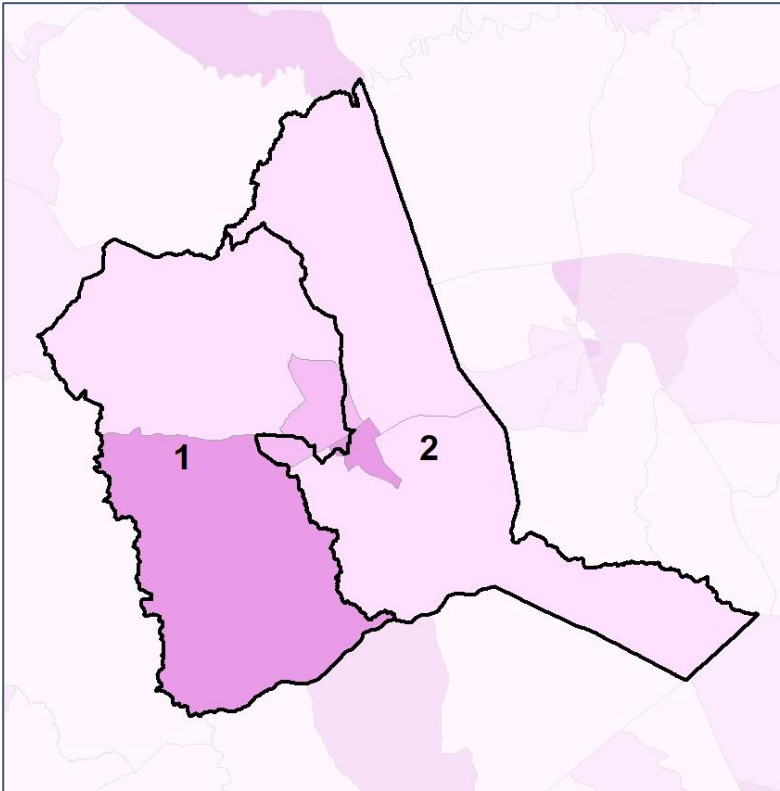


Warren County Commission

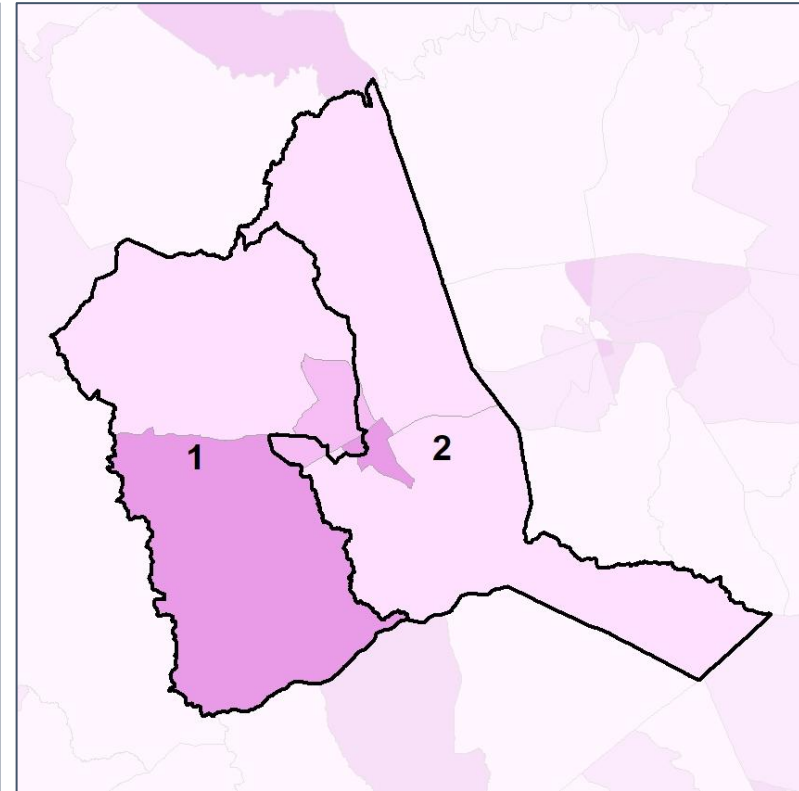
% Renter by Census Block Group



2012 Map



2022 Map*



	1	2	1*	2*	County
Population	2,417	2,798	2,612	2,603	5,215
% API	0%	0%	0%	0%	0%
% Black	65%	53%	63%	54%	58%
% Latino	1%	1%	1%	1%	1%
% Other	2%	3%	2%	3%	2%
% White	33%	42%	34%	42%	38%
Median Income	\$33,000	\$40,000	\$33,000	\$40,000	\$38,000
% Renter	35%	32%	35%	32%	34%
% Youth	20%	16%	20%	16%	18%

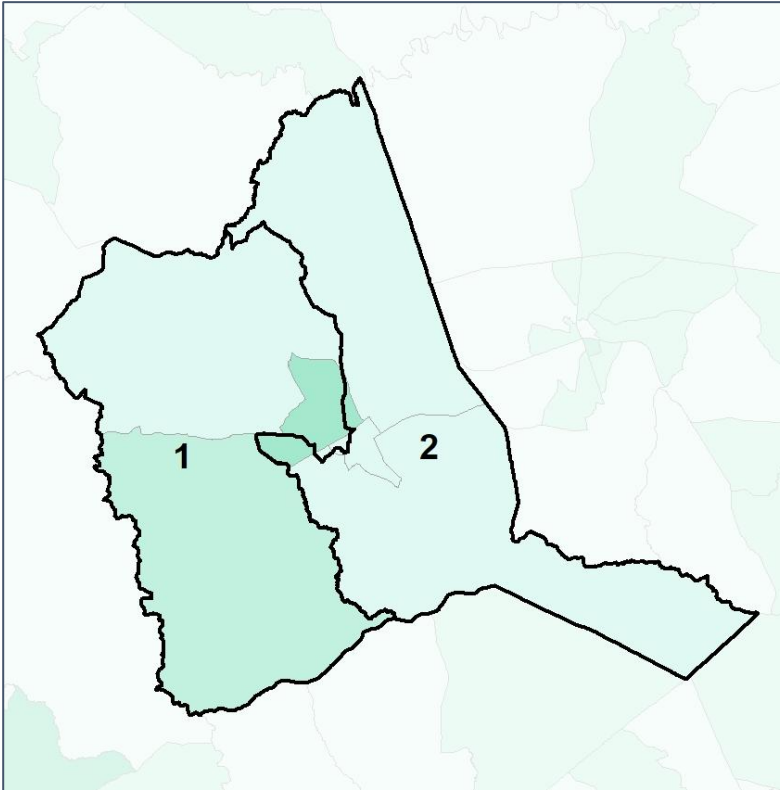


Warren County Commission

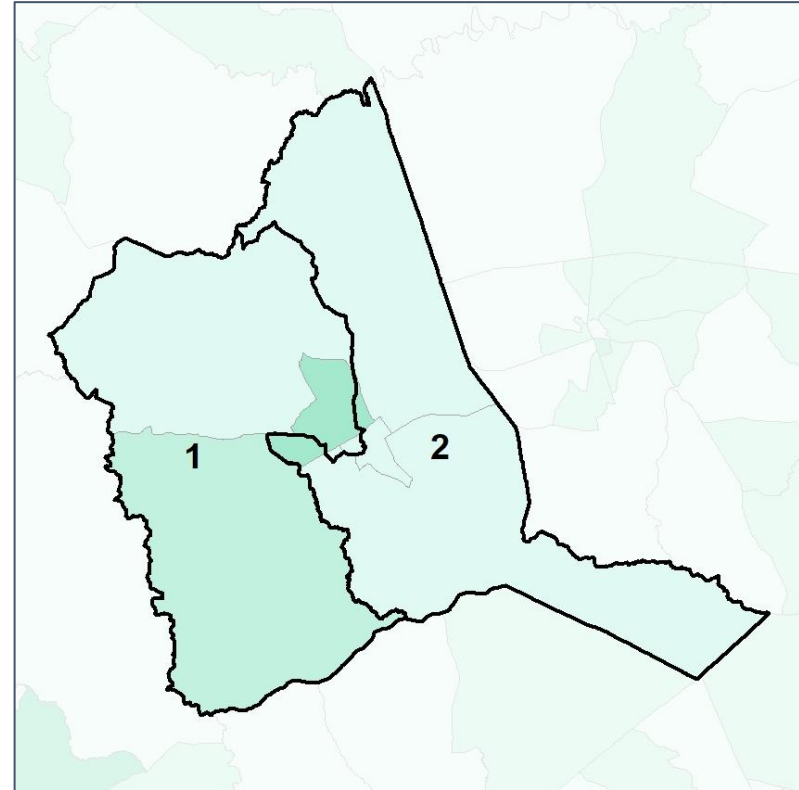
% Youth (18-34) by Census Block Group



2012 Map



2022 Map*



	1	2	1*	2*	County
Population	2,417	2,798	2,612	2,603	5,215
% API	0%	0%	0%	0%	0%
% Black	65%	53%	63%	54%	58%
% Latino	1%	1%	1%	1%	1%
% Other	2%	3%	2%	3%	2%
% White	33%	42%	34%	42%	38%
Median Income	\$33,000	\$40,000	\$33,000	\$40,000	\$38,000
% Renter	35%	32%	35%	32%	34%
% Youth	20%	16%	20%	16%	18%

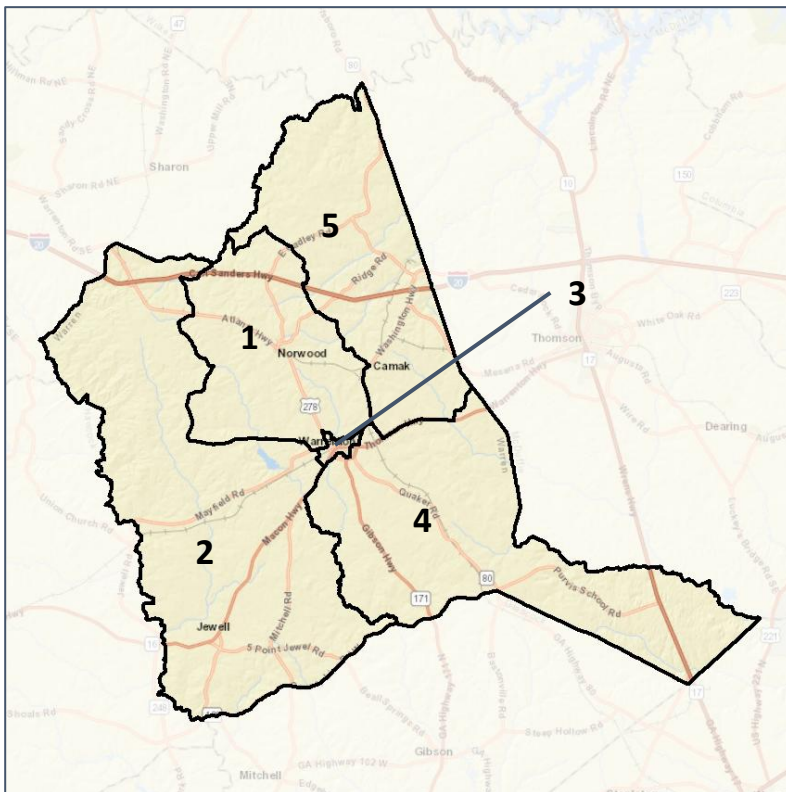


Warren County School Board

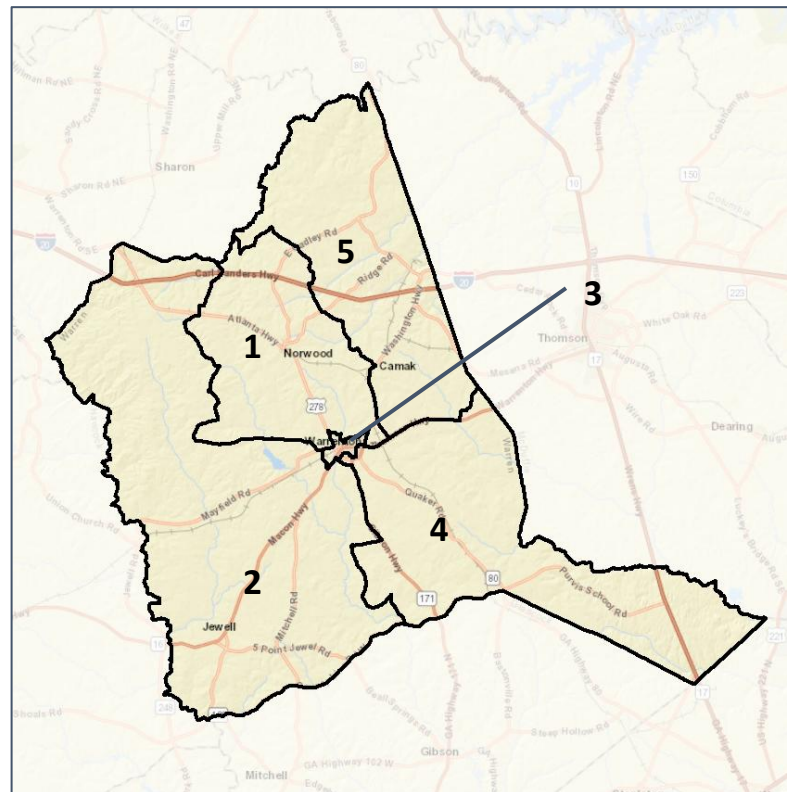
Context



2012 Map



2022 Map*



	1	2	3	4	5	1*	2*	3*	4*	5*	County
Population	893	962	1,045	1,272	1,043	1,034	1,043	1,049	1,046	1,043	5,215
API	0%	0%	0%	1%	0%	0%	0%	0%	1%	0%	0%
Black	66%	57%	77%	42%	54%	69%	56%	77%	36%	54%	58%
Latino	1%	1%	1%	1%	1%	1%	1%	1%	1%	1%	1%
Other	2%	2%	2%	4%	2%	2%	2%	2%	4%	2%	2%
White	31%	40%	20%	52%	42%	28%	41%	20%	59%	42%	38%
Population Gain	*	*	*	*	*	141	81	4	-226	0	*
Population % Gain	*	*	*	*	*	16%	8%	0%	-18%	0%	*
Net POC Gain	*	*	*	*	*	132	37	7	-176	0	*
Net POC % Gain	*	*	*	*	*	21%	6%	1%	-29%	0%	*



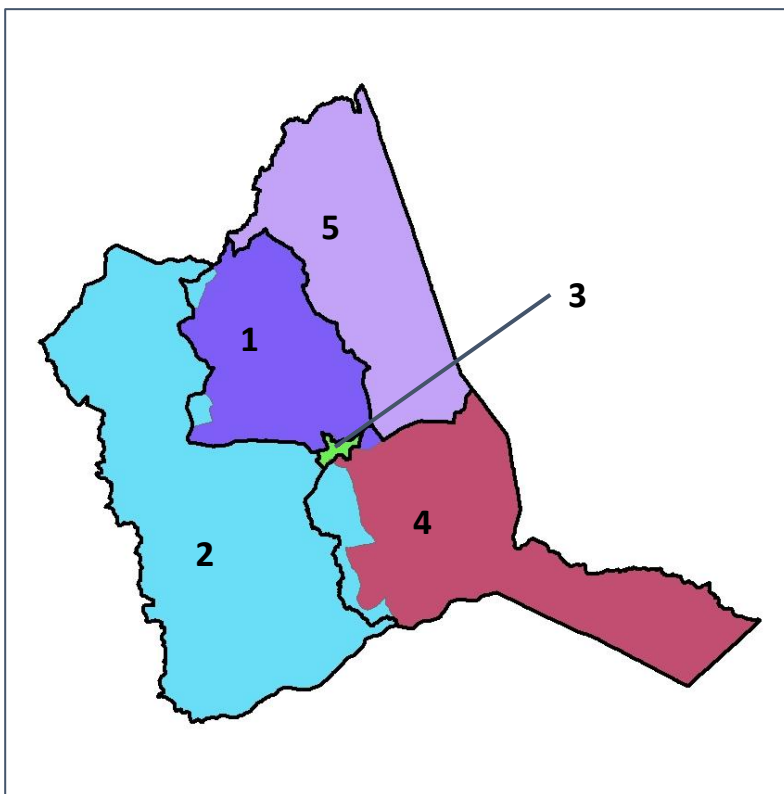
Source:
2020 Decennial Census
2020 ACS 5-Year Dataset

Warren County School Board

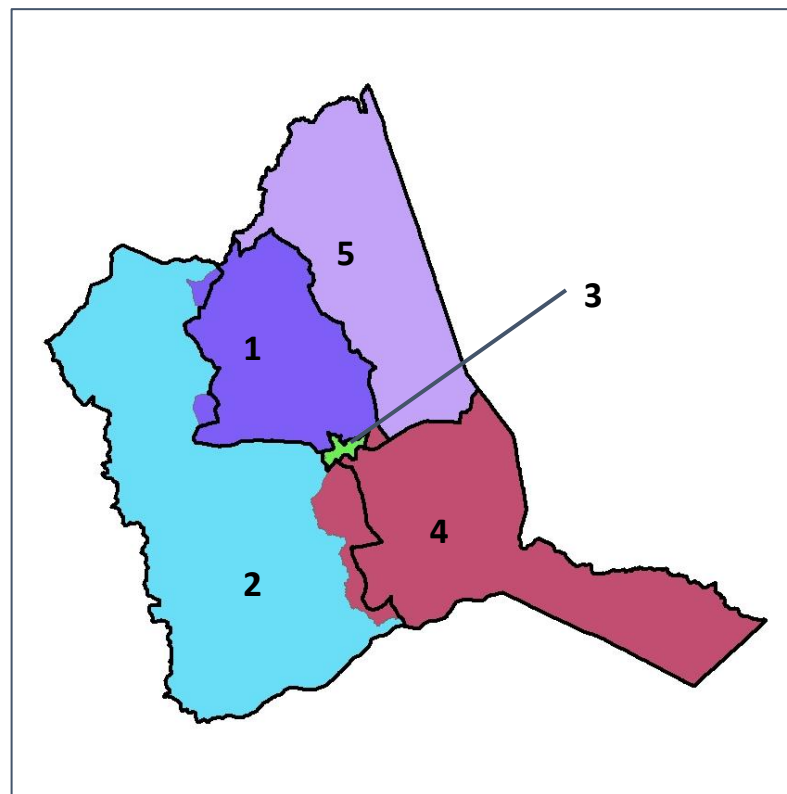
Changes in Redistricting



2012 Map (2022 in Colors)



2022 Map* (2012 in Colors)



	1	2	3	4	5	1*	2*	3*	4*	5*	County
Population	893	962	1,045	1,272	1,043	1,034	1,043	1,049	1,046	1,043	5,215
API	0%	0%	0%	1%	0%	0%	0%	0%	1%	0%	0%
Black	66%	57%	77%	42%	54%	69%	56%	77%	36%	54%	58%
Latino	1%	1%	1%	1%	1%	1%	1%	1%	1%	1%	1%
Other	2%	2%	2%	4%	2%	2%	2%	2%	4%	2%	2%
White	31%	40%	20%	52%	42%	28%	41%	20%	59%	42%	38%
Population Gain	*	*	*	*	*	141	81	4	-226	0	*
Population % Gain	*	*	*	*	*	16%	8%	0%	-18%	0%	*
Net POC Gain	*	*	*	*	*	132	37	7	-176	0	*
Net POC % Gain	*	*	*	*	*	21%	6%	1%	-29%	0%	*

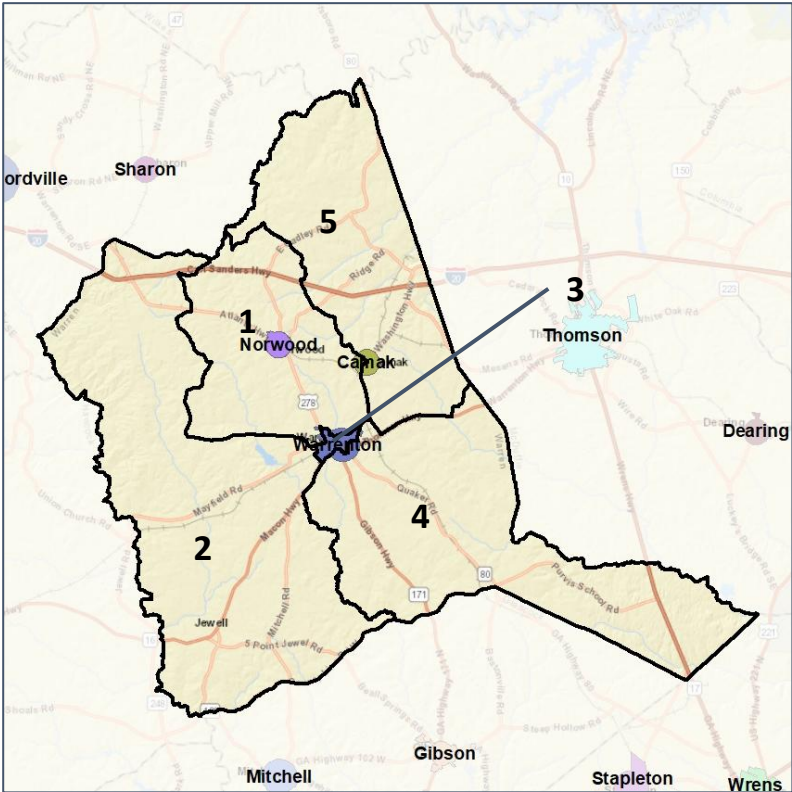


Warren County School Board

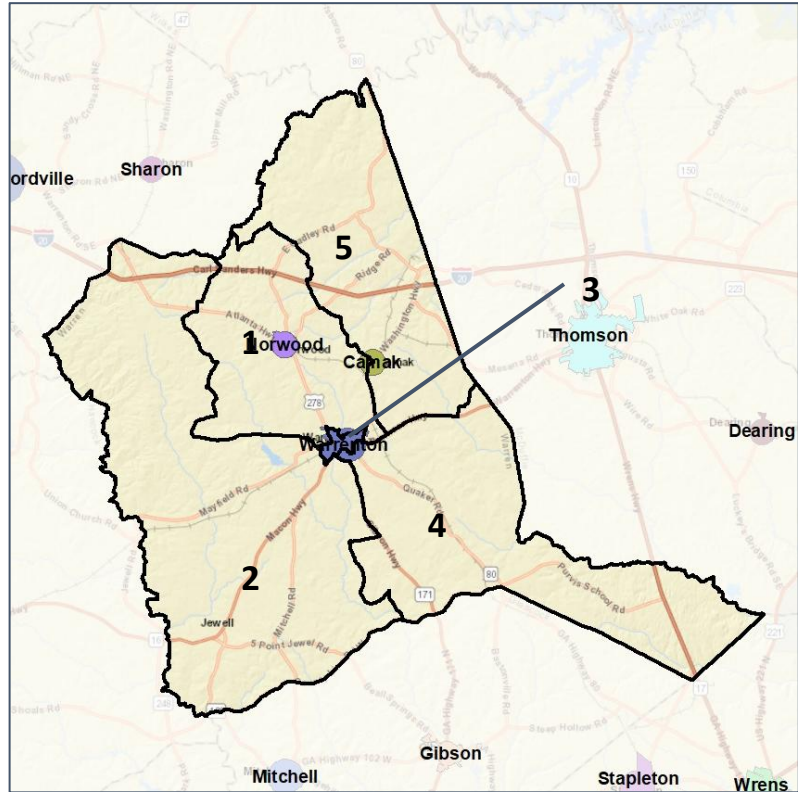
Cities and Places



2012 Map



2022 Map*



	1	2	3	4	5	1*	2*	3*	4*	5*	County
Population	893	962	1,045	1,272	1,043	1,034	1,043	1,049	1,046	1,043	5,215
API	0%	0%	0%	1%	0%	0%	0%	0%	1%	0%	0%
Black	66%	57%	77%	42%	54%	69%	56%	77%	36%	54%	58%
Latino	1%	1%	1%	1%	1%	1%	1%	1%	1%	1%	1%
Other	2%	2%	2%	4%	2%	2%	2%	2%	4%	2%	2%
White	31%	40%	20%	52%	42%	28%	41%	20%	59%	42%	38%
Population Gain	*	*	*	*	*	141	81	4	-226	0	*
Population % Gain	*	*	*	*	*	16%	8%	0%	-18%	0%	*
Net POC Gain	*	*	*	*	*	132	37	7	-176	0	*
Net POC % Gain	*	*	*	*	*	21%	6%	1%	-29%	0%	*



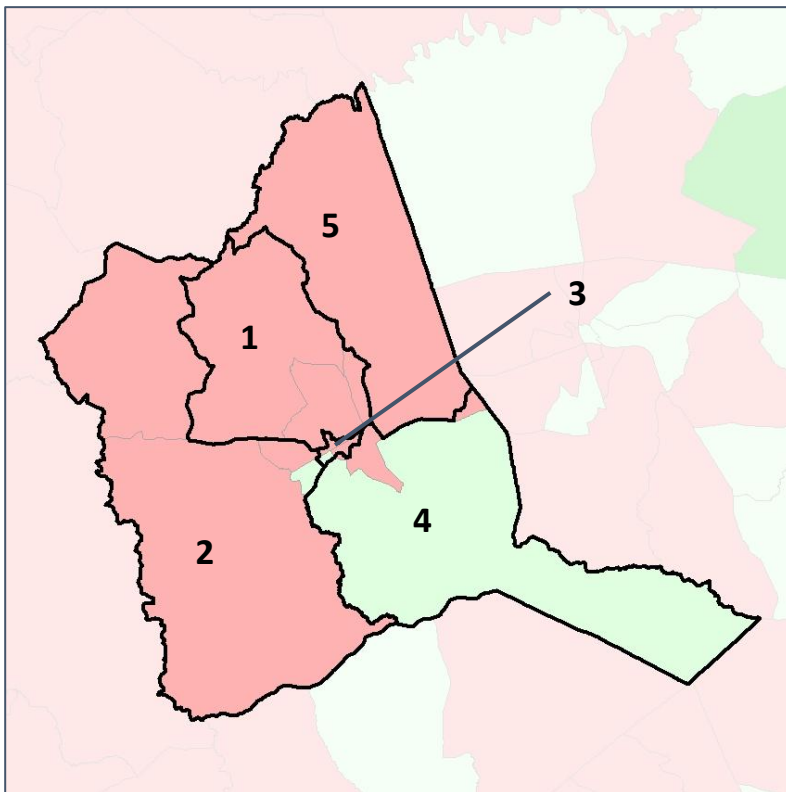
Source: 2020 Decennial Census 2020 ACS 5-Year Dataset

Warren County School Board

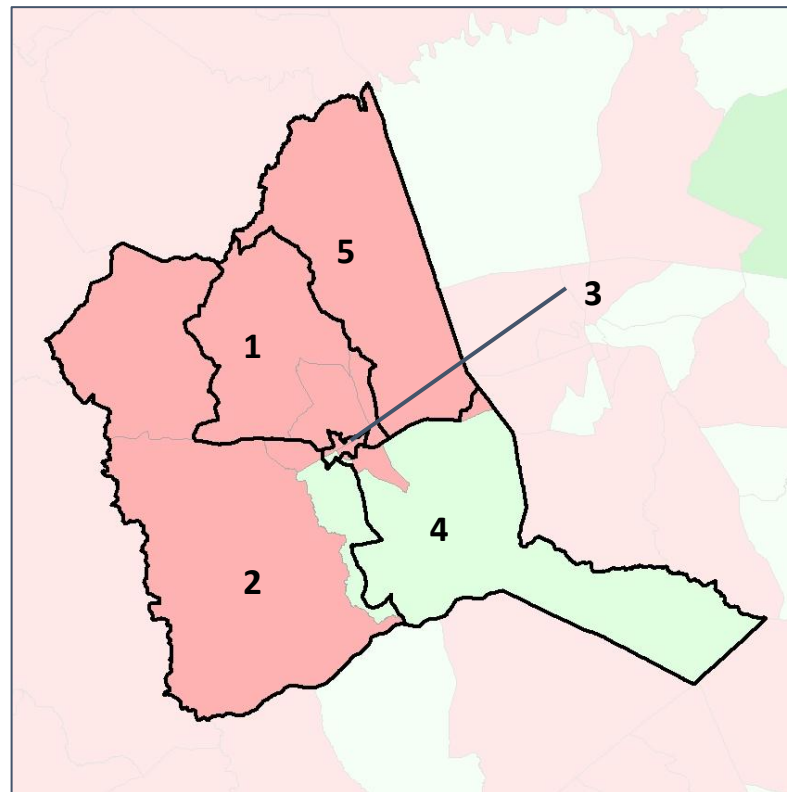
Net Gain in Population (2010 - 2020)



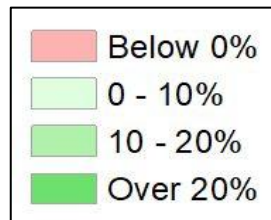
2012 Map



2022 Map*



	1	2	3	4	5	1*	2*	3*	4*	5*	County
Population	893	962	1,045	1,272	1,043	1,034	1,043	1,049	1,046	1,043	5,215
API	0%	0%	0%	1%	0%	0%	0%	0%	1%	0%	0%
Black	66%	57%	77%	42%	54%	69%	56%	77%	36%	54%	58%
Latino	1%	1%	1%	1%	1%	1%	1%	1%	1%	1%	1%
Other	2%	2%	2%	4%	2%	2%	2%	2%	4%	2%	2%
White	31%	40%	20%	52%	42%	28%	41%	20%	59%	42%	38%
Population Gain	*	*	*	*	*	141	81	4	-226	0	*
Population % Gain	*	*	*	*	*	16%	8%	0%	-18%	0%	*
Net POC Gain	*	*	*	*	*	132	37	7	-176	0	*
Net POC % Gain	*	*	*	*	*	21%	6%	1%	-29%	0%	*

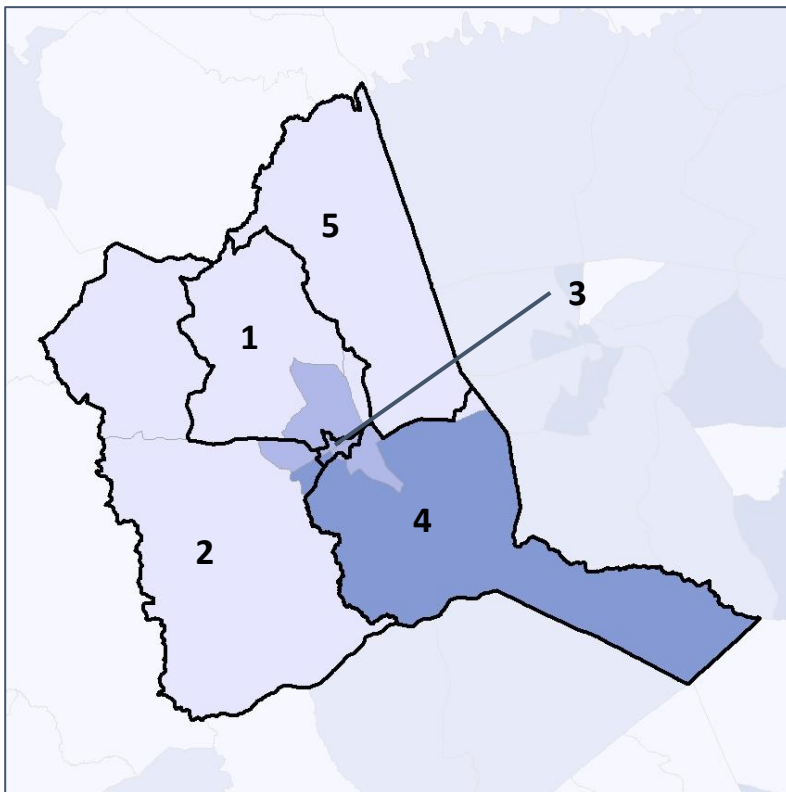


Warren County School Board

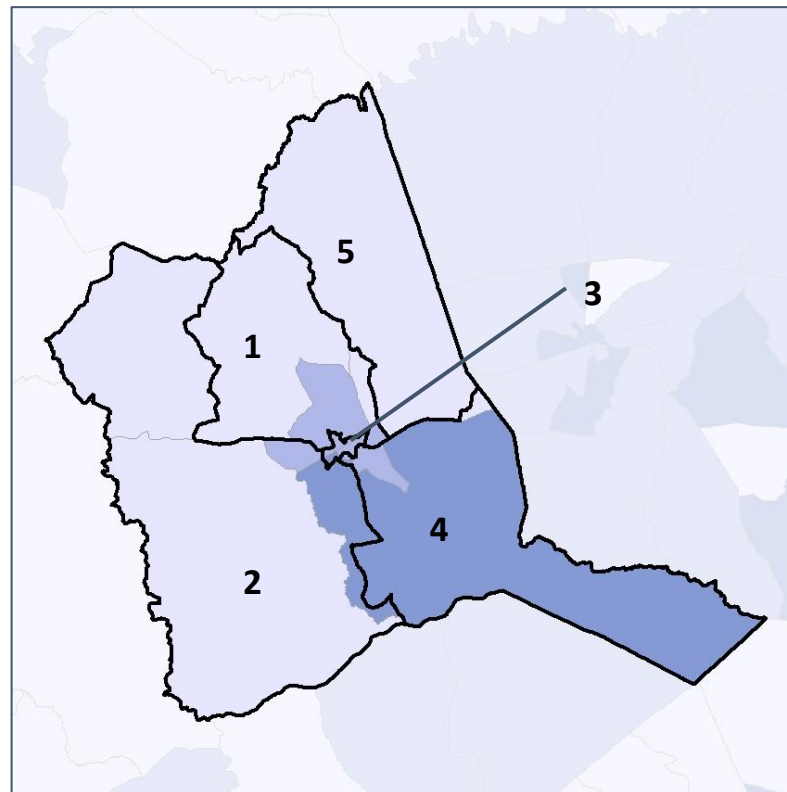
Net Gain in % POC (2020 - 2010) by Census Block Group



2012 Map



2022 Map*



	1	2	3	4	5	1*	2*	3*	4*	5*	County
Population	893	962	1,045	1,272	1,043	1,034	1,043	1,049	1,046	1,043	5,215
API	0%	0%	0%	1%	0%	0%	0%	0%	1%	0%	0%
Black	66%	57%	77%	42%	54%	69%	56%	77%	36%	54%	58%
Latino	1%	1%	1%	1%	1%	1%	1%	1%	1%	1%	1%
Other	2%	2%	2%	4%	2%	2%	2%	2%	4%	2%	2%
White	31%	40%	20%	52%	42%	28%	41%	20%	59%	42%	38%
Population Gain	*	*	*	*	*	141	81	4	-226	0	*
Population % Gain	*	*	*	*	*	16%	8%	0%	-18%	0%	*
Net POC Gain	*	*	*	*	*	132	37	7	-176	0	*
Net POC % Gain	*	*	*	*	*	21%	6%	1%	-29%	0%	*

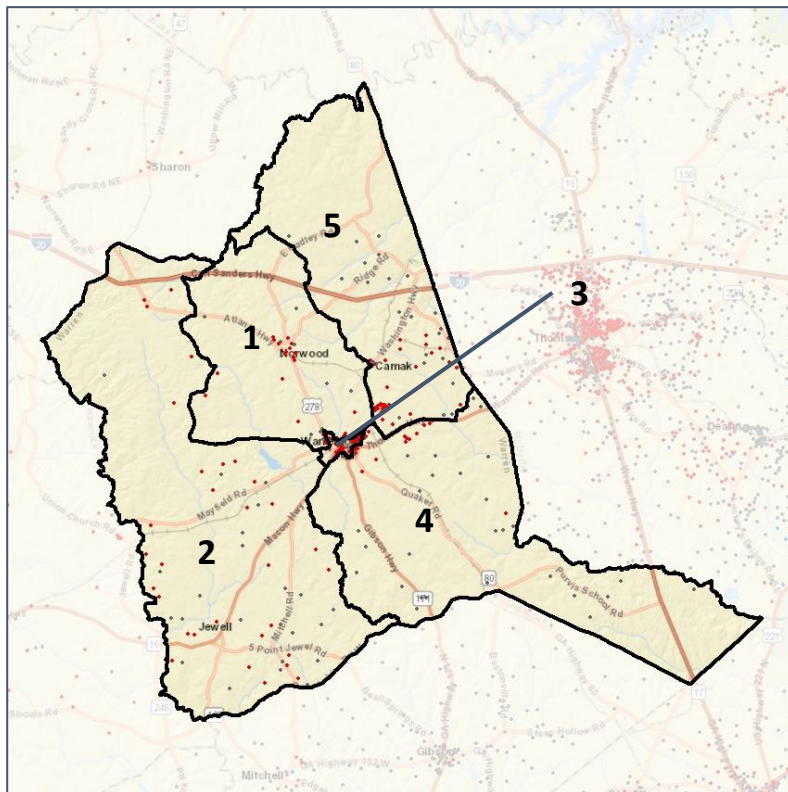


Warren County School Board

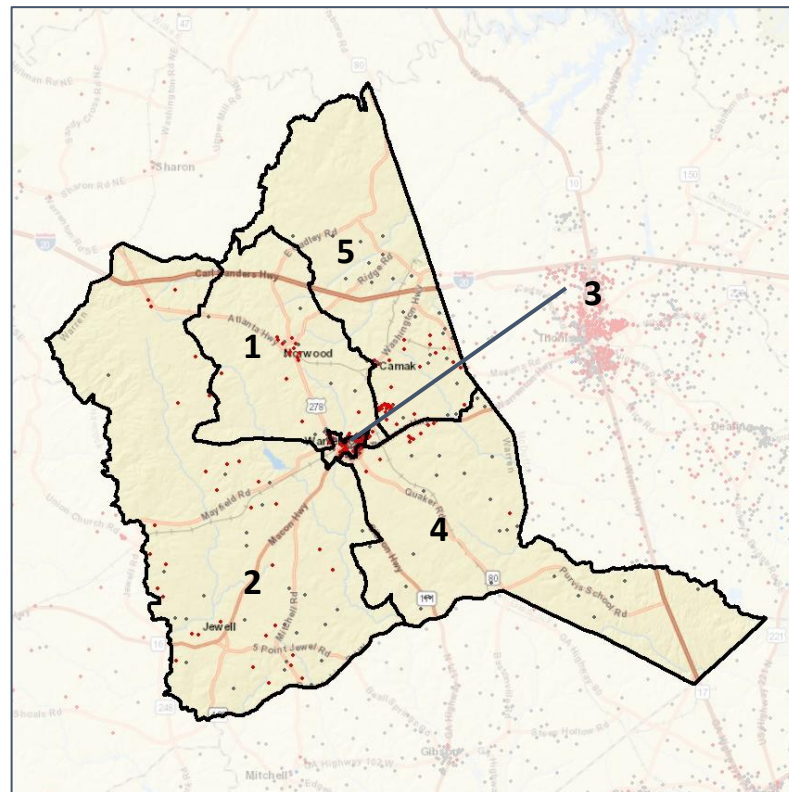
Population Density by Race



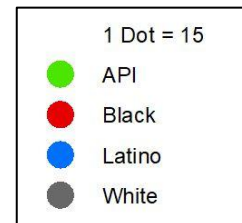
2012 Map



2022 Map*



	1	2	3	4	5	1*	2*	3*	4*	5*	County
Population	893	962	1,045	1,272	1,043	1,034	1,043	1,049	1,046	1,043	5,215
API	3	0	2	7	4	3	0	2	7	4	16
% API	0%	0%	0%	1%	0%	0%	0%	0%	1%	0%	0%
Black	590	550	805	537	565	717	581	812	372	565	3,047
% Black	66%	57%	77%	42%	54%	69%	56%	77%	36%	54%	58%
Latino	6	8	8	17	14	6	10	8	15	14	53
% Latino	1%	1%	1%	1%	1%	1%	1%	1%	1%	1%	1%
Other	17	22	16	47	23	22	26	16	38	23	125
% Other	2%	2%	2%	4%	2%	2%	2%	2%	4%	2%	2%
White	277	382	214	664	437	286	426	211	614	437	1,974
% White	31%	40%	20%	52%	42%	28%	41%	20%	59%	42%	38%



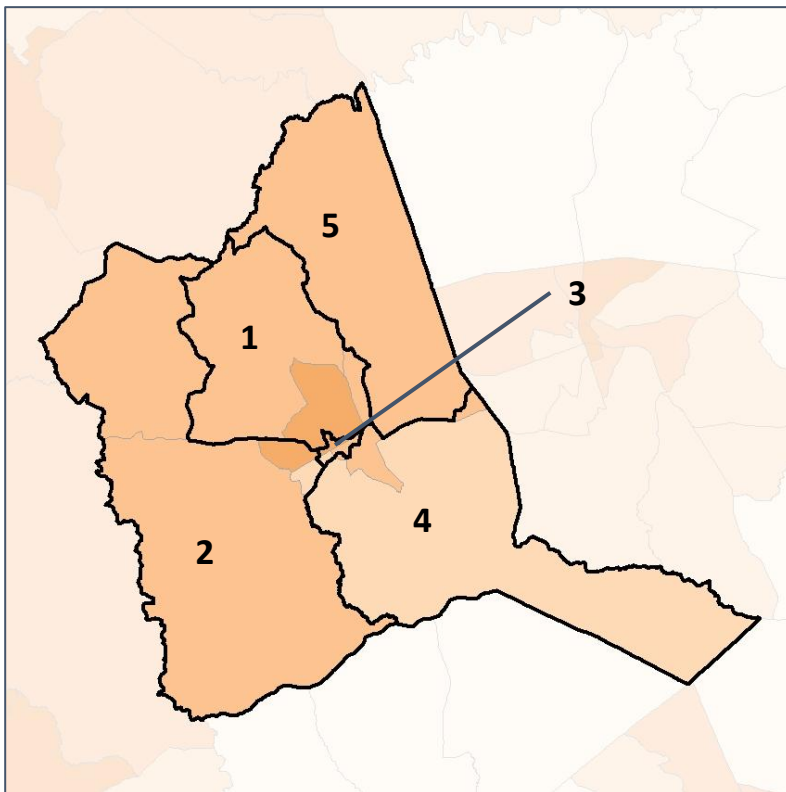
Source: 2020 Decennial Census 2020 ACS 5-Year Dataset

Warren County School Board

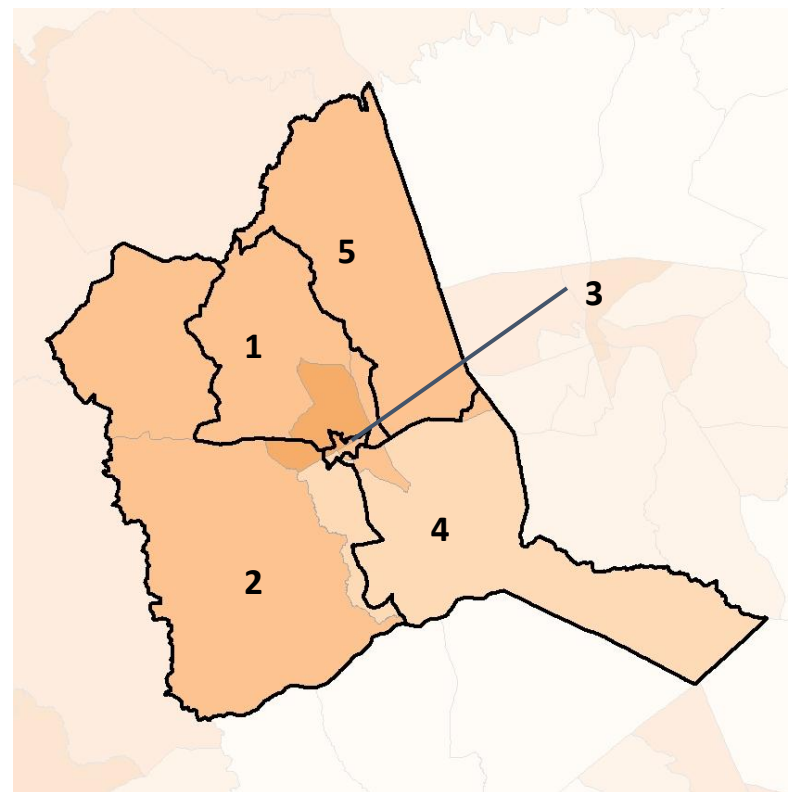
% People of Color by Census Block Group



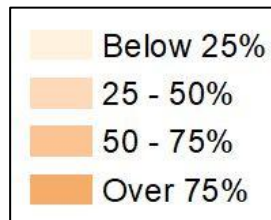
2012 Map



2022 Map*



	1	2	3	4	5	1*	2*	3*	4*	5*	County
Population	893	962	1,045	1,272	1,043	1,034	1,043	1,049	1,046	1,043	5,215
API	3	0	2	7	4	3	0	2	7	4	16
% API	0%	0%	0%	1%	0%	0%	0%	0%	1%	0%	0%
Black	590	550	805	537	565	717	581	812	372	565	3,047
% Black	66%	57%	77%	42%	54%	69%	56%	77%	36%	54%	58%
Latino	6	8	8	17	14	6	10	8	15	14	53
% Latino	1%	1%	1%	1%	1%	1%	1%	1%	1%	1%	1%
Other	17	22	16	47	23	22	26	16	38	23	125
% Other	2%	2%	2%	4%	2%	2%	2%	2%	4%	2%	2%
White	277	382	214	664	437	286	426	211	614	437	1,974
% White	31%	40%	20%	52%	42%	28%	41%	20%	59%	42%	38%

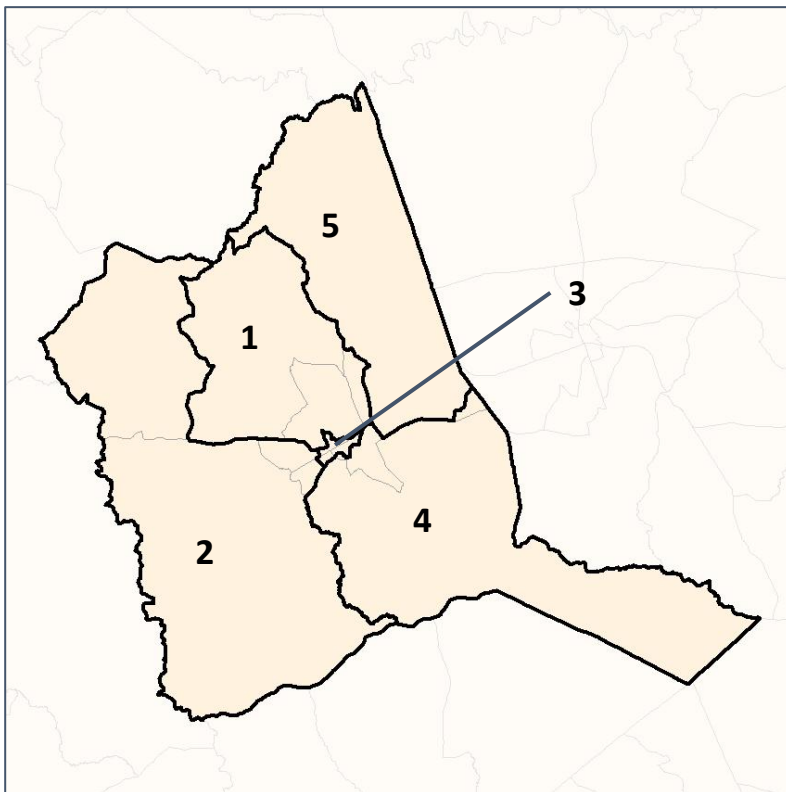


Warren County School Board

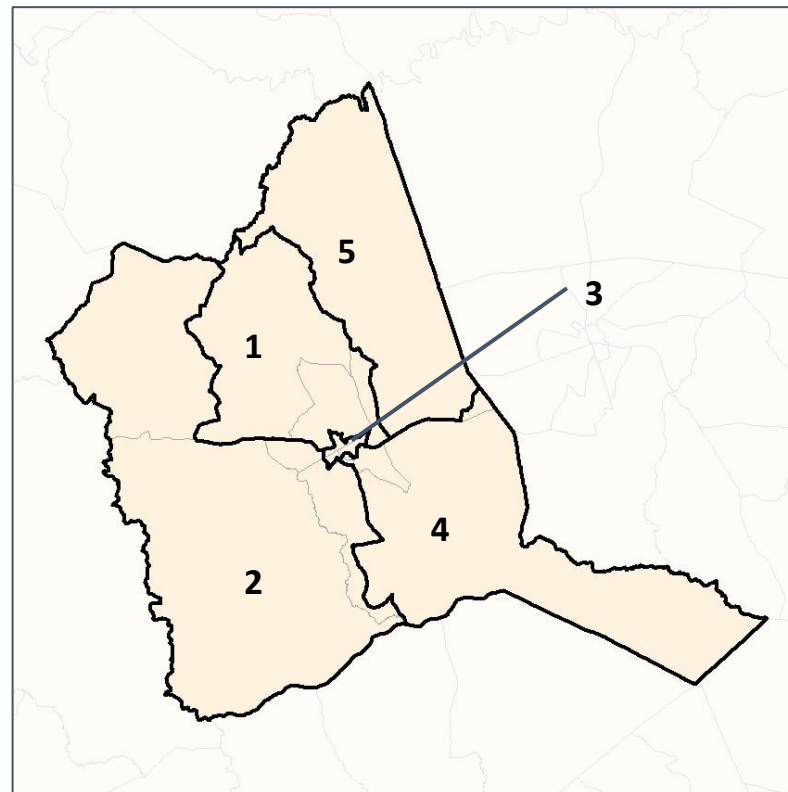
% API by Census Block Group



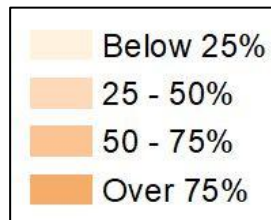
2012 Map



2022 Map*



	1	2	3	4	5	1*	2*	3*	4*	5*	County
Population	893	962	1,045	1,272	1,043	1,034	1,043	1,049	1,046	1,043	5,215
API	3	0	2	7	4	3	0	2	7	4	16
% API	0%	0%	0%	1%	0%	0%	0%	0%	1%	0%	0%
Black	590	550	805	537	565	717	581	812	372	565	3,047
% Black	66%	57%	77%	42%	54%	69%	56%	77%	36%	54%	58%
Latino	6	8	8	17	14	6	10	8	15	14	53
% Latino	1%	1%	1%	1%	1%	1%	1%	1%	1%	1%	1%
Other	17	22	16	47	23	22	26	16	38	23	125
% Other	2%	2%	2%	4%	2%	2%	2%	2%	4%	2%	2%
White	277	382	214	664	437	286	426	211	614	437	1,974
% White	31%	40%	20%	52%	42%	28%	41%	20%	59%	42%	38%

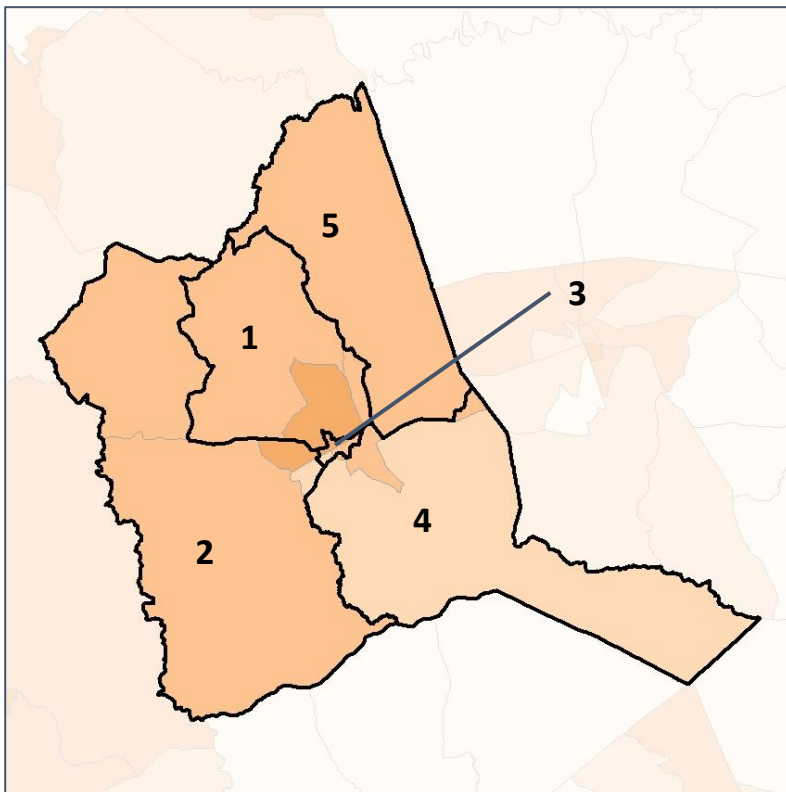


Warren County School Board

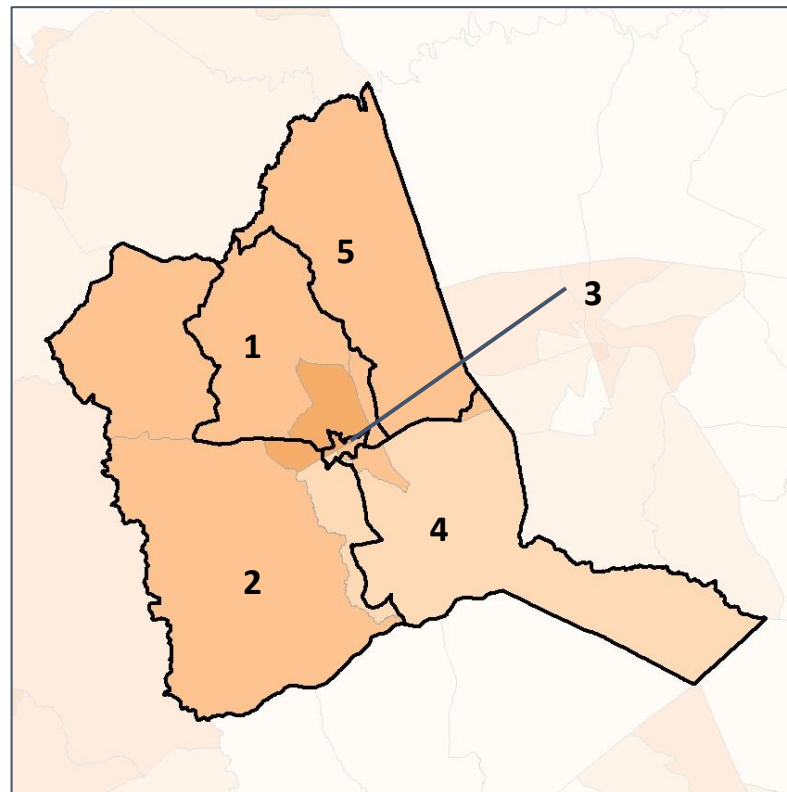
% Black by Census Block Group



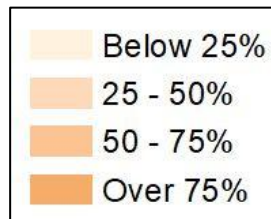
2012 Map



2022 Map*



	1	2	3	4	5	1*	2*	3*	4*	5*	County
Population	893	962	1,045	1,272	1,043	1,034	1,043	1,049	1,046	1,043	5,215
API	3	0	2	7	4	3	0	2	7	4	16
% API	0%	0%	0%	1%	0%	0%	0%	0%	1%	0%	0%
Black	590	550	805	537	565	717	581	812	372	565	3,047
% Black	66%	57%	77%	42%	54%	69%	56%	77%	36%	54%	58%
Latino	6	8	8	17	14	6	10	8	15	14	53
% Latino	1%	1%	1%	1%	1%	1%	1%	1%	1%	1%	1%
Other	17	22	16	47	23	22	26	16	38	23	125
% Other	2%	2%	2%	4%	2%	2%	2%	2%	4%	2%	2%
White	277	382	214	664	437	286	426	211	614	437	1,974
% White	31%	40%	20%	52%	42%	28%	41%	20%	59%	42%	38%

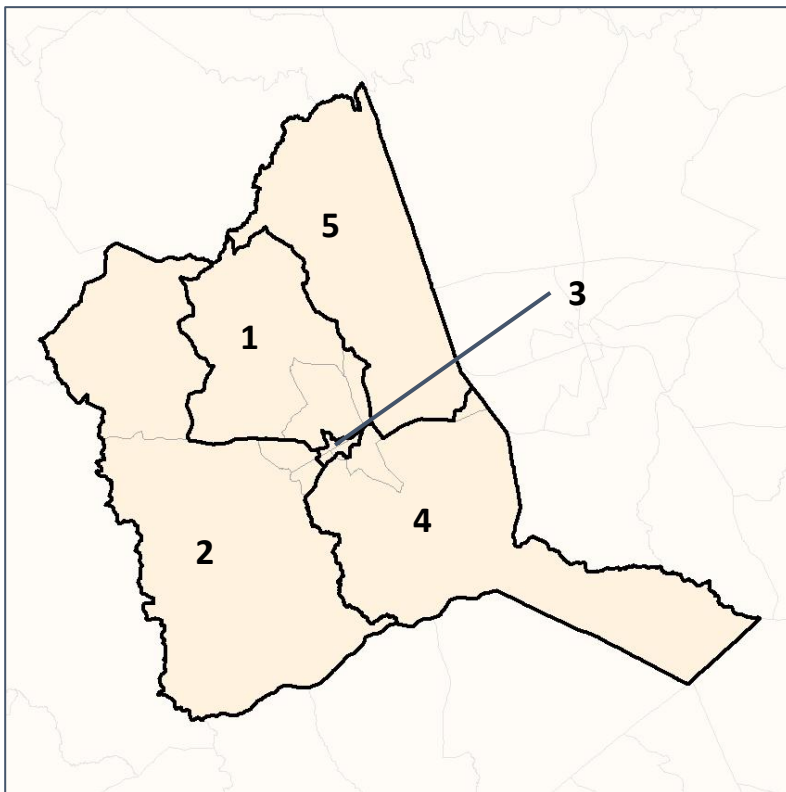


Warren County School Board

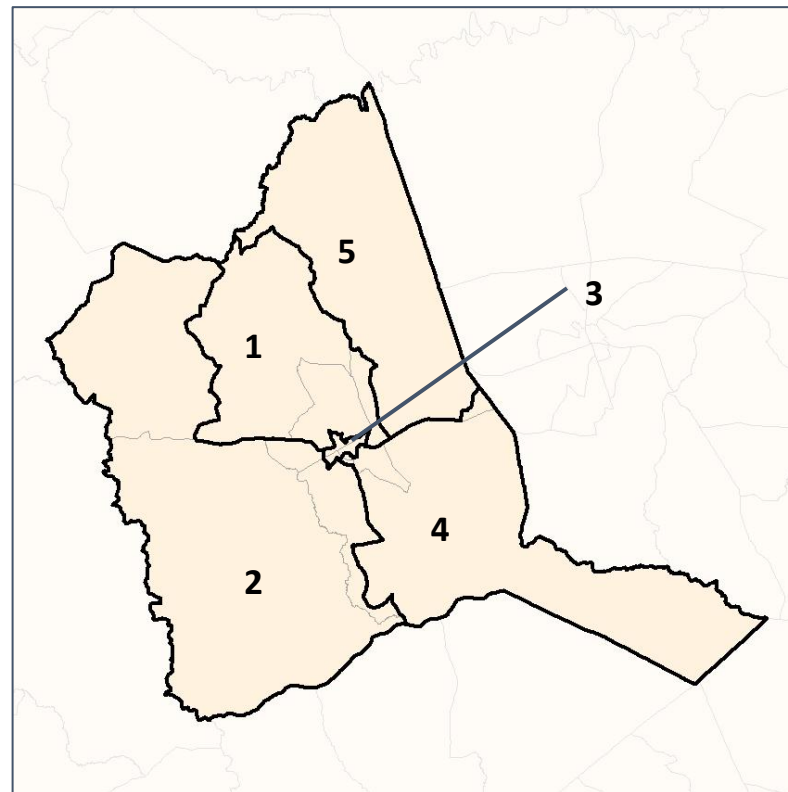
% Latino by Census Block Group



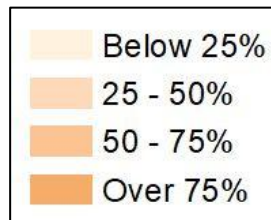
2012 Map



2022 Map*



	1	2	3	4	5	1*	2*	3*	4*	5*	County
Population	893	962	1,045	1,272	1,043	1,034	1,043	1,049	1,046	1,043	5,215
API	3	0	2	7	4	3	0	2	7	4	16
% API	0%	0%	0%	1%	0%	0%	0%	0%	1%	0%	0%
Black	590	550	805	537	565	717	581	812	372	565	3,047
% Black	66%	57%	77%	42%	54%	69%	56%	77%	36%	54%	58%
Latino	6	8	8	17	14	6	10	8	15	14	53
% Latino	1%	1%	1%	1%	1%	1%	1%	1%	1%	1%	1%
Other	17	22	16	47	23	22	26	16	38	23	125
% Other	2%	2%	2%	4%	2%	2%	2%	2%	4%	2%	2%
White	277	382	214	664	437	286	426	211	614	437	1,974
% White	31%	40%	20%	52%	42%	28%	41%	20%	59%	42%	38%

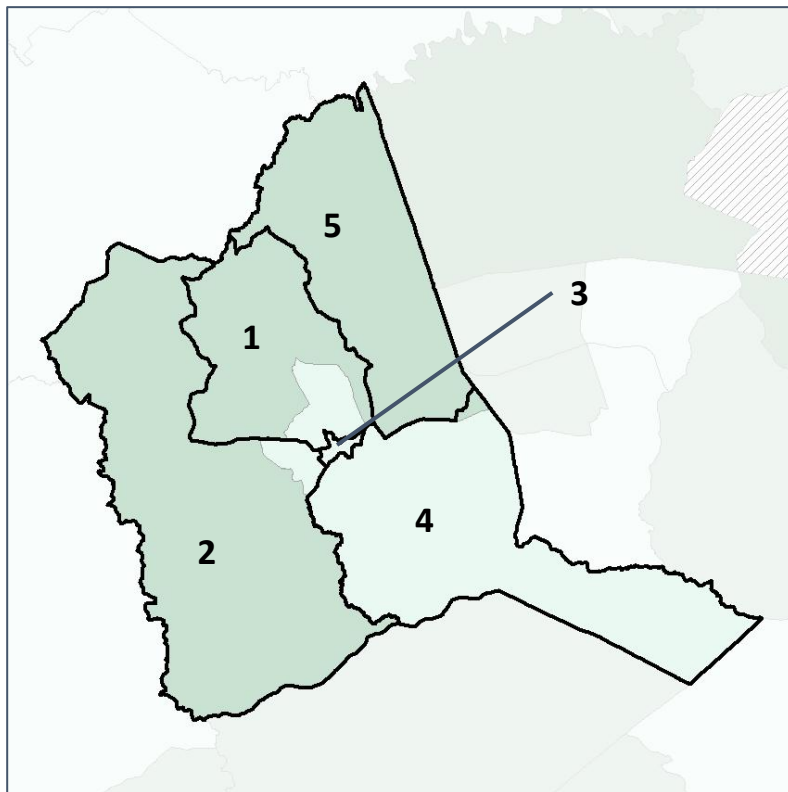


Warren County School Board

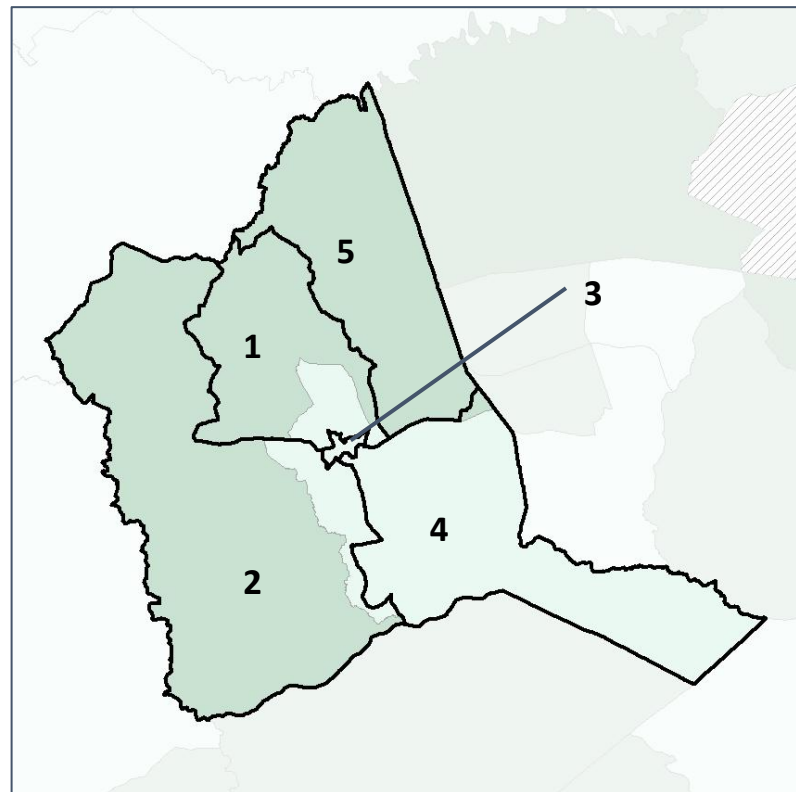
Median Household Income by Census Tract



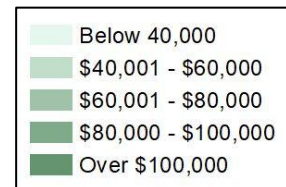
2012 Map



2022 Map*



	1	2	3	4	5	1*	2*	3*	4*	5*	County
Population	893	962	1,045	1,272	1,043	1,034	1,043	1,049	1,046	1,043	5,215
% API	0%	0%	0%	1%	0%	0%	0%	0%	1%	0%	0%
% Black	66%	57%	77%	42%	54%	69%	56%	77%	36%	54%	58%
% Latino	1%	1%	1%	1%	1%	1%	1%	1%	1%	1%	1%
% Other	2%	2%	2%	4%	2%	2%	2%	2%	4%	2%	2%
% White	31%	40%	20%	52%	42%	28%	41%	20%	59%	42%	38%
Median Income	\$42,000	\$26,000	\$29,000	\$48,000	\$52,000	\$42,000	\$26,000	\$29,000	\$48,000	\$52,000	\$38,000
% Renter	20%	51%	49%	16%	11%	20%	51%	49%	16%	11%	34%
% Youth	8%	22%	23%	5%	19%	8%	22%	23%	5%	19%	18%



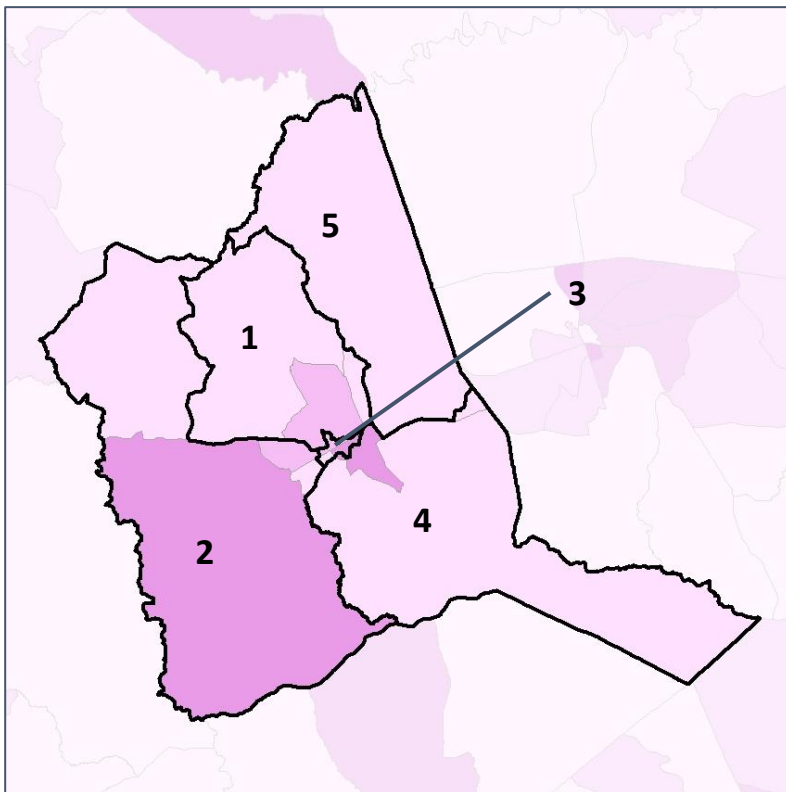
Source:
2020 Decennial Census
2020 ACS 5-Year Dataset

Warren County School Board

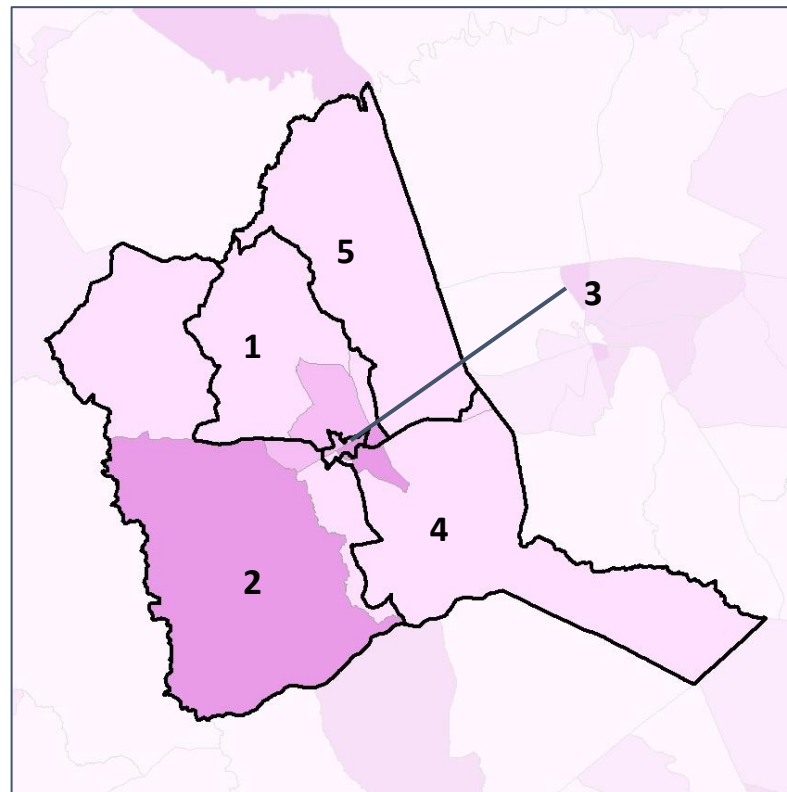
% Renter by Census Block Group



2012 Map



2022 Map*



	1	2	3	4	5	1*	2*	3*	4*	5*	County
Population	893	962	1,045	1,272	1,043	1,034	1,043	1,049	1,046	1,043	5,215
% API	0%	0%	0%	1%	0%	0%	0%	0%	1%	0%	0%
% Black	66%	57%	77%	42%	54%	69%	56%	77%	36%	54%	58%
% Latino	1%	1%	1%	1%	1%	1%	1%	1%	1%	1%	1%
% Other	2%	2%	2%	4%	2%	2%	2%	2%	4%	2%	2%
% White	31%	40%	20%	52%	42%	28%	41%	20%	59%	42%	38%
Median Income	\$42,000	\$26,000	\$29,000	\$48,000	\$52,000	\$42,000	\$26,000	\$29,000	\$48,000	\$52,000	\$38,000
% Renter	20%	51%	49%	16%	11%	20%	51%	49%	16%	11%	34%
% Youth	8%	22%	23%	5%	19%	8%	22%	23%	5%	19%	18%

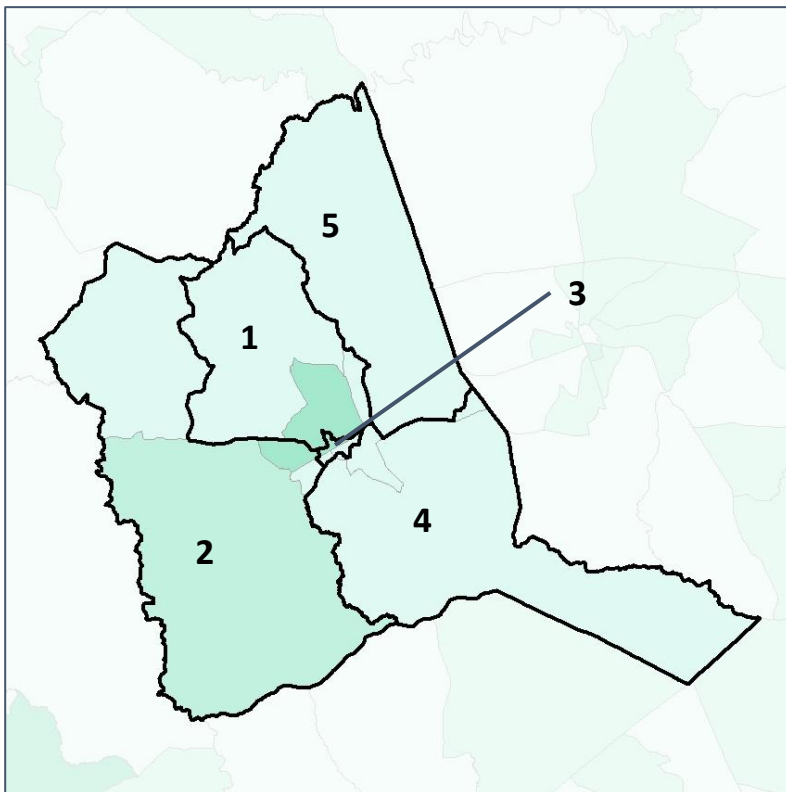


Warren County School Board

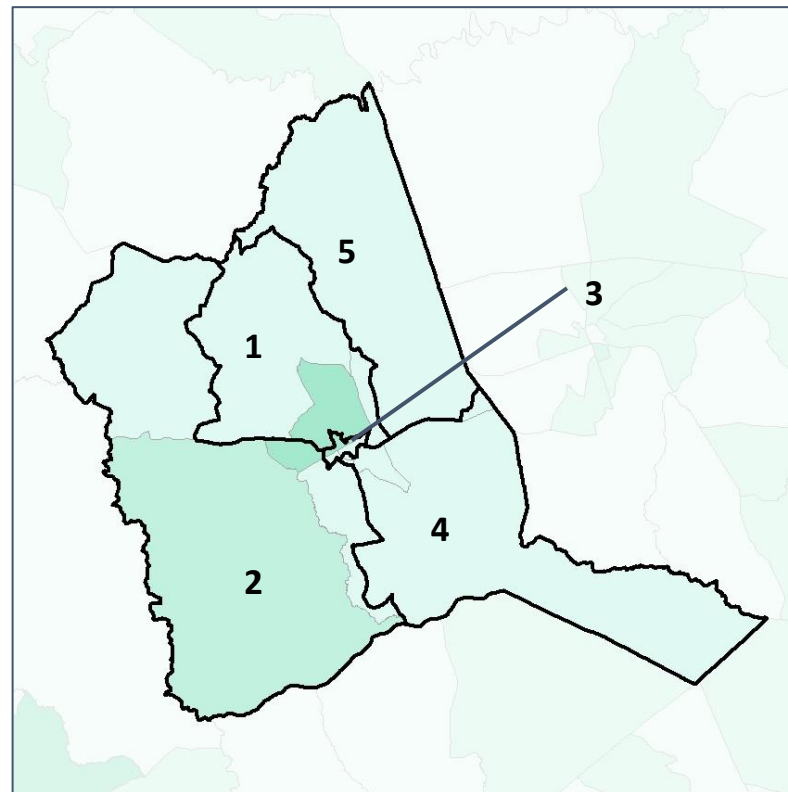
% Youth (18-34) by Census Block Group



2012 Map



2022 Map*



	1	2	3	4	5	1*	2*	3*	4*	5*	County
Population	893	962	1,045	1,272	1,043	1,034	1,043	1,049	1,046	1,043	5,215
% API	0%	0%	0%	1%	0%	0%	0%	0%	1%	0%	0%
% Black	66%	57%	77%	42%	54%	69%	56%	77%	36%	54%	58%
% Latino	1%	1%	1%	1%	1%	1%	1%	1%	1%	1%	1%
% Other	2%	2%	2%	4%	2%	2%	2%	2%	4%	2%	2%
% White	31%	40%	20%	52%	42%	28%	41%	20%	59%	42%	38%
Median Income	\$42,000	\$26,000	\$29,000	\$48,000	\$52,000	\$42,000	\$26,000	\$29,000	\$48,000	\$52,000	\$38,000
% Renter	20%	51%	49%	16%	11%	20%	51%	49%	16%	11%	34%
% Youth	8%	22%	23%	5%	19%	8%	22%	23%	5%	19%	18%

