



Demographic Overview

Racial Breakdown in Upson County

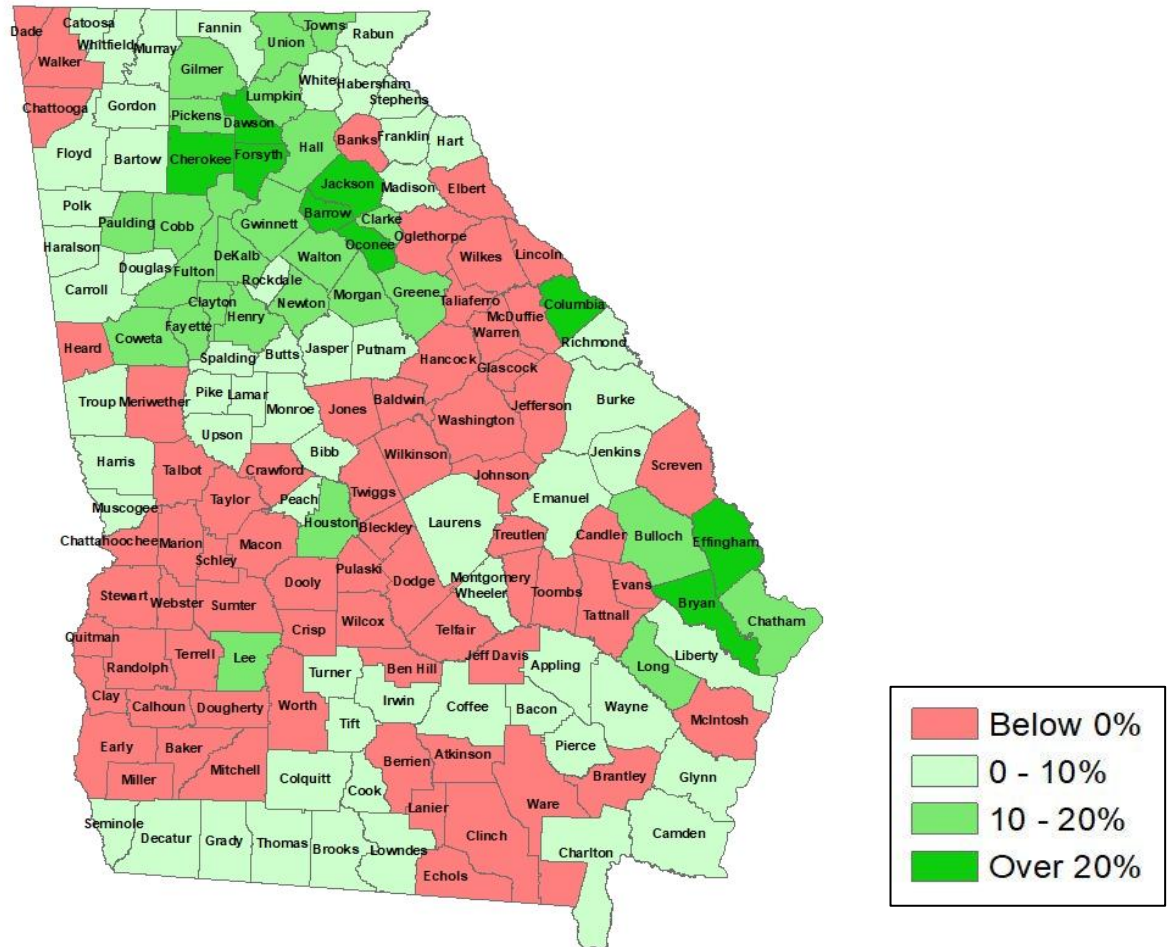
Upson County	2010	2020	% Change
Total Population	27,153	27,700	2%
AAPI	127	152	20%
Black	7,544	7,851	4%
Latino	588	633	8%
Other/Mixed Race	372	1,055	184%
POC	8,631	9,691	12%
White	18,522	18,009	-3%





Population Gain

Change in Population in Georgia by County



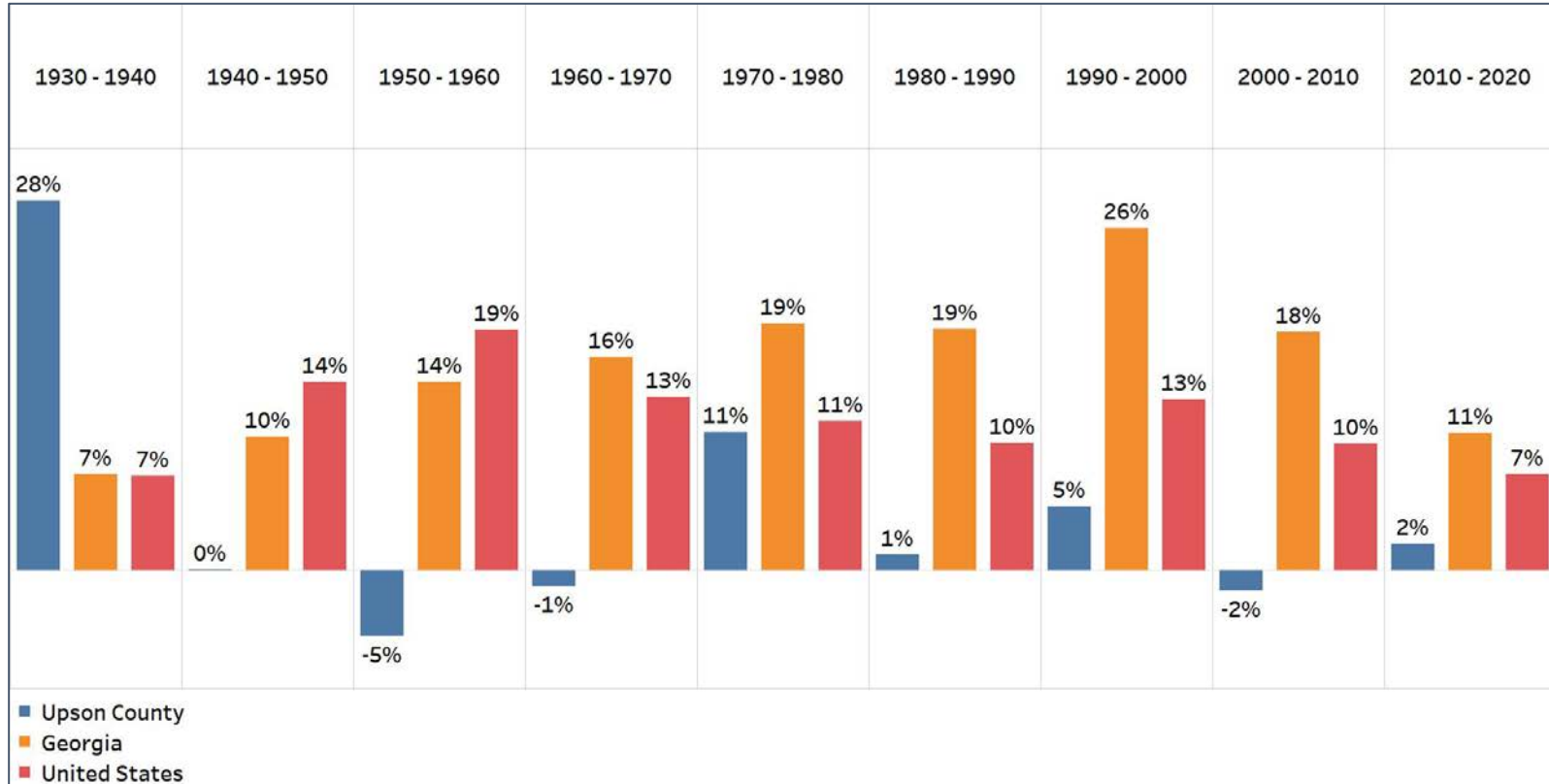
- Georgia is experiencing rapid population growth in the Atlanta, Augusta, and Savannah regions of the state





Population Gain

Change in Population by Decade



- Upson County has fluctuated between slight population growth and decline
- The last decade restored the 2% of population lost in the previous decade

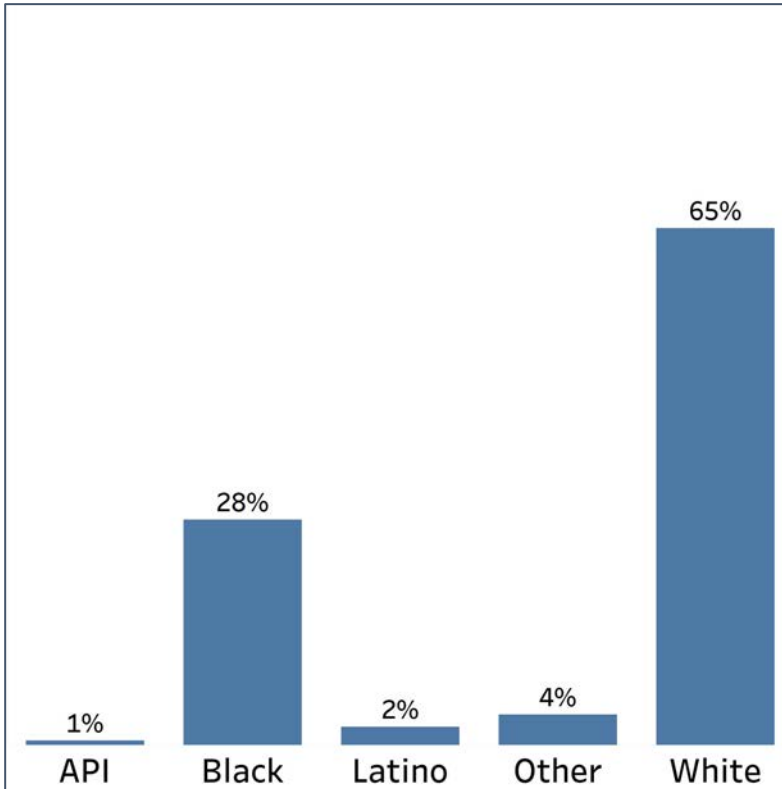


Demographics

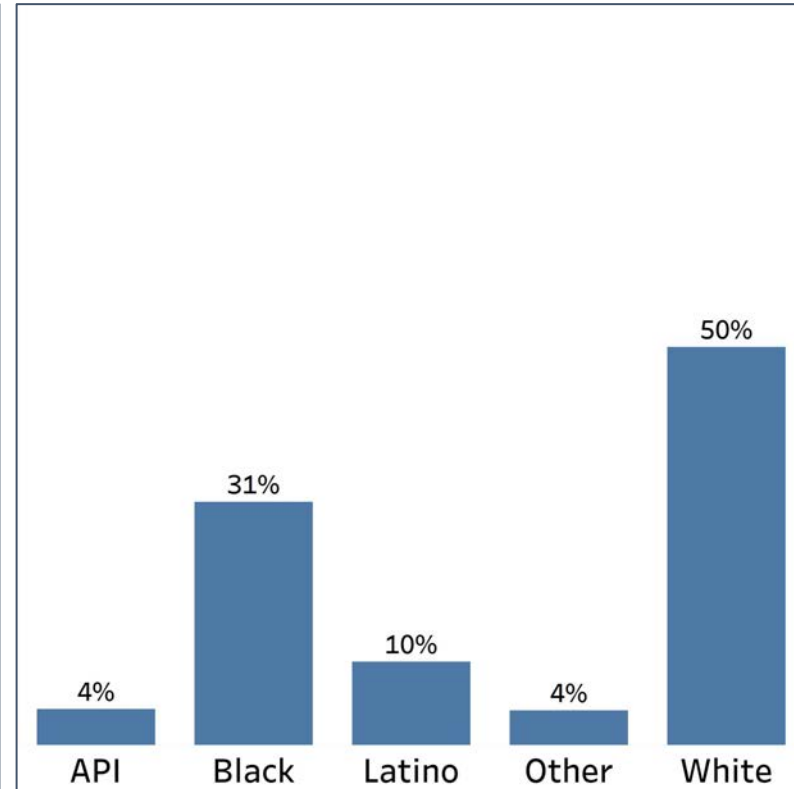
Comparison between Upson County and Georgia



Upson County



Georgia



- Upson County is nearly $\frac{2}{3}$ White, and has a sizeable Black population whose share is a bit smaller in the county compared to Georgia overall
- The Other demographic also has the same share of the population in the county as it does in Georgia

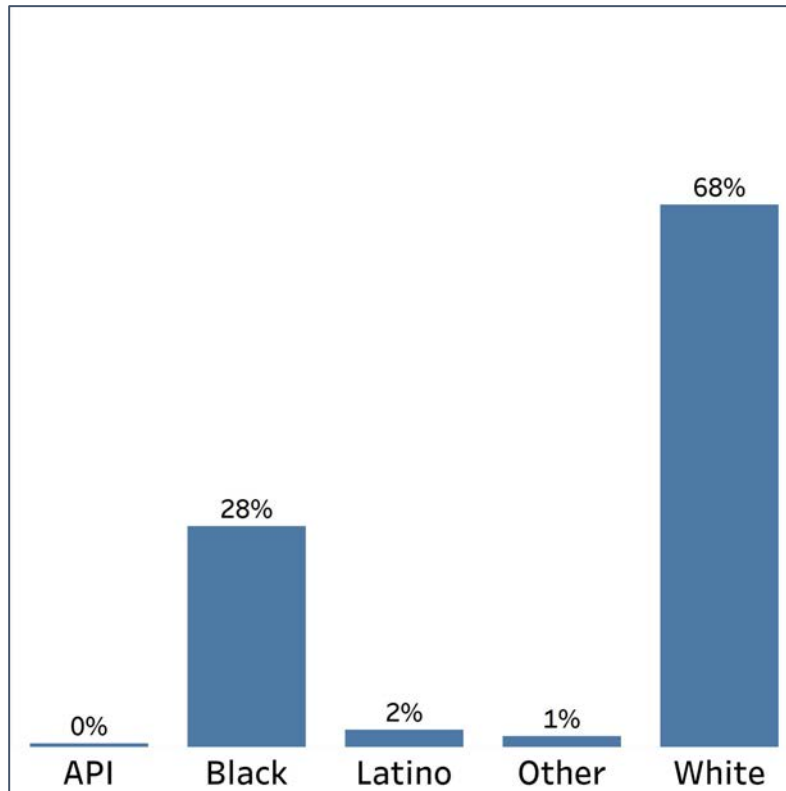


Demographics

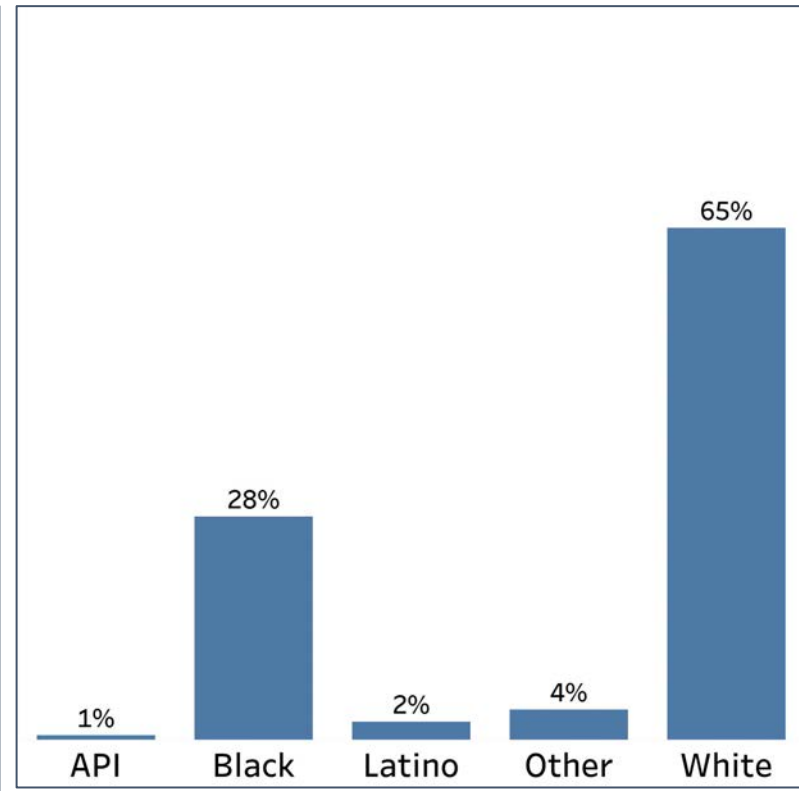
2010 vs 2020 Demographics in Upson County



Upson County 2010



Upson County 2020



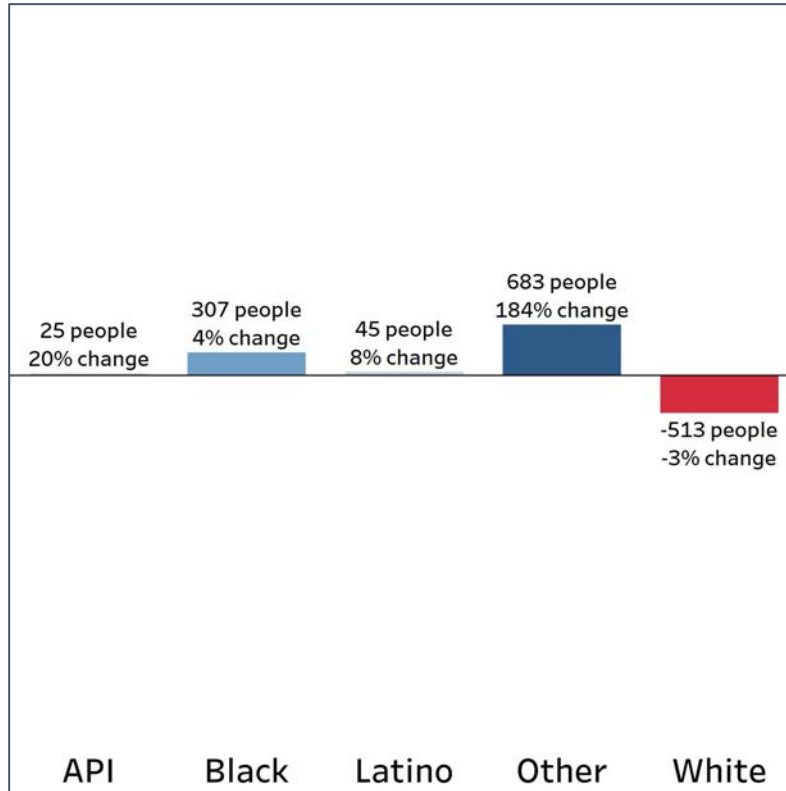
- Upson County had a reduction in its share of the White population
- Both the API and Other populations increased their share, with the Other population quadrupling

Demographics

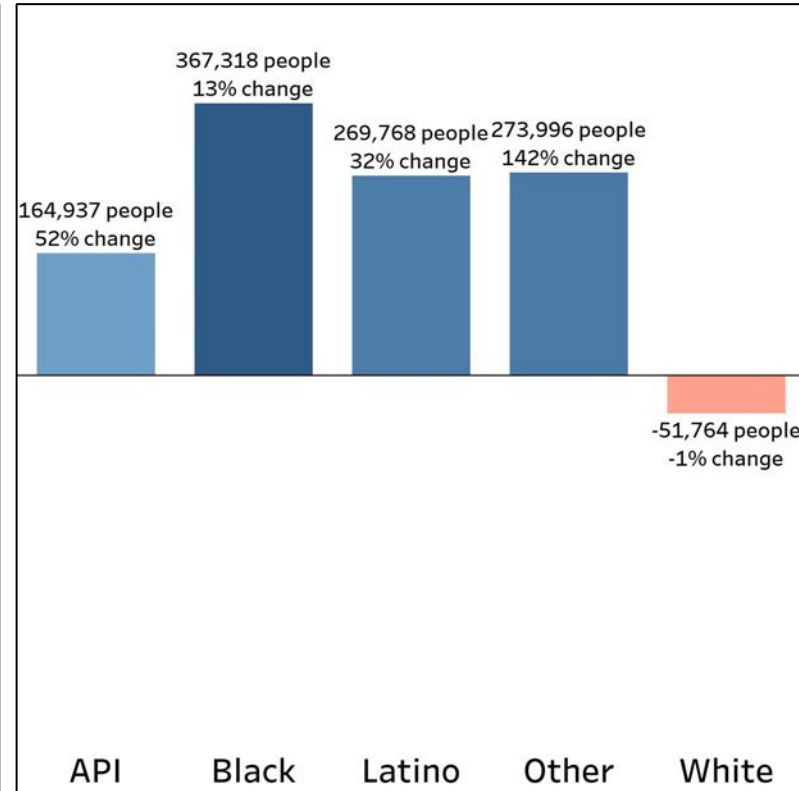
Population Change by Race (2020 - 2010)



Upson County



Georgia



- Upson County had at least some population increase in all demographic groups except for the White population
- The Other population had a higher growth rate in the county than Georgia overall, while the White population had a higher decline rate

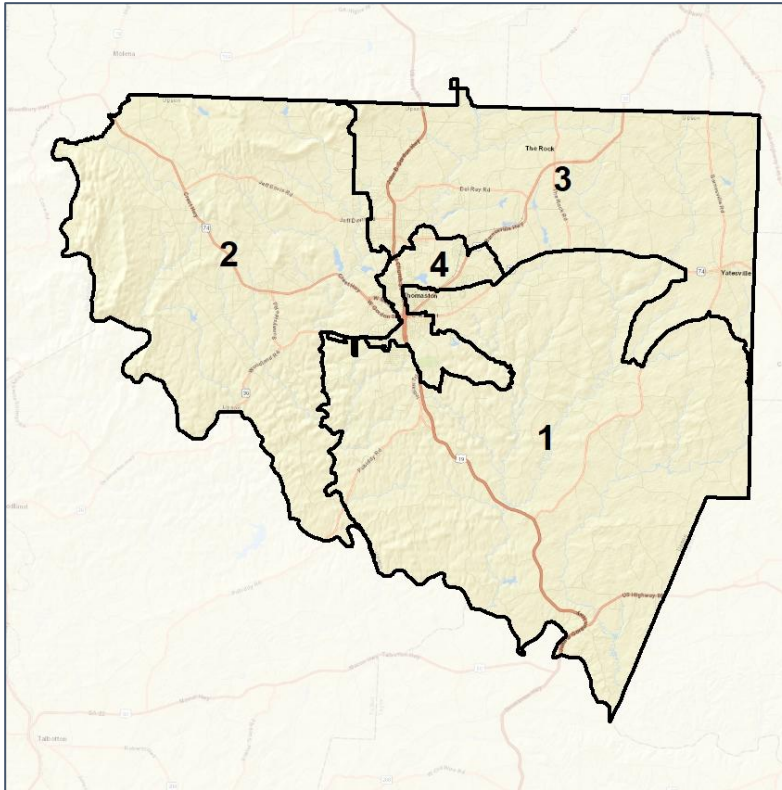


Upson County Commission

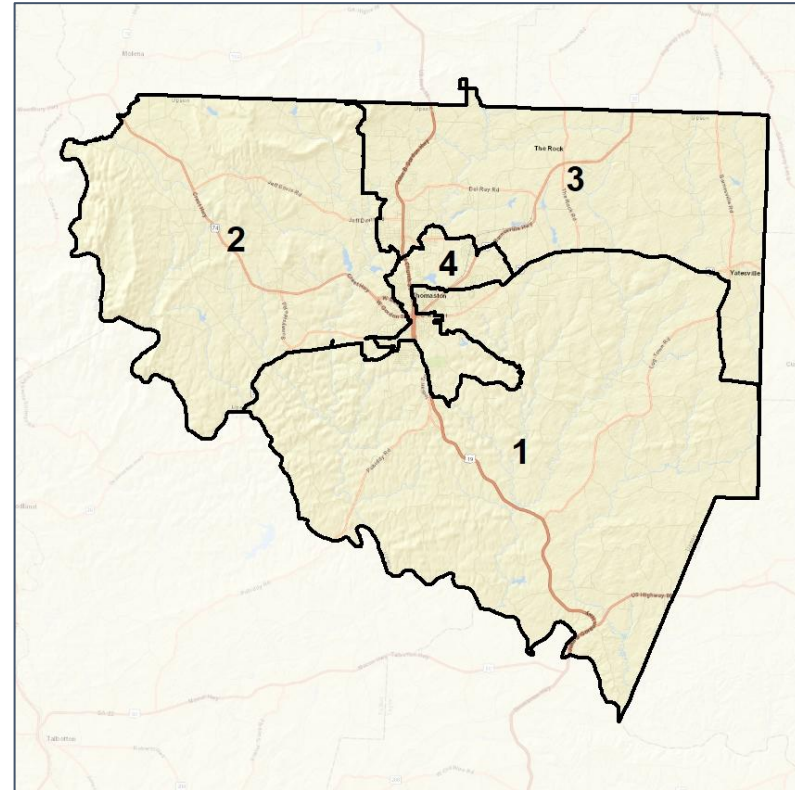
Context



2012 Map



2022 Map*



	1	2	3	4	1*	2*	3*	4*	County
Population	6,737	7,079	6,962	6,922	6,931	6,921	6,922	6,926	27,700
API	0%	0%	1%	0%	0%	0%	1%	0%	1%
Black	58%	9%	15%	33%	56%	9%	15%	33%	28%
Latino	2%	2%	2%	3%	2%	2%	2%	3%	2%
Other	3%	4%	4%	4%	3%	4%	4%	4%	4%
White	37%	85%	78%	59%	38%	85%	78%	59%	65%
Population Gain	77	309	106	55	194	-158	-40	4	*
Population % Gain	1%	5%	2%	1%	3%	-2%	-1%	0%	*
Net POC Gain	38	351	365	306	7	-2	-11	6	*
Net POC % Gain	1%	49%	31%	12%	0%	0%	-1%	0%	*

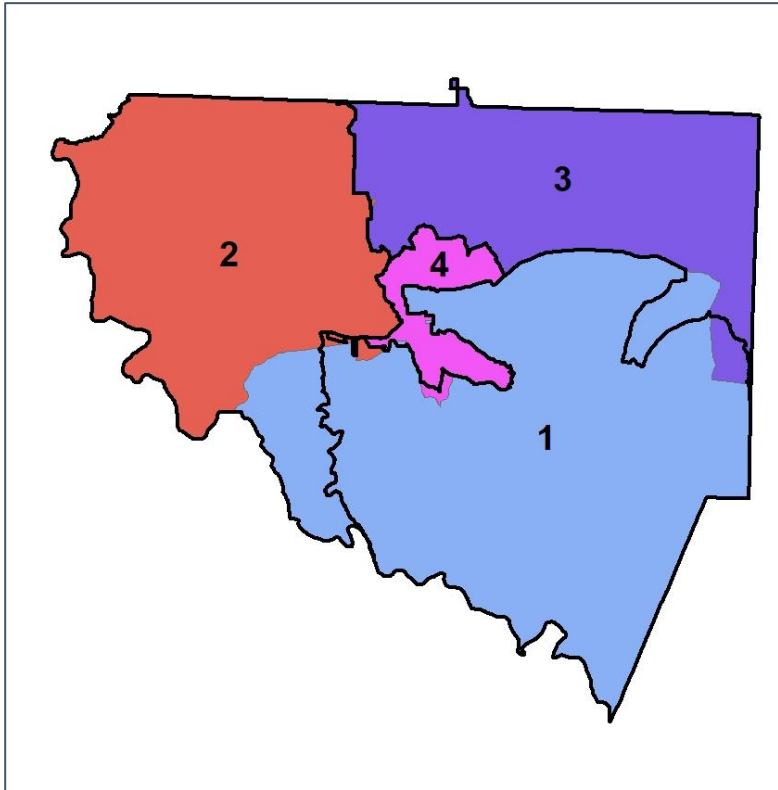


Upson County Commission

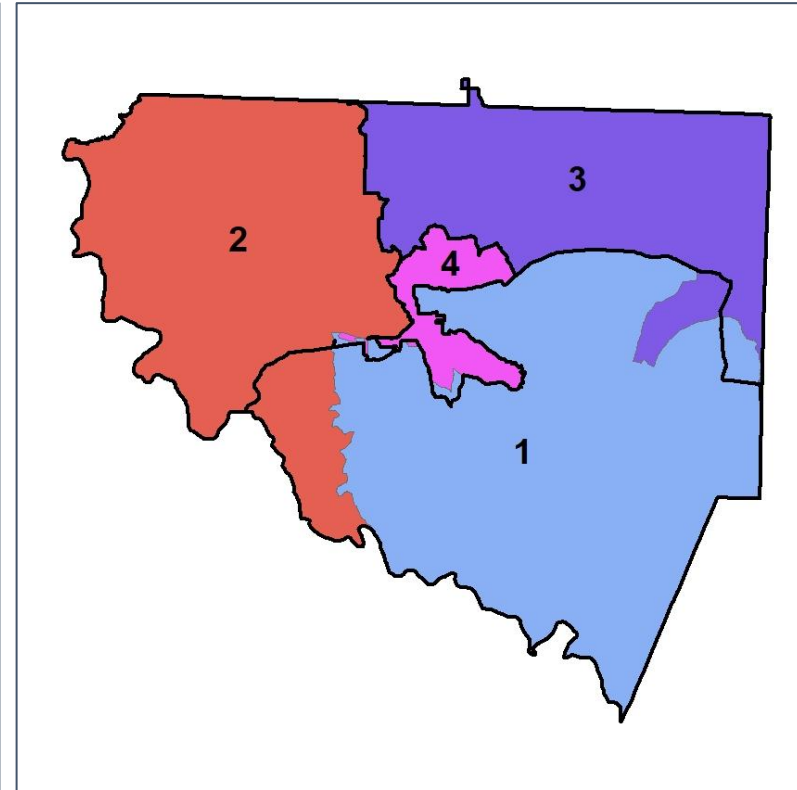
Changes in Redistricting



2012 Map (2022 in Colors)



2022 Map* (2012 in Colors)



	1	2	3	4	1*	2*	3*	4*	County
Population	6,737	7,079	6,962	6,922	6,931	6,921	6,922	6,926	27,700
API	0%	0%	1%	0%	0%	0%	1%	0%	1%
Black	58%	9%	15%	33%	56%	9%	15%	33%	28%
Latino	2%	2%	2%	3%	2%	2%	2%	3%	2%
Other	3%	4%	4%	4%	3%	4%	4%	4%	4%
White	37%	85%	78%	59%	38%	85%	78%	59%	65%
Population Gain	77	309	106	55	194	-158	-40	4	*
Population % Gain	1%	5%	2%	1%	3%	-2%	-1%	0%	*
Net POC Gain	38	351	365	306	7	-2	-11	6	*
Net POC % Gain	1%	49%	31%	12%	0%	0%	-1%	0%	*

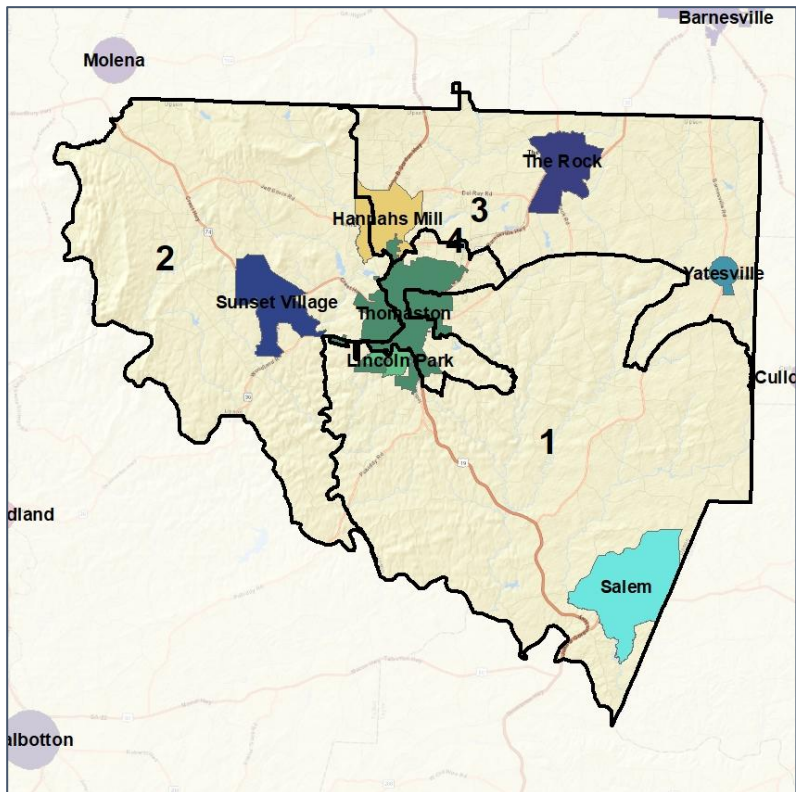


Upson County Commission

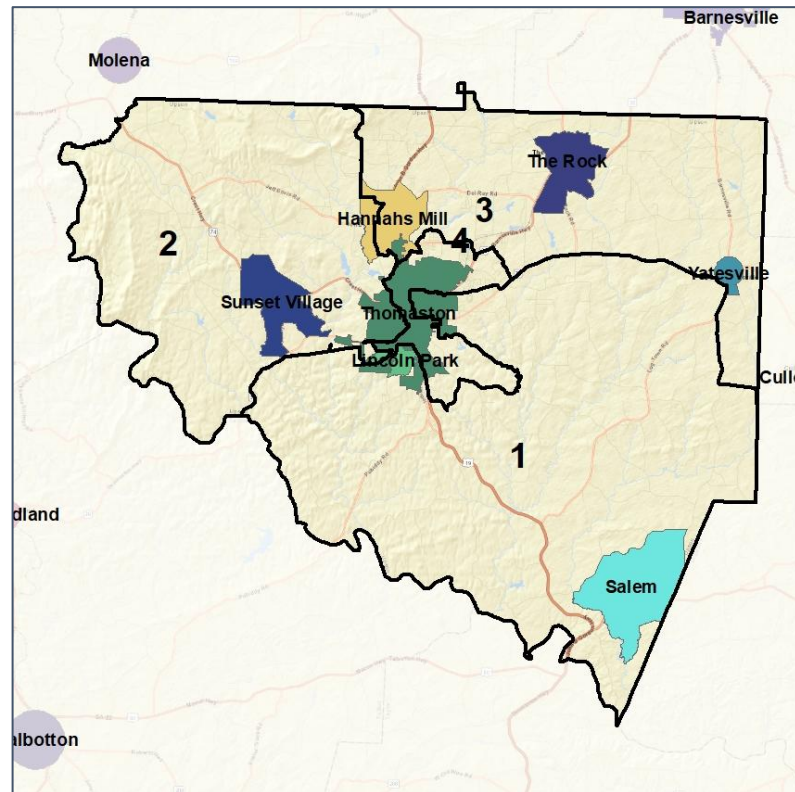
Cities and Places



2012 Map



2022 Map*



	1	2	3	4	1*	2*	3*	4*	County
Population	6,737	7,079	6,962	6,922	6,931	6,921	6,922	6,926	27,700
API	0%	0%	1%	0%	0%	0%	1%	0%	1%
Black	58%	9%	15%	33%	56%	9%	15%	33%	28%
Latino	2%	2%	2%	3%	2%	2%	2%	3%	2%
Other	3%	4%	4%	4%	3%	4%	4%	4%	4%
White	37%	85%	78%	59%	38%	85%	78%	59%	65%
Population Gain	77	309	106	55	194	-158	-40	4	*
Population % Gain	1%	5%	2%	1%	3%	-2%	-1%	0%	*
Net POC Gain	38	351	365	306	7	-2	-11	6	*
Net POC % Gain	1%	49%	31%	12%	0%	0%	-1%	0%	*

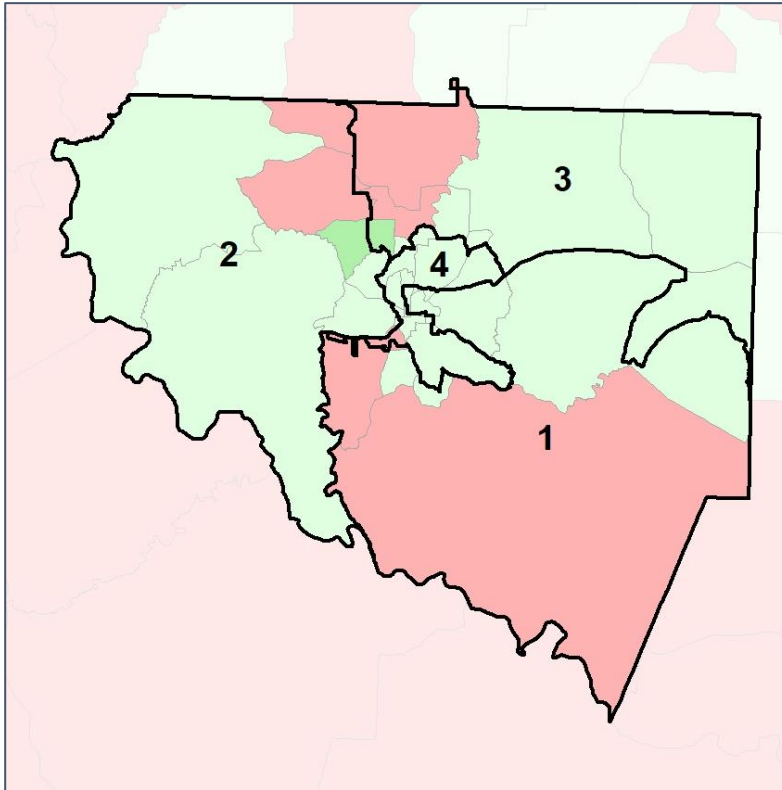


Upson County Commission

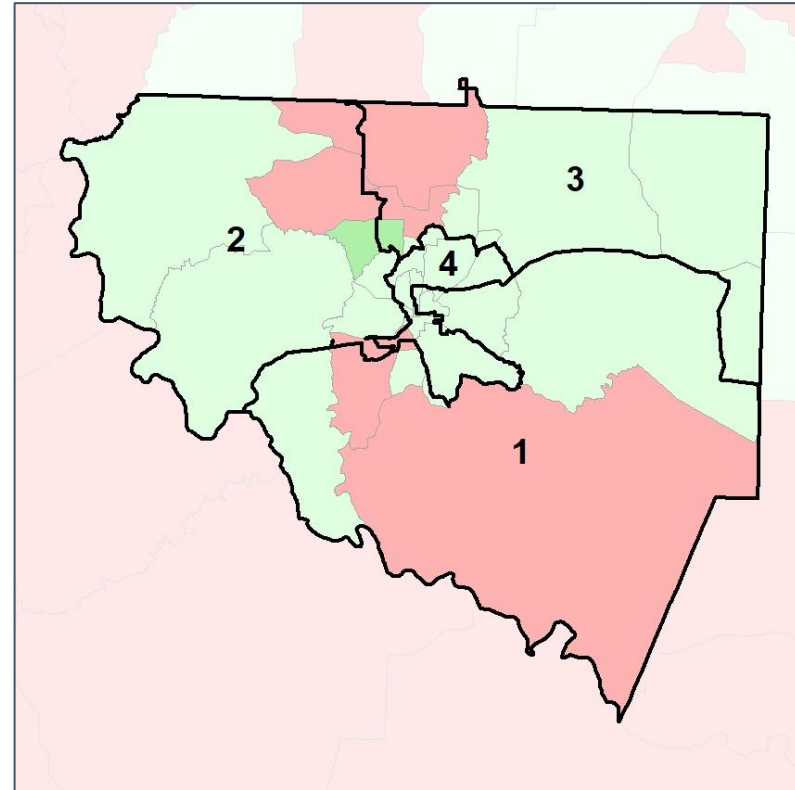
Net Gain in Population (2010 - 2020) by Census Block Group



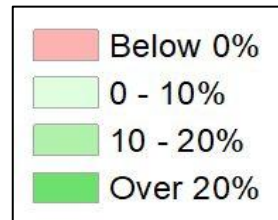
2012 Map



2022 Map*



	1	2	3	4	1*	2*	3*	4*	County
Population	6,737	7,079	6,962	6,922	6,931	6,921	6,922	6,926	27,700
API	0%	0%	1%	0%	0%	0%	1%	0%	1%
Black	58%	9%	15%	33%	56%	9%	15%	33%	28%
Latino	2%	2%	2%	3%	2%	2%	2%	3%	2%
Other	3%	4%	4%	4%	3%	4%	4%	4%	4%
White	37%	85%	78%	59%	38%	85%	78%	59%	65%
Population Gain	77	309	106	55	194	-158	-40	4	*
Population % Gain	1%	5%	2%	1%	3%	-2%	-1%	0%	*
Net POC Gain	38	351	365	306	7	-2	-11	6	*
Net POC % Gain	1%	49%	31%	12%	0%	0%	-1%	0%	*

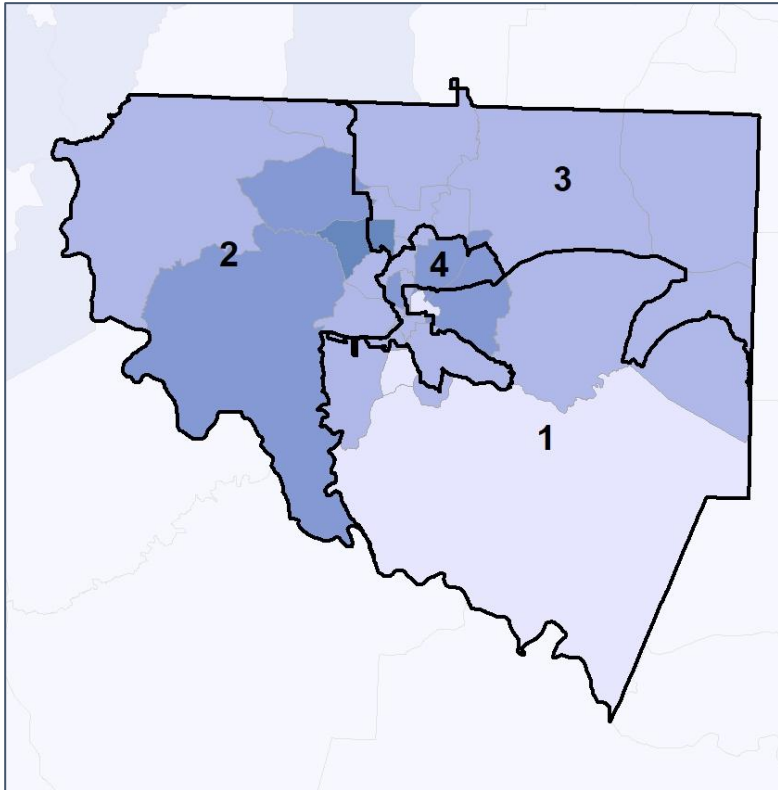


Upson County Commission

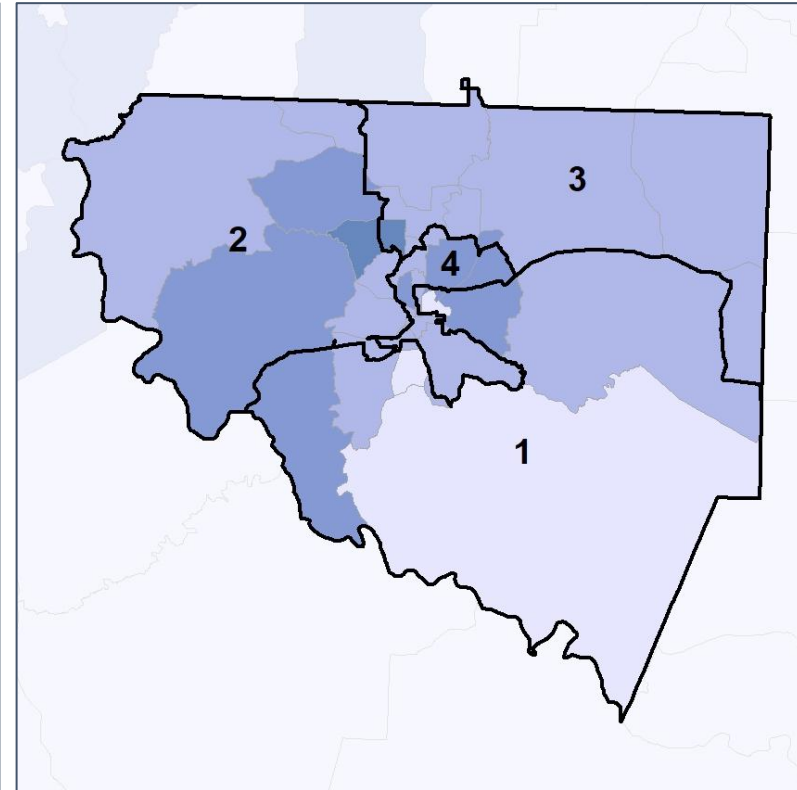
Net Gain in % POC (2020 - 2010) by Census Block Group



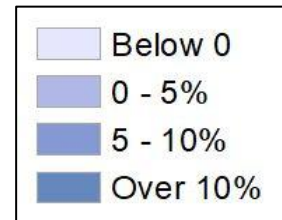
2012 Map



2022 Map*



	1	2	3	4	1*	2*	3*	4*	County
Population	6,737	7,079	6,962	6,922	6,931	6,921	6,922	6,926	27,700
API	0%	0%	1%	0%	0%	0%	1%	0%	1%
Black	58%	9%	15%	33%	56%	9%	15%	33%	28%
Latino	2%	2%	2%	3%	2%	2%	2%	3%	2%
Other	3%	4%	4%	4%	3%	4%	4%	4%	4%
White	37%	85%	78%	59%	38%	85%	78%	59%	65%
Population Gain	77	309	106	55	194	-158	-40	4	*
Population % Gain	1%	5%	2%	1%	3%	-2%	-1%	0%	*
Net POC Gain	38	351	365	306	7	-2	-11	6	*
Net POC % Gain	1%	49%	31%	12%	0%	0%	-1%	0%	*

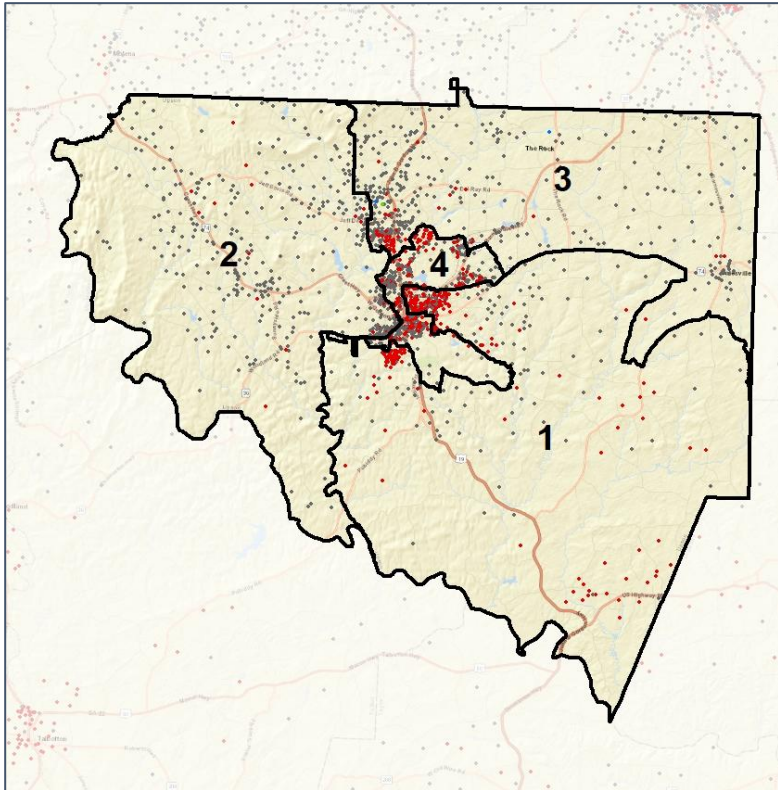


Upson County Commission

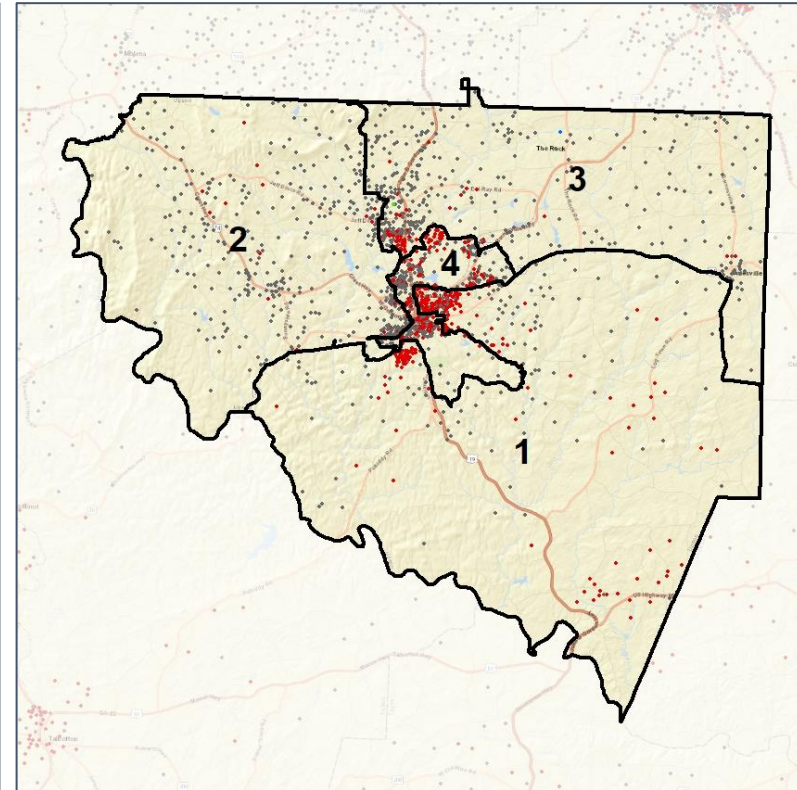
Population Density by Race



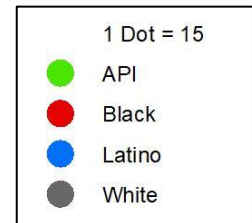
2012 Map



2022 Map*



	1	2	3	4	1*	2*	3*	4*	County
Population	6,737	7,079	6,962	6,922	6,931	6,921	6,922	6,926	27,700
API	14	32	74	32	14	32	74	32	152
% API	0%	0%	1%	0%	0%	0%	1%	0%	1%
Black	3,917	614	1,020	2,300	3,913	618	1,012	2,308	7,851
% Black	58%	9%	15%	33%	56%	9%	15%	33%	28%
Latino	135	130	168	200	140	131	165	197	633
% Latino	2%	2%	2%	3%	2%	2%	2%	3%	2%
Other	195	292	267	301	201	285	267	302	1,055
% Other	3%	4%	4%	4%	3%	4%	4%	4%	4%
White	2,476	6,011	5,433	4,089	2,663	5,855	5,404	4,087	18,009
% White	37%	85%	78%	59%	38%	85%	78%	59%	65%

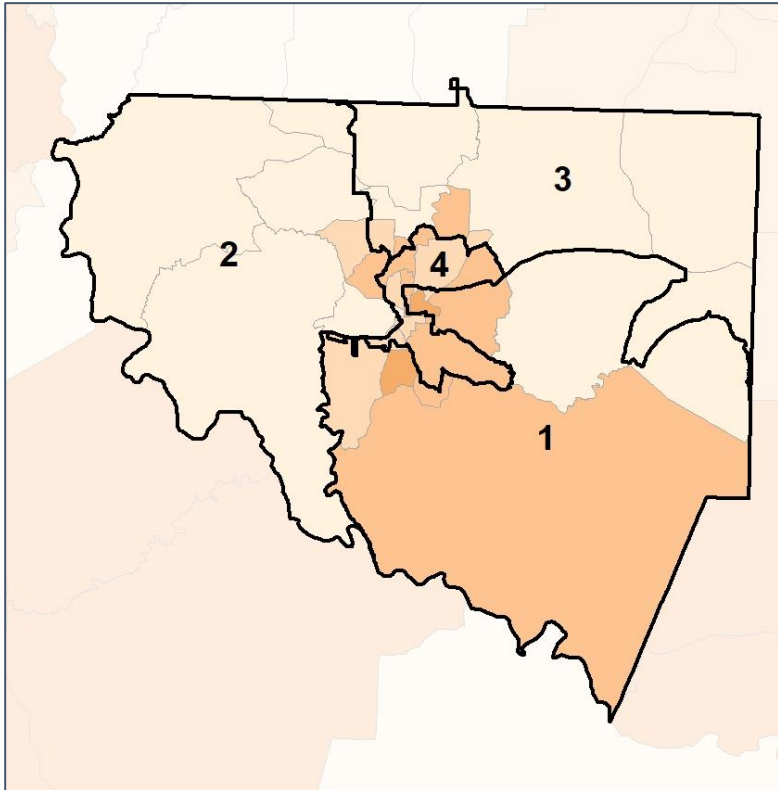


Upson County Commission

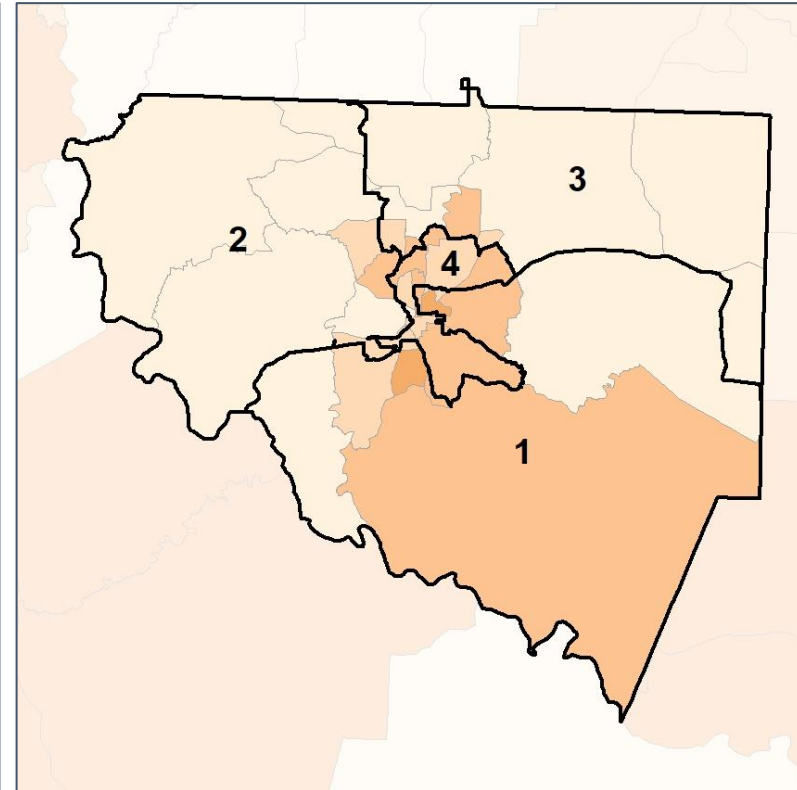
% People of Color by Census Block Group



2012 Map



2022 Map*



	1	2	3	4	1*	2*	3*	4*	County
Population	6,737	7,079	6,962	6,922	6,931	6,921	6,922	6,926	27,700
API	14	32	74	32	14	32	74	32	152
% API	0%	0%	1%	0%	0%	0%	1%	0%	1%
Black	3,917	614	1,020	2,300	3,913	618	1,012	2,308	7,851
% Black	58%	9%	15%	33%	56%	9%	15%	33%	28%
Latino	135	130	168	200	140	131	165	197	633
% Latino	2%	2%	2%	3%	2%	2%	2%	3%	2%
Other	195	292	267	301	201	285	267	302	1,055
% Other	3%	4%	4%	4%	3%	4%	4%	4%	4%
White	2,476	6,011	5,433	4,089	2,663	5,855	5,404	4,087	18,009
% White	37%	85%	78%	59%	38%	85%	78%	59%	65%

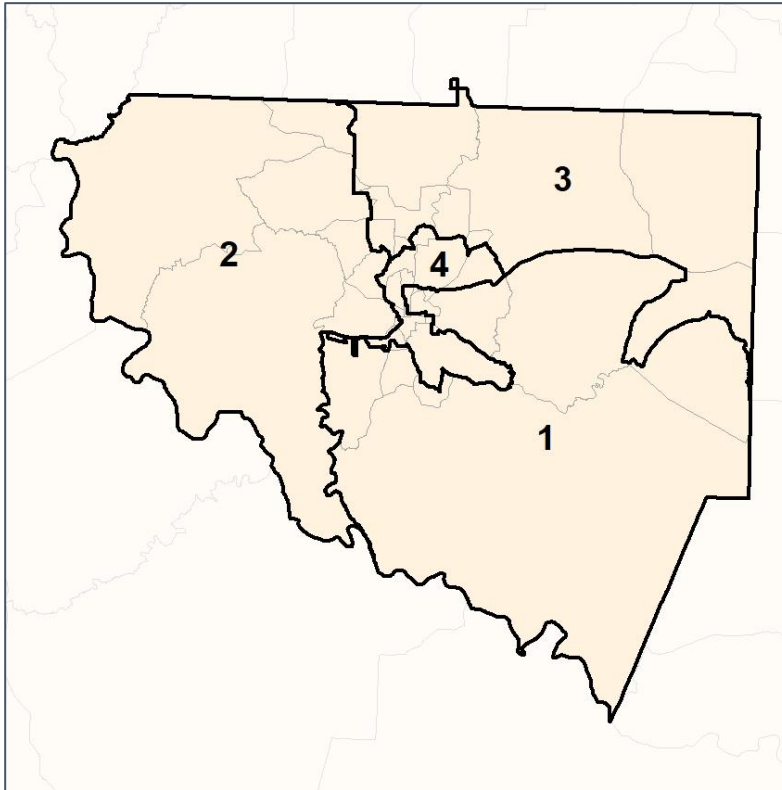


Upson County Commission

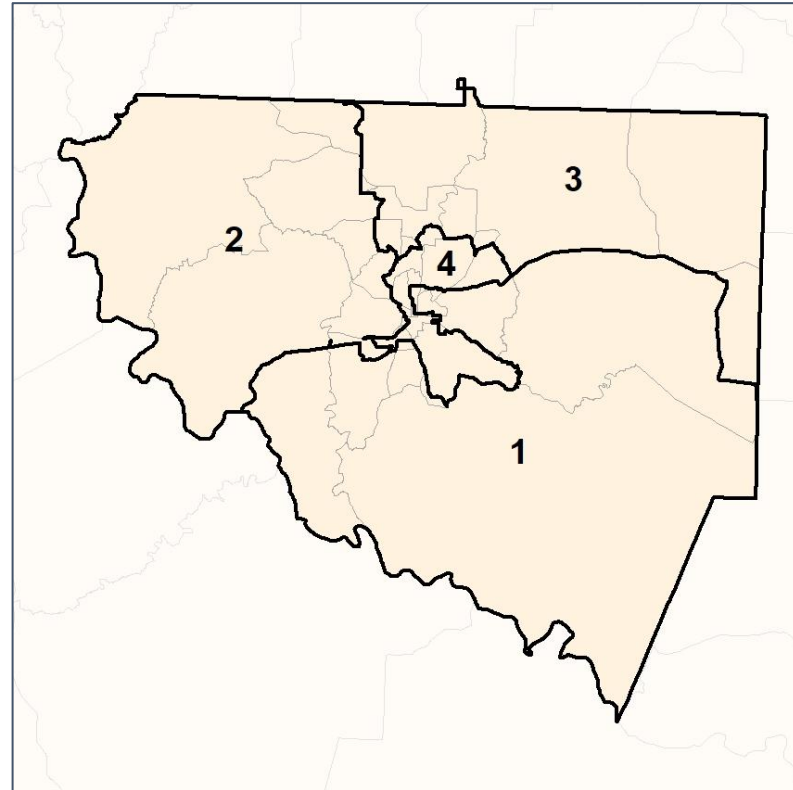
% API by Census Block Group



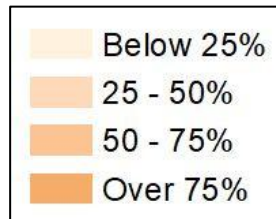
2012 Map



2022 Map*



	1	2	3	4	1*	2*	3*	4*	County
Population	6,737	7,079	6,962	6,922	6,931	6,921	6,922	6,926	27,700
API	14	32	74	32	14	32	74	32	152
% API	0%	0%	1%	0%	0%	0%	1%	0%	1%
Black	3,917	614	1,020	2,300	3,913	618	1,012	2,308	7,851
% Black	58%	9%	15%	33%	56%	9%	15%	33%	28%
Latino	135	130	168	200	140	131	165	197	633
% Latino	2%	2%	2%	3%	2%	2%	2%	3%	2%
Other	195	292	267	301	201	285	267	302	1,055
% Other	3%	4%	4%	4%	3%	4%	4%	4%	4%
White	2,476	6,011	5,433	4,089	2,663	5,855	5,404	4,087	18,009
% White	37%	85%	78%	59%	38%	85%	78%	59%	65%

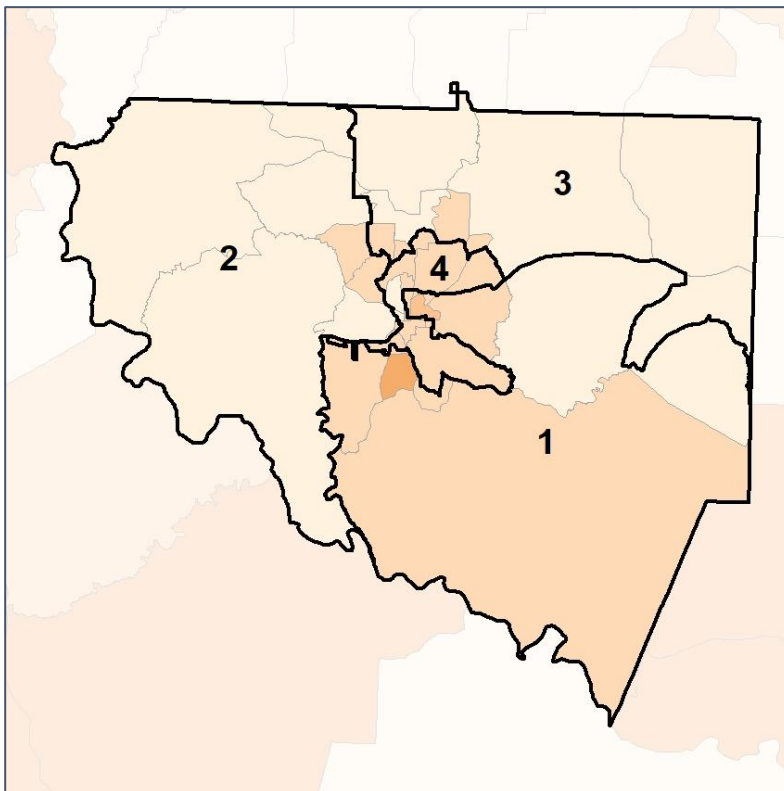


Upson County Commission

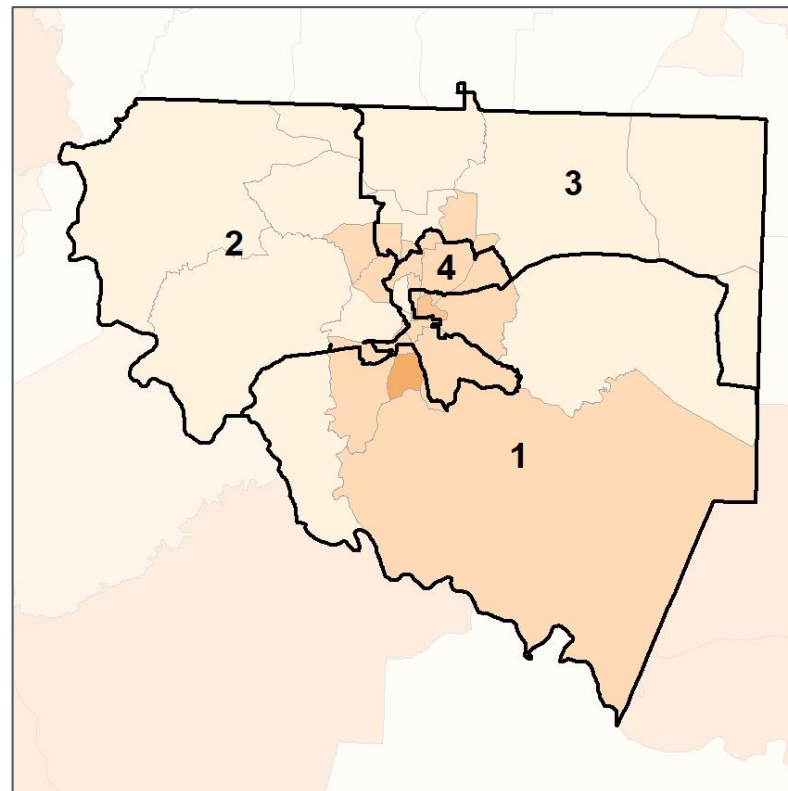
% Black by Census Block Group



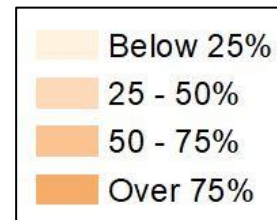
2012 Map



2022 Map*



	1	2	3	4	1*	2*	3*	4*	County
Population	6,737	7,079	6,962	6,922	6,931	6,921	6,922	6,926	27,700
API	14	32	74	32	14	32	74	32	152
% API	0%	0%	1%	0%	0%	0%	1%	0%	1%
Black	3,917	614	1,020	2,300	3,913	618	1,012	2,308	7,851
% Black	58%	9%	15%	33%	56%	9%	15%	33%	28%
Latino	135	130	168	200	140	131	165	197	633
% Latino	2%	2%	2%	3%	2%	2%	2%	3%	2%
Other	195	292	267	301	201	285	267	302	1,055
% Other	3%	4%	4%	4%	3%	4%	4%	4%	4%
White	2,476	6,011	5,433	4,089	2,663	5,855	5,404	4,087	18,009
% White	37%	85%	78%	59%	38%	85%	78%	59%	65%

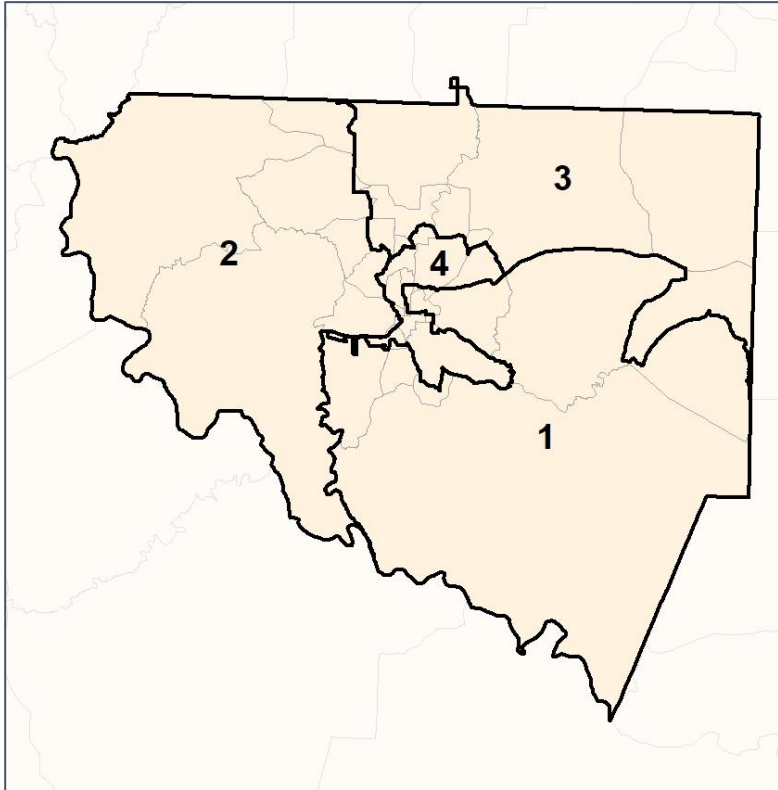


Upson County Commission

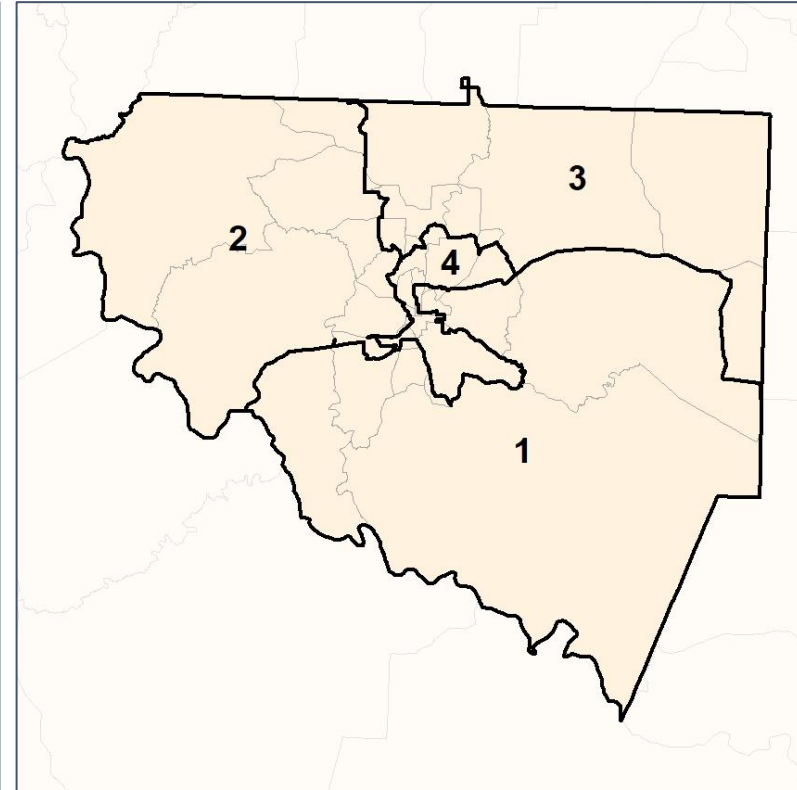
% Latino by Census Block Group



2012 Map



2022 Map*



	1	2	3	4	1*	2*	3*	4*	County
Population	6,737	7,079	6,962	6,922	6,931	6,921	6,922	6,926	27,700
API	14	32	74	32	14	32	74	32	152
% API	0%	0%	1%	0%	0%	0%	1%	0%	1%
Black	3,917	614	1,020	2,300	3,913	618	1,012	2,308	7,851
% Black	58%	9%	15%	33%	56%	9%	15%	33%	28%
Latino	135	130	168	200	140	131	165	197	633
% Latino	2%	2%	2%	3%	2%	2%	2%	3%	2%
Other	195	292	267	301	201	285	267	302	1,055
% Other	3%	4%	4%	4%	3%	4%	4%	4%	4%
White	2,476	6,011	5,433	4,089	2,663	5,855	5,404	4,087	18,009
% White	37%	85%	78%	59%	38%	85%	78%	59%	65%

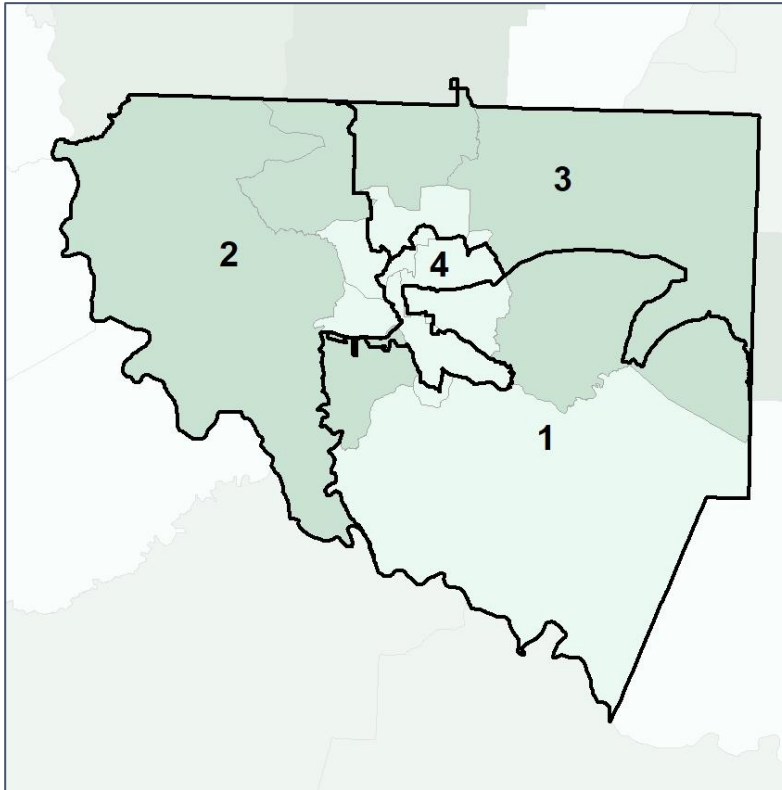


Upson County Commission

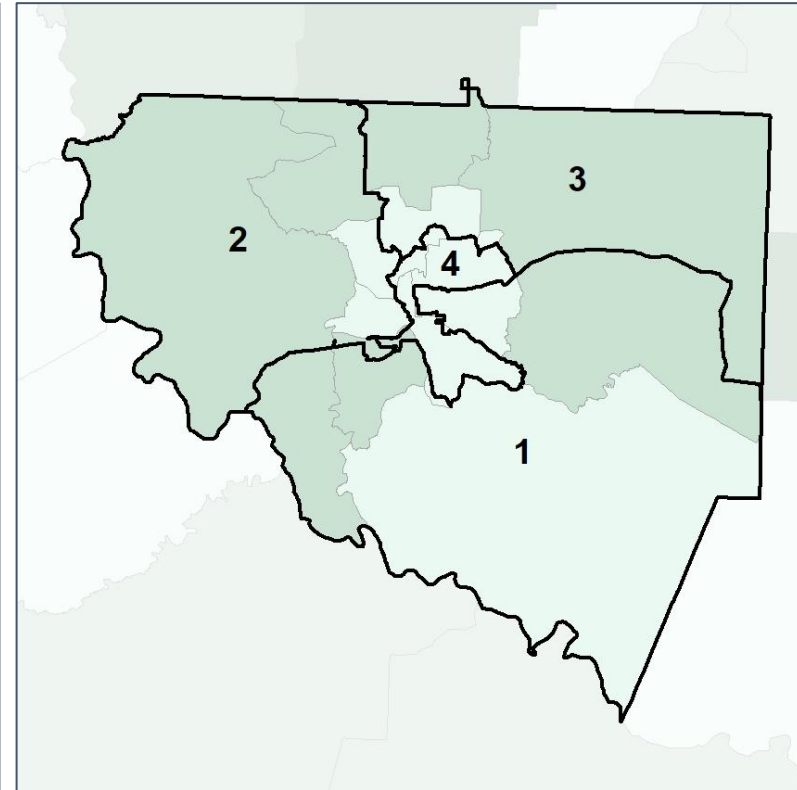
Median Household Income by Census Tract



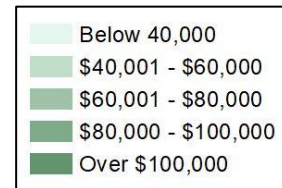
2012 Map



2022 Map*



	1	2	3	4	1*	2*	3*	4*	County
Population	6,737	7,079	6,962	6,922	6,931	6,921	6,922	6,926	27,700
% API	0%	0%	1%	0%	0%	0%	1%	0%	1%
% Black	58%	9%	15%	33%	56%	9%	15%	33%	28%
% Latino	2%	2%	2%	3%	2%	2%	2%	3%	2%
% Other	3%	4%	4%	4%	3%	4%	4%	4%	4%
% White	37%	85%	78%	59%	38%	85%	78%	59%	65%
Median Income	\$38,000	\$41,000	\$54,000	\$30,000	\$41,000	\$41,000	\$53,000	\$30,000	\$39,000
% Renter	44%	25%	18%	53%	41%	25%	17%	53%	35%
% Youth	19%	21%	19%	21%	20%	21%	18%	21%	20%

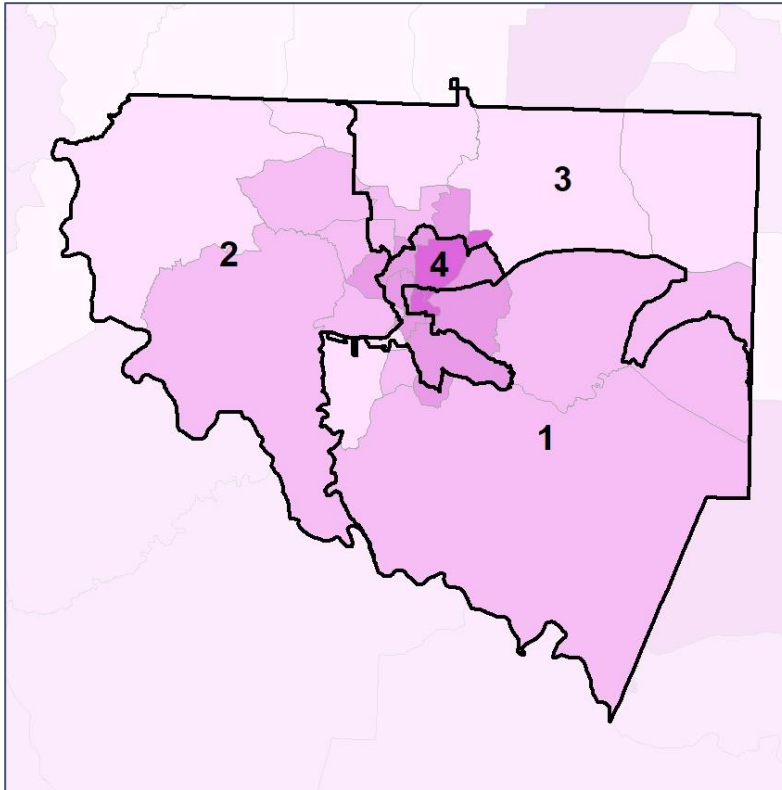


Upson County Commission

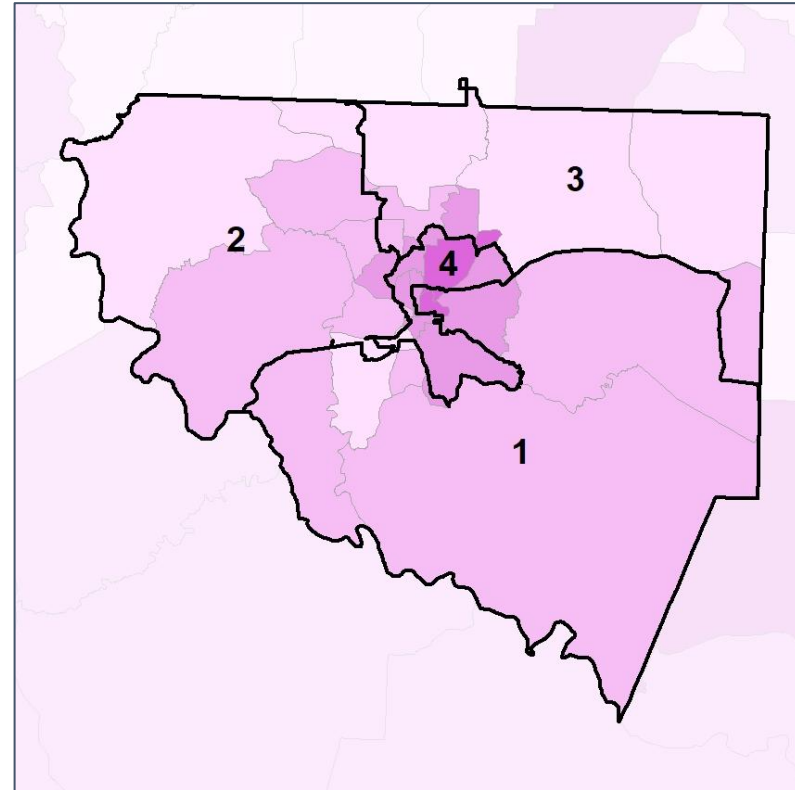
% Renter by Census Block Group



2012 Map



2022 Map*



	1	2	3	4	1*	2*	3*	4*	County
Population	6,737	7,079	6,962	6,922	6,931	6,921	6,922	6,926	27,700
% API	0%	0%	1%	0%	0%	0%	1%	0%	1%
% Black	58%	9%	15%	33%	56%	9%	15%	33%	28%
% Latino	2%	2%	2%	3%	2%	2%	2%	3%	2%
% Other	3%	4%	4%	4%	3%	4%	4%	4%	4%
% White	37%	85%	78%	59%	38%	85%	78%	59%	65%
Median Income	\$38,000	\$41,000	\$54,000	\$30,000	\$41,000	\$41,000	\$53,000	\$30,000	\$39,000
% Renter	44%	25%	18%	53%	41%	25%	17%	53%	35%
% Youth	19%	21%	19%	21%	20%	21%	18%	21%	20%

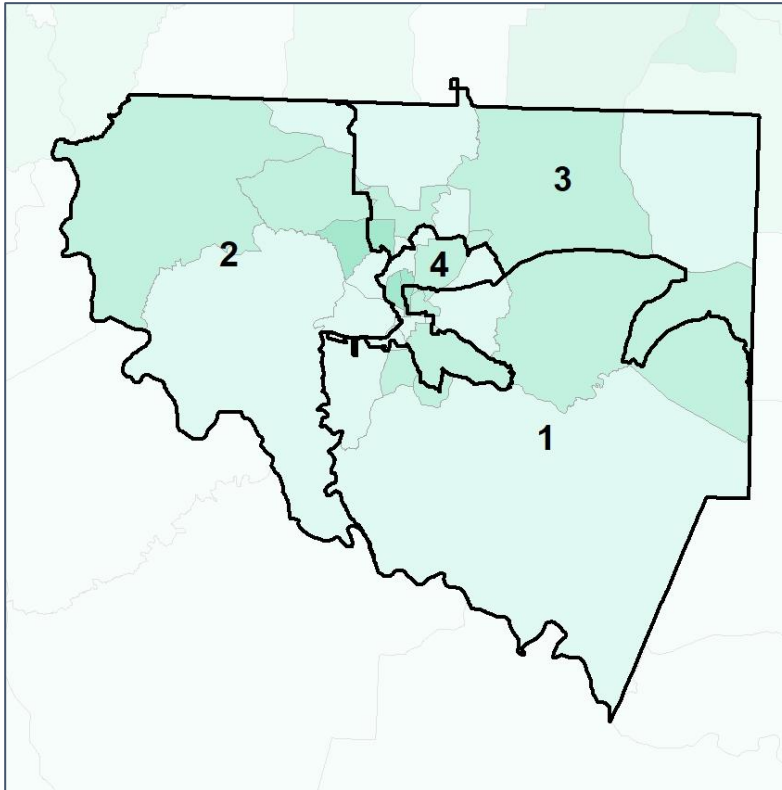


Upson County Commission

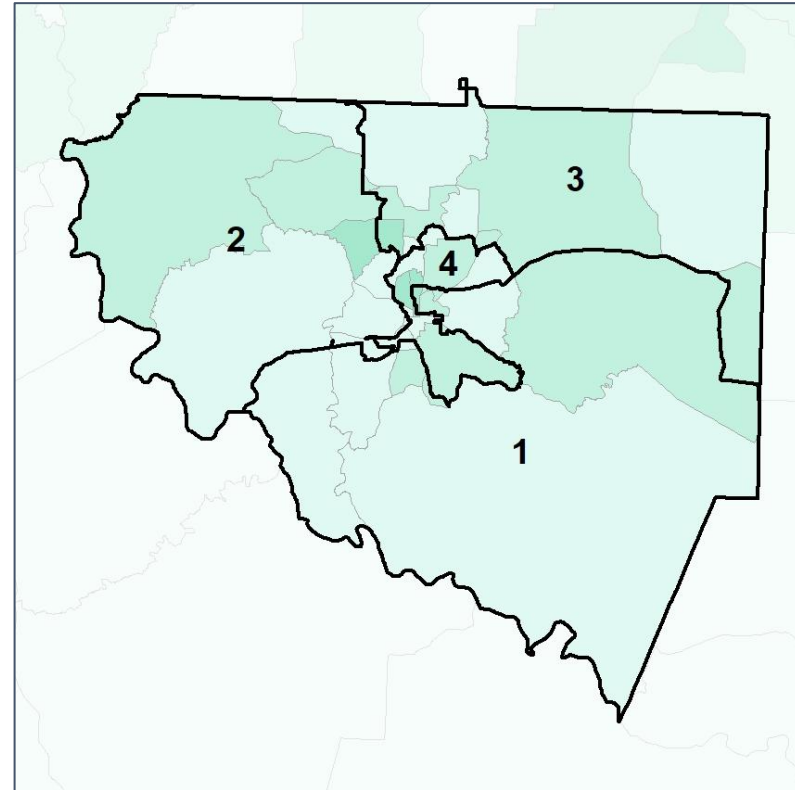
% Youth (18-34) by Census Block Group



2012 Map



2022 Map*



	1	2	3	4	1*	2*	3*	4*	County
Population	6,737	7,079	6,962	6,922	6,931	6,921	6,922	6,926	27,700
% API	0%	0%	1%	0%	0%	0%	1%	0%	1%
% Black	58%	9%	15%	33%	56%	9%	15%	33%	28%
% Latino	2%	2%	2%	3%	2%	2%	2%	3%	2%
% Other	3%	4%	4%	4%	3%	4%	4%	4%	4%
% White	37%	85%	78%	59%	38%	85%	78%	59%	65%
Median Income	\$38,000	\$41,000	\$54,000	\$30,000	\$41,000	\$41,000	\$53,000	\$30,000	\$39,000
% Renter	44%	25%	18%	53%	41%	25%	17%	53%	35%
% Youth	19%	21%	19%	21%	20%	21%	18%	21%	20%

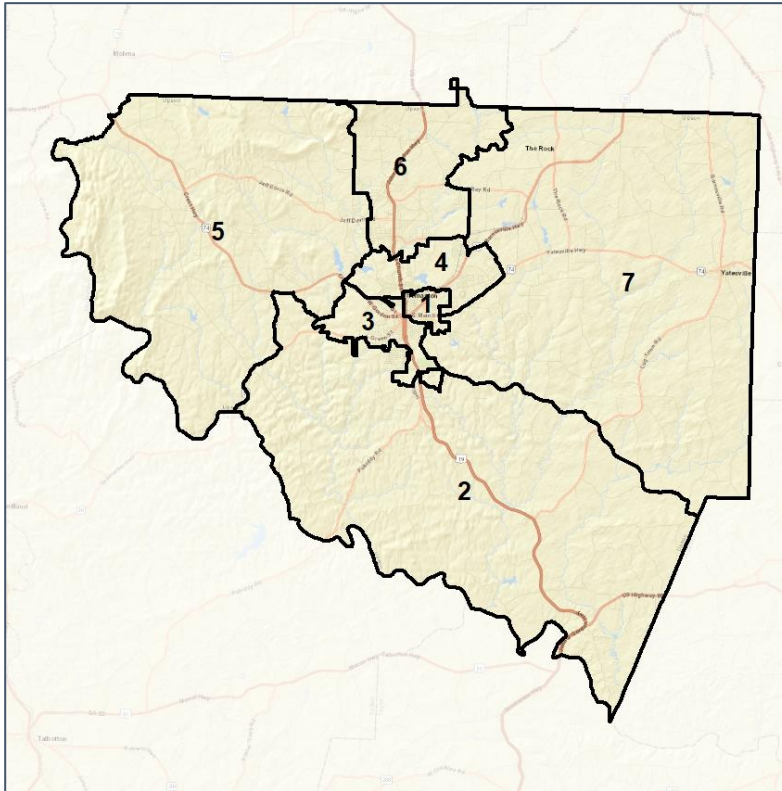


Upson County School Board

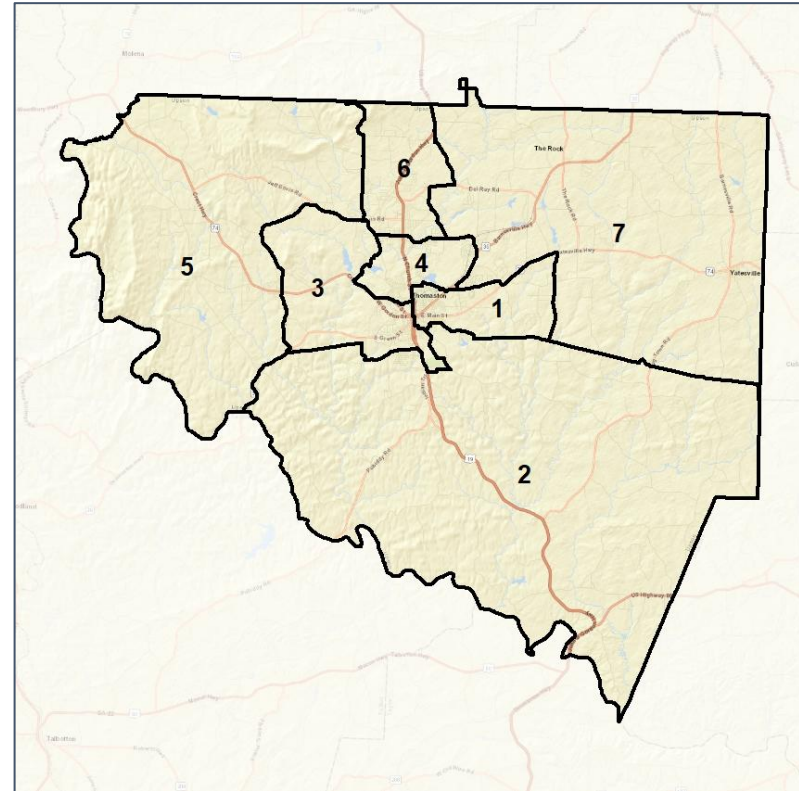
Context



2012 Map



2022 Map*



	1	2	3	4	5	6	7	1*	2*	3*	4*	5*	6*	7*	County
Population	3,045	2,724	3,818	4,287	4,870	5,070	3,886	3,923	3,952	3,949	3,962	3,950	3,999	3,965	27,700
API	0%	0%	0%	0%	1%	1%	0%	0%	0%	0%	0%	1%	1%	1%	1%
Black	71%	50%	23%	31%	6%	23%	16%	56%	54%	17%	36%	6%	14%	14%	28%
Latino	3%	1%	3%	3%	2%	2%	2%	3%	1%	2%	3%	2%	2%	2%	2%
Other	3%	3%	4%	4%	4%	4%	4%	3%	3%	4%	5%	5%	4%	4%	4%
White	23%	46%	69%	62%	87%	70%	77%	38%	41%	76%	56%	87%	78%	79%	65%
Population Gain	188	-38	160	94	103	4	36	878	1,228	131	-325	-920	-1,071	79	*
Population % Gain	7%	-1%	4%	2%	2%	0%	1%	29%	45%	3%	-8%	-19%	-21%	2%	*
Net POC Gain	86	-30	210	287	216	282	9	95	864	-243	101	-108	-666	-43	*
Net POC % Gain	4%	-2%	22%	21%	52%	22%	1%	4%	59%	-21%	6%	-17%	-43%	-5%	*

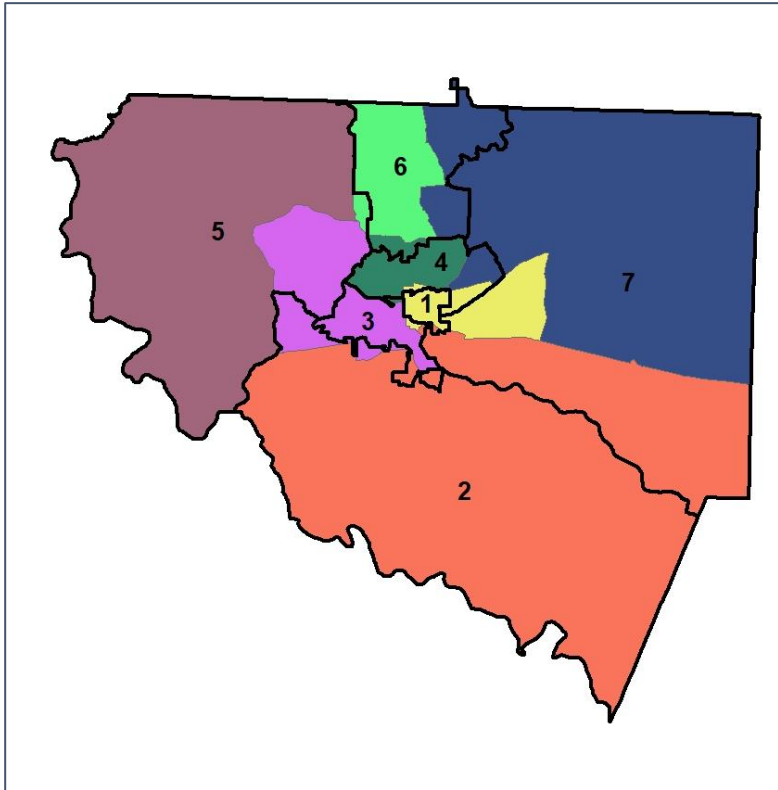


Upson County School Board

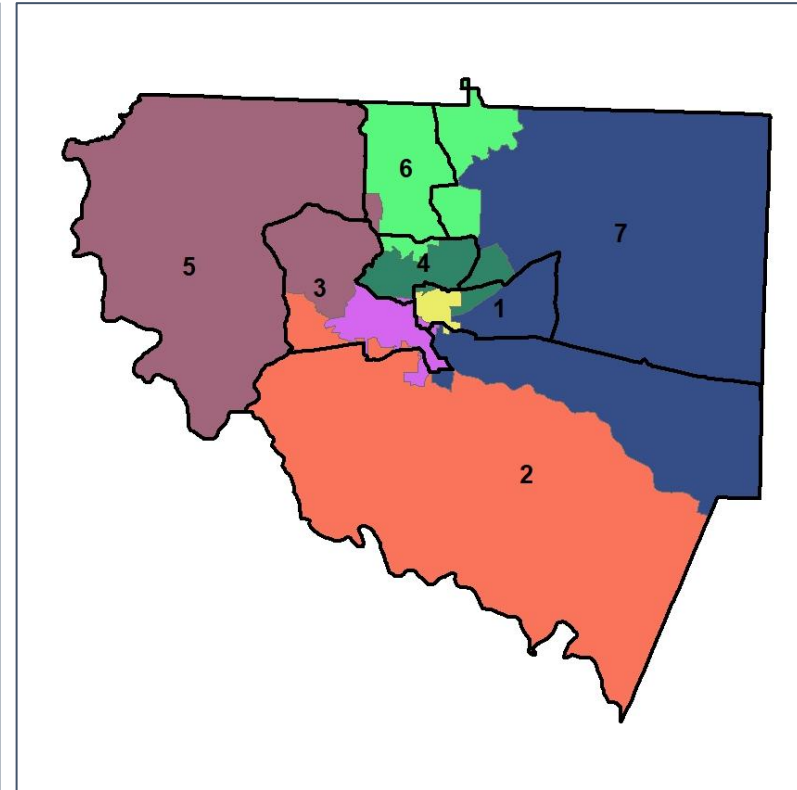
Changes in Redistricting



2012 Map (2022 in Colors)



2022 Map* (2012 in Colors)



	1	2	3	4	5	6	7	1*	2*	3*	4*	5*	6*	7*	County
Population	3,045	2,724	3,818	4,287	4,870	5,070	3,886	3,923	3,952	3,949	3,962	3,950	3,999	3,965	27,700
API	0%	0%	0%	0%	1%	1%	0%	0%	0%	0%	0%	1%	1%	1%	1%
Black	71%	50%	23%	31%	6%	23%	16%	56%	54%	17%	36%	6%	14%	14%	28%
Latino	3%	1%	3%	3%	2%	2%	2%	3%	1%	2%	3%	2%	2%	2%	2%
Other	3%	3%	4%	4%	4%	4%	4%	3%	3%	4%	5%	5%	4%	4%	4%
White	23%	46%	69%	62%	87%	70%	77%	38%	41%	76%	56%	87%	78%	79%	65%
Population Gain	188	-38	160	94	103	4	36	878	1,228	131	-325	-920	-1,071	79	*
Population % Gain	7%	-1%	4%	2%	2%	0%	1%	29%	45%	3%	-8%	-19%	-21%	2%	*
Net POC Gain	86	-30	210	287	216	282	9	95	864	-243	101	-108	-666	-43	*
Net POC % Gain	4%	-2%	22%	21%	52%	22%	1%	4%	59%	-21%	6%	-17%	-43%	-5%	*

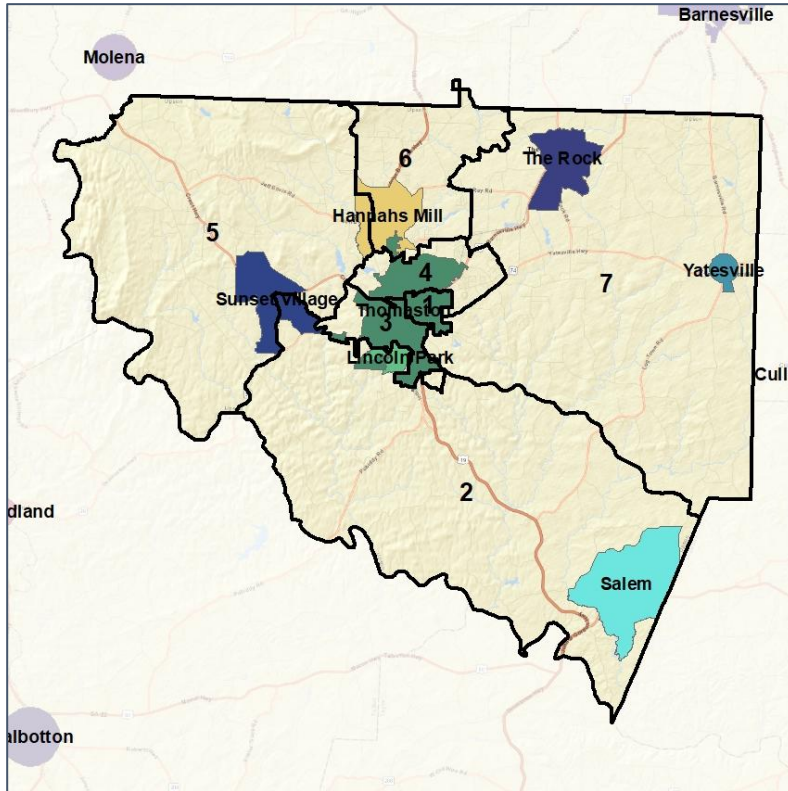


Upson County School Board

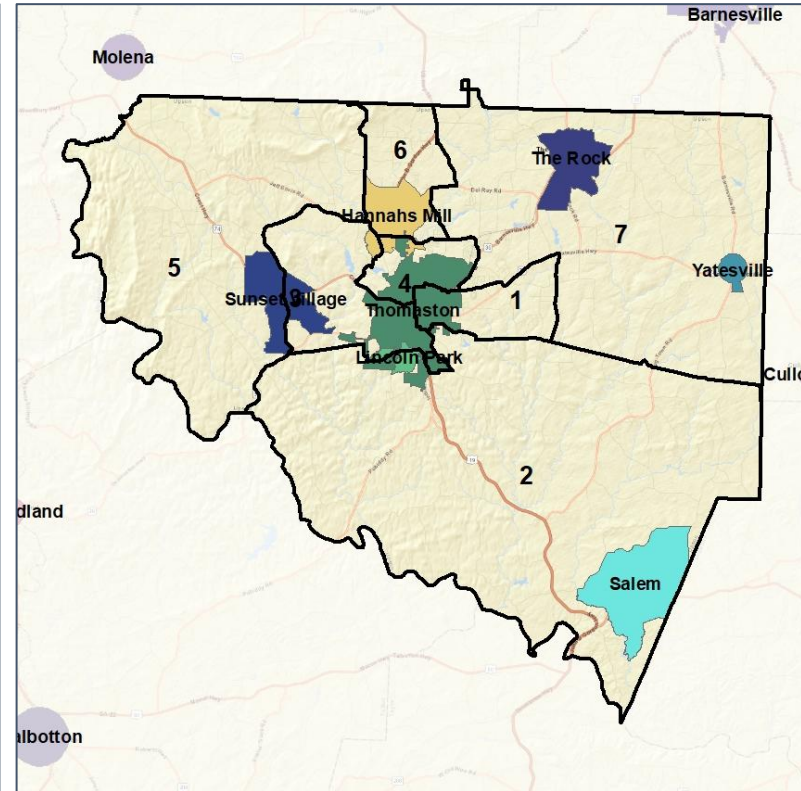
Cities and Places



2012 Map



2022 Map*



	1	2	3	4	5	6	7	1*	2*	3*	4*	5*	6*	7*	County
Population	3,045	2,724	3,818	4,287	4,870	5,070	3,886	3,923	3,952	3,949	3,962	3,950	3,999	3,965	27,700
API	0%	0%	0%	0%	1%	1%	0%	0%	0%	0%	0%	1%	1%	1%	1%
Black	71%	50%	23%	31%	6%	23%	16%	56%	54%	17%	36%	6%	14%	14%	28%
Latino	3%	1%	3%	3%	2%	2%	2%	3%	1%	2%	3%	2%	2%	2%	2%
Other	3%	3%	4%	4%	4%	4%	4%	3%	3%	4%	5%	5%	4%	4%	4%
White	23%	46%	69%	62%	87%	70%	77%	38%	41%	76%	56%	87%	78%	79%	65%
Population Gain	188	-38	160	94	103	4	36	878	1,228	131	-325	-920	-1,071	79	*
Population % Gain	7%	-1%	4%	2%	2%	0%	1%	29%	45%	3%	-8%	-19%	-21%	2%	*
Net POC Gain	86	-30	210	287	216	282	9	95	864	-243	101	-108	-666	-43	*
Net POC % Gain	4%	-2%	22%	21%	52%	22%	1%	4%	59%	-21%	6%	-17%	-43%	-5%	*



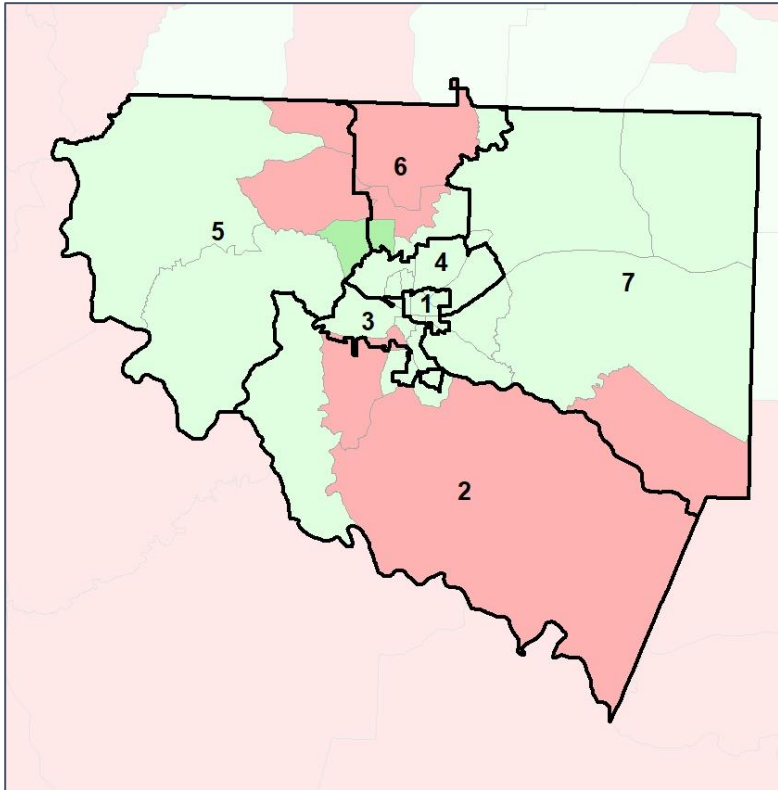
Source:
2020 Decennial Census
2020 ACS 5-Year Dataset

Upson County School Board

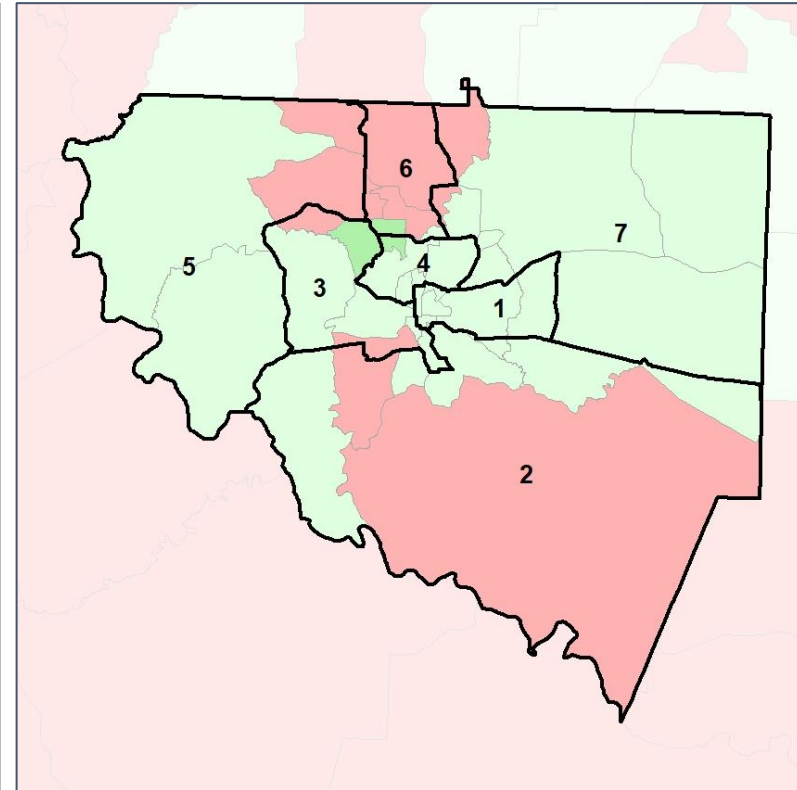
Net Gain in Population (2010 - 2020) by Census Block Group



2012 Map



2022 Map*



	1	2	3	4	5	6	7	1*	2*	3*	4*	5*	6*	7*	County
Population	3,045	2,724	3,818	4,287	4,870	5,070	3,886	3,923	3,952	3,949	3,962	3,950	3,999	3,965	27,700
API	0%	0%	0%	0%	1%	1%	0%	0%	0%	0%	0%	1%	1%	1%	1%
Black	71%	50%	23%	31%	6%	23%	16%	56%	54%	17%	36%	6%	14%	14%	28%
Latino	3%	1%	3%	3%	2%	2%	2%	3%	1%	2%	3%	2%	2%	2%	2%
Other	3%	3%	4%	4%	4%	4%	4%	3%	3%	4%	5%	5%	4%	4%	4%
White	23%	46%	69%	62%	87%	70%	77%	38%	41%	76%	56%	87%	78%	79%	65%
Population Gain	188	-38	160	94	103	4	36	878	1,228	131	-325	-920	-1,071	79	*
Population % Gain	7%	-1%	4%	2%	2%	0%	1%	29%	45%	3%	-8%	-19%	-21%	2%	*
Net POC Gain	86	-30	210	287	216	282	9	95	864	-243	101	-108	-666	-43	*
Net POC % Gain	4%	-2%	22%	21%	52%	22%	1%	4%	59%	-21%	6%	-17%	-43%	-5%	*

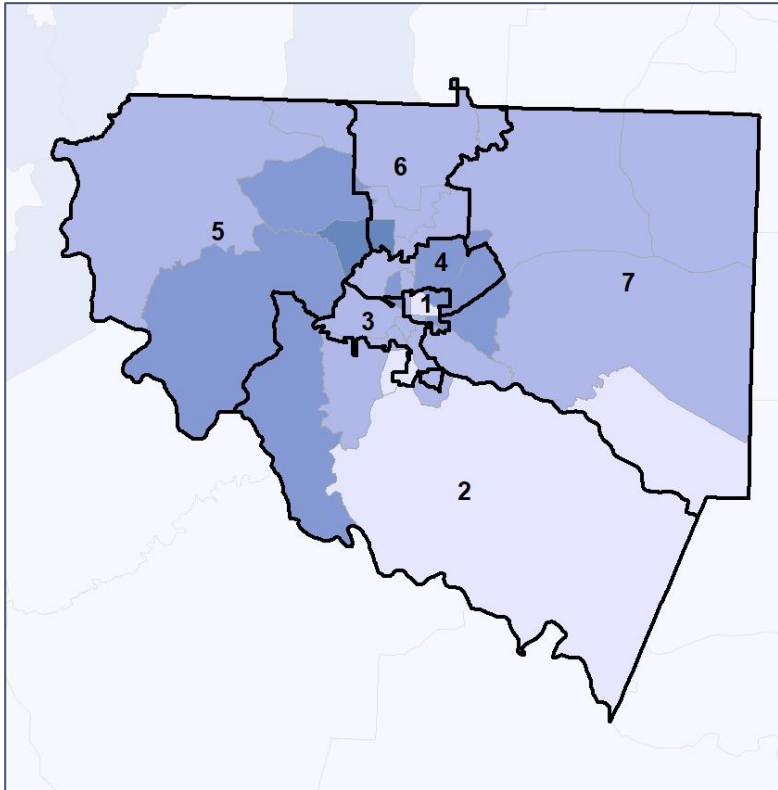


Upson County School Board

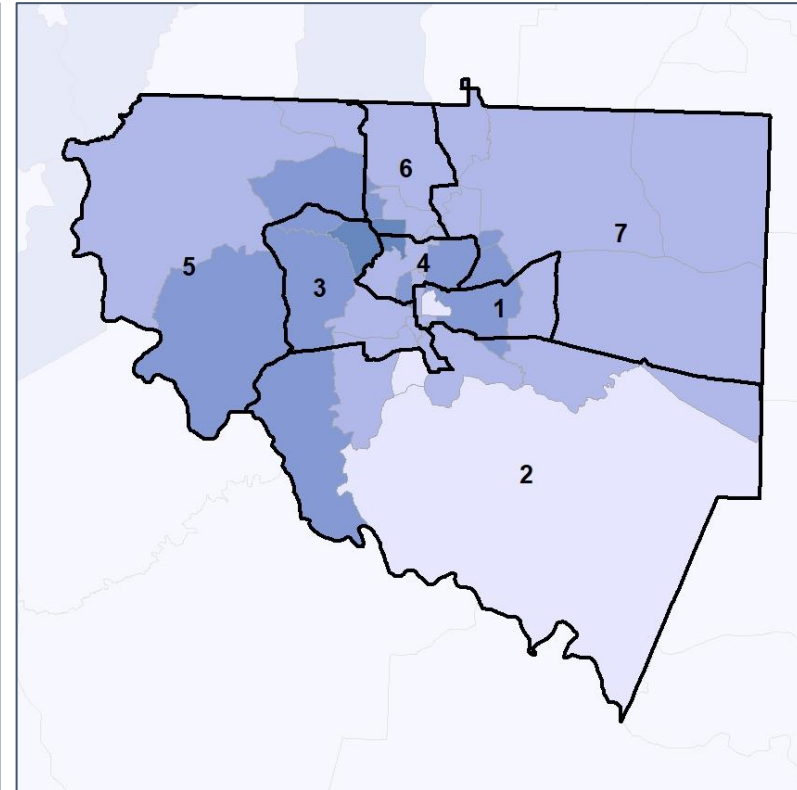
Net Gain in % POC (2020 - 2010) by Census Block Group



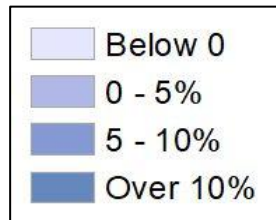
2012 Map



2022 Map*



	1	2	3	4	5	6	7	1*	2*	3*	4*	5*	6*	7*	County
Population	3,045	2,724	3,818	4,287	4,870	5,070	3,886	3,923	3,952	3,949	3,962	3,950	3,999	3,965	27,700
API	0%	0%	0%	0%	1%	1%	0%	0%	0%	0%	0%	1%	1%	1%	1%
Black	71%	50%	23%	31%	6%	23%	16%	56%	54%	17%	36%	6%	14%	14%	28%
Latino	3%	1%	3%	3%	2%	2%	2%	3%	1%	2%	3%	2%	2%	2%	2%
Other	3%	3%	4%	4%	4%	4%	4%	3%	3%	4%	5%	5%	4%	4%	4%
White	23%	46%	69%	62%	87%	70%	77%	38%	41%	76%	56%	87%	78%	79%	65%
Population Gain	188	-38	160	94	103	4	36	878	1,228	131	-325	-920	-1,071	79	*
Population % Gain	7%	-1%	4%	2%	2%	0%	1%	29%	45%	3%	-8%	-19%	-21%	2%	*
Net POC Gain	86	-30	210	287	216	282	9	95	864	-243	101	-108	-666	-43	*
Net POC % Gain	4%	-2%	22%	21%	52%	22%	1%	4%	59%	-21%	6%	-17%	-43%	-5%	*

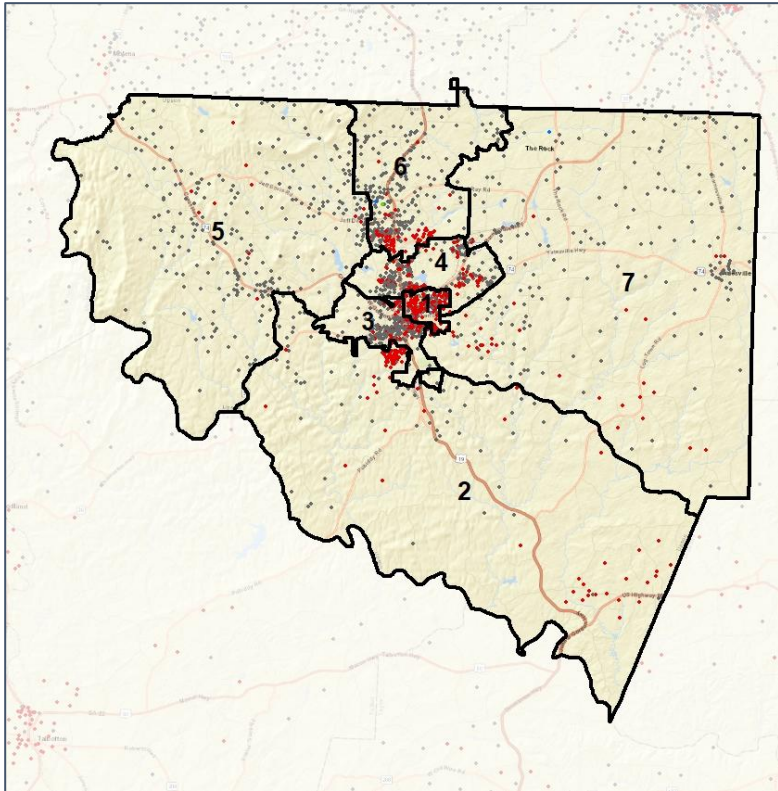


Upson County School Board

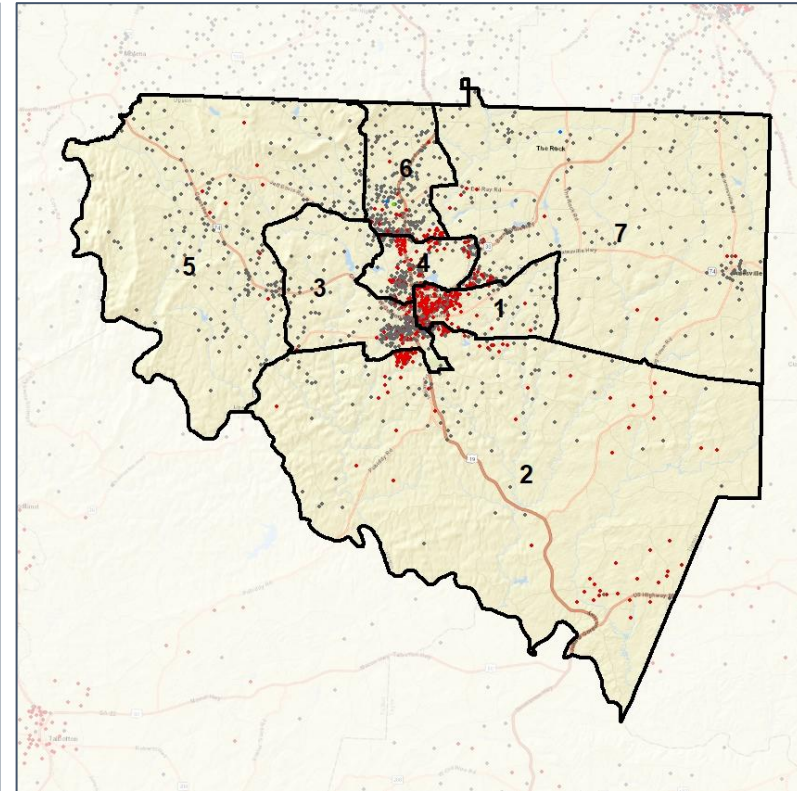
Population Density by Race



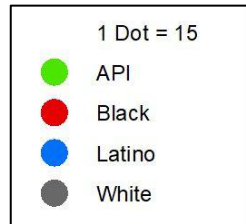
2012 Map



2022 Map*



	1	2	3	4	5	6	7	1*	2*	3*	4*	5*	6*	7*	County
Population	3,045	2,724	3,818	4,287	4,870	5,070	3,886	3,923	3,952	3,949	3,962	3,950	3,999	3,965	27,700
API	5	8	17	17	27	59	19	5	14	14	12	24	58	25	152
% API	0%	0%	0%	0%	1%	1%	0%	0%	0%	0%	0%	1%	1%	1%	1%
Black	2,157	1,351	889	1,332	310	1,179	633	2,209	2,144	675	1,435	252	567	569	7,851
% Black	71%	50%	23%	31%	6%	23%	16%	56%	54%	17%	36%	6%	14%	14%	28%
Latino	96	34	114	112	77	117	83	121	53	94	104	68	96	97	633
% Latino	3%	1%	3%	3%	2%	2%	2%	3%	1%	2%	3%	2%	2%	2%	2%
Other	98	82	158	171	219	186	141	116	128	152	182	181	154	142	1,055
% Other	3%	3%	4%	4%	4%	4%	4%	3%	3%	4%	5%	5%	4%	4%	4%
White	689	1,249	2,640	2,655	4,237	3,529	3,010	1,472	1,613	3,014	2,229	3,425	3,124	3,132	18,009
% White	23%	46%	69%	62%	87%	70%	77%	38%	41%	76%	56%	87%	78%	79%	65%

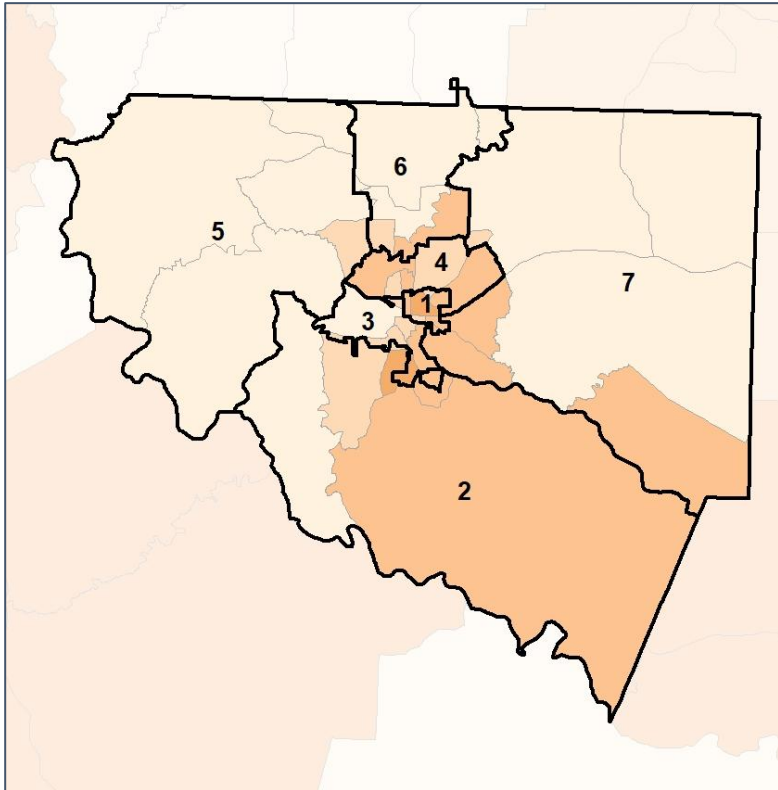


Upson County School Board

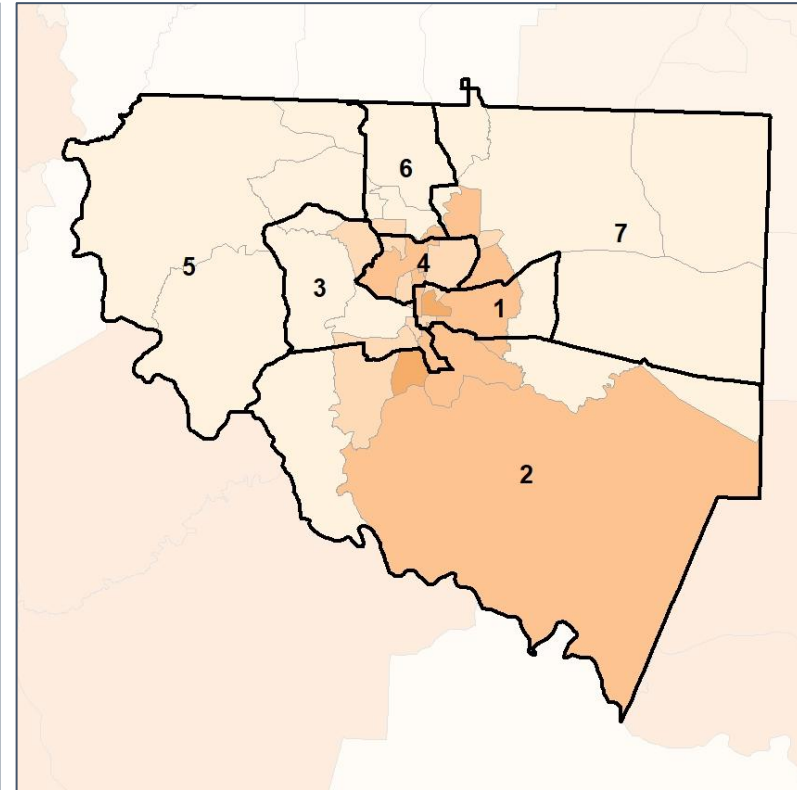
% People of Color by Census Block Group



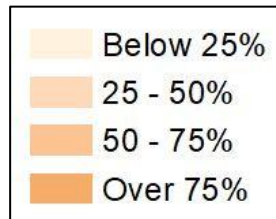
2012 Map



2022 Map*



	1	2	3	4	5	6	7	1*	2*	3*	4*	5*	6*	7*	County
Population	3,045	2,724	3,818	4,287	4,870	5,070	3,886	3,923	3,952	3,949	3,962	3,950	3,999	3,965	27,700
API	5	8	17	17	27	59	19	5	14	14	12	24	58	25	152
% API	0%	0%	0%	0%	1%	1%	0%	0%	0%	0%	0%	1%	1%	1%	1%
Black	2,157	1,351	889	1,332	310	1,179	633	2,209	2,144	675	1,435	252	567	569	7,851
% Black	71%	50%	23%	31%	6%	23%	16%	56%	54%	17%	36%	6%	14%	14%	28%
Latino	96	34	114	112	77	117	83	121	53	94	104	68	96	97	633
% Latino	3%	1%	3%	3%	2%	2%	2%	3%	1%	2%	3%	2%	2%	2%	2%
Other	98	82	158	171	219	186	141	116	128	152	182	181	154	142	1,055
% Other	3%	3%	4%	4%	4%	4%	4%	3%	3%	4%	5%	5%	4%	4%	4%
White	689	1,249	2,640	2,655	4,237	3,529	3,010	1,472	1,613	3,014	2,229	3,425	3,124	3,132	18,009
% White	23%	46%	69%	62%	87%	70%	77%	38%	41%	76%	56%	87%	78%	79%	65%



Source:
2020 Decennial Census
2020 ACS 5-Year Dataset

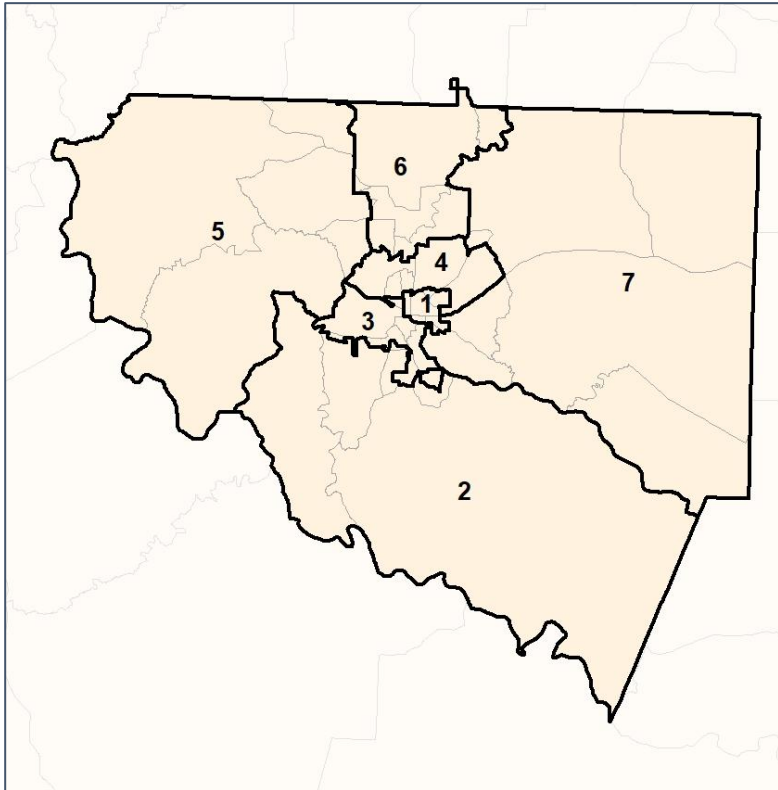


Upson County School Board

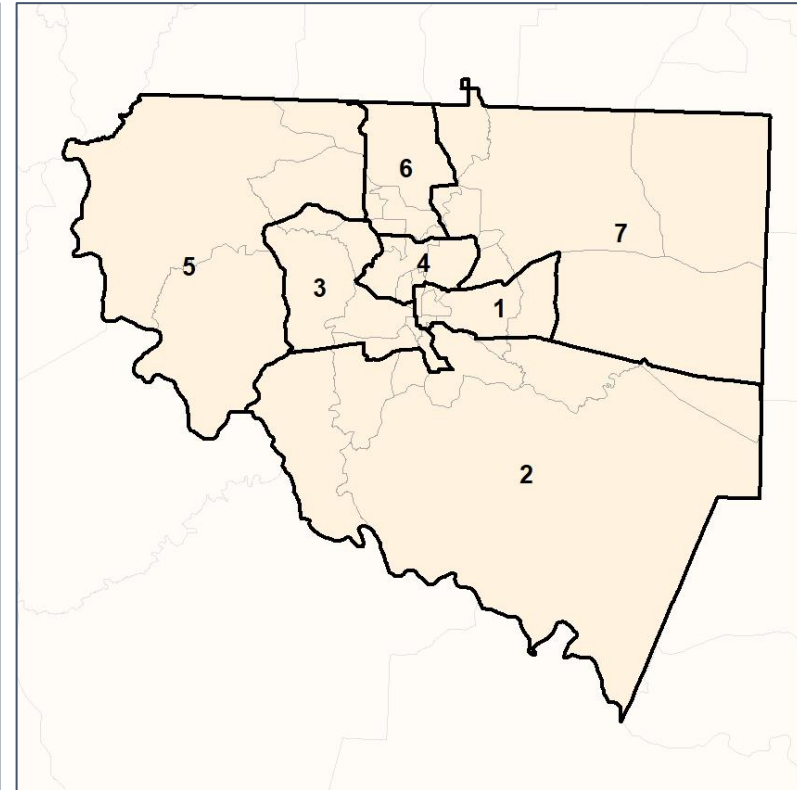
% API by Census Block Group



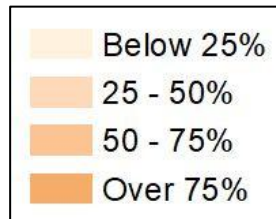
2012 Map



2022 Map*



	1	2	3	4	5	6	7	1*	2*	3*	4*	5*	6*	7*	County
Population	3,045	2,724	3,818	4,287	4,870	5,070	3,886	3,923	3,952	3,949	3,962	3,950	3,999	3,965	27,700
API	5	8	17	17	27	59	19	5	14	14	12	24	58	25	152
% API	0%	0%	0%	0%	1%	1%	0%	0%	0%	0%	0%	1%	1%	1%	1%
Black	2,157	1,351	889	1,332	310	1,179	633	2,209	2,144	675	1,435	252	567	569	7,851
% Black	71%	50%	23%	31%	6%	23%	16%	56%	54%	17%	36%	6%	14%	14%	28%
Latino	96	34	114	112	77	117	83	121	53	94	104	68	96	97	633
% Latino	3%	1%	3%	3%	2%	2%	2%	3%	1%	2%	3%	2%	2%	2%	2%
Other	98	82	158	171	219	186	141	116	128	152	182	181	154	142	1,055
% Other	3%	3%	4%	4%	4%	4%	4%	3%	3%	4%	5%	5%	4%	4%	4%
White	689	1,249	2,640	2,655	4,237	3,529	3,010	1,472	1,613	3,014	2,229	3,425	3,124	3,132	18,009
% White	23%	46%	69%	62%	87%	70%	77%	38%	41%	76%	56%	87%	78%	79%	65%



Source:
2020 Decennial Census
2020 ACS 5-Year Dataset

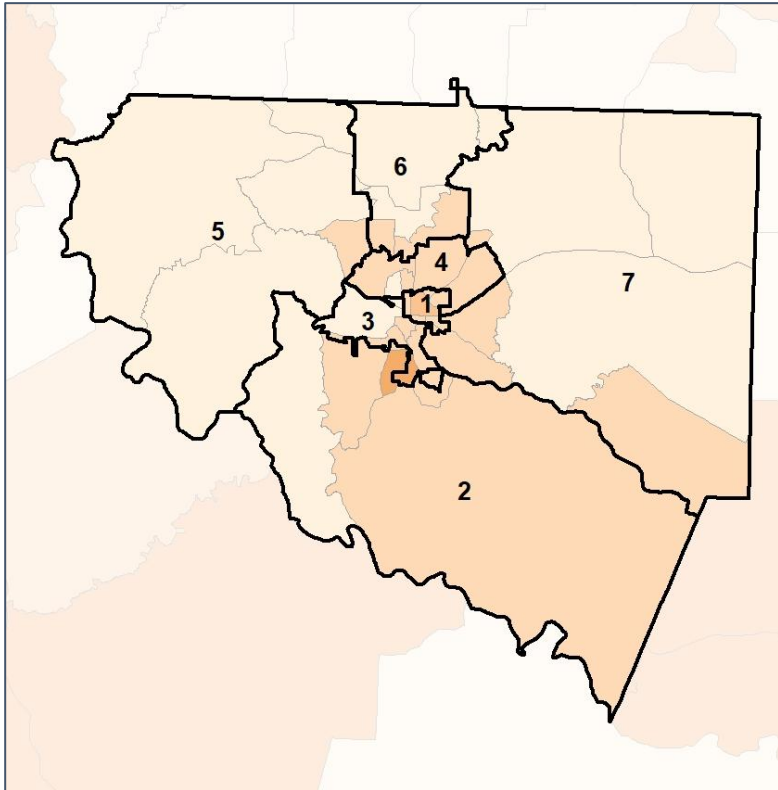


Upson County School Board

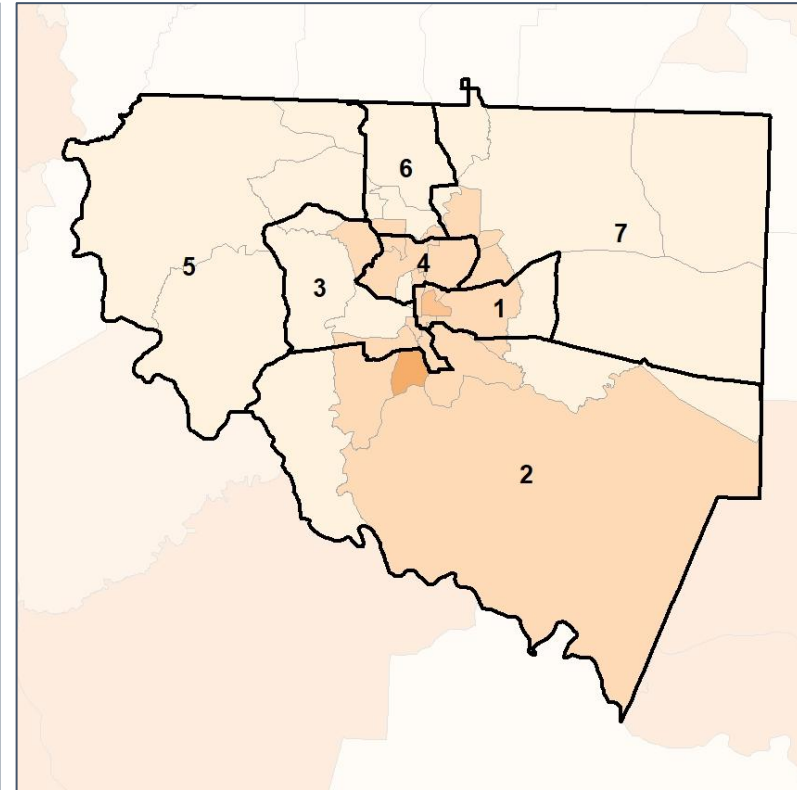
% Black by Census Block Group



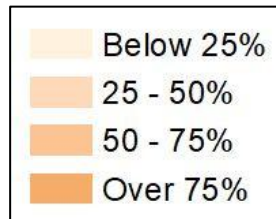
2012 Map



2022 Map*



	1	2	3	4	5	6	7	1*	2*	3*	4*	5*	6*	7*	County
Population	3,045	2,724	3,818	4,287	4,870	5,070	3,886	3,923	3,952	3,949	3,962	3,950	3,999	3,965	27,700
API	5	8	17	17	27	59	19	5	14	14	12	24	58	25	152
% API	0%	0%	0%	0%	1%	1%	0%	0%	0%	0%	0%	1%	1%	1%	1%
Black	2,157	1,351	889	1,332	310	1,179	633	2,209	2,144	675	1,435	252	567	569	7,851
% Black	71%	50%	23%	31%	6%	23%	16%	56%	54%	17%	36%	6%	14%	14%	28%
Latino	96	34	114	112	77	117	83	121	53	94	104	68	96	97	633
% Latino	3%	1%	3%	3%	2%	2%	2%	3%	1%	2%	3%	2%	2%	2%	2%
Other	98	82	158	171	219	186	141	116	128	152	182	181	154	142	1,055
% Other	3%	3%	4%	4%	4%	4%	4%	3%	3%	4%	5%	5%	4%	4%	4%
White	689	1,249	2,640	2,655	4,237	3,529	3,010	1,472	1,613	3,014	2,229	3,425	3,124	3,132	18,009
% White	23%	46%	69%	62%	87%	70%	77%	38%	41%	76%	56%	87%	78%	79%	65%



Source:
2020 Decennial Census
2020 ACS 5-Year Dataset

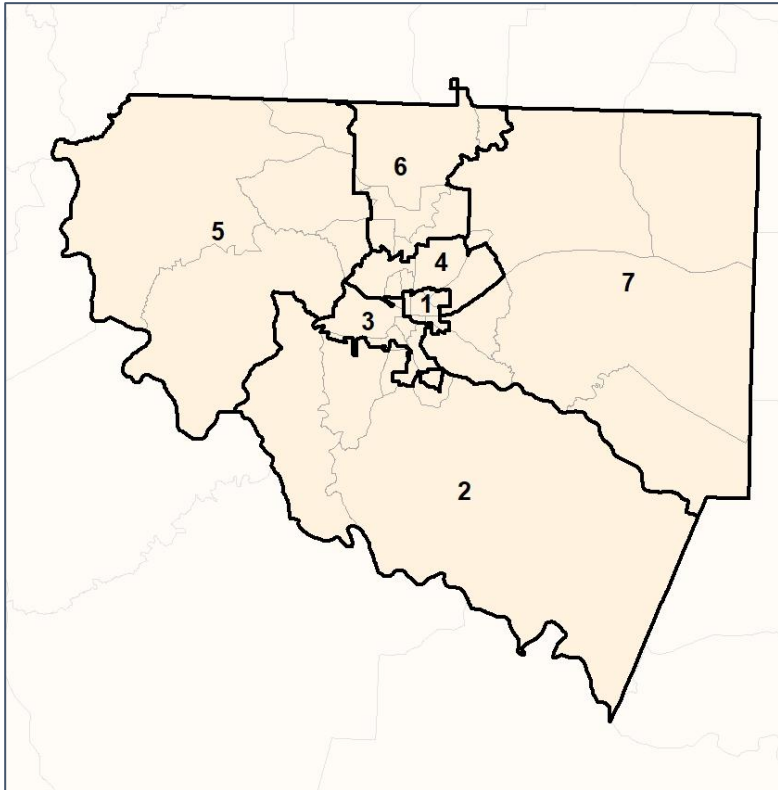


Upson County School Board

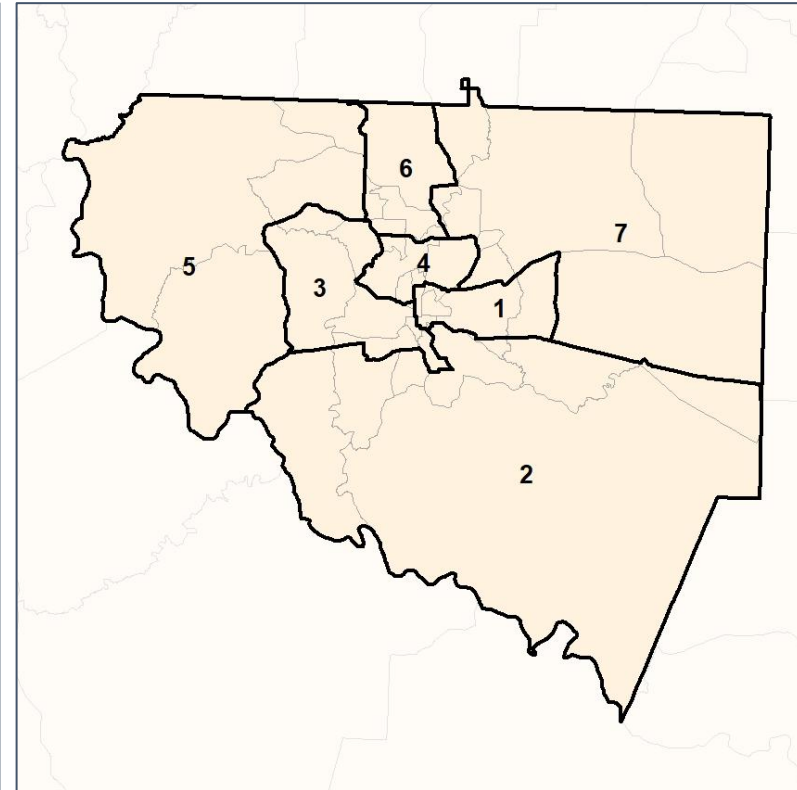
% Latino by Census Block Group



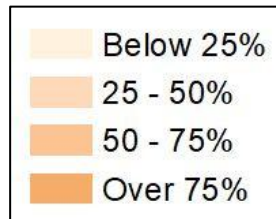
2012 Map



2022 Map*



	1	2	3	4	5	6	7	1*	2*	3*	4*	5*	6*	7*	County
Population	3,045	2,724	3,818	4,287	4,870	5,070	3,886	3,923	3,952	3,949	3,962	3,950	3,999	3,965	27,700
API	5	8	17	17	27	59	19	5	14	14	12	24	58	25	152
% API	0%	0%	0%	0%	1%	1%	0%	0%	0%	0%	0%	1%	1%	1%	1%
Black	2,157	1,351	889	1,332	310	1,179	633	2,209	2,144	675	1,435	252	567	569	7,851
% Black	71%	50%	23%	31%	6%	23%	16%	56%	54%	17%	36%	6%	14%	14%	28%
Latino	96	34	114	112	77	117	83	121	53	94	104	68	96	97	633
% Latino	3%	1%	3%	3%	2%	2%	2%	3%	1%	2%	3%	2%	2%	2%	2%
Other	98	82	158	171	219	186	141	116	128	152	182	181	154	142	1,055
% Other	3%	3%	4%	4%	4%	4%	4%	3%	3%	4%	5%	5%	4%	4%	4%
White	689	1,249	2,640	2,655	4,237	3,529	3,010	1,472	1,613	3,014	2,229	3,425	3,124	3,132	18,009
% White	23%	46%	69%	62%	87%	70%	77%	38%	41%	76%	56%	87%	78%	79%	65%

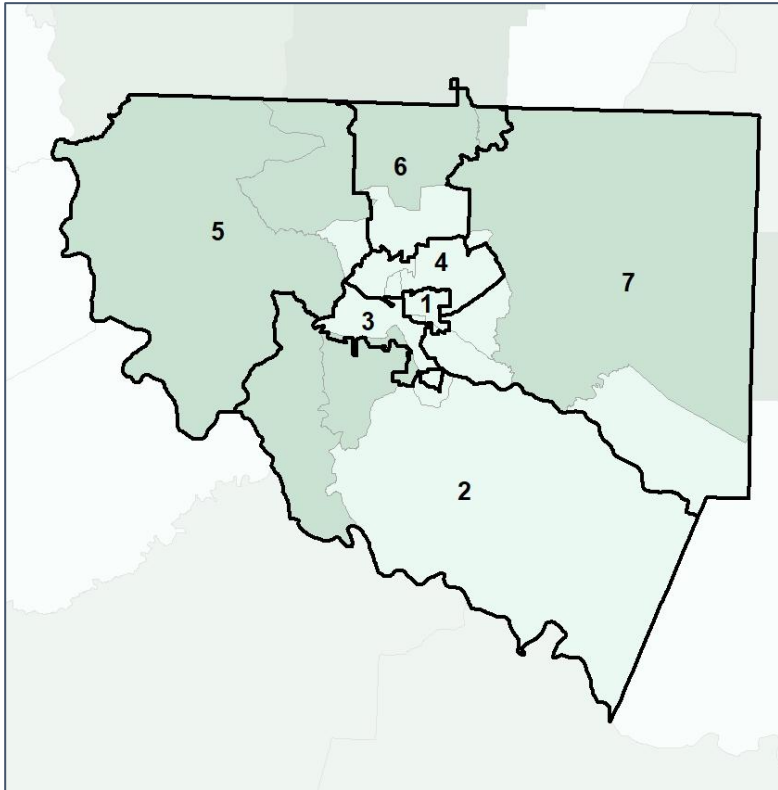


Upson County School Board

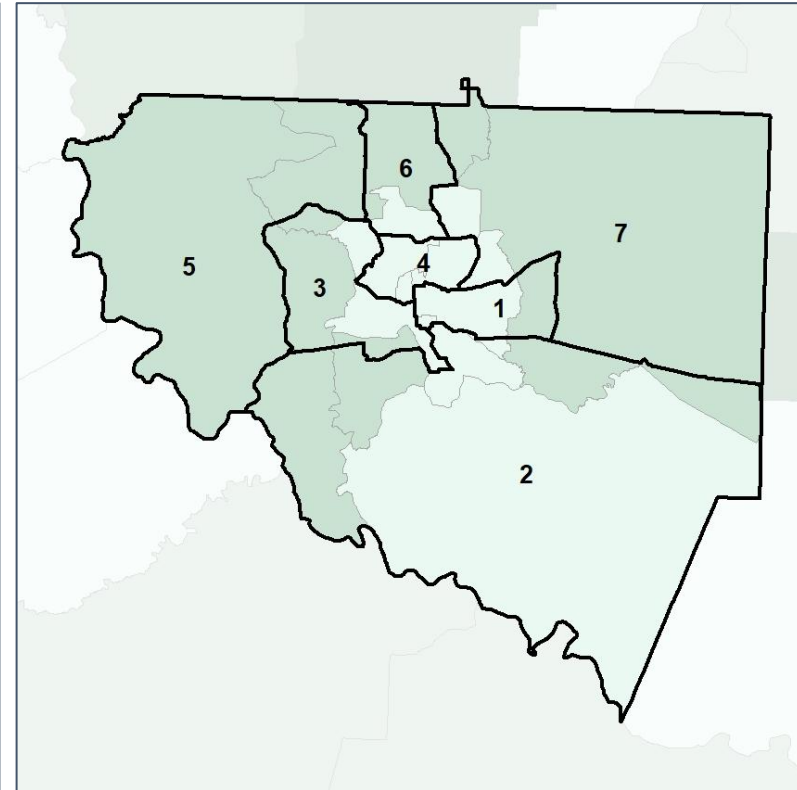
Median Household Income by Census Tract



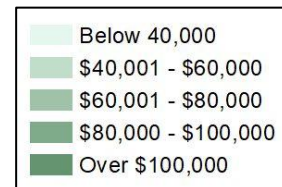
2012 Map



2022 Map*



	1	2	3	4	5	6	7	1*	2*	3*	4*	5*	6*	7*	County
Population	3,045	2,724	3,818	4,287	4,870	5,070	3,886	3,923	3,952	3,949	3,962	3,950	3,999	3,965	27,700
% API	0%	0%	0%	0%	1%	1%	0%	0%	0%	0%	0%	1%	1%	1%	1%
% Black	71%	50%	23%	31%	6%	23%	16%	56%	54%	17%	36%	6%	14%	14%	28%
% Latino	3%	1%	3%	3%	2%	2%	2%	3%	1%	2%	3%	2%	2%	2%	2%
% Other	3%	3%	4%	4%	4%	4%	4%	3%	3%	4%	5%	5%	4%	4%	4%
% White	23%	46%	69%	62%	87%	70%	77%	38%	41%	76%	56%	87%	78%	79%	65%
Median Income	\$27K	\$50K	\$40K	\$38K	\$41K	\$40K	\$41K	\$29K	\$43K	\$33K	\$30K	\$45K	\$52K	\$56K	\$39K
% Renter	86%	28%	40%	55%	25%	36%	32%	57%	33%	30%	55%	22%	21%	15%	35%
% Youth	23%	14%	10%	29%	22%	15%	22%	20%	18%	25%	22%	18%	16%	22%	20%

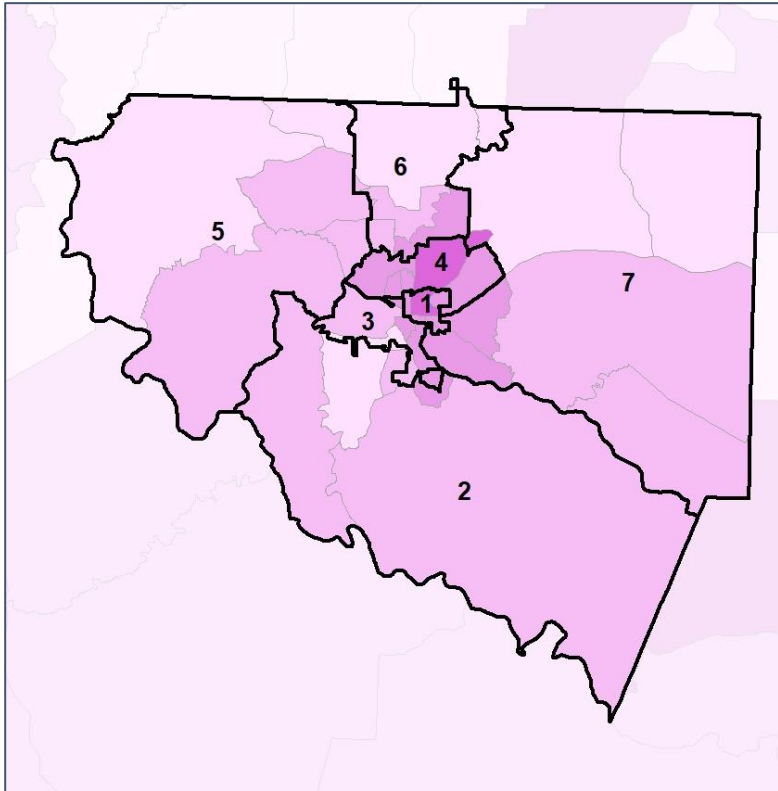


Upson County School Board

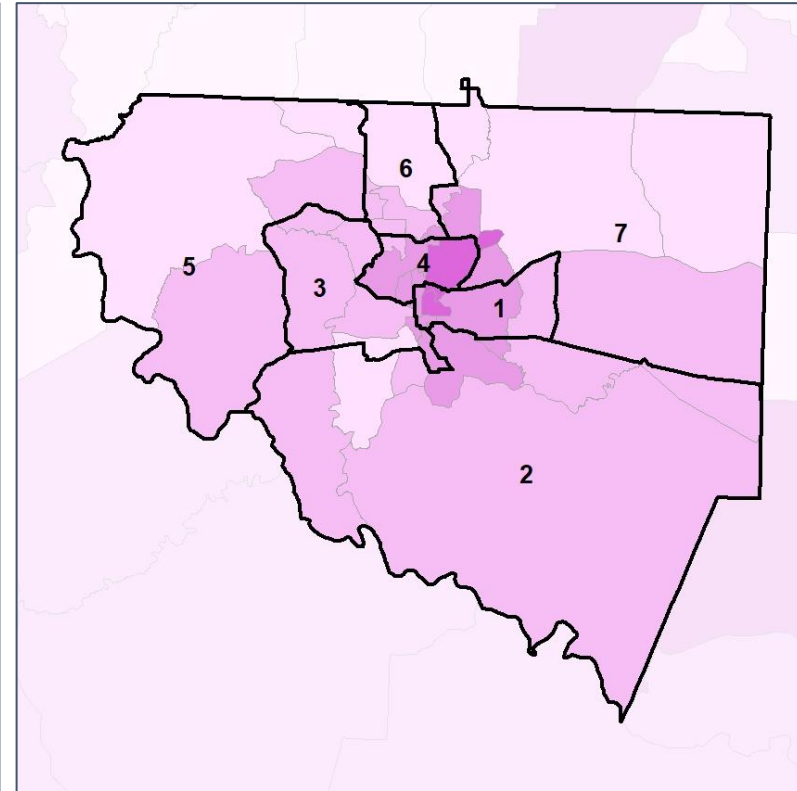
% Renter by Census Block Group



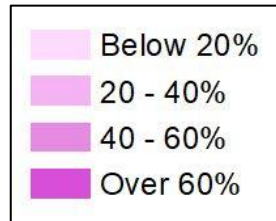
2012 Map



2022 Map*



	1	2	3	4	5	6	7	1*	2*	3*	4*	5*	6*	7*	County
Population	3,045	2,724	3,818	4,287	4,870	5,070	3,886	3,923	3,952	3,949	3,962	3,950	3,999	3,965	27,700
% API	0%	0%	0%	0%	1%	1%	0%	0%	0%	0%	0%	1%	1%	1%	1%
% Black	71%	50%	23%	31%	6%	23%	16%	56%	54%	17%	36%	6%	14%	14%	28%
% Latino	3%	1%	3%	3%	2%	2%	2%	3%	1%	2%	3%	2%	2%	2%	2%
% Other	3%	3%	4%	4%	4%	4%	4%	3%	3%	4%	5%	5%	4%	4%	4%
% White	23%	46%	69%	62%	87%	70%	77%	38%	41%	76%	56%	87%	78%	79%	65%
Median Income	\$27K	\$50K	\$40K	\$38K	\$41K	\$40K	\$41K	\$29K	\$43K	\$33K	\$30K	\$45K	\$52K	\$56K	\$39K
% Renter	86%	28%	40%	55%	25%	36%	32%	57%	33%	30%	55%	22%	21%	15%	35%
% Youth	23%	14%	10%	29%	22%	15%	22%	20%	18%	25%	22%	18%	16%	22%	20%

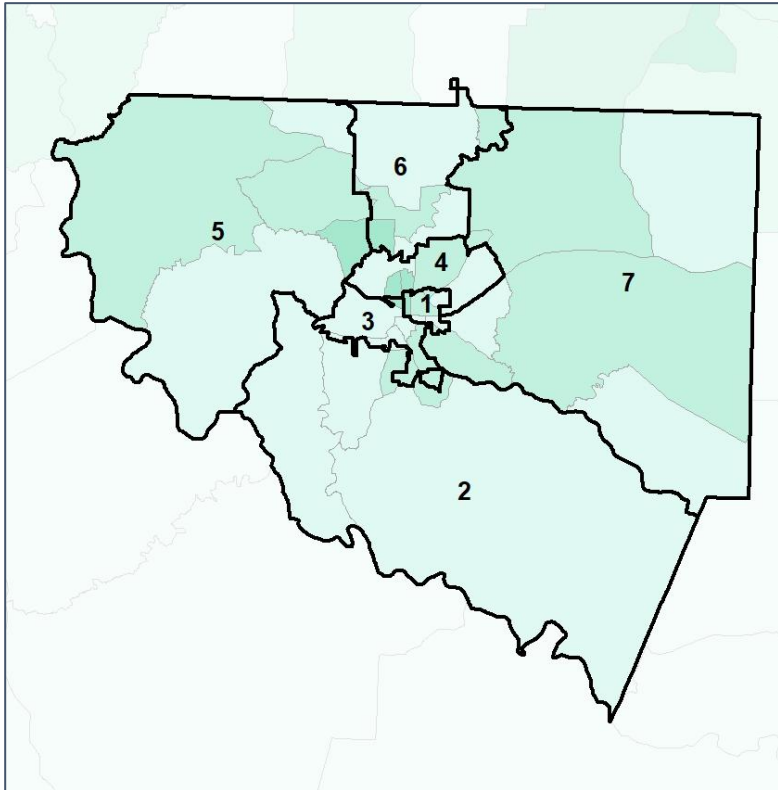


Upson County School Board

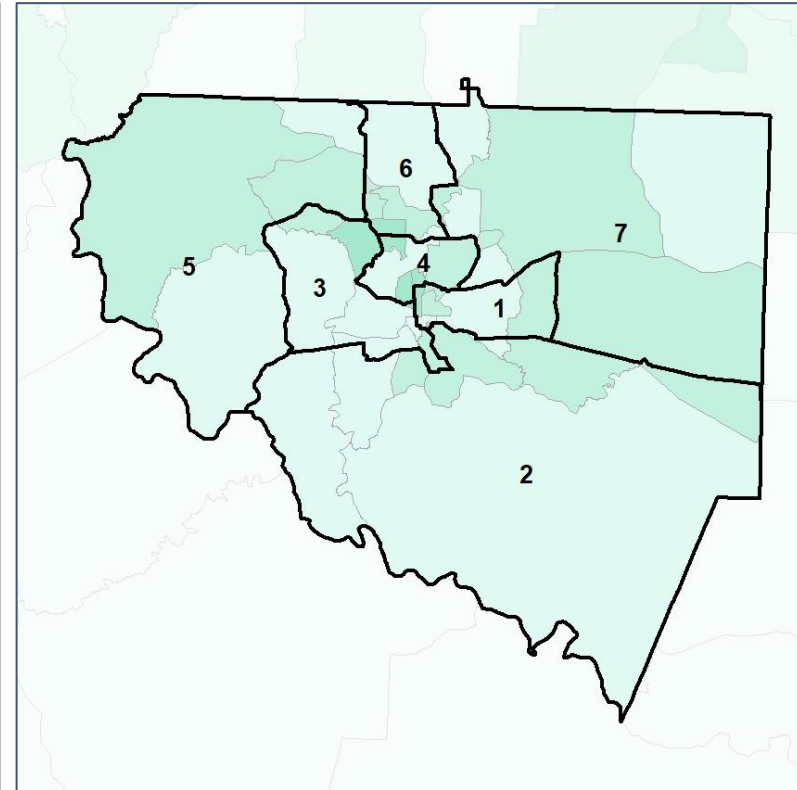
% Youth (18-34) by Census Block Group



2012 Map



2022 Map*



	1	2	3	4	5	6	7	1*	2*	3*	4*	5*	6*	7*	County
Population	3,045	2,724	3,818	4,287	4,870	5,070	3,886	3,923	3,952	3,949	3,962	3,950	3,999	3,965	27,700
% API	0%	0%	0%	0%	1%	1%	0%	0%	0%	0%	0%	1%	1%	1%	1%
% Black	71%	50%	23%	31%	6%	23%	16%	56%	54%	17%	36%	6%	14%	14%	28%
% Latino	3%	1%	3%	3%	2%	2%	2%	3%	1%	2%	3%	2%	2%	2%	2%
% Other	3%	3%	4%	4%	4%	4%	4%	3%	3%	4%	5%	5%	4%	4%	4%
% White	23%	46%	69%	62%	87%	70%	77%	38%	41%	76%	56%	87%	78%	79%	65%
Median Income	\$27K	\$50K	\$40K	\$38K	\$41K	\$40K	\$41K	\$29K	\$43K	\$33K	\$30K	\$45K	\$52K	\$56K	\$39K
% Renter	86%	28%	40%	55%	25%	36%	32%	57%	33%	30%	55%	22%	21%	15%	35%
% Youth	23%	14%	10%	29%	22%	15%	22%	20%	18%	25%	22%	18%	16%	22%	20%

