

Demographic Overview

Racial Breakdown in Union County



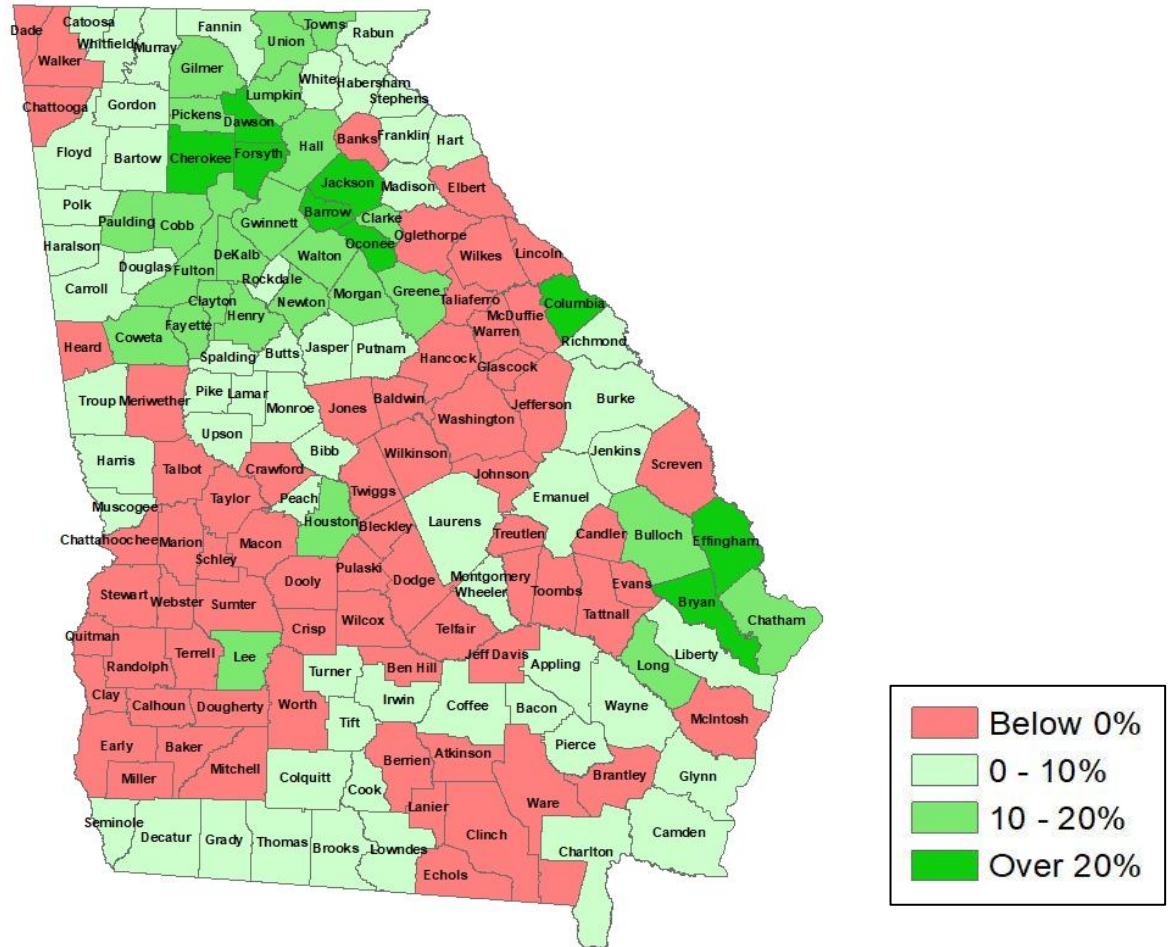
| Union County | 2010 | 2020 | % Change |
|------------------|--------|--------|----------|
| Total Population | 21,356 | 24,632 | 15% |
| AAPI | 79 | 100 | 27% |
| Black | 95 | 126 | 33% |
| Latino | 519 | 816 | 57% |
| Other/Mixed Race | 318 | 944 | 197% |
| POC | 1,011 | 1,986 | 96% |
| White | 20,345 | 22,646 | 11% |





Population Gain

Change in Population in Georgia by County

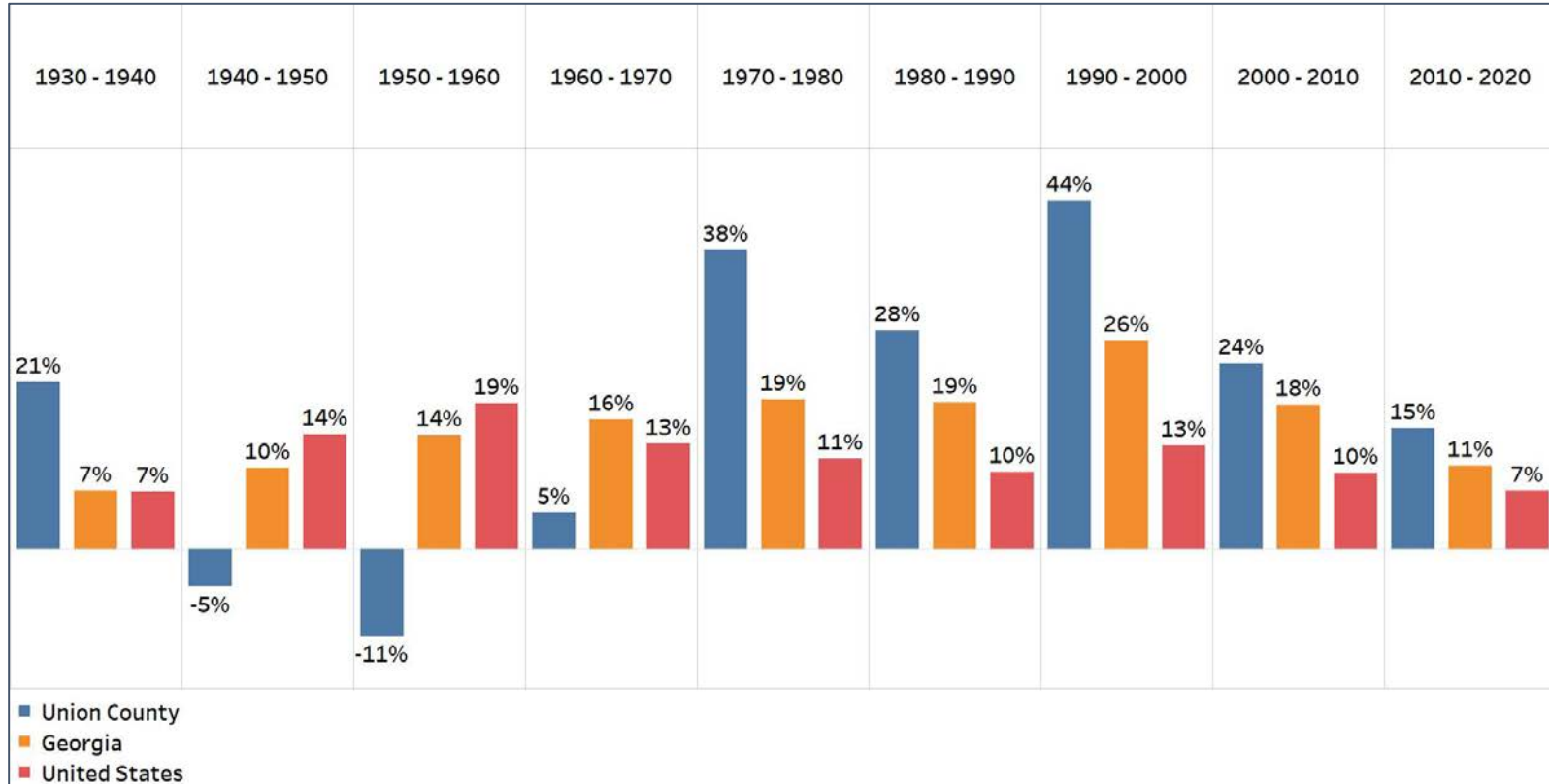


- Georgia is experiencing rapid population growth in the Atlanta, Augusta, and Savannah regions of the state



Population Gain

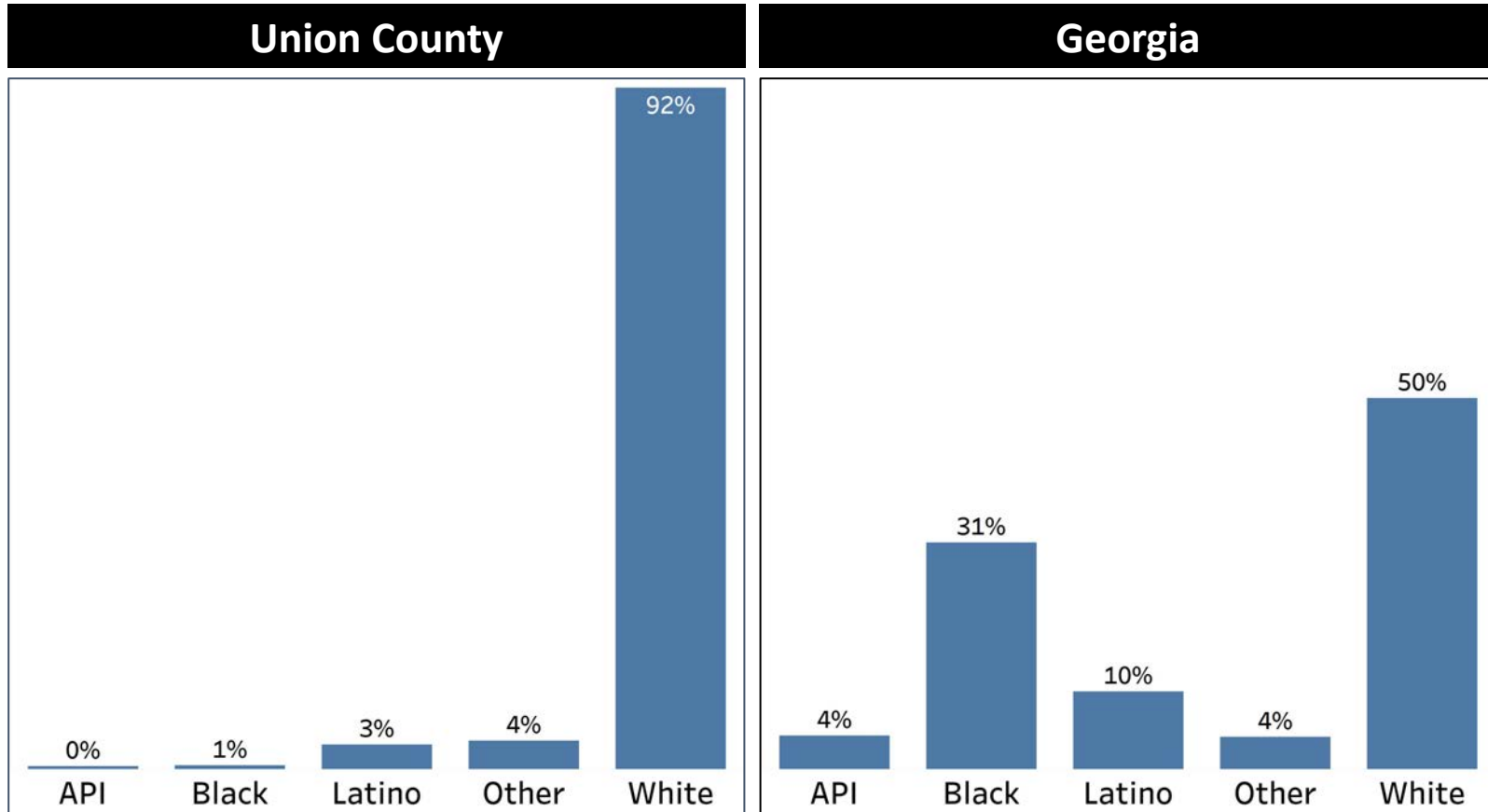
Change in Population by Decade



- Union County has had a period of significant growth since 1970
- The last decade's growth was the slowest since 1970, but still was a higher growth rate than Georgia's growth rate overall

Demographics

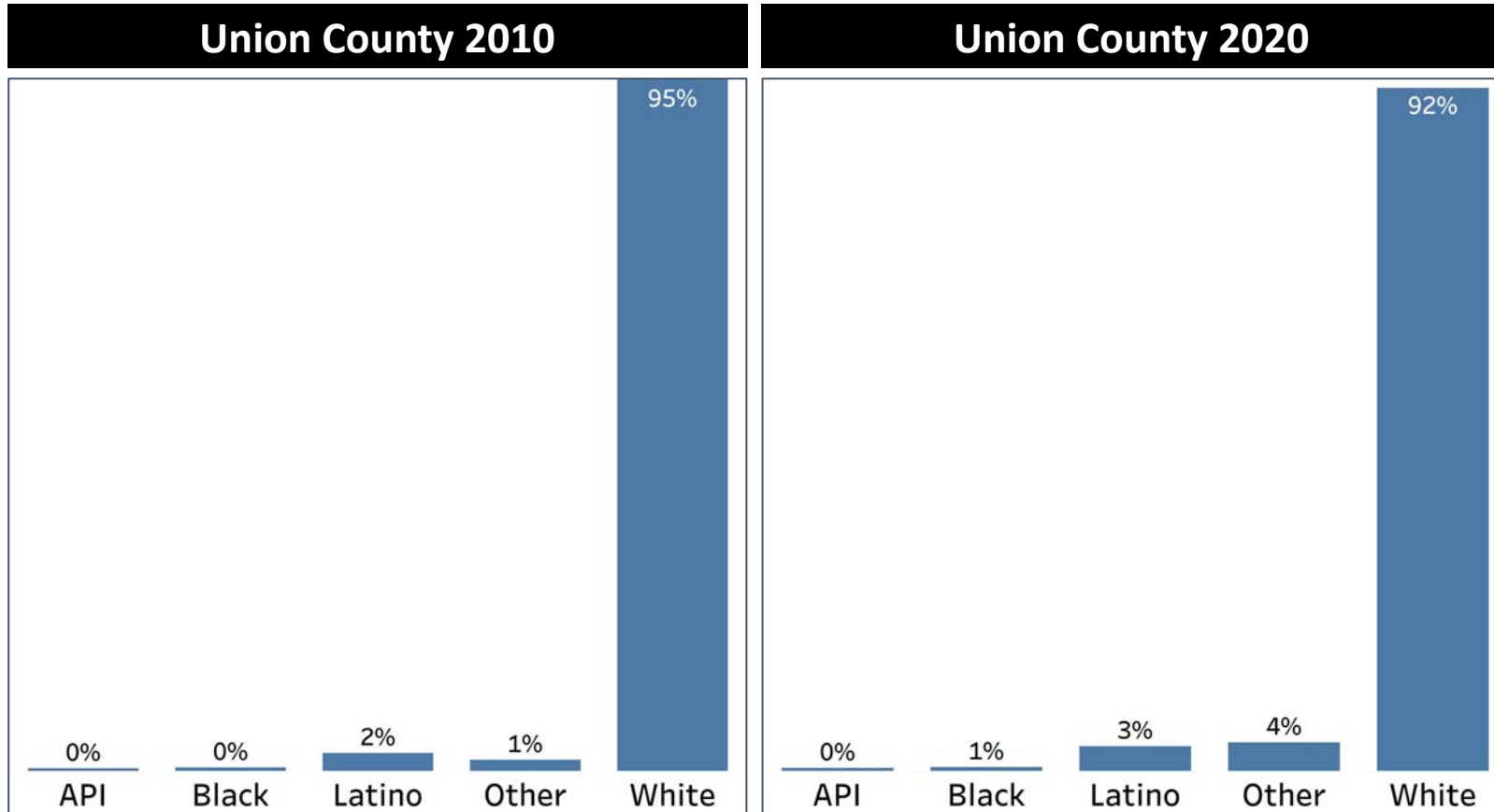
Comparison between Union County and Georgia



- Union County is overwhelmingly White and the share of the Black population in the county is one of the lowest in the state
- The Other demographic is the only group that matches its share of the population in the county as it does in Georgia

Demographics

2010 vs 2020 Demographics in Union County

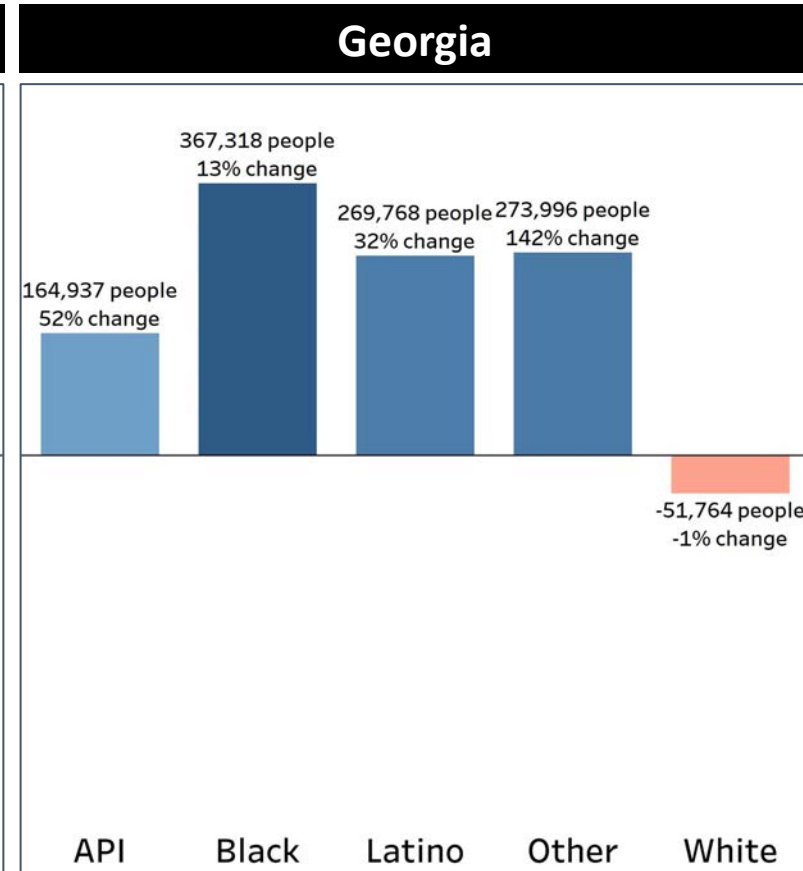
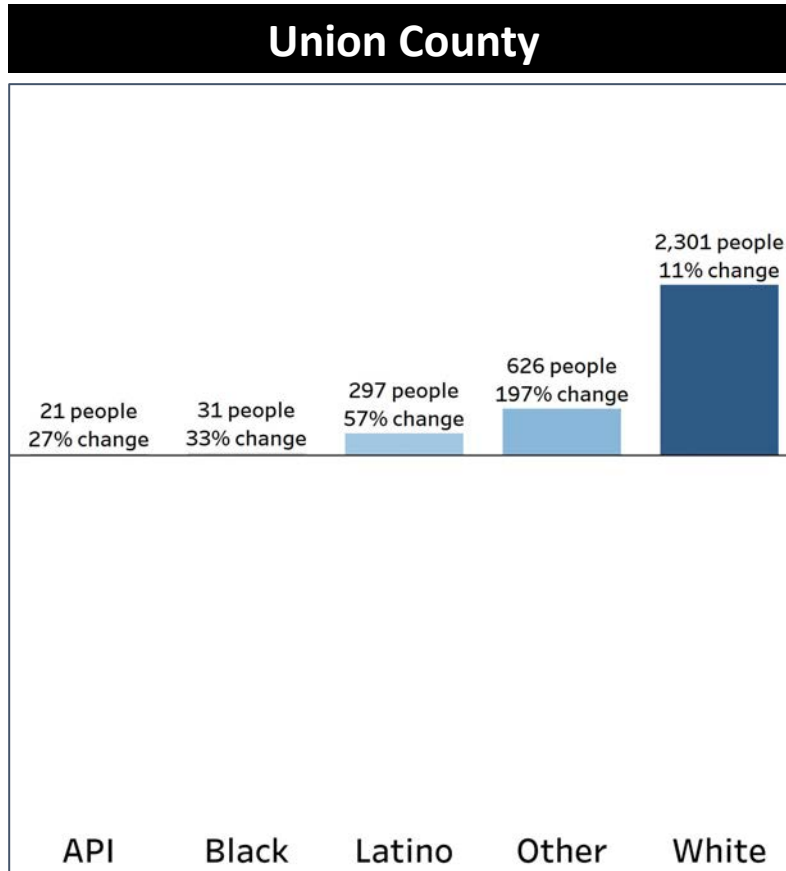


- Union County had a slight decline in the share of the White population
- The Black, Latino, and Other populations all had increases in their share of the population, with the Other population quadrupling its share of the population



Demographics

Population Change by Race (2020 - 2010)



- Union County had growth in all demographic groups, and in all demographic groups except the API community, had a higher growth rate than in Georgia overall

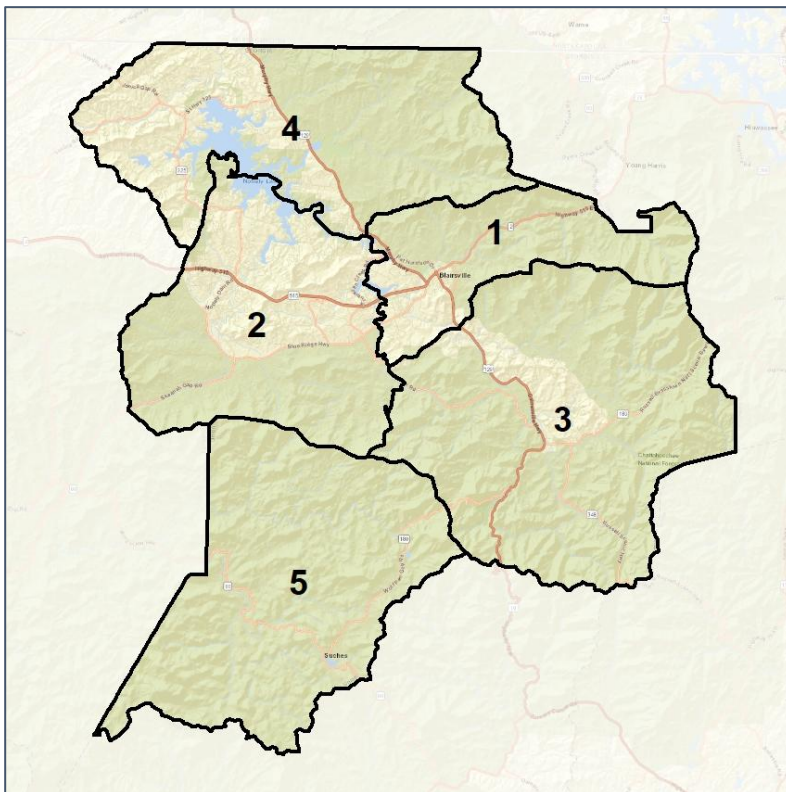


Union Co. Commission & School Board

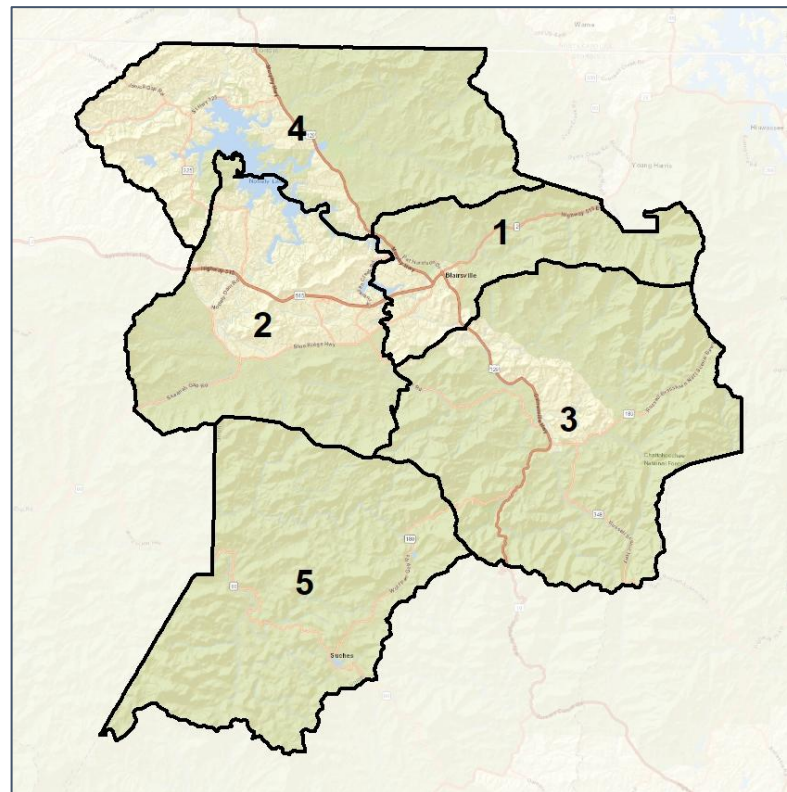
Context



2012 Map



2022 Map*



| | 1 | 2 | 3 | 4 | 5 | 1* | 2* | 3* | 4* | 5* | County |
|-------------------|-------|-------|-------|-------|------|-------|-------|-------|-------|-----|--------|
| Population | 4,568 | 7,879 | 4,247 | 7,183 | 755 | 4,568 | 7,879 | 4,247 | 7,183 | 755 | 24,632 |
| API | 0% | 0% | 1% | 0% | 1% | 0% | 0% | 1% | 0% | 1% | 0% |
| Black | 1% | 0% | 0% | 1% | 0% | 1% | 0% | 0% | 1% | 0% | 1% |
| Latino | 4% | 3% | 3% | 3% | 3% | 4% | 3% | 3% | 3% | 3% | 3% |
| Other | 4% | 4% | 4% | 3% | 5% | 4% | 4% | 4% | 3% | 5% | 4% |
| White | 90% | 93% | 92% | 93% | 92% | 90% | 93% | 92% | 93% | 92% | 92% |
| Population Gain | 331 | 1,256 | 472 | 1,298 | -81 | 0 | 0 | 0 | 0 | 0 | * |
| Population % Gain | 8% | 19% | 13% | 22% | -10% | 0% | 0% | 0% | 0% | 0% | * |
| Net POC Gain | 167 | 280 | 205 | 321 | 2 | 0 | 0 | 0 | 0 | 0 | * |
| Net POC % Gain | 56% | 90% | 160% | 149% | 3% | 0% | 0% | 0% | 0% | 0% | * |



Union Co. Commission & School Board

Changes in Redistricting



2012 Map (2022 in Colors)



2022 Map* (2012 in Colors)



| | 1 | 2 | 3 | 4 | 5 | 1* | 2* | 3* | 4* | 5* | County |
|-------------------|-------|-------|-------|-------|------|-------|-------|-------|-------|-----|--------|
| Population | 4,568 | 7,879 | 4,247 | 7,183 | 755 | 4,568 | 7,879 | 4,247 | 7,183 | 755 | 24,632 |
| API | 0% | 0% | 1% | 0% | 1% | 0% | 0% | 1% | 0% | 1% | 0% |
| Black | 1% | 0% | 0% | 1% | 0% | 1% | 0% | 0% | 1% | 0% | 1% |
| Latino | 4% | 3% | 3% | 3% | 3% | 4% | 3% | 3% | 3% | 3% | 3% |
| Other | 4% | 4% | 4% | 3% | 5% | 4% | 4% | 4% | 3% | 5% | 4% |
| White | 90% | 93% | 92% | 93% | 92% | 90% | 93% | 92% | 93% | 92% | 92% |
| Population Gain | 331 | 1,256 | 472 | 1,298 | -81 | 0 | 0 | 0 | 0 | 0 | * |
| Population % Gain | 8% | 19% | 13% | 22% | -10% | 0% | 0% | 0% | 0% | 0% | * |
| Net POC Gain | 167 | 280 | 205 | 321 | 2 | 0 | 0 | 0 | 0 | 0 | * |
| Net POC % Gain | 56% | 90% | 160% | 149% | 3% | 0% | 0% | 0% | 0% | 0% | * |

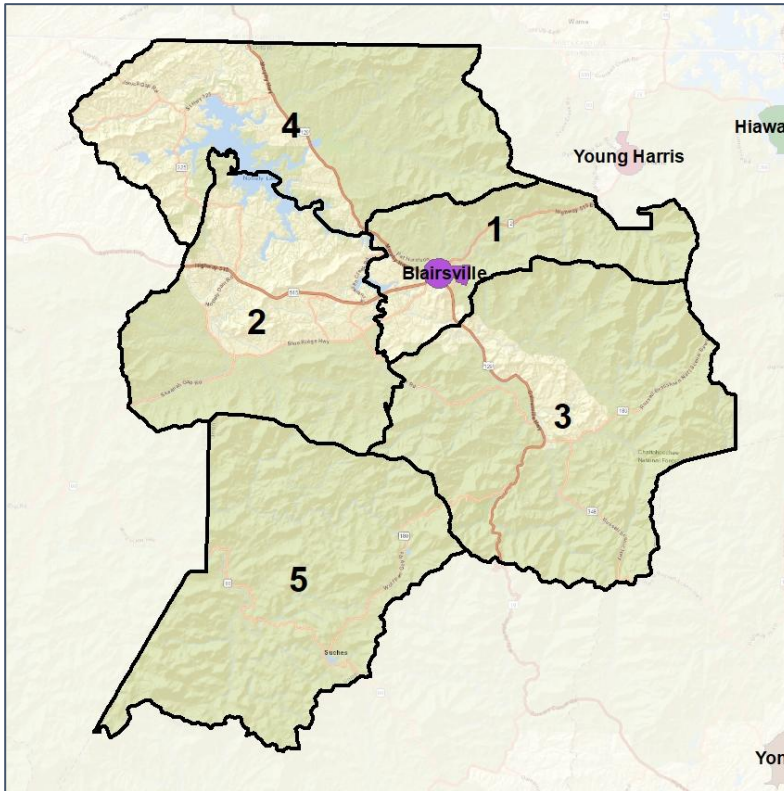


Union Co. Commission & School Board

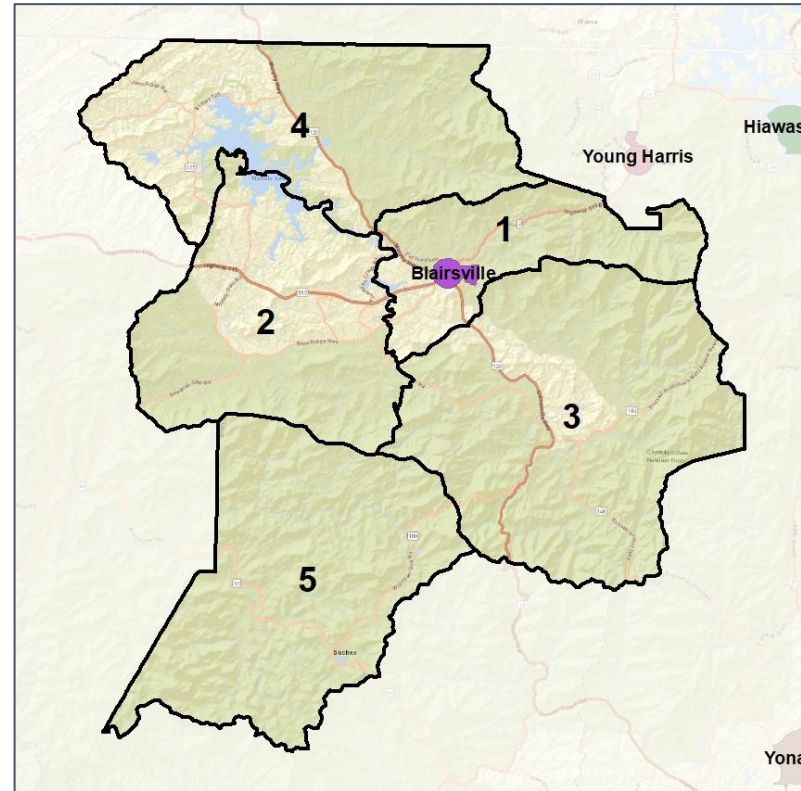
Cities and Places



2012 Map



2022 Map*



| | 1 | 2 | 3 | 4 | 5 | 1* | 2* | 3* | 4* | 5* | County |
|-------------------|-------|-------|-------|-------|------|-------|-------|-------|-------|-----|--------|
| Population | 4,568 | 7,879 | 4,247 | 7,183 | 755 | 4,568 | 7,879 | 4,247 | 7,183 | 755 | 24,632 |
| API | 0% | 0% | 1% | 0% | 1% | 0% | 0% | 1% | 0% | 1% | 0% |
| Black | 1% | 0% | 0% | 1% | 0% | 1% | 0% | 0% | 1% | 0% | 1% |
| Latino | 4% | 3% | 3% | 3% | 3% | 4% | 3% | 3% | 3% | 3% | 3% |
| Other | 4% | 4% | 4% | 3% | 5% | 4% | 4% | 4% | 3% | 5% | 4% |
| White | 90% | 93% | 92% | 93% | 92% | 90% | 93% | 92% | 93% | 92% | 92% |
| Population Gain | 331 | 1,256 | 472 | 1,298 | -81 | 0 | 0 | 0 | 0 | 0 | * |
| Population % Gain | 8% | 19% | 13% | 22% | -10% | 0% | 0% | 0% | 0% | 0% | * |
| Net POC Gain | 167 | 280 | 205 | 321 | 2 | 0 | 0 | 0 | 0 | 0 | * |
| Net POC % Gain | 56% | 90% | 160% | 149% | 3% | 0% | 0% | 0% | 0% | 0% | * |

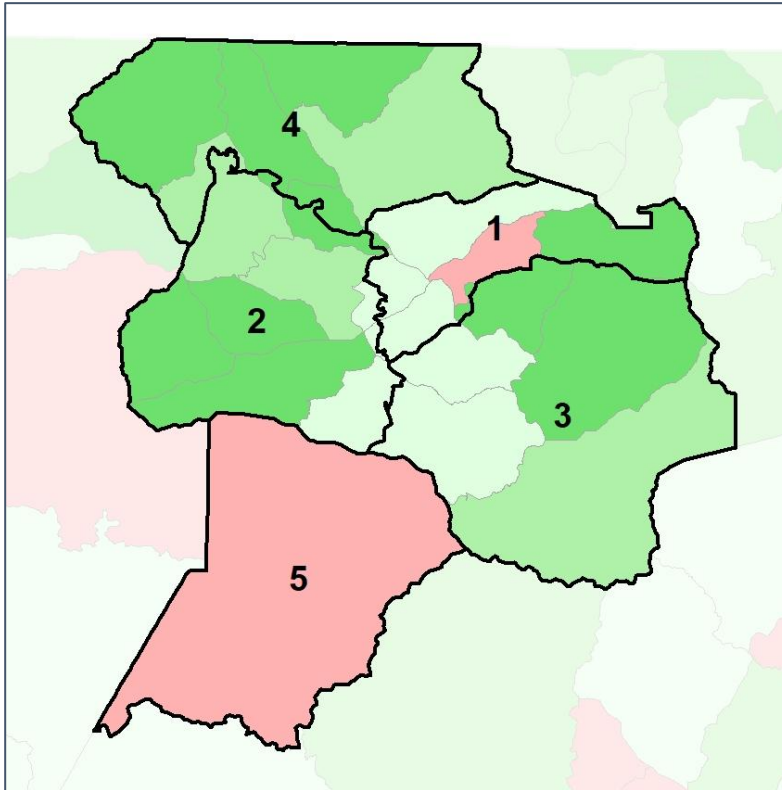


Union Co. Commission & School Board

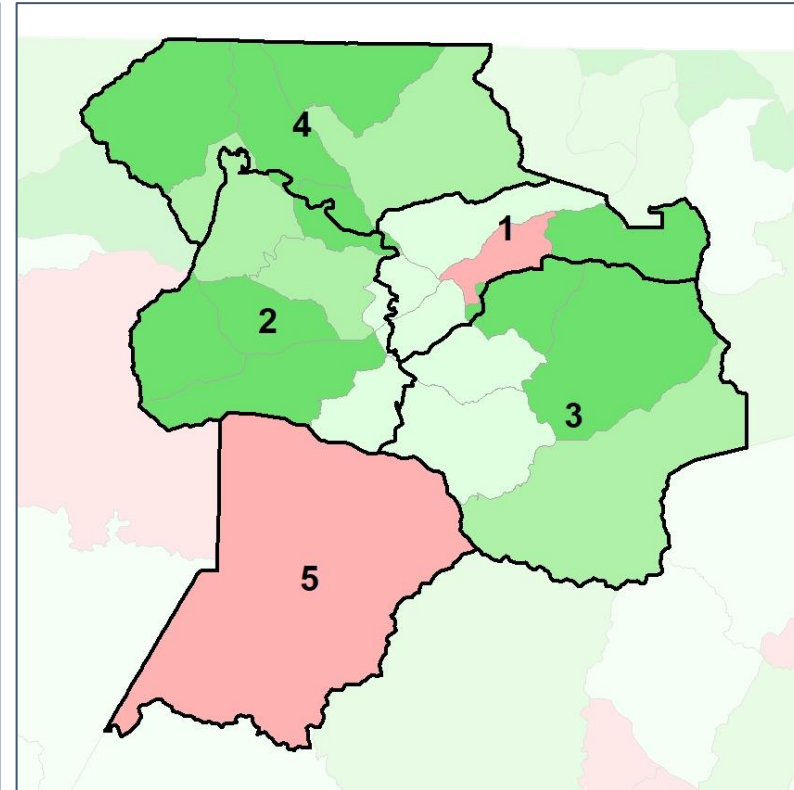
Net Gain in Population (2010 - 2020) by Census Block Group



2012 Map



2022 Map*



| | 1 | 2 | 3 | 4 | 5 | 1* | 2* | 3* | 4* | 5* | County |
|-------------------|-------|-------|-------|-------|------|-------|-------|-------|-------|-----|--------|
| Population | 4,568 | 7,879 | 4,247 | 7,183 | 755 | 4,568 | 7,879 | 4,247 | 7,183 | 755 | 24,632 |
| API | 0% | 0% | 1% | 0% | 1% | 0% | 0% | 1% | 0% | 1% | 0% |
| Black | 1% | 0% | 0% | 1% | 0% | 1% | 0% | 0% | 1% | 0% | 1% |
| Latino | 4% | 3% | 3% | 3% | 3% | 4% | 3% | 3% | 3% | 3% | 3% |
| Other | 4% | 4% | 4% | 3% | 5% | 4% | 4% | 4% | 3% | 5% | 4% |
| White | 90% | 93% | 92% | 93% | 92% | 90% | 93% | 92% | 93% | 92% | 92% |
| Population Gain | 331 | 1,256 | 472 | 1,298 | -81 | 0 | 0 | 0 | 0 | 0 | * |
| Population % Gain | 8% | 19% | 13% | 22% | -10% | 0% | 0% | 0% | 0% | 0% | * |
| Net POC Gain | 167 | 280 | 205 | 321 | 2 | 0 | 0 | 0 | 0 | 0 | * |
| Net POC % Gain | 56% | 90% | 160% | 149% | 3% | 0% | 0% | 0% | 0% | 0% | * |

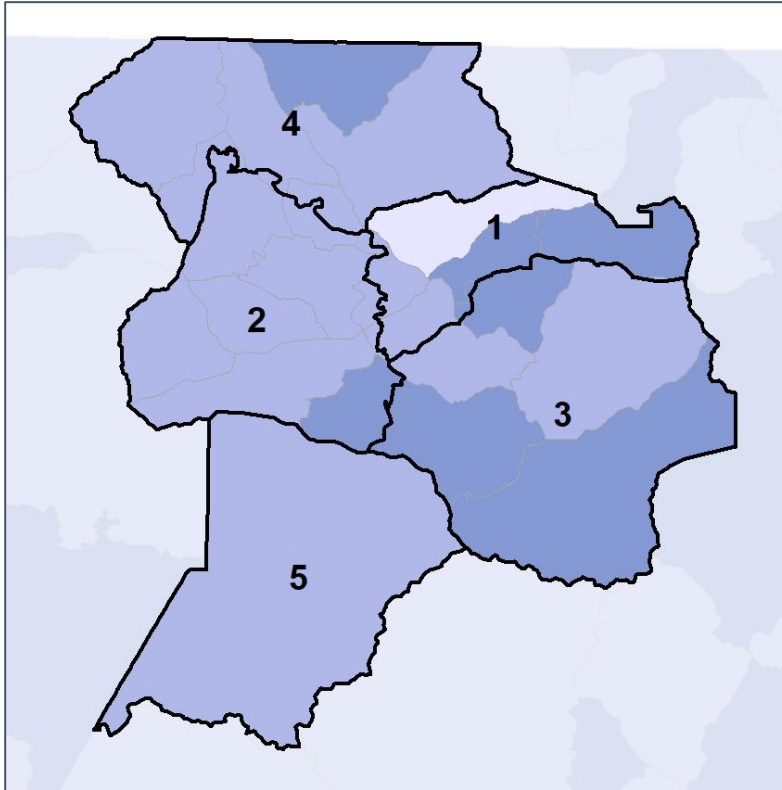


Union Co. Commission & School Board

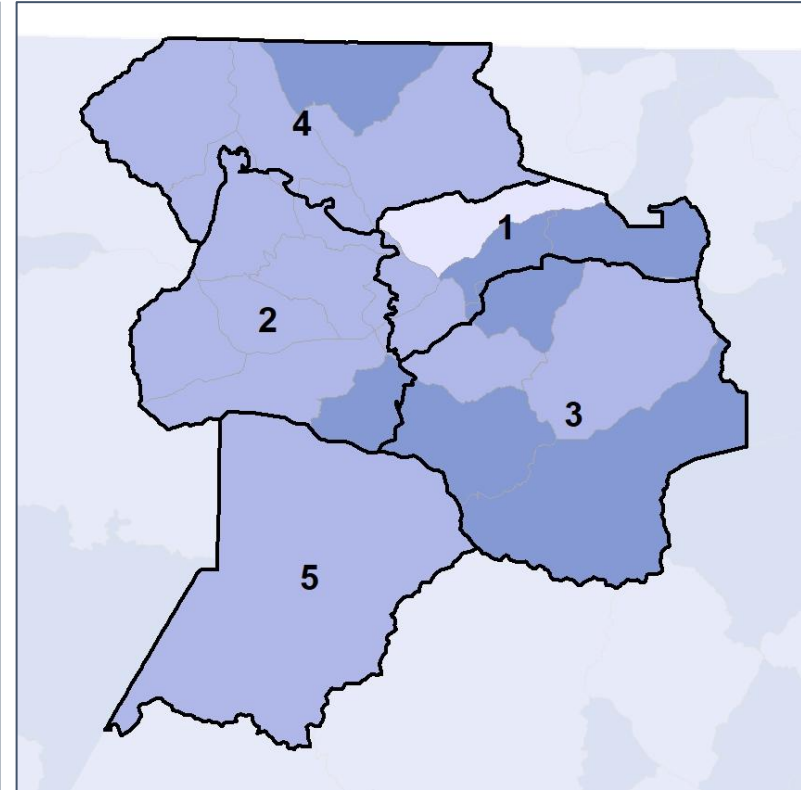
Net Gain in % POC (2020 - 2010) by Census Block Group



2012 Map



2022 Map*



| | 1 | 2 | 3 | 4 | 5 | 1* | 2* | 3* | 4* | 5* | County |
|-------------------|-------|-------|-------|-------|------|-------|-------|-------|-------|-----|--------|
| Population | 4,568 | 7,879 | 4,247 | 7,183 | 755 | 4,568 | 7,879 | 4,247 | 7,183 | 755 | 24,632 |
| API | 0% | 0% | 1% | 0% | 1% | 0% | 0% | 1% | 0% | 1% | 0% |
| Black | 1% | 0% | 0% | 1% | 0% | 1% | 0% | 0% | 1% | 0% | 1% |
| Latino | 4% | 3% | 3% | 3% | 3% | 4% | 3% | 3% | 3% | 3% | 3% |
| Other | 4% | 4% | 4% | 3% | 5% | 4% | 4% | 4% | 3% | 5% | 4% |
| White | 90% | 93% | 92% | 93% | 92% | 90% | 93% | 92% | 93% | 92% | 92% |
| Population Gain | 331 | 1,256 | 472 | 1,298 | -81 | 0 | 0 | 0 | 0 | 0 | * |
| Population % Gain | 8% | 19% | 13% | 22% | -10% | 0% | 0% | 0% | 0% | 0% | * |
| Net POC Gain | 167 | 280 | 205 | 321 | 2 | 0 | 0 | 0 | 0 | 0 | * |
| Net POC % Gain | 56% | 90% | 160% | 149% | 3% | 0% | 0% | 0% | 0% | 0% | * |

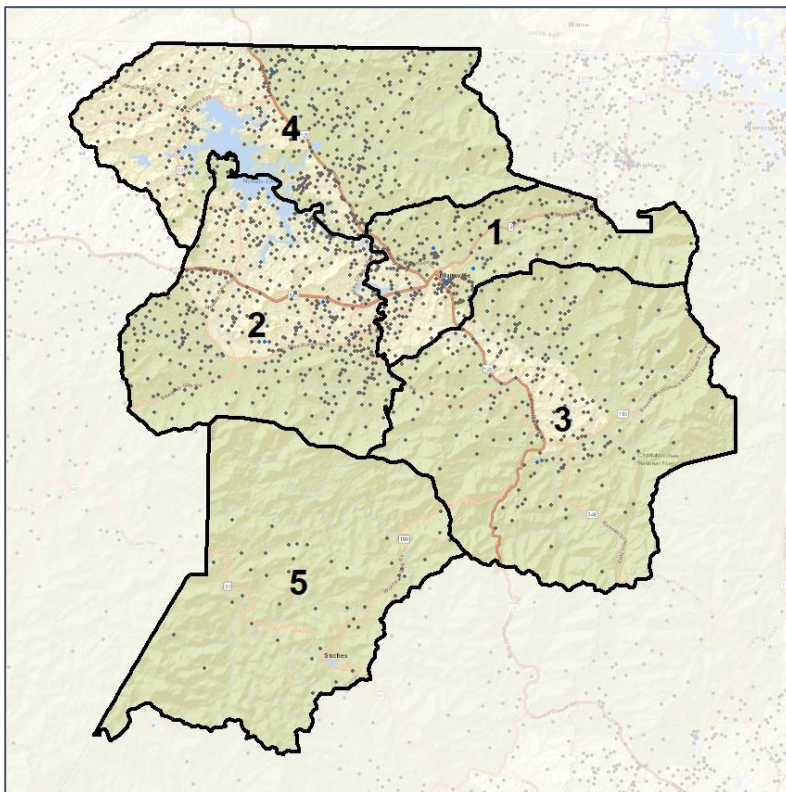


Union Co. Commission & School Board

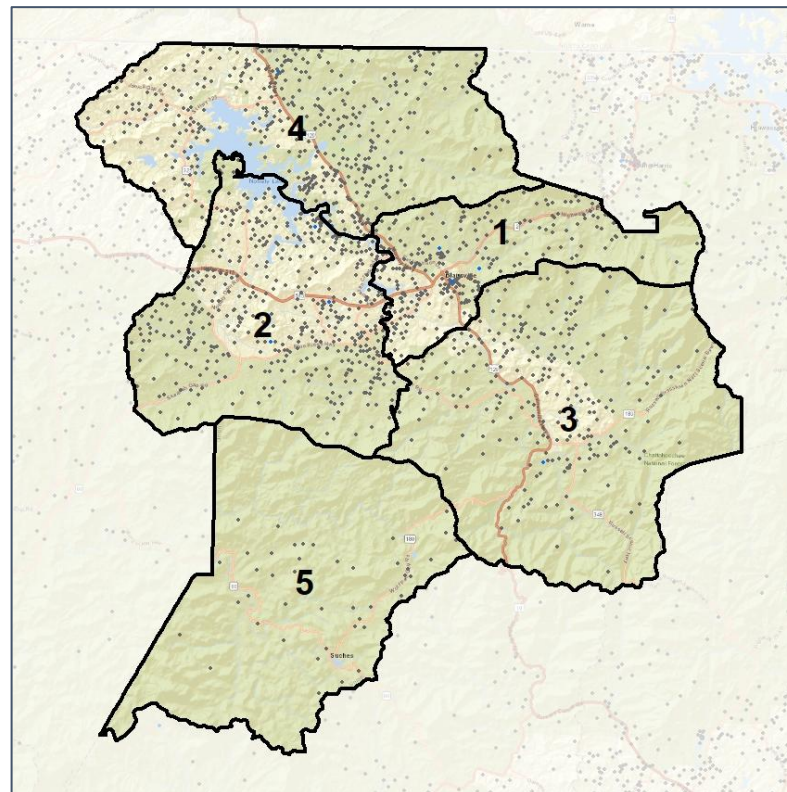
Population Density by Race



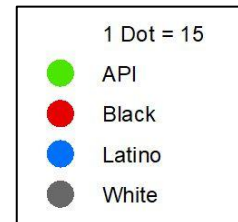
2012 Map



2022 Map*



| | 1 | 2 | 3 | 4 | 5 | 1* | 2* | 3* | 4* | 5* | County |
|------------|-------|-------|-------|-------|-----|-------|-------|-------|-------|-----|--------|
| Population | 4,568 | 7,879 | 4,247 | 7,183 | 755 | 4,568 | 7,879 | 4,247 | 7,183 | 755 | 24,632 |
| API | 19 | 22 | 25 | 30 | 4 | 19 | 22 | 25 | 30 | 4 | 100 |
| % API | 0% | 0% | 1% | 0% | 1% | 0% | 0% | 1% | 0% | 1% | 0% |
| Black | 57 | 21 | 10 | 36 | 2 | 57 | 21 | 10 | 36 | 2 | 126 |
| % Black | 1% | 0% | 0% | 1% | 0% | 1% | 0% | 0% | 1% | 0% | 1% |
| Latino | 199 | 249 | 124 | 222 | 22 | 199 | 249 | 124 | 222 | 22 | 816 |
| % Latino | 4% | 3% | 3% | 3% | 3% | 4% | 3% | 3% | 3% | 3% | 3% |
| Other | 189 | 298 | 174 | 248 | 35 | 189 | 298 | 174 | 248 | 35 | 944 |
| % Other | 4% | 4% | 4% | 3% | 5% | 4% | 4% | 4% | 3% | 5% | 4% |
| White | 4,104 | 7,289 | 3,914 | 6,647 | 692 | 4,104 | 7,289 | 3,914 | 6,647 | 692 | 22,646 |
| % White | 90% | 93% | 92% | 93% | 92% | 90% | 93% | 92% | 93% | 92% | 92% |



Source:
2020 Decennial Census
2020 ACS 5-Year Dataset

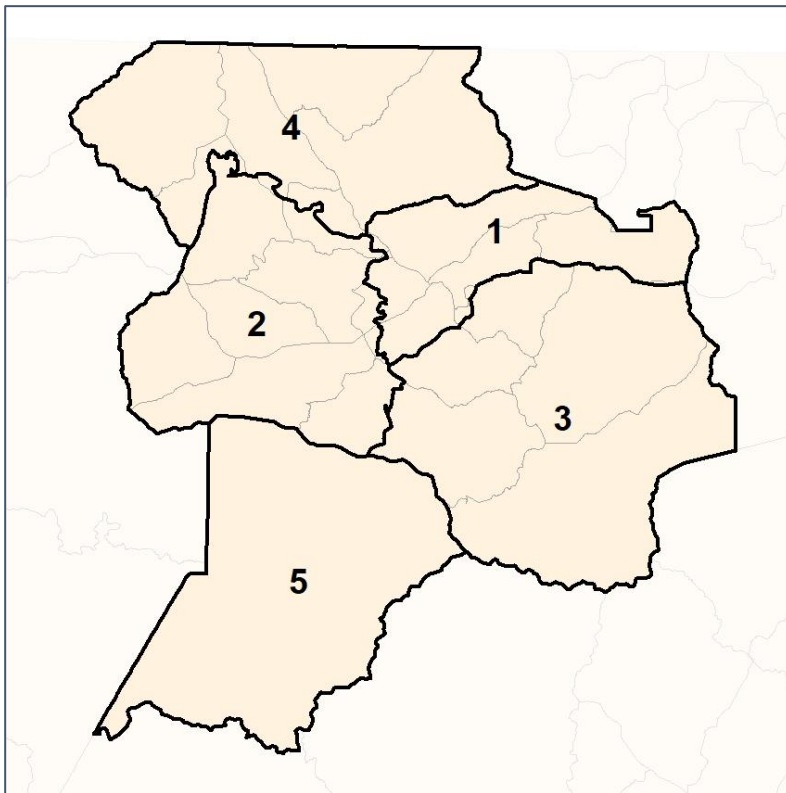


Union Co. Commission & School Board

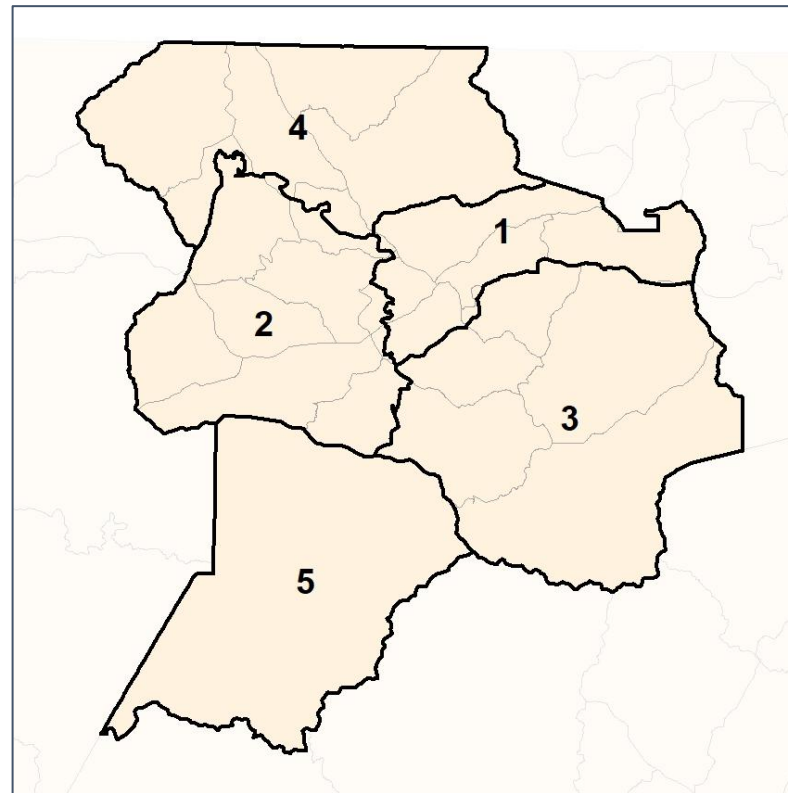
% People of Color by Census Block Group



2012 Map



2022 Map*



| | 1 | 2 | 3 | 4 | 5 | 1* | 2* | 3* | 4* | 5* | County |
|------------|-------|-------|-------|-------|-----|-------|-------|-------|-------|-----|--------|
| Population | 4,568 | 7,879 | 4,247 | 7,183 | 755 | 4,568 | 7,879 | 4,247 | 7,183 | 755 | 24,632 |
| API | 19 | 22 | 25 | 30 | 4 | 19 | 22 | 25 | 30 | 4 | 100 |
| % API | 0% | 0% | 1% | 0% | 1% | 0% | 0% | 1% | 0% | 1% | 0% |
| Black | 57 | 21 | 10 | 36 | 2 | 57 | 21 | 10 | 36 | 2 | 126 |
| % Black | 1% | 0% | 0% | 1% | 0% | 1% | 0% | 0% | 1% | 0% | 1% |
| Latino | 199 | 249 | 124 | 222 | 22 | 199 | 249 | 124 | 222 | 22 | 816 |
| % Latino | 4% | 3% | 3% | 3% | 3% | 4% | 3% | 3% | 3% | 3% | 3% |
| Other | 189 | 298 | 174 | 248 | 35 | 189 | 298 | 174 | 248 | 35 | 944 |
| % Other | 4% | 4% | 4% | 3% | 5% | 4% | 4% | 4% | 3% | 5% | 4% |
| White | 4,104 | 7,289 | 3,914 | 6,647 | 692 | 4,104 | 7,289 | 3,914 | 6,647 | 692 | 22,646 |
| % White | 90% | 93% | 92% | 93% | 92% | 90% | 93% | 92% | 93% | 92% | 92% |



Source:
2020 Decennial Census
2020 ACS 5-Year Dataset

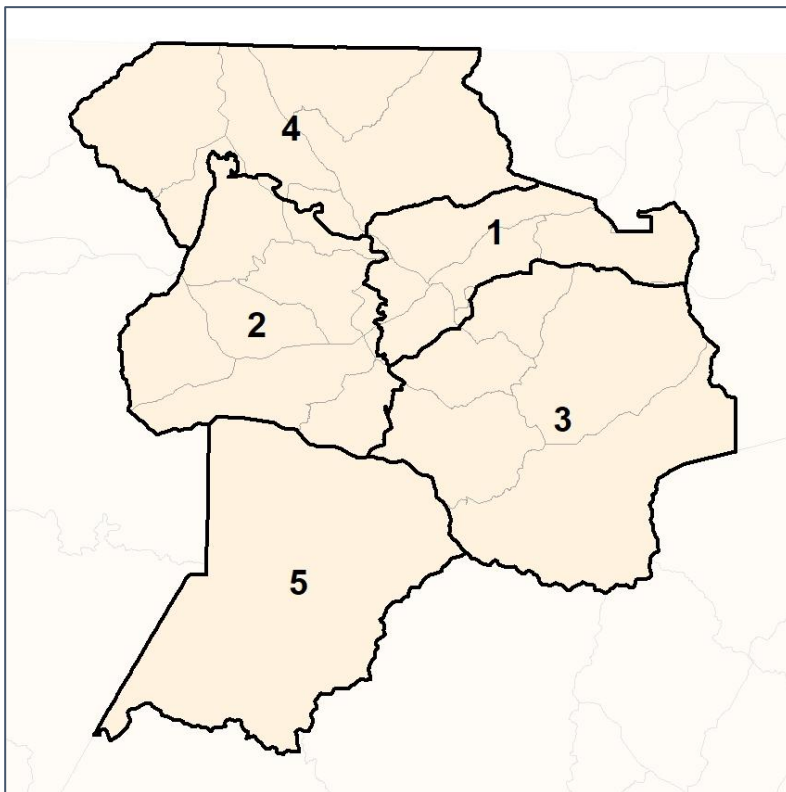


Union Co. Commission & School Board

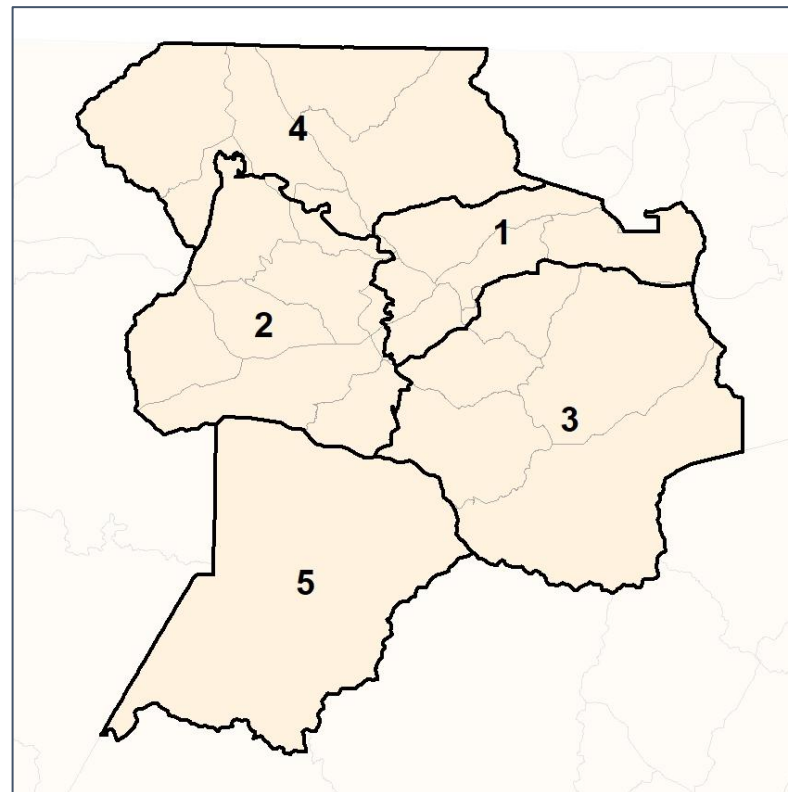
% API by Census Block Group



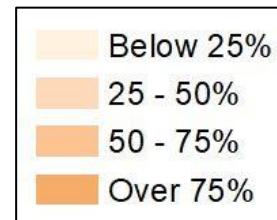
2012 Map



2022 Map*



| | 1 | 2 | 3 | 4 | 5 | 1* | 2* | 3* | 4* | 5* | County |
|------------|-------|-------|-------|-------|-----|-------|-------|-------|-------|-----|--------|
| Population | 4,568 | 7,879 | 4,247 | 7,183 | 755 | 4,568 | 7,879 | 4,247 | 7,183 | 755 | 24,632 |
| API | 19 | 22 | 25 | 30 | 4 | 19 | 22 | 25 | 30 | 4 | 100 |
| % API | 0% | 0% | 1% | 0% | 1% | 0% | 0% | 1% | 0% | 1% | 0% |
| Black | 57 | 21 | 10 | 36 | 2 | 57 | 21 | 10 | 36 | 2 | 126 |
| % Black | 1% | 0% | 0% | 1% | 0% | 1% | 0% | 0% | 1% | 0% | 1% |
| Latino | 199 | 249 | 124 | 222 | 22 | 199 | 249 | 124 | 222 | 22 | 816 |
| % Latino | 4% | 3% | 3% | 3% | 3% | 4% | 3% | 3% | 3% | 3% | 3% |
| Other | 189 | 298 | 174 | 248 | 35 | 189 | 298 | 174 | 248 | 35 | 944 |
| % Other | 4% | 4% | 4% | 3% | 5% | 4% | 4% | 4% | 3% | 5% | 4% |
| White | 4,104 | 7,289 | 3,914 | 6,647 | 692 | 4,104 | 7,289 | 3,914 | 6,647 | 692 | 22,646 |
| % White | 90% | 93% | 92% | 93% | 92% | 90% | 93% | 92% | 93% | 92% | 92% |

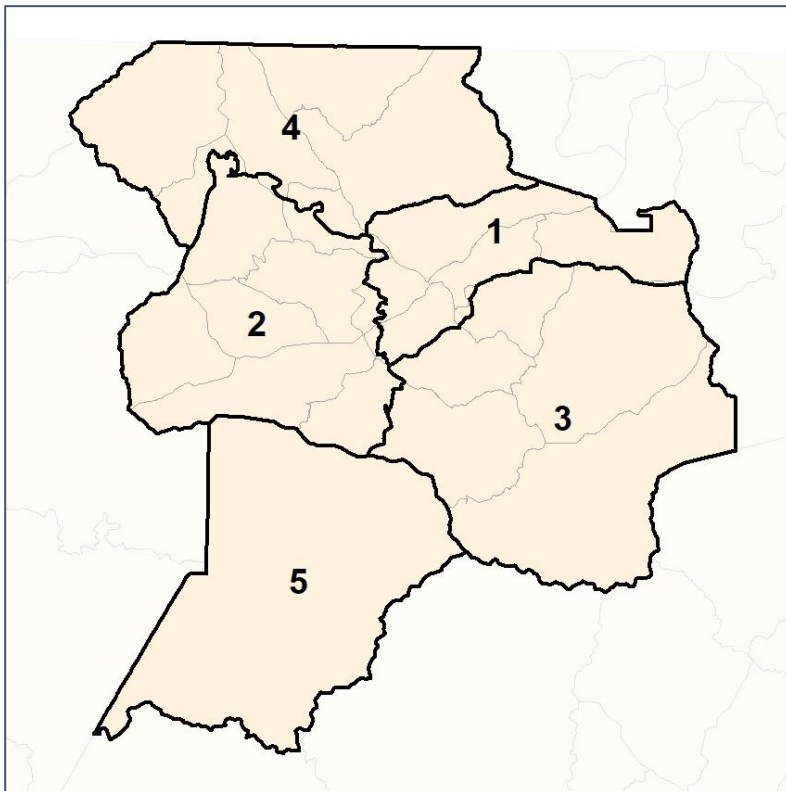


Union Co. Commission & School Board

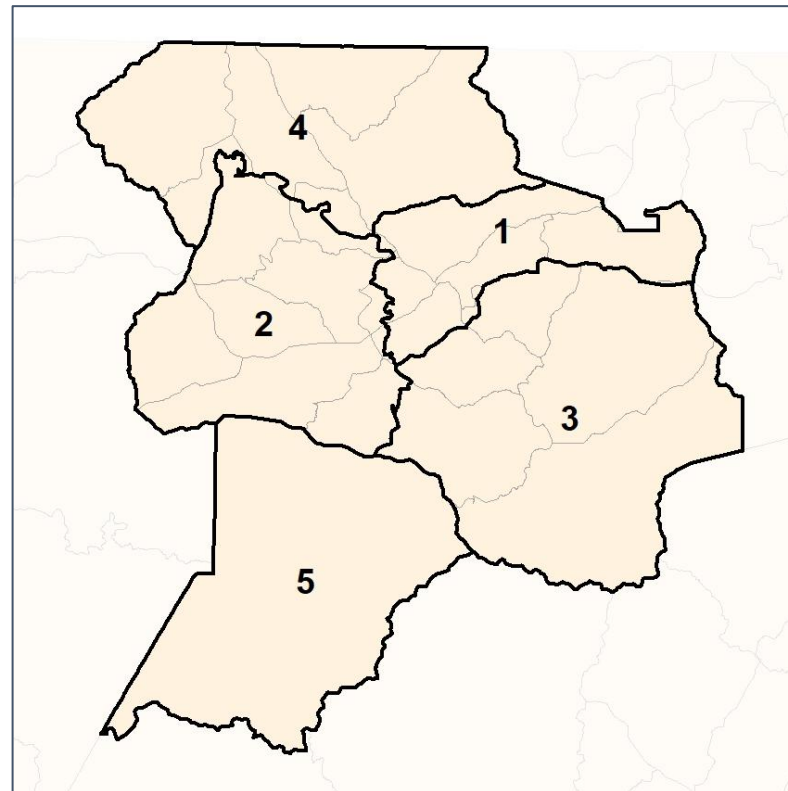
% Black by Census Block Group



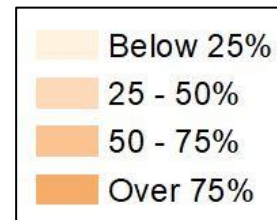
2012 Map



2022 Map*



| | 1 | 2 | 3 | 4 | 5 | 1* | 2* | 3* | 4* | 5* | County |
|------------|-------|-------|-------|-------|-----|-------|-------|-------|-------|-----|--------|
| Population | 4,568 | 7,879 | 4,247 | 7,183 | 755 | 4,568 | 7,879 | 4,247 | 7,183 | 755 | 24,632 |
| API | 19 | 22 | 25 | 30 | 4 | 19 | 22 | 25 | 30 | 4 | 100 |
| % API | 0% | 0% | 1% | 0% | 1% | 0% | 0% | 1% | 0% | 1% | 0% |
| Black | 57 | 21 | 10 | 36 | 2 | 57 | 21 | 10 | 36 | 2 | 126 |
| % Black | 1% | 0% | 0% | 1% | 0% | 1% | 0% | 0% | 1% | 0% | 1% |
| Latino | 199 | 249 | 124 | 222 | 22 | 199 | 249 | 124 | 222 | 22 | 816 |
| % Latino | 4% | 3% | 3% | 3% | 3% | 4% | 3% | 3% | 3% | 3% | 3% |
| Other | 189 | 298 | 174 | 248 | 35 | 189 | 298 | 174 | 248 | 35 | 944 |
| % Other | 4% | 4% | 4% | 3% | 5% | 4% | 4% | 4% | 3% | 5% | 4% |
| White | 4,104 | 7,289 | 3,914 | 6,647 | 692 | 4,104 | 7,289 | 3,914 | 6,647 | 692 | 22,646 |
| % White | 90% | 93% | 92% | 93% | 92% | 90% | 93% | 92% | 93% | 92% | 92% |

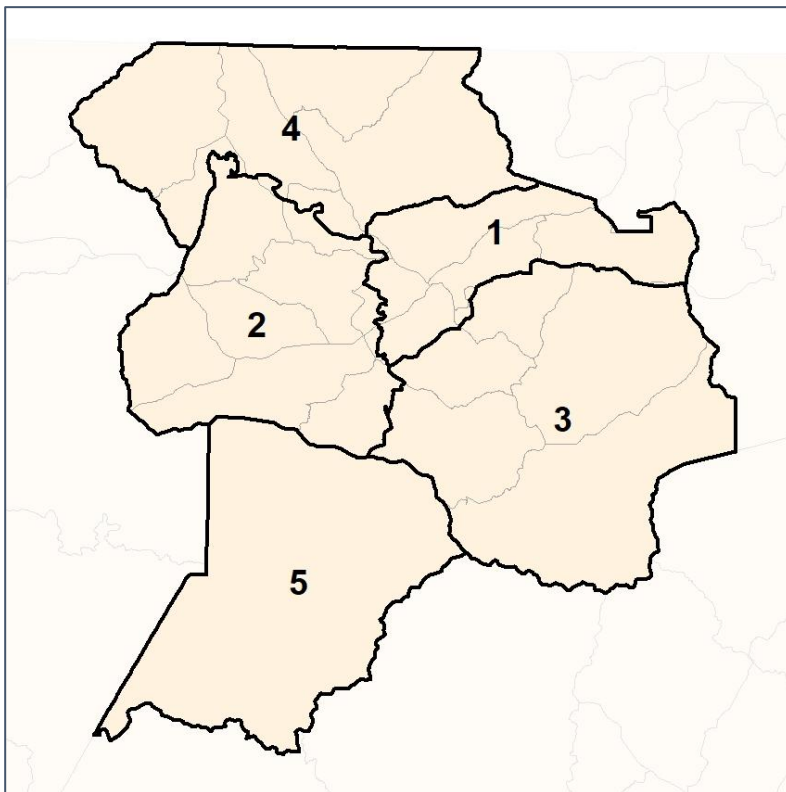


Union Co. Commission & School Board

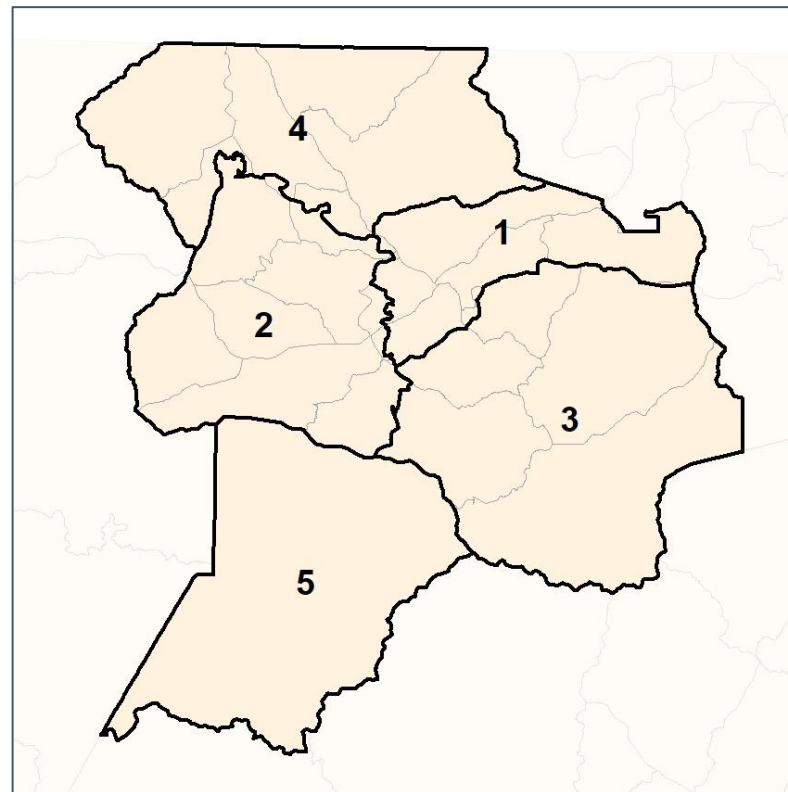
% Latino by Census Block Group



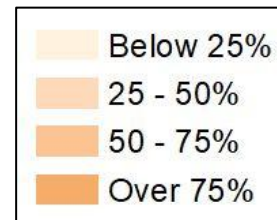
2012 Map



2022 Map*



| | 1 | 2 | 3 | 4 | 5 | 1* | 2* | 3* | 4* | 5* | County |
|------------|-------|-------|-------|-------|-----|-------|-------|-------|-------|-----|--------|
| Population | 4,568 | 7,879 | 4,247 | 7,183 | 755 | 4,568 | 7,879 | 4,247 | 7,183 | 755 | 24,632 |
| API | 19 | 22 | 25 | 30 | 4 | 19 | 22 | 25 | 30 | 4 | 100 |
| % API | 0% | 0% | 1% | 0% | 1% | 0% | 0% | 1% | 0% | 1% | 0% |
| Black | 57 | 21 | 10 | 36 | 2 | 57 | 21 | 10 | 36 | 2 | 126 |
| % Black | 1% | 0% | 0% | 1% | 0% | 1% | 0% | 0% | 1% | 0% | 1% |
| Latino | 199 | 249 | 124 | 222 | 22 | 199 | 249 | 124 | 222 | 22 | 816 |
| % Latino | 4% | 3% | 3% | 3% | 3% | 4% | 3% | 3% | 3% | 3% | 3% |
| Other | 189 | 298 | 174 | 248 | 35 | 189 | 298 | 174 | 248 | 35 | 944 |
| % Other | 4% | 4% | 4% | 3% | 5% | 4% | 4% | 4% | 3% | 5% | 4% |
| White | 4,104 | 7,289 | 3,914 | 6,647 | 692 | 4,104 | 7,289 | 3,914 | 6,647 | 692 | 22,646 |
| % White | 90% | 93% | 92% | 93% | 92% | 90% | 93% | 92% | 93% | 92% | 92% |

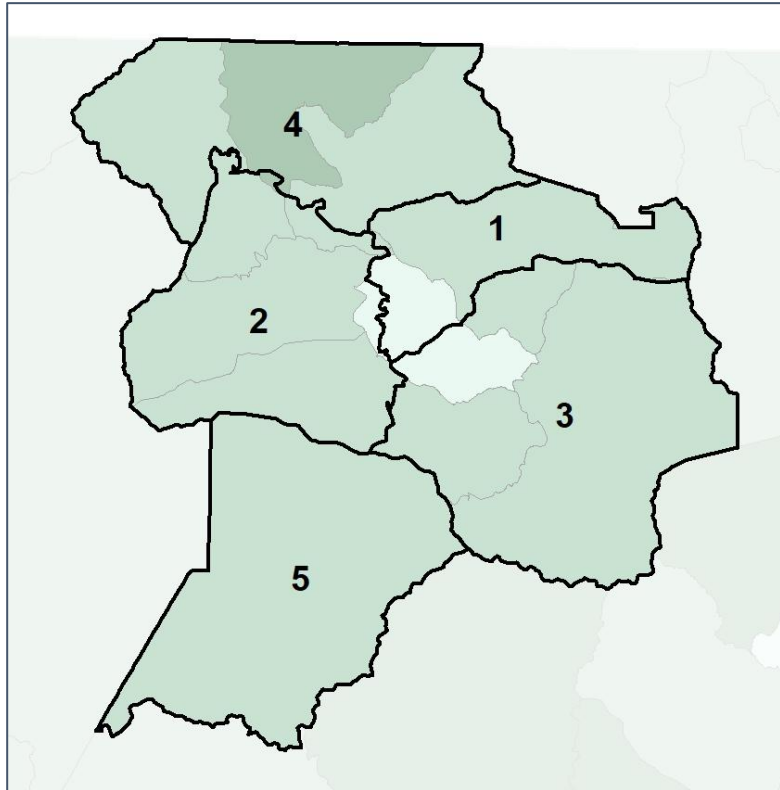


Union Co. Commission & School Board

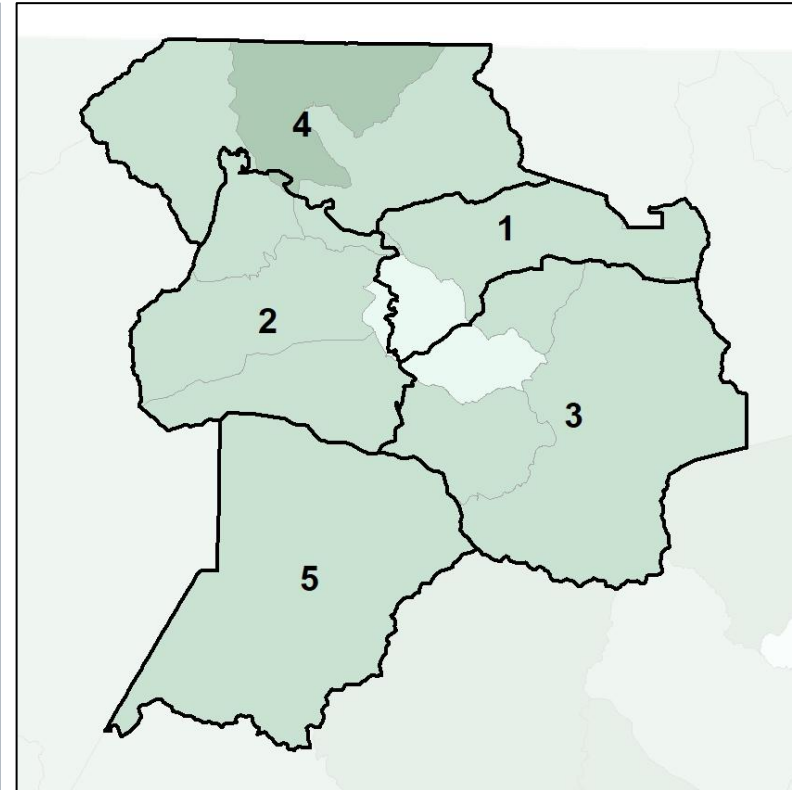
Median Household Income by Census Tract



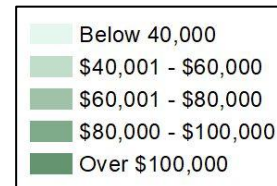
2012 Map



2022 Map*



| | 1 | 2 | 3 | 4 | 5 | 1* | 2* | 3* | 4* | 5* | County |
|---------------|----------|----------|----------|----------|----------|----------|----------|----------|----------|----------|----------|
| Population | 4,568 | 7,879 | 4,247 | 7,183 | 755 | 4,568 | 7,879 | 4,247 | 7,183 | 755 | 24,632 |
| % API | 0% | 0% | 1% | 0% | 1% | 0% | 0% | 1% | 0% | 1% | 0% |
| % Black | 1% | 0% | 0% | 1% | 0% | 1% | 0% | 0% | 1% | 0% | 1% |
| % Latino | 4% | 3% | 3% | 3% | 3% | 4% | 3% | 3% | 3% | 3% | 3% |
| % Other | 4% | 4% | 4% | 3% | 5% | 4% | 4% | 4% | 3% | 5% | 4% |
| % White | 90% | 93% | 92% | 93% | 92% | 90% | 93% | 92% | 93% | 92% | 92% |
| Median Income | \$33,000 | \$55,000 | \$59,000 | \$50,000 | \$32,000 | \$33,000 | \$55,000 | \$59,000 | \$50,000 | \$32,000 | \$50,000 |
| % Renter | 57% | 25% | 10% | 14% | 22% | 57% | 25% | 10% | 14% | 22% | 22% |
| % Youth | 15% | 17% | 13% | 12% | 13% | 15% | 17% | 13% | 12% | 13% | 14% |

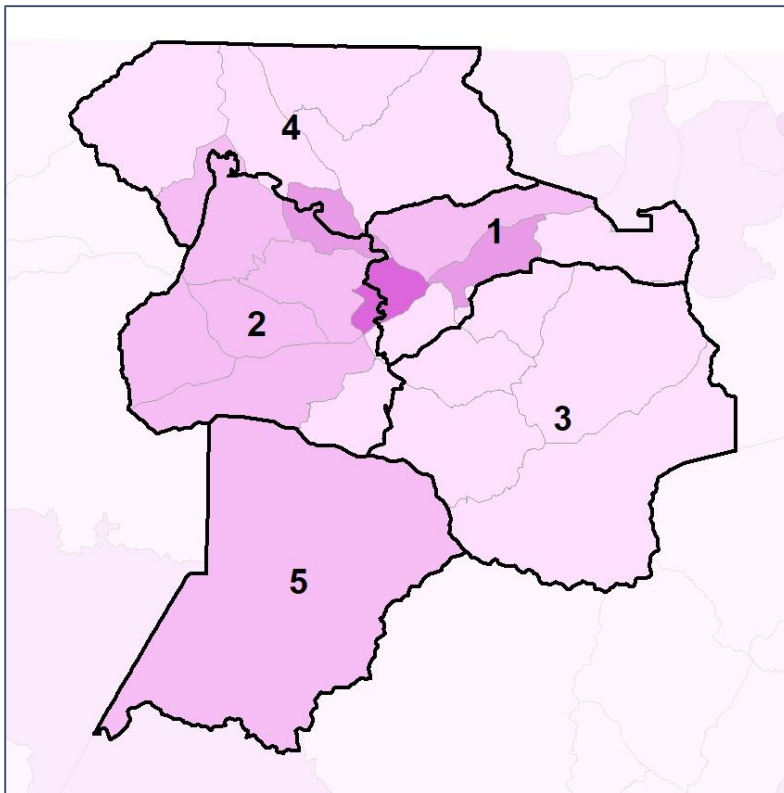


Union Co. Commission & School Board

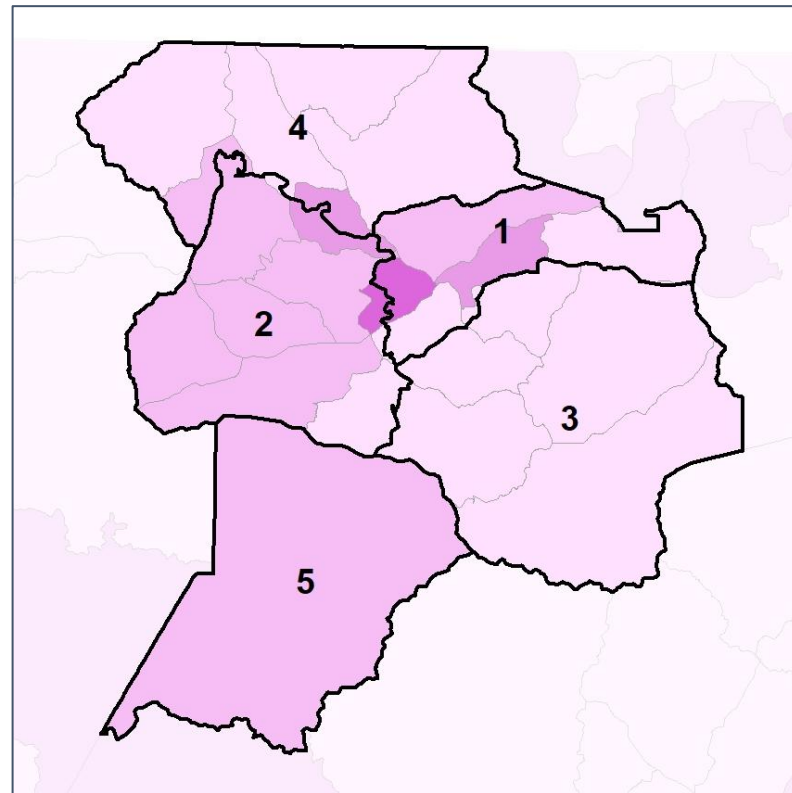
% Renter by Census Block Group



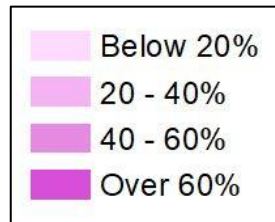
2012 Map



2022 Map*



| | 1 | 2 | 3 | 4 | 5 | 1* | 2* | 3* | 4* | 5* | County |
|---------------|----------|----------|----------|----------|----------|----------|----------|----------|----------|----------|----------|
| Population | 4,568 | 7,879 | 4,247 | 7,183 | 755 | 4,568 | 7,879 | 4,247 | 7,183 | 755 | 24,632 |
| % API | 0% | 0% | 1% | 0% | 1% | 0% | 0% | 1% | 0% | 1% | 0% |
| % Black | 1% | 0% | 0% | 1% | 0% | 1% | 0% | 0% | 1% | 0% | 1% |
| % Latino | 4% | 3% | 3% | 3% | 3% | 4% | 3% | 3% | 3% | 3% | 3% |
| % Other | 4% | 4% | 4% | 3% | 5% | 4% | 4% | 4% | 3% | 5% | 4% |
| % White | 90% | 93% | 92% | 93% | 92% | 90% | 93% | 92% | 93% | 92% | 92% |
| Median Income | \$33,000 | \$55,000 | \$59,000 | \$50,000 | \$32,000 | \$33,000 | \$55,000 | \$59,000 | \$50,000 | \$32,000 | \$50,000 |
| % Renter | 57% | 25% | 10% | 14% | 22% | 57% | 25% | 10% | 14% | 22% | 22% |
| % Youth | 15% | 17% | 13% | 12% | 13% | 15% | 17% | 13% | 12% | 13% | 14% |

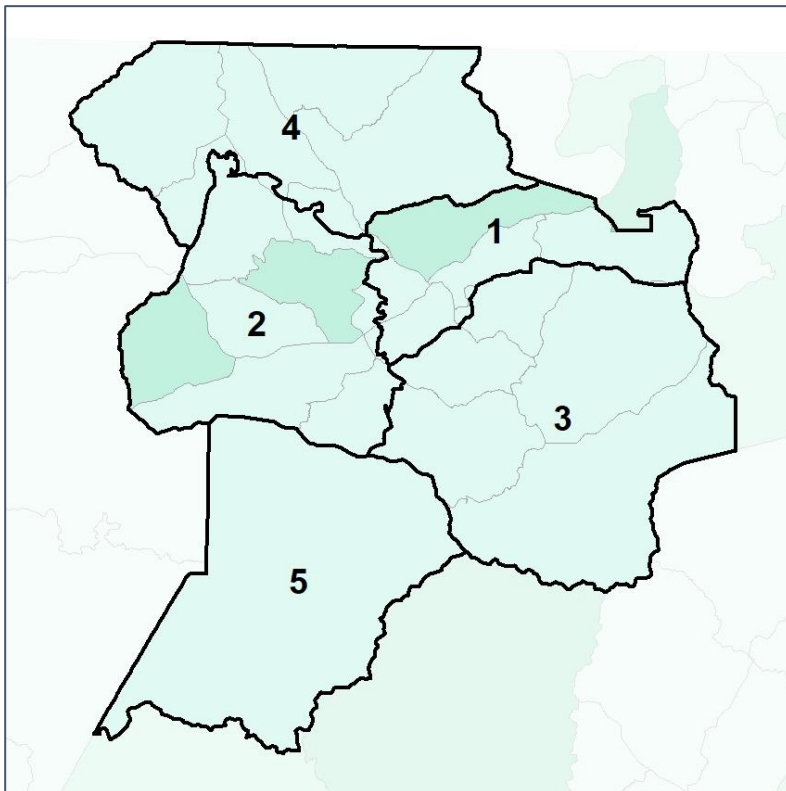


Union Co. Commission & School Board

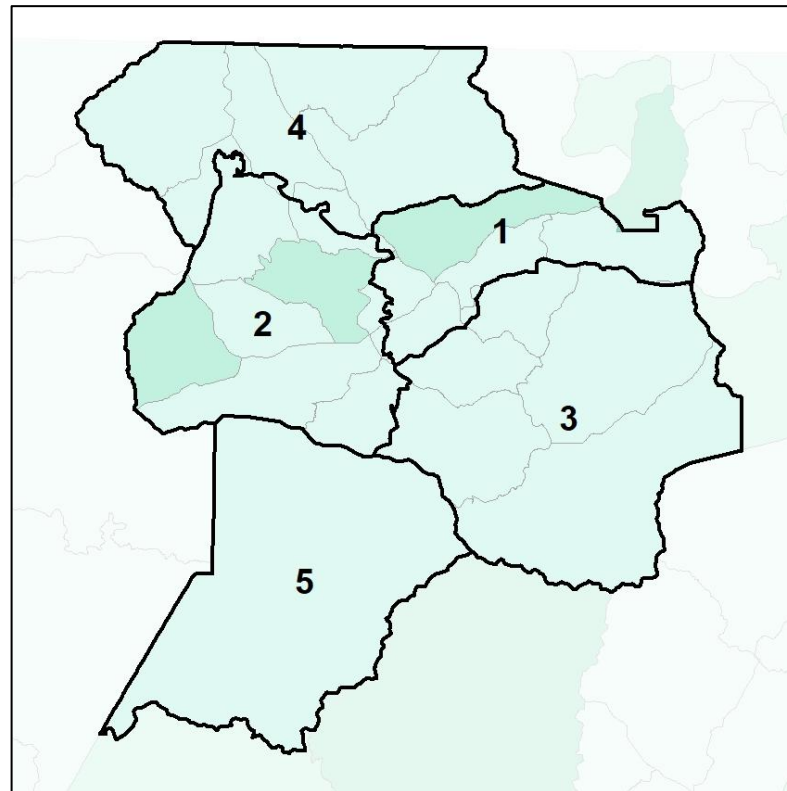
% Youth (18-34) by Census Block Group



2012 Map



2022 Map*



| | 1 | 2 | 3 | 4 | 5 | 1* | 2* | 3* | 4* | 5* | County |
|---------------|----------|----------|----------|----------|----------|----------|----------|----------|----------|----------|----------|
| Population | 4,568 | 7,879 | 4,247 | 7,183 | 755 | 4,568 | 7,879 | 4,247 | 7,183 | 755 | 24,632 |
| % API | 0% | 0% | 1% | 0% | 1% | 0% | 0% | 1% | 0% | 1% | 0% |
| % Black | 1% | 0% | 0% | 1% | 0% | 1% | 0% | 0% | 1% | 0% | 1% |
| % Latino | 4% | 3% | 3% | 3% | 3% | 4% | 3% | 3% | 3% | 3% | 3% |
| % Other | 4% | 4% | 4% | 3% | 5% | 4% | 4% | 4% | 3% | 5% | 4% |
| % White | 90% | 93% | 92% | 93% | 92% | 90% | 93% | 92% | 93% | 92% | 92% |
| Median Income | \$33,000 | \$55,000 | \$59,000 | \$50,000 | \$32,000 | \$33,000 | \$55,000 | \$59,000 | \$50,000 | \$32,000 | \$50,000 |
| % Renter | 57% | 25% | 10% | 14% | 22% | 57% | 25% | 10% | 14% | 22% | 22% |
| % Youth | 15% | 17% | 13% | 12% | 13% | 15% | 17% | 13% | 12% | 13% | 14% |

