



Demographic Overview

Racial Breakdown in Troup County

Troup County	2010	2020	% Change
Total Population	67,044	69,426	4%
AAPI	1,075	1,644	53%
Black	22,319	24,157	8%
Latino	2,170	2,956	36%
Other/Mixed Race	1,072	2,570	140%
POC	26,636	31,327	18%
White	40,408	38,099	-6%

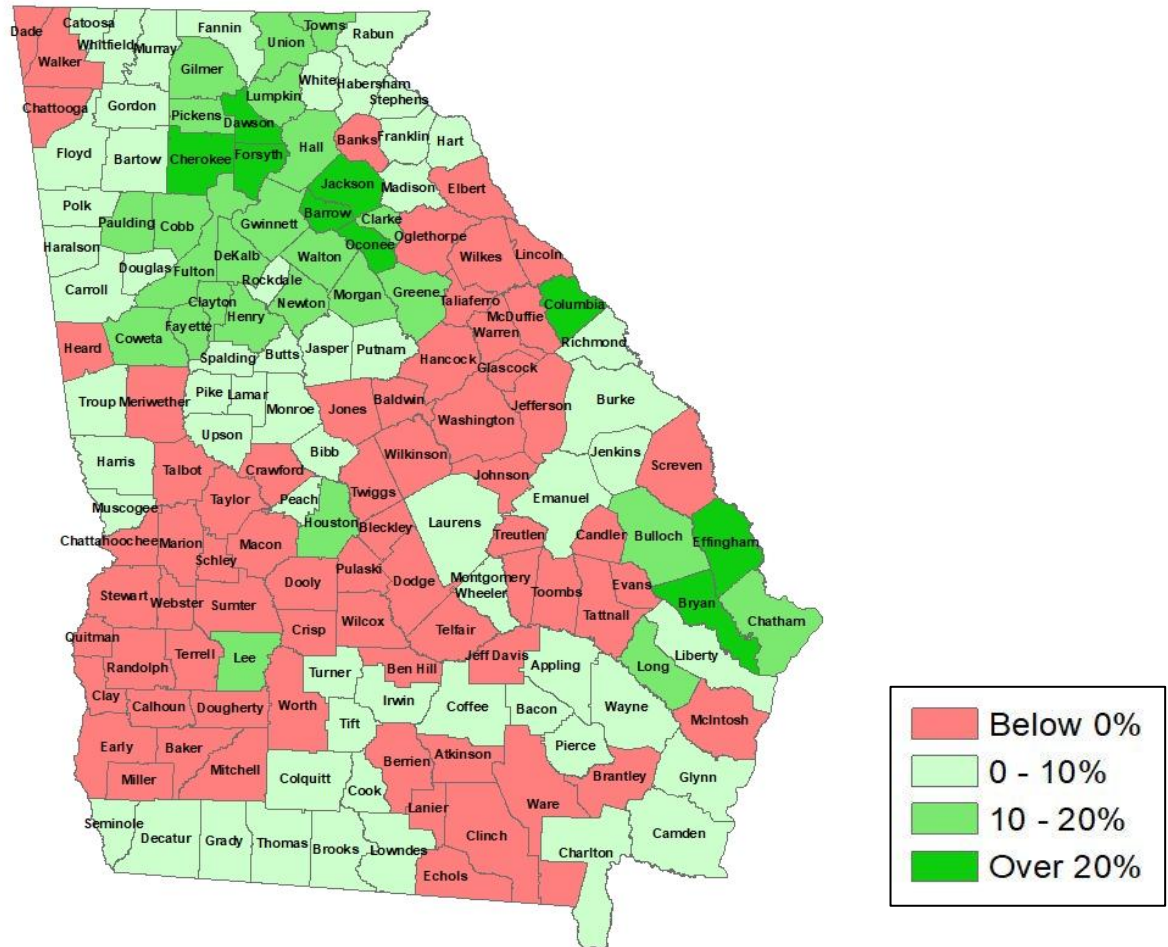
*Note: The use of "Other" in these statistics combines those who identify as Native American, Mixed Race, and "Other" race





Population Gain

Change in Population in Georgia by County



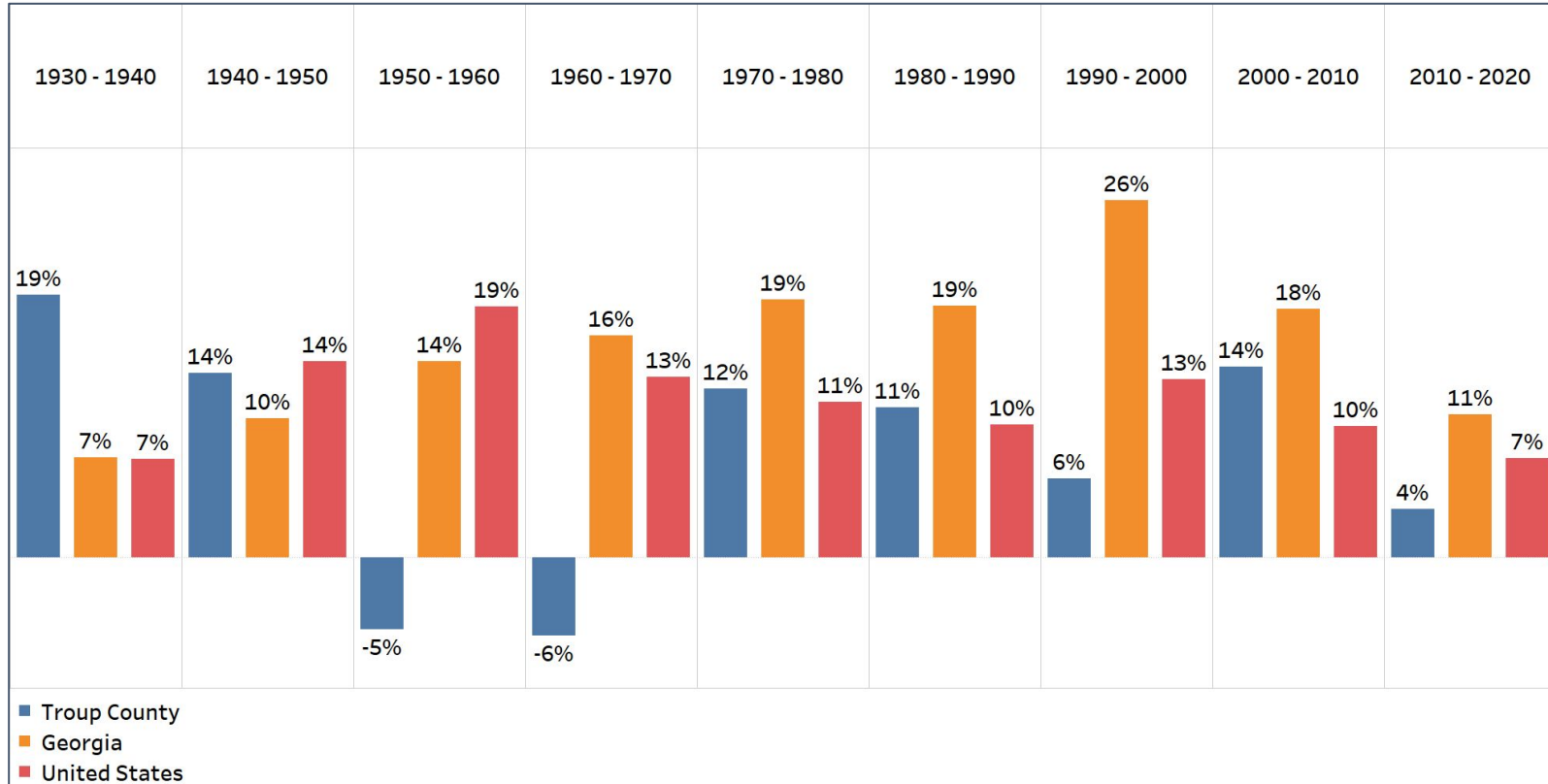
- Georgia is experiencing rapid population growth in the Atlanta, Augusta, and Savannah regions of the state





Population Gain

Change in Population by Decade

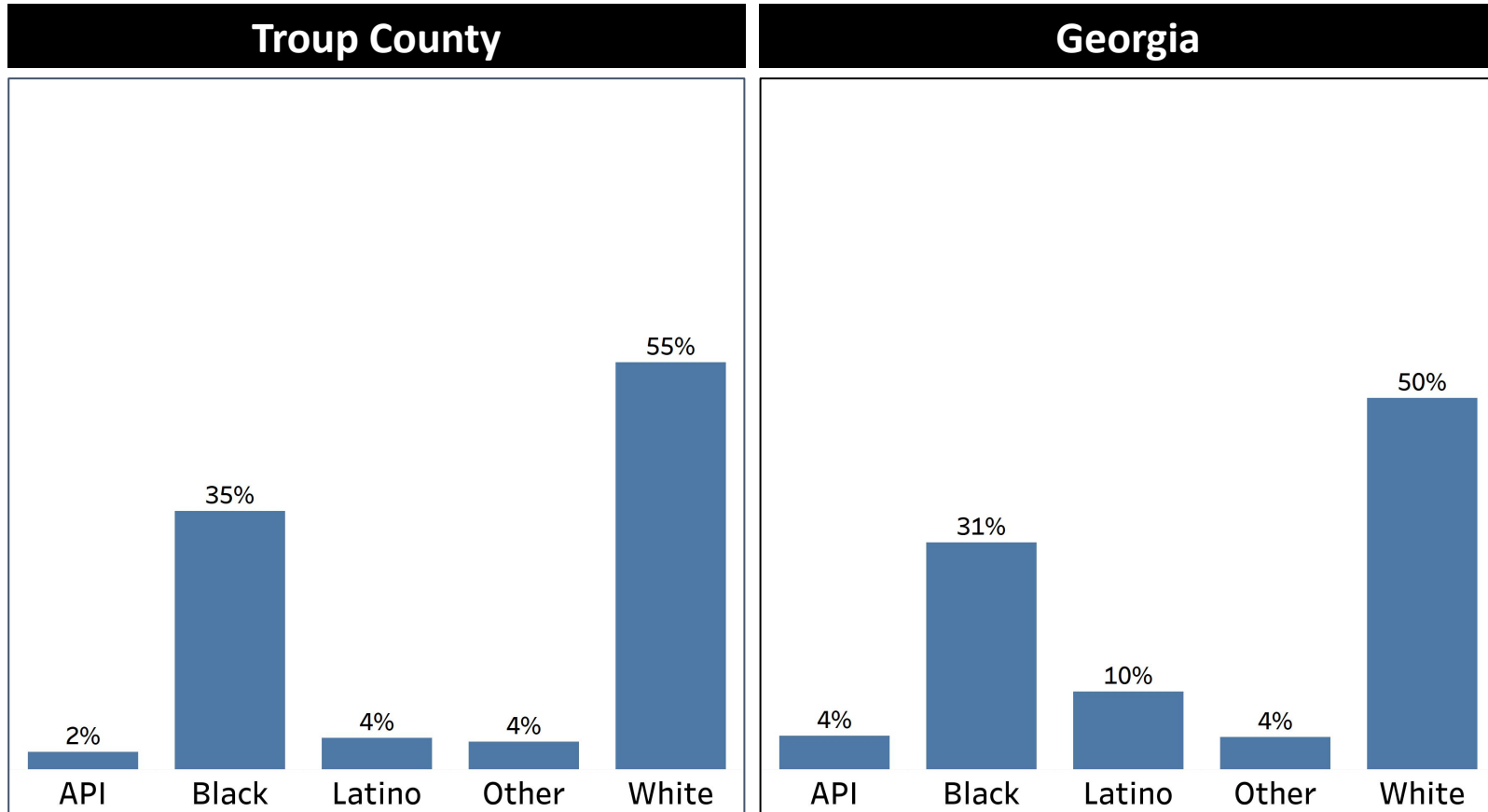


- Since 1930, Troup County has experienced an increased in population expect between 1950-1970 when it experienced a population decline
- Despite Troup county population growth, since 1930 it has been below the statewide average



Demographics

Comparison between Troup County and Georgia

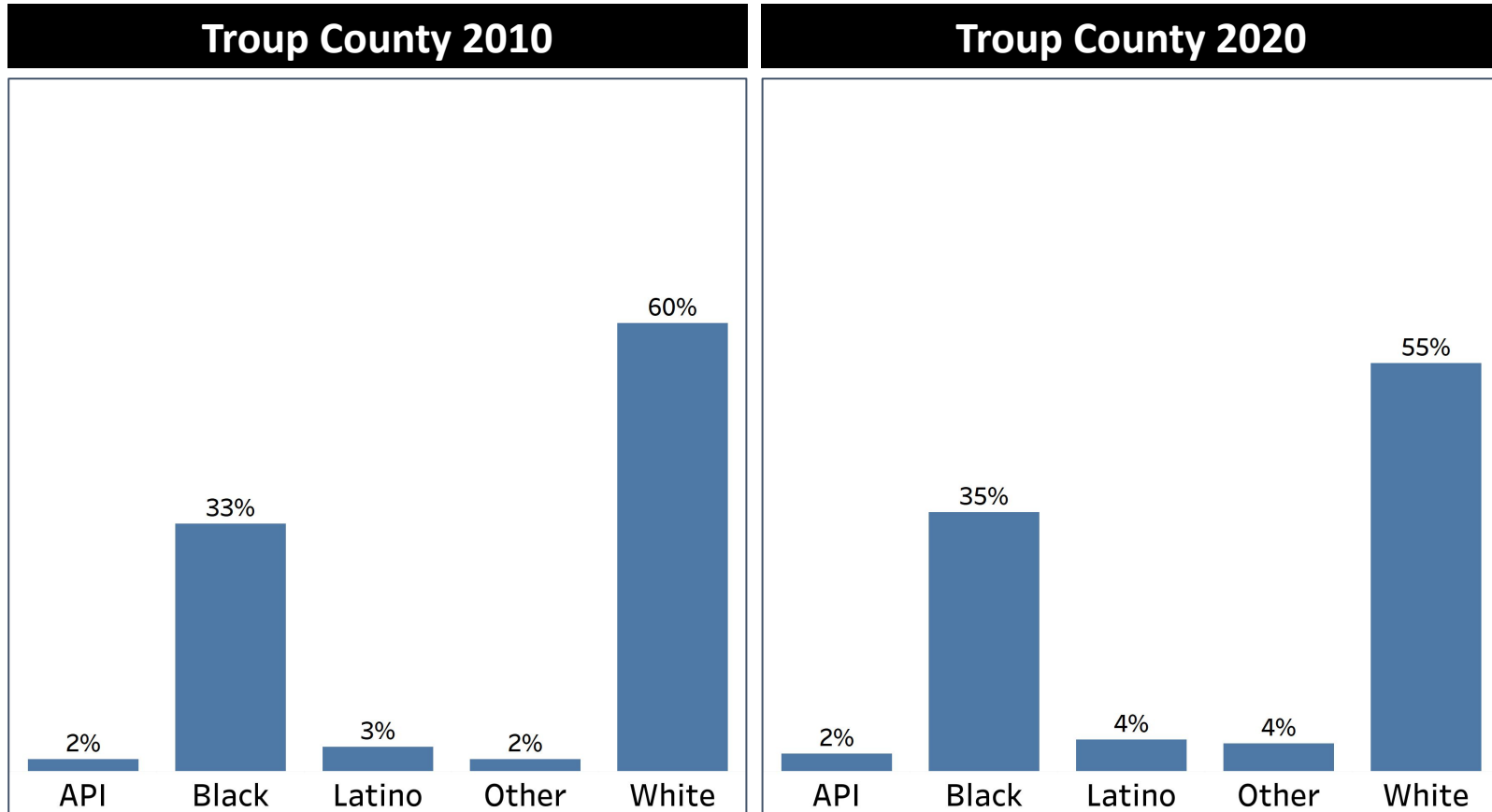


- Troup County population is majority White with the Latinos, API, and “other” communities making up less than 10% of the County’s population
- Both the Black and White population in Troup County are above the states overall average



Demographics

2010 vs 2020 Demographics in Troup County



- Troup County’s White population experienced a decline of 5% while the Black, API, and “other” population grew

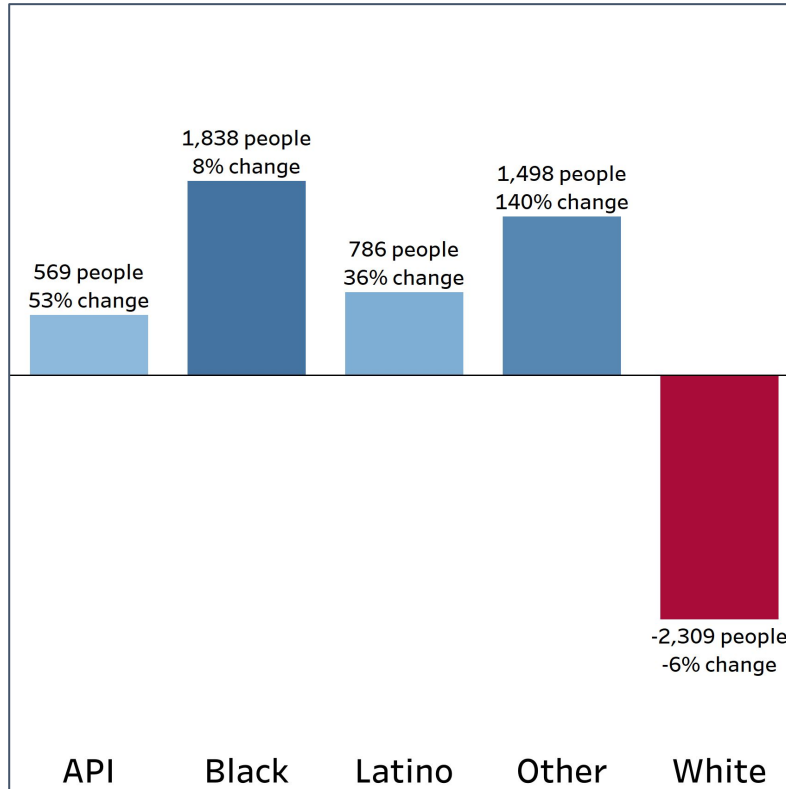


Demographics

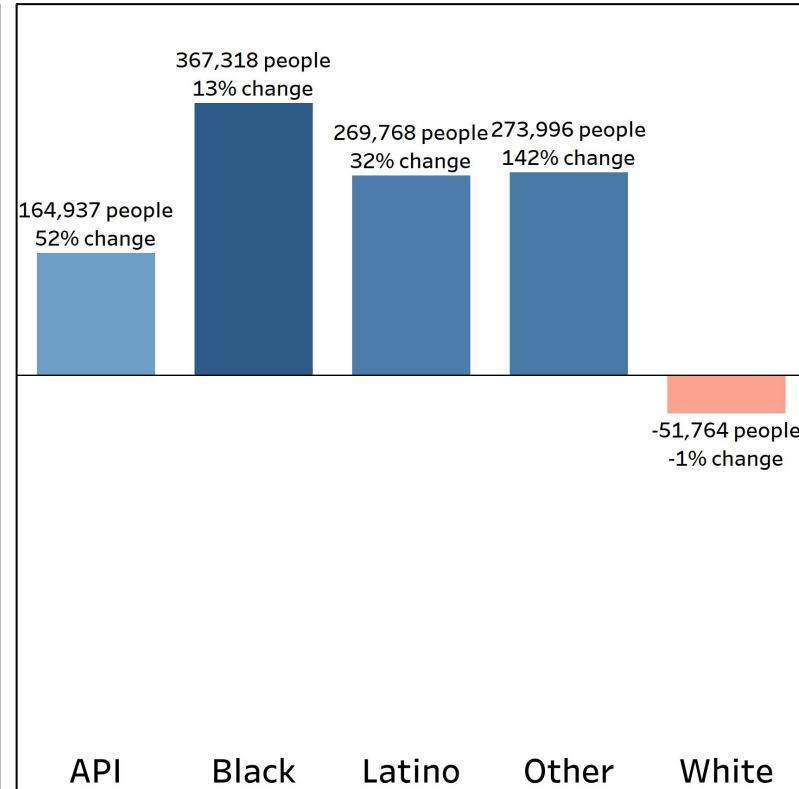
Population Change by Race (2020 - 2010)



Troup County



Georgia



- Troup County is experiencing a population growth in both API and Latino communities that exceed the statewide average
- Overall Troup county's population percentage changes resembles that of Georgia with the exception of the White population which has decreased at a faster rate than the state

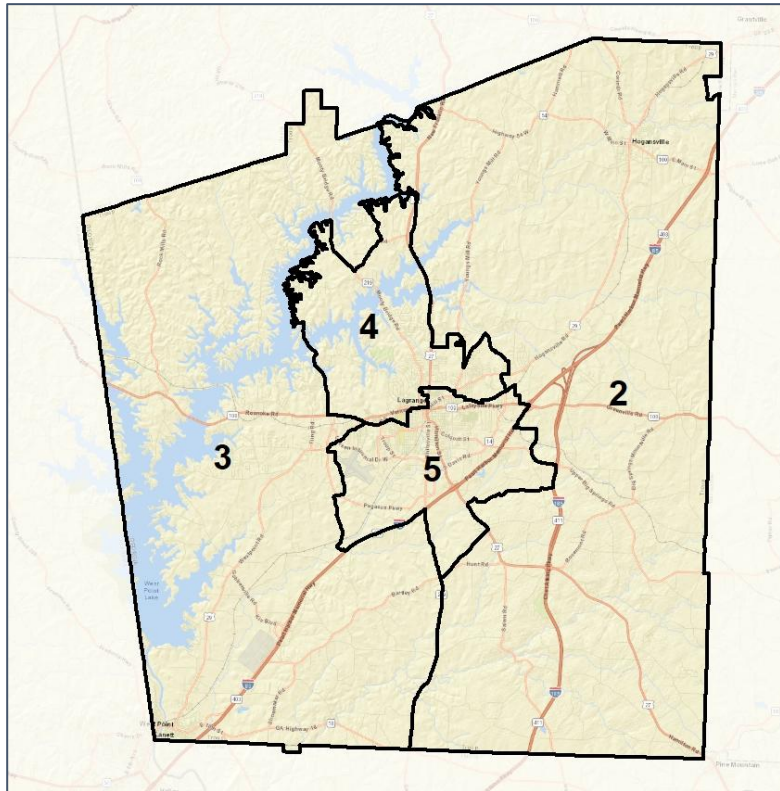


Troup County Commission

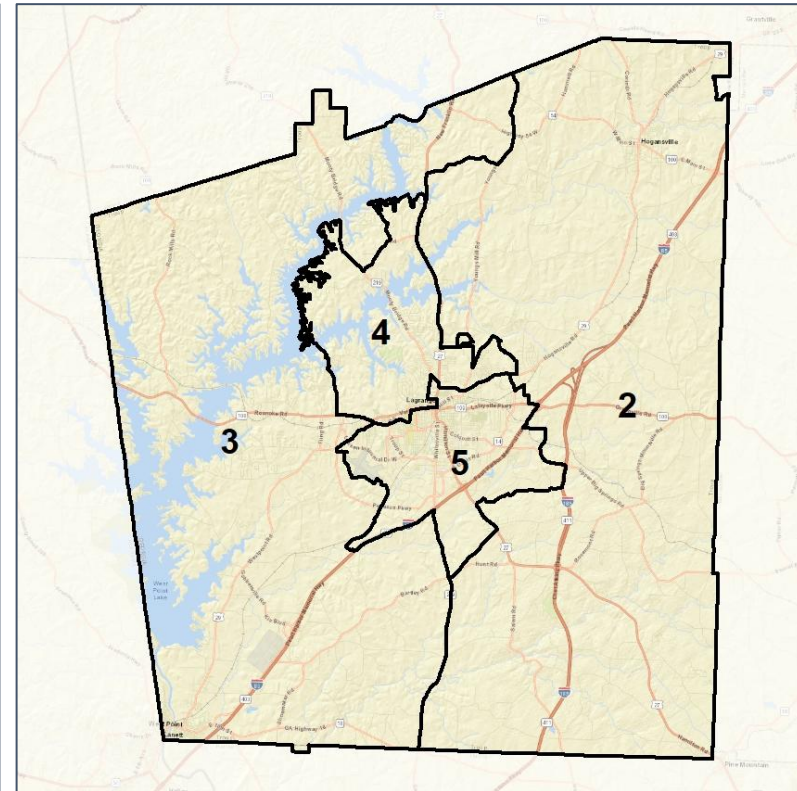
Context



2012 Map



2022 Map*



	2	3	4	5	2*	3*	4*	5*	County
Population	17,913	16,735	18,687	16,091	17,438	17,327	17,240	17,421	69,426
API	2%	1%	4%	2%	2%	1%	4%	3%	2%
Black	20%	23%	36%	63%	20%	22%	35%	62%	35%
Latino	3%	3%	5%	6%	3%	3%	5%	6%	4%
Other	4%	4%	4%	3%	4%	4%	3%	4%	4%
White	71%	70%	52%	25%	71%	70%	53%	26%	55%
Population Gain	*	*	*	*	-475	592	-1,447	1,330	*
Population % Gain	*	*	*	*	-3%	4%	-8%	8%	*
Net POC Gain	*	*	*	*	-67	103	-886	850	*
Net POC % Gain	*	*	*	*	-1%	2%	-10%	7%	*

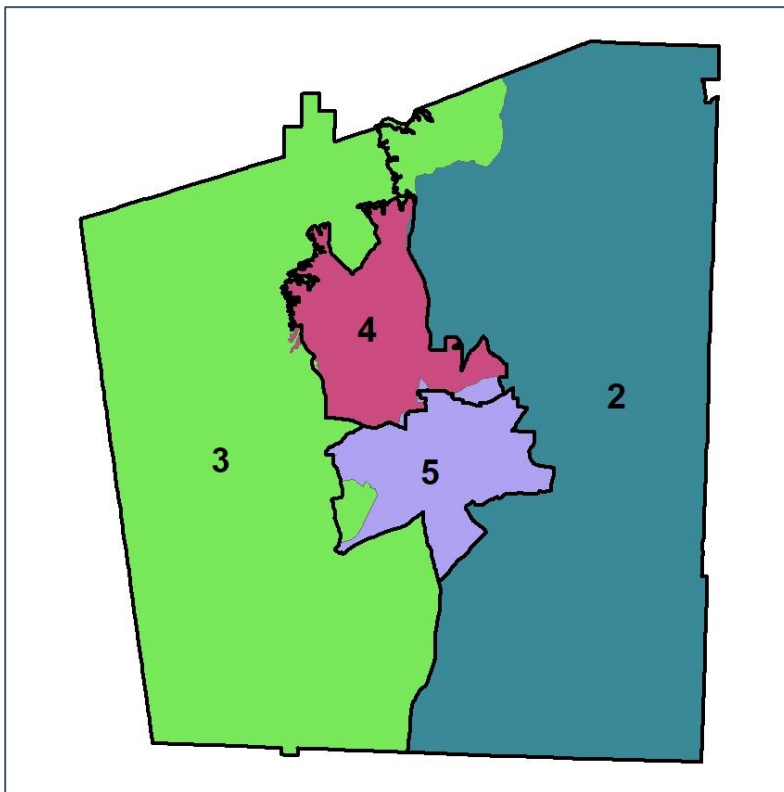


Troup County Commission

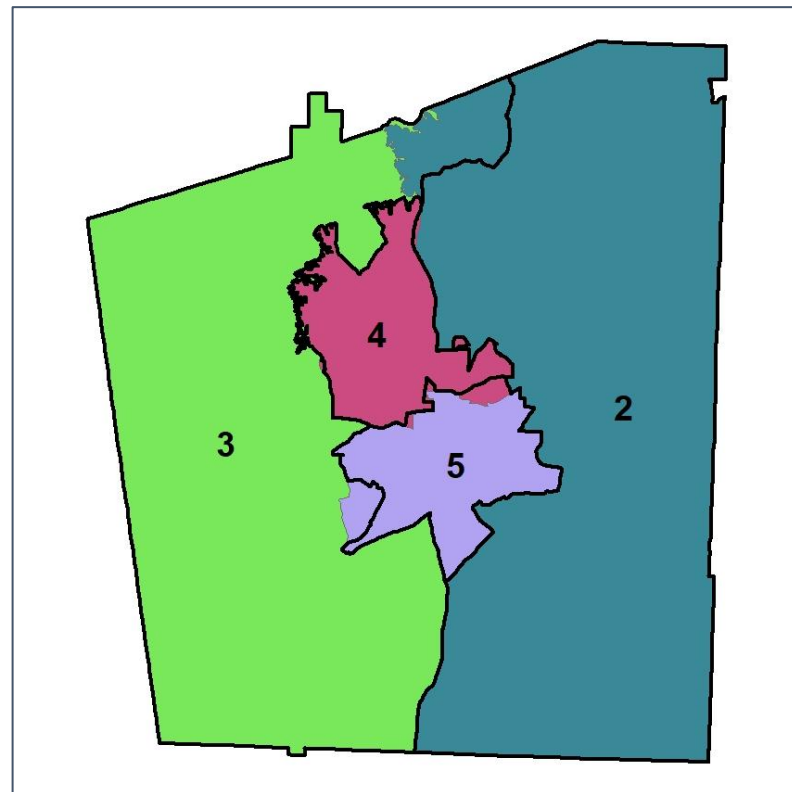
Changes in Redistricting



2012 Map (2022 in Colors)



2022 Map* (2012 in Colors)



	2	3	4	5	2*	3*	4*	5*	County
Population	17,913	16,735	18,687	16,091	17,438	17,327	17,240	17,421	69,426
API	2%	1%	4%	2%	2%	1%	4%	3%	2%
Black	20%	23%	36%	63%	20%	22%	35%	62%	35%
Latino	3%	3%	5%	6%	3%	3%	5%	6%	4%
Other	4%	4%	4%	3%	4%	4%	3%	4%	4%
White	71%	70%	52%	25%	71%	70%	53%	26%	55%
Population Gain	*	*	*	*	-475	592	-1,447	1,330	*
Population % Gain	*	*	*	*	-3%	4%	-8%	8%	*
Net POC Gain	*	*	*	*	-67	103	-886	850	*
Net POC % Gain	*	*	*	*	-1%	2%	-10%	7%	*

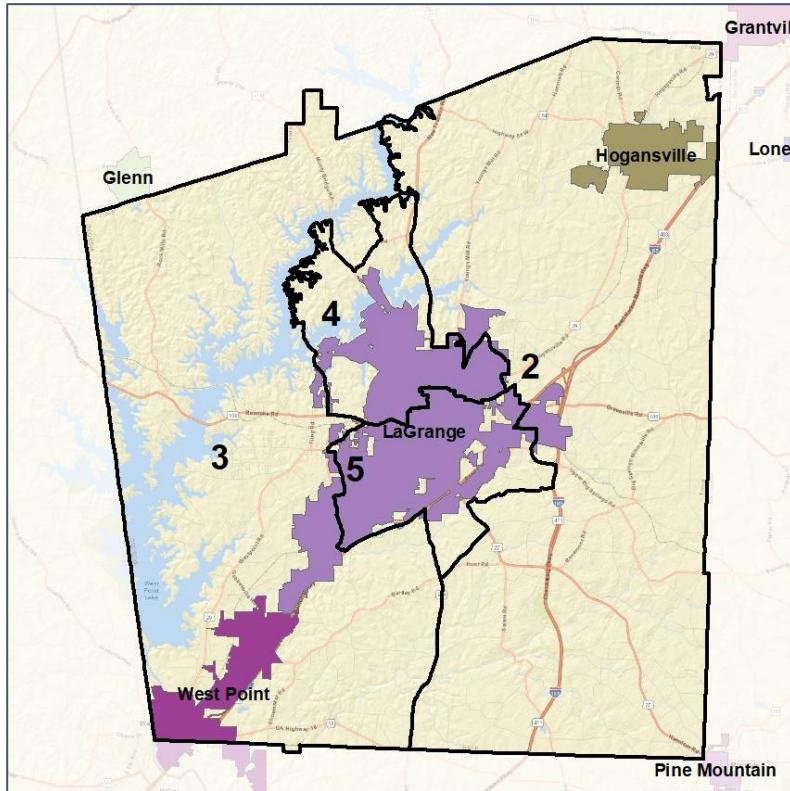


Troup County Commission

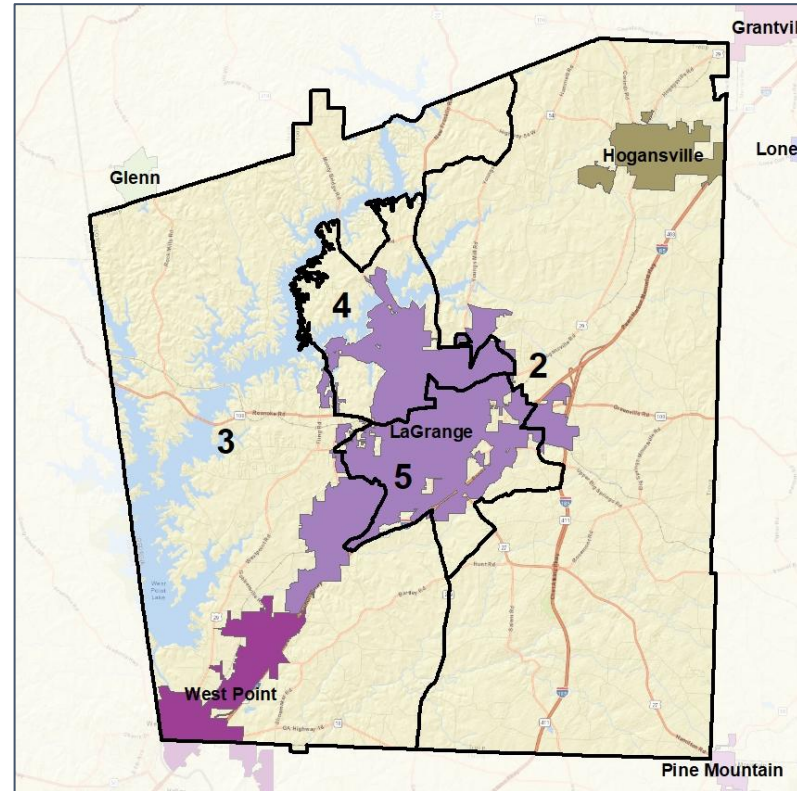
Cities and Places



2012 Map



2022 Map*



	2	3	4	5	2*	3*	4*	5*	County
Population	17,913	16,735	18,687	16,091	17,438	17,327	17,240	17,421	69,426
API	2%	1%	4%	2%	2%	1%	4%	3%	2%
Black	20%	23%	36%	63%	20%	22%	35%	62%	35%
Latino	3%	3%	5%	6%	3%	3%	5%	6%	4%
Other	4%	4%	4%	3%	4%	4%	3%	4%	4%
White	71%	70%	52%	25%	71%	70%	53%	26%	55%
Population Gain	*	*	*	*	-475	592	-1,447	1,330	*
Population % Gain	*	*	*	*	-3%	4%	-8%	8%	*
Net POC Gain	*	*	*	*	-67	103	-886	850	*
Net POC % Gain	*	*	*	*	-1%	2%	-10%	7%	*

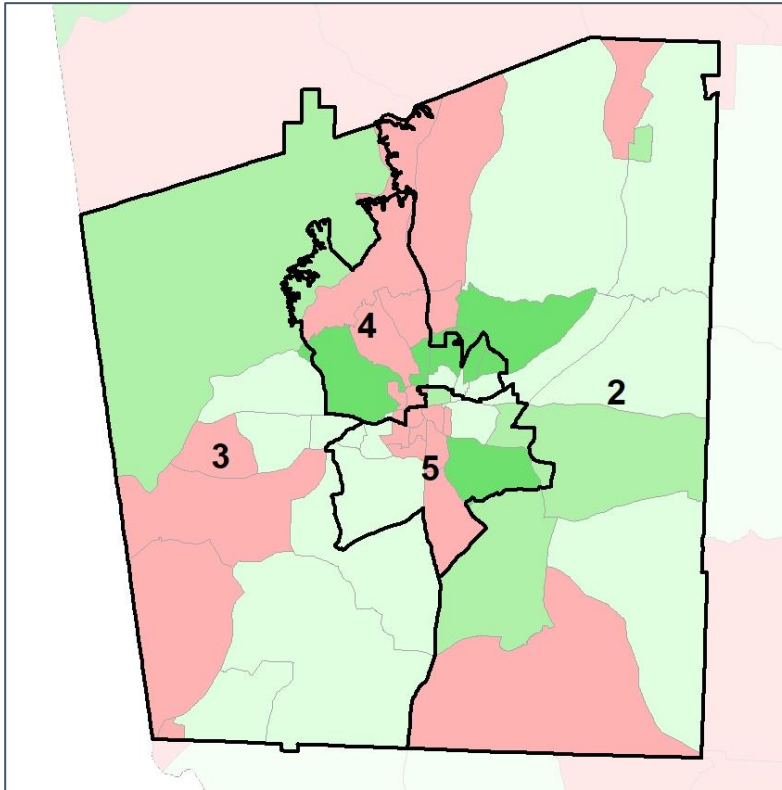


Troup County Commission

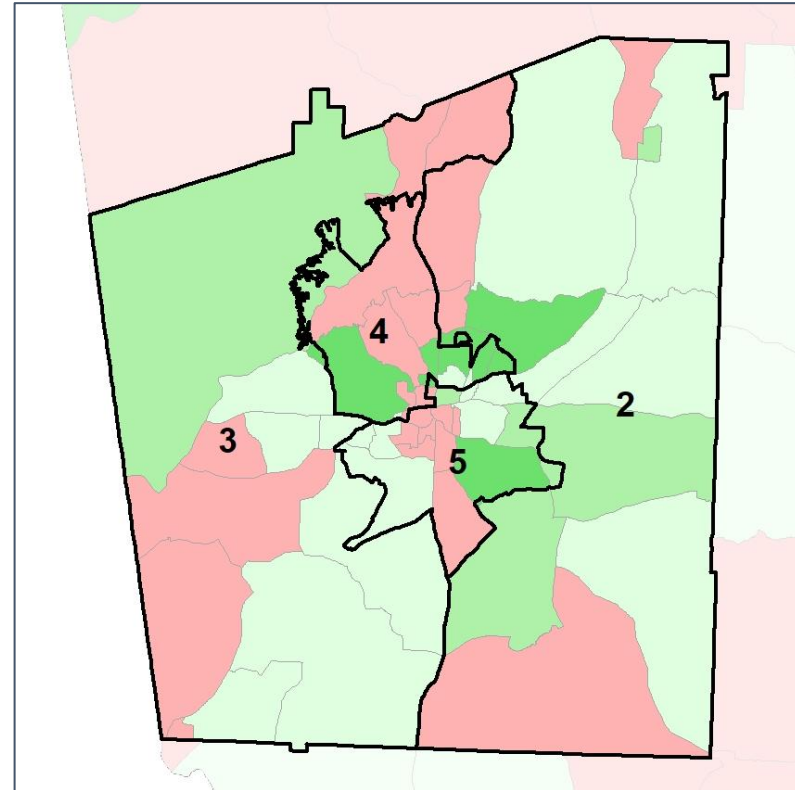
Net Gain in Population (2010 - 2020)



2012 Map



2022 Map*



	2	3	4	5	2*	3*	4*	5*	County
Population	17,913	16,735	18,687	16,091	17,438	17,327	17,240	17,421	69,426
API	2%	1%	4%	2%	2%	1%	4%	3%	2%
Black	20%	23%	36%	63%	20%	22%	35%	62%	35%
Latino	3%	3%	5%	6%	3%	3%	5%	6%	4%
Other	4%	4%	4%	3%	4%	4%	3%	4%	4%
White	71%	70%	52%	25%	71%	70%	53%	26%	55%
Population Gain	*	*	*	*	-475	592	-1,447	1,330	*
Population % Gain	*	*	*	*	-3%	4%	-8%	8%	*
Net POC Gain	*	*	*	*	-67	103	-886	850	*
Net POC % Gain	*	*	*	*	-1%	2%	-10%	7%	*

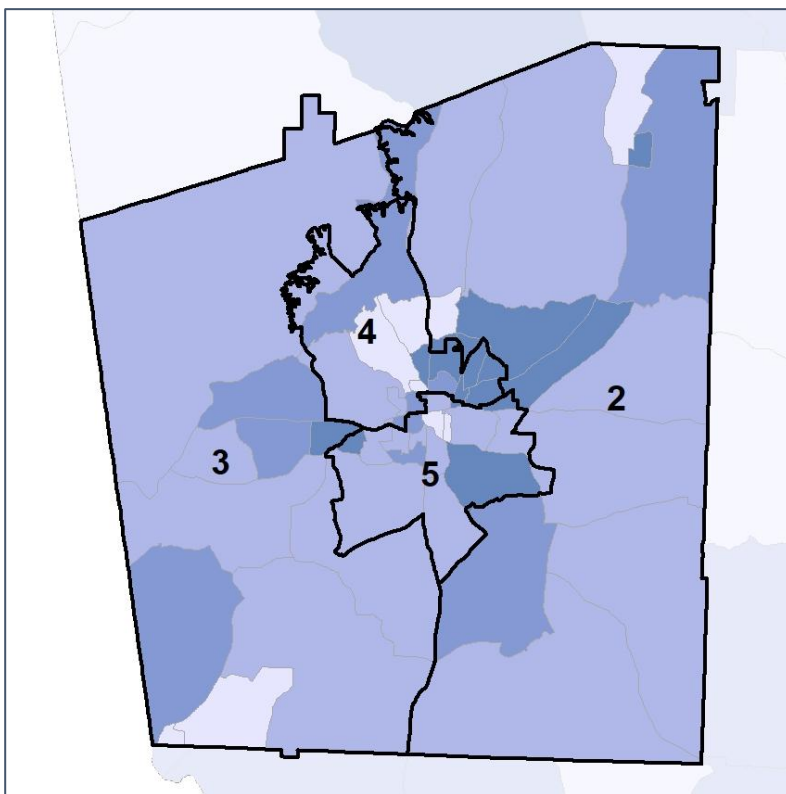


Troup County Commission

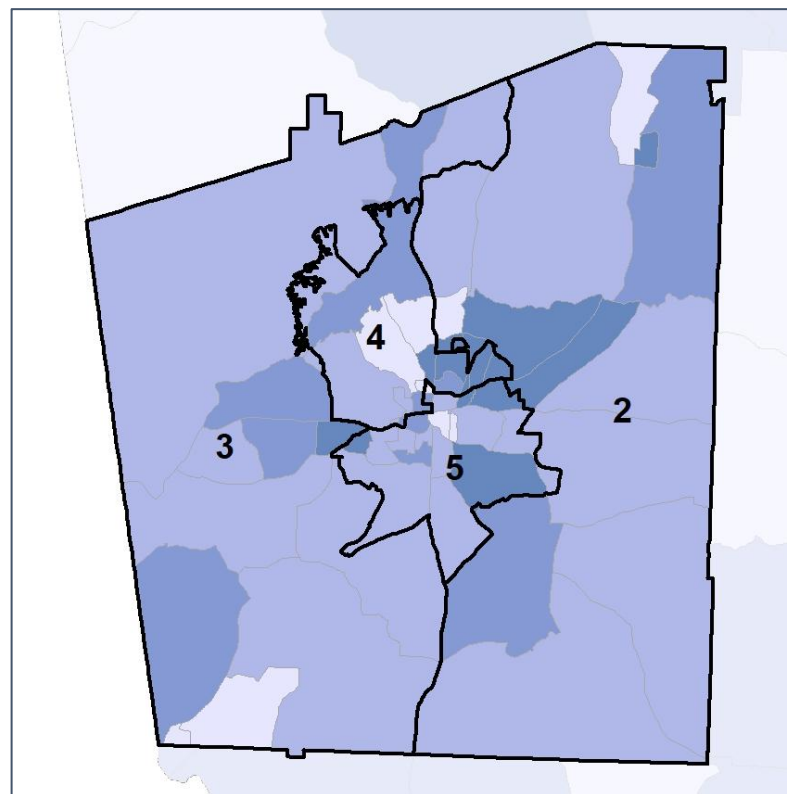
Net Gain in % POC (2020 - 2010) by Census Block Group



2012 Map



2022 Map*



	2	3	4	5	2*	3*	4*	5*	County
Population	17,913	16,735	18,687	16,091	17,438	17,327	17,240	17,421	69,426
API	2%	1%	4%	2%	2%	1%	4%	3%	2%
Black	20%	23%	36%	63%	20%	22%	35%	62%	35%
Latino	3%	3%	5%	6%	3%	3%	5%	6%	4%
Other	4%	4%	4%	3%	4%	4%	3%	4%	4%
White	71%	70%	52%	25%	71%	70%	53%	26%	55%
Population Gain	*	*	*	*	-475	592	-1,447	1,330	*
Population % Gain	*	*	*	*	-3%	4%	-8%	8%	*
Net POC Gain	*	*	*	*	-67	103	-886	850	*
Net POC % Gain	*	*	*	*	-1%	2%	-10%	7%	*

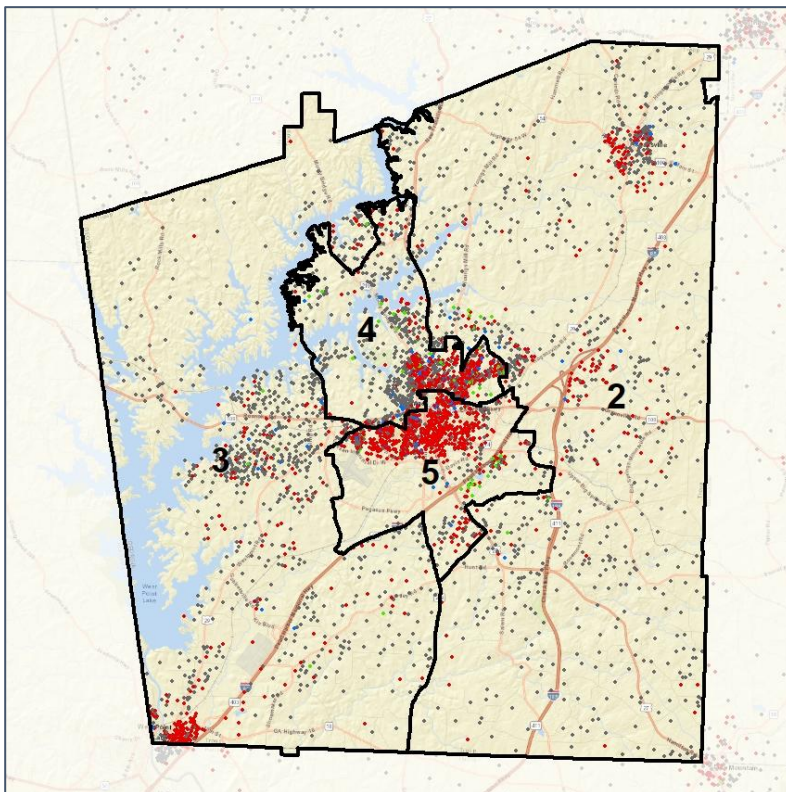


Troup County Commission

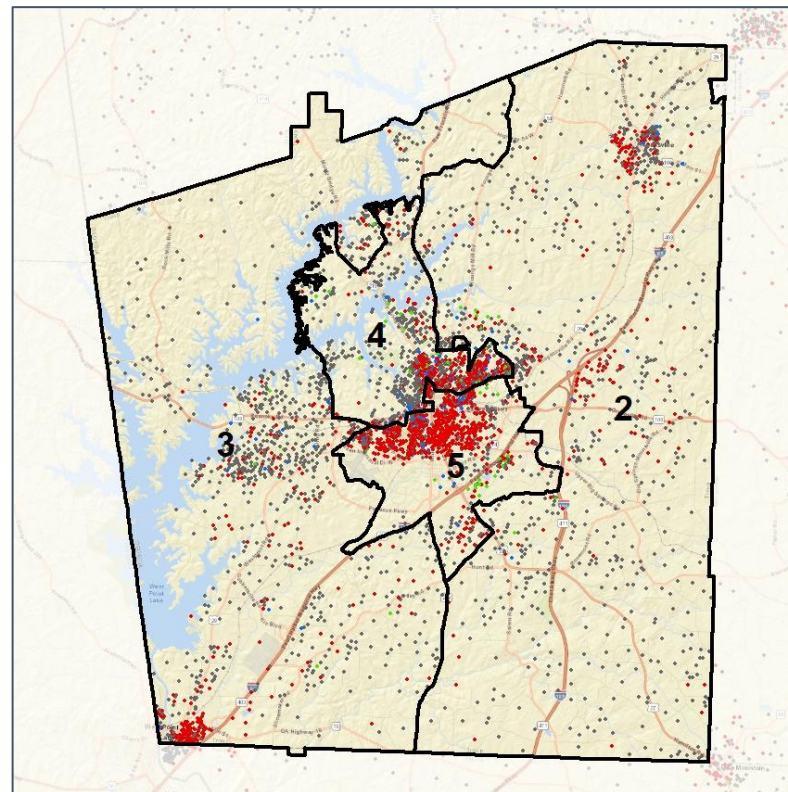
Population Density by Race



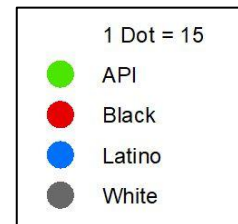
2012 Map



2022 Map*



	2	3	4	5	2*	3*	4*	5*	County
Population	17,913	16,735	18,687	16,091	17,438	17,327	17,240	17,421	69,426
API	278	190	792	384	268	201	695	480	1,644
% API	2%	1%	4%	2%	2%	1%	4%	3%	2%
Black	3,526	3,832	6,653	10,146	3,498	3,867	6,054	10,738	24,157
% Black	20%	23%	36%	63%	20%	22%	35%	62%	35%
Latino	586	420	918	1,032	589	438	802	1,127	2,956
% Latino	3%	3%	5%	6%	3%	3%	5%	6%	4%
Other	742	621	662	545	710	660	588	612	2,570
% Other	4%	4%	4%	3%	4%	4%	3%	4%	4%
White	12,781	11,672	9,662	3,984	12,373	12,161	9,101	4,464	38,099
% White	71%	70%	52%	25%	71%	70%	53%	26%	55%



Source:
2020 Decennial Census
2020 ACS 5-Year Dataset

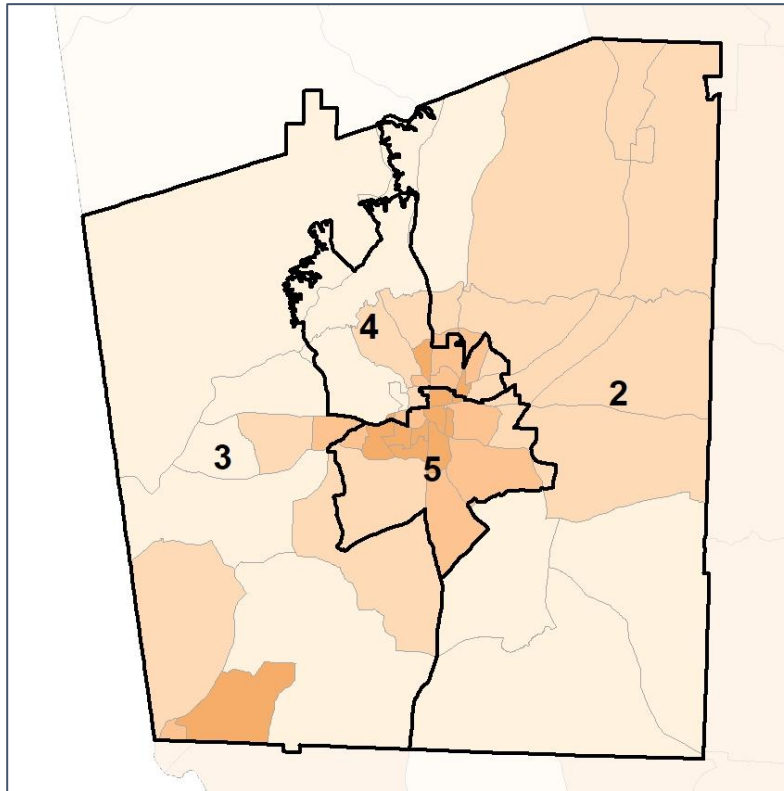


Troup County Commission

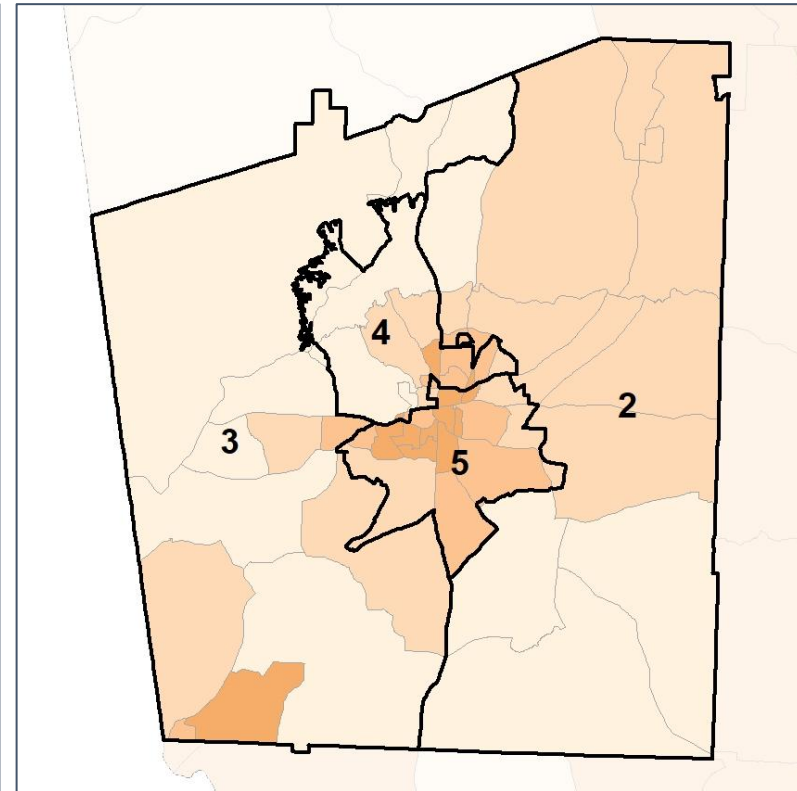
% People of Color by Census Block Group



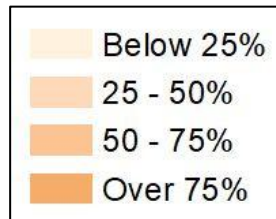
2012 Map



2022 Map*



	2	3	4	5	2*	3*	4*	5*	County
Population	17,913	16,735	18,687	16,091	17,438	17,327	17,240	17,421	69,426
API	278	190	792	384	268	201	695	480	1,644
% API	2%	1%	4%	2%	2%	1%	4%	3%	2%
Black	3,526	3,832	6,653	10,146	3,498	3,867	6,054	10,738	24,157
% Black	20%	23%	36%	63%	20%	22%	35%	62%	35%
Latino	586	420	918	1,032	589	438	802	1,127	2,956
% Latino	3%	3%	5%	6%	3%	3%	5%	6%	4%
Other	742	621	662	545	710	660	588	612	2,570
% Other	4%	4%	4%	3%	4%	4%	3%	4%	4%
White	12,781	11,672	9,662	3,984	12,373	12,161	9,101	4,464	38,099
% White	71%	70%	52%	25%	71%	70%	53%	26%	55%



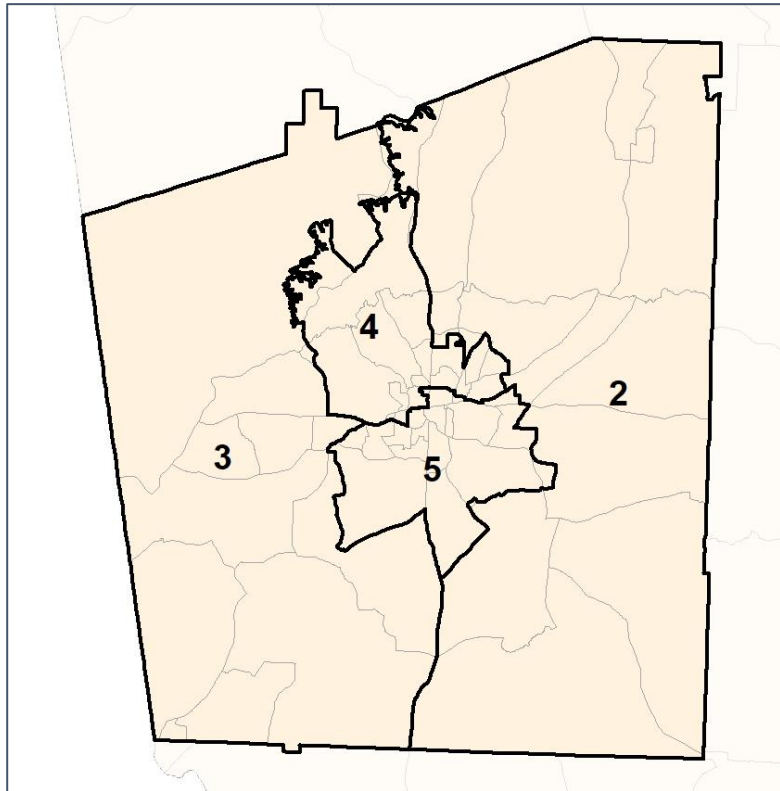
Source:
2020 Decennial Census
2020 ACS 5-Year Dataset

Troup County Commission

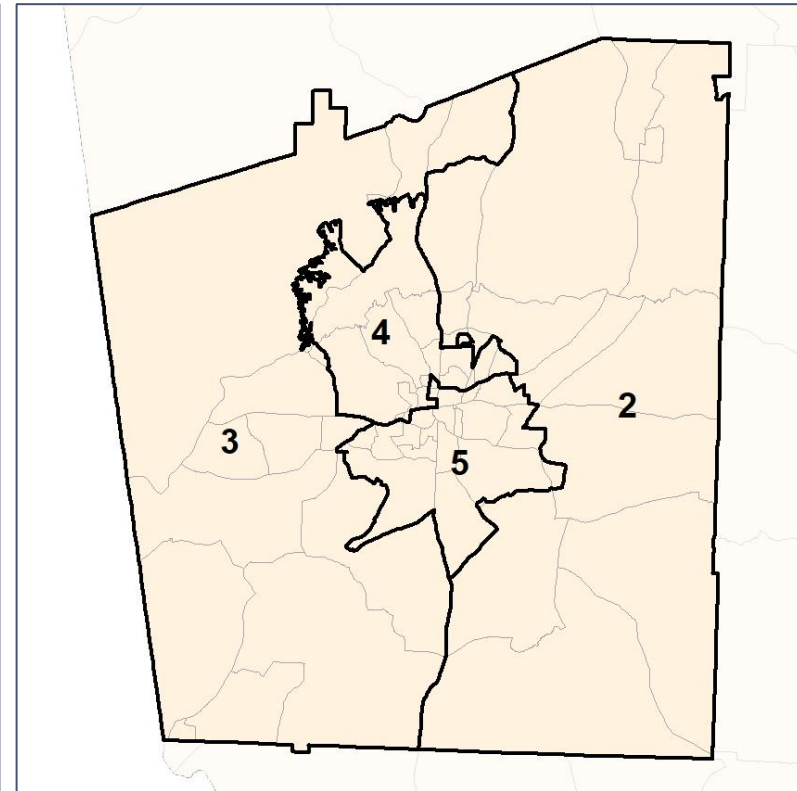
% API by Census Block Group



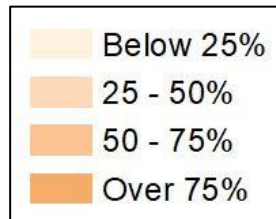
2012 Map



2022 Map*



	2	3	4	5	2*	3*	4*	5*	County
Population	17,913	16,735	18,687	16,091	17,438	17,327	17,240	17,421	69,426
API	278	190	792	384	268	201	695	480	1,644
% API	2%	1%	4%	2%	2%	1%	4%	3%	2%
Black	3,526	3,832	6,653	10,146	3,498	3,867	6,054	10,738	24,157
% Black	20%	23%	36%	63%	20%	22%	35%	62%	35%
Latino	586	420	918	1,032	589	438	802	1,127	2,956
% Latino	3%	3%	5%	6%	3%	3%	5%	6%	4%
Other	742	621	662	545	710	660	588	612	2,570
% Other	4%	4%	4%	3%	4%	4%	3%	4%	4%
White	12,781	11,672	9,662	3,984	12,373	12,161	9,101	4,464	38,099
% White	71%	70%	52%	25%	71%	70%	53%	26%	55%



Source:
2020 Decennial Census
2020 ACS 5-Year Dataset

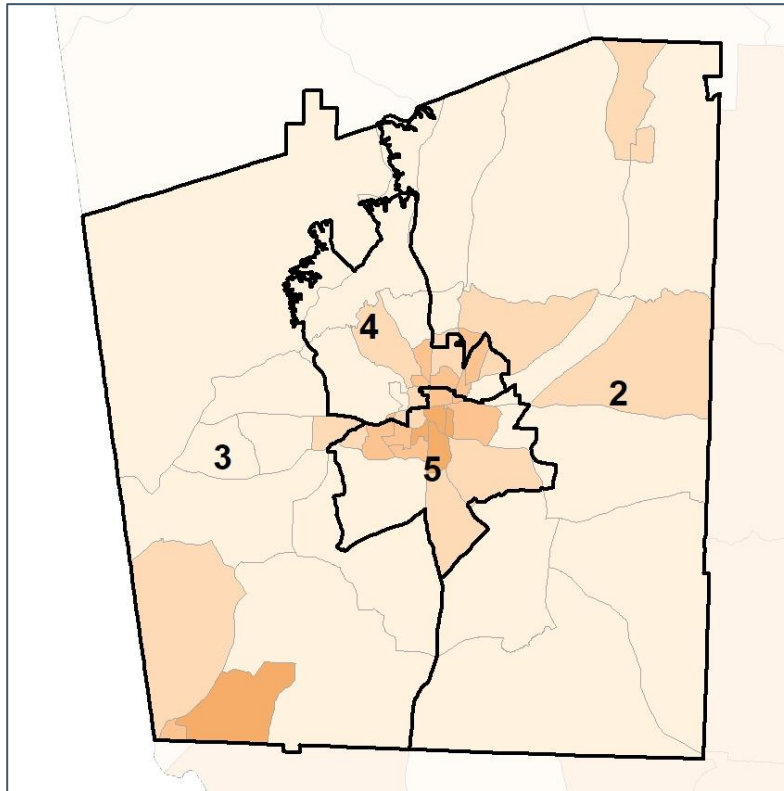


Troup County Commission

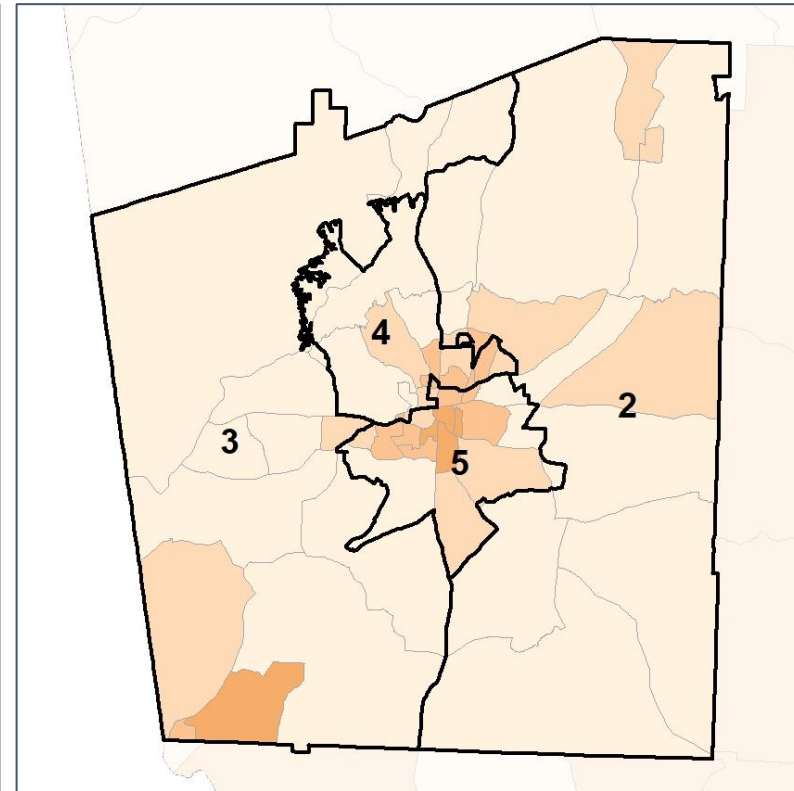
% Black by Census Block Group



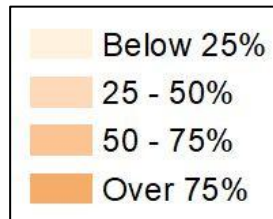
2012 Map



2022 Map*



	2	3	4	5	2*	3*	4*	5*	County
Population	17,913	16,735	18,687	16,091	17,438	17,327	17,240	17,421	69,426
API	278	190	792	384	268	201	695	480	1,644
% API	2%	1%	4%	2%	2%	1%	4%	3%	2%
Black	3,526	3,832	6,653	10,146	3,498	3,867	6,054	10,738	24,157
% Black	20%	23%	36%	63%	20%	22%	35%	62%	35%
Latino	586	420	918	1,032	589	438	802	1,127	2,956
% Latino	3%	3%	5%	6%	3%	3%	5%	6%	4%
Other	742	621	662	545	710	660	588	612	2,570
% Other	4%	4%	4%	3%	4%	4%	3%	4%	4%
White	12,781	11,672	9,662	3,984	12,373	12,161	9,101	4,464	38,099
% White	71%	70%	52%	25%	71%	70%	53%	26%	55%



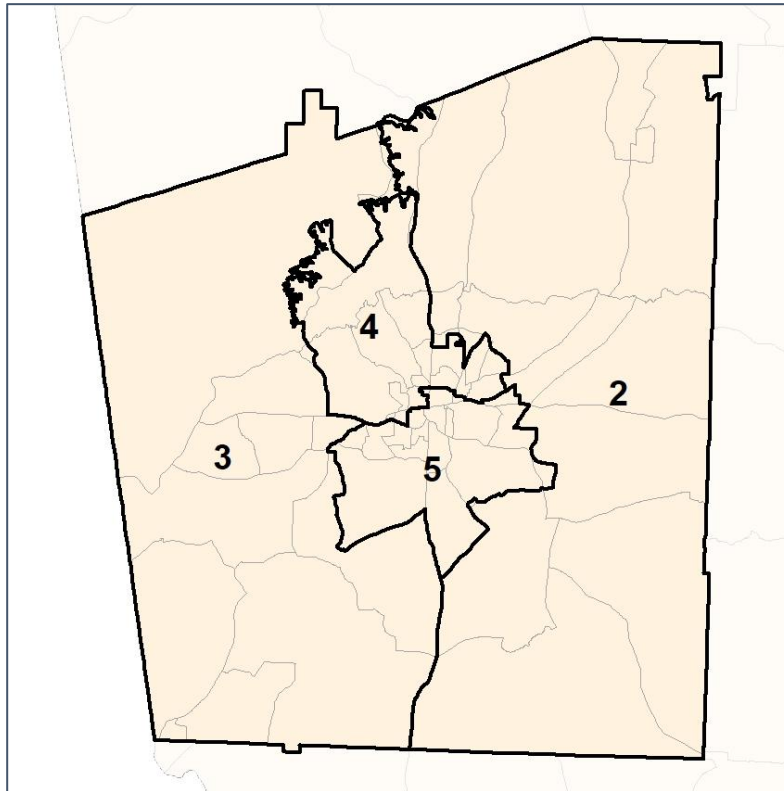
Source:
2020 Decennial Census
2020 ACS 5-Year Dataset

Troup County Commission

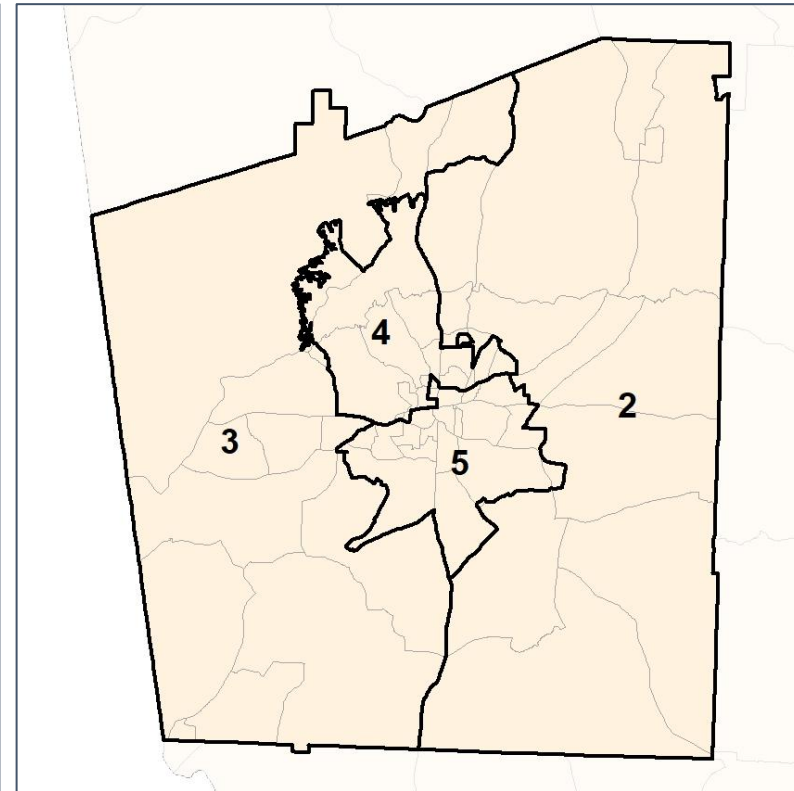
% Latino by Census Block Group



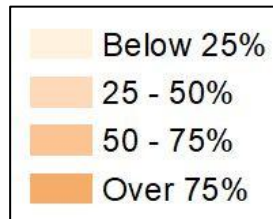
2012 Map



2022 Map*



	2	3	4	5	2*	3*	4*	5*	County
Population	17,913	16,735	18,687	16,091	17,438	17,327	17,240	17,421	69,426
API	278	190	792	384	268	201	695	480	1,644
% API	2%	1%	4%	2%	2%	1%	4%	3%	2%
Black	3,526	3,832	6,653	10,146	3,498	3,867	6,054	10,738	24,157
% Black	20%	23%	36%	63%	20%	22%	35%	62%	35%
Latino	586	420	918	1,032	589	438	802	1,127	2,956
% Latino	3%	3%	5%	6%	3%	3%	5%	6%	4%
Other	742	621	662	545	710	660	588	612	2,570
% Other	4%	4%	4%	3%	4%	4%	3%	4%	4%
White	12,781	11,672	9,662	3,984	12,373	12,161	9,101	4,464	38,099
% White	71%	70%	52%	25%	71%	70%	53%	26%	55%

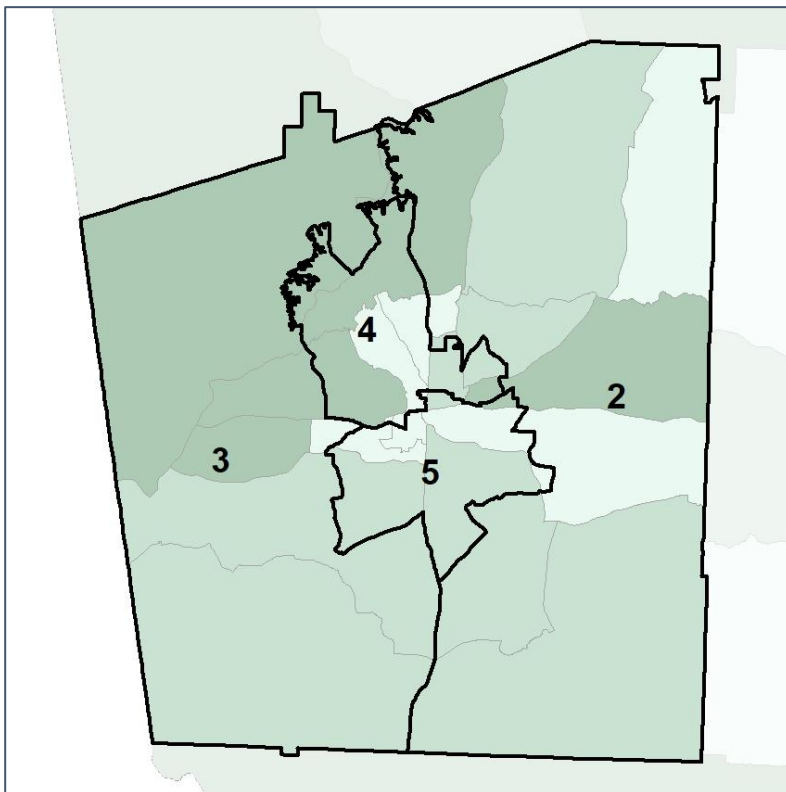


Troup County Commission

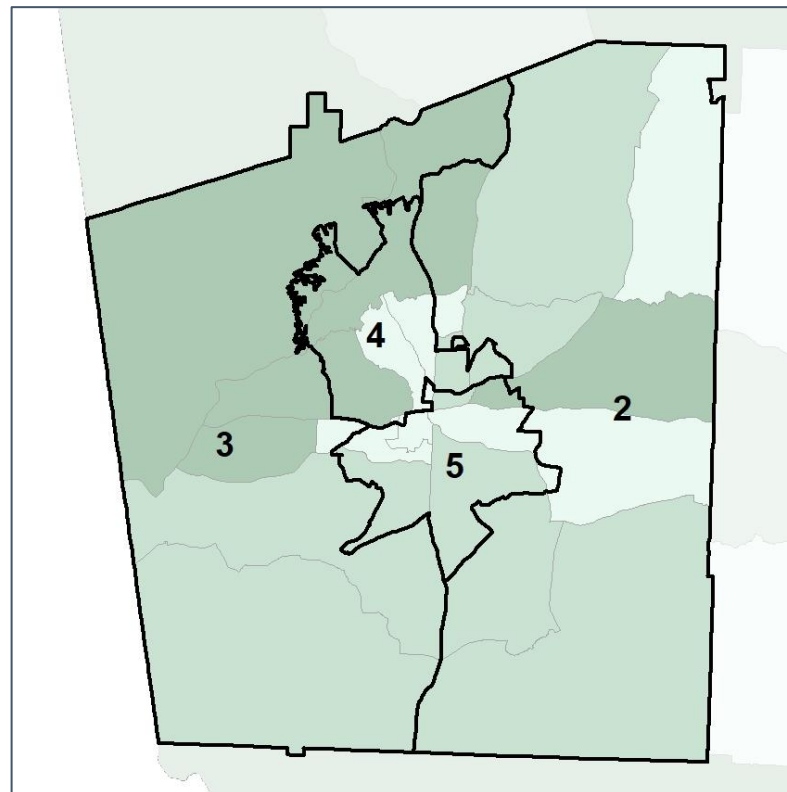
Median Household Income by Census Tract



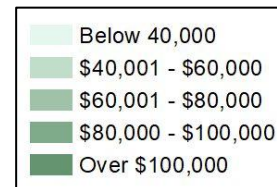
2012 Map



2022 Map*



	2	3	4	5	2*	3*	4*	5*	County
Population	17,913	16,735	18,687	16,091	17,438	17,327	17,240	17,421	69,426
% API	2%	1%	4%	2%	2%	1%	4%	3%	2%
% Black	20%	23%	36%	63%	20%	22%	35%	62%	35%
% Latino	3%	3%	5%	6%	3%	3%	5%	6%	4%
% Other	4%	4%	4%	3%	4%	4%	3%	4%	4%
% White	71%	70%	52%	25%	71%	70%	53%	26%	55%
Median Income	\$52,000	\$61,000	\$58,000	\$33,000	\$52,000	\$61,000	\$62,000	\$32,000	\$47,000
% Renter	35%	24%	47%	61%	35%	24%	47%	60%	40%
% Youth	22%	20%	28%	23%	22%	20%	28%	24%	23%

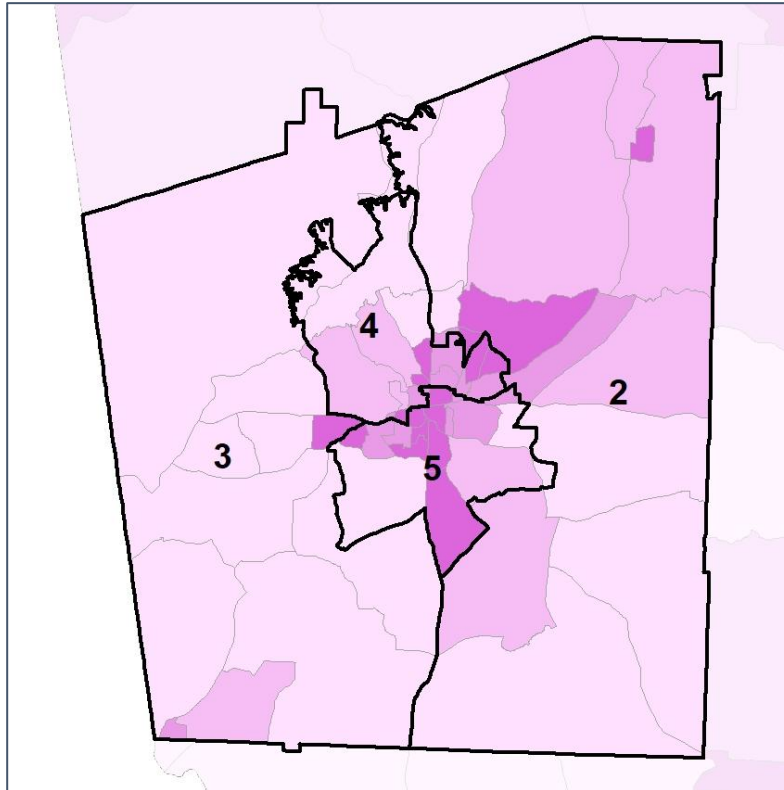


Troup County Commission

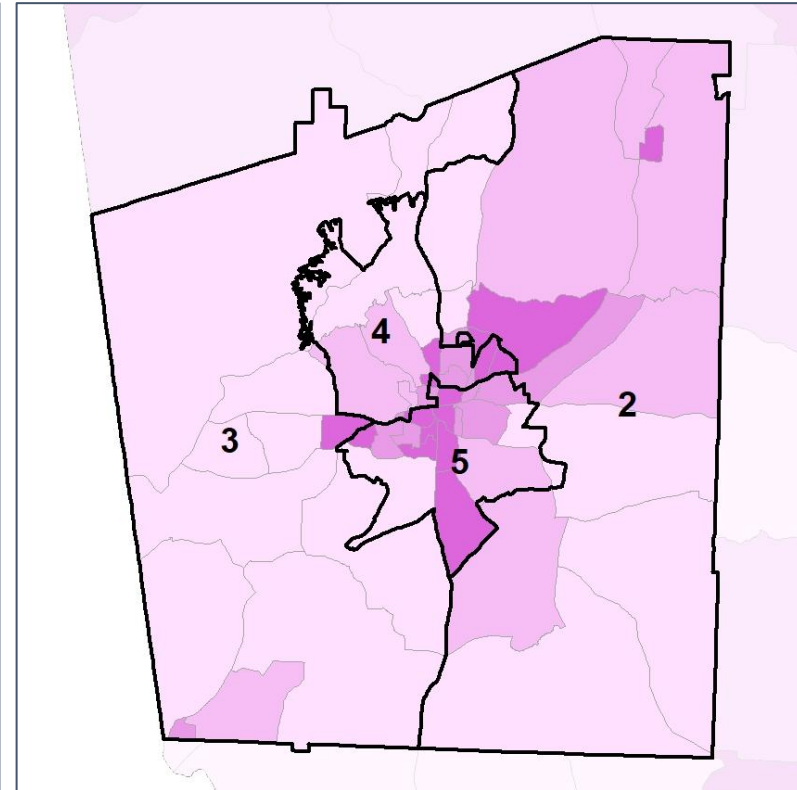
% Renter by Census Block Group



2012 Map



2022 Map*



	2	3	4	5	2*	3*	4*	5*	County
Population	17,913	16,735	18,687	16,091	17,438	17,327	17,240	17,421	69,426
% API	2%	1%	4%	2%	2%	1%	4%	3%	2%
% Black	20%	23%	36%	63%	20%	22%	35%	62%	35%
% Latino	3%	3%	5%	6%	3%	3%	5%	6%	4%
% Other	4%	4%	4%	3%	4%	4%	3%	4%	4%
% White	71%	70%	52%	25%	71%	70%	53%	26%	55%
Median Income	\$52,000	\$61,000	\$58,000	\$33,000	\$52,000	\$61,000	\$62,000	\$32,000	\$47,000
% Renter	35%	24%	47%	61%	35%	24%	47%	60%	40%
% Youth	22%	20%	28%	23%	22%	20%	28%	24%	23%

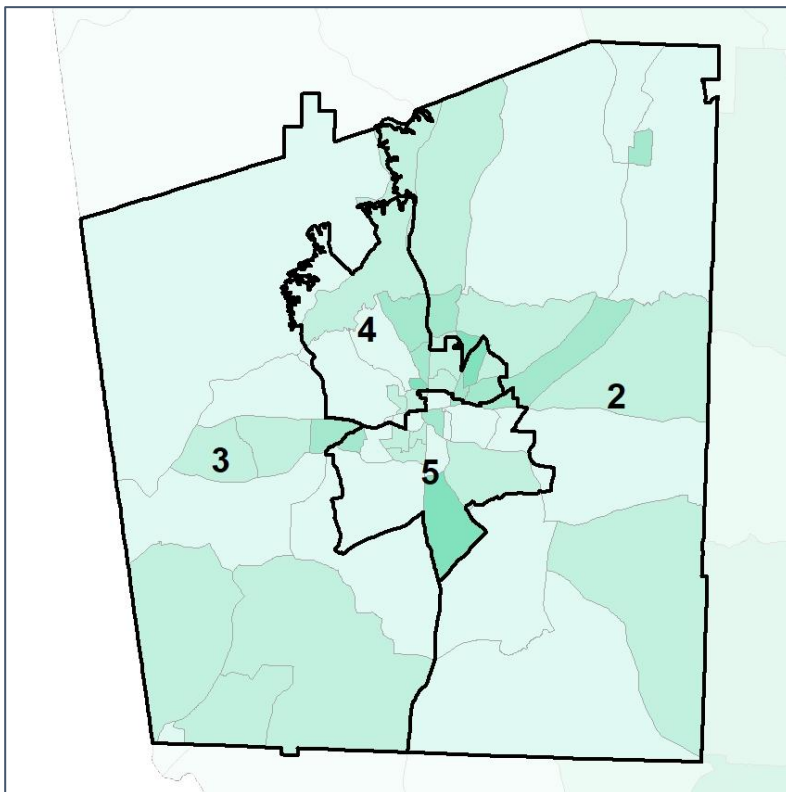


Troup County Commission

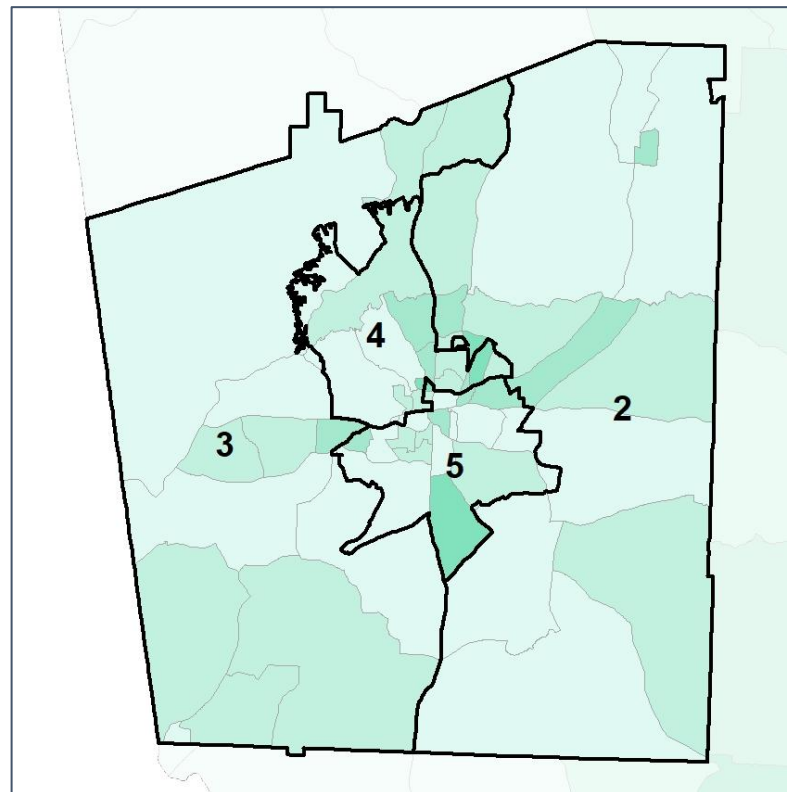
% Youth (18-34) by Census Block Group



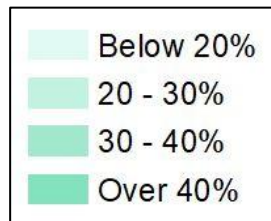
2012 Map



2022 Map*



	2	3	4	5	2*	3*	4*	5*	County
Population	17,913	16,735	18,687	16,091	17,438	17,327	17,240	17,421	69,426
% API	2%	1%	4%	2%	2%	1%	4%	3%	2%
% Black	20%	23%	36%	63%	20%	22%	35%	62%	35%
% Latino	3%	3%	5%	6%	3%	3%	5%	6%	4%
% Other	4%	4%	4%	3%	4%	4%	3%	4%	4%
% White	71%	70%	52%	25%	71%	70%	53%	26%	55%
Median Income	\$52,000	\$61,000	\$58,000	\$33,000	\$52,000	\$61,000	\$62,000	\$32,000	\$47,000
% Renter	35%	24%	47%	61%	35%	24%	47%	60%	40%
% Youth	22%	20%	28%	23%	22%	20%	28%	24%	23%

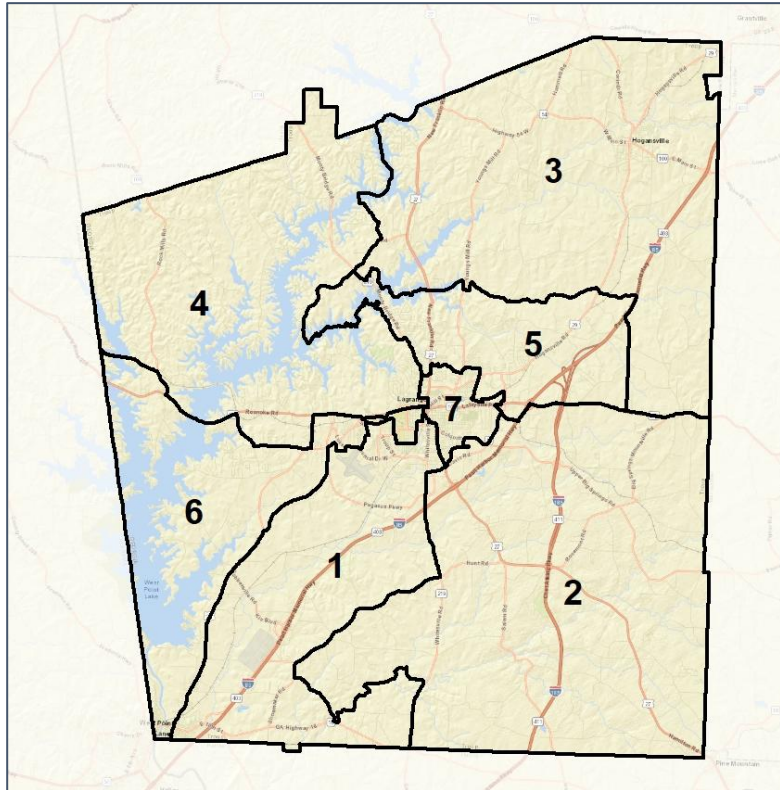


Troup County School Board

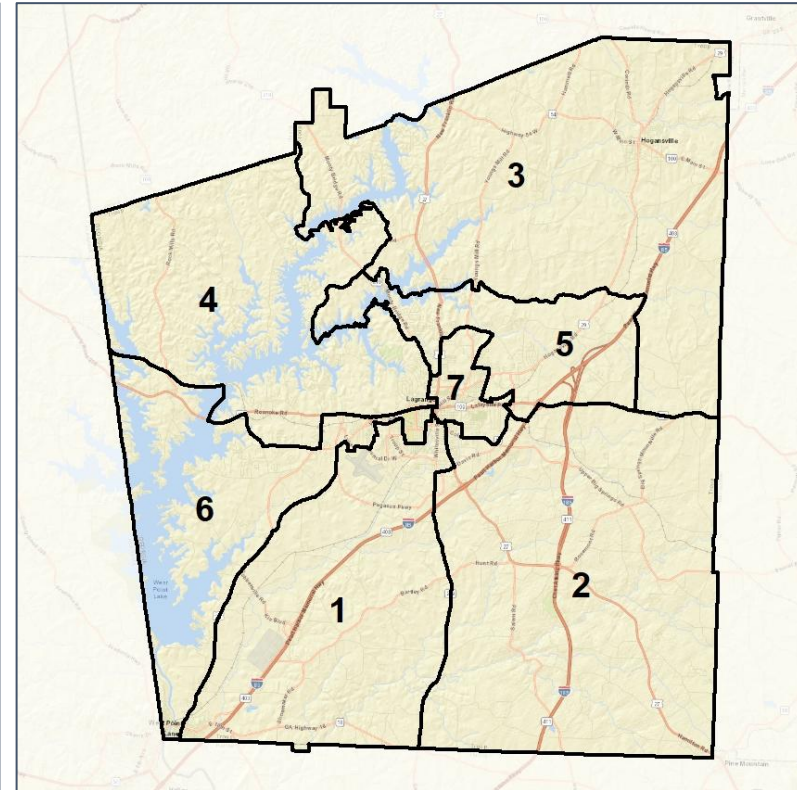
Context



2012 Map



2022 Map*



	1	2	3	4	5	6	7	1*	2*	3*	4*	5*	6*	7*	County
Population	8,979	9,635	9,652	10,205	11,455	9,789	9,711	10,014	9,824	9,868	9,945	9,974	9,833	9,968	69,426
API	1%	4%	1%	2%	5%	2%	2%	1%	3%	1%	2%	6%	2%	3%	2%
Black	58%	19%	21%	16%	38%	28%	65%	53%	29%	21%	16%	38%	29%	58%	35%
Latino	4%	3%	4%	4%	4%	5%	7%	4%	3%	4%	4%	4%	5%	7%	4%
Other	3%	3%	4%	4%	4%	4%	3%	3%	3%	4%	4%	4%	4%	3%	4%
White	34%	71%	70%	74%	49%	62%	23%	39%	62%	70%	74%	49%	62%	29%	55%
Population Gain	*	*	*	*	*	*	*	1,035	189	216	-260	-1,481	44	257	*
Population % Gain	*	*	*	*	*	*	*	12%	2%	2%	-3%	-13%	0%	3%	*
Net POC Gain	*	*	*	*	*	*	*	185	989	42	-67	-761	25	-413	*
Net POC % Gain	*	*	*	*	*	*	*	3%	36%	1%	-3%	-13%	1%	-6%	*

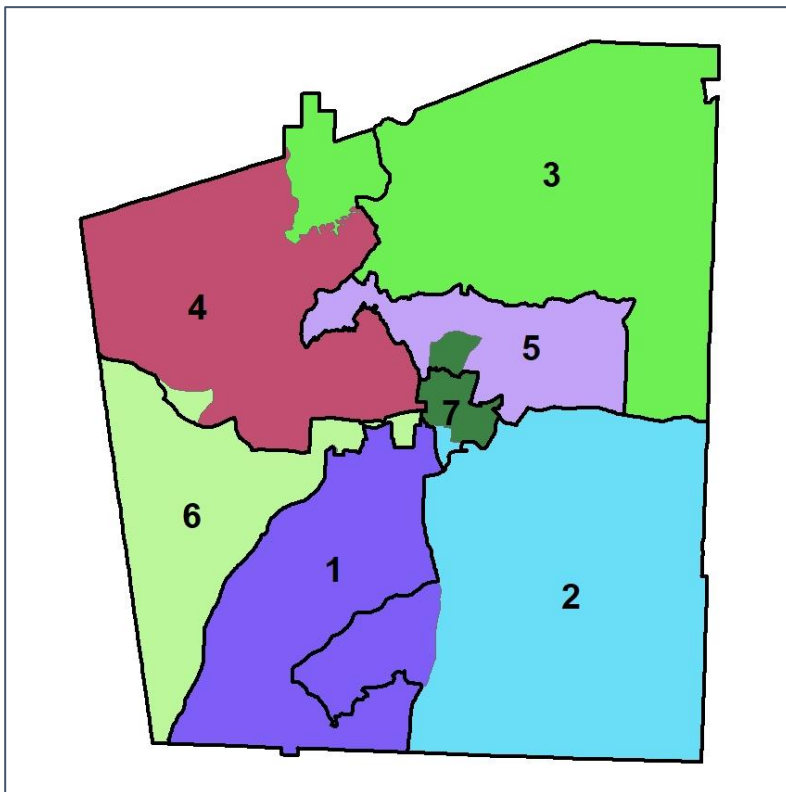


Troup County School Board

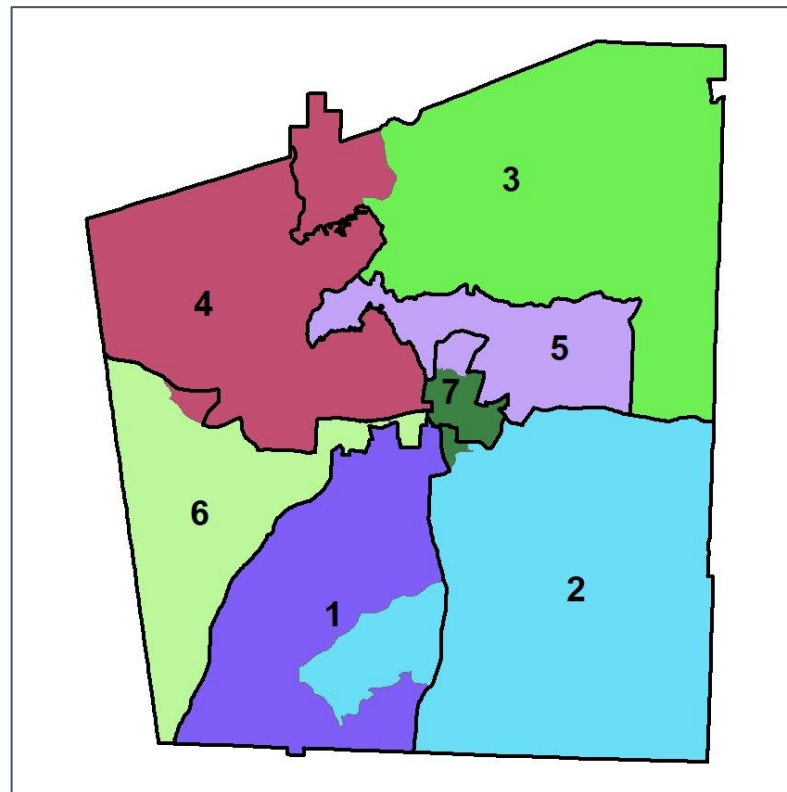
Changes in Redistricting



2012 Map (2022 in Colors)



2022 Map* (2012 in Colors)



	1	2	3	4	5	6	7	1*	2*	3*	4*	5*	6*	7*	County
Population	8,979	9,635	9,652	10,205	11,455	9,789	9,711	10,014	9,824	9,868	9,945	9,974	9,833	9,968	69,426
API	1%	4%	1%	2%	5%	2%	2%	1%	3%	1%	2%	6%	2%	3%	2%
Black	58%	19%	21%	16%	38%	28%	65%	53%	29%	21%	16%	38%	29%	58%	35%
Latino	4%	3%	4%	4%	4%	5%	7%	4%	3%	4%	4%	4%	5%	7%	4%
Other	3%	3%	4%	4%	4%	4%	3%	3%	3%	4%	4%	4%	4%	3%	4%
White	34%	71%	70%	74%	49%	62%	23%	39%	62%	70%	74%	49%	62%	29%	55%
Population Gain	*	*	*	*	*	*	*	1,035	189	216	-260	-1,481	44	257	*
Population % Gain	*	*	*	*	*	*	*	12%	2%	2%	-3%	-13%	0%	3%	*
Net POC Gain	*	*	*	*	*	*	*	185	989	42	-67	-761	25	-413	*
Net POC % Gain	*	*	*	*	*	*	*	3%	36%	1%	-3%	-13%	1%	-6%	*

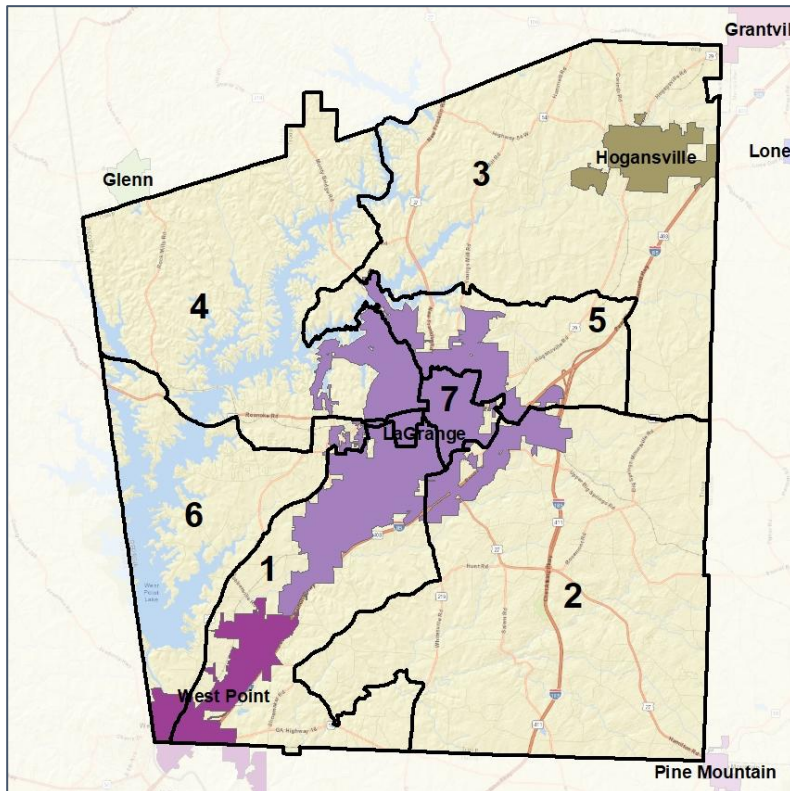


Troup County School Board

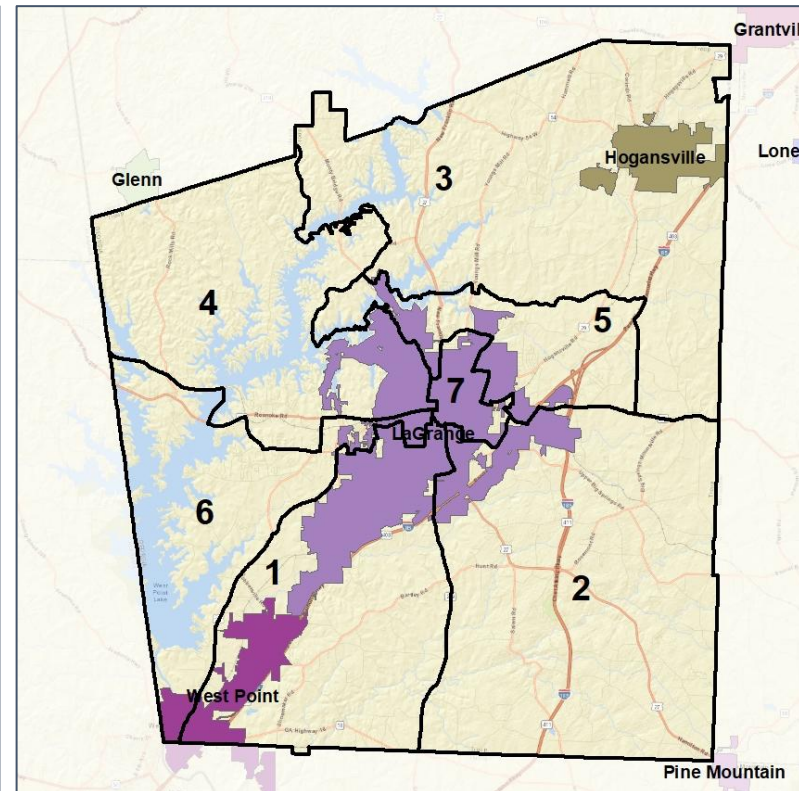
Cities and Places



2012 Map



2022 Map*



	1	2	3	4	5	6	7	1*	2*	3*	4*	5*	6*	7*	County
Population	8,979	9,635	9,652	10,205	11,455	9,789	9,711	10,014	9,824	9,868	9,945	9,974	9,833	9,968	69,426
API	1%	4%	1%	2%	5%	2%	2%	1%	3%	1%	2%	6%	2%	3%	2%
Black	58%	19%	21%	16%	38%	28%	65%	53%	29%	21%	16%	38%	29%	58%	35%
Latino	4%	3%	4%	4%	4%	5%	7%	4%	3%	4%	4%	4%	5%	7%	4%
Other	3%	3%	4%	4%	4%	4%	3%	3%	3%	4%	4%	4%	4%	3%	4%
White	34%	71%	70%	74%	49%	62%	23%	39%	62%	70%	74%	49%	62%	29%	55%
Population Gain	*	*	*	*	*	*	*	1,035	189	216	-260	-1,481	44	257	2,382
Population % Gain	*	*	*	*	*	*	*	12%	2%	2%	-3%	-13%	0%	3%	4%
Net POC Gain	*	*	*	*	*	*	*	185	989	42	-67	-761	25	-413	4,691
Net POC % Gain	*	*	*	*	*	*	*	3%	36%	1%	-3%	-13%	1%	-6%	18%

Source:
2020 Decennial Census
2020 ACS 5-Year Dataset

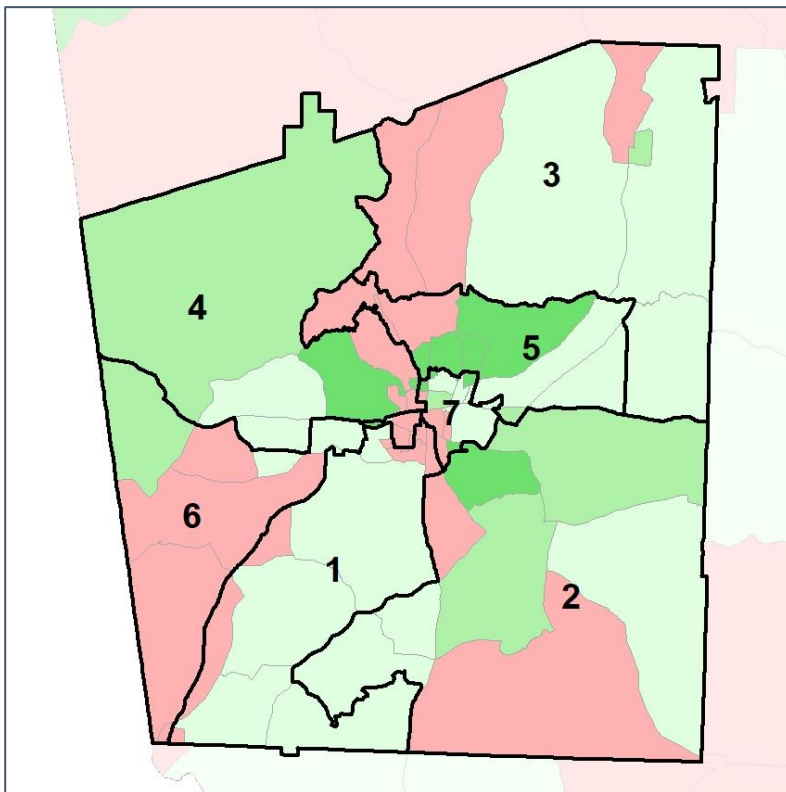


Troup County School Board

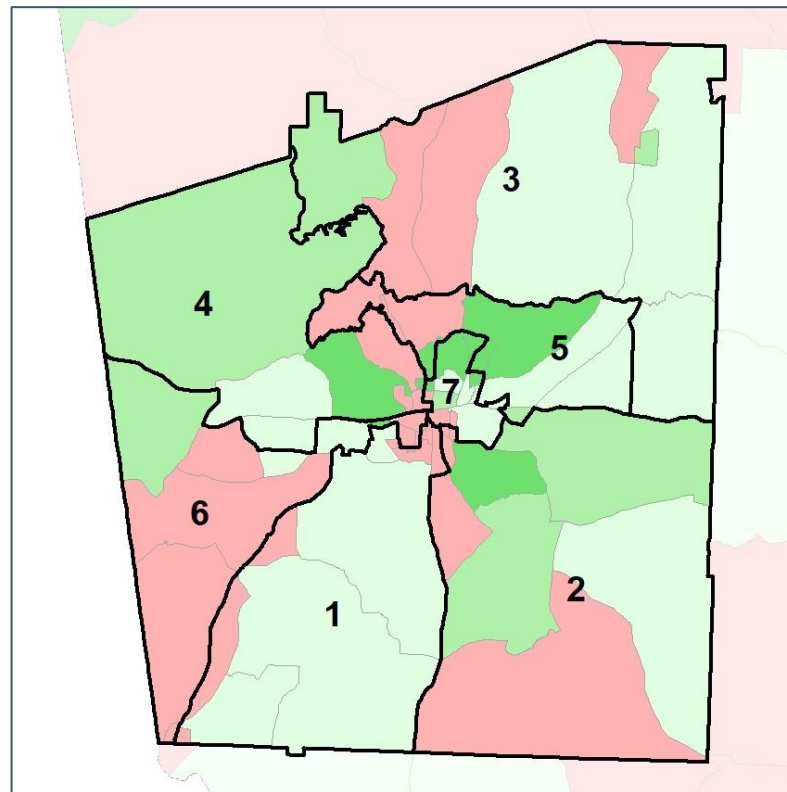
Net Gain in Population (2010 - 2020)



2012 Map



2022 Map*



	1	2	3	4	5	6	7	1*	2*	3*	4*	5*	6*	7*	County
Population	8,979	9,635	9,652	10,205	11,455	9,789	9,711	10,014	9,824	9,868	9,945	9,974	9,833	9,968	69,426
API	1%	4%	1%	2%	5%	2%	2%	1%	3%	1%	2%	6%	2%	3%	2%
Black	58%	19%	21%	16%	38%	28%	65%	53%	29%	21%	16%	38%	29%	58%	35%
Latino	4%	3%	4%	4%	4%	5%	7%	4%	3%	4%	4%	4%	5%	7%	4%
Other	3%	3%	4%	4%	4%	4%	3%	3%	3%	4%	4%	4%	4%	3%	4%
White	34%	71%	70%	74%	49%	62%	23%	39%	62%	70%	74%	49%	62%	29%	55%
Population Gain	*	*	*	*	*	*	*	1,035	189	216	-260	-1,481	44	257	*
Population % Gain	*	*	*	*	*	*	*	12%	2%	2%	-3%	-13%	0%	3%	*
Net POC Gain	*	*	*	*	*	*	*	185	989	42	-67	-761	25	-413	*
Net POC % Gain	*	*	*	*	*	*	*	3%	36%	1%	-3%	-13%	1%	-6%	*

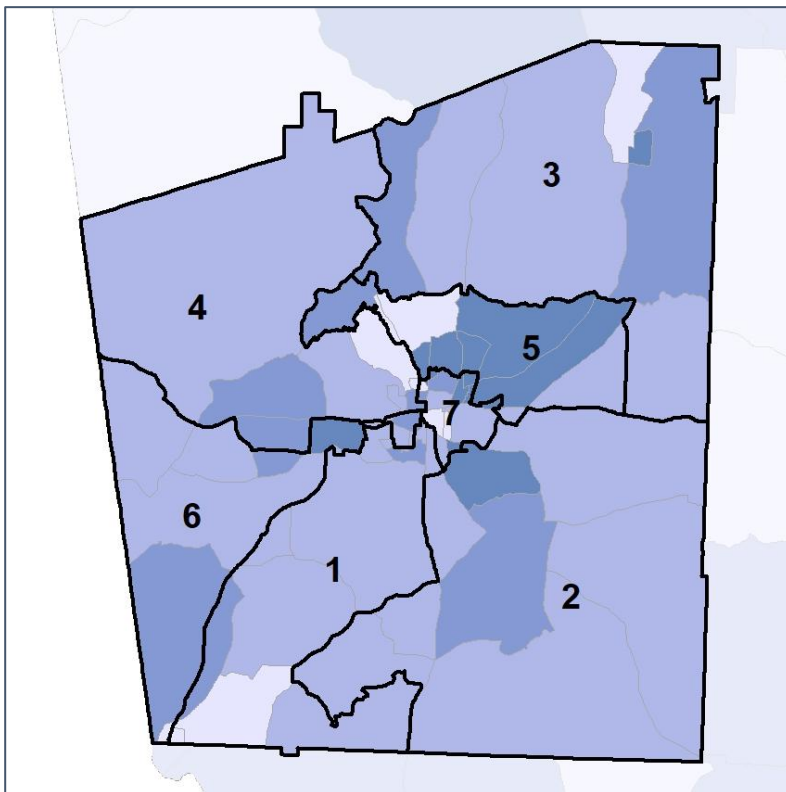


Troup County School Board

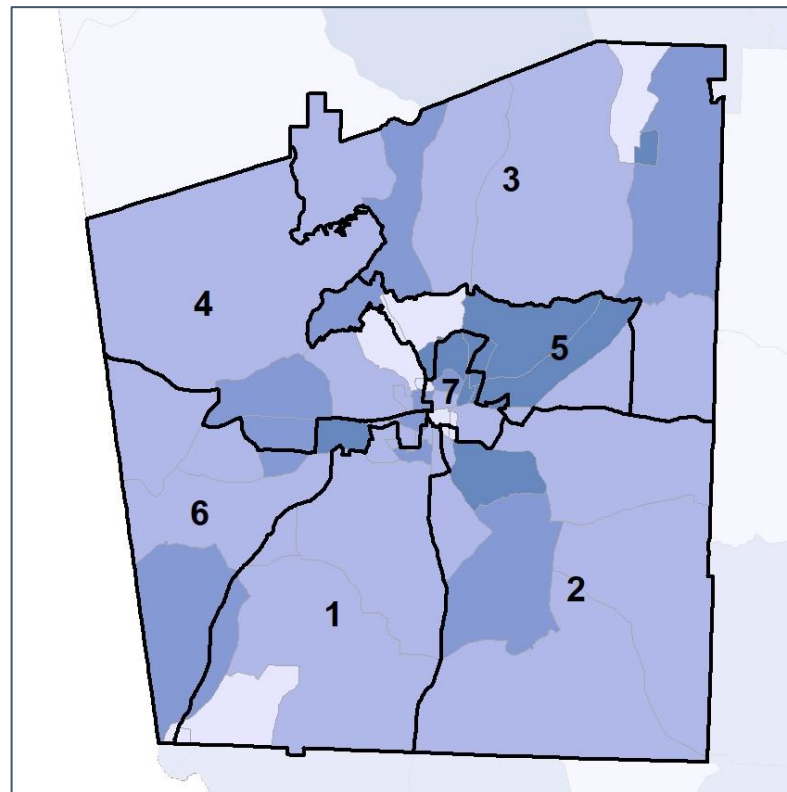
Net Gain in % POC (2020 - 2010) by Census Block Group



2012 Map



2022 Map*



	1	2	3	4	5	6	7	1*	2*	3*	4*	5*	6*	7*	County
Population	8,979	9,635	9,652	10,205	11,455	9,789	9,711	10,014	9,824	9,868	9,945	9,974	9,833	9,968	69,426
API	1%	4%	1%	2%	5%	2%	2%	1%	3%	1%	2%	6%	2%	3%	2%
Black	58%	19%	21%	16%	38%	28%	65%	53%	29%	21%	16%	38%	29%	58%	35%
Latino	4%	3%	4%	4%	4%	5%	7%	4%	3%	4%	4%	4%	5%	7%	4%
Other	3%	3%	4%	4%	4%	4%	3%	3%	3%	4%	4%	4%	4%	3%	4%
White	34%	71%	70%	74%	49%	62%	23%	39%	62%	70%	74%	49%	62%	29%	55%
Population Gain	*	*	*	*	*	*	*	1,035	189	216	-260	-1,481	44	257	*
Population % Gain	*	*	*	*	*	*	*	12%	2%	2%	-3%	-13%	0%	3%	*
Net POC Gain	*	*	*	*	*	*	*	185	989	42	-67	-761	25	-413	*
Net POC % Gain	*	*	*	*	*	*	*	3%	36%	1%	-3%	-13%	1%	-6%	*

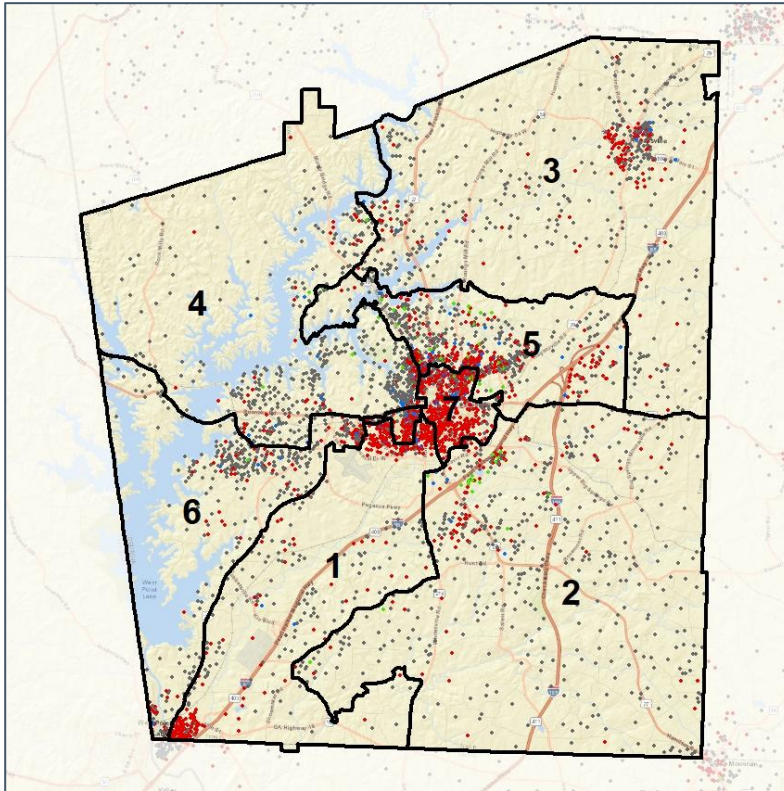


Troup County School Board

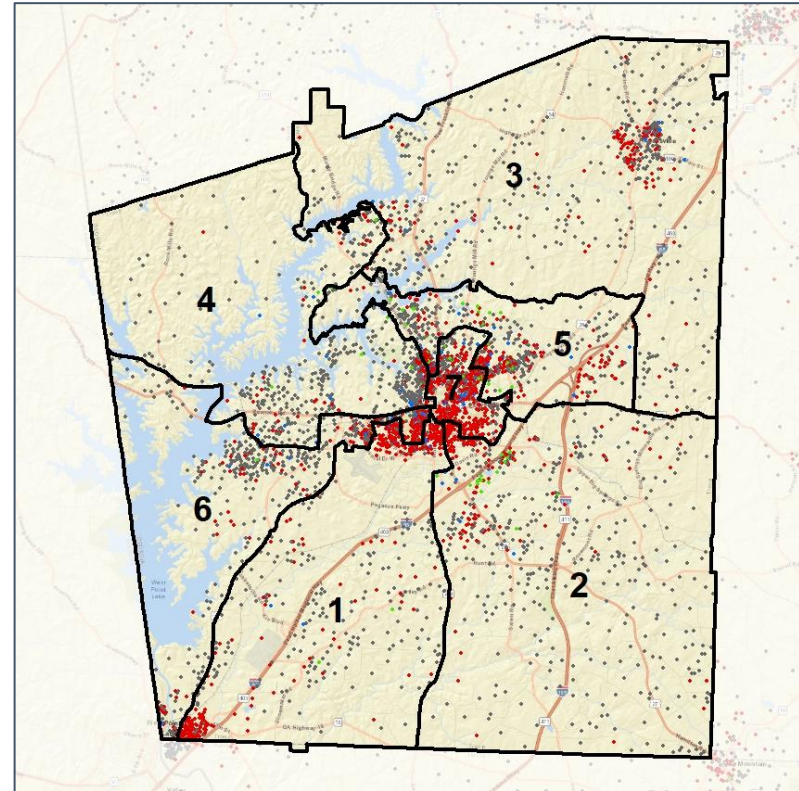
Population Density by Race



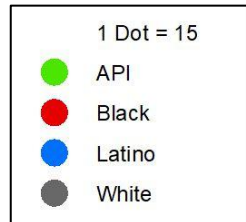
2012 Map



2022 Map*



	1	2	3	4	5	6	7	1*	2*	3*	4*	5*	6*	7*	County
Population	8,979	9,635	9,652	10,205	11,455	9,789	9,711	10,014	9,824	9,868	9,945	9,974	9,833	9,968	69,426
API	50	350	77	187	630	152	198	78	332	82	182	558	152	260	1,644
% API	1%	4%	1%	2%	5%	2%	2%	1%	3%	1%	2%	6%	2%	3%	2%
Black	5,234	1,830	2,016	1,661	4,336	2,786	6,294	5,350	2,804	2,036	1,622	3,761	2,805	5,779	24,157
% Black	58%	19%	21%	16%	38%	28%	65%	53%	29%	21%	16%	38%	29%	58%	35%
Latino	368	259	361	417	461	446	644	382	278	364	412	393	448	679	2,956
% Latino	4%	3%	4%	4%	4%	5%	7%	4%	3%	4%	4%	4%	5%	7%	4%
Other	312	329	430	395	409	366	329	339	343	444	377	363	370	334	2,570
% Other	3%	3%	4%	4%	4%	4%	3%	3%	3%	4%	4%	4%	4%	3%	4%
White	3,015	6,867	6,768	7,545	5,619	6,039	2,246	3,865	6,067	6,942	7,352	4,899	6,058	2,916	38,099
% White	34%	71%	70%	74%	49%	62%	23%	39%	62%	70%	74%	49%	62%	29%	55%



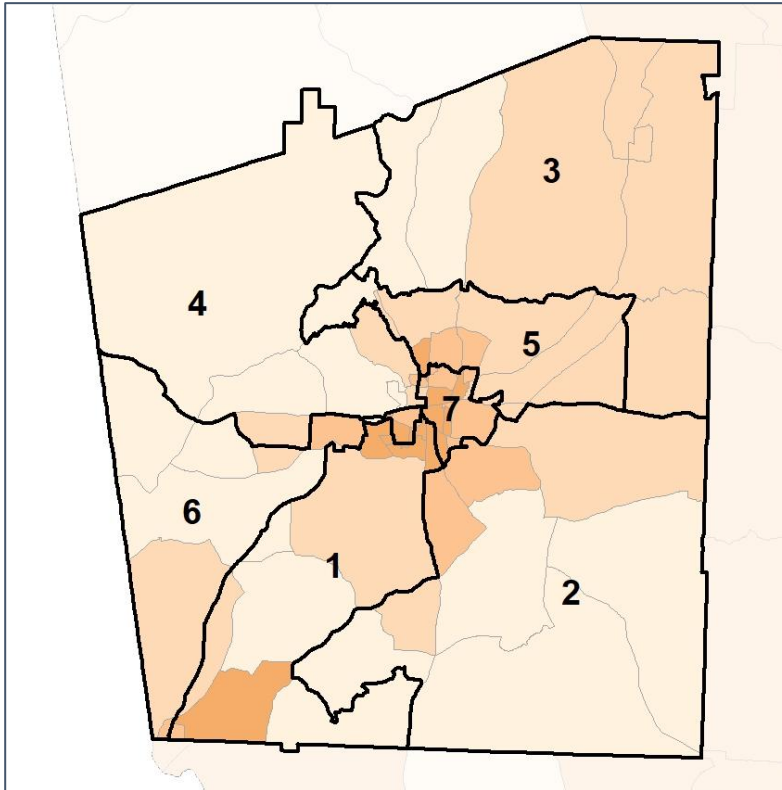
Source:
2020 Decennial Census
2020 ACS 5-Year Dataset

Troup County School Board

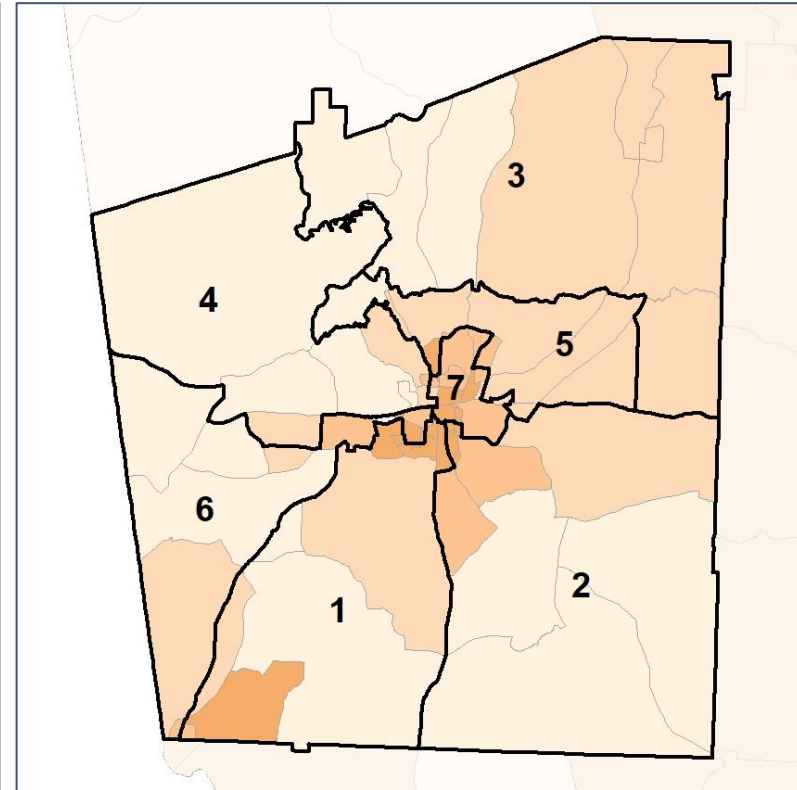
% People of Color by Census Block Group



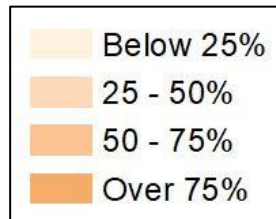
2012 Map



2022 Map*



	1	2	3	4	5	6	7	1*	2*	3*	4*	5*	6*	7*	County
Population	8,979	9,635	9,652	10,205	11,455	9,789	9,711	10,014	9,824	9,868	9,945	9,974	9,833	9,968	69,426
API	50	350	77	187	630	152	198	78	332	82	182	558	152	260	1,644
% API	1%	4%	1%	2%	5%	2%	2%	1%	3%	1%	2%	6%	2%	3%	2%
Black	5,234	1,830	2,016	1,661	4,336	2,786	6,294	5,350	2,804	2,036	1,622	3,761	2,805	5,779	24,157
% Black	58%	19%	21%	16%	38%	28%	65%	53%	29%	21%	16%	38%	29%	58%	35%
Latino	368	259	361	417	461	446	644	382	278	364	412	393	448	679	2,956
% Latino	4%	3%	4%	4%	4%	5%	7%	4%	3%	4%	4%	4%	5%	7%	4%
Other	312	329	430	395	409	366	329	339	343	444	377	363	370	334	2,570
% Other	3%	3%	4%	4%	4%	4%	3%	3%	3%	4%	4%	4%	4%	3%	4%
White	3,015	6,867	6,768	7,545	5,619	6,039	2,246	3,865	6,067	6,942	7,352	4,899	6,058	2,916	38,099
% White	34%	71%	70%	74%	49%	62%	23%	39%	62%	70%	74%	49%	62%	29%	55%



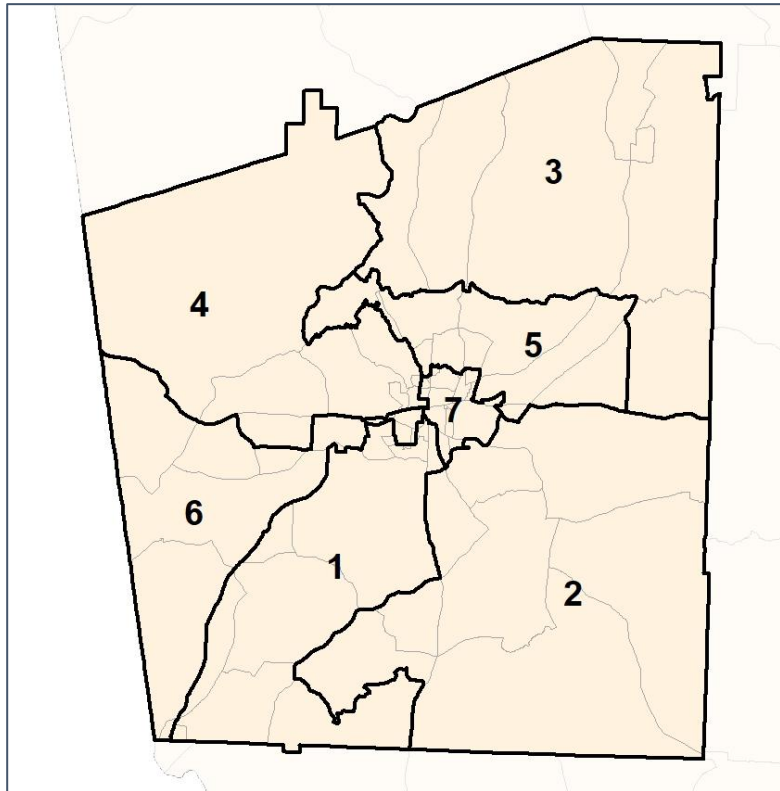
Source:
2020 Decennial Census
2020 ACS 5-Year Dataset

Troup County School Board

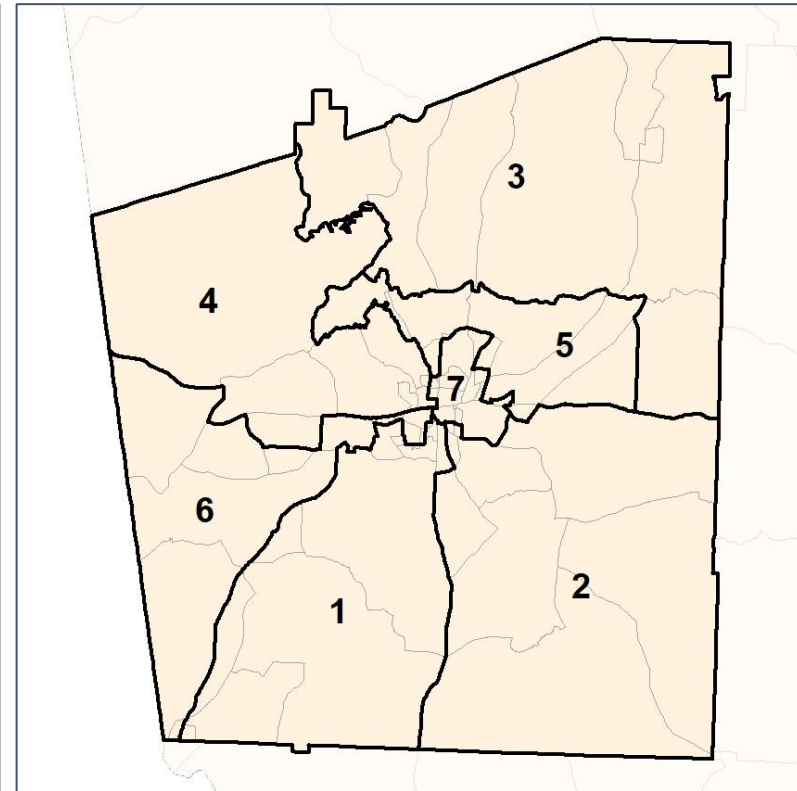
% API by Census Block Group



2012 Map



2022 Map*



	1	2	3	4	5	6	7	1*	2*	3*	4*	5*	6*	7*	County
Population	8,979	9,635	9,652	10,205	11,455	9,789	9,711	10,014	9,824	9,868	9,945	9,974	9,833	9,968	69,426
API	50	350	77	187	630	152	198	78	332	82	182	558	152	260	1,644
% API	1%	4%	1%	2%	5%	2%	2%	1%	3%	1%	2%	6%	2%	3%	2%
Black	5,234	1,830	2,016	1,661	4,336	2,786	6,294	5,350	2,804	2,036	1,622	3,761	2,805	5,779	24,157
% Black	58%	19%	21%	16%	38%	28%	65%	53%	29%	21%	16%	38%	29%	58%	35%
Latino	368	259	361	417	461	446	644	382	278	364	412	393	448	679	2,956
% Latino	4%	3%	4%	4%	4%	5%	7%	4%	3%	4%	4%	4%	5%	7%	4%
Other	312	329	430	395	409	366	329	339	343	444	377	363	370	334	2,570
% Other	3%	3%	4%	4%	4%	4%	3%	3%	3%	4%	4%	4%	4%	3%	4%
White	3,015	6,867	6,768	7,545	5,619	6,039	2,246	3,865	6,067	6,942	7,352	4,899	6,058	2,916	38,099
% White	34%	71%	70%	74%	49%	62%	23%	39%	62%	70%	74%	49%	62%	29%	55%



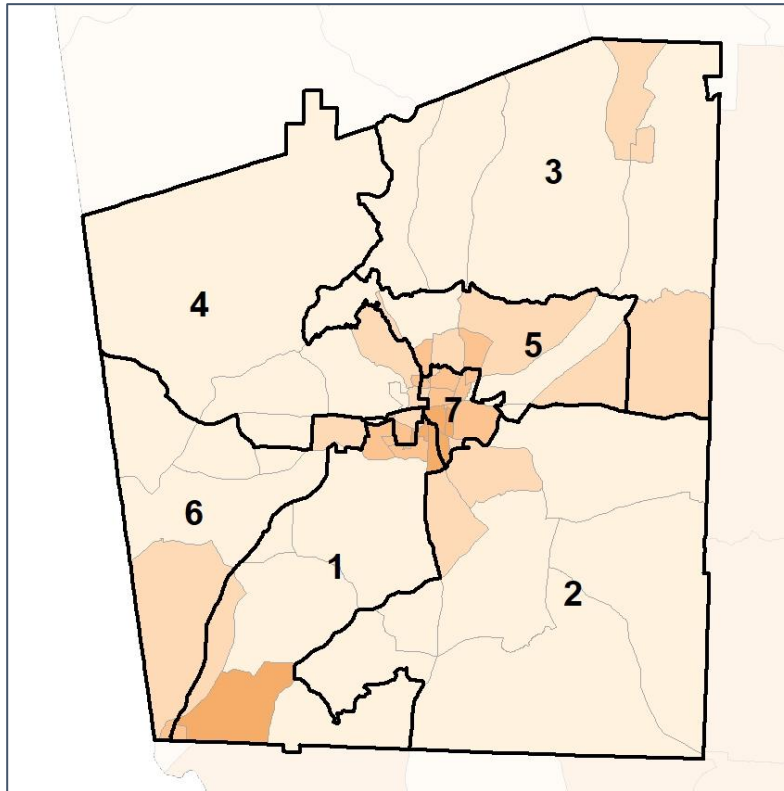
Source:
2020 Decennial Census
2020 ACS 5-Year Dataset

Troup County School Board

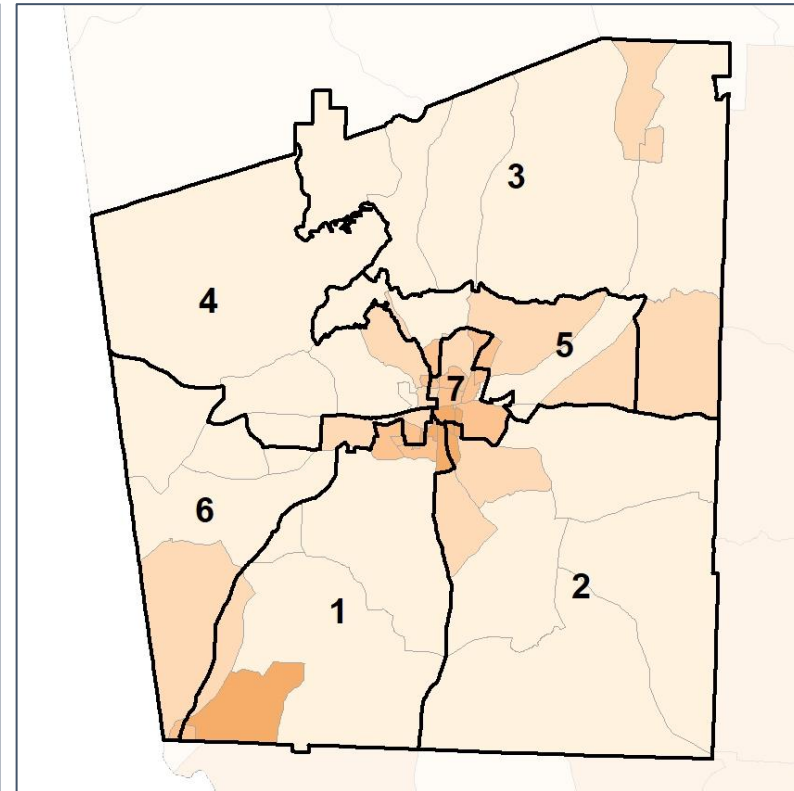
% Black by Census Block Group



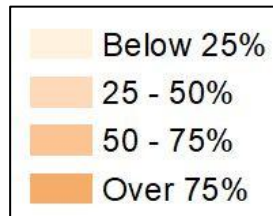
2012 Map



2022 Map*



	1	2	3	4	5	6	7	1*	2*	3*	4*	5*	6*	7*	County
Population	8,979	9,635	9,652	10,205	11,455	9,789	9,711	10,014	9,824	9,868	9,945	9,974	9,833	9,968	69,426
API	50	350	77	187	630	152	198	78	332	82	182	558	152	260	1,644
% API	1%	4%	1%	2%	5%	2%	2%	1%	3%	1%	2%	6%	2%	3%	2%
Black	5,234	1,830	2,016	1,661	4,336	2,786	6,294	5,350	2,804	2,036	1,622	3,761	2,805	5,779	24,157
% Black	58%	19%	21%	16%	38%	28%	65%	53%	29%	21%	16%	38%	29%	58%	35%
Latino	368	259	361	417	461	446	644	382	278	364	412	393	448	679	2,956
% Latino	4%	3%	4%	4%	4%	5%	7%	4%	3%	4%	4%	4%	5%	7%	4%
Other	312	329	430	395	409	366	329	339	343	444	377	363	370	334	2,570
% Other	3%	3%	4%	4%	4%	4%	3%	3%	3%	4%	4%	4%	4%	3%	4%
White	3,015	6,867	6,768	7,545	5,619	6,039	2,246	3,865	6,067	6,942	7,352	4,899	6,058	2,916	38,099
% White	34%	71%	70%	74%	49%	62%	23%	39%	62%	70%	74%	49%	62%	29%	55%



Source:
2020 Decennial Census
2020 ACS 5-Year Dataset

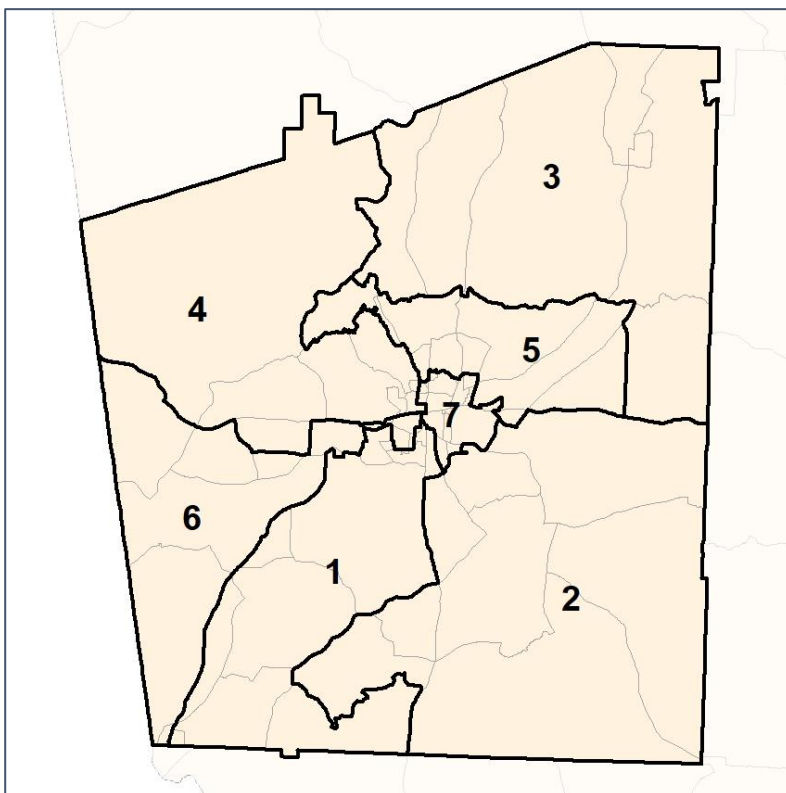


Troup County School Board

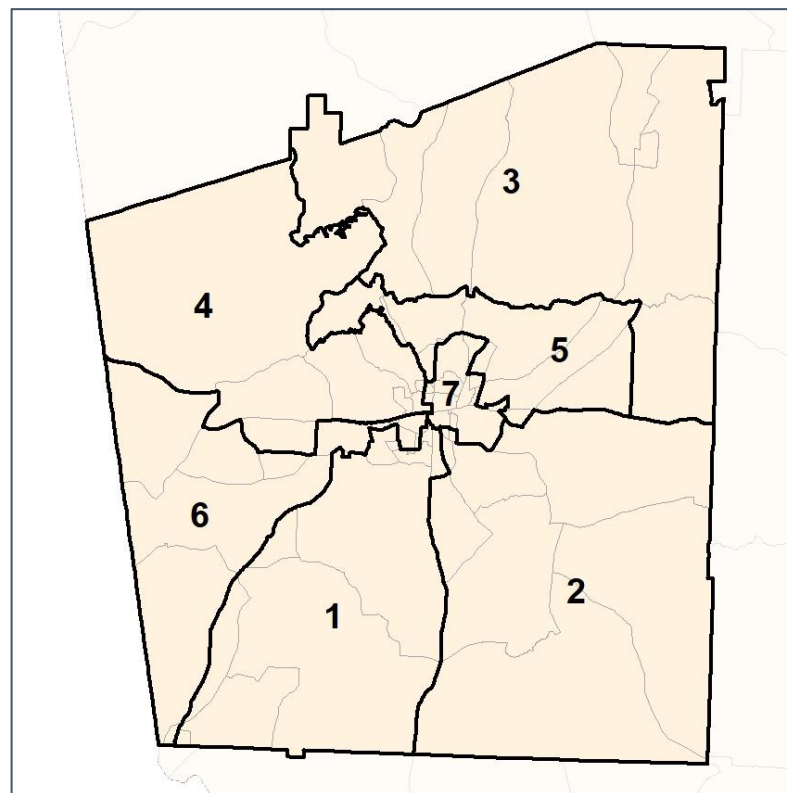
% Latino by Census Block Group



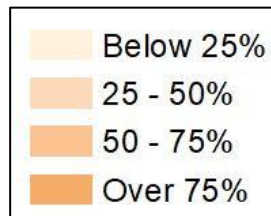
2012 Map



2022 Map*



	1	2	3	4	5	6	7	1*	2*	3*	4*	5*	6*	7*	County
Population	8,979	9,635	9,652	10,205	11,455	9,789	9,711	10,014	9,824	9,868	9,945	9,974	9,833	9,968	69,426
API	50	350	77	187	630	152	198	78	332	82	182	558	152	260	1,644
% API	1%	4%	1%	2%	5%	2%	2%	1%	3%	1%	2%	6%	2%	3%	2%
Black	5,234	1,830	2,016	1,661	4,336	2,786	6,294	5,350	2,804	2,036	1,622	3,761	2,805	5,779	24,157
% Black	58%	19%	21%	16%	38%	28%	65%	53%	29%	21%	16%	38%	29%	58%	35%
Latino	368	259	361	417	461	446	644	382	278	364	412	393	448	679	2,956
% Latino	4%	3%	4%	4%	4%	5%	7%	4%	3%	4%	4%	4%	5%	7%	4%
Other	312	329	430	395	409	366	329	339	343	444	377	363	370	334	2,570
% Other	3%	3%	4%	4%	4%	4%	3%	3%	3%	4%	4%	4%	4%	3%	4%
White	3,015	6,867	6,768	7,545	5,619	6,039	2,246	3,865	6,067	6,942	7,352	4,899	6,058	2,916	38,099
% White	34%	71%	70%	74%	49%	62%	23%	39%	62%	70%	74%	49%	62%	29%	55%

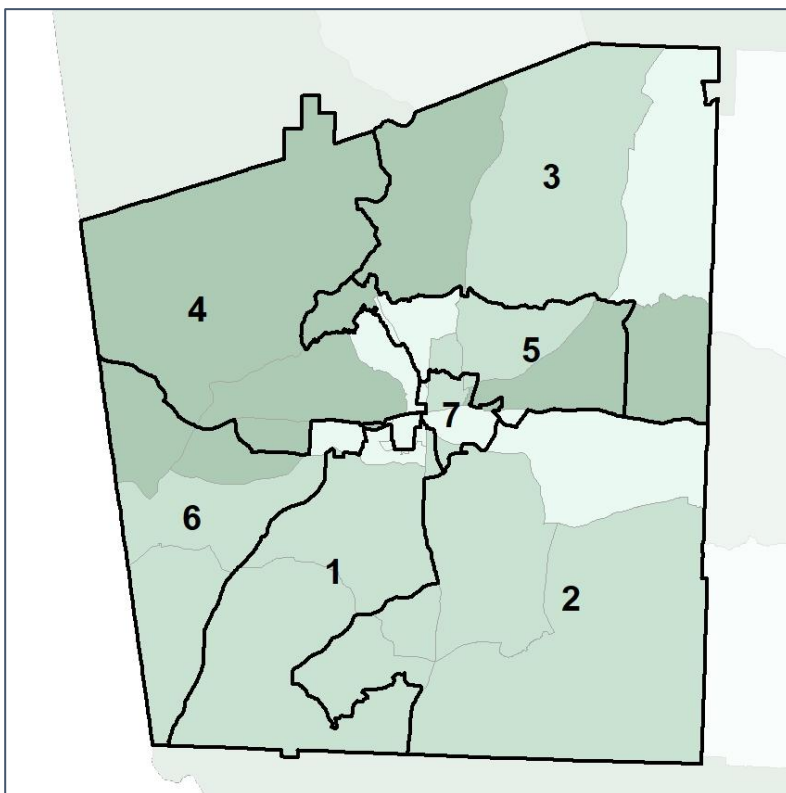


Troup County School Board

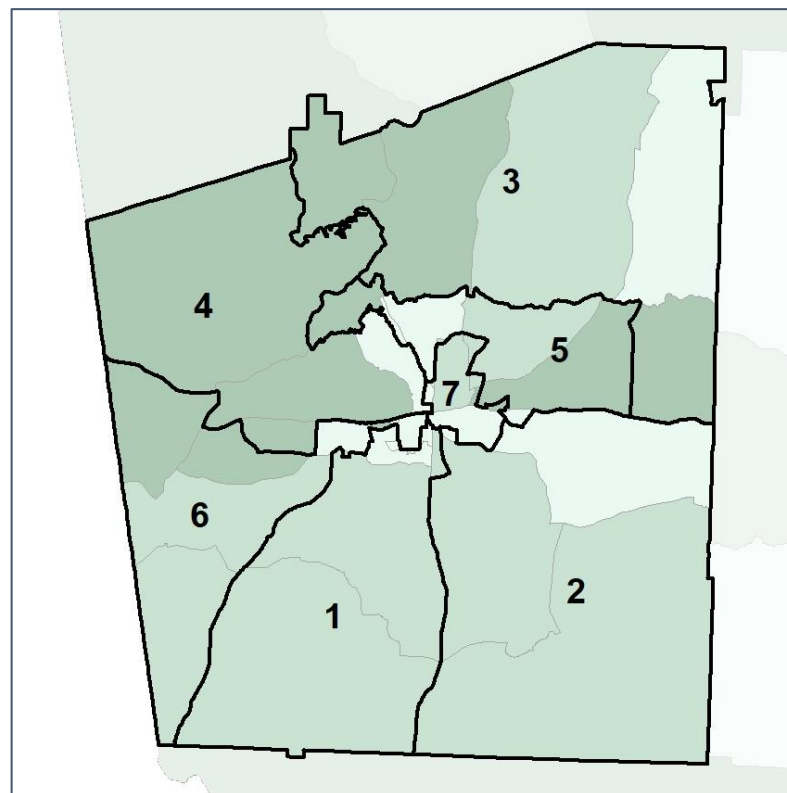
Median Household Income by Census Tract



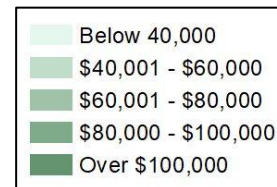
2012 Map



2022 Map*



	1	2	3	4	5	6	7	1*	2*	3*	4*	5*	6*	7*	County
Population	8,979	9,635	9,652	10,205	11,455	9,789	9,711	10,014	9,824	9,868	9,945	9,974	9,833	9,968	69,426
% API	1%	4%	1%	2%	5%	2%	2%	1%	3%	1%	2%	6%	2%	3%	2%
% Black	58%	19%	21%	16%	38%	28%	65%	53%	29%	21%	16%	38%	29%	58%	35%
% Latino	4%	3%	4%	4%	4%	5%	7%	4%	3%	4%	4%	4%	5%	7%	4%
% Other	3%	3%	4%	4%	4%	4%	3%	3%	3%	4%	4%	4%	4%	3%	4%
% White	34%	71%	70%	74%	49%	62%	23%	39%	62%	70%	74%	49%	62%	29%	55%
Median Income	\$37K	\$66K	\$48K	\$59K	\$58K	\$49K	\$33K	\$37K	\$66K	\$48K	\$59K	\$59K	\$49K	\$38K	\$47K
% Renter	42%	23%	33%	27%	59%	43%	56%	42%	23%	33%	27%	58%	43%	58%	40%
% Youth	21%	23%	23%	22%	31%	20%	23%	21%	23%	23%	22%	30%	20%	27%	23%



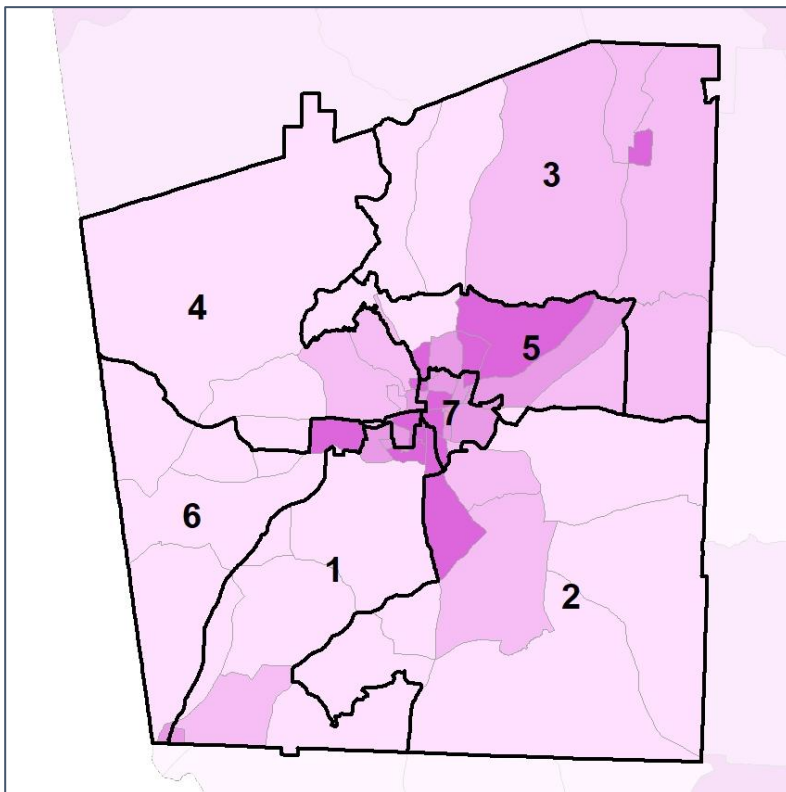
Source:
2020 Decennial Census
2020 ACS 5-Year Dataset

Troup County School Board

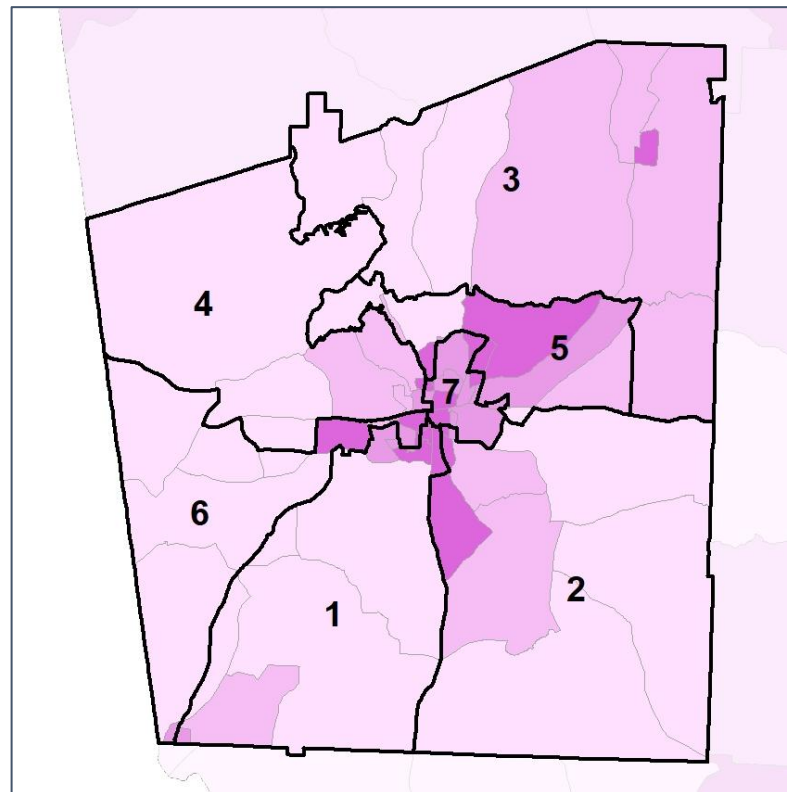
% Renter by Census Block Group



2012 Map



2022 Map*



	1	2	3	4	5	6	7	1*	2*	3*	4*	5*	6*	7*	County
Population	8,979	9,635	9,652	10,205	11,455	9,789	9,711	10,014	9,824	9,868	9,945	9,974	9,833	9,968	69,426
% API	1%	4%	1%	2%	5%	2%	2%	1%	3%	1%	2%	6%	2%	3%	2%
% Black	58%	19%	21%	16%	38%	28%	65%	53%	29%	21%	16%	38%	29%	58%	35%
% Latino	4%	3%	4%	4%	4%	5%	7%	4%	3%	4%	4%	4%	5%	7%	4%
% Other	3%	3%	4%	4%	4%	4%	3%	3%	3%	4%	4%	4%	4%	3%	4%
% White	34%	71%	70%	74%	49%	62%	23%	39%	62%	70%	74%	49%	62%	29%	55%
Median Income	\$37K	\$66K	\$48K	\$59K	\$58K	\$49K	\$33K	\$37K	\$66K	\$48K	\$59K	\$59K	\$49K	\$38K	\$47K
% Renter	42%	23%	33%	27%	59%	43%	56%	42%	23%	33%	27%	58%	43%	58%	40%
% Youth	21%	23%	23%	22%	31%	20%	23%	21%	23%	23%	22%	30%	20%	27%	23%

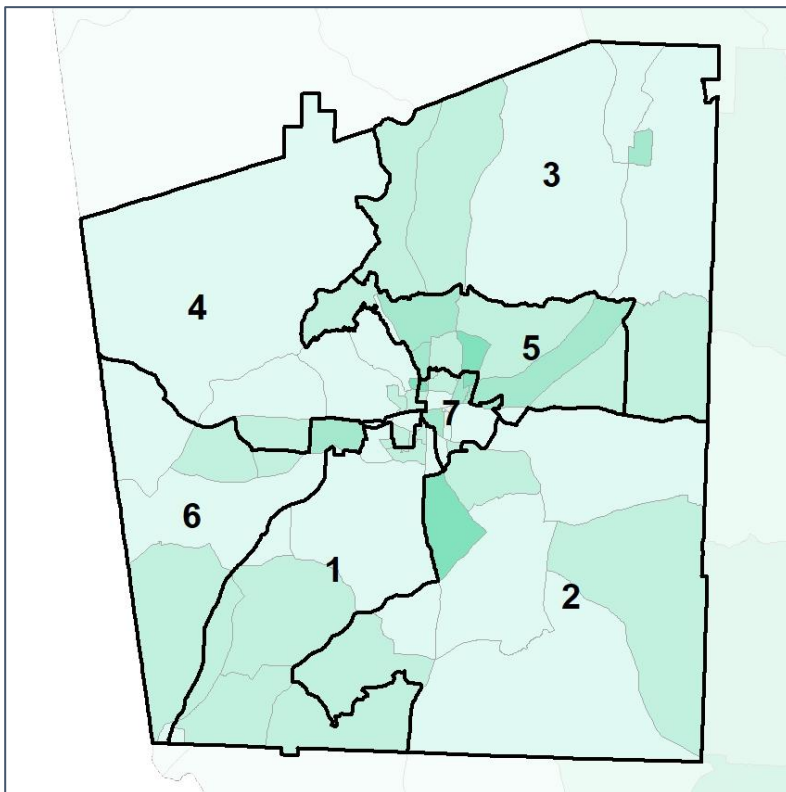


Troup County School Board

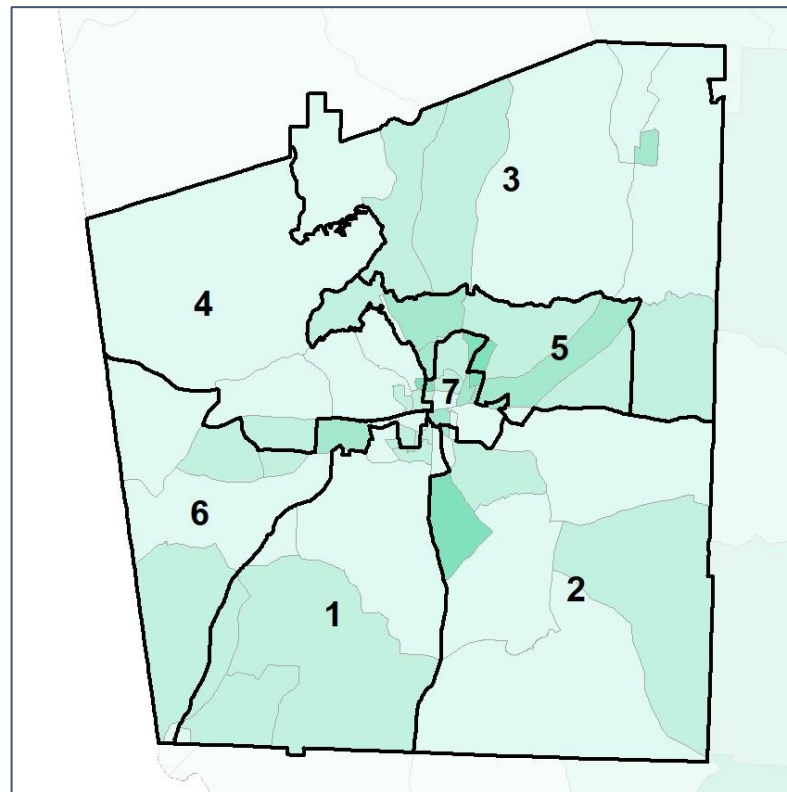
% Youth (18-34) by Census Block Group



2012 Map



2022 Map*



	1	2	3	4	5	6	7	1*	2*	3*	4*	5*	6*	7*	County
Population	8,979	9,635	9,652	10,205	11,455	9,789	9,711	10,014	9,824	9,868	9,945	9,974	9,833	9,968	69,426
% API	1%	4%	1%	2%	5%	2%	2%	1%	3%	1%	2%	6%	2%	3%	2%
% Black	58%	19%	21%	16%	38%	28%	65%	53%	29%	21%	16%	38%	29%	58%	35%
% Latino	4%	3%	4%	4%	4%	5%	7%	4%	3%	4%	4%	4%	5%	7%	4%
% Other	3%	3%	4%	4%	4%	4%	3%	3%	3%	4%	4%	4%	4%	3%	4%
% White	34%	71%	70%	74%	49%	62%	23%	39%	62%	70%	74%	49%	62%	29%	55%
Median Income	\$37K	\$66K	\$48K	\$59K	\$58K	\$49K	\$33K	\$37K	\$66K	\$48K	\$59K	\$59K	\$49K	\$38K	\$47K
% Renter	42%	23%	33%	27%	59%	43%	56%	42%	23%	33%	27%	58%	43%	58%	40%
% Youth	21%	23%	23%	22%	31%	20%	23%	21%	23%	23%	22%	30%	20%	27%	23%

