



Demographic Overview

Racial Breakdown in Taylor County

Taylor County	2010	2020	% Change
Total Population	8,906	7,816	-12%
AAPI	57	31	-46%
Black	3,485	2,807	-19%
Latino	164	168	2%
Other/Mixed Race	77	226	194%
POC	3,783	3,232	-15%
White	5,123	4,584	-11%

*Note: The use of "Other" in these statistics combines those who identify as Native American, Mixed Race, and "Other" race





Population Gain

Change in Population in Georgia by County

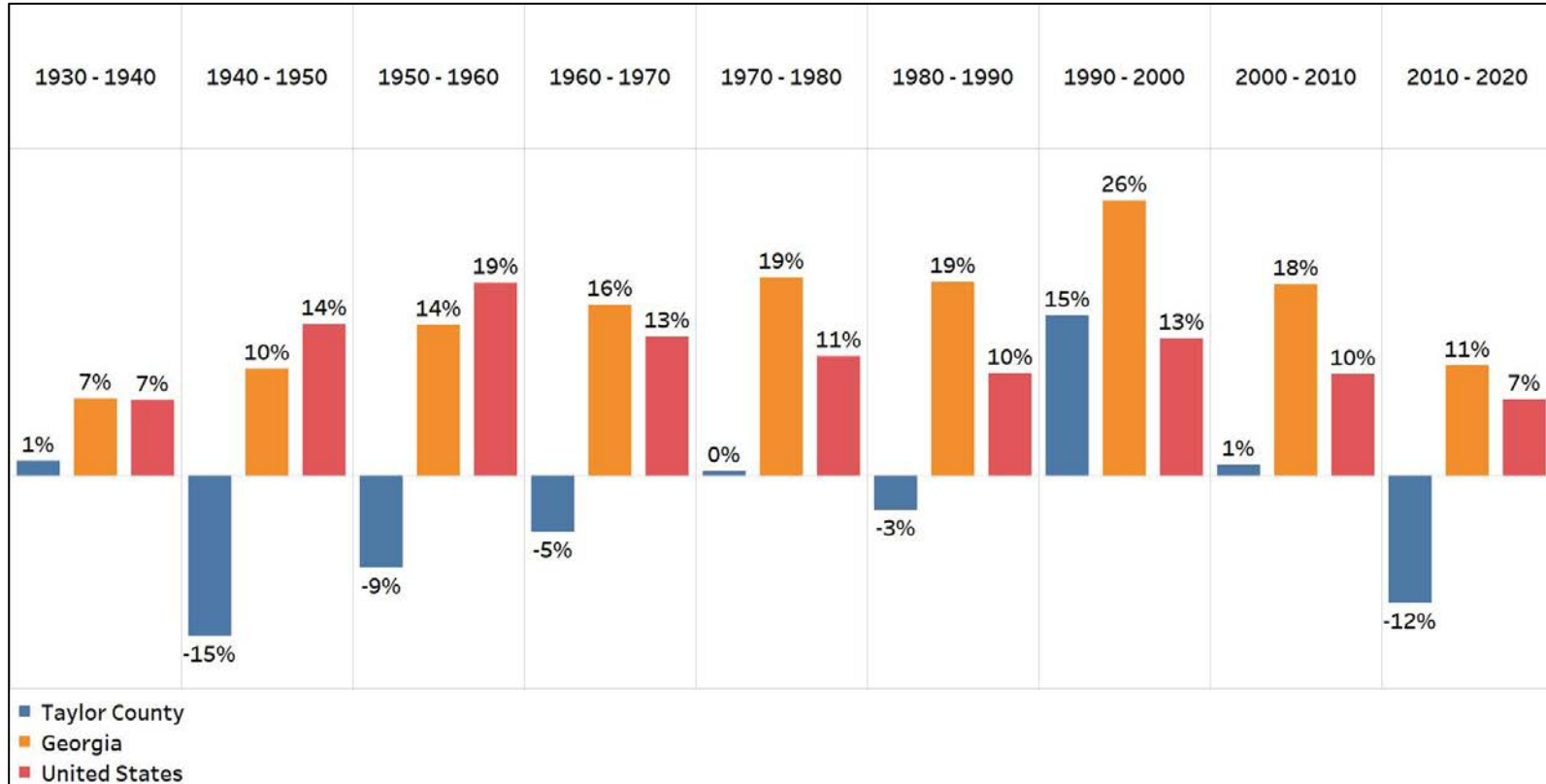


- Georgia is experiencing rapid population growth in the Atlanta, Augusta, and Savannah regions of the state



Population Gain

Change in Population by Decade

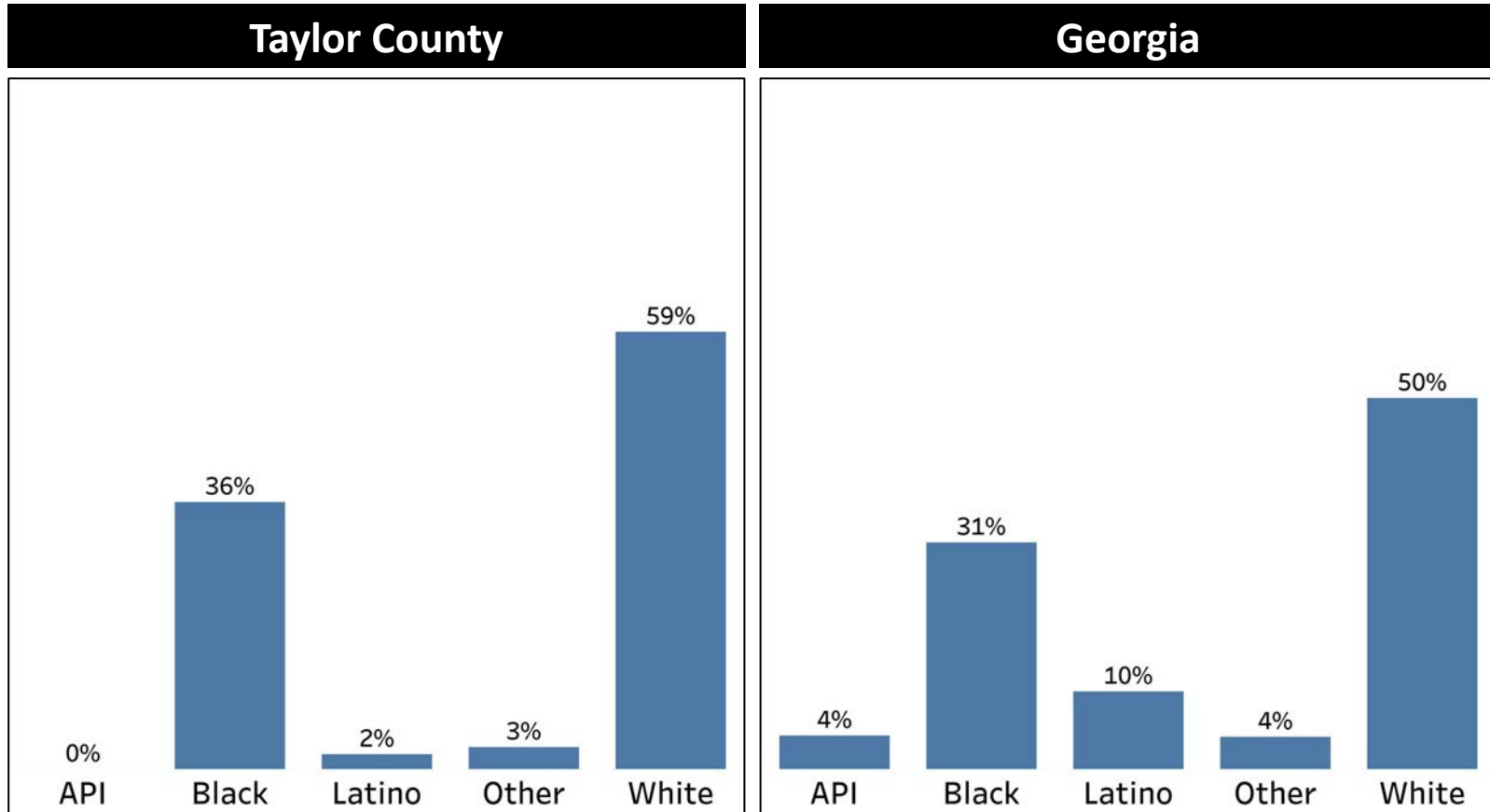


- Taylor County had a period of decline from 1940-1990, but then saw population growth from 1990-2010
- However, in the last decade Taylor County had the biggest drop in population since 1950



Demographics

Comparison between Taylor County and Georgia



- Taylor County has a higher shares of both Black and White populations compared to Georgia overall
- All other demographic groups only make up 5% of the population

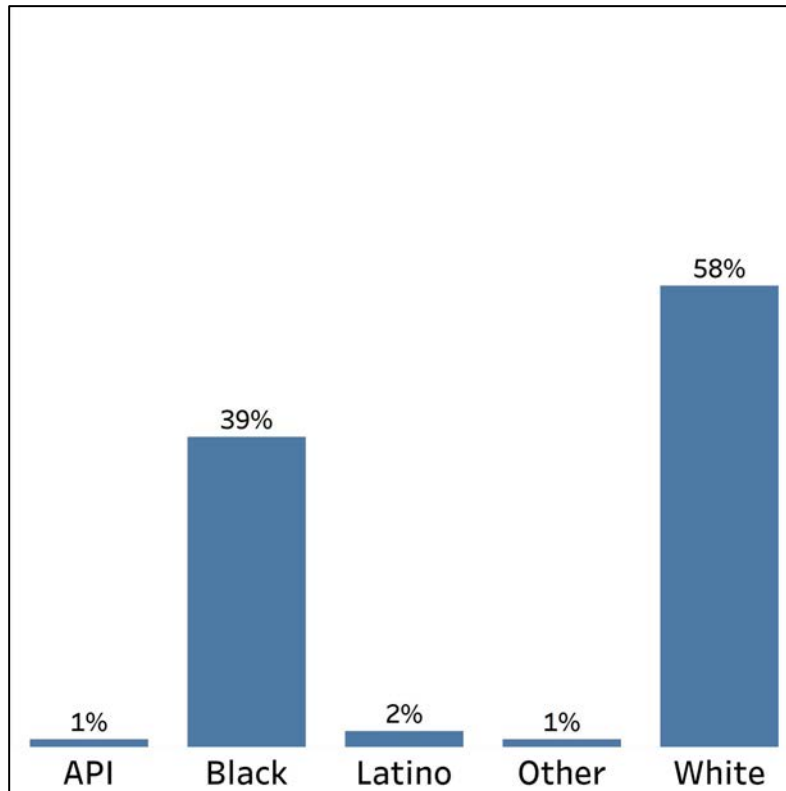


Demographics

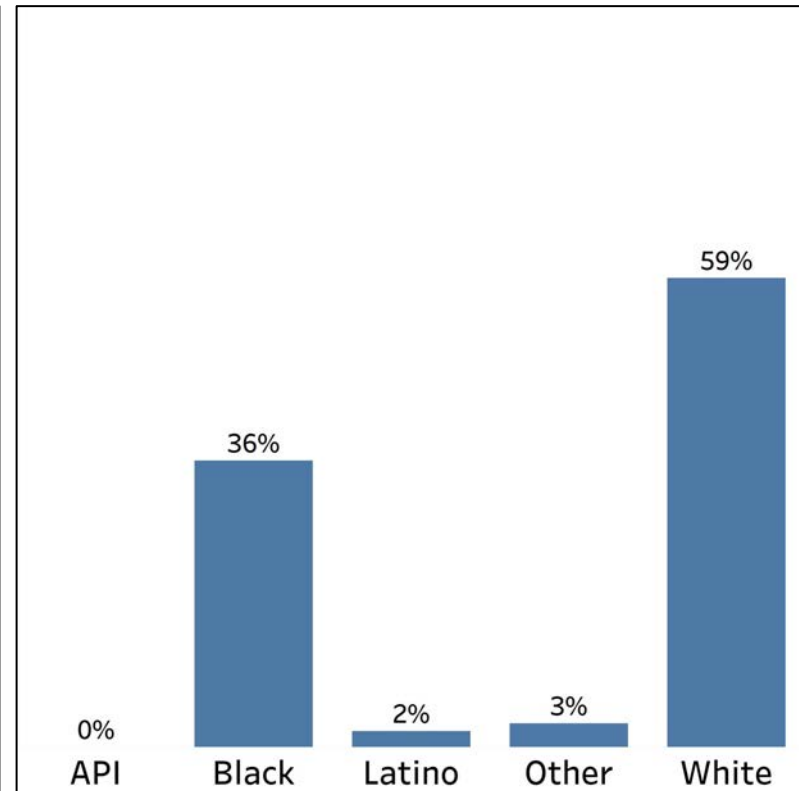
2010 vs 2020 Demographics in Taylor County



Taylor County 2010



Taylor County 2020

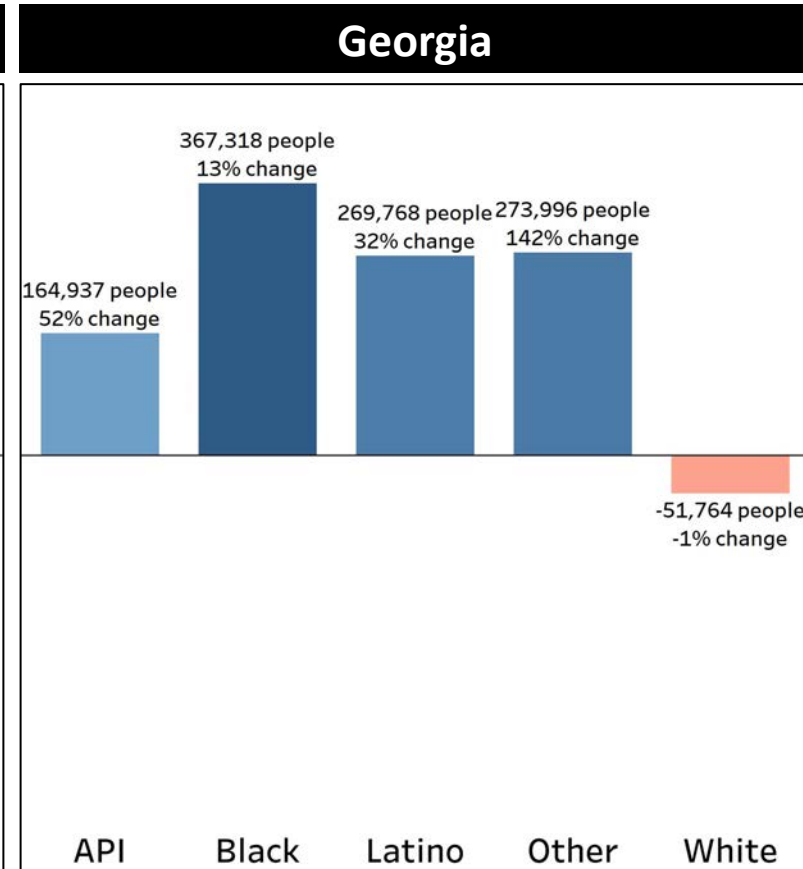
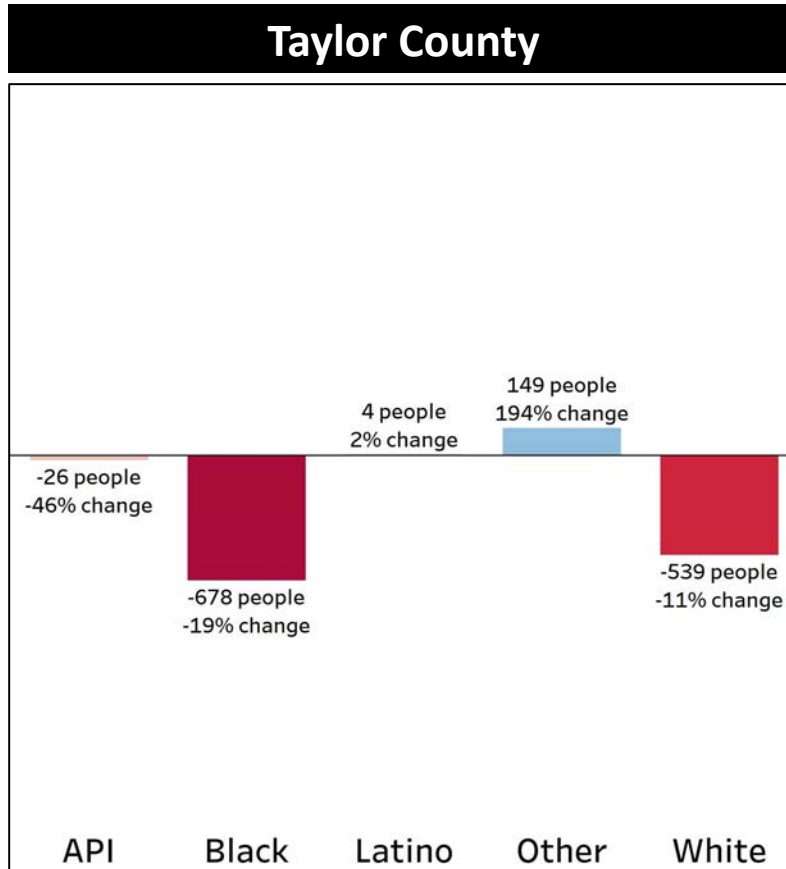


- Taylor County had a drop in its share of both the Black and API populations
- Meanwhile, the White and Other populations increased their shares



Demographics

Population Change by Race (2020 - 2010)



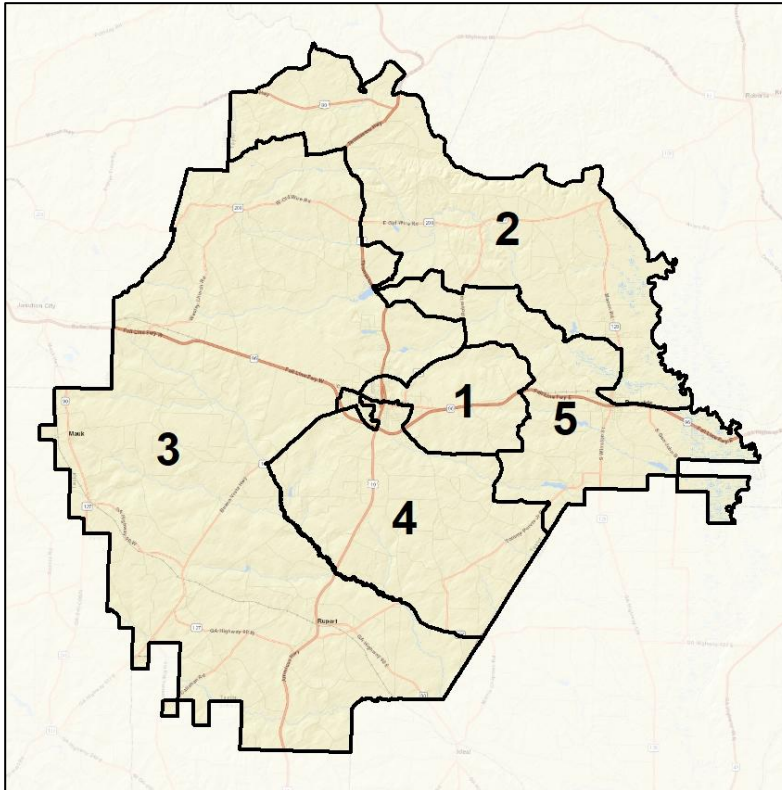
- Taylor County had a significant decrease in the Black, API, and White populations, all having higher decline rates than in Georgia overall
- The Latino population decreased slightly, while the Other population was the only population to increase

Taylor Co. Commission & School Board

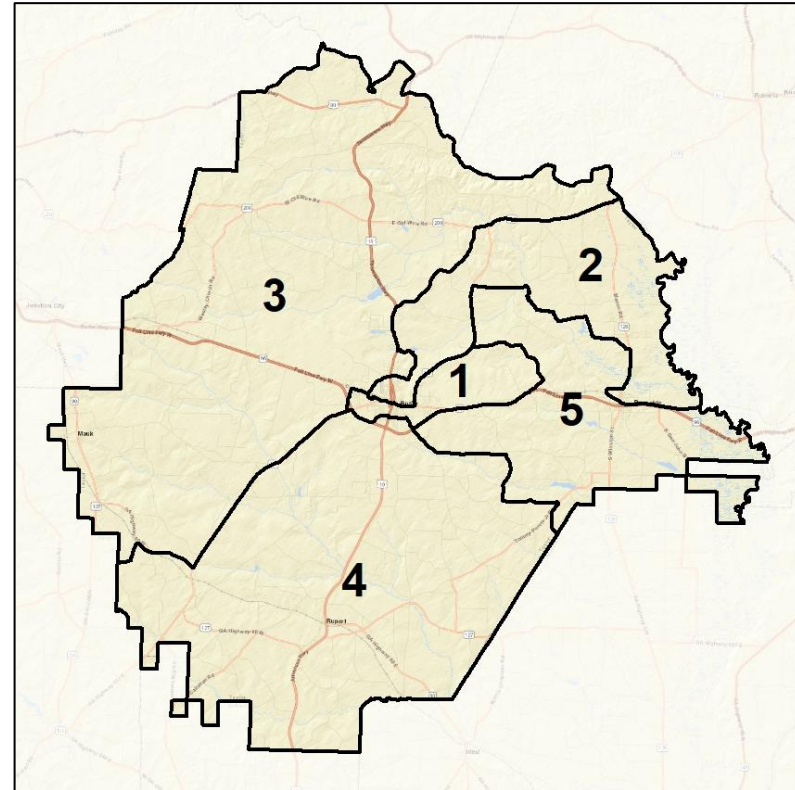
Context



2012 Map



2022 Map*



	1	2	3	4	5	1*	2*	3*	4*	5*	County
Population	1,619	1,271	1,643	1,769	1,514	1,578	1,574	1,552	1,552	1,560	7,816
API	0%	0%	1%	0%	0%	0%	0%	1%	1%	0%	0%
Black	81%	46%	15%	19%	22%	62%	58%	18%	16%	25%	36%
Latino	2%	1%	3%	3%	2%	1%	1%	3%	3%	3%	2%
Other	2%	3%	4%	3%	3%	2%	2%	4%	2%	4%	3%
White	15%	51%	77%	75%	73%	34%	39%	74%	79%	68%	59%
Population Gain	-304	-362	-276	-68	-80	-41	303	-91	-217	46	-1,090
Population % Gain	-16%	-22%	-14%	-4%	-5%	-3%	24%	-6%	-12%	3%	-12%
Net POC Gain	-251	-286	-35	43	-22	-331	329	31	-112	83	-551
Net POC % Gain	-15%	-31%	-9%	11%	-5%	-24%	52%	8%	-25%	20%	-15%

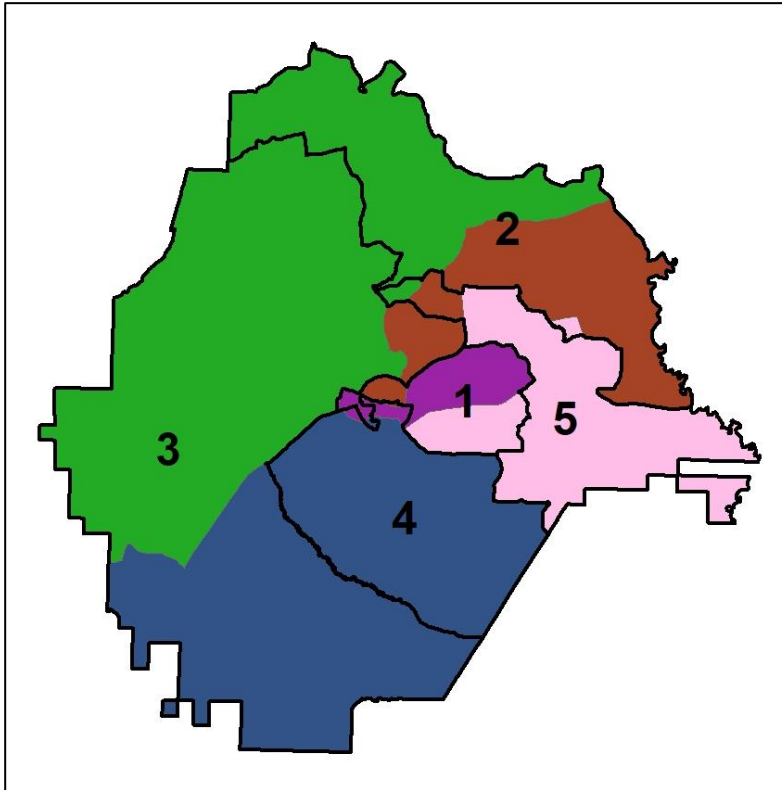


Taylor Co. Commission & School Board

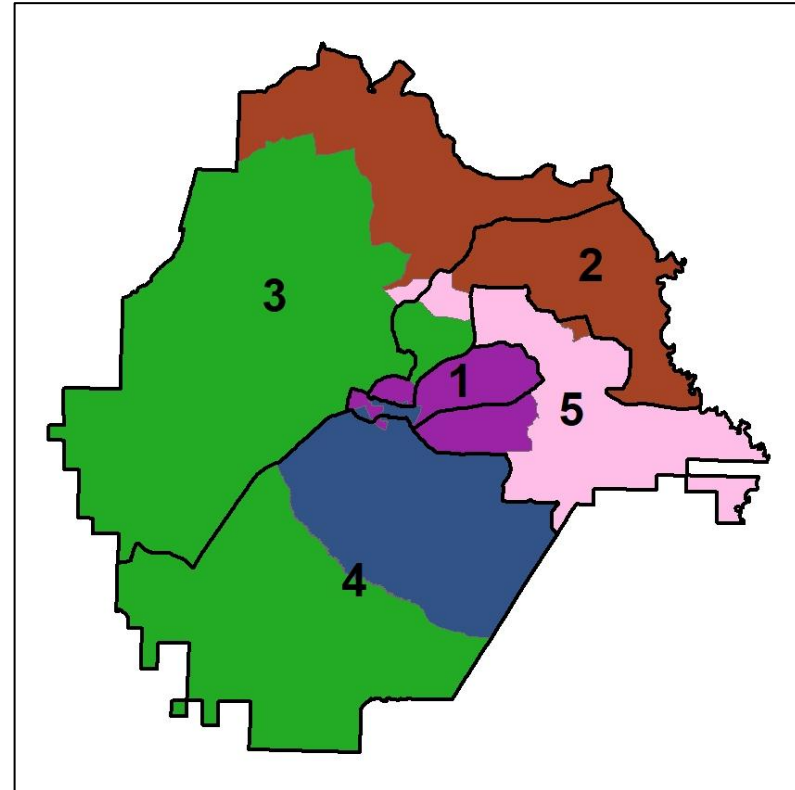
Changes in Redistricting



2012 Map (2022 in Colors)



2022 Map* (2012 in Colors)



	1	2	3	4	5	1*	2*	3*	4*	5*	County
Population	1,619	1,271	1,643	1,769	1,514	1,578	1,574	1,552	1,552	1,560	7,816
API	0%	0%	1%	0%	0%	0%	0%	1%	1%	0%	0%
Black	81%	46%	15%	19%	22%	62%	58%	18%	16%	25%	36%
Latino	2%	1%	3%	3%	2%	1%	1%	3%	3%	3%	2%
Other	2%	3%	4%	3%	3%	2%	2%	4%	2%	4%	3%
White	15%	51%	77%	75%	73%	34%	39%	74%	79%	68%	59%
Population Gain	-304	-362	-276	-68	-80	-41	303	-91	-217	46	-1,090
Population % Gain	-16%	-22%	-14%	-4%	-5%	-3%	24%	-6%	-12%	3%	-12%
Net POC Gain	-251	-286	-35	43	-22	-331	329	31	-112	83	-551
Net POC % Gain	-15%	-31%	-9%	11%	-5%	-24%	52%	8%	-25%	20%	-15%

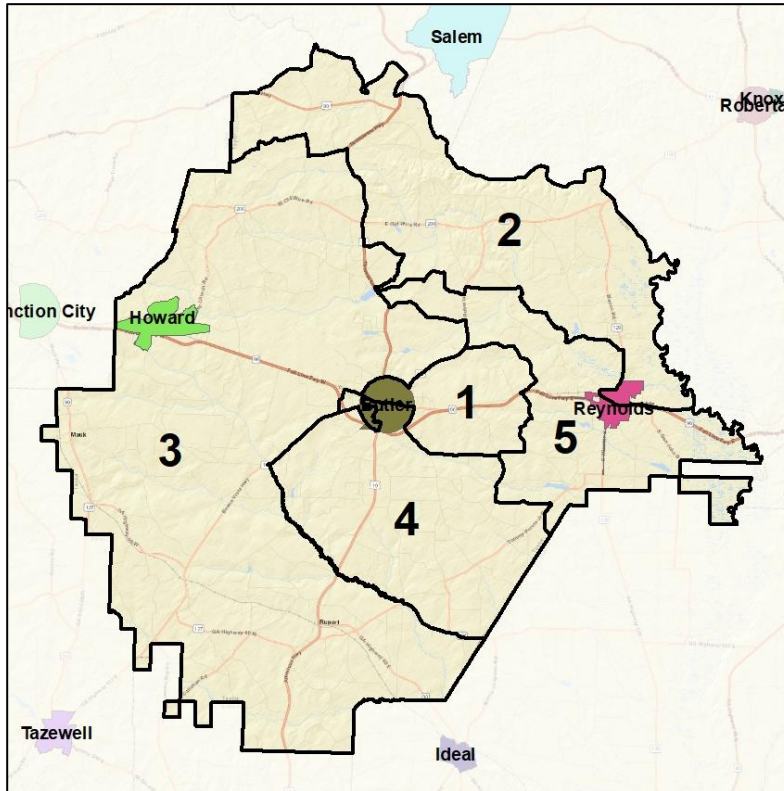


Taylor Co. Commission & School Board

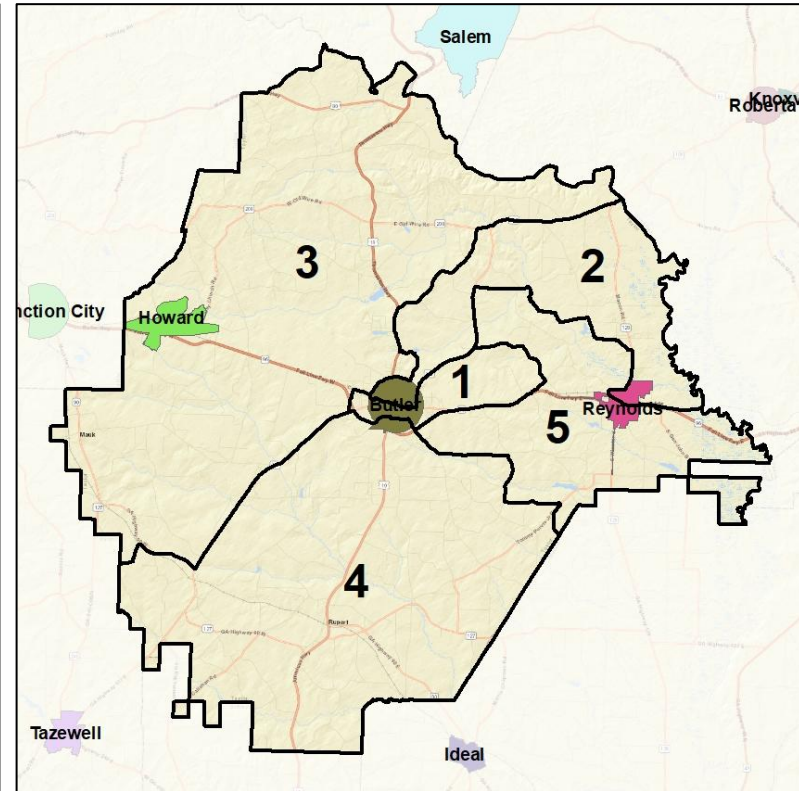
Cities and Places



2012 Map



2022 Map*



	1	2	3	4	5	1*	2*	3*	4*	5*	County
Population	1,619	1,271	1,643	1,769	1,514	1,578	1,574	1,552	1,552	1,560	7,816
API	0%	0%	1%	0%	0%	0%	0%	1%	1%	0%	0%
Black	81%	46%	15%	19%	22%	62%	58%	18%	16%	25%	36%
Latino	2%	1%	3%	3%	2%	1%	1%	3%	3%	3%	2%
Other	2%	3%	4%	3%	3%	2%	2%	4%	2%	4%	3%
White	15%	51%	77%	75%	73%	34%	39%	74%	79%	68%	59%
Population Gain	-304	-362	-276	-68	-80	-41	303	-91	-217	46	-1,090
Population % Gain	-16%	-22%	-14%	-4%	-5%	-3%	24%	-6%	-12%	3%	-12%
Net POC Gain	-251	-286	-35	43	-22	-331	329	31	-112	83	-551
Net POC % Gain	-15%	-31%	-9%	11%	-5%	-24%	52%	8%	-25%	20%	-15%

Source:
2020 Decennial Census
2020 ACS 5-Year Dataset

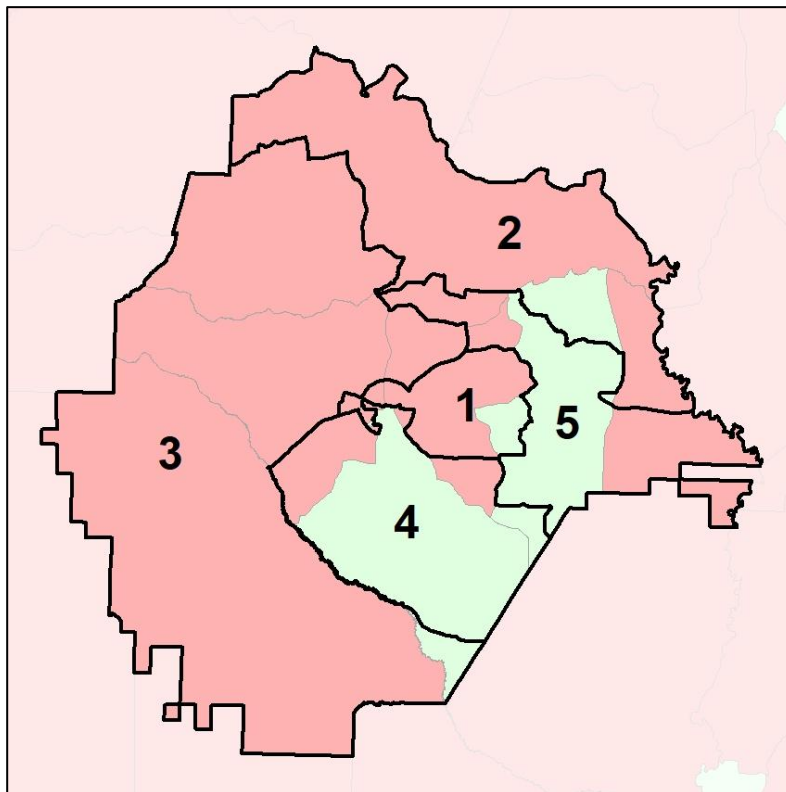


Taylor Co. Commission & School Board

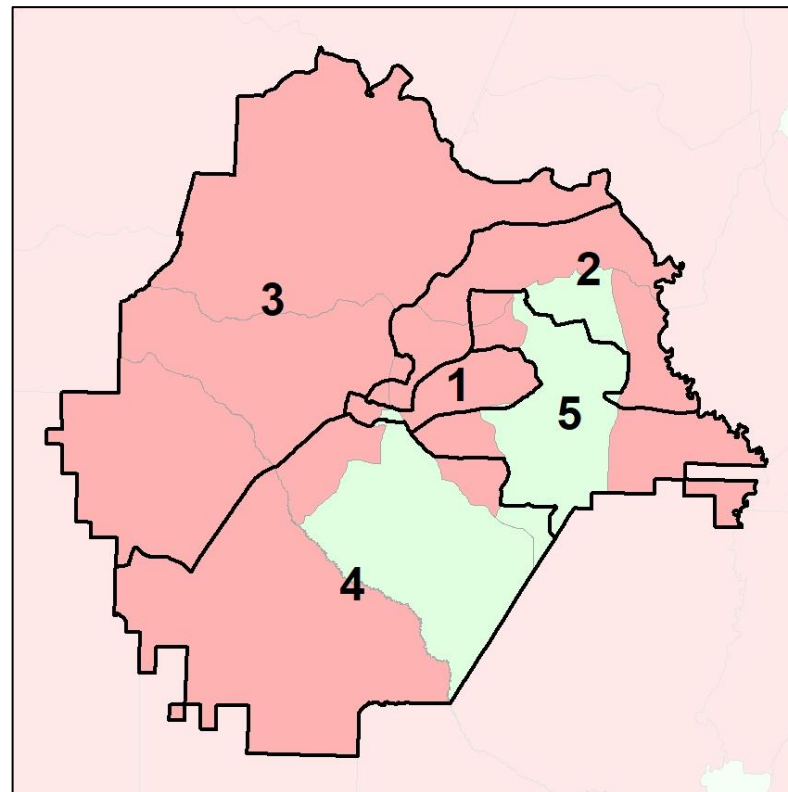
Net Gain in Population (2010 - 2020)



2012 Map



2022 Map*



	1	2	3	4	5	1*	2*	3*	4*	5*	County
Population	1,619	1,271	1,643	1,769	1,514	1,578	1,574	1,552	1,552	1,560	7,816
API	0%	0%	1%	0%	0%	0%	0%	1%	1%	0%	0%
Black	81%	46%	15%	19%	22%	62%	58%	18%	16%	25%	36%
Latino	2%	1%	3%	3%	2%	1%	1%	3%	3%	3%	2%
Other	2%	3%	4%	3%	3%	2%	2%	4%	2%	4%	3%
White	15%	51%	77%	75%	73%	34%	39%	74%	79%	68%	59%
Population Gain	-304	-362	-276	-68	-80	-41	303	-91	-217	46	-1,090
Population % Gain	-16%	-22%	-14%	-4%	-5%	-3%	24%	-6%	-12%	3%	-12%
Net POC Gain	-251	-286	-35	43	-22	-331	329	31	-112	83	-551
Net POC % Gain	-15%	-31%	-9%	11%	-5%	-24%	52%	8%	-25%	20%	-15%



Source:
2020 Decennial Census
2020 ACS 5-Year Dataset

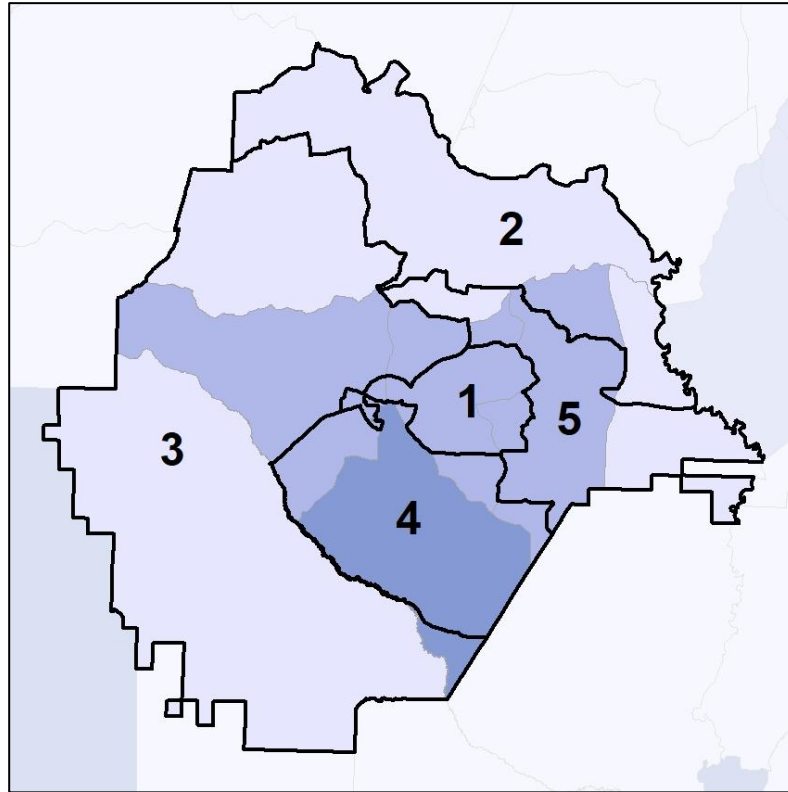


Taylor Co. Commission & School Board

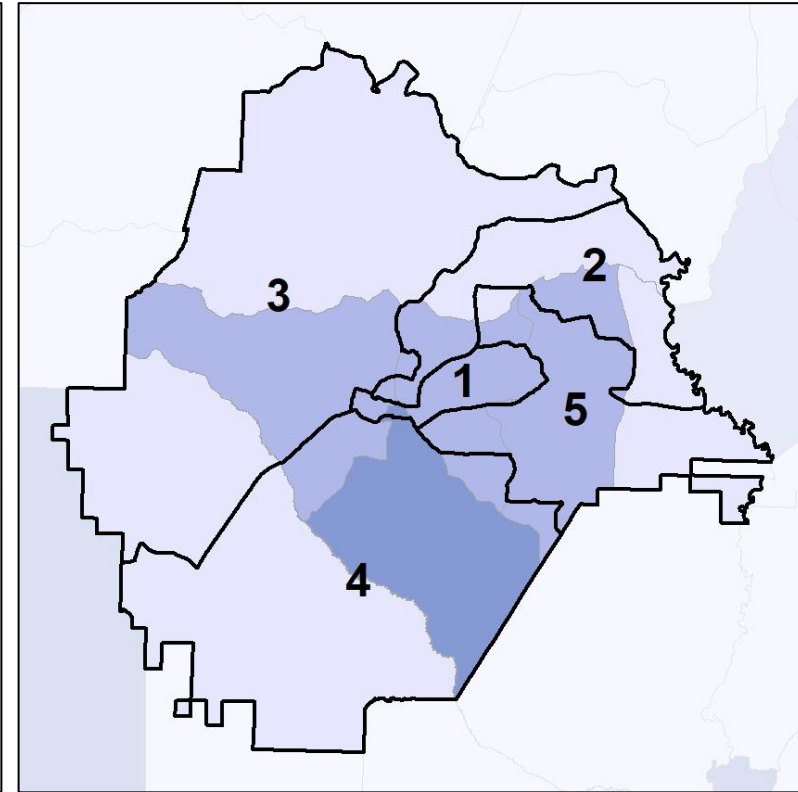
Net Gain in % POC (2020 - 2010) by Census Block Group



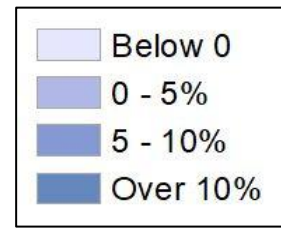
2012 Map



2022 Map*



	1	2	3	4	5	1*	2*	3*	4*	5*	County
Population	1,619	1,271	1,643	1,769	1,514	1,578	1,574	1,552	1,552	1,560	7,816
API	0%	0%	1%	0%	0%	0%	0%	1%	1%	0%	0%
Black	81%	46%	15%	19%	22%	62%	58%	18%	16%	25%	36%
Latino	2%	1%	3%	3%	2%	1%	1%	3%	3%	3%	2%
Other	2%	3%	4%	3%	3%	2%	2%	4%	2%	4%	3%
White	15%	51%	77%	75%	73%	34%	39%	74%	79%	68%	59%
Population Gain	-304	-362	-276	-68	-80	-41	303	-91	-217	46	-1,090
Population % Gain	-16%	-22%	-14%	-4%	-5%	-3%	24%	-6%	-12%	3%	-12%
Net POC Gain	-251	-286	-35	43	-22	-331	329	31	-112	83	-551
Net POC % Gain	-15%	-31%	-9%	11%	-5%	-24%	52%	8%	-25%	20%	-15%



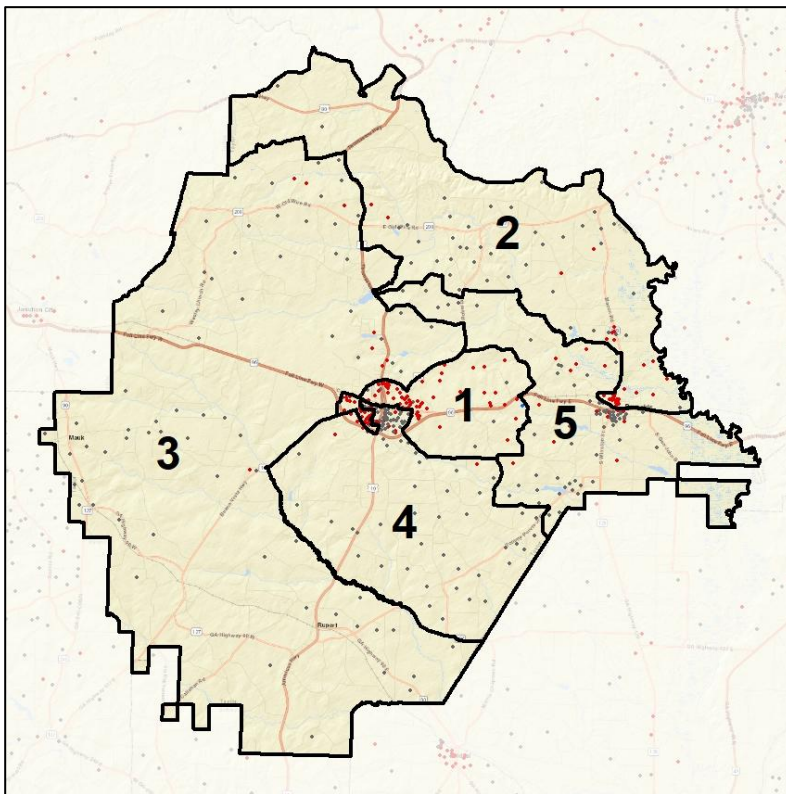
Source:
2020 Decennial Census
2020 ACS 5-Year Dataset

Taylor Co. Commission & School Board

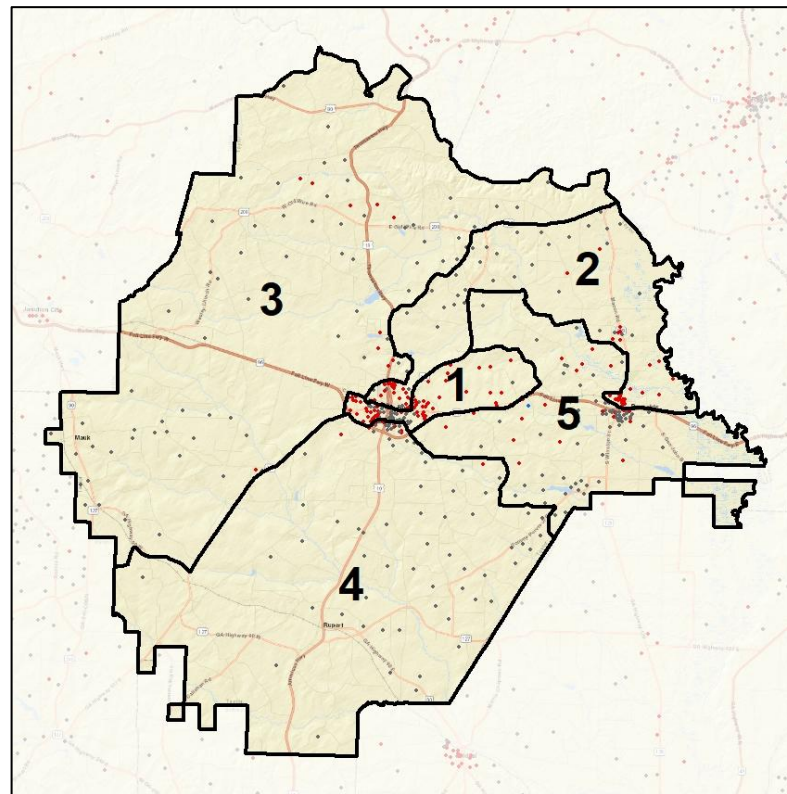
Population Density by Race



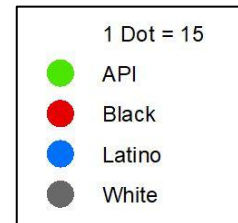
2012 Map



2022 Map*



	1	2	3	4	5	1*	2*	3*	4*	5*	County
Population	1,619	1,271	1,643	1,769	1,514	1,578	1,574	1,552	1,552	1,560	7,816
API	5	2	19	5	0	7	2	13	8	1	31
% API	0%	0%	1%	0%	0%	0%	0%	1%	1%	0%	0%
Black	1,311	584	240	339	333	978	908	285	246	390	2,807
% Black	81%	46%	15%	19%	22%	62%	58%	18%	16%	25%	36%
Latino	30	10	51	45	32	22	14	41	42	49	168
% Latino	2%	1%	3%	3%	2%	1%	1%	3%	3%	3%	2%
Other	29	33	66	51	47	37	34	68	32	55	226
% Other	2%	3%	4%	3%	3%	2%	2%	4%	2%	4%	3%
White	244	642	1,267	1,329	1,102	534	616	1,145	1,224	1,065	4,584
% White	15%	51%	77%	75%	73%	34%	39%	74%	79%	68%	59%



Source:
2020 Decennial Census
2020 ACS 5-Year Dataset

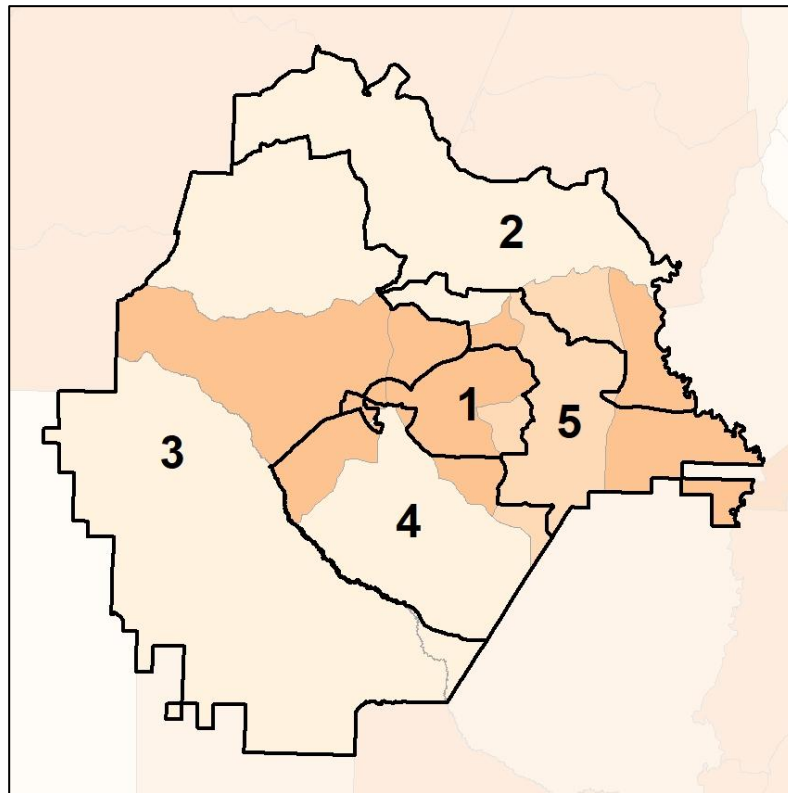


Taylor Co. Commission & School Board

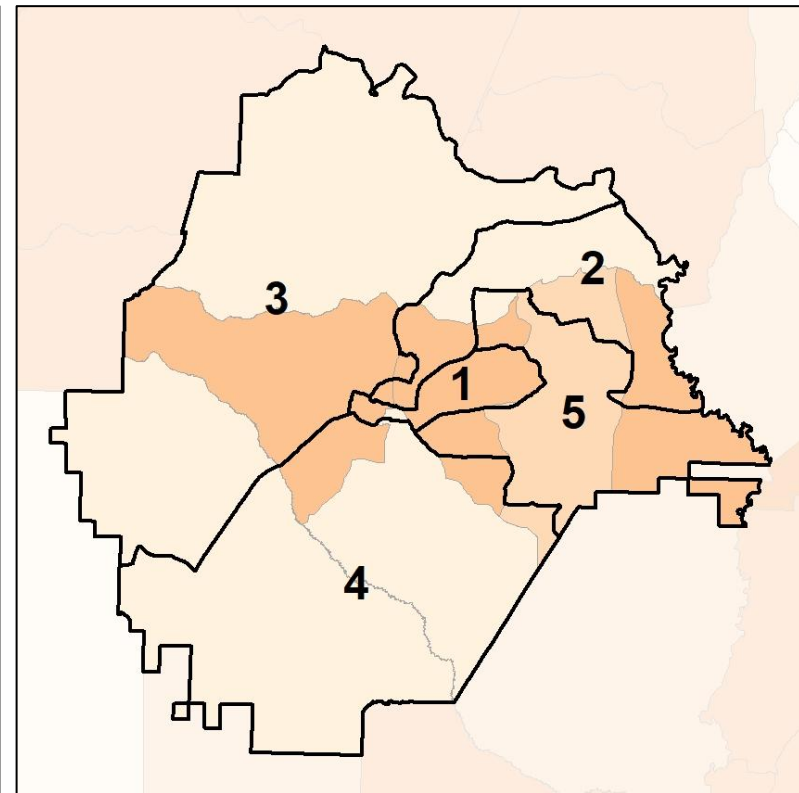
% People of Color by Census Block Group



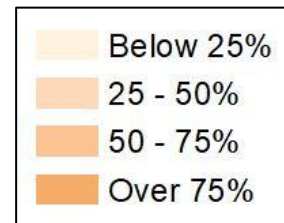
2012 Map



2022 Map*



	1	2	3	4	5	1*	2*	3*	4*	5*	County
Population	1,619	1,271	1,643	1,769	1,514	1,578	1,574	1,552	1,552	1,560	7,816
API	5	2	19	5	0	7	2	13	8	1	31
% API	0%	0%	1%	0%	0%	0%	0%	1%	1%	0%	0%
Black	1,311	584	240	339	333	978	908	285	246	390	2,807
% Black	81%	46%	15%	19%	22%	62%	58%	18%	16%	25%	36%
Latino	30	10	51	45	32	22	14	41	42	49	168
% Latino	2%	1%	3%	3%	2%	1%	1%	3%	3%	3%	2%
Other	29	33	66	51	47	37	34	68	32	55	226
% Other	2%	3%	4%	3%	3%	2%	2%	4%	2%	4%	3%
White	244	642	1,267	1,329	1,102	534	616	1,145	1,224	1,065	4,584
% White	15%	51%	77%	75%	73%	34%	39%	74%	79%	68%	59%



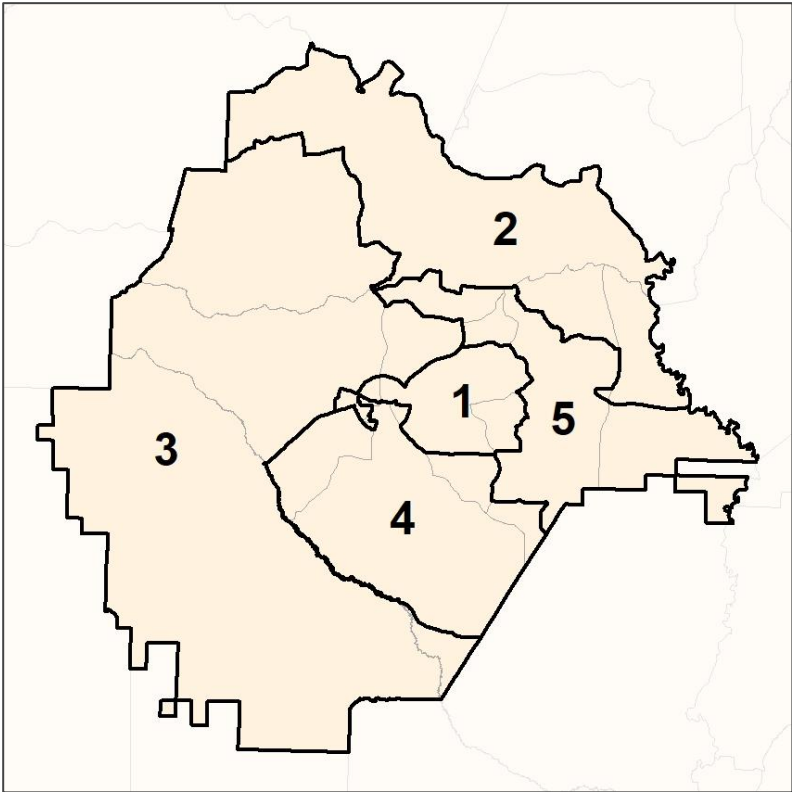
Source:
2020 Decennial Census
2020 ACS 5-Year Dataset

Taylor Co. Commission & School Board

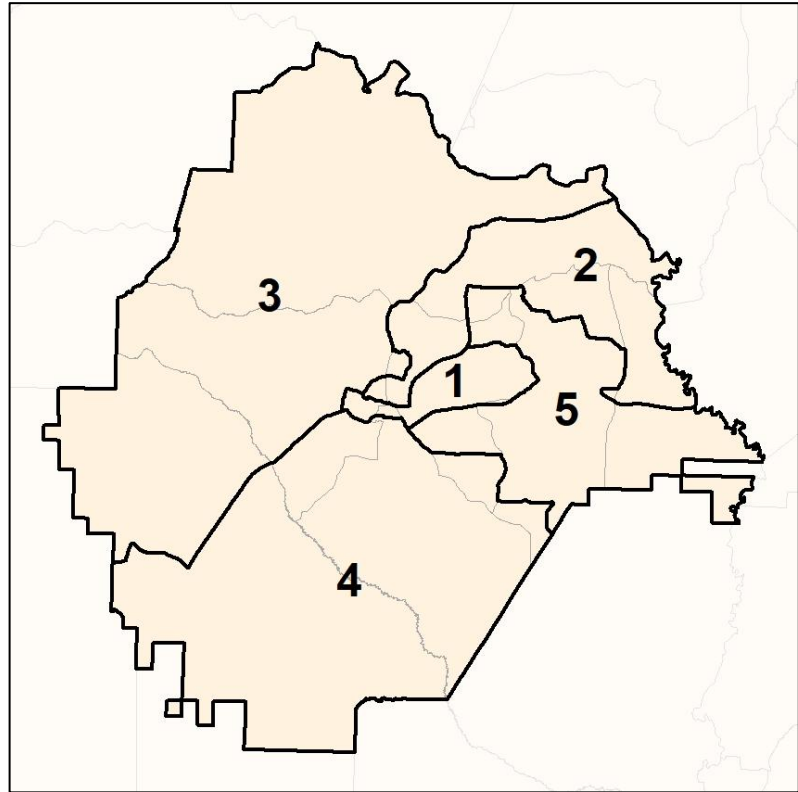
% API by Census Block Group



2012 Map



2022 Map*



	1	2	3	4	5	1*	2*	3*	4*	5*	County
Population	1,619	1,271	1,643	1,769	1,514	1,578	1,574	1,552	1,552	1,560	7,816
API	5	2	19	5	0	7	2	13	8	1	31
% API	0%	0%	1%	0%	0%	0%	0%	1%	1%	0%	0%
Black	1,311	584	240	339	333	978	908	285	246	390	2,807
% Black	81%	46%	15%	19%	22%	62%	58%	18%	16%	25%	36%
Latino	30	10	51	45	32	22	14	41	42	49	168
% Latino	2%	1%	3%	3%	2%	1%	1%	3%	3%	3%	2%
Other	29	33	66	51	47	37	34	68	32	55	226
% Other	2%	3%	4%	3%	3%	2%	2%	4%	2%	4%	3%
White	244	642	1,267	1,329	1,102	534	616	1,145	1,224	1,065	4,584
% White	15%	51%	77%	75%	73%	34%	39%	74%	79%	68%	59%



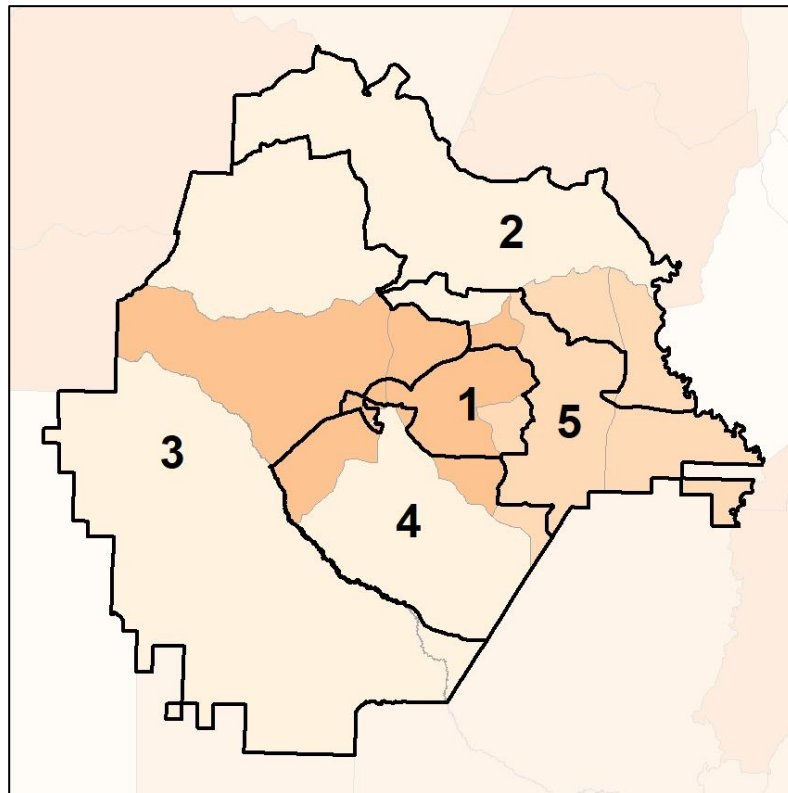
Source:
2020 Decennial Census
2020 ACS 5-Year Dataset

Taylor Co. Commission & School Board

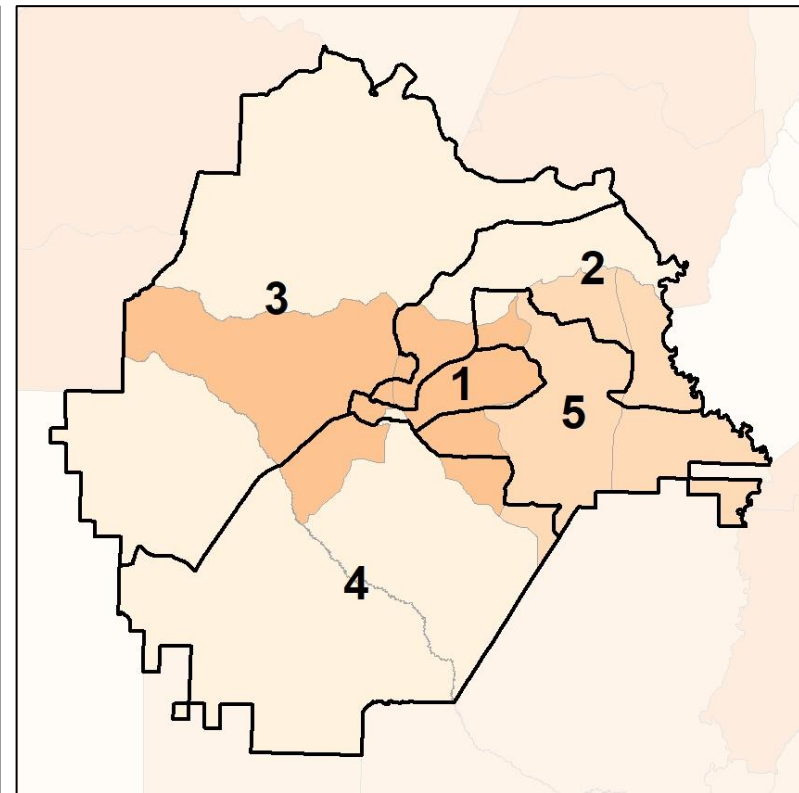
% Black by Census Block Group



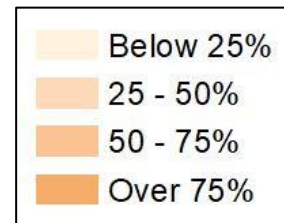
2012 Map



2022 Map*



	1	2	3	4	5	1*	2*	3*	4*	5*	County
Population	1,619	1,271	1,643	1,769	1,514	1,578	1,574	1,552	1,552	1,560	7,816
API	5	2	19	5	0	7	2	13	8	1	31
% API	0%	0%	1%	0%	0%	0%	0%	1%	1%	0%	0%
Black	1,311	584	240	339	333	978	908	285	246	390	2,807
% Black	81%	46%	15%	19%	22%	62%	58%	18%	16%	25%	36%
Latino	30	10	51	45	32	22	14	41	42	49	168
% Latino	2%	1%	3%	3%	2%	1%	1%	3%	3%	3%	2%
Other	29	33	66	51	47	37	34	68	32	55	226
% Other	2%	3%	4%	3%	3%	2%	2%	4%	2%	4%	3%
White	244	642	1,267	1,329	1,102	534	616	1,145	1,224	1,065	4,584
% White	15%	51%	77%	75%	73%	34%	39%	74%	79%	68%	59%



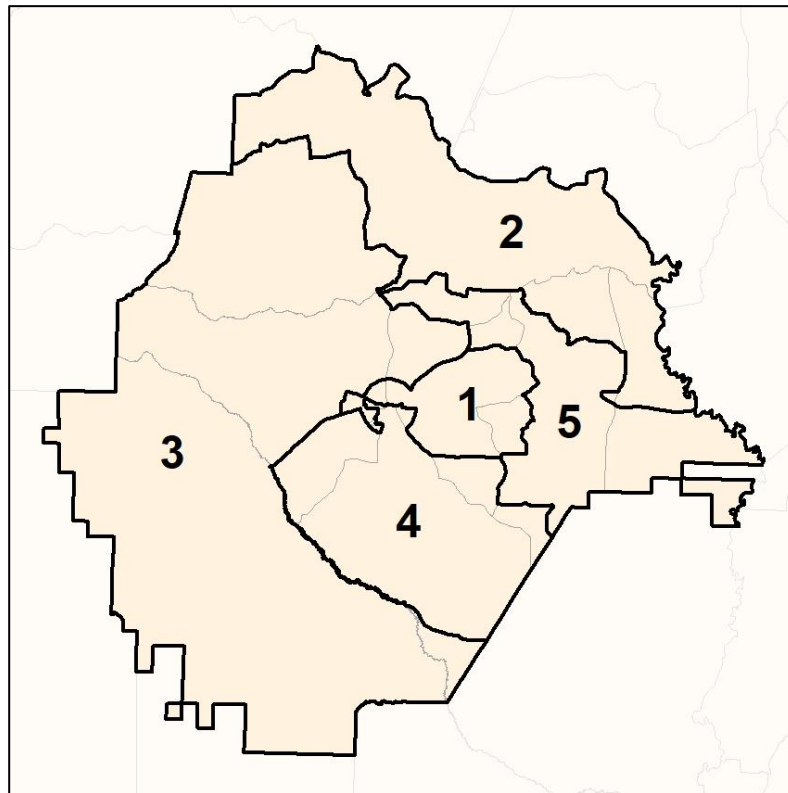
Source:
2020 Decennial Census
2020 ACS 5-Year Dataset

Taylor Co. Commission & School Board

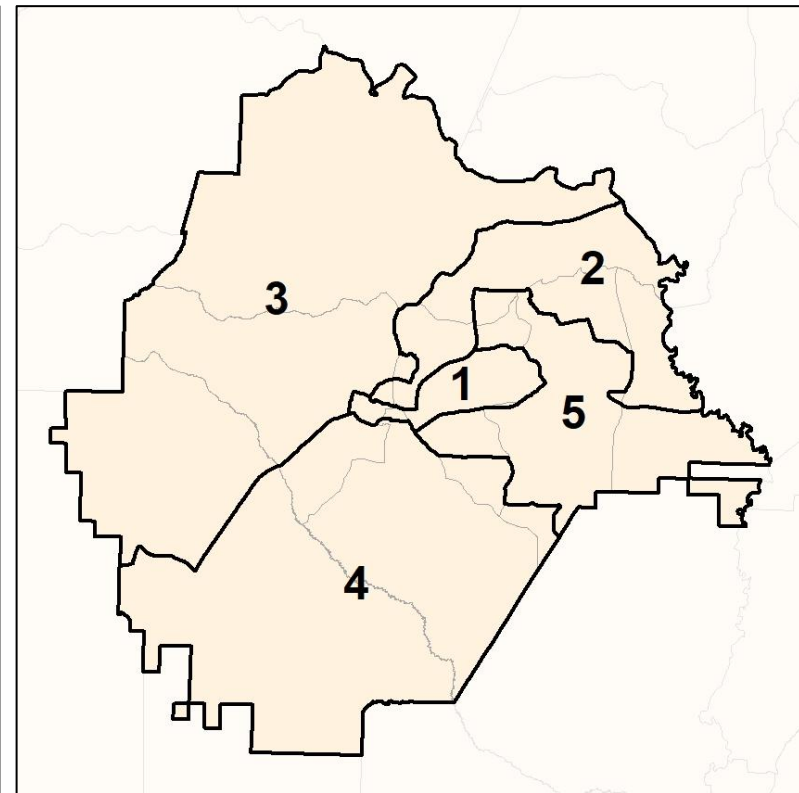
% Latino by Census Block Group



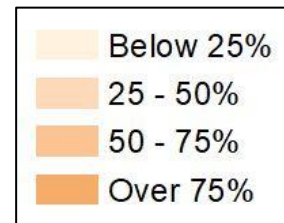
2012 Map



2022 Map*



	1	2	3	4	5	1*	2*	3*	4*	5*	County
Population	1,619	1,271	1,643	1,769	1,514	1,578	1,574	1,552	1,552	1,560	7,816
API	5	2	19	5	0	7	2	13	8	1	31
% API	0%	0%	1%	0%	0%	0%	0%	1%	1%	0%	0%
Black	1,311	584	240	339	333	978	908	285	246	390	2,807
% Black	81%	46%	15%	19%	22%	62%	58%	18%	16%	25%	36%
Latino	30	10	51	45	32	22	14	41	42	49	168
% Latino	2%	1%	3%	3%	2%	1%	1%	3%	3%	3%	2%
Other	29	33	66	51	47	37	34	68	32	55	226
% Other	2%	3%	4%	3%	3%	2%	2%	4%	2%	4%	3%
White	244	642	1,267	1,329	1,102	534	616	1,145	1,224	1,065	4,584
% White	15%	51%	77%	75%	73%	34%	39%	74%	79%	68%	59%



Source:
2020 Decennial Census
2020 ACS 5-Year Dataset

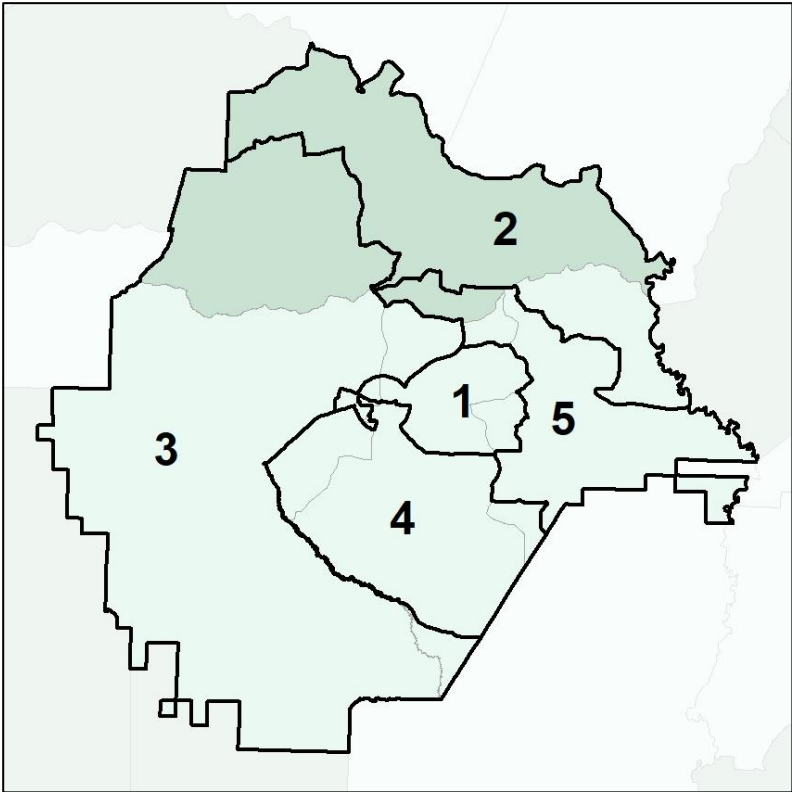


Taylor Co. Commission & School Board

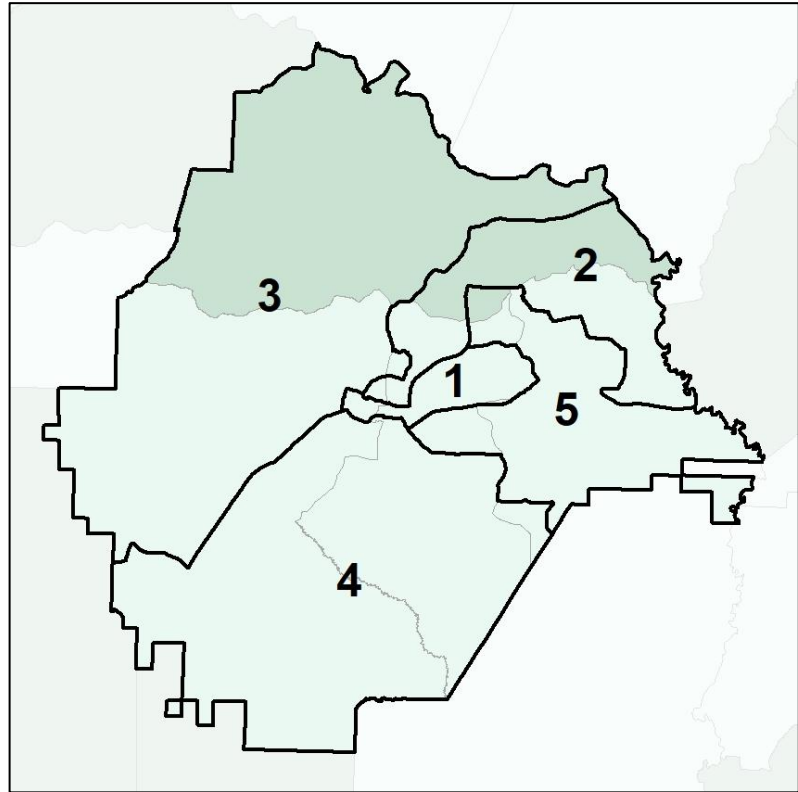
Median Household Income by Census Tract



2012 Map



2022 Map*



	1	2	3	4	5	1*	2*	3*	4*	5*	County
Population	1,619	1,271	1,643	1,769	1,514	1,578	1,574	1,552	1,552	1,560	7,816
% API	0%	0%	1%	0%	0%	0%	0%	1%	1%	0%	0%
% Black	81%	46%	15%	19%	22%	62%	58%	18%	16%	25%	36%
% Latino	2%	1%	3%	3%	2%	1%	1%	3%	3%	3%	2%
% Other	2%	3%	4%	3%	3%	2%	2%	4%	2%	4%	3%
% White	15%	51%	77%	75%	73%	34%	39%	74%	79%	68%	59%
Median Income	\$23,000	\$45,000	\$19,000	\$45,000	\$40,000	\$23,000	\$45,000	\$33,000	\$26,000	\$40,000	\$29,000
% Renter	61%	22%	55%	25%	21%	61%	22%	41%	40%	21%	40%
% Youth	13%	9%	28%	20%	16%	13%	9%	23%	20%	16%	18%



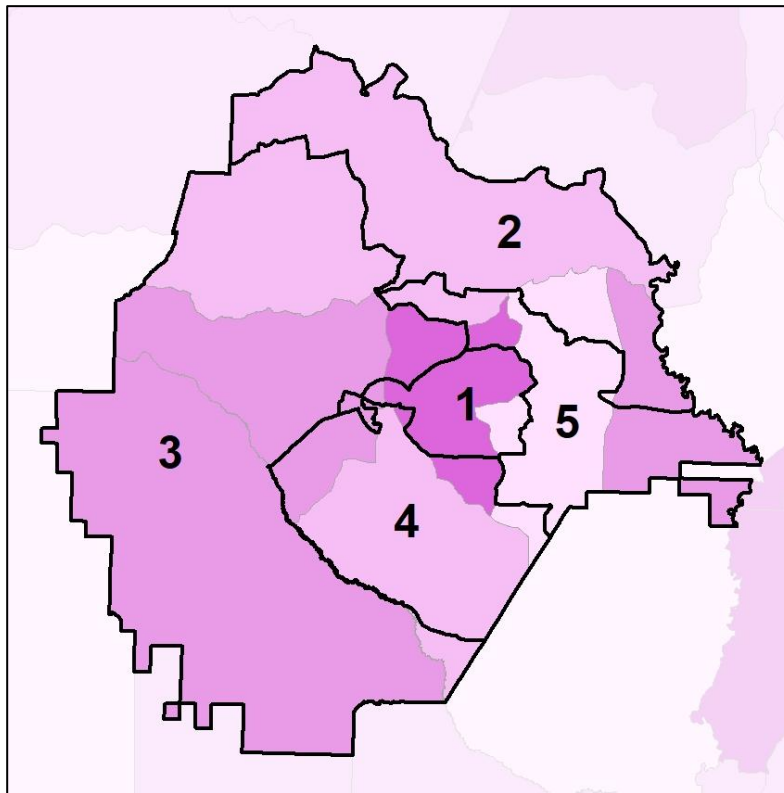
Source:
2020 Decennial Census
2020 ACS 5-Year Dataset

Taylor Co. Commission & School Board

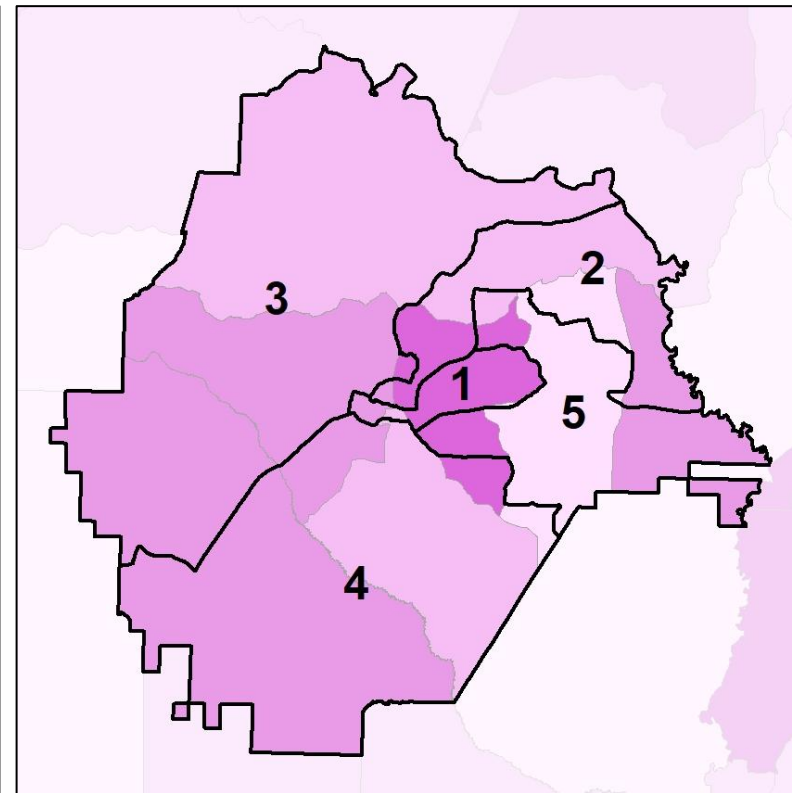
% Renter by Census Block Group



2012 Map



2022 Map*



	1	2	3	4	5	1*	2*	3*	4*	5*	County
Population	1,619	1,271	1,643	1,769	1,514	1,578	1,574	1,552	1,552	1,560	7,816
% API	0%	0%	1%	0%	0%	0%	0%	1%	1%	0%	0%
% Black	81%	46%	15%	19%	22%	62%	58%	18%	16%	25%	36%
% Latino	2%	1%	3%	3%	2%	1%	1%	3%	3%	3%	2%
% Other	2%	3%	4%	3%	3%	2%	2%	4%	2%	4%	3%
% White	15%	51%	77%	75%	73%	34%	39%	74%	79%	68%	59%
Median Income	\$23,000	\$45,000	\$19,000	\$45,000	\$40,000	\$23,000	\$45,000	\$33,000	\$26,000	\$40,000	\$29,000
% Renter	61%	22%	55%	25%	21%	61%	22%	41%	40%	21%	40%
% Youth	13%	9%	28%	20%	16%	13%	9%	23%	20%	16%	18%



Source:
2020 Decennial Census
2020 ACS 5-Year Dataset

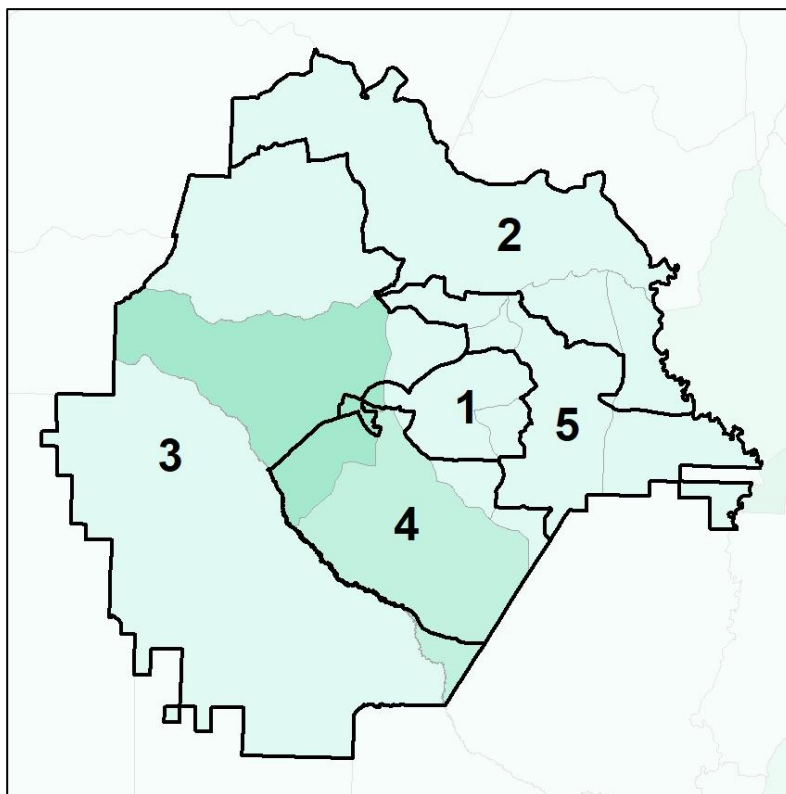


Taylor Co. Commission & School Board

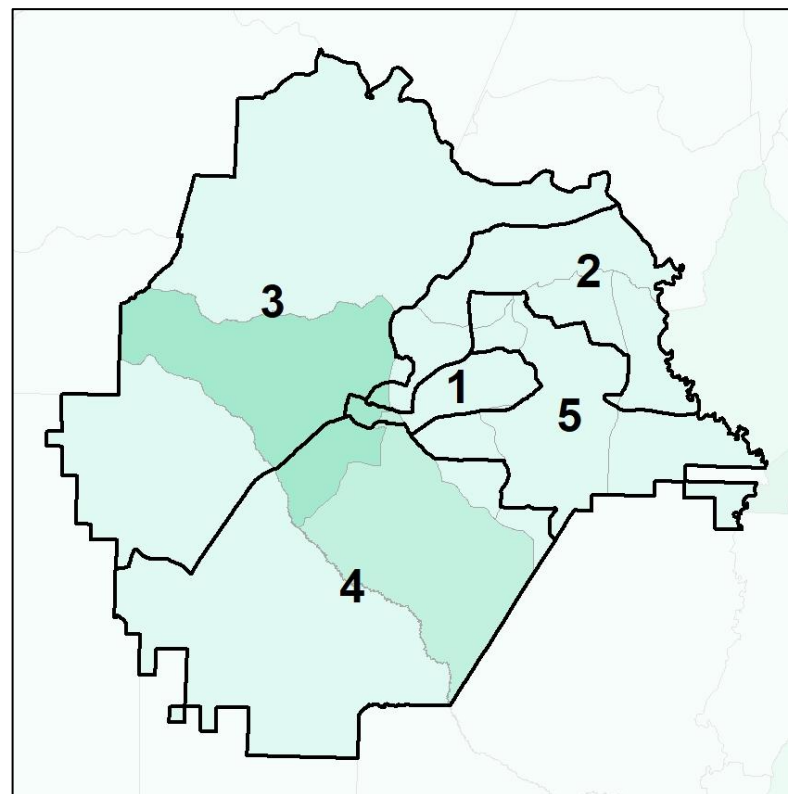
% Youth (18-34) by Census Block Group



2012 Map



2022 Map*



	1	2	3	4	5	1*	2*	3*	4*	5*	County
Population	1,619	1,271	1,643	1,769	1,514	1,578	1,574	1,552	1,552	1,560	7,816
% API	0%	0%	1%	0%	0%	0%	0%	1%	1%	0%	0%
% Black	81%	46%	15%	19%	22%	62%	58%	18%	16%	25%	36%
% Latino	2%	1%	3%	3%	2%	1%	1%	3%	3%	3%	2%
% Other	2%	3%	4%	3%	3%	2%	2%	4%	2%	4%	3%
% White	15%	51%	77%	75%	73%	34%	39%	74%	79%	68%	59%
Median Income	\$23,000	\$45,000	\$19,000	\$45,000	\$40,000	\$23,000	\$45,000	\$33,000	\$26,000	\$40,000	\$29,000
% Renter	61%	22%	55%	25%	21%	61%	22%	41%	40%	21%	40%
% Youth	13%	9%	28%	20%	16%	13%	9%	23%	20%	16%	18%

