



# Demographic Overview

## Racial Breakdown in Talbot County

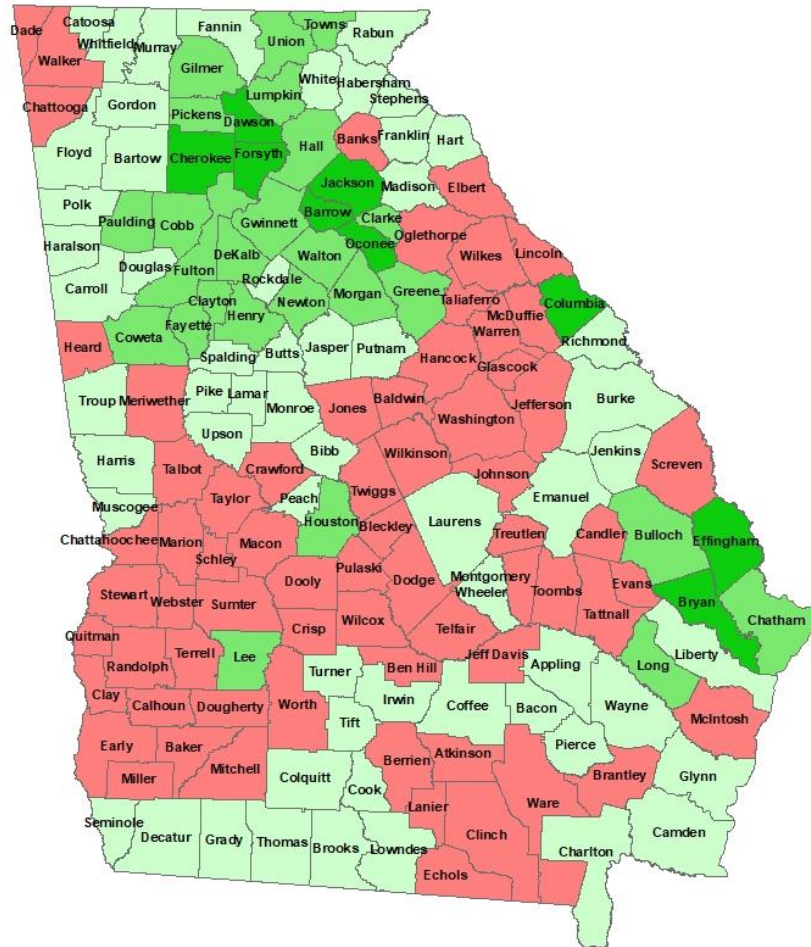
Talbot County	2010	2020	% Change
Total Population	6,865	5,733	-16%
AAPI	9	18	100%
Black	4,039	3,056	-24%
Latino	91	112	23%
Other/Mixed Race	87	120	38%
POC	4,226	3,306	-22%
White	2,639	2,427	-8%

\*Note: The use of "Other" in these statistics combines those who identify as Native American, Mixed Race, and "Other" race



# Population Gain

## Change in Population in Georgia by County



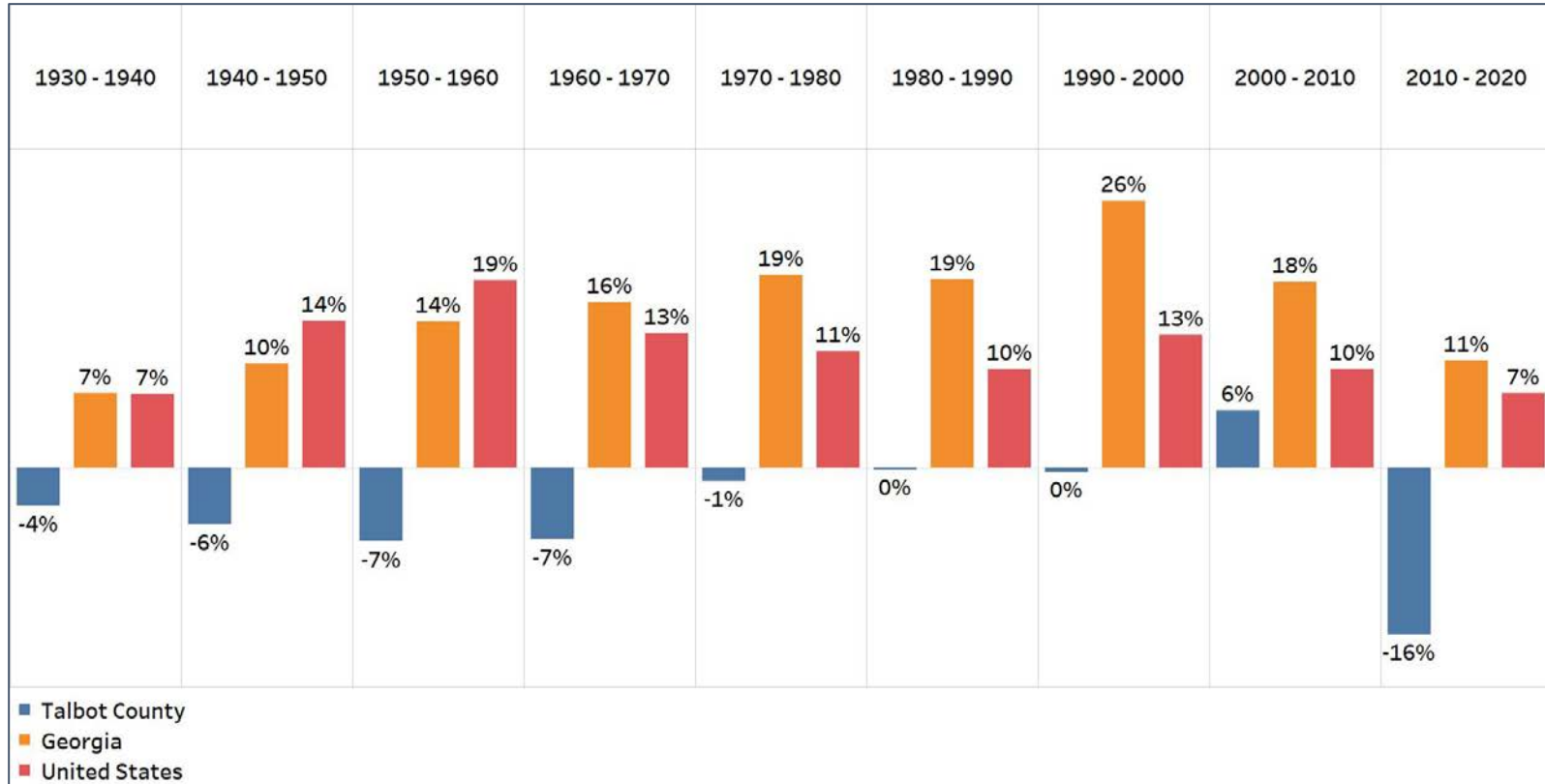
- Georgia is experiencing rapid population growth in the Atlanta, Augusta, and Savannah regions of the state





# Population Gain

## Change in Population by Decade

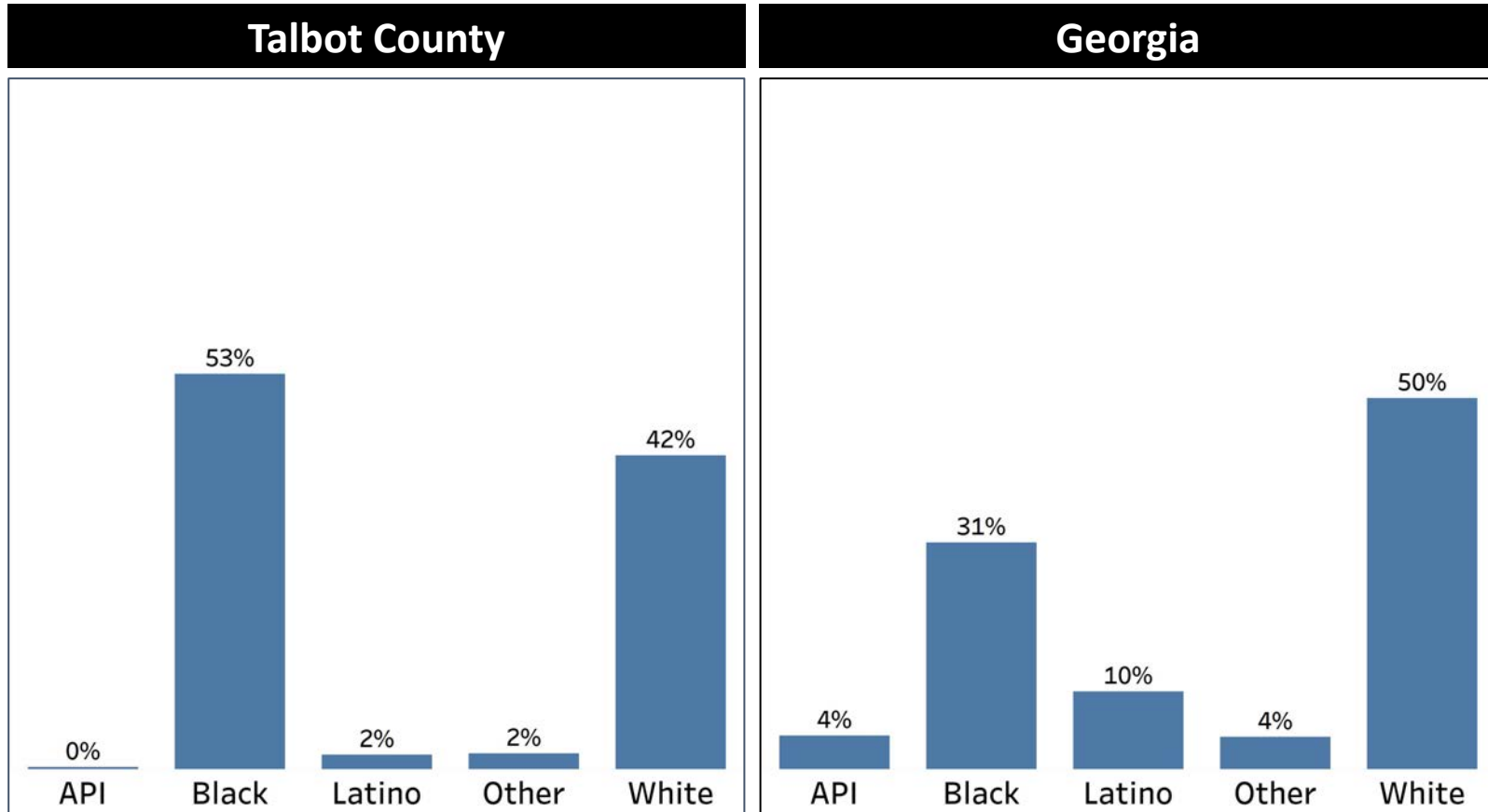


- Despite having an overall population decline, Talbot County experienced the highest population decline rate from 2010 to 2020
- At the turn of the century, Talbot County experienced its only population growth



# Demographics

## Comparison between Talbot County and Georgia

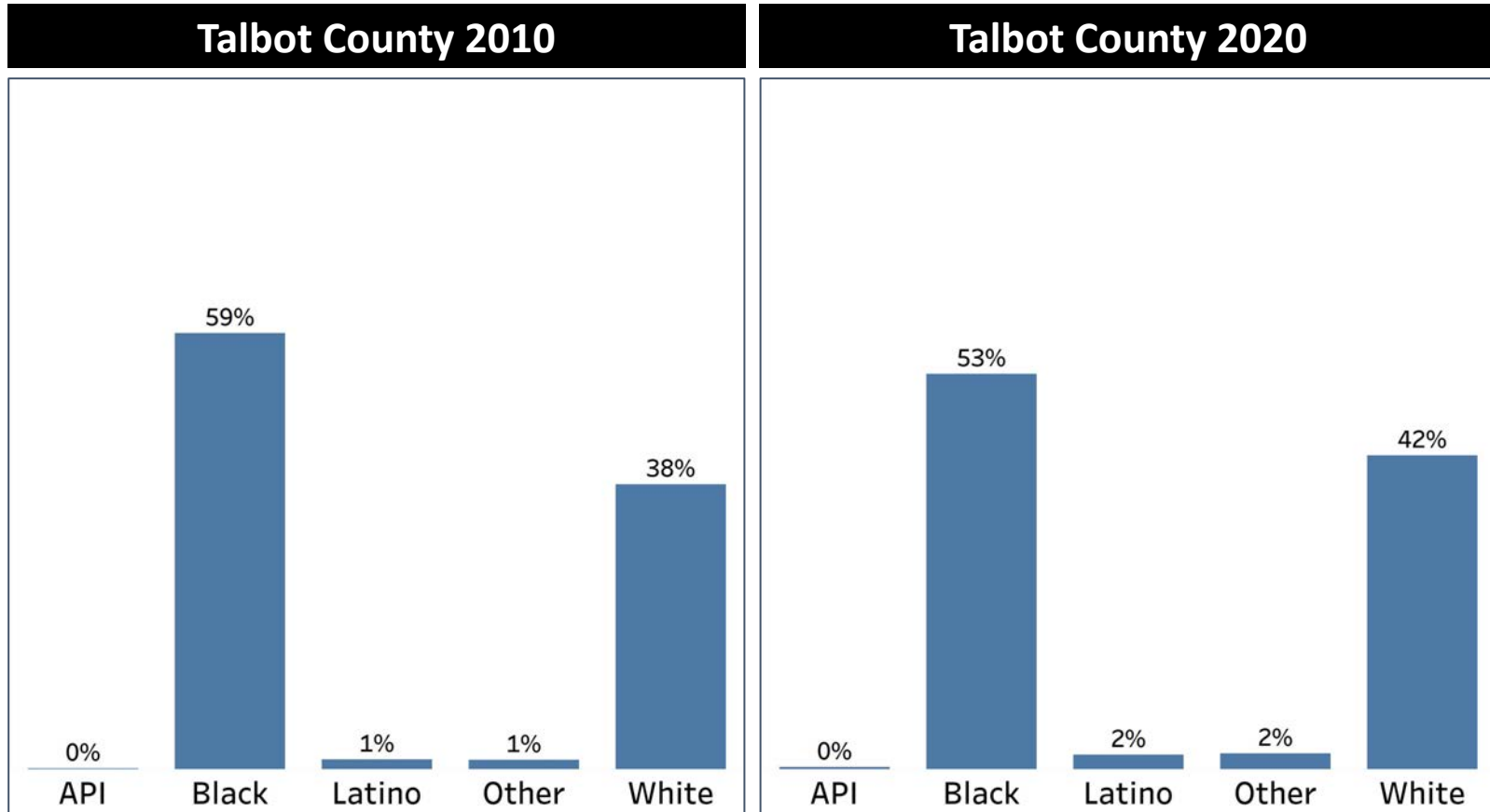


- Talbot County's Black population is higher than the statewide average, and is the largest demographic group in the county
- The White population is slightly lower than the statewide average



# Demographics

## 2010 vs 2020 Demographics in Talbot County



- Talbot County Black population is higher than their statewide average, and is the largest demographic group in the county
- The White population is slightly lower than their statewide average

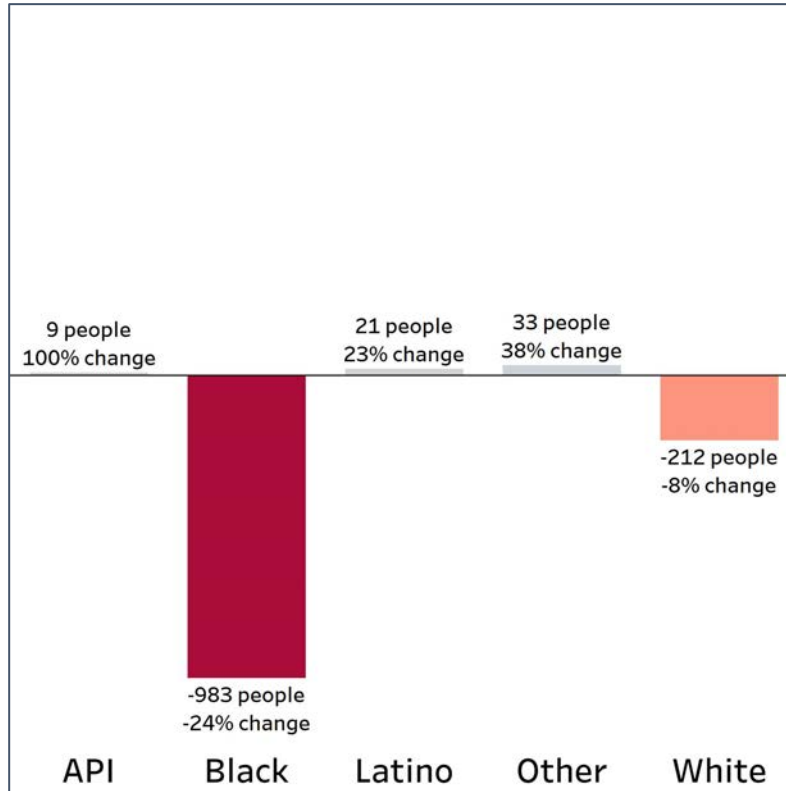


# Demographics

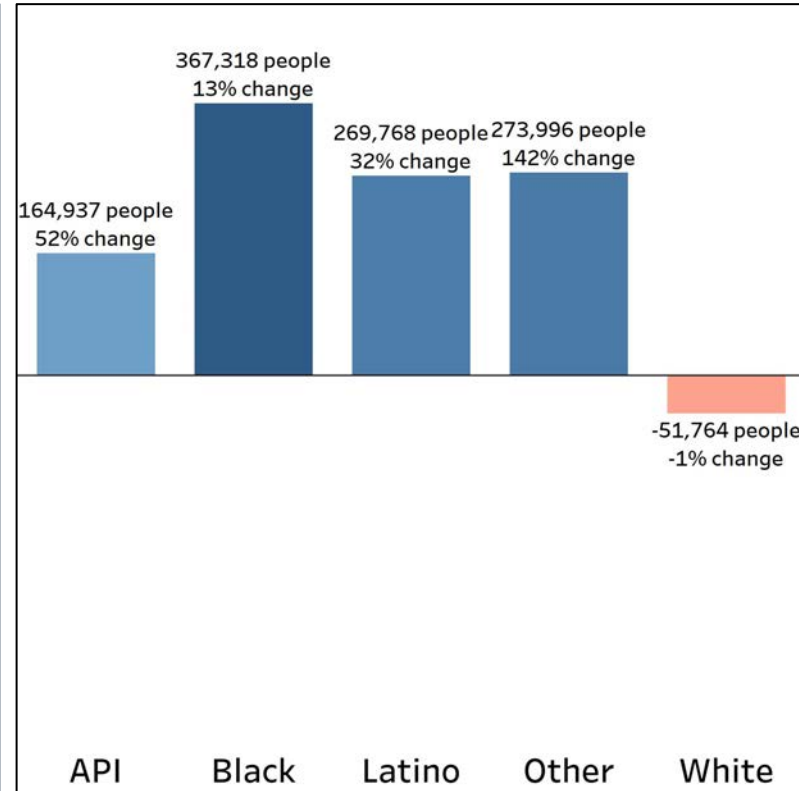
## Population Change by Race (2020 - 2010)



### Talbot County



### Georgia



- Talbot County Black And White population are experiencing a population decline
- The API, Black, and “Other” population had growth in their population with the API community having the highest percentage growth rate

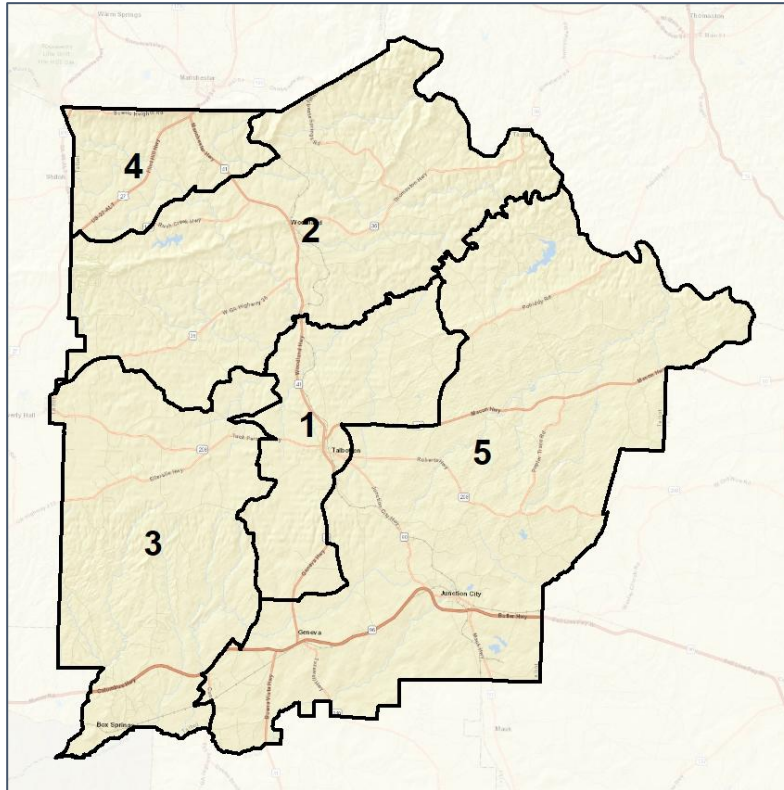


# Talbot Co. Commission & School Board

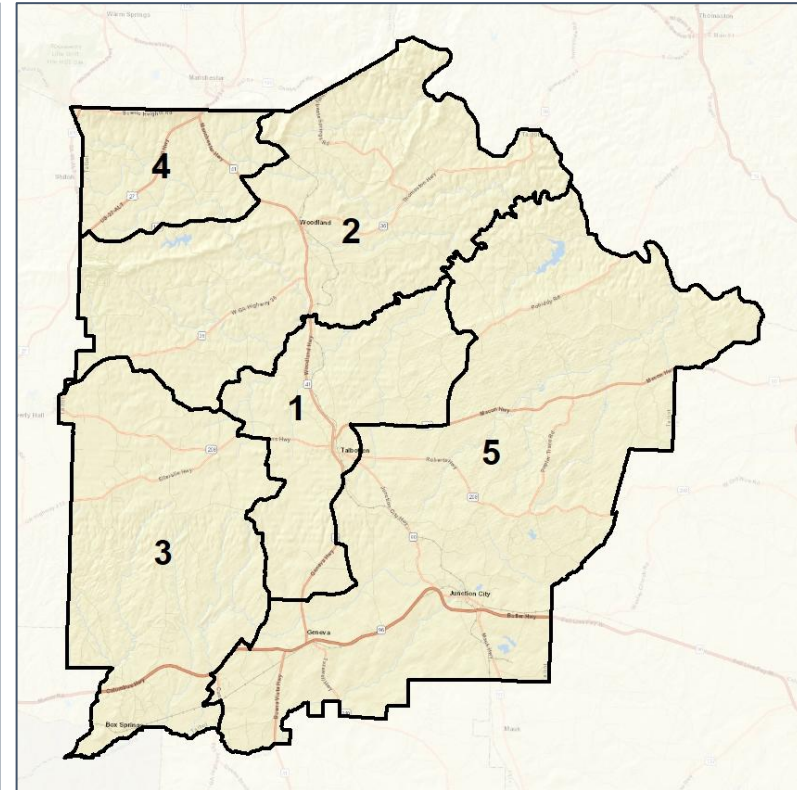
## Context



### 2012 Map



### 2022 Map\*



	1	2	3	4	5	1*	2*	3*	4*	5*	County
Population	1,058	1,183	1,227	1,110	1,155	1,146	1,158	1,139	1,135	1,155	5,733
API	0%	0%	1%	0%	0%	0%	0%	1%	0%	0%	0%
Black	75%	41%	41%	63%	49%	75%	42%	38%	62%	49%	53%
Latino	2%	2%	2%	1%	3%	2%	2%	2%	1%	3%	2%
Other	1%	2%	2%	2%	3%	1%	2%	3%	2%	3%	2%
White	22%	54%	53%	34%	45%	22%	54%	56%	35%	45%	42%
Population Gain	*	*	*	*	*	88	-25	-88	25	0	*
Population % Gain	*	*	*	*	*	8%	-2%	-7%	2%	0%	*
Net POC Gain	*	*	*	*	*	72	-4	-72	4	0	*
Net POC % Gain	*	*	*	*	*	9%	-1%	-13%	1%	0%	*

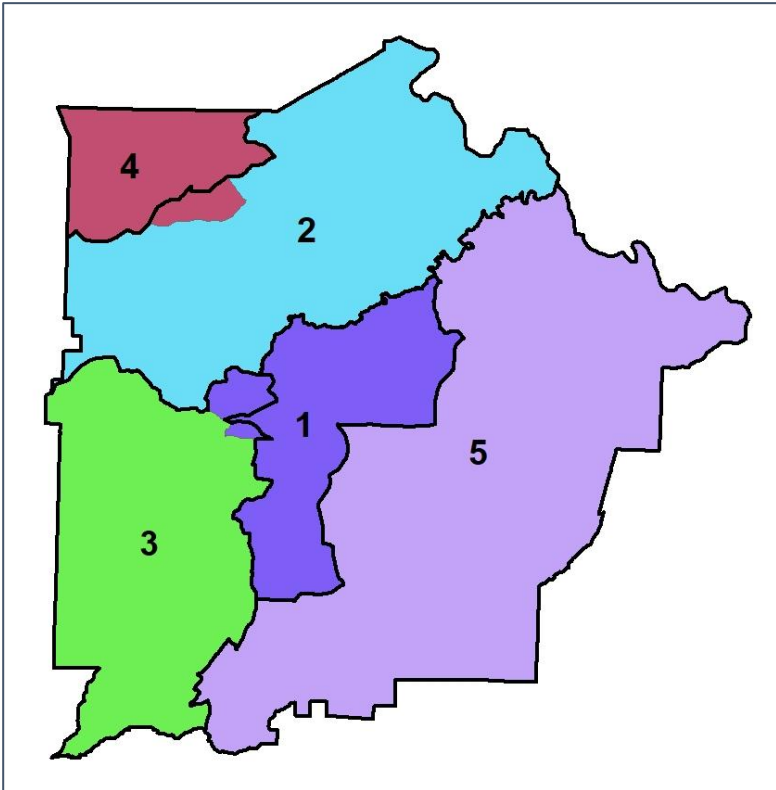


# Talbot Co. Commission & School Board

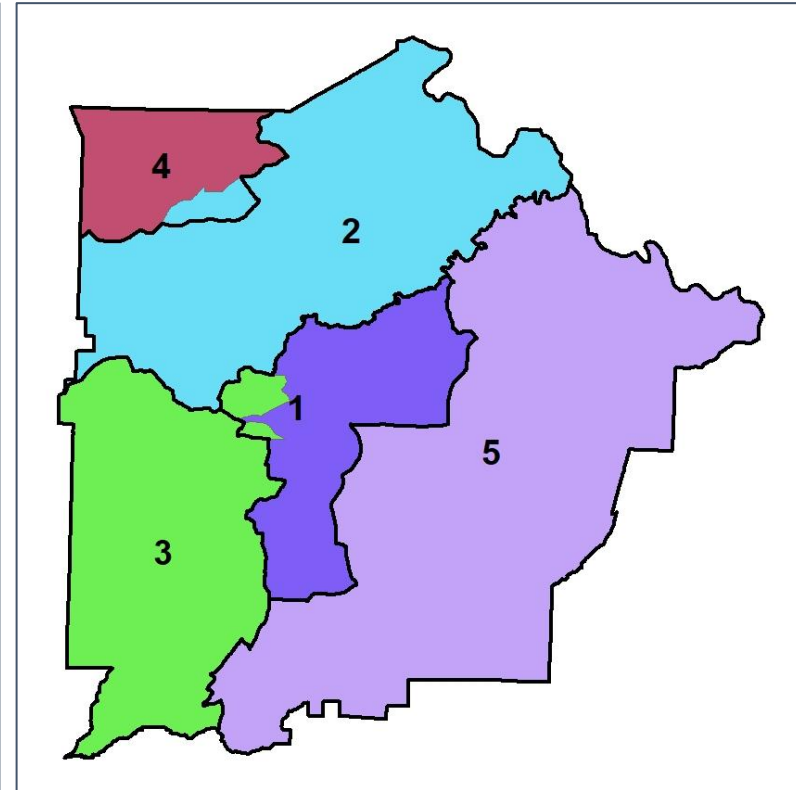
## Changes in Redistricting



**2012 Map (2022 in Colors)**



**2022 Map\* (2012 in Colors)**



	1	2	3	4	5	1*	2*	3*	4*	5*	County
Population	1,058	1,183	1,227	1,110	1,155	1,146	1,158	1,139	1,135	1,155	5,733
API	0%	0%	1%	0%	0%	0%	0%	1%	0%	0%	0%
Black	75%	41%	41%	63%	49%	75%	42%	38%	62%	49%	53%
Latino	2%	2%	2%	1%	3%	2%	2%	2%	1%	3%	2%
Other	1%	2%	2%	2%	3%	1%	2%	3%	2%	3%	2%
White	22%	54%	53%	34%	45%	22%	54%	56%	35%	45%	42%
Population Gain	*	*	*	*	*	88	-25	-88	25	0	*
Population % Gain	*	*	*	*	*	8%	-2%	-7%	2%	0%	*
Net POC Gain	*	*	*	*	*	72	-4	-72	4	0	*
Net POC % Gain	*	*	*	*	*	9%	-1%	-13%	1%	0%	*



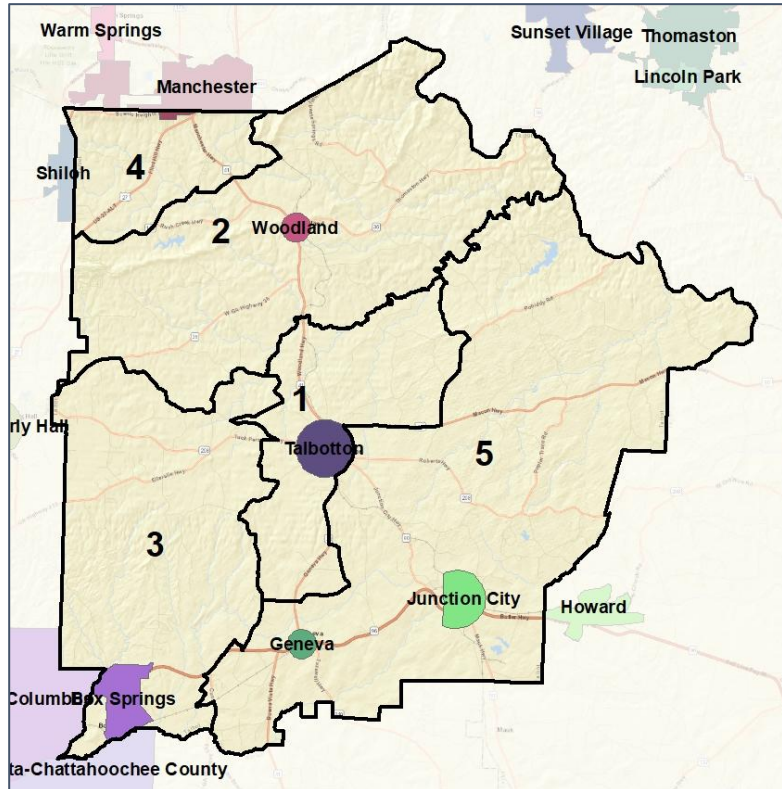


# Talbot Co. Commission & School Board

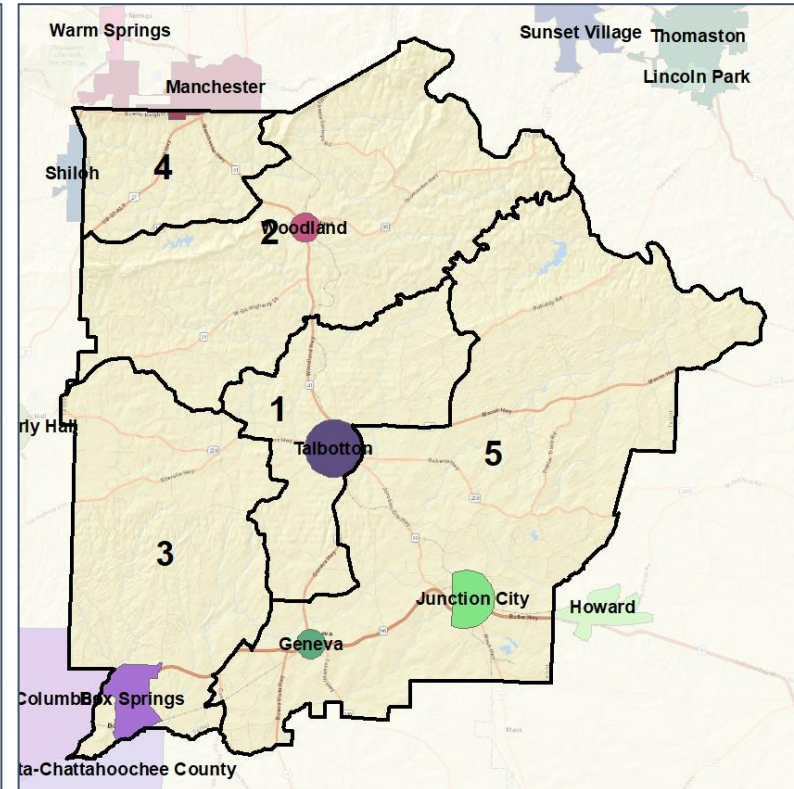
## Cities and Places



### 2012 Map



### 2022 Map\*



	1	2	3	4	5	1*	2*	3*	4*	5*	County
Population	1,058	1,183	1,227	1,110	1,155	1,146	1,158	1,139	1,135	1,155	5,733
API	0%	0%	1%	0%	0%	0%	0%	1%	0%	0%	0%
Black	75%	41%	41%	63%	49%	75%	42%	38%	62%	49%	53%
Latino	2%	2%	2%	1%	3%	2%	2%	2%	1%	3%	2%
Other	1%	2%	2%	2%	3%	1%	2%	3%	2%	3%	2%
White	22%	54%	53%	34%	45%	22%	54%	56%	35%	45%	42%
Population Gain	*	*	*	*	*	88	-25	-88	25	0	*
Population % Gain	*	*	*	*	*	8%	-2%	-7%	2%	0%	*
Net POC Gain	*	*	*	*	*	72	-4	-72	4	0	*
Net POC % Gain	*	*	*	*	*	9%	-1%	-13%	1%	0%	*

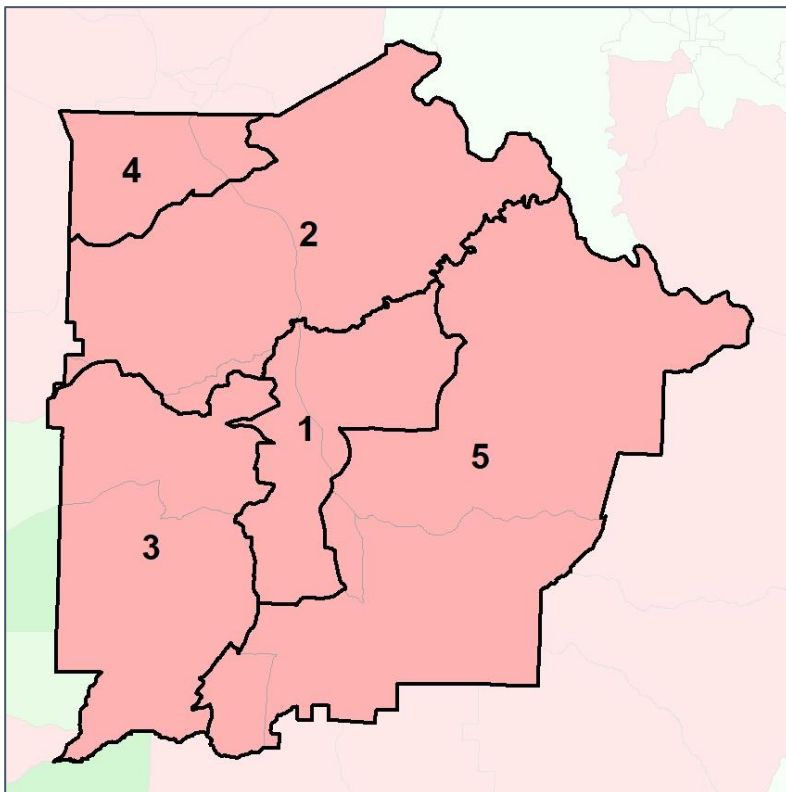


# Talbot Co. Commission & School Board

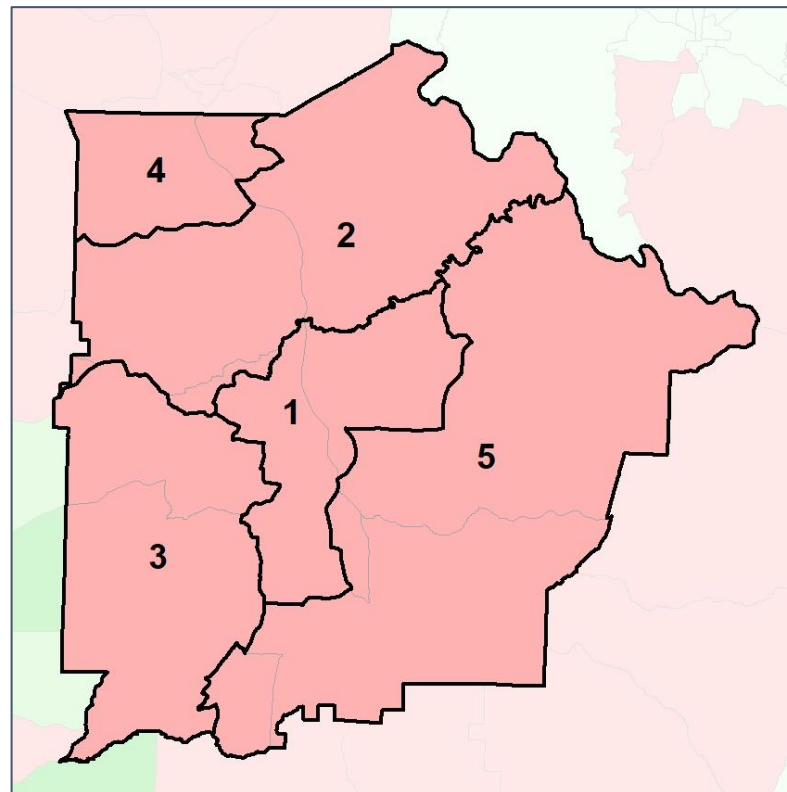
## Net Gain in Population (2010 - 2020)



### 2012 Map



### 2022 Map\*



	1	2	3	4	5	1*	2*	3*	4*	5*	County
Population	1,058	1,183	1,227	1,110	1,155	1,146	1,158	1,139	1,135	1,155	5,733
API	0%	0%	1%	0%	0%	0%	0%	1%	0%	0%	0%
Black	75%	41%	41%	63%	49%	75%	42%	38%	62%	49%	53%
Latino	2%	2%	2%	1%	3%	2%	2%	2%	1%	3%	2%
Other	1%	2%	2%	2%	3%	1%	2%	3%	2%	3%	2%
White	22%	54%	53%	34%	45%	22%	54%	56%	35%	45%	42%
Population Gain	*	*	*	*	*	88	-25	-88	25	0	*
Population % Gain	*	*	*	*	*	8%	-2%	-7%	2%	0%	*
Net POC Gain	*	*	*	*	*	72	-4	-72	4	0	*
Net POC % Gain	*	*	*	*	*	9%	-1%	-13%	1%	0%	*

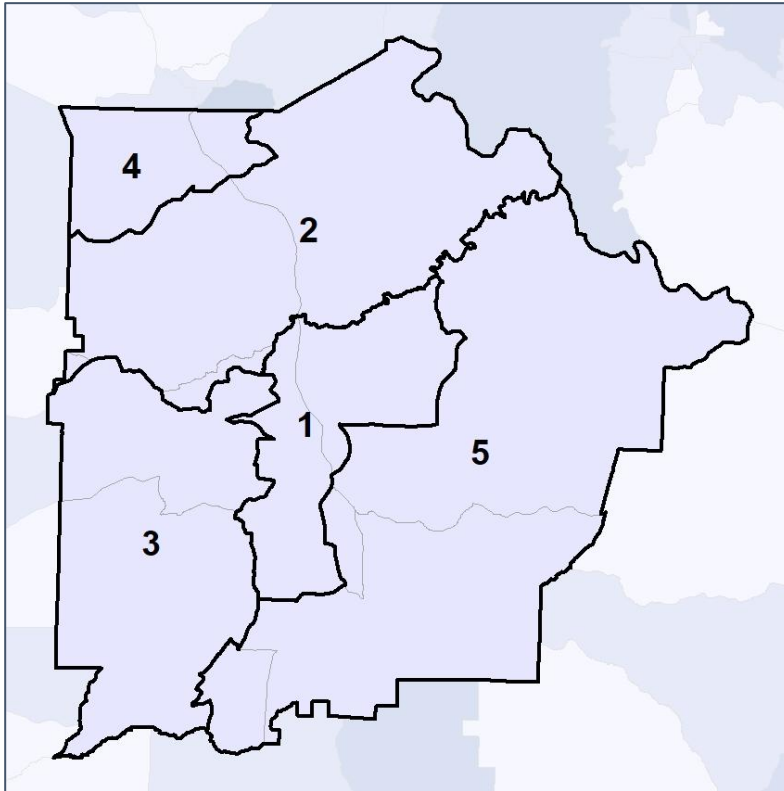


# Talbot Co. Commission & School Board

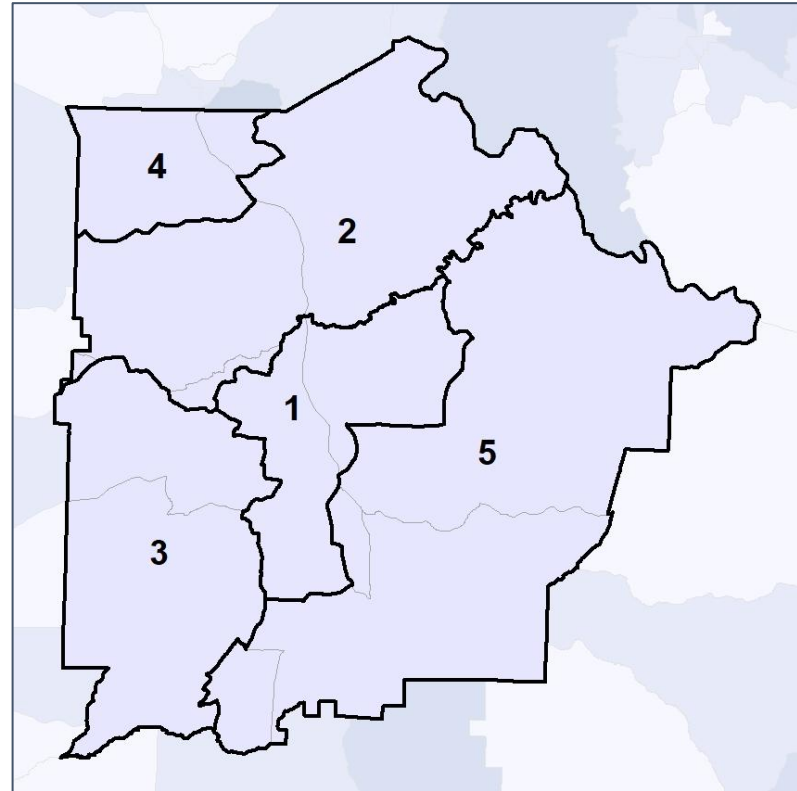
## Net Gain in % POC (2020 - 2010) by Census Block Group



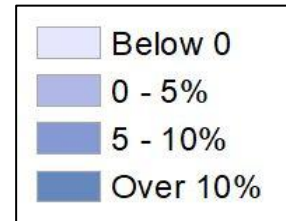
### 2012 Map



### 2022 Map\*



	1	2	3	4	5	1*	2*	3*	4*	5*	County
Population	1,058	1,183	1,227	1,110	1,155	1,146	1,158	1,139	1,135	1,155	5,733
API	0%	0%	1%	0%	0%	0%	0%	1%	0%	0%	0%
Black	75%	41%	41%	63%	49%	75%	42%	38%	62%	49%	53%
Latino	2%	2%	2%	1%	3%	2%	2%	2%	1%	3%	2%
Other	1%	2%	2%	2%	3%	1%	2%	3%	2%	3%	2%
White	22%	54%	53%	34%	45%	22%	54%	56%	35%	45%	42%
Population Gain	*	*	*	*	*	88	-25	-88	25	0	*
Population % Gain	*	*	*	*	*	8%	-2%	-7%	2%	0%	*
Net POC Gain	*	*	*	*	*	72	-4	-72	4	0	*
Net POC % Gain	*	*	*	*	*	9%	-1%	-13%	1%	0%	*

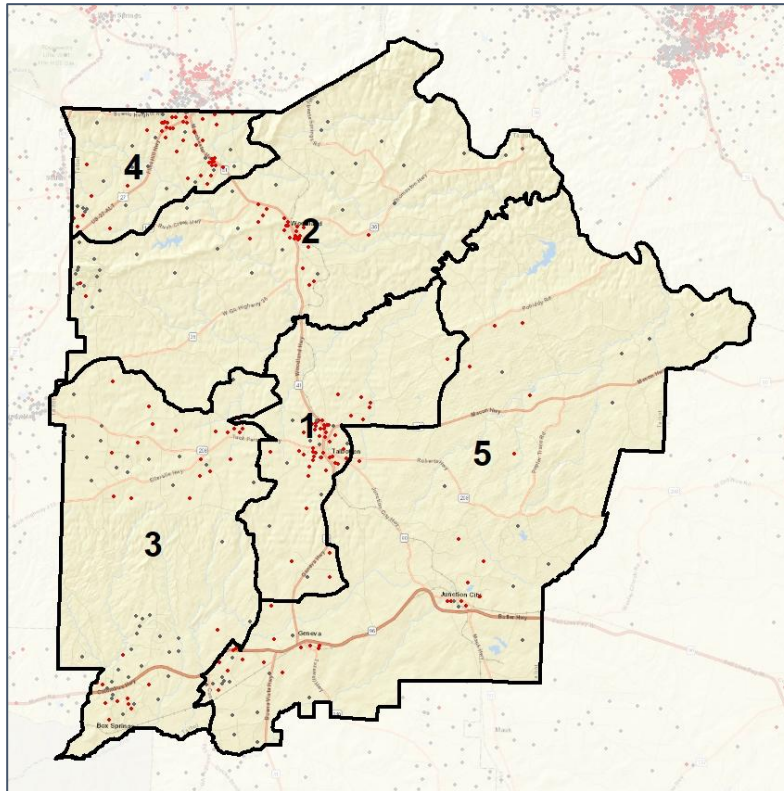


# Talbot Co. Commission & School Board

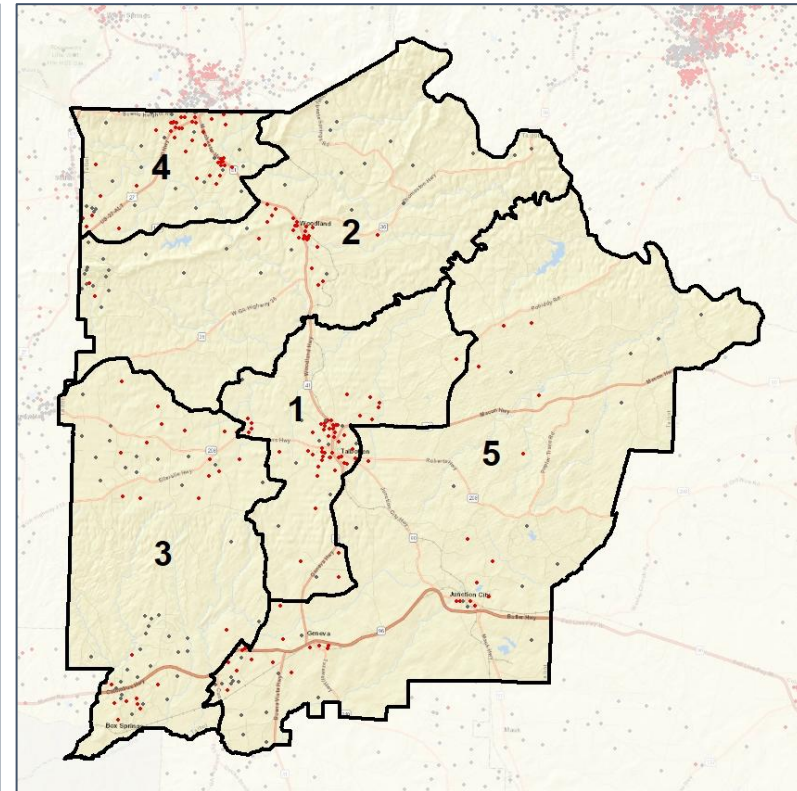
## Population Density by Race



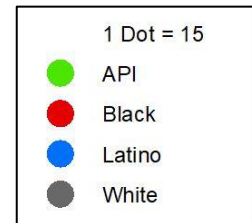
### 2012 Map



### 2022 Map\*



	1	2	3	4	5	1*	2*	3*	4*	5*	County
Population	1,058	1,183	1,227	1,110	1,155	1,146	1,158	1,139	1,135	1,155	5,733
API	4	3	7	0	4	4	3	7	0	4	18
% API	0%	0%	1%	0%	0%	0%	0%	1%	0%	0%	0%
Black	794	487	506	700	569	863	483	437	704	569	3,056
% Black	75%	41%	41%	63%	49%	75%	42%	38%	62%	49%	53%
Latino	16	23	28	12	33	18	23	26	12	33	112
% Latino	2%	2%	2%	1%	3%	2%	2%	2%	1%	3%	2%
Other	11	28	30	22	29	12	28	29	22	29	120
% Other	1%	2%	2%	2%	3%	1%	2%	3%	2%	3%	2%
White	233	642	656	376	520	249	621	640	397	520	2,427
% White	22%	54%	53%	34%	45%	22%	54%	56%	35%	45%	42%



Source:  
2020 Decennial Census  
2020 ACS 5-Year Dataset

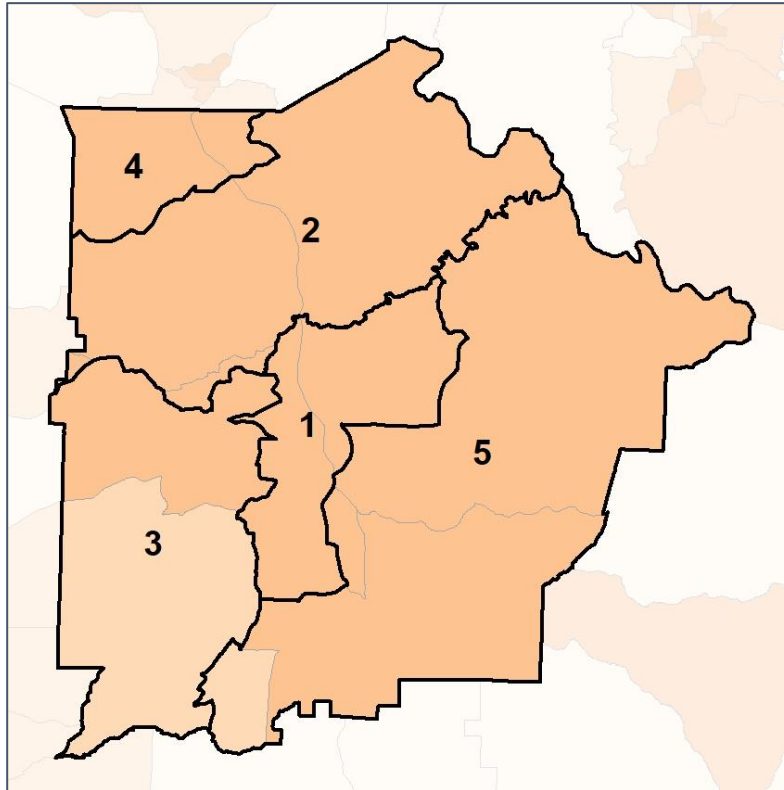


# Talbot Co. Commission & School Board

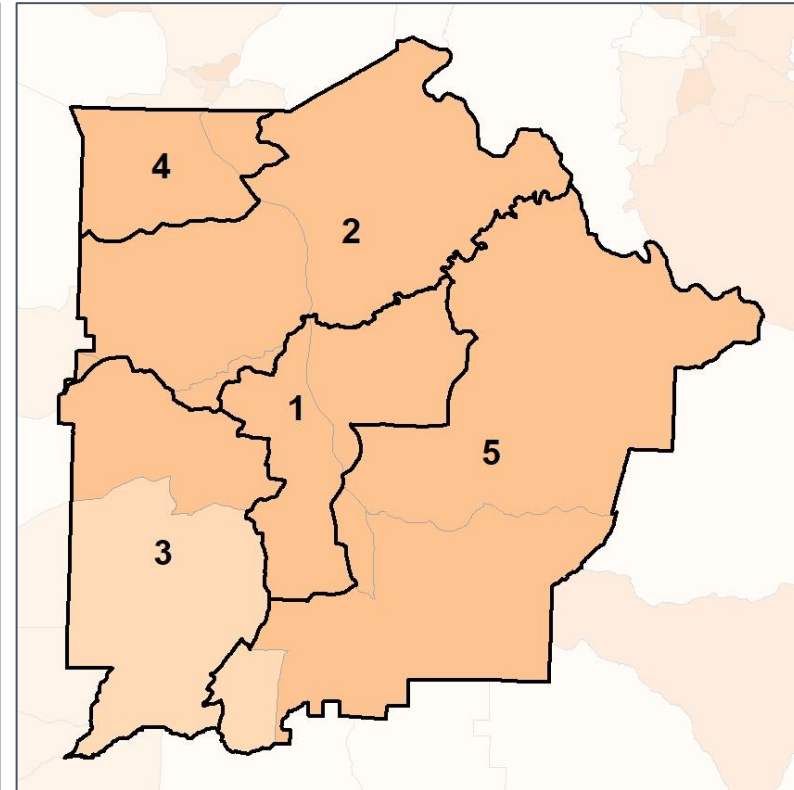
## % People of Color by Census Block Group



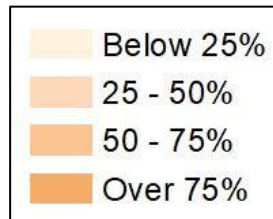
### 2012 Map



### 2022 Map\*



	1	2	3	4	5	1*	2*	3*	4*	5*	County
Population	1,058	1,183	1,227	1,110	1,155	1,146	1,158	1,139	1,135	1,155	5,733
API	4	3	7	0	4	4	3	7	0	4	18
% API	0%	0%	1%	0%	0%	0%	0%	1%	0%	0%	0%
Black	794	487	506	700	569	863	483	437	704	569	3,056
% Black	75%	41%	41%	63%	49%	75%	42%	38%	62%	49%	53%
Latino	16	23	28	12	33	18	23	26	12	33	112
% Latino	2%	2%	2%	1%	3%	2%	2%	2%	1%	3%	2%
Other	11	28	30	22	29	12	28	29	22	29	120
% Other	1%	2%	2%	2%	3%	1%	2%	3%	2%	3%	2%
White	233	642	656	376	520	249	621	640	397	520	2,427
% White	22%	54%	53%	34%	45%	22%	54%	56%	35%	45%	42%

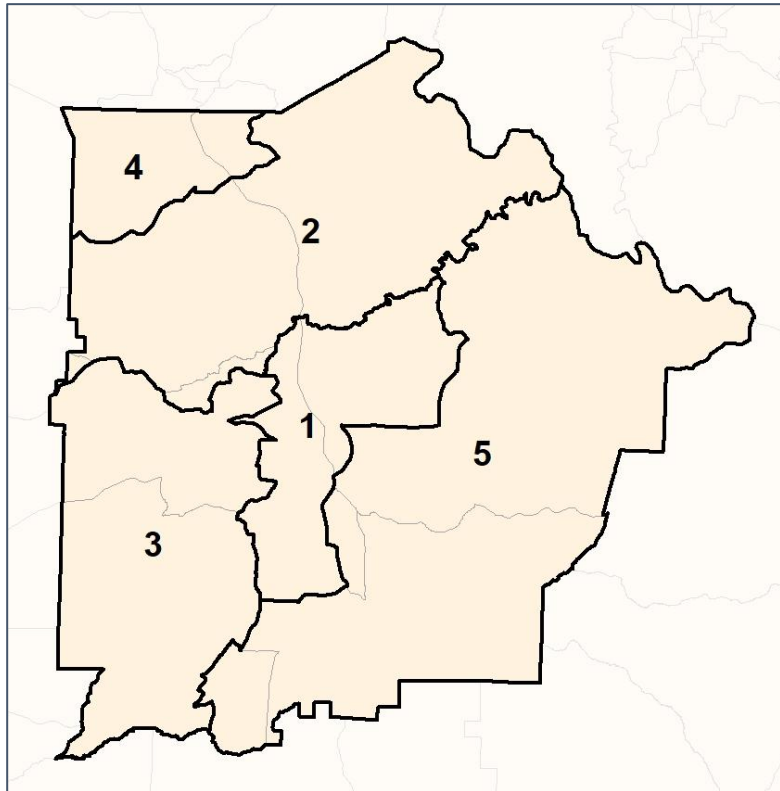


# Talbot Co. Commission & School Board

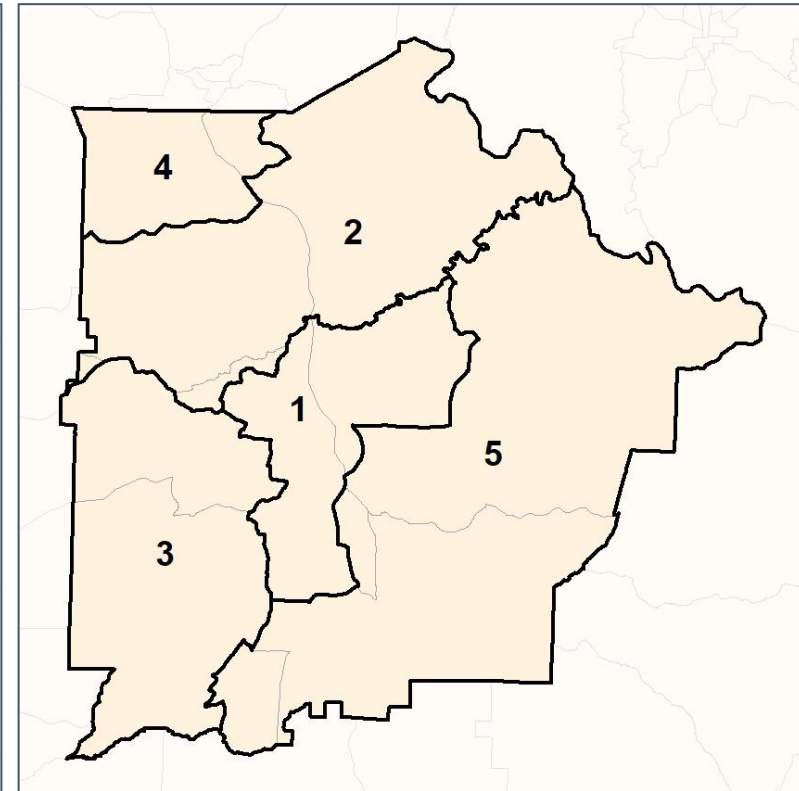
## % API by Census Block Group



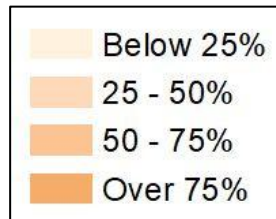
2012 Map



2022 Map\*



	1	2	3	4	5	1*	2*	3*	4*	5*	County
Population	1,058	1,183	1,227	1,110	1,155	1,146	1,158	1,139	1,135	1,155	5,733
API	4	3	7	0	4	4	3	7	0	4	18
% API	0%	0%	1%	0%	0%	0%	0%	1%	0%	0%	0%
Black	794	487	506	700	569	863	483	437	704	569	3,056
% Black	75%	41%	41%	63%	49%	75%	42%	38%	62%	49%	53%
Latino	16	23	28	12	33	18	23	26	12	33	112
% Latino	2%	2%	2%	1%	3%	2%	2%	2%	1%	3%	2%
Other	11	28	30	22	29	12	28	29	22	29	120
% Other	1%	2%	2%	2%	3%	1%	2%	3%	2%	3%	2%
White	233	642	656	376	520	249	621	640	397	520	2,427
% White	22%	54%	53%	34%	45%	22%	54%	56%	35%	45%	42%

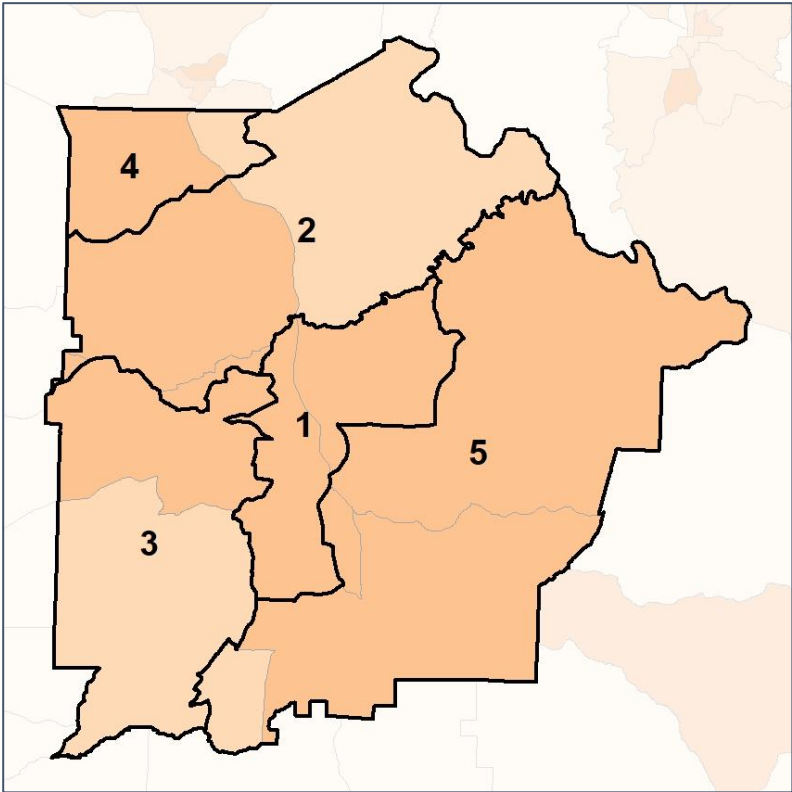


# Talbot Co. Commission & School Board

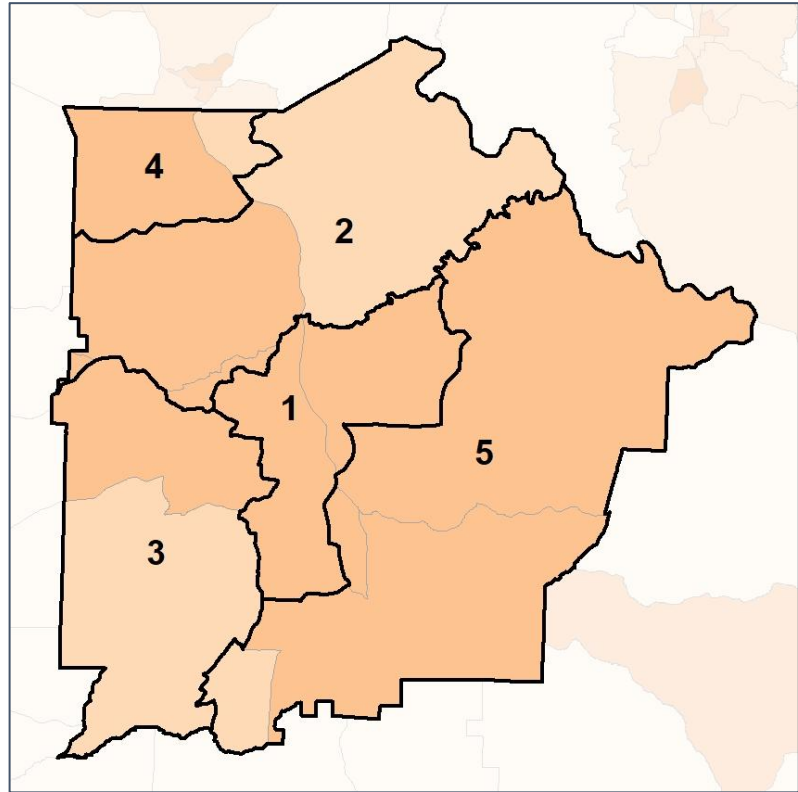
## % Black by Census Block Group



### 2012 Map



### 2022 Map\*



	1	2	3	4	5	1*	2*	3*	4*	5*	County
Population	1,058	1,183	1,227	1,110	1,155	1,146	1,158	1,139	1,135	1,155	5,733
API	4	3	7	0	4	4	3	7	0	4	18
% API	0%	0%	1%	0%	0%	0%	0%	1%	0%	0%	0%
Black	794	487	506	700	569	863	483	437	704	569	3,056
% Black	75%	41%	41%	63%	49%	75%	42%	38%	62%	49%	53%
Latino	16	23	28	12	33	18	23	26	12	33	112
% Latino	2%	2%	2%	1%	3%	2%	2%	2%	1%	3%	2%
Other	11	28	30	22	29	12	28	29	22	29	120
% Other	1%	2%	2%	2%	3%	1%	2%	3%	2%	3%	2%
White	233	642	656	376	520	249	621	640	397	520	2,427
% White	22%	54%	53%	34%	45%	22%	54%	56%	35%	45%	42%



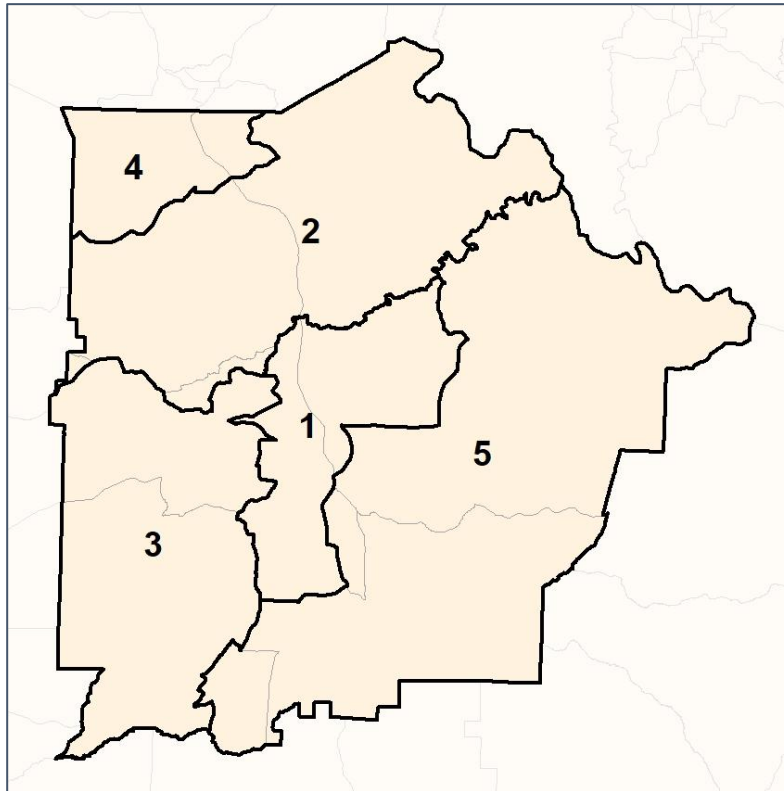
Source:  
2020 Decennial Census  
2020 ACS 5-Year Dataset

# Talbot Co. Commission & School Board

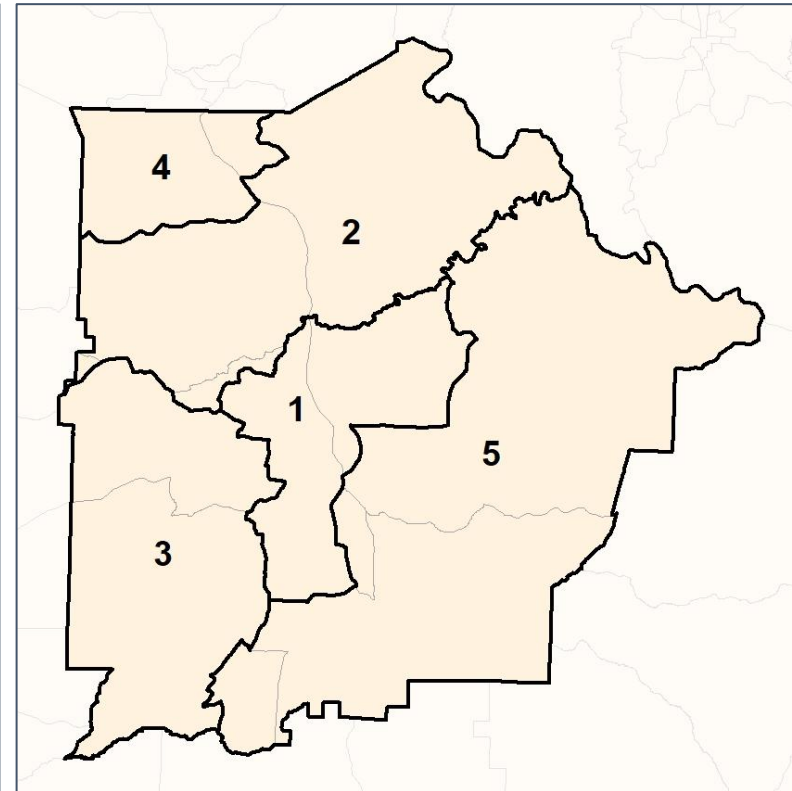
## % Latino by Census Block Group



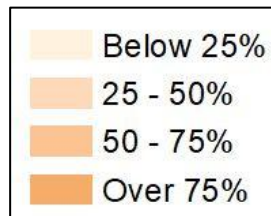
2012 Map



2022 Map\*



	1	2	3	4	5	1*	2*	3*	4*	5*	County
Population	1,058	1,183	1,227	1,110	1,155	1,146	1,158	1,139	1,135	1,155	5,733
API	4	3	7	0	4	4	3	7	0	4	18
% API	0%	0%	1%	0%	0%	0%	0%	1%	0%	0%	0%
Black	794	487	506	700	569	863	483	437	704	569	3,056
% Black	75%	41%	41%	63%	49%	75%	42%	38%	62%	49%	53%
Latino	16	23	28	12	33	18	23	26	12	33	112
% Latino	2%	2%	2%	1%	3%	2%	2%	2%	1%	3%	2%
Other	11	28	30	22	29	12	28	29	22	29	120
% Other	1%	2%	2%	2%	3%	1%	2%	3%	2%	3%	2%
White	233	642	656	376	520	249	621	640	397	520	2,427
% White	22%	54%	53%	34%	45%	22%	54%	56%	35%	45%	42%



Source:  
2020 Decennial Census  
2020 ACS 5-Year Dataset



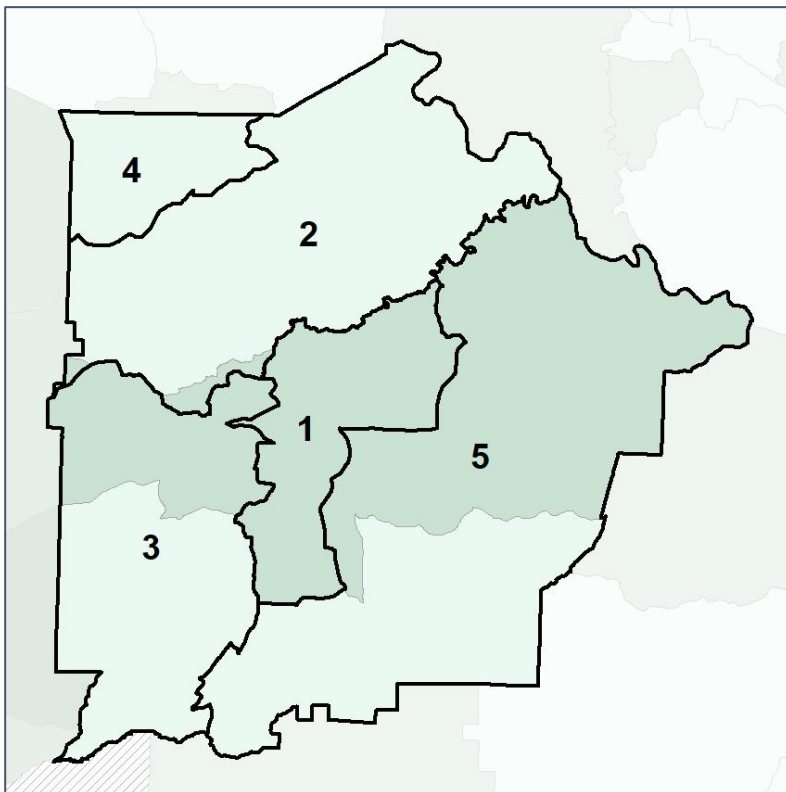


# Talbot Co. Commission & School Board

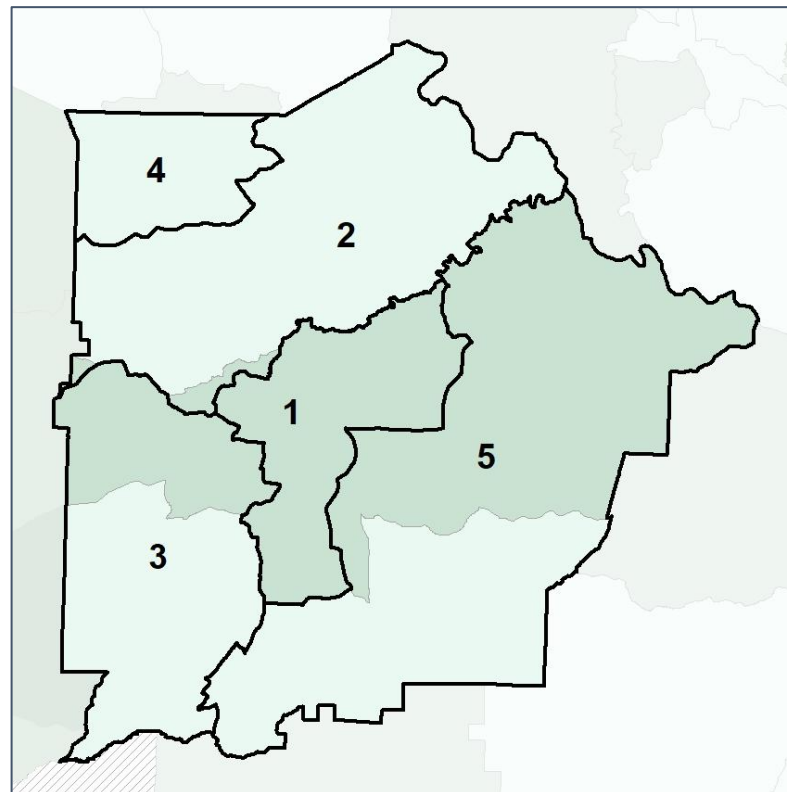
## Median Household Income by Census Tract



2012 Map



2022 Map\*



	1	2	3	4	5	1*	2*	3*	4*	5*	County
Population	1,058	1,183	1,227	1,110	1,155	1,146	1,158	1,139	1,135	1,155	5,733
% API	0%	0%	1%	0%	0%	0%	0%	1%	0%	0%	0%
% Black	75%	41%	41%	63%	49%	75%	42%	38%	62%	49%	53%
% Latino	2%	2%	2%	1%	3%	2%	2%	2%	1%	3%	2%
% Other	1%	2%	2%	2%	3%	1%	2%	3%	2%	3%	2%
% White	22%	54%	53%	34%	45%	22%	54%	56%	35%	45%	42%
Median Income	\$38,000	\$38,000	\$42,000	\$43,000	\$35,000	\$42,000	\$38,000	\$37,000	\$43,000	\$35,000	\$40,000
% Renter	27%	20%	19%	24%	17%	27%	20%	7%	24%	17%	22%
% Youth	17%	17%	16%	14%	17%	16%	17%	16%	14%	17%	16%

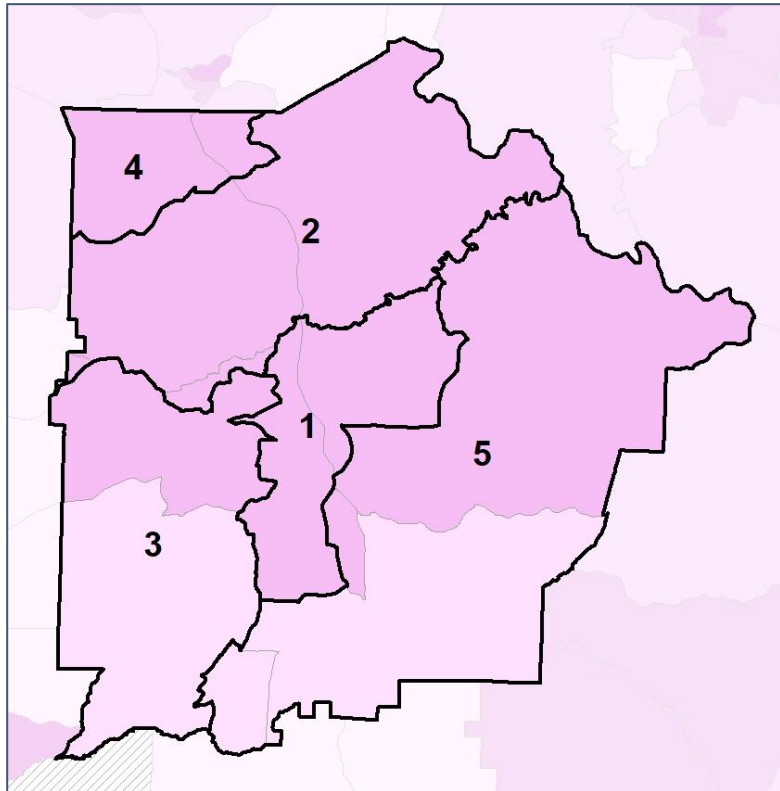


# Talbot Co. Commission & School Board

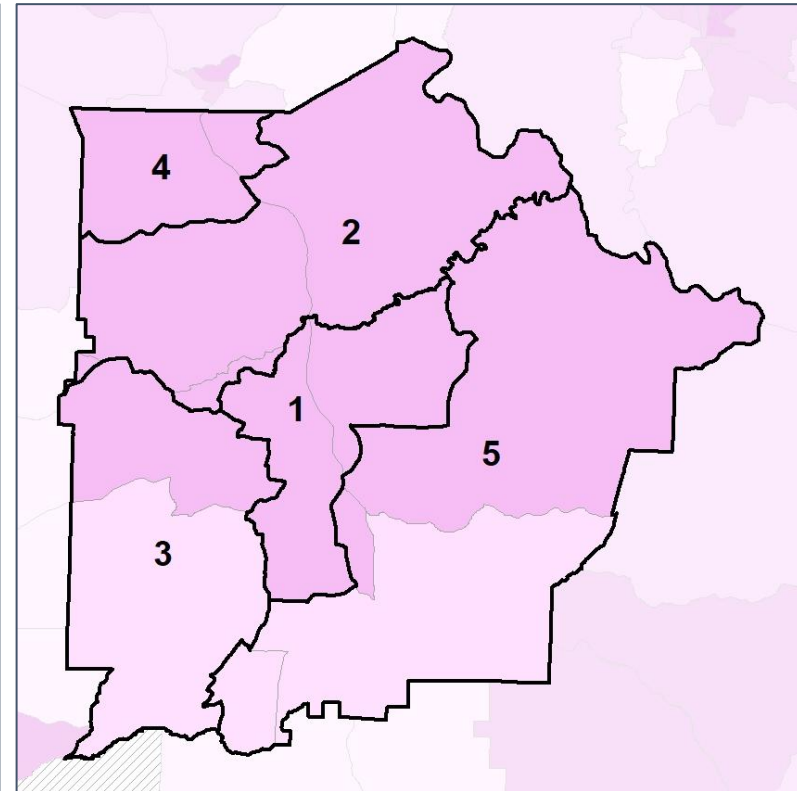
## % Renter by Census Block Group



2012 Map



2022 Map\*



	1	2	3	4	5	1*	2*	3*	4*	5*	County
Population	1,058	1,183	1,227	1,110	1,155	1,146	1,158	1,139	1,135	1,155	5,733
% API	0%	0%	1%	0%	0%	0%	0%	1%	0%	0%	0%
% Black	75%	41%	41%	63%	49%	75%	42%	38%	62%	49%	53%
% Latino	2%	2%	2%	1%	3%	2%	2%	2%	1%	3%	2%
% Other	1%	2%	2%	2%	3%	1%	2%	3%	2%	3%	2%
% White	22%	54%	53%	34%	45%	22%	54%	56%	35%	45%	42%
Median Income	\$38,000	\$38,000	\$42,000	\$43,000	\$35,000	\$42,000	\$38,000	\$37,000	\$43,000	\$35,000	\$40,000
% Renter	27%	20%	19%	24%	17%	27%	20%	7%	24%	17%	22%
% Youth	17%	17%	16%	14%	17%	16%	17%	16%	14%	17%	16%

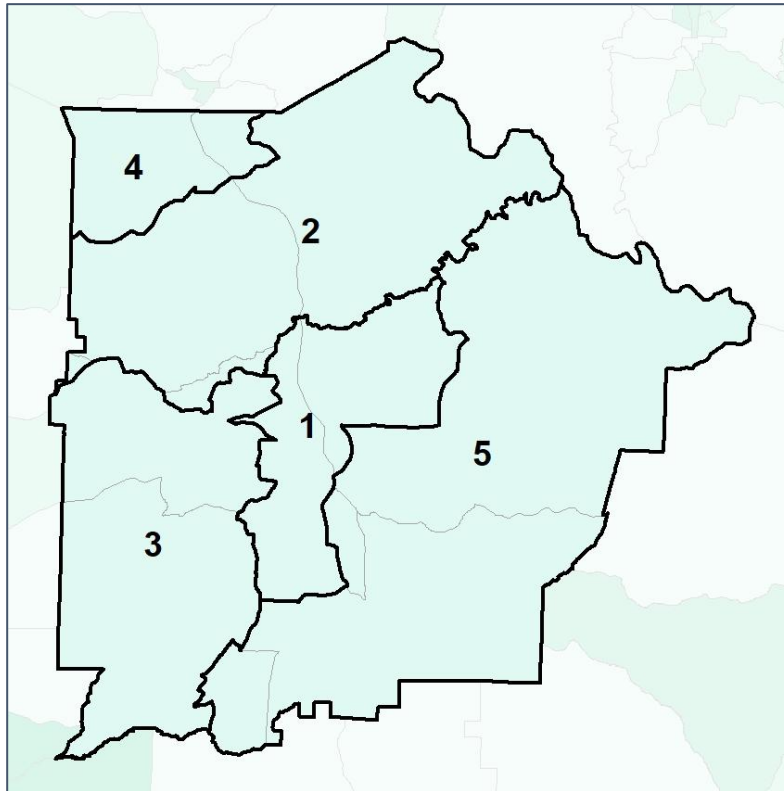


# Talbot Co. Commission & School Board

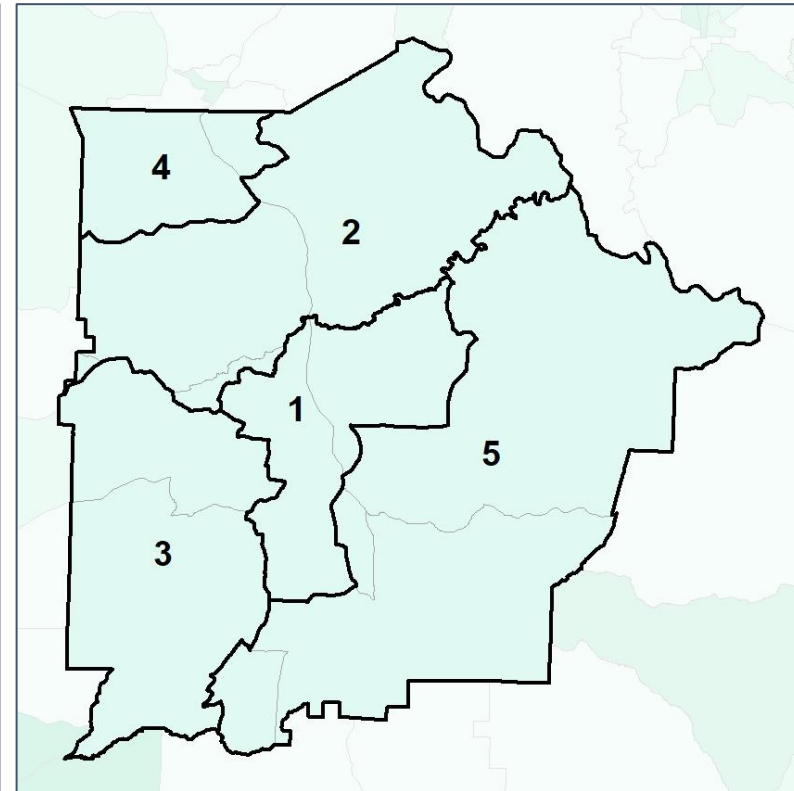
## % Youth (18-34) by Census Block Group



### 2012 Map



### 2022 Map\*



	1	2	3	4	5	1*	2*	3*	4*	5*	County
Population	1,058	1,183	1,227	1,110	1,155	1,146	1,158	1,139	1,135	1,155	5,733
% API	0%	0%	1%	0%	0%	0%	0%	1%	0%	0%	0%
% Black	75%	41%	41%	63%	49%	75%	42%	38%	62%	49%	53%
% Latino	2%	2%	2%	1%	3%	2%	2%	2%	1%	3%	2%
% Other	1%	2%	2%	2%	3%	1%	2%	3%	2%	3%	2%
% White	22%	54%	53%	34%	45%	22%	54%	56%	35%	45%	42%
Median Income	\$38,000	\$38,000	\$42,000	\$43,000	\$35,000	\$42,000	\$38,000	\$37,000	\$43,000	\$35,000	\$40,000
% Renter	27%	20%	19%	24%	17%	27%	20%	7%	24%	17%	22%
% Youth	17%	17%	16%	14%	17%	16%	17%	16%	14%	17%	16%

