



# Demographic Overview

## Racial Breakdown in Stephens County

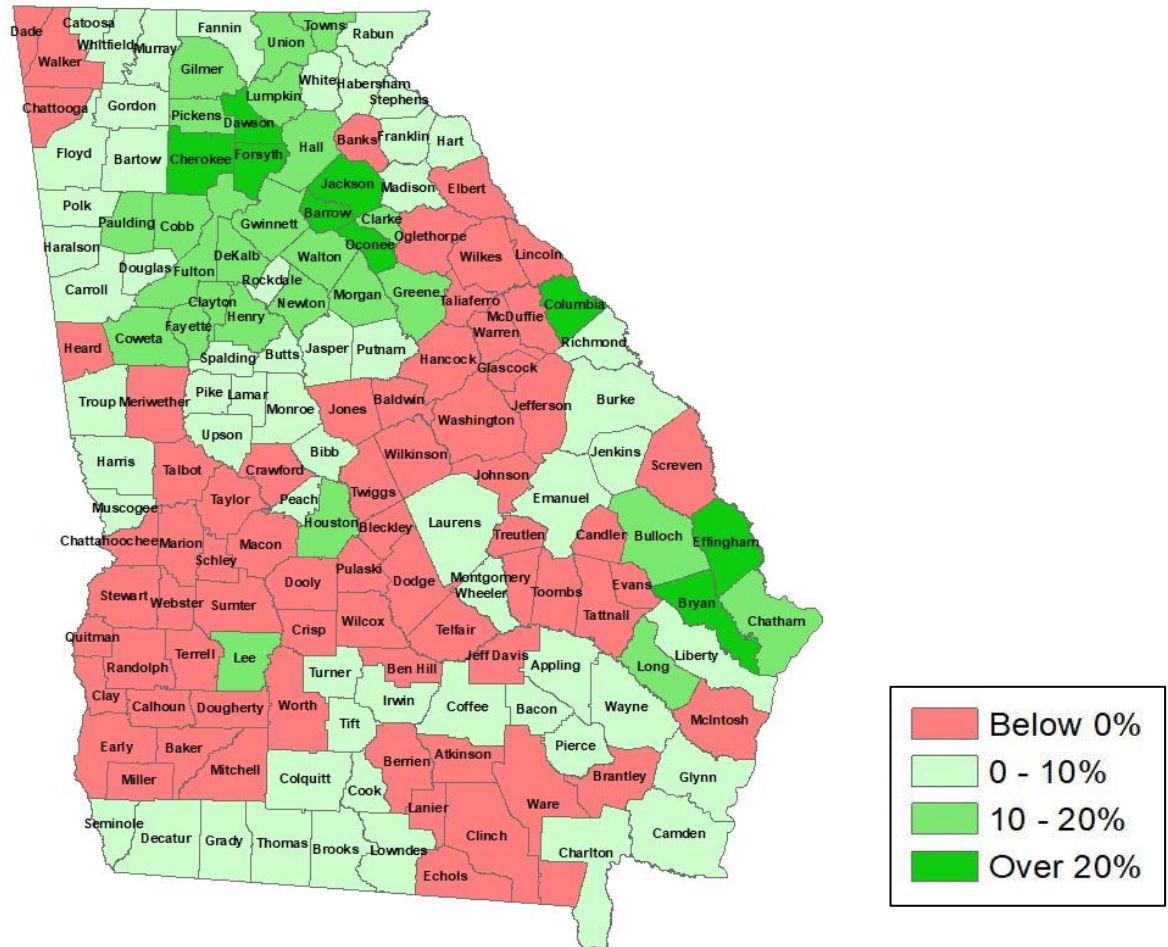
Stephens County	2010	2020	% Change
Total Population	26,175	26,784	2%
AAPI	188	234	24%
Black	2,821	2,936	4%
Latino	633	857	35%
Other/Mixed Race	527	1,434	172%
POC	4,169	5,461	31%
White	22,006	21,323	-3%





# Population Gain

## Change in Population in Georgia by County



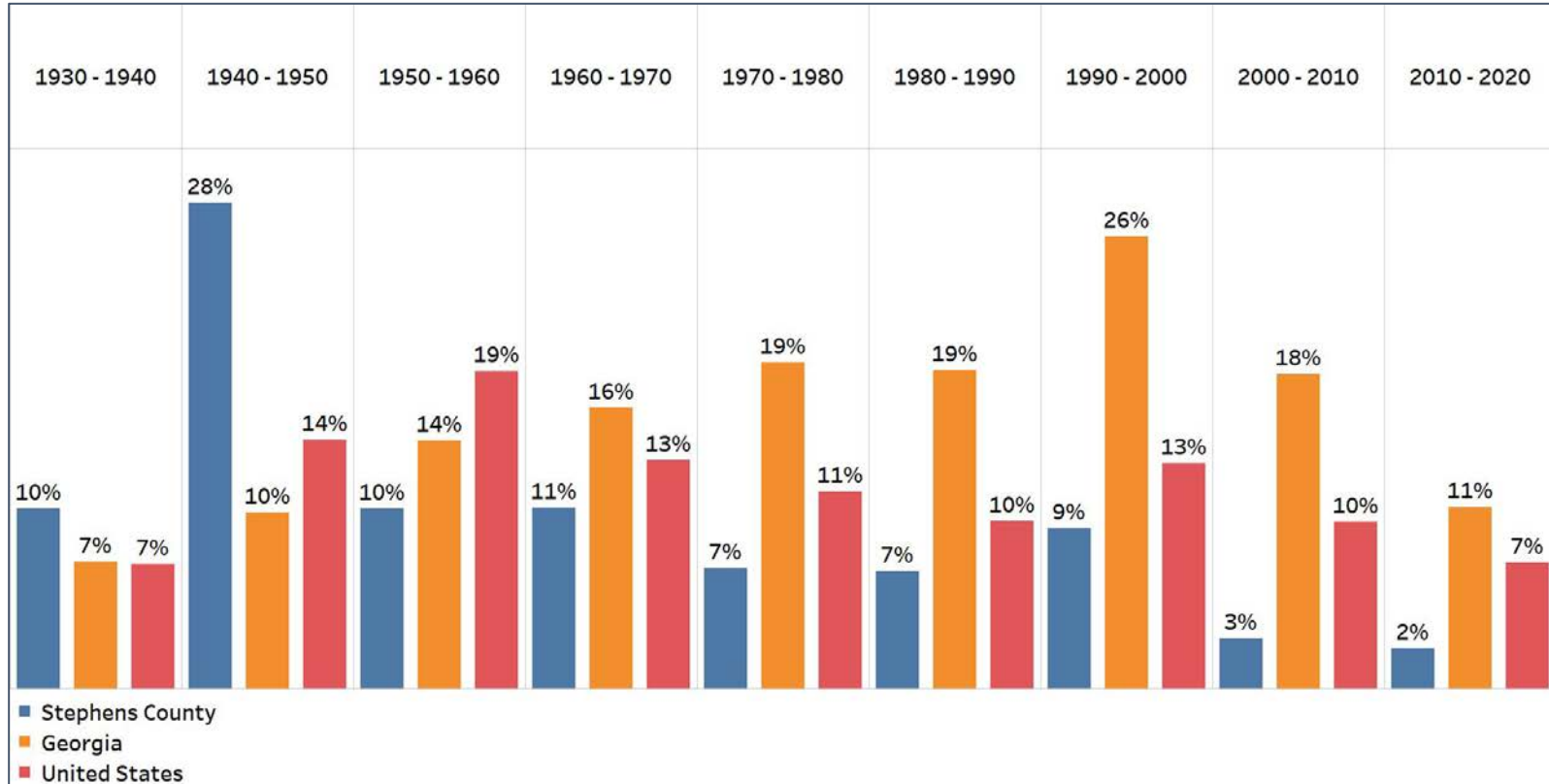
- Georgia is experiencing rapid population growth in the Atlanta, Augusta, and Savannah regions of the state





# Population Gain

## Change in Population by Decade

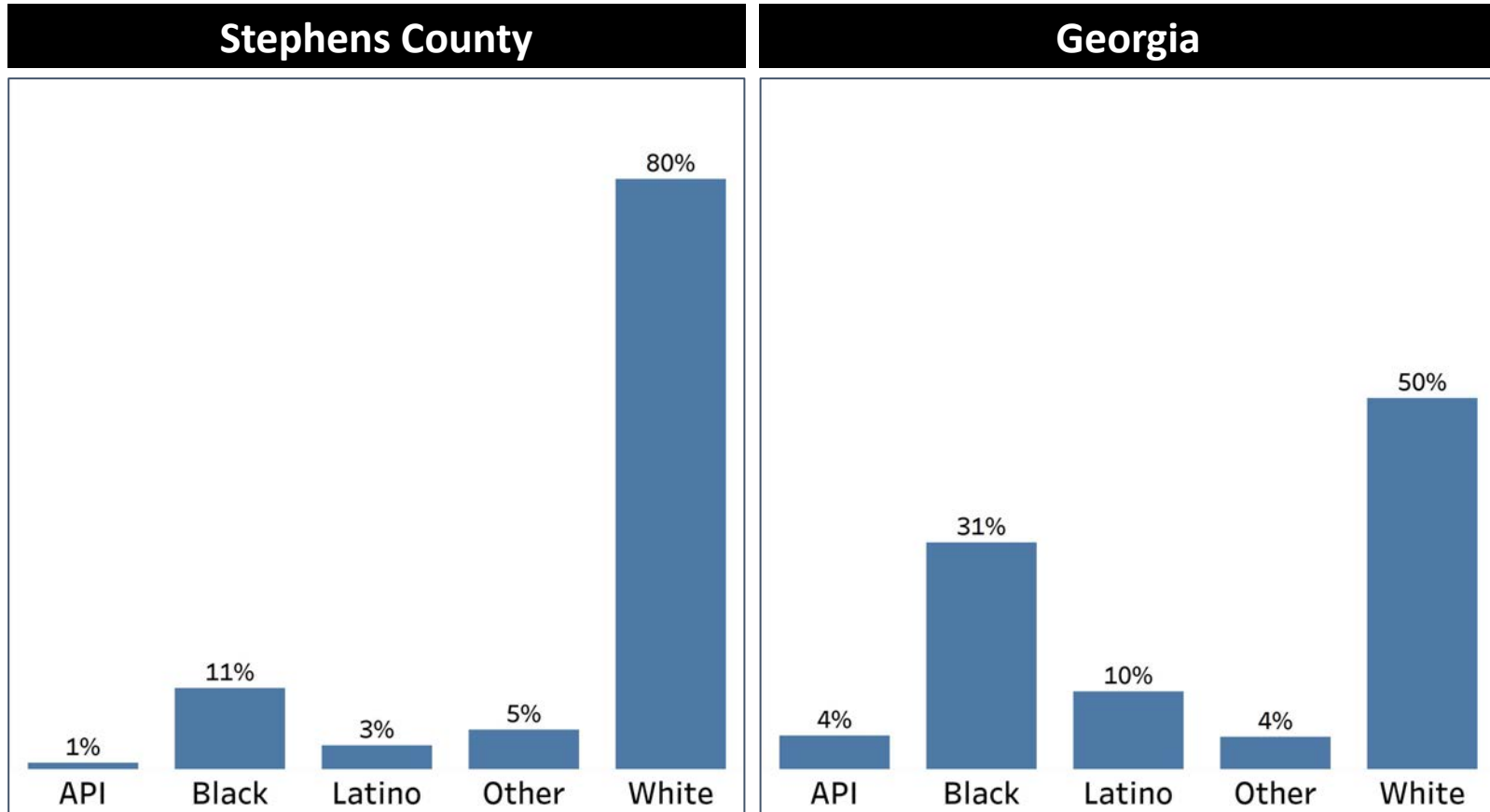


- Stephens County has had population growth since 1930, although it hasn't had a higher rate of growth than Georgia's growth since 1950
- The last decade was the lowest growth rate for the county in 90 years



# Demographics

## Comparison between Stephens County and Georgia



- Stephens County is overwhelmingly White, but the Other demographic group also has a higher share of the population in the county compared to Georgia overall

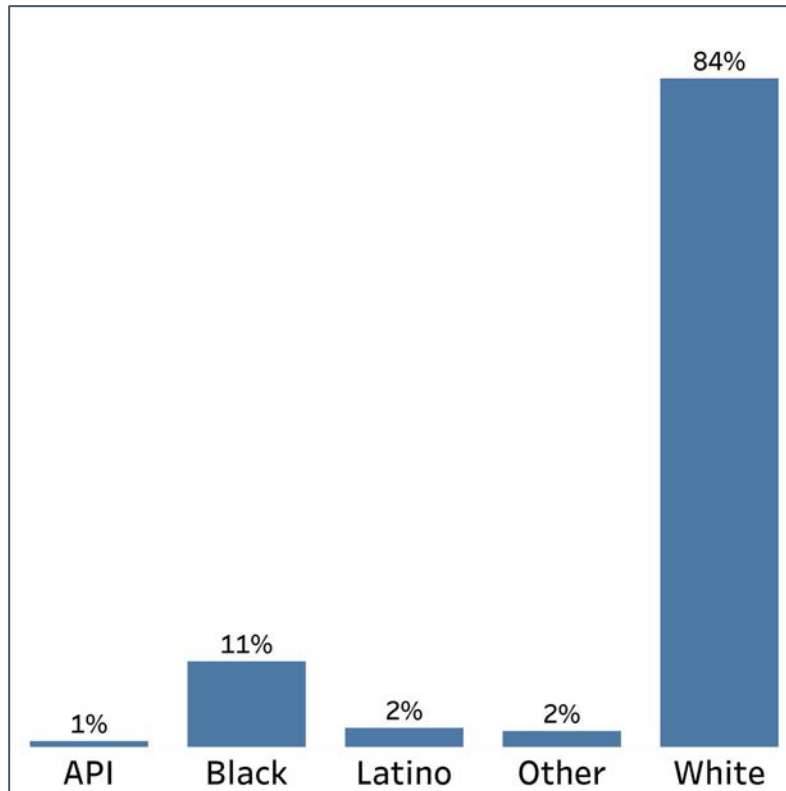


# Demographics

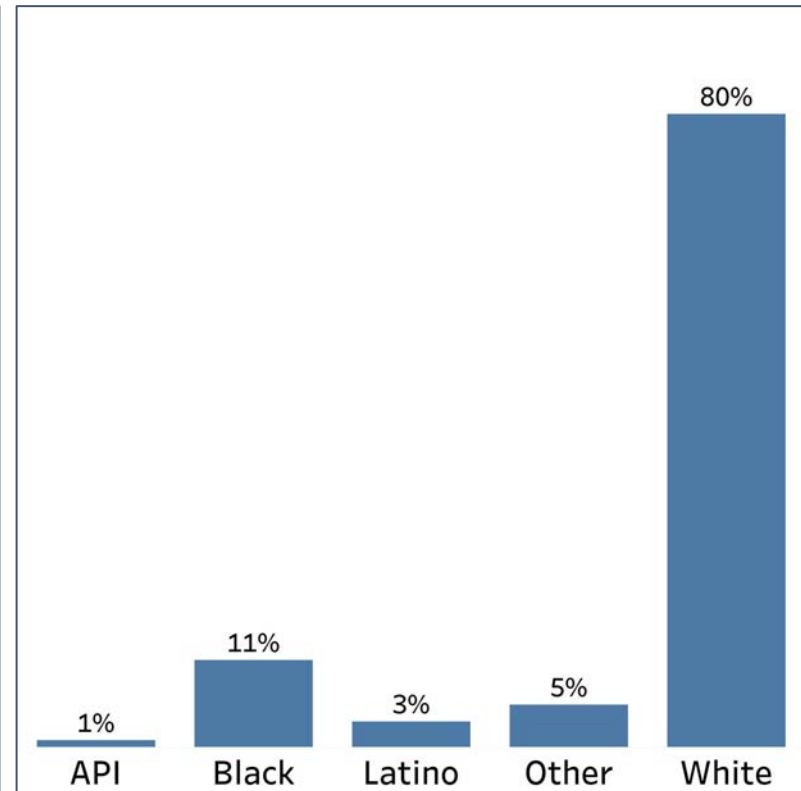
## 2010 vs 2020 Demographics in Stephens County



### Stephens County 2010



### Stephens County 2020



- Stephens County's share of the White population declined, while both the Latino and Other populations increasing their shares

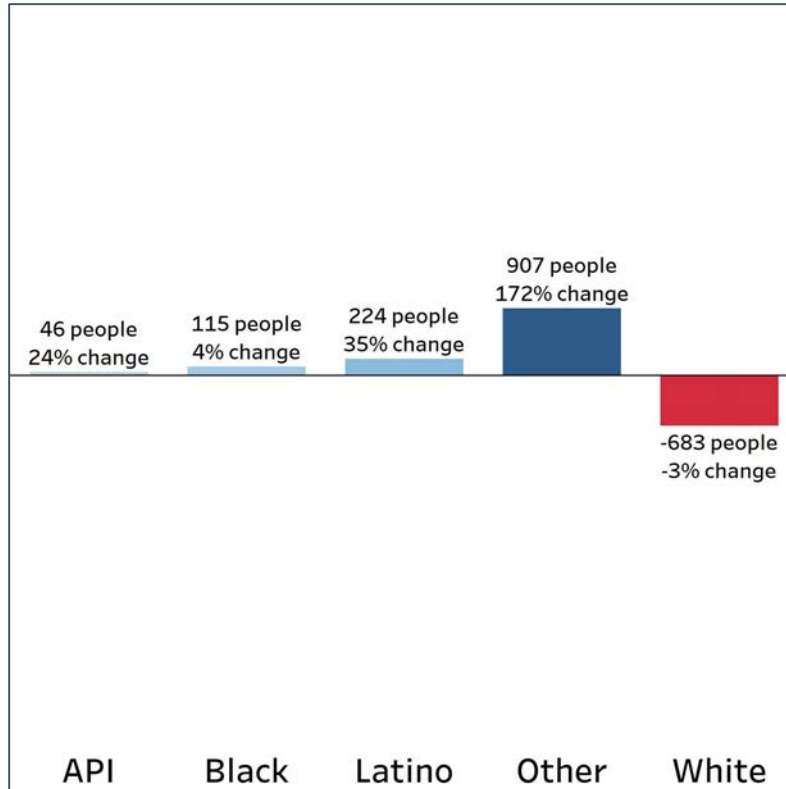


# Demographics

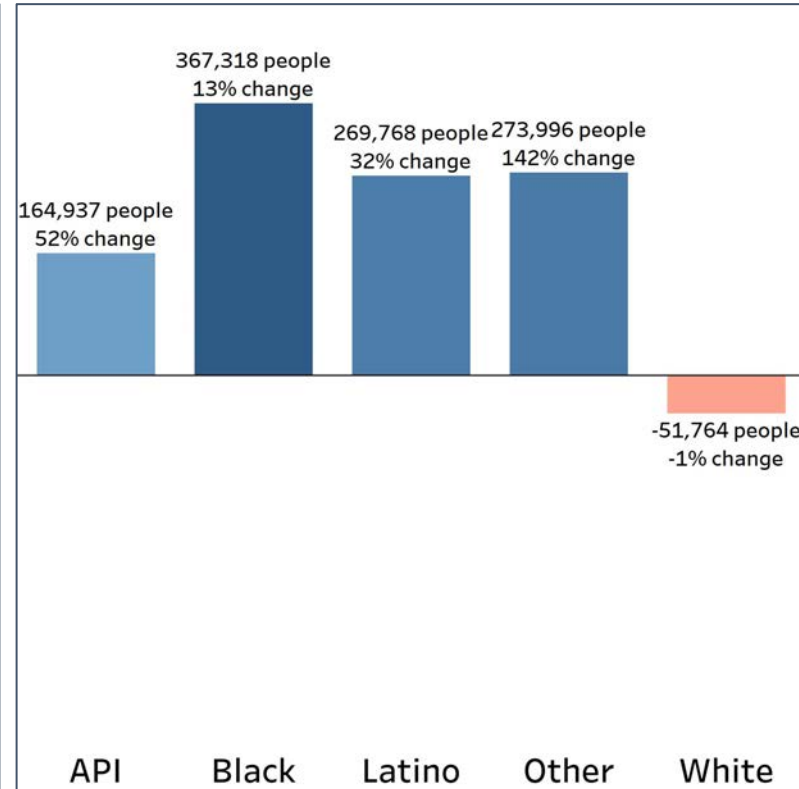
## Population Change by Race (2020 - 2010)



### Stephens County



### Georgia



- Both the Latino and Other populations had higher growth rates in the county compared to Georgia overall
- The White population also had a higher decline rate in Stephens County than in Georgia overall

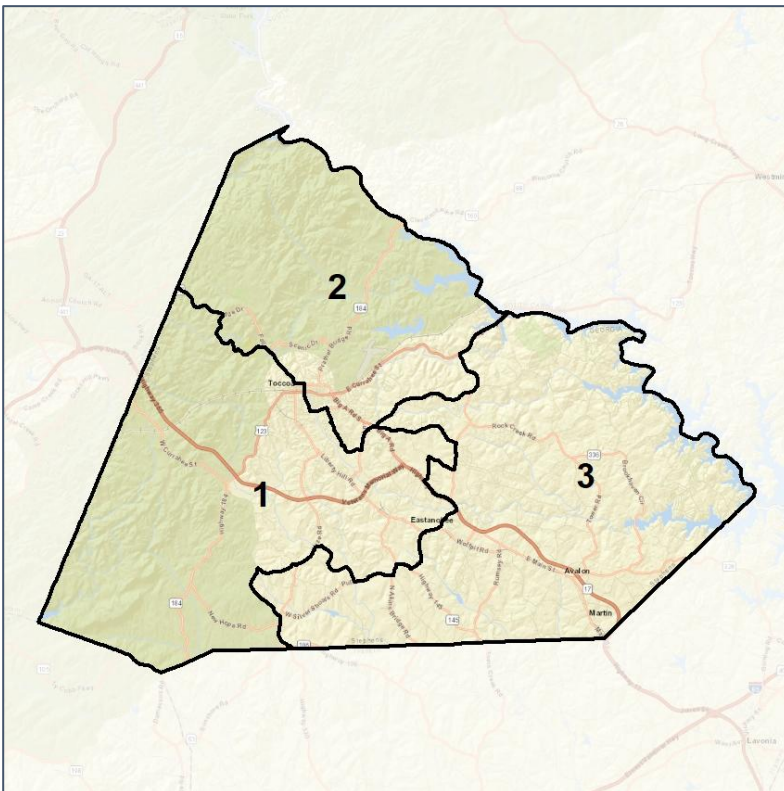


# Stephens Co. Commission & School Board

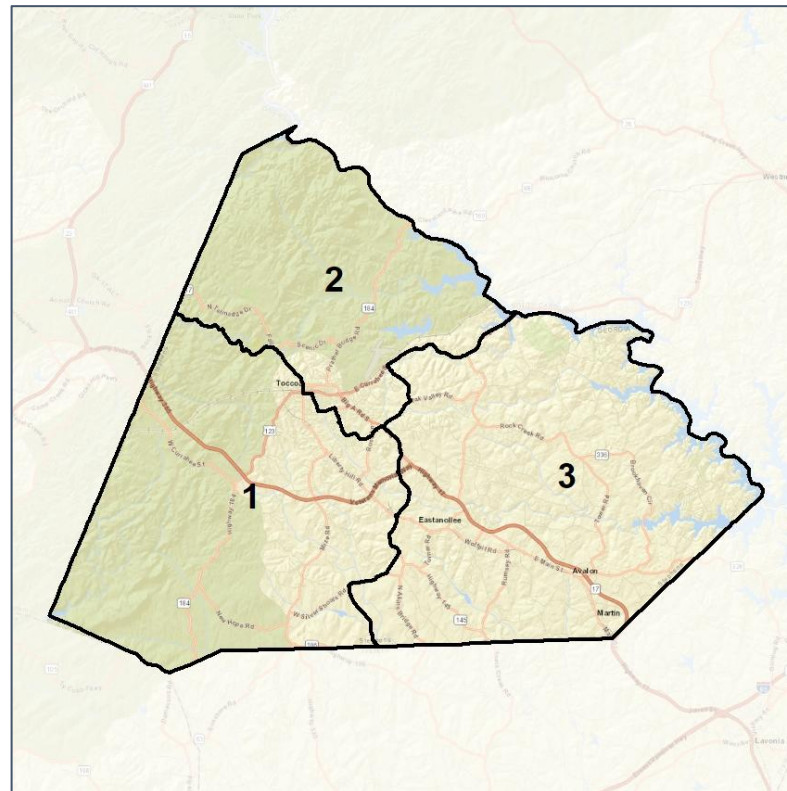
## Context



2012 Map



2022 Map\*



	1	2	3	1*	2*	3*	County
Population	8,670	9,455	8,659	8,922	8,926	8,936	26,784
API	1%	1%	1%	1%	1%	1%	1%
Black	13%	13%	7%	12%	14%	7%	11%
Latino	3%	3%	3%	3%	4%	3%	3%
Other	5%	5%	5%	5%	6%	5%	5%
White	79%	77%	84%	79%	76%	84%	80%
Population Gain	-19	621	7	252	-529	277	*
Population % Gain	0%	7%	0%	3%	-6%	3%	*
Net POC Gain	417	553	322	4	-39	35	*
Net POC % Gain	29%	33%	30%	0%	-2%	3%	*



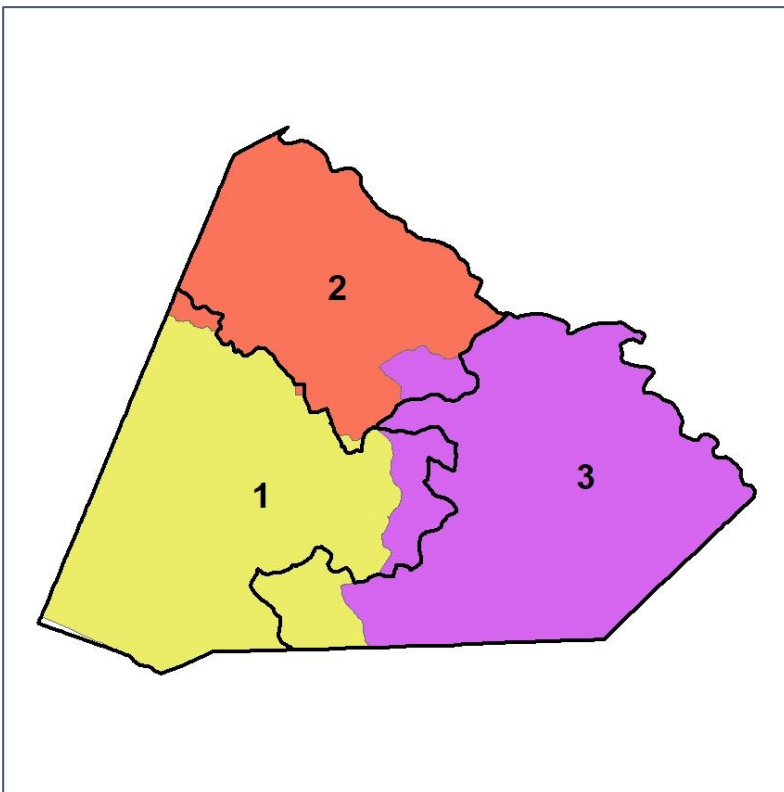


# Stephens Co. Commission & School Board

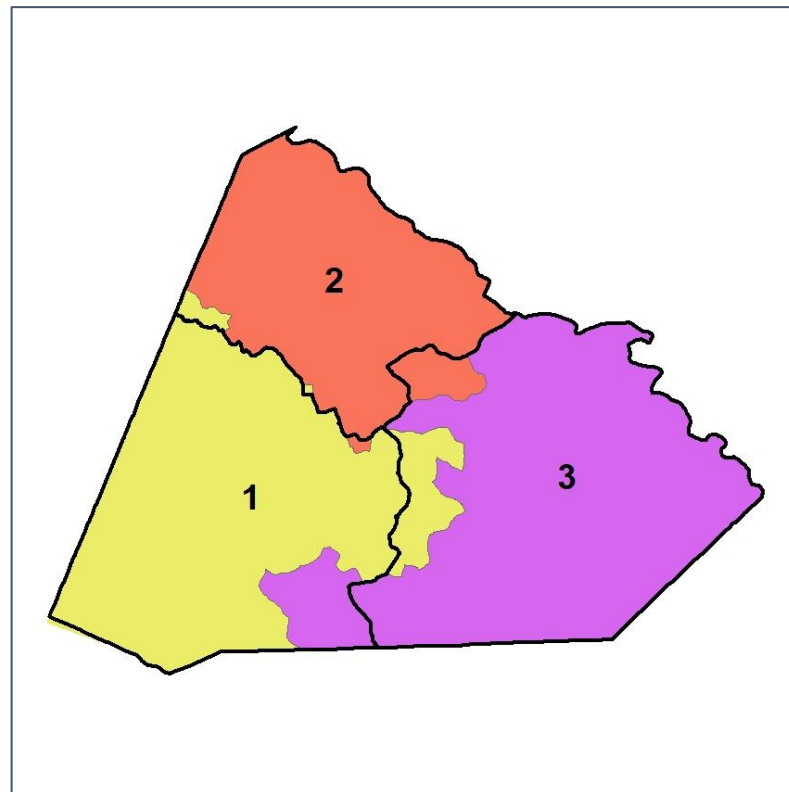
## Changes in Redistricting



**2012 Map (2022 in Colors)**



**2022 Map\* (2012 in Colors)**



	1	2	3	1*	2*	3*	County
Population	8,670	9,455	8,659	8,922	8,926	8,936	26,784
API	1%	1%	1%	1%	1%	1%	1%
Black	13%	13%	7%	12%	14%	7%	11%
Latino	3%	3%	3%	3%	4%	3%	3%
Other	5%	5%	5%	5%	6%	5%	5%
White	79%	77%	84%	79%	76%	84%	80%
Population Gain	-19	621	7	252	-529	277	*
Population % Gain	0%	7%	0%	3%	-6%	3%	*
Net POC Gain	417	553	322	4	-39	35	*
Net POC % Gain	29%	33%	30%	0%	-2%	3%	*



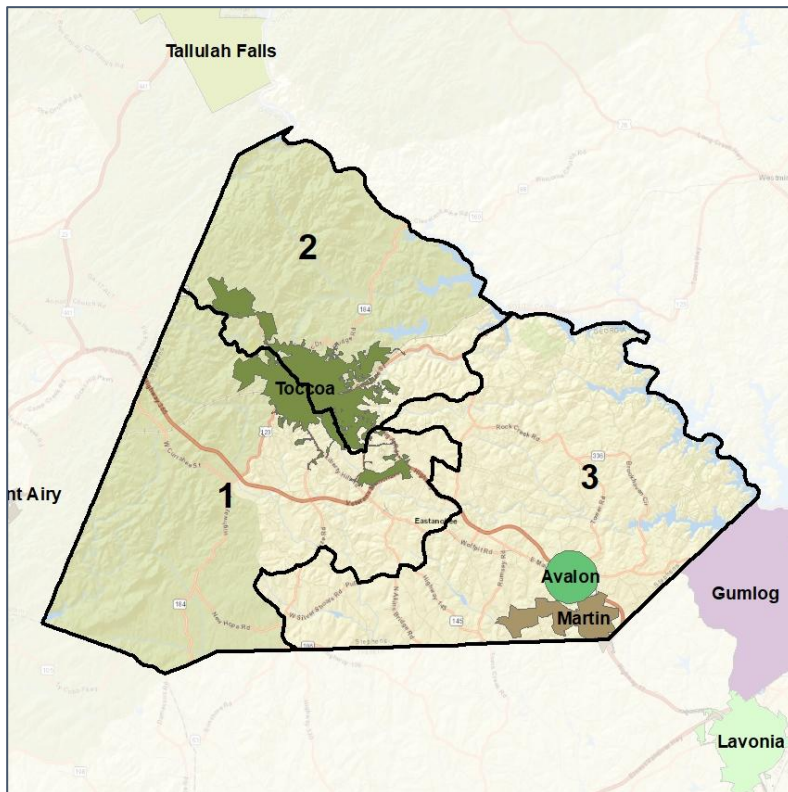


# Stephens Co. Commission & School Board

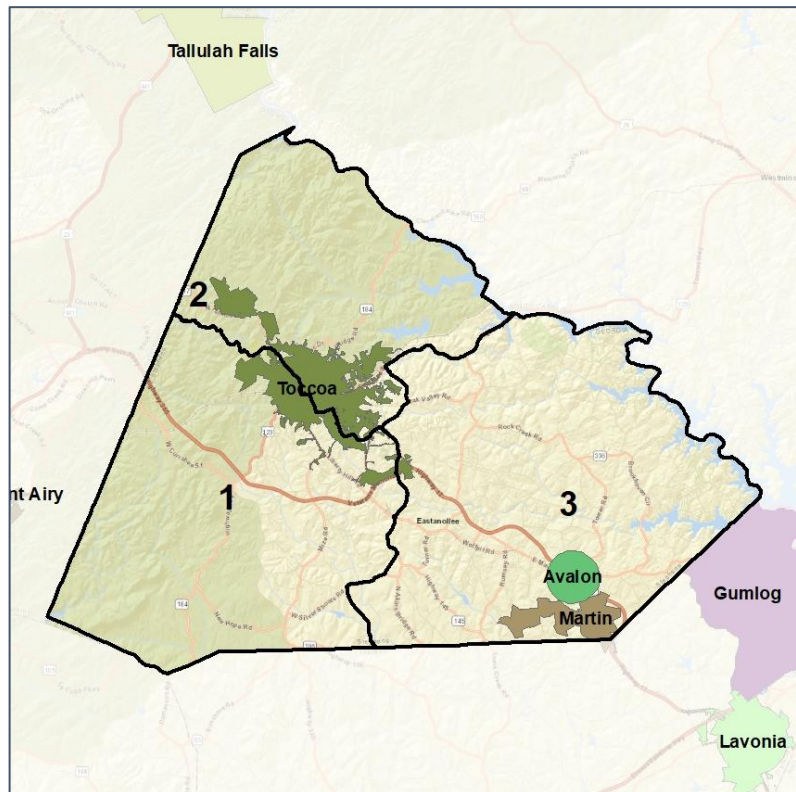
## Cities and Places



### 2012 Map



### 2022 Map\*



	1	2	3	1*	2*	3*	County
Population	8,670	9,455	8,659	8,922	8,926	8,936	26,784
API	1%	1%	1%	1%	1%	1%	1%
Black	13%	13%	7%	12%	14%	7%	11%
Latino	3%	3%	3%	3%	4%	3%	3%
Other	5%	5%	5%	5%	6%	5%	5%
White	79%	77%	84%	79%	76%	84%	80%
Population Gain	-19	621	7	252	-529	277	*
Population % Gain	0%	7%	0%	3%	-6%	3%	*
Net POC Gain	417	553	322	4	-39	35	*
Net POC % Gain	29%	33%	30%	0%	-2%	3%	*

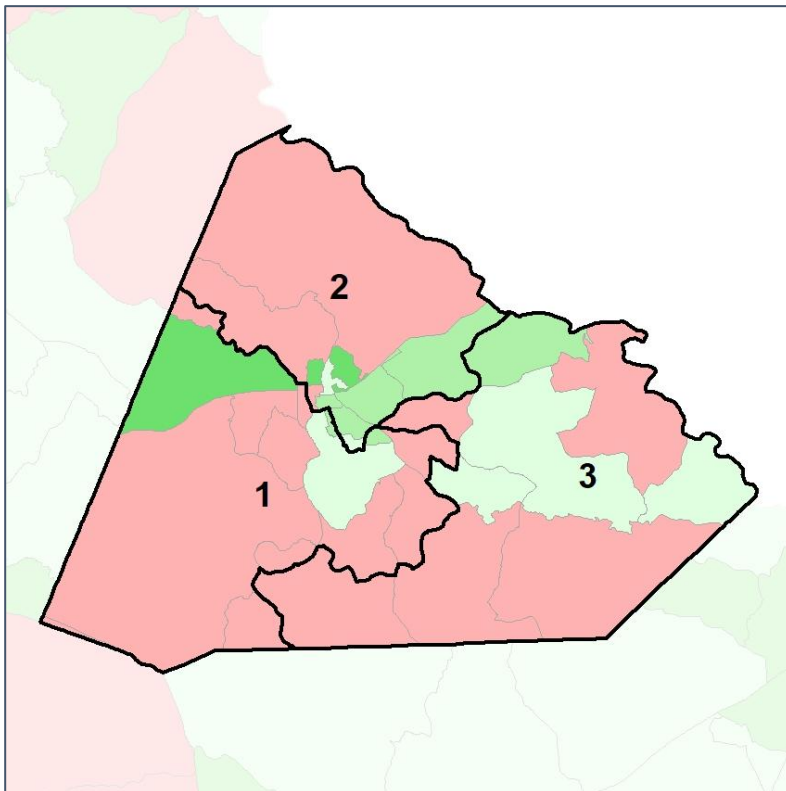


# Stephens Co. Commission & School Board

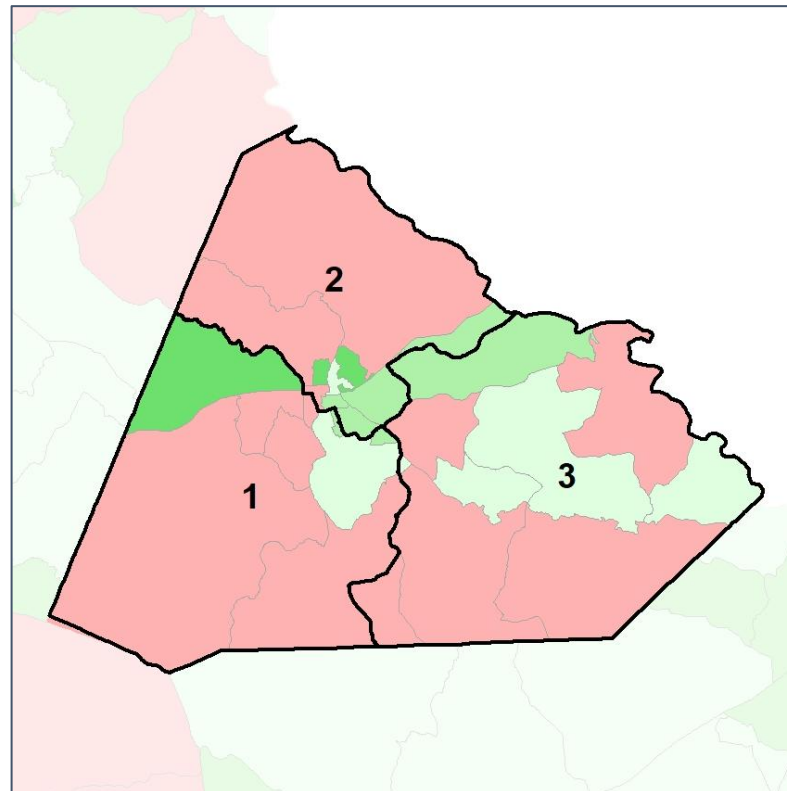
## Net Gain in Population (2010 - 2020) by Census Block Group



2012 Map



2022 Map\*



	1	2	3	1*	2*	3*	County
Population	8,670	9,455	8,659	8,922	8,926	8,936	26,784
API	1%	1%	1%	1%	1%	1%	1%
Black	13%	13%	7%	12%	14%	7%	11%
Latino	3%	3%	3%	3%	4%	3%	3%
Other	5%	5%	5%	5%	6%	5%	5%
White	79%	77%	84%	79%	76%	84%	80%
Population Gain	-19	621	7	252	-529	277	*
Population % Gain	0%	7%	0%	3%	-6%	3%	*
Net POC Gain	417	553	322	4	-39	35	*
Net POC % Gain	29%	33%	30%	0%	-2%	3%	*

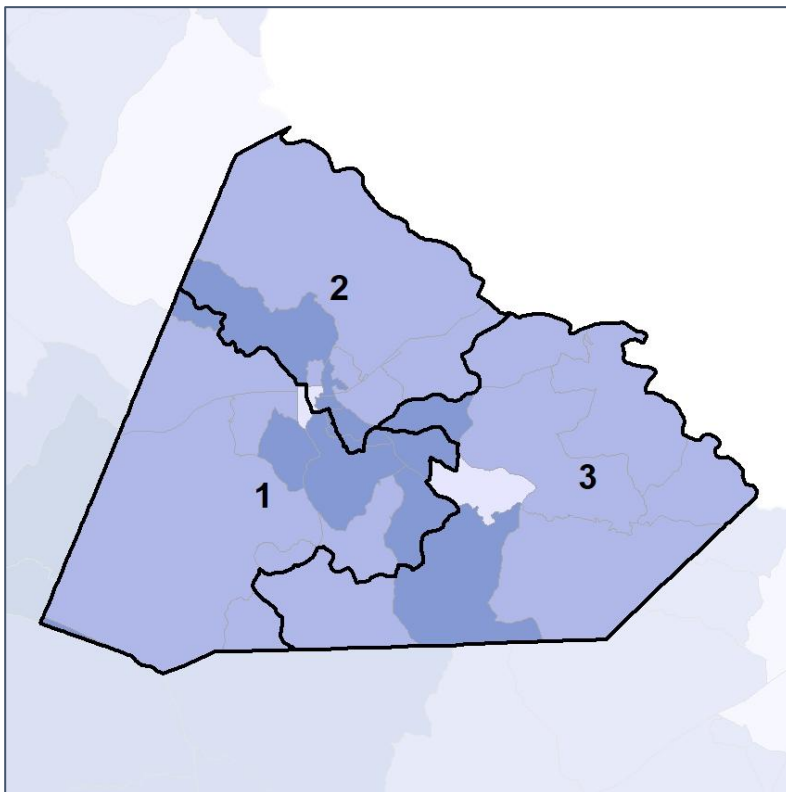


# Stephens Co. Commission & School Board

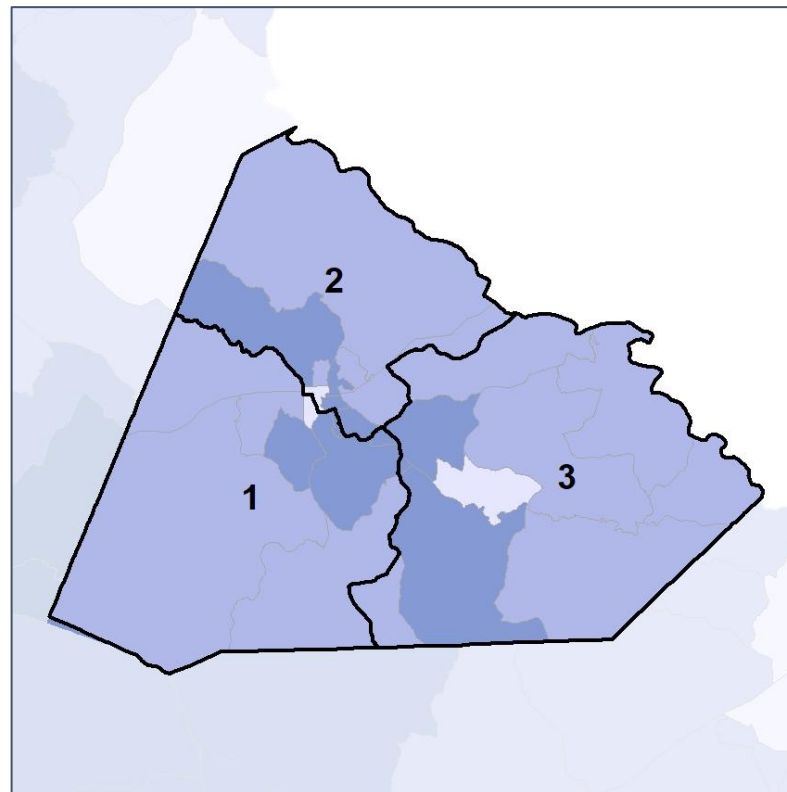
## Net Gain in % POC (2020 - 2010) by Census Block Group



2012 Map



2022 Map\*



	1	2	3	1*	2*	3*	County
Population	8,670	9,455	8,659	8,922	8,926	8,936	26,784
API	1%	1%	1%	1%	1%	1%	1%
Black	13%	13%	7%	12%	14%	7%	11%
Latino	3%	3%	3%	3%	4%	3%	3%
Other	5%	5%	5%	5%	6%	5%	5%
White	79%	77%	84%	79%	76%	84%	80%
Population Gain	-19	621	7	252	-529	277	*
Population % Gain	0%	7%	0%	3%	-6%	3%	*
Net POC Gain	417	553	322	4	-39	35	*
Net POC % Gain	29%	33%	30%	0%	-2%	3%	*

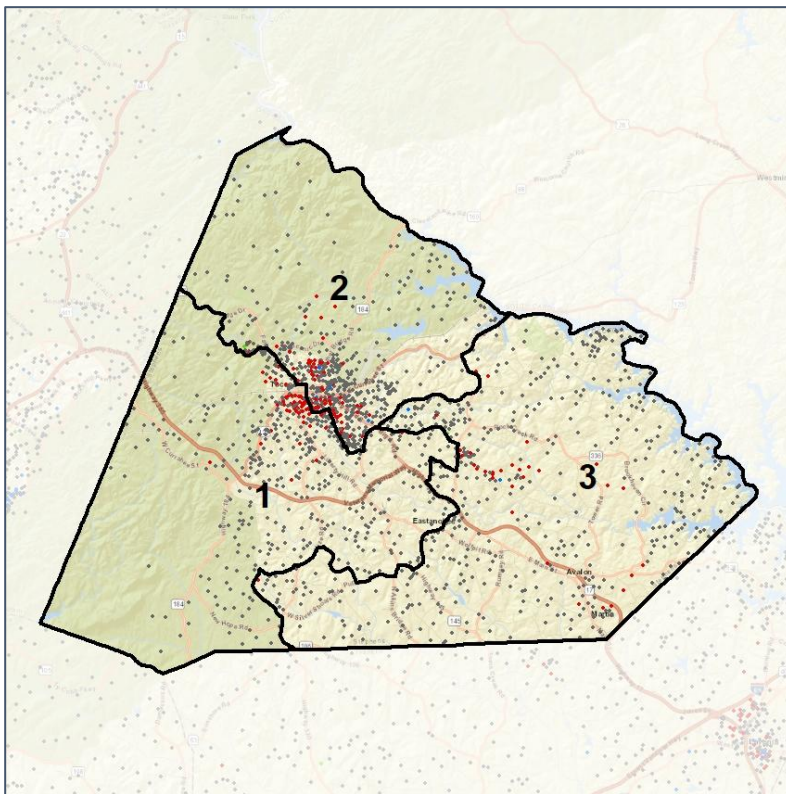


# Stephens Co. Commission & School Board

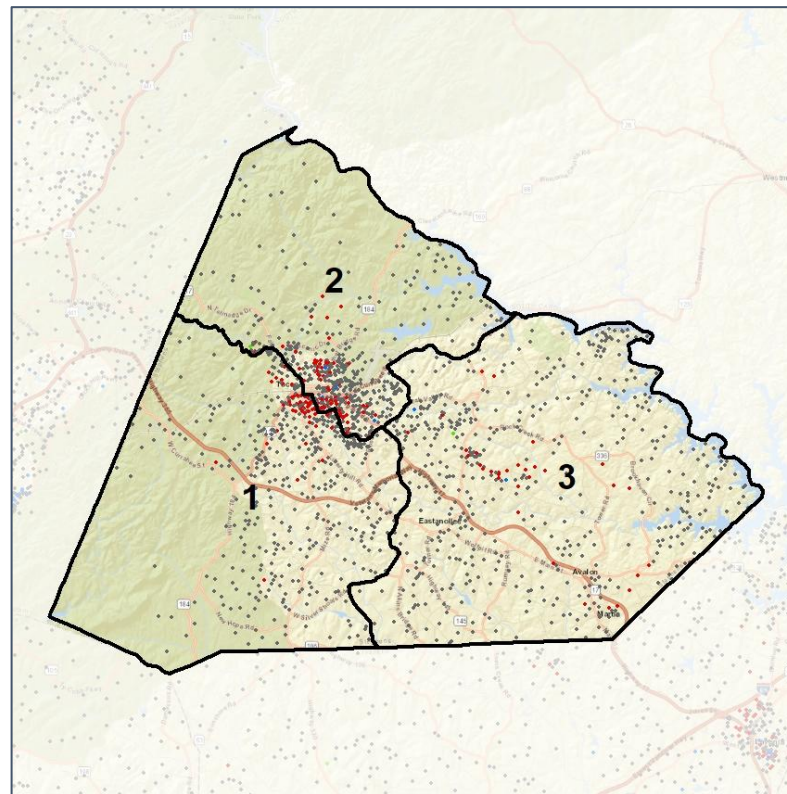
## Population Density by Race



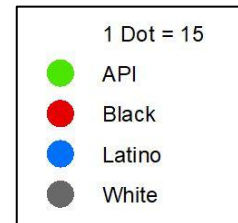
2012 Map



2022 Map\*



	1	2	3	1*	2*	3*	County
Population	8,670	9,455	8,659	8,922	8,926	8,936	26,784
API	49	119	66	49	117	68	234
% API	1%	1%	1%	1%	1%	1%	1%
Black	1,088	1,265	583	1,081	1,250	605	2,936
% Black	13%	13%	7%	12%	14%	7%	11%
Latino	242	325	290	249	320	288	857
% Latino	3%	3%	3%	3%	4%	3%	3%
Other	474	508	452	478	491	465	1,434
% Other	5%	5%	5%	5%	6%	5%	5%
White	6,817	7,238	7,268	7,065	6,748	7,510	21,323
% White	79%	77%	84%	79%	76%	84%	80%

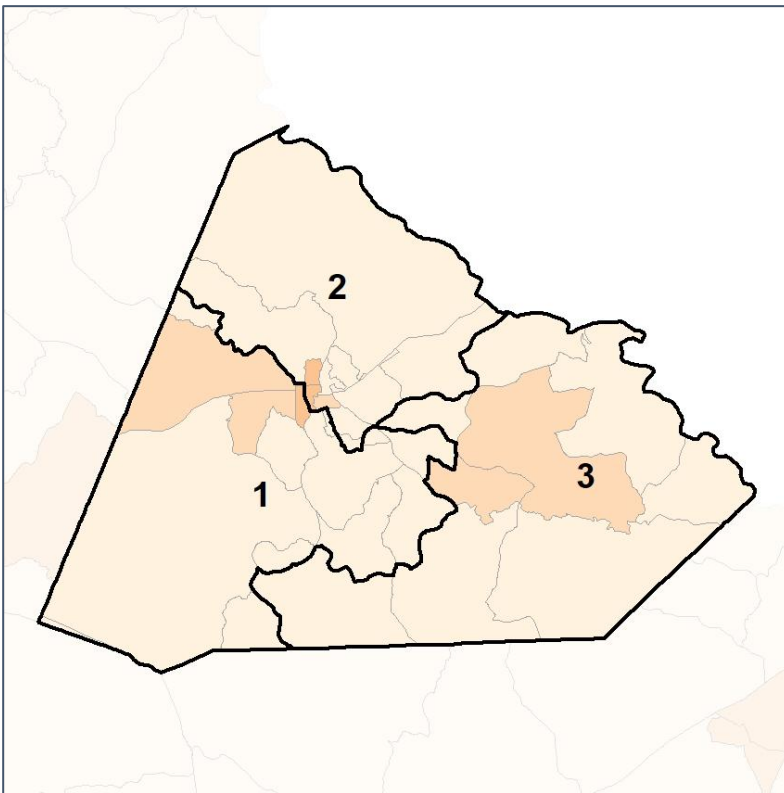


# Stephens Co. Commission & School Board

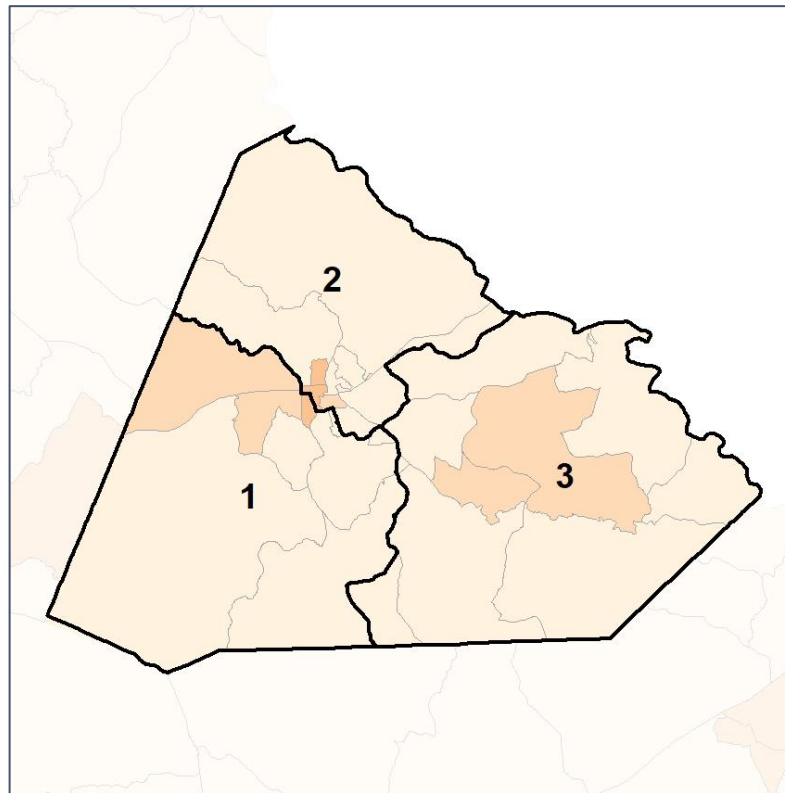
## % People of Color by Census Block Group



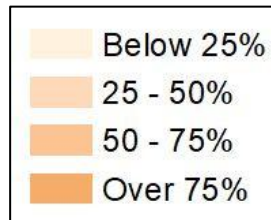
2012 Map



2022 Map\*



	1	2	3	1*	2*	3*	County
Population	8,670	9,455	8,659	8,922	8,926	8,936	26,784
API	49	119	66	49	117	68	234
% API	1%	1%	1%	1%	1%	1%	1%
Black	1,088	1,265	583	1,081	1,250	605	2,936
% Black	13%	13%	7%	12%	14%	7%	11%
Latino	242	325	290	249	320	288	857
% Latino	3%	3%	3%	3%	4%	3%	3%
Other	474	508	452	478	491	465	1,434
% Other	5%	5%	5%	5%	6%	5%	5%
White	6,817	7,238	7,268	7,065	6,748	7,510	21,323
% White	79%	77%	84%	79%	76%	84%	80%



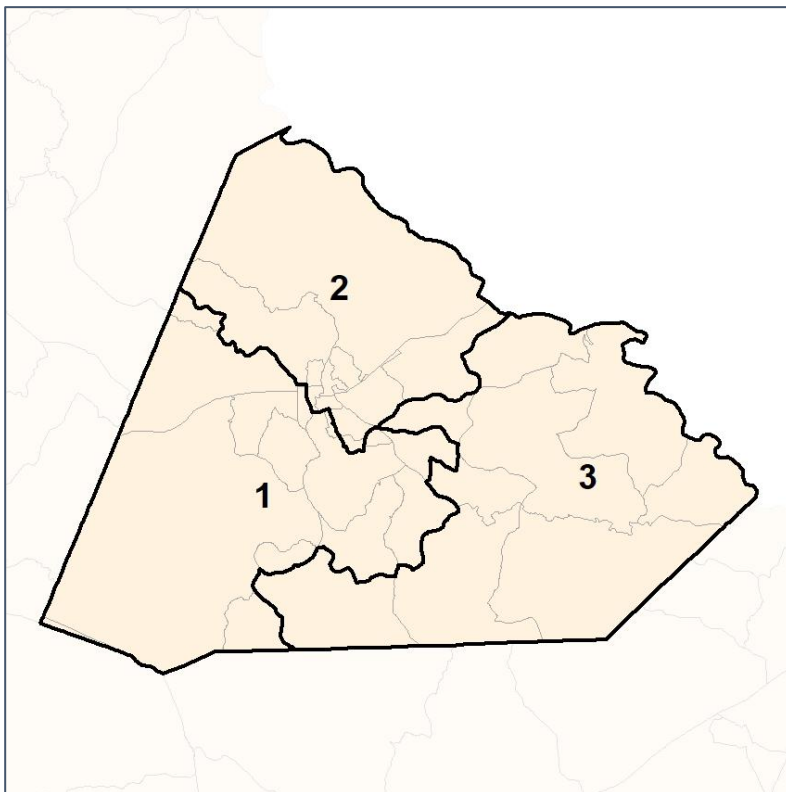


# Stephens Co. Commission & School Board

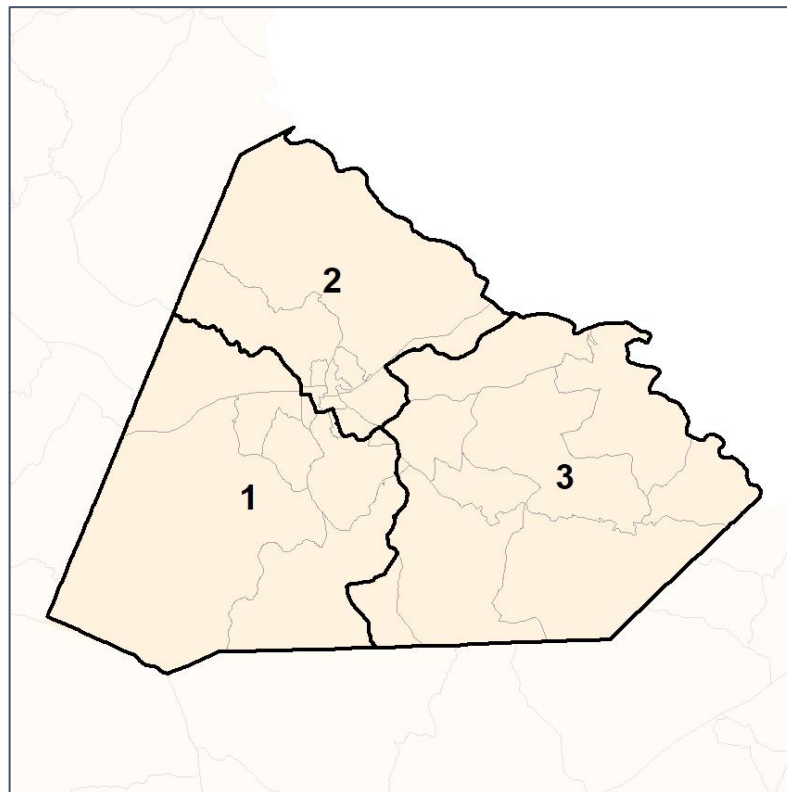
## % API by Census Block Group



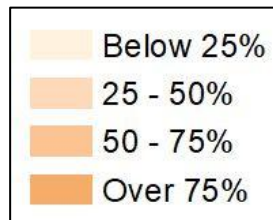
2012 Map



2022 Map\*



	1	2	3	1*	2*	3*	County
Population	8,670	9,455	8,659	8,922	8,926	8,936	26,784
API	49	119	66	49	117	68	234
% API	1%	1%	1%	1%	1%	1%	1%
Black	1,088	1,265	583	1,081	1,250	605	2,936
% Black	13%	13%	7%	12%	14%	7%	11%
Latino	242	325	290	249	320	288	857
% Latino	3%	3%	3%	3%	4%	3%	3%
Other	474	508	452	478	491	465	1,434
% Other	5%	5%	5%	5%	6%	5%	5%
White	6,817	7,238	7,268	7,065	6,748	7,510	21,323
% White	79%	77%	84%	79%	76%	84%	80%

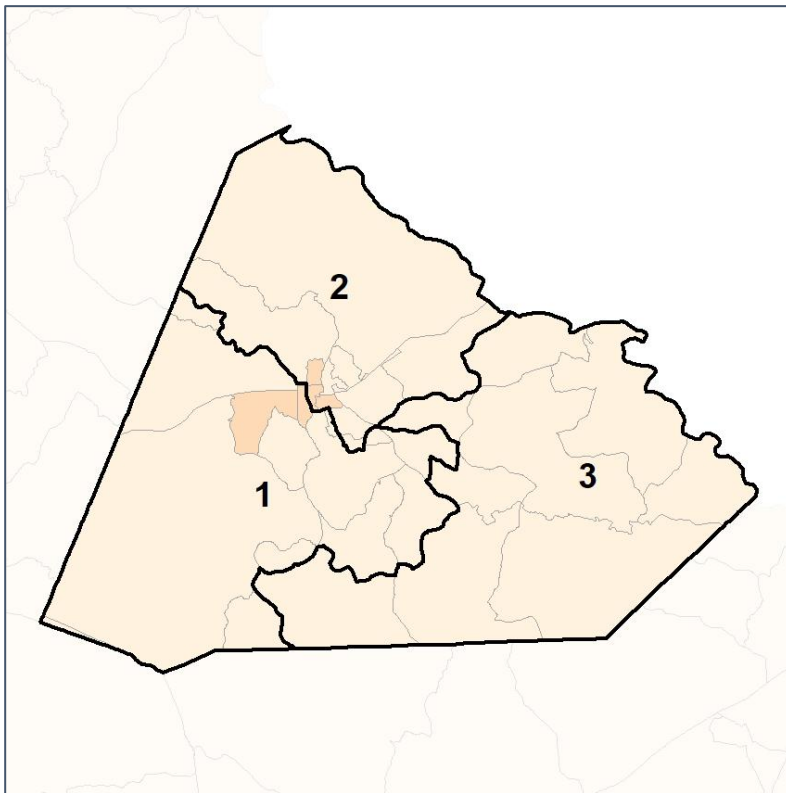


# Stephens Co. Commission & School Board

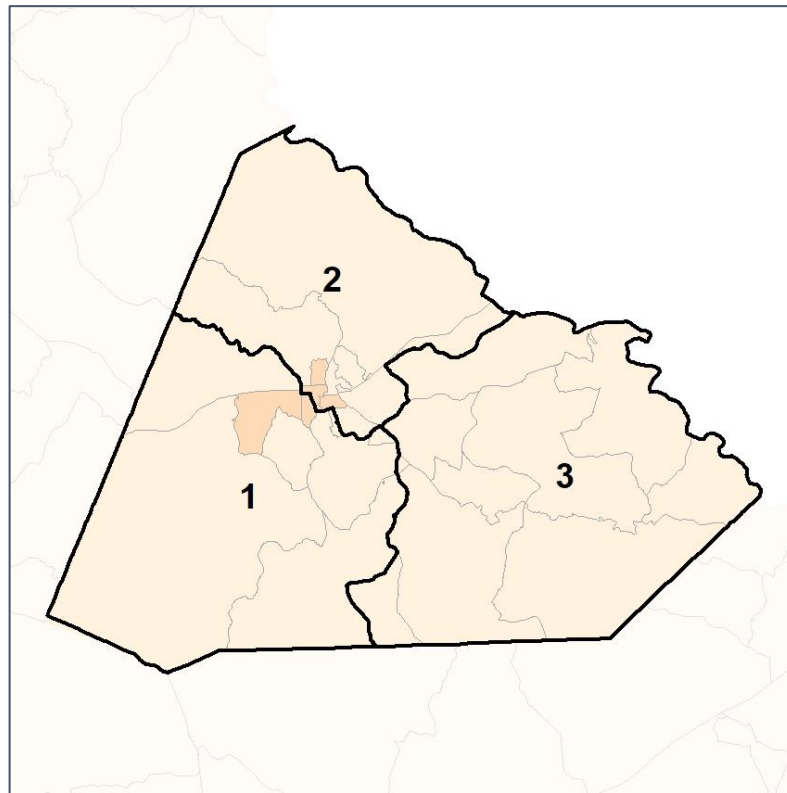
## % Black by Census Block Group



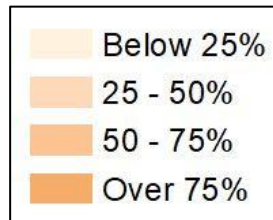
2012 Map



2022 Map\*



	1	2	3	1*	2*	3*	County
Population	8,670	9,455	8,659	8,922	8,926	8,936	26,784
API	49	119	66	49	117	68	234
% API	1%	1%	1%	1%	1%	1%	1%
Black	1,088	1,265	583	1,081	1,250	605	2,936
% Black	13%	13%	7%	12%	14%	7%	11%
Latino	242	325	290	249	320	288	857
% Latino	3%	3%	3%	3%	4%	3%	3%
Other	474	508	452	478	491	465	1,434
% Other	5%	5%	5%	5%	6%	5%	5%
White	6,817	7,238	7,268	7,065	6,748	7,510	21,323
% White	79%	77%	84%	79%	76%	84%	80%



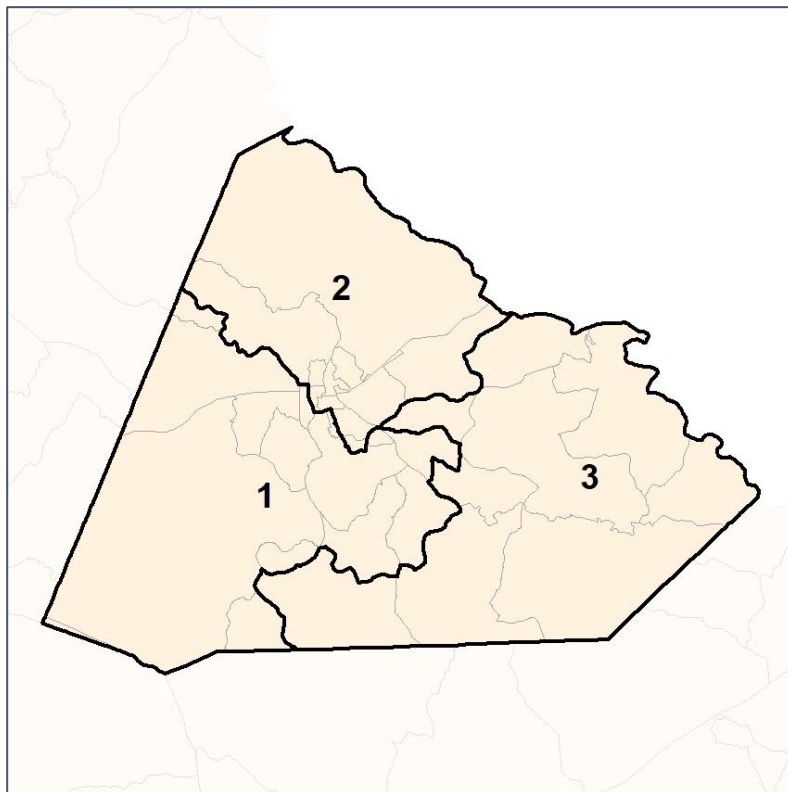


# Stephens Co. Commission & School Board

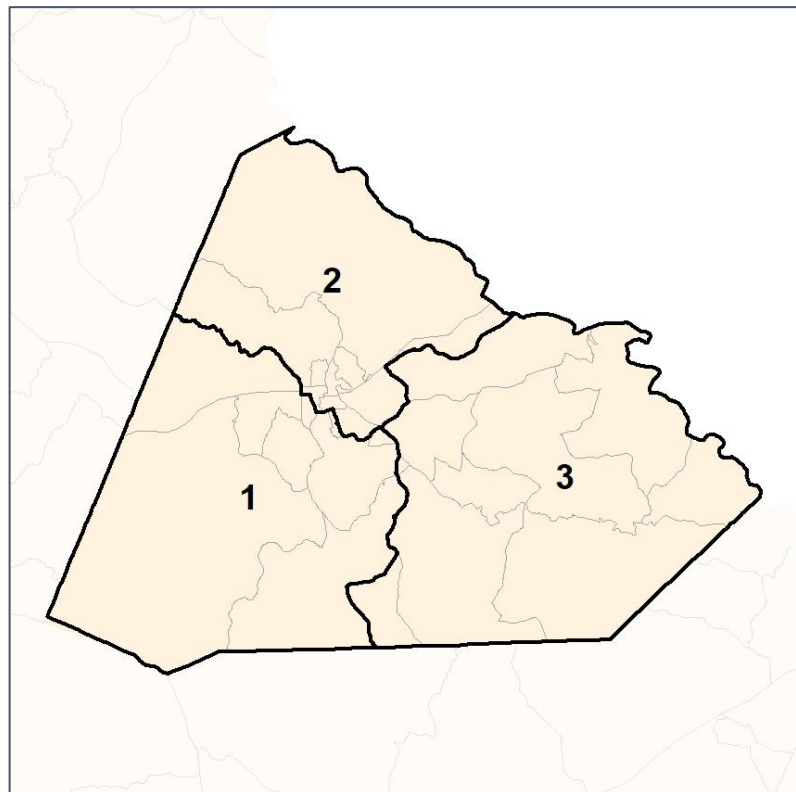
## % Latino by Census Block Group



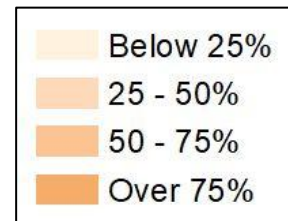
**2012 Map**



**2022 Map\***



	1	2	3	1*	2*	3*	County
Population	8,670	9,455	8,659	8,922	8,926	8,936	26,784
API	49	119	66	49	117	68	234
% API	1%	1%	1%	1%	1%	1%	1%
Black	1,088	1,265	583	1,081	1,250	605	2,936
% Black	13%	13%	7%	12%	14%	7%	11%
Latino	242	325	290	249	320	288	857
% Latino	3%	3%	3%	3%	4%	3%	3%
Other	474	508	452	478	491	465	1,434
% Other	5%	5%	5%	5%	6%	5%	5%
White	6,817	7,238	7,268	7,065	6,748	7,510	21,323
% White	79%	77%	84%	79%	76%	84%	80%

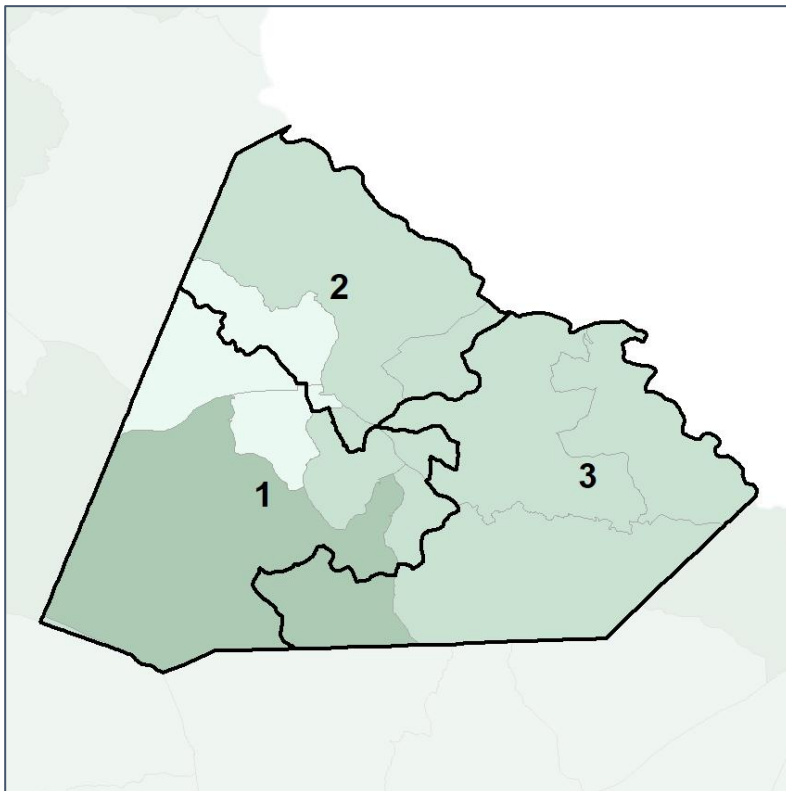


# Stephens Co. Commission & School Board

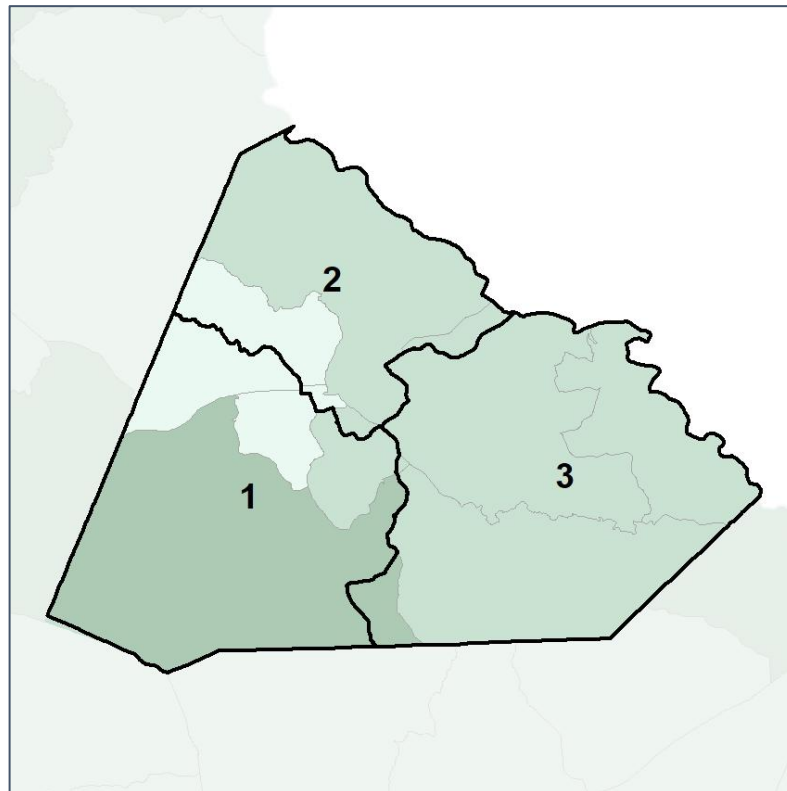
## Median Household Income by Census Tract



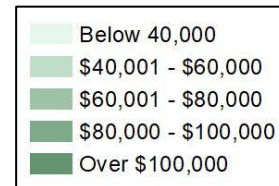
2012 Map



2022 Map\*



	1	2	3	1*	2*	3*	County
Population	8,670	9,455	8,659	8,922	8,926	8,936	26,784
% API	1%	1%	1%	1%	1%	1%	1%
% Black	13%	13%	7%	12%	14%	7%	11%
% Latino	3%	3%	3%	3%	4%	3%	3%
% Other	5%	5%	5%	5%	6%	5%	5%
% White	79%	77%	84%	79%	76%	84%	80%
Median Income	\$52,000	\$41,000	\$55,000	\$58,000	\$41,000	\$49,000	\$47,000
% Renter	26%	44%	13%	26%	44%	13%	27%
% Youth	15%	34%	18%	17%	34%	16%	22%

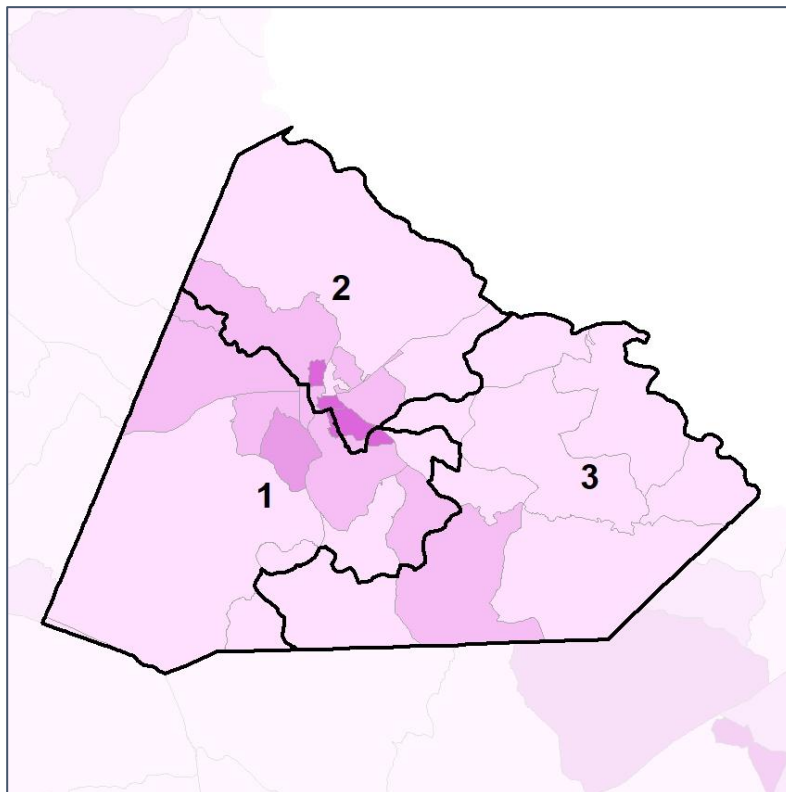


# Stephens Co. Commission & School Board

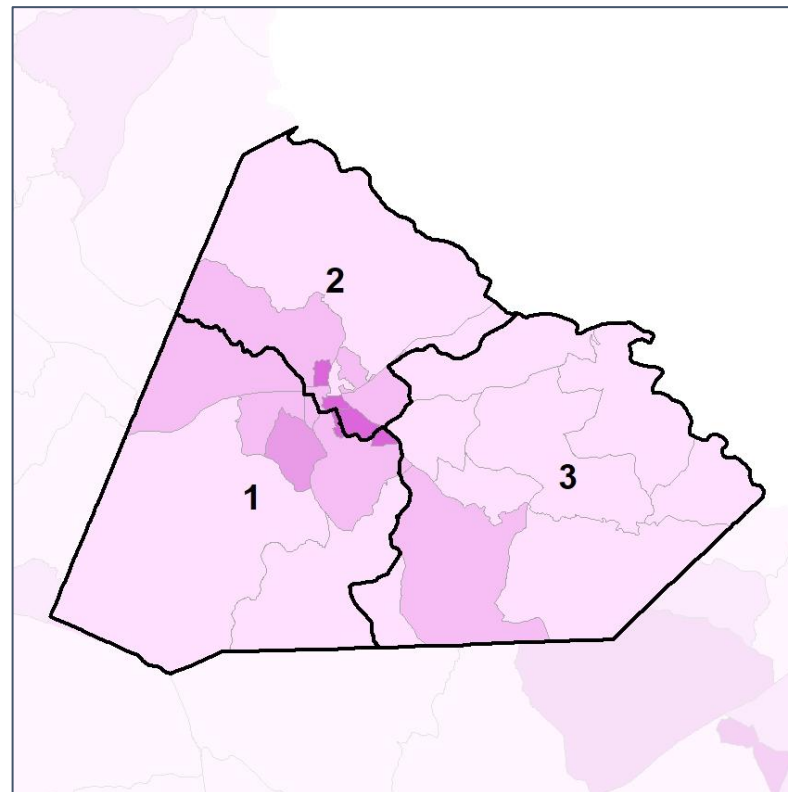
## % Renter by Census Block Group



2012 Map



2022 Map\*



	1	2	3	1*	2*	3*	County
Population	8,670	9,455	8,659	8,922	8,926	8,936	26,784
% API	1%	1%	1%	1%	1%	1%	1%
% Black	13%	13%	7%	12%	14%	7%	11%
% Latino	3%	3%	3%	3%	4%	3%	3%
% Other	5%	5%	5%	5%	6%	5%	5%
% White	79%	77%	84%	79%	76%	84%	80%
Median Income	\$52,000	\$41,000	\$55,000	\$58,000	\$41,000	\$49,000	\$47,000
% Renter	26%	44%	13%	26%	44%	13%	27%
% Youth	15%	34%	18%	17%	34%	16%	22%

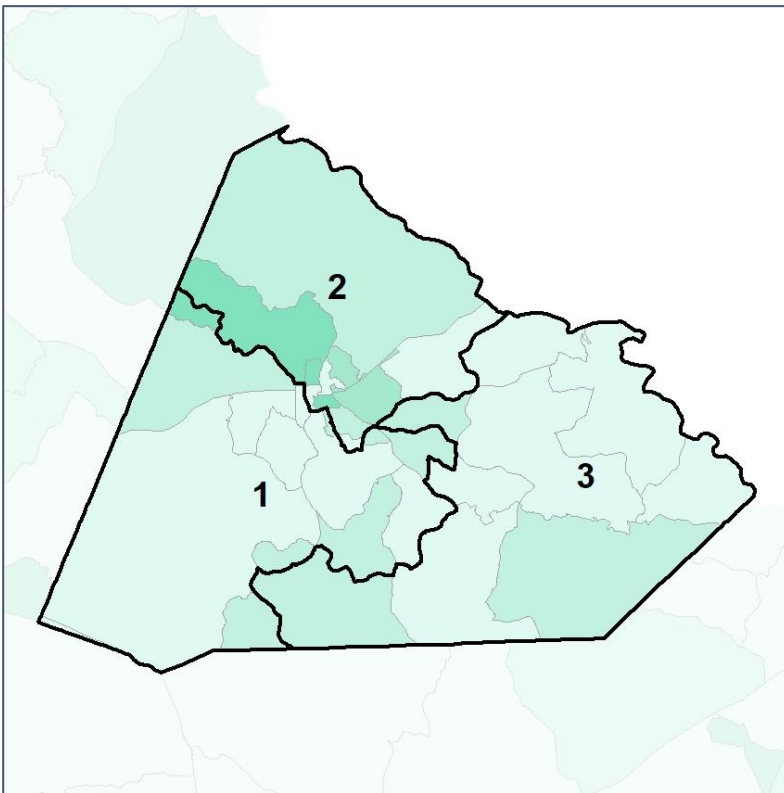


# Stephens Co. Commission & School Board

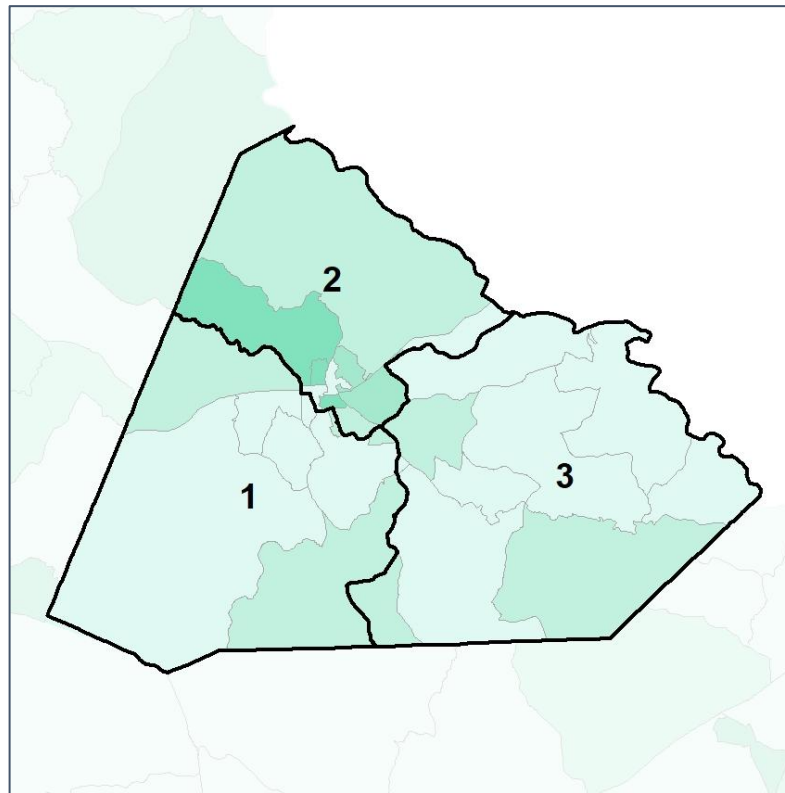
## % Youth (18-34) by Census Block Group



2012 Map



2022 Map\*



	1	2	3	1*	2*	3*	County
Population	8,670	9,455	8,659	8,922	8,926	8,936	26,784
% API	1%	1%	1%	1%	1%	1%	1%
% Black	13%	13%	7%	12%	14%	7%	11%
% Latino	3%	3%	3%	3%	4%	3%	3%
% Other	5%	5%	5%	5%	6%	5%	5%
% White	79%	77%	84%	79%	76%	84%	80%
Median Income	\$52,000	\$41,000	\$55,000	\$58,000	\$41,000	\$49,000	\$47,000
% Renter	26%	44%	13%	26%	44%	13%	27%
% Youth	15%	34%	18%	17%	34%	16%	22%

