



Demographic Overview

Racial Breakdown in Paulding County

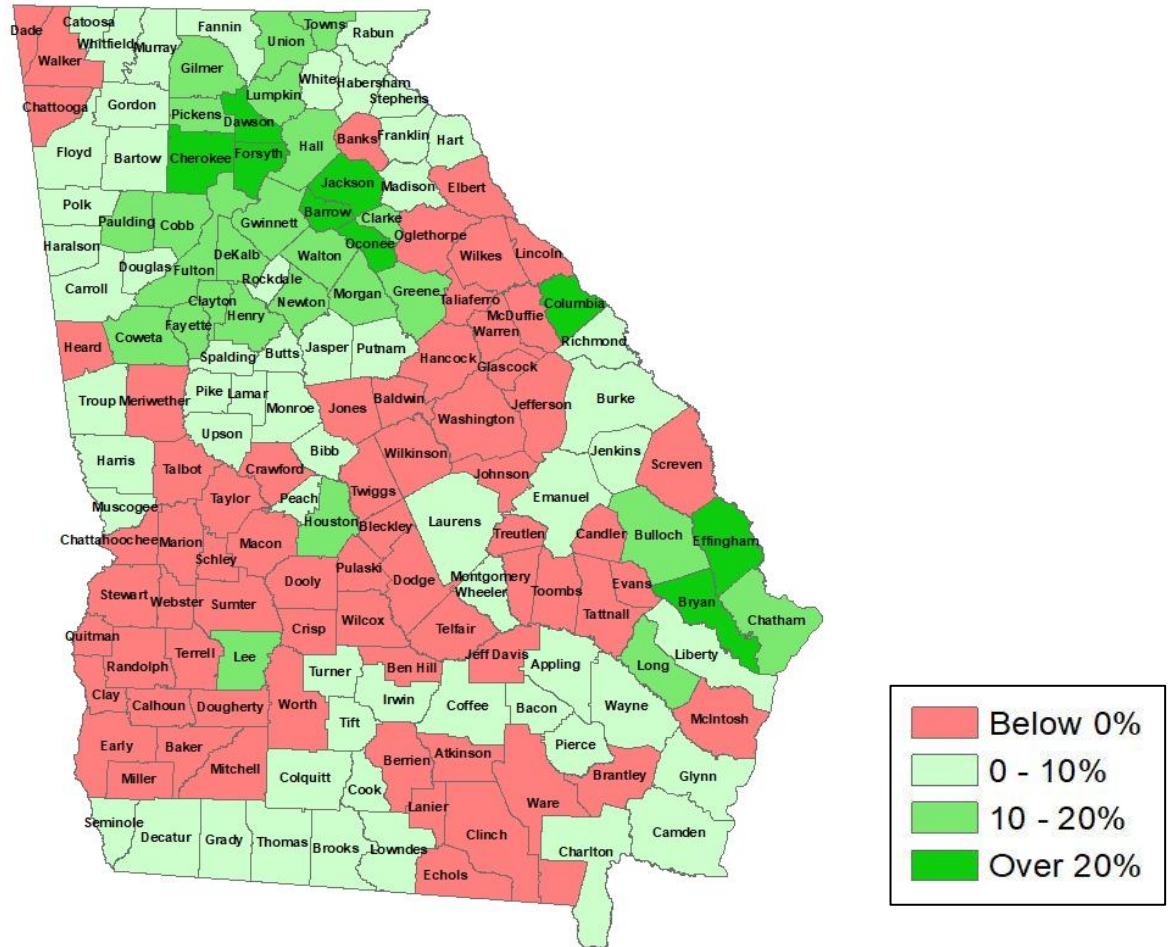
Paulding County	2010	2020	% Change
Total Population	142,324	168,661	19%
AAPI	1,295	2,040	58%
Black	23,810	36,609	54%
Latino	7,264	12,564	73%
Other/Mixed Race	3,216	9,004	180%
POC	35,585	60,217	69%
White	106,739	108,444	2%





Population Gain

Change in Population in Georgia by County



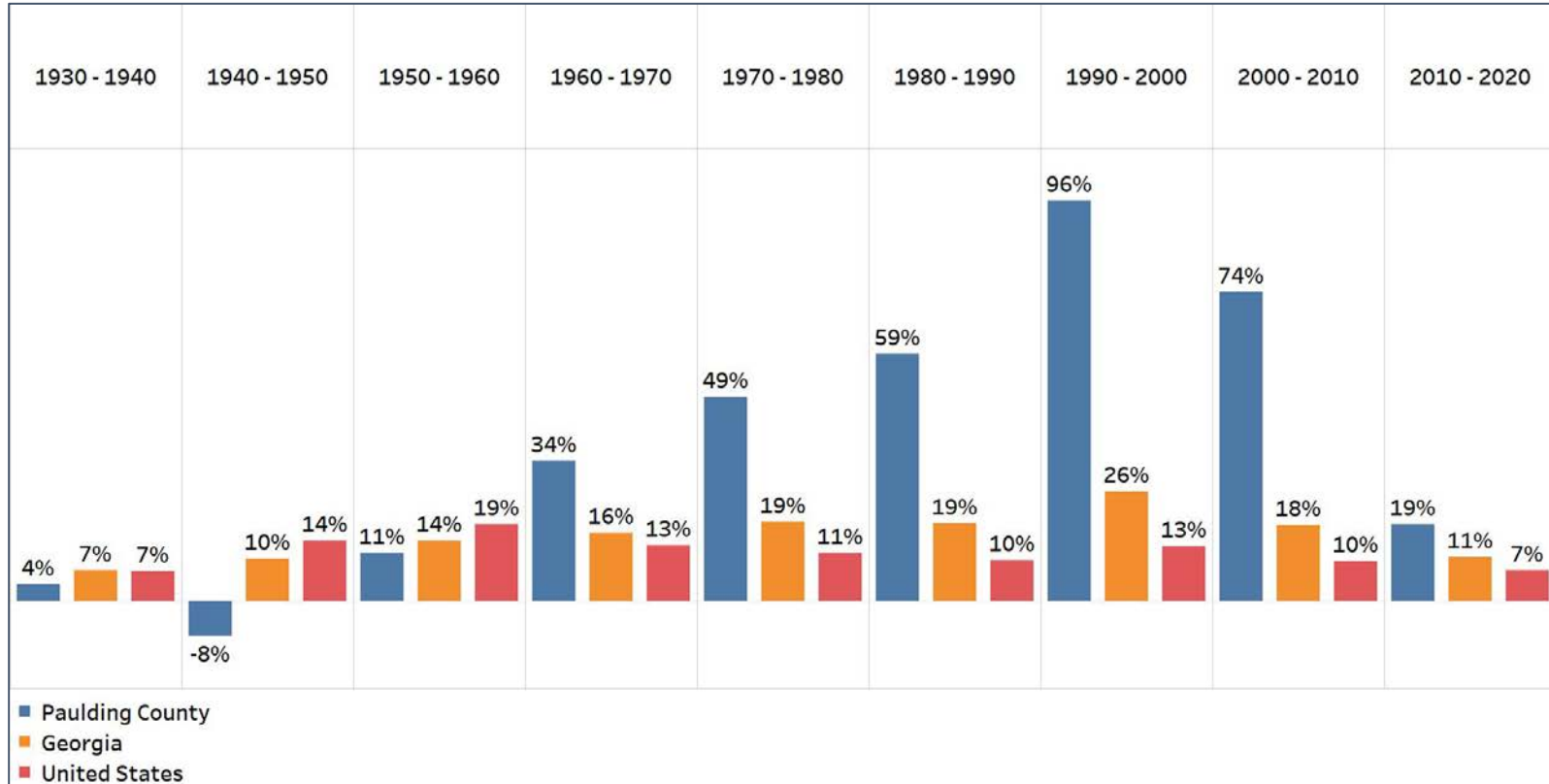
- Georgia is experiencing rapid population growth in the Atlanta, Augusta, and Savannah regions of the state





Population Gain

Change in Population by Decade

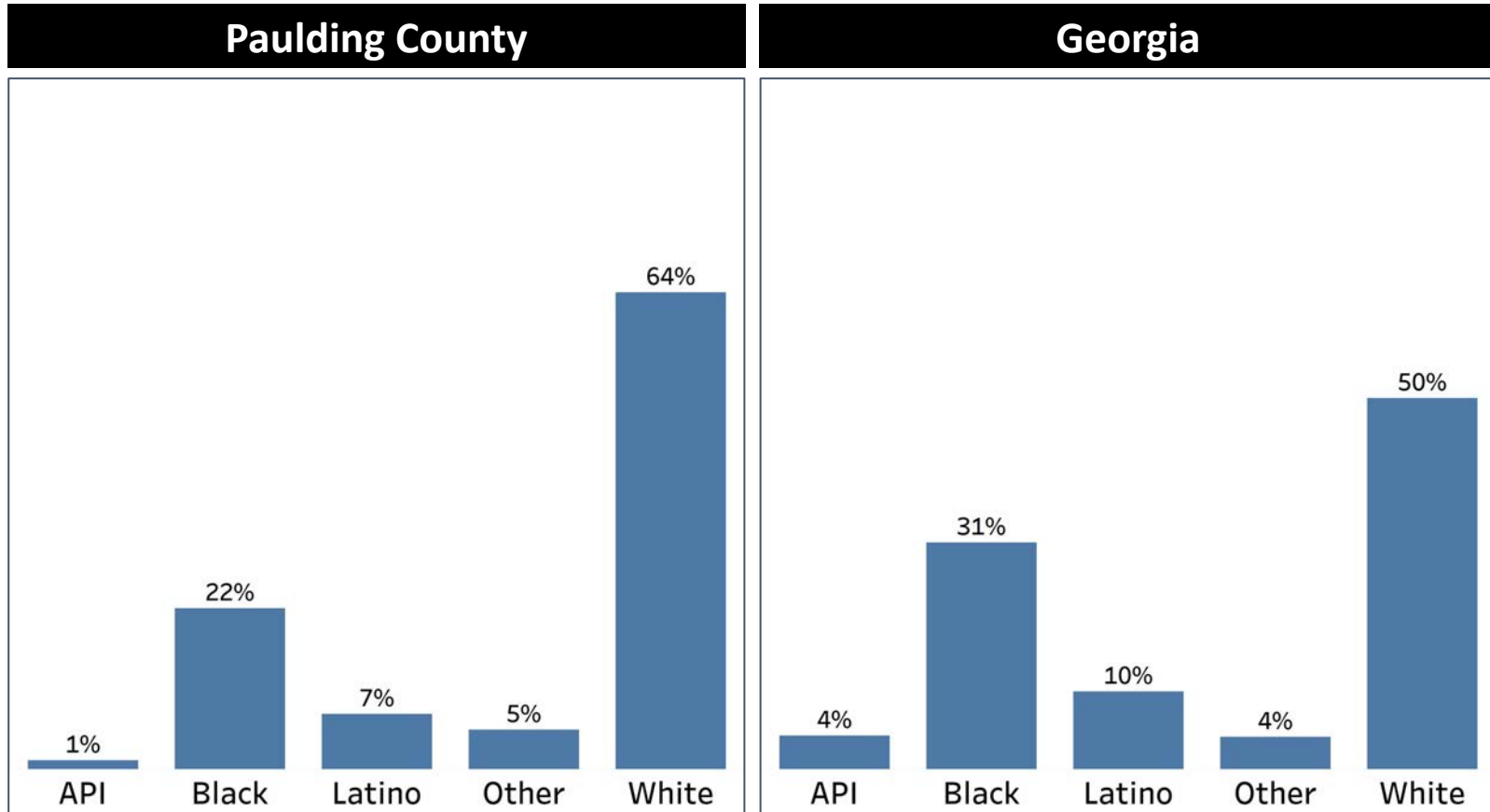


- Paulding County had an explosion in population growth from 1960-2010, nearly doubling its population in the 1990s
- The last decade was the slowest growth rate for Paulding since 1960, but was still nearly double the growth rate of Georgia overall



Demographics

Comparison between Paulding County and Georgia



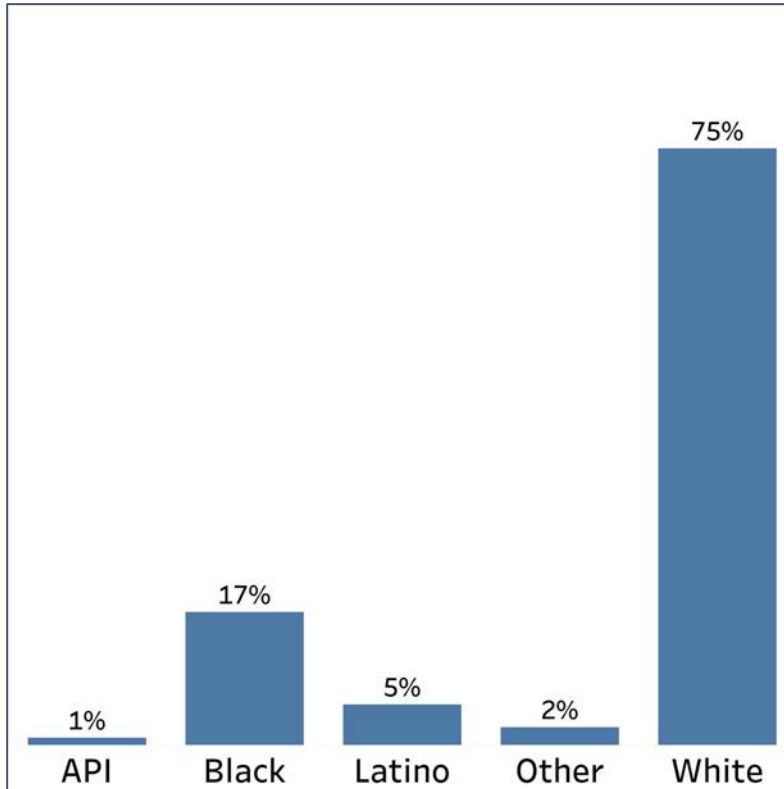
- Paulding County is disproportionately White, but still has a significant minority population, mainly from the Black and Latino community
- The Other demographic also has a higher share of the population in Paulding compared to Georgia overall

Demographics

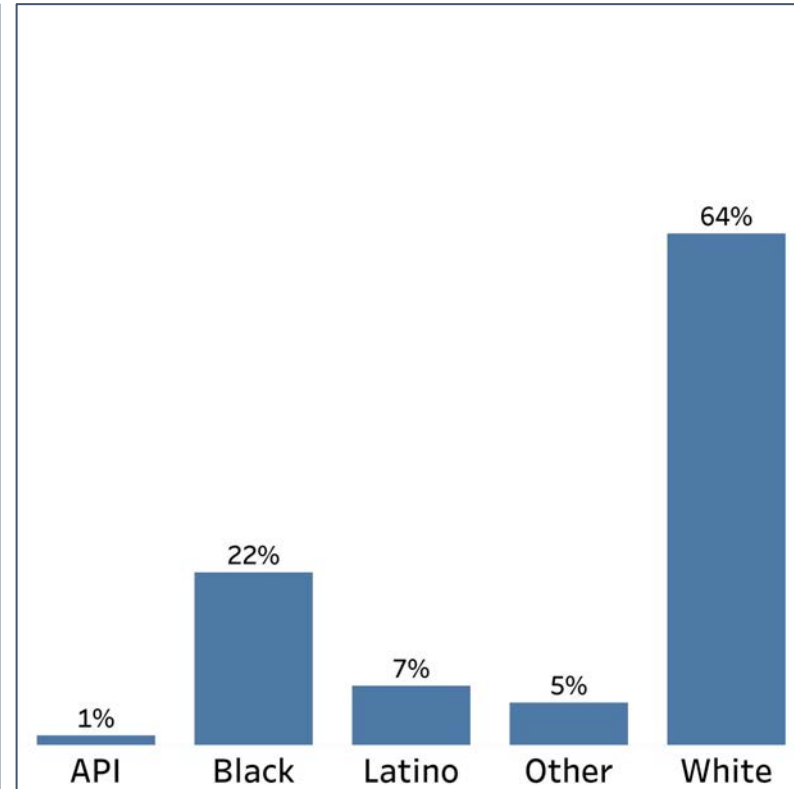
2010 vs 2020 Demographics in Paulding County



Paulding County 2010



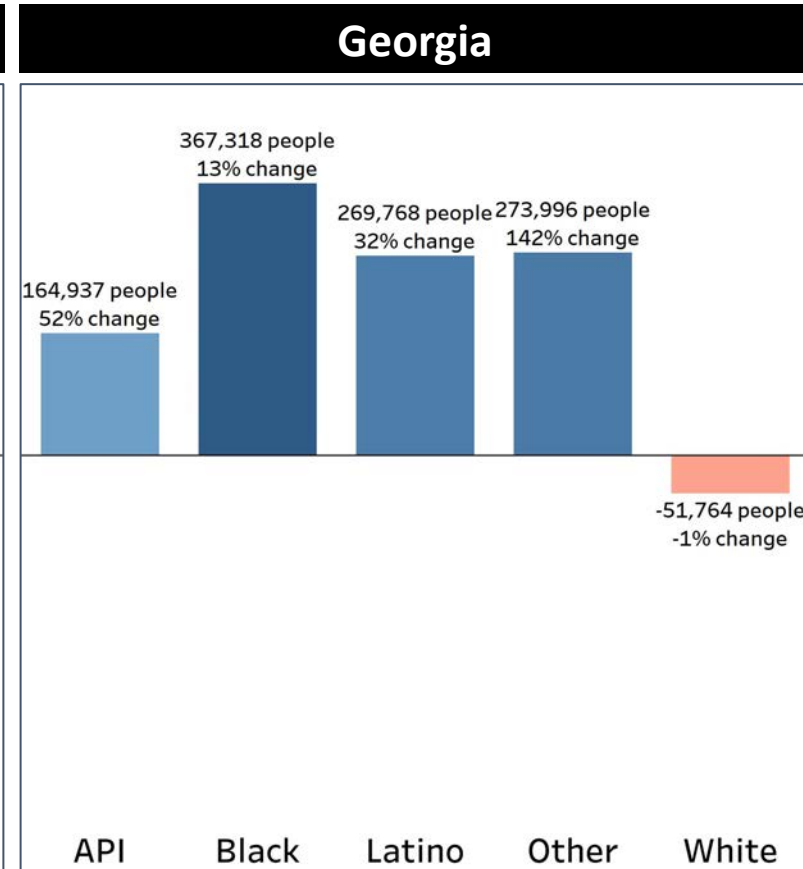
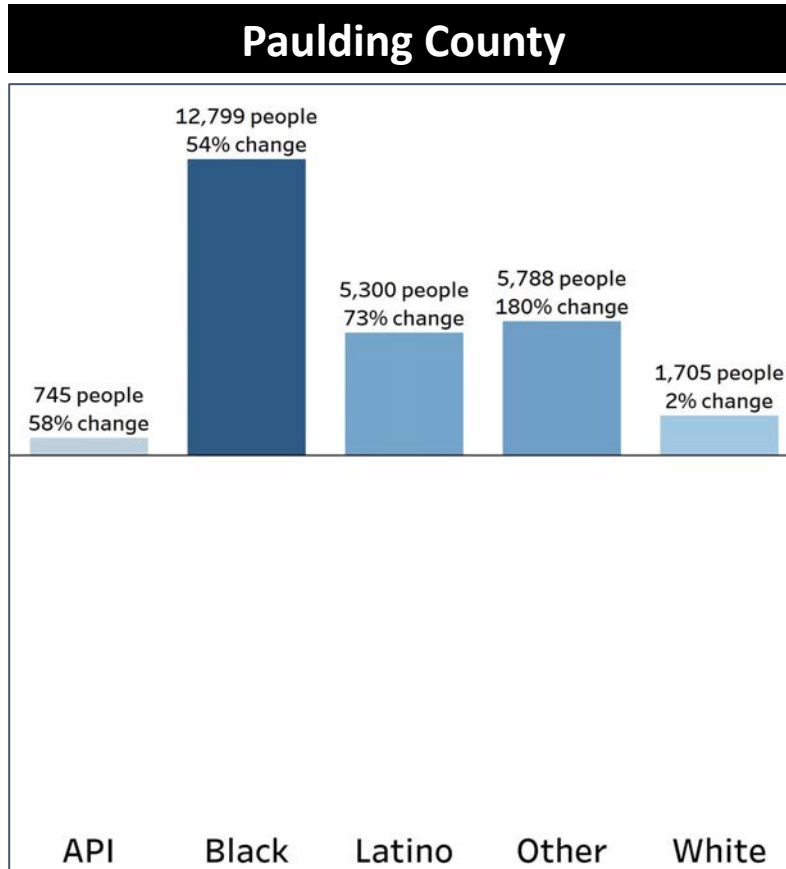
Paulding County 2020



- The White demographic in Paulding county had a significant decrease in its share of the population, with the Black, Latino, and Other demographics substantially increasing their shares
- The percent of people of color in Paulding went from only a quarter in 2010 to more than a third in 2020

Demographics

Population Change by Race (2020 - 2010)



- Paulding County had higher rates of increase amongst all demographic groups compared to Georgia overall
- The biggest gaps in growth rate were seen in the Black and Latino communities

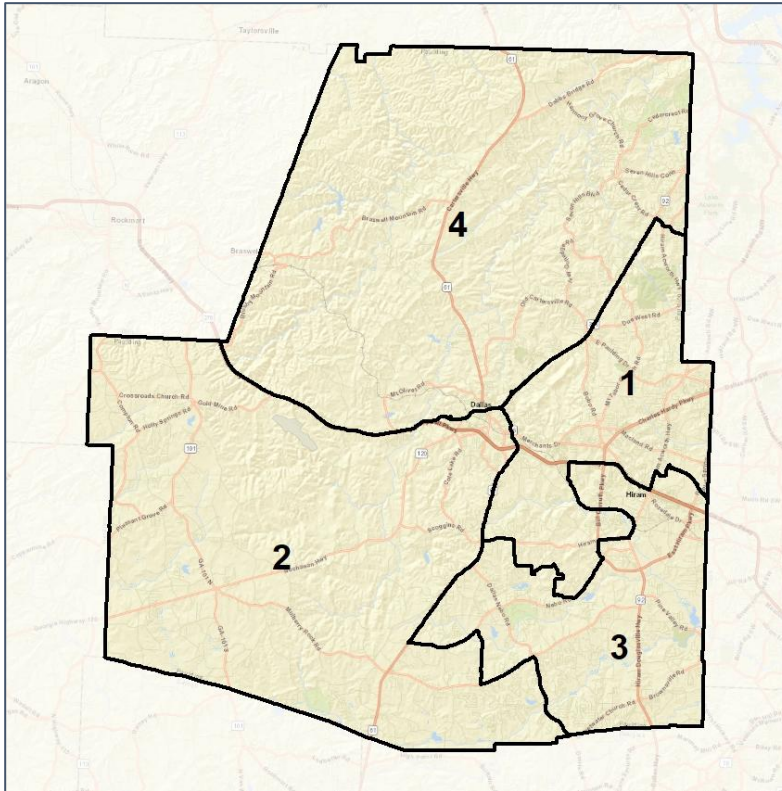


Paulding County Commission

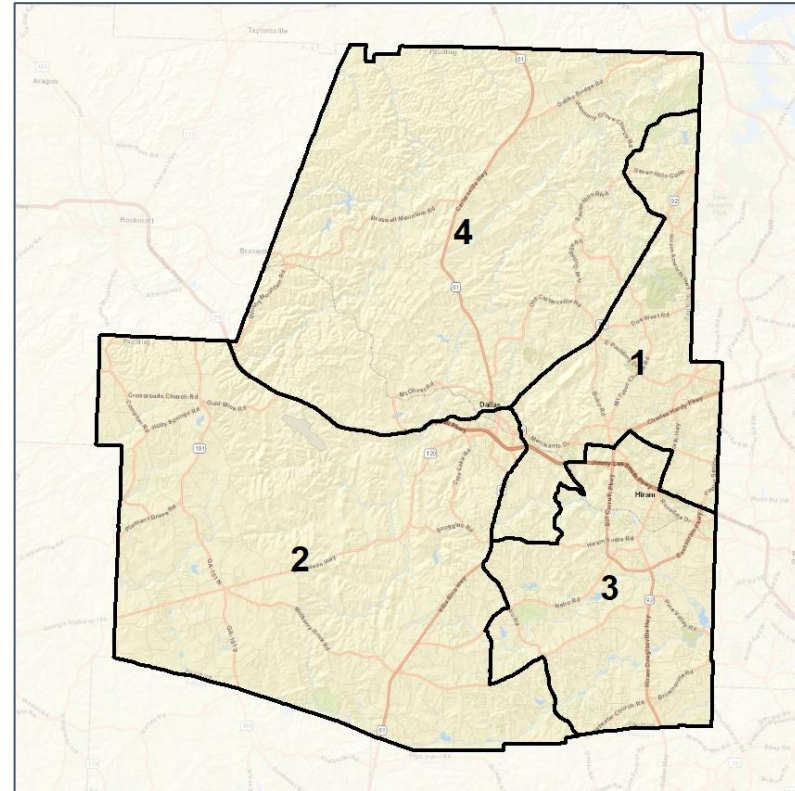
Context



2012 Map



2022 Map*



	1	2	3	4	1*	2*	3*	4*	County
Population	39,812	39,099	38,582	51,168	42,552	41,955	42,011	42,143	168,661
API	1%	1%	1%	2%	2%	1%	1%	1%	1%
Black	24%	19%	28%	17%	21%	19%	32%	16%	22%
Latino	8%	6%	9%	7%	8%	6%	9%	7%	7%
Other	5%	6%	5%	5%	5%	6%	5%	5%	5%
White	61%	68%	57%	69%	64%	69%	53%	71%	64%
Population Gain	4,415	3,530	3,309	15,083	2,740	2,856	3,429	-9,025	*
Population % Gain	12%	10%	9%	42%	7%	7%	9%	-18%	*
Net POC Gain	6,009	4,058	5,914	8,651	-323	737	2,969	-3,383	*
Net POC % Gain	63%	48%	55%	123%	-2%	6%	18%	-22%	*

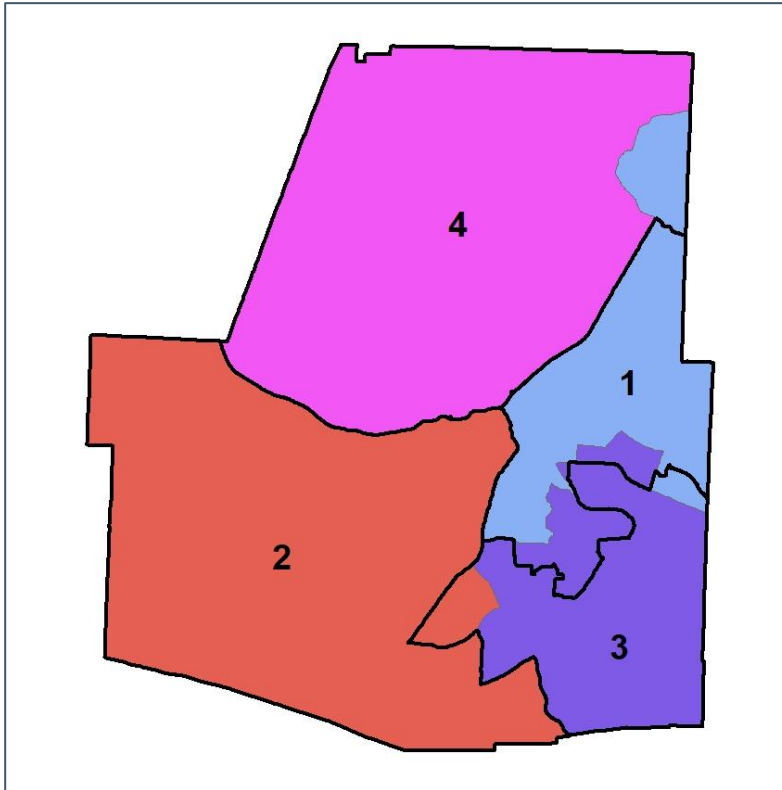


Paulding County Commission

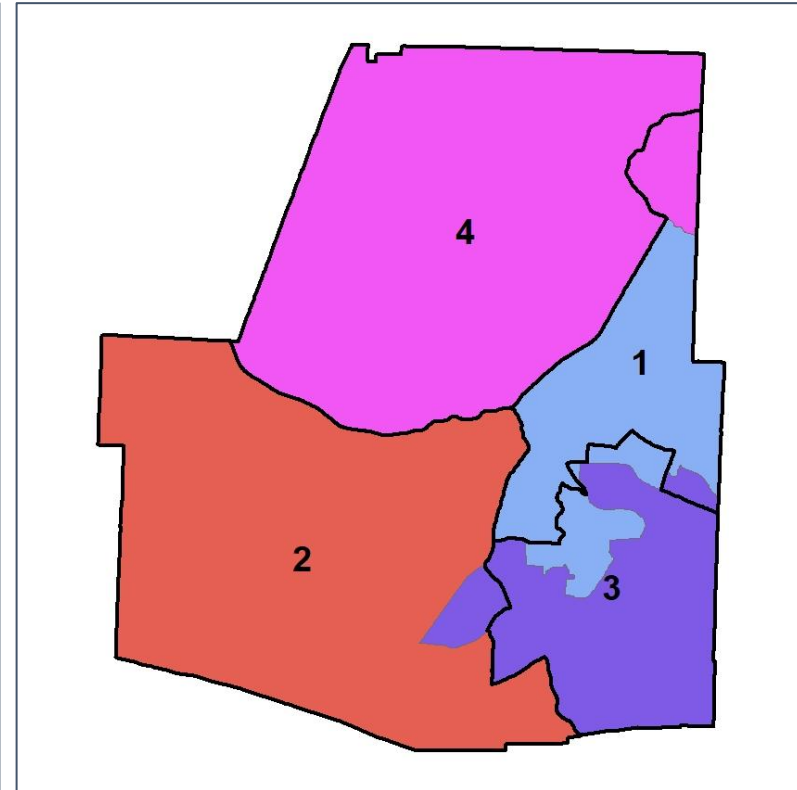
Changes in Redistricting



2012 Map (2022 in Colors)



2022 Map* (2012 in Colors)



	1	2	3	4	1*	2*	3*	4*	County
Population	39,812	39,099	38,582	51,168	42,552	41,955	42,011	42,143	168,661
API	1%	1%	1%	2%	2%	1%	1%	1%	1%
Black	24%	19%	28%	17%	21%	19%	32%	16%	22%
Latino	8%	6%	9%	7%	8%	6%	9%	7%	7%
Other	5%	6%	5%	5%	5%	6%	5%	5%	5%
White	61%	68%	57%	69%	64%	69%	53%	71%	64%
Population Gain	4,415	3,530	3,309	15,083	2,740	2,856	3,429	-9,025	*
Population % Gain	12%	10%	9%	42%	7%	7%	9%	-18%	*
Net POC Gain	6,009	4,058	5,914	8,651	-323	737	2,969	-3,383	*
Net POC % Gain	63%	48%	55%	123%	-2%	6%	18%	-22%	*

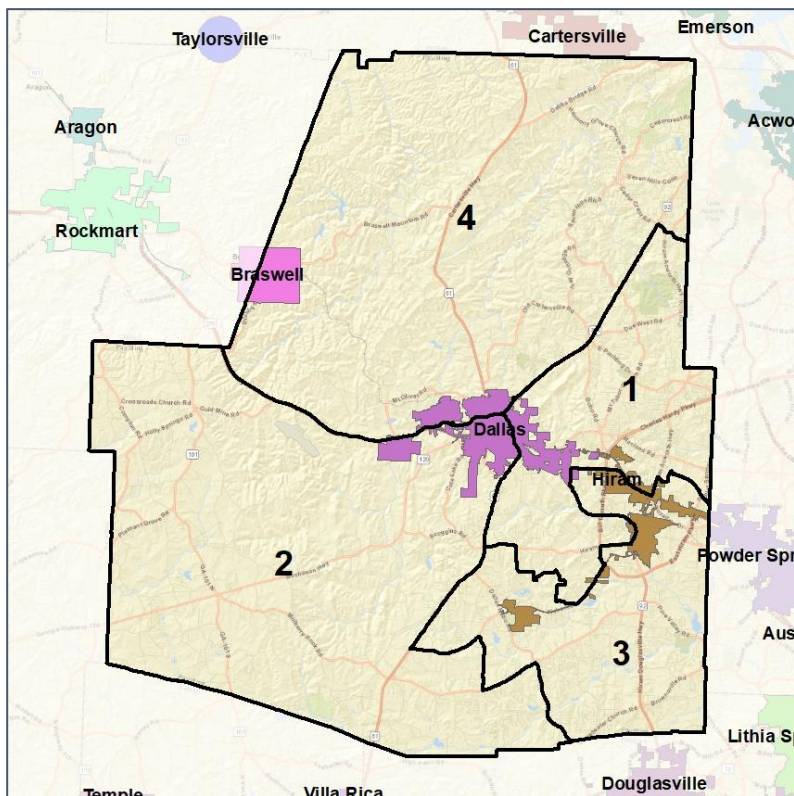


Paulding County Commission

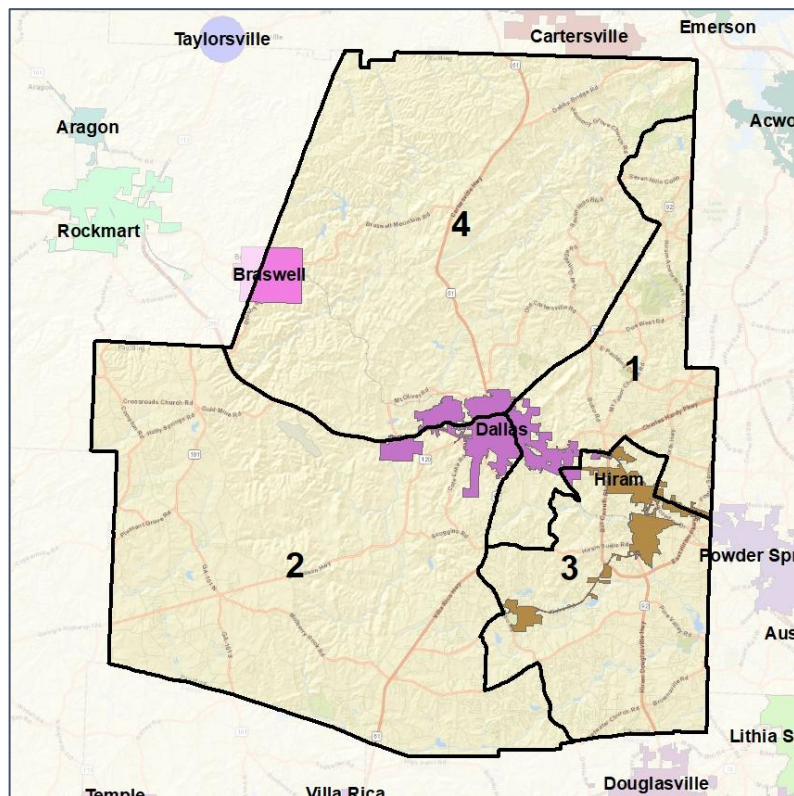
Cities and Places



2012 Map



2022 Map*



	1	2	3	4	1*	2*	3*	4*	County
Population	39,812	39,099	38,582	51,168	42,552	41,955	42,011	42,143	168,661
API	1%	1%	1%	2%	2%	1%	1%	1%	1%
Black	24%	19%	28%	17%	21%	19%	32%	16%	22%
Latino	8%	6%	9%	7%	8%	6%	9%	7%	7%
Other	5%	6%	5%	5%	5%	6%	5%	5%	5%
White	61%	68%	57%	69%	64%	69%	53%	71%	64%
Population Gain	4,415	3,530	3,309	15,083	2,740	2,856	3,429	-9,025	*
Population % Gain	12%	10%	9%	42%	7%	7%	9%	-18%	*
Net POC Gain	6,009	4,058	5,914	8,651	-323	737	2,969	-3,383	*
Net POC % Gain	63%	48%	55%	123%	-2%	6%	18%	-22%	*

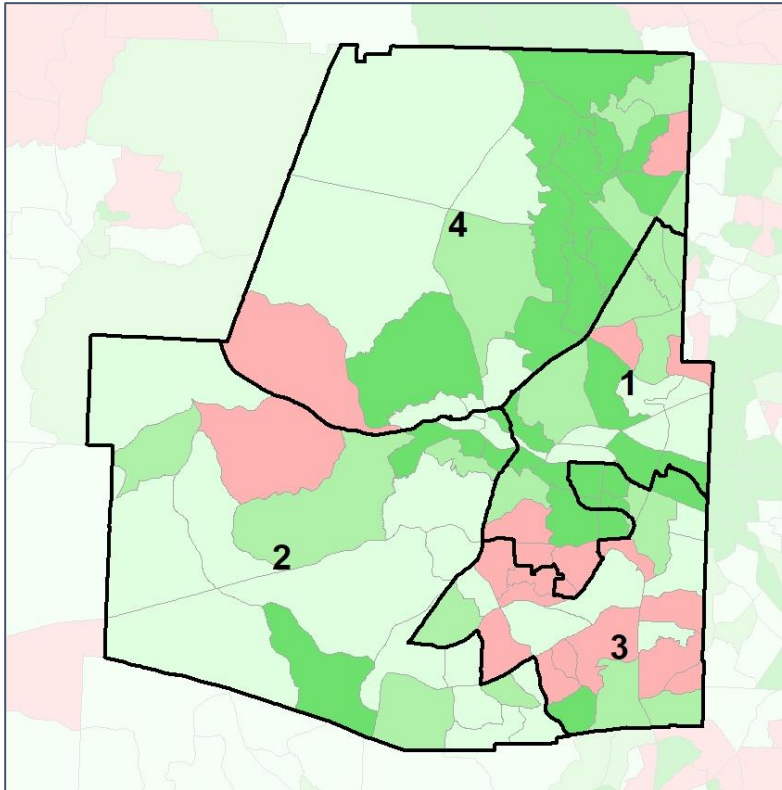


Paulding County Commission

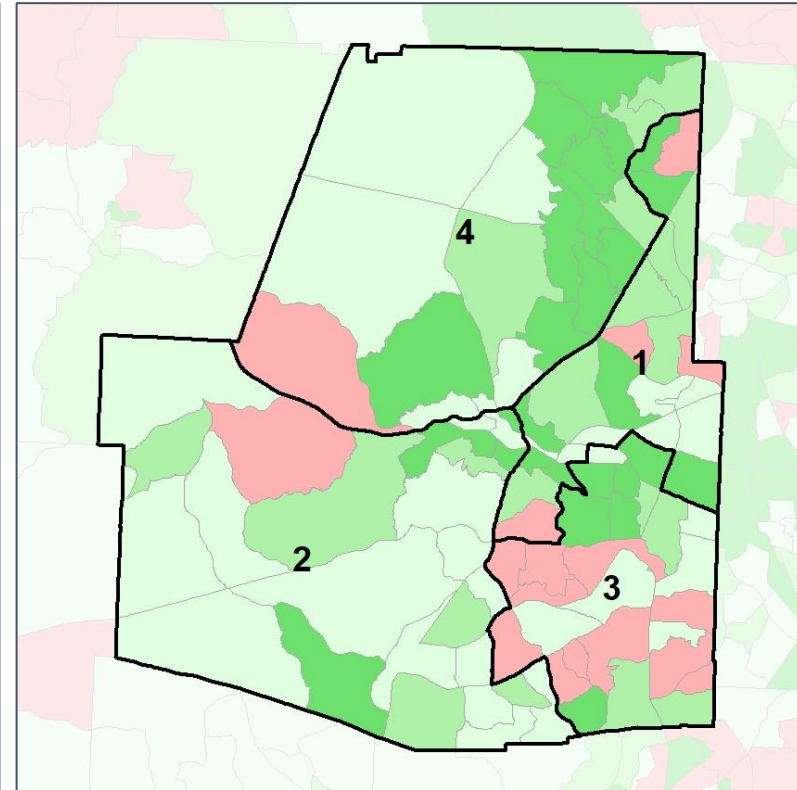
Net Gain in Population (2010 - 2020) by Census Block Group



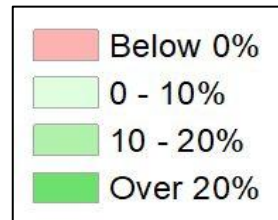
2012 Map



2022 Map*



	1	2	3	4	1*	2*	3*	4*	County
Population	39,812	39,099	38,582	51,168	42,552	41,955	42,011	42,143	168,661
API	1%	1%	1%	2%	2%	1%	1%	1%	1%
Black	24%	19%	28%	17%	21%	19%	32%	16%	22%
Latino	8%	6%	9%	7%	8%	6%	9%	7%	7%
Other	5%	6%	5%	5%	5%	6%	5%	5%	5%
White	61%	68%	57%	69%	64%	69%	53%	71%	64%
Population Gain	4,415	3,530	3,309	15,083	2,740	2,856	3,429	-9,025	*
Population % Gain	12%	10%	9%	42%	7%	7%	9%	-18%	*
Net POC Gain	6,009	4,058	5,914	8,651	-323	737	2,969	-3,383	*
Net POC % Gain	63%	48%	55%	123%	-2%	6%	18%	-22%	*

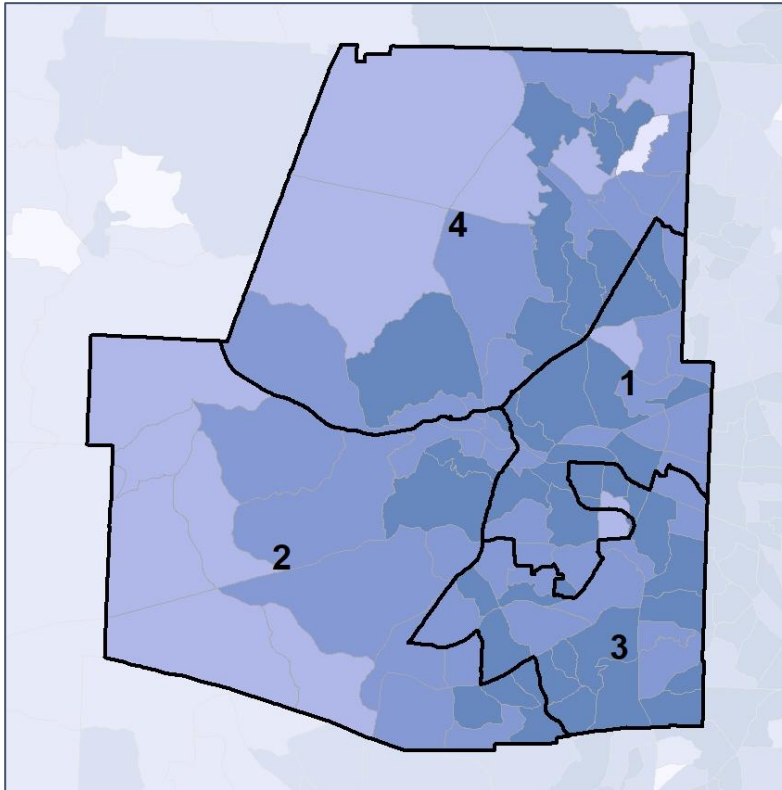


Paulding County Commission

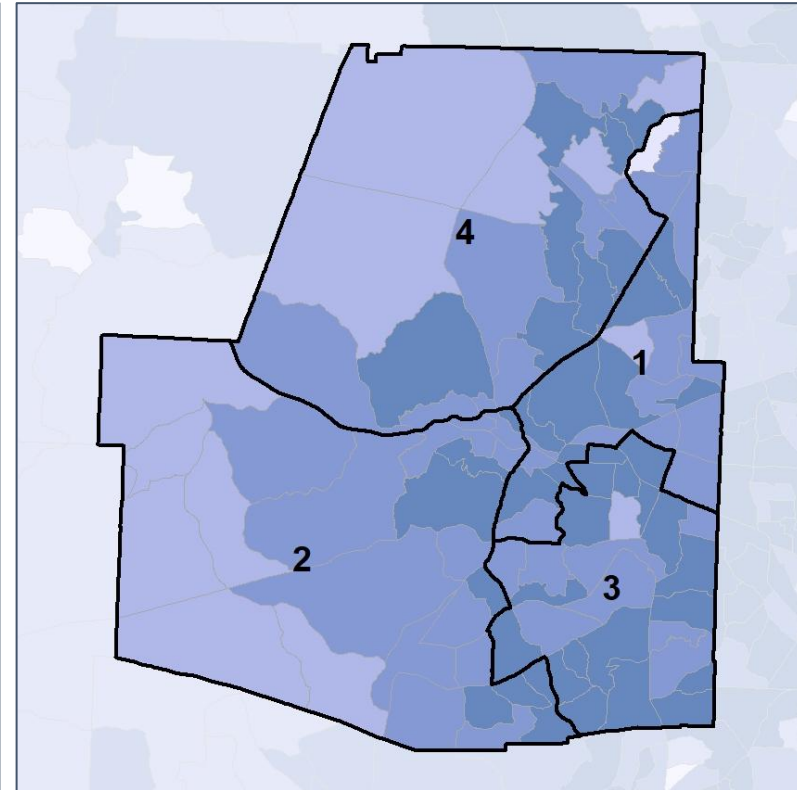
Net Gain in % POC (2020 - 2010) by Census Block Group



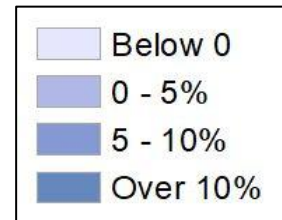
2012 Map



2022 Map*



	1	2	3	4	1*	2*	3*	4*	County
Population	39,812	39,099	38,582	51,168	42,552	41,955	42,011	42,143	168,661
API	1%	1%	1%	2%	2%	1%	1%	1%	1%
Black	24%	19%	28%	17%	21%	19%	32%	16%	22%
Latino	8%	6%	9%	7%	8%	6%	9%	7%	7%
Other	5%	6%	5%	5%	5%	6%	5%	5%	5%
White	61%	68%	57%	69%	64%	69%	53%	71%	64%
Population Gain	4,415	3,530	3,309	15,083	2,740	2,856	3,429	-9,025	*
Population % Gain	12%	10%	9%	42%	7%	7%	9%	-18%	*
Net POC Gain	6,009	4,058	5,914	8,651	-323	737	2,969	-3,383	*
Net POC % Gain	63%	48%	55%	123%	-2%	6%	18%	-22%	*

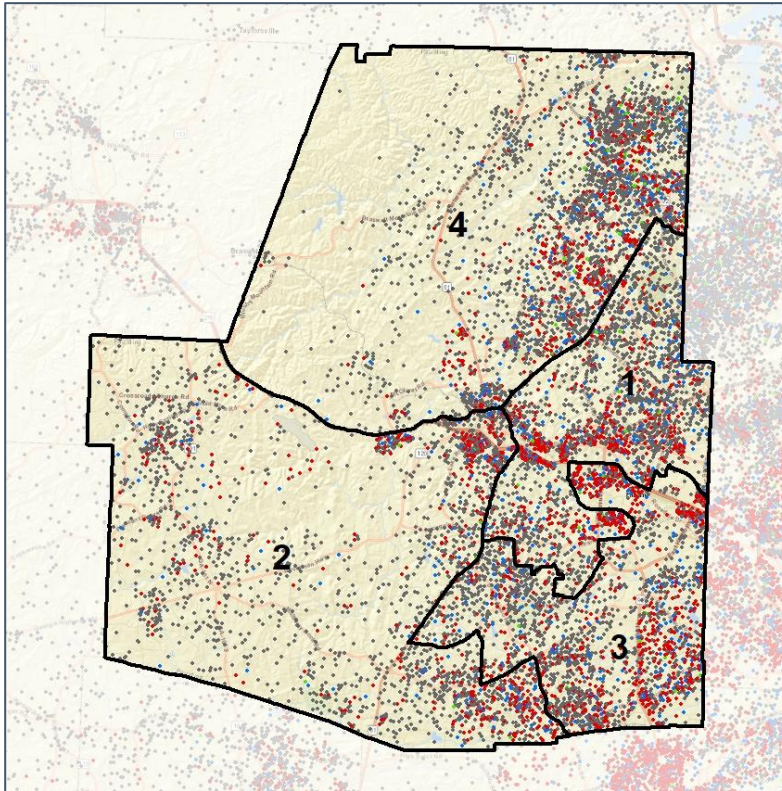


Paulding County Commission

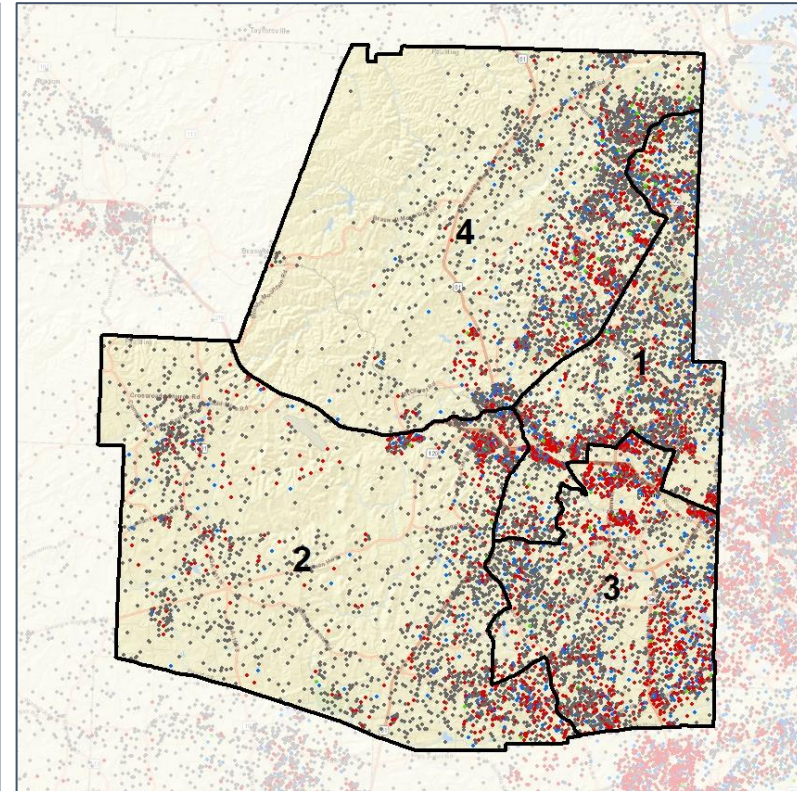
Population Density by Race



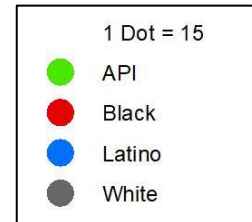
2012 Map



2022 Map*



	1	2	3	4	1*	2*	3*	4*	County
Population	39,812	39,099	38,582	51,168	42,552	41,955	42,011	42,143	168,661
API	527	276	384	853	709	290	478	563	2,040
% API	1%	1%	1%	2%	2%	1%	1%	1%	1%
Black	9,712	7,431	10,871	8,595	8,733	7,784	13,240	6,852	36,609
% Black	24%	19%	28%	17%	21%	19%	32%	16%	22%
Latino	3,136	2,475	3,291	3,662	3,448	2,680	3,601	2,835	12,564
% Latino	8%	6%	9%	7%	8%	6%	9%	7%	7%
Other	2,105	2,271	2,064	2,564	2,267	2,436	2,260	2,041	9,004
% Other	5%	6%	5%	5%	5%	6%	5%	5%	5%
White	24,332	26,646	21,972	35,494	27,395	28,765	22,432	29,852	108,444
% White	61%	68%	57%	69%	64%	69%	53%	71%	64%

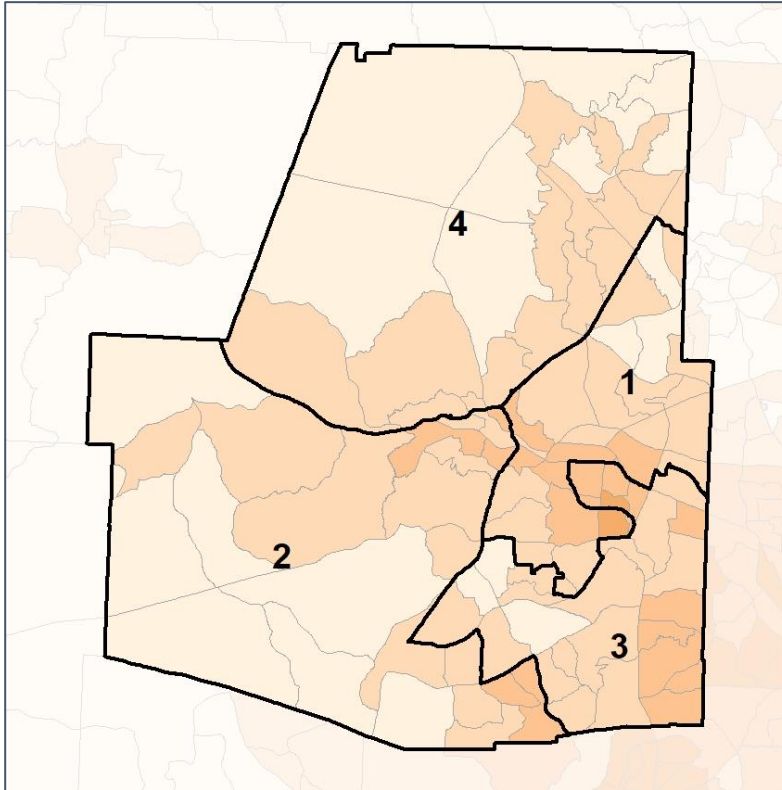


Paulding County Commission

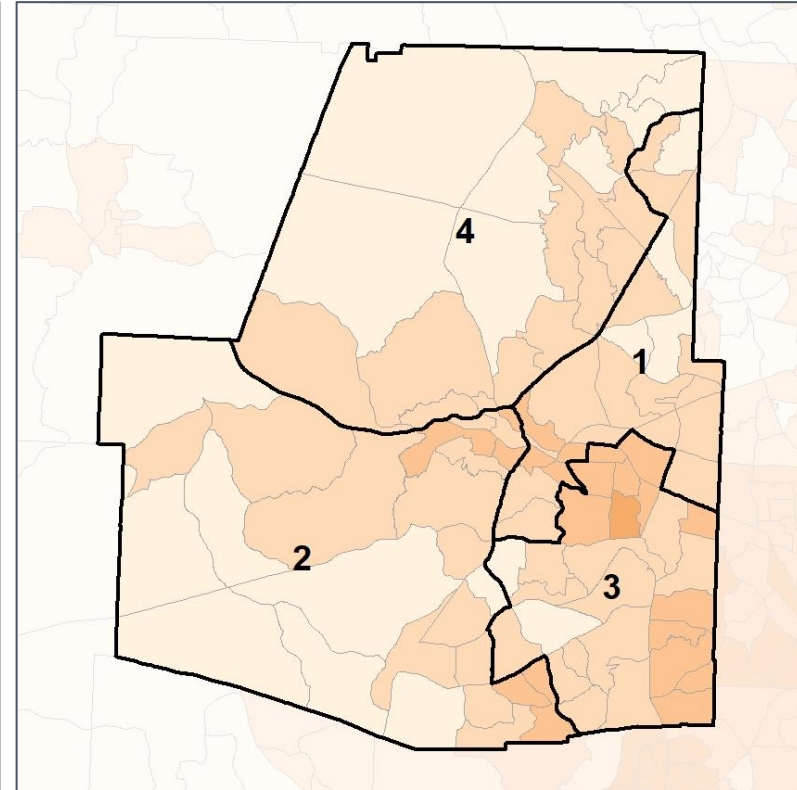
% People of Color by Census Block Group



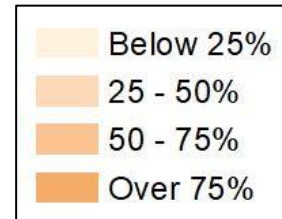
2012 Map



2022 Map*



	1	2	3	4	1*	2*	3*	4*	County
Population	39,812	39,099	38,582	51,168	42,552	41,955	42,011	42,143	168,661
API	527	276	384	853	709	290	478	563	2,040
% API	1%	1%	1%	2%	2%	1%	1%	1%	1%
Black	9,712	7,431	10,871	8,595	8,733	7,784	13,240	6,852	36,609
% Black	24%	19%	28%	17%	21%	19%	32%	16%	22%
Latino	3,136	2,475	3,291	3,662	3,448	2,680	3,601	2,835	12,564
% Latino	8%	6%	9%	7%	8%	6%	9%	7%	7%
Other	2,105	2,271	2,064	2,564	2,267	2,436	2,260	2,041	9,004
% Other	5%	6%	5%	5%	5%	6%	5%	5%	5%
White	24,332	26,646	21,972	35,494	27,395	28,765	22,432	29,852	108,444
% White	61%	68%	57%	69%	64%	69%	53%	71%	64%

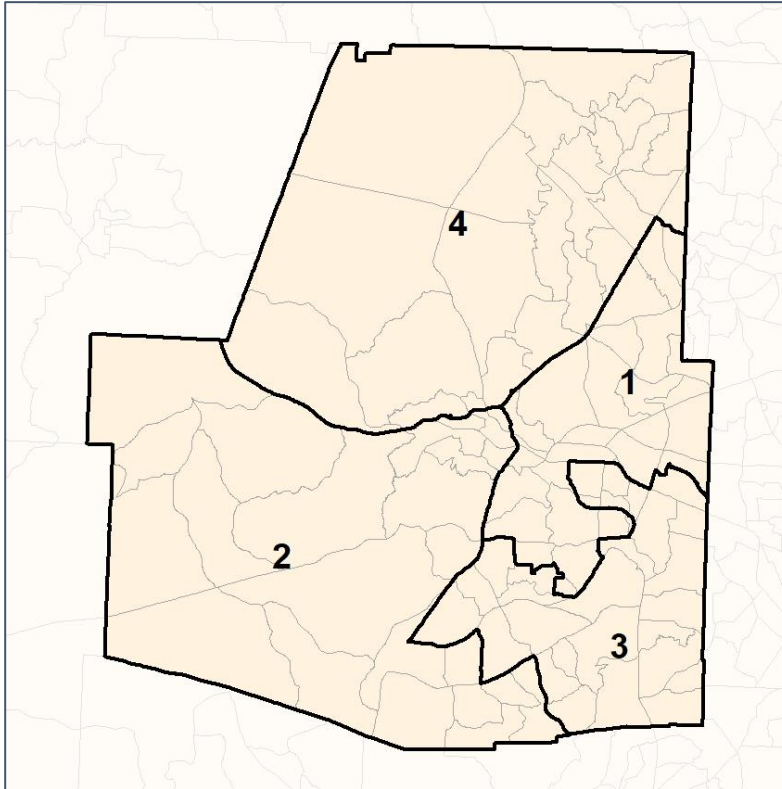


Paulding County Commission

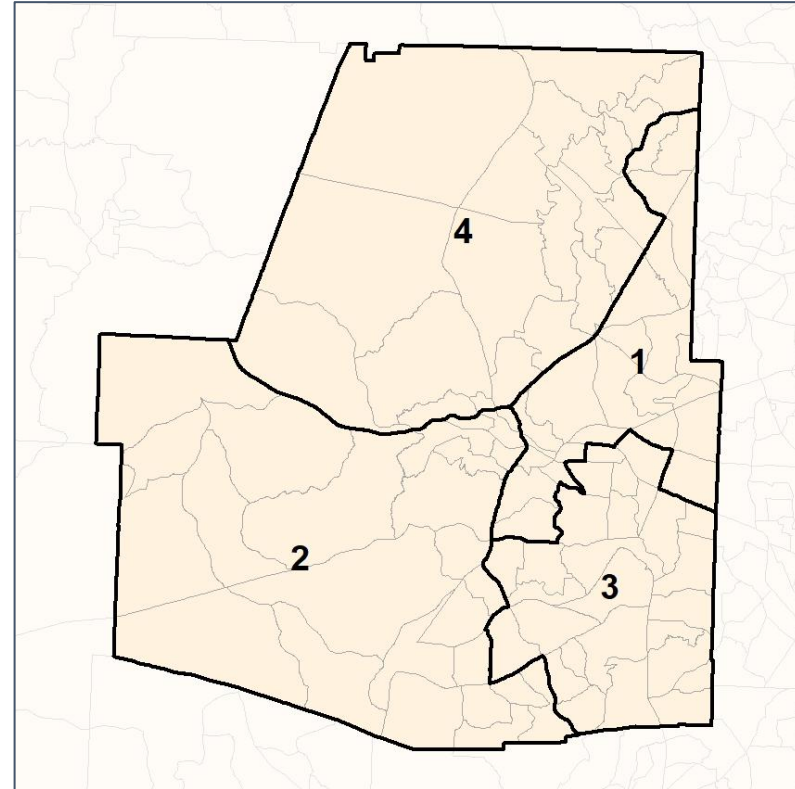
% API by Census Block Group



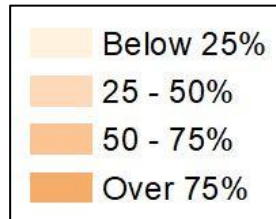
2012 Map



2022 Map*



	1	2	3	4	1*	2*	3*	4*	County
Population	39,812	39,099	38,582	51,168	42,552	41,955	42,011	42,143	168,661
API	527	276	384	853	709	290	478	563	2,040
% API	1%	1%	1%	2%	2%	1%	1%	1%	1%
Black	9,712	7,431	10,871	8,595	8,733	7,784	13,240	6,852	36,609
% Black	24%	19%	28%	17%	21%	19%	32%	16%	22%
Latino	3,136	2,475	3,291	3,662	3,448	2,680	3,601	2,835	12,564
% Latino	8%	6%	9%	7%	8%	6%	9%	7%	7%
Other	2,105	2,271	2,064	2,564	2,267	2,436	2,260	2,041	9,004
% Other	5%	6%	5%	5%	5%	6%	5%	5%	5%
White	24,332	26,646	21,972	35,494	27,395	28,765	22,432	29,852	108,444
% White	61%	68%	57%	69%	64%	69%	53%	71%	64%

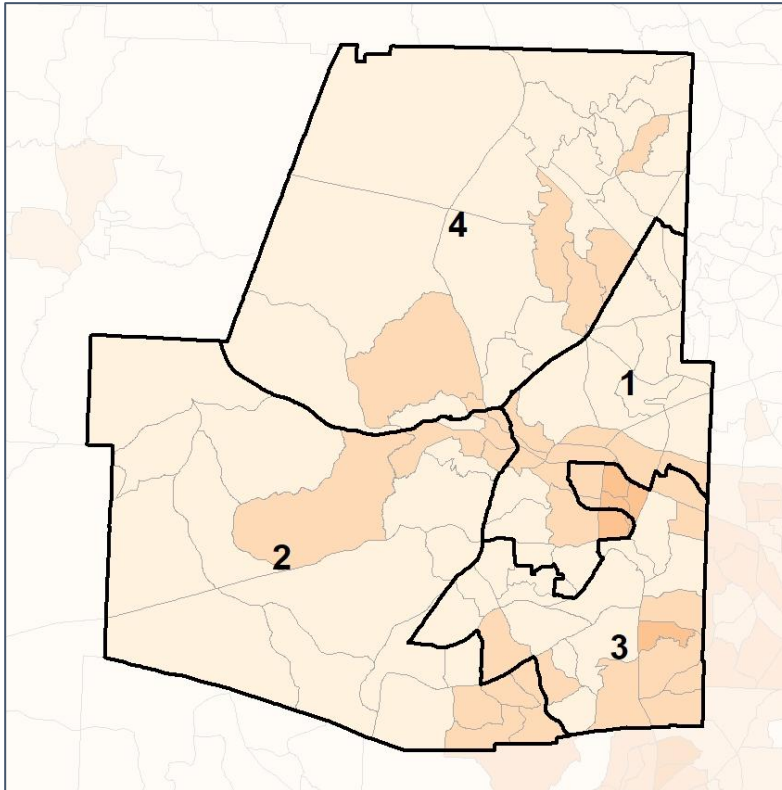


Paulding County Commission

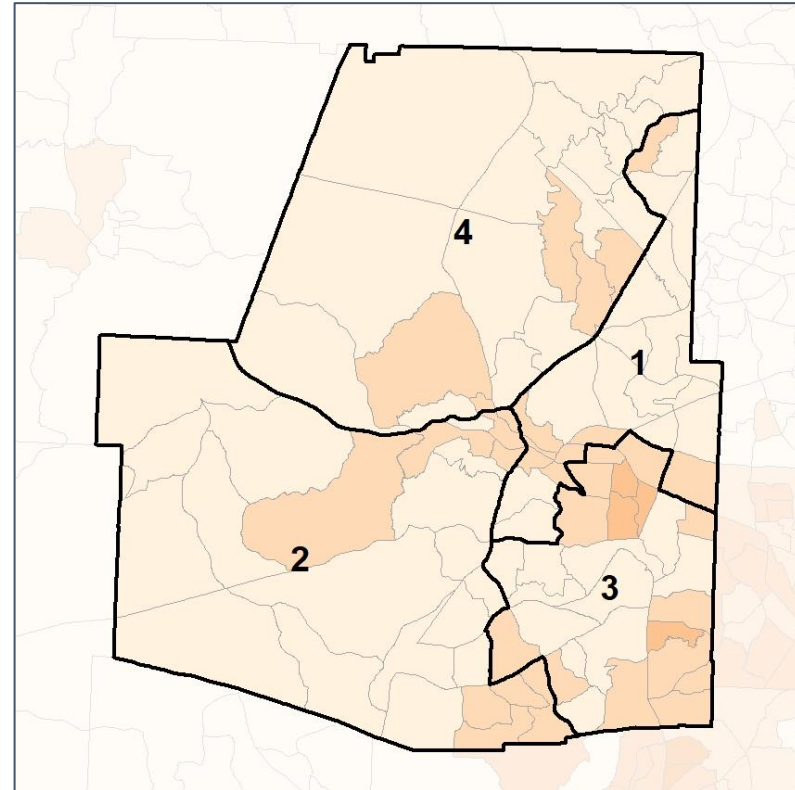
% Black by Census Block Group



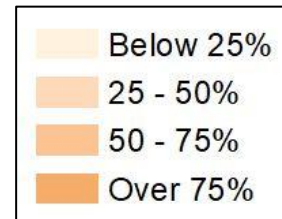
2012 Map



2022 Map*



	1	2	3	4	1*	2*	3*	4*	County
Population	39,812	39,099	38,582	51,168	42,552	41,955	42,011	42,143	168,661
API	527	276	384	853	709	290	478	563	2,040
% API	1%	1%	1%	2%	2%	1%	1%	1%	1%
Black	9,712	7,431	10,871	8,595	8,733	7,784	13,240	6,852	36,609
% Black	24%	19%	28%	17%	21%	19%	32%	16%	22%
Latino	3,136	2,475	3,291	3,662	3,448	2,680	3,601	2,835	12,564
% Latino	8%	6%	9%	7%	8%	6%	9%	7%	7%
Other	2,105	2,271	2,064	2,564	2,267	2,436	2,260	2,041	9,004
% Other	5%	6%	5%	5%	5%	6%	5%	5%	5%
White	24,332	26,646	21,972	35,494	27,395	28,765	22,432	29,852	108,444
% White	61%	68%	57%	69%	64%	69%	53%	71%	64%

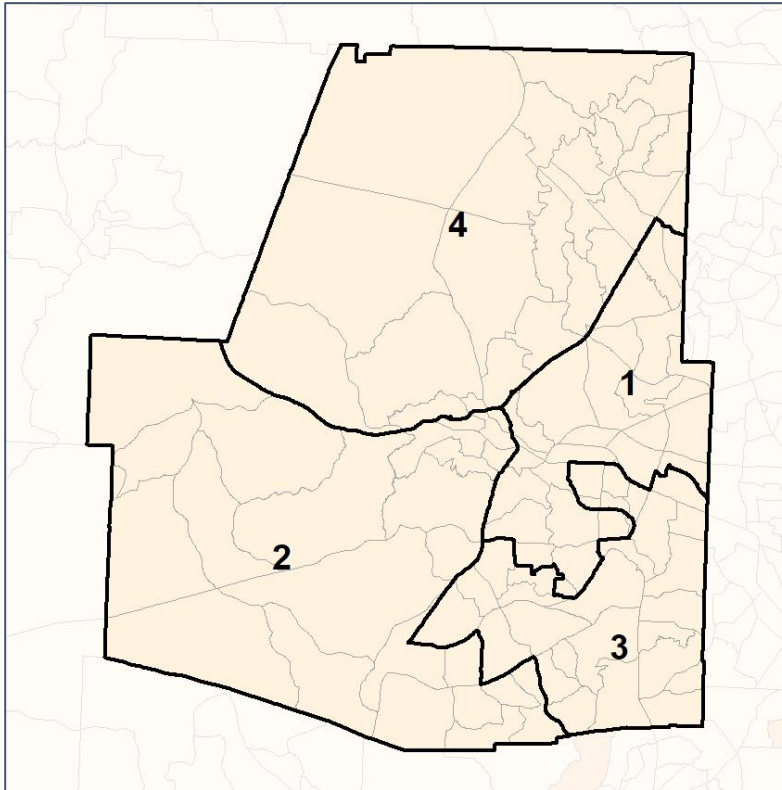


Paulding County Commission

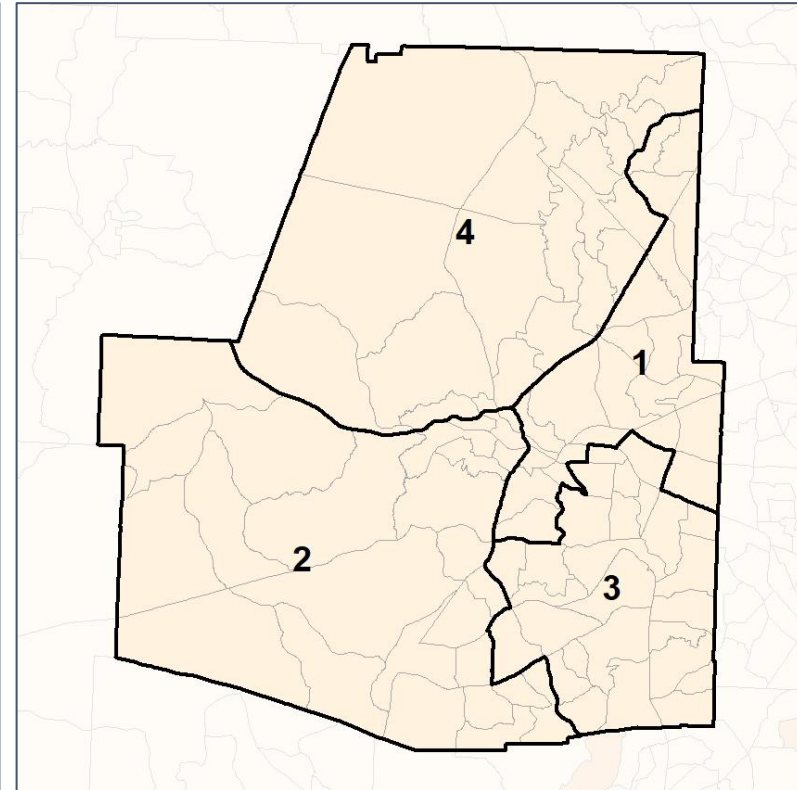
% Latino by Census Block Group



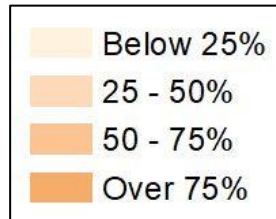
2012 Map



2022 Map*



	1	2	3	4	1*	2*	3*	4*	County
Population	39,812	39,099	38,582	51,168	42,552	41,955	42,011	42,143	168,661
API	527	276	384	853	709	290	478	563	2,040
% API	1%	1%	1%	2%	2%	1%	1%	1%	1%
Black	9,712	7,431	10,871	8,595	8,733	7,784	13,240	6,852	36,609
% Black	24%	19%	28%	17%	21%	19%	32%	16%	22%
Latino	3,136	2,475	3,291	3,662	3,448	2,680	3,601	2,835	12,564
% Latino	8%	6%	9%	7%	8%	6%	9%	7%	7%
Other	2,105	2,271	2,064	2,564	2,267	2,436	2,260	2,041	9,004
% Other	5%	6%	5%	5%	5%	6%	5%	5%	5%
White	24,332	26,646	21,972	35,494	27,395	28,765	22,432	29,852	108,444
% White	61%	68%	57%	69%	64%	69%	53%	71%	64%

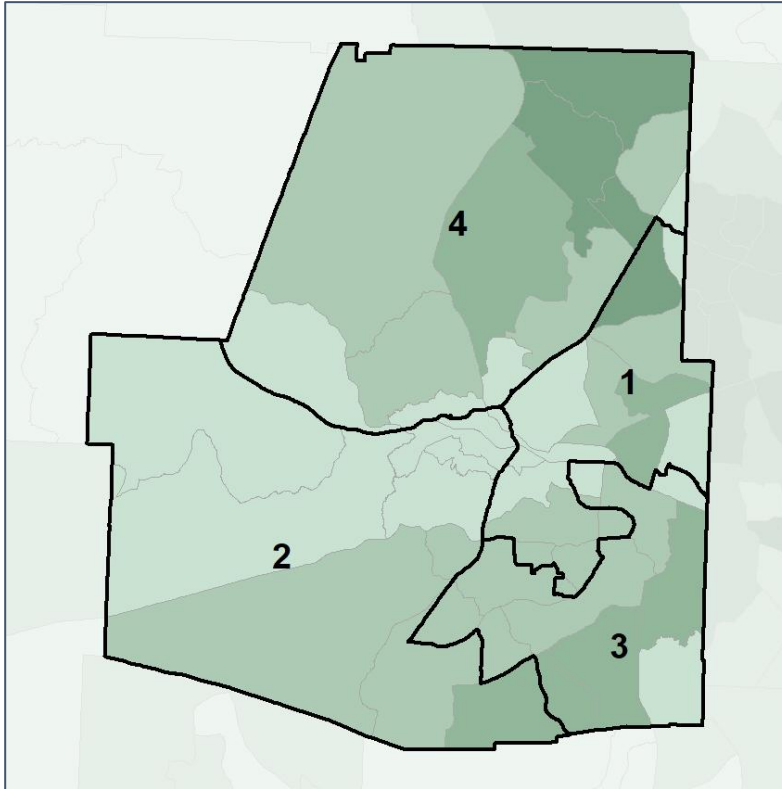


Paulding County Commission

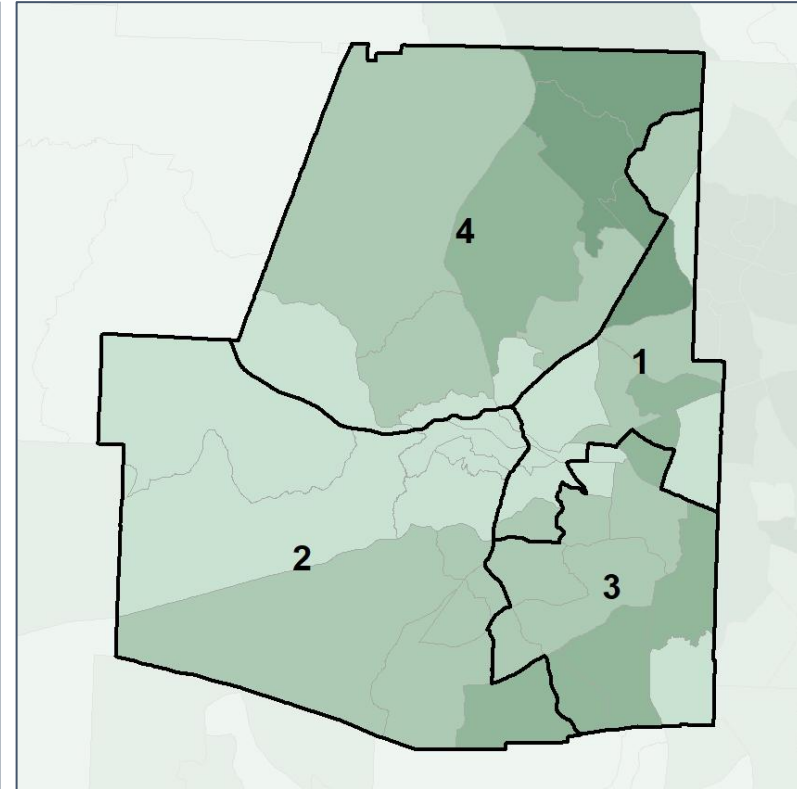
Median Household Income by Census Tract



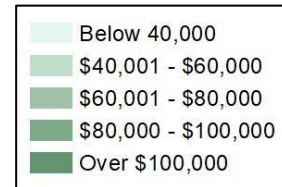
2012 Map



2022 Map*



	1	2	3	4	1*	2*	3*	4*	County
Population	39,812	39,099	38,582	51,168	42,552	41,955	42,011	42,143	168,661
% API	1%	1%	1%	2%	2%	1%	1%	1%	1%
% Black	24%	19%	28%	17%	21%	19%	32%	16%	22%
% Latino	8%	6%	9%	7%	8%	6%	9%	7%	7%
% Other	5%	6%	5%	5%	5%	6%	5%	5%	5%
% White	61%	68%	57%	69%	64%	69%	53%	71%	64%
Median Income	\$73,000	\$63,000	\$77,000	\$90,000	\$71,000	\$63,000	\$77,000	\$94,000	\$74,000
% Renter	25%	27%	22%	16%	23%	26%	25%	15%	22%
% Youth	22%	23%	20%	22%	20%	23%	22%	21%	22%

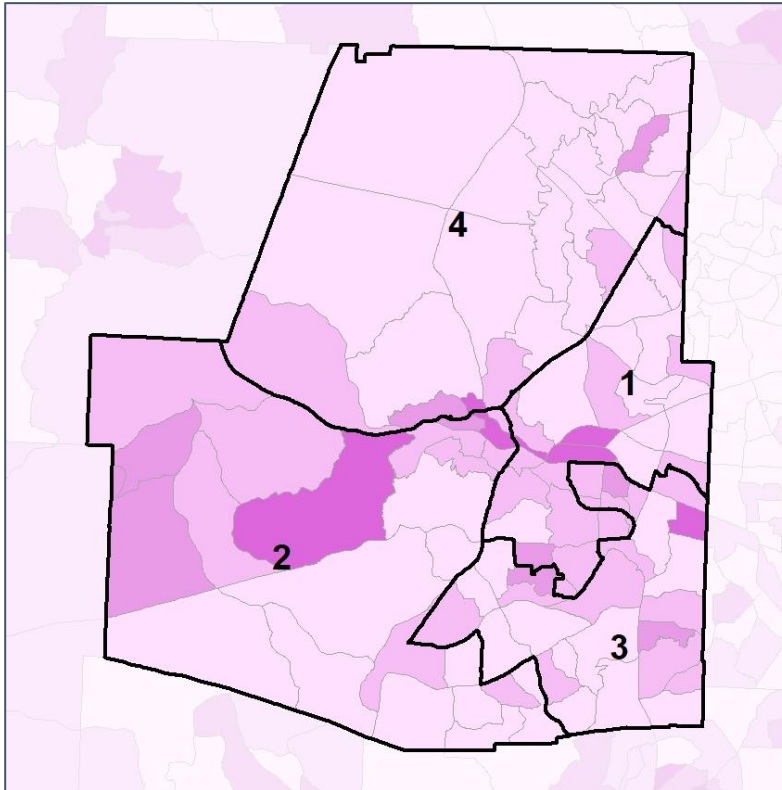


Paulding County Commission

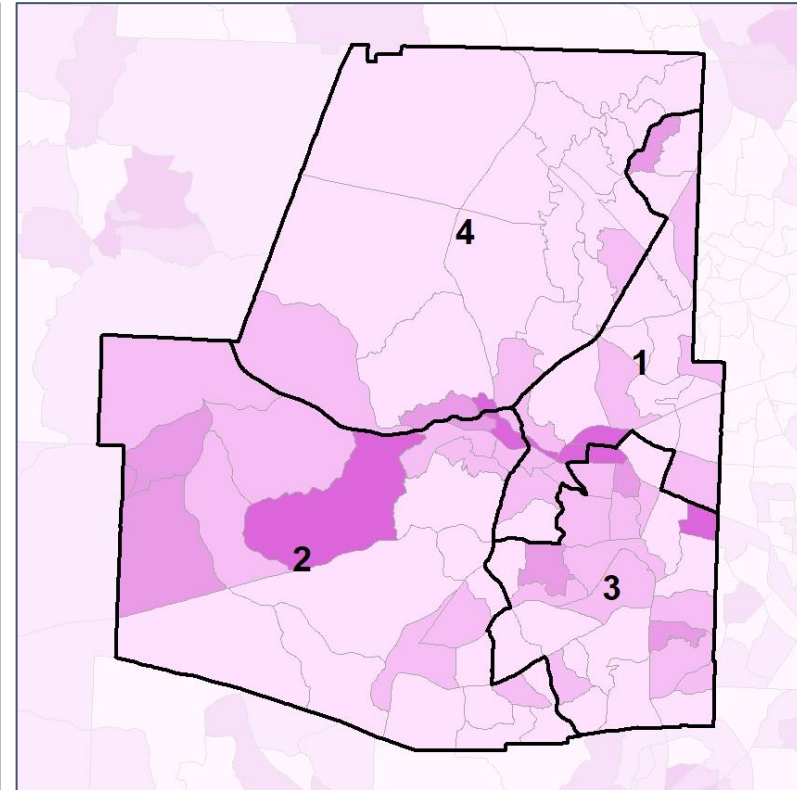
% Renter by Census Block Group



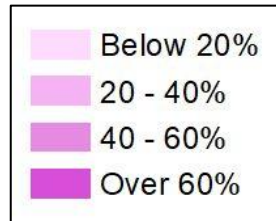
2012 Map



2022 Map*



	1	2	3	4	1*	2*	3*	4*	County
Population	39,812	39,099	38,582	51,168	42,552	41,955	42,011	42,143	168,661
% API	1%	1%	1%	2%	2%	1%	1%	1%	1%
% Black	24%	19%	28%	17%	21%	19%	32%	16%	22%
% Latino	8%	6%	9%	7%	8%	6%	9%	7%	7%
% Other	5%	6%	5%	5%	5%	6%	5%	5%	5%
% White	61%	68%	57%	69%	64%	69%	53%	71%	64%
Median Income	\$73,000	\$63,000	\$77,000	\$90,000	\$71,000	\$63,000	\$77,000	\$94,000	\$74,000
% Renter	25%	27%	22%	16%	23%	26%	25%	15%	22%
% Youth	22%	23%	20%	22%	20%	23%	22%	21%	22%

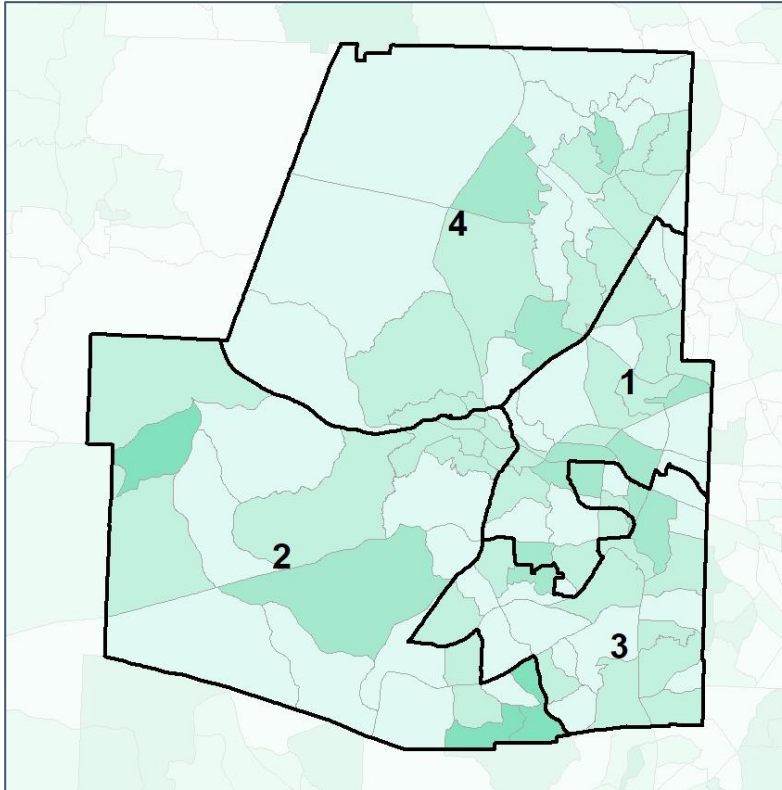


Paulding County Commission

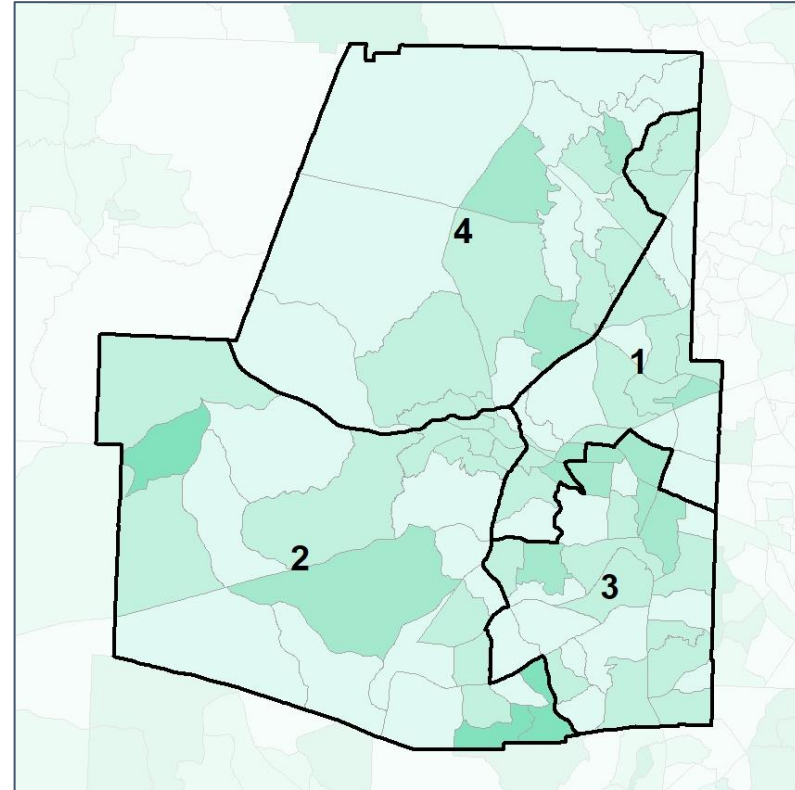
% Youth (18-34) by Census Block Group



2012 Map



2022 Map*



	1	2	3	4	1*	2*	3*	4*	County
Population	39,812	39,099	38,582	51,168	42,552	41,955	42,011	42,143	168,661
% API	1%	1%	1%	2%	2%	1%	1%	1%	1%
% Black	24%	19%	28%	17%	21%	19%	32%	16%	22%
% Latino	8%	6%	9%	7%	8%	6%	9%	7%	7%
% Other	5%	6%	5%	5%	5%	6%	5%	5%	5%
% White	61%	68%	57%	69%	64%	69%	53%	71%	64%
Median Income	\$73,000	\$63,000	\$77,000	\$90,000	\$71,000	\$63,000	\$77,000	\$94,000	\$74,000
% Renter	25%	27%	22%	16%	23%	26%	25%	15%	22%
% Youth	22%	23%	20%	22%	20%	23%	22%	21%	22%

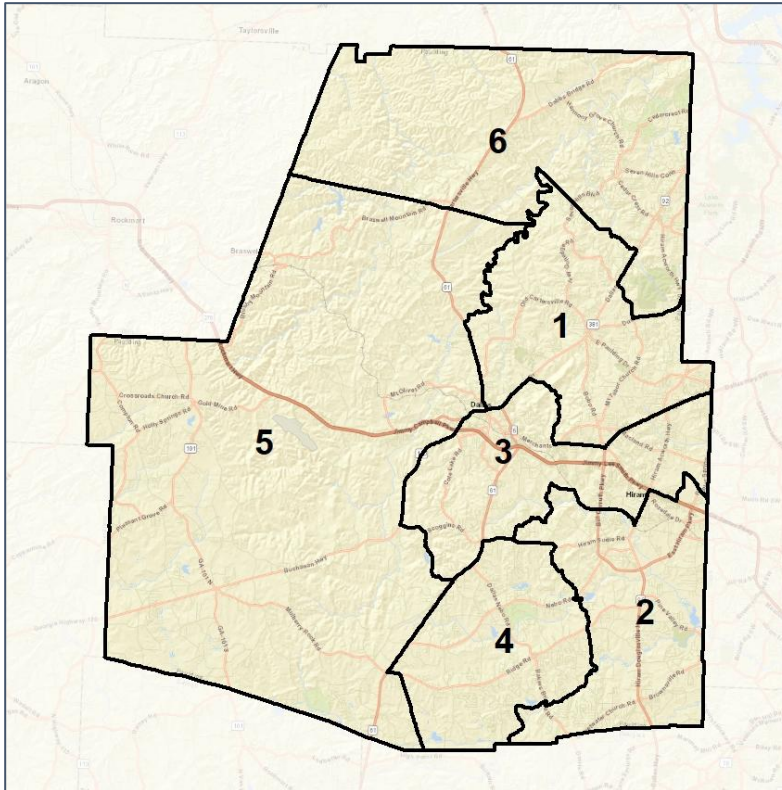


Paulding County School Board

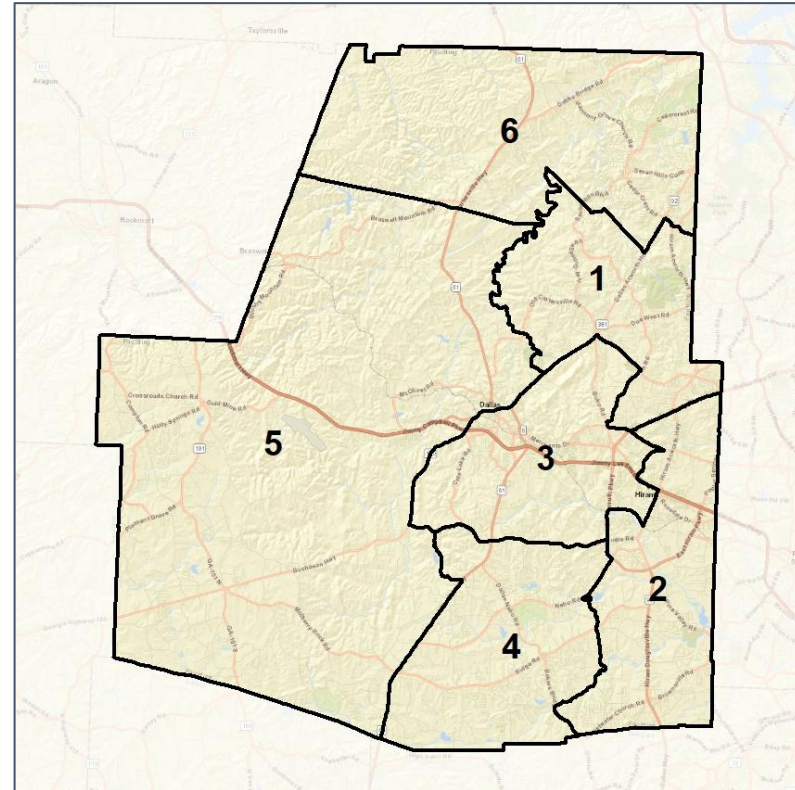
Context



2012 Map



2022 Map*



	1	2	3	4	5	6	1*	2*	3*	4*	5*	6*	County
Population	30,805	26,532	29,202	23,496	26,173	32,453	28,059	28,016	28,250	28,146	27,871	28,319	168,661
API	1%	1%	1%	1%	1%	2%	1%	1%	1%	1%	1%	2%	1%
Black	19%	34%	32%	18%	14%	14%	17%	31%	34%	19%	14%	14%	22%
Latino	8%	9%	9%	7%	5%	7%	8%	9%	9%	7%	6%	7%	7%
Other	5%	5%	5%	6%	5%	5%	5%	6%	5%	6%	5%	5%	5%
White	67%	50%	52%	69%	75%	72%	69%	53%	51%	68%	74%	72%	64%
Population Gain	7,375	3,039	4,982	-139	2,474	8,606	-2,746	1,484	-952	4,650	1,698	-4,134	*
Population % Gain	31%	13%	21%	-1%	10%	36%	-9%	6%	-3%	20%	6%	-13%	*
Net POC Gain	5,071	4,526	5,585	2,323	2,283	4,844	-1,250	11	-1	1,708	650	-1,118	*
Net POC % Gain	102%	52%	67%	46%	53%	113%	-12%	0%	0%	23%	10%	-12%	*

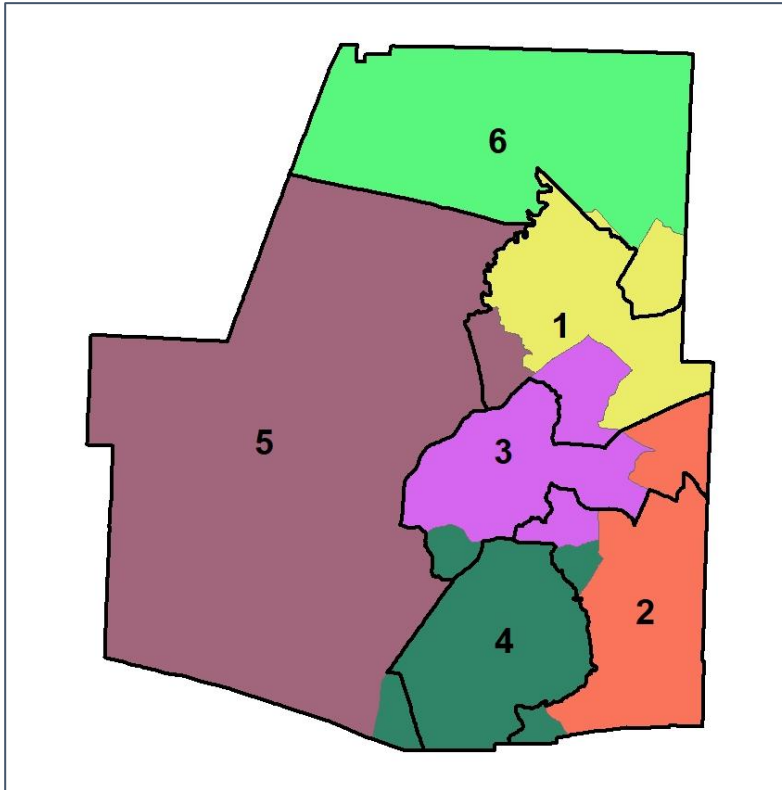


Paulding County School Board

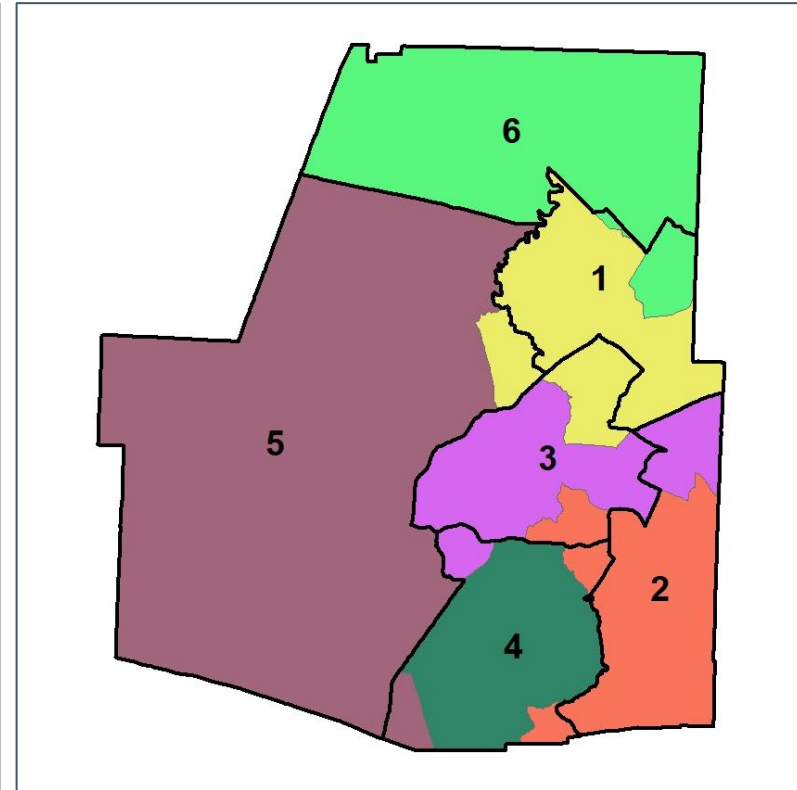
Changes in Redistricting



2012 Map (2022 in Colors)



2022 Map* (2012 in Colors)



	1	2	3	4	5	6	1*	2*	3*	4*	5*	6*	County
Population	30,805	26,532	29,202	23,496	26,173	32,453	28,059	28,016	28,250	28,146	27,871	28,319	168,661
API	1%	1%	1%	1%	1%	2%	1%	1%	1%	1%	1%	2%	1%
Black	19%	34%	32%	18%	14%	14%	17%	31%	34%	19%	14%	14%	22%
Latino	8%	9%	9%	7%	5%	7%	8%	9%	9%	7%	6%	7%	7%
Other	5%	5%	5%	6%	5%	5%	5%	6%	5%	6%	5%	5%	5%
White	67%	50%	52%	69%	75%	72%	69%	53%	51%	68%	74%	72%	64%
Population Gain	7,375	3,039	4,982	-139	2,474	8,606	-2,746	1,484	-952	4,650	1,698	-4,134	*
Population % Gain	31%	13%	21%	-1%	10%	36%	-9%	6%	-3%	20%	6%	-13%	*
Net POC Gain	5,071	4,526	5,585	2,323	2,283	4,844	-1,250	11	-1	1,708	650	-1,118	*
Net POC % Gain	102%	52%	67%	46%	53%	113%	-12%	0%	0%	23%	10%	-12%	*

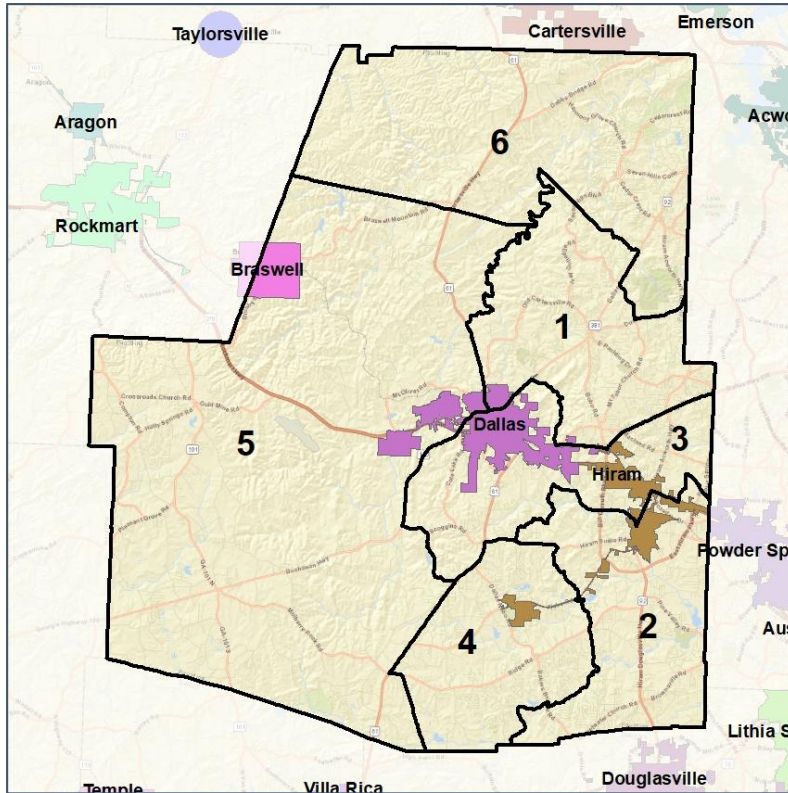


Paulding County School Board

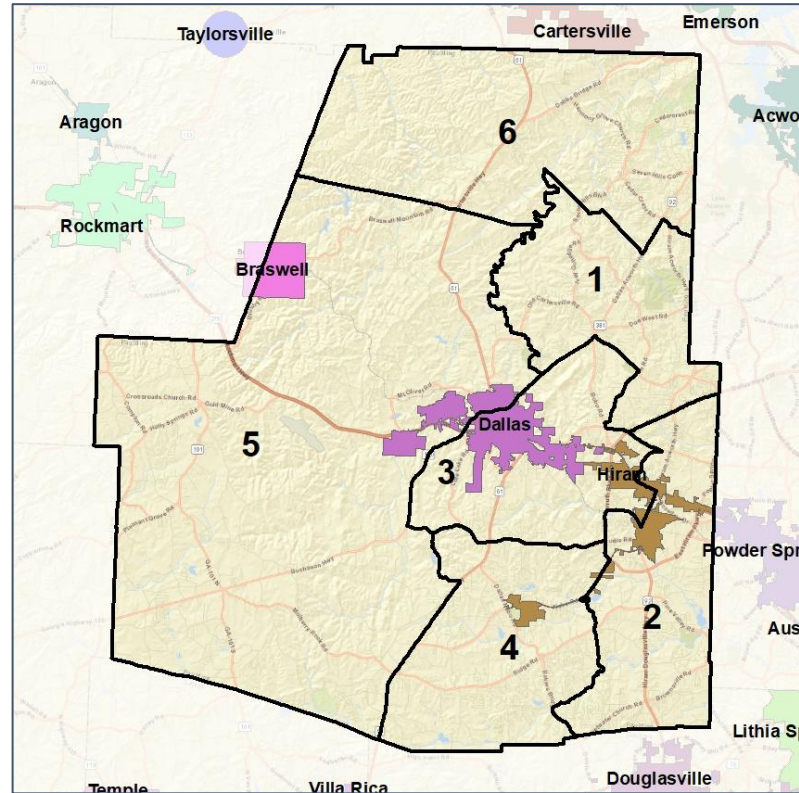
Cities and Places



2012 Map



2022 Map*



	1	2	3	4	5	6	1*	2*	3*	4*	5*	6*	County
Population	30,805	26,532	29,202	23,496	26,173	32,453	28,059	28,016	28,250	28,146	27,871	28,319	168,661
API	1%	1%	1%	1%	1%	2%	1%	1%	1%	1%	1%	2%	1%
Black	19%	34%	32%	18%	14%	14%	17%	31%	34%	19%	14%	14%	22%
Latino	8%	9%	9%	7%	5%	7%	8%	9%	9%	7%	6%	7%	7%
Other	5%	5%	5%	6%	5%	5%	5%	6%	5%	6%	5%	5%	5%
White	67%	50%	52%	69%	75%	72%	69%	53%	51%	68%	74%	72%	64%
Population Gain	7,375	3,039	4,982	-139	2,474	8,606	-2,746	1,484	-952	4,650	1,698	-4,134	*
Population % Gain	31%	13%	21%	-1%	10%	36%	-9%	6%	-3%	20%	6%	-13%	*
Net POC Gain	5,071	4,526	5,585	2,323	2,283	4,844	-1,250	11	-1	1,708	650	-1,118	*
Net POC % Gain	102%	52%	67%	46%	53%	113%	-12%	0%	0%	23%	10%	-12%	*



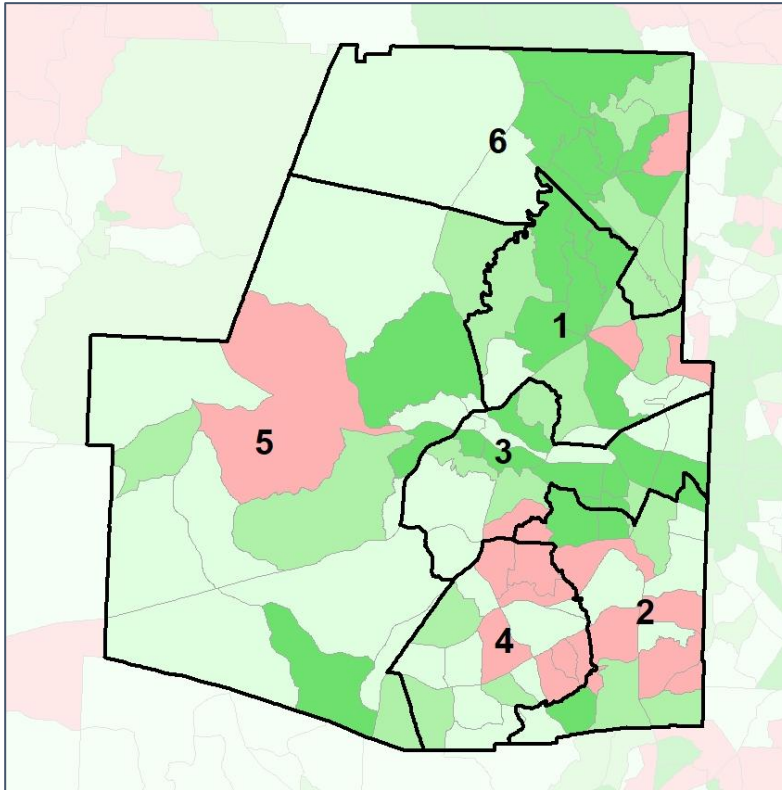
Source:
2020 Decennial Census
2020 ACS 5-Year Dataset

Paulding County School Board

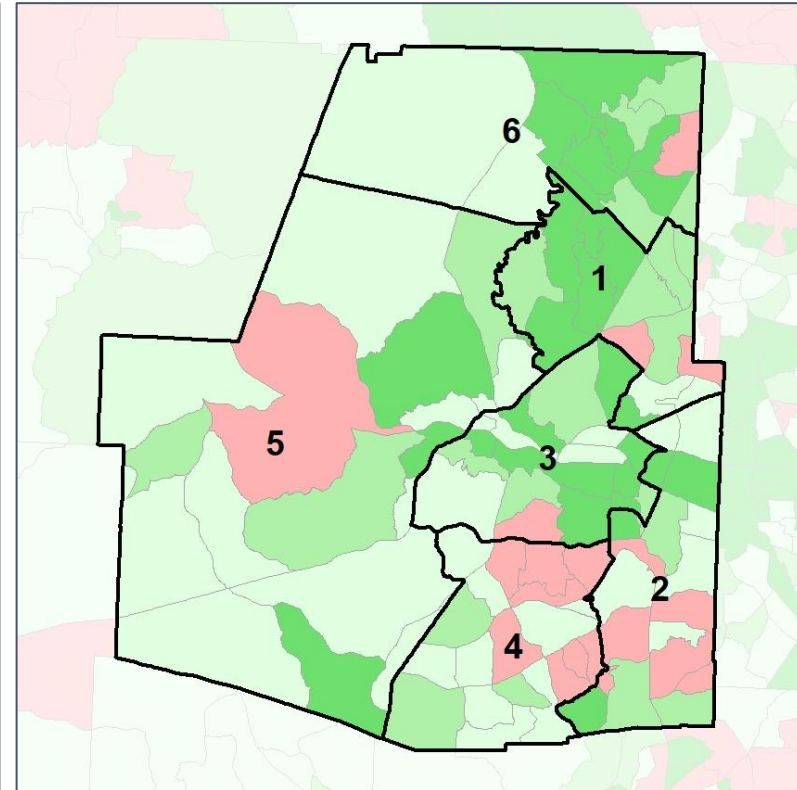
Net Gain in Population (2010 - 2020) by Census Block Group



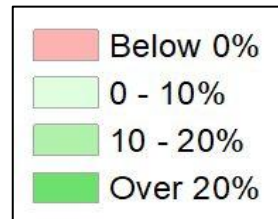
2012 Map



2022 Map*



	1	2	3	4	5	6	1*	2*	3*	4*	5*	6*	County
Population	30,805	26,532	29,202	23,496	26,173	32,453	28,059	28,016	28,250	28,146	27,871	28,319	168,661
API	1%	1%	1%	1%	1%	2%	1%	1%	1%	1%	1%	2%	1%
Black	19%	34%	32%	18%	14%	14%	17%	31%	34%	19%	14%	14%	22%
Latino	8%	9%	9%	7%	5%	7%	8%	9%	9%	7%	6%	7%	7%
Other	5%	5%	5%	6%	5%	5%	5%	6%	5%	6%	5%	5%	5%
White	67%	50%	52%	69%	75%	72%	69%	53%	51%	68%	74%	72%	64%
Population Gain	7,375	3,039	4,982	-139	2,474	8,606	-2,746	1,484	-952	4,650	1,698	-4,134	*
Population % Gain	31%	13%	21%	-1%	10%	36%	-9%	6%	-3%	20%	6%	-13%	*
Net POC Gain	5,071	4,526	5,585	2,323	2,283	4,844	-1,250	11	-1	1,708	650	-1,118	*
Net POC % Gain	102%	52%	67%	46%	53%	113%	-12%	0%	0%	23%	10%	-12%	*

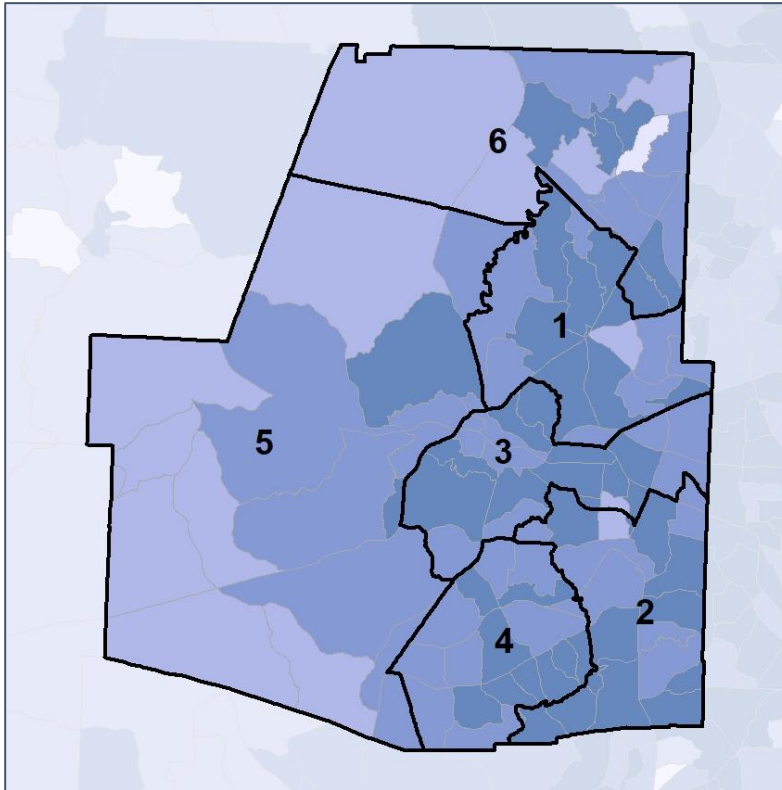


Paulding County School Board

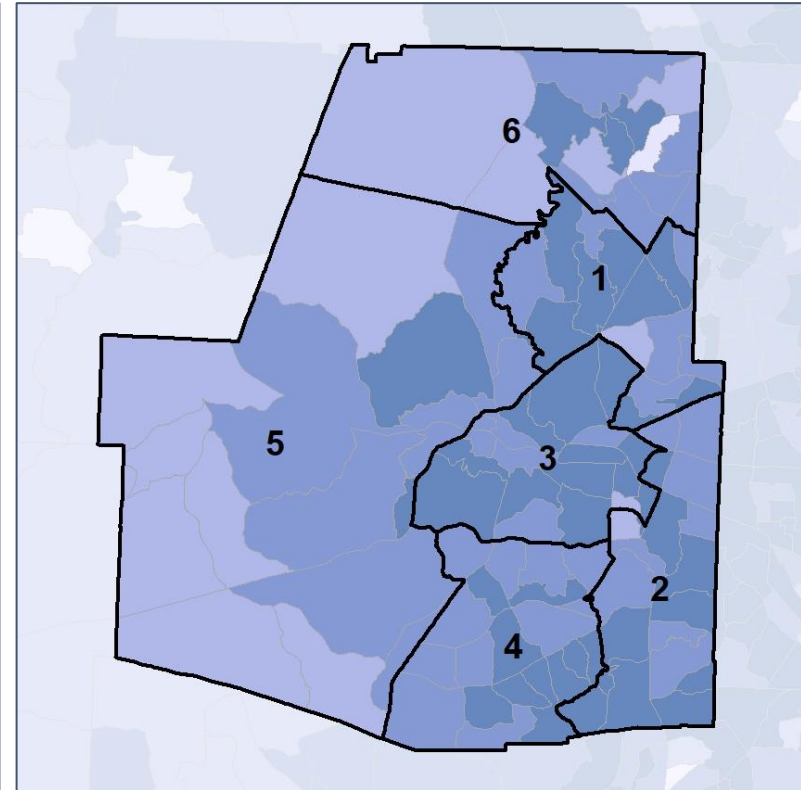
Net Gain in % POC (2020 - 2010) by Census Block Group



2012 Map



2022 Map*



	1	2	3	4	5	6	1*	2*	3*	4*	5*	6*	County
Population	30,805	26,532	29,202	23,496	26,173	32,453	28,059	28,016	28,250	28,146	27,871	28,319	168,661
API	1%	1%	1%	1%	1%	2%	1%	1%	1%	1%	1%	2%	1%
Black	19%	34%	32%	18%	14%	14%	17%	31%	34%	19%	14%	14%	22%
Latino	8%	9%	9%	7%	5%	7%	8%	9%	9%	7%	6%	7%	7%
Other	5%	5%	5%	6%	5%	5%	5%	6%	5%	6%	5%	5%	5%
White	67%	50%	52%	69%	75%	72%	69%	53%	51%	68%	74%	72%	64%
Population Gain	7,375	3,039	4,982	-139	2,474	8,606	-2,746	1,484	-952	4,650	1,698	-4,134	*
Population % Gain	31%	13%	21%	-1%	10%	36%	-9%	6%	-3%	20%	6%	-13%	*
Net POC Gain	5,071	4,526	5,585	2,323	2,283	4,844	-1,250	11	-1	1,708	650	-1,118	*
Net POC % Gain	102%	52%	67%	46%	53%	113%	-12%	0%	0%	23%	10%	-12%	*

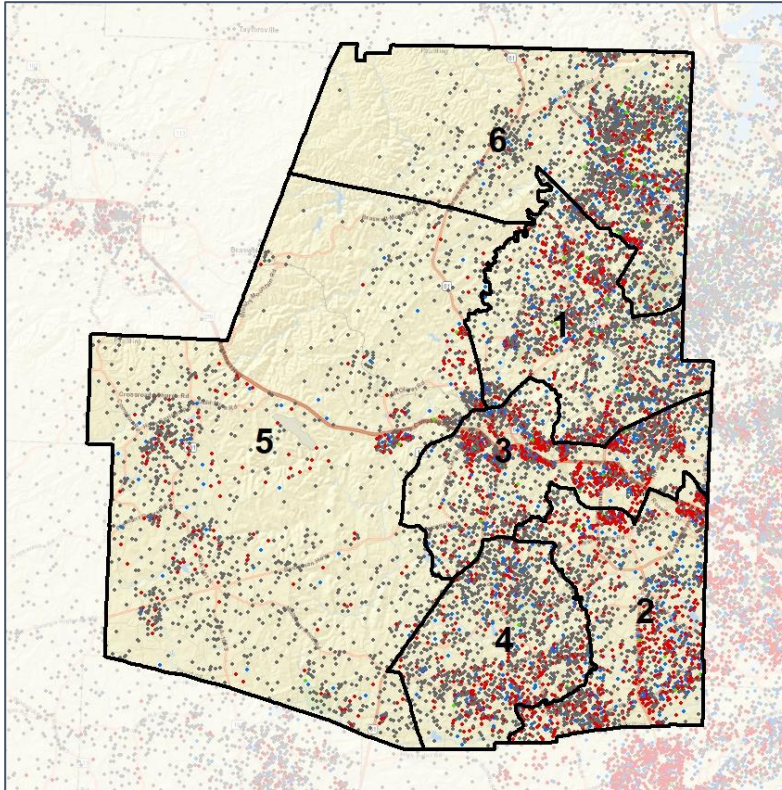


Paulding County School Board

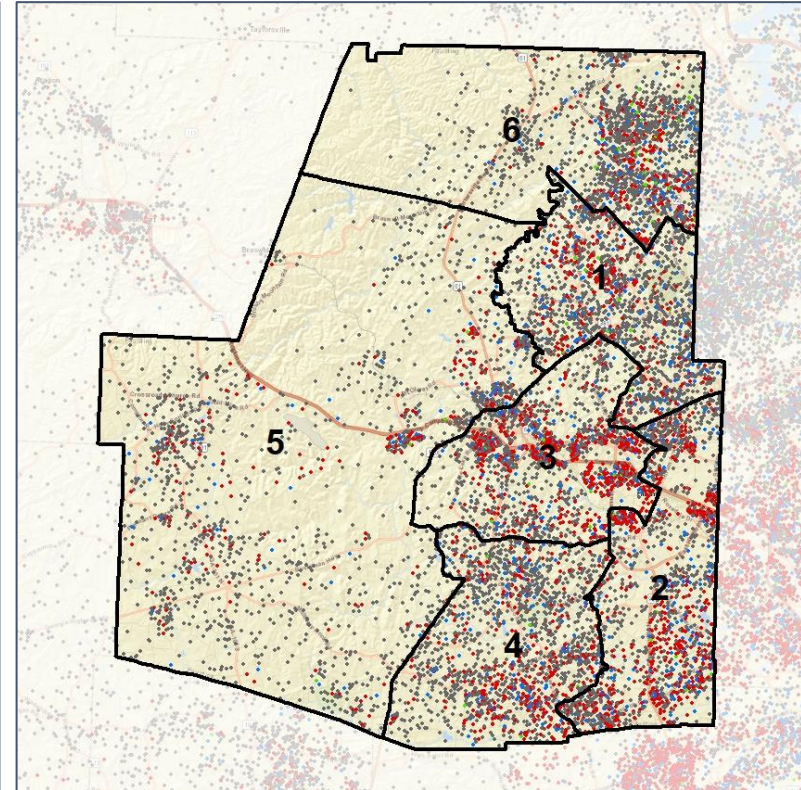
Population Density by Race



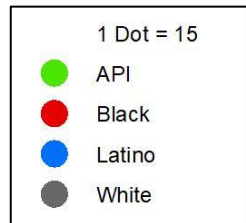
2012 Map



2022 Map*



	1	2	3	4	5	6	1*	2*	3*	4*	5*	6*	County
Population	30,805	26,532	29,202	23,496	26,173	32,453	28,059	28,016	28,250	28,146	27,871	28,319	168,661
API	369	331	384	132	179	645	349	353	360	170	199	609	2,040
% API	1%	1%	1%	1%	1%	2%	1%	1%	1%	1%	1%	2%	1%
Black	5,746	9,007	9,423	4,245	3,644	4,544	4,883	8,712	9,654	5,362	3,993	4,005	36,609
% Black	19%	34%	32%	18%	14%	14%	17%	31%	34%	19%	14%	14%	22%
Latino	2,356	2,368	2,565	1,638	1,372	2,265	2,125	2,564	2,408	1,928	1,587	1,952	12,564
% Latino	8%	9%	9%	7%	5%	7%	8%	9%	9%	7%	6%	7%	7%
Other	1,571	1,455	1,586	1,333	1,384	1,675	1,435	1,543	1,535	1,596	1,450	1,445	9,004
% Other	5%	5%	5%	6%	5%	5%	5%	6%	5%	6%	5%	5%	5%
White	20,763	13,371	15,244	16,148	19,594	23,324	19,267	14,844	14,293	19,090	20,642	20,308	108,444
% White	67%	50%	52%	69%	75%	72%	69%	53%	51%	68%	74%	72%	64%



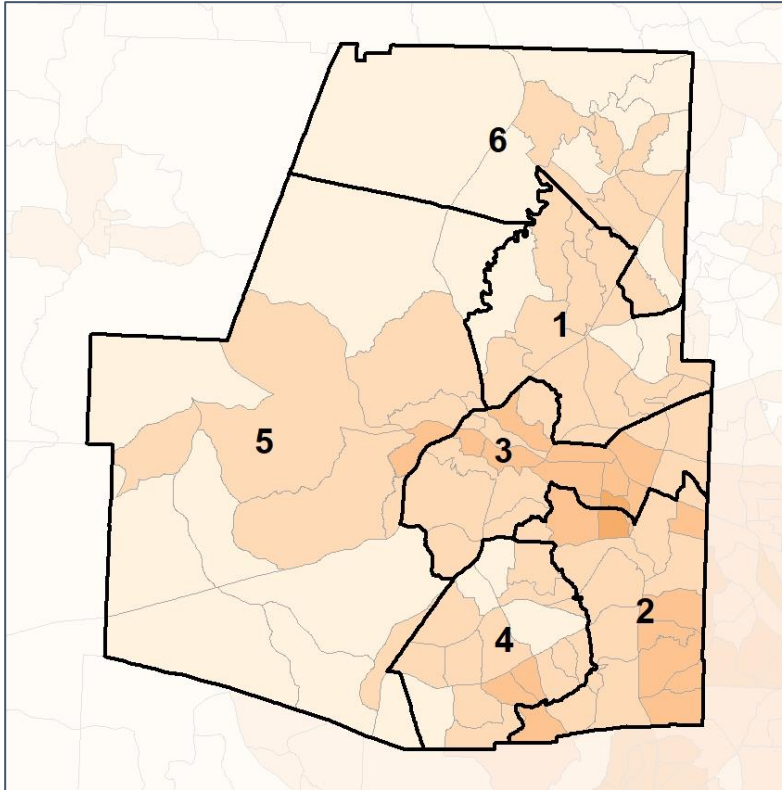
Source:
2020 Decennial Census
2020 ACS 5-Year Dataset

Paulding County School Board

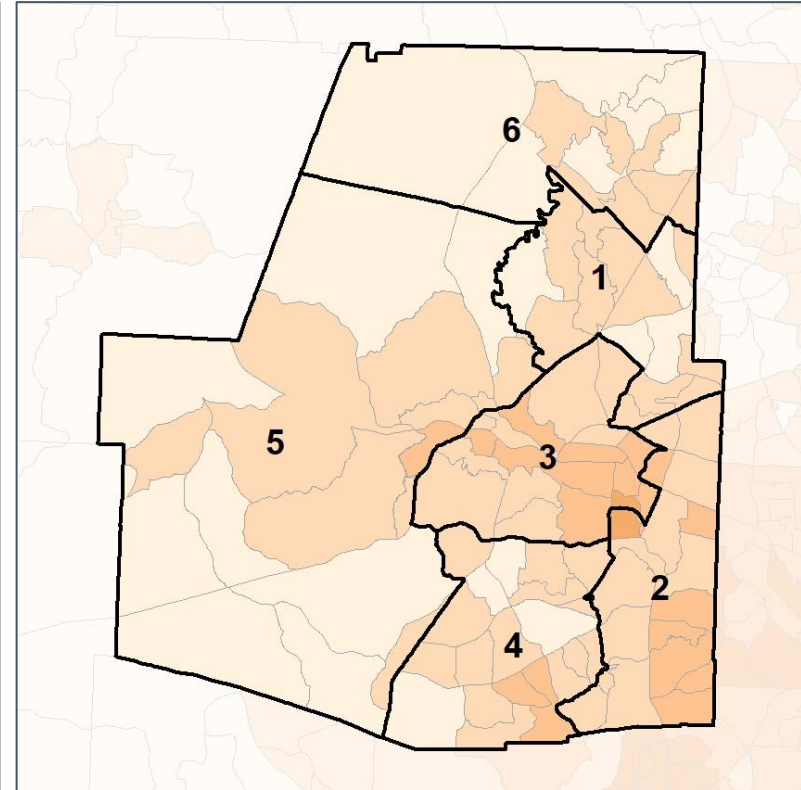
% People of Color by Census Block Group



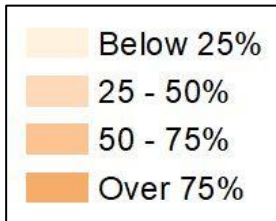
2012 Map



2022 Map*



	1	2	3	4	5	6	1*	2*	3*	4*	5*	6*	County
Population	30,805	26,532	29,202	23,496	26,173	32,453	28,059	28,016	28,250	28,146	27,871	28,319	168,661
API	369	331	384	132	179	645	349	353	360	170	199	609	2,040
% API	1%	1%	1%	1%	1%	2%	1%	1%	1%	1%	1%	2%	1%
Black	5,746	9,007	9,423	4,245	3,644	4,544	4,883	8,712	9,654	5,362	3,993	4,005	36,609
% Black	19%	34%	32%	18%	14%	14%	17%	31%	34%	19%	14%	14%	22%
Latino	2,356	2,368	2,565	1,638	1,372	2,265	2,125	2,564	2,408	1,928	1,587	1,952	12,564
% Latino	8%	9%	9%	7%	5%	7%	8%	9%	9%	7%	6%	7%	7%
Other	1,571	1,455	1,586	1,333	1,384	1,675	1,435	1,543	1,535	1,596	1,450	1,445	9,004
% Other	5%	5%	5%	6%	5%	5%	5%	6%	5%	6%	5%	5%	5%
White	20,763	13,371	15,244	16,148	19,594	23,324	19,267	14,844	14,293	19,090	20,642	20,308	108,444
% White	67%	50%	52%	69%	75%	72%	69%	53%	51%	68%	74%	72%	64%



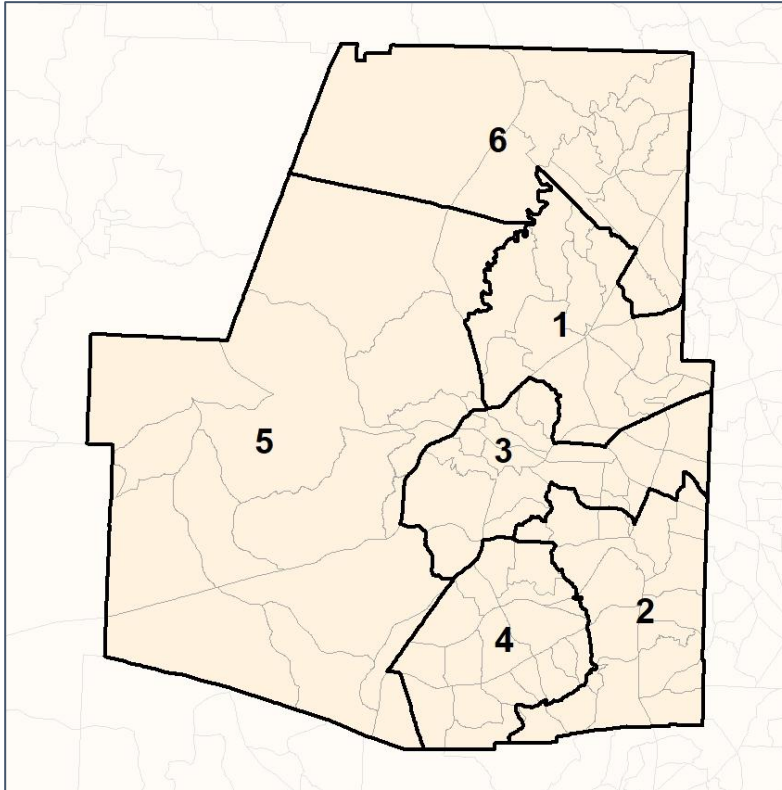
Source:
2020 Decennial Census
2020 ACS 5-Year Dataset

Paulding County School Board

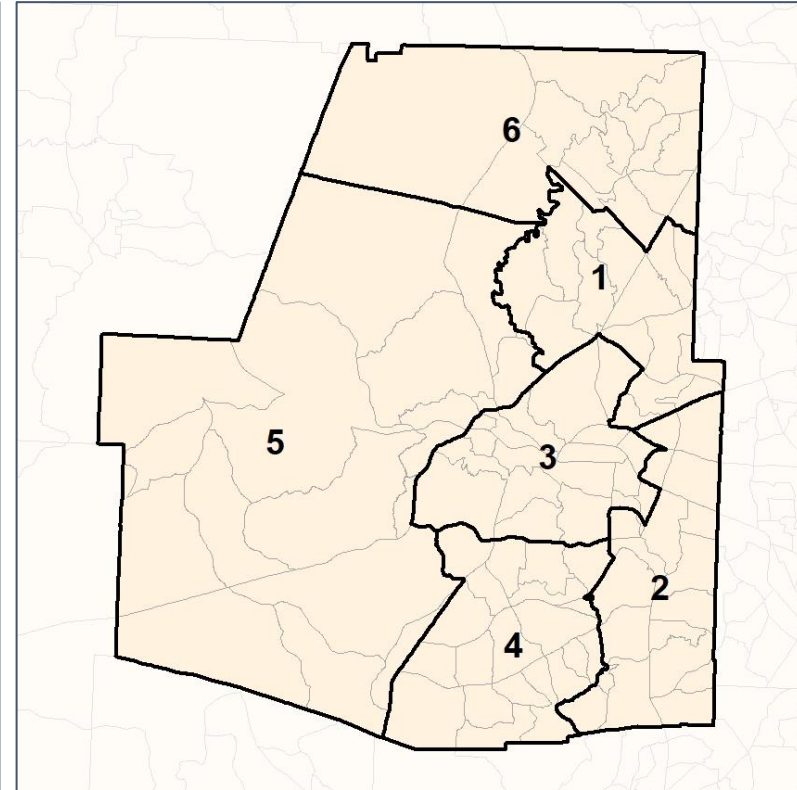
% API by Census Block Group



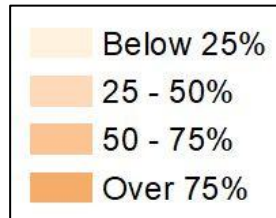
2012 Map



2022 Map*



	1	2	3	4	5	6	1*	2*	3*	4*	5*	6*	County
Population	30,805	26,532	29,202	23,496	26,173	32,453	28,059	28,016	28,250	28,146	27,871	28,319	168,661
API	369	331	384	132	179	645	349	353	360	170	199	609	2,040
% API	1%	1%	1%	1%	1%	2%	1%	1%	1%	1%	1%	2%	1%
Black	5,746	9,007	9,423	4,245	3,644	4,544	4,883	8,712	9,654	5,362	3,993	4,005	36,609
% Black	19%	34%	32%	18%	14%	14%	17%	31%	34%	19%	14%	14%	22%
Latino	2,356	2,368	2,565	1,638	1,372	2,265	2,125	2,564	2,408	1,928	1,587	1,952	12,564
% Latino	8%	9%	9%	7%	5%	7%	8%	9%	9%	7%	6%	7%	7%
Other	1,571	1,455	1,586	1,333	1,384	1,675	1,435	1,543	1,535	1,596	1,450	1,445	9,004
% Other	5%	5%	5%	6%	5%	5%	5%	6%	5%	6%	5%	5%	5%
White	20,763	13,371	15,244	16,148	19,594	23,324	19,267	14,844	14,293	19,090	20,642	20,308	108,444
% White	67%	50%	52%	69%	75%	72%	69%	53%	51%	68%	74%	72%	64%

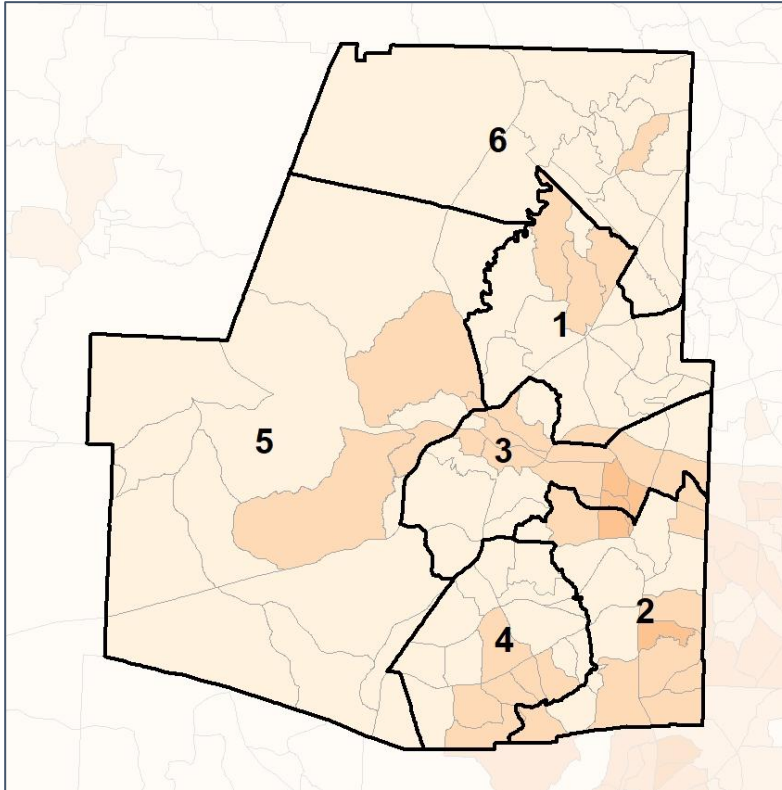


Paulding County School Board

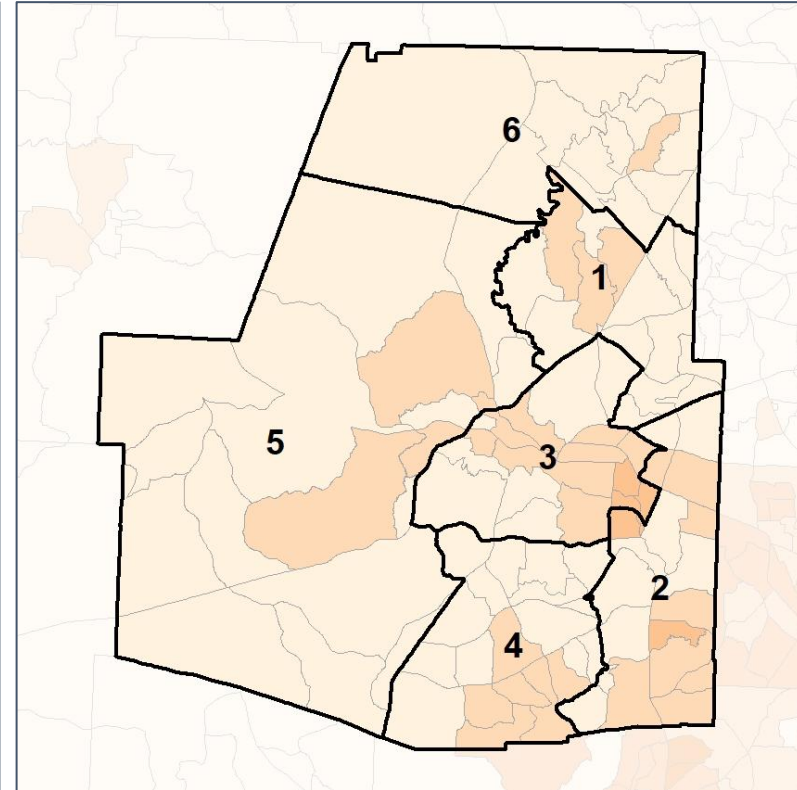
% Black by Census Block Group



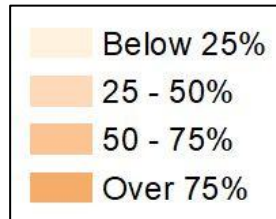
2012 Map



2022 Map*



	1	2	3	4	5	6	1*	2*	3*	4*	5*	6*	County
Population	30,805	26,532	29,202	23,496	26,173	32,453	28,059	28,016	28,250	28,146	27,871	28,319	168,661
API	369	331	384	132	179	645	349	353	360	170	199	609	2,040
% API	1%	1%	1%	1%	1%	2%	1%	1%	1%	1%	1%	2%	1%
Black	5,746	9,007	9,423	4,245	3,644	4,544	4,883	8,712	9,654	5,362	3,993	4,005	36,609
% Black	19%	34%	32%	18%	14%	14%	17%	31%	34%	19%	14%	14%	22%
Latino	2,356	2,368	2,565	1,638	1,372	2,265	2,125	2,564	2,408	1,928	1,587	1,952	12,564
% Latino	8%	9%	9%	7%	5%	7%	8%	9%	9%	7%	6%	7%	7%
Other	1,571	1,455	1,586	1,333	1,384	1,675	1,435	1,543	1,535	1,596	1,450	1,445	9,004
% Other	5%	5%	5%	6%	5%	5%	5%	6%	5%	6%	5%	5%	5%
White	20,763	13,371	15,244	16,148	19,594	23,324	19,267	14,844	14,293	19,090	20,642	20,308	108,444
% White	67%	50%	52%	69%	75%	72%	69%	53%	51%	68%	74%	72%	64%



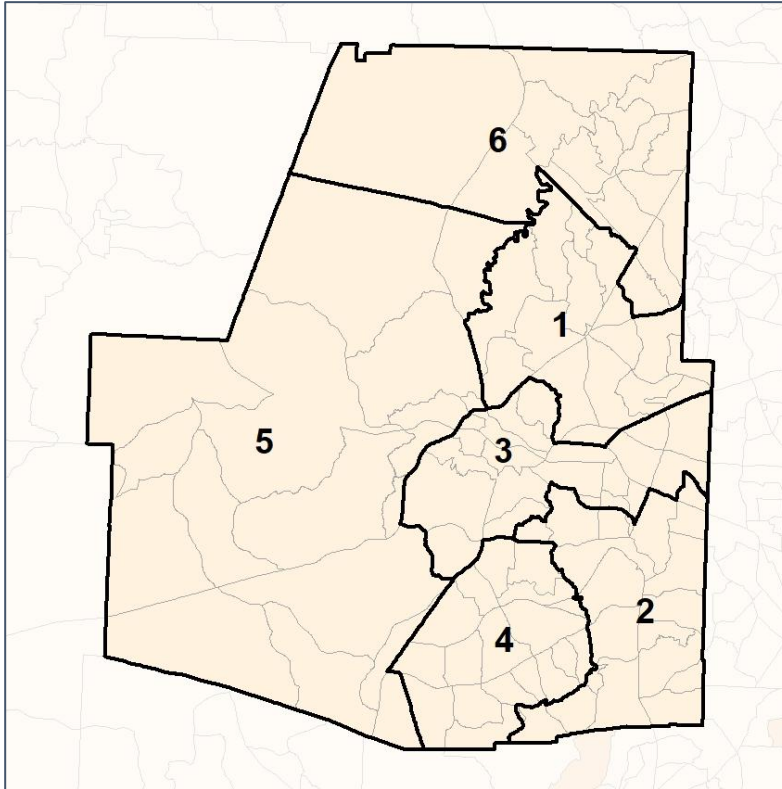
Source:
2020 Decennial Census
2020 ACS 5-Year Dataset

Paulding County School Board

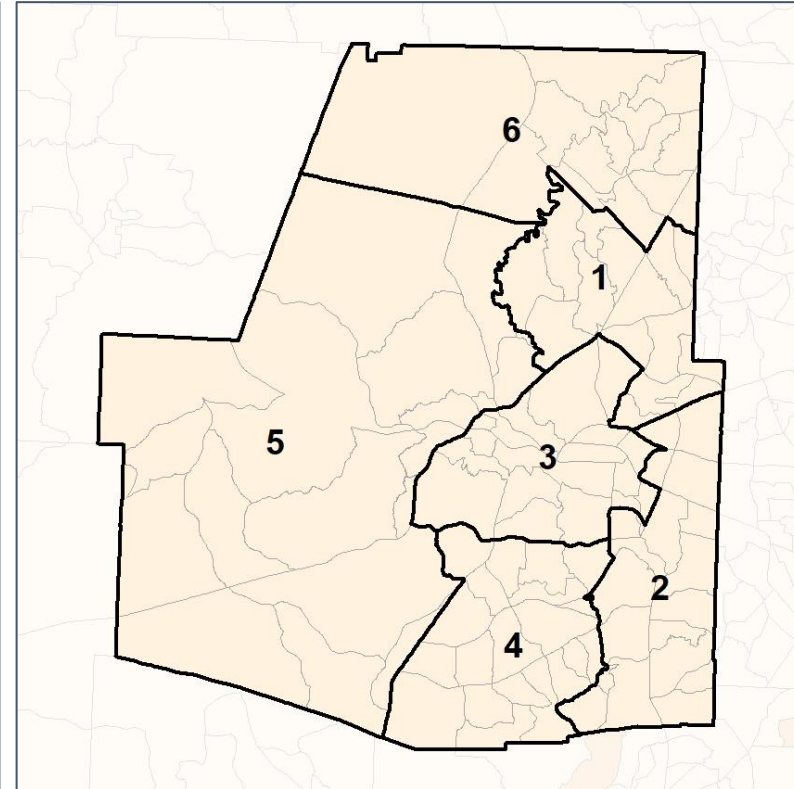
% Latino by Census Block Group



2012 Map



2022 Map*



	1	2	3	4	5	6	1*	2*	3*	4*	5*	6*	County
Population	30,805	26,532	29,202	23,496	26,173	32,453	28,059	28,016	28,250	28,146	27,871	28,319	168,661
API	369	331	384	132	179	645	349	353	360	170	199	609	2,040
% API	1%	1%	1%	1%	1%	2%	1%	1%	1%	1%	1%	2%	1%
Black	5,746	9,007	9,423	4,245	3,644	4,544	4,883	8,712	9,654	5,362	3,993	4,005	36,609
% Black	19%	34%	32%	18%	14%	14%	17%	31%	34%	19%	14%	14%	22%
Latino	2,356	2,368	2,565	1,638	1,372	2,265	2,125	2,564	2,408	1,928	1,587	1,952	12,564
% Latino	8%	9%	9%	7%	5%	7%	8%	9%	9%	7%	6%	7%	7%
Other	1,571	1,455	1,586	1,333	1,384	1,675	1,435	1,543	1,535	1,596	1,450	1,445	9,004
% Other	5%	5%	5%	6%	5%	5%	5%	6%	5%	6%	5%	5%	5%
White	20,763	13,371	15,244	16,148	19,594	23,324	19,267	14,844	14,293	19,090	20,642	20,308	108,444
% White	67%	50%	52%	69%	75%	72%	69%	53%	51%	68%	74%	72%	64%



Source:
2020 Decennial Census
2020 ACS 5-Year Dataset

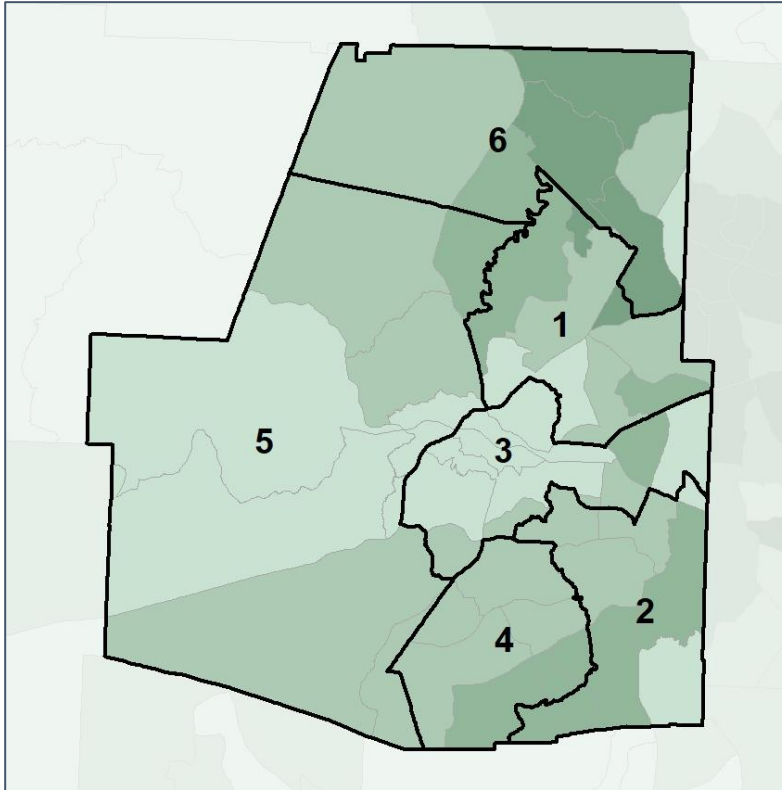


Paulding County School Board

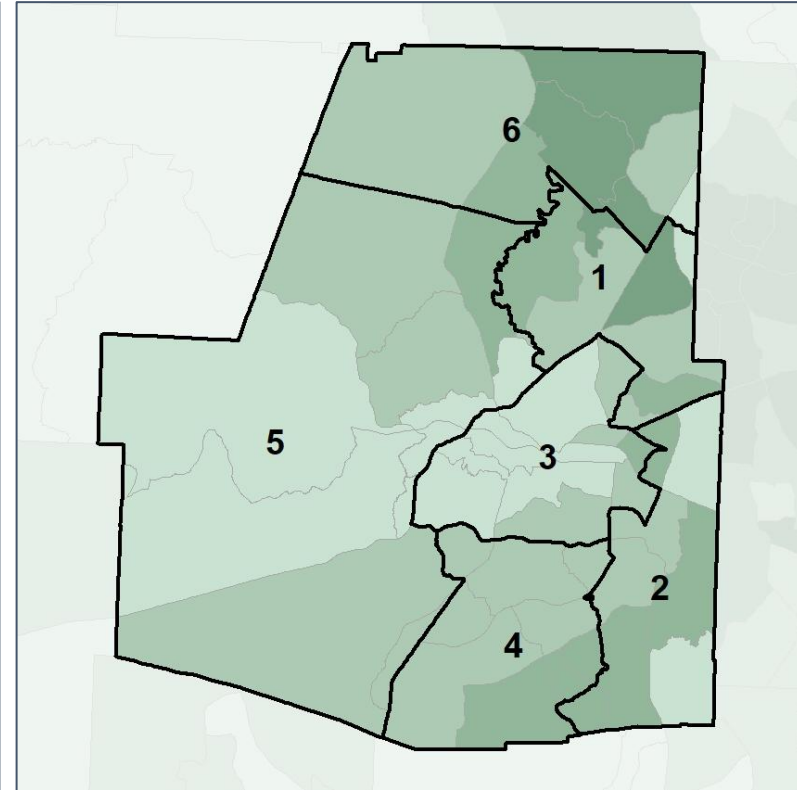
Median Household Income by Census Tract



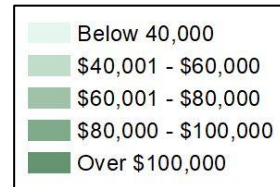
2012 Map



2022 Map*



	1	2	3	4	5	6	1*	2*	3*	4*	5*	6*	County
Population	30,805	26,532	29,202	23,496	26,173	32,453	28,059	28,016	28,250	28,146	27,871	28,319	168,661
% API	1%	1%	1%	1%	1%	2%	1%	1%	1%	1%	1%	2%	1%
% Black	19%	34%	32%	18%	14%	14%	17%	31%	34%	19%	14%	14%	22%
% Latino	8%	9%	9%	7%	5%	7%	8%	9%	9%	7%	6%	7%	7%
% Other	5%	5%	5%	6%	5%	5%	5%	6%	5%	6%	5%	5%	5%
% White	67%	50%	52%	69%	75%	72%	69%	53%	51%	68%	74%	72%	64%
Median Income	\$84,000	\$74,000	\$58,000	\$84,000	\$63,000	\$92,000	\$90,000	\$73,000	\$58,000	\$81,000	\$66,000	\$92,000	\$74,000
% Renter	23%	23%	28%	19%	29%	14%	15%	22%	35%	19%	28%	15%	22%
% Youth	24%	21%	21%	20%	23%	21%	25%	19%	24%	21%	22%	20%	22%

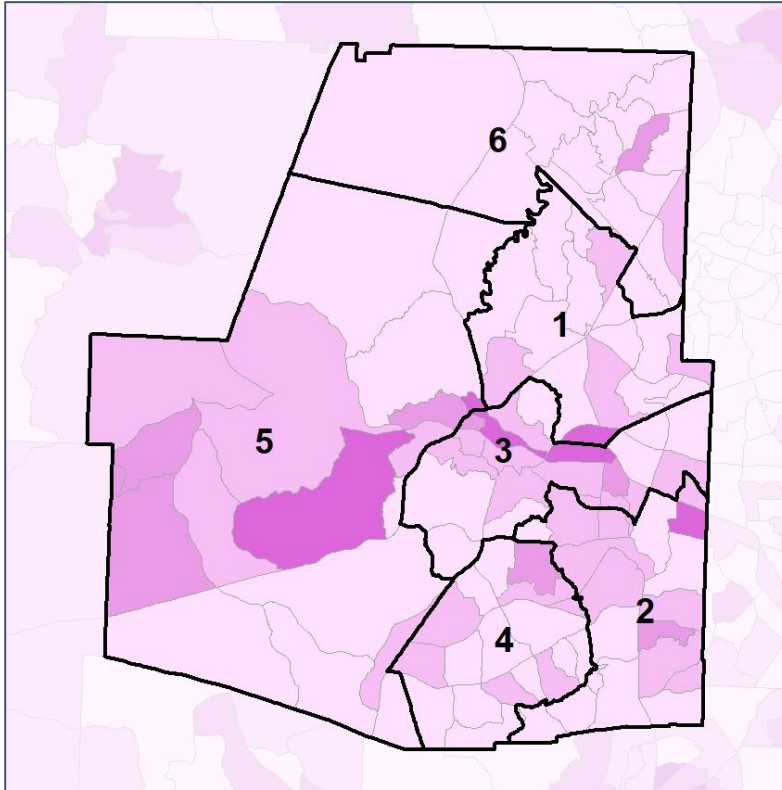


Paulding County School Board

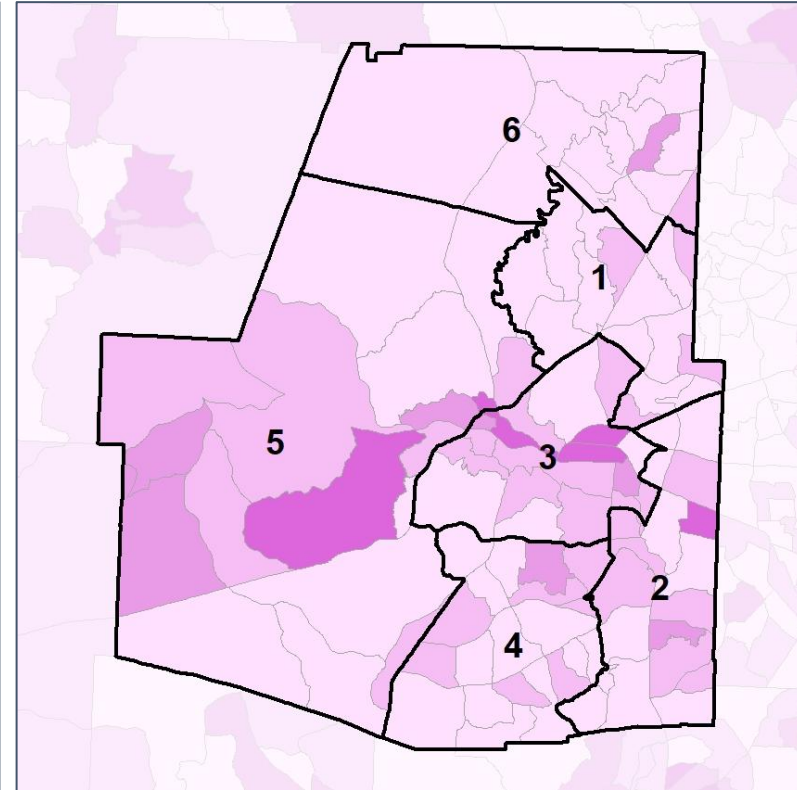
% Renter by Census Block Group



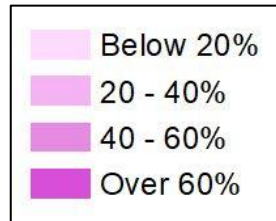
2012 Map



2022 Map*



	1	2	3	4	5	6	1*	2*	3*	4*	5*	6*	County
Population	30,805	26,532	29,202	23,496	26,173	32,453	28,059	28,016	28,250	28,146	27,871	28,319	168,661
% API	1%	1%	1%	1%	1%	2%	1%	1%	1%	1%	1%	2%	1%
% Black	19%	34%	32%	18%	14%	14%	17%	31%	34%	19%	14%	14%	22%
% Latino	8%	9%	9%	7%	5%	7%	8%	9%	9%	7%	6%	7%	7%
% Other	5%	5%	5%	6%	5%	5%	5%	6%	5%	6%	5%	5%	5%
% White	67%	50%	52%	69%	75%	72%	69%	53%	51%	68%	74%	72%	64%
Median Income	\$84,000	\$74,000	\$58,000	\$84,000	\$63,000	\$92,000	\$90,000	\$73,000	\$58,000	\$81,000	\$66,000	\$92,000	\$74,000
% Renter	23%	23%	28%	19%	29%	14%	15%	22%	35%	19%	28%	15%	22%
% Youth	24%	21%	21%	20%	23%	21%	25%	19%	24%	21%	22%	20%	22%

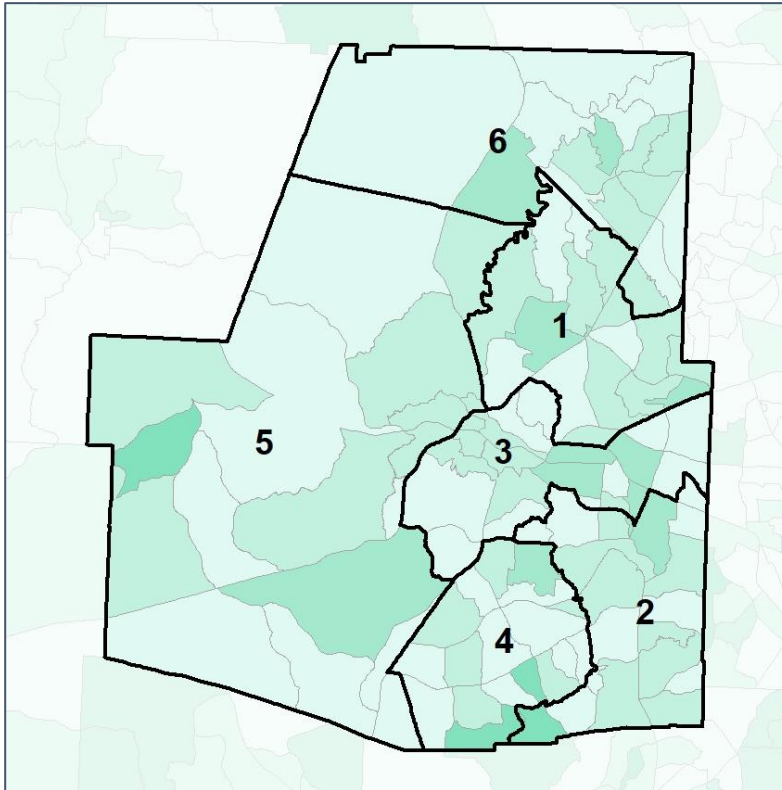


Paulding County School Board

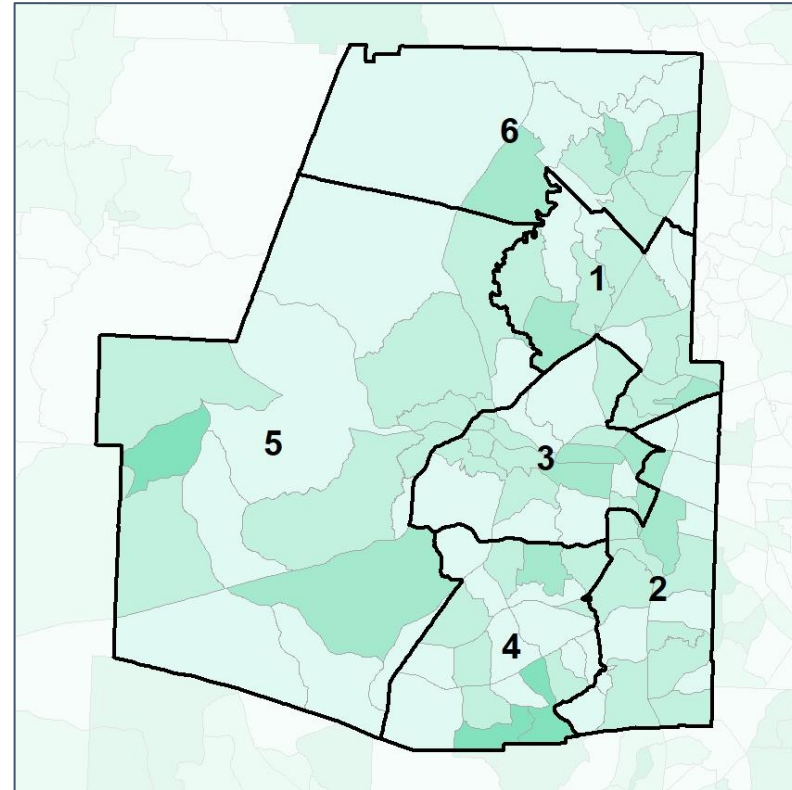
% Youth (18-34) by Census Block Group



2012 Map



2022 Map*



	1	2	3	4	5	6	1*	2*	3*	4*	5*	6*	County
Population	30,805	26,532	29,202	23,496	26,173	32,453	28,059	28,016	28,250	28,146	27,871	28,319	168,661
% API	1%	1%	1%	1%	1%	2%	1%	1%	1%	1%	1%	2%	1%
% Black	19%	34%	32%	18%	14%	14%	17%	31%	34%	19%	14%	14%	22%
% Latino	8%	9%	9%	7%	5%	7%	8%	9%	9%	7%	6%	7%	7%
% Other	5%	5%	5%	6%	5%	5%	5%	6%	5%	6%	5%	5%	5%
% White	67%	50%	52%	69%	75%	72%	69%	53%	51%	68%	74%	72%	64%
Median Income	\$84,000	\$74,000	\$58,000	\$84,000	\$63,000	\$92,000	\$90,000	\$73,000	\$58,000	\$81,000	\$66,000	\$92,000	\$74,000
% Renter	23%	23%	28%	19%	29%	14%	15%	22%	35%	19%	28%	15%	22%
% Youth	24%	21%	21%	20%	23%	21%	25%	19%	24%	21%	22%	20%	22%

