



Demographic Overview

Racial Breakdown in Oglethorpe County

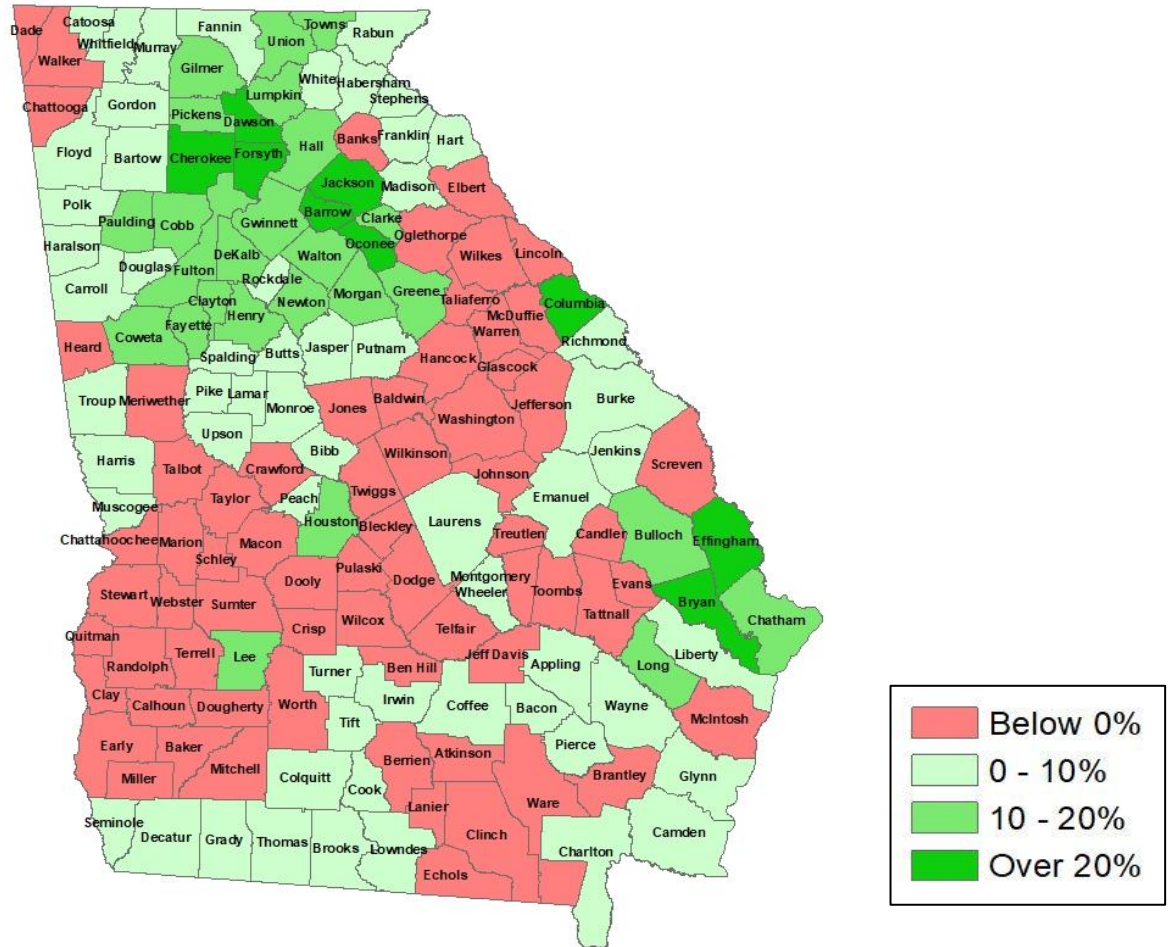
Oglethorpe County	2010	2020	% Change
Total Population	14,899	14,825	0%
AAPI	67	139	107%
Black	2,557	2,248	-12%
Latino	546	869	59%
Other/Mixed Race	300	666	122%
POC	3,470	3,922	13%
White	11,429	10,903	-5%





Population Gain

Change in Population in Georgia by County

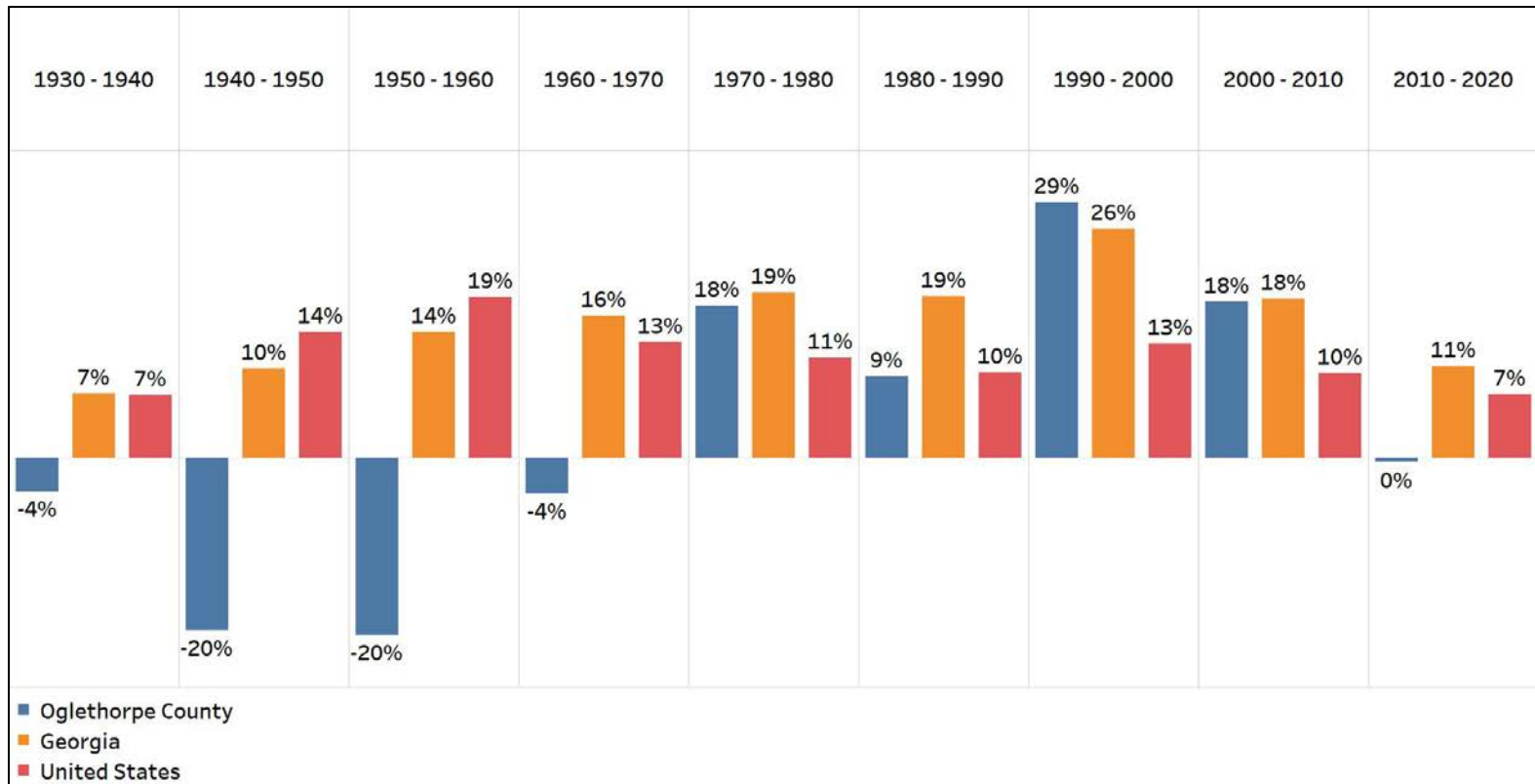


- Georgia is experiencing rapid population growth in the Atlanta, Augusta, and Savannah regions of the state



Population Gain

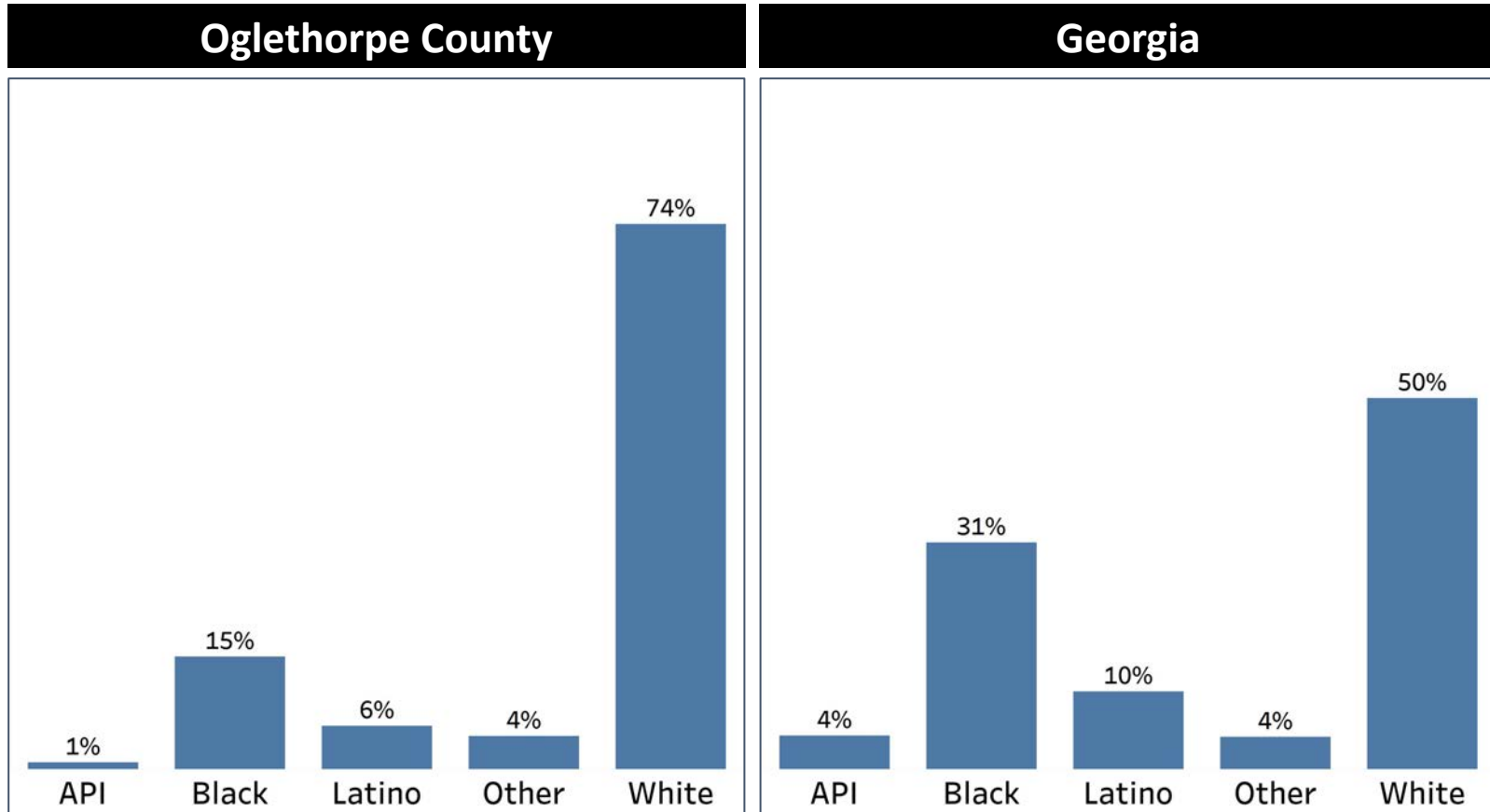
Change in Population by Decade



- Oglethorpe County had significant growth between 1970-2010, after a period of decline
- The last decade was the first time there was no growth in the county since 1970

Demographics

Comparison between Oglethorpe County and Georgia



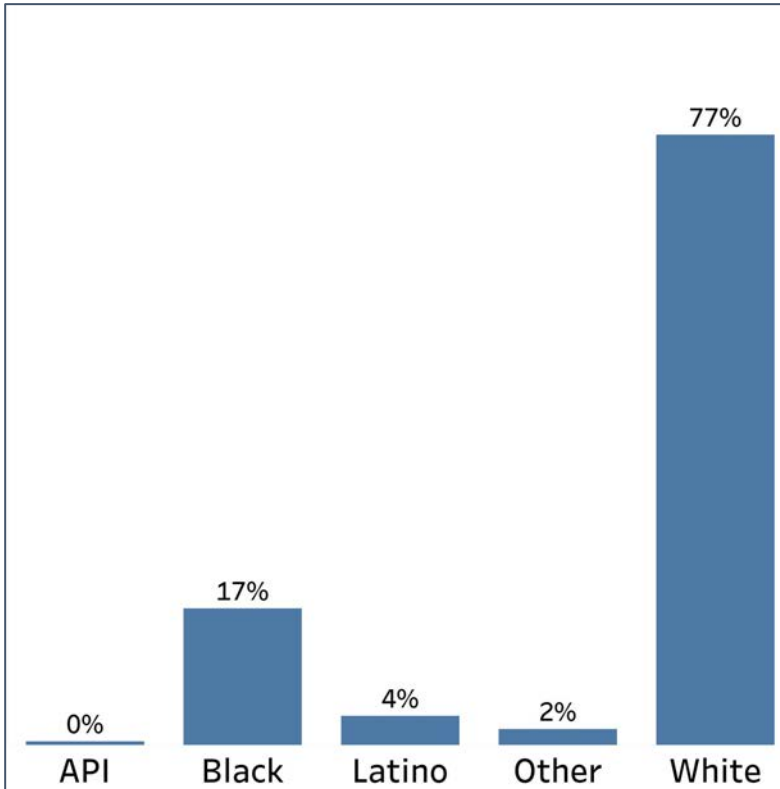
- Oglethorpe County is nearly $\frac{3}{4}$ White, and the only other demographic group that at least matches its share of the population to the statewide share is the Other demographic group
- While the county's share of the Black population is less than half of the overall share in Georgia, the Latino population's share is a little over half

Demographics

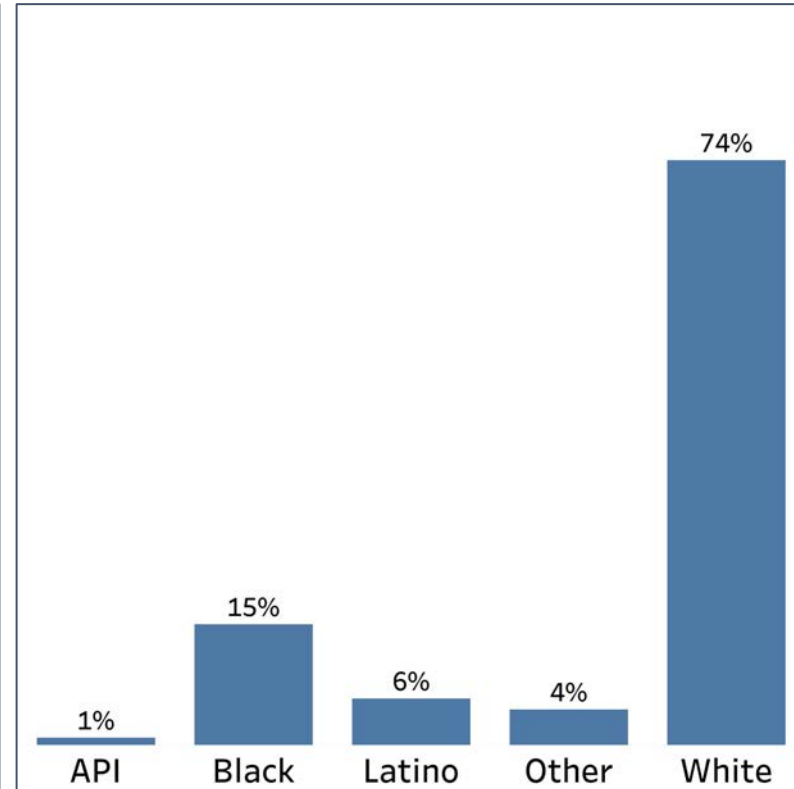
2010 vs 2020 Demographics in Oglethorpe County



Oglethorpe County 2010



Oglethorpe County 2020



- Oglethorpe County had declines in the share of both the Black and White populations, but saw an increase in the share of all other demographic groups, including the doubling of the Other population

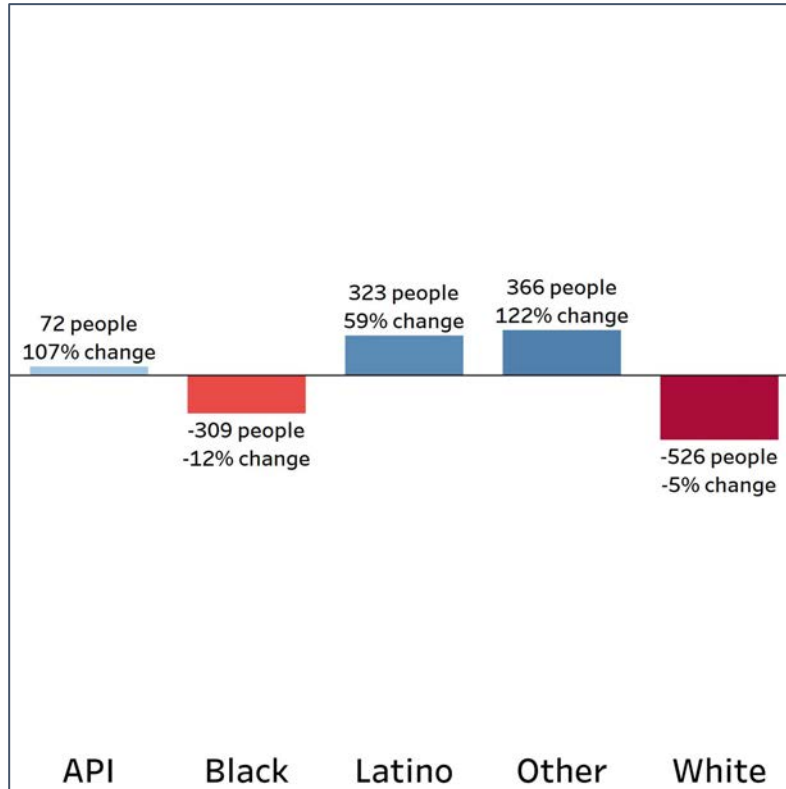


Demographics

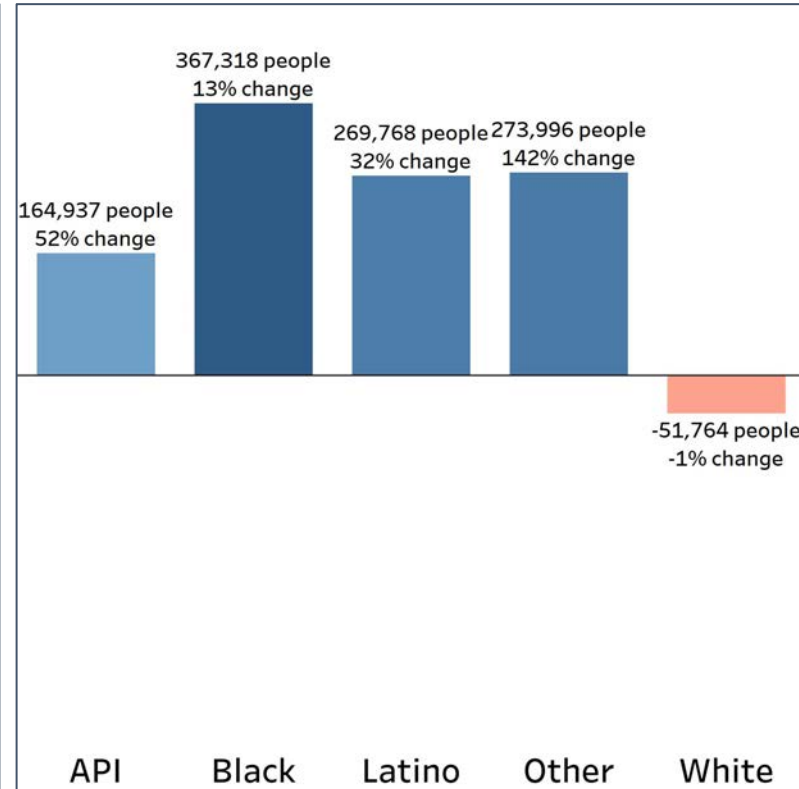
Population Change by Race (2020 - 2010)



Oglethorpe County



Georgia



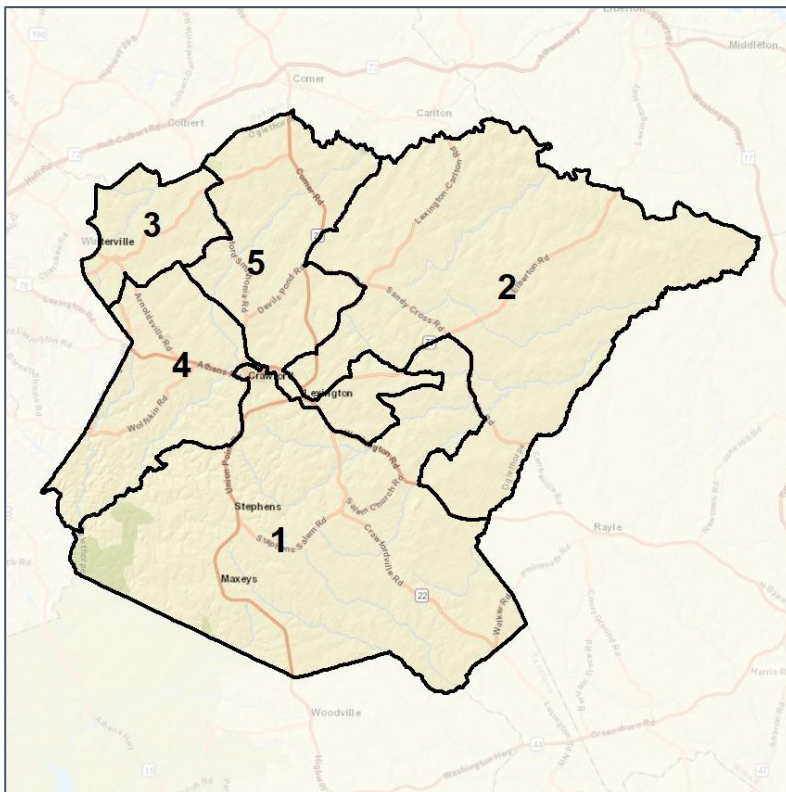
- Oglethorpe County had significant declines for both the Black and White populations, both of them having larger declines than seen in Georgia overall
- But, all other demographic groups saw higher growth rates than Georgia overall



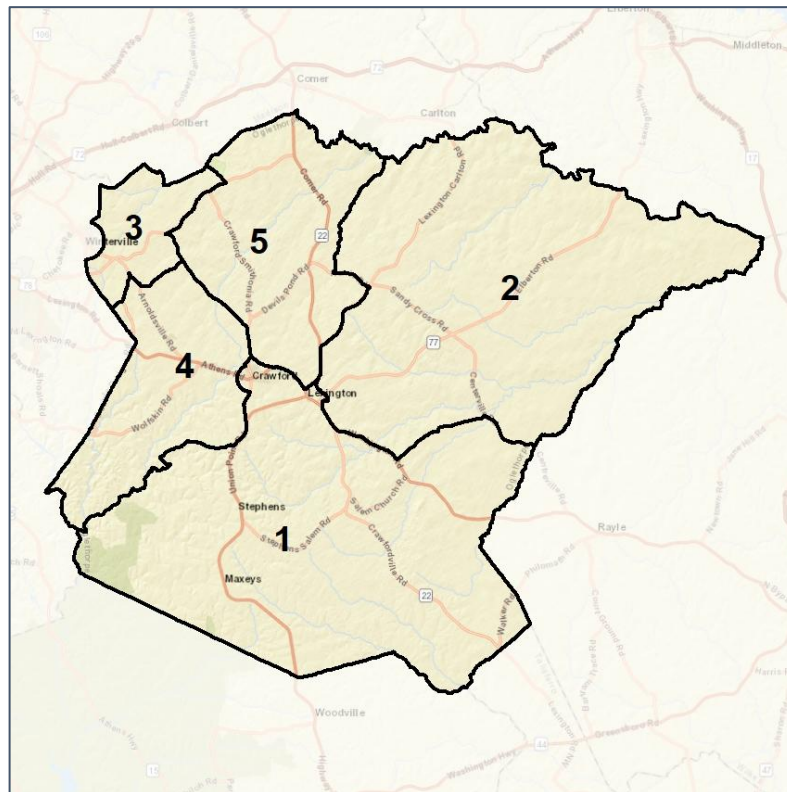
Oglethorpe Co. Commission & School Board Context



2012 Map



2022 Map*



	1	2	3	4	5	1*	2*	3*	4*	5*	County
Population	2,637	2,798	3,367	3,071	2,952	3,008	3,032	2,923	2,951	2,911	14,825
API	1%	3%	0%	0%	1%	0%	3%	0%	0%	1%	1%
Black	20%	22%	12%	17%	6%	20%	19%	11%	17%	8%	15%
Latino	5%	4%	7%	8%	5%	5%	3%	7%	8%	7%	6%
Other	4%	4%	5%	6%	4%	4%	3%	5%	6%	4%	4%
White	70%	68%	76%	69%	84%	70%	71%	77%	70%	80%	74%
Population Gain	-194	-177	214	113	-30	371	234	-444	-120	-41	*
Population % Gain	-7%	-6%	7%	4%	-1%	14%	8%	-13%	-4%	-1%	*
Net POC Gain	-53	-137	301	270	71	119	-27	-148	-43	99	*
Net POC % Gain	-6%	-13%	58%	40%	18%	15%	-3%	-18%	-5%	21%	*

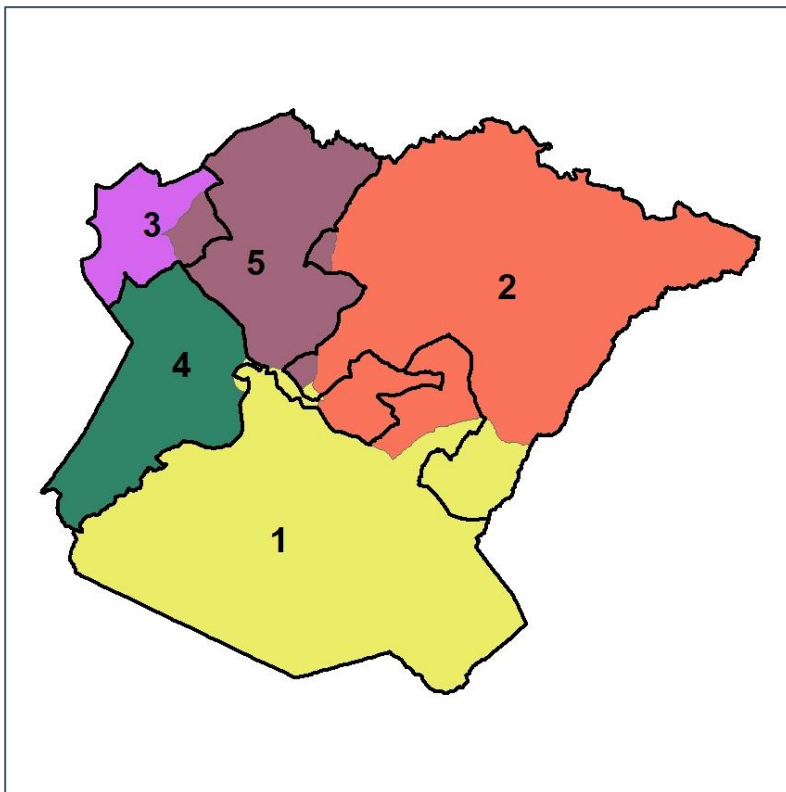


Oglethorpe Co. Commission & School Board

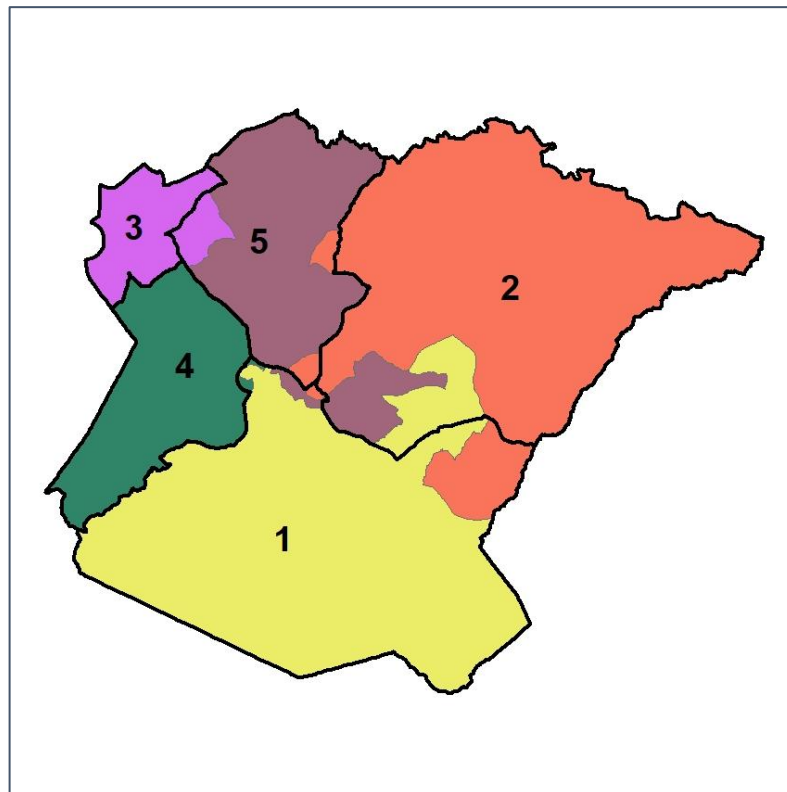
Changes in Redistricting



2012 Map (2022 in Colors)



2022 Map* (2012 in Colors)



	1	2	3	4	5	1*	2*	3*	4*	5*	County
Population	2,637	2,798	3,367	3,071	2,952	3,008	3,032	2,923	2,951	2,911	14,825
API	1%	3%	0%	0%	1%	0%	3%	0%	0%	1%	1%
Black	20%	22%	12%	17%	6%	20%	19%	11%	17%	8%	15%
Latino	5%	4%	7%	8%	5%	5%	3%	7%	8%	7%	6%
Other	4%	4%	5%	6%	4%	4%	3%	5%	6%	4%	4%
White	70%	68%	76%	69%	84%	70%	71%	77%	70%	80%	74%
Population Gain	-194	-177	214	113	-30	371	234	-444	-120	-41	*
Population % Gain	-7%	-6%	7%	4%	-1%	14%	8%	-13%	-4%	-1%	*
Net POC Gain	-53	-137	301	270	71	119	-27	-148	-43	99	*
Net POC % Gain	-6%	-13%	58%	40%	18%	15%	-3%	-18%	-5%	21%	*

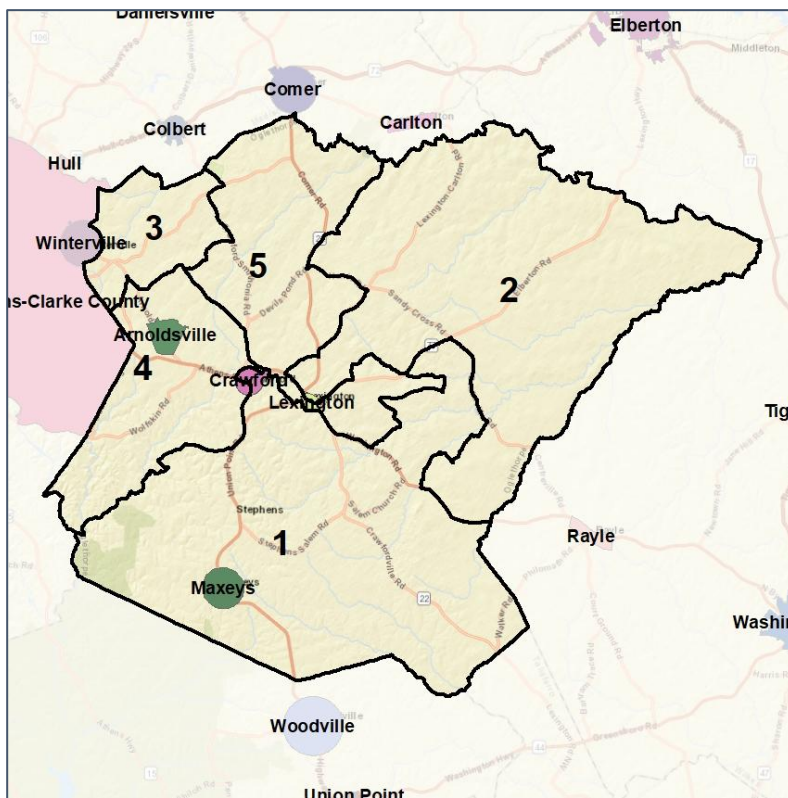


Oglethorpe Co. Commission & School Board

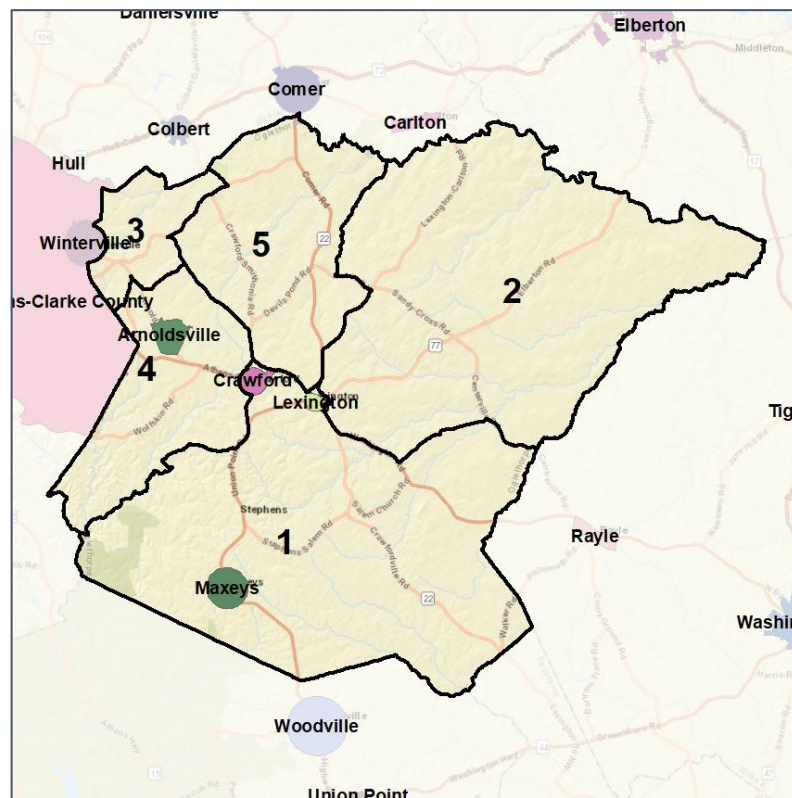
Cities and Places



2012 Map



2022 Map*



	1	2	3	4	5	1*	2*	3*	4*	5*	County
Population	2,637	2,798	3,367	3,071	2,952	3,008	3,032	2,923	2,951	2,911	14,825
API	1%	3%	0%	0%	1%	0%	3%	0%	0%	1%	1%
Black	20%	22%	12%	17%	6%	20%	19%	11%	17%	8%	15%
Latino	5%	4%	7%	8%	5%	5%	3%	7%	8%	7%	6%
Other	4%	4%	5%	6%	4%	4%	3%	5%	6%	4%	4%
White	70%	68%	76%	69%	84%	70%	71%	77%	70%	80%	74%
Population Gain	-194	-177	214	113	-30	371	234	-444	-120	-41	*
Population % Gain	-7%	-6%	7%	4%	-1%	14%	8%	-13%	-4%	-1%	*
Net POC Gain	-53	-137	301	270	71	119	-27	-148	-43	99	*
Net POC % Gain	-6%	-13%	58%	40%	18%	15%	-3%	-18%	-5%	21%	*

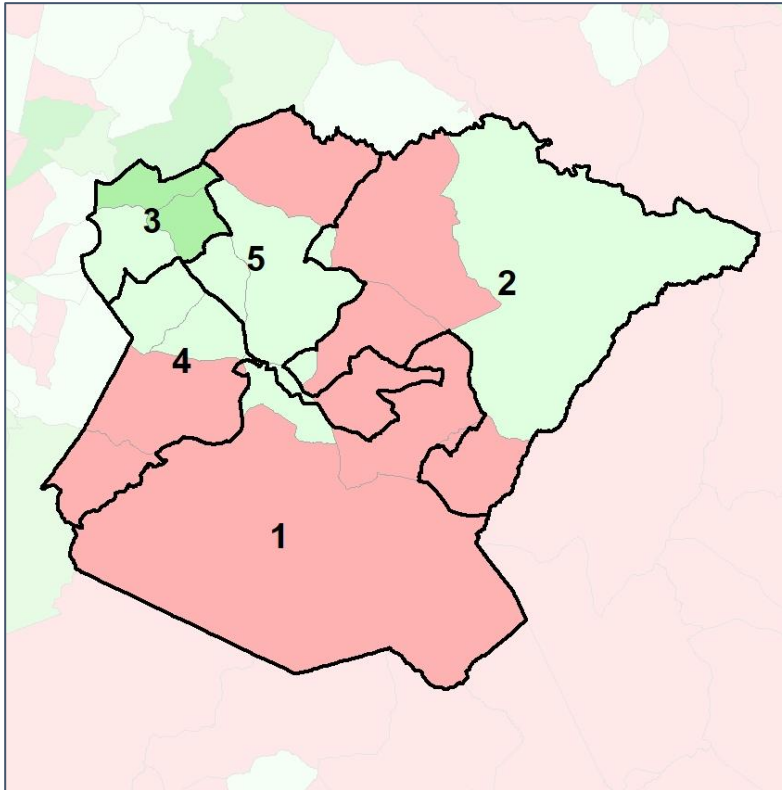


Oglethorpe Co. Commission & School Board

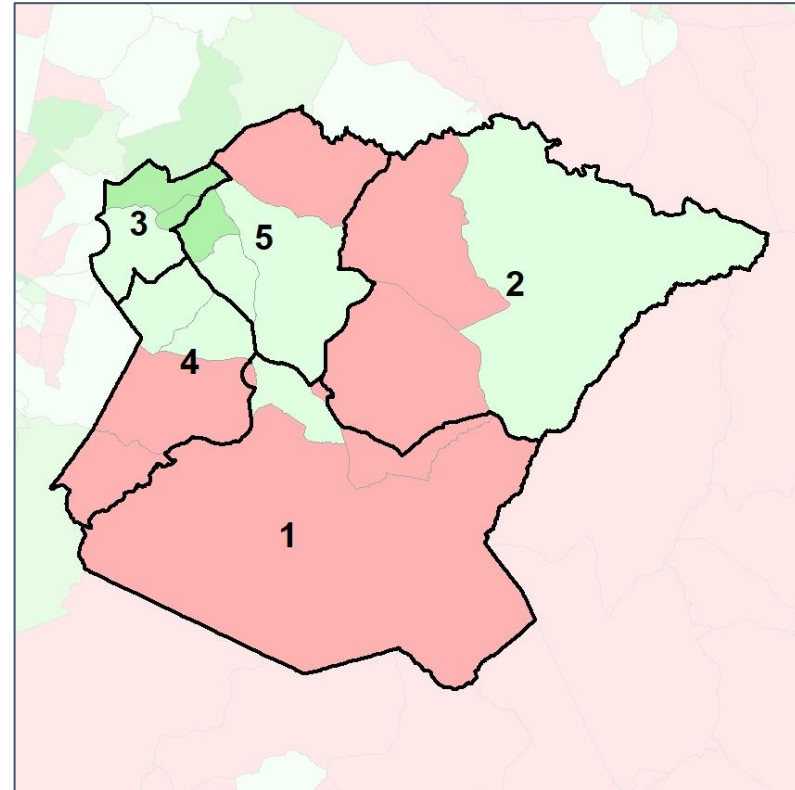
Net Gain in Population (2010 - 2020) by Census Block Group



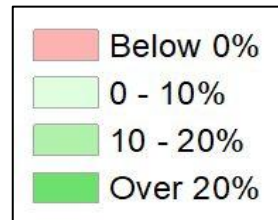
2012 Map



2022 Map*



	1	2	3	4	5	1*	2*	3*	4*	5*	County
Population	2,637	2,798	3,367	3,071	2,952	3,008	3,032	2,923	2,951	2,911	14,825
API	1%	3%	0%	0%	1%	0%	3%	0%	0%	1%	1%
Black	20%	22%	12%	17%	6%	20%	19%	11%	17%	8%	15%
Latino	5%	4%	7%	8%	5%	5%	3%	7%	8%	7%	6%
Other	4%	4%	5%	6%	4%	4%	3%	5%	6%	4%	4%
White	70%	68%	76%	69%	84%	70%	71%	77%	70%	80%	74%
Population Gain	-194	-177	214	113	-30	371	234	-444	-120	-41	*
Population % Gain	-7%	-6%	7%	4%	-1%	14%	8%	-13%	-4%	-1%	*
Net POC Gain	-53	-137	301	270	71	119	-27	-148	-43	99	*
Net POC % Gain	-6%	-13%	58%	40%	18%	15%	-3%	-18%	-5%	21%	*

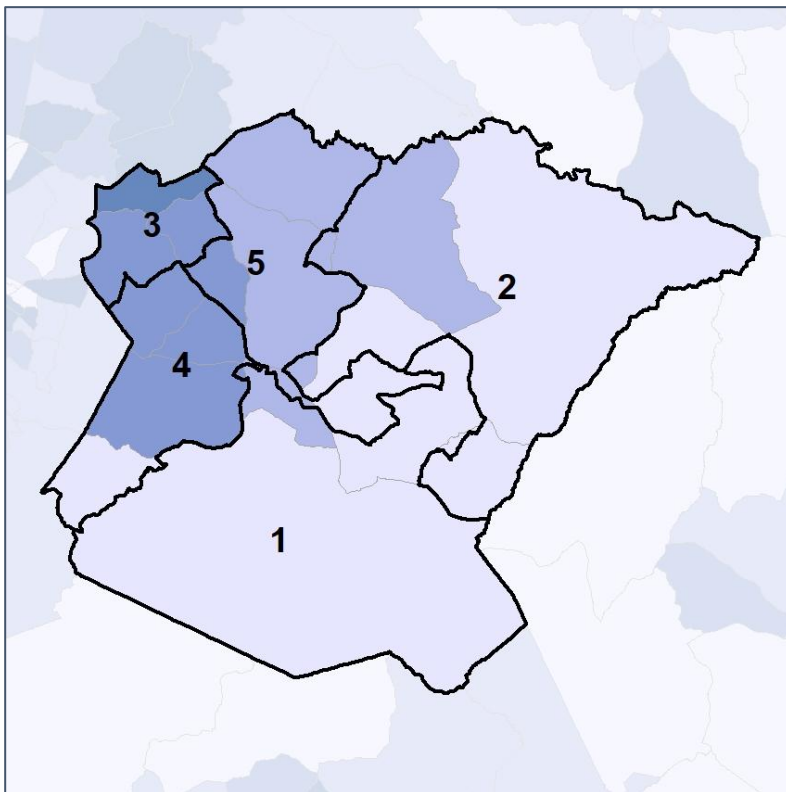


Oglethorpe Co. Commission & School Board

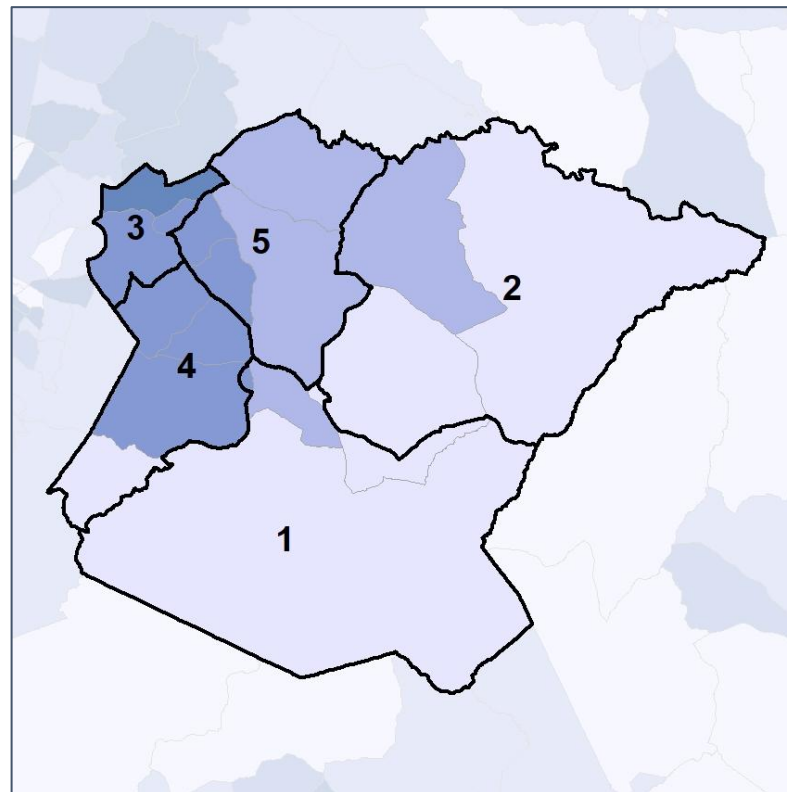
Net Gain in % POC (2020 - 2010) by Census Block Group



2012 Map



2022 Map*



	1	2	3	4	5	1*	2*	3*	4*	5*	County
Population	2,637	2,798	3,367	3,071	2,952	3,008	3,032	2,923	2,951	2,911	14,825
API	1%	3%	0%	0%	1%	0%	3%	0%	0%	1%	1%
Black	20%	22%	12%	17%	6%	20%	19%	11%	17%	8%	15%
Latino	5%	4%	7%	8%	5%	5%	3%	7%	8%	7%	6%
Other	4%	4%	5%	6%	4%	4%	3%	5%	6%	4%	4%
White	70%	68%	76%	69%	84%	70%	71%	77%	70%	80%	74%
Population Gain	-194	-177	214	113	-30	371	234	-444	-120	-41	*
Population % Gain	-7%	-6%	7%	4%	-1%	14%	8%	-13%	-4%	-1%	*
Net POC Gain	-53	-137	301	270	71	119	-27	-148	-43	99	*
Net POC % Gain	-6%	-13%	58%	40%	18%	15%	-3%	-18%	-5%	21%	*

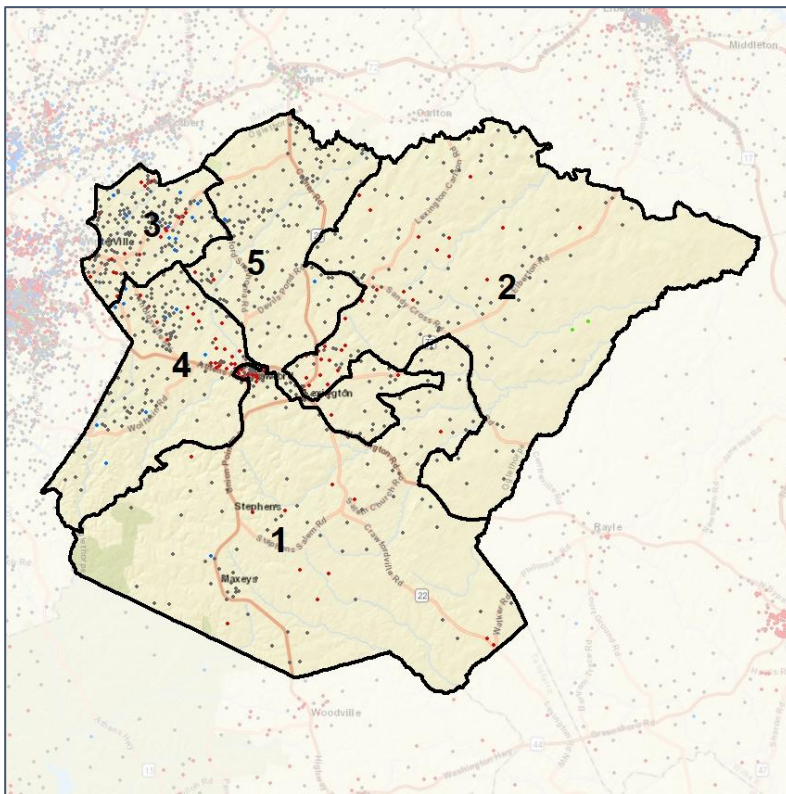


Oglethorpe Co. Commission & School Board

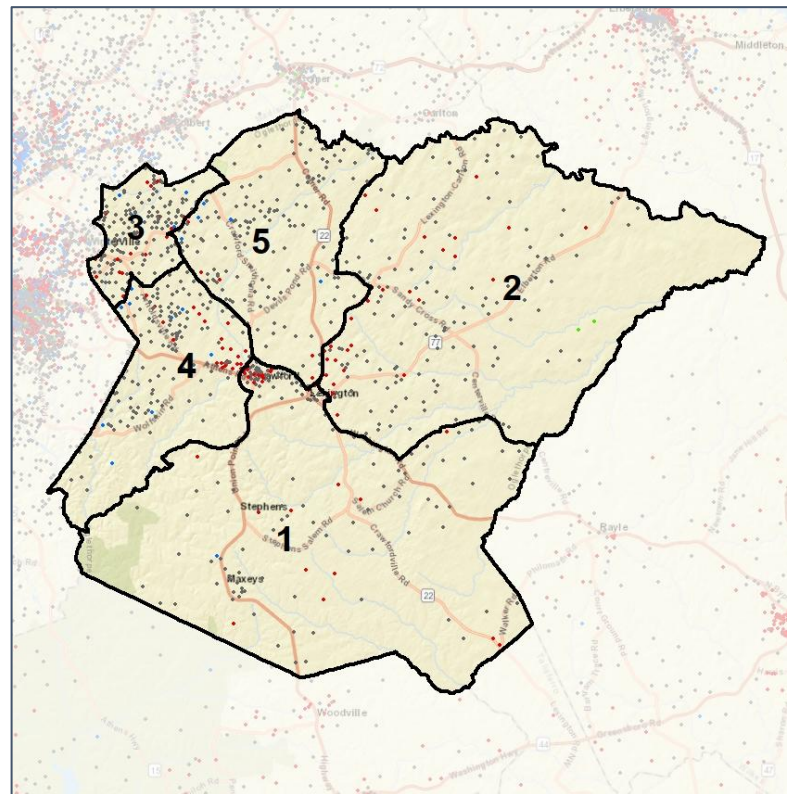
Population Density by Race



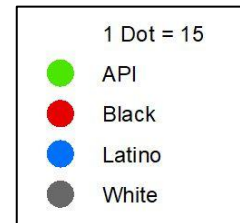
2012 Map



2022 Map*



	1	2	3	4	5	1*	2*	3*	4*	5*	County
Population	2,637	2,798	3,367	3,071	2,952	3,008	3,032	2,923	2,951	2,911	14,825
API	18	71	15	4	31	15	76	11	4	33	139
% API	1%	3%	0%	0%	1%	0%	3%	0%	0%	1%	1%
Black	538	605	396	523	186	612	585	332	497	222	2,248
% Black	20%	22%	12%	17%	6%	20%	19%	11%	17%	8%	15%
Latino	137	106	252	235	139	158	102	190	223	196	869
% Latino	5%	4%	7%	8%	5%	5%	3%	7%	8%	7%	6%
Other	98	113	160	179	116	125	105	142	174	120	666
% Other	4%	4%	5%	6%	4%	4%	3%	5%	6%	4%	4%
White	1,846	1,903	2,544	2,130	2,480	2,098	2,164	2,248	2,053	2,340	10,903
% White	70%	68%	76%	69%	84%	70%	71%	77%	70%	80%	74%

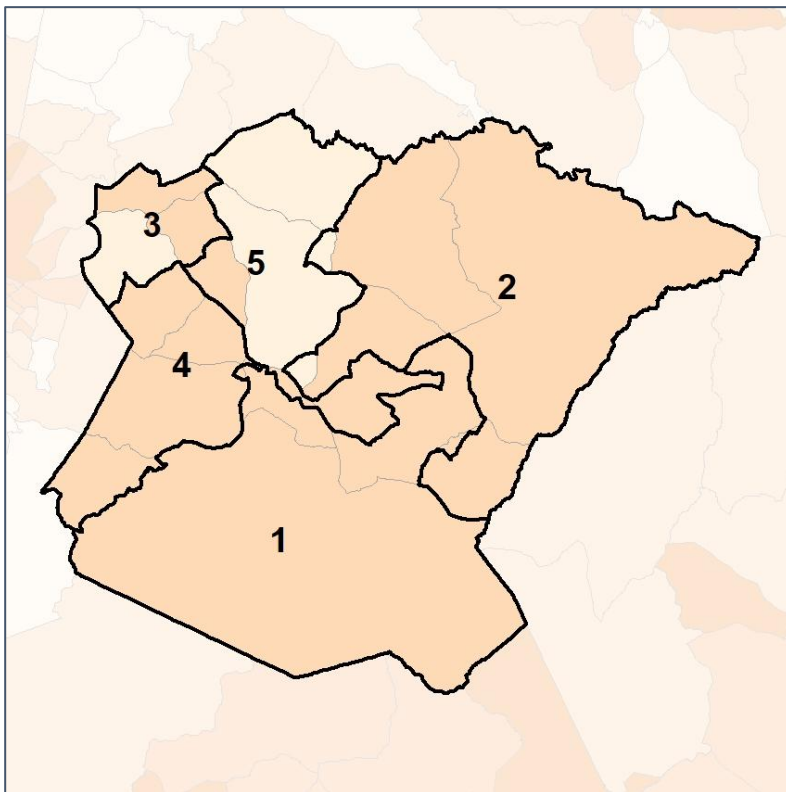


Oglethorpe Co. Commission & School Board

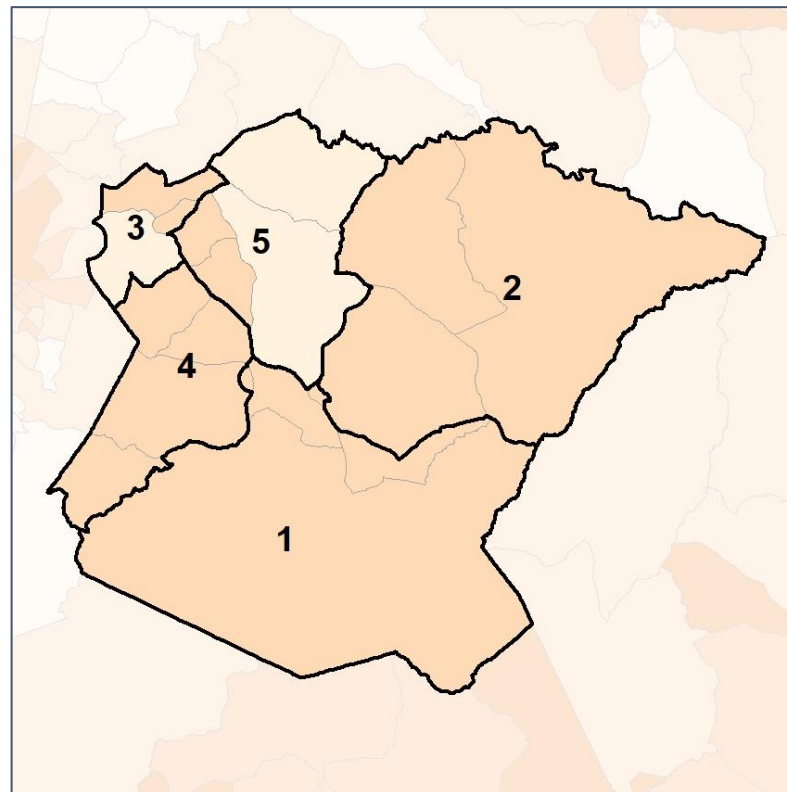
% People of Color by Census Block Group



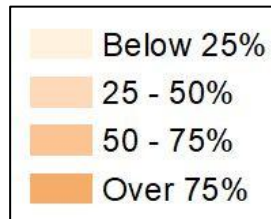
2012 Map



2022 Map*



	1	2	3	4	5	1*	2*	3*	4*	5*	County
Population	2,637	2,798	3,367	3,071	2,952	3,008	3,032	2,923	2,951	2,911	14,825
API	18	71	15	4	31	15	76	11	4	33	139
% API	1%	3%	0%	0%	1%	0%	3%	0%	0%	1%	1%
Black	538	605	396	523	186	612	585	332	497	222	2,248
% Black	20%	22%	12%	17%	6%	20%	19%	11%	17%	8%	15%
Latino	137	106	252	235	139	158	102	190	223	196	869
% Latino	5%	4%	7%	8%	5%	5%	3%	7%	8%	7%	6%
Other	98	113	160	179	116	125	105	142	174	120	666
% Other	4%	4%	5%	6%	4%	4%	3%	5%	6%	4%	4%
White	1,846	1,903	2,544	2,130	2,480	2,098	2,164	2,248	2,053	2,340	10,903
% White	70%	68%	76%	69%	84%	70%	71%	77%	70%	80%	74%

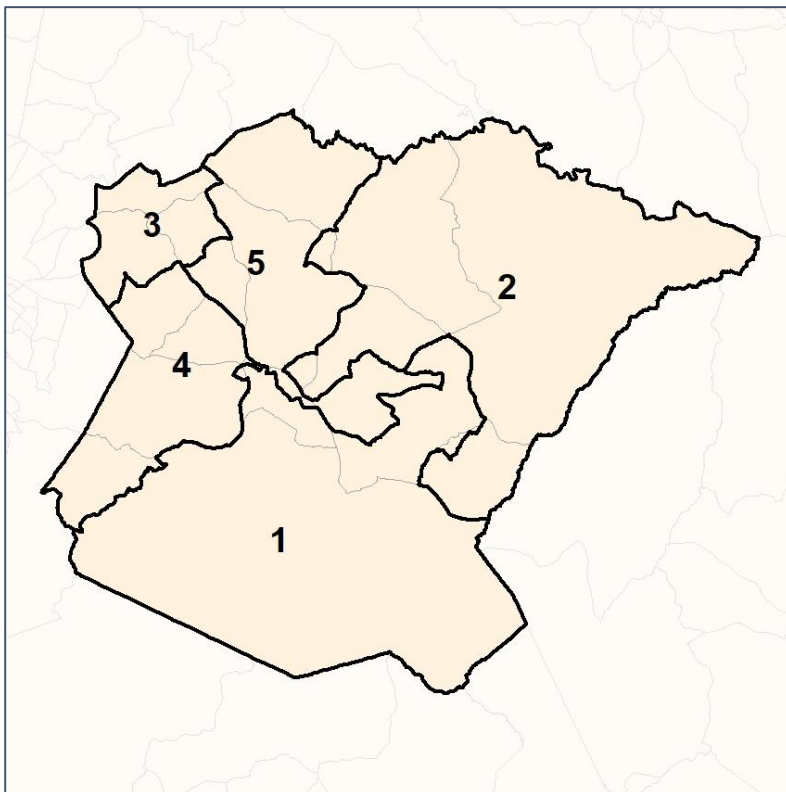


Oglethorpe Co. Commission & School Board

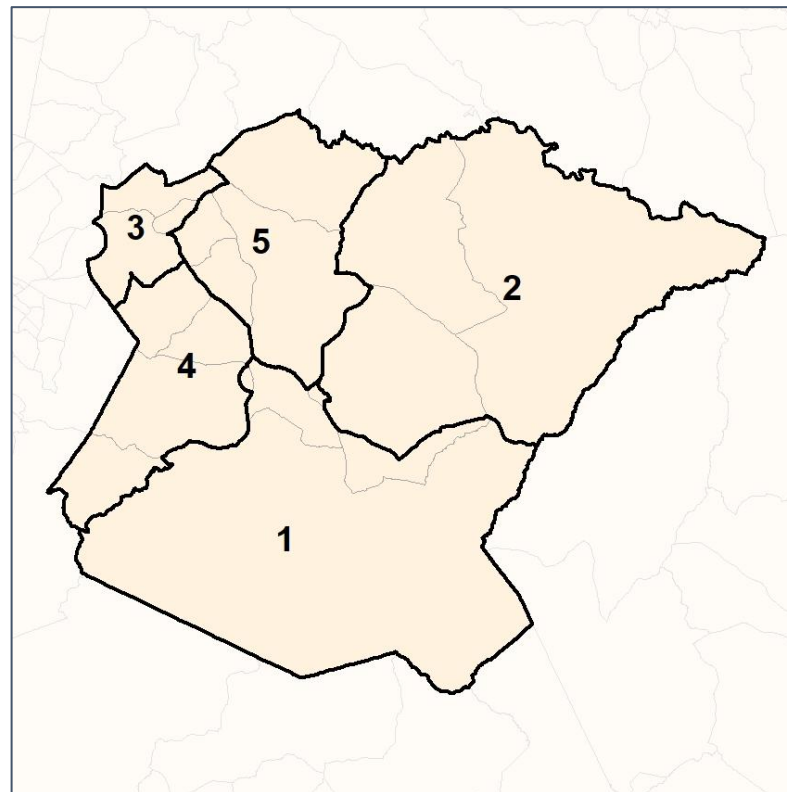
% API by Census Block Group



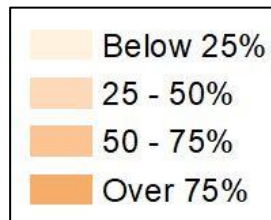
2012 Map



2022 Map*



	1	2	3	4	5	1*	2*	3*	4*	5*	County
Population	2,637	2,798	3,367	3,071	2,952	3,008	3,032	2,923	2,951	2,911	14,825
API	18	71	15	4	31	15	76	11	4	33	139
% API	1%	3%	0%	0%	1%	0%	3%	0%	0%	1%	1%
Black	538	605	396	523	186	612	585	332	497	222	2,248
% Black	20%	22%	12%	17%	6%	20%	19%	11%	17%	8%	15%
Latino	137	106	252	235	139	158	102	190	223	196	869
% Latino	5%	4%	7%	8%	5%	5%	3%	7%	8%	7%	6%
Other	98	113	160	179	116	125	105	142	174	120	666
% Other	4%	4%	5%	6%	4%	4%	3%	5%	6%	4%	4%
White	1,846	1,903	2,544	2,130	2,480	2,098	2,164	2,248	2,053	2,340	10,903
% White	70%	68%	76%	69%	84%	70%	71%	77%	70%	80%	74%

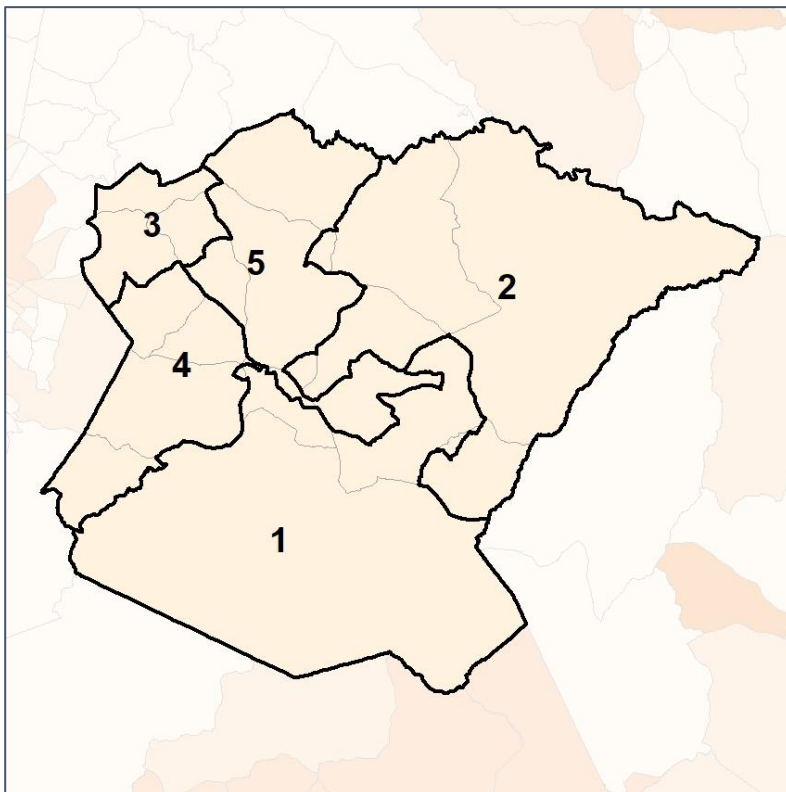


Oglethorpe Co. Commission & School Board

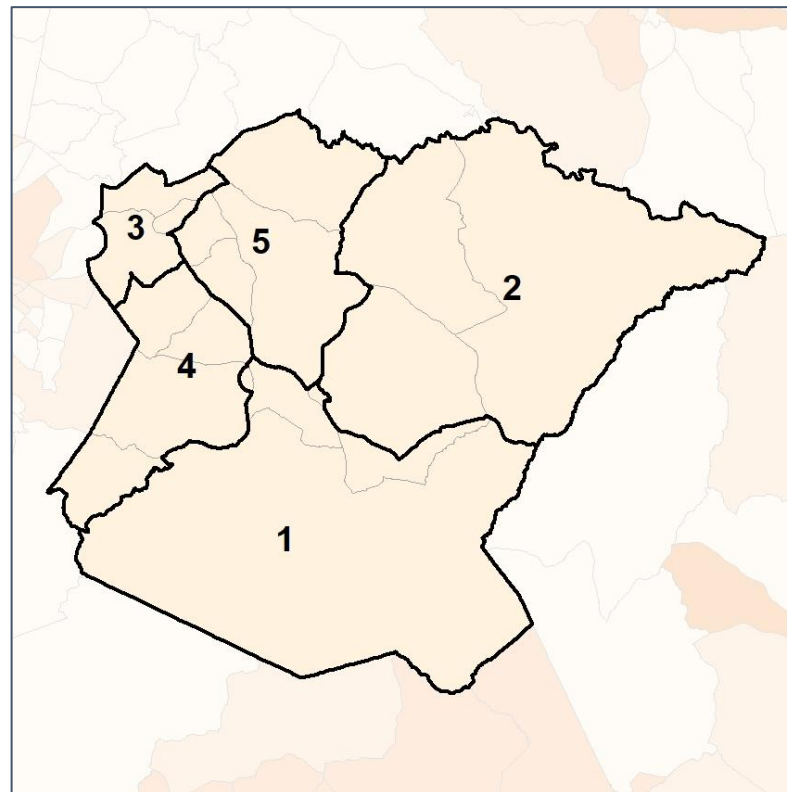
% Black by Census Block Group



2012 Map



2022 Map*



	1	2	3	4	5	1*	2*	3*	4*	5*	County
Population	2,637	2,798	3,367	3,071	2,952	3,008	3,032	2,923	2,951	2,911	14,825
API	18	71	15	4	31	15	76	11	4	33	139
% API	1%	3%	0%	0%	1%	0%	3%	0%	0%	1%	1%
Black	538	605	396	523	186	612	585	332	497	222	2,248
% Black	20%	22%	12%	17%	6%	20%	19%	11%	17%	8%	15%
Latino	137	106	252	235	139	158	102	190	223	196	869
% Latino	5%	4%	7%	8%	5%	5%	3%	7%	8%	7%	6%
Other	98	113	160	179	116	125	105	142	174	120	666
% Other	4%	4%	5%	6%	4%	4%	3%	5%	6%	4%	4%
White	1,846	1,903	2,544	2,130	2,480	2,098	2,164	2,248	2,053	2,340	10,903
% White	70%	68%	76%	69%	84%	70%	71%	77%	70%	80%	74%



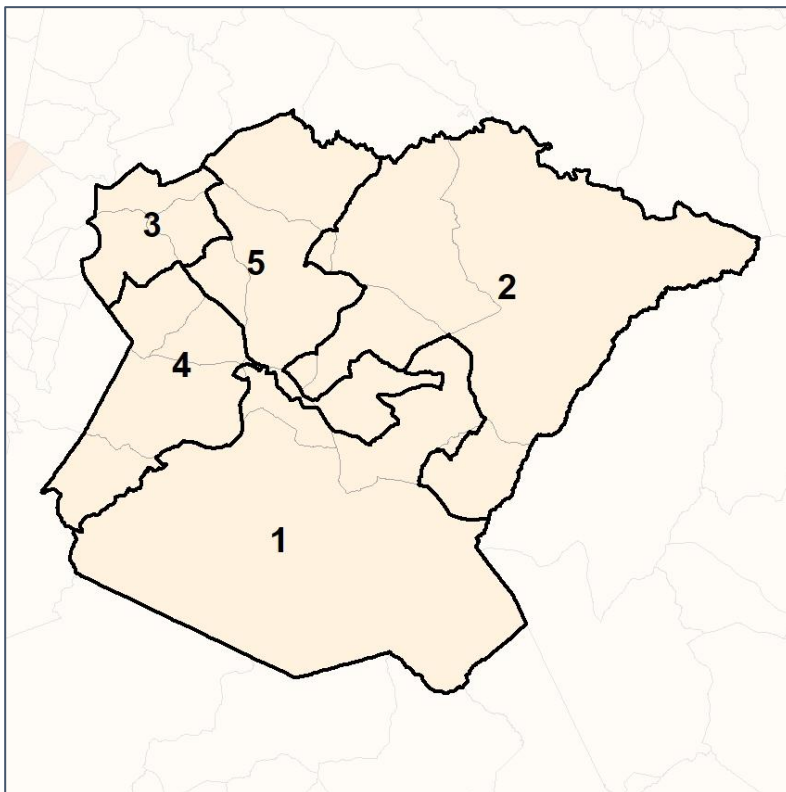
Source:
2020 Decennial Census
2020 ACS 5-Year Dataset

Oglethorpe Co. Commission & School Board

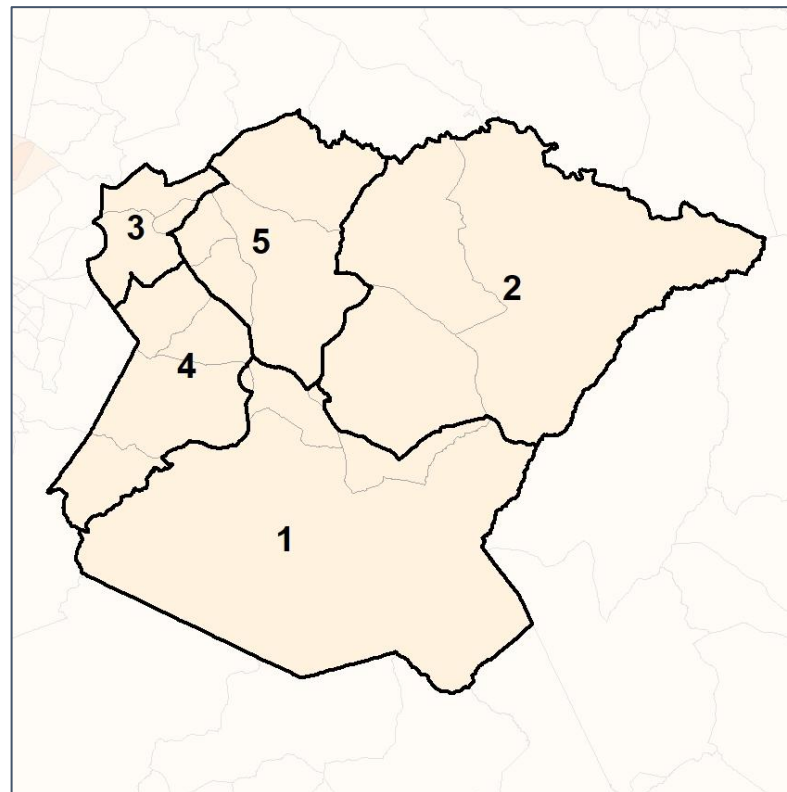
% Latino by Census Block Group



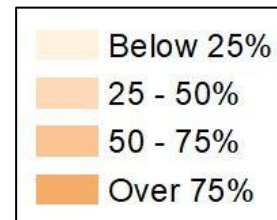
2012 Map



2022 Map*



	1	2	3	4	5	1*	2*	3*	4*	5*	County
Population	2,637	2,798	3,367	3,071	2,952	3,008	3,032	2,923	2,951	2,911	14,825
API	18	71	15	4	31	15	76	11	4	33	139
% API	1%	3%	0%	0%	1%	0%	3%	0%	0%	1%	1%
Black	538	605	396	523	186	612	585	332	497	222	2,248
% Black	20%	22%	12%	17%	6%	20%	19%	11%	17%	8%	15%
Latino	137	106	252	235	139	158	102	190	223	196	869
% Latino	5%	4%	7%	8%	5%	5%	3%	7%	8%	7%	6%
Other	98	113	160	179	116	125	105	142	174	120	666
% Other	4%	4%	5%	6%	4%	4%	3%	5%	6%	4%	4%
White	1,846	1,903	2,544	2,130	2,480	2,098	2,164	2,248	2,053	2,340	10,903
% White	70%	68%	76%	69%	84%	70%	71%	77%	70%	80%	74%

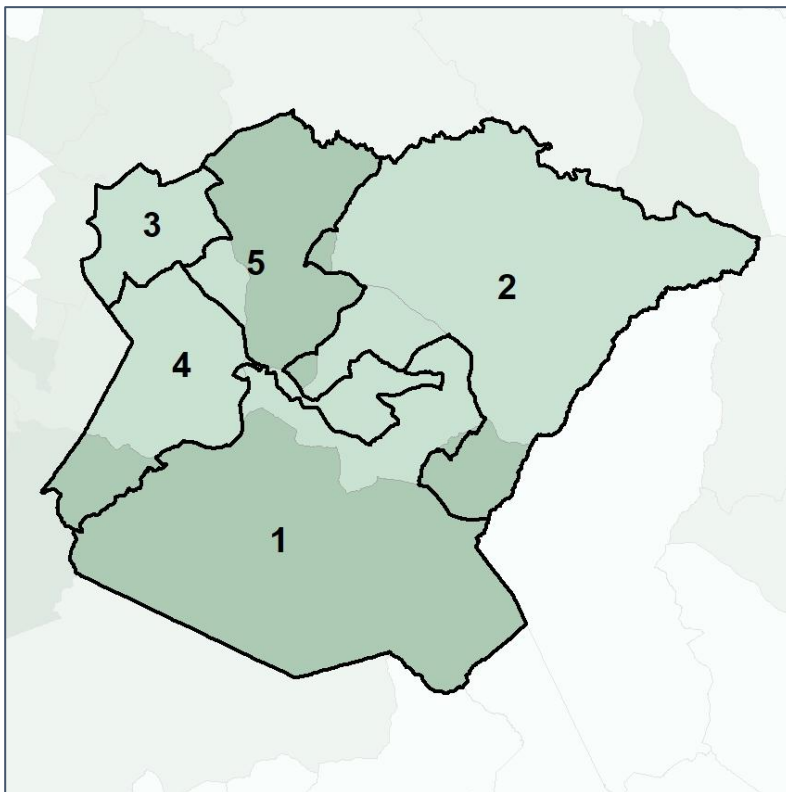


Oglethorpe Co. Commission & School Board

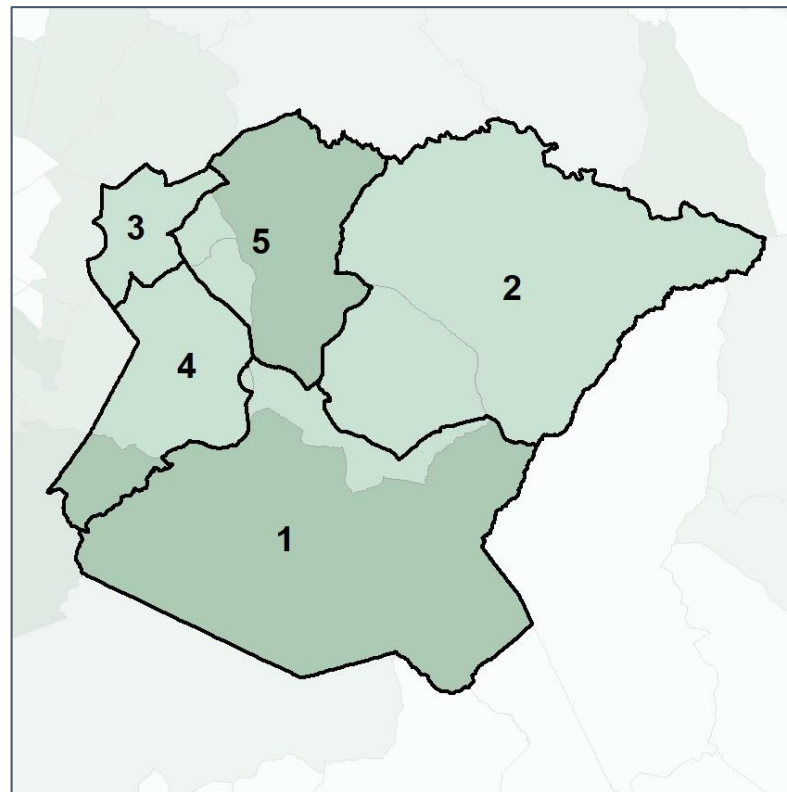
Median Household Income by Census Tract



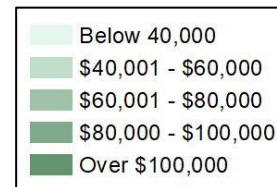
2012 Map



2022 Map*



	1	2	3	4	5	1*	2*	3*	4*	5*	County
Population	2,637	2,798	3,367	3,071	2,952	3,008	3,032	2,923	2,951	2,911	14,825
% API	1%	3%	0%	0%	1%	0%	3%	0%	0%	1%	1%
% Black	20%	22%	12%	17%	6%	20%	19%	11%	17%	8%	15%
% Latino	5%	4%	7%	8%	5%	5%	3%	7%	8%	7%	6%
% Other	4%	4%	5%	6%	4%	4%	3%	5%	6%	4%	4%
% White	70%	68%	76%	69%	84%	70%	71%	77%	70%	80%	74%
Median Income	\$51,000	\$49,000	\$61,000	\$38,000	\$66,000	\$51,000	\$50,000	\$61,000	\$38,000	\$76,000	\$53,000
% Renter	33%	16%	18%	30%	15%	33%	14%	24%	30%	13%	23%
% Youth	21%	25%	18%	20%	14%	21%	19%	18%	20%	15%	19%

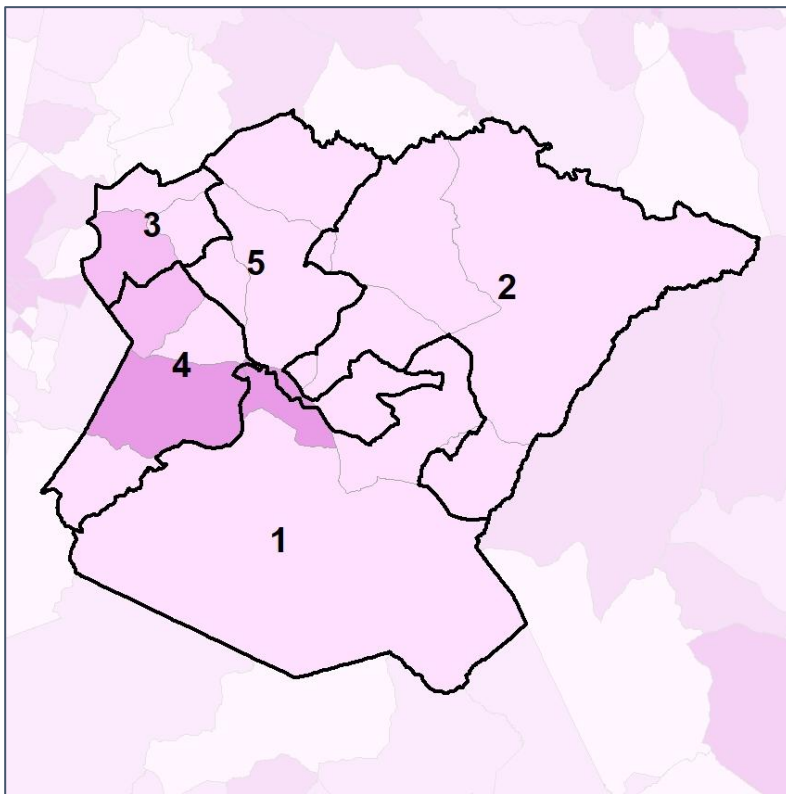


Oglethorpe Co. Commission & School Board

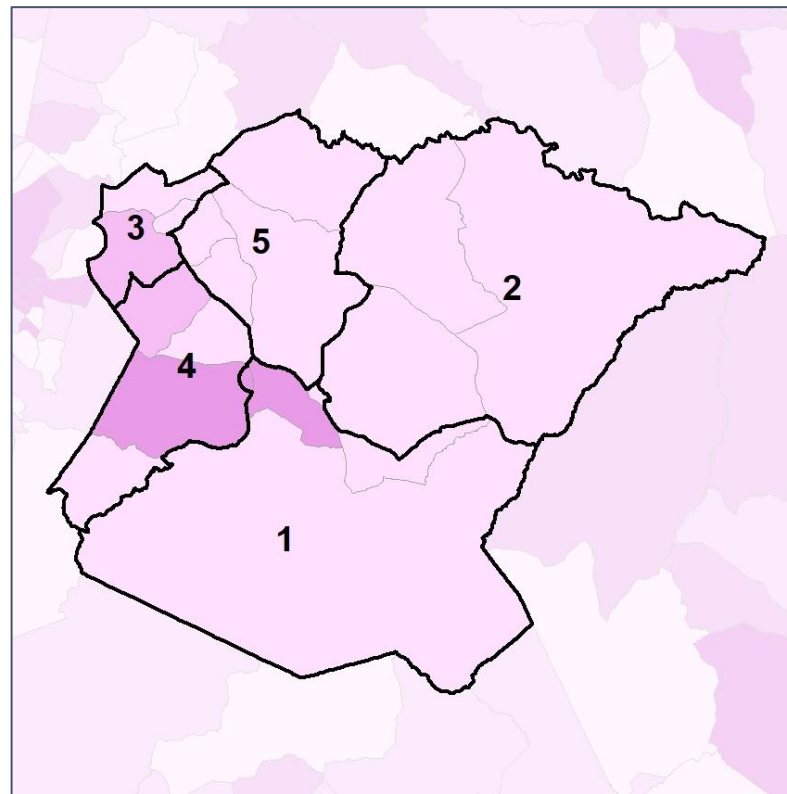
% Renter by Census Block Group



2012 Map



2022 Map*



	1	2	3	4	5	1*	2*	3*	4*	5*	County
Population	2,637	2,798	3,367	3,071	2,952	3,008	3,032	2,923	2,951	2,911	14,825
% API	1%	3%	0%	0%	1%	0%	3%	0%	0%	1%	1%
% Black	20%	22%	12%	17%	6%	20%	19%	11%	17%	8%	15%
% Latino	5%	4%	7%	8%	5%	5%	3%	7%	8%	7%	6%
% Other	4%	4%	5%	6%	4%	4%	3%	5%	6%	4%	4%
% White	70%	68%	76%	69%	84%	70%	71%	77%	70%	80%	74%
Median Income	\$51,000	\$49,000	\$61,000	\$38,000	\$66,000	\$51,000	\$50,000	\$61,000	\$38,000	\$76,000	\$53,000
% Renter	33%	16%	18%	30%	15%	33%	14%	24%	30%	13%	23%
% Youth	21%	25%	18%	20%	14%	21%	19%	18%	20%	15%	19%

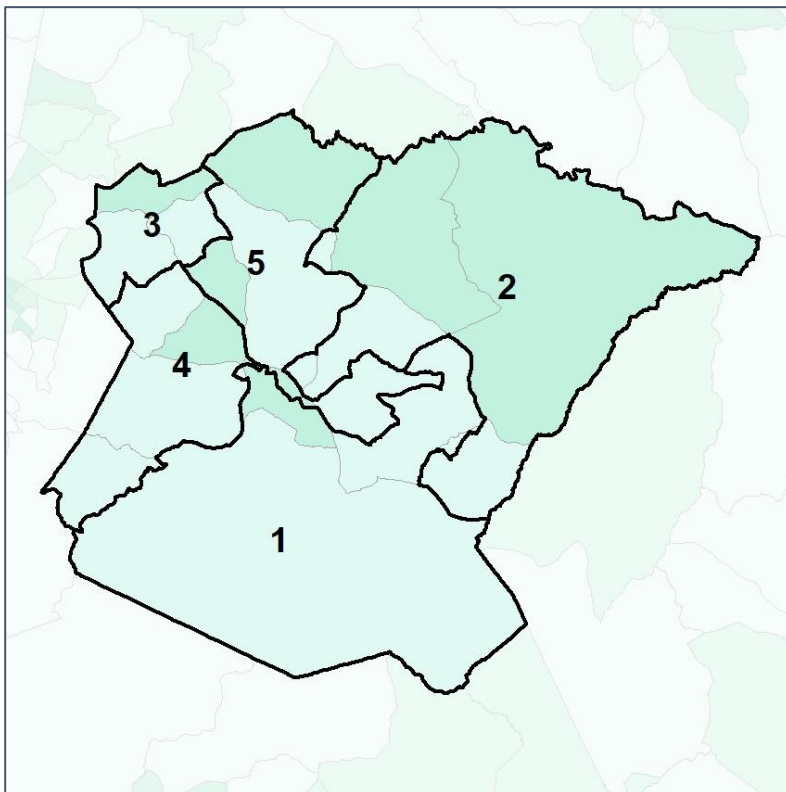


Oglethorpe Co. Commission & School Board

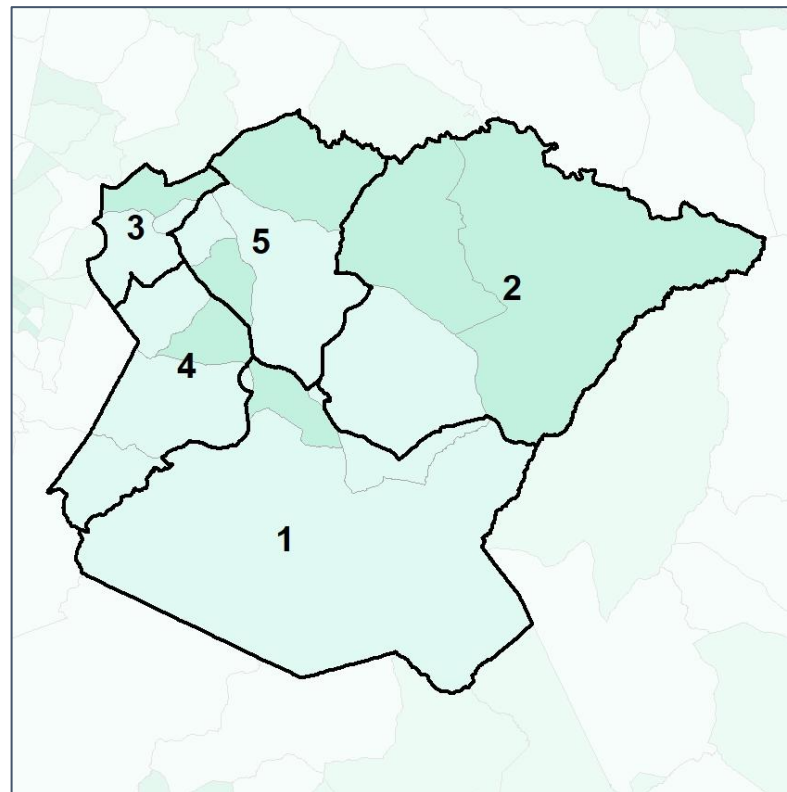
% Youth (18-34) by Census Block Group



2012 Map



2022 Map*



	1	2	3	4	5	1*	2*	3*	4*	5*	County
Population	2,637	2,798	3,367	3,071	2,952	3,008	3,032	2,923	2,951	2,911	14,825
% API	1%	3%	0%	0%	1%	0%	3%	0%	0%	1%	1%
% Black	20%	22%	12%	17%	6%	20%	19%	11%	17%	8%	15%
% Latino	5%	4%	7%	8%	5%	5%	3%	7%	8%	7%	6%
% Other	4%	4%	5%	6%	4%	4%	3%	5%	6%	4%	4%
% White	70%	68%	76%	69%	84%	70%	71%	77%	70%	80%	74%
Median Income	\$51,000	\$49,000	\$61,000	\$38,000	\$66,000	\$51,000	\$50,000	\$61,000	\$38,000	\$76,000	\$53,000
% Renter	33%	16%	18%	30%	15%	33%	14%	24%	30%	13%	23%
% Youth	21%	25%	18%	20%	14%	21%	19%	18%	20%	15%	19%

