



Demographic Overview

Racial Breakdown in Newton County

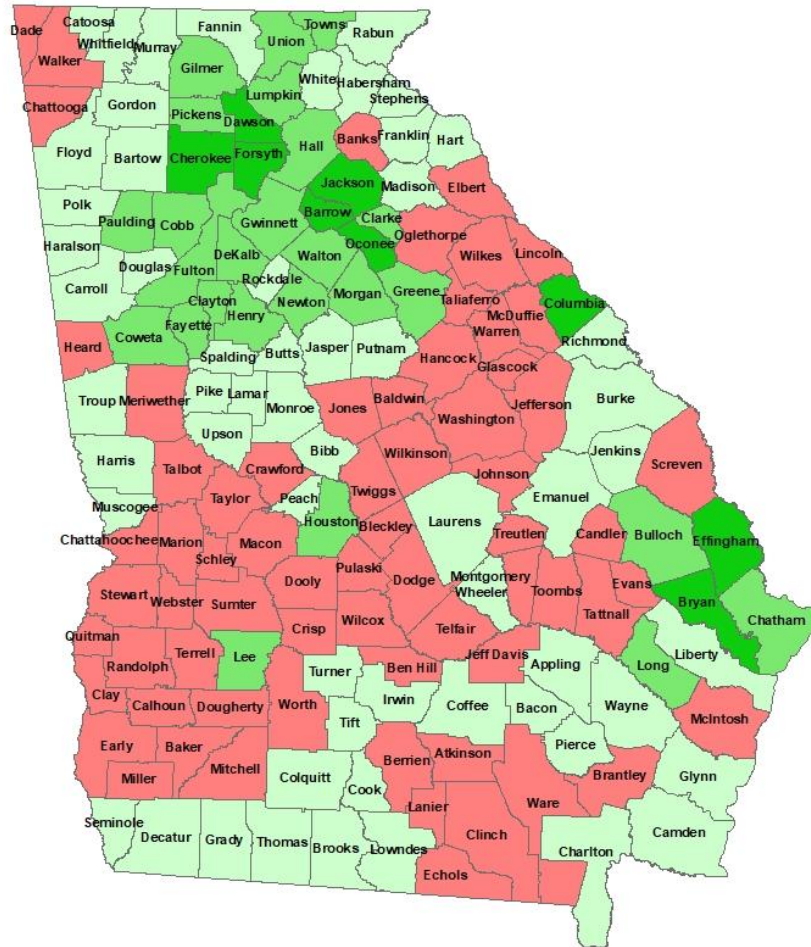
Newton County	2010	2020	% Change
Total Population	99,958	112,483	13%
AAPI	915	1,158	27%
Black	40,371	52,246	29%
Latino	4,635	7,164	55%
Other/Mixed Race	2,042	5,169	153%
POC	47,963	65,737	37%
White	51,995	46,746	-10%

*Note: The use of "Other" in these statistics combines those who identify as Native American, Mixed Race, and "Other" race



Population Gain

Change in Population in Georgia by County



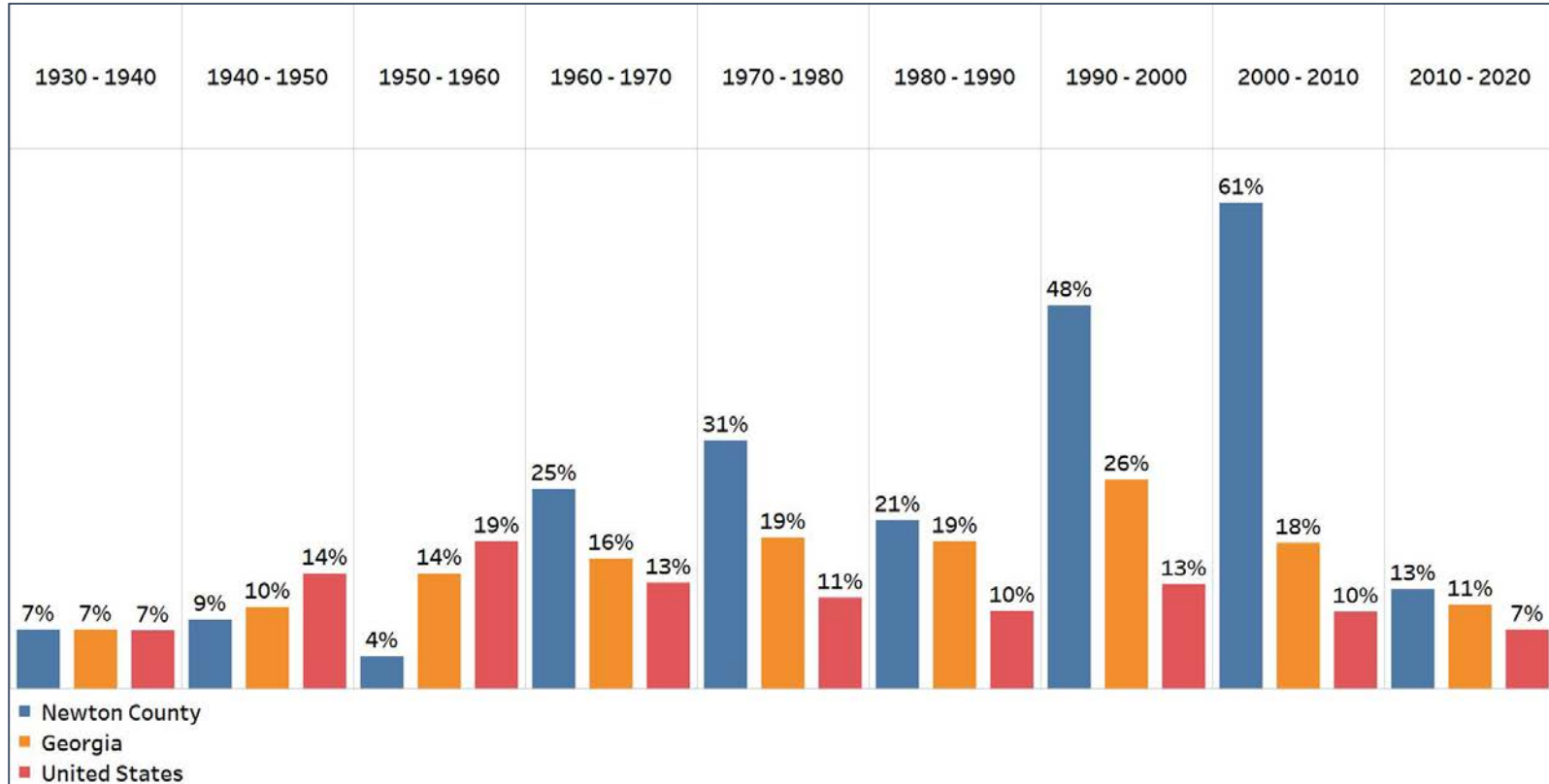
- Georgia is experiencing rapid population growth in the Atlanta, Augusta, and Savannah regions of the state





Population Gain

Change in Population by Decade

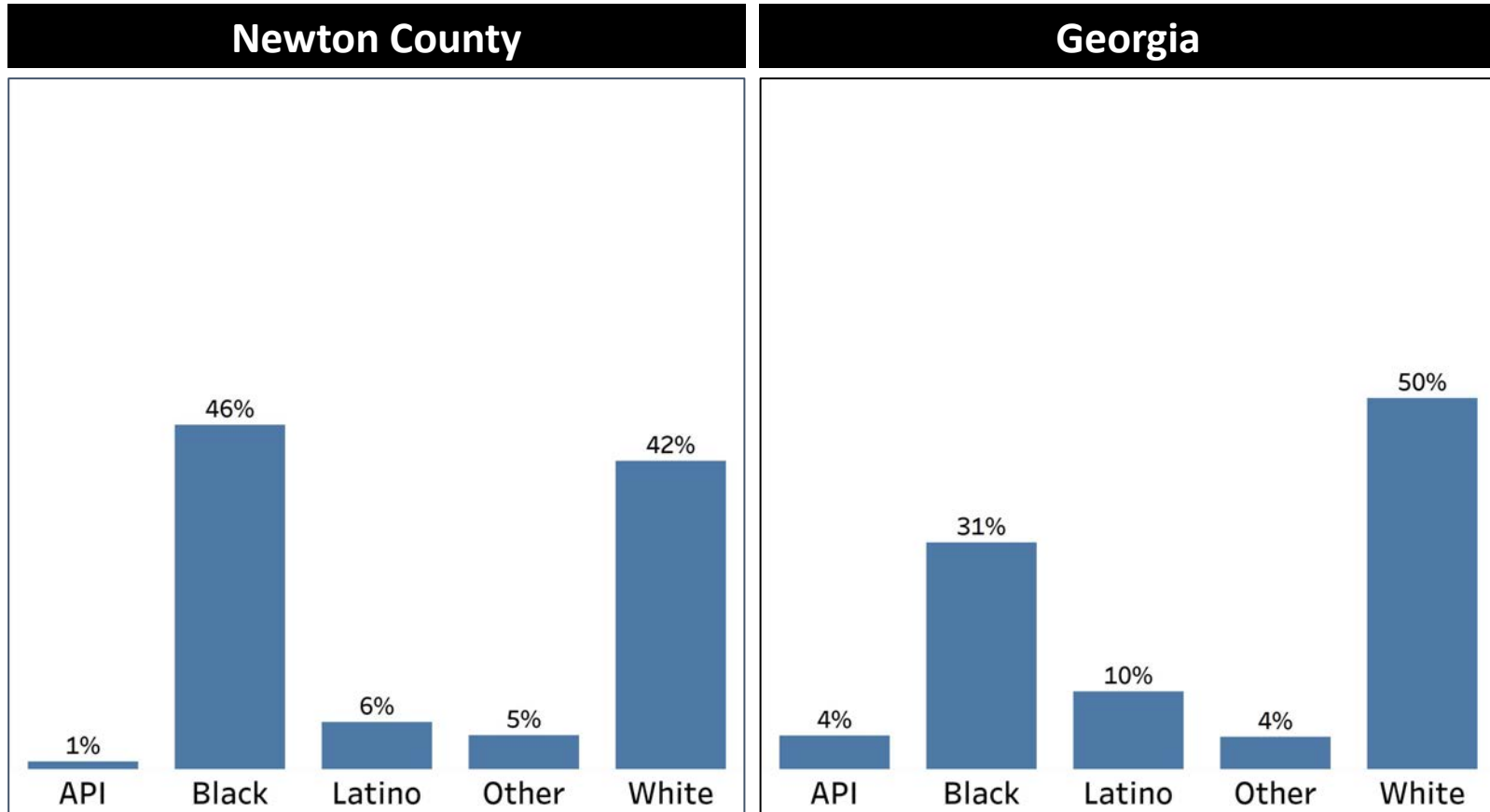


- Since 1960, Newton County population growth has been above the statewide average
- Between 1990 to 2010, Newton County population growth rate was twice the statewide average



Demographics

Comparison between Newton County and Georgia



- The Black population in Newton county is above the statewide average and is the largest demographic in the county
- Both the Latino and White population are below the statewide average while “other” is above the statewide average

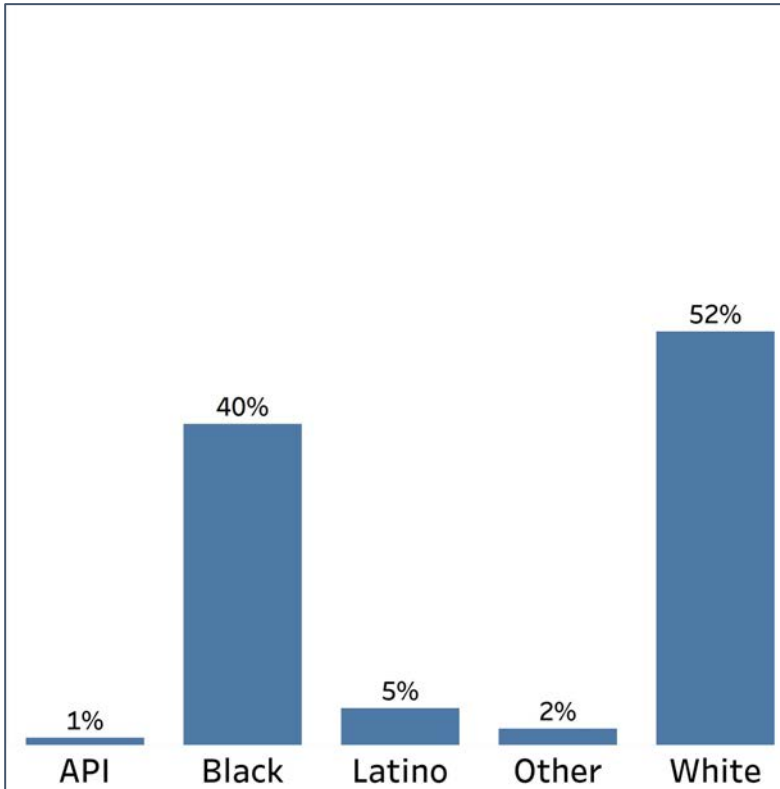


Demographics

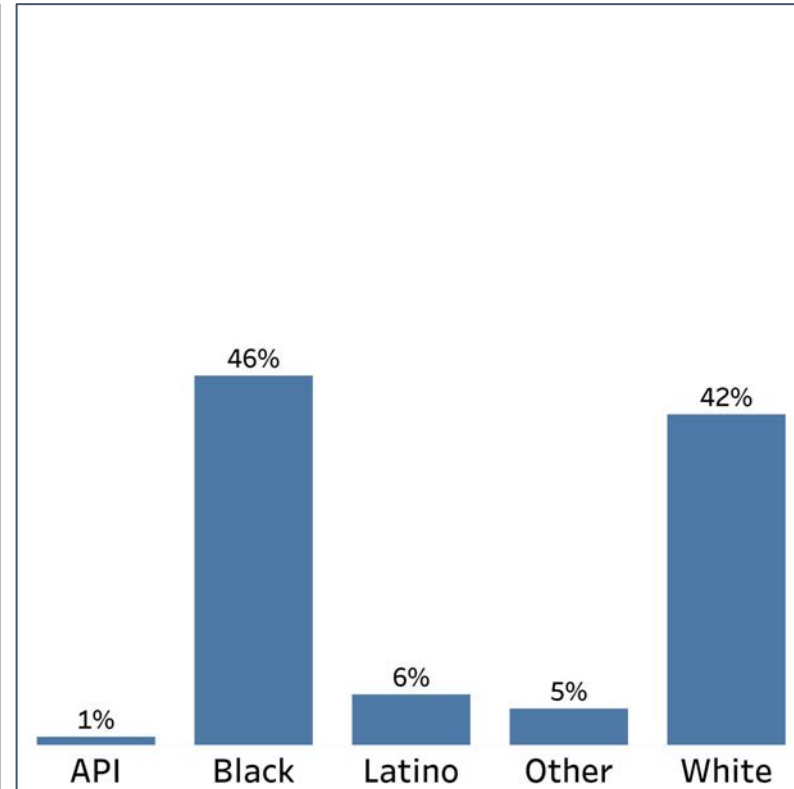
2010 vs 2020 Demographics in Newton County



Newton County 2010



Newton County 2020

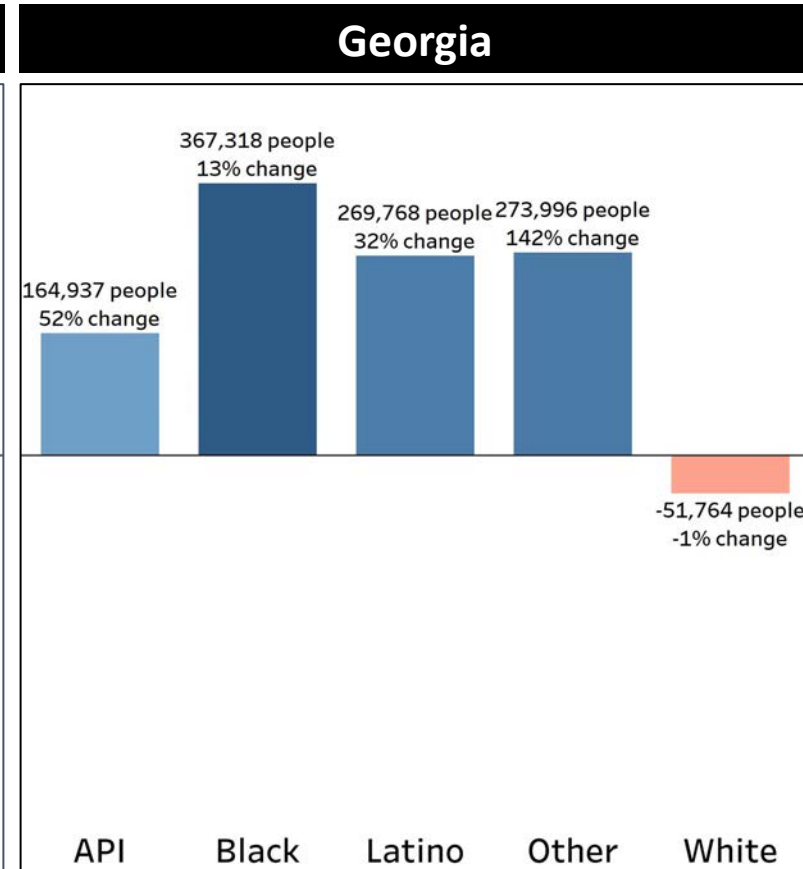
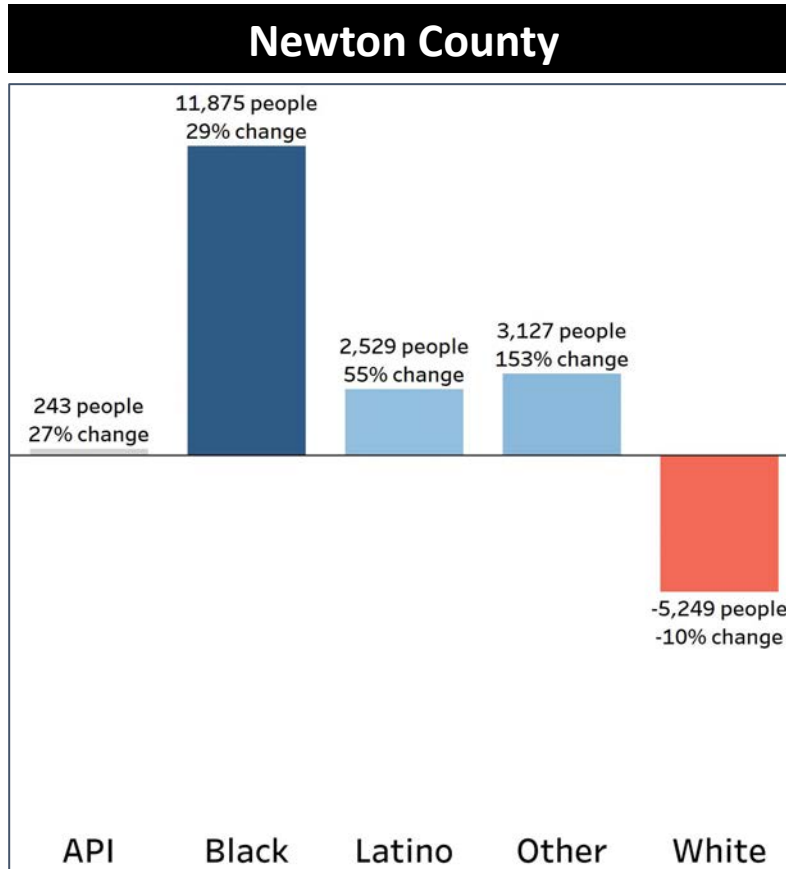


- The Black, Latino, and “Other” population of Newton County has a higher percentage of the total population when compared to 2010
- The percentage of the White population has decreased by 10%



Demographics

Population Change by Race (2020 - 2010)



- Newton County's rapid decline in its White population is 10 times greater than their statewide average
- Communities of color are growing at a faster rate in Newton county than their statewide average with the API community being the exception.

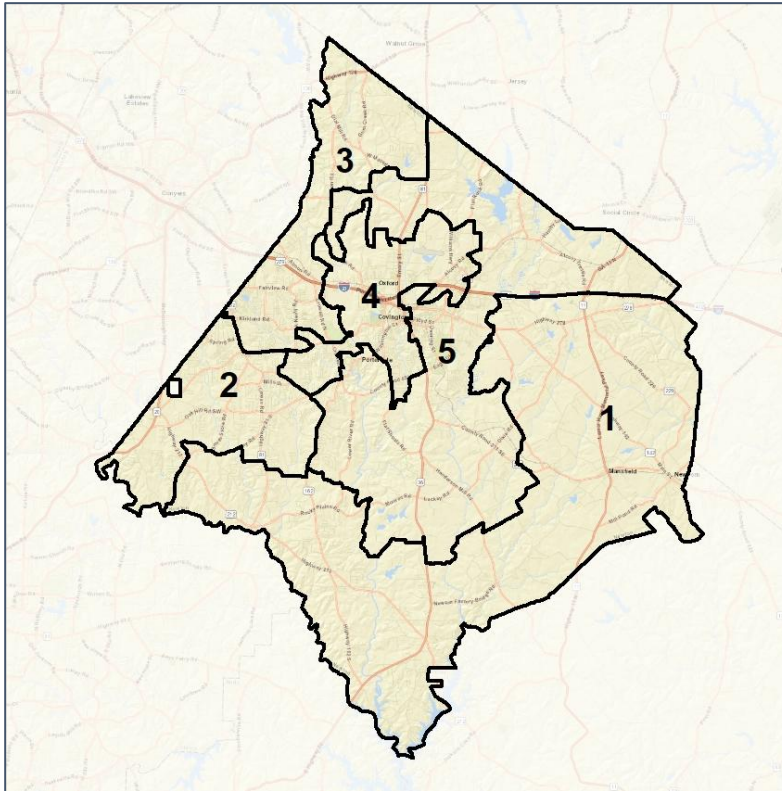


Newton Co. Commission & School Board

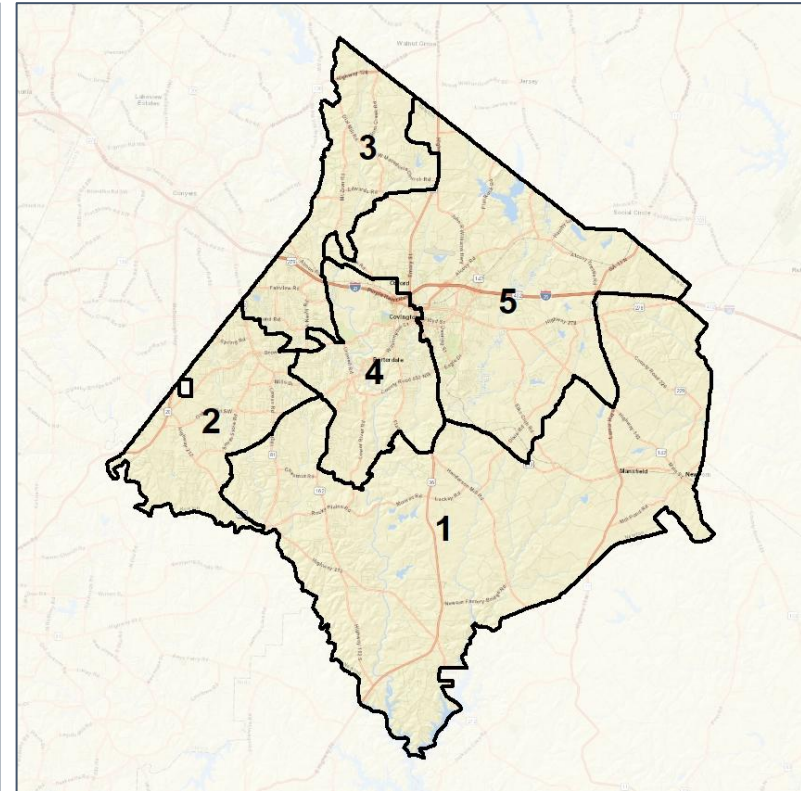
Context



2012 Map



2022 Map*



	1	2	3	4	5	1*	2*	3*	4*	5*	County
Population	21,416	22,395	24,401	21,649	22,622	22,527	22,752	22,357	22,368	22,479	112,483
API	1%	1%	1%	1%	1%	1%	1%	1%	1%	1%	1%
Black	22%	51%	64%	60%	33%	27%	51%	63%	58%	33%	46%
Latino	4%	9%	5%	8%	6%	4%	10%	5%	7%	6%	6%
Other	4%	5%	4%	5%	5%	4%	5%	4%	5%	4%	5%
White	69%	34%	25%	26%	56%	64%	34%	27%	29%	55%	42%
Population Gain	*	*	*	*	*	1,111	357	-2,044	719	-143	*
Population % Gain	*	*	*	*	*	5%	2%	-8%	3%	-1%	*
Net POC Gain	*	*	*	*	*	1,501	436	-1,949	-67	79	*
Net POC % Gain	*	*	*	*	*	22%	3%	-11%	0%	1%	*

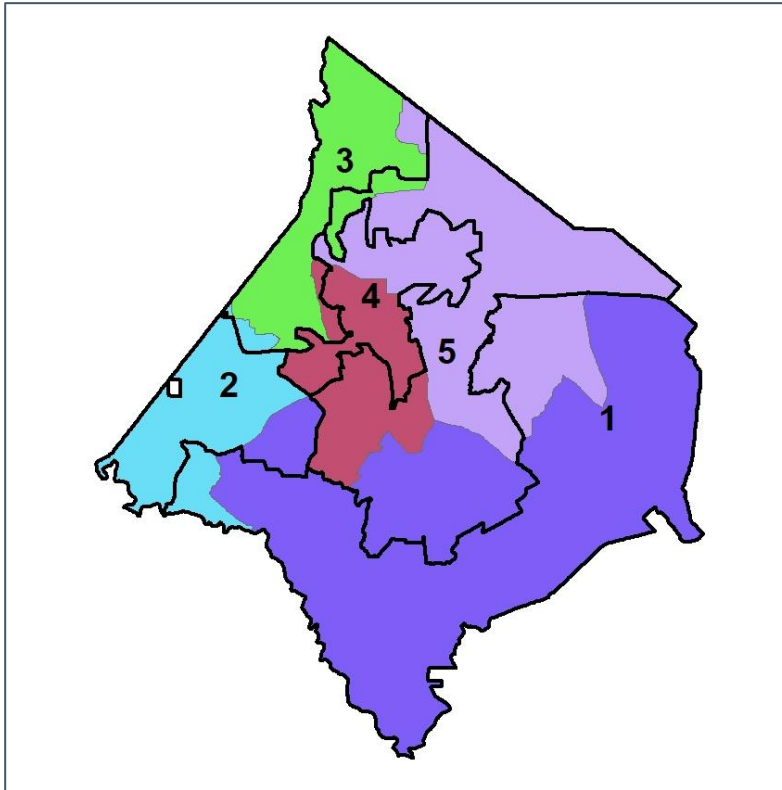


Newton Co. Commission & School Board

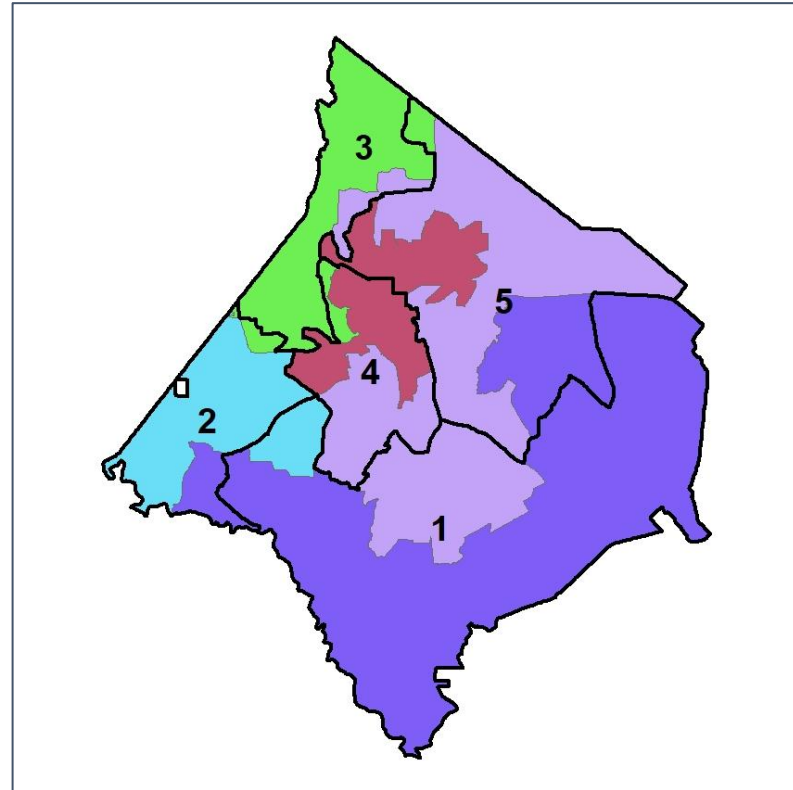
Changes in Redistricting



2012 Map (2022 in Colors)



2022 Map* (2012 in Colors)



	1	2	3	4	5	1*	2*	3*	4*	5*	County
Population	21,416	22,395	24,401	21,649	22,622	22,527	22,752	22,357	22,368	22,479	112,483
API	1%	1%	1%	1%	1%	1%	1%	1%	1%	1%	1%
Black	22%	51%	64%	60%	33%	27%	51%	63%	58%	33%	46%
Latino	4%	9%	5%	8%	6%	4%	10%	5%	7%	6%	6%
Other	4%	5%	4%	5%	5%	4%	5%	4%	5%	4%	5%
White	69%	34%	25%	26%	56%	64%	34%	27%	29%	55%	42%
Population Gain	*	*	*	*	*	1,111	357	-2,044	719	-143	*
Population % Gain	*	*	*	*	*	5%	2%	-8%	3%	-1%	*
Net POC Gain	*	*	*	*	*	1,501	436	-1,949	-67	79	*
Net POC % Gain	*	*	*	*	*	22%	3%	-11%	0%	1%	*

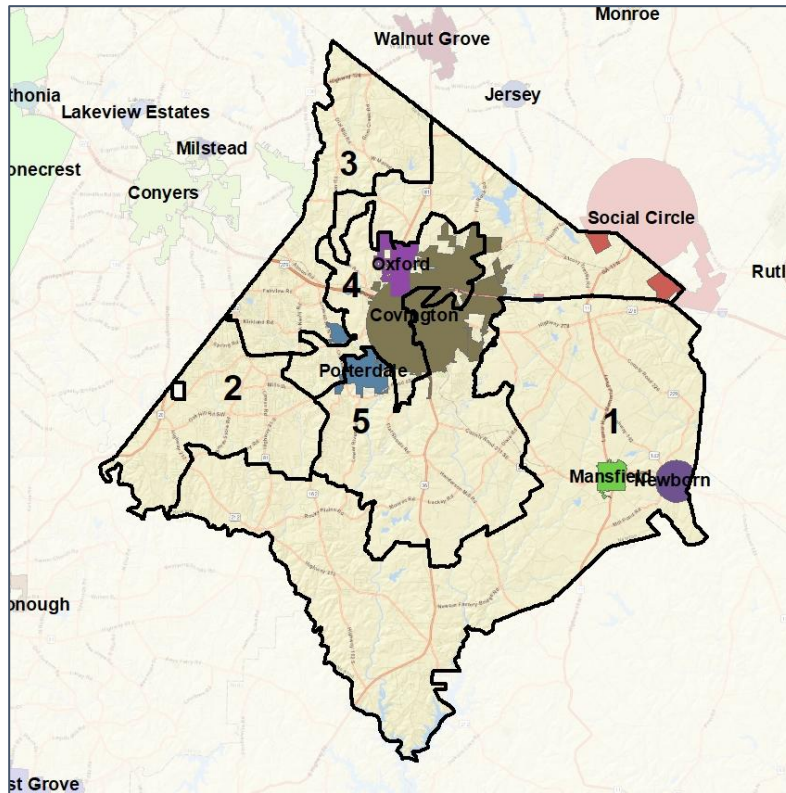


Newton Co. Commission & School Board

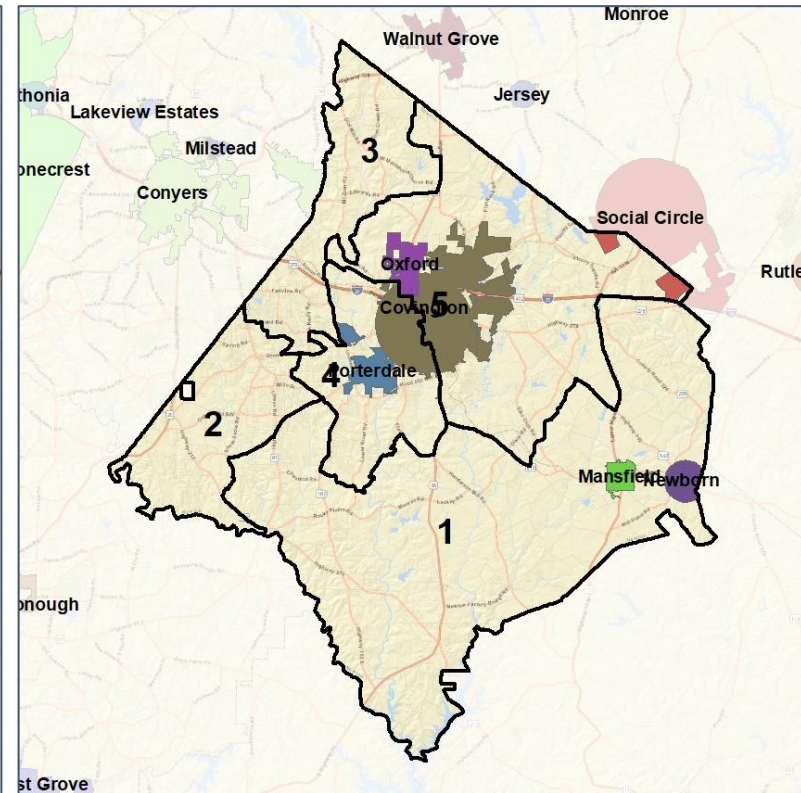
Cities and Places



2012 Map



2022 Map*



	1	2	3	4	5	1*	2*	3*	4*	5*	County
Population	21,416	22,395	24,401	21,649	22,622	22,527	22,752	22,357	22,368	22,479	112,483
API	1%	1%	1%	1%	1%	1%	1%	1%	1%	1%	1%
Black	22%	51%	64%	60%	33%	27%	51%	63%	58%	33%	46%
Latino	4%	9%	5%	8%	6%	4%	10%	5%	7%	6%	6%
Other	4%	5%	4%	5%	5%	4%	5%	4%	5%	4%	5%
White	69%	34%	25%	26%	56%	64%	34%	27%	29%	55%	42%
Population Gain	*	*	*	*	*	1,111	357	-2,044	719	-143	*
Population % Gain	*	*	*	*	*	5%	2%	-8%	3%	-1%	*
Net POC Gain	*	*	*	*	*	1,501	436	-1,949	-67	79	*
Net POC % Gain	*	*	*	*	*	22%	3%	-11%	0%	1%	*

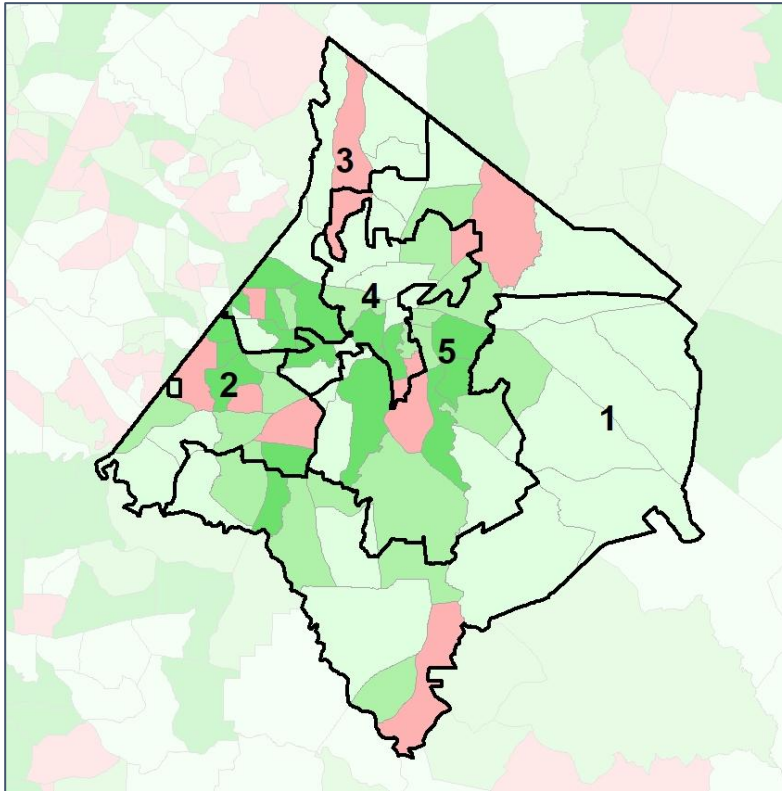


Newton Co. Commission & School Board

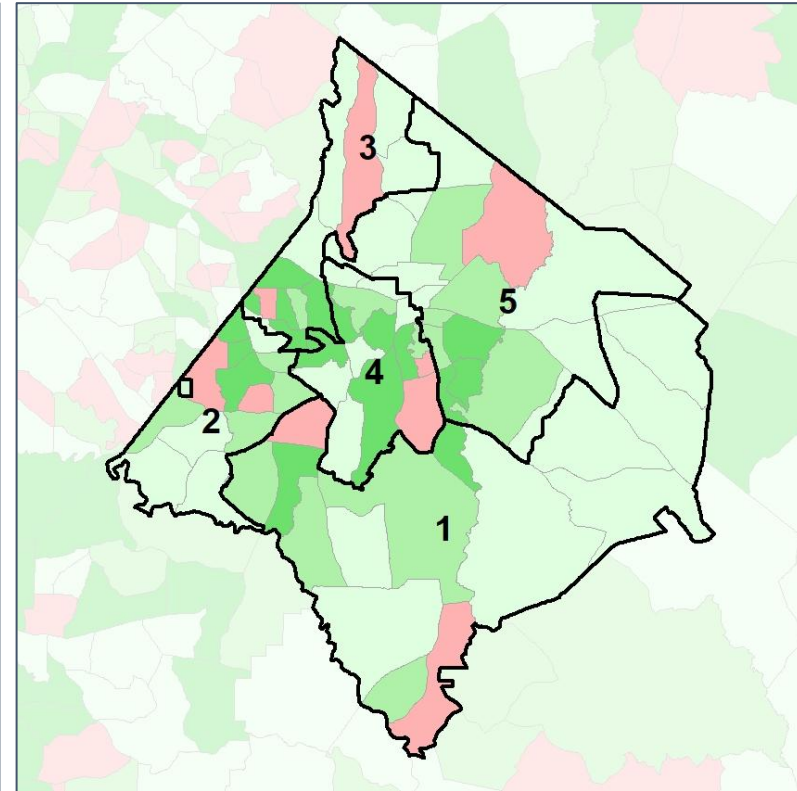
Net Gain in Population (2010 - 2020)



2012 Map



2022 Map*



	1	2	3	4	5	1*	2*	3*	4*	5*	County
Population	21,416	22,395	24,401	21,649	22,622	22,527	22,752	22,357	22,368	22,479	112,483
API	1%	1%	1%	1%	1%	1%	1%	1%	1%	1%	1%
Black	22%	51%	64%	60%	33%	27%	51%	63%	58%	33%	46%
Latino	4%	9%	5%	8%	6%	4%	10%	5%	7%	6%	6%
Other	4%	5%	4%	5%	5%	4%	5%	4%	5%	4%	5%
White	69%	34%	25%	26%	56%	64%	34%	27%	29%	55%	42%
Population Gain	*	*	*	*	*	1,111	357	-2,044	719	-143	*
Population % Gain	*	*	*	*	*	5%	2%	-8%	3%	-1%	*
Net POC Gain	*	*	*	*	*	1,501	436	-1,949	-67	79	*
Net POC % Gain	*	*	*	*	*	22%	3%	-11%	0%	1%	*

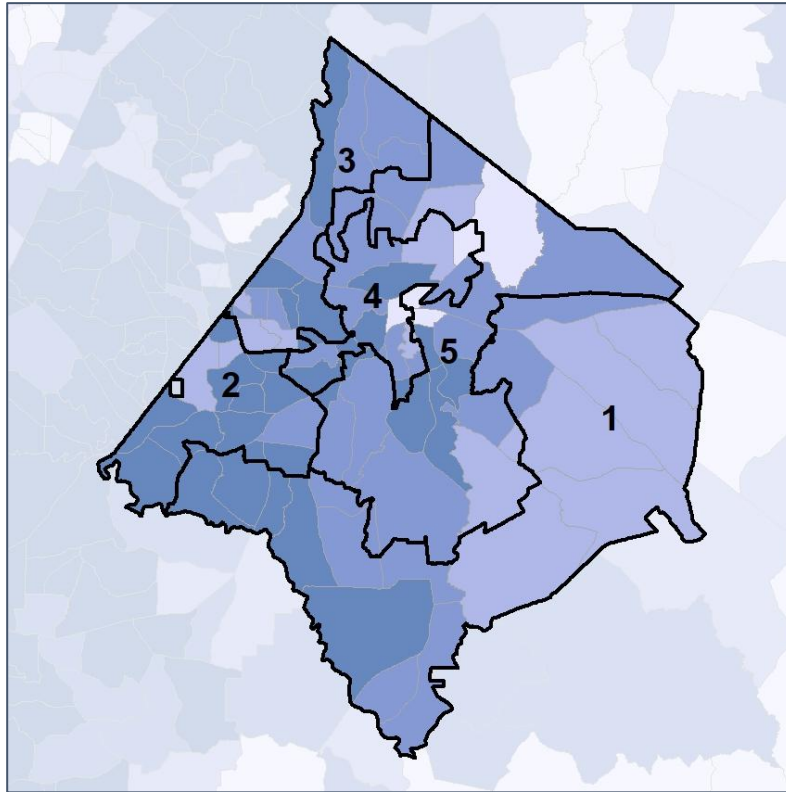


Newton Co. Commission & School Board

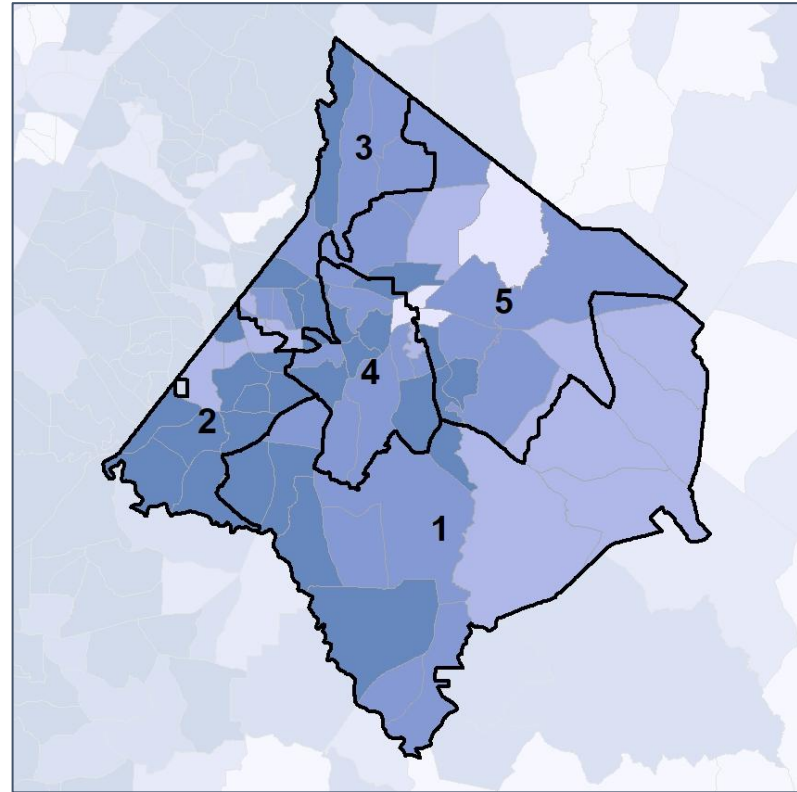
Net Gain in % POC (2020 - 2010) by Census Block Group



2012 Map



2022 Map*



	1	2	3	4	5	1*	2*	3*	4*	5*	County
Population	21,416	22,395	24,401	21,649	22,622	22,527	22,752	22,357	22,368	22,479	112,483
API	1%	1%	1%	1%	1%	1%	1%	1%	1%	1%	1%
Black	22%	51%	64%	60%	33%	27%	51%	63%	58%	33%	46%
Latino	4%	9%	5%	8%	6%	4%	10%	5%	7%	6%	6%
Other	4%	5%	4%	5%	5%	4%	5%	4%	5%	4%	5%
White	69%	34%	25%	26%	56%	64%	34%	27%	29%	55%	42%
Population Gain	*	*	*	*	*	1,111	357	-2,044	719	-143	*
Population % Gain	*	*	*	*	*	5%	2%	-8%	3%	-1%	*
Net POC Gain	*	*	*	*	*	1,501	436	-1,949	-67	79	*
Net POC % Gain	*	*	*	*	*	22%	3%	-11%	0%	1%	*



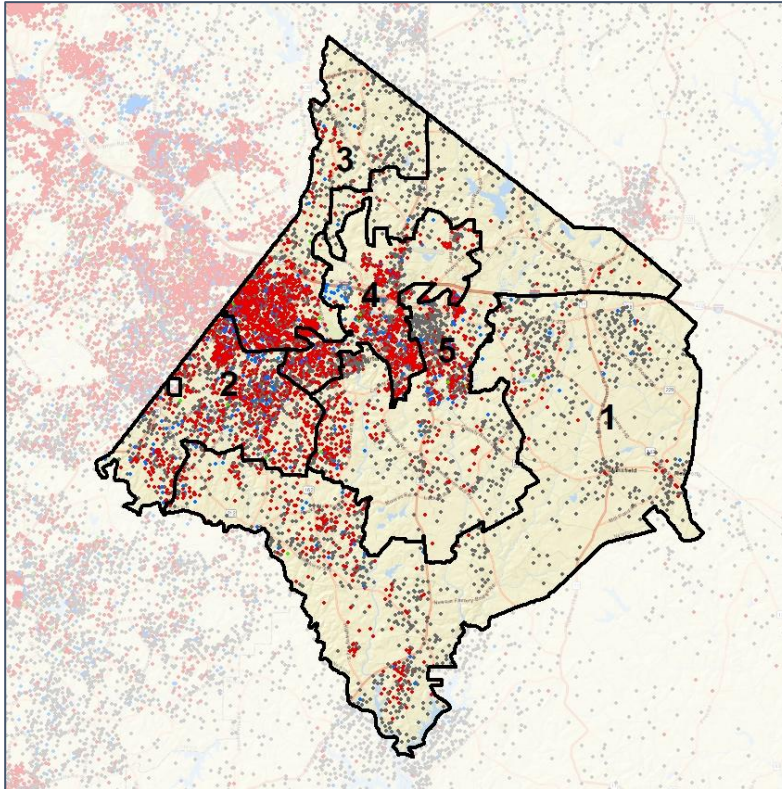
Source:
2020 Decennial Census
2020 ACS 5-Year Dataset

Newton Co. Commission & School Board

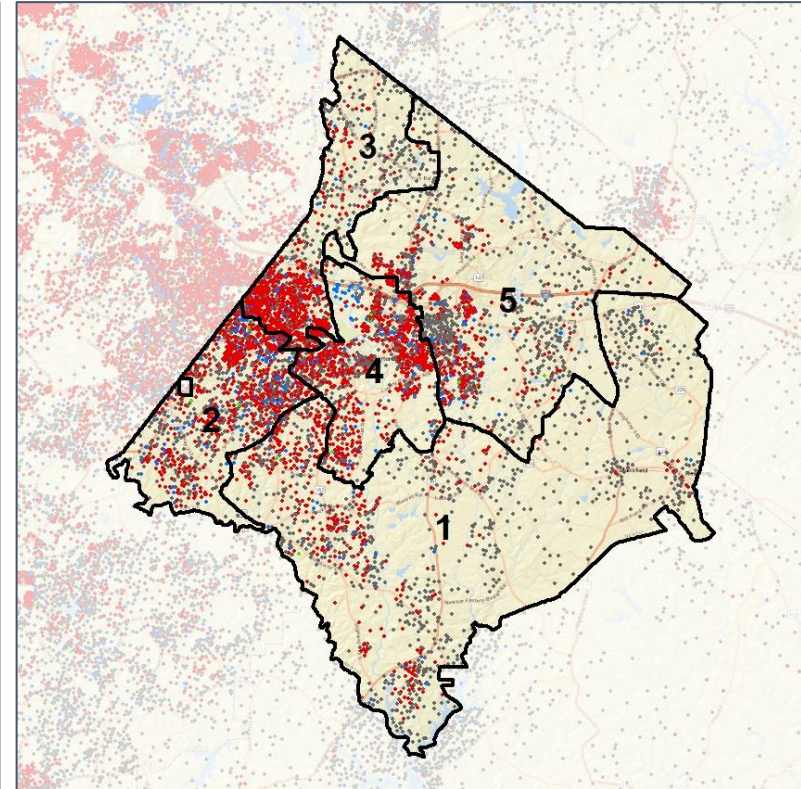
Population Density by Race



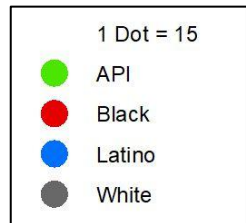
2012 Map



2022 Map*



	1	2	3	4	5	1*	2*	3*	4*	5*	County
Population	21,416	22,395	24,401	21,649	22,622	22,527	22,752	22,357	22,368	22,479	112,483
API	145	200	280	302	231	129	204	251	302	272	1,158
% API	1%	1%	1%	1%	1%	1%	1%	1%	1%	1%	1%
Black	4,710	11,438	15,646	13,083	7,369	6,162	11,603	14,082	12,922	7,477	52,246
% Black	22%	51%	64%	60%	33%	27%	51%	63%	58%	33%	46%
Latino	912	1,981	1,283	1,627	1,361	918	2,206	1,015	1,622	1,403	7,164
% Latino	4%	9%	5%	8%	6%	4%	10%	5%	7%	6%	6%
Other	945	1,059	1,060	1,041	1,064	1,004	1,101	972	1,140	952	5,169
% Other	4%	5%	4%	5%	5%	4%	5%	4%	5%	4%	5%
White	14,704	7,717	6,132	5,596	12,597	14,314	7,638	6,037	6,382	12,375	46,746
% White	69%	34%	25%	26%	56%	64%	34%	27%	29%	55%	42%



Source:
2020 Decennial Census
2020 ACS 5-Year Dataset

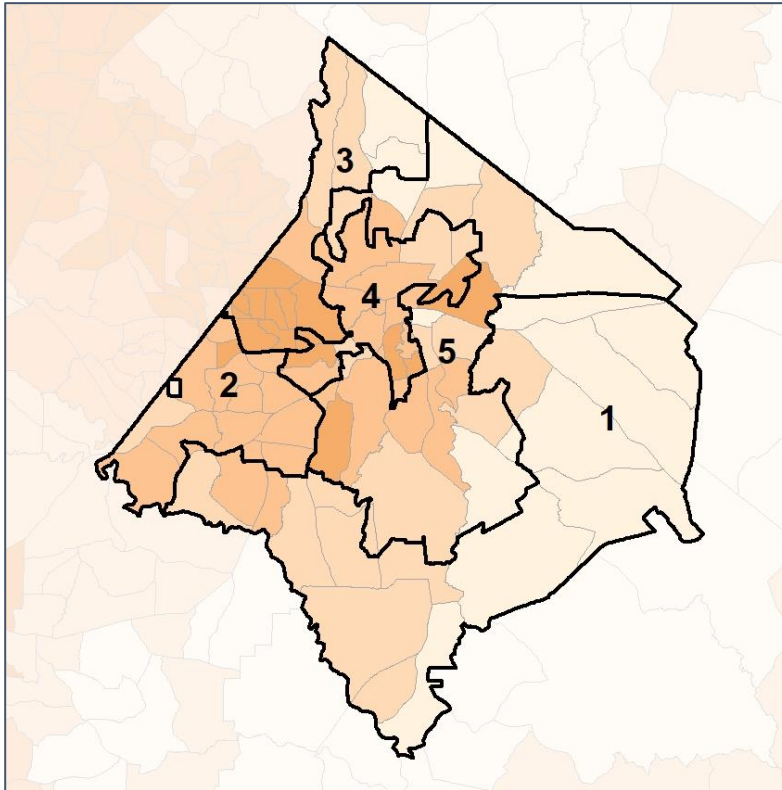


Newton Co. Commission & School Board

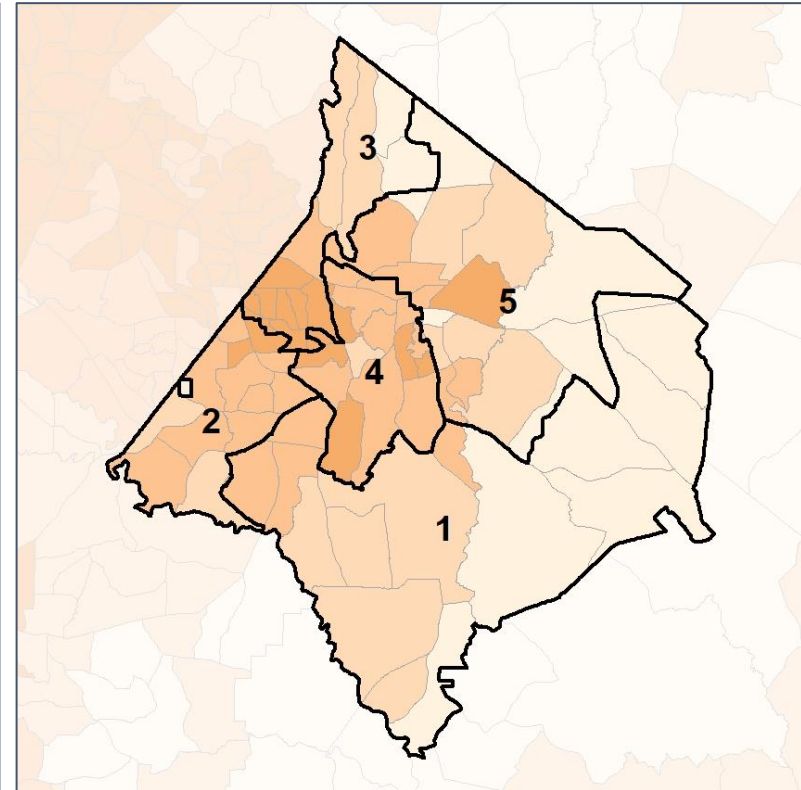
% People of Color by Census Block Group



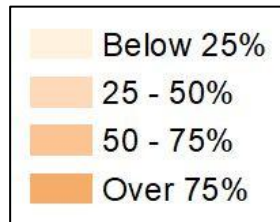
2012 Map



2022 Map*



	1	2	3	4	5	1*	2*	3*	4*	5*	County
Population	21,416	22,395	24,401	21,649	22,622	22,527	22,752	22,357	22,368	22,479	112,483
API	145	200	280	302	231	129	204	251	302	272	1,158
% API	1%	1%	1%	1%	1%	1%	1%	1%	1%	1%	1%
Black	4,710	11,438	15,646	13,083	7,369	6,162	11,603	14,082	12,922	7,477	52,246
% Black	22%	51%	64%	60%	33%	27%	51%	63%	58%	33%	46%
Latino	912	1,981	1,283	1,627	1,361	918	2,206	1,015	1,622	1,403	7,164
% Latino	4%	9%	5%	8%	6%	4%	10%	5%	7%	6%	6%
Other	945	1,059	1,060	1,041	1,064	1,004	1,101	972	1,140	952	5,169
% Other	4%	5%	4%	5%	5%	4%	5%	4%	5%	4%	5%
White	14,704	7,717	6,132	5,596	12,597	14,314	7,638	6,037	6,382	12,375	46,746
% White	69%	34%	25%	26%	56%	64%	34%	27%	29%	55%	42%



Source:
2020 Decennial Census
2020 ACS 5-Year Dataset

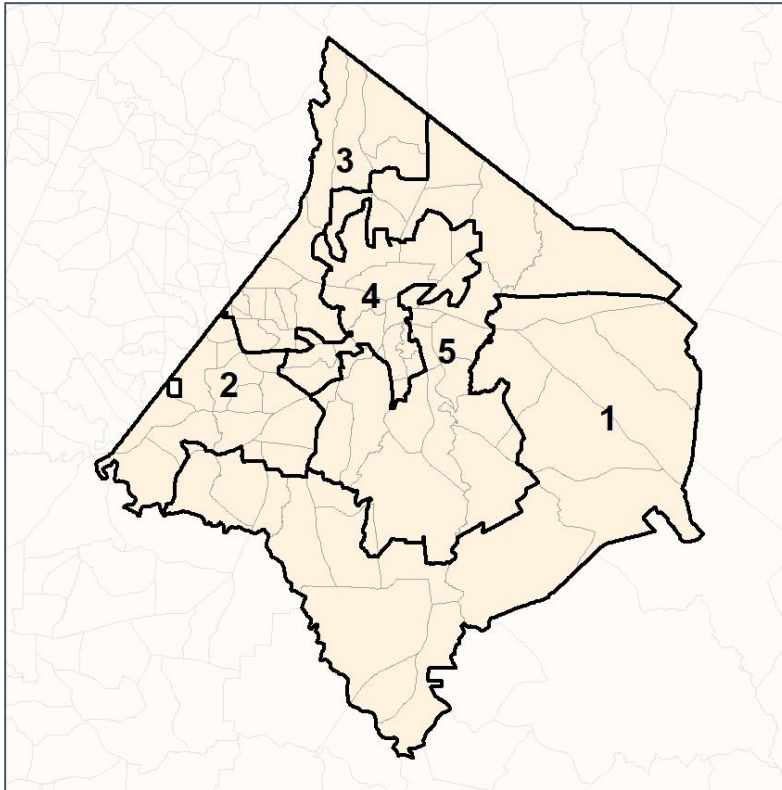


Newton Co. Commission & School Board

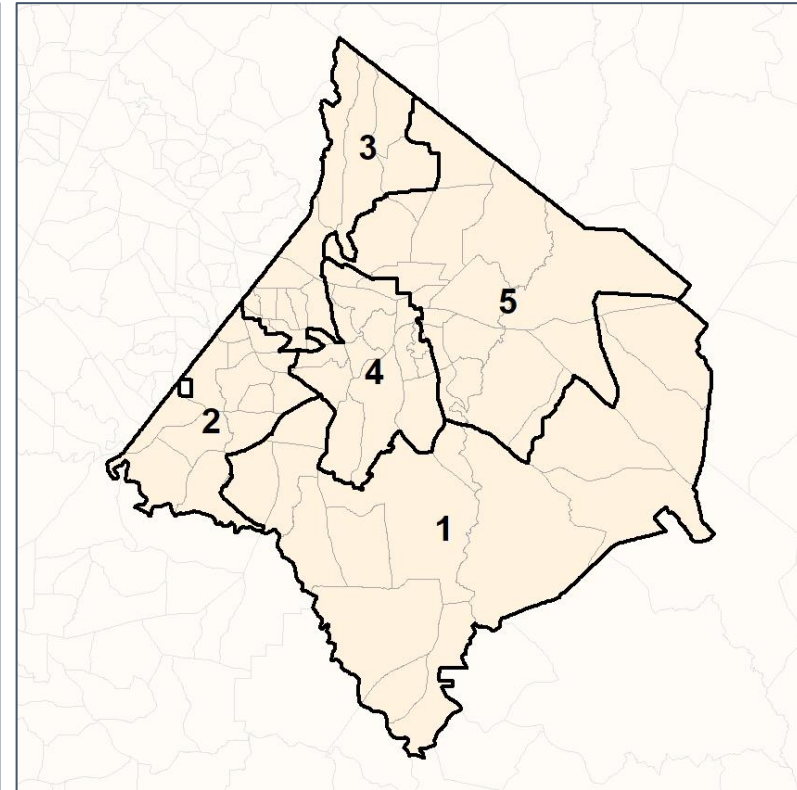
% API by Census Block Group



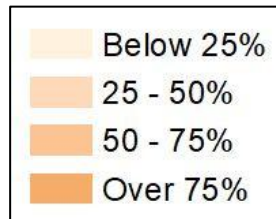
2012 Map



2022 Map*



	1	2	3	4	5	1*	2*	3*	4*	5*	County
Population	21,416	22,395	24,401	21,649	22,622	22,527	22,752	22,357	22,368	22,479	112,483
API	145	200	280	302	231	129	204	251	302	272	1,158
% API	1%	1%	1%	1%	1%	1%	1%	1%	1%	1%	1%
Black	4,710	11,438	15,646	13,083	7,369	6,162	11,603	14,082	12,922	7,477	52,246
% Black	22%	51%	64%	60%	33%	27%	51%	63%	58%	33%	46%
Latino	912	1,981	1,283	1,627	1,361	918	2,206	1,015	1,622	1,403	7,164
% Latino	4%	9%	5%	8%	6%	4%	10%	5%	7%	6%	6%
Other	945	1,059	1,060	1,041	1,064	1,004	1,101	972	1,140	952	5,169
% Other	4%	5%	4%	5%	5%	4%	5%	4%	5%	4%	5%
White	14,704	7,717	6,132	5,596	12,597	14,314	7,638	6,037	6,382	12,375	46,746
% White	69%	34%	25%	26%	56%	64%	34%	27%	29%	55%	42%

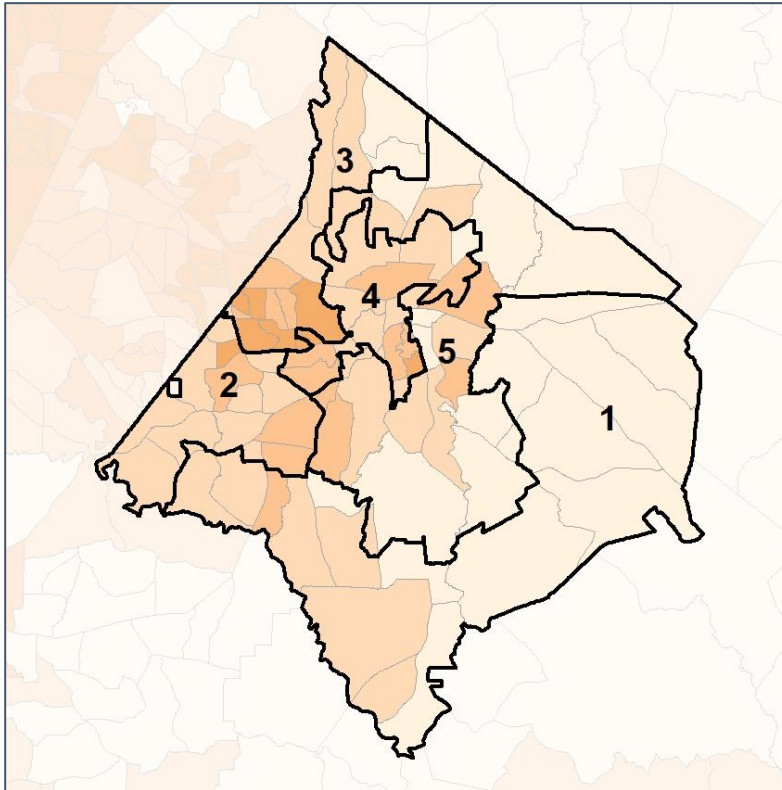


Newton Co. Commission & School Board

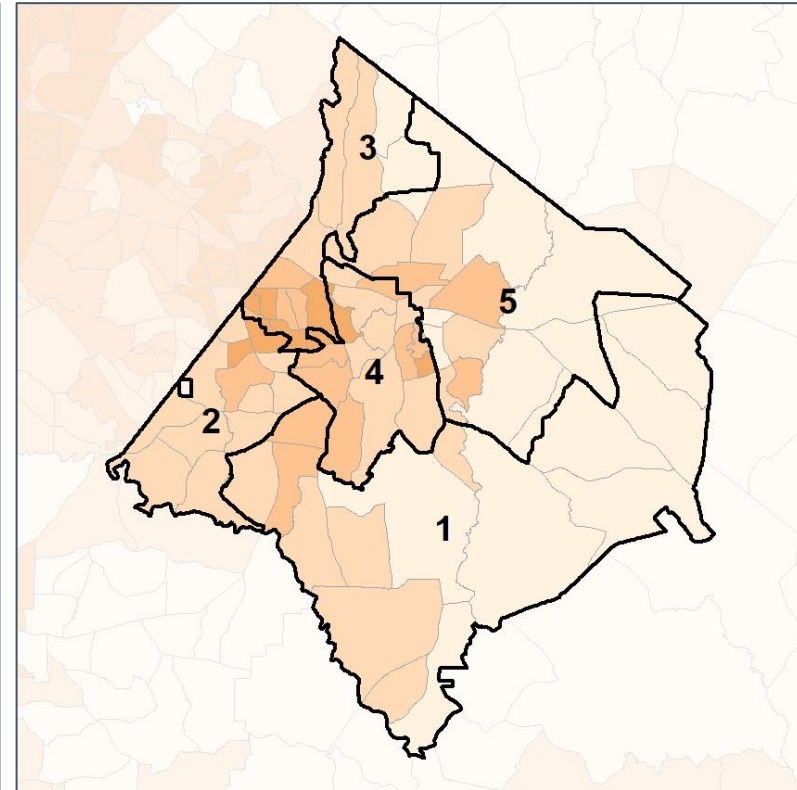
% Black by Census Block Group



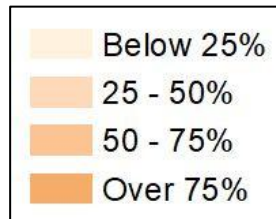
2012 Map



2022 Map*



	1	2	3	4	5	1*	2*	3*	4*	5*	County
Population	21,416	22,395	24,401	21,649	22,622	22,527	22,752	22,357	22,368	22,479	112,483
API	145	200	280	302	231	129	204	251	302	272	1,158
% API	1%	1%	1%	1%	1%	1%	1%	1%	1%	1%	1%
Black	4,710	11,438	15,646	13,083	7,369	6,162	11,603	14,082	12,922	7,477	52,246
% Black	22%	51%	64%	60%	33%	27%	51%	63%	58%	33%	46%
Latino	912	1,981	1,283	1,627	1,361	918	2,206	1,015	1,622	1,403	7,164
% Latino	4%	9%	5%	8%	6%	4%	10%	5%	7%	6%	6%
Other	945	1,059	1,060	1,041	1,064	1,004	1,101	972	1,140	952	5,169
% Other	4%	5%	4%	5%	5%	4%	5%	4%	5%	4%	5%
White	14,704	7,717	6,132	5,596	12,597	14,314	7,638	6,037	6,382	12,375	46,746
% White	69%	34%	25%	26%	56%	64%	34%	27%	29%	55%	42%



Source:
2020 Decennial Census
2020 ACS 5-Year Dataset

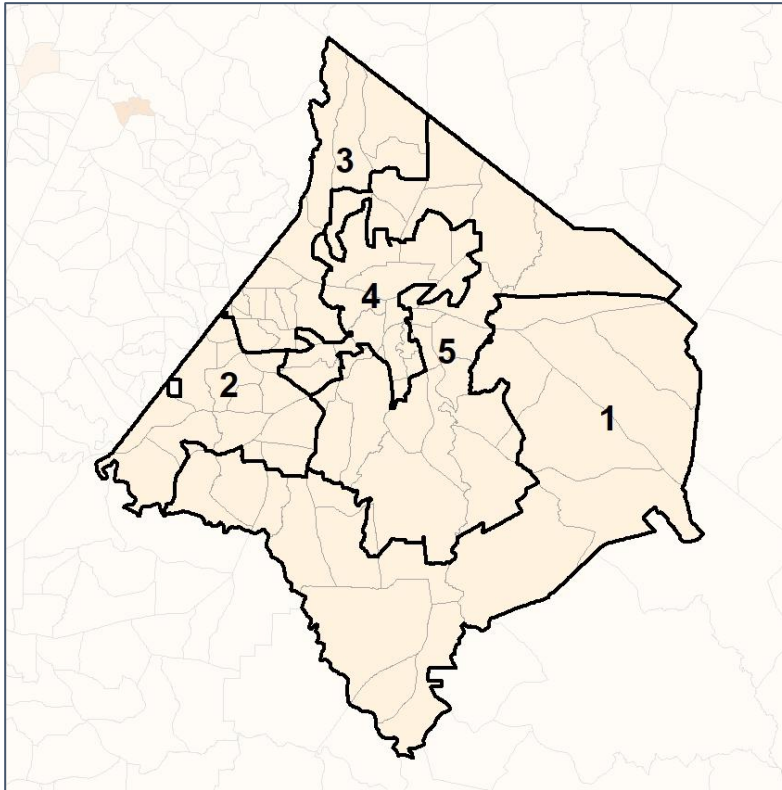


Newton Co. Commission & School Board

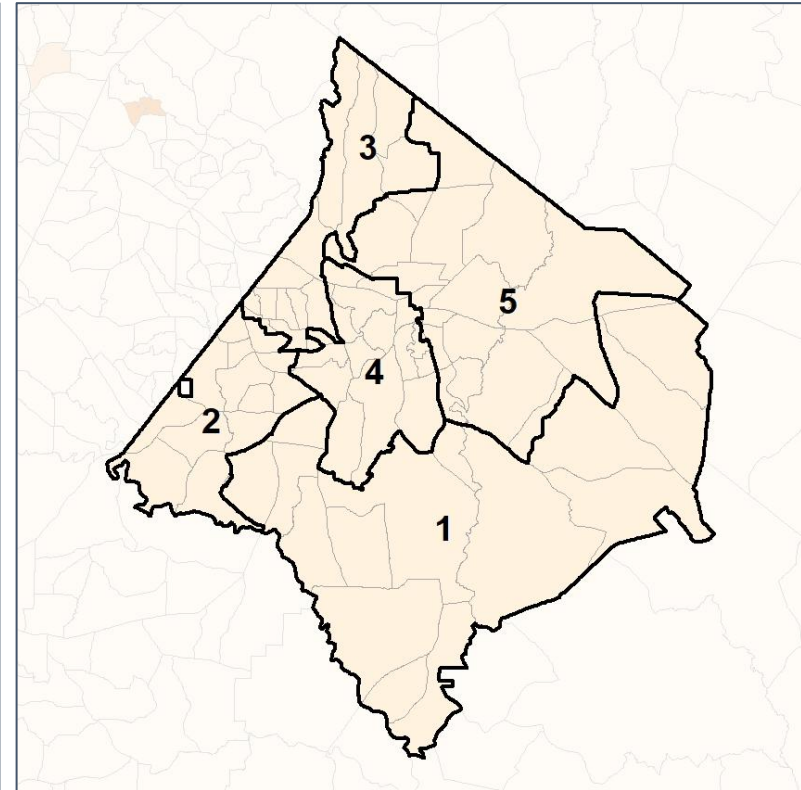
% Latino by Census Block Group



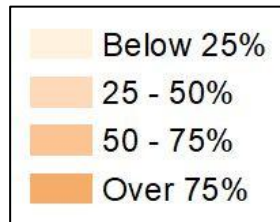
2012 Map



2022 Map*



	1	2	3	4	5	1*	2*	3*	4*	5*	County
Population	21,416	22,395	24,401	21,649	22,622	22,527	22,752	22,357	22,368	22,479	112,483
API	145	200	280	302	231	129	204	251	302	272	1,158
% API	1%	1%	1%	1%	1%	1%	1%	1%	1%	1%	1%
Black	4,710	11,438	15,646	13,083	7,369	6,162	11,603	14,082	12,922	7,477	52,246
% Black	22%	51%	64%	60%	33%	27%	51%	63%	58%	33%	46%
Latino	912	1,981	1,283	1,627	1,361	918	2,206	1,015	1,622	1,403	7,164
% Latino	4%	9%	5%	8%	6%	4%	10%	5%	7%	6%	6%
Other	945	1,059	1,060	1,041	1,064	1,004	1,101	972	1,140	952	5,169
% Other	4%	5%	4%	5%	5%	4%	5%	4%	5%	4%	5%
White	14,704	7,717	6,132	5,596	12,597	14,314	7,638	6,037	6,382	12,375	46,746
% White	69%	34%	25%	26%	56%	64%	34%	27%	29%	55%	42%



Source:
2020 Decennial Census
2020 ACS 5-Year Dataset

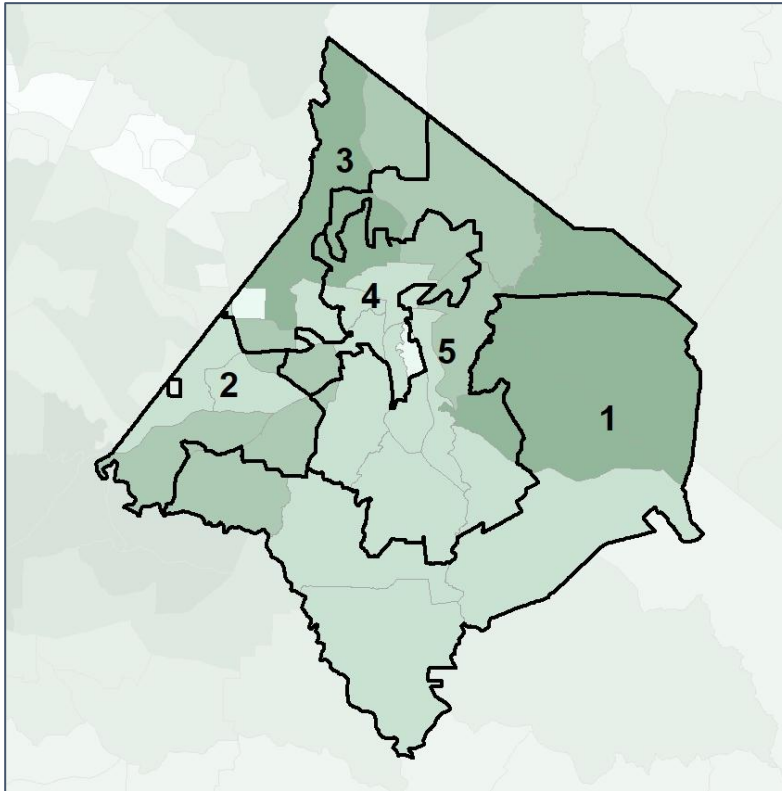


Newton Co. Commission & School Board

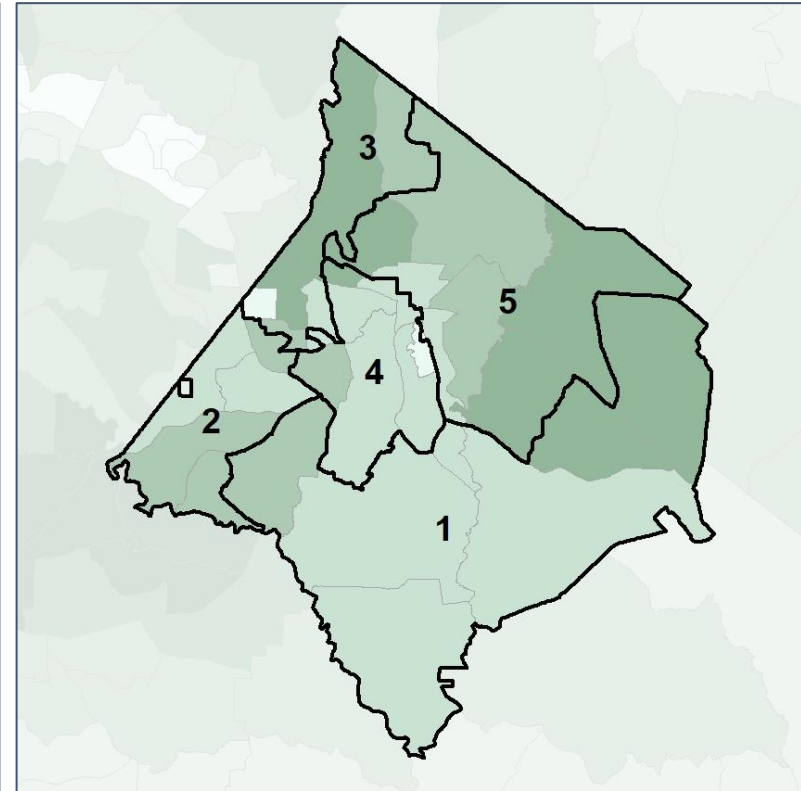
Median Household Income by Census Tract



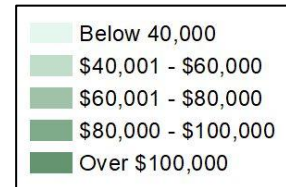
2012 Map



2022 Map*



	1	2	3	4	5	1*	2*	3*	4*	5*	County
Population	21,416	22,395	24,401	21,649	22,622	22,527	22,752	22,357	22,368	22,479	112,483
% API	1%	1%	1%	1%	1%	1%	1%	1%	1%	1%	1%
% Black	22%	51%	64%	60%	33%	27%	51%	63%	58%	33%	46%
% Latino	4%	9%	5%	8%	6%	4%	10%	5%	7%	6%	6%
% Other	4%	5%	4%	5%	5%	4%	5%	4%	5%	4%	5%
% White	69%	34%	25%	26%	56%	64%	34%	27%	29%	55%	42%
Median Income	\$67,000	\$62,000	\$72,000	\$48,000	\$65,000	\$63,000	\$60,000	\$75,000	\$49,000	\$71,000	\$59,000
% Renter	17%	25%	25%	47%	33%	20%	23%	30%	48%	27%	29%
% Youth	18%	21%	23%	27%	21%	18%	21%	22%	25%	25%	22%

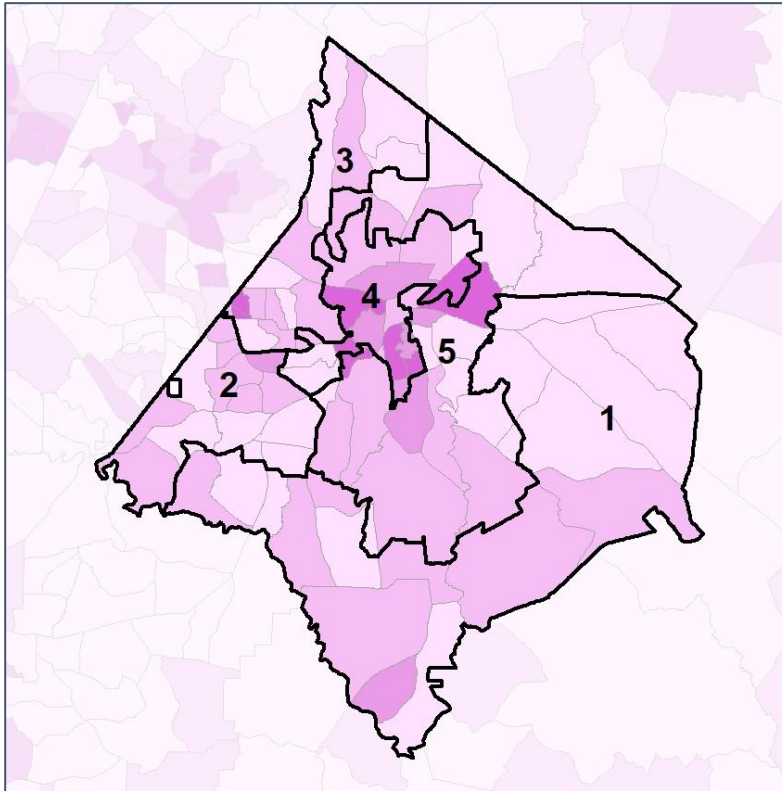


Newton Co. Commission & School Board

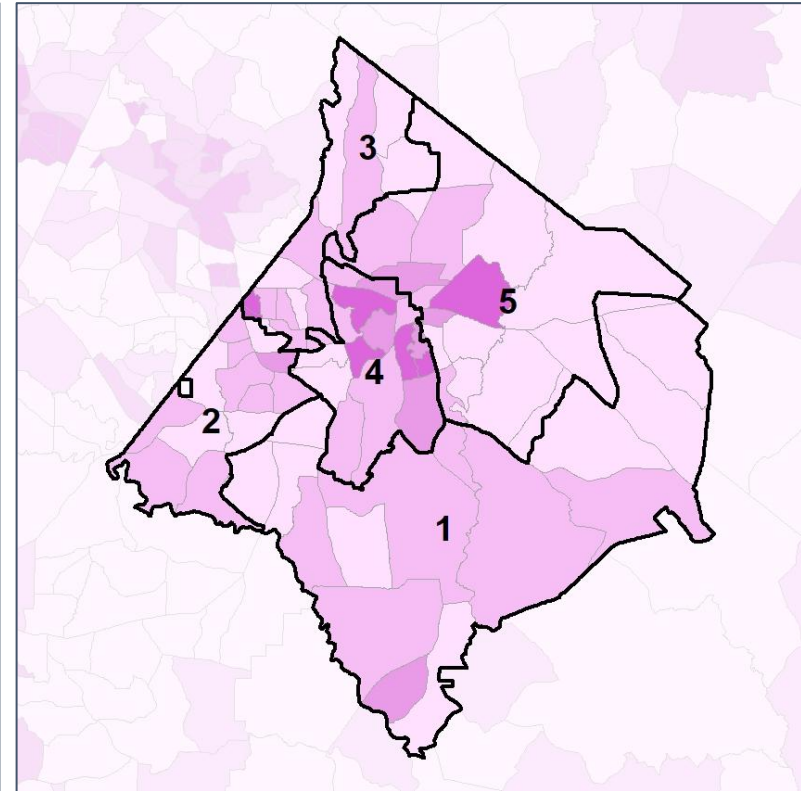
% Renter by Census Block Group



2012 Map



2022 Map*



	1	2	3	4	5	1*	2*	3*	4*	5*	County
Population	21,416	22,395	24,401	21,649	22,622	22,527	22,752	22,357	22,368	22,479	112,483
% API	1%	1%	1%	1%	1%	1%	1%	1%	1%	1%	1%
% Black	22%	51%	64%	60%	33%	27%	51%	63%	58%	33%	46%
% Latino	4%	9%	5%	8%	6%	4%	10%	5%	7%	6%	6%
% Other	4%	5%	4%	5%	5%	4%	5%	4%	5%	4%	5%
% White	69%	34%	25%	26%	56%	64%	34%	27%	29%	55%	42%
Median Income	\$67,000	\$62,000	\$72,000	\$48,000	\$65,000	\$63,000	\$60,000	\$75,000	\$49,000	\$71,000	\$59,000
% Renter	17%	25%	25%	47%	33%	20%	23%	30%	48%	27%	29%
% Youth	18%	21%	23%	27%	21%	18%	21%	22%	25%	25%	22%

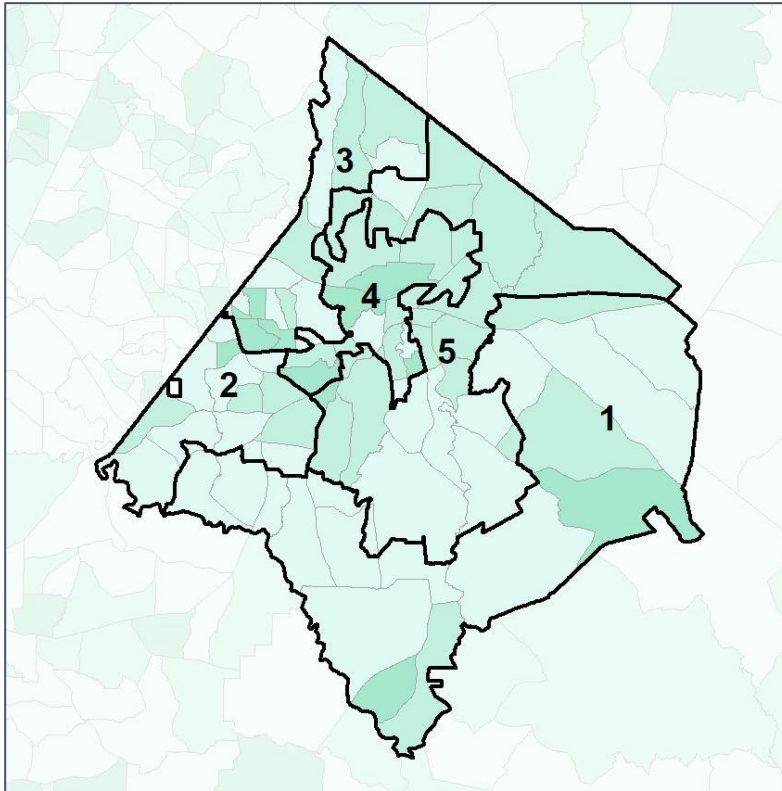


Newton Co. Commission & School Board

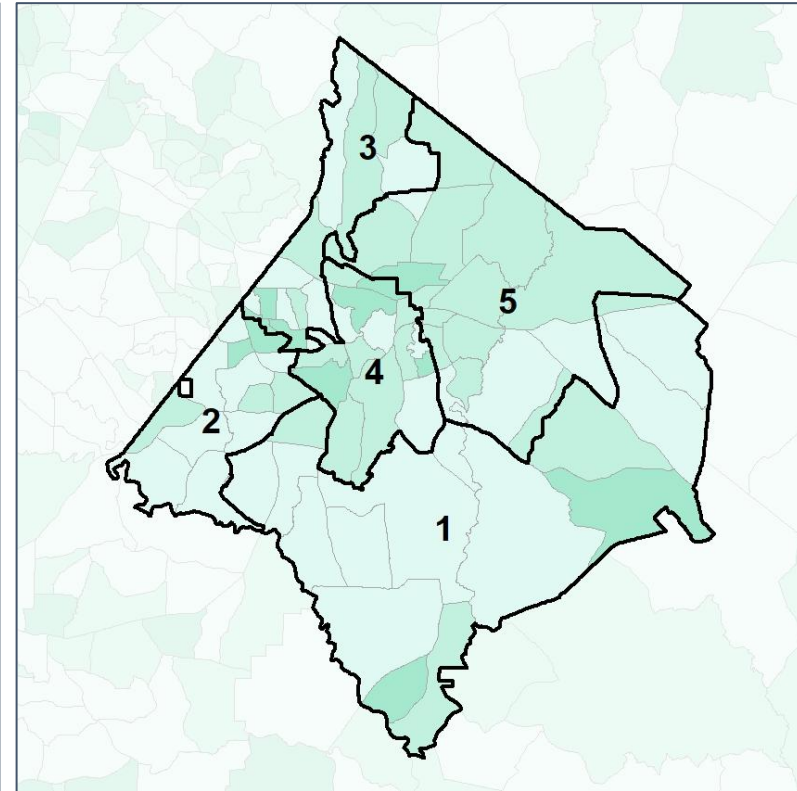
% Youth (18-34) by Census Block Group



2012 Map



2022 Map*



	1	2	3	4	5	1*	2*	3*	4*	5*	County
Population	21,416	22,395	24,401	21,649	22,622	22,527	22,752	22,357	22,368	22,479	112,483
% API	1%	1%	1%	1%	1%	1%	1%	1%	1%	1%	1%
% Black	22%	51%	64%	60%	33%	27%	51%	63%	58%	33%	46%
% Latino	4%	9%	5%	8%	6%	4%	10%	5%	7%	6%	6%
% Other	4%	5%	4%	5%	5%	4%	5%	4%	5%	4%	5%
% White	69%	34%	25%	26%	56%	64%	34%	27%	29%	55%	42%
Median Income	\$67,000	\$62,000	\$72,000	\$48,000	\$65,000	\$63,000	\$60,000	\$75,000	\$49,000	\$71,000	\$59,000
% Renter	17%	25%	25%	47%	33%	20%	23%	30%	48%	27%	29%
% Youth	18%	21%	23%	27%	21%	18%	21%	22%	25%	25%	22%

