



Demographic Overview

Racial Breakdown in Muscogee County

Muscogee County	2010	2020	% Change
Total Population	189,885	206,922	9%
AAPI	4,439	6,063	37%
Black	85,119	94,701	11%
Latino	12,110	16,513	36%
Other/Mixed Race	5,327	10,562	98%
POC	106,995	127,839	19%
White	82,890	79,083	-5%

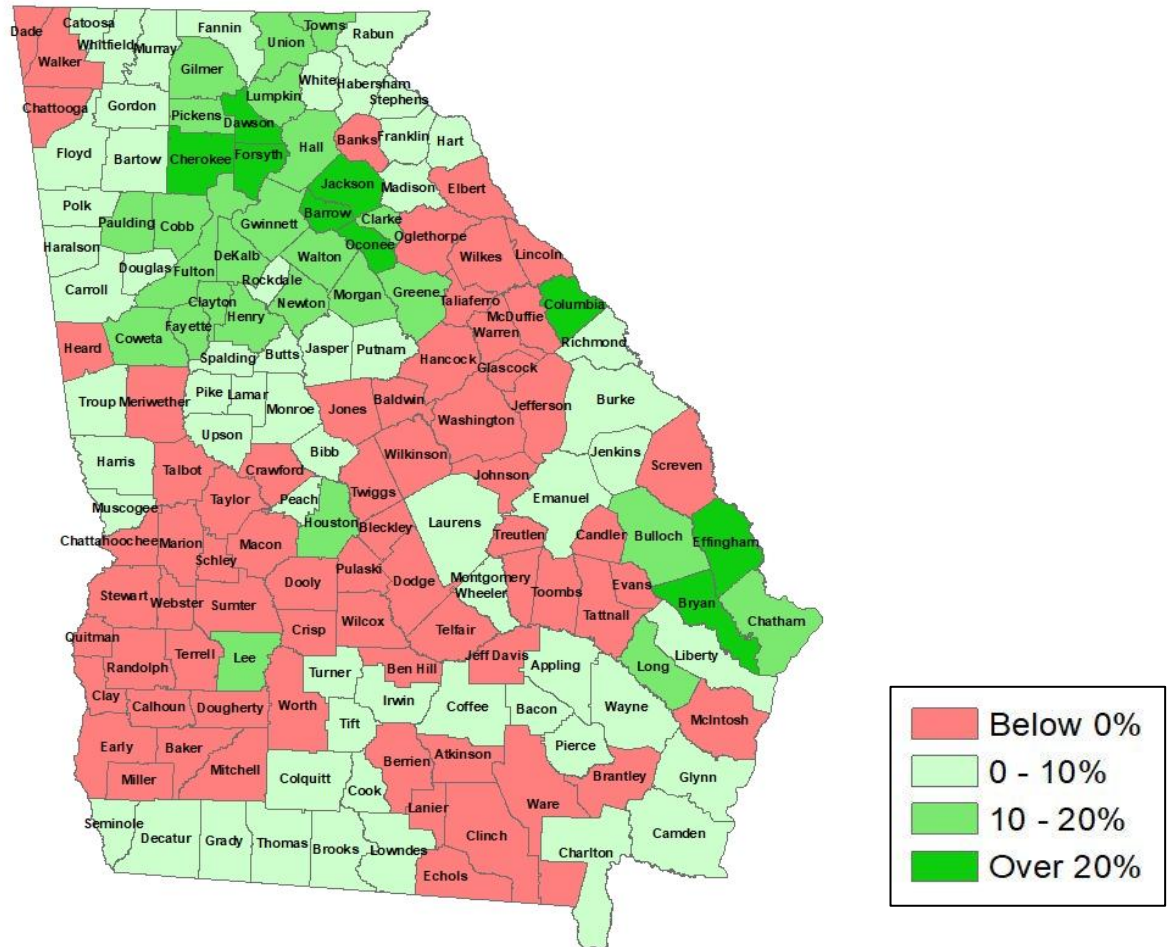
*Note: The use of "Other" in these statistics combines those who identify as Native American, Mixed Race, and "Other" race





Population Gain

Change in Population in Georgia by County

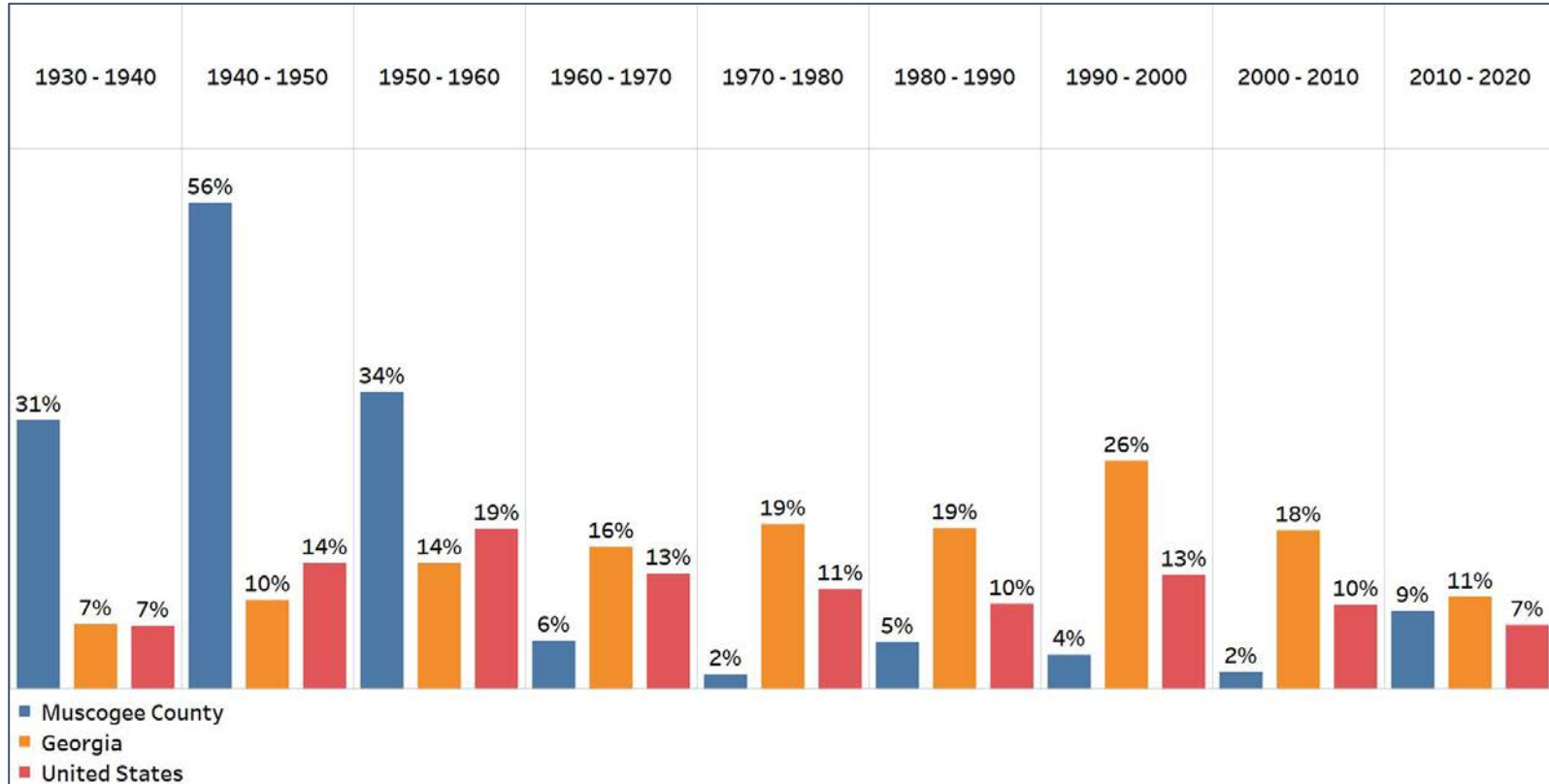


- Georgia is experiencing rapid population growth in the Atlanta, Augusta, and Savannah regions of the state



Population Gain

Change in Population by Decade

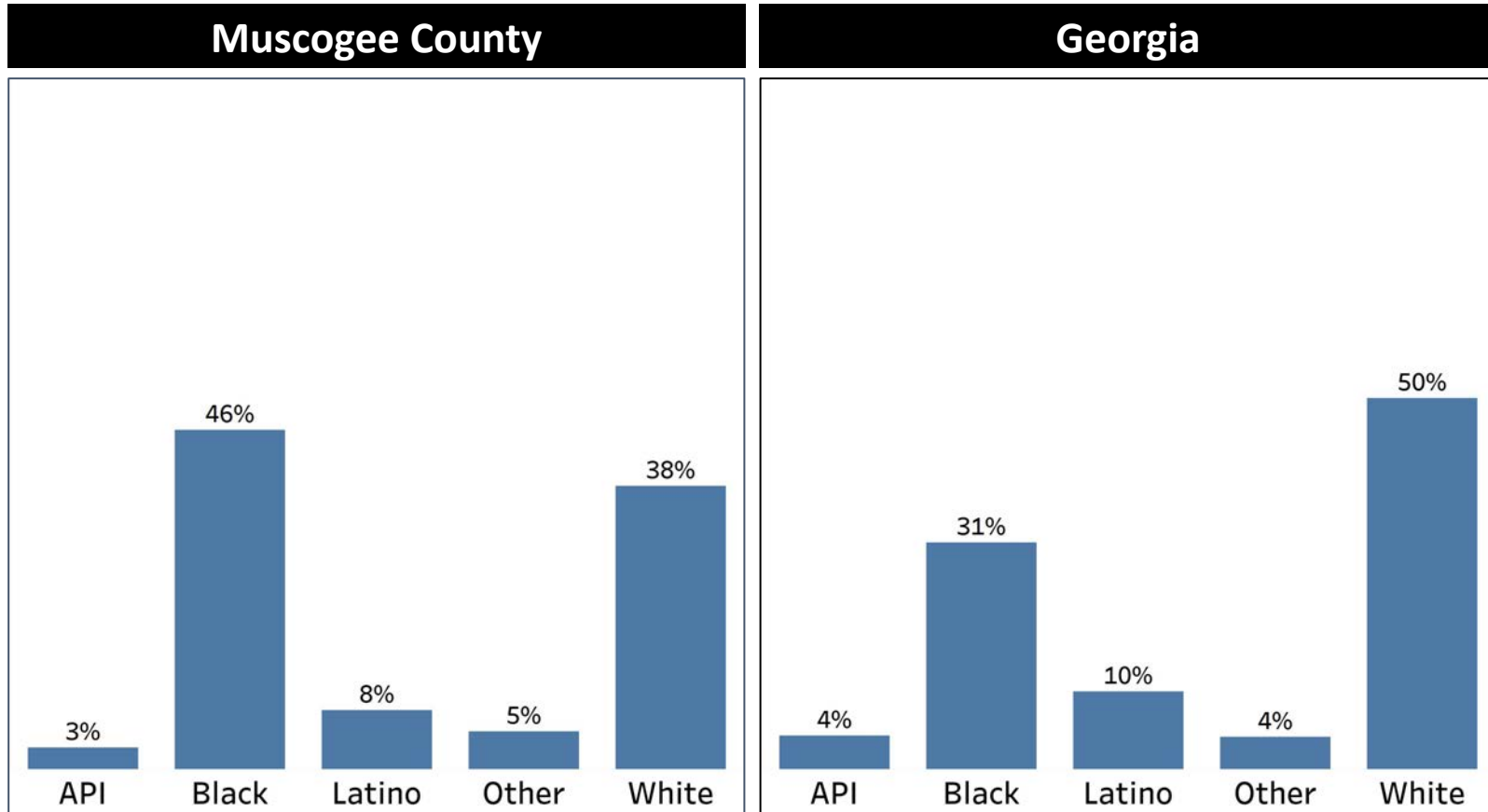


- Muscogee County experienced a large population growth from 1930 to 1960
- Since 1960, Muscogee County population growth rate has been below the statewide average



Demographics

Comparison between Muscogee County and Georgia



- Muscogee County Black population is above their statewide average and the largest demographic group in the county
- Both the Latino and White population in Muscogee county are below the statewide average

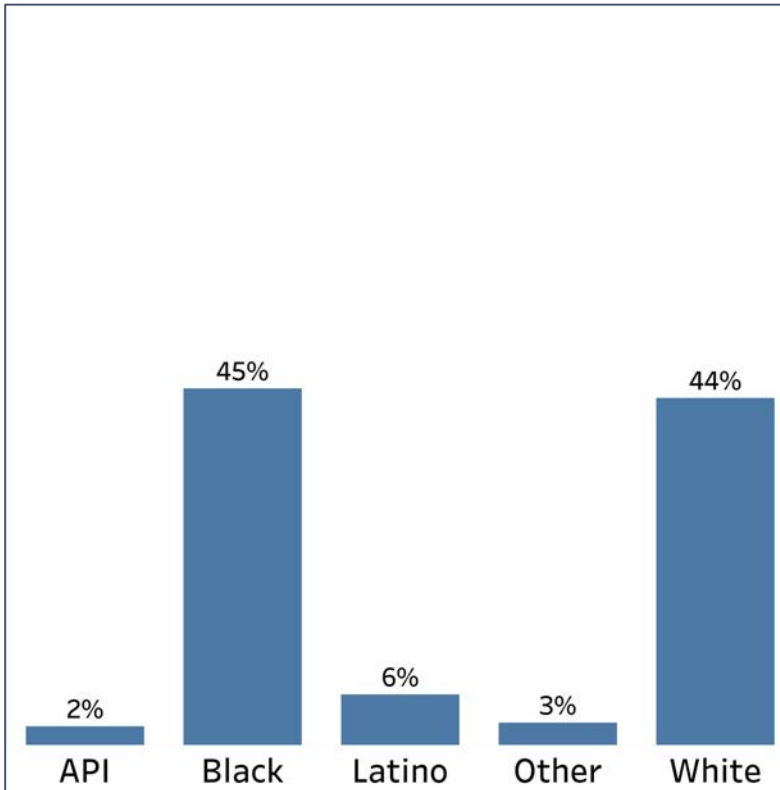


Demographics

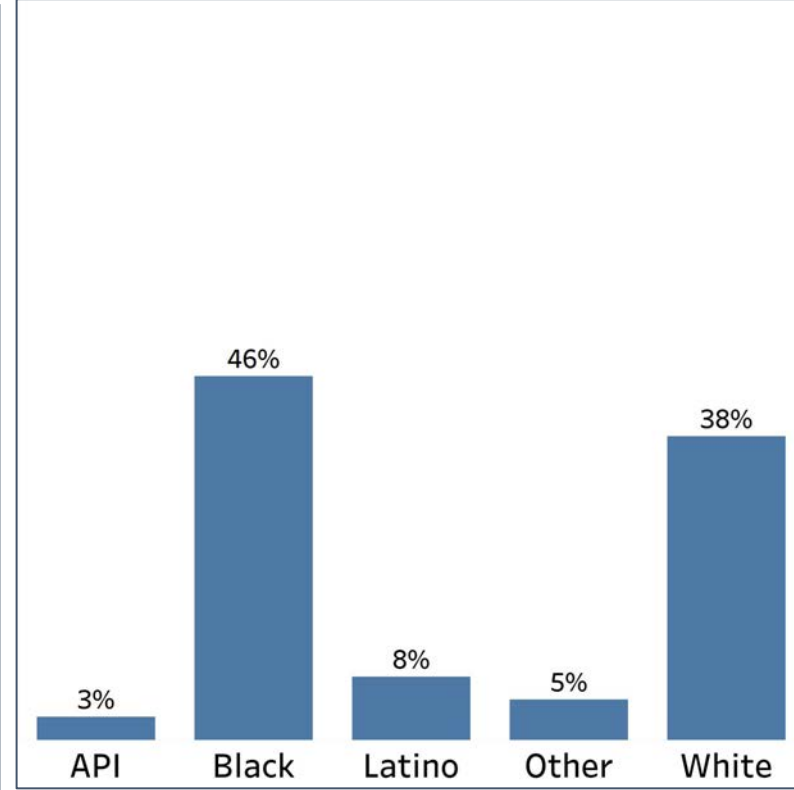
2010 vs 2020 Demographics in Muscogee County



Muscogee County 2010



Muscogee County 2020



- Muscogee County's communities of color experienced a population increase
- Since 2010, Muscogee County White population has decreased by 6%

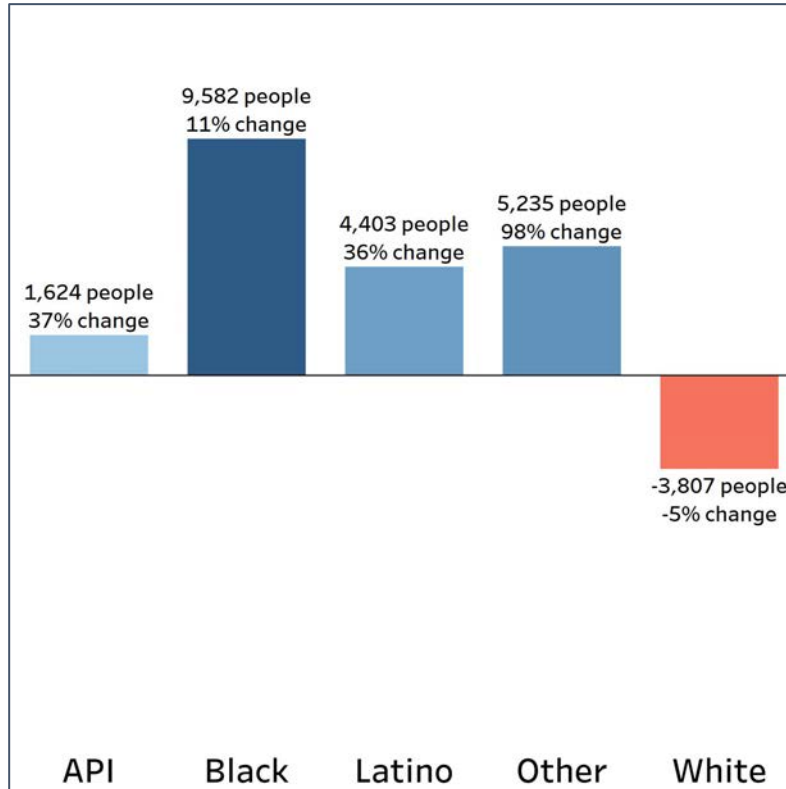


Demographics

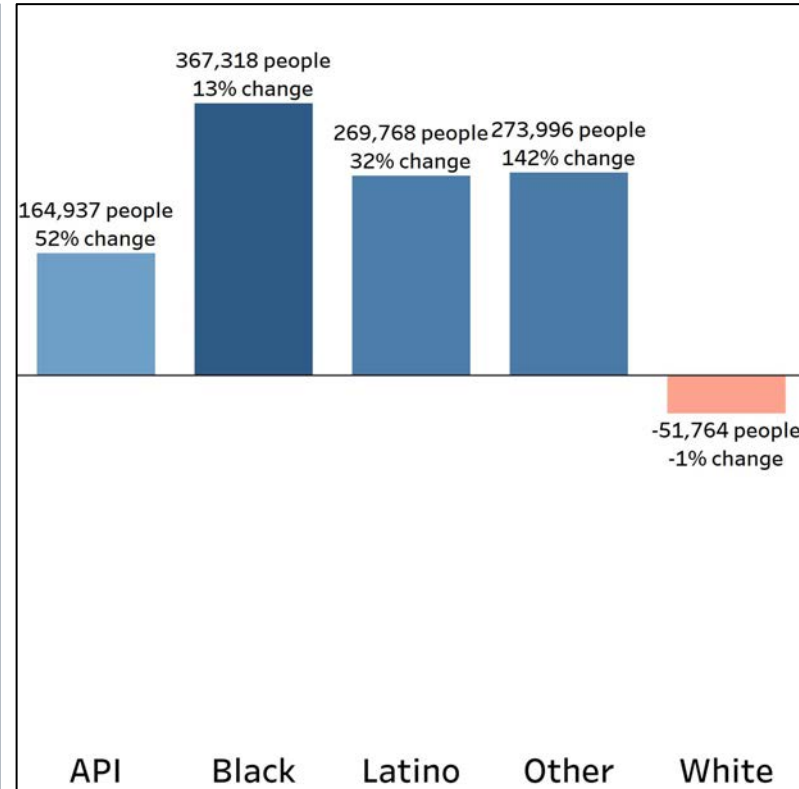
Population Change by Race (2020 - 2010)



Muscogee County



Georgia



- Muscogee County's "Other" and API population percentage change is similar to their Georgia's average
- The White population in Muscogee County is decreasing at a faster rate than the statewide average

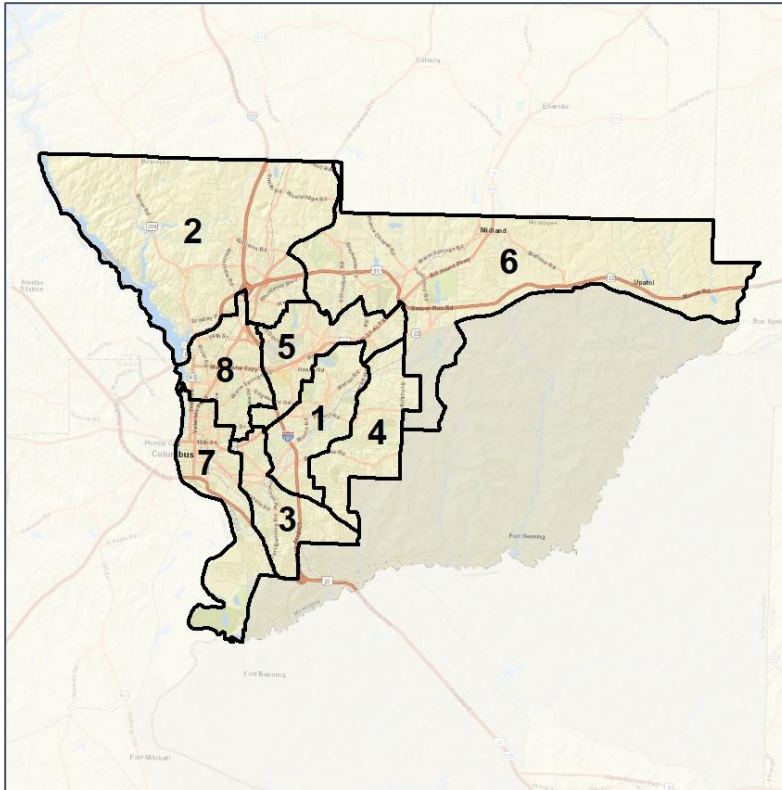


Muscogee County Commission

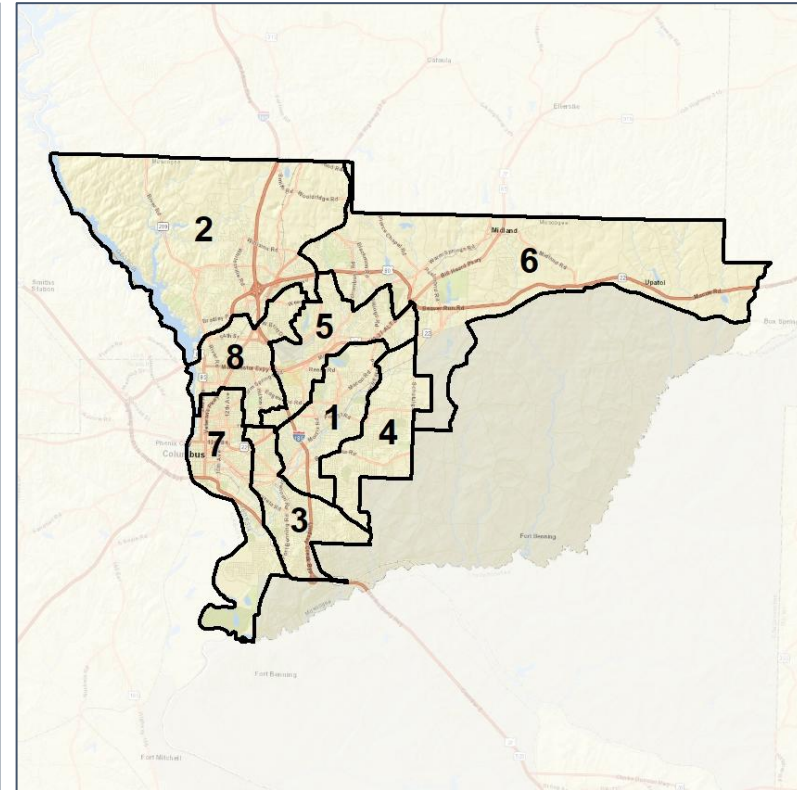
Context



2012 Map



2022 Map*



	1	2	3	4	5	6	7	8	1*	2*	3*	4*	5*	6*	7*	8*	County
Population	23,444	28,081	24,996	25,642	23,642	28,899	20,798	24,280	25,220	24,793	25,181	24,890	25,375	24,577	24,766	25,012	206,922
API	2%	6%	1%	1%	2%	7%	2%	1%	2%	7%	1%	1%	3%	7%	1%	2%	3%
Black	63%	16%	79%	79%	30%	27%	59%	32%	63%	16%	78%	79%	29%	28%	57%	26%	46%
Latino	6%	8%	7%	5%	8%	8%	10%	9%	6%	7%	7%	5%	8%	8%	9%	10%	8%
Other	4%	6%	4%	3%	6%	6%	5%	5%	4%	6%	4%	3%	6%	6%	5%	6%	5%
White	24%	65%	10%	12%	53%	52%	25%	52%	24%	65%	11%	12%	54%	51%	27%	56%	38%
Population Gain	*	*	*	*	*	*	*	*	1,776	-3,288	185	-752	1,733	-4,322	3,968	732	*
Population % Gain	*	*	*	*	*	*	*	*	8%	-12%	1%	-3%	7%	-15%	19%	3%	*
Net POC Gain	*	*	*	*	*	*	*	*	1,338	-1,166	-54	-693	575	-1,663	2,398	-708	*
Net POC % Gain	*	*	*	*	*	*	*	*	8%	-12%	0%	-3%	5%	-12%	15%	-6%	*

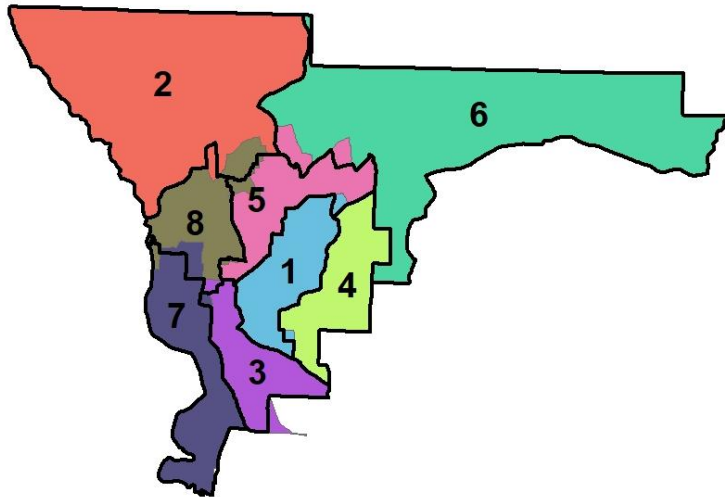


Muscogee County Commission

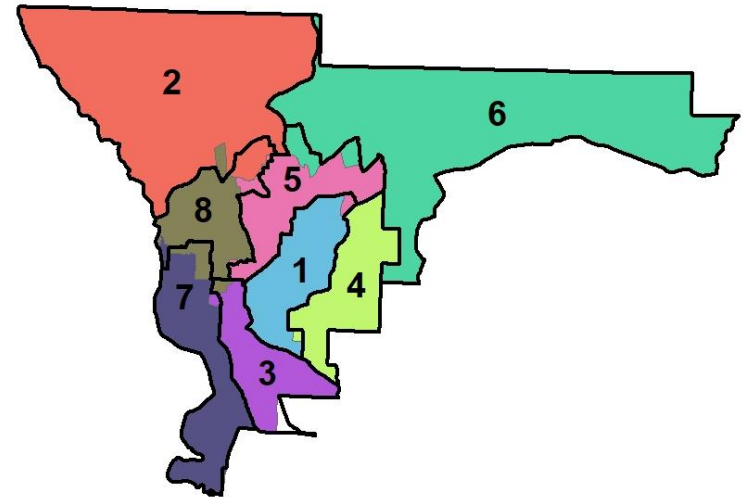
Changes in Redistricting



2012 Map



2022 Map*



	1	2	3	4	5	6	7	8	1*	2*	3*	4*	5*	6*	7*	8*	County
Population	23,444	28,081	24,996	25,642	23,642	28,899	20,798	24,280	25,220	24,793	25,181	24,890	25,375	24,577	24,766	25,012	206,922
API	2%	6%	1%	1%	2%	7%	2%	1%	2%	7%	1%	1%	3%	7%	1%	2%	3%
Black	63%	16%	79%	79%	30%	27%	59%	32%	63%	16%	78%	79%	29%	28%	57%	26%	46%
Latino	6%	8%	7%	5%	8%	8%	10%	9%	6%	7%	7%	5%	8%	8%	9%	10%	8%
Other	4%	6%	4%	3%	6%	6%	5%	5%	4%	6%	4%	3%	6%	6%	5%	6%	5%
White	24%	65%	10%	12%	53%	52%	25%	52%	24%	65%	11%	12%	54%	51%	27%	56%	38%
Population Gain	*	*	*	*	*	*	*	*	1,776	-3,288	185	-752	1,733	-4,322	3,968	732	*
Population % Gain	*	*	*	*	*	*	*	*	8%	-12%	1%	-3%	7%	-15%	19%	3%	*
Net POC Gain	*	*	*	*	*	*	*	*	1,338	-1,166	-54	-693	575	-1,663	2,398	-708	*
Net POC % Gain	*	*	*	*	*	*	*	*	8%	-12%	0%	-3%	5%	-12%	15%	-6%	*

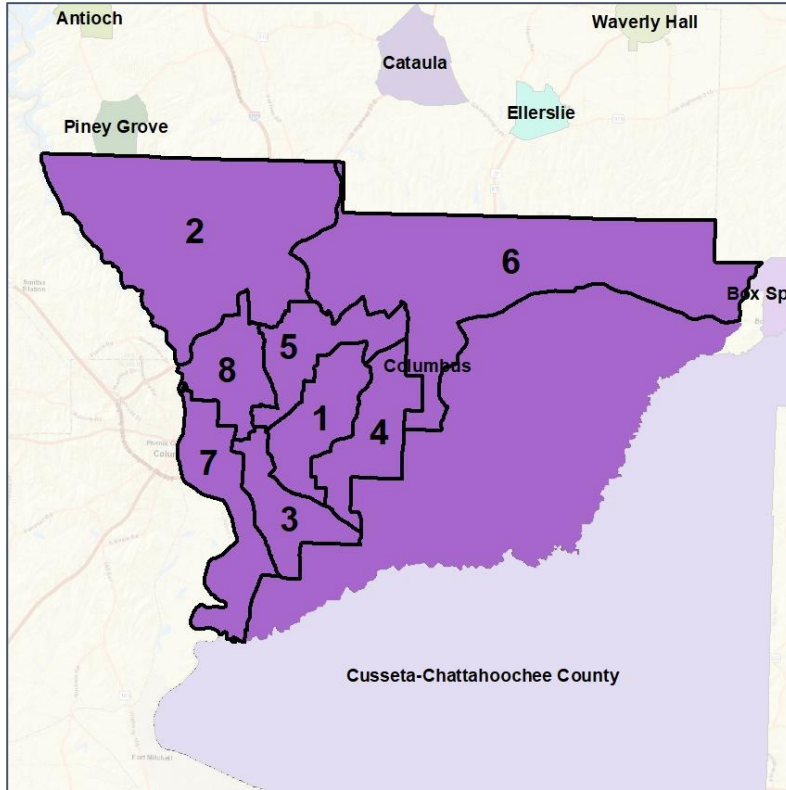


Muscogee County Commission

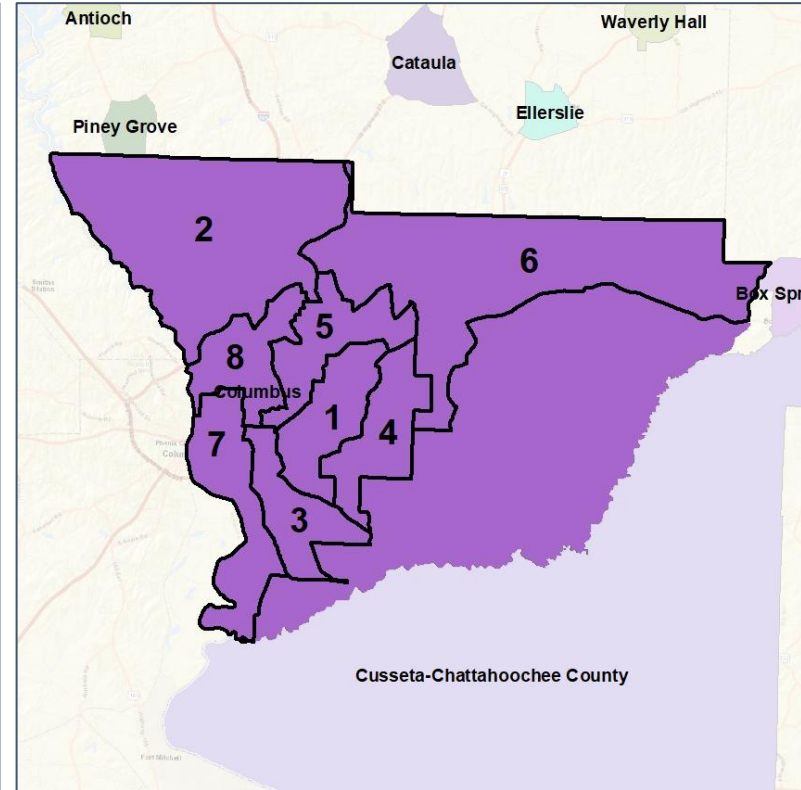
Cities and Places



2012 Map



2022 Map*



	1	2	3	4	5	6	7	8	1*	2*	3*	4*	5*	6*	7*	8*	County
Population	23,444	28,081	24,996	25,642	23,642	28,899	20,798	24,280	25,220	24,793	25,181	24,890	25,375	24,577	24,766	25,012	206,922
API	2%	6%	1%	1%	2%	7%	2%	1%	2%	7%	1%	1%	3%	7%	1%	2%	3%
Black	63%	16%	79%	79%	30%	27%	59%	32%	63%	16%	78%	79%	29%	28%	57%	26%	46%
Latino	6%	8%	7%	5%	8%	8%	10%	9%	6%	7%	7%	5%	8%	8%	9%	10%	8%
Other	4%	6%	4%	3%	6%	6%	5%	5%	4%	6%	4%	3%	6%	6%	5%	6%	5%
White	24%	65%	10%	12%	53%	52%	25%	52%	24%	65%	11%	12%	54%	51%	27%	56%	38%
Population Gain	*	*	*	*	*	*	*	*	1,776	-3,288	185	-752	1,733	-4,322	3,968	732	*
Population % Gain	*	*	*	*	*	*	*	*	8%	-12%	1%	-3%	7%	-15%	19%	3%	*
Net POC Gain	*	*	*	*	*	*	*	*	1,338	-1,166	-54	-693	575	-1,663	2,398	-708	*
Net POC % Gain	*	*	*	*	*	*	*	*	8%	-12%	0%	-3%	5%	-12%	15%	-6%	*



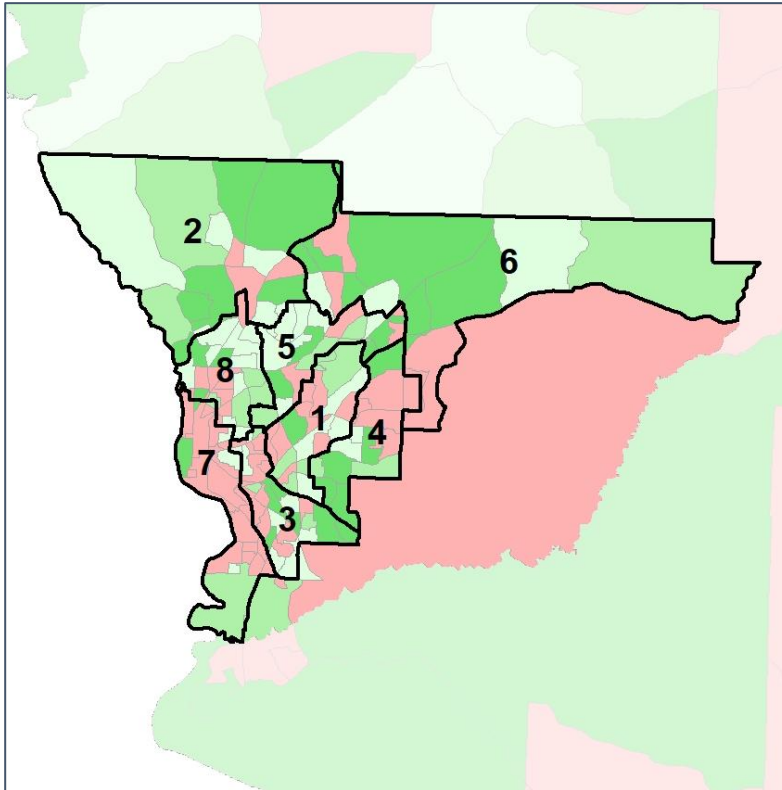
Source:
2020 Decennial Census
2020 ACS 5-Year Dataset

Muscogee County Commission

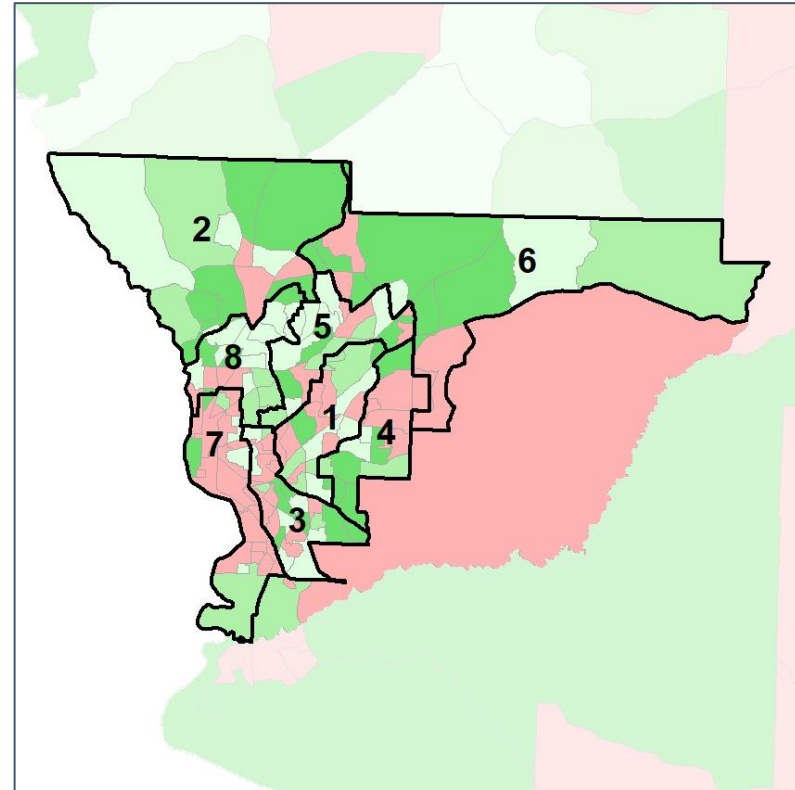
Net Gain in Population (2010 - 2020)



2012 Map



2022 Map*



	1	2	3	4	5	6	7	8	1*	2*	3*	4*	5*	6*	7*	8*	County
Population	23,444	28,081	24,996	25,642	23,642	28,899	20,798	24,280	25,220	24,793	25,181	24,890	25,375	24,577	24,766	25,012	206,922
API	2%	6%	1%	1%	2%	7%	2%	1%	2%	7%	1%	1%	3%	7%	1%	2%	3%
Black	63%	16%	79%	79%	30%	27%	59%	32%	63%	16%	78%	79%	29%	28%	57%	26%	46%
Latino	6%	8%	7%	5%	8%	8%	10%	9%	6%	7%	7%	5%	8%	8%	9%	10%	8%
Other	4%	6%	4%	3%	6%	6%	5%	5%	4%	6%	4%	3%	6%	6%	5%	6%	5%
White	24%	65%	10%	12%	53%	52%	25%	52%	24%	65%	11%	12%	54%	51%	27%	56%	38%
Population Gain	*	*	*	*	*	*	*	*	1,776	-3,288	185	-752	1,733	-4,322	3,968	732	*
Population % Gain	*	*	*	*	*	*	*	*	8%	-12%	1%	-3%	7%	-15%	19%	3%	*
Net POC Gain	*	*	*	*	*	*	*	*	1,338	-1,166	-54	-693	575	-1,663	2,398	-708	*
Net POC % Gain	*	*	*	*	*	*	*	*	8%	-12%	0%	-3%	5%	-12%	15%	-6%	*

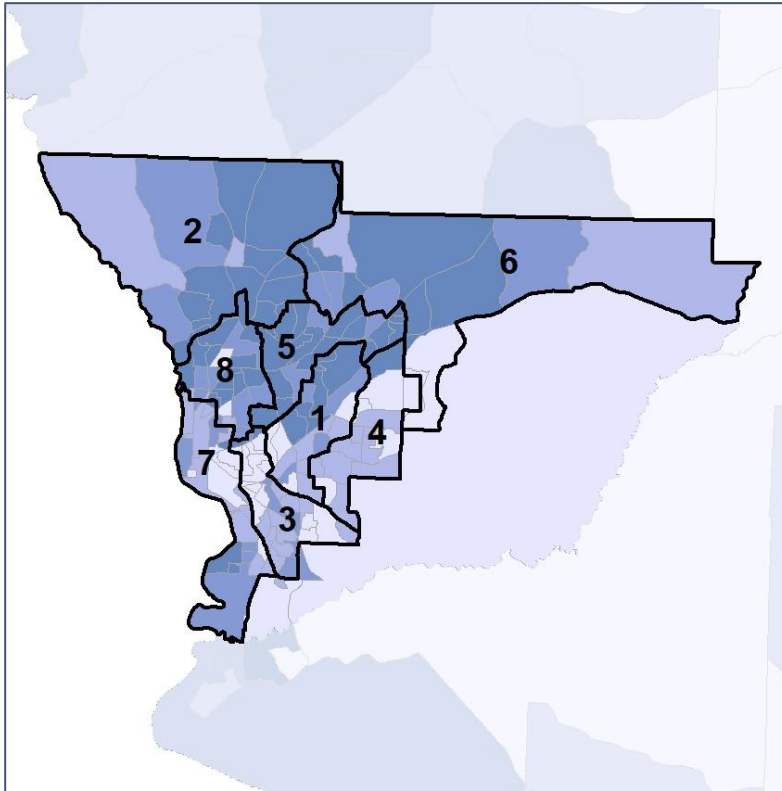


Muscogee County Commission

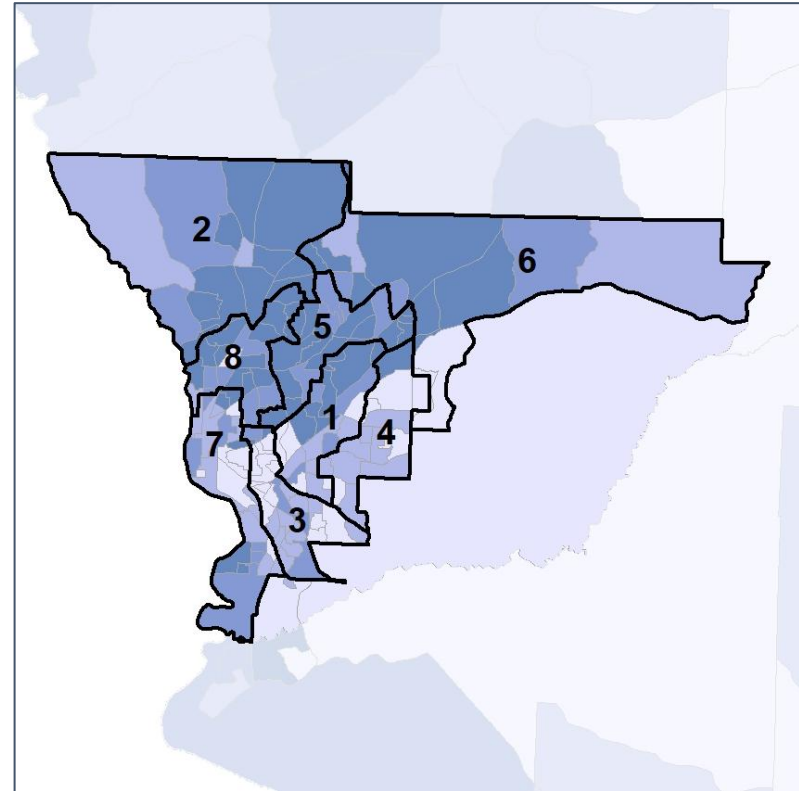
Net Gain in % POC (2020 - 2010) by Census Block Group



2012 Map



2022 Map*



	1	2	3	4	5	6	7	8	1*	2*	3*	4*	5*	6*	7*	8*	County
Population	23,444	28,081	24,996	25,642	23,642	28,899	20,798	24,280	25,220	24,793	25,181	24,890	25,375	24,577	24,766	25,012	206,922
API	2%	6%	1%	1%	2%	7%	2%	1%	2%	7%	1%	1%	3%	7%	1%	2%	3%
Black	63%	16%	79%	79%	30%	27%	59%	32%	63%	16%	78%	79%	29%	28%	57%	26%	46%
Latino	6%	8%	7%	5%	8%	8%	10%	9%	6%	7%	7%	5%	8%	8%	9%	10%	8%
Other	4%	6%	4%	3%	6%	6%	5%	5%	4%	6%	4%	3%	6%	6%	5%	6%	5%
White	24%	65%	10%	12%	53%	52%	25%	52%	24%	65%	11%	12%	54%	51%	27%	56%	38%
Population Gain	*	*	*	*	*	*	*	*	1,776	-3,288	185	-752	1,733	-4,322	3,968	732	*
Population % Gain	*	*	*	*	*	*	*	*	8%	-12%	1%	-3%	7%	-15%	19%	3%	*
Net POC Gain	*	*	*	*	*	*	*	*	1,338	-1,166	-54	-693	575	-1,663	2,398	-708	*
Net POC % Gain	*	*	*	*	*	*	*	*	8%	-12%	0%	-3%	5%	-12%	15%	-6%	*

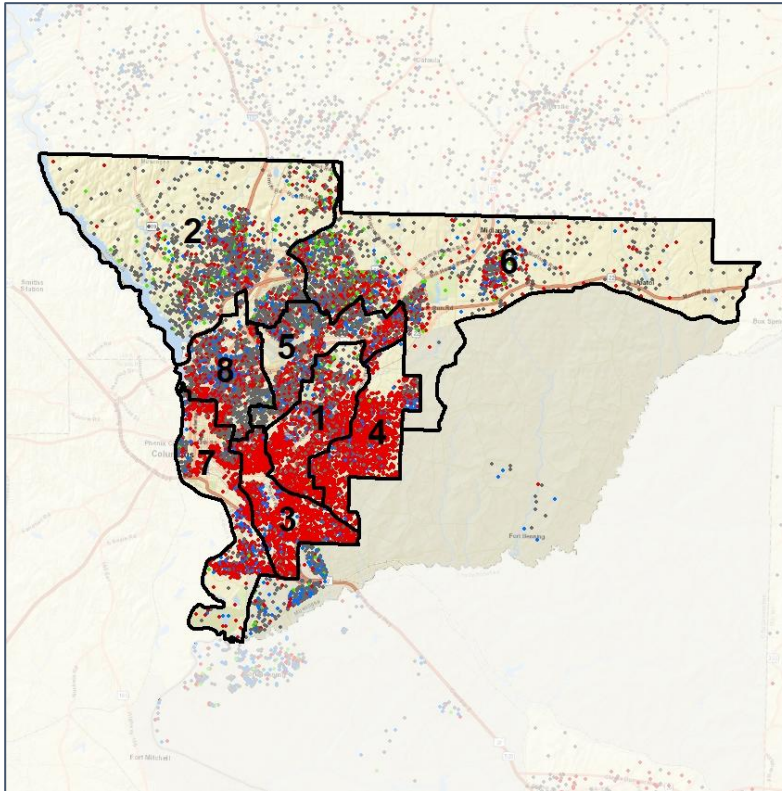


Muscogee County Commission

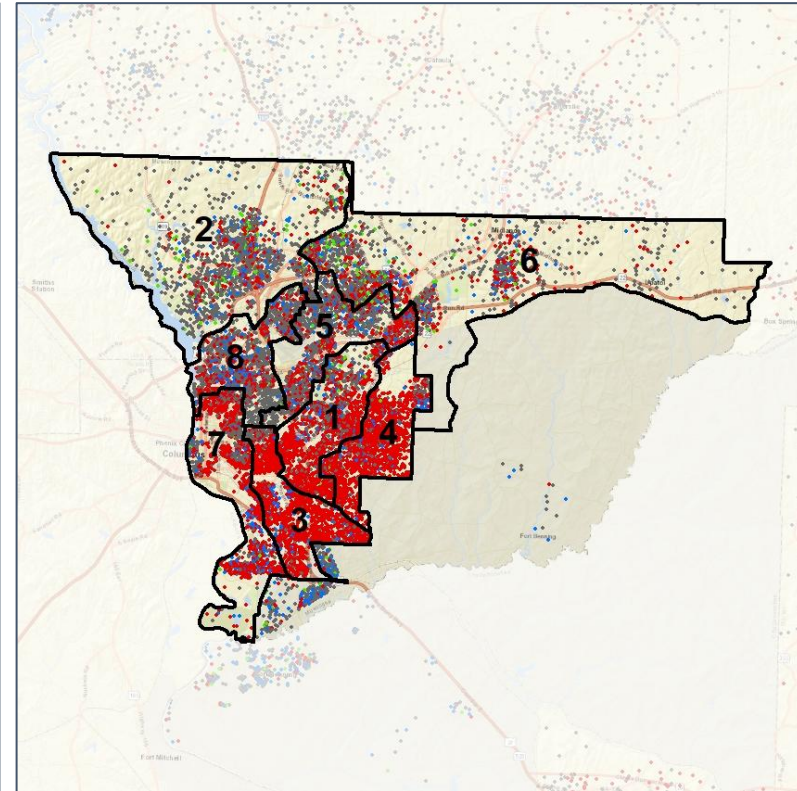
Population Density by Race



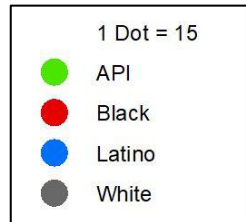
2012 Map



2022 Map*



	1	2	3	4	5	6	7	8	1*	2*	3*	4*	5*	6*	7*	8*	County
Population	23,444	28,081	24,996	25,642	23,642	28,899	20,798	24,280	25,220	24,793	25,181	24,890	25,375	24,577	24,766	25,012	206,922
API	396	1,808	150	194	565	1,958	337	350	421	1,667	157	186	695	1,788	367	479	6,063
% API	2%	6%	1%	1%	2%	7%	2%	1%	2%	7%	1%	1%	3%	7%	1%	2%	3%
Black	14,865	4,414	19,684	20,249	7,138	7,760	12,229	7,730	15,997	3,889	19,592	19,607	7,356	6,894	14,147	6,599	94,701
% Black	63%	16%	79%	79%	30%	27%	59%	32%	63%	16%	78%	79%	29%	28%	57%	26%	46%
Latino	1,439	2,123	1,653	1,327	1,994	2,391	1,995	2,232	1,559	1,838	1,678	1,304	2,109	2,033	2,225	2,415	16,513
% Latino	6%	8%	7%	5%	8%	8%	10%	9%	6%	7%	7%	5%	8%	8%	9%	10%	8%
Other	1,047	1,585	1,015	839	1,387	1,638	1,095	1,324	1,108	1,370	1,021	819	1,499	1,369	1,315	1,435	10,562
% Other	4%	6%	4%	3%	6%	6%	5%	5%	4%	6%	4%	3%	6%	6%	5%	6%	5%
White	5,697	18,151	2,494	3,033	12,558	15,152	5,142	12,644	6,135	16,029	2,733	2,974	13,716	12,493	6,712	14,084	79,083
% White	24%	65%	10%	12%	53%	52%	25%	52%	24%	65%	11%	12%	54%	51%	27%	56%	38%

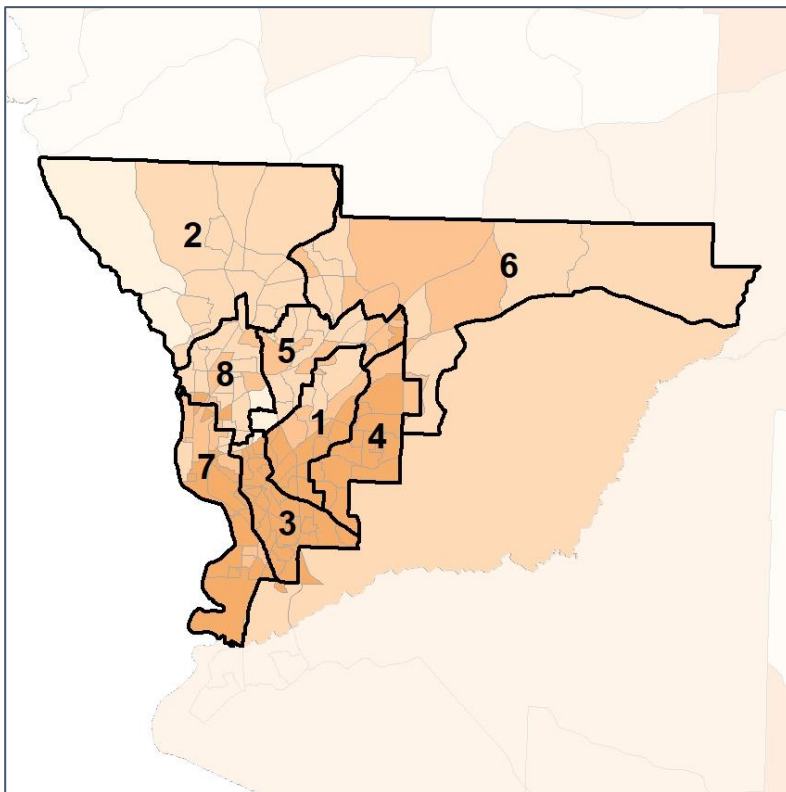


Muscogee County Commission

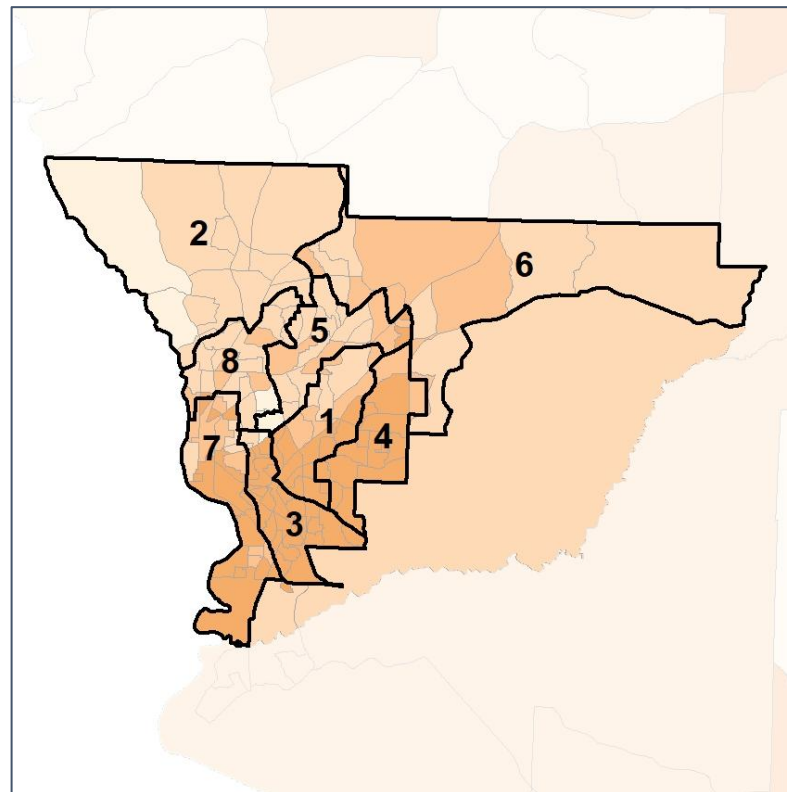
% People of Color by Census Block Group



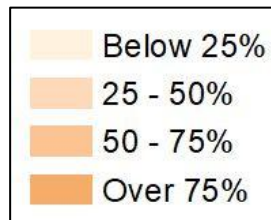
2012 Map



2022 Map*



	1	2	3	4	5	6	7	8	1*	2*	3*	4*	5*	6*	7*	8*	County
Population	23,444	28,081	24,996	25,642	23,642	28,899	20,798	24,280	25,220	24,793	25,181	24,890	25,375	24,577	24,766	25,012	206,922
API	396	1,808	150	194	565	1,958	337	350	421	1,667	157	186	695	1,788	367	479	6,063
% API	2%	6%	1%	1%	2%	7%	2%	1%	2%	7%	1%	1%	3%	7%	1%	2%	3%
Black	14,865	4,414	19,684	20,249	7,138	7,760	12,229	7,730	15,997	3,889	19,592	19,607	7,356	6,894	14,147	6,599	94,701
% Black	63%	16%	79%	79%	30%	27%	59%	32%	63%	16%	78%	79%	29%	28%	57%	26%	46%
Latino	1,439	2,123	1,653	1,327	1,994	2,391	1,995	2,232	1,559	1,838	1,678	1,304	2,109	2,033	2,225	2,415	16,513
% Latino	6%	8%	7%	5%	8%	8%	10%	9%	6%	7%	7%	5%	8%	8%	9%	10%	8%
Other	1,047	1,585	1,015	839	1,387	1,638	1,095	1,324	1,108	1,370	1,021	819	1,499	1,369	1,315	1,435	10,562
% Other	4%	6%	4%	3%	6%	6%	5%	5%	4%	6%	4%	3%	6%	6%	5%	6%	5%
White	5,697	18,151	2,494	3,033	12,558	15,152	5,142	12,644	6,135	16,029	2,733	2,974	13,716	12,493	6,712	14,084	79,083
% White	24%	65%	10%	12%	53%	52%	25%	52%	24%	65%	11%	12%	54%	51%	27%	56%	38%



Source:
2020 Decennial Census
2020 ACS 5-Year Dataset

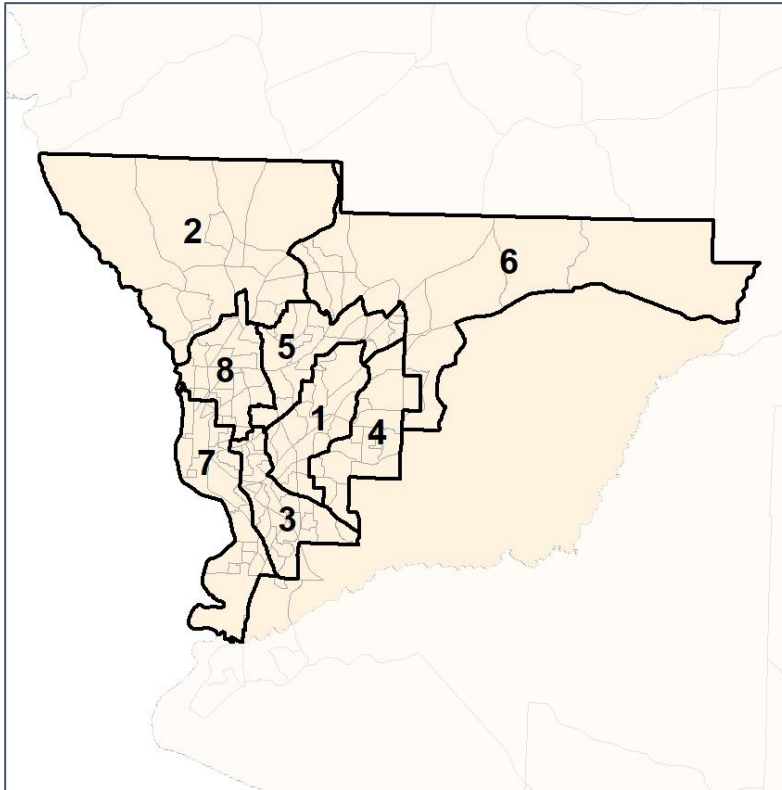


Muscogee County Commission

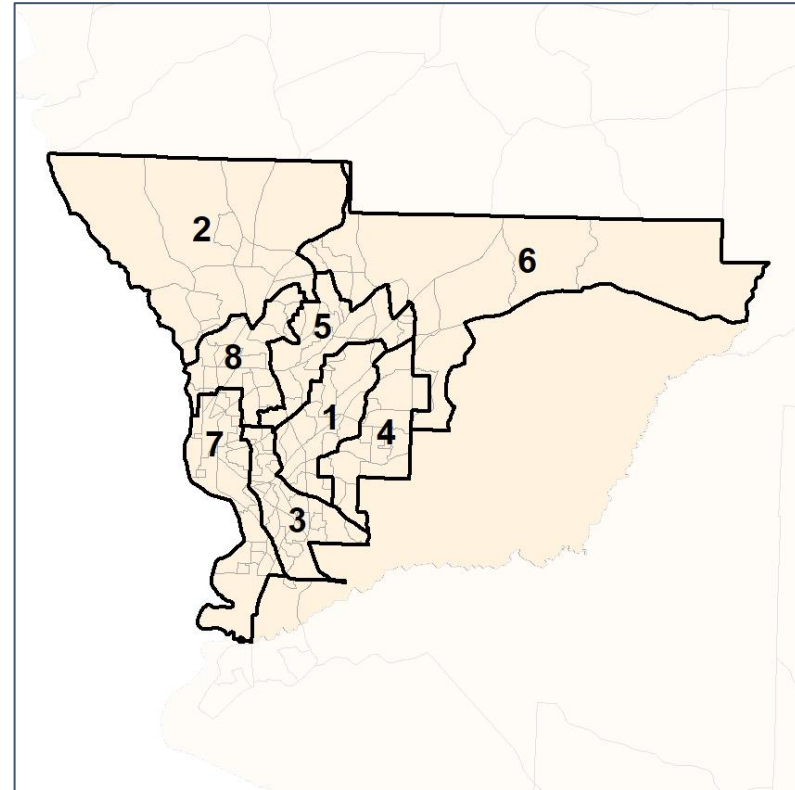
% API by Census Block Group



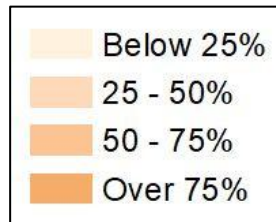
2012 Map



2022 Map*



	1	2	3	4	5	6	7	8	1*	2*	3*	4*	5*	6*	7*	8*	County
Population	23,444	28,081	24,996	25,642	23,642	28,899	20,798	24,280	25,220	24,793	25,181	24,890	25,375	24,577	24,766	25,012	206,922
API	396	1,808	150	194	565	1,958	337	350	421	1,667	157	186	695	1,788	367	479	6,063
% API	2%	6%	1%	1%	2%	7%	2%	1%	2%	7%	1%	1%	3%	7%	1%	2%	3%
Black	14,865	4,414	19,684	20,249	7,138	7,760	12,229	7,730	15,997	3,889	19,592	19,607	7,356	6,894	14,147	6,599	94,701
% Black	63%	16%	79%	79%	30%	27%	59%	32%	63%	16%	78%	79%	29%	28%	57%	26%	46%
Latino	1,439	2,123	1,653	1,327	1,994	2,391	1,995	2,232	1,559	1,838	1,678	1,304	2,109	2,033	2,225	2,415	16,513
% Latino	6%	8%	7%	5%	8%	8%	10%	9%	6%	7%	7%	5%	8%	8%	9%	10%	8%
Other	1,047	1,585	1,015	839	1,387	1,638	1,095	1,324	1,108	1,370	1,021	819	1,499	1,369	1,315	1,435	10,562
% Other	4%	6%	4%	3%	6%	6%	5%	5%	4%	6%	4%	3%	6%	6%	5%	6%	5%
White	5,697	18,151	2,494	3,033	12,558	15,152	5,142	12,644	6,135	16,029	2,733	2,974	13,716	12,493	6,712	14,084	79,083
% White	24%	65%	10%	12%	53%	52%	25%	52%	24%	65%	11%	12%	54%	51%	27%	56%	38%



Source:
2020 Decennial Census
2020 ACS 5-Year Dataset

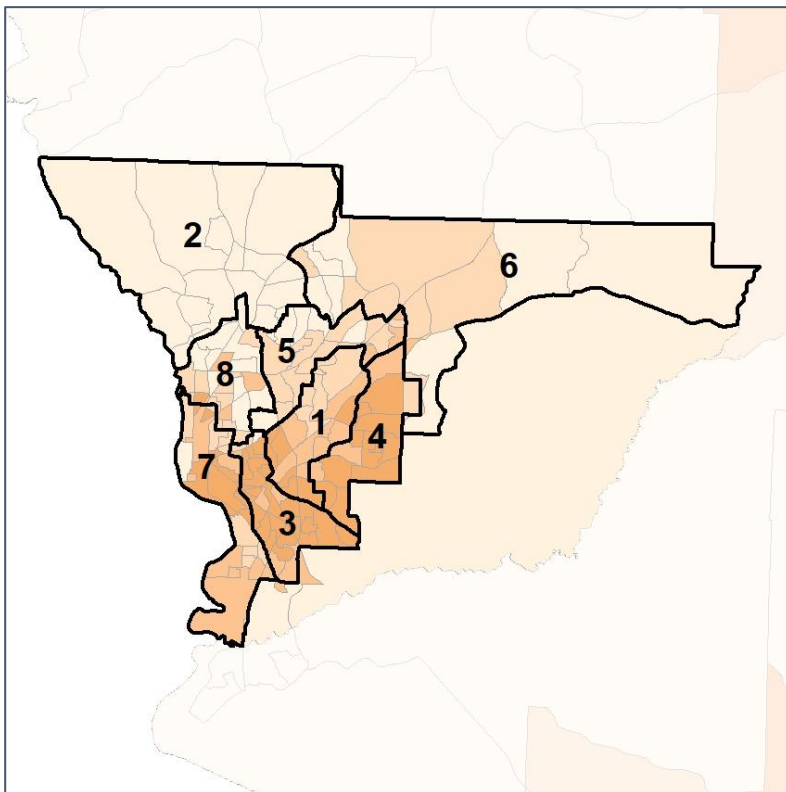


Muscogee County Commission

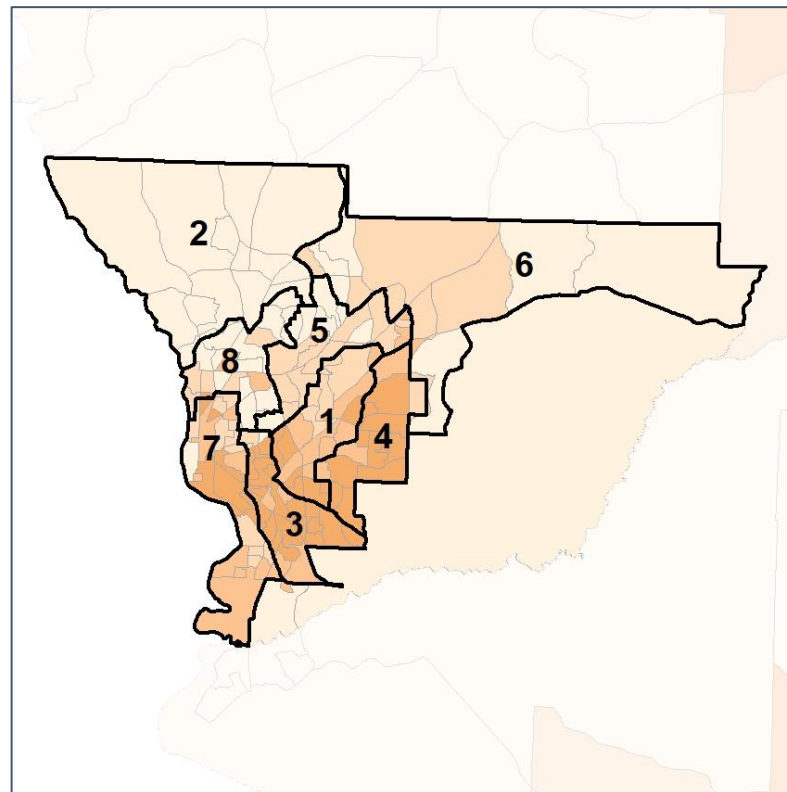
% Black by Census Block Group



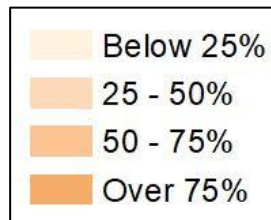
2012 Map



2022 Map*



	1	2	3	4	5	6	7	8	1*	2*	3*	4*	5*	6*	7*	8*	County
Population	23,444	28,081	24,996	25,642	23,642	28,899	20,798	24,280	25,220	24,793	25,181	24,890	25,375	24,577	24,766	25,012	206,922
API	396	1,808	150	194	565	1,958	337	350	421	1,667	157	186	695	1,788	367	479	6,063
% API	2%	6%	1%	1%	2%	7%	2%	1%	2%	7%	1%	1%	3%	7%	1%	2%	3%
Black	14,865	4,414	19,684	20,249	7,138	7,760	12,229	7,730	15,997	3,889	19,592	19,607	7,356	6,894	14,147	6,599	94,701
% Black	63%	16%	79%	79%	30%	27%	59%	32%	63%	16%	78%	79%	29%	28%	57%	26%	46%
Latino	1,439	2,123	1,653	1,327	1,994	2,391	1,995	2,232	1,559	1,838	1,678	1,304	2,109	2,033	2,225	2,415	16,513
% Latino	6%	8%	7%	5%	8%	8%	10%	9%	6%	7%	7%	5%	8%	8%	9%	10%	8%
Other	1,047	1,585	1,015	839	1,387	1,638	1,095	1,324	1,108	1,370	1,021	819	1,499	1,369	1,315	1,435	10,562
% Other	4%	6%	4%	3%	6%	6%	5%	5%	4%	6%	4%	3%	6%	6%	5%	6%	5%
White	5,697	18,151	2,494	3,033	12,558	15,152	5,142	12,644	6,135	16,029	2,733	2,974	13,716	12,493	6,712	14,084	79,083
% White	24%	65%	10%	12%	53%	52%	25%	52%	24%	65%	11%	12%	54%	51%	27%	56%	38%

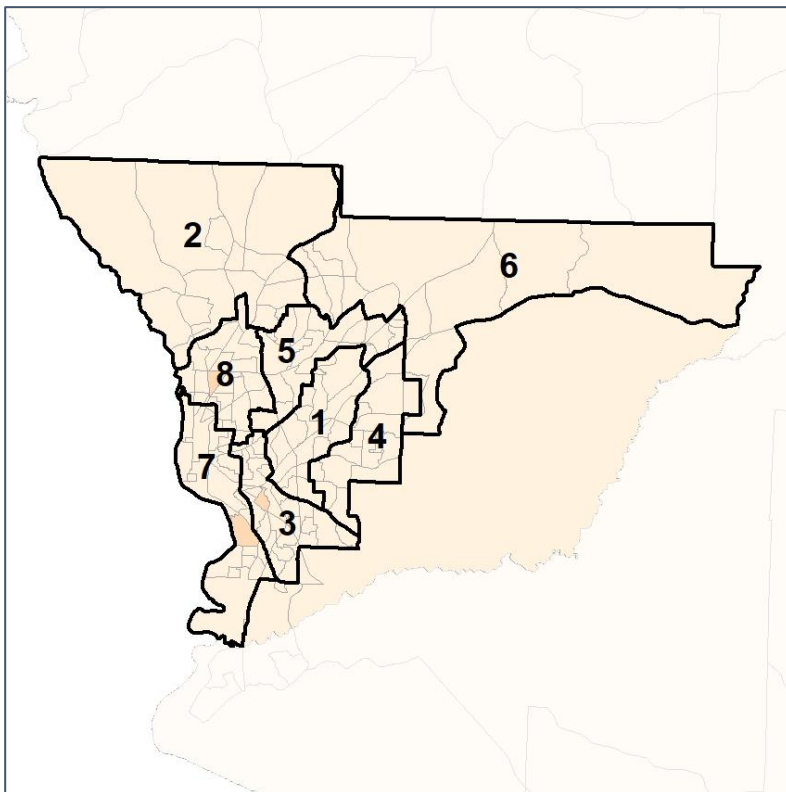


Muscogee County Commission

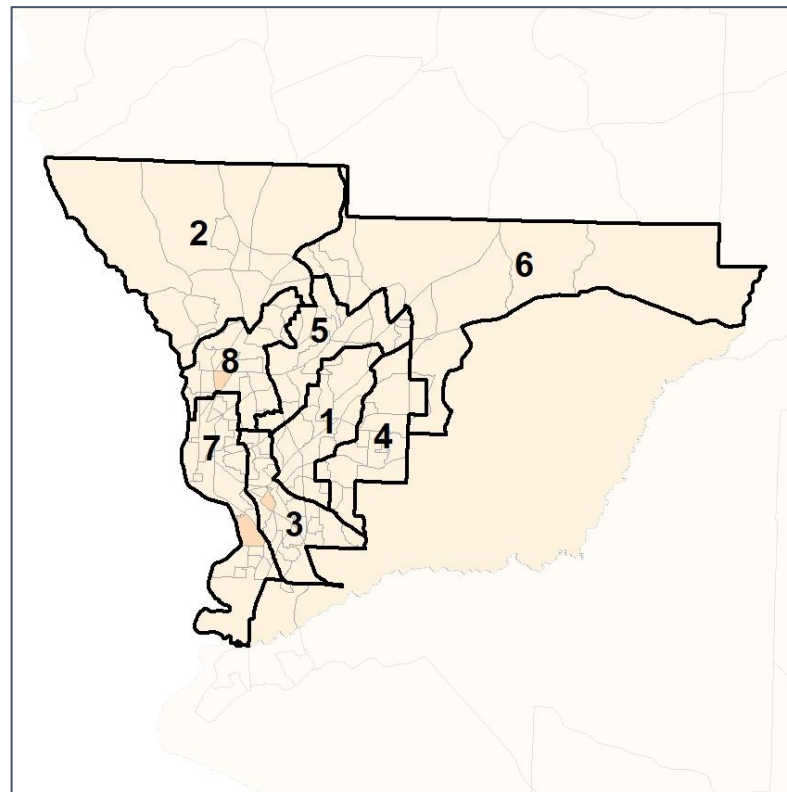
% Latino by Census Block Group



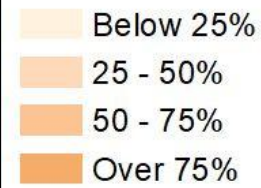
2012 Map



2022 Map*



	1	2	3	4	5	6	7	8	1*	2*	3*	4*	5*	6*	7*	8*	County
Population	23,444	28,081	24,996	25,642	23,642	28,899	20,798	24,280	25,220	24,793	25,181	24,890	25,375	24,577	24,766	25,012	206,922
API	396	1,808	150	194	565	1,958	337	350	421	1,667	157	186	695	1,788	367	479	6,063
% API	2%	6%	1%	1%	2%	7%	2%	1%	2%	7%	1%	1%	3%	7%	1%	2%	3%
Black	14,865	4,414	19,684	20,249	7,138	7,760	12,229	7,730	15,997	3,889	19,592	19,607	7,356	6,894	14,147	6,599	94,701
% Black	63%	16%	79%	79%	30%	27%	59%	32%	63%	16%	78%	79%	29%	28%	57%	26%	46%
Latino	1,439	2,123	1,653	1,327	1,994	2,391	1,995	2,232	1,559	1,838	1,678	1,304	2,109	2,033	2,225	2,415	16,513
% Latino	6%	8%	7%	5%	8%	8%	10%	9%	6%	7%	7%	5%	8%	8%	9%	10%	8%
Other	1,047	1,585	1,015	839	1,387	1,638	1,095	1,324	1,108	1,370	1,021	819	1,499	1,369	1,315	1,435	10,562
% Other	4%	6%	4%	3%	6%	6%	5%	5%	4%	6%	4%	3%	6%	6%	5%	6%	5%
White	5,697	18,151	2,494	3,033	12,558	15,152	5,142	12,644	6,135	16,029	2,733	2,974	13,716	12,493	6,712	14,084	79,083
% White	24%	65%	10%	12%	53%	52%	25%	52%	24%	65%	11%	12%	54%	51%	27%	56%	38%



Source:
2020 Decennial Census
2020 ACS 5-Year Dataset

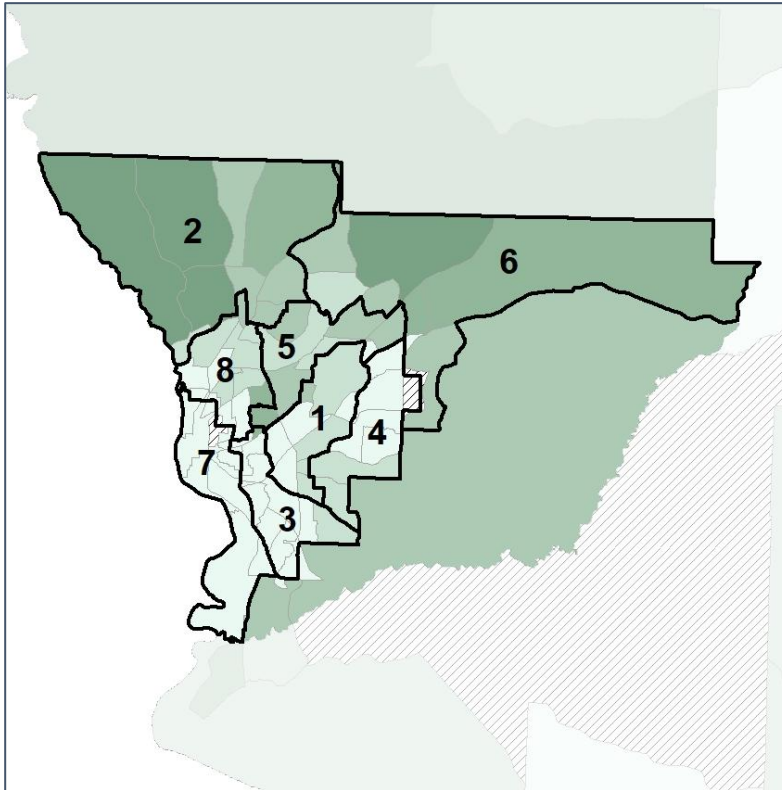


Muscogee County Commission

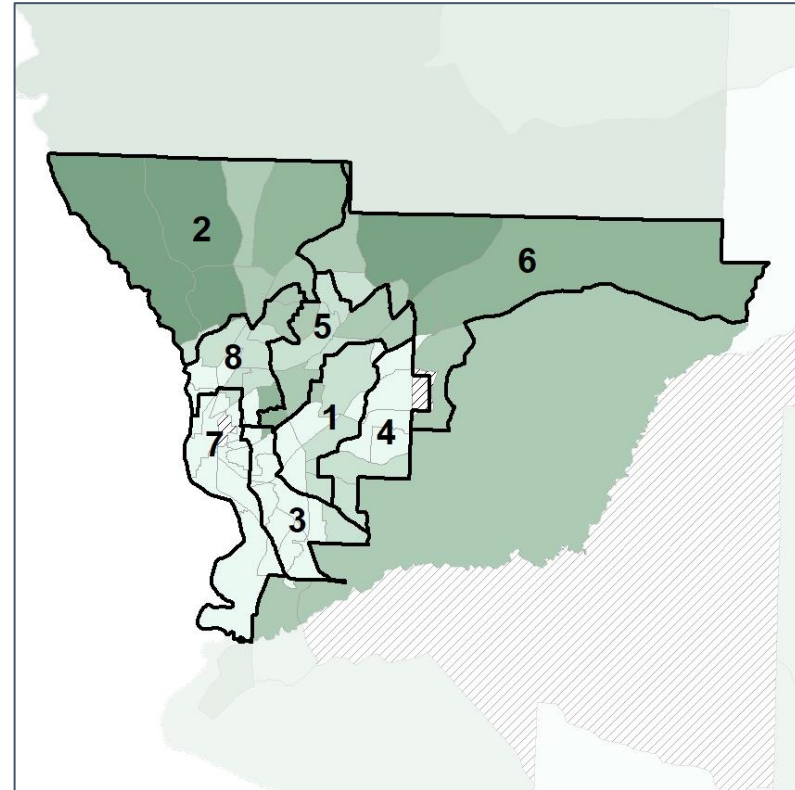
Median Household Income by Census Tract



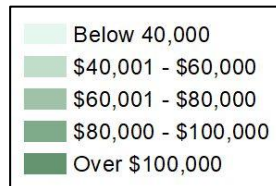
2012 Map



2022 Map*



	1	2	3	4	5	6	7	8	1*	2*	3*	4*	5*	6*	7*	8*	County
Population	23,444	28,081	24,996	25,642	23,642	28,899	20,798	24,280	25,220	24,793	25,181	24,890	25,375	24,577	24,766	25,012	206,922
% API	2%	6%	1%	1%	2%	7%	2%	1%	2%	7%	1%	1%	3%	7%	1%	2%	3%
% Black	63%	16%	79%	79%	30%	27%	59%	32%	63%	16%	78%	79%	29%	28%	57%	26%	46%
% Latino	6%	8%	7%	5%	8%	8%	10%	9%	6%	7%	7%	5%	8%	8%	9%	10%	8%
% Other	4%	6%	4%	3%	6%	6%	5%	5%	4%	6%	4%	3%	6%	6%	5%	6%	5%
% White	24%	65%	10%	12%	53%	52%	25%	52%	24%	65%	11%	12%	54%	51%	27%	56%	38%
Median Income	\$43K	\$92K	\$30K	\$43K	\$59K	\$79K	\$33K	\$44K	\$43K	\$98K	\$36K	\$43K	\$61K	\$80K	\$28K	\$49K	\$47K
% Renter	42%	38%	62%	36%	53%	44%	76%	60%	42%	38%	63%	36%	55%	45%	74%	49%	51%
% Youth	22%	22%	22%	25%	36%	27%	31%	25%	22%	22%	24%	25%	35%	28%	26%	26%	26%

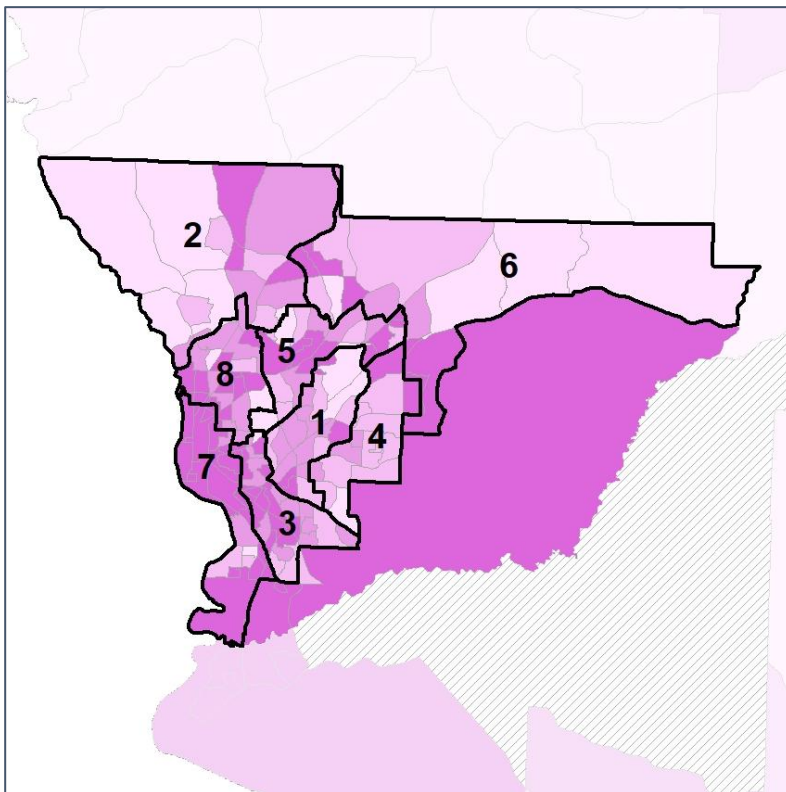


Muscogee County Commission

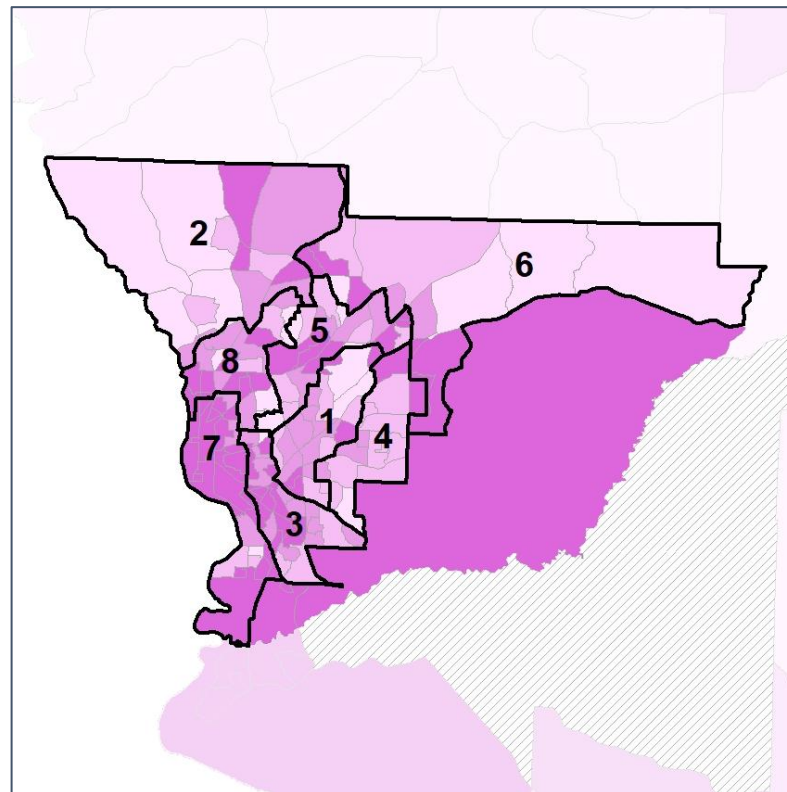
% Renter by Census Block Group



2012 Map



2022 Map*



	1	2	3	4	5	6	7	8	1*	2*	3*	4*	5*	6*	7*	8*	County
Population	23,444	28,081	24,996	25,642	23,642	28,899	20,798	24,280	25,220	24,793	25,181	24,890	25,375	24,577	24,766	25,012	206,922
% API	2%	6%	1%	1%	2%	7%	2%	1%	2%	7%	1%	1%	3%	7%	1%	2%	3%
% Black	63%	16%	79%	79%	30%	27%	59%	32%	63%	16%	78%	79%	29%	28%	57%	26%	46%
% Latino	6%	8%	7%	5%	8%	8%	10%	9%	6%	7%	7%	5%	8%	8%	9%	10%	8%
% Other	4%	6%	4%	3%	6%	6%	5%	5%	4%	6%	4%	3%	6%	6%	5%	6%	5%
% White	24%	65%	10%	12%	53%	52%	25%	52%	24%	65%	11%	12%	54%	51%	27%	56%	38%
Median Income	\$43K	\$92K	\$30K	\$43K	\$59K	\$79K	\$33K	\$44K	\$43K	\$98K	\$36K	\$43K	\$61K	\$80K	\$28K	\$49K	\$47K
% Renter	42%	38%	62%	36%	53%	44%	76%	60%	42%	38%	63%	36%	55%	45%	74%	49%	51%
% Youth	22%	22%	22%	25%	36%	27%	31%	25%	22%	22%	24%	25%	35%	28%	26%	26%	26%

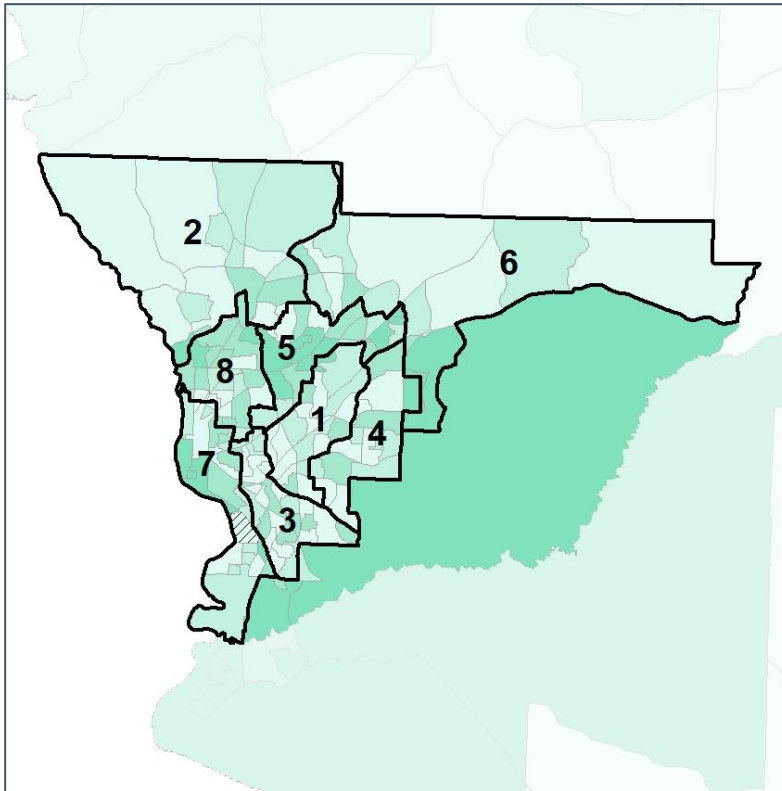


Muscogee County Commission

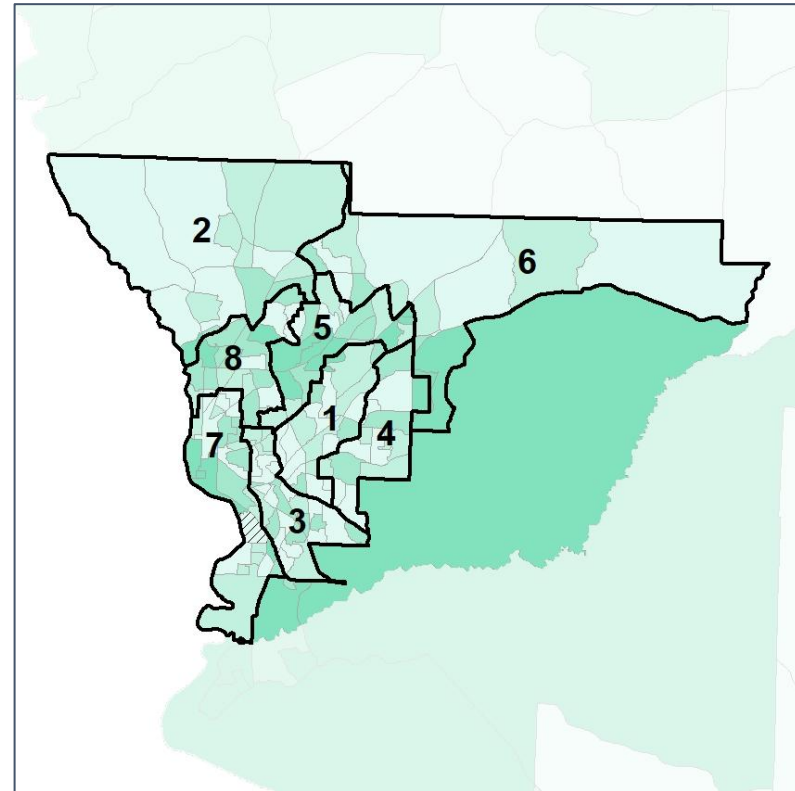
% Youth (18-34) by Census Block Group



2012 Map



2022 Map*



	1	2	3	4	5	6	7	8	1*	2*	3*	4*	5*	6*	7*	8*	County
Population	23,444	28,081	24,996	25,642	23,642	28,899	20,798	24,280	25,220	24,793	25,181	24,890	25,375	24,577	24,766	25,012	206,922
% API	2%	6%	1%	1%	2%	7%	2%	1%	2%	7%	1%	1%	3%	7%	1%	2%	3%
% Black	63%	16%	79%	79%	30%	27%	59%	32%	63%	16%	78%	79%	29%	28%	57%	26%	46%
% Latino	6%	8%	7%	5%	8%	8%	10%	9%	6%	7%	7%	5%	8%	8%	9%	10%	8%
% Other	4%	6%	4%	3%	6%	6%	5%	5%	4%	6%	4%	3%	6%	6%	5%	6%	5%
% White	24%	65%	10%	12%	53%	52%	25%	52%	24%	65%	11%	12%	54%	51%	27%	56%	38%
Median Income	\$43K	\$92K	\$30K	\$43K	\$59K	\$79K	\$33K	\$44K	\$43K	\$98K	\$36K	\$43K	\$61K	\$80K	\$28K	\$49K	\$47K
% Renter	42%	38%	62%	36%	53%	44%	76%	60%	42%	38%	63%	36%	55%	45%	74%	49%	51%
% Youth	22%	22%	22%	25%	36%	27%	31%	25%	22%	22%	24%	25%	35%	28%	26%	26%	26%

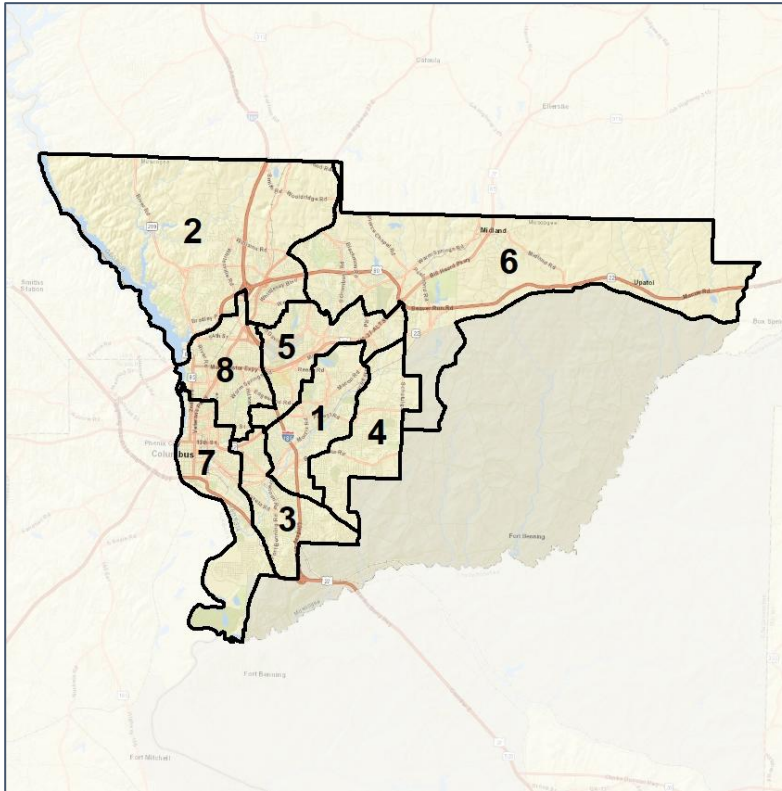


Muscogee County School Board

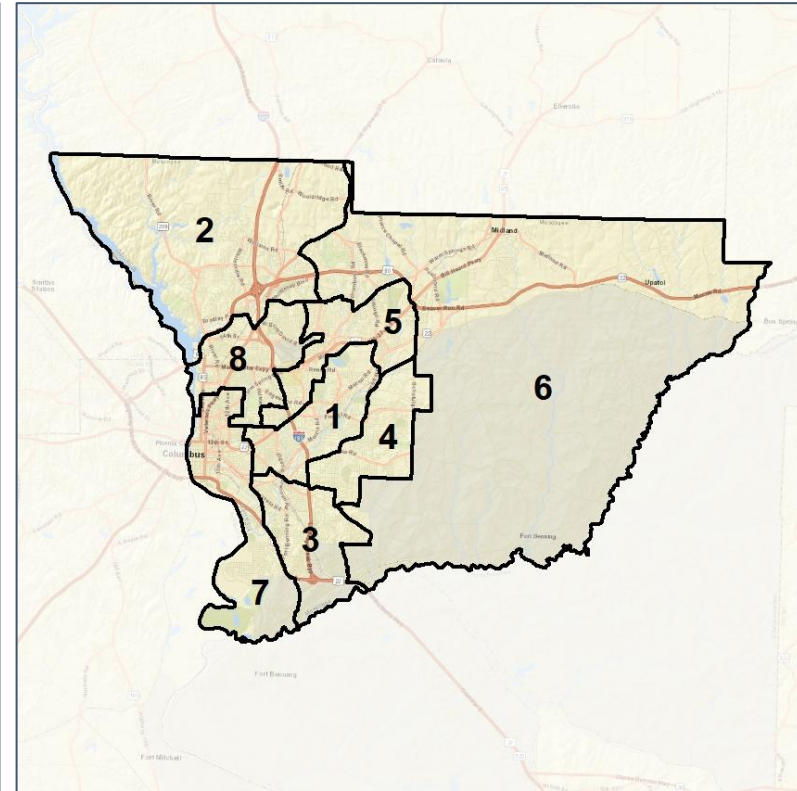
Context



2012 Map



2022 Map*



	1	2	3	4	5	6	7	8	1*	2*	3*	4*	5*	6*	7*	8*	County
Population	23,444	28,081	24,996	25,642	23,642	28,899	20,798	24,280	25,881	25,806	26,288	25,506	26,106	26,081	25,694	25,560	206,922
API	2%	6%	1%	1%	2%	7%	2%	1%	1%	7%	1%	1%	3%	7%	2%	2%	3%
Black	63%	16%	79%	79%	30%	27%	59%	32%	62%	16%	66%	80%	33%	28%	55%	27%	46%
Latino	6%	8%	7%	5%	8%	8%	10%	9%	6%	8%	10%	5%	8%	8%	9%	9%	8%
Other	4%	6%	4%	3%	6%	6%	5%	5%	5%	6%	5%	3%	6%	6%	5%	6%	5%
White	24%	65%	10%	12%	53%	52%	25%	52%	26%	64%	18%	11%	50%	51%	29%	57%	38%
Population Gain	*	*	*	*	*	*	*	*	2,437	-2,275	1,292	-136	2,464	-2,818	4,896	1,280	*
Population % Gain	*	*	*	*	*	*	*	*	10%	-8%	5%	-1%	10%	-10%	24%	5%	*
Net POC Gain	*	*	*	*	*	*	*	*	1,530	-695	-1,003	80	1,922	-1,084	2,709	-531	*
Net POC % Gain	*	*	*	*	*	*	*	*	9%	-7%	-4%	0%	17%	-8%	17%	-5%	*

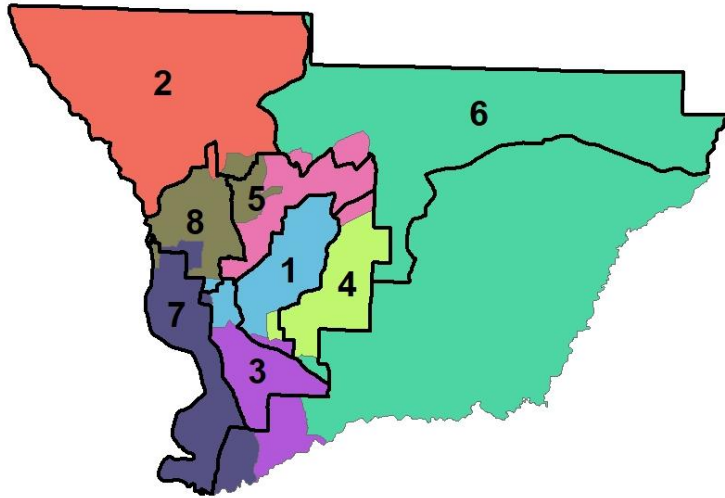


Muscogee County School Board

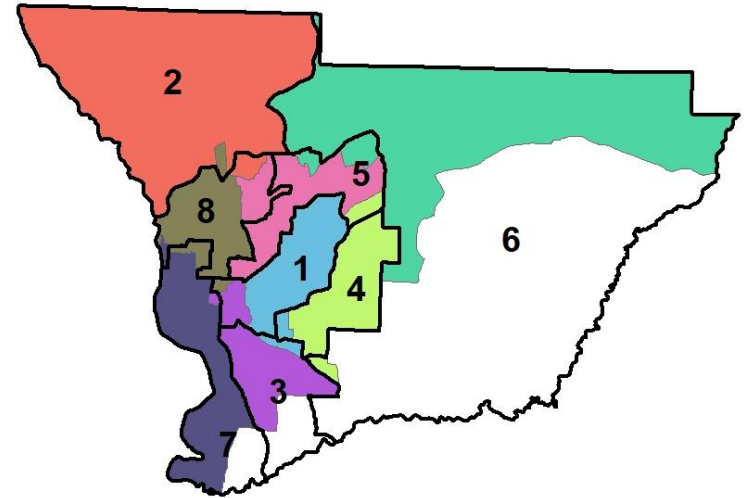
Context



2012 Map



2022 Map*



	1	2	3	4	5	6	7	8	1*	2*	3*	4*	5*	6*	7*	8*	County
Population	23,444	28,081	24,996	25,642	23,642	28,899	20,798	24,280	25,881	25,806	26,288	25,506	26,106	26,081	25,694	25,560	206,922
API	2%	6%	1%	1%	2%	7%	2%	1%	1%	7%	1%	1%	3%	7%	2%	2%	3%
Black	63%	16%	79%	79%	30%	27%	59%	32%	62%	16%	66%	80%	33%	28%	55%	27%	46%
Latino	6%	8%	7%	5%	8%	8%	10%	9%	6%	8%	10%	5%	8%	8%	9%	9%	8%
Other	4%	6%	4%	3%	6%	6%	5%	5%	5%	6%	5%	3%	6%	6%	5%	6%	5%
White	24%	65%	10%	12%	53%	52%	25%	52%	26%	64%	18%	11%	50%	51%	29%	57%	38%
Population Gain	*	*	*	*	*	*	*	*	2,437	-2,275	1,292	-136	2,464	-2,818	4,896	1,280	*
Population % Gain	*	*	*	*	*	*	*	*	10%	-8%	5%	-1%	10%	-10%	24%	5%	*
Net POC Gain	*	*	*	*	*	*	*	*	1,530	-695	-1,003	80	1,922	-1,084	2,709	-531	*
Net POC % Gain	*	*	*	*	*	*	*	*	9%	-7%	-4%	0%	17%	-8%	17%	-5%	*

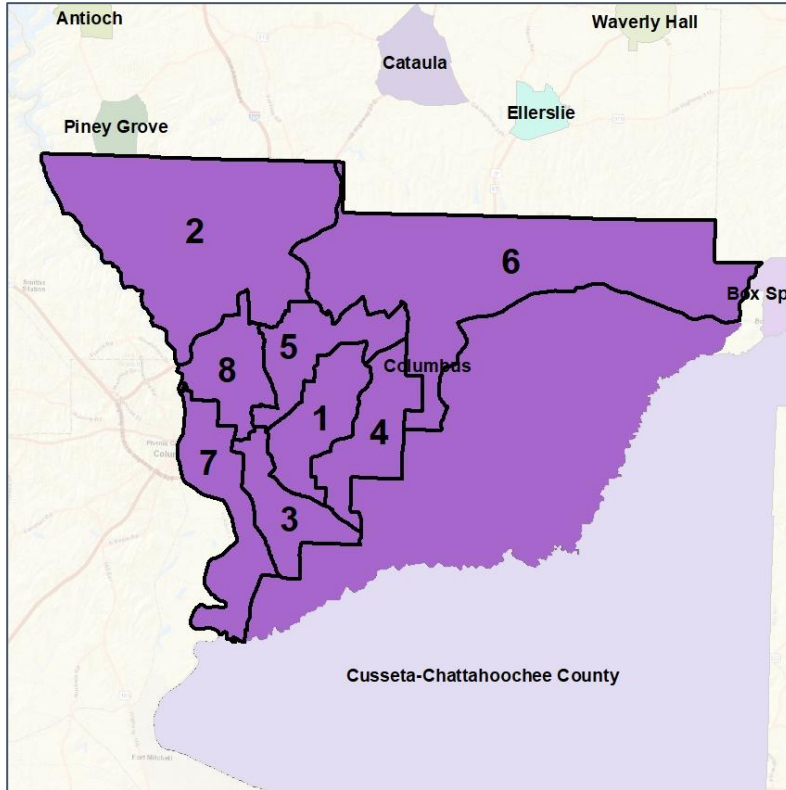


Muscogee County Commission

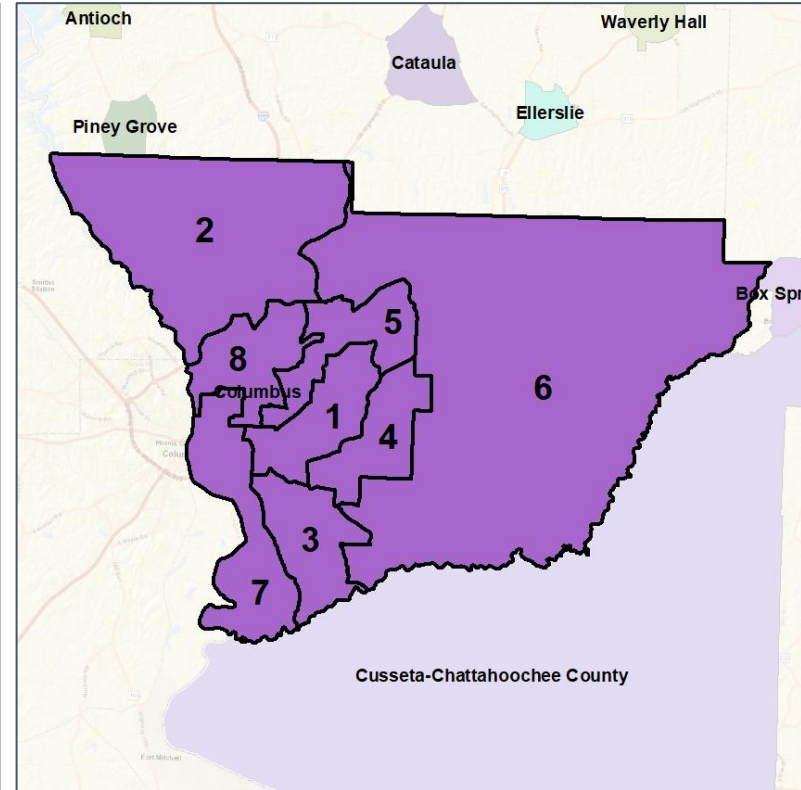
Cities and Places



2012 Map



2022 Map*



	1	2	3	4	5	6	7	8	1*	2*	3*	4*	5*	6*	7*	8*	County
Population	23,444	28,081	24,996	25,642	23,642	28,899	20,798	24,280	25,881	25,806	26,288	25,506	26,106	26,081	25,694	25,560	206,922
API	2%	6%	1%	1%	2%	7%	2%	1%	1%	7%	1%	1%	3%	7%	2%	2%	3%
Black	63%	16%	79%	79%	30%	27%	59%	32%	62%	16%	66%	80%	33%	28%	55%	27%	46%
Latino	6%	8%	7%	5%	8%	8%	10%	9%	6%	8%	10%	5%	8%	8%	9%	9%	8%
Other	4%	6%	4%	3%	6%	6%	5%	5%	5%	6%	5%	3%	6%	6%	5%	6%	5%
White	24%	65%	10%	12%	53%	52%	25%	52%	26%	64%	18%	11%	50%	51%	29%	57%	38%
Population Gain	*	*	*	*	*	*	*	*	2,437	-2,275	1,292	-136	2,464	-2,818	4,896	1,280	*
Population % Gain	*	*	*	*	*	*	*	*	10%	-8%	5%	-1%	10%	-10%	24%	5%	*
Net POC Gain	*	*	*	*	*	*	*	*	1,530	-695	-1,003	80	1,922	-1,084	2,709	-531	*
Net POC % Gain	*	*	*	*	*	*	*	*	9%	-7%	-4%	0%	17%	-8%	17%	-5%	*

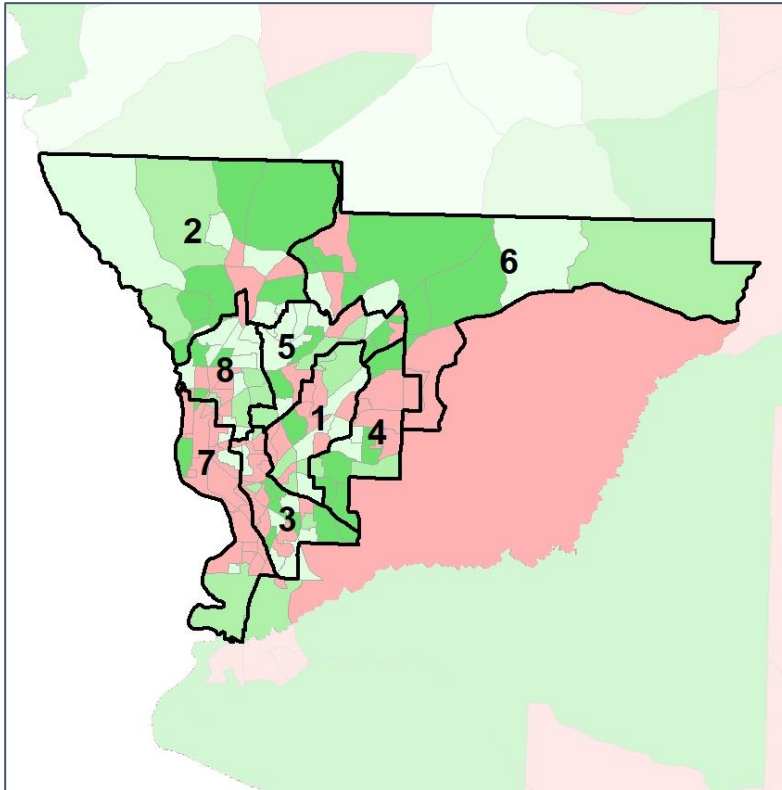


Muscogee County Commission

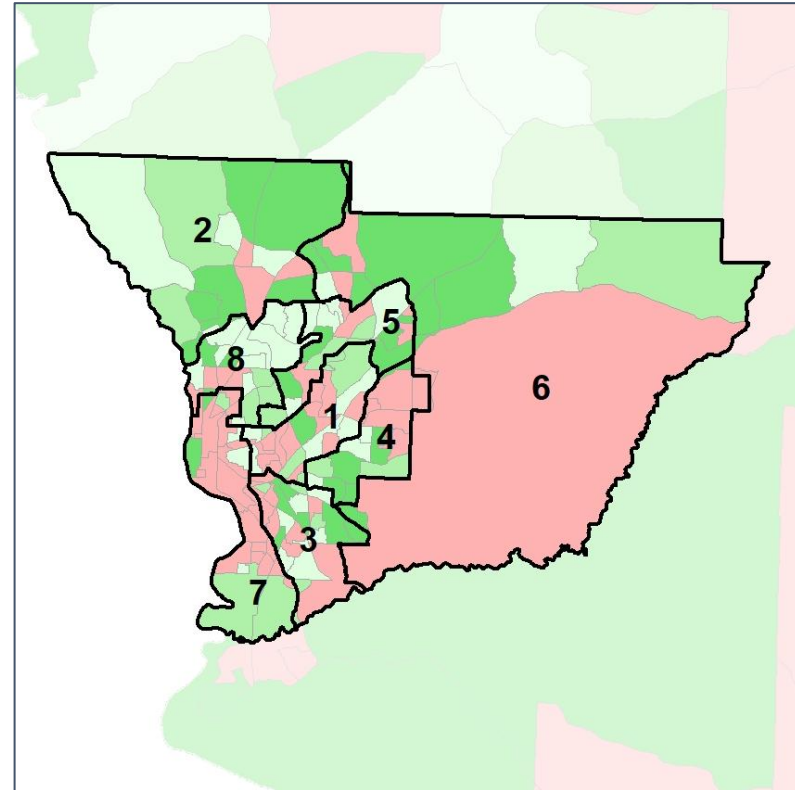
Net Gain in Population (2010 - 2020)



2012 Map



2022 Map*



	1	2	3	4	5	6	7	8	1*	2*	3*	4*	5*	6*	7*	8*	County
Population	23,444	28,081	24,996	25,642	23,642	28,899	20,798	24,280	25,881	25,806	26,288	25,506	26,106	26,081	25,694	25,560	206,922
API	2%	6%	1%	1%	2%	7%	2%	1%	1%	7%	1%	1%	3%	7%	2%	2%	3%
Black	63%	16%	79%	79%	30%	27%	59%	32%	62%	16%	66%	80%	33%	28%	55%	27%	46%
Latino	6%	8%	7%	5%	8%	8%	10%	9%	6%	8%	10%	5%	8%	8%	9%	9%	8%
Other	4%	6%	4%	3%	6%	6%	5%	5%	5%	6%	5%	3%	6%	6%	5%	6%	5%
White	24%	65%	10%	12%	53%	52%	25%	52%	26%	64%	18%	11%	50%	51%	29%	57%	38%
Population Gain	*	*	*	*	*	*	*	*	2,437	-2,275	1,292	-136	2,464	-2,818	4,896	1,280	*
Population % Gain	*	*	*	*	*	*	*	*	10%	-8%	5%	-1%	10%	-10%	24%	5%	*
Net POC Gain	*	*	*	*	*	*	*	*	1,530	-695	-1,003	80	1,922	-1,084	2,709	-531	*
Net POC % Gain	*	*	*	*	*	*	*	*	9%	-7%	-4%	0%	17%	-8%	17%	-5%	*

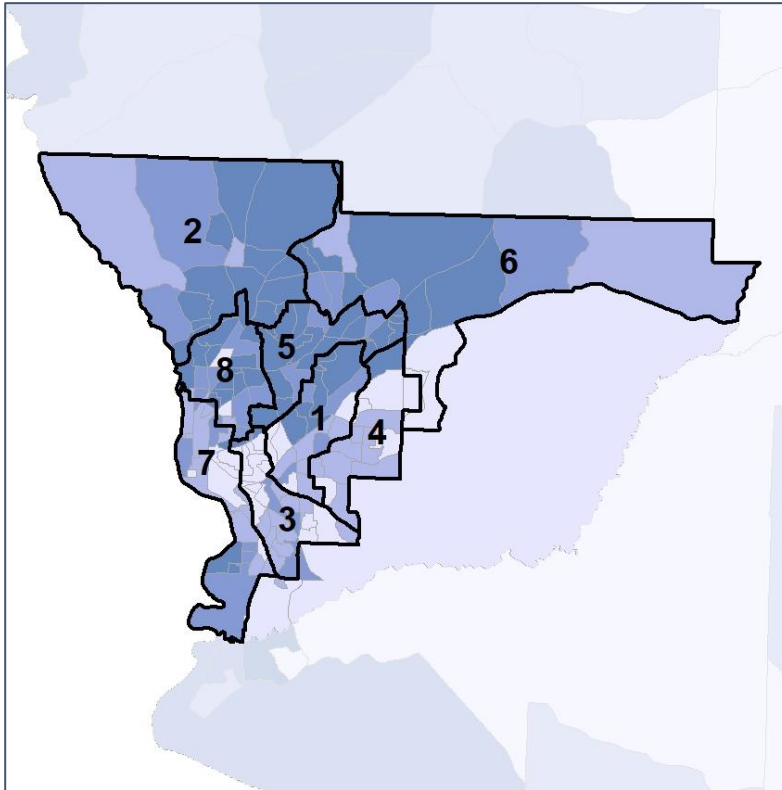


Muscogee County Commission

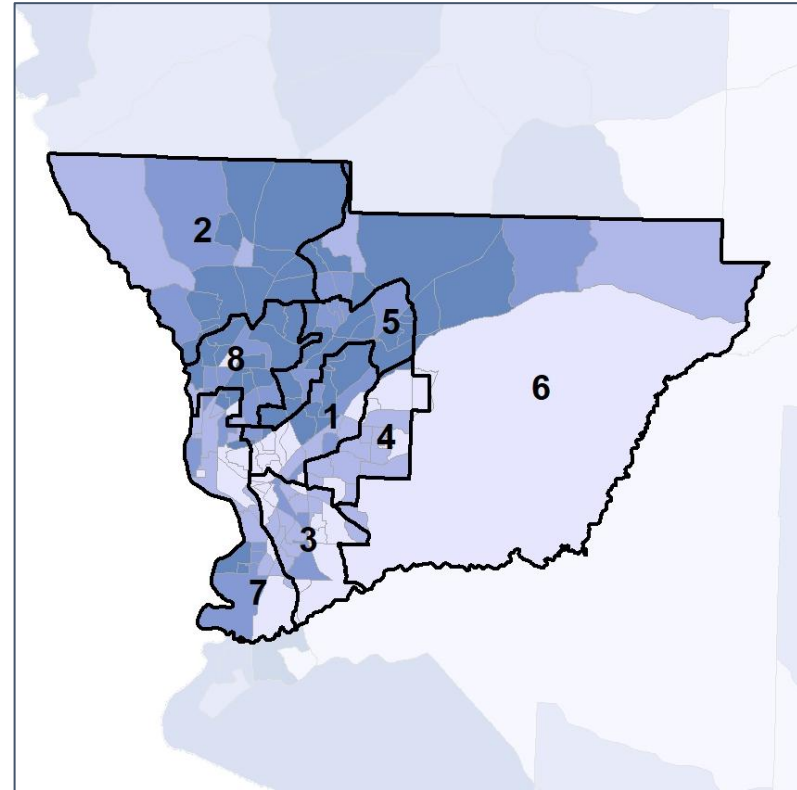
Net Gain in % POC (2020 - 2010) by Census Block Group



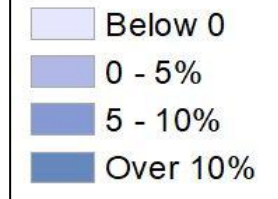
2012 Map



2022 Map*



	1	2	3	4	5	6	7	8	1*	2*	3*	4*	5*	6*	7*	8*	County
Population	23,444	28,081	24,996	25,642	23,642	28,899	20,798	24,280	25,881	25,806	26,288	25,506	26,106	26,081	25,694	25,560	206,922
API	2%	6%	1%	1%	2%	7%	2%	1%	1%	7%	1%	1%	3%	7%	2%	2%	3%
Black	63%	16%	79%	79%	30%	27%	59%	32%	62%	16%	66%	80%	33%	28%	55%	27%	46%
Latino	6%	8%	7%	5%	8%	8%	10%	9%	6%	8%	10%	5%	8%	8%	9%	9%	8%
Other	4%	6%	4%	3%	6%	6%	5%	5%	5%	6%	5%	3%	6%	6%	5%	6%	5%
White	24%	65%	10%	12%	53%	52%	25%	52%	26%	64%	18%	11%	50%	51%	29%	57%	38%
Population Gain	*	*	*	*	*	*	*	*	2,437	-2,275	1,292	-136	2,464	-2,818	4,896	1,280	*
Population % Gain	*	*	*	*	*	*	*	*	10%	-8%	5%	-1%	10%	-10%	24%	5%	*
Net POC Gain	*	*	*	*	*	*	*	*	1,530	-695	-1,003	80	1,922	-1,084	2,709	-531	*
Net POC % Gain	*	*	*	*	*	*	*	*	9%	-7%	-4%	0%	17%	-8%	17%	-5%	*

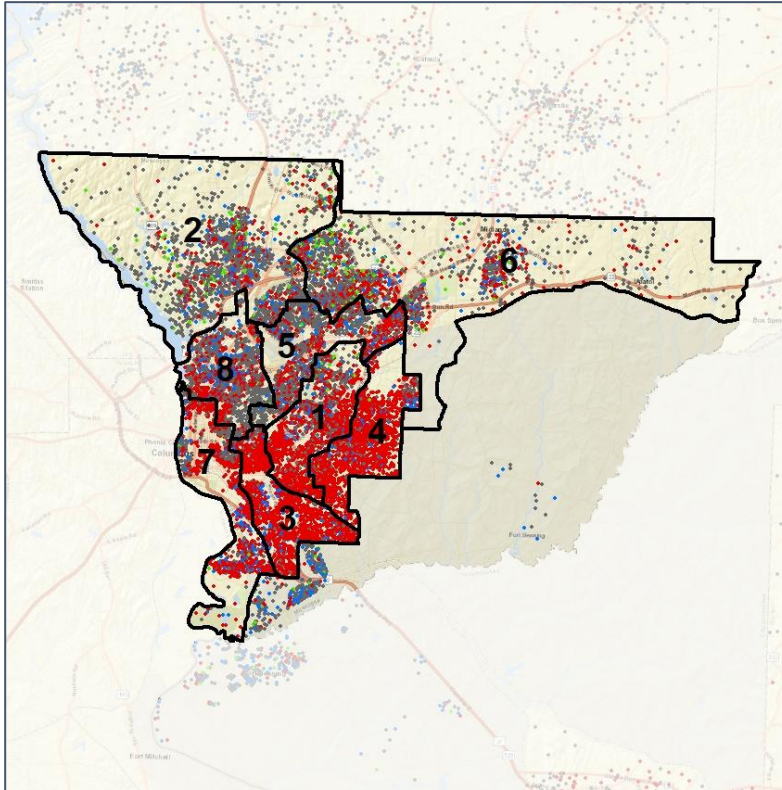


Muscogee County Commission

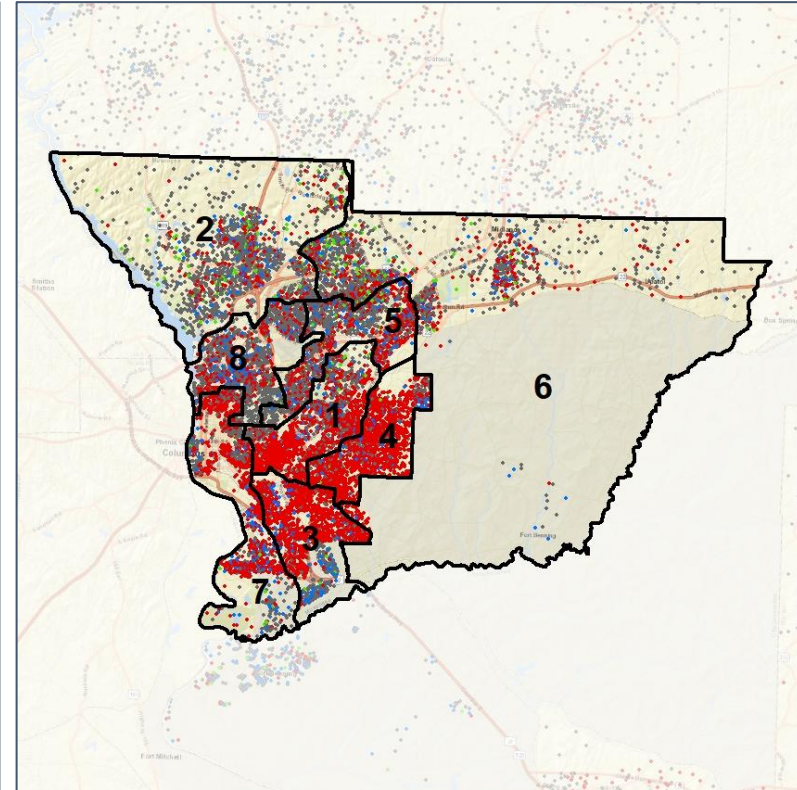
Population Density by Race



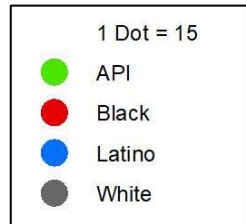
2012 Map



2022 Map*



	1	2	3	4	5	6	7	8	1*	2*	3*	4*	5*	6*	7*	8*	County
Population	23,444	28,081	24,996	25,642	23,642	28,899	20,798	24,280	25,881	25,806	26,288	25,506	26,106	26,081	25,694	25,560	206,922
API	396	1,808	150	194	565	1,958	337	350	375	1,741	352	209	686	1,823	446	431	6,063
% API	2%	6%	1%	1%	2%	7%	2%	1%	1%	7%	1%	1%	3%	7%	2%	2%	3%
Black	14,865	4,414	19,684	20,249	7,138	7,760	12,229	7,730	16,160	4,096	17,317	20,325	8,659	7,238	14,111	6,795	94,701
% Black	63%	16%	79%	79%	30%	27%	59%	32%	62%	16%	66%	80%	33%	28%	55%	27%	46%
Latino	1,439	2,123	1,653	1,327	1,994	2,391	1,995	2,232	1,570	1,940	2,531	1,308	2,199	2,124	2,414	2,427	16,513
% Latino	6%	8%	7%	5%	8%	8%	10%	9%	6%	8%	10%	5%	8%	8%	9%	9%	8%
Other	1,047	1,585	1,015	839	1,387	1,638	1,095	1,324	1,172	1,458	1,299	847	1,462	1,478	1,394	1,452	10,562
% Other	4%	6%	4%	3%	6%	6%	5%	5%	5%	6%	5%	3%	6%	6%	5%	6%	5%
White	5,697	18,151	2,494	3,033	12,558	15,152	5,142	12,644	6,604	16,571	4,789	2,817	13,100	13,418	7,329	14,455	79,083
% White	24%	65%	10%	12%	53%	52%	25%	52%	26%	64%	18%	11%	50%	51%	29%	57%	38%

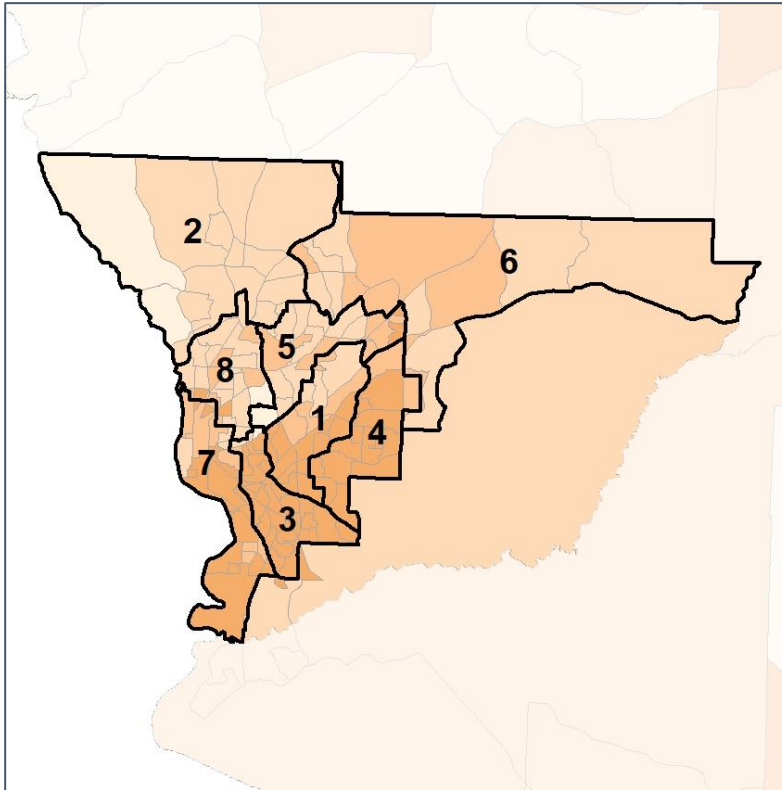


Muscogee County Commission

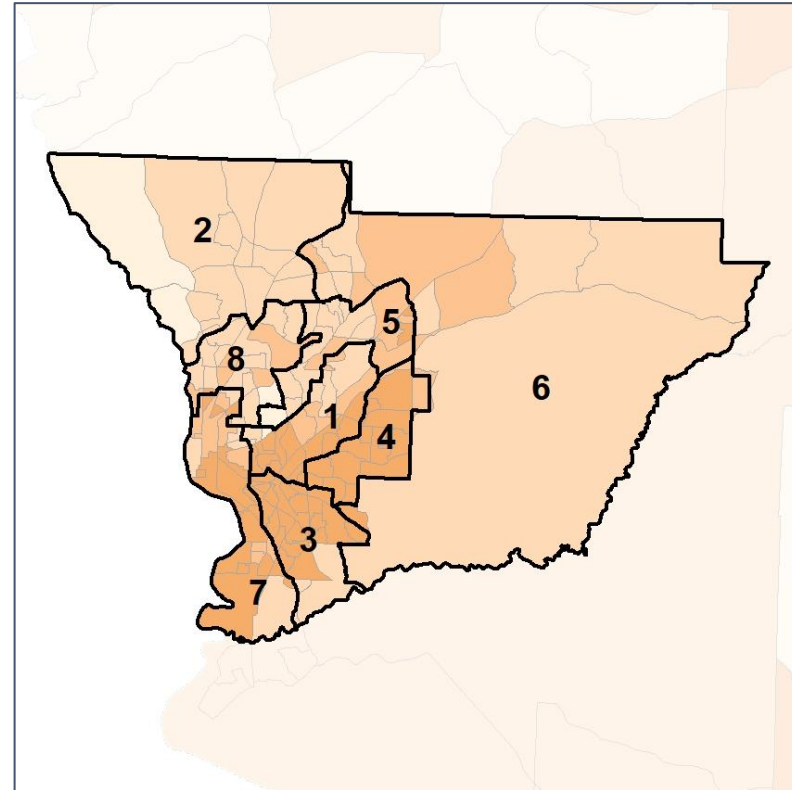
% People of Color by Census Block Group



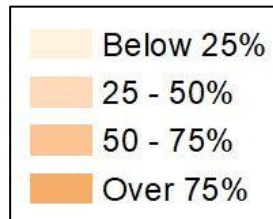
2012 Map



2022 Map*



	1	2	3	4	5	6	7	8	1*	2*	3*	4*	5*	6*	7*	8*	County
Population	23,444	28,081	24,996	25,642	23,642	28,899	20,798	24,280	25,881	25,806	26,288	25,506	26,106	26,081	25,694	25,560	206,922
API	396	1,808	150	194	565	1,958	337	350	375	1,741	352	209	686	1,823	446	431	6,063
% API	2%	6%	1%	1%	2%	7%	2%	1%	1%	7%	1%	1%	3%	7%	2%	2%	3%
Black	14,865	4,414	19,684	20,249	7,138	7,760	12,229	7,730	16,160	4,096	17,317	20,325	8,659	7,238	14,111	6,795	94,701
% Black	63%	16%	79%	79%	30%	27%	59%	32%	62%	16%	66%	80%	33%	28%	55%	27%	46%
Latino	1,439	2,123	1,653	1,327	1,994	2,391	1,995	2,232	1,570	1,940	2,531	1,308	2,199	2,124	2,414	2,427	16,513
% Latino	6%	8%	7%	5%	8%	8%	10%	9%	6%	8%	10%	5%	8%	8%	9%	9%	8%
Other	1,047	1,585	1,015	839	1,387	1,638	1,095	1,324	1,172	1,458	1,299	847	1,462	1,478	1,394	1,452	10,562
% Other	4%	6%	4%	3%	6%	6%	5%	5%	5%	6%	5%	3%	6%	6%	5%	6%	5%
White	5,697	18,151	2,494	3,033	12,558	15,152	5,142	12,644	6,604	16,571	4,789	2,817	13,100	13,418	7,329	14,455	79,083
% White	24%	65%	10%	12%	53%	52%	25%	52%	26%	64%	18%	11%	50%	51%	29%	57%	38%



Source:
2020 Decennial Census
2020 ACS 5-Year Dataset

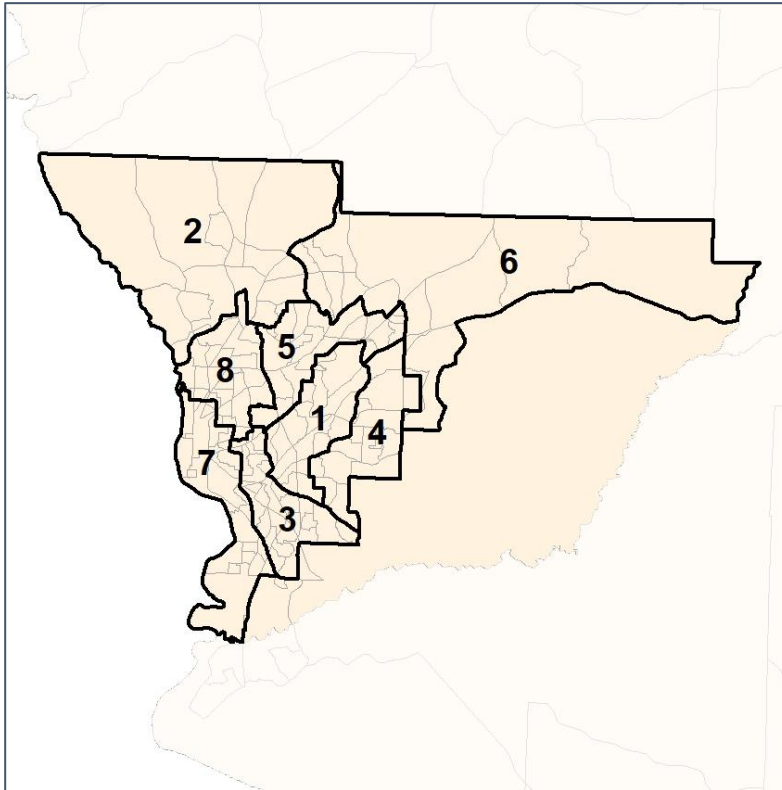


Muscogee County Commission

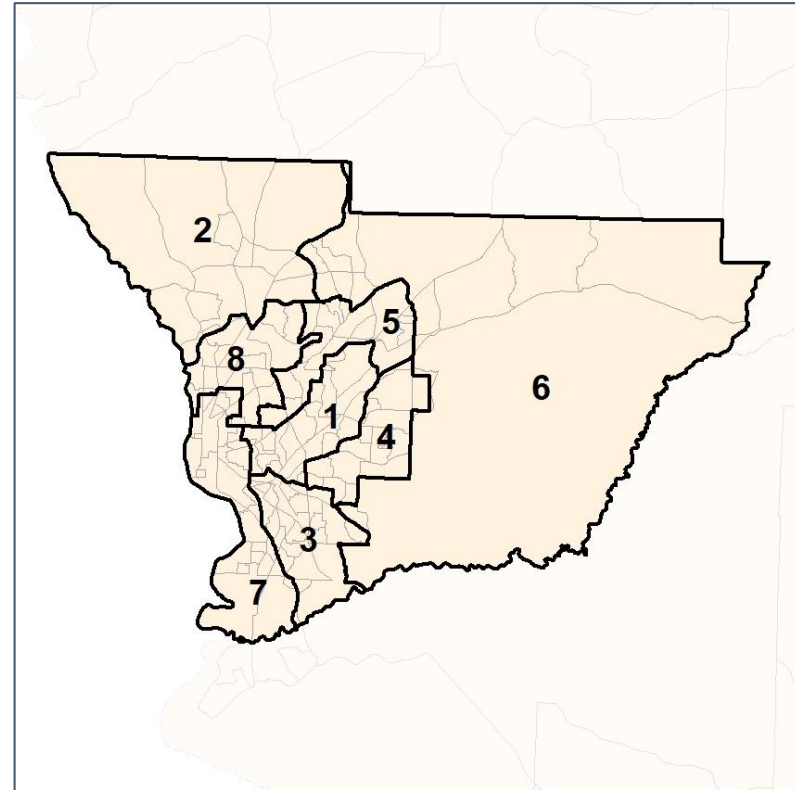
% API by Census Block Group



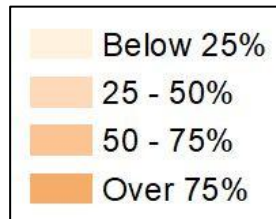
2012 Map



2022 Map*



	1	2	3	4	5	6	7	8	1*	2*	3*	4*	5*	6*	7*	8*	County
Population	23,444	28,081	24,996	25,642	23,642	28,899	20,798	24,280	25,881	25,806	26,288	25,506	26,106	26,081	25,694	25,560	206,922
API	396	1,808	150	194	565	1,958	337	350	375	1,741	352	209	686	1,823	446	431	6,063
% API	2%	6%	1%	1%	2%	7%	2%	1%	1%	7%	1%	1%	3%	7%	2%	2%	3%
Black	14,865	4,414	19,684	20,249	7,138	7,760	12,229	7,730	16,160	4,096	17,317	20,325	8,659	7,238	14,111	6,795	94,701
% Black	63%	16%	79%	79%	30%	27%	59%	32%	62%	16%	66%	80%	33%	28%	55%	27%	46%
Latino	1,439	2,123	1,653	1,327	1,994	2,391	1,995	2,232	1,570	1,940	2,531	1,308	2,199	2,124	2,414	2,427	16,513
% Latino	6%	8%	7%	5%	8%	8%	10%	9%	6%	8%	10%	5%	8%	8%	9%	9%	8%
Other	1,047	1,585	1,015	839	1,387	1,638	1,095	1,324	1,172	1,458	1,299	847	1,462	1,478	1,394	1,452	10,562
% Other	4%	6%	4%	3%	6%	6%	5%	5%	5%	6%	5%	3%	6%	6%	5%	6%	5%
White	5,697	18,151	2,494	3,033	12,558	15,152	5,142	12,644	6,604	16,571	4,789	2,817	13,100	13,418	7,329	14,455	79,083
% White	24%	65%	10%	12%	53%	52%	25%	52%	26%	64%	18%	11%	50%	51%	29%	57%	38%



Source:
2020 Decennial Census
2020 ACS 5-Year Dataset

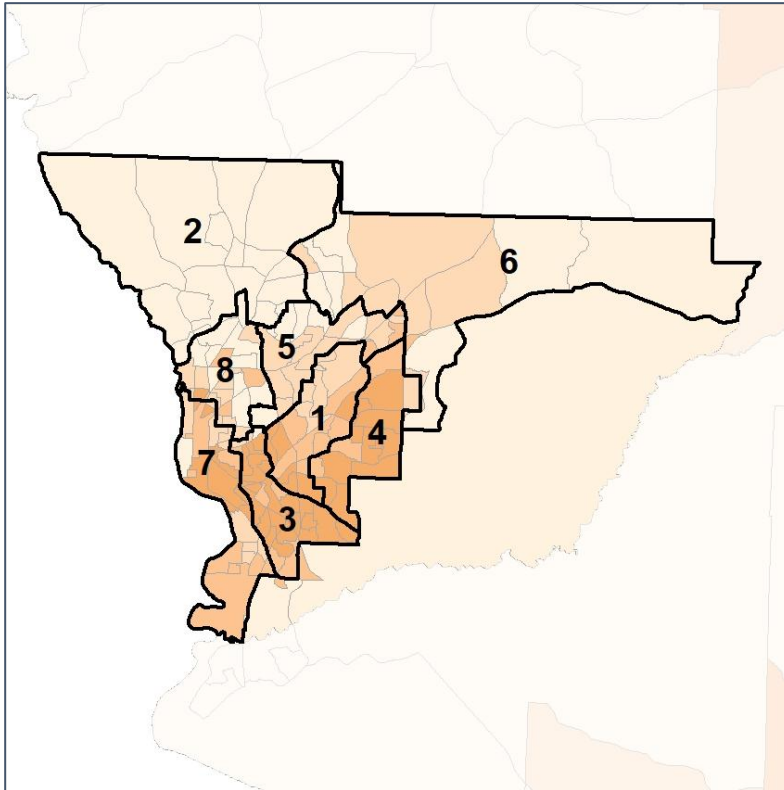


Muscogee County Commission

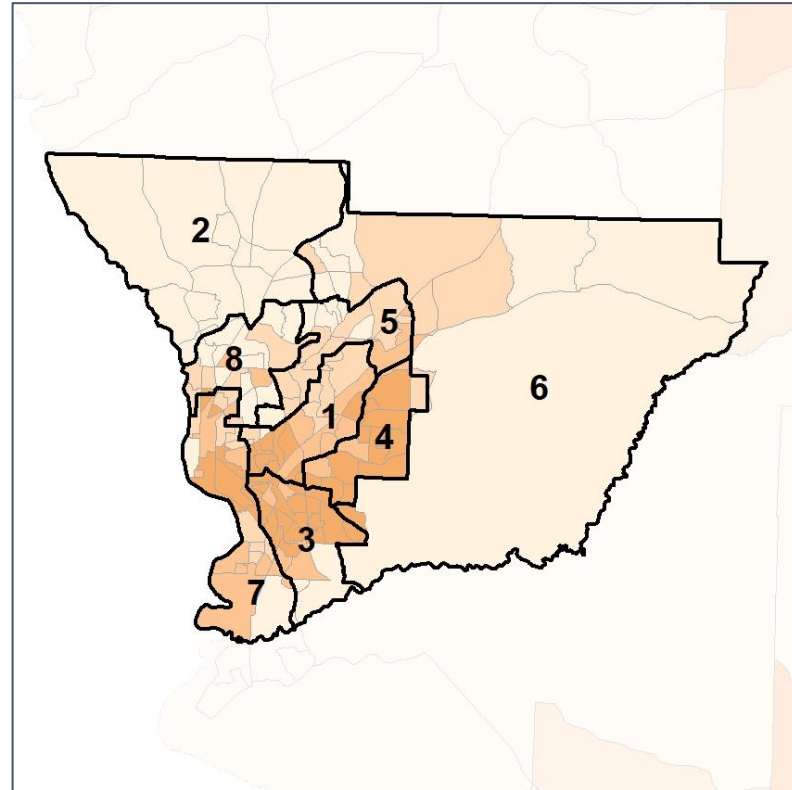
% Black by Census Block Group



2012 Map



2022 Map*



	1	2	3	4	5	6	7	8	1*	2*	3*	4*	5*	6*	7*	8*	County
Population	23,444	28,081	24,996	25,642	23,642	28,899	20,798	24,280	25,881	25,806	26,288	25,506	26,106	26,081	25,694	25,560	206,922
API	396	1,808	150	194	565	1,958	337	350	375	1,741	352	209	686	1,823	446	431	6,063
% API	2%	6%	1%	1%	2%	7%	2%	1%	1%	7%	1%	1%	3%	7%	2%	2%	3%
Black	14,865	4,414	19,684	20,249	7,138	7,760	12,229	7,730	16,160	4,096	17,317	20,325	8,659	7,238	14,111	6,795	94,701
% Black	63%	16%	79%	79%	30%	27%	59%	32%	62%	16%	66%	80%	33%	28%	55%	27%	46%
Latino	1,439	2,123	1,653	1,327	1,994	2,391	1,995	2,232	1,570	1,940	2,531	1,308	2,199	2,124	2,414	2,427	16,513
% Latino	6%	8%	7%	5%	8%	8%	10%	9%	6%	8%	10%	5%	8%	8%	9%	9%	8%
Other	1,047	1,585	1,015	839	1,387	1,638	1,095	1,324	1,172	1,458	1,299	847	1,462	1,478	1,394	1,452	10,562
% Other	4%	6%	4%	3%	6%	6%	5%	5%	5%	6%	5%	3%	6%	6%	5%	6%	5%
White	5,697	18,151	2,494	3,033	12,558	15,152	5,142	12,644	6,604	16,571	4,789	2,817	13,100	13,418	7,329	14,455	79,083
% White	24%	65%	10%	12%	53%	52%	25%	52%	26%	64%	18%	11%	50%	51%	29%	57%	38%



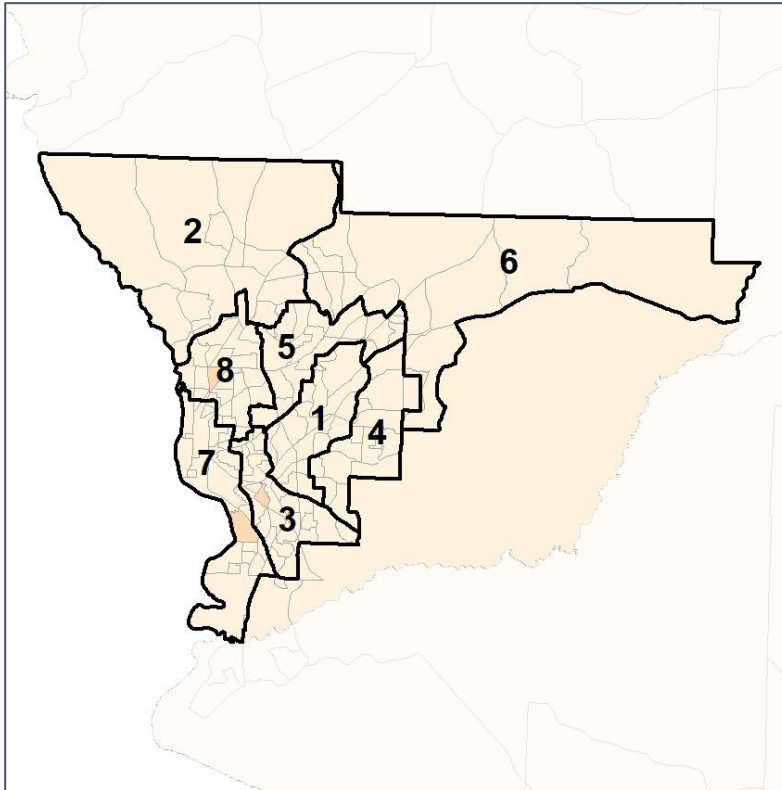
Source: 2020 Decennial Census 2020 ACS 5-Year Dataset

Muscogee County Commission

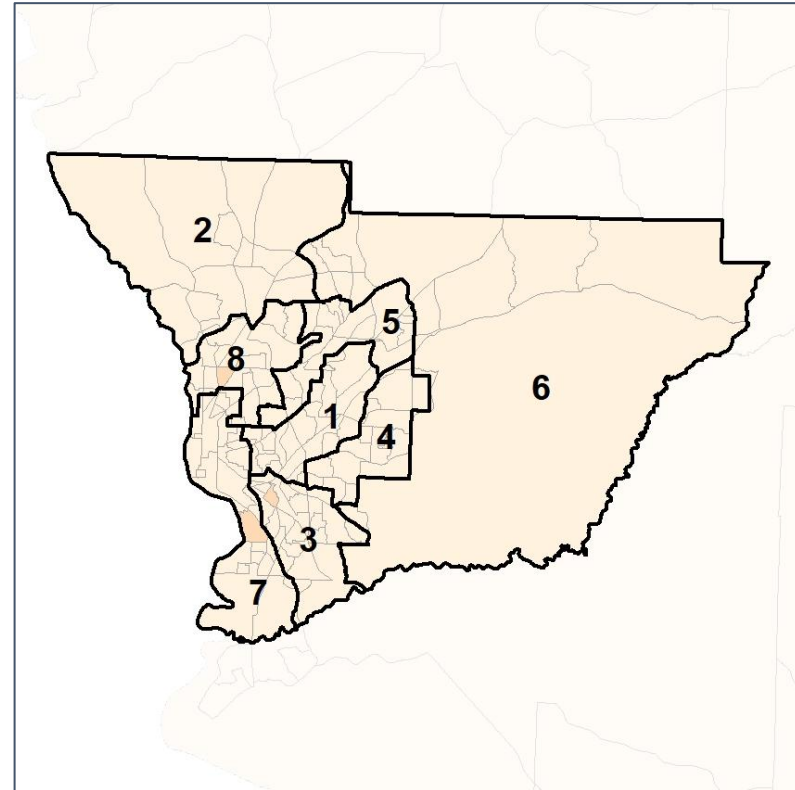
% Latino by Census Block Group



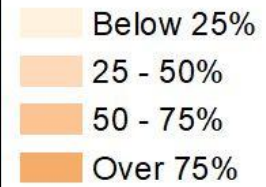
2012 Map



2022 Map*



	1	2	3	4	5	6	7	8	1*	2*	3*	4*	5*	6*	7*	8*	County
Population	23,444	28,081	24,996	25,642	23,642	28,899	20,798	24,280	25,881	25,806	26,288	25,506	26,106	26,081	25,694	25,560	206,922
API	396	1,808	150	194	565	1,958	337	350	375	1,741	352	209	686	1,823	446	431	6,063
% API	2%	6%	1%	1%	2%	7%	2%	1%	1%	7%	1%	1%	3%	7%	2%	2%	3%
Black	14,865	4,414	19,684	20,249	7,138	7,760	12,229	7,730	16,160	4,096	17,317	20,325	8,659	7,238	14,111	6,795	94,701
% Black	63%	16%	79%	79%	30%	27%	59%	32%	62%	16%	66%	80%	33%	28%	55%	27%	46%
Latino	1,439	2,123	1,653	1,327	1,994	2,391	1,995	2,232	1,570	1,940	2,531	1,308	2,199	2,124	2,414	2,427	16,513
% Latino	6%	8%	7%	5%	8%	8%	10%	9%	6%	8%	10%	5%	8%	8%	9%	9%	8%
Other	1,047	1,585	1,015	839	1,387	1,638	1,095	1,324	1,172	1,458	1,299	847	1,462	1,478	1,394	1,452	10,562
% Other	4%	6%	4%	3%	6%	6%	5%	5%	5%	6%	5%	3%	6%	6%	5%	6%	5%
White	5,697	18,151	2,494	3,033	12,558	15,152	5,142	12,644	6,604	16,571	4,789	2,817	13,100	13,418	7,329	14,455	79,083
% White	24%	65%	10%	12%	53%	52%	25%	52%	26%	64%	18%	11%	50%	51%	29%	57%	38%

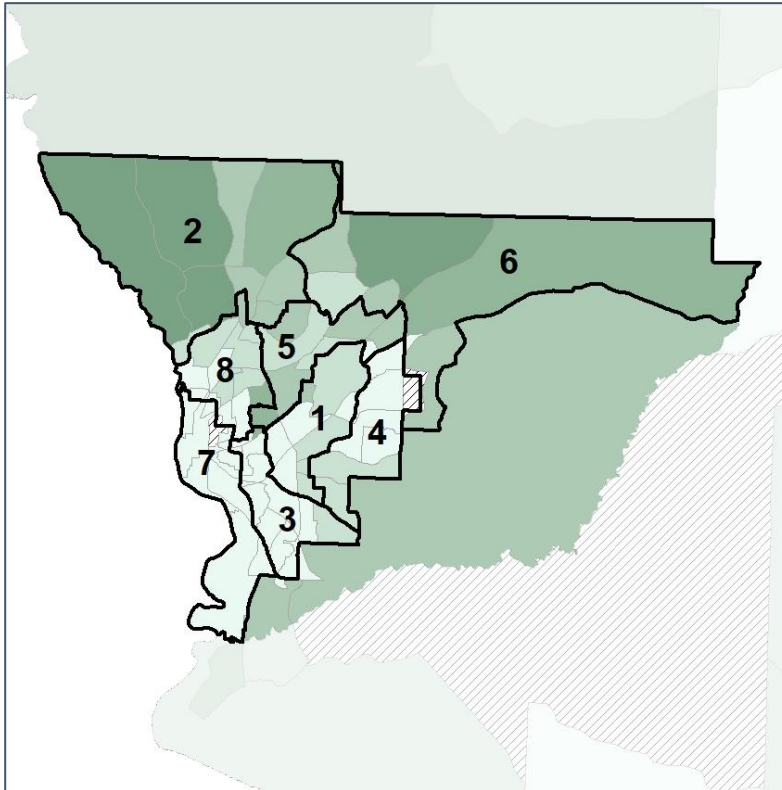


Muscogee County Commission

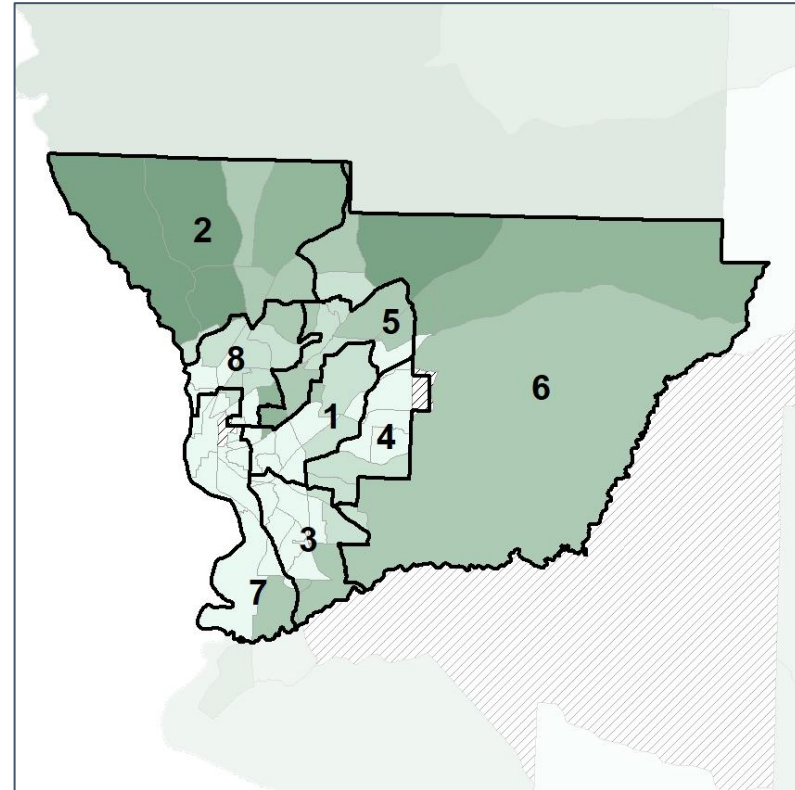
Median Household Income by Census Tract



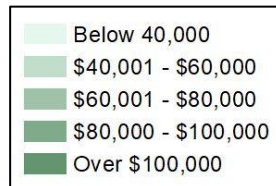
2012 Map



2022 Map*



	1	2	3	4	5	6	7	8	1*	2*	3*	4*	5*	6*	7*	8*	County
Population	23,444	28,081	24,996	25,642	23,642	28,899	20,798	24,280	25,881	25,806	26,288	25,506	26,106	26,081	25,694	25,560	206,922
% API	2%	6%	1%	1%	2%	7%	2%	1%	1%	7%	1%	1%	3%	7%	2%	2%	3%
% Black	63%	16%	79%	79%	30%	27%	59%	32%	62%	16%	66%	80%	33%	28%	55%	27%	46%
% Latino	6%	8%	7%	5%	8%	8%	10%	9%	6%	8%	10%	5%	8%	8%	9%	9%	8%
% Other	4%	6%	4%	3%	6%	6%	5%	5%	5%	6%	5%	3%	6%	6%	5%	6%	5%
% White	24%	65%	10%	12%	53%	52%	25%	52%	26%	64%	18%	11%	50%	51%	29%	57%	38%
Median Income	\$43K	\$92K	\$30K	\$43K	\$59K	\$79K	\$33K	\$44K	\$41K	\$96K	\$33K	\$43K	\$58K	\$79K	\$32K	\$49K	\$47K
% Renter	42%	38%	62%	36%	53%	44%	76%	60%	46%	38%	58%	32%	59%	42%	76%	51%	51%
% Youth	22%	22%	22%	25%	36%	27%	31%	25%	20%	22%	24%	25%	36%	27%	28%	26%	26%

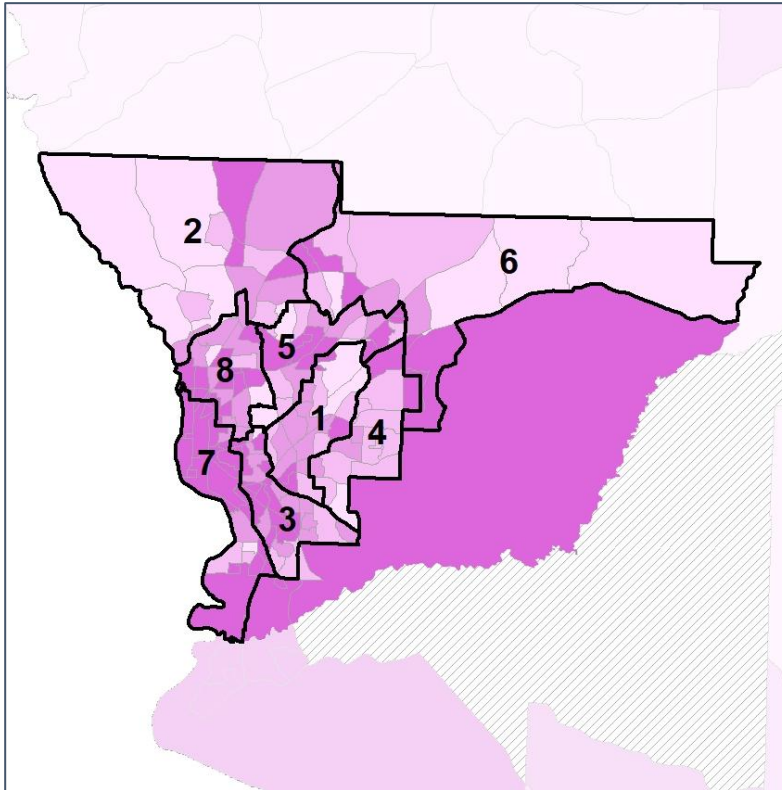


Muscogee County Commission

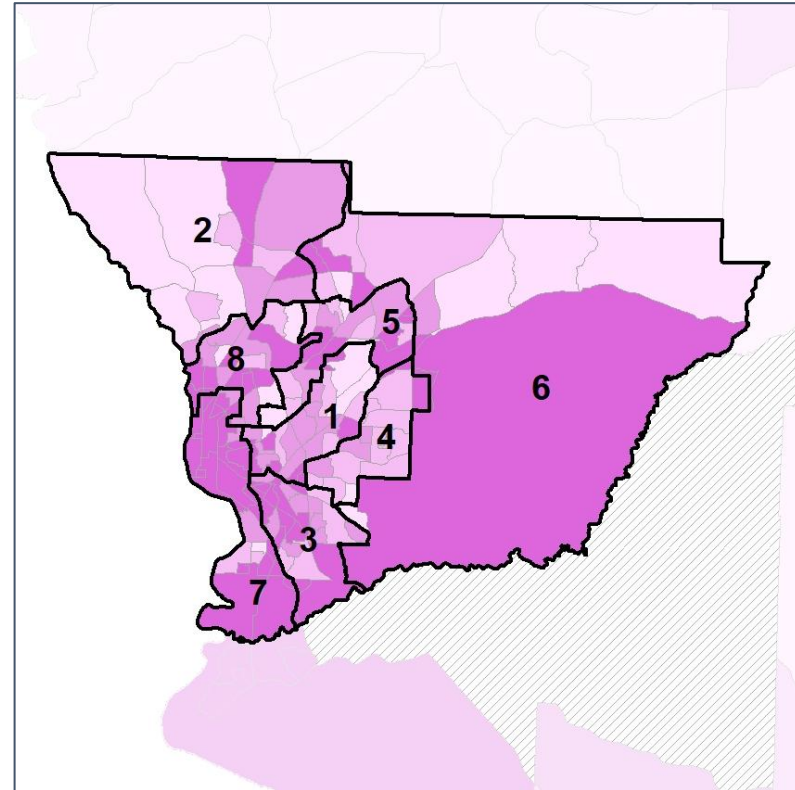
% Renter by Census Block Group



2012 Map



2022 Map*



	1	2	3	4	5	6	7	8	1*	2*	3*	4*	5*	6*	7*	8*	County
Population	23,444	28,081	24,996	25,642	23,642	28,899	20,798	24,280	25,881	25,806	26,288	25,506	26,106	26,081	25,694	25,560	206,922
% API	2%	6%	1%	1%	2%	7%	2%	1%	1%	7%	1%	1%	3%	7%	2%	2%	3%
% Black	63%	16%	79%	79%	30%	27%	59%	32%	62%	16%	66%	80%	33%	28%	55%	27%	46%
% Latino	6%	8%	7%	5%	8%	8%	10%	9%	6%	8%	10%	5%	8%	8%	9%	9%	8%
% Other	4%	6%	4%	3%	6%	6%	5%	5%	5%	6%	5%	3%	6%	6%	5%	6%	5%
% White	24%	65%	10%	12%	53%	52%	25%	52%	26%	64%	18%	11%	50%	51%	29%	57%	38%
Median Income	\$43K	\$92K	\$30K	\$43K	\$59K	\$79K	\$33K	\$44K	\$41K	\$96K	\$33K	\$43K	\$58K	\$79K	\$32K	\$49K	\$47K
% Renter	42%	38%	62%	36%	53%	44%	76%	60%	46%	38%	58%	32%	59%	42%	76%	51%	51%
% Youth	22%	22%	22%	25%	36%	27%	31%	25%	20%	22%	24%	25%	36%	27%	28%	26%	26%

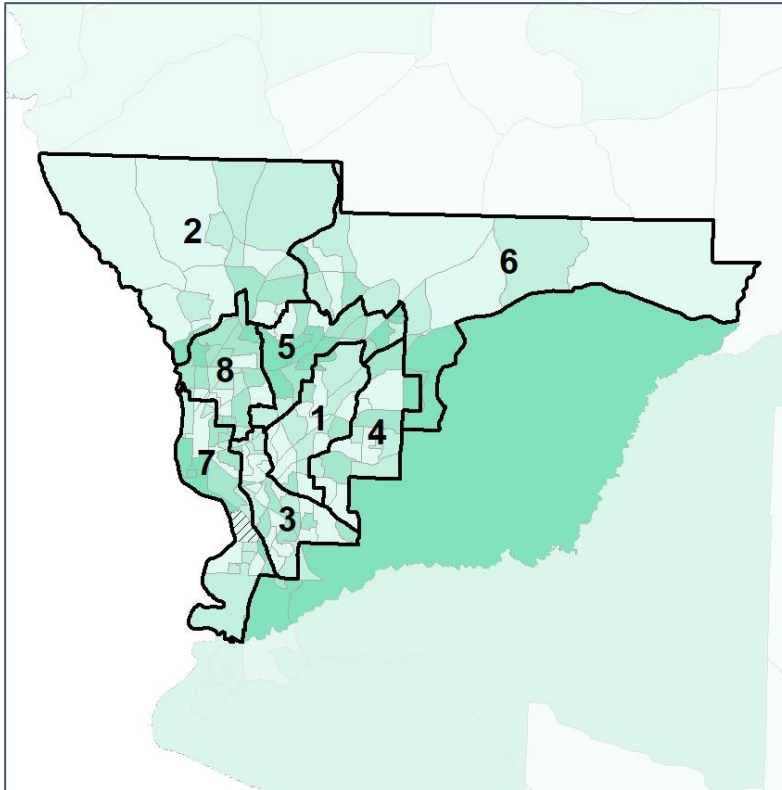


Muscogee County Commission

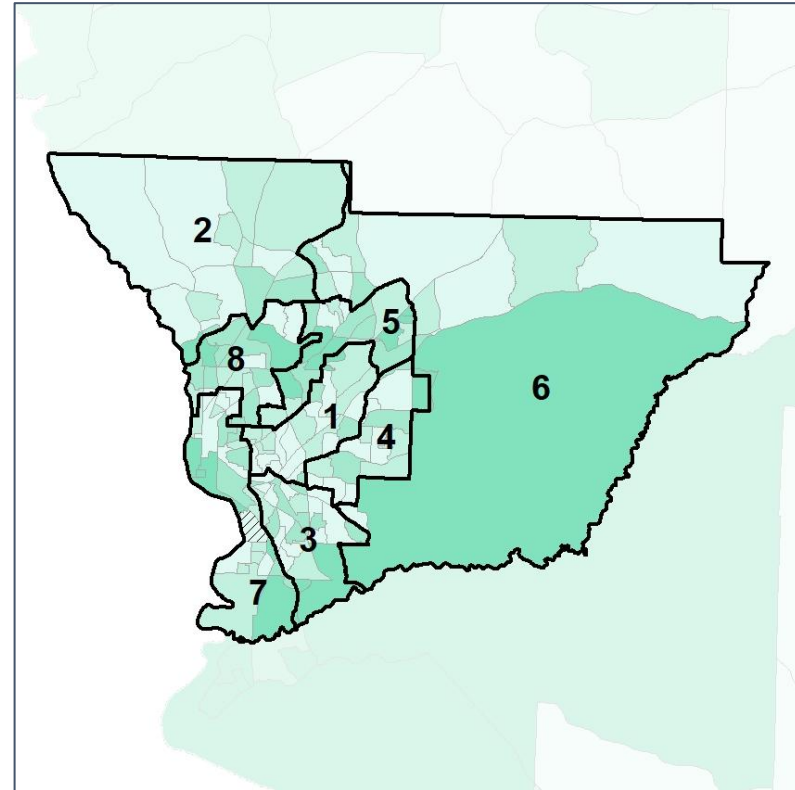
% Youth (18-34) by Census Block Group



2012 Map



2022 Map*



	1	2	3	4	5	6	7	8	1*	2*	3*	4*	5*	6*	7*	8*	County
Population	23,444	28,081	24,996	25,642	23,642	28,899	20,798	24,280	25,881	25,806	26,288	25,506	26,106	26,081	25,694	25,560	206,922
% API	2%	6%	1%	1%	2%	7%	2%	1%	1%	7%	1%	1%	3%	7%	2%	2%	3%
% Black	63%	16%	79%	79%	30%	27%	59%	32%	62%	16%	66%	80%	33%	28%	55%	27%	46%
% Latino	6%	8%	7%	5%	8%	8%	10%	9%	6%	8%	10%	5%	8%	8%	9%	9%	8%
% Other	4%	6%	4%	3%	6%	6%	5%	5%	5%	6%	5%	3%	6%	6%	5%	6%	5%
% White	24%	65%	10%	12%	53%	52%	25%	52%	26%	64%	18%	11%	50%	51%	29%	57%	38%
Median Income	\$43K	\$92K	\$30K	\$43K	\$59K	\$79K	\$33K	\$44K	\$41K	\$96K	\$33K	\$43K	\$58K	\$79K	\$32K	\$49K	\$47K
% Renter	42%	38%	62%	36%	53%	44%	76%	60%	46%	38%	58%	32%	59%	42%	76%	51%	51%
% Youth	22%	22%	22%	25%	36%	27%	31%	25%	20%	22%	24%	25%	36%	27%	28%	26%	26%

