

Demographic Overview

Racial Breakdown in Montgomery County

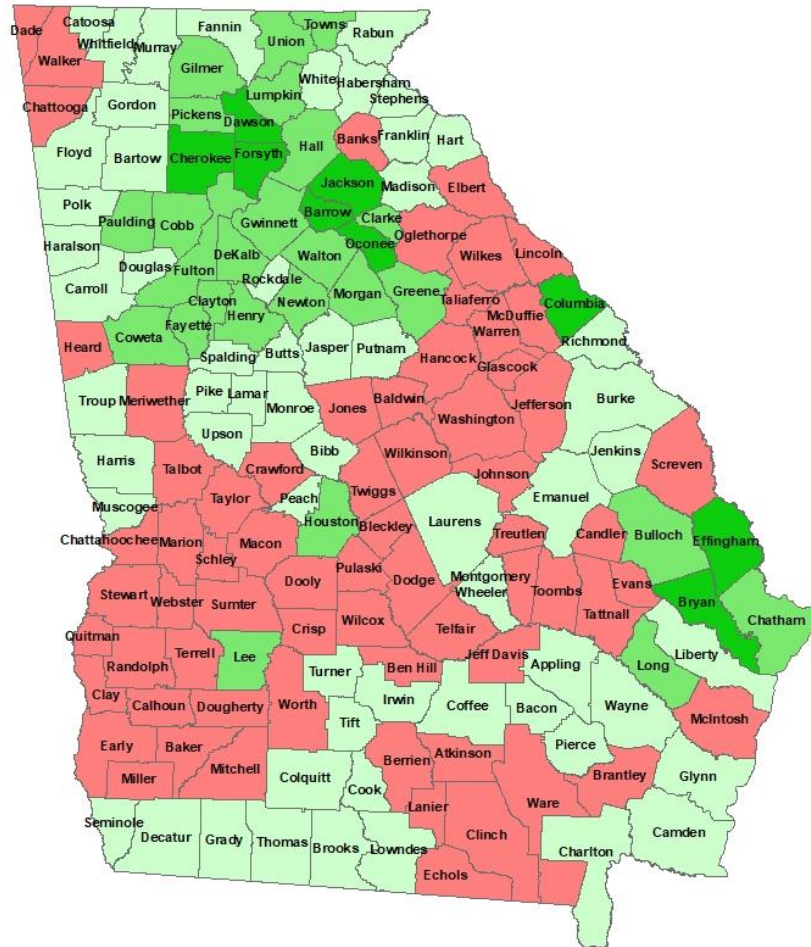


Montgomery County	2010	2020	% Change
Total Population	9,123	8,610	-6%
AAPI	27	34	26%
Black	2,372	2,120	-11%
Latino	480	571	19%
Other/Mixed Race	100	220	120%
POC	2,979	2,945	-1%
White	6,144	5,665	-8%



Population Gain

Change in Population in Georgia by County



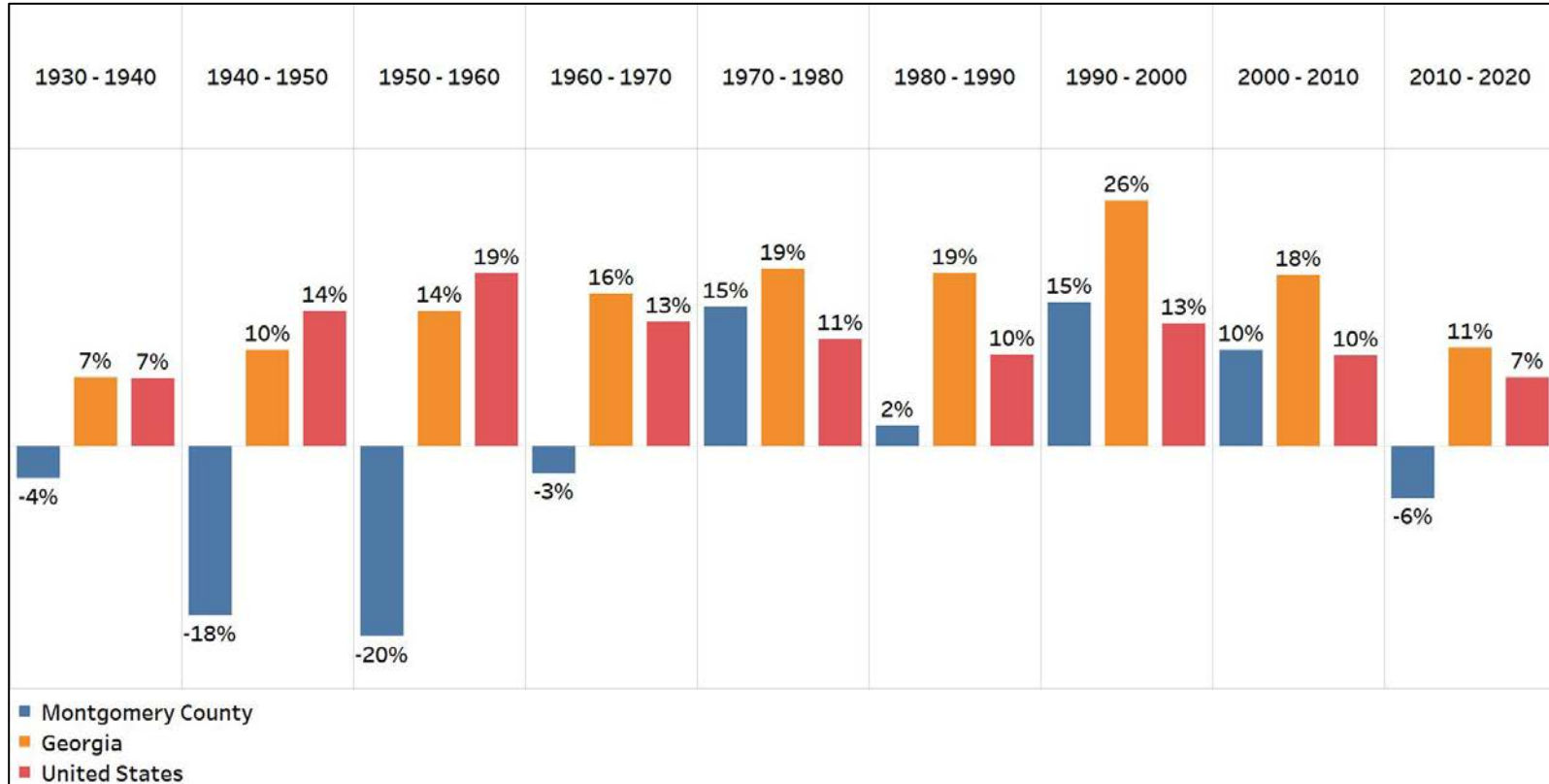
- Georgia is experiencing rapid population growth in the Atlanta, Augusta, and Savannah regions of the state





Population Gain

Change in Population by Decade



- Montgomery County had a period of population growth starting in 1970 that continued until 2010
- However, the past decade was the first since the 1960's that the county had population decline

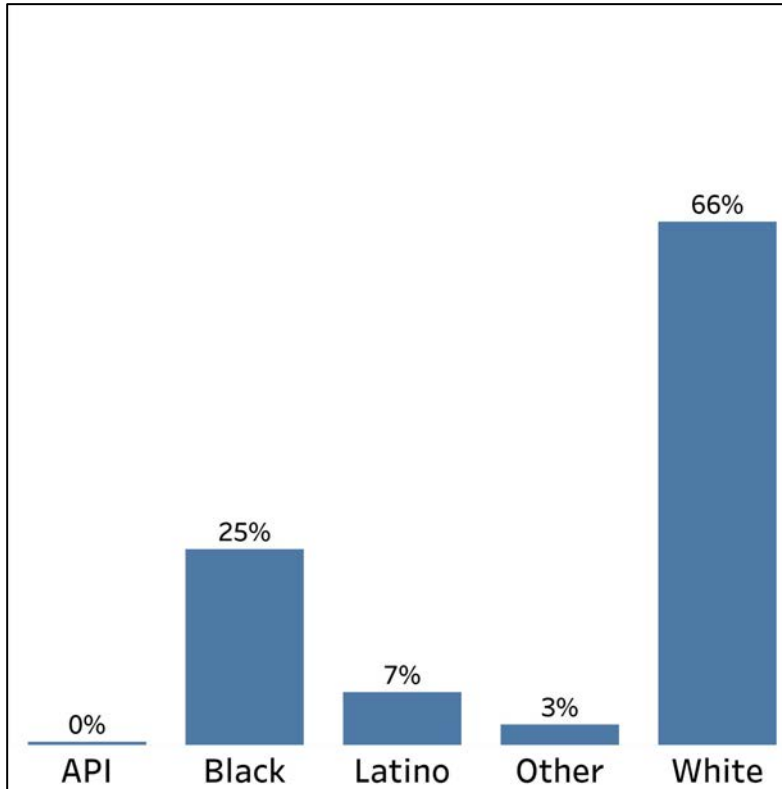


Demographics

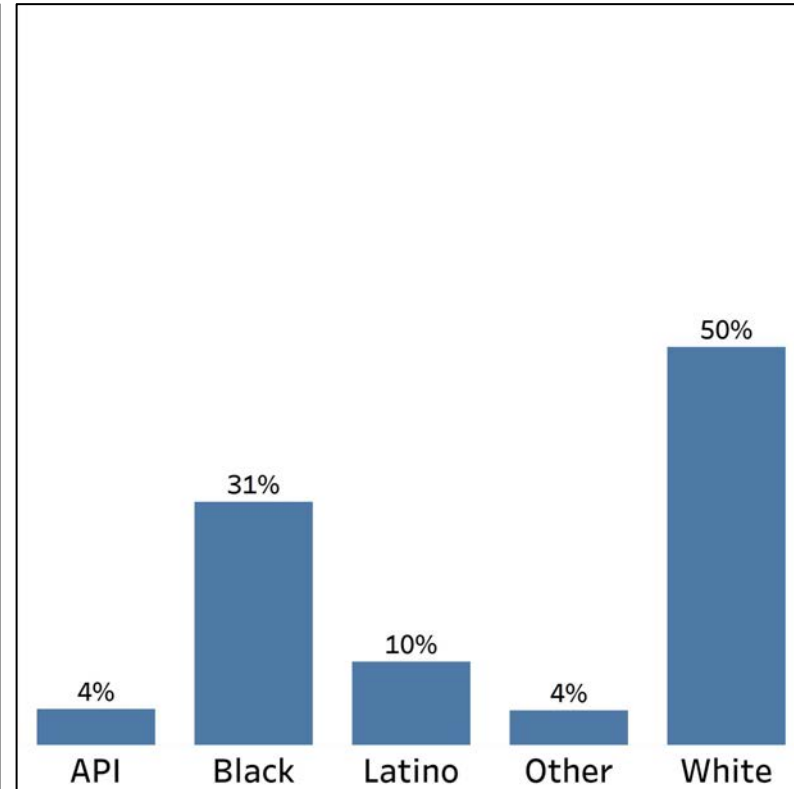
Comparison between Montgomery County and Georgia



Montgomery County



Georgia



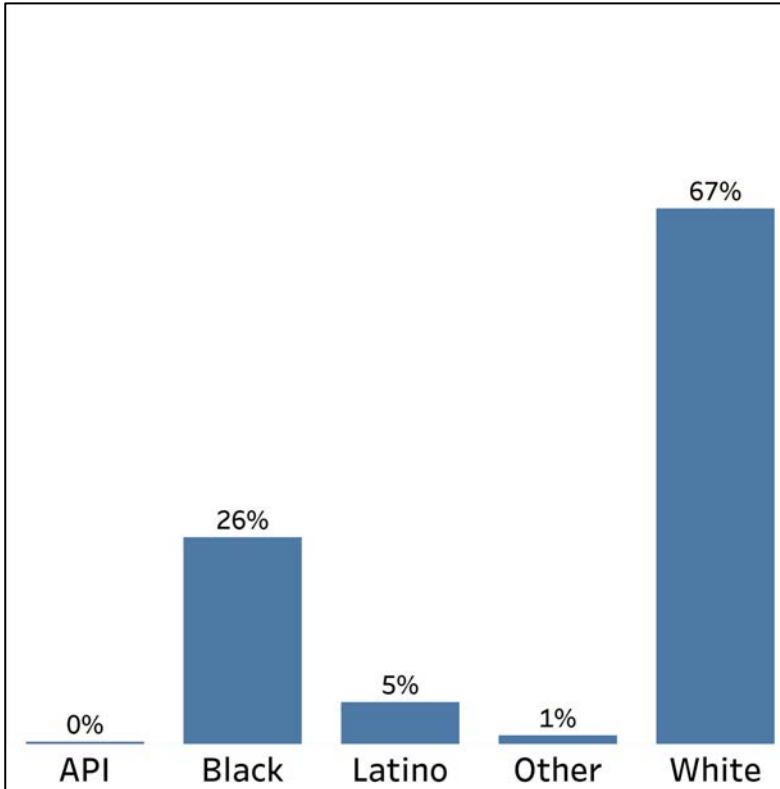
- Montgomery County is disproportionately White, however it does have similar demographic ratios as Georgia overall
- The Black population makes up a quarter of the county, and both the Latino and Other populations have a similar share of the county's population compared to their overall share in Georgia

Demographics

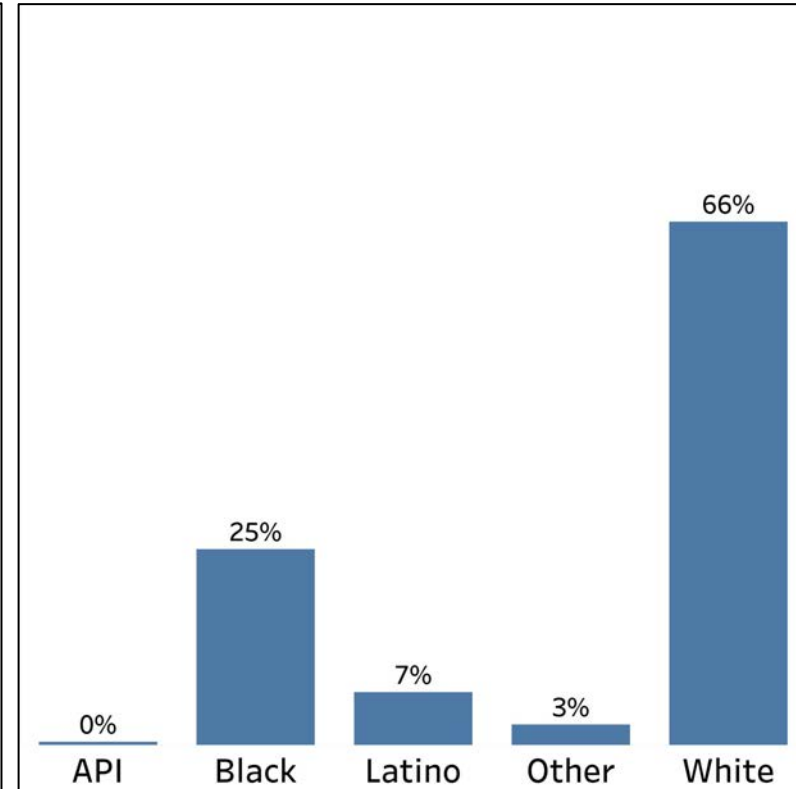
2010 vs 2020 Demographics in Montgomery County



Montgomery County 2010



Montgomery County 2020

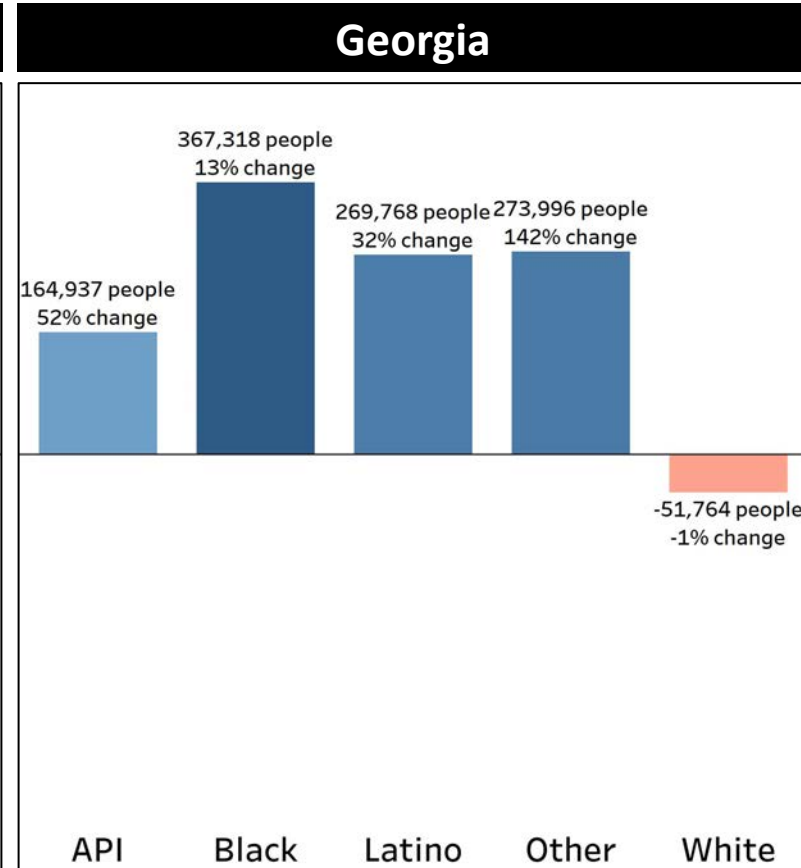
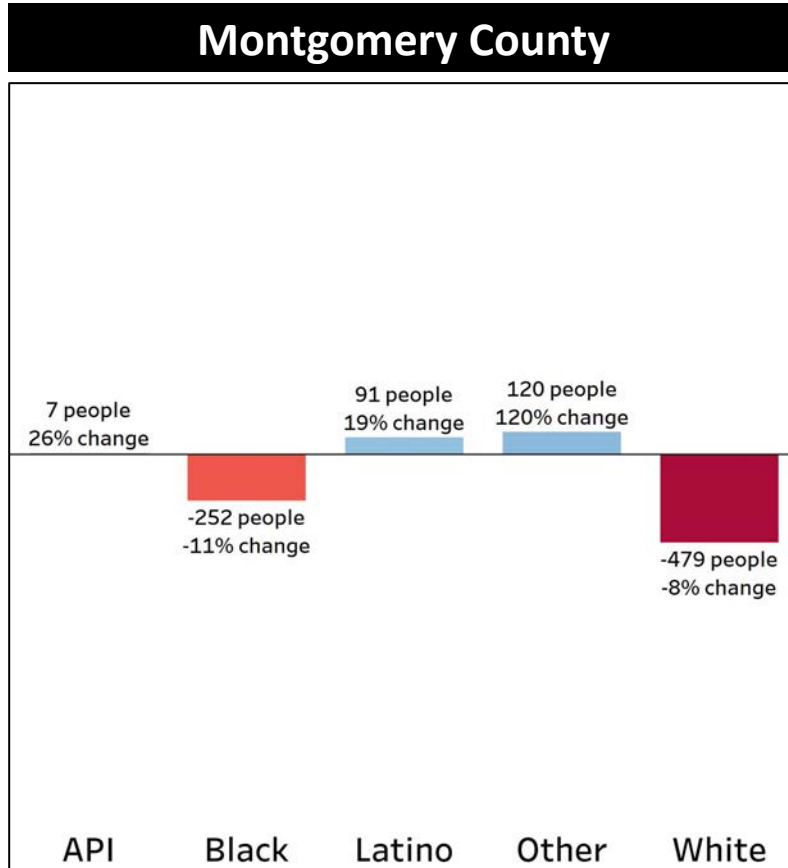


- Montgomery County has had slight decline in the share of the both the Black and White populations
- Meanwhile, both the Latino and Other populations' shares grew in the past decade



Demographics

Population Change by Race (2020 - 2010)



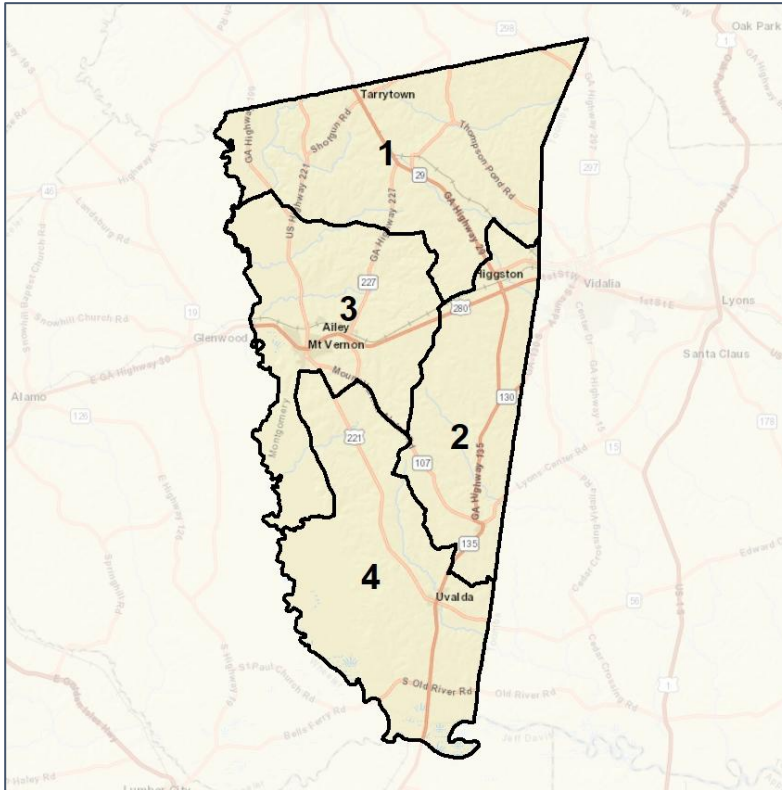
- Lumpkin County has had strong population growth every decade since 1930, and had an even higher surge from 1980-2010
- The last decade was the slowest growth for the county since 1960, but it was still a higher growth rate than Georgia overall



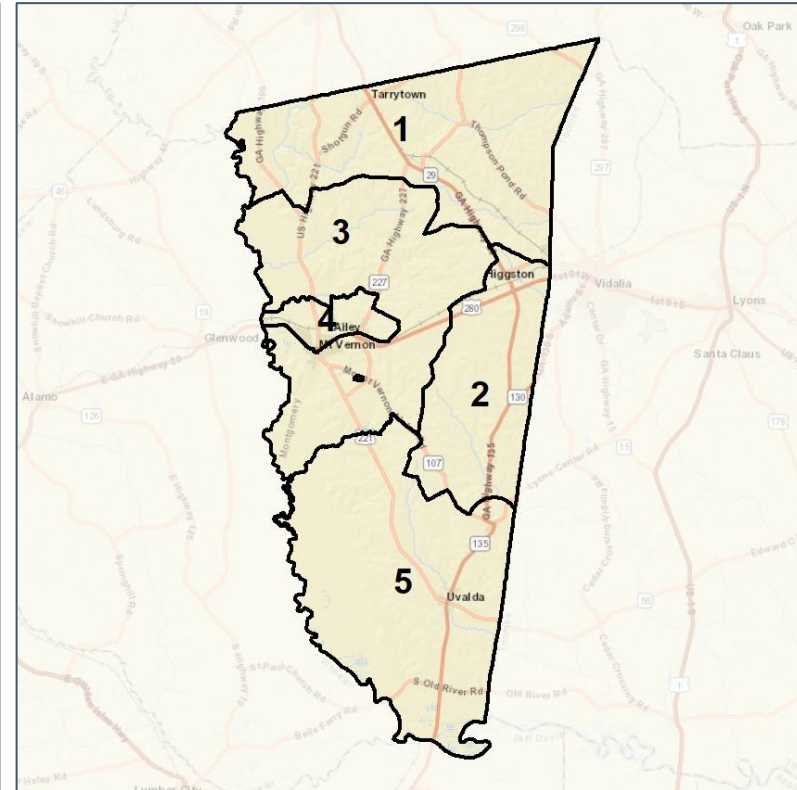
Montgomery Co. Comm. & School Board Context



2012 Map



2022 Map*



	1	2	3	4	1*	2*	3*	4*	5*	County
Population	1,800	2,111	3,184	1,515	1,621	1,635	1,654	1,669	1,659	8,610
API	0%	0%	1%	0%	0%	0%	0%	1%	0%	0%
Black	10%	15%	43%	18%	4%	17%	25%	52%	18%	25%
Latino	4%	6%	6%	11%	3%	8%	5%	9%	10%	7%
Other	2%	3%	2%	3%	2%	3%	3%	3%	3%	3%
White	84%	76%	48%	68%	91%	72%	67%	35%	69%	66%
Population Gain	26	226	-485	-280	-179	-476	-1,530	154	n/a	*
Population % Gain	1%	12%	-13%	-16%	-10%	-23%	-48%	10%	n/a	*
Net POC Gain	-23	168	-109	-70	-136	-59	-1,112	605	n/a	*
Net POC % Gain	-7%	48%	-6%	-13%	-48%	-11%	-67%	125%	n/a	*

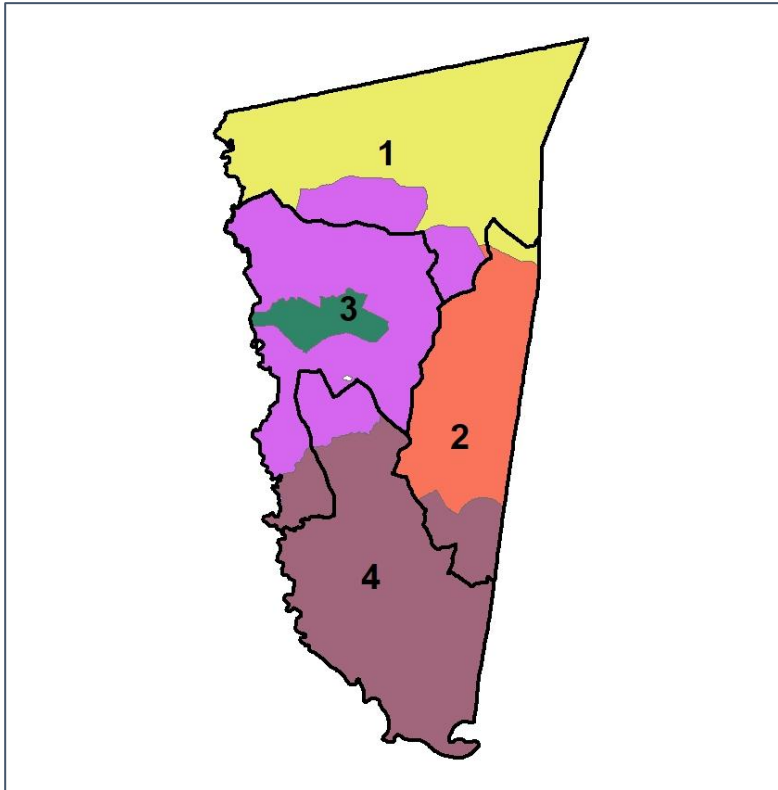


Montgomery Co. Comm. & School Board

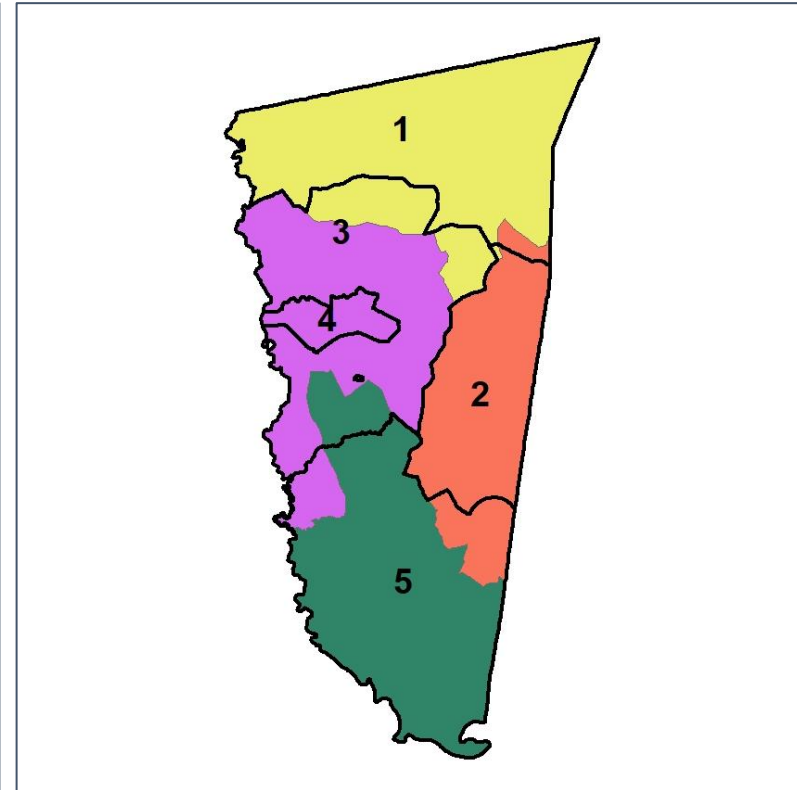
Changes in Redistricting



2012 Map (2022 in Colors)



2022 Map* (2012 in Colors)



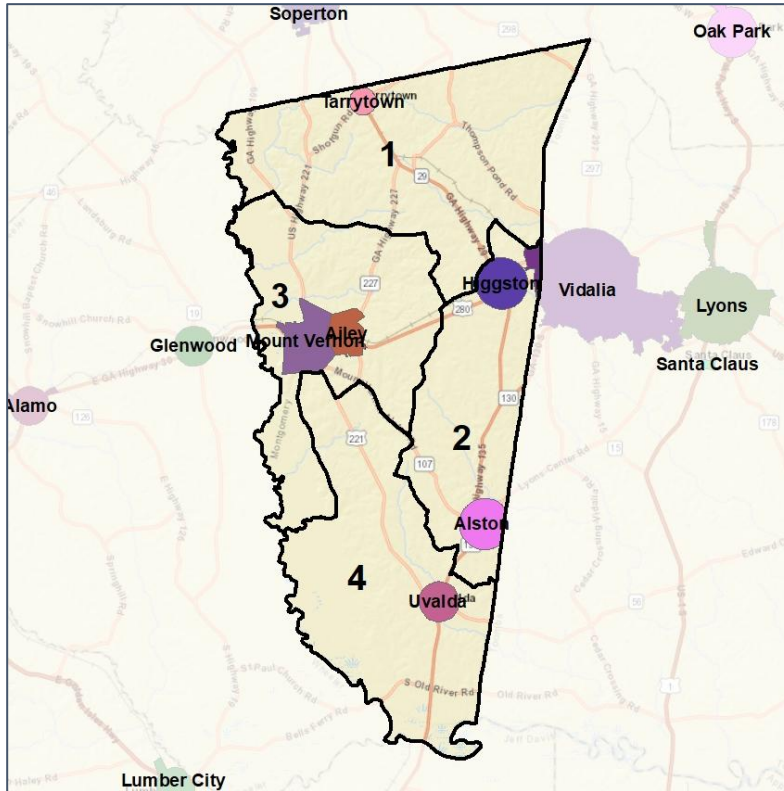
	1	2	3	4	1*	2*	3*	4*	5*	County
Population	1,800	2,111	3,184	1,515	1,621	1,635	1,654	1,669	1,659	8,610
API	0%	0%	1%	0%	0%	0%	0%	1%	0%	0%
Black	10%	15%	43%	18%	4%	17%	25%	52%	18%	25%
Latino	4%	6%	6%	11%	3%	8%	5%	9%	10%	7%
Other	2%	3%	2%	3%	2%	3%	3%	3%	3%	3%
White	84%	76%	48%	68%	91%	72%	67%	35%	69%	66%
Population Gain	26	226	-485	-280	-179	-476	-1,530	154	n/a	*
Population % Gain	1%	12%	-13%	-16%	-10%	-23%	-48%	10%	n/a	*
Net POC Gain	-23	168	-109	-70	-136	-59	-1,112	605	n/a	*
Net POC % Gain	-7%	48%	-6%	-13%	-48%	-11%	-67%	125%	n/a	*



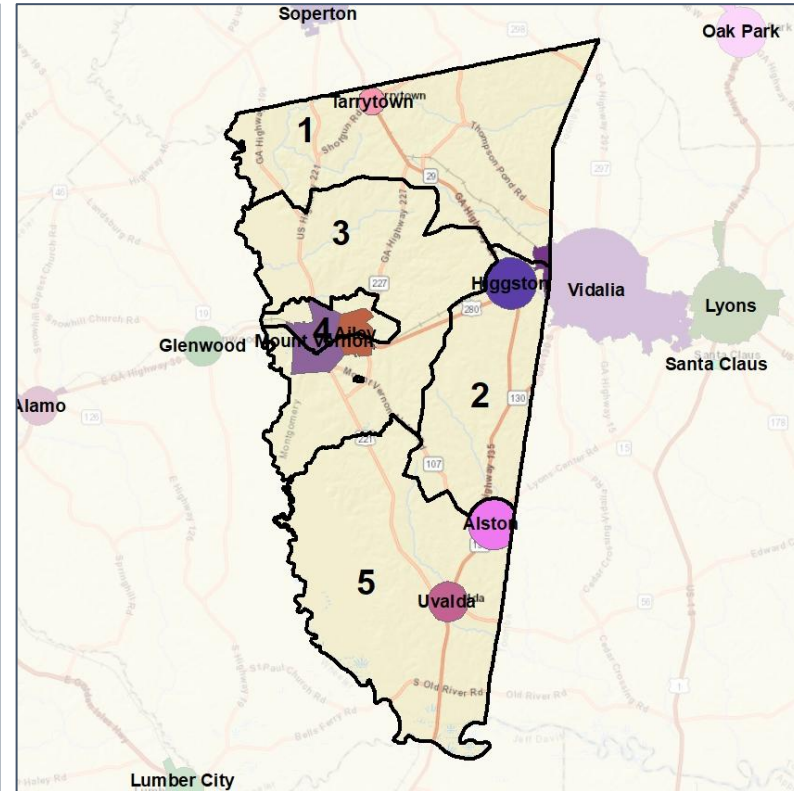
Montgomery Co. Comm. & School Board Cities and Places



2012 Map



2022 Map*



	1	2	3	4	1*	2*	3*	4*	5*	County
Population	1,800	2,111	3,184	1,515	1,621	1,635	1,654	1,669	1,659	8,610
API	0%	0%	1%	0%	0%	0%	0%	1%	0%	0%
Black	10%	15%	43%	18%	4%	17%	25%	52%	18%	25%
Latino	4%	6%	6%	11%	3%	8%	5%	9%	10%	7%
Other	2%	3%	2%	3%	2%	3%	3%	3%	3%	3%
White	84%	76%	48%	68%	91%	72%	67%	35%	69%	66%
Population Gain	26	226	-485	-280	-179	-476	-1,530	154	n/a	*
Population % Gain	1%	12%	-13%	-16%	-10%	-23%	-48%	10%	n/a	*
Net POC Gain	-23	168	-109	-70	-136	-59	-1,112	605	n/a	*
Net POC % Gain	-7%	48%	-6%	-13%	-48%	-11%	-67%	125%	n/a	*

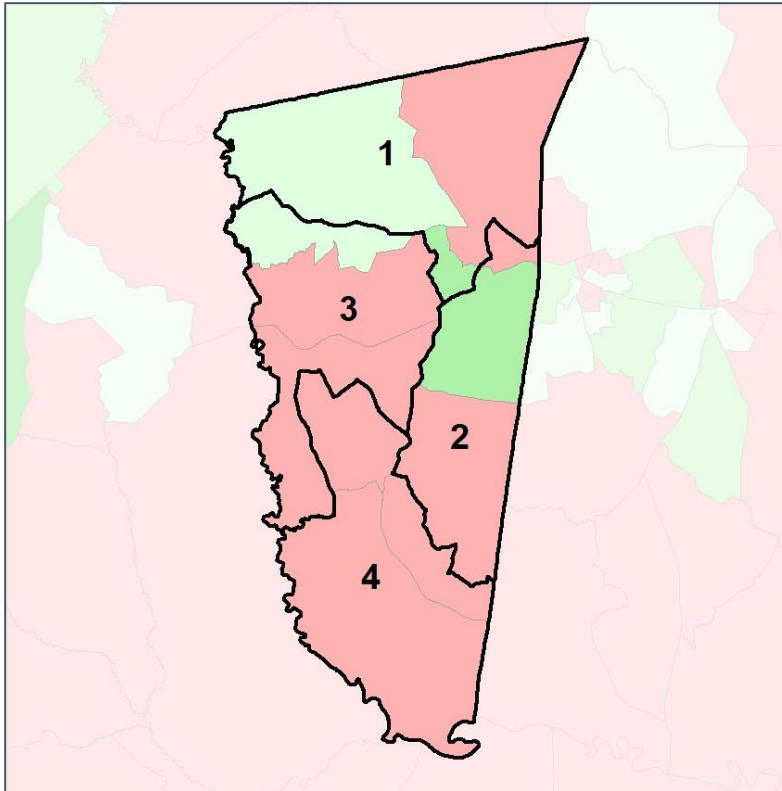


Montgomery Co. Comm. & School Board

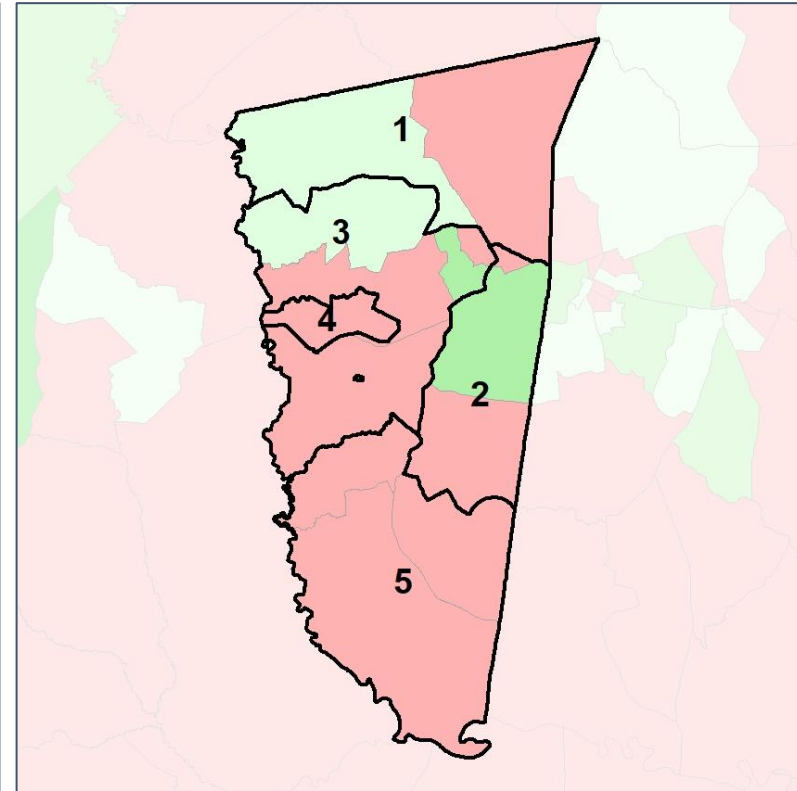
Net Gain in Population (2010 - 2020) by Census Block Group



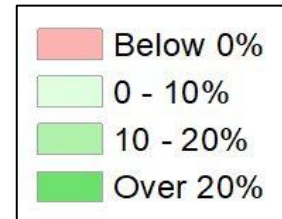
2012 Map



2022 Map*



	1	2	3	4	1*	2*	3*	4*	5*	County
Population	1,800	2,111	3,184	1,515	1,621	1,635	1,654	1,669	1,659	8,610
API	0%	0%	1%	0%	0%	0%	0%	1%	0%	0%
Black	10%	15%	43%	18%	4%	17%	25%	52%	18%	25%
Latino	4%	6%	6%	11%	3%	8%	5%	9%	10%	7%
Other	2%	3%	2%	3%	2%	3%	3%	3%	3%	3%
White	84%	76%	48%	68%	91%	72%	67%	35%	69%	66%
Population Gain	26	226	-485	-280	-179	-476	-1,530	154	n/a	*
Population % Gain	1%	12%	-13%	-16%	-10%	-23%	-48%	10%	n/a	*
Net POC Gain	-23	168	-109	-70	-136	-59	-1,112	605	n/a	*
Net POC % Gain	-7%	48%	-6%	-13%	-48%	-11%	-67%	125%	n/a	*

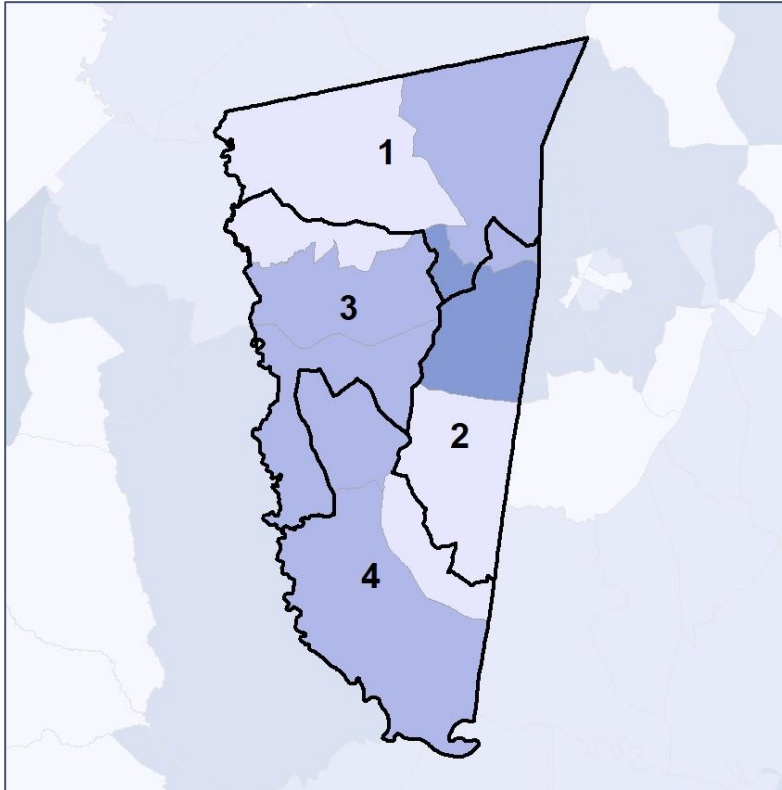


Montgomery Co. Comm. & School Board

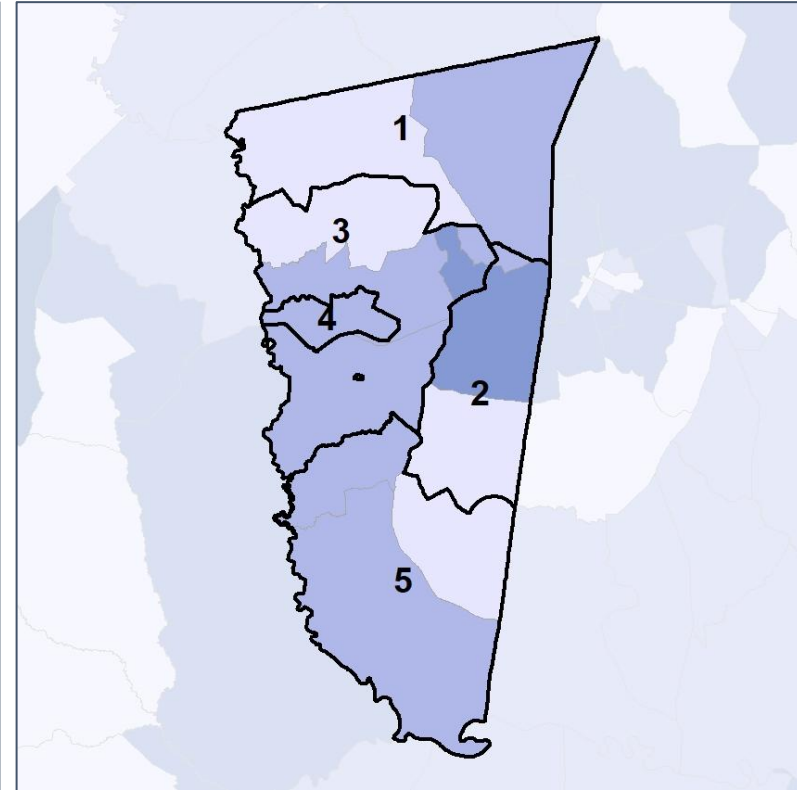
Net Gain in % POC (2020 - 2010) by Census Block Group



2012 Map



2022 Map*



	1	2	3	4	1*	2*	3*	4*	5*	County
Population	1,800	2,111	3,184	1,515	1,621	1,635	1,654	1,669	1,659	8,610
API	0%	0%	1%	0%	0%	0%	0%	1%	0%	0%
Black	10%	15%	43%	18%	4%	17%	25%	52%	18%	25%
Latino	4%	6%	6%	11%	3%	8%	5%	9%	10%	7%
Other	2%	3%	2%	3%	2%	3%	3%	3%	3%	3%
White	84%	76%	48%	68%	91%	72%	67%	35%	69%	66%
Population Gain	26	226	-485	-280	-179	-476	-1,530	154	n/a	*
Population % Gain	1%	12%	-13%	-16%	-10%	-23%	-48%	10%	n/a	*
Net POC Gain	-23	168	-109	-70	-136	-59	-1,112	605	n/a	*
Net POC % Gain	-7%	48%	-6%	-13%	-48%	-11%	-67%	125%	n/a	*

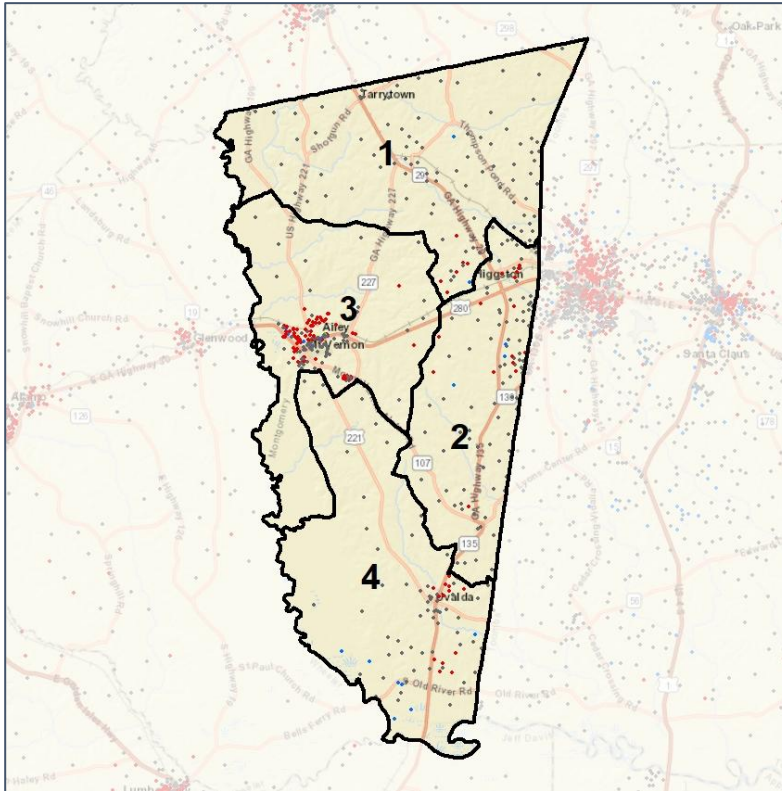


Montgomery Co. Comm. & School Board

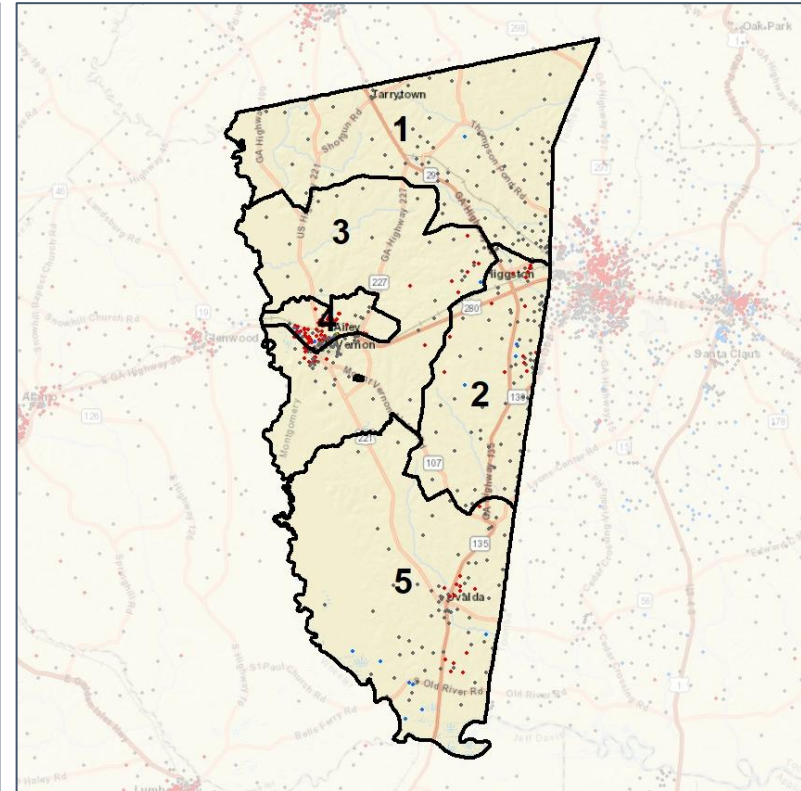
Population Density by Race



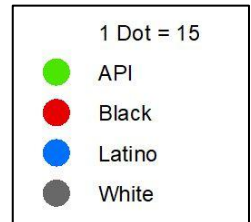
2012 Map



2022 Map*



	1	2	3	4	1*	2*	3*	4*	5*	County
Population	1,800	2,111	3,184	1,515	1,621	1,635	1,654	1,669	1,659	8,610
API	0	9	24	1	1	8	8	17	0	34
% API	0%	0%	1%	0%	0%	0%	0%	1%	0%	0%
Black	173	318	1,356	273	69	275	409	876	299	2,120
% Black	10%	15%	43%	18%	4%	17%	25%	52%	18%	25%
Latino	76	129	203	163	53	125	79	151	163	571
% Latino	4%	6%	6%	11%	3%	8%	5%	9%	10%	7%
Other	37	60	76	47	27	49	51	45	48	220
% Other	2%	3%	2%	3%	2%	3%	3%	3%	3%	3%
White	1,514	1,595	1,525	1,031	1,471	1,178	1,107	580	1,149	5,665
% White	84%	76%	48%	68%	91%	72%	67%	35%	69%	66%

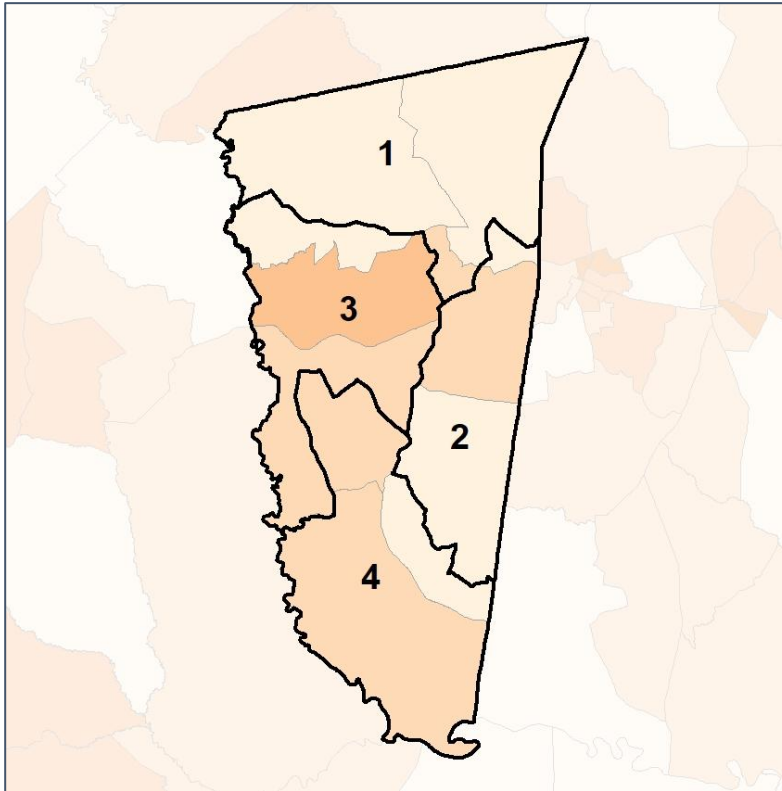


Montgomery Co. Comm. & School Board

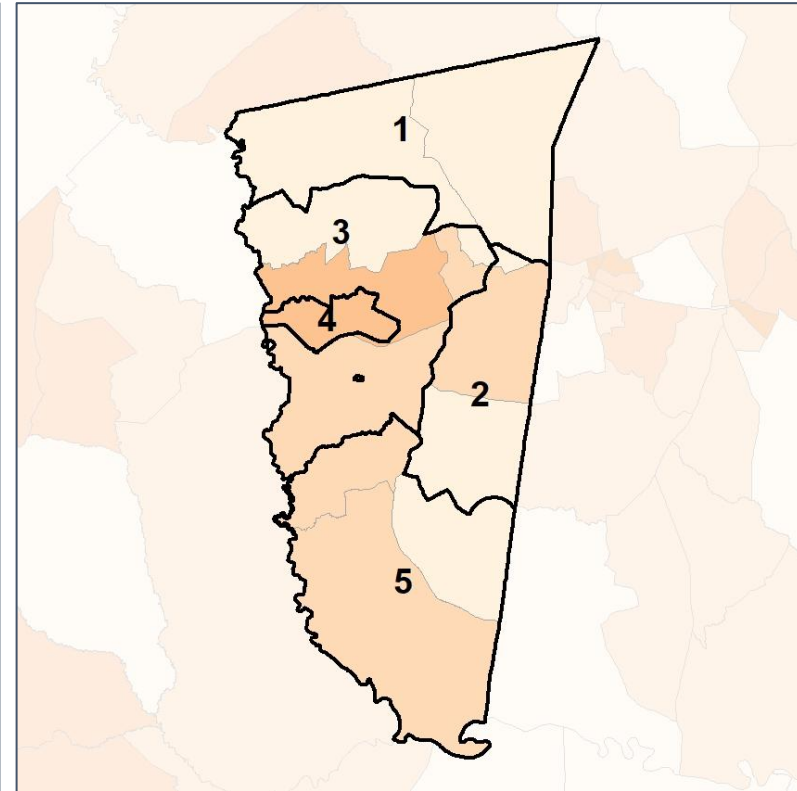
% People of Color by Census Block Group



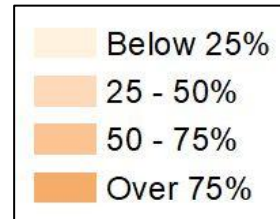
2012 Map



2022 Map*



	1	2	3	4	1*	2*	3*	4*	5*	County
Population	1,800	2,111	3,184	1,515	1,621	1,635	1,654	1,669	1,659	8,610
API	0	9	24	1	1	8	8	17	0	34
% API	0%	0%	1%	0%	0%	0%	0%	1%	0%	0%
Black	173	318	1,356	273	69	275	409	876	299	2,120
% Black	10%	15%	43%	18%	4%	17%	25%	52%	18%	25%
Latino	76	129	203	163	53	125	79	151	163	571
% Latino	4%	6%	6%	11%	3%	8%	5%	9%	10%	7%
Other	37	60	76	47	27	49	51	45	48	220
% Other	2%	3%	2%	3%	2%	3%	3%	3%	3%	3%
White	1,514	1,595	1,525	1,031	1,471	1,178	1,107	580	1,149	5,665
% White	84%	76%	48%	68%	91%	72%	67%	35%	69%	66%

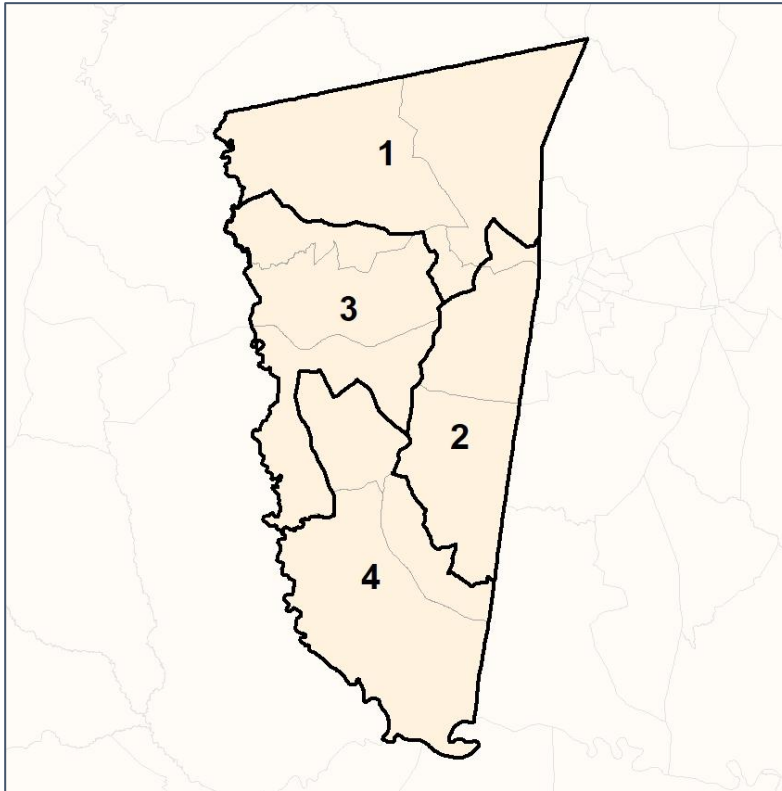


Montgomery Co. Comm. & School Board

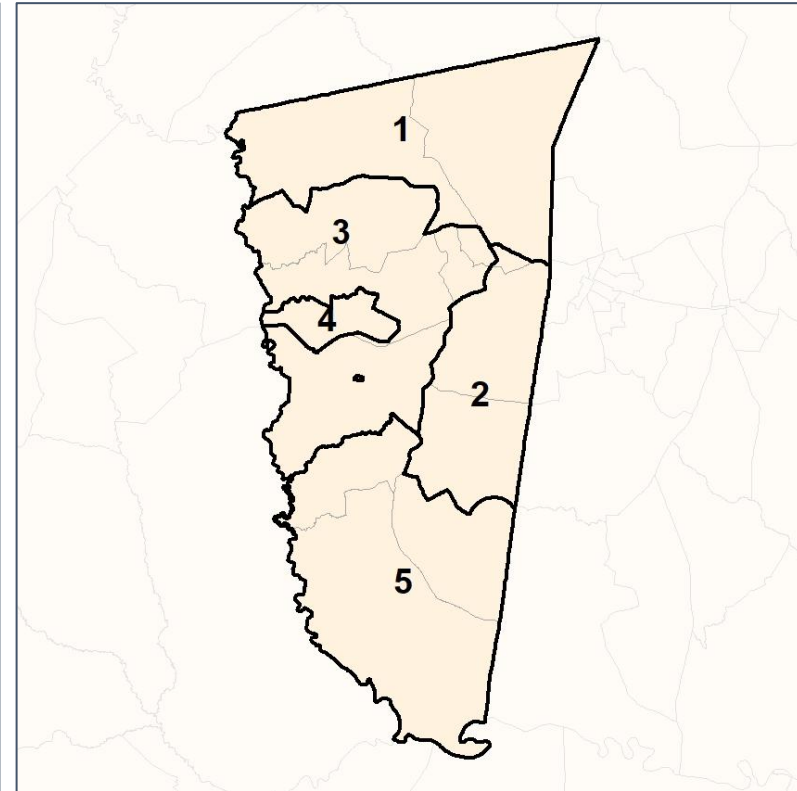
% API by Census Block Group



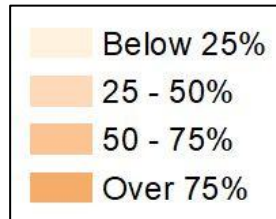
2012 Map



2022 Map*



	1	2	3	4	1*	2*	3*	4*	5*	County
Population	1,800	2,111	3,184	1,515	1,621	1,635	1,654	1,669	1,659	8,610
API	0	9	24	1	1	8	8	17	0	34
% API	0%	0%	1%	0%	0%	0%	0%	1%	0%	0%
Black	173	318	1,356	273	69	275	409	876	299	2,120
% Black	10%	15%	43%	18%	4%	17%	25%	52%	18%	25%
Latino	76	129	203	163	53	125	79	151	163	571
% Latino	4%	6%	6%	11%	3%	8%	5%	9%	10%	7%
Other	37	60	76	47	27	49	51	45	48	220
% Other	2%	3%	2%	3%	2%	3%	3%	3%	3%	3%
White	1,514	1,595	1,525	1,031	1,471	1,178	1,107	580	1,149	5,665
% White	84%	76%	48%	68%	91%	72%	67%	35%	69%	66%

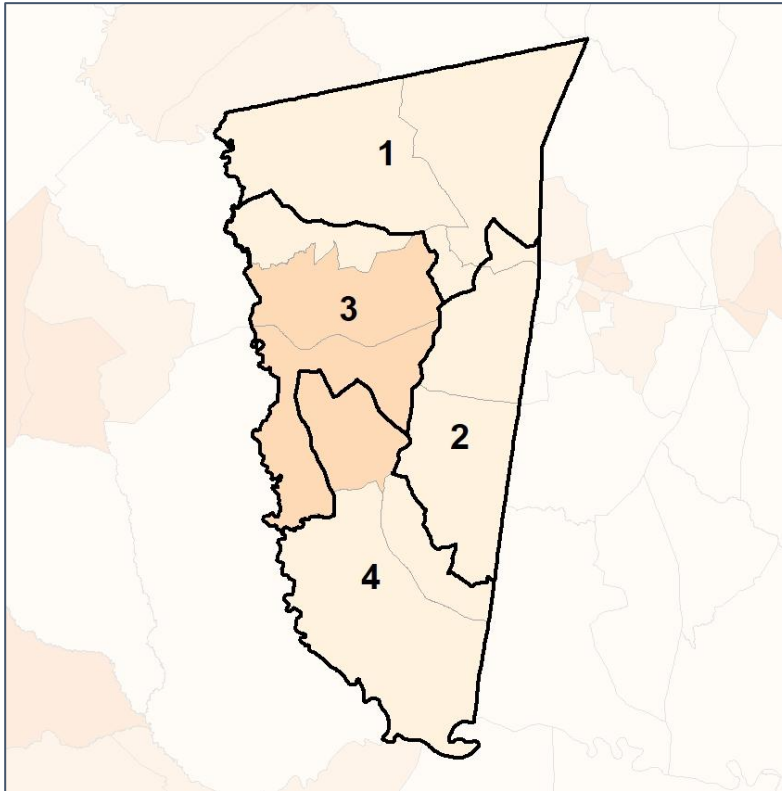


Montgomery Co. Comm. & School Board

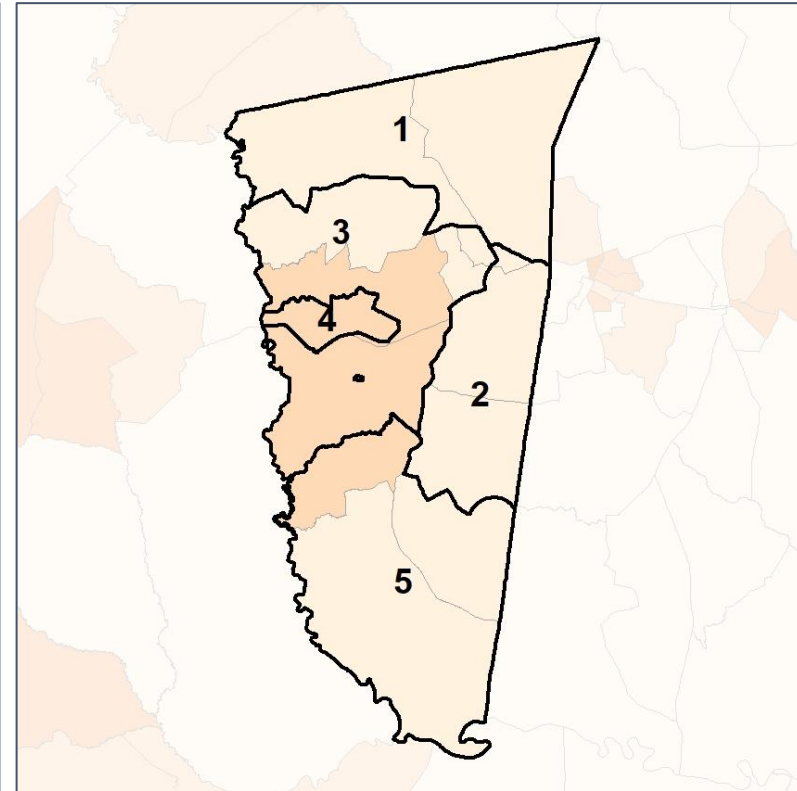
% Black by Census Block Group



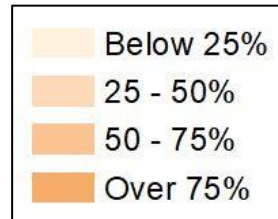
2012 Map



2022 Map*



	1	2	3	4	1*	2*	3*	4*	5*	County
Population	1,800	2,111	3,184	1,515	1,621	1,635	1,654	1,669	1,659	8,610
API	0	9	24	1	1	8	8	17	0	34
% API	0%	0%	1%	0%	0%	0%	0%	1%	0%	0%
Black	173	318	1,356	273	69	275	409	876	299	2,120
% Black	10%	15%	43%	18%	4%	17%	25%	52%	18%	25%
Latino	76	129	203	163	53	125	79	151	163	571
% Latino	4%	6%	6%	11%	3%	8%	5%	9%	10%	7%
Other	37	60	76	47	27	49	51	45	48	220
% Other	2%	3%	2%	3%	2%	3%	3%	3%	3%	3%
White	1,514	1,595	1,525	1,031	1,471	1,178	1,107	580	1,149	5,665
% White	84%	76%	48%	68%	91%	72%	67%	35%	69%	66%

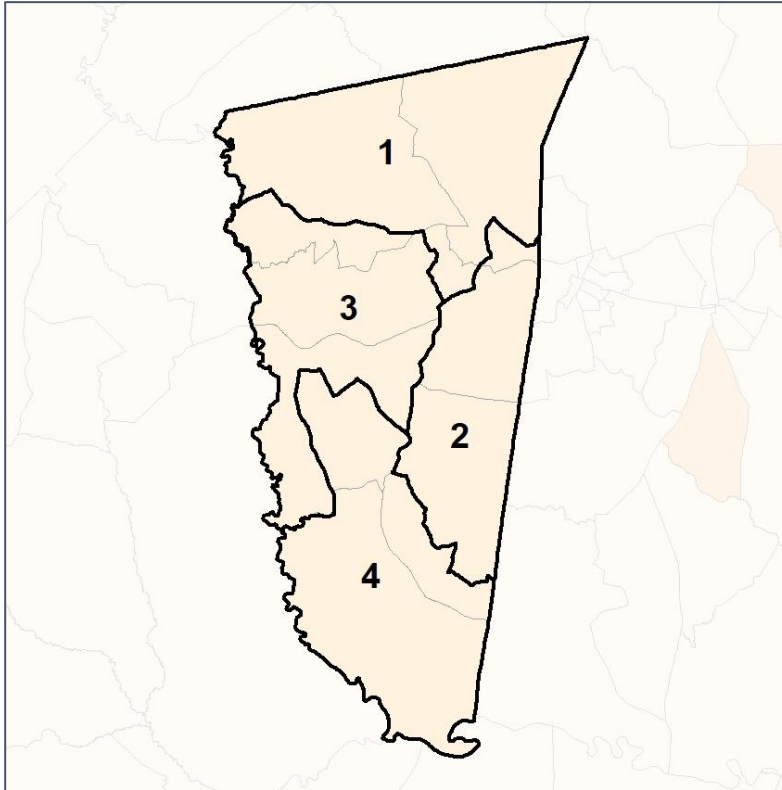


Montgomery Co. Comm. & School Board

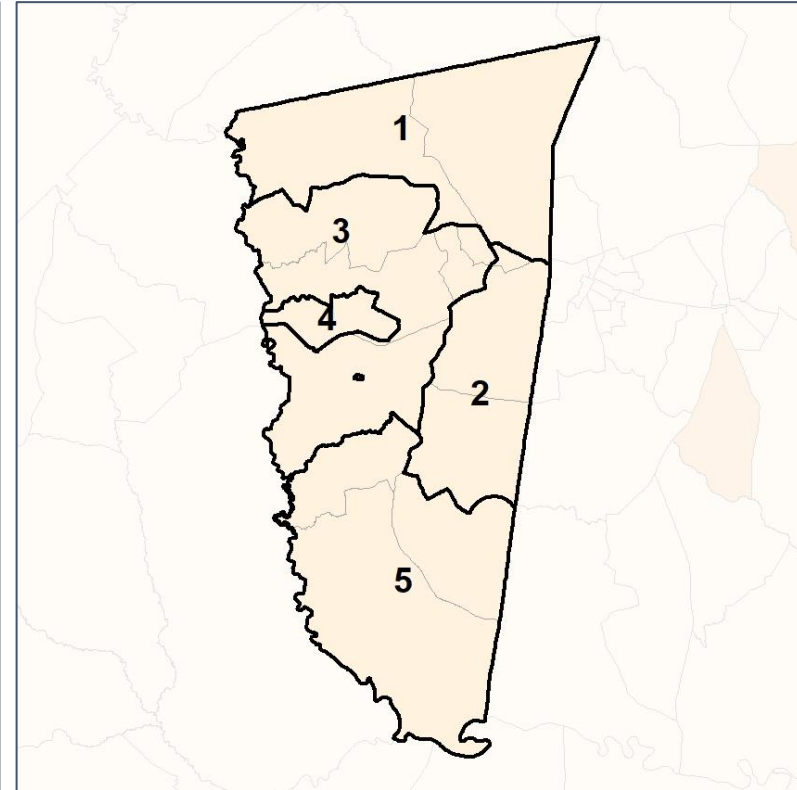
% Latino by Census Block Group



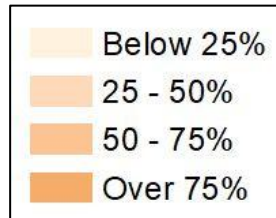
2012 Map



2022 Map*



	1	2	3	4	1*	2*	3*	4*	5*	County
Population	1,800	2,111	3,184	1,515	1,621	1,635	1,654	1,669	1,659	8,610
API	0	9	24	1	1	8	8	17	0	34
% API	0%	0%	1%	0%	0%	0%	0%	1%	0%	0%
Black	173	318	1,356	273	69	275	409	876	299	2,120
% Black	10%	15%	43%	18%	4%	17%	25%	52%	18%	25%
Latino	76	129	203	163	53	125	79	151	163	571
% Latino	4%	6%	6%	11%	3%	8%	5%	9%	10%	7%
Other	37	60	76	47	27	49	51	45	48	220
% Other	2%	3%	2%	3%	2%	3%	3%	3%	3%	3%
White	1,514	1,595	1,525	1,031	1,471	1,178	1,107	580	1,149	5,665
% White	84%	76%	48%	68%	91%	72%	67%	35%	69%	66%

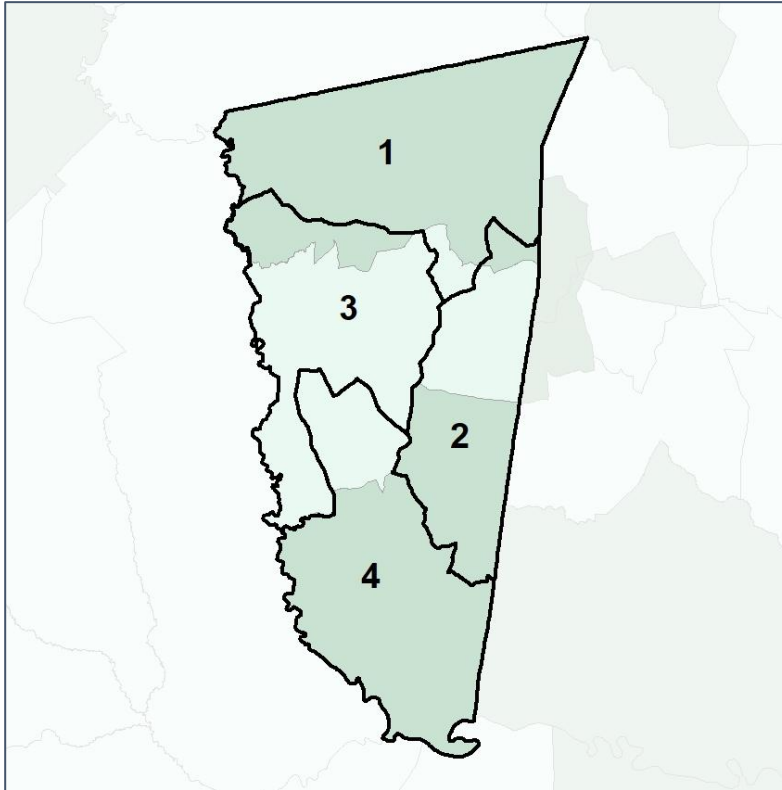


Montgomery Co. Comm. & School Board

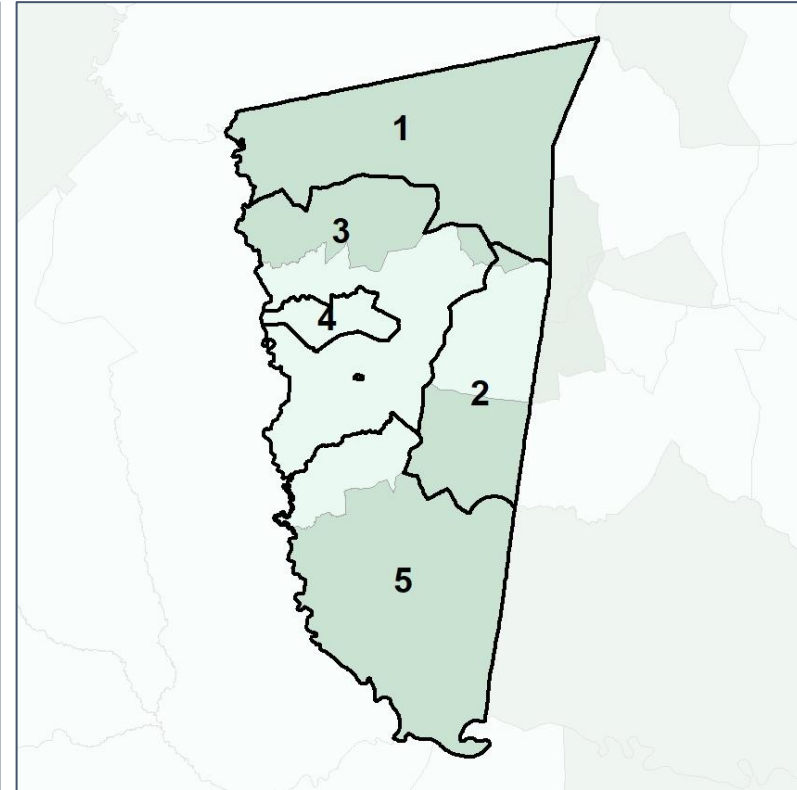
Median Household Income by Census Tract



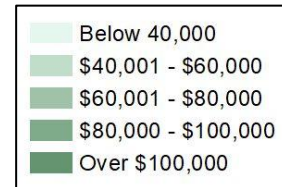
2012 Map



2022 Map*



	1	2	3	4	1*	2*	3*	4*	5*	County
Population	1,800	2,111	3,184	1,515	1,621	1,635	1,654	1,669	1,659	8,610
% API	0%	0%	1%	0%	0%	0%	0%	1%	0%	0%
% Black	10%	15%	43%	18%	4%	17%	25%	52%	18%	25%
% Latino	4%	6%	6%	11%	3%	8%	5%	9%	10%	7%
% Other	2%	3%	2%	3%	2%	3%	3%	3%	3%	3%
% White	84%	76%	48%	68%	91%	72%	67%	35%	69%	66%
Median Income	\$55,000	\$47,000	\$49,000	\$31,000	\$55,000	\$47,000	\$49,000	\$31,000	\$50,000	\$45,000
% Renter	11%	25%	31%	41%	11%	25%	31%	41%	14%	25%
% Youth	16%	26%	19%	32%	16%	26%	19%	32%	28%	24%

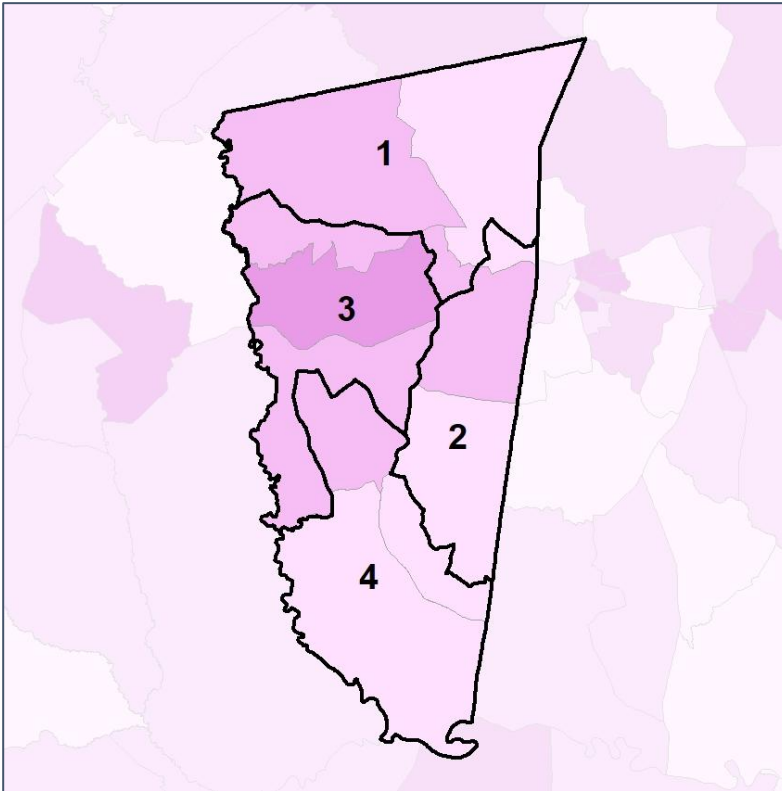


Montgomery Co. Comm. & School Board

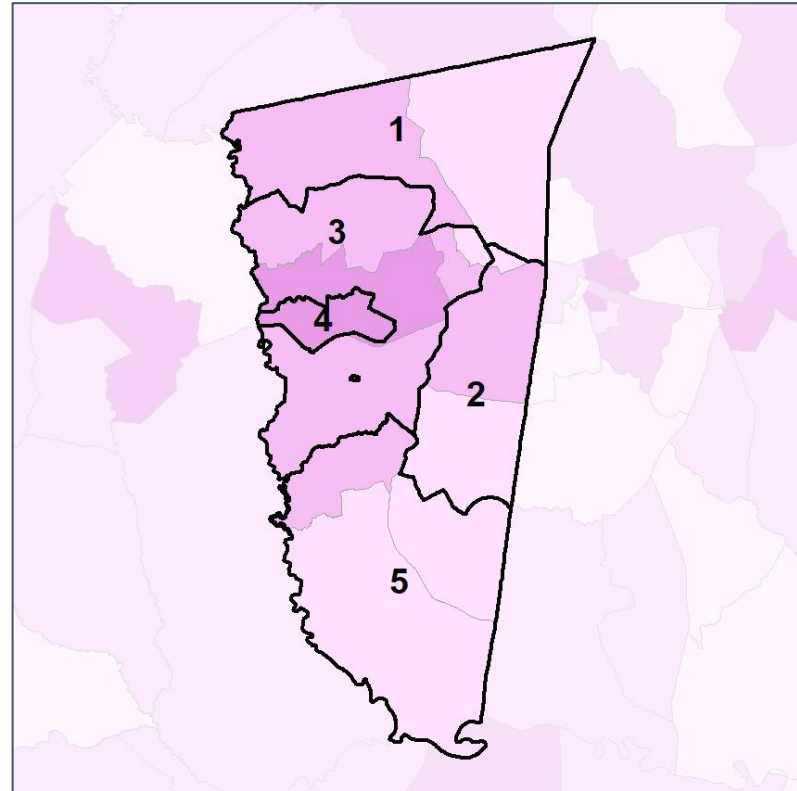
% Renter by Census Block Group



2012 Map



2022 Map*



	1	2	3	4	1*	2*	3*	4*	5*	County
Population	1,800	2,111	3,184	1,515	1,621	1,635	1,654	1,669	1,659	8,610
% API	0%	0%	1%	0%	0%	0%	0%	1%	0%	0%
% Black	10%	15%	43%	18%	4%	17%	25%	52%	18%	25%
% Latino	4%	6%	6%	11%	3%	8%	5%	9%	10%	7%
% Other	2%	3%	2%	3%	2%	3%	3%	3%	3%	3%
% White	84%	76%	48%	68%	91%	72%	67%	35%	69%	66%
Median Income	\$55,000	\$47,000	\$49,000	\$31,000	\$55,000	\$47,000	\$49,000	\$31,000	\$50,000	\$45,000
% Renter	11%	25%	31%	41%	11%	25%	31%	41%	14%	25%
% Youth	16%	26%	19%	32%	16%	26%	19%	32%	28%	24%

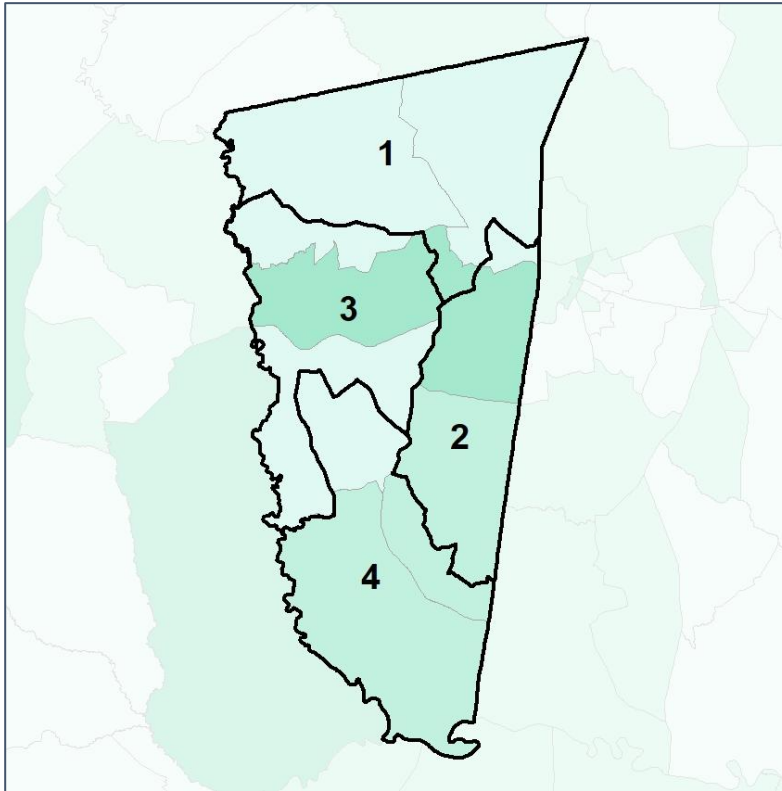


Montgomery Co. Comm. & School Board

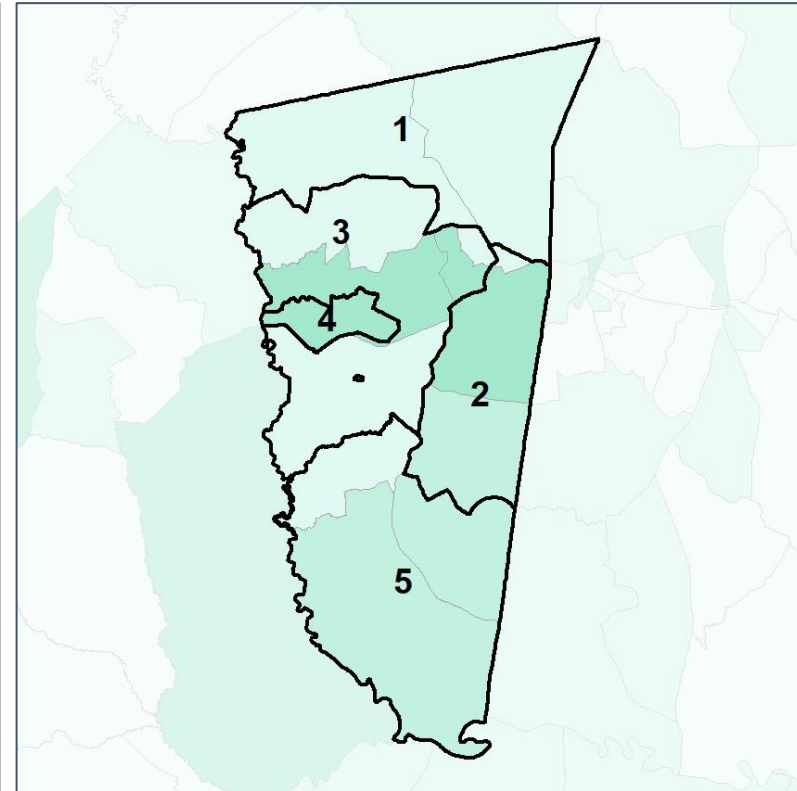
% Youth (18-34) by Census Block Group



2012 Map



2022 Map*



	1	2	3	4	1*	2*	3*	4*	5*	County
Population	1,800	2,111	3,184	1,515	1,621	1,635	1,654	1,669	1,659	8,610
% API	0%	0%	1%	0%	0%	0%	0%	1%	0%	0%
% Black	10%	15%	43%	18%	4%	17%	25%	52%	18%	25%
% Latino	4%	6%	6%	11%	3%	8%	5%	9%	10%	7%
% Other	2%	3%	2%	3%	2%	3%	3%	3%	3%	3%
% White	84%	76%	48%	68%	91%	72%	67%	35%	69%	66%
Median Income	\$55,000	\$47,000	\$49,000	\$31,000	\$55,000	\$47,000	\$49,000	\$31,000	\$50,000	\$45,000
% Renter	11%	25%	31%	41%	11%	25%	31%	41%	14%	25%
% Youth	16%	26%	19%	32%	16%	26%	19%	32%	28%	24%

