

# Demographic Overview

## Racial Breakdown in Meriwether County



Meriwether County	2010	2020	% Change
Total Population	21,992	20,613	-6%
AAPI	143	84	-41%
Black	8,583	7,273	-15%
Latino	347	475	37%
Other/Mixed Race	313	697	123%
POC	9,386	8,529	-9%
White	12,606	12,084	-4%

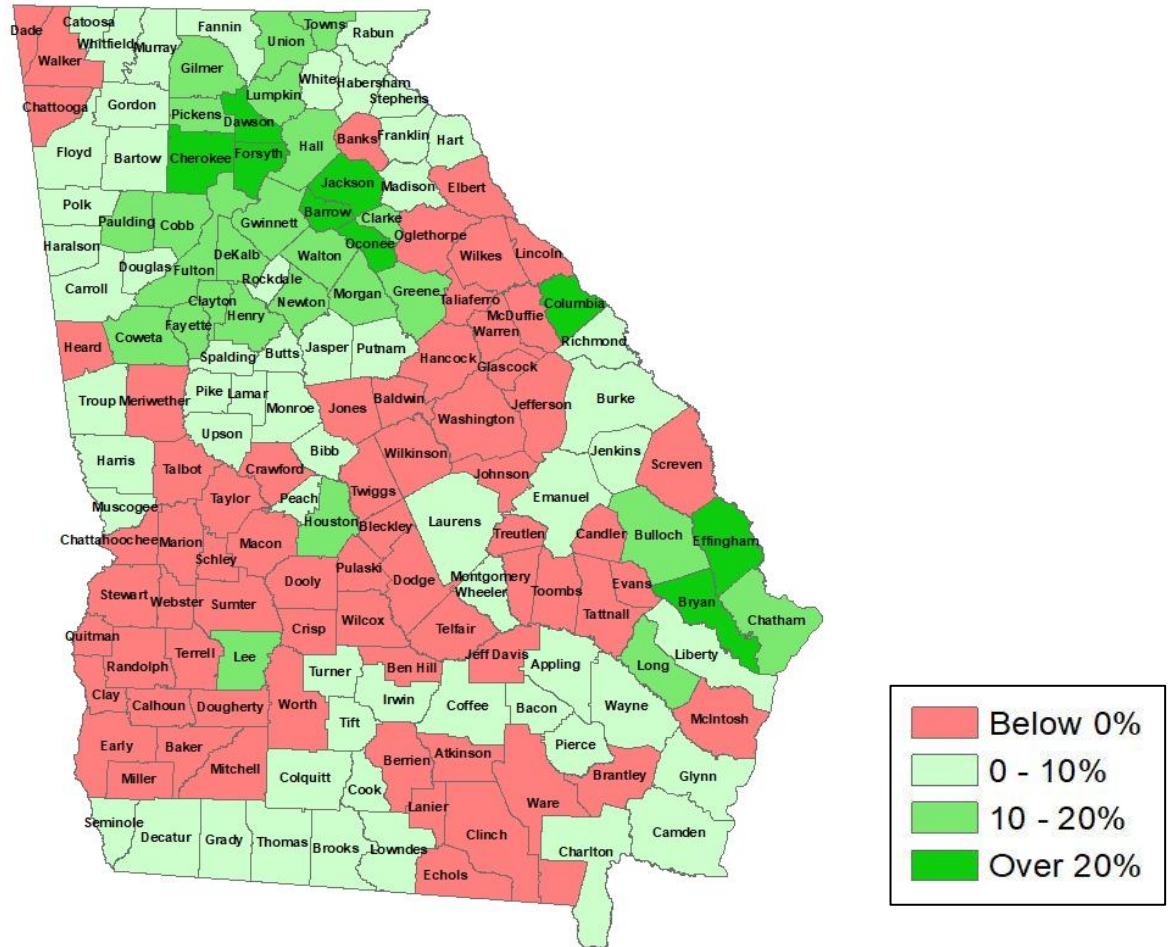
\*Note: The use of "Other" in these statistics combines those who identify as Native American, Mixed Race, and "Other" race





# Population Gain

## Change in Population in Georgia by County



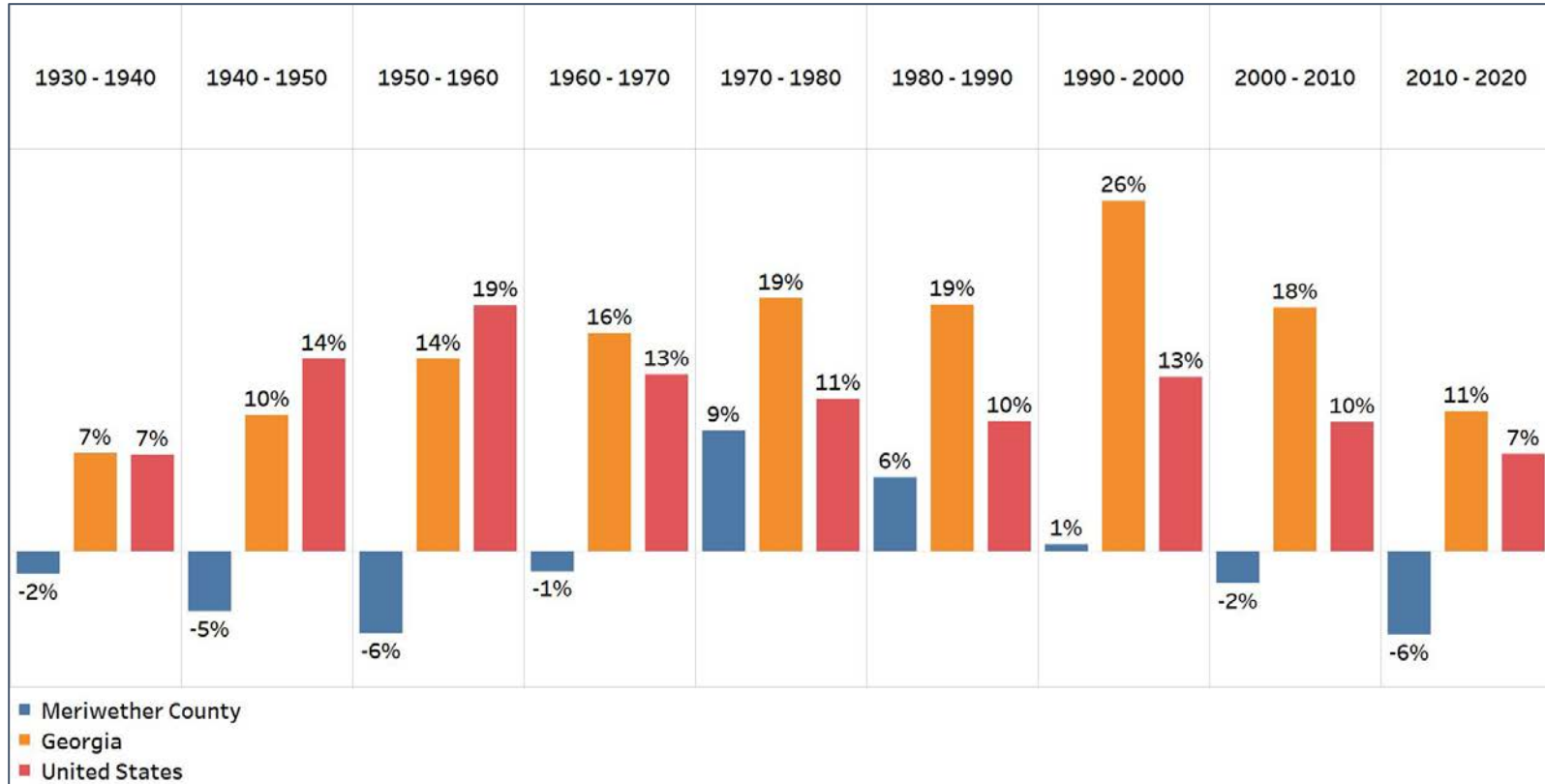
- Georgia is experiencing rapid population growth in the Atlanta, Augusta, and Savannah regions of the state





# Population Gain

## Change in Population by Decade

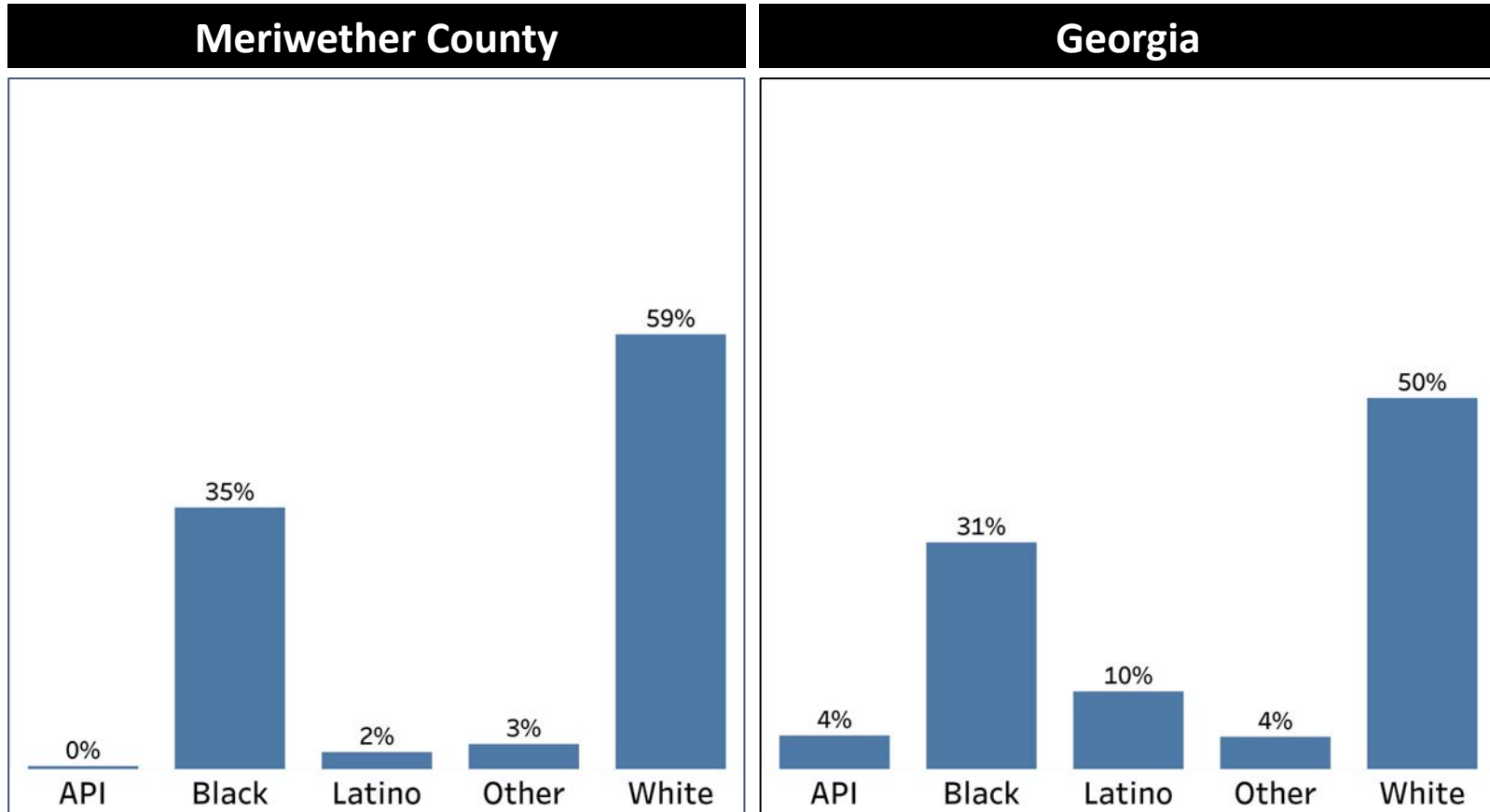


- Since 1930, Meriwether County has experienced a population decline every decade with 1970 to 2000 being the exception.



# Demographics

## Comparison between Meriwether County and Georgia



- Meriwether county has a majority White population which has a higher percentage rate than Georgia's overall average
- The Black Population in Meriwether county comprises a higher percentage of the population than the statewide average

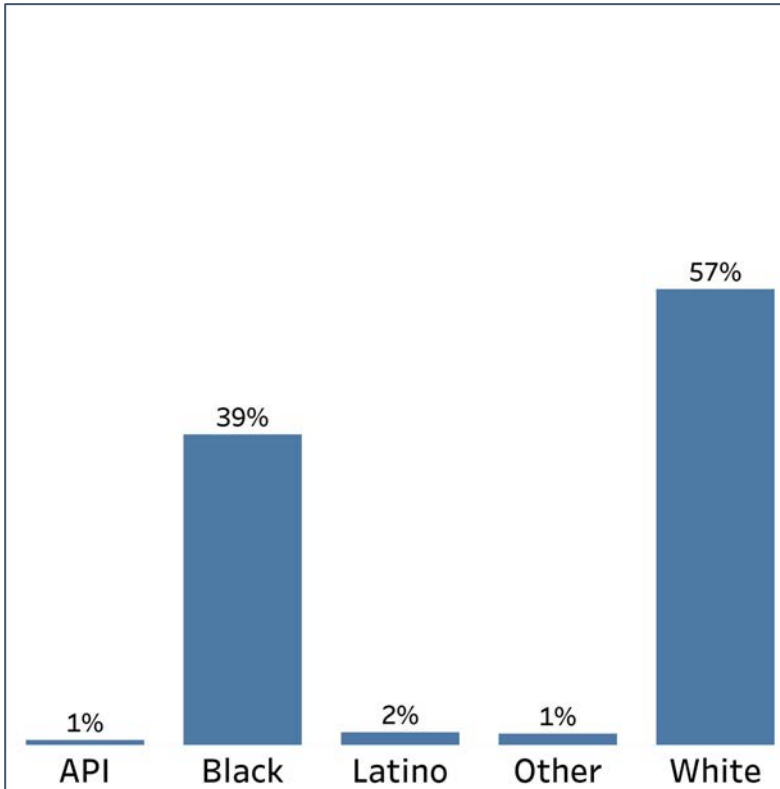


# Demographics

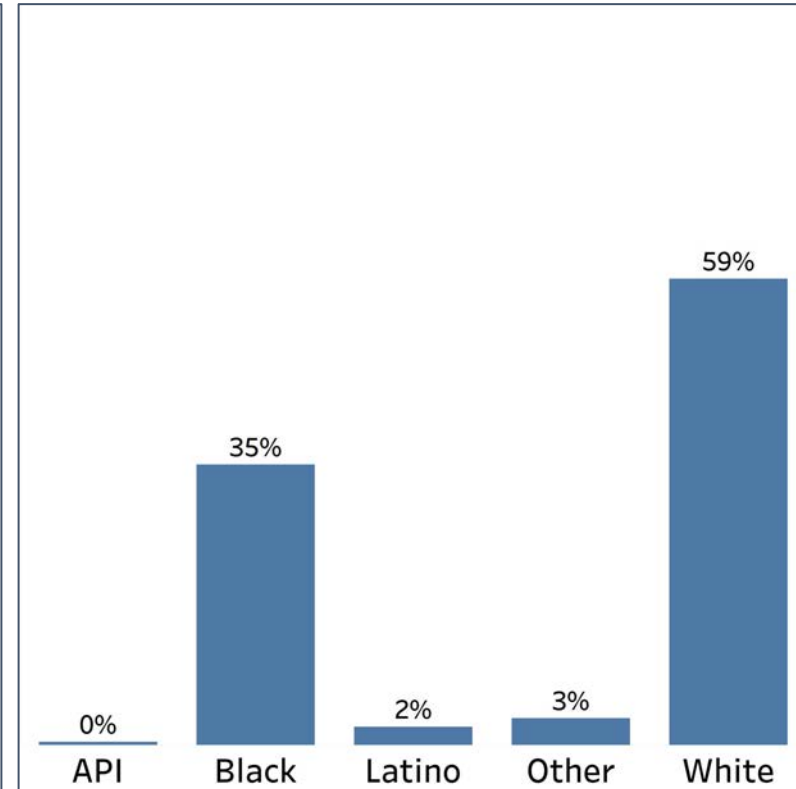
## 2010 vs 2020 Demographics in Meriwether County



Meriwether County 2010



Meriwether County 2020

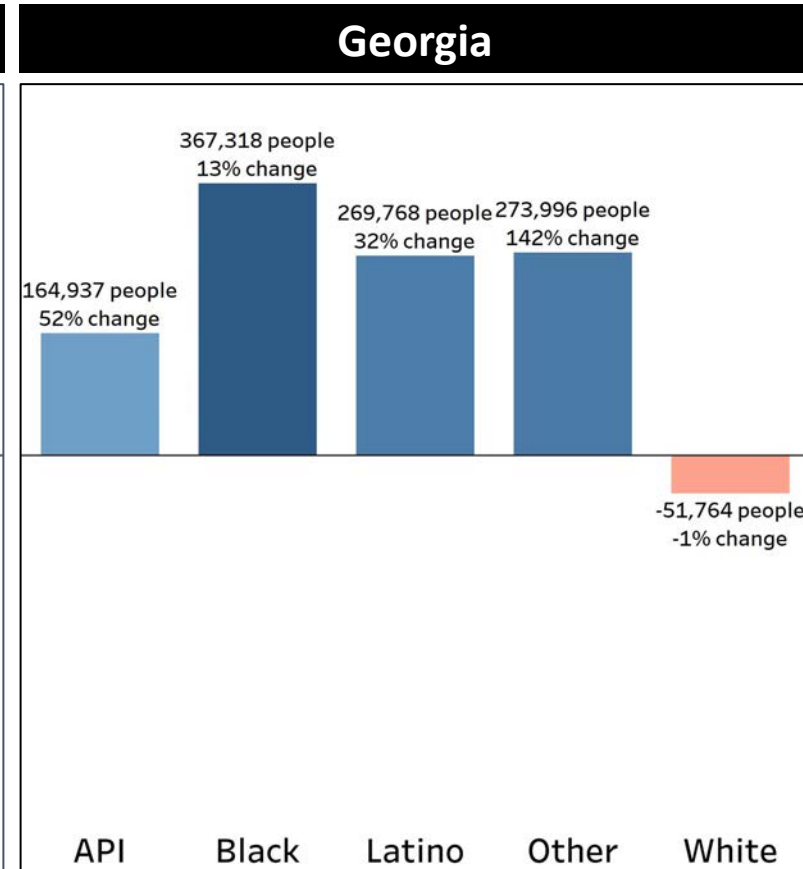
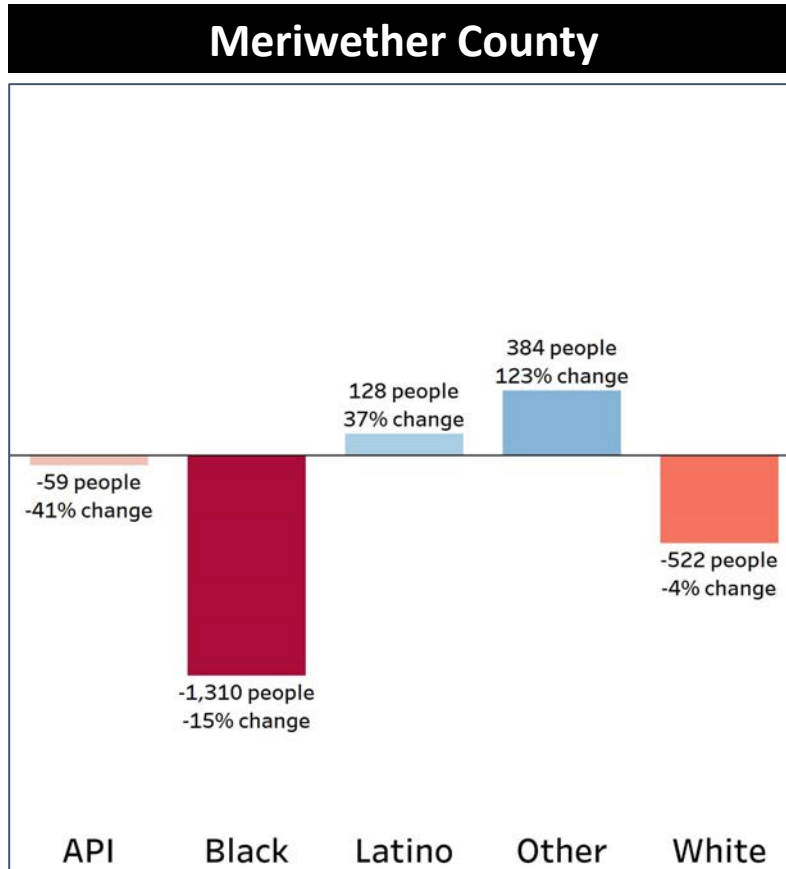


- The majority of counties across Georgia are experiencing a decline in their White population, but Meriwether county had a small increased in their White population
- Meriwether county's Black population decreased by 2%



# Demographics

## Population Change by Race (2020 - 2010)

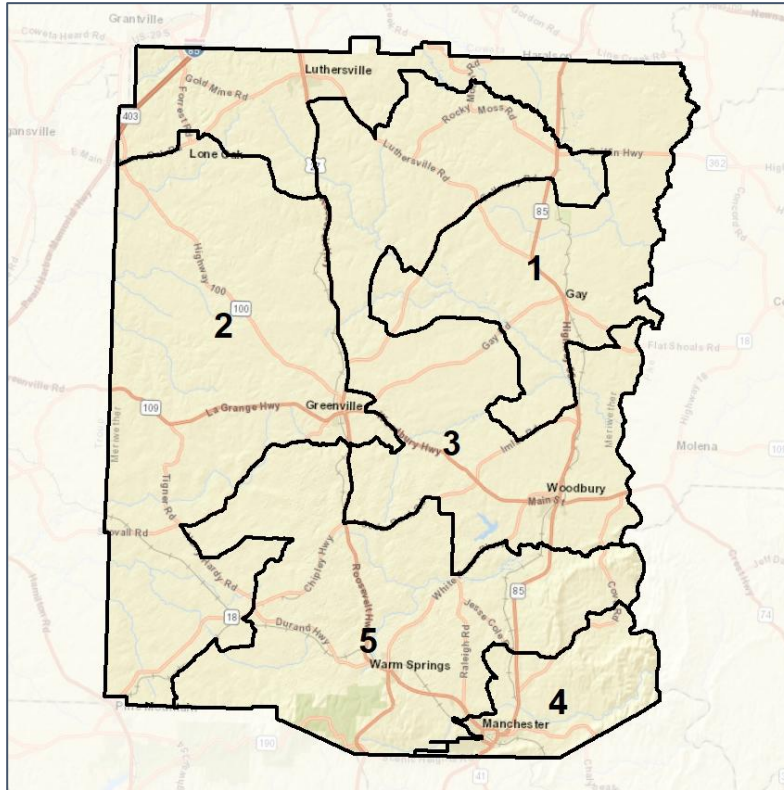


- Meriwether County's Black, API, and White population are experiencing a decline in their population, but the Black population had a higher percentage rate decline
- The Latino population growth rate in Meriwether county is higher than the statewide average

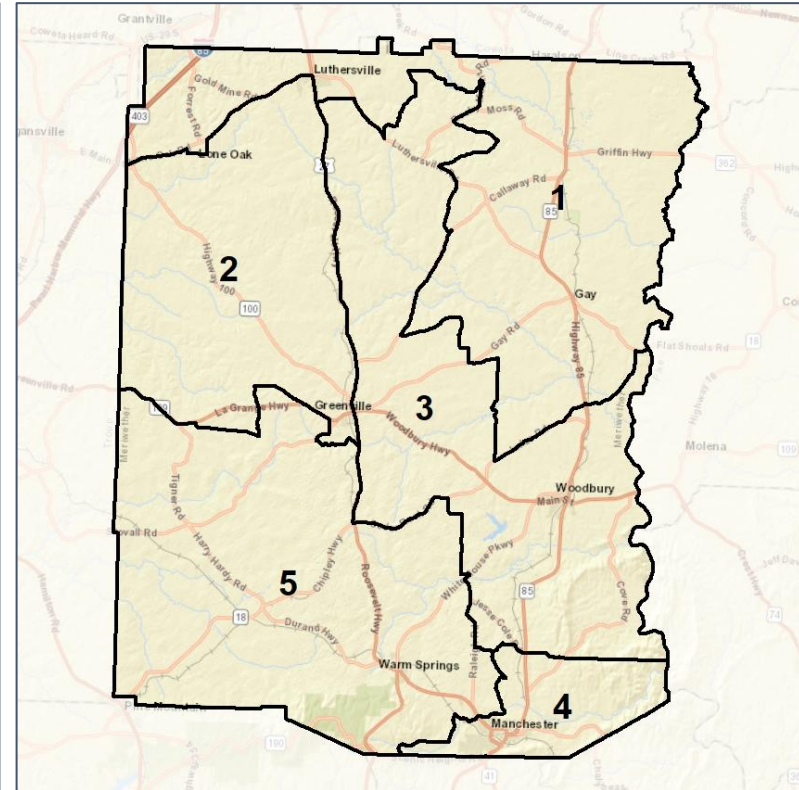
# Meriwether Co. Commission & School Board Context



## 2012 Map



## 2022 Map\*



	1	2	3	4	5	1*	2*	3*	4*	5*	County
Population	4,207	4,418	4,352	3,931	3,705	4,119	4,150	4,153	4,096	4,095	20,613
API	0%	0%	0%	1%	1%	0%	0%	0%	1%	1%	0%
Black	39%	44%	28%	41%	24%	28%	50%	30%	41%	27%	35%
Latino	3%	2%	3%	2%	2%	3%	2%	3%	2%	1%	2%
Other	3%	3%	4%	3%	3%	3%	2%	4%	3%	4%	3%
White	55%	51%	65%	54%	70%	65%	45%	62%	54%	67%	59%
Population Gain	*	*	*	*	*	-88	-268	-199	165	390	*
Population % Gain	*	*	*	*	*	-2%	-6%	-5%	4%	11%	*
Net POC Gain	*	*	*	*	*	-472	88	41	81	262	*
Net POC % Gain	*	*	*	*	*	-25%	4%	3%	4%	24%	*

Source:  
2020 Decennial Census  
2020 ACS 5-Year Dataset

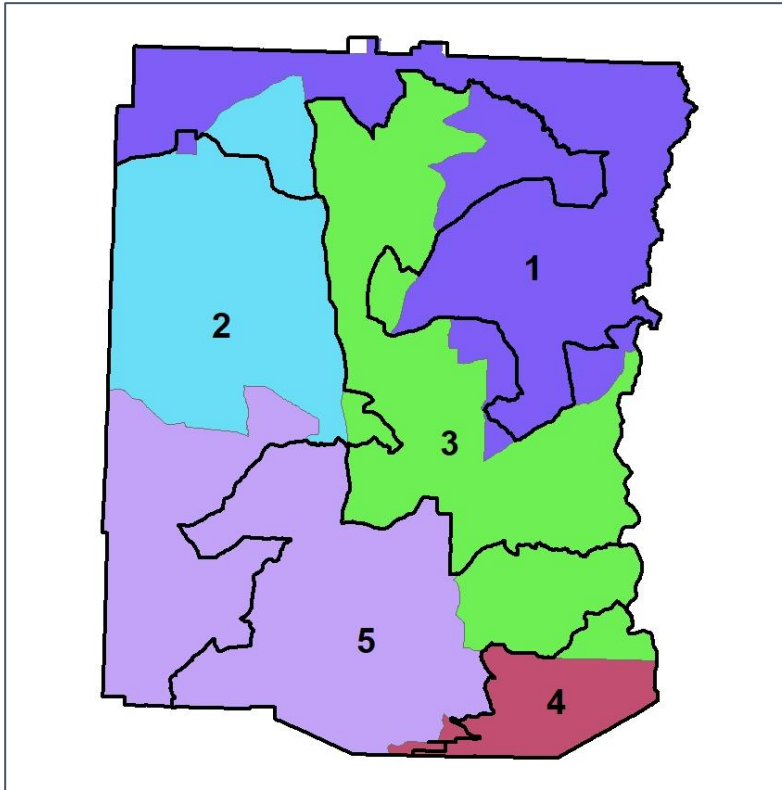


# Meriwether Co. Commission & School Board

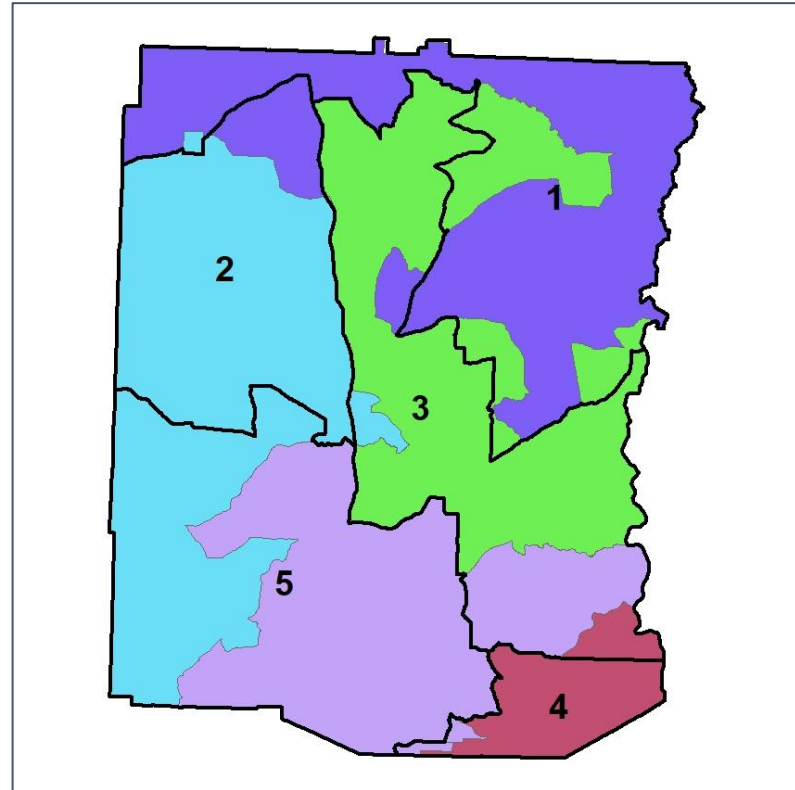
## Changes in Redistricting



**2012 Map (2022 in Colors)**



**2022 Map\* (2012 in Colors)**



	1	2	3	4	5	1*	2*	3*	4*	5*	County
Population	4,207	4,418	4,352	3,931	3,705	4,119	4,150	4,153	4,096	4,095	20,613
API	0%	0%	0%	1%	1%	0%	0%	0%	1%	1%	0%
Black	39%	44%	28%	41%	24%	28%	50%	30%	41%	27%	35%
Latino	3%	2%	3%	2%	2%	3%	2%	3%	2%	1%	2%
Other	3%	3%	4%	3%	3%	3%	2%	4%	3%	4%	3%
White	55%	51%	65%	54%	70%	65%	45%	62%	54%	67%	59%
Population Gain	*	*	*	*	*	-88	-268	-199	165	390	*
Population % Gain	*	*	*	*	*	-2%	-6%	-5%	4%	11%	*
Net POC Gain	*	*	*	*	*	-472	88	41	81	262	*
Net POC % Gain	*	*	*	*	*	-25%	4%	3%	4%	24%	*

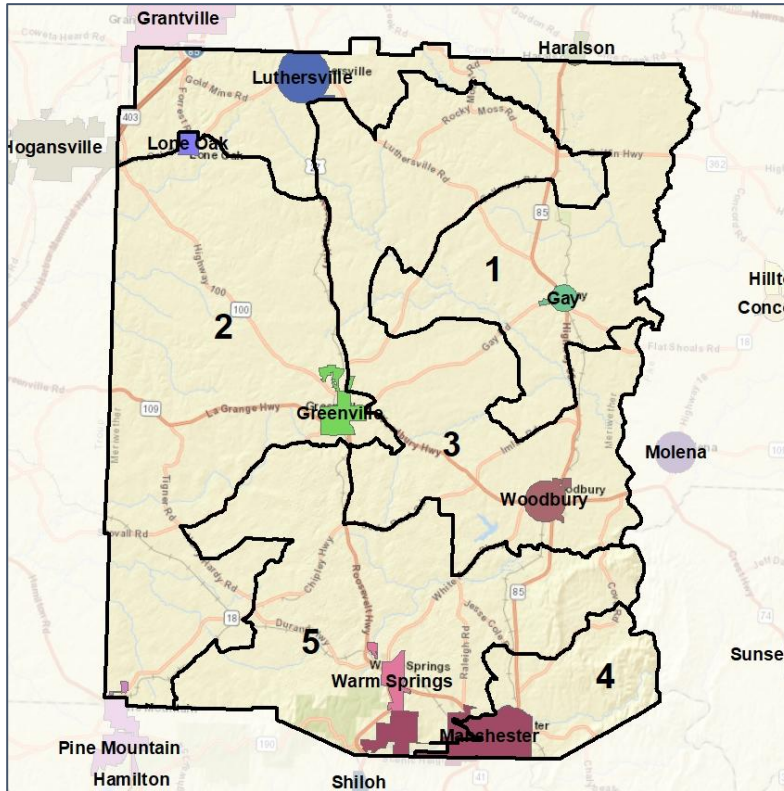




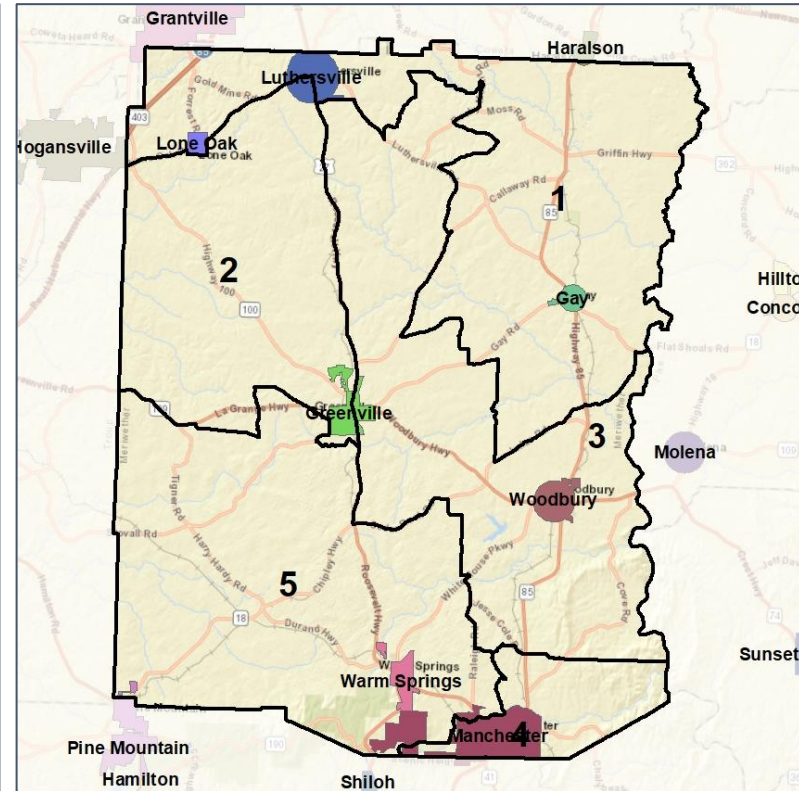
# Meriwether Co. Commission & School Board Cities and Places



## 2012 Map



## 2022 Map\*



	1	2	3	4	5	1*	2*	3*	4*	5*	County
Population	4,207	4,418	4,352	3,931	3,705	4,119	4,150	4,153	4,096	4,095	20,613
API	0%	0%	0%	1%	1%	0%	0%	0%	1%	1%	0%
Black	39%	44%	28%	41%	24%	28%	50%	30%	41%	27%	35%
Latino	3%	2%	3%	2%	2%	3%	2%	3%	2%	1%	2%
Other	3%	3%	4%	3%	3%	3%	2%	4%	3%	4%	3%
White	55%	51%	65%	54%	70%	65%	45%	62%	54%	67%	59%
Population Gain	*	*	*	*	*	-88	-268	-199	165	390	*
Population % Gain	*	*	*	*	*	-2%	-6%	-5%	4%	11%	*
Net POC Gain	*	*	*	*	*	-472	88	41	81	262	*
Net POC % Gain	*	*	*	*	*	-25%	4%	3%	4%	24%	*



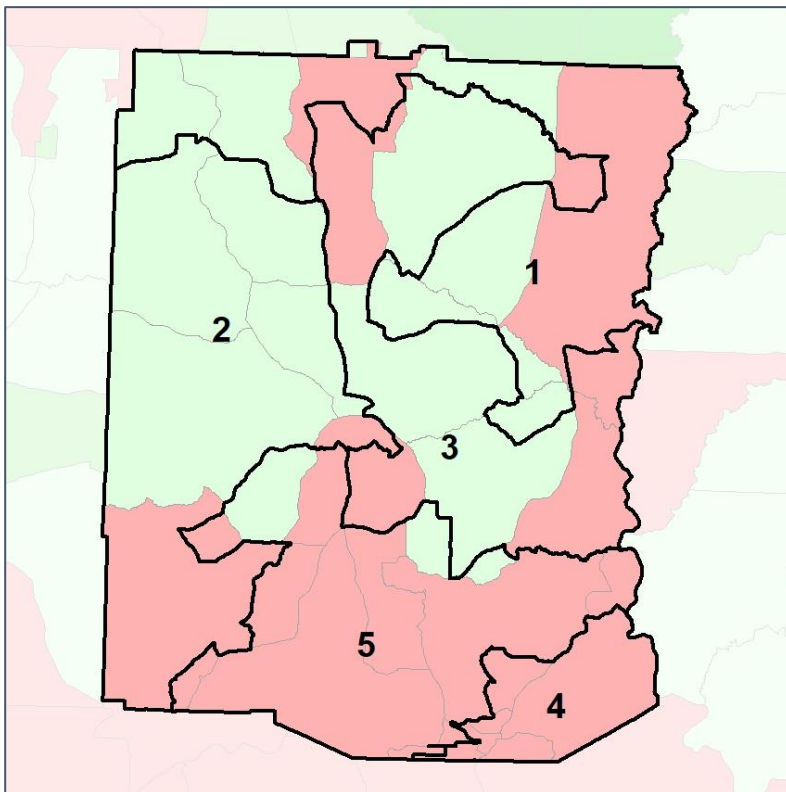
Source:  
2020 Decennial Census  
2020 ACS 5-Year Dataset

# Meriwether Co. Commission & School Board

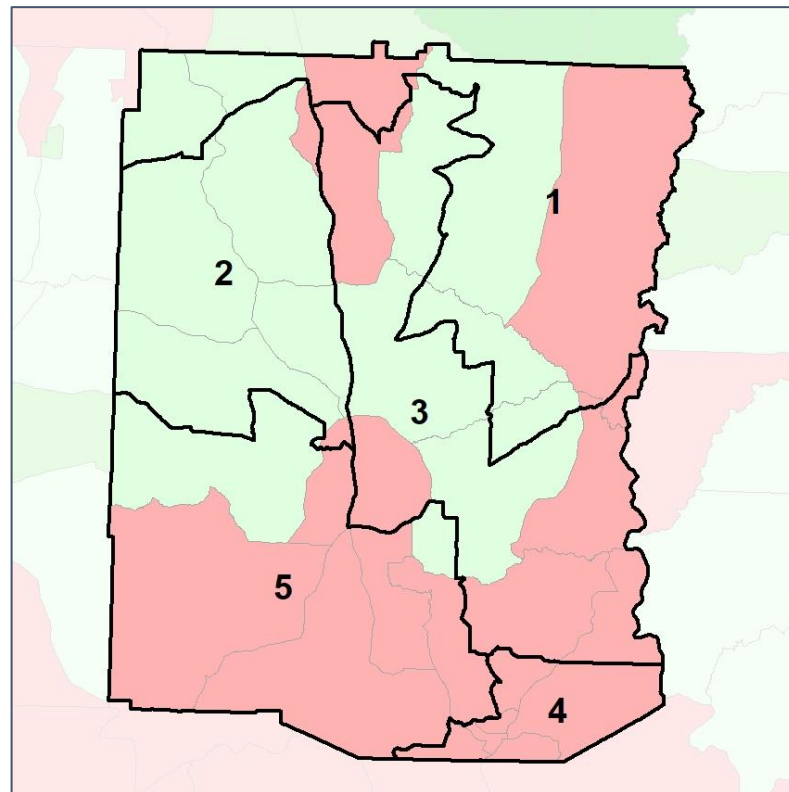
## Net Gain in Population (2010 - 2020)



2012 Map



2022 Map\*



	1	2	3	4	5	1*	2*	3*	4*	5*	County
Population	4,207	4,418	4,352	3,931	3,705	4,119	4,150	4,153	4,096	4,095	20,613
API	0%	0%	0%	1%	1%	0%	0%	0%	1%	1%	0%
Black	39%	44%	28%	41%	24%	28%	50%	30%	41%	27%	35%
Latino	3%	2%	3%	2%	2%	3%	2%	3%	2%	1%	2%
Other	3%	3%	4%	3%	3%	3%	2%	4%	3%	4%	3%
White	55%	51%	65%	54%	70%	65%	45%	62%	54%	67%	59%
Population Gain	*	*	*	*	*	-88	-268	-199	165	390	*
Population % Gain	*	*	*	*	*	-2%	-6%	-5%	4%	11%	*
Net POC Gain	*	*	*	*	*	-472	88	41	81	262	*
Net POC % Gain	*	*	*	*	*	-25%	4%	3%	4%	24%	*

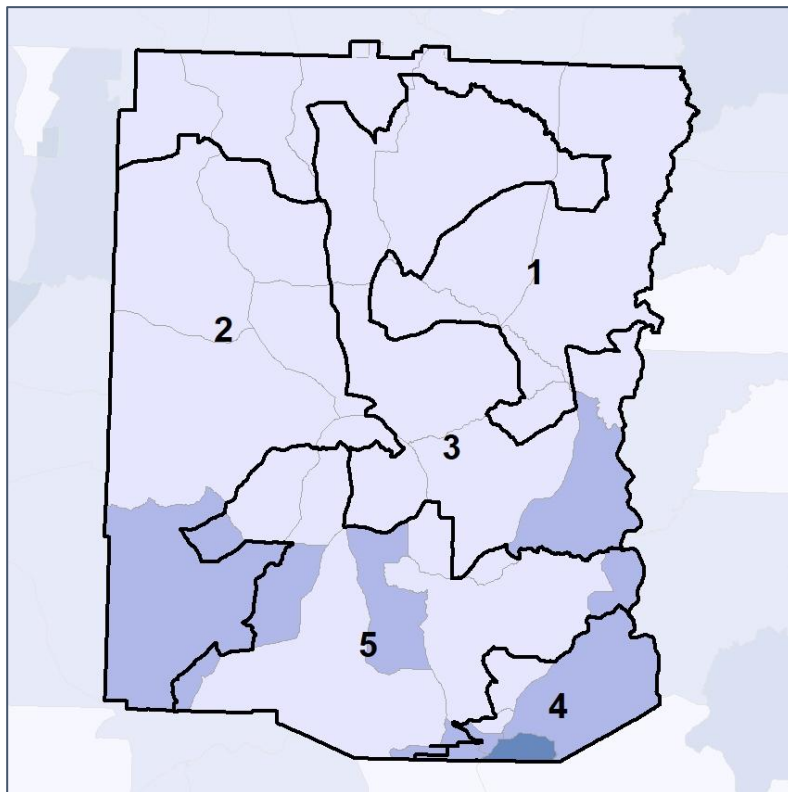


# Meriwether Co. Commission & School Board

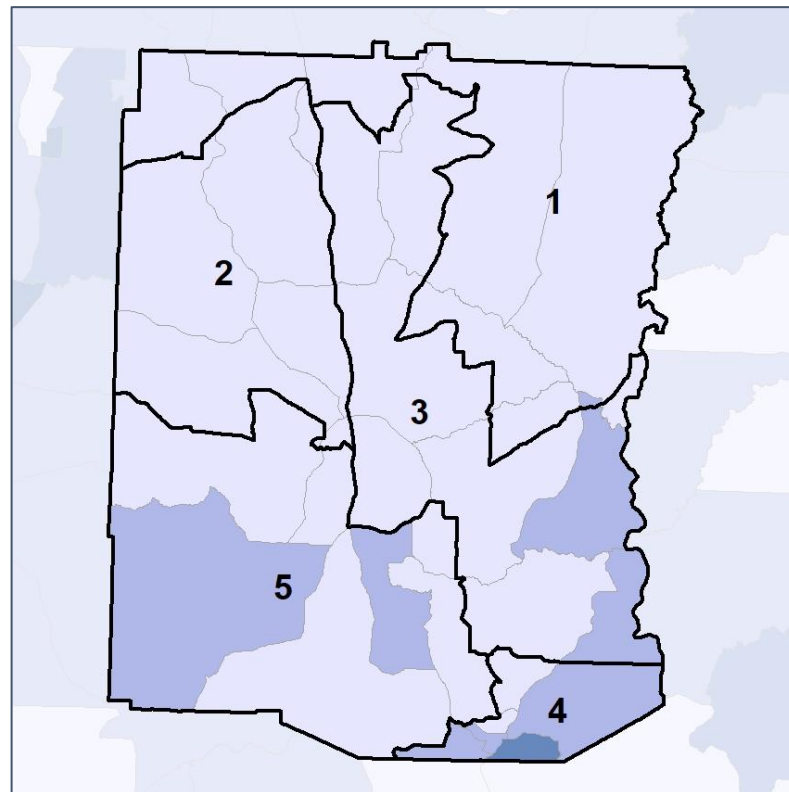
## Net Gain in % POC (2020 - 2010) by Census Block Group



### 2012 Map



### 2022 Map\*



	1	2	3	4	5	1*	2*	3*	4*	5*	County
Population	4,207	4,418	4,352	3,931	3,705	4,119	4,150	4,153	4,096	4,095	20,613
API	0%	0%	0%	1%	1%	0%	0%	0%	1%	1%	0%
Black	39%	44%	28%	41%	24%	28%	50%	30%	41%	27%	35%
Latino	3%	2%	3%	2%	2%	3%	2%	3%	2%	1%	2%
Other	3%	3%	4%	3%	3%	3%	2%	4%	3%	4%	3%
White	55%	51%	65%	54%	70%	65%	45%	62%	54%	67%	59%
Population Gain	*	*	*	*	*	-88	-268	-199	165	390	*
Population % Gain	*	*	*	*	*	-2%	-6%	-5%	4%	11%	*
Net POC Gain	*	*	*	*	*	-472	88	41	81	262	*
Net POC % Gain	*	*	*	*	*	-25%	4%	3%	4%	24%	*



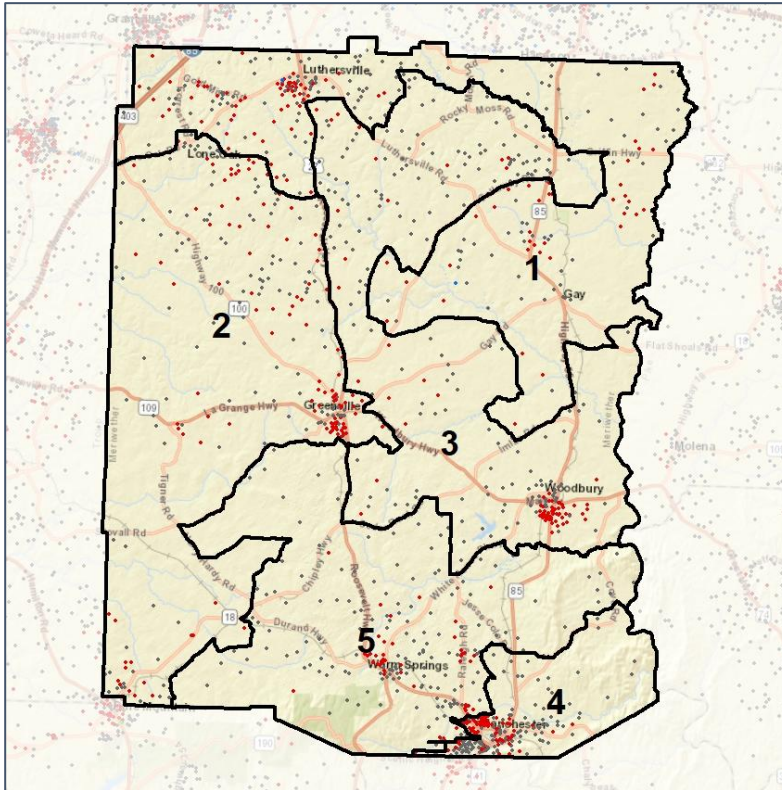
Source:  
2020 Decennial Census  
2020 ACS 5-Year Dataset

# Meriwether Co. Commission & School Board

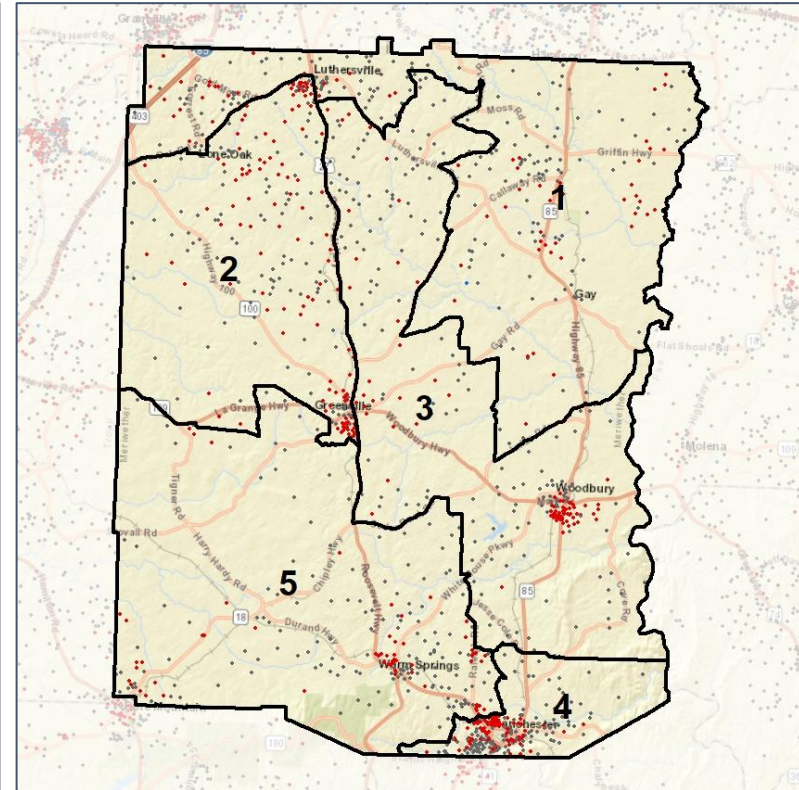
## Population Density by Race



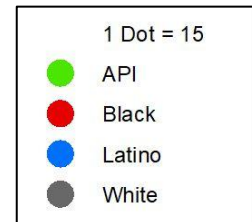
### 2012 Map



### 2022 Map\*



	1	2	3	4	5	1*	2*	3*	4*	5*	County
Population	4,207	4,418	4,352	3,931	3,705	4,119	4,150	4,153	4,096	4,095	20,613
API	14	14	8	23	25	16	10	6	24	28	84
% API	0%	0%	0%	1%	1%	0%	0%	0%	1%	1%	0%
Black	1,633	1,946	1,208	1,599	887	1,148	2,076	1,260	1,664	1,125	7,273
% Black	39%	44%	28%	41%	24%	28%	50%	30%	41%	27%	35%
Latino	129	81	121	76	68	131	92	109	84	59	475
% Latino	3%	2%	3%	2%	2%	3%	2%	3%	2%	1%	2%
Other	132	141	183	122	119	141	92	186	129	149	697
% Other	3%	3%	4%	3%	3%	3%	2%	4%	3%	4%	3%
White	2,299	2,236	2,832	2,111	2,606	2,683	1,880	2,592	2,195	2,734	12,084
% White	55%	51%	65%	54%	70%	65%	45%	62%	54%	67%	59%



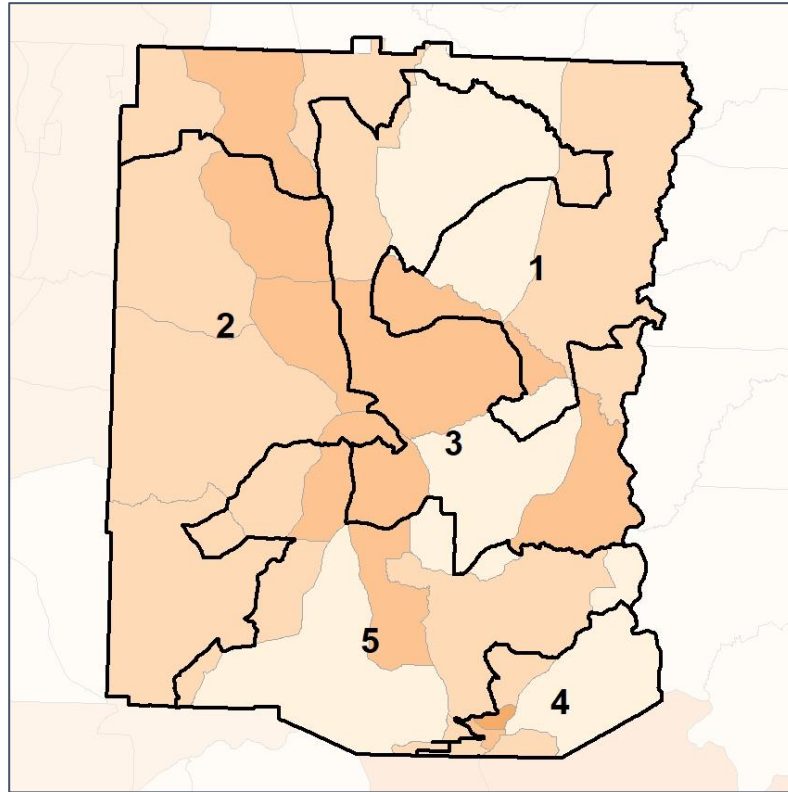
Source:  
2020 Decennial Census  
2020 ACS 5-Year Dataset

# Meriwether Co. Commission & School Board

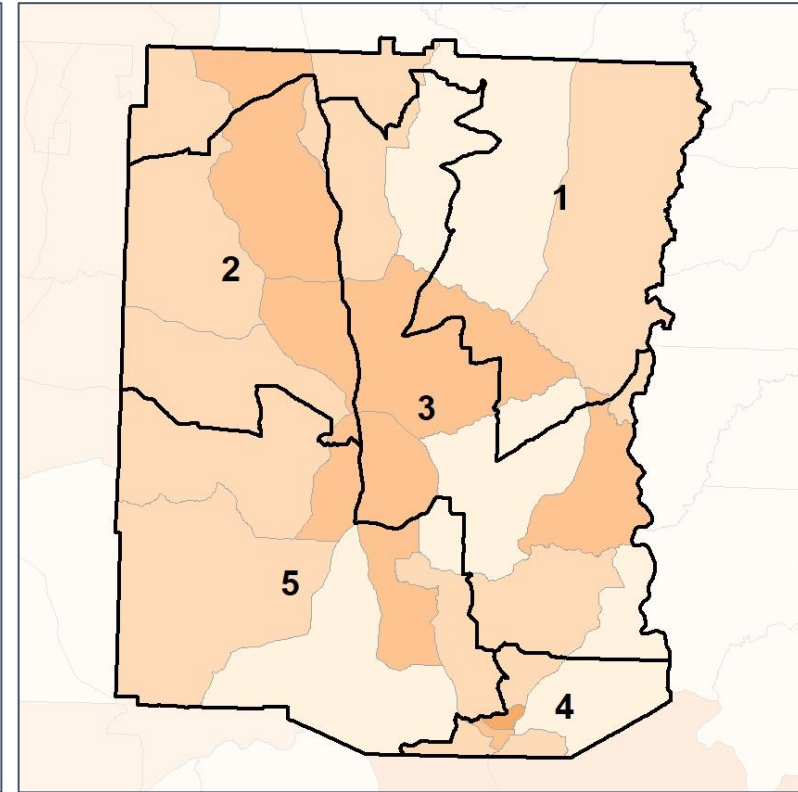
## % People of Color by Census Block Group



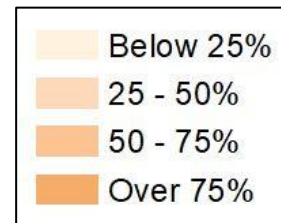
### 2012 Map



### 2022 Map\*



	1	2	3	4	5	1*	2*	3*	4*	5*	County
Population	4,207	4,418	4,352	3,931	3,705	4,119	4,150	4,153	4,096	4,095	20,613
API	14	14	8	23	25	16	10	6	24	28	84
% API	0%	0%	0%	1%	1%	0%	0%	0%	1%	1%	0%
Black	1,633	1,946	1,208	1,599	887	1,148	2,076	1,260	1,664	1,125	7,273
% Black	39%	44%	28%	41%	24%	28%	50%	30%	41%	27%	35%
Latino	129	81	121	76	68	131	92	109	84	59	475
% Latino	3%	2%	3%	2%	2%	3%	2%	3%	2%	1%	2%
Other	132	141	183	122	119	141	92	186	129	149	697
% Other	3%	3%	4%	3%	3%	3%	2%	4%	3%	4%	3%
White	2,299	2,236	2,832	2,111	2,606	2,683	1,880	2,592	2,195	2,734	12,084
% White	55%	51%	65%	54%	70%	65%	45%	62%	54%	67%	59%



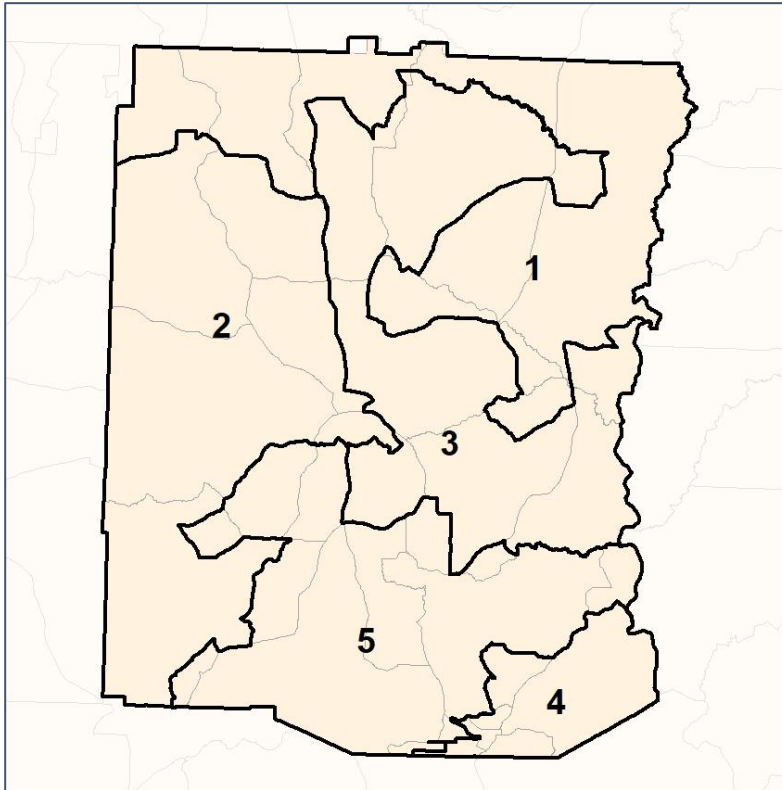
Source:  
2020 Decennial Census  
2020 ACS 5-Year Dataset

# Meriwether Co. Commission & School Board

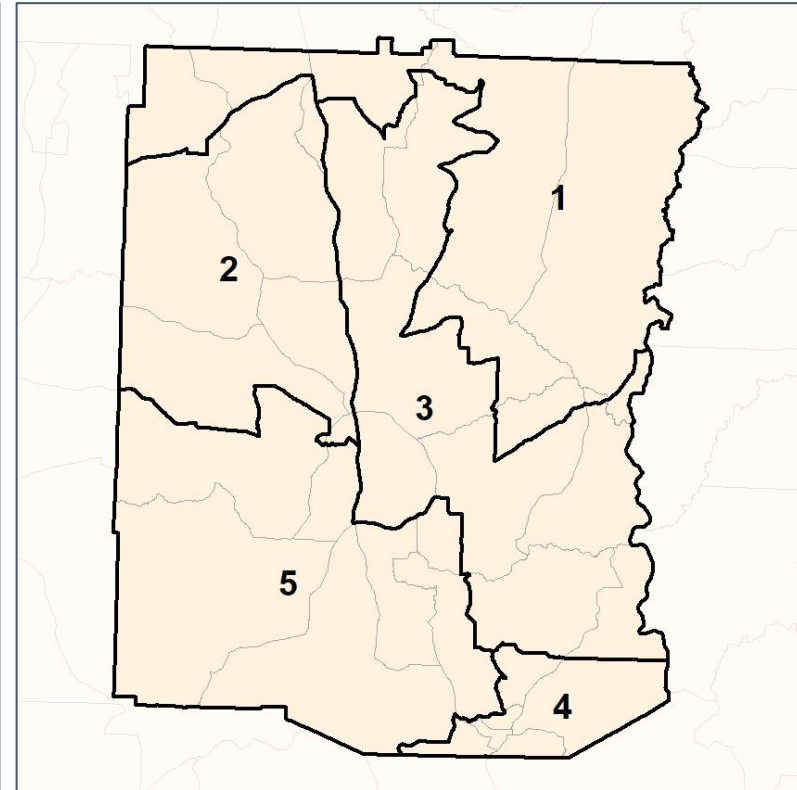
## % API by Census Block Group



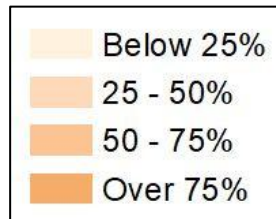
### 2012 Map



### 2022 Map\*



	1	2	3	4	5	1*	2*	3*	4*	5*	County
Population	4,207	4,418	4,352	3,931	3,705	4,119	4,150	4,153	4,096	4,095	20,613
API	14	14	8	23	25	16	10	6	24	28	84
% API	0%	0%	0%	1%	1%	0%	0%	0%	1%	1%	0%
Black	1,633	1,946	1,208	1,599	887	1,148	2,076	1,260	1,664	1,125	7,273
% Black	39%	44%	28%	41%	24%	28%	50%	30%	41%	27%	35%
Latino	129	81	121	76	68	131	92	109	84	59	475
% Latino	3%	2%	3%	2%	2%	3%	2%	3%	2%	1%	2%
Other	132	141	183	122	119	141	92	186	129	149	697
% Other	3%	3%	4%	3%	3%	3%	2%	4%	3%	4%	3%
White	2,299	2,236	2,832	2,111	2,606	2,683	1,880	2,592	2,195	2,734	12,084
% White	55%	51%	65%	54%	70%	65%	45%	62%	54%	67%	59%

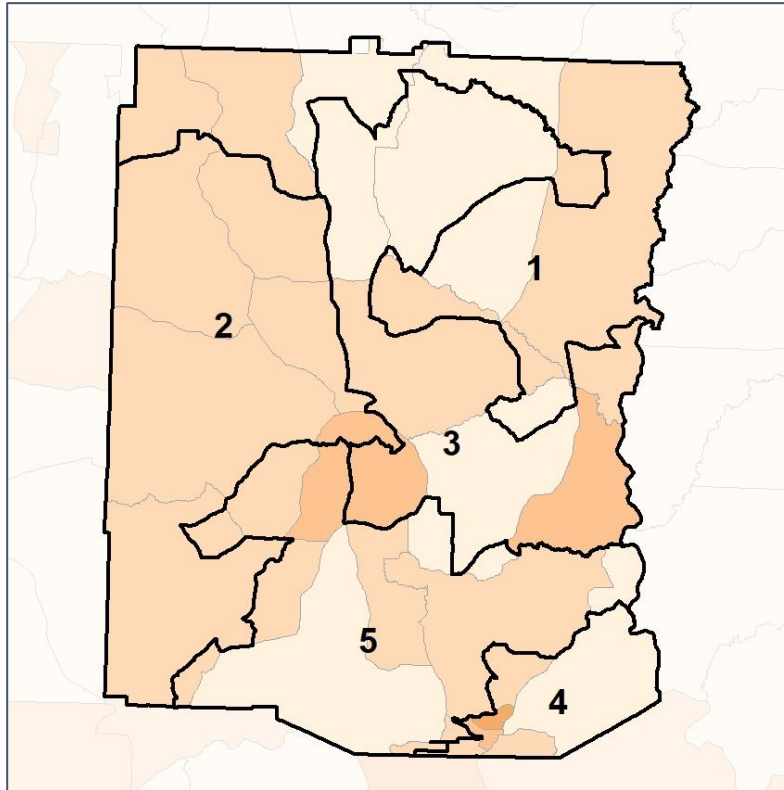


# Meriwether Co. Commission & School Board

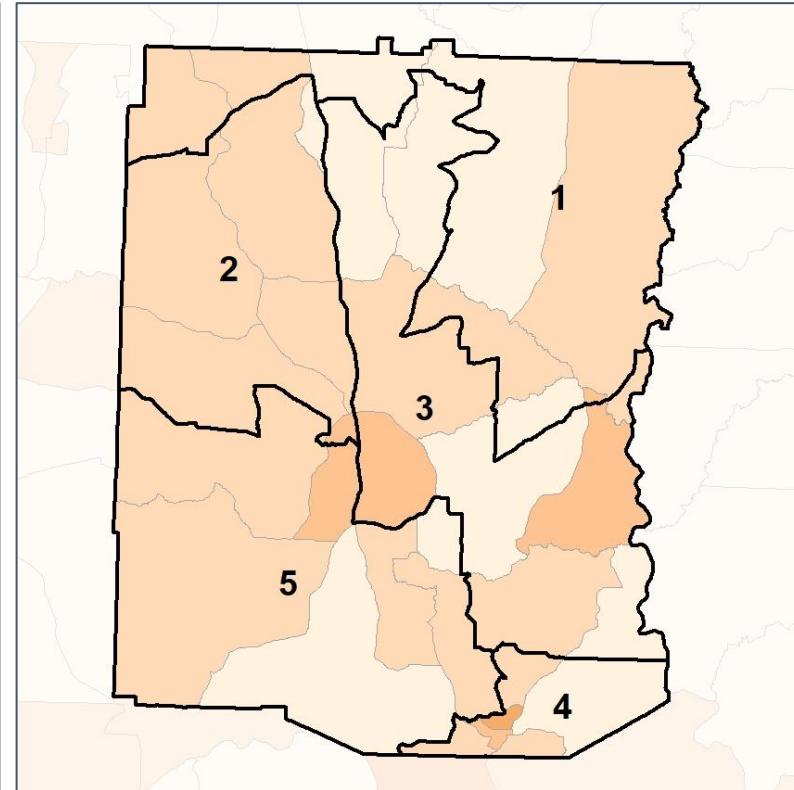
## % Black by Census Block Group



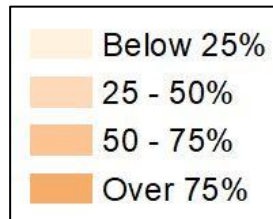
### 2012 Map



### 2022 Map\*



	1	2	3	4	5	1*	2*	3*	4*	5*	County
Population	4,207	4,418	4,352	3,931	3,705	4,119	4,150	4,153	4,096	4,095	20,613
API	14	14	8	23	25	16	10	6	24	28	84
% API	0%	0%	0%	1%	1%	0%	0%	0%	1%	1%	0%
Black	1,633	1,946	1,208	1,599	887	1,148	2,076	1,260	1,664	1,125	7,273
% Black	39%	44%	28%	41%	24%	28%	50%	30%	41%	27%	35%
Latino	129	81	121	76	68	131	92	109	84	59	475
% Latino	3%	2%	3%	2%	2%	3%	2%	3%	2%	1%	2%
Other	132	141	183	122	119	141	92	186	129	149	697
% Other	3%	3%	4%	3%	3%	3%	2%	4%	3%	4%	3%
White	2,299	2,236	2,832	2,111	2,606	2,683	1,880	2,592	2,195	2,734	12,084
% White	55%	51%	65%	54%	70%	65%	45%	62%	54%	67%	59%

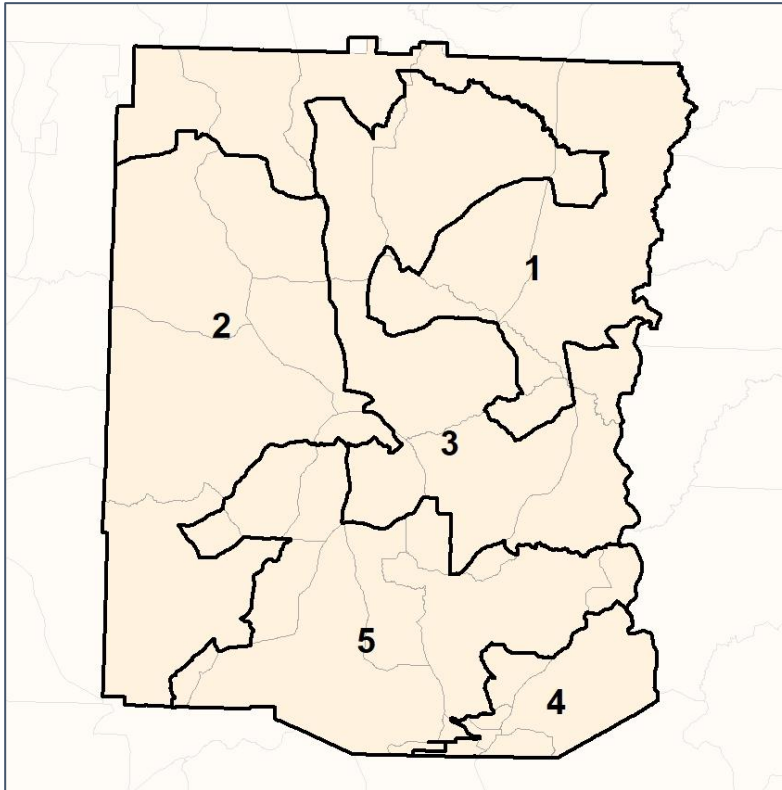


# Meriwether Co. Commission & School Board

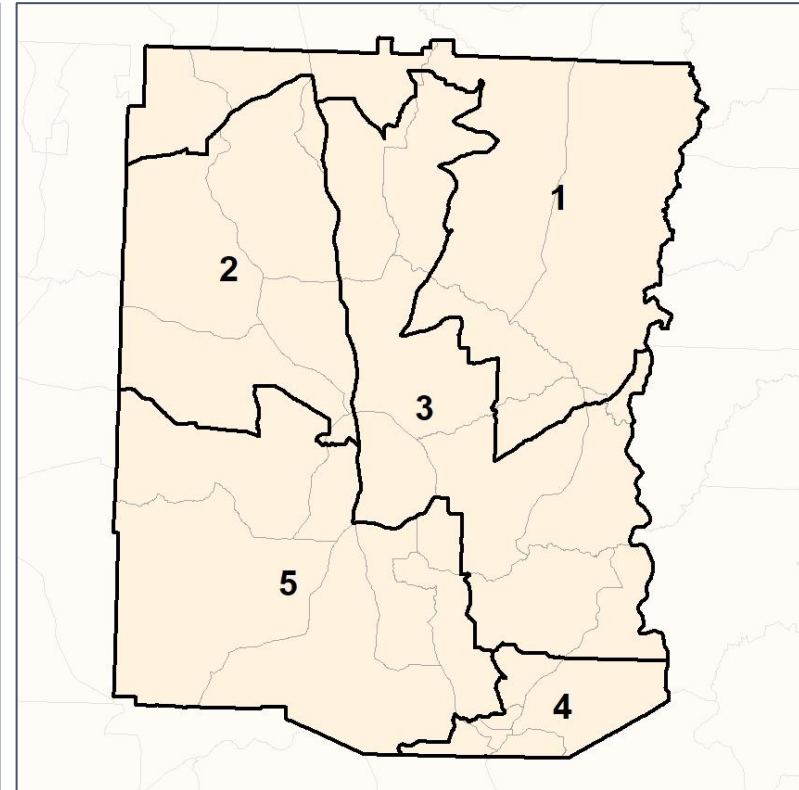
## % Latino by Census Block Group



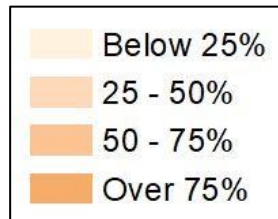
2012 Map



2022 Map\*



	1	2	3	4	5	1*	2*	3*	4*	5*	County
Population	4,207	4,418	4,352	3,931	3,705	4,119	4,150	4,153	4,096	4,095	20,613
API	14	14	8	23	25	16	10	6	24	28	84
% API	0%	0%	0%	1%	1%	0%	0%	0%	1%	1%	0%
Black	1,633	1,946	1,208	1,599	887	1,148	2,076	1,260	1,664	1,125	7,273
% Black	39%	44%	28%	41%	24%	28%	50%	30%	41%	27%	35%
Latino	129	81	121	76	68	131	92	109	84	59	475
% Latino	3%	2%	3%	2%	2%	3%	2%	3%	2%	1%	2%
Other	132	141	183	122	119	141	92	186	129	149	697
% Other	3%	3%	4%	3%	3%	3%	2%	4%	3%	4%	3%
White	2,299	2,236	2,832	2,111	2,606	2,683	1,880	2,592	2,195	2,734	12,084
% White	55%	51%	65%	54%	70%	65%	45%	62%	54%	67%	59%



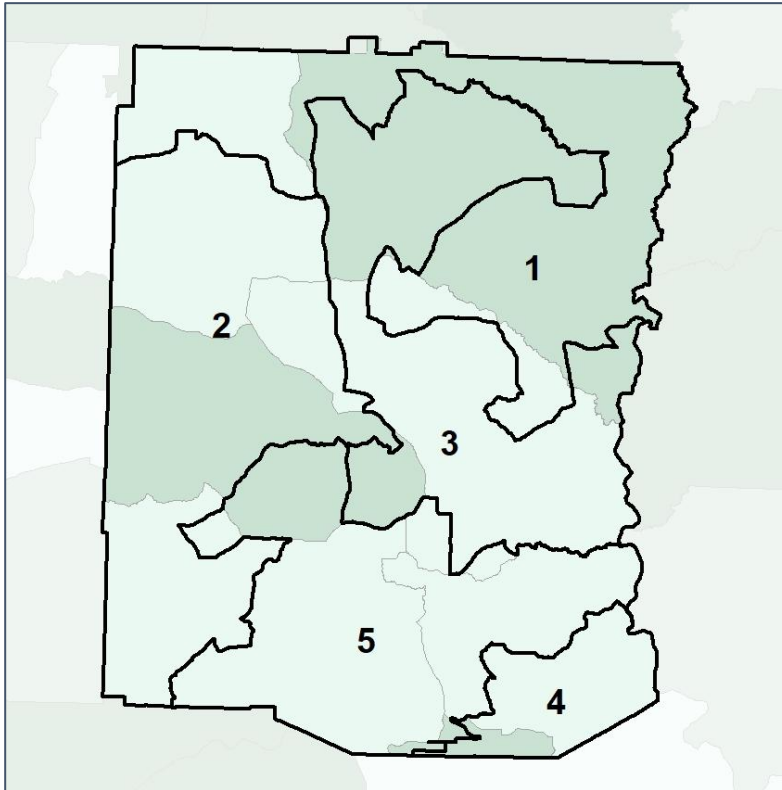


# Meriwether Co. Commission & School Board

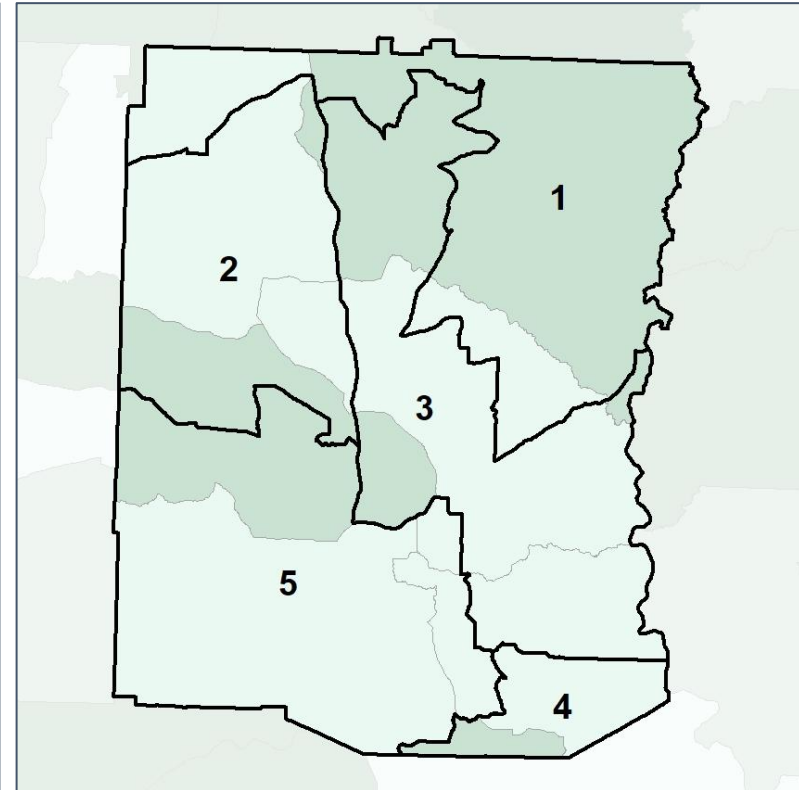
## Median Household Income by Census Tract



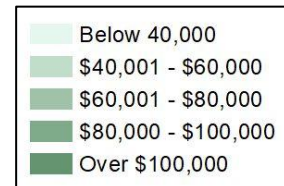
2012 Map



2022 Map\*



	1	2	3	4	5	1*	2*	3*	4*	5*	County
Population	4,207	4,418	4,352	3,931	3,705	4,119	4,150	4,153	4,096	4,095	20,613
% API	0%	0%	0%	1%	1%	0%	0%	0%	1%	1%	0%
% Black	39%	44%	28%	41%	24%	28%	50%	30%	41%	27%	35%
% Latino	3%	2%	3%	2%	2%	3%	2%	3%	2%	1%	2%
% Other	3%	3%	4%	3%	3%	3%	2%	4%	3%	4%	3%
% White	55%	51%	65%	54%	70%	65%	45%	62%	54%	67%	59%
Median Income	\$58,000	\$44,000	\$44,000	\$39,000	\$50,000	\$63,000	\$43,000	\$40,000	\$44,000	\$44,000	\$41,000
% Renter	13%	29%	31%	52%	33%	9%	34%	37%	46%	32%	34%
% Youth	7%	26%	18%	19%	19%	13%	25%	19%	18%	24%	20%

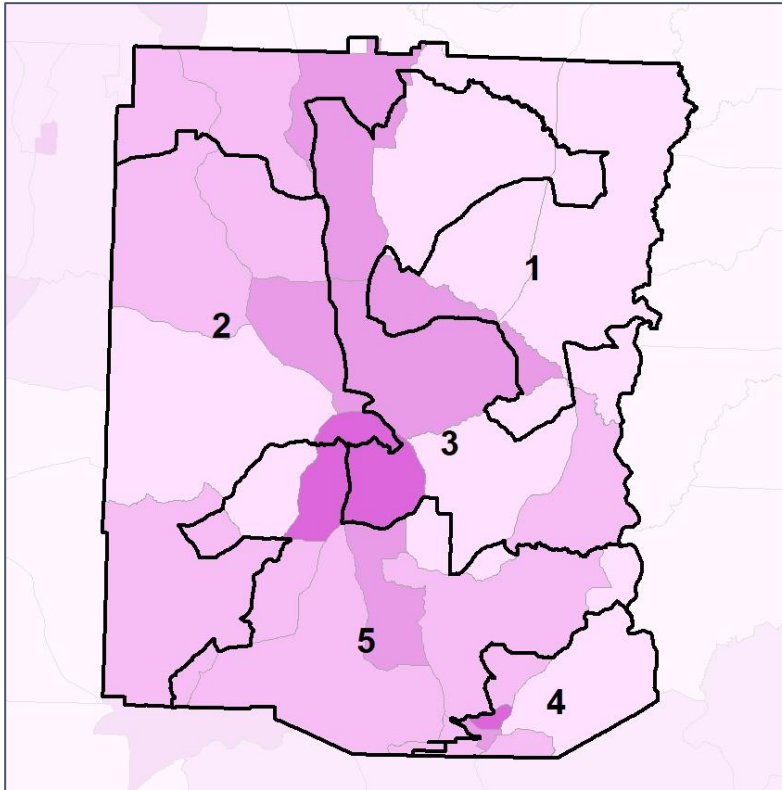


# Meriwether Co. Commission & School Board

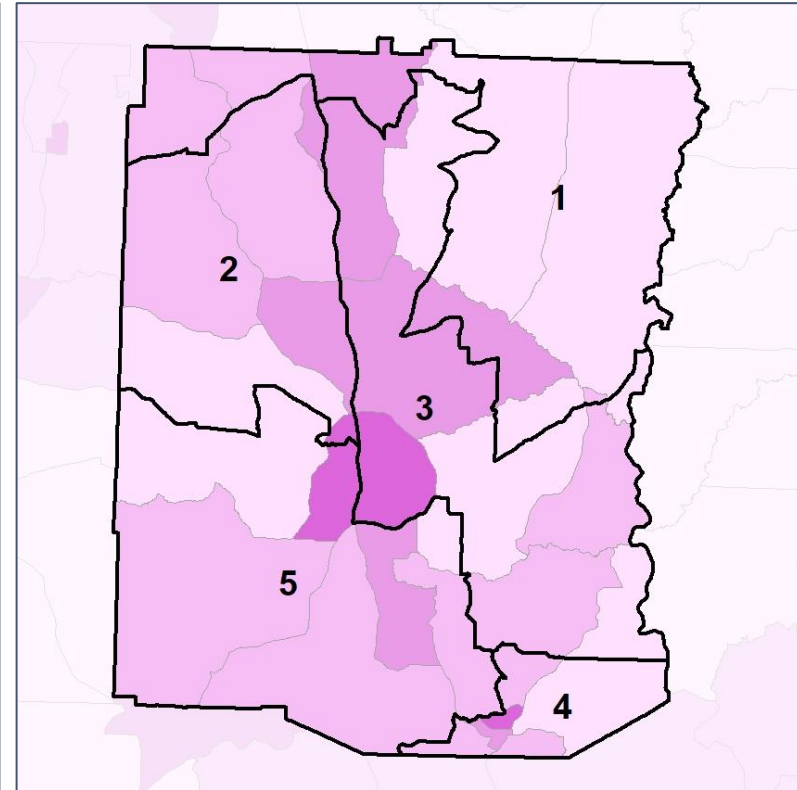
## % Renter by Census Block Group



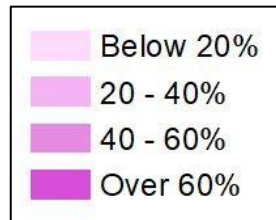
### 2012 Map



### 2022 Map\*



	1	2	3	4	5	1*	2*	3*	4*	5*	County
Population	4,207	4,418	4,352	3,931	3,705	4,119	4,150	4,153	4,096	4,095	20,613
% API	0%	0%	0%	1%	1%	0%	0%	0%	1%	1%	0%
% Black	39%	44%	28%	41%	24%	28%	50%	30%	41%	27%	35%
% Latino	3%	2%	3%	2%	2%	3%	2%	3%	2%	1%	2%
% Other	3%	3%	4%	3%	3%	3%	2%	4%	3%	4%	3%
% White	55%	51%	65%	54%	70%	65%	45%	62%	54%	67%	59%
Median Income	\$58,000	\$44,000	\$44,000	\$39,000	\$50,000	\$63,000	\$43,000	\$40,000	\$44,000	\$44,000	\$41,000
% Renter	13%	29%	31%	52%	33%	9%	34%	37%	46%	32%	34%
% Youth	7%	26%	18%	19%	19%	13%	25%	19%	18%	24%	20%

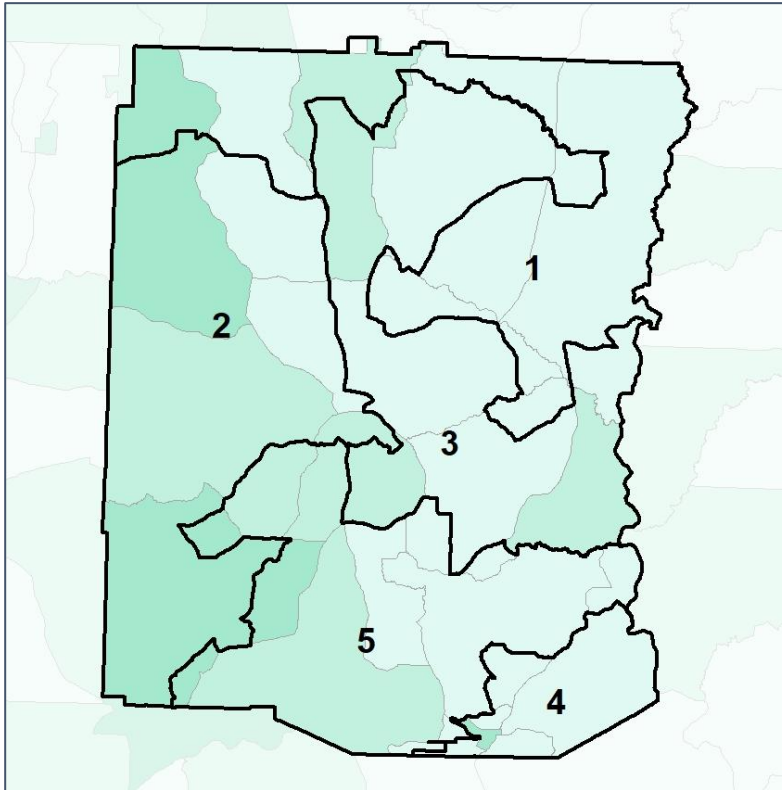


# Meriwether Co. Commission & School Board

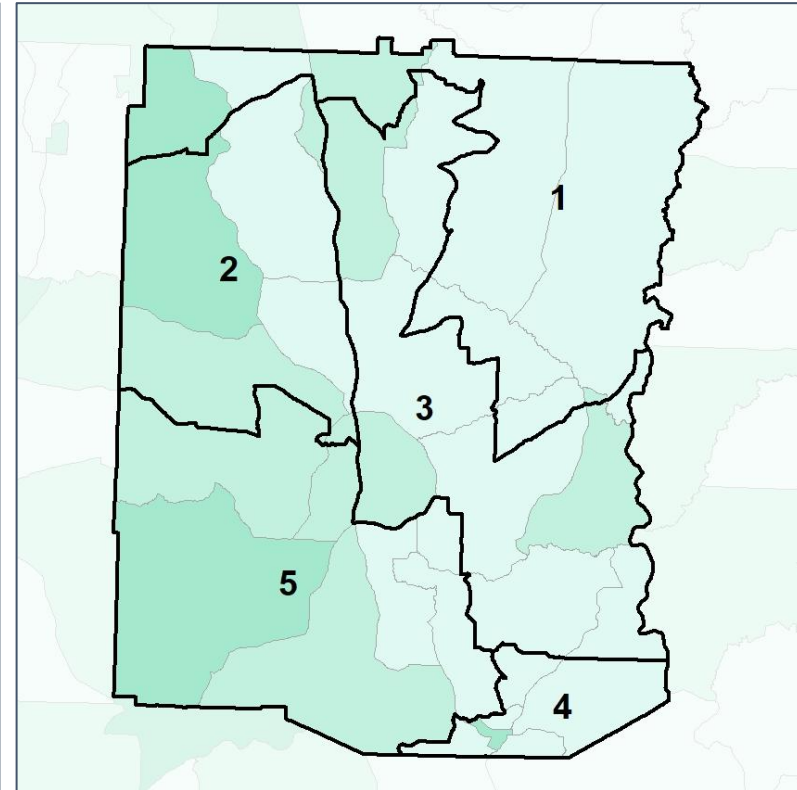
## % Youth (18-34) by Census Block Group



### 2012 Map



### 2022 Map\*



	1	2	3	4	5	1*	2*	3*	4*	5*	County
Population	4,207	4,418	4,352	3,931	3,705	4,119	4,150	4,153	4,096	4,095	20,613
% API	0%	0%	0%	1%	1%	0%	0%	0%	1%	1%	0%
% Black	39%	44%	28%	41%	24%	28%	50%	30%	41%	27%	35%
% Latino	3%	2%	3%	2%	2%	3%	2%	3%	2%	1%	2%
% Other	3%	3%	4%	3%	3%	3%	2%	4%	3%	4%	3%
% White	55%	51%	65%	54%	70%	65%	45%	62%	54%	67%	59%
Median Income	\$58,000	\$44,000	\$44,000	\$39,000	\$50,000	\$63,000	\$43,000	\$40,000	\$44,000	\$44,000	\$41,000
% Renter	13%	29%	31%	52%	33%	9%	34%	37%	46%	32%	34%
% Youth	7%	26%	18%	19%	19%	13%	25%	19%	18%	24%	20%

