



# Demographic Overview

## Racial Breakdown in Marion County

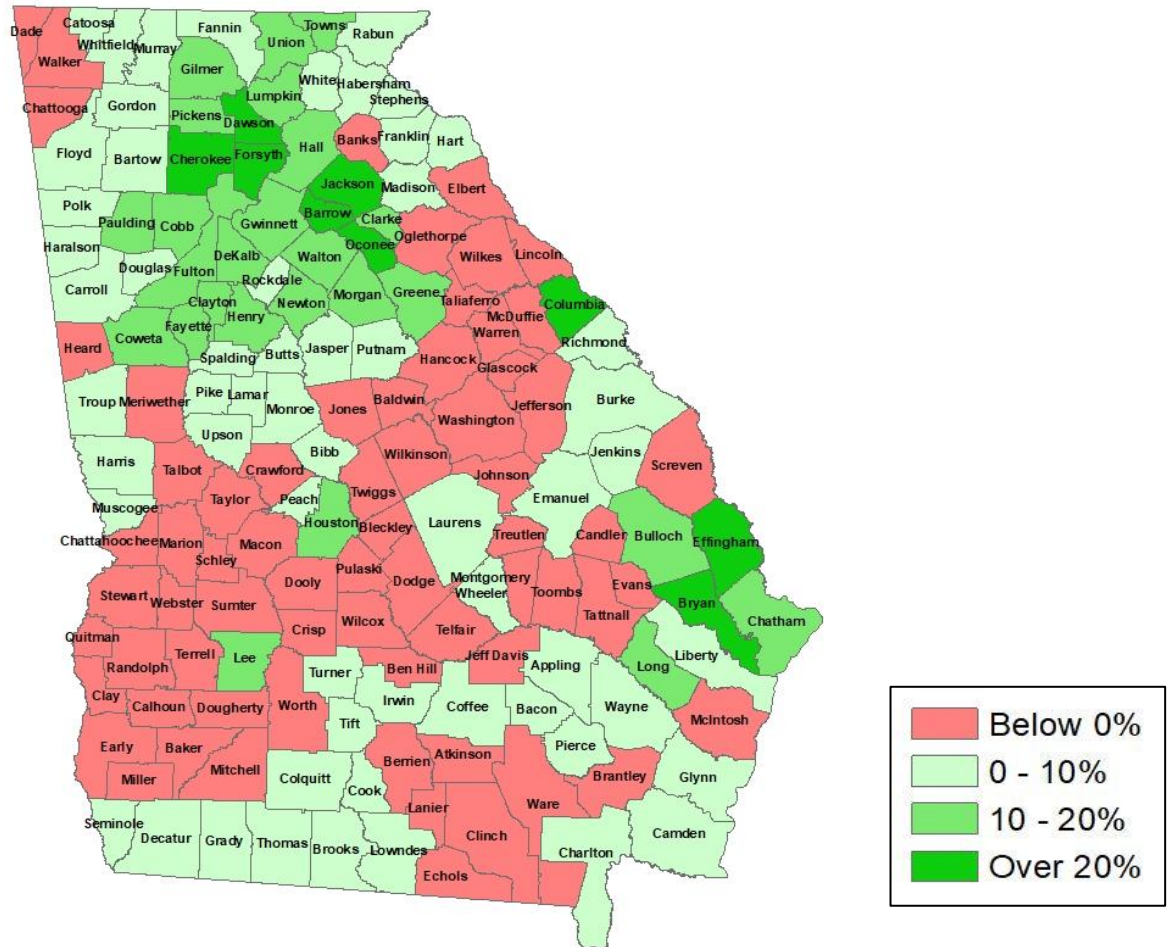
Marion County	2010	2020	% Change
Total Population	8,742	7,498	-14%
AAPI	90	70	-22%
Black	2,837	2,122	-25%
Latino	570	560	-2%
Other/Mixed Race	145	260	79%
POC	3,642	3,012	-17%
White	5,100	4,486	-12%





# Population Gain

## Change in Population in Georgia by County



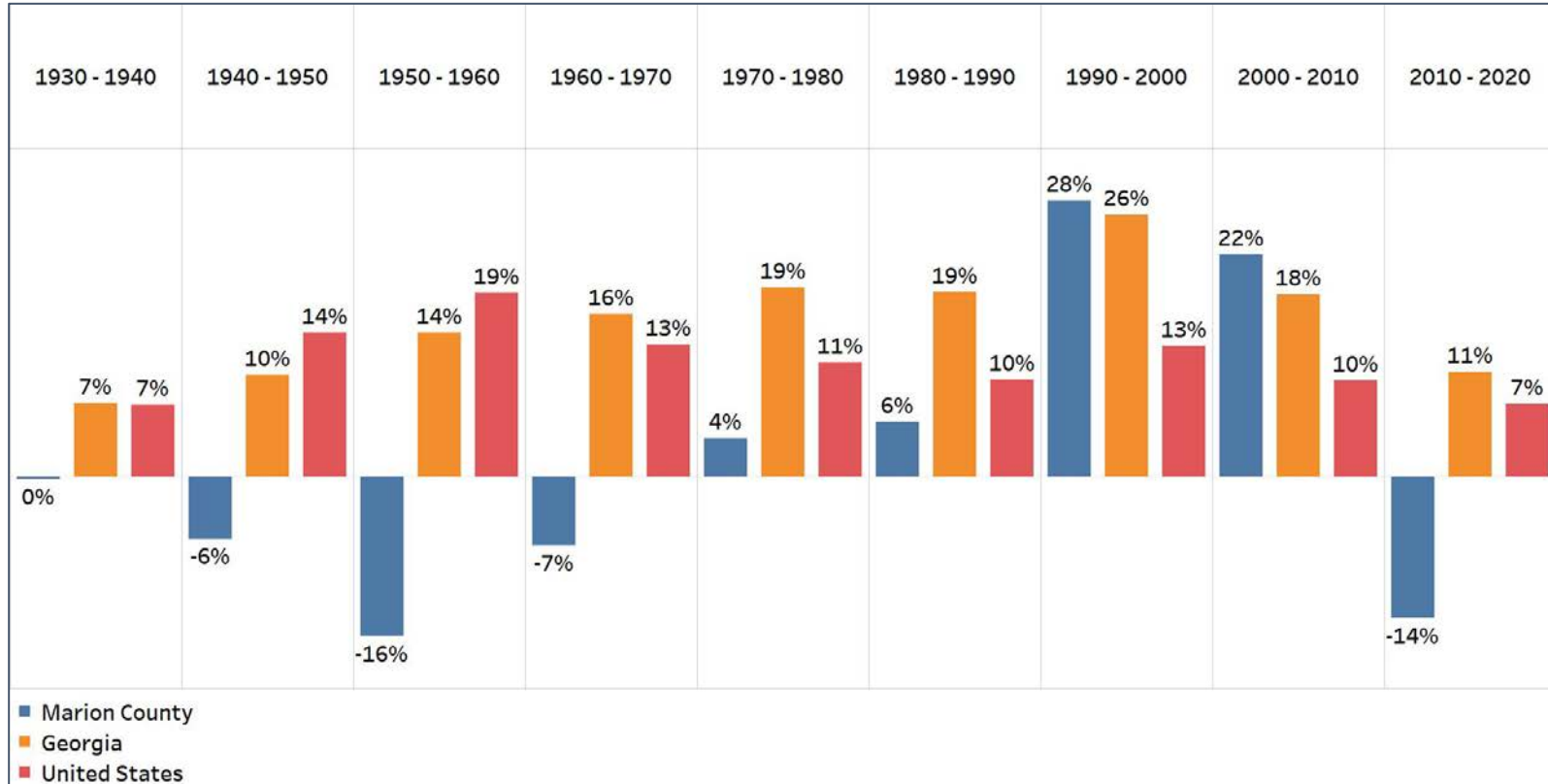
- Georgia is experiencing rapid population growth in the Atlanta, Augusta, and Savannah regions of the state





# Population Gain

## Change in Population by Decade



- After a period of population decline, Marion County had a period of growth starting in 1970, which then grew significantly between 1990-2010
- However, the last decade saw significant decline for Marion County, marking the 2nd biggest drop in population for the county in the past 90 years

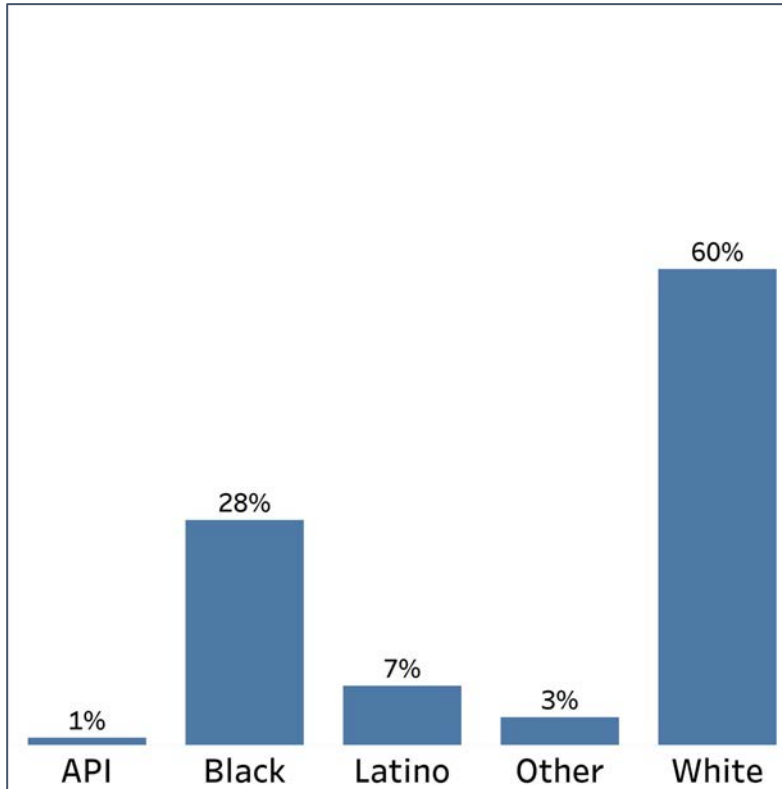


# Demographics

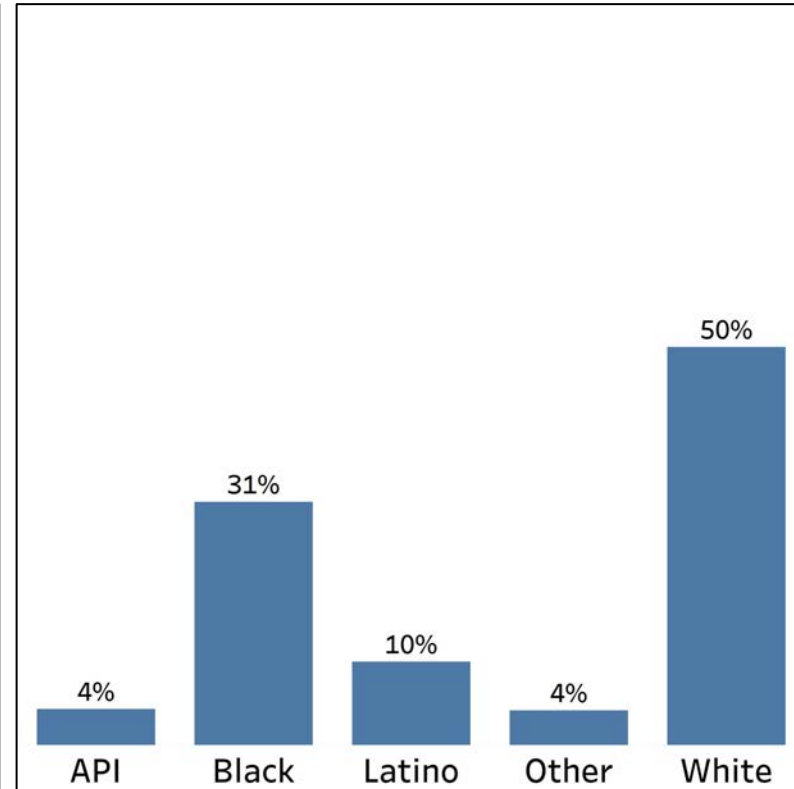
## Comparison between Marion County and Georgia



Marion County



Georgia



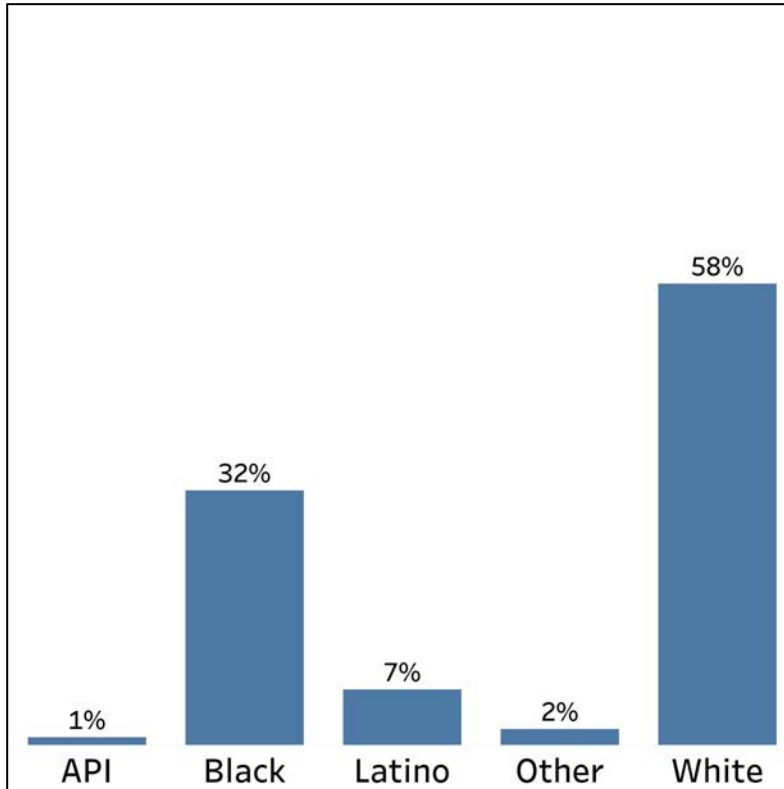
- Marion County has a higher share of White people in the county compared to Georgia overall, but the Black, Latino, and Other populations have sizeable shares of the population that are relatively close to Georgia's overall demographic breakdown

# Demographics

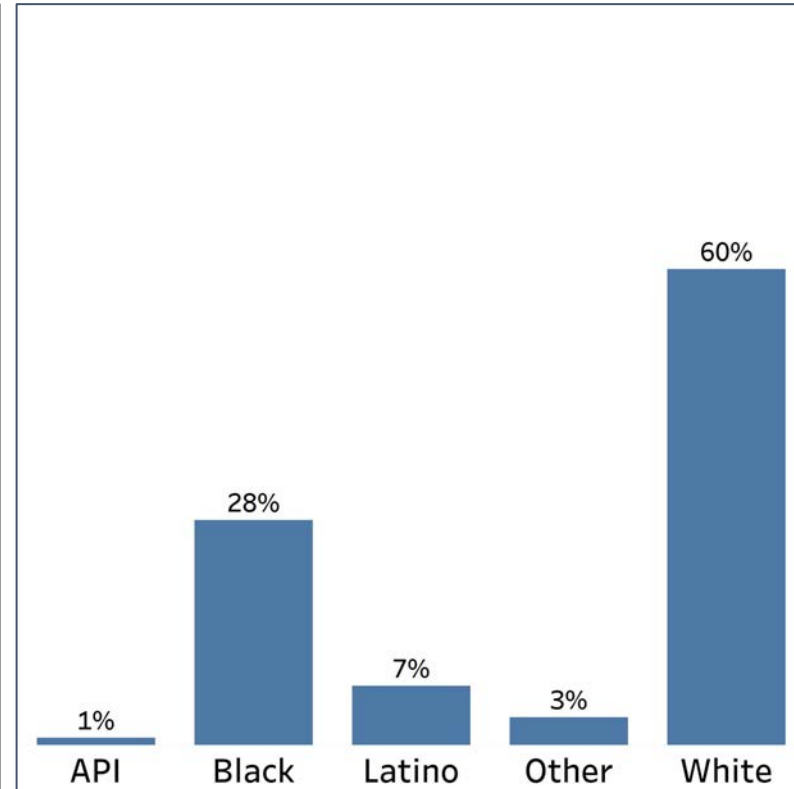
## 2010 vs 2020 Demographics in Marion County



Marion County 2010



Marion County 2020



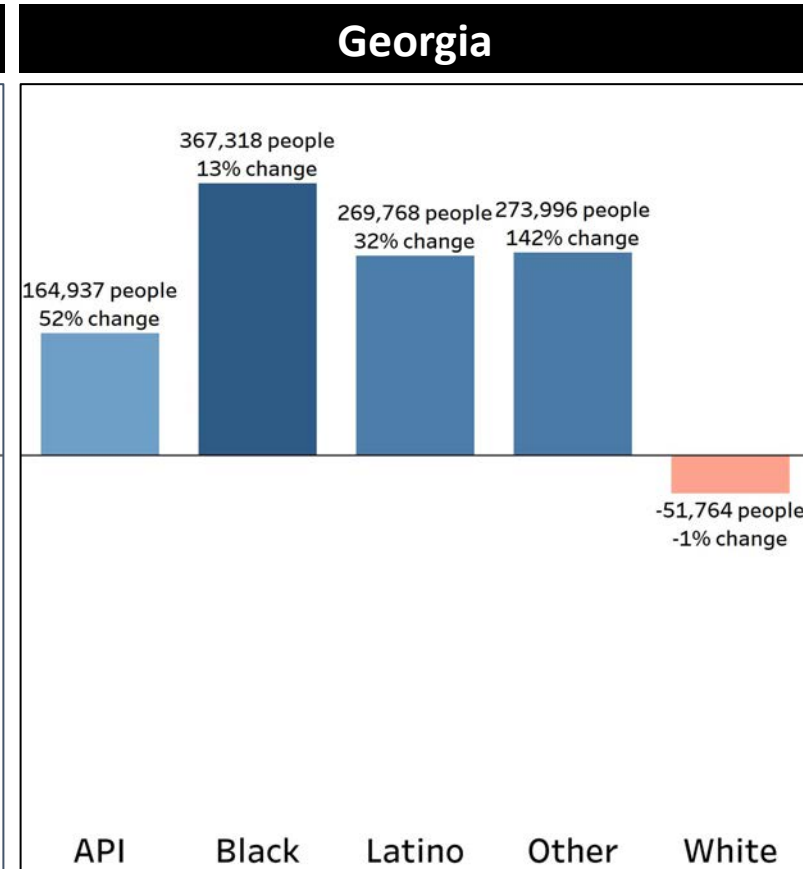
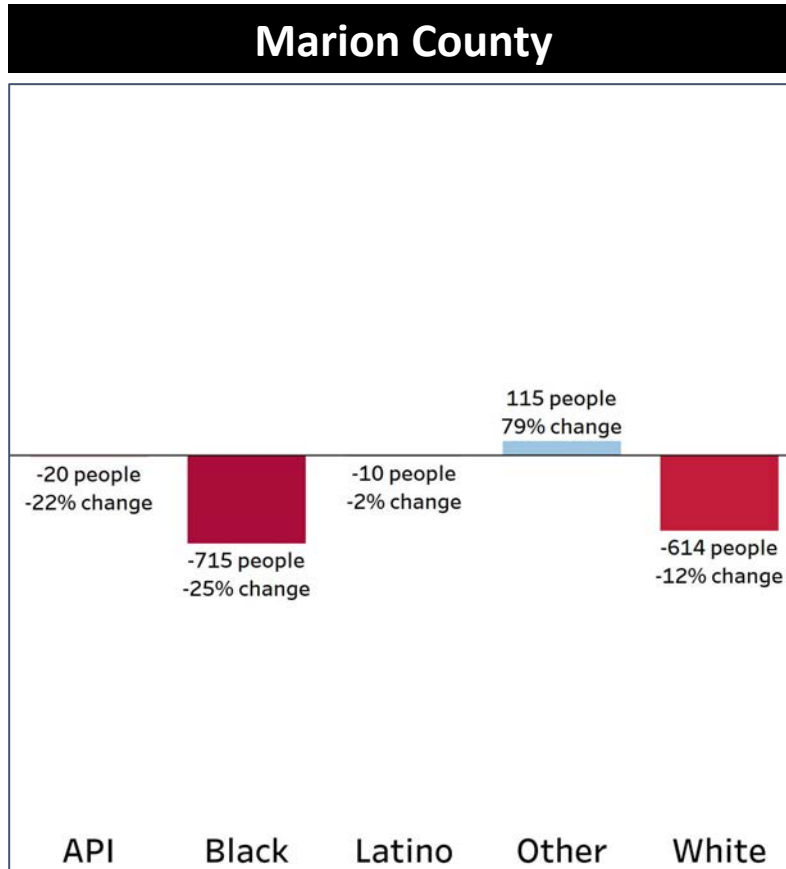
- Marion County has had an increase in the share of the White and Other populations, while seeing a decline in the share of the Black population





# Demographics

## Population Change by Race (2020 - 2010)



- Both the Black and White communities had significant decline in the last decade
- The only group to see any growth in the past decade was the Other population

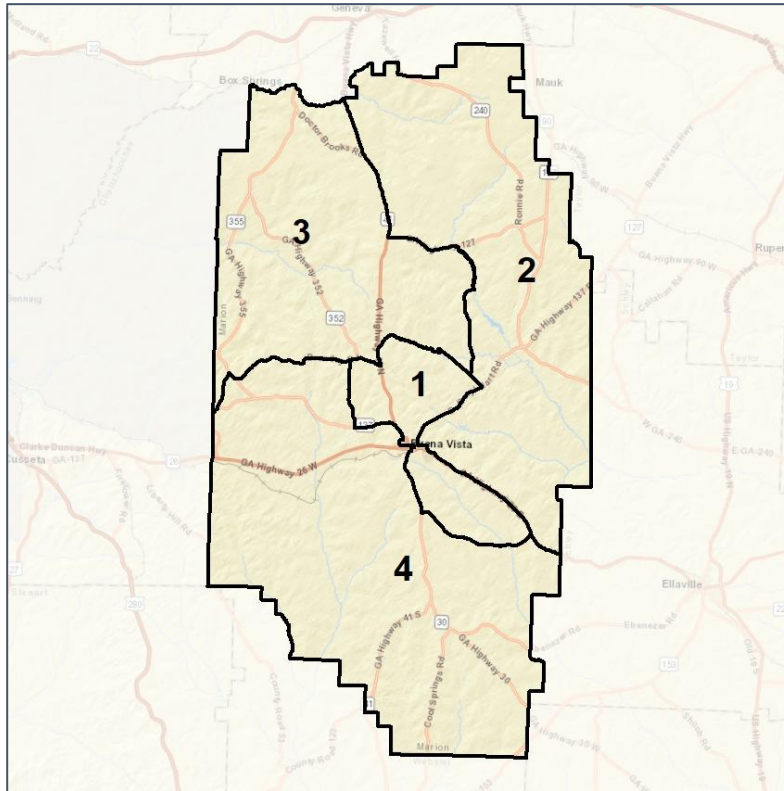


# Marion Co. Commission & School Board

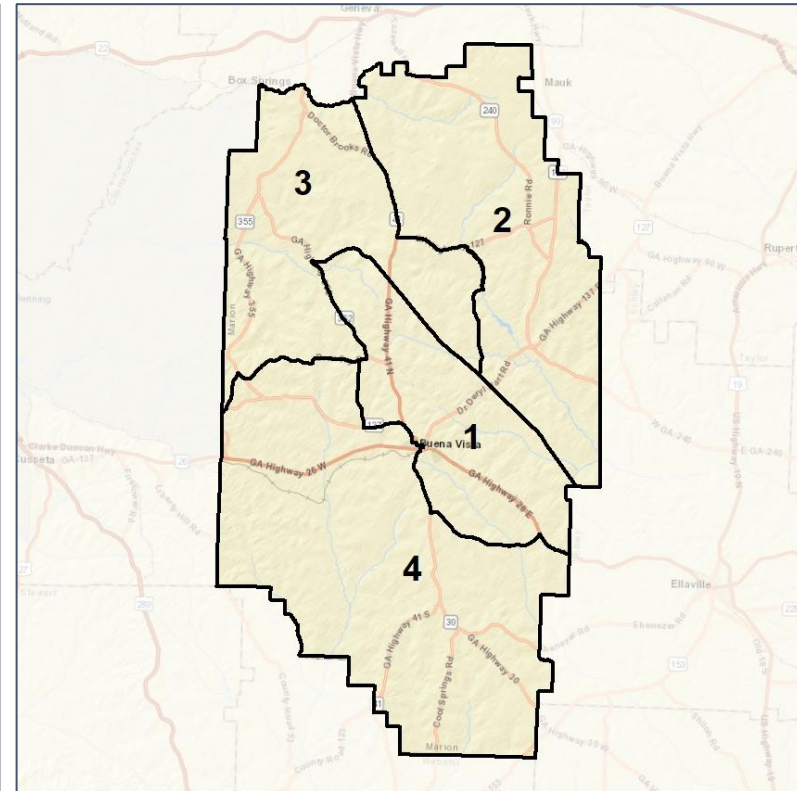
## Context



### 2012 Map



### 2022 Map\*



	1	2	3	4	1*	2*	3*	4*	County
Population	1,663	2,033	2,006	1,796	1,883	1,845	1,894	1,876	7,498
API	1%	1%	1%	1%	1%	1%	1%	1%	1%
Black	54%	10%	7%	50%	47%	9%	6%	50%	28%
Latino	13%	7%	4%	7%	12%	6%	4%	8%	7%
Other	1%	4%	6%	3%	2%	4%	6%	3%	3%
White	32%	79%	83%	39%	38%	80%	83%	38%	60%
Population Gain	-522	-239	-189	-294	220	-188	-112	80	*
Population % Gain	-24%	-11%	-9%	-14%	13%	-9%	-6%	4%	*
Net POC Gain	-489	59	97	-297	25	-65	-27	67	*
Net POC % Gain	-30%	16%	38%	-21%	2%	-15%	-8%	6%	*

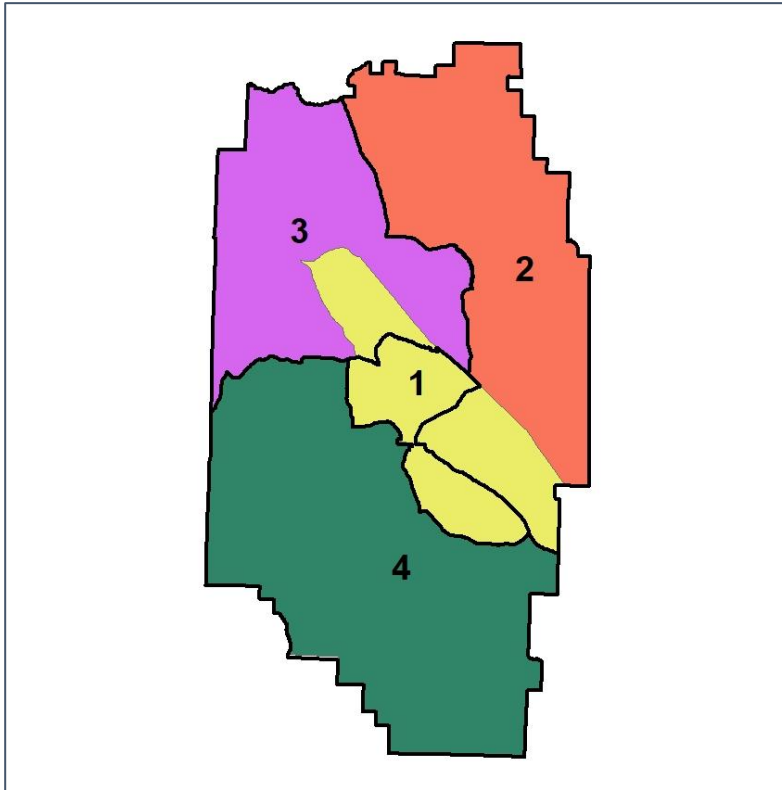


# Marion Co. Commission & School Board

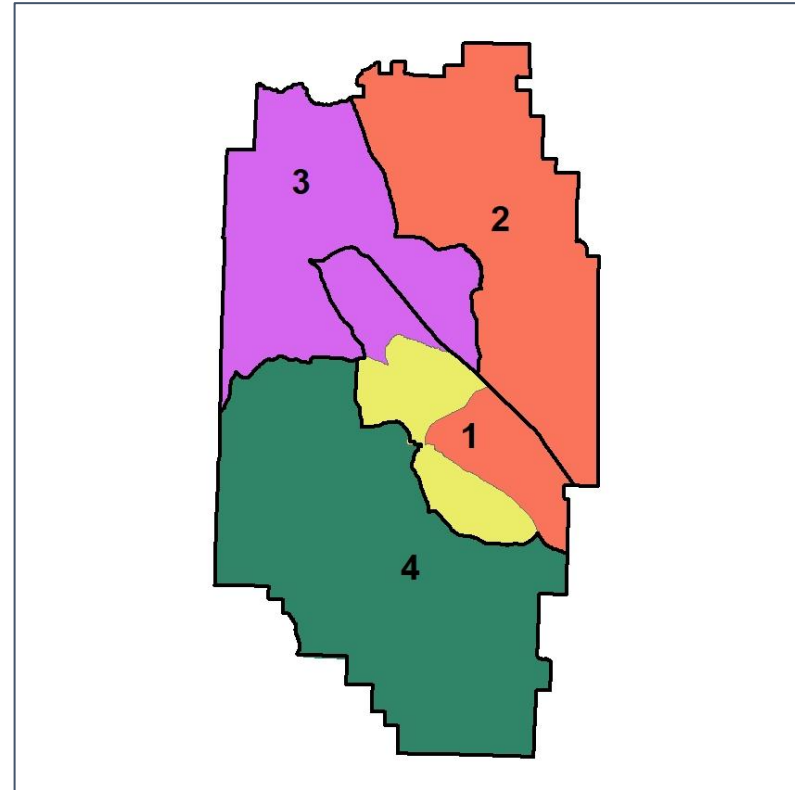
## Changes in Redistricting



**2012 Map (2022 in Colors)**



**2022 Map\* (2012 in Colors)**



	1	2	3	4	1*	2*	3*	4*	County
Population	1,663	2,033	2,006	1,796	1,883	1,845	1,894	1,876	7,498
API	1%	1%	1%	1%	1%	1%	1%	1%	1%
Black	54%	10%	7%	50%	47%	9%	6%	50%	28%
Latino	13%	7%	4%	7%	12%	6%	4%	8%	7%
Other	1%	4%	6%	3%	2%	4%	6%	3%	3%
White	32%	79%	83%	39%	38%	80%	83%	38%	60%
Population Gain	-522	-239	-189	-294	220	-188	-112	80	*
Population % Gain	-24%	-11%	-9%	-14%	13%	-9%	-6%	4%	*
Net POC Gain	-489	59	97	-297	25	-65	-27	67	*
Net POC % Gain	-30%	16%	38%	-21%	2%	-15%	-8%	6%	*



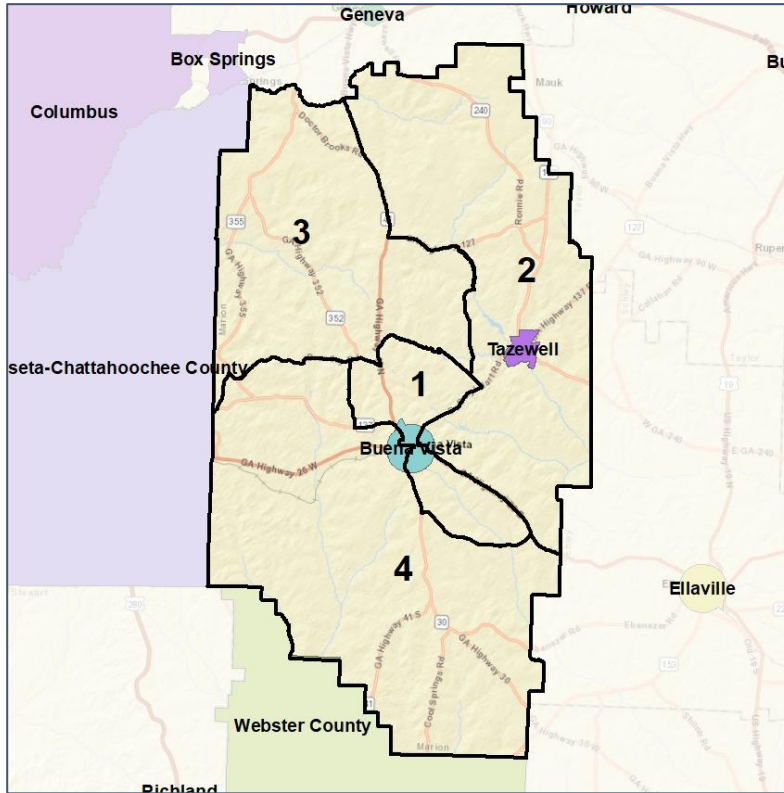


# Marion Co. Commission & School Board

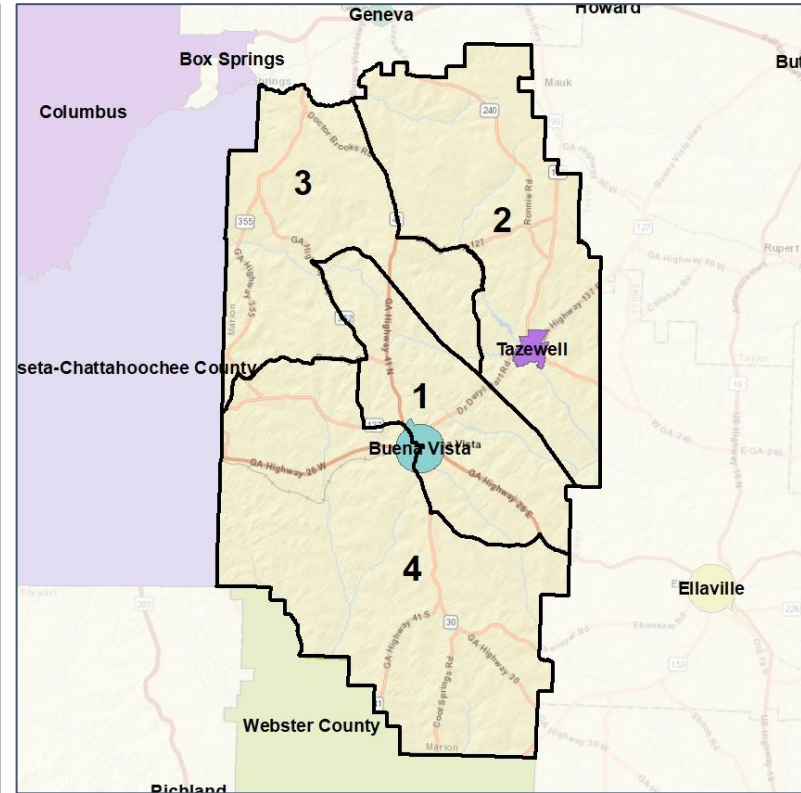
## Cities and Places



### 2012 Map



### 2022 Map\*



	1	2	3	4	1*	2*	3*	4*	County
Population	1,663	2,033	2,006	1,796	1,883	1,845	1,894	1,876	7,498
API	1%	1%	1%	1%	1%	1%	1%	1%	1%
Black	54%	10%	7%	50%	47%	9%	6%	50%	28%
Latino	13%	7%	4%	7%	12%	6%	4%	8%	7%
Other	1%	4%	6%	3%	2%	4%	6%	3%	3%
White	32%	79%	83%	39%	38%	80%	83%	38%	60%
Population Gain	-522	-239	-189	-294	220	-188	-112	80	*
Population % Gain	-24%	-11%	-9%	-14%	13%	-9%	-6%	4%	*
Net POC Gain	-489	59	97	-297	25	-65	-27	67	*
Net POC % Gain	-30%	16%	38%	-21%	2%	-15%	-8%	6%	*

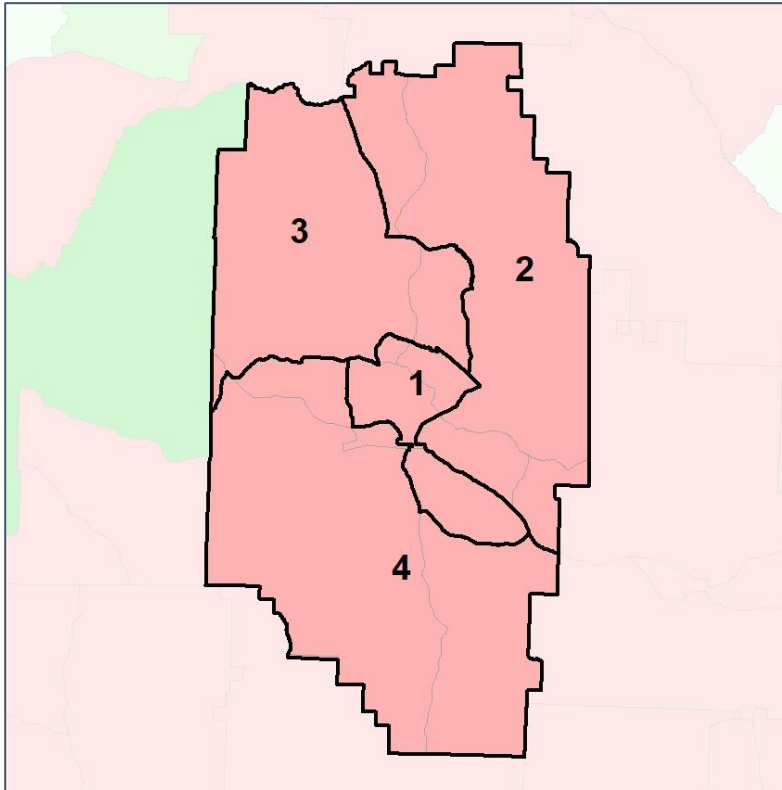


# Marion Co. Commission & School Board

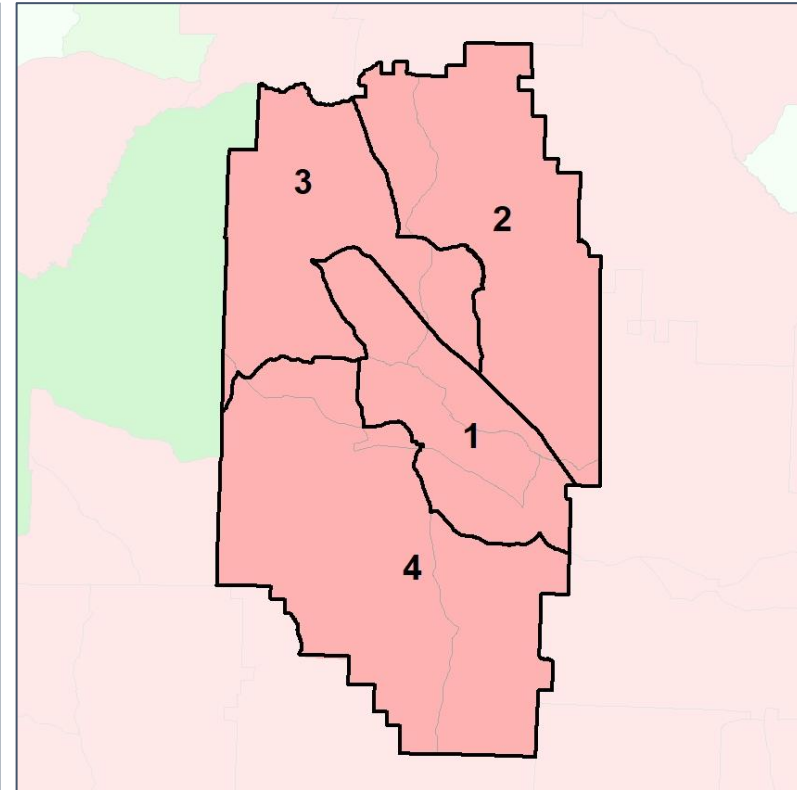
## Net Gain in Population (2010 - 2020) by Census Block Group



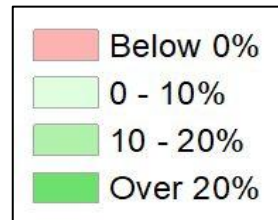
2012 Map



2022 Map\*



	1	2	3	4	1*	2*	3*	4*	County
Population	1,663	2,033	2,006	1,796	1,883	1,845	1,894	1,876	7,498
API	1%	1%	1%	1%	1%	1%	1%	1%	1%
Black	54%	10%	7%	50%	47%	9%	6%	50%	28%
Latino	13%	7%	4%	7%	12%	6%	4%	8%	7%
Other	1%	4%	6%	3%	2%	4%	6%	3%	3%
White	32%	79%	83%	39%	38%	80%	83%	38%	60%
Population Gain	-522	-239	-189	-294	220	-188	-112	80	*
Population % Gain	-24%	-11%	-9%	-14%	13%	-9%	-6%	4%	*
Net POC Gain	-489	59	97	-297	25	-65	-27	67	*
Net POC % Gain	-30%	16%	38%	-21%	2%	-15%	-8%	6%	*

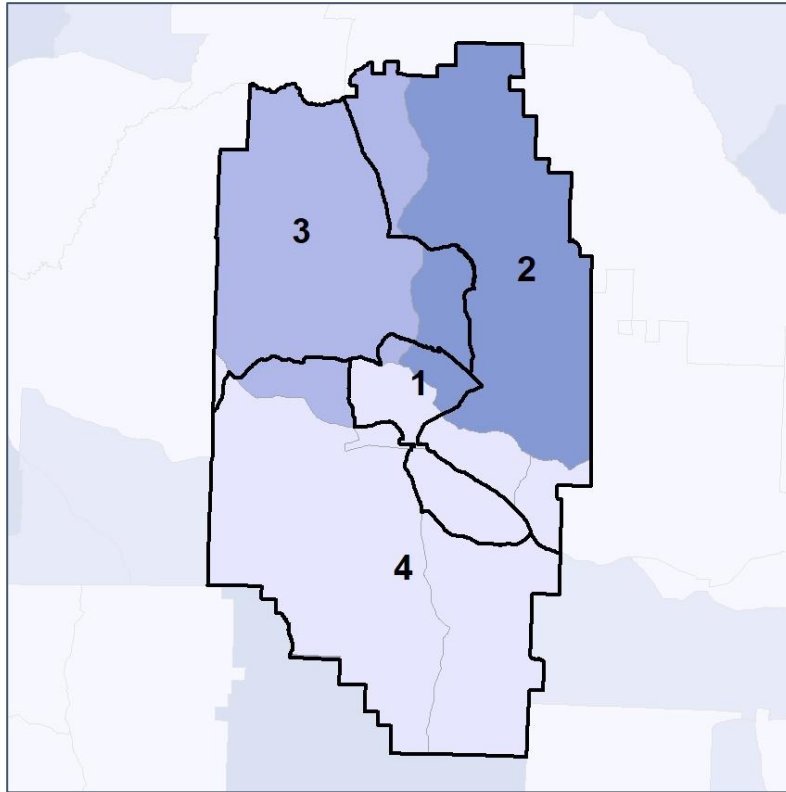


# Marion Co. Commission & School Board

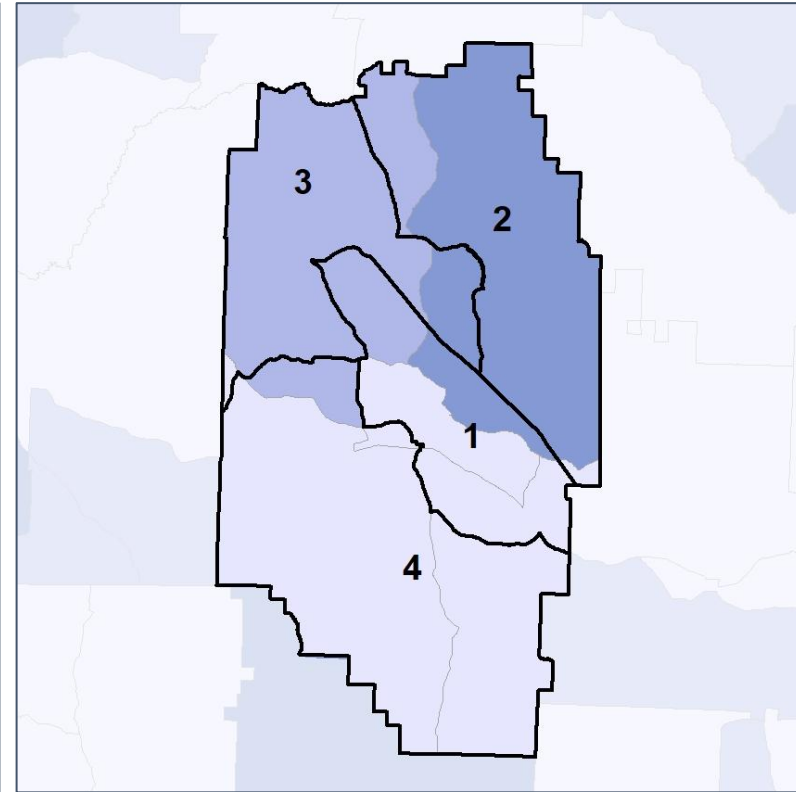
## Net Gain in % POC (2020 - 2010) by Census Block Group



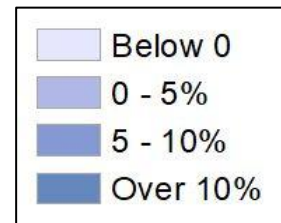
### 2012 Map



### 2022 Map\*



	1	2	3	4	1*	2*	3*	4*	County
Population	1,663	2,033	2,006	1,796	1,883	1,845	1,894	1,876	7,498
API	1%	1%	1%	1%	1%	1%	1%	1%	1%
Black	54%	10%	7%	50%	47%	9%	6%	50%	28%
Latino	13%	7%	4%	7%	12%	6%	4%	8%	7%
Other	1%	4%	6%	3%	2%	4%	6%	3%	3%
White	32%	79%	83%	39%	38%	80%	83%	38%	60%
Population Gain	-522	-239	-189	-294	220	-188	-112	80	*
Population % Gain	-24%	-11%	-9%	-14%	13%	-9%	-6%	4%	*
Net POC Gain	-489	59	97	-297	25	-65	-27	67	*
Net POC % Gain	-30%	16%	38%	-21%	2%	-15%	-8%	6%	*



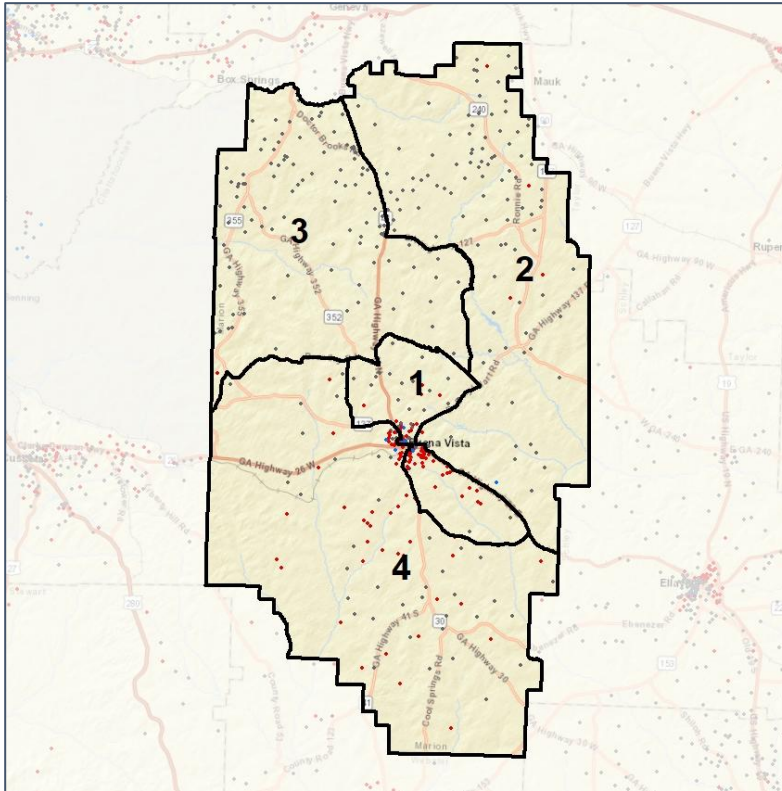
Source:  
2020 Decennial Census  
2020 ACS 5-Year Dataset

# Marion Co. Commission & School Board

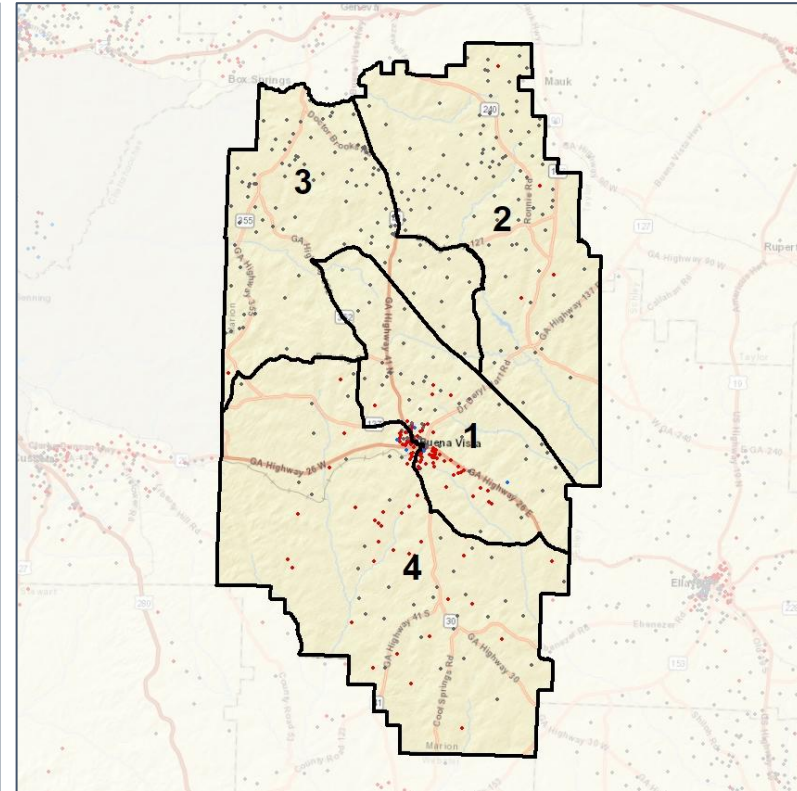
## Population Density by Race



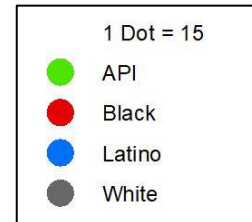
### 2012 Map



### 2022 Map\*



	1	2	3	4	1*	2*	3*	4*	County
Population	1,663	2,033	2,006	1,796	1,883	1,845	1,894	1,876	7,498
API	12	20	21	17	15	20	17	18	70
% API	1%	1%	1%	1%	1%	1%	1%	1%	1%
Black	898	197	131	896	890	168	123	941	2,122
% Black	54%	10%	7%	50%	47%	9%	6%	50%	28%
Latino	211	140	80	129	227	109	74	150	560
% Latino	13%	7%	4%	7%	12%	6%	4%	8%	7%
Other	18	76	118	48	32	71	109	48	260
% Other	1%	4%	6%	3%	2%	4%	6%	3%	3%
White	524	1,600	1,656	706	719	1,477	1,571	719	4,486
% White	32%	79%	83%	39%	38%	80%	83%	38%	60%

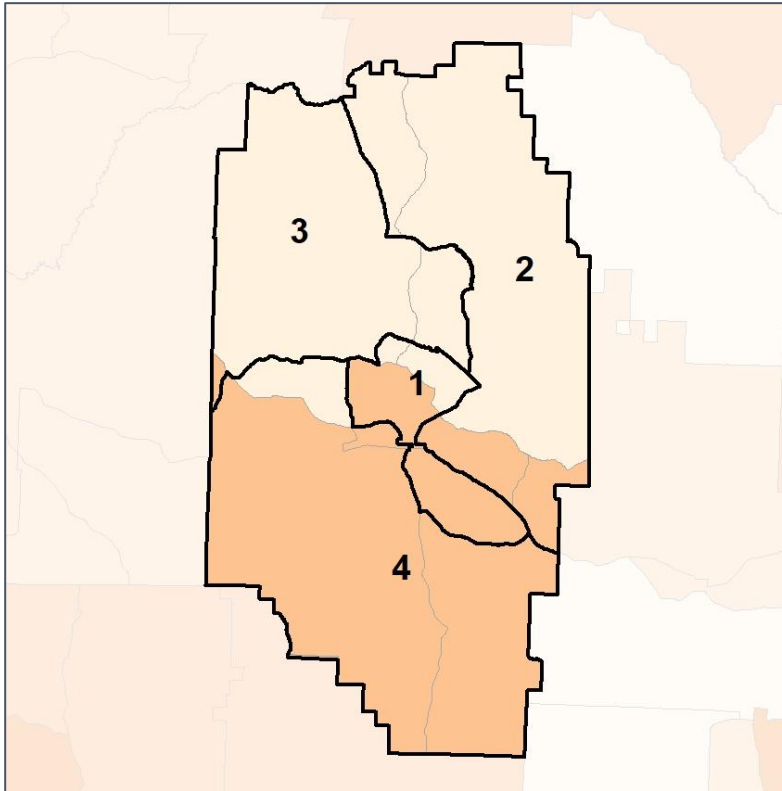


# Marion Co. Commission & School Board

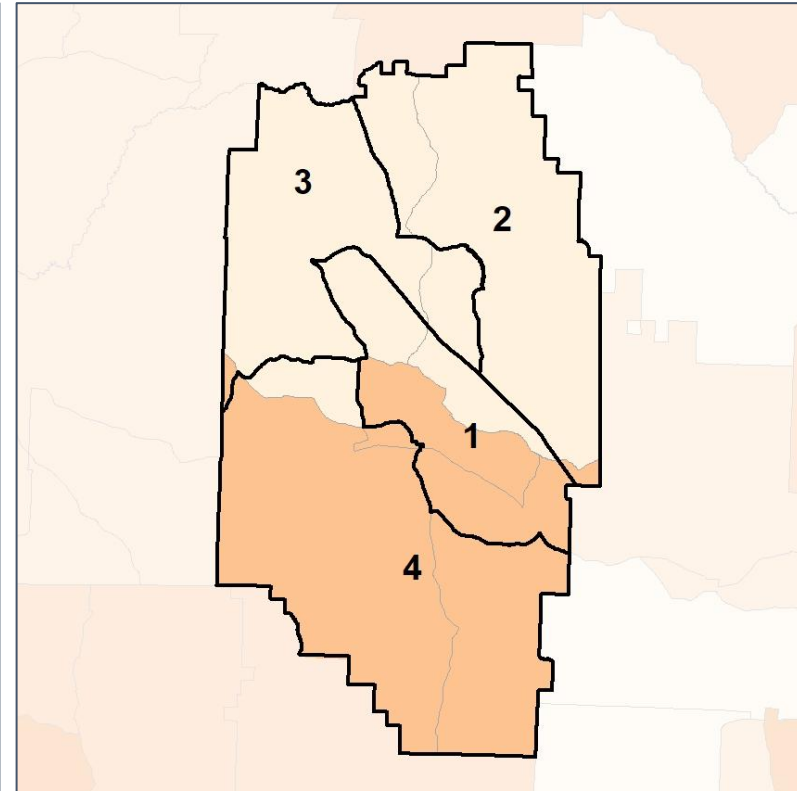
## % People of Color by Census Block Group



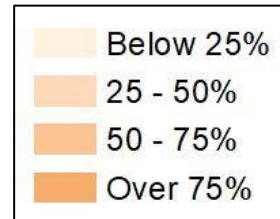
### 2012 Map



### 2022 Map\*



	1	2	3	4	1*	2*	3*	4*	County
Population	1,663	2,033	2,006	1,796	1,883	1,845	1,894	1,876	7,498
API	12	20	21	17	15	20	17	18	70
% API	1%	1%	1%	1%	1%	1%	1%	1%	1%
Black	898	197	131	896	890	168	123	941	2,122
% Black	54%	10%	7%	50%	47%	9%	6%	50%	28%
Latino	211	140	80	129	227	109	74	150	560
% Latino	13%	7%	4%	7%	12%	6%	4%	8%	7%
Other	18	76	118	48	32	71	109	48	260
% Other	1%	4%	6%	3%	2%	4%	6%	3%	3%
White	524	1,600	1,656	706	719	1,477	1,571	719	4,486
% White	32%	79%	83%	39%	38%	80%	83%	38%	60%

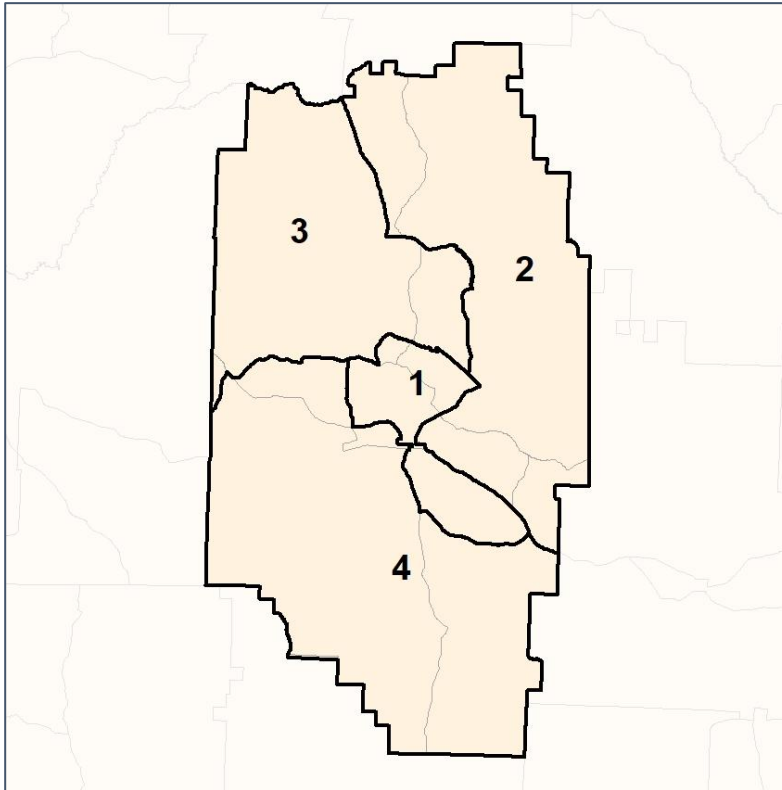


# Marion Co. Commission & School Board

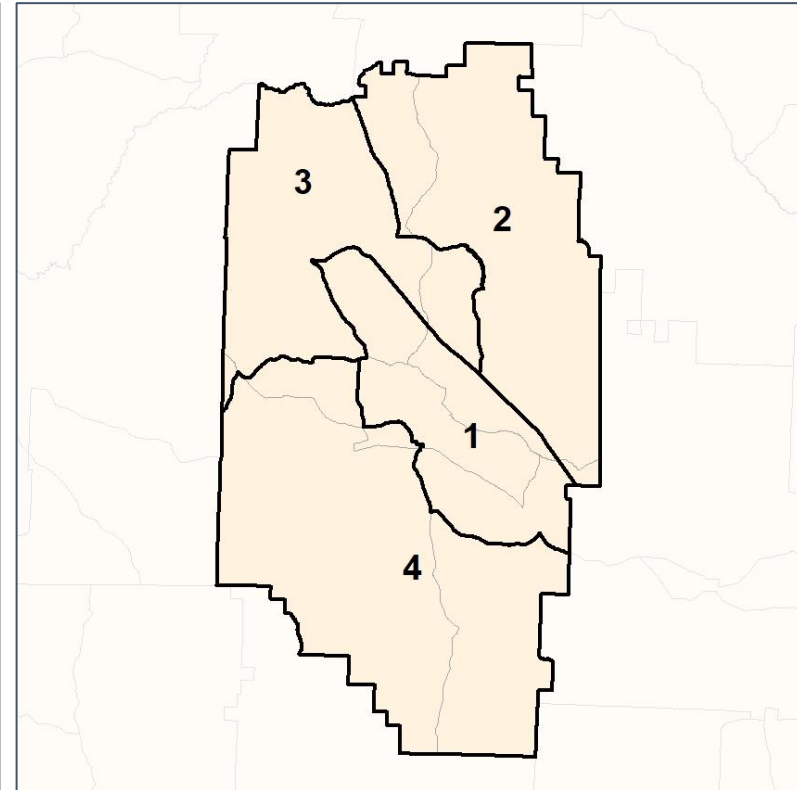
## % API by Census Block Group



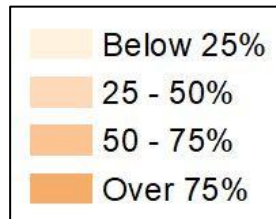
### 2012 Map



### 2022 Map\*



	1	2	3	4	1*	2*	3*	4*	County
Population	1,663	2,033	2,006	1,796	1,883	1,845	1,894	1,876	7,498
API	12	20	21	17	15	20	17	18	70
% API	1%	1%	1%	1%	1%	1%	1%	1%	1%
Black	898	197	131	896	890	168	123	941	2,122
% Black	54%	10%	7%	50%	47%	9%	6%	50%	28%
Latino	211	140	80	129	227	109	74	150	560
% Latino	13%	7%	4%	7%	12%	6%	4%	8%	7%
Other	18	76	118	48	32	71	109	48	260
% Other	1%	4%	6%	3%	2%	4%	6%	3%	3%
White	524	1,600	1,656	706	719	1,477	1,571	719	4,486
% White	32%	79%	83%	39%	38%	80%	83%	38%	60%

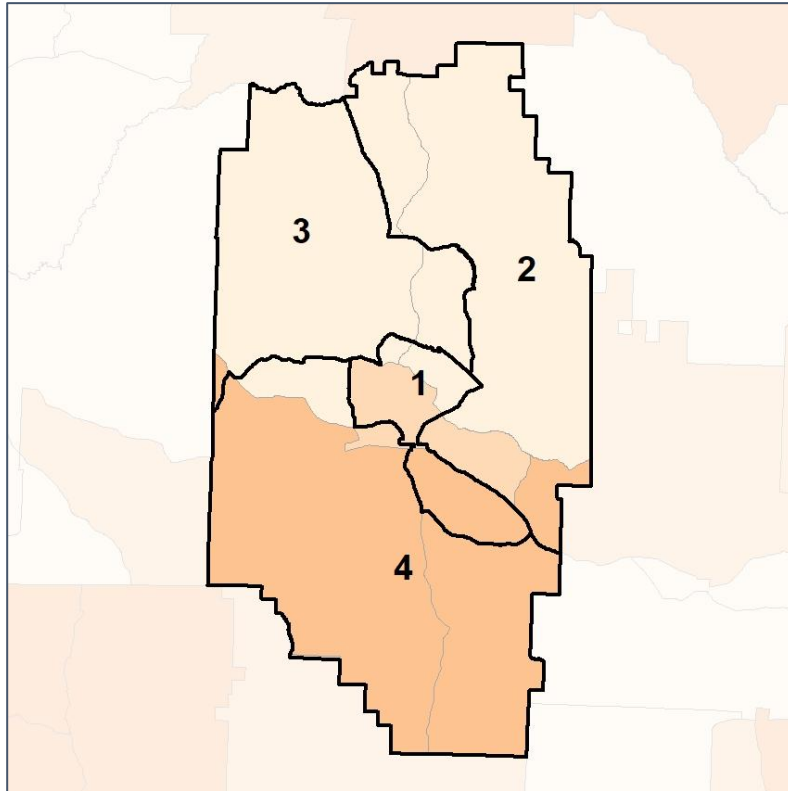


# Marion Co. Commission & School Board

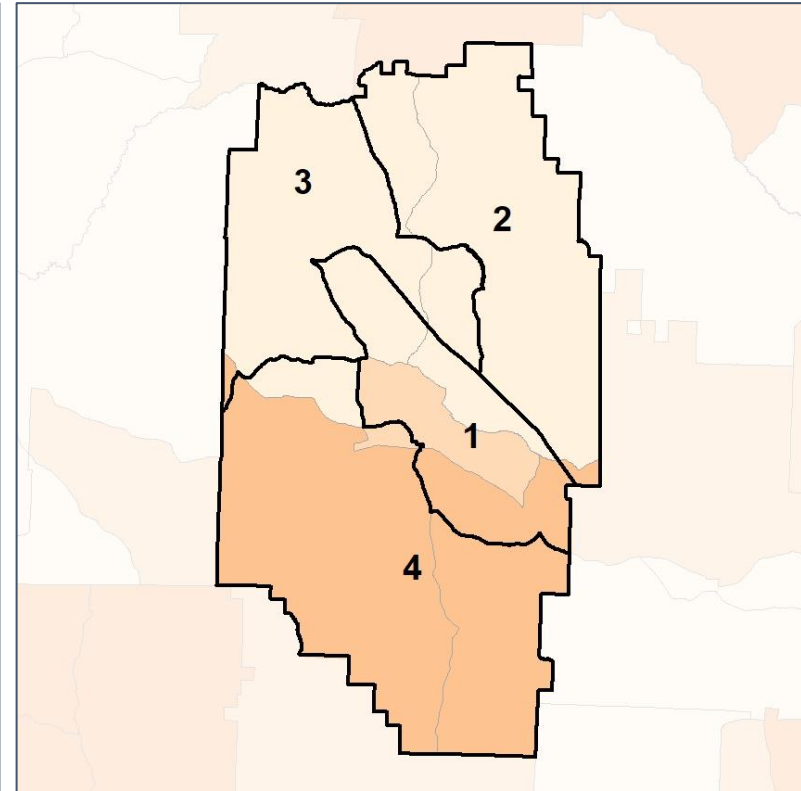
## % Black by Census Block Group



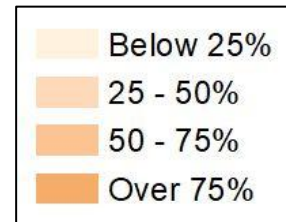
### 2012 Map



### 2022 Map\*



	1	2	3	4	1*	2*	3*	4*	County
Population	1,663	2,033	2,006	1,796	1,883	1,845	1,894	1,876	7,498
API	12	20	21	17	15	20	17	18	70
% API	1%	1%	1%	1%	1%	1%	1%	1%	1%
Black	898	197	131	896	890	168	123	941	2,122
% Black	54%	10%	7%	50%	47%	9%	6%	50%	28%
Latino	211	140	80	129	227	109	74	150	560
% Latino	13%	7%	4%	7%	12%	6%	4%	8%	7%
Other	18	76	118	48	32	71	109	48	260
% Other	1%	4%	6%	3%	2%	4%	6%	3%	3%
White	524	1,600	1,656	706	719	1,477	1,571	719	4,486
% White	32%	79%	83%	39%	38%	80%	83%	38%	60%

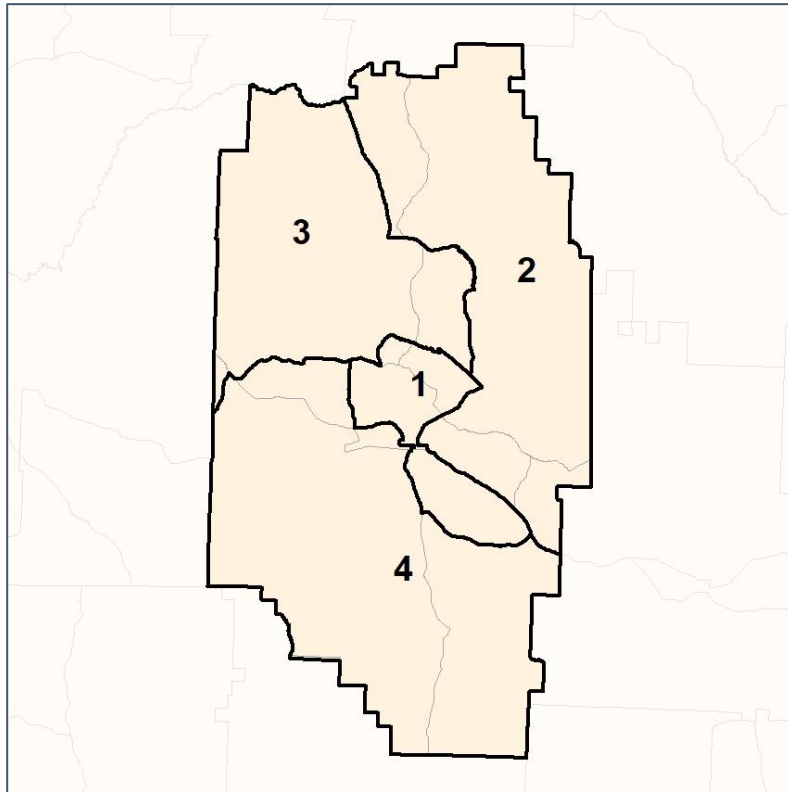


# Marion Co. Commission & School Board

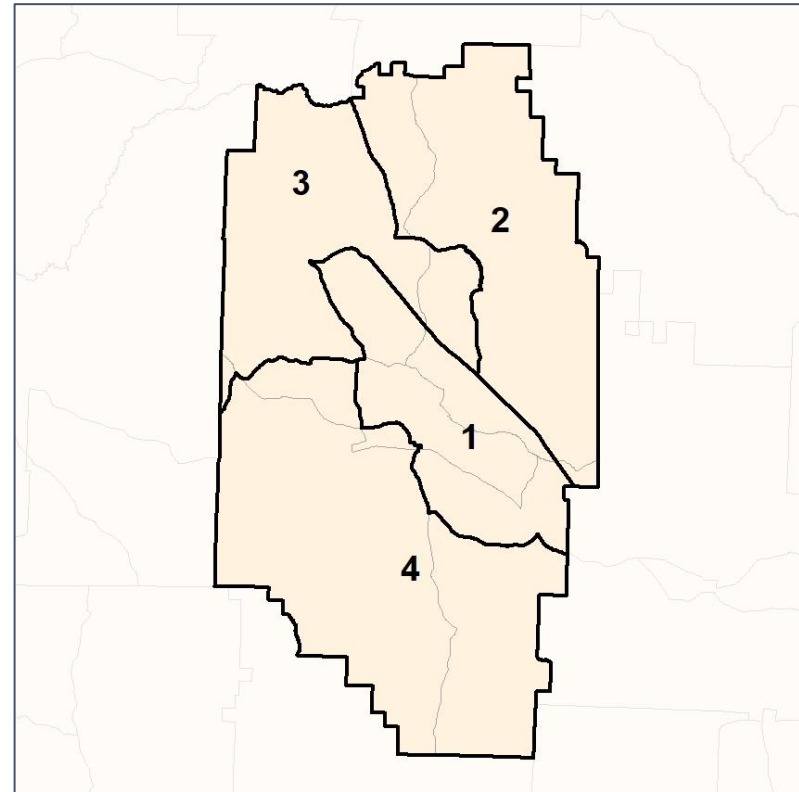
## % Latino by Census Block Group



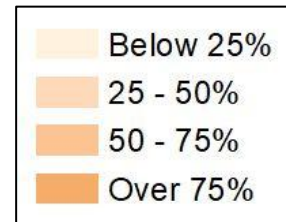
### 2012 Map



### 2022 Map\*



	1	2	3	4	1*	2*	3*	4*	County
Population	1,663	2,033	2,006	1,796	1,883	1,845	1,894	1,876	7,498
API	12	20	21	17	15	20	17	18	70
% API	1%	1%	1%	1%	1%	1%	1%	1%	1%
Black	898	197	131	896	890	168	123	941	2,122
% Black	54%	10%	7%	50%	47%	9%	6%	50%	28%
Latino	211	140	80	129	227	109	74	150	560
% Latino	13%	7%	4%	7%	12%	6%	4%	8%	7%
Other	18	76	118	48	32	71	109	48	260
% Other	1%	4%	6%	3%	2%	4%	6%	3%	3%
White	524	1,600	1,656	706	719	1,477	1,571	719	4,486
% White	32%	79%	83%	39%	38%	80%	83%	38%	60%



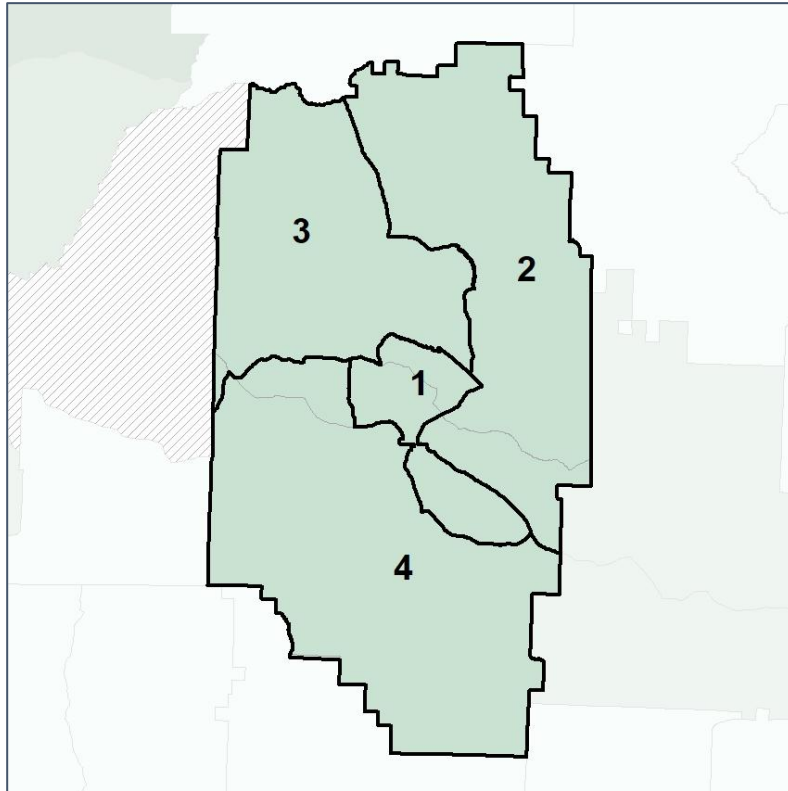


# Marion Co. Commission & School Board

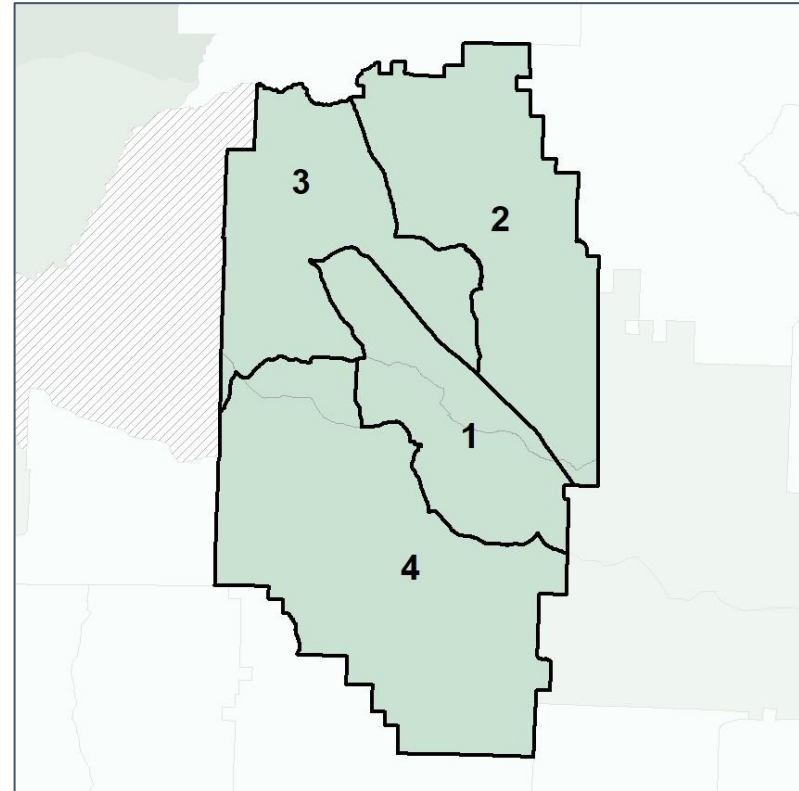
## Median Household Income by Census Tract



### 2012 Map



### 2022 Map\*



	1	2	3	4	1*	2*	3*	4*	County
Population	1,663	2,033	2,006	1,796	1,883	1,845	1,894	1,876	7,498
% API	1%	1%	1%	1%	1%	1%	1%	1%	1%
% Black	54%	10%	7%	50%	47%	9%	6%	50%	28%
% Latino	13%	7%	4%	7%	12%	6%	4%	8%	7%
% Other	1%	4%	6%	3%	2%	4%	6%	3%	3%
% White	32%	79%	83%	39%	38%	80%	83%	38%	60%
<b>Median Income</b>	<b>\$53,000</b>	<b>\$60,000</b>	<b>\$52,000</b>	<b>\$40,000</b>	<b>\$53,000</b>	<b>\$60,000</b>	<b>\$52,000</b>	<b>\$40,000</b>	<b>\$52,000</b>
% Renter	44%	16%	9%	35%	44%	16%	9%	35%	24%
% Youth	12%	16%	19%	18%	12%	16%	19%	18%	16%

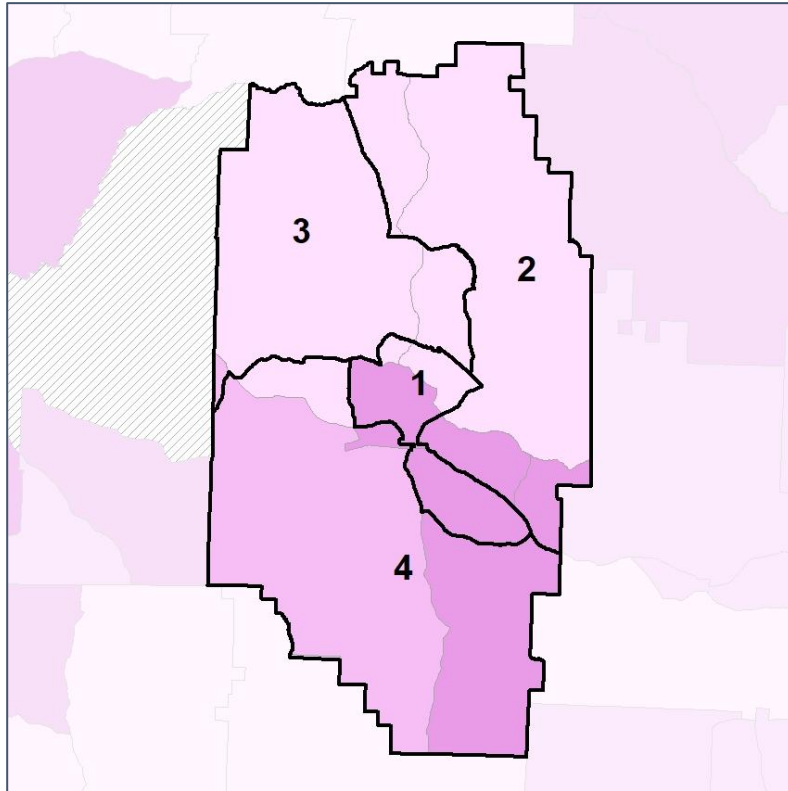


# Marion Co. Commission & School Board

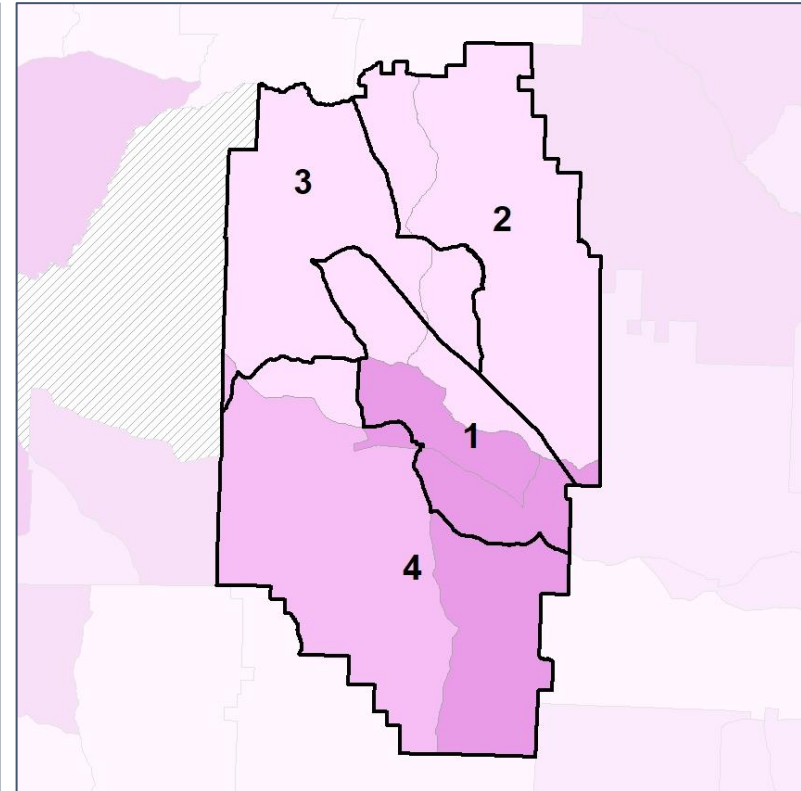
## % Renter by Census Block Group



### 2012 Map



### 2022 Map\*



	1	2	3	4	1*	2*	3*	4*	County
Population	1,663	2,033	2,006	1,796	1,883	1,845	1,894	1,876	7,498
% API	1%	1%	1%	1%	1%	1%	1%	1%	1%
% Black	54%	10%	7%	50%	47%	9%	6%	50%	28%
% Latino	13%	7%	4%	7%	12%	6%	4%	8%	7%
% Other	1%	4%	6%	3%	2%	4%	6%	3%	3%
% White	32%	79%	83%	39%	38%	80%	83%	38%	60%
Median Income	\$53,000	\$60,000	\$52,000	\$40,000	\$53,000	\$60,000	\$52,000	\$40,000	\$52,000
<b>% Renter</b>	<b>44%</b>	<b>16%</b>	<b>9%</b>	<b>35%</b>	<b>44%</b>	<b>16%</b>	<b>9%</b>	<b>35%</b>	<b>24%</b>
% Youth	12%	16%	19%	18%	12%	16%	19%	18%	16%

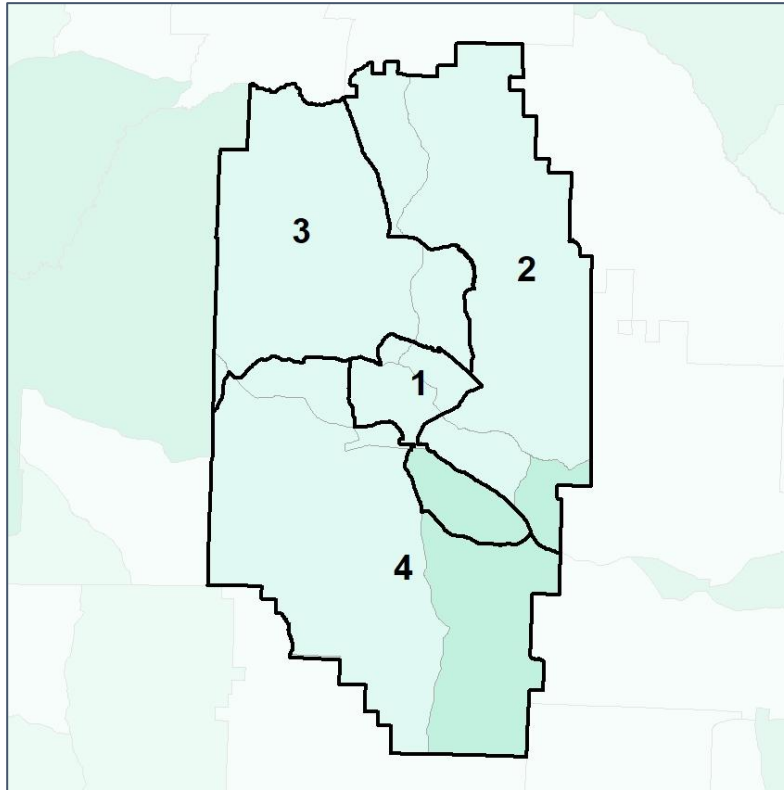


# Marion Co. Commission & School Board

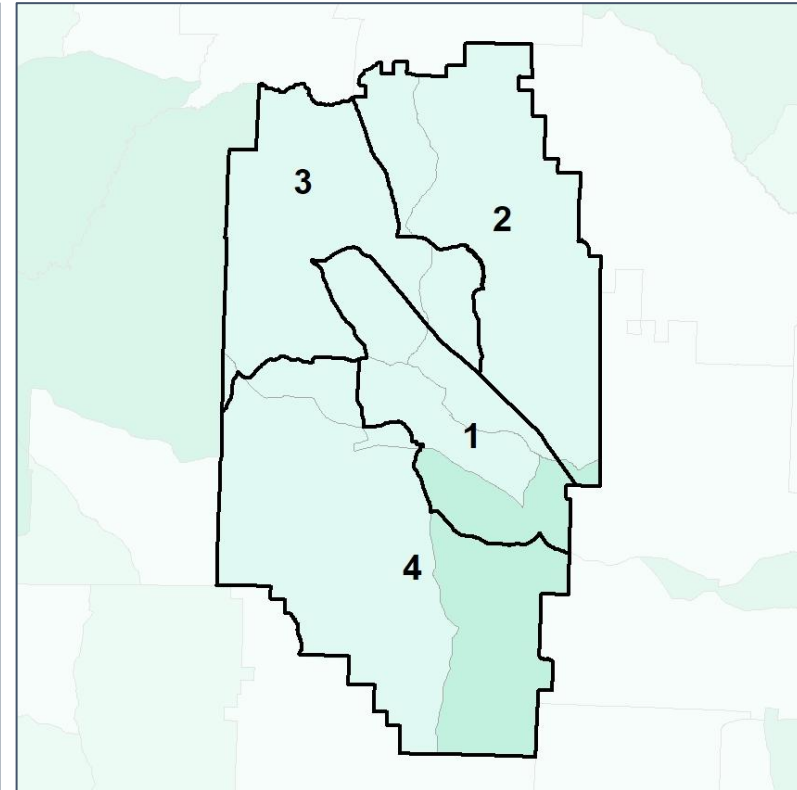
## % Youth (18-34) by Census Block Group



### 2012 Map



### 2022 Map\*



	1	2	3	4	1*	2*	3*	4*	County
Population	1,663	2,033	2,006	1,796	1,883	1,845	1,894	1,876	7,498
% API	1%	1%	1%	1%	1%	1%	1%	1%	1%
% Black	54%	10%	7%	50%	47%	9%	6%	50%	28%
% Latino	13%	7%	4%	7%	12%	6%	4%	8%	7%
% Other	1%	4%	6%	3%	2%	4%	6%	3%	3%
% White	32%	79%	83%	39%	38%	80%	83%	38%	60%
Median Income	\$53,000	\$60,000	\$52,000	\$40,000	\$53,000	\$60,000	\$52,000	\$40,000	\$52,000
% Renter	44%	16%	9%	35%	44%	16%	9%	35%	24%
% Youth	12%	16%	19%	18%	12%	16%	19%	18%	16%

