



# Demographic Overview

## Racial Breakdown in Macon County

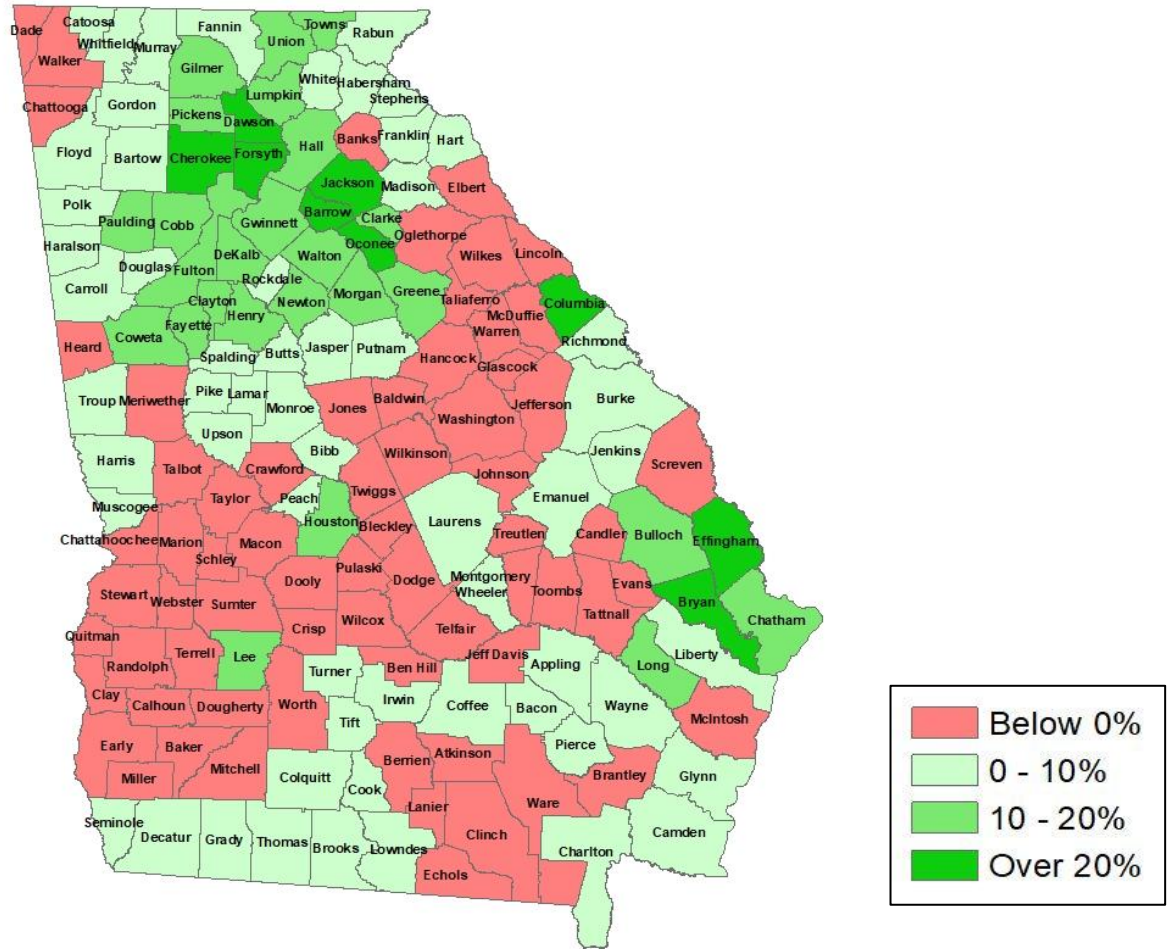
Macon County	2010	2020	% Change
Total Population	14,740	12,082	-18%
AAPI	208	163	-22%
Black	8,902	7,150	-20%
Latino	527	472	-10%
Other/Mixed Race	142	219	54%
POC	9,779	8,004	-18%
White	4,961	4,078	-18%

\*Note: The use of "Other" in these statistics combines those who identify as Native American, Mixed Race, and "Other" race



# Population Gain

## Change in Population in Georgia by County

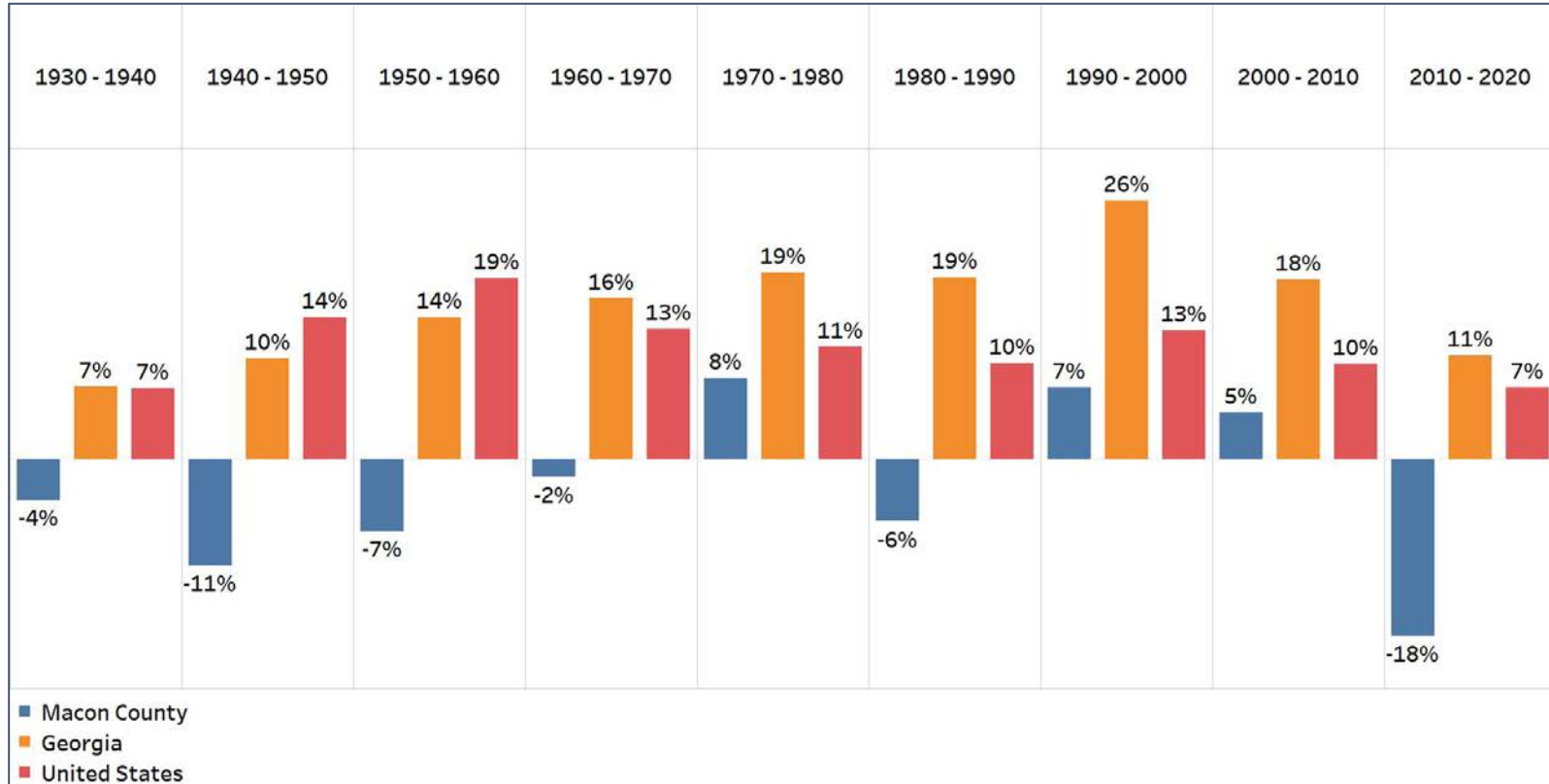


- Georgia is experiencing rapid population growth in the Atlanta, Augusta, and Savannah regions of the state



# Population Gain

## Change in Population by Decade

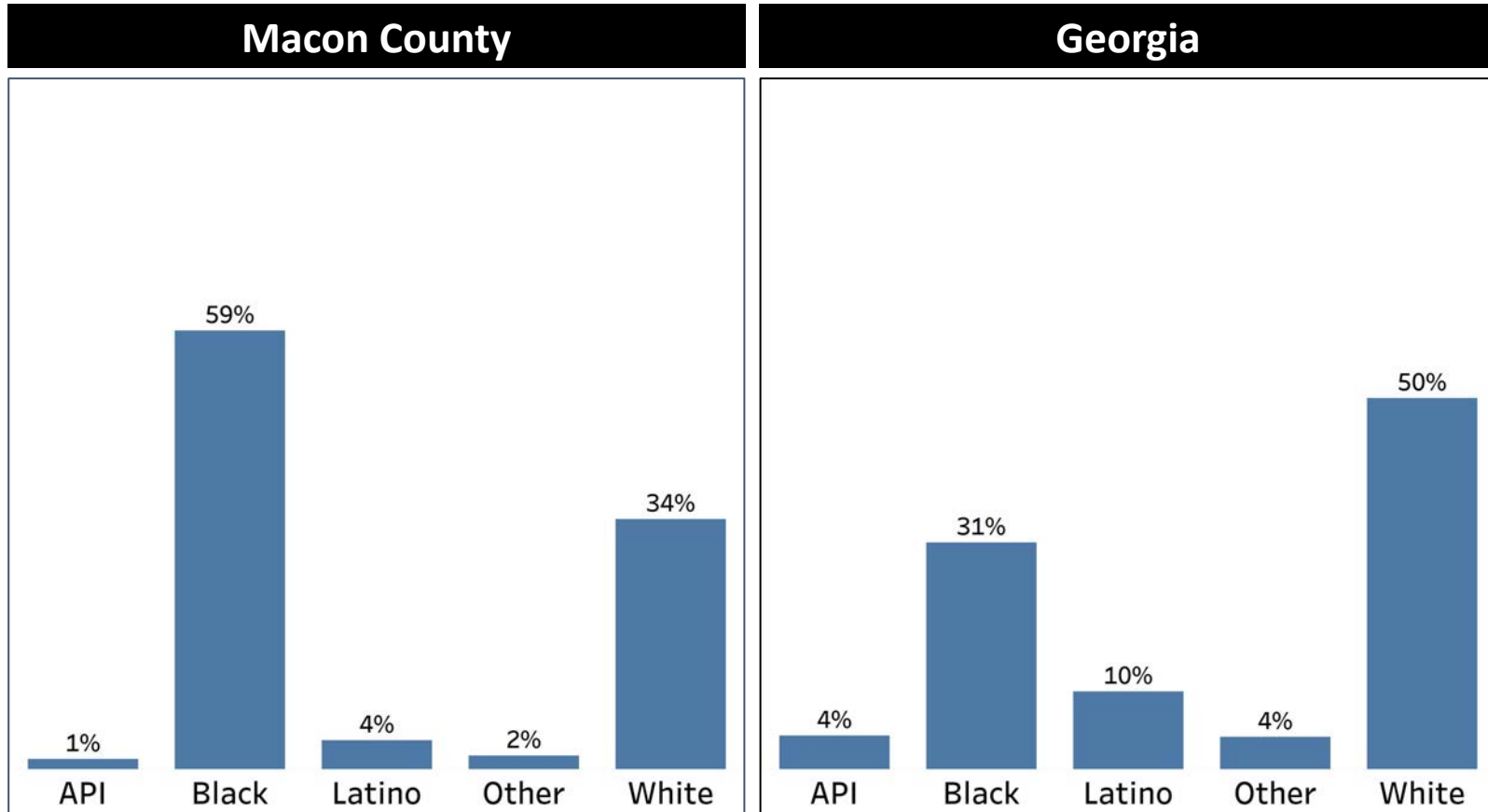


- Macon County has experienced mostly population declines with a few exceptions where there was small population growth
- In the last decade, Macon County experienced the largest population decline since 1930, with an 18% decline



# Demographics

## Comparison between Macon County and Georgia



- Macon County is composed of a majority Black population, comprising more than half of the county's population
- The White population of Macon County is 16% below their statewide average

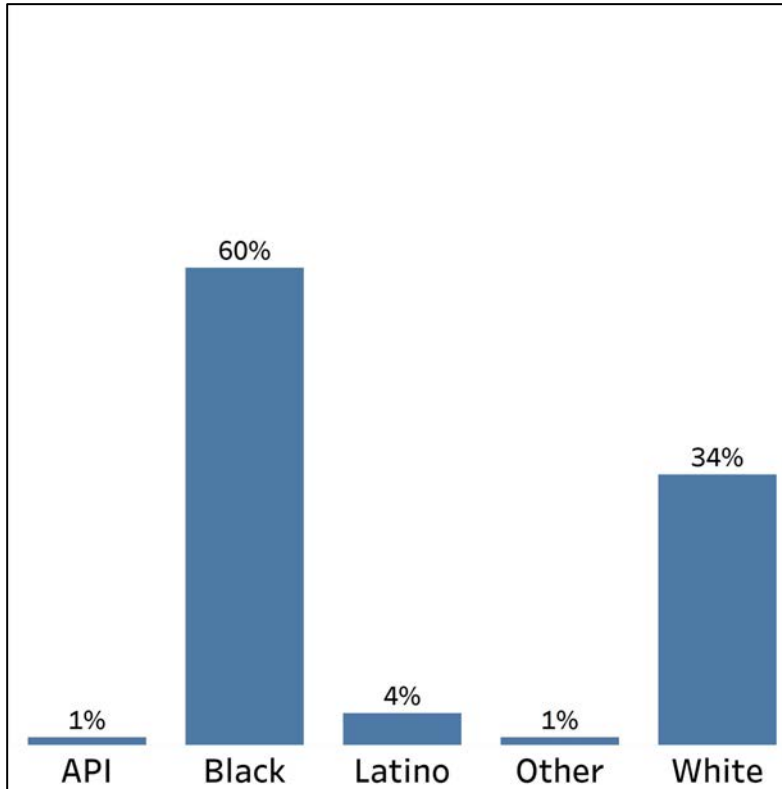


# Demographics

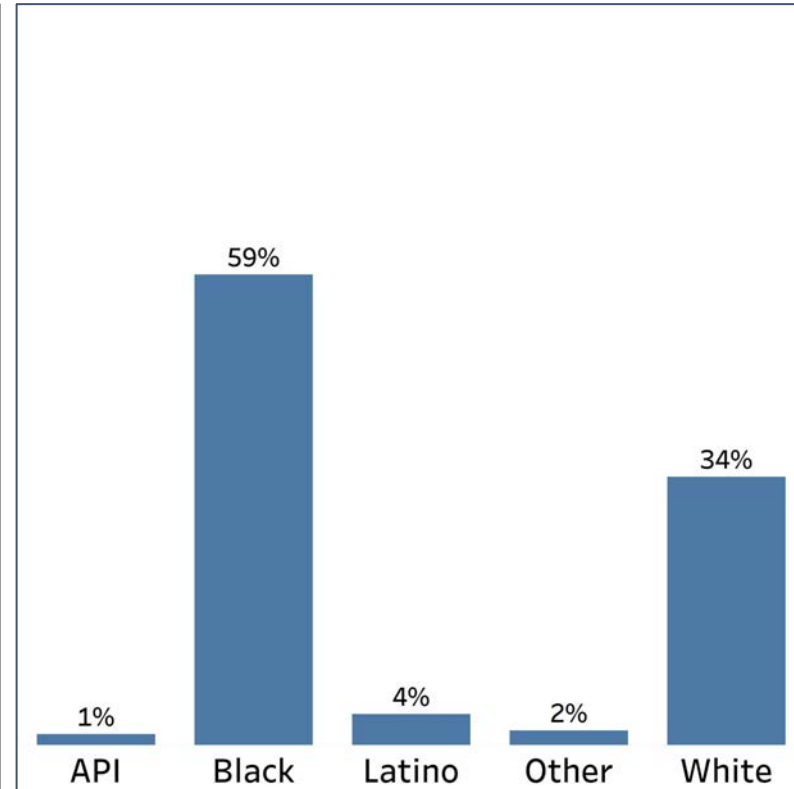
## 2010 vs 2020 Demographics in Macon County



Macon County 2010



Macon County 2020

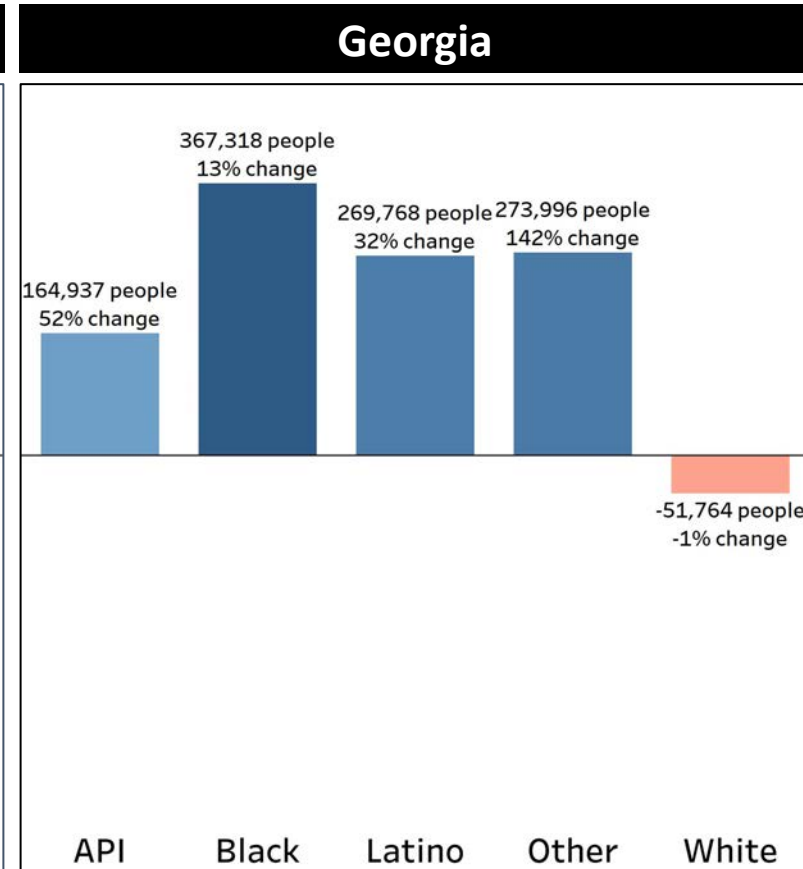
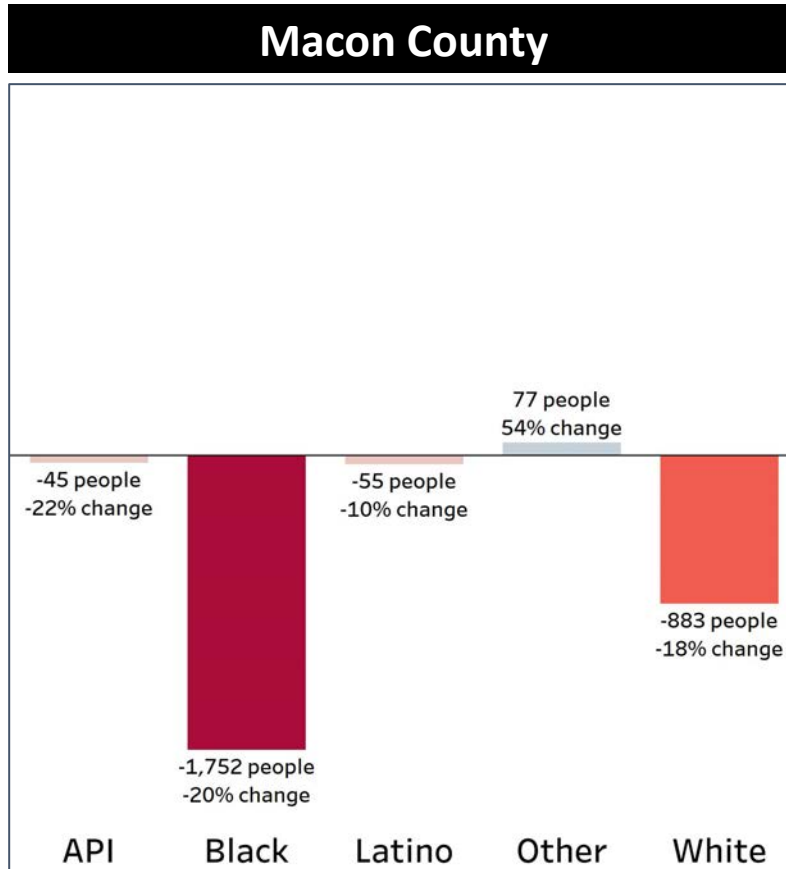


- Macon County Black population decrease by 1% from the overall county population
- “Other” population was the only demographic group that grew



# Demographics

## Population Change by Race (2020 - 2010)



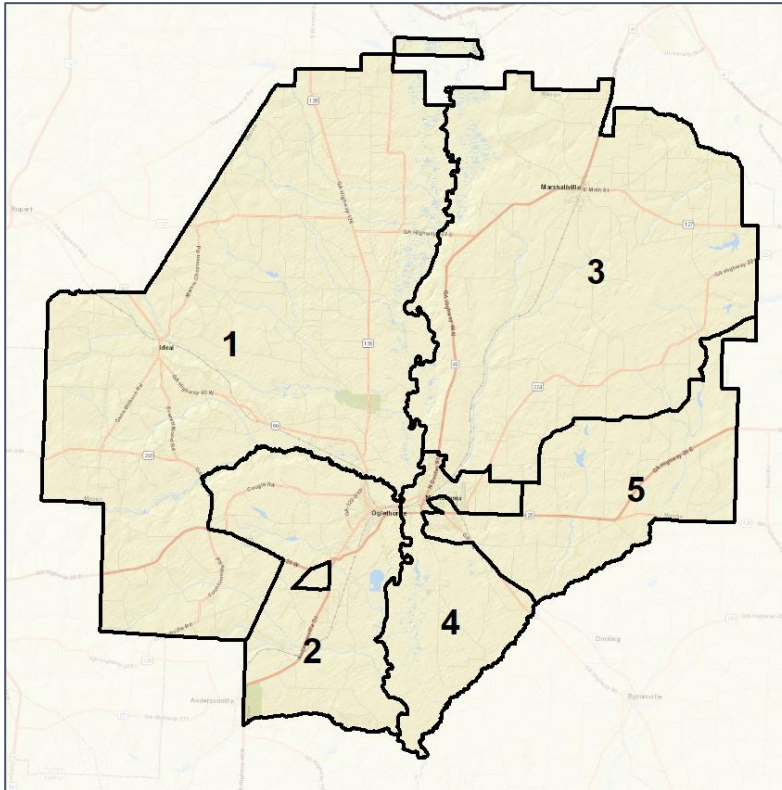
- Macon County experienced a population decline across all demographic groups with the exception of “Other”
- Macon county White and Black population are on a rapid decline rate, but the Black population had a higher percentage rate of decline

# Macon Co. Commission & School Board

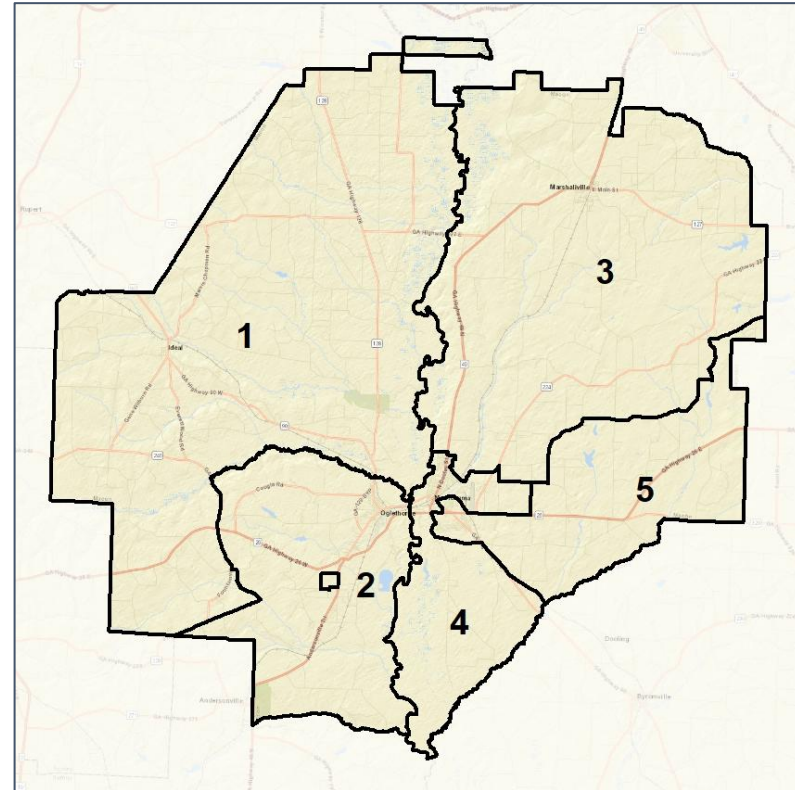
## Context



### 2012 Map



### 2022 Map\*



	1	2	3	4	5	1*	2*	3*	4*	5*	County
Population	2,183	1,871	2,094	2,229	2,065	2,061	2,018	2,094	2,154	2,140	12,082
API	1%	1%	1%	3%	1%	1%	1%	1%	3%	1%	1%
Black	44%	58%	52%	59%	65%	43%	58%	52%	58%	66%	59%
Latino	2%	4%	5%	4%	5%	2%	4%	5%	5%	5%	4%
Other	2%	3%	2%	2%	1%	2%	3%	2%	2%	1%	2%
White	50%	35%	40%	31%	27%	50%	35%	40%	32%	26%	34%
Population Gain	*	*	*	*	*	-122	147	0	-75	75	*
Population % Gain	*	*	*	*	*	-6%	8%	0%	-3%	4%	*
Net POC Gain	*	*	*	*	*	-74	87	0	-74	74	*
Net POC % Gain	*	*	*	*	*	-7%	7%	0%	-5%	5%	*



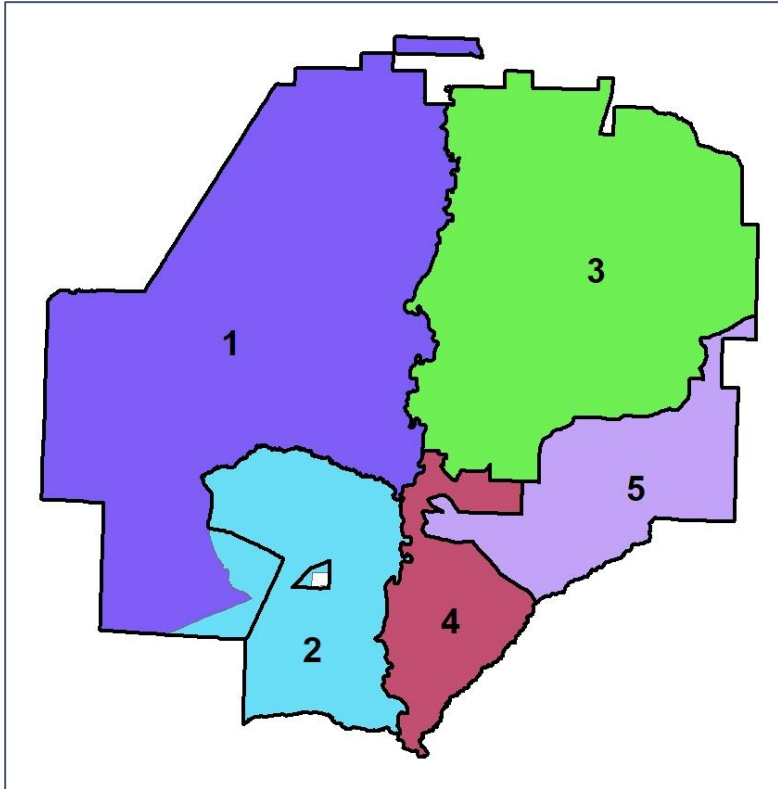


# Macon Co. Commission & School Board

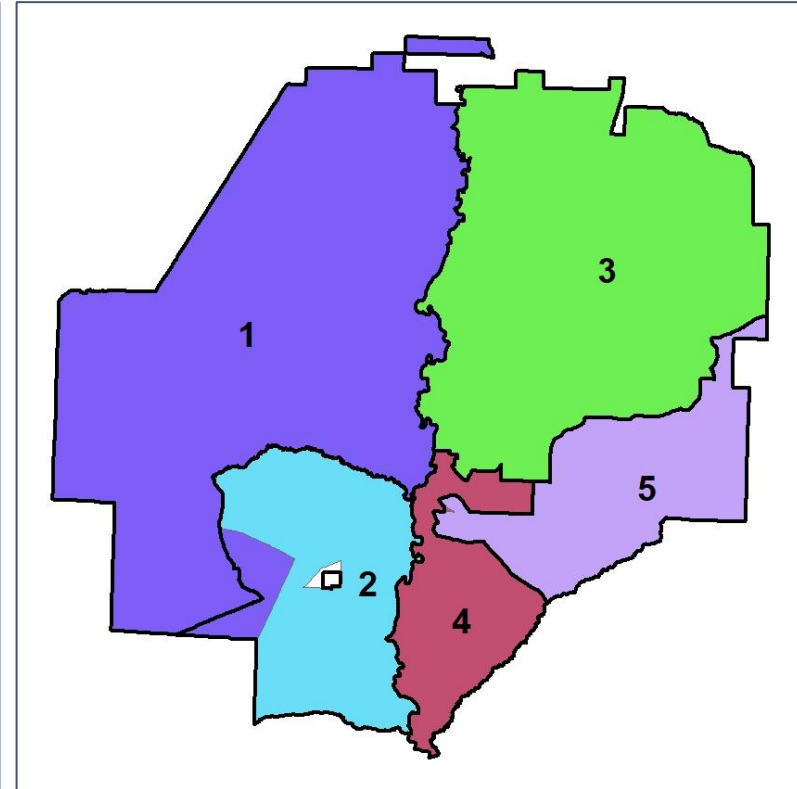
## Changes in Redistricting



**2012 Map (2022 in Colors)**



**2022 Map\* (2012 in Colors)**



	1	2	3	4	5	1*	2*	3*	4*	5*	County
Population	2,183	1,871	2,094	2,229	2,065	2,061	2,018	2,094	2,154	2,140	12,082
API	1%	1%	1%	3%	1%	1%	1%	1%	3%	1%	1%
Black	44%	58%	52%	59%	65%	43%	58%	52%	58%	66%	59%
Latino	2%	4%	5%	4%	5%	2%	4%	5%	5%	5%	4%
Other	2%	3%	2%	2%	1%	2%	3%	2%	2%	1%	2%
White	50%	35%	40%	31%	27%	50%	35%	40%	32%	26%	34%
Population Gain	*	*	*	*	*	-122	147	0	-75	75	*
Population % Gain	*	*	*	*	*	-6%	8%	0%	-3%	4%	*
Net POC Gain	*	*	*	*	*	-74	87	0	-74	74	*
Net POC % Gain	*	*	*	*	*	-7%	7%	0%	-5%	5%	*



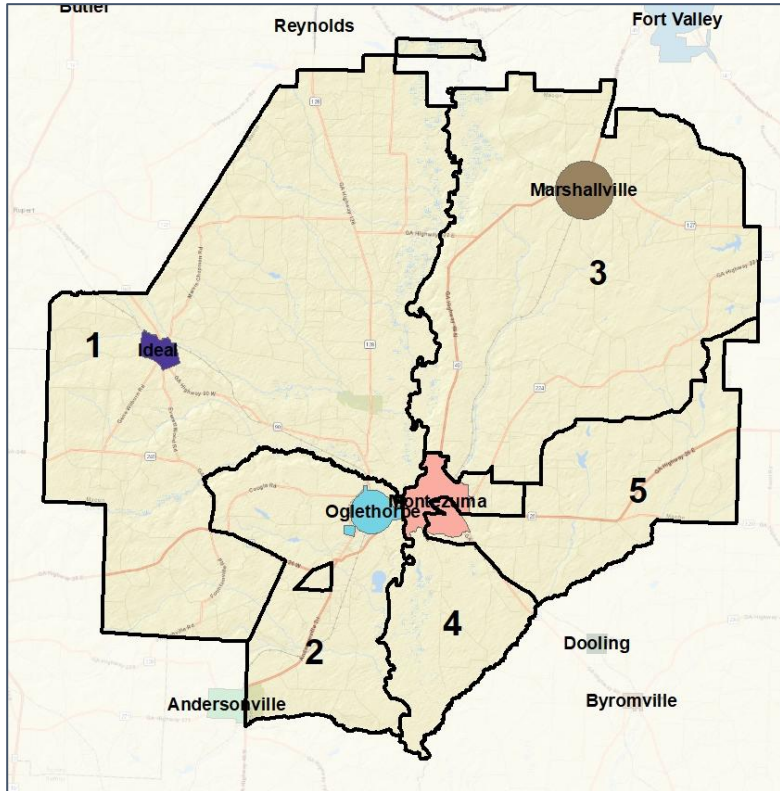


# Macon Co. Commission & School Board

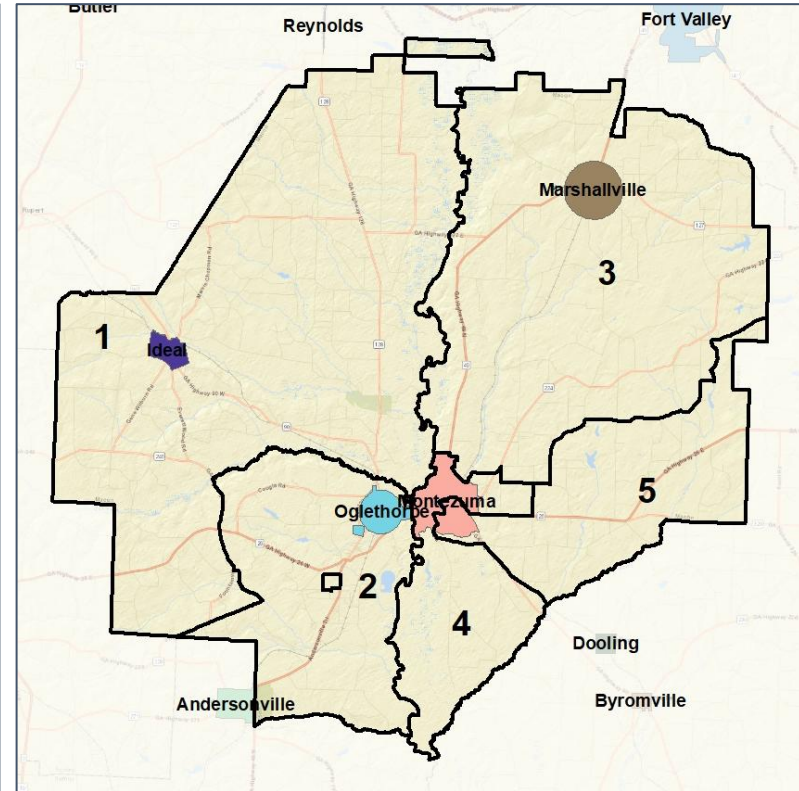
## Cities and Places



### 2012 Map



### 2022 Map\*



	1	2	3	4	5	1*	2*	3*	4*	5*	County
Population	2,183	1,871	2,094	2,229	2,065	2,061	2,018	2,094	2,154	2,140	12,082
API	1%	1%	1%	3%	1%	1%	1%	1%	3%	1%	1%
Black	44%	58%	52%	59%	65%	43%	58%	52%	58%	66%	59%
Latino	2%	4%	5%	4%	5%	2%	4%	5%	5%	5%	4%
Other	2%	3%	2%	2%	1%	2%	3%	2%	2%	1%	2%
White	50%	35%	40%	31%	27%	50%	35%	40%	32%	26%	34%
Population Gain	*	*	*	*	*	-122	147	0	-75	75	*
Population % Gain	*	*	*	*	*	-6%	8%	0%	-3%	4%	*
Net POC Gain	*	*	*	*	*	-74	87	0	-74	74	*
Net POC % Gain	*	*	*	*	*	-7%	7%	0%	-5%	5%	*



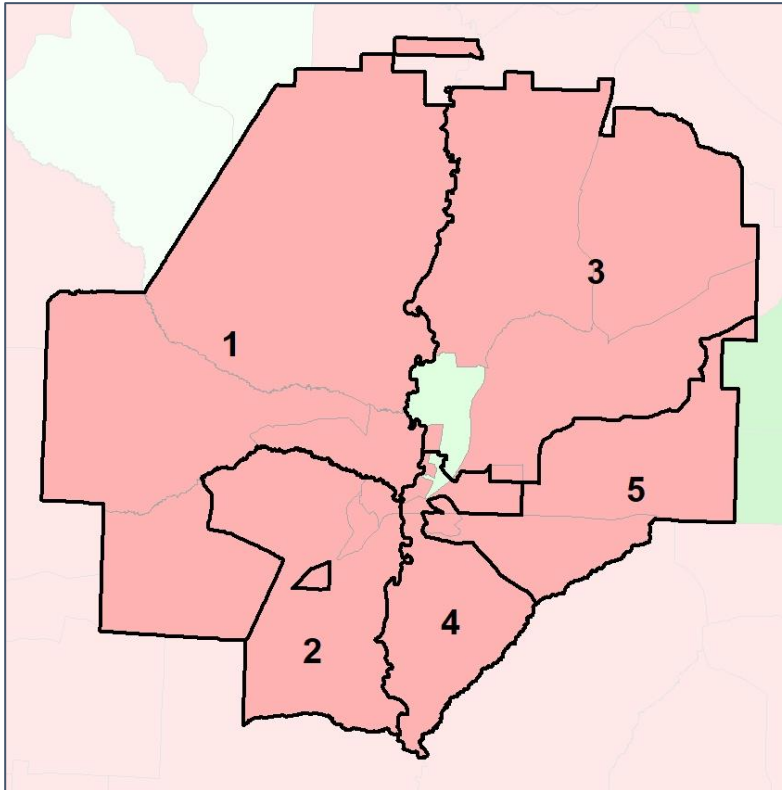
Source:  
2020 Decennial Census  
2020 ACS 5-Year Dataset

# Macon Co. Commission & School Board

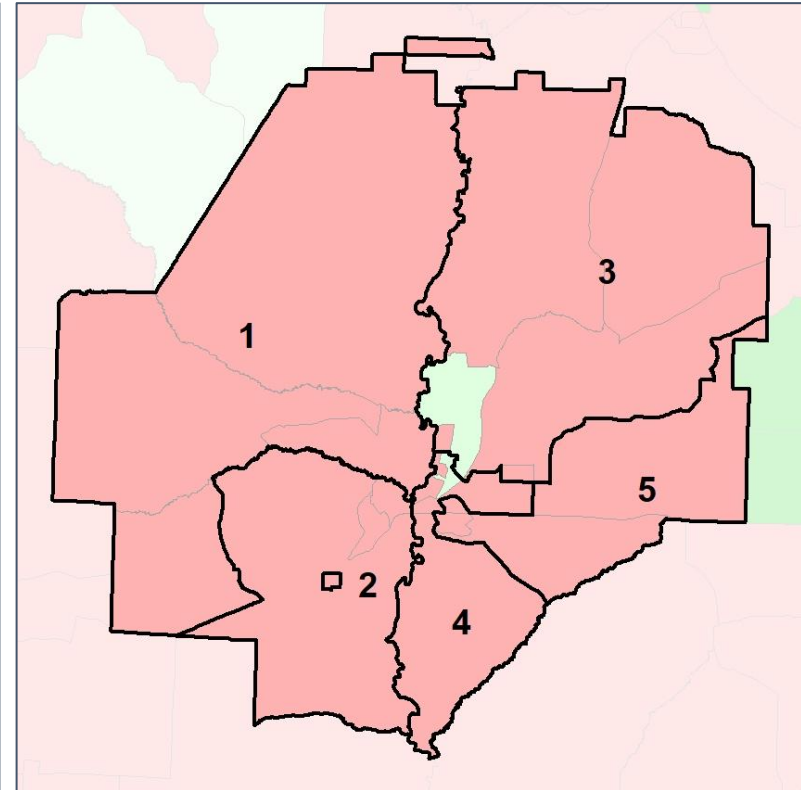
## Net Gain in Population (2010 - 2020)



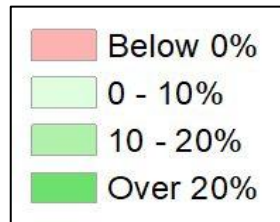
2012 Map



2022 Map\*



	1	2	3	4	5	1*	2*	3*	4*	5*	County
Population	2,183	1,871	2,094	2,229	2,065	2,061	2,018	2,094	2,154	2,140	12,082
API	1%	1%	1%	3%	1%	1%	1%	1%	3%	1%	1%
Black	44%	58%	52%	59%	65%	43%	58%	52%	58%	66%	59%
Latino	2%	4%	5%	4%	5%	2%	4%	5%	5%	5%	4%
Other	2%	3%	2%	2%	1%	2%	3%	2%	2%	1%	2%
White	50%	35%	40%	31%	27%	50%	35%	40%	32%	26%	34%
Population Gain	*	*	*	*	*	-122	147	0	-75	75	*
Population % Gain	*	*	*	*	*	-6%	8%	0%	-3%	4%	*
Net POC Gain	*	*	*	*	*	-74	87	0	-74	74	*
Net POC % Gain	*	*	*	*	*	-7%	7%	0%	-5%	5%	*

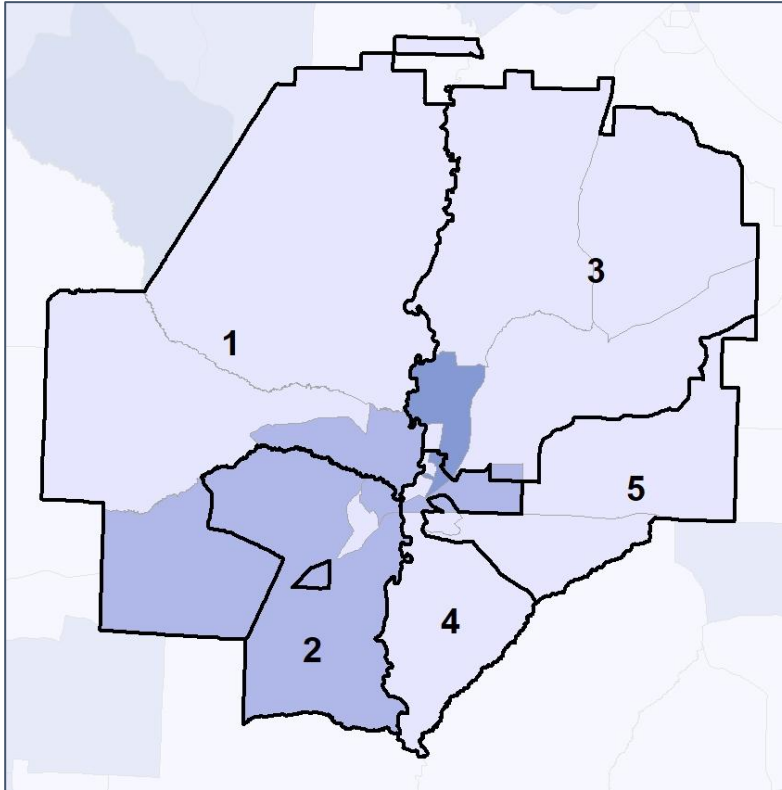


# Macon Co. Commission & School Board

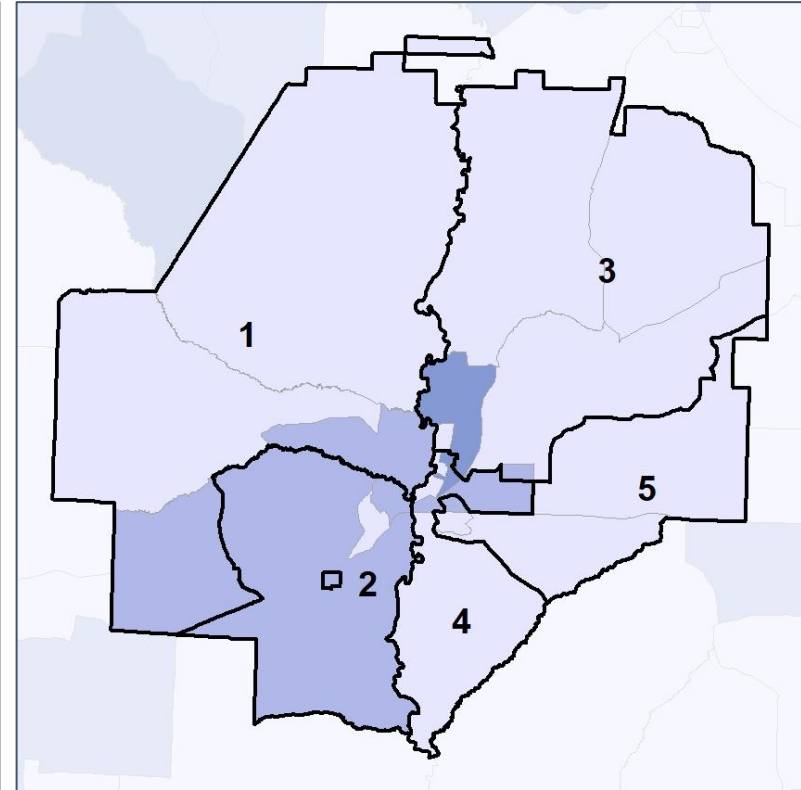
## Net Gain in % POC (2020 - 2010) by Census Block Group



2012 Map



2022 Map\*



	1	2	3	4	5	1*	2*	3*	4*	5*	County
Population	2,183	1,871	2,094	2,229	2,065	2,061	2,018	2,094	2,154	2,140	12,082
API	1%	1%	1%	3%	1%	1%	1%	1%	3%	1%	1%
Black	44%	58%	52%	59%	65%	43%	58%	52%	58%	66%	59%
Latino	2%	4%	5%	4%	5%	2%	4%	5%	5%	5%	4%
Other	2%	3%	2%	2%	1%	2%	3%	2%	2%	1%	2%
White	50%	35%	40%	31%	27%	50%	35%	40%	32%	26%	34%
Population Gain	*	*	*	*	*	-122	147	0	-75	75	*
Population % Gain	*	*	*	*	*	-6%	8%	0%	-3%	4%	*
Net POC Gain	*	*	*	*	*	-74	87	0	-74	74	*
Net POC % Gain	*	*	*	*	*	-7%	7%	0%	-5%	5%	*

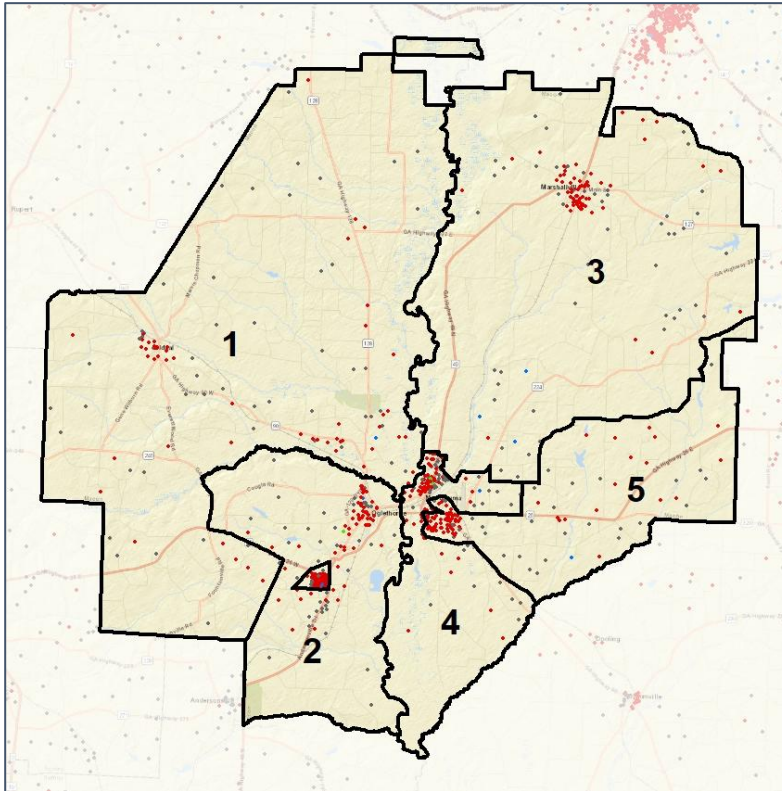


# Macon Co. Commission & School Board

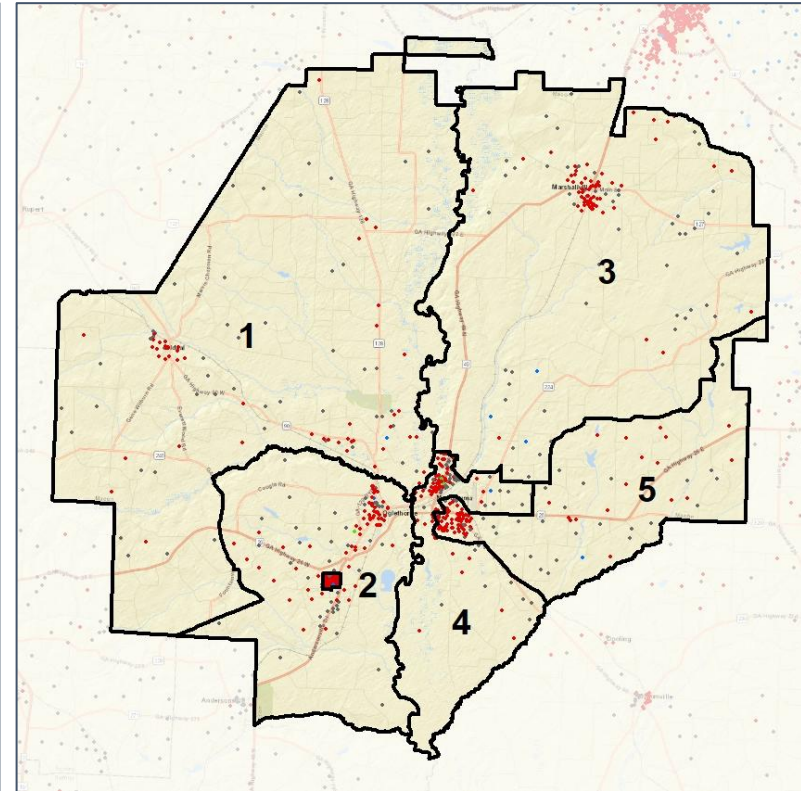
## Population Density by Race



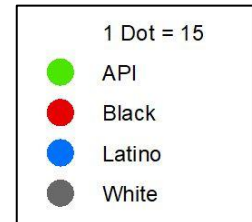
### 2012 Map



### 2022 Map\*



	1	2	3	4	5	1*	2*	3*	4*	5*	County
Population	2,183	1,871	2,094	2,229	2,065	2,061	2,018	2,094	2,154	2,140	12,082
API	28	17	11	76	28	28	17	11	73	31	163
% API	1%	1%	1%	3%	1%	1%	1%	1%	3%	1%	1%
Black	967	1,082	1,090	1,316	1,349	896	1,164	1,090	1,250	1,415	7,150
% Black	44%	58%	52%	59%	65%	43%	58%	52%	58%	66%	59%
Latino	47	76	110	100	106	46	78	110	100	106	472
% Latino	2%	4%	5%	4%	5%	2%	4%	5%	5%	5%	4%
Other	53	49	48	44	24	51	52	48	39	29	219
% Other	2%	3%	2%	2%	1%	2%	3%	2%	2%	1%	2%
White	1,088	647	835	693	558	1,040	707	835	692	559	4,078
% White	50%	35%	40%	31%	27%	50%	35%	40%	32%	26%	34%



Source:  
2020 Decennial Census  
2020 ACS 5-Year Dataset

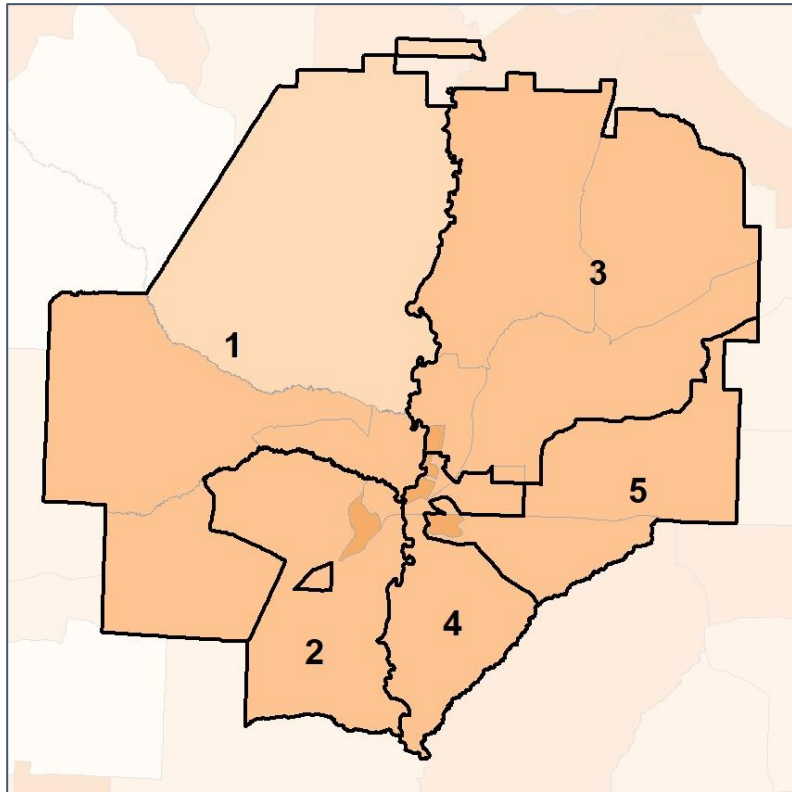


# Macon Co. Commission & School Board

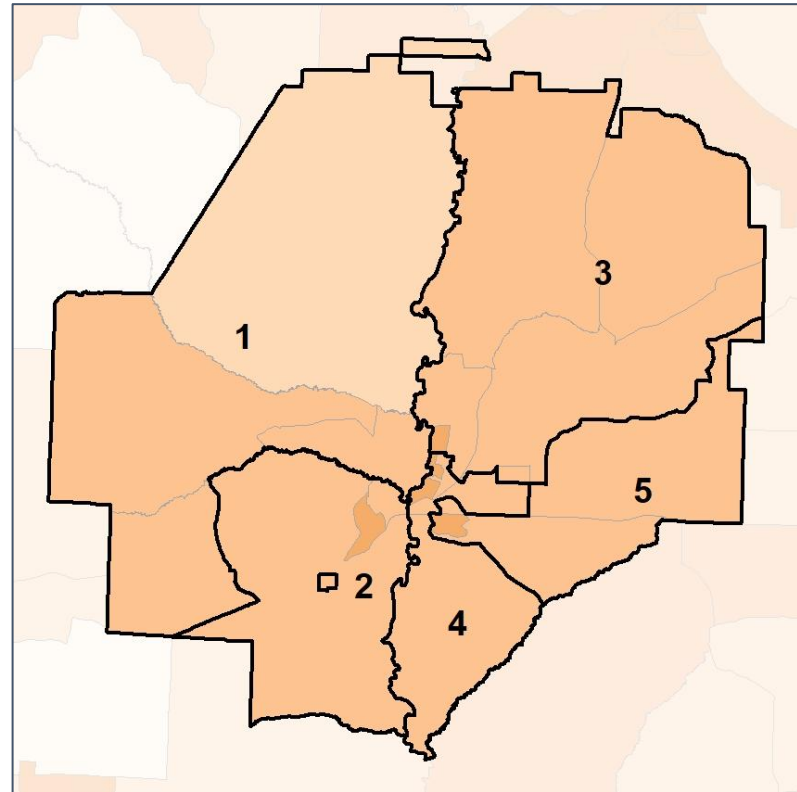
## % People of Color by Census Block Group



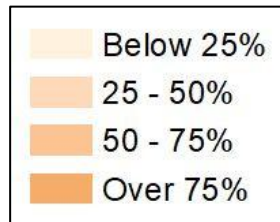
### 2012 Map



### 2022 Map\*



	1	2	3	4	5	1*	2*	3*	4*	5*	County
Population	2,183	1,871	2,094	2,229	2,065	2,061	2,018	2,094	2,154	2,140	12,082
API	28	17	11	76	28	28	17	11	73	31	163
% API	1%	1%	1%	3%	1%	1%	1%	1%	3%	1%	1%
Black	967	1,082	1,090	1,316	1,349	896	1,164	1,090	1,250	1,415	7,150
% Black	44%	58%	52%	59%	65%	43%	58%	52%	58%	66%	59%
Latino	47	76	110	100	106	46	78	110	100	106	472
% Latino	2%	4%	5%	4%	5%	2%	4%	5%	5%	5%	4%
Other	53	49	48	44	24	51	52	48	39	29	219
% Other	2%	3%	2%	2%	1%	2%	3%	2%	2%	1%	2%
White	1,088	647	835	693	558	1,040	707	835	692	559	4,078
% White	50%	35%	40%	31%	27%	50%	35%	40%	32%	26%	34%



Source:  
2020 Decennial Census  
2020 ACS 5-Year Dataset

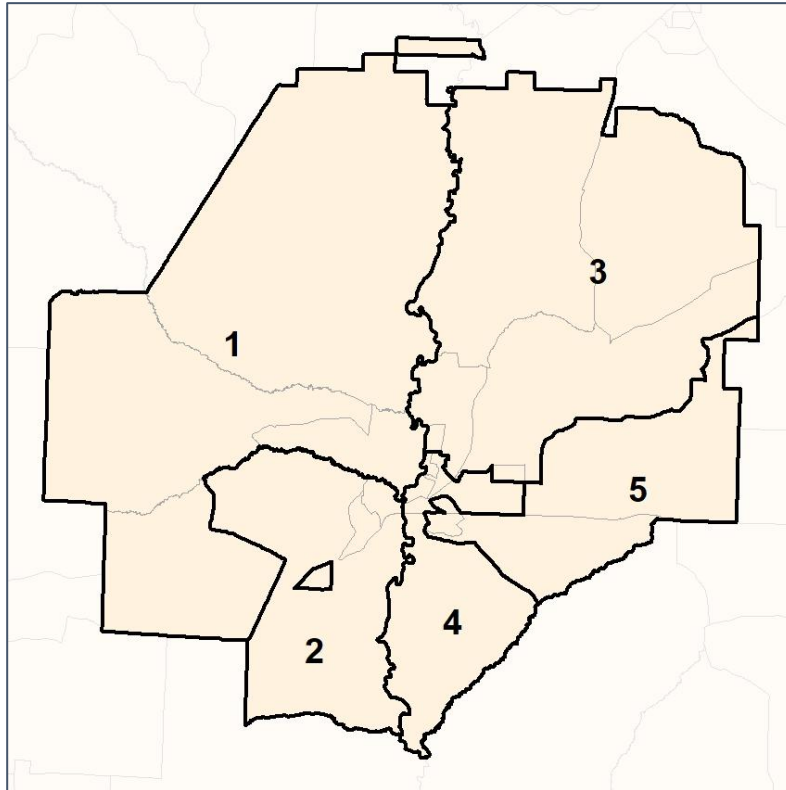


# Macon Co. Commission & School Board

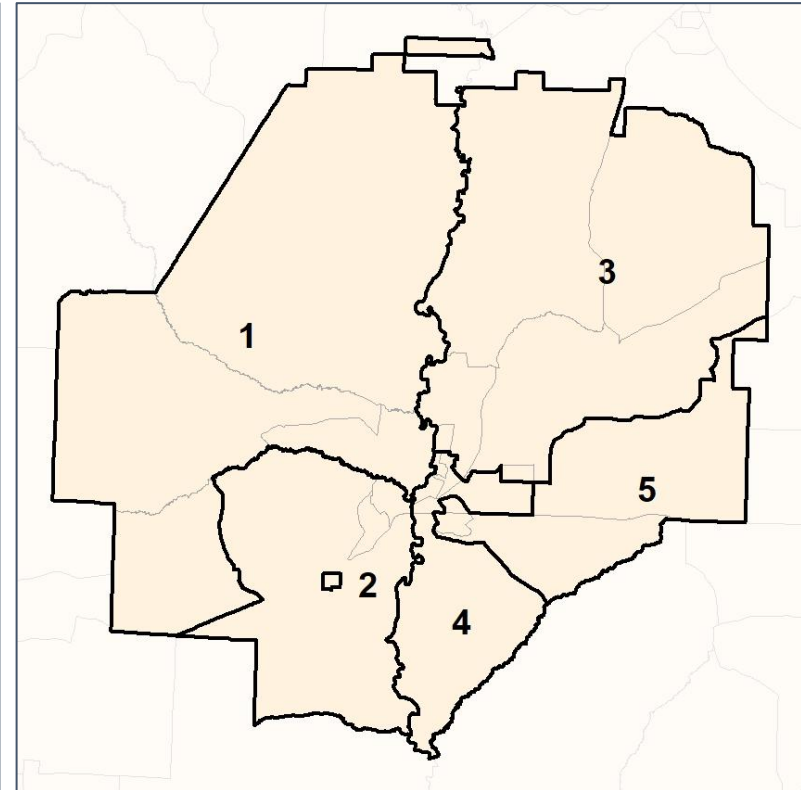
## % API by Census Block Group



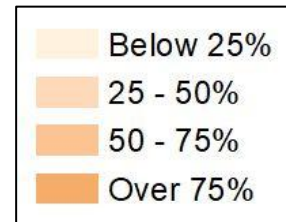
### 2012 Map



### 2022 Map\*



	1	2	3	4	5	1*	2*	3*	4*	5*	County
Population	2,183	1,871	2,094	2,229	2,065	2,061	2,018	2,094	2,154	2,140	12,082
API	28	17	11	76	28	28	17	11	73	31	163
% API	1%	1%	1%	3%	1%	1%	1%	1%	3%	1%	1%
Black	967	1,082	1,090	1,316	1,349	896	1,164	1,090	1,250	1,415	7,150
% Black	44%	58%	52%	59%	65%	43%	58%	52%	58%	66%	59%
Latino	47	76	110	100	106	46	78	110	100	106	472
% Latino	2%	4%	5%	4%	5%	2%	4%	5%	5%	5%	4%
Other	53	49	48	44	24	51	52	48	39	29	219
% Other	2%	3%	2%	2%	1%	2%	3%	2%	2%	1%	2%
White	1,088	647	835	693	558	1,040	707	835	692	559	4,078
% White	50%	35%	40%	31%	27%	50%	35%	40%	32%	26%	34%



Source:  
2020 Decennial Census  
2020 ACS 5-Year Dataset

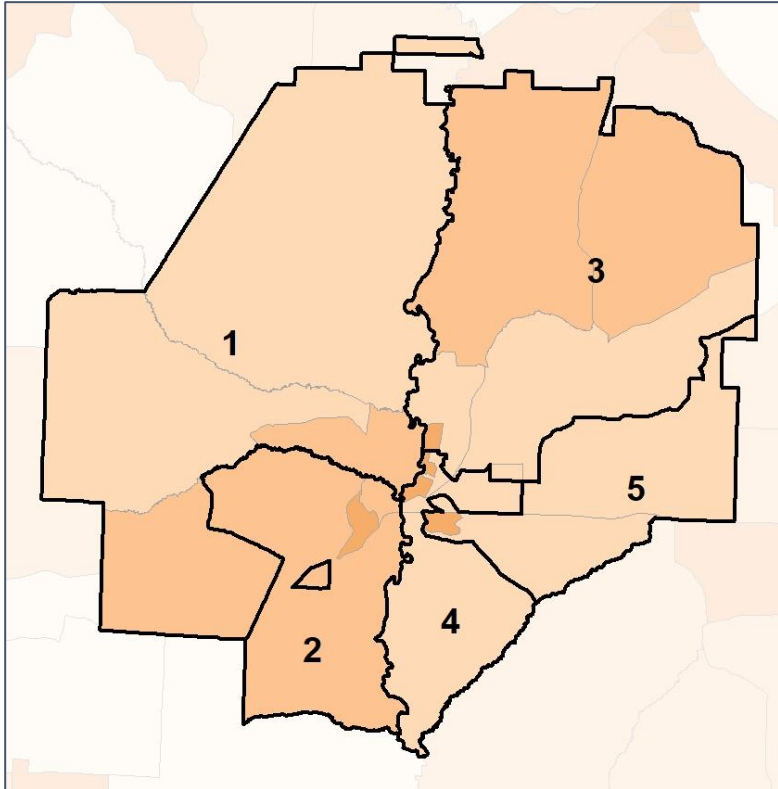


# Macon Co. Commission & School Board

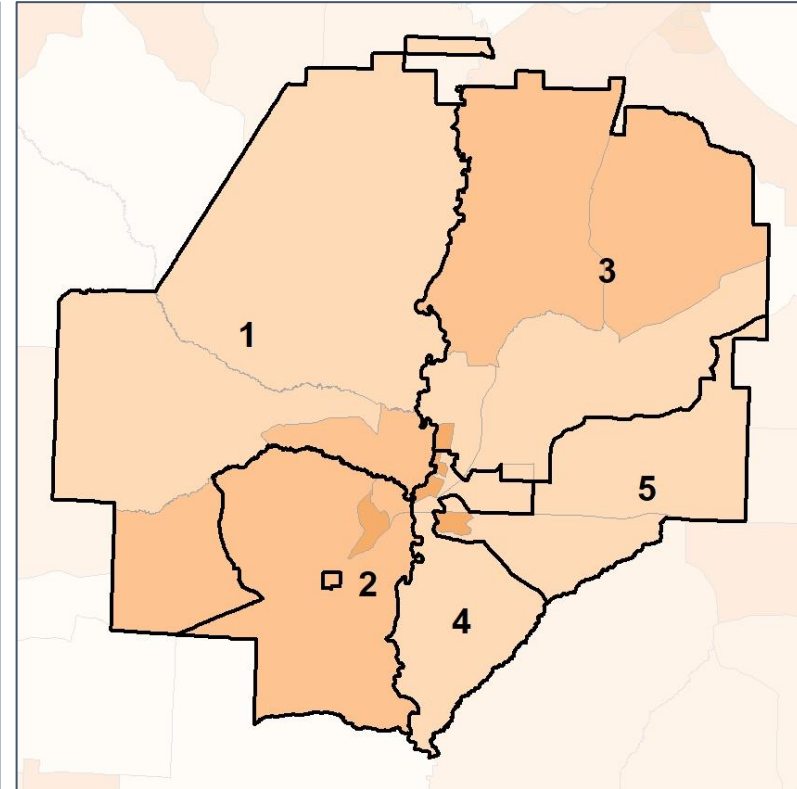
## % Black by Census Block Group



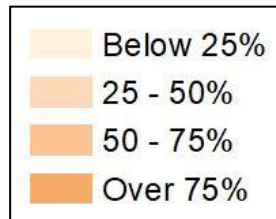
### 2012 Map



### 2022 Map\*



	1	2	3	4	5	1*	2*	3*	4*	5*	County
Population	2,183	1,871	2,094	2,229	2,065	2,061	2,018	2,094	2,154	2,140	12,082
API	28	17	11	76	28	28	17	11	73	31	163
% API	1%	1%	1%	3%	1%	1%	1%	1%	3%	1%	1%
Black	967	1,082	1,090	1,316	1,349	896	1,164	1,090	1,250	1,415	7,150
% Black	44%	58%	52%	59%	65%	43%	58%	52%	58%	66%	59%
Latino	47	76	110	100	106	46	78	110	100	106	472
% Latino	2%	4%	5%	4%	5%	2%	4%	5%	5%	5%	4%
Other	53	49	48	44	24	51	52	48	39	29	219
% Other	2%	3%	2%	2%	1%	2%	3%	2%	2%	1%	2%
White	1,088	647	835	693	558	1,040	707	835	692	559	4,078
% White	50%	35%	40%	31%	27%	50%	35%	40%	32%	26%	34%



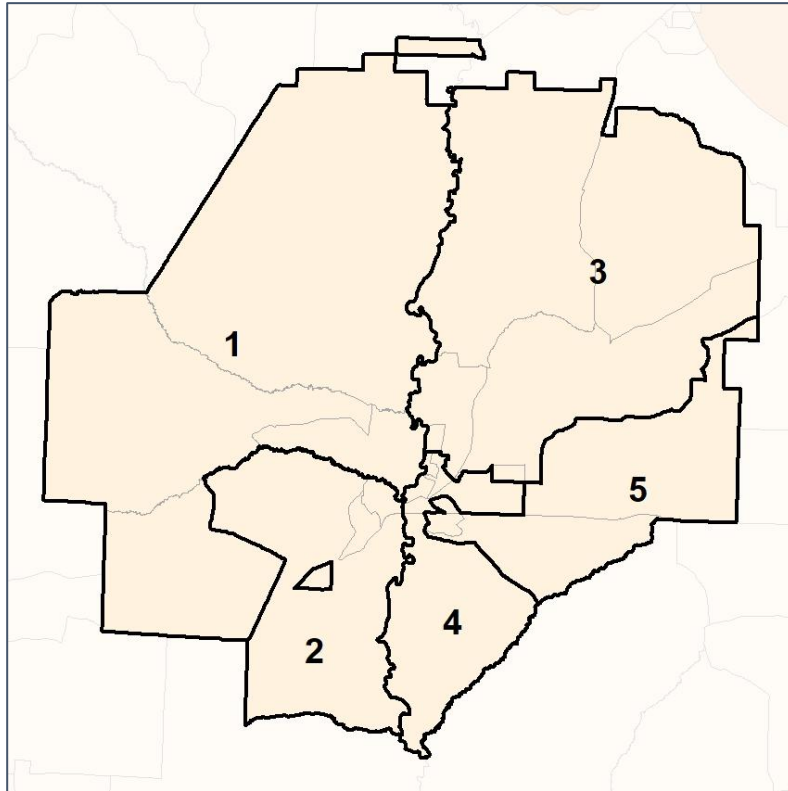


# Macon Co. Commission & School Board

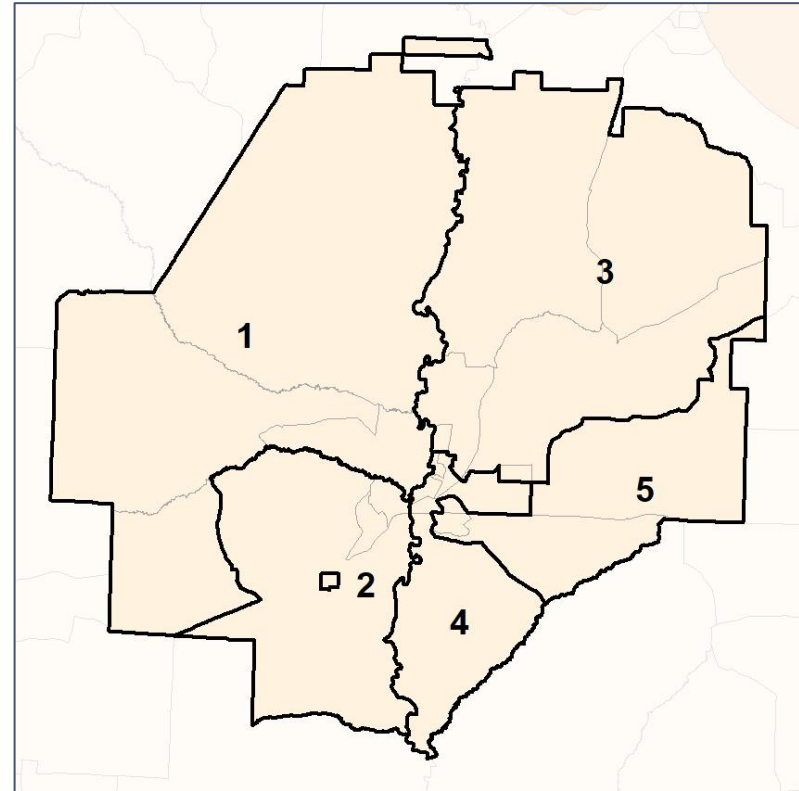
## % Latino by Census Block Group



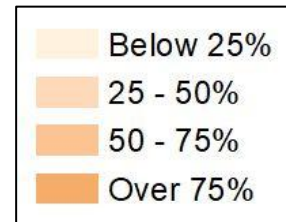
### 2012 Map



### 2022 Map\*



	1	2	3	4	5	1*	2*	3*	4*	5*	County
Population	2,183	1,871	2,094	2,229	2,065	2,061	2,018	2,094	2,154	2,140	12,082
API	28	17	11	76	28	28	17	11	73	31	163
% API	1%	1%	1%	3%	1%	1%	1%	1%	3%	1%	1%
Black	967	1,082	1,090	1,316	1,349	896	1,164	1,090	1,250	1,415	7,150
% Black	44%	58%	52%	59%	65%	43%	58%	52%	58%	66%	59%
Latino	47	76	110	100	106	46	78	110	100	106	472
% Latino	2%	4%	5%	4%	5%	2%	4%	5%	5%	5%	4%
Other	53	49	48	44	24	51	52	48	39	29	219
% Other	2%	3%	2%	2%	1%	2%	3%	2%	2%	1%	2%
White	1,088	647	835	693	558	1,040	707	835	692	559	4,078
% White	50%	35%	40%	31%	27%	50%	35%	40%	32%	26%	34%



Source:  
2020 Decennial Census  
2020 ACS 5-Year Dataset

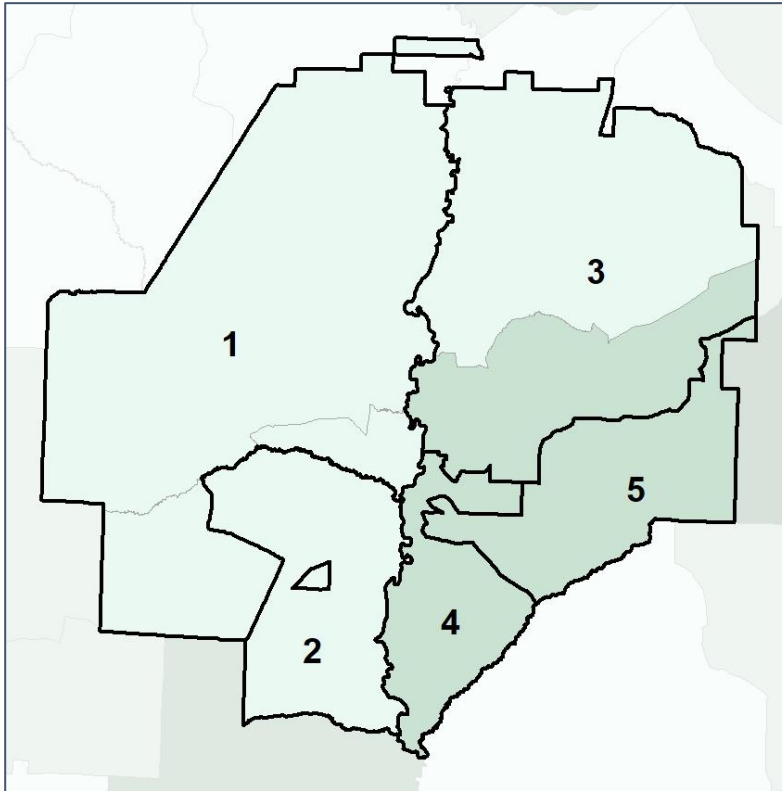


# Macon Co. Commission & School Board

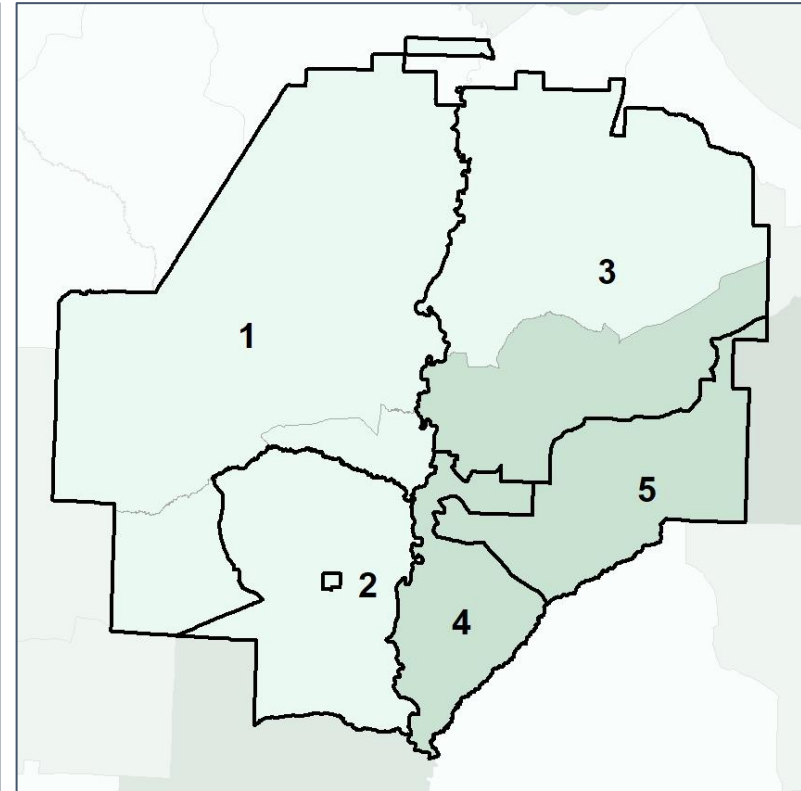
## Median Household Income by Census Tract



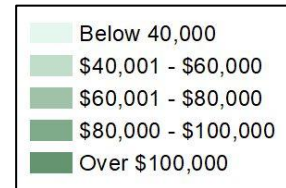
2012 Map



2022 Map\*



	1	2	3	4	5	1*	2*	3*	4*	5*	County
Population	2,183	1,871	2,094	2,229	2,065	2,061	2,018	2,094	2,154	2,140	12,082
% API	1%	1%	1%	3%	1%	1%	1%	1%	3%	1%	1%
% Black	44%	58%	52%	59%	65%	43%	58%	52%	58%	66%	59%
% Latino	2%	4%	5%	4%	5%	2%	4%	5%	5%	5%	4%
% Other	2%	3%	2%	2%	1%	2%	3%	2%	2%	1%	2%
% White	50%	35%	40%	31%	27%	50%	35%	40%	32%	26%	34%
Median Income	\$26,000	\$30,000	\$35,000	\$37,000	\$22,000	\$26,000	\$30,000	\$35,000	\$37,000	\$22,000	\$32,000
% Renter	39%	42%	38%	23%	68%	39%	42%	38%	23%	68%	39%
% Youth	17%	43%	20%	17%	16%	17%	43%	20%	17%	16%	25%

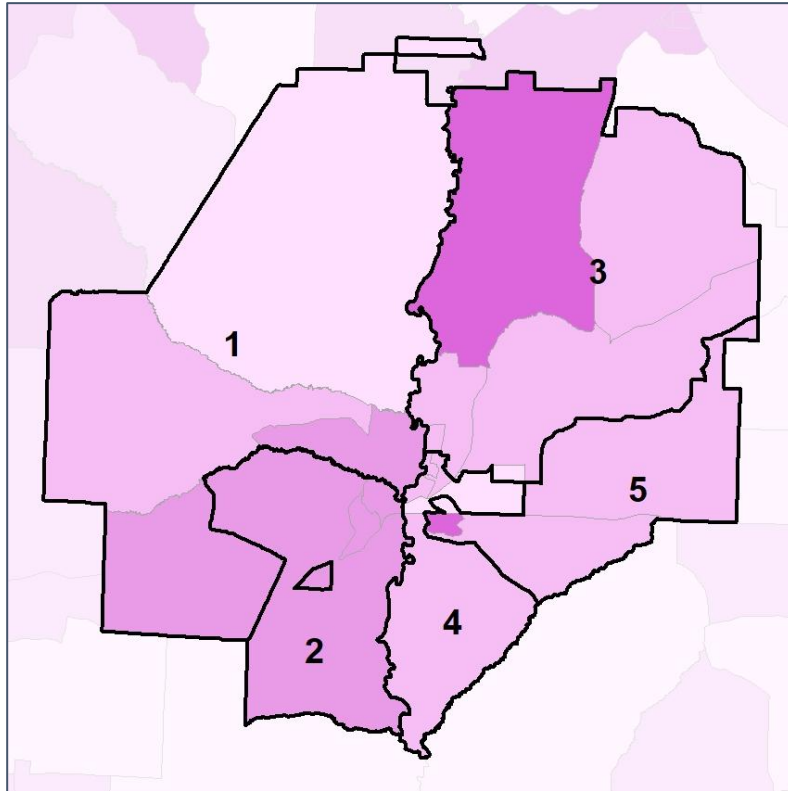


# Macon Co. Commission & School Board

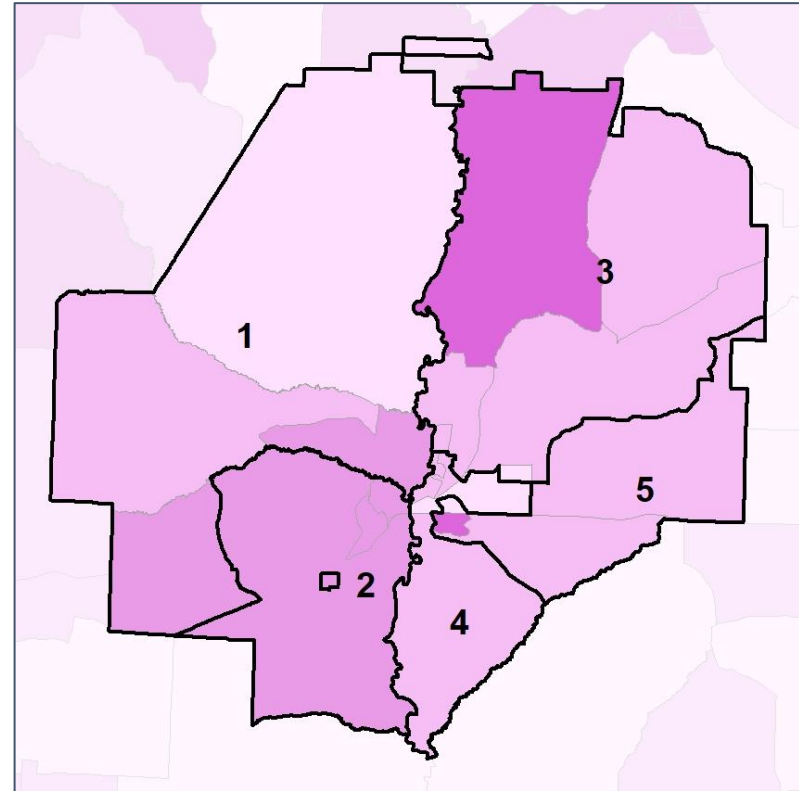
## % Renter by Census Block Group



### 2012 Map



### 2022 Map\*



	1	2	3	4	5	1*	2*	3*	4*	5*	County
Population	2,183	1,871	2,094	2,229	2,065	2,061	2,018	2,094	2,154	2,140	12,082
% API	1%	1%	1%	3%	1%	1%	1%	1%	3%	1%	1%
% Black	44%	58%	52%	59%	65%	43%	58%	52%	58%	66%	59%
% Latino	2%	4%	5%	4%	5%	2%	4%	5%	5%	5%	4%
% Other	2%	3%	2%	2%	1%	2%	3%	2%	2%	1%	2%
% White	50%	35%	40%	31%	27%	50%	35%	40%	32%	26%	34%
Median Income	\$26,000	\$30,000	\$35,000	\$37,000	\$22,000	\$26,000	\$30,000	\$35,000	\$37,000	\$22,000	\$32,000
% Renter	39%	42%	38%	23%	68%	39%	42%	38%	23%	68%	39%
% Youth	17%	43%	20%	17%	16%	17%	43%	20%	17%	16%	25%



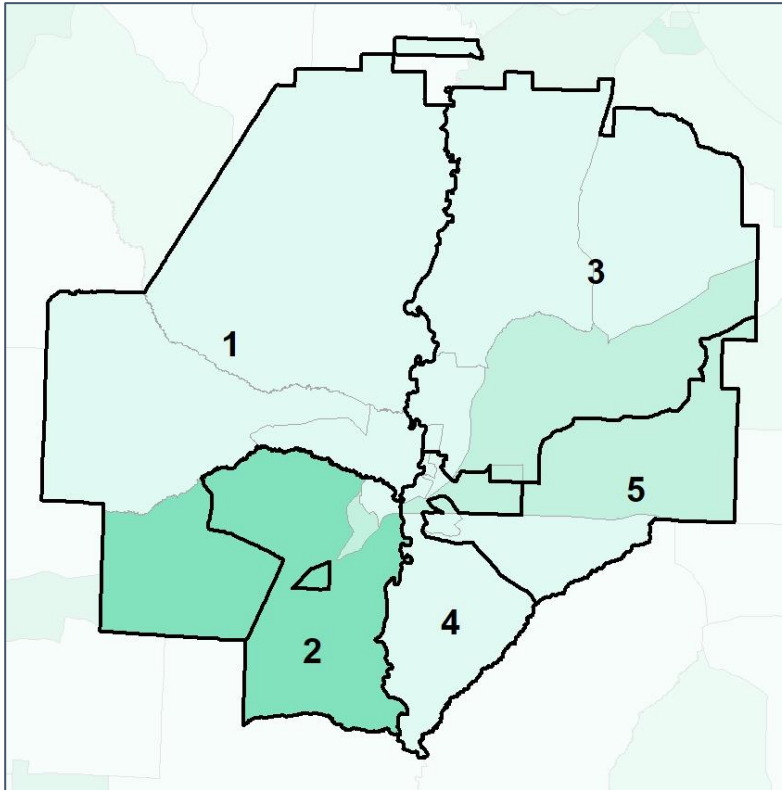
Source:  
2020 Decennial Census  
2020 ACS 5-Year Dataset

# Macon Co. Commission & School Board

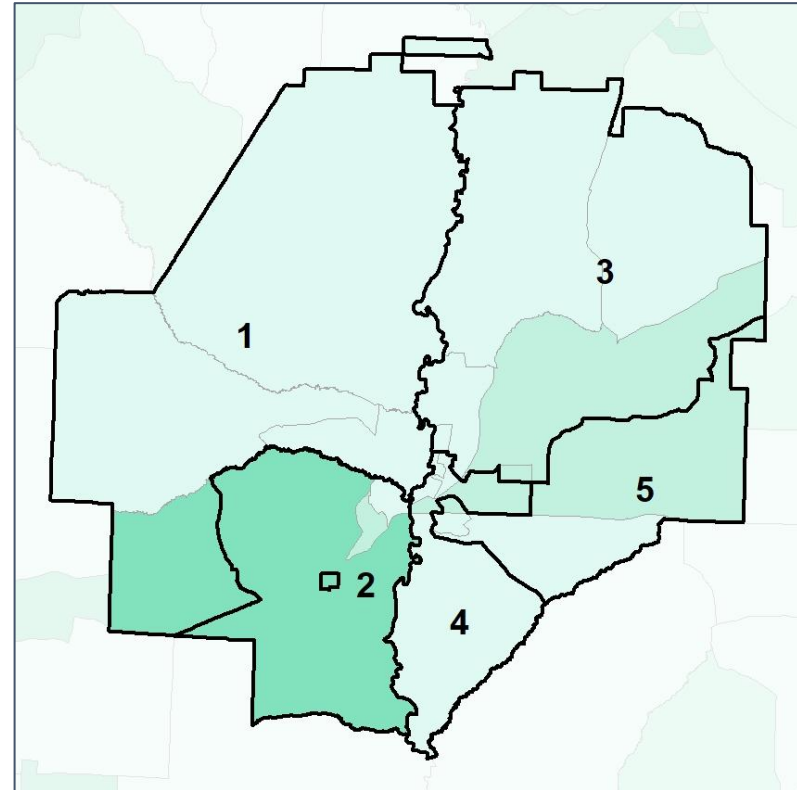
## % Youth (18-34) by Census Block Group



2012 Map



2022 Map\*



	1	2	3	4	5	1*	2*	3*	4*	5*	County
Population	2,183	1,871	2,094	2,229	2,065	2,061	2,018	2,094	2,154	2,140	12,082
% API	1%	1%	1%	3%	1%	1%	1%	1%	3%	1%	1%
% Black	44%	58%	52%	59%	65%	43%	58%	52%	58%	66%	59%
% Latino	2%	4%	5%	4%	5%	2%	4%	5%	5%	5%	4%
% Other	2%	3%	2%	2%	1%	2%	3%	2%	2%	1%	2%
% White	50%	35%	40%	31%	27%	50%	35%	40%	32%	26%	34%
Median Income	\$26,000	\$30,000	\$35,000	\$37,000	\$22,000	\$26,000	\$30,000	\$35,000	\$37,000	\$22,000	\$32,000
% Renter	39%	42%	38%	23%	68%	39%	42%	38%	23%	68%	39%
% Youth	17%	43%	20%	17%	16%	17%	43%	20%	17%	16%	25%

