



Demographic Overview

Racial Breakdown in Liberty County

Liberty County	2010	2020	% Change
Total Population	63,453	65,256	3%
AAPI	1,546	1,762	14%
Black	26,018	27,309	5%
Latino	6,159	7,786	26%
Other/Mixed Race	2,645	4,395	66%
POC	36,368	41,252	13%
White	27,085	24,004	-11%

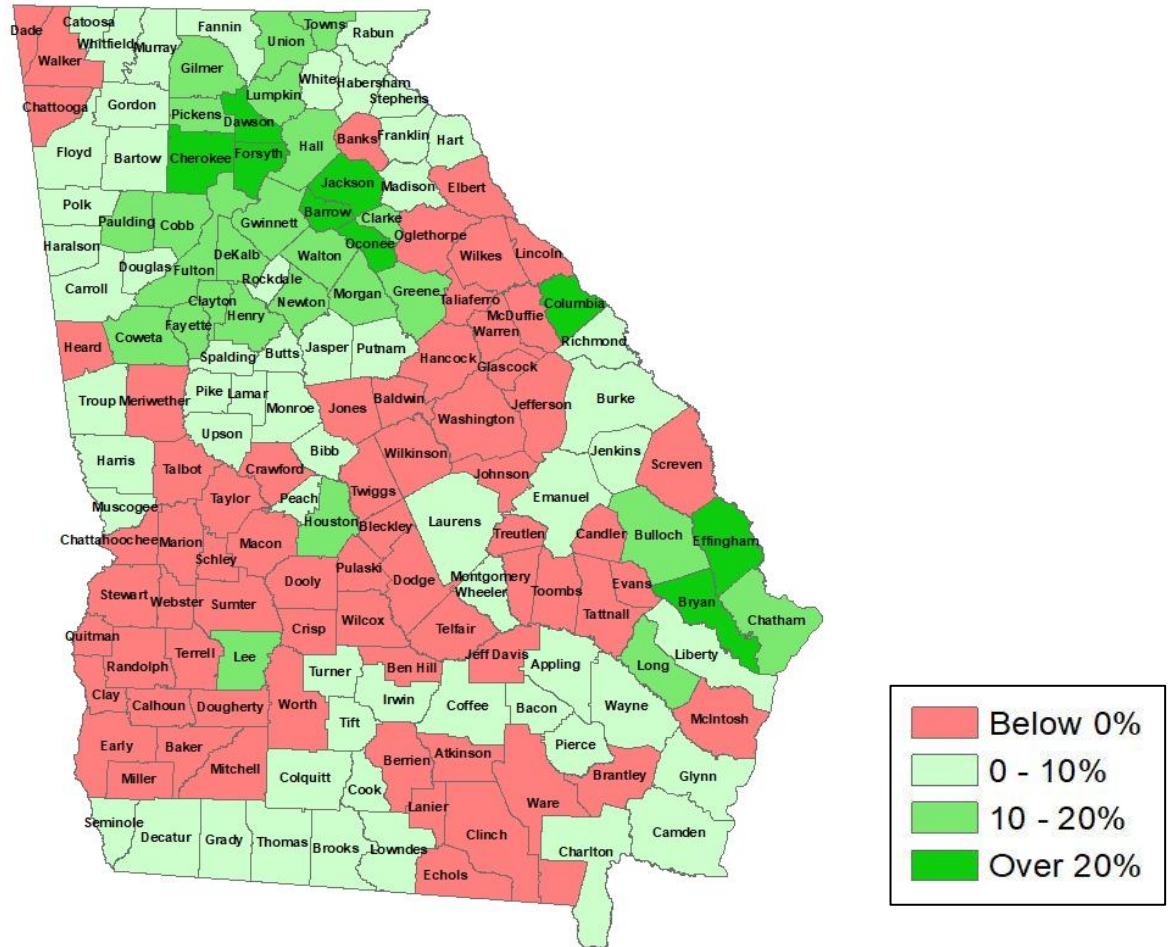
*Note: The use of "Other" in these statistics combines those who identify as Native American, Mixed Race, and "Other" race





Population Gain

Change in Population in Georgia by County



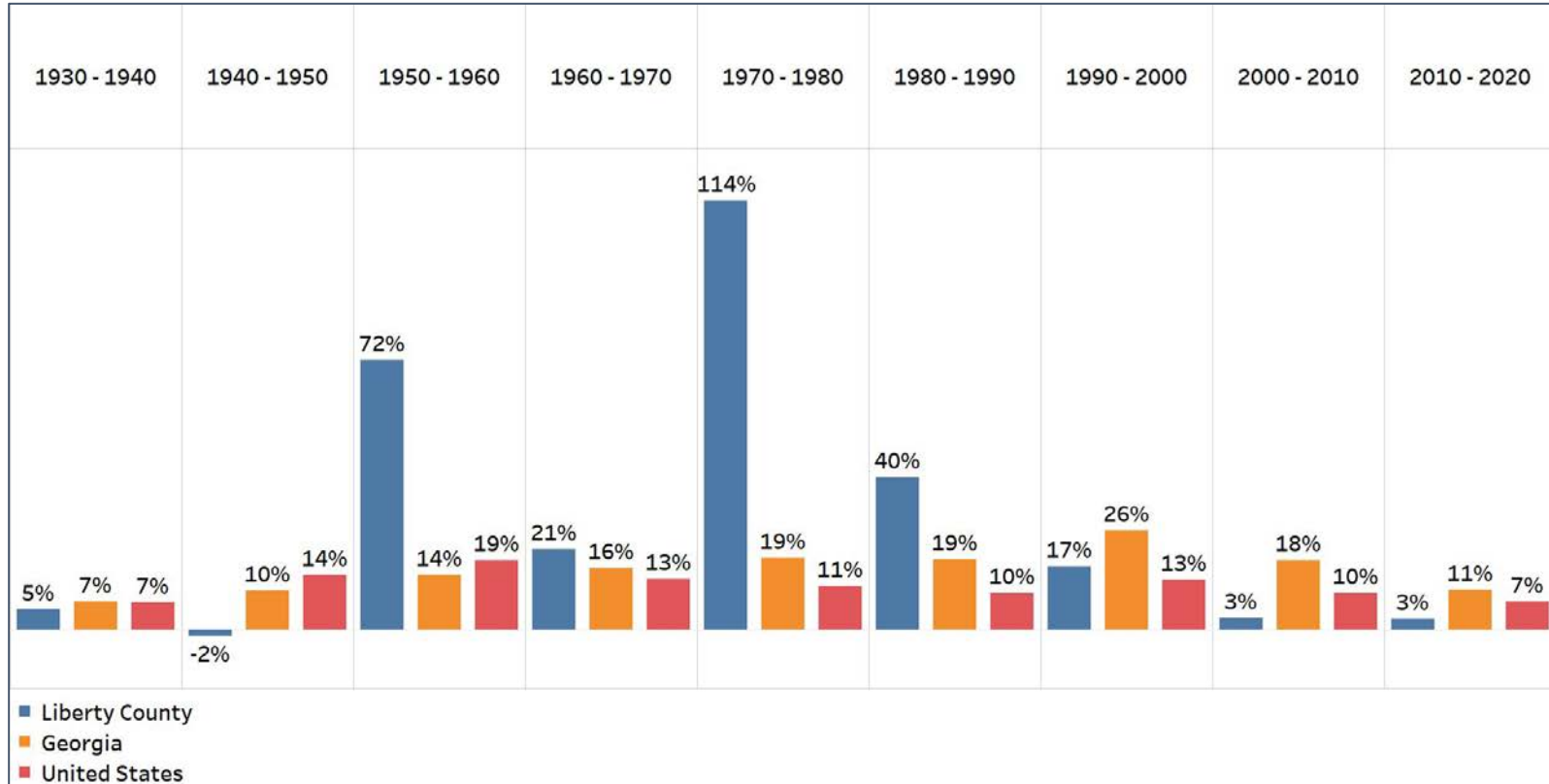
- Georgia is experiencing rapid population growth in the Atlanta, Augusta, and Savannah regions of the state





Population Gain

Change in Population by Decade



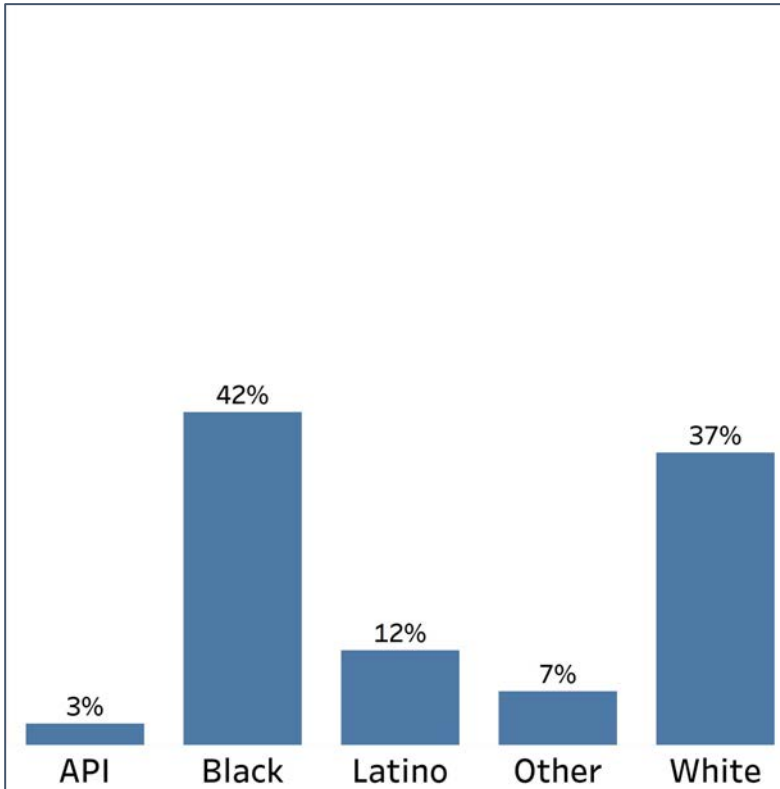
- Liberty county experienced an exceptionally large population growth from 1950-1960 and 1970- 1980 that exceed the statewide and national percentage combined
- Since 1990 Liberty county's population growth has been below the statewide average

Demographics

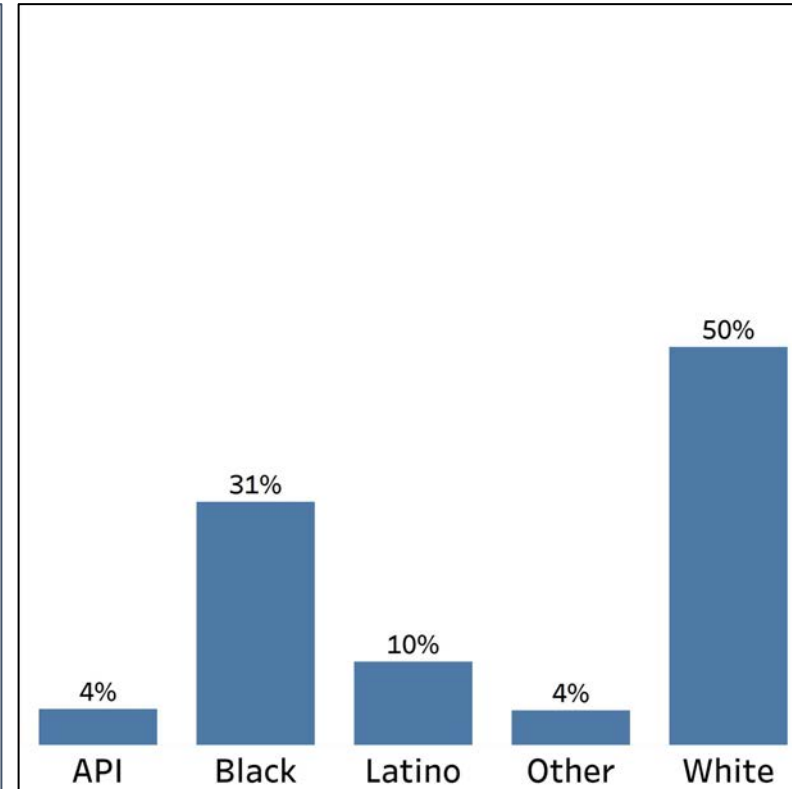
Comparison between Liberty County and Georgia



Liberty County



Georgia



- Liberty County has a higher Black population relative to the state average while the White population is below the state average
- The Latino population in Liberty County compose a slightly higher population than the statewide average

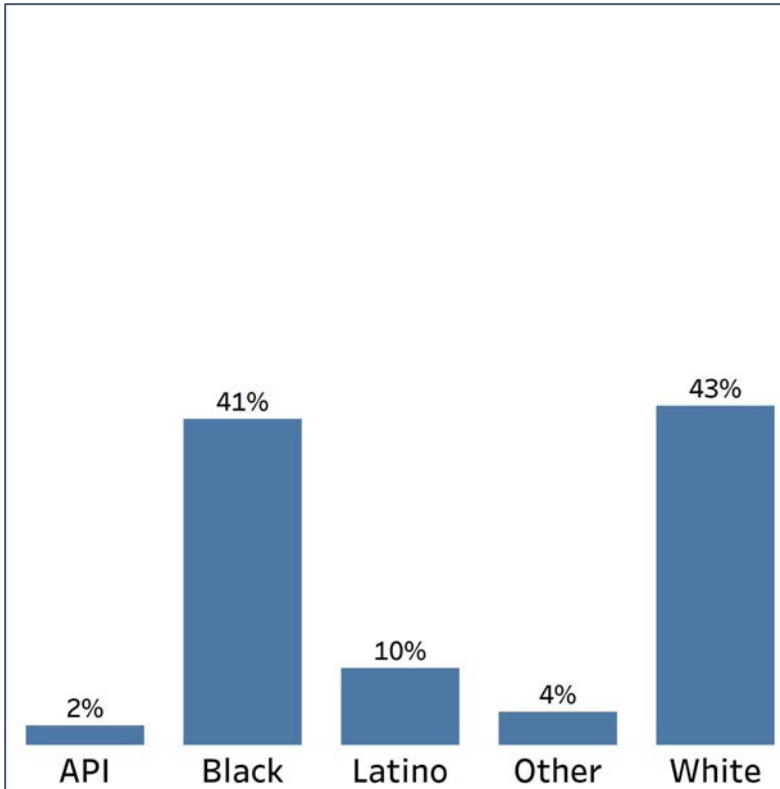


Demographics

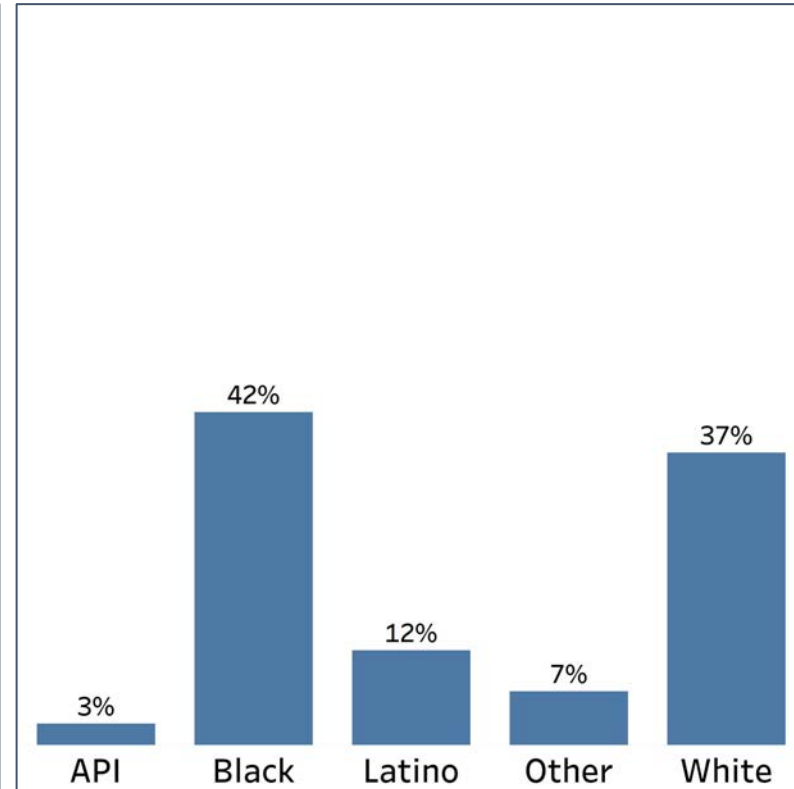
2010 vs 2020 Demographics in Liberty County



Liberty County 2010



Liberty County 2020



- Liberty county White population decreased by 6% since 2010
- Liberty county communities of color have increased in population by at least 1%

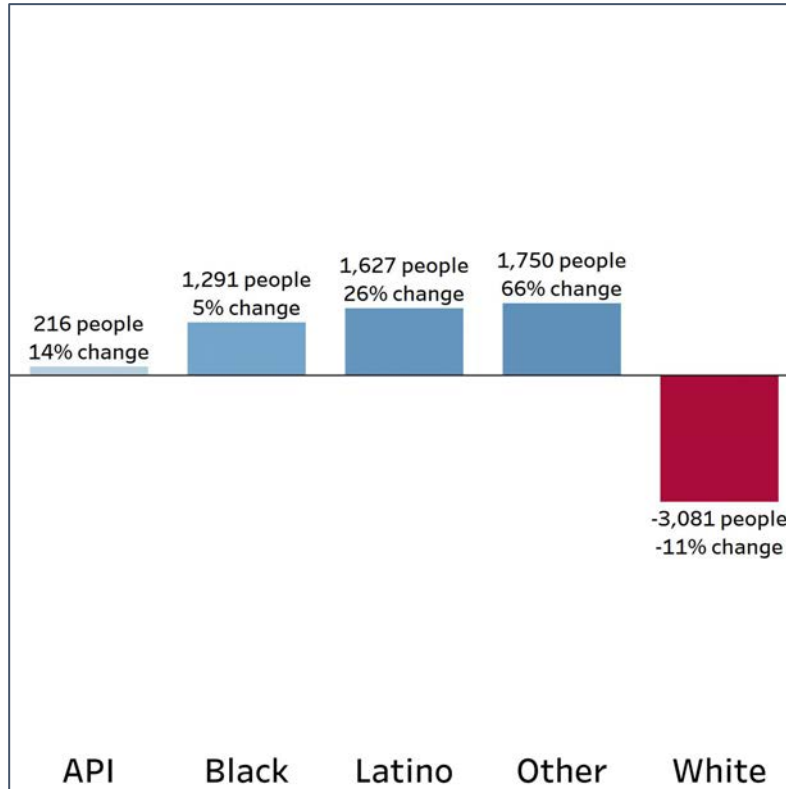


Demographics

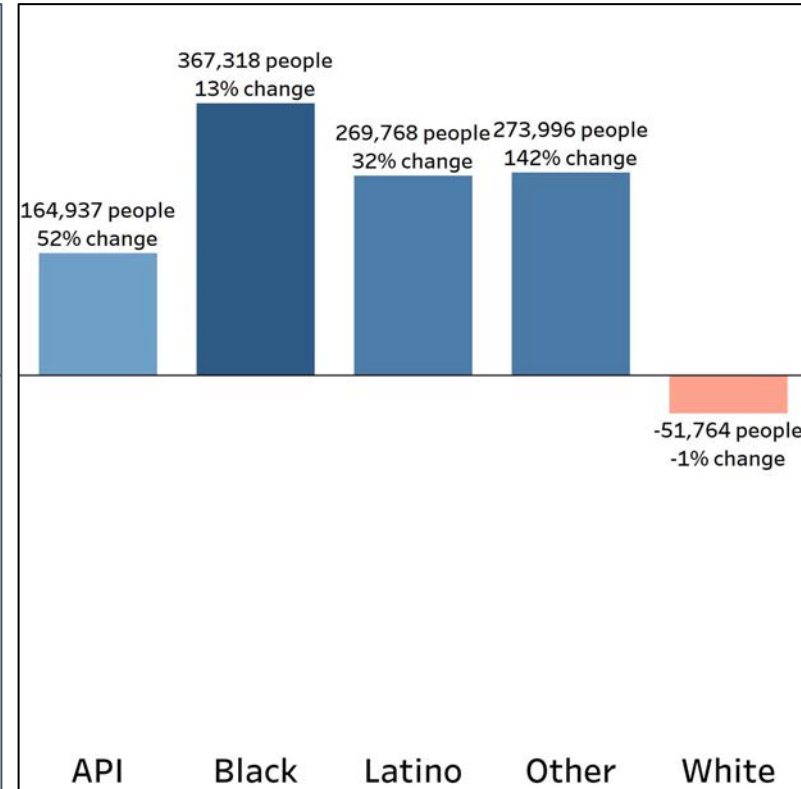
Population Change by Race (2020 - 2010)



Liberty County



Georgia

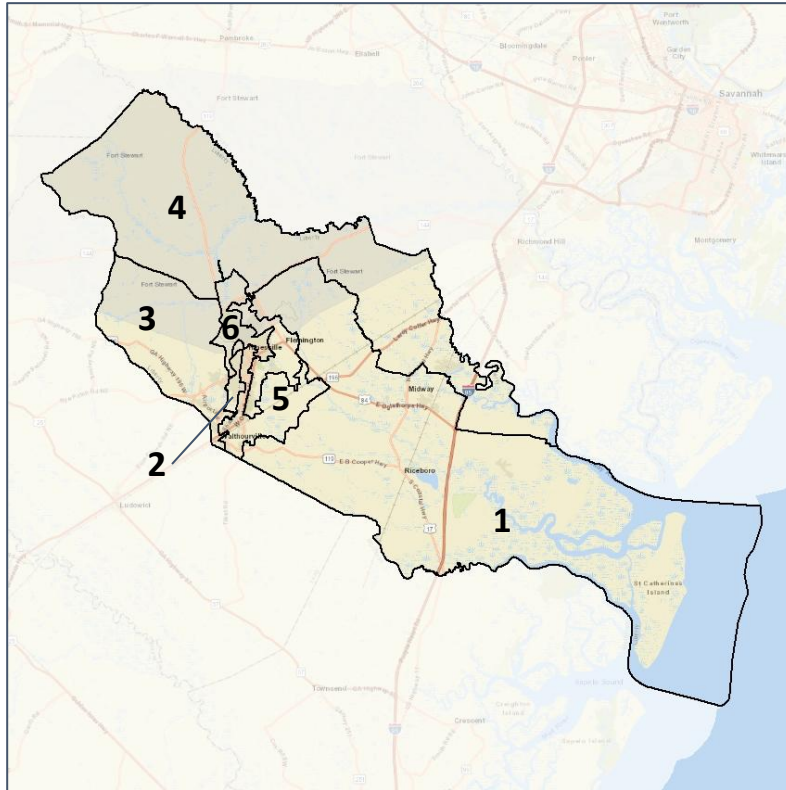


- Liberty County's communities of color are experiencing a population growth, but are below the statewide percentage average
- The White population in Liberty county decline at a 10 % which is a higher rate than the statewide average.

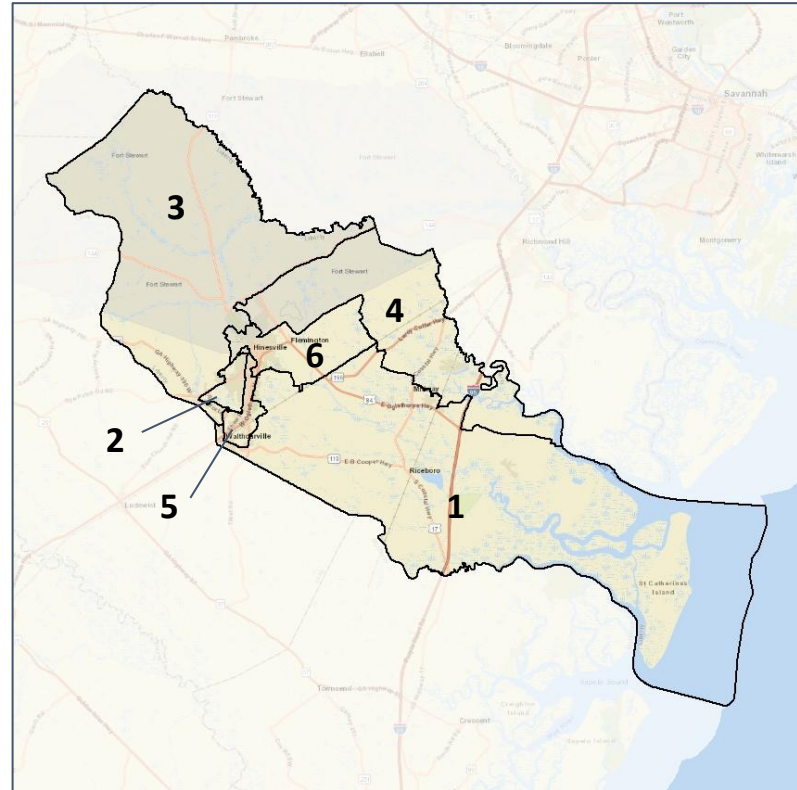


Liberty Co. Commission & School Board Context

2012 Map



2022 Map*



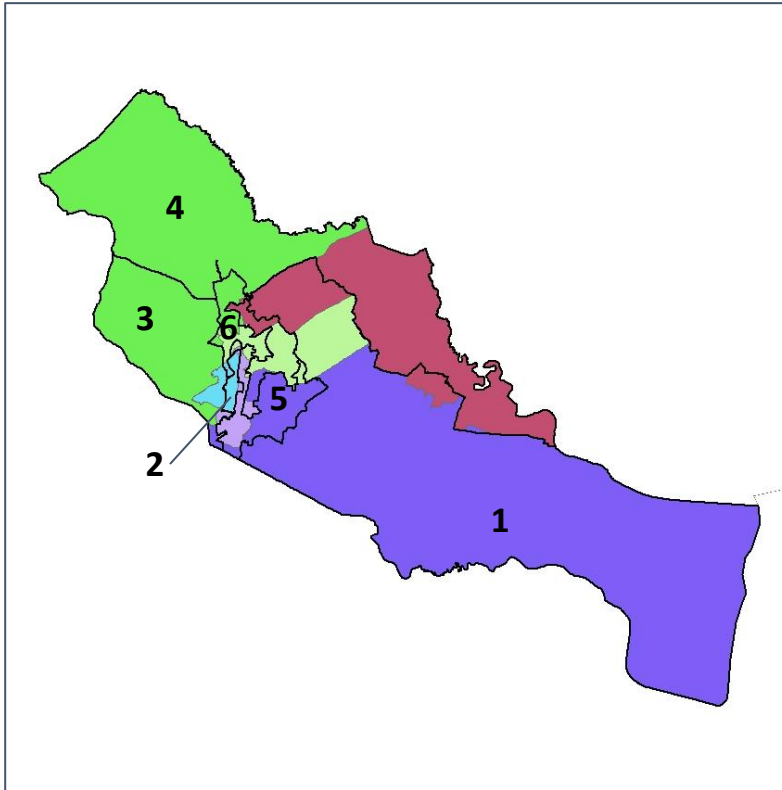
	1	2	3	4	5	6	1*	2*	3*	4*	5*	6*	County
Population	10,144	8,713	13,950	12,569	9,568	10,312	10,860	10,815	10,910	10,886	10,984	10,801	65,256
API	1%	3%	3%	3%	2%	4%	1%	3%	3%	2%	2%	4%	3%
Black	42%	51%	42%	32%	56%	33%	50%	50%	34%	20%	54%	43%	42%
Latino	7%	12%	14%	10%	11%	17%	7%	13%	15%	13%	12%	13%	12%
Other	5%	7%	7%	6%	7%	8%	5%	7%	7%	7%	7%	7%	7%
White	45%	27%	34%	49%	24%	39%	37%	27%	41%	58%	25%	33%	37%
Population Gain	*	*	*	*	*	*	716	2,102	-3,040	-1,683	1,416	489	*
Population % Gain	*	*	*	*	*	*	7%	24%	-22%	-13%	15%	5%	*
Net POC Gain	*	*	*	*	*	*	1,206	1,478	-2,748	-1,843	949	958	*
Net POC % Gain	*	*	*	*	*	*	21%	23%	-30%	-29%	13%	15%	*

Liberty Co. Commission & School Board

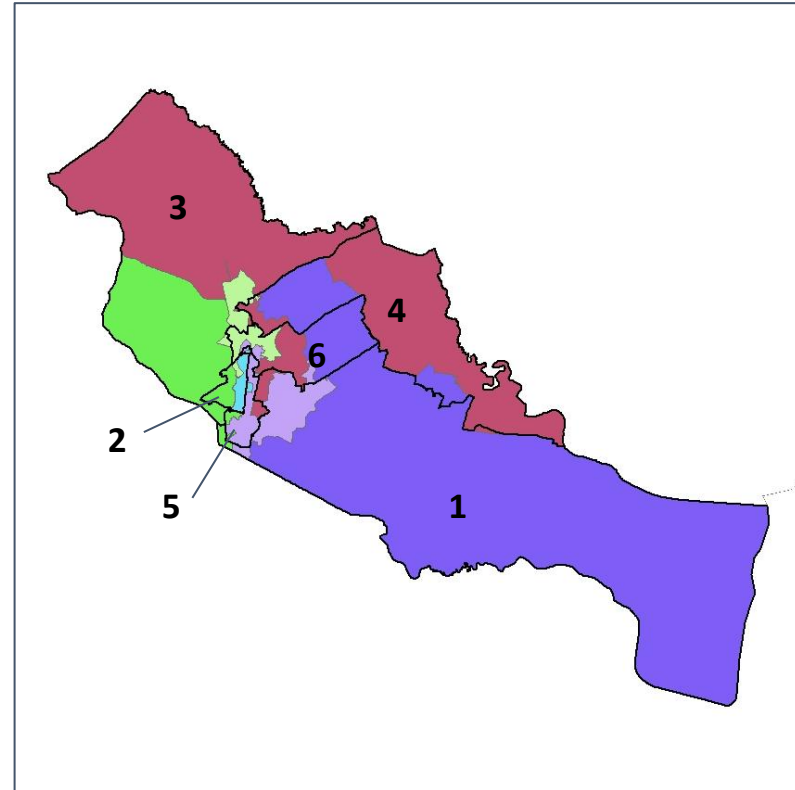
Changes in Redistricting



2012 Map (2022 in Colors)



2022 Map* (2012 in Colors)



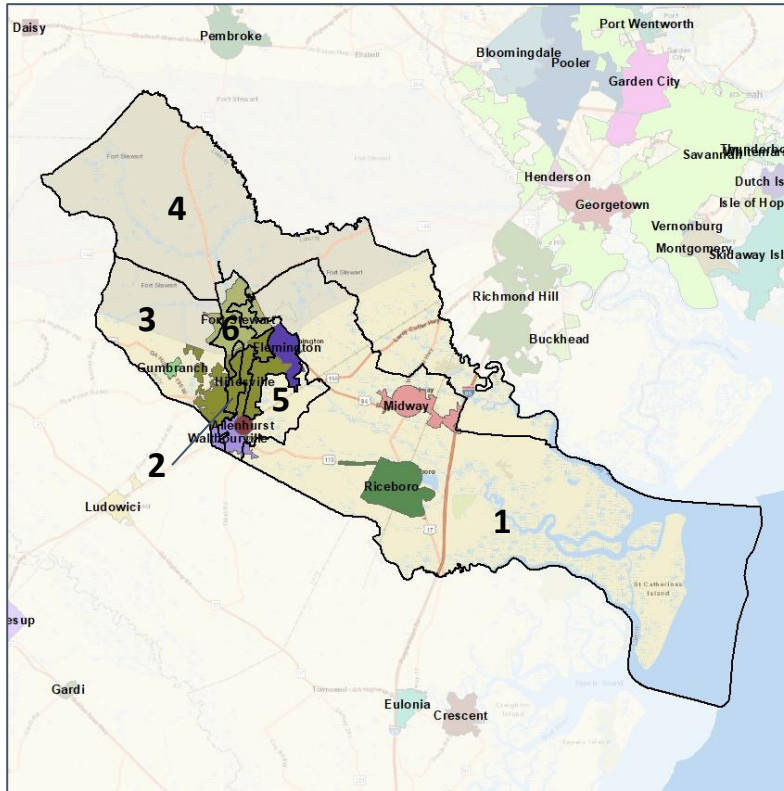
	1	2	3	4	5	6	1*	2*	3*	4*	5*	6*	County
Population	10,144	8,713	13,950	12,569	9,568	10,312	10,860	10,815	10,910	10,886	10,984	10,801	65,256
API	1%	3%	3%	3%	2%	4%	1%	3%	3%	2%	2%	4%	3%
Black	42%	51%	42%	32%	56%	33%	50%	50%	34%	20%	54%	43%	42%
Latino	7%	12%	14%	10%	11%	17%	7%	13%	15%	13%	12%	13%	12%
Other	5%	7%	7%	6%	7%	8%	5%	7%	7%	7%	7%	7%	7%
White	45%	27%	34%	49%	24%	39%	37%	27%	41%	58%	25%	33%	37%
Population Gain	*	*	*	*	*	*	716	2,102	-3,040	-1,683	1,416	489	*
Population % Gain	*	*	*	*	*	*	7%	24%	-22%	-13%	15%	5%	*
Net POC Gain	*	*	*	*	*	*	1,206	1,478	-2,748	-1,843	949	958	*
Net POC % Gain	*	*	*	*	*	*	21%	23%	-30%	-29%	13%	15%	*



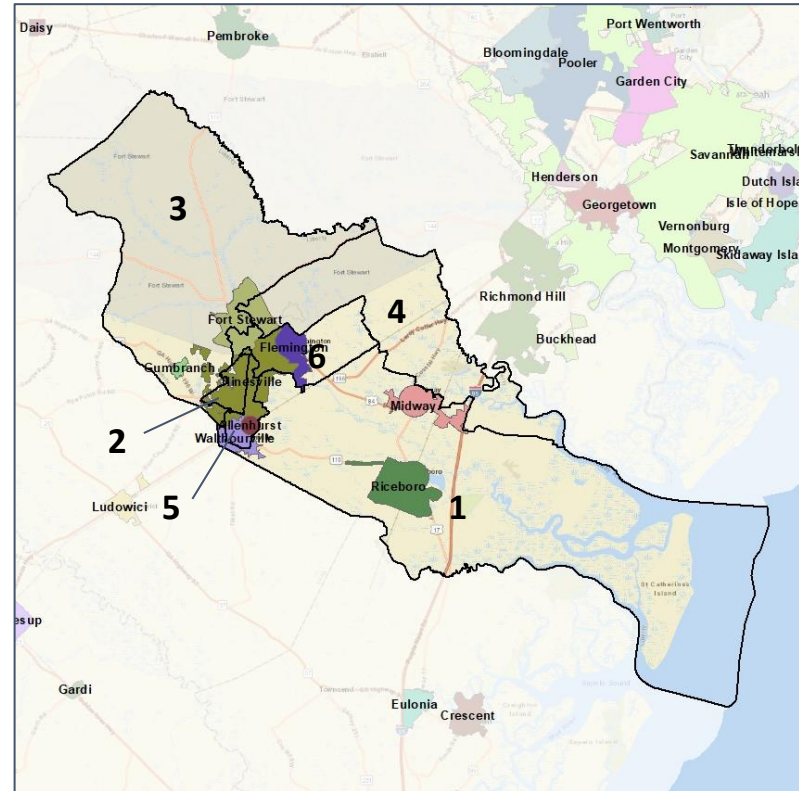
Liberty Co. Commission & School Board Cities and Places



2012 Map



2022 Map*



	1	2	3	4	5	6	1*	2*	3*	4*	5*	6*	County
Population	10,144	8,713	13,950	12,569	9,568	10,312	10,860	10,815	10,910	10,886	10,984	10,801	65,256
API	1%	3%	3%	3%	2%	4%	1%	3%	3%	2%	2%	4%	3%
Black	42%	51%	42%	32%	56%	33%	50%	50%	34%	20%	54%	43%	42%
Latino	7%	12%	14%	10%	11%	17%	7%	13%	15%	13%	12%	13%	12%
Other	5%	7%	7%	6%	7%	8%	5%	7%	7%	7%	7%	7%	7%
White	45%	27%	34%	49%	24%	39%	37%	27%	41%	58%	25%	33%	37%
Population Gain	*	*	*	*	*	*	716	2,102	-3,040	-1,683	1,416	489	*
Population % Gain	*	*	*	*	*	*	7%	24%	-22%	-13%	15%	5%	*
Net POC Gain	*	*	*	*	*	*	1,206	1,478	-2,748	-1,843	949	958	*
Net POC % Gain	*	*	*	*	*	*	21%	23%	-30%	-29%	13%	15%	*



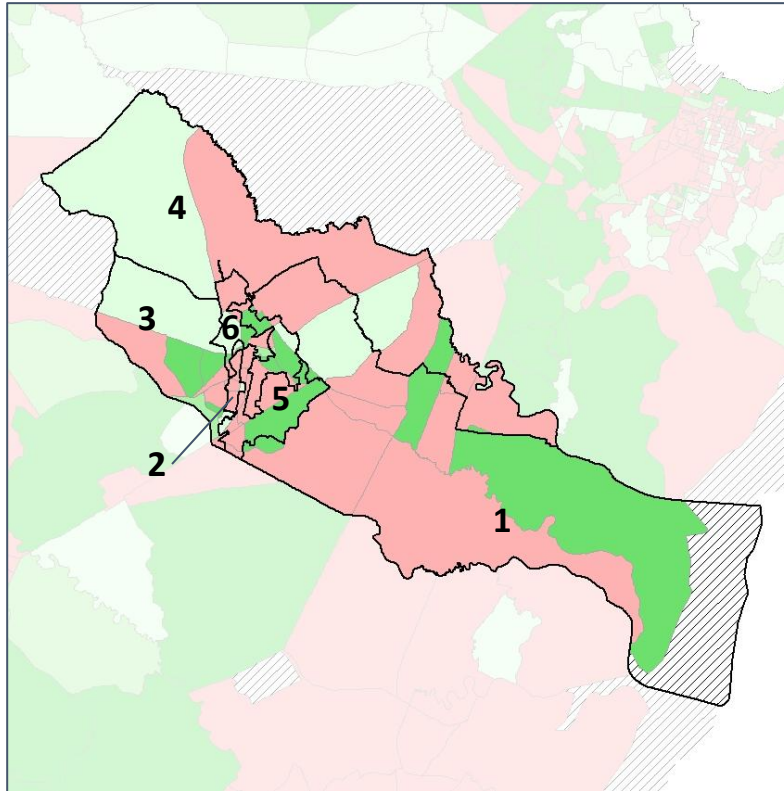
Source:
2020 Decennial Census
2020 ACS 5-Year Dataset

Liberty Co. Commission & School Board

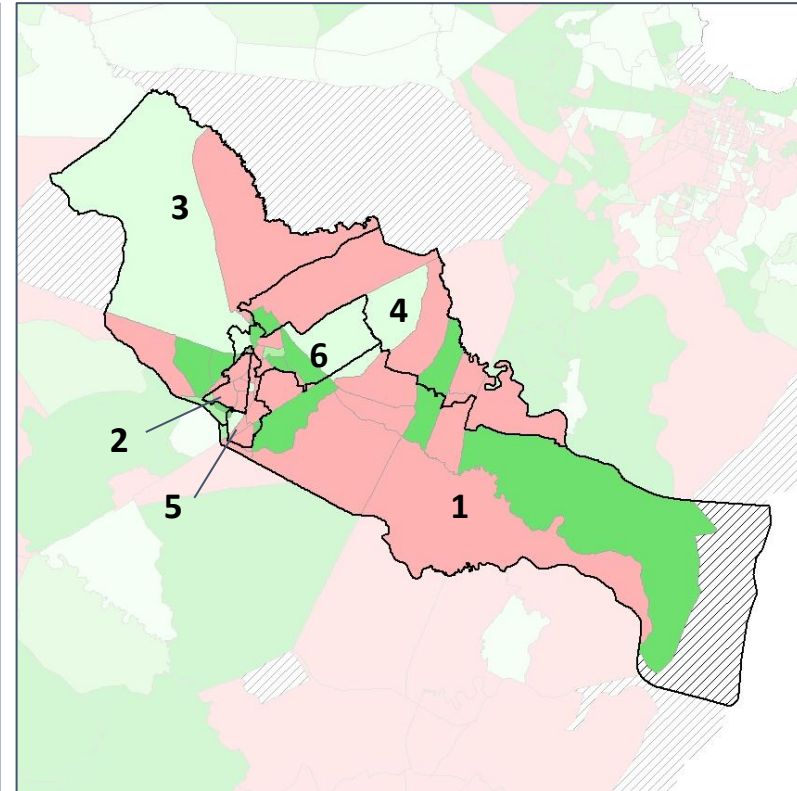
Net Gain in Population (2010 - 2020)



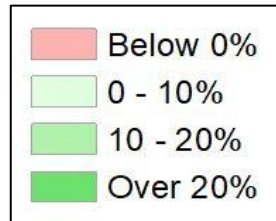
2012 Map



2022 Map*



	1	2	3	4	5	6	1*	2*	3*	4*	5*	6*	County
Population	10,144	8,713	13,950	12,569	9,568	10,312	10,860	10,815	10,910	10,886	10,984	10,801	65,256
API	1%	3%	3%	3%	2%	4%	1%	3%	3%	2%	2%	4%	3%
Black	42%	51%	42%	32%	56%	33%	50%	50%	34%	20%	54%	43%	42%
Latino	7%	12%	14%	10%	11%	17%	7%	13%	15%	13%	12%	13%	12%
Other	5%	7%	7%	6%	7%	8%	5%	7%	7%	7%	7%	7%	7%
White	45%	27%	34%	49%	24%	39%	37%	27%	41%	58%	25%	33%	37%
Population Gain	*	*	*	*	*	*	716	2,102	-3,040	-1,683	1,416	489	*
Population % Gain	*	*	*	*	*	*	7%	24%	-22%	-13%	15%	5%	*
Net POC Gain	*	*	*	*	*	*	1,206	1,478	-2,748	-1,843	949	958	*
Net POC % Gain	*	*	*	*	*	*	21%	23%	-30%	-29%	13%	15%	*

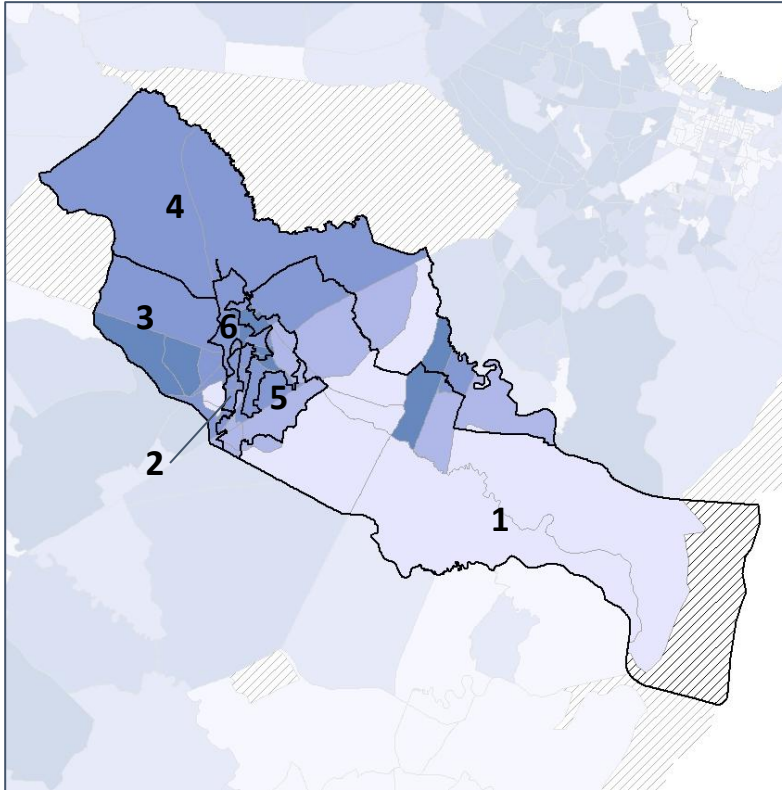


Liberty Co. Commission & School Board

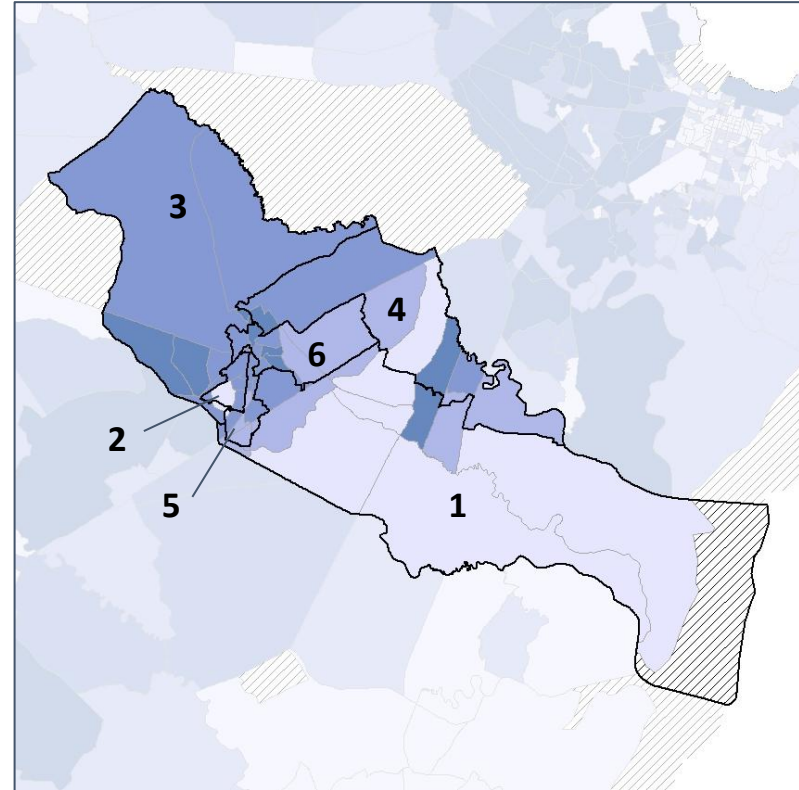
Net Gain in % POC (2020 - 2010) by Census Block Group



2012 Map



2022 Map*



	1	2	3	4	5	6	1*	2*	3*	4*	5*	6*	County
Population	10,144	8,713	13,950	12,569	9,568	10,312	10,860	10,815	10,910	10,886	10,984	10,801	65,256
API	1%	3%	3%	3%	2%	4%	1%	3%	3%	2%	2%	4%	3%
Black	42%	51%	42%	32%	56%	33%	50%	50%	34%	20%	54%	43%	42%
Latino	7%	12%	14%	10%	11%	17%	7%	13%	15%	13%	12%	13%	12%
Other	5%	7%	7%	6%	7%	8%	5%	7%	7%	7%	7%	7%	7%
White	45%	27%	34%	49%	24%	39%	37%	27%	41%	58%	25%	33%	37%
Population Gain	*	*	*	*	*	*	716	2,102	-3,040	-1,683	1,416	489	*
Population % Gain	*	*	*	*	*	*	7%	24%	-22%	-13%	15%	5%	*
Net POC Gain	*	*	*	*	*	*	1,206	1,478	-2,748	-1,843	949	958	*
Net POC % Gain	*	*	*	*	*	*	21%	23%	-30%	-29%	13%	15%	*



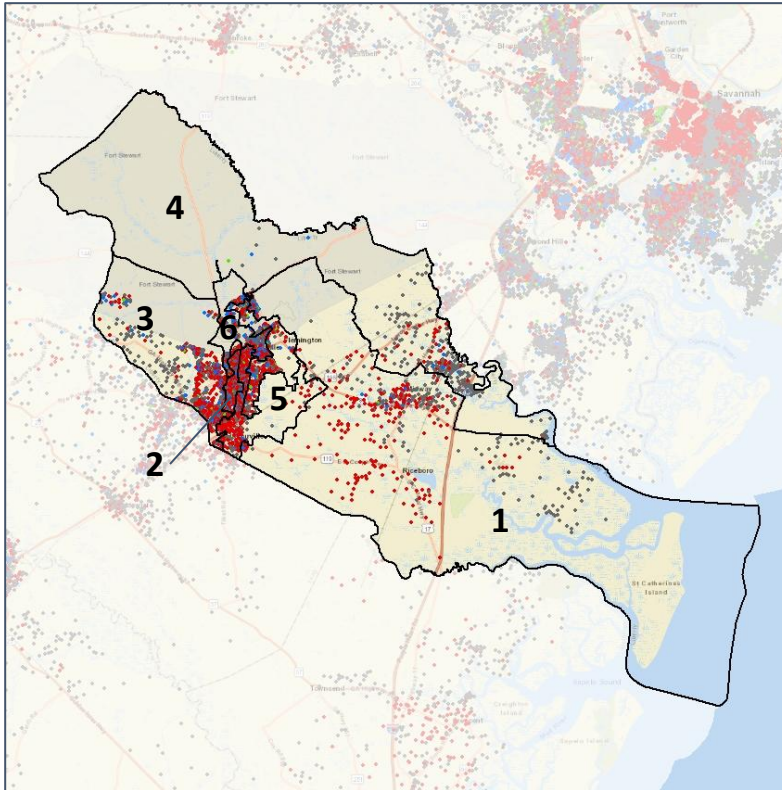
Source: 2020 Decennial Census 2020 ACS 5-Year Dataset

Liberty Co. Commission & School Board

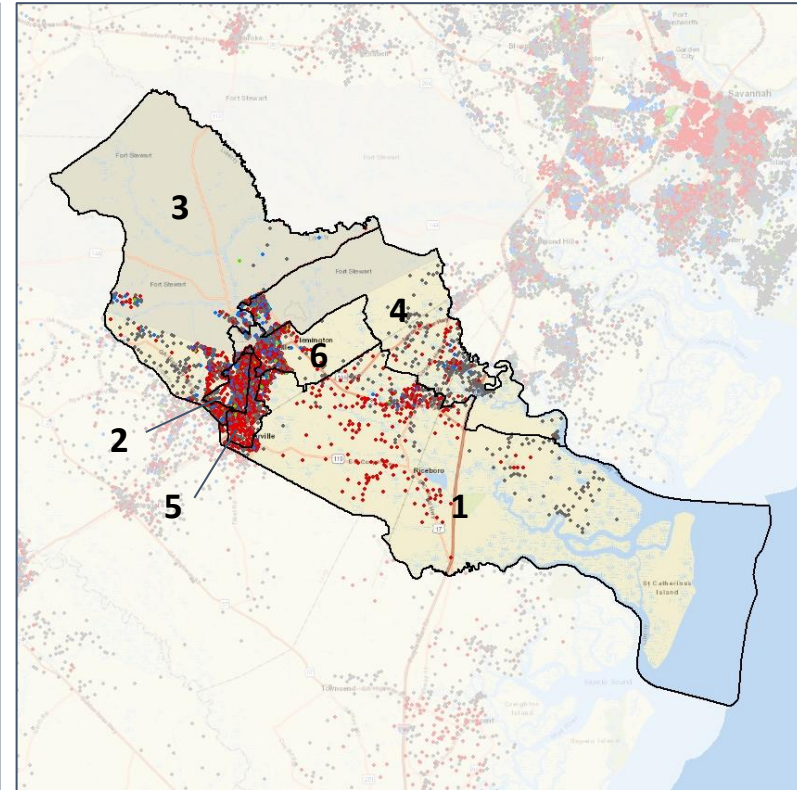
Population Density by Race



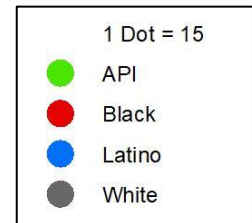
2012 Map



2022 Map*



	1	2	3	4	5	6	1*	2*	3*	4*	5*	6*	County
Population	10,144	8,713	13,950	12,569	9,568	10,312	10,860	10,815	10,910	10,886	10,984	10,801	65,256
API	109	285	413	385	207	363	152	335	343	235	257	440	1,762
% API	1%	3%	3%	3%	2%	4%	1%	3%	3%	2%	2%	4%	3%
Black	4,244	4,411	5,902	4,041	5,349	3,362	5,441	5,361	3,762	2,190	5,878	4,677	27,309
% Black	42%	51%	42%	32%	56%	33%	50%	50%	34%	20%	54%	43%	42%
Latino	734	1,075	1,904	1,215	1,074	1,784	709	1,405	1,622	1,397	1,279	1,374	7,786
% Latino	7%	12%	14%	10%	11%	17%	7%	13%	15%	13%	12%	13%	12%
Other	541	632	1,003	772	639	808	532	780	747	748	804	784	4,395
% Other	5%	7%	7%	6%	7%	8%	5%	7%	7%	7%	7%	7%	7%
White	4,516	2,310	4,728	6,156	2,299	3,995	4,026	2,934	4,436	6,316	2,766	3,526	24,004
% White	45%	27%	34%	49%	24%	39%	37%	27%	41%	58%	25%	33%	37%



Source:
2020 Decennial Census
2020 ACS 5-Year Dataset

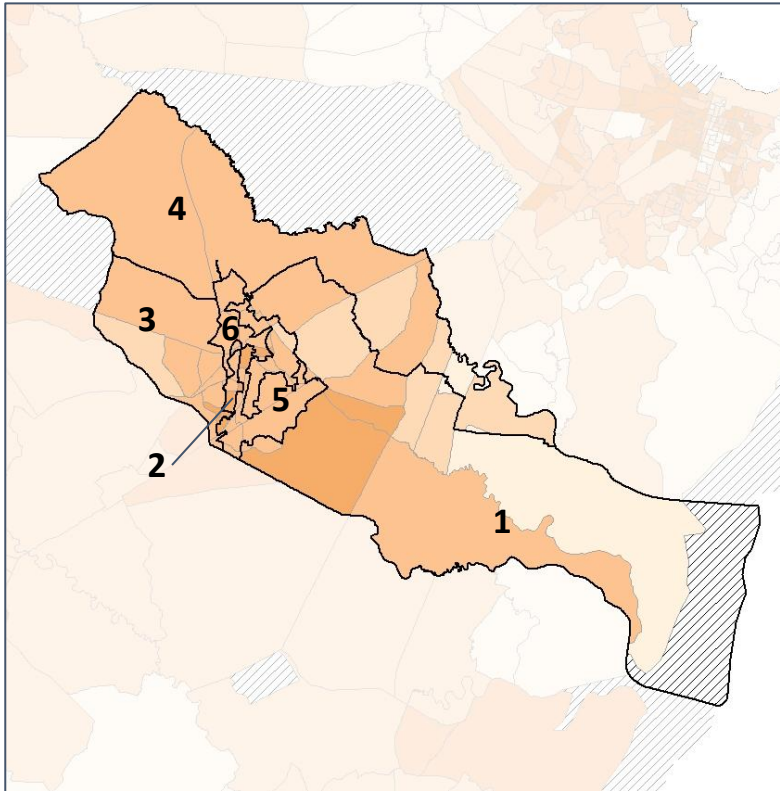


Liberty Co. Commission & School Board

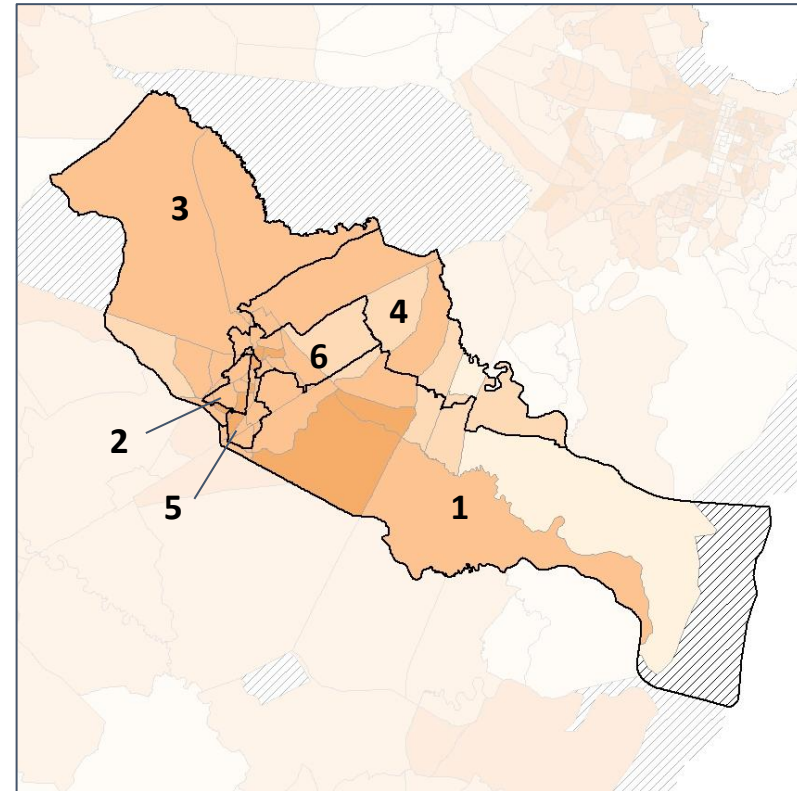
% People of Color by Census Block Group



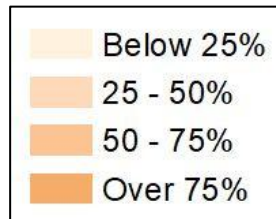
2012 Map



2022 Map*



	1	2	3	4	5	6	1*	2*	3*	4*	5*	6*	County
Population	10,144	8,713	13,950	12,569	9,568	10,312	10,860	10,815	10,910	10,886	10,984	10,801	65,256
API	109	285	413	385	207	363	152	335	343	235	257	440	1,762
% API	1%	3%	3%	3%	2%	4%	1%	3%	3%	2%	2%	4%	3%
Black	4,244	4,411	5,902	4,041	5,349	3,362	5,441	5,361	3,762	2,190	5,878	4,677	27,309
% Black	42%	51%	42%	32%	56%	33%	50%	50%	34%	20%	54%	43%	42%
Latino	734	1,075	1,904	1,215	1,074	1,784	709	1,405	1,622	1,397	1,279	1,374	7,786
% Latino	7%	12%	14%	10%	11%	17%	7%	13%	15%	13%	12%	13%	12%
Other	541	632	1,003	772	639	808	532	780	747	748	804	784	4,395
% Other	5%	7%	7%	6%	7%	8%	5%	7%	7%	7%	7%	7%	7%
White	4,516	2,310	4,728	6,156	2,299	3,995	4,026	2,934	4,436	6,316	2,766	3,526	24,004
% White	45%	27%	34%	49%	24%	39%	37%	27%	41%	58%	25%	33%	37%



Source:
2020 Decennial Census
2020 ACS 5-Year Dataset

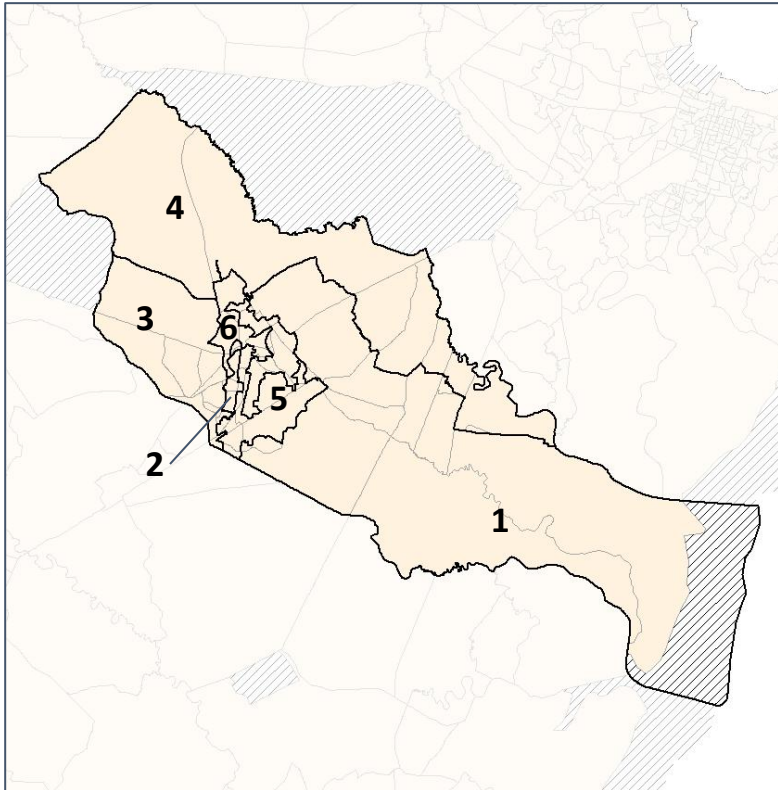


Liberty Co. Commission & School Board

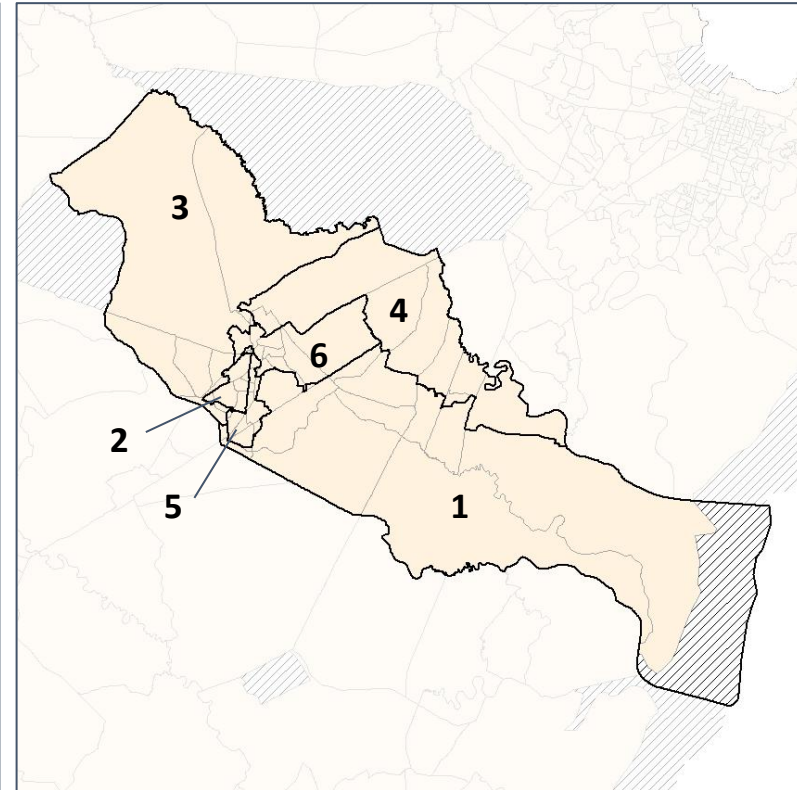
% API by Census Block Group



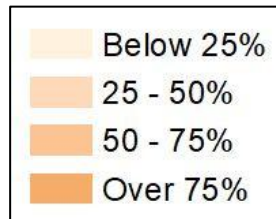
2012 Map



2022 Map*



	1	2	3	4	5	6	1*	2*	3*	4*	5*	6*	County
Population	10,144	8,713	13,950	12,569	9,568	10,312	10,860	10,815	10,910	10,886	10,984	10,801	65,256
API	109	285	413	385	207	363	152	335	343	235	257	440	1,762
% API	1%	3%	3%	3%	2%	4%	1%	3%	3%	2%	2%	4%	3%
Black	4,244	4,411	5,902	4,041	5,349	3,362	5,441	5,361	3,762	2,190	5,878	4,677	27,309
% Black	42%	51%	42%	32%	56%	33%	50%	50%	34%	20%	54%	43%	42%
Latino	734	1,075	1,904	1,215	1,074	1,784	709	1,405	1,622	1,397	1,279	1,374	7,786
% Latino	7%	12%	14%	10%	11%	17%	7%	13%	15%	13%	12%	13%	12%
Other	541	632	1,003	772	639	808	532	780	747	748	804	784	4,395
% Other	5%	7%	7%	6%	7%	8%	5%	7%	7%	7%	7%	7%	7%
White	4,516	2,310	4,728	6,156	2,299	3,995	4,026	2,934	4,436	6,316	2,766	3,526	24,004
% White	45%	27%	34%	49%	24%	39%	37%	27%	41%	58%	25%	33%	37%



Source:
2020 Decennial Census
2020 ACS 5-Year Dataset

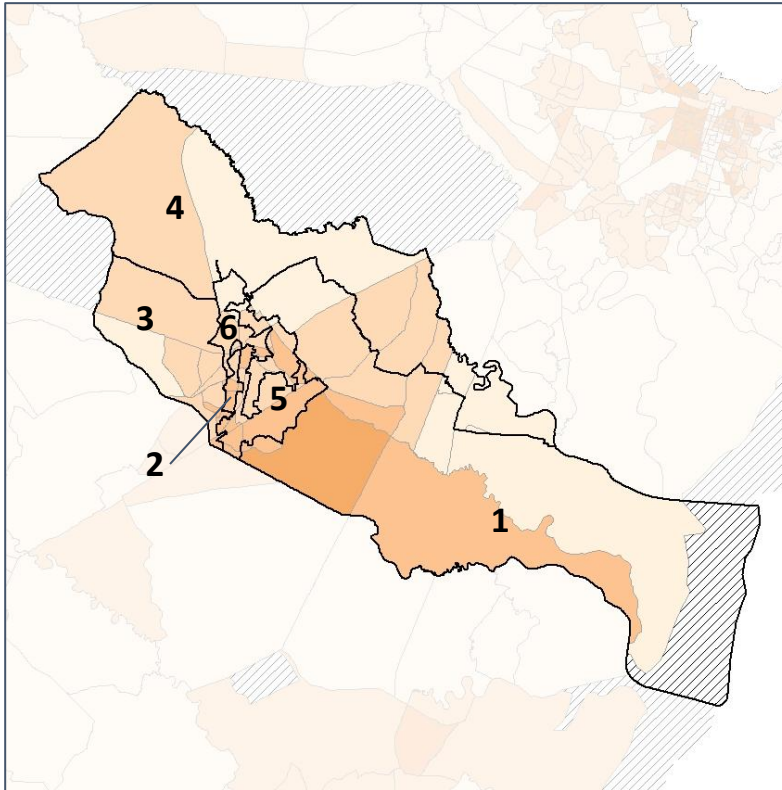


Liberty Co. Commission & School Board

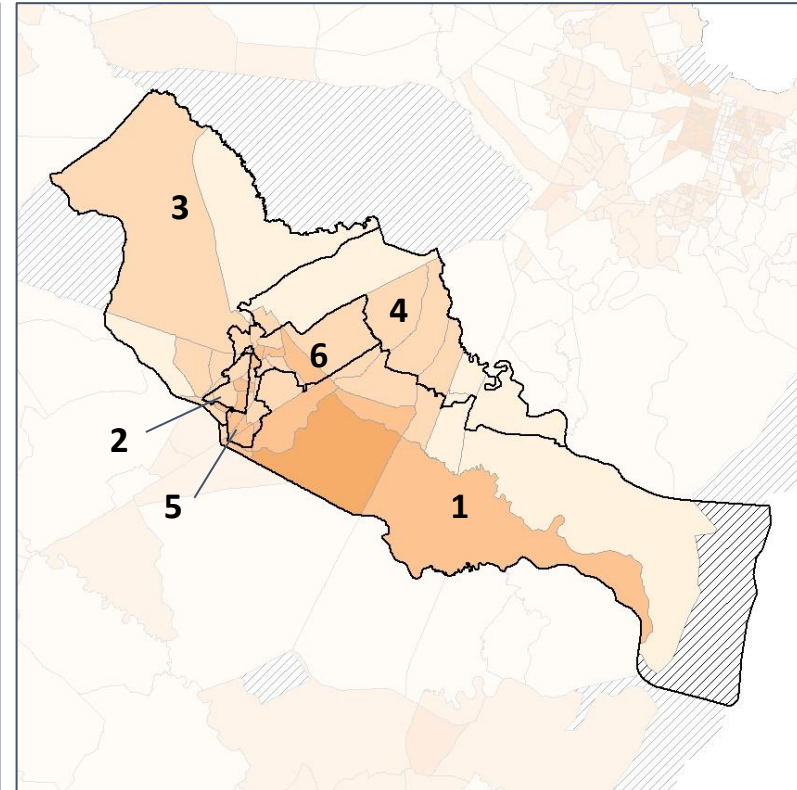
% Black by Census Block Group



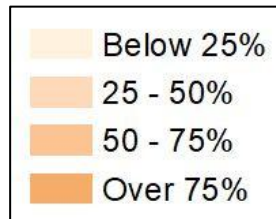
2012 Map



2022 Map*



	1	2	3	4	5	6	1*	2*	3*	4*	5*	6*	County
Population	10,144	8,713	13,950	12,569	9,568	10,312	10,860	10,815	10,910	10,886	10,984	10,801	65,256
API	109	285	413	385	207	363	152	335	343	235	257	440	1,762
% API	1%	3%	3%	3%	2%	4%	1%	3%	3%	2%	2%	4%	3%
Black	4,244	4,411	5,902	4,041	5,349	3,362	5,441	5,361	3,762	2,190	5,878	4,677	27,309
% Black	42%	51%	42%	32%	56%	33%	50%	50%	34%	20%	54%	43%	42%
Latino	734	1,075	1,904	1,215	1,074	1,784	709	1,405	1,622	1,397	1,279	1,374	7,786
% Latino	7%	12%	14%	10%	11%	17%	7%	13%	15%	13%	12%	13%	12%
Other	541	632	1,003	772	639	808	532	780	747	748	804	784	4,395
% Other	5%	7%	7%	6%	7%	8%	5%	7%	7%	7%	7%	7%	7%
White	4,516	2,310	4,728	6,156	2,299	3,995	4,026	2,934	4,436	6,316	2,766	3,526	24,004
% White	45%	27%	34%	49%	24%	39%	37%	27%	41%	58%	25%	33%	37%



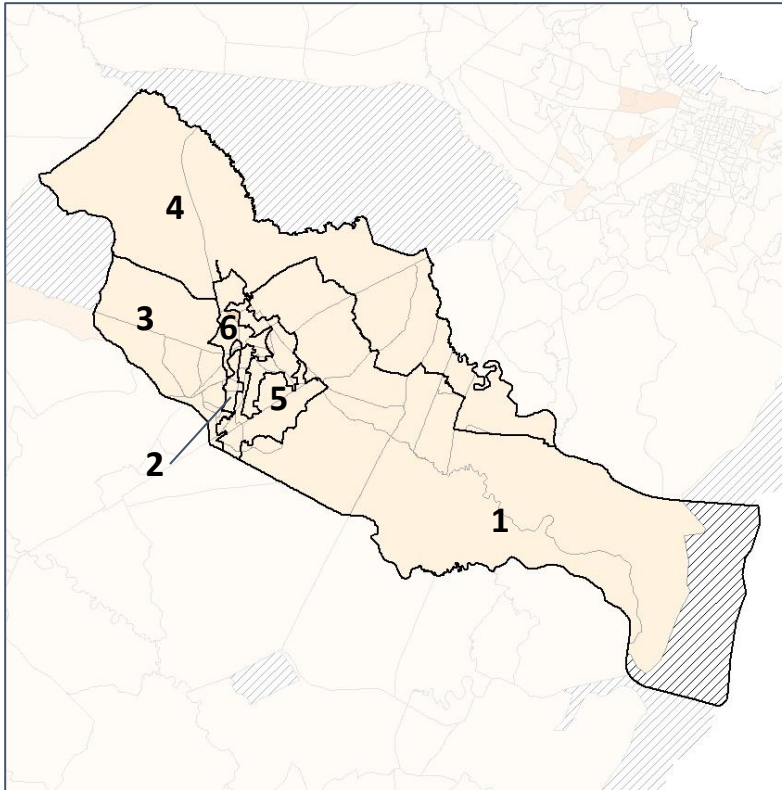
Source:
2020 Decennial Census
2020 ACS 5-Year Dataset

Liberty Co. Commission & School Board

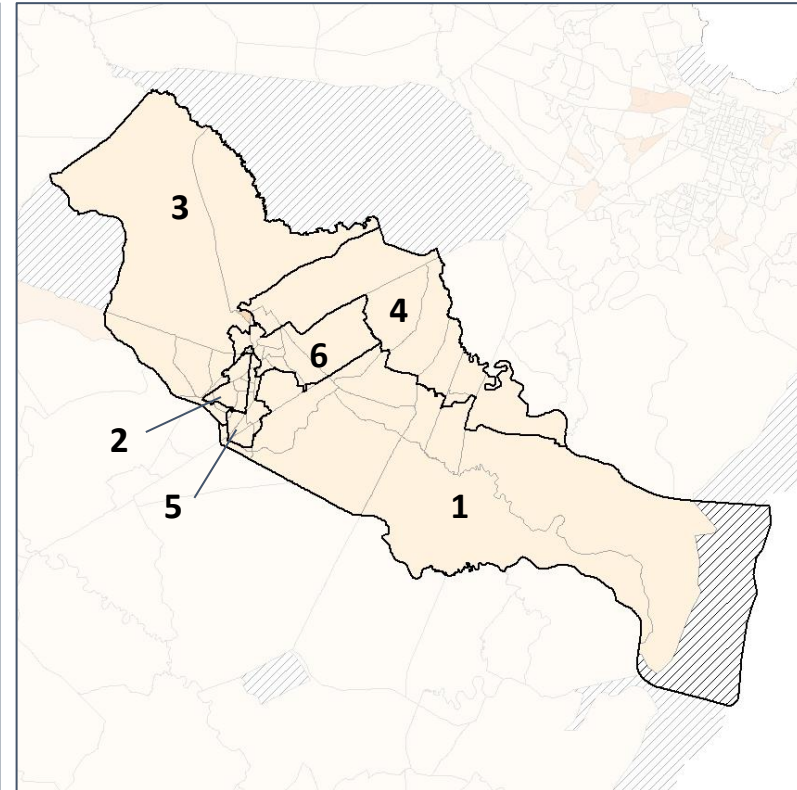
% Latino by Census Block Group



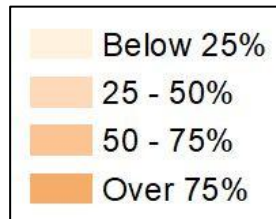
2012 Map



2022 Map*



	1	2	3	4	5	6	1*	2*	3*	4*	5*	6*	County
Population	10,144	8,713	13,950	12,569	9,568	10,312	10,860	10,815	10,910	10,886	10,984	10,801	65,256
API	109	285	413	385	207	363	152	335	343	235	257	440	1,762
% API	1%	3%	3%	3%	2%	4%	1%	3%	3%	2%	2%	4%	3%
Black	4,244	4,411	5,902	4,041	5,349	3,362	5,441	5,361	3,762	2,190	5,878	4,677	27,309
% Black	42%	51%	42%	32%	56%	33%	50%	50%	34%	20%	54%	43%	42%
Latino	734	1,075	1,904	1,215	1,074	1,784	709	1,405	1,622	1,397	1,279	1,374	7,786
% Latino	7%	12%	14%	10%	11%	17%	7%	13%	15%	13%	12%	13%	12%
Other	541	632	1,003	772	639	808	532	780	747	748	804	784	4,395
% Other	5%	7%	7%	6%	7%	8%	5%	7%	7%	7%	7%	7%	7%
White	4,516	2,310	4,728	6,156	2,299	3,995	4,026	2,934	4,436	6,316	2,766	3,526	24,004
% White	45%	27%	34%	49%	24%	39%	37%	27%	41%	58%	25%	33%	37%



Source:
2020 Decennial Census
2020 ACS 5-Year Dataset

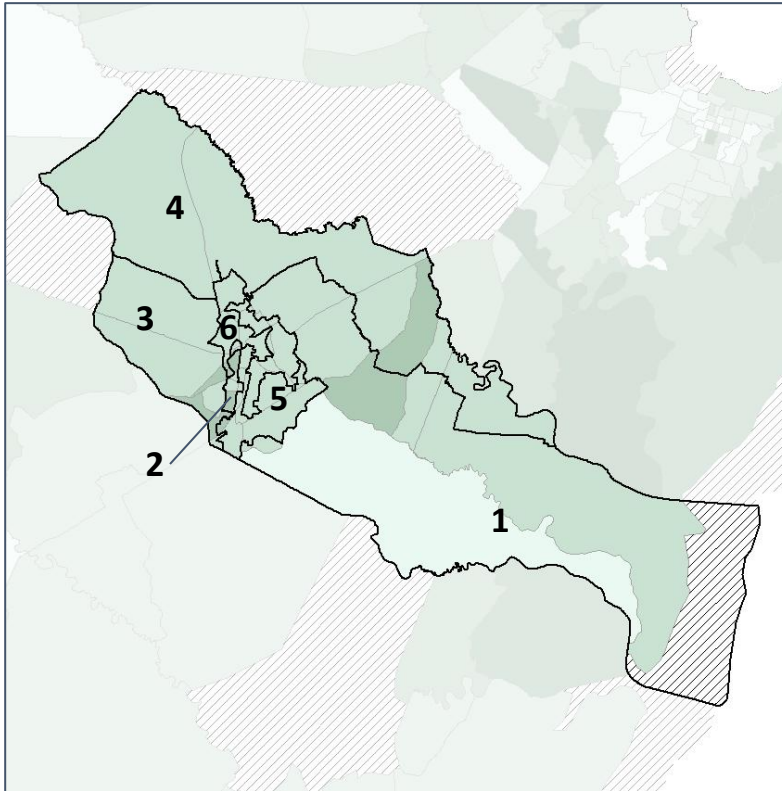


Liberty Co. Commission & School Board

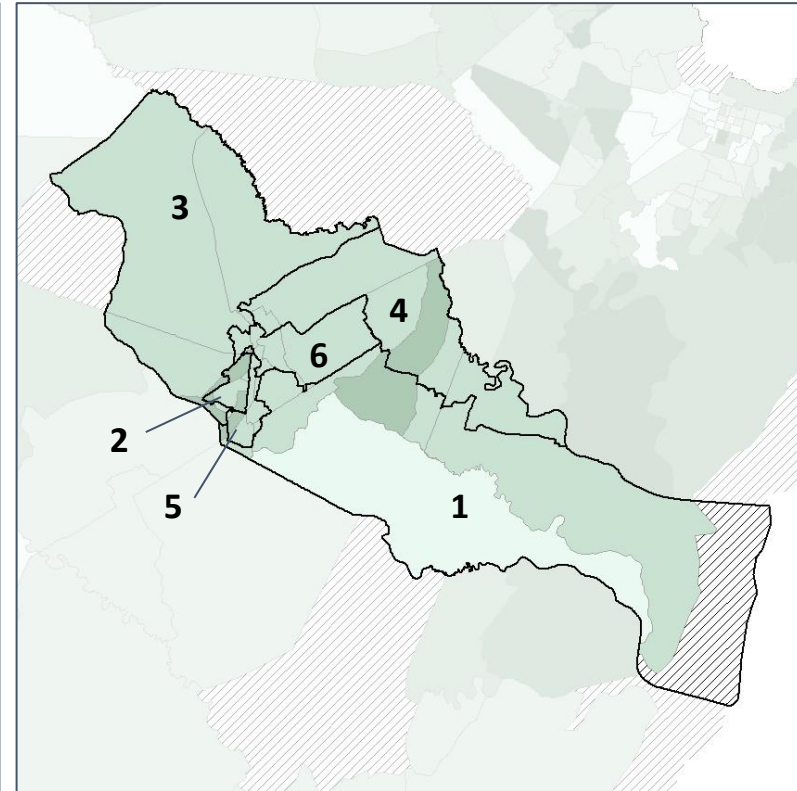
Median Household Income by Census Tract



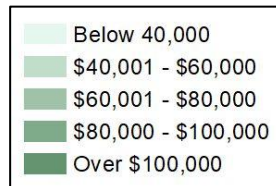
2012 Map



2022 Map*



	1	2	3	4	5	6	1*	2*	3*	4*	5*	6*	County
Population	10,144	8,713	13,950	12,569	9,568	10,312	10,860	10,815	10,910	10,886	10,984	10,801	65,256
% API	1%	3%	3%	3%	2%	4%	1%	3%	3%	2%	2%	4%	3%
% Black	42%	51%	42%	32%	56%	33%	50%	50%	34%	20%	54%	43%	42%
% Latino	7%	12%	14%	10%	11%	17%	7%	13%	15%	13%	12%	13%	12%
% Other	5%	7%	7%	6%	7%	8%	5%	7%	7%	7%	7%	7%	7%
% White	45%	27%	34%	49%	24%	39%	37%	27%	41%	58%	25%	33%	37%
Median Income	\$59,000	\$48,000	\$56,000	\$45,000	\$50,000	\$47,000	\$56,000	\$57,000	\$51,000	\$52,000	\$48,000	\$43,000	\$50,000
% Renter	30%	56%	56%	65%	52%	61%	39%	56%	70%	37%	57%	52%	54%
% Youth	26%	29%	35%	42%	29%	30%	24%	31%	43%	30%	35%	27%	34%

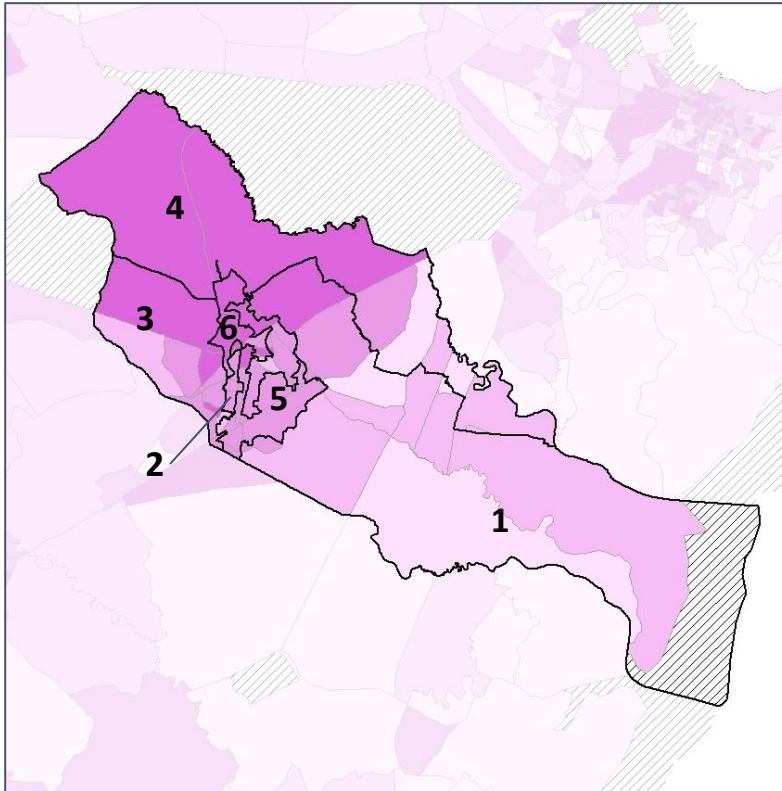


Liberty Co. Commission & School Board

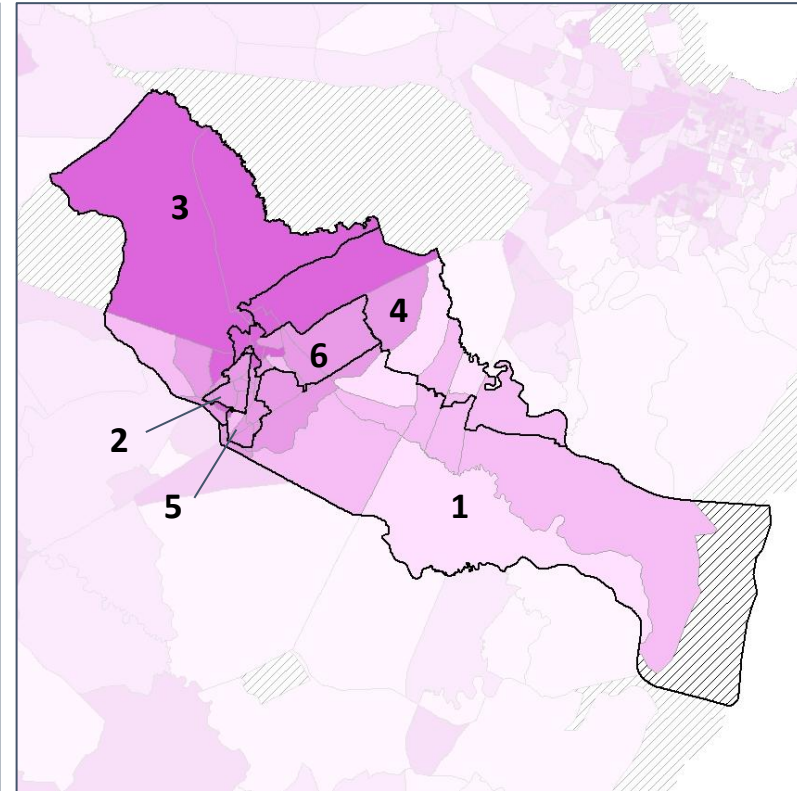
% Renter by Census Block Group



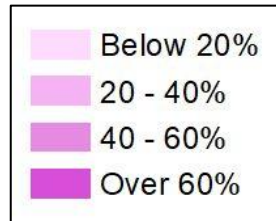
2012 Map



2022 Map*



	1	2	3	4	5	6	1*	2*	3*	4*	5*	6*	County
Population	10,144	8,713	13,950	12,569	9,568	10,312	10,860	10,815	10,910	10,886	10,984	10,801	65,256
% API	1%	3%	3%	3%	2%	4%	1%	3%	3%	2%	2%	4%	3%
% Black	42%	51%	42%	32%	56%	33%	50%	50%	34%	20%	54%	43%	42%
% Latino	7%	12%	14%	10%	11%	17%	7%	13%	15%	13%	12%	13%	12%
% Other	5%	7%	7%	6%	7%	8%	5%	7%	7%	7%	7%	7%	7%
% White	45%	27%	34%	49%	24%	39%	37%	27%	41%	58%	25%	33%	37%
Median Income	\$59,000	\$48,000	\$56,000	\$45,000	\$50,000	\$47,000	\$56,000	\$57,000	\$51,000	\$52,000	\$48,000	\$43,000	\$50,000
% Renter	30%	56%	56%	65%	52%	61%	39%	56%	70%	37%	57%	52%	54%
% Youth	26%	29%	35%	42%	29%	30%	24%	31%	43%	30%	35%	27%	34%

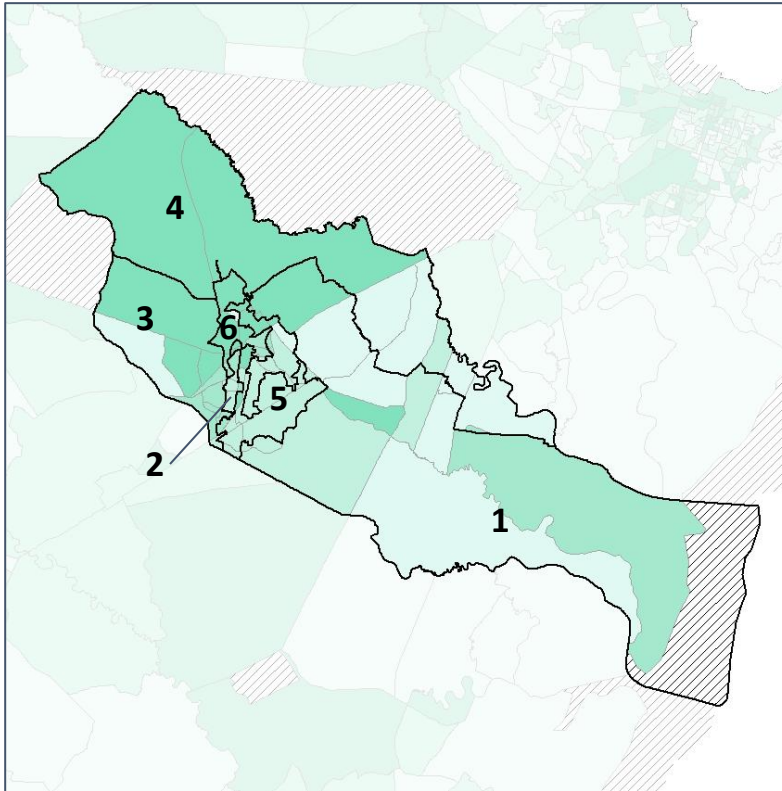


Liberty Co. Commission & School Board

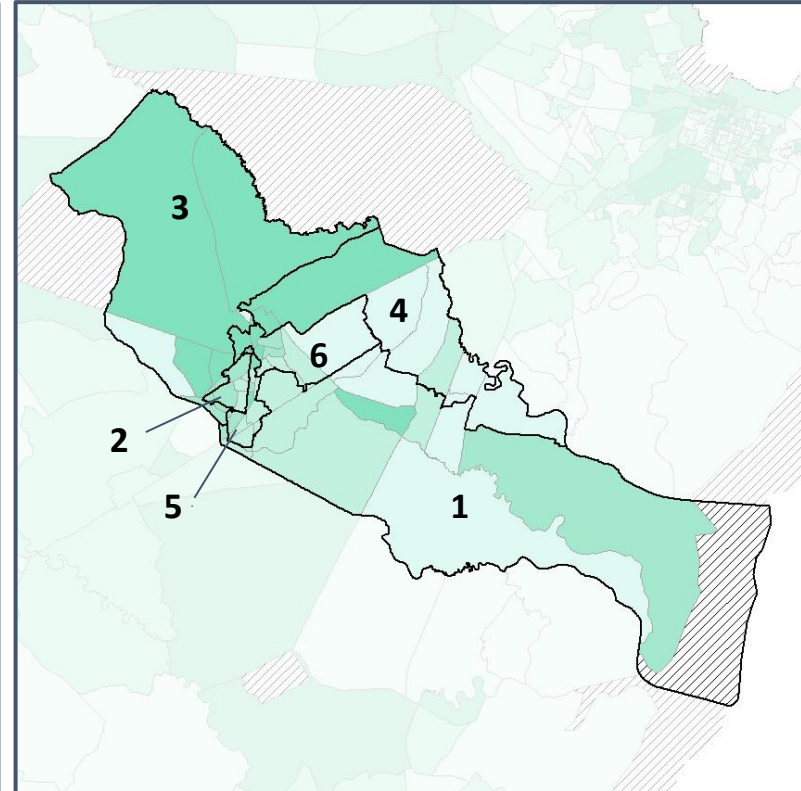
% Youth (18-34) by Census Block Group



2012 Map



2022 Map*



	1	2	3	4	5	6	1*	2*	3*	4*	5*	6*	County
Population	10,144	8,713	13,950	12,569	9,568	10,312	10,860	10,815	10,910	10,886	10,984	10,801	65,256
% API	1%	3%	3%	3%	2%	4%	1%	3%	3%	2%	2%	4%	3%
% Black	42%	51%	42%	32%	56%	33%	50%	50%	34%	20%	54%	43%	42%
% Latino	7%	12%	14%	10%	11%	17%	7%	13%	15%	13%	12%	13%	12%
% Other	5%	7%	7%	6%	7%	8%	5%	7%	7%	7%	7%	7%	7%
% White	45%	27%	34%	49%	24%	39%	37%	27%	41%	58%	25%	33%	37%
Median Income	\$59,000	\$48,000	\$56,000	\$45,000	\$50,000	\$47,000	\$56,000	\$57,000	\$51,000	\$52,000	\$48,000	\$43,000	\$50,000
% Renter	30%	56%	56%	65%	52%	61%	39%	56%	70%	37%	57%	52%	54%
% Youth	26%	29%	35%	42%	29%	30%	24%	31%	43%	30%	35%	27%	34%

