



Demographic Overview

Racial Breakdown in Jefferson County

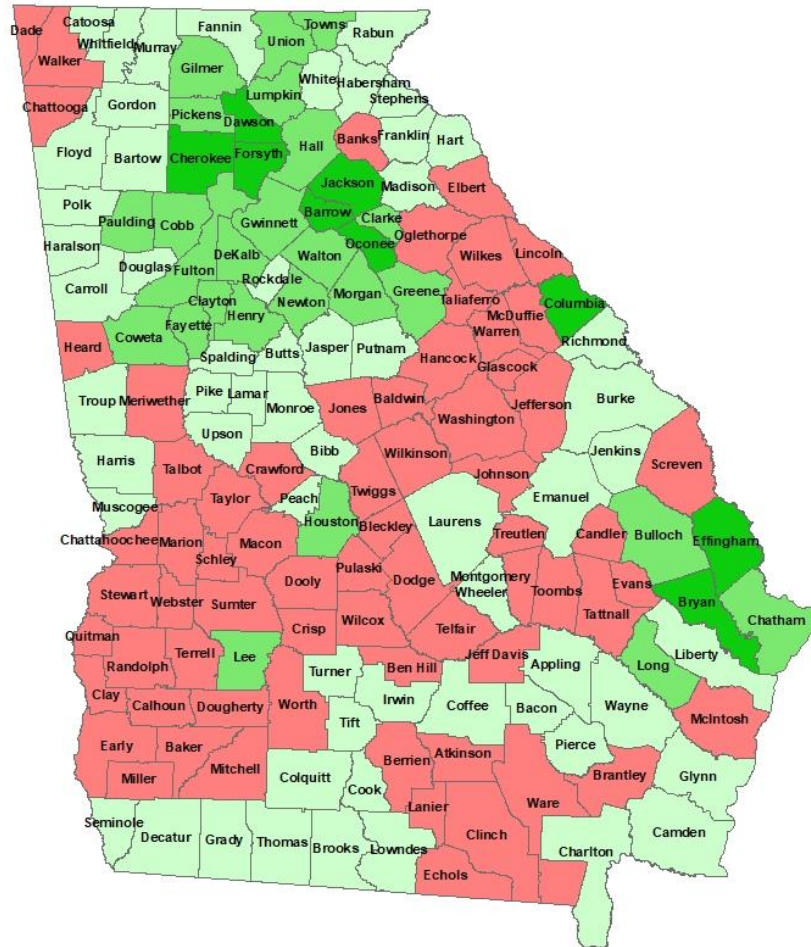
Jefferson County	2010	2020	% Change
Total Population	16,930	15,709	-7%
AAPI	66	70	6%
Black	9,187	7,970	-13%
Latino	517	462	-11%
Other/Mixed Race	145	373	157%
POC	9,915	8,875	-10%
White	7,015	6,834	-3%

*Note: The use of "Other" in these statistics combines those who identify as Native American, Mixed Race, and "Other" race



Population Gain

Change in Population in Georgia by County



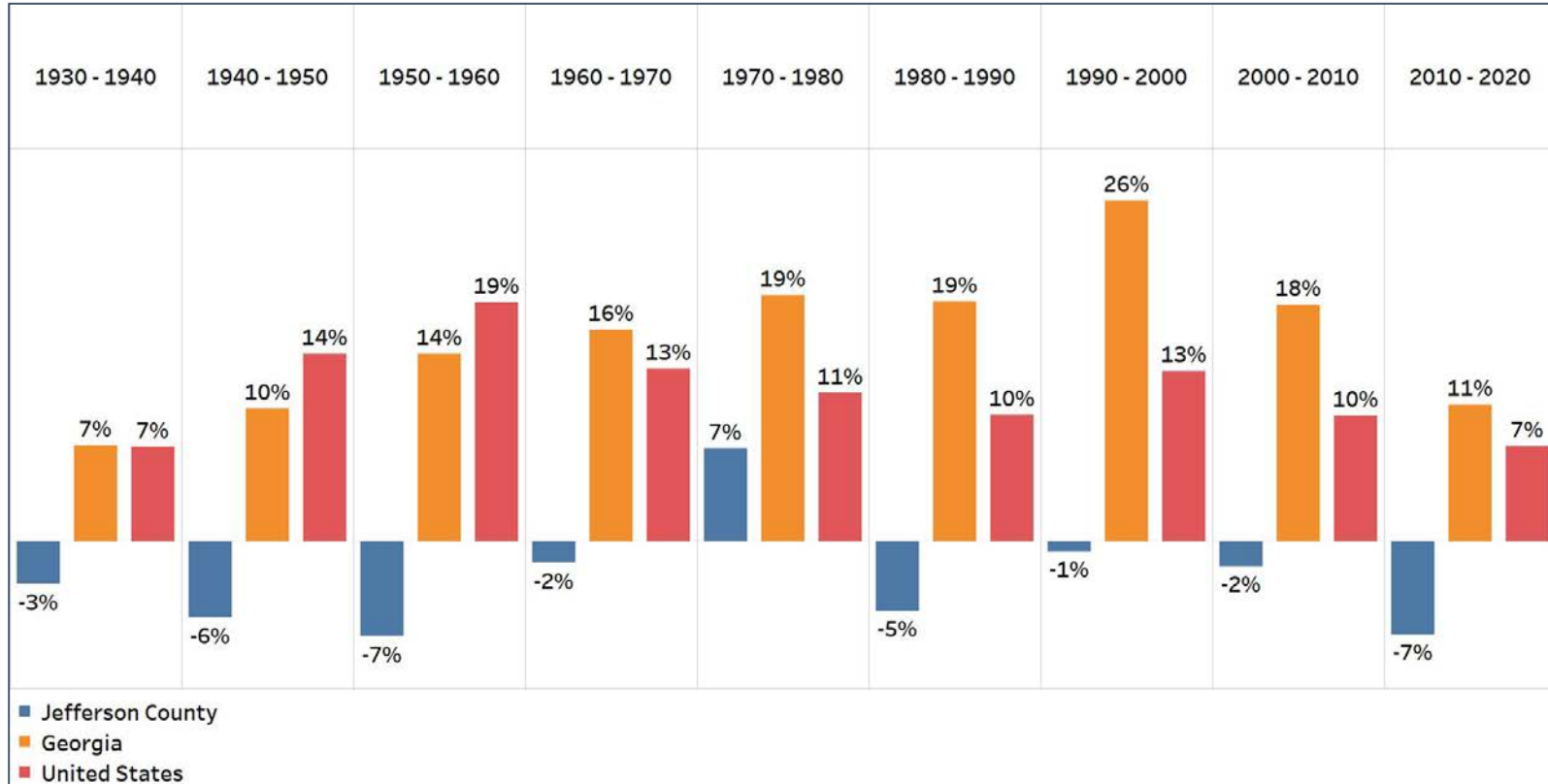
- Georgia is experiencing rapid population growth in the Atlanta, Augusta, and Savannah regions of the state





Population Gain

Change in Population by Decade

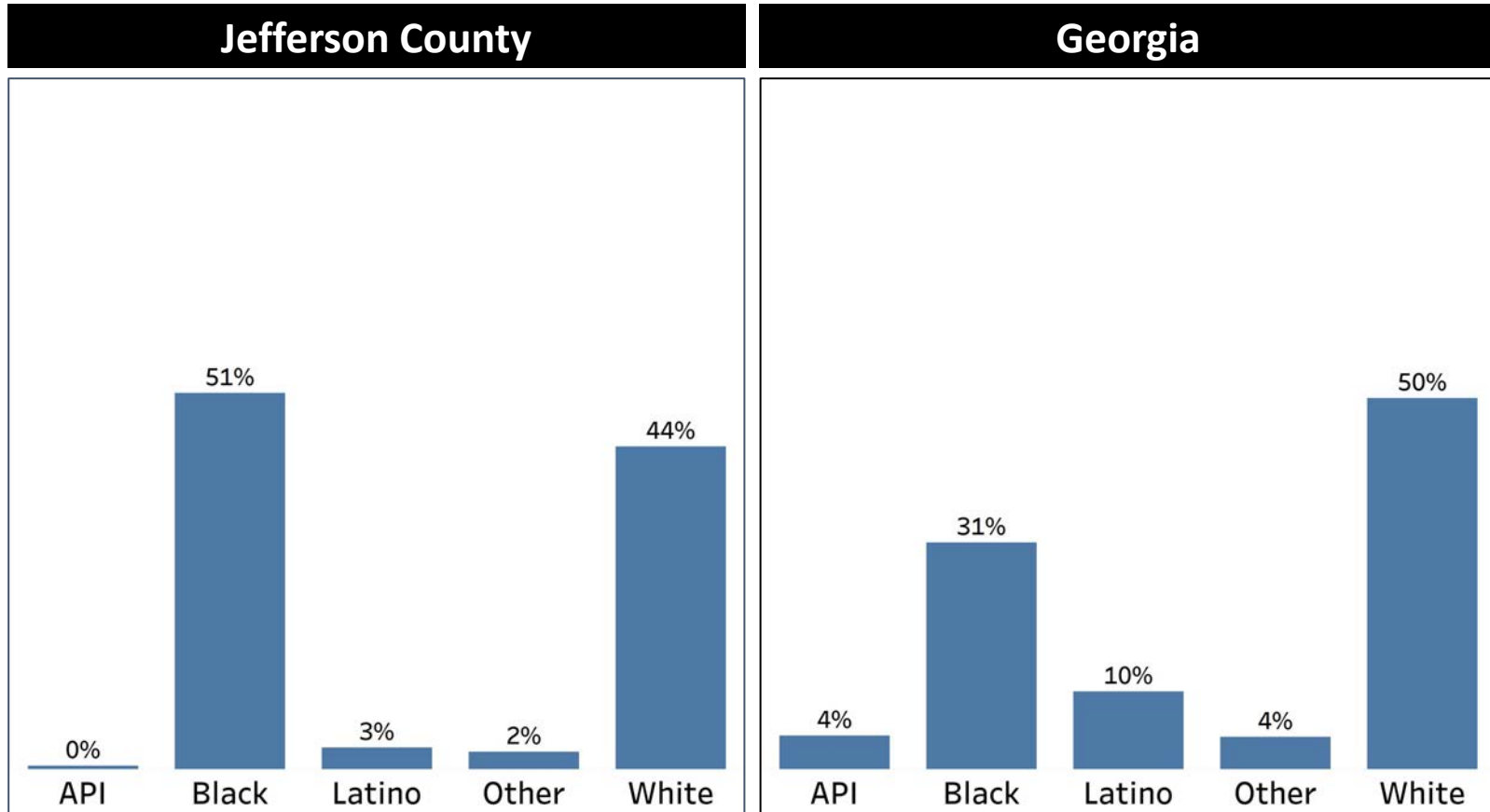


- Jefferson County has been experiencing a population loss since 1930 with the exception being between 1970-1980



Demographics

Comparison between Jefferson County and Georgia



- Jefferson County's Black population is the largest population demographic and being slightly higher to the White population in the county
- Compared to the states average, Jefferson County has a 20% higher Black population and a 6% lower white population

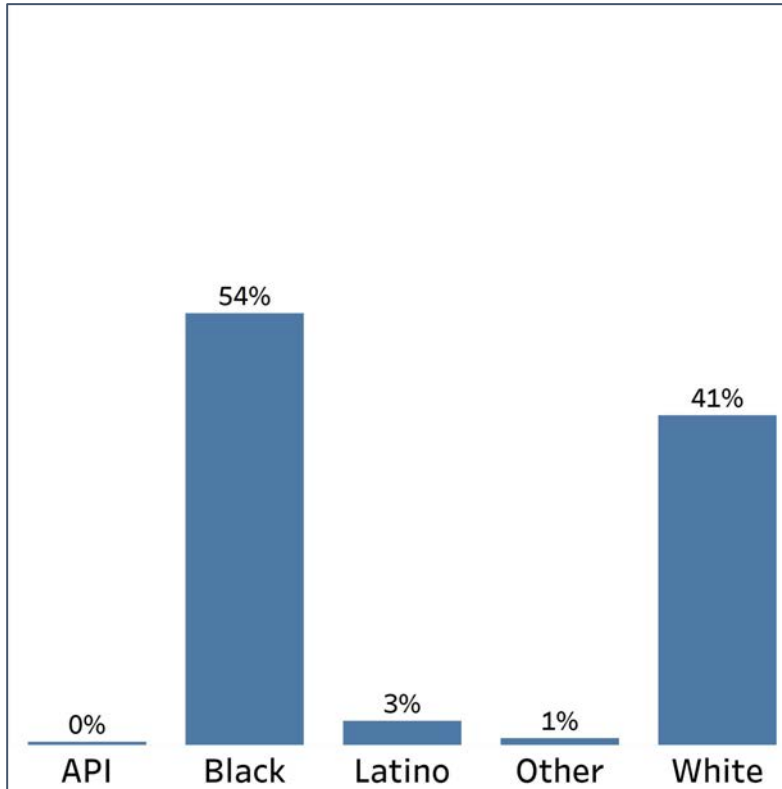


Demographics

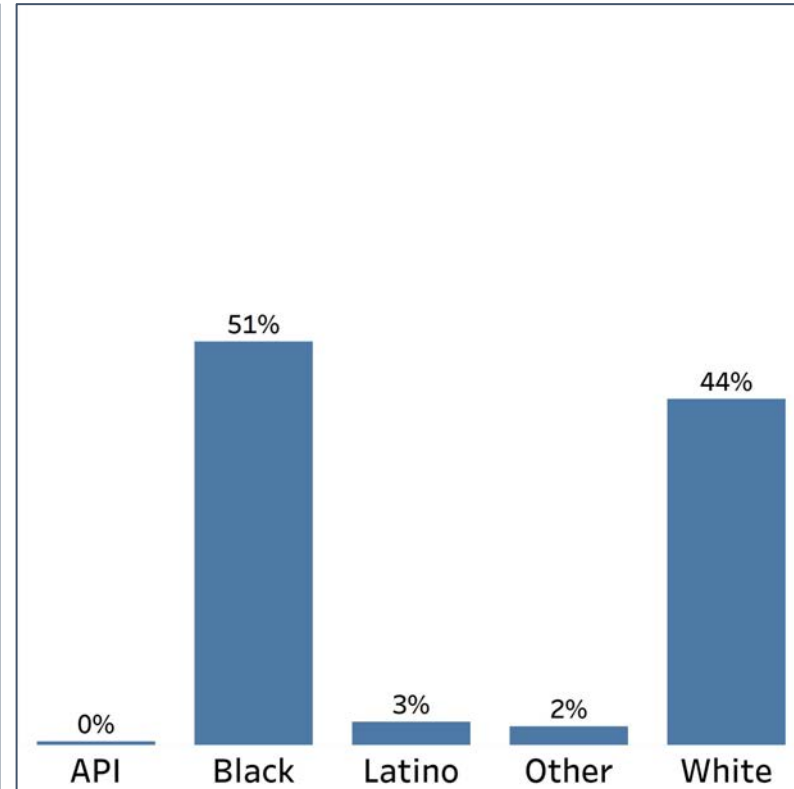
2010 vs 2020 Demographics in Jefferson County



Jefferson County 2010



Jefferson County 2020

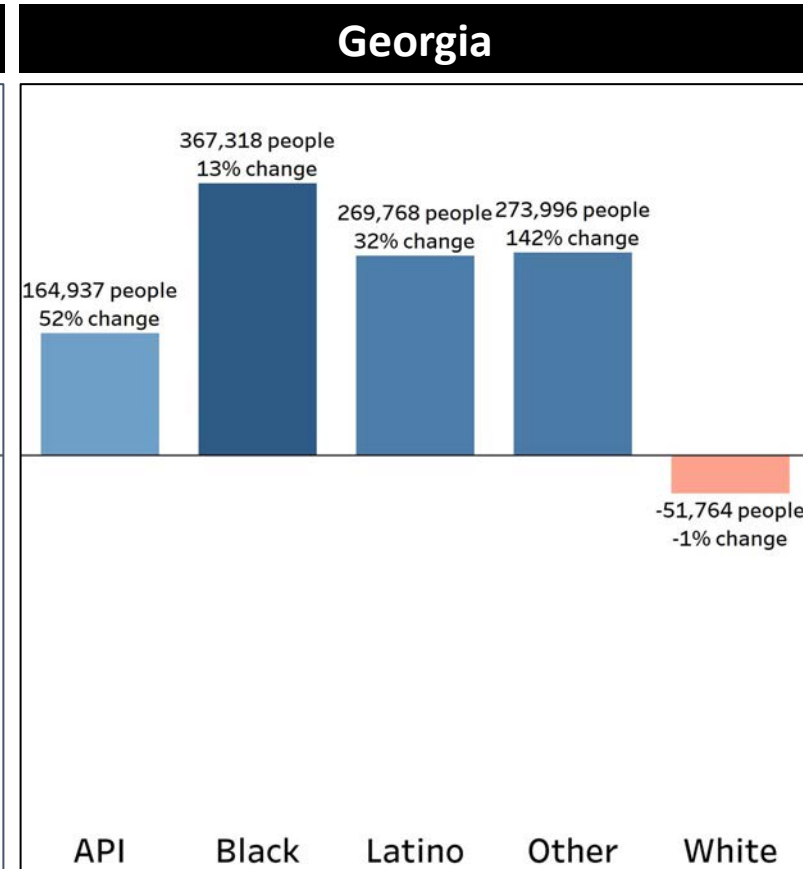
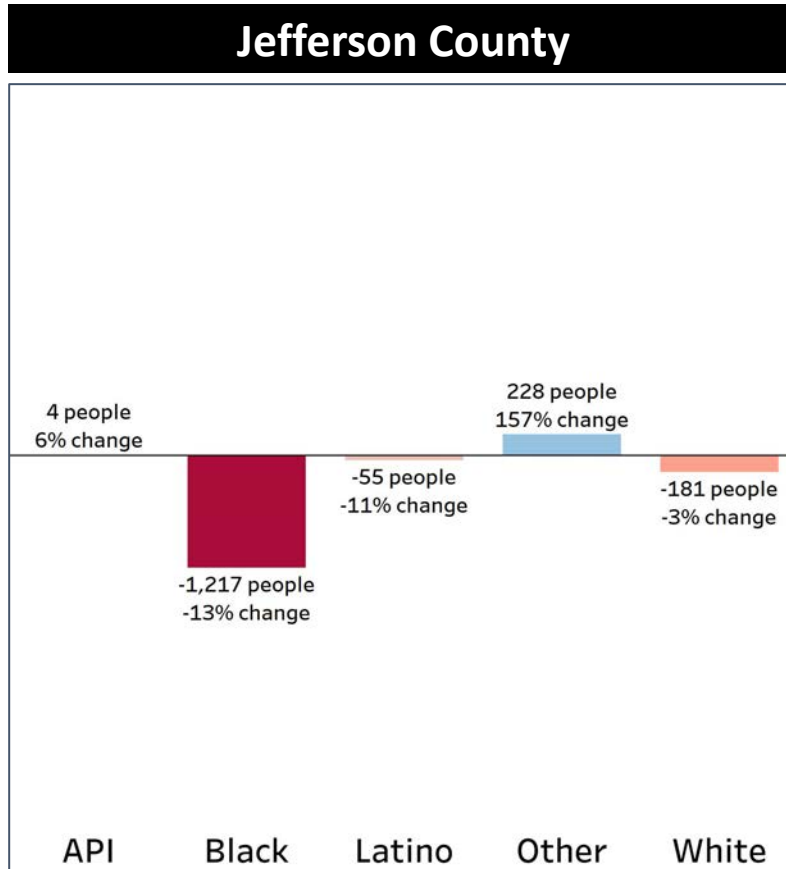


- Jefferson County's Black population declined by 3% since 2010 while the White population increased by 3%



Demographics

Population Change by Race (2020 - 2010)



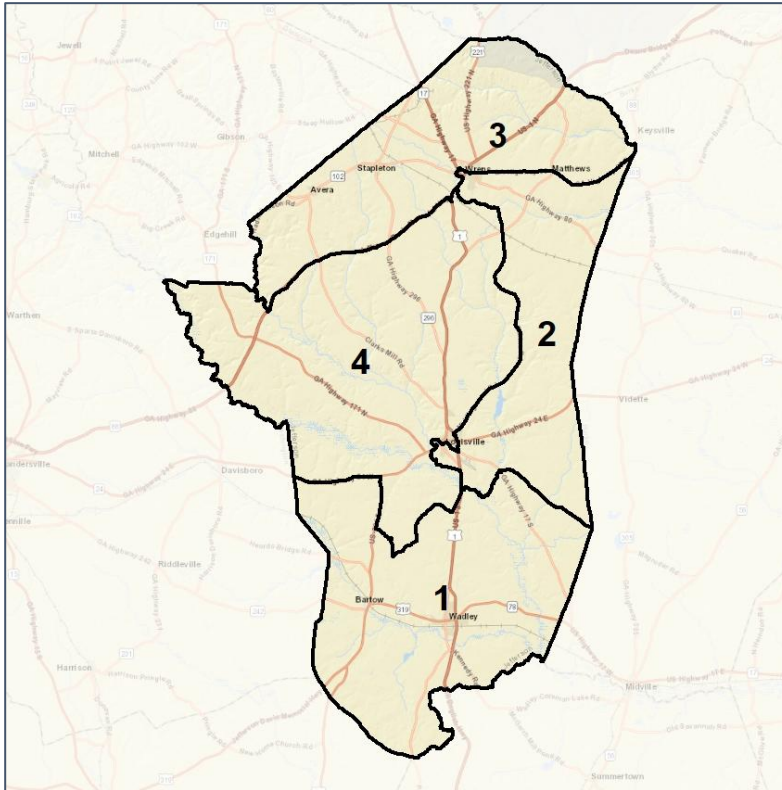
- Jefferson County's is having a population decline across all demographics groups with the exception of the API and "Other" demographic groups.



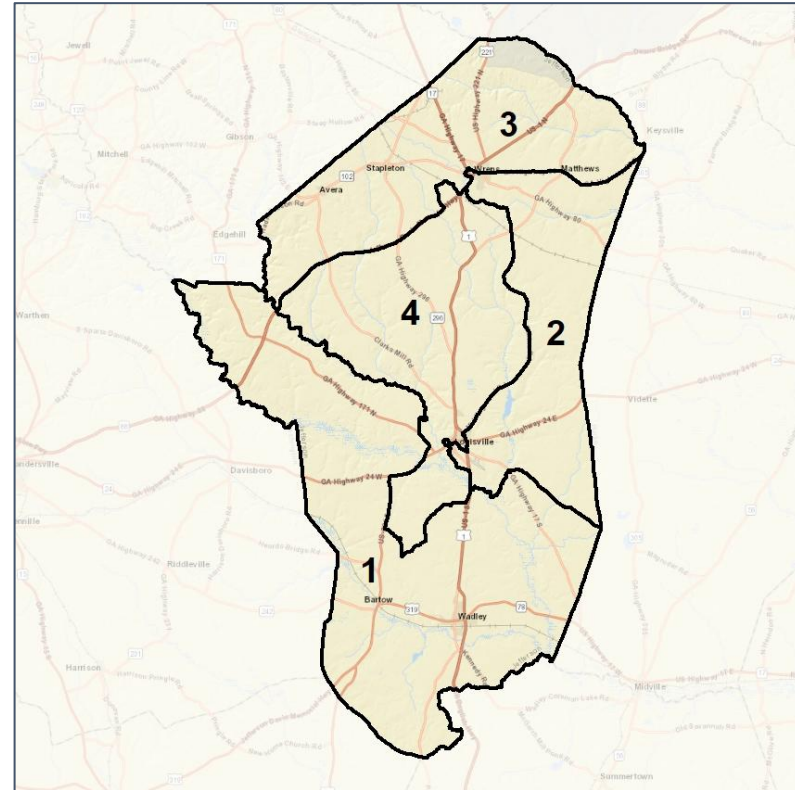
Jefferson Co. Commission & School Board Context



2012 Map



2022 Map*



	1	2	3	4	1*	2*	3*	4*	County
Population	3,411	4,137	4,100	4,061	3,961	3,934	3,890	3,924	15,709
API	0%	1%	0%	0%	0%	1%	0%	1%	0%
Black	62%	74%	28%	40%	61%	73%	24%	44%	51%
Latino	4%	3%	3%	3%	3%	3%	3%	3%	3%
Other	2%	2%	3%	2%	2%	3%	3%	2%	2%
White	32%	20%	66%	54%	33%	21%	69%	51%	44%
Population Gain	*	*	*	*	550	-203	-210	-137	*
Population % Gain	*	*	*	*	16%	-5%	-5%	-3%	*
Net POC Gain	*	*	*	*	330	-201	-196	67	*
Net POC % Gain	*	*	*	*	14%	-6%	-14%	4%	*

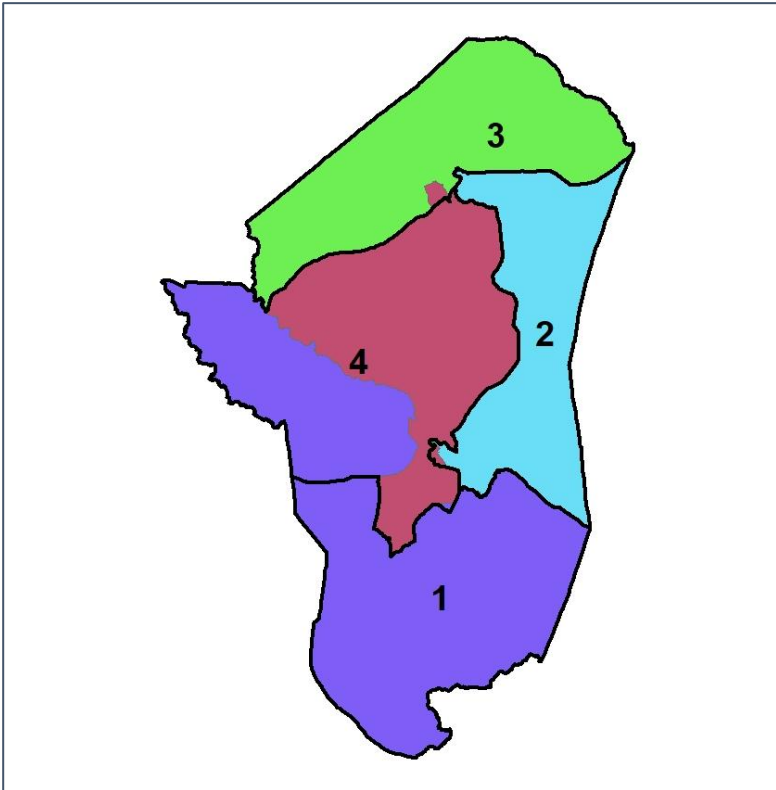


Jefferson Co. Commission & School Board

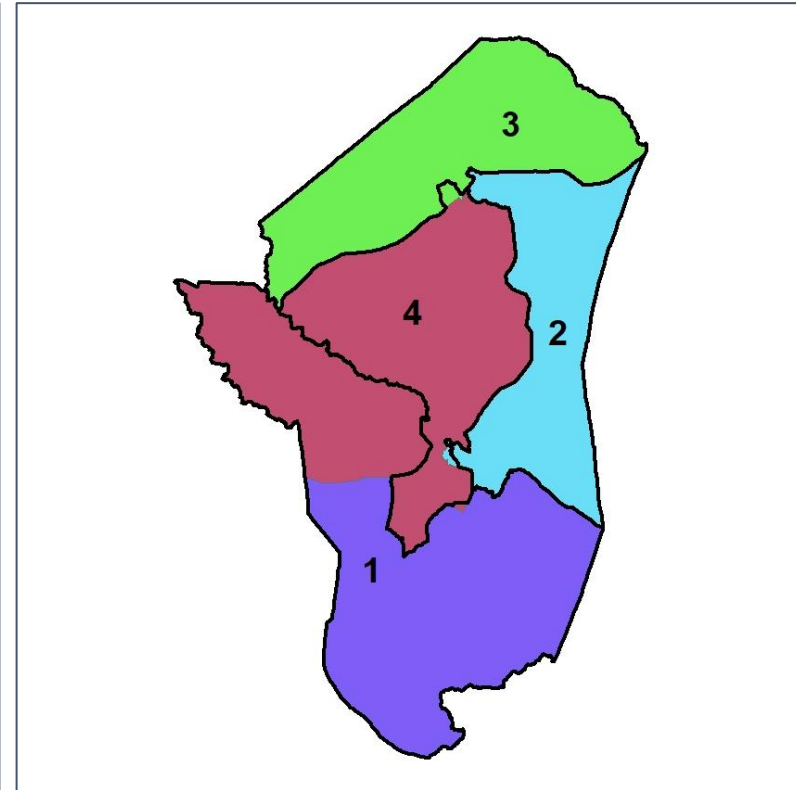
Changes in Redistricting



2012 Map (2022 in Colors)



2022 Map* (2012 in Colors)



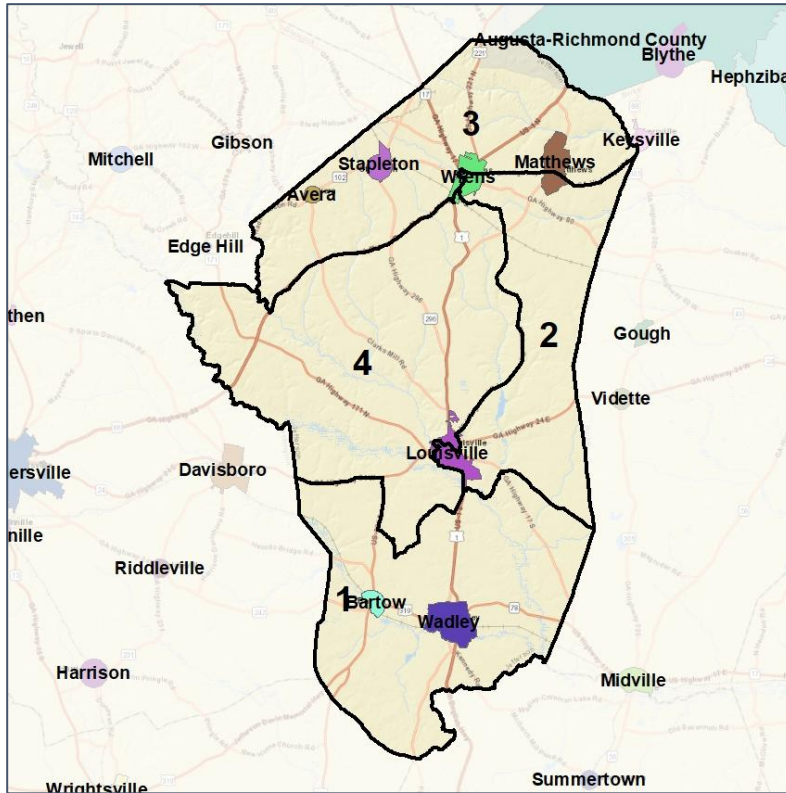
	1	2	3	4	1*	2*	3*	4*	County
Population	3,411	4,137	4,100	4,061	3,961	3,934	3,890	3,924	15,709
API	0%	1%	0%	0%	0%	1%	0%	1%	0%
Black	62%	74%	28%	40%	61%	73%	24%	44%	51%
Latino	4%	3%	3%	3%	3%	3%	3%	3%	3%
Other	2%	2%	3%	2%	2%	3%	3%	2%	2%
White	32%	20%	66%	54%	33%	21%	69%	51%	44%
Population Gain	*	*	*	*	550	-203	-210	-137	*
Population % Gain	*	*	*	*	16%	-5%	-5%	-3%	*
Net POC Gain	*	*	*	*	330	-201	-196	67	*
Net POC % Gain	*	*	*	*	14%	-6%	-14%	4%	*



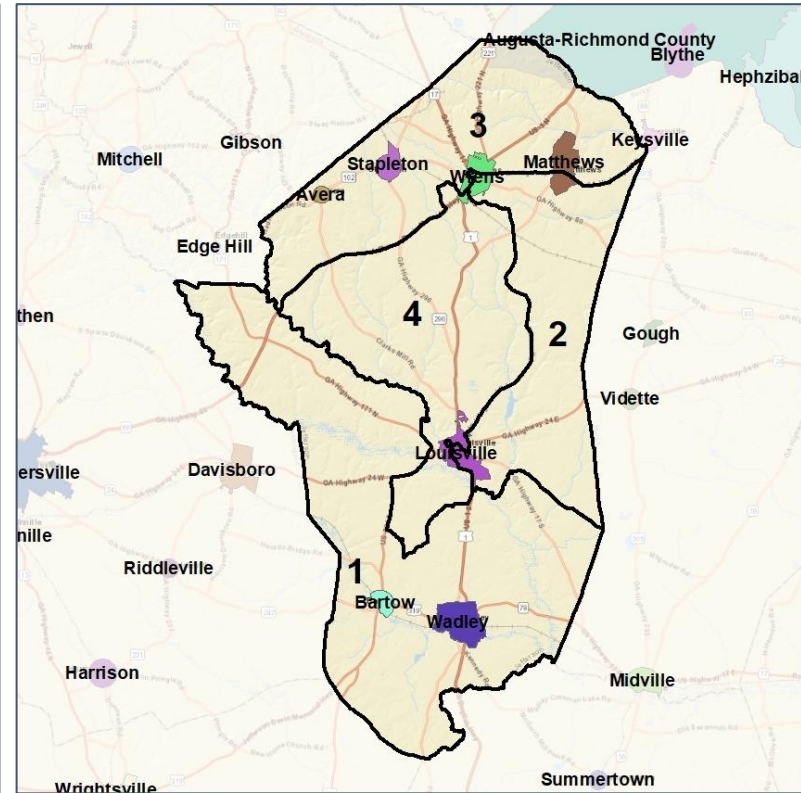
Jefferson Co. Commission & School Board Cities and Places



2012 Map



2022 Map*



	1	2	3	4	1*	2*	3*	4*	County
Population	3,411	4,137	4,100	4,061	3,961	3,934	3,890	3,924	15,709
API	0%	1%	0%	0%	0%	1%	0%	1%	0%
Black	62%	74%	28%	40%	61%	73%	24%	44%	51%
Latino	4%	3%	3%	3%	3%	3%	3%	3%	3%
Other	2%	2%	3%	2%	2%	3%	3%	2%	2%
White	32%	20%	66%	54%	33%	21%	69%	51%	44%
Population Gain	*	*	*	*	550	-203	-210	-137	*
Population % Gain	*	*	*	*	16%	-5%	-5%	-3%	*
Net POC Gain	*	*	*	*	330	-201	-196	67	*
Net POC % Gain	*	*	*	*	14%	-6%	-14%	4%	*



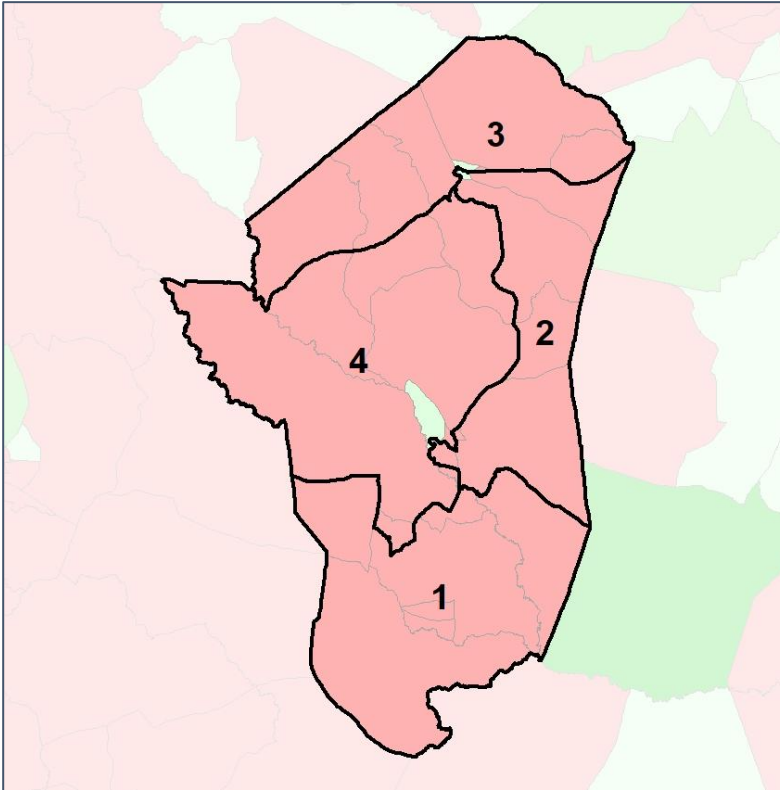
Source:
2020 Decennial Census
2020 ACS 5-Year Dataset

Jefferson Co. Commission & School Board

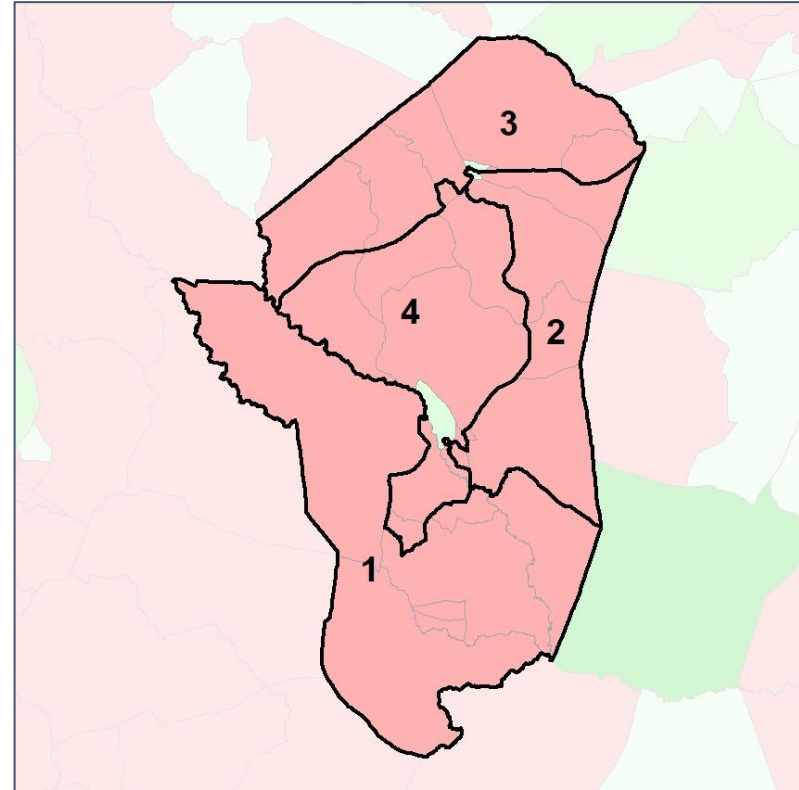
Net Gain in Population (2010 - 2020)



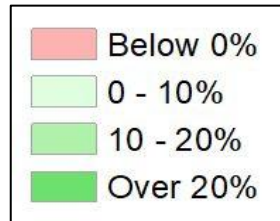
2012 Map



2022 Map*



	1	2	3	4	1*	2*	3*	4*	County
Population	3,411	4,137	4,100	4,061	3,961	3,934	3,890	3,924	15,709
API	0%	1%	0%	0%	0%	1%	0%	1%	0%
Black	62%	74%	28%	40%	61%	73%	24%	44%	51%
Latino	4%	3%	3%	3%	3%	3%	3%	3%	3%
Other	2%	2%	3%	2%	2%	3%	3%	2%	2%
White	32%	20%	66%	54%	33%	21%	69%	51%	44%
Population Gain	*	*	*	*	550	-203	-210	-137	*
Population % Gain	*	*	*	*	16%	-5%	-5%	-3%	*
Net POC Gain	*	*	*	*	330	-201	-196	67	*
Net POC % Gain	*	*	*	*	14%	-6%	-14%	4%	*

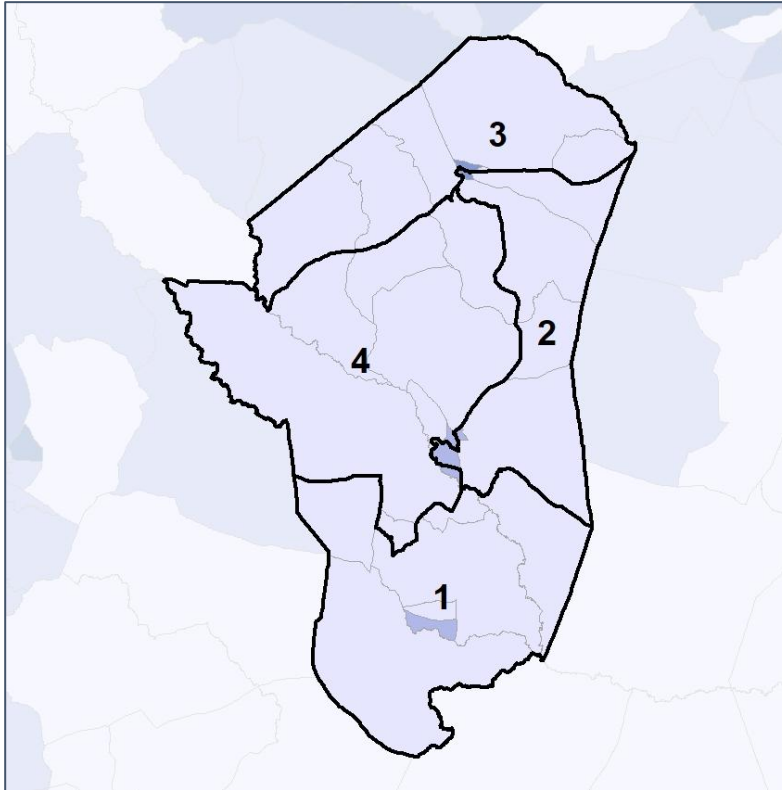


Jefferson Co. Commission & School Board

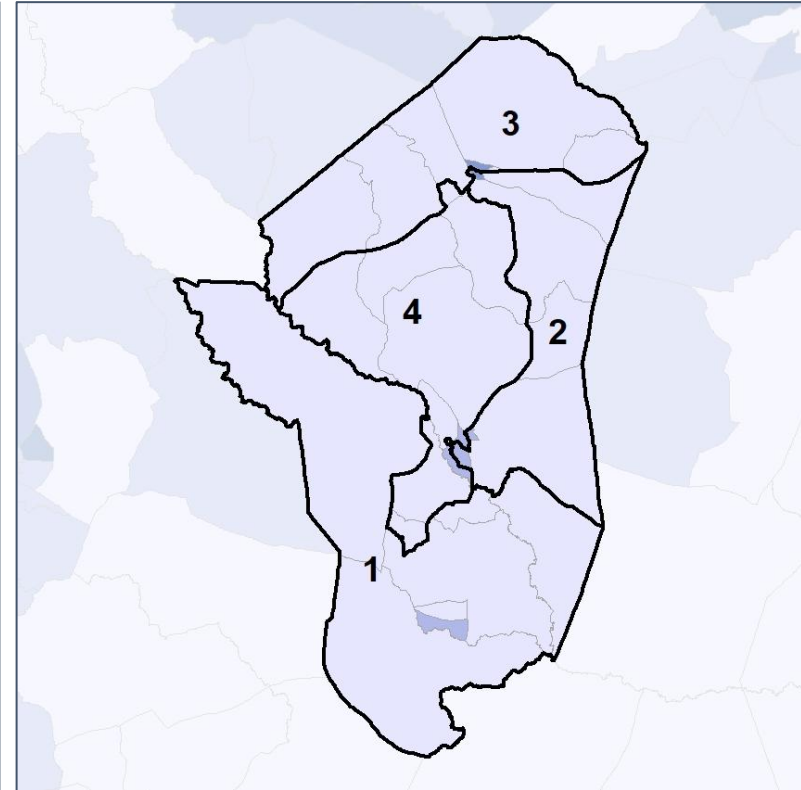
Net Gain in % POC (2020 - 2010) by Census Block Group



2012 Map



2022 Map*



	1	2	3	4	1*	2*	3*	4*	County
Population	3,411	4,137	4,100	4,061	3,961	3,934	3,890	3,924	15,709
API	0%	1%	0%	0%	0%	1%	0%	1%	0%
Black	62%	74%	28%	40%	61%	73%	24%	44%	51%
Latino	4%	3%	3%	3%	3%	3%	3%	3%	3%
Other	2%	2%	3%	2%	2%	3%	3%	2%	2%
White	32%	20%	66%	54%	33%	21%	69%	51%	44%
Population Gain	*	*	*	*	550	-203	-210	-137	*
Population % Gain	*	*	*	*	16%	-5%	-5%	-3%	*
Net POC Gain	*	*	*	*	330	-201	-196	67	*
Net POC % Gain	*	*	*	*	14%	-6%	-14%	4%	*

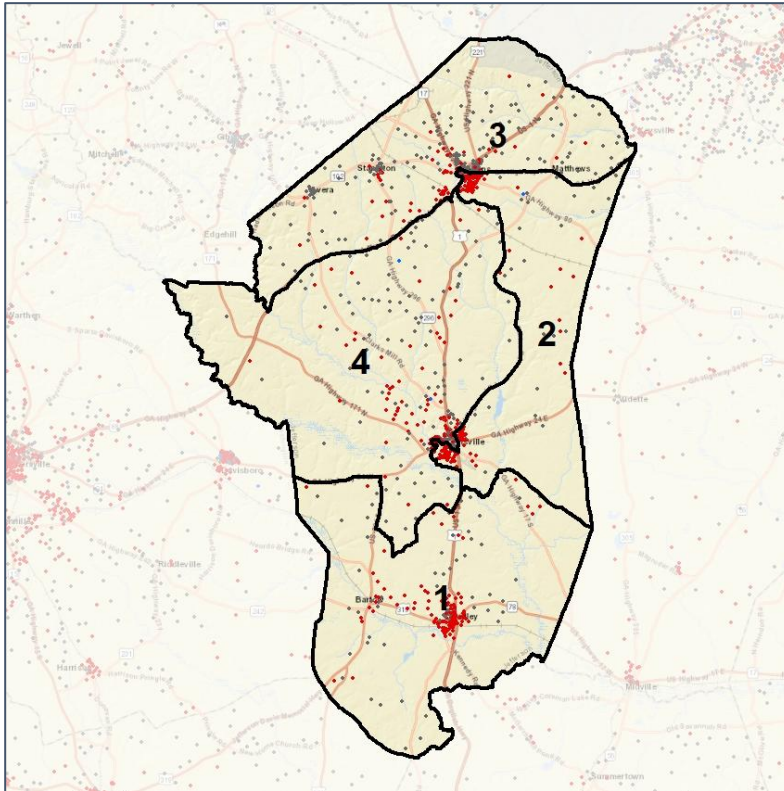


Jefferson Co. Commission & School Board

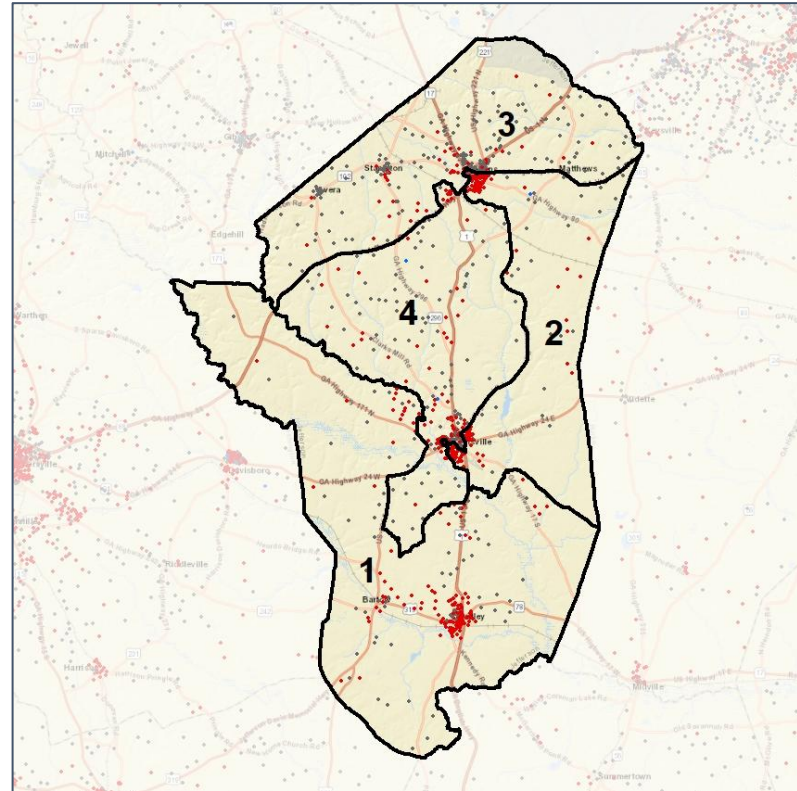
Population Density by Race



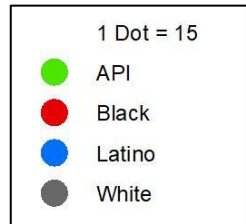
2012 Map



2022 Map*



	1	2	3	4	1*	2*	3*	4*	County
Population	3,411	4,137	4,100	4,061	3,961	3,934	3,890	3,924	15,709
API	8	26	16	20	8	23	16	23	70
% API	0%	1%	0%	0%	0%	1%	0%	1%	0%
Black	2,121	3,073	1,141	1,635	2,422	2,880	948	1,720	7,970
% Black	62%	74%	28%	40%	61%	73%	24%	44%	51%
Latino	124	123	109	106	137	118	107	100	462
% Latino	4%	3%	3%	3%	3%	3%	3%	3%	3%
Other	53	99	120	101	69	99	119	86	373
% Other	2%	2%	3%	2%	2%	3%	3%	2%	2%
White	1,105	816	2,714	2,199	1,325	814	2,700	1,995	6,834
% White	32%	20%	66%	54%	33%	21%	69%	51%	44%



Source:
2020 Decennial Census
2020 ACS 5-Year Dataset

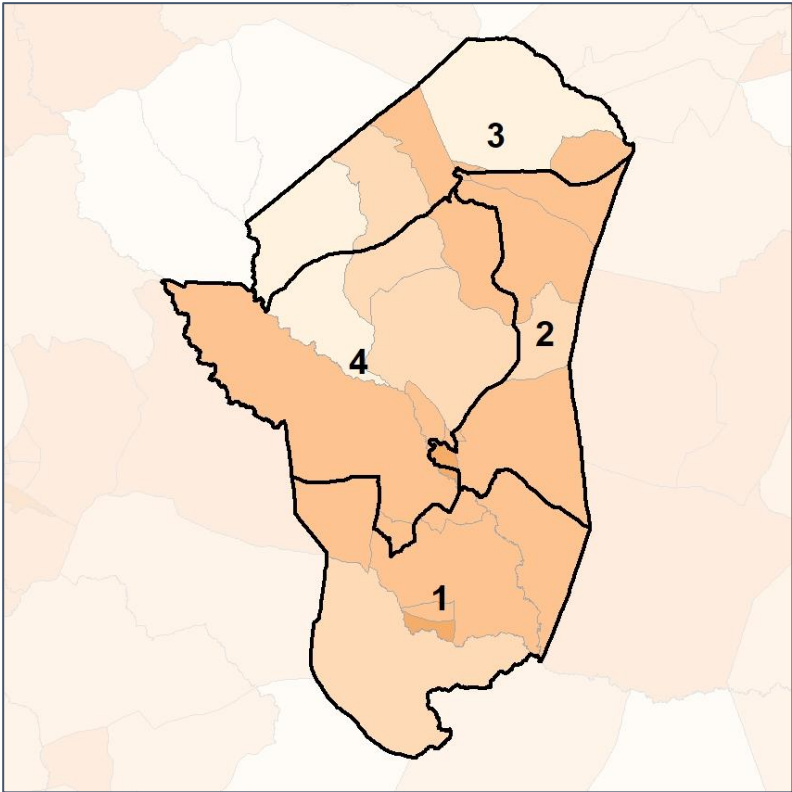


Jefferson Co. Commission & School Board

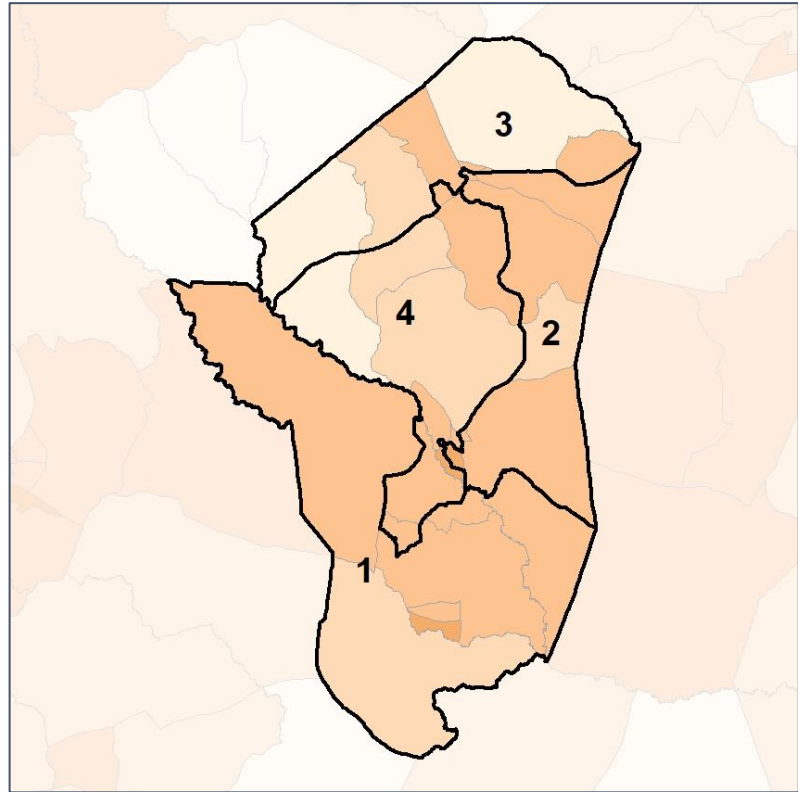
% People of Color by Census Block Group



2012 Map



2022 Map*



	1	2	3	4	1*	2*	3*	4*	County
Population	3,411	4,137	4,100	4,061	3,961	3,934	3,890	3,924	15,709
API	8	26	16	20	8	23	16	23	70
% API	0%	1%	0%	0%	0%	1%	0%	1%	0%
Black	2,121	3,073	1,141	1,635	2,422	2,880	948	1,720	7,970
% Black	62%	74%	28%	40%	61%	73%	24%	44%	51%
Latino	124	123	109	106	137	118	107	100	462
% Latino	4%	3%	3%	3%	3%	3%	3%	3%	3%
Other	53	99	120	101	69	99	119	86	373
% Other	2%	2%	3%	2%	2%	3%	3%	2%	2%
White	1,105	816	2,714	2,199	1,325	814	2,700	1,995	6,834
% White	32%	20%	66%	54%	33%	21%	69%	51%	44%



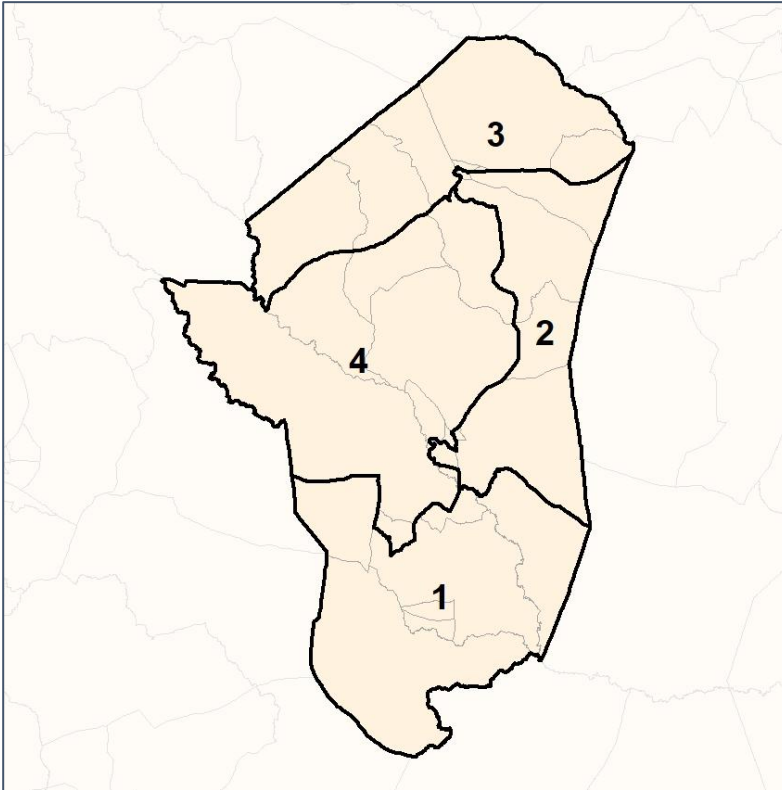
Source:
2020 Decennial Census
2020 ACS 5-Year Dataset

Jefferson Co. Commission & School Board

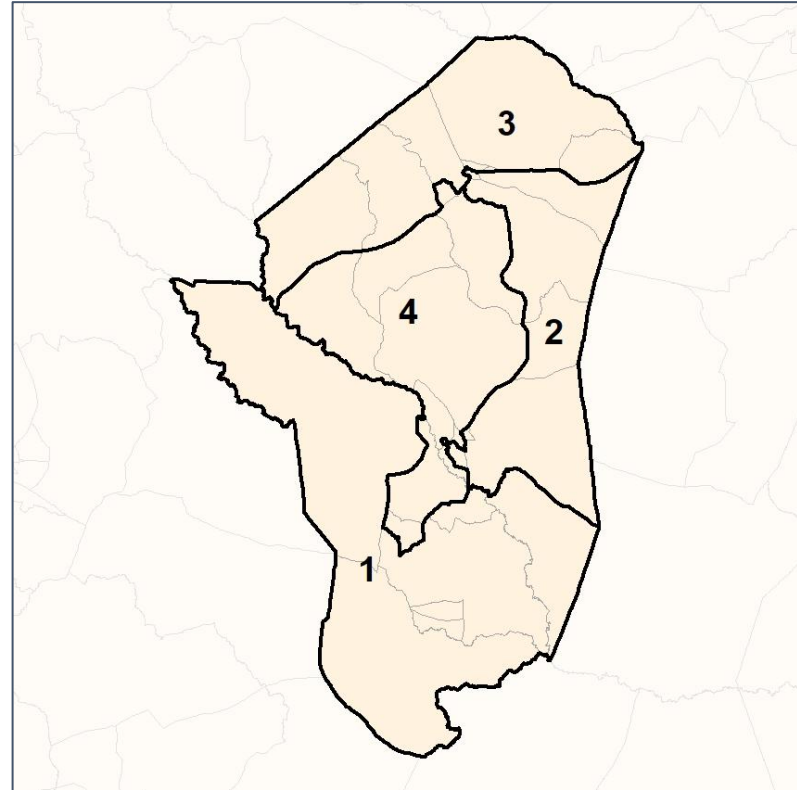
% API by Census Block Group



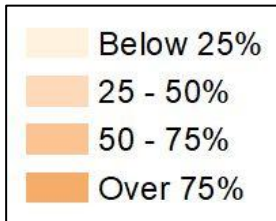
2012 Map



2022 Map*



	1	2	3	4	1*	2*	3*	4*	County
Population	3,411	4,137	4,100	4,061	3,961	3,934	3,890	3,924	15,709
API	8	26	16	20	8	23	16	23	70
% API	0%	1%	0%	0%	0%	1%	0%	1%	0%
Black	2,121	3,073	1,141	1,635	2,422	2,880	948	1,720	7,970
% Black	62%	74%	28%	40%	61%	73%	24%	44%	51%
Latino	124	123	109	106	137	118	107	100	462
% Latino	4%	3%	3%	3%	3%	3%	3%	3%	3%
Other	53	99	120	101	69	99	119	86	373
% Other	2%	2%	3%	2%	2%	3%	3%	2%	2%
White	1,105	816	2,714	2,199	1,325	814	2,700	1,995	6,834
% White	32%	20%	66%	54%	33%	21%	69%	51%	44%



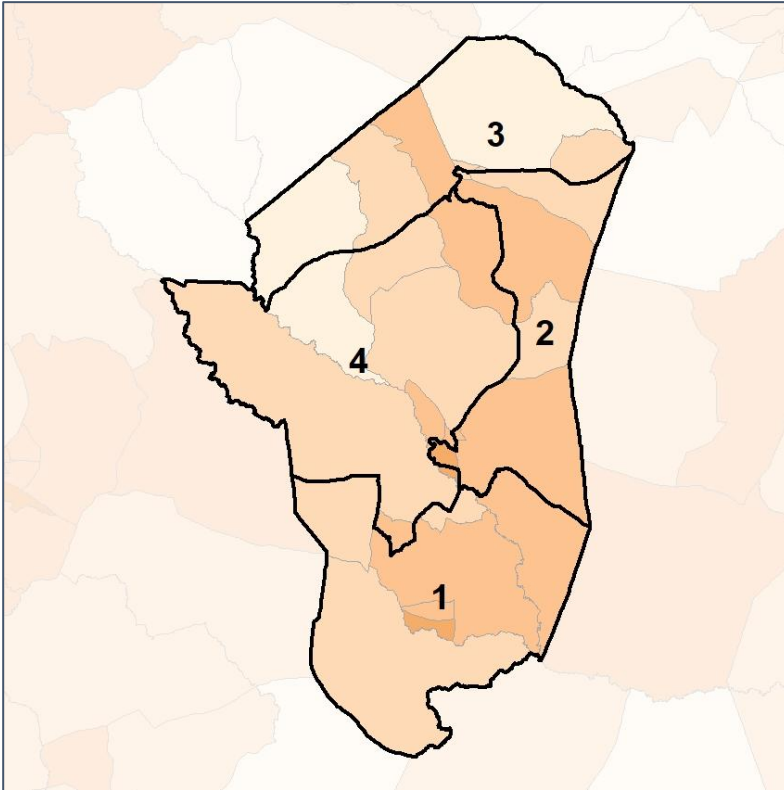
Source:
2020 Decennial Census
2020 ACS 5-Year Dataset

Jefferson Co. Commission & School Board

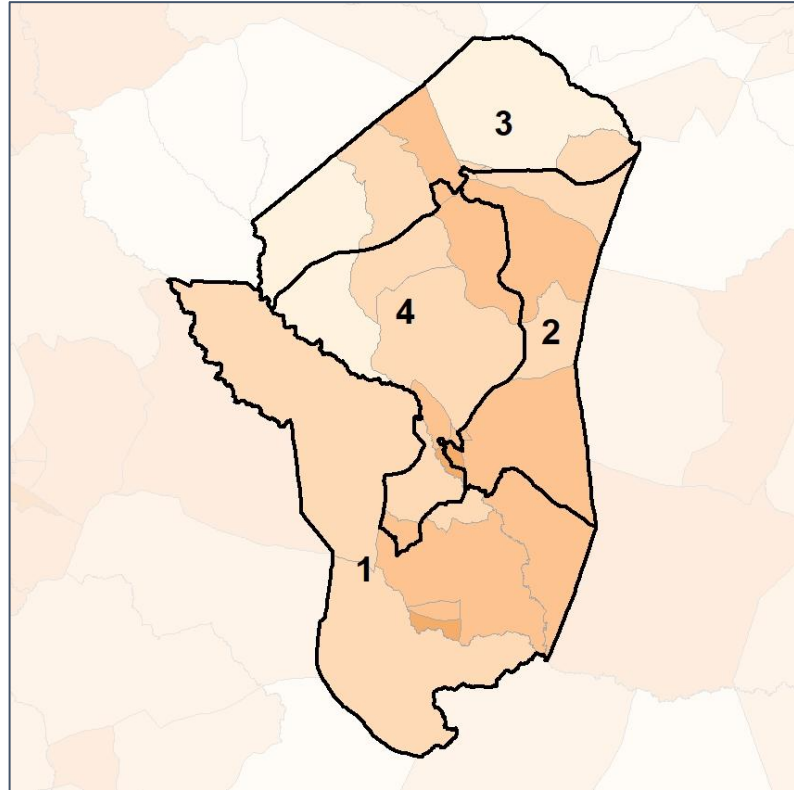
% Black by Census Block Group



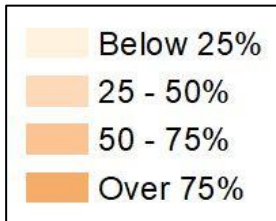
2012 Map



2022 Map*



	1	2	3	4	1*	2*	3*	4*	County
Population	3,411	4,137	4,100	4,061	3,961	3,934	3,890	3,924	15,709
API	8	26	16	20	8	23	16	23	70
% API	0%	1%	0%	0%	0%	1%	0%	1%	0%
Black	2,121	3,073	1,141	1,635	2,422	2,880	948	1,720	7,970
% Black	62%	74%	28%	40%	61%	73%	24%	44%	51%
Latino	124	123	109	106	137	118	107	100	462
% Latino	4%	3%	3%	3%	3%	3%	3%	3%	3%
Other	53	99	120	101	69	99	119	86	373
% Other	2%	2%	3%	2%	2%	3%	3%	2%	2%
White	1,105	816	2,714	2,199	1,325	814	2,700	1,995	6,834
% White	32%	20%	66%	54%	33%	21%	69%	51%	44%



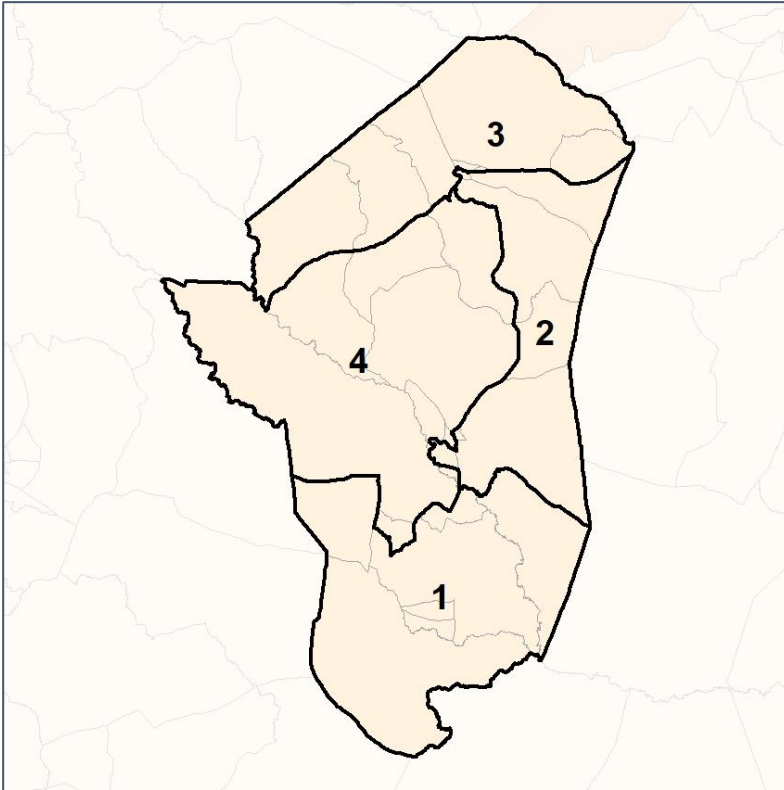
Source:
2020 Decennial Census
2020 ACS 5-Year Dataset

Jefferson Co. Commission & School Board

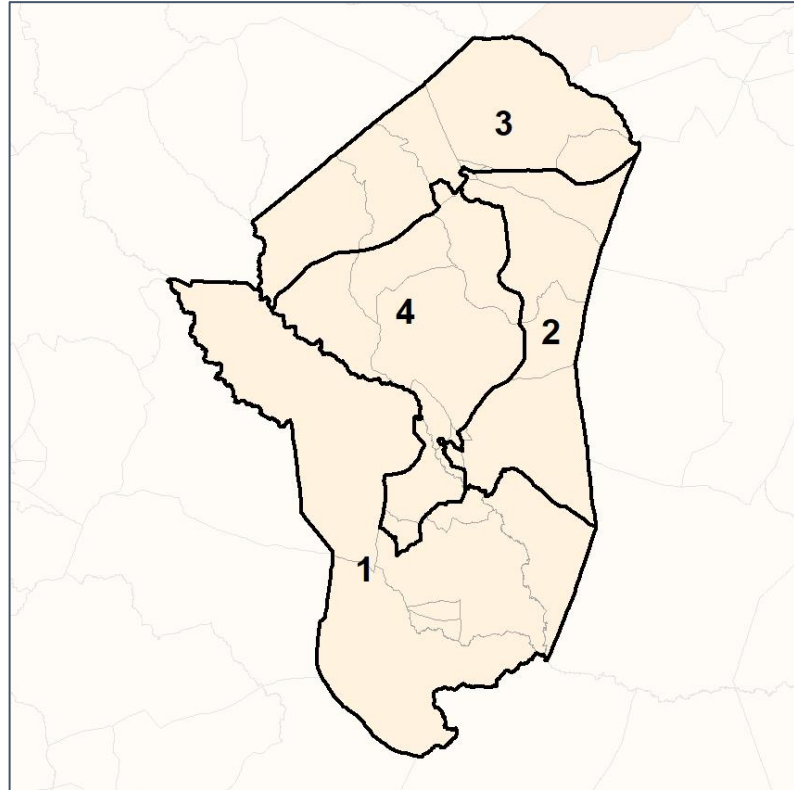
% Latino by Census Block Group



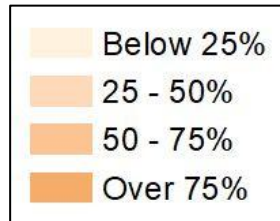
2012 Map



2022 Map*



	1	2	3	4	1*	2*	3*	4*	County
Population	3,411	4,137	4,100	4,061	3,961	3,934	3,890	3,924	15,709
API	8	26	16	20	8	23	16	23	70
% API	0%	1%	0%	0%	0%	1%	0%	1%	0%
Black	2,121	3,073	1,141	1,635	2,422	2,880	948	1,720	7,970
% Black	62%	74%	28%	40%	61%	73%	24%	44%	51%
Latino	124	123	109	106	137	118	107	100	462
% Latino	4%	3%	3%	3%	3%	3%	3%	3%	3%
Other	53	99	120	101	69	99	119	86	373
% Other	2%	2%	3%	2%	2%	3%	3%	2%	2%
White	1,105	816	2,714	2,199	1,325	814	2,700	1,995	6,834
% White	32%	20%	66%	54%	33%	21%	69%	51%	44%



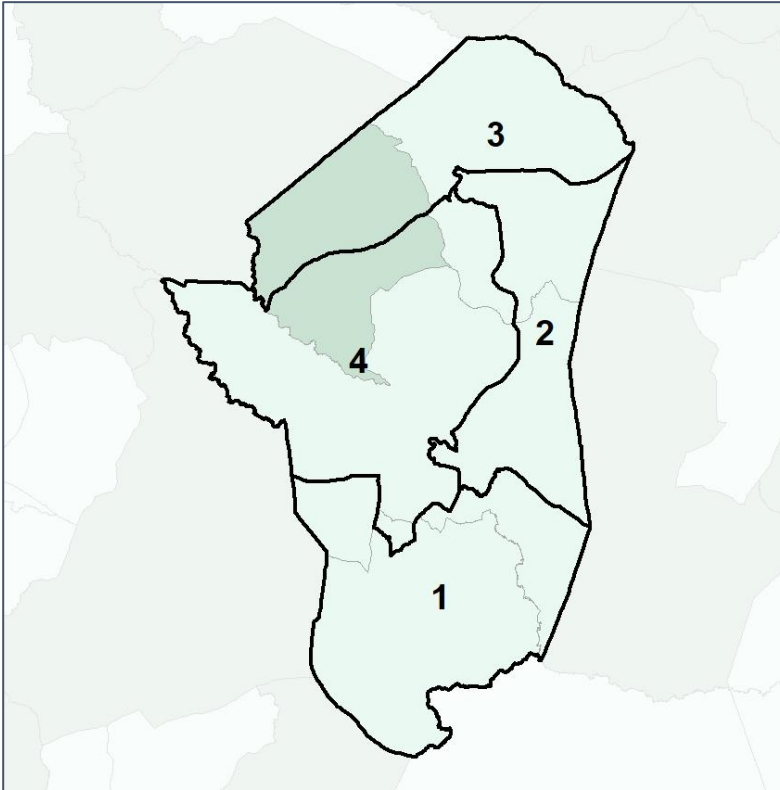
Source:
2020 Decennial Census
2020 ACS 5-Year Dataset

Jefferson Co. Commission & School Board

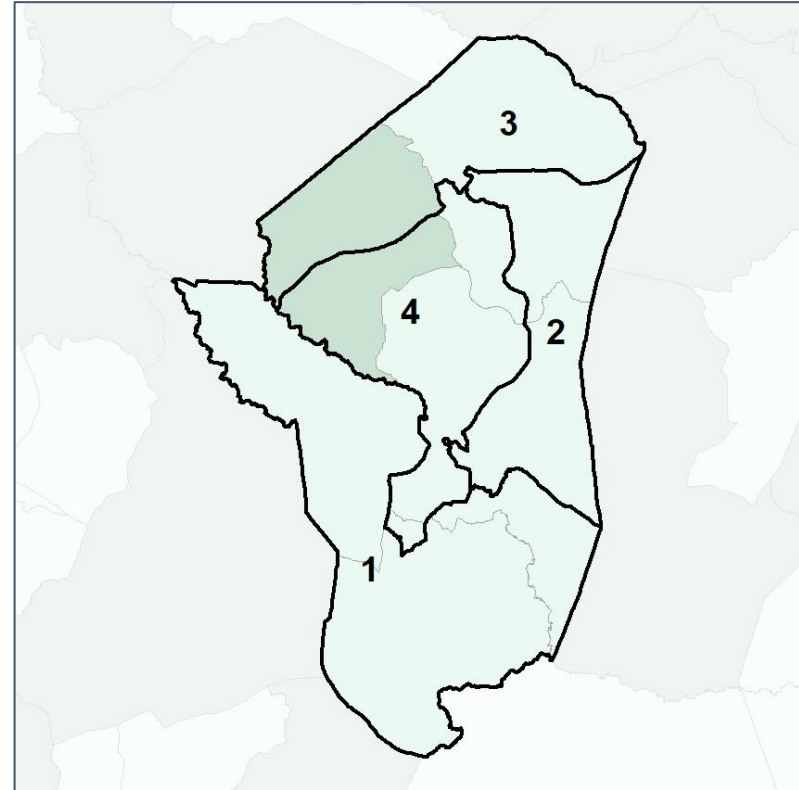
Median Household Income by Census Tract



2012 Map



2022 Map*



	1	2	3	4	1*	2*	3*	4*	County
Population	3,411	4,137	4,100	4,061	3,961	3,934	3,890	3,924	15,709
% API	0%	1%	0%	0%	0%	1%	0%	1%	0%
% Black	62%	74%	28%	40%	61%	73%	24%	44%	51%
% Latino	4%	3%	3%	3%	3%	3%	3%	3%	3%
% Other	2%	2%	3%	2%	2%	3%	3%	2%	2%
% White	32%	20%	66%	54%	33%	21%	69%	51%	44%
Median Income	\$35,000	\$47,000	\$45,000	\$60,000	\$52,000	\$50,000	\$45,000	\$37,000	\$37,000
% Renter	33%	42%	30%	40%	32%	42%	30%	43%	36%
% Youth	18%	21%	20%	21%	17%	19%	20%	25%	20%

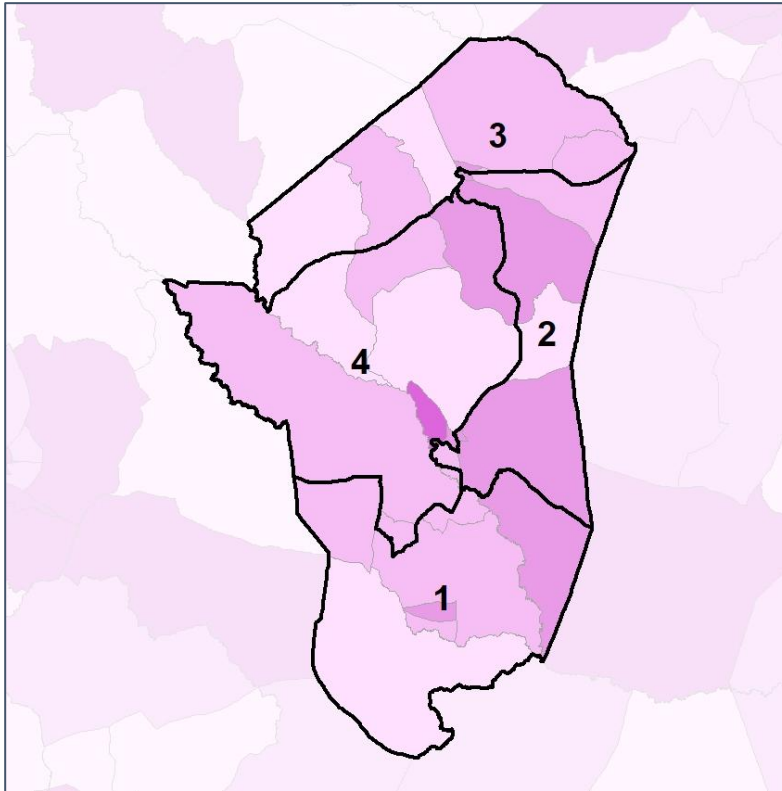


Jefferson Co. Commission & School Board

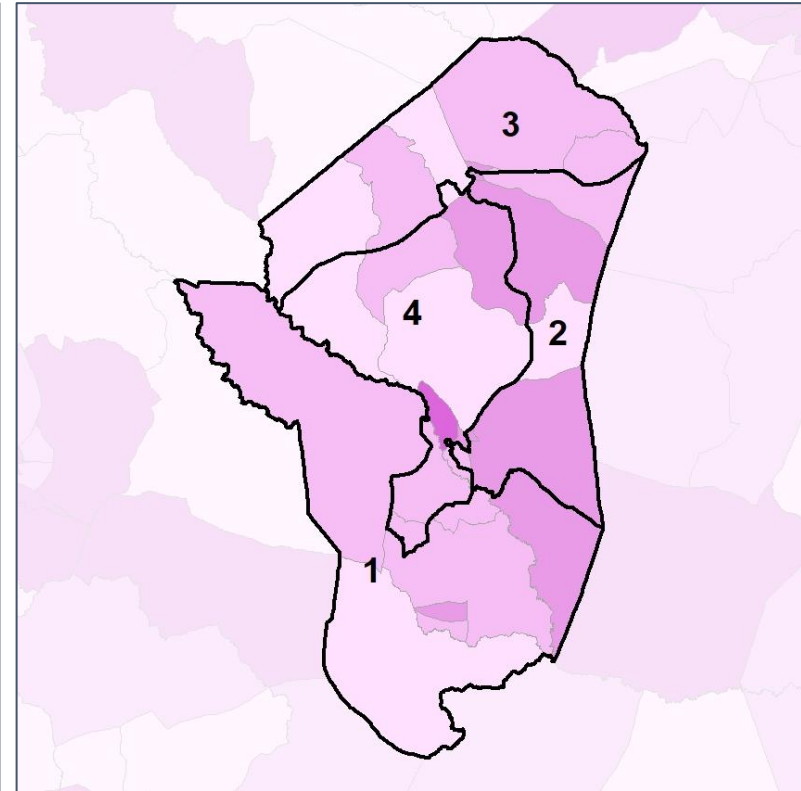
% Renter by Census Block Group



2012 Map



2022 Map*



	1	2	3	4	1*	2*	3*	4*	County
Population	3,411	4,137	4,100	4,061	3,961	3,934	3,890	3,924	15,709
% API	0%	1%	0%	0%	0%	1%	0%	1%	0%
% Black	62%	74%	28%	40%	61%	73%	24%	44%	51%
% Latino	4%	3%	3%	3%	3%	3%	3%	3%	3%
% Other	2%	2%	3%	2%	2%	3%	3%	2%	2%
% White	32%	20%	66%	54%	33%	21%	69%	51%	44%
Median Income	\$35,000	\$47,000	\$45,000	\$60,000	\$52,000	\$50,000	\$45,000	\$37,000	\$37,000
% Renter	33%	42%	30%	40%	32%	42%	30%	43%	36%
% Youth	18%	21%	20%	21%	17%	19%	20%	25%	20%

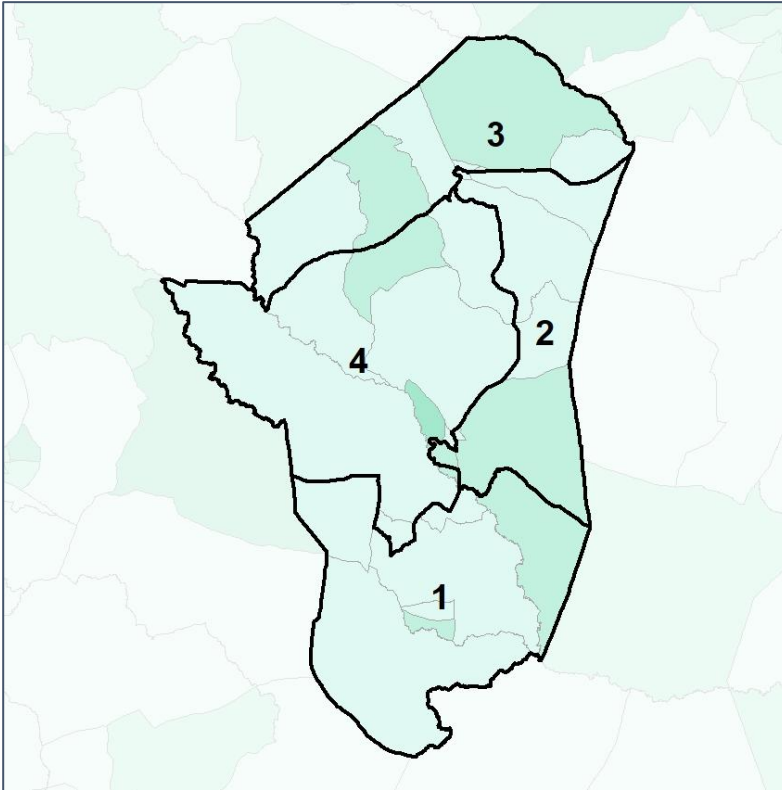


Jefferson Co. Commission & School Board

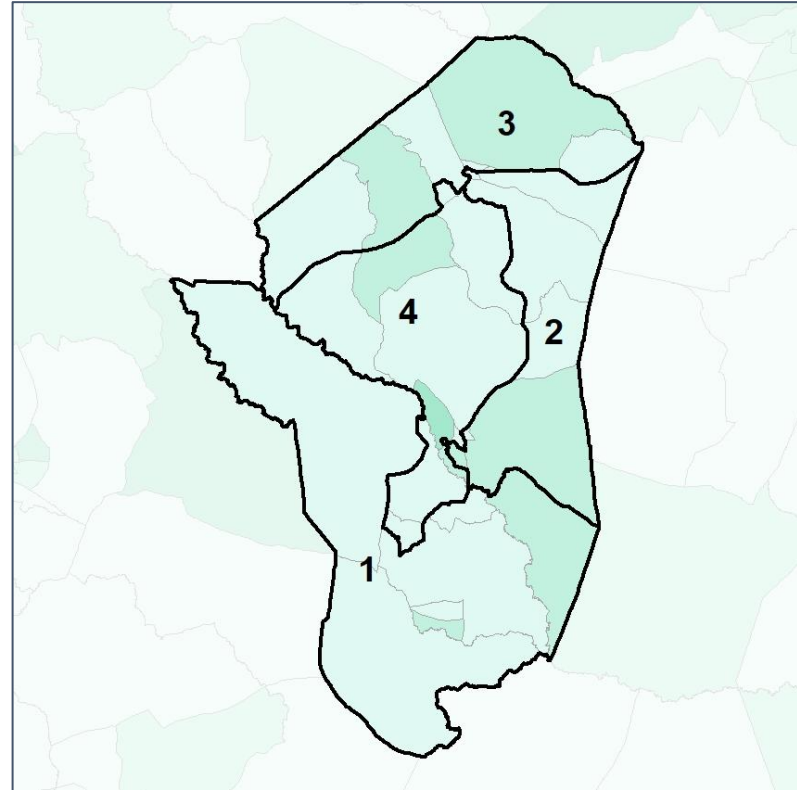
% Youth (18-34) by Census Block Group



2012 Map



2022 Map*



	1	2	3	4	1*	2*	3*	4*	County
Population	3,411	4,137	4,100	4,061	3,961	3,934	3,890	3,924	15,709
% API	0%	1%	0%	0%	0%	1%	0%	1%	0%
% Black	62%	74%	28%	40%	61%	73%	24%	44%	51%
% Latino	4%	3%	3%	3%	3%	3%	3%	3%	3%
% Other	2%	2%	3%	2%	2%	3%	3%	2%	2%
% White	32%	20%	66%	54%	33%	21%	69%	51%	44%
Median Income	\$35,000	\$47,000	\$45,000	\$60,000	\$52,000	\$50,000	\$45,000	\$37,000	\$37,000
% Renter	33%	42%	30%	40%	32%	42%	30%	43%	36%
% Youth	18%	21%	20%	21%	17%	19%	20%	25%	20%



Source:
2020 Decennial Census
2020 ACS 5-Year Dataset