



Demographic Overview

Racial Breakdown in Jasper County

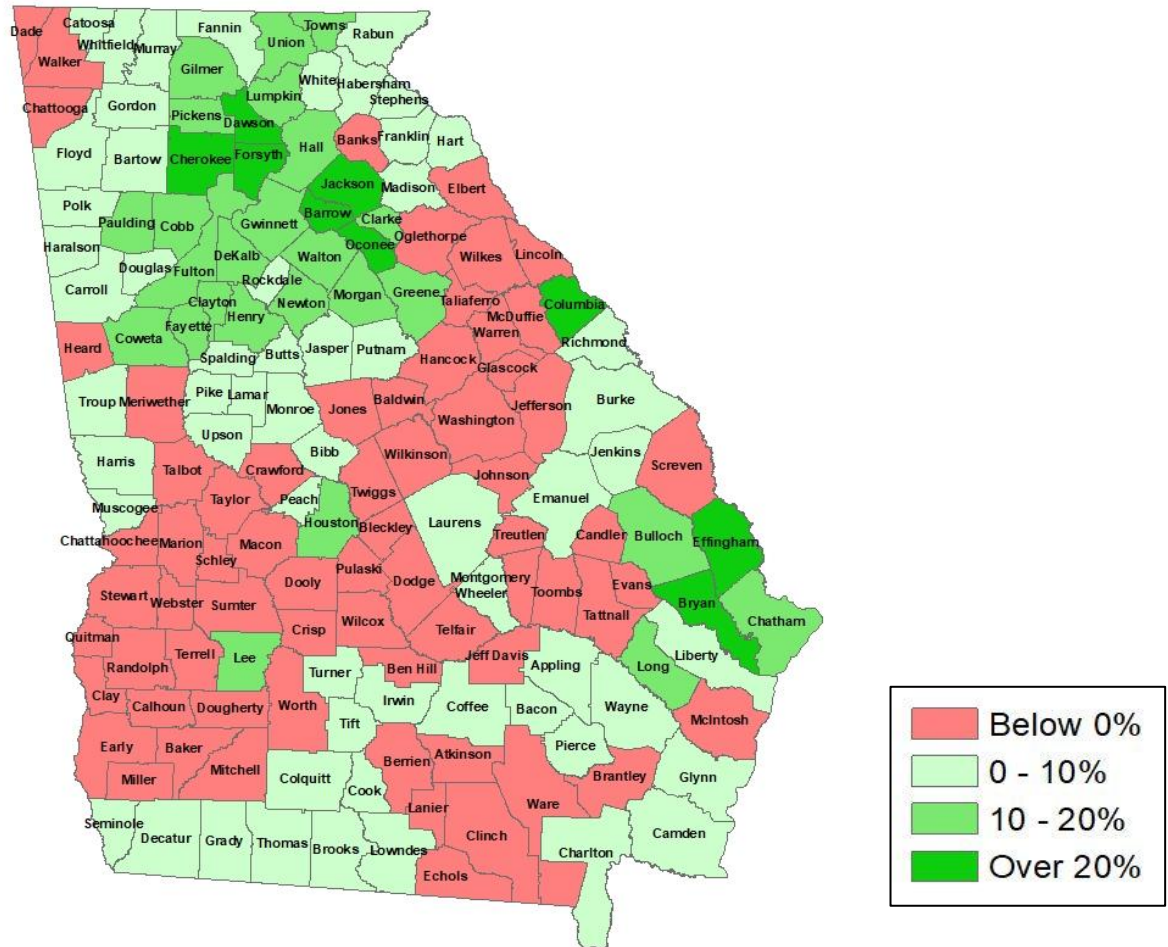
Jasper County	2010	2020	% Change
Total Population	13,900	14,588	5%
AAPI	31	23	-26%
Black	3,030	2,442	-19%
Latino	510	684	34%
Other/Mixed Race	234	668	185%
POC	3,805	3,817	0%
White	10,095	10,771	7%





Population Gain

Change in Population in Georgia by County

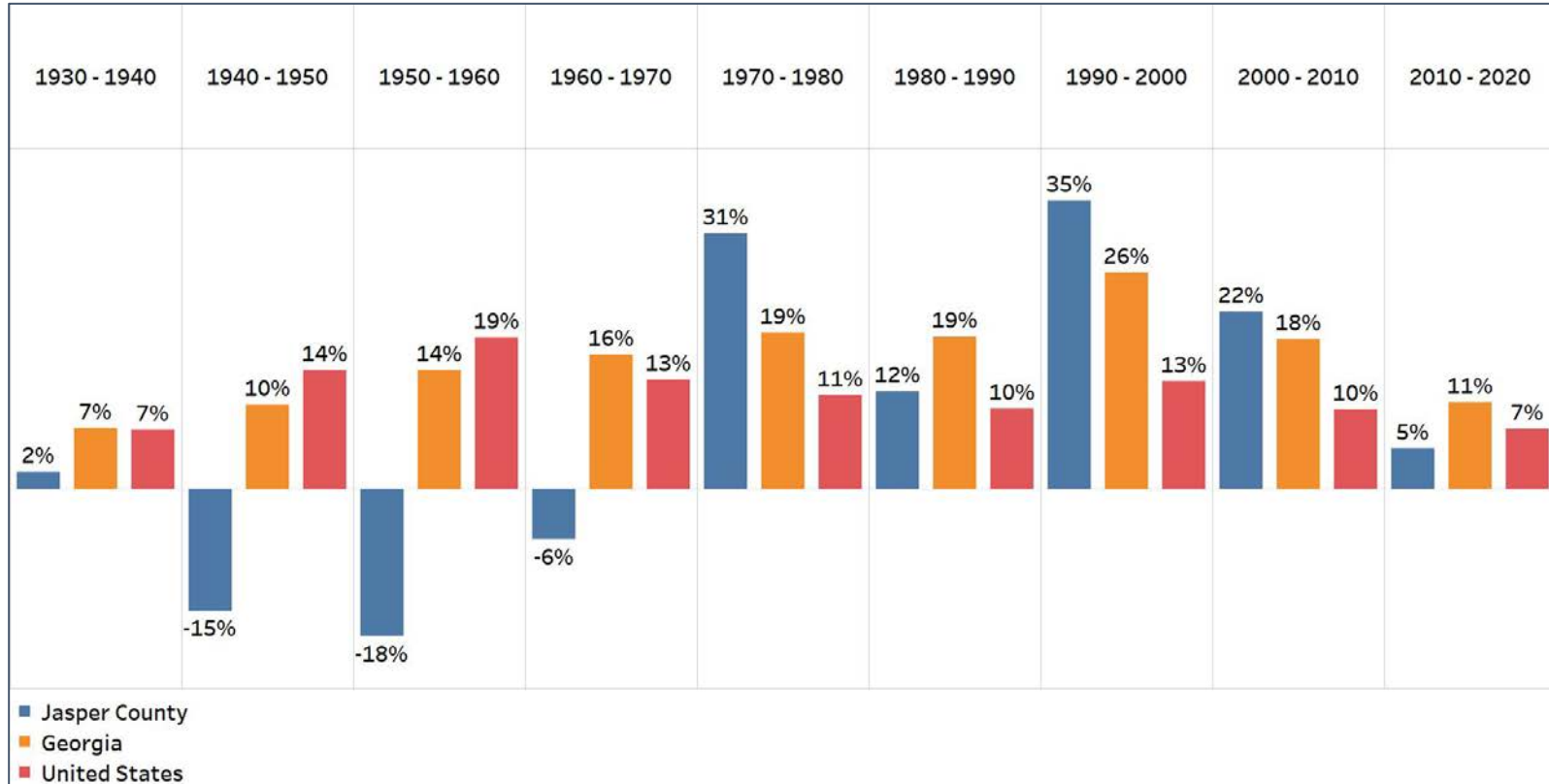


- Georgia is experiencing rapid population growth in the Atlanta, Augusta, and Savannah regions of the state



Population Gain

Change in Population by Decade

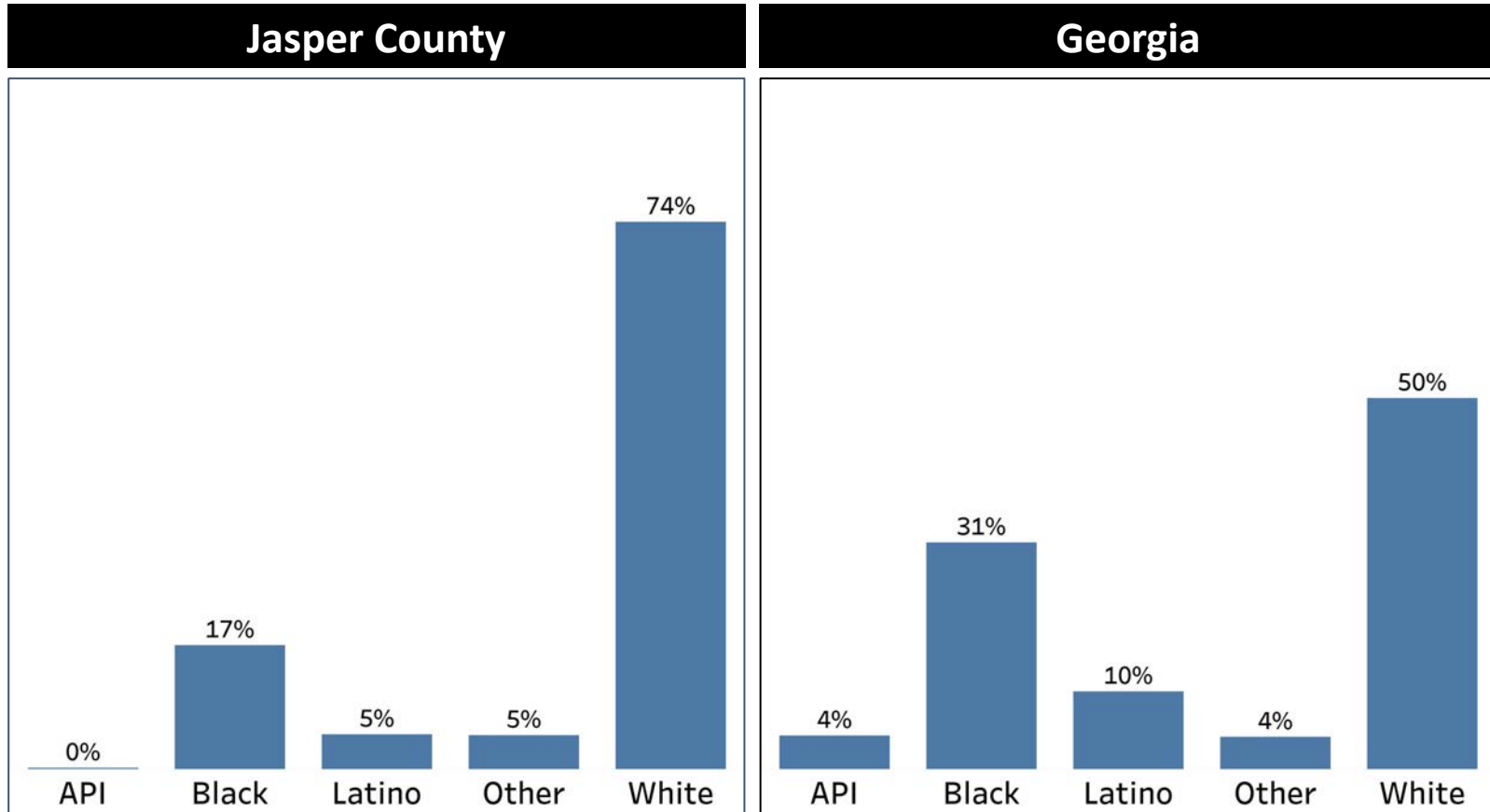


- After several decades of decline, Jasper County had significant population growth from 1970-2010
- However, it's growth has slowed significantly in the last decade, being the lowest growth rate in the county since 1940



Demographics

Comparison between Jasper County and Georgia



- Jasper County is nearly $\frac{3}{4}$ White, while having only about half of the Black and Latino population compared to Georgia overall
- The Other population is the only other demographic group that is higher in the county than Georgia overall

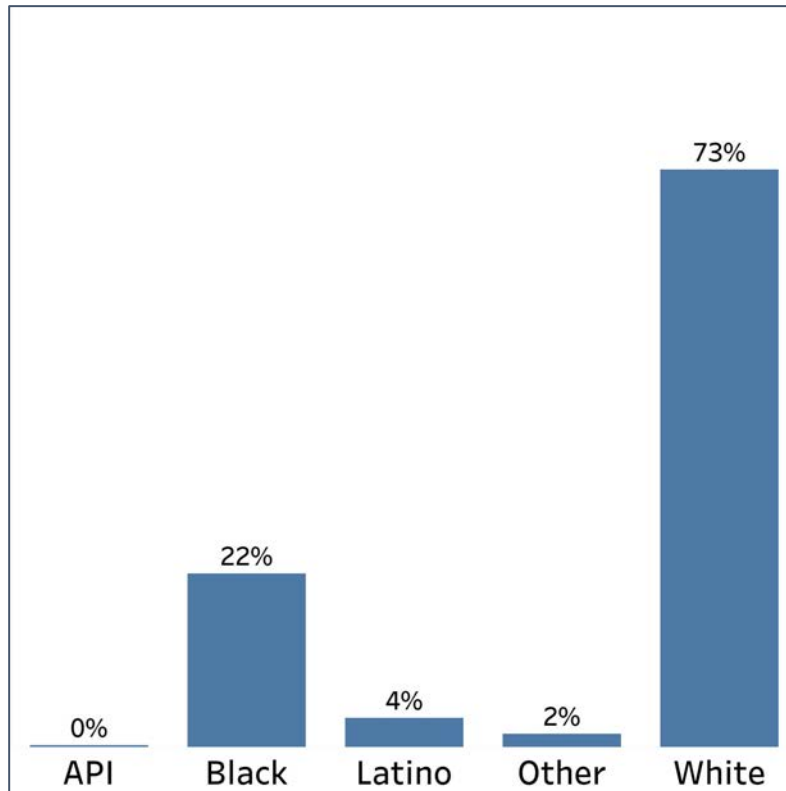


Demographics

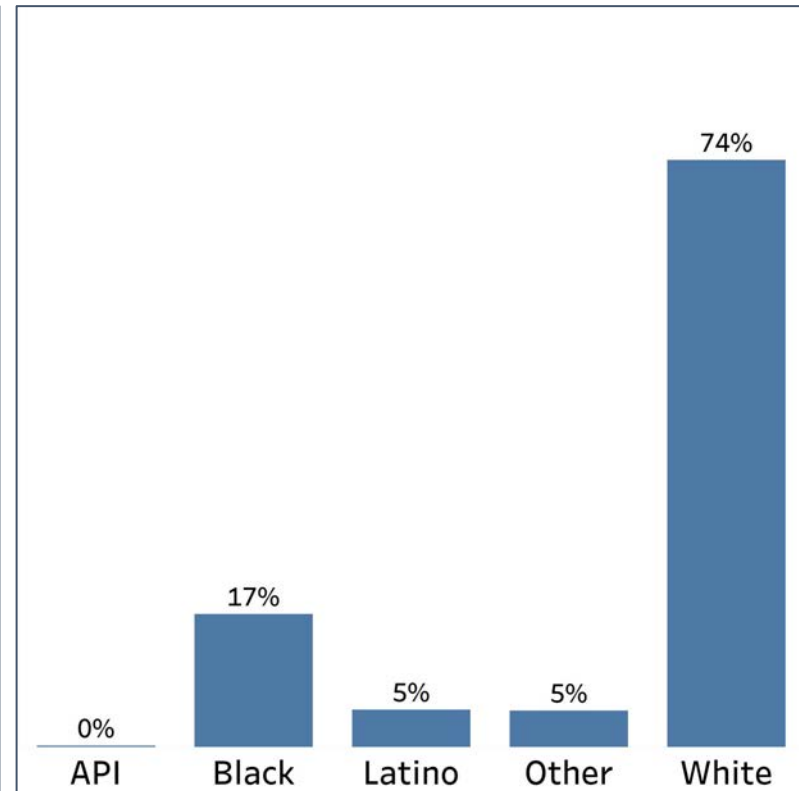
2010 vs 2020 Demographics in Jasper County



Jasper County 2010



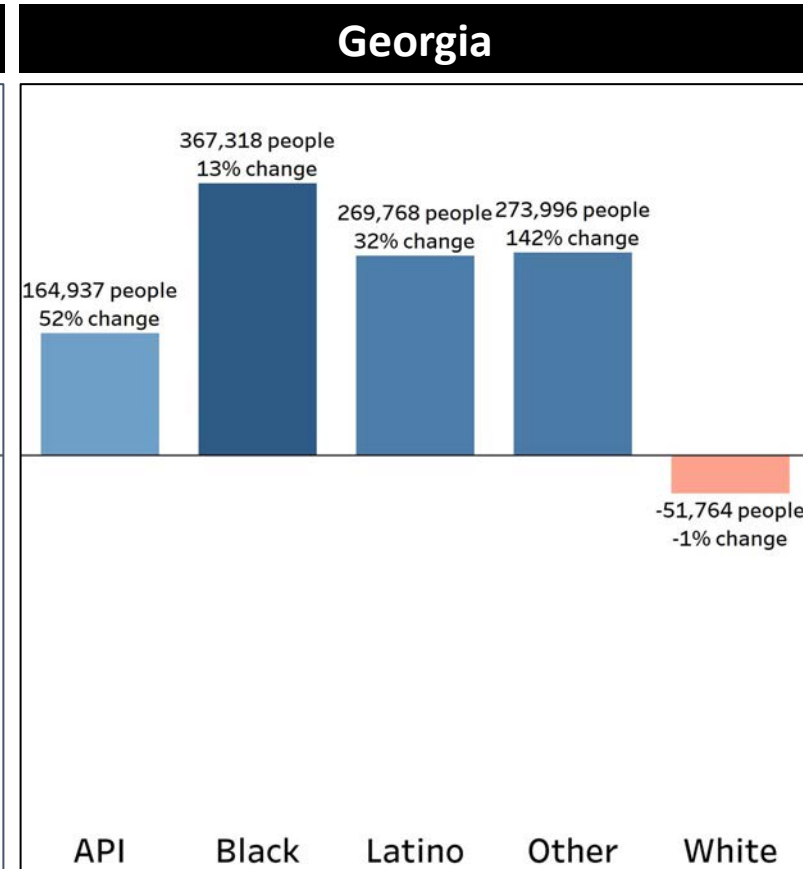
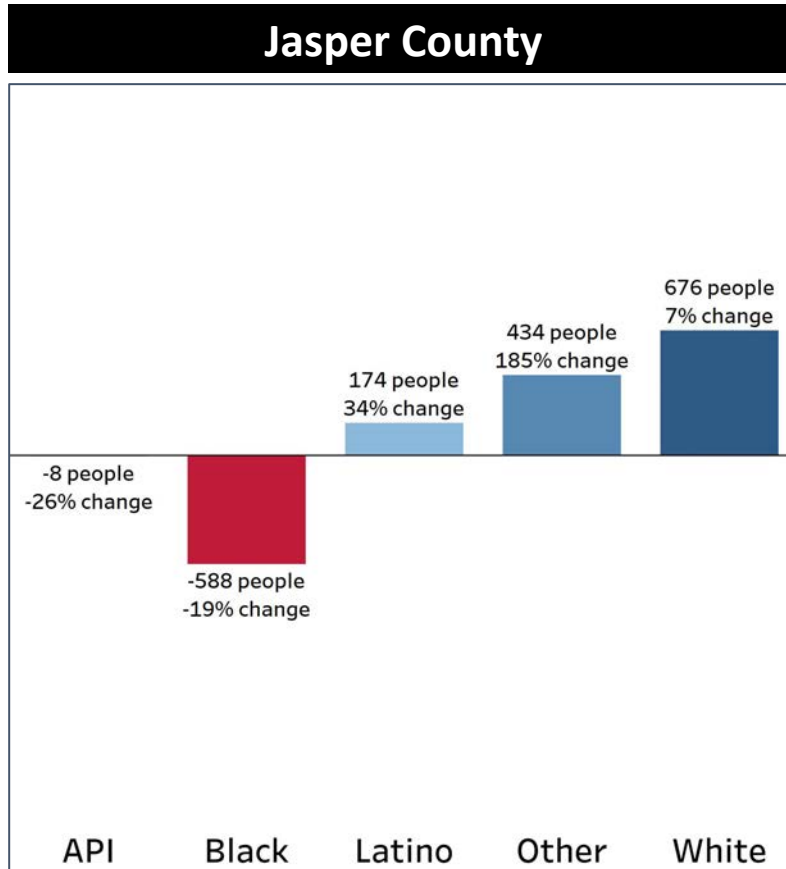
Jasper County 2020



- Jasper county had a slight increase in the share of both the White and Latino populations
- Meanwhile, there was a significant decrease in the share of the Black population, while the Other population more than doubled

Demographics

Population Change by Race (2020 - 2010)

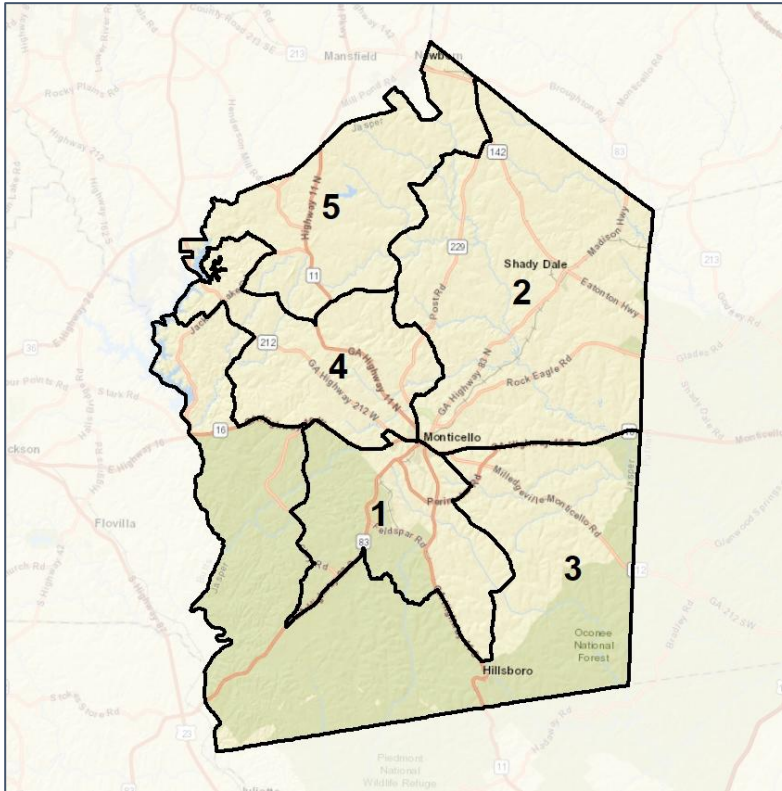


- Jasper County had similar rates of increase for the Latino and Other populations compared to Georgia's rates
- The Black population, however, had significant decline, while the White Population had a slight increase, which is the opposite of what was seen in Georgia overall

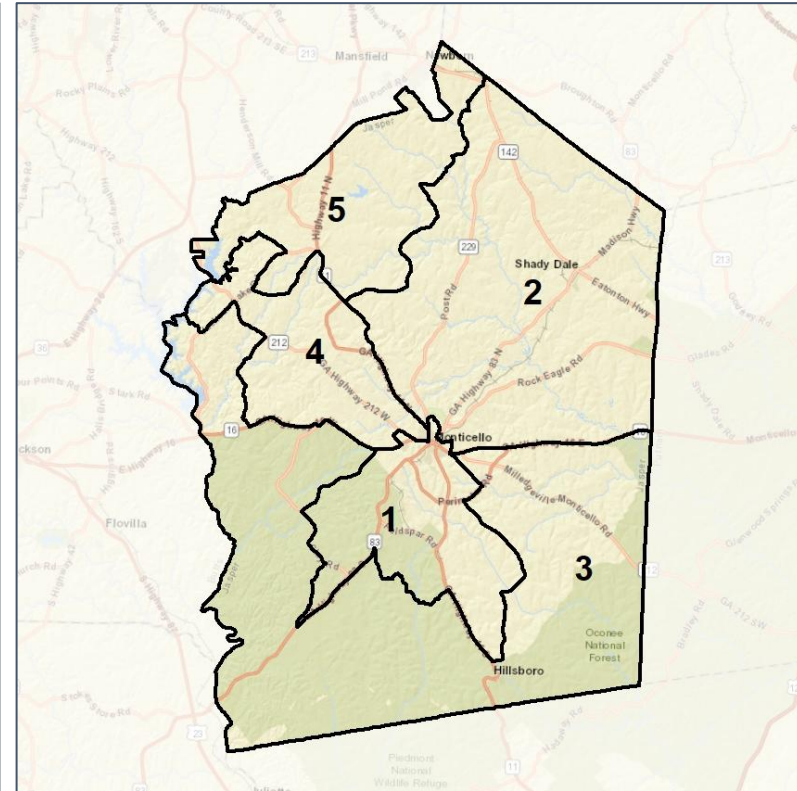
Jasper Co. Commission & School Board Context



2012 Map



2022 Map*



	1	2	3	4	5	1	2	3	4	5	County
Population	2,505	2,764	3,117	3,038	3,164	2,906	2,921	2,932	2,903	2,926	14,588
API	0%	0%	0%	0%	0%	0%	0%	0%	0%	0%	0%
Black	50%	27%	6%	6%	4%	53%	16%	6%	5%	3%	17%
Latino	5%	7%	3%	3%	5%	5%	8%	3%	4%	4%	5%
Other	4%	5%	3%	5%	6%	3%	5%	3%	6%	6%	5%
White	41%	61%	87%	86%	86%	39%	71%	87%	85%	87%	74%
Population Gain	-201	-16	313	186	406	401	157	-185	-135	-238	*
Population % Gain	-7%	-1%	11%	7%	15%	16%	6%	-6%	-4%	-8%	*
Net POC Gain	-281	-44	60	106	171	312	-239	-14	-4	-55	*
Net POC % Gain	-16%	-4%	18%	32%	64%	21%	-22%	-4%	-1%	-13%	*

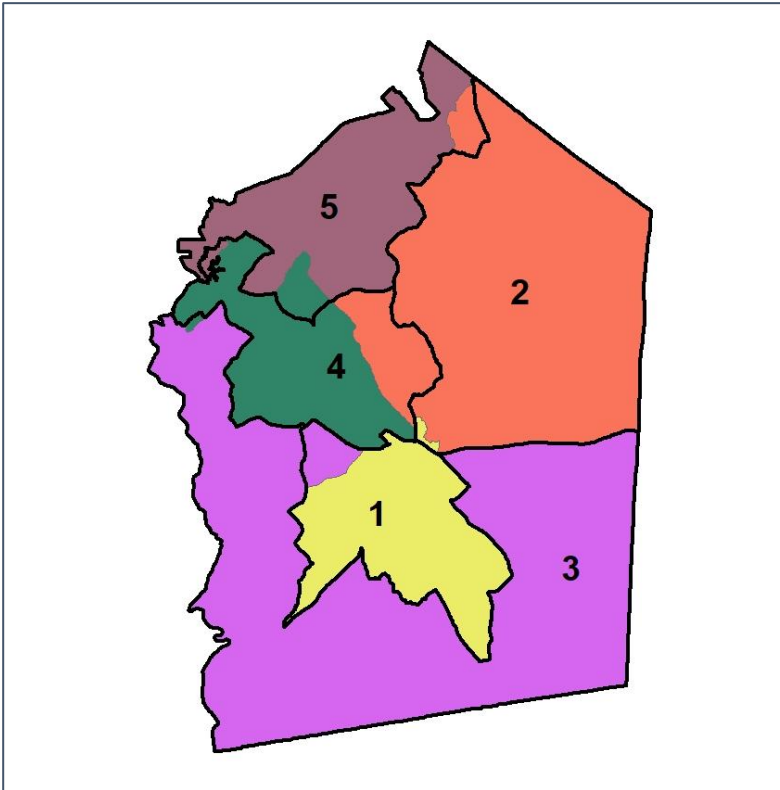


Jasper Co. Commission & School Board

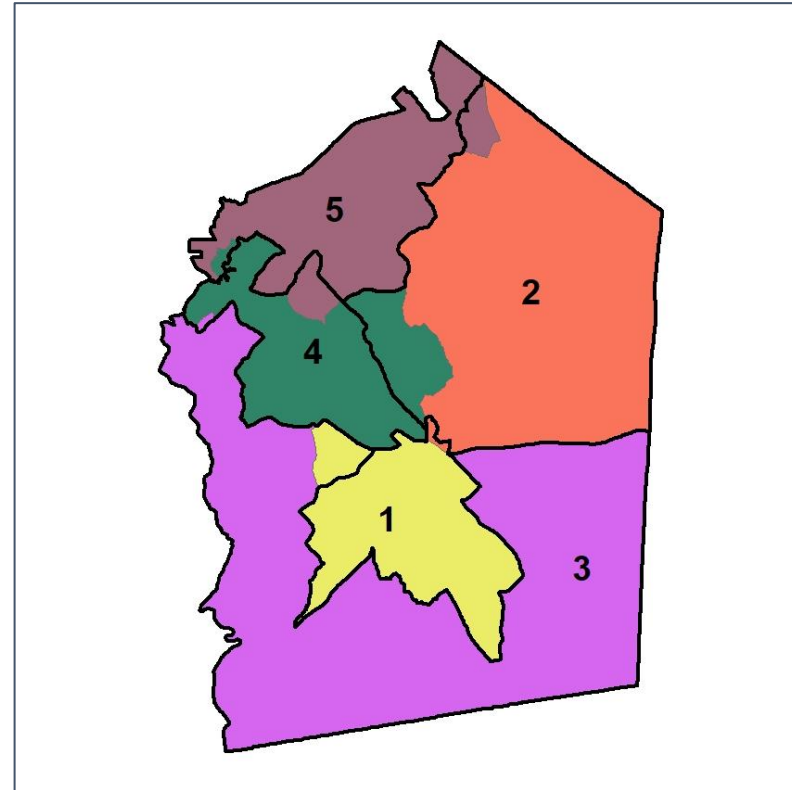
Changes in Redistricting



2012 Map (2022 in Colors)



2022 Map* (2012 in Colors)



	1	2	3	4	5	1	2	3	4	5	County
Population	2,505	2,764	3,117	3,038	3,164	2,906	2,921	2,932	2,903	2,926	14,588
API	0%	0%	0%	0%	0%	0%	0%	0%	0%	0%	0%
Black	50%	27%	6%	6%	4%	53%	16%	6%	5%	3%	17%
Latino	5%	7%	3%	3%	5%	5%	8%	3%	4%	4%	5%
Other	4%	5%	3%	5%	6%	3%	5%	3%	6%	6%	5%
White	41%	61%	87%	86%	86%	39%	71%	87%	85%	87%	74%
Population Gain	-201	-16	313	186	406	401	157	-185	-135	-238	*
Population % Gain	-7%	-1%	11%	7%	15%	16%	6%	-6%	-4%	-8%	*
Net POC Gain	-281	-44	60	106	171	312	-239	-14	-4	-55	*
Net POC % Gain	-16%	-4%	18%	32%	64%	21%	-22%	-4%	-1%	-13%	*

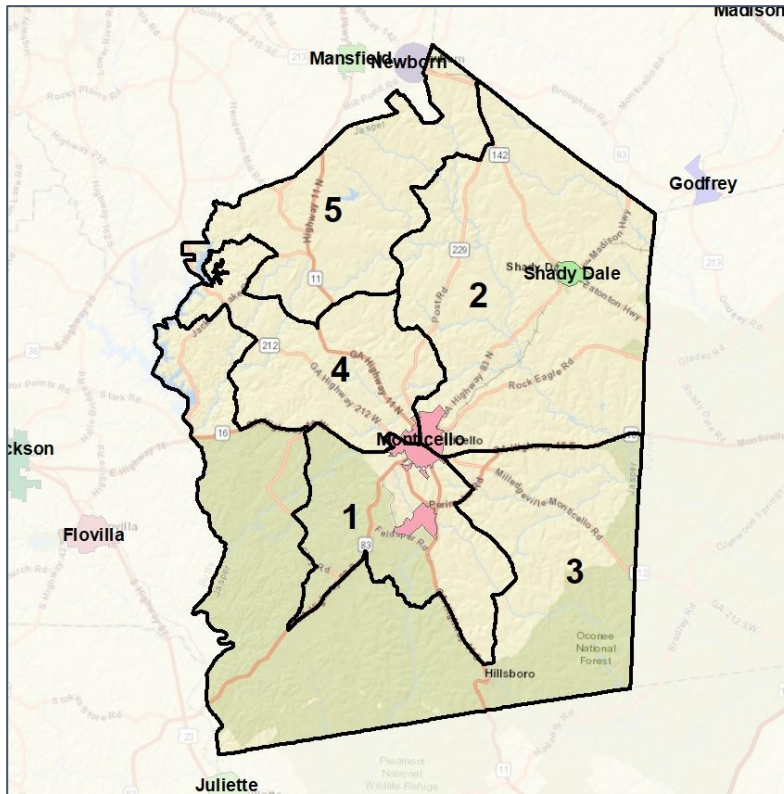


Jasper Co. Commission & School Board

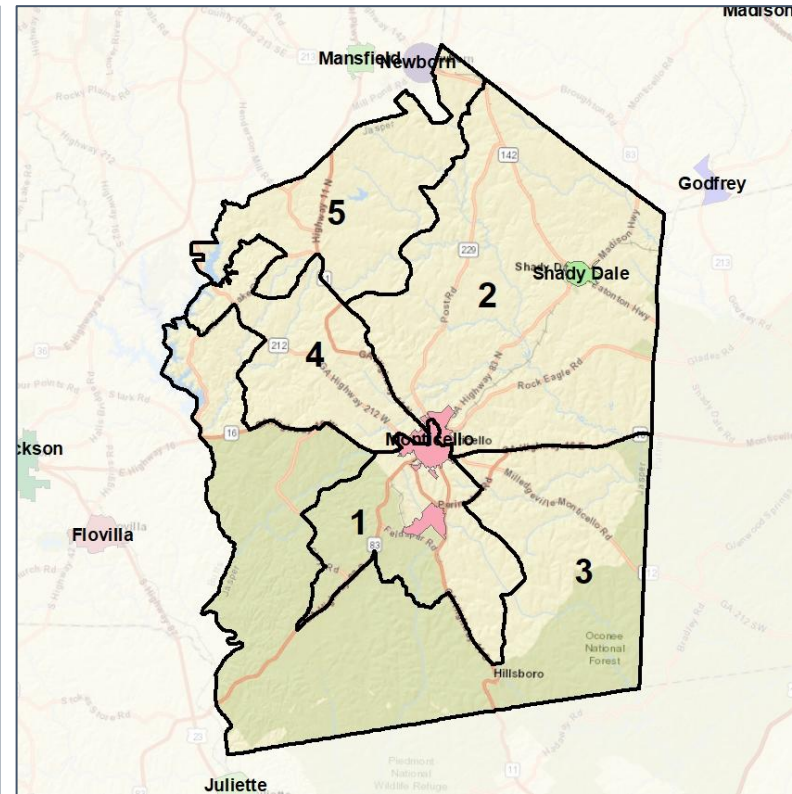
Cities and Places



2012 Map



2022 Map*



	1	2	3	4	5	1	2	3	4	5	County
Population	2,505	2,764	3,117	3,038	3,164	2,906	2,921	2,932	2,903	2,926	14,588
API	0%	0%	0%	0%	0%	0%	0%	0%	0%	0%	0%
Black	50%	27%	6%	6%	4%	53%	16%	6%	5%	3%	17%
Latino	5%	7%	3%	3%	5%	5%	8%	3%	4%	4%	5%
Other	4%	5%	3%	5%	6%	3%	5%	3%	6%	6%	5%
White	41%	61%	87%	86%	86%	39%	71%	87%	85%	87%	74%
Population Gain	-201	-16	313	186	406	401	157	-185	-135	-238	*
Population % Gain	-7%	-1%	11%	7%	15%	16%	6%	-6%	-4%	-8%	*
Net POC Gain	-281	-44	60	106	171	312	-239	-14	-4	-55	*
Net POC % Gain	-16%	-4%	18%	32%	64%	21%	-22%	-4%	-1%	-13%	*



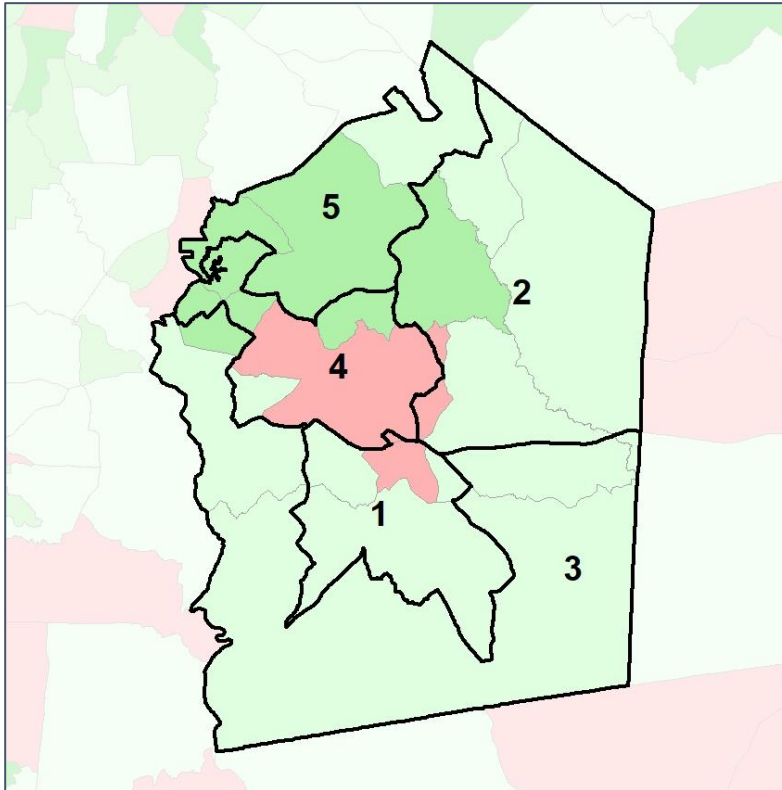
Source:
2020 Decennial Census
2020 ACS 5-Year Dataset

Jasper Co. Commission & School Board

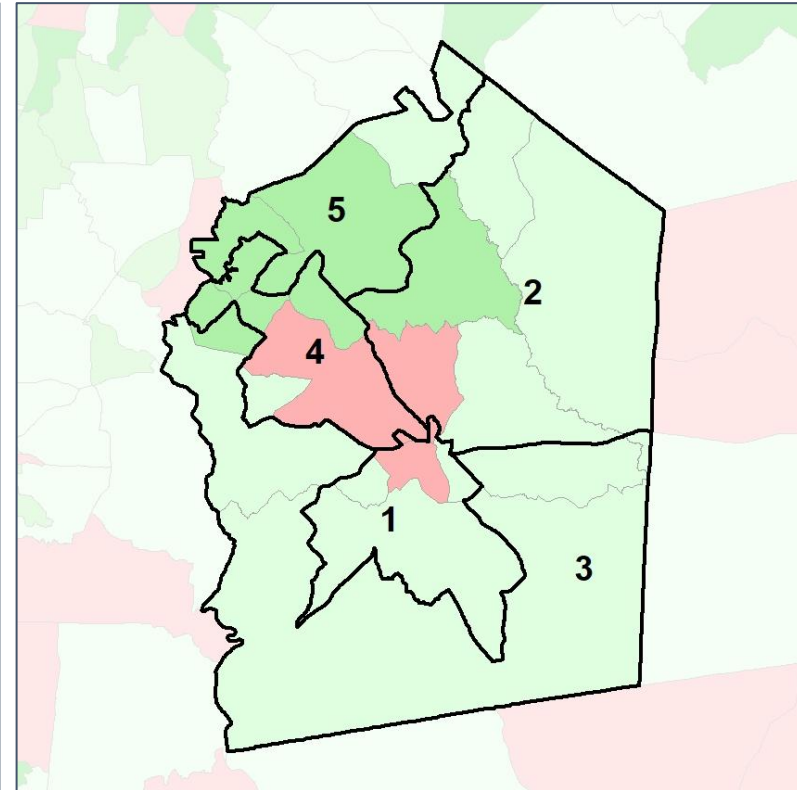
Net Gain in Population (2010 - 2020) by Census Block Group



2012 Map



2022 Map*



	1	2	3	4	5	1	2	3	4	5	County
Population	2,505	2,764	3,117	3,038	3,164	2,906	2,921	2,932	2,903	2,926	14,588
API	0%	0%	0%	0%	0%	0%	0%	0%	0%	0%	0%
Black	50%	27%	6%	6%	4%	53%	16%	6%	5%	3%	17%
Latino	5%	7%	3%	3%	5%	5%	8%	3%	4%	4%	5%
Other	4%	5%	3%	5%	6%	3%	5%	3%	6%	6%	5%
White	41%	61%	87%	86%	86%	39%	71%	87%	85%	87%	74%
Population Gain	-201	-16	313	186	406	401	157	-185	-135	-238	*
Population % Gain	-7%	-1%	11%	7%	15%	16%	6%	-6%	-4%	-8%	*
Net POC Gain	-281	-44	60	106	171	312	-239	-14	-4	-55	*
Net POC % Gain	-16%	-4%	18%	32%	64%	21%	-22%	-4%	-1%	-13%	*

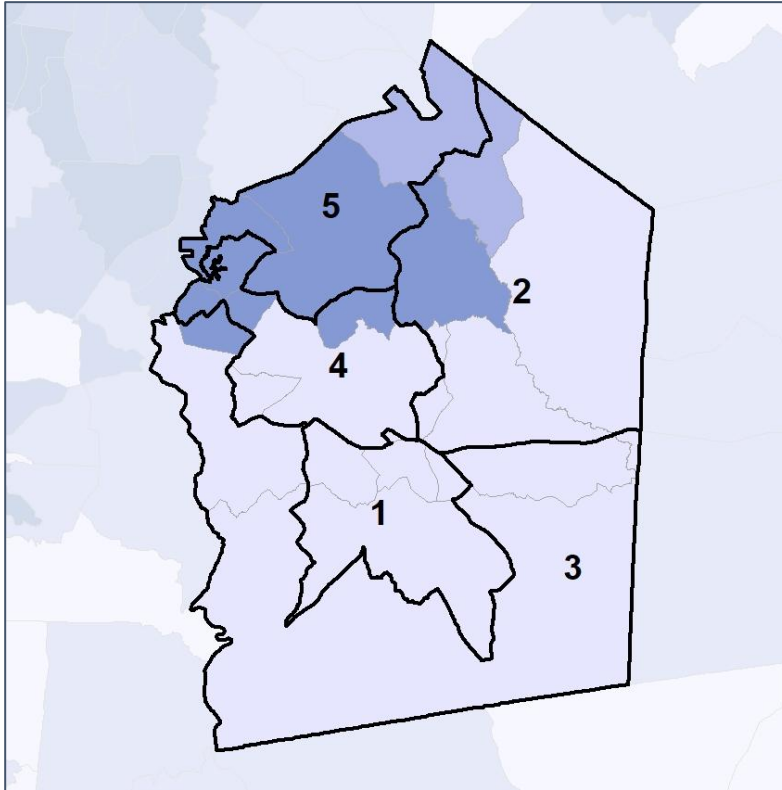


Jasper Co. Commission & School Board

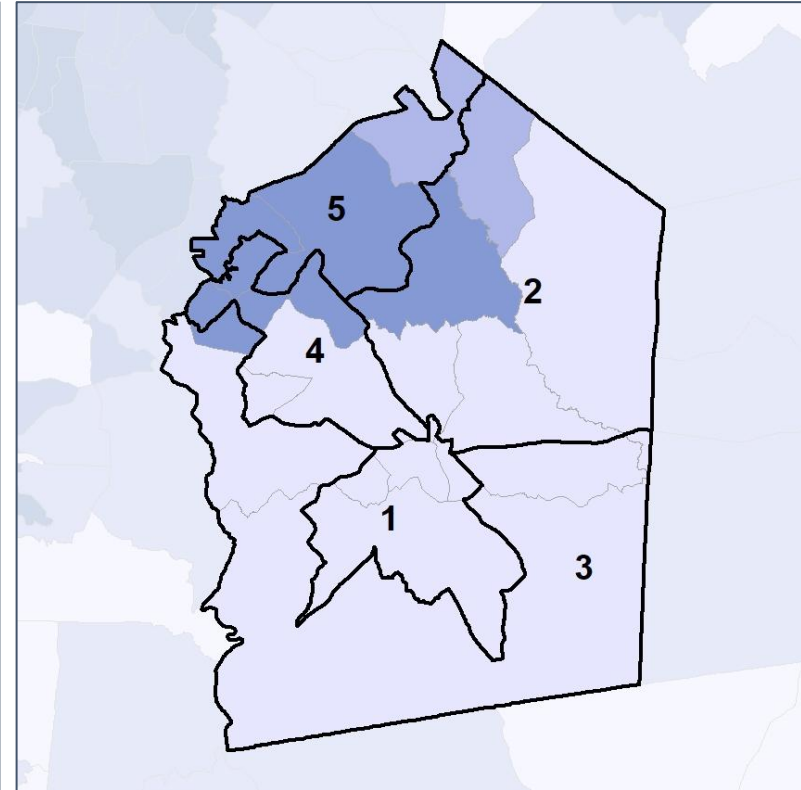
Net Gain in % POC (2020 - 2010) by Census Block Group



2012 Map



2022 Map*



	1	2	3	4	5	1	2	3	4	5	County
Population	2,505	2,764	3,117	3,038	3,164	2,906	2,921	2,932	2,903	2,926	14,588
API	0%	0%	0%	0%	0%	0%	0%	0%	0%	0%	0%
Black	50%	27%	6%	6%	4%	53%	16%	6%	5%	3%	17%
Latino	5%	7%	3%	3%	5%	5%	8%	3%	4%	4%	5%
Other	4%	5%	3%	5%	6%	3%	5%	3%	6%	6%	5%
White	41%	61%	87%	86%	86%	39%	71%	87%	85%	87%	74%
Population Gain	-201	-16	313	186	406	401	157	-185	-135	-238	*
Population % Gain	-7%	-1%	11%	7%	15%	16%	6%	-6%	-4%	-8%	*
Net POC Gain	-281	-44	60	106	171	312	-239	-14	-4	-55	*
Net POC % Gain	-16%	-4%	18%	32%	64%	21%	-22%	-4%	-1%	-13%	*

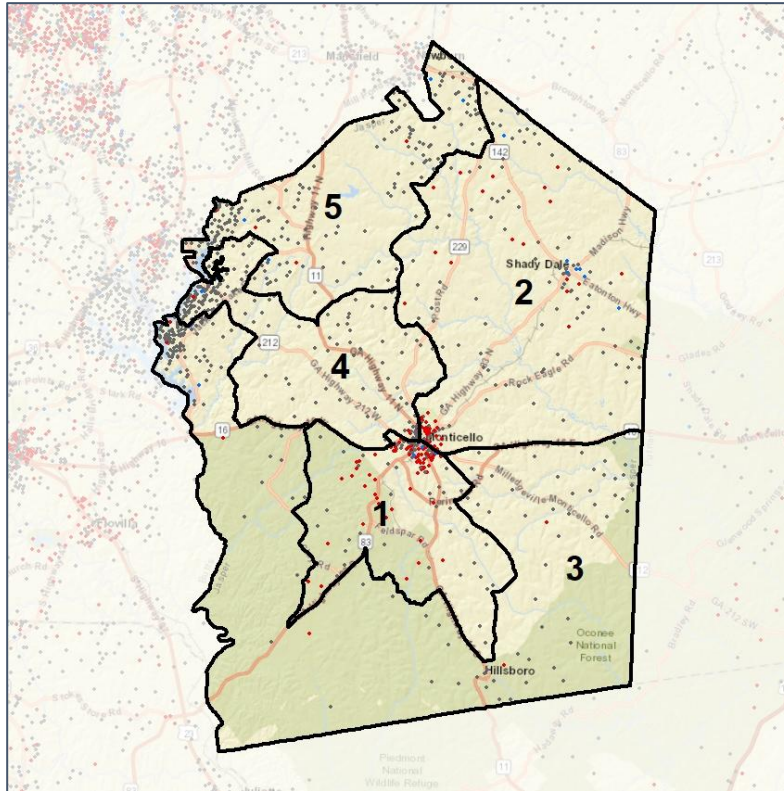


Jasper Co. Commission & School Board

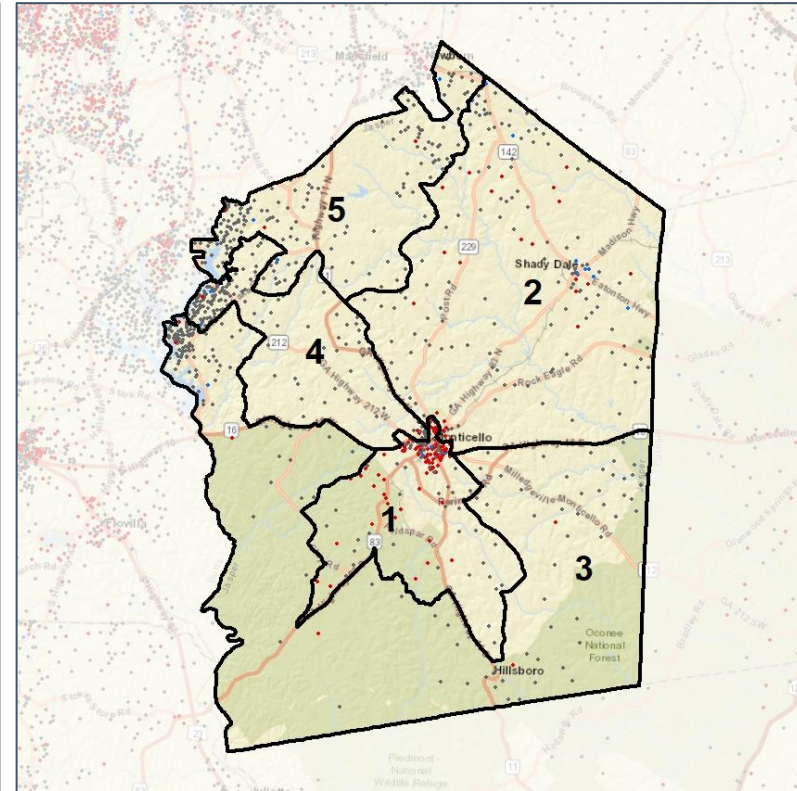
Population Density by Race



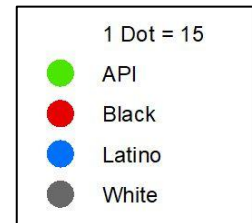
2012 Map



2022 Map*



	1	2	3	4	5	1	2	3	4	5	County
Population	2,505	2,764	3,117	3,038	3,164	2,906	2,921	2,932	2,903	2,926	14,588
API	1	3	7	8	4	2	3	7	7	4	23
% API	0%	0%	0%	0%	0%	0%	0%	0%	0%	0%	0%
Black	1,243	733	185	168	113	1,544	456	185	157	100	2,442
% Black	50%	27%	6%	6%	4%	53%	16%	6%	5%	3%	17%
Latino	132	204	95	106	147	142	233	88	104	117	684
% Latino	5%	7%	3%	3%	5%	5%	8%	3%	4%	4%	5%
Other	91	140	107	155	175	91	149	100	165	163	668
% Other	4%	5%	3%	5%	6%	3%	5%	3%	6%	6%	5%
White	1,038	1,684	2,723	2,601	2,725	1,127	2,080	2,552	2,470	2,542	10,771
% White	41%	61%	87%	86%	86%	39%	71%	87%	85%	87%	74%



Source:
2020 Decennial Census
2020 ACS 5-Year Dataset

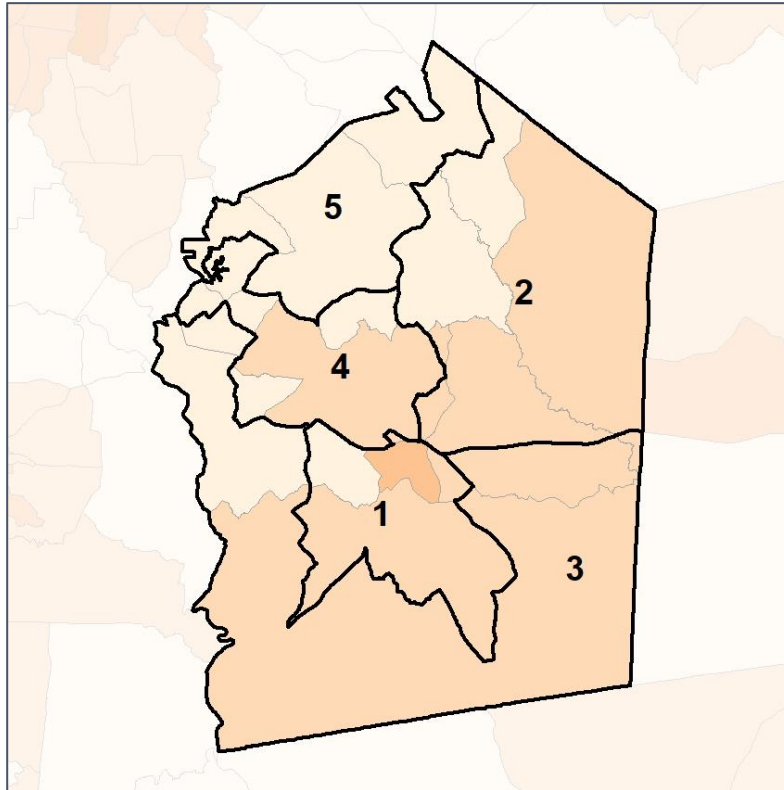


Jasper Co. Commission & School Board

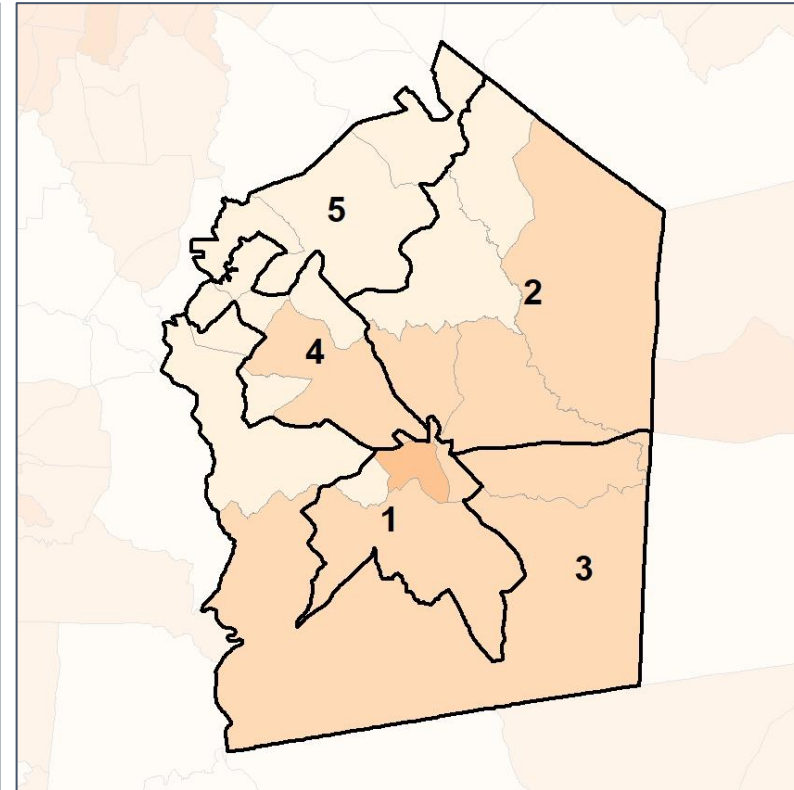
% People of Color by Census Block Group



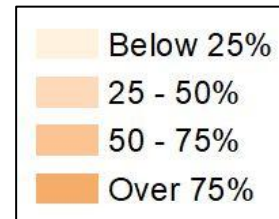
2012 Map



2022 Map*



	1	2	3	4	5	1	2	3	4	5	County
Population	2,505	2,764	3,117	3,038	3,164	2,906	2,921	2,932	2,903	2,926	14,588
API	1	3	7	8	4	2	3	7	7	4	23
% API	0%	0%	0%	0%	0%	0%	0%	0%	0%	0%	0%
Black	1,243	733	185	168	113	1,544	456	185	157	100	2,442
% Black	50%	27%	6%	6%	4%	53%	16%	6%	5%	3%	17%
Latino	132	204	95	106	147	142	233	88	104	117	684
% Latino	5%	7%	3%	3%	5%	5%	8%	3%	4%	4%	5%
Other	91	140	107	155	175	91	149	100	165	163	668
% Other	4%	5%	3%	5%	6%	3%	5%	3%	6%	6%	5%
White	1,038	1,684	2,723	2,601	2,725	1,127	2,080	2,552	2,470	2,542	10,771
% White	41%	61%	87%	86%	86%	39%	71%	87%	85%	87%	74%

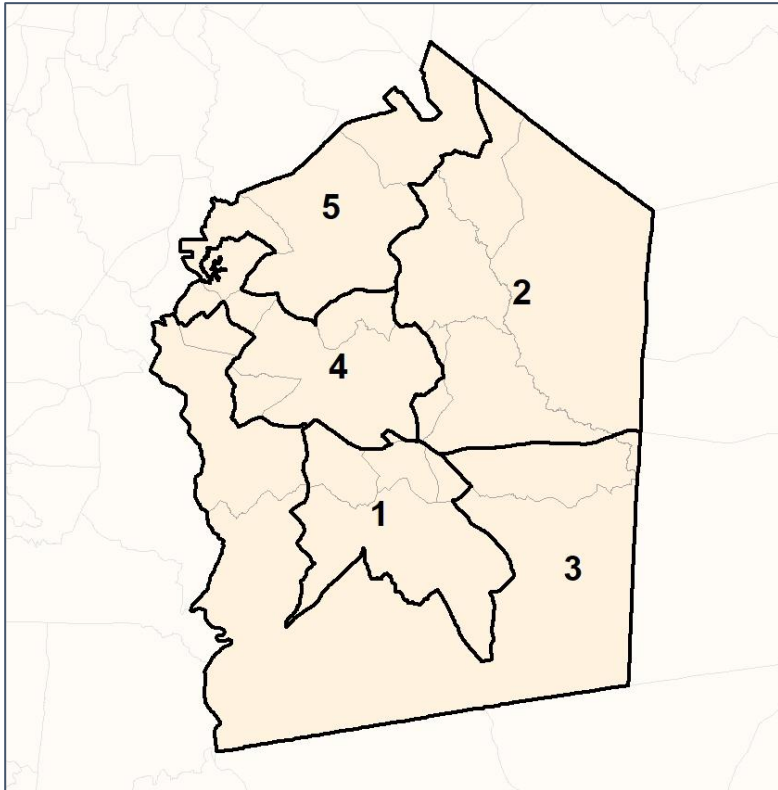


Jasper Co. Commission & School Board

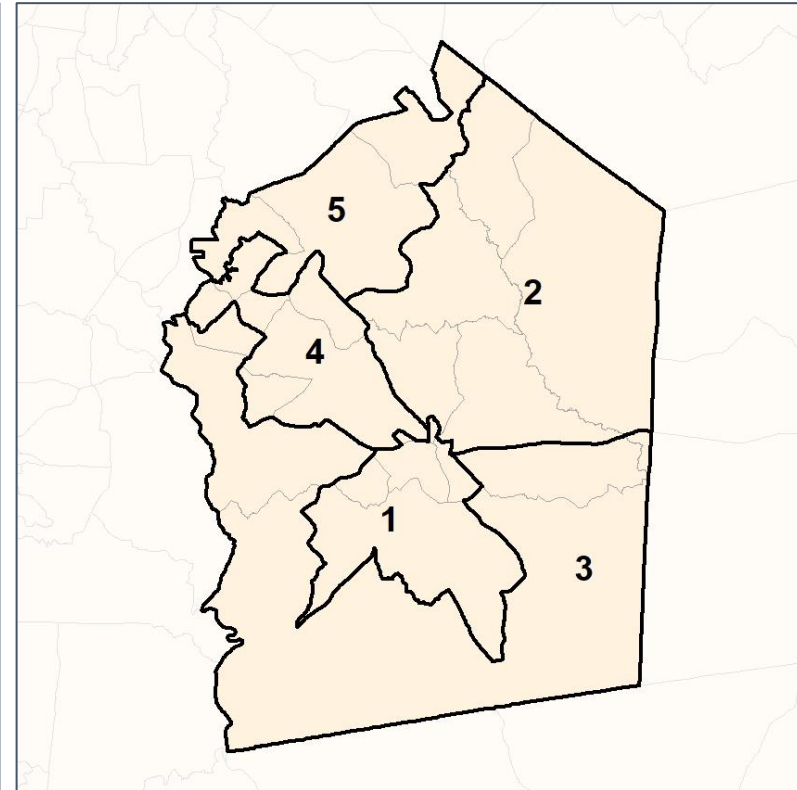
% API by Census Block Group



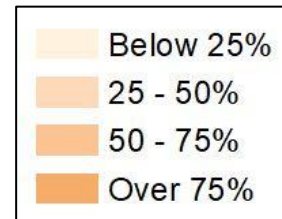
2012 Map



2022 Map*



	1	2	3	4	5	1	2	3	4	5	County
Population	2,505	2,764	3,117	3,038	3,164	2,906	2,921	2,932	2,903	2,926	14,588
API	1	3	7	8	4	2	3	7	7	4	23
% API	0%	0%	0%	0%	0%	0%	0%	0%	0%	0%	0%
Black	1,243	733	185	168	113	1,544	456	185	157	100	2,442
% Black	50%	27%	6%	6%	4%	53%	16%	6%	5%	3%	17%
Latino	132	204	95	106	147	142	233	88	104	117	684
% Latino	5%	7%	3%	3%	5%	5%	8%	3%	4%	4%	5%
Other	91	140	107	155	175	91	149	100	165	163	668
% Other	4%	5%	3%	5%	6%	3%	5%	3%	6%	6%	5%
White	1,038	1,684	2,723	2,601	2,725	1,127	2,080	2,552	2,470	2,542	10,771
% White	41%	61%	87%	86%	86%	39%	71%	87%	85%	87%	74%

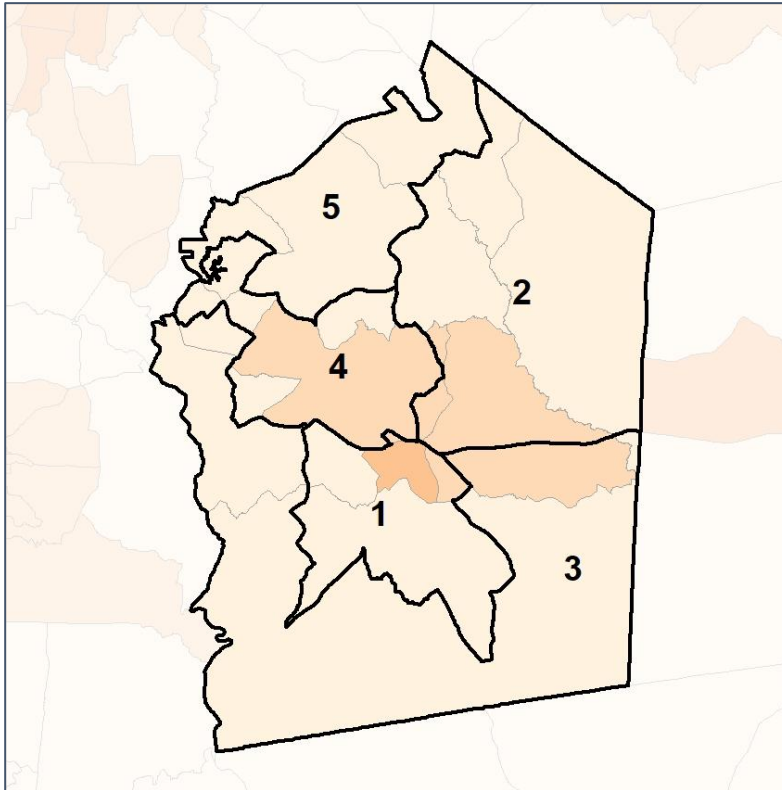


Jasper Co. Commission & School Board

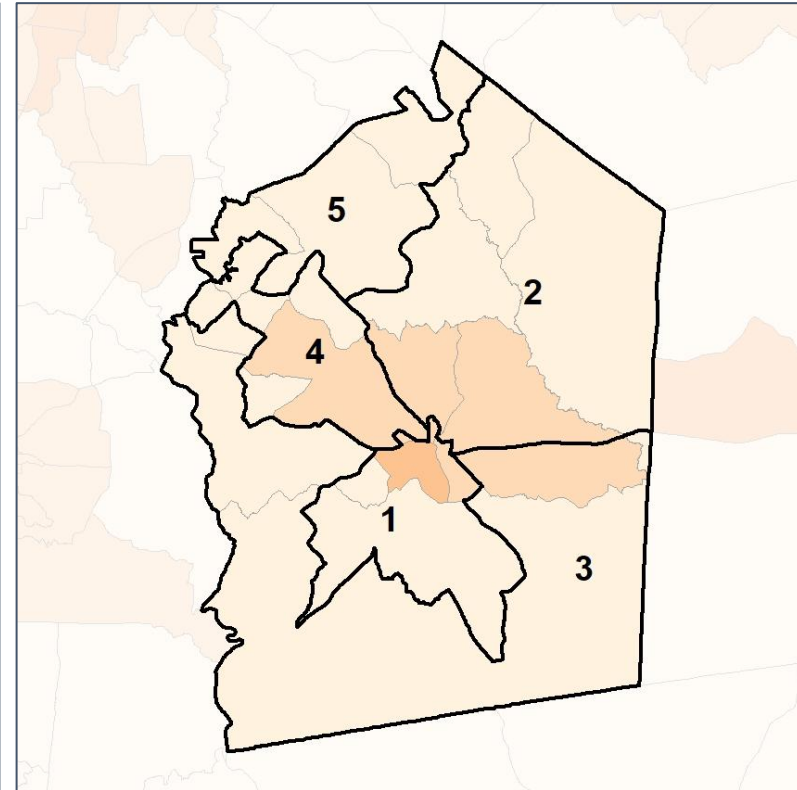
% Black by Census Block Group



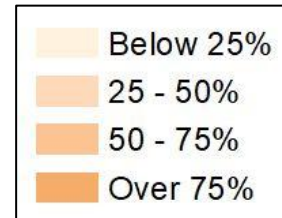
2012 Map



2022 Map*



	1	2	3	4	5	1	2	3	4	5	County
Population	2,505	2,764	3,117	3,038	3,164	2,906	2,921	2,932	2,903	2,926	14,588
API	1	3	7	8	4	2	3	7	7	4	23
% API	0%	0%	0%	0%	0%	0%	0%	0%	0%	0%	0%
Black	1,243	733	185	168	113	1,544	456	185	157	100	2,442
% Black	50%	27%	6%	6%	4%	53%	16%	6%	5%	3%	17%
Latino	132	204	95	106	147	142	233	88	104	117	684
% Latino	5%	7%	3%	3%	5%	5%	8%	3%	4%	4%	5%
Other	91	140	107	155	175	91	149	100	165	163	668
% Other	4%	5%	3%	5%	6%	3%	5%	3%	6%	6%	5%
White	1,038	1,684	2,723	2,601	2,725	1,127	2,080	2,552	2,470	2,542	10,771
% White	41%	61%	87%	86%	86%	39%	71%	87%	85%	87%	74%

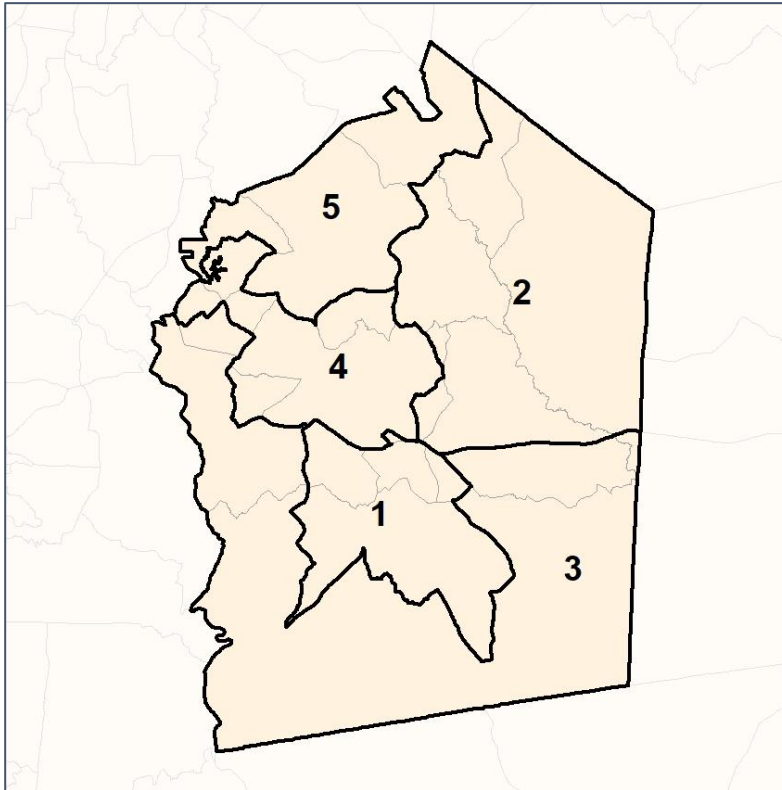


Jasper Co. Commission & School Board

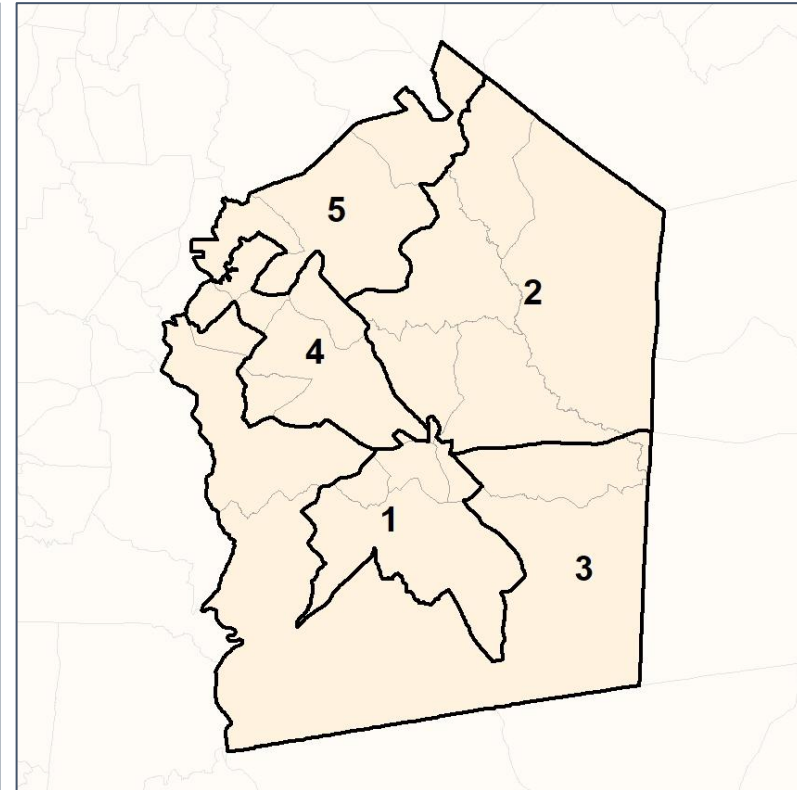
% Latino by Census Block Group



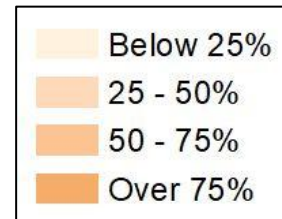
2012 Map



2022 Map*



	1	2	3	4	5	1	2	3	4	5	County
Population	2,505	2,764	3,117	3,038	3,164	2,906	2,921	2,932	2,903	2,926	14,588
API	1	3	7	8	4	2	3	7	7	4	23
% API	0%	0%	0%	0%	0%	0%	0%	0%	0%	0%	0%
Black	1,243	733	185	168	113	1,544	456	185	157	100	2,442
% Black	50%	27%	6%	6%	4%	53%	16%	6%	5%	3%	17%
Latino	132	204	95	106	147	142	233	88	104	117	684
% Latino	5%	7%	3%	3%	5%	5%	8%	3%	4%	4%	5%
Other	91	140	107	155	175	91	149	100	165	163	668
% Other	4%	5%	3%	5%	6%	3%	5%	3%	6%	6%	5%
White	1,038	1,684	2,723	2,601	2,725	1,127	2,080	2,552	2,470	2,542	10,771
% White	41%	61%	87%	86%	86%	39%	71%	87%	85%	87%	74%

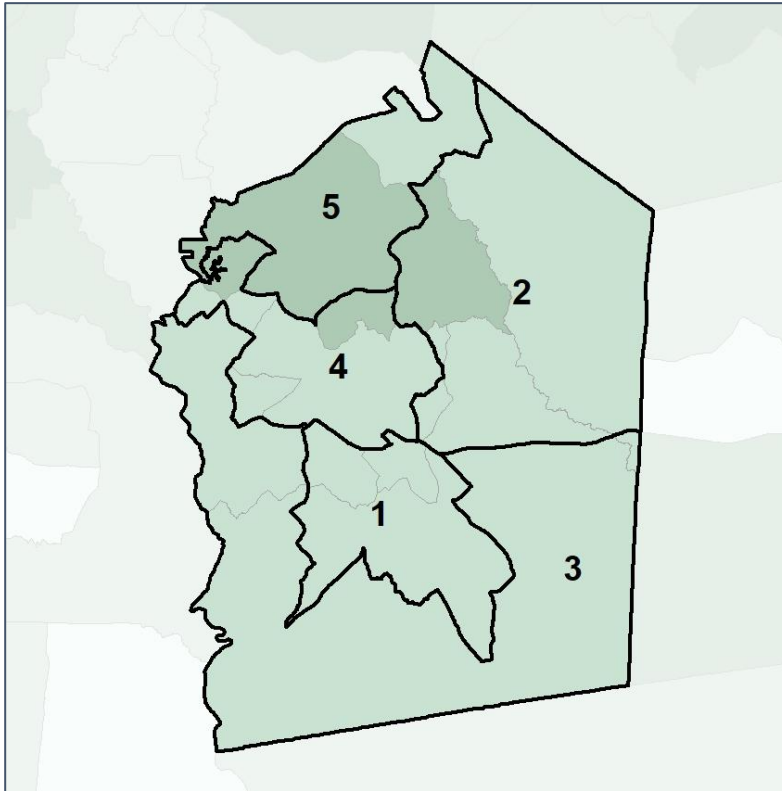


Jasper Co. Commission & School Board

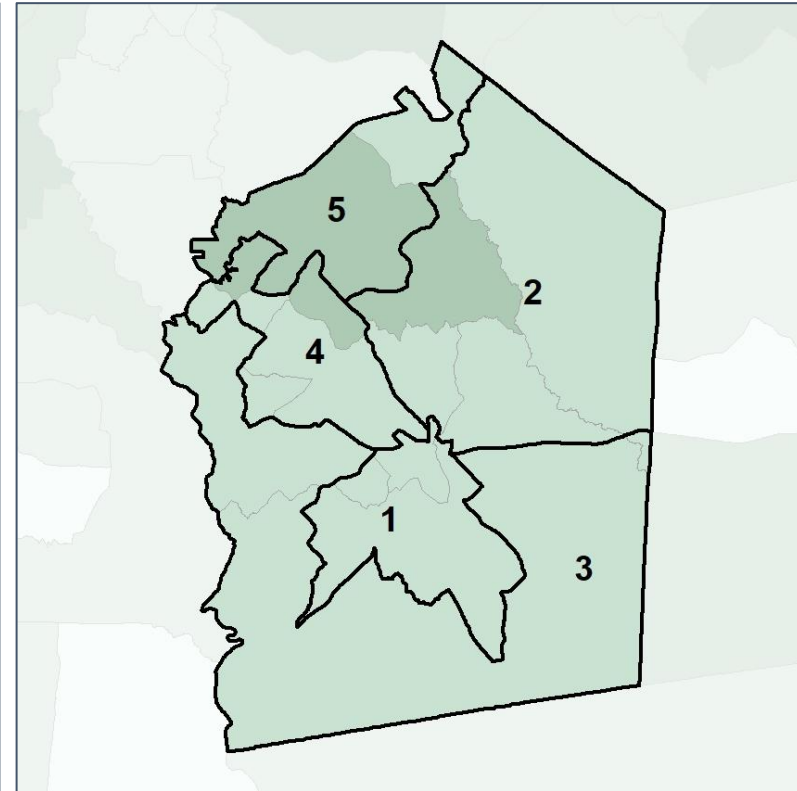
Median Household Income by Census Tract



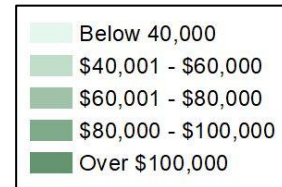
2012 Map



2022 Map*



	1	2	3	4	5	1	2	3	4	5	County
Population	2,505	2,764	3,117	3,038	3,164	2,906	2,921	2,932	2,903	2,926	14,588
% API	0%	0%	0%	0%	0%	0%	0%	0%	0%	0%	0%
% Black	50%	27%	6%	6%	4%	53%	16%	6%	5%	3%	17%
% Latino	5%	7%	3%	3%	5%	5%	8%	3%	4%	4%	5%
% Other	4%	5%	3%	5%	6%	3%	5%	3%	6%	6%	5%
% White	41%	61%	87%	86%	86%	39%	71%	87%	85%	87%	74%
Median Income	\$49,000	\$66,000	\$51,000	\$35,000	\$60,000	\$49,000	\$66,000	\$51,000	\$35,000	\$60,000	\$52,000
% Renter	46%	28%	9%	31%	11%	46%	28%	9%	31%	11%	20%
% Youth	15%	22%	18%	19%	19%	15%	22%	18%	19%	19%	19%

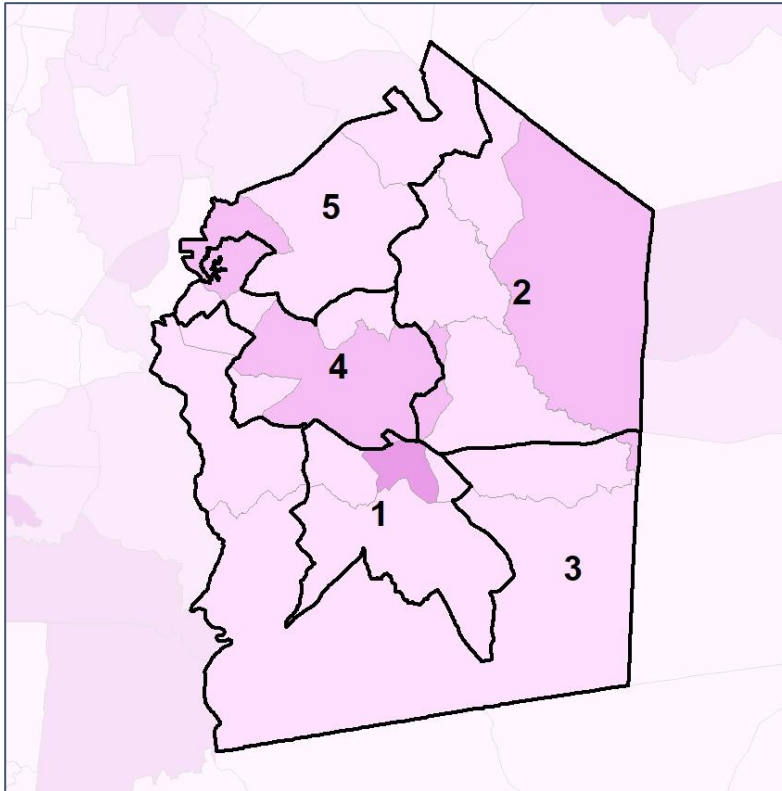


Jasper Co. Commission & School Board

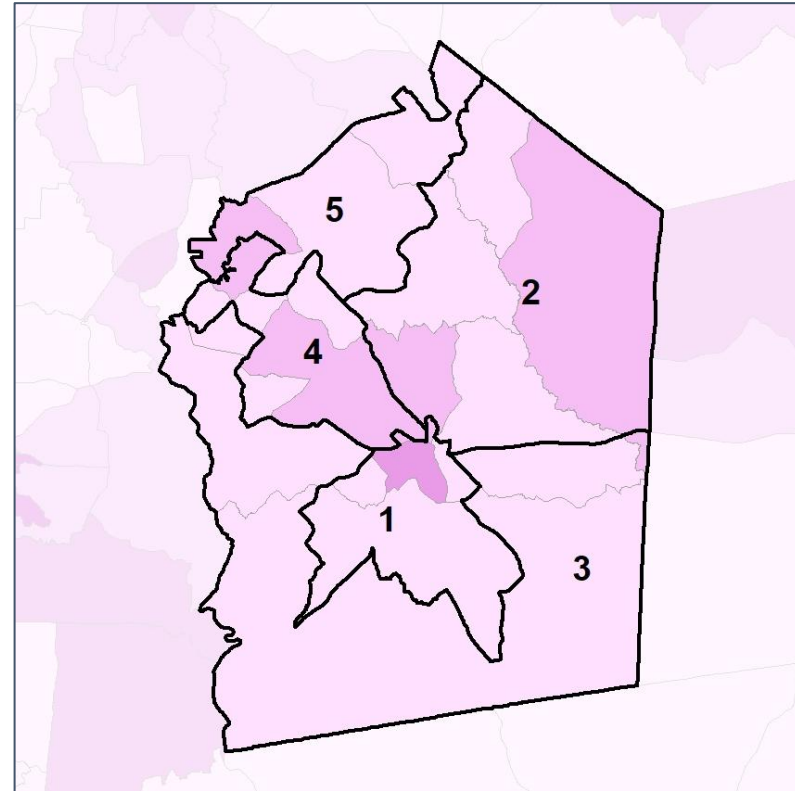
% Renter by Census Block Group



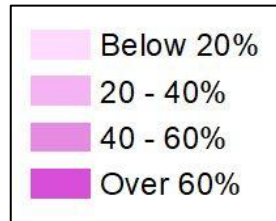
2012 Map



2022 Map*



	1	2	3	4	5	1	2	3	4	5	County
Population	2,505	2,764	3,117	3,038	3,164	2,906	2,921	2,932	2,903	2,926	14,588
% API	0%	0%	0%	0%	0%	0%	0%	0%	0%	0%	0%
% Black	50%	27%	6%	6%	4%	53%	16%	6%	5%	3%	17%
% Latino	5%	7%	3%	3%	5%	5%	8%	3%	4%	4%	5%
% Other	4%	5%	3%	5%	6%	3%	5%	3%	6%	6%	5%
% White	41%	61%	87%	86%	86%	39%	71%	87%	85%	87%	74%
Median Income	\$49,000	\$66,000	\$51,000	\$35,000	\$60,000	\$49,000	\$66,000	\$51,000	\$35,000	\$60,000	\$52,000
% Renter	46%	28%	9%	31%	11%	46%	28%	9%	31%	11%	20%
% Youth	15%	22%	18%	19%	19%	15%	22%	18%	19%	19%	19%

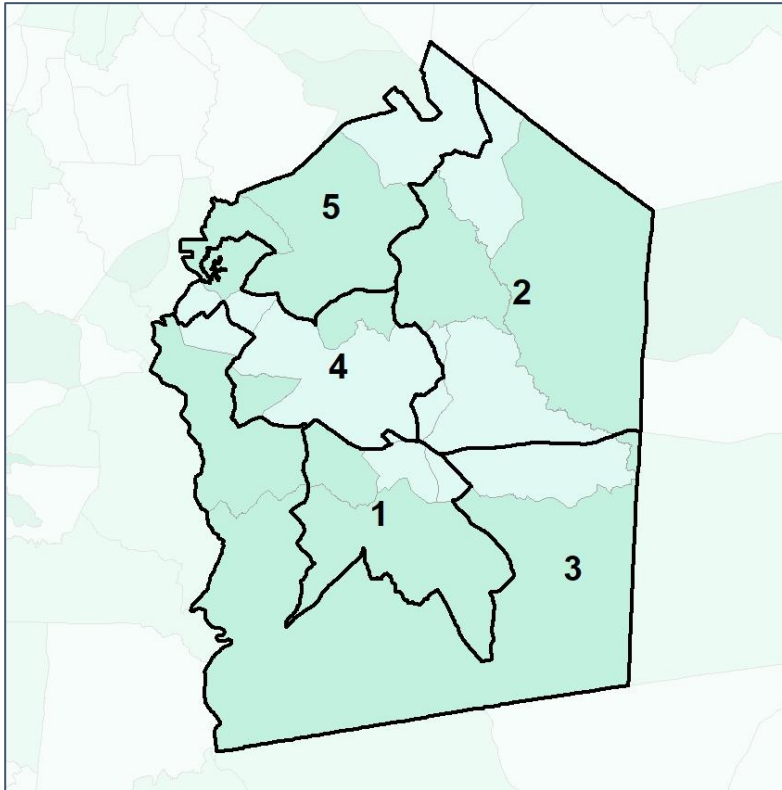


Jasper Co. Commission & School Board

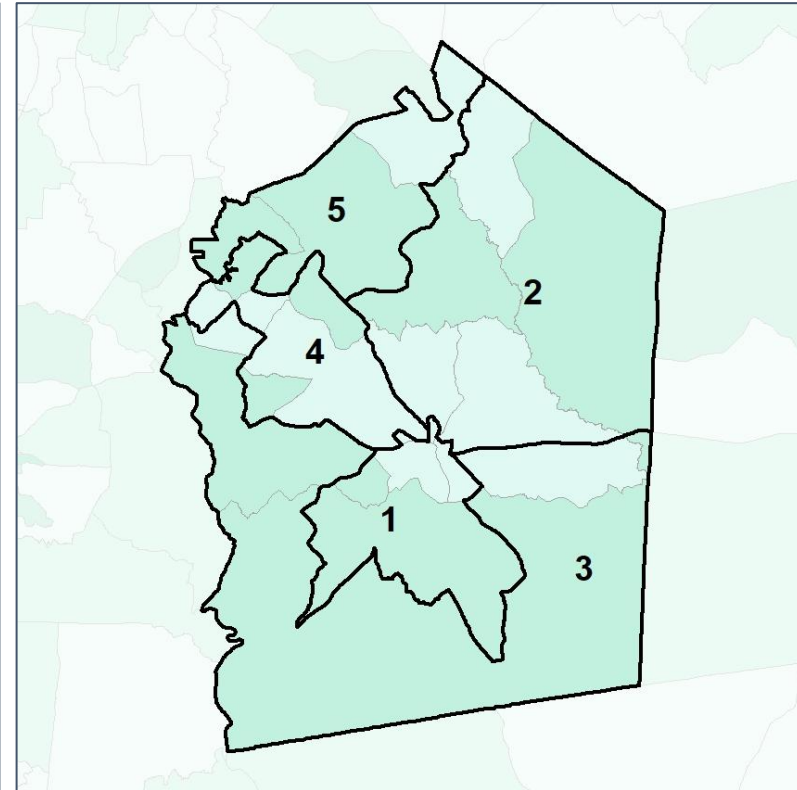
% Youth (18-34) by Census Block Group



2012 Map



2022 Map*



	1	2	3	4	5	1	2	3	4	5	County
Population	2,505	2,764	3,117	3,038	3,164	2,906	2,921	2,932	2,903	2,926	14,588
% API	0%	0%	0%	0%	0%	0%	0%	0%	0%	0%	0%
% Black	50%	27%	6%	6%	4%	53%	16%	6%	5%	3%	17%
% Latino	5%	7%	3%	3%	5%	5%	8%	3%	4%	4%	5%
% Other	4%	5%	3%	5%	6%	3%	5%	3%	6%	6%	5%
% White	41%	61%	87%	86%	86%	39%	71%	87%	85%	87%	74%
Median Income	\$49,000	\$66,000	\$51,000	\$35,000	\$60,000	\$49,000	\$66,000	\$51,000	\$35,000	\$60,000	\$52,000
% Renter	46%	28%	9%	31%	11%	46%	28%	9%	31%	11%	20%
% Youth	15%	22%	18%	19%	19%	15%	22%	18%	19%	19%	19%

