

Demographic Overview

Racial Breakdown in Jackson County



Jackson County	2010	2020	% Change
Total Population	60,485	75,907	25%
AAPI	1,038	1,774	71%
Black	4,050	5,136	27%
Latino	3,736	6,712	80%
Other/Mixed Race	966	3,221	233%
POC	9,790	16,843	72%
White	50,695	59,064	17%

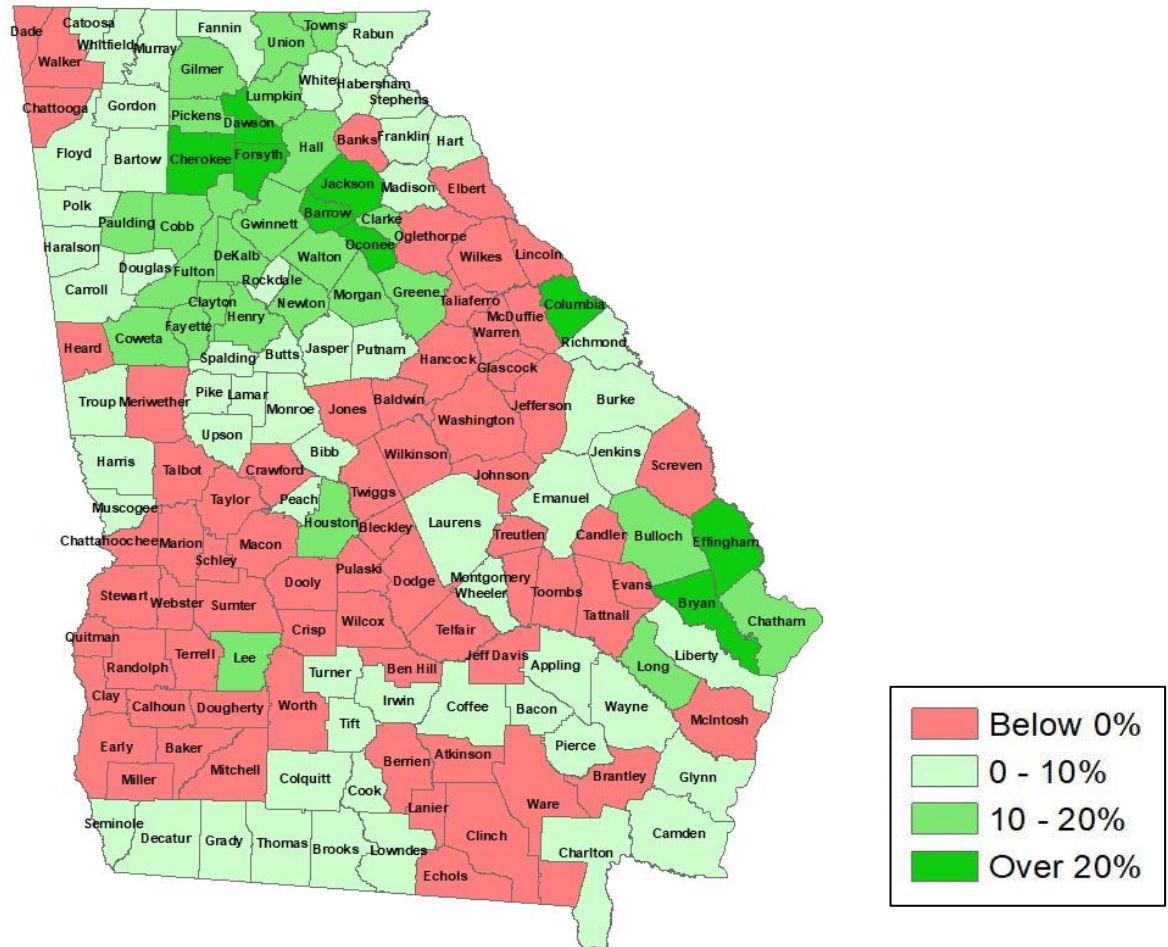
*Note: The use of "Other" in these statistics combines those who identify as Native American, Mixed Race, and "Other" race





Population Gain

Change in Population in Georgia by County



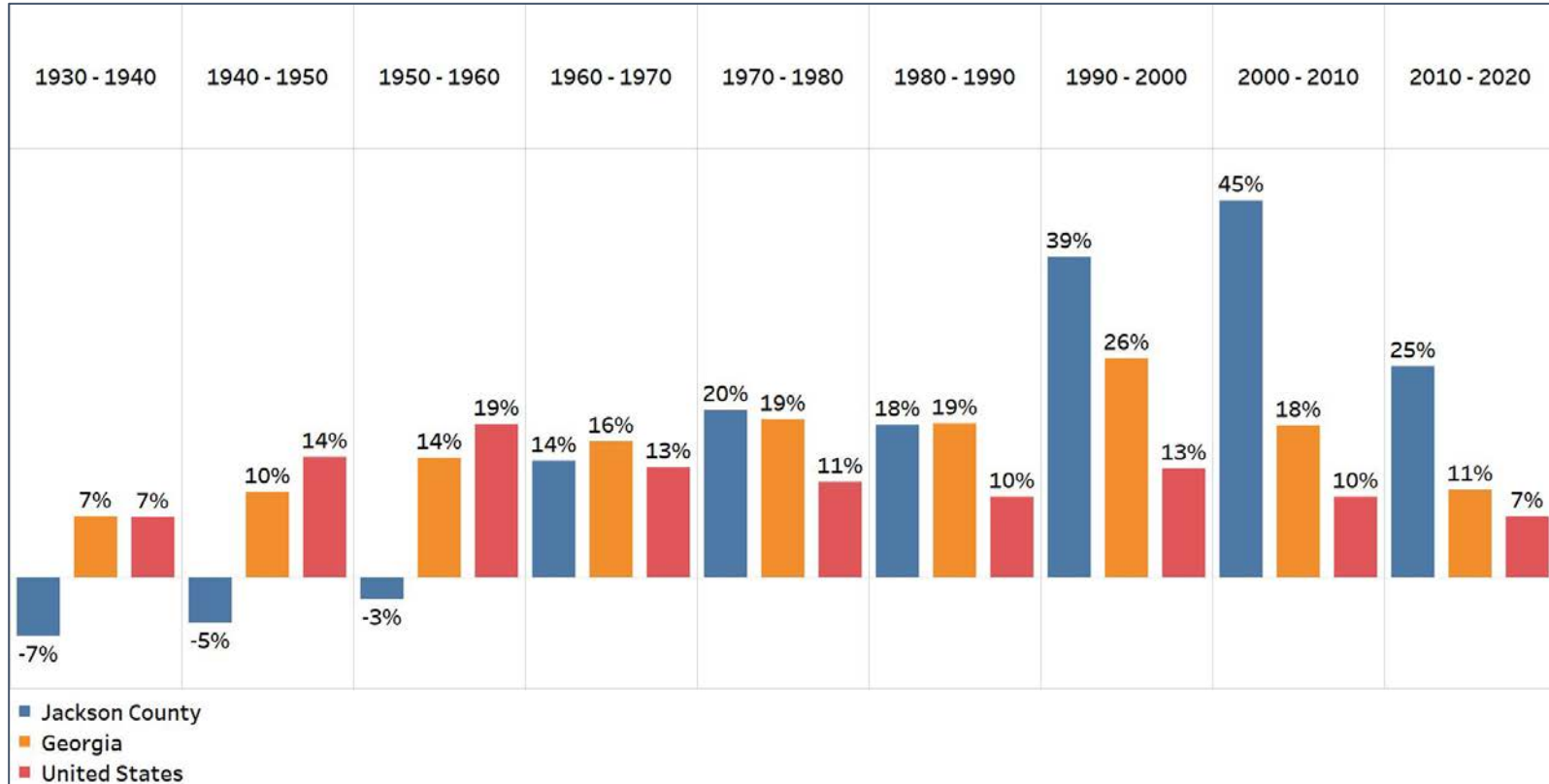
- Georgia is experiencing rapid population growth in the Atlanta, Augusta, and Savannah regions of the state





Population Gain

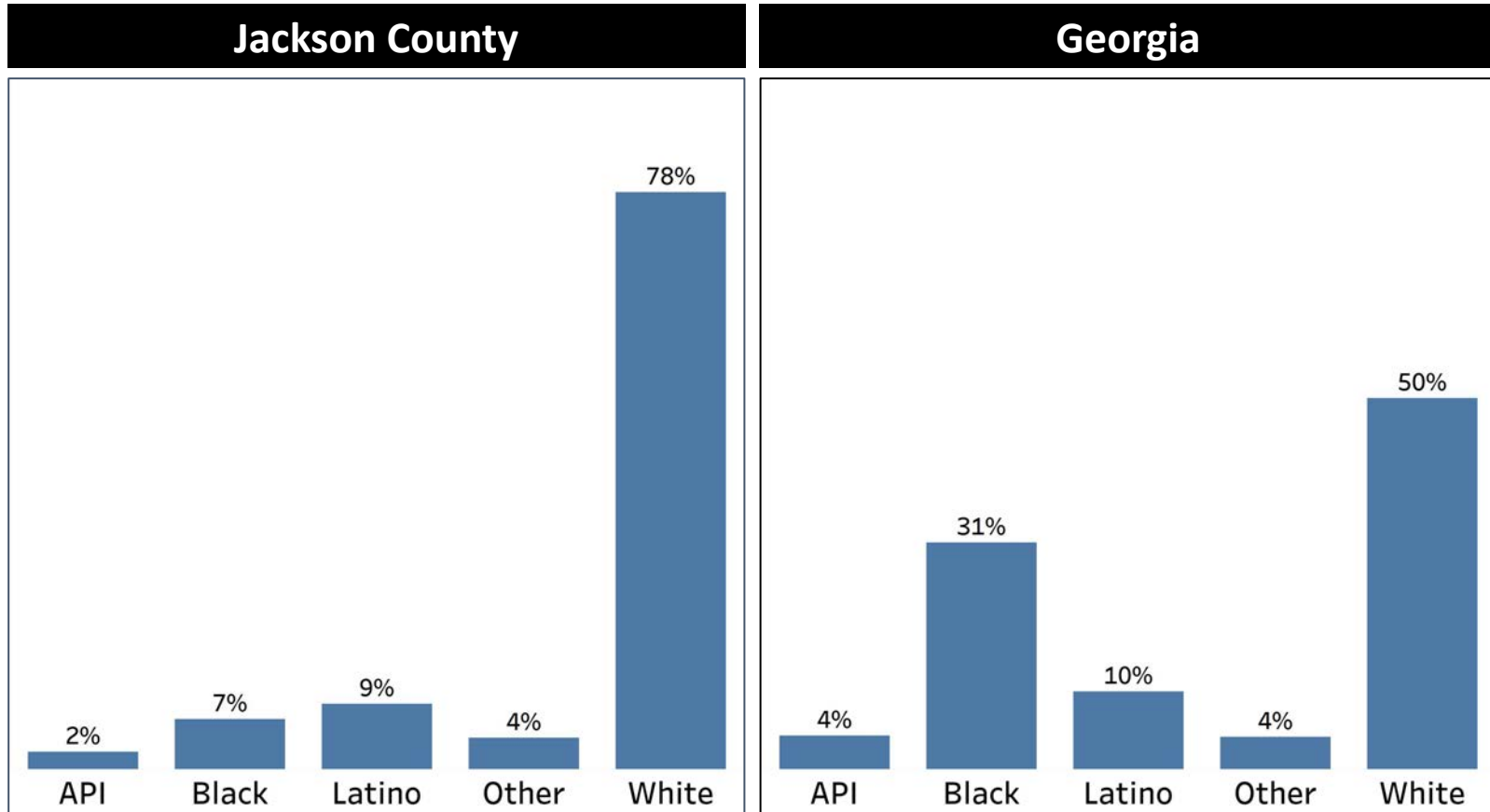
Change in Population by Decade



- Jackson county has had significant growth since 1960, and had an explosion in population growth since 1990 that has continued in the last decade
- While the growth rate declined significantly in the last decade, it is still more than double Georgia's overall growth rate

Demographics

Comparison between Jackson County and Georgia



- Jackson County is mostly White, but also has a significant Latino population that almost matches the population percentage of Georgia overall
- The Other population is also the same, and the API community is slightly larger than in most other counties

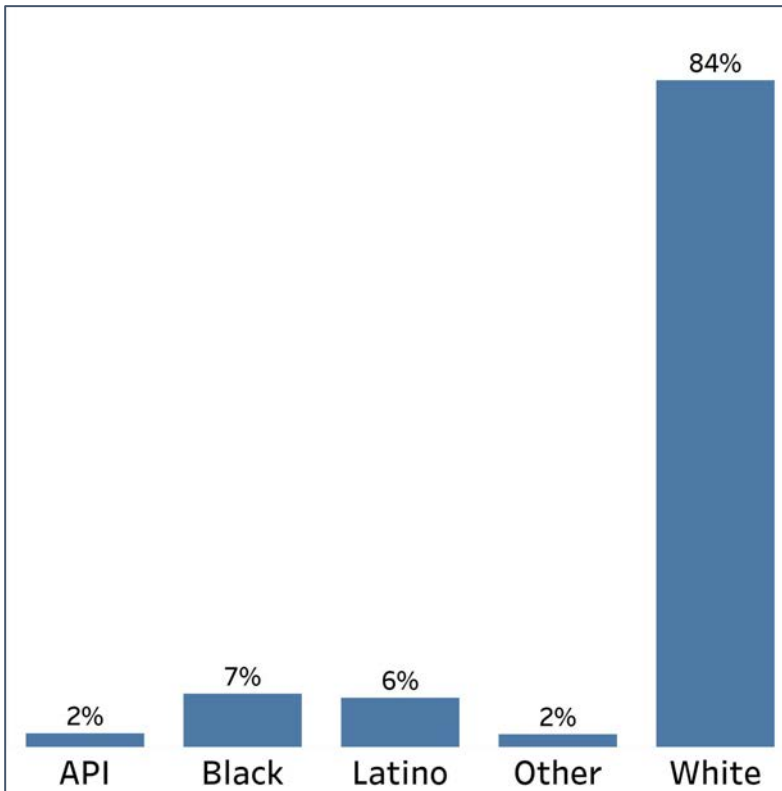


Demographics

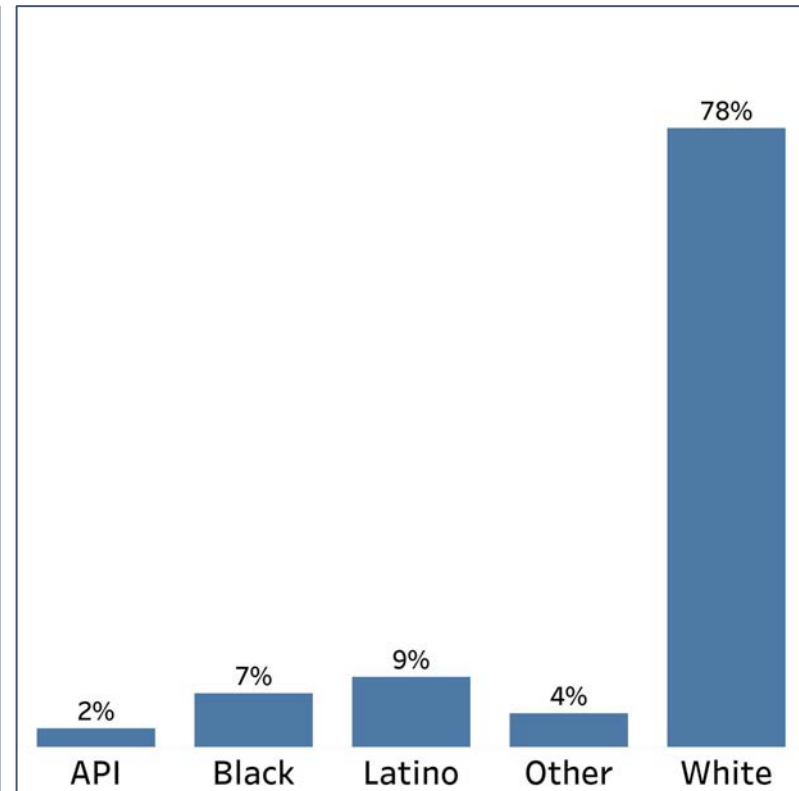
2010 vs 2020 Demographics in Jackson County



Jackson County 2010



Jackson County 2020

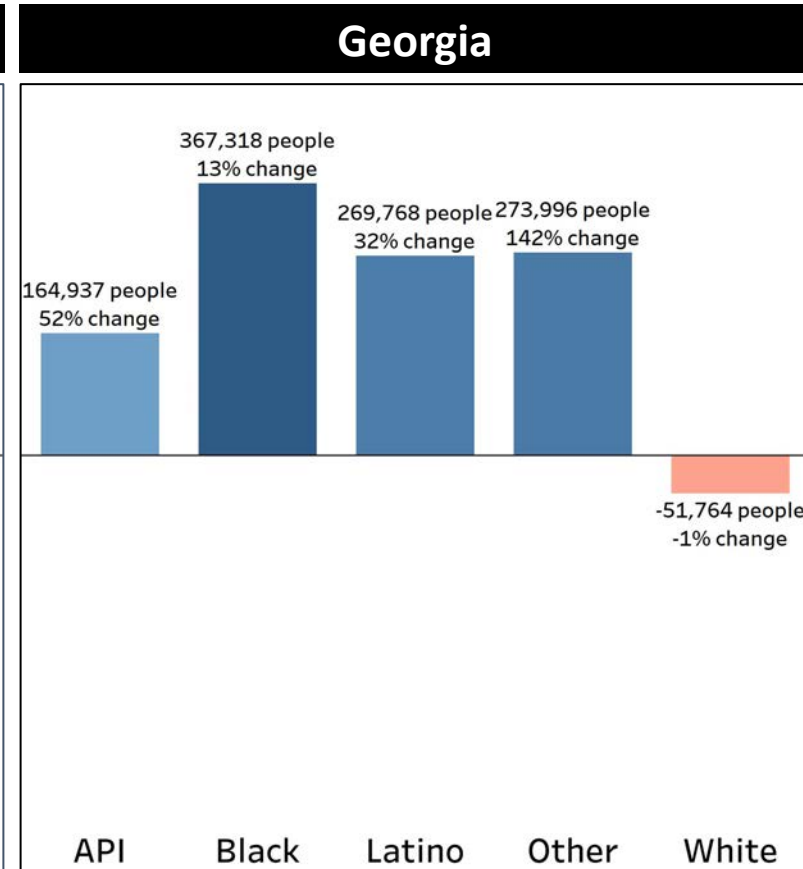
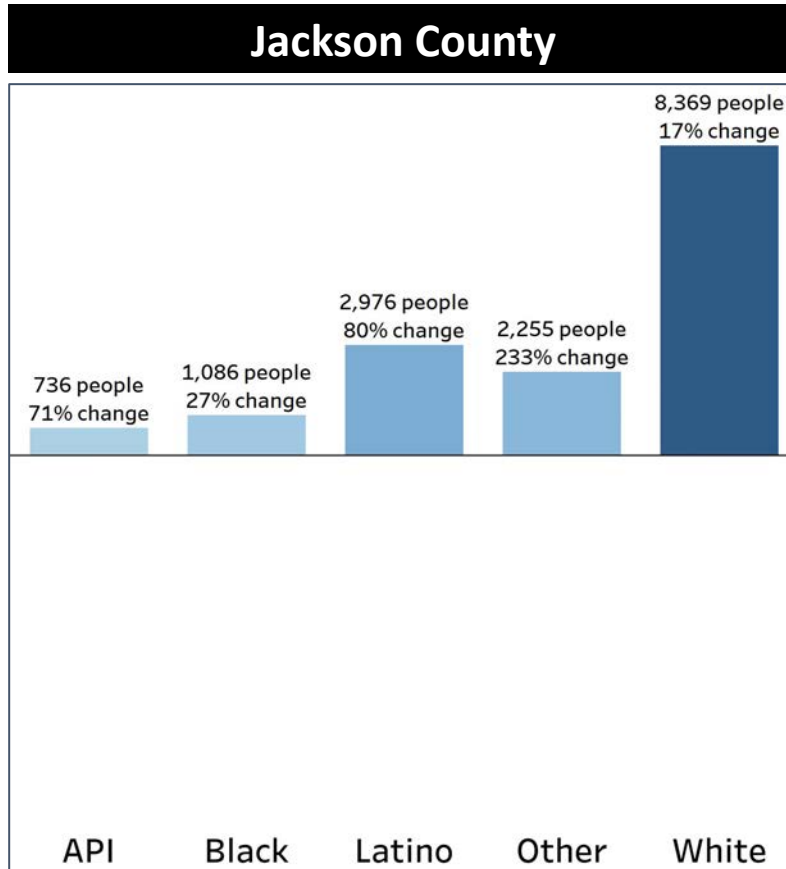


- Jackson County's White population declined, while the Latino population increased their share of the population by 50%
- The share of the Other population also doubled in size



Demographics

Population Change by Race (2020 - 2010)



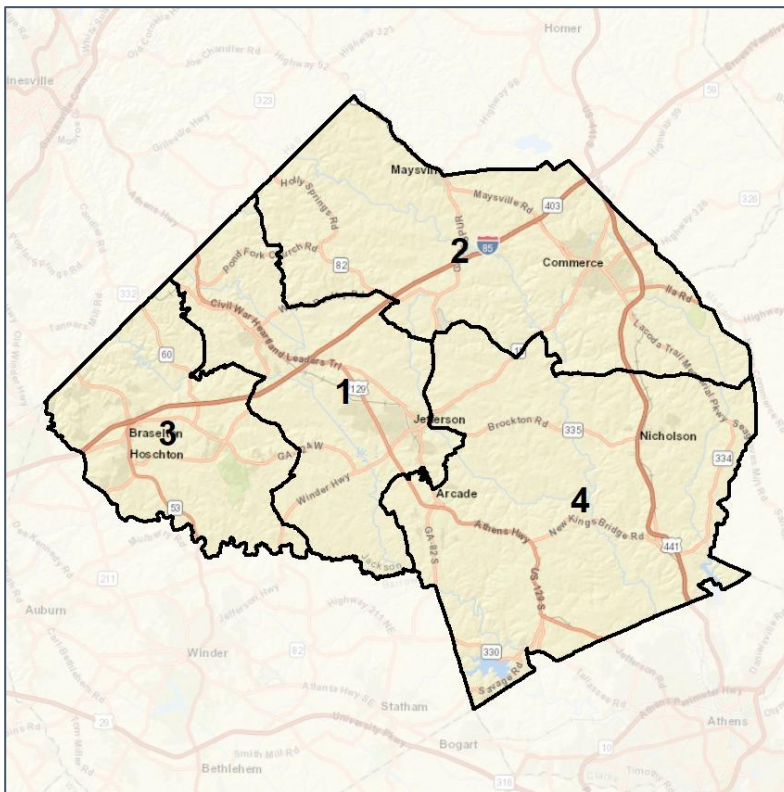
- All demographic groups had higher growth rates than in Georgia overall, the biggest being from the Latino, White, and Other population groups

Jackson County Commission

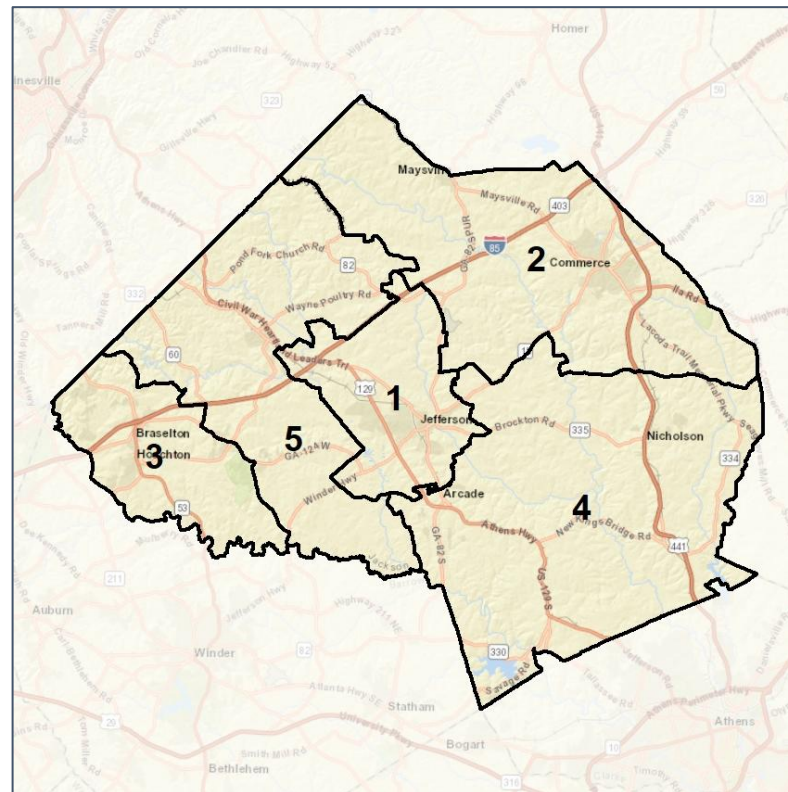
Context



2012 Map



2022 Map*



	1	2	3	4	1*	2*	3*	4*	5*	County
Population	21,504	16,587	21,416	16,400	15,356	15,109	15,240	15,053	15,149	75,907
API	3%	2%	3%	1%	2%	2%	3%	1%	4%	2%
Black	7%	8%	5%	7%	9%	9%	6%	6%	4%	7%
Latino	9%	8%	9%	8%	8%	8%	10%	9%	9%	9%
Other	5%	4%	4%	4%	5%	4%	4%	4%	4%	4%
White	76%	78%	78%	79%	77%	77%	76%	79%	80%	78%
Population Gain	6,282	1,483	6,599	1,058	-6,148	-1,478	-6,176	-1,347	n/a	*
Population % Gain	41%	10%	45%	7%	-29%	-9%	-29%	-8%	n/a	*
Net POC Gain	2,286	1,011	2,689	1,067	-1,605	-174	-1,048	-276	n/a	*
Net POC % Gain	80%	39%	135%	46%	-31%	-5%	-22%	-8%	n/a	*

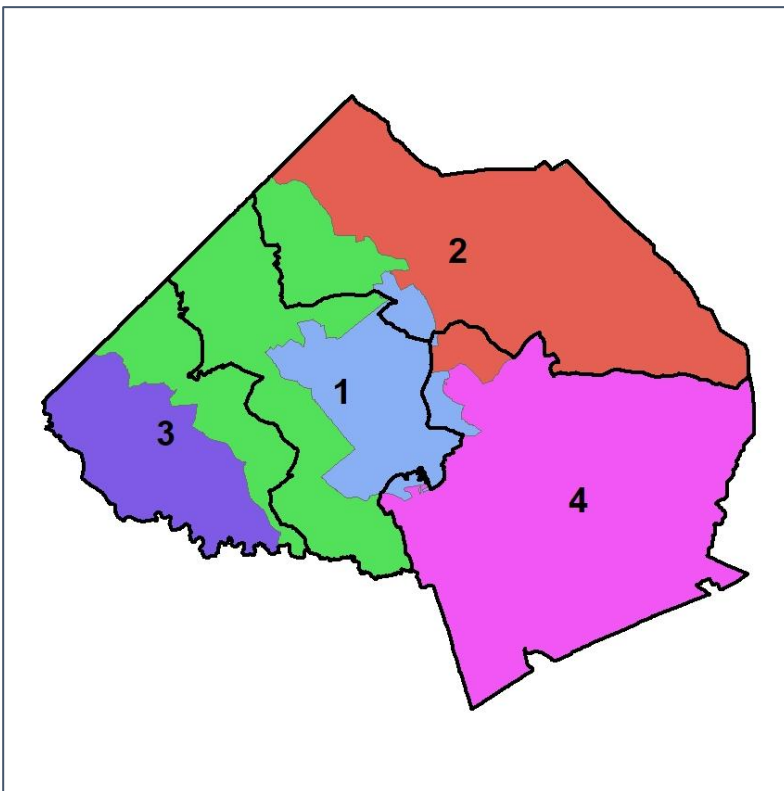


Jackson County Commission

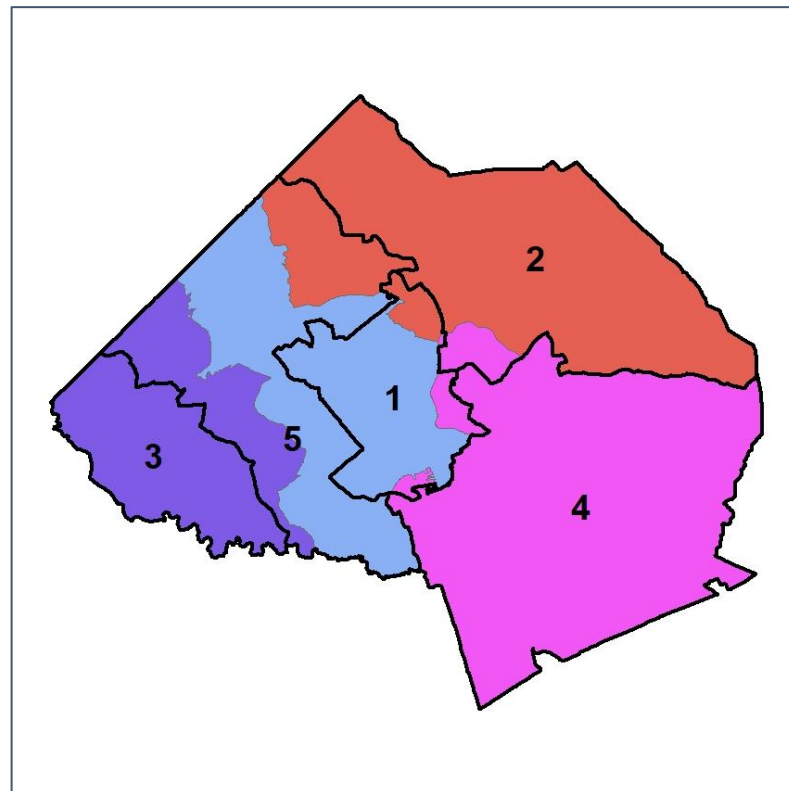
Changes in Redistricting



2012 Map (2022 in Colors)



2022 Map* (2012 in Colors)



	1	2	3	4	1*	2*	3*	4*	5*	County
Population	21,504	16,587	21,416	16,400	15,356	15,109	15,240	15,053	15,149	75,907
API	3%	2%	3%	1%	2%	2%	3%	1%	4%	2%
Black	7%	8%	5%	7%	9%	9%	6%	6%	4%	7%
Latino	9%	8%	9%	8%	8%	8%	10%	9%	9%	9%
Other	5%	4%	4%	4%	5%	4%	4%	4%	4%	4%
White	76%	78%	78%	79%	77%	77%	76%	79%	80%	78%
Population Gain	6,282	1,483	6,599	1,058	-6,148	-1,478	-6,176	-1,347	n/a	*
Population % Gain	41%	10%	45%	7%	-29%	-9%	-29%	-8%	n/a	*
Net POC Gain	2,286	1,011	2,689	1,067	-1,605	-174	-1,048	-276	n/a	*
Net POC % Gain	80%	39%	135%	46%	-31%	-5%	-22%	-8%	n/a	*

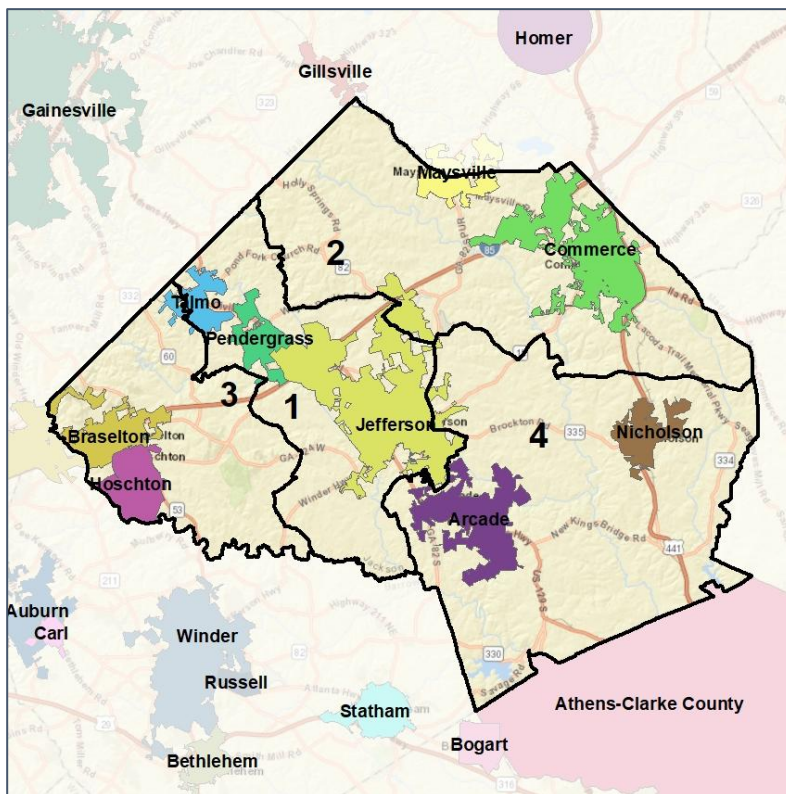


Jackson County Commission

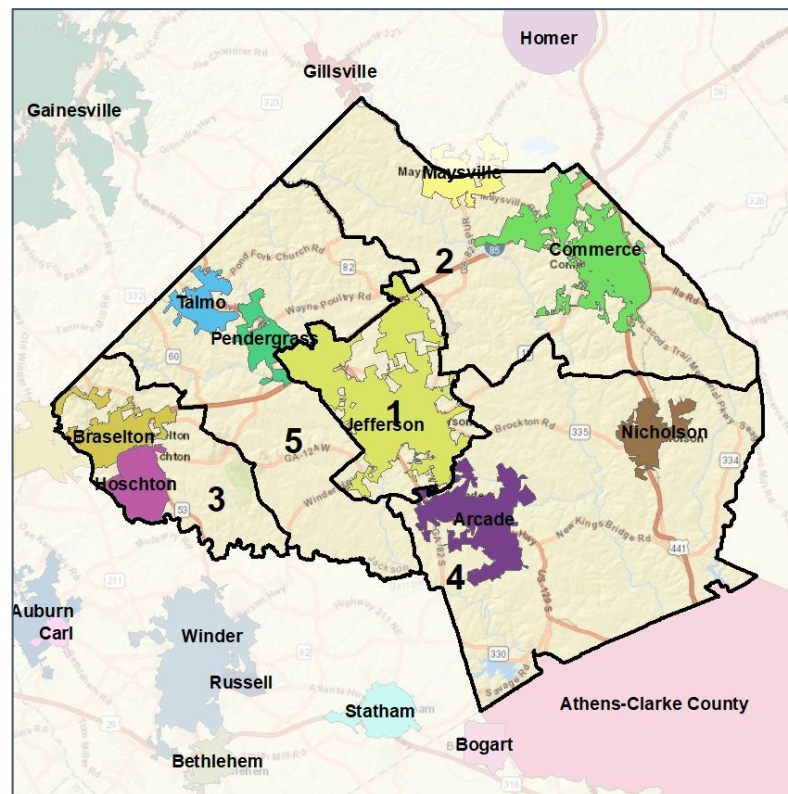
Cities and Places



2012 Map



2022 Map*



	1	2	3	4	1*	2*	3*	4*	5*	County
Population	21,504	16,587	21,416	16,400	15,356	15,109	15,240	15,053	15,149	75,907
API	3%	2%	3%	1%	2%	2%	3%	1%	4%	2%
Black	7%	8%	5%	7%	9%	9%	6%	6%	4%	7%
Latino	9%	8%	9%	8%	8%	8%	10%	9%	9%	9%
Other	5%	4%	4%	4%	5%	4%	4%	4%	4%	4%
White	76%	78%	78%	79%	77%	77%	76%	79%	80%	78%
Population Gain	6,282	1,483	6,599	1,058	-6,148	-1,478	-6,176	-1,347	n/a	*
Population % Gain	41%	10%	45%	7%	-29%	-9%	-29%	-8%	n/a	*
Net POC Gain	2,286	1,011	2,689	1,067	-1,605	-174	-1,048	-276	n/a	*
Net POC % Gain	80%	39%	135%	46%	-31%	-5%	-22%	-8%	n/a	*

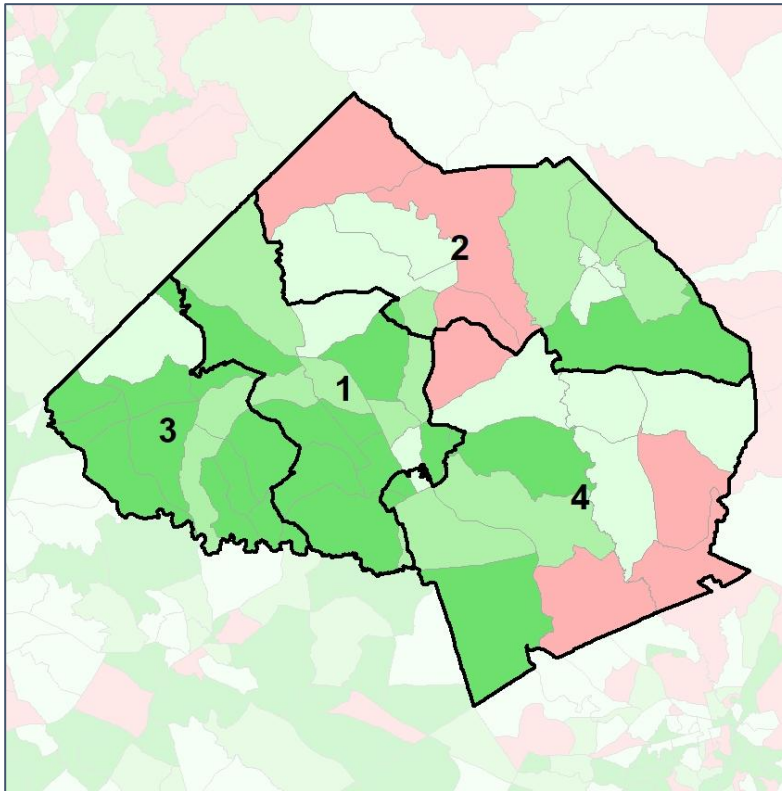


Jackson County Commission

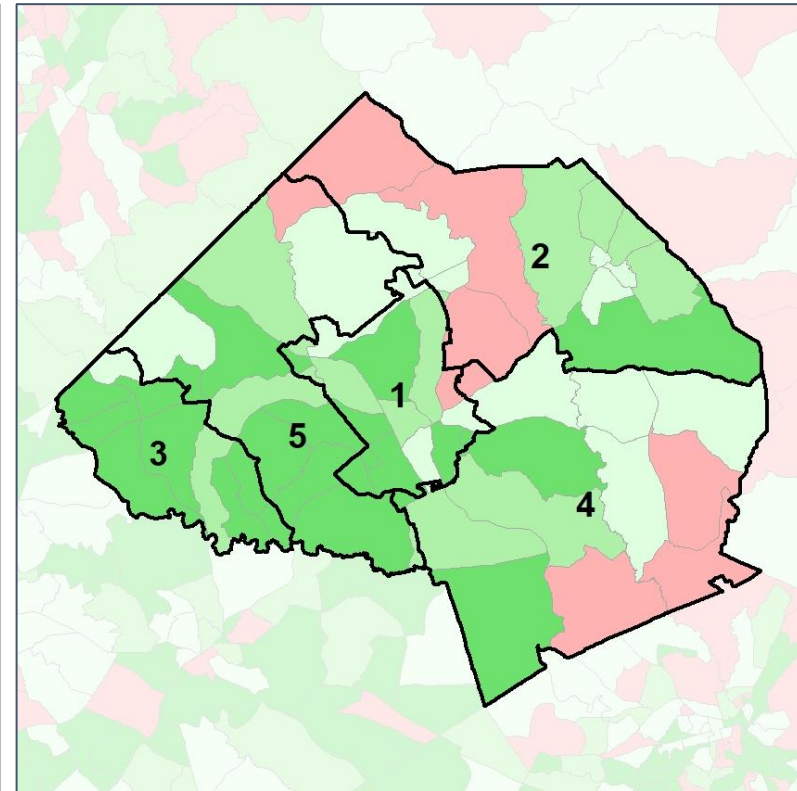
Net Gain in Population (2010 - 2020) by Census Block Group



2012 Map



2022 Map*



	1	2	3	4	1*	2*	3*	4*	5*	County
Population	21,504	16,587	21,416	16,400	15,356	15,109	15,240	15,053	15,149	75,907
API	3%	2%	3%	1%	2%	2%	3%	1%	4%	2%
Black	7%	8%	5%	7%	9%	9%	6%	6%	4%	7%
Latino	9%	8%	9%	8%	8%	8%	10%	9%	9%	9%
Other	5%	4%	4%	4%	5%	4%	4%	4%	4%	4%
White	76%	78%	78%	79%	77%	77%	76%	79%	80%	78%
Population Gain	6,282	1,483	6,599	1,058	-6,148	-1,478	-6,176	-1,347	n/a	*
Population % Gain	41%	10%	45%	7%	-29%	-9%	-29%	-8%	n/a	*
Net POC Gain	2,286	1,011	2,689	1,067	-1,605	-174	-1,048	-276	n/a	*
Net POC % Gain	80%	39%	135%	46%	-31%	-5%	-22%	-8%	n/a	*

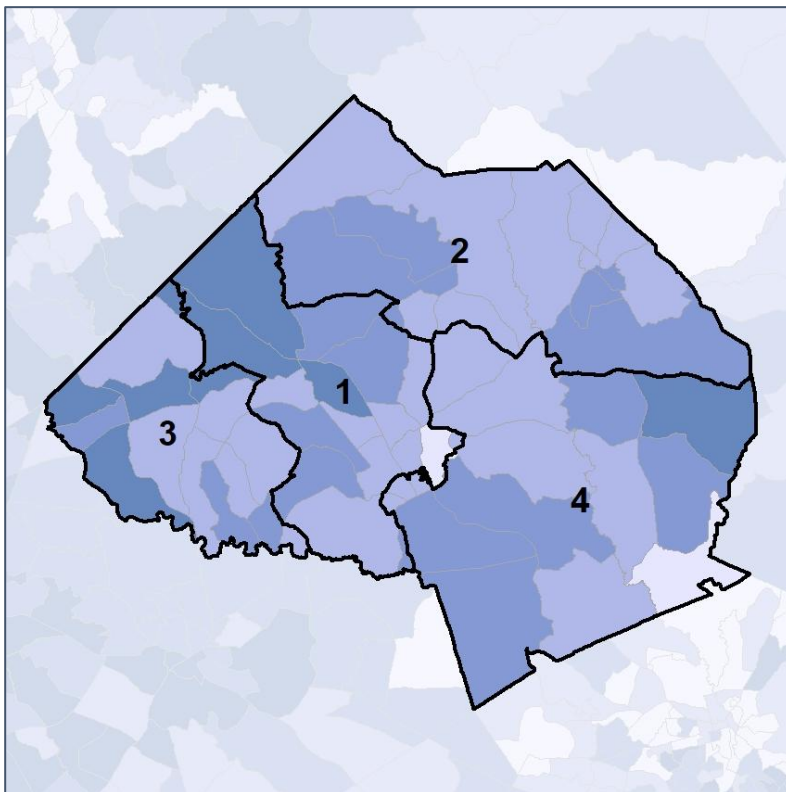


Jackson County Commission

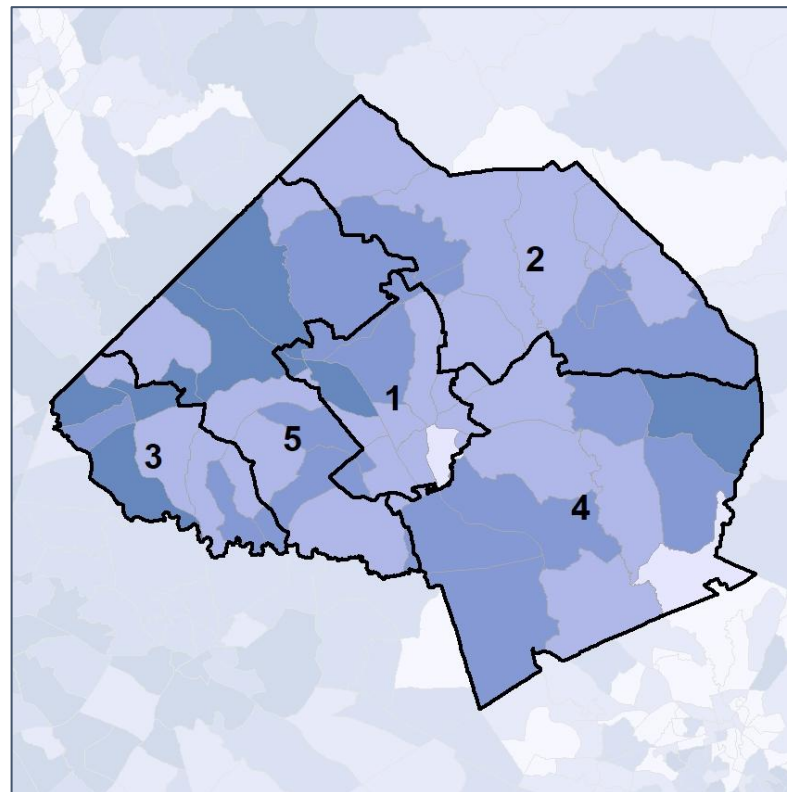
Net Gain in % POC (2020 - 2010) by Census Block Group



2012 Map



2022 Map*



	1	2	3	4	1*	2*	3*	4*	5*	County
Population	21,504	16,587	21,416	16,400	15,356	15,109	15,240	15,053	15,149	75,907
API	3%	2%	3%	1%	2%	2%	3%	1%	4%	2%
Black	7%	8%	5%	7%	9%	9%	6%	6%	4%	7%
Latino	9%	8%	9%	8%	8%	8%	10%	9%	9%	9%
Other	5%	4%	4%	4%	5%	4%	4%	4%	4%	4%
White	76%	78%	78%	79%	77%	77%	76%	79%	80%	78%
Population Gain	6,282	1,483	6,599	1,058	-6,148	-1,478	-6,176	-1,347	n/a	*
Population % Gain	41%	10%	45%	7%	-29%	-9%	-29%	-8%	n/a	*
Net POC Gain	2,286	1,011	2,689	1,067	-1,605	-174	-1,048	-276	n/a	*
Net POC % Gain	80%	39%	135%	46%	-31%	-5%	-22%	-8%	n/a	*

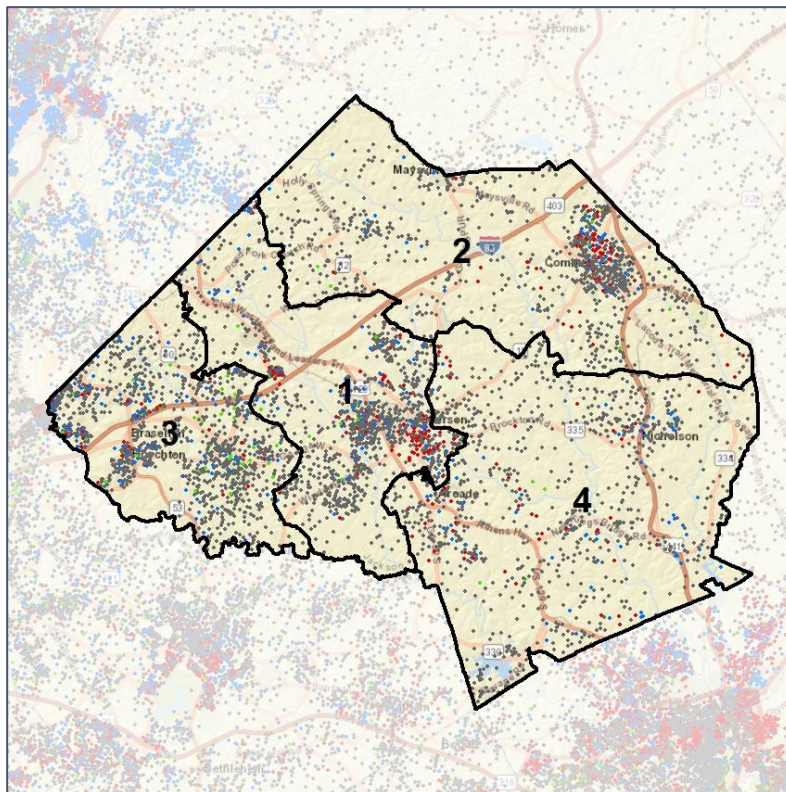


Jackson County Commission

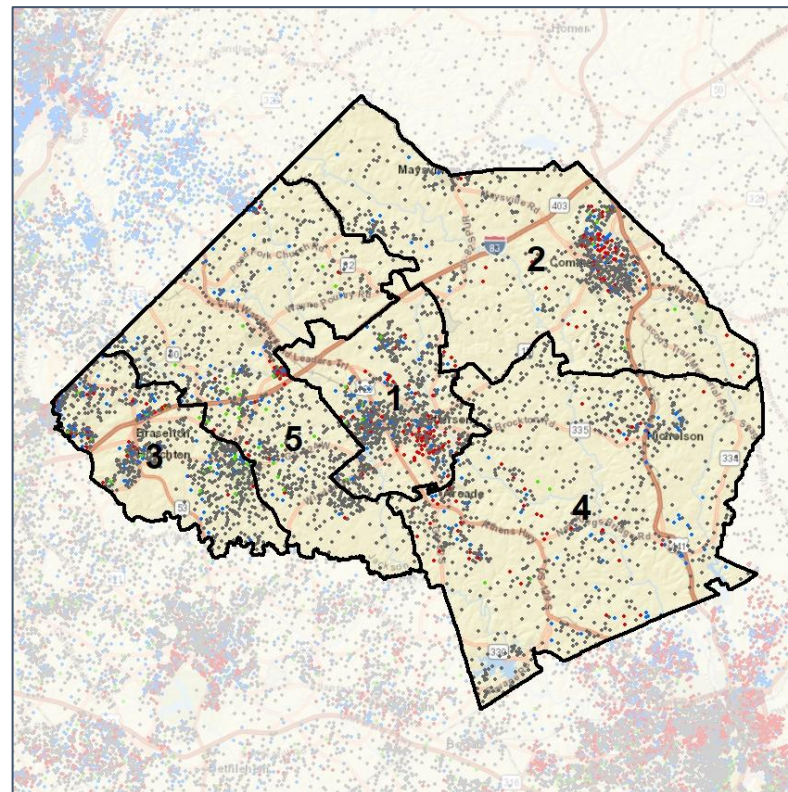
Population Density by Race



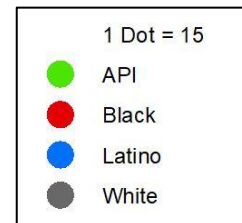
2012 Map



2022 Map*



	1	2	3	4	1*	2*	3*	4*	5*	County
Population	21,504	16,587	21,416	16,400	15,356	15,109	15,240	15,053	15,149	75,907
API	548	295	741	190	328	248	480	187	531	1,774
% API	3%	2%	3%	1%	2%	2%	3%	1%	4%	2%
Black	1,608	1,332	1,076	1,120	1,321	1,363	912	976	564	5,136
% Black	7%	8%	5%	7%	9%	9%	6%	6%	4%	7%
Latino	2,011	1,321	2,008	1,372	1,188	1,247	1,600	1,302	1,375	6,712
% Latino	9%	8%	9%	8%	8%	8%	10%	9%	9%	9%
Other	983	678	854	706	708	594	639	647	633	3,221
% Other	5%	4%	4%	4%	5%	4%	4%	4%	4%	4%
White	16,354	12,961	16,737	13,012	11,811	11,657	11,609	11,941	12,046	59,064
% White	76%	78%	78%	79%	77%	77%	76%	79%	80%	78%



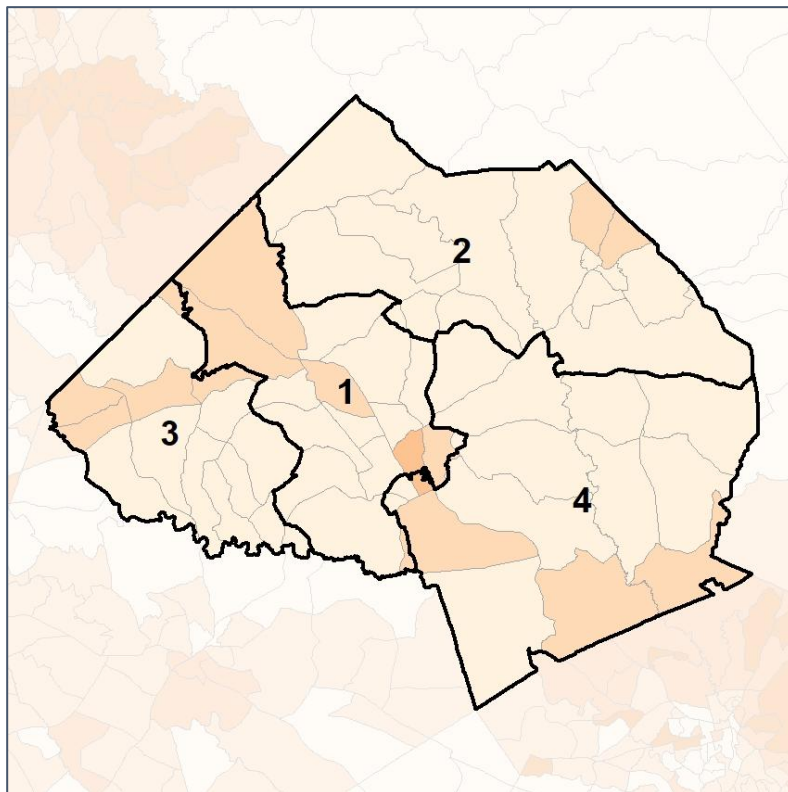
Source:
2020 Decennial Census
2020 ACS 5-Year Dataset

Jackson County Commission

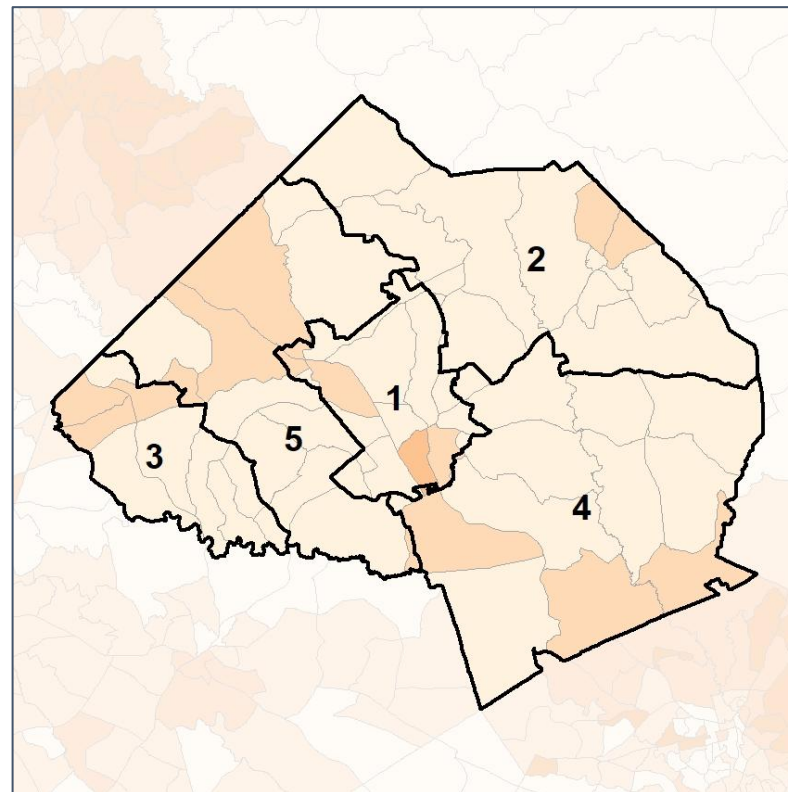
% People of Color by Census Block Group



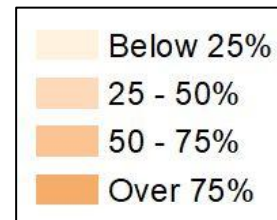
2012 Map



2022 Map*



	1	2	3	4	1*	2*	3*	4*	5*	County
Population	21,504	16,587	21,416	16,400	15,356	15,109	15,240	15,053	15,149	75,907
API	548	295	741	190	328	248	480	187	531	1,774
% API	3%	2%	3%	1%	2%	2%	3%	1%	4%	2%
Black	1,608	1,332	1,076	1,120	1,321	1,363	912	976	564	5,136
% Black	7%	8%	5%	7%	9%	9%	6%	6%	4%	7%
Latino	2,011	1,321	2,008	1,372	1,188	1,247	1,600	1,302	1,375	6,712
% Latino	9%	8%	9%	8%	8%	8%	10%	9%	9%	9%
Other	983	678	854	706	708	594	639	647	633	3,221
% Other	5%	4%	4%	4%	5%	4%	4%	4%	4%	4%
White	16,354	12,961	16,737	13,012	11,811	11,657	11,609	11,941	12,046	59,064
% White	76%	78%	78%	79%	77%	77%	76%	79%	80%	78%

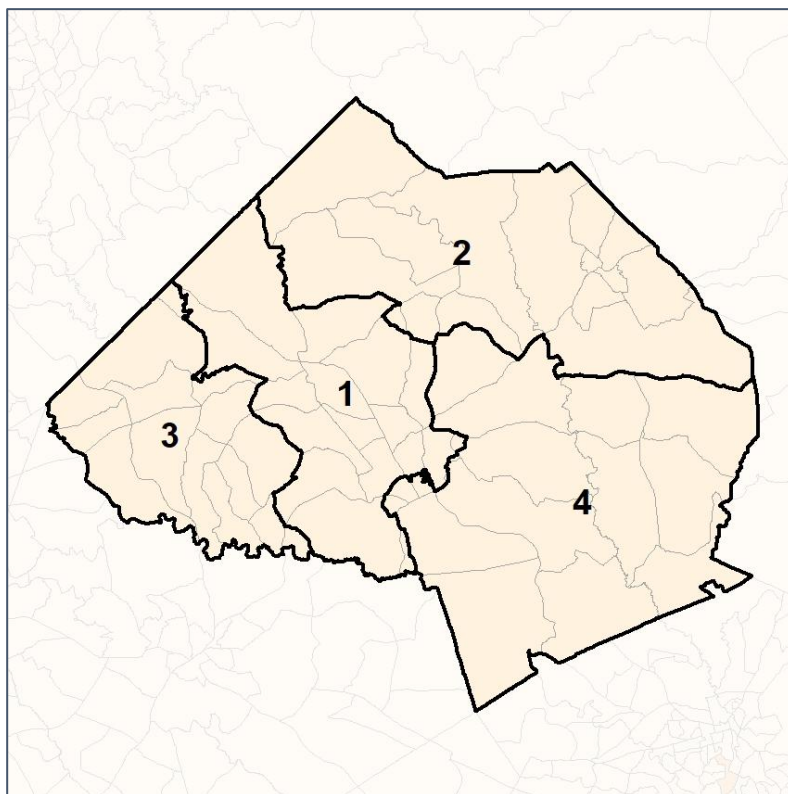


Jackson County Commission

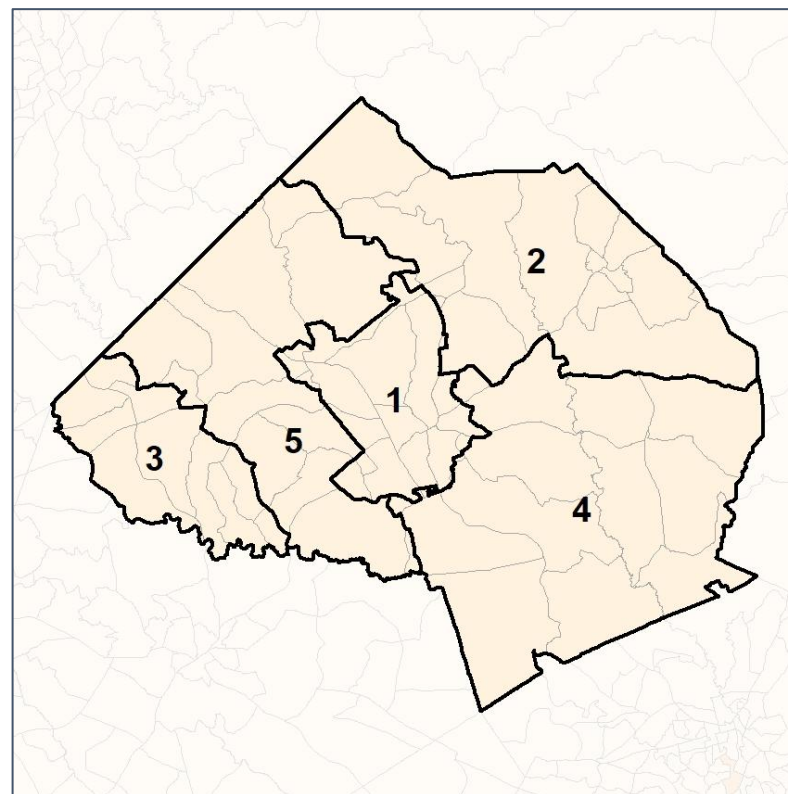
% API by Census Block Group



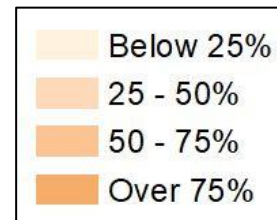
2012 Map



2022 Map*



	1	2	3	4	1*	2*	3*	4*	5*	County
Population	21,504	16,587	21,416	16,400	15,356	15,109	15,240	15,053	15,149	75,907
API	548	295	741	190	328	248	480	187	531	1,774
% API	3%	2%	3%	1%	2%	2%	3%	1%	4%	2%
Black	1,608	1,332	1,076	1,120	1,321	1,363	912	976	564	5,136
% Black	7%	8%	5%	7%	9%	9%	6%	6%	4%	7%
Latino	2,011	1,321	2,008	1,372	1,188	1,247	1,600	1,302	1,375	6,712
% Latino	9%	8%	9%	8%	8%	8%	10%	9%	9%	9%
Other	983	678	854	706	708	594	639	647	633	3,221
% Other	5%	4%	4%	4%	5%	4%	4%	4%	4%	4%
White	16,354	12,961	16,737	13,012	11,811	11,657	11,609	11,941	12,046	59,064
% White	76%	78%	78%	79%	77%	77%	76%	79%	80%	78%



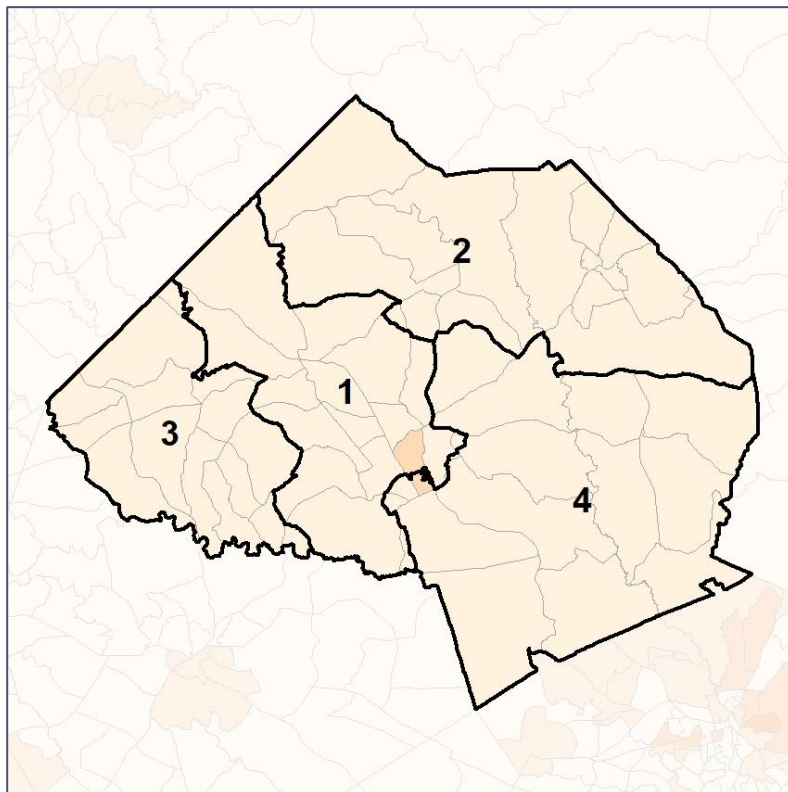
Source:
2020 Decennial Census
2020 ACS 5-Year Dataset

Jackson County Commission

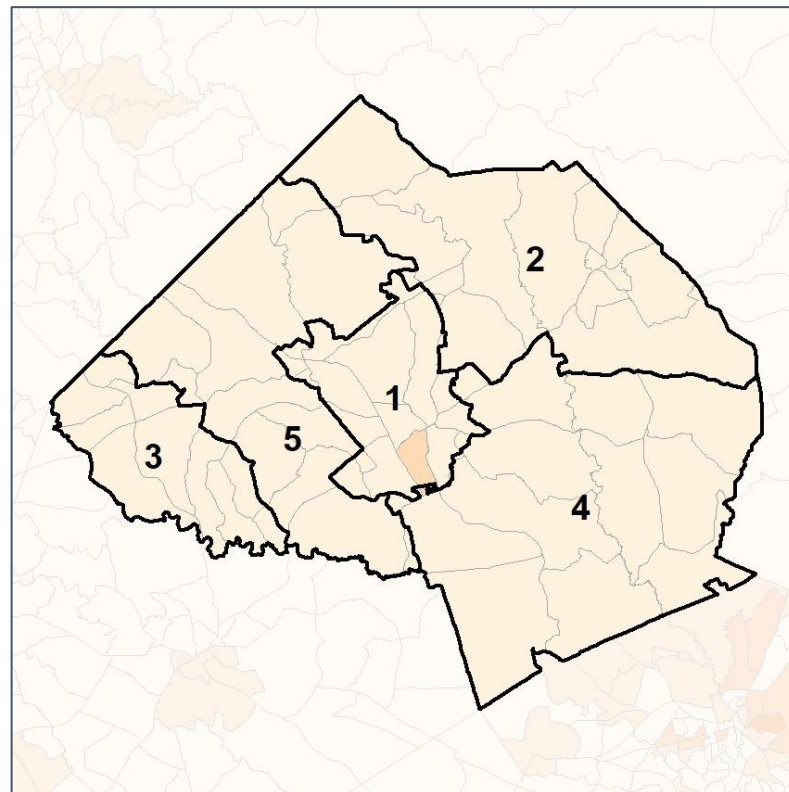
% Black by Census Block Group



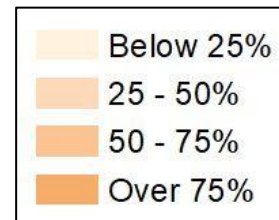
2012 Map



2022 Map*



	1	2	3	4	1*	2*	3*	4*	5*	County
Population	21,504	16,587	21,416	16,400	15,356	15,109	15,240	15,053	15,149	75,907
API	548	295	741	190	328	248	480	187	531	1,774
% API	3%	2%	3%	1%	2%	2%	3%	1%	4%	2%
Black	1,608	1,332	1,076	1,120	1,321	1,363	912	976	564	5,136
% Black	7%	8%	5%	7%	9%	9%	6%	6%	4%	7%
Latino	2,011	1,321	2,008	1,372	1,188	1,247	1,600	1,302	1,375	6,712
% Latino	9%	8%	9%	8%	8%	8%	10%	9%	9%	9%
Other	983	678	854	706	708	594	639	647	633	3,221
% Other	5%	4%	4%	4%	5%	4%	4%	4%	4%	4%
White	16,354	12,961	16,737	13,012	11,811	11,657	11,609	11,941	12,046	59,064
% White	76%	78%	78%	79%	77%	77%	76%	79%	80%	78%

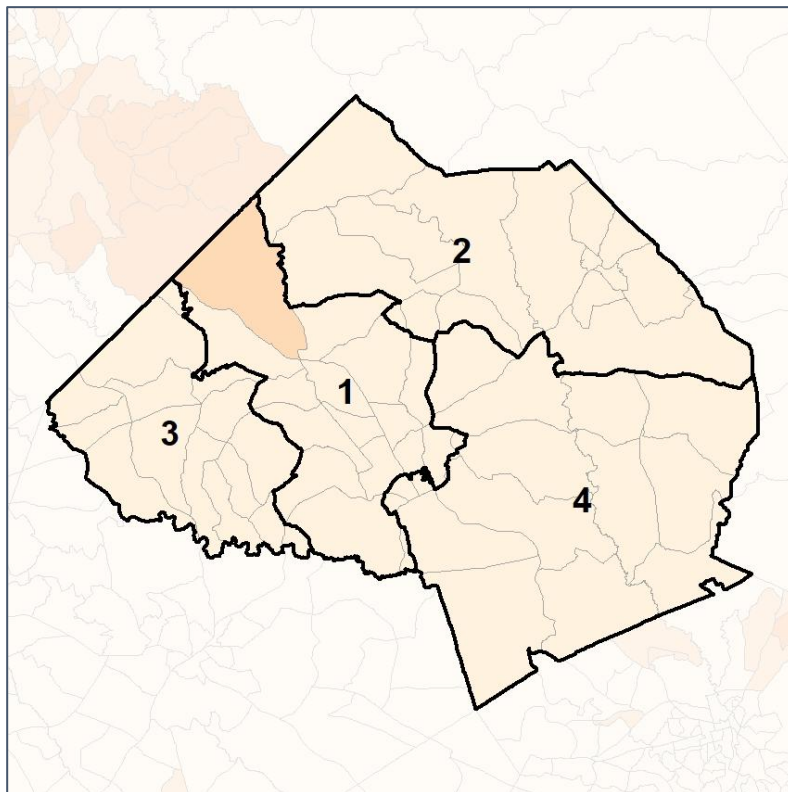


Jackson County Commission

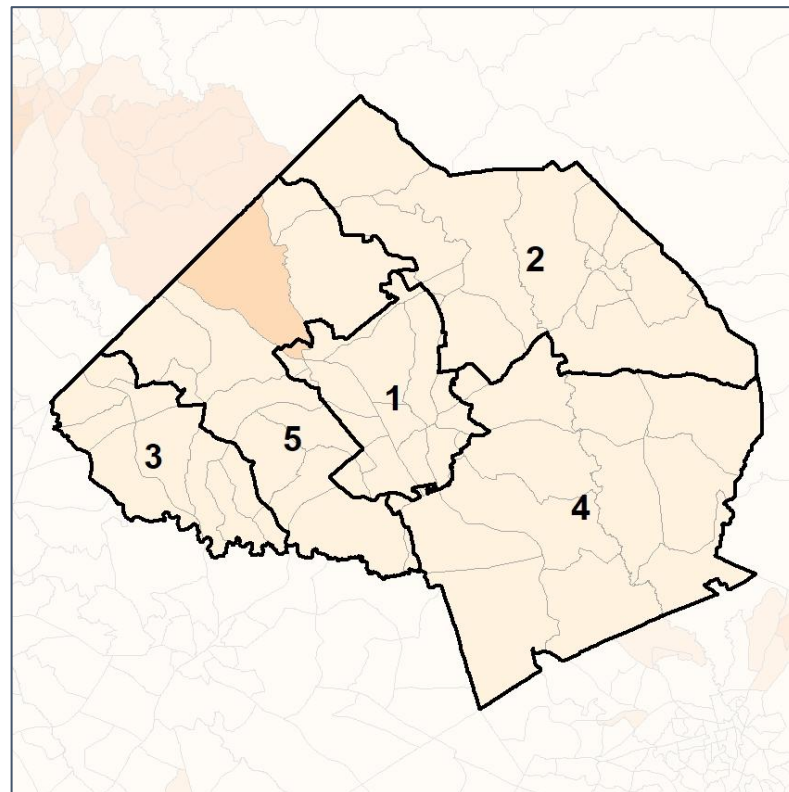
% Latino by Census Block Group



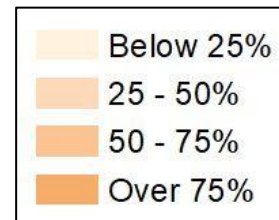
2012 Map



2022 Map*



	1	2	3	4	1*	2*	3*	4*	5*	County
Population	21,504	16,587	21,416	16,400	15,356	15,109	15,240	15,053	15,149	75,907
API	548	295	741	190	328	248	480	187	531	1,774
% API	3%	2%	3%	1%	2%	2%	3%	1%	4%	2%
Black	1,608	1,332	1,076	1,120	1,321	1,363	912	976	564	5,136
% Black	7%	8%	5%	7%	9%	9%	6%	6%	4%	7%
Latino	2,011	1,321	2,008	1,372	1,188	1,247	1,600	1,302	1,375	6,712
% Latino	9%	8%	9%	8%	8%	8%	10%	9%	9%	9%
Other	983	678	854	706	708	594	639	647	633	3,221
% Other	5%	4%	4%	4%	5%	4%	4%	4%	4%	4%
White	16,354	12,961	16,737	13,012	11,811	11,657	11,609	11,941	12,046	59,064
% White	76%	78%	78%	79%	77%	77%	76%	79%	80%	78%

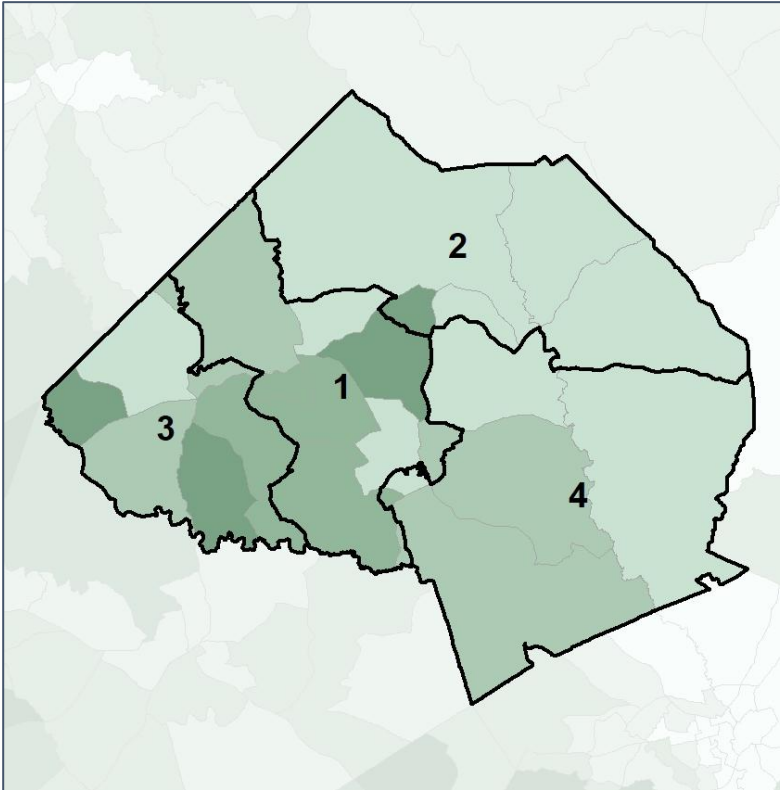


Jackson County Commission

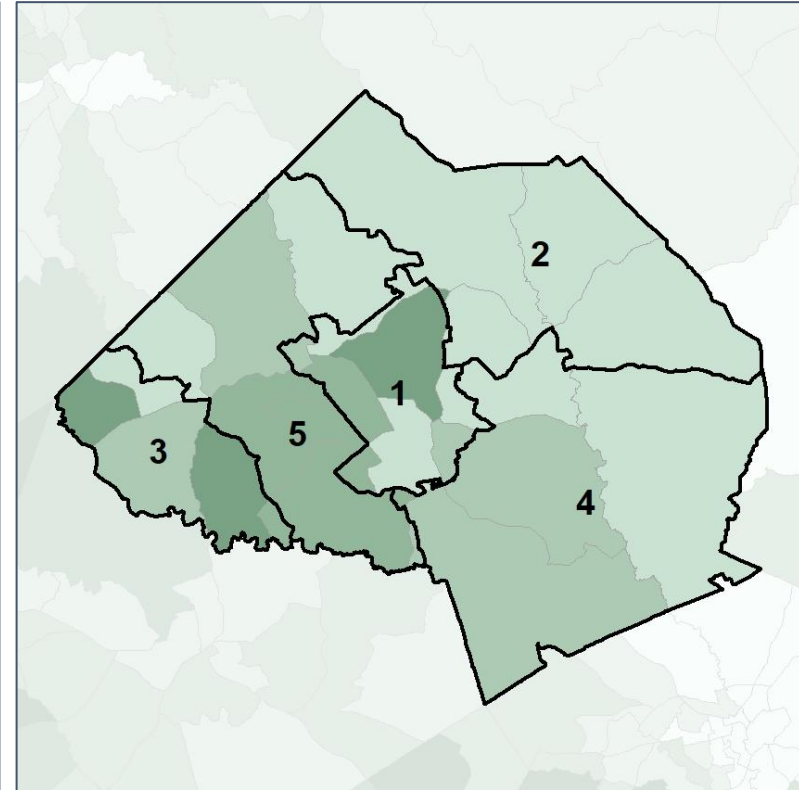
Median Household Income by Census Tract



2012 Map



2022 Map*



	1	2	3	4	1*	2*	3*	4*	5*	County
Population	21,504	16,587	21,416	16,400	15,356	15,109	15,240	15,053	15,149	75,907
% API	3%	2%	3%	1%	2%	2%	3%	1%	4%	2%
% Black	7%	8%	5%	7%	9%	9%	6%	6%	4%	7%
% Latino	9%	8%	9%	8%	8%	8%	10%	9%	9%	9%
% Other	5%	4%	4%	4%	5%	4%	4%	4%	4%	4%
% White	76%	78%	78%	79%	77%	77%	76%	79%	80%	78%
Median Income	\$81,000	\$56,000	\$86,000	\$64,000	\$80,000	\$57,000	\$92,000	\$64,000	\$76,000	\$68,000
% Renter	20%	34%	12%	17%	28%	35%	14%	17%	11%	21%
% Youth	20%	21%	18%	23%	24%	22%	19%	22%	16%	20%

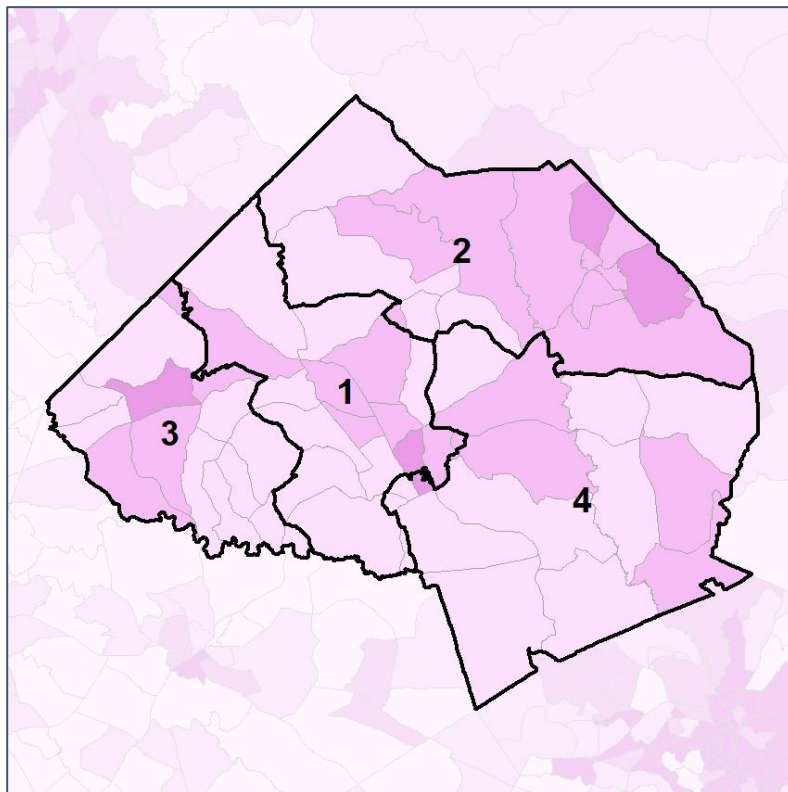


Jackson County Commission

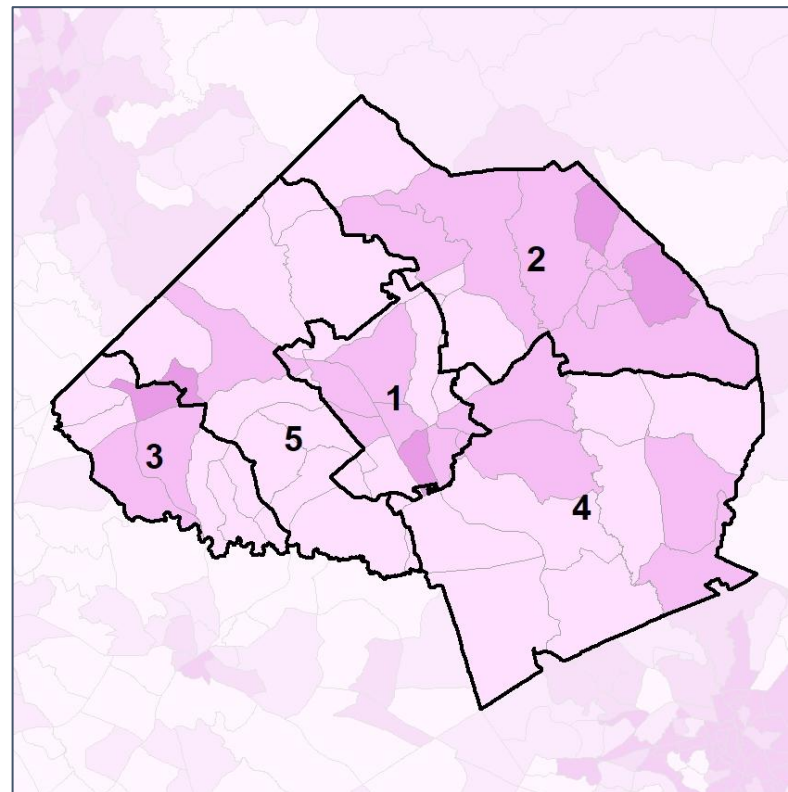
% Renter by Census Block Group



2012 Map



2022 Map*



	1	2	3	4	1*	2*	3*	4*	5*	County
Population	21,504	16,587	21,416	16,400	15,356	15,109	15,240	15,053	15,149	75,907
% API	3%	2%	3%	1%	2%	2%	3%	1%	4%	2%
% Black	7%	8%	5%	7%	9%	9%	6%	6%	4%	7%
% Latino	9%	8%	9%	8%	8%	8%	10%	9%	9%	9%
% Other	5%	4%	4%	4%	5%	4%	4%	4%	4%	4%
% White	76%	78%	78%	79%	77%	77%	76%	79%	80%	78%
Median Income	\$81,000	\$56,000	\$86,000	\$64,000	\$80,000	\$57,000	\$92,000	\$64,000	\$76,000	\$68,000
% Renter	20%	34%	12%	17%	28%	35%	14%	17%	11%	21%
% Youth	20%	21%	18%	23%	24%	22%	19%	22%	16%	20%

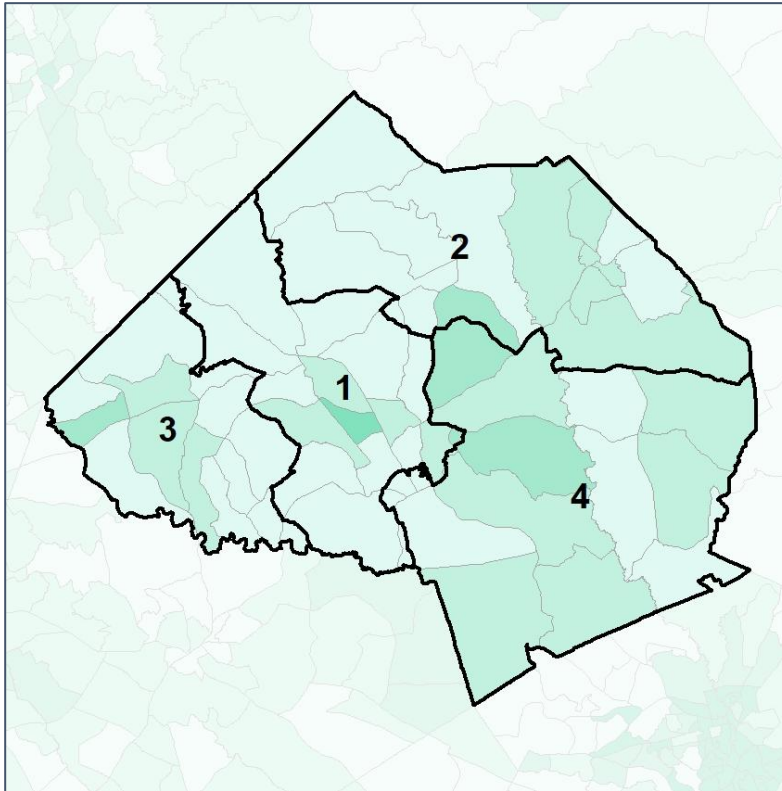


Jackson County Commission

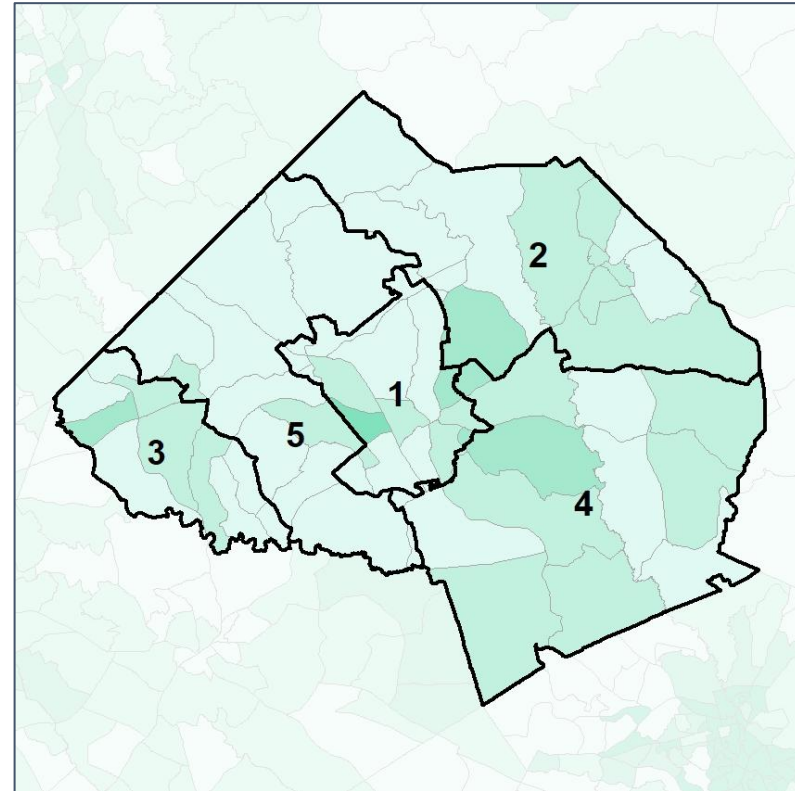
% Youth (18-34) by Census Block Group



2012 Map



2022 Map*



	1	2	3	4	1*	2*	3*	4*	5*	County
Population	21,504	16,587	21,416	16,400	15,356	15,109	15,240	15,053	15,149	75,907
% API	3%	2%	3%	1%	2%	2%	3%	1%	4%	2%
% Black	7%	8%	5%	7%	9%	9%	6%	6%	4%	7%
% Latino	9%	8%	9%	8%	8%	8%	10%	9%	9%	9%
% Other	5%	4%	4%	4%	5%	4%	4%	4%	4%	4%
% White	76%	78%	78%	79%	77%	77%	76%	79%	80%	78%
Median Income	\$81,000	\$56,000	\$86,000	\$64,000	\$80,000	\$57,000	\$92,000	\$64,000	\$76,000	\$68,000
% Renter	20%	34%	12%	17%	28%	35%	14%	17%	11%	21%
% Youth	20%	21%	18%	23%	24%	22%	19%	22%	16%	20%

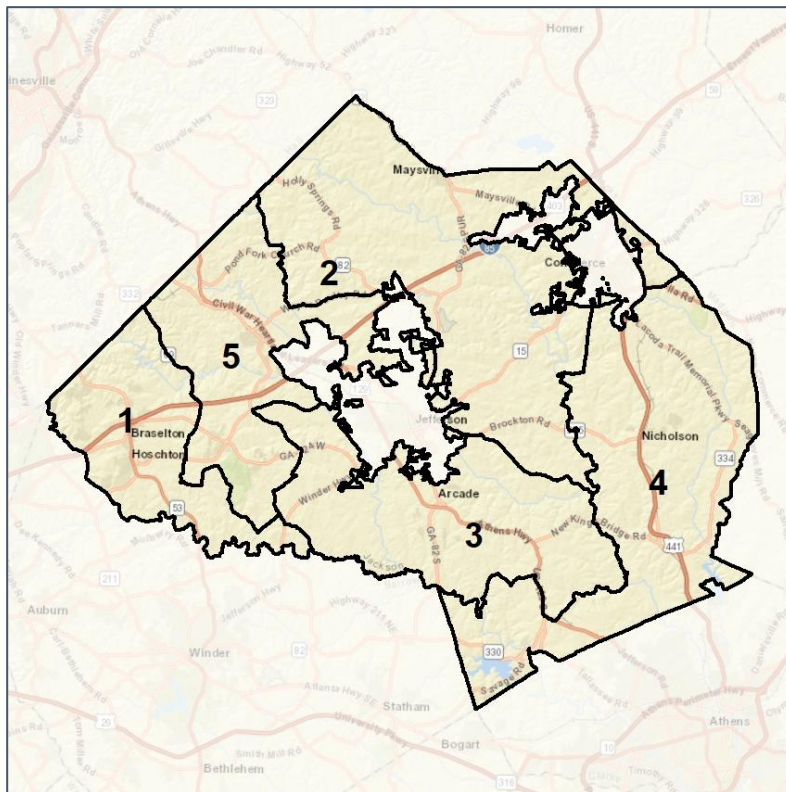


Jackson County School Board

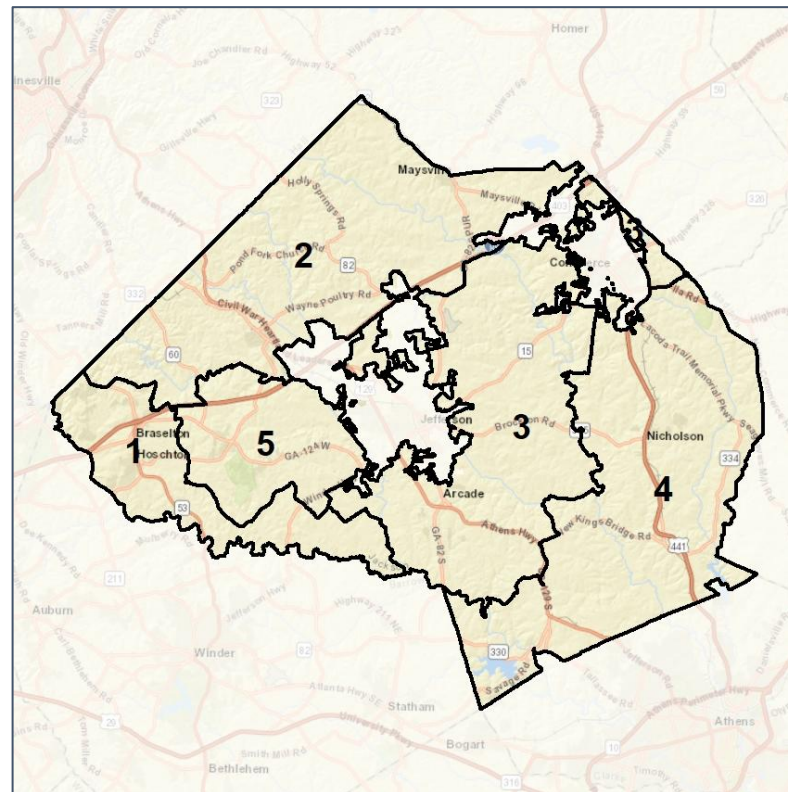
Context



2012 Map



2022 Map*



	1	2	3	4	5	1*	2*	3*	4*	5*	County
Population	13,351	9,246	10,662	9,878	12,697	11,025	11,081	11,048	11,155	10,978	75,907
API	3%	1%	2%	1%	4%	3%	3%	2%	1%	4%	2%
Black	6%	5%	7%	5%	5%	7%	4%	9%	5%	3%	7%
Latino	11%	6%	7%	9%	10%	12%	12%	6%	9%	6%	9%
Other	4%	4%	4%	4%	4%	5%	5%	5%	4%	3%	4%
White	75%	83%	80%	81%	77%	73%	77%	78%	81%	85%	78%
Population Gain	4,490	340	1,935	749	3,811	-2,326	1,835	386	1,277	-1,719	*
Population % Gain	51%	4%	22%	8%	43%	-17%	20%	4%	13%	-14%	*
Net POC Gain	2,047	414	834	615	1,716	-416	981	265	283	-1,250	*
Net POC % Gain	153%	35%	63%	49%	145%	-12%	61%	12%	15%	-43%	*

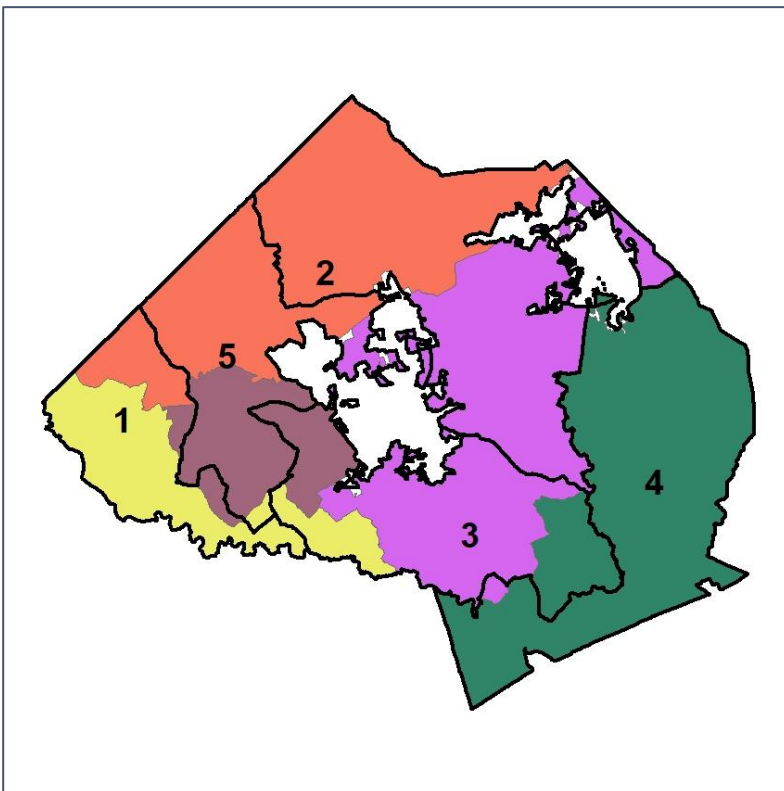


Jackson County School Board

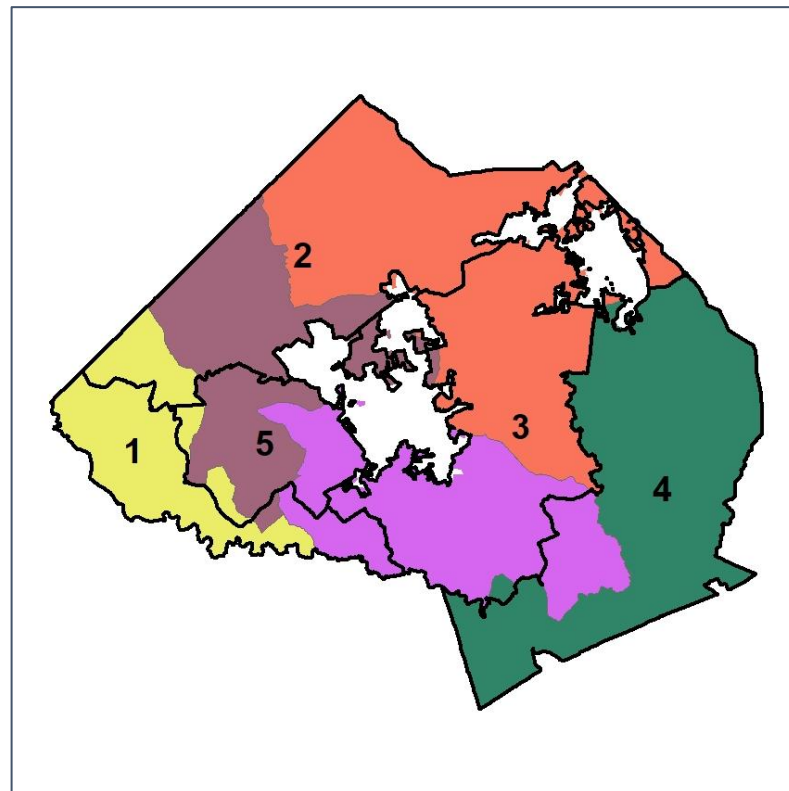
Changes in Redistricting



2012 Map (2022 in Colors)



2022 Map* (2012 in Colors)



	1	2	3	4	5	1*	2*	3*	4*	5*	County
Population	13,351	9,246	10,662	9,878	12,697	11,025	11,081	11,048	11,155	10,978	75,907
API	3%	1%	2%	1%	4%	3%	3%	2%	1%	4%	2%
Black	6%	5%	7%	5%	5%	7%	4%	9%	5%	3%	7%
Latino	11%	6%	7%	9%	10%	12%	12%	6%	9%	6%	9%
Other	4%	4%	4%	4%	4%	5%	5%	5%	4%	3%	4%
White	75%	83%	80%	81%	77%	73%	77%	78%	81%	85%	78%
Population Gain	4,490	340	1,935	749	3,811	-2,326	1,835	386	1,277	-1,719	*
Population % Gain	51%	4%	22%	8%	43%	-17%	20%	4%	13%	-14%	*
Net POC Gain	2,047	414	834	615	1,716	-416	981	265	283	-1,250	*
Net POC % Gain	153%	35%	63%	49%	145%	-12%	61%	12%	15%	-43%	*

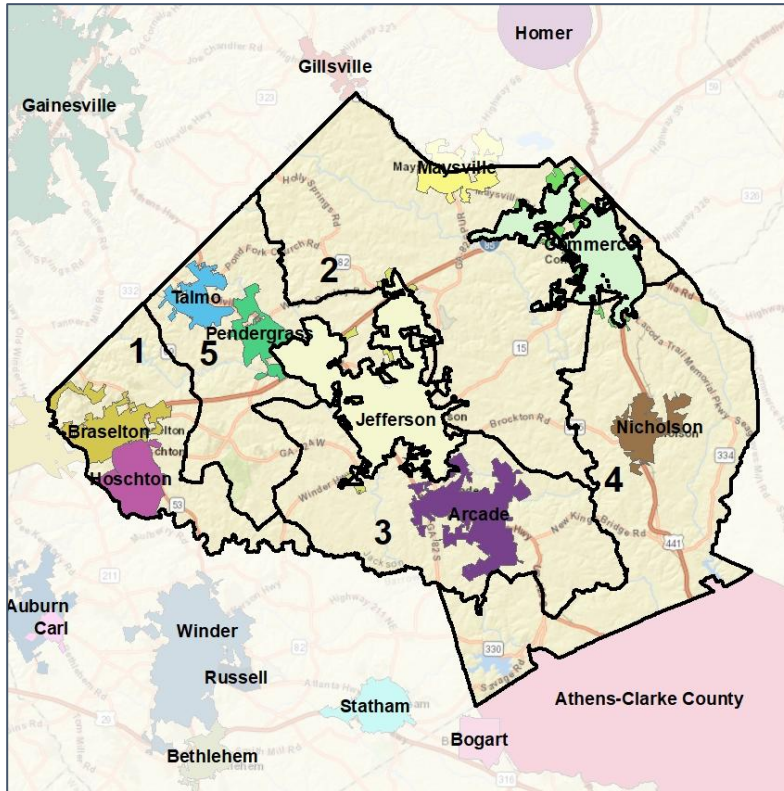


Jackson County School Board

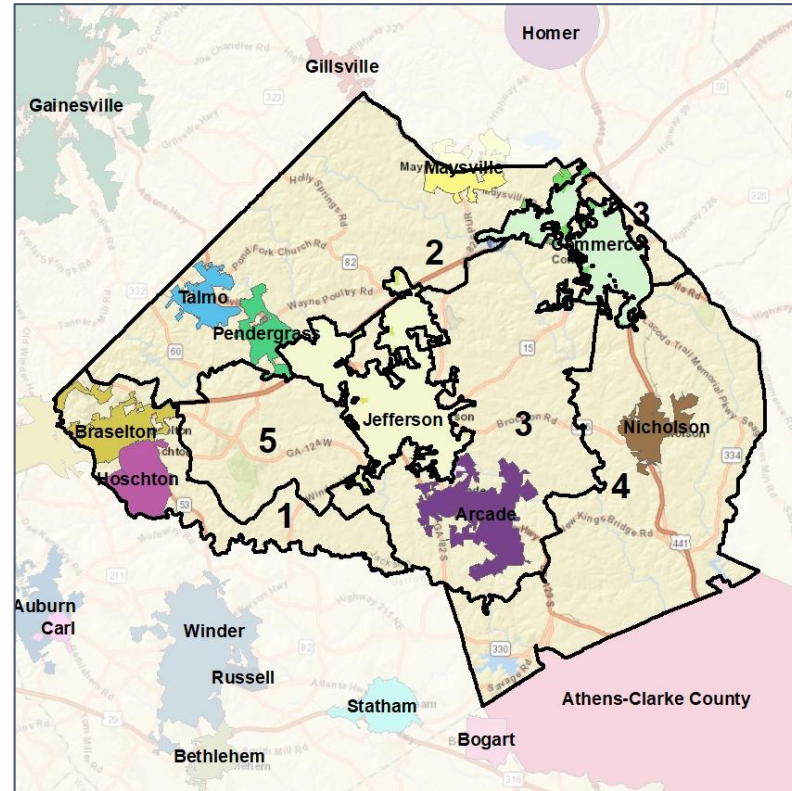
Cities and Places



2012 Map



2022 Map*



	1	2	3	4	5	1*	2*	3*	4*	5*	County
Population	13,351	9,246	10,662	9,878	12,697	11,025	11,081	11,048	11,155	10,978	75,907
API	3%	1%	2%	1%	4%	3%	3%	2%	1%	4%	2%
Black	6%	5%	7%	5%	5%	7%	4%	9%	5%	3%	7%
Latino	11%	6%	7%	9%	10%	12%	12%	6%	9%	6%	9%
Other	4%	4%	4%	4%	4%	5%	5%	5%	4%	3%	4%
White	75%	83%	80%	81%	77%	73%	77%	78%	81%	85%	78%
Population Gain	4,490	340	1,935	749	3,811	-2,326	1,835	386	1,277	-1,719	*
Population % Gain	51%	4%	22%	8%	43%	-17%	20%	4%	13%	-14%	*
Net POC Gain	2,047	414	834	615	1,716	-416	981	265	283	-1,250	*
Net POC % Gain	153%	35%	63%	49%	145%	-12%	61%	12%	15%	-43%	*



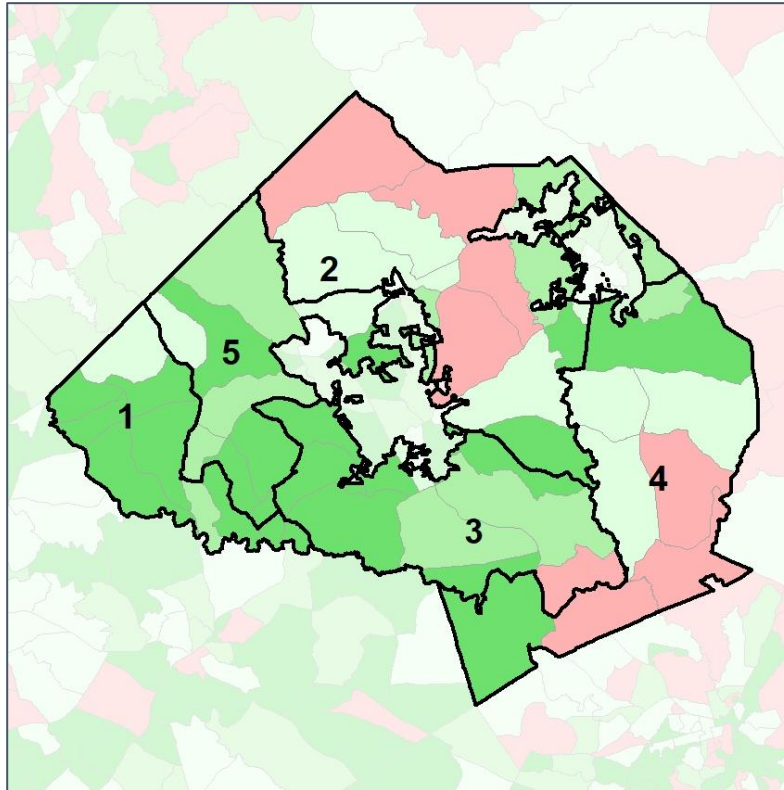
Source:
2020 Decennial Census
2020 ACS 5-Year Dataset

Jackson County School Board

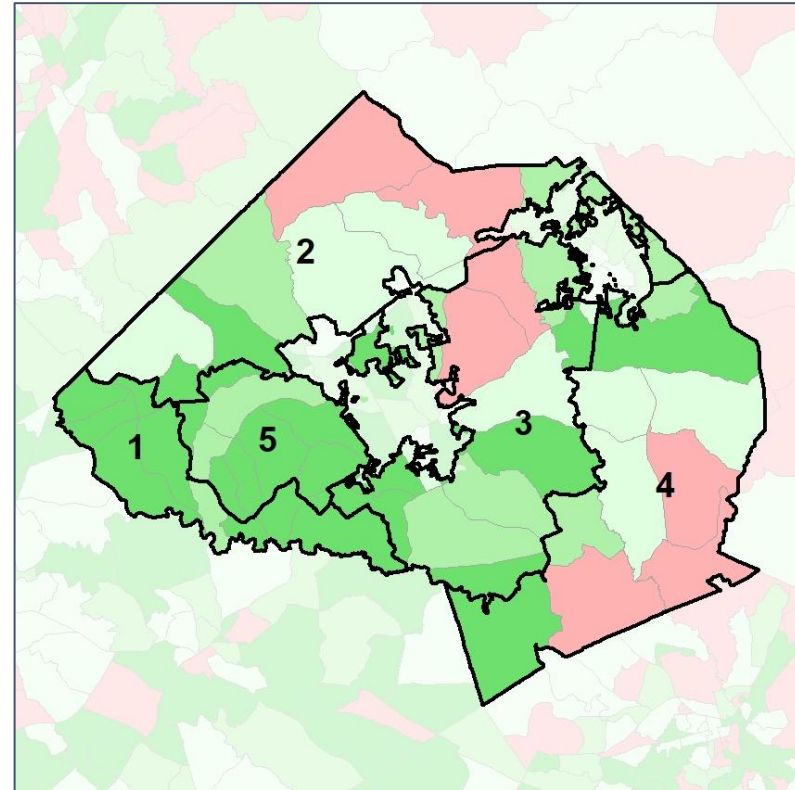
Net Gain in Population (2010 - 2020) by Census Block Group



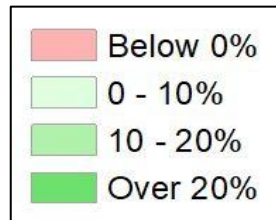
2012 Map



2022 Map*



	1	2	3	4	5	1*	2*	3*	4*	5*	County
Population	13,351	9,246	10,662	9,878	12,697	11,025	11,081	11,048	11,155	10,978	75,907
API	3%	1%	2%	1%	4%	3%	3%	2%	1%	4%	2%
Black	6%	5%	7%	5%	5%	7%	4%	9%	5%	3%	7%
Latino	11%	6%	7%	9%	10%	12%	12%	6%	9%	6%	9%
Other	4%	4%	4%	4%	4%	5%	5%	5%	4%	3%	4%
White	75%	83%	80%	81%	77%	73%	77%	78%	81%	85%	78%
Population Gain	4,490	340	1,935	749	3,811	-2,326	1,835	386	1,277	-1,719	*
Population % Gain	51%	4%	22%	8%	43%	-17%	20%	4%	13%	-14%	*
Net POC Gain	2,047	414	834	615	1,716	-416	981	265	283	-1,250	*
Net POC % Gain	153%	35%	63%	49%	145%	-12%	61%	12%	15%	-43%	*

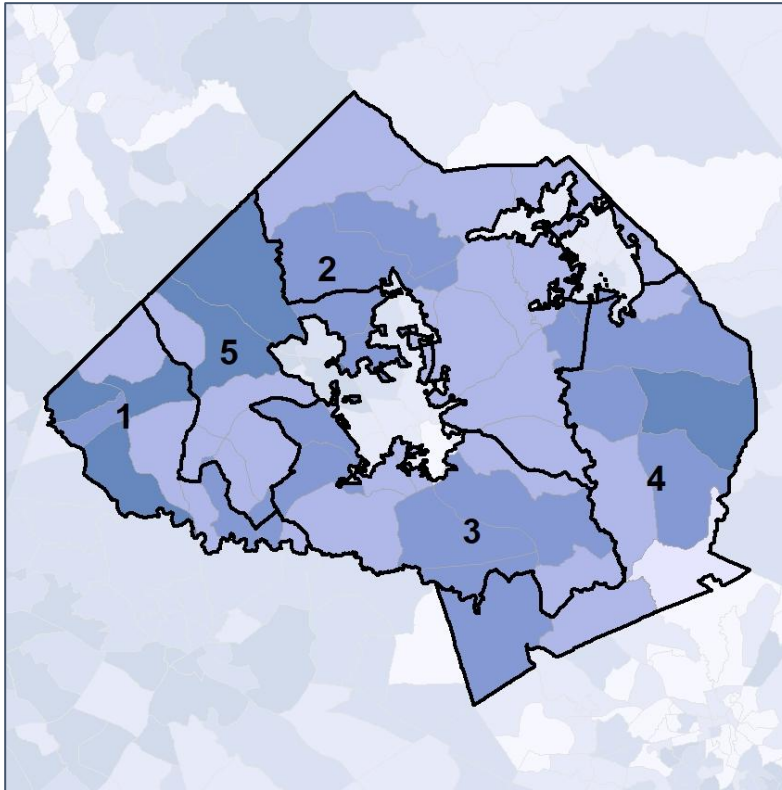


Jackson County School Board

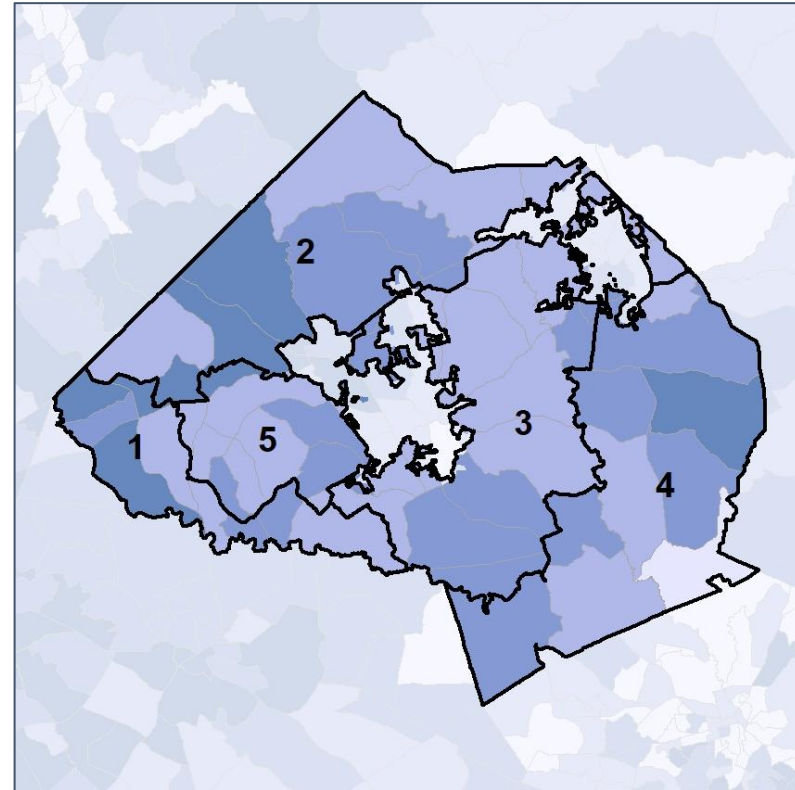
Net Gain in % POC (2020 - 2010) by Census Block Group



2012 Map



2022 Map*



	1	2	3	4	5	1*	2*	3*	4*	5*	County
Population	13,351	9,246	10,662	9,878	12,697	11,025	11,081	11,048	11,155	10,978	75,907
API	3%	1%	2%	1%	4%	3%	3%	2%	1%	4%	2%
Black	6%	5%	7%	5%	5%	7%	4%	9%	5%	3%	7%
Latino	11%	6%	7%	9%	10%	12%	12%	6%	9%	6%	9%
Other	4%	4%	4%	4%	4%	5%	5%	5%	4%	3%	4%
White	75%	83%	80%	81%	77%	73%	77%	78%	81%	85%	78%
Population Gain	4,490	340	1,935	749	3,811	-2,326	1,835	386	1,277	-1,719	*
Population % Gain	51%	4%	22%	8%	43%	-17%	20%	4%	13%	-14%	*
Net POC Gain	2,047	414	834	615	1,716	-416	981	265	283	-1,250	*
Net POC % Gain	153%	35%	63%	49%	145%	-12%	61%	12%	15%	-43%	*

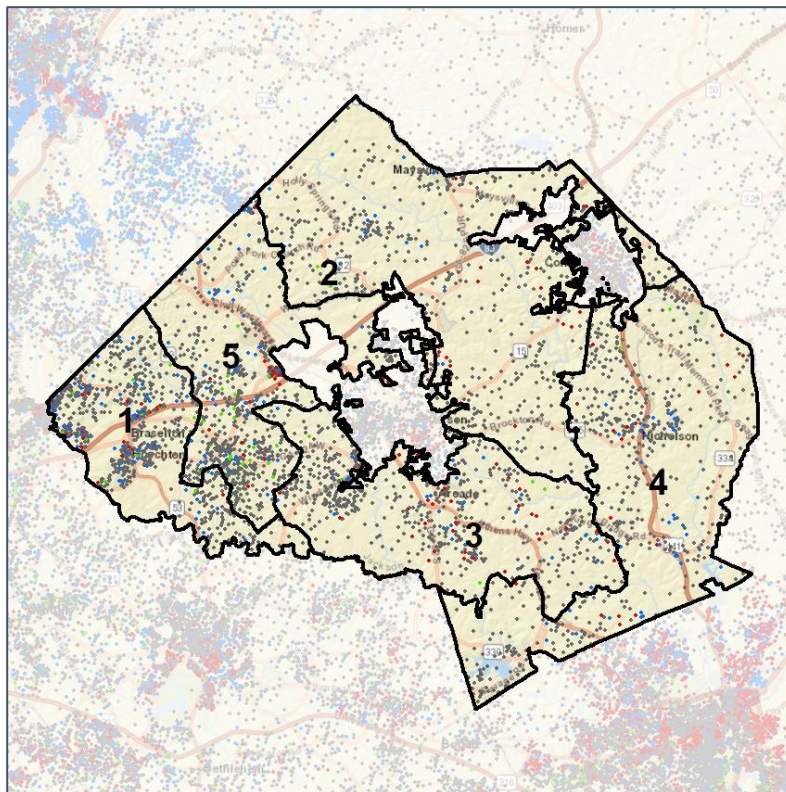


Jackson County School Board

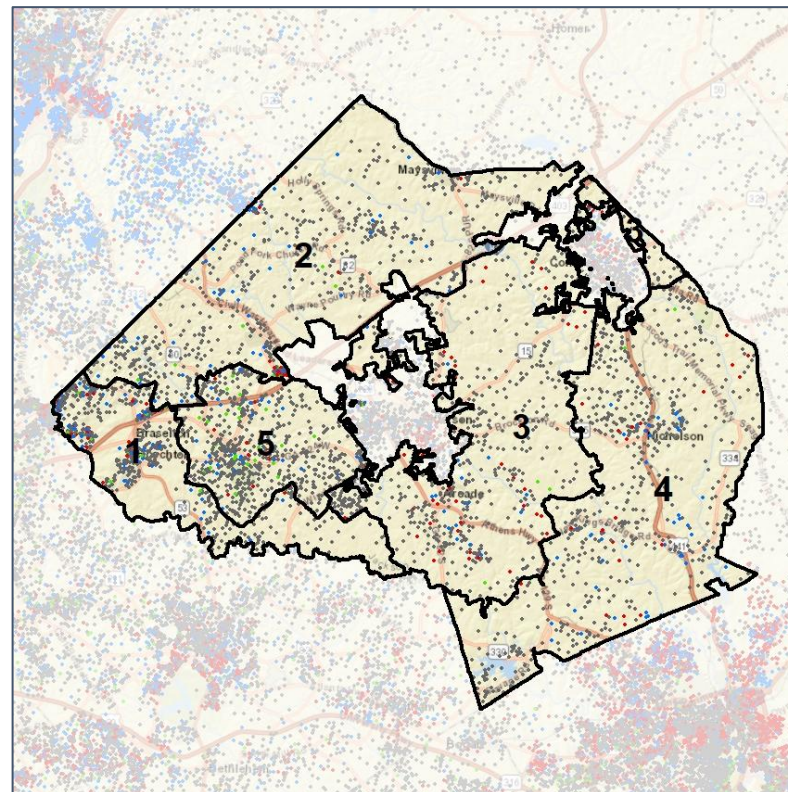
Population Density by Race



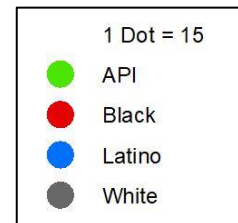
2012 Map



2022 Map*



	1	2	3	4	5	1*	2*	3*	4*	5*	County
Population	13,351	9,175	10,216	9,844	12,687	11,025	11,081	11,048	11,155	10,978	75,907
API	417	131	225	126	478	359	279	198	135	401	1,774
% API	3%	1%	2%	1%	4%	3%	3%	2%	1%	4%	2%
Black	856	486	769	472	617	810	429	1,049	582	293	5,136
% Black	6%	5%	7%	5%	5%	7%	4%	9%	5%	3%	7%
Latino	1,534	569	701	868	1,291	1,290	1,345	666	996	611	6,712
% Latino	11%	6%	7%	9%	10%	12%	12%	6%	9%	6%	9%
Other	580	411	472	392	516	512	525	519	428	347	3,221
% Other	4%	4%	4%	4%	4%	5%	5%	5%	4%	3%	4%
White	9,964	7,649	8,495	8,020	9,795	8,054	8,503	8,616	9,014	9,326	59,064
% White	75%	83%	80%	81%	77%	73%	77%	78%	81%	85%	78%



Source:
2020 Decennial Census
2020 ACS 5-Year Dataset

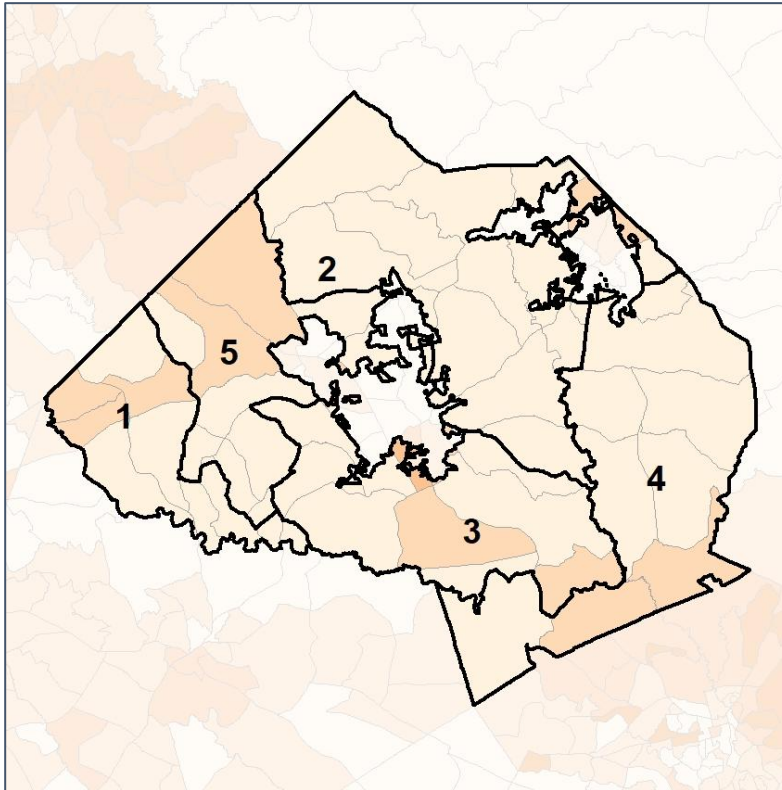


Jackson County School Board

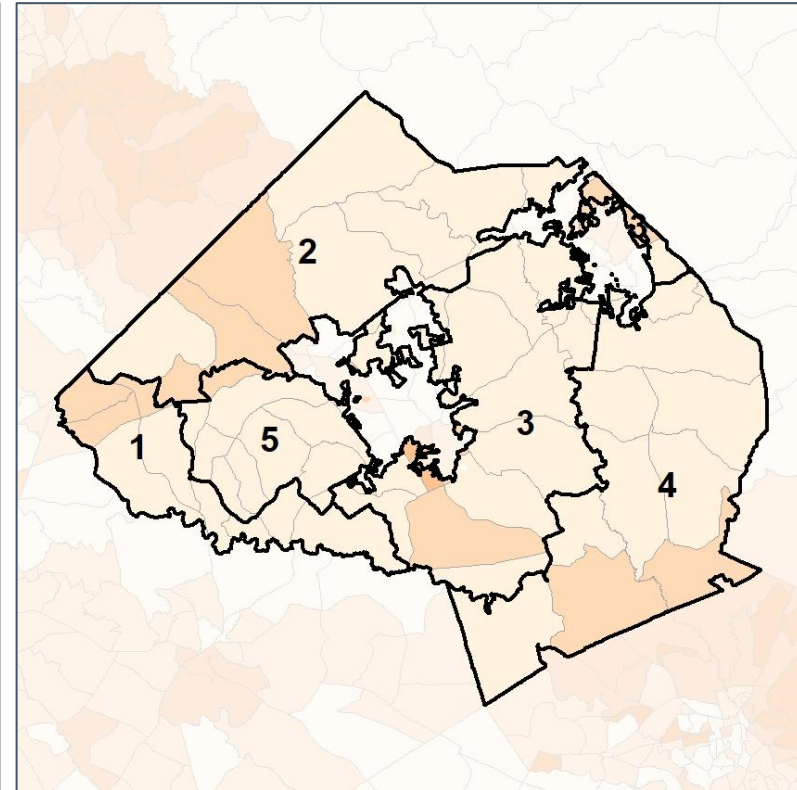
% People of Color by Census Block Group



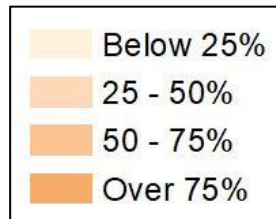
2012 Map



2022 Map*



	1	2	3	4	5	1*	2*	3*	4*	5*	County
Population	13,351	9,175	10,216	9,844	12,687	11,025	11,081	11,048	11,155	10,978	75,907
API	417	131	225	126	478	359	279	198	135	401	1,774
% API	3%	1%	2%	1%	4%	3%	3%	2%	1%	4%	2%
Black	856	486	769	472	617	810	429	1,049	582	293	5,136
% Black	6%	5%	7%	5%	5%	7%	4%	9%	5%	3%	7%
Latino	1,534	569	701	868	1,291	1,290	1,345	666	996	611	6,712
% Latino	11%	6%	7%	9%	10%	12%	12%	6%	9%	6%	9%
Other	580	411	472	392	516	512	525	519	428	347	3,221
% Other	4%	4%	4%	4%	4%	5%	5%	5%	4%	3%	4%
White	9,964	7,649	8,495	8,020	9,795	8,054	8,503	8,616	9,014	9,326	59,064
% White	75%	83%	80%	81%	77%	73%	77%	78%	81%	85%	78%

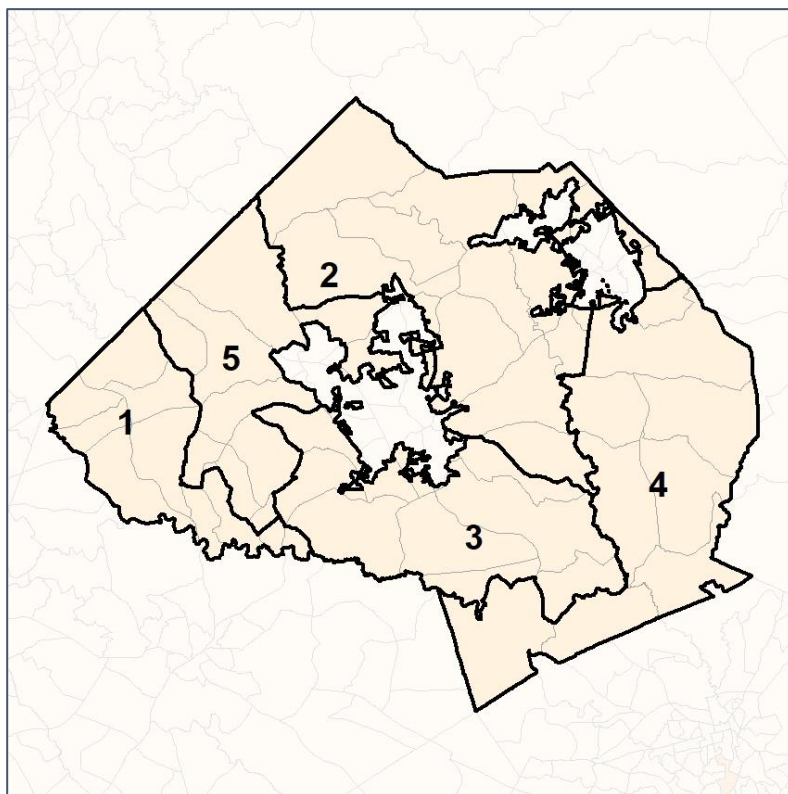


Jackson County School Board

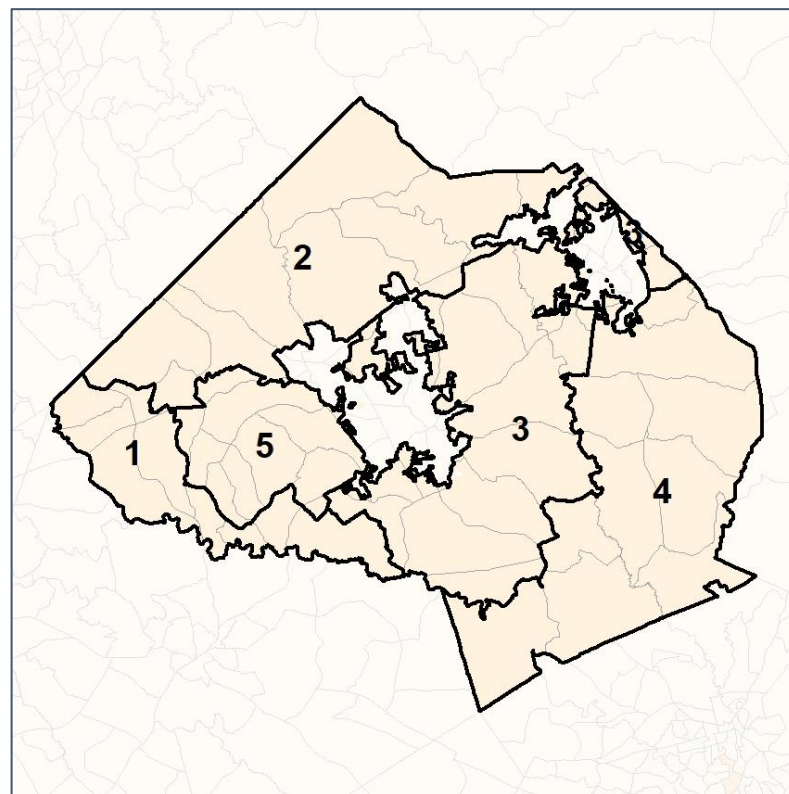
% API by Census Block Group



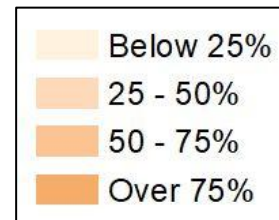
2012 Map



2022 Map*



	1	2	3	4	5	1*	2*	3*	4*	5*	County
Population	13,351	9,175	10,216	9,844	12,687	11,025	11,081	11,048	11,155	10,978	75,907
API	417	131	225	126	478	359	279	198	135	401	1,774
% API	3%	1%	2%	1%	4%	3%	3%	2%	1%	4%	2%
Black	856	486	769	472	617	810	429	1,049	582	293	5,136
% Black	6%	5%	7%	5%	5%	7%	4%	9%	5%	3%	7%
Latino	1,534	569	701	868	1,291	1,290	1,345	666	996	611	6,712
% Latino	11%	6%	7%	9%	10%	12%	12%	6%	9%	6%	9%
Other	580	411	472	392	516	512	525	519	428	347	3,221
% Other	4%	4%	4%	4%	4%	5%	5%	5%	4%	3%	4%
White	9,964	7,649	8,495	8,020	9,795	8,054	8,503	8,616	9,014	9,326	59,064
% White	75%	83%	80%	81%	77%	73%	77%	78%	81%	85%	78%



Source:
2020 Decennial Census
2020 ACS 5-Year Dataset

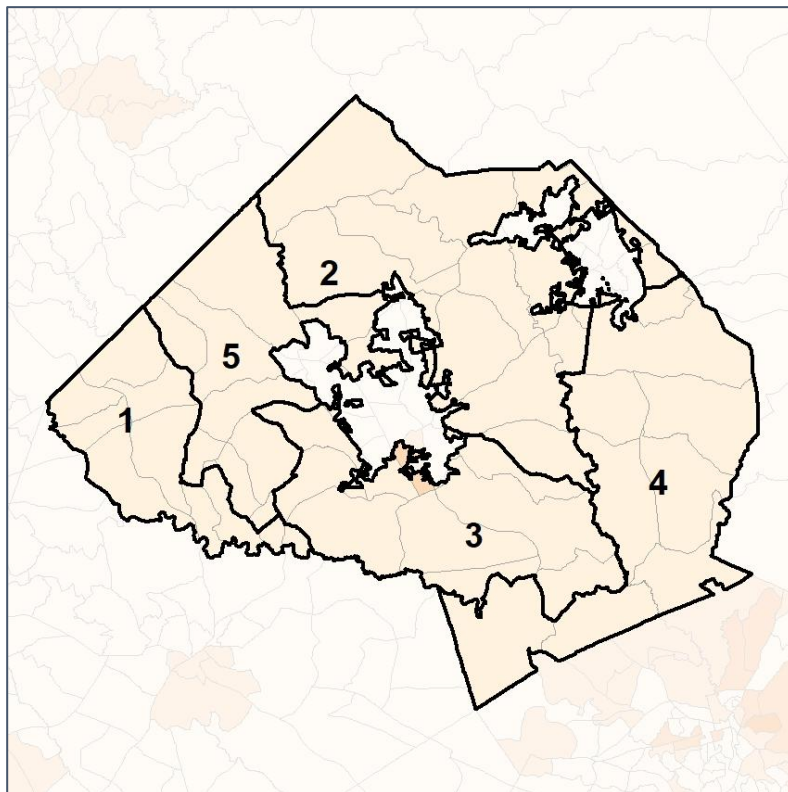


Jackson County School Board

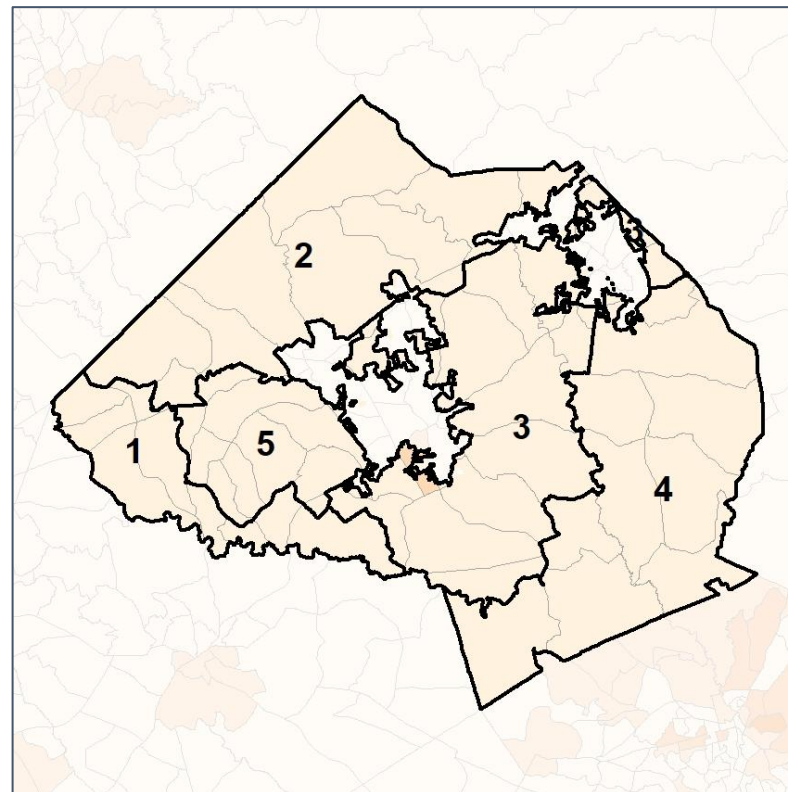
% Black by Census Block Group



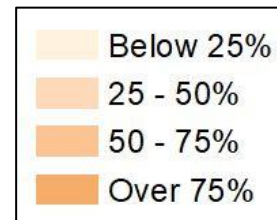
2012 Map



2022 Map*



	1	2	3	4	5	1*	2*	3*	4*	5*	County
Population	13,351	9,175	10,216	9,844	12,687	11,025	11,081	11,048	11,155	10,978	75,907
API	417	131	225	126	478	359	279	198	135	401	1,774
% API	3%	1%	2%	1%	4%	3%	3%	2%	1%	4%	2%
Black	856	486	769	472	617	810	429	1,049	582	293	5,136
% Black	6%	5%	7%	5%	5%	7%	4%	9%	5%	3%	7%
Latino	1,534	569	701	868	1,291	1,290	1,345	666	996	611	6,712
% Latino	11%	6%	7%	9%	10%	12%	12%	6%	9%	6%	9%
Other	580	411	472	392	516	512	525	519	428	347	3,221
% Other	4%	4%	4%	4%	4%	5%	5%	5%	4%	3%	4%
White	9,964	7,649	8,495	8,020	9,795	8,054	8,503	8,616	9,014	9,326	59,064
% White	75%	83%	80%	81%	77%	73%	77%	78%	81%	85%	78%

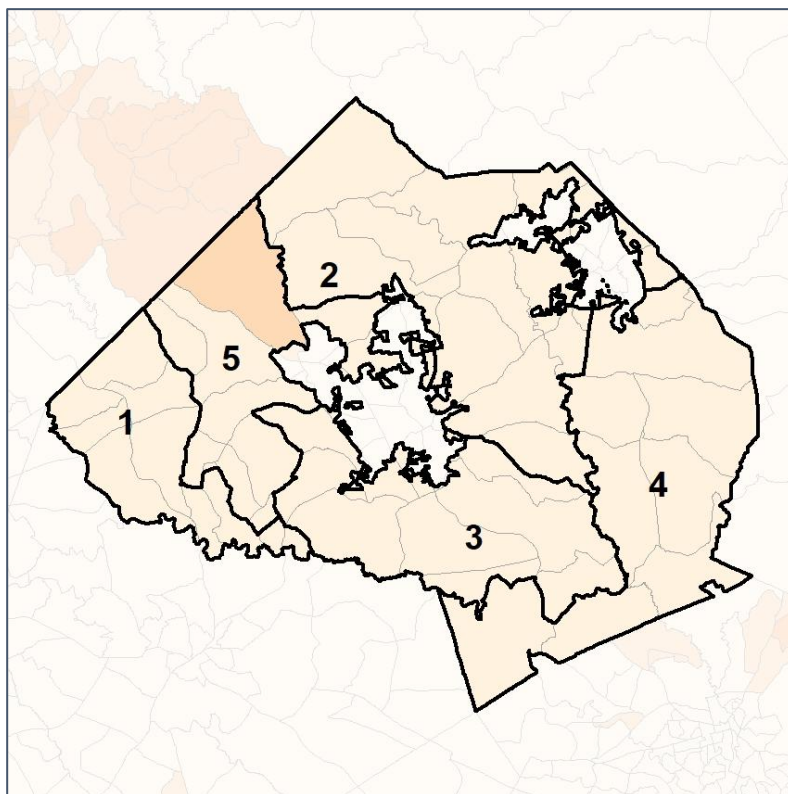


Jackson County School Board

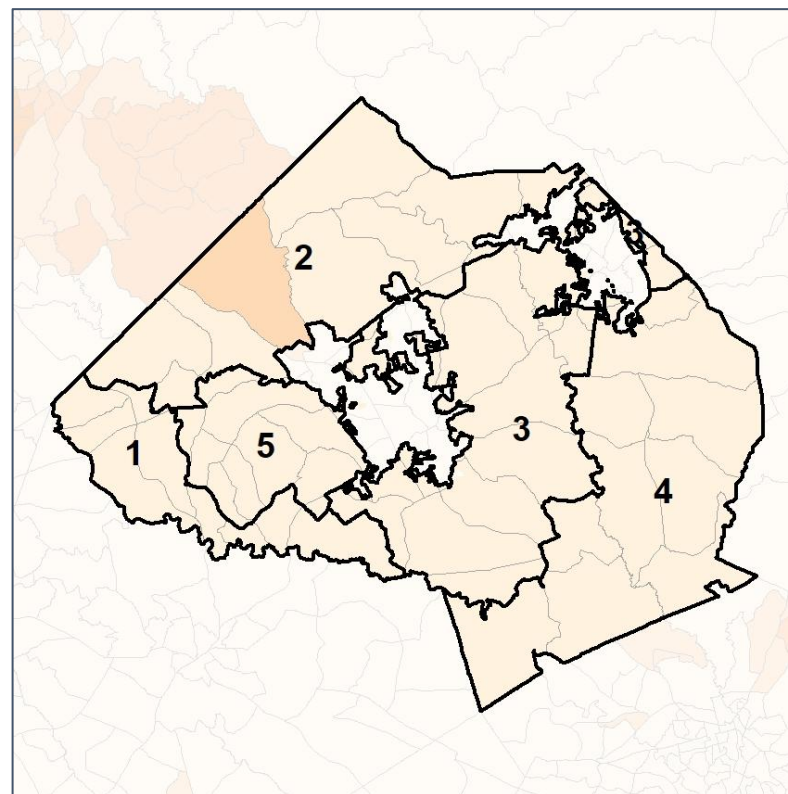
% Latino by Census Block Group



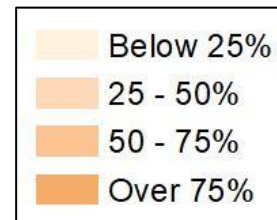
2012 Map



2022 Map*



	1	2	3	4	5	1*	2*	3*	4*	5*	County
Population	13,351	9,175	10,216	9,844	12,687	11,025	11,081	11,048	11,155	10,978	75,907
API	417	131	225	126	478	359	279	198	135	401	1,774
% API	3%	1%	2%	1%	4%	3%	3%	2%	1%	4%	2%
Black	856	486	769	472	617	810	429	1,049	582	293	5,136
% Black	6%	5%	7%	5%	5%	7%	4%	9%	5%	3%	7%
Latino	1,534	569	701	868	1,291	1,290	1,345	666	996	611	6,712
% Latino	11%	6%	7%	9%	10%	12%	12%	6%	9%	6%	9%
Other	580	411	472	392	516	512	525	519	428	347	3,221
% Other	4%	4%	4%	4%	4%	5%	5%	5%	4%	3%	4%
White	9,964	7,649	8,495	8,020	9,795	8,054	8,503	8,616	9,014	9,326	59,064
% White	75%	83%	80%	81%	77%	73%	77%	78%	81%	85%	78%



Source:
2020 Decennial Census
2020 ACS 5-Year Dataset

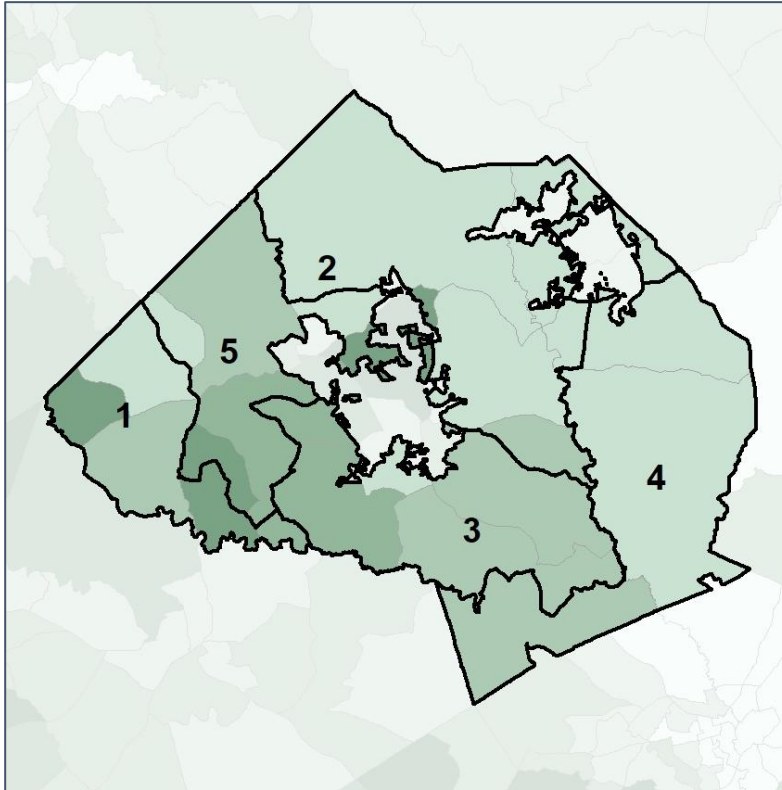


Jackson County School Board

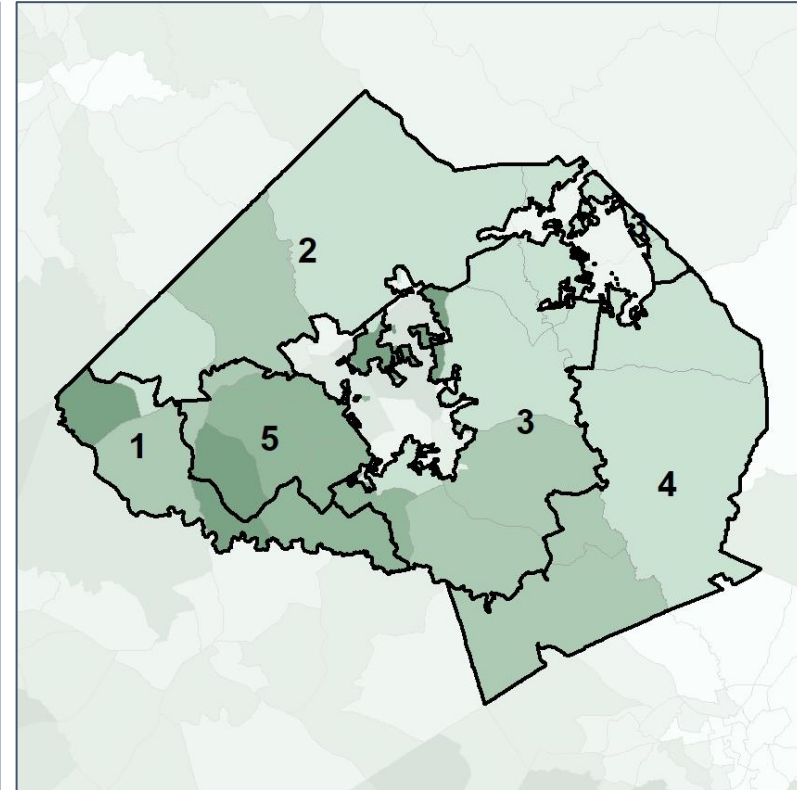
Median Household Income by Census Tract



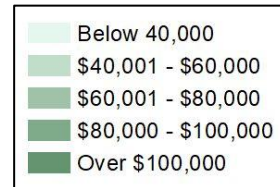
2012 Map



2022 Map*



	1	2	3	4	5	1*	2*	3*	4*	5*	County
Population	13,351	9,246	10,662	9,878	12,697	11,025	11,081	11,048	11,155	10,978	75,907
% API	3%	1%	2%	1%	4%	3%	3%	2%	1%	4%	2%
% Black	6%	5%	7%	5%	5%	7%	4%	9%	5%	3%	7%
% Latino	11%	6%	7%	9%	10%	12%	12%	6%	9%	6%	9%
% Other	4%	4%	4%	4%	4%	5%	5%	5%	4%	3%	4%
% White	75%	83%	80%	81%	77%	73%	77%	78%	81%	85%	78%
Median Income	\$81,000	\$58,000	\$76,000	\$65,000	\$91,000	\$91,000	\$59,000	\$69,000	\$65,000	\$97,000	\$68,000
% Renter	13%	27%	17%	20%	14%	9%	22%	25%	20%	8%	21%
% Youth	20%	21%	19%	22%	12%	20%	16%	20%	22%	14%	20%

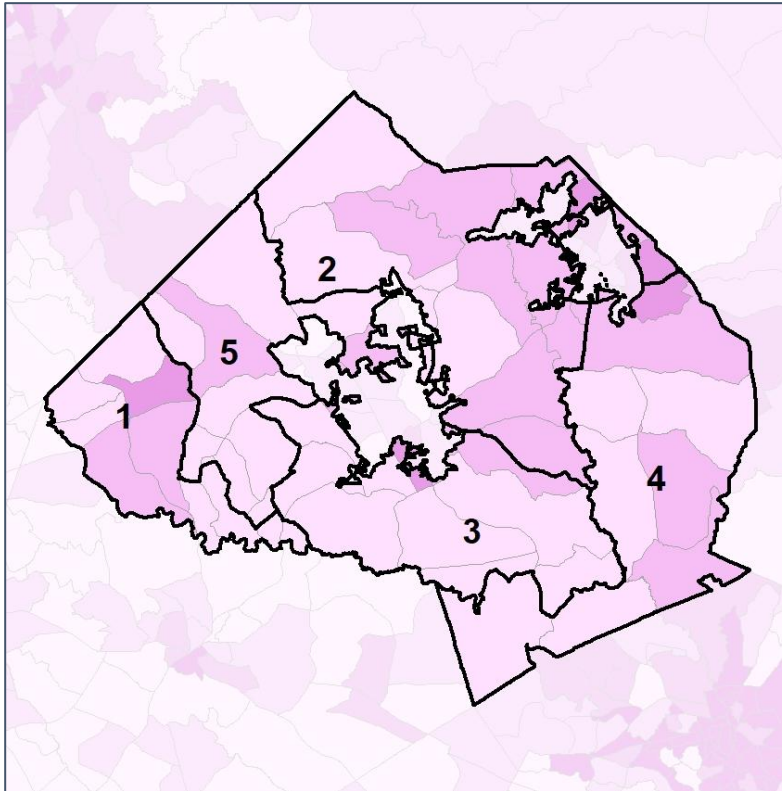


Jackson County School Board

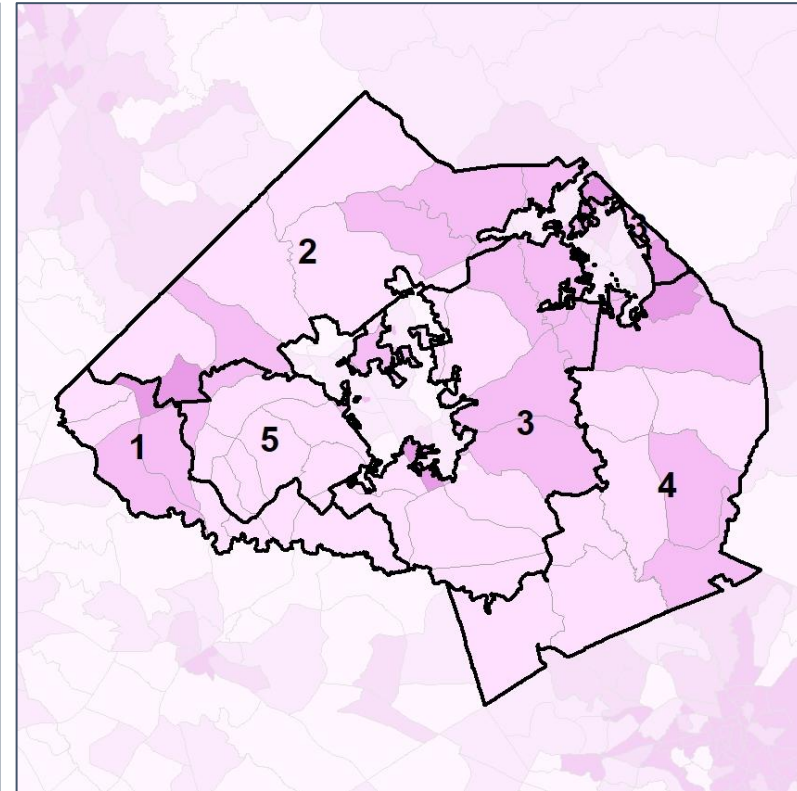
% Renter by Census Block Group



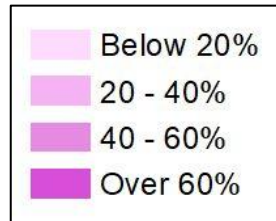
2012 Map



2022 Map*



	1	2	3	4	5	1*	2*	3*	4*	5*	County
Population	13,351	9,246	10,662	9,878	12,697	11,025	11,081	11,048	11,155	10,978	75,907
% API	3%	1%	2%	1%	4%	3%	3%	2%	1%	4%	2%
% Black	6%	5%	7%	5%	5%	7%	4%	9%	5%	3%	7%
% Latino	11%	6%	7%	9%	10%	12%	12%	6%	9%	6%	9%
% Other	4%	4%	4%	4%	4%	5%	5%	5%	4%	3%	4%
% White	75%	83%	80%	81%	77%	73%	77%	78%	81%	85%	78%
Median Income	\$81,000	\$58,000	\$76,000	\$65,000	\$91,000	\$91,000	\$59,000	\$69,000	\$65,000	\$97,000	\$68,000
% Renter	13%	27%	17%	20%	14%	9%	22%	25%	20%	8%	21%
% Youth	20%	21%	19%	22%	12%	20%	16%	20%	22%	14%	20%

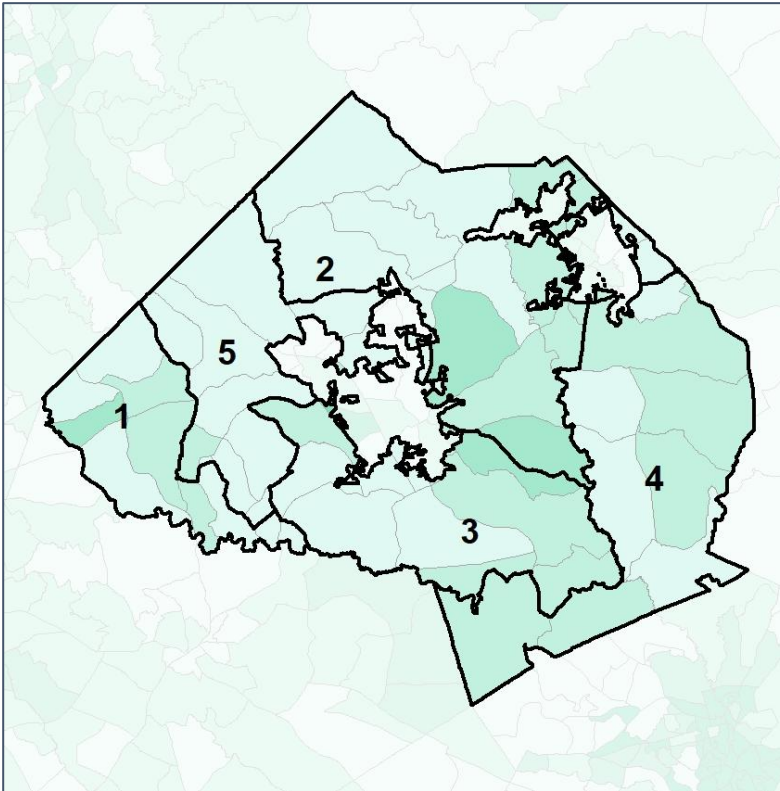


Jackson County School Board

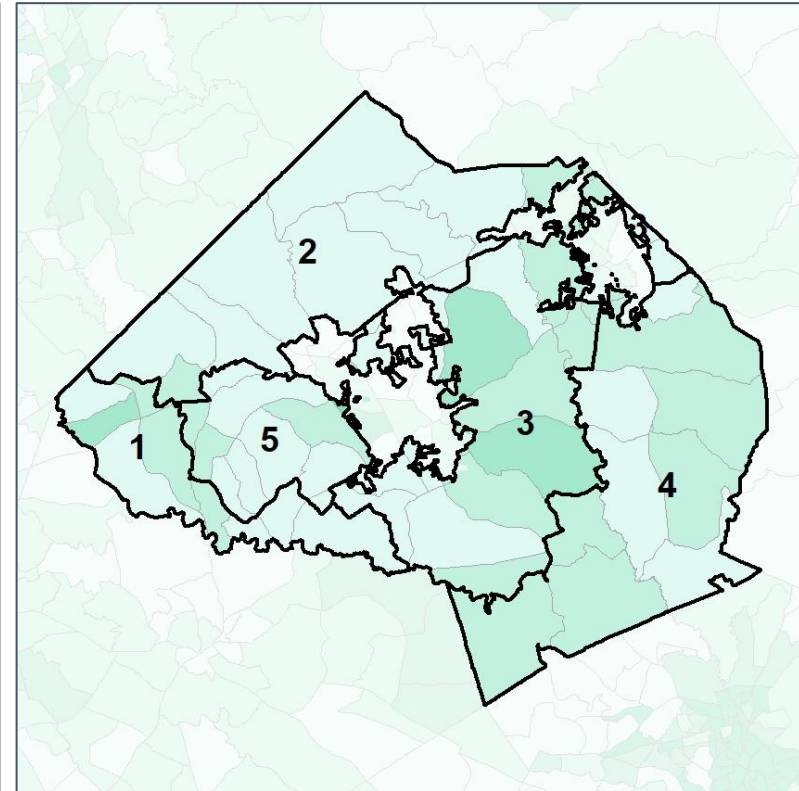
% Youth (18-34) by Census Block Group



2012 Map



2022 Map*



	1	2	3	4	5	1*	2*	3*	4*	5*	County
Population	13,351	9,246	10,662	9,878	12,697	11,025	11,081	11,048	11,155	10,978	75,907
% API	3%	1%	2%	1%	4%	3%	3%	2%	1%	4%	2%
% Black	6%	5%	7%	5%	5%	7%	4%	9%	5%	3%	7%
% Latino	11%	6%	7%	9%	10%	12%	12%	6%	9%	6%	9%
% Other	4%	4%	4%	4%	4%	5%	5%	5%	4%	3%	4%
% White	75%	83%	80%	81%	77%	73%	77%	78%	81%	85%	78%
Median Income	\$81,000	\$58,000	\$76,000	\$65,000	\$91,000	\$91,000	\$59,000	\$69,000	\$65,000	\$97,000	\$68,000
% Renter	13%	27%	17%	20%	14%	9%	22%	25%	20%	8%	21%
% Youth	20%	21%	19%	22%	12%	20%	16%	20%	22%	14%	20%

