



Demographic Overview

Racial Breakdown in Houston County

Houston County	2010	2020	% Change
Total Population	139,900	163,633	17%
AAPI	3,456	5,029	46%
Black	39,535	51,992	32%
Latino	8,515	11,807	39%
Other/Mixed Race	3,691	8,594	133%
POC	55,197	77,422	40%
White	84,703	86,211	2%

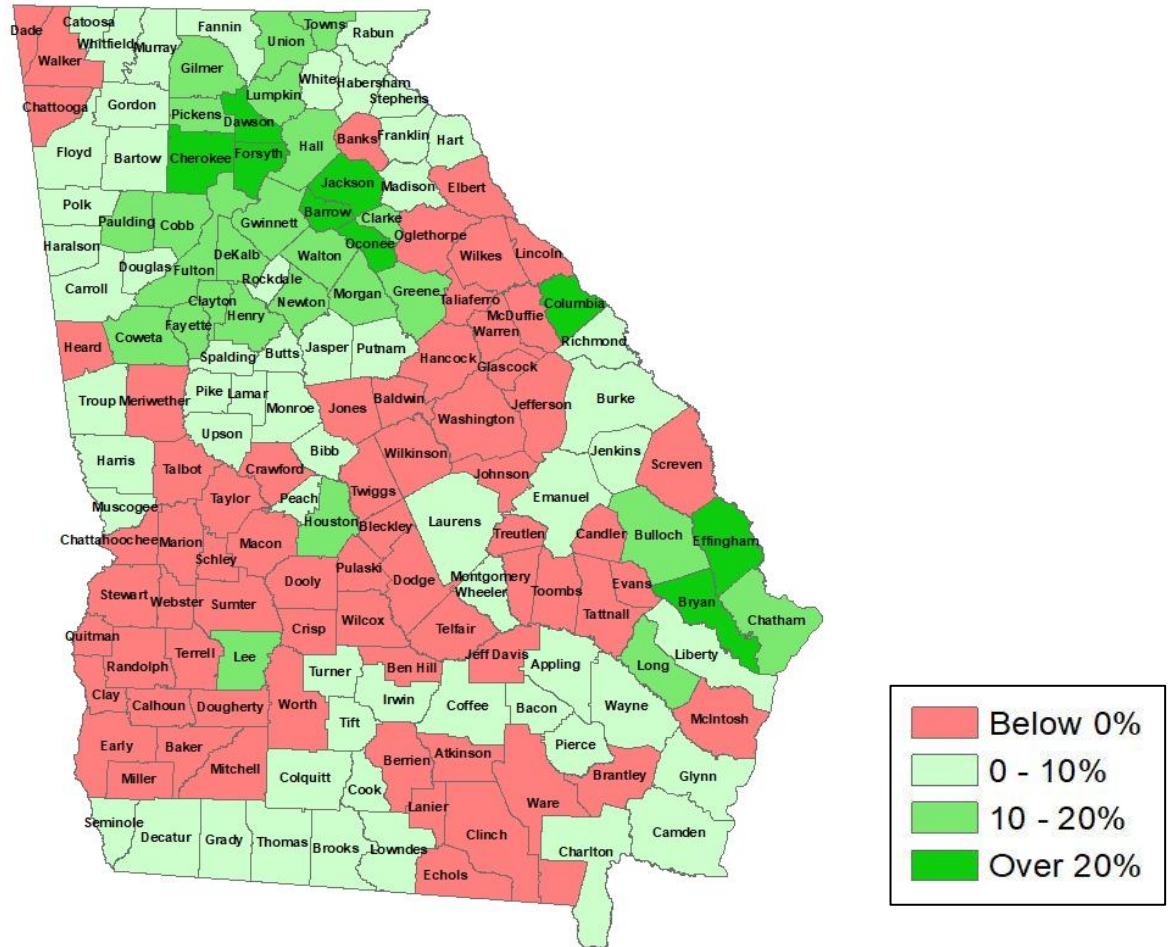
*Note: The use of "Other" in these statistics combines those who identify as Native American, Mixed Race, and "Other" race





Population Gain

Change in Population in Georgia by County



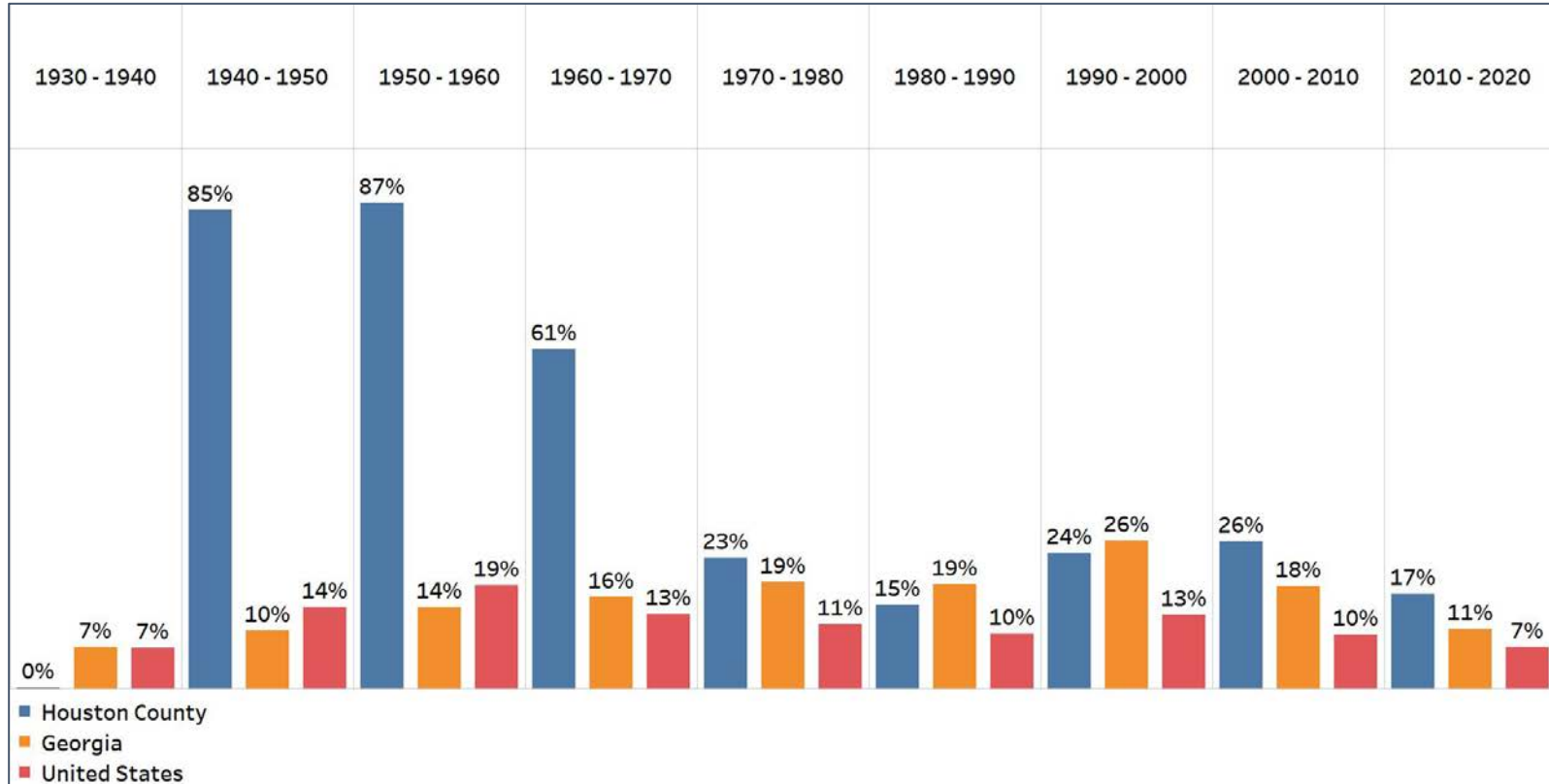
- Georgia is experiencing rapid population growth in the Atlanta, Augusta, and Savannah regions of the state





Population Gain

Change in Population by Decade

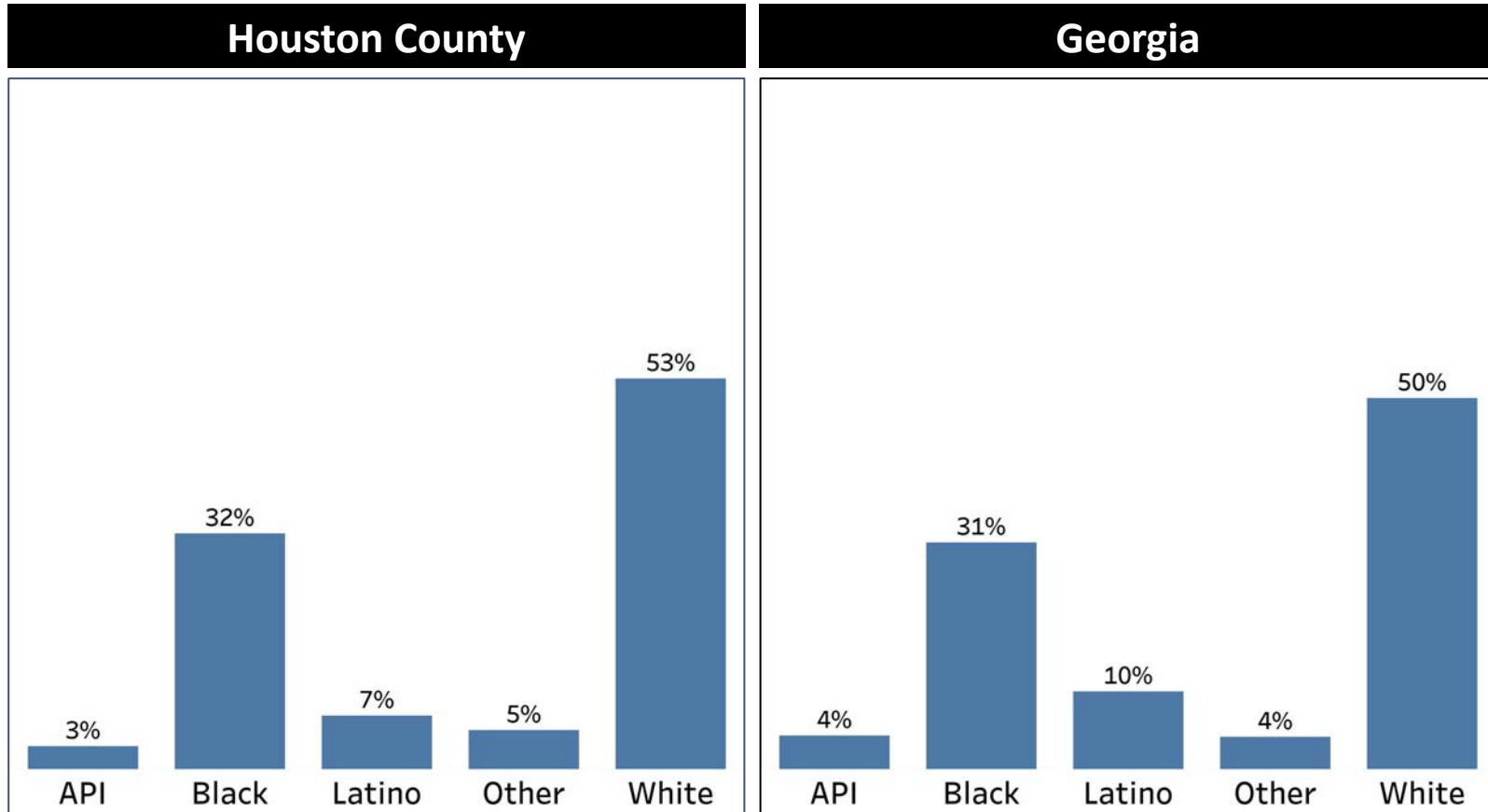


- Houston County experienced a growth in population since 1940, with a large spike between 1940-1970
- Relative to the states average, Houston County population has been above average for the last two decades



Demographics

Comparison between Houston County and Georgia



- Despite closely resembling the statewide averages, Houston County' white and Black population is above their statewide average
- API and other population are 1% below Georgia's overall average with the Latino population being 3% below the statewide average

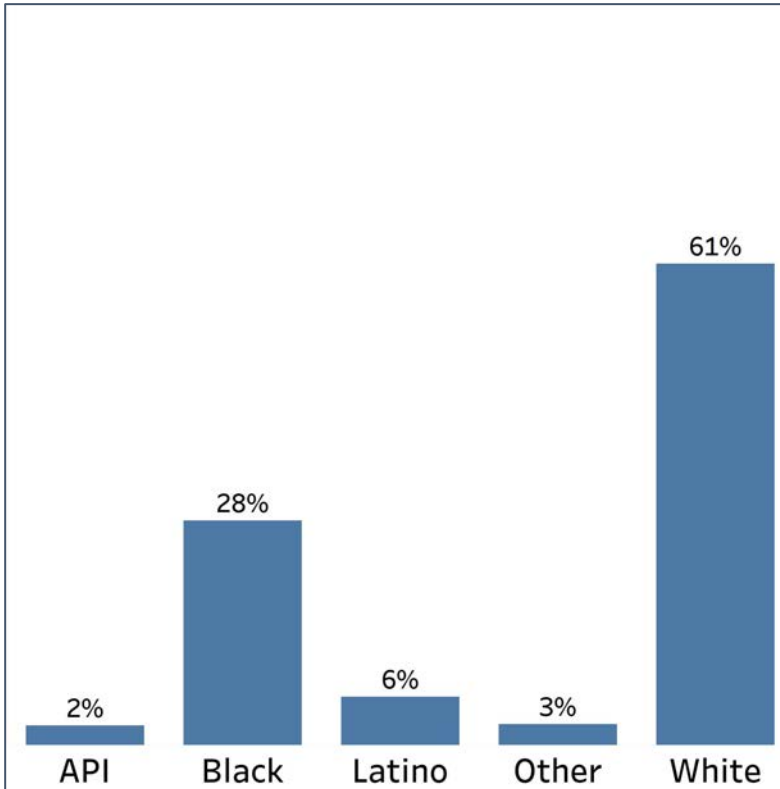


Demographics

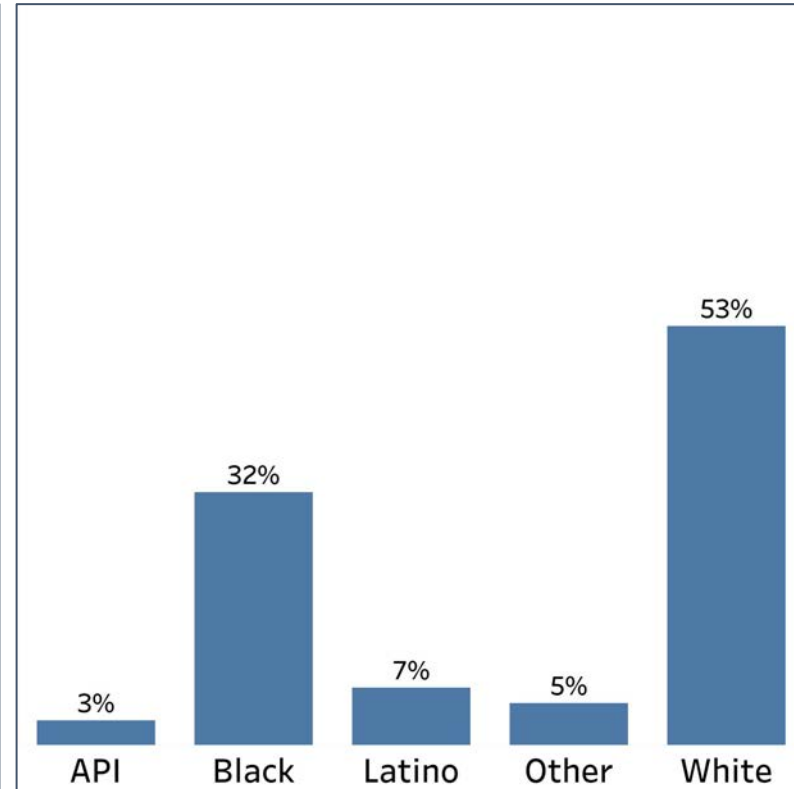
2010 vs 2020 Demographics in Houston County



Houston County 2010



Houston County 2020

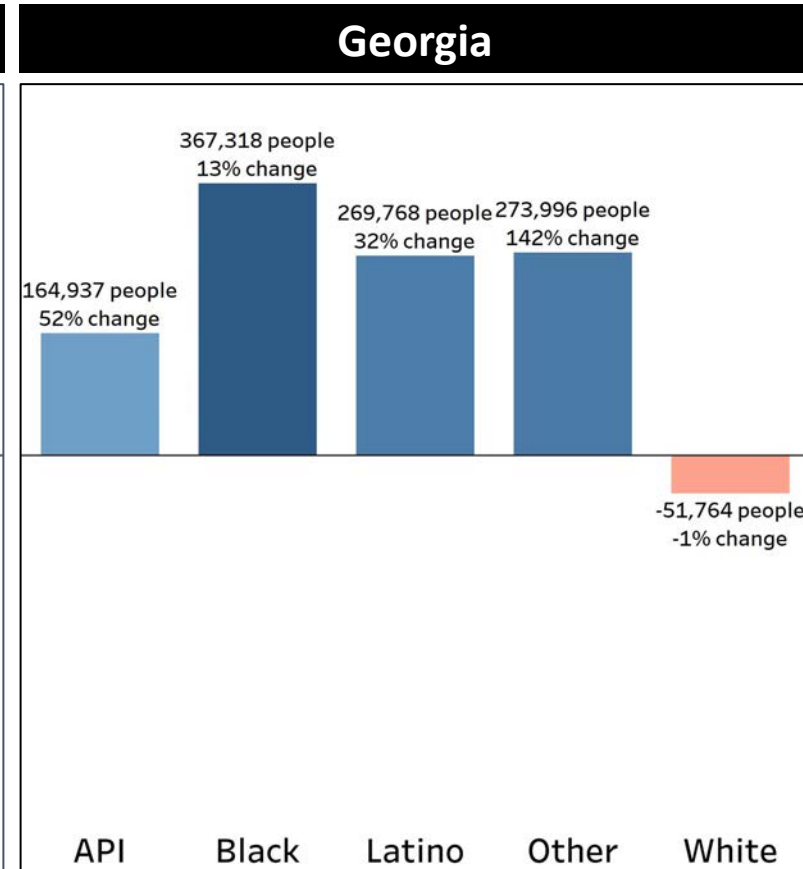
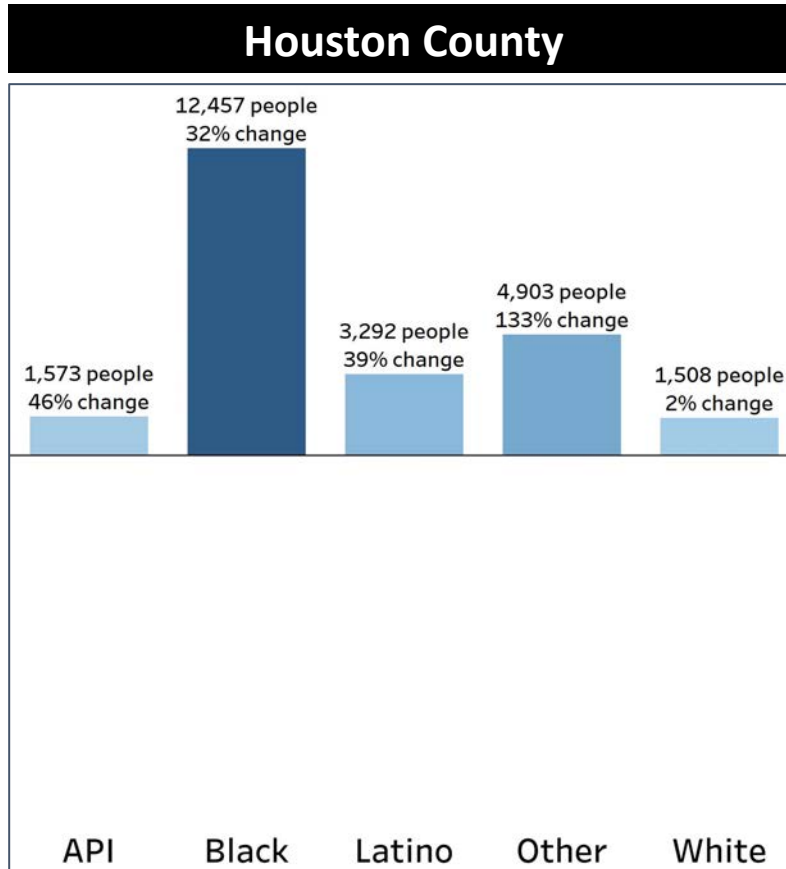


- While remaining the largest population demographic, the white population in Houston county decreased by 8%
- All the communities of color in Houston County increased, most notably the black population which increased by 4%



Demographics

Population Change by Race (2020 - 2010)



- Houston County's Black population increased more than double the rate of the statewide growth
- While having some slight percentage differences, Houston county's demographics resemble their statewide growth rates, with the exception of the Black and White populations

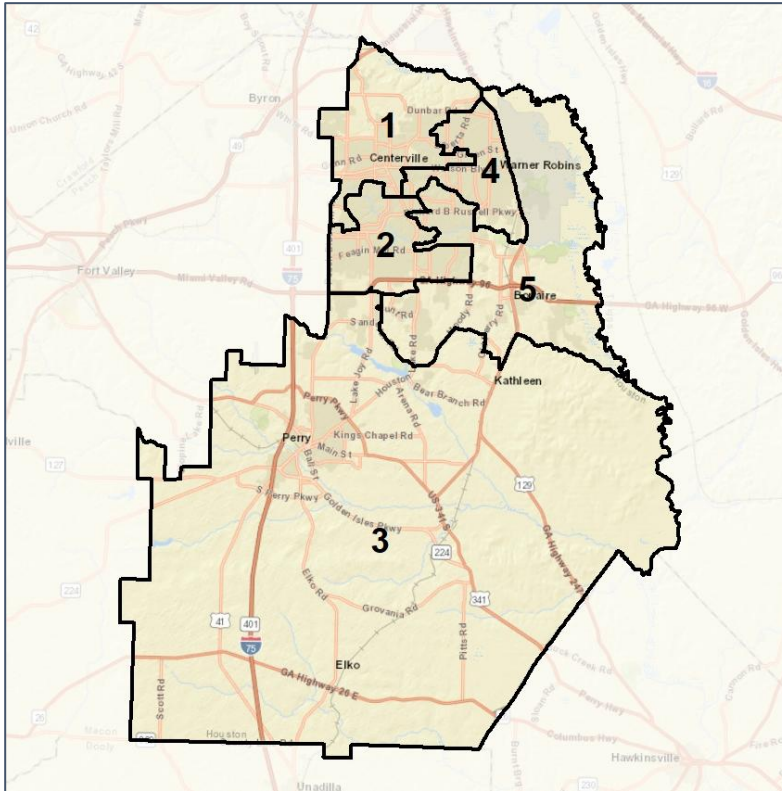


Houston Co. Commission & School Board

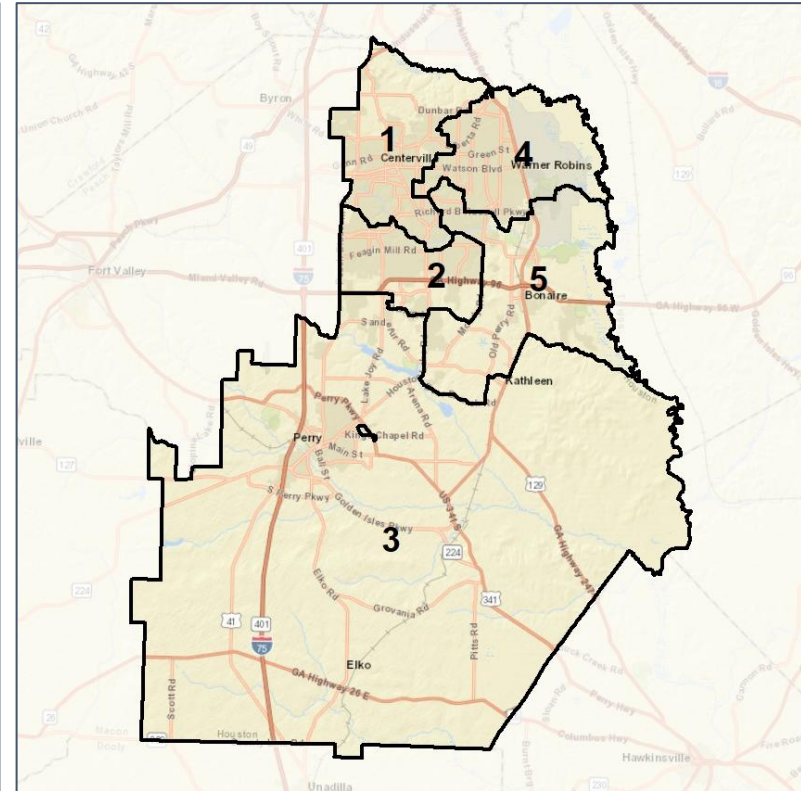
Context



2012 Map



2022 Map*



	1	2	3	4	5	1*	2*	3*	4*	5*	County
Population	30,219	33,273	37,061	28,086	34,994	32,638	32,579	32,608	32,550	32,776	163,633
API	3%	6%	2%	1%	3%	3%	6%	2%	1%	3%	3%
Black	31%	27%	27%	56%	24%	28%	27%	26%	54%	24%	32%
Latino	7%	8%	5%	11%	6%	9%	6%	4%	10%	7%	7%
Other	5%	6%	4%	5%	6%	5%	6%	4%	5%	6%	5%
White	53%	54%	63%	27%	61%	55%	55%	63%	30%	60%	53%
Population Gain	*	*	*	*	*	2,419	-694	-4,453	4,464	-2,218	*
Population % Gain	*	*	*	*	*	8%	-2%	-12%	16%	-6%	*
Net POC Gain	*	*	*	*	*	443	-538	-1,906	2,363	-658	*
Net POC % Gain	*	*	*	*	*	3%	-4%	-14%	12%	-5%	*



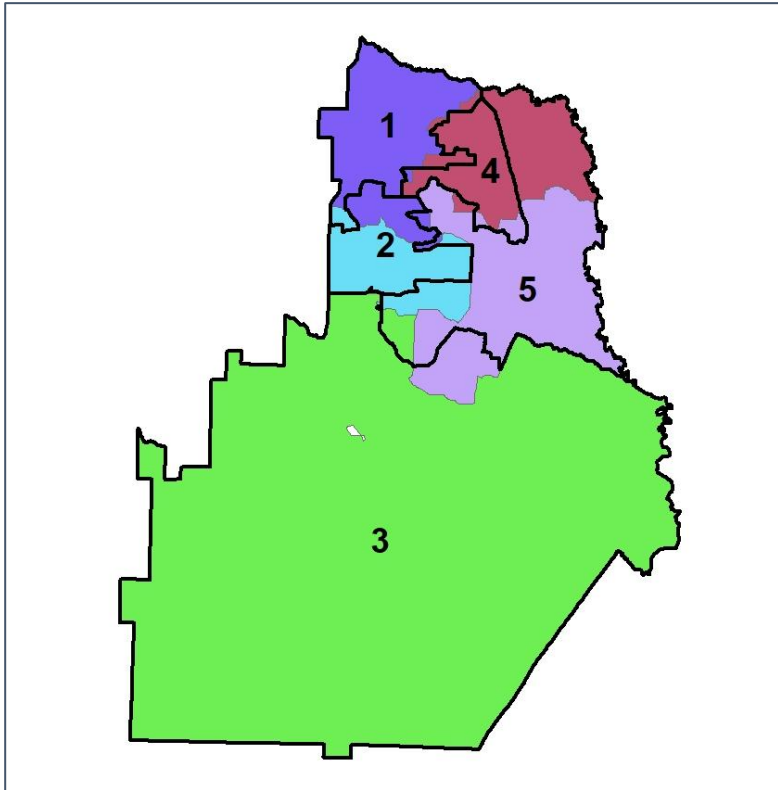
Source:
2020 Decennial Census
2020 ACS 5-Year Dataset

Houston Co. Commission & School Board

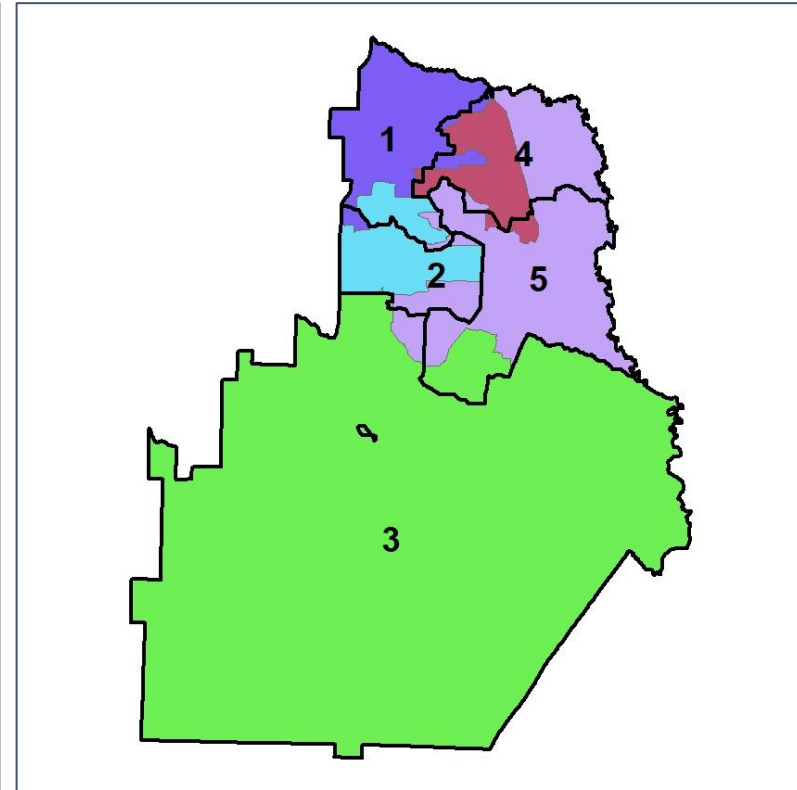
Changes in Redistricting



2012 Map (2022 in Colors)



2022 Map* (2012 in Colors)



	1	2	3	4	5	1*	2*	3*	4*	5*	County
Population	30,219	33,273	37,061	28,086	34,994	32,638	32,579	32,608	32,550	32,776	163,633
API	3%	6%	2%	1%	3%	3%	6%	2%	1%	3%	3%
Black	31%	27%	27%	56%	24%	28%	27%	26%	54%	24%	32%
Latino	7%	8%	5%	11%	6%	9%	6%	4%	10%	7%	7%
Other	5%	6%	4%	5%	6%	5%	6%	4%	5%	6%	5%
White	53%	54%	63%	27%	61%	55%	55%	63%	30%	60%	53%
Population Gain	*	*	*	*	*	2,419	-694	-4,453	4,464	-2,218	*
Population % Gain	*	*	*	*	*	8%	-2%	-12%	16%	-6%	*
Net POC Gain	*	*	*	*	*	443	-538	-1,906	2,363	-658	*
Net POC % Gain	*	*	*	*	*	3%	-4%	-14%	12%	-5%	*

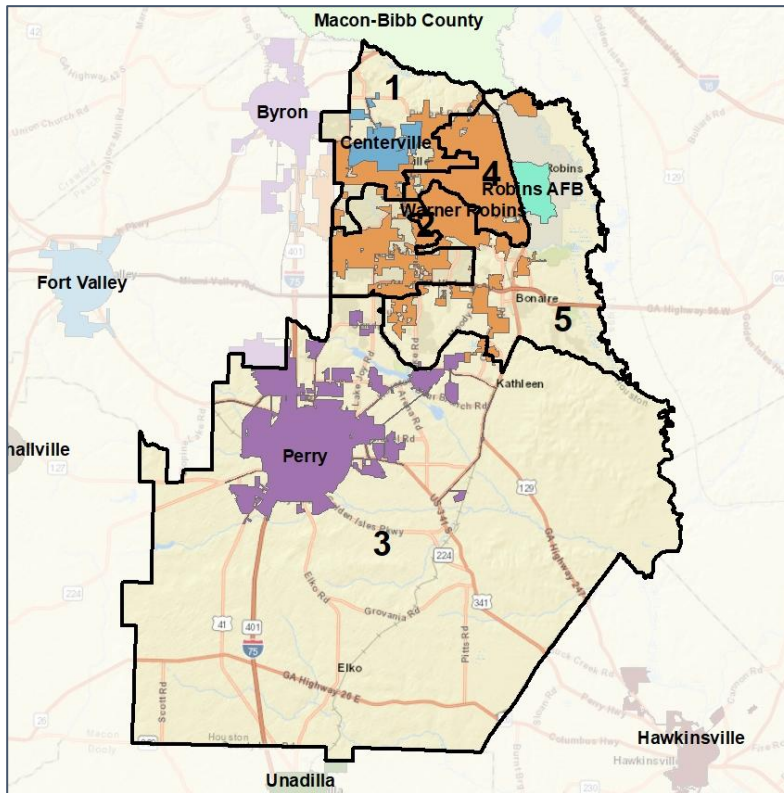


Houston Co. Commission & School Board

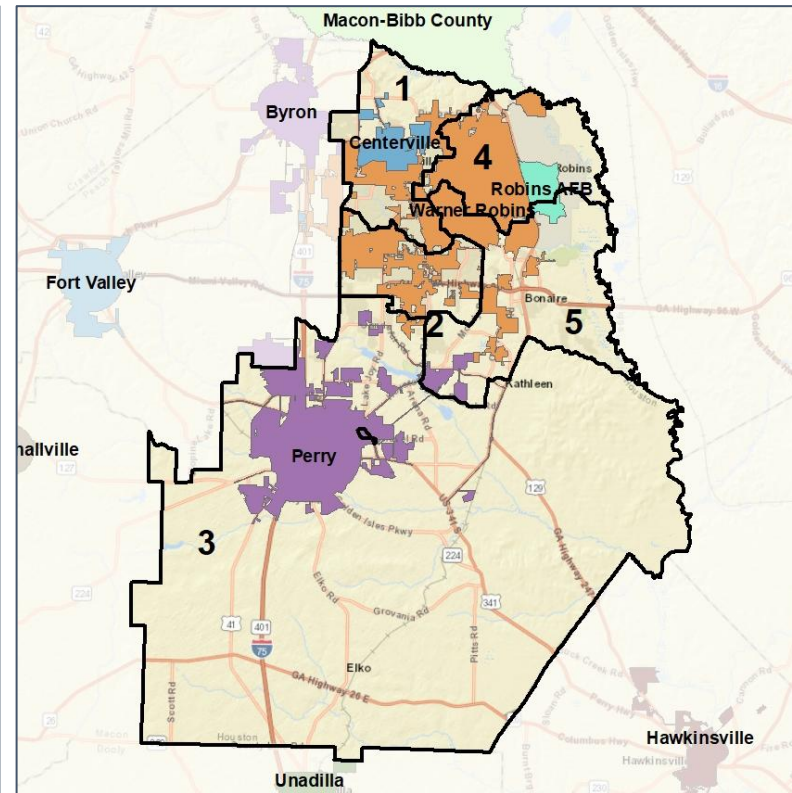
Cities and Places



2012 Map



2022 Map*



	1	2	3	4	5	1*	2*	3*	4*	5*	County
Population	30,219	33,273	37,061	28,086	34,994	32,638	32,579	32,608	32,550	32,776	163,633
API	3%	6%	2%	1%	3%	3%	6%	2%	1%	3%	3%
Black	31%	27%	27%	56%	24%	28%	27%	26%	54%	24%	32%
Latino	7%	8%	5%	11%	6%	9%	6%	4%	10%	7%	7%
Other	5%	6%	4%	5%	6%	5%	6%	4%	5%	6%	5%
White	53%	54%	63%	27%	61%	55%	55%	63%	30%	60%	53%
Population Gain	*	*	*	*	*	2,419	-694	-4,453	4,464	-2,218	*
Population % Gain	*	*	*	*	*	8%	-2%	-12%	16%	-6%	*
Net POC Gain	*	*	*	*	*	443	-538	-1,906	2,363	-658	*
Net POC % Gain	*	*	*	*	*	3%	-4%	-14%	12%	-5%	*



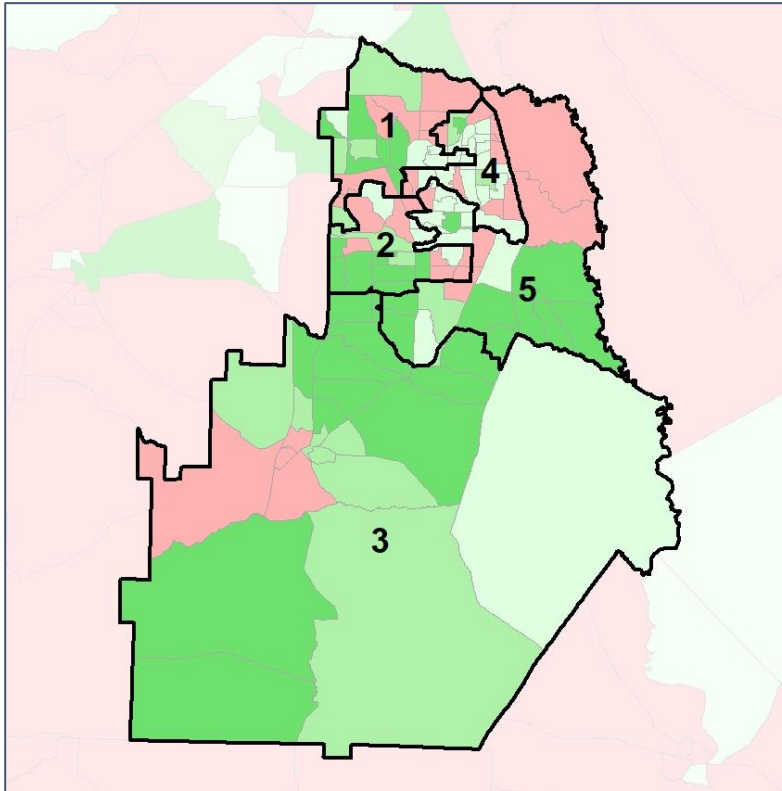
Source:
2020 Decennial Census
2020 ACS 5-Year Dataset

Houston Co. Commission & School Board

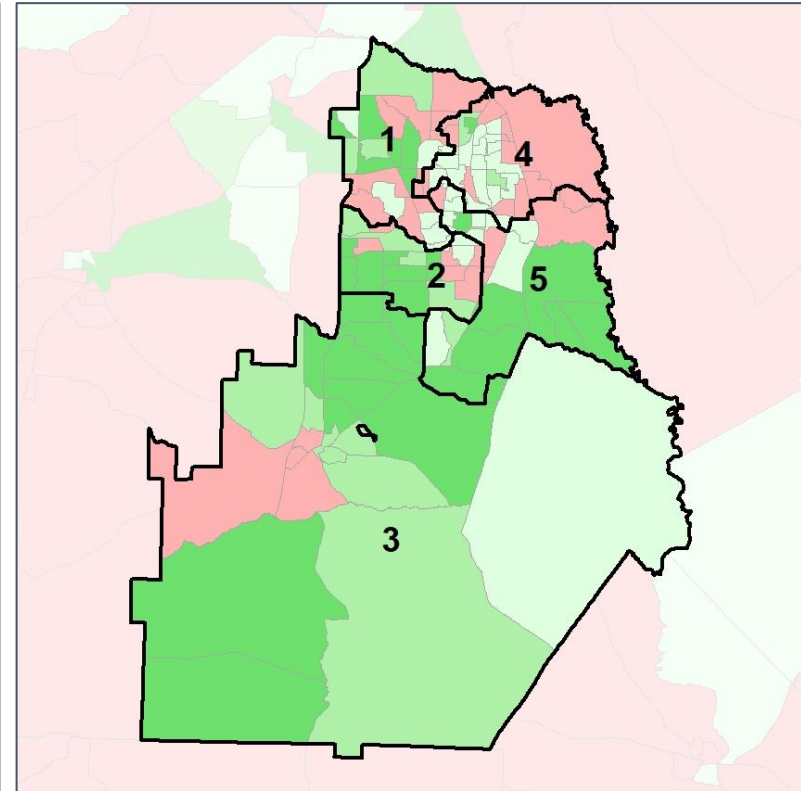
Net Gain in Population (2010 - 2020)



2012 Map



2022 Map*



	1	2	3	4	5	1*	2*	3*	4*	5*	County
Population	30,219	33,273	37,061	28,086	34,994	32,638	32,579	32,608	32,550	32,776	163,633
API	3%	6%	2%	1%	3%	3%	6%	2%	1%	3%	3%
Black	31%	27%	27%	56%	24%	28%	27%	26%	54%	24%	32%
Latino	7%	8%	5%	11%	6%	9%	6%	4%	10%	7%	7%
Other	5%	6%	4%	5%	6%	5%	6%	4%	5%	6%	5%
White	53%	54%	63%	27%	61%	55%	55%	63%	30%	60%	53%
Population Gain	*	*	*	*	*	2,419	-694	-4,453	4,464	-2,218	*
Population % Gain	*	*	*	*	*	8%	-2%	-12%	16%	-6%	*
Net POC Gain	*	*	*	*	*	443	-538	-1,906	2,363	-658	*
Net POC % Gain	*	*	*	*	*	3%	-4%	-14%	12%	-5%	*

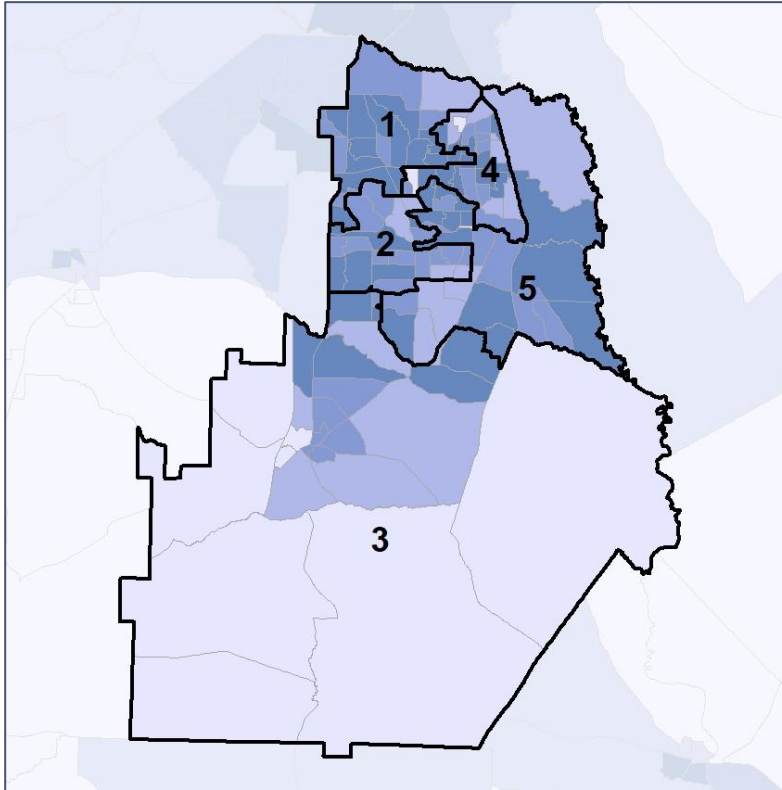


Houston Co. Commission & School Board

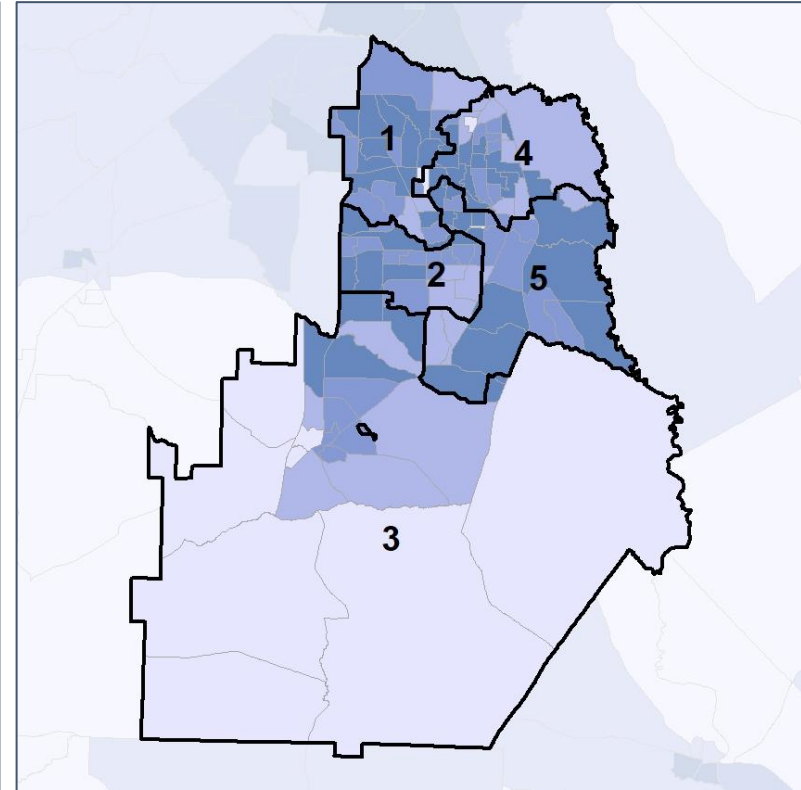
Net Gain in % POC (2020 - 2010) by Census Block Group



2012 Map



2022 Map*



	1	2	3	4	5	1*	2*	3*	4*	5*	County
Population	30,219	33,273	37,061	28,086	34,994	32,638	32,579	32,608	32,550	32,776	163,633
API	3%	6%	2%	1%	3%	3%	6%	2%	1%	3%	3%
Black	31%	27%	27%	56%	24%	28%	27%	26%	54%	24%	32%
Latino	7%	8%	5%	11%	6%	9%	6%	4%	10%	7%	7%
Other	5%	6%	4%	5%	6%	5%	6%	4%	5%	6%	5%
White	53%	54%	63%	27%	61%	55%	55%	63%	30%	60%	53%
Population Gain	*	*	*	*	*	2,419	-694	-4,453	4,464	-2,218	*
Population % Gain	*	*	*	*	*	8%	-2%	-12%	16%	-6%	*
Net POC Gain	*	*	*	*	*	443	-538	-1,906	2,363	-658	*
Net POC % Gain	*	*	*	*	*	3%	-4%	-14%	12%	-5%	*

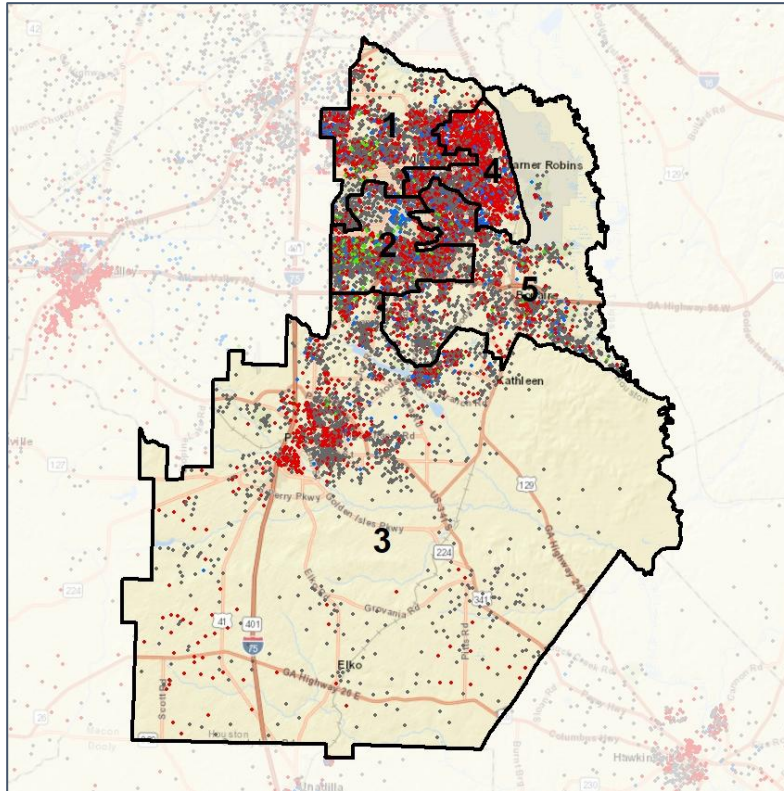


Houston Co. Commission & School Board

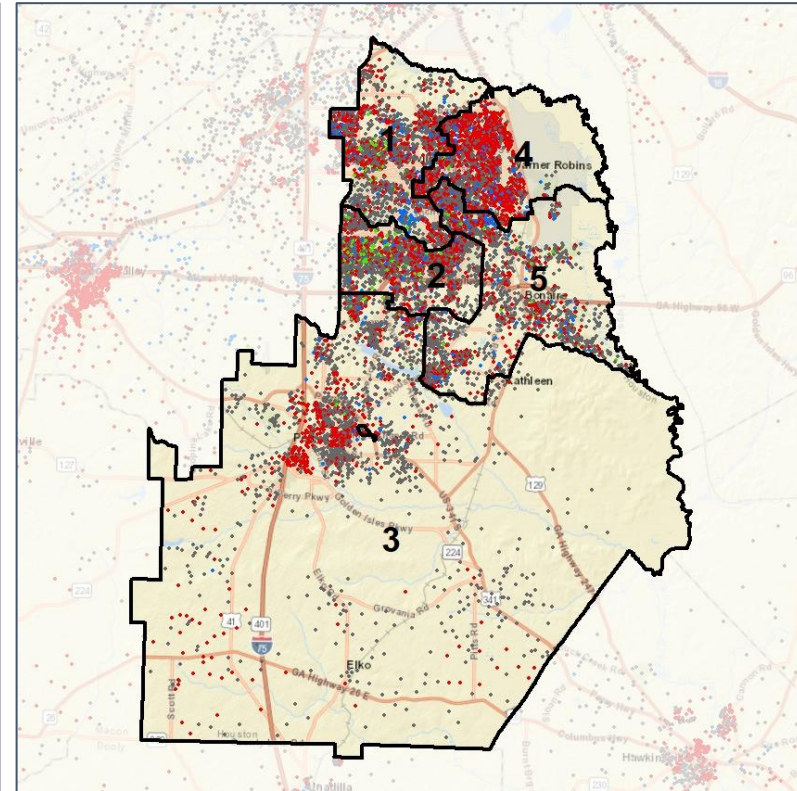
Population Density by Race



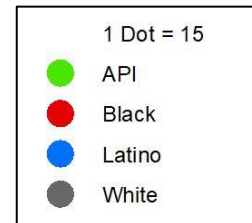
2012 Map



2022 Map*



	1	2	3	4	5	1*	2*	3*	4*	5*	County
Population	30,219	33,273	37,061	28,086	34,994	32,638	32,579	32,608	32,550	32,776	163,633
API	1,013	1,984	693	361	978	1,073	2,007	592	461	896	5,029
% API	3%	6%	2%	1%	3%	3%	6%	2%	1%	3%	3%
Black	9,378	8,901	9,845	15,588	8,280	9,104	8,860	8,576	17,440	7,718	51,992
% Black	31%	27%	27%	56%	24%	28%	27%	26%	54%	24%	32%
Latino	2,193	2,598	1,705	3,059	2,252	2,806	2,067	1,384	3,175	2,373	11,807
% Latino	7%	8%	5%	11%	6%	9%	6%	4%	10%	7%	7%
Other	1,602	1,851	1,648	1,391	2,102	1,646	1,862	1,433	1,686	1,967	8,594
% Other	5%	6%	4%	5%	6%	5%	6%	4%	5%	6%	5%
White	16,033	17,939	23,170	7,687	21,382	18,009	17,783	20,623	9,788	19,822	86,211
% White	53%	54%	63%	27%	61%	55%	55%	63%	30%	60%	53%



Source:
2020 Decennial Census
2020 ACS 5-Year Dataset

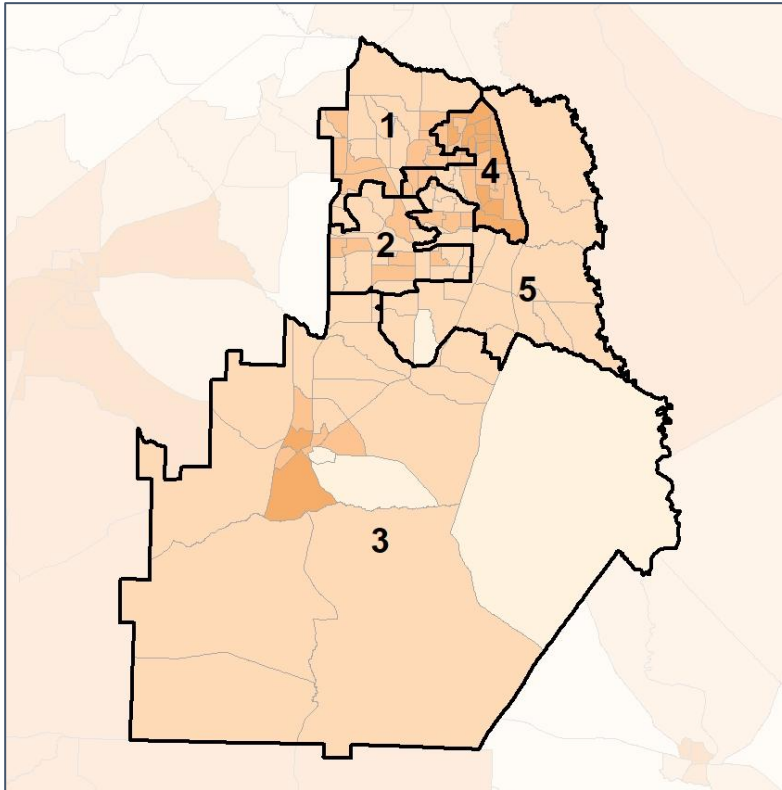


Houston Co. Commission & School Board

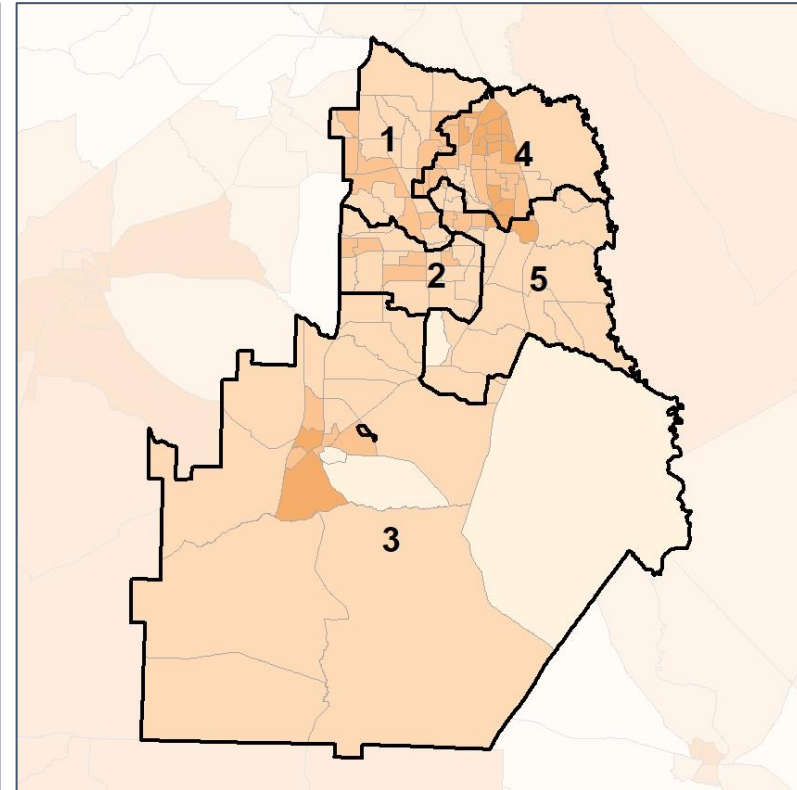
% People of Color by Census Block Group



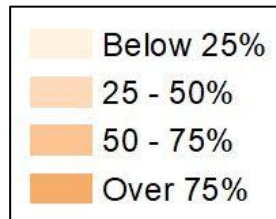
2012 Map



2022 Map*



	1	2	3	4	5	1*	2*	3*	4*	5*	County
Population	30,219	33,273	37,061	28,086	34,994	32,638	32,579	32,608	32,550	32,776	163,633
API	1,013	1,984	693	361	978	1,073	2,007	592	461	896	5,029
% API	3%	6%	2%	1%	3%	3%	6%	2%	1%	3%	3%
Black	9,378	8,901	9,845	15,588	8,280	9,104	8,860	8,576	17,440	7,718	51,992
% Black	31%	27%	27%	56%	24%	28%	27%	26%	54%	24%	32%
Latino	2,193	2,598	1,705	3,059	2,252	2,806	2,067	1,384	3,175	2,373	11,807
% Latino	7%	8%	5%	11%	6%	9%	6%	4%	10%	7%	7%
Other	1,602	1,851	1,648	1,391	2,102	1,646	1,862	1,433	1,686	1,967	8,594
% Other	5%	6%	4%	5%	6%	5%	6%	4%	5%	6%	5%
White	16,033	17,939	23,170	7,687	21,382	18,009	17,783	20,623	9,788	19,822	86,211
% White	53%	54%	63%	27%	61%	55%	55%	63%	30%	60%	53%



Source:
2020 Decennial Census
2020 ACS 5-Year Dataset

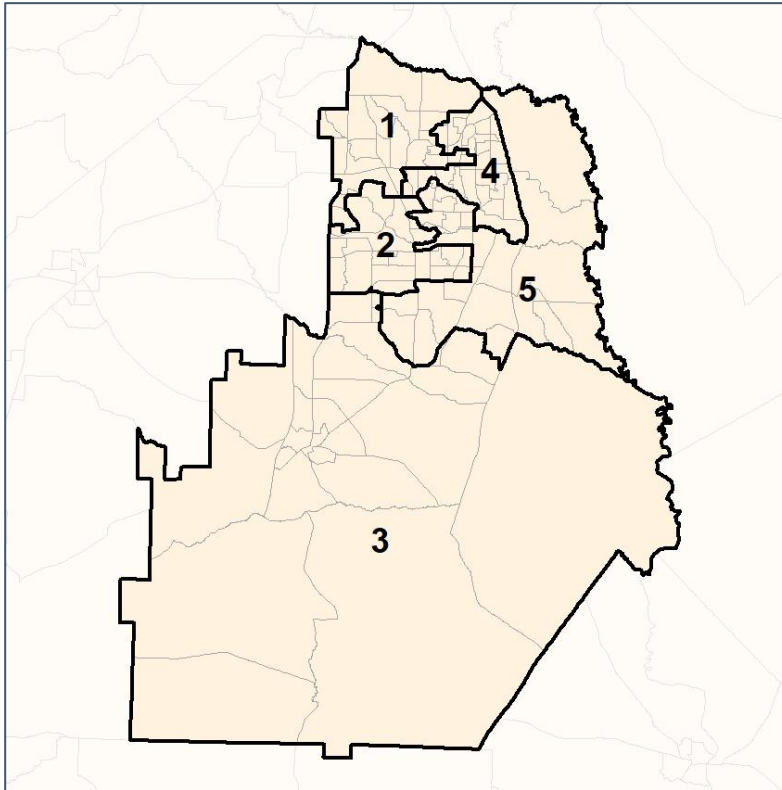


Houston Co. Commission & School Board

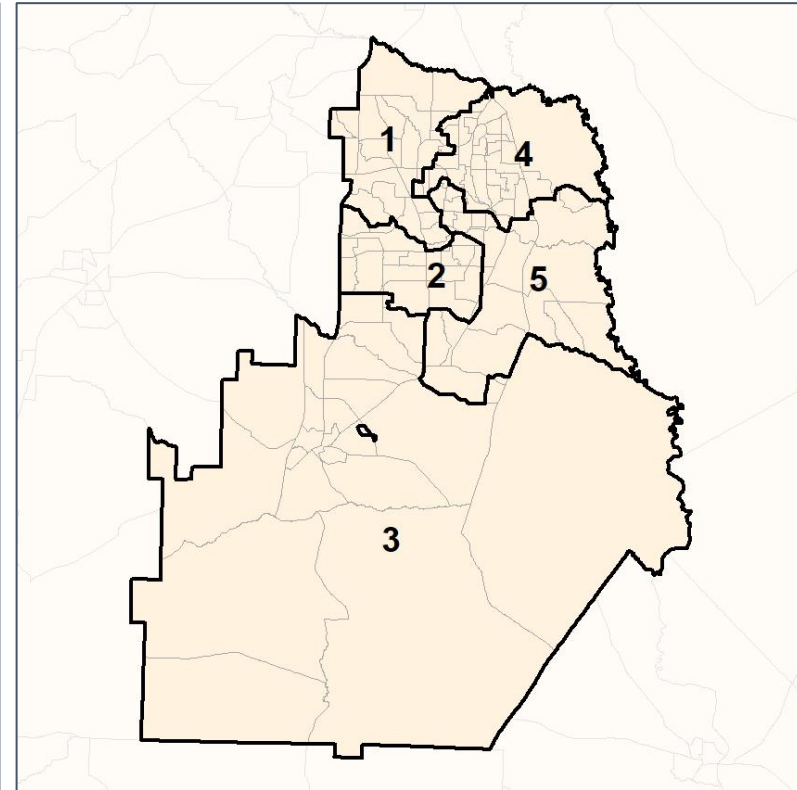
% API by Census Block Group



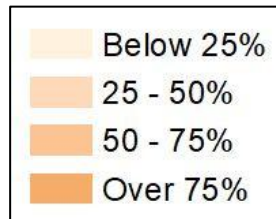
2012 Map



2022 Map*



	1	2	3	4	5	1*	2*	3*	4*	5*	County
Population	30,219	33,273	37,061	28,086	34,994	32,638	32,579	32,608	32,550	32,776	163,633
API	1,013	1,984	693	361	978	1,073	2,007	592	461	896	5,029
% API	3%	6%	2%	1%	3%	3%	6%	2%	1%	3%	3%
Black	9,378	8,901	9,845	15,588	8,280	9,104	8,860	8,576	17,440	7,718	51,992
% Black	31%	27%	27%	56%	24%	28%	27%	26%	54%	24%	32%
Latino	2,193	2,598	1,705	3,059	2,252	2,806	2,067	1,384	3,175	2,373	11,807
% Latino	7%	8%	5%	11%	6%	9%	6%	4%	10%	7%	7%
Other	1,602	1,851	1,648	1,391	2,102	1,646	1,862	1,433	1,686	1,967	8,594
% Other	5%	6%	4%	5%	6%	5%	6%	4%	5%	6%	5%
White	16,033	17,939	23,170	7,687	21,382	18,009	17,783	20,623	9,788	19,822	86,211
% White	53%	54%	63%	27%	61%	55%	55%	63%	30%	60%	53%

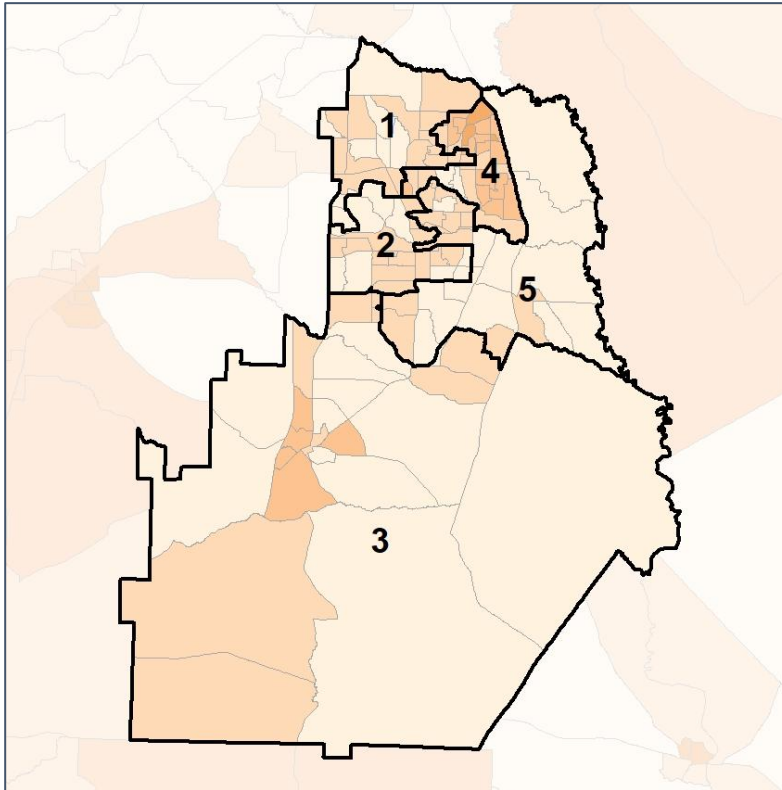


Houston Co. Commission & School Board

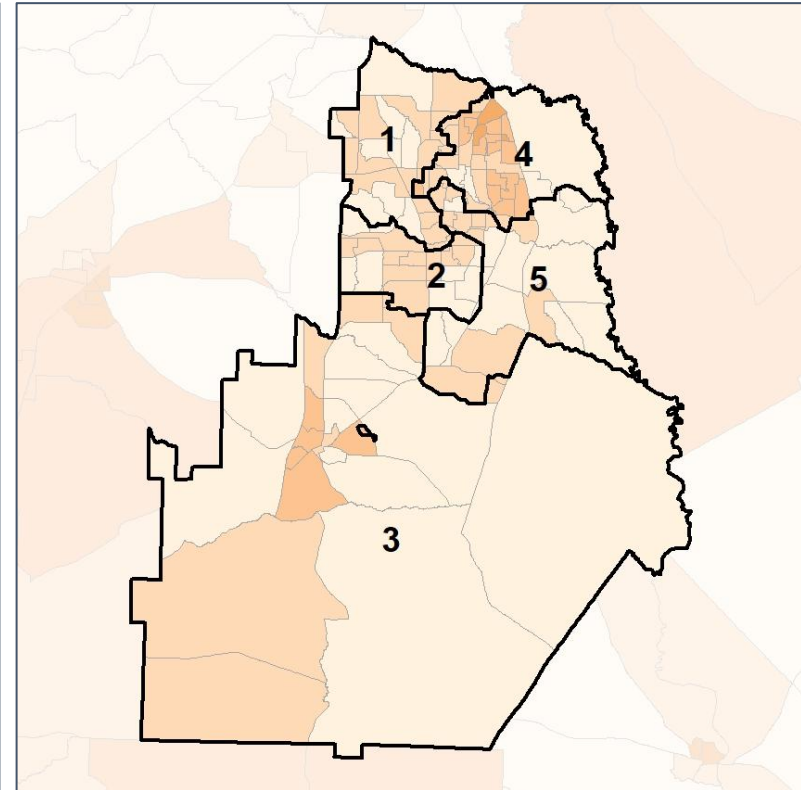
% Black by Census Block Group



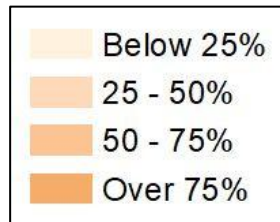
2012 Map



2022 Map*



	1	2	3	4	5	1*	2*	3*	4*	5*	County
Population	30,219	33,273	37,061	28,086	34,994	32,638	32,579	32,608	32,550	32,776	163,633
API	1,013	1,984	693	361	978	1,073	2,007	592	461	896	5,029
% API	3%	6%	2%	1%	3%	3%	6%	2%	1%	3%	3%
Black	9,378	8,901	9,845	15,588	8,280	9,104	8,860	8,576	17,440	7,718	51,992
% Black	31%	27%	27%	56%	24%	28%	27%	26%	54%	24%	32%
Latino	2,193	2,598	1,705	3,059	2,252	2,806	2,067	1,384	3,175	2,373	11,807
% Latino	7%	8%	5%	11%	6%	9%	6%	4%	10%	7%	7%
Other	1,602	1,851	1,648	1,391	2,102	1,646	1,862	1,433	1,686	1,967	8,594
% Other	5%	6%	4%	5%	6%	5%	6%	4%	5%	6%	5%
White	16,033	17,939	23,170	7,687	21,382	18,009	17,783	20,623	9,788	19,822	86,211
% White	53%	54%	63%	27%	61%	55%	55%	63%	30%	60%	53%



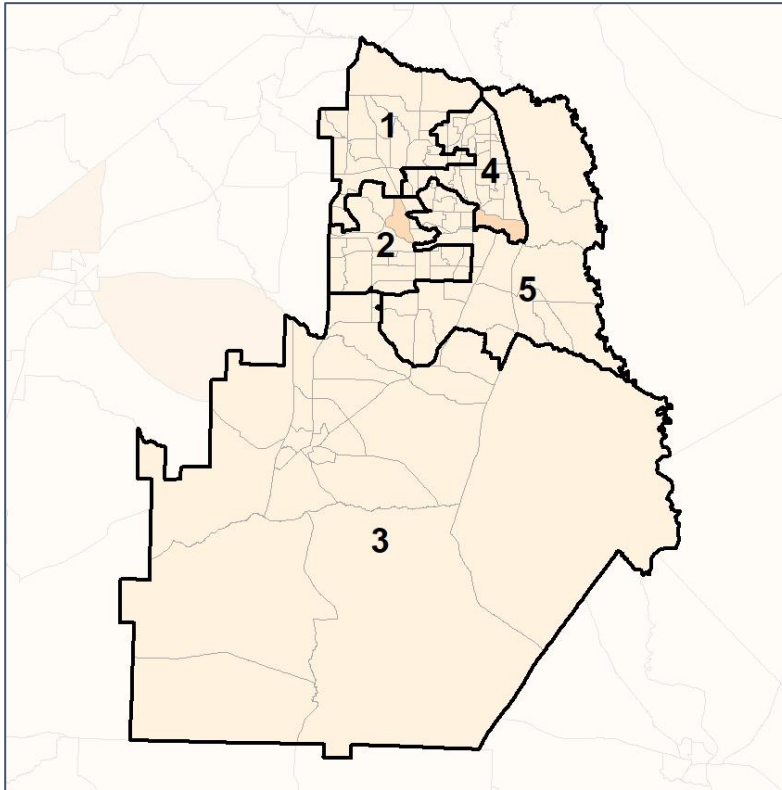
Source:
2020 Decennial Census
2020 ACS 5-Year Dataset

Houston Co. Commission & School Board

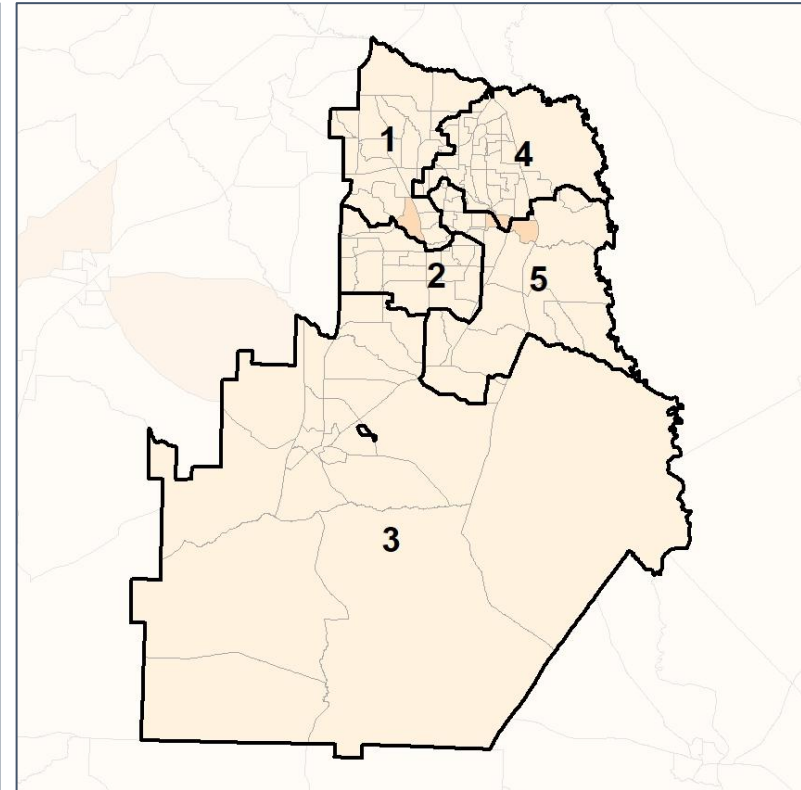
% Latino by Census Block Group



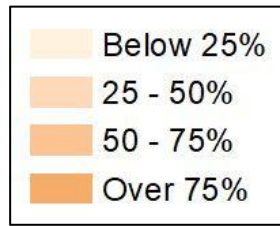
2012 Map



2022 Map*



	1	2	3	4	5	1*	2*	3*	4*	5*	County
Population	30,219	33,273	37,061	28,086	34,994	32,638	32,579	32,608	32,550	32,776	163,633
API	1,013	1,984	693	361	978	1,073	2,007	592	461	896	5,029
% API	3%	6%	2%	1%	3%	3%	6%	2%	1%	3%	3%
Black	9,378	8,901	9,845	15,588	8,280	9,104	8,860	8,576	17,440	7,718	51,992
% Black	31%	27%	27%	56%	24%	28%	27%	26%	54%	24%	32%
Latino	2,193	2,598	1,705	3,059	2,252	2,806	2,067	1,384	3,175	2,373	11,807
% Latino	7%	8%	5%	11%	6%	9%	6%	4%	10%	7%	7%
Other	1,602	1,851	1,648	1,391	2,102	1,646	1,862	1,433	1,686	1,967	8,594
% Other	5%	6%	4%	5%	6%	5%	6%	4%	5%	6%	5%
White	16,033	17,939	23,170	7,687	21,382	18,009	17,783	20,623	9,788	19,822	86,211
% White	53%	54%	63%	27%	61%	55%	55%	63%	30%	60%	53%

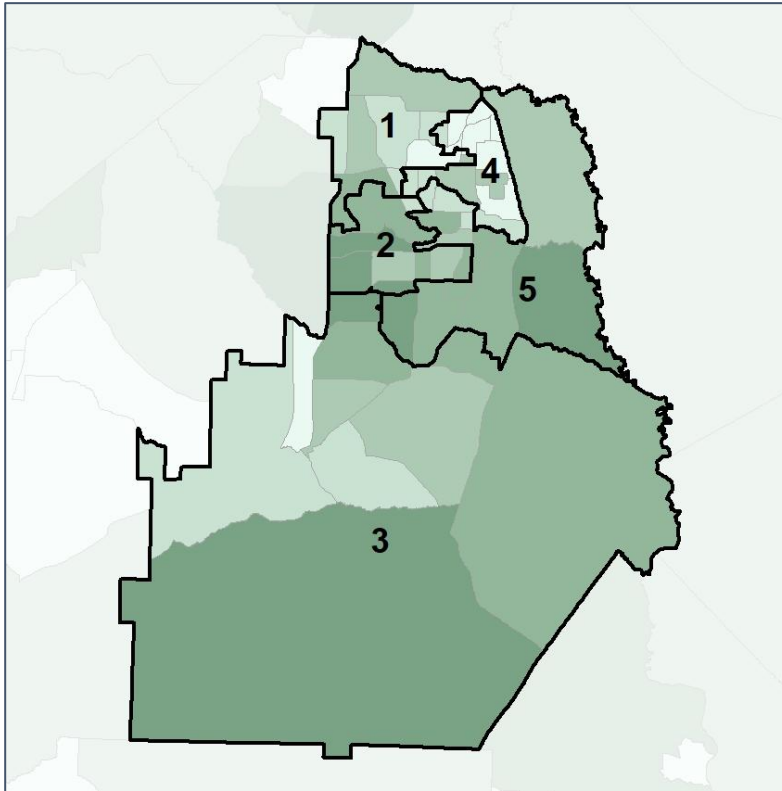


Houston Co. Commission & School Board

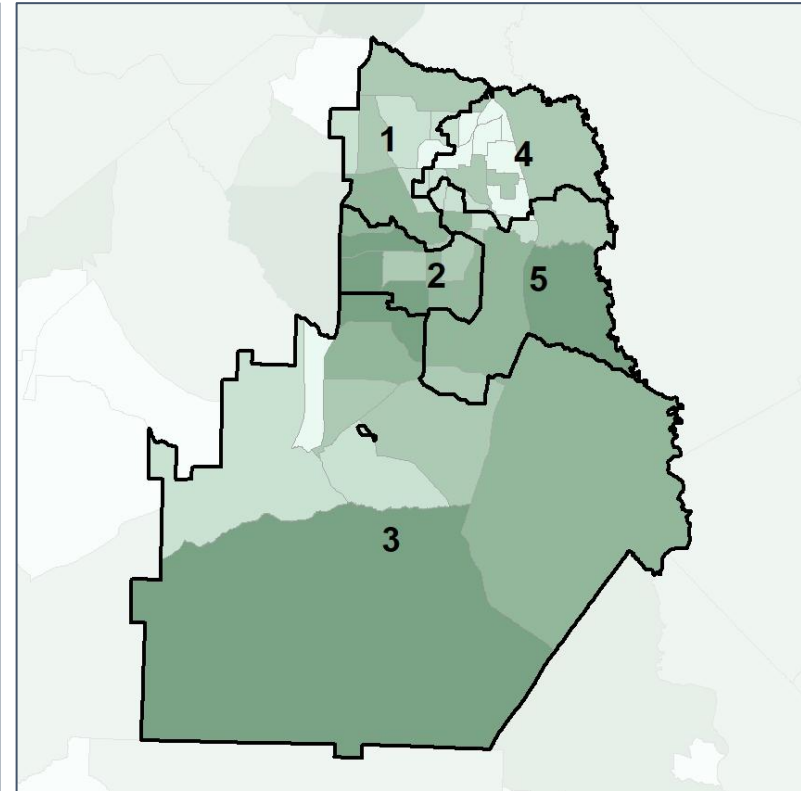
Median Household Income by Census Tract



2012 Map



2022 Map*



	1	2	3	4	5	1*	2*	3*	4*	5*	County
Population	30,219	33,273	37,061	28,086	34,994	32,638	32,579	32,608	32,550	32,776	163,633
% API	3%	6%	2%	1%	3%	3%	6%	2%	1%	3%	3%
% Black	31%	27%	27%	56%	24%	28%	27%	26%	54%	24%	32%
% Latino	7%	8%	5%	11%	6%	9%	6%	4%	10%	7%	7%
% Other	5%	6%	4%	5%	6%	5%	6%	4%	5%	6%	5%
% White	53%	54%	63%	27%	61%	55%	55%	63%	30%	60%	53%
Median Income	\$61,000	\$94,000	\$72,000	\$41,000	\$85,000	\$70,000	\$94,000	\$71,000	\$41,000	\$86,000	\$66,000
% Renter	38%	23%	26%	56%	27%	31%	21%	25%	56%	31%	34%
% Youth	26%	21%	20%	25%	26%	22%	24%	21%	24%	27%	24%

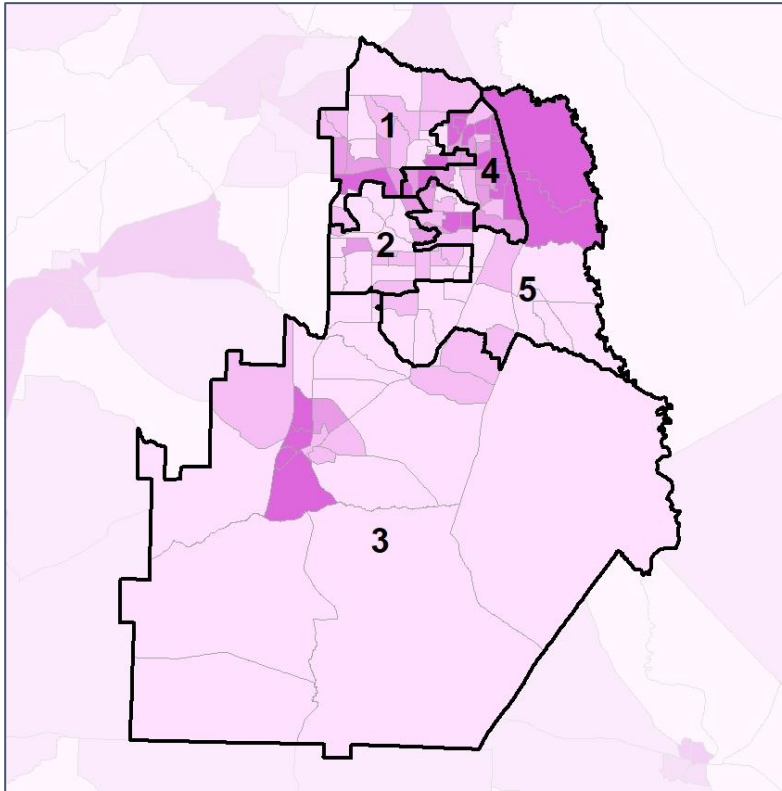


Houston Co. Commission & School Board

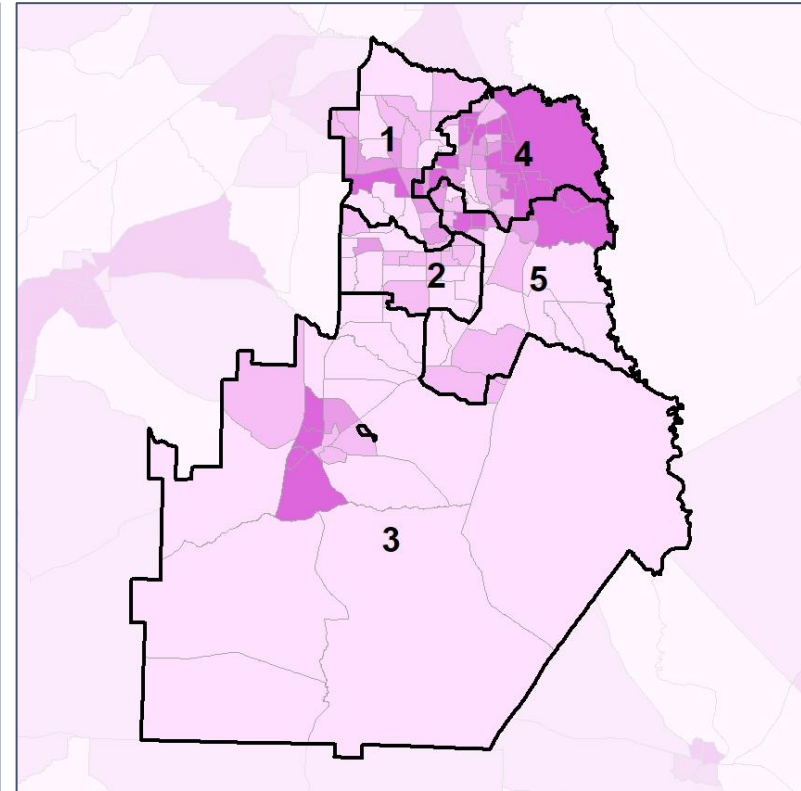
% Renter by Census Block Group



2012 Map



2022 Map*



	1	2	3	4	5	1*	2*	3*	4*	5*	County
Population	30,219	33,273	37,061	28,086	34,994	32,638	32,579	32,608	32,550	32,776	163,633
% API	3%	6%	2%	1%	3%	3%	6%	2%	1%	3%	3%
% Black	31%	27%	27%	56%	24%	28%	27%	26%	54%	24%	32%
% Latino	7%	8%	5%	11%	6%	9%	6%	4%	10%	7%	7%
% Other	5%	6%	4%	5%	6%	5%	6%	4%	5%	6%	5%
% White	53%	54%	63%	27%	61%	55%	55%	63%	30%	60%	53%
Median Income	\$61,000	\$94,000	\$72,000	\$41,000	\$85,000	\$70,000	\$94,000	\$71,000	\$41,000	\$86,000	\$66,000
% Renter	38%	23%	26%	56%	27%	31%	21%	25%	56%	31%	34%
% Youth	26%	21%	20%	25%	26%	22%	24%	21%	24%	27%	24%

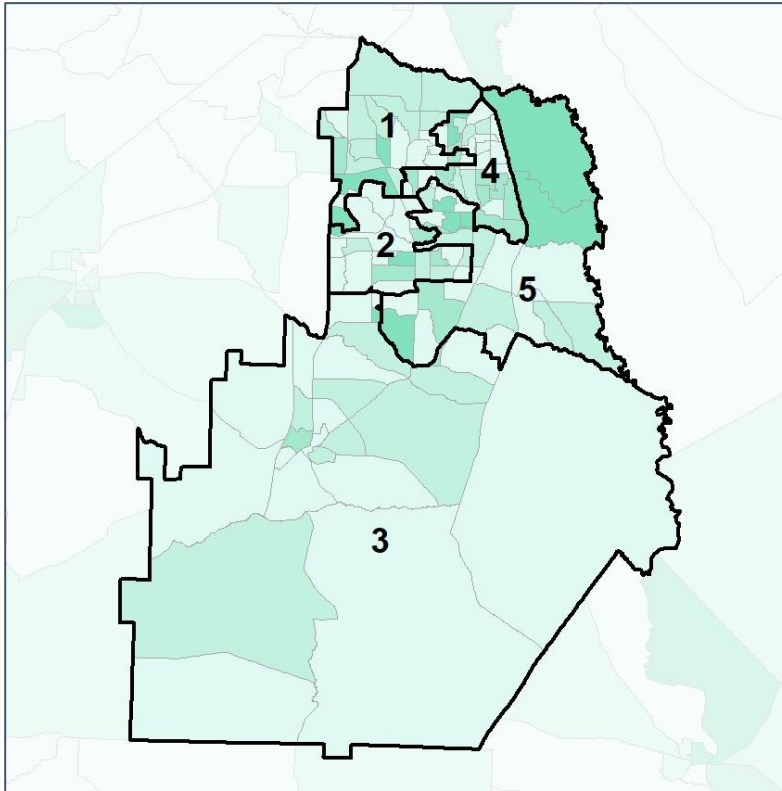


Houston Co. Commission & School Board

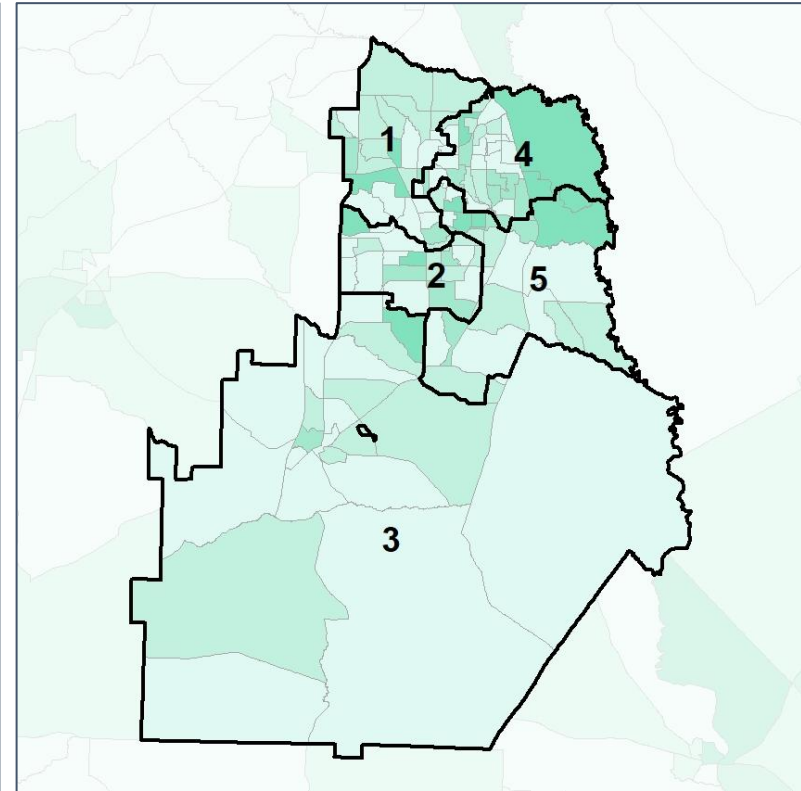
% Youth (18-34) by Census Block Group



2012 Map



2022 Map*



	1	2	3	4	5	1*	2*	3*	4*	5*	County
Population	30,219	33,273	37,061	28,086	34,994	32,638	32,579	32,608	32,550	32,776	163,633
% API	3%	6%	2%	1%	3%	3%	6%	2%	1%	3%	3%
% Black	31%	27%	27%	56%	24%	28%	27%	26%	54%	24%	32%
% Latino	7%	8%	5%	11%	6%	9%	6%	4%	10%	7%	7%
% Other	5%	6%	4%	5%	6%	5%	6%	4%	5%	6%	5%
% White	53%	54%	63%	27%	61%	55%	55%	63%	30%	60%	53%
Median Income	\$61,000	\$94,000	\$72,000	\$41,000	\$85,000	\$70,000	\$94,000	\$71,000	\$41,000	\$86,000	\$66,000
% Renter	38%	23%	26%	56%	27%	31%	21%	25%	56%	31%	34%
% Youth	26%	21%	20%	25%	26%	22%	24%	21%	24%	27%	24%

