



Demographic Overview

Racial Breakdown in Henry County

Henry County	2010	2020	% Change
Total Population	203,922	240,712	18%
AAPI	6,012	8,095	35%
Black	74,056	116,431	57%
Latino	11,813	18,437	56%
Other/Mixed Race	4,958	11,452	131%
POC	96,839	154,415	59%
White	107,083	86,297	-19%

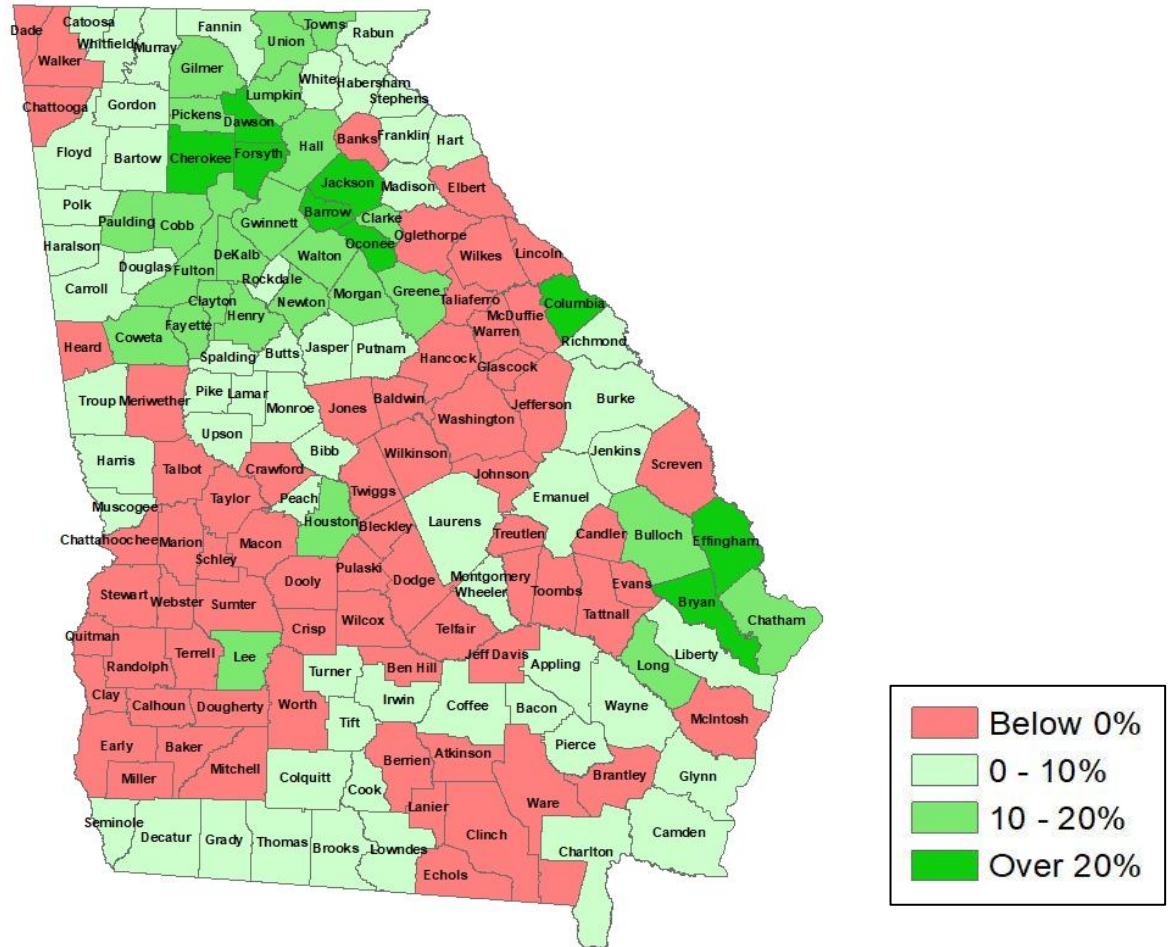
*Note: The use of "Other" in these statistics combines those who identify as Native American, Mixed Race, and "Other" race





Population Gain

Change in Population in Georgia by County



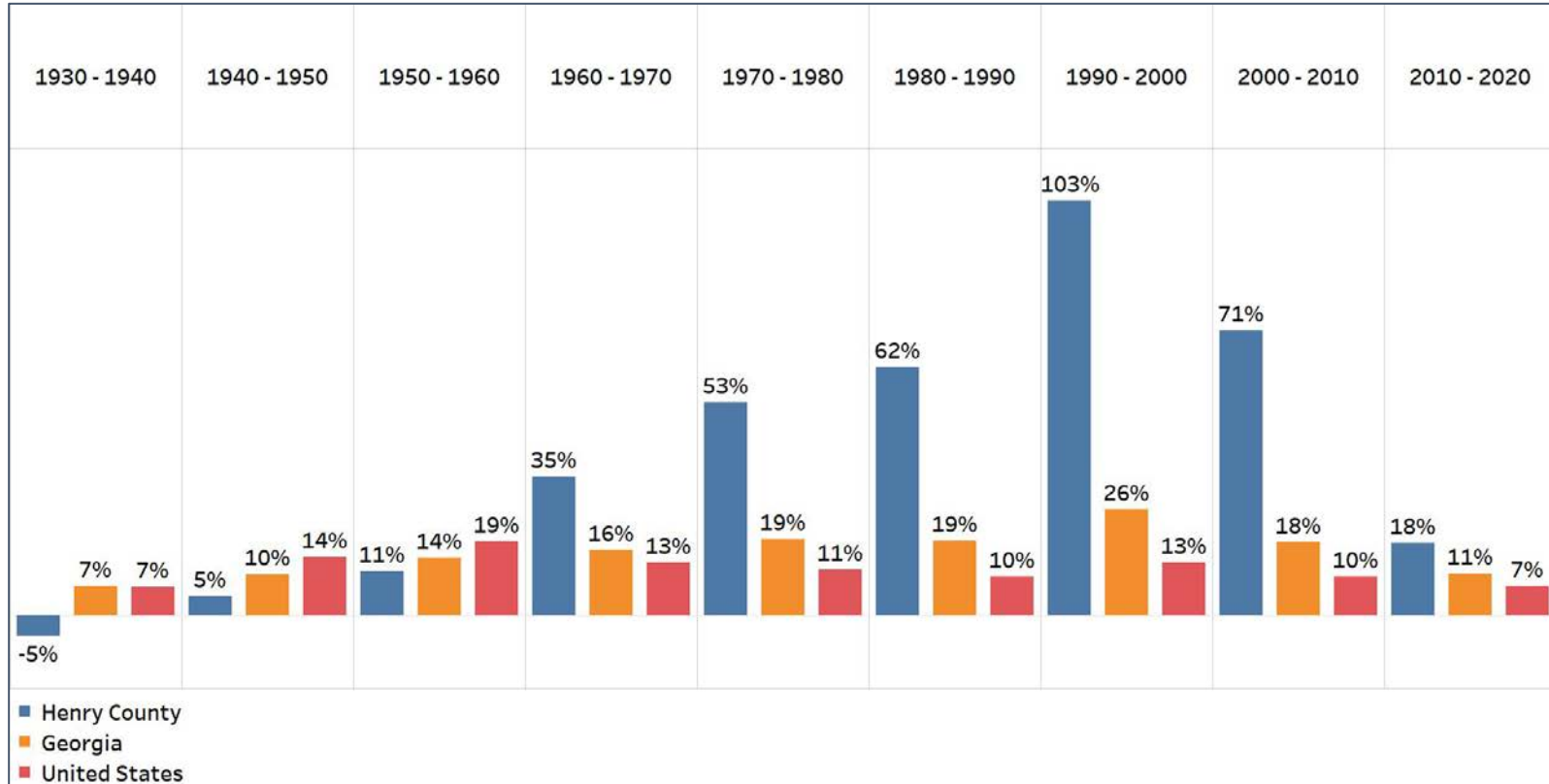
- Georgia is experiencing rapid population growth in the Atlanta, Augusta, and Savannah regions of the state





Population Gain

Change in Population by Decade

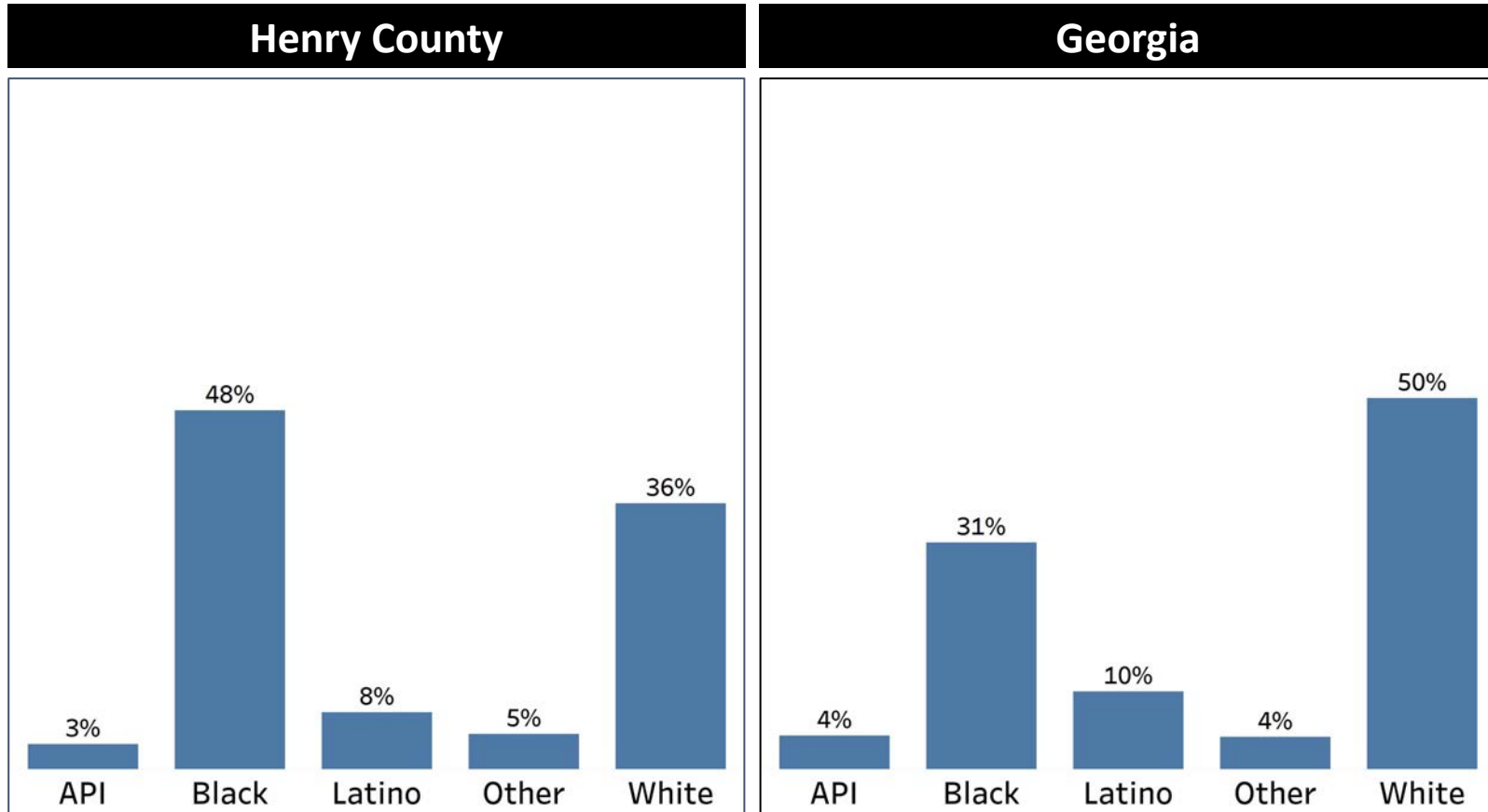


- Henry County experienced a population spike from 1960 to 2010, with the population increasing at least twice the state percentage rate
- In the last decade, Henry county has seen its smallest population growth since 1960, but it is still above Georgia's growth rate



Demographics

Comparison between Henry County and Georgia



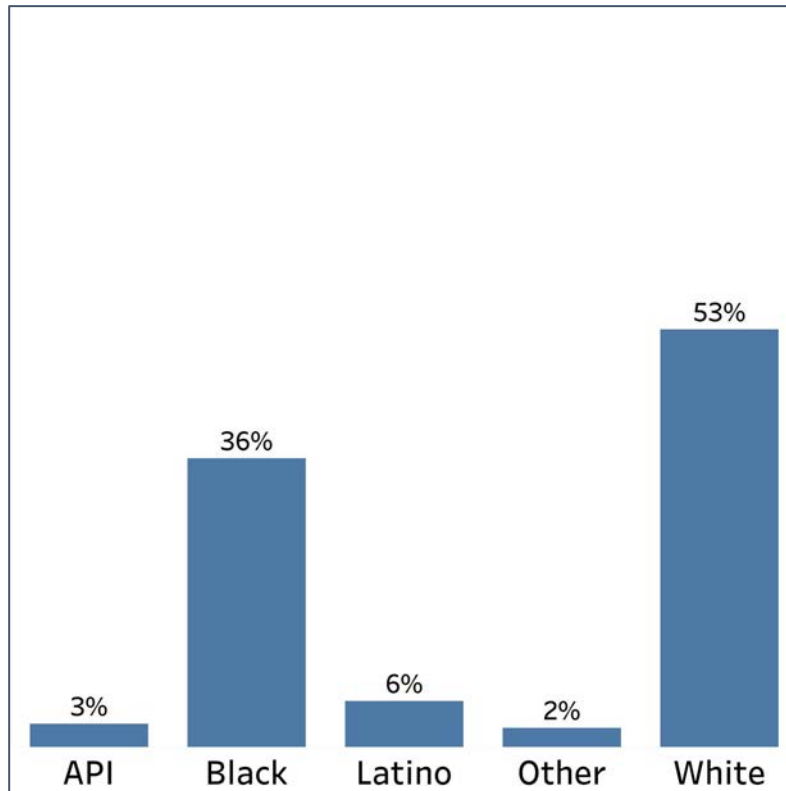
- Henry County is composed of a plurality Black population which is 10% over the statewide average
- The API, Latino, and white population are below the statewide average; most notably the White population being 14% below Georgia's overall average

Demographics

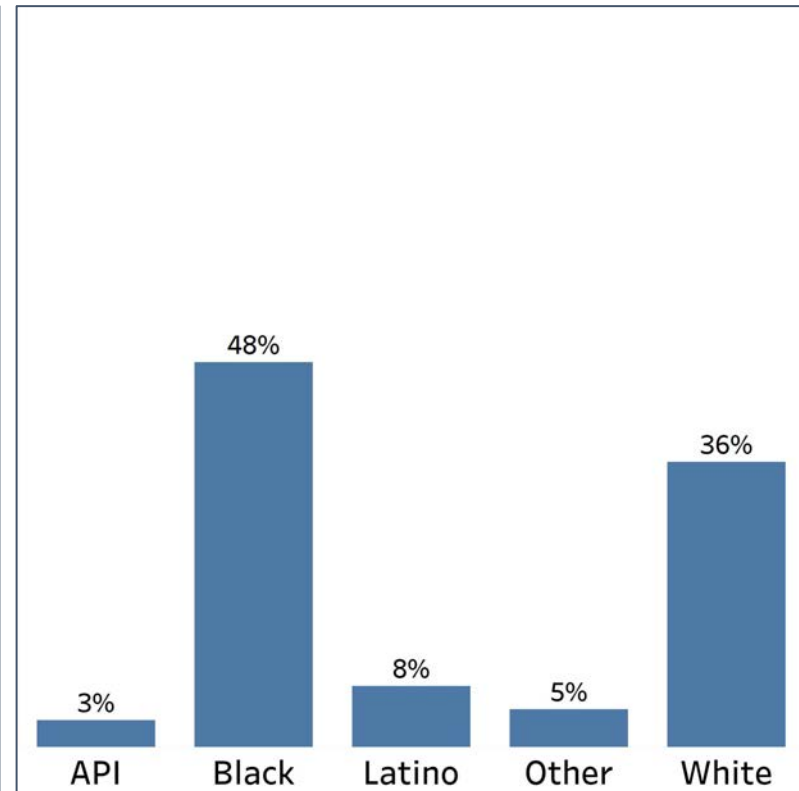
2010 vs 2020 Demographics in Henry County



Henry County 2010



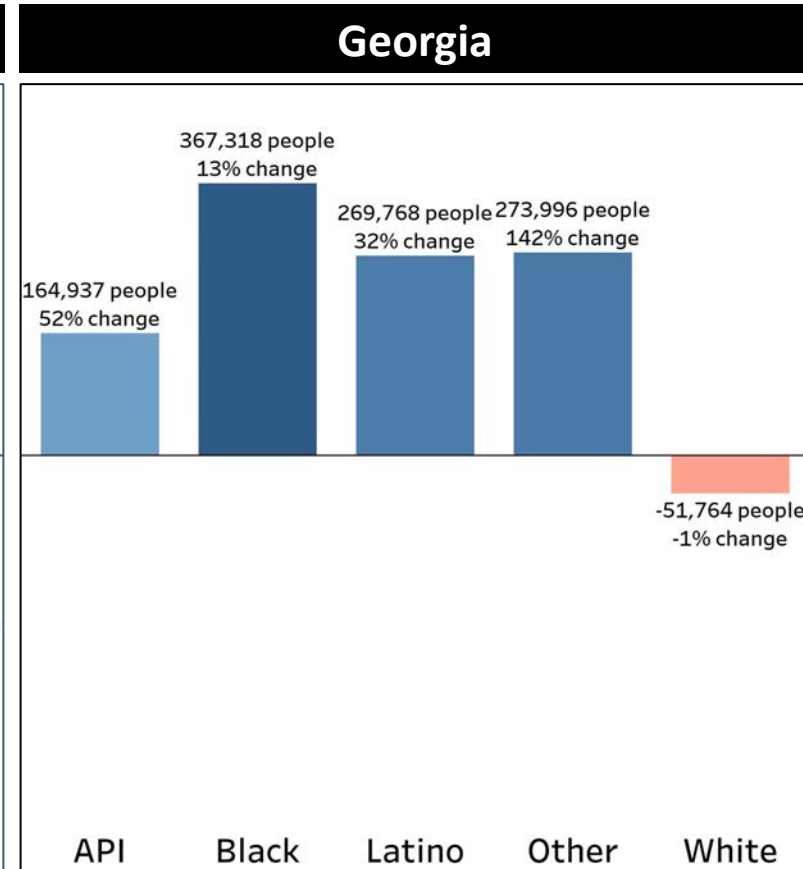
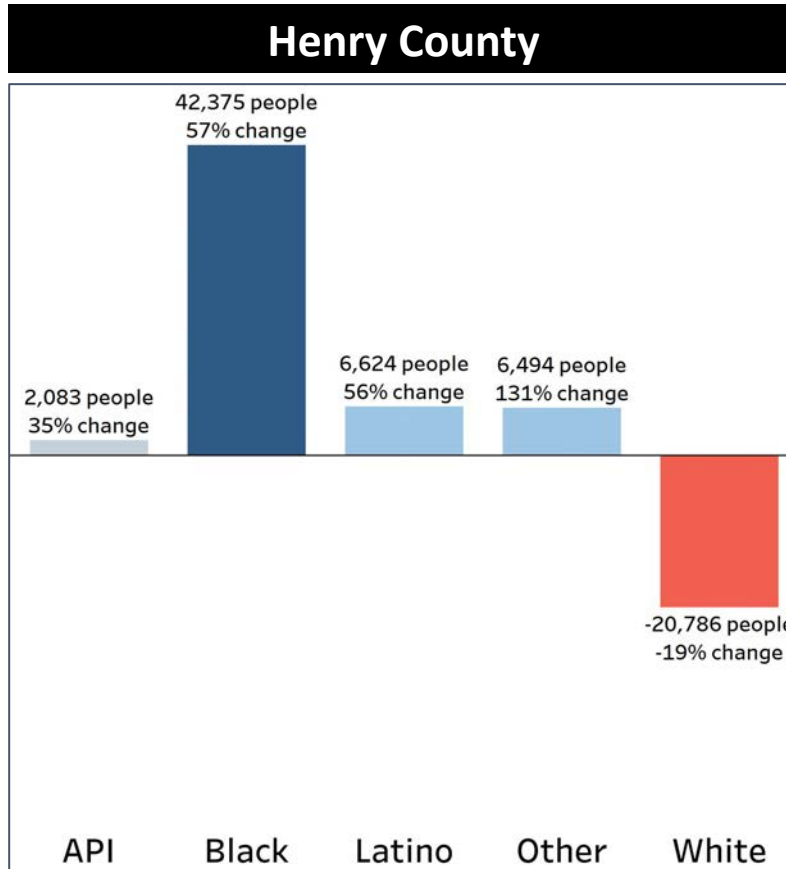
Henry County 2020



- Since 2010 Henry County communities of color have grown in population with the exception of the API community
- In Henry county the Black population increasing by 12% while the White population declined by 17%, making the black population the biggest racial group

Demographics

Population Change by Race (2020 - 2010)



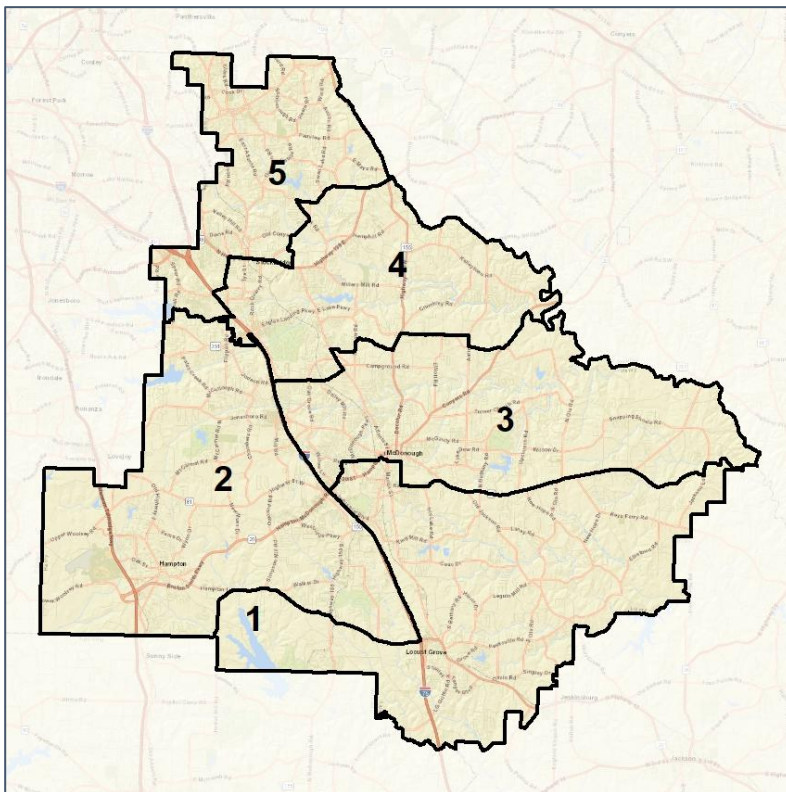
- Henry County white population has decreased at a rapid rate when compared to Georgia's average
- The Black population in Henry county has increased at a rate that is over 4 times the statewide average

Henry Co. Commission & School Board

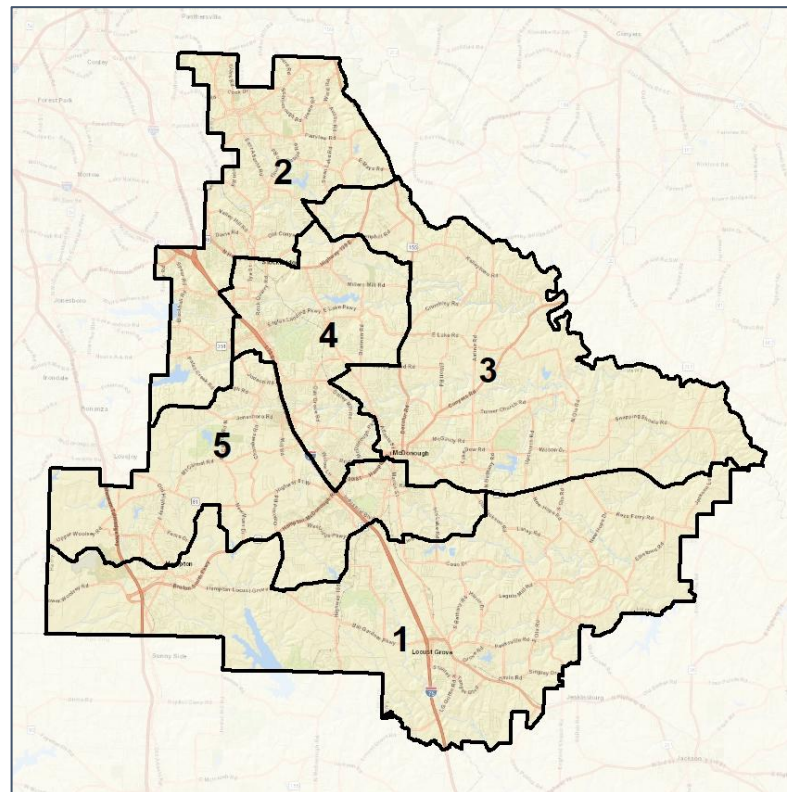
Context



2012 Map



2022 Map*



	1	2	3	4	5	1*	2*	3*	4*	5*	County
Population	47,572	53,666	52,270	44,161	43,043	47,610	48,644	48,508	48,309	47,641	240,712
API	1%	4%	2%	6%	4%	1%	5%	2%	5%	3%	3%
Black	40%	52%	43%	50%	59%	33%	57%	35%	58%	59%	48%
Latino	7%	8%	8%	7%	9%	7%	9%	6%	9%	8%	8%
Other	5%	5%	5%	5%	4%	5%	4%	5%	5%	5%	5%
White	48%	32%	43%	32%	23%	54%	25%	53%	23%	26%	36%
Population Gain	*	*	*	*	*	38	-5,022	-3,762	4,148	4,598	*
Population % Gain	*	*	*	*	*	0%	-9%	-7%	9%	11%	*
Net POC Gain	*	*	*	*	*	-2,684	171	-7,155	7,431	2,237	*
Net POC % Gain	*	*	*	*	*	-11%	0%	-24%	25%	7%	*

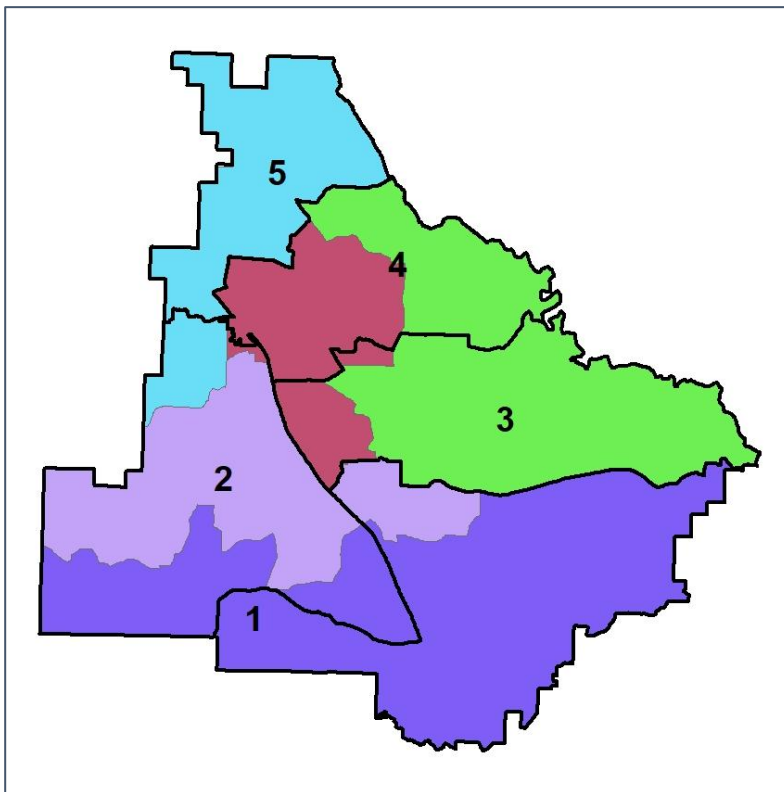


Henry Co. Commission & School Board

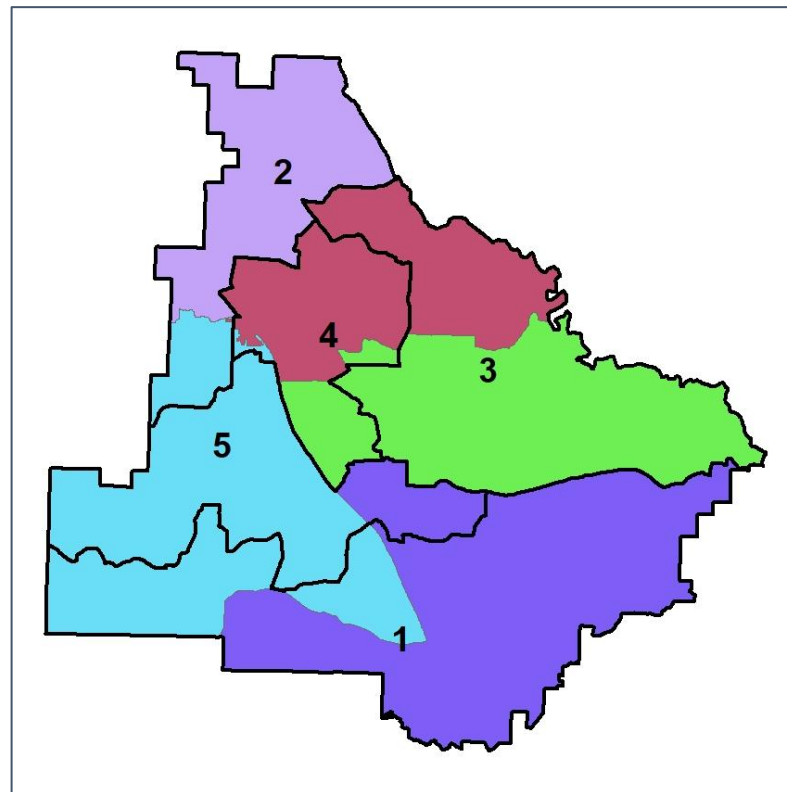
Changes in Redistricting



2012 Map (2022 in Colors)



2022 Map* (2012 in Colors)



	1	2	3	4	5	1*	2*	3*	4*	5*	County
Population	47,572	53,666	52,270	44,161	43,043	47,610	48,644	48,508	48,309	47,641	240,712
API	1%	4%	2%	6%	4%	1%	5%	2%	5%	3%	3%
Black	40%	52%	43%	50%	59%	33%	57%	35%	58%	59%	48%
Latino	7%	8%	8%	7%	9%	7%	9%	6%	9%	8%	8%
Other	5%	5%	5%	5%	4%	5%	4%	5%	5%	5%	5%
White	48%	32%	43%	32%	23%	54%	25%	53%	23%	26%	36%
Population Gain	*	*	*	*	*	38	-5,022	-3,762	4,148	4,598	*
Population % Gain	*	*	*	*	*	0%	-9%	-7%	9%	11%	*
Net POC Gain	*	*	*	*	*	-2,684	171	-7,155	7,431	2,237	*
Net POC % Gain	*	*	*	*	*	-11%	0%	-24%	25%	7%	*

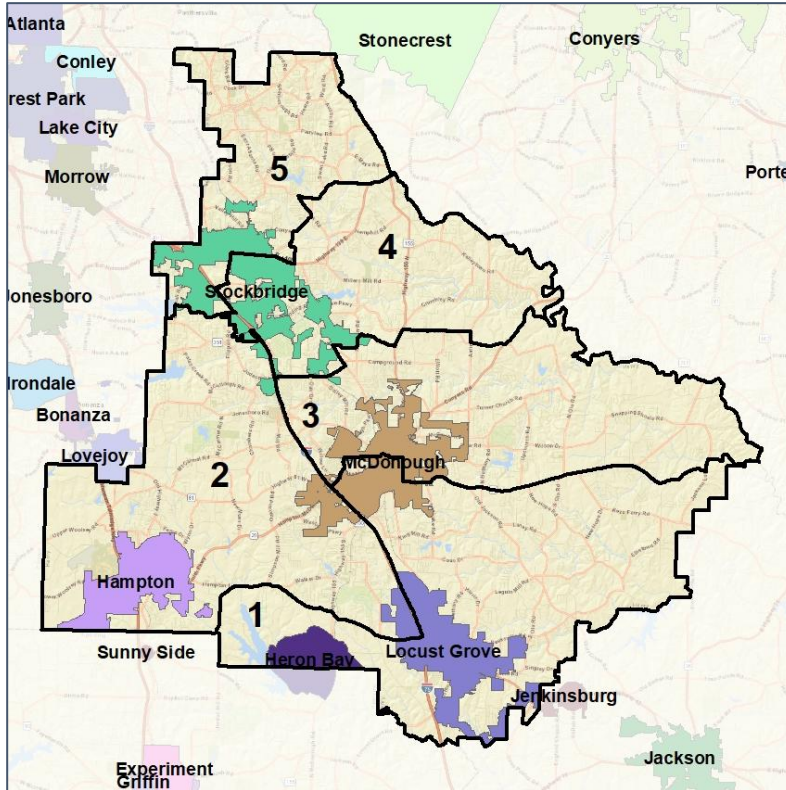


Henry Co. Commission & School Board

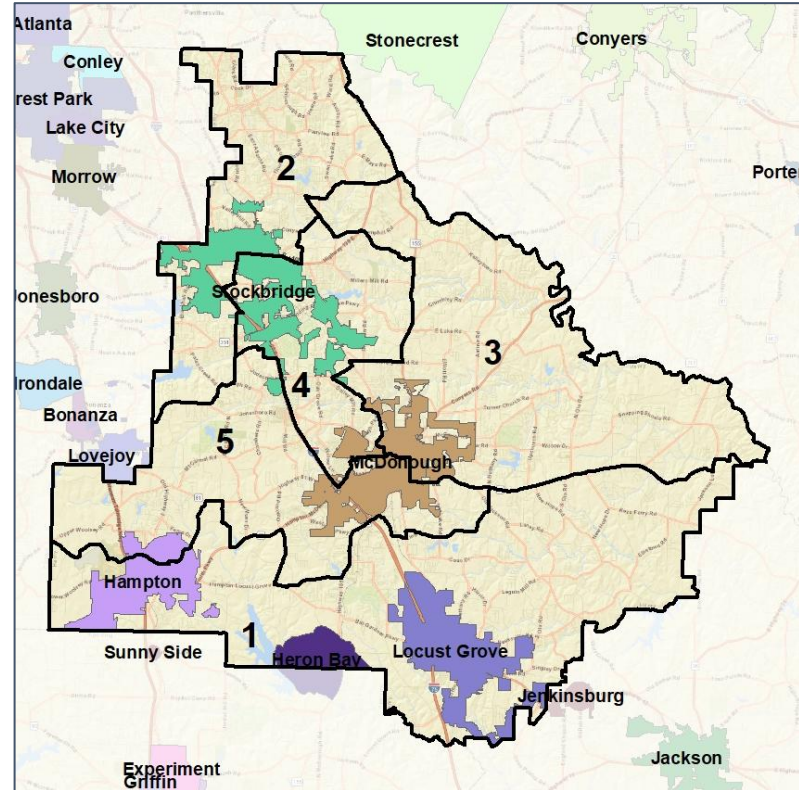
Cities and Places



2012 Map



2022 Map*



	1	2	3	4	5	1*	2*	3*	4*	5*	County
Population	47,572	53,666	52,270	44,161	43,043	47,610	48,644	48,508	48,309	47,641	240,712
API	1%	4%	2%	6%	4%	1%	5%	2%	5%	3%	3%
Black	40%	52%	43%	50%	59%	33%	57%	35%	58%	59%	48%
Latino	7%	8%	8%	7%	9%	7%	9%	6%	9%	8%	8%
Other	5%	5%	5%	5%	4%	5%	4%	5%	5%	5%	5%
White	48%	32%	43%	32%	23%	54%	25%	53%	23%	26%	36%
Population Gain	*	*	*	*	*	38	-5,022	-3,762	4,148	4,598	*
Population % Gain	*	*	*	*	*	0%	-9%	-7%	9%	11%	*
Net POC Gain	*	*	*	*	*	-2,684	171	-7,155	7,431	2,237	*
Net POC % Gain	*	*	*	*	*	-11%	0%	-24%	25%	7%	*



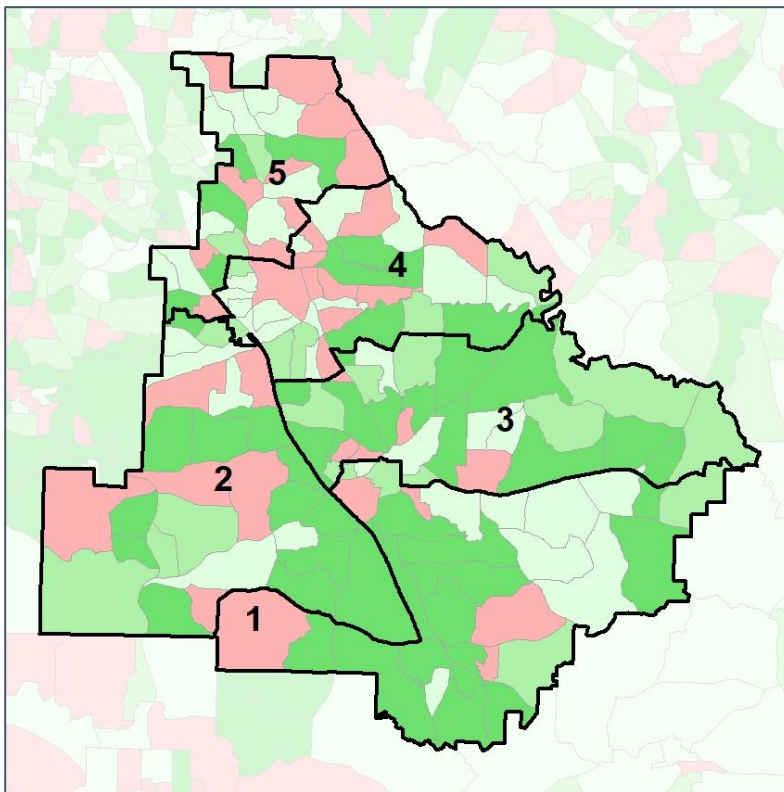
Source:
2020 Decennial Census
2020 ACS 5-Year Dataset

Henry Co. Commission & School Board

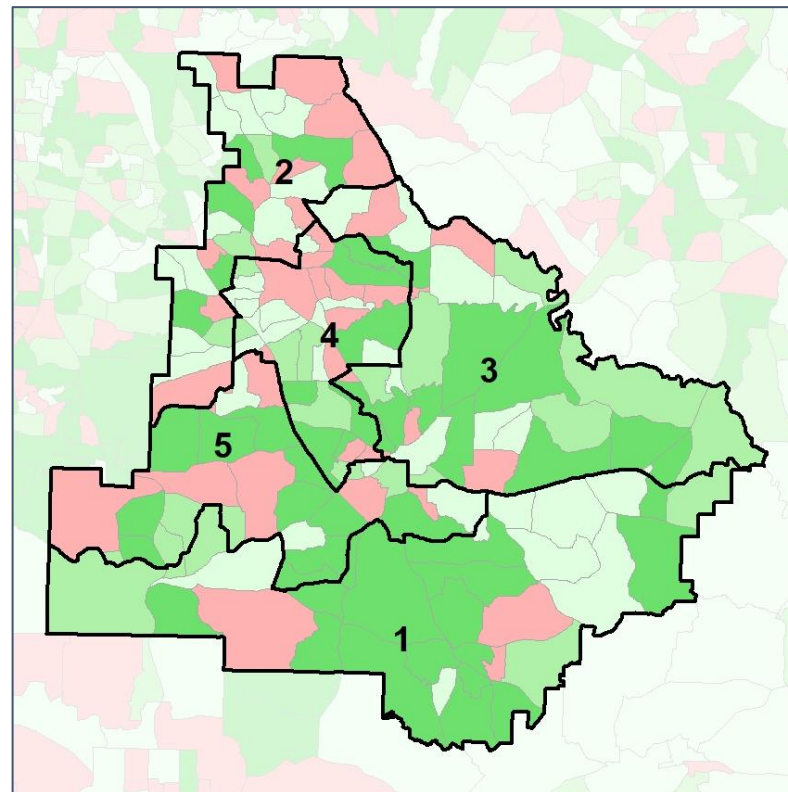
Net Gain in Population (2010 - 2020)



2012 Map



2022 Map*



	1	2	3	4	5	1*	2*	3*	4*	5*	County
Population	47,572	53,666	52,270	44,161	43,043	47,610	48,644	48,508	48,309	47,641	240,712
API	1%	4%	2%	6%	4%	1%	5%	2%	5%	3%	3%
Black	40%	52%	43%	50%	59%	33%	57%	35%	58%	59%	48%
Latino	7%	8%	8%	7%	9%	7%	9%	6%	9%	8%	8%
Other	5%	5%	5%	5%	4%	5%	4%	5%	5%	5%	5%
White	48%	32%	43%	32%	23%	54%	25%	53%	23%	26%	36%
Population Gain	*	*	*	*	*	38	-5,022	-3,762	4,148	4,598	*
Population % Gain	*	*	*	*	*	0%	-9%	-7%	9%	11%	*
Net POC Gain	*	*	*	*	*	-2,684	171	-7,155	7,431	2,237	*
Net POC % Gain	*	*	*	*	*	-11%	0%	-24%	25%	7%	*

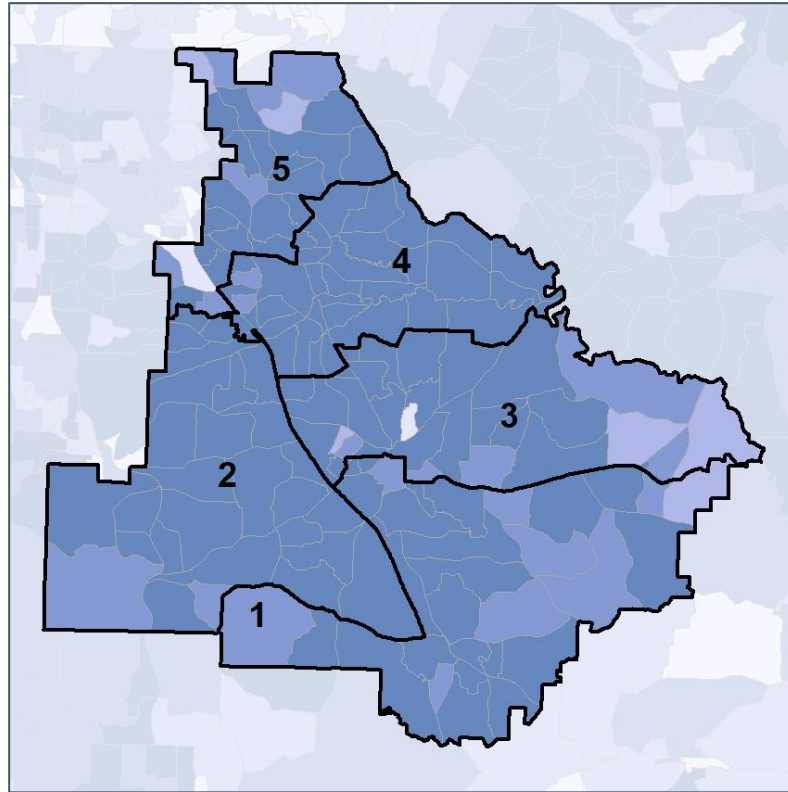


Henry Co. Commission & School Board

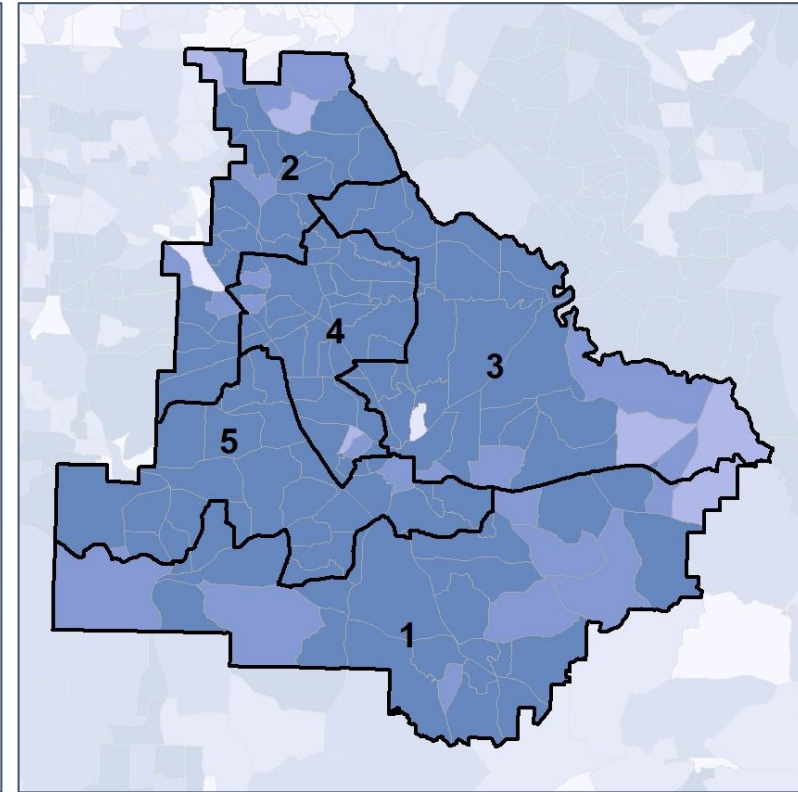
Net Gain in % POC (2020 - 2010) by Census Block Group



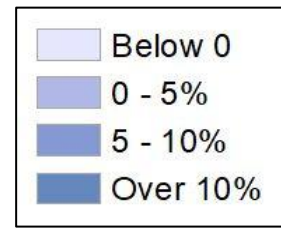
2012 Map



2022 Map*



	1	2	3	4	5	1*	2*	3*	4*	5*	County
Population	47,572	53,666	52,270	44,161	43,043	47,610	48,644	48,508	48,309	47,641	240,712
API	1%	4%	2%	6%	4%	1%	5%	2%	5%	3%	3%
Black	40%	52%	43%	50%	59%	33%	57%	35%	58%	59%	48%
Latino	7%	8%	8%	7%	9%	7%	9%	6%	9%	8%	8%
Other	5%	5%	5%	5%	4%	5%	4%	5%	5%	5%	5%
White	48%	32%	43%	32%	23%	54%	25%	53%	23%	26%	36%
Population Gain	*	*	*	*	*	38	-5,022	-3,762	4,148	4,598	*
Population % Gain	*	*	*	*	*	0%	-9%	-7%	9%	11%	*
Net POC Gain	*	*	*	*	*	-2,684	171	-7,155	7,431	2,237	*
Net POC % Gain	*	*	*	*	*	-11%	0%	-24%	25%	7%	*



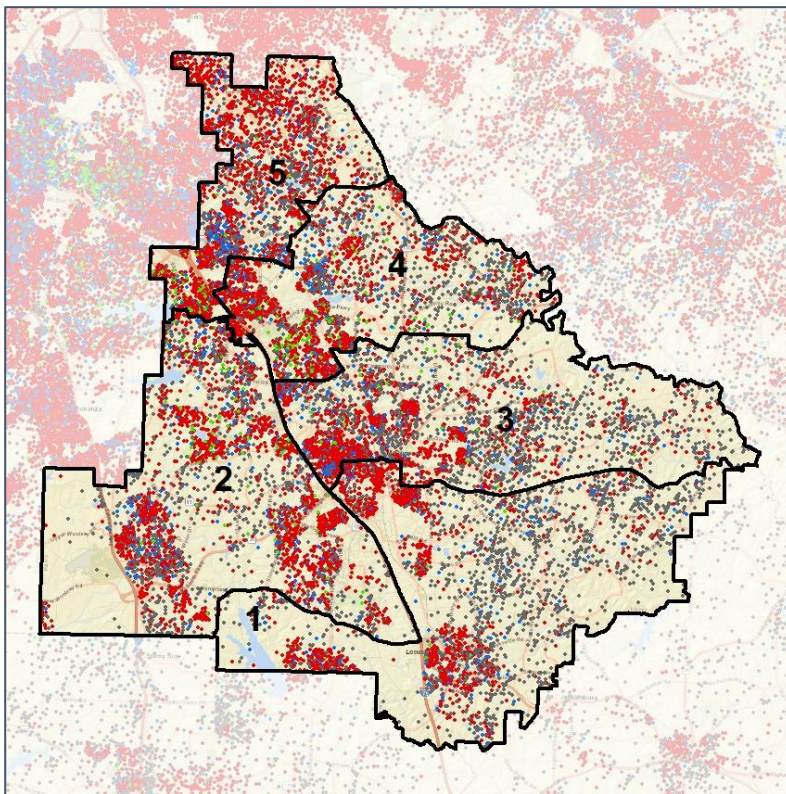
Source:
2020 Decennial Census
2020 ACS 5-Year Dataset

Henry Co. Commission & School Board

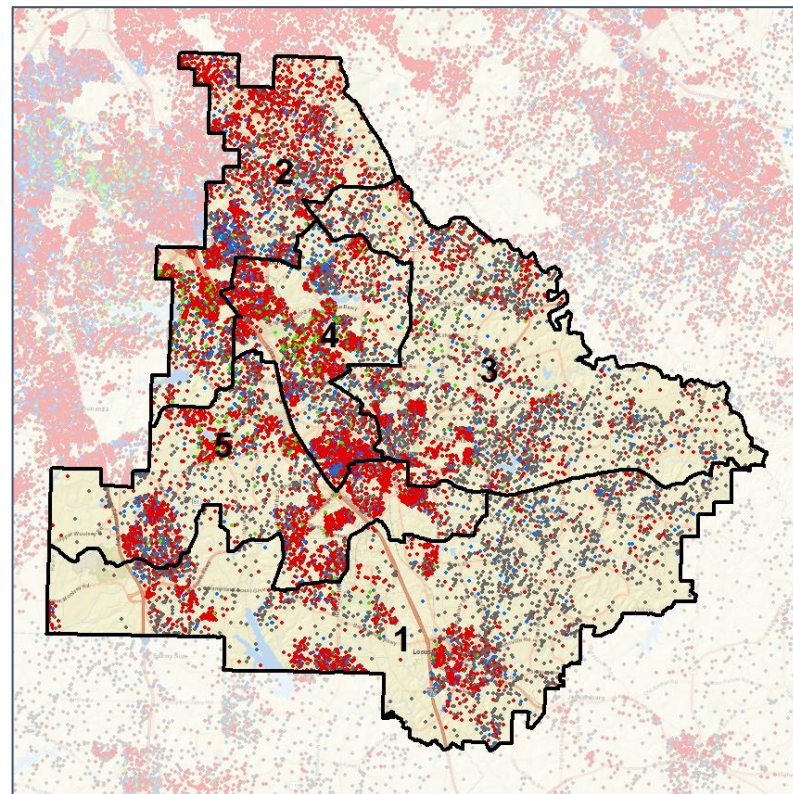
Population Density by Race



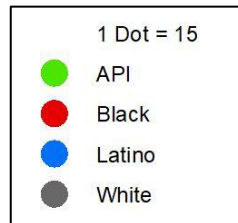
2012 Map



2022 Map*



	1	2	3	4	5	1*	2*	3*	4*	5*	County
Population	47,572	53,666	52,270	44,161	43,043	47,610	48,644	48,508	48,309	47,641	240,712
API	601	2,072	1,062	2,472	1,888	702	2,297	1,007	2,522	1,567	8,095
% API	1%	4%	2%	6%	4%	1%	5%	2%	5%	3%	3%
Black	18,837	27,697	22,389	22,104	25,404	15,924	27,814	16,765	27,923	28,005	116,431
% Black	40%	52%	43%	50%	59%	33%	57%	35%	58%	59%	48%
Latino	3,115	4,193	3,956	3,214	3,959	3,211	4,406	2,803	4,420	3,597	18,437
% Latino	7%	8%	8%	7%	9%	7%	9%	6%	9%	8%	8%
Other	2,239	2,522	2,639	2,197	1,855	2,271	2,138	2,316	2,553	2,174	11,452
% Other	5%	5%	5%	5%	4%	5%	4%	5%	5%	5%	5%
White	22,780	17,182	22,224	14,174	9,937	25,502	11,989	25,617	10,891	12,298	86,297
% White	48%	32%	43%	32%	23%	54%	25%	53%	23%	26%	36%



Source:
2020 Decennial Census
2020 ACS 5-Year Dataset

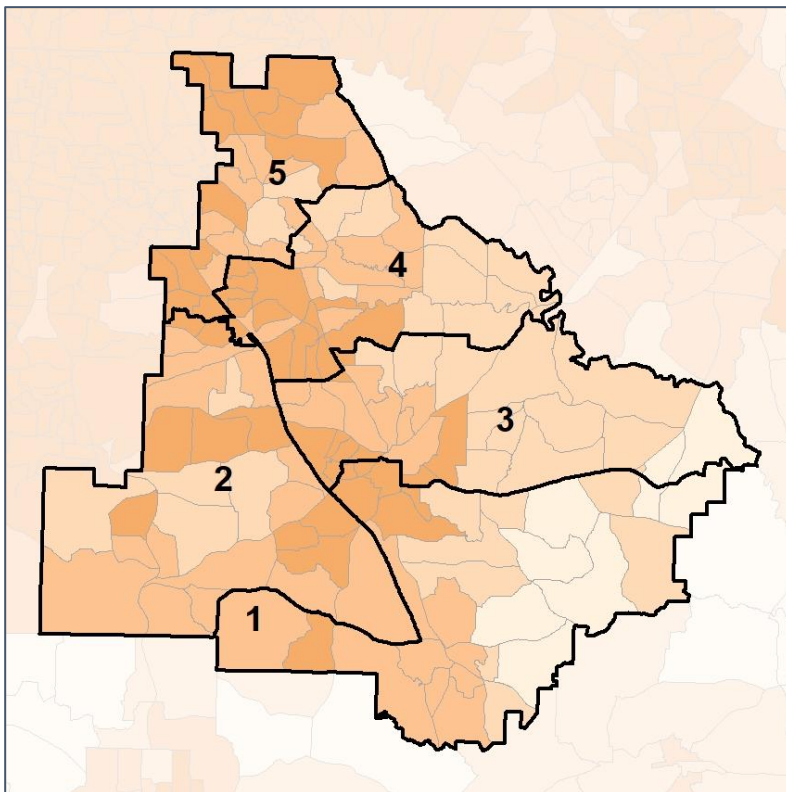


Henry Co. Commission & School Board

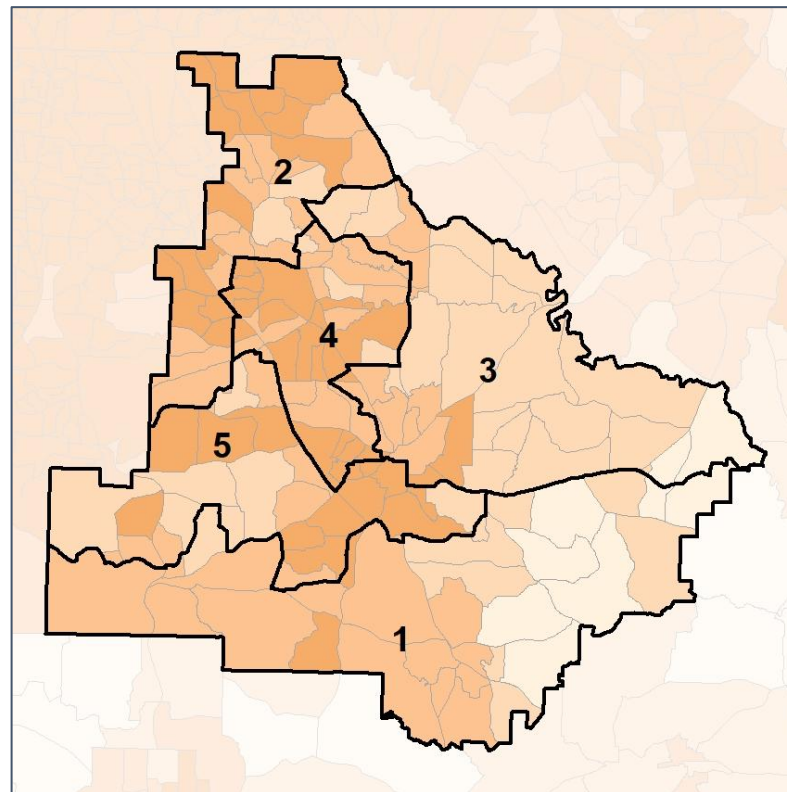
% People of Color by Census Block Group



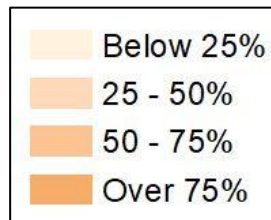
2012 Map



2022 Map*



	1	2	3	4	5	1*	2*	3*	4*	5*	County
Population	47,572	53,666	52,270	44,161	43,043	47,610	48,644	48,508	48,309	47,641	240,712
API	601	2,072	1,062	2,472	1,888	702	2,297	1,007	2,522	1,567	8,095
% API	1%	4%	2%	6%	4%	1%	5%	2%	5%	3%	3%
Black	18,837	27,697	22,389	22,104	25,404	15,924	27,814	16,765	27,923	28,005	116,431
% Black	40%	52%	43%	50%	59%	33%	57%	35%	58%	59%	48%
Latino	3,115	4,193	3,956	3,214	3,959	3,211	4,406	2,803	4,420	3,597	18,437
% Latino	7%	8%	8%	7%	9%	7%	9%	6%	9%	8%	8%
Other	2,239	2,522	2,639	2,197	1,855	2,271	2,138	2,316	2,553	2,174	11,452
% Other	5%	5%	5%	5%	4%	5%	4%	5%	5%	5%	5%
White	22,780	17,182	22,224	14,174	9,937	25,502	11,989	25,617	10,891	12,298	86,297
% White	48%	32%	43%	32%	23%	54%	25%	53%	23%	26%	36%



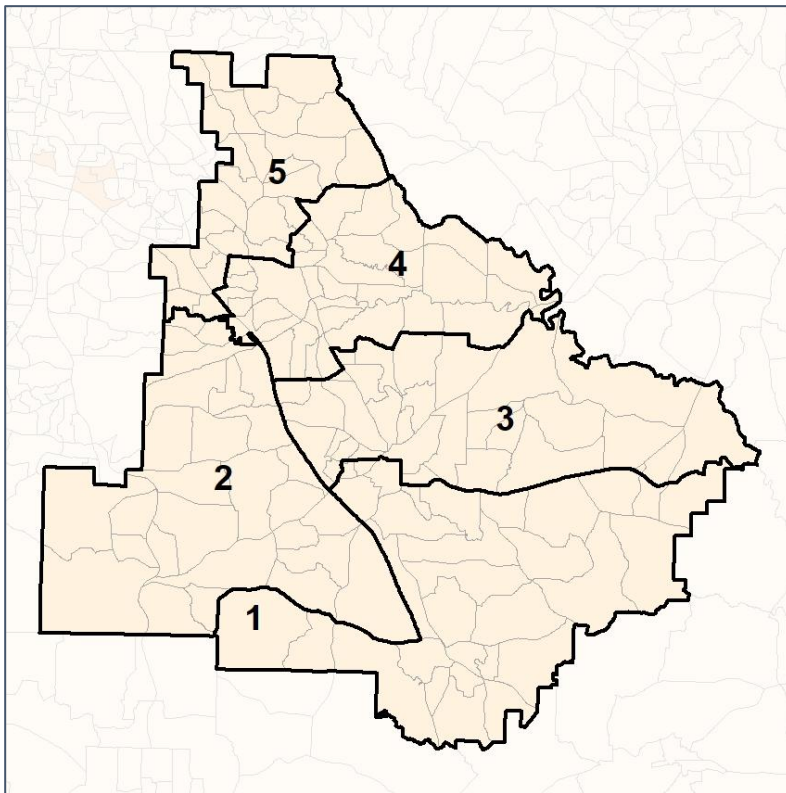
Source:
2020 Decennial Census
2020 ACS 5-Year Dataset

Henry Co. Commission & School Board

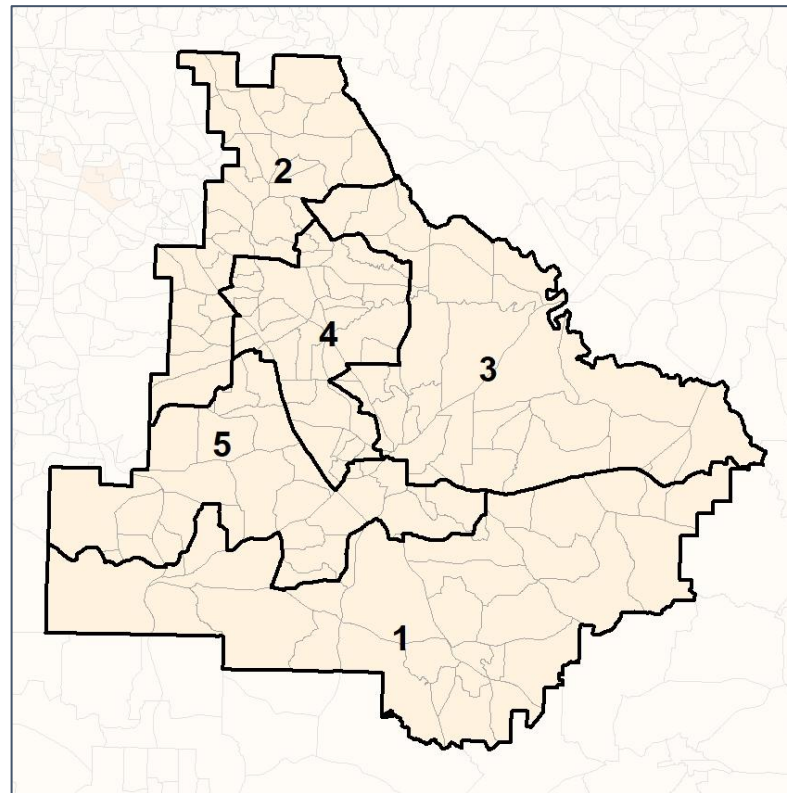
% API by Census Block Group



2012 Map



2022 Map*



	1	2	3	4	5	1*	2*	3*	4*	5*	County
Population	47,572	53,666	52,270	44,161	43,043	47,610	48,644	48,508	48,309	47,641	240,712
API	601	2,072	1,062	2,472	1,888	702	2,297	1,007	2,522	1,567	8,095
% API	1%	4%	2%	6%	4%	1%	5%	2%	5%	3%	3%
Black	18,837	27,697	22,389	22,104	25,404	15,924	27,814	16,765	27,923	28,005	116,431
% Black	40%	52%	43%	50%	59%	33%	57%	35%	58%	59%	48%
Latino	3,115	4,193	3,956	3,214	3,959	3,211	4,406	2,803	4,420	3,597	18,437
% Latino	7%	8%	8%	7%	9%	7%	9%	6%	9%	8%	8%
Other	2,239	2,522	2,639	2,197	1,855	2,271	2,138	2,316	2,553	2,174	11,452
% Other	5%	5%	5%	5%	4%	5%	4%	5%	5%	5%	5%
White	22,780	17,182	22,224	14,174	9,937	25,502	11,989	25,617	10,891	12,298	86,297
% White	48%	32%	43%	32%	23%	54%	25%	53%	23%	26%	36%

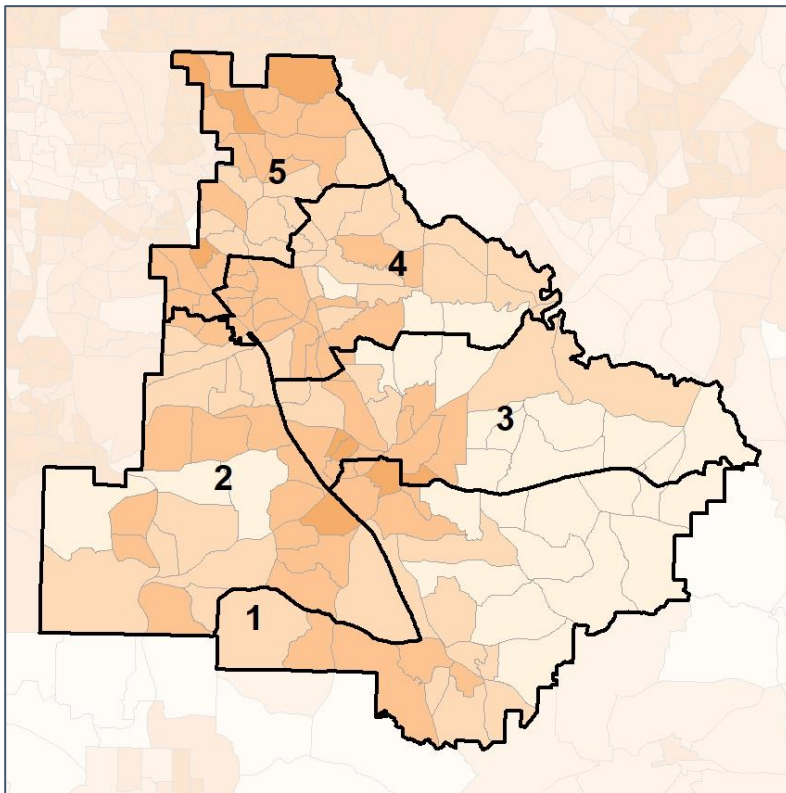


Henry Co. Commission & School Board

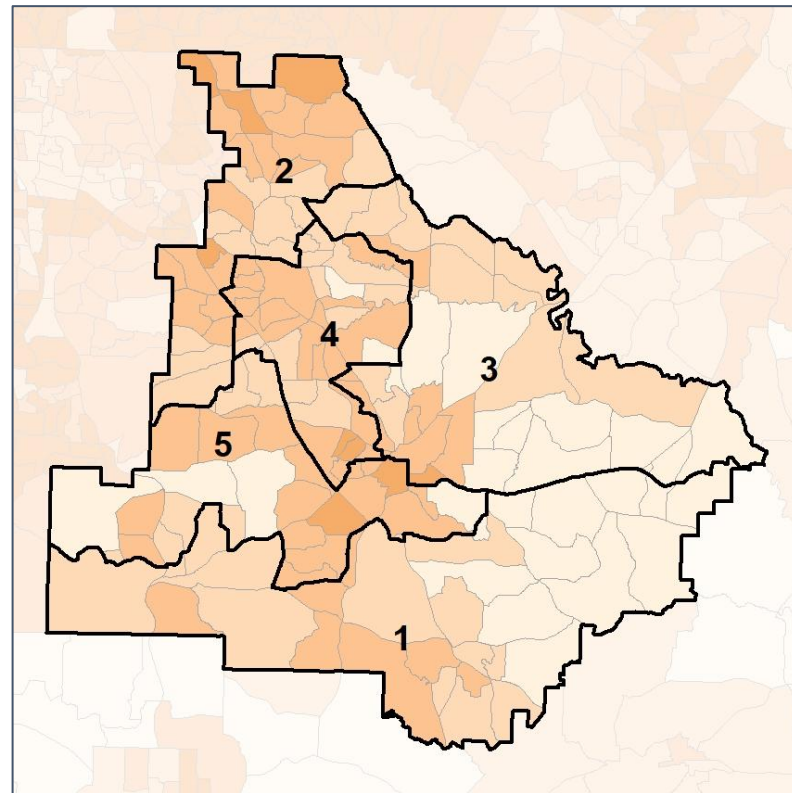
% Black by Census Block Group



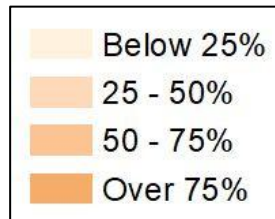
2012 Map



2022 Map*



	1	2	3	4	5	1*	2*	3*	4*	5*	County
Population	47,572	53,666	52,270	44,161	43,043	47,610	48,644	48,508	48,309	47,641	240,712
API	601	2,072	1,062	2,472	1,888	702	2,297	1,007	2,522	1,567	8,095
% API	1%	4%	2%	6%	4%	1%	5%	2%	5%	3%	3%
Black	18,837	27,697	22,389	22,104	25,404	15,924	27,814	16,765	27,923	28,005	116,431
% Black	40%	52%	43%	50%	59%	33%	57%	35%	58%	59%	48%
Latino	3,115	4,193	3,956	3,214	3,959	3,211	4,406	2,803	4,420	3,597	18,437
% Latino	7%	8%	8%	7%	9%	7%	9%	6%	9%	8%	8%
Other	2,239	2,522	2,639	2,197	1,855	2,271	2,138	2,316	2,553	2,174	11,452
% Other	5%	5%	5%	5%	4%	5%	4%	5%	5%	5%	5%
White	22,780	17,182	22,224	14,174	9,937	25,502	11,989	25,617	10,891	12,298	86,297
% White	48%	32%	43%	32%	23%	54%	25%	53%	23%	26%	36%

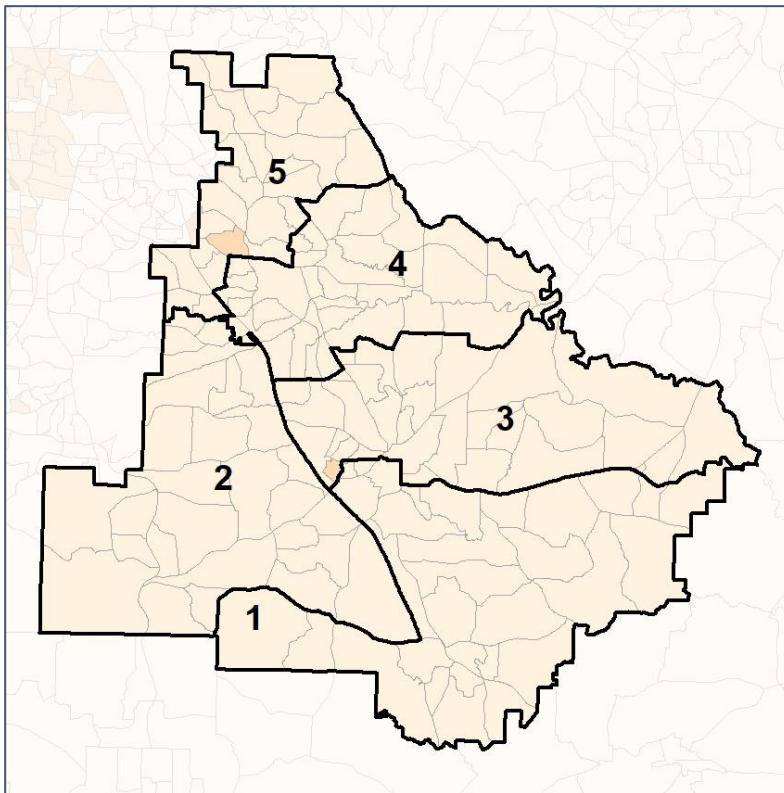


Henry Co. Commission & School Board

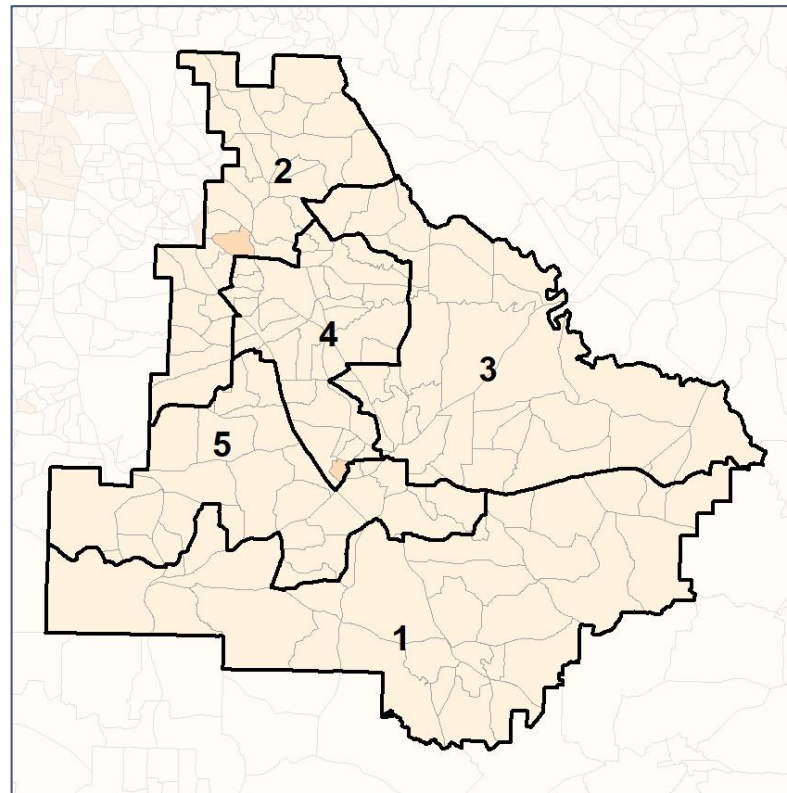
% Latino by Census Block Group



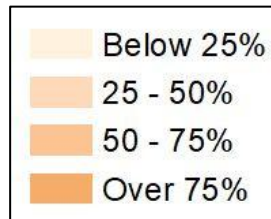
2012 Map



2022 Map*



	1	2	3	4	5	1*	2*	3*	4*	5*	County
Population	47,572	53,666	52,270	44,161	43,043	47,610	48,644	48,508	48,309	47,641	240,712
API	601	2,072	1,062	2,472	1,888	702	2,297	1,007	2,522	1,567	8,095
% API	1%	4%	2%	6%	4%	1%	5%	2%	5%	3%	3%
Black	18,837	27,697	22,389	22,104	25,404	15,924	27,814	16,765	27,923	28,005	116,431
% Black	40%	52%	43%	50%	59%	33%	57%	35%	58%	59%	48%
Latino	3,115	4,193	3,956	3,214	3,959	3,211	4,406	2,803	4,420	3,597	18,437
% Latino	7%	8%	8%	7%	9%	7%	9%	6%	9%	8%	8%
Other	2,239	2,522	2,639	2,197	1,855	2,271	2,138	2,316	2,553	2,174	11,452
% Other	5%	5%	5%	5%	4%	5%	4%	5%	5%	5%	5%
White	22,780	17,182	22,224	14,174	9,937	25,502	11,989	25,617	10,891	12,298	86,297
% White	48%	32%	43%	32%	23%	54%	25%	53%	23%	26%	36%

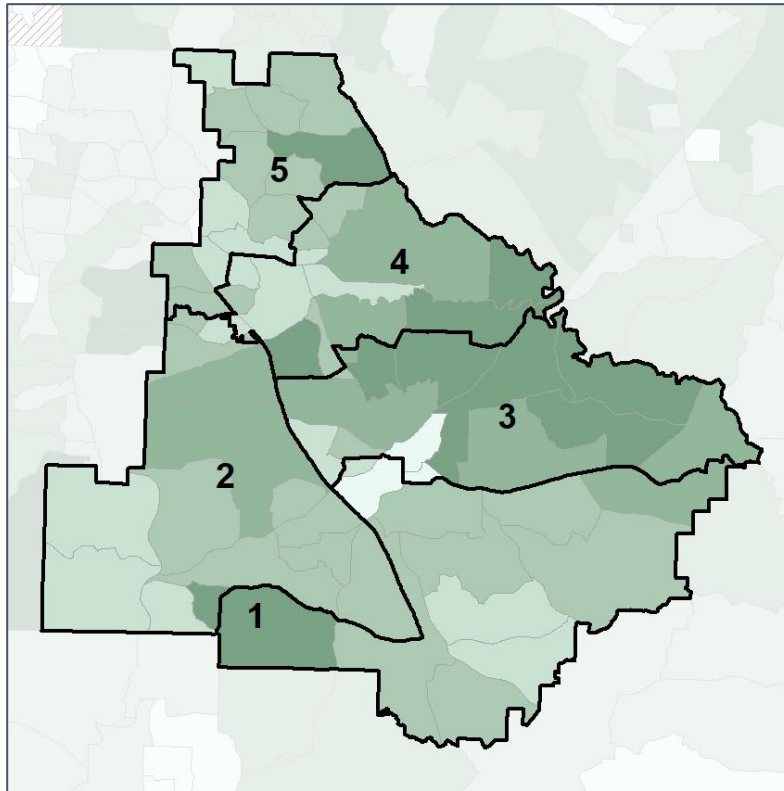


Henry Co. Commission & School Board

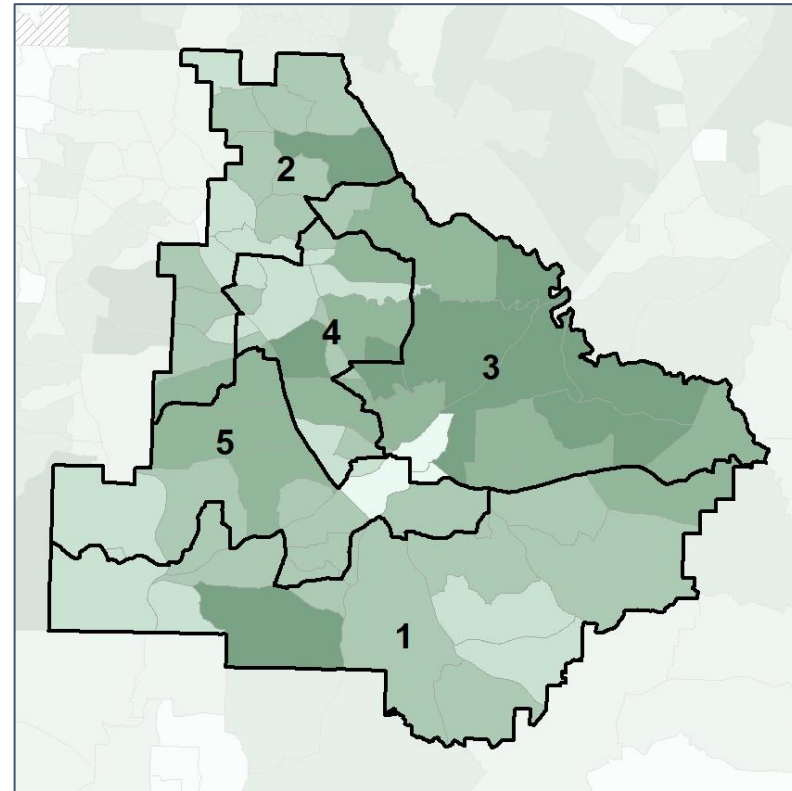
Median Household Income by Census Tract



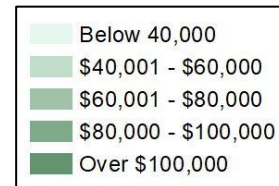
2012 Map



2022 Map*



	1	2	3	4	5	1*	2*	3*	4*	5*	County
Population	47,572	53,666	52,270	44,161	43,043	47,610	48,644	48,508	48,309	47,641	240,712
% API	1%	4%	2%	6%	4%	1%	5%	2%	5%	3%	3%
% Black	40%	52%	43%	50%	59%	33%	57%	35%	58%	59%	48%
% Latino	7%	8%	8%	7%	9%	7%	9%	6%	9%	8%	8%
% Other	5%	5%	5%	5%	4%	5%	4%	5%	5%	5%	5%
% White	48%	32%	43%	32%	23%	54%	25%	53%	23%	26%	36%
Median Income	\$67,000	\$69,000	\$91,000	\$82,000	\$68,000	\$72,000	\$66,000	\$100,000	\$75,000	\$67,000	\$71,000
% Renter	28%	29%	27%	32%	30%	19%	32%	12%	46%	34%	29%
% Youth	25%	20%	22%	19%	21%	22%	21%	19%	22%	23%	21%

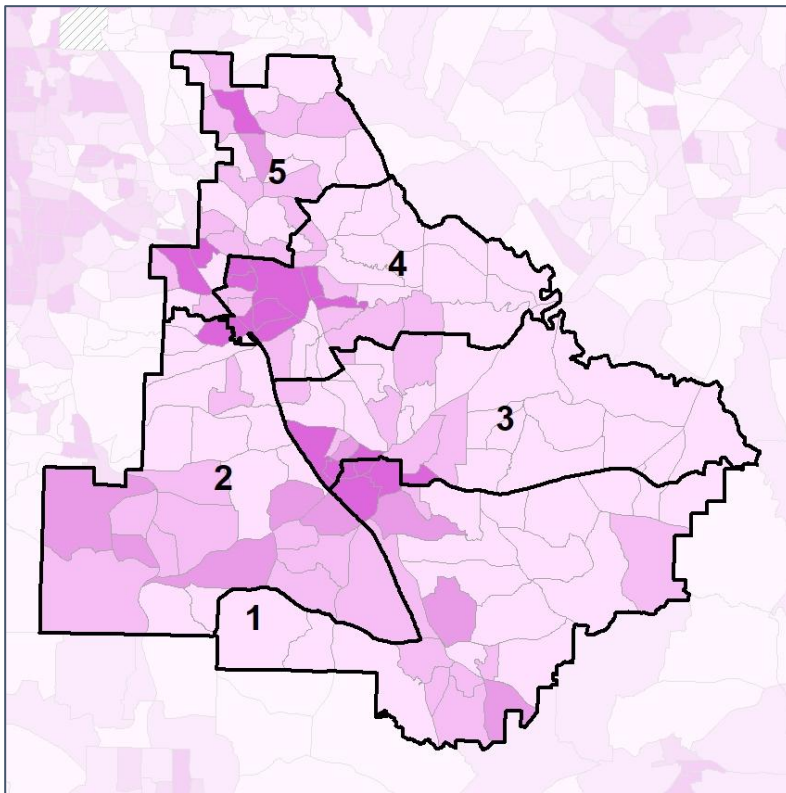


Henry Co. Commission & School Board

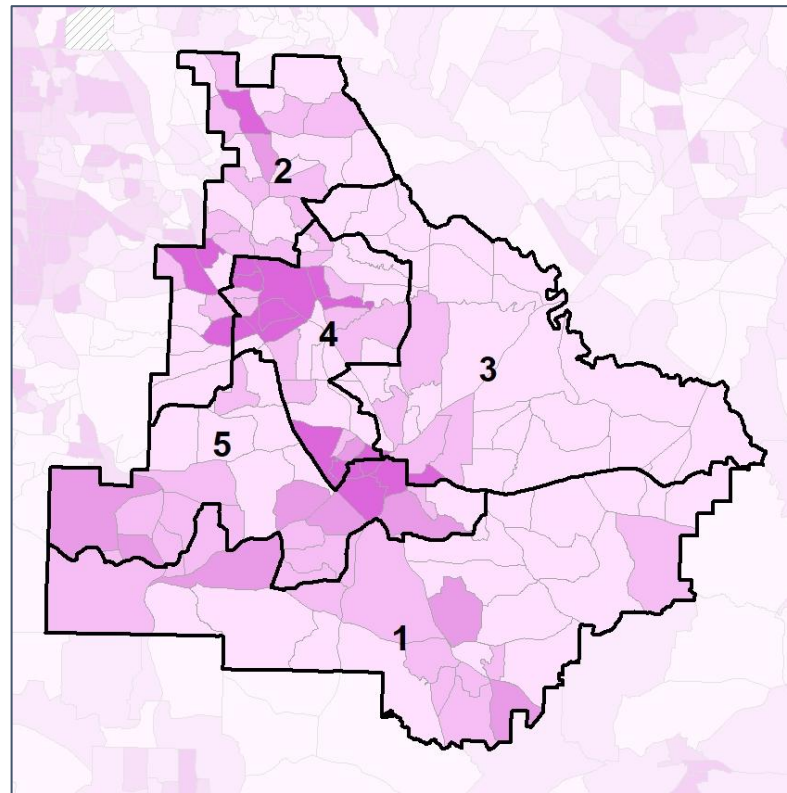
% Renter by Census Block Group



2012 Map



2022 Map*



	1	2	3	4	5	1*	2*	3*	4*	5*	County
Population	47,572	53,666	52,270	44,161	43,043	47,610	48,644	48,508	48,309	47,641	240,712
% API	1%	4%	2%	6%	4%	1%	5%	2%	5%	3%	3%
% Black	40%	52%	43%	50%	59%	33%	57%	35%	58%	59%	48%
% Latino	7%	8%	8%	7%	9%	7%	9%	6%	9%	8%	8%
% Other	5%	5%	5%	5%	4%	5%	4%	5%	5%	5%	5%
% White	48%	32%	43%	32%	23%	54%	25%	53%	23%	26%	36%
Median Income	\$67,000	\$69,000	\$91,000	\$82,000	\$68,000	\$72,000	\$66,000	\$100,000	\$75,000	\$67,000	\$71,000
% Renter	28%	29%	27%	32%	30%	19%	32%	12%	46%	34%	29%
% Youth	25%	20%	22%	19%	21%	22%	21%	19%	22%	23%	21%

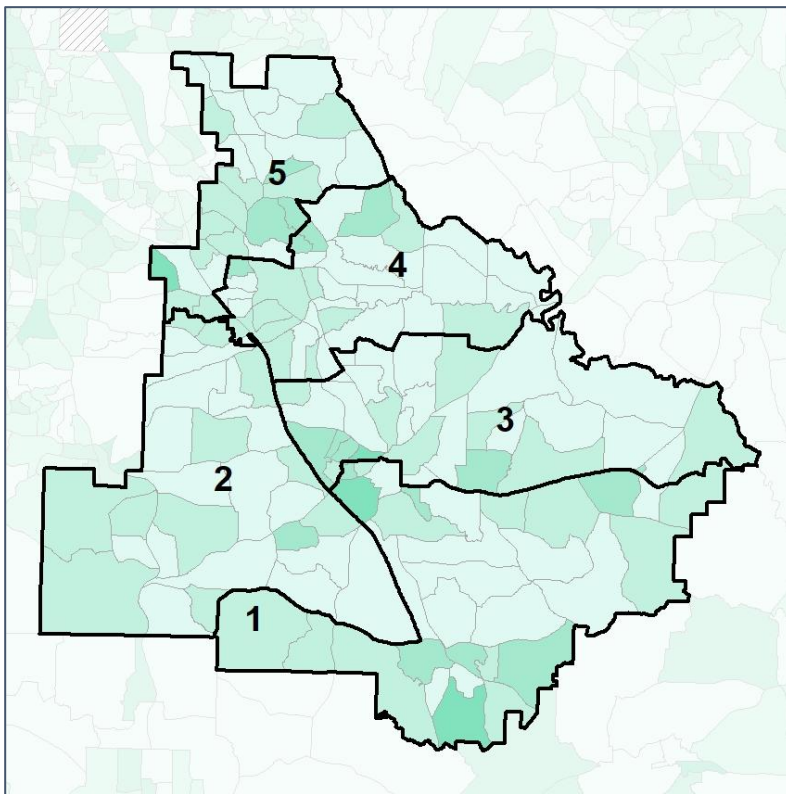


Henry Co. Commission & School Board

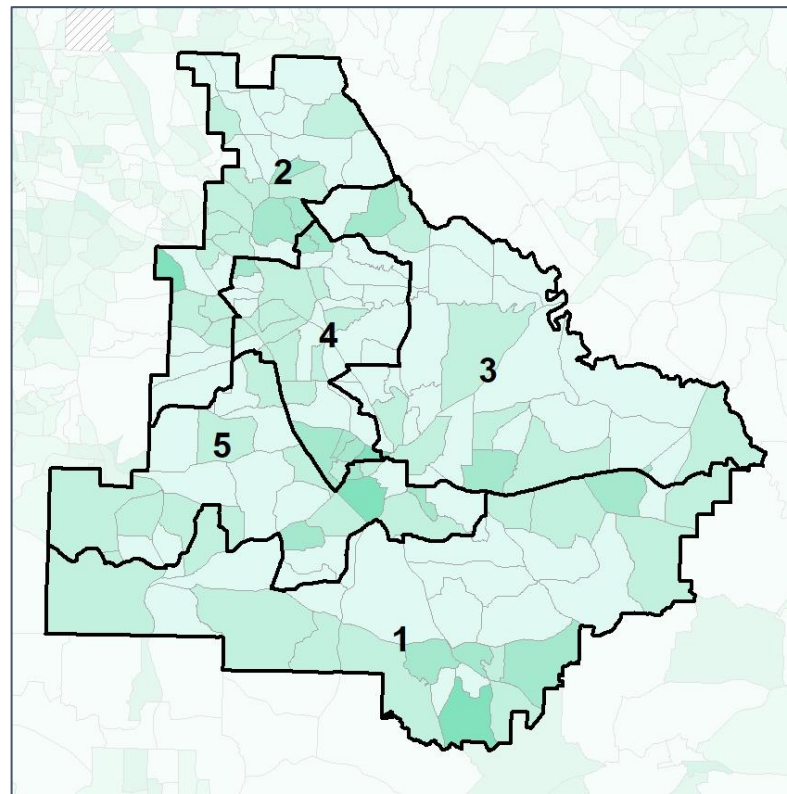
% Youth (18-34) by Census Block Group



2012 Map



2022 Map*



	1	2	3	4	5	1*	2*	3*	4*	5*	County
Population	47,572	53,666	52,270	44,161	43,043	47,610	48,644	48,508	48,309	47,641	240,712
% API	1%	4%	2%	6%	4%	1%	5%	2%	5%	3%	3%
% Black	40%	52%	43%	50%	59%	33%	57%	35%	58%	59%	48%
% Latino	7%	8%	8%	7%	9%	7%	9%	6%	9%	8%	8%
% Other	5%	5%	5%	5%	4%	5%	4%	5%	5%	5%	5%
% White	48%	32%	43%	32%	23%	54%	25%	53%	23%	26%	36%
Median Income	\$67,000	\$69,000	\$91,000	\$82,000	\$68,000	\$72,000	\$66,000	\$100,000	\$75,000	\$67,000	\$71,000
% Renter	28%	29%	27%	32%	30%	19%	32%	12%	46%	34%	29%
% Youth	25%	20%	22%	19%	21%	22%	21%	19%	22%	23%	21%

