



Demographic Overview

Racial Breakdown in Harris County

Harris County	2010	2020	% Change
Total Population	32,024	34,668	8%
AAPI	297	409	38%
Black	5,457	5,170	-5%
Latino	872	1,417	63%
Other/Mixed Race	550	1,747	218%
POC	7,176	8,743	22%
White	24,848	25,925	4%

*Note: The use of "Other" in these statistics combines those who identify as Native American, Mixed Race, and "Other" race





Population Gain

Change in Population in Georgia by County



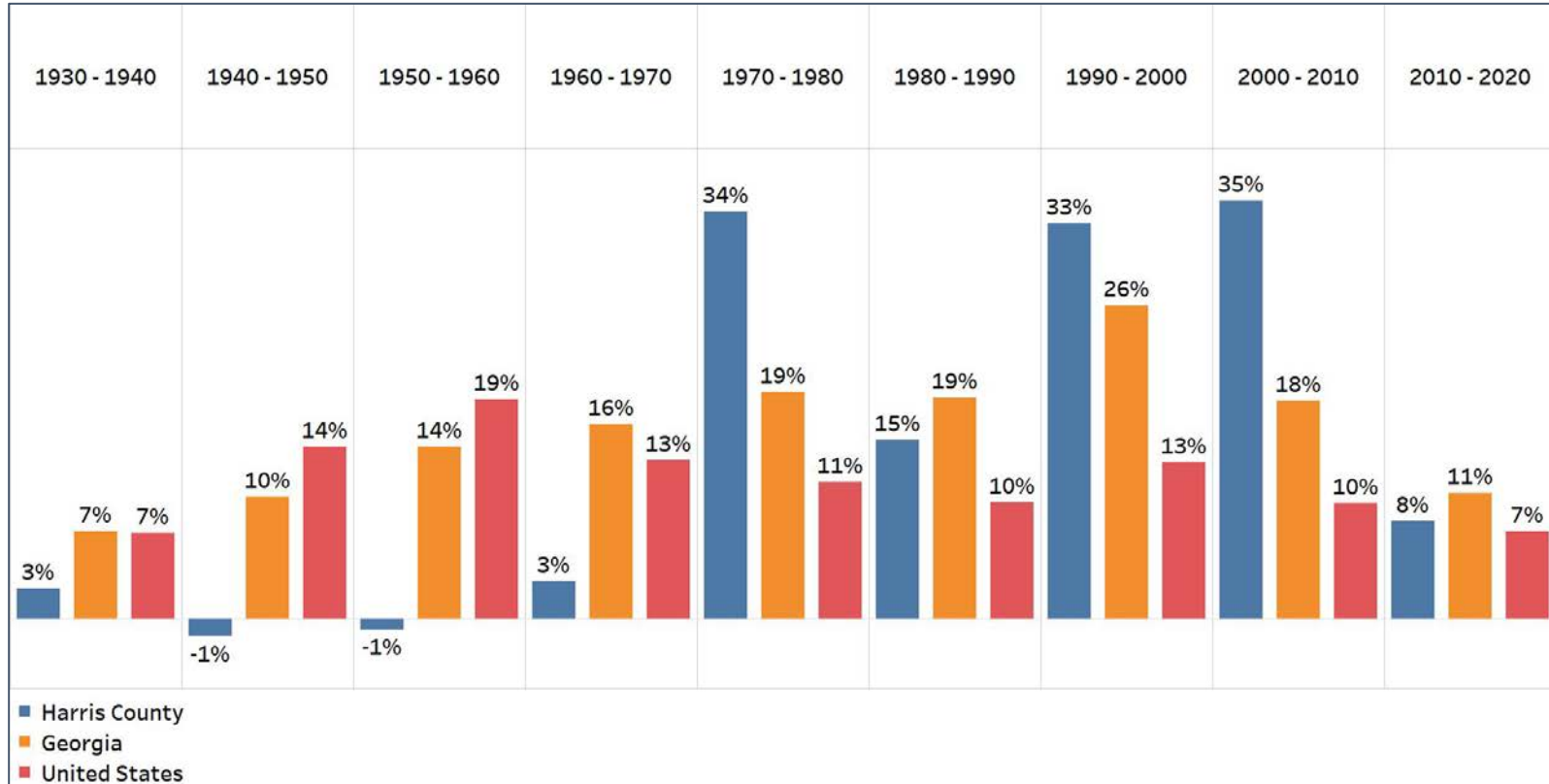
- Georgia is experiencing rapid population growth in the Atlanta, Augusta, and Savannah regions of the state





Population Gain

Change in Population by Decade

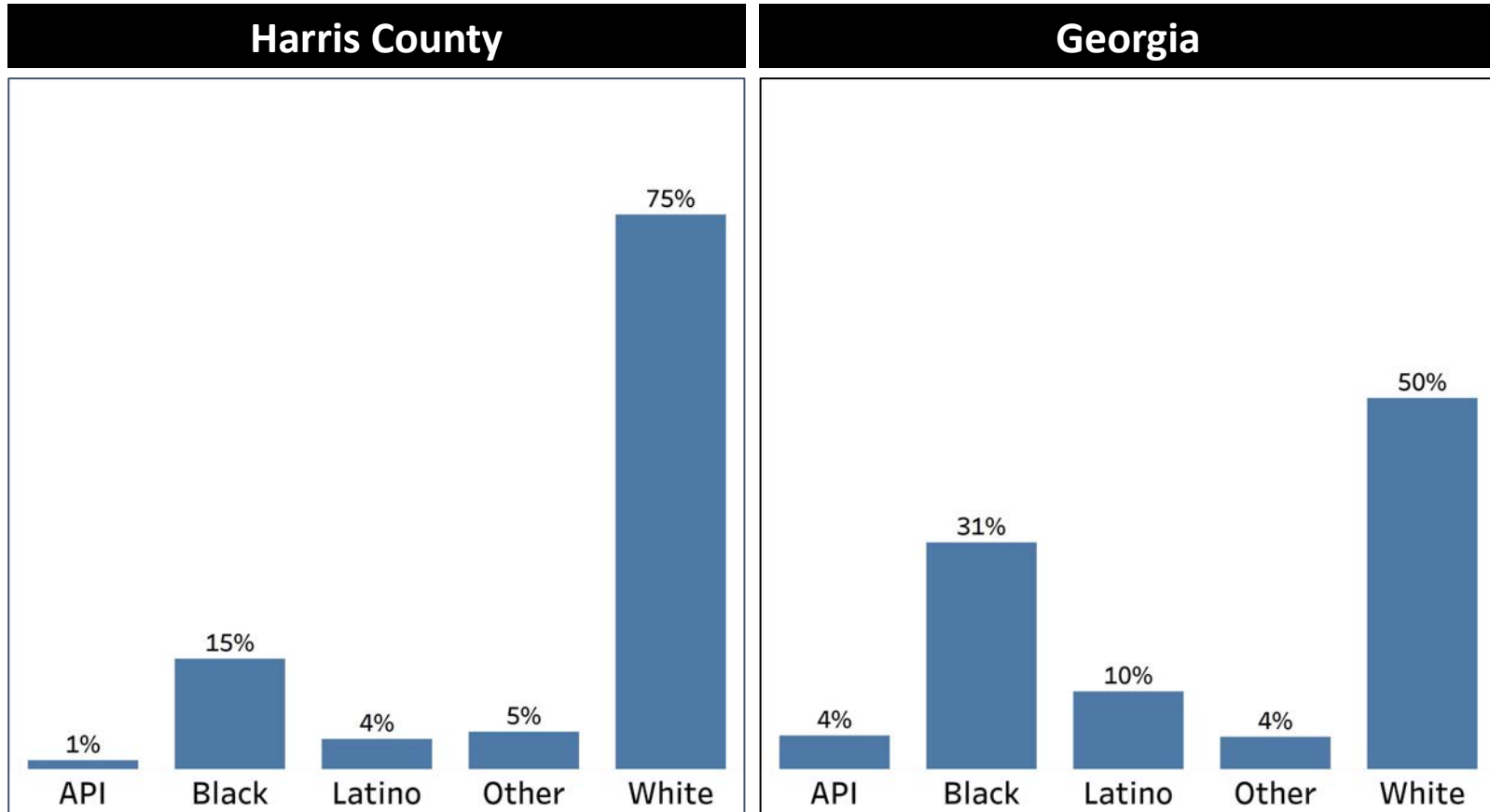


- Harris County had a strong surge in population from 1970-2010
- The last decade was the slowest growth Harris County had since 1970, but was still somewhat significant



Demographics

Comparison between Harris County and Georgia

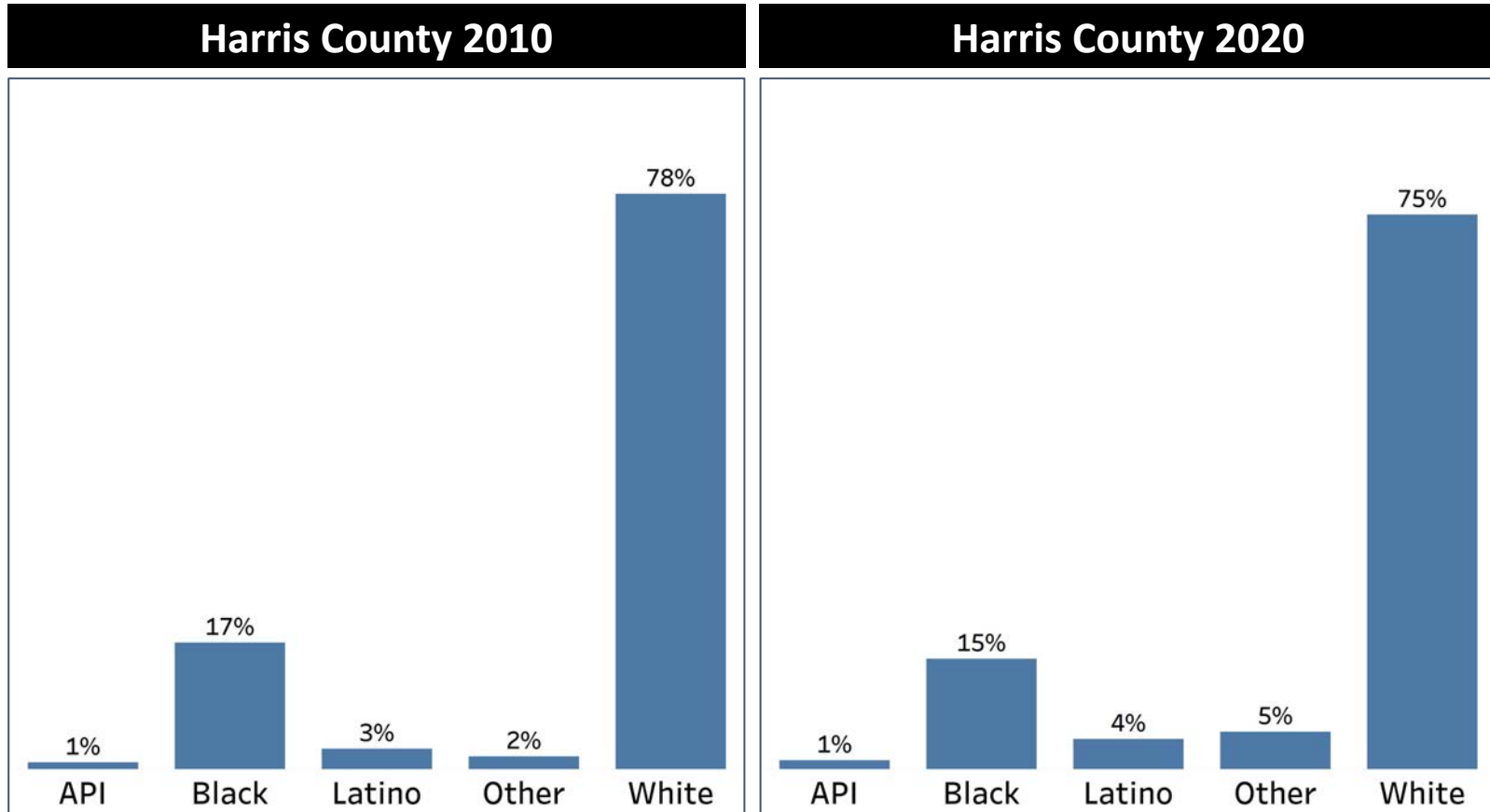


- Harris County is $\frac{3}{4}$ White, and has about half the population of Black and Latino groups in the county compared to Georgia's overall share



Demographics

2010 vs 2020 Demographics in Harris County



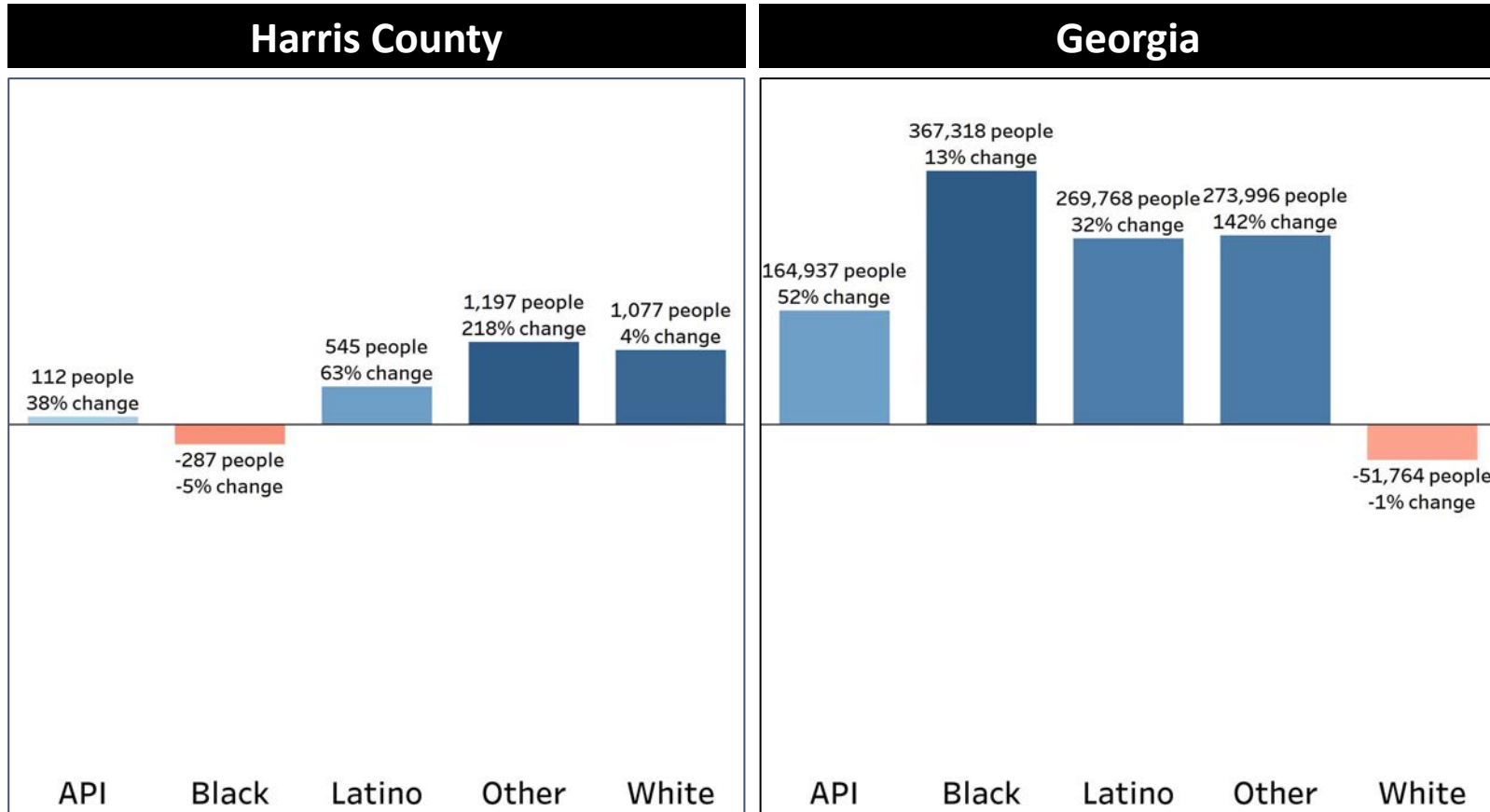
- Harris County had slight declines in the share of both the Black and White populations, while gaining in both the Latino and Other populations





Demographics

Population Change by Race (2020 - 2010)



- Only the Black community declined in Harris County, while both the Latino and Other populations had higher growth rates than Georgia overall

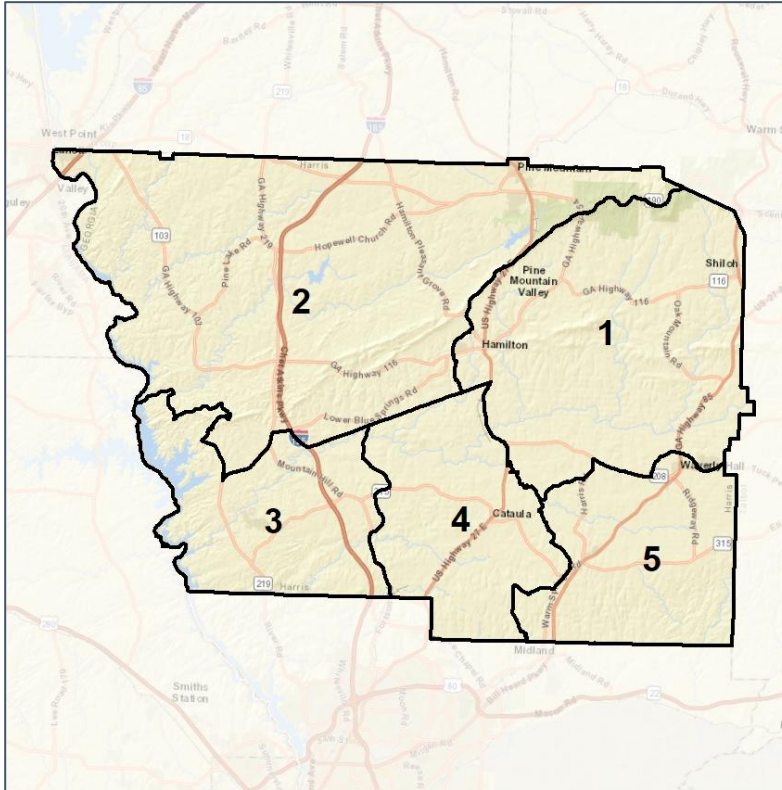


Harris County Commission

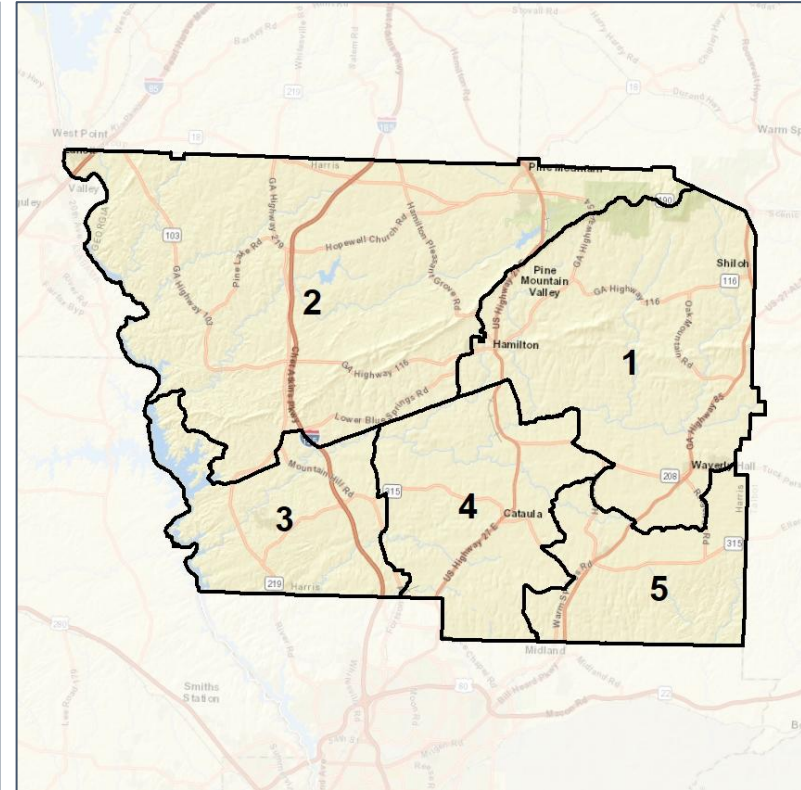
Context



2012 Map



2022 Map*



	1	2	3	4	5	1	2	3	4	5	County
Population	6,755	6,190	7,350	6,601	7,772	6,966	6,898	6,950	6,906	6,948	34,668
API	1%	1%	1%	1%	1%	1%	1%	1%	1%	1%	1%
Black	18%	24%	6%	10%	17%	19%	23%	6%	11%	15%	15%
Latino	4%	2%	5%	5%	4%	3%	2%	5%	5%	5%	4%
Other	6%	5%	4%	5%	5%	5%	5%	4%	6%	5%	5%
White	72%	67%	83%	78%	73%	72%	68%	83%	77%	74%	75%
Population Gain	618	14	674	265	1,073	211	708	-400	305	-824	*
Population % Gain	10%	0%	10%	4%	16%	3%	11%	-5%	5%	-11%	*
Net POC Gain	503	12	324	385	343	50	183	-63	158	-328	*
Net POC % Gain	36%	1%	35%	37%	19%	3%	9%	-5%	11%	-15%	*



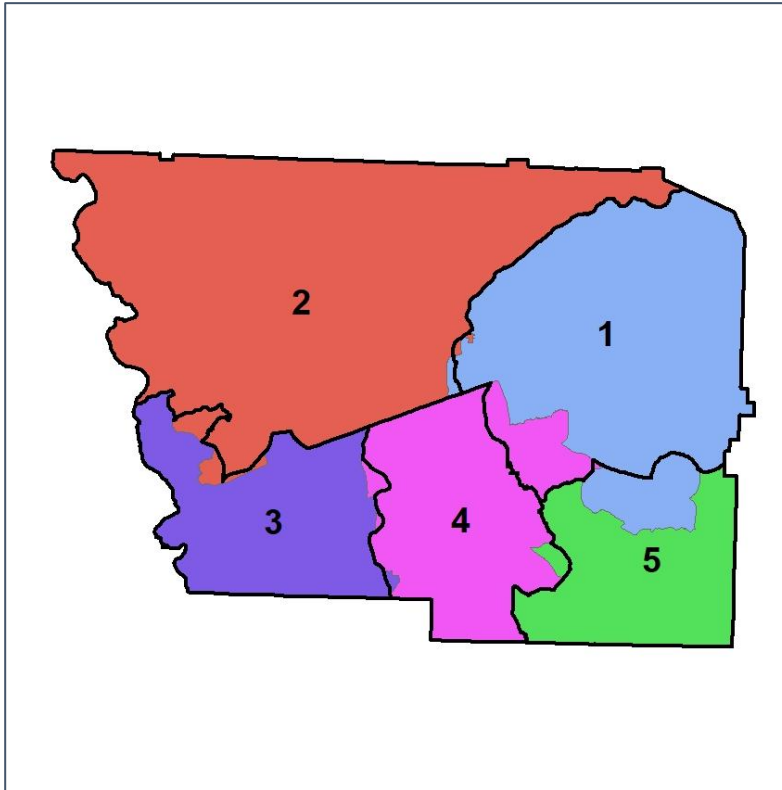
Source:
2020 Decennial Census
2020 ACS 5-Year Dataset

Harris County Commission

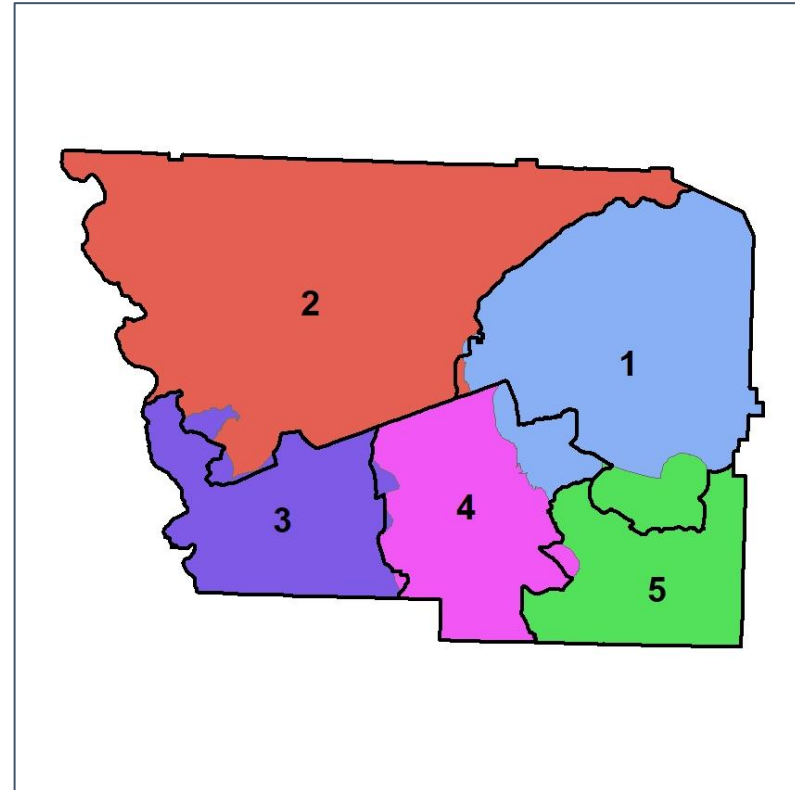
Changes in Redistricting



2012 Map (2022 in Colors)



2022 Map* (2012 in Colors)



	1	2	3	4	5	1	2	3	4	5	County
Population	6,755	6,190	7,350	6,601	7,772	6,966	6,898	6,950	6,906	6,948	34,668
API	1%	1%	1%	1%	1%	1%	1%	1%	1%	1%	1%
Black	18%	24%	6%	10%	17%	19%	23%	6%	11%	15%	15%
Latino	4%	2%	5%	5%	4%	3%	2%	5%	5%	5%	4%
Other	6%	5%	4%	5%	5%	5%	5%	4%	6%	5%	5%
White	72%	67%	83%	78%	73%	72%	68%	83%	77%	74%	75%
Population Gain	618	14	674	265	1,073	211	708	-400	305	-824	*
Population % Gain	10%	0%	10%	4%	16%	3%	11%	-5%	5%	-11%	*
Net POC Gain	503	12	324	385	343	50	183	-63	158	-328	*
Net POC % Gain	36%	1%	35%	37%	19%	3%	9%	-5%	11%	-15%	*

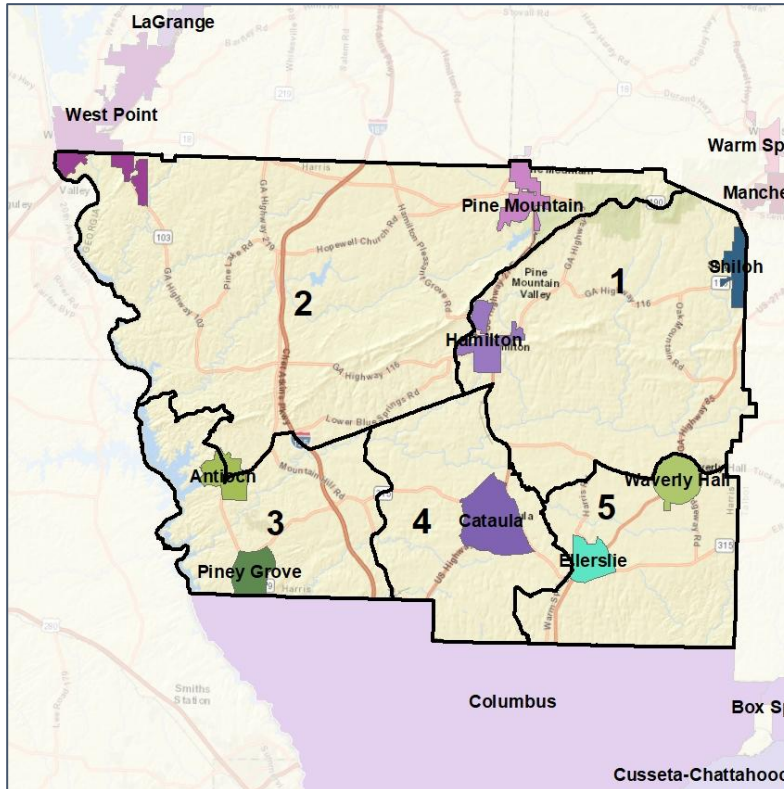


Harris County Commission

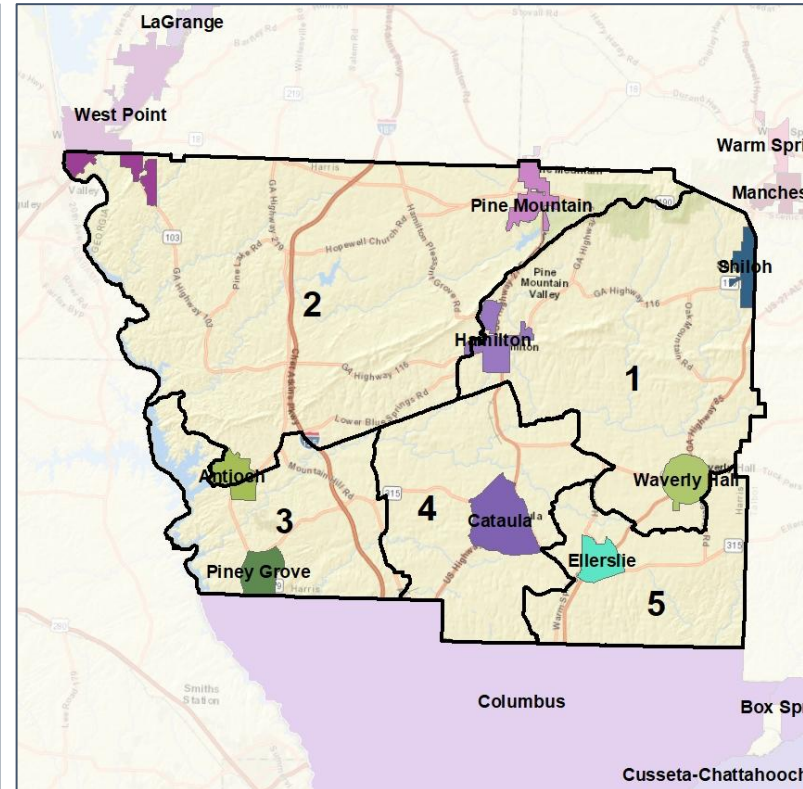
Cities and Places



2012 Map



2022 Map*



	1	2	3	4	5	1	2	3	4	5	County
Population	6,755	6,190	7,350	6,601	7,772	6,966	6,898	6,950	6,906	6,948	34,668
API	1%	1%	1%	1%	1%	1%	1%	1%	1%	1%	1%
Black	18%	24%	6%	10%	17%	19%	23%	6%	11%	15%	15%
Latino	4%	2%	5%	5%	4%	3%	2%	5%	5%	5%	4%
Other	6%	5%	4%	5%	5%	5%	5%	4%	6%	5%	5%
White	72%	67%	83%	78%	73%	72%	68%	83%	77%	74%	75%
Population Gain	618	14	674	265	1,073	211	708	-400	305	-824	*
Population % Gain	10%	0%	10%	4%	16%	3%	11%	-5%	5%	-11%	*
Net POC Gain	503	12	324	385	343	50	183	-63	158	-328	*
Net POC % Gain	36%	1%	35%	37%	19%	3%	9%	-5%	11%	-15%	*

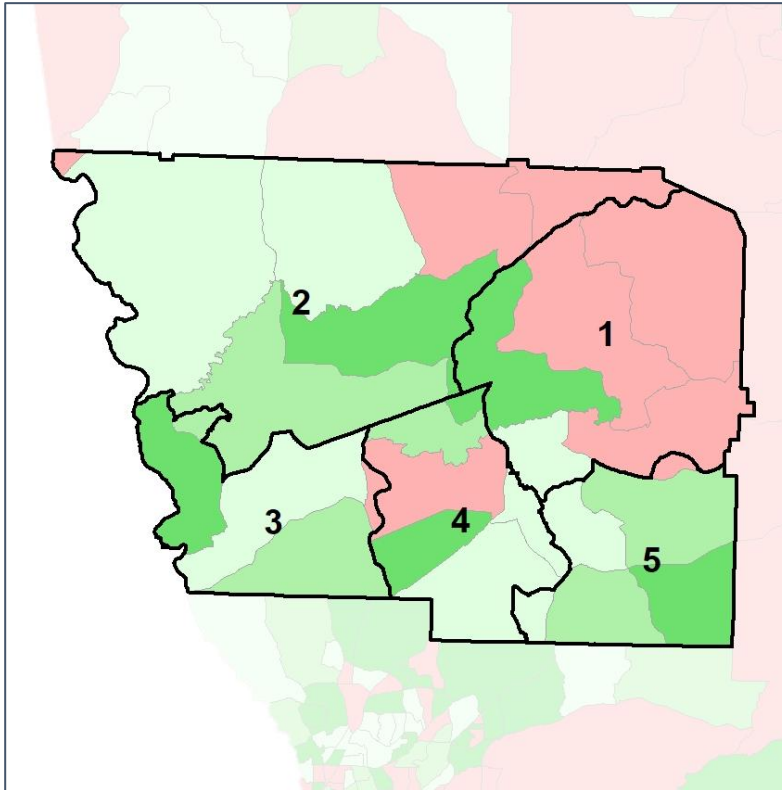


Harris County Commission

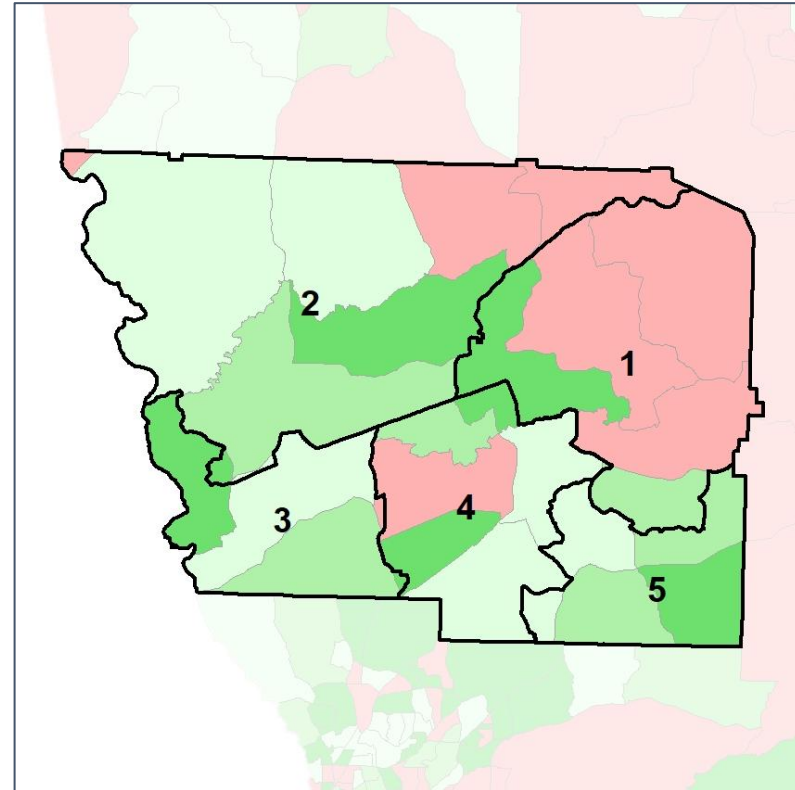
Net Gain in Population (2010 - 2020) by Census Block Group



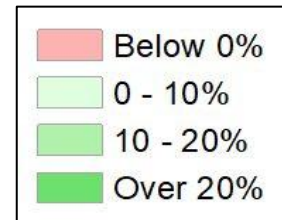
2012 Map



2022 Map*



	1	2	3	4	5	1	2	3	4	5	County
Population	6,755	6,190	7,350	6,601	7,772	6,966	6,898	6,950	6,906	6,948	34,668
API	1%	1%	1%	1%	1%	1%	1%	1%	1%	1%	1%
Black	18%	24%	6%	10%	17%	19%	23%	6%	11%	15%	15%
Latino	4%	2%	5%	5%	4%	3%	2%	5%	5%	5%	4%
Other	6%	5%	4%	5%	5%	5%	5%	4%	6%	5%	5%
White	72%	67%	83%	78%	73%	72%	68%	83%	77%	74%	75%
Population Gain	618	14	674	265	1,073	211	708	-400	305	-824	*
Population % Gain	10%	0%	10%	4%	16%	3%	11%	-5%	5%	-11%	*
Net POC Gain	503	12	324	385	343	50	183	-63	158	-328	*
Net POC % Gain	36%	1%	35%	37%	19%	3%	9%	-5%	11%	-15%	*

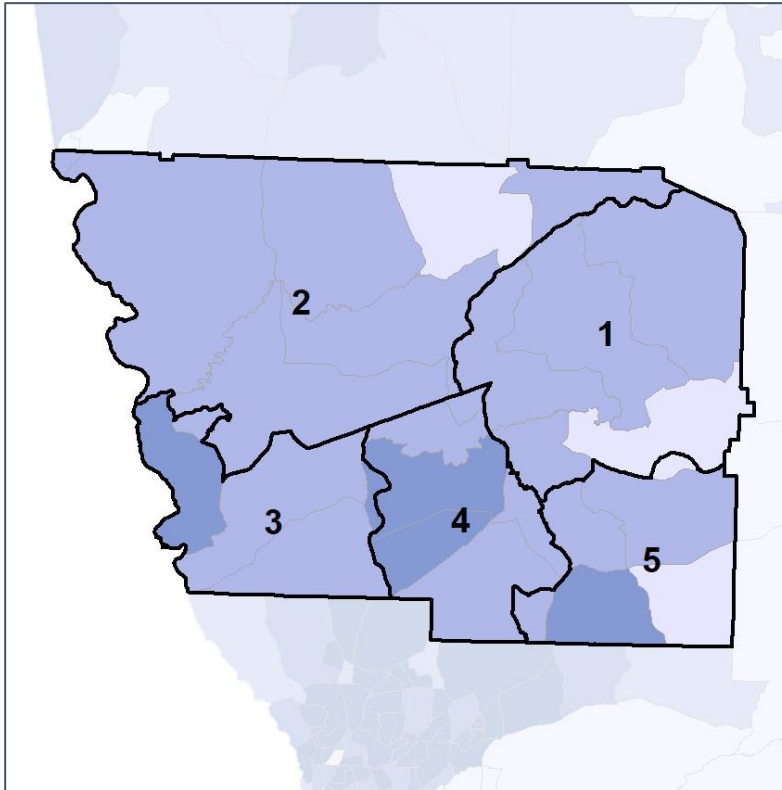


Harris County Commission

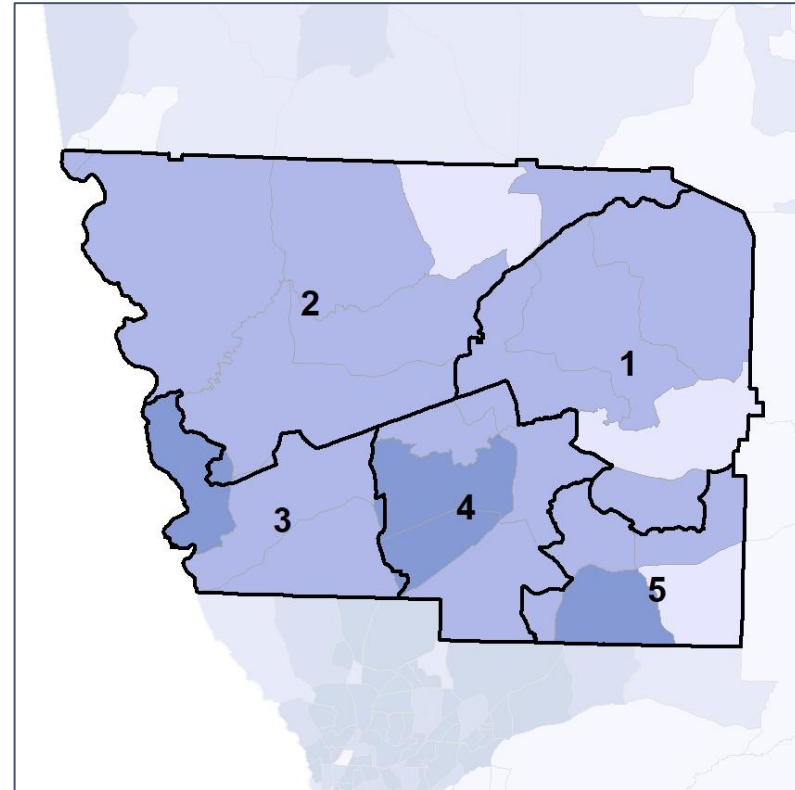
Net Gain in % POC (2020 - 2010) by Census Block Group



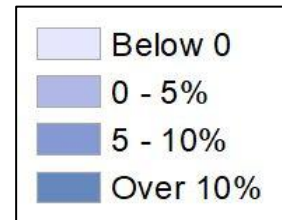
2012 Map



2022 Map*



	1	2	3	4	5	1	2	3	4	5	County
Population	6,755	6,190	7,350	6,601	7,772	6,966	6,898	6,950	6,906	6,948	34,668
API	1%	1%	1%	1%	1%	1%	1%	1%	1%	1%	1%
Black	18%	24%	6%	10%	17%	19%	23%	6%	11%	15%	15%
Latino	4%	2%	5%	5%	4%	3%	2%	5%	5%	5%	4%
Other	6%	5%	4%	5%	5%	5%	5%	4%	6%	5%	5%
White	72%	67%	83%	78%	73%	72%	68%	83%	77%	74%	75%
Population Gain	618	14	674	265	1,073	211	708	-400	305	-824	*
Population % Gain	10%	0%	10%	4%	16%	3%	11%	-5%	5%	-11%	*
Net POC Gain	503	12	324	385	343	50	183	-63	158	-328	*
Net POC % Gain	36%	1%	35%	37%	19%	3%	9%	-5%	11%	-15%	*

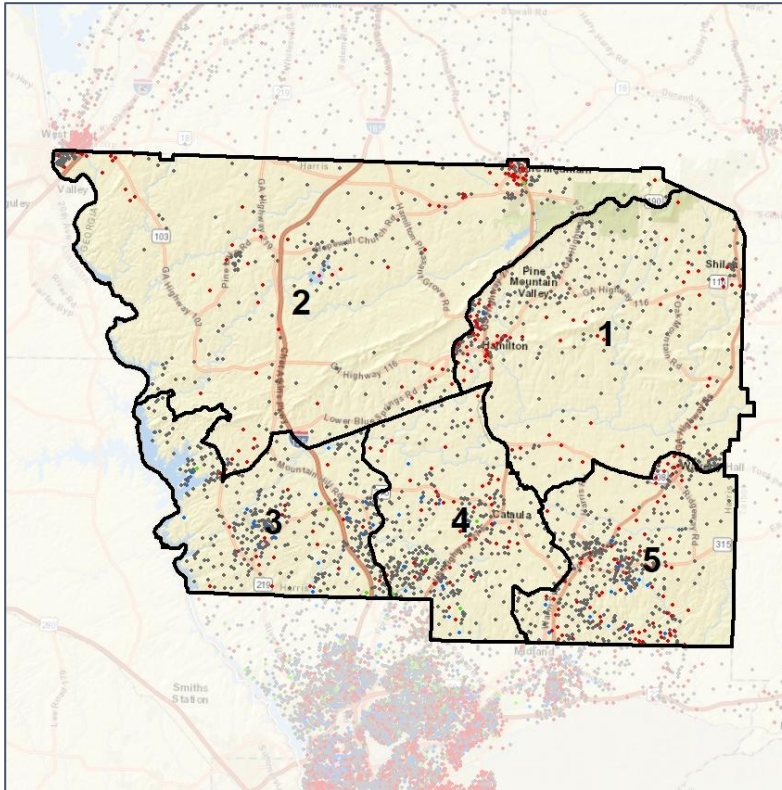


Harris County Commission

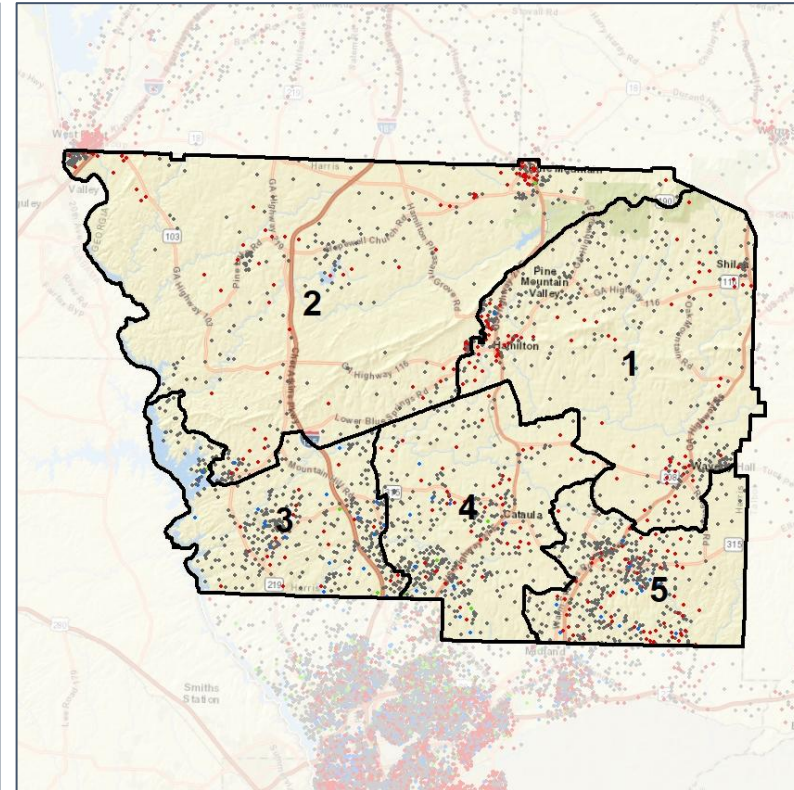
Population Density by Race



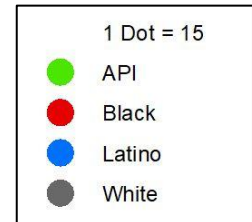
2012 Map



2022 Map*



	1	2	3	4	5	1	2	3	4	5	County
Population	6,755	6,190	7,350	6,601	7,772	6,966	6,898	6,950	6,906	6,948	34,668
API	60	86	98	79	86	51	89	95	92	82	409
% API	1%	1%	1%	1%	1%	1%	1%	1%	1%	1%	1%
Black	1,206	1,506	438	688	1,332	1,301	1,610	421	774	1,064	5,170
% Black	18%	24%	6%	10%	17%	19%	23%	6%	11%	15%	15%
Latino	237	144	395	298	343	232	167	379	317	322	1,417
% Latino	4%	2%	5%	5%	4%	3%	2%	5%	5%	5%	4%
Other	395	297	326	362	367	364	350	299	402	332	1,747
% Other	6%	5%	4%	5%	5%	5%	5%	4%	6%	5%	5%
White	4,857	4,157	6,093	5,174	5,644	5,018	4,682	5,756	5,321	5,148	25,925
% White	72%	67%	83%	78%	73%	72%	68%	83%	77%	74%	75%



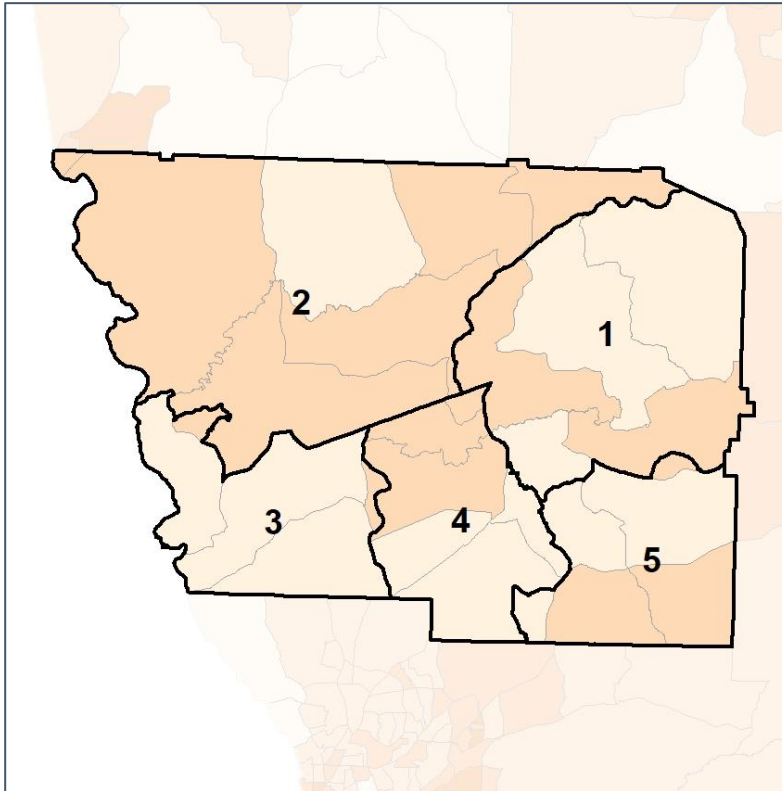
Source:
2020 Decennial Census
2020 ACS 5-Year Dataset

Harris County Commission

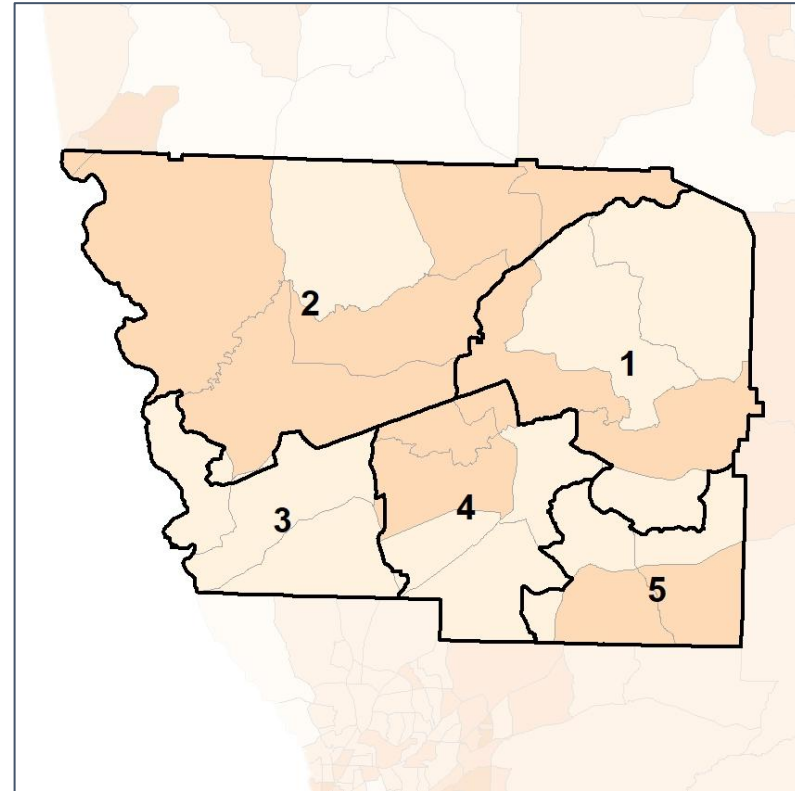
% People of Color by Census Block Group



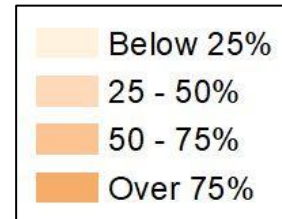
2012 Map



2022 Map*



	1	2	3	4	5	1	2	3	4	5	County
Population	6,755	6,190	7,350	6,601	7,772	6,966	6,898	6,950	6,906	6,948	34,668
API	60	86	98	79	86	51	89	95	92	82	409
% API	1%	1%	1%	1%	1%	1%	1%	1%	1%	1%	1%
Black	1,206	1,506	438	688	1,332	1,301	1,610	421	774	1,064	5,170
% Black	18%	24%	6%	10%	17%	19%	23%	6%	11%	15%	15%
Latino	237	144	395	298	343	232	167	379	317	322	1,417
% Latino	4%	2%	5%	5%	4%	3%	2%	5%	5%	5%	4%
Other	395	297	326	362	367	364	350	299	402	332	1,747
% Other	6%	5%	4%	5%	5%	5%	5%	4%	6%	5%	5%
White	4,857	4,157	6,093	5,174	5,644	5,018	4,682	5,756	5,321	5,148	25,925
% White	72%	67%	83%	78%	73%	72%	68%	83%	77%	74%	75%



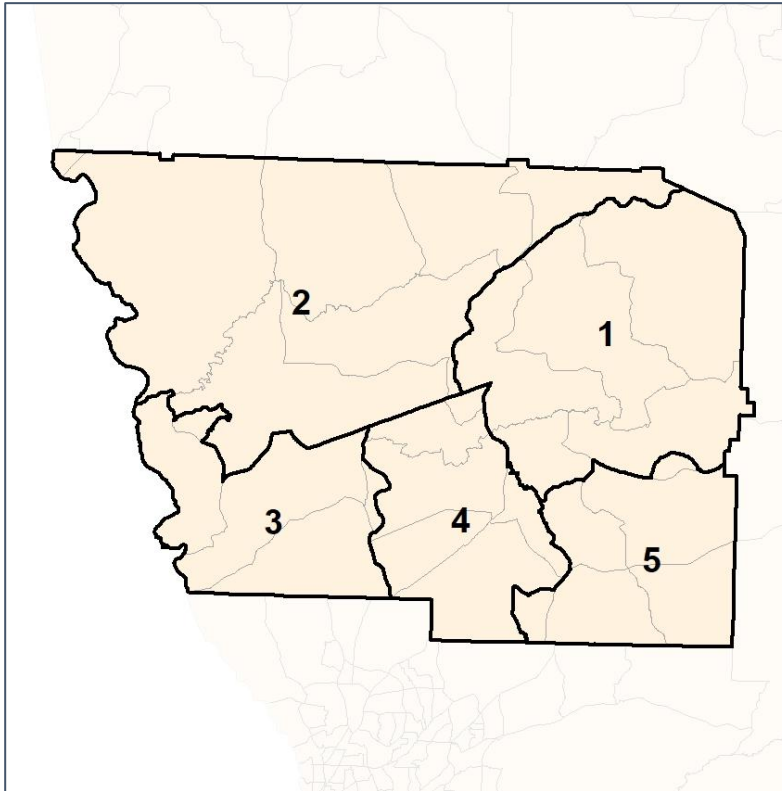
Source:
2020 Decennial Census
2020 ACS 5-Year Dataset

Harris County Commission

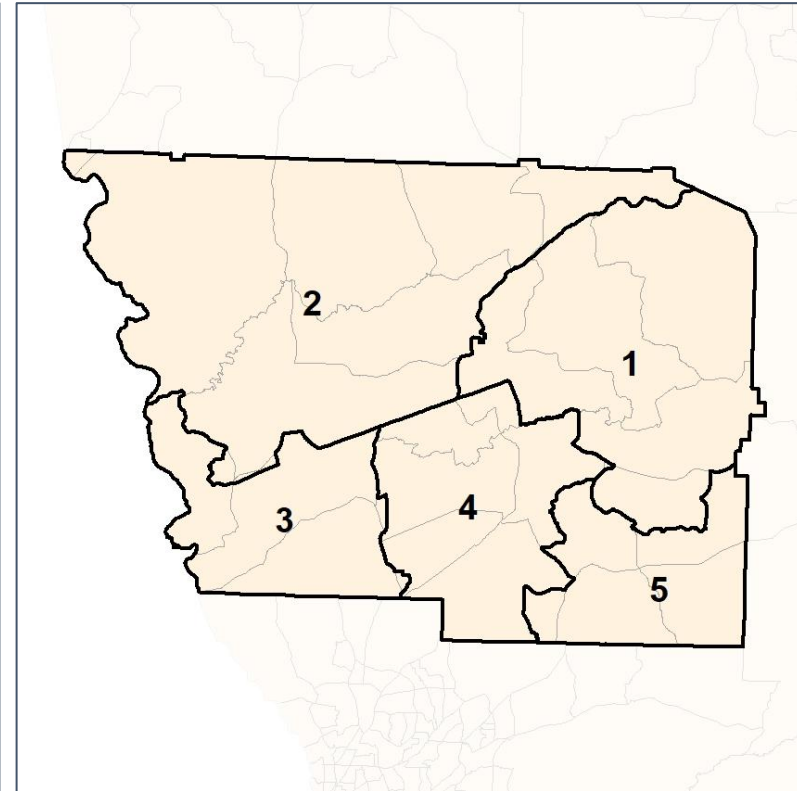
% API by Census Block Group



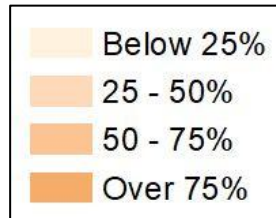
2012 Map



2022 Map*



	1	2	3	4	5	1	2	3	4	5	County
Population	6,755	6,190	7,350	6,601	7,772	6,966	6,898	6,950	6,906	6,948	34,668
API	60	86	98	79	86	51	89	95	92	82	409
% API	1%	1%	1%	1%	1%	1%	1%	1%	1%	1%	1%
Black	1,206	1,506	438	688	1,332	1,301	1,610	421	774	1,064	5,170
% Black	18%	24%	6%	10%	17%	19%	23%	6%	11%	15%	15%
Latino	237	144	395	298	343	232	167	379	317	322	1,417
% Latino	4%	2%	5%	5%	4%	3%	2%	5%	5%	5%	4%
Other	395	297	326	362	367	364	350	299	402	332	1,747
% Other	6%	5%	4%	5%	5%	5%	5%	4%	6%	5%	5%
White	4,857	4,157	6,093	5,174	5,644	5,018	4,682	5,756	5,321	5,148	25,925
% White	72%	67%	83%	78%	73%	72%	68%	83%	77%	74%	75%

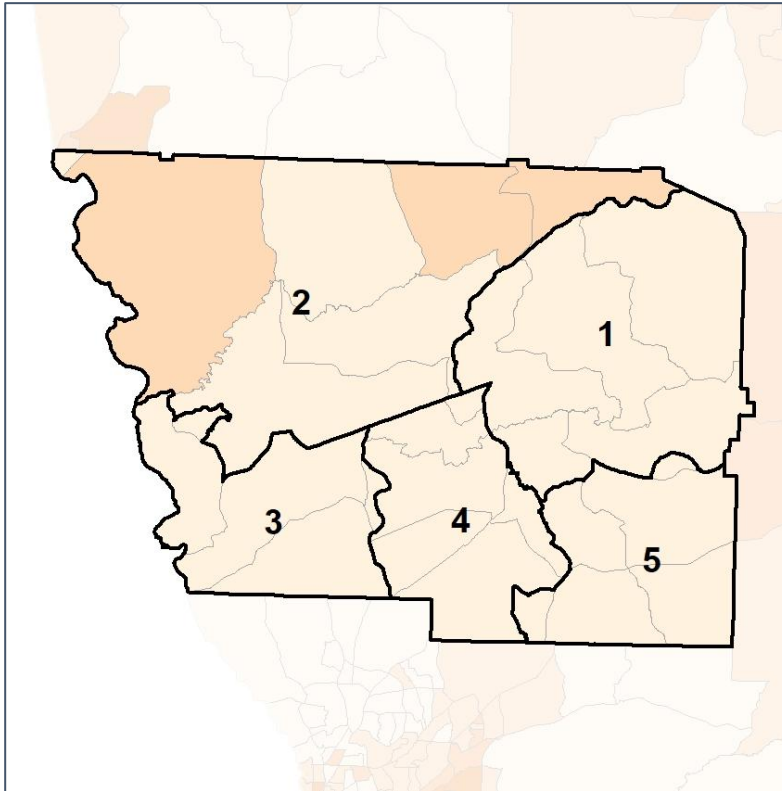


Harris County Commission

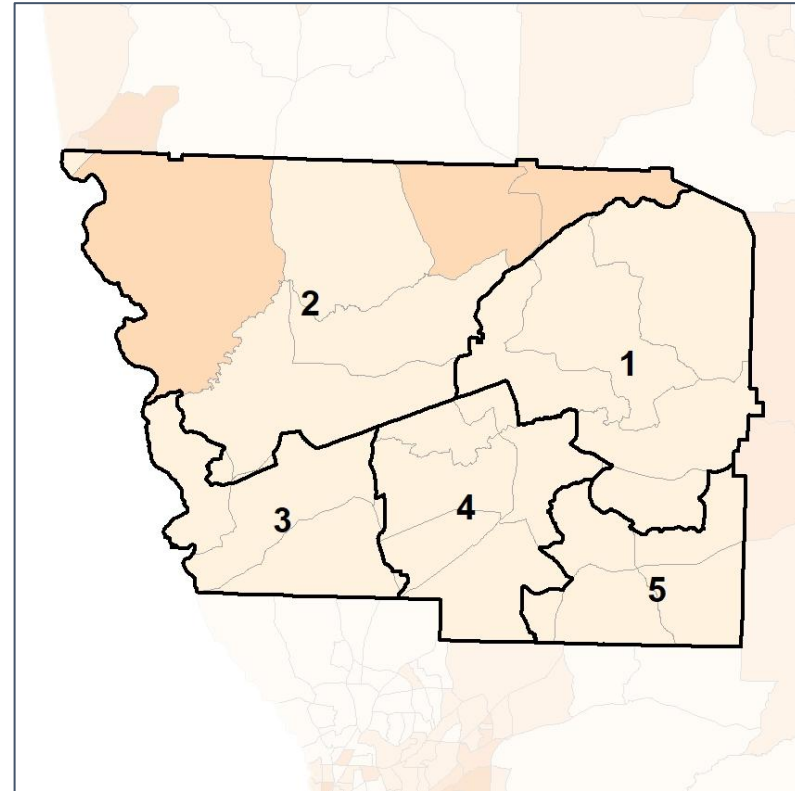
% Black by Census Block Group



2012 Map



2022 Map*



	1	2	3	4	5	1	2	3	4	5	County
Population	6,755	6,190	7,350	6,601	7,772	6,966	6,898	6,950	6,906	6,948	34,668
API	60	86	98	79	86	51	89	95	92	82	409
% API	1%	1%	1%	1%	1%	1%	1%	1%	1%	1%	1%
Black	1,206	1,506	438	688	1,332	1,301	1,610	421	774	1,064	5,170
% Black	18%	24%	6%	10%	17%	19%	23%	6%	11%	15%	15%
Latino	237	144	395	298	343	232	167	379	317	322	1,417
% Latino	4%	2%	5%	5%	4%	3%	2%	5%	5%	5%	4%
Other	395	297	326	362	367	364	350	299	402	332	1,747
% Other	6%	5%	4%	5%	5%	5%	5%	4%	6%	5%	5%
White	4,857	4,157	6,093	5,174	5,644	5,018	4,682	5,756	5,321	5,148	25,925
% White	72%	67%	83%	78%	73%	72%	68%	83%	77%	74%	75%

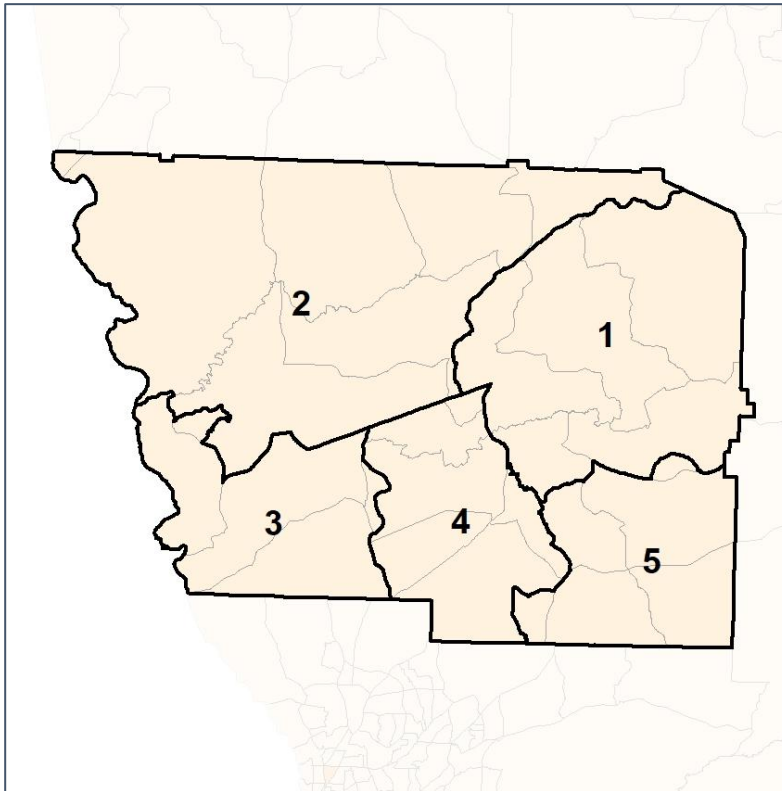


Harris County Commission

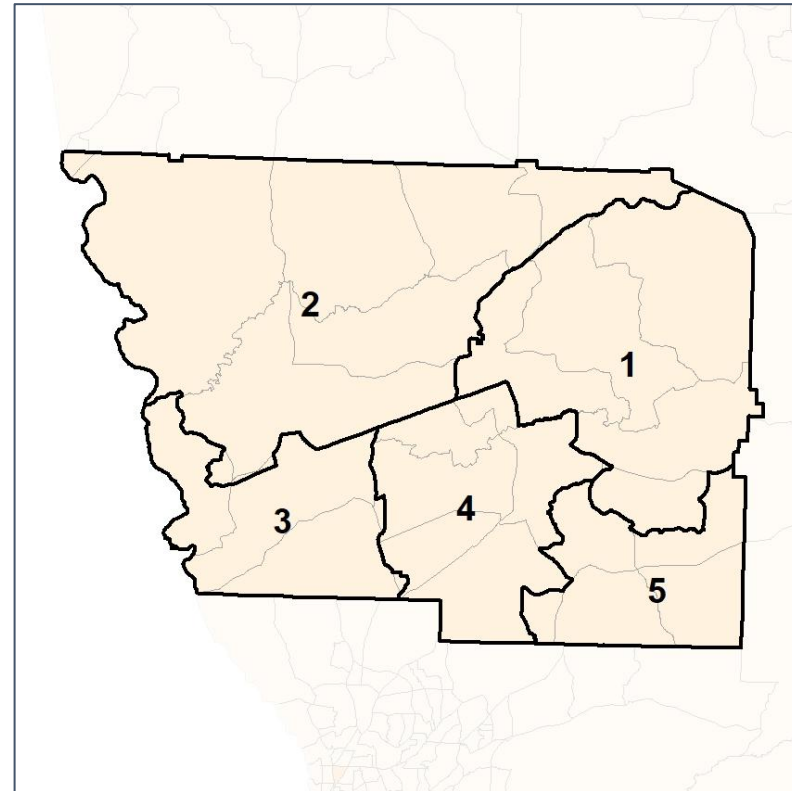
% Latino by Census Block Group



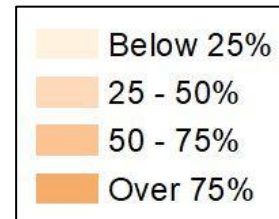
2012 Map



2022 Map*



	1	2	3	4	5	1	2	3	4	5	County
Population	6,755	6,190	7,350	6,601	7,772	6,966	6,898	6,950	6,906	6,948	34,668
API	60	86	98	79	86	51	89	95	92	82	409
% API	1%	1%	1%	1%	1%	1%	1%	1%	1%	1%	1%
Black	1,206	1,506	438	688	1,332	1,301	1,610	421	774	1,064	5,170
% Black	18%	24%	6%	10%	17%	19%	23%	6%	11%	15%	15%
Latino	237	144	395	298	343	232	167	379	317	322	1,417
% Latino	4%	2%	5%	5%	4%	3%	2%	5%	5%	5%	4%
Other	395	297	326	362	367	364	350	299	402	332	1,747
% Other	6%	5%	4%	5%	5%	5%	5%	4%	6%	5%	5%
White	4,857	4,157	6,093	5,174	5,644	5,018	4,682	5,756	5,321	5,148	25,925
% White	72%	67%	83%	78%	73%	72%	68%	83%	77%	74%	75%

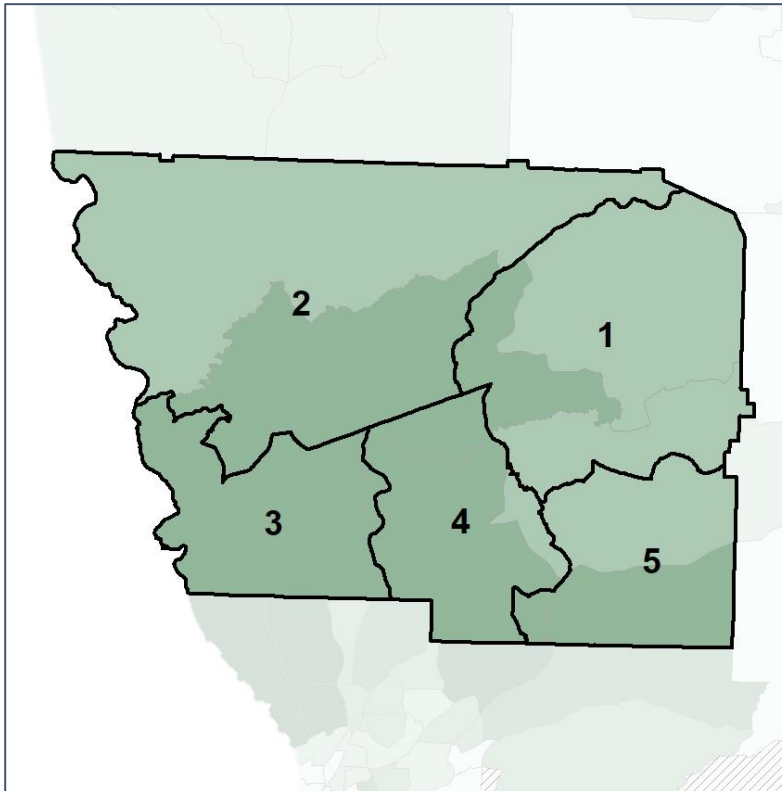


Harris County Commission

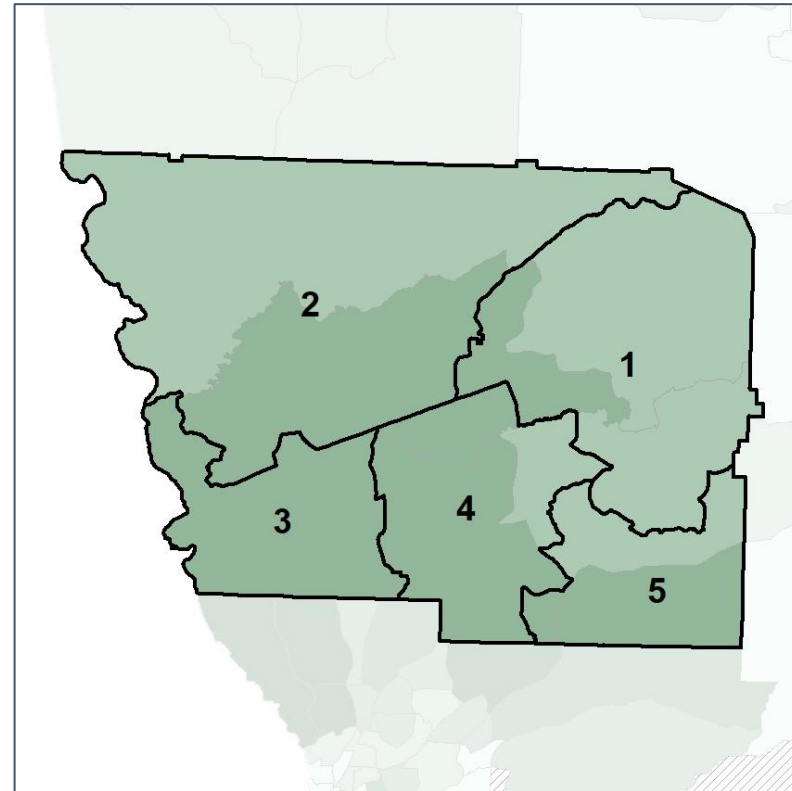
Median Household Income by Census Tract



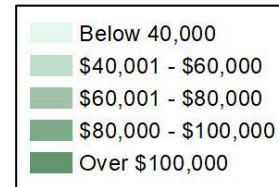
2012 Map



2022 Map*



	1	2	3	4	5	1	2	3	4	5	County
Population	6,755	6,190	7,350	6,601	7,772	6,966	6,898	6,950	6,906	6,948	34,668
% API	1%	1%	1%	1%	1%	1%	1%	1%	1%	1%	1%
% Black	18%	24%	6%	10%	17%	19%	23%	6%	11%	15%	15%
% Latino	4%	2%	5%	5%	4%	3%	2%	5%	5%	5%	4%
% Other	6%	5%	4%	5%	5%	5%	5%	4%	6%	5%	5%
% White	72%	67%	83%	78%	73%	72%	68%	83%	77%	74%	75%
Median Income	\$62,000	\$81,000	\$89,000	\$94,000	\$93,000	\$66,000	\$81,000	\$89,000	\$94,000	\$95,000	\$80,000
% Renter	22%	16%	5%	5%	5%	20%	16%	5%	5%	5%	11%
% Youth	19%	20%	23%	15%	18%	20%	20%	23%	15%	18%	19%

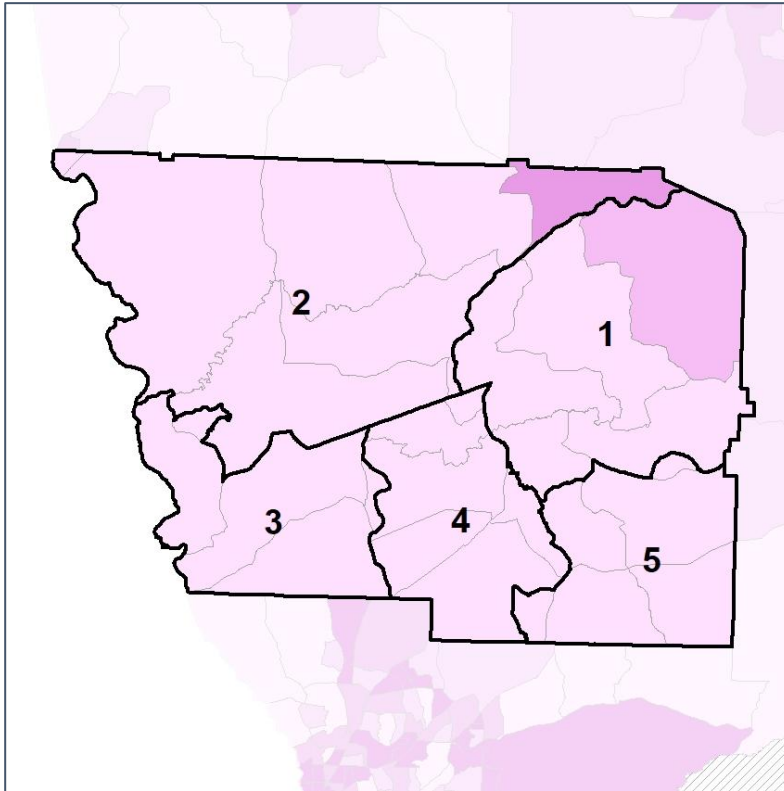


Harris County Commission

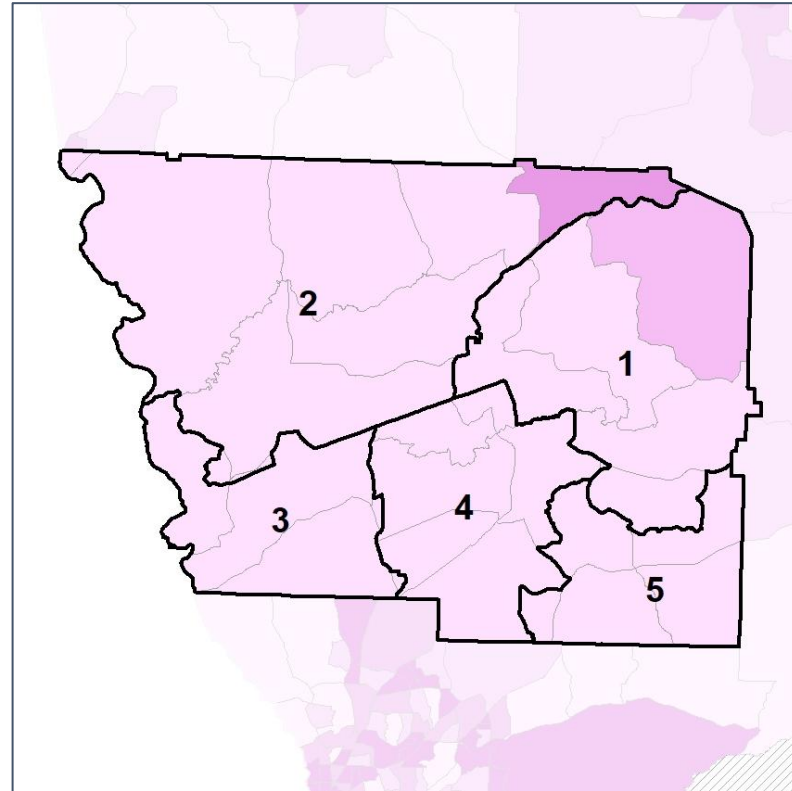
% Renter by Census Block Group



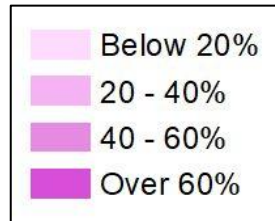
2012 Map



2022 Map*



	1	2	3	4	5	1	2	3	4	5	County
Population	6,755	6,190	7,350	6,601	7,772	6,966	6,898	6,950	6,906	6,948	34,668
% API	1%	1%	1%	1%	1%	1%	1%	1%	1%	1%	1%
% Black	18%	24%	6%	10%	17%	19%	23%	6%	11%	15%	15%
% Latino	4%	2%	5%	5%	4%	3%	2%	5%	5%	5%	4%
% Other	6%	5%	4%	5%	5%	5%	5%	4%	6%	5%	5%
% White	72%	67%	83%	78%	73%	72%	68%	83%	77%	74%	75%
Median Income	\$62,000	\$81,000	\$89,000	\$94,000	\$93,000	\$66,000	\$81,000	\$89,000	\$94,000	\$95,000	\$80,000
% Renter	22%	16%	5%	5%	5%	20%	16%	5%	5%	5%	11%
% Youth	19%	20%	23%	15%	18%	20%	20%	23%	15%	18%	19%

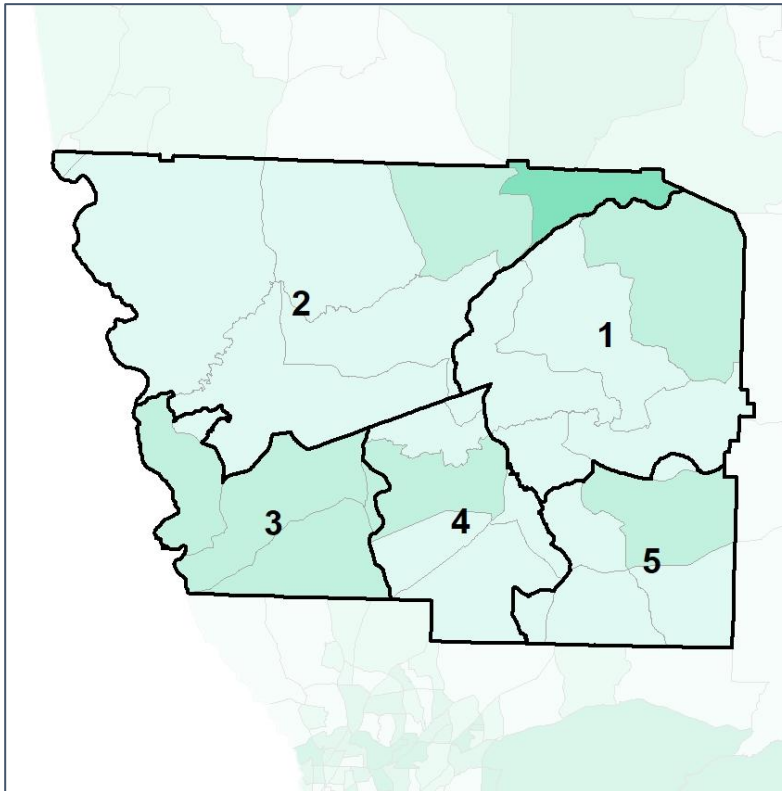


Harris County Commission

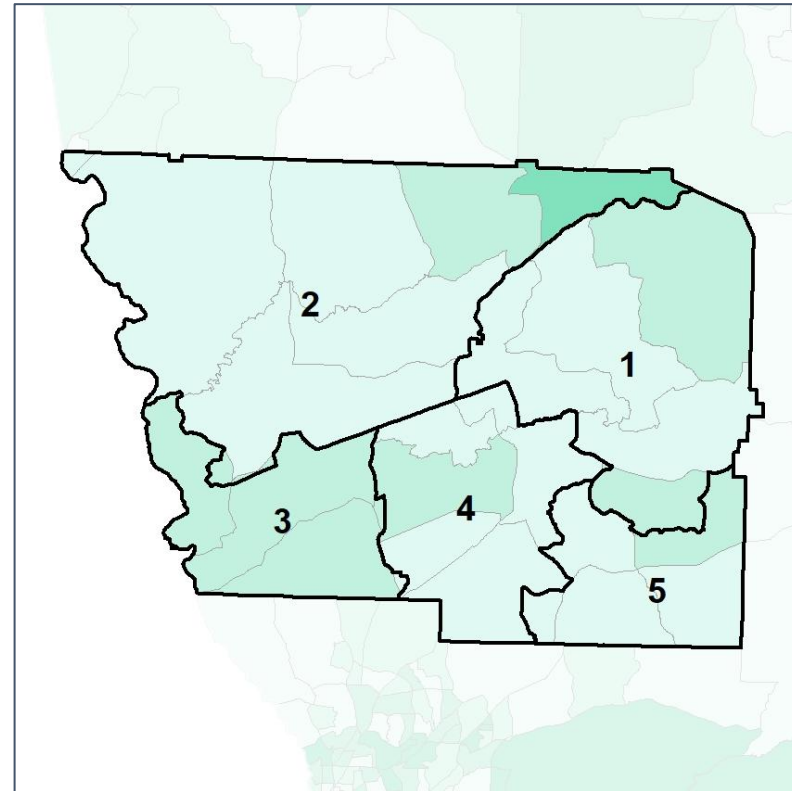
% Youth (18-34) by Census Block Group



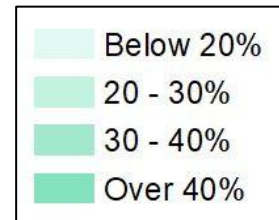
2012 Map



2022 Map*



	1	2	3	4	5	1	2	3	4	5	County
Population	6,755	6,190	7,350	6,601	7,772	6,966	6,898	6,950	6,906	6,948	34,668
% API	1%	1%	1%	1%	1%	1%	1%	1%	1%	1%	1%
% Black	18%	24%	6%	10%	17%	19%	23%	6%	11%	15%	15%
% Latino	4%	2%	5%	5%	4%	3%	2%	5%	5%	5%	4%
% Other	6%	5%	4%	5%	5%	5%	5%	4%	6%	5%	5%
% White	72%	67%	83%	78%	73%	72%	68%	83%	77%	74%	75%
Median Income	\$62,000	\$81,000	\$89,000	\$94,000	\$93,000	\$66,000	\$81,000	\$89,000	\$94,000	\$95,000	\$80,000
% Renter	22%	16%	5%	5%	5%	20%	16%	5%	5%	5%	11%
% Youth	19%	20%	23%	15%	18%	20%	20%	23%	15%	18%	19%

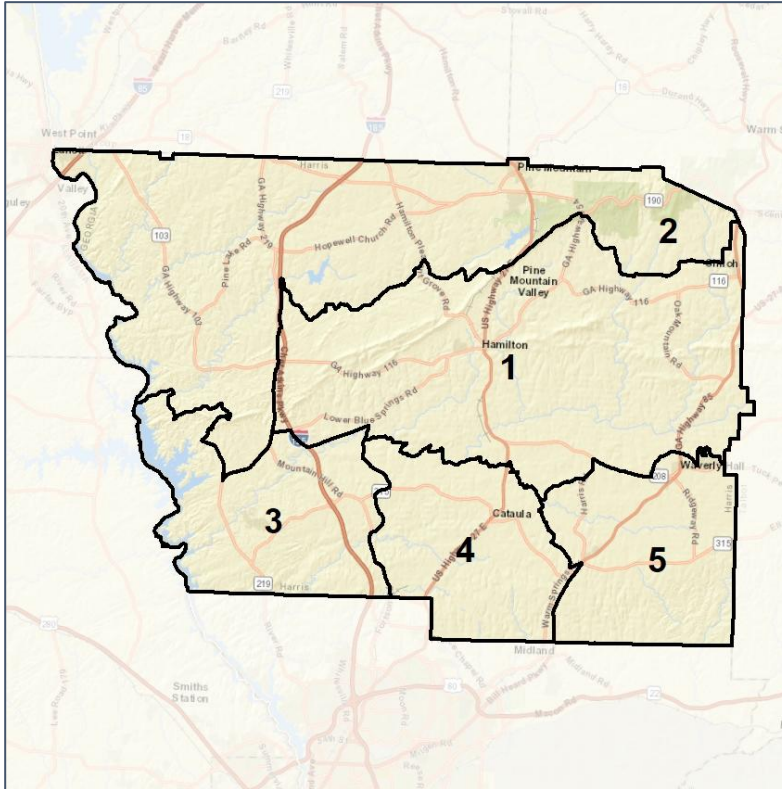


Harris County School Board

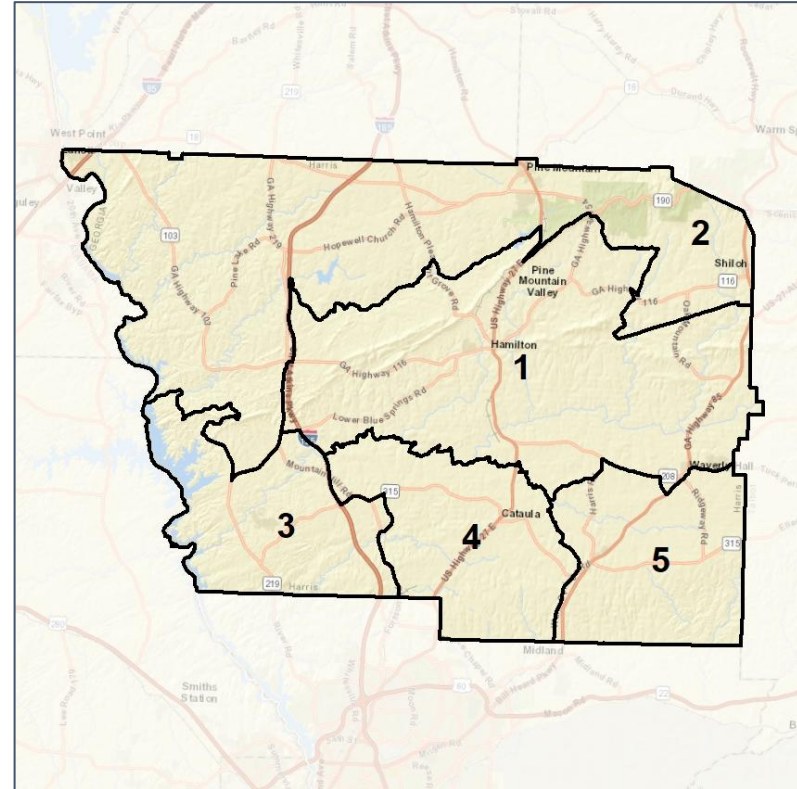
Context



2012 Map



2022 Map*



	1	2	3	4	5	1	2	3	4	5	County
Population	6,794	6,192	7,350	6,680	7,652	6,906	6,986	6,892	6,914	6,970	34,668
API	1%	1%	1%	1%	1%	1%	1%	1%	1%	1%	1%
Black	19%	23%	6%	11%	17%	19%	23%	6%	10%	16%	15%
Latino	3%	2%	5%	5%	4%	3%	2%	5%	5%	5%	4%
Other	5%	5%	4%	5%	5%	6%	5%	5%	5%	5%	5%
White	72%	68%	83%	78%	73%	71%	68%	82%	79%	73%	75%
Population Gain	633	12	674	234	1,091	112	794	-458	234	-682	*
Population % Gain	10%	0%	10%	4%	17%	2%	13%	-6%	4%	-9%	*
Net POC Gain	428	25	324	406	384	65	253	-50	-45	-223	*
Net POC % Gain	28%	1%	35%	38%	22%	3%	13%	-4%	-3%	-11%	*



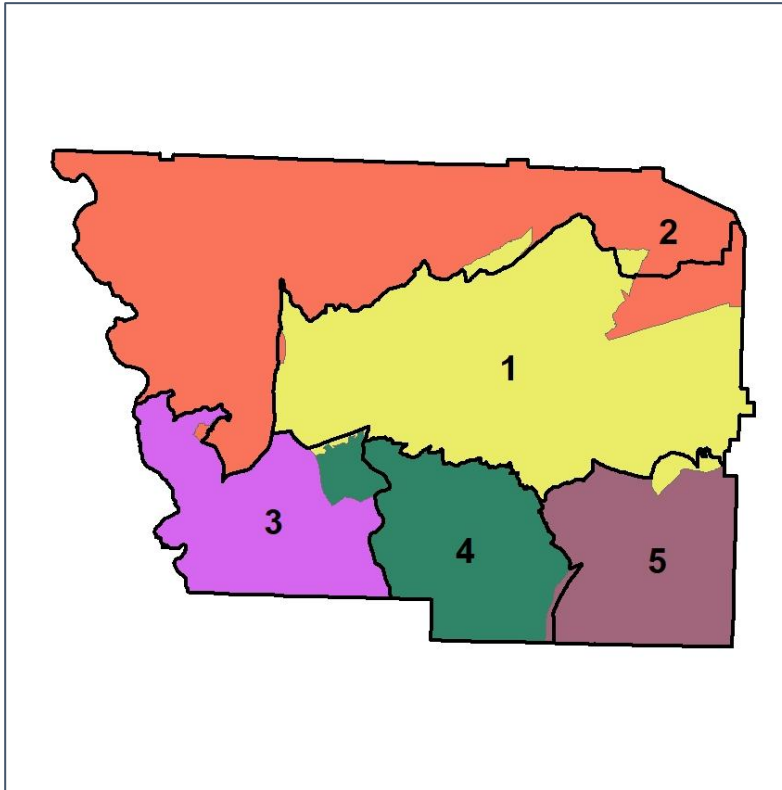
Source:
2020 Decennial Census
2020 ACS 5-Year Dataset

Harris County School Board

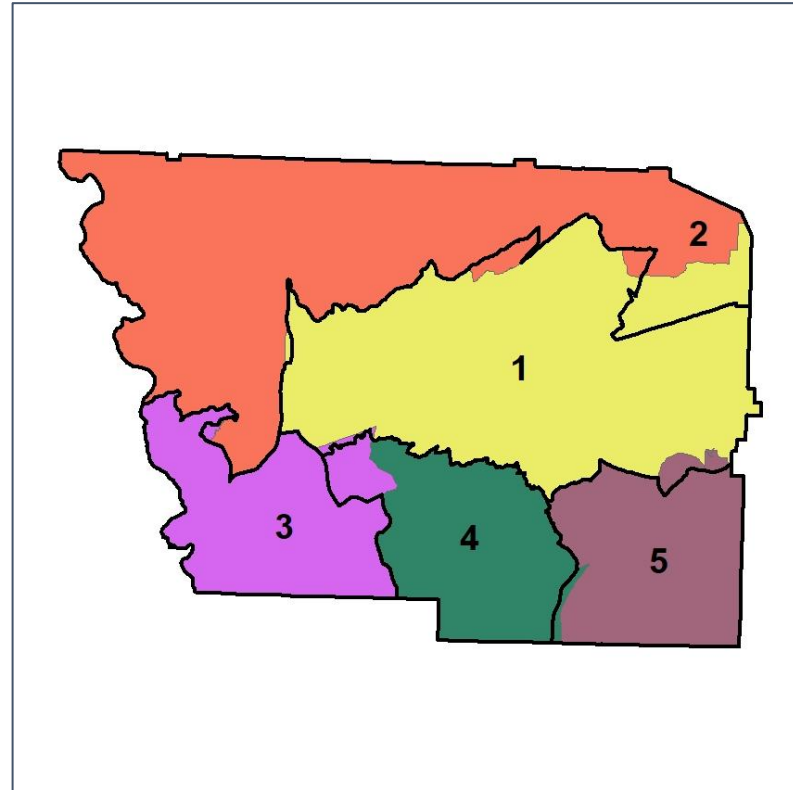
Changes in Redistricting



2012 Map (2022 in Colors)



2022 Map* (2012 in Colors)



	1	2	3	4	5	1	2	3	4	5	County
Population	6,794	6,192	7,350	6,680	7,652	6,906	6,986	6,892	6,914	6,970	34,668
API	1%	1%	1%	1%	1%	1%	1%	1%	1%	1%	1%
Black	19%	23%	6%	11%	17%	19%	23%	6%	10%	16%	15%
Latino	3%	2%	5%	5%	4%	3%	2%	5%	5%	5%	4%
Other	5%	5%	4%	5%	5%	6%	5%	5%	5%	5%	5%
White	72%	68%	83%	78%	73%	71%	68%	82%	79%	73%	75%
Population Gain	633	12	674	234	1,091	112	794	-458	234	-682	*
Population % Gain	10%	0%	10%	4%	17%	2%	13%	-6%	4%	-9%	*
Net POC Gain	428	25	324	406	384	65	253	-50	-45	-223	*
Net POC % Gain	28%	1%	35%	38%	22%	3%	13%	-4%	-3%	-11%	*

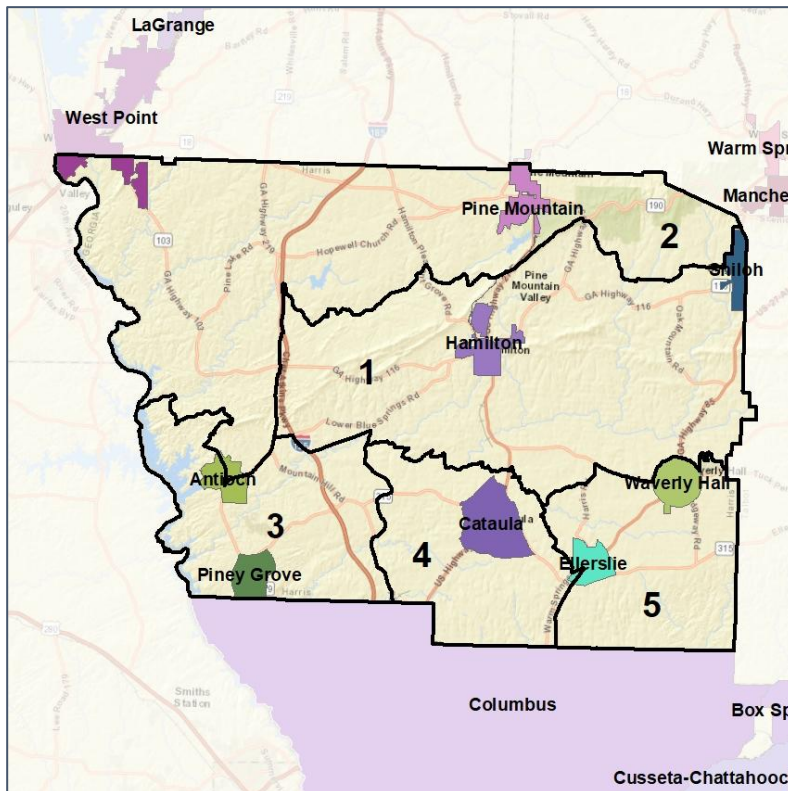


Harris County School Board

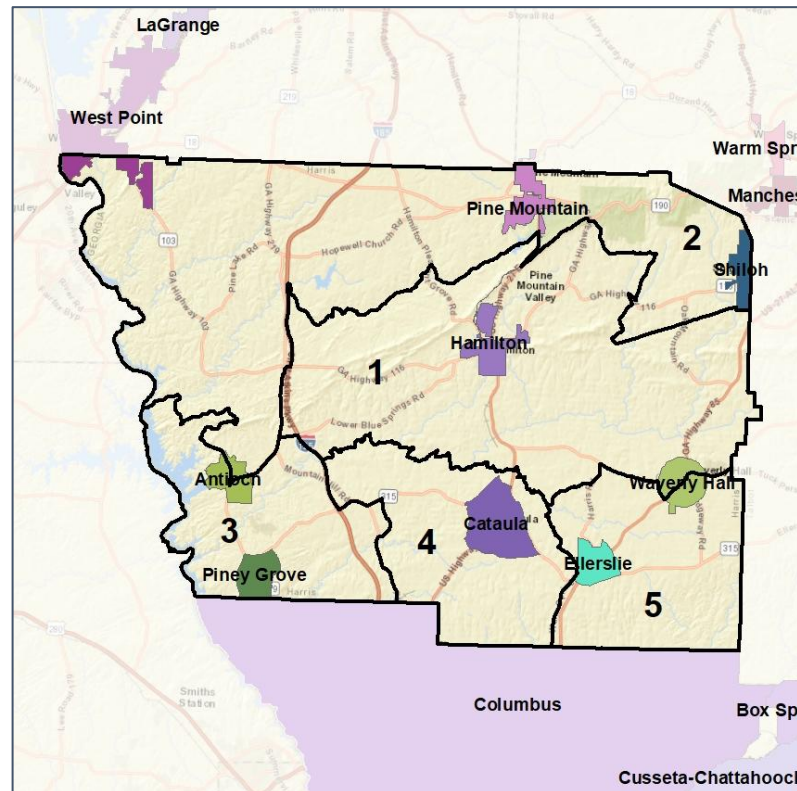
Cities and Places



2012 Map



2022 Map*



	1	2	3	4	5	1	2	3	4	5	County
Population	6,794	6,192	7,350	6,680	7,652	6,906	6,986	6,892	6,914	6,970	34,668
API	1%	1%	1%	1%	1%	1%	1%	1%	1%	1%	1%
Black	19%	23%	6%	11%	17%	19%	23%	6%	10%	16%	15%
Latino	3%	2%	5%	5%	4%	3%	2%	5%	5%	5%	4%
Other	5%	5%	4%	5%	5%	6%	5%	5%	5%	5%	5%
White	72%	68%	83%	78%	73%	71%	68%	82%	79%	73%	75%
Population Gain	633	12	674	234	1,091	112	794	-458	234	-682	*
Population % Gain	10%	0%	10%	4%	17%	2%	13%	-6%	4%	-9%	*
Net POC Gain	428	25	324	406	384	65	253	-50	-45	-223	*
Net POC % Gain	28%	1%	35%	38%	22%	3%	13%	-4%	-3%	-11%	*

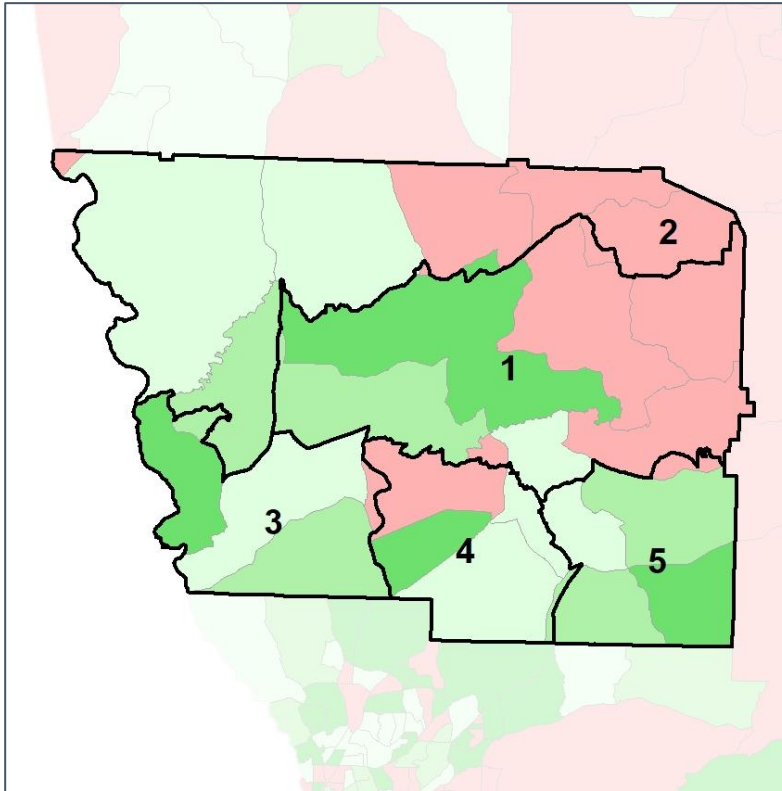


Harris County School Board

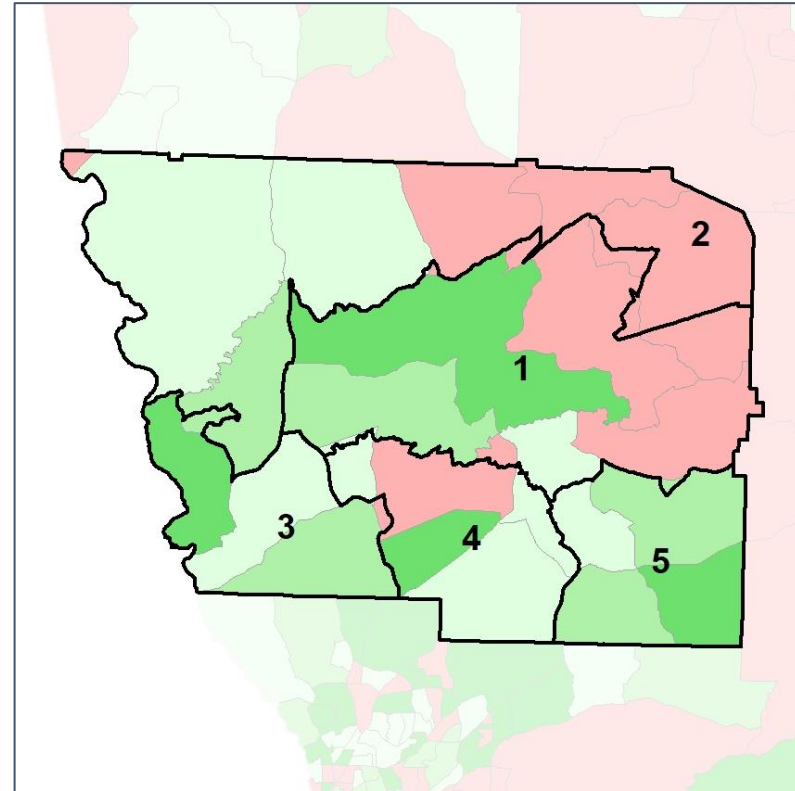
Net Gain in Population (2010 - 2020) by Census Block Group



2012 Map



2022 Map*



	1	2	3	4	5	1	2	3	4	5	County
Population	6,794	6,192	7,350	6,680	7,652	6,906	6,986	6,892	6,914	6,970	34,668
API	1%	1%	1%	1%	1%	1%	1%	1%	1%	1%	1%
Black	19%	23%	6%	11%	17%	19%	23%	6%	10%	16%	15%
Latino	3%	2%	5%	5%	4%	3%	2%	5%	5%	5%	4%
Other	5%	5%	4%	5%	5%	6%	5%	5%	5%	5%	5%
White	72%	68%	83%	78%	73%	71%	68%	82%	79%	73%	75%
Population Gain	633	12	674	234	1,091	112	794	-458	234	-682	*
Population % Gain	10%	0%	10%	4%	17%	2%	13%	-6%	4%	-9%	*
Net POC Gain	428	25	324	406	384	65	253	-50	-45	-223	*
Net POC % Gain	28%	1%	35%	38%	22%	3%	13%	-4%	-3%	-11%	*

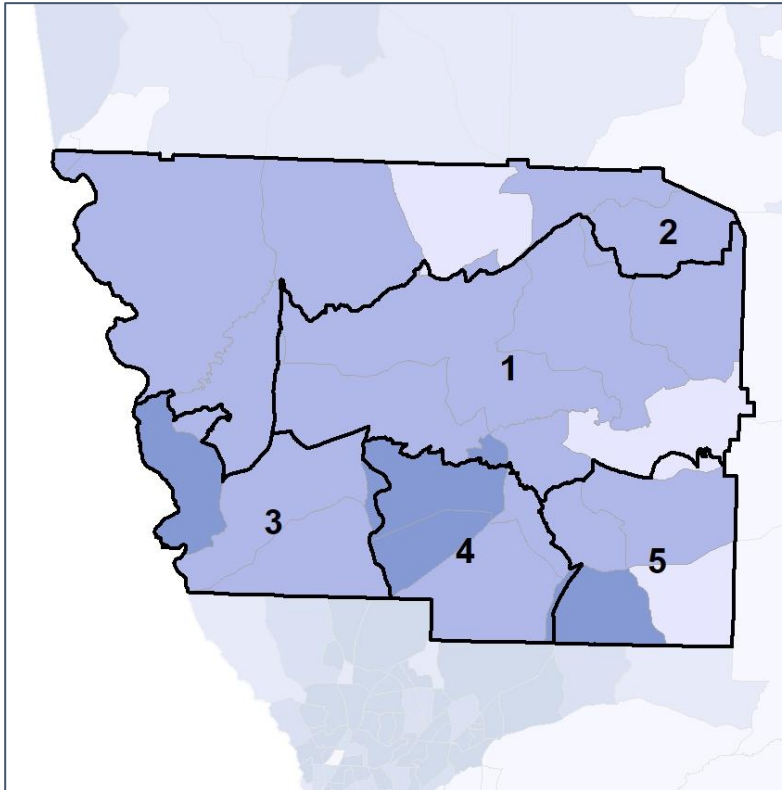


Harris County School Board

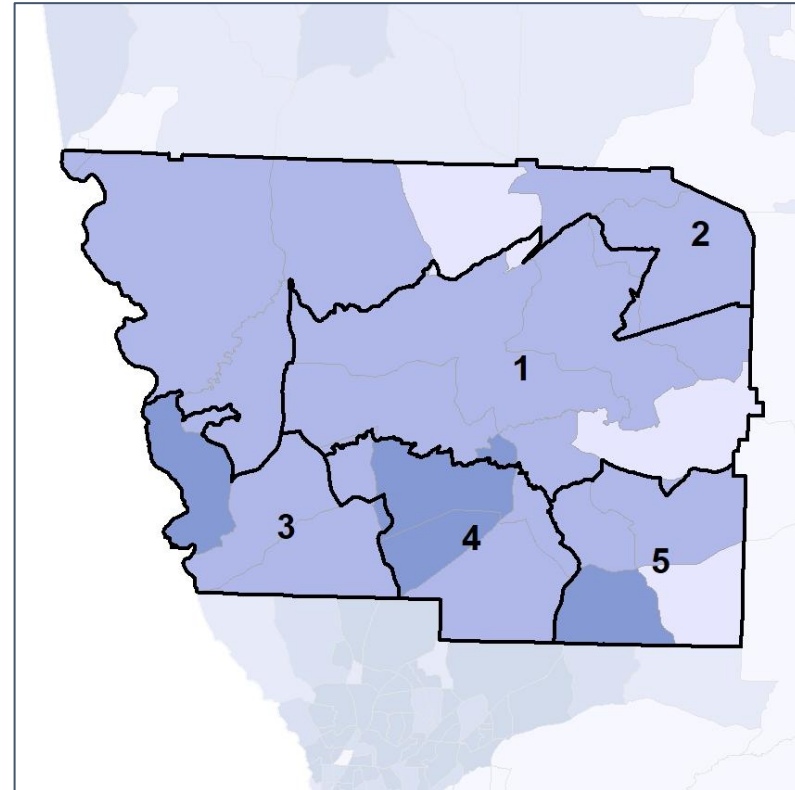
Net Gain in % POC (2020 - 2010) by Census Block Group



2012 Map



2022 Map*



	1	2	3	4	5	1	2	3	4	5	County
Population	6,794	6,192	7,350	6,680	7,652	6,906	6,986	6,892	6,914	6,970	34,668
API	1%	1%	1%	1%	1%	1%	1%	1%	1%	1%	1%
Black	19%	23%	6%	11%	17%	19%	23%	6%	10%	16%	15%
Latino	3%	2%	5%	5%	4%	3%	2%	5%	5%	5%	4%
Other	5%	5%	4%	5%	5%	6%	5%	5%	5%	5%	5%
White	72%	68%	83%	78%	73%	71%	68%	82%	79%	73%	75%
Population Gain	633	12	674	234	1,091	112	794	-458	234	-682	*
Population % Gain	10%	0%	10%	4%	17%	2%	13%	-6%	4%	-9%	*
Net POC Gain	428	25	324	406	384	65	253	-50	-45	-223	*
Net POC % Gain	28%	1%	35%	38%	22%	3%	13%	-4%	-3%	-11%	*

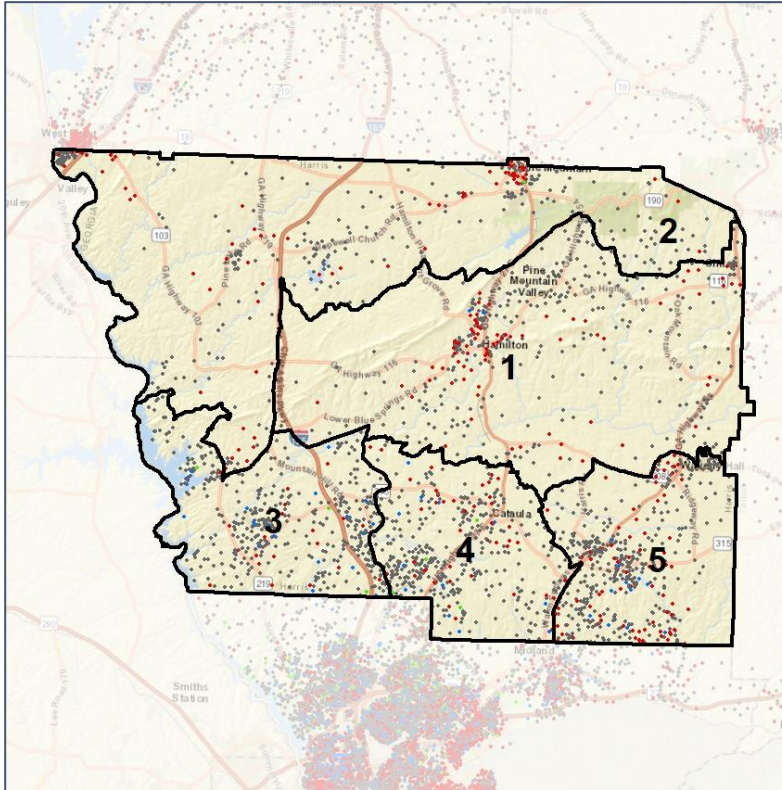


Harris County School Board

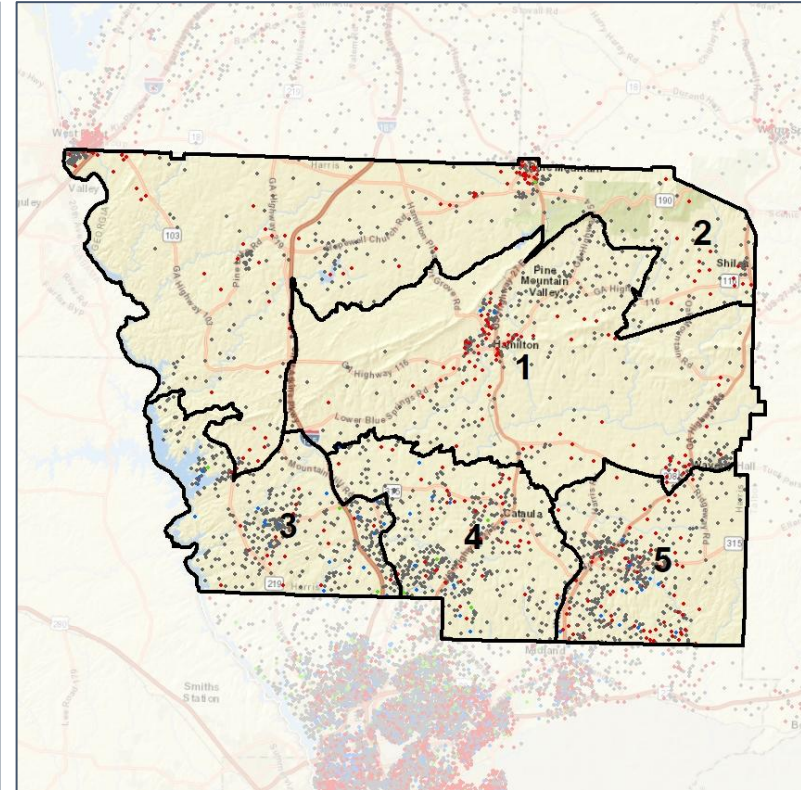
Population Density by Race



2012 Map



2022 Map*



	1	2	3	4	5	1	2	3	4	5	County
Population	6,794	6,192	7,350	6,680	7,652	6,906	6,986	6,892	6,914	6,970	34,668
API	39	91	98	87	94	57	91	98	82	81	409
% API	1%	1%	1%	1%	1%	1%	1%	1%	1%	1%	1%
Black	1,297	1,446	438	707	1,282	1,320	1,639	414	681	1,116	5,170
% Black	19%	23%	6%	11%	17%	19%	23%	6%	10%	16%	15%
Latino	228	141	395	330	323	233	159	376	323	326	1,417
% Latino	3%	2%	5%	5%	4%	3%	2%	5%	5%	5%	4%
Other	368	299	326	361	393	387	341	319	354	346	1,747
% Other	5%	5%	4%	5%	5%	6%	5%	5%	5%	5%	5%
White	4,862	4,215	6,093	5,195	5,560	4,909	4,756	5,685	5,474	5,101	25,925
% White	72%	68%	83%	78%	73%	71%	68%	82%	79%	73%	75%



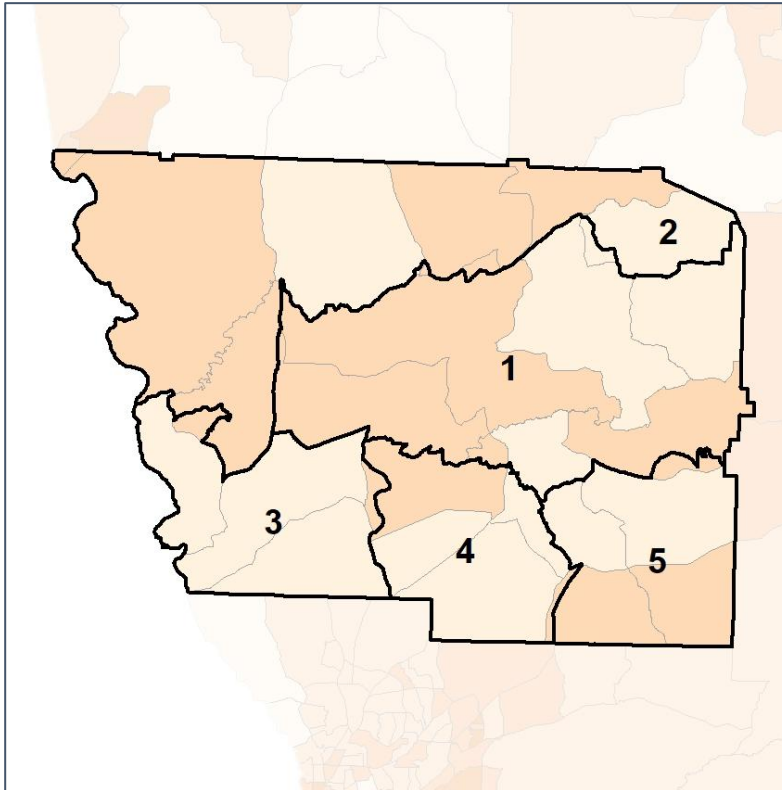
Source: 2020 Decennial Census 2020 ACS 5-Year Dataset

Harris County School Board

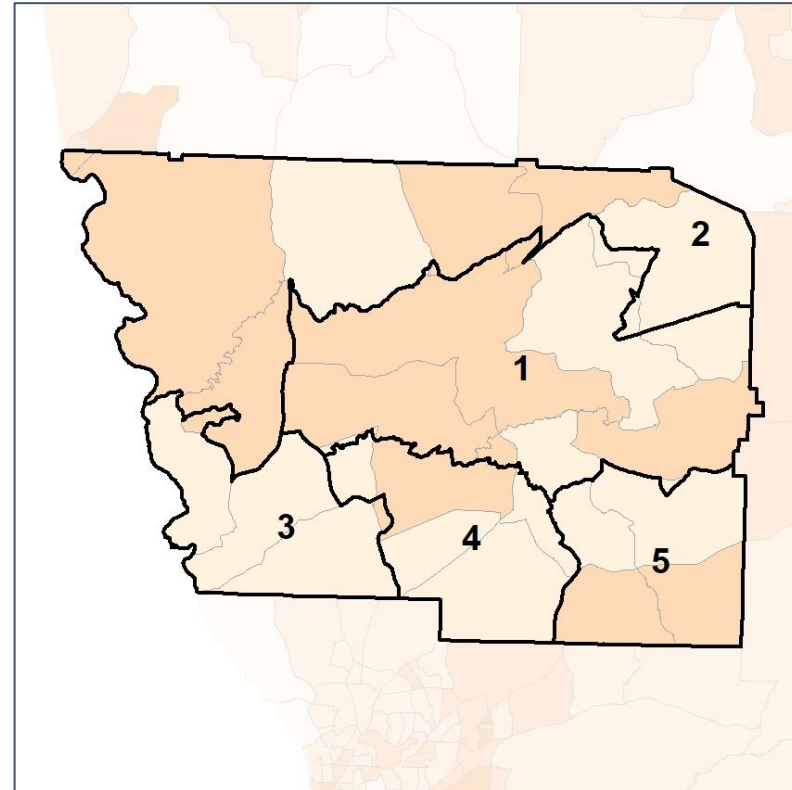
% People of Color by Census Block Group



2012 Map



2022 Map*



	1	2	3	4	5	1	2	3	4	5	County
Population	6,794	6,192	7,350	6,680	7,652	6,906	6,986	6,892	6,914	6,970	34,668
API	39	91	98	87	94	57	91	98	82	81	409
% API	1%	1%	1%	1%	1%	1%	1%	1%	1%	1%	1%
Black	1,297	1,446	438	707	1,282	1,320	1,639	414	681	1,116	5,170
% Black	19%	23%	6%	11%	17%	19%	23%	6%	10%	16%	15%
Latino	228	141	395	330	323	233	159	376	323	326	1,417
% Latino	3%	2%	5%	5%	4%	3%	2%	5%	5%	5%	4%
Other	368	299	326	361	393	387	341	319	354	346	1,747
% Other	5%	5%	4%	5%	5%	6%	5%	5%	5%	5%	5%
White	4,862	4,215	6,093	5,195	5,560	4,909	4,756	5,685	5,474	5,101	25,925
% White	72%	68%	83%	78%	73%	71%	68%	82%	79%	73%	75%

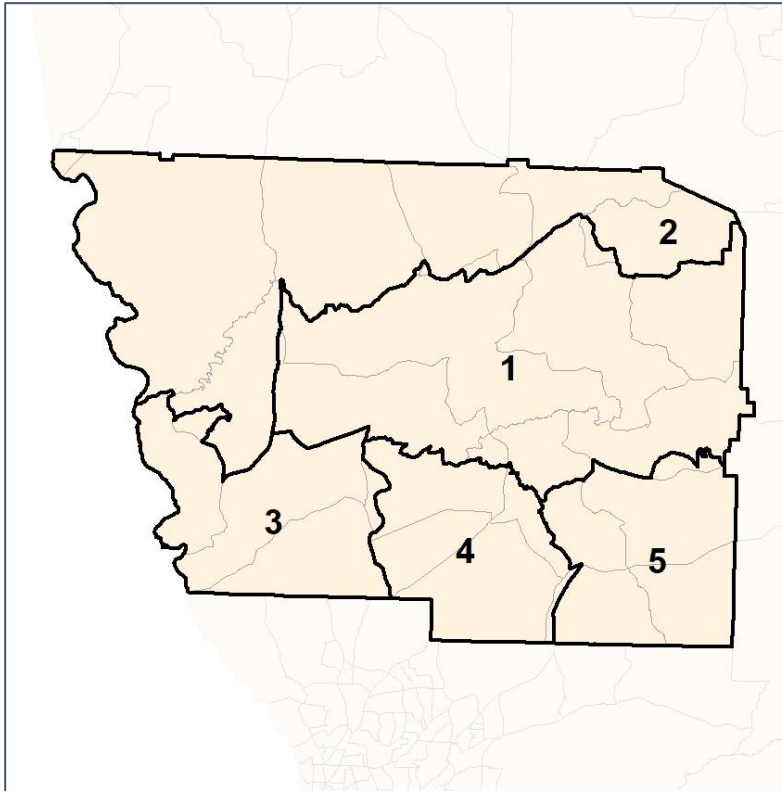


Harris County School Board

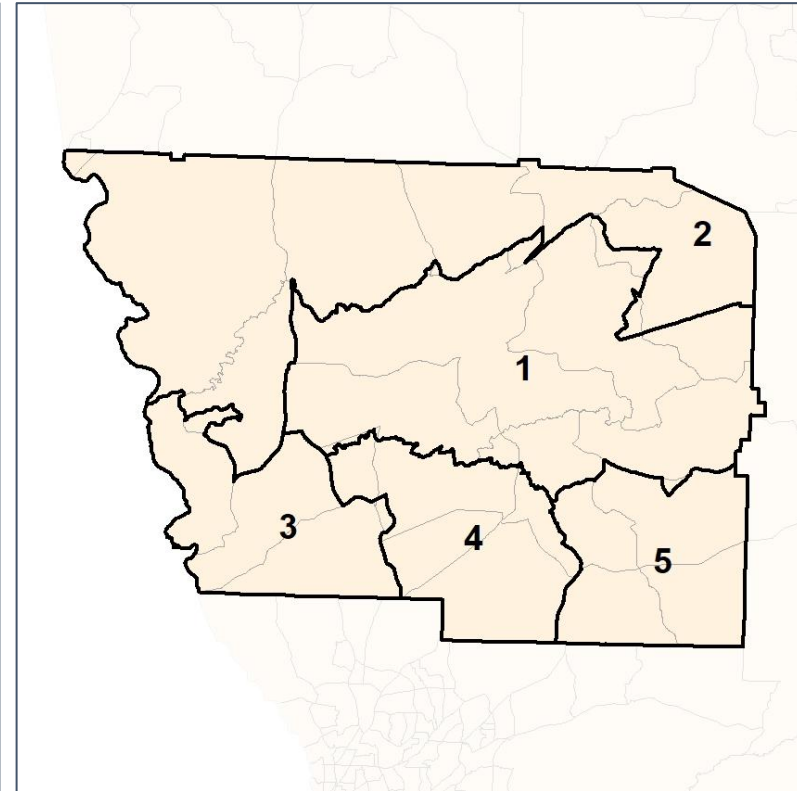
% API by Census Block Group



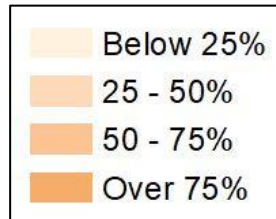
2012 Map



2022 Map*



	1	2	3	4	5	1	2	3	4	5	County
Population	6,794	6,192	7,350	6,680	7,652	6,906	6,986	6,892	6,914	6,970	34,668
API	39	91	98	87	94	57	91	98	82	81	409
% API	1%	1%	1%	1%	1%	1%	1%	1%	1%	1%	1%
Black	1,297	1,446	438	707	1,282	1,320	1,639	414	681	1,116	5,170
% Black	19%	23%	6%	11%	17%	19%	23%	6%	10%	16%	15%
Latino	228	141	395	330	323	233	159	376	323	326	1,417
% Latino	3%	2%	5%	5%	4%	3%	2%	5%	5%	5%	4%
Other	368	299	326	361	393	387	341	319	354	346	1,747
% Other	5%	5%	4%	5%	5%	6%	5%	5%	5%	5%	5%
White	4,862	4,215	6,093	5,195	5,560	4,909	4,756	5,685	5,474	5,101	25,925
% White	72%	68%	83%	78%	73%	71%	68%	82%	79%	73%	75%

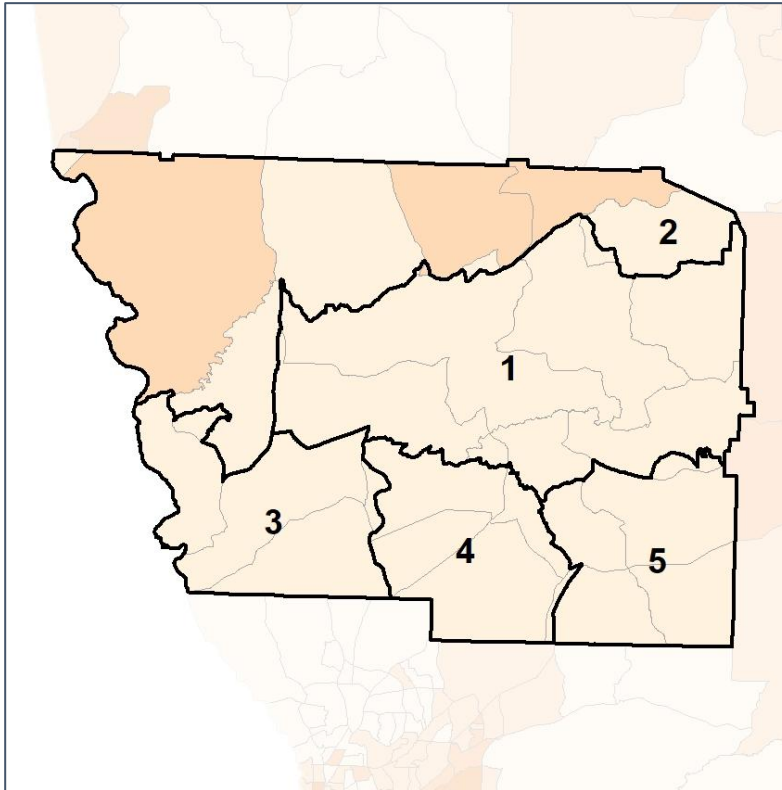


Harris County School Board

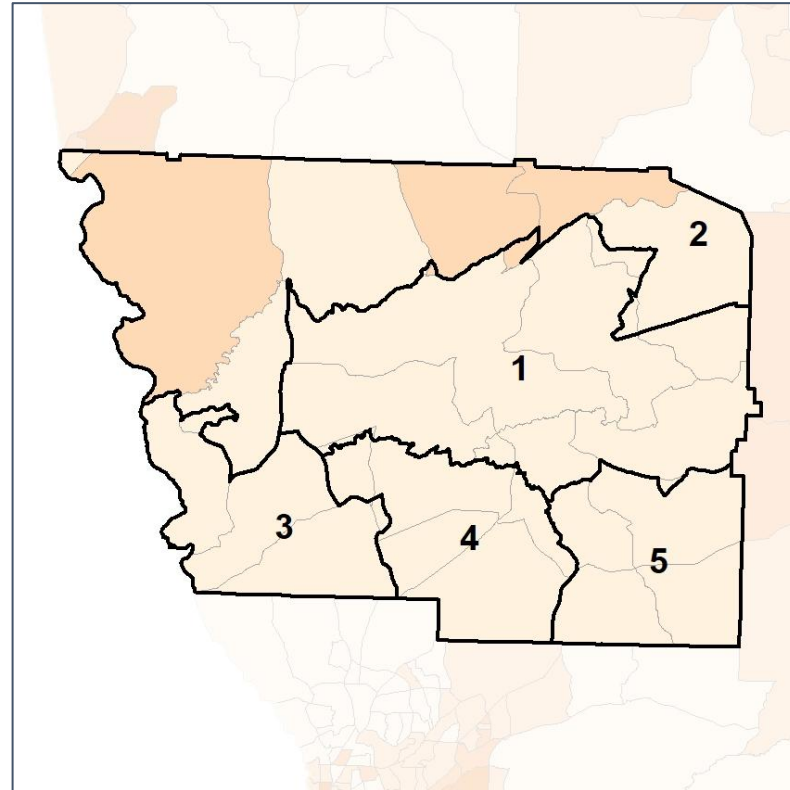
% Black by Census Block Group



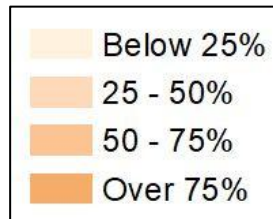
2012 Map



2022 Map*



	1	2	3	4	5	1	2	3	4	5	County
Population	6,794	6,192	7,350	6,680	7,652	6,906	6,986	6,892	6,914	6,970	34,668
API	39	91	98	87	94	57	91	98	82	81	409
% API	1%	1%	1%	1%	1%	1%	1%	1%	1%	1%	1%
Black	1,297	1,446	438	707	1,282	1,320	1,639	414	681	1,116	5,170
% Black	19%	23%	6%	11%	17%	19%	23%	6%	10%	16%	15%
Latino	228	141	395	330	323	233	159	376	323	326	1,417
% Latino	3%	2%	5%	5%	4%	3%	2%	5%	5%	5%	4%
Other	368	299	326	361	393	387	341	319	354	346	1,747
% Other	5%	5%	4%	5%	5%	6%	5%	5%	5%	5%	5%
White	4,862	4,215	6,093	5,195	5,560	4,909	4,756	5,685	5,474	5,101	25,925
% White	72%	68%	83%	78%	73%	71%	68%	82%	79%	73%	75%

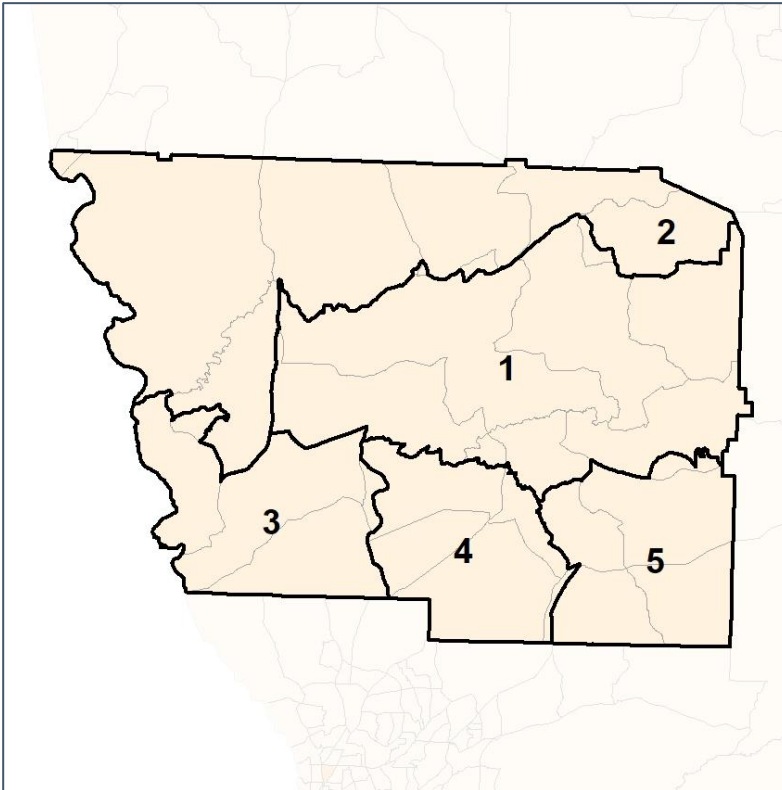


Harris County School Board

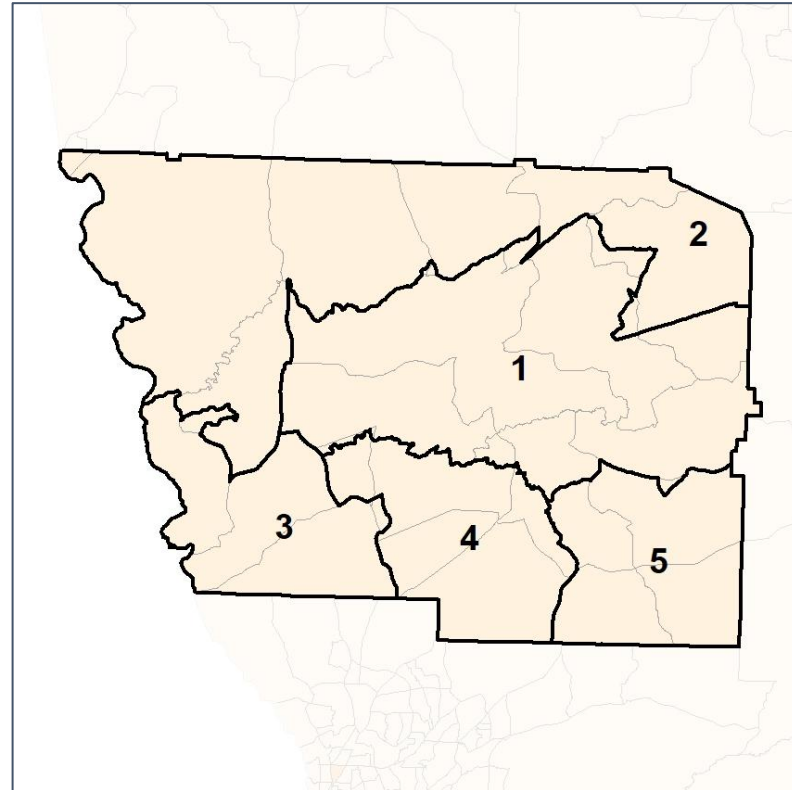
% Latino by Census Block Group



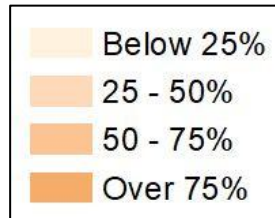
2012 Map



2022 Map*



	1	2	3	4	5	1	2	3	4	5	County
Population	6,794	6,192	7,350	6,680	7,652	6,906	6,986	6,892	6,914	6,970	34,668
API	39	91	98	87	94	57	91	98	82	81	409
% API	1%	1%	1%	1%	1%	1%	1%	1%	1%	1%	1%
Black	1,297	1,446	438	707	1,282	1,320	1,639	414	681	1,116	5,170
% Black	19%	23%	6%	11%	17%	19%	23%	6%	10%	16%	15%
Latino	228	141	395	330	323	233	159	376	323	326	1,417
% Latino	3%	2%	5%	5%	4%	3%	2%	5%	5%	5%	4%
Other	368	299	326	361	393	387	341	319	354	346	1,747
% Other	5%	5%	4%	5%	5%	6%	5%	5%	5%	5%	5%
White	4,862	4,215	6,093	5,195	5,560	4,909	4,756	5,685	5,474	5,101	25,925
% White	72%	68%	83%	78%	73%	71%	68%	82%	79%	73%	75%



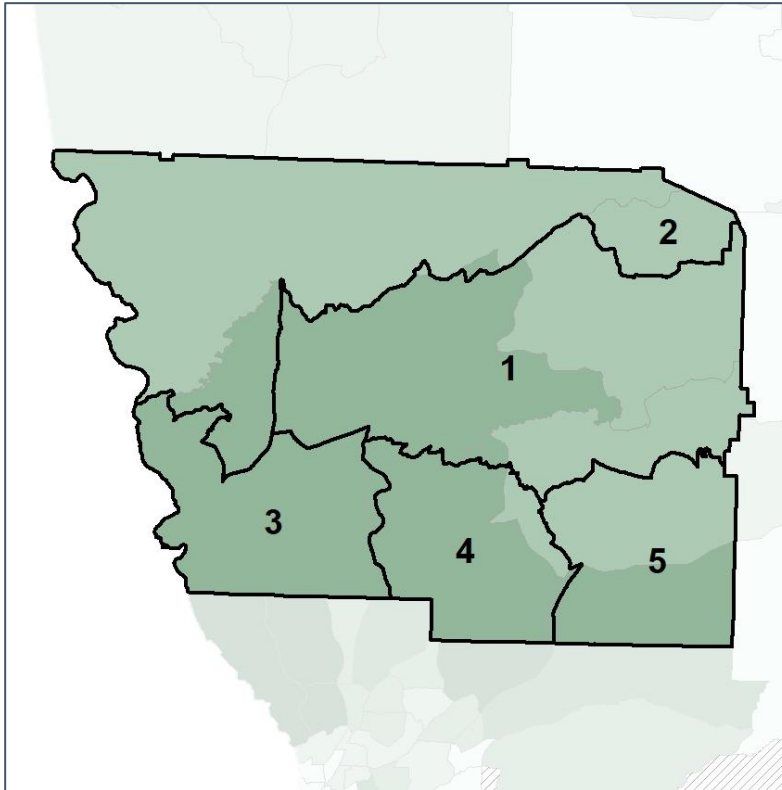
Source:
2020 Decennial Census
2020 ACS 5-Year Dataset

Harris County School Board

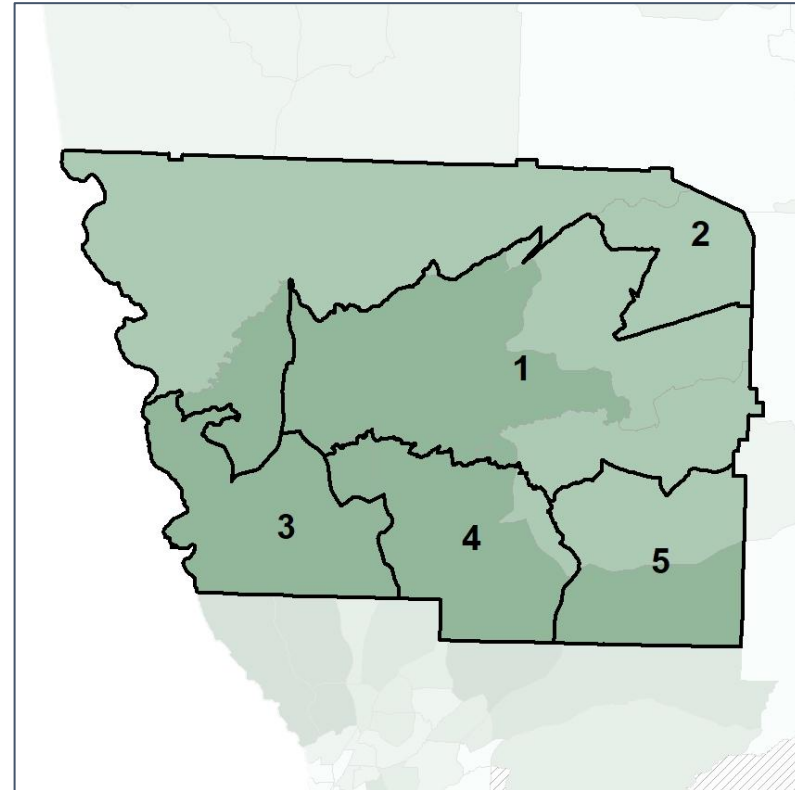
Median Household Income by Census Tract



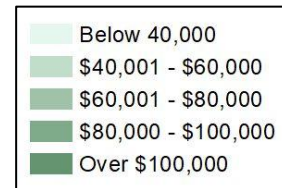
2012 Map



2022 Map*



	1	2	3	4	5	1	2	3	4	5	County
Population	6,794	6,192	7,350	6,680	7,652	6,906	6,986	6,892	6,914	6,970	34,668
% API	1%	1%	1%	1%	1%	1%	1%	1%	1%	1%	1%
% Black	19%	23%	6%	11%	17%	19%	23%	6%	10%	16%	15%
% Latino	3%	2%	5%	5%	4%	3%	2%	5%	5%	5%	4%
% Other	5%	5%	4%	5%	5%	6%	5%	5%	5%	5%	5%
% White	72%	68%	83%	78%	73%	71%	68%	82%	79%	73%	75%
Median Income	\$80,000	\$68,000	\$89,000	\$94,000	\$93,000	\$84,000	\$69,000	\$89,000	\$94,000	\$93,000	\$80,000
% Renter	18%	19%	5%	5%	5%	13%	24%	5%	5%	5%	11%
% Youth	18%	22%	23%	15%	18%	17%	22%	23%	15%	18%	19%

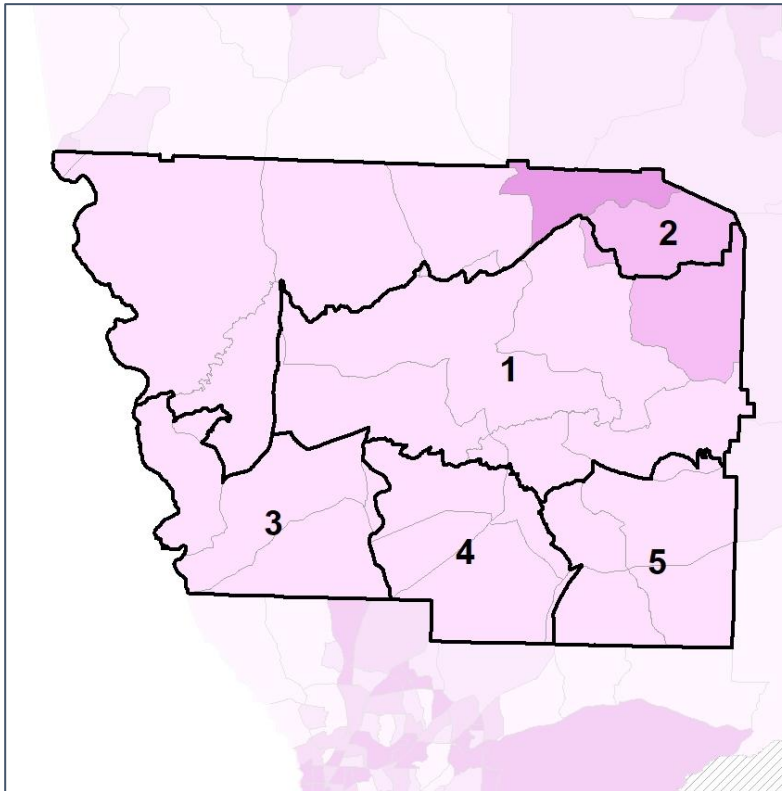


Harris County School Board

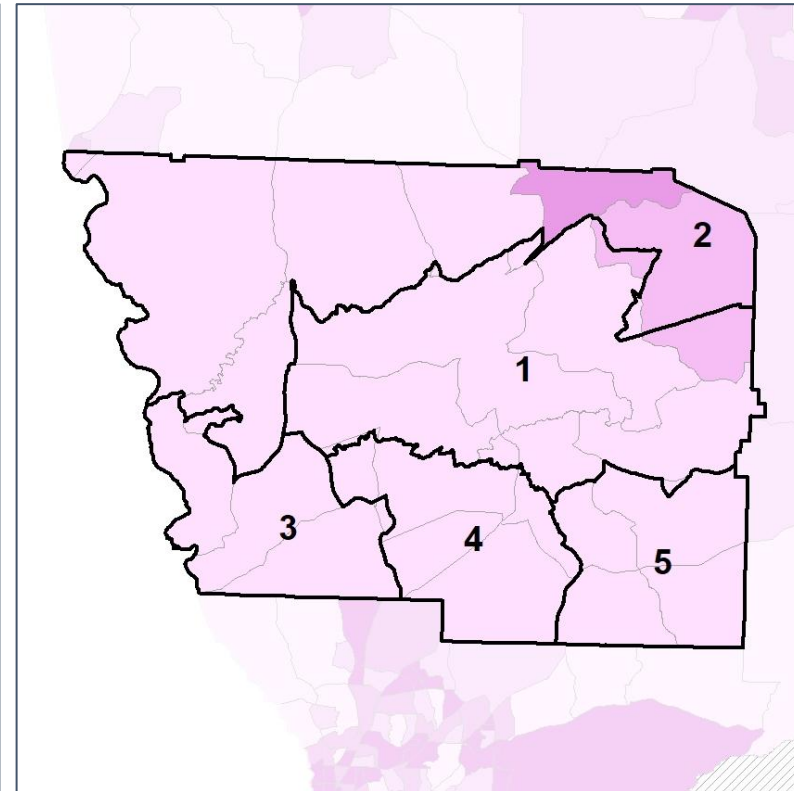
% Renter by Census Block Group



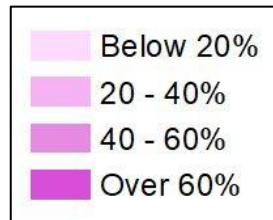
2012 Map



2022 Map*



	1	2	3	4	5	1	2	3	4	5	County
Population	6,794	6,192	7,350	6,680	7,652	6,906	6,986	6,892	6,914	6,970	34,668
% API	1%	1%	1%	1%	1%	1%	1%	1%	1%	1%	1%
% Black	19%	23%	6%	11%	17%	19%	23%	6%	10%	16%	15%
% Latino	3%	2%	5%	5%	4%	3%	2%	5%	5%	5%	4%
% Other	5%	5%	4%	5%	5%	6%	5%	5%	5%	5%	5%
% White	72%	68%	83%	78%	73%	71%	68%	82%	79%	73%	75%
Median Income	\$80,000	\$68,000	\$89,000	\$94,000	\$93,000	\$84,000	\$69,000	\$89,000	\$94,000	\$93,000	\$80,000
% Renter	18%	19%	5%	5%	5%	13%	24%	5%	5%	5%	11%
% Youth	18%	22%	23%	15%	18%	17%	22%	23%	15%	18%	19%

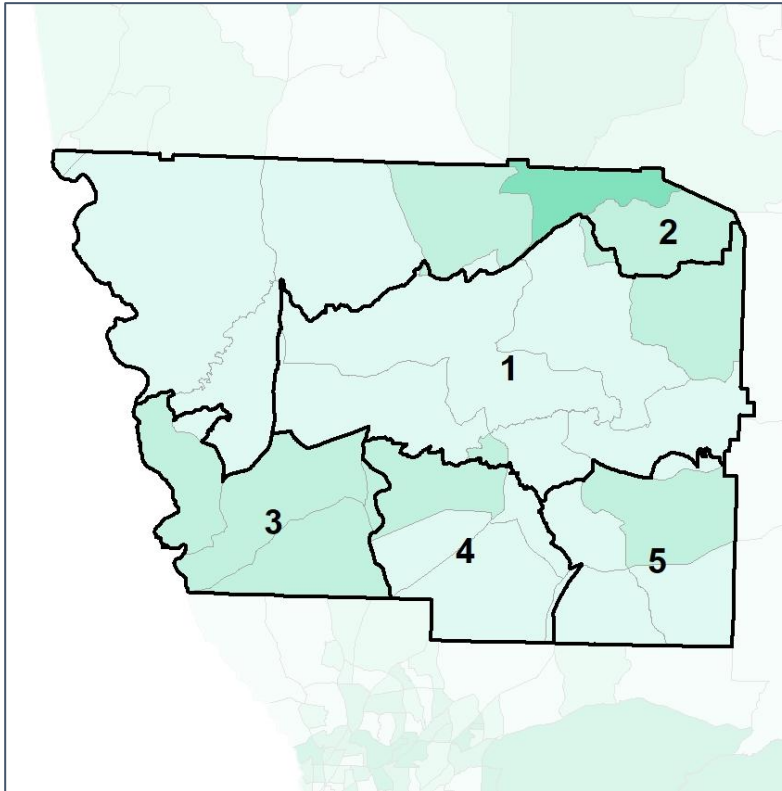


Harris County School Board

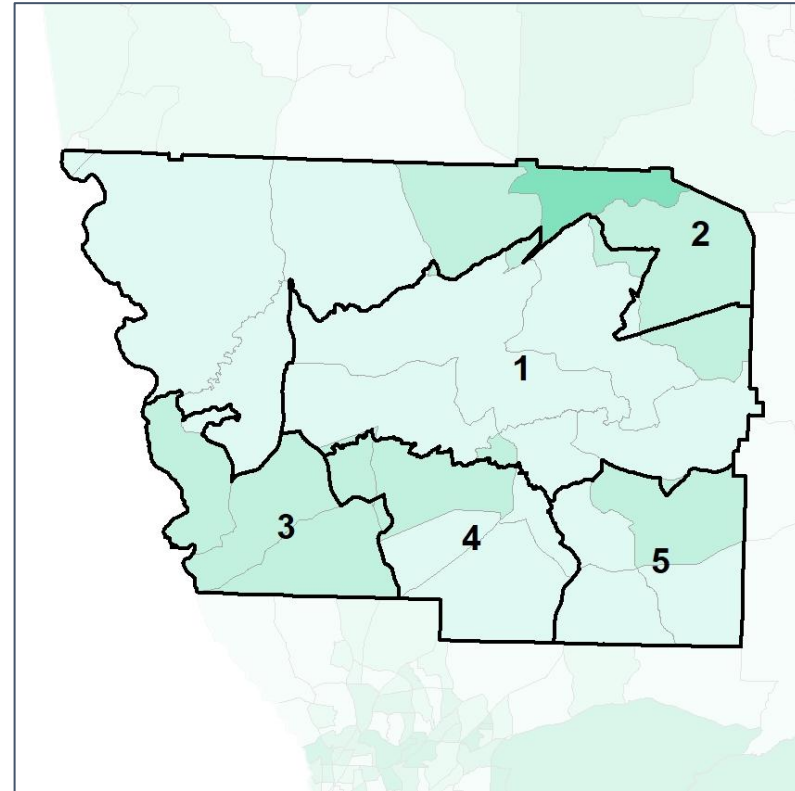
% Youth (18-34) by Census Block Group



2012 Map



2022 Map*



	1	2	3	4	5	1	2	3	4	5	County
Population	6,794	6,192	7,350	6,680	7,652	6,906	6,986	6,892	6,914	6,970	34,668
% API	1%	1%	1%	1%	1%	1%	1%	1%	1%	1%	1%
% Black	19%	23%	6%	11%	17%	19%	23%	6%	10%	16%	15%
% Latino	3%	2%	5%	5%	4%	3%	2%	5%	5%	5%	4%
% Other	5%	5%	4%	5%	5%	6%	5%	5%	5%	5%	5%
% White	72%	68%	83%	78%	73%	71%	68%	82%	79%	73%	75%
Median Income	\$80,000	\$68,000	\$89,000	\$94,000	\$93,000	\$84,000	\$69,000	\$89,000	\$94,000	\$93,000	\$80,000
% Renter	18%	19%	5%	5%	5%	13%	24%	5%	5%	5%	11%
% Youth	18%	22%	23%	15%	18%	17%	22%	23%	15%	18%	19%

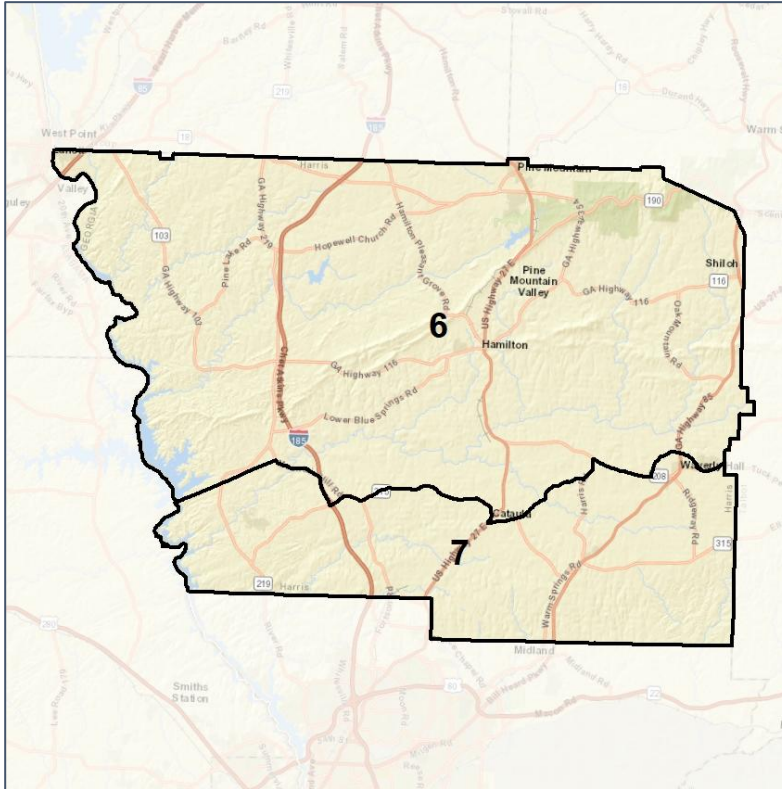


Harris County Super District

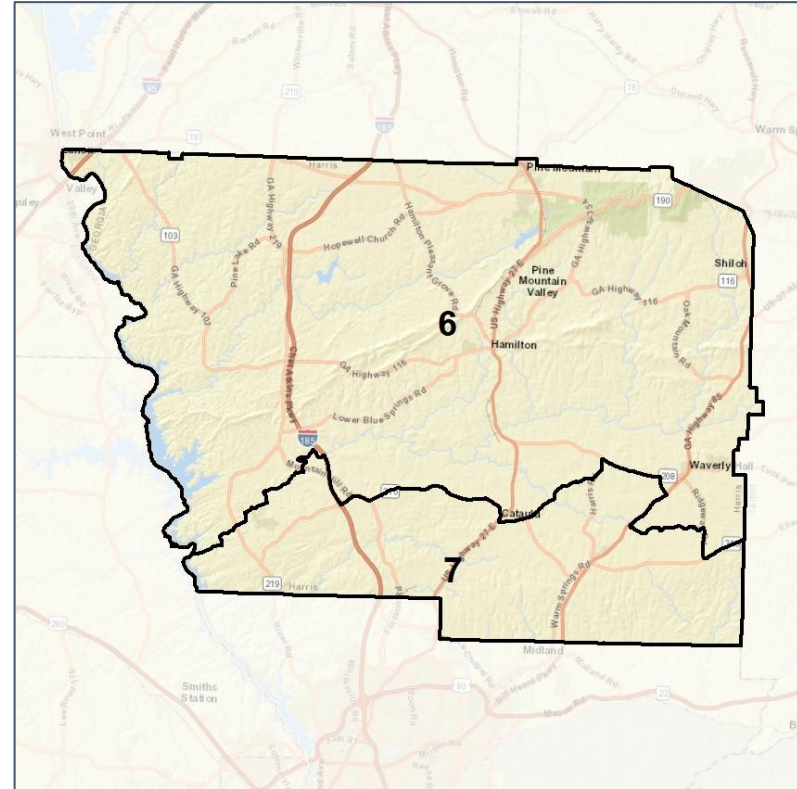
Context



2012 Map



2022 Map*



	6	7	6	7	County
Population	16,456	15,568	17,340	17,328	34,668
API	1%	1%	1%	1%	1%
Black	22%	12%	19%	11%	15%
Latino	2%	3%	3%	5%	4%
Other	1%	2%	5%	5%	5%
White	74%	81%	72%	78%	75%
Population Gain	1,222	-1,222	884	1,760	*
Population % Gain	8%	-7%	5%	11%	*
Net POC Gain	368	-368	677	890	*
Net POC % Gain	10%	-11%	16%	30%	*

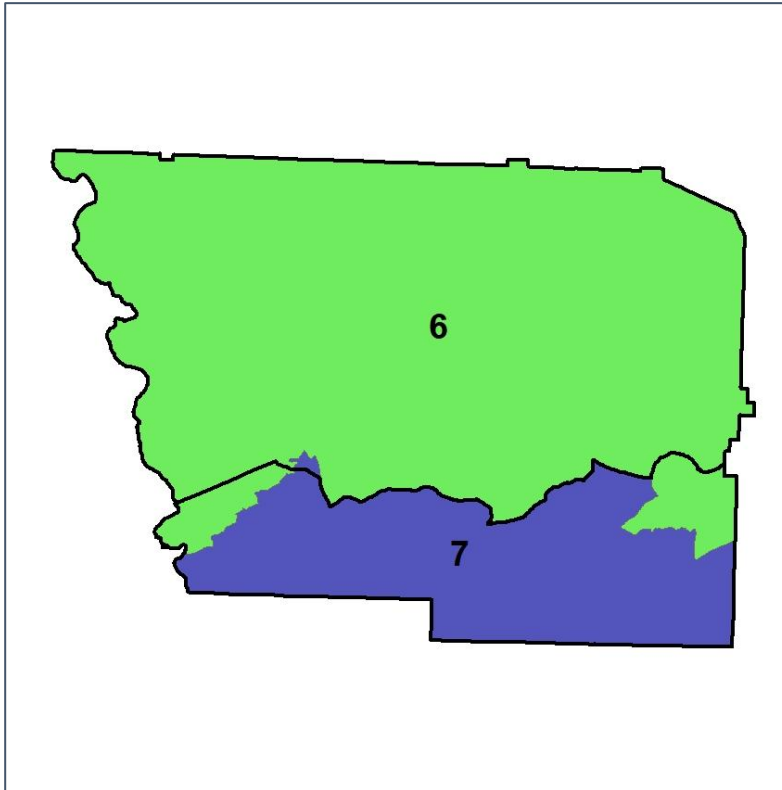


Harris County Super District

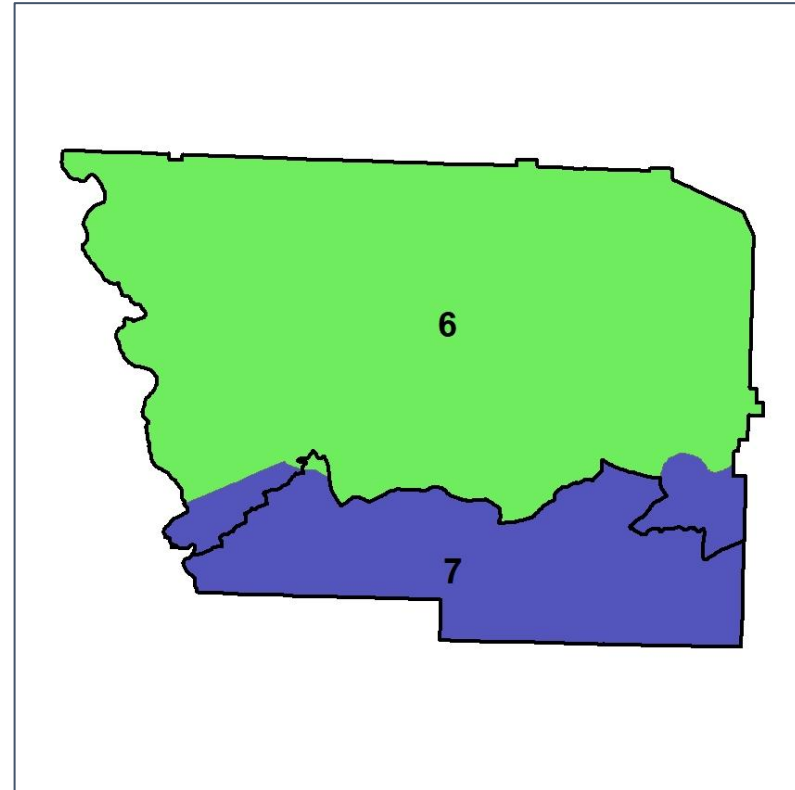
Changes in Redistricting



2012 Map (2022 in Colors)



2022 Map* (2012 in Colors)



	6	7	6	7	County
Population	16,456	15,568	17,340	17,328	34,668
API	1%	1%	1%	1%	1%
Black	22%	12%	19%	11%	15%
Latino	2%	3%	3%	5%	4%
Other	1%	2%	5%	5%	5%
White	74%	81%	72%	78%	75%
Population Gain	1,222	-1,222	884	1,760	*
Population % Gain	8%	-7%	5%	11%	*
Net POC Gain	368	-368	677	890	*
Net POC % Gain	10%	-11%	16%	30%	*

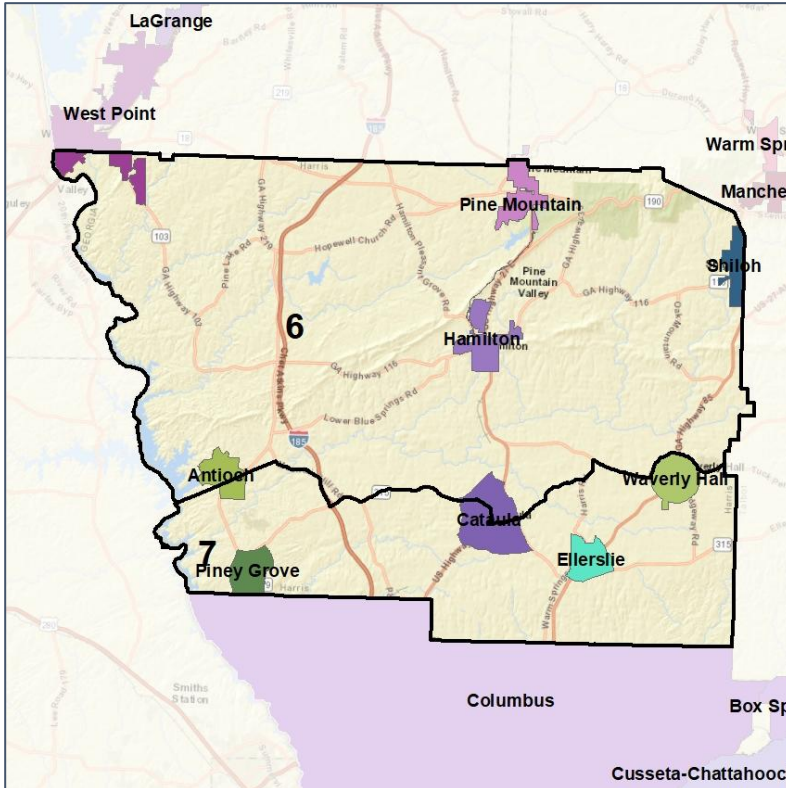


Harris County Super District

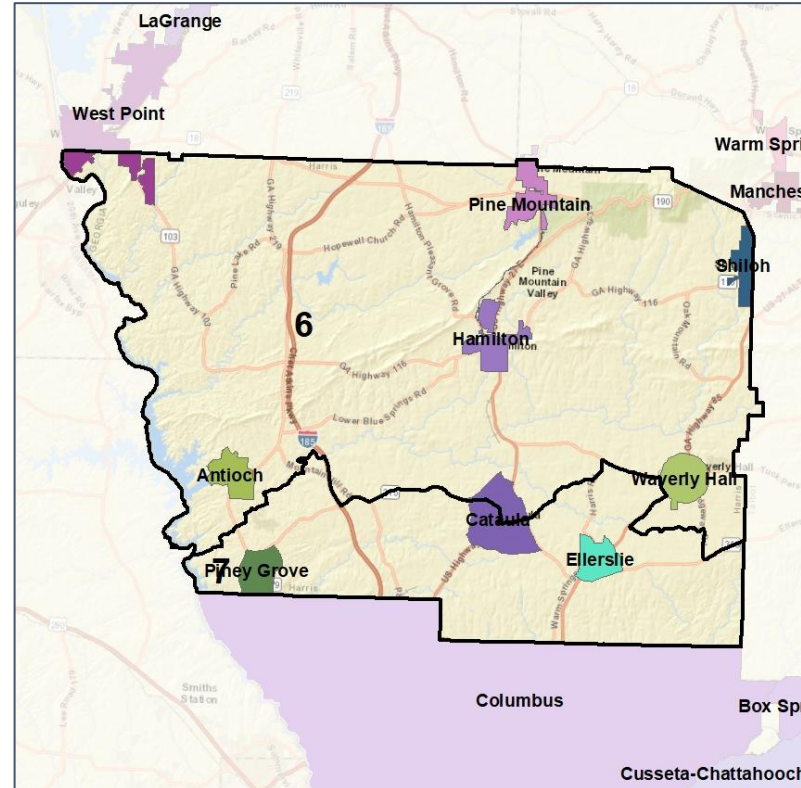
Cities and Places



2012 Map



2022 Map*



	6	7	6	7	County
Population	16,456	15,568	17,340	17,328	34,668
API	1%	1%	1%	1%	1%
Black	22%	12%	19%	11%	15%
Latino	2%	3%	3%	5%	4%
Other	1%	2%	5%	5%	5%
White	74%	81%	72%	78%	75%
Population Gain	1,222	-1,222	884	1,760	*
Population % Gain	8%	-7%	5%	11%	*
Net POC Gain	368	-368	677	890	*
Net POC % Gain	10%	-11%	16%	30%	*



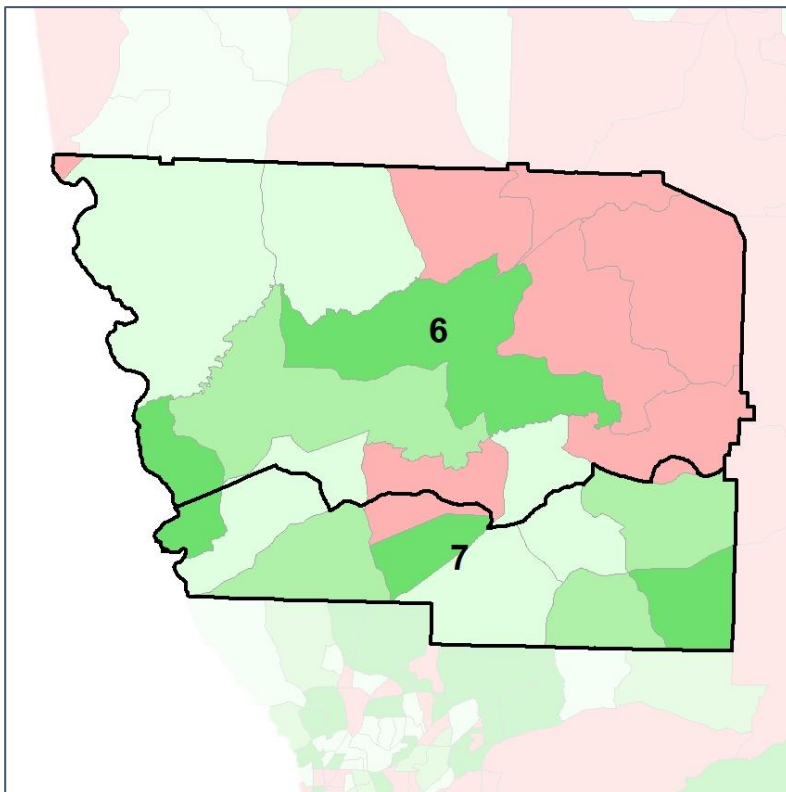
Source:
2020 Decennial Census
2020 ACS 5-Year Dataset

Harris County Super District

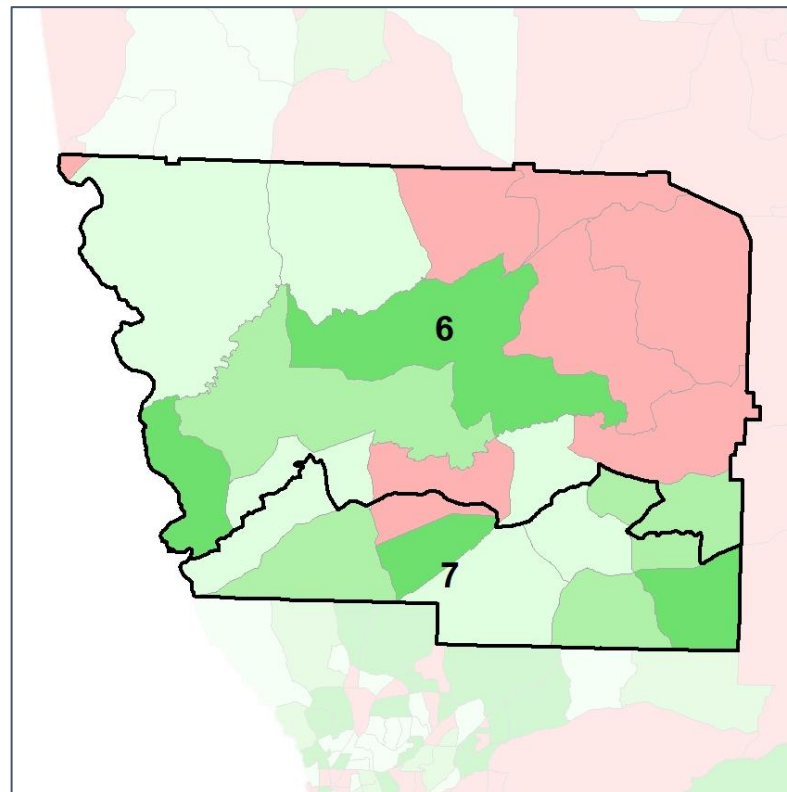
Net Gain in Population (2010 - 2020)



2012 Map



2022 Map*



	6	7	6	7	County
Population	16,456	15,568	17,340	17,328	34,668
API	1%	1%	1%	1%	1%
Black	22%	12%	19%	11%	15%
Latino	2%	3%	3%	5%	4%
Other	1%	2%	5%	5%	5%
White	74%	81%	72%	78%	75%
Population Gain	1,222	-1,222	884	1,760	*
Population % Gain	8%	-7%	5%	11%	*
Net POC Gain	368	-368	677	890	*
Net POC % Gain	10%	-11%	16%	30%	*

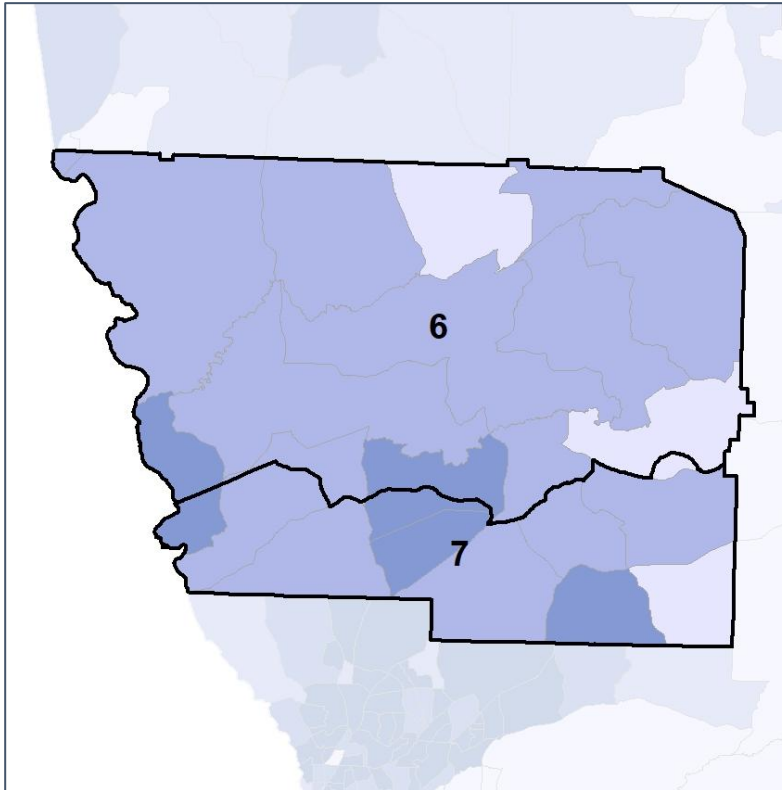


Harris County Super District

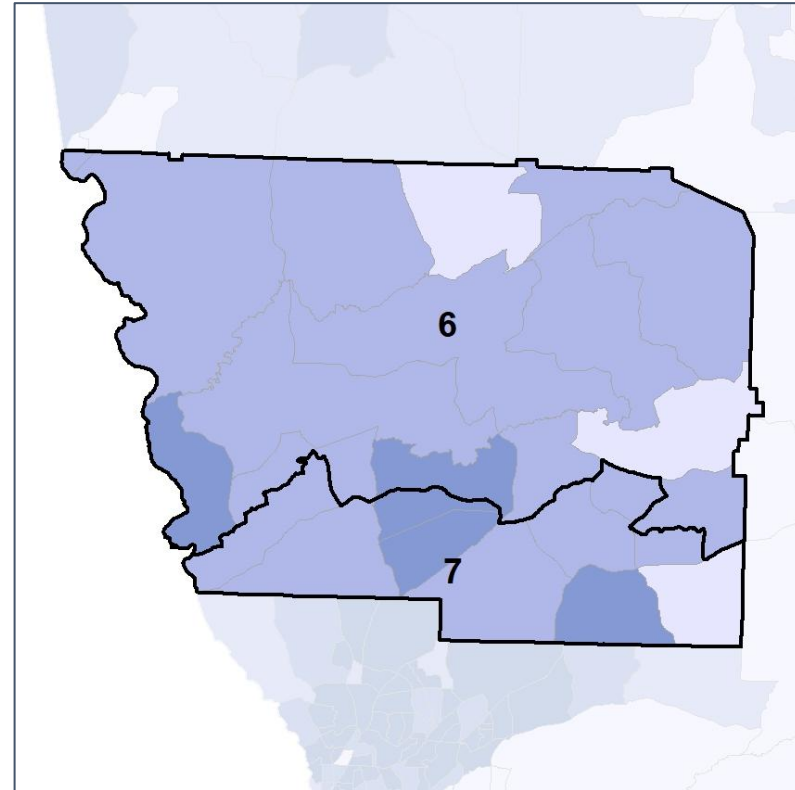
Net Gain in % POC (2020 - 2010) by Census Block Group



2012 Map



2022 Map*



	6	7	6	7	County
Population	16,456	15,568	17,340	17,328	34,668
API	1%	1%	1%	1%	1%
Black	22%	12%	19%	11%	15%
Latino	2%	3%	3%	5%	4%
Other	1%	2%	5%	5%	5%
White	74%	81%	72%	78%	75%
Population Gain	1,222	-1,222	884	1,760	*
Population % Gain	8%	-7%	5%	11%	*
Net POC Gain	368	-368	677	890	*
Net POC % Gain	10%	-11%	16%	30%	*

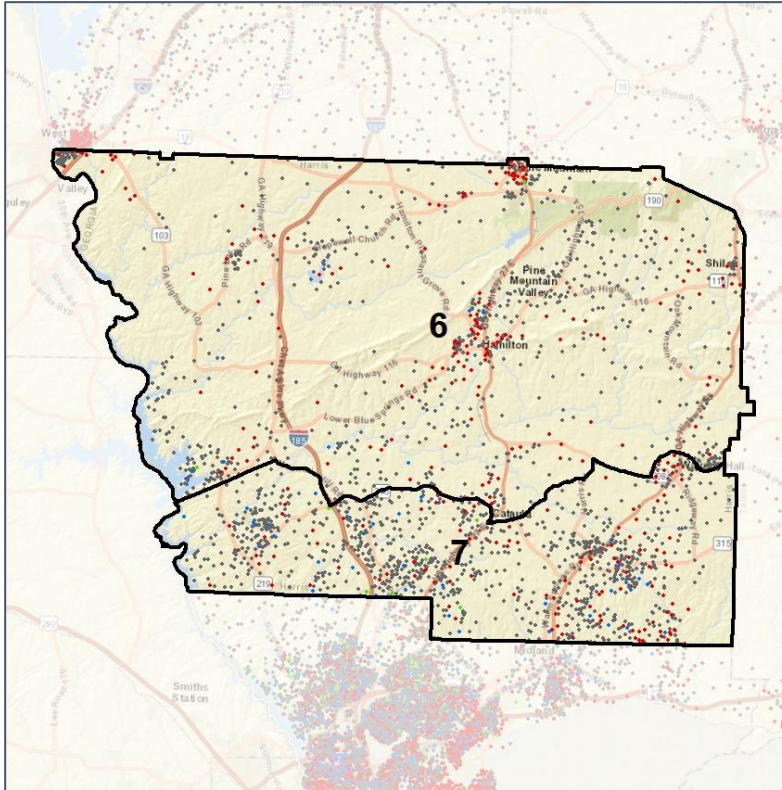


Harris County Super District

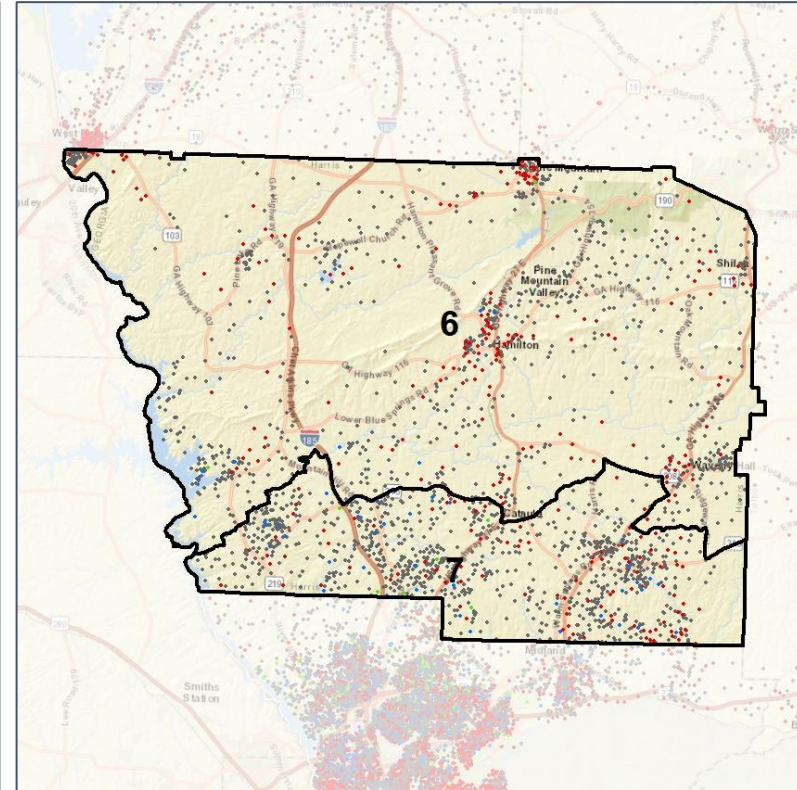
Population Density by Race



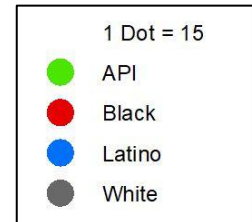
2012 Map



2022 Map*



	6	7	6	7	County
Population	16,456	15,568	17,340	17,328	34,668
API	86	211	183	226	409
% API	1%	1%	1%	1%	1%
Black	3,591	1,866	3,265	1,905	5,170
% Black	22%	12%	19%	11%	15%
Latino	336	536	579	838	1,417
% Latino	2%	3%	3%	5%	4%
Other	227	323	890	857	1,747
% Other	1%	2%	5%	5%	5%
White	12,216	12,632	12,423	13,502	25,925
% White	74%	81%	72%	78%	75%

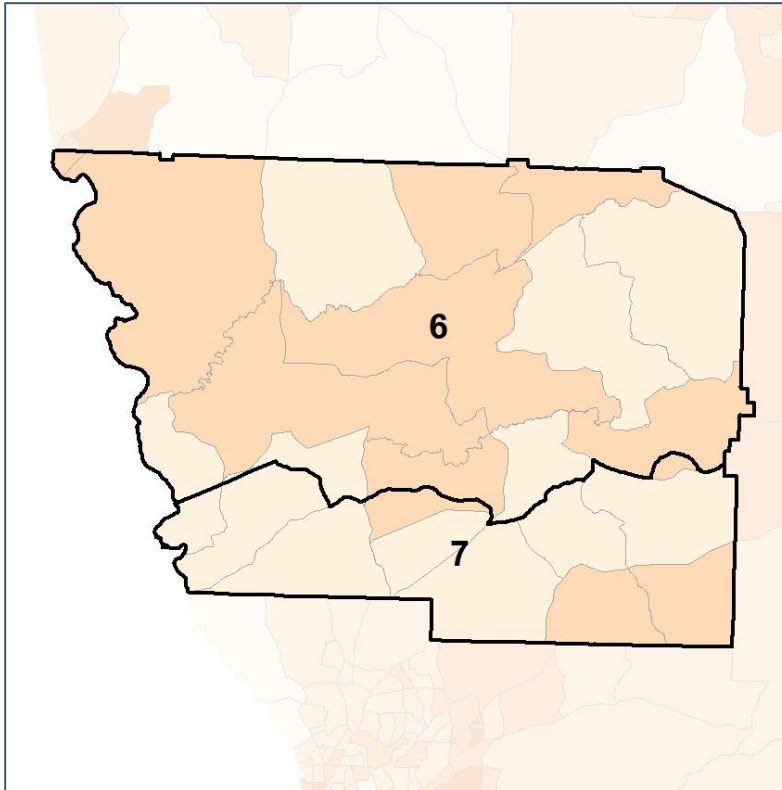


Harris County Super District

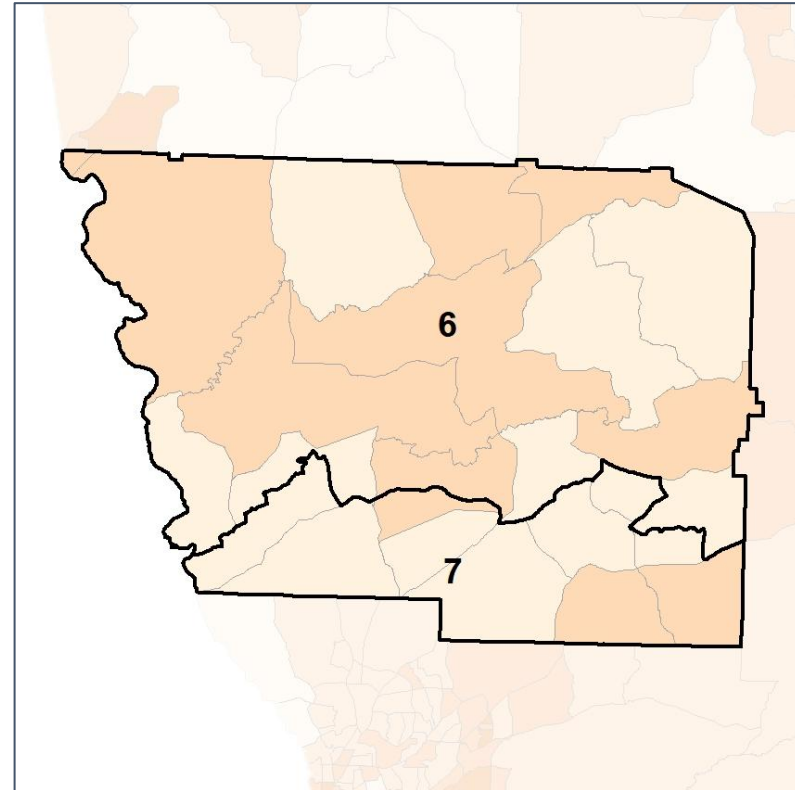
% People of Color by Census Block Group



2012 Map



2022 Map*



	6	7	6	7	County
Population	16,456	15,568	17,340	17,328	34,668
API	86	211	183	226	409
% API	1%	1%	1%	1%	1%
Black	3,591	1,866	3,265	1,905	5,170
% Black	22%	12%	19%	11%	15%
Latino	336	536	579	838	1,417
% Latino	2%	3%	3%	5%	4%
Other	227	323	890	857	1,747
% Other	1%	2%	5%	5%	5%
White	12,216	12,632	12,423	13,502	25,925
% White	74%	81%	72%	78%	75%

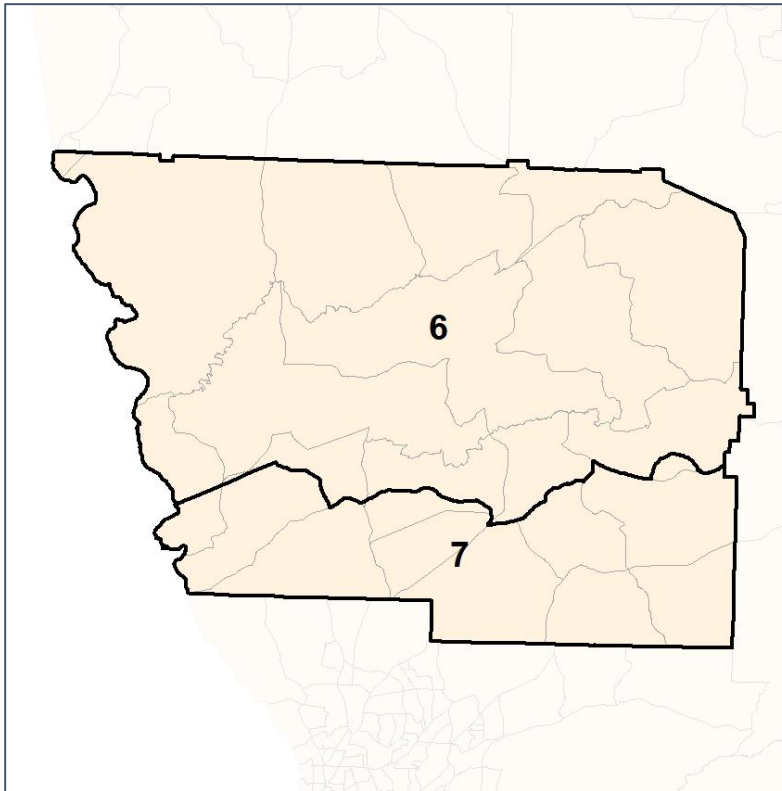


Harris County Super District

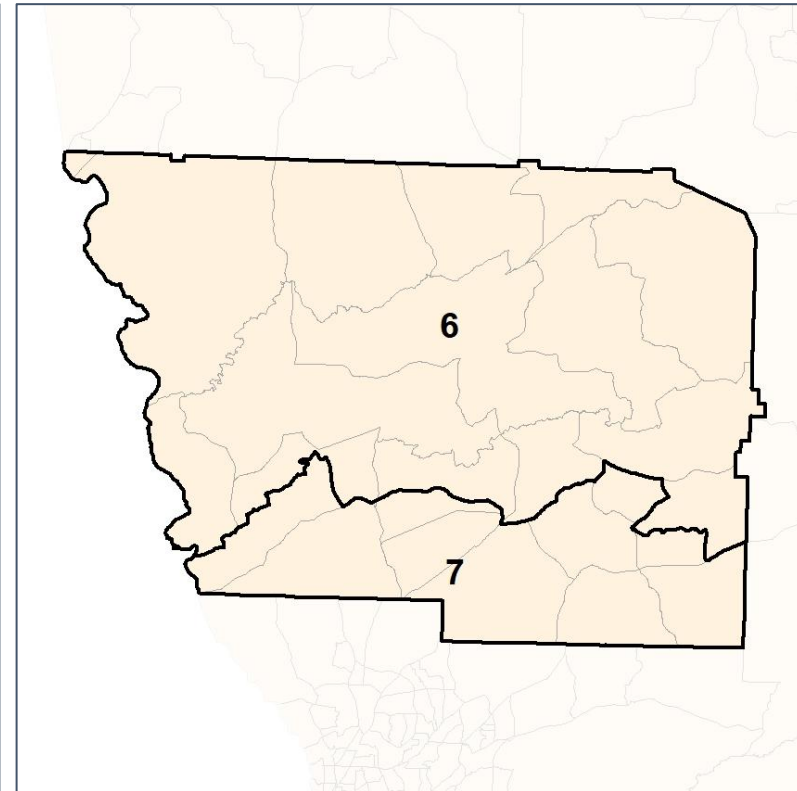
% API by Census Block Group



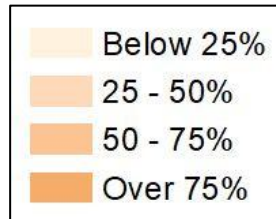
2012 Map



2022 Map*



	6	7	6	7	County
Population	16,456	15,568	17,340	17,328	34,668
API	86	211	183	226	409
% API	1%	1%	1%	1%	1%
Black	3,591	1,866	3,265	1,905	5,170
% Black	22%	12%	19%	11%	15%
Latino	336	536	579	838	1,417
% Latino	2%	3%	3%	5%	4%
Other	227	323	890	857	1,747
% Other	1%	2%	5%	5%	5%
White	12,216	12,632	12,423	13,502	25,925
% White	74%	81%	72%	78%	75%

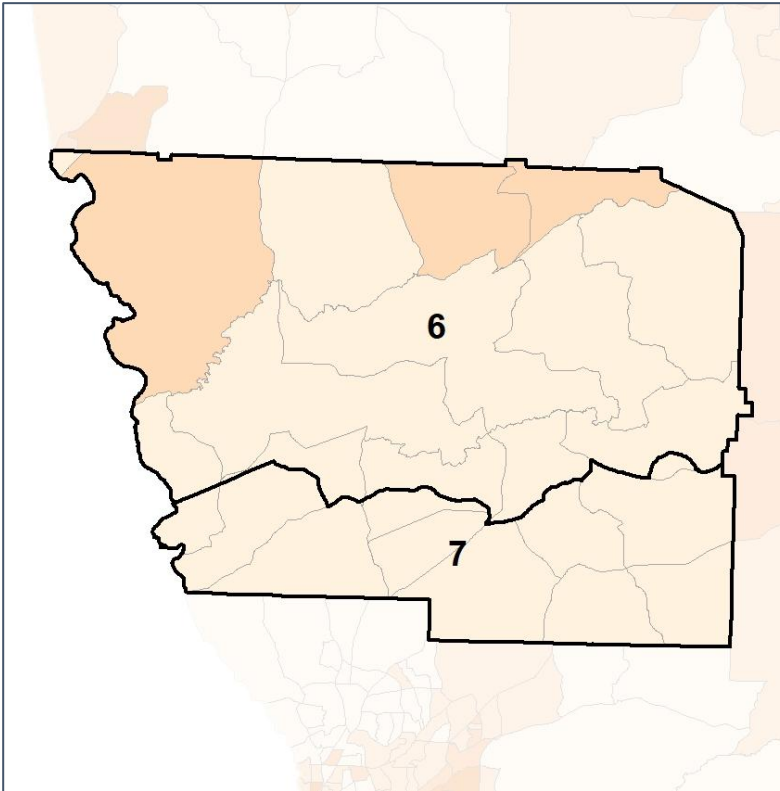


Harris County Super District

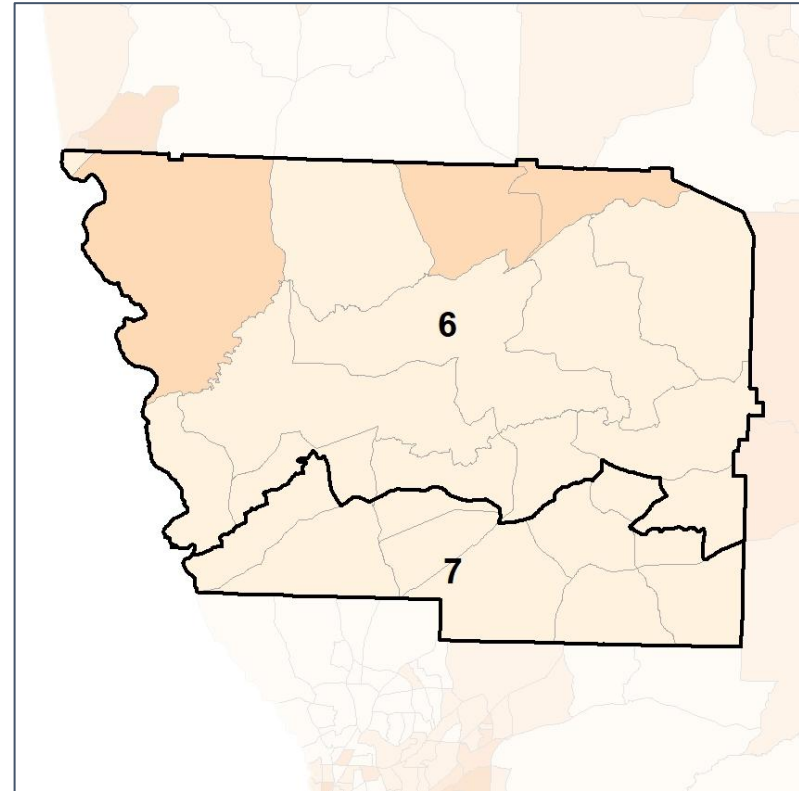
% Black by Census Block Group



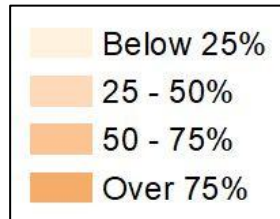
2012 Map



2022 Map*



	6	7	6	7	County
Population	16,456	15,568	17,340	17,328	34,668
API	86	211	183	226	409
% API	1%	1%	1%	1%	1%
Black	3,591	1,866	3,265	1,905	5,170
% Black	22%	12%	19%	11%	15%
Latino	336	536	579	838	1,417
% Latino	2%	3%	3%	5%	4%
Other	227	323	890	857	1,747
% Other	1%	2%	5%	5%	5%
White	12,216	12,632	12,423	13,502	25,925
% White	74%	81%	72%	78%	75%

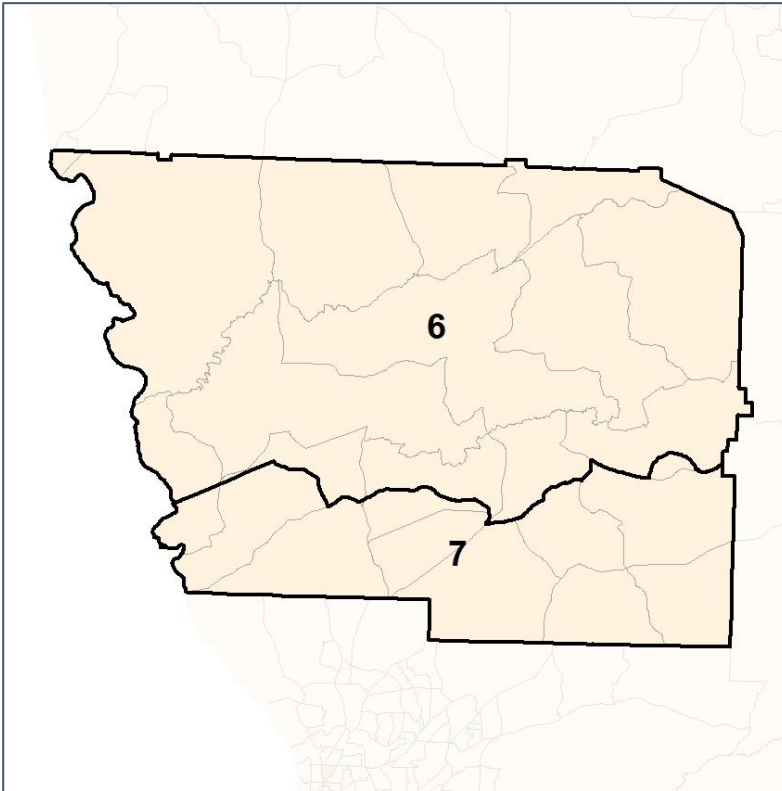


Harris County Super District

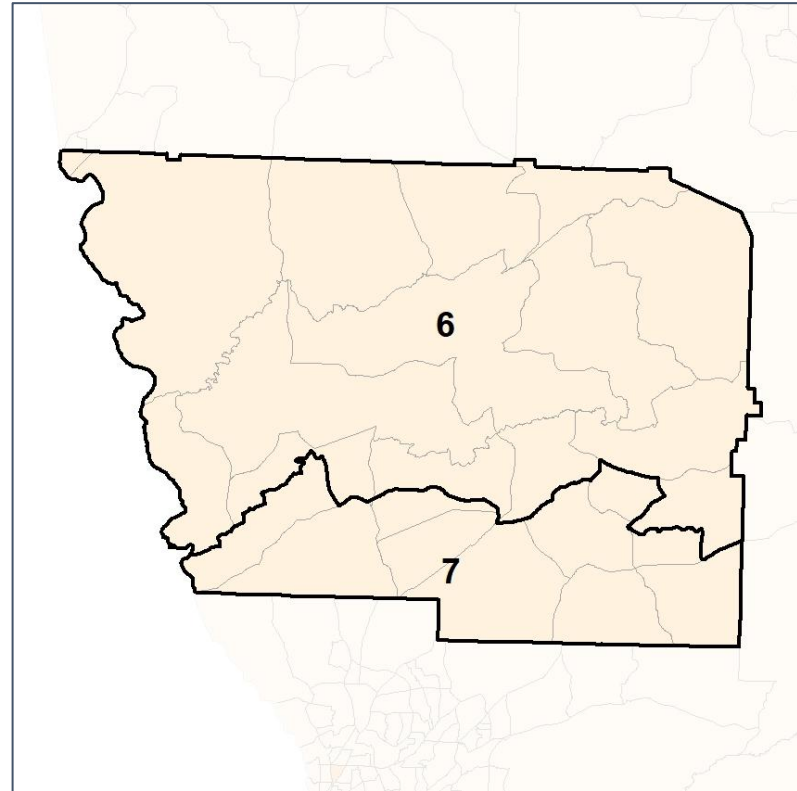
% Latino by Census Block Group



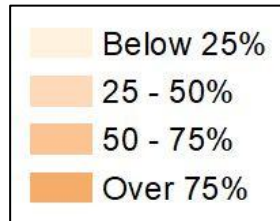
2012 Map



2022 Map*



	6	7	6	7	County
Population	16,456	15,568	17,340	17,328	34,668
API	86	211	183	226	409
% API	1%	1%	1%	1%	1%
Black	3,591	1,866	3,265	1,905	5,170
% Black	22%	12%	19%	11%	15%
Latino	336	536	579	838	1,417
% Latino	2%	3%	3%	5%	4%
Other	227	323	890	857	1,747
% Other	1%	2%	5%	5%	5%
White	12,216	12,632	12,423	13,502	25,925
% White	74%	81%	72%	78%	75%

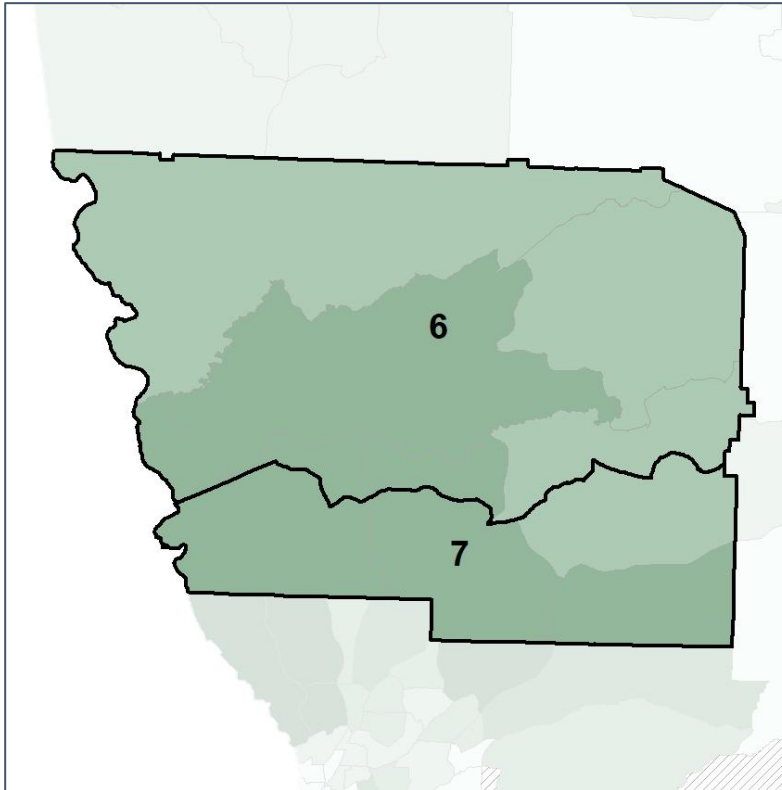


Harris County Super District

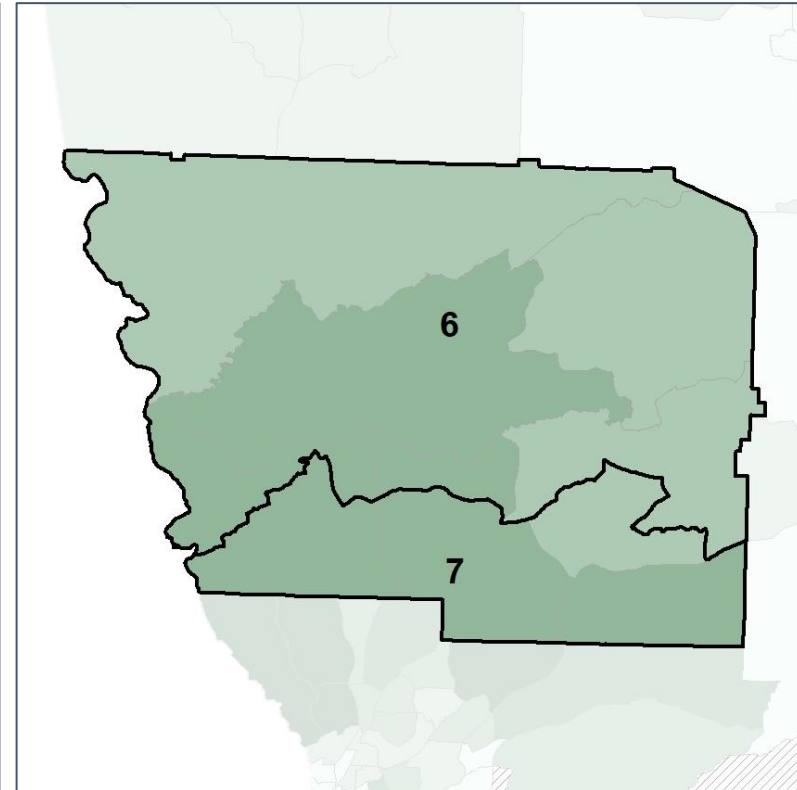
Median Household Income by Census Tract



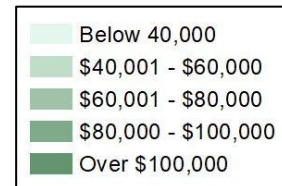
2012 Map



2022 Map*



	6	7	6	7	County
Population	16,456	15,568	17,340	17,328	34,668
% API	1%	1%	1%	1%	1%
% Black	22%	12%	19%	11%	15%
% Latino	2%	3%	3%	5%	4%
% Other	1%	2%	5%	5%	5%
% White	74%	81%	72%	78%	75%
Median Income	\$76,000	\$94,000	\$77,000	\$94,000	\$80,000
% Renter	18%	4%	18%	4%	11%
% Youth	21%	18%	21%	18%	19%

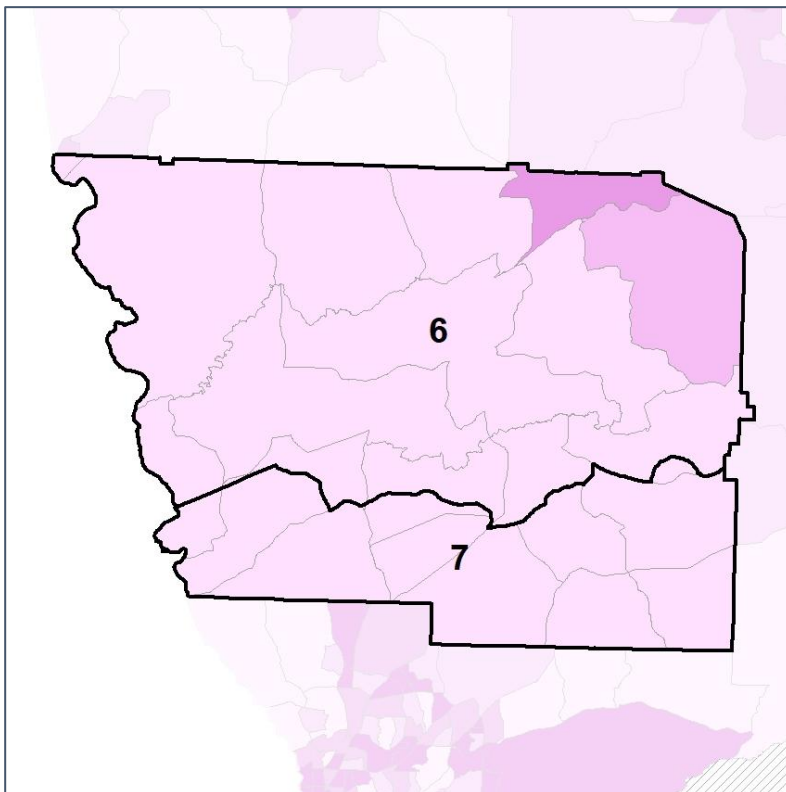


Harris County Super District

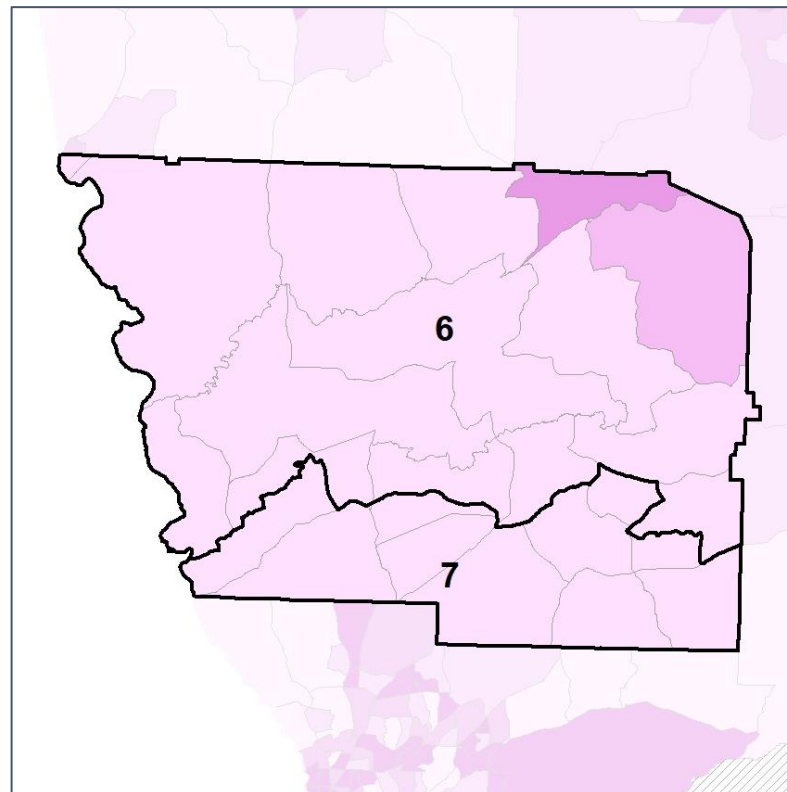
% Renter by Census Block Group



2012 Map



2022 Map*



	6	7	6	7	County
Population	16,456	15,568	17,340	17,328	34,668
% API	1%	1%	1%	1%	1%
% Black	22%	12%	19%	11%	15%
% Latino	2%	3%	3%	5%	4%
% Other	1%	2%	5%	5%	5%
% White	74%	81%	72%	78%	75%
Median Income	\$76,000	\$94,000	\$77,000	\$94,000	\$80,000
% Renter	18%	4%	18%	4%	11%
% Youth	21%	18%	21%	18%	19%

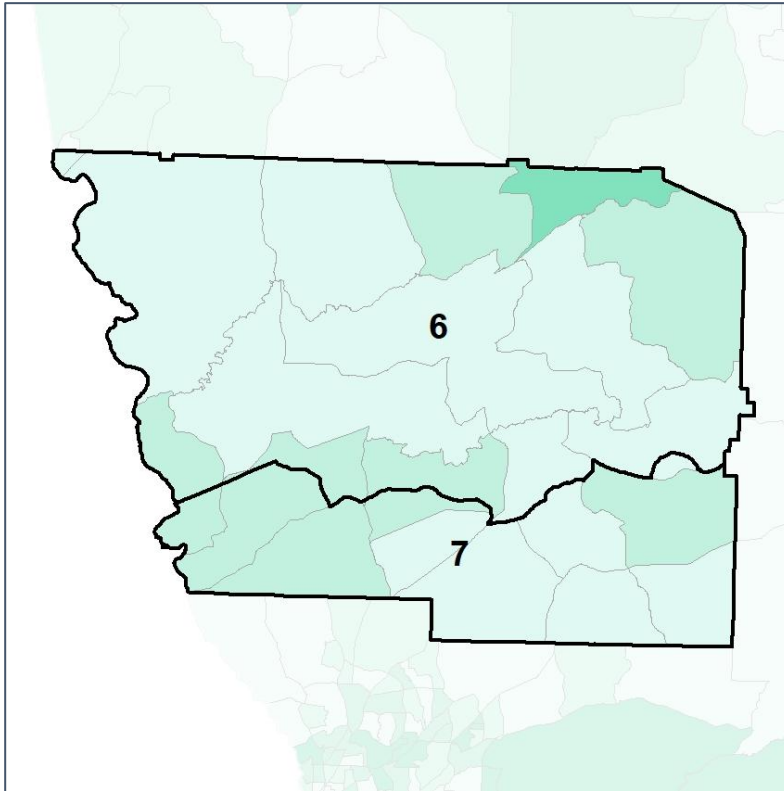


Harris County Super District

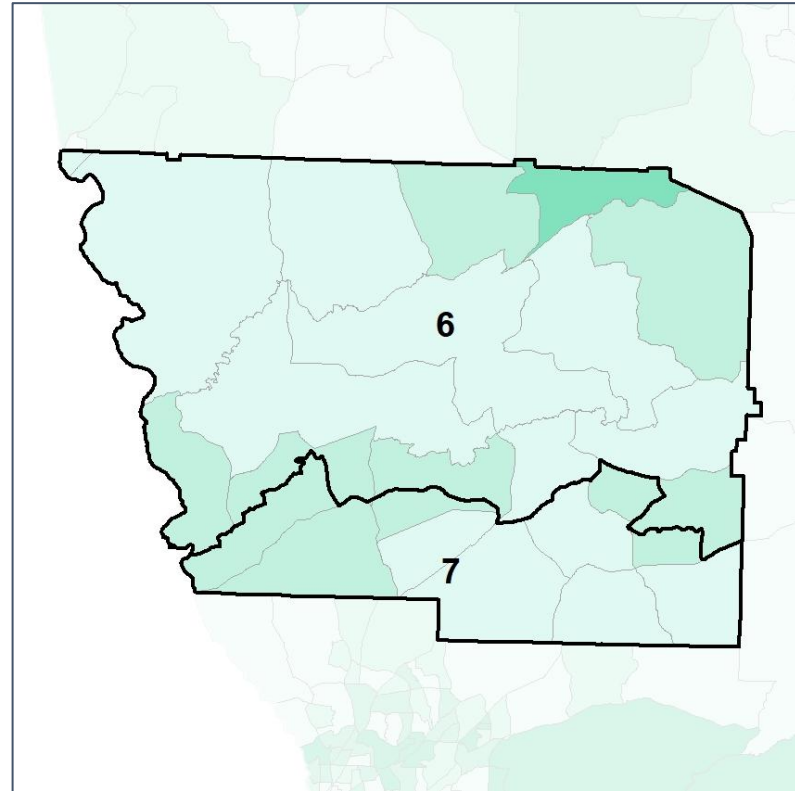
% Youth (18-34) by Census Block Group



2012 Map



2022 Map*



	6	7	6	7	County
Population	16,456	15,568	17,340	17,328	34,668
% API	1%	1%	1%	1%	1%
% Black	22%	12%	19%	11%	15%
% Latino	2%	3%	3%	5%	4%
% Other	1%	2%	5%	5%	5%
% White	74%	81%	72%	78%	75%
Median Income	\$76,000	\$94,000	\$77,000	\$94,000	\$80,000
% Renter	18%	4%	18%	4%	11%
% Youth	21%	18%	21%	18%	19%

