



Demographic Overview

Racial Breakdown in Hall County

Hall County	2010	2020	% Change
Total Population	179,684	203,136	13%
AAPI	3,238	4,283	32%
Black	12,757	14,256	12%
Latino	46,906	57,010	22%
Other/Mixed Race	2,483	7,169	189%
POC	65,384	82,718	27%
White	114,300	120,418	5%

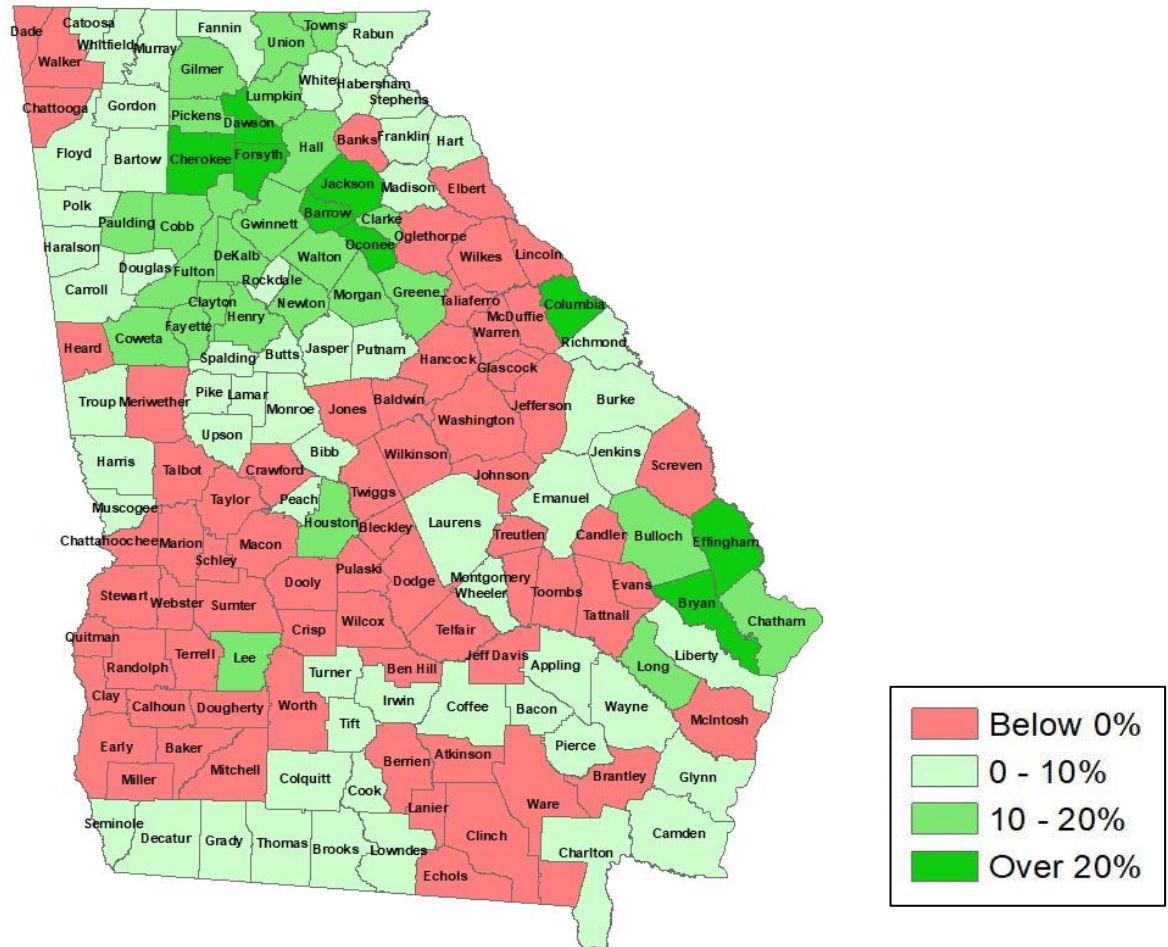
*Note: The use of "Other" in these statistics combines those who identify as Native American, Mixed Race, and "Other" race





Population Gain

Change in Population in Georgia by County



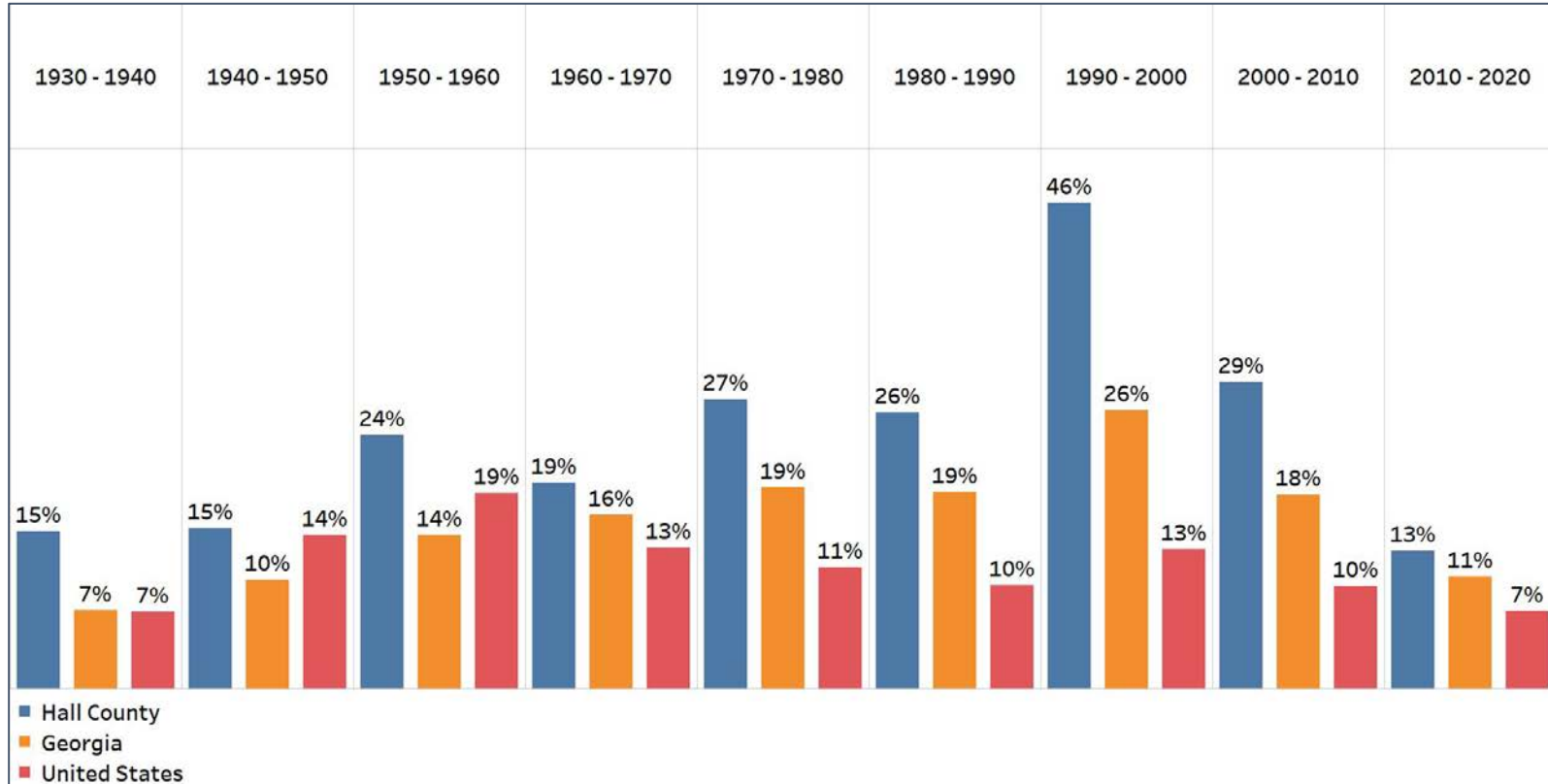
- Georgia is experiencing rapid population growth in the Atlanta, Augusta, and Savannah regions of the state





Population Gain

Change in Population by Decade

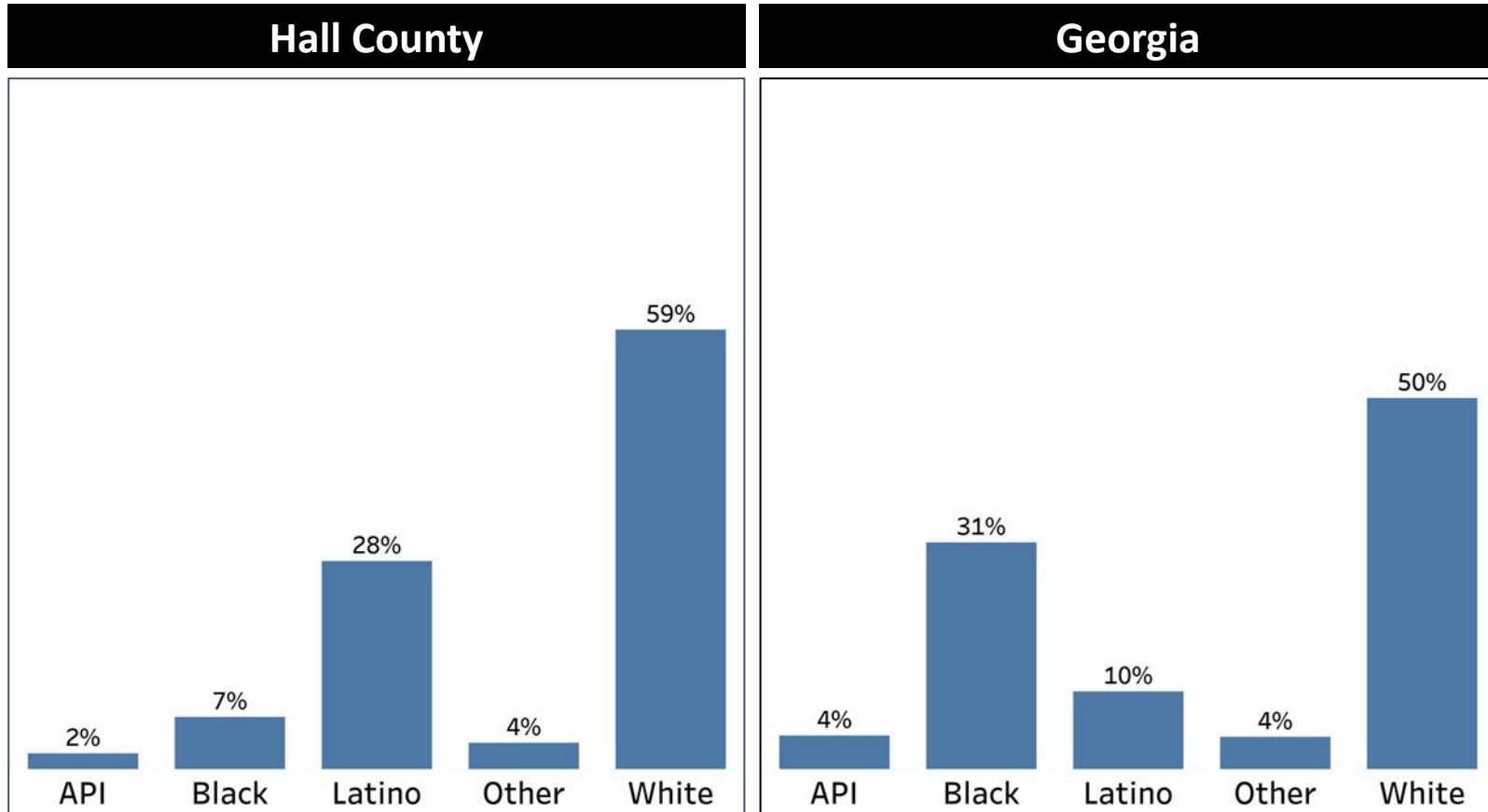


- Hall County has continually had population growth that is above the statewide average
- The last decade was the lowest growth rate since 1930



Demographics

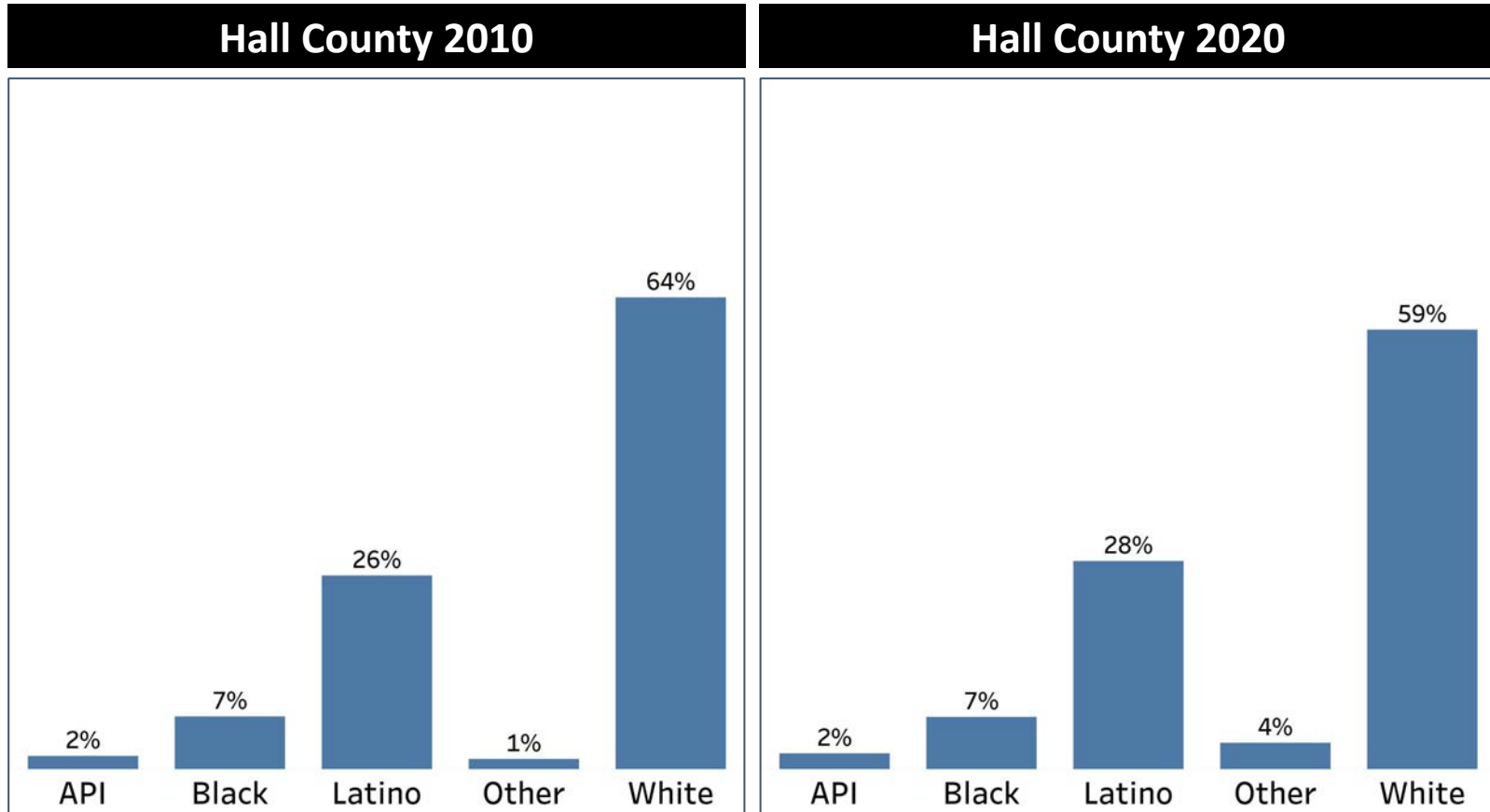
Comparison between Hall County and Georgia



- Hall County has one of the lowest Black population rates within the state
- The Latino population in Hall county is the second largest demographic group, composing nearly a third of the population

Demographics

2010 vs 2020 Demographics in Hall County

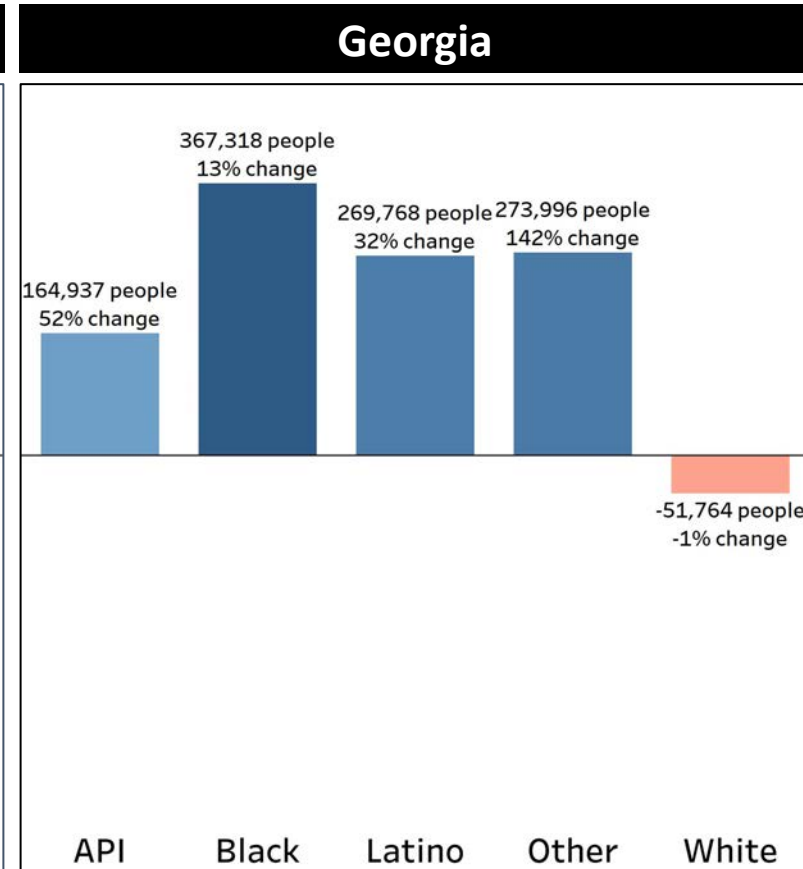
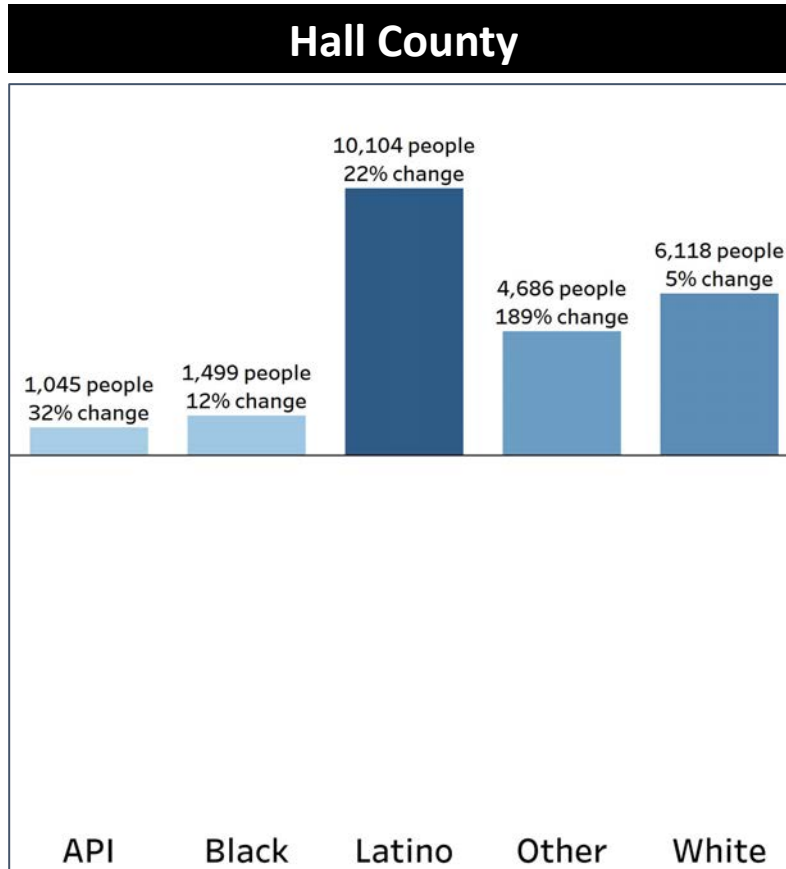


- Hall County White population decreased by 5%
- Both the Latino and “Other” populations have increased in population in Hall county while the Black population percentage remains the same



Demographics

Population Change by Race (2020 - 2010)



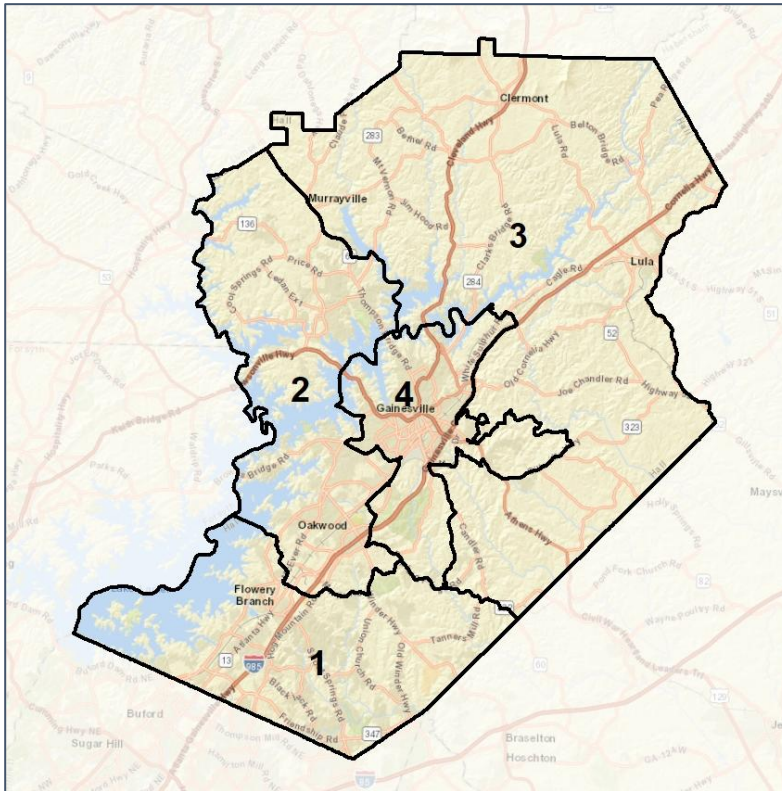
- Despite having a large Latino population, Since 2010 Hall county's Latino population grew at a slower rate than the statewide average
- Hall county's White population grew by 5% while the statewide average shows a decline of 1%

Hall County Commission

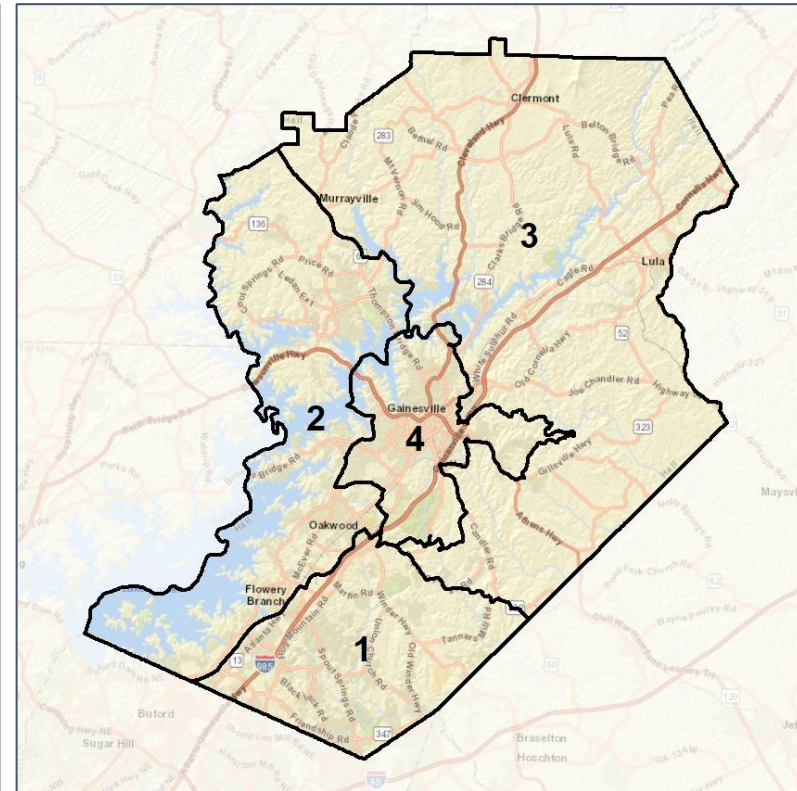
Context



2012 Map



2022 Map*



	1	2	3	4	1*	2*	3*	4*	County
Population	55,238	53,457	46,128	48,313	50,778	50,648	50,840	50,870	203,136
API	3%	3%	1%	2%	3%	2%	1%	2%	2%
Black	5%	4%	4%	15%	6%	4%	4%	14%	7%
Latino	13%	29%	29%	44%	16%	18%	28%	50%	28%
Other	4%	3%	3%	3%	4%	4%	4%	3%	4%
White	75%	61%	63%	36%	71%	73%	63%	31%	59%
Population Gain	*	*	*	*	-4,460	-2,809	4,712	2,557	*
Population % Gain	*	*	*	*	-8%	-5%	10%	5%	*
Net POC Gain	*	*	*	*	998	-6,969	1,684	4,287	*
Net POC % Gain	*	*	*	*	7%	-33%	10%	14%	*



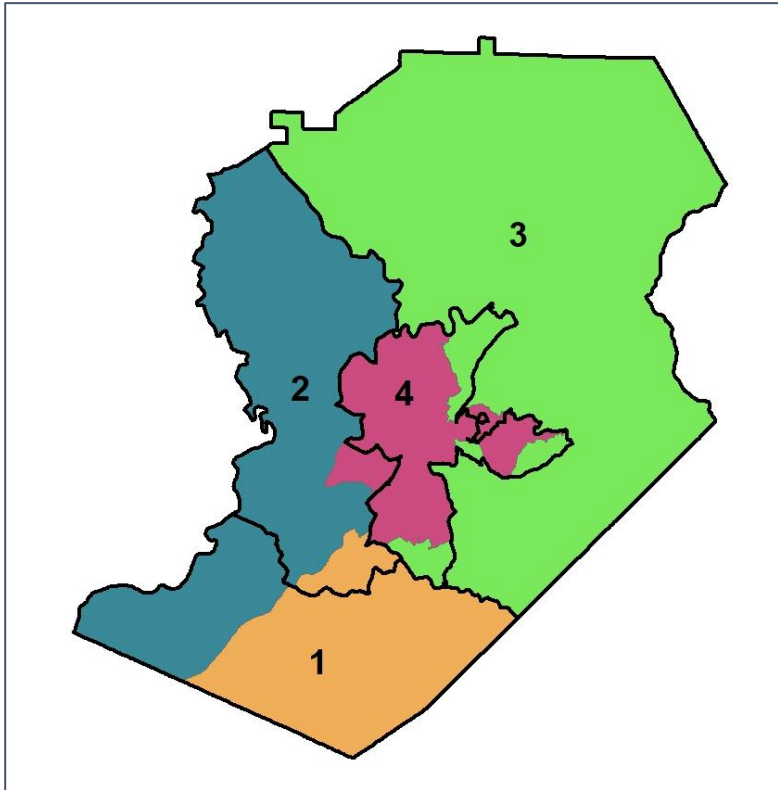
Source:
2020 Decennial Census
2020 ACS 5-Year Dataset

Hall County Commission

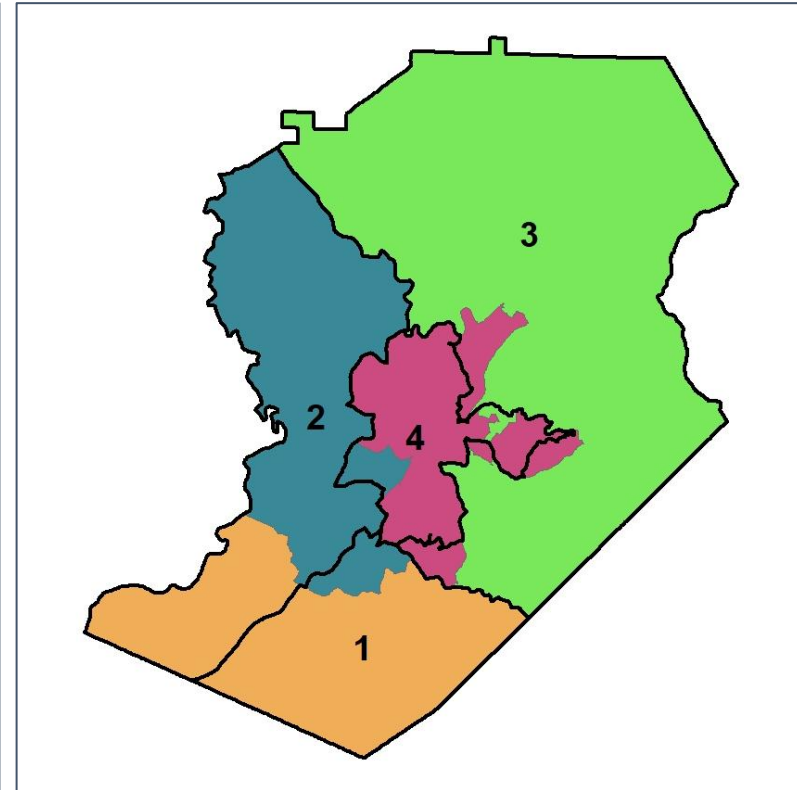
Changes in Redistricting



2012 Map (2022 in Colors)



2022 Map* (2012 in Colors)



	1	2	3	4	1*	2*	3*	4*	County
Population	55,238	53,457	46,128	48,313	50,778	50,648	50,840	50,870	203,136
API	3%	3%	1%	2%	3%	2%	1%	2%	2%
Black	5%	4%	4%	15%	6%	4%	4%	14%	7%
Latino	13%	29%	29%	44%	16%	18%	28%	50%	28%
Other	4%	3%	3%	3%	4%	4%	4%	3%	4%
White	75%	61%	63%	36%	71%	73%	63%	31%	59%
Population Gain	*	*	*	*	-4,460	-2,809	4,712	2,557	*
Population % Gain	*	*	*	*	-8%	-5%	10%	5%	*
Net POC Gain	*	*	*	*	998	-6,969	1,684	4,287	*
Net POC % Gain	*	*	*	*	7%	-33%	10%	14%	*

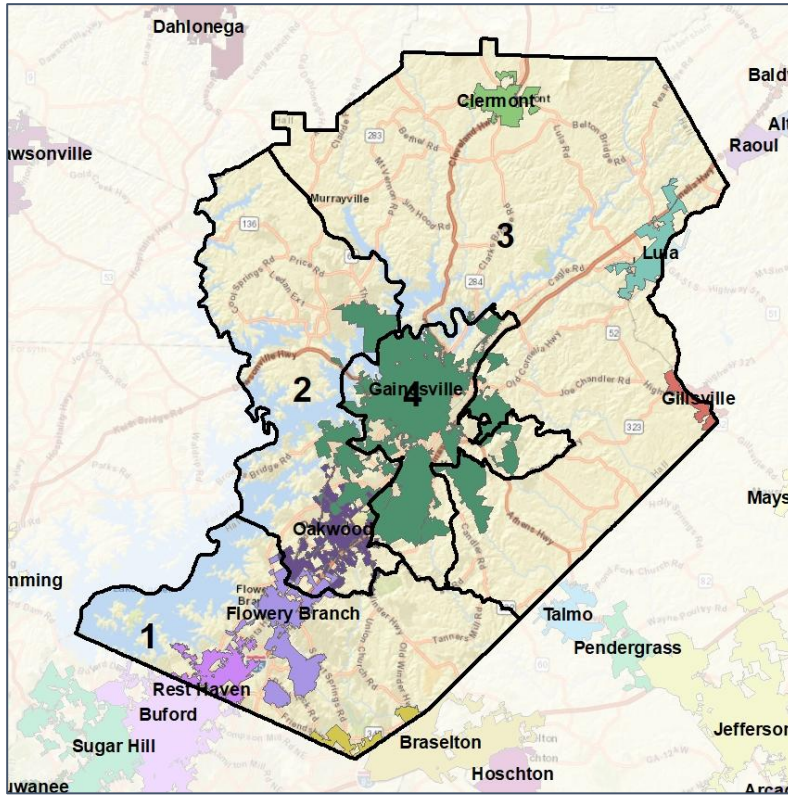


Hall County Commission

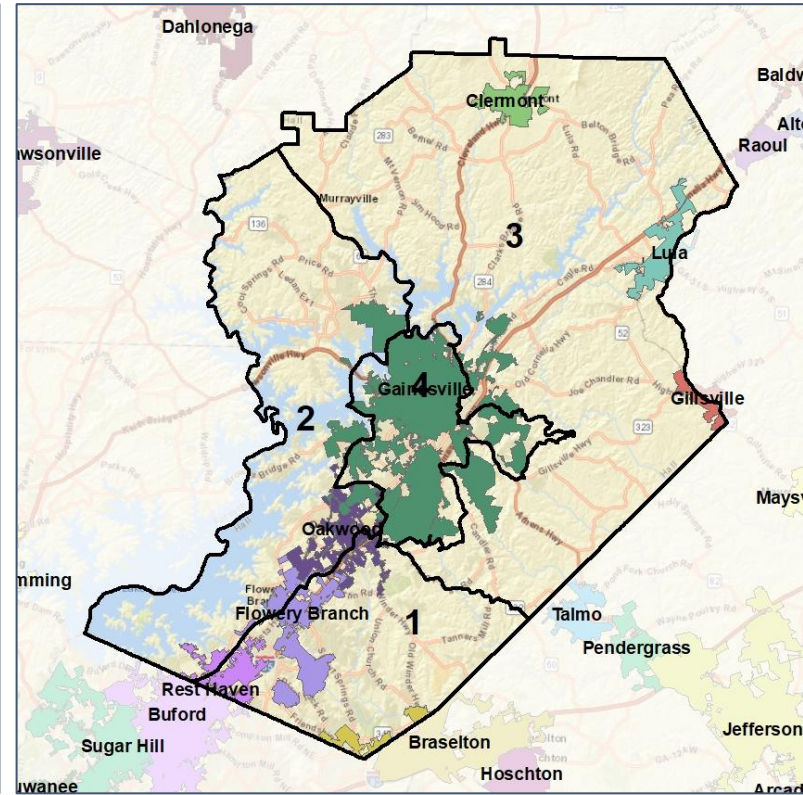
Cities and Places



2012 Map



2022 Map*



	1	2	3	4	1*	2*	3*	4*	County
Population	55,238	53,457	46,128	48,313	50,778	50,648	50,840	50,870	203,136
API	3%	3%	1%	2%	3%	2%	1%	2%	2%
Black	5%	4%	4%	15%	6%	4%	4%	14%	7%
Latino	13%	29%	29%	44%	16%	18%	28%	50%	28%
Other	4%	3%	3%	3%	4%	4%	4%	3%	4%
White	75%	61%	63%	36%	71%	73%	63%	31%	59%
Population Gain	*	*	*	*	-4,460	-2,809	4,712	2,557	*
Population % Gain	*	*	*	*	-8%	-5%	10%	5%	*
Net POC Gain	*	*	*	*	998	-6,969	1,684	4,287	*
Net POC % Gain	*	*	*	*	7%	-33%	10%	14%	*



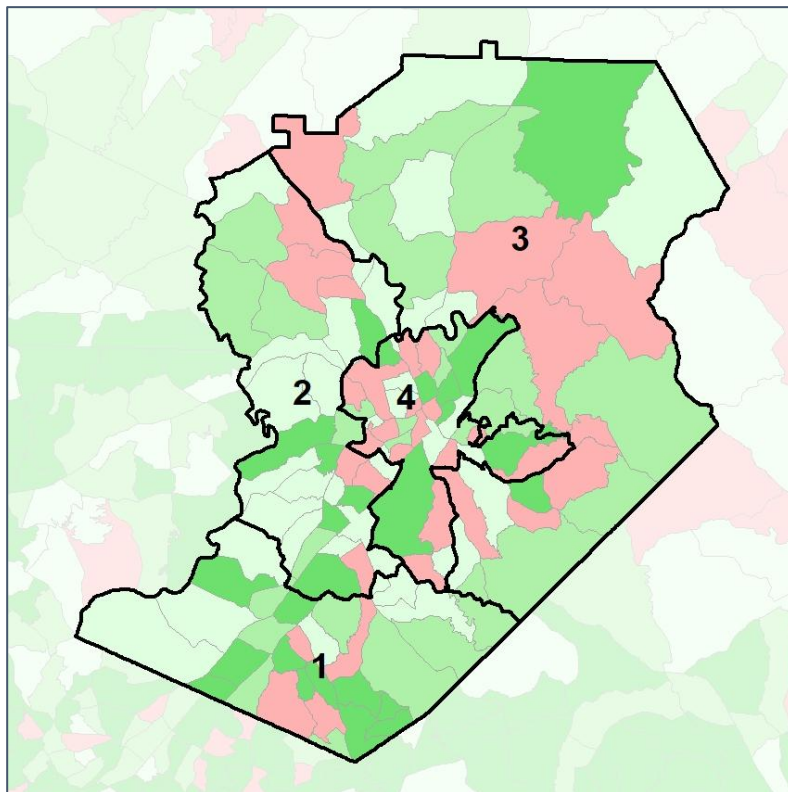
Source:
2020 Decennial Census
2020 ACS 5-Year Dataset

Hall County Commission

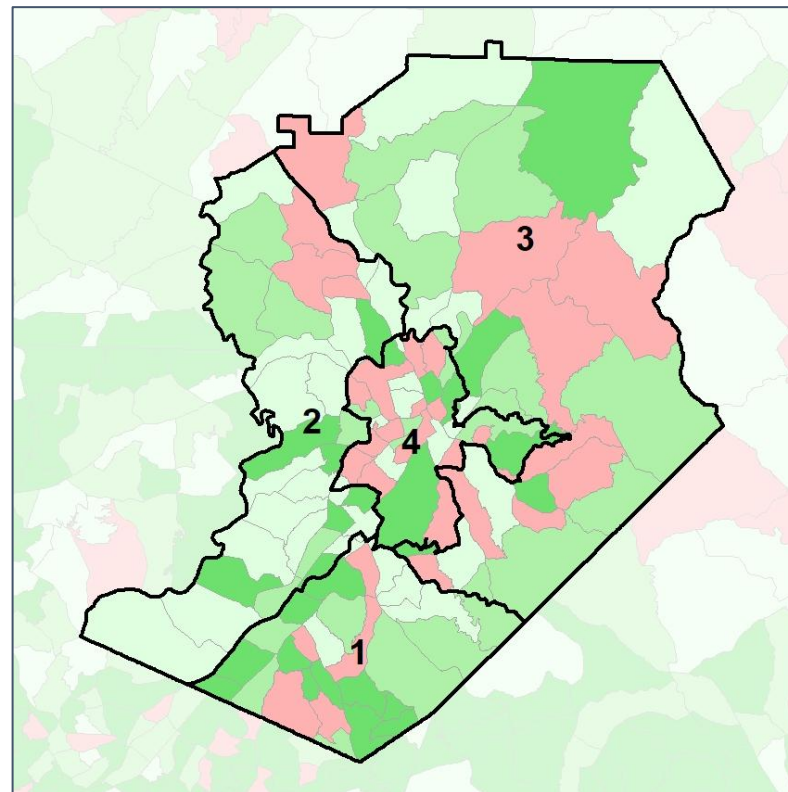
Net Gain in Population (2010 - 2020)



2012 Map



2022 Map*



	1	2	3	4	1*	2*	3*	4*	County
Population	55,238	53,457	46,128	48,313	50,778	50,648	50,840	50,870	203,136
API	3%	3%	1%	2%	3%	2%	1%	2%	2%
Black	5%	4%	4%	15%	6%	4%	4%	14%	7%
Latino	13%	29%	29%	44%	16%	18%	28%	50%	28%
Other	4%	3%	3%	3%	4%	4%	4%	3%	4%
White	75%	61%	63%	36%	71%	73%	63%	31%	59%
Population Gain	*	*	*	*	-4,460	-2,809	4,712	2,557	*
Population % Gain	*	*	*	*	-8%	-5%	10%	5%	*
Net POC Gain	*	*	*	*	998	-6,969	1,684	4,287	*
Net POC % Gain	*	*	*	*	7%	-33%	10%	14%	*

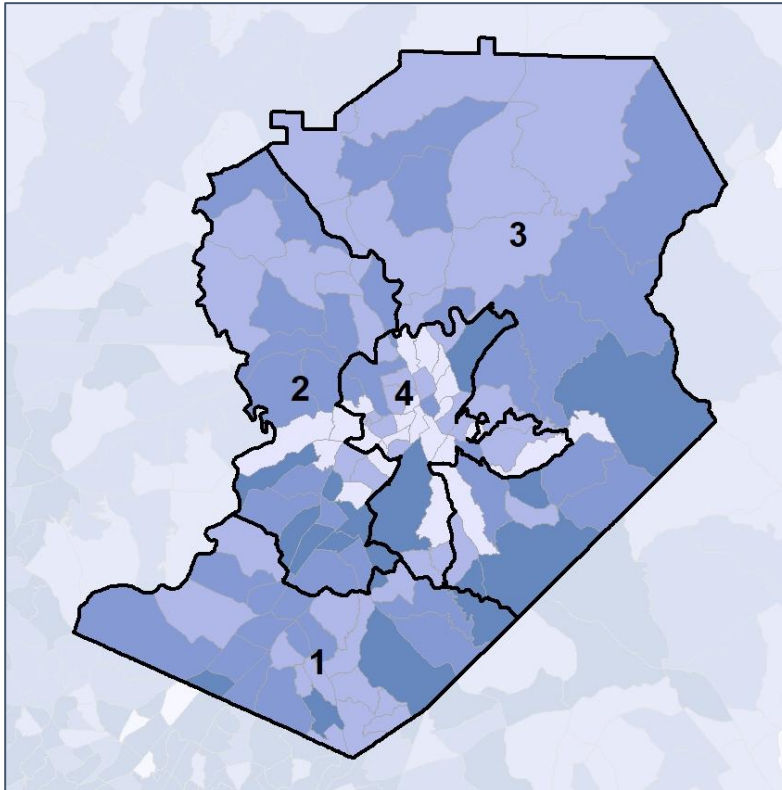


Hall County Commission

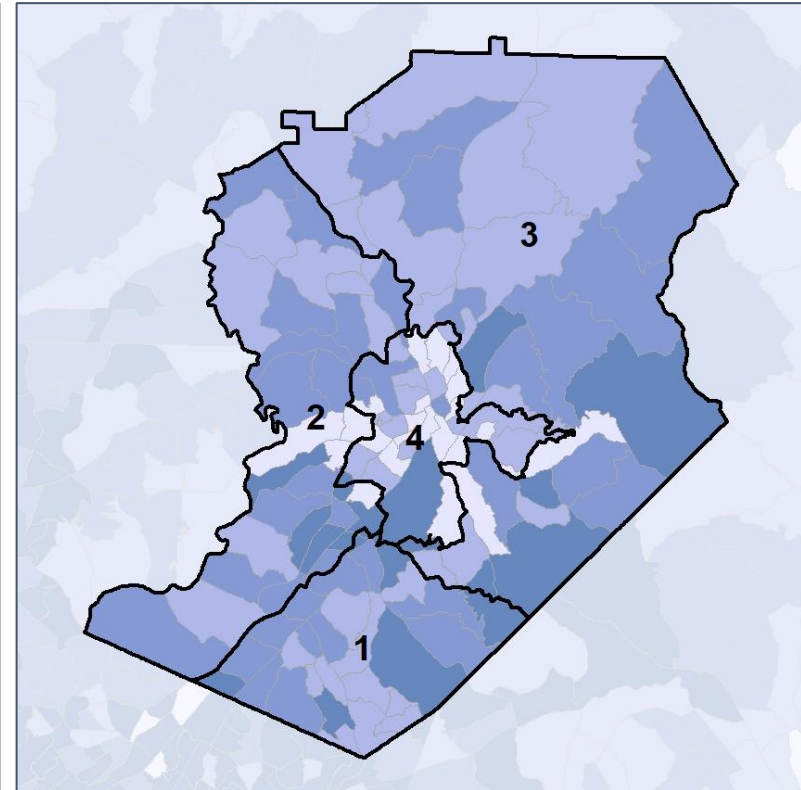
Net Gain in % POC (2020 - 2010) by Census Block Group



2012 Map



2022 Map*



	1	2	3	4	1*	2*	3*	4*	County
Population	55,238	53,457	46,128	48,313	50,778	50,648	50,840	50,870	203,136
API	3%	3%	1%	2%	3%	2%	1%	2%	2%
Black	5%	4%	4%	15%	6%	4%	4%	14%	7%
Latino	13%	29%	29%	44%	16%	18%	28%	50%	28%
Other	4%	3%	3%	3%	4%	4%	4%	3%	4%
White	75%	61%	63%	36%	71%	73%	63%	31%	59%
Population Gain	*	*	*	*	-4,460	-2,809	4,712	2,557	*
Population % Gain	*	*	*	*	-8%	-5%	10%	5%	*
Net POC Gain	*	*	*	*	998	-6,969	1,684	4,287	*
Net POC % Gain	*	*	*	*	7%	-33%	10%	14%	*

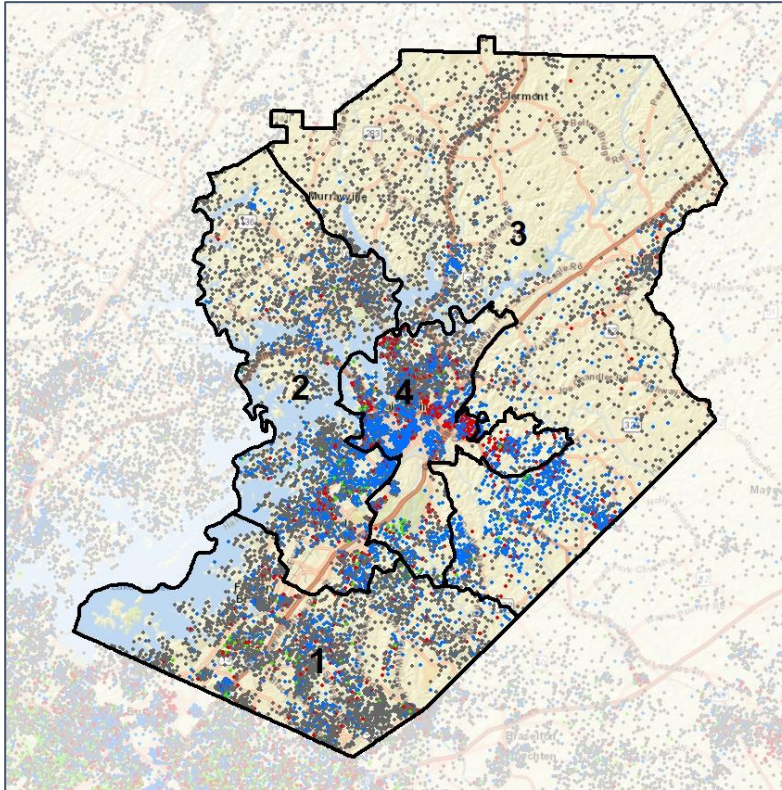


Hall County Commission

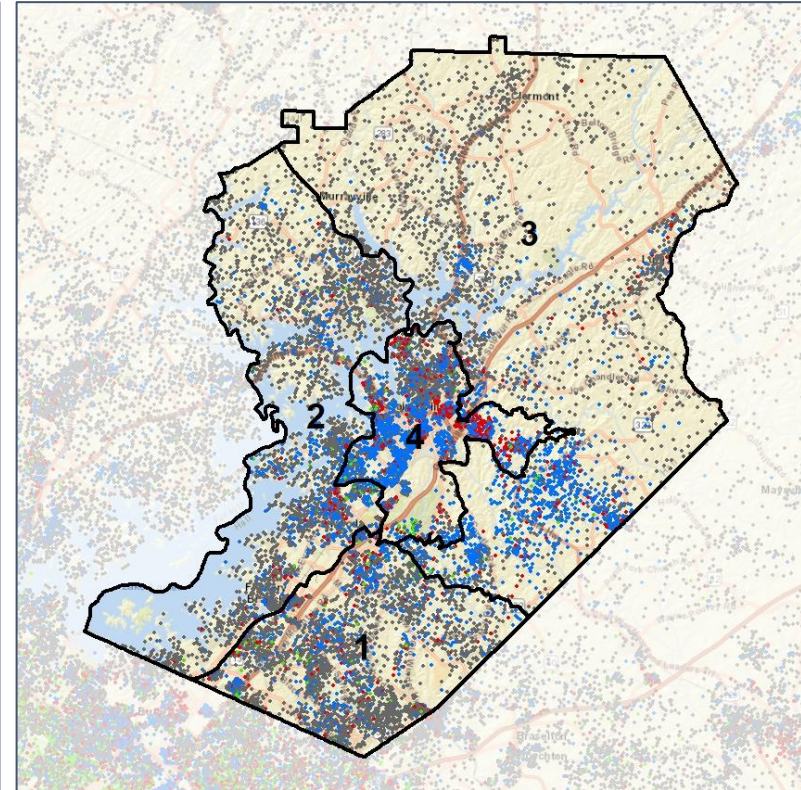
Population Density by Race



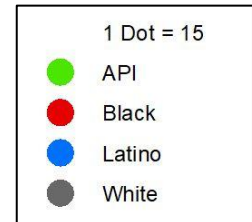
2012 Map



2022 Map*



	1	2	3	4	1*	2*	3*	4*	County
Population	55,238	53,457	46,128	48,313	50,778	50,648	50,840	50,870	203,136
API	1,476	1,361	423	1,023	1,429	1,146	508	1,200	4,283
% API	3%	3%	1%	2%	3%	2%	1%	2%	2%
Black	2,896	2,356	1,701	7,303	3,134	1,919	1,990	7,213	14,256
% Black	5%	4%	4%	15%	6%	4%	4%	14%	7%
Latino	7,225	15,372	13,250	21,163	8,281	8,901	14,389	25,439	57,010
% Latino	13%	29%	29%	44%	16%	18%	28%	50%	28%
Other	2,291	1,790	1,609	1,479	2,042	1,944	1,780	1,403	7,169
% Other	4%	3%	3%	3%	4%	4%	4%	3%	4%
White	41,350	32,578	29,145	17,345	35,892	36,738	32,173	15,615	120,418
% White	75%	61%	63%	36%	71%	73%	63%	31%	59%



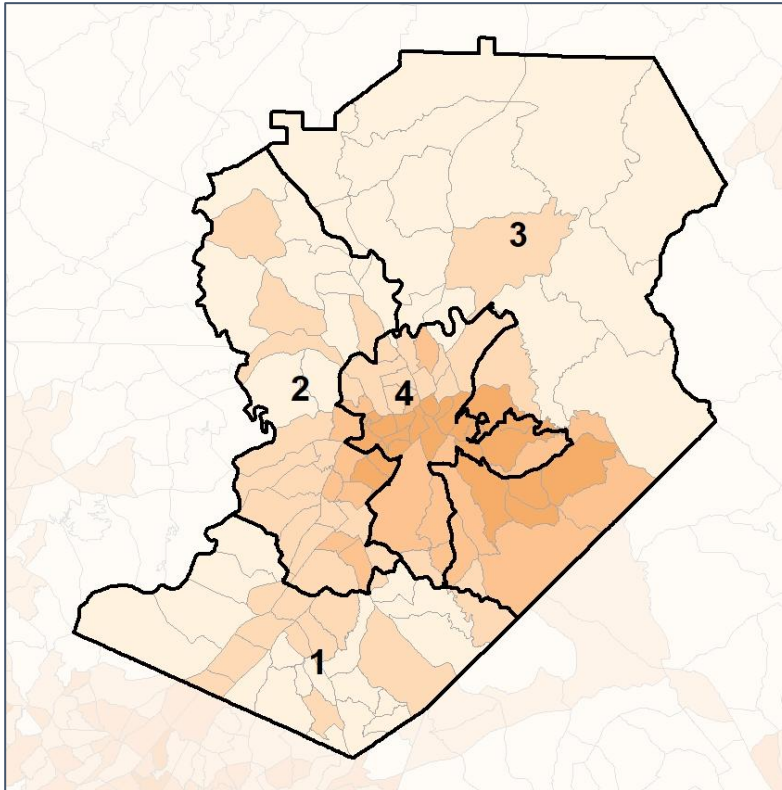
Source:
2020 Decennial Census
2020 ACS 5-Year Dataset

Hall County Commission

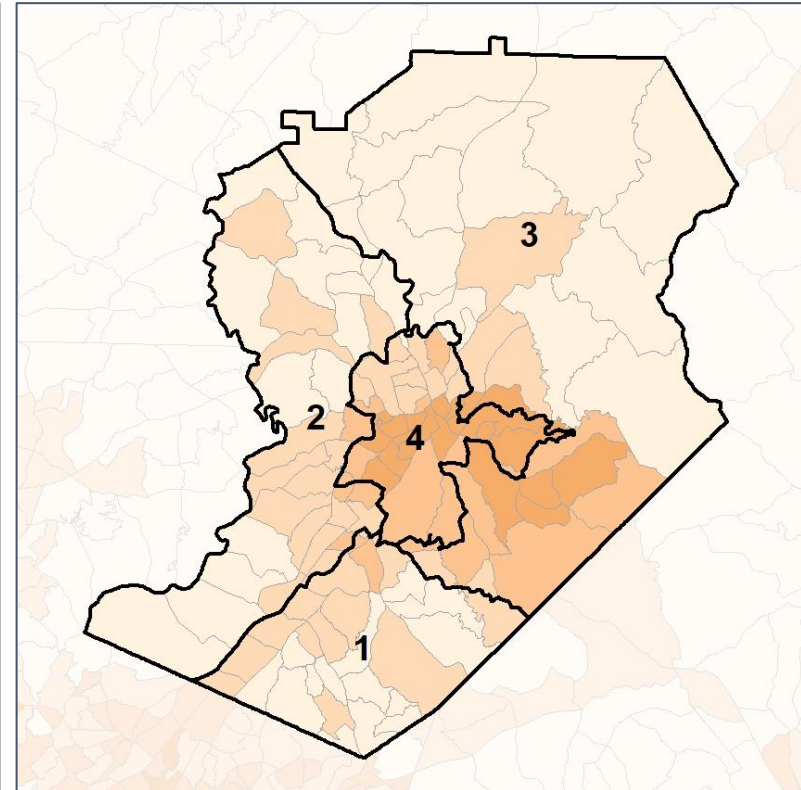
% People of Color by Census Block Group



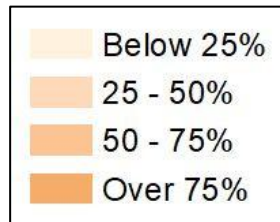
2012 Map



2022 Map*



	1	2	3	4	1*	2*	3*	4*	County
Population	55,238	53,457	46,128	48,313	50,778	50,648	50,840	50,870	203,136
API	1,476	1,361	423	1,023	1,429	1,146	508	1,200	4,283
% API	3%	3%	1%	2%	3%	2%	1%	2%	2%
Black	2,896	2,356	1,701	7,303	3,134	1,919	1,990	7,213	14,256
% Black	5%	4%	4%	15%	6%	4%	4%	14%	7%
Latino	7,225	15,372	13,250	21,163	8,281	8,901	14,389	25,439	57,010
% Latino	13%	29%	29%	44%	16%	18%	28%	50%	28%
Other	2,291	1,790	1,609	1,479	2,042	1,944	1,780	1,403	7,169
% Other	4%	3%	3%	3%	4%	4%	4%	3%	4%
White	41,350	32,578	29,145	17,345	35,892	36,738	32,173	15,615	120,418
% White	75%	61%	63%	36%	71%	73%	63%	31%	59%

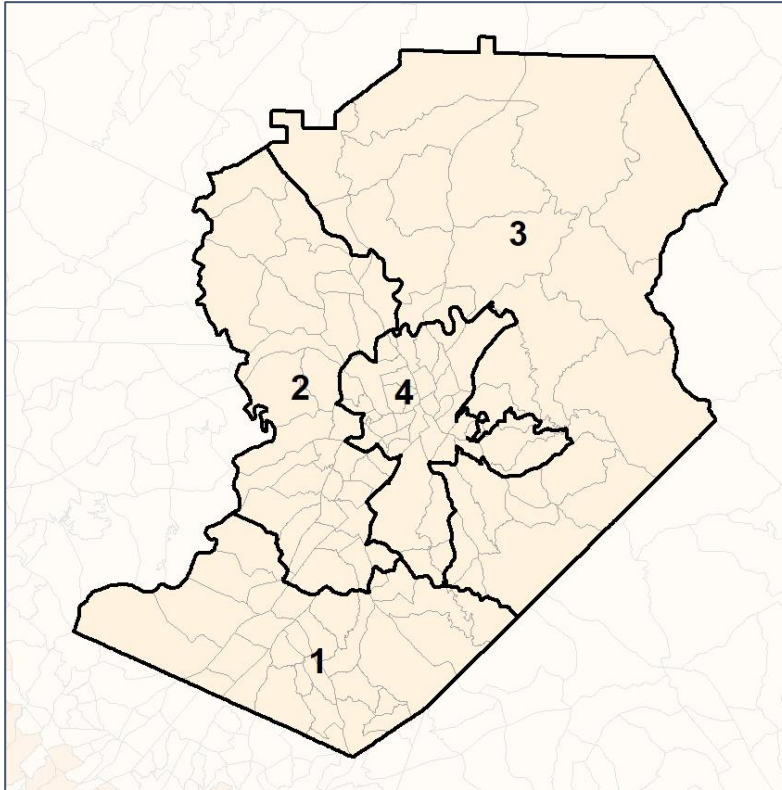


Hall County Commission

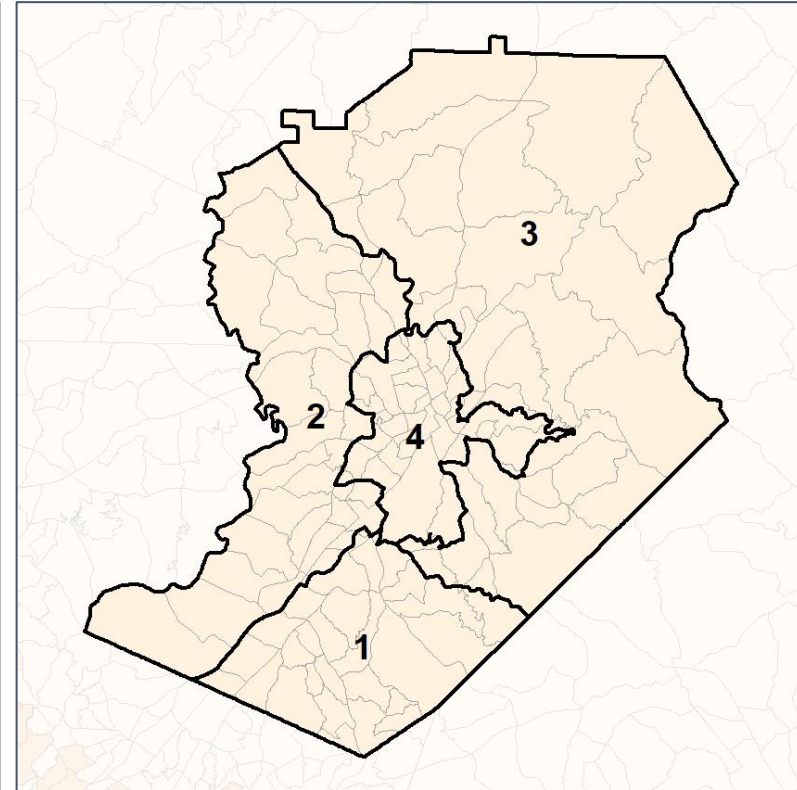
% API by Census Block Group



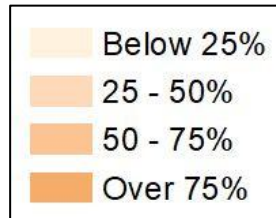
2012 Map



2022 Map*



	1	2	3	4	1*	2*	3*	4*	County
Population	55,238	53,457	46,128	48,313	50,778	50,648	50,840	50,870	203,136
API	1,476	1,361	423	1,023	1,429	1,146	508	1,200	4,283
% API	3%	3%	1%	2%	3%	2%	1%	2%	2%
Black	2,896	2,356	1,701	7,303	3,134	1,919	1,990	7,213	14,256
% Black	5%	4%	4%	15%	6%	4%	4%	14%	7%
Latino	7,225	15,372	13,250	21,163	8,281	8,901	14,389	25,439	57,010
% Latino	13%	29%	29%	44%	16%	18%	28%	50%	28%
Other	2,291	1,790	1,609	1,479	2,042	1,944	1,780	1,403	7,169
% Other	4%	3%	3%	3%	4%	4%	4%	3%	4%
White	41,350	32,578	29,145	17,345	35,892	36,738	32,173	15,615	120,418
% White	75%	61%	63%	36%	71%	73%	63%	31%	59%

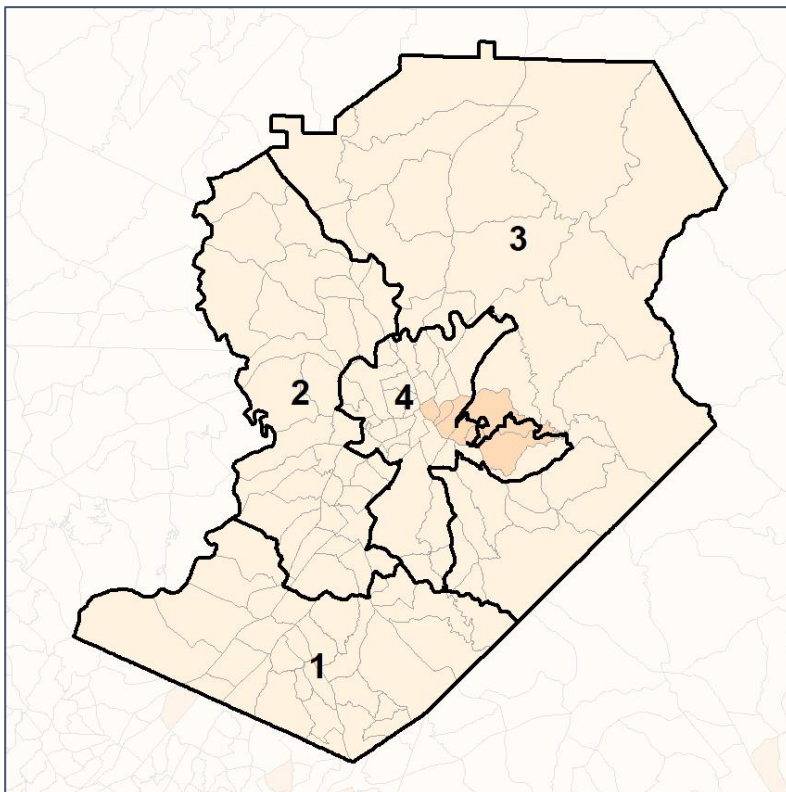


Hall County Commission

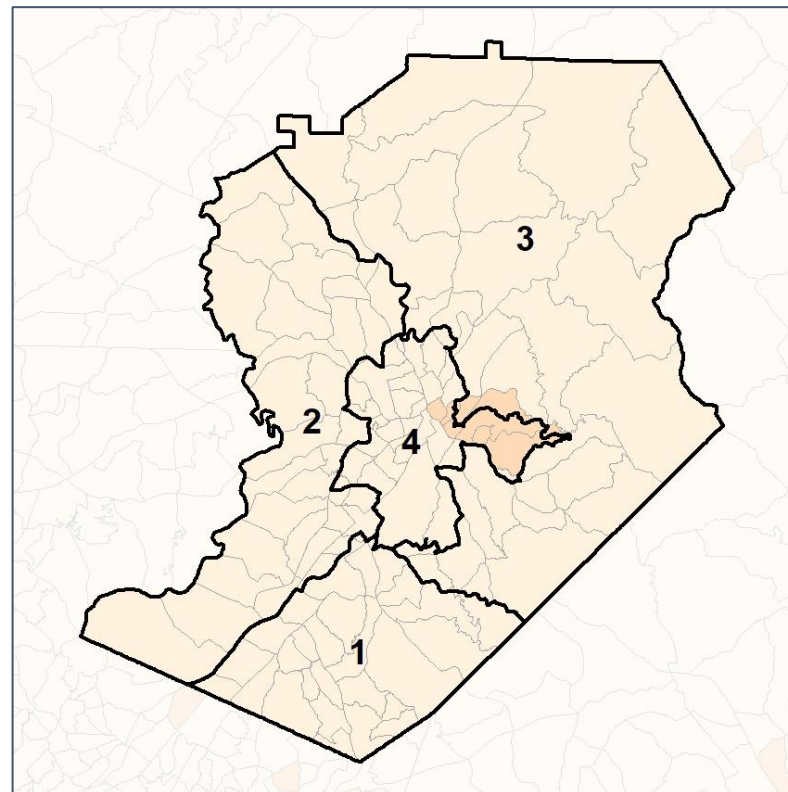
% Black by Census Block Group



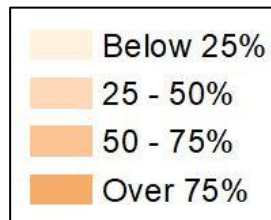
2012 Map



2022 Map*



	1	2	3	4	1*	2*	3*	4*	County
Population	55,238	53,457	46,128	48,313	50,778	50,648	50,840	50,870	203,136
API	1,476	1,361	423	1,023	1,429	1,146	508	1,200	4,283
% API	3%	3%	1%	2%	3%	2%	1%	2%	2%
Black	2,896	2,356	1,701	7,303	3,134	1,919	1,990	7,213	14,256
% Black	5%	4%	4%	15%	6%	4%	4%	14%	7%
Latino	7,225	15,372	13,250	21,163	8,281	8,901	14,389	25,439	57,010
% Latino	13%	29%	29%	44%	16%	18%	28%	50%	28%
Other	2,291	1,790	1,609	1,479	2,042	1,944	1,780	1,403	7,169
% Other	4%	3%	3%	3%	4%	4%	4%	3%	4%
White	41,350	32,578	29,145	17,345	35,892	36,738	32,173	15,615	120,418
% White	75%	61%	63%	36%	71%	73%	63%	31%	59%



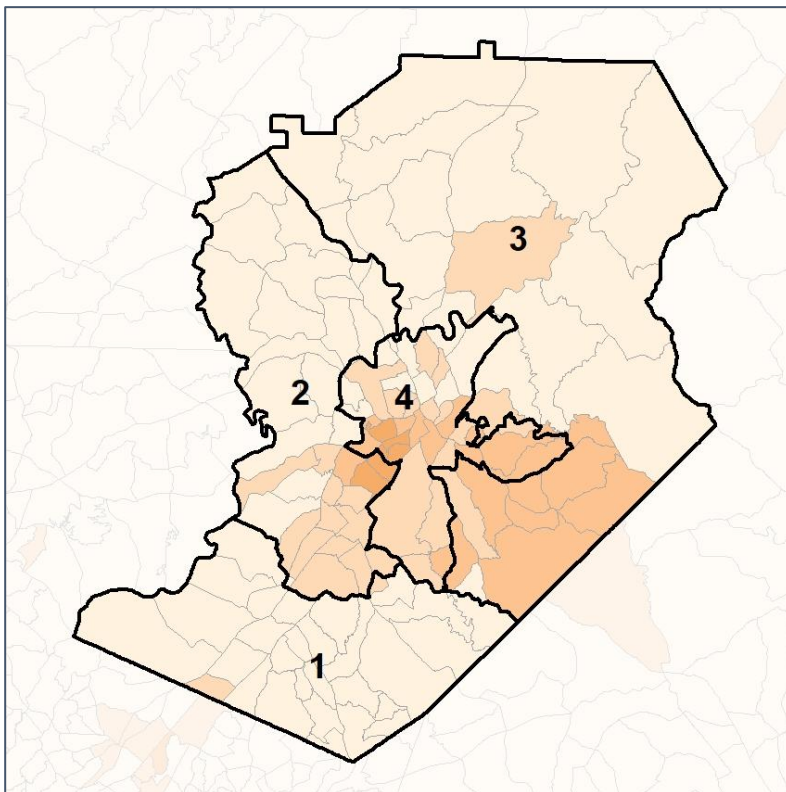
Source:
2020 Decennial Census
2020 ACS 5-Year Dataset

Hall County Commission

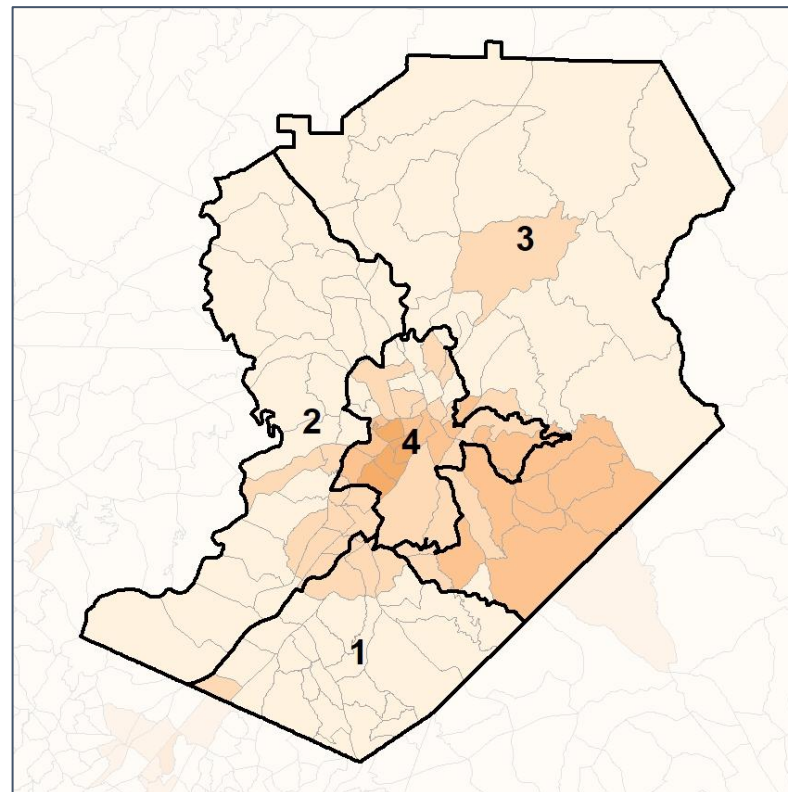
% Latino by Census Block Group



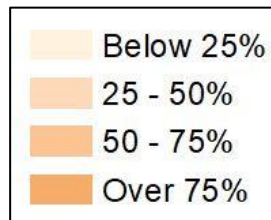
2012 Map



2022 Map*



	1	2	3	4	1*	2*	3*	4*	County
Population	55,238	53,457	46,128	48,313	50,778	50,648	50,840	50,870	203,136
API	1,476	1,361	423	1,023	1,429	1,146	508	1,200	4,283
% API	3%	3%	1%	2%	3%	2%	1%	2%	2%
Black	2,896	2,356	1,701	7,303	3,134	1,919	1,990	7,213	14,256
% Black	5%	4%	4%	15%	6%	4%	4%	14%	7%
Latino	7,225	15,372	13,250	21,163	8,281	8,901	14,389	25,439	57,010
% Latino	13%	29%	29%	44%	16%	18%	28%	50%	28%
Other	2,291	1,790	1,609	1,479	2,042	1,944	1,780	1,403	7,169
% Other	4%	3%	3%	3%	4%	4%	4%	3%	4%
White	41,350	32,578	29,145	17,345	35,892	36,738	32,173	15,615	120,418
% White	75%	61%	63%	36%	71%	73%	63%	31%	59%

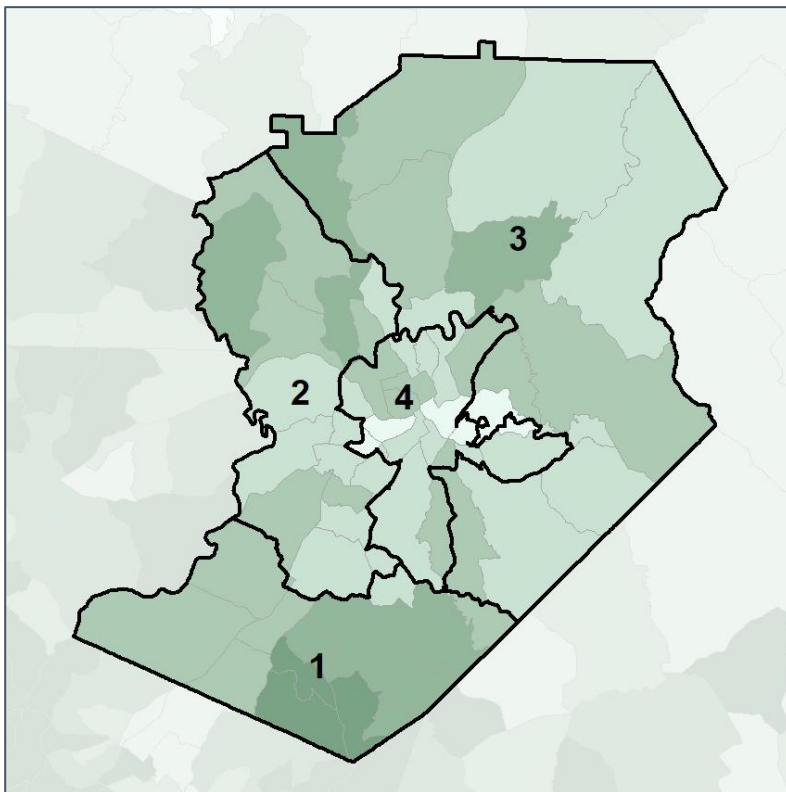


Hall County Commission

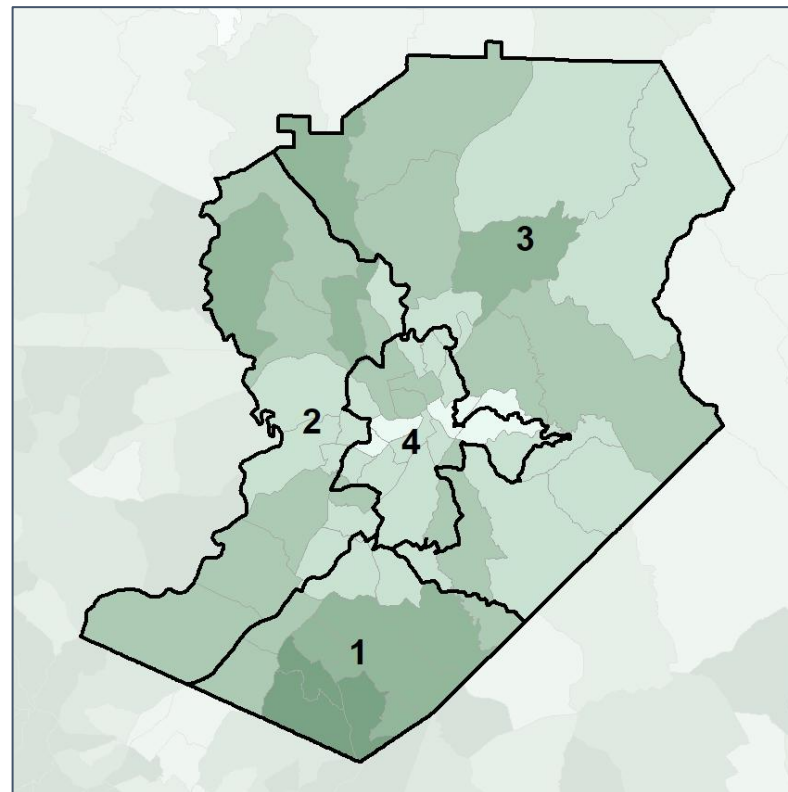
Median Household Income by Census Tract



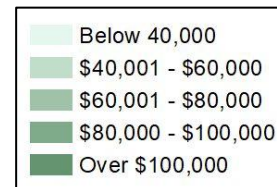
2012 Map



2022 Map*



	1	2	3	4	1*	2*	3*	4*	County
Population	55,238	53,457	46,128	48,313	50,778	50,648	50,840	50,870	203,136
% API	3%	3%	1%	2%	3%	2%	1%	2%	2%
% Black	5%	4%	4%	15%	6%	4%	4%	14%	7%
% Latino	13%	29%	29%	44%	16%	18%	28%	50%	28%
% Other	4%	3%	3%	3%	4%	4%	4%	3%	4%
% White	75%	61%	63%	36%	71%	73%	63%	31%	59%
Median Income	\$89,000	\$68,000	\$61,000	\$54,000	\$88,000	\$72,000	\$65,000	\$50,000	\$64,000
% Renter	14%	28%	27%	58%	16%	24%	27%	59%	31%
% Youth	19%	23%	19%	27%	20%	22%	20%	27%	22%

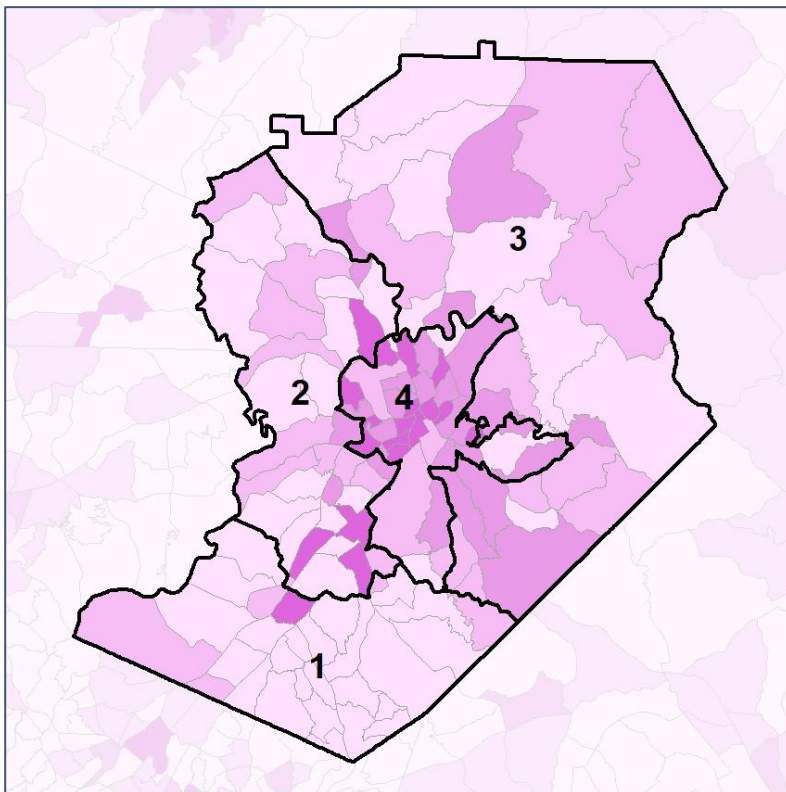


Hall County Commission

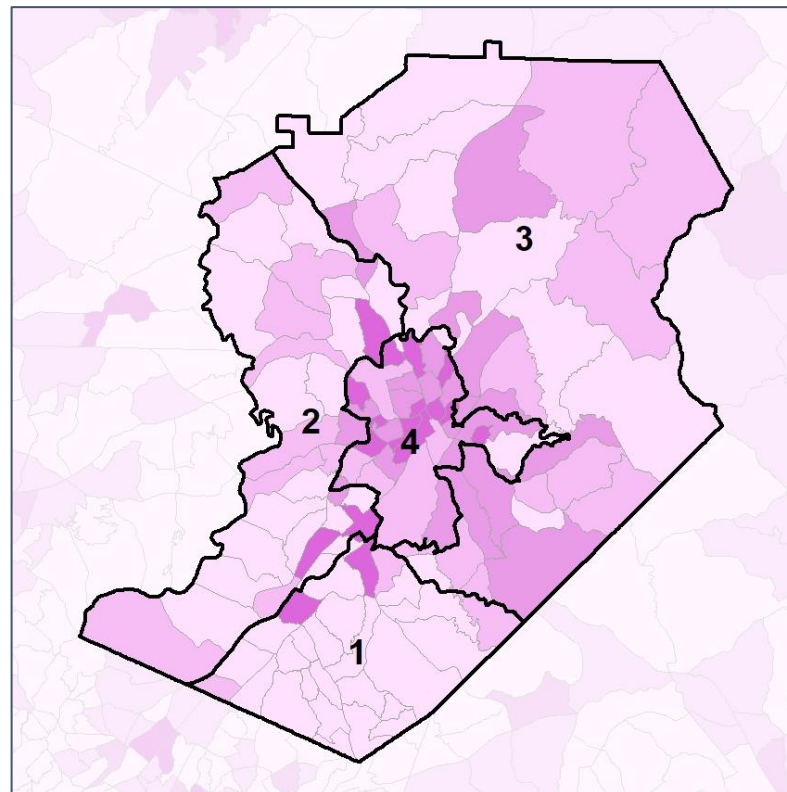
% Renter by Census Block Group



2012 Map



2022 Map*



	1	2	3	4	1*	2*	3*	4*	County
Population	55,238	53,457	46,128	48,313	50,778	50,648	50,840	50,870	203,136
% API	3%	3%	1%	2%	3%	2%	1%	2%	2%
% Black	5%	4%	4%	15%	6%	4%	4%	14%	7%
% Latino	13%	29%	29%	44%	16%	18%	28%	50%	28%
% Other	4%	3%	3%	3%	4%	4%	4%	3%	4%
% White	75%	61%	63%	36%	71%	73%	63%	31%	59%
Median Income	\$89,000	\$68,000	\$61,000	\$54,000	\$88,000	\$72,000	\$65,000	\$50,000	\$64,000
% Renter	14%	28%	27%	58%	16%	24%	27%	59%	31%
% Youth	19%	23%	19%	27%	20%	22%	20%	27%	22%

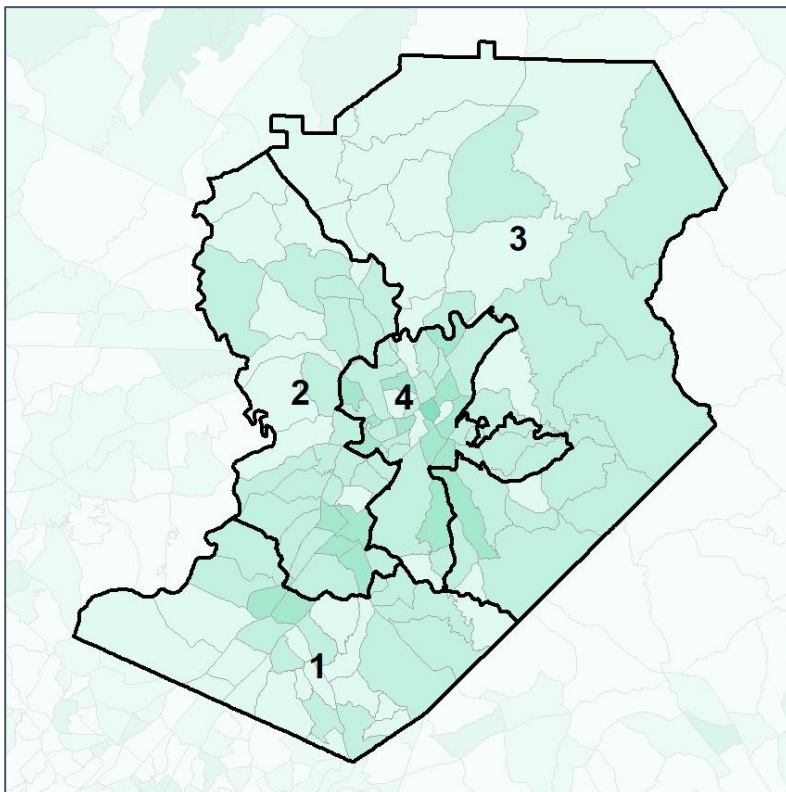


Hall County Commission

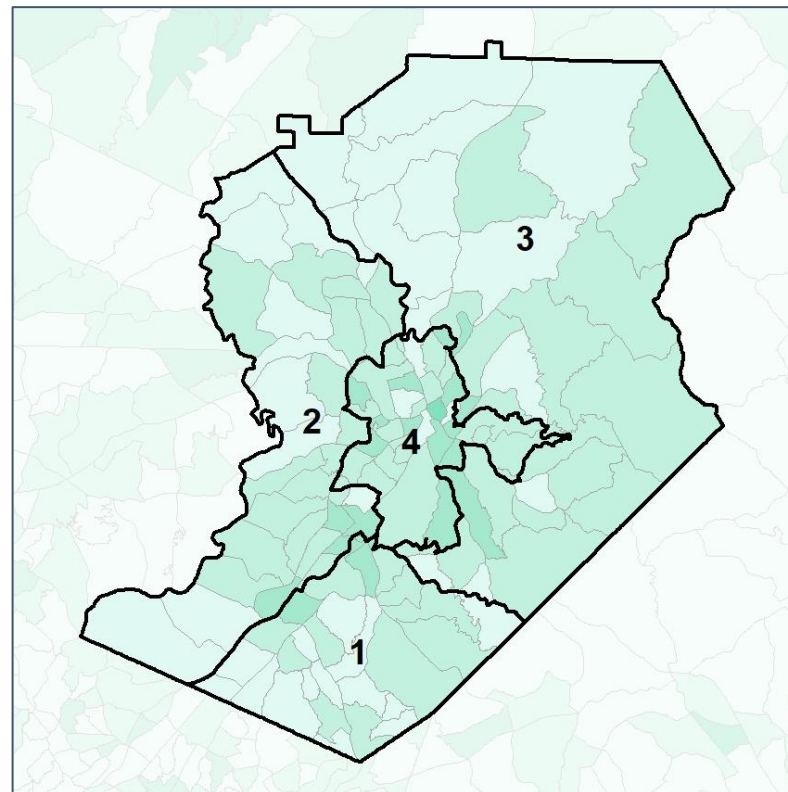
% Youth (18-34) by Census Block Group



2012 Map



2022 Map*



	1	2	3	4	1*	2*	3*	4*	County
Population	55,238	53,457	46,128	48,313	50,778	50,648	50,840	50,870	203,136
% API	3%	3%	1%	2%	3%	2%	1%	2%	2%
% Black	5%	4%	4%	15%	6%	4%	4%	14%	7%
% Latino	13%	29%	29%	44%	16%	18%	28%	50%	28%
% Other	4%	3%	3%	3%	4%	4%	4%	3%	4%
% White	75%	61%	63%	36%	71%	73%	63%	31%	59%
Median Income	\$89,000	\$68,000	\$61,000	\$54,000	\$88,000	\$72,000	\$65,000	\$50,000	\$64,000
% Renter	14%	28%	27%	58%	16%	24%	27%	59%	31%
% Youth	19%	23%	19%	27%	20%	22%	20%	27%	22%

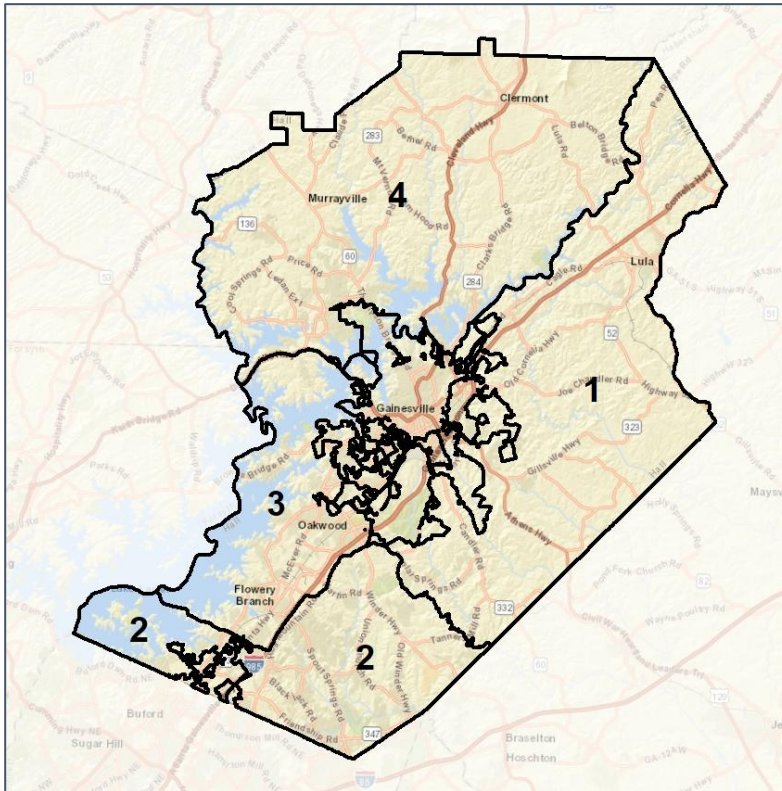


Hall County School Board

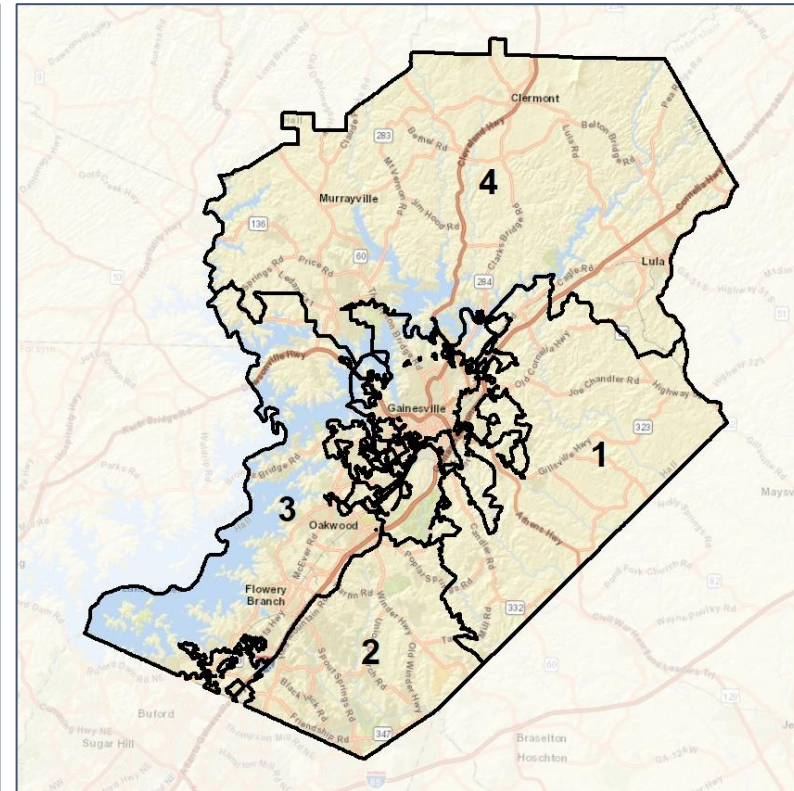
Context



2012 Map



2022 Map*



	1	2	3	4	1*	2*	3*	4*	County
Population	37,284	43,088	40,182	38,433	39,857	39,277	39,698	39,343	203,136
API	1%	2%	2%	1%	1%	2%	2%	1%	2%
Black	9%	5%	5%	1%	8%	5%	5%	2%	7%
Latino	41%	16%	38%	11%	53%	16%	24%	10%	28%
Other	3%	4%	3%	4%	3%	4%	4%	4%	4%
White	46%	73%	51%	83%	35%	72%	65%	83%	59%
Population Gain	*	*	*	*	2,573	-3,811	-484	910	*
Population % Gain	*	*	*	*	7%	-9%	-1%	2%	*
Net POC Gain	*	*	*	*	5,917	-766	-5,625	132	*
Net POC % Gain	*	*	*	*	29%	-7%	-29%	2%	*

Source:
2020 Decennial Census
2020 ACS 5-Year Dataset

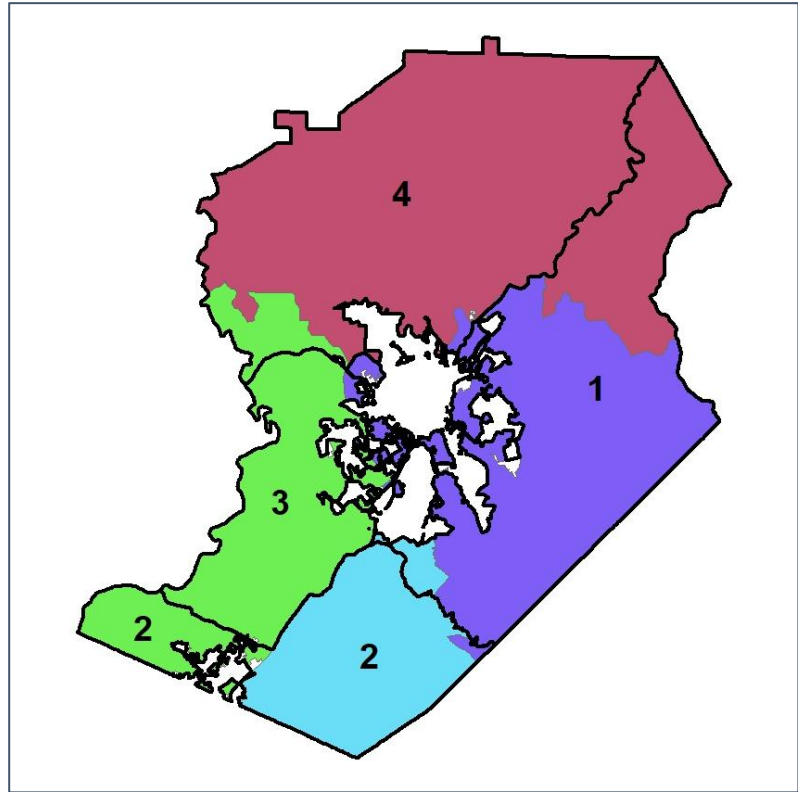


Hall County School Board

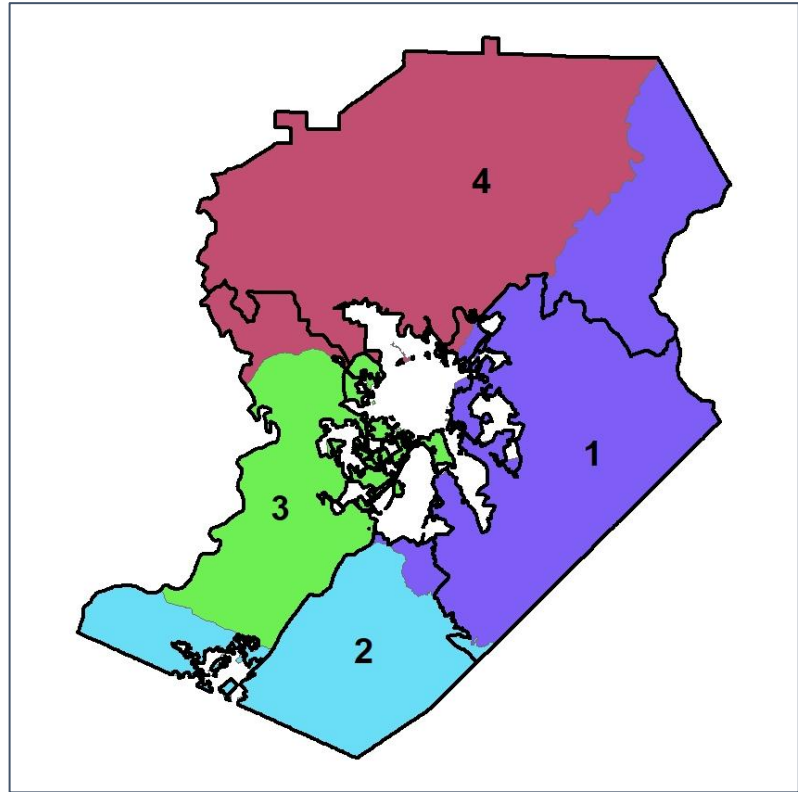
Changes in Redistricting



2012 Map (2022 in Colors)



2022 Map* (2012 in Colors)



	1	2	3	4	1*	2*	3*	4*	County
Population	37,284	43,088	40,182	38,433	39,857	39,277	39,698	39,343	203,136
API	1%	2%	2%	1%	1%	2%	2%	1%	2%
Black	9%	5%	5%	1%	8%	5%	5%	2%	7%
Latino	41%	16%	38%	11%	53%	16%	24%	10%	28%
Other	3%	4%	3%	4%	3%	4%	4%	4%	4%
White	46%	73%	51%	83%	35%	72%	65%	83%	59%
Population Gain	*	*	*	*	2,573	-3,811	-484	910	*
Population % Gain	*	*	*	*	7%	-9%	-1%	2%	*
Net POC Gain	*	*	*	*	5,917	-766	-5,625	132	*
Net POC % Gain	*	*	*	*	29%	-7%	-29%	2%	*



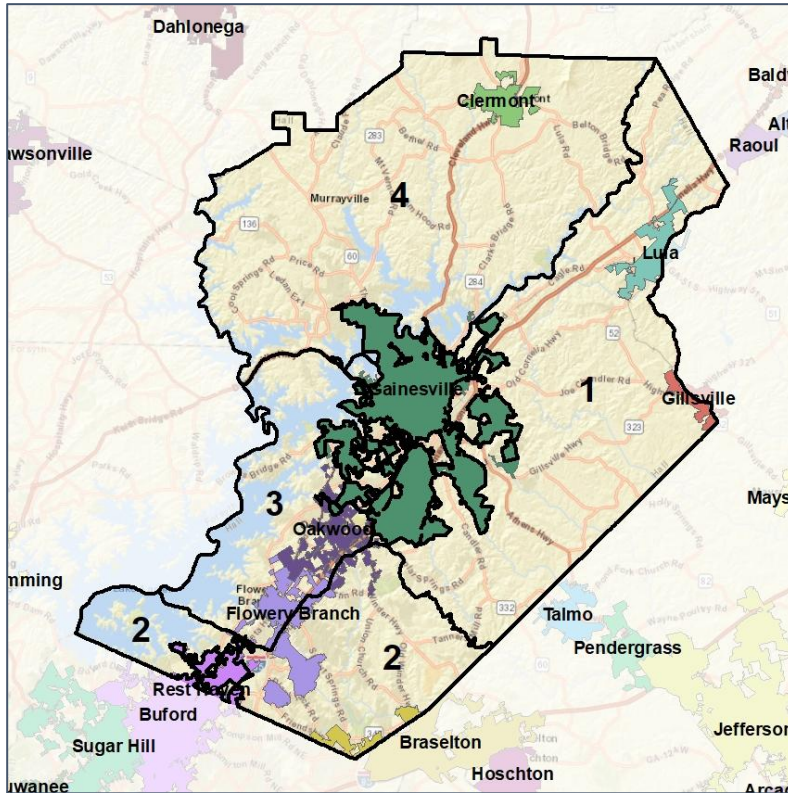
Source:
2020 Decennial Census
2020 ACS 5-Year Dataset

Hall County School Board

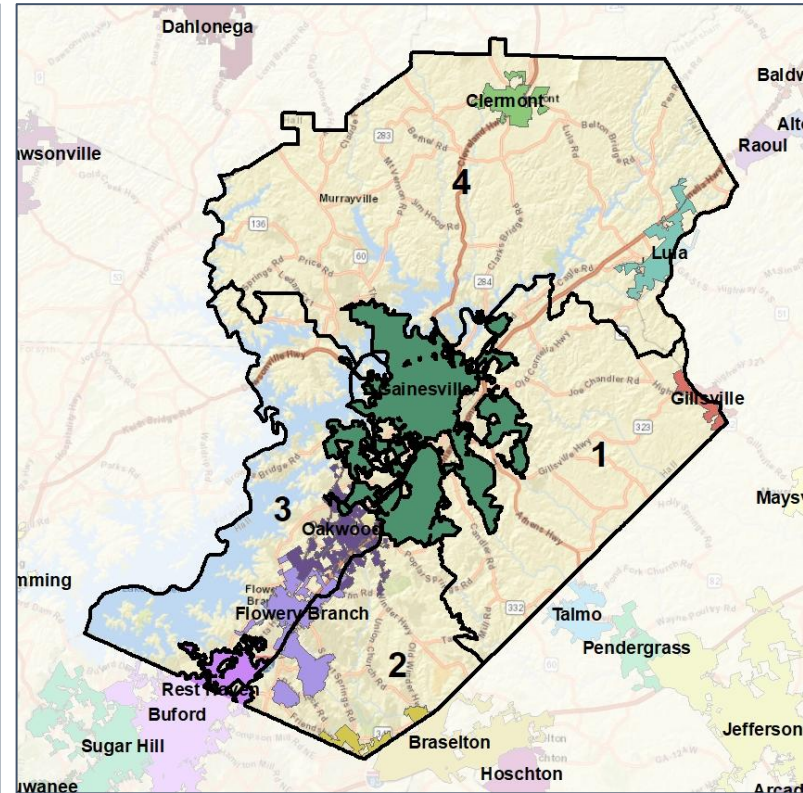
Cities and Places



2012 Map



2022 Map*



	1	2	3	4	1*	2*	3*	4*	County
Population	37,284	43,088	40,182	38,433	39,857	39,277	39,698	39,343	203,136
API	1%	2%	2%	1%	1%	2%	2%	1%	2%
Black	9%	5%	5%	1%	8%	5%	5%	2%	7%
Latino	41%	16%	38%	11%	53%	16%	24%	10%	28%
Other	3%	4%	3%	4%	3%	4%	4%	4%	4%
White	46%	73%	51%	83%	35%	72%	65%	83%	59%
Population Gain	*	*	*	*	2,573	-3,811	-484	910	*
Population % Gain	*	*	*	*	7%	-9%	-1%	2%	*
Net POC Gain	*	*	*	*	5,917	-766	-5,625	132	*
Net POC % Gain	*	*	*	*	29%	-7%	-29%	2%	*

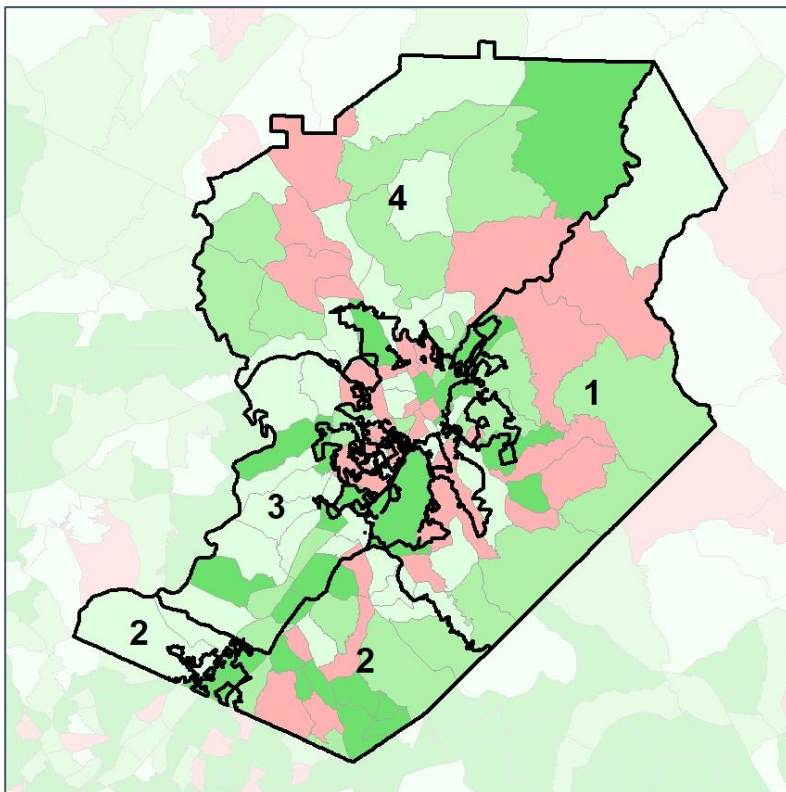


Hall County School Board

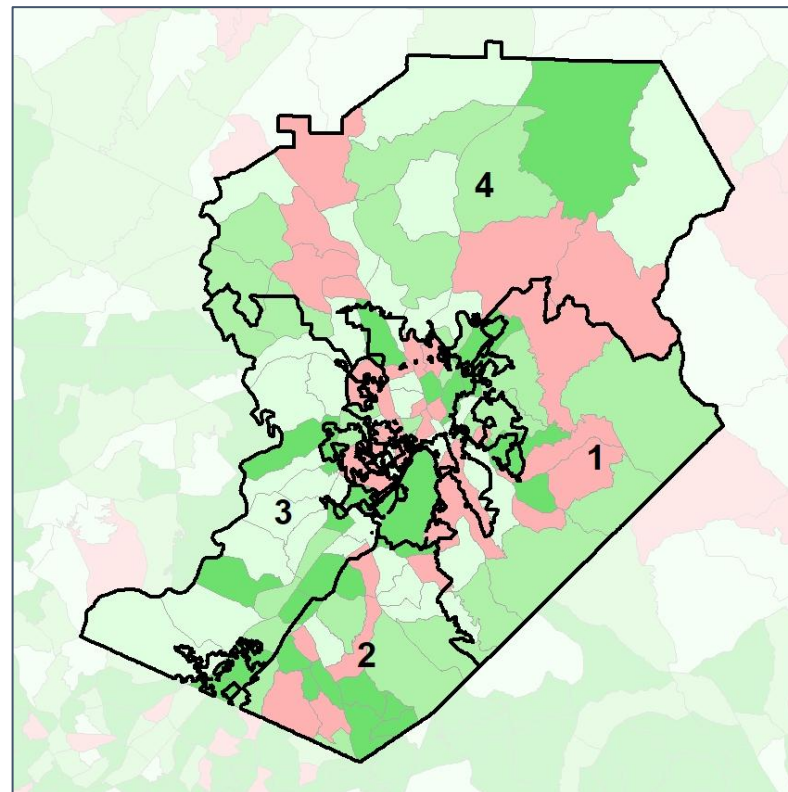
Net Gain in Population (2010 - 2020)



2012 Map



2022 Map*



	1	2	3	4	1*	2*	3*	4*	County
Population	37,284	43,088	40,182	38,433	39,857	39,277	39,698	39,343	203,136
API	1%	2%	2%	1%	1%	2%	2%	1%	2%
Black	9%	5%	5%	1%	8%	5%	5%	2%	7%
Latino	41%	16%	38%	11%	53%	16%	24%	10%	28%
Other	3%	4%	3%	4%	3%	4%	4%	4%	4%
White	46%	73%	51%	83%	35%	72%	65%	83%	59%
Population Gain	*	*	*	*	2,573	-3,811	-484	910	*
Population % Gain	*	*	*	*	7%	-9%	-1%	2%	*
Net POC Gain	*	*	*	*	5,917	-766	-5,625	132	*
Net POC % Gain	*	*	*	*	29%	-7%	-29%	2%	*

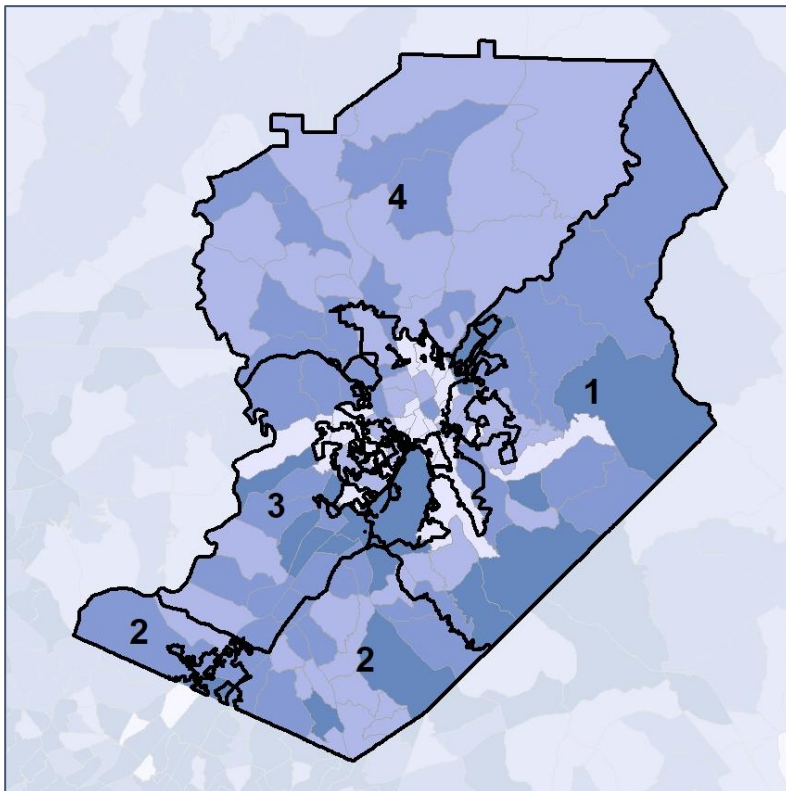


Hall County School Board

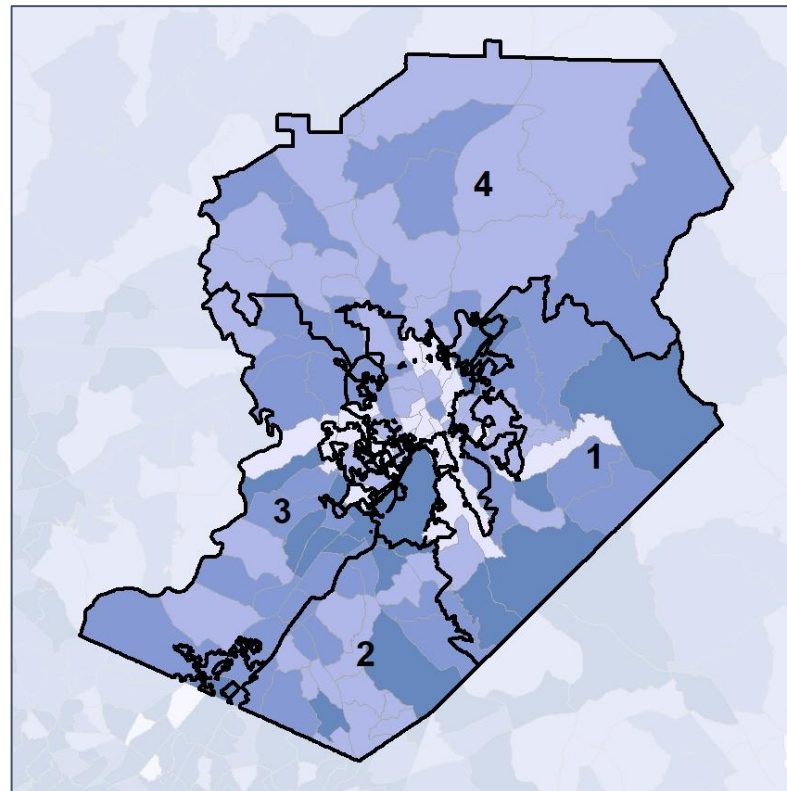
Net Gain in % POC (2020 - 2010) by Census Block Group



2012 Map



2022 Map*



	1	2	3	4	1*	2*	3*	4*	County
Population	37,284	43,088	40,182	38,433	39,857	39,277	39,698	39,343	203,136
API	1%	2%	2%	1%	1%	2%	2%	1%	2%
Black	9%	5%	5%	1%	8%	5%	5%	2%	7%
Latino	41%	16%	38%	11%	53%	16%	24%	10%	28%
Other	3%	4%	3%	4%	3%	4%	4%	4%	4%
White	46%	73%	51%	83%	35%	72%	65%	83%	59%
Population Gain	*	*	*	*	2,573	-3,811	-484	910	*
Population % Gain	*	*	*	*	7%	-9%	-1%	2%	*
Net POC Gain	*	*	*	*	5,917	-766	-5,625	132	*
Net POC % Gain	*	*	*	*	29%	-7%	-29%	2%	*

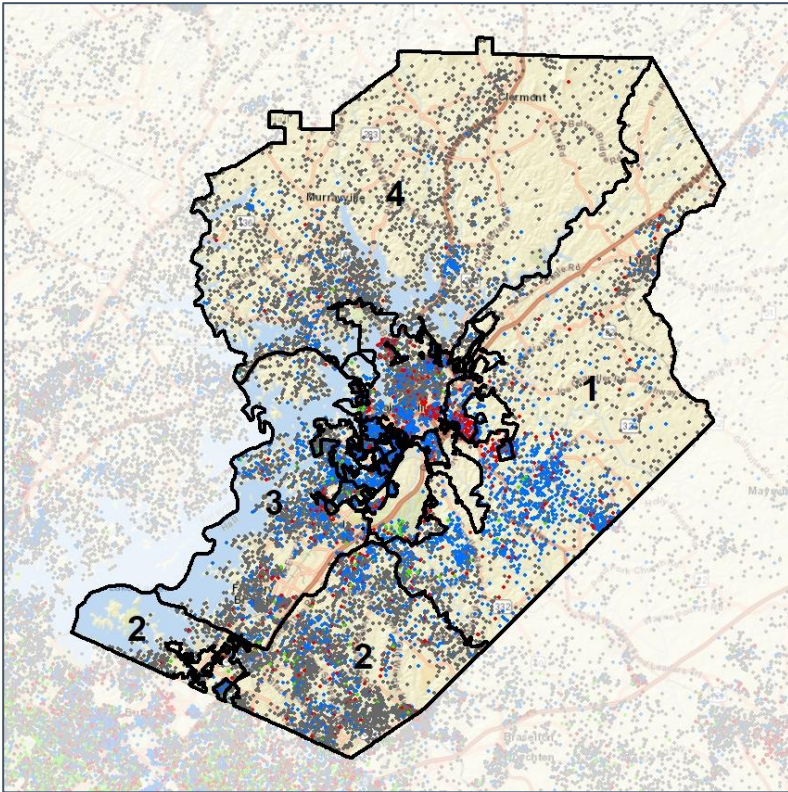


Hall County School Board

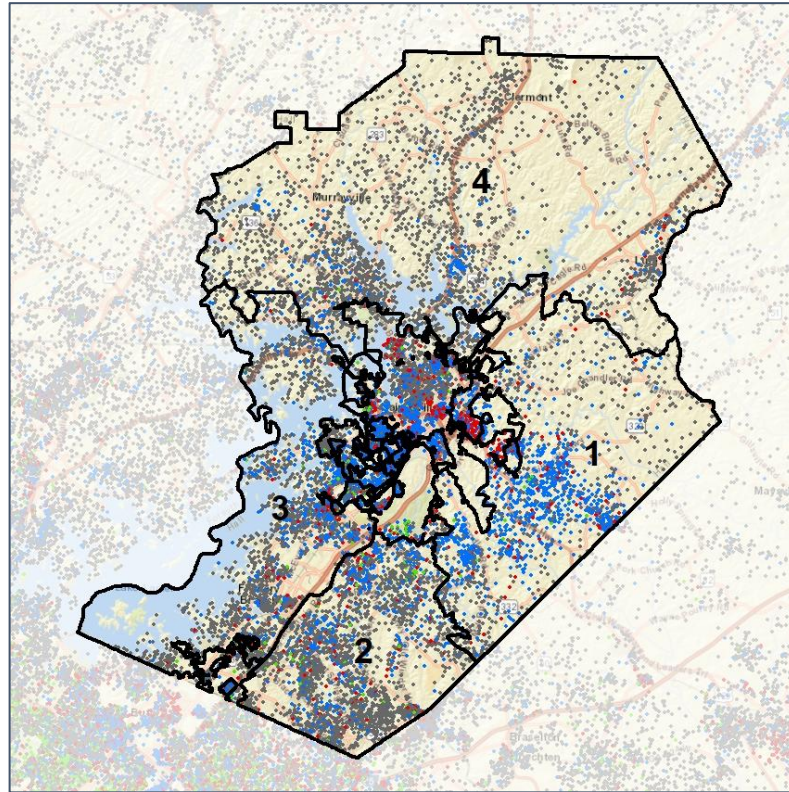
Population Density by Race



2012 Map



2022 Map*



	1	2	3	4	1*	2*	3*	4*	County
Population	37,284	43,088	40,182	38,433	39,857	39,277	39,698	39,343	203,136
API	498	949	819	311	404	966	858	319	4,283
% API	1%	2%	2%	1%	1%	2%	2%	1%	2%
Black	3,282	2,126	2,109	502	3,279	1,876	2,143	669	14,256
% Black	9%	5%	5%	1%	8%	5%	5%	2%	7%
Latino	15,174	6,760	15,316	4,157	21,275	6,439	9,414	4,072	57,010
% Latino	41%	16%	38%	11%	53%	16%	24%	10%	28%
Other	1,155	1,746	1,262	1,642	1,068	1,534	1,466	1,684	7,169
% Other	3%	4%	3%	4%	3%	4%	4%	4%	4%
White	17,175	31,507	20,676	31,821	13,831	28,462	25,817	32,599	120,418
% White	46%	73%	51%	83%	35%	72%	65%	83%	59%

1 Dot = 15

- API
- Black
- Latino
- White



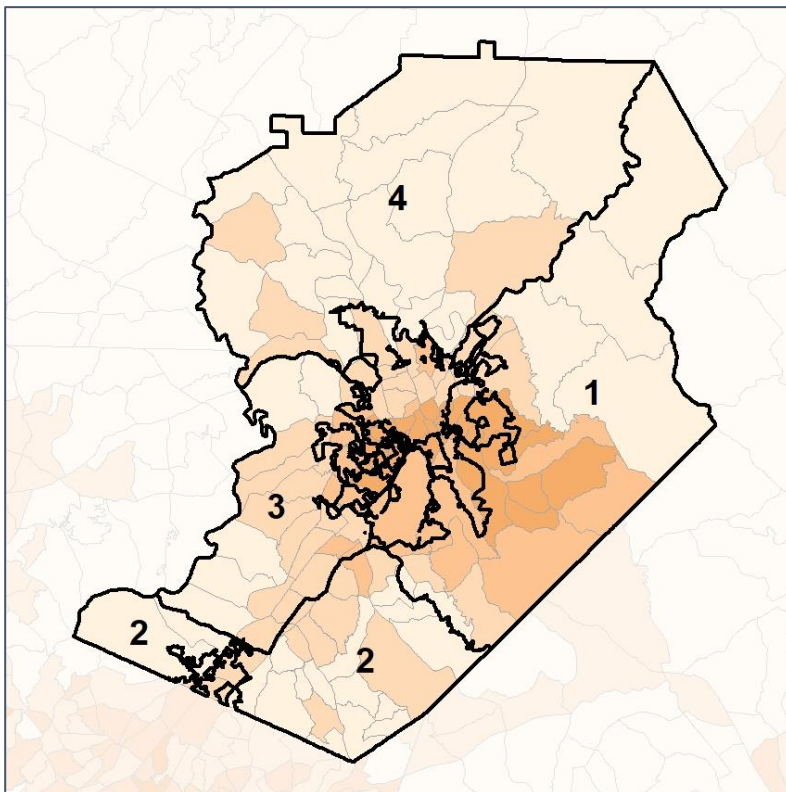
Source: 2020 Decennial Census 2020 ACS 5-Year Dataset

Hall County School Board

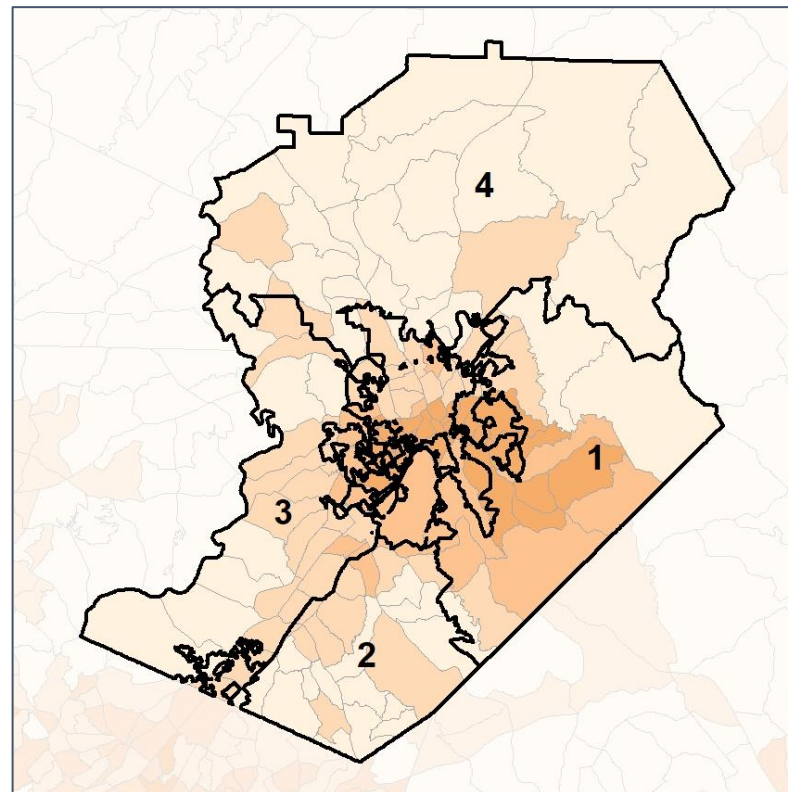
% People of Color by Census Block Group



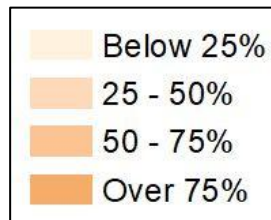
2012 Map



2022 Map*



	1	2	3	4	1*	2*	3*	4*	County
Population	37,284	43,088	40,182	38,433	39,857	39,277	39,698	39,343	203,136
API	498	949	819	311	404	966	858	319	4,283
% API	1%	2%	2%	1%	1%	2%	2%	1%	2%
Black	3,282	2,126	2,109	502	3,279	1,876	2,143	669	14,256
% Black	9%	5%	5%	1%	8%	5%	5%	2%	7%
Latino	15,174	6,760	15,316	4,157	21,275	6,439	9,414	4,072	57,010
% Latino	41%	16%	38%	11%	53%	16%	24%	10%	28%
Other	1,155	1,746	1,262	1,642	1,068	1,534	1,466	1,684	7,169
% Other	3%	4%	3%	4%	3%	4%	4%	4%	4%
White	17,175	31,507	20,676	31,821	13,831	28,462	25,817	32,599	120,418
% White	46%	73%	51%	83%	35%	72%	65%	83%	59%

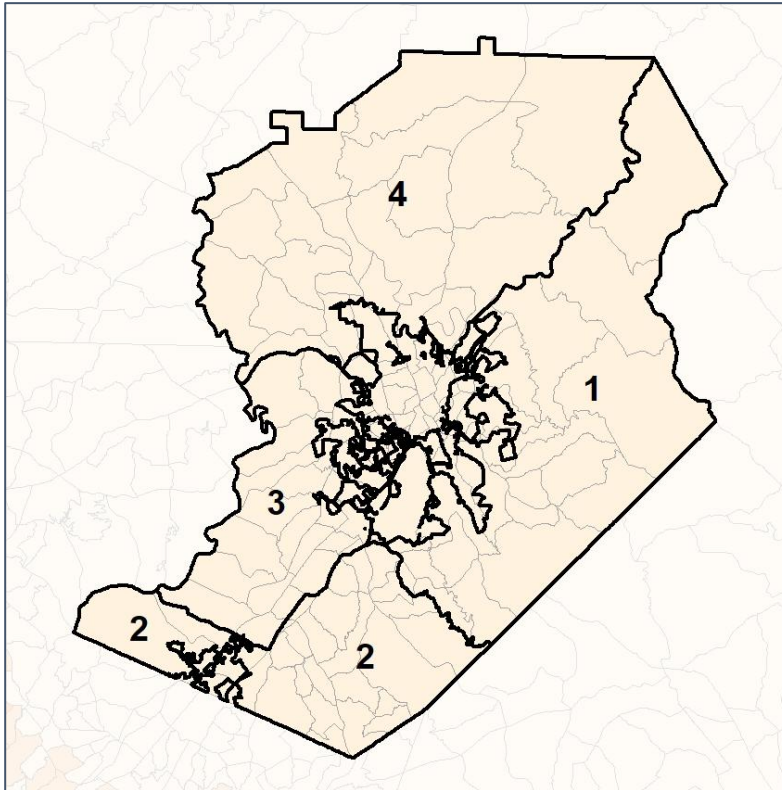


Hall County School Board

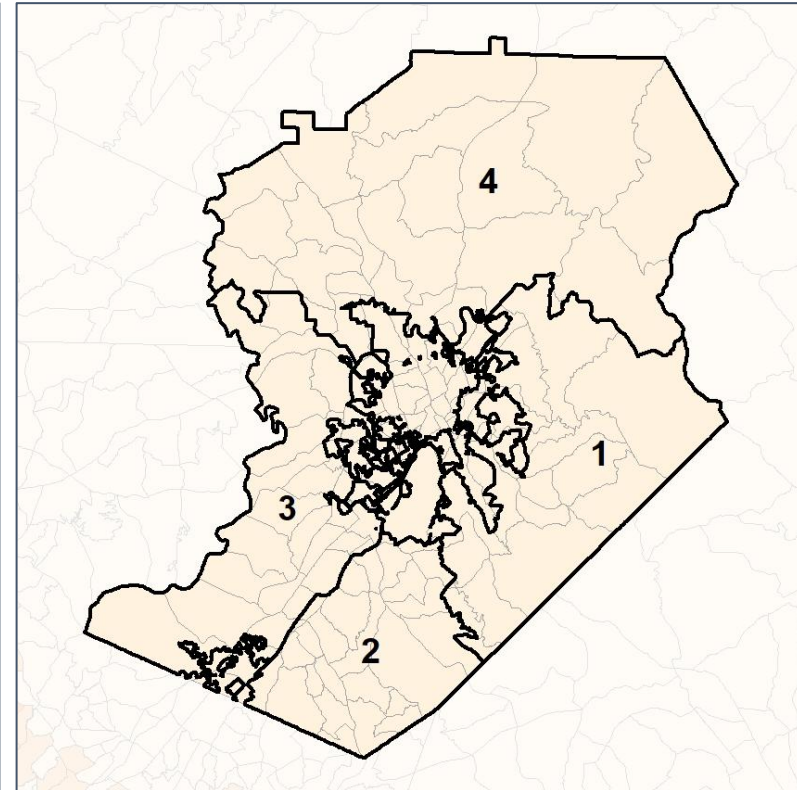
% API by Census Block Group



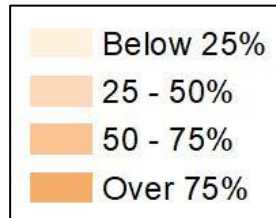
2012 Map



2022 Map*



	1	2	3	4	1*	2*	3*	4*	County
Population	37,284	43,088	40,182	38,433	39,857	39,277	39,698	39,343	203,136
API	498	949	819	311	404	966	858	319	4,283
% API	1%	2%	2%	1%	1%	2%	2%	1%	2%
Black	3,282	2,126	2,109	502	3,279	1,876	2,143	669	14,256
% Black	9%	5%	5%	1%	8%	5%	5%	2%	7%
Latino	15,174	6,760	15,316	4,157	21,275	6,439	9,414	4,072	57,010
% Latino	41%	16%	38%	11%	53%	16%	24%	10%	28%
Other	1,155	1,746	1,262	1,642	1,068	1,534	1,466	1,684	7,169
% Other	3%	4%	3%	4%	3%	4%	4%	4%	4%
White	17,175	31,507	20,676	31,821	13,831	28,462	25,817	32,599	120,418
% White	46%	73%	51%	83%	35%	72%	65%	83%	59%

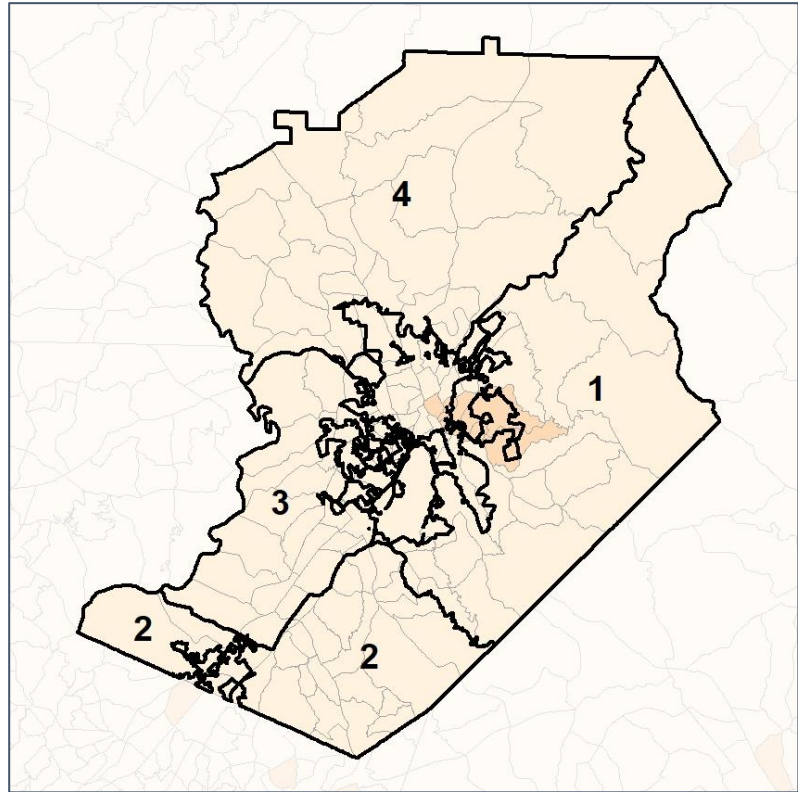


Hall County School Board

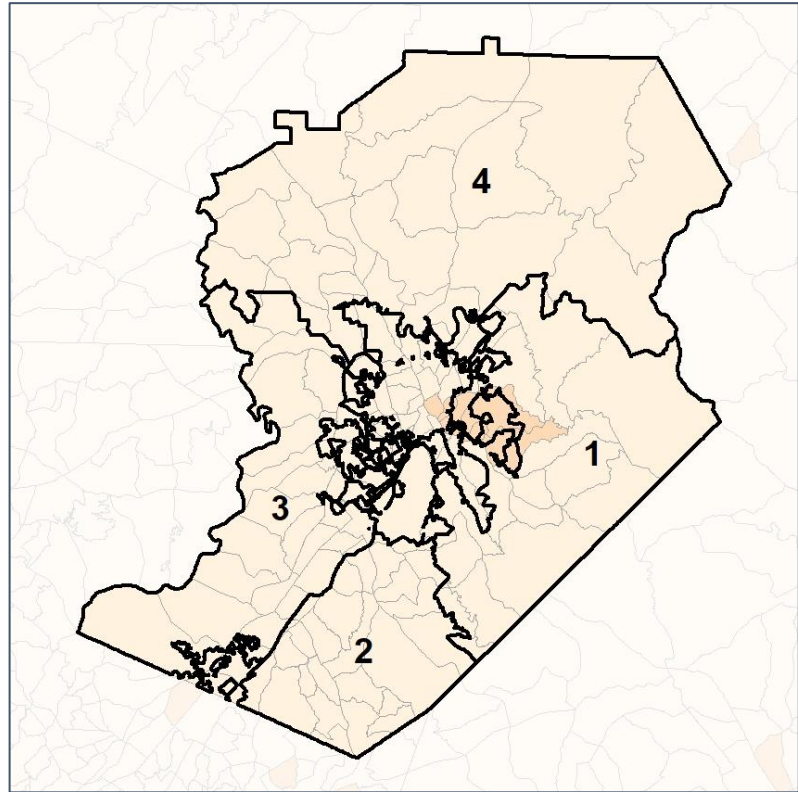
% Black by Census Block Group



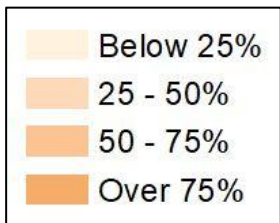
2012 Map



2022 Map*



	1	2	3	4	1*	2*	3*	4*	County
Population	37,284	43,088	40,182	38,433	39,857	39,277	39,698	39,343	203,136
API	498	949	819	311	404	966	858	319	4,283
% API	1%	2%	2%	1%	1%	2%	2%	1%	2%
Black	3,282	2,126	2,109	502	3,279	1,876	2,143	669	14,256
% Black	9%	5%	5%	1%	8%	5%	5%	2%	7%
Latino	15,174	6,760	15,316	4,157	21,275	6,439	9,414	4,072	57,010
% Latino	41%	16%	38%	11%	53%	16%	24%	10%	28%
Other	1,155	1,746	1,262	1,642	1,068	1,534	1,466	1,684	7,169
% Other	3%	4%	3%	4%	3%	4%	4%	4%	4%
White	17,175	31,507	20,676	31,821	13,831	28,462	25,817	32,599	120,418
% White	46%	73%	51%	83%	35%	72%	65%	83%	59%



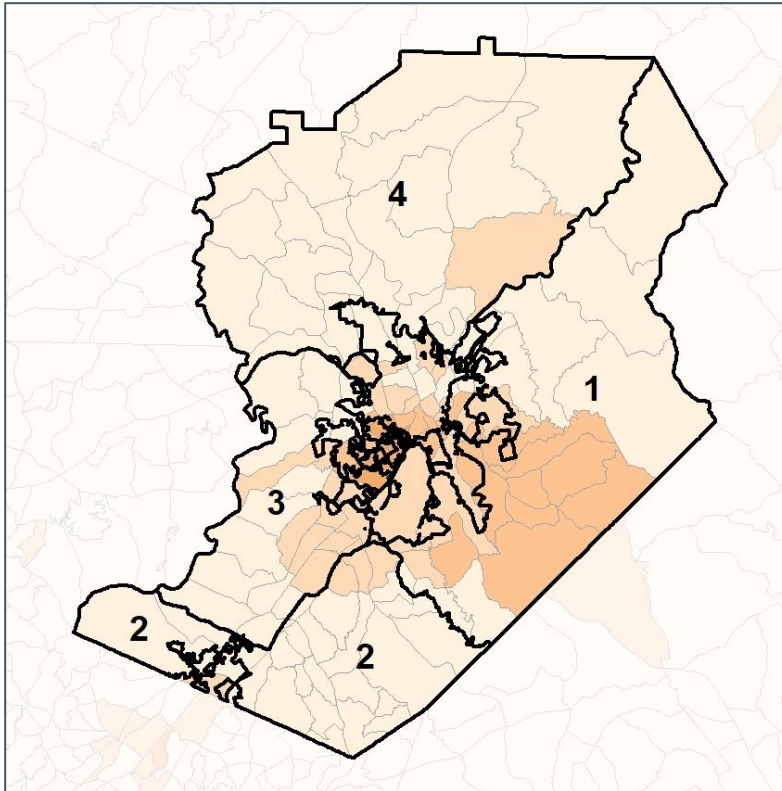
Source:
2020 Decennial Census
2020 ACS 5-Year Dataset

Hall County School Board

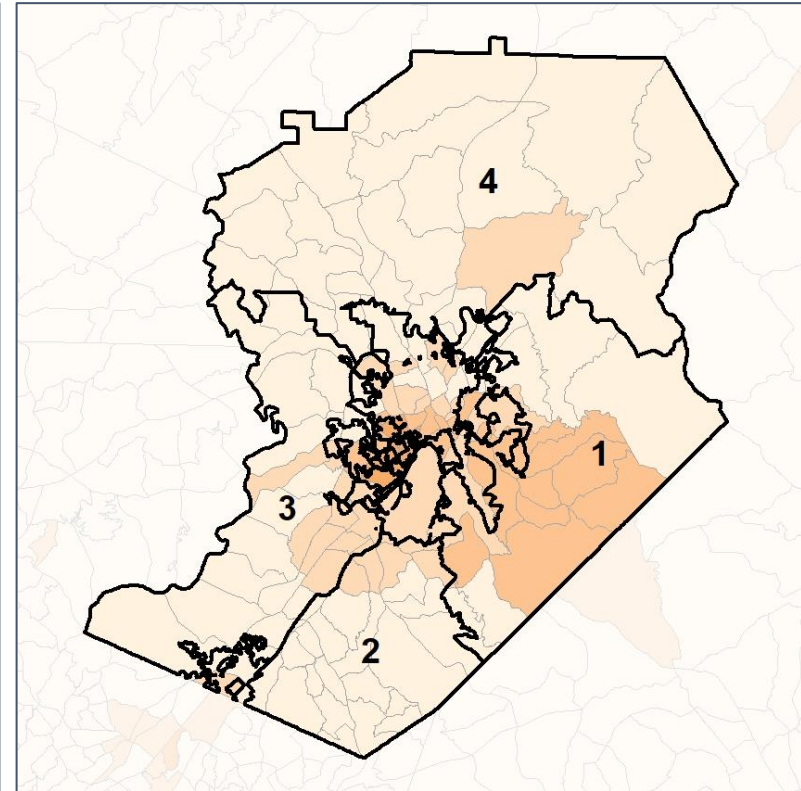
% Latino by Census Block Group



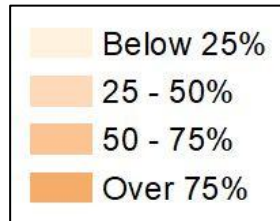
2012 Map



2022 Map*



	1	2	3	4	1*	2*	3*	4*	County
Population	37,284	43,088	40,182	38,433	39,857	39,277	39,698	39,343	203,136
API	498	949	819	311	404	966	858	319	4,283
% API	1%	2%	2%	1%	1%	2%	2%	1%	2%
Black	3,282	2,126	2,109	502	3,279	1,876	2,143	669	14,256
% Black	9%	5%	5%	1%	8%	5%	5%	2%	7%
Latino	15,174	6,760	15,316	4,157	21,275	6,439	9,414	4,072	57,010
% Latino	41%	16%	38%	11%	53%	16%	24%	10%	28%
Other	1,155	1,746	1,262	1,642	1,068	1,534	1,466	1,684	7,169
% Other	3%	4%	3%	4%	3%	4%	4%	4%	4%
White	17,175	31,507	20,676	31,821	13,831	28,462	25,817	32,599	120,418
% White	46%	73%	51%	83%	35%	72%	65%	83%	59%

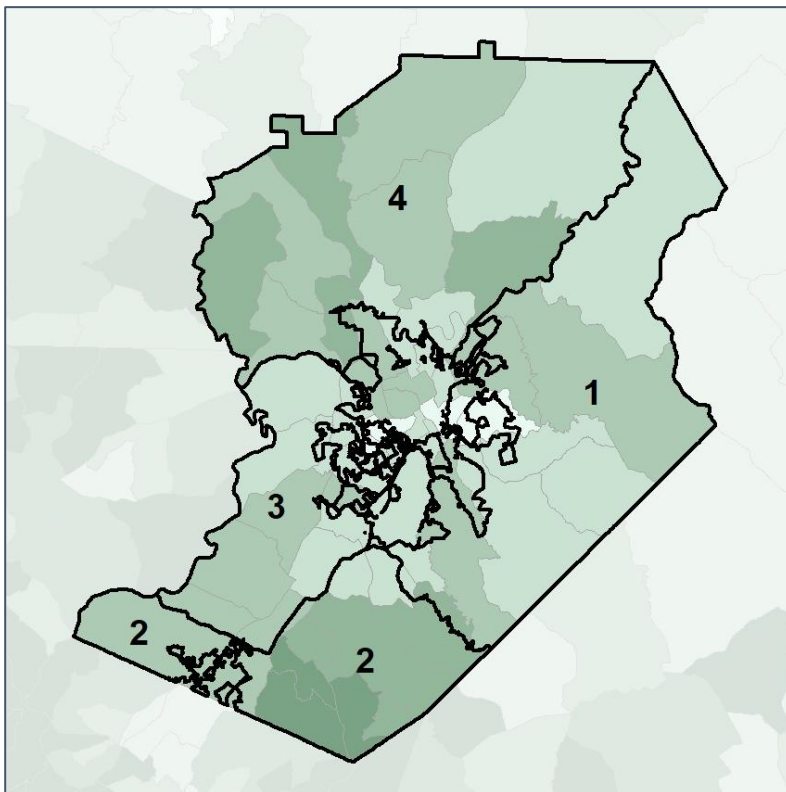


Hall County School Board

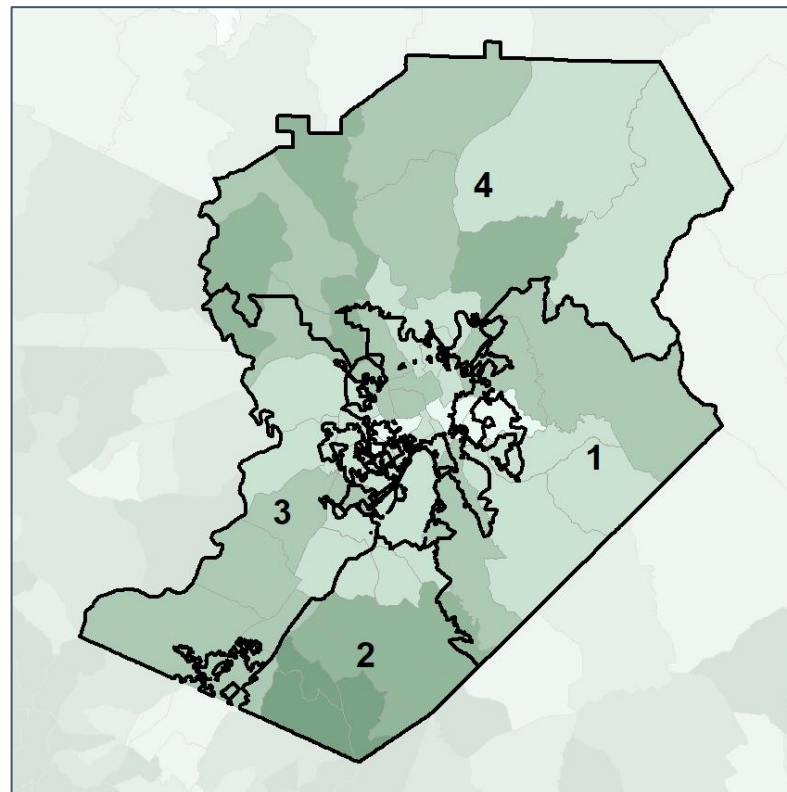
Median Household Income by Census Tract



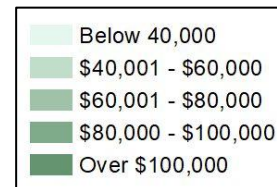
2012 Map



2022 Map*



	1	2	3	4	1*	2*	3*	4*	County
Population	37,284	43,088	40,182	38,433	39,857	39,277	39,698	39,343	203,136
% API	1%	2%	2%	1%	1%	2%	2%	1%	2%
% Black	9%	5%	5%	1%	8%	5%	5%	2%	7%
% Latino	41%	16%	38%	11%	53%	16%	24%	10%	28%
% Other	3%	4%	3%	4%	3%	4%	4%	4%	4%
% White	46%	73%	51%	83%	35%	72%	65%	83%	59%
Median Income	\$59,000	\$93,000	\$65,000	\$77,000	\$59,000	\$94,000	\$69,000	\$71,000	\$64,000
% Renter	31%	13%	34%	21%	40%	12%	26%	22%	31%
% Youth	23%	18%	25%	18%	25%	19%	23%	18%	22%

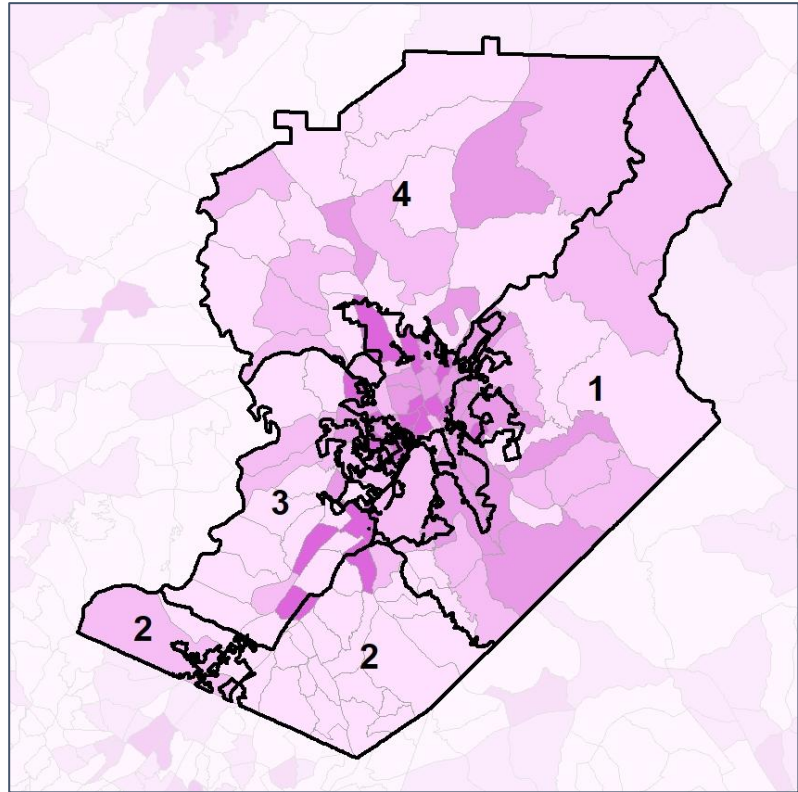


Hall County School Board

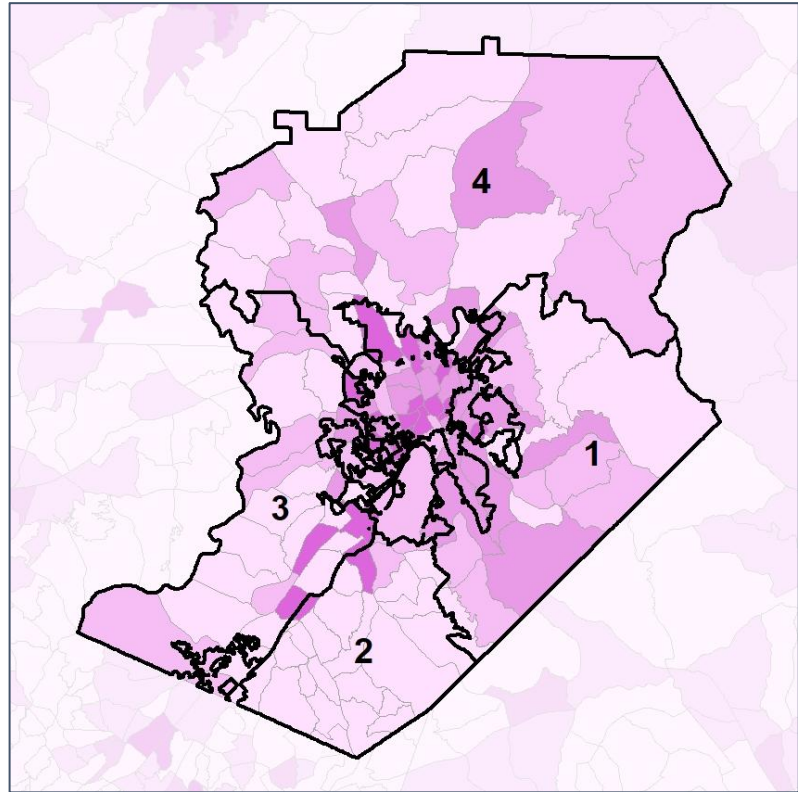
% Renter by Census Block Group



2012 Map



2022 Map*



	1	2	3	4	1*	2*	3*	4*	County
Population	37,284	43,088	40,182	38,433	39,857	39,277	39,698	39,343	203,136
% API	1%	2%	2%	1%	1%	2%	2%	1%	2%
% Black	9%	5%	5%	1%	8%	5%	5%	2%	7%
% Latino	41%	16%	38%	11%	53%	16%	24%	10%	28%
% Other	3%	4%	3%	4%	3%	4%	4%	4%	4%
% White	46%	73%	51%	83%	35%	72%	65%	83%	59%
Median Income	\$59,000	\$93,000	\$65,000	\$77,000	\$59,000	\$94,000	\$69,000	\$71,000	\$64,000
% Renter	31%	13%	34%	21%	40%	12%	26%	22%	31%
% Youth	23%	18%	25%	18%	25%	19%	23%	18%	22%



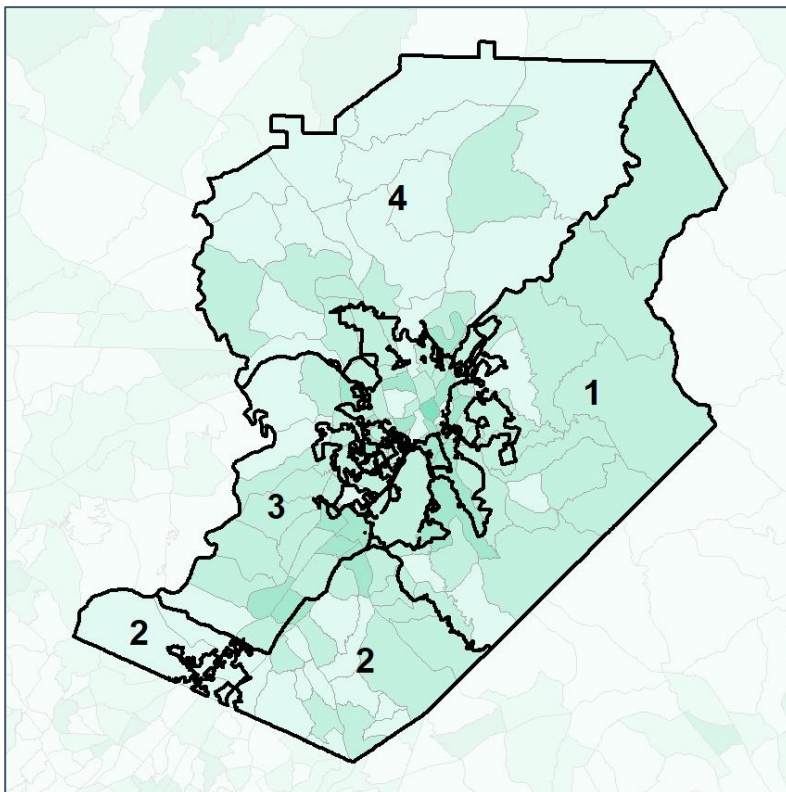
Source:
2020 Decennial Census
2020 ACS 5-Year Dataset

Hall County School Board

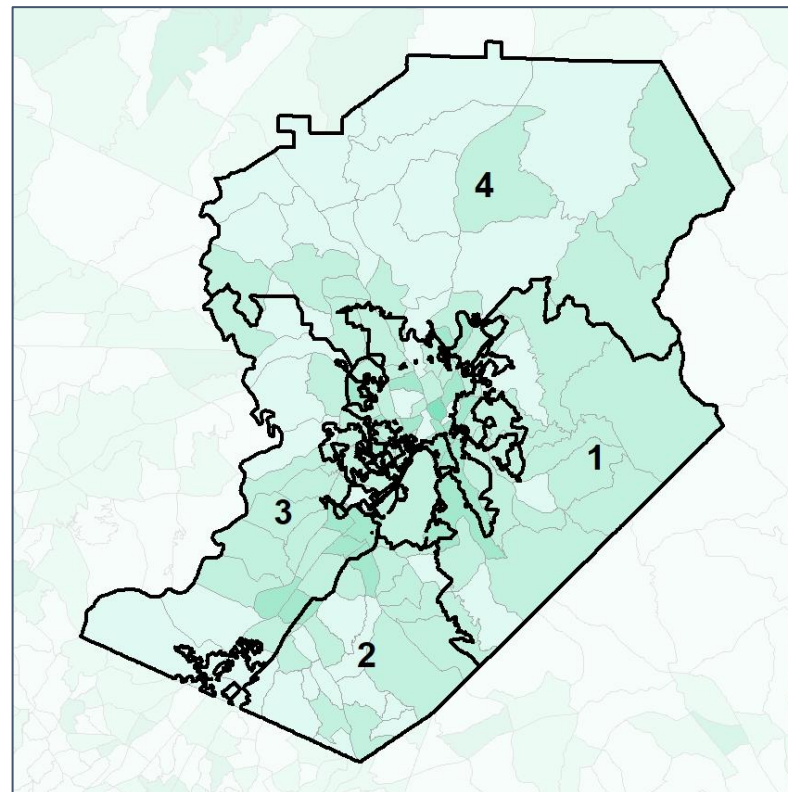
% Youth (18-34) by Census Block Group



2012 Map



2022 Map*



	1	2	3	4	1*	2*	3*	4*	County
Population	37,284	43,088	40,182	38,433	39,857	39,277	39,698	39,343	203,136
% API	1%	2%	2%	1%	1%	2%	2%	1%	2%
% Black	9%	5%	5%	1%	8%	5%	5%	2%	7%
% Latino	41%	16%	38%	11%	53%	16%	24%	10%	28%
% Other	3%	4%	3%	4%	3%	4%	4%	4%	4%
% White	46%	73%	51%	83%	35%	72%	65%	83%	59%
Median Income	\$59,000	\$93,000	\$65,000	\$77,000	\$59,000	\$94,000	\$69,000	\$71,000	\$64,000
% Renter	31%	13%	34%	21%	40%	12%	26%	22%	31%
% Youth	23%	18%	25%	18%	25%	19%	23%	18%	22%

