



Demographic Overview

Racial Breakdown in Fulton County

Fulton County	2010	2020	% Change
Total Population	920,581	1,066,710	16%
AAPI	51,591	81,013	57%
Black	400,457	448,803	12%
Latino	72,566	86,302	19%
Other/Mixed Race	19,953	45,799	130%
POC	544,567	661,917	22%
White	376,014	404,793	8%

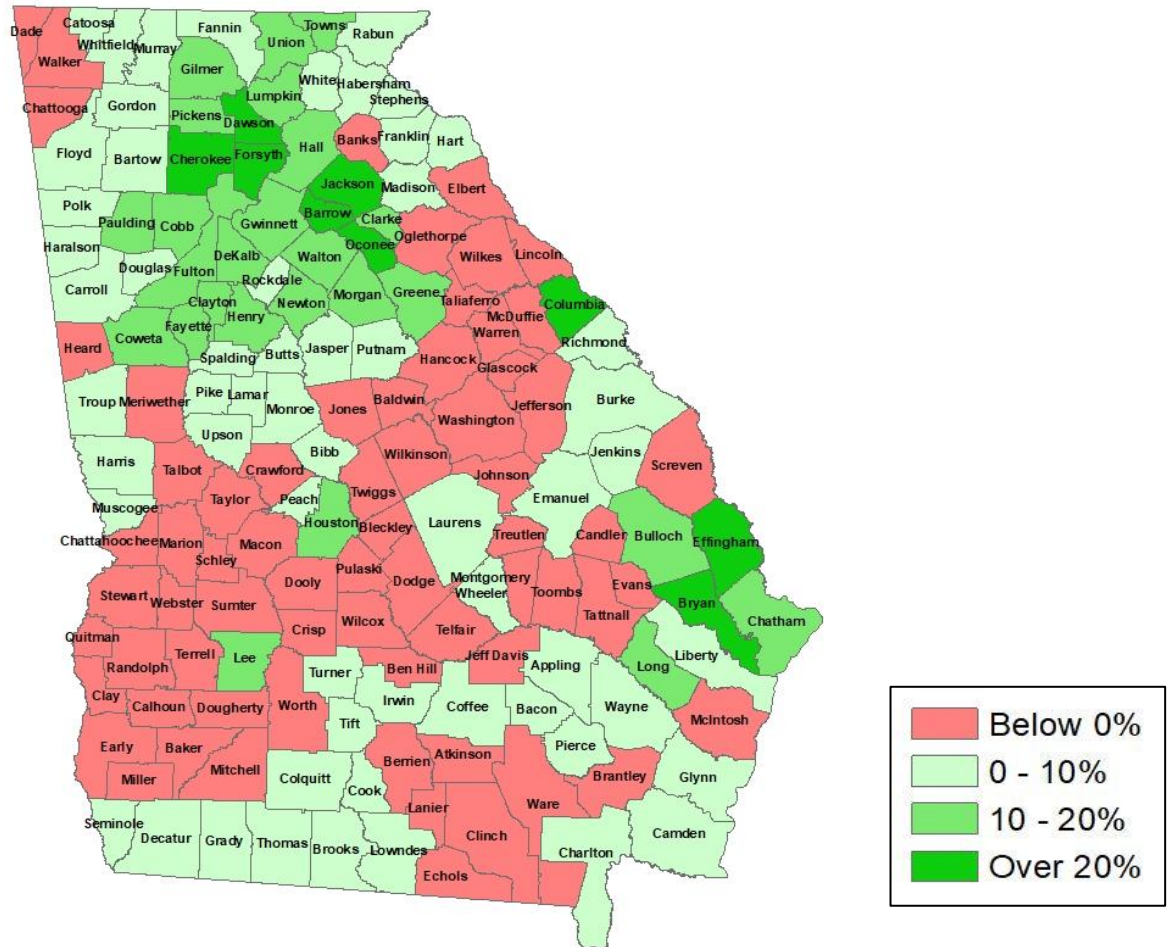
*Note: The use of "Other" in these statistics combines those who identify as Native American, Mixed Race, and "Other" race





Population Gain

Change in Population in Georgia by County

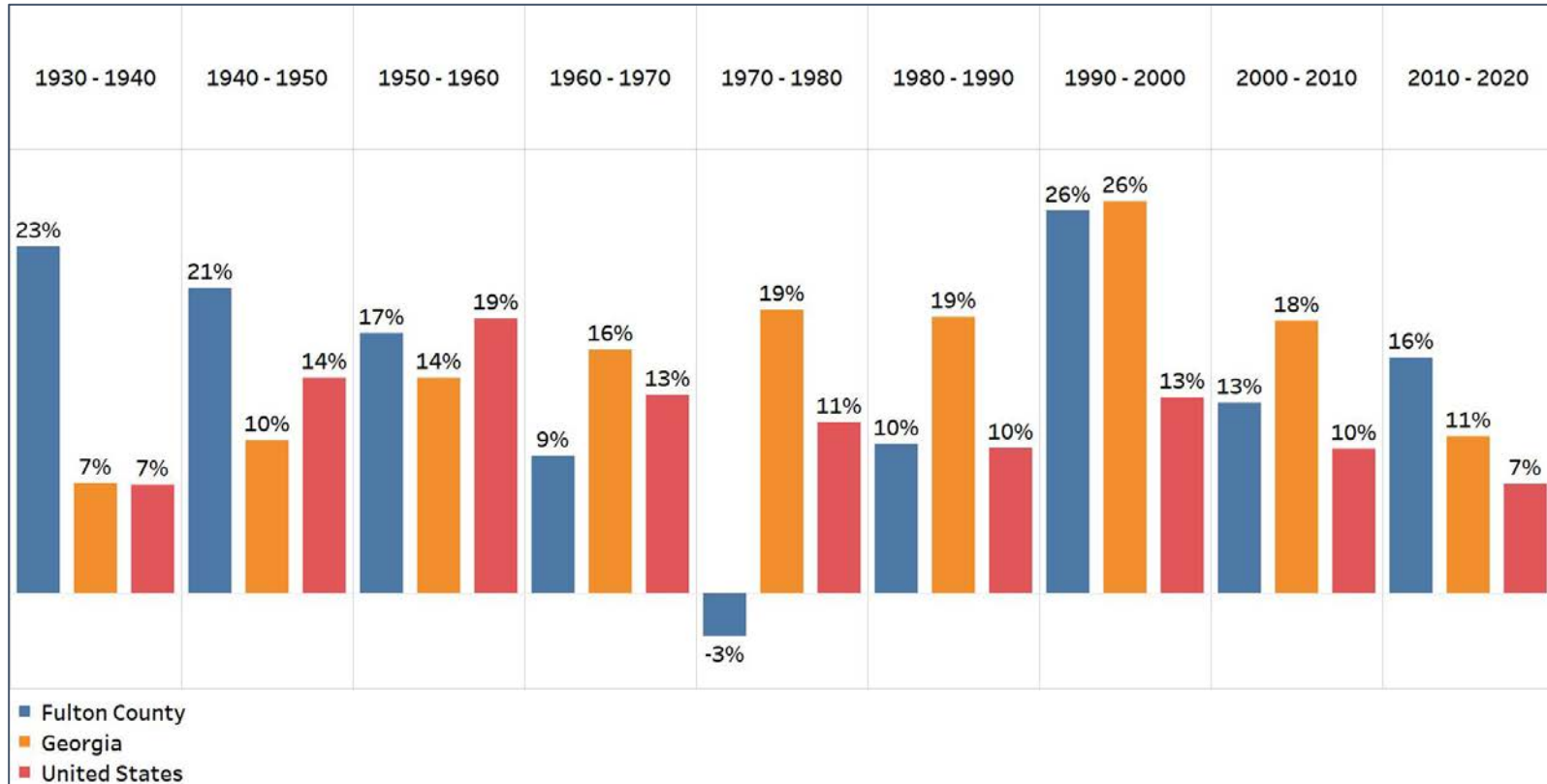


- Georgia is experiencing rapid population growth in the Atlanta, Augusta, and Savannah regions of the state



Population Gain

Change in Population by Decade

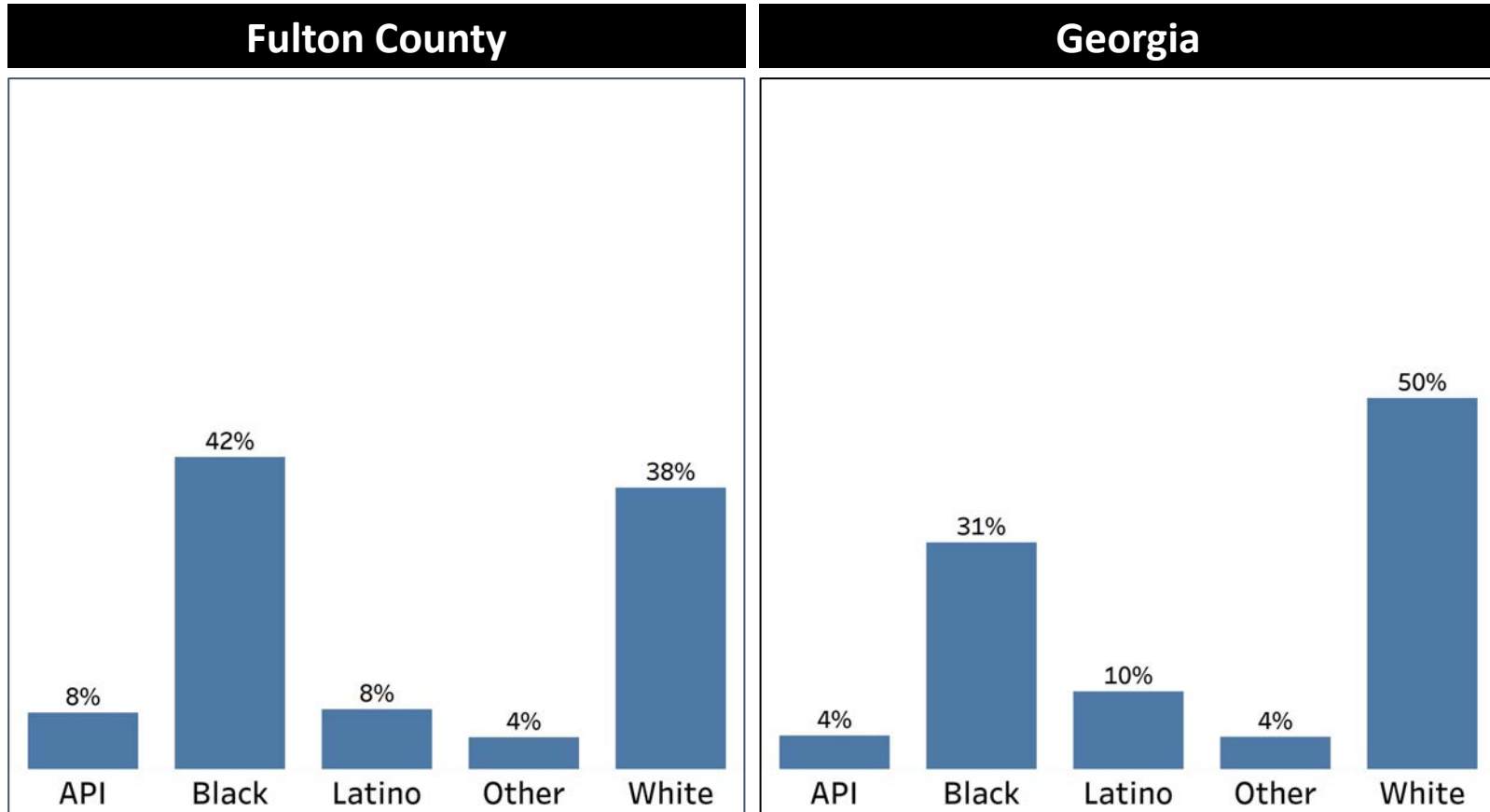


- Fulton County has experienced a steady population growth since 1930, with only having a decline from 1970 to 1980
- Fulton County's population growth has been above the state and national average expect between 1960 to 1980 and from 2000 to 2010.



Demographics

Comparison between Fulton County and Georgia

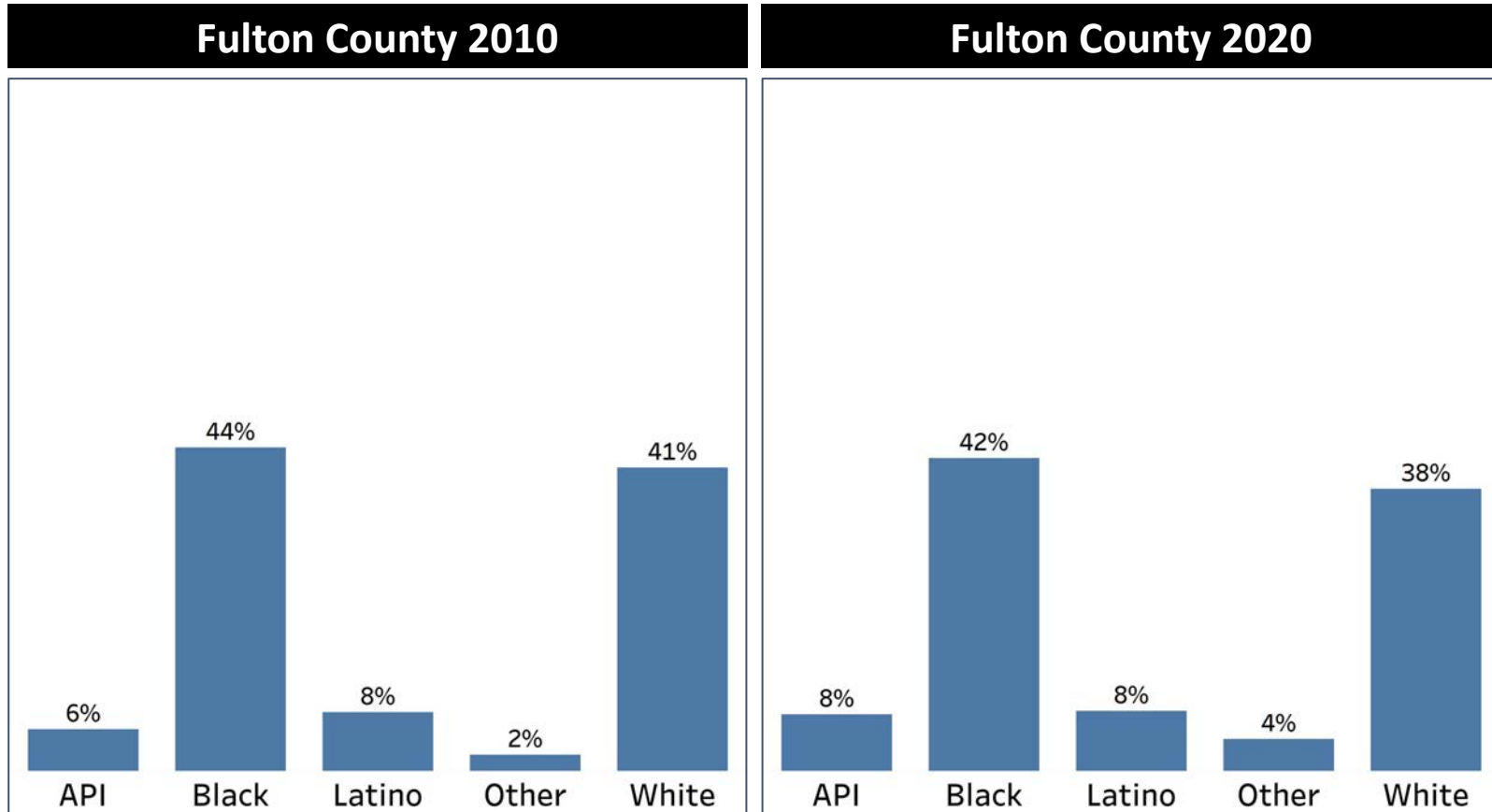


- Fulton County has a plurality Black population, above the statewides average
- Fulton County's API community is double the statewide average while the White population is below the state average



Demographics

2010 vs 2020 Demographics in Fulton County

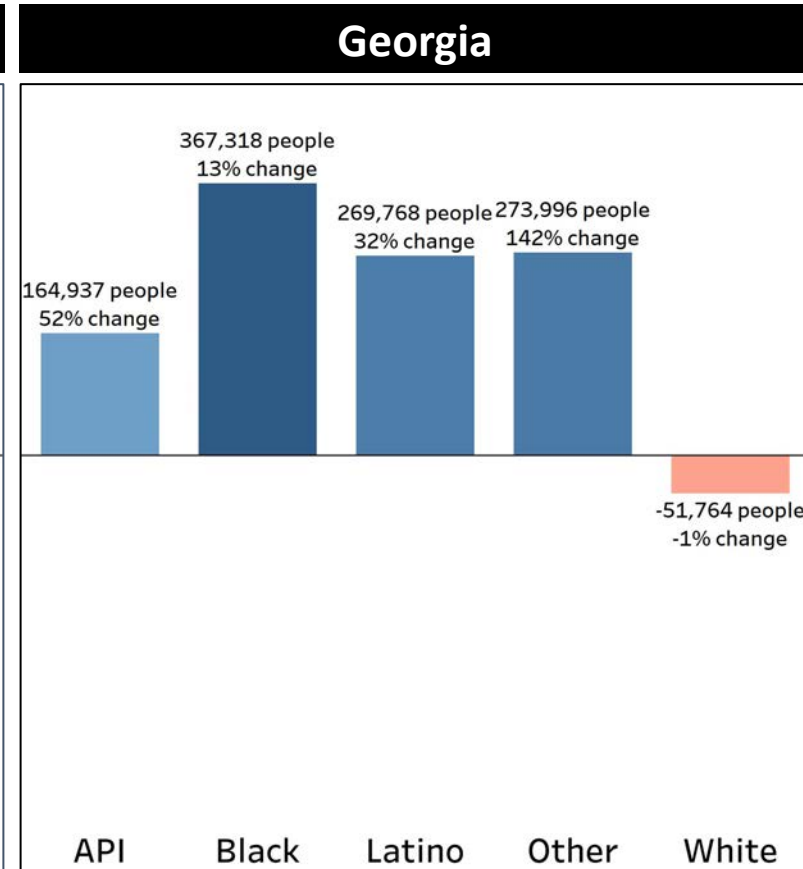
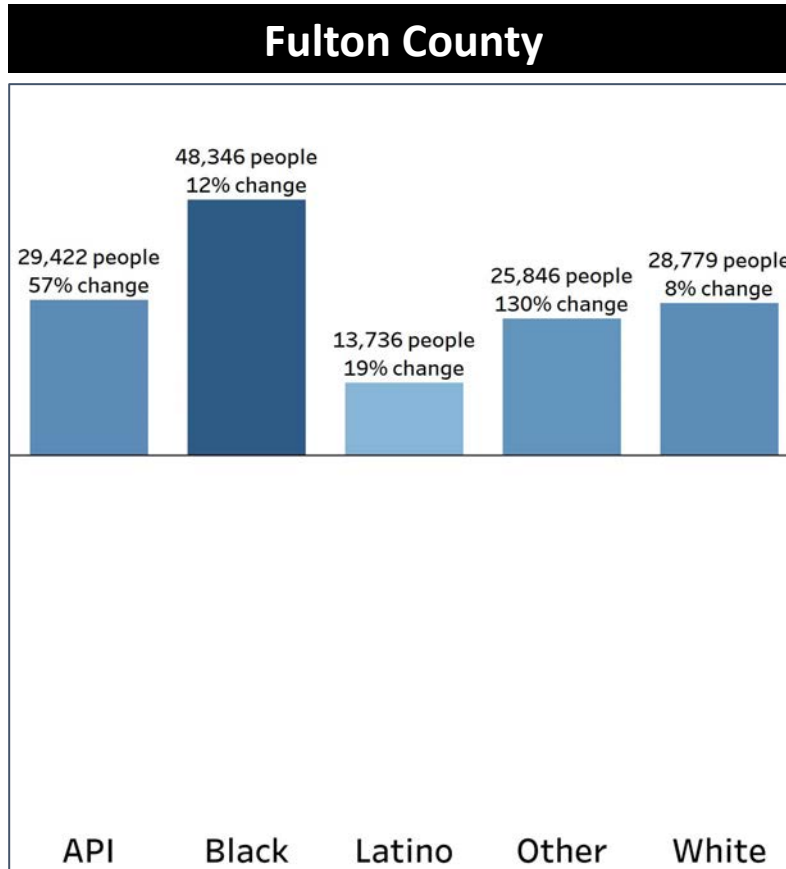


- Despite Fulton county's Black and White population both declining since 2010, the Black population remains the plurality
- Fulton county API and "Other" population increased by 2% while the latino population did not grow



Demographics

Population Change by Race (2020 - 2010)



- Fulton County is experiencing rapid population growth in all demographics which resemble the statewide average except with the Latino population growing at a slower rate
- Contrary to Georgia's statewide average, Fulton county White population has increased by 8%

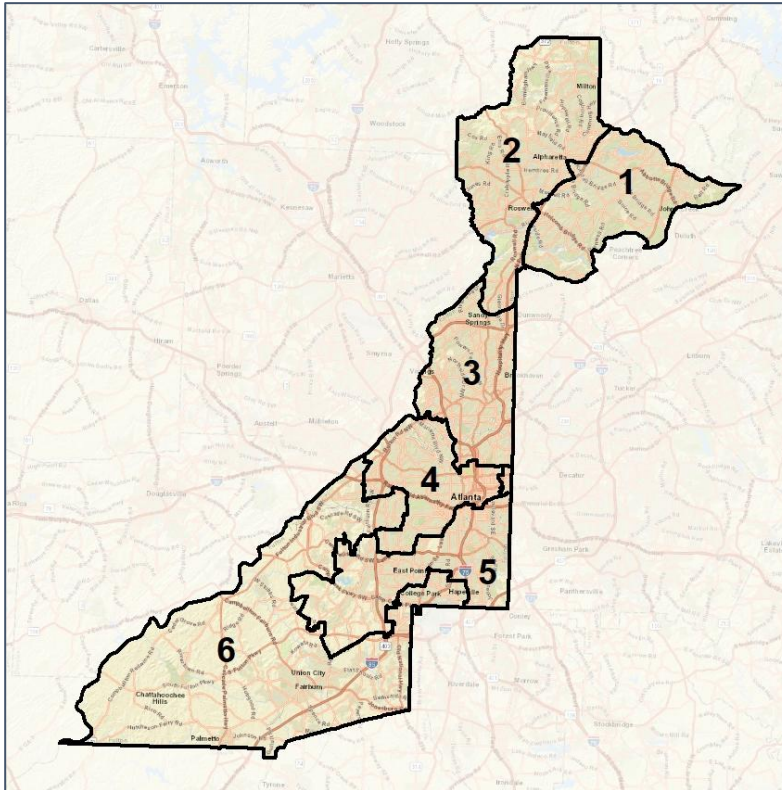


Fulton County Commission

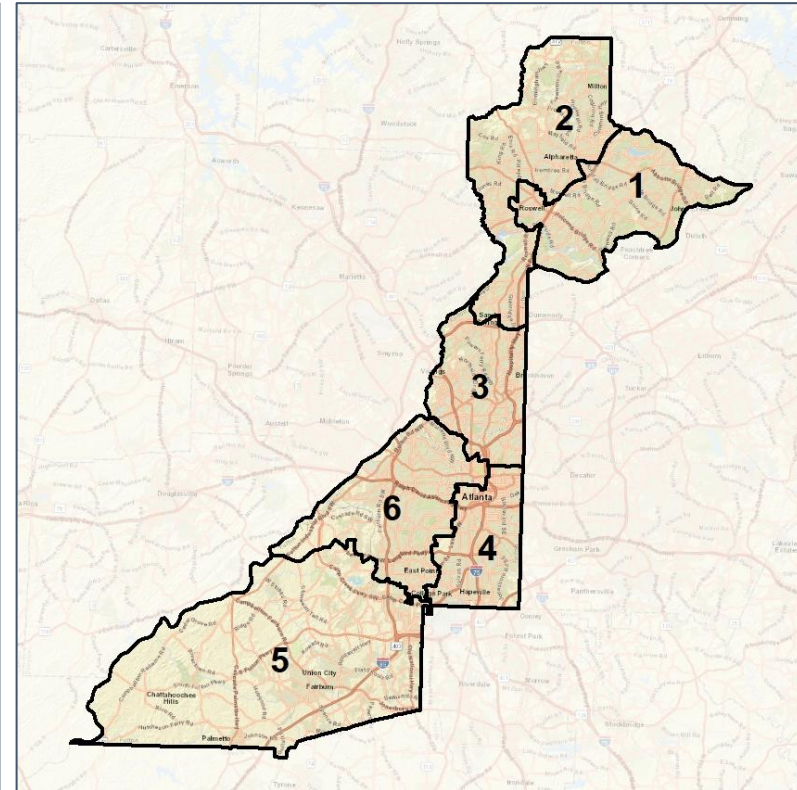
Context



2012 Map



2022 Map*



	1	2	3	4	5	6	1*	2*	3*	4*	5*	6*	County
Population	164,127	176,771	194,401	177,762	169,967	183,682	178,147	177,553	177,358	177,742	177,577	178,333	1,066,710
API	22%	11%	8%	4%	1%	1%	21%	11%	7%	3%	1%	3%	8%
Black	12%	14%	14%	58%	72%	83%	12%	14%	14%	54%	86%	73%	42%
Latino	9%	11%	10%	6%	6%	6%	10%	10%	10%	8%	5%	6%	8%
Other	5%	5%	5%	4%	4%	3%	5%	5%	4%	4%	3%	4%	4%
White	51%	59%	64%	28%	17%	7%	52%	59%	66%	30%	5%	15%	38%
Population Gain	*	*	*	*	*	*	14,020	782	-17,043	-20	7,610	-5,349	*
Population % Gain	*	*	*	*	*	*	9%	0%	-9%	0%	4%	-3%	*
Net POC Gain	*	*	*	*	*	*	6,353	-1,013	-8,009	-4,424	27,223	-20,130	*
Net POC % Gain	*	*	*	*	*	*	8%	-1%	-12%	-3%	19%	-12%	*

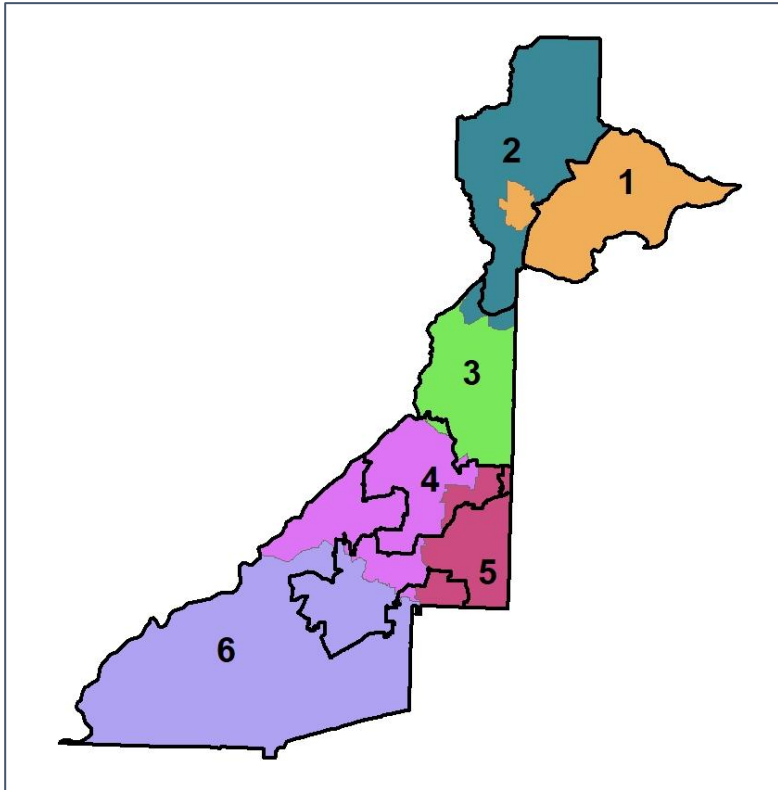


Fulton County Commission

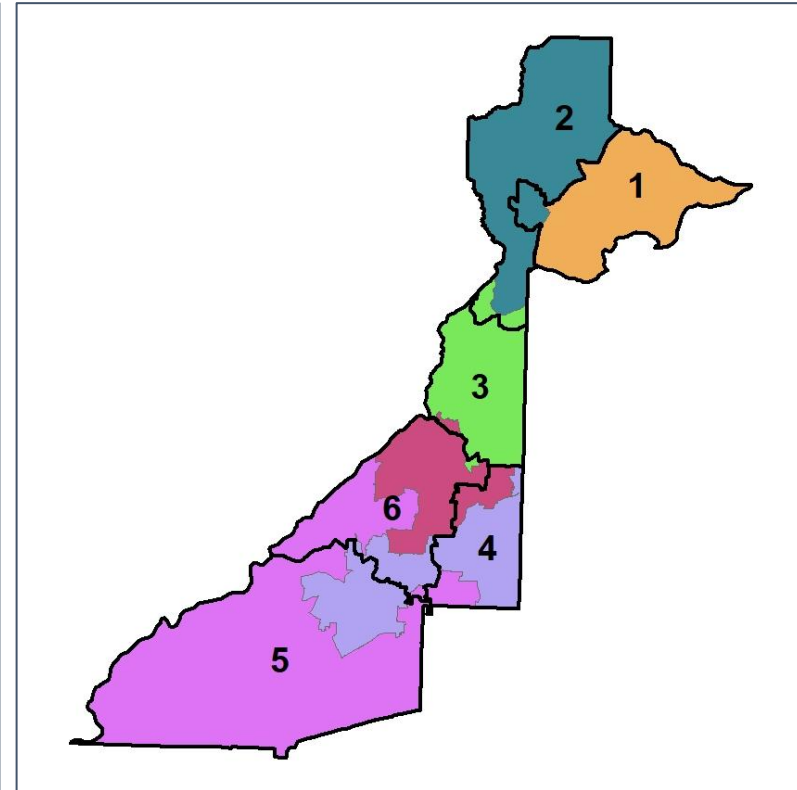
Changes in Redistricting



2012 Map (2022 in Colors)



2022 Map* (2012 in Colors)



	1	2	3	4	5	6	1*	2*	3*	4*	5*	6*	County
Population	164,127	176,771	194,401	177,762	169,967	183,682	178,147	177,553	177,358	177,742	177,577	178,333	1,066,710
API	22%	11%	8%	4%	1%	1%	21%	11%	7%	3%	1%	3%	8%
Black	12%	14%	14%	58%	72%	83%	12%	14%	14%	54%	86%	73%	42%
Latino	9%	11%	10%	6%	6%	6%	10%	10%	10%	8%	5%	6%	8%
Other	5%	5%	5%	4%	4%	3%	5%	5%	4%	4%	3%	4%	4%
White	51%	59%	64%	28%	17%	7%	52%	59%	66%	30%	5%	15%	38%
Population Gain	*	*	*	*	*	*	14,020	782	-17,043	-20	7,610	-5,349	*
Population % Gain	*	*	*	*	*	*	9%	0%	-9%	0%	4%	-3%	*
Net POC Gain	*	*	*	*	*	*	6,353	-1,013	-8,009	-4,424	27,223	-20,130	*
Net POC % Gain	*	*	*	*	*	*	8%	-1%	-12%	-3%	19%	-12%	*

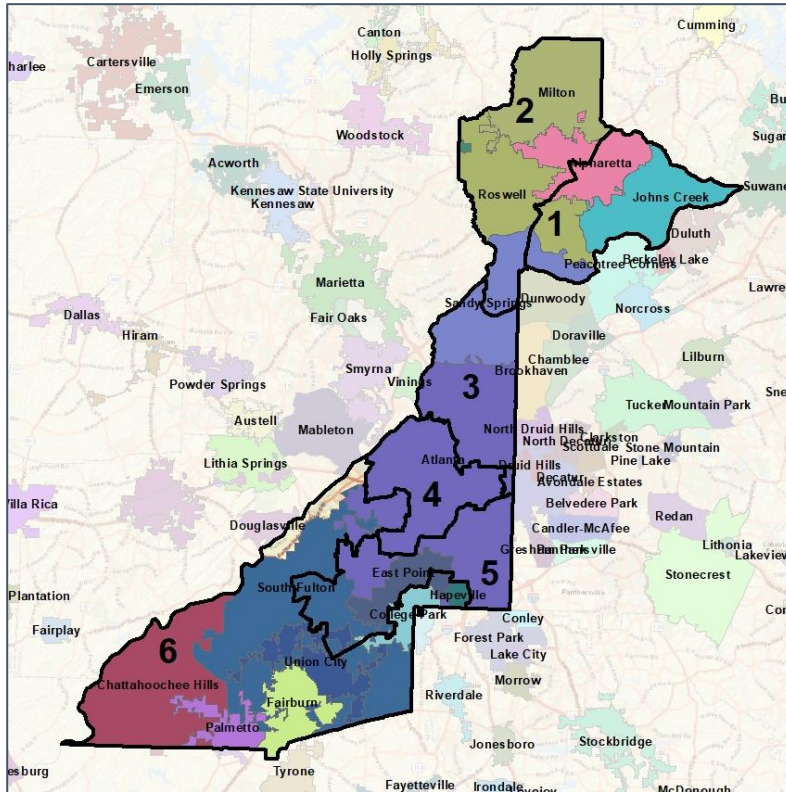


Fulton County Commission

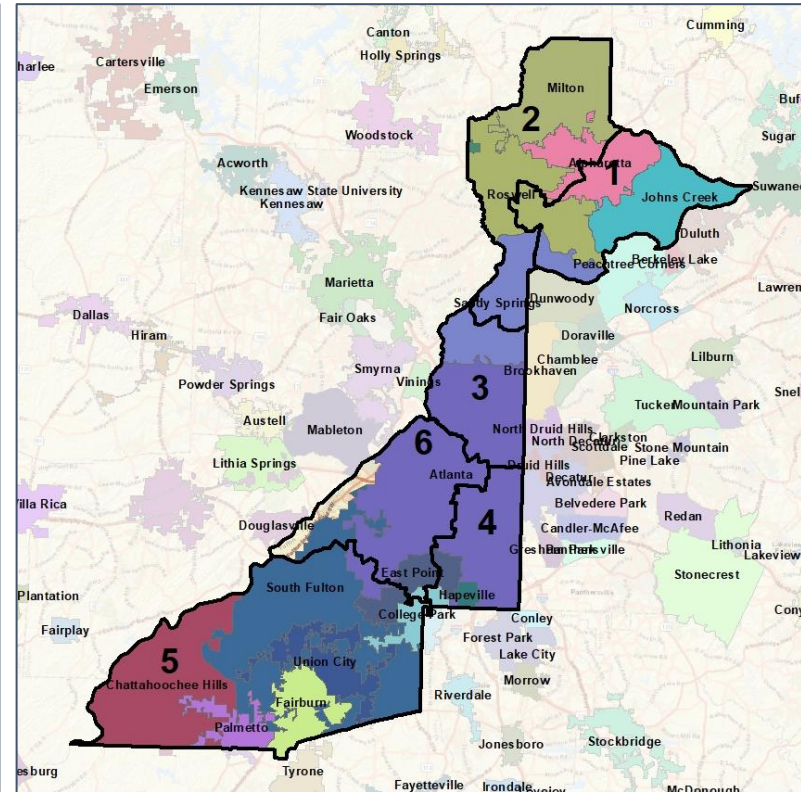
Cities and Places



2012 Map



2022 Map*



	1	2	3	4	5	6	1*	2*	3*	4*	5*	6*	County
Population	164,127	176,771	194,401	177,762	169,967	183,682	178,147	177,553	177,358	177,742	177,577	178,333	1,066,710
API	22%	11%	8%	4%	1%	1%	21%	11%	7%	3%	1%	3%	8%
Black	12%	14%	14%	58%	72%	83%	12%	14%	14%	54%	86%	73%	42%
Latino	9%	11%	10%	6%	6%	6%	10%	10%	10%	8%	5%	6%	8%
Other	5%	5%	5%	4%	4%	3%	5%	5%	4%	4%	3%	4%	4%
White	51%	59%	64%	28%	17%	7%	52%	59%	66%	30%	5%	15%	38%
Population Gain	*	*	*	*	*	*	14,020	782	-17,043	-20	7,610	-5,349	*
Population % Gain	*	*	*	*	*	*	9%	0%	-9%	0%	4%	-3%	*
Net POC Gain	*	*	*	*	*	*	6,353	-1,013	-8,009	-4,424	27,223	-20,130	*
Net POC % Gain	*	*	*	*	*	*	8%	-1%	-12%	-3%	19%	-12%	*



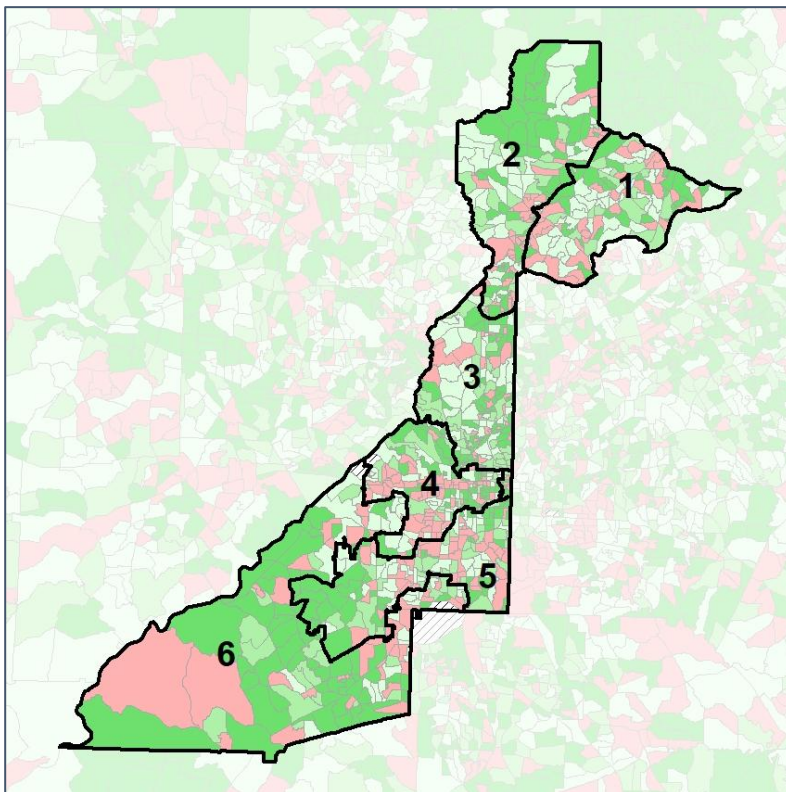
Source:
2020 Decennial Census
2020 ACS 5-Year Dataset

Fulton County Commission

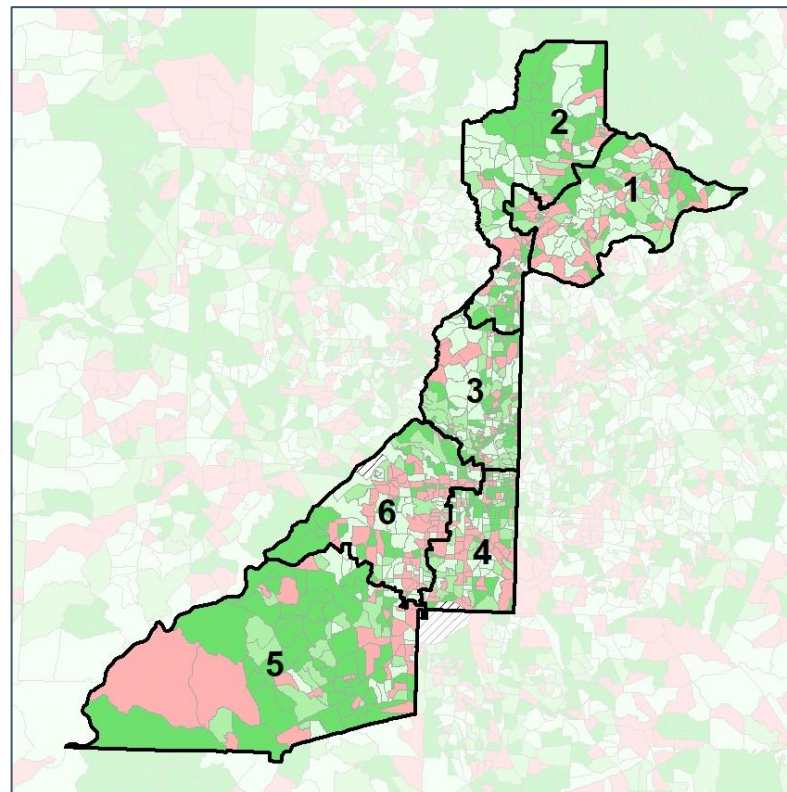
Net Gain in Population (2010 - 2020)



2012 Map



2022 Map*



	1	2	3	4	5	6	1*	2*	3*	4*	5*	6*	County
Population	164,127	176,771	194,401	177,762	169,967	183,682	178,147	177,553	177,358	177,742	177,577	178,333	1,066,710
API	22%	11%	8%	4%	1%	1%	21%	11%	7%	3%	1%	3%	8%
Black	12%	14%	14%	58%	72%	83%	12%	14%	14%	54%	86%	73%	42%
Latino	9%	11%	10%	6%	6%	6%	10%	10%	10%	8%	5%	6%	8%
Other	5%	5%	5%	4%	4%	3%	5%	5%	4%	4%	3%	4%	4%
White	51%	59%	64%	28%	17%	7%	52%	59%	66%	30%	5%	15%	38%
Population Gain	*	*	*	*	*	*	14,020	782	-17,043	-20	7,610	-5,349	*
Population % Gain	*	*	*	*	*	*	9%	0%	-9%	0%	4%	-3%	*
Net POC Gain	*	*	*	*	*	*	6,353	-1,013	-8,009	-4,424	27,223	-20,130	*
Net POC % Gain	*	*	*	*	*	*	8%	-1%	-12%	-3%	19%	-12%	*

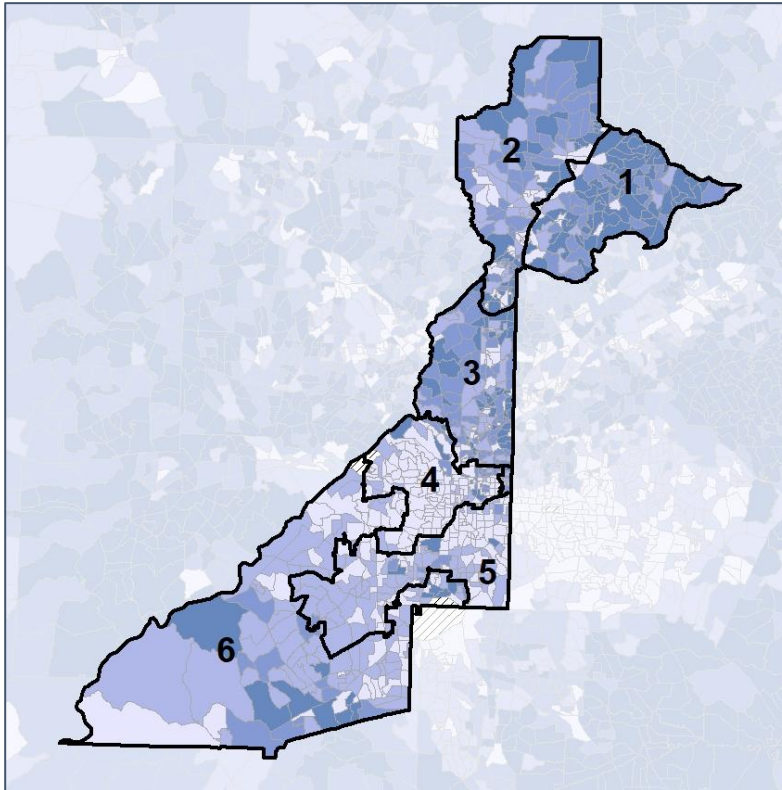


Fulton County Commission

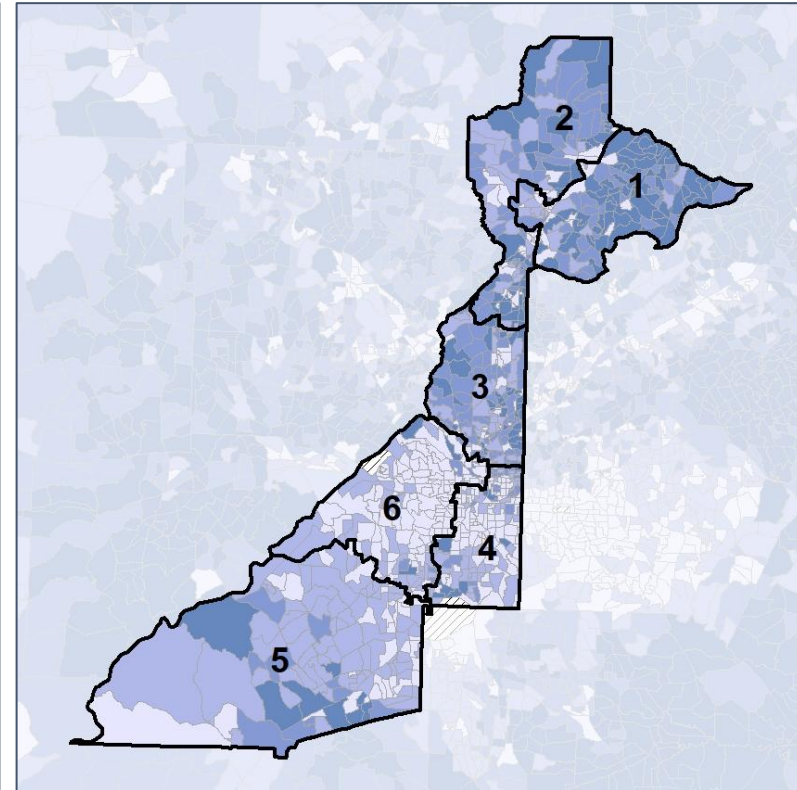
Net Gain in % POC (2020 - 2010) by Census Block Group



2012 Map



2022 Map*



	1	2	3	4	5	6	1*	2*	3*	4*	5*	6*	County
Population	164,127	176,771	194,401	177,762	169,967	183,682	178,147	177,553	177,358	177,742	177,577	178,333	1,066,710
API	22%	11%	8%	4%	1%	1%	21%	11%	7%	3%	1%	3%	8%
Black	12%	14%	14%	58%	72%	83%	12%	14%	14%	54%	86%	73%	42%
Latino	9%	11%	10%	6%	6%	6%	10%	10%	10%	8%	5%	6%	8%
Other	5%	5%	5%	4%	4%	3%	5%	5%	4%	4%	3%	4%	4%
White	51%	59%	64%	28%	17%	7%	52%	59%	66%	30%	5%	15%	38%
Population Gain	*	*	*	*	*	*	14,020	782	-17,043	-20	7,610	-5,349	*
Population % Gain	*	*	*	*	*	*	9%	0%	-9%	0%	4%	-3%	*
Net POC Gain	*	*	*	*	*	*	6,353	-1,013	-8,009	-4,424	27,223	-20,130	*
Net POC % Gain	*	*	*	*	*	*	8%	-1%	-12%	-3%	19%	-12%	*

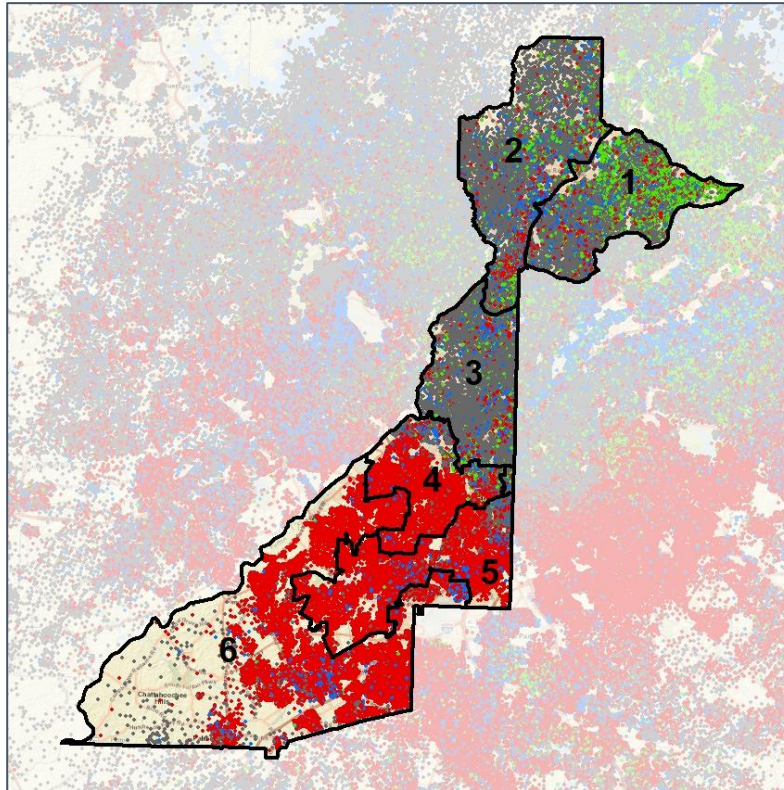


Fulton County Commission

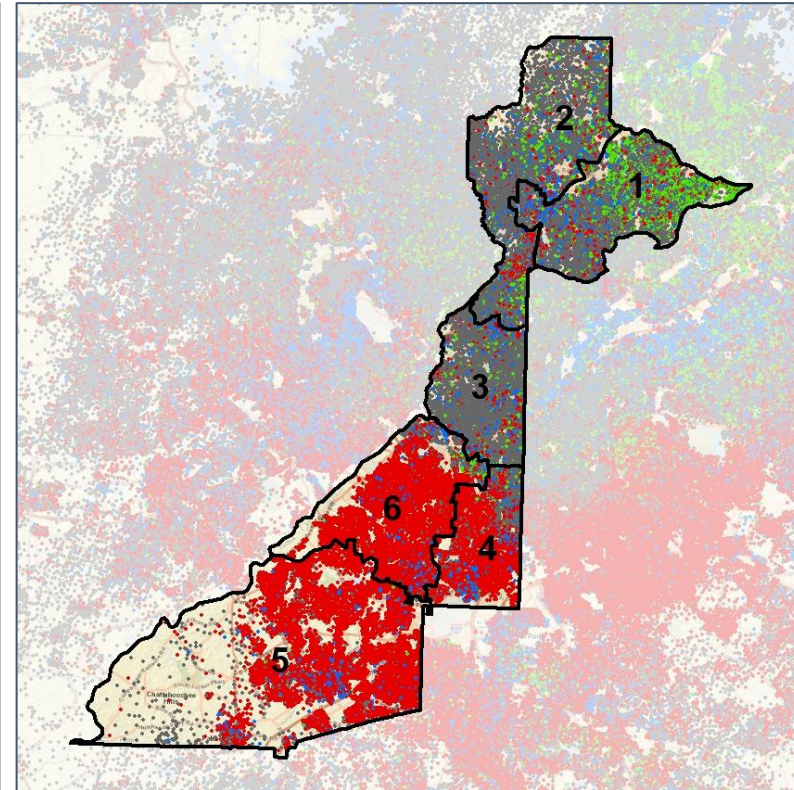
Population Density by Race



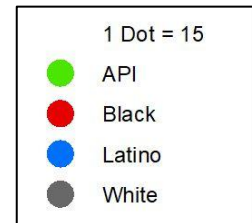
2012 Map



2022 Map*



	1	2	3	4	5	6	1*	2*	3*	4*	5*	6*	County
Population	164,127	176,771	194,401	177,762	169,967	183,682	178,147	177,553	177,358	177,742	177,577	178,333	1,066,710
API	36,707	18,942	15,001	7,184	1,922	1,257	37,279	20,012	11,762	5,834	1,024	5,102	81,013
% API	22%	11%	8%	4%	1%	1%	21%	11%	7%	3%	1%	3%	8%
Black	19,106	24,953	26,618	103,211	122,405	152,510	21,088	24,731	24,084	96,763	152,535	129,602	448,803
% Black	12%	14%	14%	58%	72%	83%	12%	14%	14%	54%	86%	73%	42%
Latino	15,571	20,067	18,638	10,250	10,127	11,649	18,690	18,191	17,250	13,428	8,653	10,090	86,302
% Latino	9%	11%	10%	6%	6%	6%	10%	10%	10%	8%	5%	6%	8%
Other	8,359	9,007	8,809	7,476	6,300	5,848	9,039	9,022	7,961	7,672	5,765	6,340	45,799
% Other	5%	5%	5%	4%	4%	3%	5%	5%	4%	4%	3%	4%	4%
White	84,384	103,802	125,335	49,641	29,213	12,418	92,051	105,597	116,301	54,045	9,600	27,199	404,793
% White	51%	59%	64%	28%	17%	7%	52%	59%	66%	30%	5%	15%	38%



Source:
2020 Decennial Census
2020 ACS 5-Year Dataset

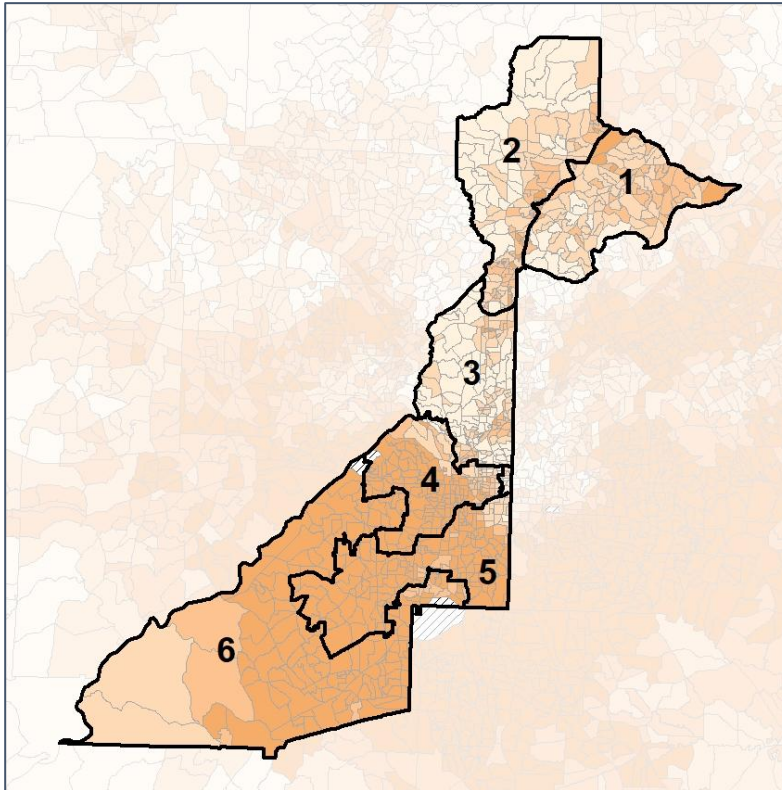


Fulton County Commission

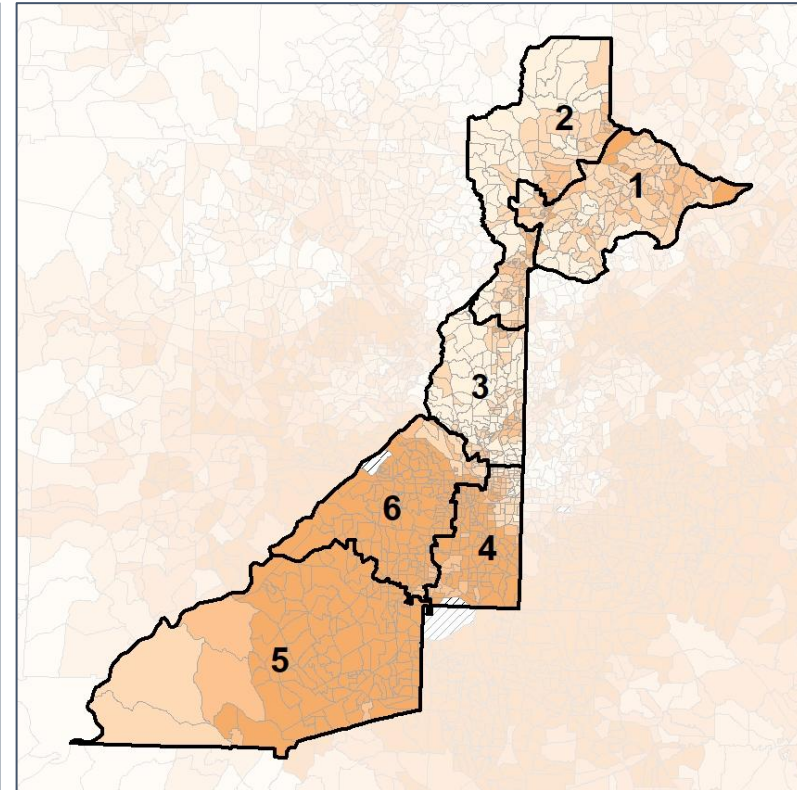
% People of Color by Census Block Group



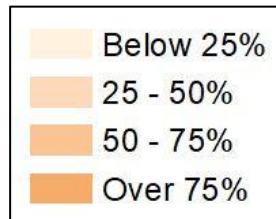
2012 Map



2022 Map*



	1	2	3	4	5	6	1*	2*	3*	4*	5*	6*	County
Population	164,127	176,771	194,401	177,762	169,967	183,682	178,147	177,553	177,358	177,742	177,577	178,333	1,066,710
API	36,707	18,942	15,001	7,184	1,922	1,257	37,279	20,012	11,762	5,834	1,024	5,102	81,013
% API	22%	11%	8%	4%	1%	1%	21%	11%	7%	3%	1%	3%	8%
Black	19,106	24,953	26,618	103,211	122,405	152,510	21,088	24,731	24,084	96,763	152,535	129,602	448,803
% Black	12%	14%	14%	58%	72%	83%	12%	14%	14%	54%	86%	73%	42%
Latino	15,571	20,067	18,638	10,250	10,127	11,649	18,690	18,191	17,250	13,428	8,653	10,090	86,302
% Latino	9%	11%	10%	6%	6%	6%	10%	10%	10%	8%	5%	6%	8%
Other	8,359	9,007	8,809	7,476	6,300	5,848	9,039	9,022	7,961	7,672	5,765	6,340	45,799
% Other	5%	5%	5%	4%	4%	3%	5%	5%	4%	4%	3%	4%	4%
White	84,384	103,802	125,335	49,641	29,213	12,418	92,051	105,597	116,301	54,045	9,600	27,199	404,793
% White	51%	59%	64%	28%	17%	7%	52%	59%	66%	30%	5%	15%	38%



Source:
2020 Decennial Census
2020 ACS 5-Year Dataset

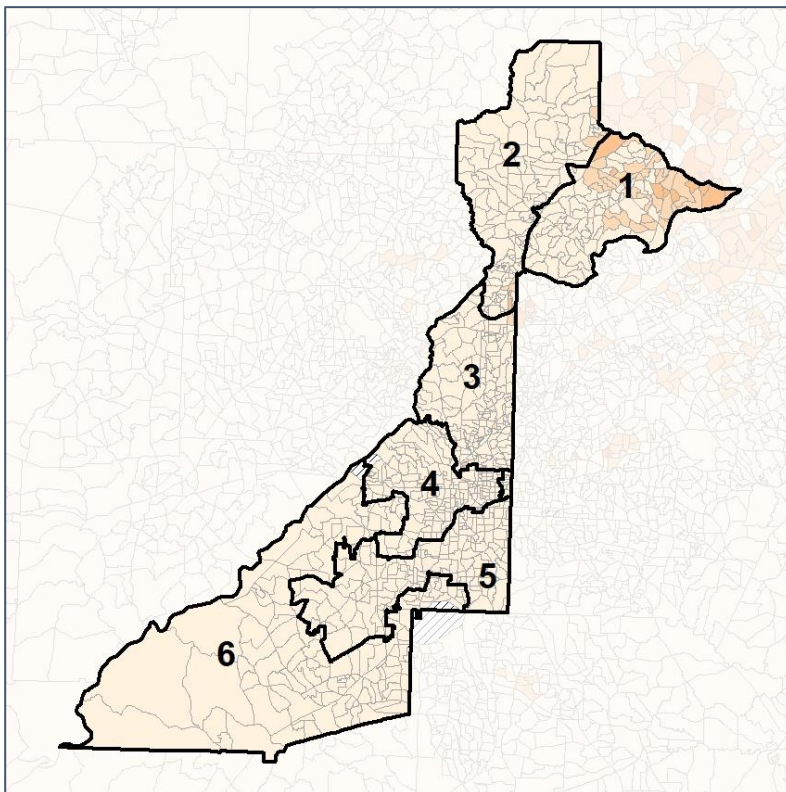


Fulton County Commission

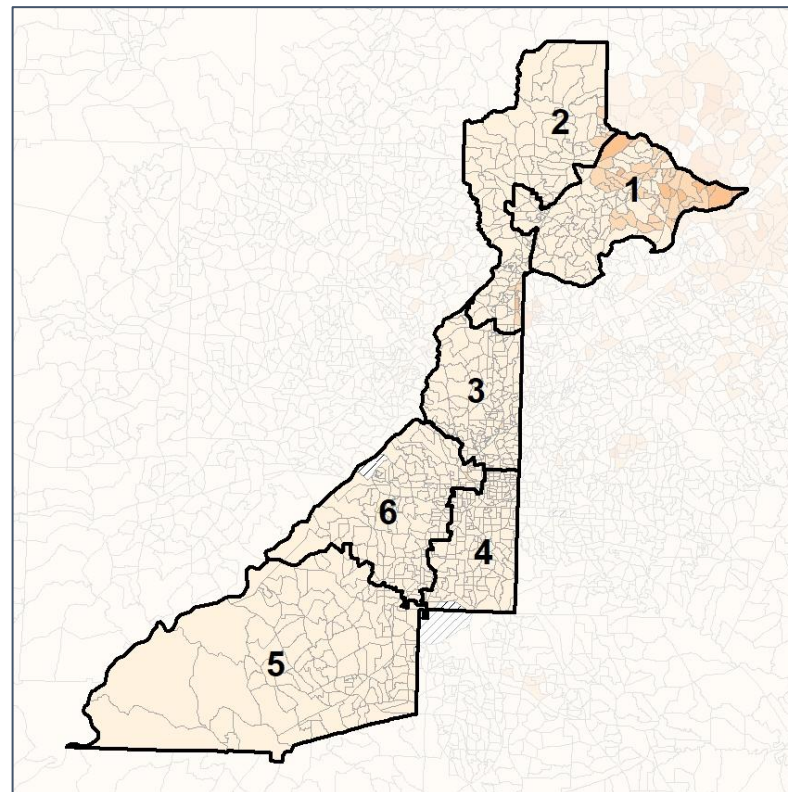
% API by Census Block Group



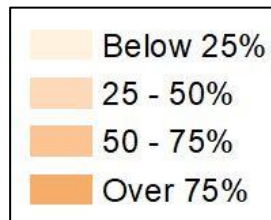
2012 Map



2022 Map*



	1	2	3	4	5	6	1*	2*	3*	4*	5*	6*	County
Population	164,127	176,771	194,401	177,762	169,967	183,682	178,147	177,553	177,358	177,742	177,577	178,333	1,066,710
API	36,707	18,942	15,001	7,184	1,922	1,257	37,279	20,012	11,762	5,834	1,024	5,102	81,013
% API	22%	11%	8%	4%	1%	1%	21%	11%	7%	3%	1%	3%	8%
Black	19,106	24,953	26,618	103,211	122,405	152,510	21,088	24,731	24,084	96,763	152,535	129,602	448,803
% Black	12%	14%	14%	58%	72%	83%	12%	14%	14%	54%	86%	73%	42%
Latino	15,571	20,067	18,638	10,250	10,127	11,649	18,690	18,191	17,250	13,428	8,653	10,090	86,302
% Latino	9%	11%	10%	6%	6%	6%	10%	10%	10%	8%	5%	6%	8%
Other	8,359	9,007	8,809	7,476	6,300	5,848	9,039	9,022	7,961	7,672	5,765	6,340	45,799
% Other	5%	5%	5%	4%	4%	3%	5%	5%	4%	4%	3%	4%	4%
White	84,384	103,802	125,335	49,641	29,213	12,418	92,051	105,597	116,301	54,045	9,600	27,199	404,793
% White	51%	59%	64%	28%	17%	7%	52%	59%	66%	30%	5%	15%	38%



Source:
2020 Decennial Census
2020 ACS 5-Year Dataset

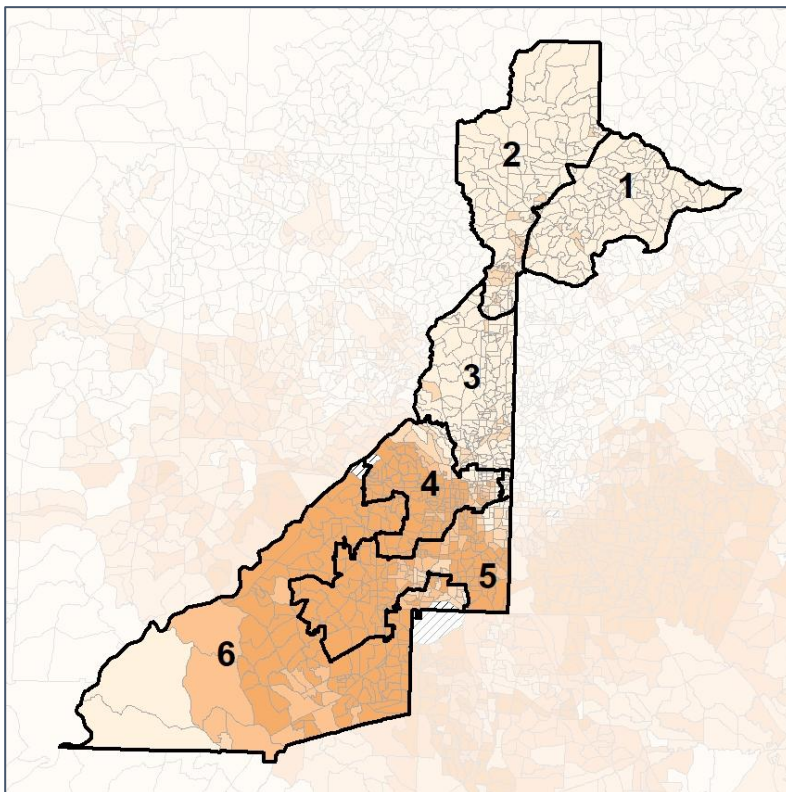


Fulton County Commission

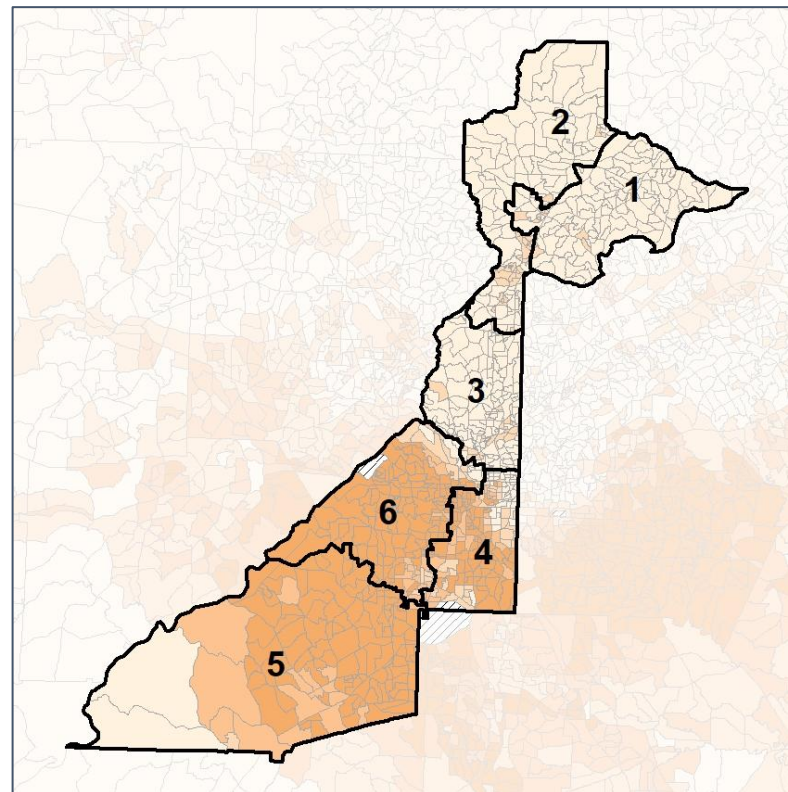
% Black by Census Block Group



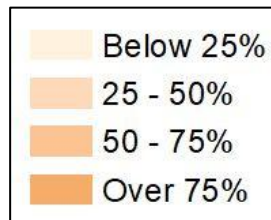
2012 Map



2022 Map*



	1	2	3	4	5	6	1*	2*	3*	4*	5*	6*	County
Population	164,127	176,771	194,401	177,762	169,967	183,682	178,147	177,553	177,358	177,742	177,577	178,333	1,066,710
API	36,707	18,942	15,001	7,184	1,922	1,257	37,279	20,012	11,762	5,834	1,024	5,102	81,013
% API	22%	11%	8%	4%	1%	1%	21%	11%	7%	3%	1%	3%	8%
Black	19,106	24,953	26,618	103,211	122,405	152,510	21,088	24,731	24,084	96,763	152,535	129,602	448,803
% Black	12%	14%	14%	58%	72%	83%	12%	14%	14%	54%	86%	73%	42%
Latino	15,571	20,067	18,638	10,250	10,127	11,649	18,690	18,191	17,250	13,428	8,653	10,090	86,302
% Latino	9%	11%	10%	6%	6%	6%	10%	10%	10%	8%	5%	6%	8%
Other	8,359	9,007	8,809	7,476	6,300	5,848	9,039	9,022	7,961	7,672	5,765	6,340	45,799
% Other	5%	5%	5%	4%	4%	3%	5%	5%	4%	4%	3%	4%	4%
White	84,384	103,802	125,335	49,641	29,213	12,418	92,051	105,597	116,301	54,045	9,600	27,199	404,793
% White	51%	59%	64%	28%	17%	7%	52%	59%	66%	30%	5%	15%	38%



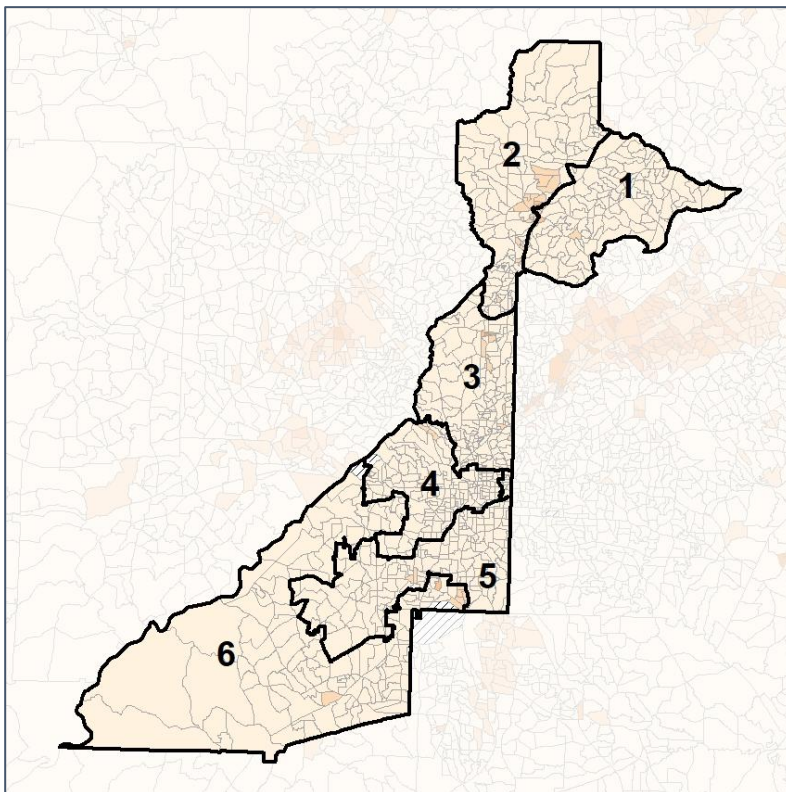
Source:
2020 Decennial Census
2020 ACS 5-Year Dataset

Fulton County Commission

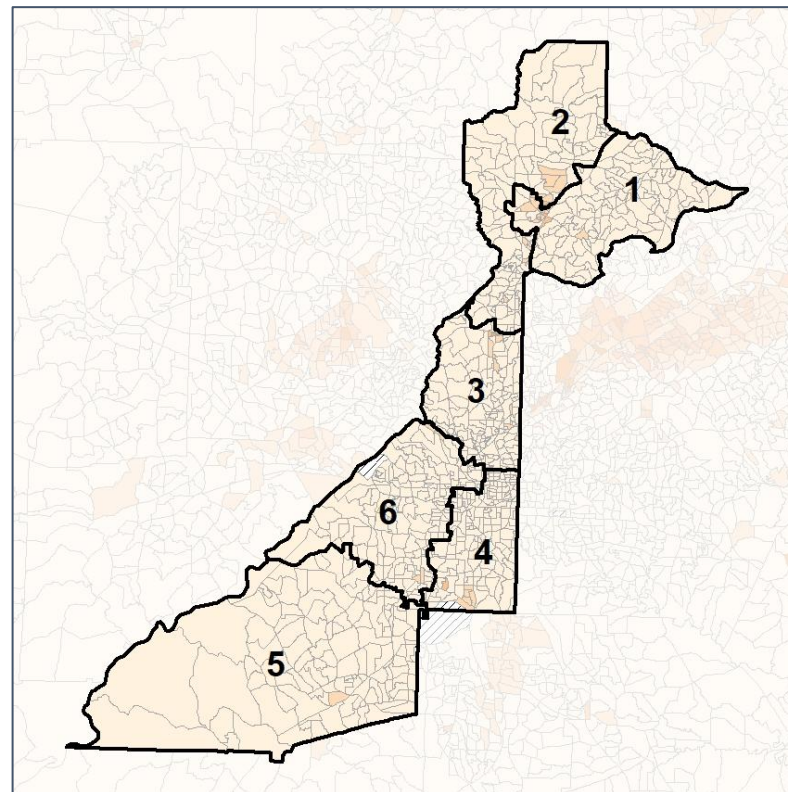
% Latino by Census Block Group



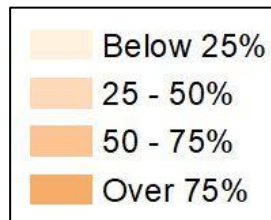
2012 Map



2022 Map*



	1	2	3	4	5	6	1*	2*	3*	4*	5*	6*	County
Population	164,127	176,771	194,401	177,762	169,967	183,682	178,147	177,553	177,358	177,742	177,577	178,333	1,066,710
API	36,707	18,942	15,001	7,184	1,922	1,257	37,279	20,012	11,762	5,834	1,024	5,102	81,013
% API	22%	11%	8%	4%	1%	1%	21%	11%	7%	3%	1%	3%	8%
Black	19,106	24,953	26,618	103,211	122,405	152,510	21,088	24,731	24,084	96,763	152,535	129,602	448,803
% Black	12%	14%	14%	58%	72%	83%	12%	14%	14%	54%	86%	73%	42%
Latino	15,571	20,067	18,638	10,250	10,127	11,649	18,690	18,191	17,250	13,428	8,653	10,090	86,302
% Latino	9%	11%	10%	6%	6%	6%	10%	10%	10%	8%	5%	6%	8%
Other	8,359	9,007	8,809	7,476	6,300	5,848	9,039	9,022	7,961	7,672	5,765	6,340	45,799
% Other	5%	5%	5%	4%	4%	3%	5%	5%	4%	4%	3%	4%	4%
White	84,384	103,802	125,335	49,641	29,213	12,418	92,051	105,597	116,301	54,045	9,600	27,199	404,793
% White	51%	59%	64%	28%	17%	7%	52%	59%	66%	30%	5%	15%	38%



Source:
2020 Decennial Census
2020 ACS 5-Year Dataset

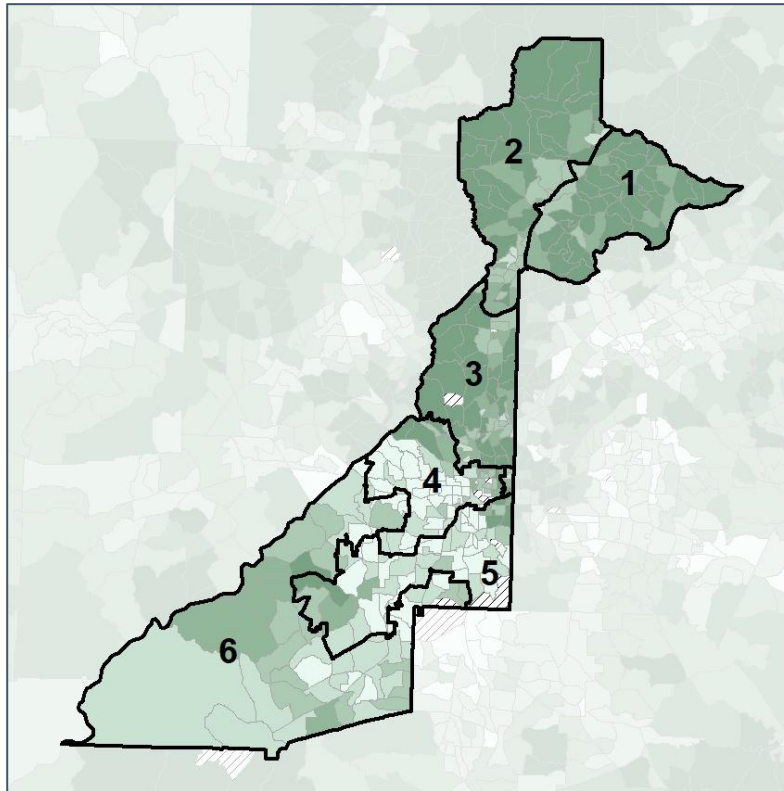


Fulton County Commission

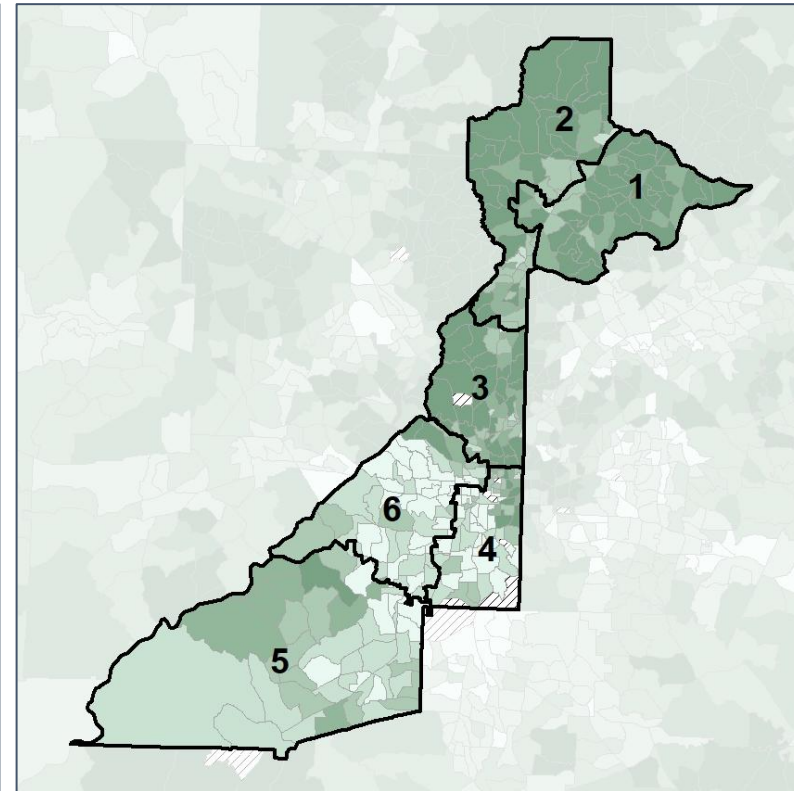
Median Household Income by Census Tract



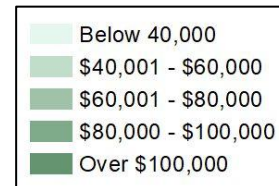
2012 Map



2022 Map*



	1	2	3	4	5	6	1*	2*	3*	4*	5*	6*	County
Population	164,127	176,771	194,401	177,762	169,967	183,682	178,147	177,553	177,358	177,742	177,577	178,333	1,066,710
% API	22%	11%	8%	4%	1%	1%	21%	11%	7%	3%	1%	3%	8%
% Black	12%	14%	14%	58%	72%	83%	12%	14%	14%	54%	86%	73%	42%
% Latino	9%	11%	10%	6%	6%	6%	10%	10%	10%	8%	5%	6%	8%
% Other	5%	5%	5%	4%	4%	3%	5%	5%	4%	4%	3%	4%	4%
% White	51%	59%	64%	28%	17%	7%	52%	59%	66%	30%	5%	15%	38%
Median Income	\$129K	\$117K	\$117K	\$61K	\$57K	\$61K	\$126K	\$118K	\$119K	\$64K	\$61K	\$51K	\$73K
% Renter	29%	38%	49%	61%	56%	45%	32%	37%	49%	62%	44%	57%	47%
% Youth	16%	21%	34%	40%	28%	23%	17%	21%	32%	38%	23%	33%	27%

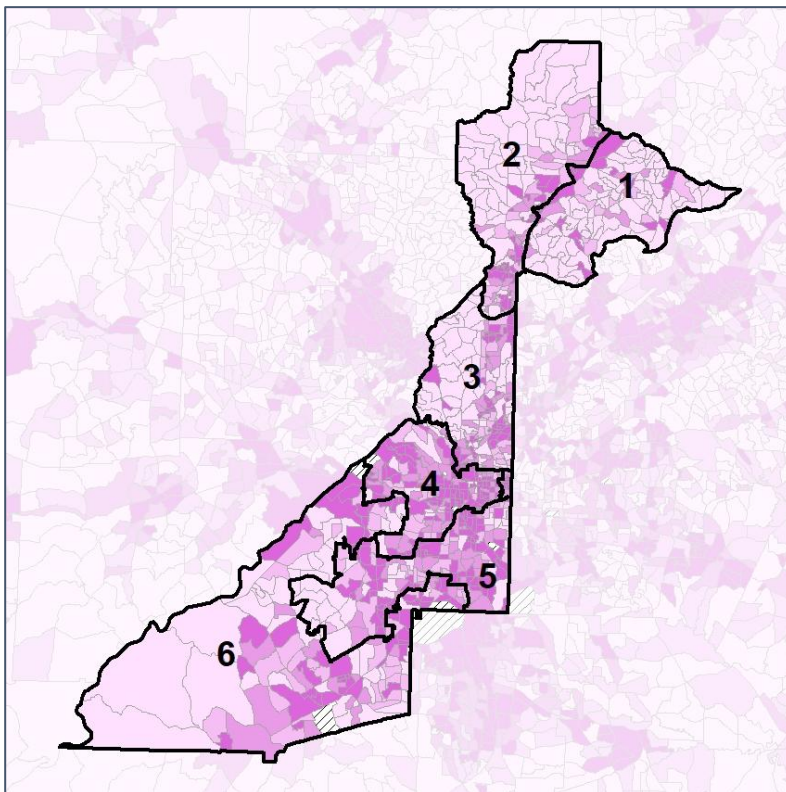


Fulton County Commission

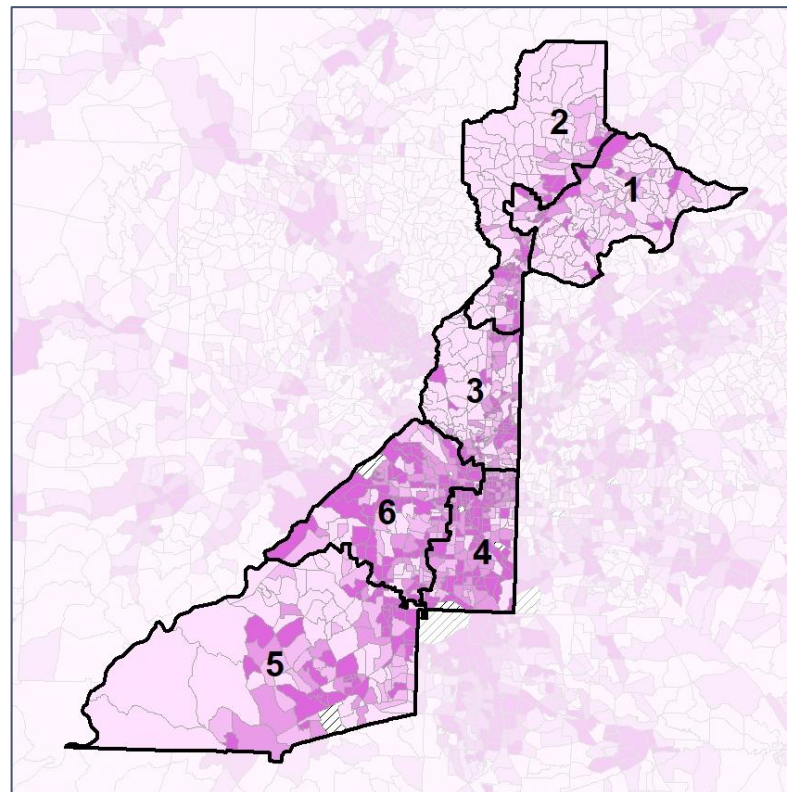
% Renter by Census Block Group



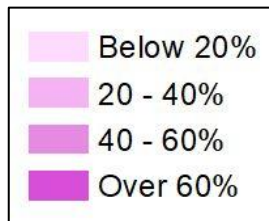
2012 Map



2022 Map*



	1	2	3	4	5	6	1*	2*	3*	4*	5*	6*	County
Population	164,127	176,771	194,401	177,762	169,967	183,682	178,147	177,553	177,358	177,742	177,577	178,333	1,066,710
% API	22%	11%	8%	4%	1%	1%	21%	11%	7%	3%	1%	3%	8%
% Black	12%	14%	14%	58%	72%	83%	12%	14%	14%	54%	86%	73%	42%
% Latino	9%	11%	10%	6%	6%	6%	10%	10%	10%	8%	5%	6%	8%
% Other	5%	5%	5%	4%	4%	3%	5%	5%	4%	4%	3%	4%	4%
% White	51%	59%	64%	28%	17%	7%	52%	59%	66%	30%	5%	15%	38%
Median Income	\$129K	\$117K	\$117K	\$61K	\$57K	\$61K	\$126K	\$118K	\$119K	\$64K	\$61K	\$51K	\$73K
% Renter	29%	38%	49%	61%	56%	45%	32%	37%	49%	62%	44%	57%	47%
% Youth	16%	21%	34%	40%	28%	23%	17%	21%	32%	38%	23%	33%	27%

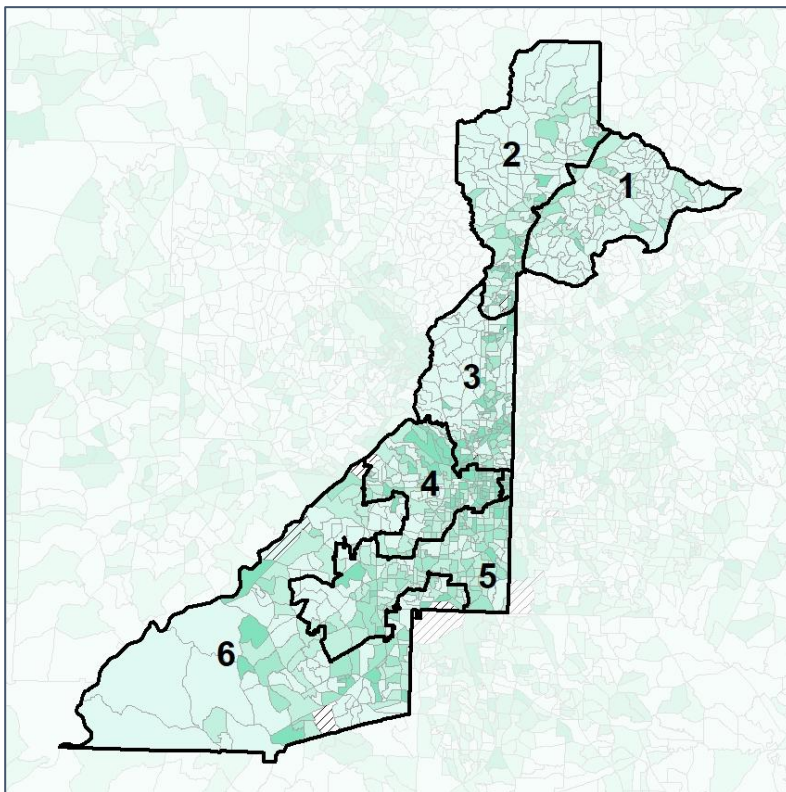


Fulton County Commission

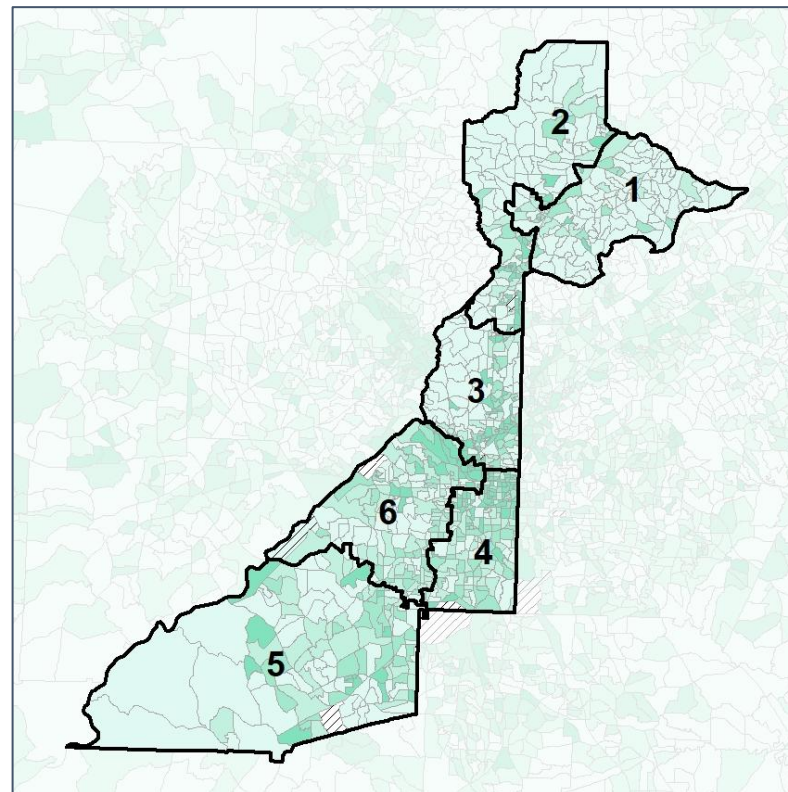
% Youth (18-34) by Census Block Group



2012 Map



2022 Map*



	1	2	3	4	5	6	1*	2*	3*	4*	5*	6*	County
Population	164,127	176,771	194,401	177,762	169,967	183,682	178,147	177,553	177,358	177,742	177,577	178,333	1,066,710
% API	22%	11%	8%	4%	1%	1%	21%	11%	7%	3%	1%	3%	8%
% Black	12%	14%	14%	58%	72%	83%	12%	14%	14%	54%	86%	73%	42%
% Latino	9%	11%	10%	6%	6%	6%	10%	10%	10%	8%	5%	6%	8%
% Other	5%	5%	5%	4%	4%	3%	5%	5%	4%	4%	3%	4%	4%
% White	51%	59%	64%	28%	17%	7%	52%	59%	66%	30%	5%	15%	38%
Median Income	\$129K	\$117K	\$117K	\$61K	\$57K	\$61K	\$126K	\$118K	\$119K	\$64K	\$61K	\$51K	\$73K
% Renter	29%	38%	49%	61%	56%	45%	32%	37%	49%	62%	44%	57%	47%
% Youth	16%	21%	34%	40%	28%	23%	17%	21%	32%	38%	23%	33%	27%

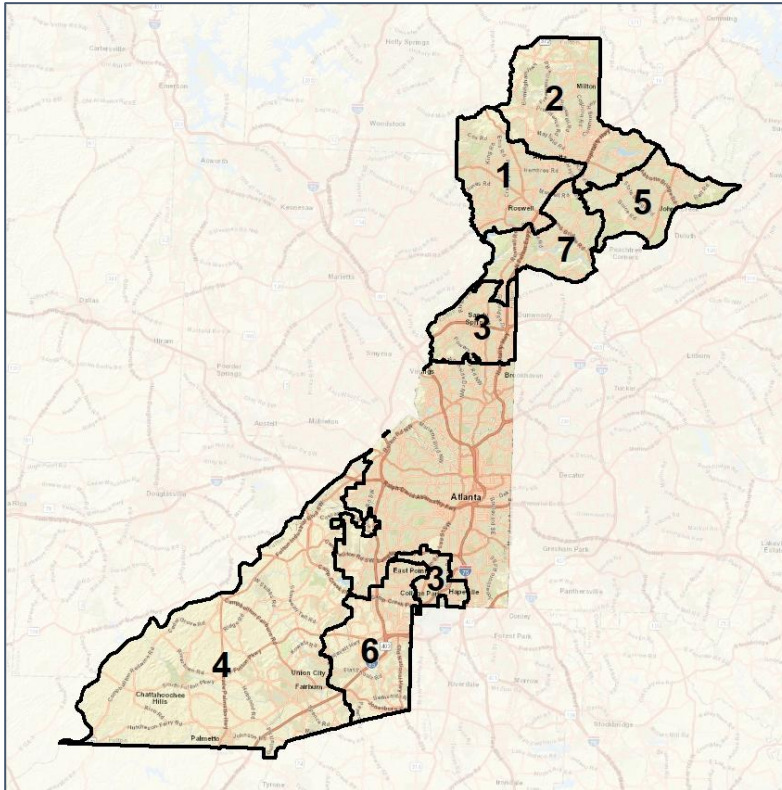


Fulton County School Board

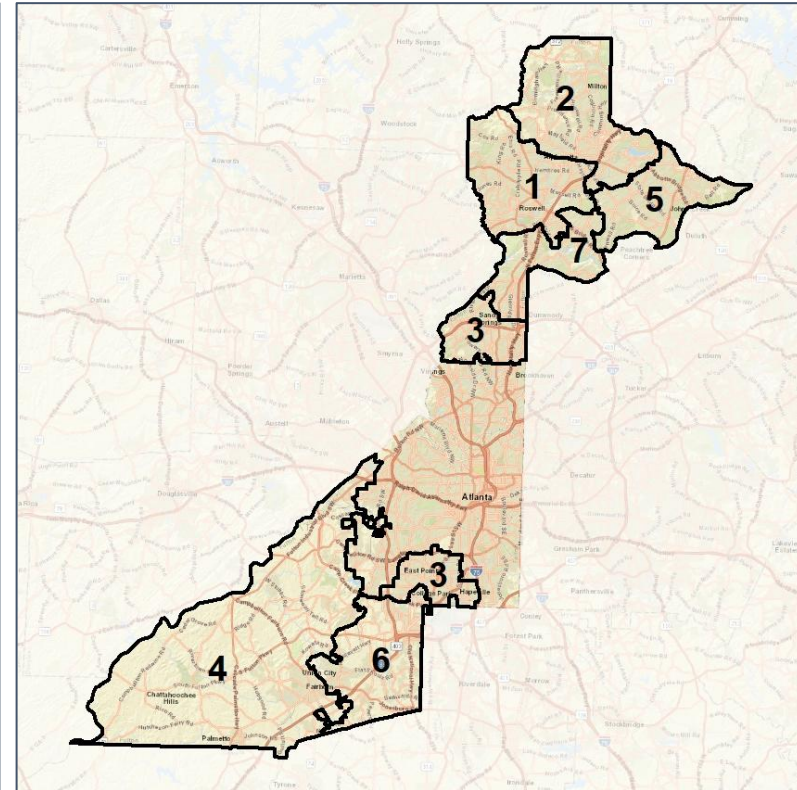
Context



2012 Map



2022 Map*



	1	2	3	4	5	6	7	1*	2*	3*	4*	5*	6*	7*	County
Population	78,394	89,565	89,777	101,783	78,900	90,192	79,960	87,036	87,158	84,956	87,407	86,742	88,711	86,005	1,066,710
API	5%	20%	8%	1%	31%	1%	7%	6%	19%	4%	1%	30%	1%	11%	8%
Black	11%	10%	26%	83%	10%	87%	22%	11%	9%	37%	84%	10%	88%	22%	42%
Latino	16%	8%	15%	6%	7%	5%	12%	15%	8%	16%	5%	7%	5%	11%	8%
Other	5%	5%	4%	3%	5%	3%	6%	5%	5%	4%	3%	5%	3%	5%	4%
White	63%	58%	47%	7%	47%	4%	53%	63%	58%	39%	8%	48%	3%	51%	38%
Population Gain	*	*	*	*	*	*	*	8,642	-2,407	-4,821	-14,376	7,842	-1,481	6,045	*
Population % Gain	*	*	*	*	*	*	*	11%	-3%	-5%	-14%	10%	-2%	8%	*
Net POC Gain	*	*	*	*	*	*	*	2,841	-1,315	4,322	-13,664	3,351	-798	4,717	*
Net POC % Gain	*	*	*	*	*	*	*	10%	-3%	9%	-15%	8%	-1%	13%	*

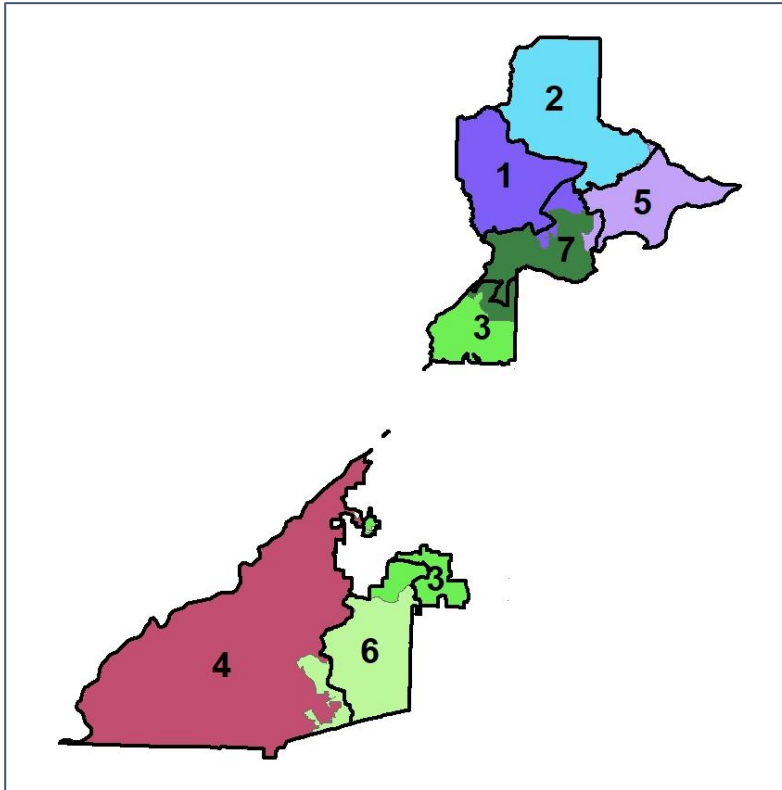


Fulton County School Board

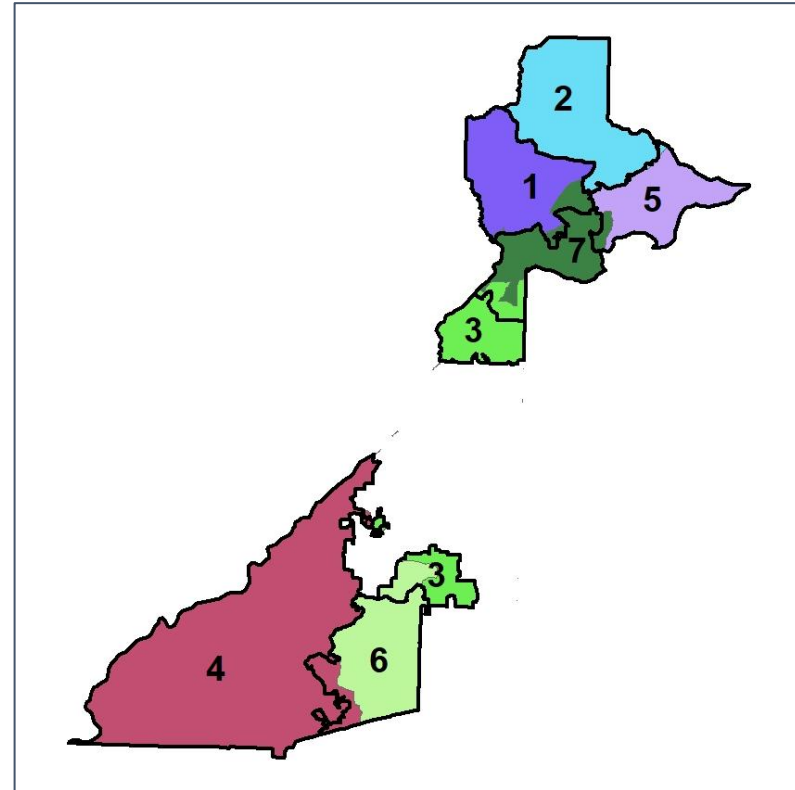
Changes in Redistricting



2012 Map (2022 in Colors)



2022 Map* (2012 in Colors)



	1	2	3	4	5	6	7	1*	2*	3*	4*	5*	6*	7*	County
Population	78,394	89,565	89,777	101,783	78,900	90,192	79,960	87,036	87,158	84,956	87,407	86,742	88,711	86,005	1,066,710
API	5%	20%	8%	1%	31%	1%	7%	6%	19%	4%	1%	30%	1%	11%	8%
Black	11%	10%	26%	83%	10%	87%	22%	11%	9%	37%	84%	10%	88%	22%	42%
Latino	16%	8%	15%	6%	7%	5%	12%	15%	8%	16%	5%	7%	5%	11%	8%
Other	5%	5%	4%	3%	5%	3%	6%	5%	5%	4%	3%	5%	3%	5%	4%
White	63%	58%	47%	7%	47%	4%	53%	63%	58%	39%	8%	48%	3%	51%	38%
Population Gain	*	*	*	*	*	*	*	8,642	-2,407	-4,821	-14,376	7,842	-1,481	6,045	*
Population % Gain	*	*	*	*	*	*	*	11%	-3%	-5%	-14%	10%	-2%	8%	*
Net POC Gain	*	*	*	*	*	*	*	2,841	-1,315	4,322	-13,664	3,351	-798	4,717	*
Net POC % Gain	*	*	*	*	*	*	*	10%	-3%	9%	-15%	8%	-1%	13%	*

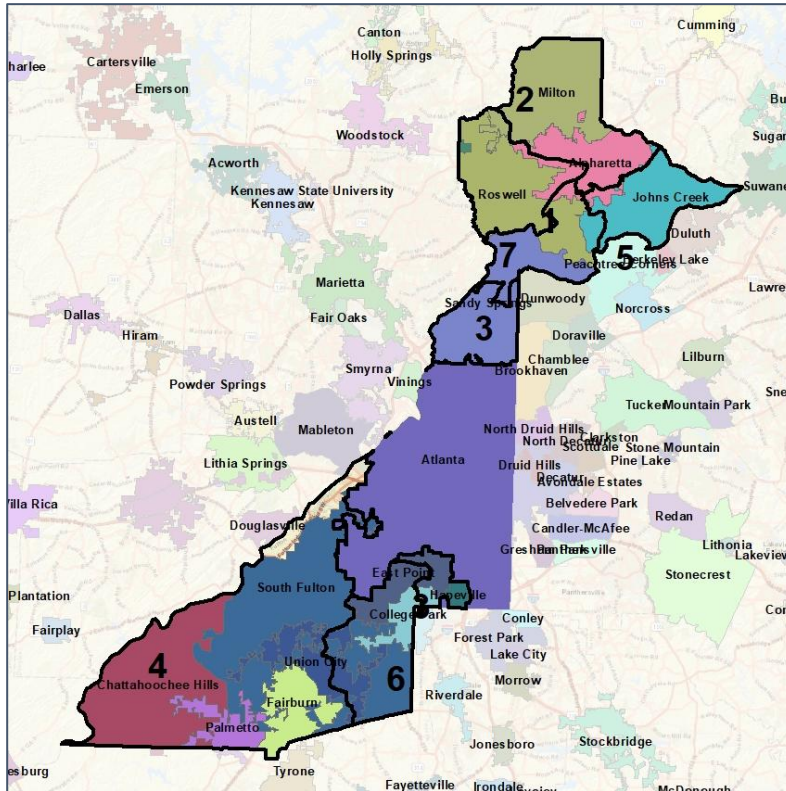


Fulton County School Board

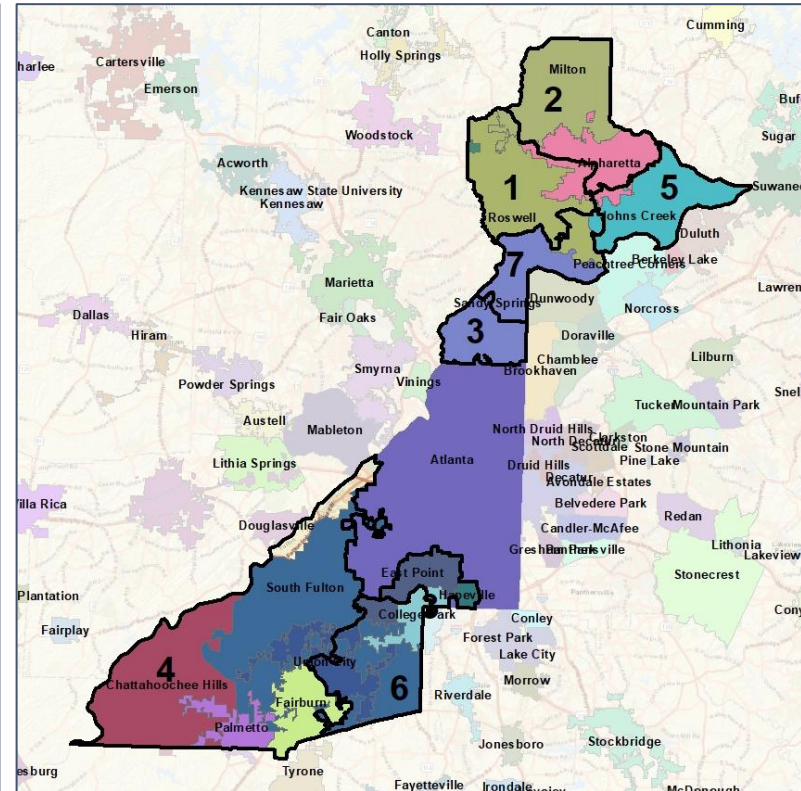
Cities and Places



2012 Map



2022 Map*



	1	2	3	4	5	6	7	1*	2*	3*	4*	5*	6*	7*	County
Population	78,394	89,565	89,777	101,783	78,900	90,192	79,960	87,036	87,158	84,956	87,407	86,742	88,711	86,005	1,066,710
API	5%	20%	8%	1%	31%	1%	7%	6%	19%	4%	1%	30%	1%	11%	8%
Black	11%	10%	26%	83%	10%	87%	22%	11%	9%	37%	84%	10%	88%	22%	42%
Latino	16%	8%	15%	6%	7%	5%	12%	15%	8%	16%	5%	7%	5%	11%	8%
Other	5%	5%	4%	3%	5%	3%	6%	5%	5%	4%	3%	5%	3%	5%	4%
White	63%	58%	47%	7%	47%	4%	53%	63%	58%	39%	8%	48%	3%	51%	38%
Population Gain	*	*	*	*	*	*	*	8,642	-2,407	-4,821	-14,376	7,842	-1,481	6,045	*
Population % Gain	*	*	*	*	*	*	*	11%	-3%	-5%	-14%	10%	-2%	8%	*
Net POC Gain	*	*	*	*	*	*	*	2,841	-1,315	4,322	-13,664	3,351	-798	4,717	*
Net POC % Gain	*	*	*	*	*	*	*	10%	-3%	9%	-15%	8%	-1%	13%	*



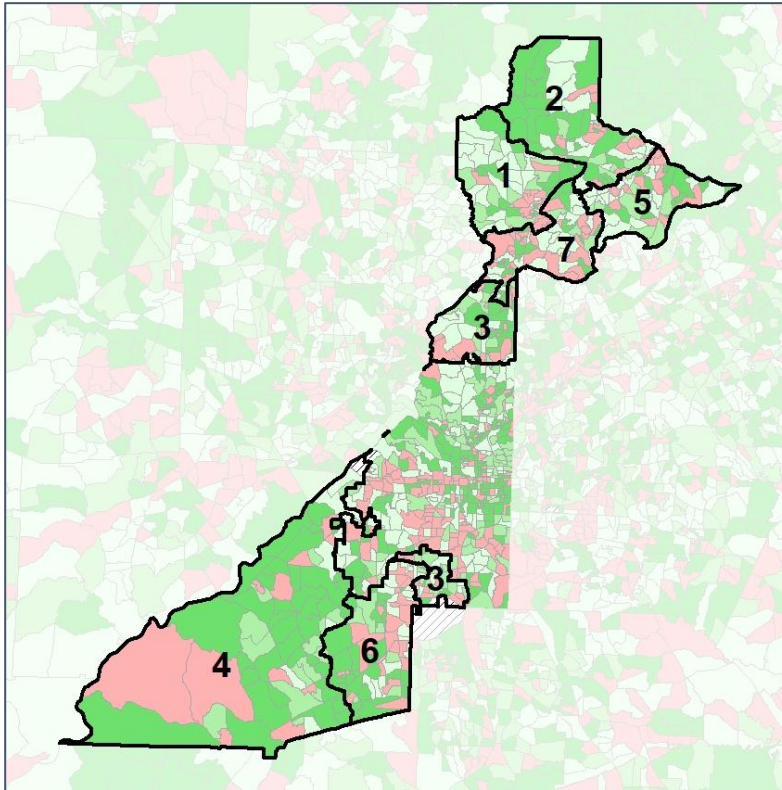
Source:
2020 Decennial Census
2020 ACS 5-Year Dataset

Fulton County School Board

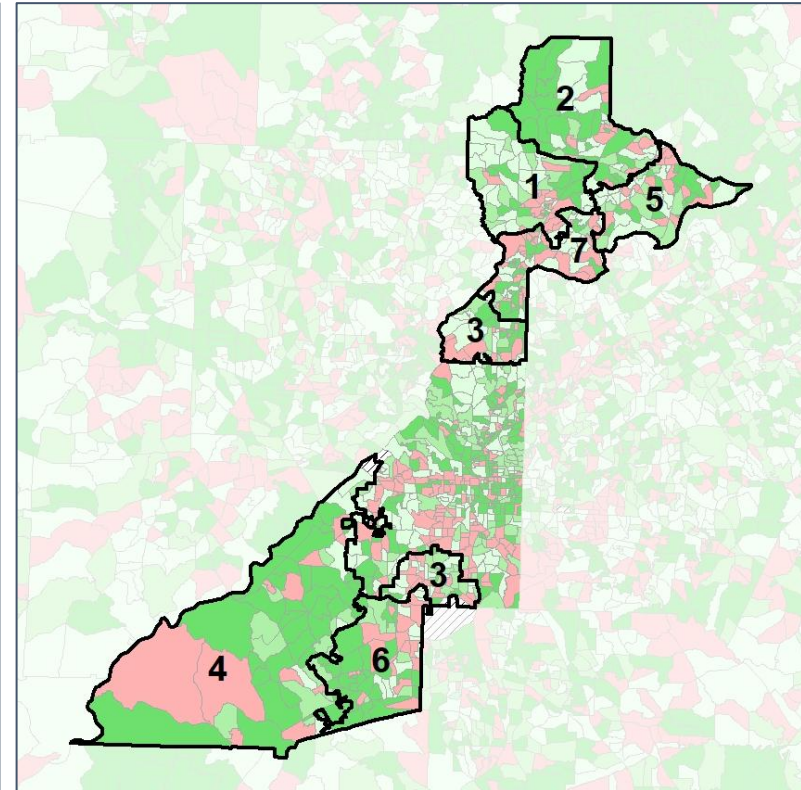
Net Gain in Population (2010 - 2020)



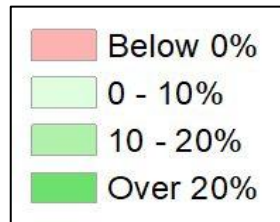
2012 Map



2022 Map*



	1	2	3	4	5	6	7	1*	2*	3*	4*	5*	6*	7*	County
Population	78,394	89,565	89,777	101,783	78,900	90,192	79,960	87,036	87,158	84,956	87,407	86,742	88,711	86,005	1,066,710
API	5%	20%	8%	1%	31%	1%	7%	6%	19%	4%	1%	30%	1%	11%	8%
Black	11%	10%	26%	83%	10%	87%	22%	11%	9%	37%	84%	10%	88%	22%	42%
Latino	16%	8%	15%	6%	7%	5%	12%	15%	8%	16%	5%	7%	5%	11%	8%
Other	5%	5%	4%	3%	5%	3%	6%	5%	5%	4%	3%	5%	3%	5%	4%
White	63%	58%	47%	7%	47%	4%	53%	63%	58%	39%	8%	48%	3%	51%	38%
Population Gain	*	*	*	*	*	*	*	8,642	-2,407	-4,821	-14,376	7,842	-1,481	6,045	*
Population % Gain	*	*	*	*	*	*	*	11%	-3%	-5%	-14%	10%	-2%	8%	*
Net POC Gain	*	*	*	*	*	*	*	2,841	-1,315	4,322	-13,664	3,351	-798	4,717	*
Net POC % Gain	*	*	*	*	*	*	*	10%	-3%	9%	-15%	8%	-1%	13%	*

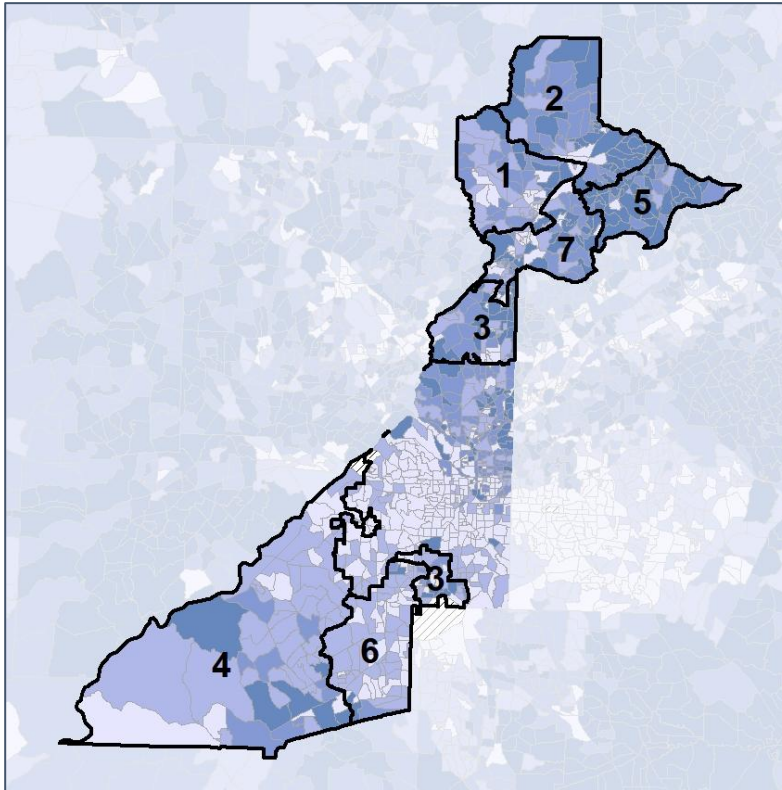


Fulton County School Board

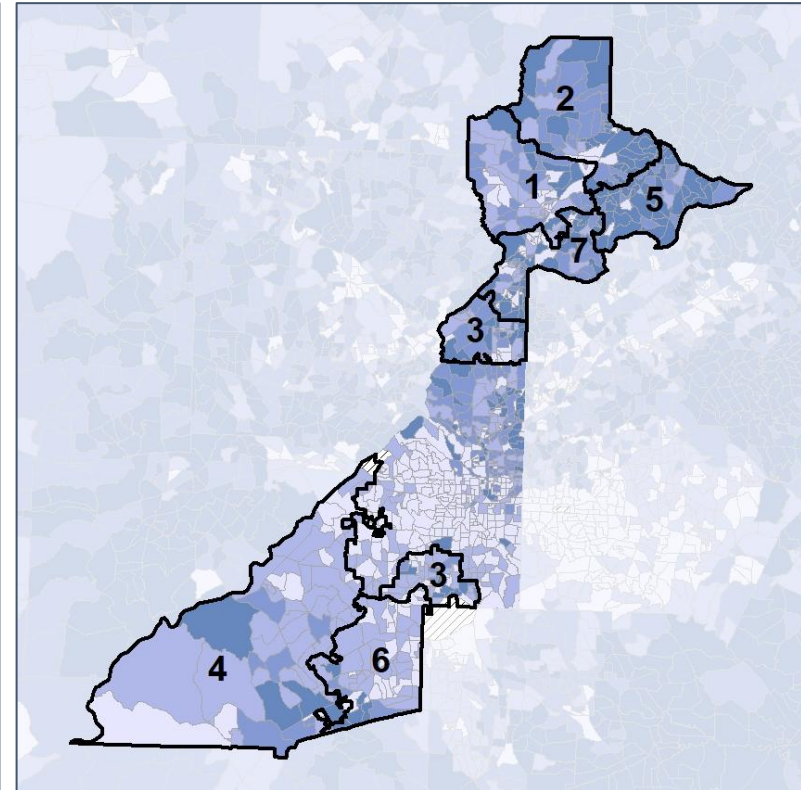
Net Gain in % POC (2020 - 2010) by Census Block Group



2012 Map



2022 Map*



	1	2	3	4	5	6	7	1*	2*	3*	4*	5*	6*	7*	County
Population	78,394	89,565	89,777	101,783	78,900	90,192	79,960	87,036	87,158	84,956	87,407	86,742	88,711	86,005	1,066,710
API	5%	20%	8%	1%	31%	1%	7%	6%	19%	4%	1%	30%	1%	11%	8%
Black	11%	10%	26%	83%	10%	87%	22%	11%	9%	37%	84%	10%	88%	22%	42%
Latino	16%	8%	15%	6%	7%	5%	12%	15%	8%	16%	5%	7%	5%	11%	8%
Other	5%	5%	4%	3%	5%	3%	6%	5%	5%	4%	3%	5%	3%	5%	4%
White	63%	58%	47%	7%	47%	4%	53%	63%	58%	39%	8%	48%	3%	51%	38%
Population Gain	*	*	*	*	*	*	*	8,642	-2,407	-4,821	-14,376	7,842	-1,481	6,045	*
Population % Gain	*	*	*	*	*	*	*	11%	-3%	-5%	-14%	10%	-2%	8%	*
Net POC Gain	*	*	*	*	*	*	*	2,841	-1,315	4,322	-13,664	3,351	-798	4,717	*
Net POC % Gain	*	*	*	*	*	*	*	10%	-3%	9%	-15%	8%	-1%	13%	*

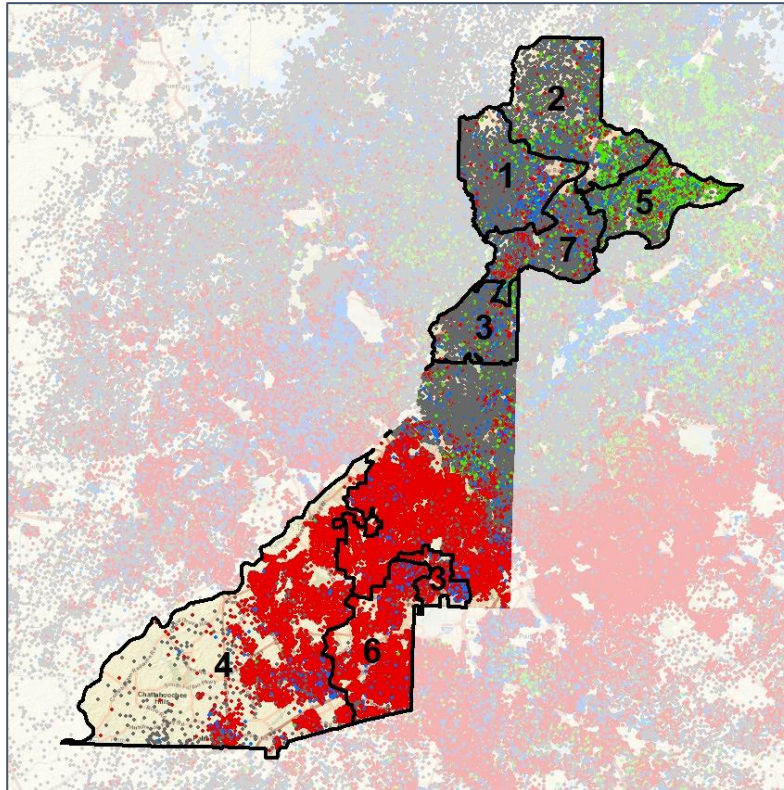


Fulton County School Board

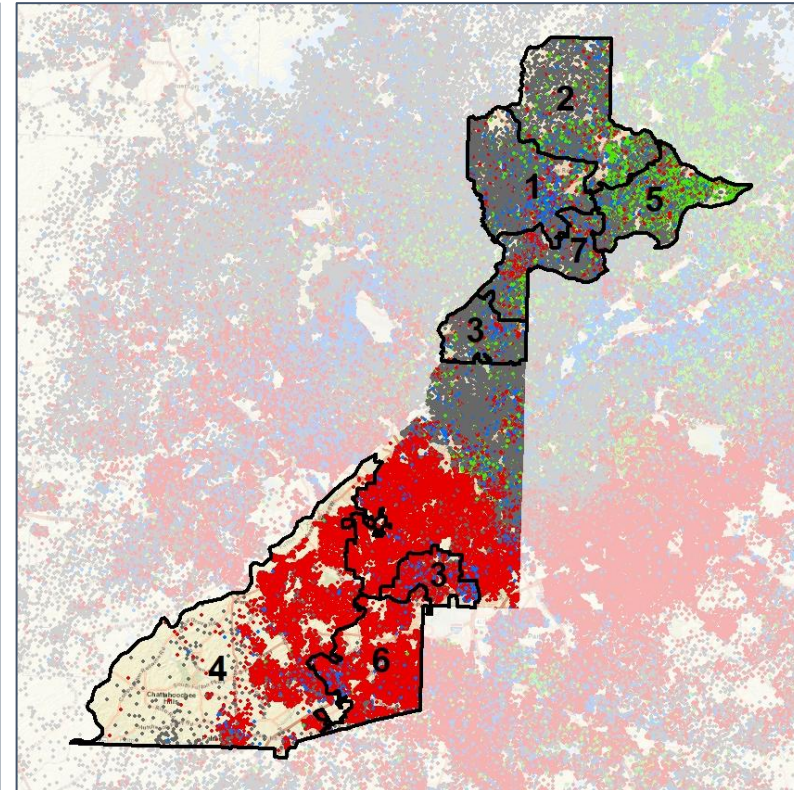
Population Density by Race



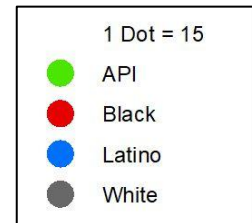
2012 Map



2022 Map*



	1	2	3	4	5	6	7	1*	2*	3*	4*	5*	6*	7*	County
Population	78,394	89,565	89,777	101,783	78,900	90,192	79,960	87,036	87,158	84,956	87,407	86,742	88,711	86,005	1,066,710
API	4,310	17,550	7,269	662	24,503	453	5,977	4,894	16,940	3,130	551	25,701	449	9,059	81,013
% API	5%	20%	8%	1%	31%	1%	7%	6%	19%	4%	1%	30%	1%	11%	8%
Black	8,431	8,618	22,929	84,468	7,809	78,329	17,194	9,240	8,276	31,332	73,051	8,835	77,950	18,572	448,803
% Black	11%	10%	26%	83%	10%	87%	22%	11%	9%	37%	84%	10%	88%	22%	42%
Latino	12,410	6,937	13,398	5,812	5,629	4,700	9,567	13,353	6,734	13,859	4,173	6,298	4,334	9,687	86,302
% Latino	16%	8%	15%	6%	7%	5%	12%	15%	8%	16%	5%	7%	5%	11%	8%
Other	3,876	4,559	3,726	3,278	3,774	2,932	4,536	4,381	4,399	3,323	2,781	4,232	2,883	4,673	45,799
% Other	5%	5%	4%	3%	5%	3%	6%	5%	5%	4%	3%	5%	3%	5%	4%
White	49,367	51,901	42,455	7,563	37,185	3,778	42,686	55,168	50,809	33,312	6,851	41,676	3,095	44,014	404,793
% White	63%	58%	47%	7%	47%	4%	53%	63%	58%	39%	8%	48%	3%	51%	38%



Source:
2020 Decennial Census
2020 ACS 5-Year Dataset

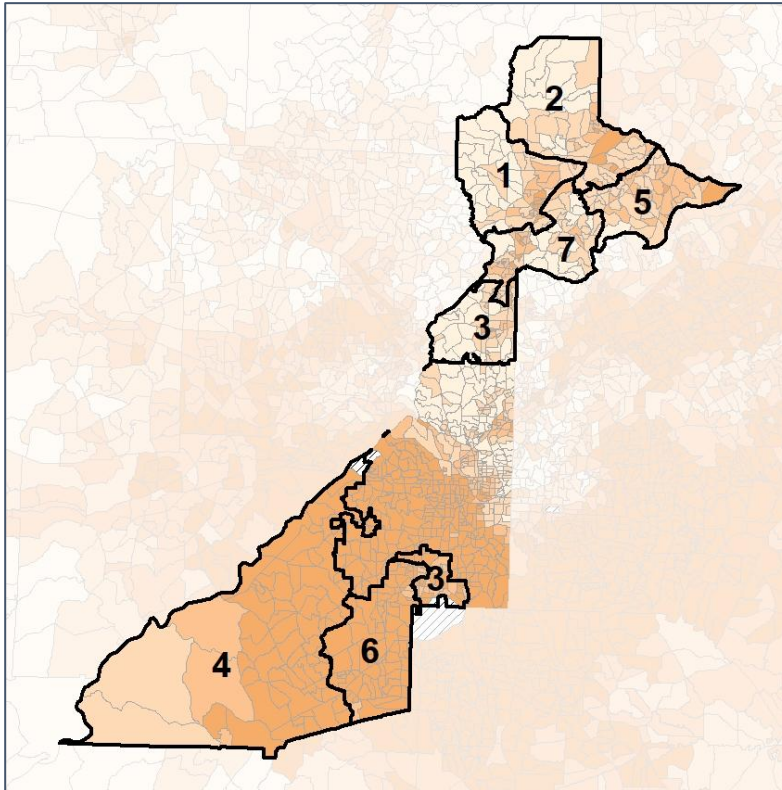


Fulton County School Board

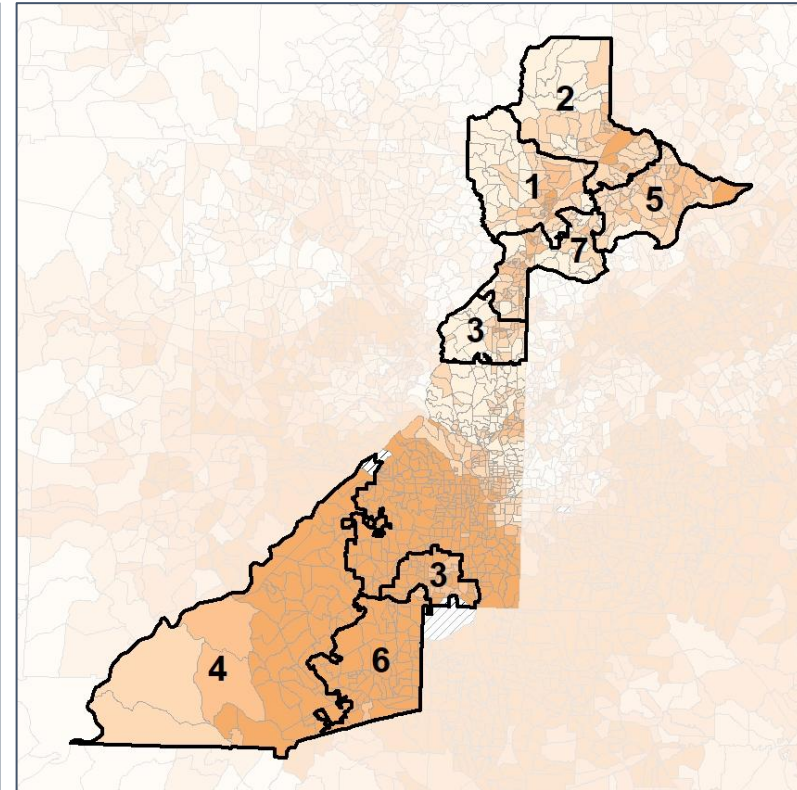
% People of Color by Census Block Group



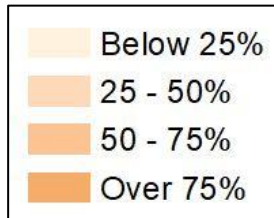
2012 Map



2022 Map*



	1	2	3	4	5	6	7	1*	2*	3*	4*	5*	6*	7*	County
Population	78,394	89,565	89,777	101,783	78,900	90,192	79,960	87,036	87,158	84,956	87,407	86,742	88,711	86,005	1,066,710
API	4,310	17,550	7,269	662	24,503	453	5,977	4,894	16,940	3,130	551	25,701	449	9,059	81,013
% API	5%	20%	8%	1%	31%	1%	7%	6%	19%	4%	1%	30%	1%	11%	8%
Black	8,431	8,618	22,929	84,468	7,809	78,329	17,194	9,240	8,276	31,332	73,051	8,835	77,950	18,572	448,803
% Black	11%	10%	26%	83%	10%	87%	22%	11%	9%	37%	84%	10%	88%	22%	42%
Latino	12,410	6,937	13,398	5,812	5,629	4,700	9,567	13,353	6,734	13,859	4,173	6,298	4,334	9,687	86,302
% Latino	16%	8%	15%	6%	7%	5%	12%	15%	8%	16%	5%	7%	5%	11%	8%
Other	3,876	4,559	3,726	3,278	3,774	2,932	4,536	4,381	4,399	3,323	2,781	4,232	2,883	4,673	45,799
% Other	5%	5%	4%	3%	5%	3%	6%	5%	5%	4%	3%	5%	3%	5%	4%
White	49,367	51,901	42,455	7,563	37,185	3,778	42,686	55,168	50,809	33,312	6,851	41,676	3,095	44,014	404,793
% White	63%	58%	47%	7%	47%	4%	53%	63%	58%	39%	8%	48%	3%	51%	38%



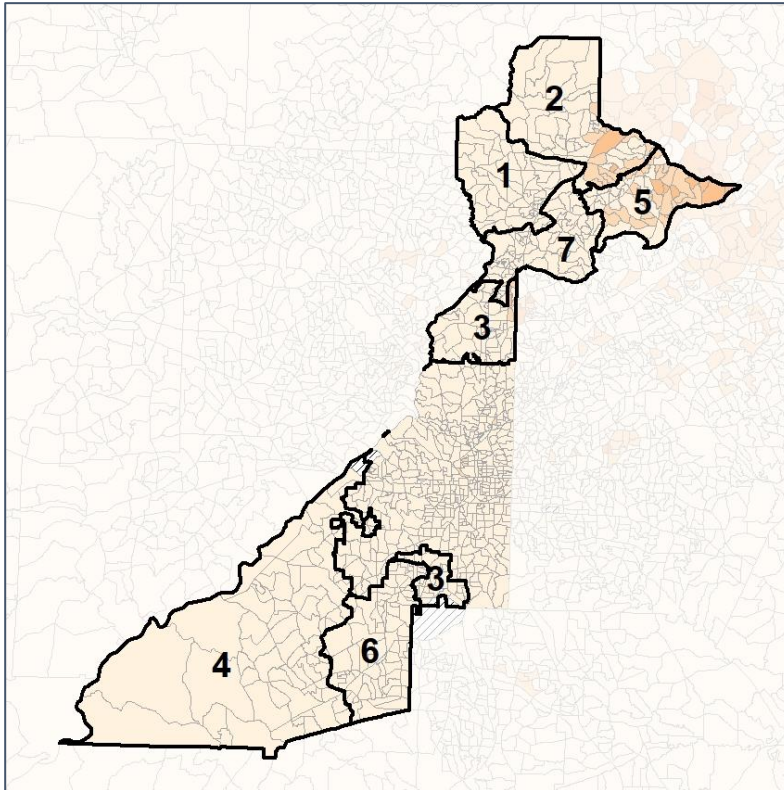
Source:
2020 Decennial Census
2020 ACS 5-Year Dataset

Fulton County School Board

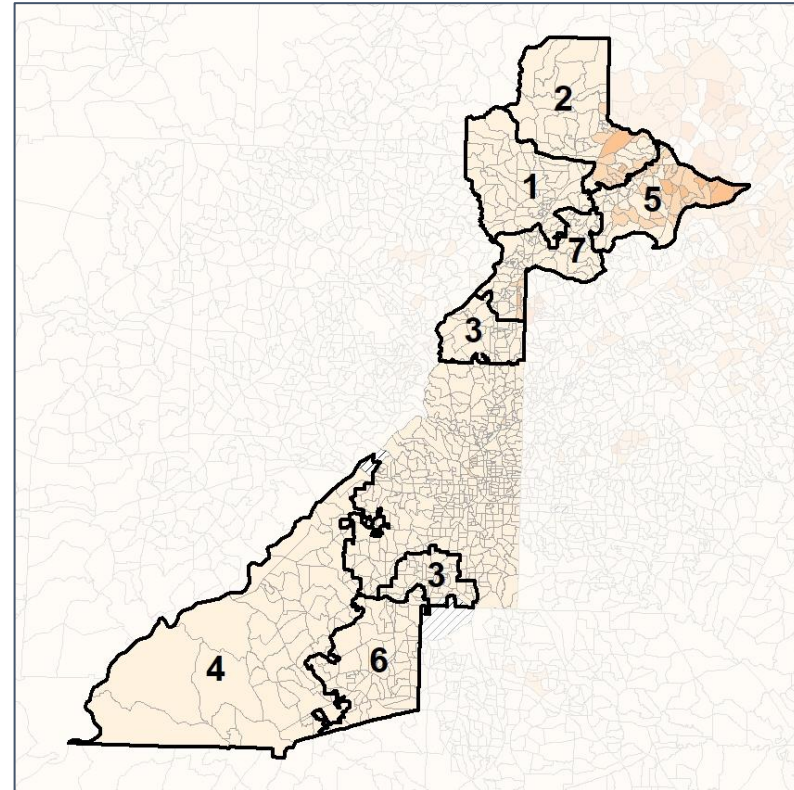
% API by Census Block Group



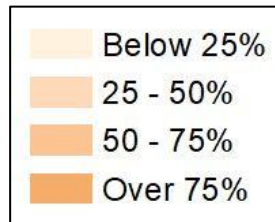
2012 Map



2022 Map*



	1	2	3	4	5	6	7	1*	2*	3*	4*	5*	6*	7*	County
Population	78,394	89,565	89,777	101,783	78,900	90,192	79,960	87,036	87,158	84,956	87,407	86,742	88,711	86,005	1,066,710
API	4,310	17,550	7,269	662	24,503	453	5,977	4,894	16,940	3,130	551	25,701	449	9,059	81,013
% API	5%	20%	8%	1%	31%	1%	7%	6%	19%	4%	1%	30%	1%	11%	8%
Black	8,431	8,618	22,929	84,468	7,809	78,329	17,194	9,240	8,276	31,332	73,051	8,835	77,950	18,572	448,803
% Black	11%	10%	26%	83%	10%	87%	22%	11%	9%	37%	84%	10%	88%	22%	42%
Latino	12,410	6,937	13,398	5,812	5,629	4,700	9,567	13,353	6,734	13,859	4,173	6,298	4,334	9,687	86,302
% Latino	16%	8%	15%	6%	7%	5%	12%	15%	8%	16%	5%	7%	5%	11%	8%
Other	3,876	4,559	3,726	3,278	3,774	2,932	4,536	4,381	4,399	3,323	2,781	4,232	2,883	4,673	45,799
% Other	5%	5%	4%	3%	5%	3%	6%	5%	5%	4%	3%	5%	3%	5%	4%
White	49,367	51,901	42,455	7,563	37,185	3,778	42,686	55,168	50,809	33,312	6,851	41,676	3,095	44,014	404,793
% White	63%	58%	47%	7%	47%	4%	53%	63%	58%	39%	8%	48%	3%	51%	38%



Source: 2020 Decennial Census 2020 ACS 5-Year Dataset

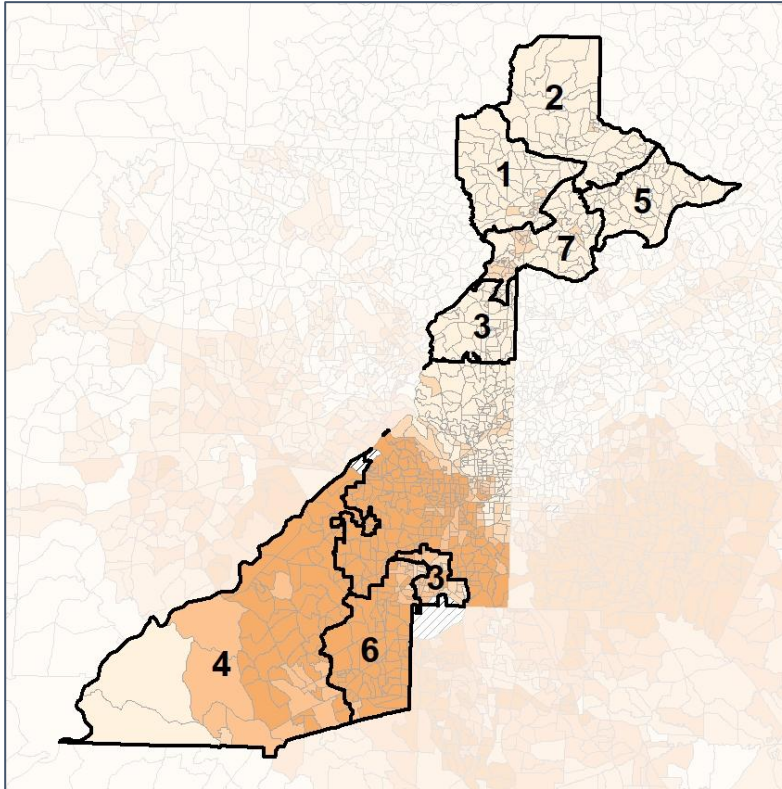


Fulton County School Board

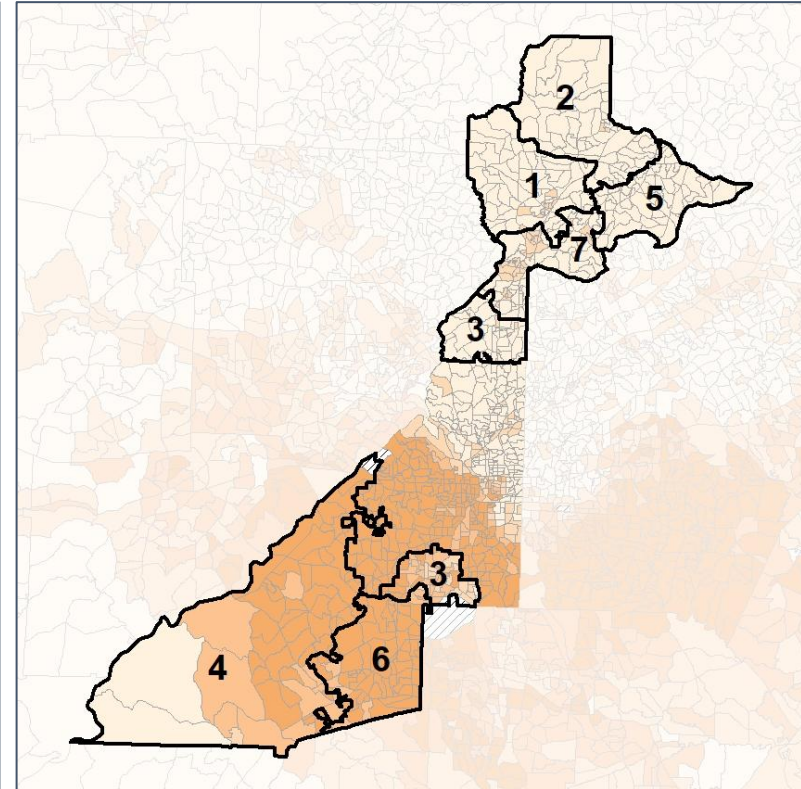
% Black by Census Block Group



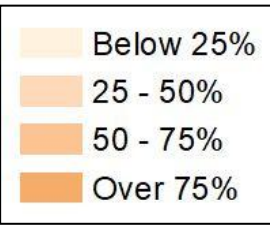
2012 Map



2022 Map*



	1	2	3	4	5	6	7	1*	2*	3*	4*	5*	6*	7*	County
Population	78,394	89,565	89,777	101,783	78,900	90,192	79,960	87,036	87,158	84,956	87,407	86,742	88,711	86,005	1,066,710
API	4,310	17,550	7,269	662	24,503	453	5,977	4,894	16,940	3,130	551	25,701	449	9,059	81,013
% API	5%	20%	8%	1%	31%	1%	7%	6%	19%	4%	1%	30%	1%	11%	8%
Black	8,431	8,618	22,929	84,468	7,809	78,329	17,194	9,240	8,276	31,332	73,051	8,835	77,950	18,572	448,803
% Black	11%	10%	26%	83%	10%	87%	22%	11%	9%	37%	84%	10%	88%	22%	42%
Latino	12,410	6,937	13,398	5,812	5,629	4,700	9,567	13,353	6,734	13,859	4,173	6,298	4,334	9,687	86,302
% Latino	16%	8%	15%	6%	7%	5%	12%	15%	8%	16%	5%	7%	5%	11%	8%
Other	3,876	4,559	3,726	3,278	3,774	2,932	4,536	4,381	4,399	3,323	2,781	4,232	2,883	4,673	45,799
% Other	5%	5%	4%	3%	5%	3%	6%	5%	5%	4%	3%	5%	3%	5%	4%
White	49,367	51,901	42,455	7,563	37,185	3,778	42,686	55,168	50,809	33,312	6,851	41,676	3,095	44,014	404,793
% White	63%	58%	47%	7%	47%	4%	53%	63%	58%	39%	8%	48%	3%	51%	38%



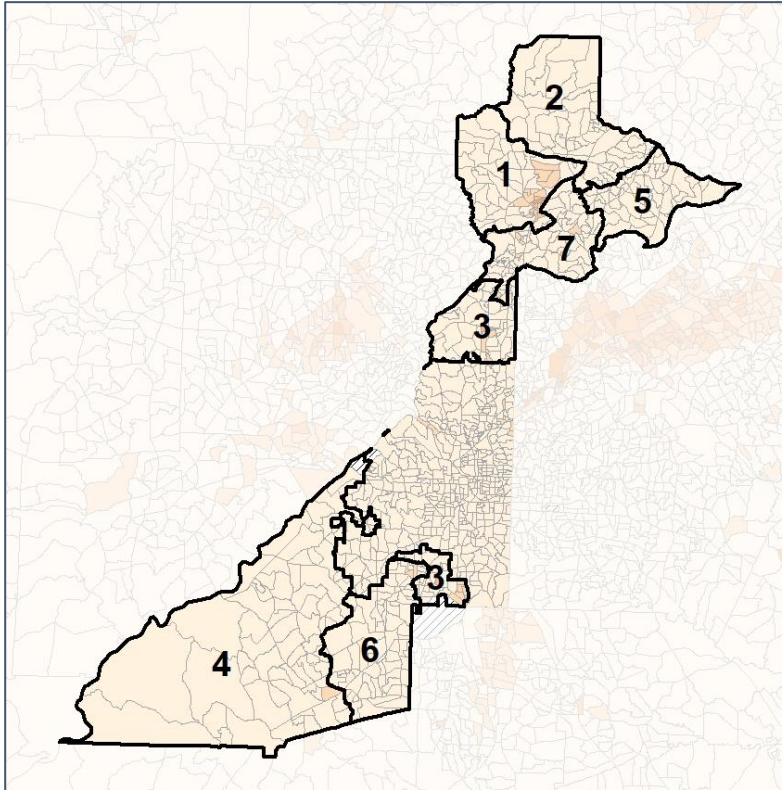
Source:
2020 Decennial Census
2020 ACS 5-Year Dataset

Fulton County School Board

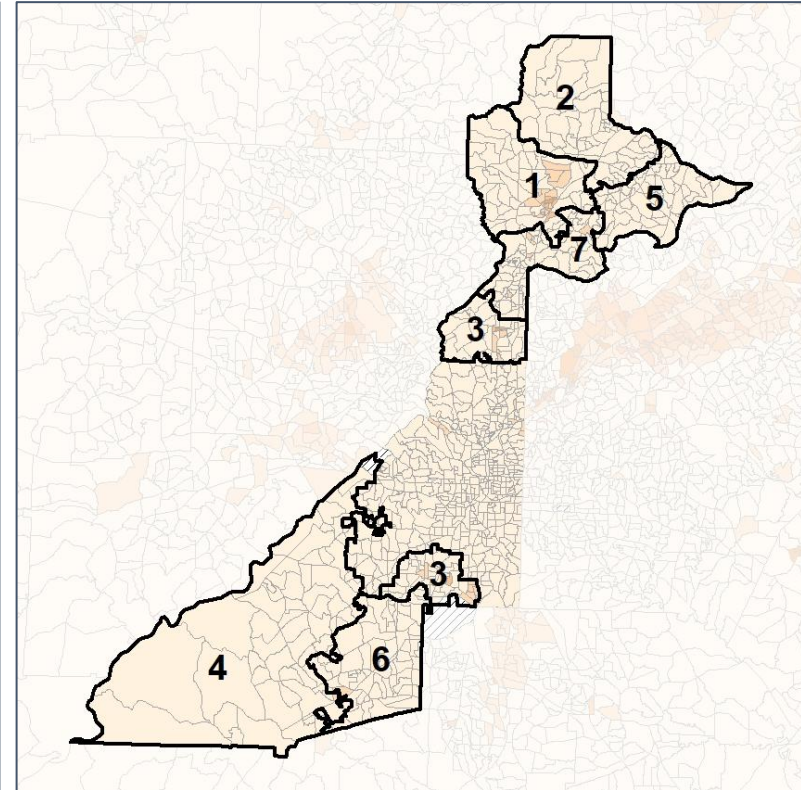
% Latino by Census Block Group



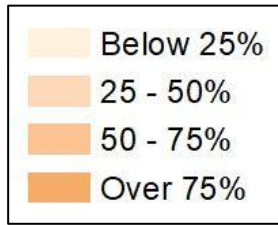
2012 Map



2022 Map*



	1	2	3	4	5	6	7	1*	2*	3*	4*	5*	6*	7*	County
Population	78,394	89,565	89,777	101,783	78,900	90,192	79,960	87,036	87,158	84,956	87,407	86,742	88,711	86,005	1,066,710
API	4,310	17,550	7,269	662	24,503	453	5,977	4,894	16,940	3,130	551	25,701	449	9,059	81,013
% API	5%	20%	8%	1%	31%	1%	7%	6%	19%	4%	1%	30%	1%	11%	8%
Black	8,431	8,618	22,929	84,468	7,809	78,329	17,194	9,240	8,276	31,332	73,051	8,835	77,950	18,572	448,803
% Black	11%	10%	26%	83%	10%	87%	22%	11%	9%	37%	84%	10%	88%	22%	42%
Latino	12,410	6,937	13,398	5,812	5,629	4,700	9,567	13,353	6,734	13,859	4,173	6,298	4,334	9,687	86,302
% Latino	16%	8%	15%	6%	7%	5%	12%	15%	8%	16%	5%	7%	5%	11%	8%
Other	3,876	4,559	3,726	3,278	3,774	2,932	4,536	4,381	4,399	3,323	2,781	4,232	2,883	4,673	45,799
% Other	5%	5%	4%	3%	5%	3%	6%	5%	5%	4%	3%	5%	3%	5%	4%
White	49,367	51,901	42,455	7,563	37,185	3,778	42,686	55,168	50,809	33,312	6,851	41,676	3,095	44,014	404,793
% White	63%	58%	47%	7%	47%	4%	53%	63%	58%	39%	8%	48%	3%	51%	38%



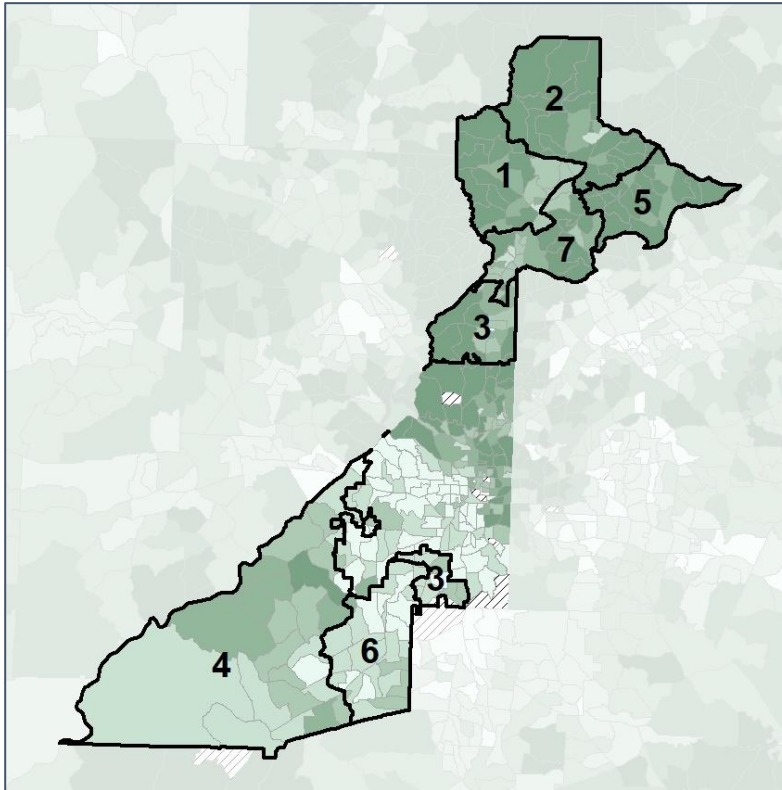
Source: 2020 Decennial Census 2020 ACS 5-Year Dataset

Fulton County School Board

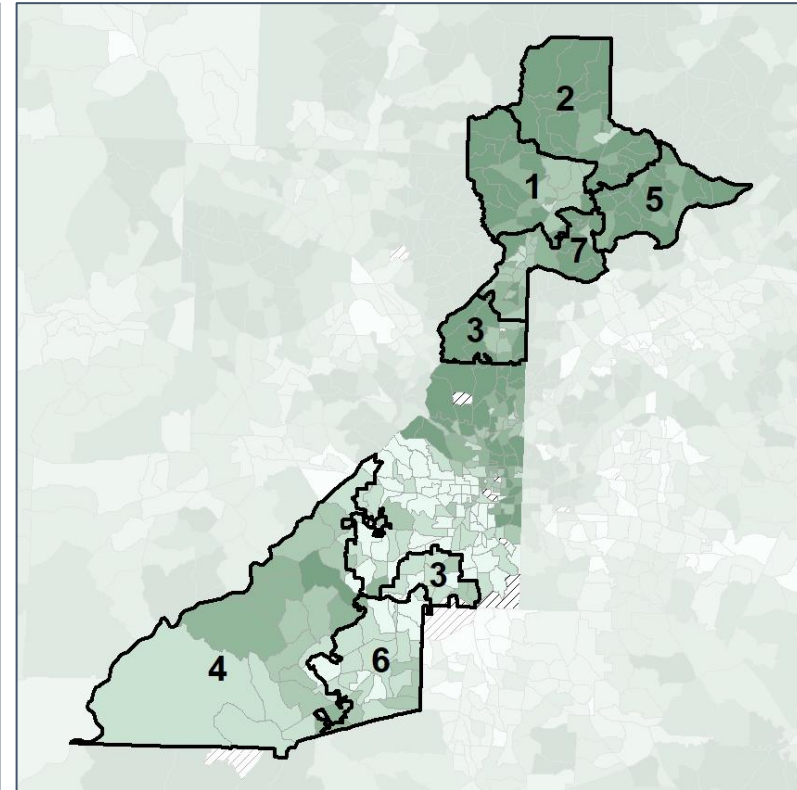
Median Household Income by Census Tract



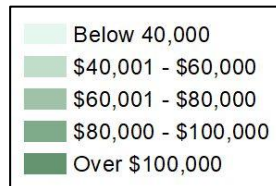
2012 Map



2022 Map*



	1	2	3	4	5	6	7	1*	2*	3*	4*	5*	6*	7*	County
Population	78,394	89,565	89,777	101,783	78,900	90,192	79,960	87,036	87,158	84,956	87,407	86,742	88,711	86,005	1,066,710
% API	5%	20%	8%	1%	31%	1%	7%	6%	19%	4%	1%	30%	1%	11%	8%
% Black	11%	10%	26%	83%	10%	87%	22%	11%	9%	37%	84%	10%	88%	22%	42%
% Latino	16%	8%	15%	6%	7%	5%	12%	15%	8%	16%	5%	7%	5%	11%	8%
% Other	5%	5%	4%	3%	5%	3%	6%	5%	5%	4%	3%	5%	3%	5%	4%
% White	63%	58%	47%	7%	47%	4%	53%	63%	58%	39%	8%	48%	3%	51%	38%
Median Income	\$115K	\$156K	\$96K	\$67K	\$132K	\$52K	\$96K	\$114K	\$156K	\$88K	\$69K	\$131K	\$51K	\$97K	\$73K
% Renter	32%	27%	48%	39%	26%	51%	45%	31%	28%	49%	38%	24%	49%	49%	47%
% Youth	18%	16%	26%	20%	15%	27%	23%	18%	16%	26%	21%	14%	25%	26%	27%

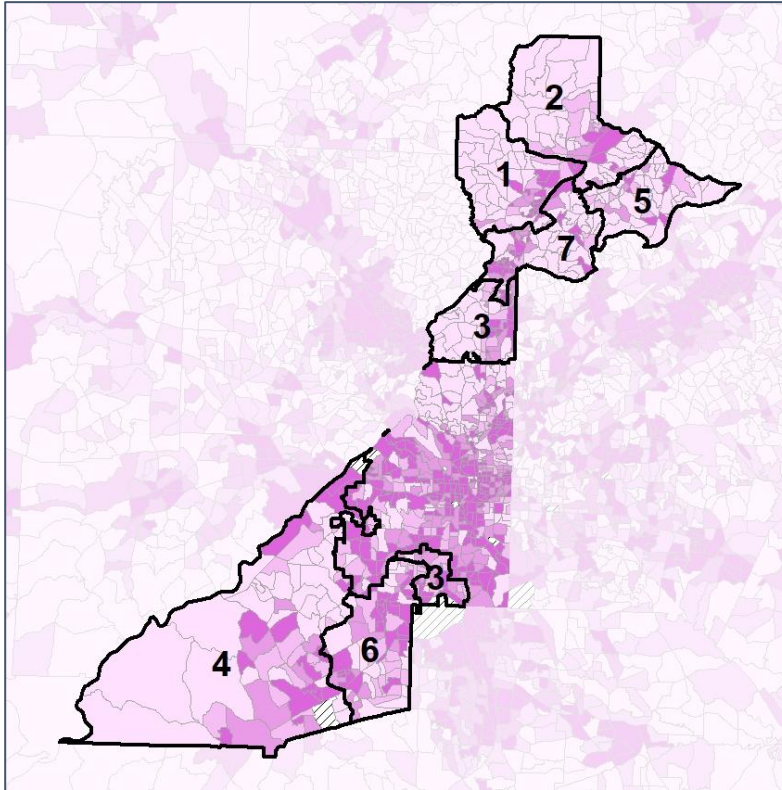


Fulton County School Board

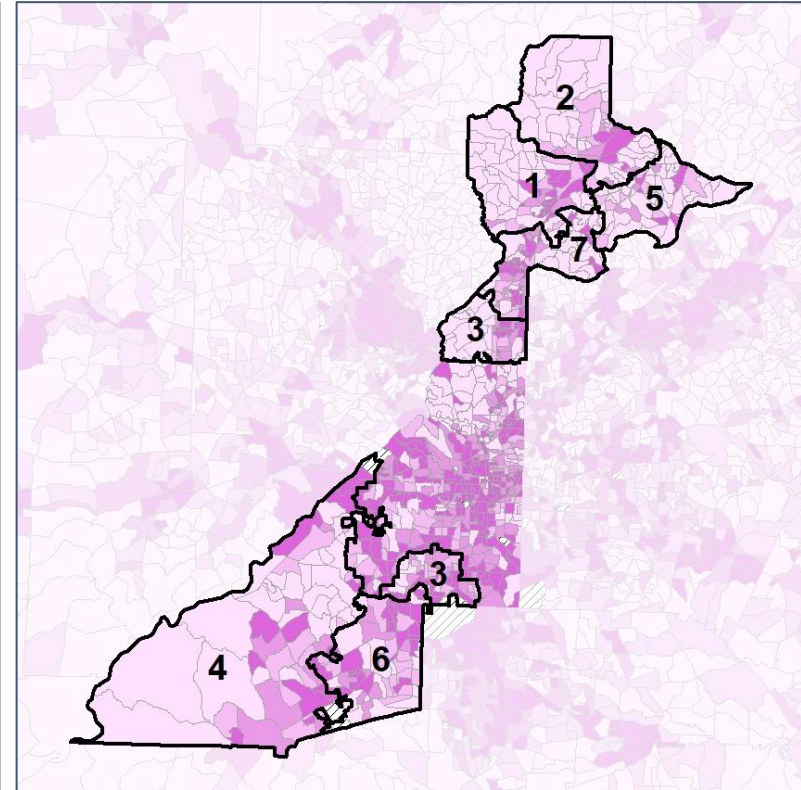
% Renter by Census Block Group



2012 Map



2022 Map*



	1	2	3	4	5	6	7	1*	2*	3*	4*	5*	6*	7*	County
Population	78,394	89,565	89,777	101,783	78,900	90,192	79,960	87,036	87,158	84,956	87,407	86,742	88,711	86,005	1,066,710
% API	5%	20%	8%	1%	31%	1%	7%	6%	19%	4%	1%	30%	1%	11%	8%
% Black	11%	10%	26%	83%	10%	87%	22%	11%	9%	37%	84%	10%	88%	22%	42%
% Latino	16%	8%	15%	6%	7%	5%	12%	15%	8%	16%	5%	7%	5%	11%	8%
% Other	5%	5%	4%	3%	5%	3%	6%	5%	5%	4%	3%	5%	3%	5%	4%
% White	63%	58%	47%	7%	47%	4%	53%	63%	58%	39%	8%	48%	3%	51%	38%
Median Income	\$115K	\$156K	\$96K	\$67K	\$132K	\$52K	\$96K	\$114K	\$156K	\$88K	\$69K	\$131K	\$51K	\$97K	\$73K
% Renter	32%	27%	48%	39%	26%	51%	45%	31%	28%	49%	38%	24%	49%	49%	47%
% Youth	18%	16%	26%	20%	15%	27%	23%	18%	16%	26%	21%	14%	25%	26%	27%

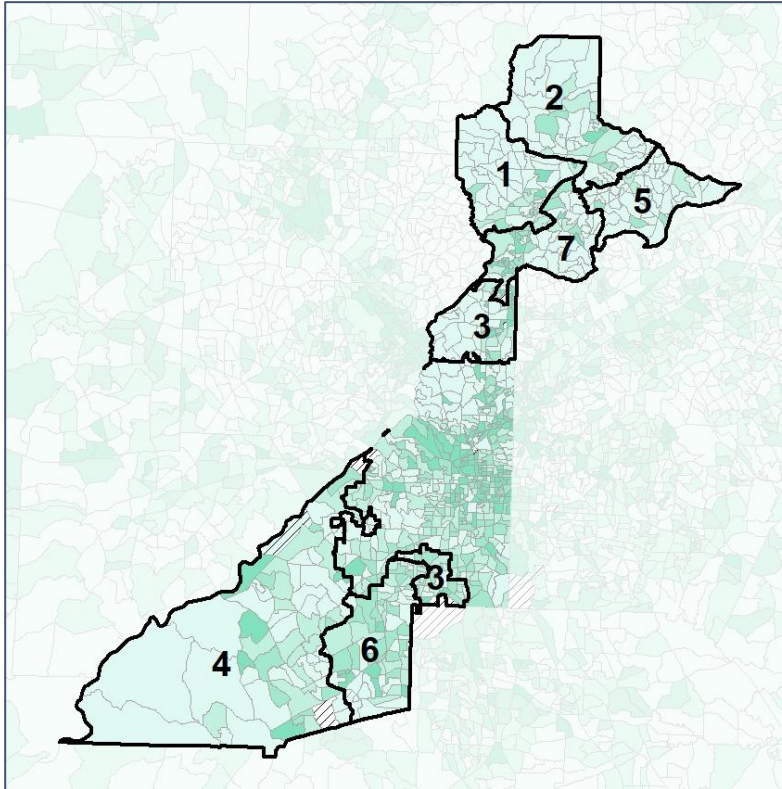


Fulton County School Board

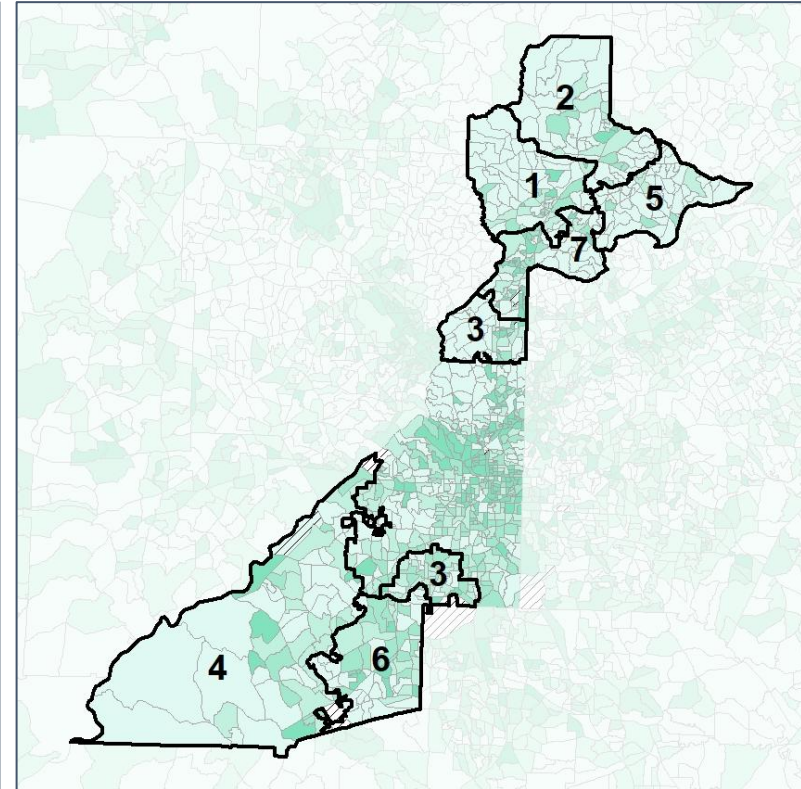
% Youth (18-34) by Census Block Group



2012 Map



2022 Map*



	1	2	3	4	5	6	7	1*	2*	3*	4*	5*	6*	7*	County
Population	78,394	89,565	89,777	101,783	78,900	90,192	79,960	87,036	87,158	84,956	87,407	86,742	88,711	86,005	1,066,710
% API	5%	20%	8%	1%	31%	1%	7%	6%	19%	4%	1%	30%	1%	11%	8%
% Black	11%	10%	26%	83%	10%	87%	22%	11%	9%	37%	84%	10%	88%	22%	42%
% Latino	16%	8%	15%	6%	7%	5%	12%	15%	8%	16%	5%	7%	5%	11%	8%
% Other	5%	5%	4%	3%	5%	3%	6%	5%	5%	4%	3%	5%	3%	5%	4%
% White	63%	58%	47%	7%	47%	4%	53%	63%	58%	39%	8%	48%	3%	51%	38%
Median Income	\$115K	\$156K	\$96K	\$67K	\$132K	\$52K	\$96K	\$114K	\$156K	\$88K	\$69K	\$131K	\$51K	\$97K	\$73K
% Renter	32%	27%	48%	39%	26%	51%	45%	31%	28%	49%	38%	24%	49%	49%	47%
% Youth	18%	16%	26%	20%	15%	27%	23%	18%	16%	26%	21%	14%	25%	26%	27%

