



Demographic Overview

Racial Breakdown in Forsyth County

Forsyth County	2010	2020	% Change
Total Population	175,511	251,283	43%
AAPI	10,929	45,202	314%
Black	4,287	10,455	144%
Latino	16,550	25,226	52%
Other/Mixed Race	2,802	10,993	292%
POC	34,568	91,876	166%
White	140,943	159,407	13%

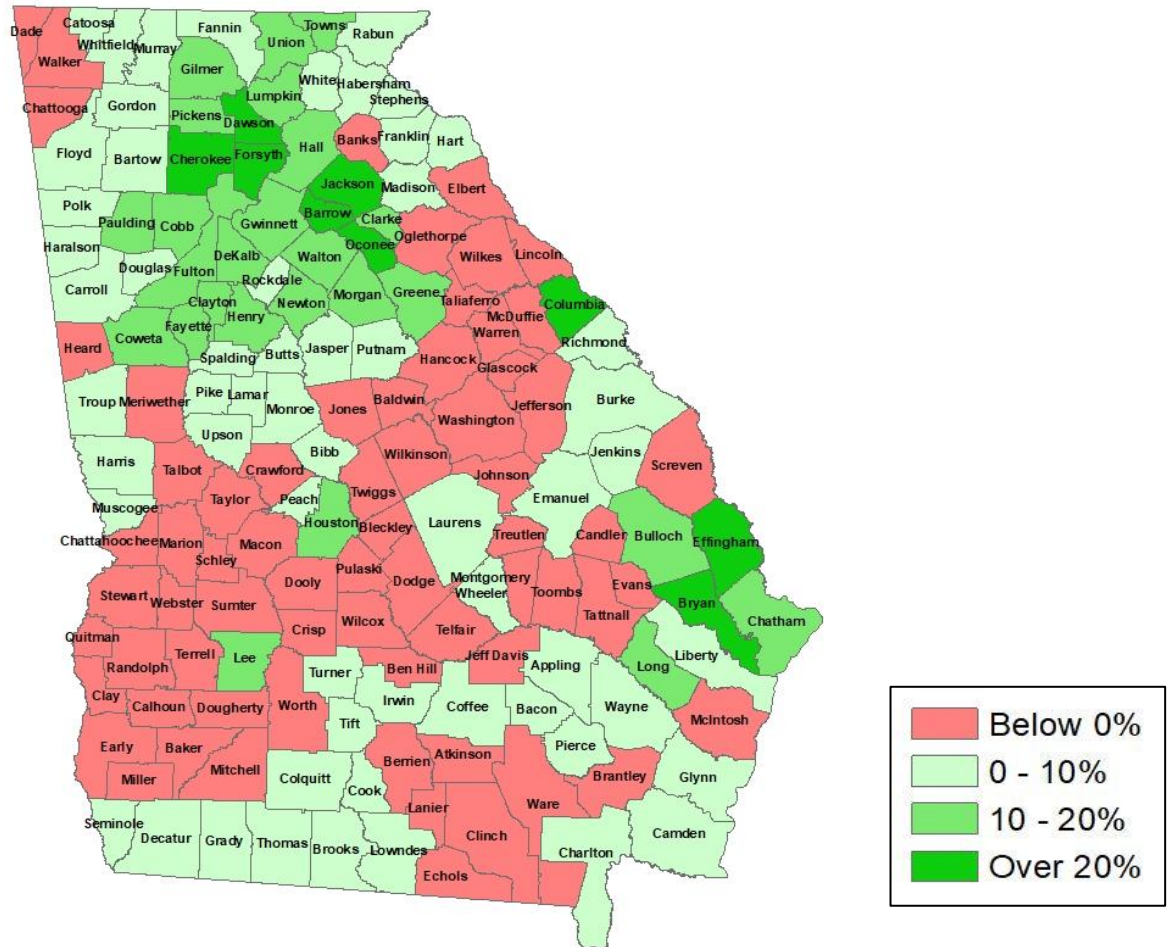
*Note: The use of "Other" in these statistics combines those who identify as Native American, Mixed Race, and "Other" race





Population Gain

Change in Population in Georgia by County



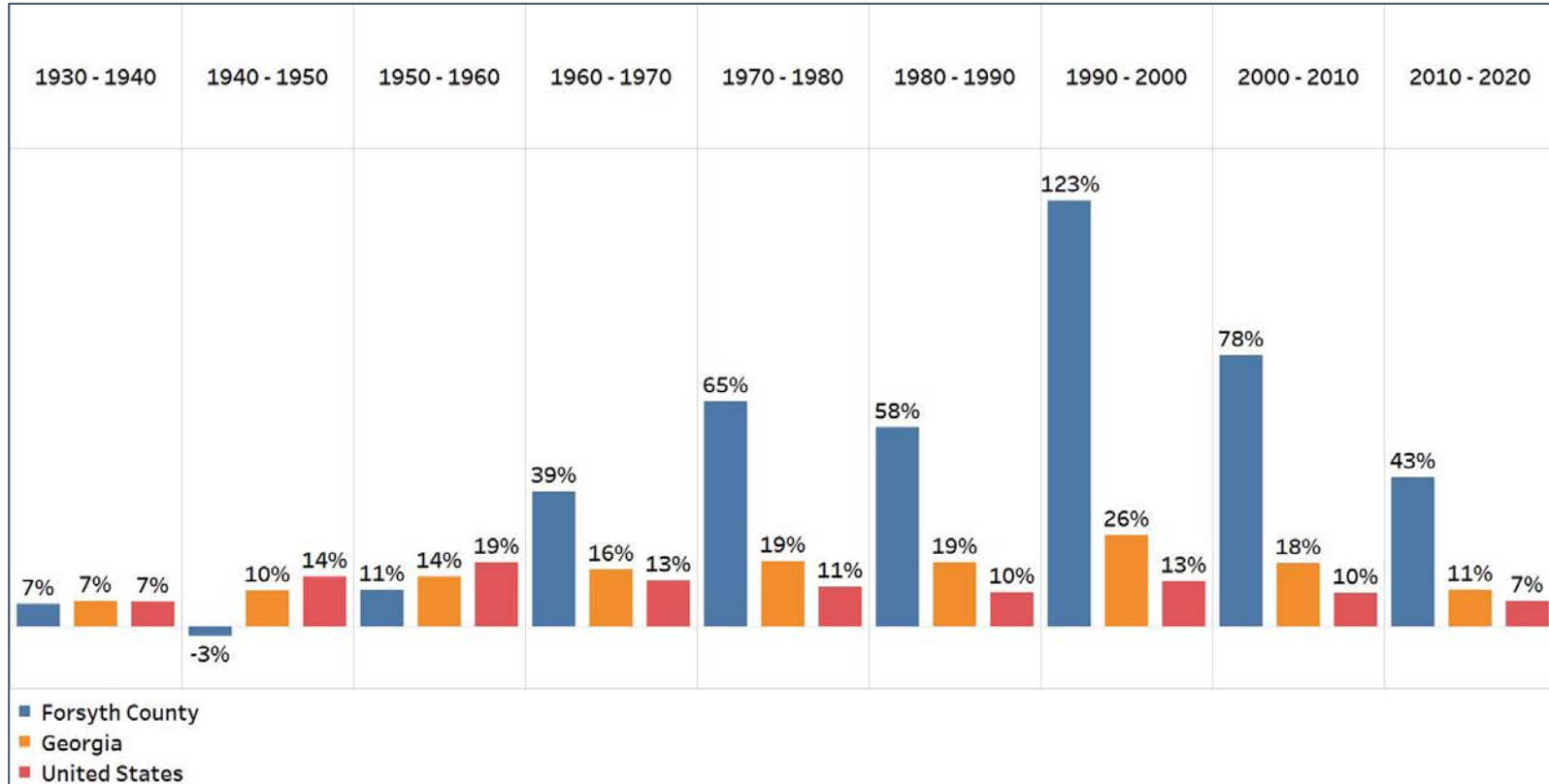
- Georgia is experiencing rapid population growth in the Atlanta, Augusta, and Savannah regions of the state





Population Gain

Change in Population by Decade



- Forsyth County's population growth has been above Georgia's and the United States average since 1960
- Forsyth county population more than doubled during 1990-2000

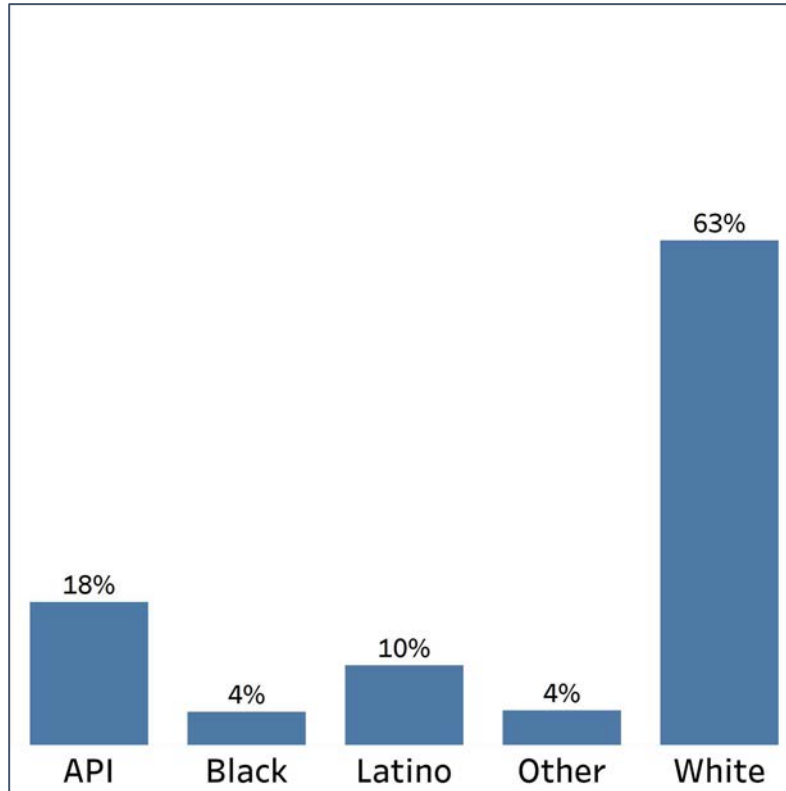


Demographics

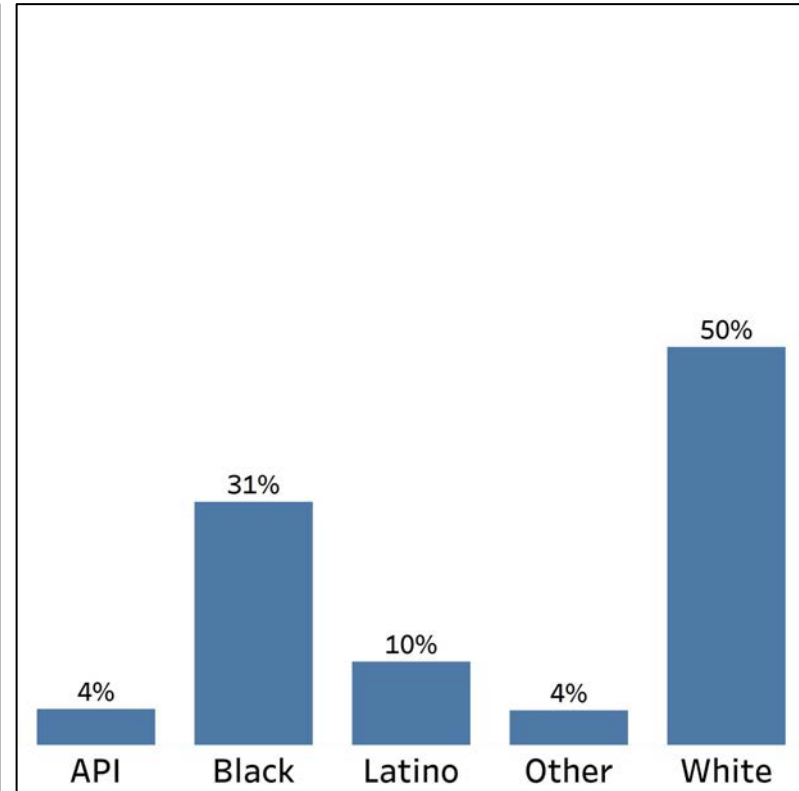
Comparison between Forsyth County and Georgia



Forsyth County



Georgia



- Forsyth County's Black population is smaller than both the API and Latino population, and is 27% less than the statewide average, one of the lowest in the state
- The White and API population in Forsyth county are both above the statewide average

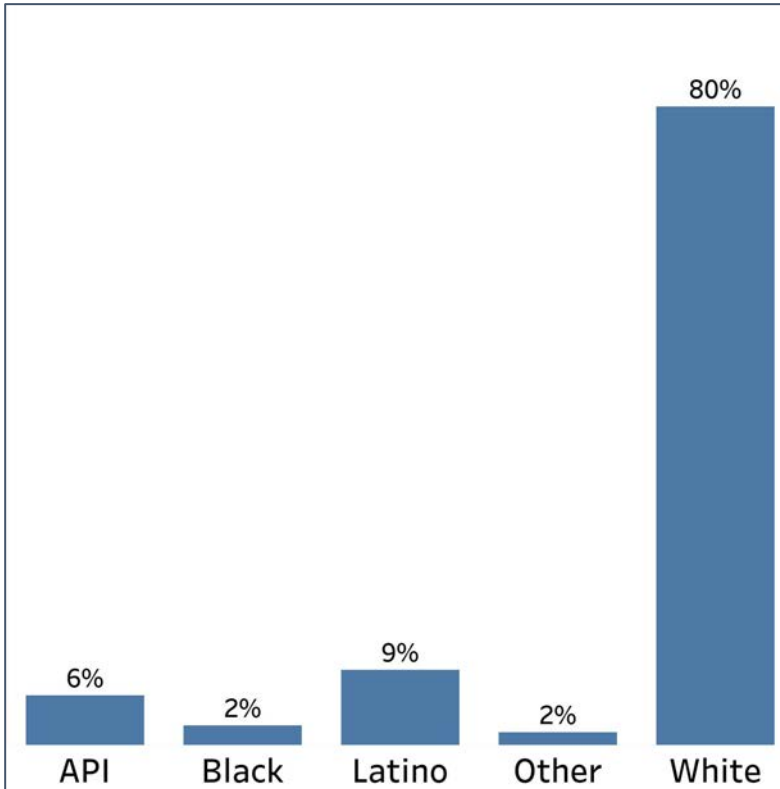


Demographics

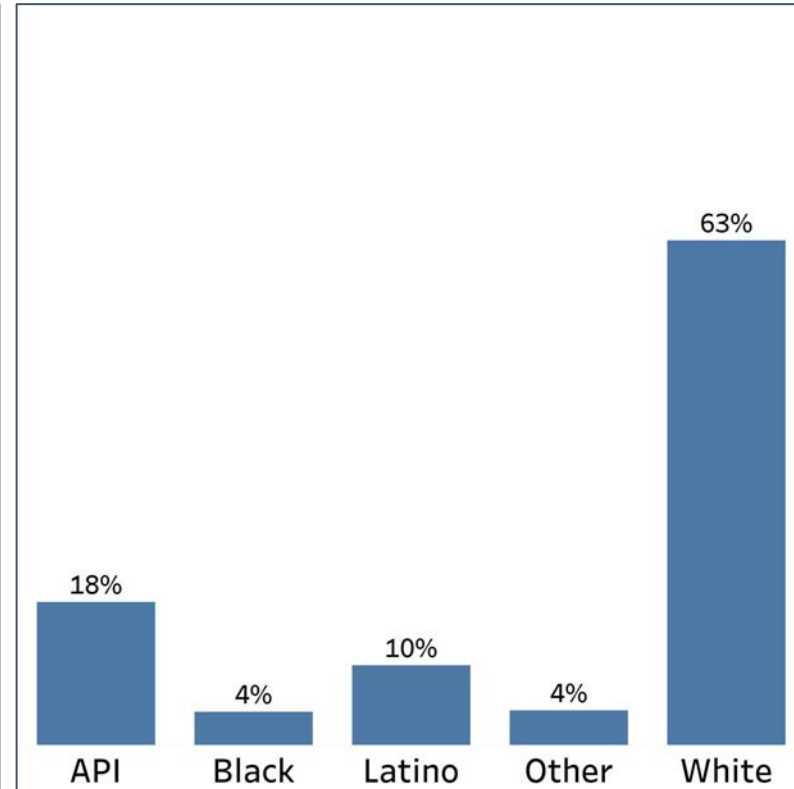
2010 vs 2020 Demographics in Forsyth County



Forsyth County 2010



Forsyth County 2020

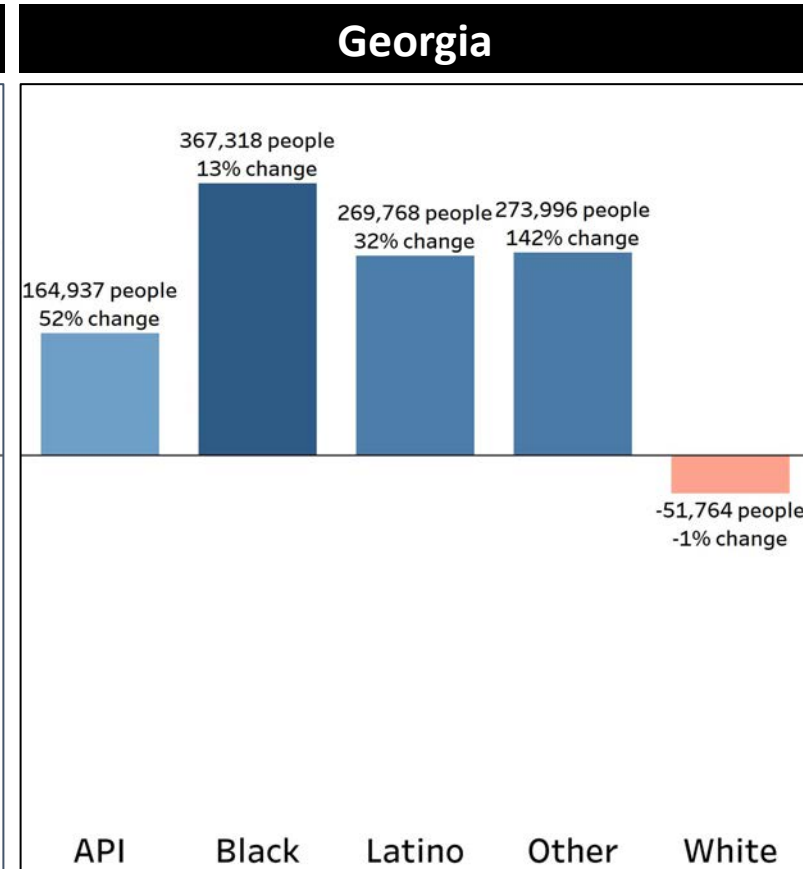
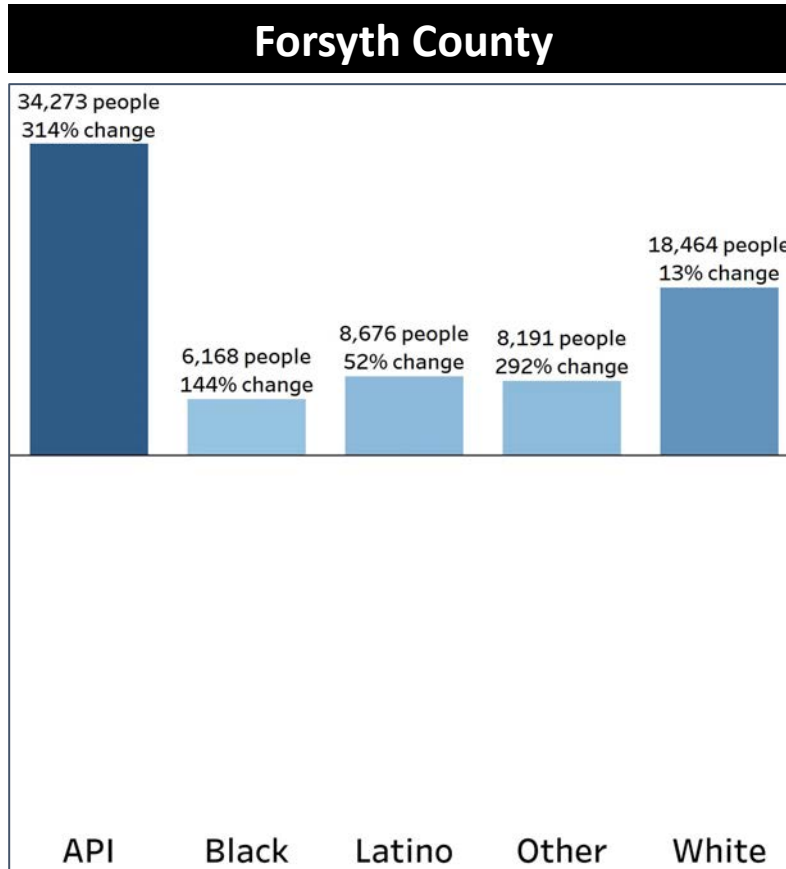


- Since 2010 Forsyth County White population has declined by 17%
- Communities of color experienced a population increase in Forsyth County; most notably the API population which tripled in population.



Demographics

Population Change by Race (2020 - 2010)



- All demographic groups in Forsyth county experienced a population growth and exceed the statewide average
- Forsyth County's API community has the biggest population growth followed by "other" and Black population

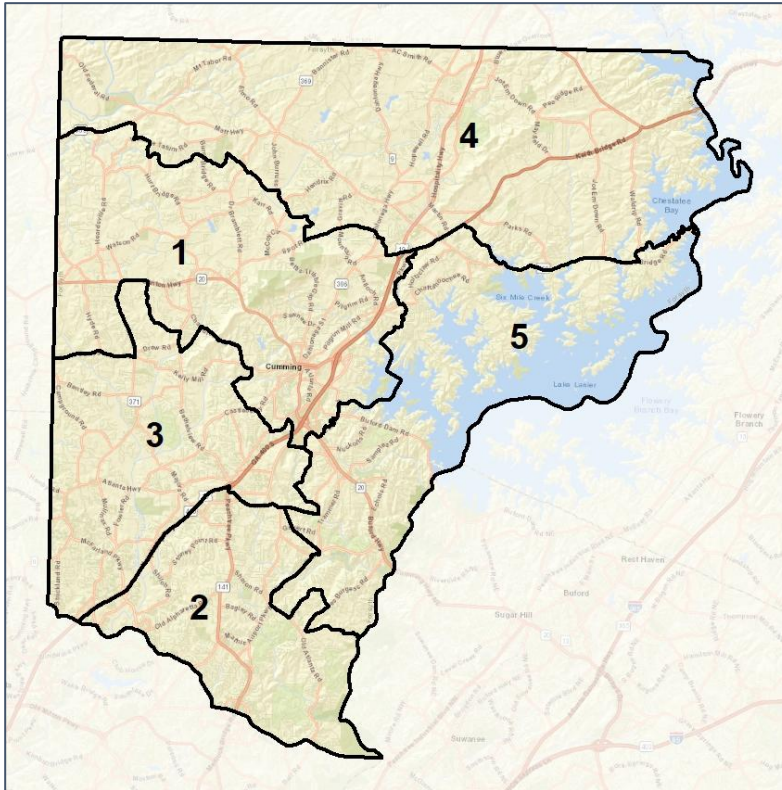


Forsyth Co. Commission & School Board

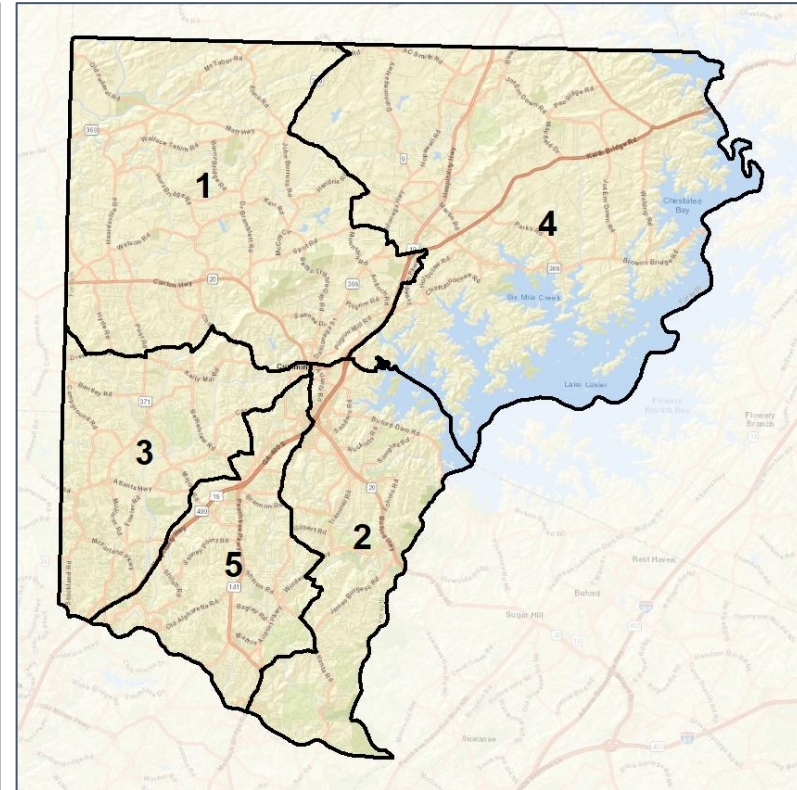
Context



2012 Map



2022 Map*



	1	2	3	4	5	1*	2*	3*	4*	5*	County
Population	46,323	54,236	58,818	47,467	44,439	50,750	49,966	50,557	49,861	50,149	251,283
API	6%	37%	23%	2%	18%	5%	33%	20%	2%	30%	18%
Black	4%	4%	5%	3%	3%	3%	4%	6%	3%	5%	4%
Latino	16%	5%	12%	10%	8%	13%	7%	11%	11%	8%	10%
Other	5%	4%	5%	5%	4%	5%	4%	5%	4%	4%	4%
White	69%	50%	55%	80%	67%	75%	53%	58%	79%	53%	63%
Population Gain	*	*	*	*	*	4,427	-4,270	-8,261	2,394	5,710	*
Population % Gain	*	*	*	*	*	10%	-8%	-14%	5%	13%	*
Net POC Gain	*	*	*	*	*	-1,205	-3,305	-5,283	1,095	8,698	*
Net POC % Gain	*	*	*	*	*	-9%	-12%	-20%	11%	59%	*

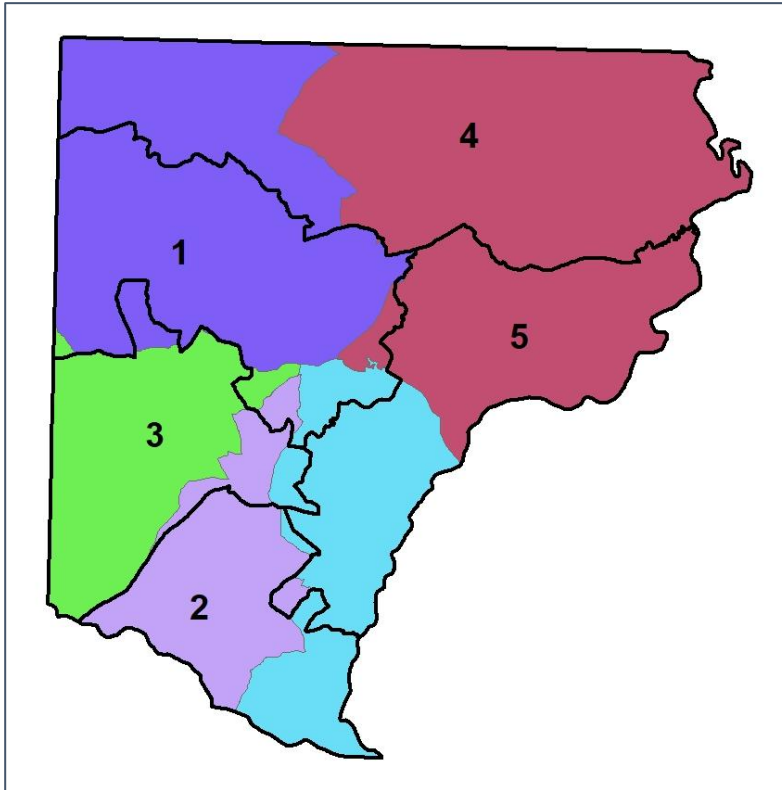


Forsyth Co. Commission & School Board

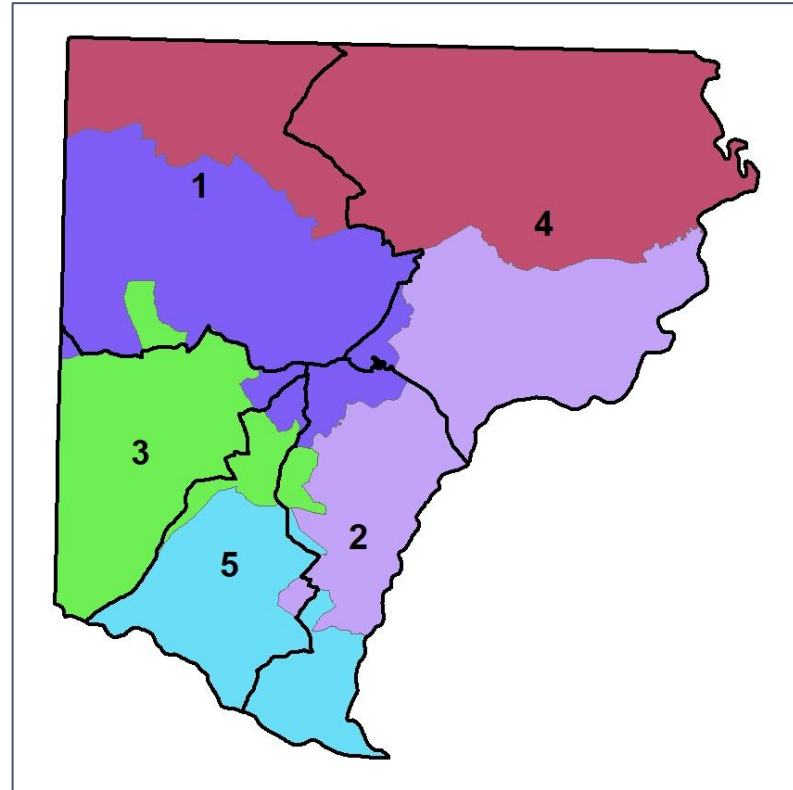
Changes in Redistricting



2012 Map (2022 in Colors)



2022 Map* (2012 in Colors)



	1	2	3	4	5	1*	2*	3*	4*	5*	County
Population	46,323	54,236	58,818	47,467	44,439	50,750	49,966	50,557	49,861	50,149	251,283
API	6%	37%	23%	2%	18%	5%	33%	20%	2%	30%	18%
Black	4%	4%	5%	3%	3%	3%	4%	6%	3%	5%	4%
Latino	16%	5%	12%	10%	8%	13%	7%	11%	11%	8%	10%
Other	5%	4%	5%	5%	4%	5%	4%	5%	4%	4%	4%
White	69%	50%	55%	80%	67%	75%	53%	58%	79%	53%	63%
Population Gain	*	*	*	*	*	4,427	-4,270	-8,261	2,394	5,710	*
Population % Gain	*	*	*	*	*	10%	-8%	-14%	5%	13%	*
Net POC Gain	*	*	*	*	*	-1,205	-3,305	-5,283	1,095	8,698	*
Net POC % Gain	*	*	*	*	*	-9%	-12%	-20%	11%	59%	*

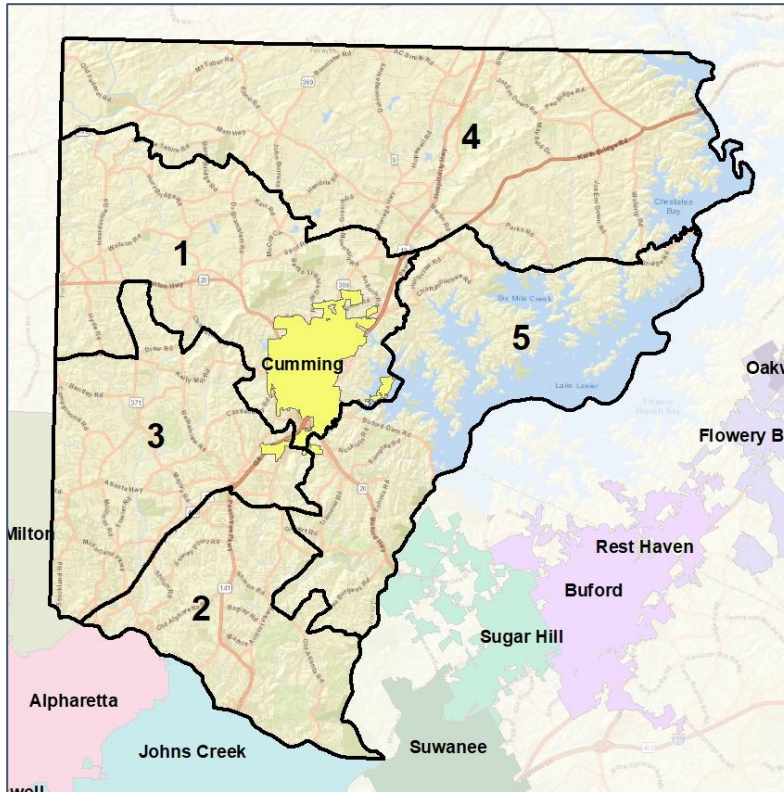


Forsyth Co. Commission & School Board

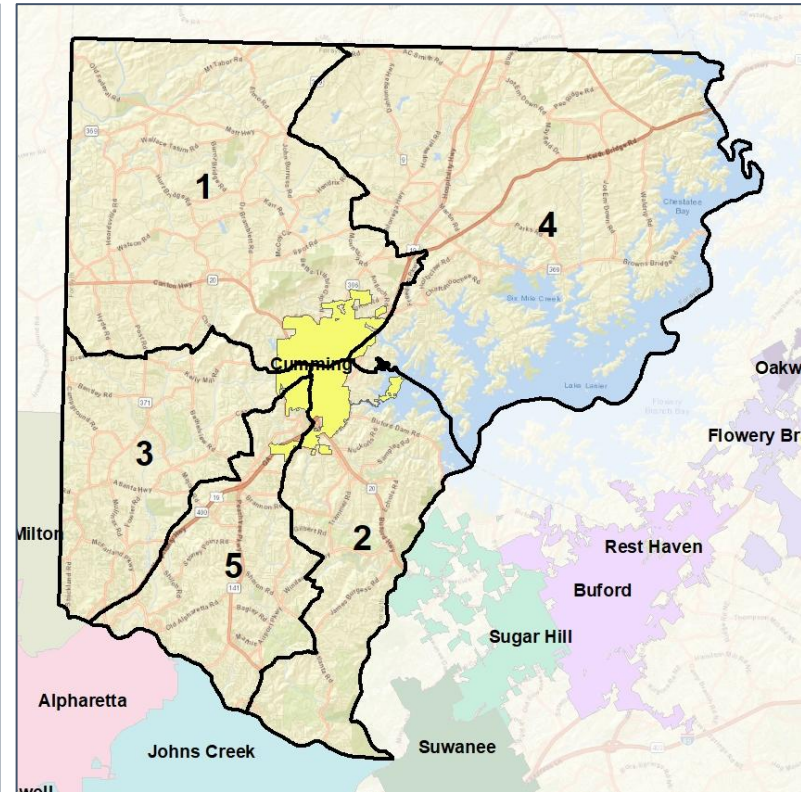
Cities and Places



2012 Map



2022 Map*



	1	2	3	4	5	1*	2*	3*	4*	5*	County
Population	46,323	54,236	58,818	47,467	44,439	50,750	49,966	50,557	49,861	50,149	251,283
API	6%	37%	23%	2%	18%	5%	33%	20%	2%	30%	18%
Black	4%	4%	5%	3%	3%	3%	4%	6%	3%	5%	4%
Latino	16%	5%	12%	10%	8%	13%	7%	11%	11%	8%	10%
Other	5%	4%	5%	5%	4%	5%	4%	5%	4%	4%	4%
White	69%	50%	55%	80%	67%	75%	53%	58%	79%	53%	63%
Population Gain	*	*	*	*	*	4,427	-4,270	-8,261	2,394	5,710	*
Population % Gain	*	*	*	*	*	10%	-8%	-14%	5%	13%	*
Net POC Gain	*	*	*	*	*	-1,205	-3,305	-5,283	1,095	8,698	*
Net POC % Gain	*	*	*	*	*	-9%	-12%	-20%	11%	59%	*



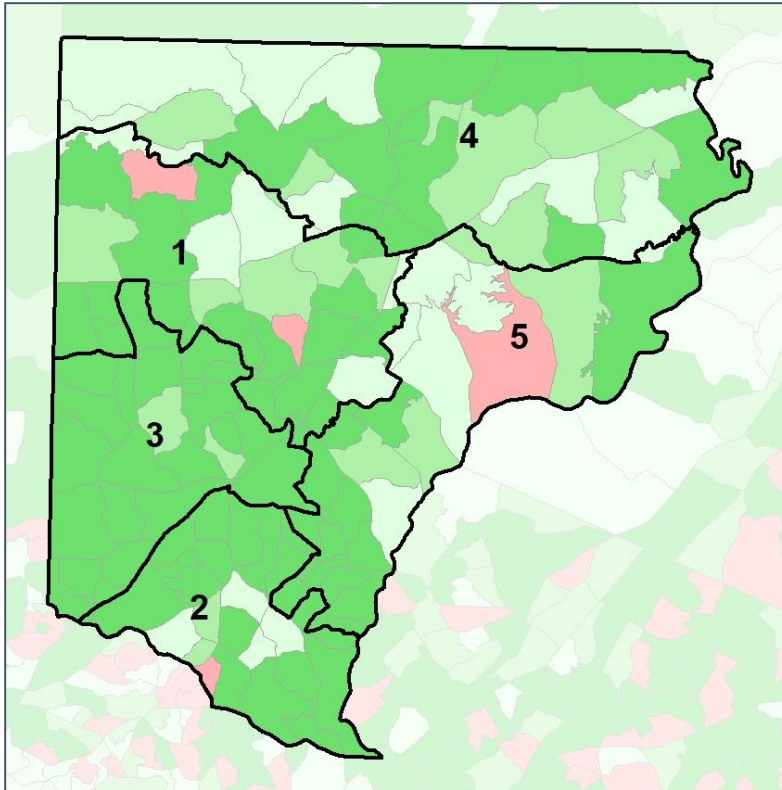
Source:
2020 Decennial Census
2020 ACS 5-Year Dataset

Forsyth Co. Commission & School Board

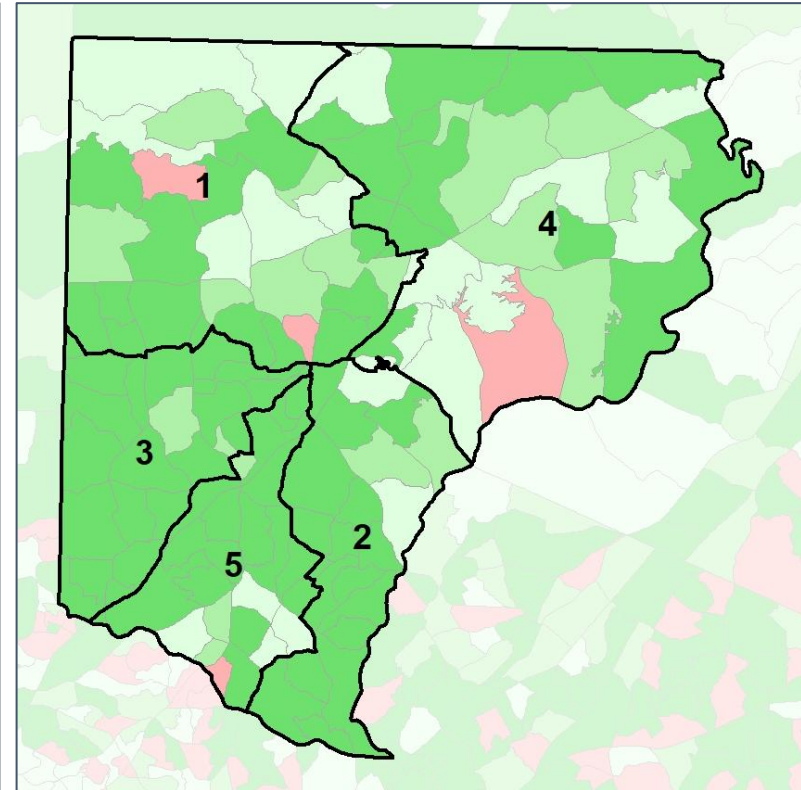
Net Gain in Population (2010 - 2020)



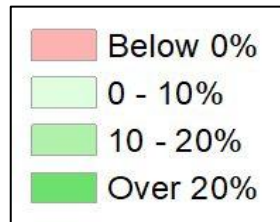
2012 Map



2022 Map*



	1	2	3	4	5	1*	2*	3*	4*	5*	County
Population	46,323	54,236	58,818	47,467	44,439	50,750	49,966	50,557	49,861	50,149	251,283
API	6%	37%	23%	2%	18%	5%	33%	20%	2%	30%	18%
Black	4%	4%	5%	3%	3%	3%	4%	6%	3%	5%	4%
Latino	16%	5%	12%	10%	8%	13%	7%	11%	11%	8%	10%
Other	5%	4%	5%	5%	4%	5%	4%	5%	4%	4%	4%
White	69%	50%	55%	80%	67%	75%	53%	58%	79%	53%	63%
Population Gain	*	*	*	*	*	4,427	-4,270	-8,261	2,394	5,710	*
Population % Gain	*	*	*	*	*	10%	-8%	-14%	5%	13%	*
Net POC Gain	*	*	*	*	*	-1,205	-3,305	-5,283	1,095	8,698	*
Net POC % Gain	*	*	*	*	*	-9%	-12%	-20%	11%	59%	*

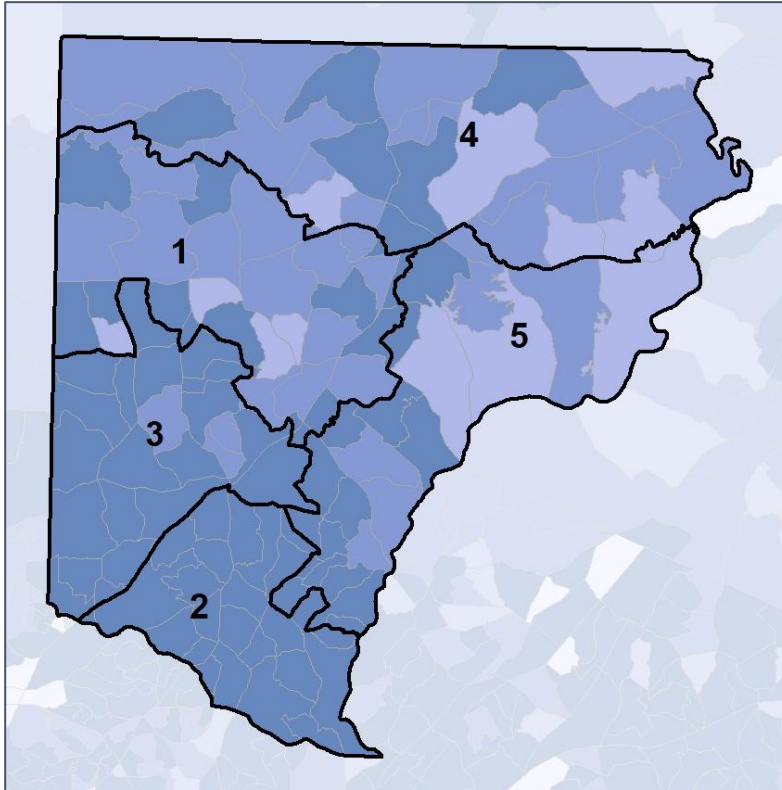


Forsyth Co. Commission & School Board

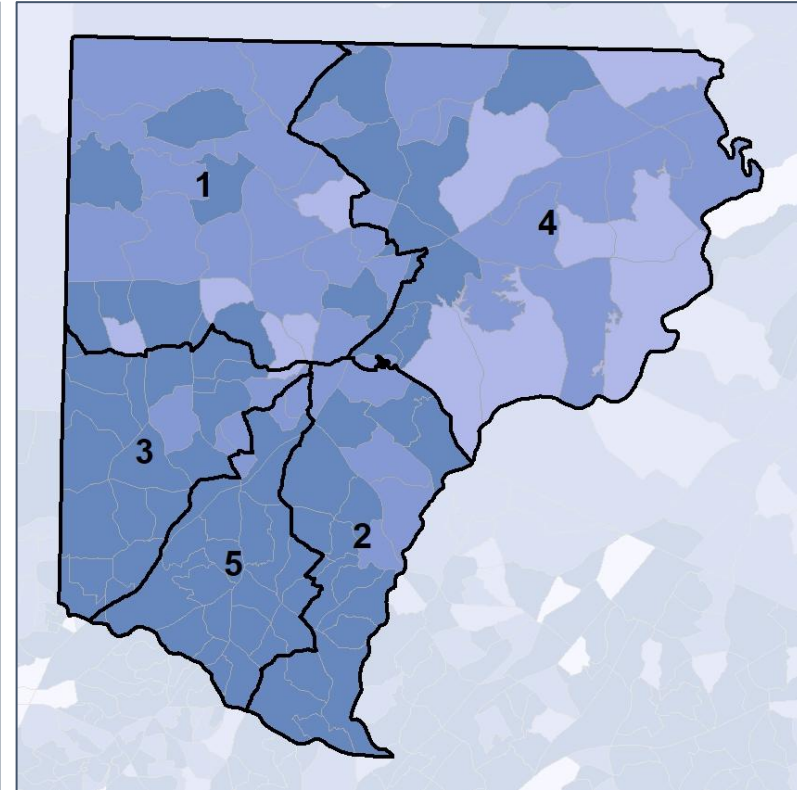
Net Gain in % POC (2020 - 2010) by Census Block Group



2012 Map



2022 Map*



	1	2	3	4	5	1*	2*	3*	4*	5*	County
Population	46,323	54,236	58,818	47,467	44,439	50,750	49,966	50,557	49,861	50,149	251,283
API	6%	37%	23%	2%	18%	5%	33%	20%	2%	30%	18%
Black	4%	4%	5%	3%	3%	3%	4%	6%	3%	5%	4%
Latino	16%	5%	12%	10%	8%	13%	7%	11%	11%	8%	10%
Other	5%	4%	5%	5%	4%	5%	4%	5%	4%	4%	4%
White	69%	50%	55%	80%	67%	75%	53%	58%	79%	53%	63%
Population Gain	*	*	*	*	*	4,427	-4,270	-8,261	2,394	5,710	*
Population % Gain	*	*	*	*	*	10%	-8%	-14%	5%	13%	*
Net POC Gain	*	*	*	*	*	-1,205	-3,305	-5,283	1,095	8,698	*
Net POC % Gain	*	*	*	*	*	-9%	-12%	-20%	11%	59%	*

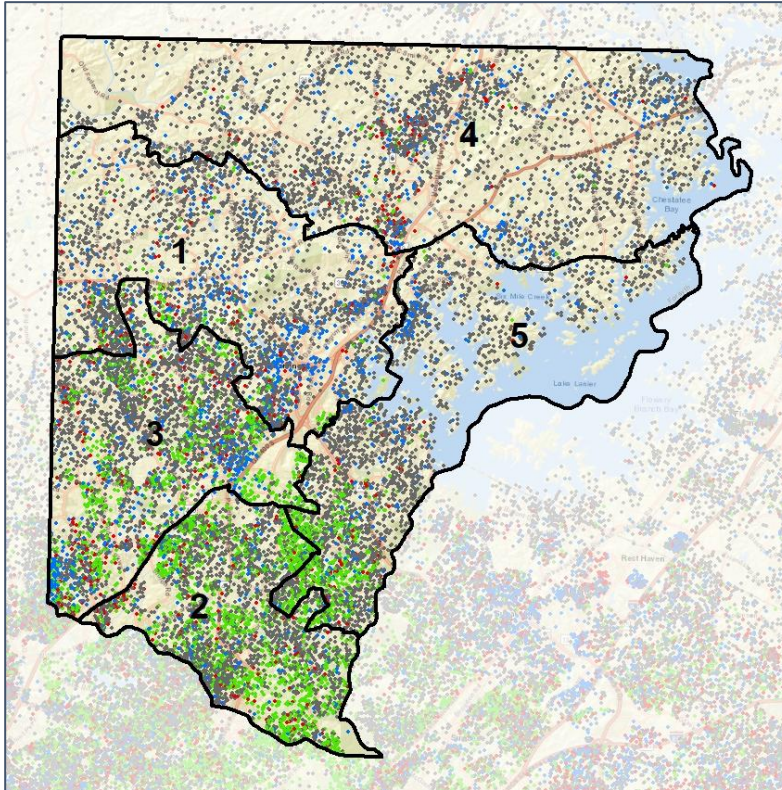


Forsyth Co. Commission & School Board

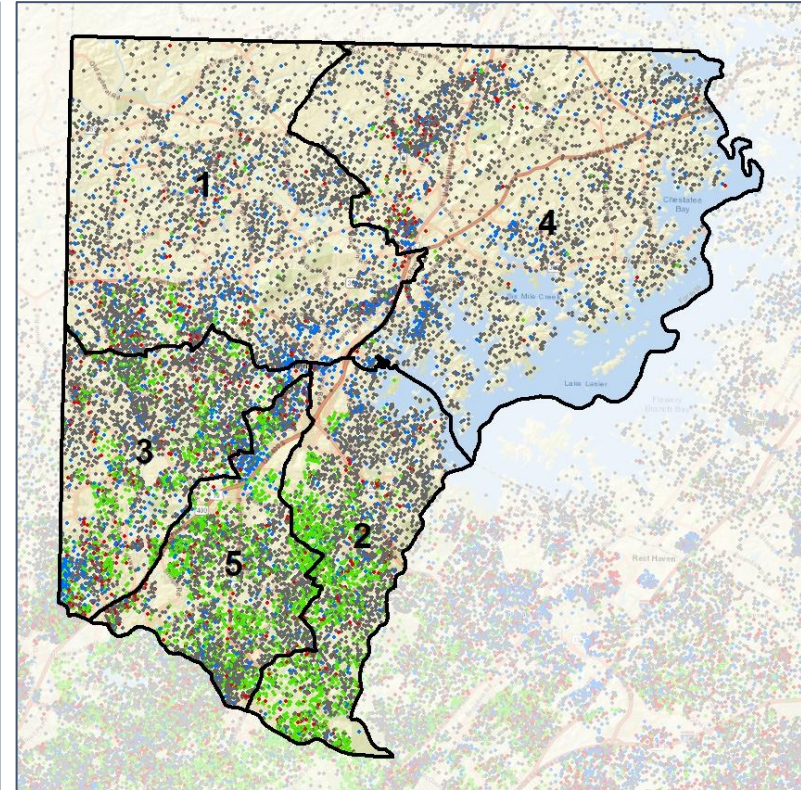
Population Density by Race



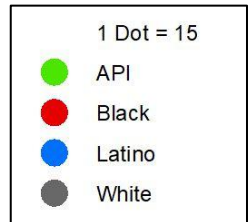
2012 Map



2022 Map*



	1	2	3	4	5	1*	2*	3*	4*	5*	County
Population	46,323	54,236	58,818	47,467	44,439	50,750	49,966	50,557	49,861	50,149	251,283
API	2,711	19,855	13,653	1,102	7,881	2,306	16,566	10,249	1,191	14,890	45,202
% API	6%	37%	23%	2%	18%	5%	33%	20%	2%	30%	18%
Black	1,951	2,333	3,178	1,623	1,370	1,727	1,907	2,834	1,652	2,335	10,455
% Black	4%	4%	5%	3%	3%	3%	4%	6%	3%	5%	4%
Latino	7,222	2,803	6,893	4,666	3,642	6,496	3,301	5,712	5,646	4,071	25,226
% Latino	16%	5%	12%	10%	8%	13%	7%	11%	11%	8%	10%
Other	2,258	1,986	2,752	2,188	1,809	2,408	1,898	2,398	2,185	2,104	10,993
% Other	5%	4%	5%	5%	4%	5%	4%	5%	4%	4%	4%
White	32,181	27,259	32,342	37,888	29,737	37,813	26,294	29,364	39,187	26,749	159,407
% White	69%	50%	55%	80%	67%	75%	53%	58%	79%	53%	63%



Source:
2020 Decennial Census
2020 ACS 5-Year Dataset

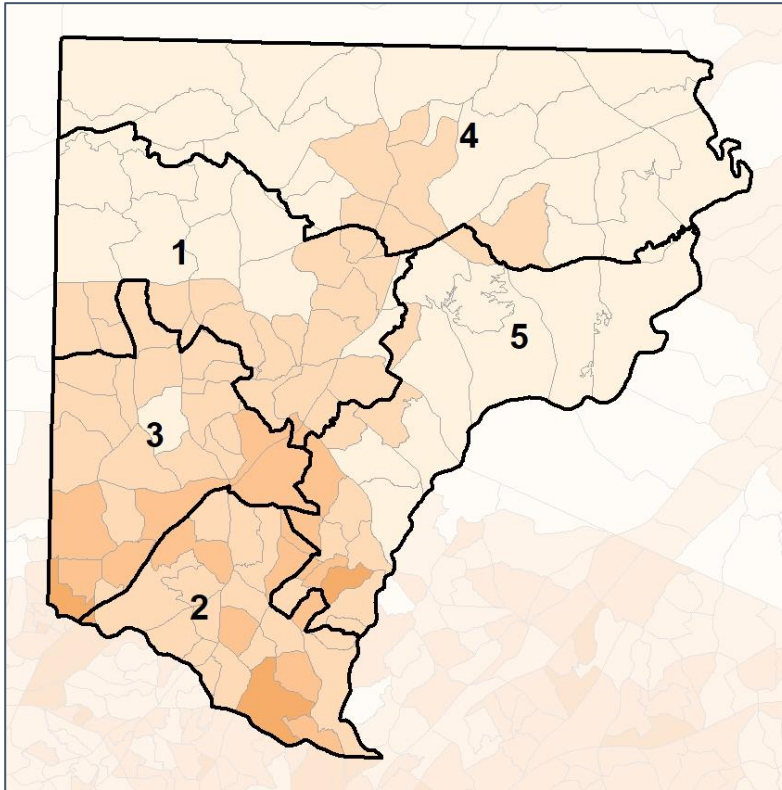


Forsyth Co. Commission & School Board

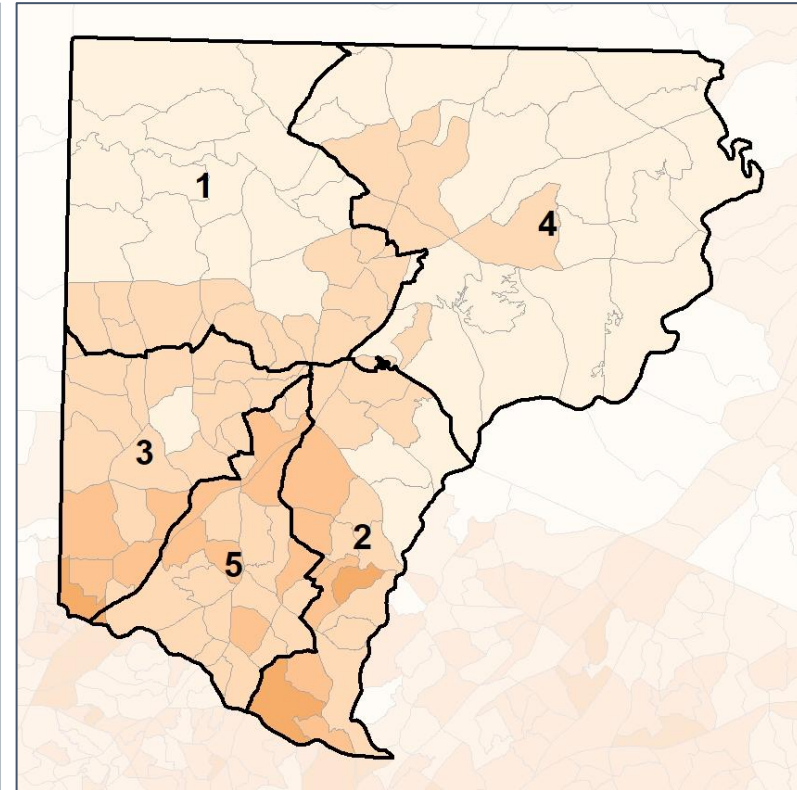
% People of Color by Census Block Group



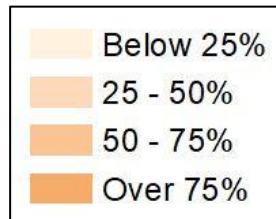
2012 Map



2022 Map*



	1	2	3	4	5	1*	2*	3*	4*	5*	County
Population	46,323	54,236	58,818	47,467	44,439	50,750	49,966	50,557	49,861	50,149	251,283
API	2,711	19,855	13,653	1,102	7,881	2,306	16,566	10,249	1,191	14,890	45,202
% API	6%	37%	23%	2%	18%	5%	33%	20%	2%	30%	18%
Black	1,951	2,333	3,178	1,623	1,370	1,727	1,907	2,834	1,652	2,335	10,455
% Black	4%	4%	5%	3%	3%	3%	4%	6%	3%	5%	4%
Latino	7,222	2,803	6,893	4,666	3,642	6,496	3,301	5,712	5,646	4,071	25,226
% Latino	16%	5%	12%	10%	8%	13%	7%	11%	11%	8%	10%
Other	2,258	1,986	2,752	2,188	1,809	2,408	1,898	2,398	2,185	2,104	10,993
% Other	5%	4%	5%	5%	4%	5%	4%	5%	4%	4%	4%
White	32,181	27,259	32,342	37,888	29,737	37,813	26,294	29,364	39,187	26,749	159,407
% White	69%	50%	55%	80%	67%	75%	53%	58%	79%	53%	63%

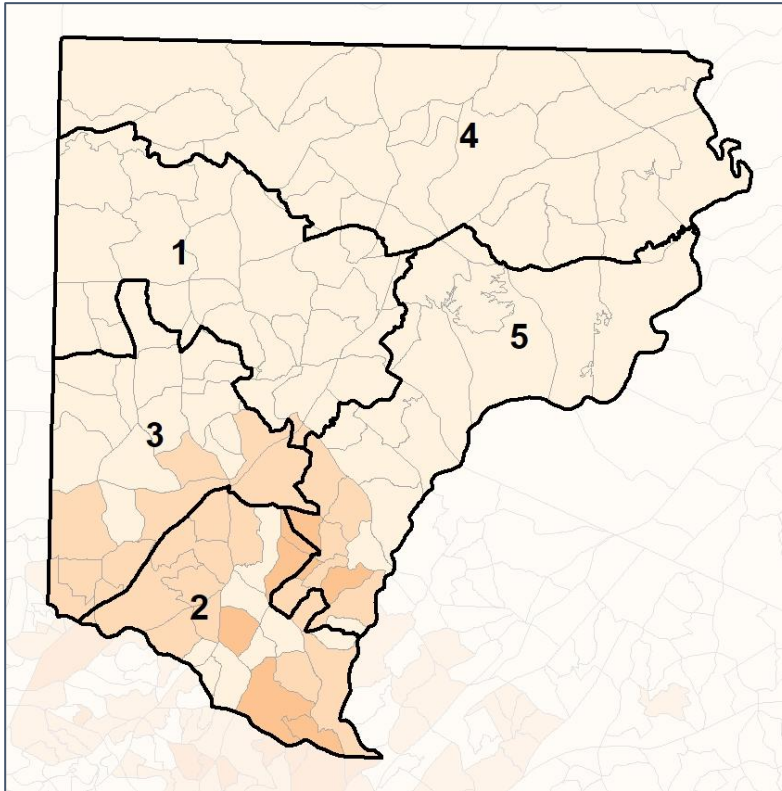


Forsyth Co. Commission & School Board

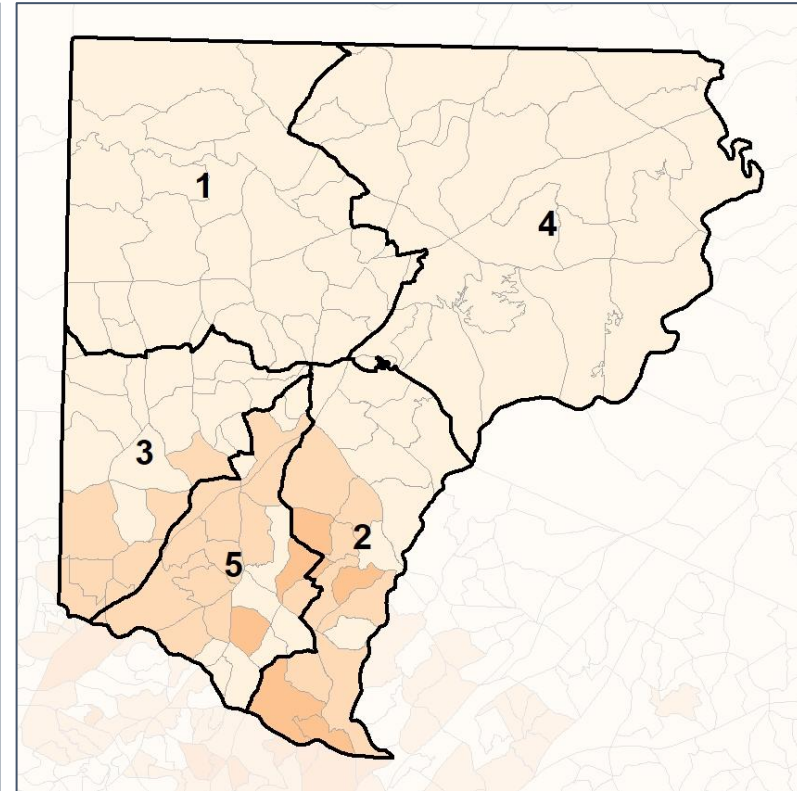
% API by Census Block Group



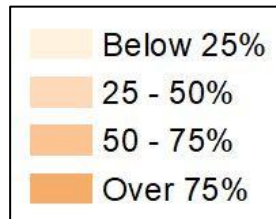
2012 Map



2022 Map*



	1	2	3	4	5	1*	2*	3*	4*	5*	County
Population	46,323	54,236	58,818	47,467	44,439	50,750	49,966	50,557	49,861	50,149	251,283
API	2,711	19,855	13,653	1,102	7,881	2,306	16,566	10,249	1,191	14,890	45,202
% API	6%	37%	23%	2%	18%	5%	33%	20%	2%	30%	18%
Black	1,951	2,333	3,178	1,623	1,370	1,727	1,907	2,834	1,652	2,335	10,455
% Black	4%	4%	5%	3%	3%	3%	4%	6%	3%	5%	4%
Latino	7,222	2,803	6,893	4,666	3,642	6,496	3,301	5,712	5,646	4,071	25,226
% Latino	16%	5%	12%	10%	8%	13%	7%	11%	11%	8%	10%
Other	2,258	1,986	2,752	2,188	1,809	2,408	1,898	2,398	2,185	2,104	10,993
% Other	5%	4%	5%	5%	4%	5%	4%	5%	4%	4%	4%
White	32,181	27,259	32,342	37,888	29,737	37,813	26,294	29,364	39,187	26,749	159,407
% White	69%	50%	55%	80%	67%	75%	53%	58%	79%	53%	63%

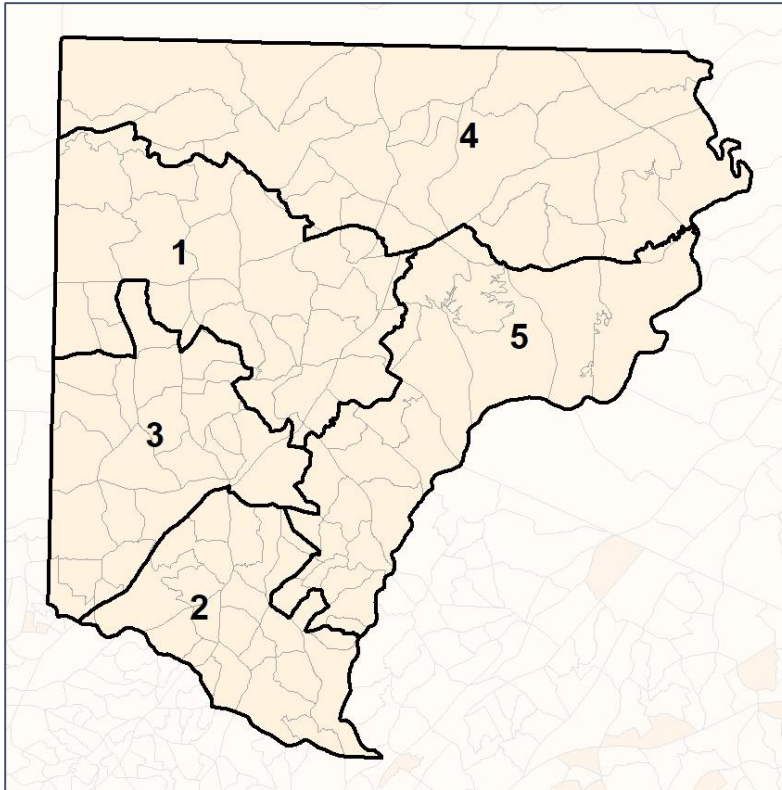


Forsyth Co. Commission & School Board

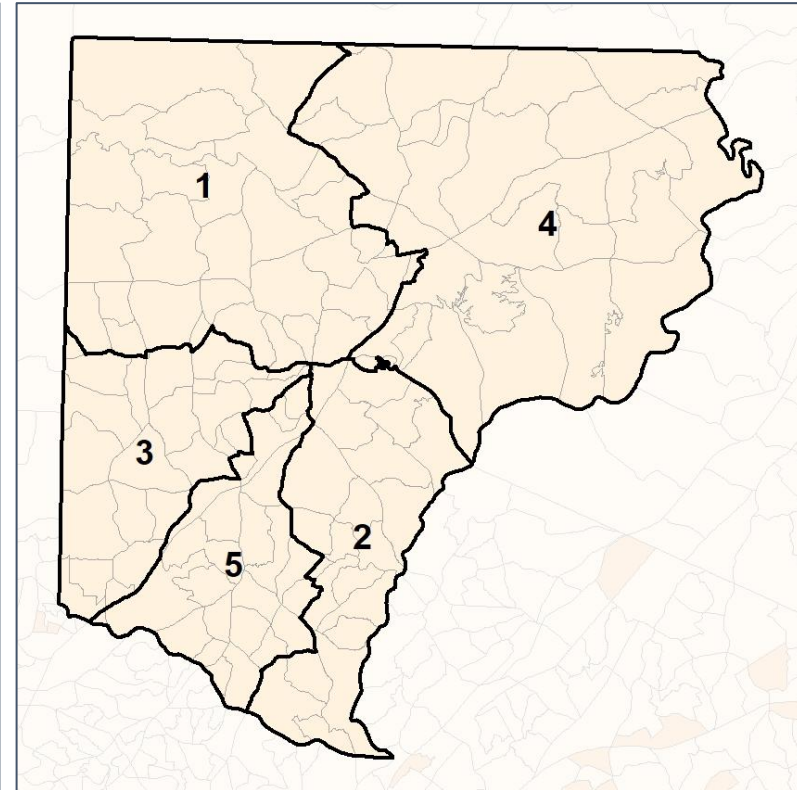
% Black by Census Block Group



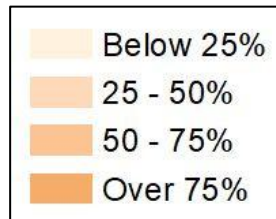
2012 Map



2022 Map*



	1	2	3	4	5	1*	2*	3*	4*	5*	County
Population	46,323	54,236	58,818	47,467	44,439	50,750	49,966	50,557	49,861	50,149	251,283
API	2,711	19,855	13,653	1,102	7,881	2,306	16,566	10,249	1,191	14,890	45,202
% API	6%	37%	23%	2%	18%	5%	33%	20%	2%	30%	18%
Black	1,951	2,333	3,178	1,623	1,370	1,727	1,907	2,834	1,652	2,335	10,455
% Black	4%	4%	5%	3%	3%	3%	4%	6%	3%	5%	4%
Latino	7,222	2,803	6,893	4,666	3,642	6,496	3,301	5,712	5,646	4,071	25,226
% Latino	16%	5%	12%	10%	8%	13%	7%	11%	11%	8%	10%
Other	2,258	1,986	2,752	2,188	1,809	2,408	1,898	2,398	2,185	2,104	10,993
% Other	5%	4%	5%	5%	4%	5%	4%	5%	4%	4%	4%
White	32,181	27,259	32,342	37,888	29,737	37,813	26,294	29,364	39,187	26,749	159,407
% White	69%	50%	55%	80%	67%	75%	53%	58%	79%	53%	63%



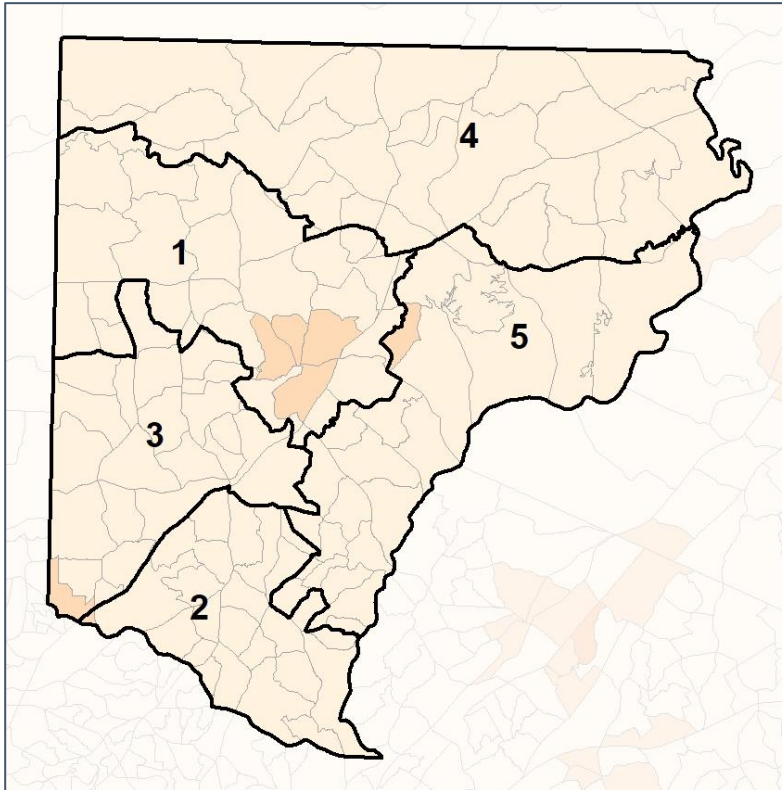
Source:
2020 Decennial Census
2020 ACS 5-Year Dataset

Forsyth Co. Commission & School Board

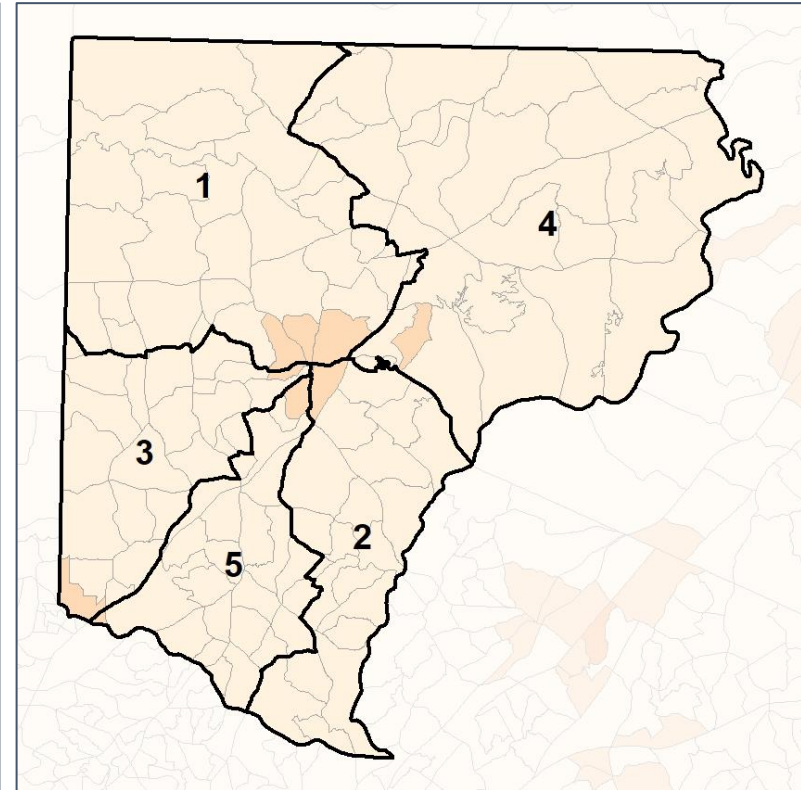
% Latino by Census Block Group



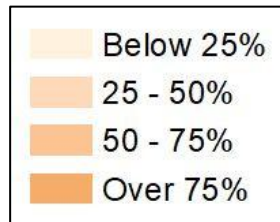
2012 Map



2022 Map*



	1	2	3	4	5	1*	2*	3*	4*	5*	County
Population	46,323	54,236	58,818	47,467	44,439	50,750	49,966	50,557	49,861	50,149	251,283
API	2,711	19,855	13,653	1,102	7,881	2,306	16,566	10,249	1,191	14,890	45,202
% API	6%	37%	23%	2%	18%	5%	33%	20%	2%	30%	18%
Black	1,951	2,333	3,178	1,623	1,370	1,727	1,907	2,834	1,652	2,335	10,455
% Black	4%	4%	5%	3%	3%	3%	4%	6%	3%	5%	4%
Latino	7,222	2,803	6,893	4,666	3,642	6,496	3,301	5,712	5,646	4,071	25,226
% Latino	16%	5%	12%	10%	8%	13%	7%	11%	11%	8%	10%
Other	2,258	1,986	2,752	2,188	1,809	2,408	1,898	2,398	2,185	2,104	10,993
% Other	5%	4%	5%	5%	4%	5%	4%	5%	4%	4%	4%
White	32,181	27,259	32,342	37,888	29,737	37,813	26,294	29,364	39,187	26,749	159,407
% White	69%	50%	55%	80%	67%	75%	53%	58%	79%	53%	63%



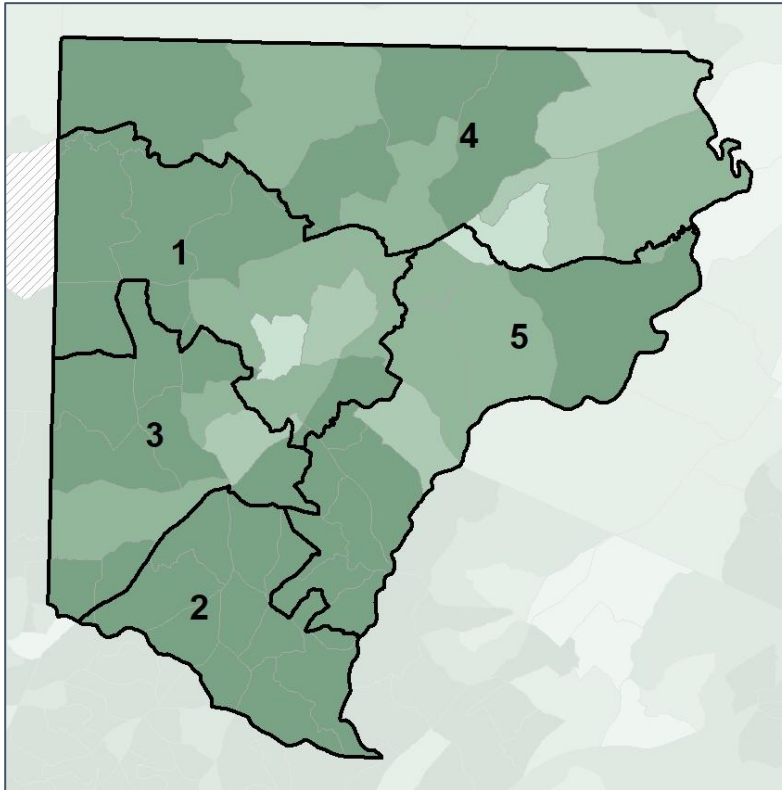
Source:
2020 Decennial Census
2020 ACS 5-Year Dataset

Forsyth Co. Commission & School Board

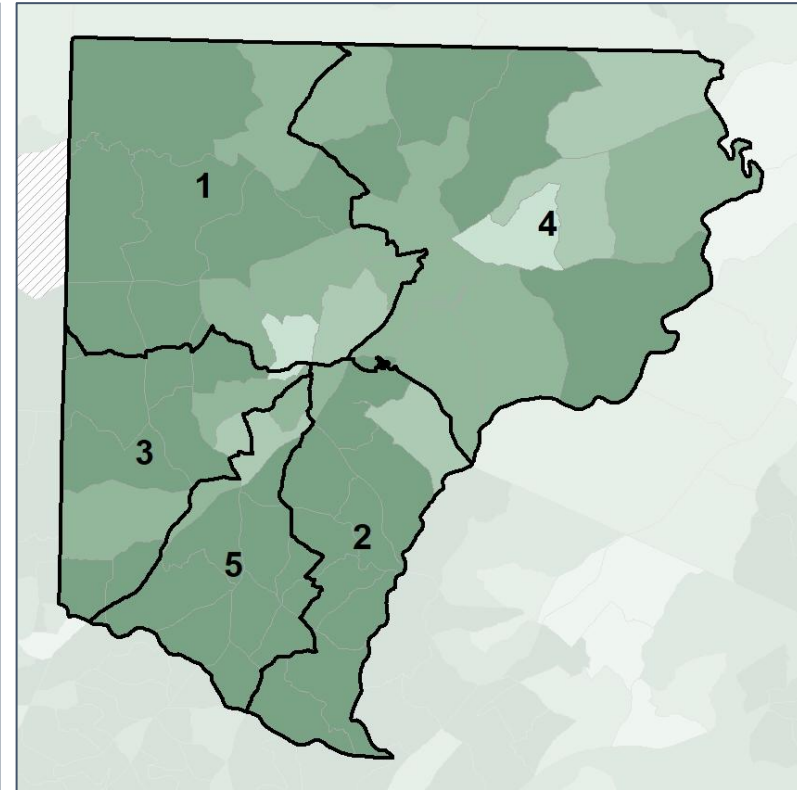
Median Household Income by Census Tract



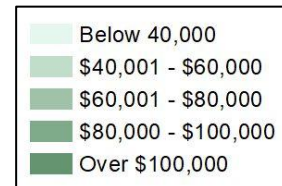
2012 Map



2022 Map*



	1	2	3	4	5	1*	2*	3*	4*	5*	County
Population	46,323	54,236	58,818	47,467	44,439	50,750	49,966	50,557	49,861	50,149	251,283
% API	6%	37%	23%	2%	18%	5%	33%	20%	2%	30%	18%
% Black	4%	4%	5%	3%	3%	3%	4%	6%	3%	5%	4%
% Latino	16%	5%	12%	10%	8%	13%	7%	11%	11%	8%	10%
% Other	5%	4%	5%	5%	4%	5%	4%	5%	4%	4%	4%
% White	69%	50%	55%	80%	67%	75%	53%	58%	79%	53%	63%
Median Income	\$96,000	\$143,000	\$121,000	\$100,000	\$127,000	\$108,000	\$131,000	\$123,000	\$95,000	\$138,000	\$113,000
% Renter	21%	16%	14%	15%	14%	14%	14%	14%	17%	20%	16%
% Youth	20%	14%	17%	20%	16%	19%	16%	17%	19%	14%	17%

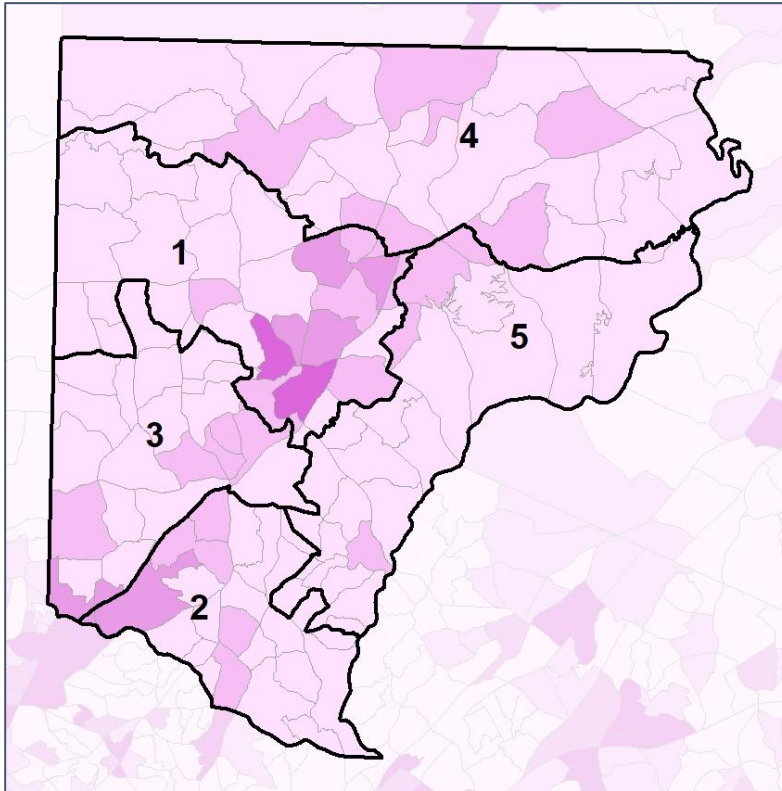


Forsyth Co. Commission & School Board

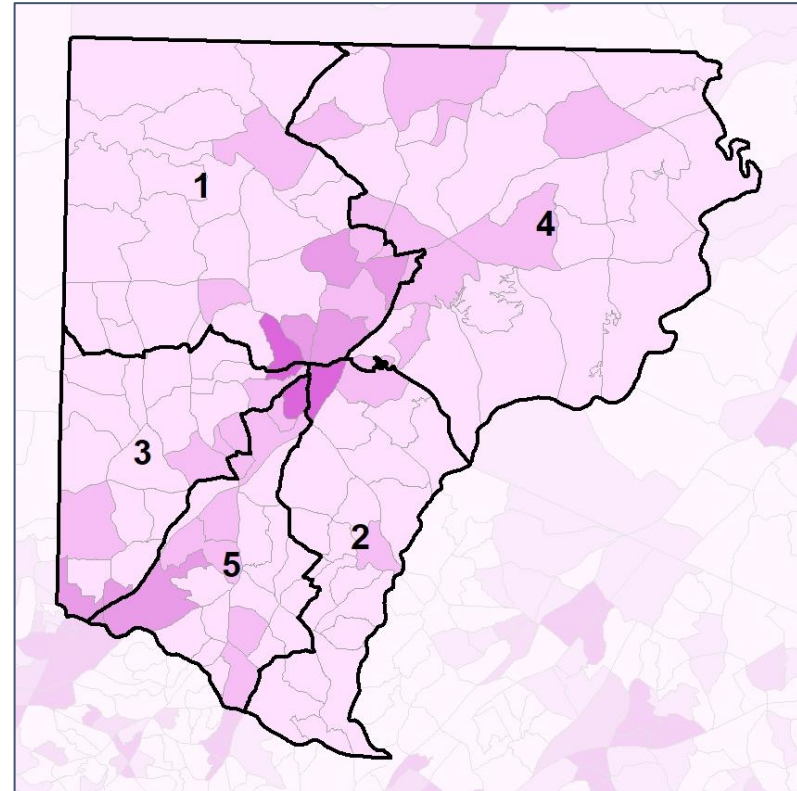
% Renter by Census Block Group



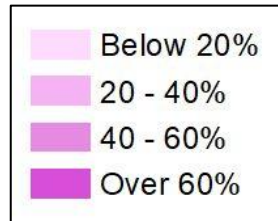
2012 Map



2022 Map*



	1	2	3	4	5	1*	2*	3*	4*	5*	County
Population	46,323	54,236	58,818	47,467	44,439	50,750	49,966	50,557	49,861	50,149	251,283
% API	6%	37%	23%	2%	18%	5%	33%	20%	2%	30%	18%
% Black	4%	4%	5%	3%	3%	3%	4%	6%	3%	5%	4%
% Latino	16%	5%	12%	10%	8%	13%	7%	11%	11%	8%	10%
% Other	5%	4%	5%	5%	4%	5%	4%	5%	4%	4%	4%
% White	69%	50%	55%	80%	67%	75%	53%	58%	79%	53%	63%
Median Income	\$96,000	\$143,000	\$121,000	\$100,000	\$127,000	\$108,000	\$131,000	\$123,000	\$95,000	\$138,000	\$113,000
% Renter	21%	16%	14%	15%	14%	14%	14%	14%	17%	20%	16%
% Youth	20%	14%	17%	20%	16%	19%	16%	17%	19%	14%	17%

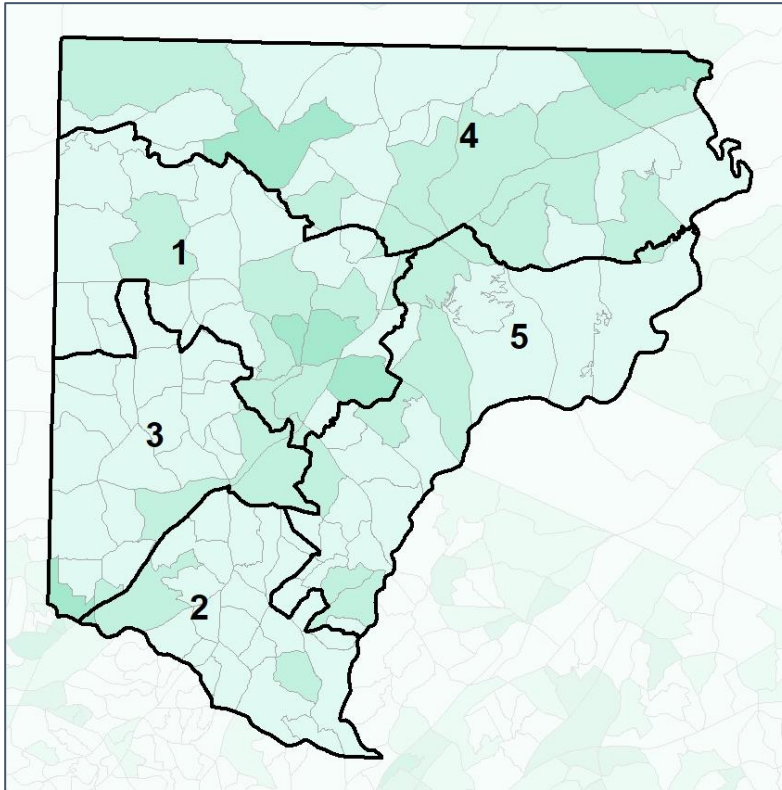


Forsyth Co. Commission & School Board

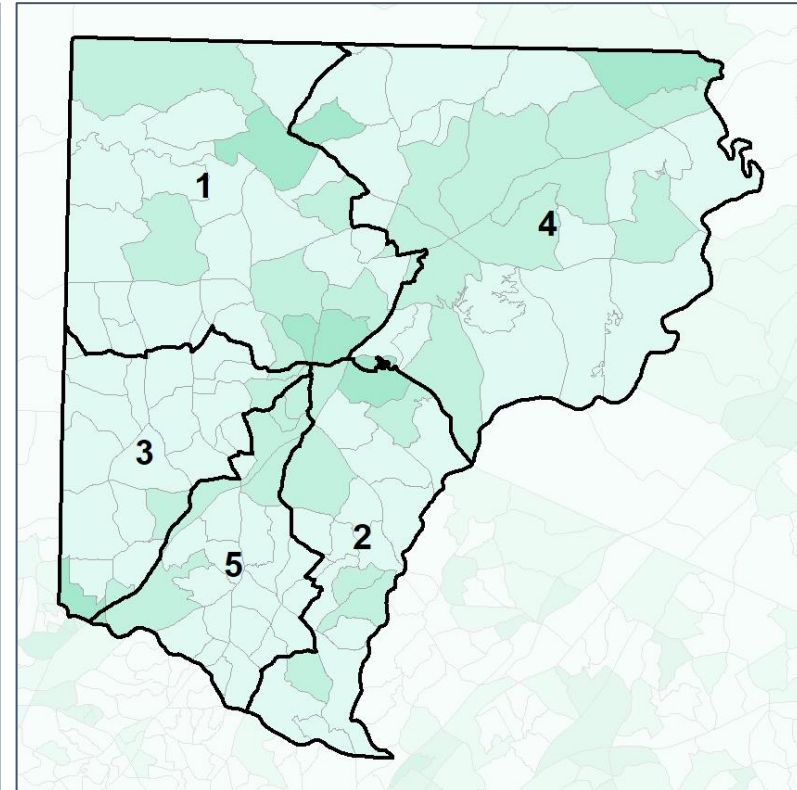
% Youth (18-34) by Census Block Group



2012 Map



2022 Map*



	1	2	3	4	5	1*	2*	3*	4*	5*	County
Population	46,323	54,236	58,818	47,467	44,439	50,750	49,966	50,557	49,861	50,149	251,283
% API	6%	37%	23%	2%	18%	5%	33%	20%	2%	30%	18%
% Black	4%	4%	5%	3%	3%	3%	4%	6%	3%	5%	4%
% Latino	16%	5%	12%	10%	8%	13%	7%	11%	11%	8%	10%
% Other	5%	4%	5%	5%	4%	5%	4%	5%	4%	4%	4%
% White	69%	50%	55%	80%	67%	75%	53%	58%	79%	53%	63%
Median Income	\$96,000	\$143,000	\$121,000	\$100,000	\$127,000	\$108,000	\$131,000	\$123,000	\$95,000	\$138,000	\$113,000
% Renter	21%	16%	14%	15%	14%	14%	14%	14%	17%	20%	16%
% Youth	20%	14%	17%	20%	16%	19%	16%	17%	19%	14%	17%

