



# Demographic Overview

## Racial Breakdown in Fayette County

Fayette County	2010	2020	% Change
Total Population	106,567	119,194	12%
AAPI	4,167	6,406	54%
Black	21,117	29,166	38%
Latino	6,760	9,480	40%
Other/Mixed Race	2,321	5,998	158%
POC	34,365	51,050	49%
White	72,202	68,144	-6%

\*Note: The use of "Other" in these statistics combines those who identify as Native American, Mixed Race, and "Other" race





# Population Gain

## Change in Population in Georgia by County



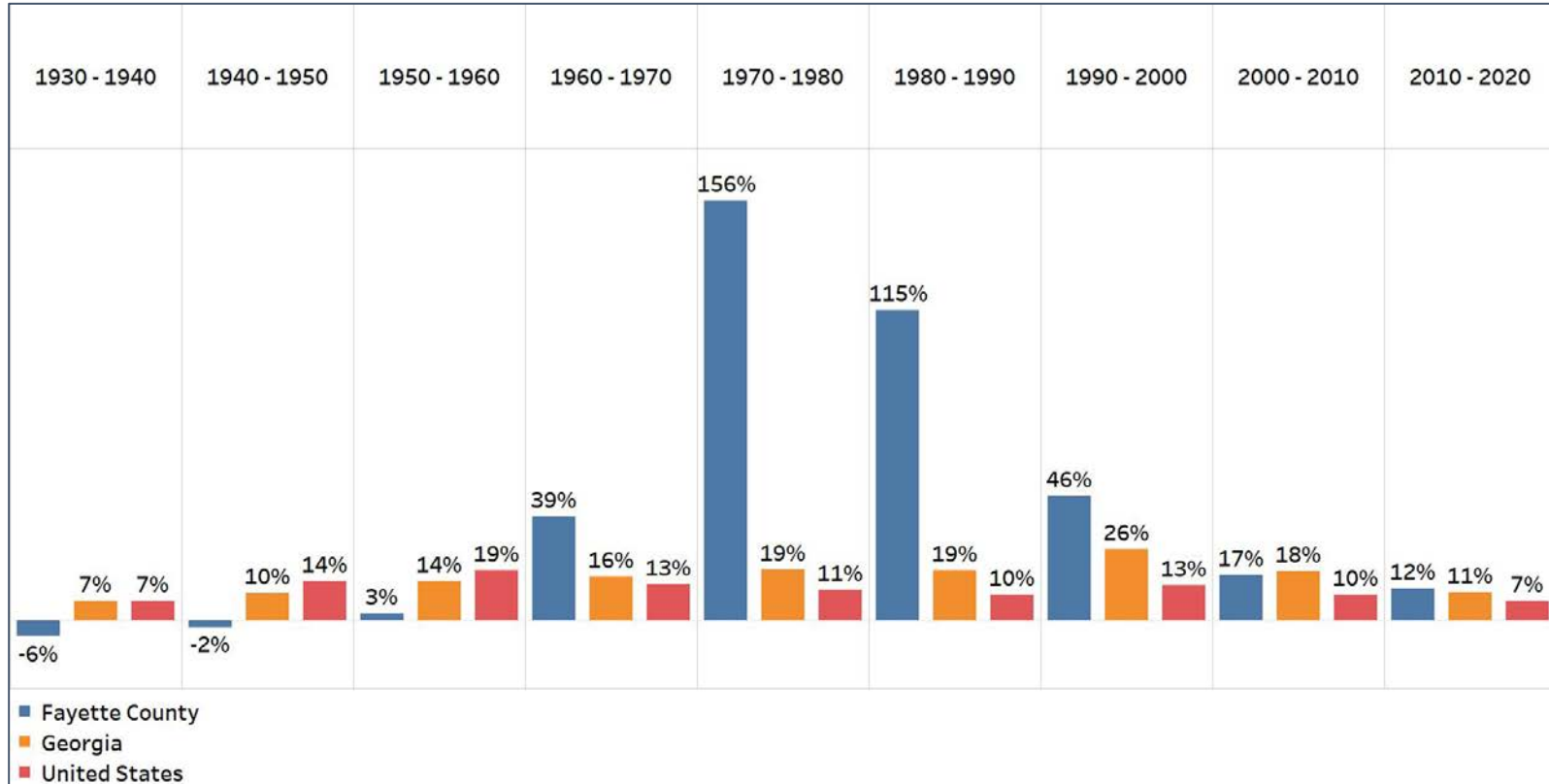
- Georgia is experience rapid population growth in the Atlanta, Augusta, and Savannah regions of the state





# Population Gain

## Change in Population by Decade



- Fayette County had an explosion in population growth from 1970-1990, and has continued to have significant growth since
- The growth in the last decade is the smallest growth in population since 1960

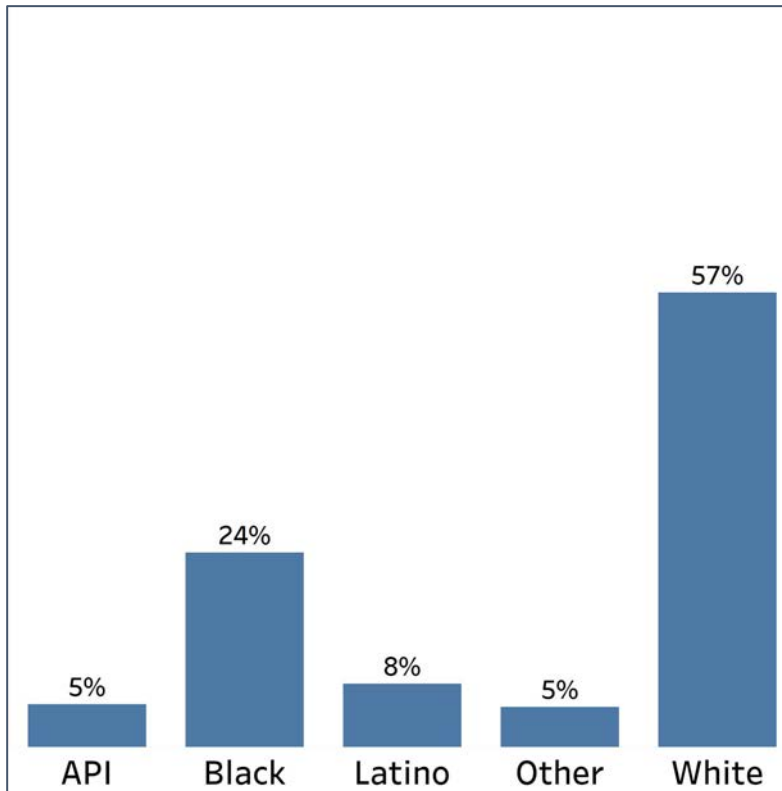


# Demographics

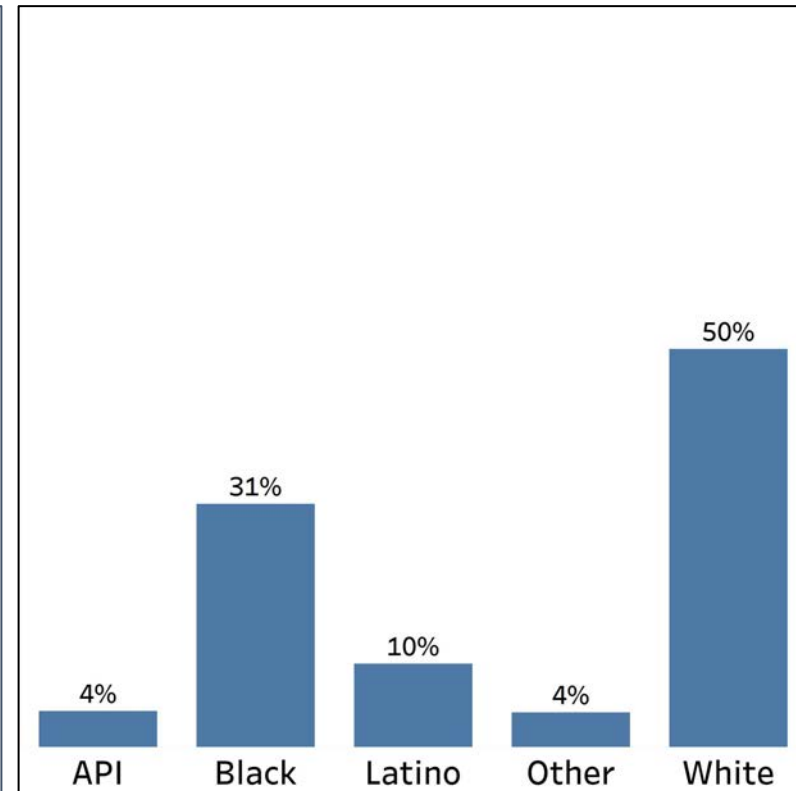
## Comparison between Fayette County and Georgia



Fayette County



Georgia



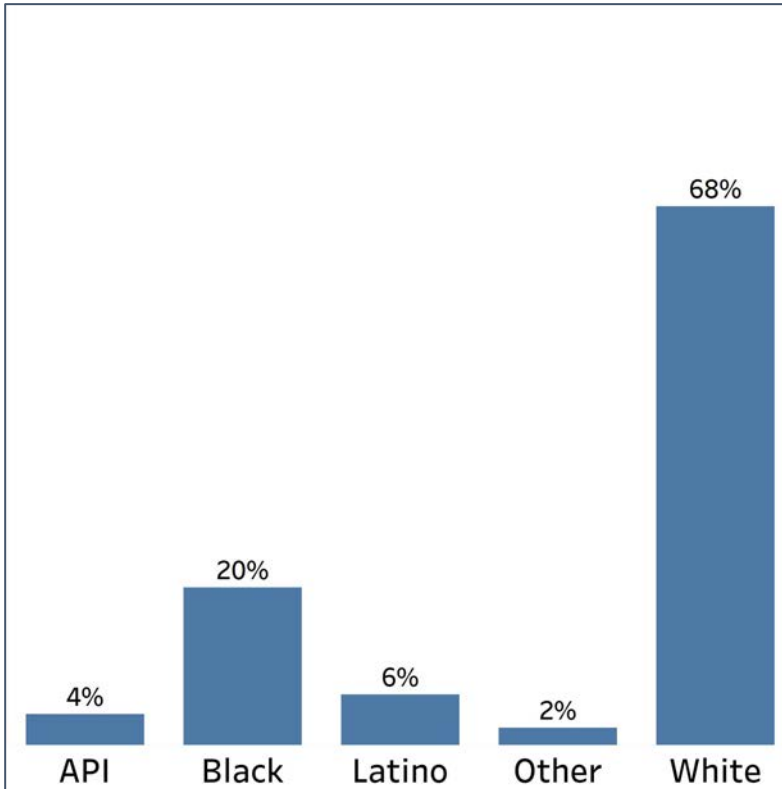
- Fayette County's API, Other, and White communities are a slightly higher proportion of the county's population compared to Georgia's overall share
- While they are a lower share, both the Black and Latino communities still hold similar shares of Fayette County's population as Georgia overall, making the county a decent reflection of Georgia's overall demographic breakdown

# Demographics

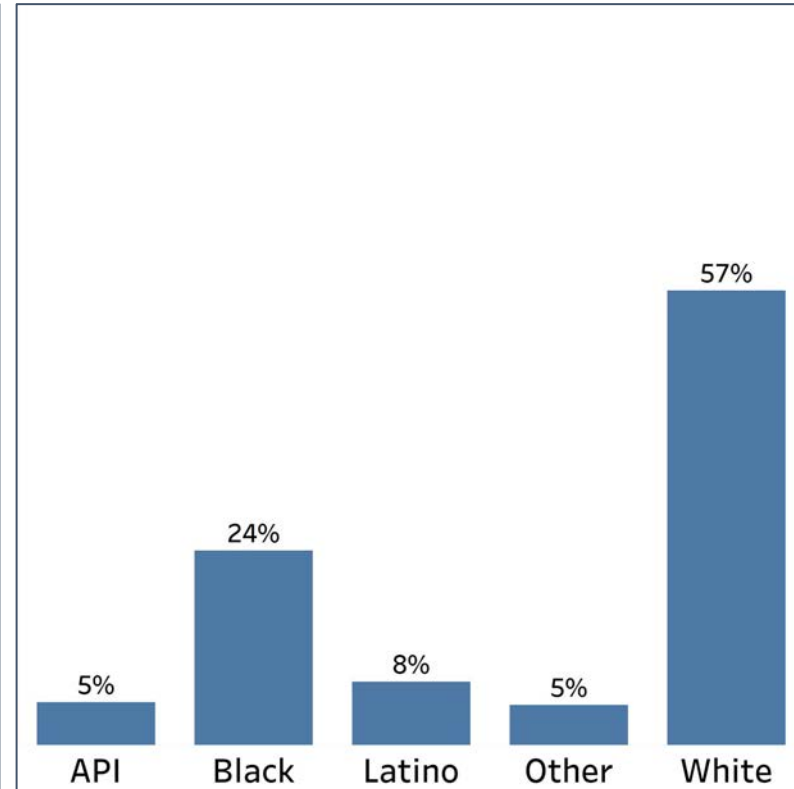
## 2010 vs 2020 Demographics in Fayette County



Fayette County 2010



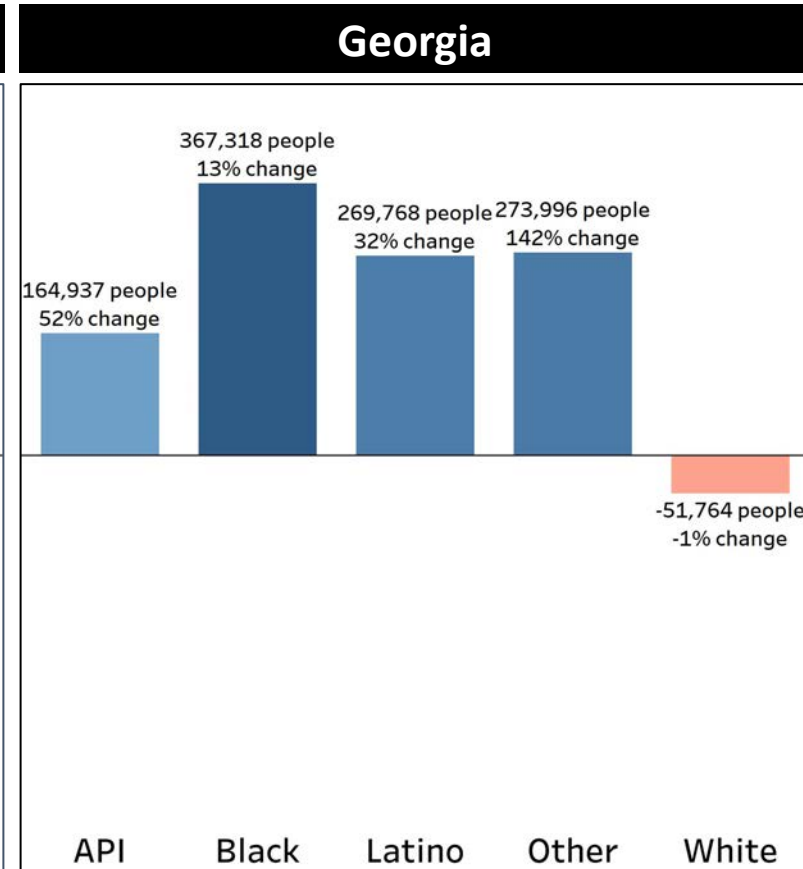
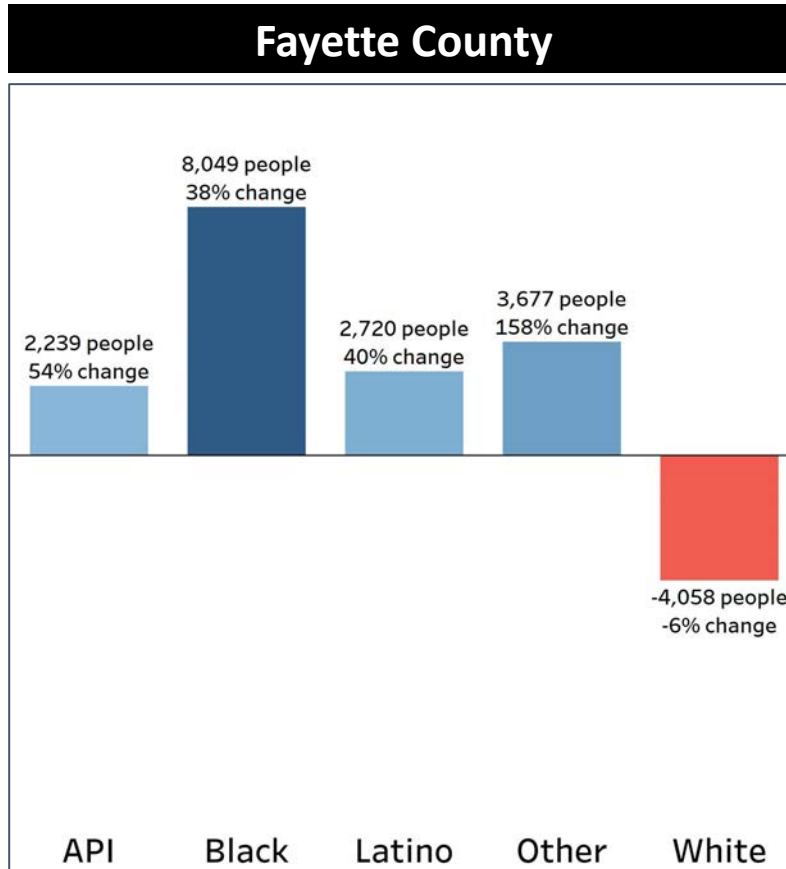
Fayette County 2020



- Fayette county has had significant growth from communities of color
- In 2010, people of color only made up less than a  $\frac{1}{3}$  of the population, and now it makes up over 40%

# Demographics

## Population Change by Race (2020 - 2010)



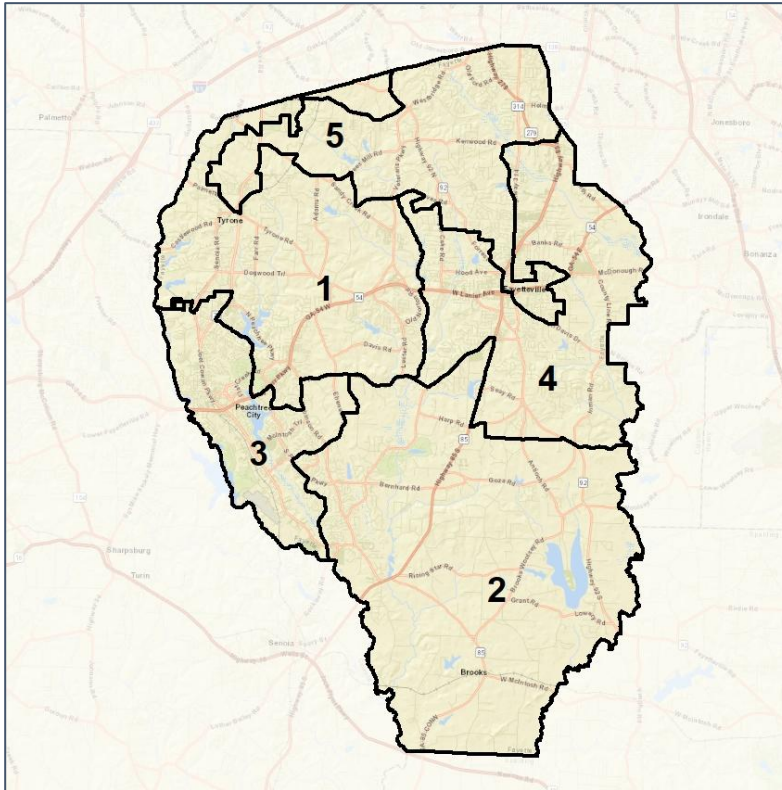
- Fayette County's communities of color have all grown at higher rates than Georgia overall, especially the Black community
- The White community declined at a higher rate than Georgia overall

# Fayette Co. Commission & School Board

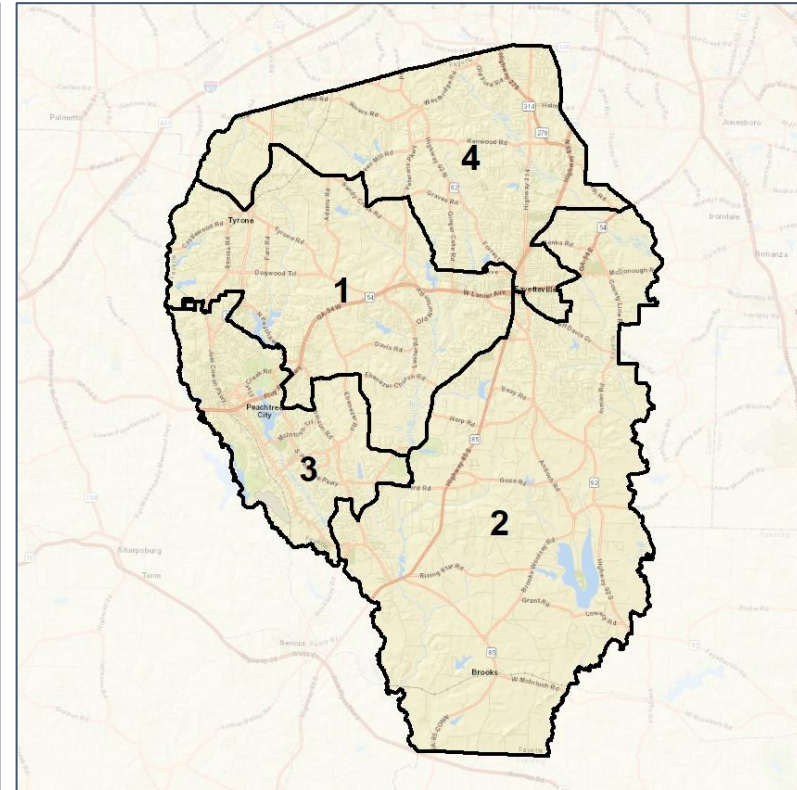
## Context



### 2012 Map



### 2022 Map\*



	1	2	3	4	5	1*	2*	3*	4*	County
Population	23,646	23,974	24,311	24,592	22,671	29,084	30,234	30,827	29,049	119,194
API	4%	4%	10%	4%	4%	4%	4%	9%	4%	5%
Black	17%	7%	9%	33%	59%	20%	18%	9%	53%	24%
Latino	12%	5%	8%	7%	7%	9%	6%	8%	10%	8%
Other	5%	5%	5%	5%	4%	5%	5%	5%	5%	5%
White	62%	79%	67%	51%	25%	61%	68%	69%	29%	57%
Population Gain	2,146	2,808	2,930	2,821	1,922	5,438	6,260	6,516	4,457	*
Population % Gain	10%	13%	14%	13%	9%	23%	26%	27%	18%	*
Net POC Gain	3,309	2,449	2,757	4,482	3,688	2,299	4,636	1,475	8,546	*
Net POC % Gain	58%	97%	52%	59%	28%	26%	93%	18%	71%	*



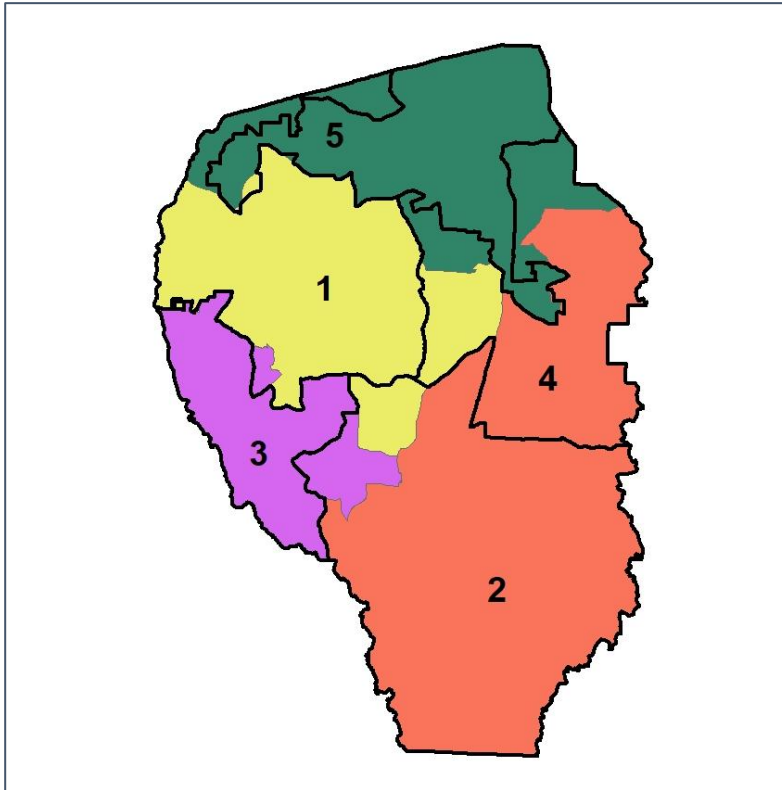


# Fayette Co. Commission & School Board

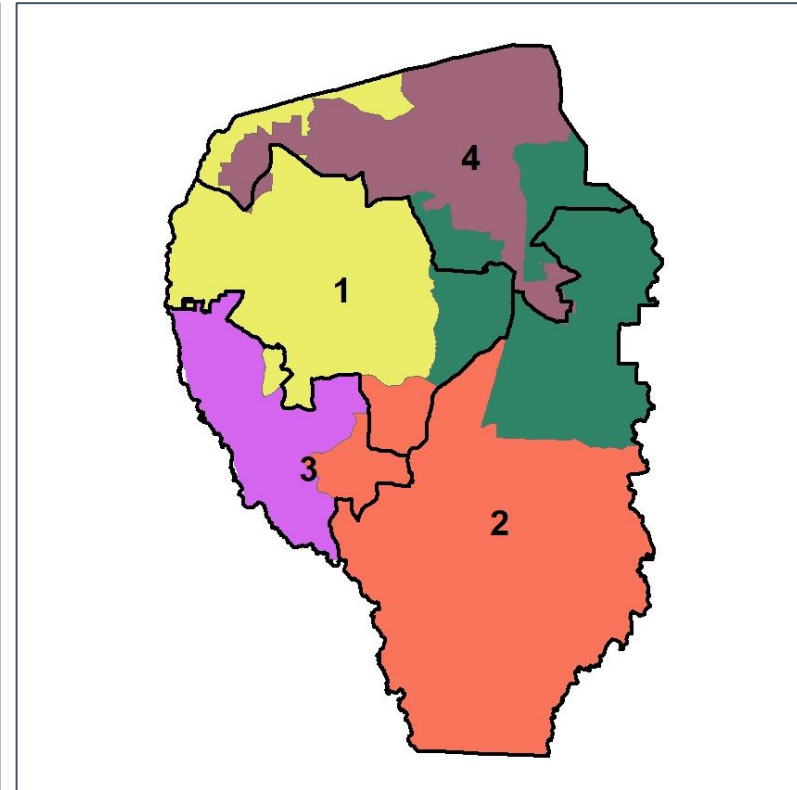
## Changes in Redistricting



**2012 Map (2022 in Colors)**



**2022 Map\* (2012 in Colors)**



	1	2	3	4	5	1*	2*	3*	4*	County
Population	23,646	23,974	24,311	24,592	22,671	29,084	30,234	30,827	29,049	119,194
API	4%	4%	10%	4%	4%	4%	4%	9%	4%	5%
Black	17%	7%	9%	33%	59%	20%	18%	9%	53%	24%
Latino	12%	5%	8%	7%	7%	9%	6%	8%	10%	8%
Other	5%	5%	5%	5%	4%	5%	5%	5%	5%	5%
White	62%	79%	67%	51%	25%	61%	68%	69%	29%	57%
Population Gain	2,146	2,808	2,930	2,821	1,922	5,438	6,260	6,516	4,457	*
Population % Gain	10%	13%	14%	13%	9%	23%	26%	27%	18%	*
Net POC Gain	3,309	2,449	2,757	4,482	3,688	2,299	4,636	1,475	8,546	*
Net POC % Gain	58%	97%	52%	59%	28%	26%	93%	18%	71%	*



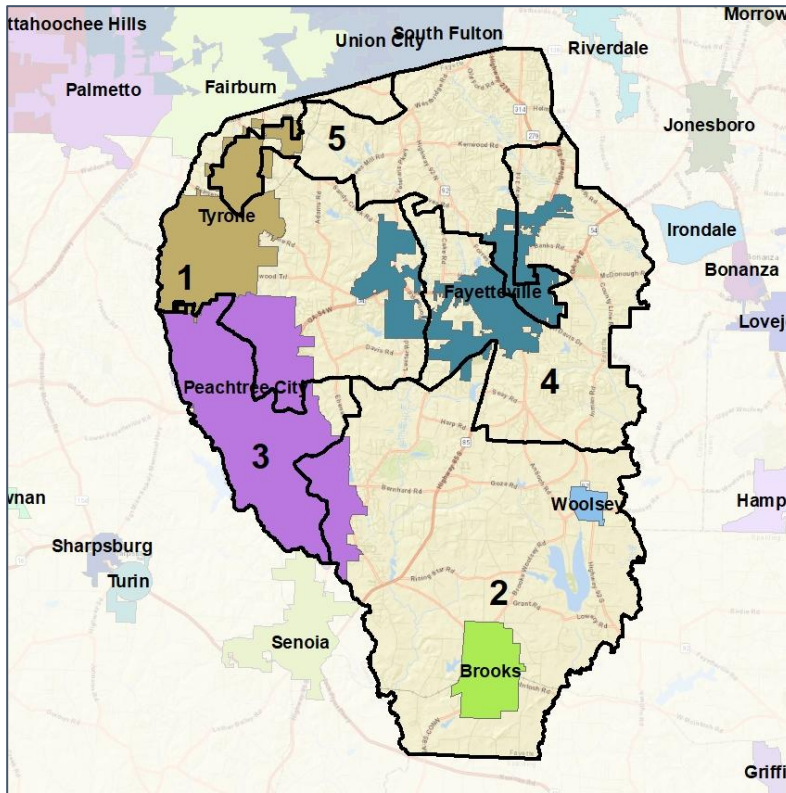


# Fayette Co. Commission & School Board

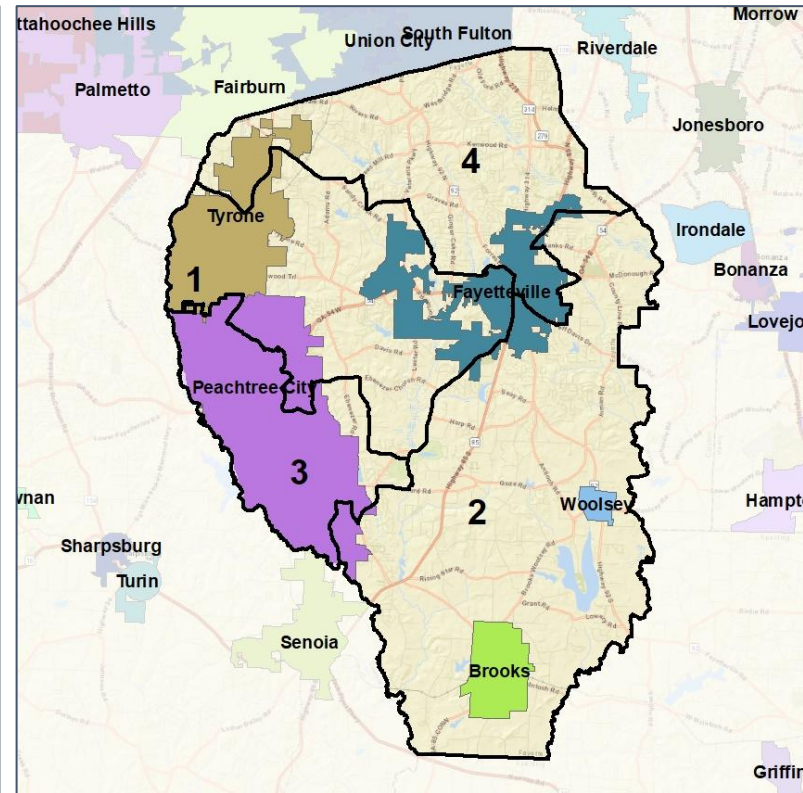
## Cities and Places



### 2012 Map



### 2022 Map\*



	1	2	3	4	5	1*	2*	3*	4*	County
Population	23,646	23,974	24,311	24,592	22,671	29,084	30,234	30,827	29,049	119,194
API	4%	4%	10%	4%	4%	4%	4%	9%	4%	5%
Black	17%	7%	9%	33%	59%	20%	18%	9%	53%	24%
Latino	12%	5%	8%	7%	7%	9%	6%	8%	10%	8%
Other	5%	5%	5%	5%	4%	5%	5%	5%	5%	5%
White	62%	79%	67%	51%	25%	61%	68%	69%	29%	57%
Population Gain	2,146	2,808	2,930	2,821	1,922	5,438	6,260	6,516	4,457	*
Population % Gain	10%	13%	14%	13%	9%	23%	26%	27%	18%	*
Net POC Gain	3,309	2,449	2,757	4,482	3,688	2,299	4,636	1,475	8,546	*
Net POC % Gain	58%	97%	52%	59%	28%	26%	93%	18%	71%	*

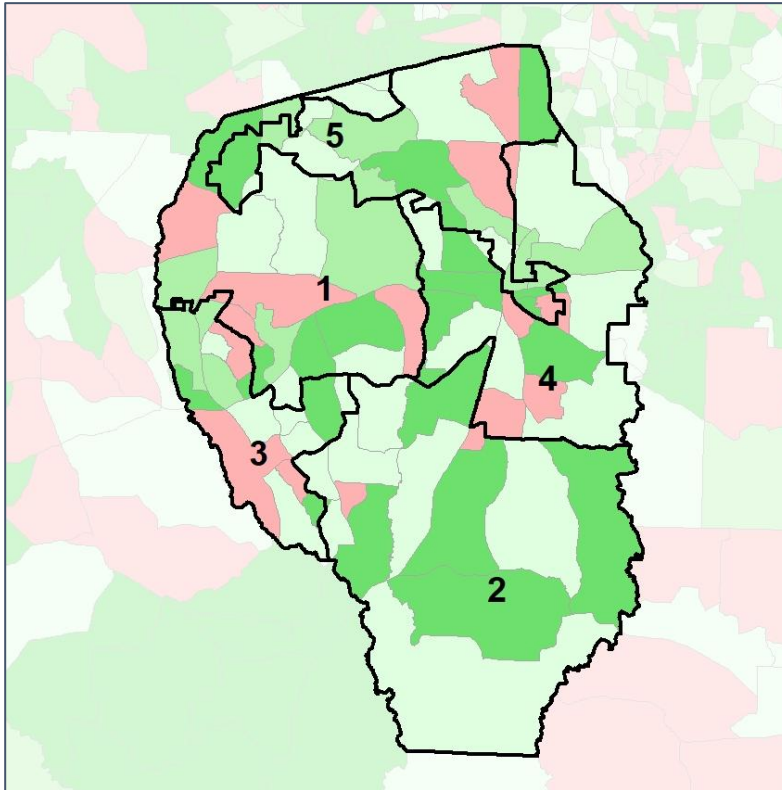


# Fayette Co. Commission & School Board

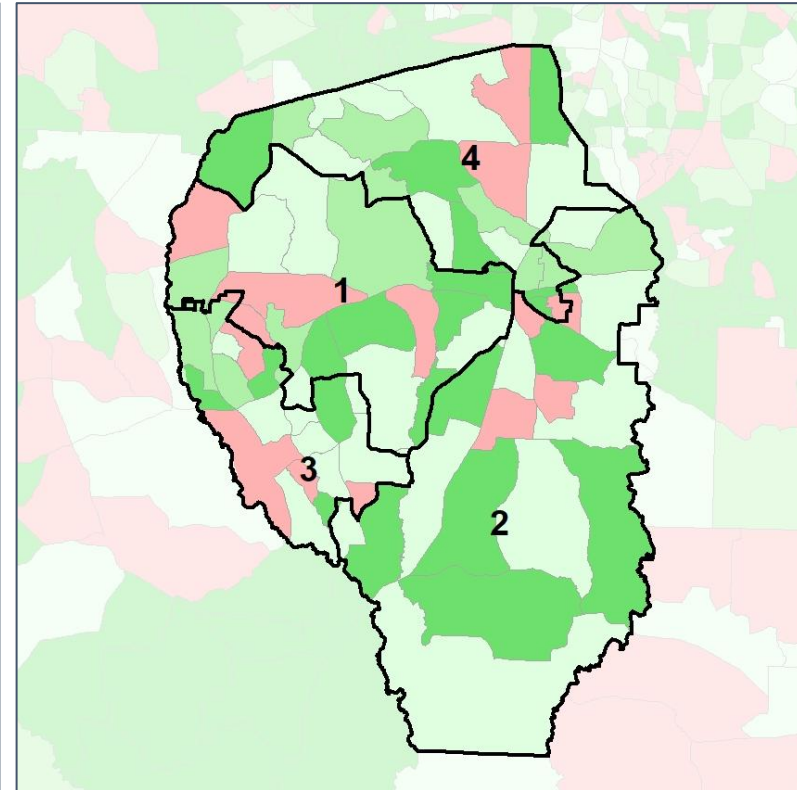
## Net Gain in Population (2010 - 2020) by Census Block Group



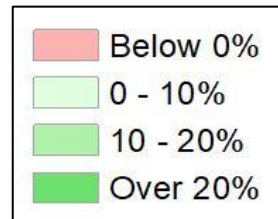
2012 Map



2022 Map\*



	1	2	3	4	5	1*	2*	3*	4*	County
Population	23,646	23,974	24,311	24,592	22,671	29,084	30,234	30,827	29,049	119,194
API	4%	4%	10%	4%	4%	4%	4%	9%	4%	5%
Black	17%	7%	9%	33%	59%	20%	18%	9%	53%	24%
Latino	12%	5%	8%	7%	7%	9%	6%	8%	10%	8%
Other	5%	5%	5%	5%	4%	5%	5%	5%	5%	5%
White	62%	79%	67%	51%	25%	61%	68%	69%	29%	57%
Population Gain	2,146	2,808	2,930	2,821	1,922	5,438	6,260	6,516	4,457	*
Population % Gain	10%	13%	14%	13%	9%	23%	26%	27%	18%	*
Net POC Gain	3,309	2,449	2,757	4,482	3,688	2,299	4,636	1,475	8,546	*
Net POC % Gain	58%	97%	52%	59%	28%	26%	93%	18%	71%	*

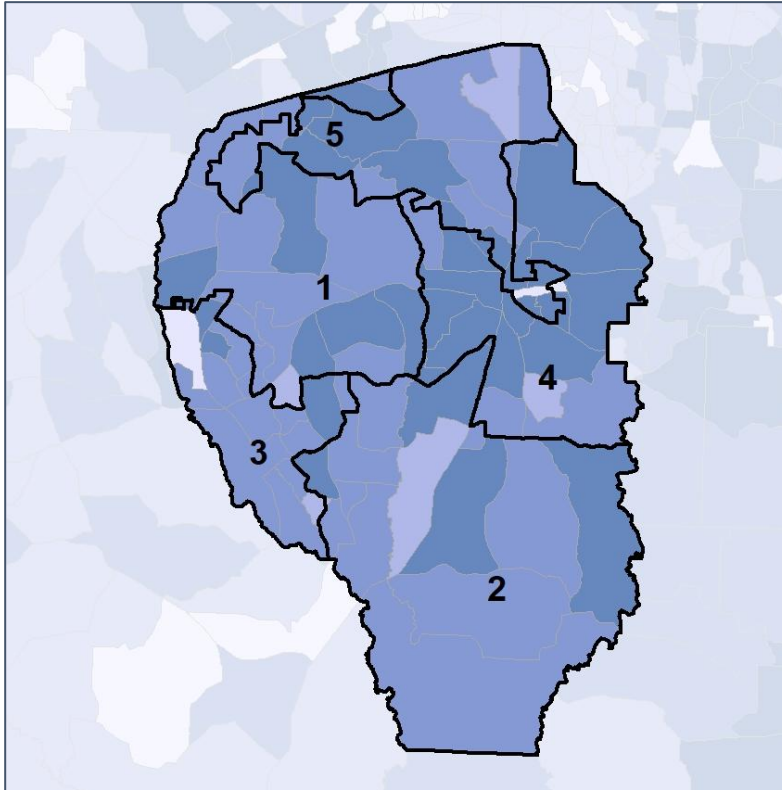


# Fayette Co. Commission & School Board

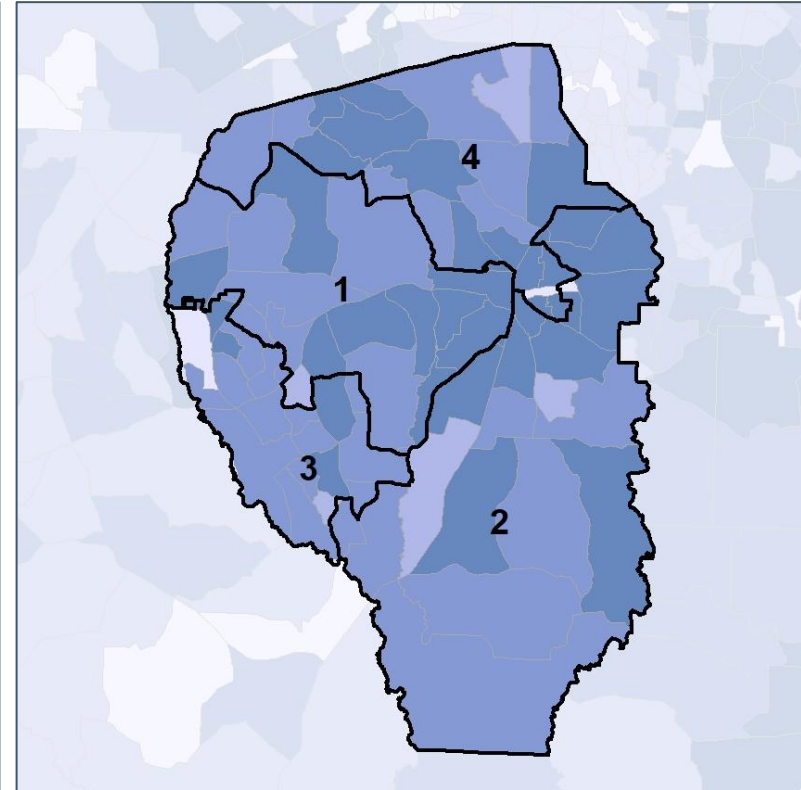
## Net Gain in % POC (2020 - 2010) by Census Block Group



2012 Map



2022 Map\*



	1	2	3	4	5	1*	2*	3*	4*	County
Population	23,646	23,974	24,311	24,592	22,671	29,084	30,234	30,827	29,049	119,194
API	4%	4%	10%	4%	4%	4%	4%	9%	4%	5%
Black	17%	7%	9%	33%	59%	20%	18%	9%	53%	24%
Latino	12%	5%	8%	7%	7%	9%	6%	8%	10%	8%
Other	5%	5%	5%	5%	4%	5%	5%	5%	5%	5%
White	62%	79%	67%	51%	25%	61%	68%	69%	29%	57%
Population Gain	2,146	2,808	2,930	2,821	1,922	5,438	6,260	6,516	4,457	*
Population % Gain	10%	13%	14%	13%	9%	23%	26%	27%	18%	*
Net POC Gain	3,309	2,449	2,757	4,482	3,688	2,299	4,636	1,475	8,546	*
Net POC % Gain	58%	97%	52%	59%	28%	26%	93%	18%	71%	*



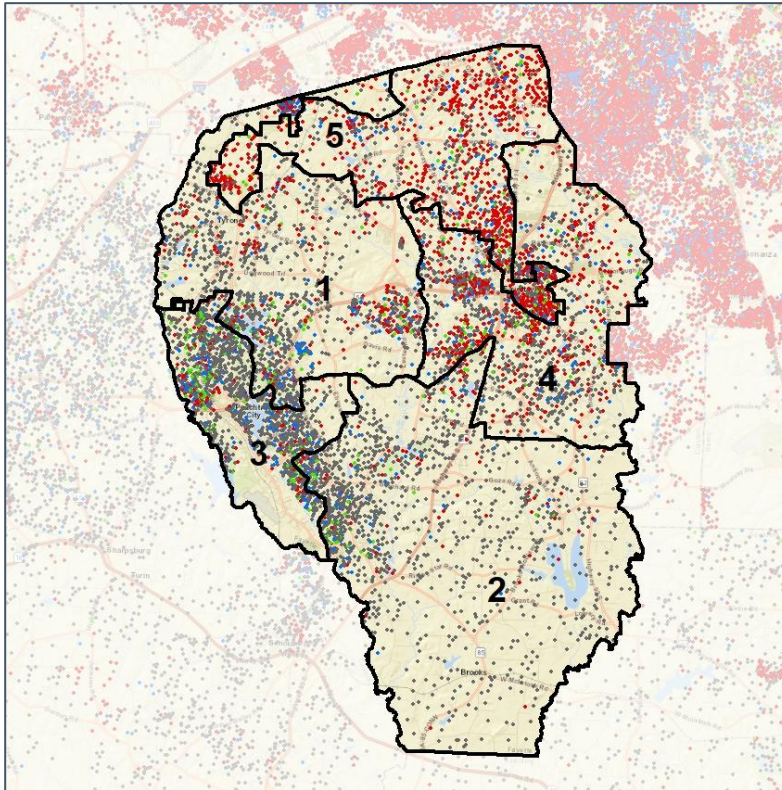


# Fayette Co. Commission & School Board

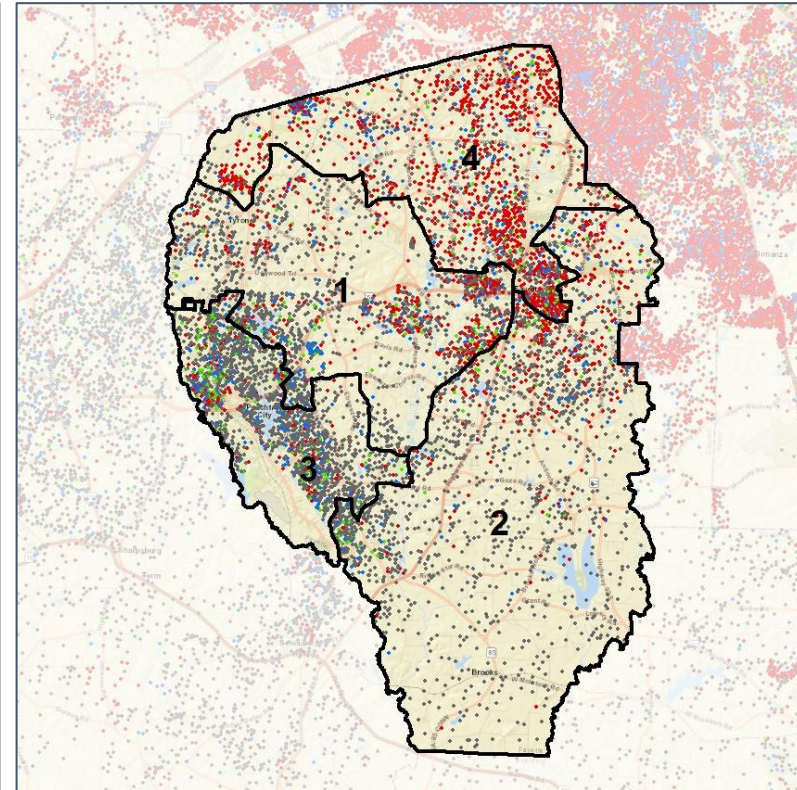
## Population Density by Race



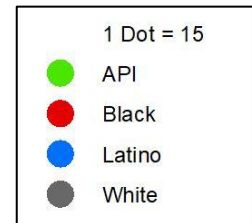
2012 Map



2022 Map\*



	1	2	3	4	5	1*	2*	3*	4*	County
Population	23,646	23,974	24,311	24,592	22,671	29,084	30,234	30,827	29,049	119,194
API	1,028	875	2,463	1,023	1,017	1,280	1,068	2,854	1,204	6,406
% API	4%	4%	10%	4%	4%	4%	4%	9%	4%	5%
Black	3,916	1,658	2,292	8,005	13,295	5,913	5,335	2,641	15,277	29,166
% Black	17%	7%	9%	33%	59%	20%	18%	9%	53%	24%
Latino	2,810	1,244	2,026	1,755	1,645	2,502	1,713	2,471	2,794	9,480
% Latino	12%	5%	8%	7%	7%	9%	6%	8%	10%	8%
Other	1,238	1,208	1,235	1,318	999	1,596	1,505	1,525	1,372	5,998
% Other	5%	5%	5%	5%	4%	5%	5%	5%	5%	5%
White	14,654	18,989	16,295	12,491	5,715	17,793	20,613	21,336	8,402	68,144
% White	62%	79%	67%	51%	25%	61%	68%	69%	29%	57%



Source:  
2020 Decennial Census  
2020 ACS 5-Year Dataset

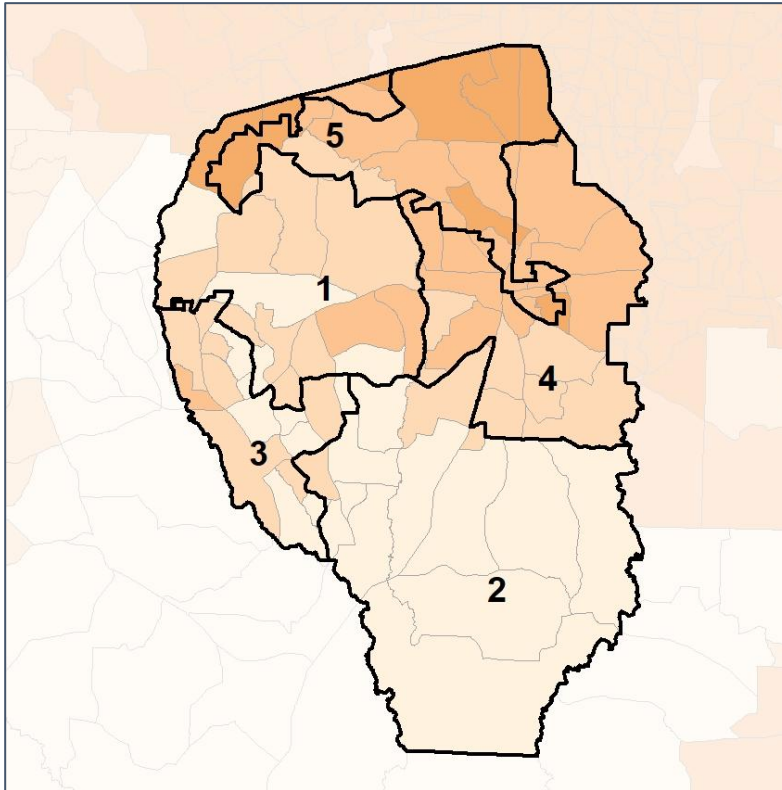


# Fayette Co. Commission & School Board

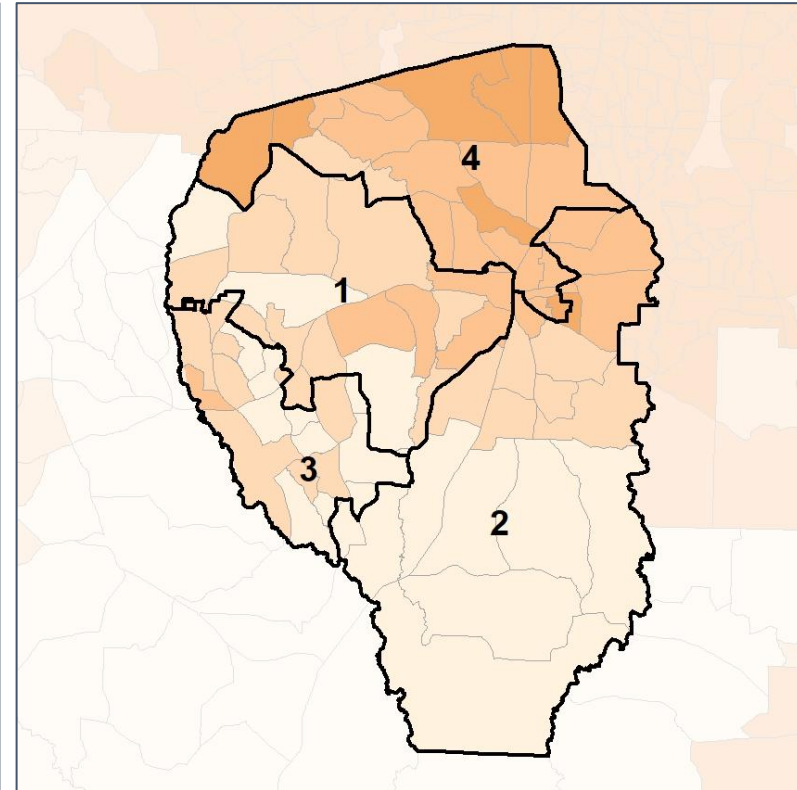
## % People of Color by Census Block Group



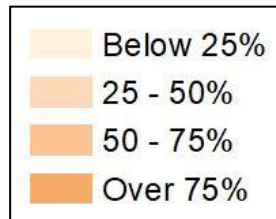
### 2012 Map



### 2022 Map\*



	1	2	3	4	5	1*	2*	3*	4*	County
Population	23,646	23,974	24,311	24,592	22,671	29,084	30,234	30,827	29,049	119,194
API	1,028	875	2,463	1,023	1,017	1,280	1,068	2,854	1,204	6,406
% API	4%	4%	10%	4%	4%	4%	4%	9%	4%	5%
Black	3,916	1,658	2,292	8,005	13,295	5,913	5,335	2,641	15,277	29,166
% Black	17%	7%	9%	33%	59%	20%	18%	9%	53%	24%
Latino	2,810	1,244	2,026	1,755	1,645	2,502	1,713	2,471	2,794	9,480
% Latino	12%	5%	8%	7%	7%	9%	6%	8%	10%	8%
Other	1,238	1,208	1,235	1,318	999	1,596	1,505	1,525	1,372	5,998
% Other	5%	5%	5%	5%	4%	5%	5%	5%	5%	5%
White	14,654	18,989	16,295	12,491	5,715	17,793	20,613	21,336	8,402	68,144
% White	62%	79%	67%	51%	25%	61%	68%	69%	29%	57%

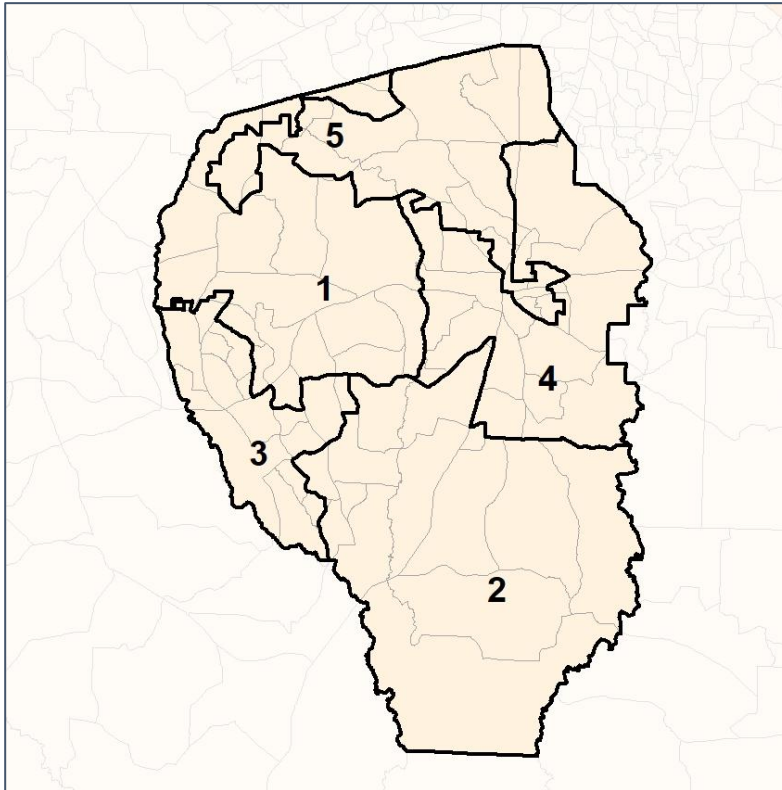


# Fayette Co. Commission & School Board

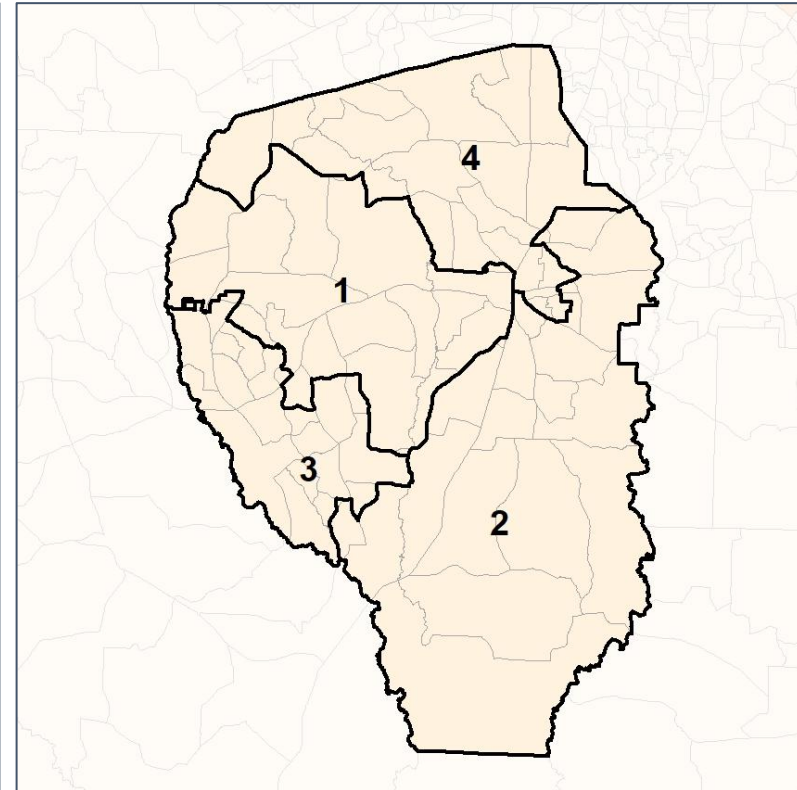
## % API by Census Block Group



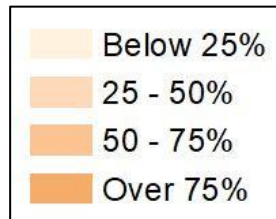
### 2012 Map



### 2022 Map\*



	1	2	3	4	5	1*	2*	3*	4*	County
Population	23,646	23,974	24,311	24,592	22,671	29,084	30,234	30,827	29,049	119,194
API	1,028	875	2,463	1,023	1,017	1,280	1,068	2,854	1,204	6,406
% API	4%	4%	10%	4%	4%	4%	4%	9%	4%	5%
Black	3,916	1,658	2,292	8,005	13,295	5,913	5,335	2,641	15,277	29,166
% Black	17%	7%	9%	33%	59%	20%	18%	9%	53%	24%
Latino	2,810	1,244	2,026	1,755	1,645	2,502	1,713	2,471	2,794	9,480
% Latino	12%	5%	8%	7%	7%	9%	6%	8%	10%	8%
Other	1,238	1,208	1,235	1,318	999	1,596	1,505	1,525	1,372	5,998
% Other	5%	5%	5%	5%	4%	5%	5%	5%	5%	5%
White	14,654	18,989	16,295	12,491	5,715	17,793	20,613	21,336	8,402	68,144
% White	62%	79%	67%	51%	25%	61%	68%	69%	29%	57%



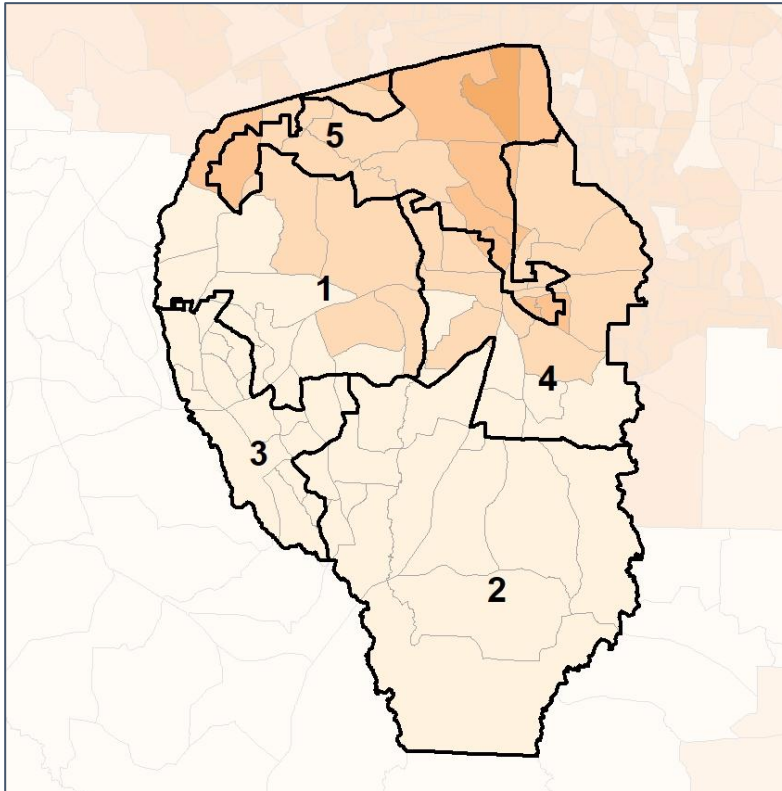


# Fayette Co. Commission & School Board

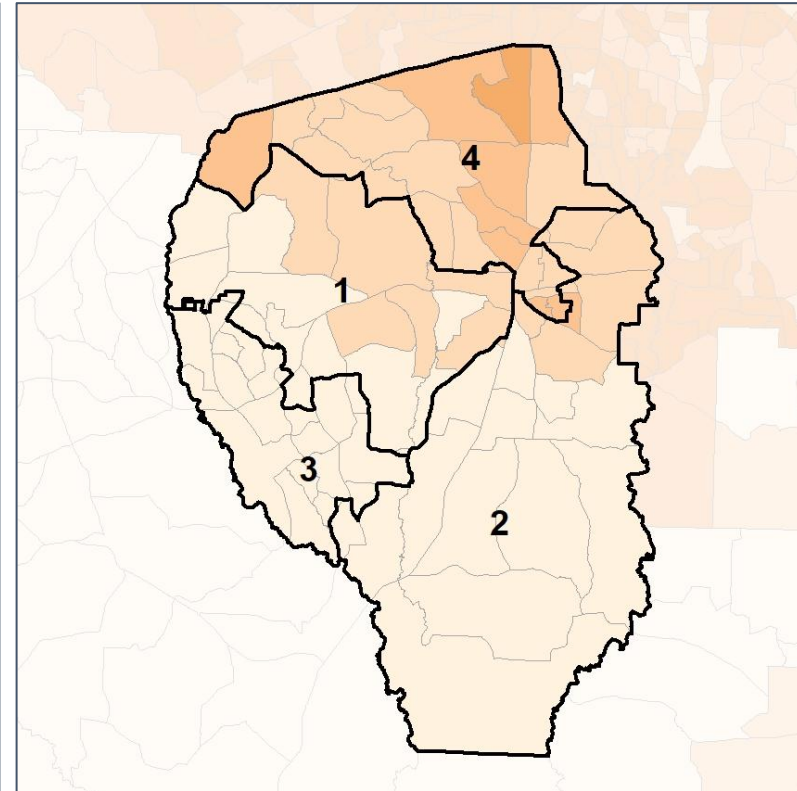
## % Black by Census Block Group



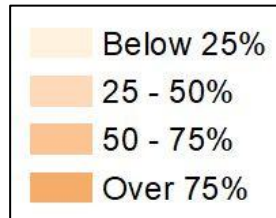
### 2012 Map



### 2022 Map\*



	1	2	3	4	5	1*	2*	3*	4*	County
Population	23,646	23,974	24,311	24,592	22,671	29,084	30,234	30,827	29,049	119,194
API	1,028	875	2,463	1,023	1,017	1,280	1,068	2,854	1,204	6,406
% API	4%	4%	10%	4%	4%	4%	4%	9%	4%	5%
Black	3,916	1,658	2,292	8,005	13,295	5,913	5,335	2,641	15,277	29,166
% Black	17%	7%	9%	33%	59%	20%	18%	9%	53%	24%
Latino	2,810	1,244	2,026	1,755	1,645	2,502	1,713	2,471	2,794	9,480
% Latino	12%	5%	8%	7%	7%	9%	6%	8%	10%	8%
Other	1,238	1,208	1,235	1,318	999	1,596	1,505	1,525	1,372	5,998
% Other	5%	5%	5%	5%	4%	5%	5%	5%	5%	5%
White	14,654	18,989	16,295	12,491	5,715	17,793	20,613	21,336	8,402	68,144
% White	62%	79%	67%	51%	25%	61%	68%	69%	29%	57%



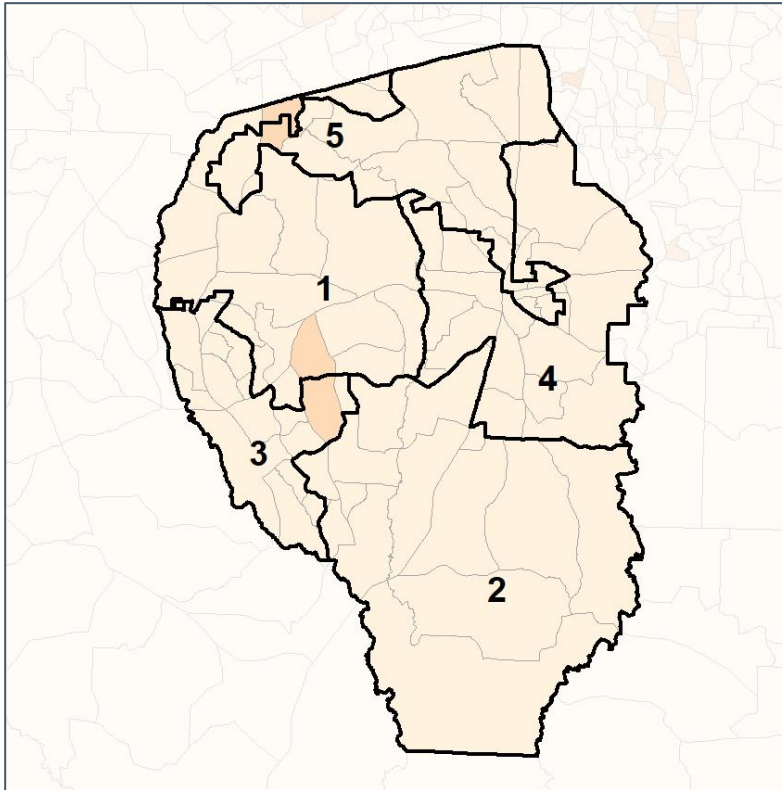


# Fayette Co. Commission & School Board

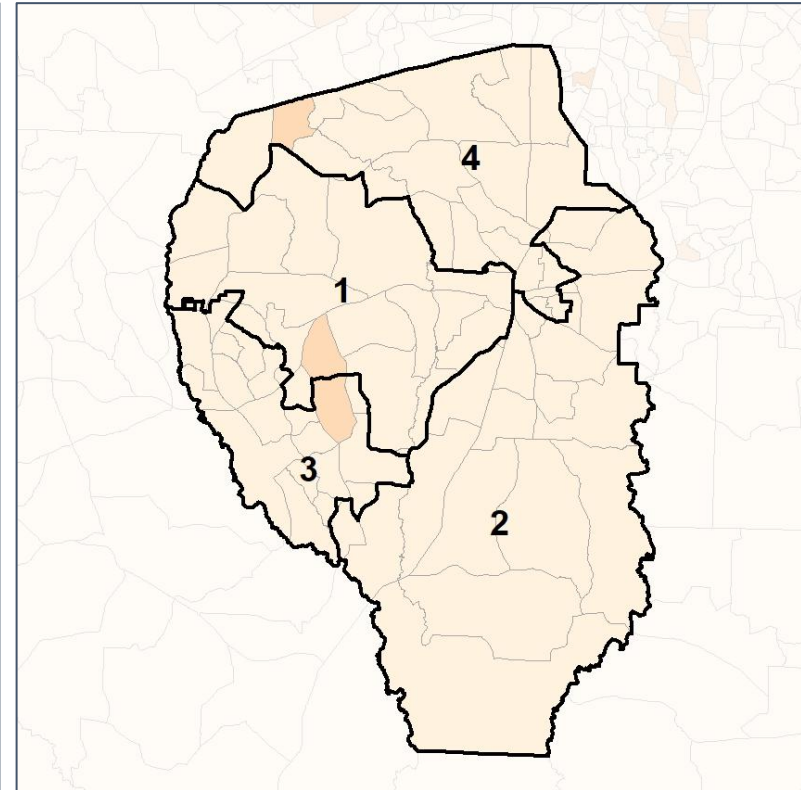
## % Latino by Census Block Group



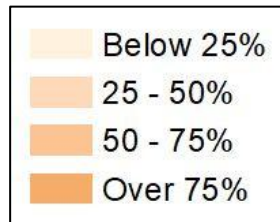
### 2012 Map



### 2022 Map\*



	1	2	3	4	5	1*	2*	3*	4*	County
Population	23,646	23,974	24,311	24,592	22,671	29,084	30,234	30,827	29,049	119,194
API	1,028	875	2,463	1,023	1,017	1,280	1,068	2,854	1,204	6,406
% API	4%	4%	10%	4%	4%	4%	4%	9%	4%	5%
Black	3,916	1,658	2,292	8,005	13,295	5,913	5,335	2,641	15,277	29,166
% Black	17%	7%	9%	33%	59%	20%	18%	9%	53%	24%
Latino	2,810	1,244	2,026	1,755	1,645	2,502	1,713	2,471	2,794	9,480
% Latino	12%	5%	8%	7%	7%	9%	6%	8%	10%	8%
Other	1,238	1,208	1,235	1,318	999	1,596	1,505	1,525	1,372	5,998
% Other	5%	5%	5%	5%	4%	5%	5%	5%	5%	5%
White	14,654	18,989	16,295	12,491	5,715	17,793	20,613	21,336	8,402	68,144
% White	62%	79%	67%	51%	25%	61%	68%	69%	29%	57%

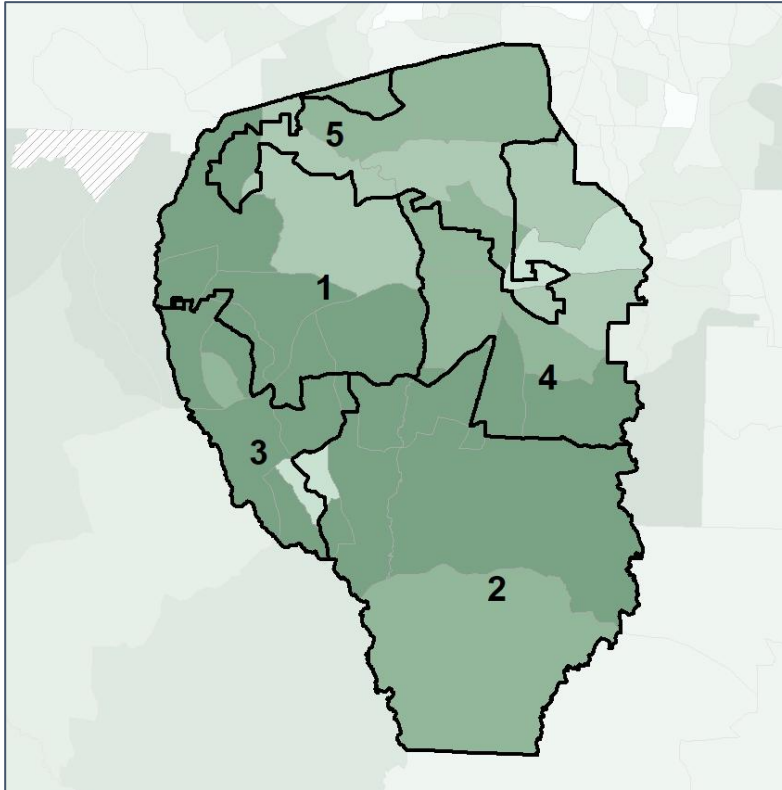


# Fayette Co. Commission & School Board

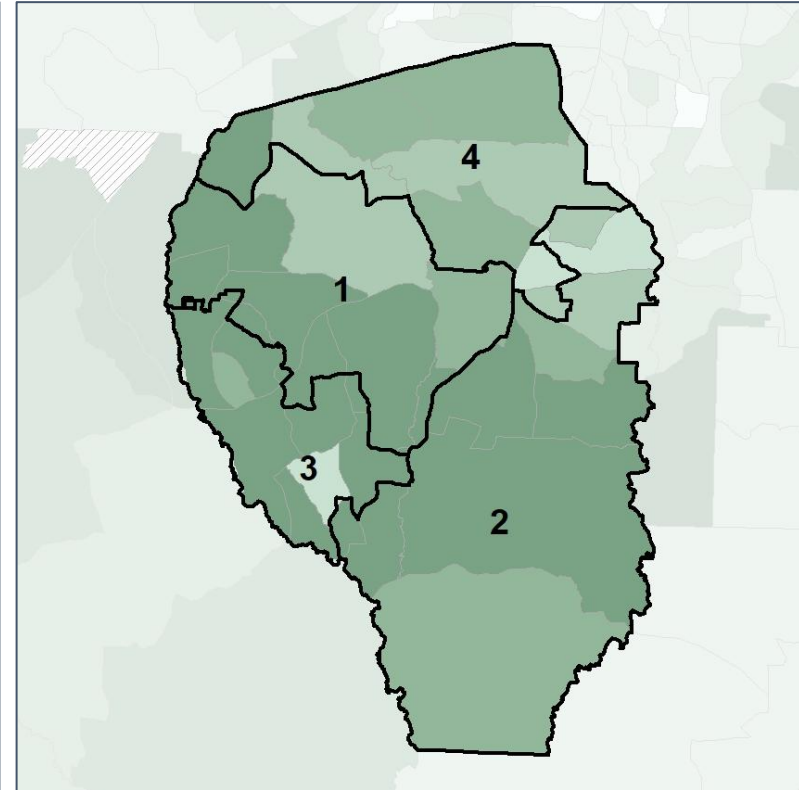
## Median Household Income by Census Tract



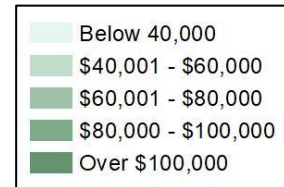
2012 Map



2022 Map\*



	1	2	3	4	5	1*	2*	3*	4*	County
Population	23,646	23,974	24,311	24,592	22,671	29,084	30,234	30,827	29,049	119,194
% API	4%	4%	10%	4%	4%	4%	4%	9%	4%	5%
% Black	17%	7%	9%	33%	59%	20%	18%	9%	53%	24%
% Latino	12%	5%	8%	7%	7%	9%	6%	8%	10%	8%
% Other	5%	5%	5%	5%	4%	5%	5%	5%	5%	5%
% White	62%	79%	67%	51%	25%	61%	68%	69%	29%	57%
Median Income	\$101,000	\$126,000	\$103,000	\$88,000	\$82,000	\$101,000	\$108,000	\$105,000	\$83,000	\$94,000
% Renter	19%	8%	23%	18%	22%	22%	8%	22%	19%	19%
% Youth	18%	14%	15%	20%	21%	18%	18%	14%	21%	18%

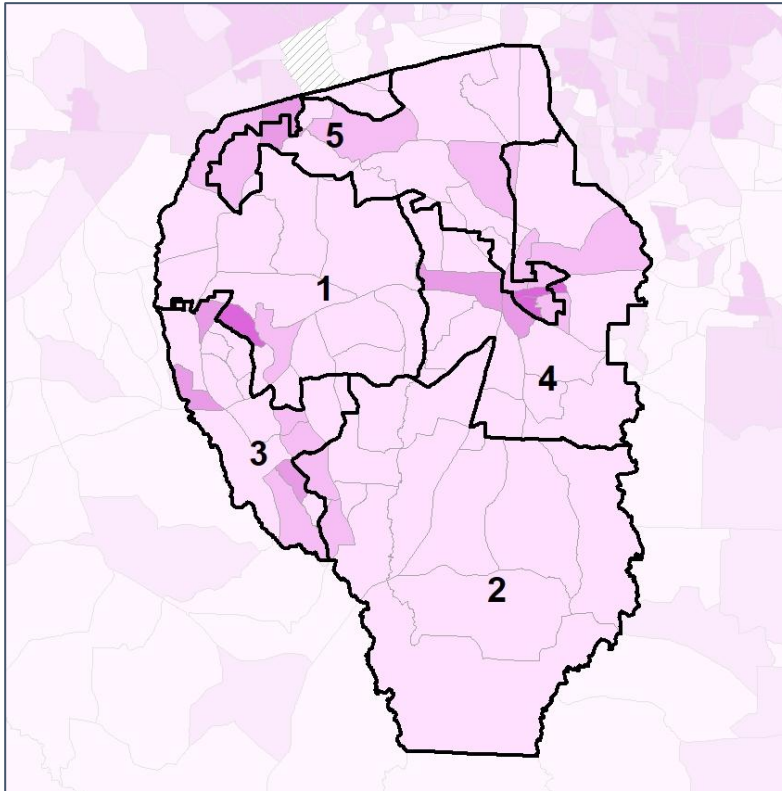


# Fayette Co. Commission & School Board

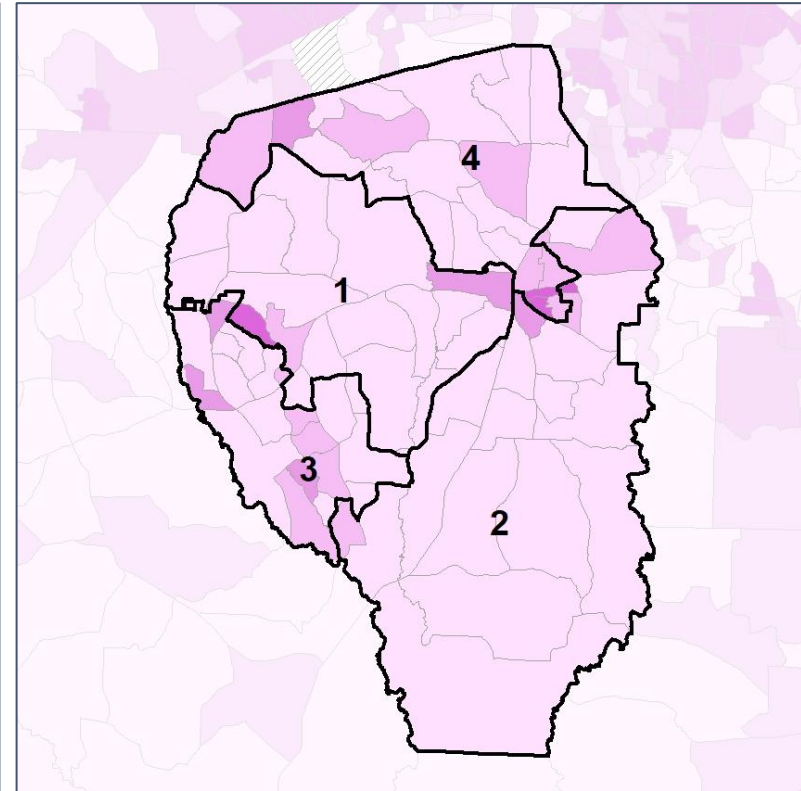
## % Renter by Census Block Group



### 2012 Map



### 2022 Map\*



	1	2	3	4	5	1*	2*	3*	4*	County
Population	23,646	23,974	24,311	24,592	22,671	29,084	30,234	30,827	29,049	119,194
% API	4%	4%	10%	4%	4%	4%	4%	9%	4%	5%
% Black	17%	7%	9%	33%	59%	20%	18%	9%	53%	24%
% Latino	12%	5%	8%	7%	7%	9%	6%	8%	10%	8%
% Other	5%	5%	5%	5%	4%	5%	5%	5%	5%	5%
% White	62%	79%	67%	51%	25%	61%	68%	69%	29%	57%
Median Income	\$101,000	\$126,000	\$103,000	\$88,000	\$82,000	\$101,000	\$108,000	\$105,000	\$83,000	\$94,000
% Renter	19%	8%	23%	18%	22%	22%	8%	22%	19%	19%
% Youth	18%	14%	15%	20%	21%	18%	18%	14%	21%	18%

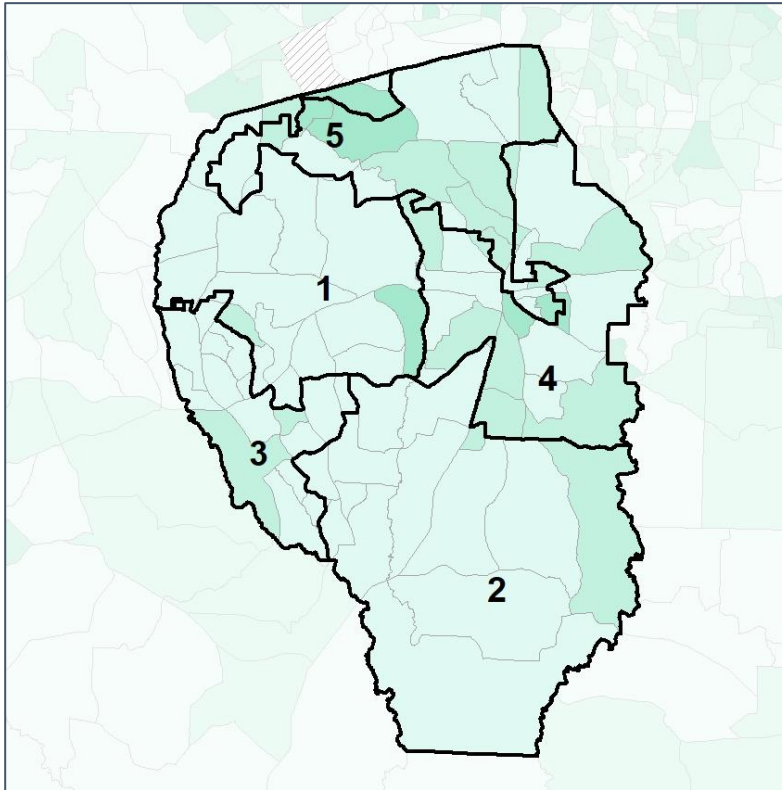


# Fayette Co. Commission & School Board

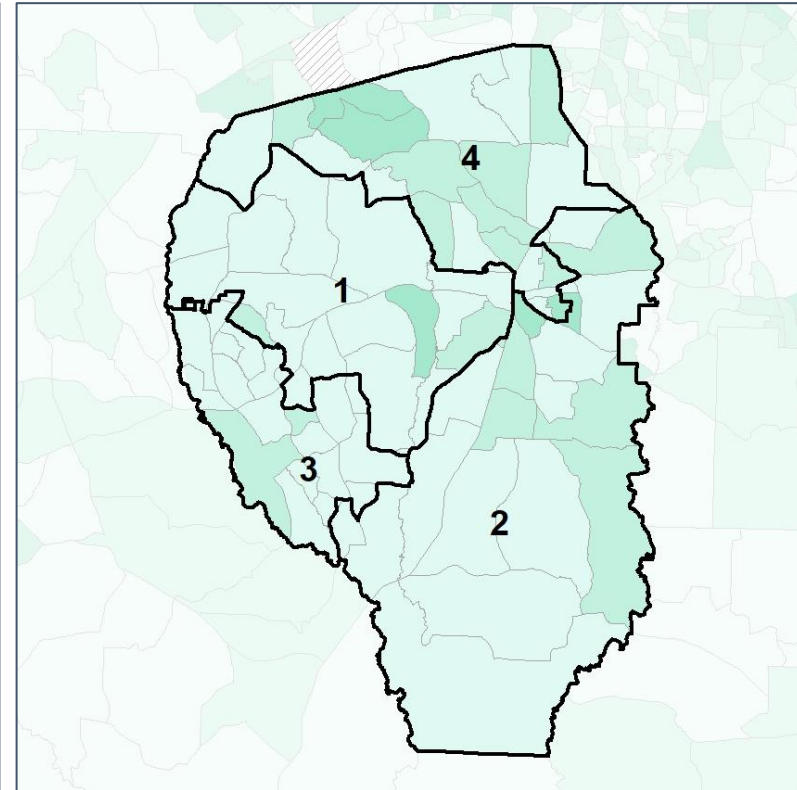
## % Youth (18-34) by Census Block Group



2012 Map



2022 Map\*



	1	2	3	4	5	1*	2*	3*	4*	County
Population	23,646	23,974	24,311	24,592	22,671	29,084	30,234	30,827	29,049	119,194
% API	4%	4%	10%	4%	4%	4%	4%	9%	4%	5%
% Black	17%	7%	9%	33%	59%	20%	18%	9%	53%	24%
% Latino	12%	5%	8%	7%	7%	9%	6%	8%	10%	8%
% Other	5%	5%	5%	5%	4%	5%	5%	5%	5%	5%
% White	62%	79%	67%	51%	25%	61%	68%	69%	29%	57%
Median Income	\$101,000	\$126,000	\$103,000	\$88,000	\$82,000	\$101,000	\$108,000	\$105,000	\$83,000	\$94,000
% Renter	19%	8%	23%	18%	22%	22%	8%	22%	19%	19%
% Youth	18%	14%	15%	20%	21%	18%	18%	14%	21%	18%

