



Demographic Overview

Racial Breakdown in Elbert County

Elbert County	2010	2020	% Change
Total Population	20,166	19,637	-3%
AAPI	126	185	47%
Black	5,906	5,253	-11%
Latino	967	996	3%
Other/Mixed Race	211	593	181%
POC	7,210	7,027	-3%
White	12,956	12,610	-3%

*Note: The use of "Other" in these statistics combines those who identify as Native American, Mixed Race, and "Other" race





Population Gain

Change in Population in Georgia by County

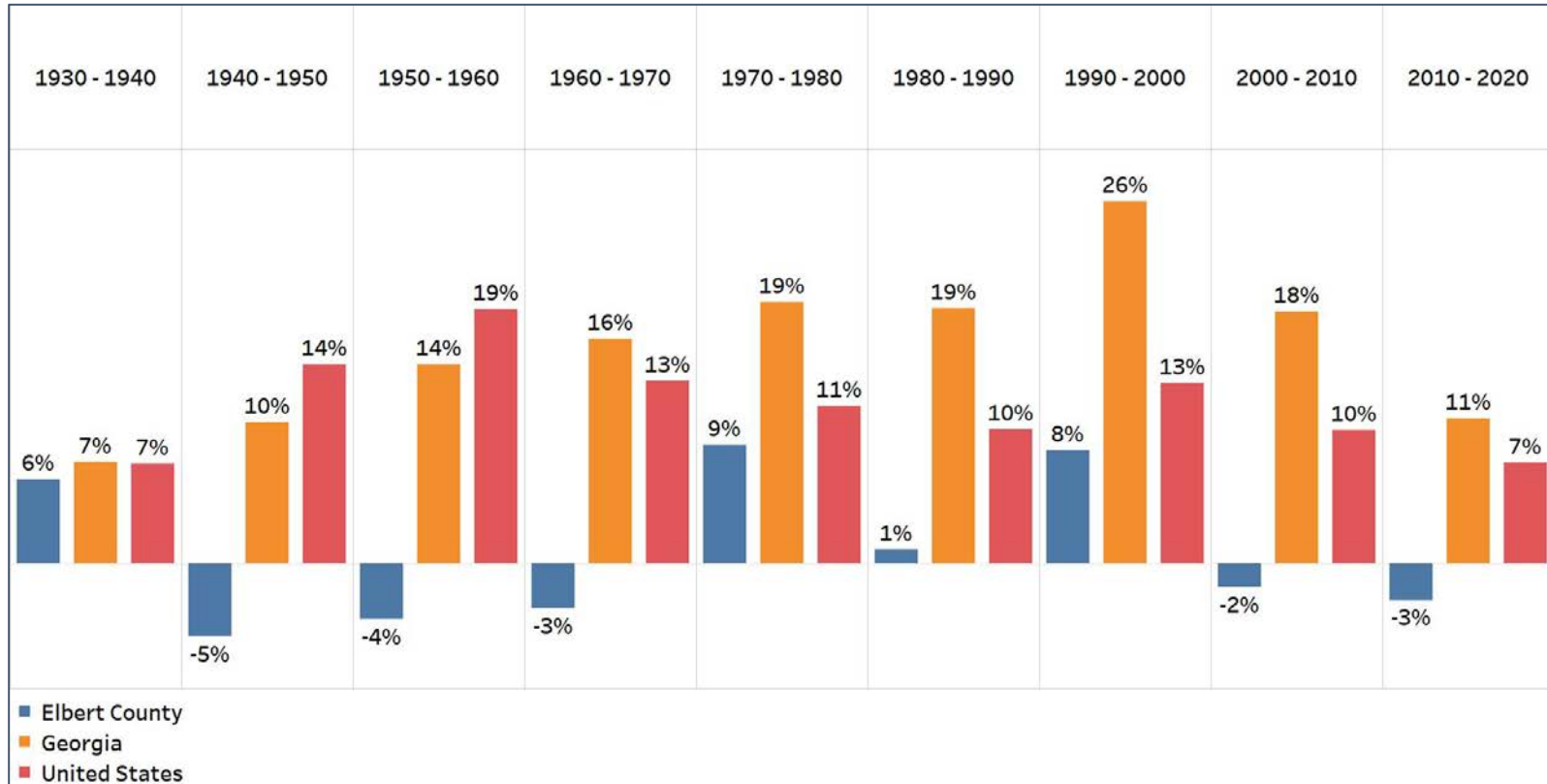


- Georgia is experiencing rapid population growth in the Atlanta, Augusta, and Savannah regions of the state



Population Gain

Change in Population by Decade



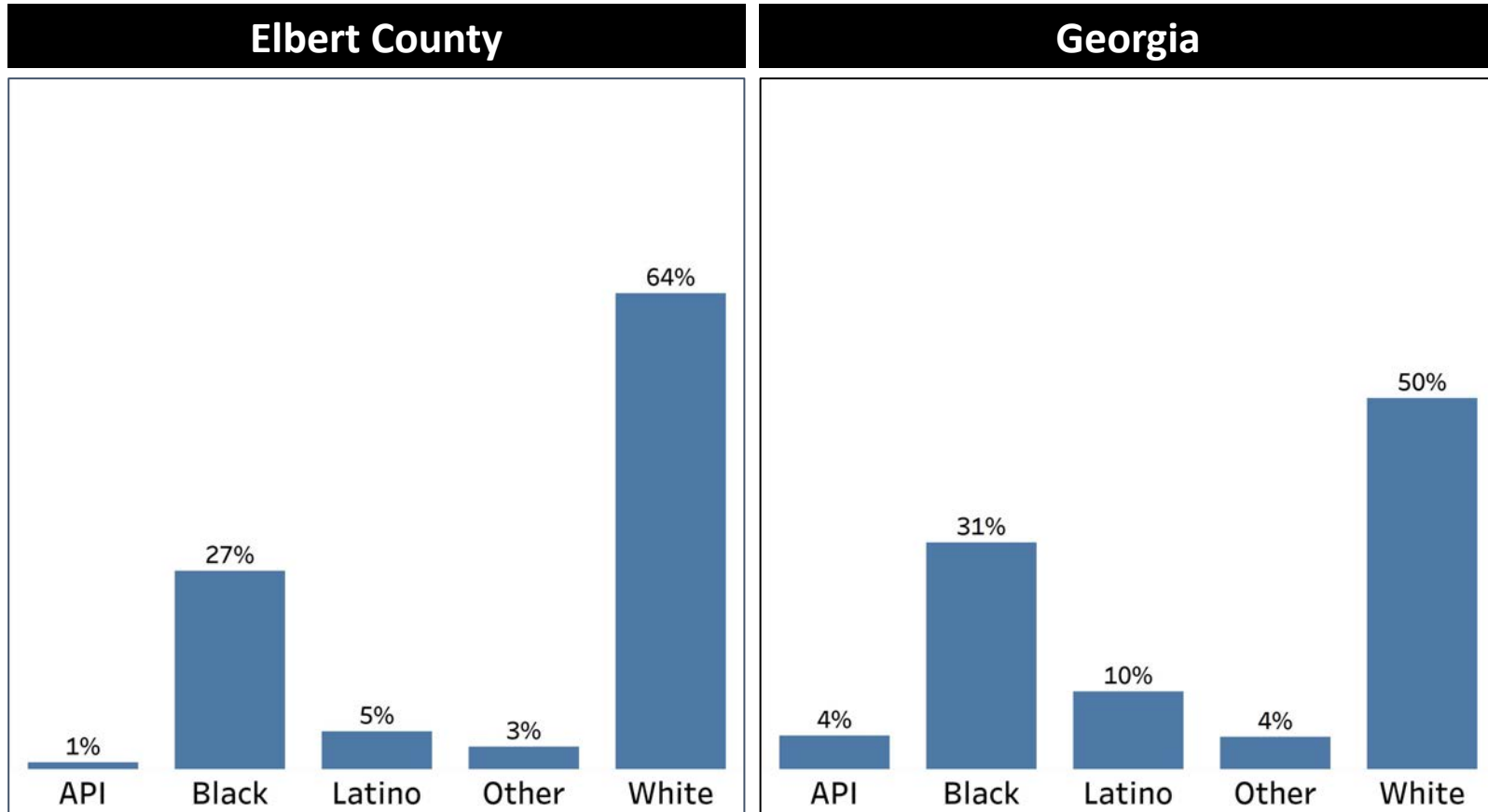
- Elbert County has had a cycle of slight increases and decreases in population
- In the last 2 decades, it has had some decline in population





Demographics

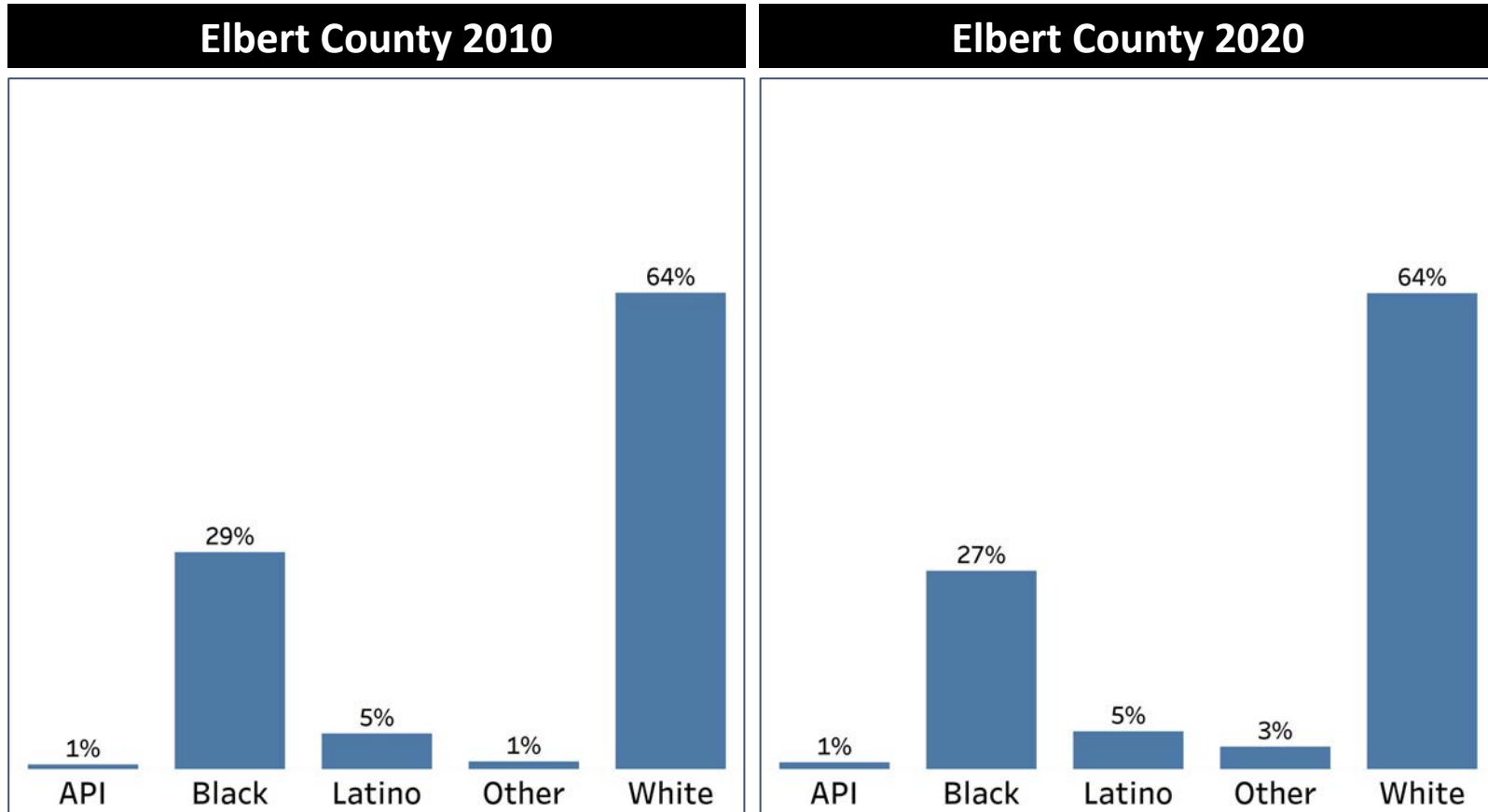
Comparison between Elbert County and Georgia



- Elbert County's White community is a higher share of the population compared to Georgia overall
- The Black and Other populations share similar percentages in Elbert County as Georgia overall

Demographics

2010 vs 2020 Demographics in Elbert County



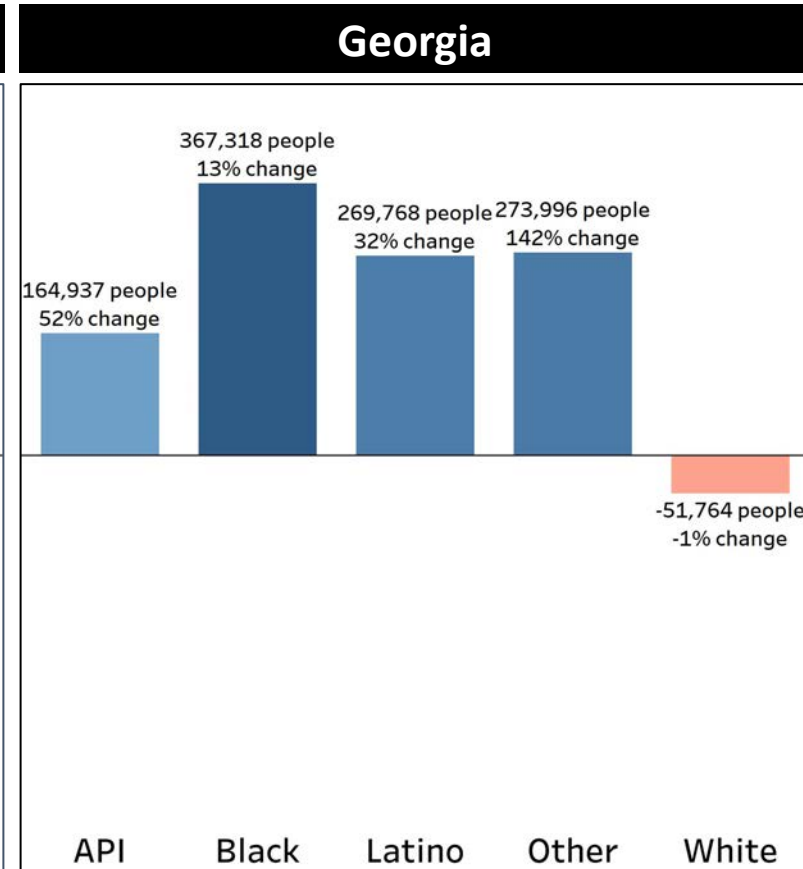
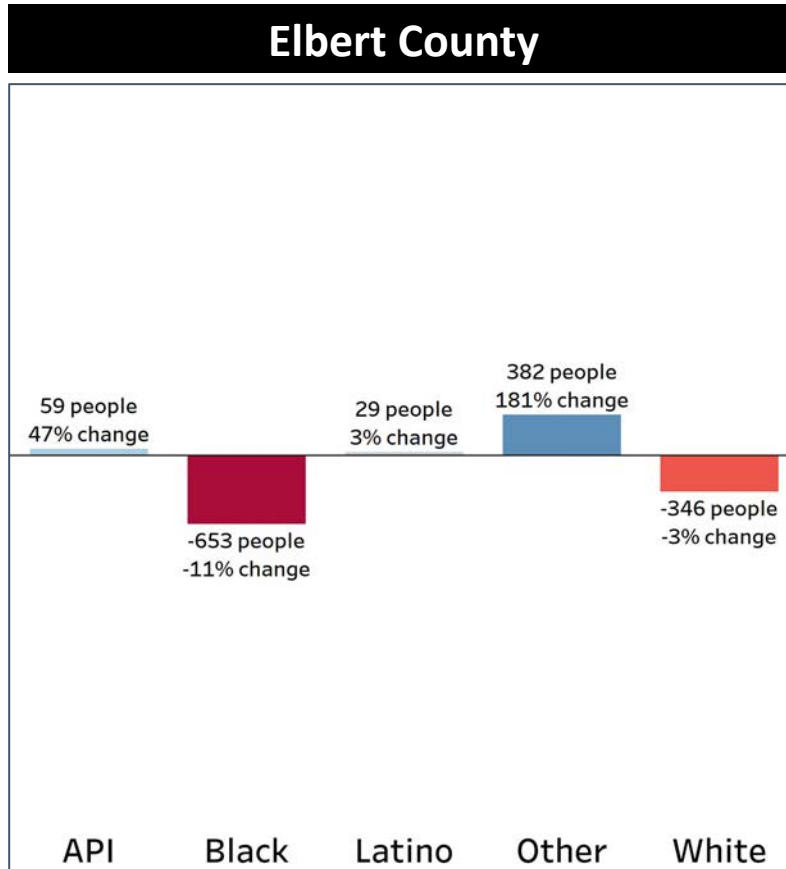
- Elbert County's share of the Black population declined in the past decade, while the Other population increased at the same rate





Demographics

Population Change by Race (2020 - 2010)



- Elbert County has had negligible growth or decline in all demographic groups except for the Other demographic

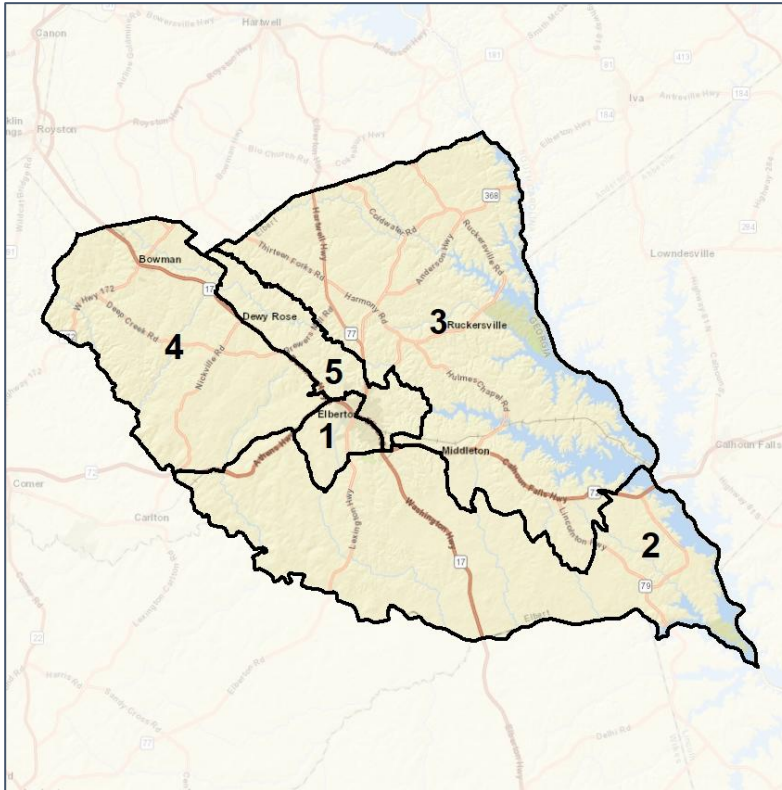


Elbert Co. Commission & School Board

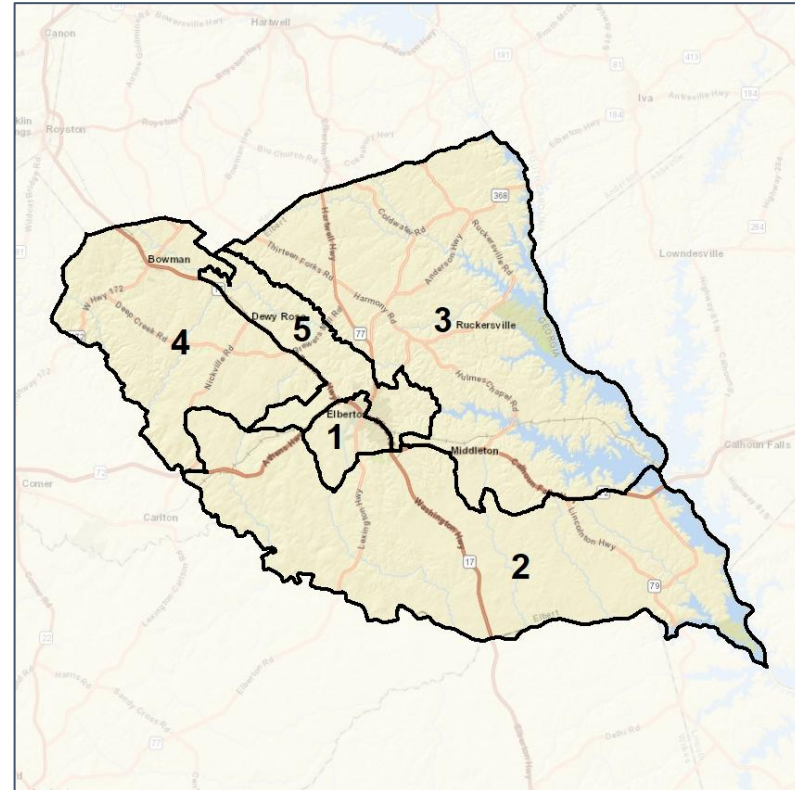
Context



2012 Map



2022 Map*



	1	2	3	4	5	1	2	3	4	5	County
Population	4,006	3,601	4,114	4,291	3,625	3,926	3,946	3,923	3,914	3,928	19,637
API	1%	1%	1%	1%	1%	1%	1%	1%	2%	1%	1%
Black	35%	18%	12%	16%	55%	35%	18%	12%	13%	56%	27%
Latino	6%	5%	6%	4%	4%	6%	5%	6%	4%	4%	5%
Other	3%	3%	4%	3%	2%	3%	3%	4%	3%	2%	3%
White	54%	74%	78%	76%	37%	55%	74%	77%	79%	36%	64%
Population Gain	51	-280	-72	119	-347	-80	345	-191	-377	303	*
Population % Gain	1%	-7%	-2%	3%	-9%	-2%	10%	-5%	-9%	8%	*
Net POC Gain	98	-11	-31	16	-255	-45	87	-35	-225	218	*
Net POC % Gain	6%	-1%	-3%	2%	-10%	-2%	9%	-4%	-22%	10%	*



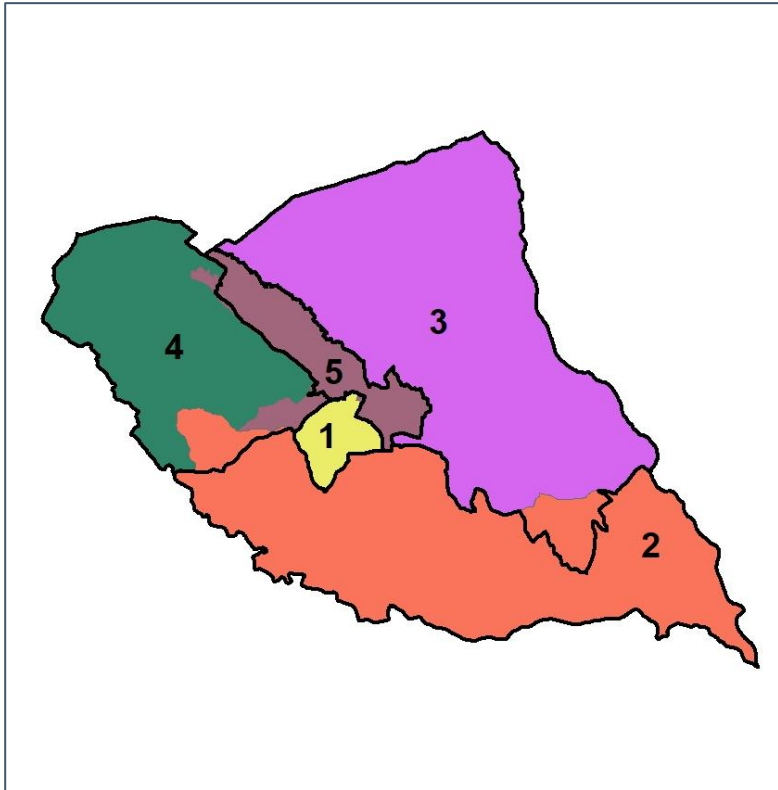
Source:
2020 Decennial Census
2020 ACS 5-Year Dataset

Elbert Co. Commission & School Board

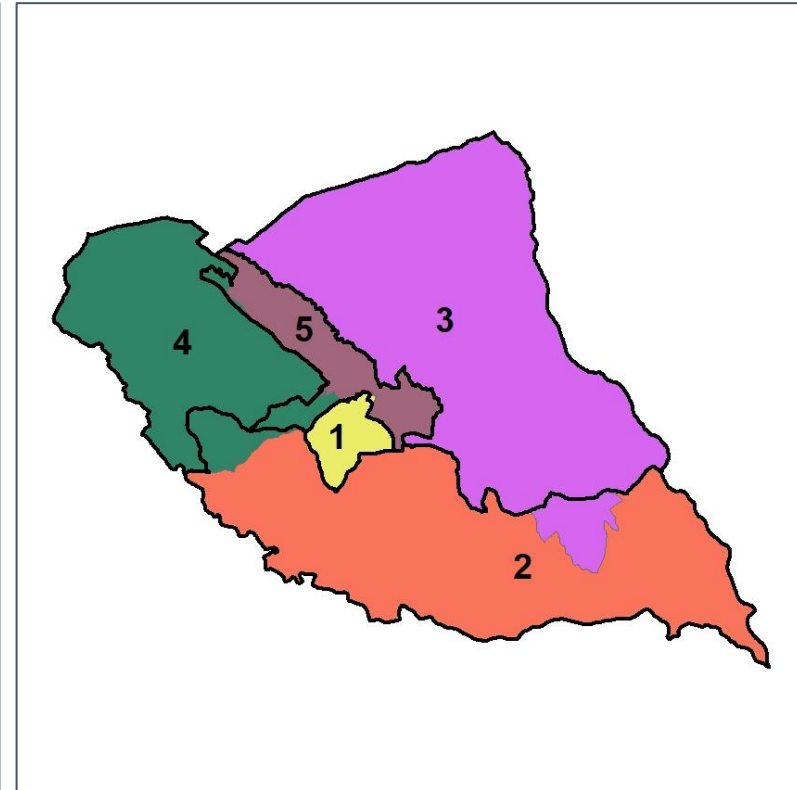
Changes in Redistricting



2012 Map (2022 in Colors)



2022 Map* (2012 in Colors)



	1	2	3	4	5	1	2	3	4	5	County
Population	4,006	3,601	4,114	4,291	3,625	3,926	3,946	3,923	3,914	3,928	19,637
API	1%	1%	1%	1%	1%	1%	1%	1%	2%	1%	1%
Black	35%	18%	12%	16%	55%	35%	18%	12%	13%	56%	27%
Latino	6%	5%	6%	4%	4%	6%	5%	6%	4%	4%	5%
Other	3%	3%	4%	3%	2%	3%	3%	4%	3%	2%	3%
White	54%	74%	78%	76%	37%	55%	74%	77%	79%	36%	64%
Population Gain	51	-280	-72	119	-347	-80	345	-191	-377	303	*
Population % Gain	1%	-7%	-2%	3%	-9%	-2%	10%	-5%	-9%	8%	*
Net POC Gain	98	-11	-31	16	-255	-45	87	-35	-225	218	*
Net POC % Gain	6%	-1%	-3%	2%	-10%	-2%	9%	-4%	-22%	10%	*

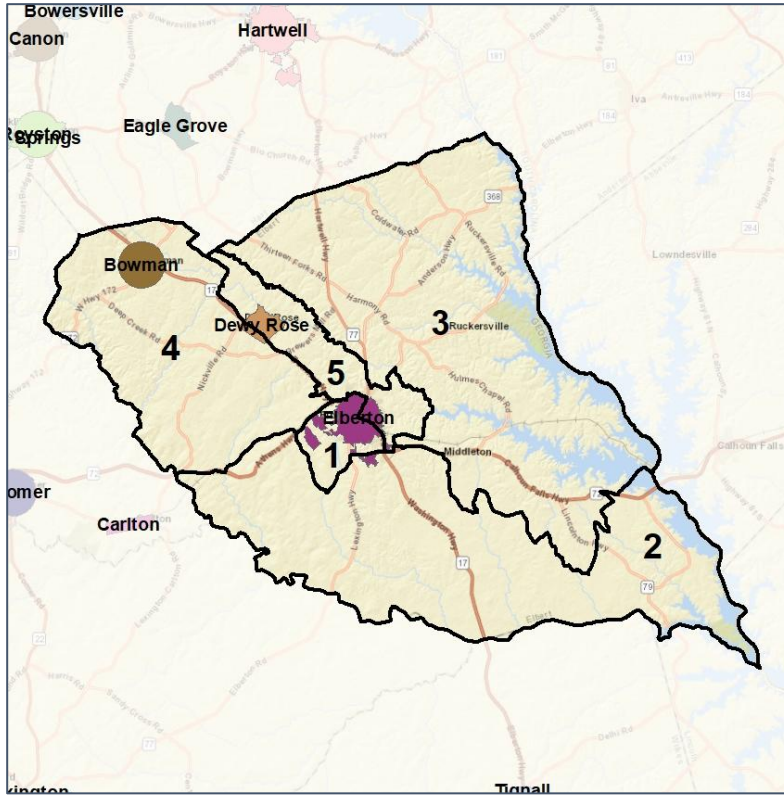


Elbert Co. Commission & School Board

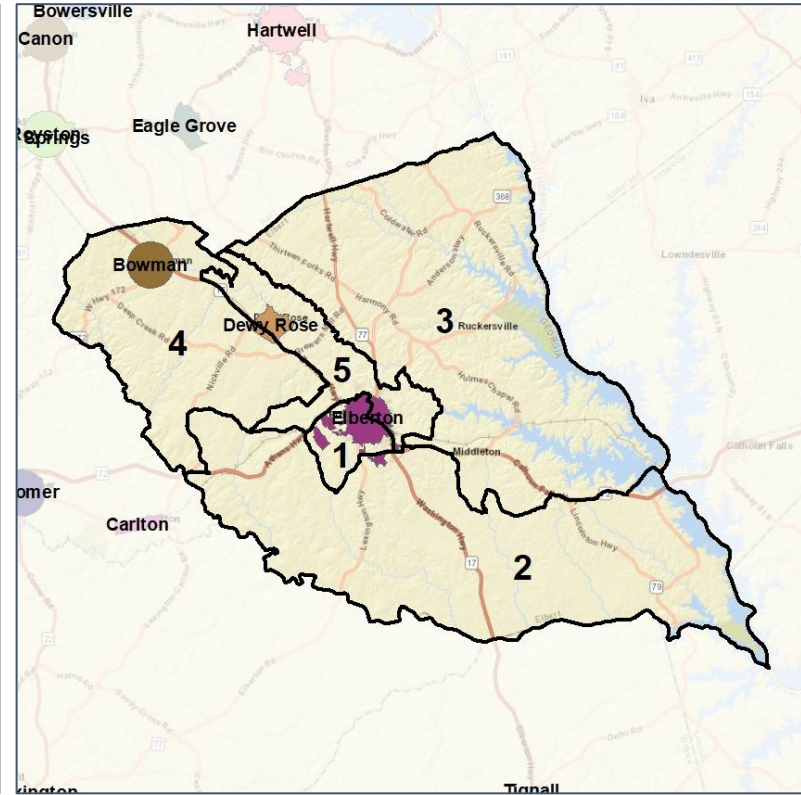
Cities and Places



2012 Map



2022 Map*



	1	2	3	4	5	1	2	3	4	5	County
Population	4,006	3,601	4,114	4,291	3,625	3,926	3,946	3,923	3,914	3,928	19,637
API	1%	1%	1%	1%	1%	1%	1%	1%	2%	1%	1%
Black	35%	18%	12%	16%	55%	35%	18%	12%	13%	56%	27%
Latino	6%	5%	6%	4%	4%	6%	5%	6%	4%	4%	5%
Other	3%	3%	4%	3%	2%	3%	3%	4%	3%	2%	3%
White	54%	74%	78%	76%	37%	55%	74%	77%	79%	36%	64%
Population Gain	51	-280	-72	119	-347	-80	345	-191	-377	303	*
Population % Gain	1%	-7%	-2%	3%	-9%	-2%	10%	-5%	-9%	8%	*
Net POC Gain	98	-11	-31	16	-255	-45	87	-35	-225	218	*
Net POC % Gain	6%	-1%	-3%	2%	-10%	-2%	9%	-4%	-22%	10%	*



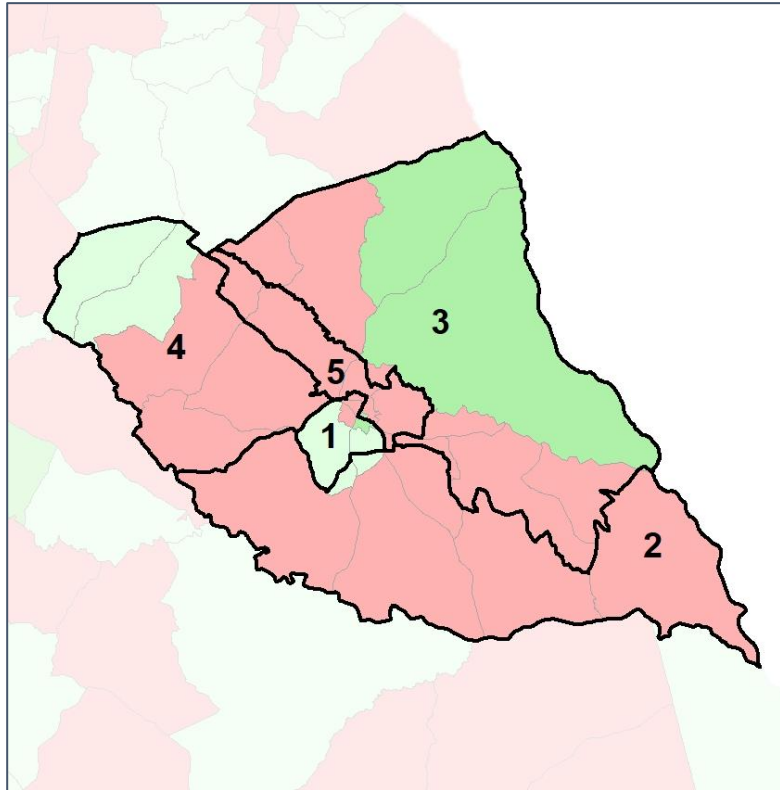
Source:
2020 Decennial Census
2020 ACS 5-Year Dataset

Elbert Co. Commission & School Board

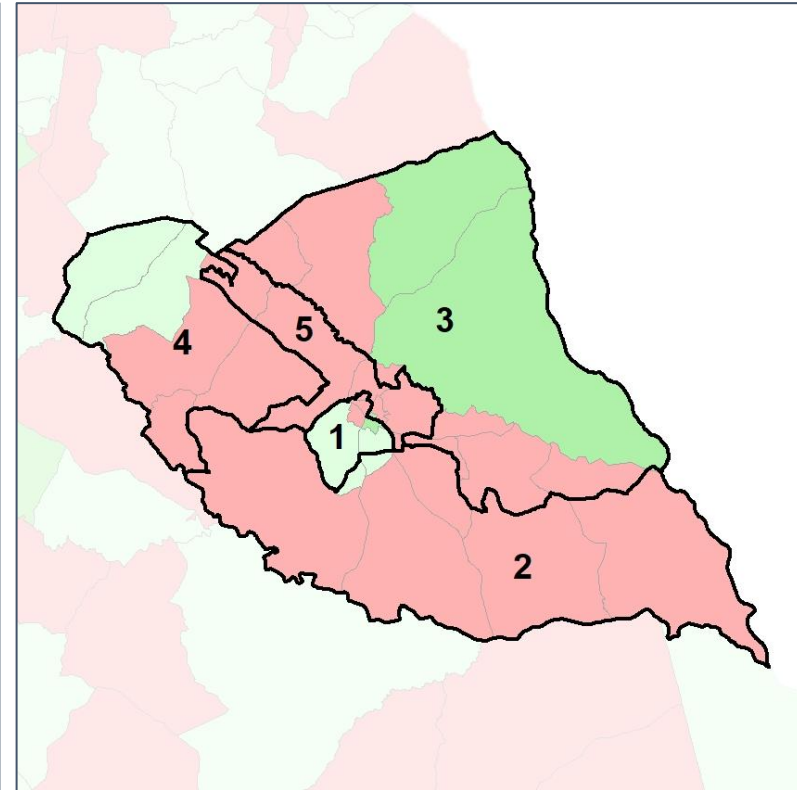
Net Gain in Population (2010 - 2020) by Census Block Group



2012 Map



2022 Map*



	1	2	3	4	5	1	2	3	4	5	County
Population	4,006	3,601	4,114	4,291	3,625	3,926	3,946	3,923	3,914	3,928	19,637
API	1%	1%	1%	1%	1%	1%	1%	1%	2%	1%	1%
Black	35%	18%	12%	16%	55%	35%	18%	12%	13%	56%	27%
Latino	6%	5%	6%	4%	4%	6%	5%	6%	4%	4%	5%
Other	3%	3%	4%	3%	2%	3%	3%	4%	3%	2%	3%
White	54%	74%	78%	76%	37%	55%	74%	77%	79%	36%	64%
Population Gain	51	-280	-72	119	-347	-80	345	-191	-377	303	*
Population % Gain	1%	-7%	-2%	3%	-9%	-2%	10%	-5%	-9%	8%	*
Net POC Gain	98	-11	-31	16	-255	-45	87	-35	-225	218	*
Net POC % Gain	6%	-1%	-3%	2%	-10%	-2%	9%	-4%	-22%	10%	*

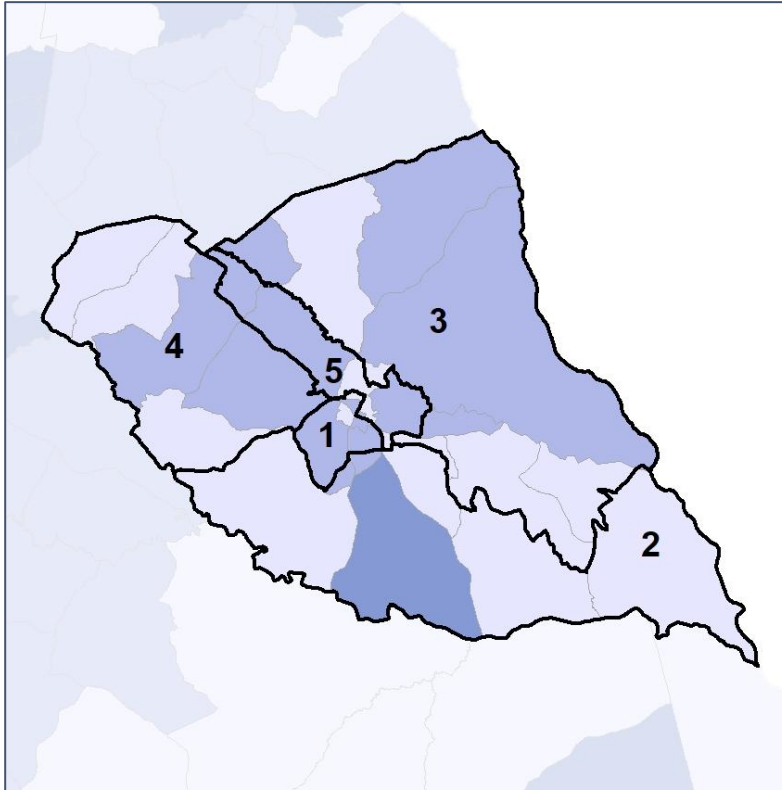


Elbert Co. Commission & School Board

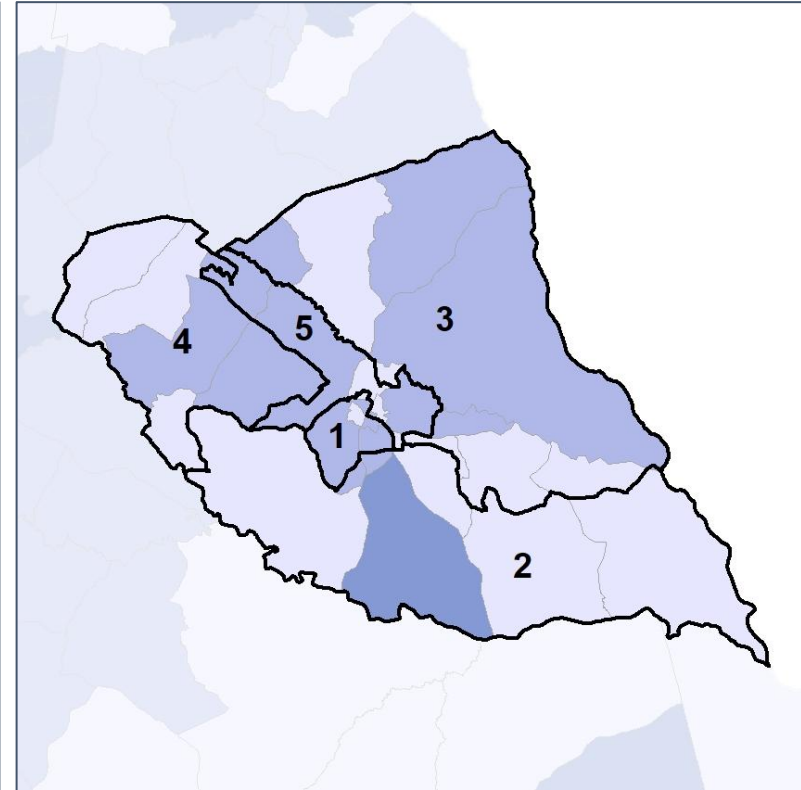
Net Gain in % POC (2020 - 2010) by Census Block Group



2012 Map



2022 Map*



	1	2	3	4	5	1	2	3	4	5	County
Population	4,006	3,601	4,114	4,291	3,625	3,926	3,946	3,923	3,914	3,928	19,637
API	1%	1%	1%	1%	1%	1%	1%	1%	2%	1%	1%
Black	35%	18%	12%	16%	55%	35%	18%	12%	13%	56%	27%
Latino	6%	5%	6%	4%	4%	6%	5%	6%	4%	4%	5%
Other	3%	3%	4%	3%	2%	3%	3%	4%	3%	2%	3%
White	54%	74%	78%	76%	37%	55%	74%	77%	79%	36%	64%
Population Gain	51	-280	-72	119	-347	-80	345	-191	-377	303	*
Population % Gain	1%	-7%	-2%	3%	-9%	-2%	10%	-5%	-9%	8%	*
Net POC Gain	98	-11	-31	16	-255	-45	87	-35	-225	218	*
Net POC % Gain	6%	-1%	-3%	2%	-10%	-2%	9%	-4%	-22%	10%	*

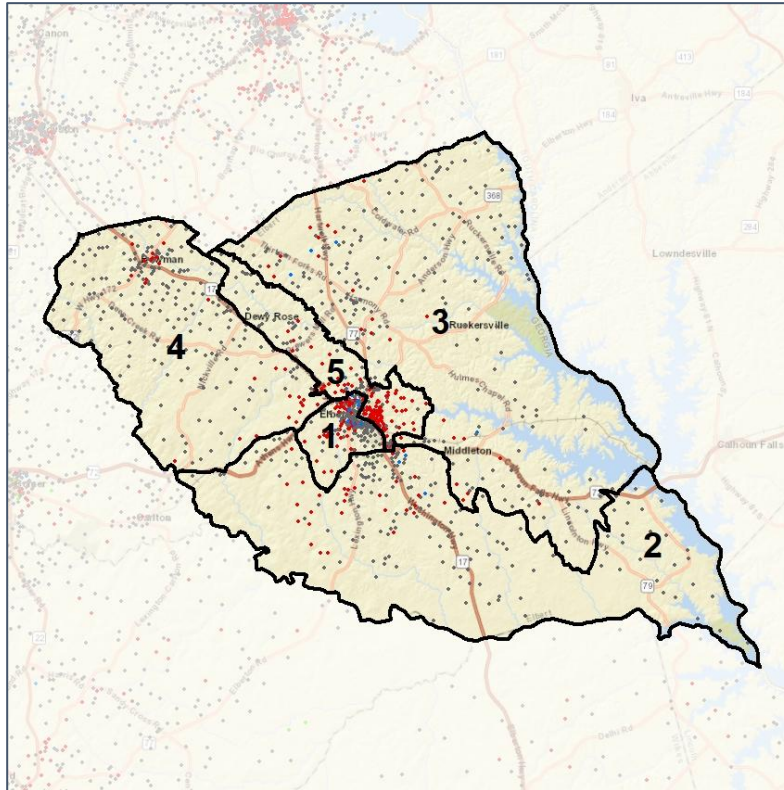


Elbert Co. Commission & School Board

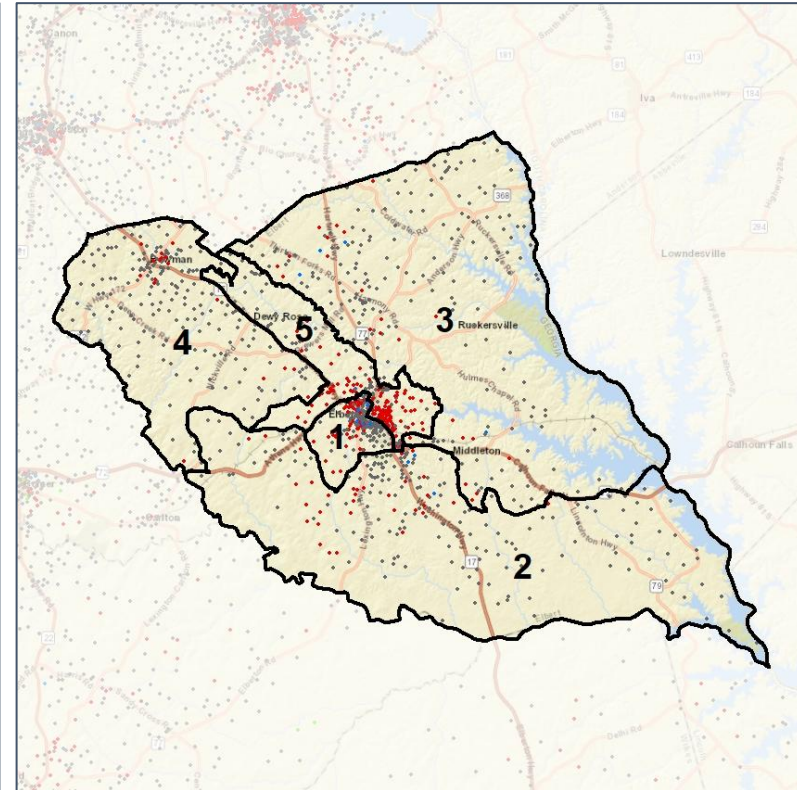
Population Density by Race



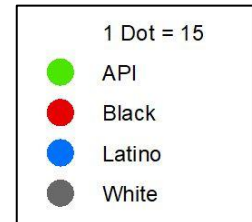
2012 Map



2022 Map*



	1	2	3	4	5	1	2	3	4	5	County
Population	4,006	3,601	4,114	4,291	3,625	3,926	3,946	3,923	3,914	3,928	19,637
API	33	20	23	62	47	33	21	22	61	48	185
% API	1%	1%	1%	1%	1%	1%	1%	1%	2%	1%	1%
Black	1,402	644	510	700	1,997	1,365	708	483	512	2,185	5,253
% Black	35%	18%	12%	16%	55%	35%	18%	12%	13%	56%	27%
Latino	259	190	231	161	155	252	194	230	150	170	996
% Latino	6%	5%	6%	4%	4%	6%	5%	6%	4%	4%	5%
Other	133	97	160	123	80	132	115	154	98	94	593
% Other	3%	3%	4%	3%	2%	3%	3%	4%	3%	2%	3%
White	2,179	2,650	3,190	3,245	1,346	2,144	2,908	3,034	3,093	1,431	12,610
% White	54%	74%	78%	76%	37%	55%	74%	77%	79%	36%	64%



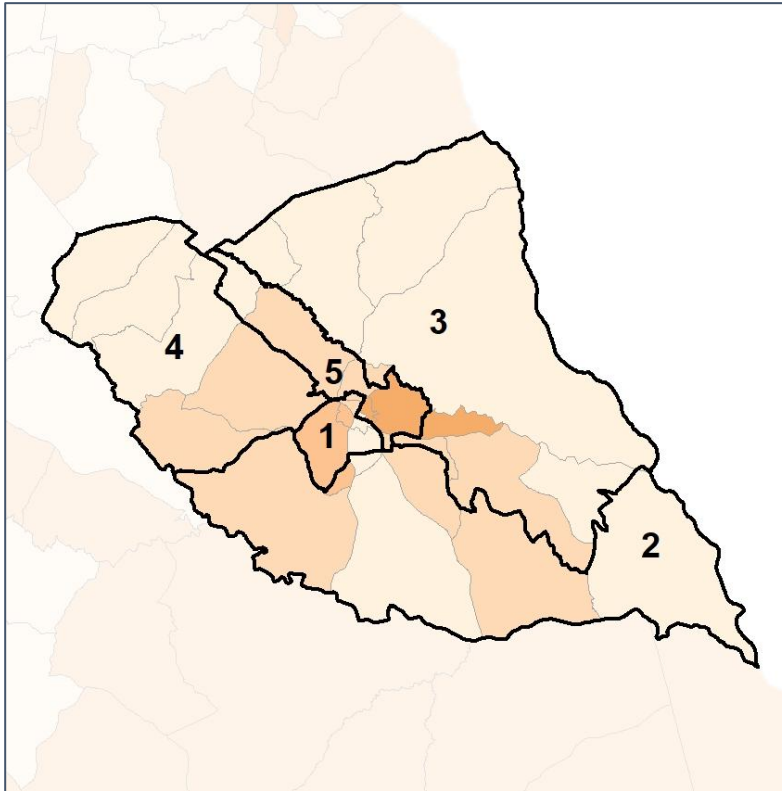
Source:
2020 Decennial Census
2020 ACS 5-Year Dataset

Elbert Co. Commission & School Board

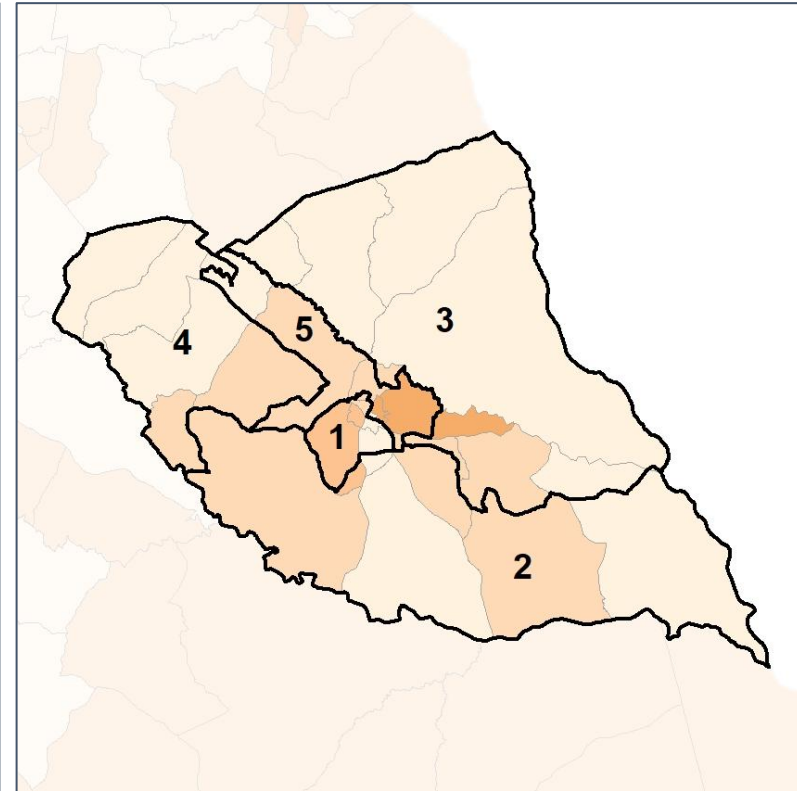
% People of Color by Census Block Group



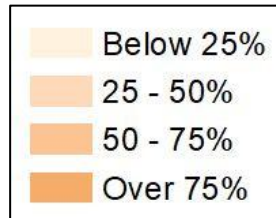
2012 Map



2022 Map*



	1	2	3	4	5	1	2	3	4	5	County
Population	4,006	3,601	4,114	4,291	3,625	3,926	3,946	3,923	3,914	3,928	19,637
API	33	20	23	62	47	33	21	22	61	48	185
% API	1%	1%	1%	1%	1%	1%	1%	1%	2%	1%	1%
Black	1,402	644	510	700	1,997	1,365	708	483	512	2,185	5,253
% Black	35%	18%	12%	16%	55%	35%	18%	12%	13%	56%	27%
Latino	259	190	231	161	155	252	194	230	150	170	996
% Latino	6%	5%	6%	4%	4%	6%	5%	6%	4%	4%	5%
Other	133	97	160	123	80	132	115	154	98	94	593
% Other	3%	3%	4%	3%	2%	3%	3%	4%	3%	2%	3%
White	2,179	2,650	3,190	3,245	1,346	2,144	2,908	3,034	3,093	1,431	12,610
% White	54%	74%	78%	76%	37%	55%	74%	77%	79%	36%	64%

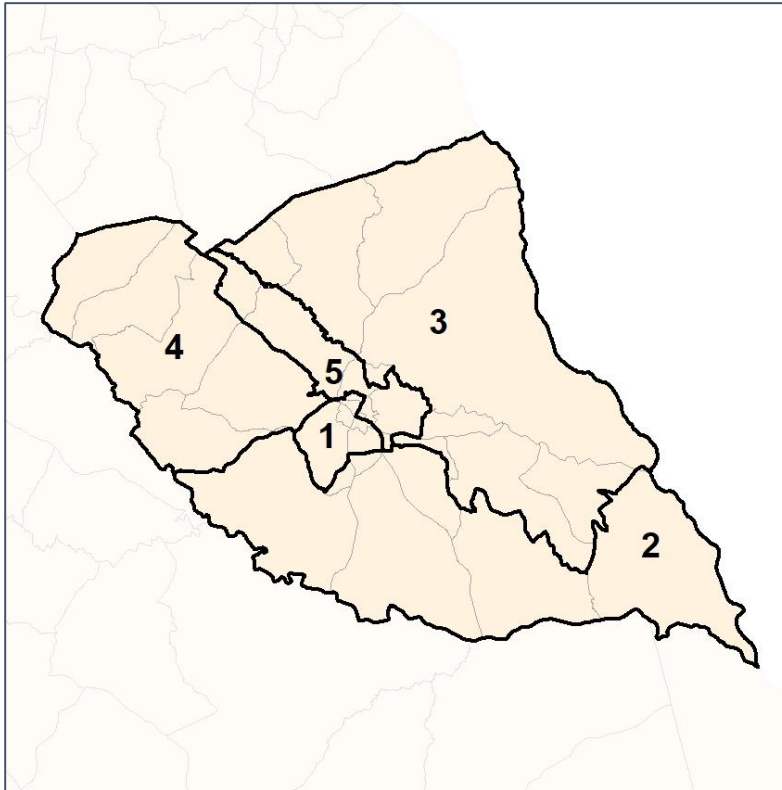


Elbert Co. Commission & School Board

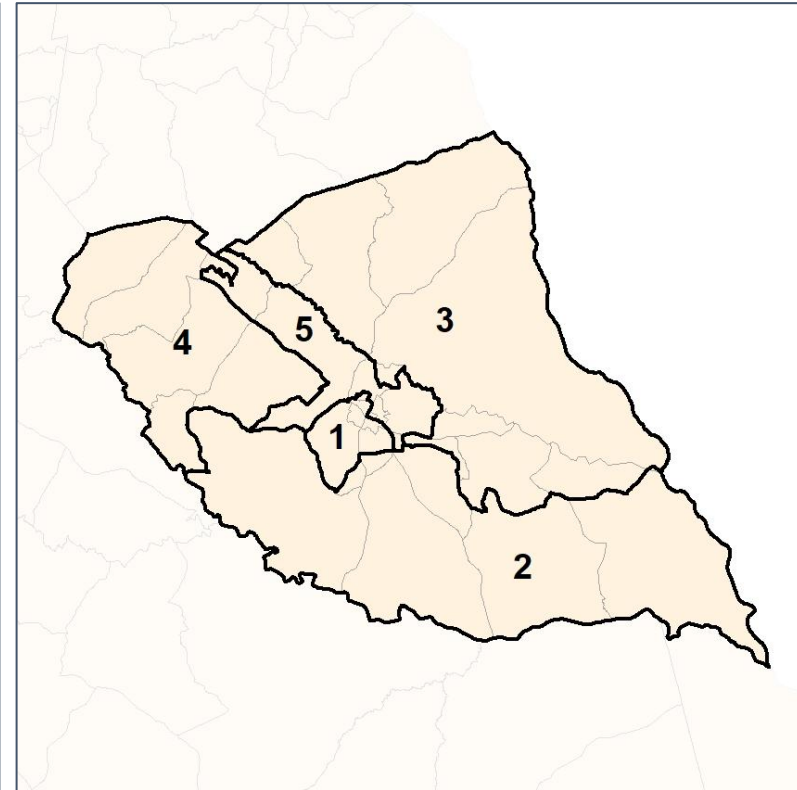
% API by Census Block Group



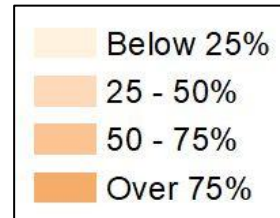
2012 Map



2022 Map*



	1	2	3	4	5	1	2	3	4	5	County
Population	4,006	3,601	4,114	4,291	3,625	3,926	3,946	3,923	3,914	3,928	19,637
API	33	20	23	62	47	33	21	22	61	48	185
% API	1%	1%	1%	1%	1%	1%	1%	1%	2%	1%	1%
Black	1,402	644	510	700	1,997	1,365	708	483	512	2,185	5,253
% Black	35%	18%	12%	16%	55%	35%	18%	12%	13%	56%	27%
Latino	259	190	231	161	155	252	194	230	150	170	996
% Latino	6%	5%	6%	4%	4%	6%	5%	6%	4%	4%	5%
Other	133	97	160	123	80	132	115	154	98	94	593
% Other	3%	3%	4%	3%	2%	3%	3%	4%	3%	2%	3%
White	2,179	2,650	3,190	3,245	1,346	2,144	2,908	3,034	3,093	1,431	12,610
% White	54%	74%	78%	76%	37%	55%	74%	77%	79%	36%	64%

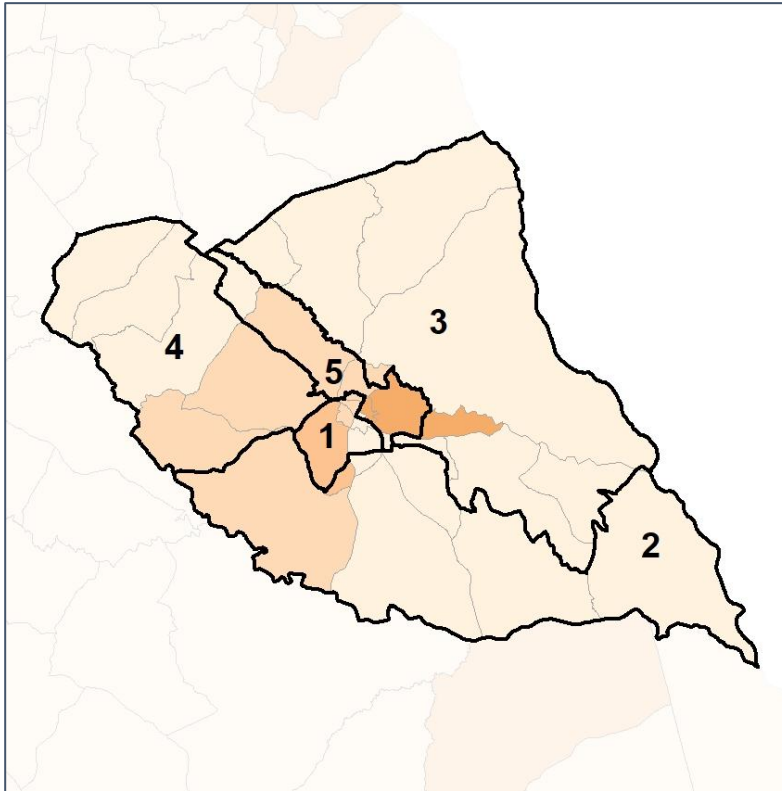


Elbert Co. Commission & School Board

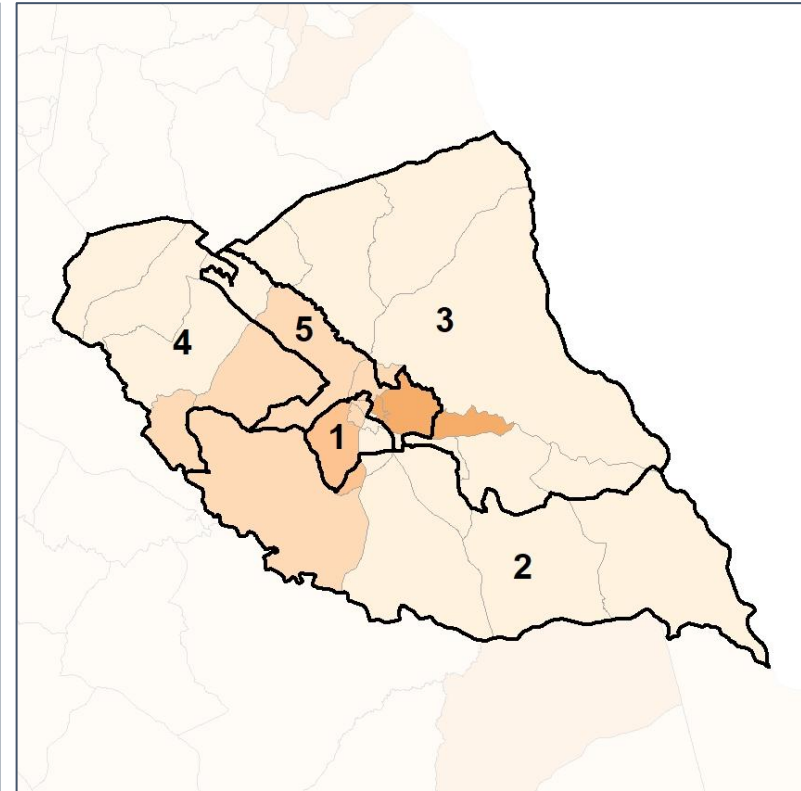
% Black by Census Block Group



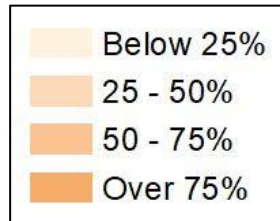
2012 Map



2022 Map*



	1	2	3	4	5	1	2	3	4	5	County
Population	4,006	3,601	4,114	4,291	3,625	3,926	3,946	3,923	3,914	3,928	19,637
API	33	20	23	62	47	33	21	22	61	48	185
% API	1%	1%	1%	1%	1%	1%	1%	1%	2%	1%	1%
Black	1,402	644	510	700	1,997	1,365	708	483	512	2,185	5,253
% Black	35%	18%	12%	16%	55%	35%	18%	12%	13%	56%	27%
Latino	259	190	231	161	155	252	194	230	150	170	996
% Latino	6%	5%	6%	4%	4%	6%	5%	6%	4%	4%	5%
Other	133	97	160	123	80	132	115	154	98	94	593
% Other	3%	3%	4%	3%	2%	3%	3%	4%	3%	2%	3%
White	2,179	2,650	3,190	3,245	1,346	2,144	2,908	3,034	3,093	1,431	12,610
% White	54%	74%	78%	76%	37%	55%	74%	77%	79%	36%	64%



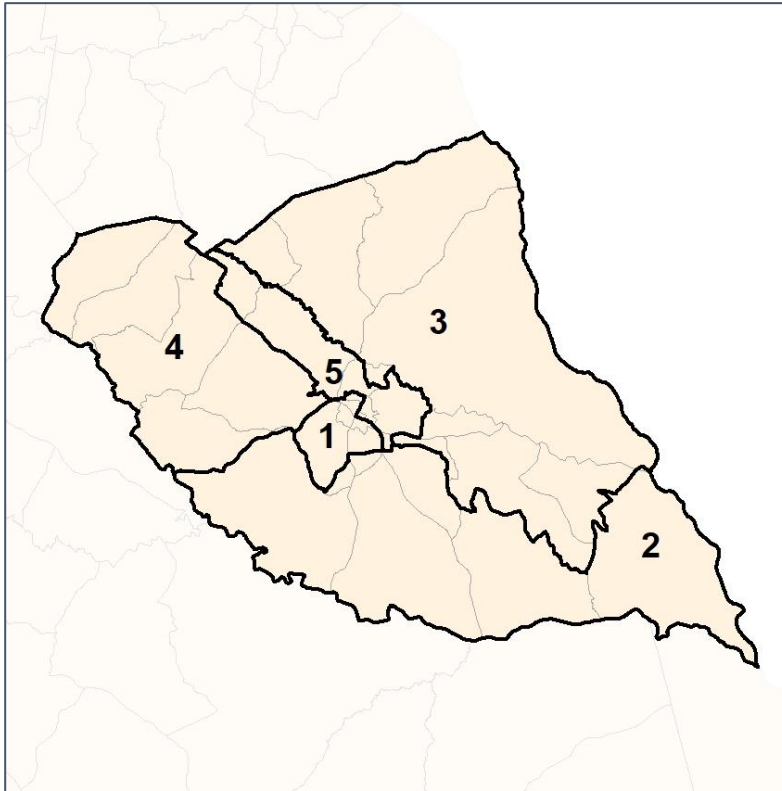
Source:
2020 Decennial Census
2020 ACS 5-Year Dataset

Elbert Co. Commission & School Board

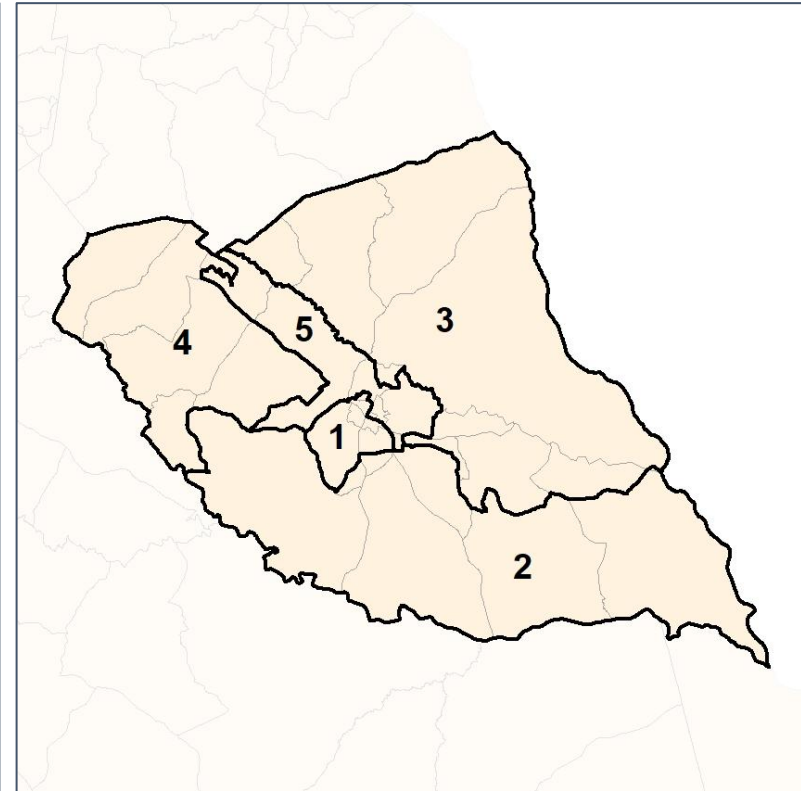
% Latino by Census Block Group



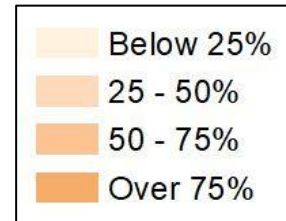
2012 Map



2022 Map*



	1	2	3	4	5	1	2	3	4	5	County
Population	4,006	3,601	4,114	4,291	3,625	3,926	3,946	3,923	3,914	3,928	19,637
API	33	20	23	62	47	33	21	22	61	48	185
% API	1%	1%	1%	1%	1%	1%	1%	1%	2%	1%	1%
Black	1,402	644	510	700	1,997	1,365	708	483	512	2,185	5,253
% Black	35%	18%	12%	16%	55%	35%	18%	12%	13%	56%	27%
Latino	259	190	231	161	155	252	194	230	150	170	996
% Latino	6%	5%	6%	4%	4%	6%	5%	6%	4%	4%	5%
Other	133	97	160	123	80	132	115	154	98	94	593
% Other	3%	3%	4%	3%	2%	3%	3%	4%	3%	2%	3%
White	2,179	2,650	3,190	3,245	1,346	2,144	2,908	3,034	3,093	1,431	12,610
% White	54%	74%	78%	76%	37%	55%	74%	77%	79%	36%	64%



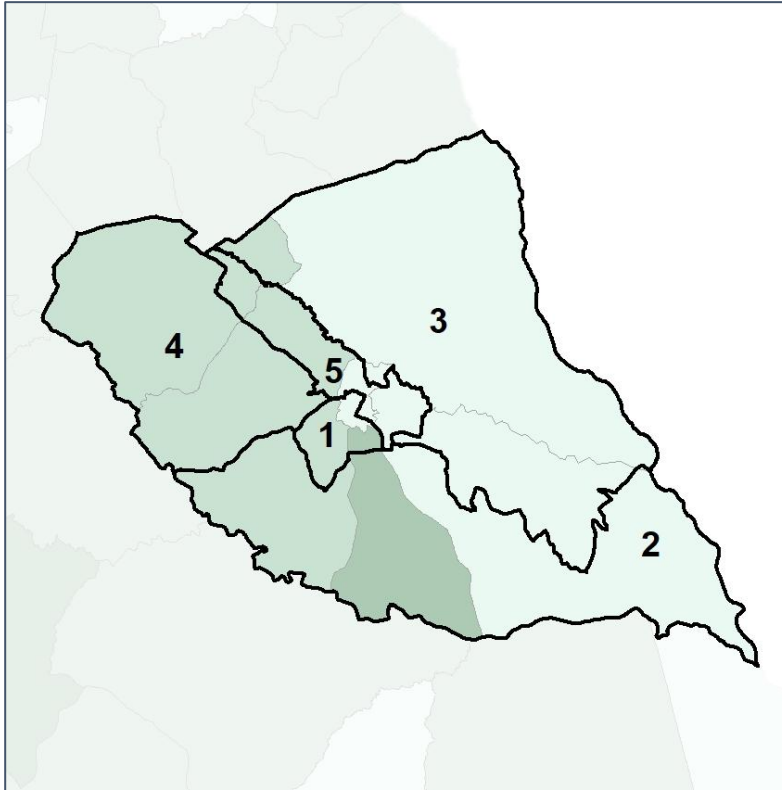
Source:
2020 Decennial Census
2020 ACS 5-Year Dataset

Elbert Co. Commission & School Board

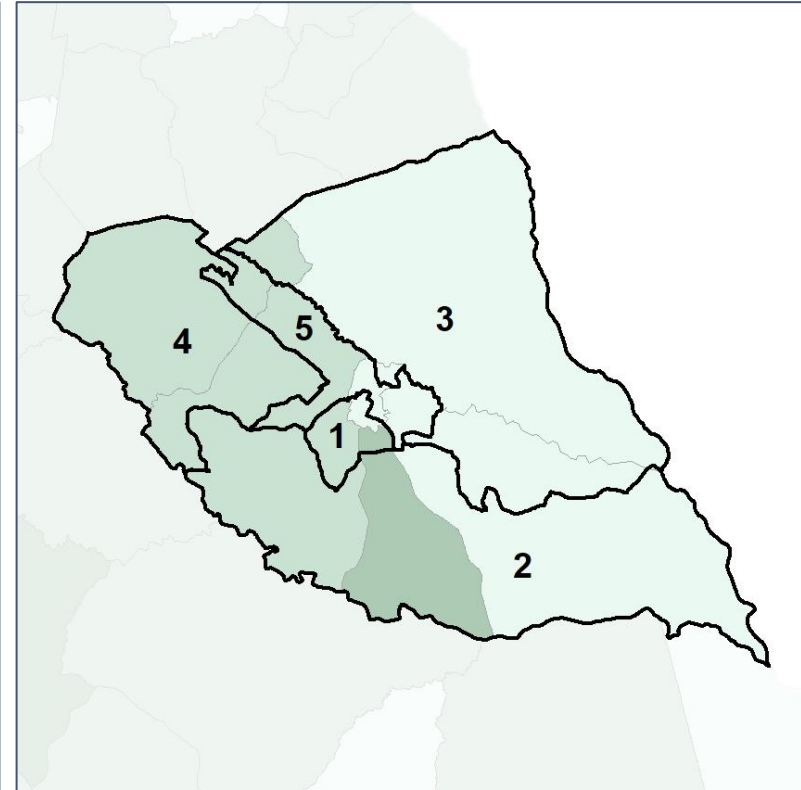
Median Household Income by Census Tract



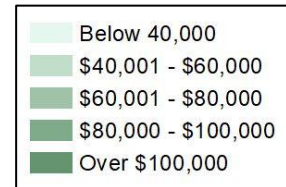
2012 Map



2022 Map*



	1	2	3	4	5	1	2	3	4	5	County
Population	4,006	3,601	4,114	4,291	3,625	3,926	3,946	3,923	3,914	3,928	19,637
% API	1%	1%	1%	1%	1%	1%	1%	1%	2%	1%	1%
% Black	35%	18%	12%	16%	55%	35%	18%	12%	13%	56%	27%
% Latino	6%	5%	6%	4%	4%	6%	5%	6%	4%	4%	5%
% Other	3%	3%	4%	3%	2%	3%	3%	4%	3%	2%	3%
% White	54%	74%	78%	76%	37%	55%	74%	77%	79%	36%	64%
Median Income	\$56,000	\$38,000	\$39,000	\$44,000	\$32,000	\$56,000	\$38,000	\$39,000	\$44,000	\$32,000	\$39,000
% Renter	36%	31%	4%	22%	47%	36%	31%	4%	22%	47%	28%
% Youth	18%	19%	15%	14%	33%	18%	19%	15%	14%	33%	19%

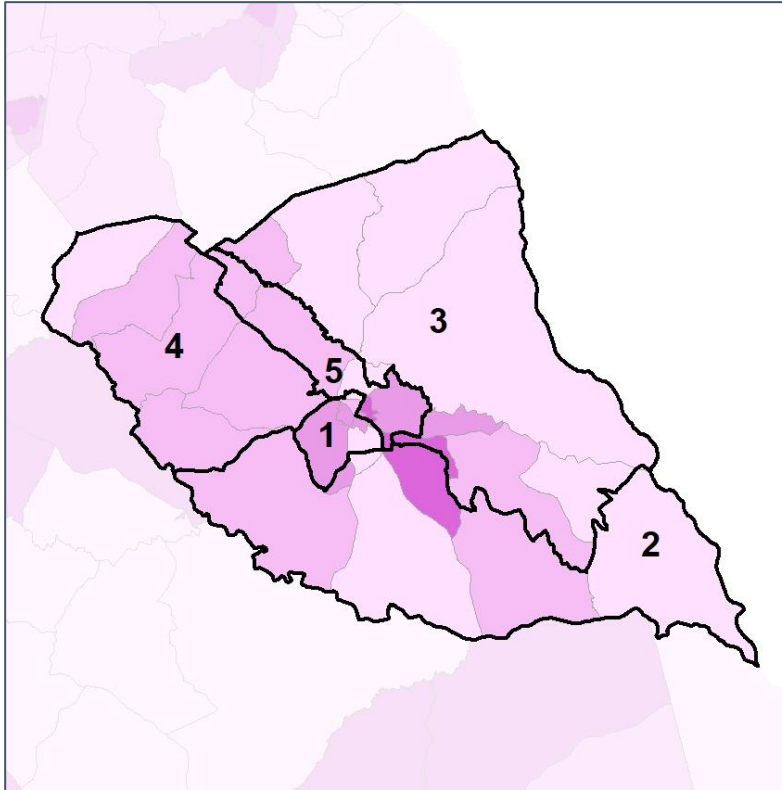


Elbert Co. Commission & School Board

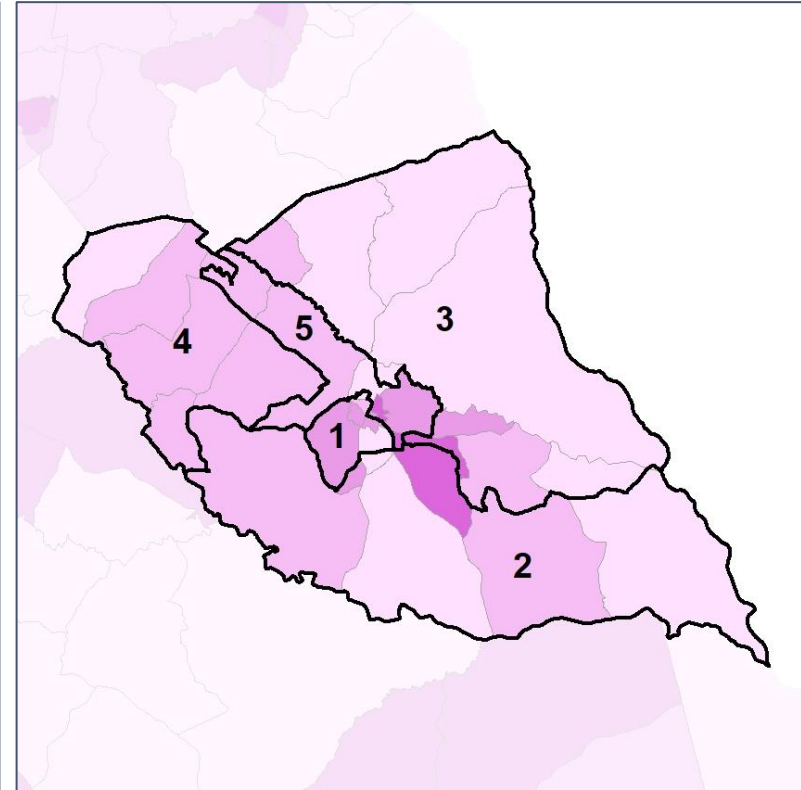
% Renter by Census Block Group



2012 Map



2022 Map*



	1	2	3	4	5	1	2	3	4	5	County
Population	4,006	3,601	4,114	4,291	3,625	3,926	3,946	3,923	3,914	3,928	19,637
% API	1%	1%	1%	1%	1%	1%	1%	1%	2%	1%	1%
% Black	35%	18%	12%	16%	55%	35%	18%	12%	13%	56%	27%
% Latino	6%	5%	6%	4%	4%	6%	5%	6%	4%	4%	5%
% Other	3%	3%	4%	3%	2%	3%	3%	4%	3%	2%	3%
% White	54%	74%	78%	76%	37%	55%	74%	77%	79%	36%	64%
Median Income	\$56,000	\$38,000	\$39,000	\$44,000	\$32,000	\$56,000	\$38,000	\$39,000	\$44,000	\$32,000	\$39,000
% Renter	36%	31%	4%	22%	47%	36%	31%	4%	22%	47%	28%
% Youth	18%	19%	15%	14%	33%	18%	19%	15%	14%	33%	19%

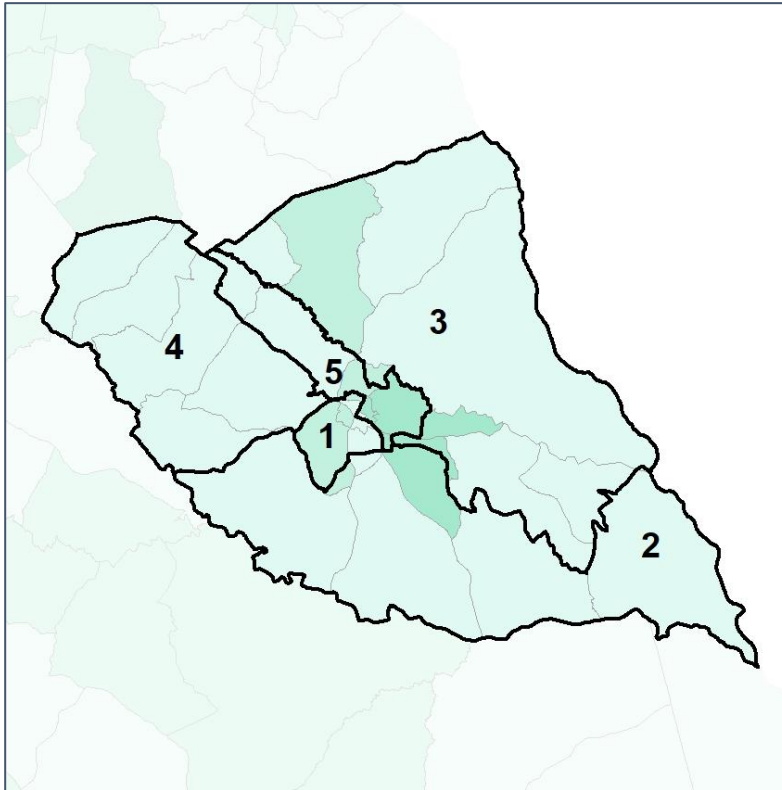


Elbert Co. Commission & School Board

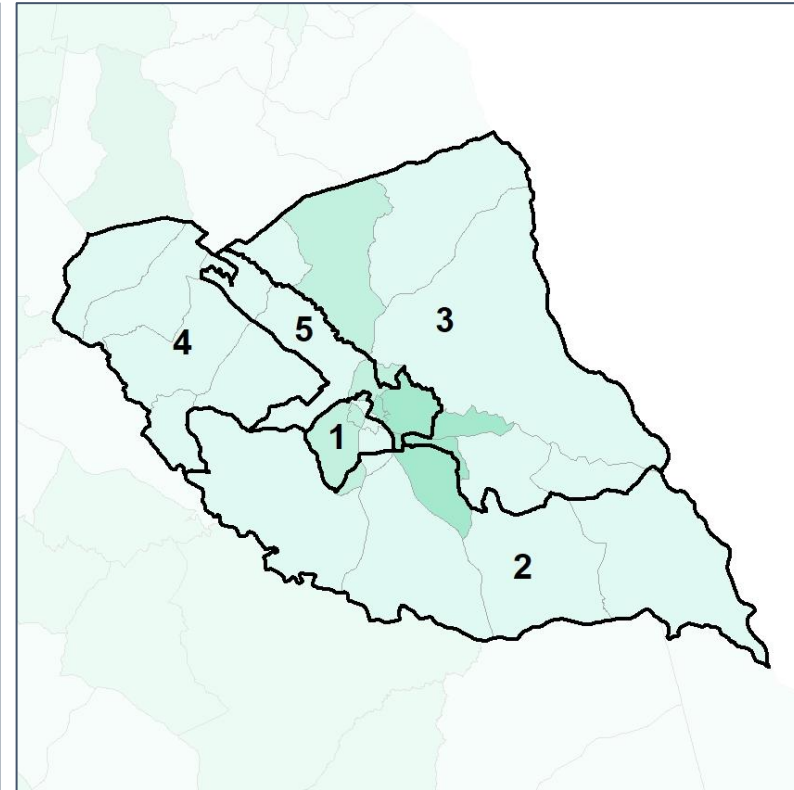
% Youth (18-34) by Census Block Group



2012 Map



2022 Map*



	1	2	3	4	5	1	2	3	4	5	County
Population	4,006	3,601	4,114	4,291	3,625	3,926	3,946	3,923	3,914	3,928	19,637
% API	1%	1%	1%	1%	1%	1%	1%	1%	2%	1%	1%
% Black	35%	18%	12%	16%	55%	35%	18%	12%	13%	56%	27%
% Latino	6%	5%	6%	4%	4%	6%	5%	6%	4%	4%	5%
% Other	3%	3%	4%	3%	2%	3%	3%	4%	3%	2%	3%
% White	54%	74%	78%	76%	37%	55%	74%	77%	79%	36%	64%
Median Income	\$56,000	\$38,000	\$39,000	\$44,000	\$32,000	\$56,000	\$38,000	\$39,000	\$44,000	\$32,000	\$39,000
% Renter	36%	31%	4%	22%	47%	36%	31%	4%	22%	47%	28%
% Youth	18%	19%	15%	14%	33%	18%	19%	15%	14%	33%	19%

