

Demographic Overview

Racial Breakdown in Douglas County



Douglas County	2010	2020	% Change
Total Population	132,403	144,237	9%
AAPI	2,004	2,410	20%
Black	51,387	68,763	34%
Latino	11,125	16,035	44%
Other/Mixed Race	2,976	7,152	140%
POC	67,492	94,360	40%
White	64,911	49,877	-23%

*Note: The use of "Other" in these statistics combines those who identify as Native American, Mixed Race, and "Other" race





Population Gain

Change in Population in Georgia by County



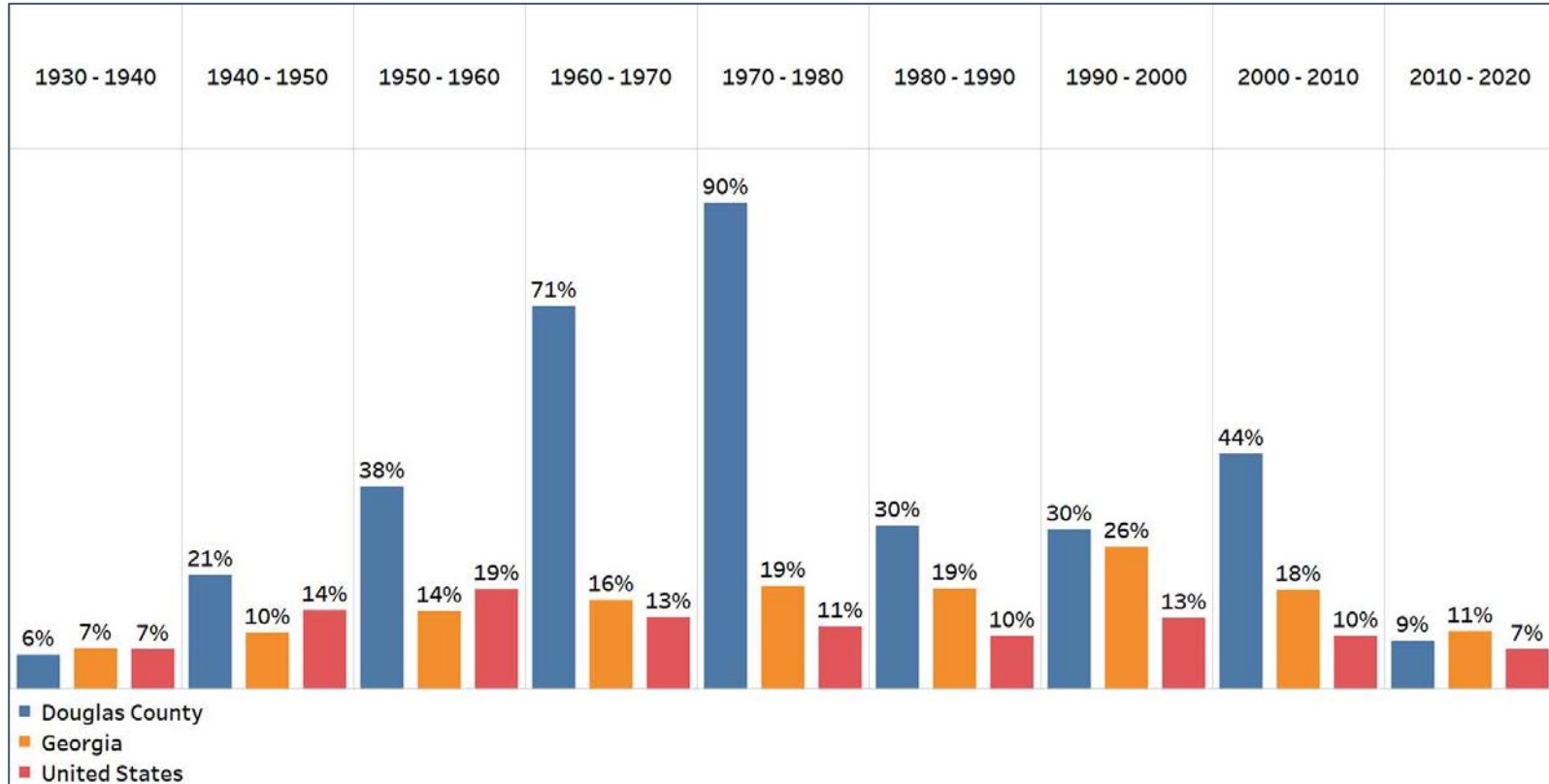
- Georgia is experiencing rapid population growth in the Atlanta, Augusta, and Savannah regions of the state





Population Gain

Change in Population by Decade



- From 1940 to 2010 Douglas County population growth rate exceeded both the state and national average
- Douglas County has consistently had a growth rate every decade since 1930

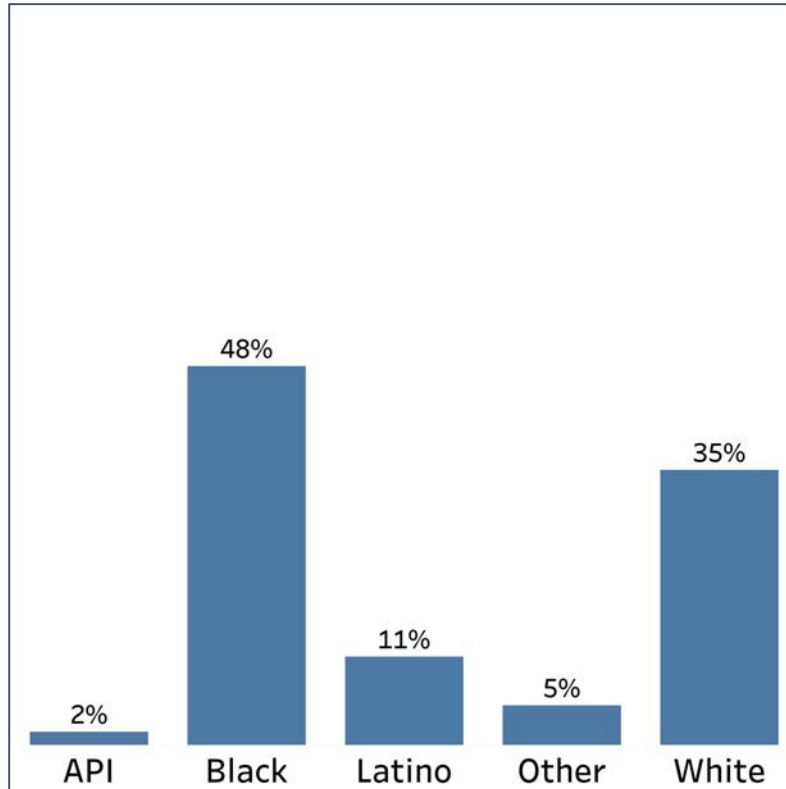


Demographics

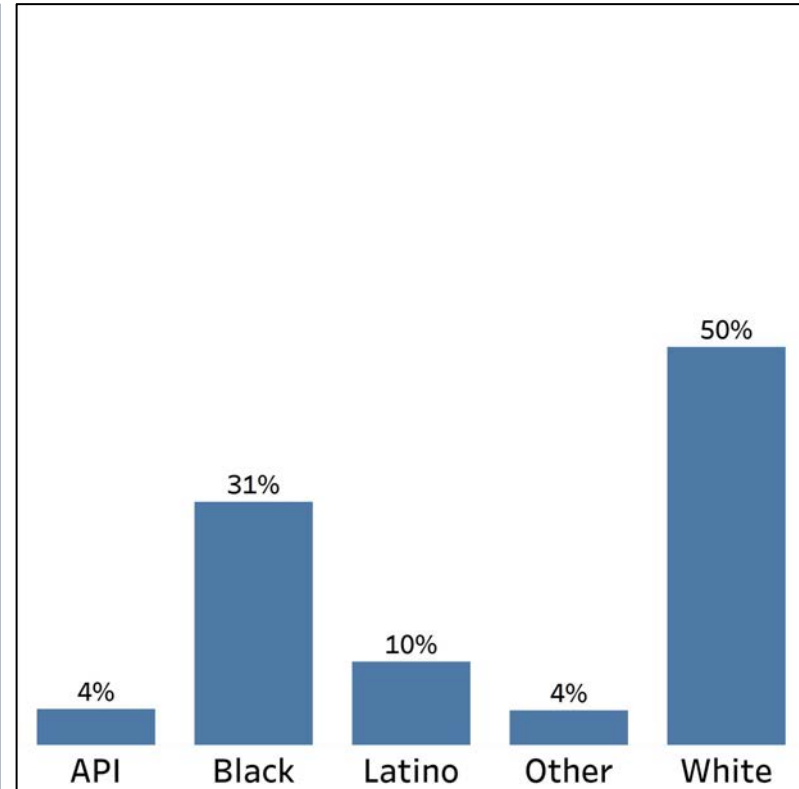
Comparison between Douglas County and Georgia



Douglas County



Georgia



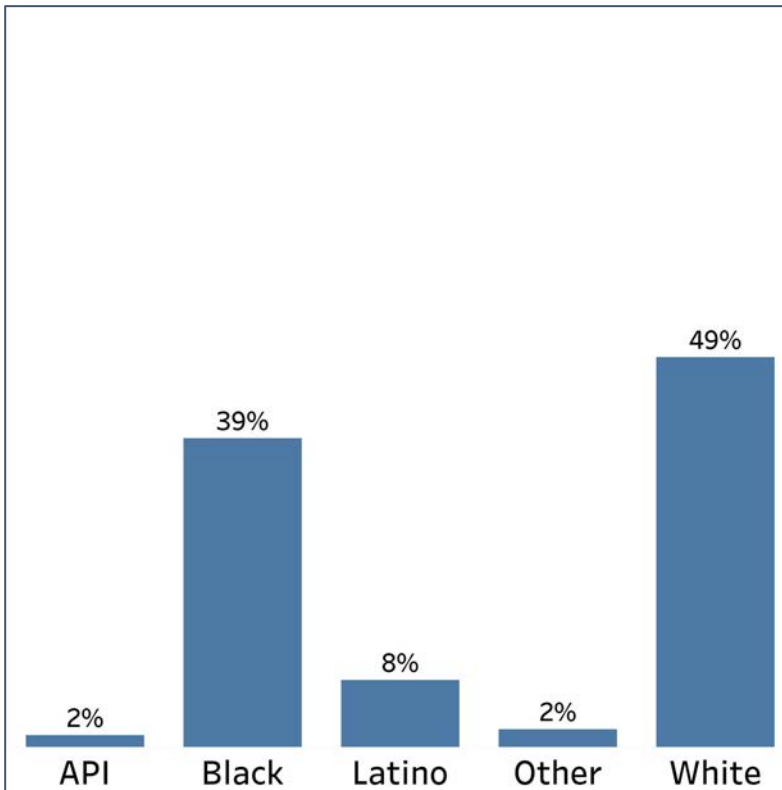
- Douglas County's black population comprises a plurality of the county's population
- The White population of Douglas County is much lower than the state's share, comprising slightly over a third of the county population
- The Latino population in Douglas County is slightly above the state's share

Demographics

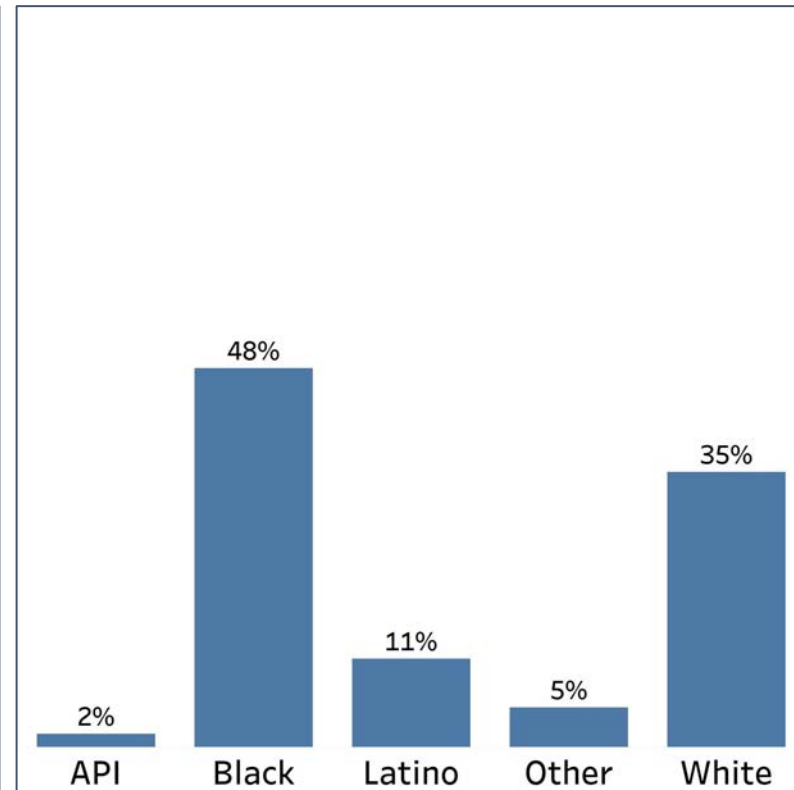
2010 vs 2020 Demographics in Douglas County



Douglas County 2010



Douglas County 2020



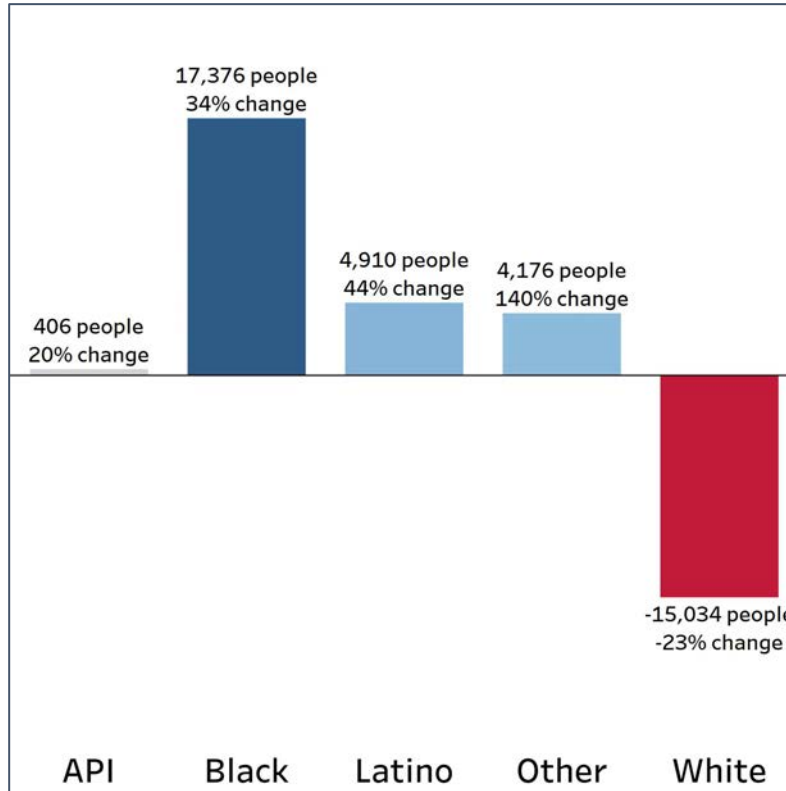
- Douglas County's Black population had the highest population growth rate in the county, making the black population the plurality in the county
- The White population of Douglas County declined by 14%
- The Latino population grew by 3%, making the share of Latinos in the county higher than the statewide average

Demographics

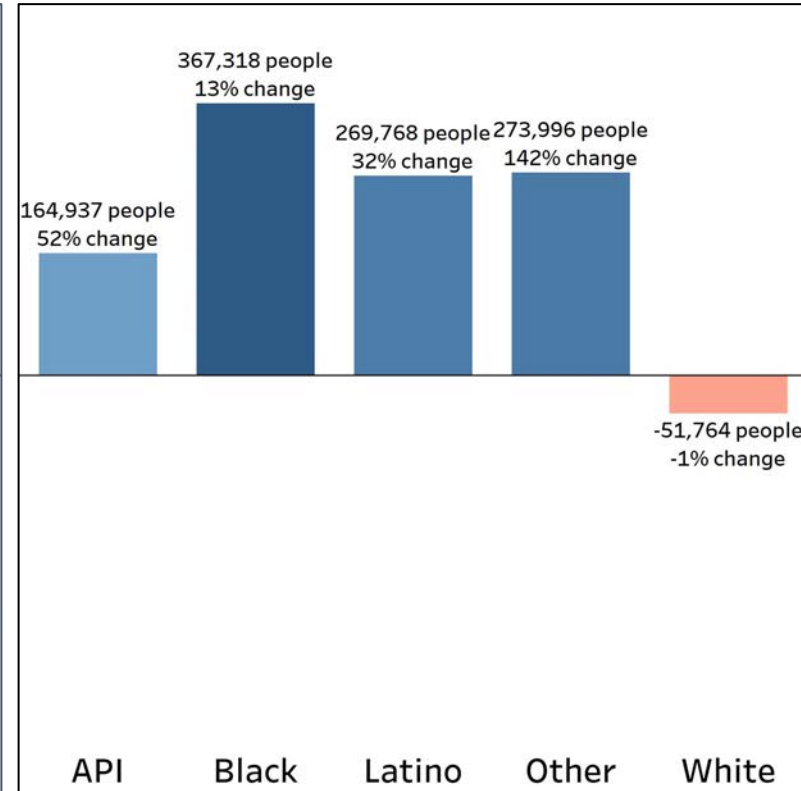
Population Change by Race (2020 - 2010)



Douglas County



Georgia



- Douglas County's White population decline rate is 23 times higher than the statewide average
- The Latino and Black population growth rate in Douglas county is higher than their statewide average

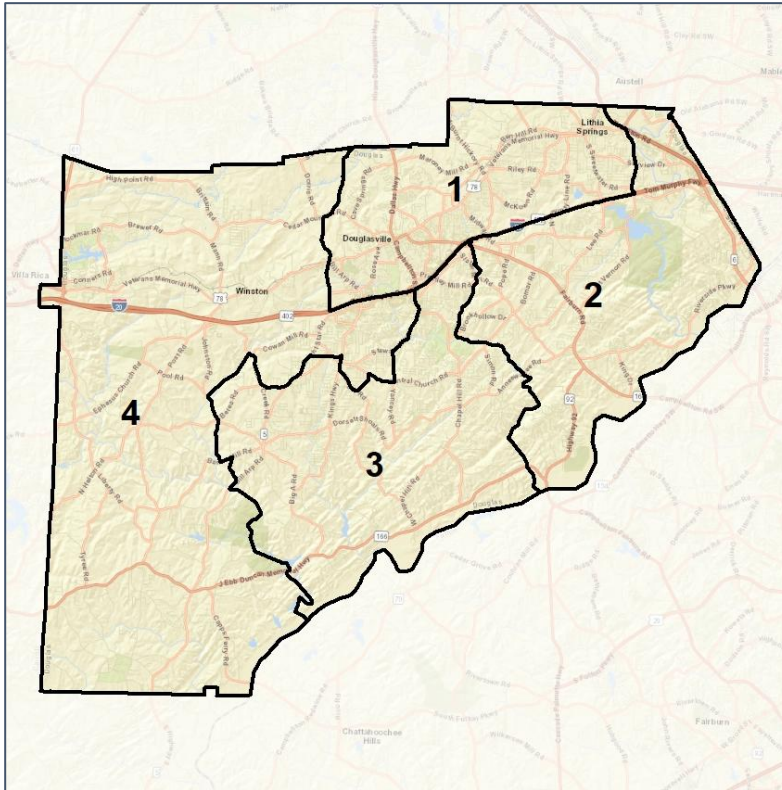


Douglas County Commission

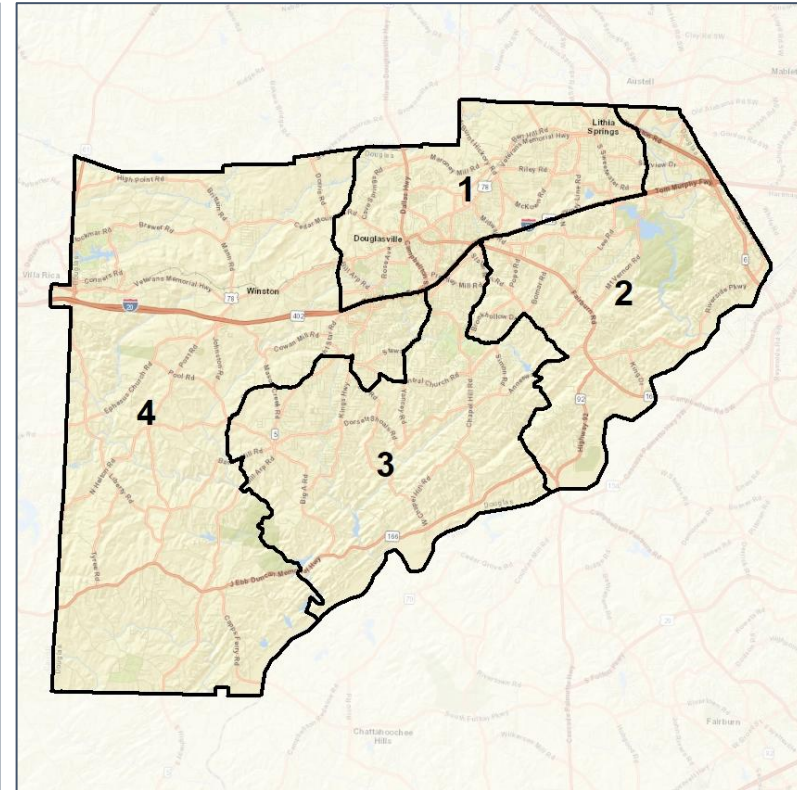
Context



2012 Map



2022 Map*



	1	2	3	4	1*	2*	3*	4*	County
Population	36,106	37,020	35,514	35,597	36,106	36,191	36,032	35,908	144,237
API	1%	2%	2%	2%	1%	2%	2%	2%	2%
Black	52%	62%	45%	31%	52%	63%	45%	31%	48%
Latino	15%	10%	9%	10%	15%	10%	9%	10%	11%
Other	5%	4%	5%	5%	5%	4%	5%	5%	5%
White	28%	21%	38%	52%	28%	20%	38%	52%	35%
Population Gain	*	*	*	*	0	-829	518	311	*
Population % Gain	*	*	*	*	0%	-2%	1%	1%	*
Net POC Gain	*	*	*	*	0	-393	261	132	*
Net POC % Gain	*	*	*	*	0%	-1%	1%	1%	*

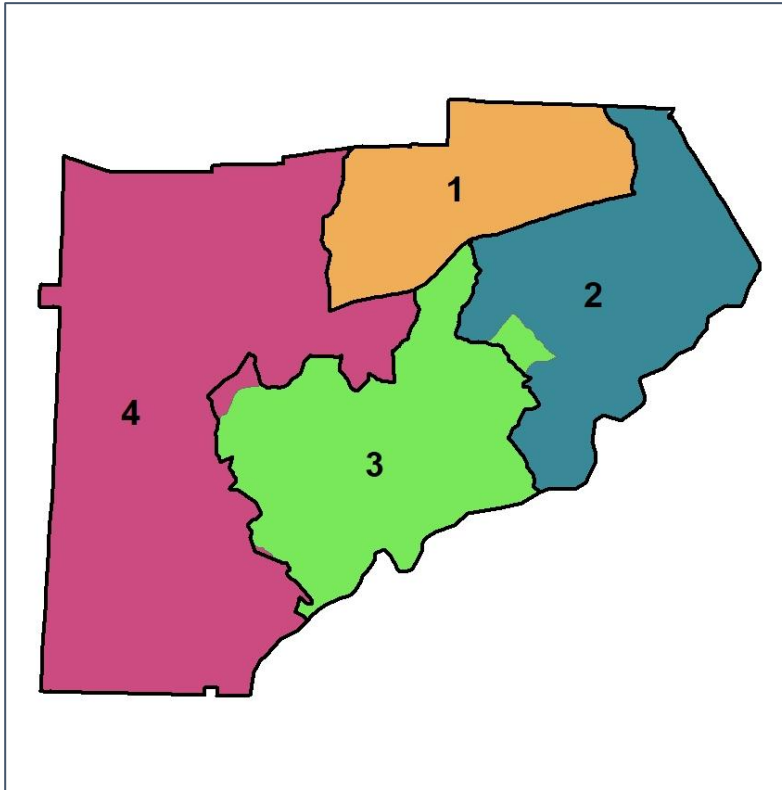


Douglas County Commission

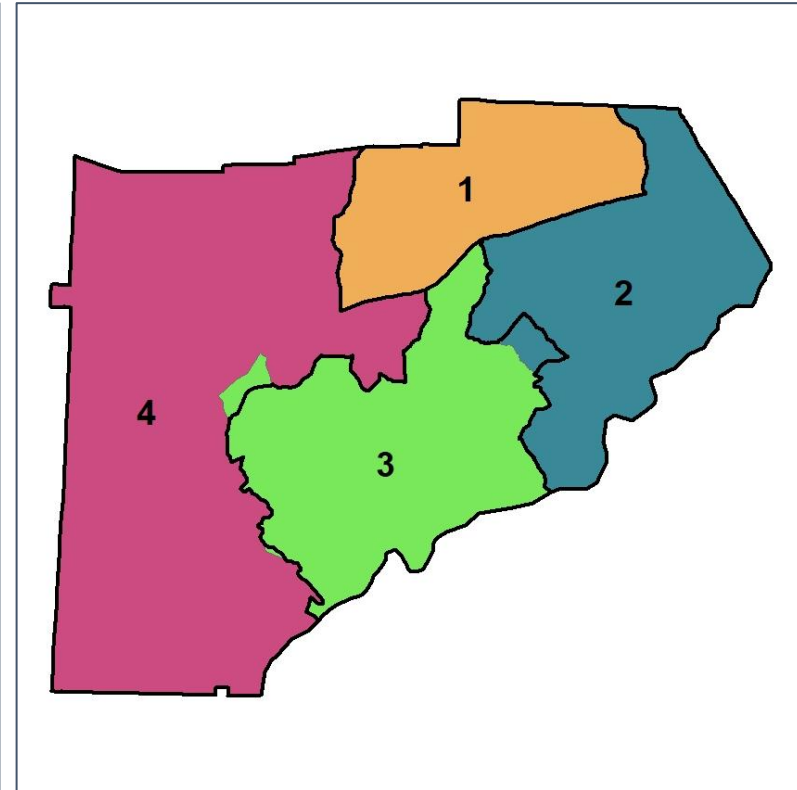
Changes in Redistricting



2012 Map (2022 in Colors)



2022 Map* (2012 in Colors)



	1	2	3	4	1*	2*	3*	4*	County
Population	36,106	37,020	35,514	35,597	36,106	36,191	36,032	35,908	144,237
API	1%	2%	2%	2%	1%	2%	2%	2%	2%
Black	52%	62%	45%	31%	52%	63%	45%	31%	48%
Latino	15%	10%	9%	10%	15%	10%	9%	10%	11%
Other	5%	4%	5%	5%	5%	4%	5%	5%	5%
White	28%	21%	38%	52%	28%	20%	38%	52%	35%
Population Gain	*	*	*	*	0	-829	518	311	*
Population % Gain	*	*	*	*	0%	-2%	1%	1%	*
Net POC Gain	*	*	*	*	0	-393	261	132	*
Net POC % Gain	*	*	*	*	0%	-1%	1%	1%	*

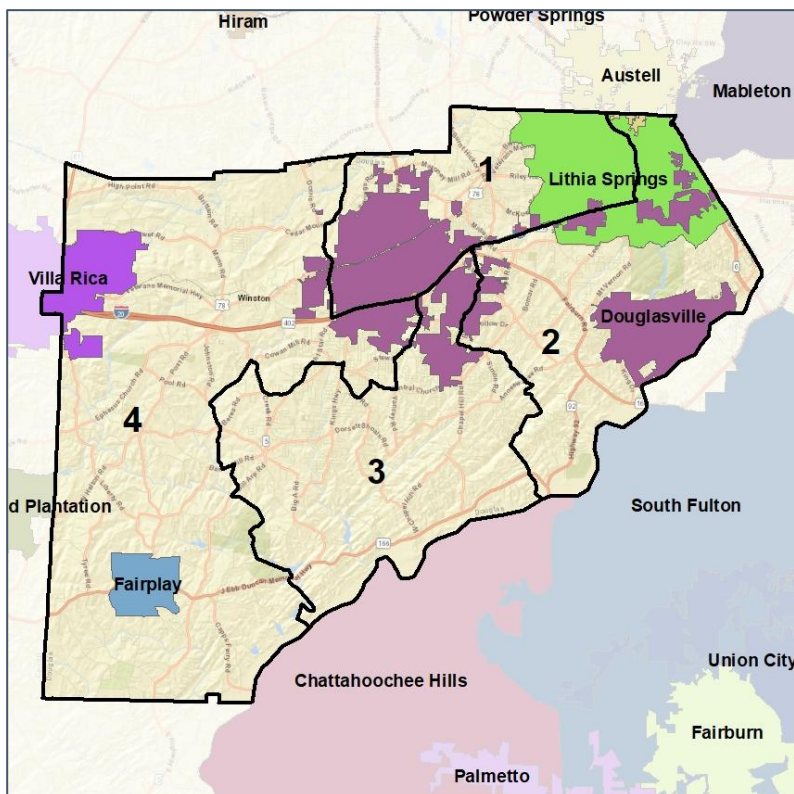


Douglas County Commission

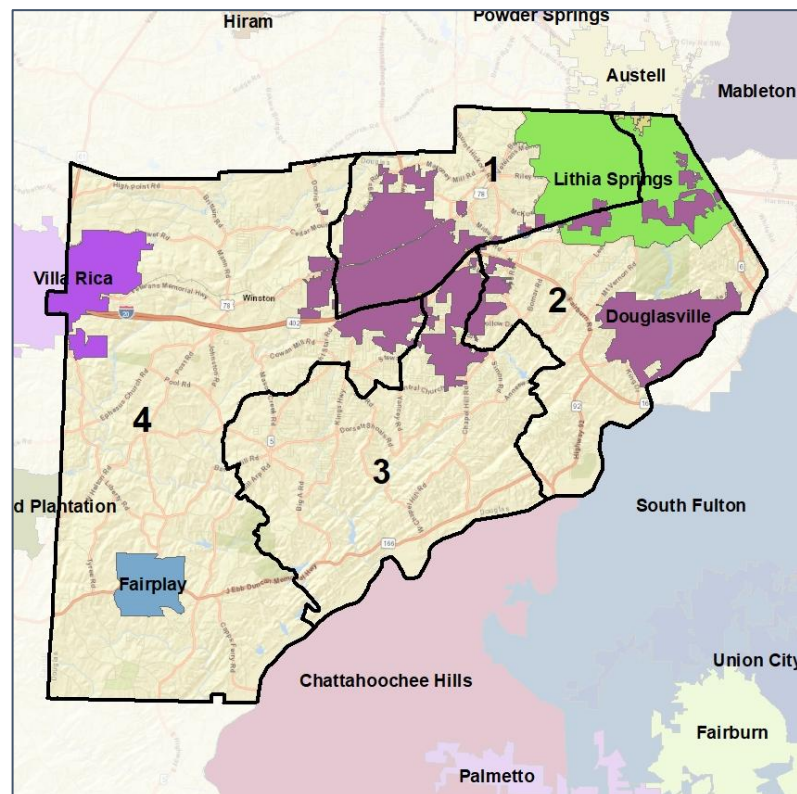
Cities and Places



2012 Map



2022 Map*



	1	2	3	4	1*	2*	3*	4*	County
Population	36,106	37,020	35,514	35,597	36,106	36,191	36,032	35,908	144,237
API	1%	2%	2%	2%	1%	2%	2%	2%	2%
Black	52%	62%	45%	31%	52%	63%	45%	31%	48%
Latino	15%	10%	9%	10%	15%	10%	9%	10%	11%
Other	5%	4%	5%	5%	5%	4%	5%	5%	5%
White	28%	21%	38%	52%	28%	20%	38%	52%	35%
Population Gain	*	*	*	*	0	-829	518	311	*
Population % Gain	*	*	*	*	0%	-2%	1%	1%	*
Net POC Gain	*	*	*	*	0	-393	261	132	*
Net POC % Gain	*	*	*	*	0%	-1%	1%	1%	*



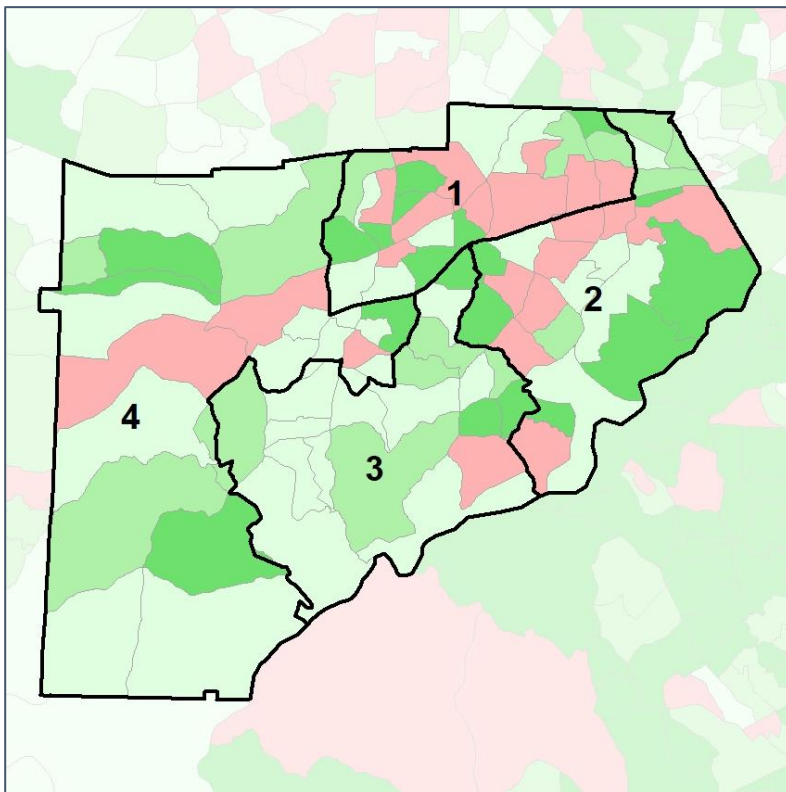
Source:
2020 Decennial Census
2020 ACS 5-Year Dataset

Douglas County Commission

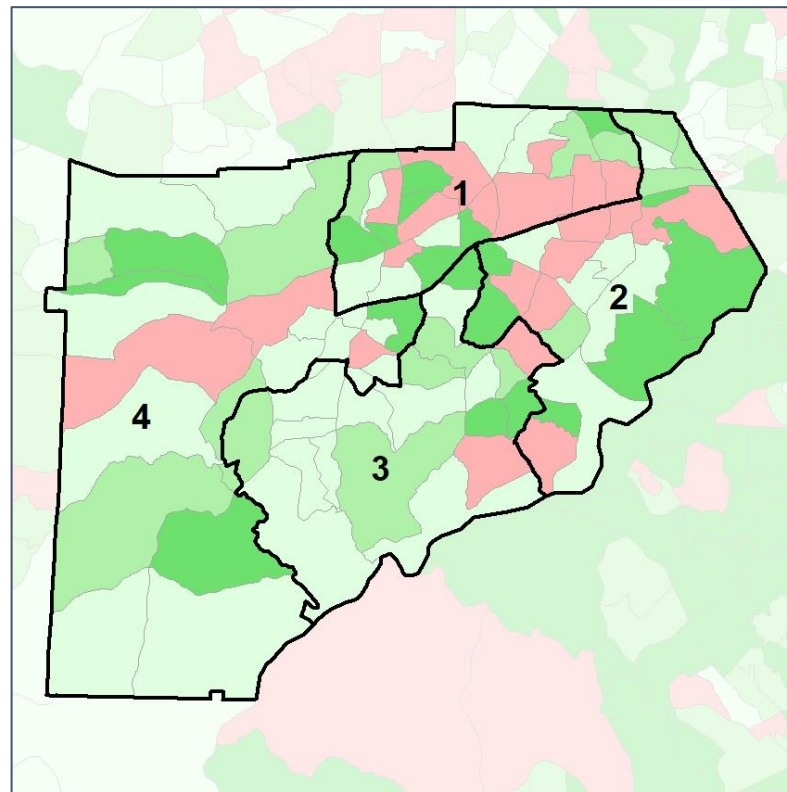
Net Gain in Population (2010 - 2020)



2012 Map



2022 Map*



	1	2	3	4	1*	2*	3*	4*	County
Population	36,106	37,020	35,514	35,597	36,106	36,191	36,032	35,908	144,237
API	1%	2%	2%	2%	1%	2%	2%	2%	2%
Black	52%	62%	45%	31%	52%	63%	45%	31%	48%
Latino	15%	10%	9%	10%	15%	10%	9%	10%	11%
Other	5%	4%	5%	5%	5%	4%	5%	5%	5%
White	28%	21%	38%	52%	28%	20%	38%	52%	35%
Population Gain	*	*	*	*	0	-829	518	311	*
Population % Gain	*	*	*	*	0%	-2%	1%	1%	*
Net POC Gain	*	*	*	*	0	-393	261	132	*
Net POC % Gain	*	*	*	*	0%	-1%	1%	1%	*

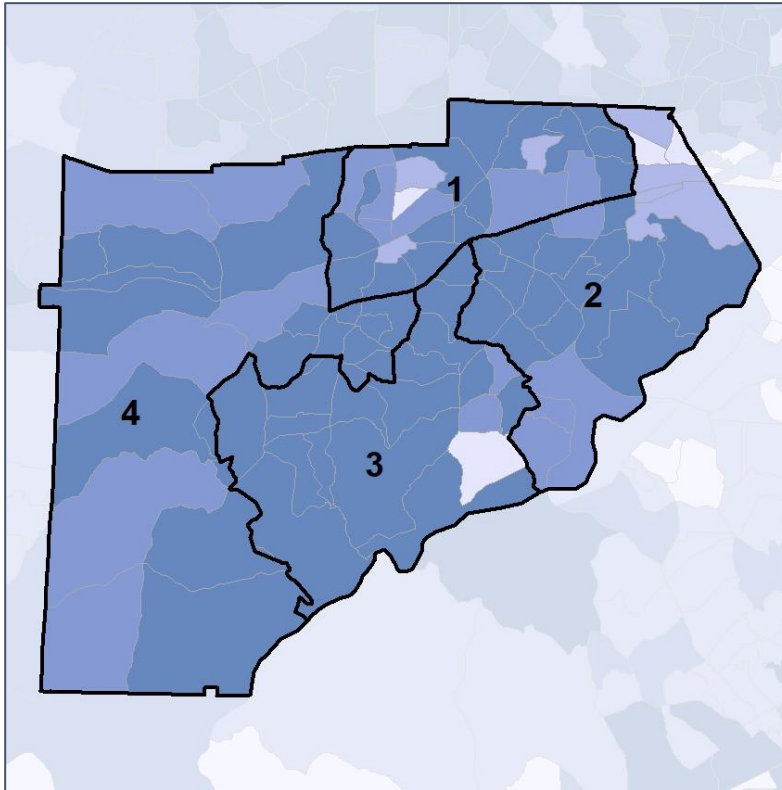


Douglas County Commission

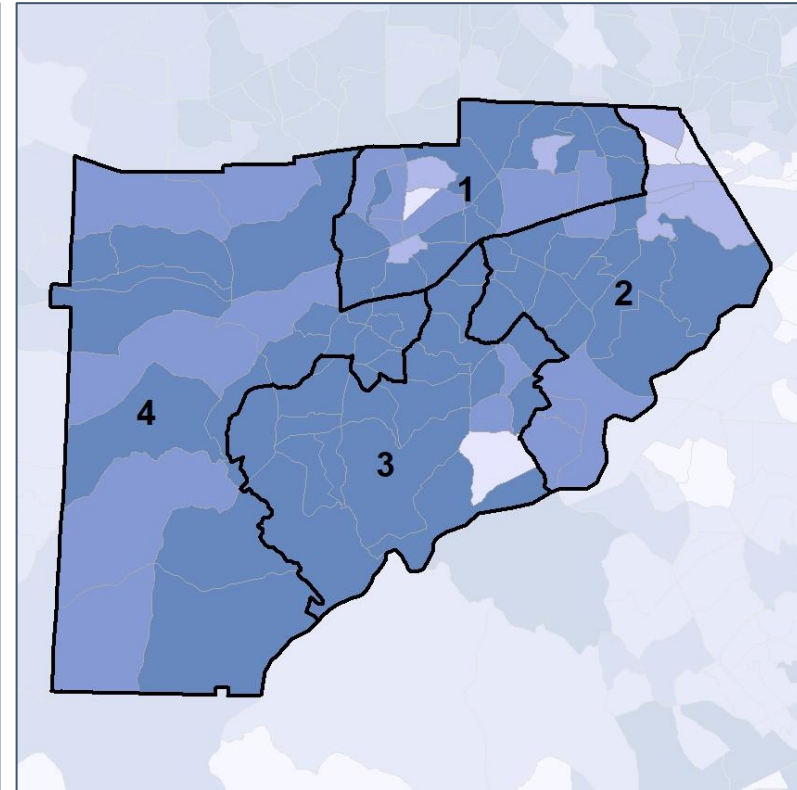
Net Gain in % POC (2020 - 2010) by Census Block Group



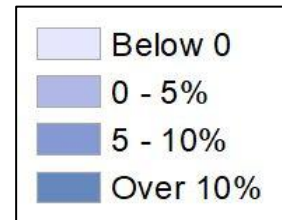
2012 Map



2022 Map*



	1	2	3	4	1*	2*	3*	4*	County
Population	36,106	37,020	35,514	35,597	36,106	36,191	36,032	35,908	144,237
API	1%	2%	2%	2%	1%	2%	2%	2%	2%
Black	52%	62%	45%	31%	52%	63%	45%	31%	48%
Latino	15%	10%	9%	10%	15%	10%	9%	10%	11%
Other	5%	4%	5%	5%	5%	4%	5%	5%	5%
White	28%	21%	38%	52%	28%	20%	38%	52%	35%
Population Gain	*	*	*	*	0	-829	518	311	*
Population % Gain	*	*	*	*	0%	-2%	1%	1%	*
Net POC Gain	*	*	*	*	0	-393	261	132	*
Net POC % Gain	*	*	*	*	0%	-1%	1%	1%	*

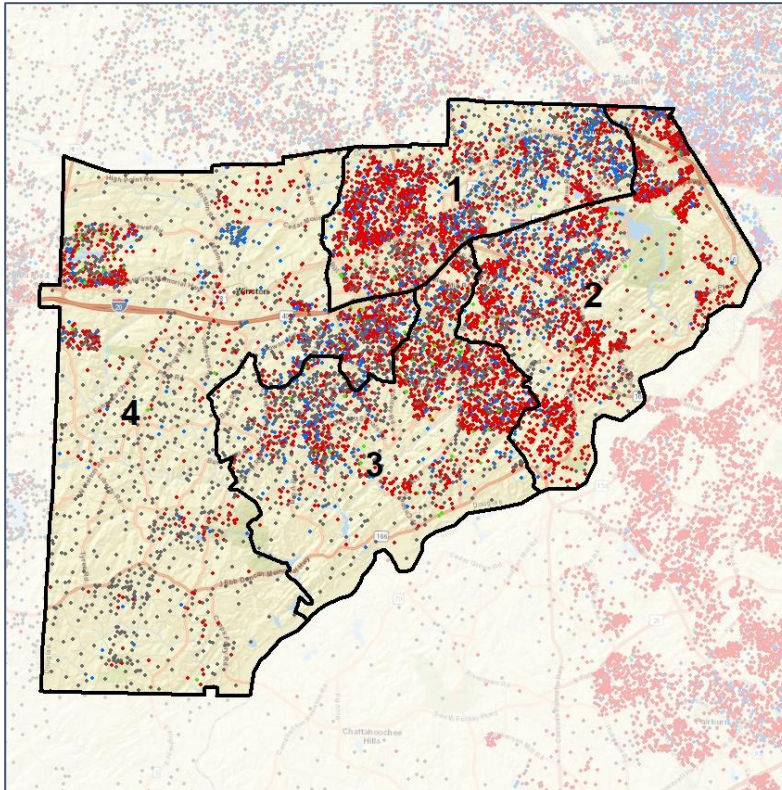


Douglas County Commission

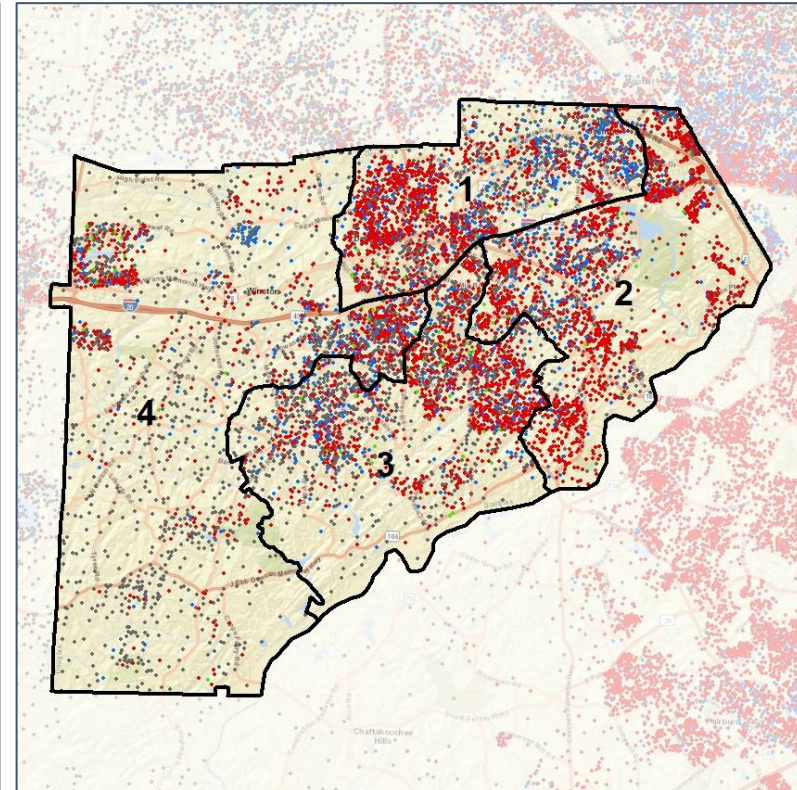
Population Density by Race



2012 Map



2022 Map*



	1	2	3	4	1*	2*	3*	4*	County
Population	36,106	37,020	35,514	35,597	36,106	36,191	36,032	35,908	144,237
API	397	568	787	658	397	559	790	664	2,410
% API	1%	2%	2%	2%	1%	2%	2%	2%	2%
Black	18,675	23,115	15,927	11,046	18,675	22,857	16,092	11,139	68,763
% Black	52%	62%	45%	31%	52%	63%	45%	31%	48%
Latino	5,397	3,849	3,341	3,448	5,397	3,764	3,410	3,464	16,035
% Latino	15%	10%	9%	10%	15%	10%	9%	10%	11%
Other	1,642	1,651	1,923	1,936	1,642	1,610	1,947	1,953	7,152
% Other	5%	4%	5%	5%	5%	4%	5%	5%	5%
White	9,995	7,837	13,536	18,509	9,995	7,401	13,793	18,688	49,877
% White	28%	21%	38%	52%	28%	20%	38%	52%	35%

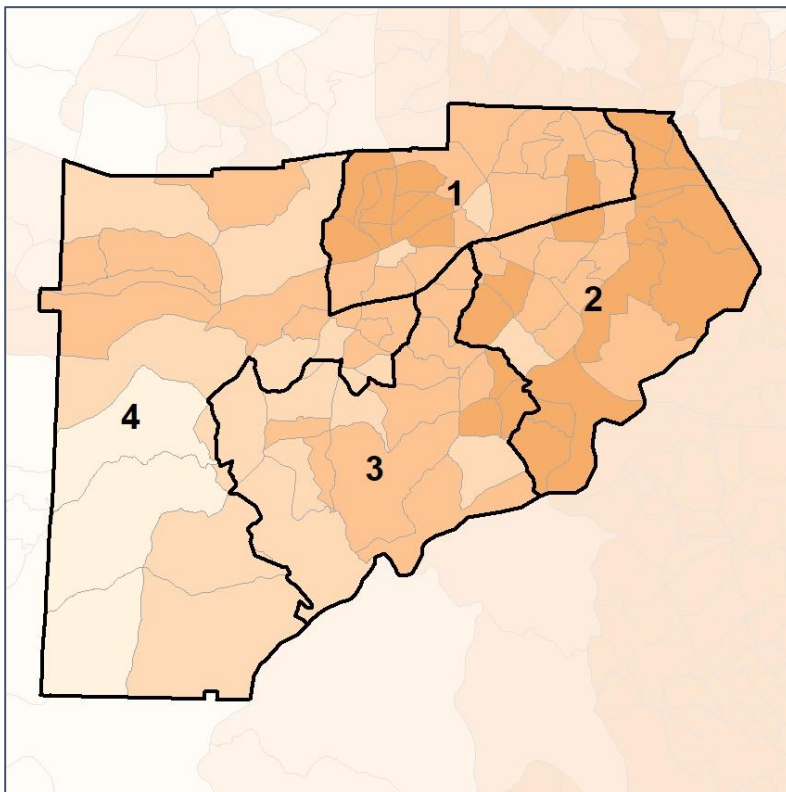


Douglas County Commission

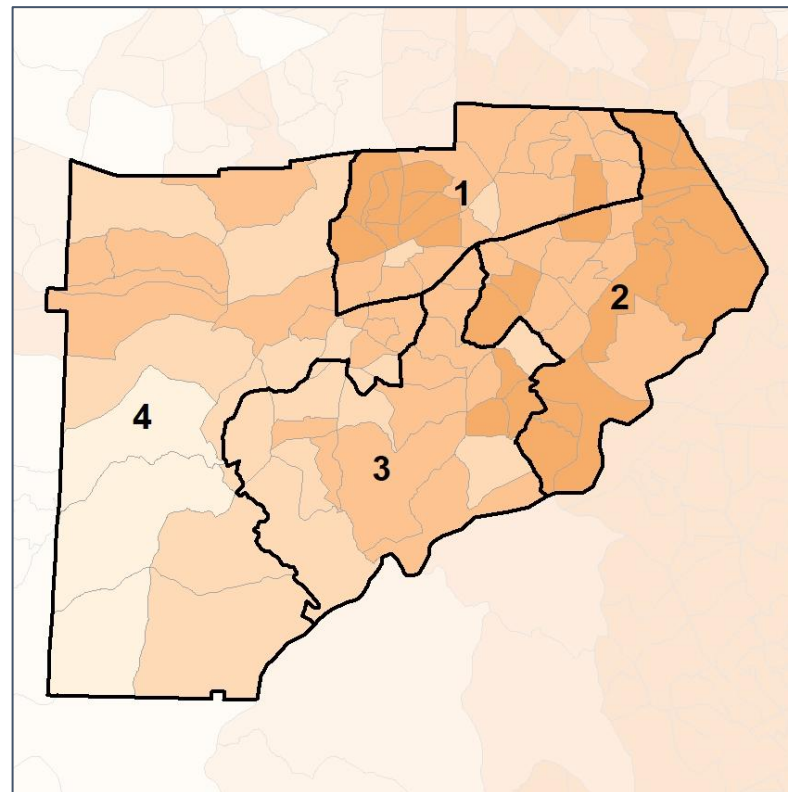
% People of Color by Census Block Group



2012 Map



2022 Map*



	1	2	3	4	1*	2*	3*	4*	County
Population	36,106	37,020	35,514	35,597	36,106	36,191	36,032	35,908	144,237
API	397	568	787	658	397	559	790	664	2,410
% API	1%	2%	2%	2%	1%	2%	2%	2%	2%
Black	18,675	23,115	15,927	11,046	18,675	22,857	16,092	11,139	68,763
% Black	52%	62%	45%	31%	52%	63%	45%	31%	48%
Latino	5,397	3,849	3,341	3,448	5,397	3,764	3,410	3,464	16,035
% Latino	15%	10%	9%	10%	15%	10%	9%	10%	11%
Other	1,642	1,651	1,923	1,936	1,642	1,610	1,947	1,953	7,152
% Other	5%	4%	5%	5%	5%	4%	5%	5%	5%
White	9,995	7,837	13,536	18,509	9,995	7,401	13,793	18,688	49,877
% White	28%	21%	38%	52%	28%	20%	38%	52%	35%

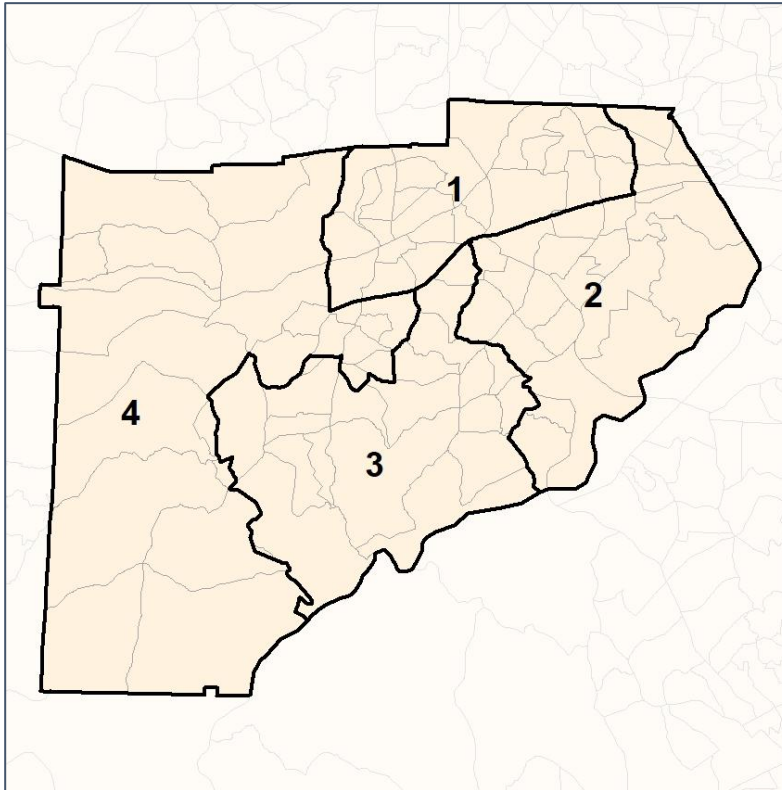


Douglas County Commission

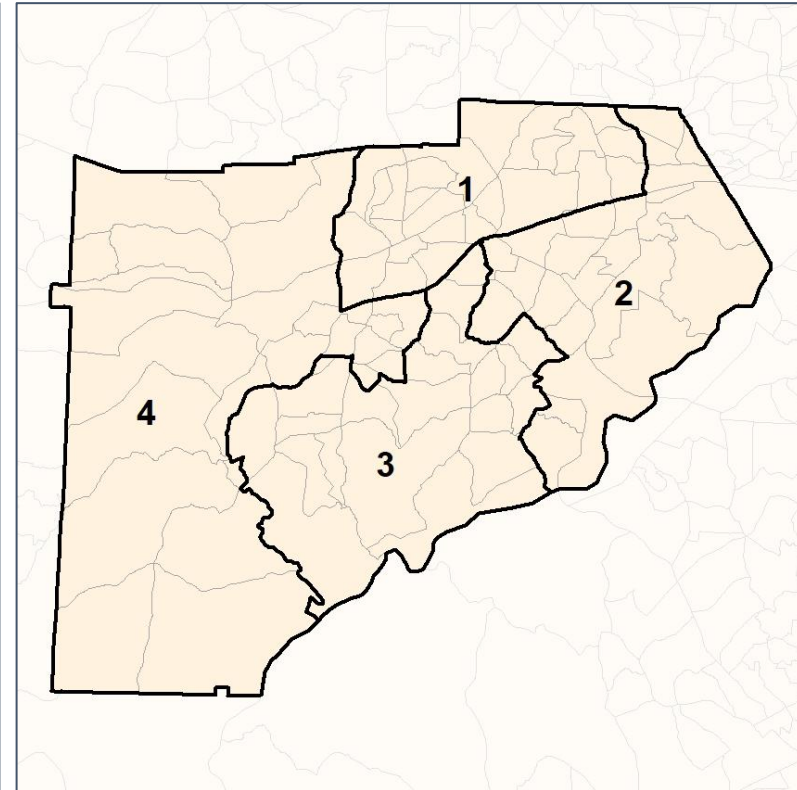
% API by Census Block Group



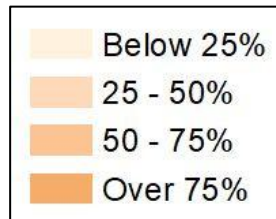
2012 Map



2022 Map*



	1	2	3	4	1*	2*	3*	4*	County
Population	36,106	37,020	35,514	35,597	36,106	36,191	36,032	35,908	144,237
API	397	568	787	658	397	559	790	664	2,410
% API	1%	2%	2%	2%	1%	2%	2%	2%	2%
Black	18,675	23,115	15,927	11,046	18,675	22,857	16,092	11,139	68,763
% Black	52%	62%	45%	31%	52%	63%	45%	31%	48%
Latino	5,397	3,849	3,341	3,448	5,397	3,764	3,410	3,464	16,035
% Latino	15%	10%	9%	10%	15%	10%	9%	10%	11%
Other	1,642	1,651	1,923	1,936	1,642	1,610	1,947	1,953	7,152
% Other	5%	4%	5%	5%	5%	4%	5%	5%	5%
White	9,995	7,837	13,536	18,509	9,995	7,401	13,793	18,688	49,877
% White	28%	21%	38%	52%	28%	20%	38%	52%	35%

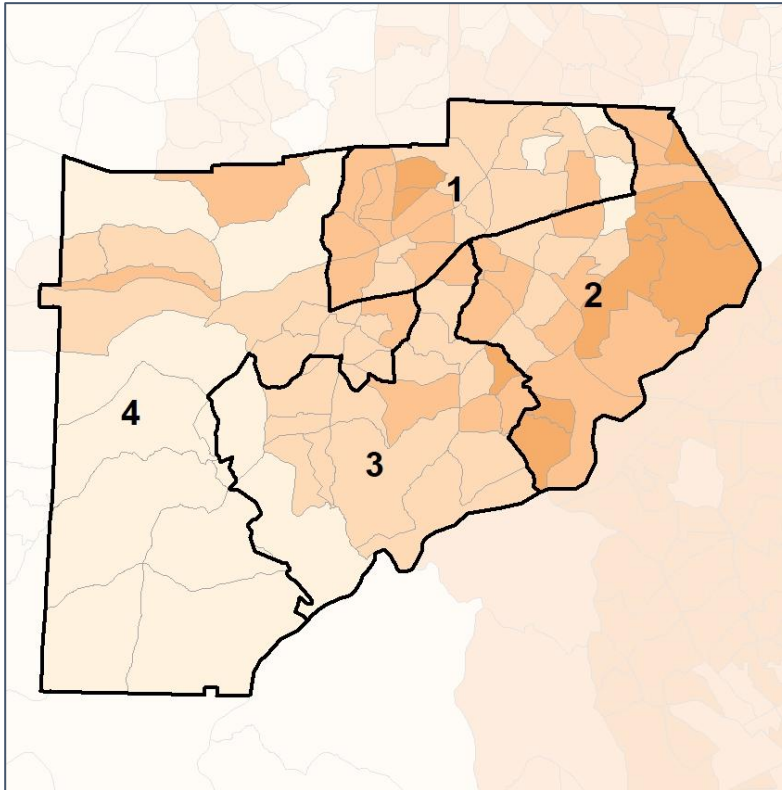


Douglas County Commission

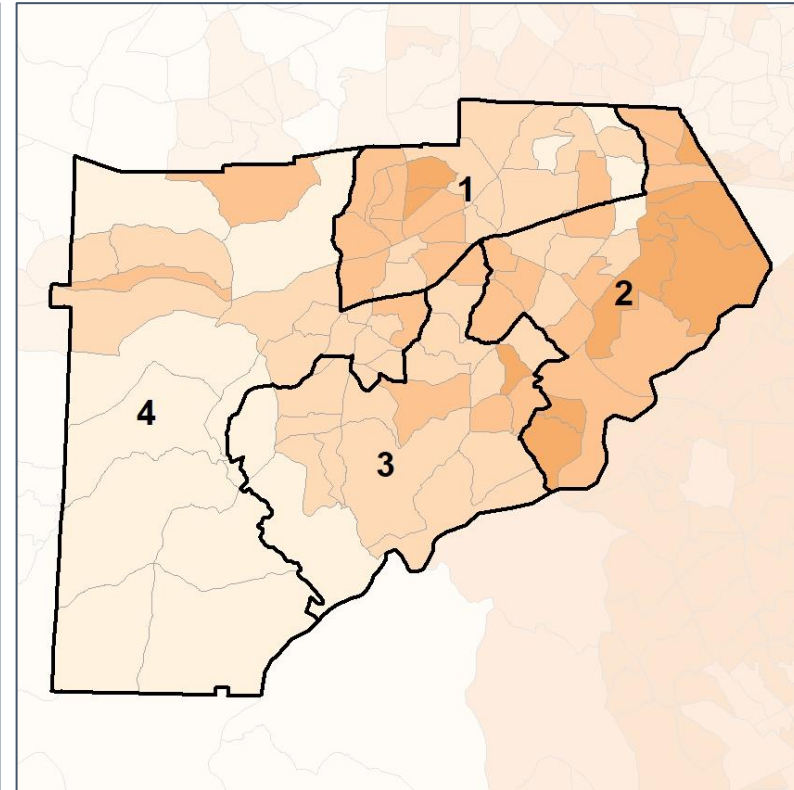
% Black by Census Block Group



2012 Map



2022 Map*



	1	2	3	4	1*	2*	3*	4*	County
Population	36,106	37,020	35,514	35,597	36,106	36,191	36,032	35,908	144,237
API	397	568	787	658	397	559	790	664	2,410
% API	1%	2%	2%	2%	1%	2%	2%	2%	2%
Black	18,675	23,115	15,927	11,046	18,675	22,857	16,092	11,139	68,763
% Black	52%	62%	45%	31%	52%	63%	45%	31%	48%
Latino	5,397	3,849	3,341	3,448	5,397	3,764	3,410	3,464	16,035
% Latino	15%	10%	9%	10%	15%	10%	9%	10%	11%
Other	1,642	1,651	1,923	1,936	1,642	1,610	1,947	1,953	7,152
% Other	5%	4%	5%	5%	5%	4%	5%	5%	5%
White	9,995	7,837	13,536	18,509	9,995	7,401	13,793	18,688	49,877
% White	28%	21%	38%	52%	28%	20%	38%	52%	35%



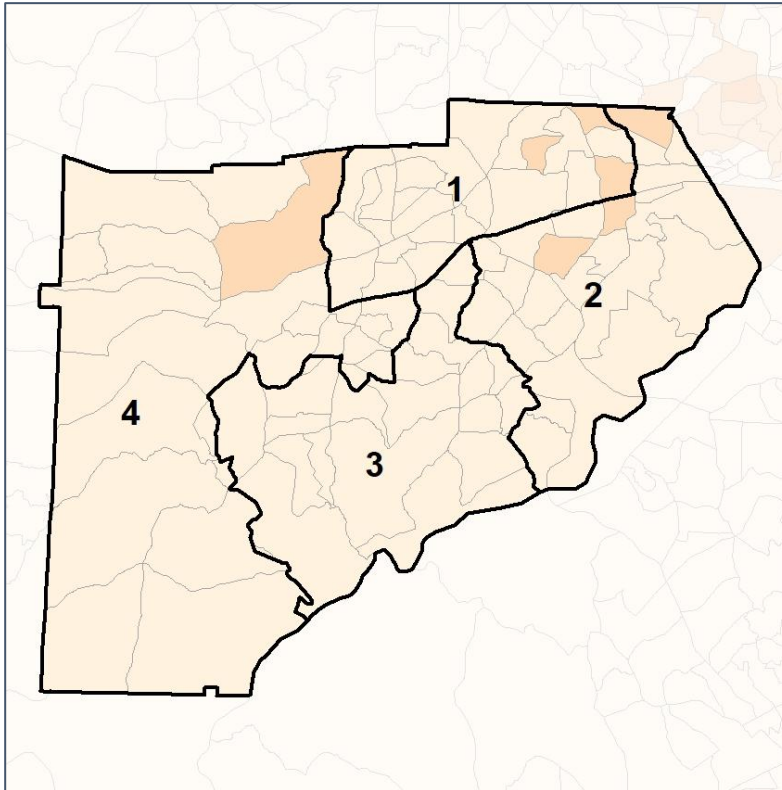
Source:
2020 Decennial Census
2020 ACS 5-Year Dataset

Douglas County Commission

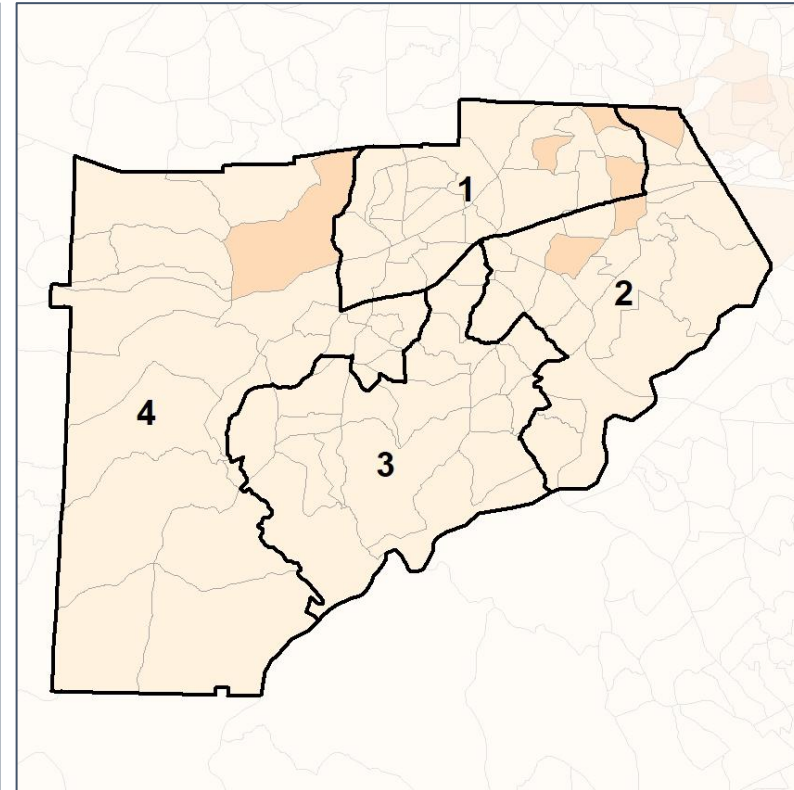
% Latino by Census Block Group



2012 Map



2022 Map*



	1	2	3	4	1*	2*	3*	4*	County
Population	36,106	37,020	35,514	35,597	36,106	36,191	36,032	35,908	144,237
API	397	568	787	658	397	559	790	664	2,410
% API	1%	2%	2%	2%	1%	2%	2%	2%	2%
Black	18,675	23,115	15,927	11,046	18,675	22,857	16,092	11,139	68,763
% Black	52%	62%	45%	31%	52%	63%	45%	31%	48%
Latino	5,397	3,849	3,341	3,448	5,397	3,764	3,410	3,464	16,035
% Latino	15%	10%	9%	10%	15%	10%	9%	10%	11%
Other	1,642	1,651	1,923	1,936	1,642	1,610	1,947	1,953	7,152
% Other	5%	4%	5%	5%	5%	4%	5%	5%	5%
White	9,995	7,837	13,536	18,509	9,995	7,401	13,793	18,688	49,877
% White	28%	21%	38%	52%	28%	20%	38%	52%	35%

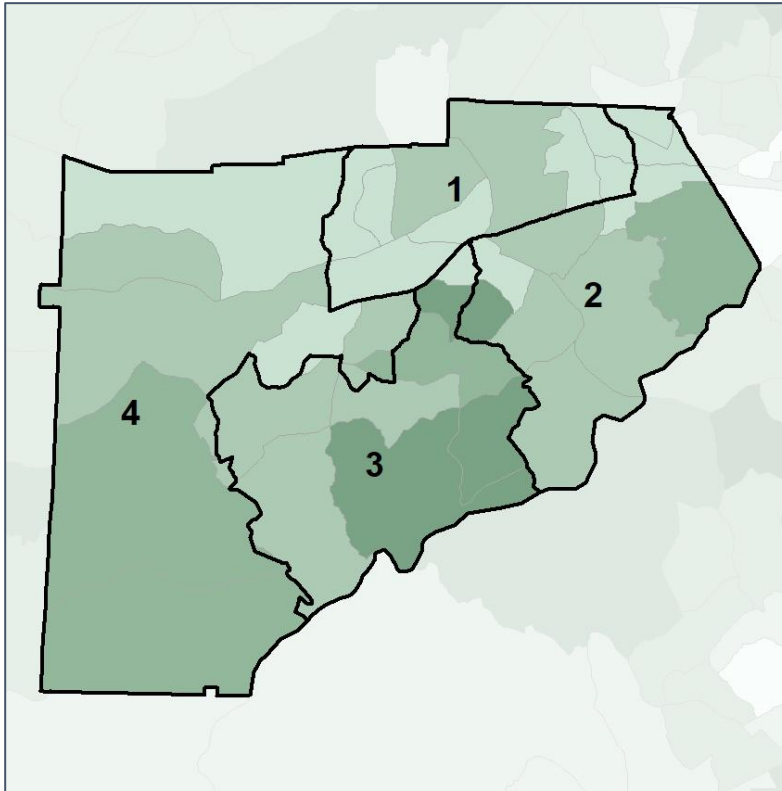


Douglas County Commission

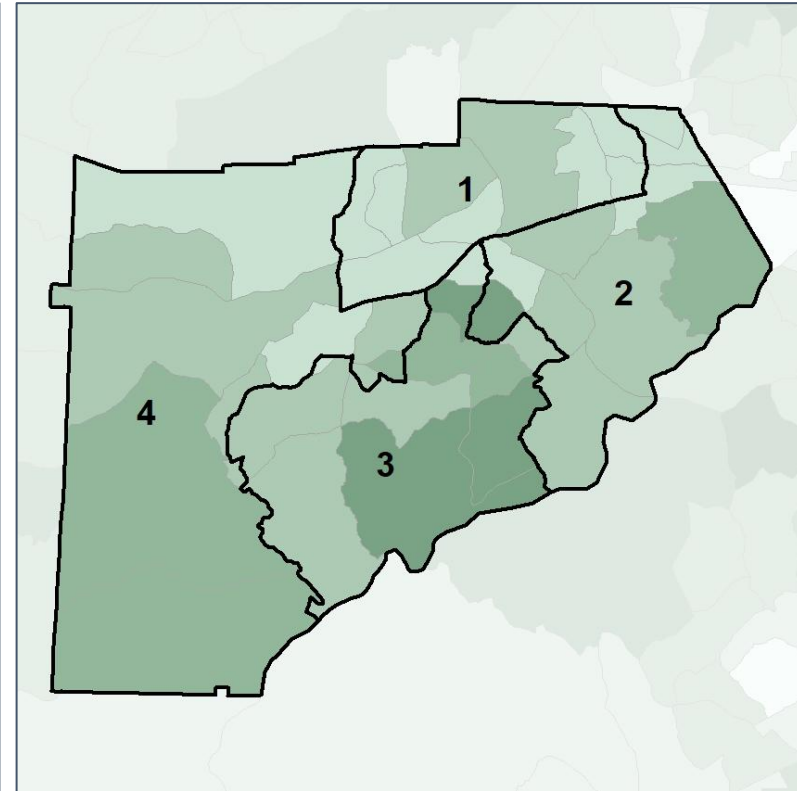
Median Household Income by Census Tract



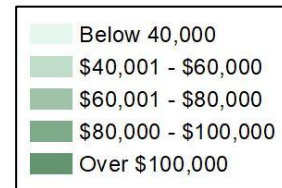
2012 Map



2022 Map*



	1	2	3	4	1*	2*	3*	4*	County
Population	36,106	37,020	35,514	35,597	36,106	36,191	36,032	35,908	144,237
% API	1%	2%	2%	2%	1%	2%	2%	2%	2%
% Black	52%	62%	45%	31%	52%	63%	45%	31%	48%
% Latino	15%	10%	9%	10%	15%	10%	9%	10%	11%
% Other	5%	4%	5%	5%	5%	4%	5%	5%	5%
% White	28%	21%	38%	52%	28%	20%	38%	52%	35%
Median Income	\$56,000	\$67,000	\$94,000	\$80,000	\$56,000	\$68,000	\$93,000	\$80,000	\$68,000
% Renter	45%	47%	18%	24%	45%	48%	18%	24%	35%
% Youth	25%	24%	20%	18%	25%	24%	20%	18%	22%

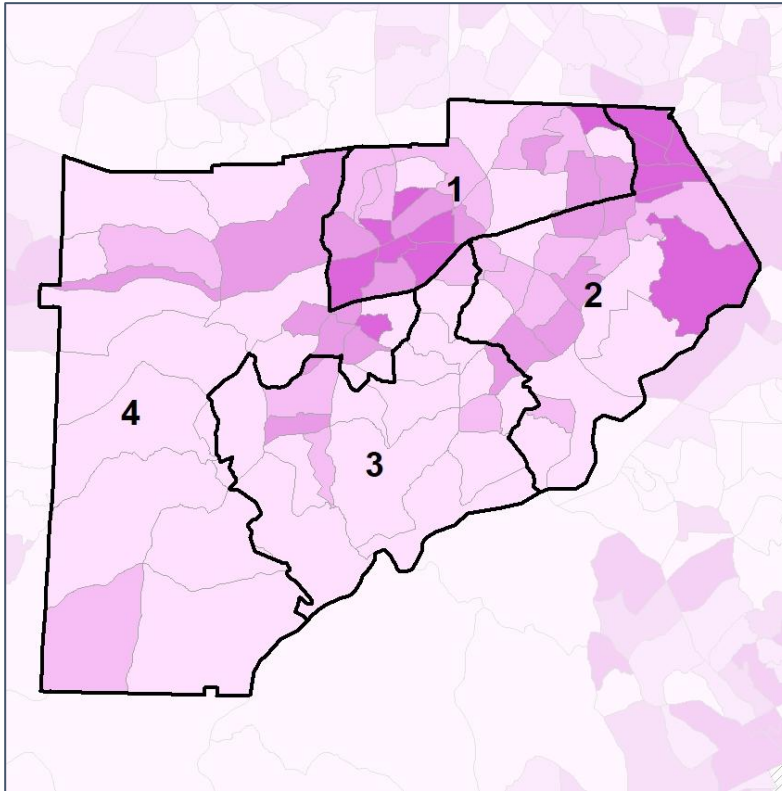


Douglas County Commission

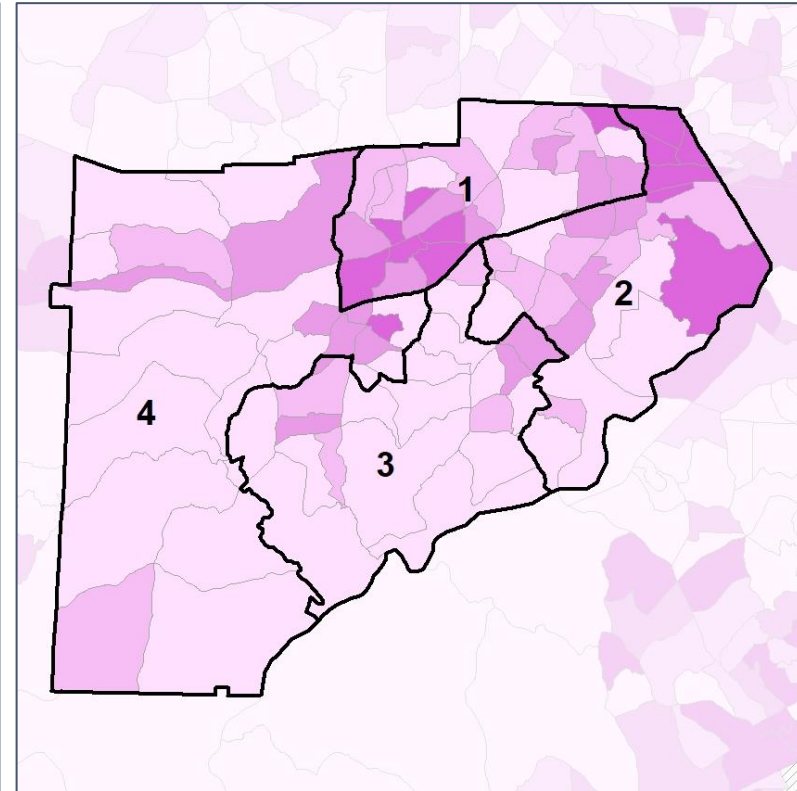
% Renter by Census Block Group



2012 Map



2022 Map*



	1	2	3	4	1*	2*	3*	4*	County
Population	36,106	37,020	35,514	35,597	36,106	36,191	36,032	35,908	144,237
% API	1%	2%	2%	2%	1%	2%	2%	2%	2%
% Black	52%	62%	45%	31%	52%	63%	45%	31%	48%
% Latino	15%	10%	9%	10%	15%	10%	9%	10%	11%
% Other	5%	4%	5%	5%	5%	4%	5%	5%	5%
% White	28%	21%	38%	52%	28%	20%	38%	52%	35%
Median Income	\$56,000	\$67,000	\$94,000	\$80,000	\$56,000	\$68,000	\$93,000	\$80,000	\$68,000
% Renter	45%	47%	18%	24%	45%	48%	18%	24%	35%
% Youth	25%	24%	20%	18%	25%	24%	20%	18%	22%

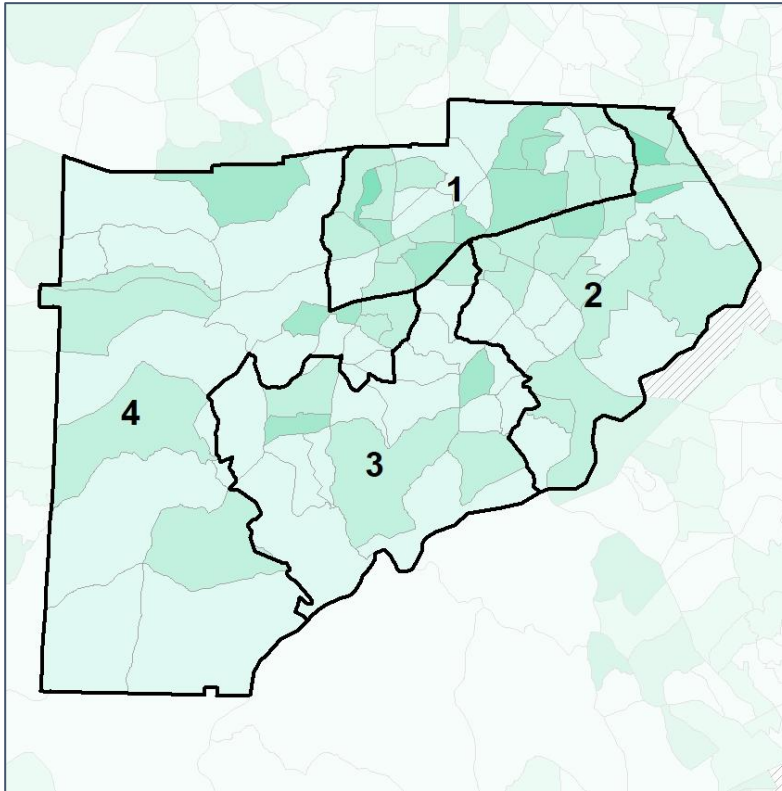


Douglas County Commission

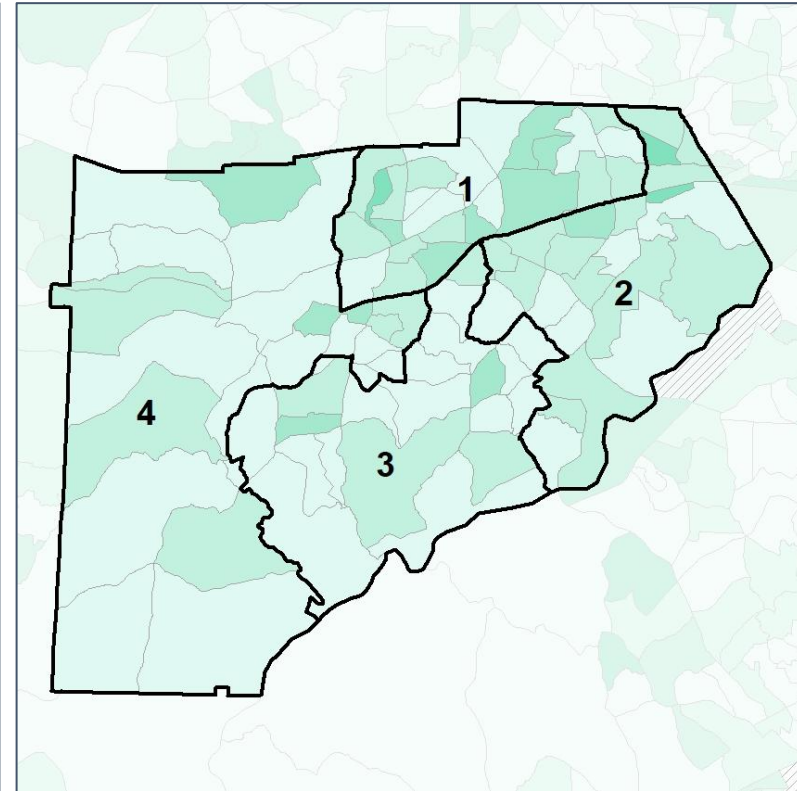
% Youth (18-34) by Census Block Group



2012 Map



2022 Map*



	1	2	3	4	1*	2*	3*	4*	County
Population	36,106	37,020	35,514	35,597	36,106	36,191	36,032	35,908	144,237
% API	1%	2%	2%	2%	1%	2%	2%	2%	2%
% Black	52%	62%	45%	31%	52%	63%	45%	31%	48%
% Latino	15%	10%	9%	10%	15%	10%	9%	10%	11%
% Other	5%	4%	5%	5%	5%	4%	5%	5%	5%
% White	28%	21%	38%	52%	28%	20%	38%	52%	35%
Median Income	\$56,000	\$67,000	\$94,000	\$80,000	\$56,000	\$68,000	\$93,000	\$80,000	\$68,000
% Renter	45%	47%	18%	24%	45%	48%	18%	24%	35%
% Youth	25%	24%	20%	18%	25%	24%	20%	18%	22%

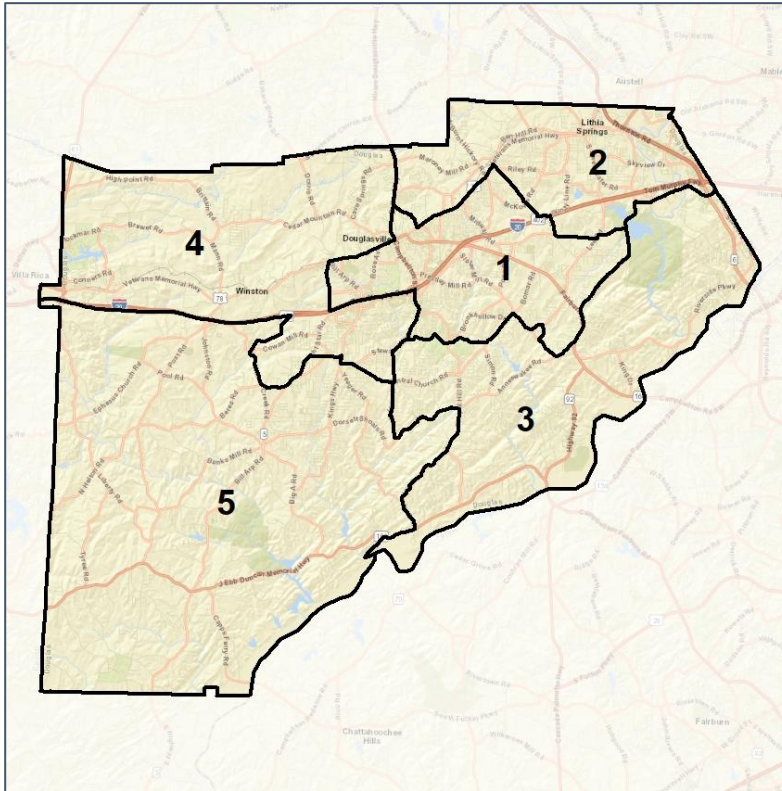


Douglas County School Board

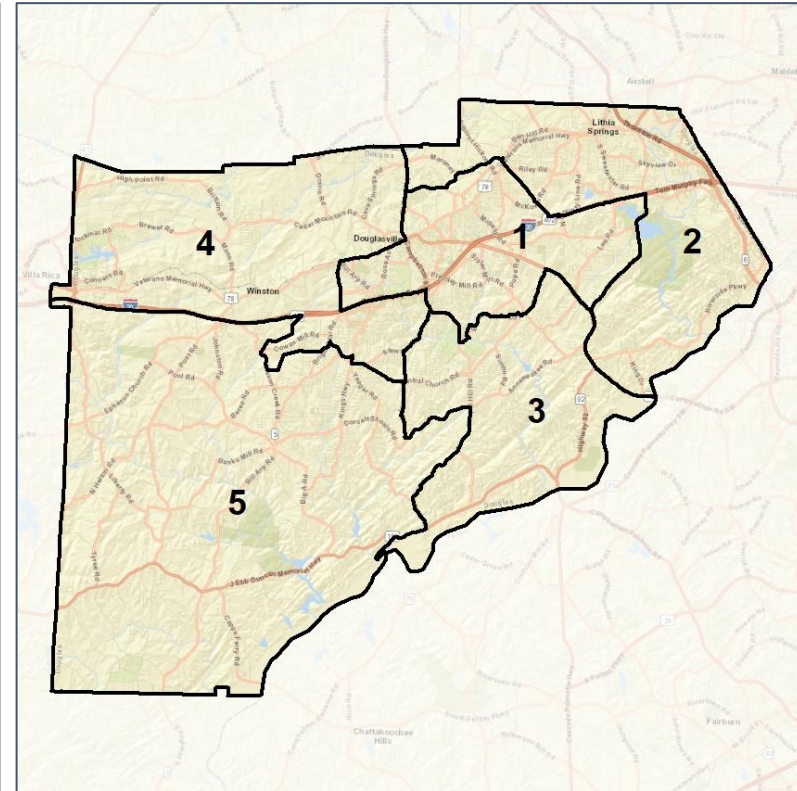
Context



2012 Map



2022 Map*



	1	2	3	4	5	1*	2*	3*	4*	5*	County
Population	29,210	26,799	30,186	30,166	27,850	28,992	28,724	28,479	29,125	28,917	144,237
API	2%	1%	2%	2%	1%	2%	1%	2%	2%	1%	2%
Black	48%	54%	63%	48%	24%	51%	56%	59%	48%	24%	48%
Latino	13%	16%	7%	12%	8%	13%	14%	9%	12%	8%	11%
Other	5%	4%	5%	5%	6%	5%	4%	5%	5%	6%	5%
White	32%	25%	23%	33%	61%	29%	25%	26%	33%	60%	35%
Population Gain	*	*	*	*	*	-218	1,925	-1,707	-1,041	1,067	*
Population % Gain	*	*	*	*	*	-1%	7%	-6%	-3%	4%	*
Net POC Gain	*	*	*	*	*	616	1,472	-2,088	-488	508	*
Net POC % Gain	*	*	*	*	*	3%	7%	-9%	-2%	5%	*

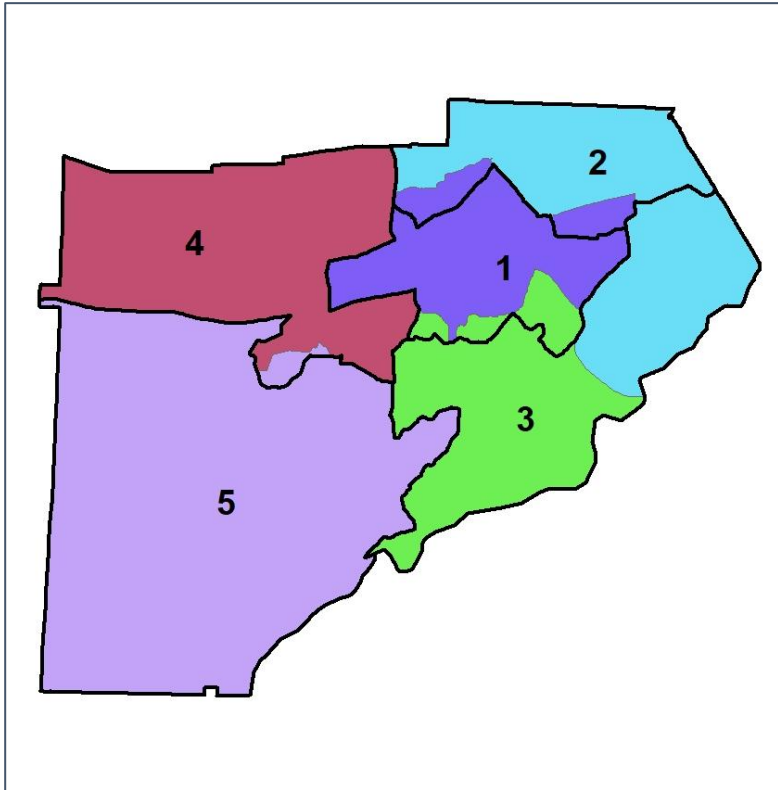


Douglas County School Board

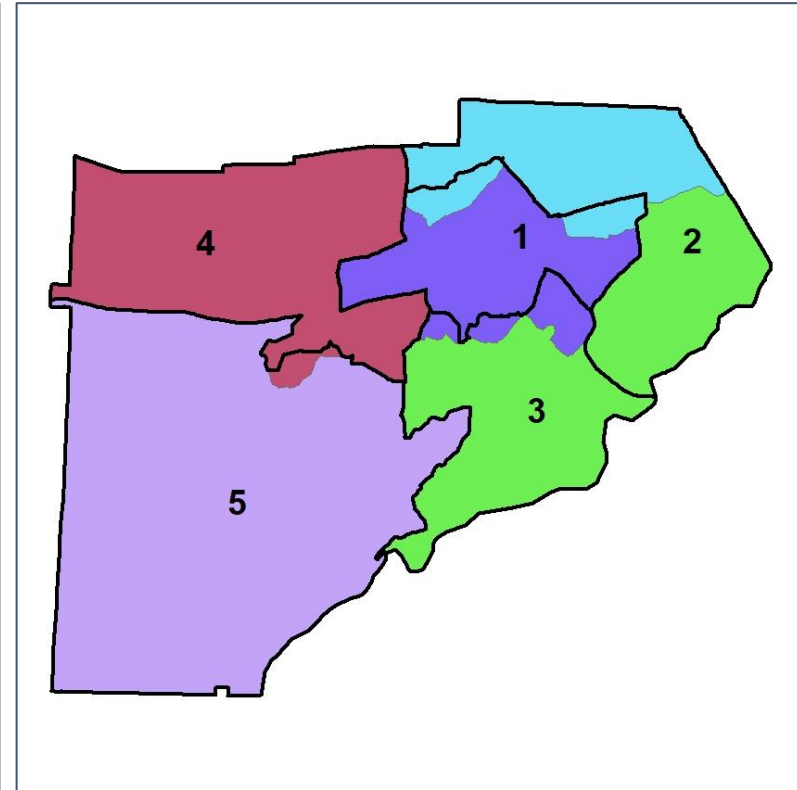
Changes in Redistricting



2012 Map (2022 in Colors)



2022 Map* (2012 in Colors)



	1	2	3	4	5	1*	2*	3*	4*	5*	County
Population	29,210	26,799	30,186	30,166	27,850	28,992	28,724	28,479	29,125	28,917	144,237
API	2%	1%	2%	2%	1%	2%	1%	2%	2%	1%	2%
Black	48%	54%	63%	48%	24%	51%	56%	59%	48%	24%	48%
Latino	13%	16%	7%	12%	8%	13%	14%	9%	12%	8%	11%
Other	5%	4%	5%	5%	6%	5%	4%	5%	5%	6%	5%
White	32%	25%	23%	33%	61%	29%	25%	26%	33%	60%	35%
Population Gain	*	*	*	*	*	-218	1,925	-1,707	-1,041	1,067	*
Population % Gain	*	*	*	*	*	-1%	7%	-6%	-3%	4%	*
Net POC Gain	*	*	*	*	*	616	1,472	-2,088	-488	508	*
Net POC % Gain	*	*	*	*	*	3%	7%	-9%	-2%	5%	*

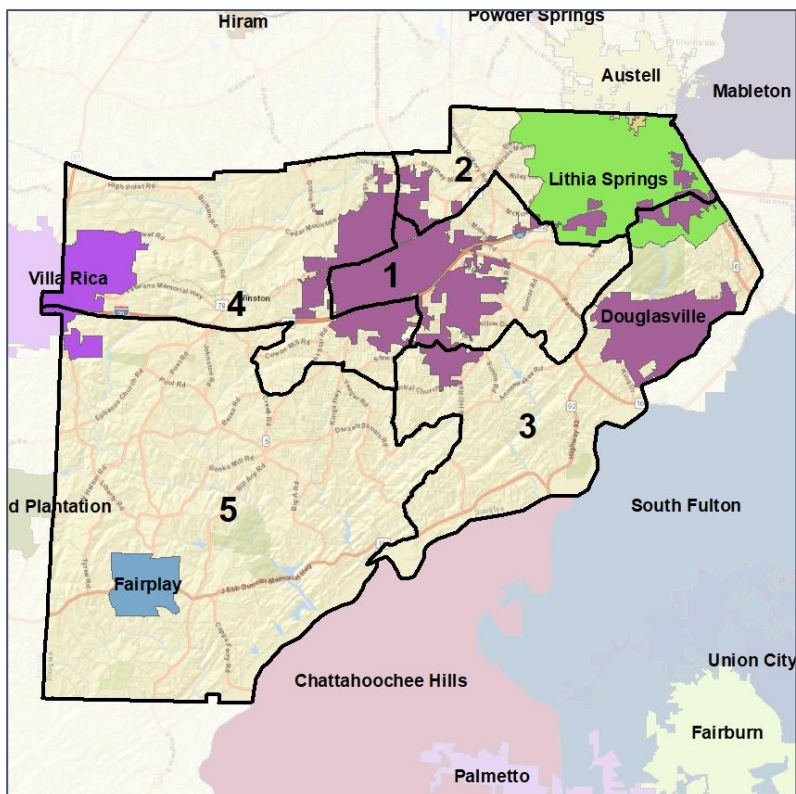


Douglas County School Board

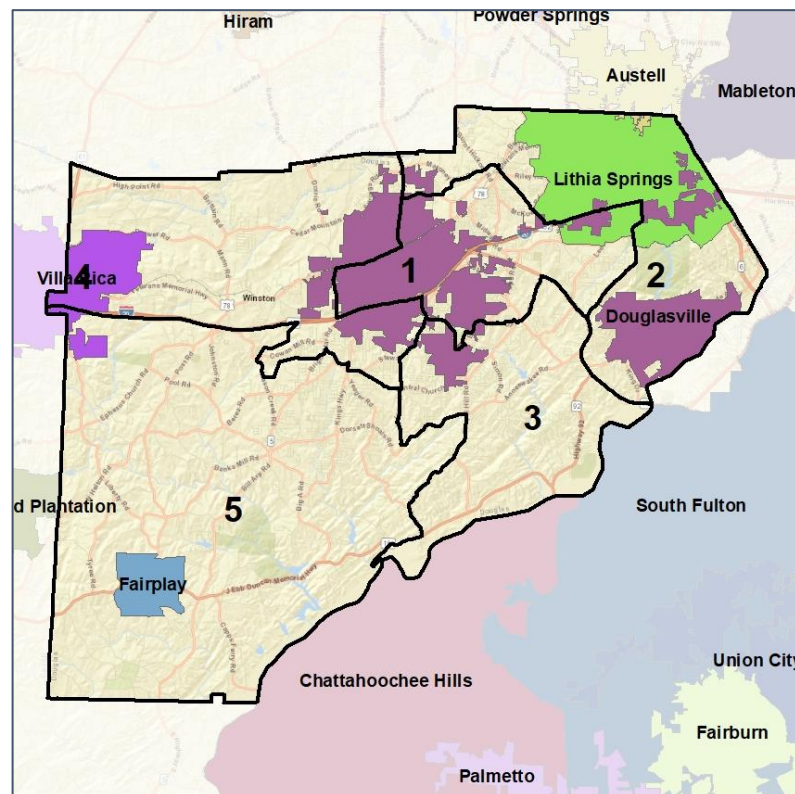
Cities and Places



2012 Map



2022 Map*



	1	2	3	4	5	1*	2*	3*	4*	5*	County
Population	29,210	26,799	30,186	30,166	27,850	28,992	28,724	28,479	29,125	28,917	144,237
API	2%	1%	2%	2%	1%	2%	1%	2%	2%	1%	2%
Black	48%	54%	63%	48%	24%	51%	56%	59%	48%	24%	48%
Latino	13%	16%	7%	12%	8%	13%	14%	9%	12%	8%	11%
Other	5%	4%	5%	5%	6%	5%	4%	5%	5%	6%	5%
White	32%	25%	23%	33%	61%	29%	25%	26%	33%	60%	35%
Population Gain	*	*	*	*	*	-218	1,925	-1,707	-1,041	1,067	*
Population % Gain	*	*	*	*	*	-1%	7%	-6%	-3%	4%	*
Net POC Gain	*	*	*	*	*	616	1,472	-2,088	-488	508	*
Net POC % Gain	*	*	*	*	*	3%	7%	-9%	-2%	5%	*



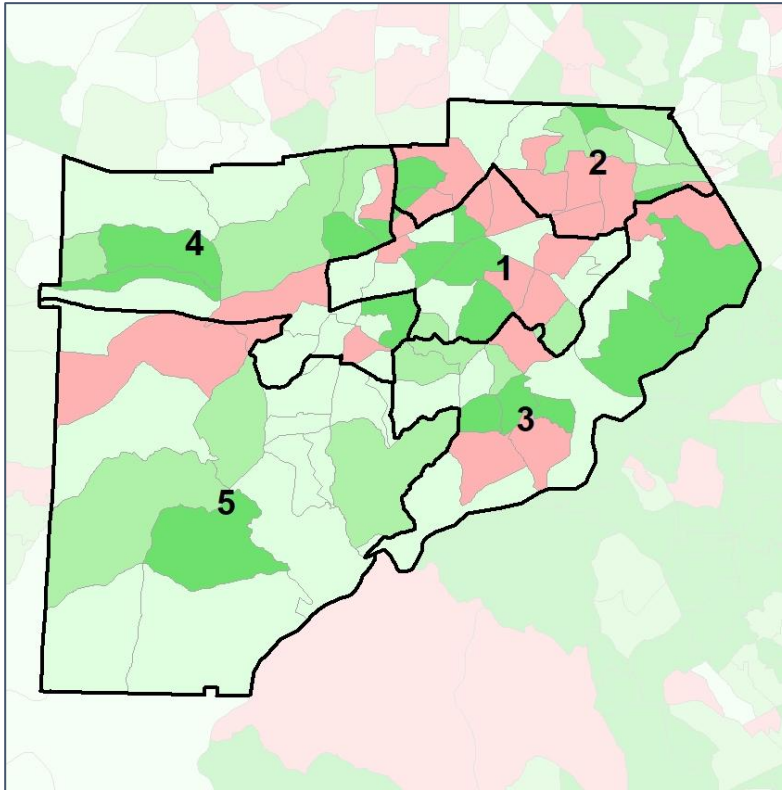
Source:
2020 Decennial Census
2020 ACS 5-Year Dataset

Douglas County School Board

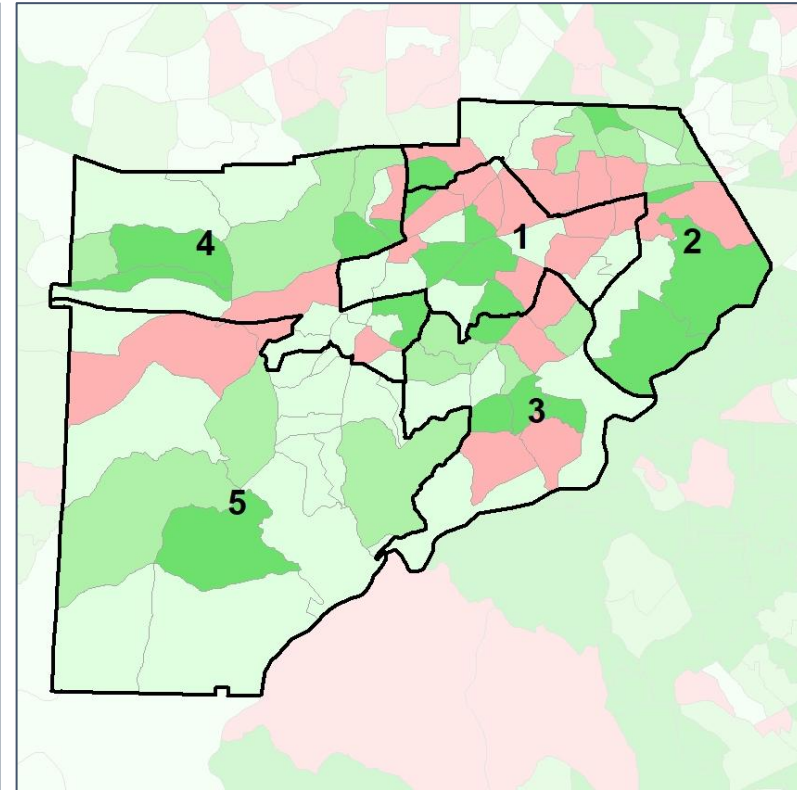
Net Gain in Population (2010 - 2020)



2012 Map



2022 Map*



	1	2	3	4	5	1*	2*	3*	4*	5*	County
Population	29,210	26,799	30,186	30,166	27,850	28,992	28,724	28,479	29,125	28,917	144,237
API	2%	1%	2%	2%	1%	2%	1%	2%	2%	1%	2%
Black	48%	54%	63%	48%	24%	51%	56%	59%	48%	24%	48%
Latino	13%	16%	7%	12%	8%	13%	14%	9%	12%	8%	11%
Other	5%	4%	5%	5%	6%	5%	4%	5%	5%	6%	5%
White	32%	25%	23%	33%	61%	29%	25%	26%	33%	60%	35%
Population Gain	*	*	*	*	*	-218	1,925	-1,707	-1,041	1,067	*
Population % Gain	*	*	*	*	*	-1%	7%	-6%	-3%	4%	*
Net POC Gain	*	*	*	*	*	616	1,472	-2,088	-488	508	*
Net POC % Gain	*	*	*	*	*	3%	7%	-9%	-2%	5%	*

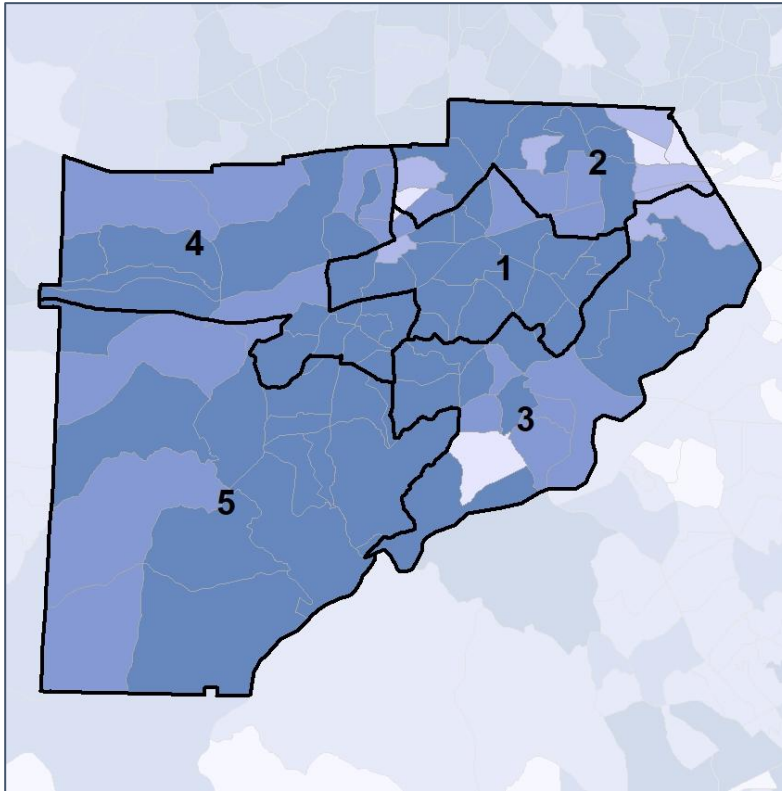


Douglas County School Board

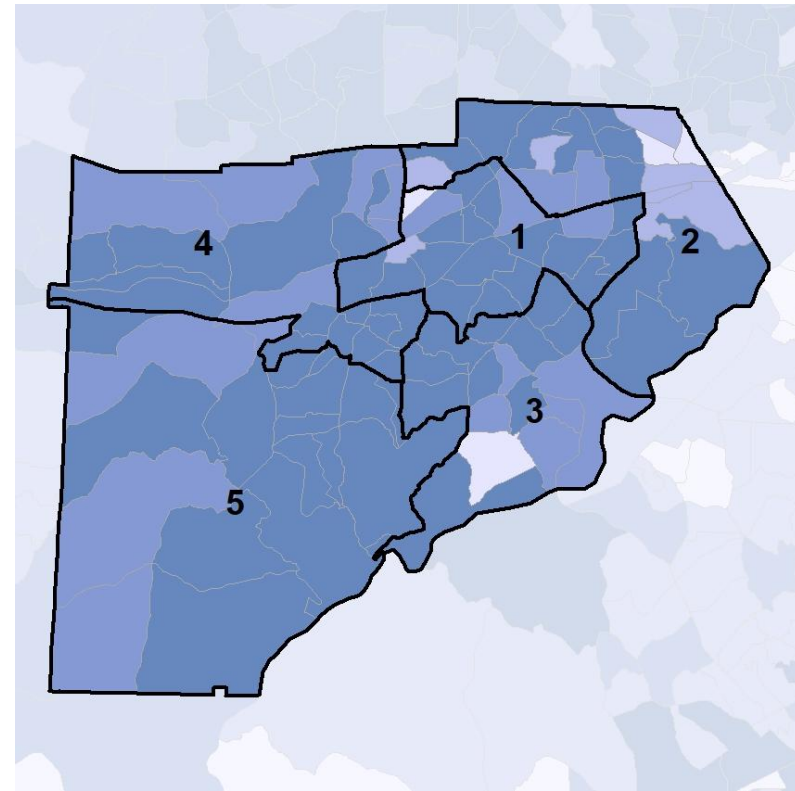
Net Gain in % POC (2020 - 2010) by Census Block Group



2012 Map



2022 Map*



	1	2	3	4	5	1*	2*	3*	4*	5*	County
Population	29,210	26,799	30,186	30,166	27,850	28,992	28,724	28,479	29,125	28,917	144,237
API	2%	1%	2%	2%	1%	2%	1%	2%	2%	1%	2%
Black	48%	54%	63%	48%	24%	51%	56%	59%	48%	24%	48%
Latino	13%	16%	7%	12%	8%	13%	14%	9%	12%	8%	11%
Other	5%	4%	5%	5%	6%	5%	4%	5%	5%	6%	5%
White	32%	25%	23%	33%	61%	29%	25%	26%	33%	60%	35%
Population Gain	*	*	*	*	*	-218	1,925	-1,707	-1,041	1,067	*
Population % Gain	*	*	*	*	*	-1%	7%	-6%	-3%	4%	*
Net POC Gain	*	*	*	*	*	616	1,472	-2,088	-488	508	*
Net POC % Gain	*	*	*	*	*	3%	7%	-9%	-2%	5%	*

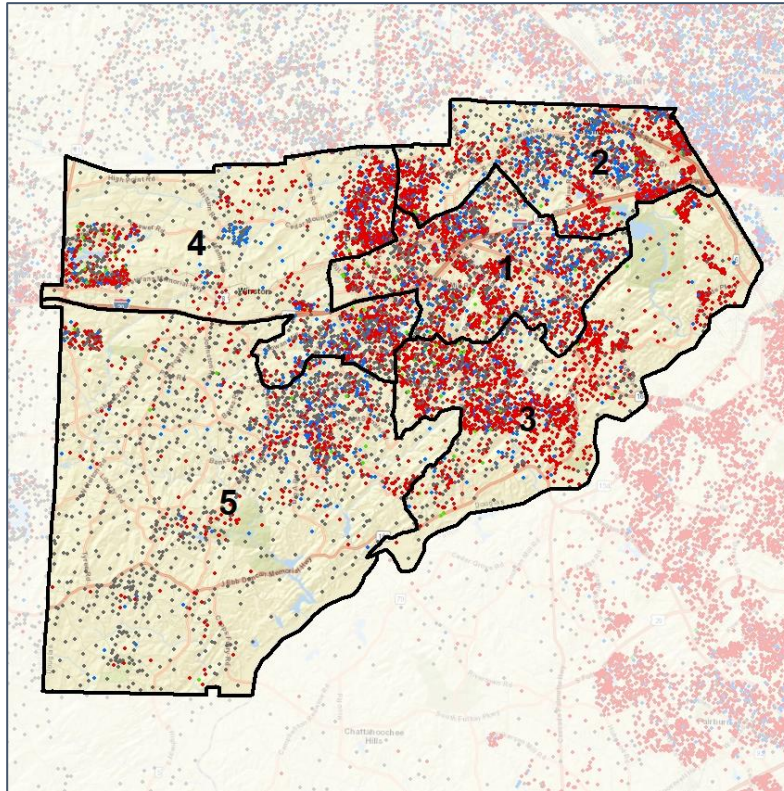


Douglas County School Board

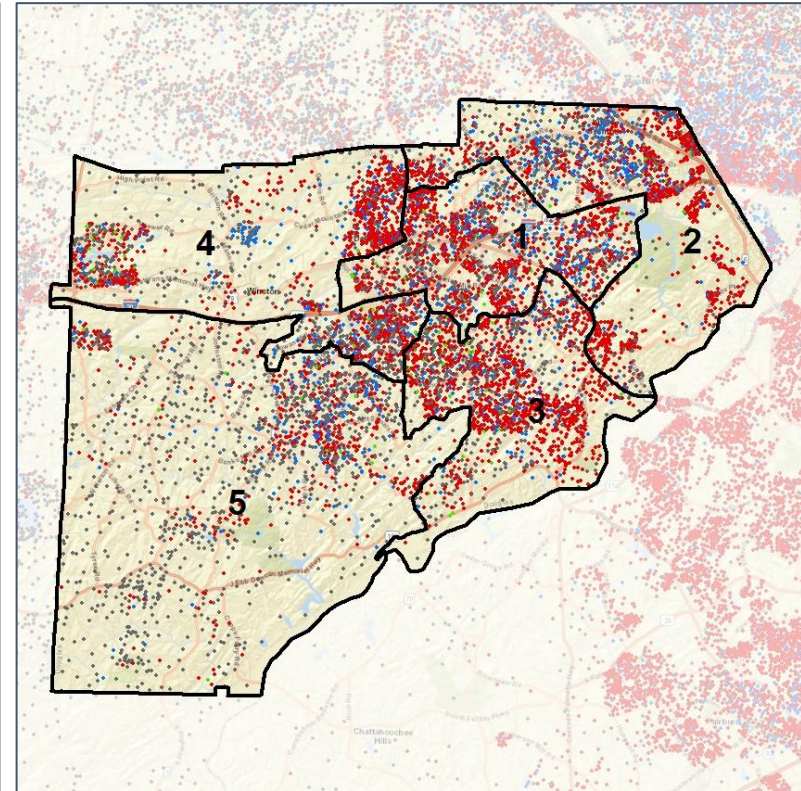
Population Density by Race



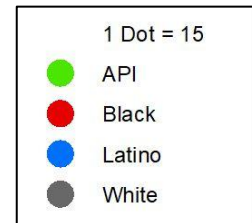
2012 Map



2022 Map*



	1	2	3	4	5	1*	2*	3*	4*	5*	County
Population	29,210	26,799	30,186	30,166	27,850	28,992	28,724	28,479	29,125	28,917	144,237
API	561	321	640	564	323	495	370	657	555	333	2,410
% API	2%	1%	2%	2%	1%	2%	1%	2%	2%	1%	2%
Black	14,087	14,533	18,981	14,420	6,742	14,873	16,034	16,694	14,107	7,055	68,763
% Black	48%	54%	63%	48%	24%	51%	56%	59%	48%	24%	48%
Latino	3,735	4,222	2,253	3,510	2,306	3,664	4,070	2,476	3,387	2,438	16,035
% Latino	13%	16%	7%	12%	8%	13%	14%	9%	12%	8%	11%
Other	1,510	1,031	1,400	1,641	1,560	1,477	1,105	1,359	1,598	1,613	7,152
% Other	5%	4%	5%	5%	6%	5%	4%	5%	5%	6%	5%
White	9,317	6,692	6,912	10,031	16,919	8,483	7,145	7,293	9,478	17,478	49,877
% White	32%	25%	23%	33%	61%	29%	25%	26%	33%	60%	35%

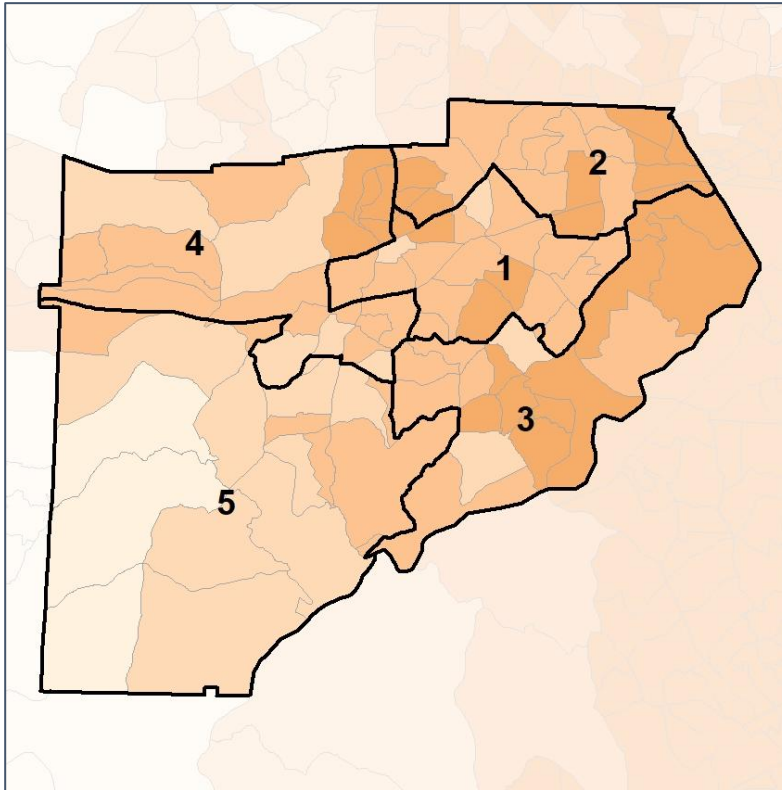


Douglas County School Board

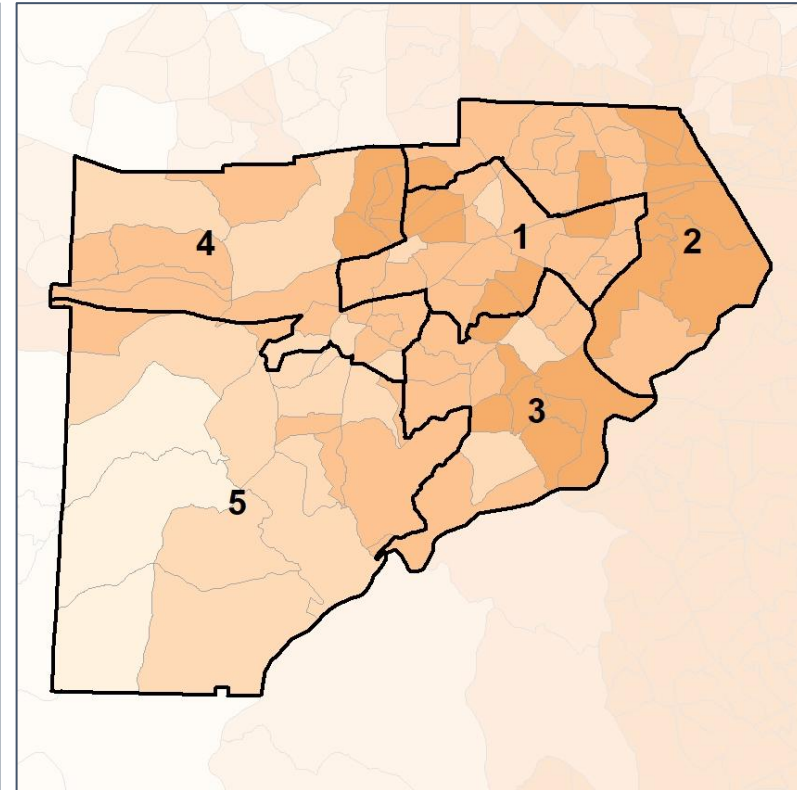
% People of Color by Census Block Group



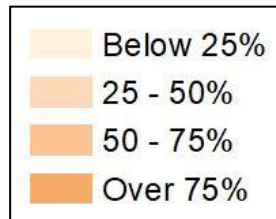
2012 Map



2022 Map*



	1	2	3	4	5	1*	2*	3*	4*	5*	County
Population	29,210	26,799	30,186	30,166	27,850	28,992	28,724	28,479	29,125	28,917	144,237
API	561	321	640	564	323	495	370	657	555	333	2,410
% API	2%	1%	2%	2%	1%	2%	1%	2%	2%	1%	2%
Black	14,087	14,533	18,981	14,420	6,742	14,873	16,034	16,694	14,107	7,055	68,763
% Black	48%	54%	63%	48%	24%	51%	56%	59%	48%	24%	48%
Latino	3,735	4,222	2,253	3,510	2,306	3,664	4,070	2,476	3,387	2,438	16,035
% Latino	13%	16%	7%	12%	8%	13%	14%	9%	12%	8%	11%
Other	1,510	1,031	1,400	1,641	1,560	1,477	1,105	1,359	1,598	1,613	7,152
% Other	5%	4%	5%	5%	6%	5%	4%	5%	5%	6%	5%
White	9,317	6,692	6,912	10,031	16,919	8,483	7,145	7,293	9,478	17,478	49,877
% White	32%	25%	23%	33%	61%	29%	25%	26%	33%	60%	35%



Source:
2020 Decennial Census
2020 ACS 5-Year Dataset

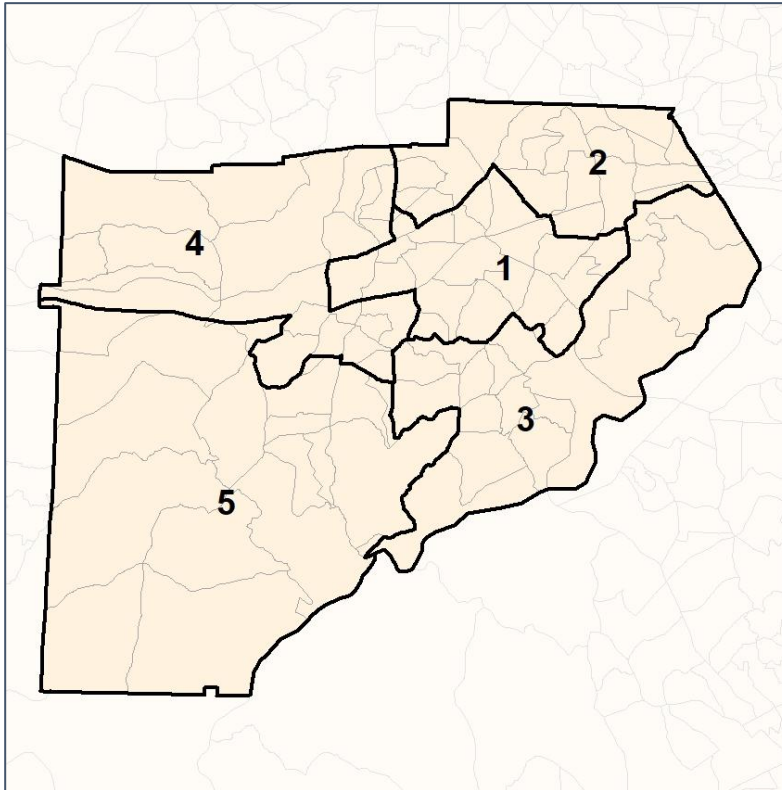


Douglas County School Board

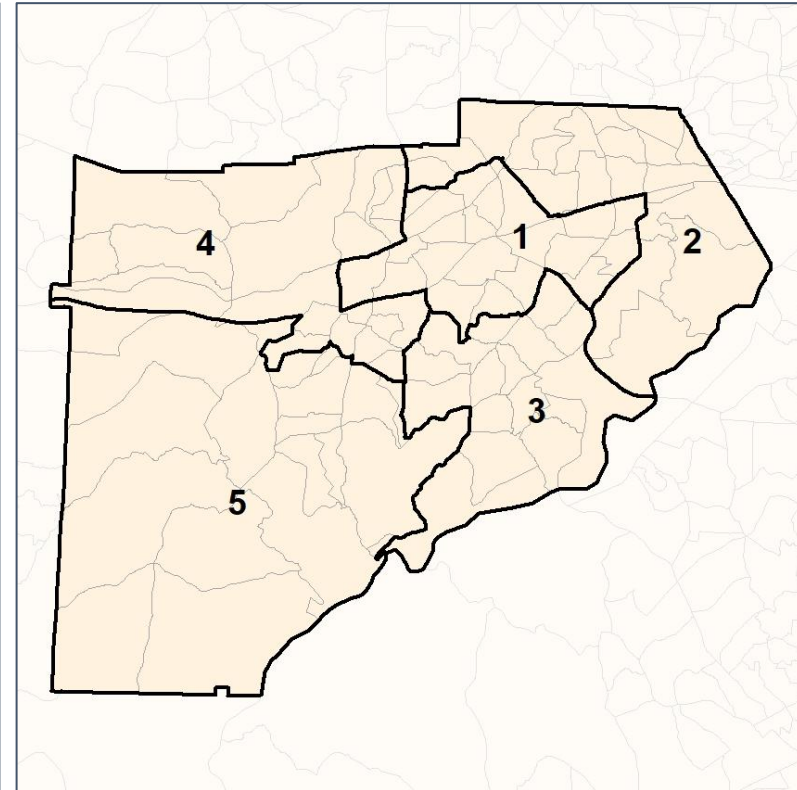
% API by Census Block Group



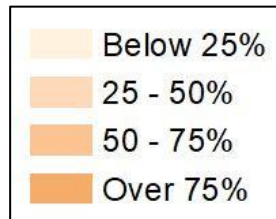
2012 Map



2022 Map*



	1	2	3	4	5	1*	2*	3*	4*	5*	County
Population	29,210	26,799	30,186	30,166	27,850	28,992	28,724	28,479	29,125	28,917	144,237
API	561	321	640	564	323	495	370	657	555	333	2,410
% API	2%	1%	2%	2%	1%	2%	1%	2%	2%	1%	2%
Black	14,087	14,533	18,981	14,420	6,742	14,873	16,034	16,694	14,107	7,055	68,763
% Black	48%	54%	63%	48%	24%	51%	56%	59%	48%	24%	48%
Latino	3,735	4,222	2,253	3,510	2,306	3,664	4,070	2,476	3,387	2,438	16,035
% Latino	13%	16%	7%	12%	8%	13%	14%	9%	12%	8%	11%
Other	1,510	1,031	1,400	1,641	1,560	1,477	1,105	1,359	1,598	1,613	7,152
% Other	5%	4%	5%	5%	6%	5%	4%	5%	5%	6%	5%
White	9,317	6,692	6,912	10,031	16,919	8,483	7,145	7,293	9,478	17,478	49,877
% White	32%	25%	23%	33%	61%	29%	25%	26%	33%	60%	35%

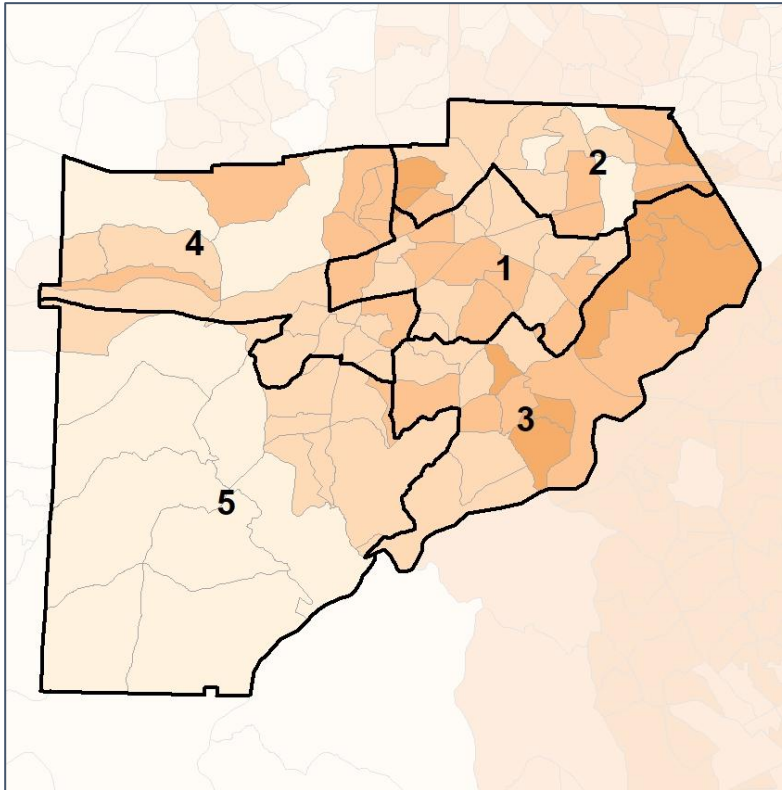


Douglas County School Board

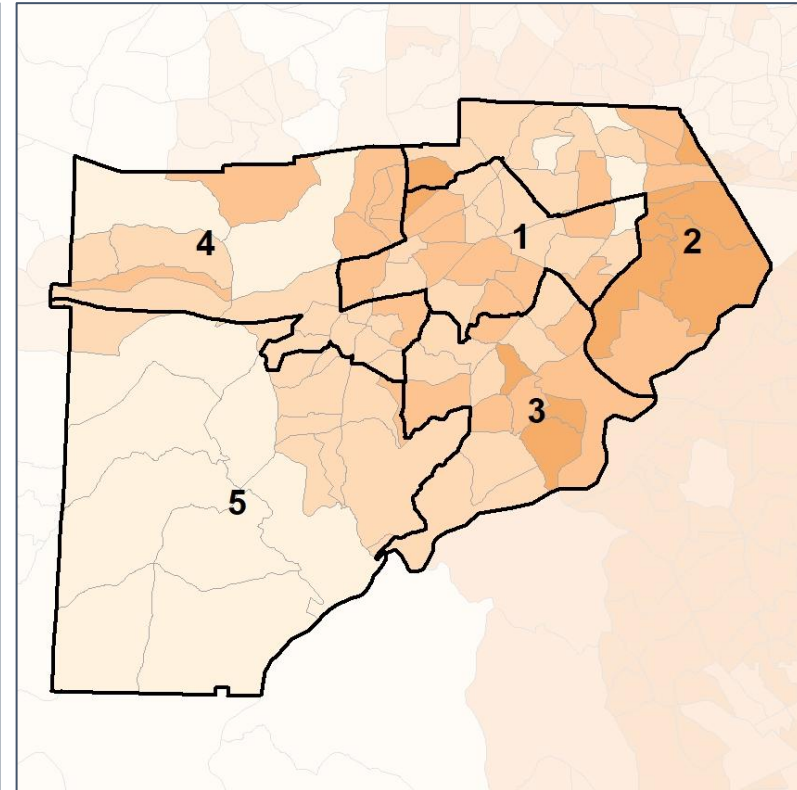
% Black by Census Block Group



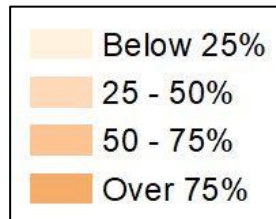
2012 Map



2022 Map*



	1	2	3	4	5	1*	2*	3*	4*	5*	County
Population	29,210	26,799	30,186	30,166	27,850	28,992	28,724	28,479	29,125	28,917	144,237
API	561	321	640	564	323	495	370	657	555	333	2,410
% API	2%	1%	2%	2%	1%	2%	1%	2%	2%	1%	2%
Black	14,087	14,533	18,981	14,420	6,742	14,873	16,034	16,694	14,107	7,055	68,763
% Black	48%	54%	63%	48%	24%	51%	56%	59%	48%	24%	48%
Latino	3,735	4,222	2,253	3,510	2,306	3,664	4,070	2,476	3,387	2,438	16,035
% Latino	13%	16%	7%	12%	8%	13%	14%	9%	12%	8%	11%
Other	1,510	1,031	1,400	1,641	1,560	1,477	1,105	1,359	1,598	1,613	7,152
% Other	5%	4%	5%	5%	6%	5%	4%	5%	5%	6%	5%
White	9,317	6,692	6,912	10,031	16,919	8,483	7,145	7,293	9,478	17,478	49,877
% White	32%	25%	23%	33%	61%	29%	25%	26%	33%	60%	35%

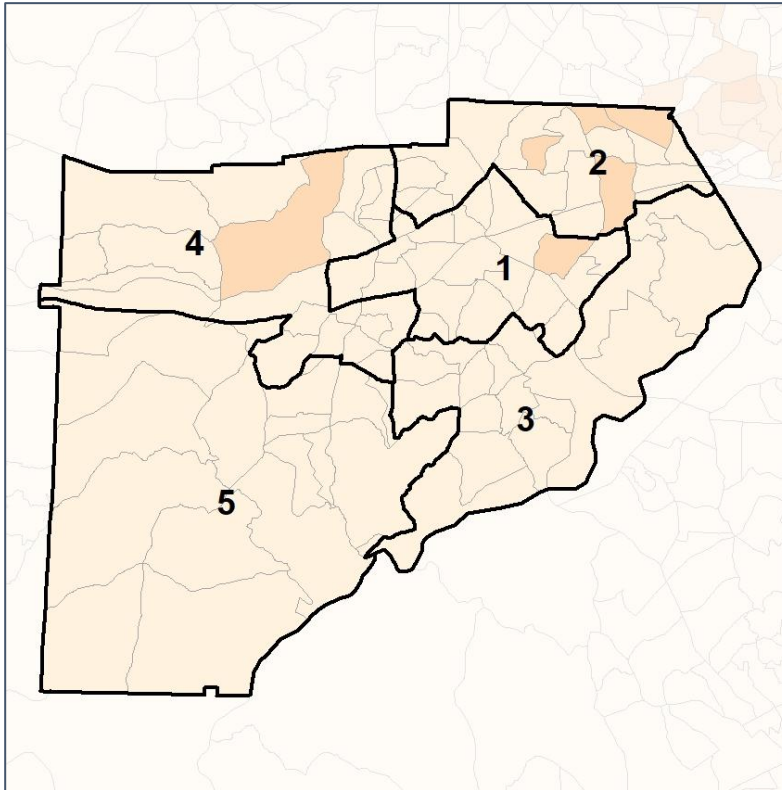


Douglas County School Board

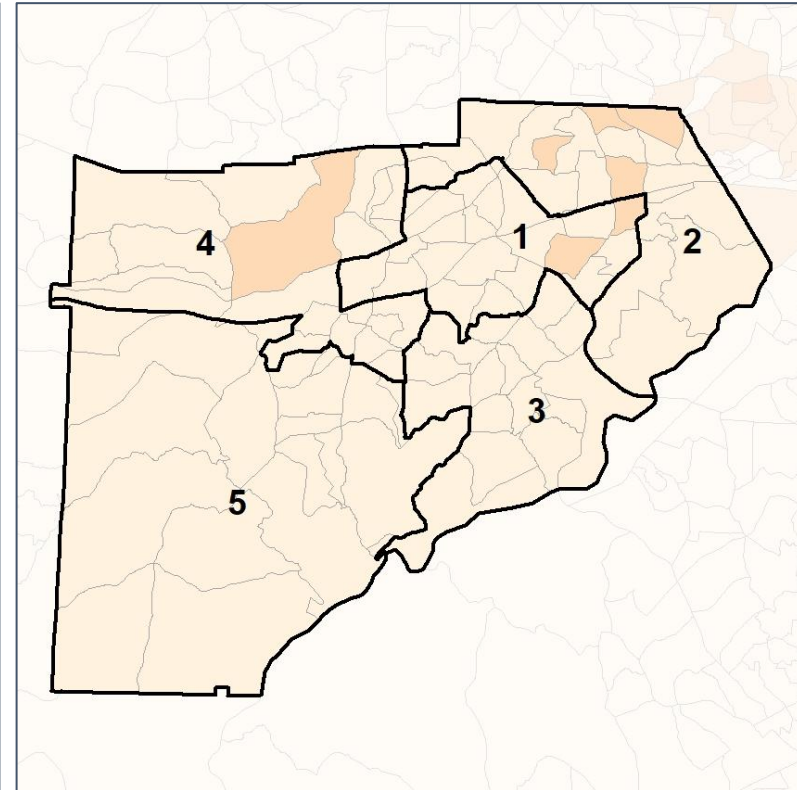
% Latino by Census Block Group



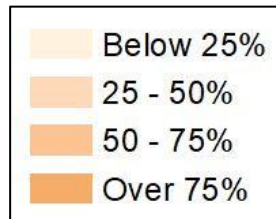
2012 Map



2022 Map*



	1	2	3	4	5	1*	2*	3*	4*	5*	County
Population	29,210	26,799	30,186	30,166	27,850	28,992	28,724	28,479	29,125	28,917	144,237
API	561	321	640	564	323	495	370	657	555	333	2,410
% API	2%	1%	2%	2%	1%	2%	1%	2%	2%	1%	2%
Black	14,087	14,533	18,981	14,420	6,742	14,873	16,034	16,694	14,107	7,055	68,763
% Black	48%	54%	63%	48%	24%	51%	56%	59%	48%	24%	48%
Latino	3,735	4,222	2,253	3,510	2,306	3,664	4,070	2,476	3,387	2,438	16,035
% Latino	13%	16%	7%	12%	8%	13%	14%	9%	12%	8%	11%
Other	1,510	1,031	1,400	1,641	1,560	1,477	1,105	1,359	1,598	1,613	7,152
% Other	5%	4%	5%	5%	6%	5%	4%	5%	5%	6%	5%
White	9,317	6,692	6,912	10,031	16,919	8,483	7,145	7,293	9,478	17,478	49,877
% White	32%	25%	23%	33%	61%	29%	25%	26%	33%	60%	35%

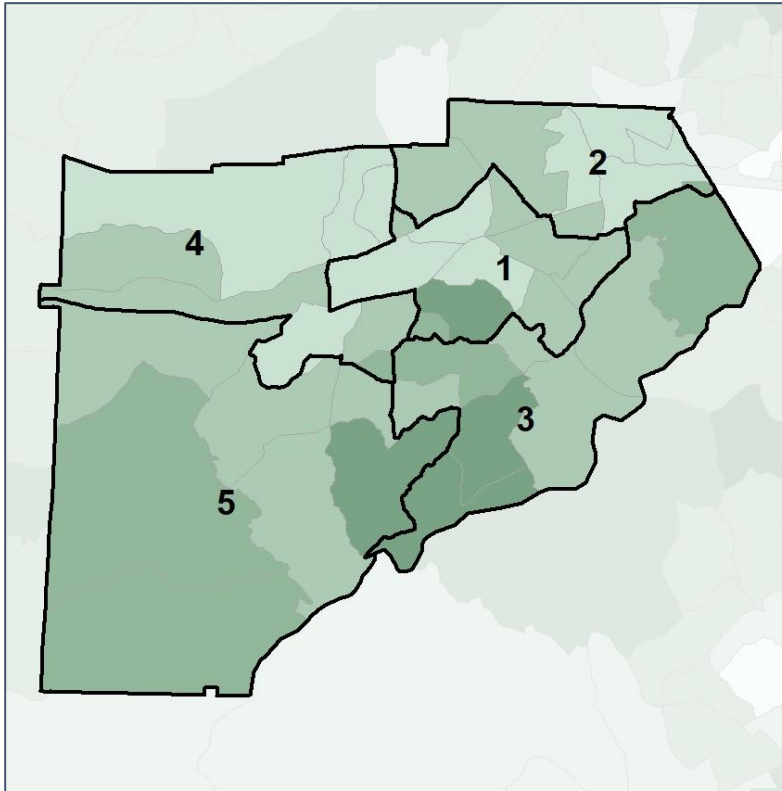


Douglas County School Board

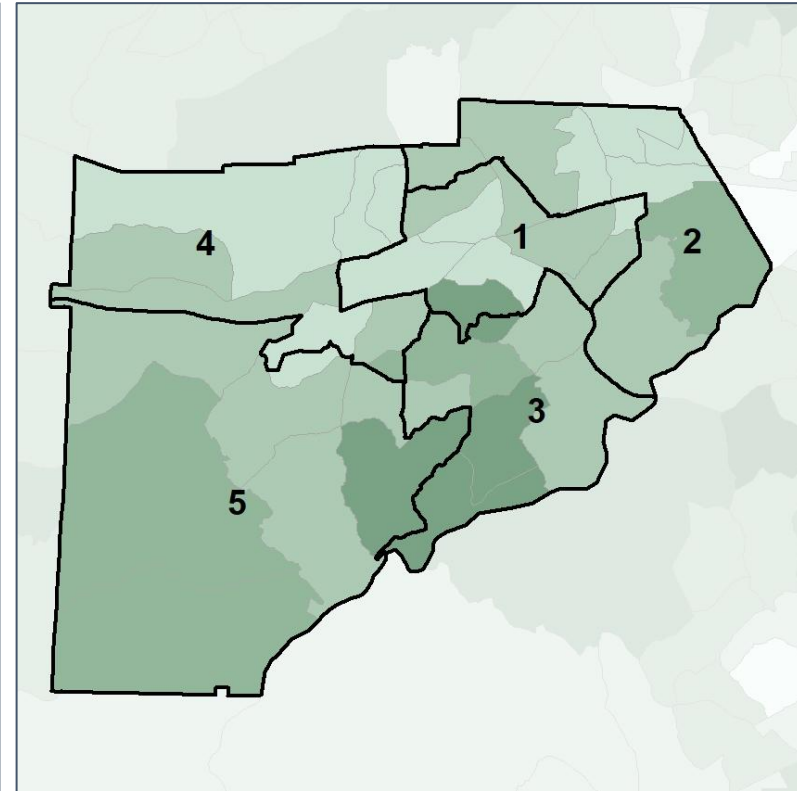
Median Household Income by Census Tract



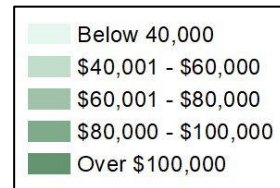
2012 Map



2022 Map*



	1	2	3	4	5	1*	2*	3*	4*	5*	County
Population	29,210	26,799	30,186	30,166	27,850	28,992	28,724	28,479	29,125	28,917	144,237
% API	2%	1%	2%	2%	1%	2%	1%	2%	2%	1%	2%
% Black	48%	54%	63%	48%	24%	51%	56%	59%	48%	24%	48%
% Latino	13%	16%	7%	12%	8%	13%	14%	9%	12%	8%	11%
% Other	5%	4%	5%	5%	6%	5%	4%	5%	5%	6%	5%
% White	32%	25%	23%	33%	61%	29%	25%	26%	33%	60%	35%
Median Income	\$61,000	\$54,000	\$100,000	\$67,000	\$90,000	\$60,000	\$65,000	\$95,000	\$67,000	\$90,000	\$68,000
% Renter	43%	54%	22%	36%	14%	44%	50%	19%	36%	14%	35%
% Youth	23%	27%	19%	22%	18%	23%	25%	19%	22%	18%	22%

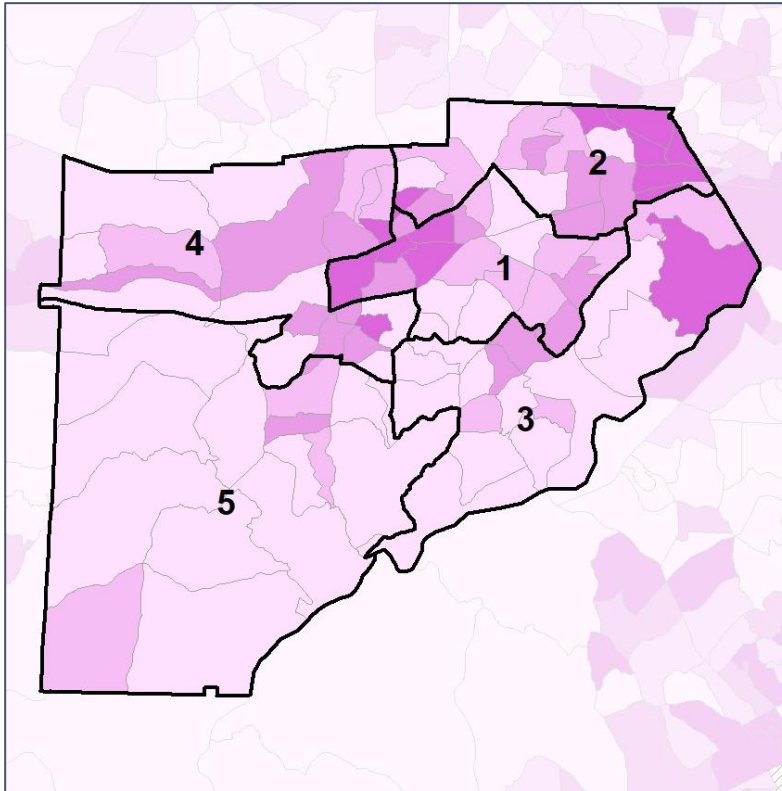


Douglas County School Board

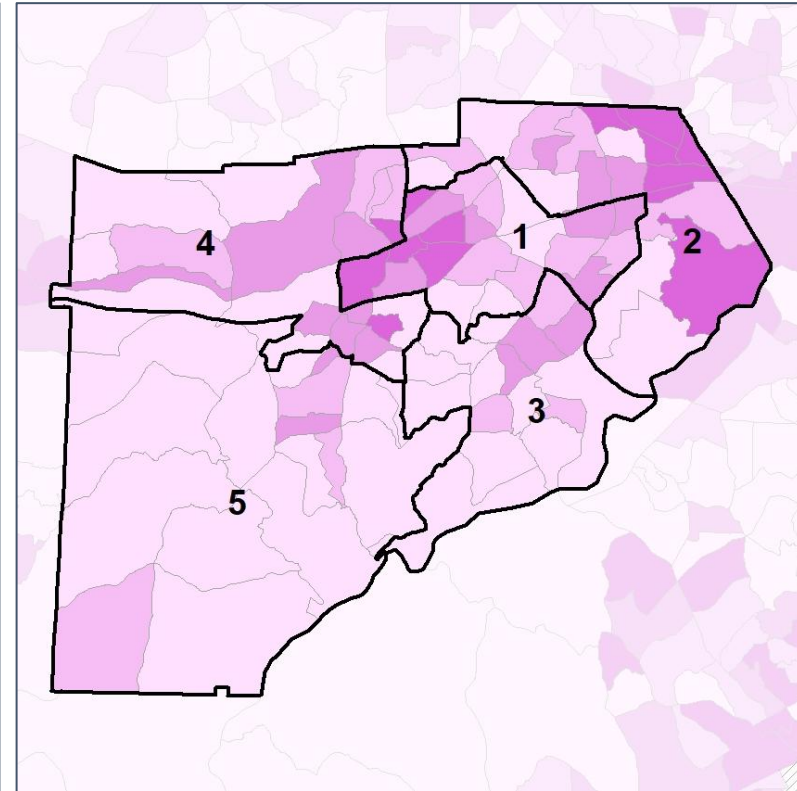
% Renter by Census Block Group



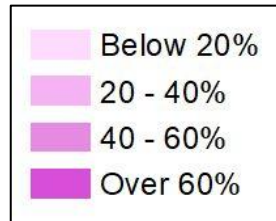
2012 Map



2022 Map*



	1	2	3	4	5	1*	2*	3*	4*	5*	County
Population	29,210	26,799	30,186	30,166	27,850	28,992	28,724	28,479	29,125	28,917	144,237
% API	2%	1%	2%	2%	1%	2%	1%	2%	2%	1%	2%
% Black	48%	54%	63%	48%	24%	51%	56%	59%	48%	24%	48%
% Latino	13%	16%	7%	12%	8%	13%	14%	9%	12%	8%	11%
% Other	5%	4%	5%	5%	6%	5%	4%	5%	5%	6%	5%
% White	32%	25%	23%	33%	61%	29%	25%	26%	33%	60%	35%
Median Income	\$61,000	\$54,000	\$100,000	\$67,000	\$90,000	\$60,000	\$65,000	\$95,000	\$67,000	\$90,000	\$68,000
% Renter	43%	54%	22%	36%	14%	44%	50%	19%	36%	14%	35%
% Youth	23%	27%	19%	22%	18%	23%	25%	19%	22%	18%	22%

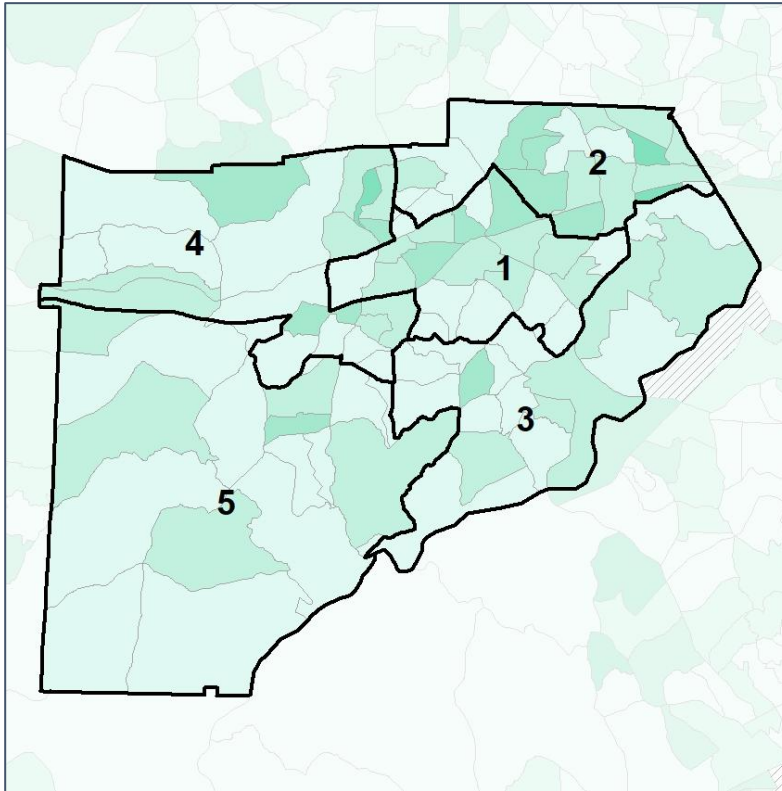


Douglas County School Board

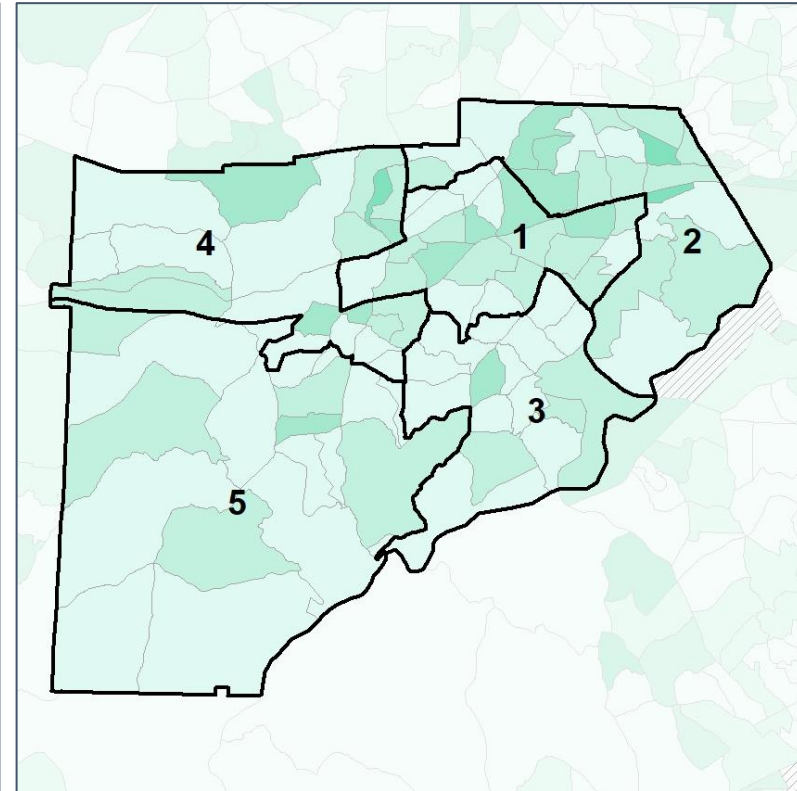
% Youth (18-34) by Census Block Group



2012 Map



2022 Map*



	1	2	3	4	5	1*	2*	3*	4*	5*	County
Population	29,210	26,799	30,186	30,166	27,850	28,992	28,724	28,479	29,125	28,917	144,237
% API	2%	1%	2%	2%	1%	2%	1%	2%	2%	1%	2%
% Black	48%	54%	63%	48%	24%	51%	56%	59%	48%	24%	48%
% Latino	13%	16%	7%	12%	8%	13%	14%	9%	12%	8%	11%
% Other	5%	4%	5%	5%	6%	5%	4%	5%	5%	6%	5%
% White	32%	25%	23%	33%	61%	29%	25%	26%	33%	60%	35%
Median Income	\$61,000	\$54,000	\$100,000	\$67,000	\$90,000	\$60,000	\$65,000	\$95,000	\$67,000	\$90,000	\$68,000
% Renter	43%	54%	22%	36%	14%	44%	50%	19%	36%	14%	35%
% Youth	23%	27%	19%	22%	18%	23%	25%	19%	22%	18%	22%

