



Demographic Overview

Racial Breakdown in Coweta County

Coweta County	2010	2020	% Change
Total Population	127,317	146,158	15%
AAPI	1,949	3,391	74%
Black	21,744	25,544	17%
Latino	8,493	11,053	30%
Other/Mixed Race	2,527	6,749	167%
POC	34,713	46,737	35%
White	92,604	99,421	7%

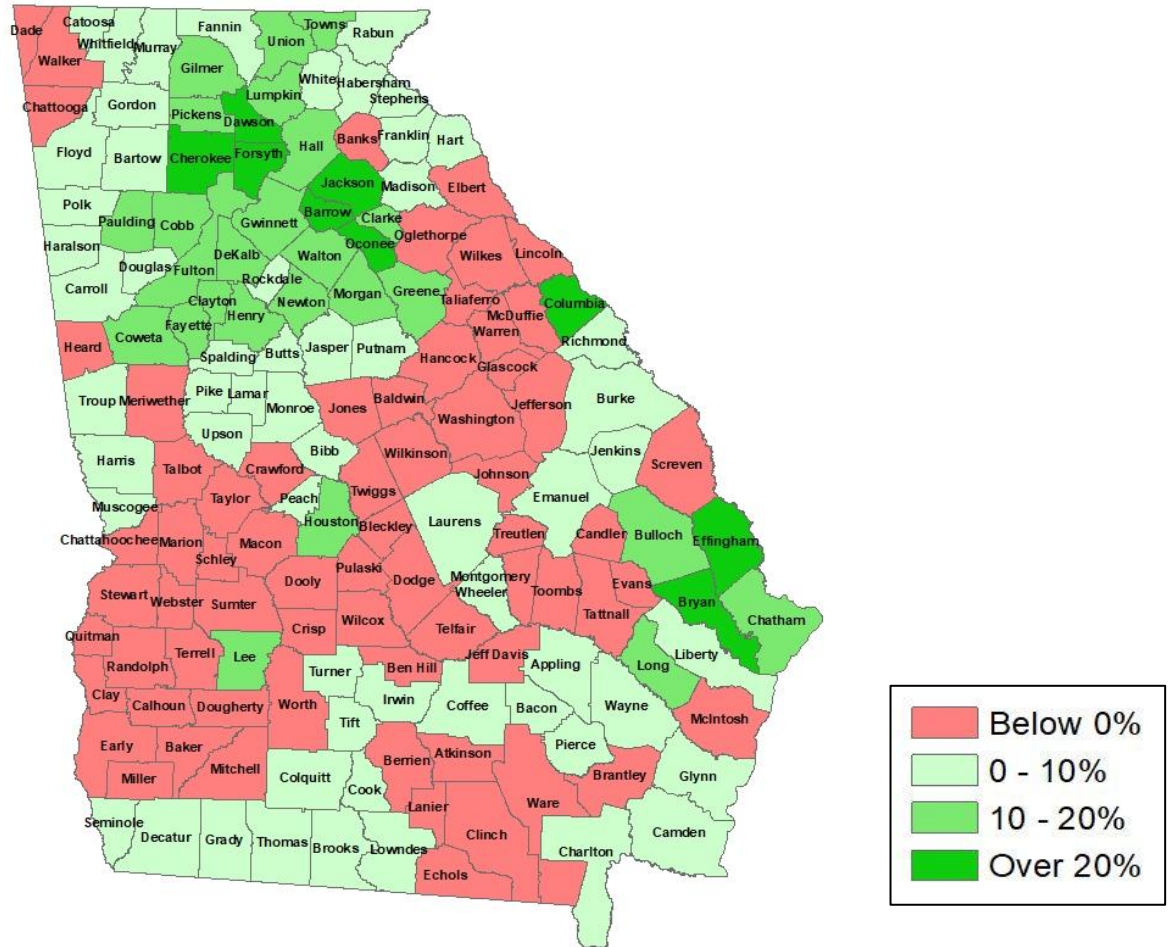
*Note: The use of "Other" in these statistics combines those who identify as Native American, Mixed Race, and "Other" race





Population Gain

Change in Population in Georgia by County

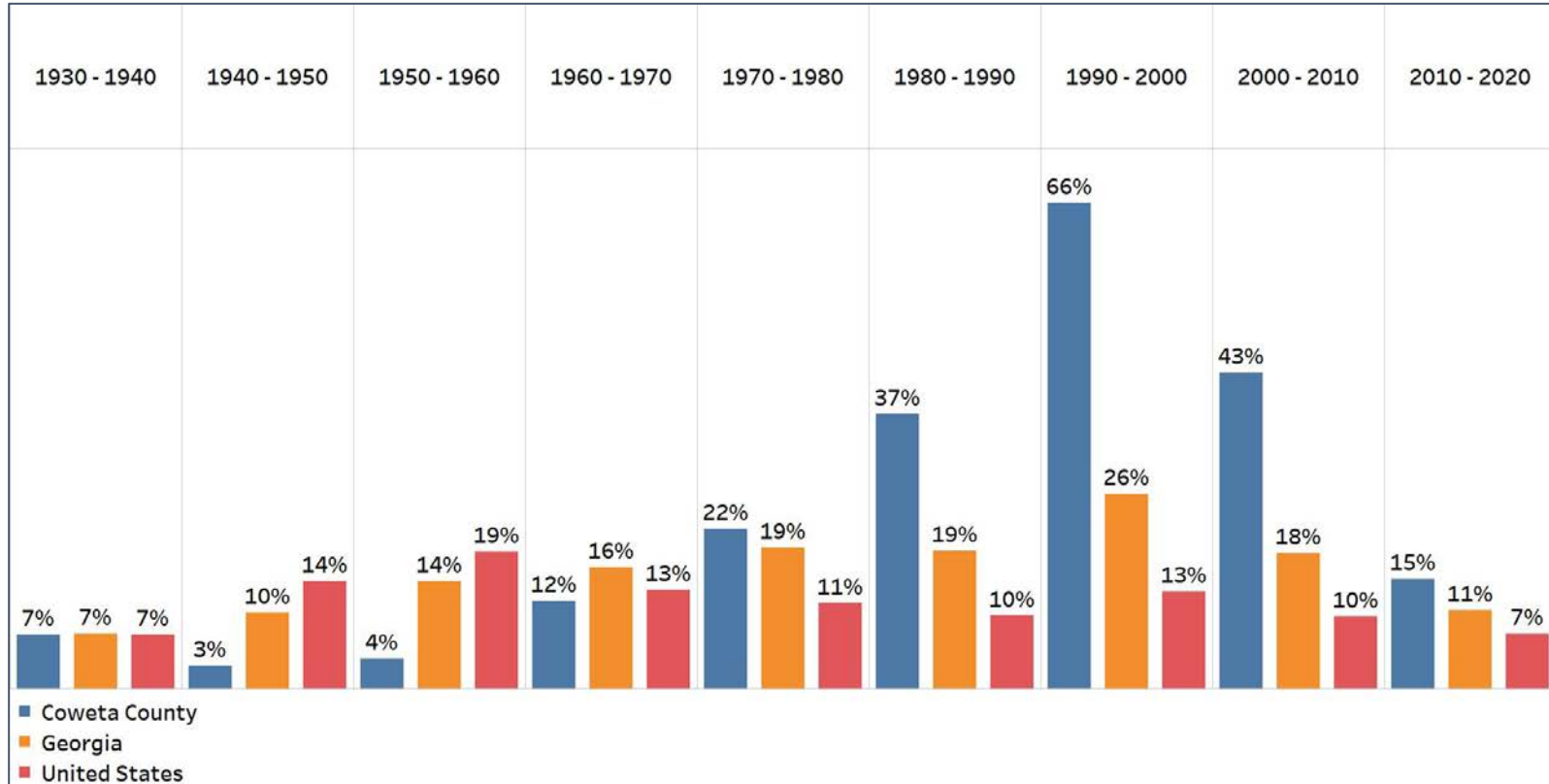


- Georgia is experiencing rapid population growth in the Atlanta, Augusta, and Savannah regions of the state



Population Gain

Change in Population by Decade



- Coweta County had an explosion in population starting in the 1970s, and since then has had higher population growth than Georgia

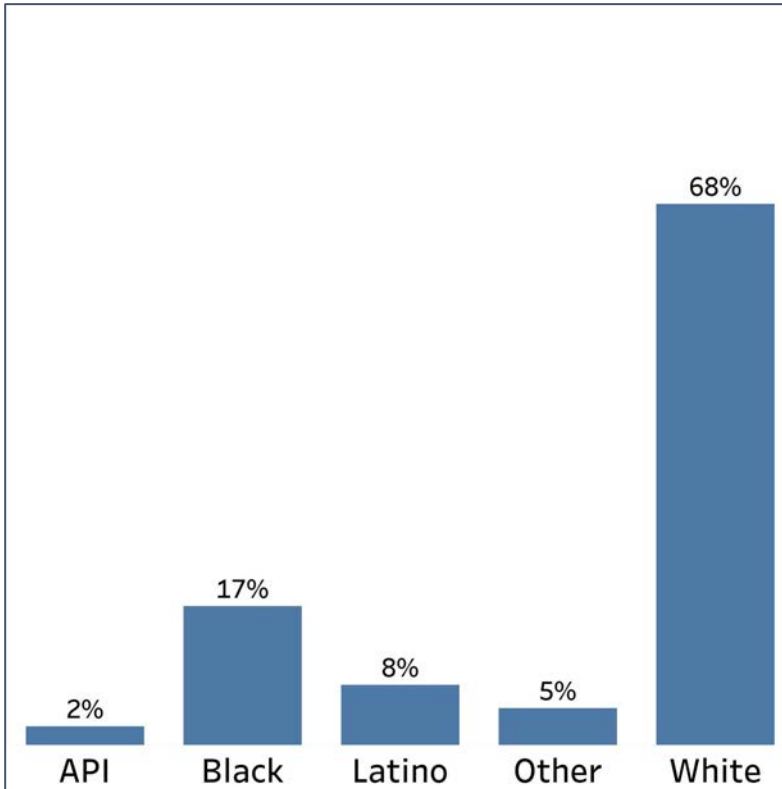


Demographics

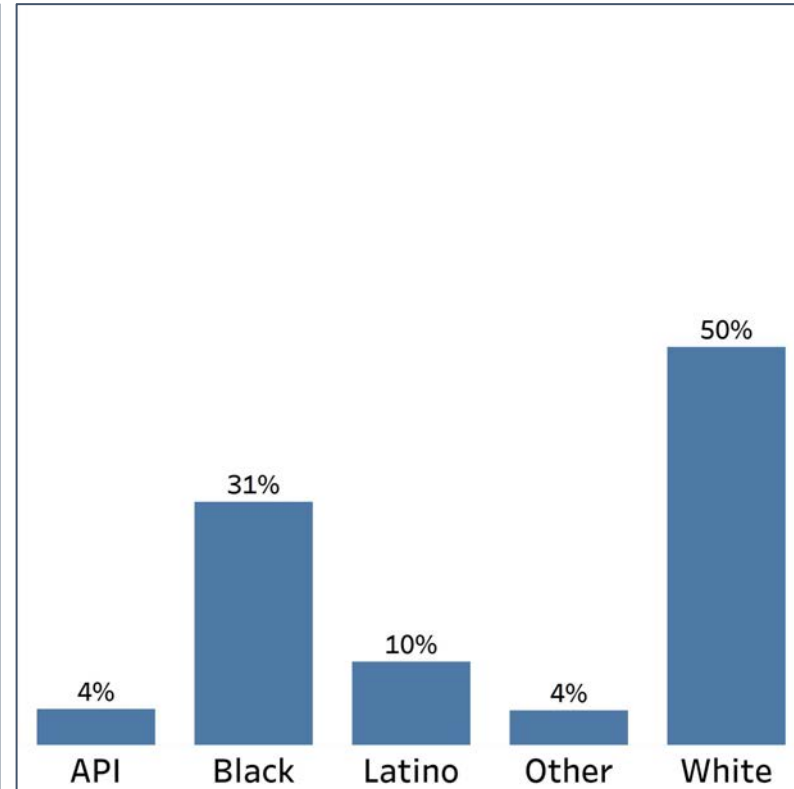
Comparison between Coweta County and Georgia



Coweta County



Georgia



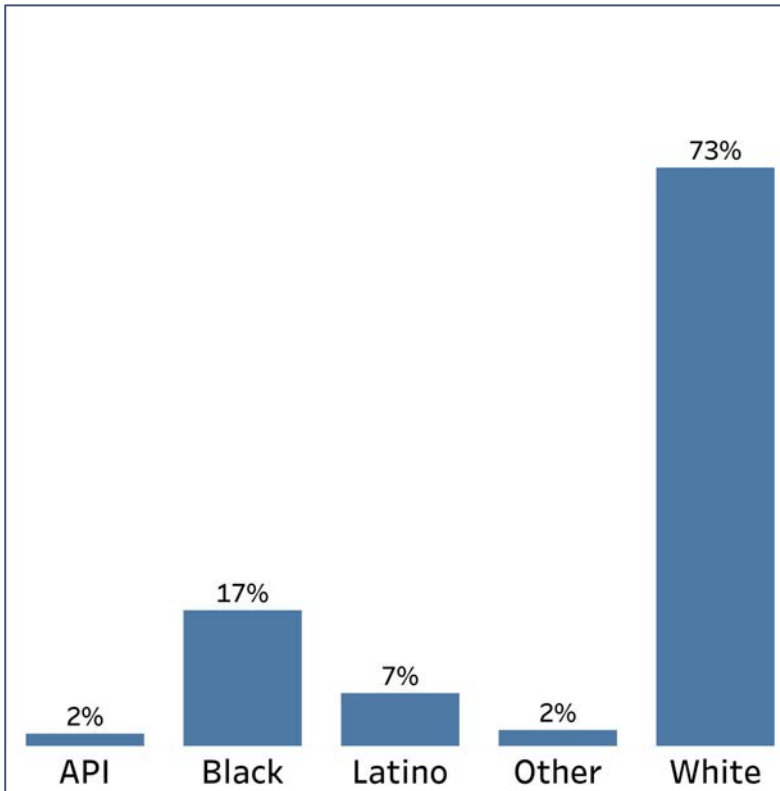
- Coweta County is disproportionately White, where more than $\frac{2}{3}$ of the population is White
- There is significantly less representation for Black and API communities compared to Georgia, while there is only slightly less for the Latino population

Demographics

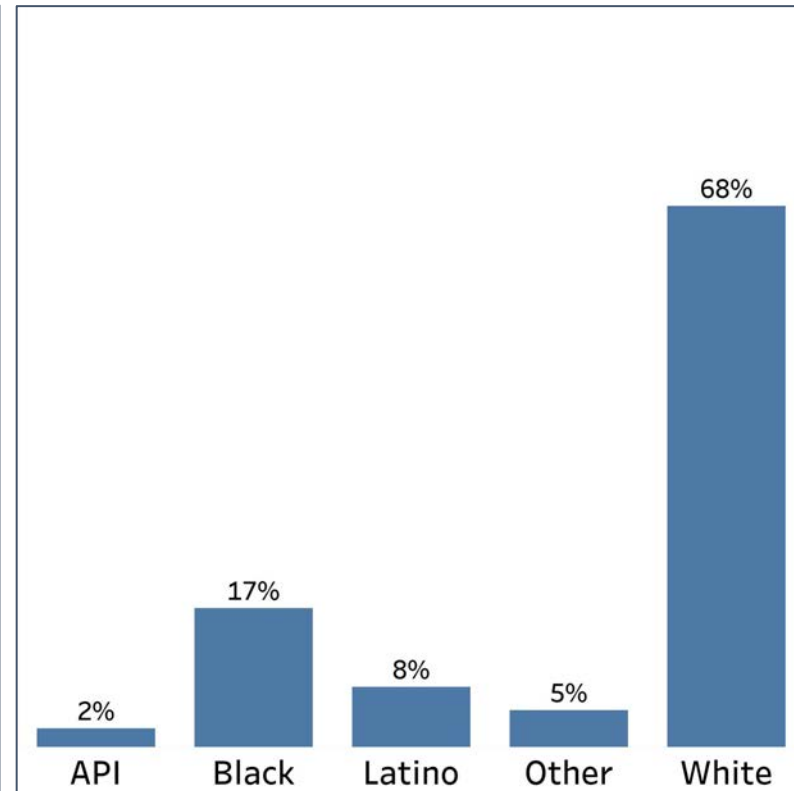
2010 vs 2020 Demographics in Coweta County



Coweta County 2010



Coweta County 2020



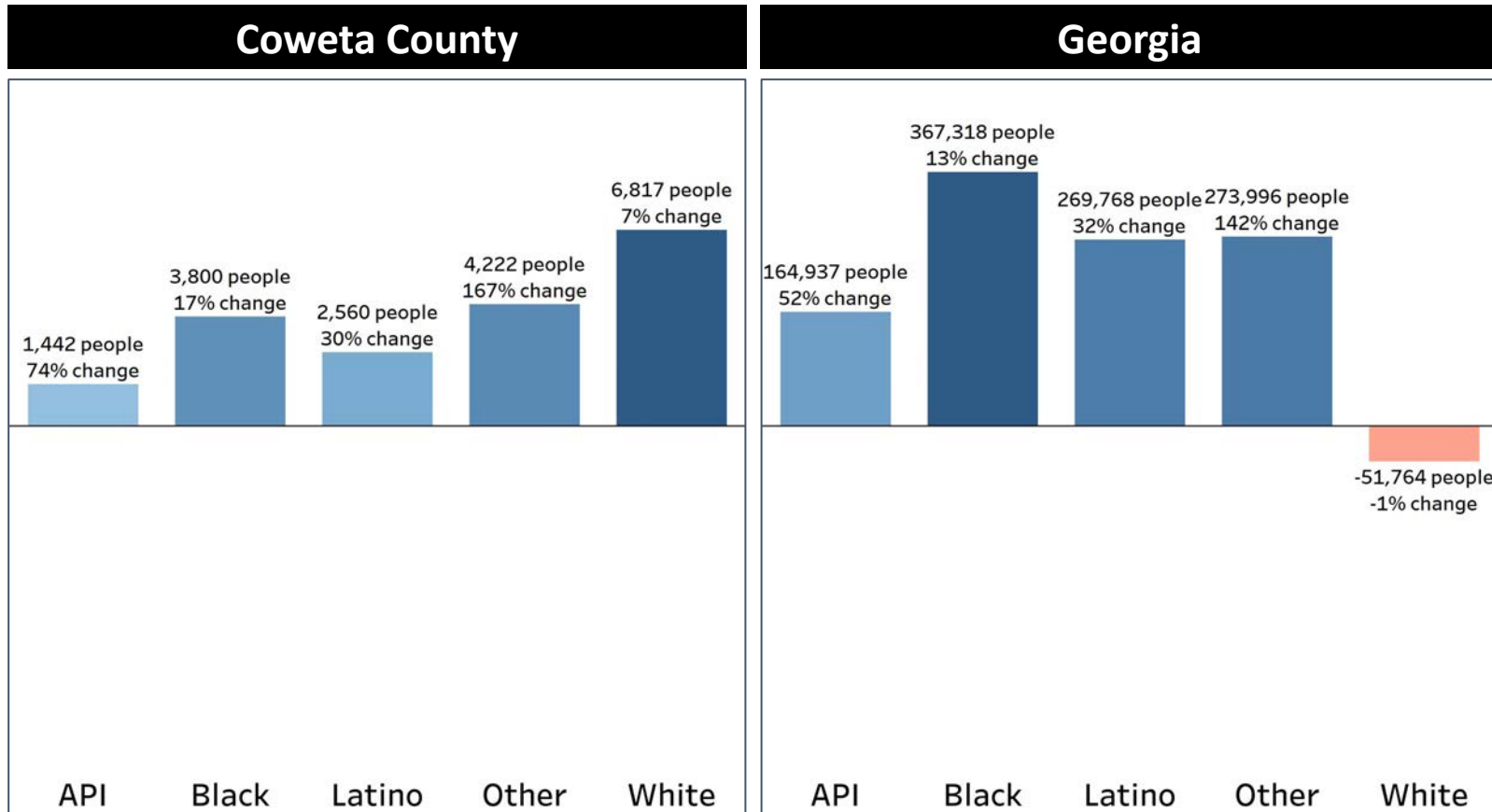
- Coweta County had a decrease in the proportion of the White population, with an increase in both the Latino and Other populations





Demographics

Population Change by Race (2020 - 2010)



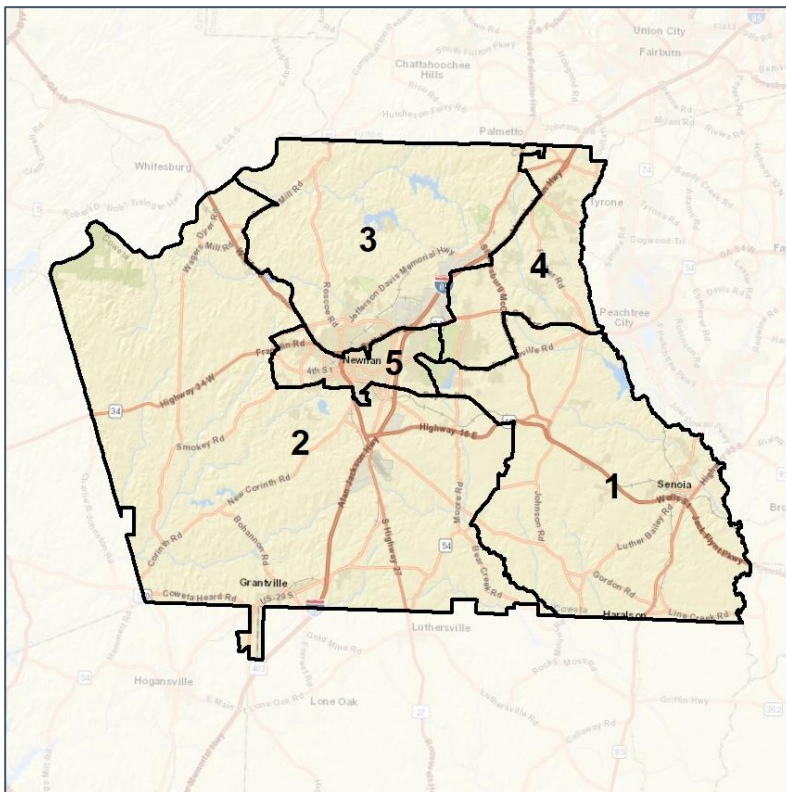
- Coweta County had slightly higher rates of increase amongst all demographic groups compared to Georgia's growth rate
- The White population had some growth compared to Georgia's decreasing rate overall

Coweta County Commission

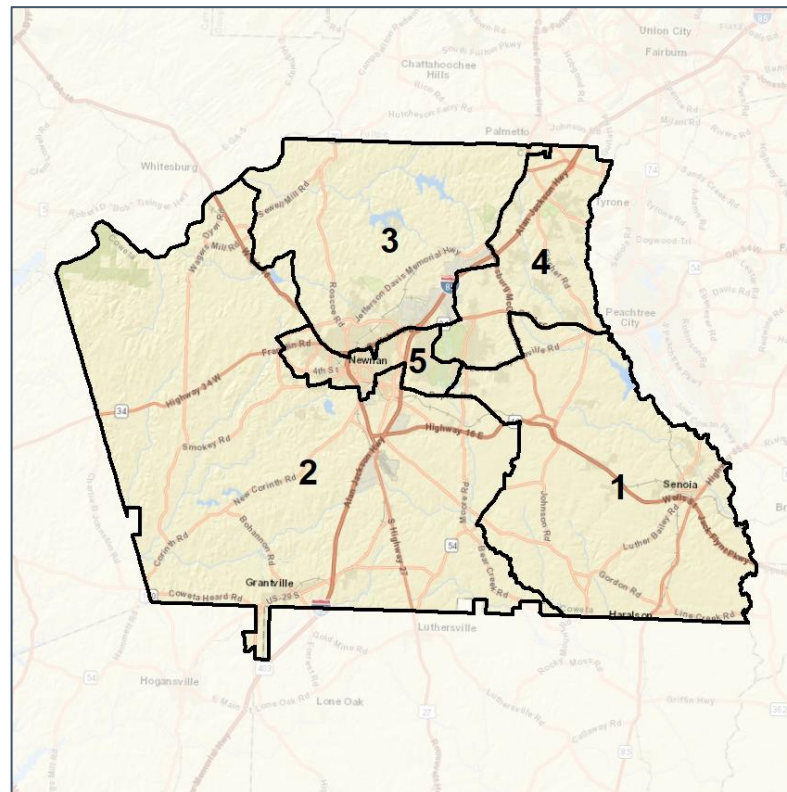
Context



2012 Map



2022 Map*



	1	2	3	4	5	1*	2*	3*	4*	5*	County
Population	32,032	26,341	31,059	26,296	30,430	29,368	28,993	28,987	29,328	29,482	146,158
API	2%	1%	2%	3%	4%	2%	1%	2%	3%	5%	2%
Black	9%	14%	16%	9%	39%	9%	16%	16%	10%	36%	17%
Latino	6%	6%	8%	8%	11%	6%	6%	8%	8%	10%	8%
Other	5%	5%	4%	5%	5%	5%	5%	4%	5%	5%	5%
White	79%	75%	70%	76%	41%	79%	73%	70%	75%	44%	68%
Population Gain	5,778	1,346	5,160	726	5,831	-2,664	2,652	-2,072	3,032	-948	*
Population % Gain	22%	5%	20%	3%	24%	-8%	10%	-7%	12%	-3%	*
Net POC Gain	2,097	1,321	3,026	1,590	3,990	-586	1,233	-500	1,196	-1,343	*
Net POC % Gain	45%	25%	48%	34%	29%	-9%	19%	-5%	19%	-8%	*



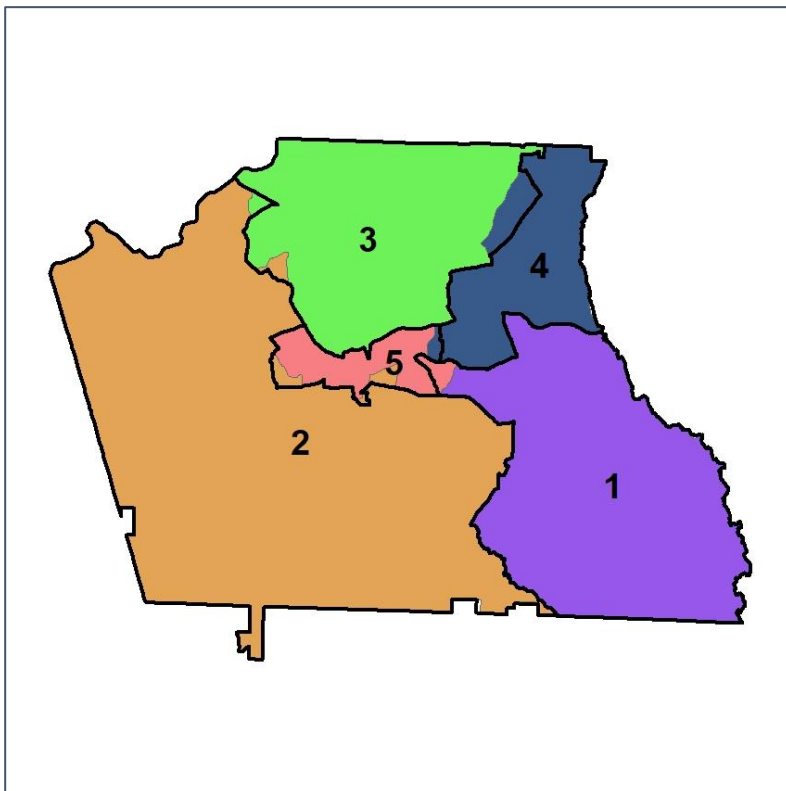
Source:
2020 Decennial Census
2020 ACS 5-Year Dataset

Coweta County Commission

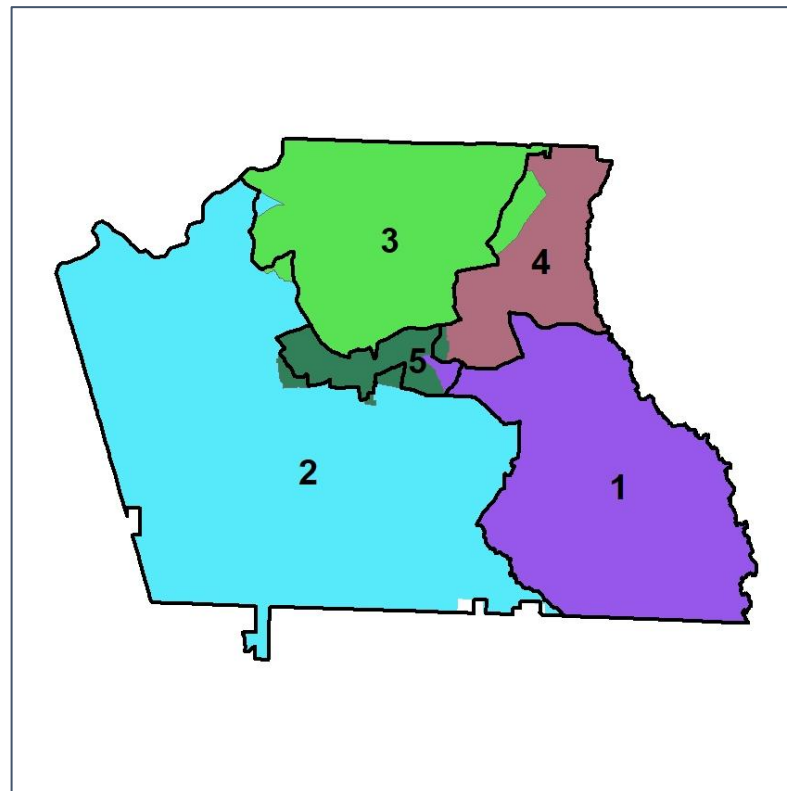
Changes in Redistricting



2012 Map (2022 in Colors)



2022 Map* (2012 in Colors)



	1	2	3	4	5	1*	2*	3*	4*	5*	County
Population	32,032	26,341	31,059	26,296	30,430	29,368	28,993	28,987	29,328	29,482	146,158
API	2%	1%	2%	3%	4%	2%	1%	2%	3%	5%	2%
Black	9%	14%	16%	9%	39%	9%	16%	16%	10%	36%	17%
Latino	6%	6%	8%	8%	11%	6%	6%	8%	8%	10%	8%
Other	5%	5%	4%	5%	5%	5%	5%	4%	5%	5%	5%
White	79%	75%	70%	76%	41%	79%	73%	70%	75%	44%	68%
Population Gain	5,778	1,346	5,160	726	5,831	-2,664	2,652	-2,072	3,032	-948	*
Population % Gain	22%	5%	20%	3%	24%	-8%	10%	-7%	12%	-3%	*
Net POC Gain	2,097	1,321	3,026	1,590	3,990	-586	1,233	-500	1,196	-1,343	*
Net POC % Gain	45%	25%	48%	34%	29%	-9%	19%	-5%	19%	-8%	*

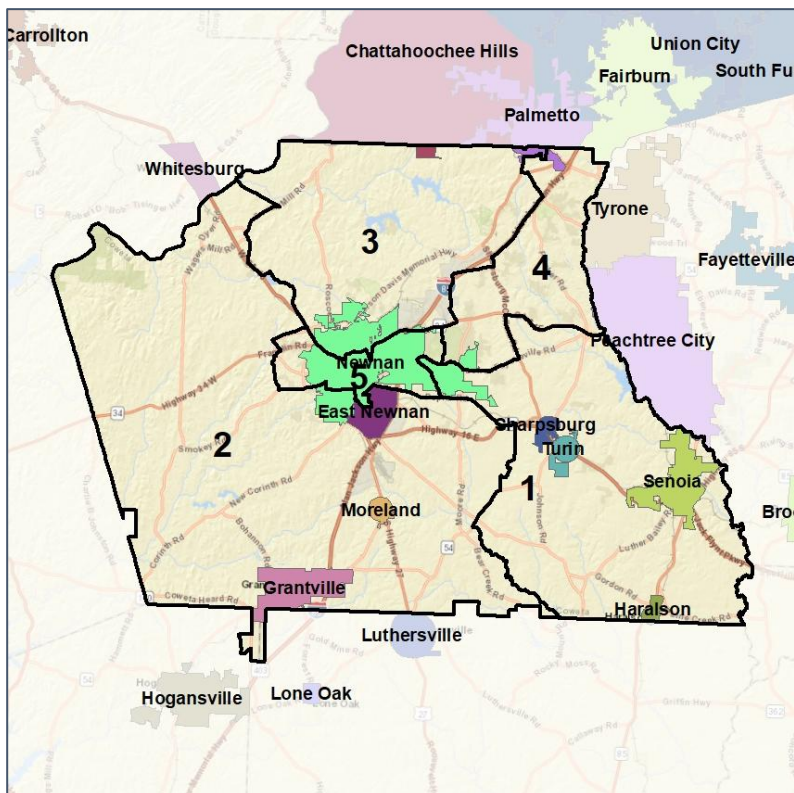


Coweta County Commission

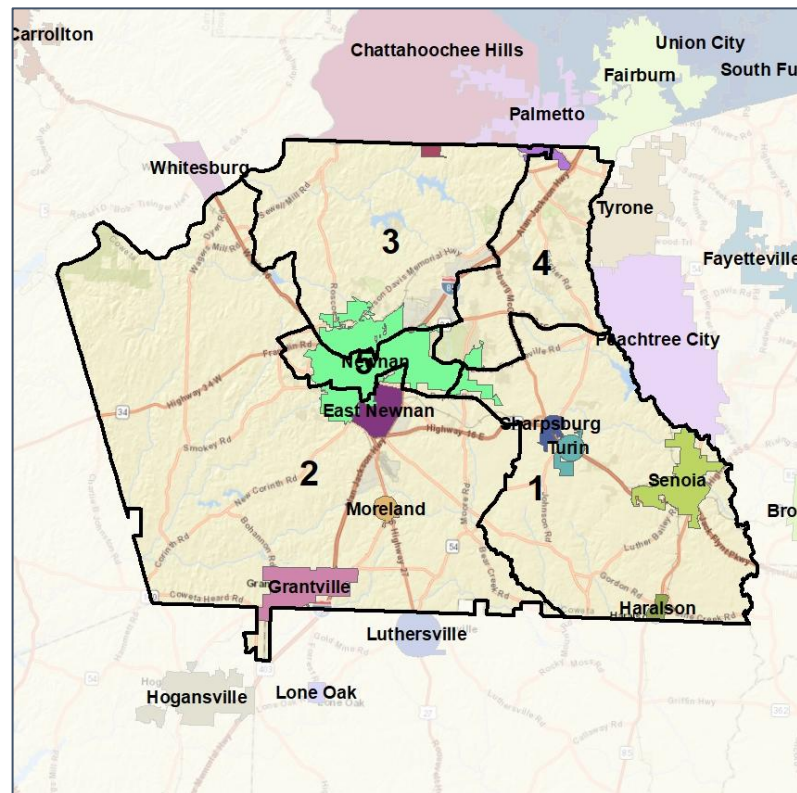
Cities and Places



2012 Map



2022 Map*



	1	2	3	4	5	1*	2*	3*	4*	5*	County
Population	32,032	26,341	31,059	26,296	30,430	29,368	28,993	28,987	29,328	29,482	146,158
API	2%	1%	2%	3%	4%	2%	1%	2%	3%	5%	2%
Black	9%	14%	16%	9%	39%	9%	16%	16%	10%	36%	17%
Latino	6%	6%	8%	8%	11%	6%	6%	8%	8%	10%	8%
Other	5%	5%	4%	5%	5%	5%	5%	4%	5%	5%	5%
White	79%	75%	70%	76%	41%	79%	73%	70%	75%	44%	68%
Population Gain	5,778	1,346	5,160	726	5,831	-2,664	2,652	-2,072	3,032	-948	*
Population % Gain	22%	5%	20%	3%	24%	-8%	10%	-7%	12%	-3%	*
Net POC Gain	2,097	1,321	3,026	1,590	3,990	-586	1,233	-500	1,196	-1,343	*
Net POC % Gain	45%	25%	48%	34%	29%	-9%	19%	-5%	19%	-8%	*



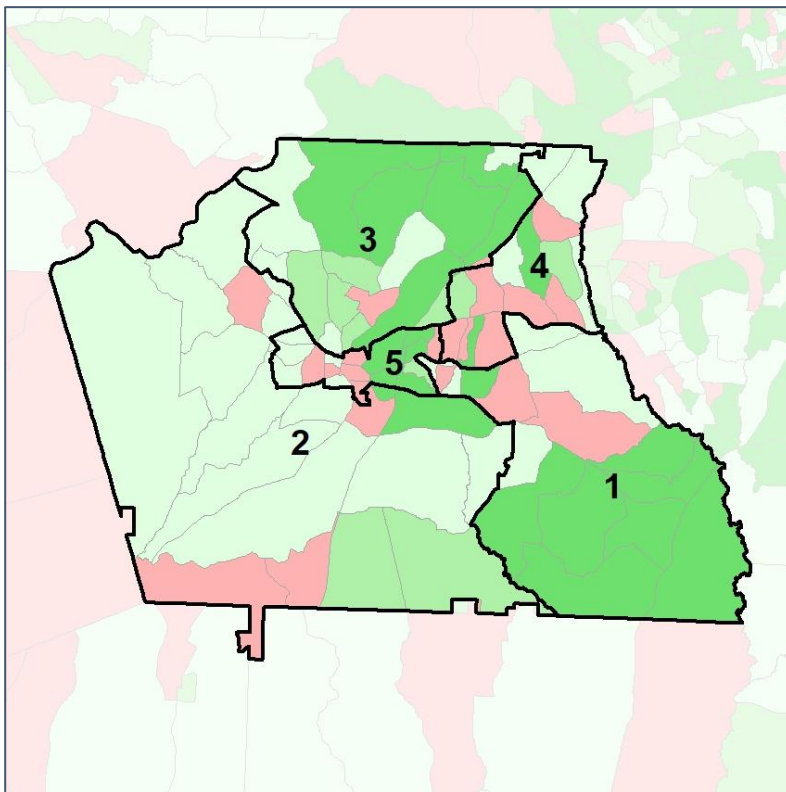
Source:
2020 Decennial Census
2020 ACS 5-Year Dataset

Coweta County Commission

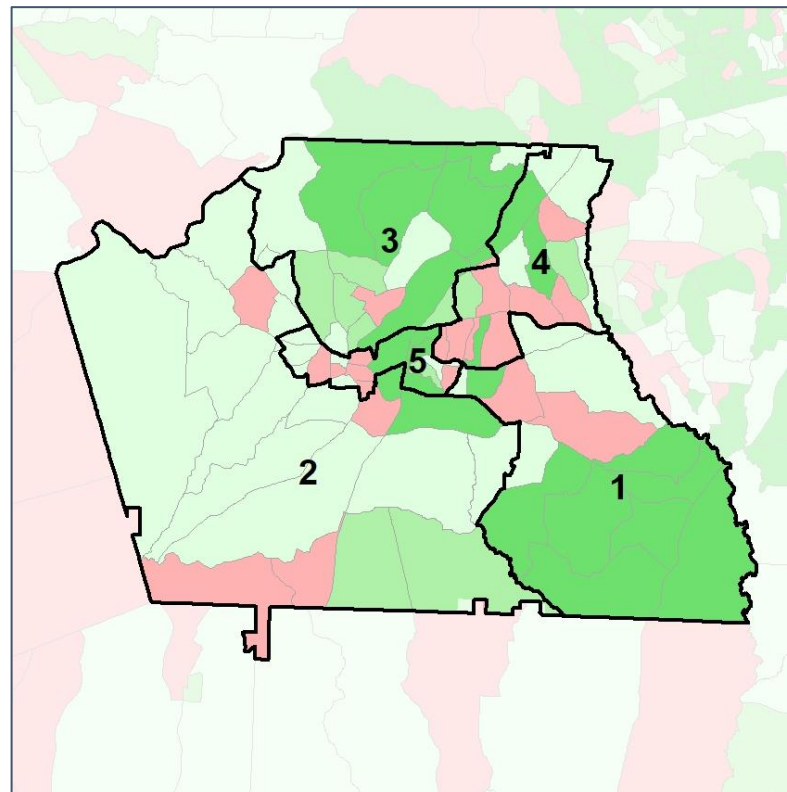
Net Gain in Population (2010 - 2020) by Census Block Group



2012 Map



2022 Map*



	1	2	3	4	5	1*	2*	3*	4*	5*	County
Population	32,032	26,341	31,059	26,296	30,430	29,368	28,993	28,987	29,328	29,482	146,158
API	2%	1%	2%	3%	4%	2%	1%	2%	3%	5%	2%
Black	9%	14%	16%	9%	39%	9%	16%	16%	10%	36%	17%
Latino	6%	6%	8%	8%	11%	6%	6%	8%	8%	10%	8%
Other	5%	5%	4%	5%	5%	5%	5%	4%	5%	5%	5%
White	79%	75%	70%	76%	41%	79%	73%	70%	75%	44%	68%
Population Gain	5,778	1,346	5,160	726	5,831	-2,664	2,652	-2,072	3,032	-948	*
Population % Gain	22%	5%	20%	3%	24%	-8%	10%	-7%	12%	-3%	*
Net POC Gain	2,097	1,321	3,026	1,590	3,990	-586	1,233	-500	1,196	-1,343	*
Net POC % Gain	45%	25%	48%	34%	29%	-9%	19%	-5%	19%	-8%	*

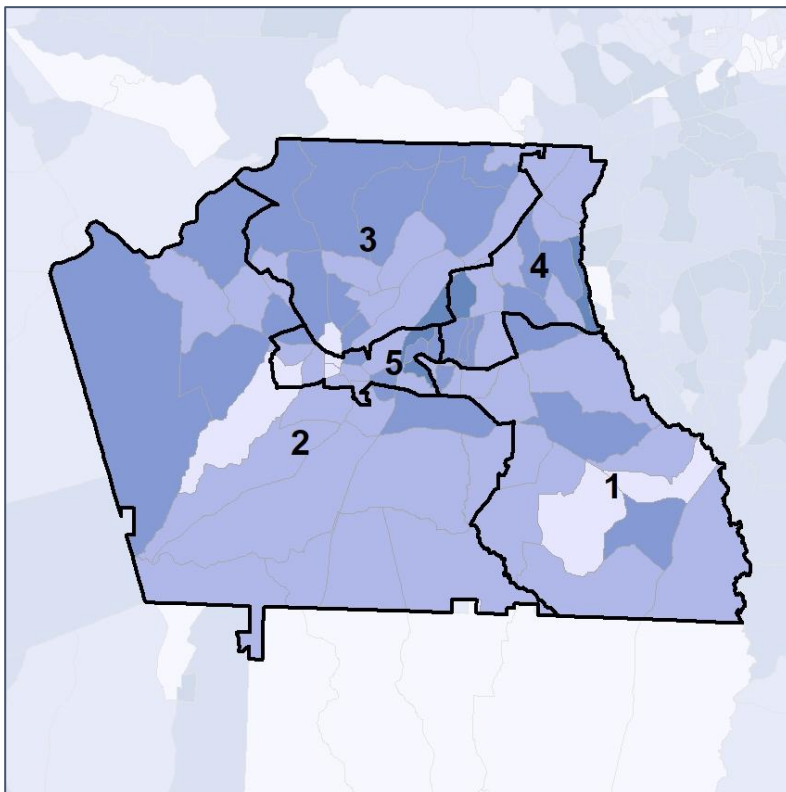


Coweta County Commission

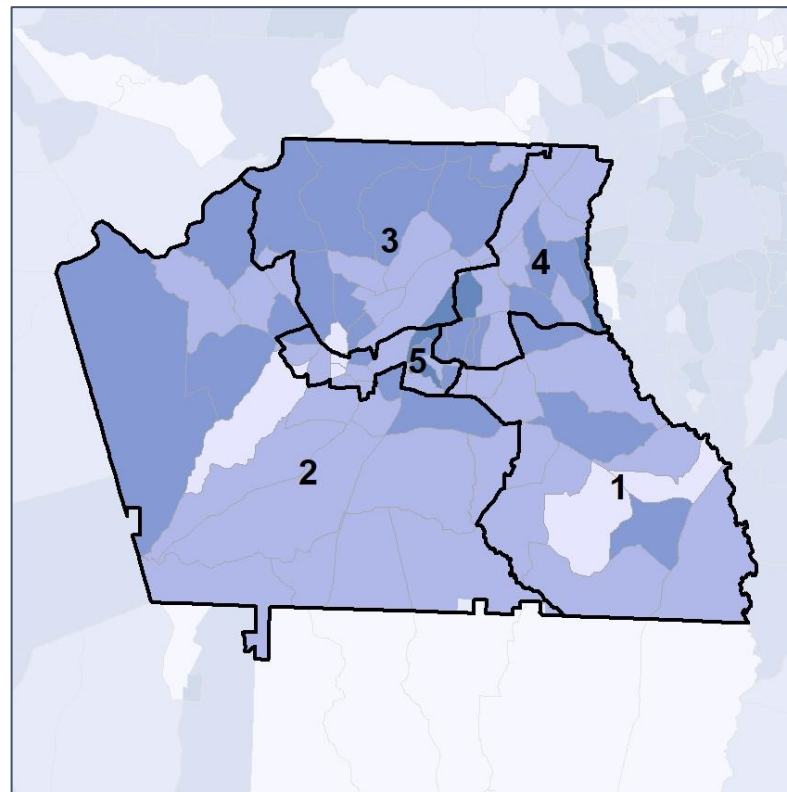
Net Gain in % POC (2020 - 2010) by Census Block Group



2012 Map



2022 Map*



	1	2	3	4	5	1*	2*	3*	4*	5*	County
Population	32,032	26,341	31,059	26,296	30,430	29,368	28,993	28,987	29,328	29,482	146,158
API	2%	1%	2%	3%	4%	2%	1%	2%	3%	5%	2%
Black	9%	14%	16%	9%	39%	9%	16%	16%	10%	36%	17%
Latino	6%	6%	8%	8%	11%	6%	6%	8%	8%	10%	8%
Other	5%	5%	4%	5%	5%	5%	5%	4%	5%	5%	5%
White	79%	75%	70%	76%	41%	79%	73%	70%	75%	44%	68%
Population Gain	5,778	1,346	5,160	726	5,831	-2,664	2,652	-2,072	3,032	-948	*
Population % Gain	22%	5%	20%	3%	24%	-8%	10%	-7%	12%	-3%	*
Net POC Gain	2,097	1,321	3,026	1,590	3,990	-586	1,233	-500	1,196	-1,343	*
Net POC % Gain	45%	25%	48%	34%	29%	-9%	19%	-5%	19%	-8%	*

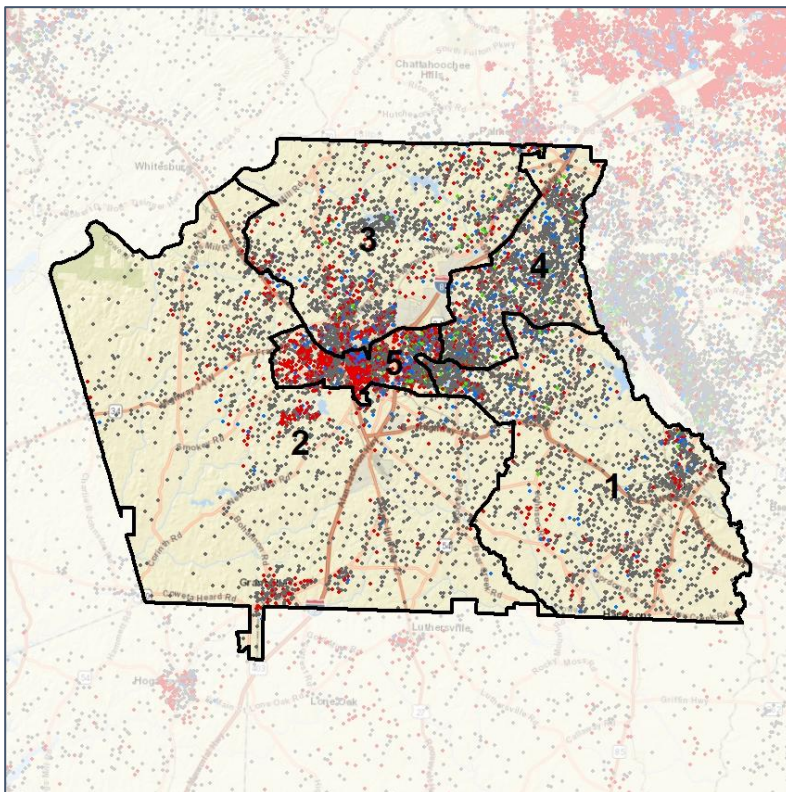


Coweta County Commission

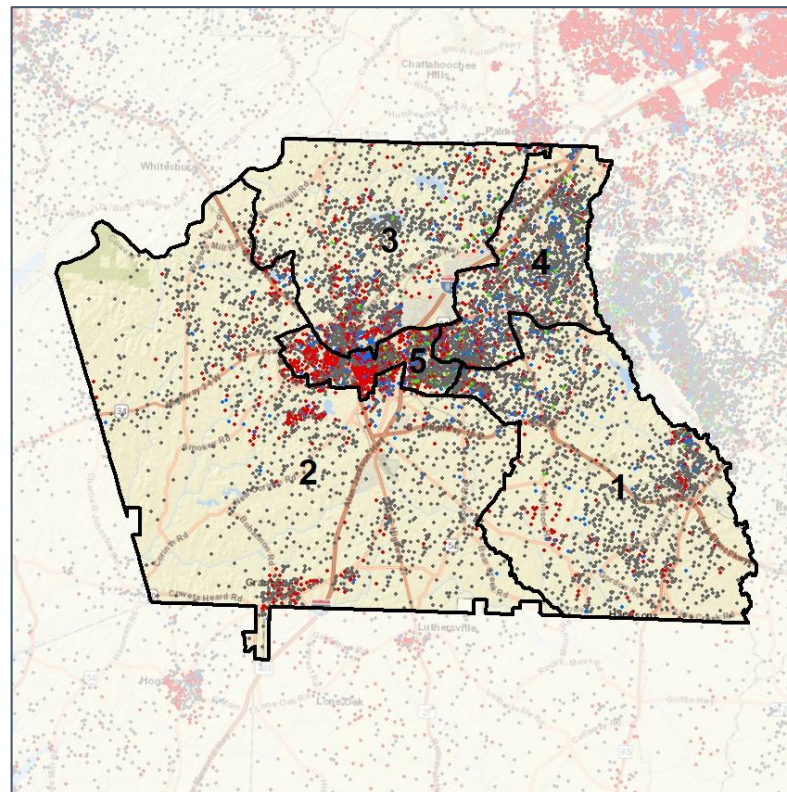
Population Density by Race



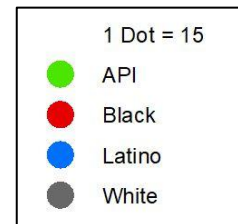
2012 Map



2022 Map*



	1	2	3	4	5	1*	2*	3*	4*	5*	County
Population	32,032	26,341	31,059	26,296	30,430	29,368	28,993	28,987	29,328	29,482	146,158
API	629	144	578	684	1,356	491	215	553	736	1,396	3,391
% API	2%	1%	2%	3%	4%	2%	1%	2%	3%	5%	2%
Black	2,736	3,734	4,967	2,273	11,834	2,587	4,499	4,729	3,021	10,708	25,544
% Black	9%	14%	16%	9%	39%	9%	16%	16%	10%	36%	17%
Latino	1,909	1,472	2,406	1,978	3,288	1,743	1,768	2,254	2,215	3,073	11,053
% Latino	6%	6%	8%	8%	11%	6%	6%	8%	8%	10%	8%
Other	1,513	1,216	1,333	1,295	1,392	1,380	1,317	1,248	1,454	1,350	6,749
% Other	5%	5%	4%	5%	5%	5%	5%	4%	5%	5%	5%
White	25,245	19,775	21,775	20,066	12,560	23,167	21,194	20,203	21,902	12,955	99,421
% White	79%	75%	70%	76%	41%	79%	73%	70%	75%	44%	68%



Source:
2020 Decennial Census
2020 ACS 5-Year Dataset

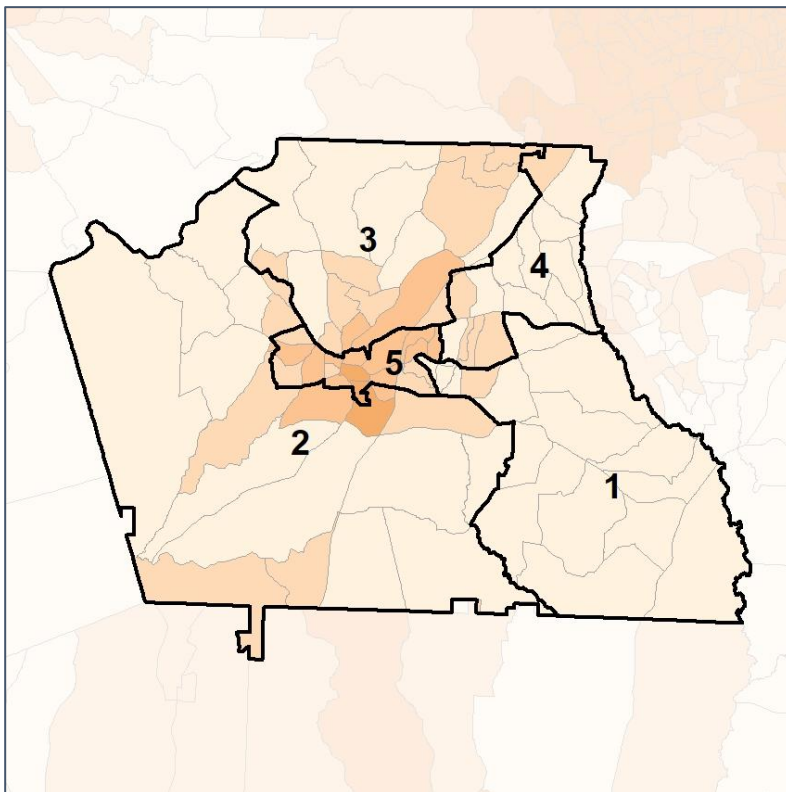


Coweta County Commission

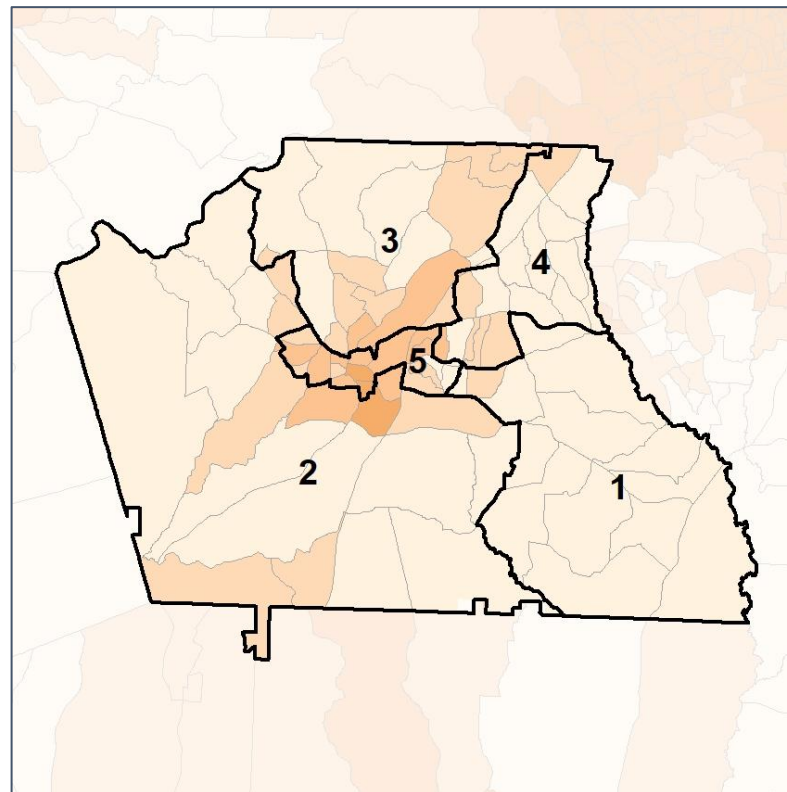
% People of Color by Census Block Group



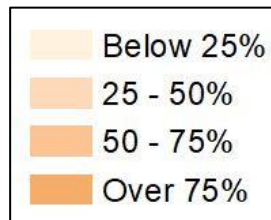
2012 Map



2022 Map*



	1	2	3	4	5	1*	2*	3*	4*	5*	County
Population	32,032	26,341	31,059	26,296	30,430	29,368	28,993	28,987	29,328	29,482	146,158
API	629	144	578	684	1,356	491	215	553	736	1,396	3,391
% API	2%	1%	2%	3%	4%	2%	1%	2%	3%	5%	2%
Black	2,736	3,734	4,967	2,273	11,834	2,587	4,499	4,729	3,021	10,708	25,544
% Black	9%	14%	16%	9%	39%	9%	16%	16%	10%	36%	17%
Latino	1,909	1,472	2,406	1,978	3,288	1,743	1,768	2,254	2,215	3,073	11,053
% Latino	6%	6%	8%	8%	11%	6%	6%	8%	8%	10%	8%
Other	1,513	1,216	1,333	1,295	1,392	1,380	1,317	1,248	1,454	1,350	6,749
% Other	5%	5%	4%	5%	5%	5%	5%	4%	5%	5%	5%
White	25,245	19,775	21,775	20,066	12,560	23,167	21,194	20,203	21,902	12,955	99,421
% White	79%	75%	70%	76%	41%	79%	73%	70%	75%	44%	68%



Source:
2020 Decennial Census
2020 ACS 5-Year Dataset

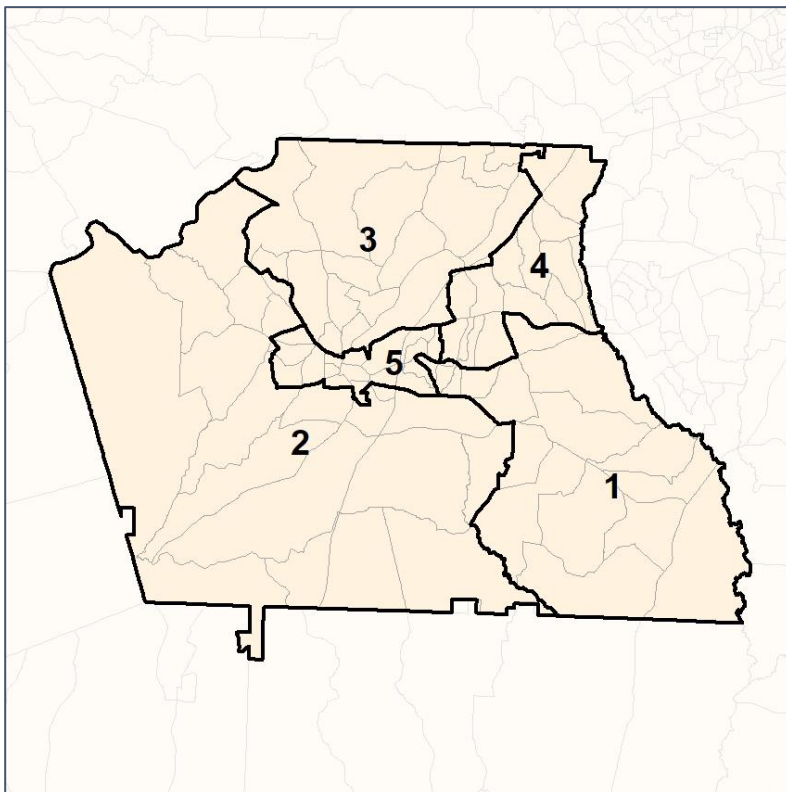


Coweta County Commission

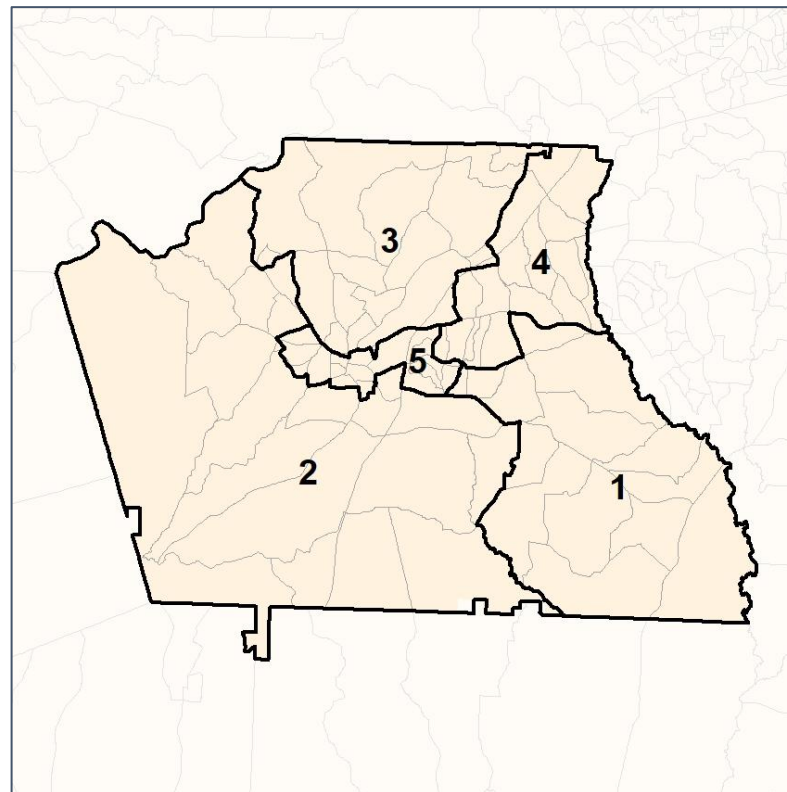
% API by Census Block Group



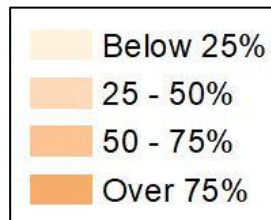
2012 Map



2022 Map*



	1	2	3	4	5	1*	2*	3*	4*	5*	County
Population	32,032	26,341	31,059	26,296	30,430	29,368	28,993	28,987	29,328	29,482	146,158
API	629	144	578	684	1,356	491	215	553	736	1,396	3,391
% API	2%	1%	2%	3%	4%	2%	1%	2%	3%	5%	2%
Black	2,736	3,734	4,967	2,273	11,834	2,587	4,499	4,729	3,021	10,708	25,544
% Black	9%	14%	16%	9%	39%	9%	16%	16%	10%	36%	17%
Latino	1,909	1,472	2,406	1,978	3,288	1,743	1,768	2,254	2,215	3,073	11,053
% Latino	6%	6%	8%	8%	11%	6%	6%	8%	8%	10%	8%
Other	1,513	1,216	1,333	1,295	1,392	1,380	1,317	1,248	1,454	1,350	6,749
% Other	5%	5%	4%	5%	5%	5%	5%	4%	5%	5%	5%
White	25,245	19,775	21,775	20,066	12,560	23,167	21,194	20,203	21,902	12,955	99,421
% White	79%	75%	70%	76%	41%	79%	73%	70%	75%	44%	68%

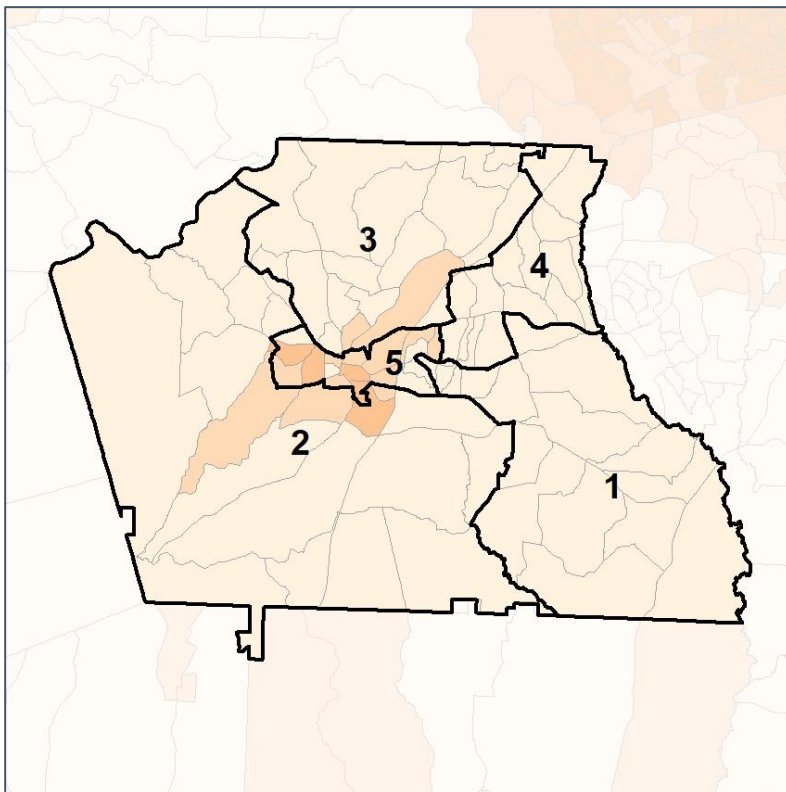


Coweta County Commission

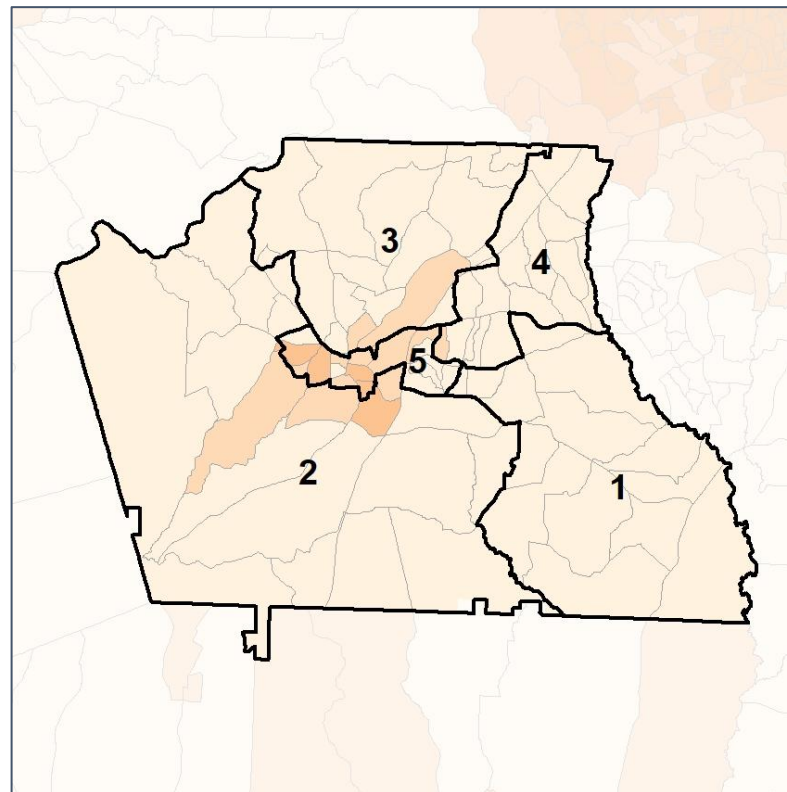
% Black by Census Block Group



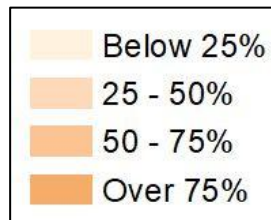
2012 Map



2022 Map*



	1	2	3	4	5	1*	2*	3*	4*	5*	County
Population	32,032	26,341	31,059	26,296	30,430	29,368	28,993	28,987	29,328	29,482	146,158
API	629	144	578	684	1,356	491	215	553	736	1,396	3,391
% API	2%	1%	2%	3%	4%	2%	1%	2%	3%	5%	2%
Black	2,736	3,734	4,967	2,273	11,834	2,587	4,499	4,729	3,021	10,708	25,544
% Black	9%	14%	16%	9%	39%	9%	16%	16%	10%	36%	17%
Latino	1,909	1,472	2,406	1,978	3,288	1,743	1,768	2,254	2,215	3,073	11,053
% Latino	6%	6%	8%	8%	11%	6%	6%	8%	8%	10%	8%
Other	1,513	1,216	1,333	1,295	1,392	1,380	1,317	1,248	1,454	1,350	6,749
% Other	5%	5%	4%	5%	5%	5%	5%	4%	5%	5%	5%
White	25,245	19,775	21,775	20,066	12,560	23,167	21,194	20,203	21,902	12,955	99,421
% White	79%	75%	70%	76%	41%	79%	73%	70%	75%	44%	68%



Source:
2020 Decennial Census
2020 ACS 5-Year Dataset

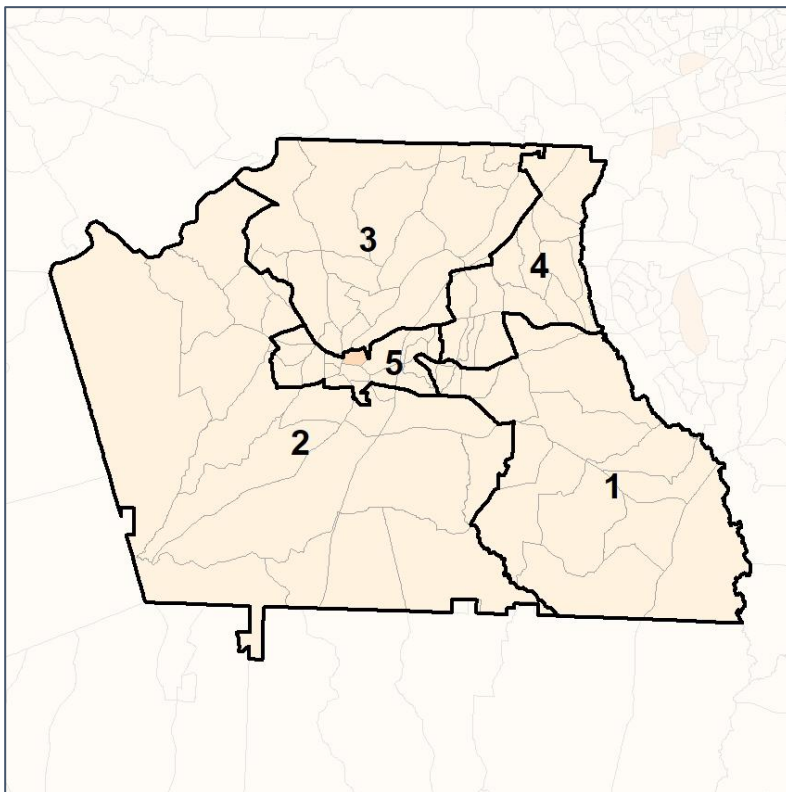


Coweta County Commission

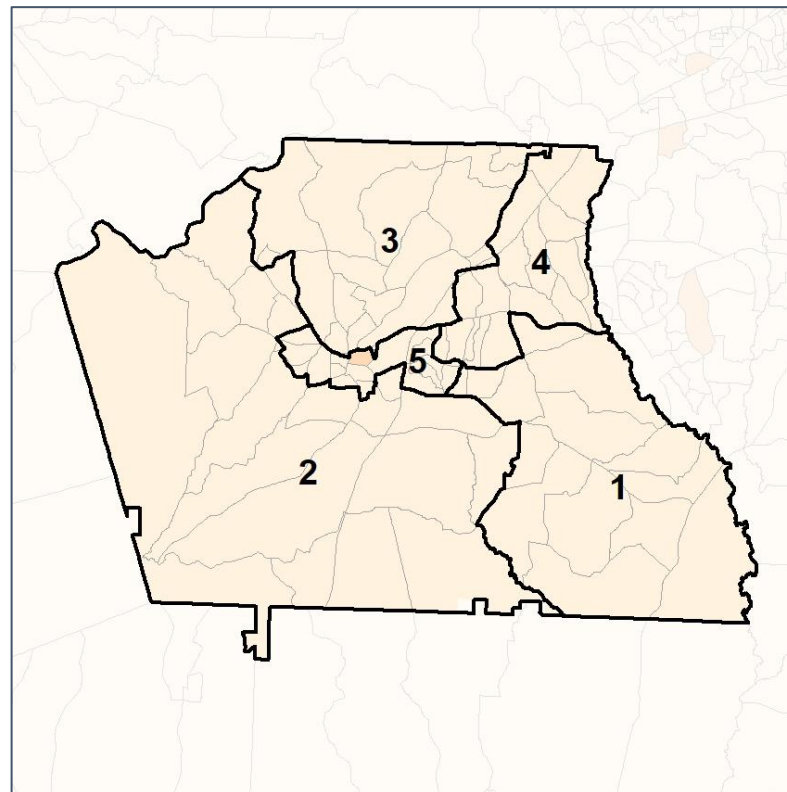
% Latino by Census Block Group



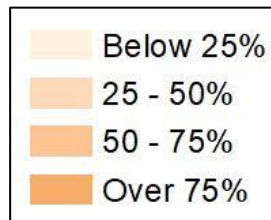
2012 Map



2022 Map*



	1	2	3	4	5	1*	2*	3*	4*	5*	County
Population	32,032	26,341	31,059	26,296	30,430	29,368	28,993	28,987	29,328	29,482	146,158
API	629	144	578	684	1,356	491	215	553	736	1,396	3,391
% API	2%	1%	2%	3%	4%	2%	1%	2%	3%	5%	2%
Black	2,736	3,734	4,967	2,273	11,834	2,587	4,499	4,729	3,021	10,708	25,544
% Black	9%	14%	16%	9%	39%	9%	16%	16%	10%	36%	17%
Latino	1,909	1,472	2,406	1,978	3,288	1,743	1,768	2,254	2,215	3,073	11,053
% Latino	6%	6%	8%	8%	11%	6%	6%	8%	8%	10%	8%
Other	1,513	1,216	1,333	1,295	1,392	1,380	1,317	1,248	1,454	1,350	6,749
% Other	5%	5%	4%	5%	5%	5%	5%	4%	5%	5%	5%
White	25,245	19,775	21,775	20,066	12,560	23,167	21,194	20,203	21,902	12,955	99,421
% White	79%	75%	70%	76%	41%	79%	73%	70%	75%	44%	68%



Source:
2020 Decennial Census
2020 ACS 5-Year Dataset

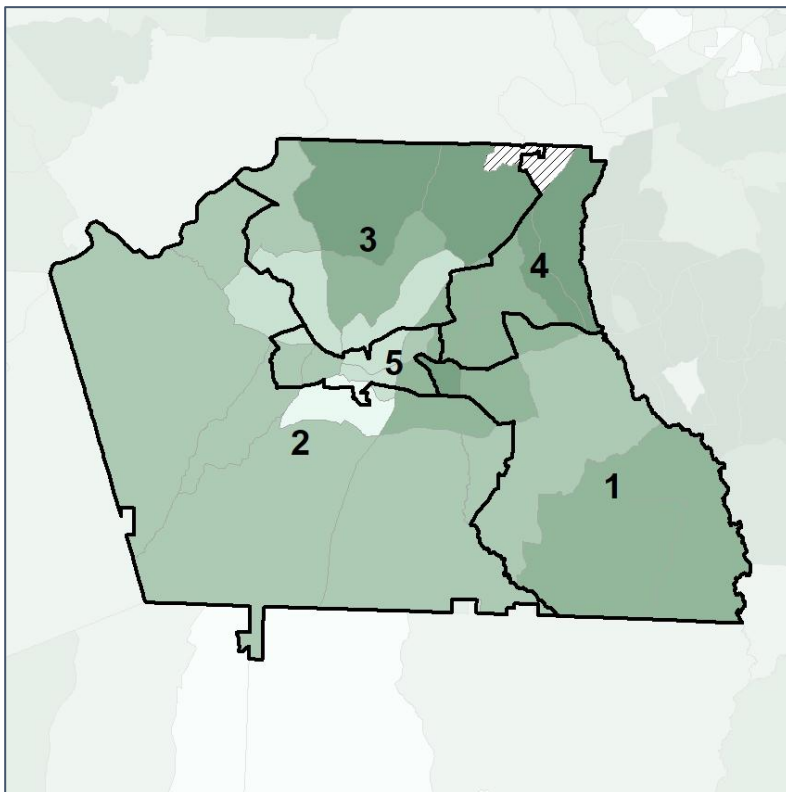


Coweta County Commission

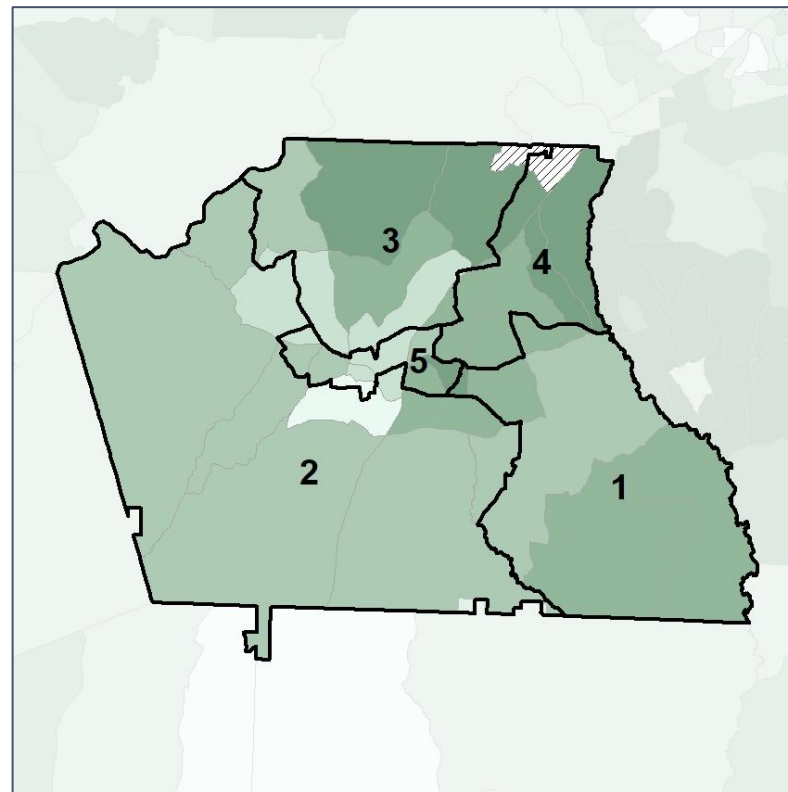
Median Household Income by Census Tract



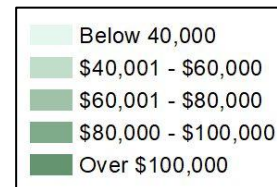
2012 Map



2022 Map*



	1	2	3	4	5	1*	2*	3*	4*	5*	County
Population	32,032	26,341	31,059	26,296	30,430	29,368	28,993	28,987	29,328	29,482	146,158
% API	2%	1%	2%	3%	4%	2%	1%	2%	3%	5%	2%
% Black	9%	14%	16%	9%	39%	9%	16%	16%	10%	36%	17%
% Latino	6%	6%	8%	8%	11%	6%	6%	8%	8%	10%	8%
% Other	5%	5%	4%	5%	5%	5%	5%	4%	5%	5%	5%
% White	79%	75%	70%	76%	41%	79%	73%	70%	75%	44%	68%
Median Income	\$91,000	\$70,000	\$89,000	\$107,000	\$62,000	\$90,000	\$70,000	\$90,000	\$102,000	\$66,000	\$80,000
% Renter	9%	27%	22%	11%	56%	10%	26%	22%	15%	51%	25%
% Youth	18%	22%	20%	17%	26%	18%	22%	20%	18%	26%	21%

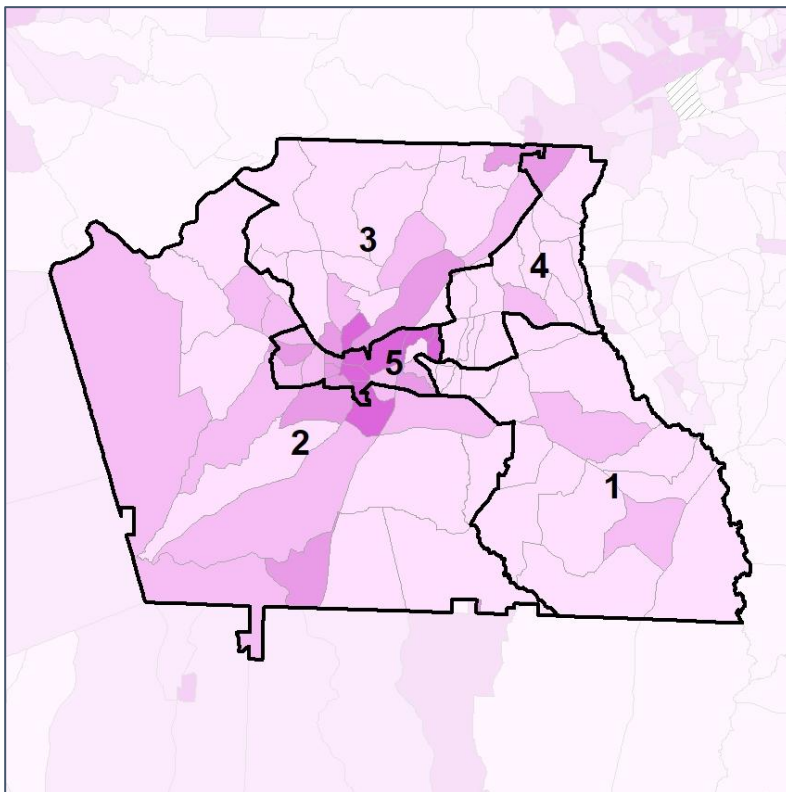


Coweta County Commission

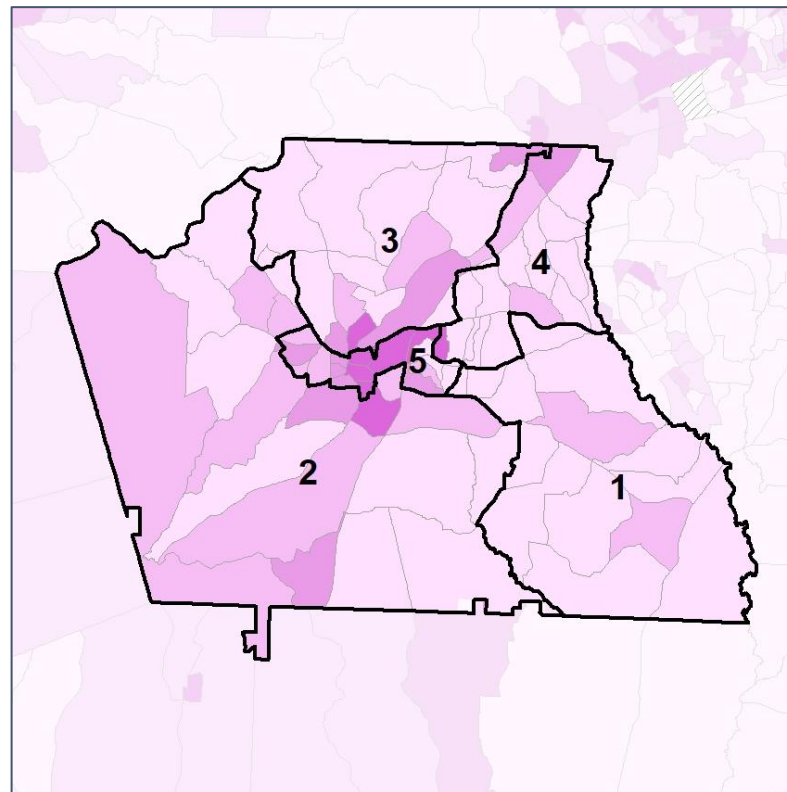
% Renter by Census Block Group



2012 Map



2022 Map*



	1	2	3	4	5	1*	2*	3*	4*	5*	County
Population	32,032	26,341	31,059	26,296	30,430	29,368	28,993	28,987	29,328	29,482	146,158
% API	2%	1%	2%	3%	4%	2%	1%	2%	3%	5%	2%
% Black	9%	14%	16%	9%	39%	9%	16%	16%	10%	36%	17%
% Latino	6%	6%	8%	8%	11%	6%	6%	8%	8%	10%	8%
% Other	5%	5%	4%	5%	5%	5%	5%	4%	5%	5%	5%
% White	79%	75%	70%	76%	41%	79%	73%	70%	75%	44%	68%
Median Income	\$91,000	\$70,000	\$89,000	\$107,000	\$62,000	\$90,000	\$70,000	\$90,000	\$102,000	\$66,000	\$80,000
% Renter	9%	27%	22%	11%	56%	10%	26%	22%	15%	51%	25%
% Youth	18%	22%	20%	17%	26%	18%	22%	20%	18%	26%	21%

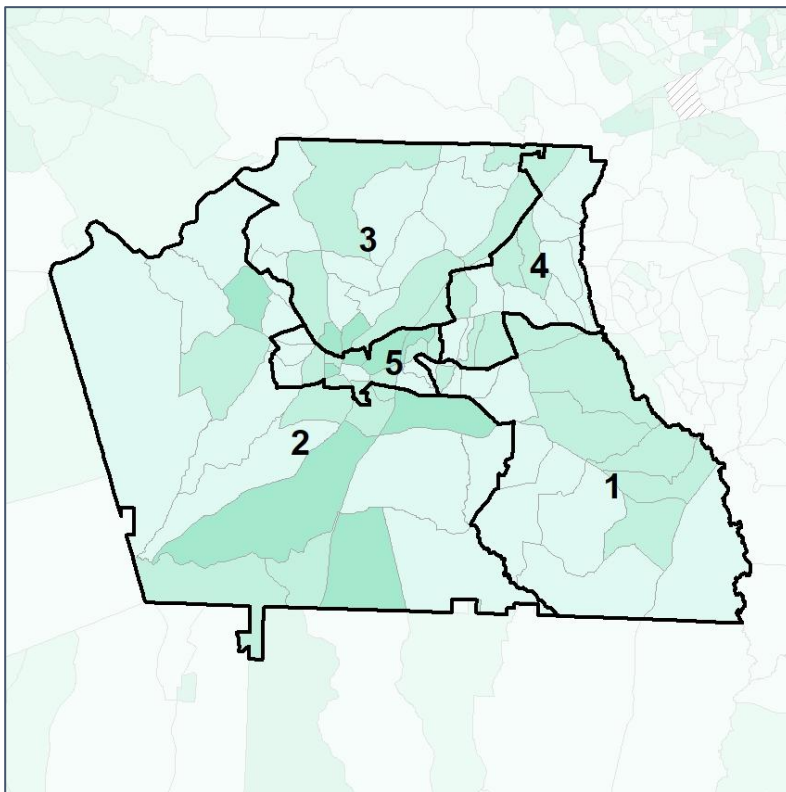


Coweta County Commission

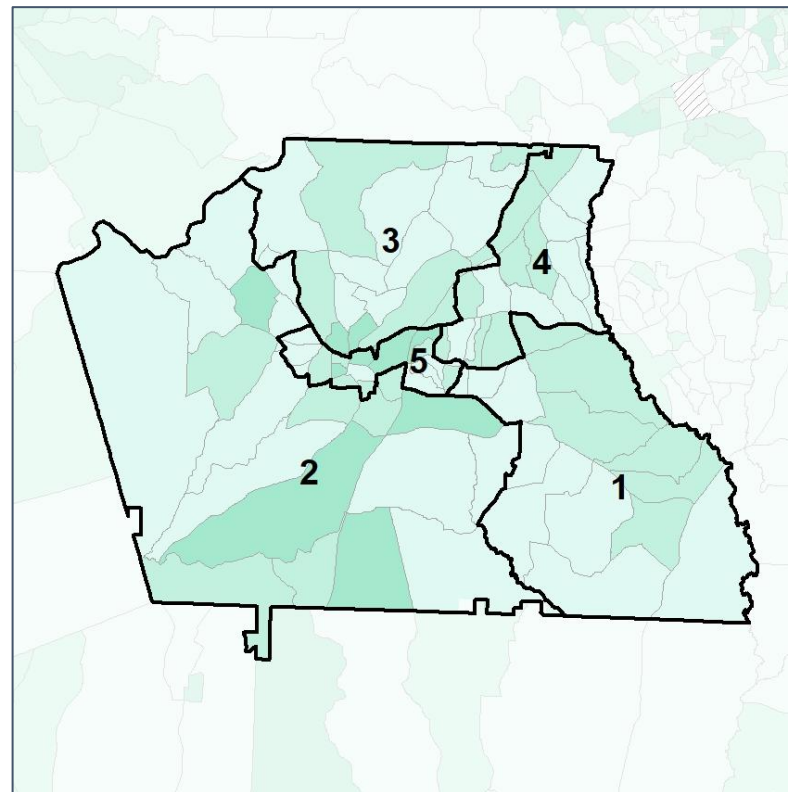
% Youth (18-34) by Census Block Group



2012 Map



2022 Map*



	1	2	3	4	5	1*	2*	3*	4*	5*	County
Population	32,032	26,341	31,059	26,296	30,430	29,368	28,993	28,987	29,328	29,482	146,158
% API	2%	1%	2%	3%	4%	2%	1%	2%	3%	5%	2%
% Black	9%	14%	16%	9%	39%	9%	16%	16%	10%	36%	17%
% Latino	6%	6%	8%	8%	11%	6%	6%	8%	8%	10%	8%
% Other	5%	5%	4%	5%	5%	5%	5%	4%	5%	5%	5%
% White	79%	75%	70%	76%	41%	79%	73%	70%	75%	44%	68%
Median Income	\$91,000	\$70,000	\$89,000	\$107,000	\$62,000	\$90,000	\$70,000	\$90,000	\$102,000	\$66,000	\$80,000
% Renter	9%	27%	22%	11%	56%	10%	26%	22%	15%	51%	25%
% Youth	18%	22%	20%	17%	26%	18%	22%	20%	18%	26%	21%

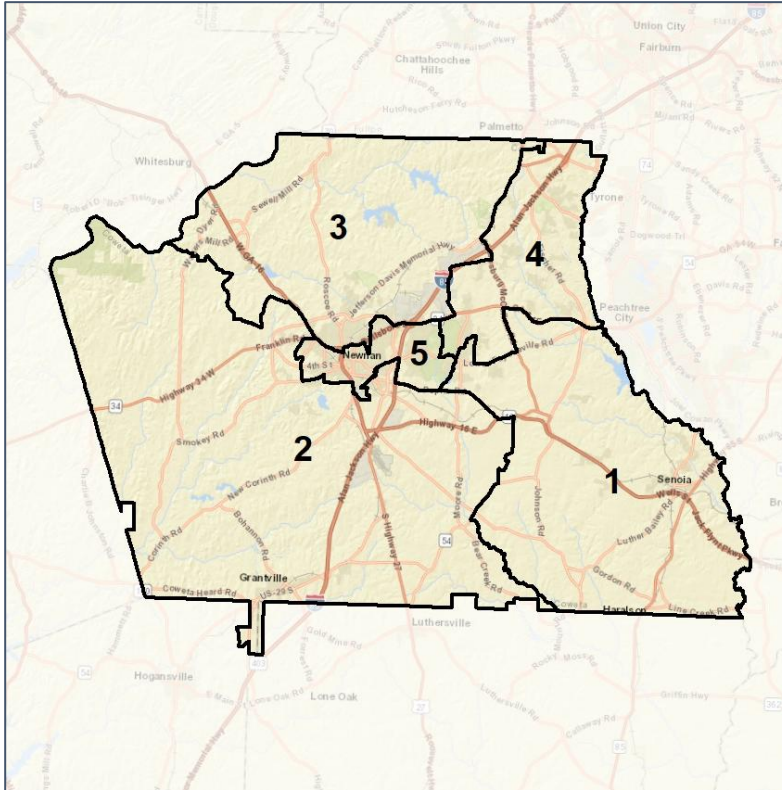


Coweta County School Board

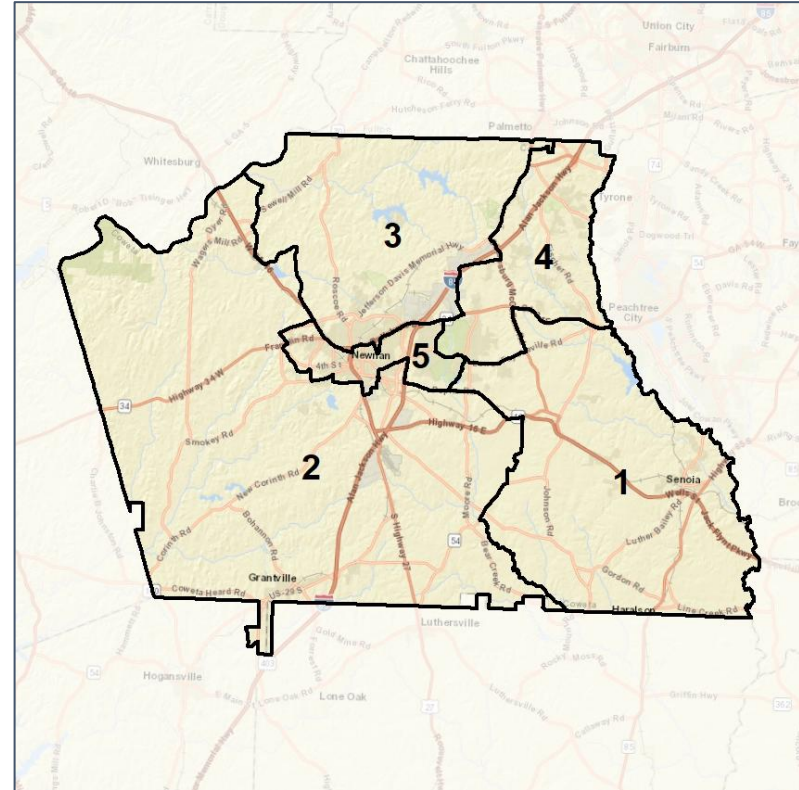
Context



2012 Map



2022 Map*



	1	2	3	4	5	1*	2*	3*	4*	5*	County
Population	31,683	26,746	30,995	25,492	31,242	29,368	28,993	28,987	29,328	29,482	146,158
API	2%	1%	2%	2%	5%	2%	1%	2%	3%	5%	2%
Black	9%	17%	16%	8%	36%	9%	16%	16%	10%	36%	17%
Latino	6%	6%	7%	7%	11%	6%	6%	8%	8%	10%	8%
Other	5%	5%	4%	5%	5%	5%	5%	4%	5%	5%	5%
White	78%	72%	71%	78%	44%	79%	73%	70%	75%	44%	68%
Population Gain	6,206	1,512	4,948	531	5,644	-2,315	2,247	-2,008	3,836	-1,760	*
Population % Gain	24%	6%	19%	2%	22%	-7%	8%	-6%	15%	-6%	*
Net POC Gain	2,324	1,222	3,035	1,280	4,163	-876	240	-191	1,728	-901	*
Net POC % Gain	49%	19%	51%	29%	31%	-12%	3%	-2%	30%	-5%	*



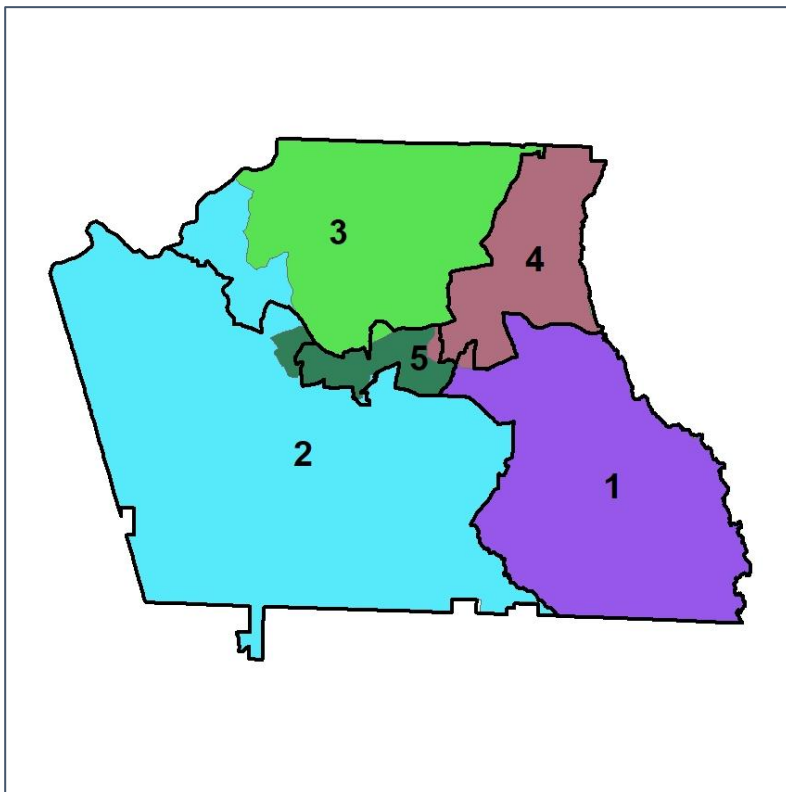
Source:
2020 Decennial Census
2020 ACS 5-Year Dataset

Coweta County School Board

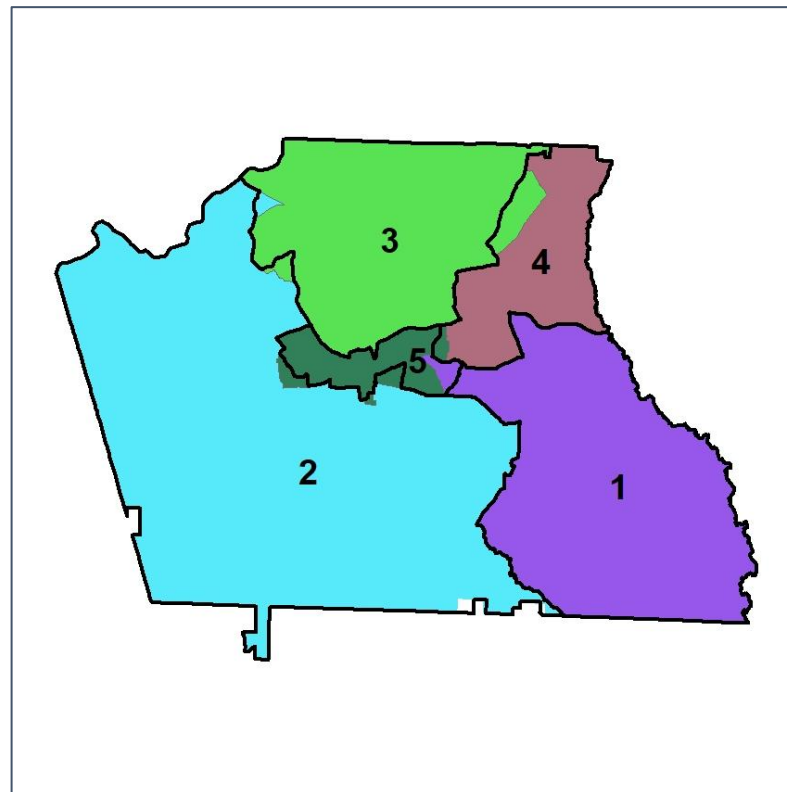
Changes in Redistricting



2012 Map (2022 in Colors)



2022 Map* (2012 in Colors)



	1	2	3	4	5	1*	2*	3*	4*	5*	County
Population	31,683	26,746	30,995	25,492	31,242	29,368	28,993	28,987	29,328	29,482	146,158
API	2%	1%	2%	2%	5%	2%	1%	2%	3%	5%	2%
Black	9%	17%	16%	8%	36%	9%	16%	16%	10%	36%	17%
Latino	6%	6%	7%	7%	11%	6%	6%	8%	8%	10%	8%
Other	5%	5%	4%	5%	5%	5%	5%	4%	5%	5%	5%
White	78%	72%	71%	78%	44%	79%	73%	70%	75%	44%	68%
Population Gain	6,206	1,512	4,948	531	5,644	-2,315	2,247	-2,008	3,836	-1,760	*
Population % Gain	24%	6%	19%	2%	22%	-7%	8%	-6%	15%	-6%	*
Net POC Gain	2,324	1,222	3,035	1,280	4,163	-876	240	-191	1,728	-901	*
Net POC % Gain	49%	19%	51%	29%	31%	-12%	3%	-2%	30%	-5%	*

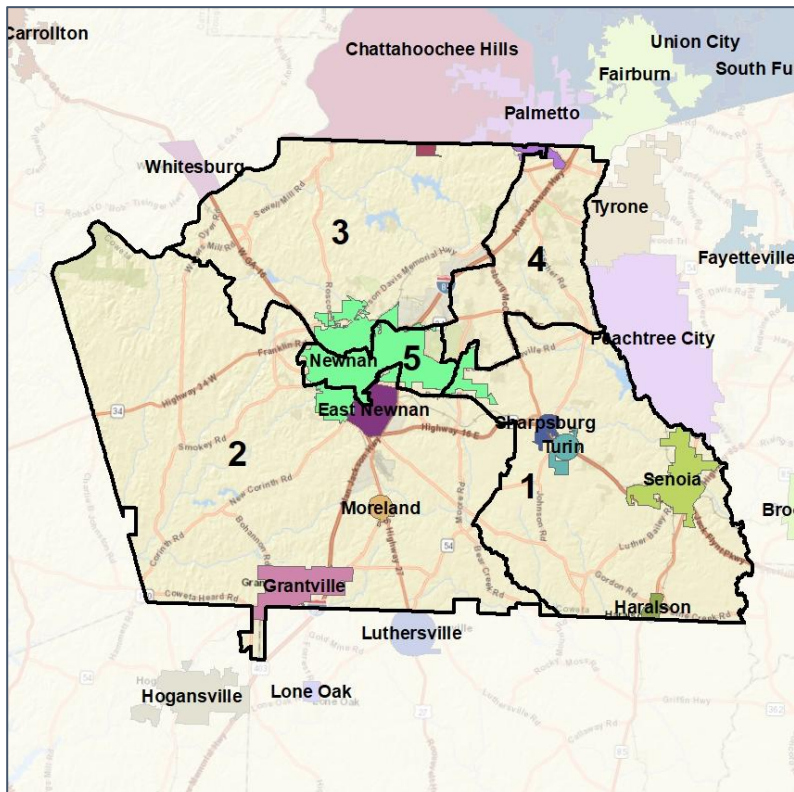


Coweta County School Board

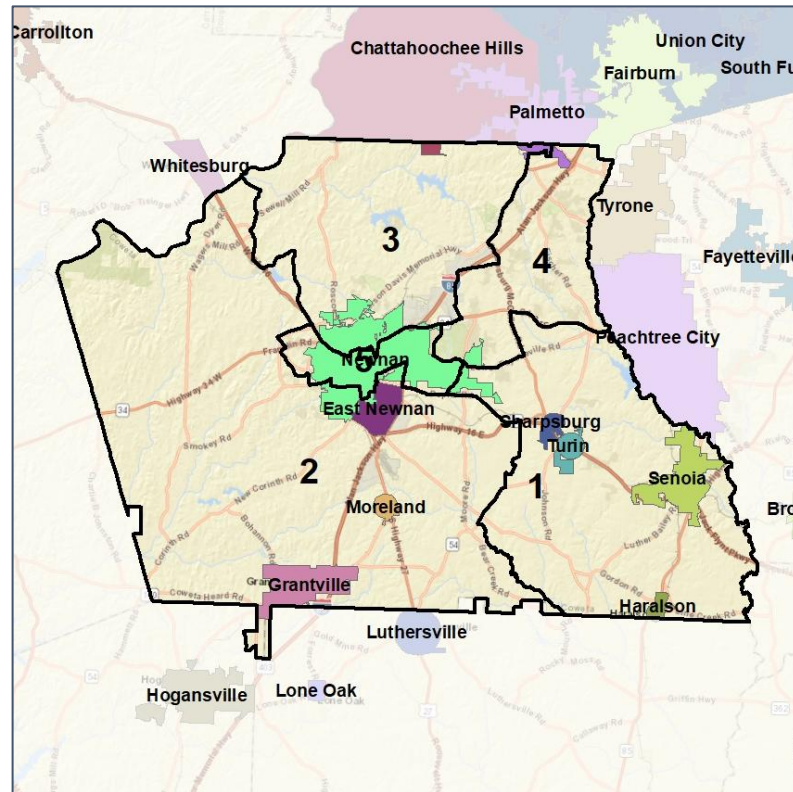
Cities and Places



2012 Map



2022 Map*



	1	2	3	4	5	1*	2*	3*	4*	5*	County
Population	31,683	26,746	30,995	25,492	31,242	29,368	28,993	28,987	29,328	29,482	146,158
API	2%	1%	2%	2%	5%	2%	1%	2%	3%	5%	2%
Black	9%	17%	16%	8%	36%	9%	16%	16%	10%	36%	17%
Latino	6%	6%	7%	7%	11%	6%	6%	8%	8%	10%	8%
Other	5%	5%	4%	5%	5%	5%	5%	4%	5%	5%	5%
White	78%	72%	71%	78%	44%	79%	73%	70%	75%	44%	68%
Population Gain	6,206	1,512	4,948	531	5,644	-2,315	2,247	-2,008	3,836	-1,760	*
Population % Gain	24%	6%	19%	2%	22%	-7%	8%	-6%	15%	-6%	*
Net POC Gain	2,324	1,222	3,035	1,280	4,163	-876	240	-191	1,728	-901	*
Net POC % Gain	49%	19%	51%	29%	31%	-12%	3%	-2%	30%	-5%	*



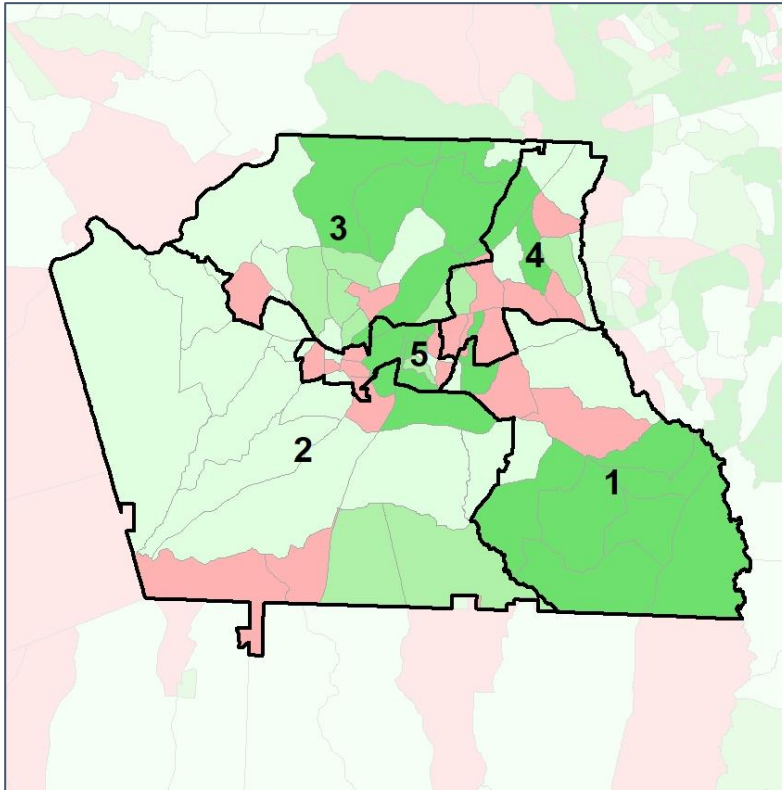
Source:
2020 Decennial Census
2020 ACS 5-Year Dataset

Coweta County School Board

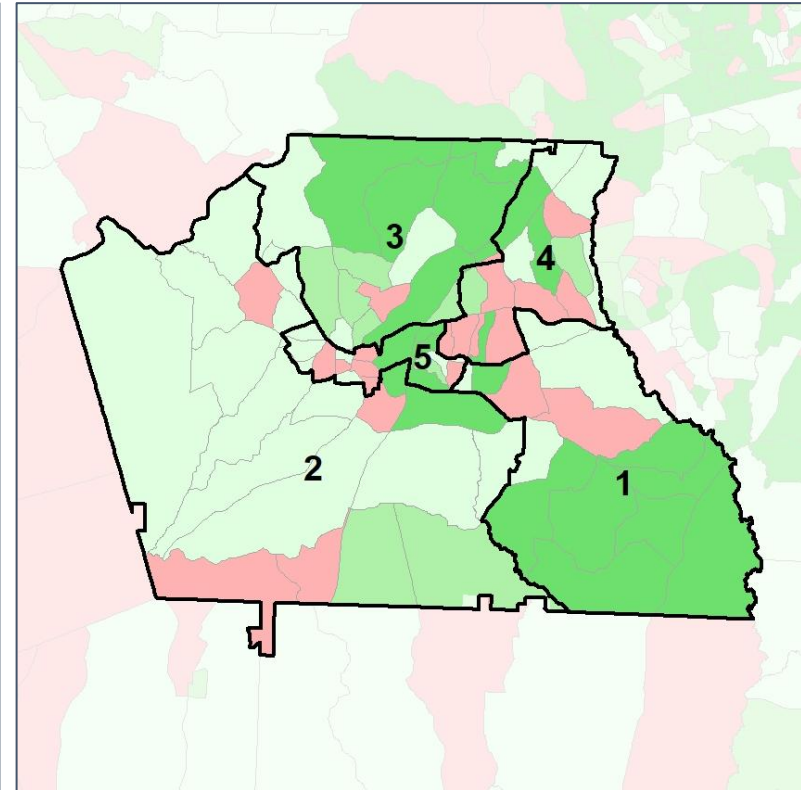
Net Gain in Population (2010 - 2020) by Census Block Group



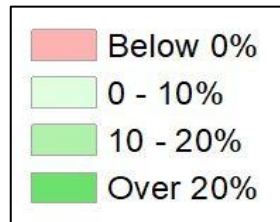
2012 Map



2022 Map*



	1	2	3	4	5	1*	2*	3*	4*	5*	County
Population	31,683	26,746	30,995	25,492	31,242	29,368	28,993	28,987	29,328	29,482	146,158
API	2%	1%	2%	2%	5%	2%	1%	2%	3%	5%	2%
Black	9%	17%	16%	8%	36%	9%	16%	16%	10%	36%	17%
Latino	6%	6%	7%	7%	11%	6%	6%	8%	8%	10%	8%
Other	5%	5%	4%	5%	5%	5%	5%	4%	5%	5%	5%
White	78%	72%	71%	78%	44%	79%	73%	70%	75%	44%	68%
Population Gain	6,206	1,512	4,948	531	5,644	-2,315	2,247	-2,008	3,836	-1,760	*
Population % Gain	24%	6%	19%	2%	22%	-7%	8%	-6%	15%	-6%	*
Net POC Gain	2,324	1,222	3,035	1,280	4,163	-876	240	-191	1,728	-901	*
Net POC % Gain	49%	19%	51%	29%	31%	-12%	3%	-2%	30%	-5%	*

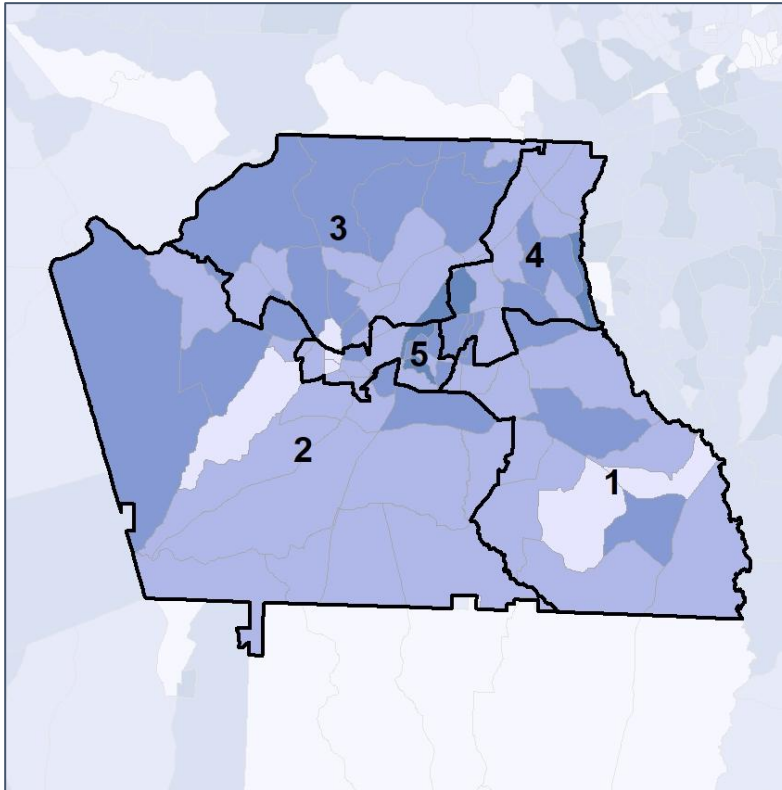


Coweta County School Board

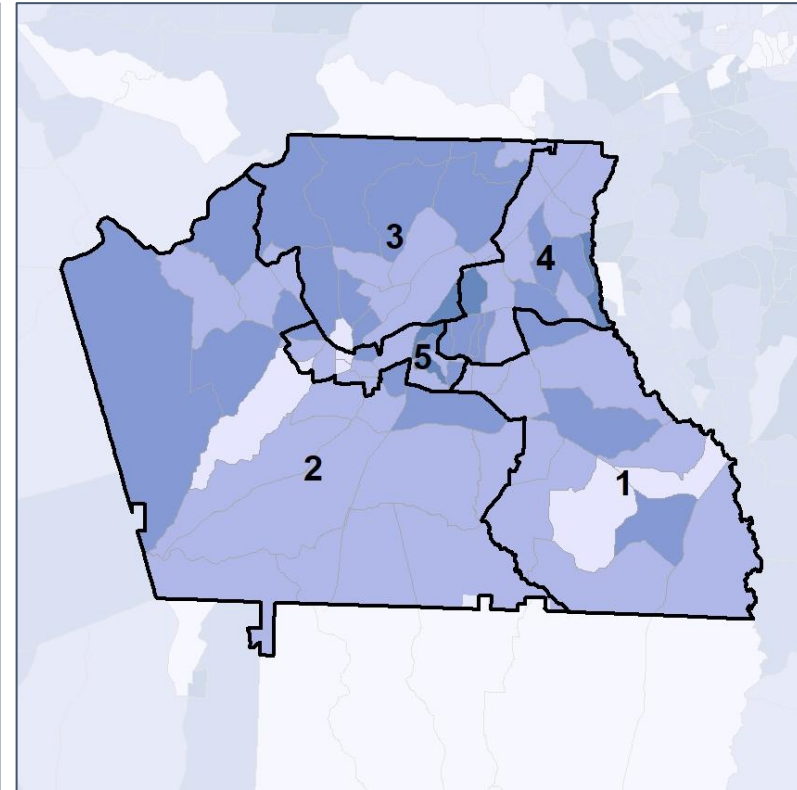
Net Gain in % POC (2020 - 2010) by Census Block Group



2012 Map



2022 Map*



	1	2	3	4	5	1*	2*	3*	4*	5*	County
Population	31,683	26,746	30,995	25,492	31,242	29,368	28,993	28,987	29,328	29,482	146,158
API	2%	1%	2%	2%	5%	2%	1%	2%	3%	5%	2%
Black	9%	17%	16%	8%	36%	9%	16%	16%	10%	36%	17%
Latino	6%	6%	7%	7%	11%	6%	6%	8%	8%	10%	8%
Other	5%	5%	4%	5%	5%	5%	5%	4%	5%	5%	5%
White	78%	72%	71%	78%	44%	79%	73%	70%	75%	44%	68%
Population Gain	6,206	1,512	4,948	531	5,644	-2,315	2,247	-2,008	3,836	-1,760	*
Population % Gain	24%	6%	19%	2%	22%	-7%	8%	-6%	15%	-6%	*
Net POC Gain	2,324	1,222	3,035	1,280	4,163	-876	240	-191	1,728	-901	*
Net POC % Gain	49%	19%	51%	29%	31%	-12%	3%	-2%	30%	-5%	*

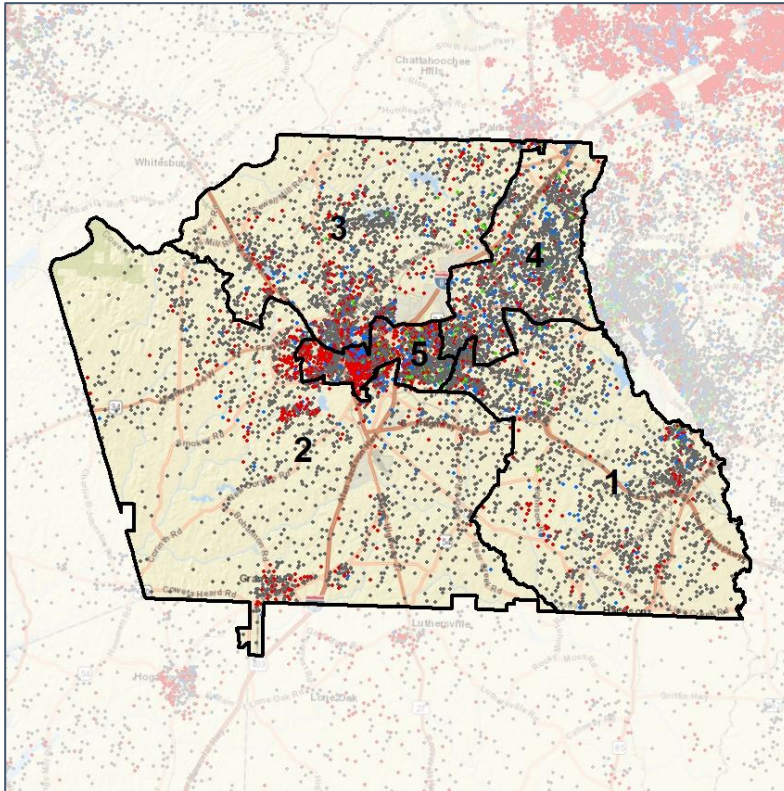


Coweta County School Board

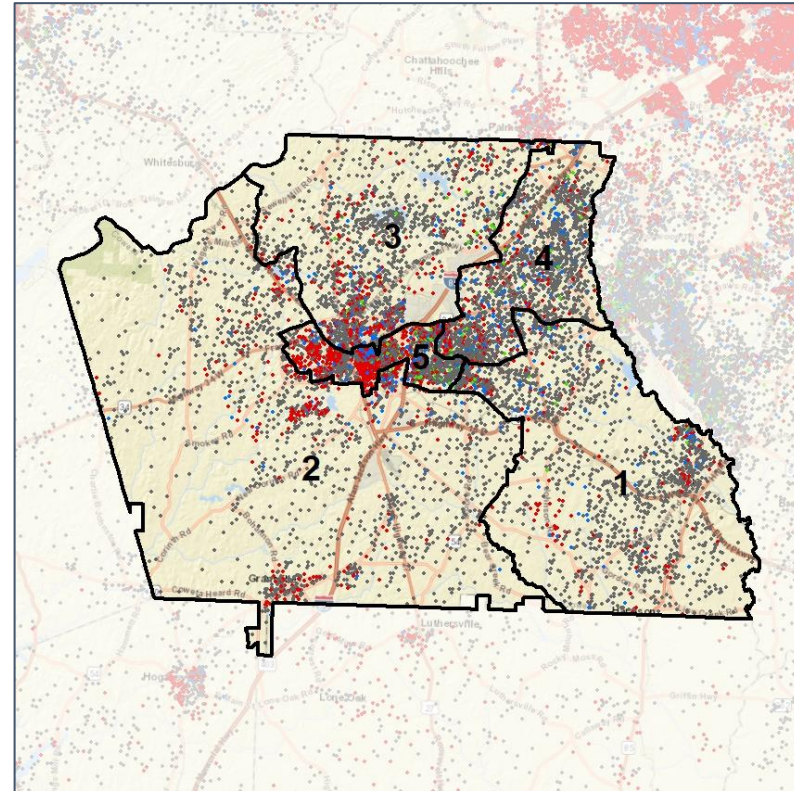
Population Density by Race



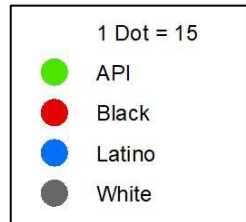
2012 Map



2022 Map*



	1	2	3	4	5	1*	2*	3*	4*	5*	County
Population	31,683	26,746	30,995	25,492	31,242	29,368	28,993	28,987	29,328	29,482	146,158
API	610	176	556	591	1,458	491	215	553	736	1,396	3,391
% API	2%	1%	2%	2%	5%	2%	1%	2%	3%	5%	2%
Black	2,992	4,474	4,869	2,000	11,209	2,587	4,499	4,729	3,021	10,708	25,544
% Black	9%	17%	16%	8%	36%	9%	16%	16%	10%	36%	17%
Latino	2,000	1,641	2,253	1,835	3,324	1,743	1,768	2,254	2,215	3,073	11,053
% Latino	6%	6%	7%	7%	11%	6%	6%	8%	8%	10%	8%
Other	1,475	1,268	1,297	1,272	1,437	1,380	1,317	1,248	1,454	1,350	6,749
% Other	5%	5%	4%	5%	5%	5%	5%	4%	5%	5%	5%
White	24,606	19,187	22,020	19,794	13,814	23,167	21,194	20,203	21,902	12,955	99,421
% White	78%	72%	71%	78%	44%	79%	73%	70%	75%	44%	68%



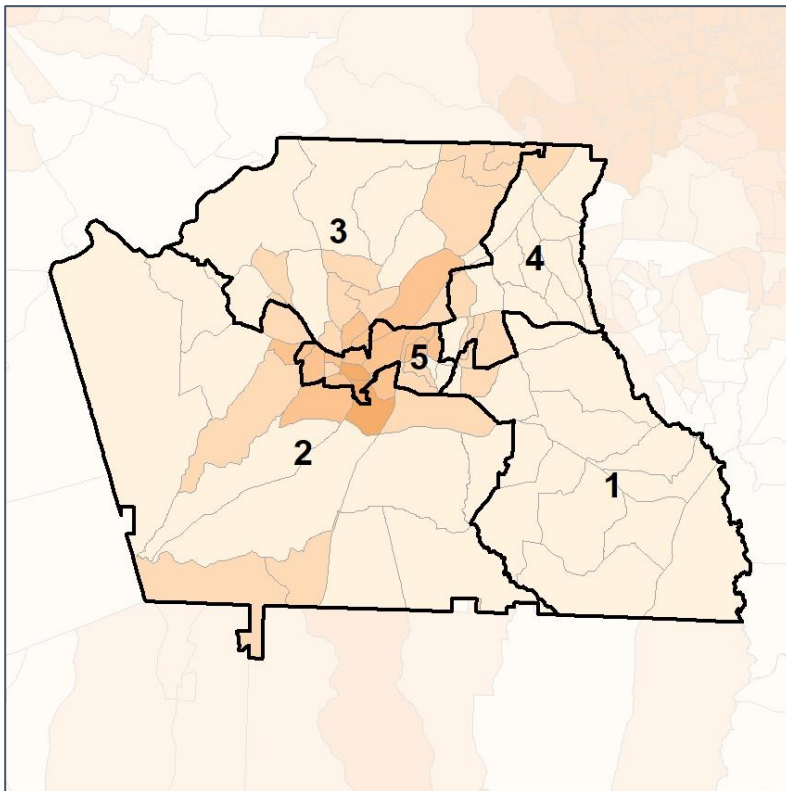
Source:
2020 Decennial Census
2020 ACS 5-Year Dataset

Coweta County School Board

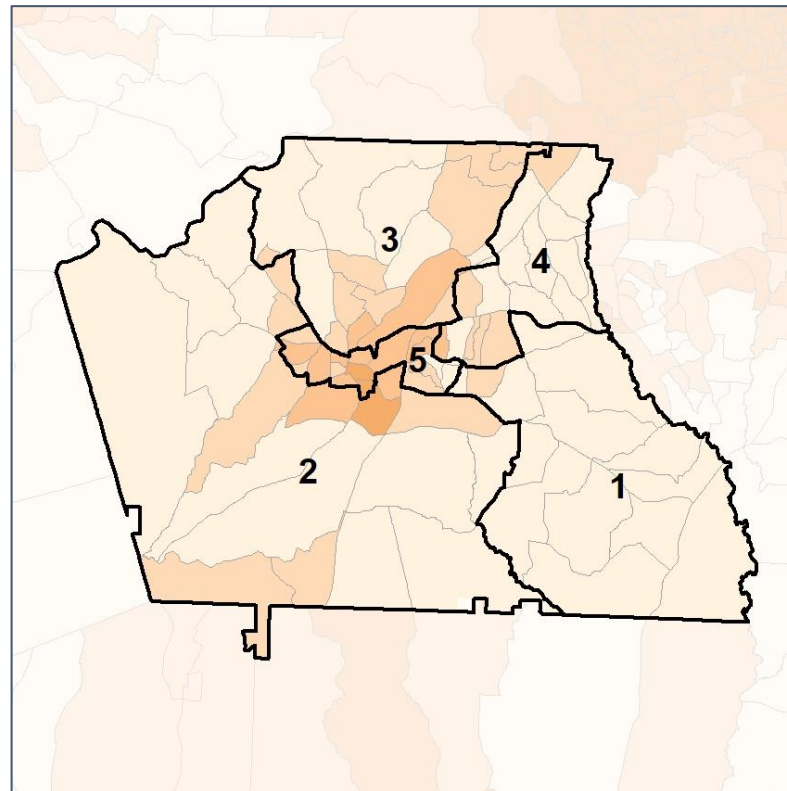
% People of Color by Census Block Group



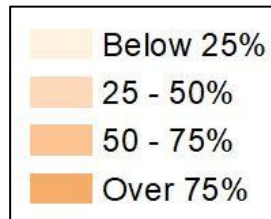
2012 Map



2022 Map*



	1	2	3	4	5	1*	2*	3*	4*	5*	County
Population	31,683	26,746	30,995	25,492	31,242	29,368	28,993	28,987	29,328	29,482	146,158
API	610	176	556	591	1,458	491	215	553	736	1,396	3,391
% API	2%	1%	2%	2%	5%	2%	1%	2%	3%	5%	2%
Black	2,992	4,474	4,869	2,000	11,209	2,587	4,499	4,729	3,021	10,708	25,544
% Black	9%	17%	16%	8%	36%	9%	16%	16%	10%	36%	17%
Latino	2,000	1,641	2,253	1,835	3,324	1,743	1,768	2,254	2,215	3,073	11,053
% Latino	6%	6%	7%	7%	11%	6%	6%	8%	8%	10%	8%
Other	1,475	1,268	1,297	1,272	1,437	1,380	1,317	1,248	1,454	1,350	6,749
% Other	5%	5%	4%	5%	5%	5%	5%	4%	5%	5%	5%
White	24,606	19,187	22,020	19,794	13,814	23,167	21,194	20,203	21,902	12,955	99,421
% White	78%	72%	71%	78%	44%	79%	73%	70%	75%	44%	68%



Source:
2020 Decennial Census
2020 ACS 5-Year Dataset

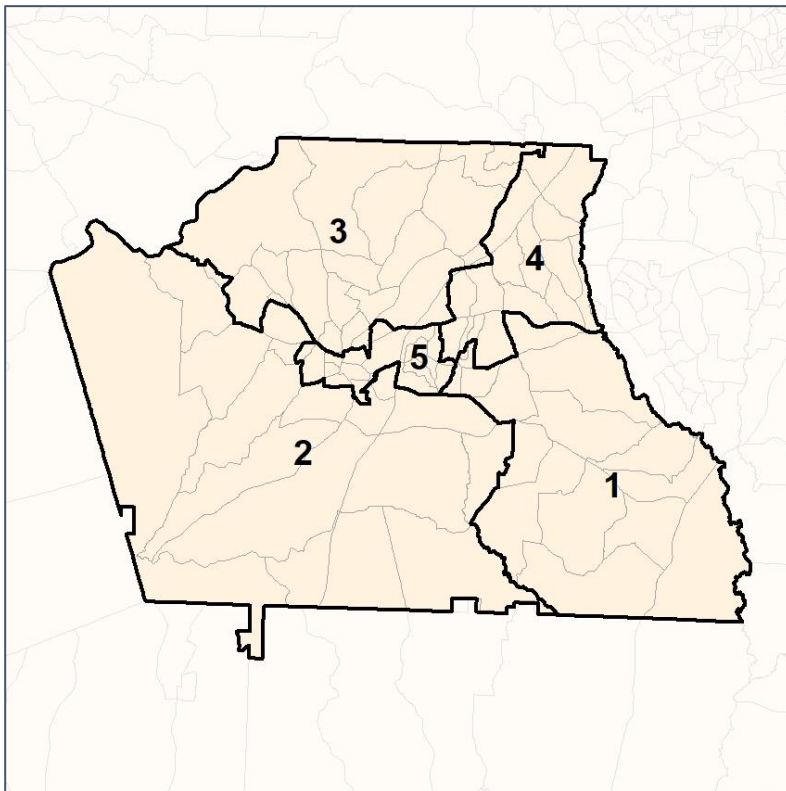


Coweta County School Board

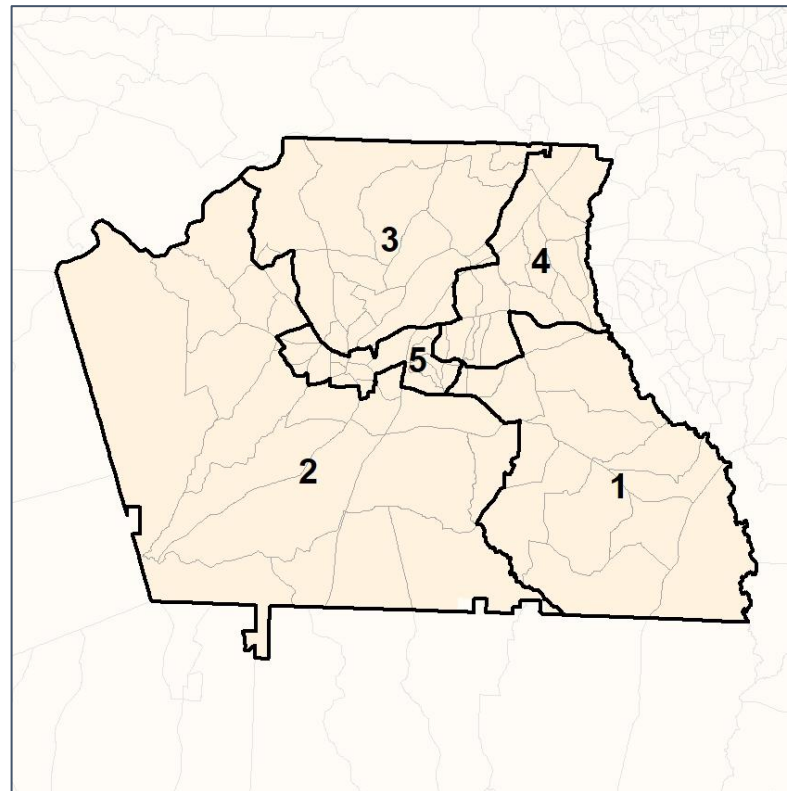
% API by Census Block Group



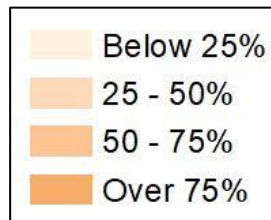
2012 Map



2022 Map*



	1	2	3	4	5	1*	2*	3*	4*	5*	County
Population	31,683	26,746	30,995	25,492	31,242	29,368	28,993	28,987	29,328	29,482	146,158
API	610	176	556	591	1,458	491	215	553	736	1,396	3,391
% API	2%	1%	2%	2%	5%	2%	1%	2%	3%	5%	2%
Black	2,992	4,474	4,869	2,000	11,209	2,587	4,499	4,729	3,021	10,708	25,544
% Black	9%	17%	16%	8%	36%	9%	16%	16%	10%	36%	17%
Latino	2,000	1,641	2,253	1,835	3,324	1,743	1,768	2,254	2,215	3,073	11,053
% Latino	6%	6%	7%	7%	11%	6%	6%	8%	8%	10%	8%
Other	1,475	1,268	1,297	1,272	1,437	1,380	1,317	1,248	1,454	1,350	6,749
% Other	5%	5%	4%	5%	5%	5%	5%	4%	5%	5%	5%
White	24,606	19,187	22,020	19,794	13,814	23,167	21,194	20,203	21,902	12,955	99,421
% White	78%	72%	71%	78%	44%	79%	73%	70%	75%	44%	68%



Source:
2020 Decennial Census
2020 ACS 5-Year Dataset

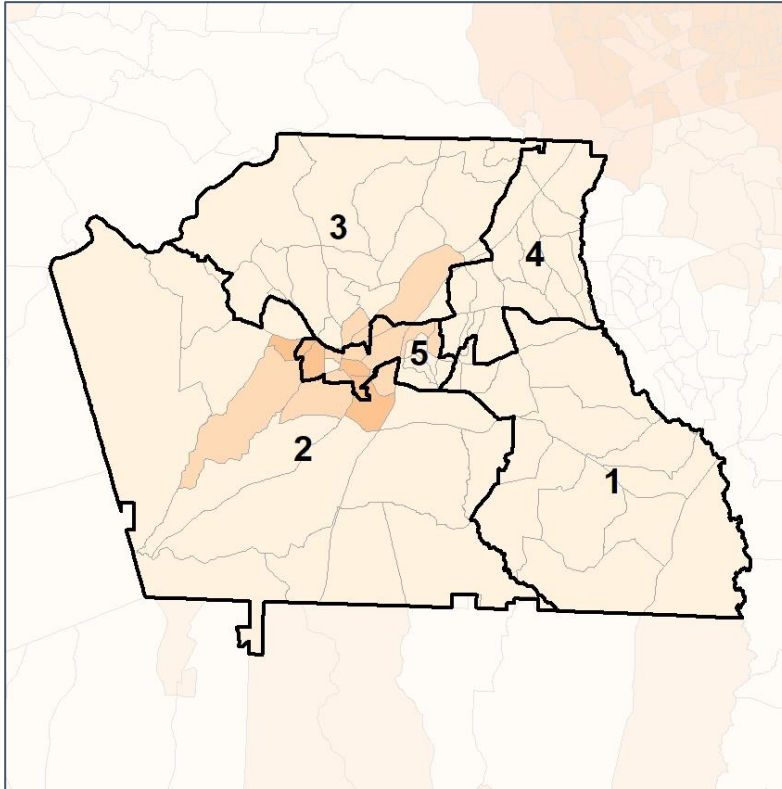


Coweta County School Board

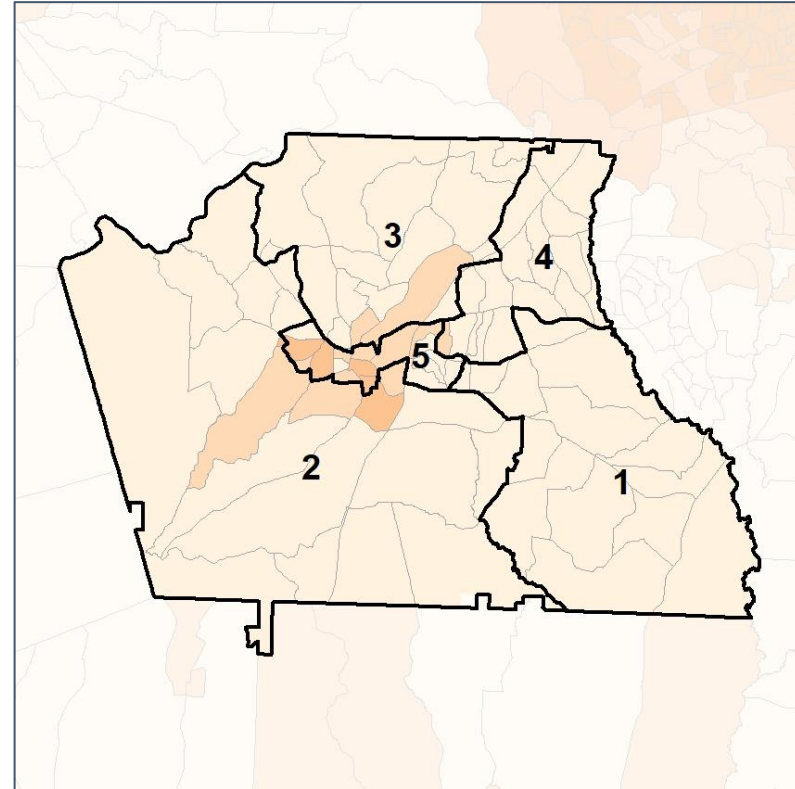
% Black by Census Block Group



2012 Map



2022 Map*



	1	2	3	4	5	1*	2*	3*	4*	5*	County
Population	31,683	26,746	30,995	25,492	31,242	29,368	28,993	28,987	29,328	29,482	146,158
API	610	176	556	591	1,458	491	215	553	736	1,396	3,391
% API	2%	1%	2%	2%	5%	2%	1%	2%	3%	5%	2%
Black	2,992	4,474	4,869	2,000	11,209	2,587	4,499	4,729	3,021	10,708	25,544
% Black	9%	17%	16%	8%	36%	9%	16%	16%	10%	36%	17%
Latino	2,000	1,641	2,253	1,835	3,324	1,743	1,768	2,254	2,215	3,073	11,053
% Latino	6%	6%	7%	7%	11%	6%	6%	8%	8%	10%	8%
Other	1,475	1,268	1,297	1,272	1,437	1,380	1,317	1,248	1,454	1,350	6,749
% Other	5%	5%	4%	5%	5%	5%	5%	4%	5%	5%	5%
White	24,606	19,187	22,020	19,794	13,814	23,167	21,194	20,203	21,902	12,955	99,421
% White	78%	72%	71%	78%	44%	79%	73%	70%	75%	44%	68%



Source:
2020 Decennial Census
2020 ACS 5-Year Dataset

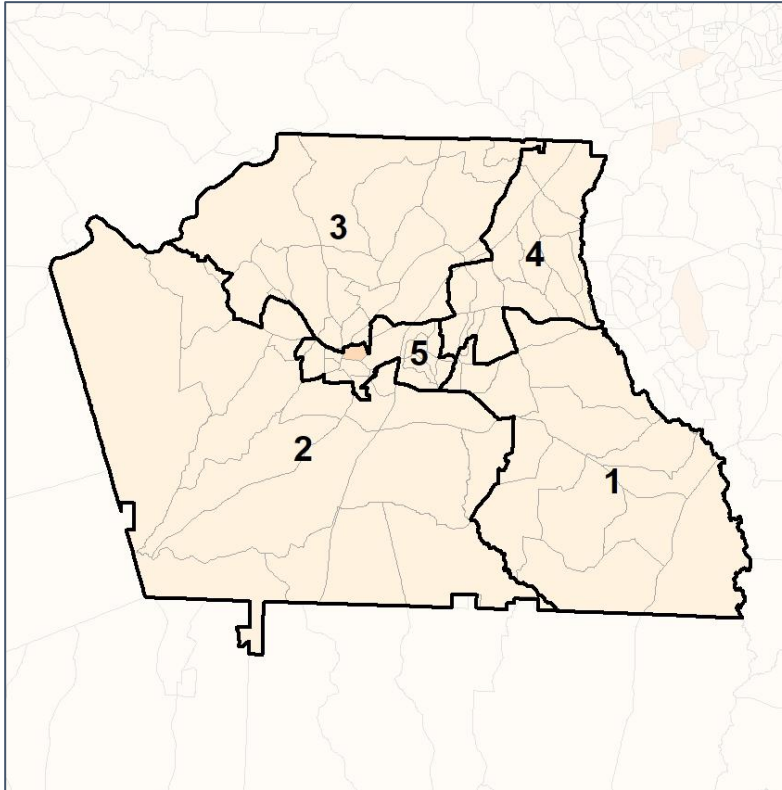


Coweta County School Board

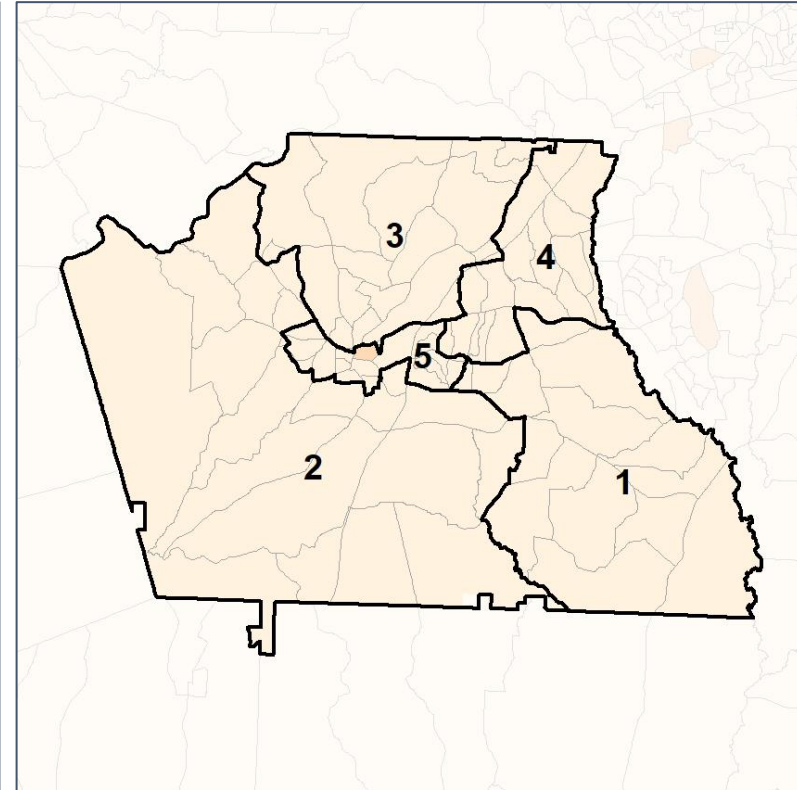
% Latino by Census Block Group



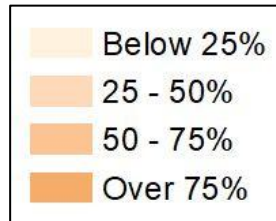
2012 Map



2022 Map*



	1	2	3	4	5	1*	2*	3*	4*	5*	County
Population	31,683	26,746	30,995	25,492	31,242	29,368	28,993	28,987	29,328	29,482	146,158
API	610	176	556	591	1,458	491	215	553	736	1,396	3,391
% API	2%	1%	2%	2%	5%	2%	1%	2%	3%	5%	2%
Black	2,992	4,474	4,869	2,000	11,209	2,587	4,499	4,729	3,021	10,708	25,544
% Black	9%	17%	16%	8%	36%	9%	16%	16%	10%	36%	17%
Latino	2,000	1,641	2,253	1,835	3,324	1,743	1,768	2,254	2,215	3,073	11,053
% Latino	6%	6%	7%	7%	11%	6%	6%	8%	8%	10%	8%
Other	1,475	1,268	1,297	1,272	1,437	1,380	1,317	1,248	1,454	1,350	6,749
% Other	5%	5%	4%	5%	5%	5%	5%	4%	5%	5%	5%
White	24,606	19,187	22,020	19,794	13,814	23,167	21,194	20,203	21,902	12,955	99,421
% White	78%	72%	71%	78%	44%	79%	73%	70%	75%	44%	68%



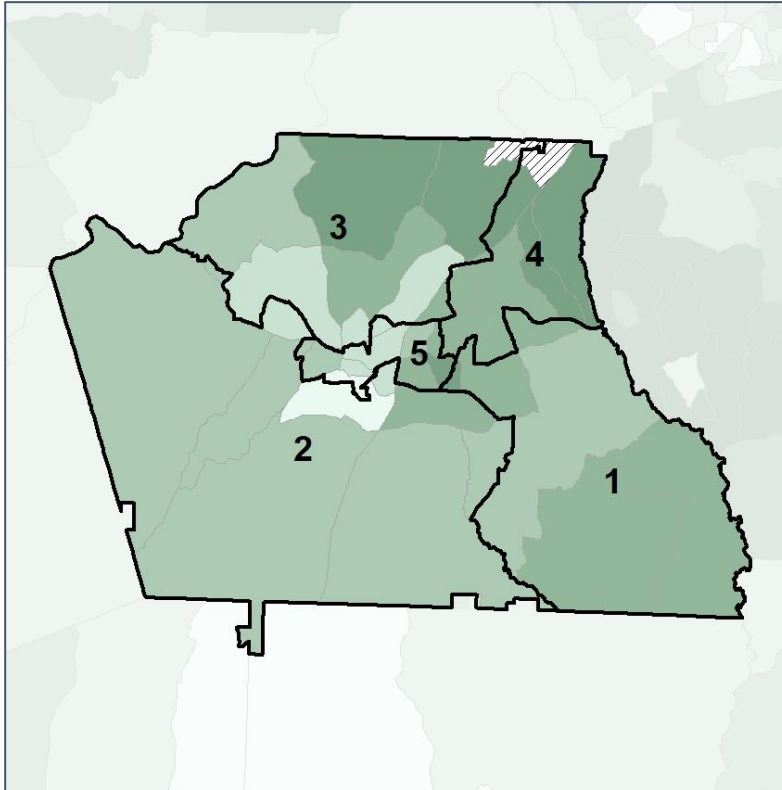
Source:
2020 Decennial Census
2020 ACS 5-Year Dataset

Coweta County School Board

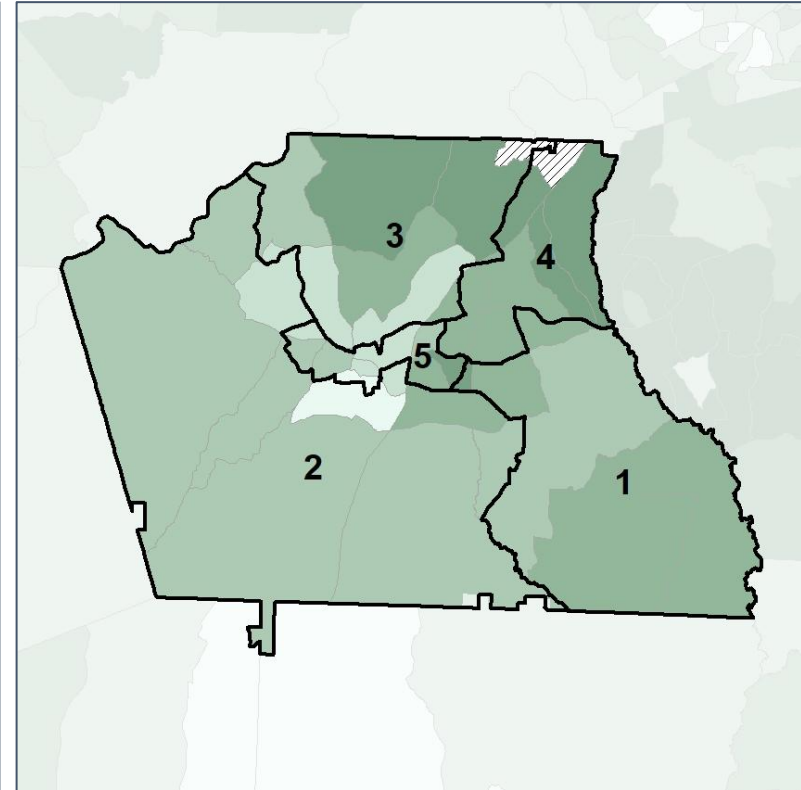
Median Household Income by Census Tract



2012 Map



2022 Map*



	1	2	3	4	5	1*	2*	3*	4*	5*	County
Population	31,683	26,746	30,995	25,492	31,242	29,368	28,993	28,987	29,328	29,482	146,158
% API	2%	1%	2%	2%	5%	2%	1%	2%	3%	5%	2%
% Black	9%	17%	16%	8%	36%	9%	16%	16%	10%	36%	17%
% Latino	6%	6%	7%	7%	11%	6%	6%	8%	8%	10%	8%
% Other	5%	5%	4%	5%	5%	5%	5%	4%	5%	5%	5%
% White	78%	72%	71%	78%	44%	79%	73%	70%	75%	44%	68%
Median Income	\$89,000	\$71,000	\$87,000	\$109,000	\$64,000	\$90,000	\$70,000	\$90,000	\$102,000	\$66,000	\$80,000
% Renter	10%	28%	22%	11%	53%	10%	26%	22%	15%	51%	25%
% Youth	18%	21%	20%	18%	26%	18%	22%	20%	18%	26%	21%

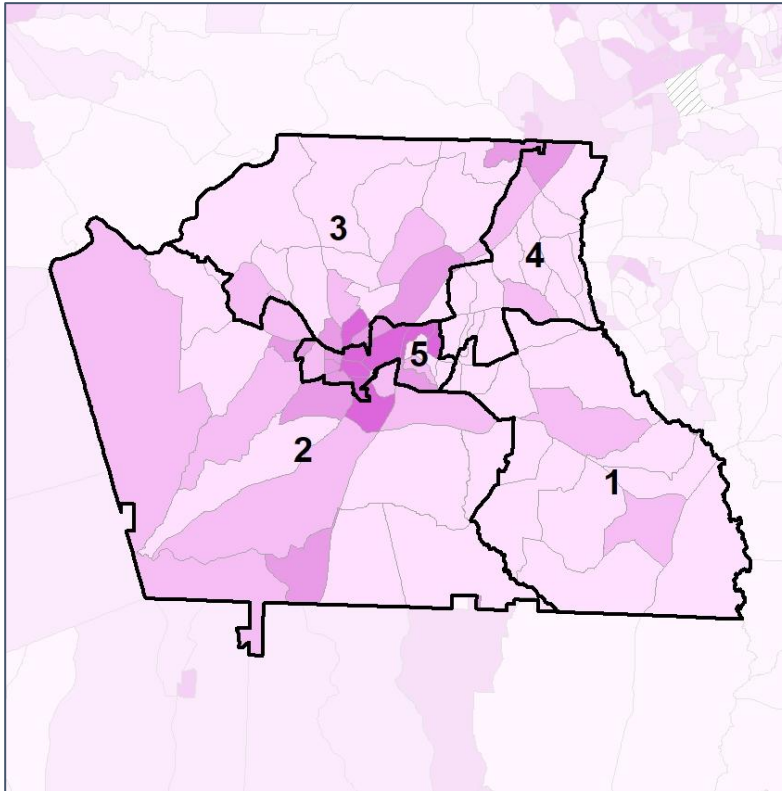


Coweta County School Board

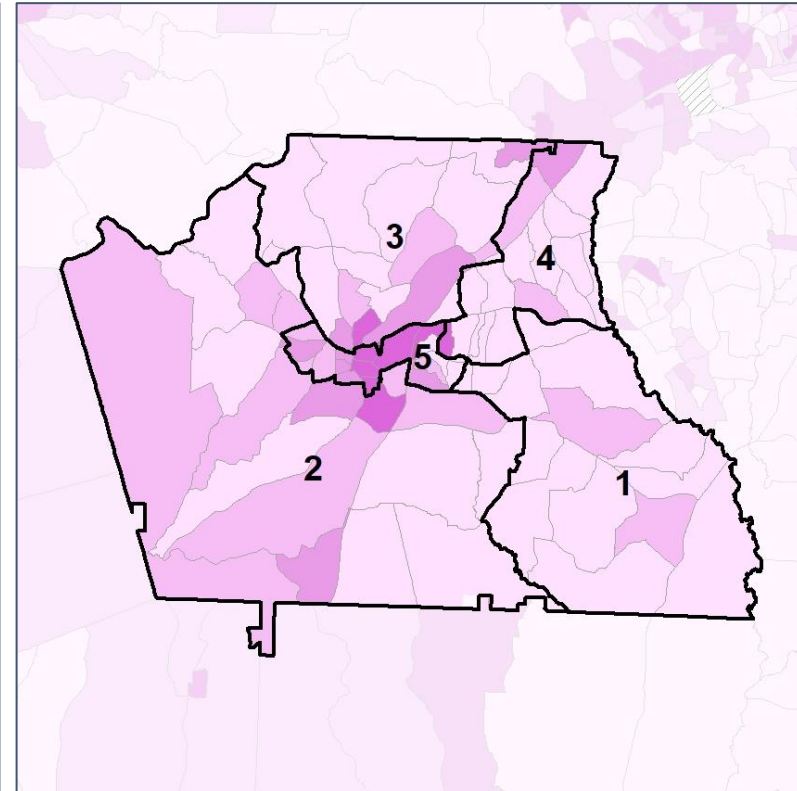
% Renter by Census Block Group



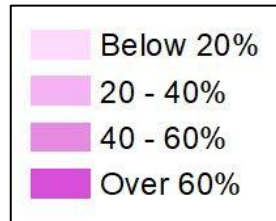
2012 Map



2022 Map*



	1	2	3	4	5	1*	2*	3*	4*	5*	County
Population	31,683	26,746	30,995	25,492	31,242	29,368	28,993	28,987	29,328	29,482	146,158
% API	2%	1%	2%	2%	5%	2%	1%	2%	3%	5%	2%
% Black	9%	17%	16%	8%	36%	9%	16%	16%	10%	36%	17%
% Latino	6%	6%	7%	7%	11%	6%	6%	8%	8%	10%	8%
% Other	5%	5%	4%	5%	5%	5%	5%	4%	5%	5%	5%
% White	78%	72%	71%	78%	44%	79%	73%	70%	75%	44%	68%
Median Income	\$89,000	\$71,000	\$87,000	\$109,000	\$64,000	\$90,000	\$70,000	\$90,000	\$102,000	\$66,000	\$80,000
% Renter	10%	28%	22%	11%	53%	10%	26%	22%	15%	51%	25%
% Youth	18%	21%	20%	18%	26%	18%	22%	20%	18%	26%	21%

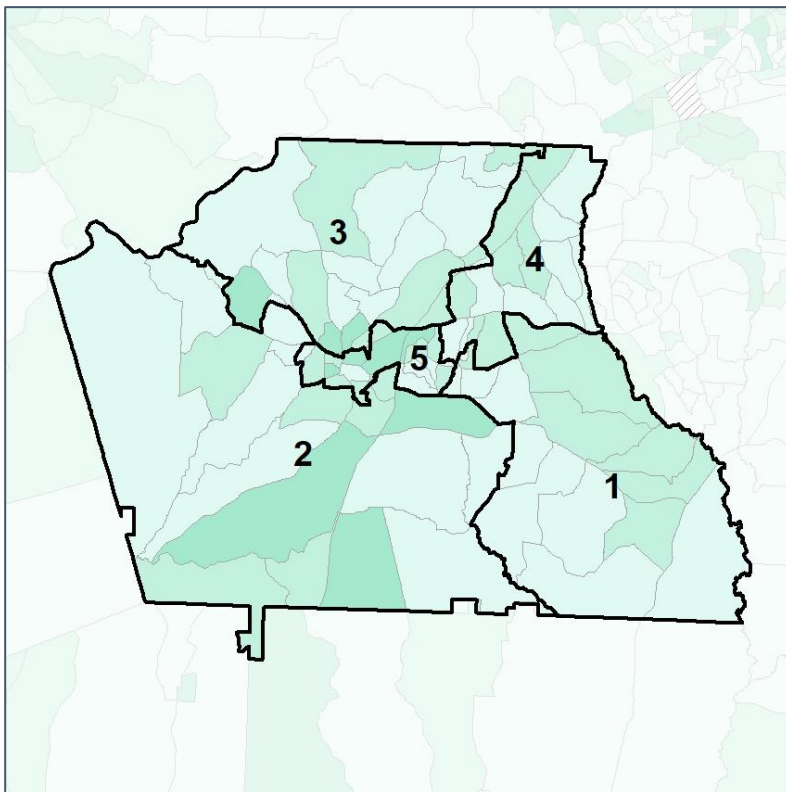


Coweta County School Board

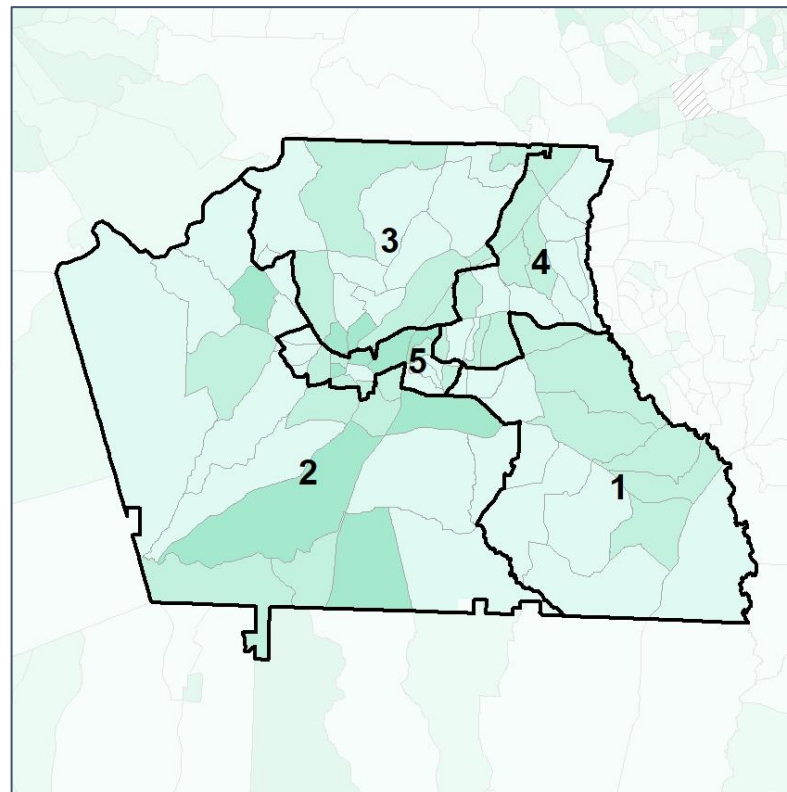
% Youth (18-34) by Census Block Group



2012 Map



2022 Map*



	1	2	3	4	5	1*	2*	3*	4*	5*	County
Population	31,683	26,746	30,995	25,492	31,242	29,368	28,993	28,987	29,328	29,482	146,158
% API	2%	1%	2%	2%	5%	2%	1%	2%	3%	5%	2%
% Black	9%	17%	16%	8%	36%	9%	16%	16%	10%	36%	17%
% Latino	6%	6%	7%	7%	11%	6%	6%	8%	8%	10%	8%
% Other	5%	5%	4%	5%	5%	5%	5%	4%	5%	5%	5%
% White	78%	72%	71%	78%	44%	79%	73%	70%	75%	44%	68%
Median Income	\$89,000	\$71,000	\$87,000	\$109,000	\$64,000	\$90,000	\$70,000	\$90,000	\$102,000	\$66,000	\$80,000
% Renter	10%	28%	22%	11%	53%	10%	26%	22%	15%	51%	25%
% Youth	18%	21%	20%	18%	26%	18%	22%	20%	18%	26%	21%

