



# Demographic Overview

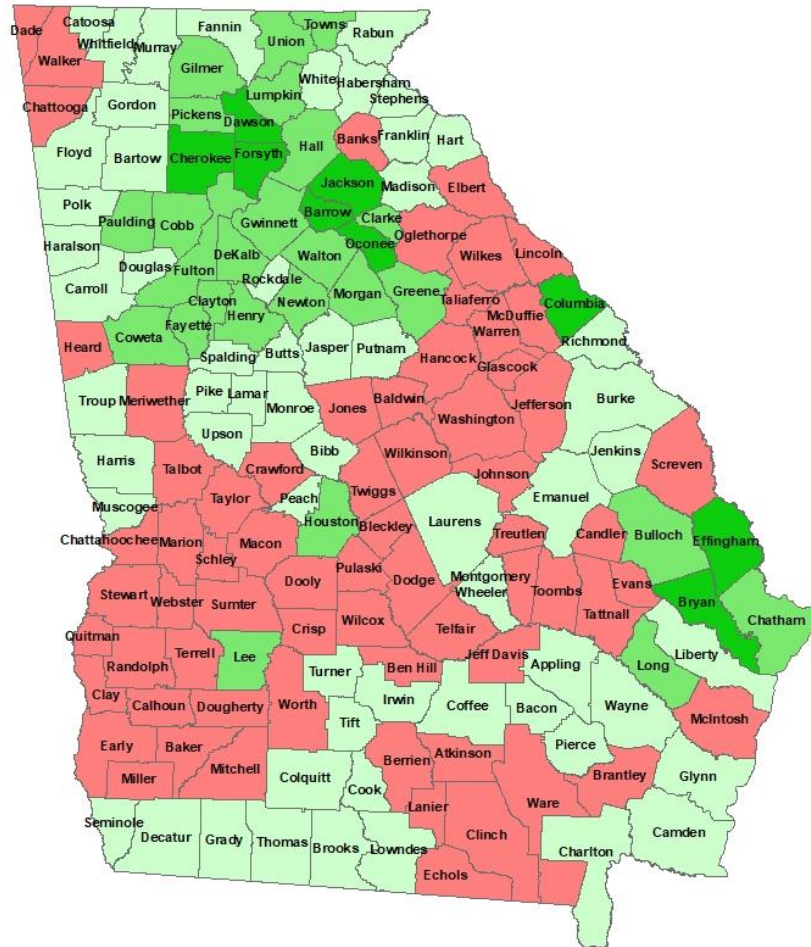
## Racial Breakdown in Cook County

Cook County	2010	2020	% Change
Total Population	17,212	17,229	0%
AAPI	115	104	-10%
Black	4,684	4,753	1%
Latino	1,024	1,134	11%
Other/Mixed Race	218	580	166%
POC	6,041	6,571	9%
White	11,171	10,658	-5%

\*Note: The use of "Other" in these statistics combines those who identify as Native American, Mixed Race, and "Other" race

# Population Gain

## Change in Population in Georgia by County



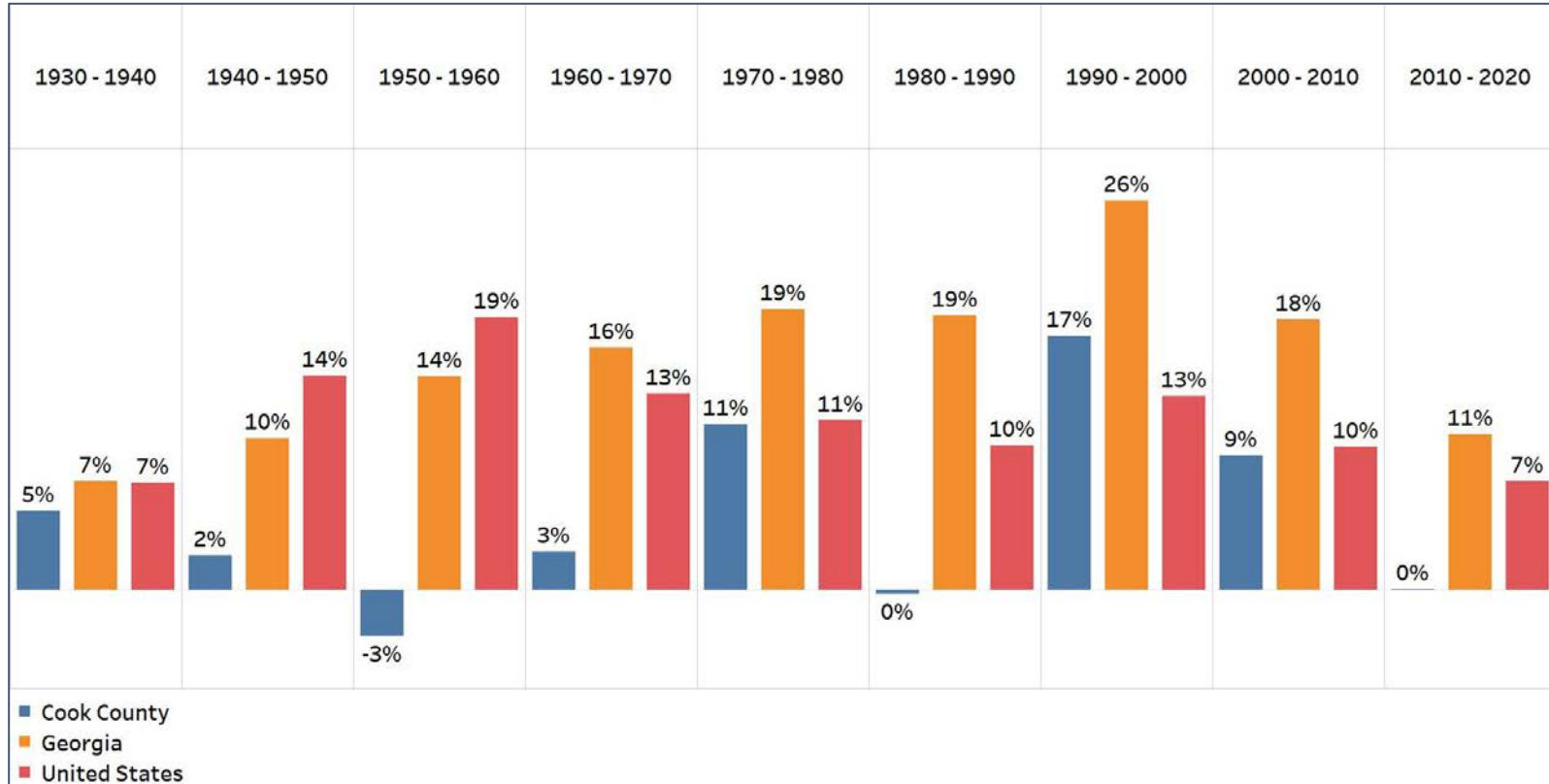
- Georgia is experiencing rapid population growth in the Atlanta, Augusta, and Savannah regions of the state





# Population Gain

## Change in Population by Decade

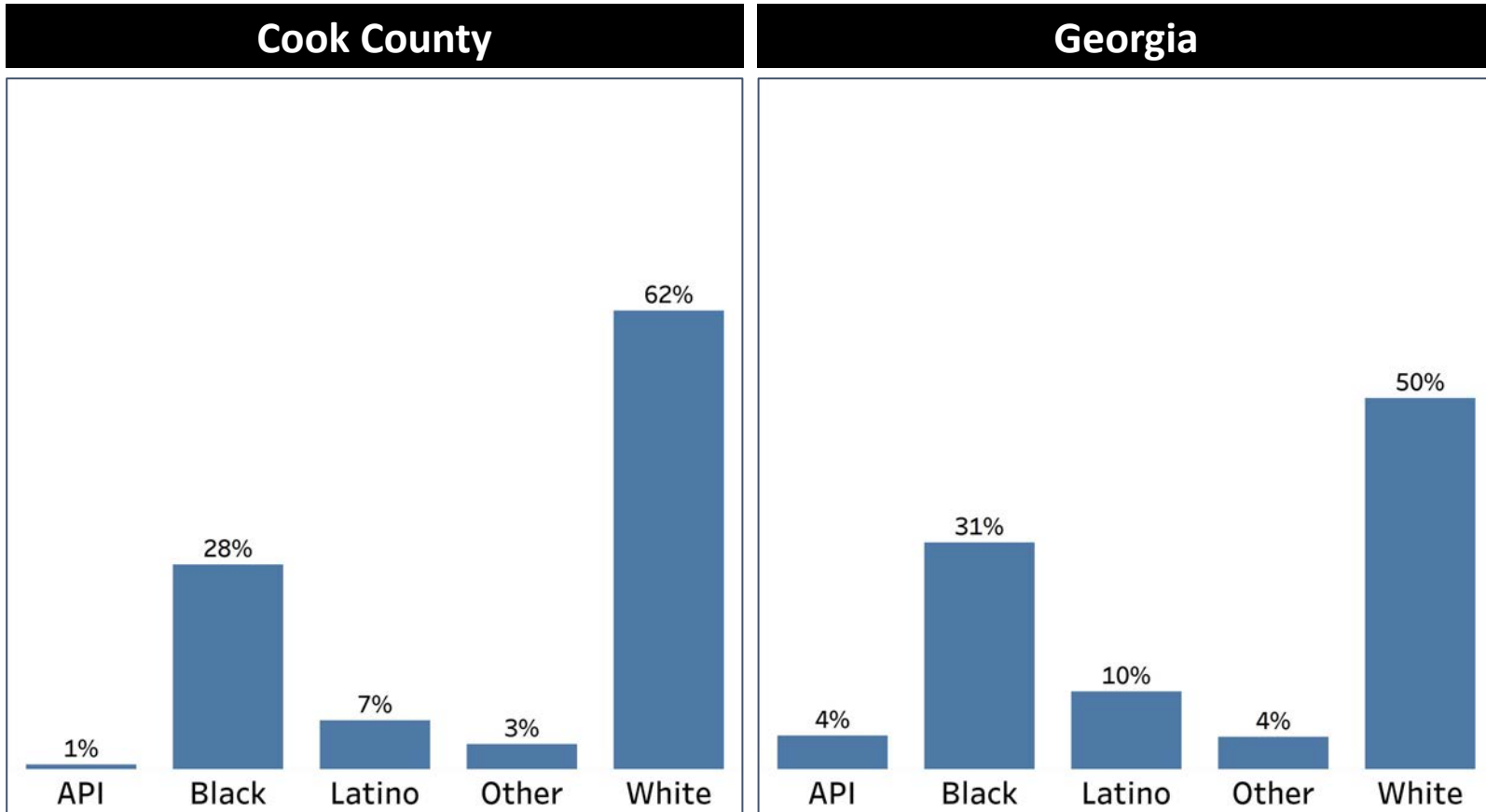


- Cook County has seen an increase in population nearly every decade since 1930, but saw no change in the last decade
- In the last 90 years, Cook county has only lost population in one decade, but has never seen growth higher than Georgia's overall growth



# Demographics

## Comparison between Cook County and Georgia

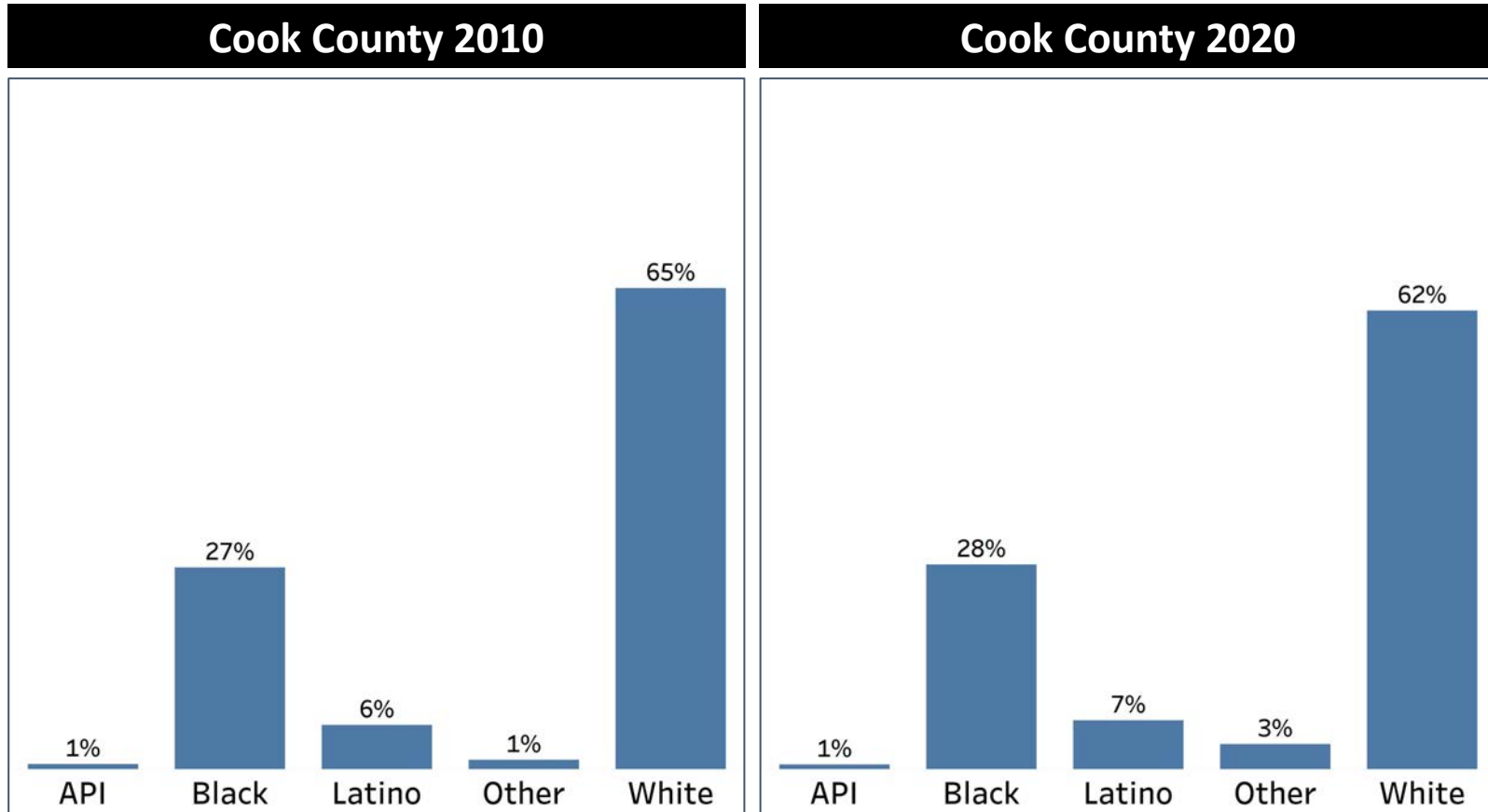


- Cook County has a disproportionate white population and a lower percent of people of color compared to Georgia
- The Black, Other, and Latino populations percentages are similar to Georgia's overall proportions



# Demographics

## 2010 vs 2020 Demographics in Cook County

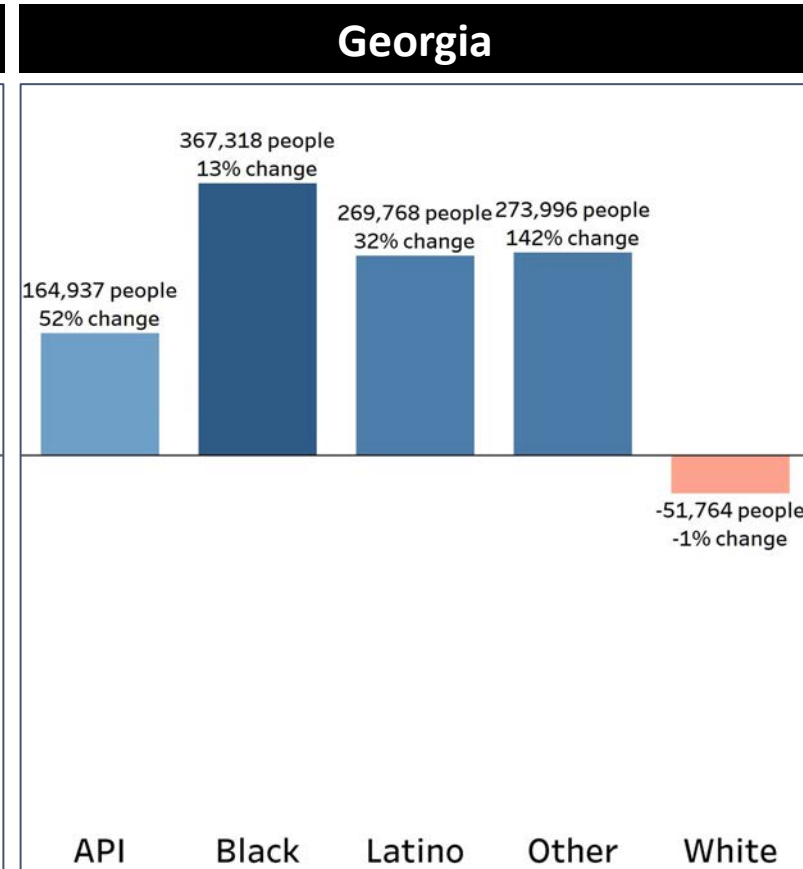
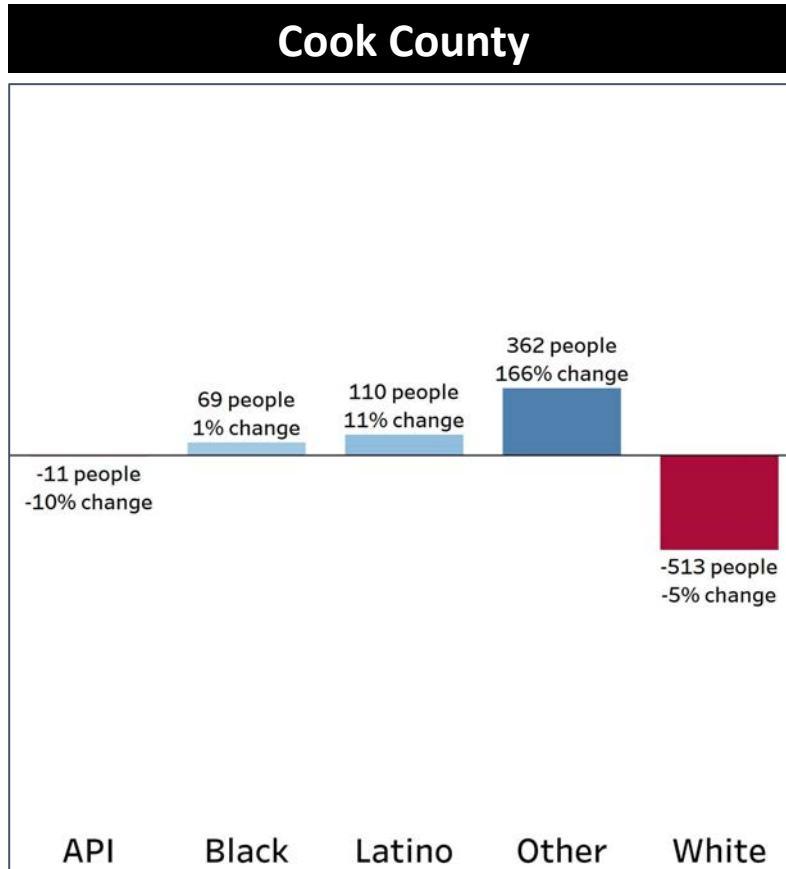


- Cook County's proportion of the white population went down, and there was a corresponding increase in the Black, Latino, and Other populations



# Demographics

## Population Change by Race (2020 - 2010)



- Clinch County saw a larger decrease in the White population than Georgia overall
- The Other population also grew at a similar rate to Georgia's rate of growth

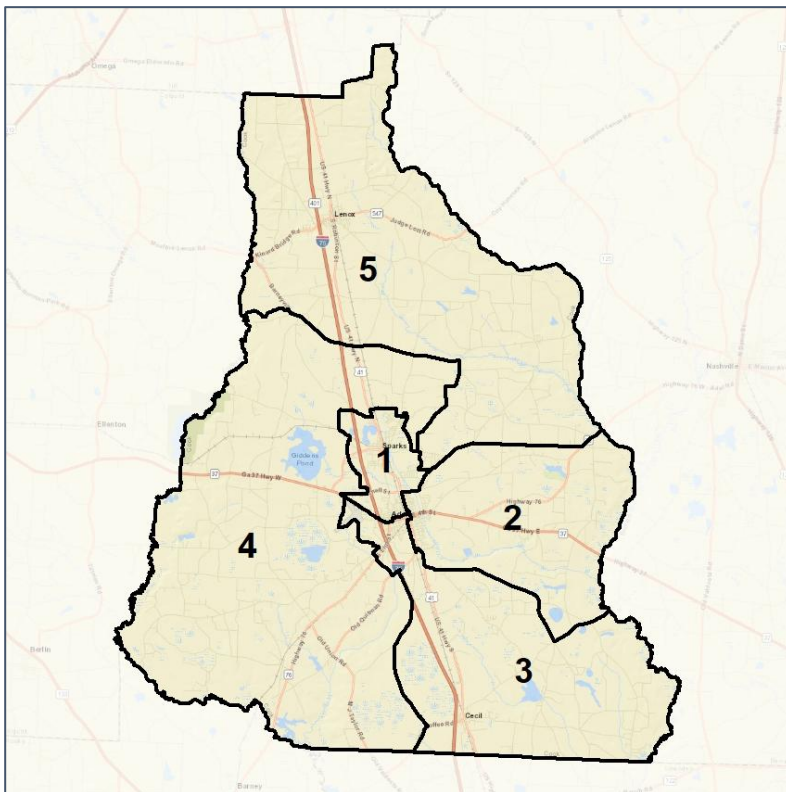


# Cook Co. Commission & School Board

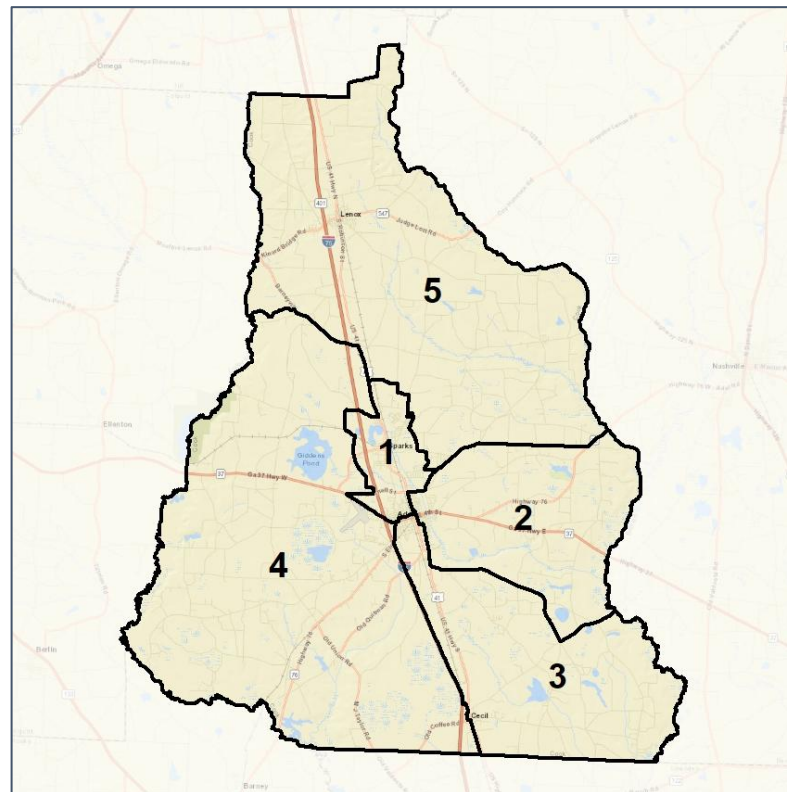
## Context



### 2012 Map



### 2022 Map\*



	1	2	3	4	5	1*	2*	3*	4*	5*	County
Population	3,286	3,922	3,447	3,337	3,237	3,443	3,450	3,431	3,449	3,456	17,229
API	0%	1%	1%	0%	0%	0%	1%	1%	1%	0%	1%
Black	58%	24%	37%	6%	13%	56%	23%	35%	11%	13%	28%
Latino	7%	6%	9%	6%	4%	7%	6%	8%	8%	4%	7%
Other	3%	4%	4%	3%	3%	3%	4%	4%	2%	4%	3%
White	31%	65%	50%	85%	79%	34%	66%	52%	78%	79%	62%
Population Gain	-210	367	-34	1	-107	157	-472	-16	112	219	*
Population % Gain	-6%	10%	-1%	0%	-3%	5%	-12%	0%	3%	7%	*
Net POC Gain	-55	492	-31	157	-33	21	-225	-78	239	43	*
Net POC % Gain	-2%	55%	-2%	44%	-5%	1%	-16%	-5%	46%	6%	*

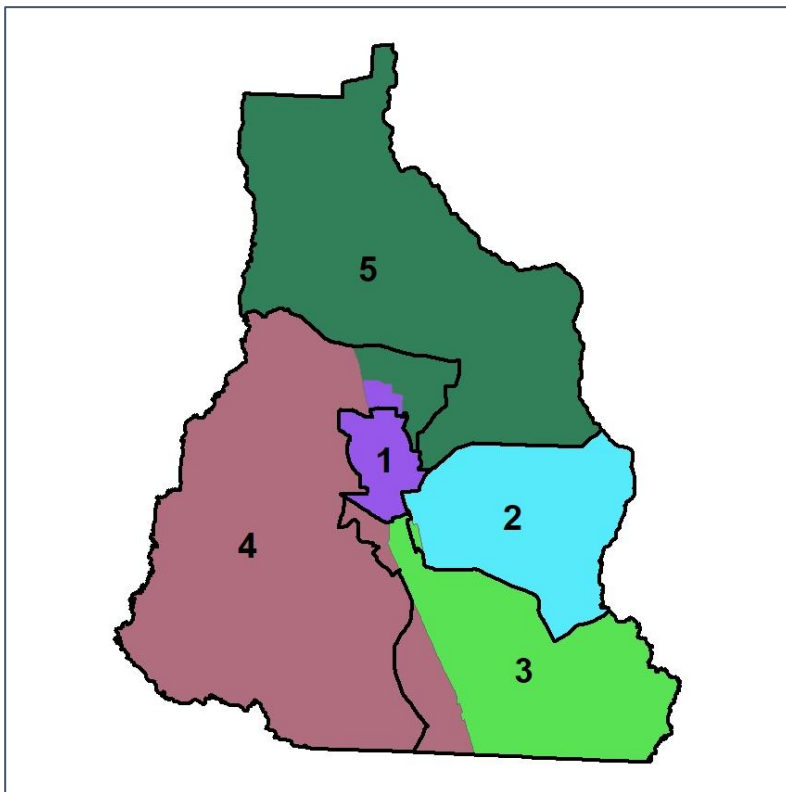


# Cook Co. Commission & School Board

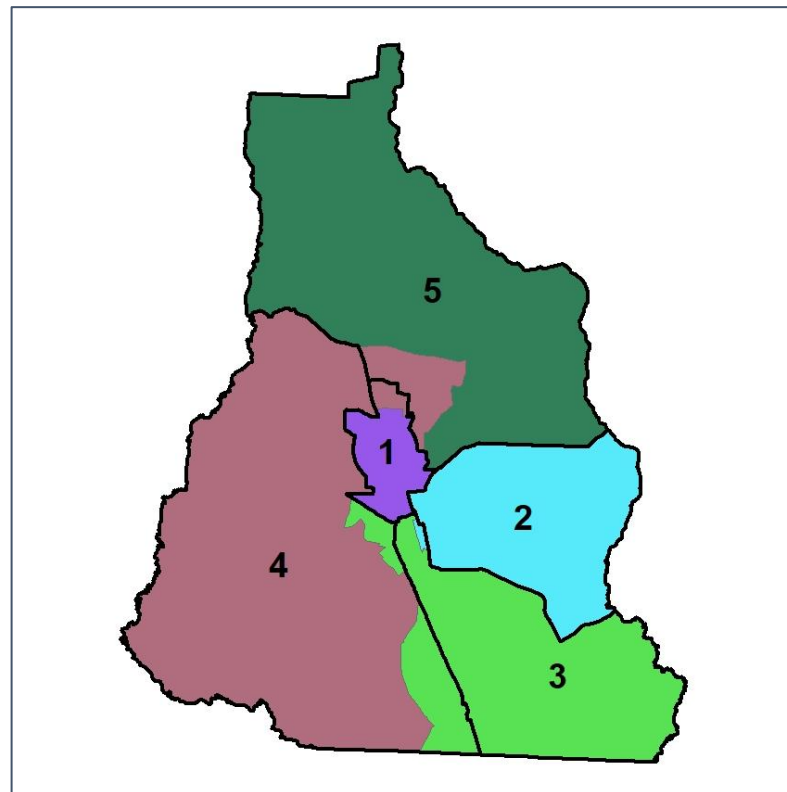
## Changes in Redistricting



**2012 Map (2022 in Colors)**



**2022 Map\* (2012 in Colors)**



	1	2	3	4	5	1*	2*	3*	4*	5*	County
Population	3,286	3,922	3,447	3,337	3,237	3,443	3,450	3,431	3,449	3,456	17,229
API	0%	1%	1%	0%	0%	0%	1%	1%	1%	0%	1%
Black	58%	24%	37%	6%	13%	56%	23%	35%	11%	13%	28%
Latino	7%	6%	9%	6%	4%	7%	6%	8%	8%	4%	7%
Other	3%	4%	4%	3%	3%	3%	4%	4%	2%	4%	3%
White	31%	65%	50%	85%	79%	34%	66%	52%	78%	79%	62%
Population Gain	-210	367	-34	1	-107	157	-472	-16	112	219	*
Population % Gain	-6%	10%	-1%	0%	-3%	5%	-12%	0%	3%	7%	*
Net POC Gain	-55	492	-31	157	-33	21	-225	-78	239	43	*
Net POC % Gain	-2%	55%	-2%	44%	-5%	1%	-16%	-5%	46%	6%	*



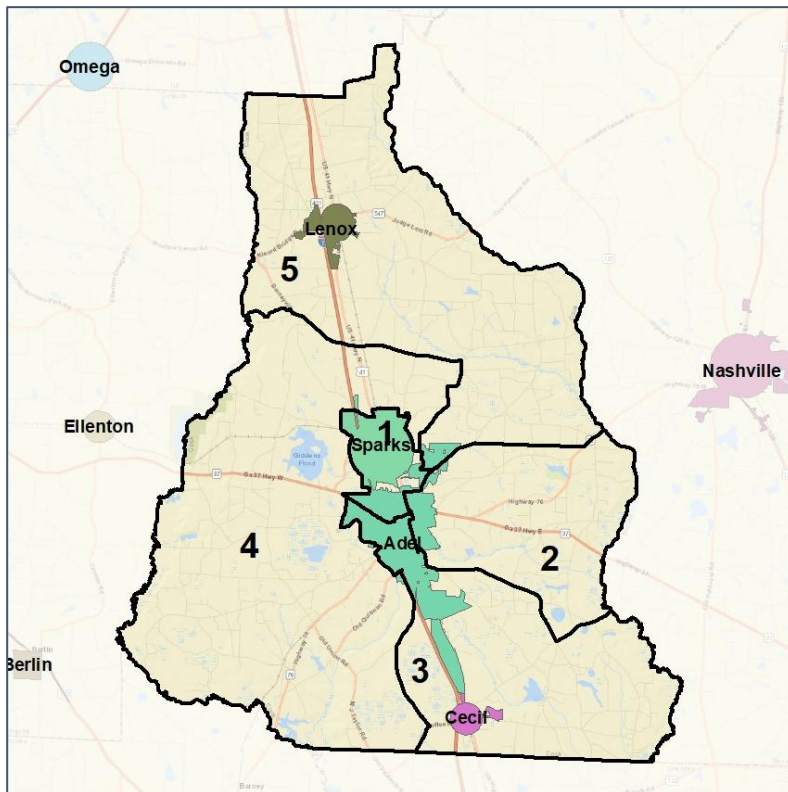


# Cook Co. Commission & School Board

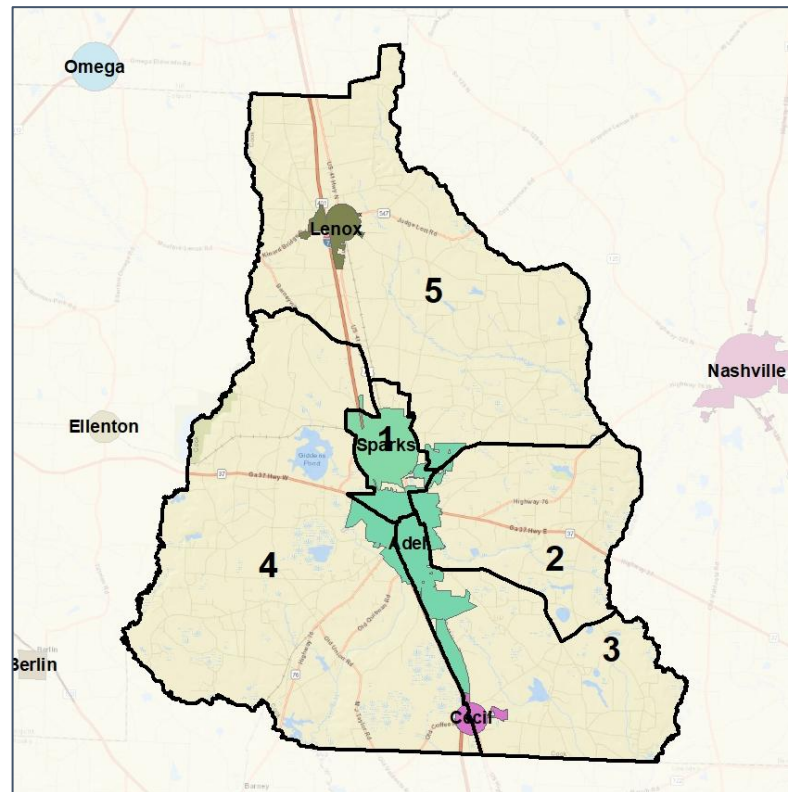
## Cities and Places



### 2012 Map



### 2022 Map\*



	1	2	3	4	5	1*	2*	3*	4*	5*	County
Population	3,286	3,922	3,447	3,337	3,237	3,443	3,450	3,431	3,449	3,456	17,229
API	0%	1%	1%	0%	0%	0%	1%	1%	1%	0%	1%
Black	58%	24%	37%	6%	13%	56%	23%	35%	11%	13%	28%
Latino	7%	6%	9%	6%	4%	7%	6%	8%	8%	4%	7%
Other	3%	4%	4%	3%	3%	3%	4%	4%	2%	4%	3%
White	31%	65%	50%	85%	79%	34%	66%	52%	78%	79%	62%
Population Gain	-210	367	-34	1	-107	157	-472	-16	112	219	*
Population % Gain	-6%	10%	-1%	0%	-3%	5%	-12%	0%	3%	7%	*
Net POC Gain	-55	492	-31	157	-33	21	-225	-78	239	43	*
Net POC % Gain	-2%	55%	-2%	44%	-5%	1%	-16%	-5%	46%	6%	*

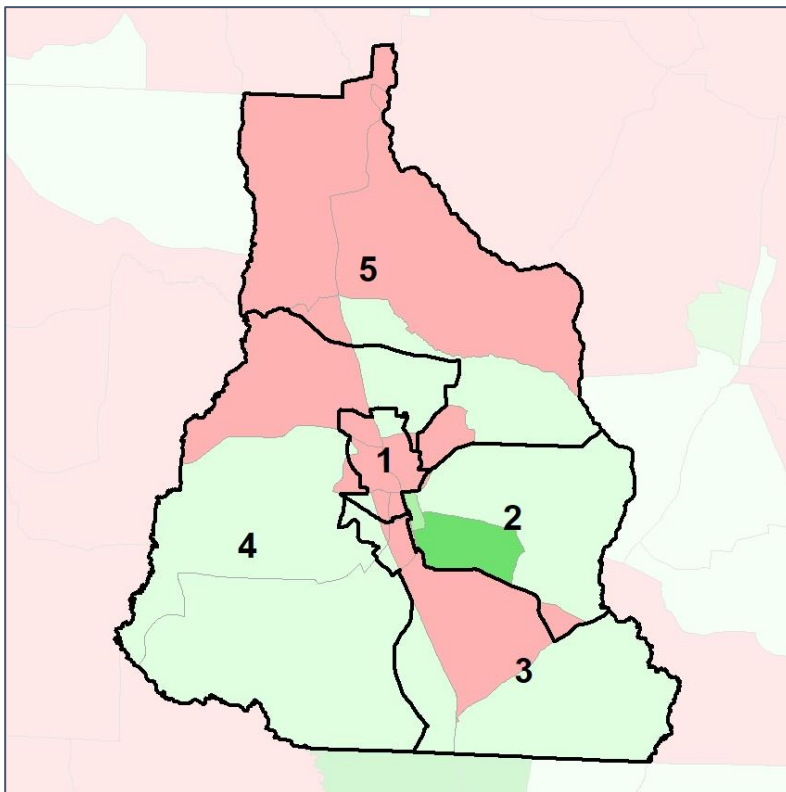


# Cook Co. Commission & School Board

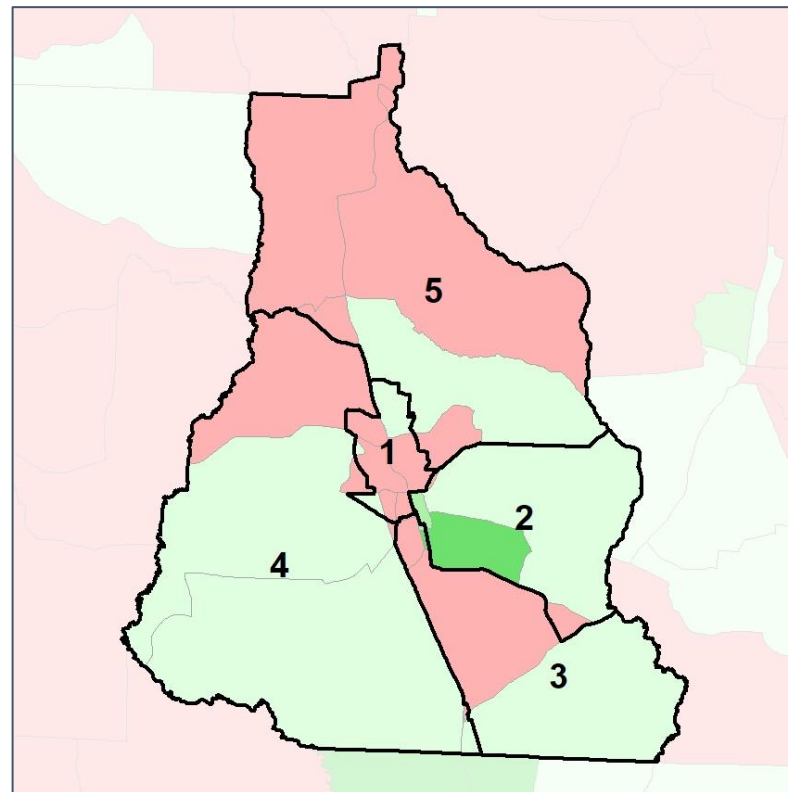
## Net Gain in Population (2010 - 2020) by Census Block Group



### 2012 Map



### 2022 Map\*



	1	2	3	4	5	1*	2*	3*	4*	5*	County
Population	3,286	3,922	3,447	3,337	3,237	3,443	3,450	3,431	3,449	3,456	17,229
API	0%	1%	1%	0%	0%	0%	1%	1%	1%	0%	1%
Black	58%	24%	37%	6%	13%	56%	23%	35%	11%	13%	28%
Latino	7%	6%	9%	6%	4%	7%	6%	8%	8%	4%	7%
Other	3%	4%	4%	3%	3%	3%	4%	4%	2%	4%	3%
White	31%	65%	50%	85%	79%	34%	66%	52%	78%	79%	62%
Population Gain	-210	367	-34	1	-107	157	-472	-16	112	219	*
Population % Gain	-6%	10%	-1%	0%	-3%	5%	-12%	0%	3%	7%	*
Net POC Gain	-55	492	-31	157	-33	21	-225	-78	239	43	*
Net POC % Gain	-2%	55%	-2%	44%	-5%	1%	-16%	-5%	46%	6%	*

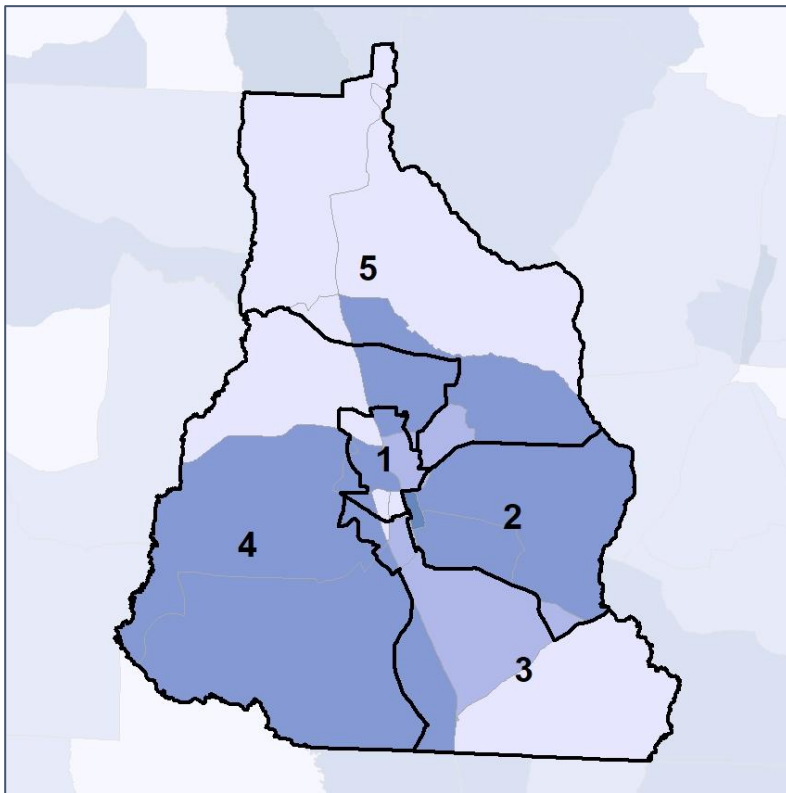


# Cook Co. Commission & School Board

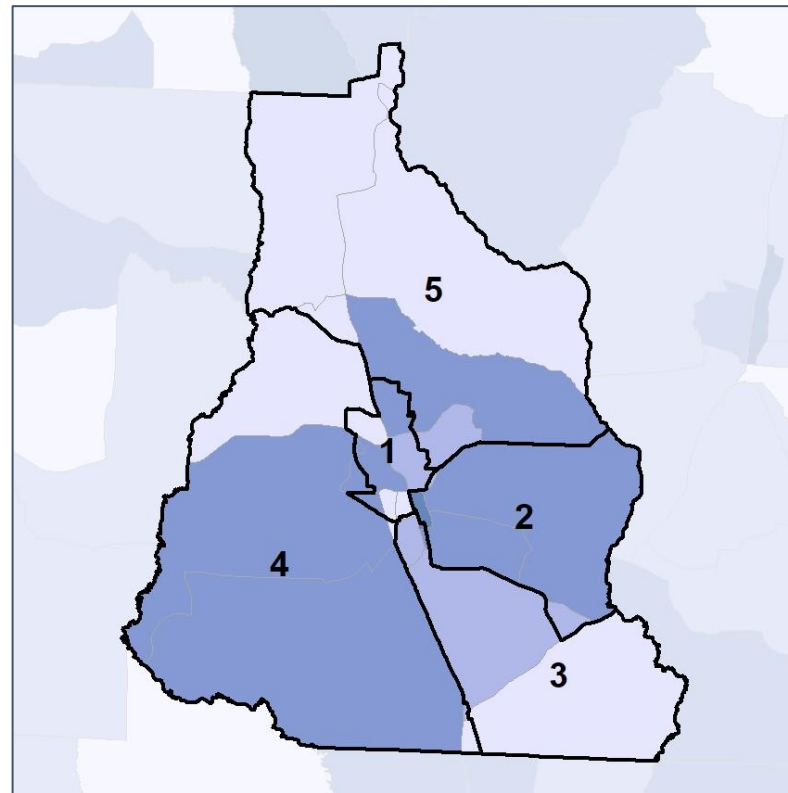
## Net Gain in % POC (2020 - 2010) by Census Block Group



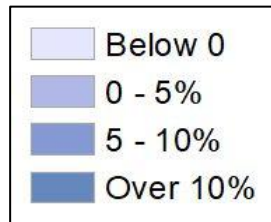
2012 Map



2022 Map\*



	1	2	3	4	5	1*	2*	3*	4*	5*	County
Population	3,286	3,922	3,447	3,337	3,237	3,443	3,450	3,431	3,449	3,456	17,229
API	0%	1%	1%	0%	0%	0%	1%	1%	1%	0%	1%
Black	58%	24%	37%	6%	13%	56%	23%	35%	11%	13%	28%
Latino	7%	6%	9%	6%	4%	7%	6%	8%	8%	4%	7%
Other	3%	4%	4%	3%	3%	3%	4%	4%	2%	4%	3%
White	31%	65%	50%	85%	79%	34%	66%	52%	78%	79%	62%
Population Gain	-210	367	-34	1	-107	157	-472	-16	112	219	*
Population % Gain	-6%	10%	-1%	0%	-3%	5%	-12%	0%	3%	7%	*
Net POC Gain	-55	492	-31	157	-33	21	-225	-78	239	43	*
Net POC % Gain	-2%	55%	-2%	44%	-5%	1%	-16%	-5%	46%	6%	*

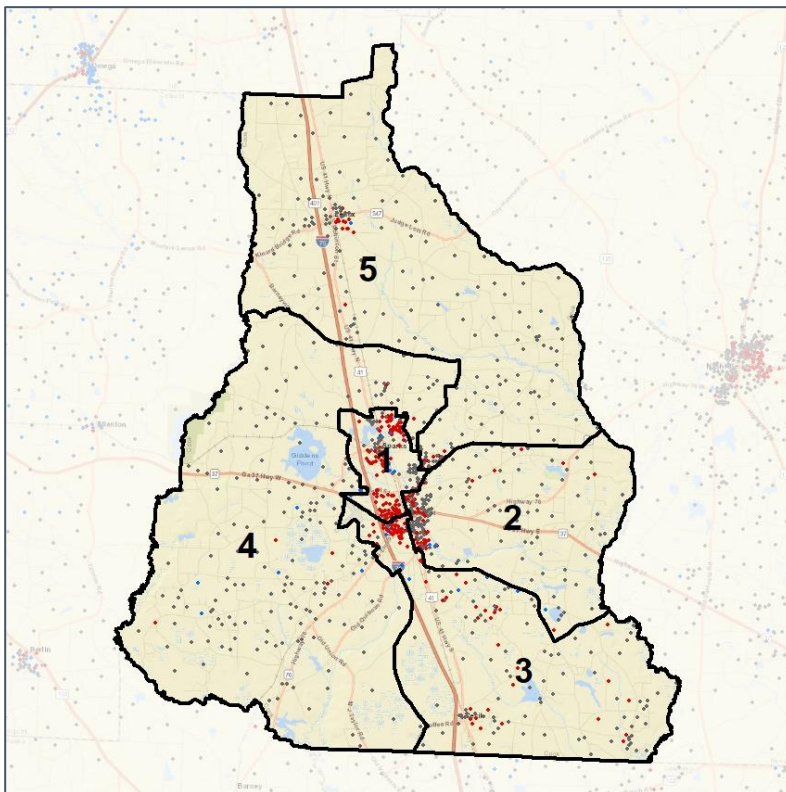


# Cook Co. Commission & School Board

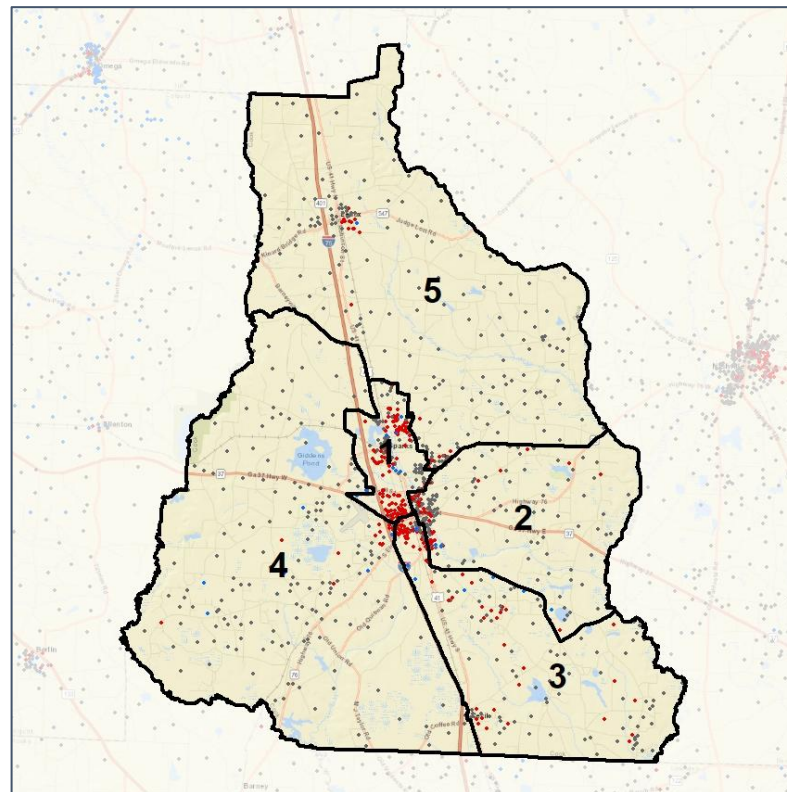
## Population Density by Race



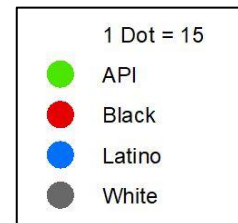
### 2012 Map



### 2022 Map\*



	1	2	3	4	5	1*	2*	3*	4*	5*	County
Population	3,286	3,922	3,447	3,337	3,237	3,443	3,450	3,431	3,449	3,456	17,229
API	6	38	35	16	9	6	31	25	33	9	104
% API	0%	1%	1%	0%	0%	0%	1%	1%	1%	0%	1%
Black	1,907	949	1,259	211	427	1,920	802	1,204	378	449	4,753
% Black	58%	24%	37%	6%	13%	56%	23%	35%	11%	13%	28%
Latino	244	253	301	195	141	244	202	282	259	147	1,134
% Latino	7%	6%	9%	6%	4%	7%	6%	8%	8%	4%	7%
Other	99	147	129	95	110	107	127	135	86	125	580
% Other	3%	4%	4%	3%	3%	3%	4%	4%	2%	4%	3%
White	1,030	2,535	1,723	2,820	2,550	1,166	2,288	1,785	2,693	2,726	10,658
% White	31%	65%	50%	85%	79%	34%	66%	52%	78%	79%	62%



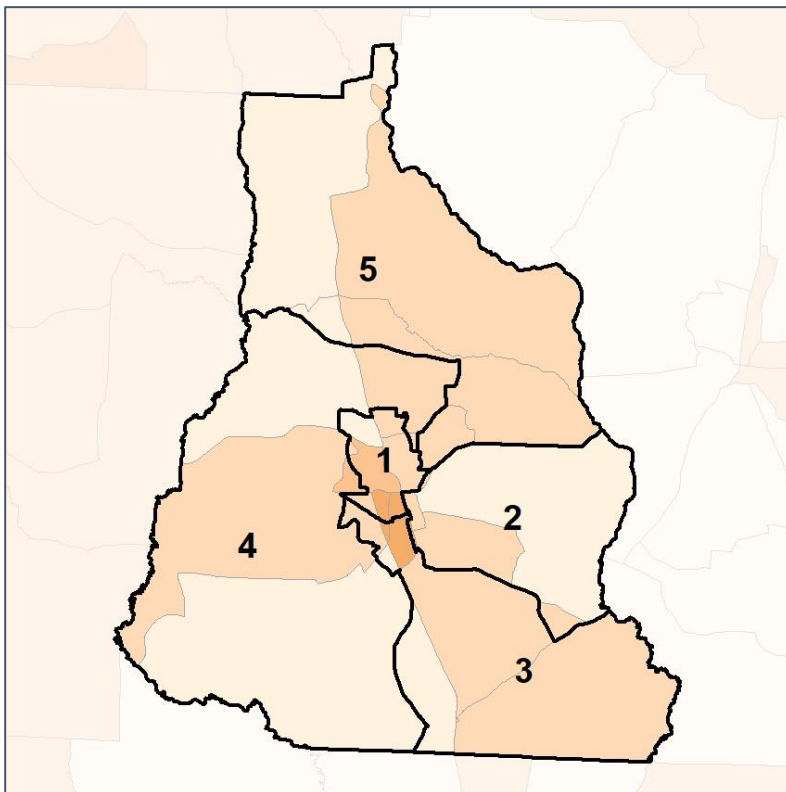
Source:  
2020 Decennial Census  
2020 ACS 5-Year Dataset

# Cook Co. Commission & School Board

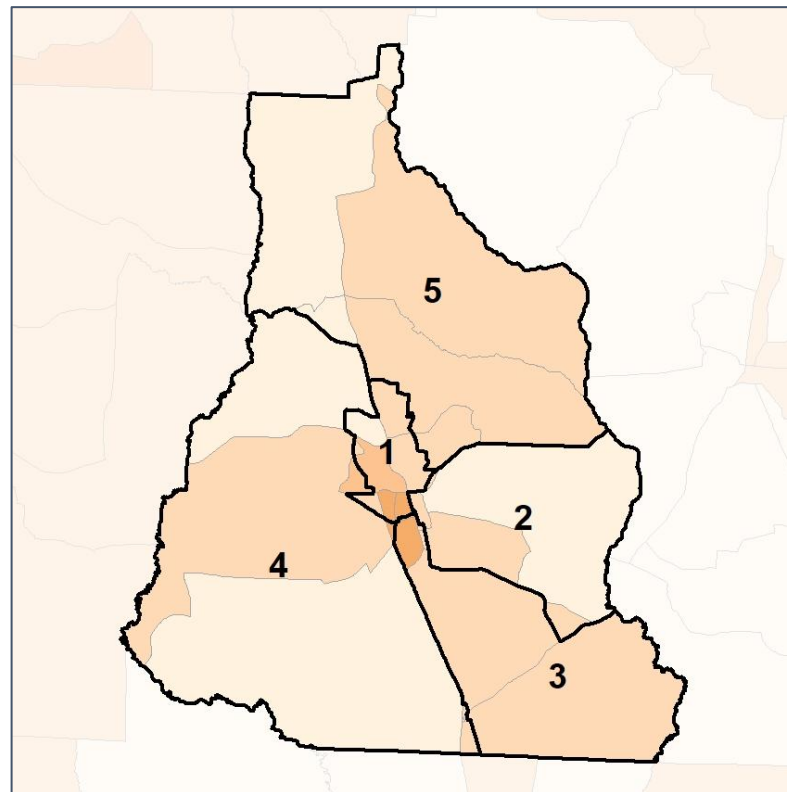
## % People of Color by Census Block Group



2012 Map



2022 Map\*



	1	2	3	4	5	1*	2*	3*	4*	5*	County
Population	3,286	3,922	3,447	3,337	3,237	3,443	3,450	3,431	3,449	3,456	17,229
API	6	38	35	16	9	6	31	25	33	9	104
% API	0%	1%	1%	0%	0%	0%	1%	1%	1%	0%	1%
Black	1,907	949	1,259	211	427	1,920	802	1,204	378	449	4,753
% Black	58%	24%	37%	6%	13%	56%	23%	35%	11%	13%	28%
Latino	244	253	301	195	141	244	202	282	259	147	1,134
% Latino	7%	6%	9%	6%	4%	7%	6%	8%	8%	4%	7%
Other	99	147	129	95	110	107	127	135	86	125	580
% Other	3%	4%	4%	3%	3%	3%	4%	4%	2%	4%	3%
White	1,030	2,535	1,723	2,820	2,550	1,166	2,288	1,785	2,693	2,726	10,658
% White	31%	65%	50%	85%	79%	34%	66%	52%	78%	79%	62%

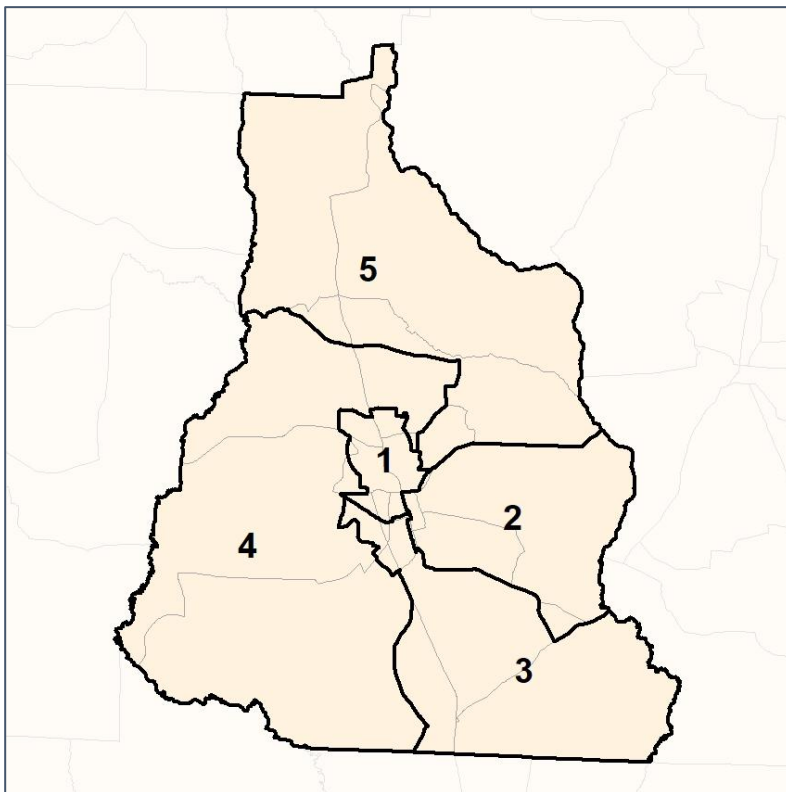


# Cook Co. Commission & School Board

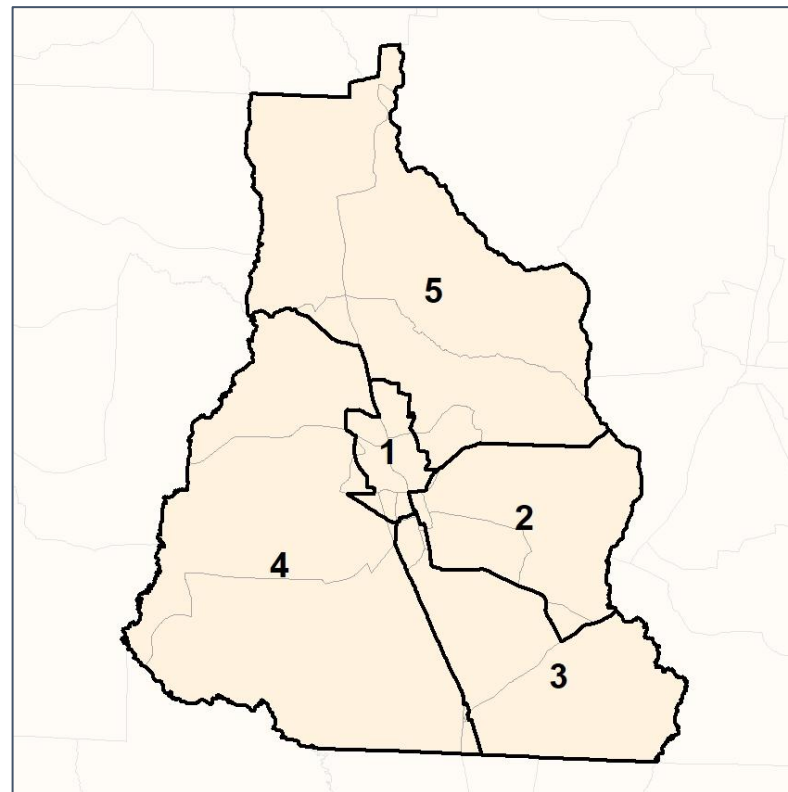
## % API by Census Block Group



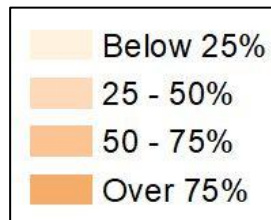
### 2012 Map



### 2022 Map\*



	1	2	3	4	5	1*	2*	3*	4*	5*	County
Population	3,286	3,922	3,447	3,337	3,237	3,443	3,450	3,431	3,449	3,456	17,229
API	6	38	35	16	9	6	31	25	33	9	104
% API	0%	1%	1%	0%	0%	0%	1%	1%	1%	0%	1%
Black	1,907	949	1,259	211	427	1,920	802	1,204	378	449	4,753
% Black	58%	24%	37%	6%	13%	56%	23%	35%	11%	13%	28%
Latino	244	253	301	195	141	244	202	282	259	147	1,134
% Latino	7%	6%	9%	6%	4%	7%	6%	8%	8%	4%	7%
Other	99	147	129	95	110	107	127	135	86	125	580
% Other	3%	4%	4%	3%	3%	3%	4%	4%	2%	4%	3%
White	1,030	2,535	1,723	2,820	2,550	1,166	2,288	1,785	2,693	2,726	10,658
% White	31%	65%	50%	85%	79%	34%	66%	52%	78%	79%	62%

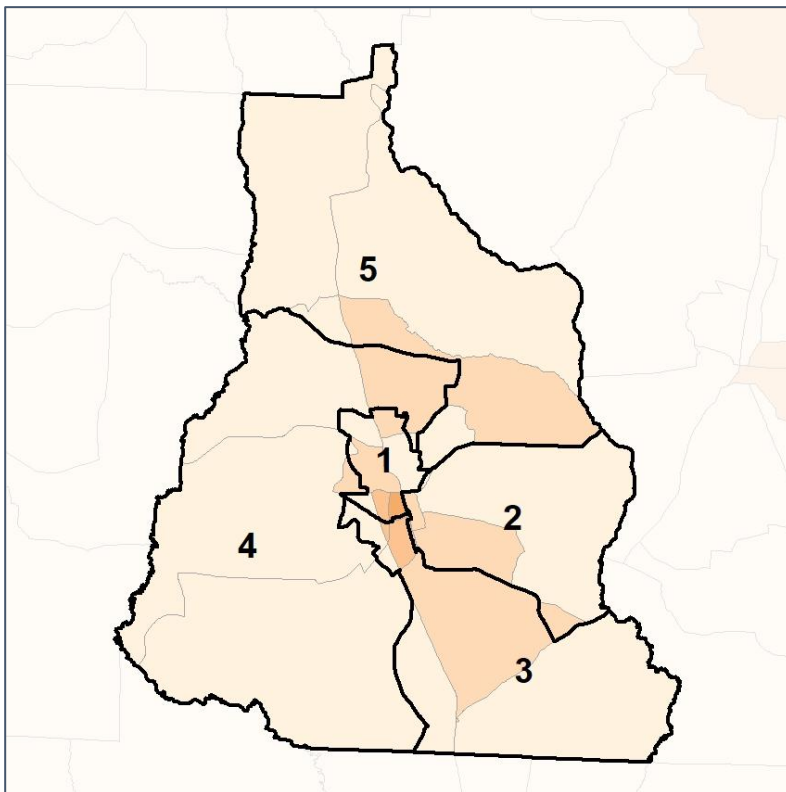


# Cook Co. Commission & School Board

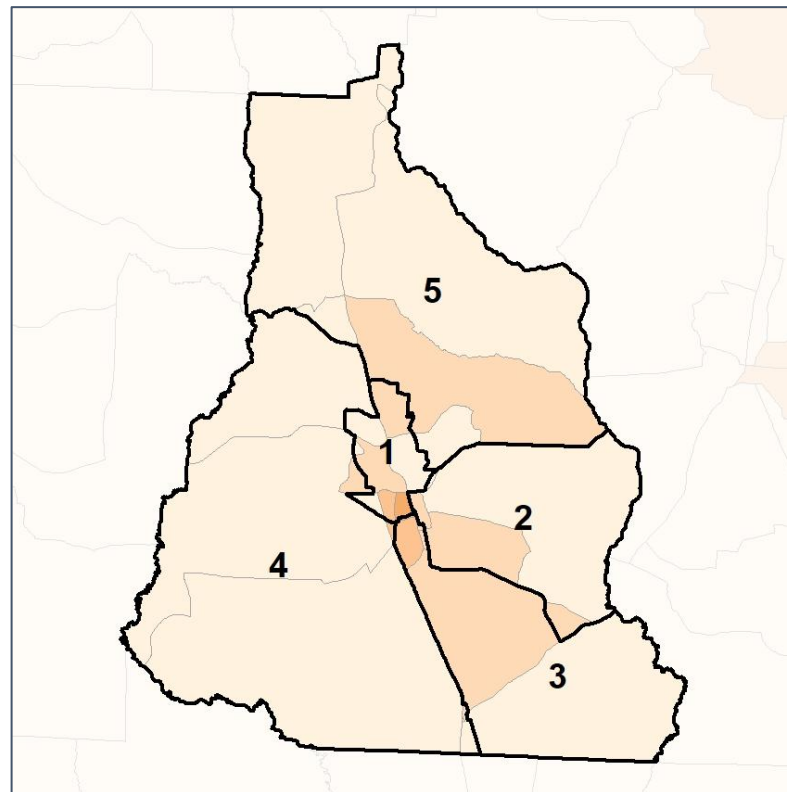
## % Black by Census Block Group



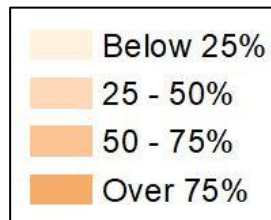
### 2012 Map



### 2022 Map\*



	1	2	3	4	5	1*	2*	3*	4*	5*	County
Population	3,286	3,922	3,447	3,337	3,237	3,443	3,450	3,431	3,449	3,456	17,229
API	6	38	35	16	9	6	31	25	33	9	104
% API	0%	1%	1%	0%	0%	0%	1%	1%	1%	0%	1%
Black	1,907	949	1,259	211	427	1,920	802	1,204	378	449	4,753
% Black	58%	24%	37%	6%	13%	56%	23%	35%	11%	13%	28%
Latino	244	253	301	195	141	244	202	282	259	147	1,134
% Latino	7%	6%	9%	6%	4%	7%	6%	8%	8%	4%	7%
Other	99	147	129	95	110	107	127	135	86	125	580
% Other	3%	4%	4%	3%	3%	3%	4%	4%	2%	4%	3%
White	1,030	2,535	1,723	2,820	2,550	1,166	2,288	1,785	2,693	2,726	10,658
% White	31%	65%	50%	85%	79%	34%	66%	52%	78%	79%	62%

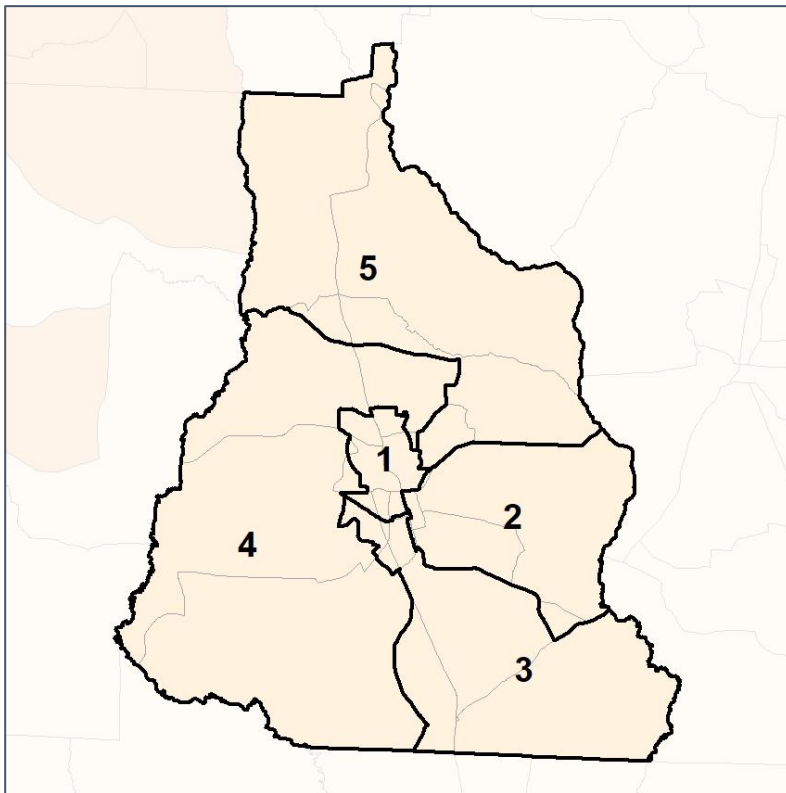


# Cook Co. Commission & School Board

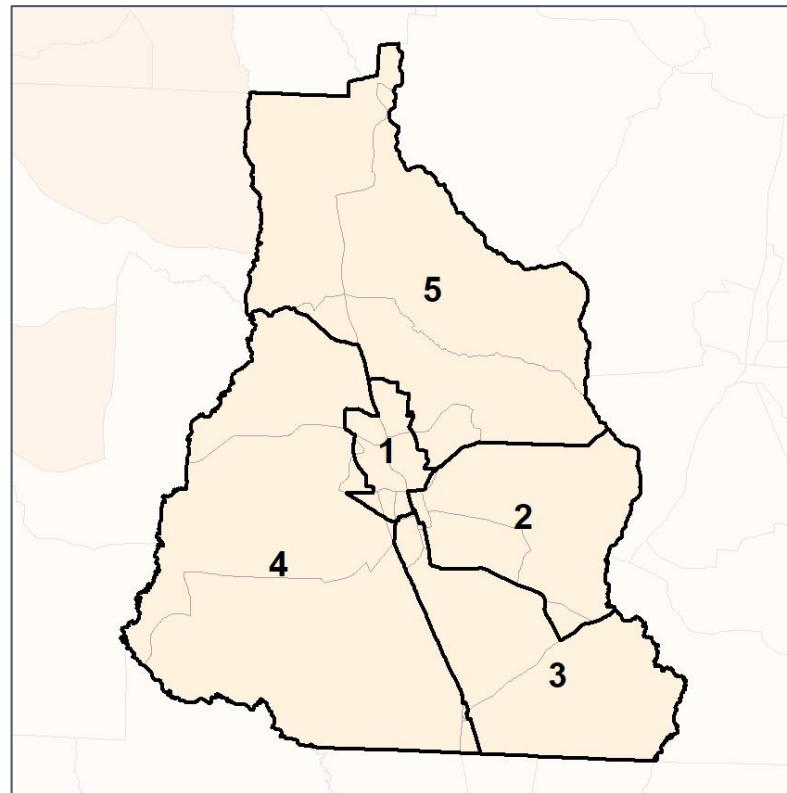
## % Latino by Census Block Group



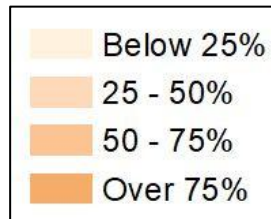
### 2012 Map



### 2022 Map\*



	1	2	3	4	5	1*	2*	3*	4*	5*	County
Population	3,286	3,922	3,447	3,337	3,237	3,443	3,450	3,431	3,449	3,456	17,229
API	6	38	35	16	9	6	31	25	33	9	104
% API	0%	1%	1%	0%	0%	0%	1%	1%	1%	0%	1%
Black	1,907	949	1,259	211	427	1,920	802	1,204	378	449	4,753
% Black	58%	24%	37%	6%	13%	56%	23%	35%	11%	13%	28%
Latino	244	253	301	195	141	244	202	282	259	147	1,134
% Latino	7%	6%	9%	6%	4%	7%	6%	8%	8%	4%	7%
Other	99	147	129	95	110	107	127	135	86	125	580
% Other	3%	4%	4%	3%	3%	3%	4%	4%	2%	4%	3%
White	1,030	2,535	1,723	2,820	2,550	1,166	2,288	1,785	2,693	2,726	10,658
% White	31%	65%	50%	85%	79%	34%	66%	52%	78%	79%	62%



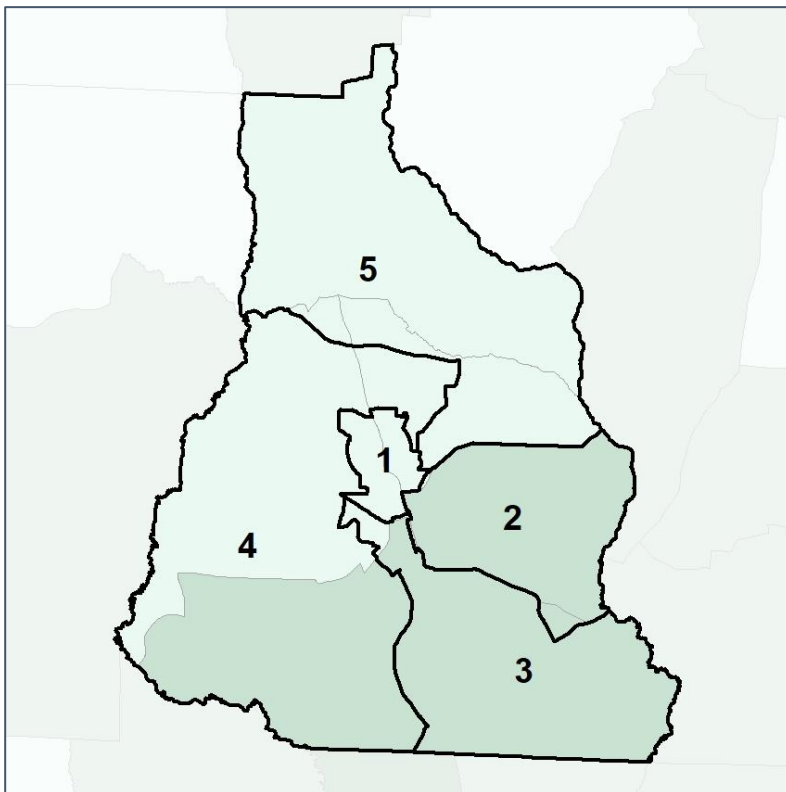


# Cook Co. Commission & School Board

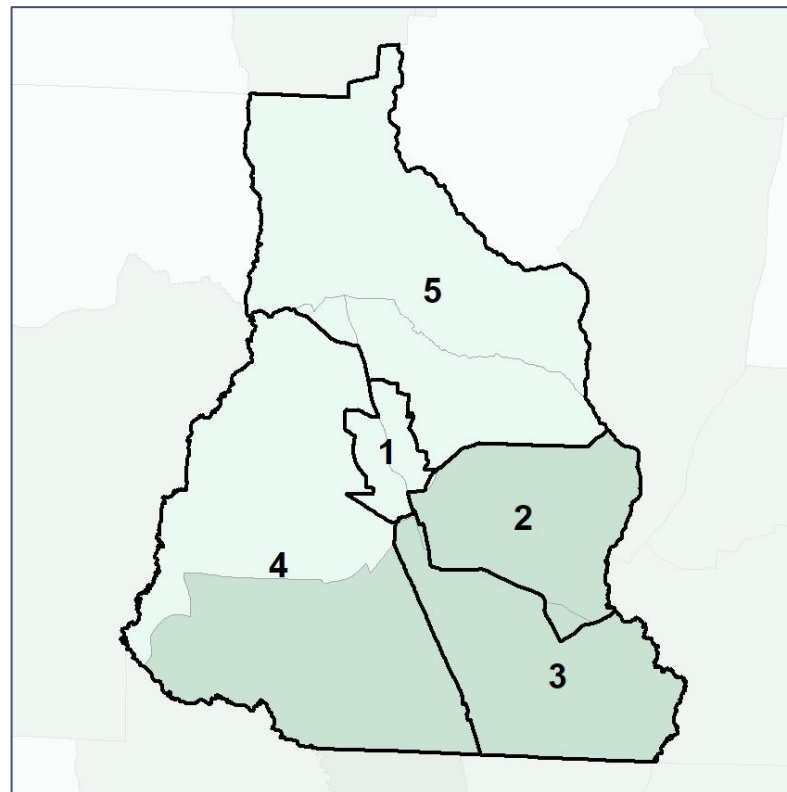
## Median Household Income by Census Tract



### 2012 Map



### 2022 Map\*



	1	2	3	4	5	1*	2*	3*	4*	5*	County
Population	3,286	3,922	3,447	3,337	3,237	3,443	3,450	3,431	3,449	3,456	17,229
% API	0%	1%	1%	0%	0%	0%	1%	1%	1%	0%	1%
% Black	58%	24%	37%	6%	13%	56%	23%	35%	11%	13%	28%
% Latino	7%	6%	9%	6%	4%	7%	6%	8%	8%	4%	7%
% Other	3%	4%	4%	3%	3%	3%	4%	4%	2%	4%	3%
% White	31%	65%	50%	85%	79%	34%	66%	52%	78%	79%	62%
<b>Median Income</b>	<b>\$24,000</b>	<b>\$72,000</b>	<b>\$32,000</b>	<b>\$51,000</b>	<b>\$37,000</b>	<b>\$24,000</b>	<b>\$72,000</b>	<b>\$32,000</b>	<b>\$51,000</b>	<b>\$37,000</b>	<b>\$41,000</b>
% Renter	42%	32%	40%	39%	26%	42%	32%	40%	39%	26%	34%
% Youth	19%	25%	18%	24%	17%	19%	25%	18%	24%	17%	21%



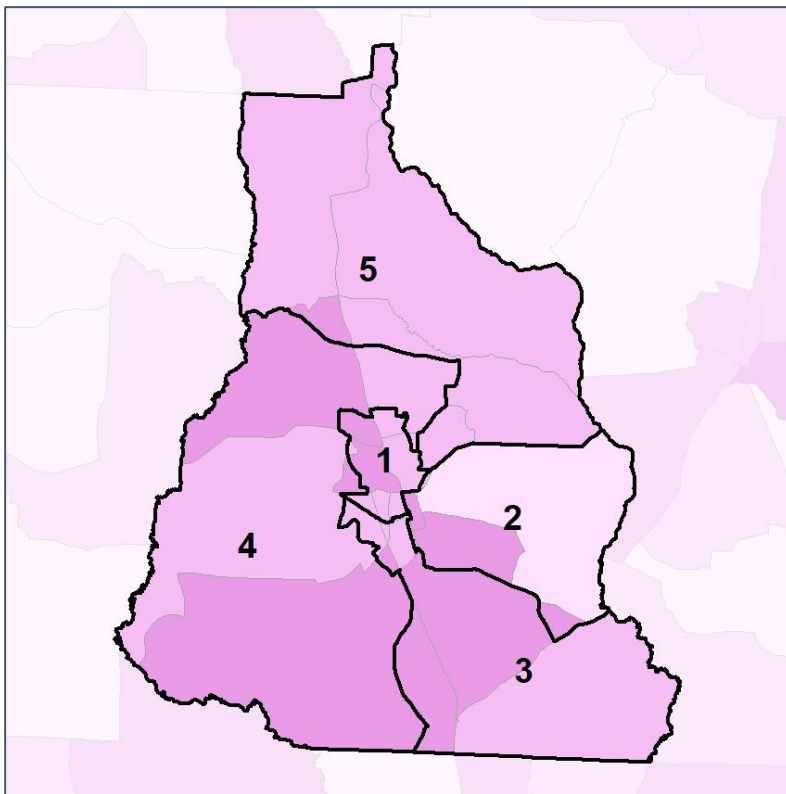
Source:  
2020 Decennial Census  
2020 ACS 5-Year Dataset

# Cook Co. Commission & School Board

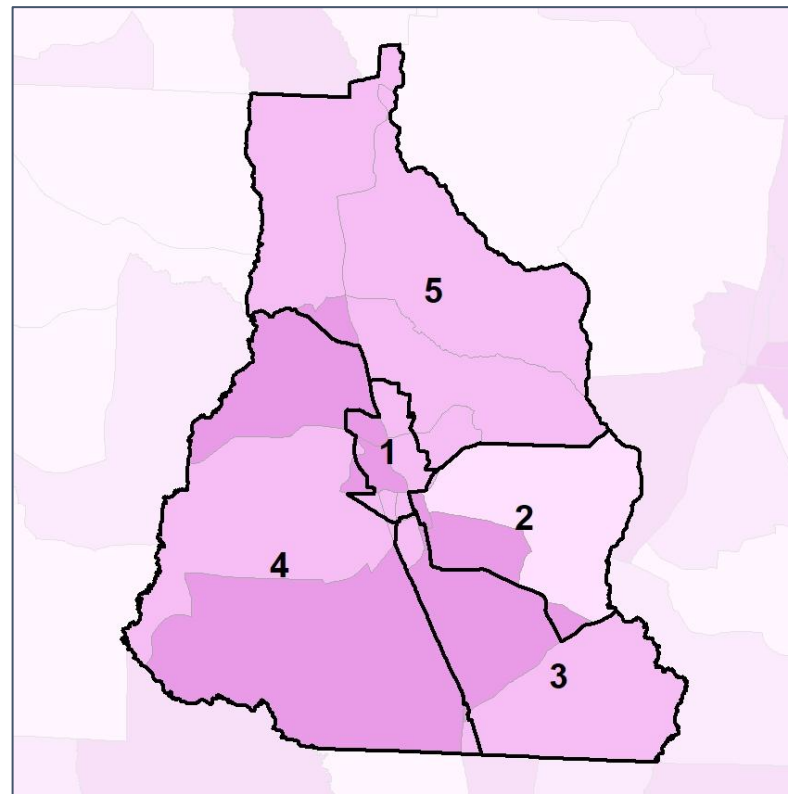
## % Renter by Census Block Group



### 2012 Map



### 2022 Map\*



	1	2	3	4	5	1*	2*	3*	4*	5*	County
Population	3,286	3,922	3,447	3,337	3,237	3,443	3,450	3,431	3,449	3,456	17,229
% API	0%	1%	1%	0%	0%	0%	1%	1%	1%	0%	1%
% Black	58%	24%	37%	6%	13%	56%	23%	35%	11%	13%	28%
% Latino	7%	6%	9%	6%	4%	7%	6%	8%	8%	4%	7%
% Other	3%	4%	4%	3%	3%	3%	4%	4%	2%	4%	3%
% White	31%	65%	50%	85%	79%	34%	66%	52%	78%	79%	62%
Median Income	\$24,000	\$72,000	\$32,000	\$51,000	\$37,000	\$24,000	\$72,000	\$32,000	\$51,000	\$37,000	\$41,000
<b>% Renter</b>	<b>42%</b>	<b>32%</b>	<b>40%</b>	<b>39%</b>	<b>26%</b>	<b>42%</b>	<b>32%</b>	<b>40%</b>	<b>39%</b>	<b>26%</b>	<b>34%</b>
% Youth	19%	25%	18%	24%	17%	19%	25%	18%	24%	17%	21%

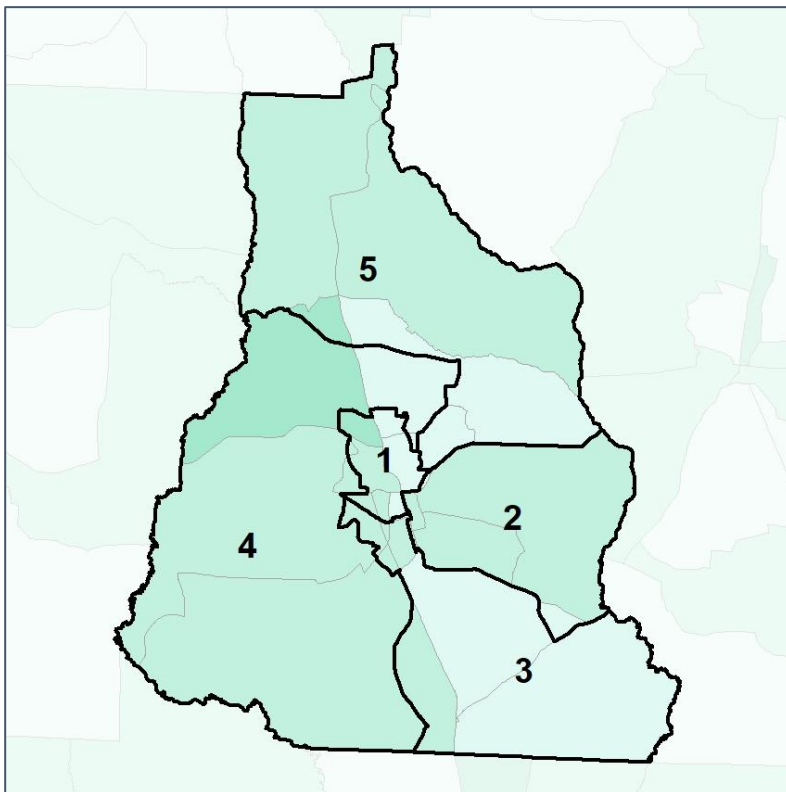


# Cook Co. Commission & School Board

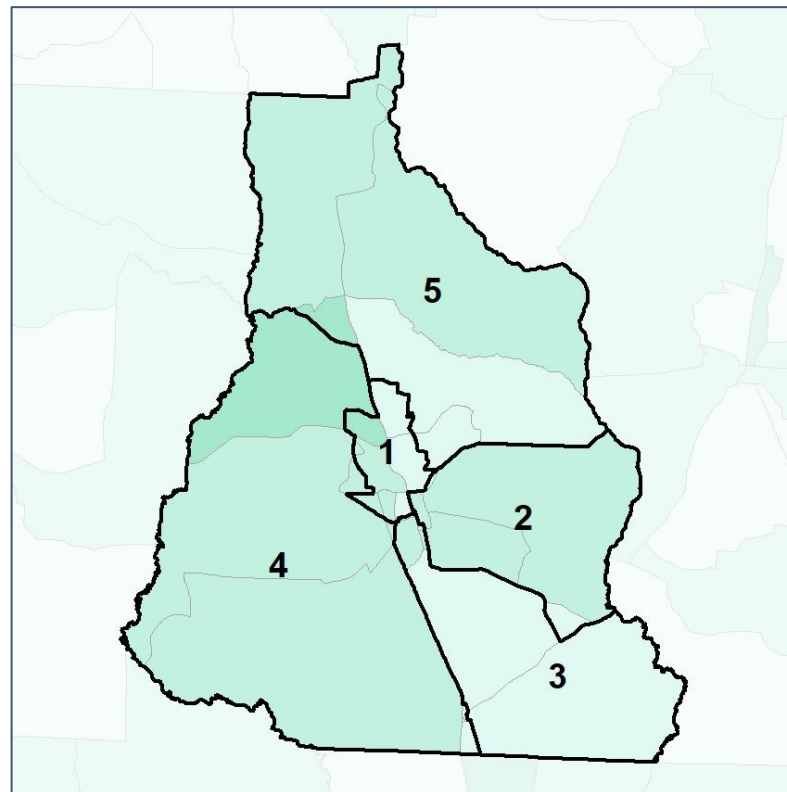
## % Youth (18-34) by Census Block Group



### 2012 Map



### 2022 Map\*



	1	2	3	4	5	1*	2*	3*	4*	5*	County
Population	3,286	3,922	3,447	3,337	3,237	3,443	3,450	3,431	3,449	3,456	17,229
% API	0%	1%	1%	0%	0%	0%	1%	1%	1%	0%	1%
% Black	58%	24%	37%	6%	13%	56%	23%	35%	11%	13%	28%
% Latino	7%	6%	9%	6%	4%	7%	6%	8%	8%	4%	7%
% Other	3%	4%	4%	3%	3%	3%	4%	4%	2%	4%	3%
% White	31%	65%	50%	85%	79%	34%	66%	52%	78%	79%	62%
Median Income	\$24,000	\$72,000	\$32,000	\$51,000	\$37,000	\$24,000	\$72,000	\$32,000	\$51,000	\$37,000	\$41,000
% Renter	42%	32%	40%	39%	26%	42%	32%	40%	39%	26%	34%
% Youth	19%	25%	18%	24%	17%	19%	25%	18%	24%	17%	21%

