



# Demographic Overview

## Racial Breakdown in Coffee County

Coffee County	2010	2020	% Change
Total Population	42,356	43,092	2%
AAPI	311	313	1%
Black	11,227	11,872	6%
Latino	4,352	5,430	25%
Other/Mixed Race	559	1,319	136%
POC	16,449	18,934	15%
White	25,907	24,158	-7%

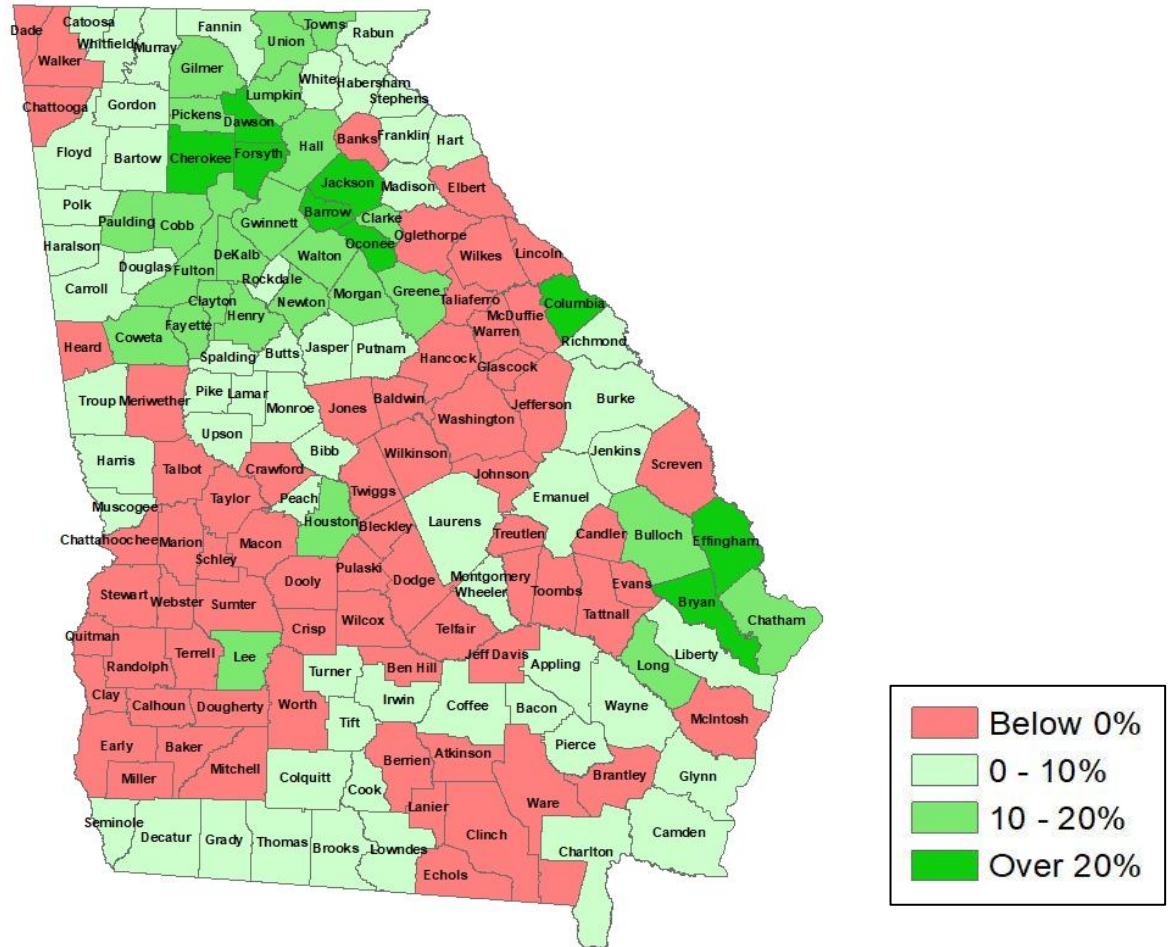
\*Note: The use of "Other" in these statistics combines those who identify as Native American, Mixed Race, and "Other" race





# Population Gain

## Change in Population in Georgia by County

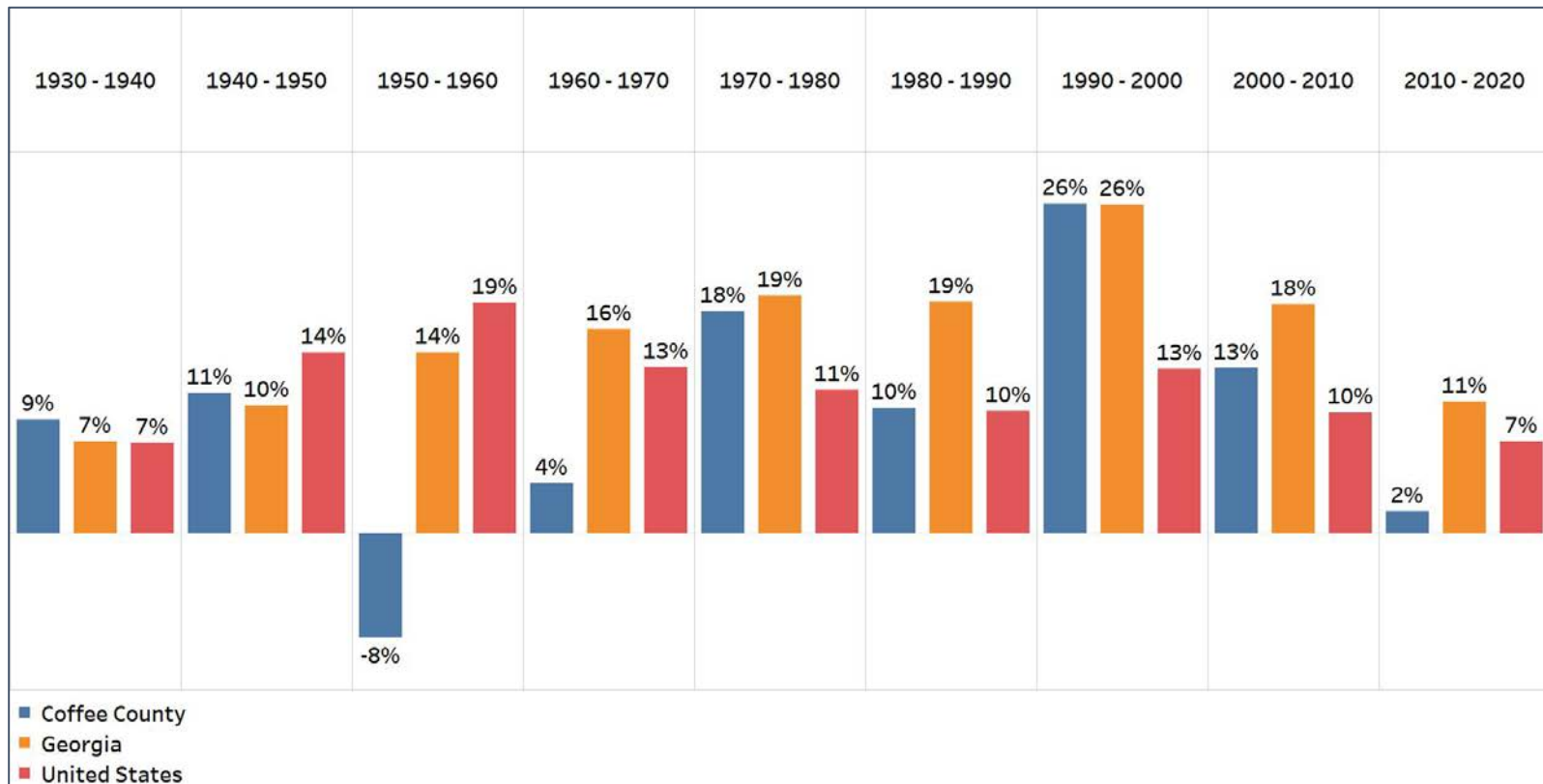


- Georgia is experiencing rapid population growth in the Atlanta, Augusta, and Savannah regions of the state



# Population Gain

## Change in Population by Decade

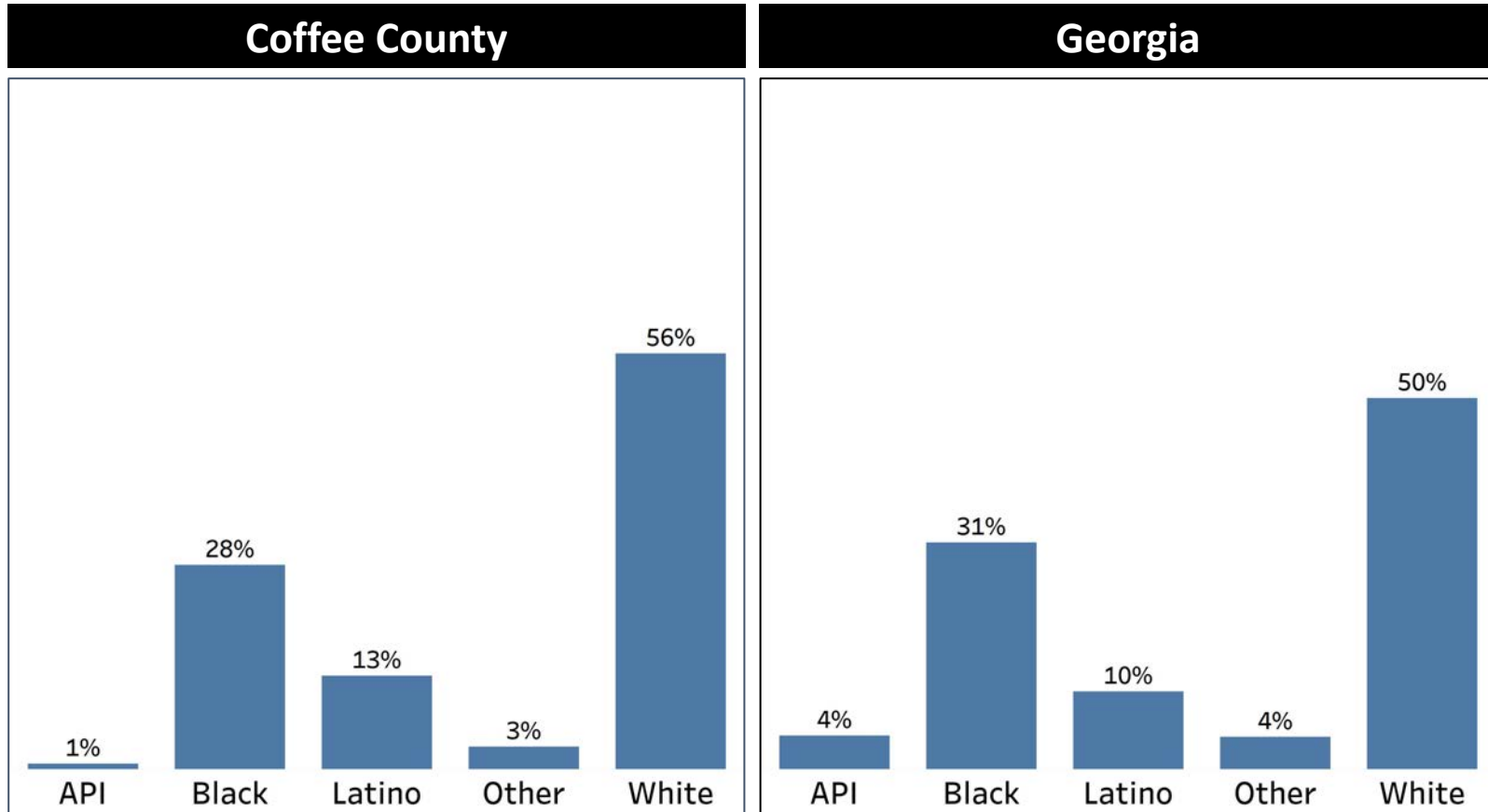


- While having a population growth every decade since 1960, Coffee County's growth has never exceeded the statewide average
- Coffee county's percentage of population growth has been at least 10% since 1970, but the past decade was only 2%



# Demographics

## Comparison between Coffee County and Georgia



- Coffee County has a slightly higher White population when compared to the statewide average
- Coffee County has a higher Latino population relative to the statewide average, but has a lower percentage average of Black population to Georgia's overall average

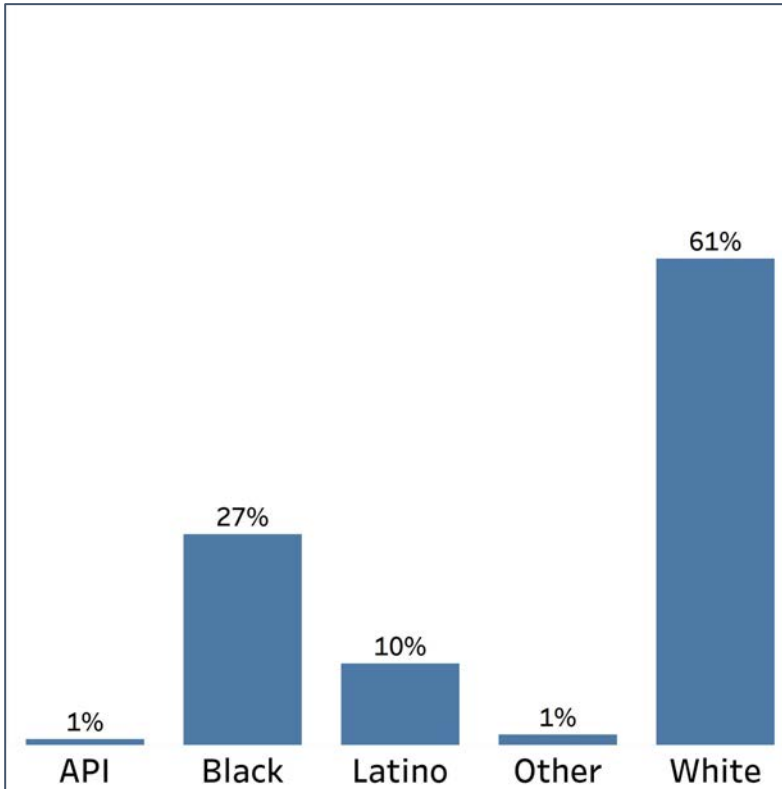


# Demographics

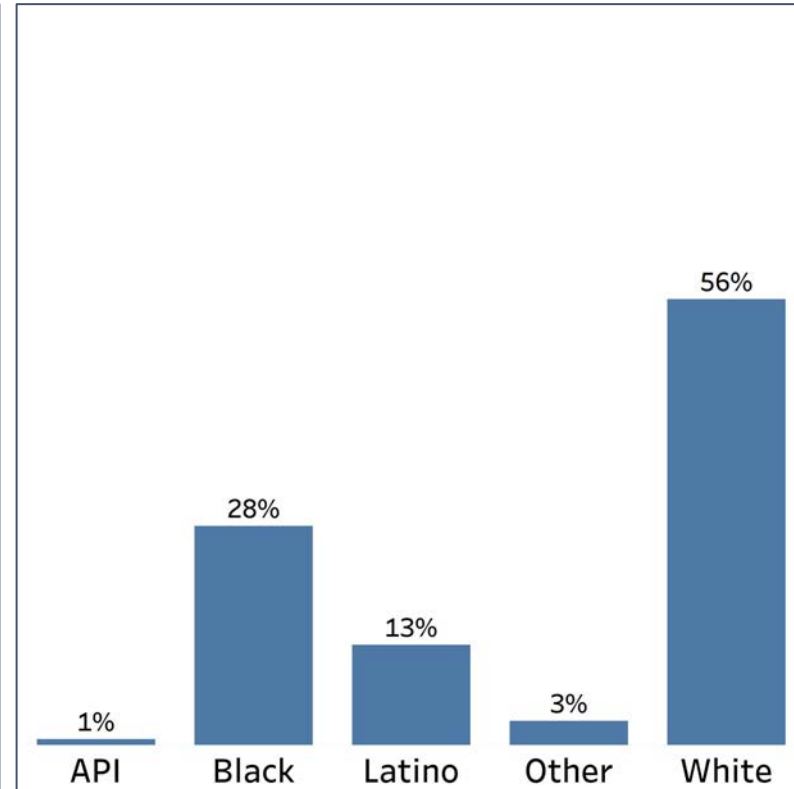
## 2010 vs 2020 Demographics in Coffee County



Coffee County 2010



Coffee County 2020



- Despite having majority White population, Coffee County White population decreased by 5% when compared to 2010
- Meanwhile the Black and Latino population in Coffee county has increased

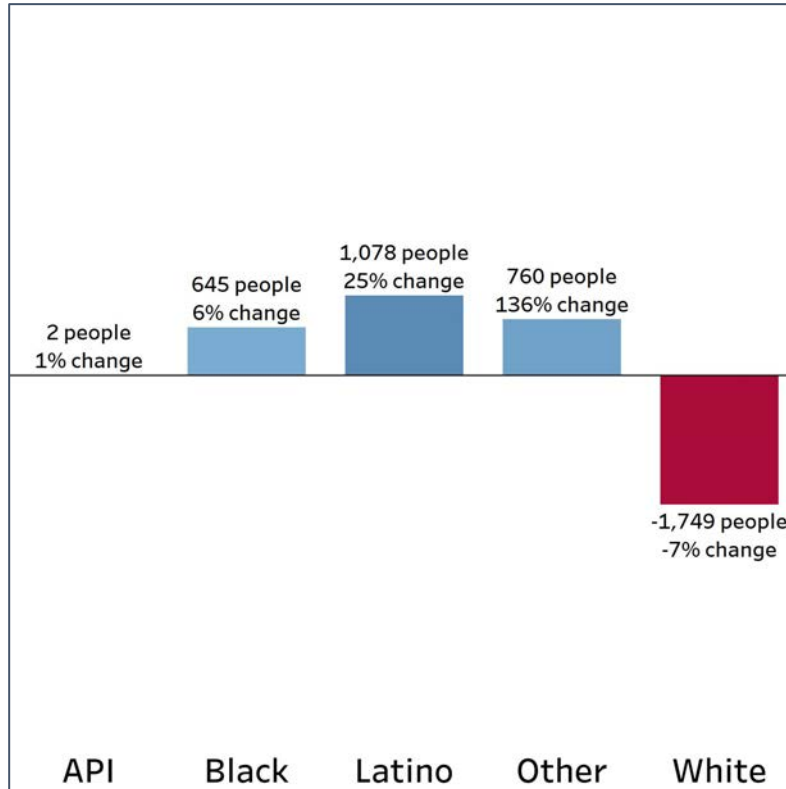


# Demographics

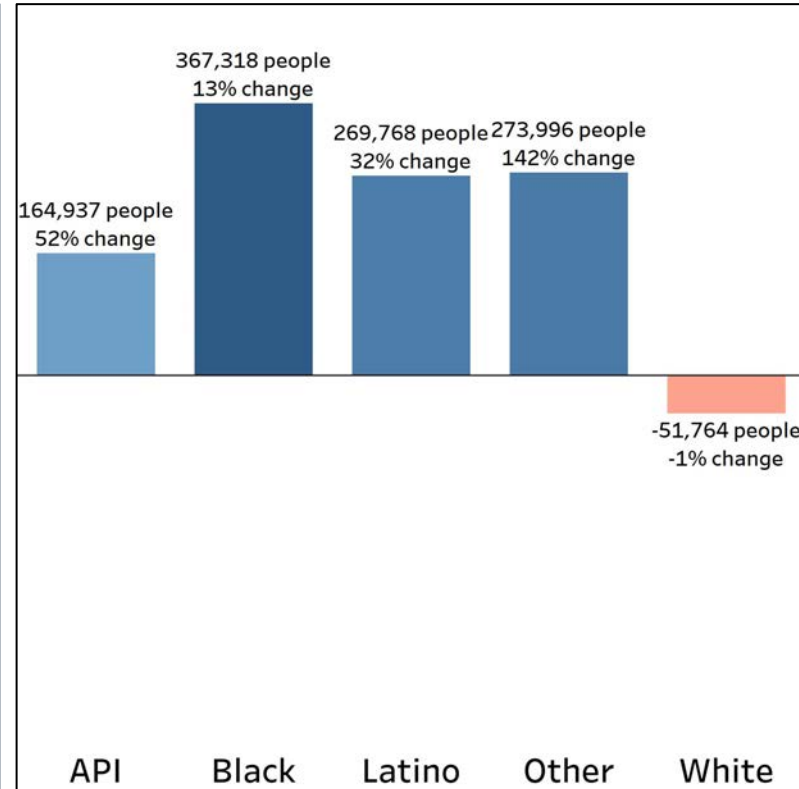
## Population Change by Race (2020 - 2010)



### Coffee County



### Georgia



- Coffee County is experiencing a population growth across all demographics except in their White population
- When compared to the statewide average, Communities of color are growing at a lower rate in Coffee county, most notably the the API community

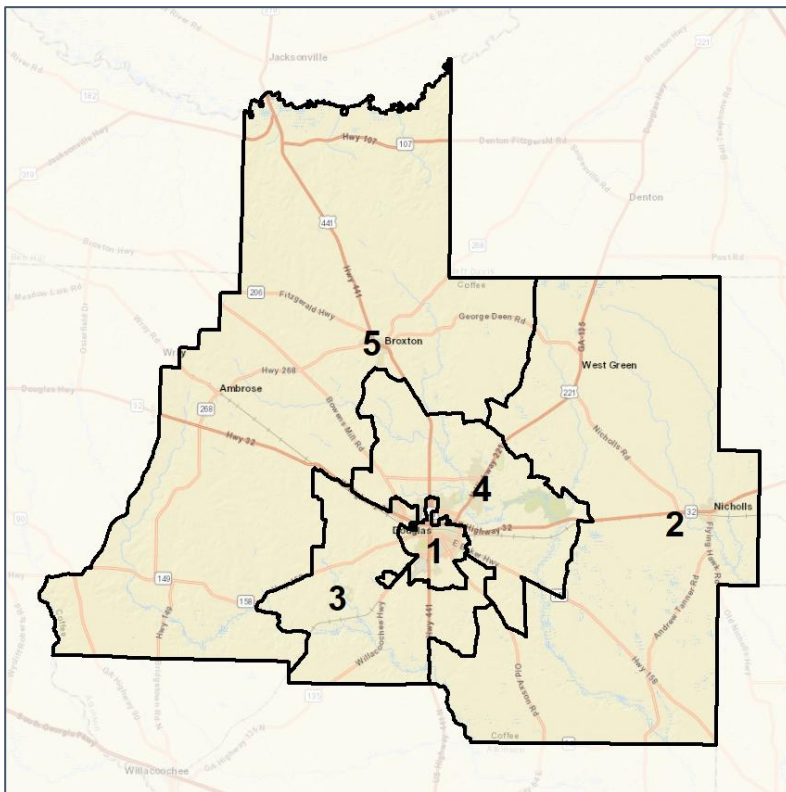


# Coffee Co. Commission & School Board

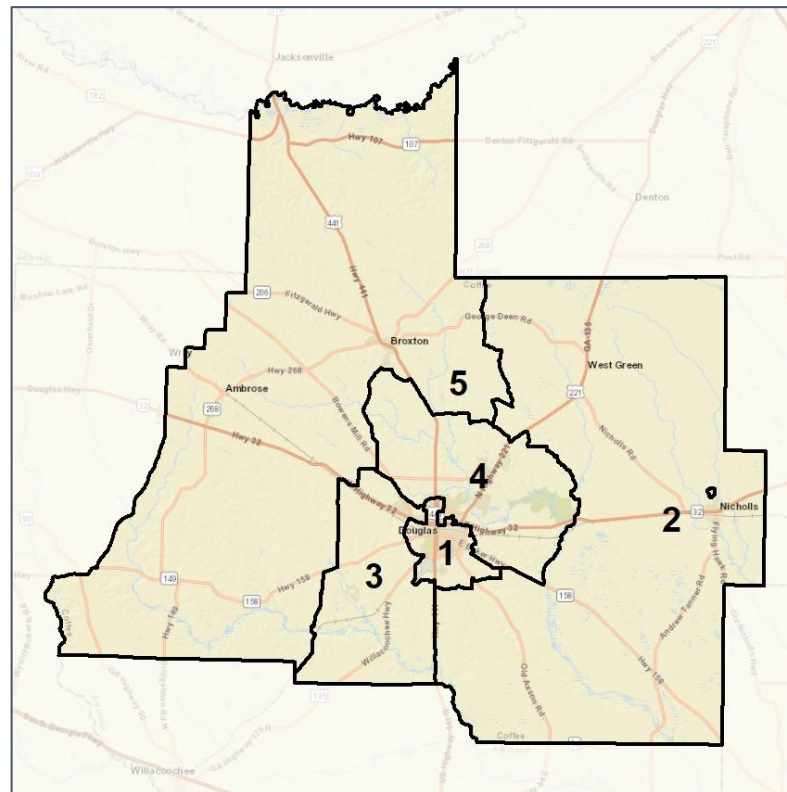
## Context



### 2012 Map



### 2022 Map\*



	1	2	3	4	5	1*	2*	3*	4*	5*	County
Population	7,388	9,298	9,515	8,881	8,010	8,144	8,158	8,136	8,154	8,118	43,092
API	1%	0%	1%	1%	0%	1%	1%	1%	1%	0%	1%
Black	70%	24%	17%	17%	17%	68%	12%	15%	15%	16%	28%
Latino	9%	9%	19%	13%	13%	9%	12%	20%	13%	13%	13%
Other	3%	2%	3%	3%	4%	3%	3%	3%	3%	4%	3%
White	17%	65%	61%	65%	66%	20%	73%	60%	67%	67%	56%
Population Gain	*	*	*	*	*	756	-1,140	-1,379	-727	108	*
Population % Gain	*	*	*	*	*	10%	-12%	-14%	-8%	1%	*
Net POC Gain	*	*	*	*	*	424	-1,063	-522	-404	-2	*
Net POC % Gain	*	*	*	*	*	7%	-32%	-14%	-13%	0%	*



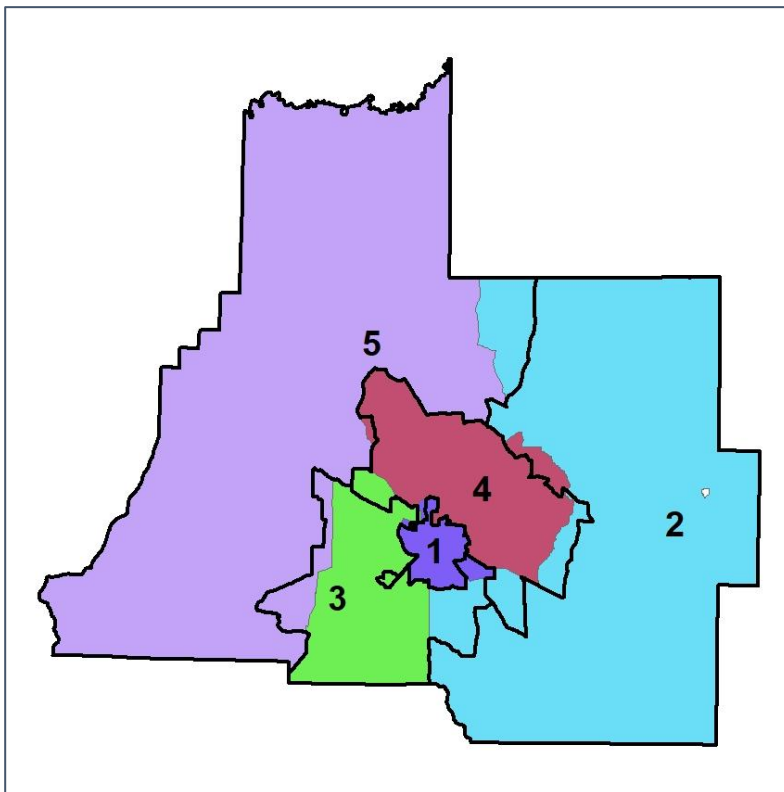
Source:  
2020 Decennial Census  
2020 ACS 5-Year Dataset

# Coffee Co. Commission & School Board

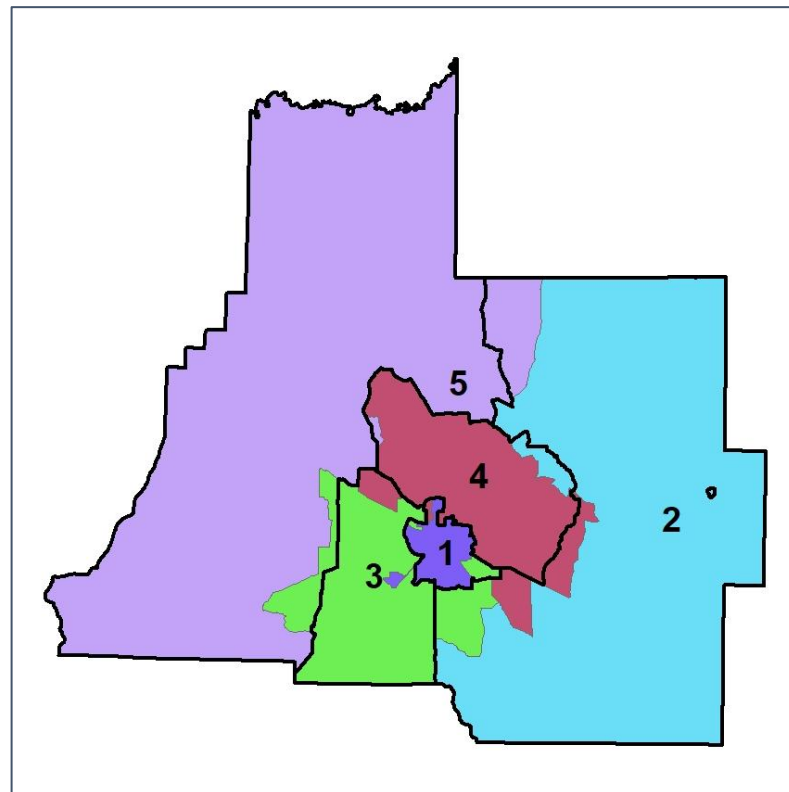
## Changes in Redistricting



### 2012 Map (2022 in Colors)



### 2022 Map\* (2012 in Colors)



	1	2	3	4	5	1*	2*	3*	4*	5*	County
Population	7,388	9,298	9,515	8,881	8,010	8,144	8,158	8,136	8,154	8,118	43,092
API	1%	0%	1%	1%	0%	1%	1%	1%	1%	0%	1%
Black	70%	24%	17%	17%	17%	68%	12%	15%	15%	16%	28%
Latino	9%	9%	19%	13%	13%	9%	12%	20%	13%	13%	13%
Other	3%	2%	3%	3%	4%	3%	3%	3%	3%	4%	3%
White	17%	65%	61%	65%	66%	20%	73%	60%	67%	67%	56%
Population Gain	*	*	*	*	*	756	-1,140	-1,379	-727	108	*
Population % Gain	*	*	*	*	*	10%	-12%	-14%	-8%	1%	*
Net POC Gain	*	*	*	*	*	424	-1,063	-522	-404	-2	*
Net POC % Gain	*	*	*	*	*	7%	-32%	-14%	-13%	0%	*



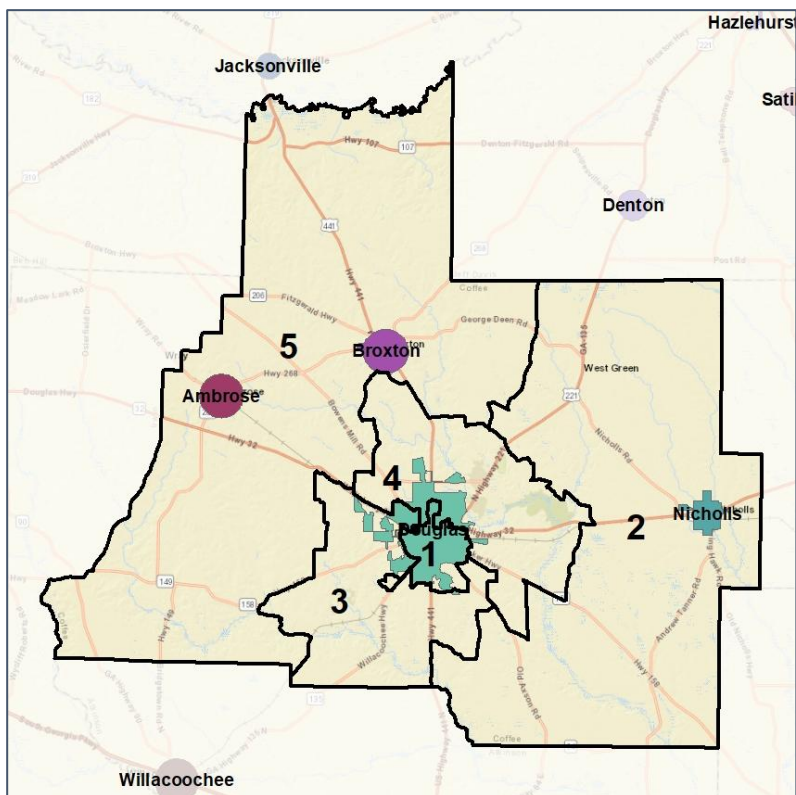


# Coffee Co. Commission & School Board

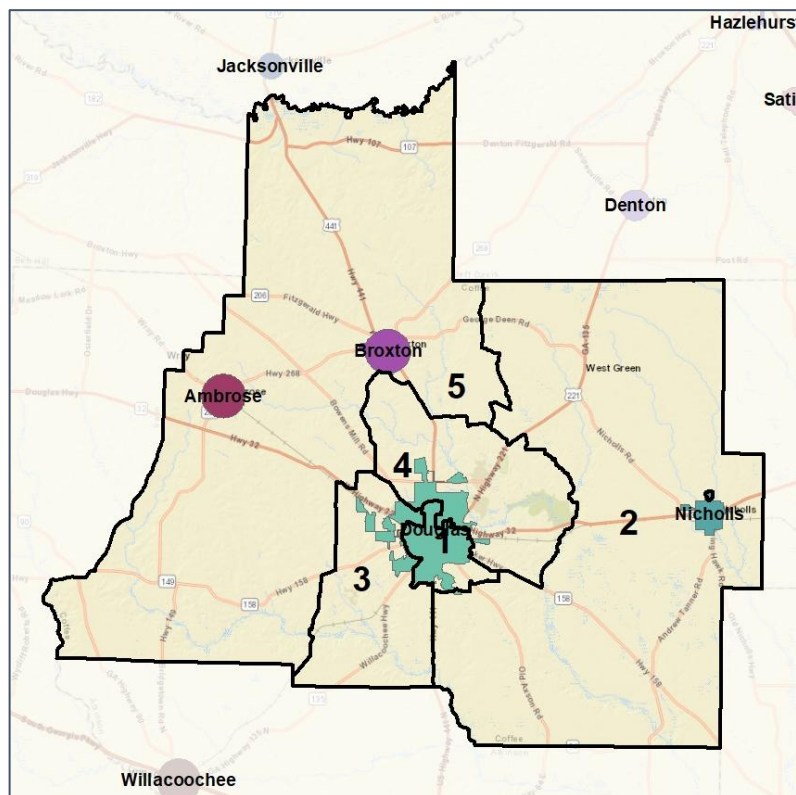
## Cities and Places



### 2012 Map



### 2022 Map\*



	1	2	3	4	5	1*	2*	3*	4*	5*	County
Population	7,388	9,298	9,515	8,881	8,010	8,144	8,158	8,136	8,154	8,118	43,092
API	1%	0%	1%	1%	0%	1%	1%	1%	1%	0%	1%
Black	70%	24%	17%	17%	17%	68%	12%	15%	15%	16%	28%
Latino	9%	9%	19%	13%	13%	9%	12%	20%	13%	13%	13%
Other	3%	2%	3%	3%	4%	3%	3%	3%	3%	4%	3%
White	17%	65%	61%	65%	66%	20%	73%	60%	67%	67%	56%
Population Gain	*	*	*	*	*	756	-1,140	-1,379	-727	108	*
Population % Gain	*	*	*	*	*	10%	-12%	-14%	-8%	1%	*
Net POC Gain	*	*	*	*	*	424	-1,063	-522	-404	-2	*
Net POC % Gain	*	*	*	*	*	7%	-32%	-14%	-13%	0%	*



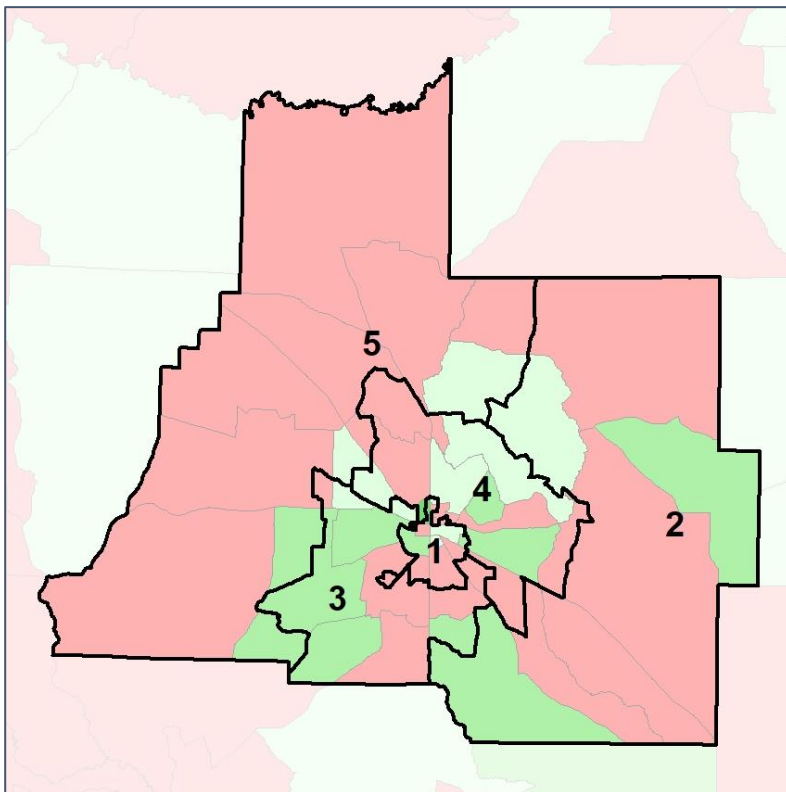
Source:  
2020 Decennial Census  
2020 ACS 5-Year Dataset

# Coffee Co. Commission & School Board

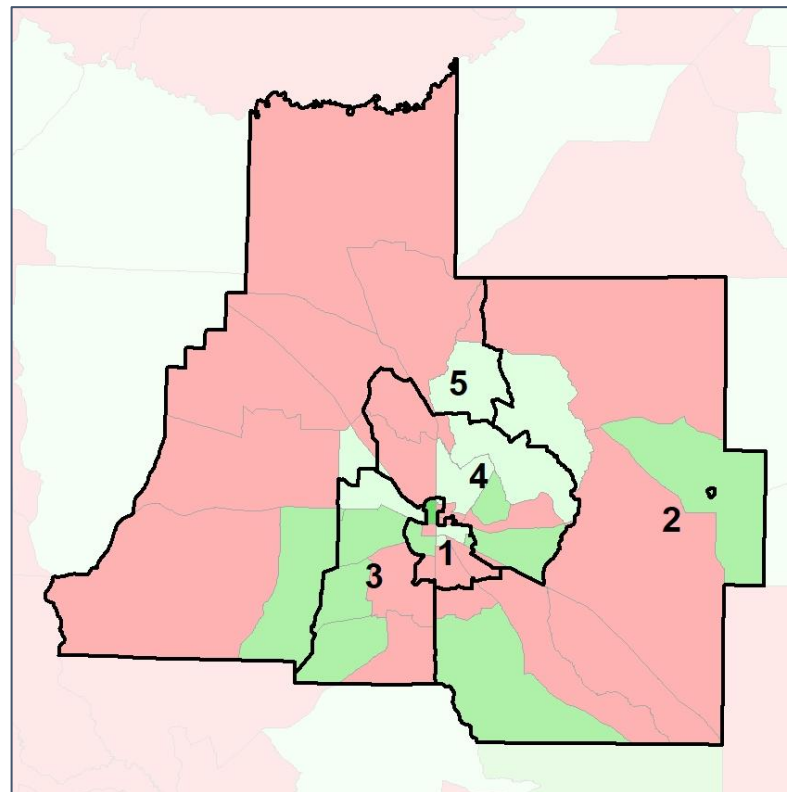
## Net Gain in Population (2010 - 2020)



### 2012 Map



### 2022 Map\*



	1	2	3	4	5	1*	2*	3*	4*	5*	County
Population	7,388	9,298	9,515	8,881	8,010	8,144	8,158	8,136	8,154	8,118	43,092
API	1%	0%	1%	1%	0%	1%	1%	1%	1%	0%	1%
Black	70%	24%	17%	17%	17%	68%	12%	15%	15%	16%	28%
Latino	9%	9%	19%	13%	13%	9%	12%	20%	13%	13%	13%
Other	3%	2%	3%	3%	4%	3%	3%	3%	3%	4%	3%
White	17%	65%	61%	65%	66%	20%	73%	60%	67%	67%	56%
Population Gain	*	*	*	*	*	756	-1,140	-1,379	-727	108	*
Population % Gain	*	*	*	*	*	10%	-12%	-14%	-8%	1%	*
Net POC Gain	*	*	*	*	*	424	-1,063	-522	-404	-2	*
Net POC % Gain	*	*	*	*	*	7%	-32%	-14%	-13%	0%	*

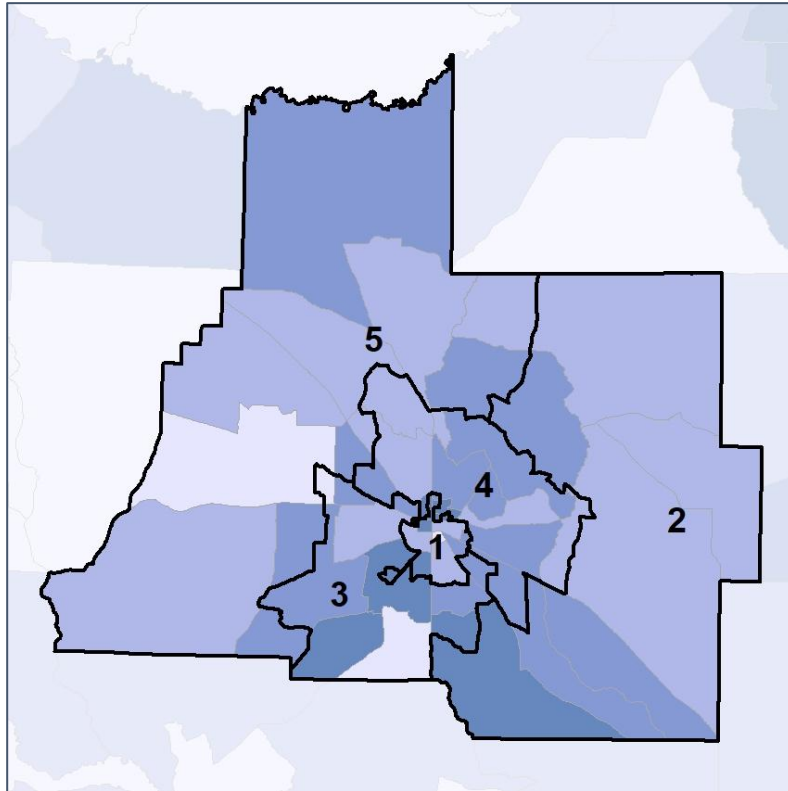


# Coffee Co. Commission & School Board

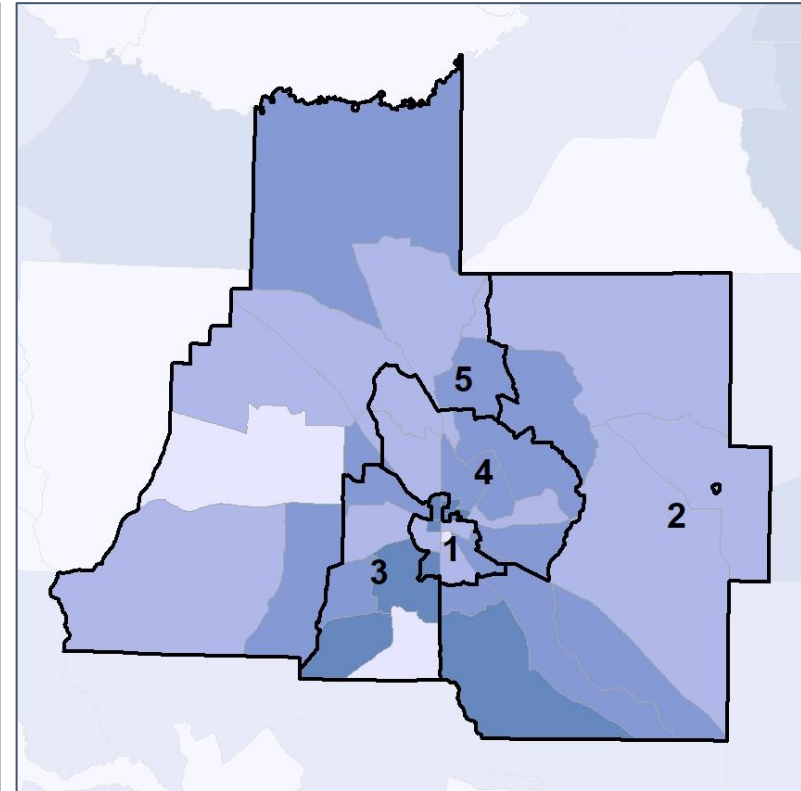
## Net Gain in % POC (2020 - 2010) by Census Block Group



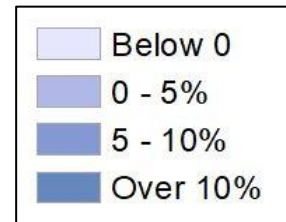
### 2012 Map



### 2022 Map\*



	1	2	3	4	5	1*	2*	3*	4*	5*	County
Population	7,388	9,298	9,515	8,881	8,010	8,144	8,158	8,136	8,154	8,118	43,092
API	1%	0%	1%	1%	0%	1%	1%	1%	1%	0%	1%
Black	70%	24%	17%	17%	17%	68%	12%	15%	15%	16%	28%
Latino	9%	9%	19%	13%	13%	9%	12%	20%	13%	13%	13%
Other	3%	2%	3%	3%	4%	3%	3%	3%	3%	4%	3%
White	17%	65%	61%	65%	66%	20%	73%	60%	67%	67%	56%
Population Gain	*	*	*	*	*	756	-1,140	-1,379	-727	108	*
Population % Gain	*	*	*	*	*	10%	-12%	-14%	-8%	1%	*
Net POC Gain	*	*	*	*	*	424	-1,063	-522	-404	-2	*
Net POC % Gain	*	*	*	*	*	7%	-32%	-14%	-13%	0%	*

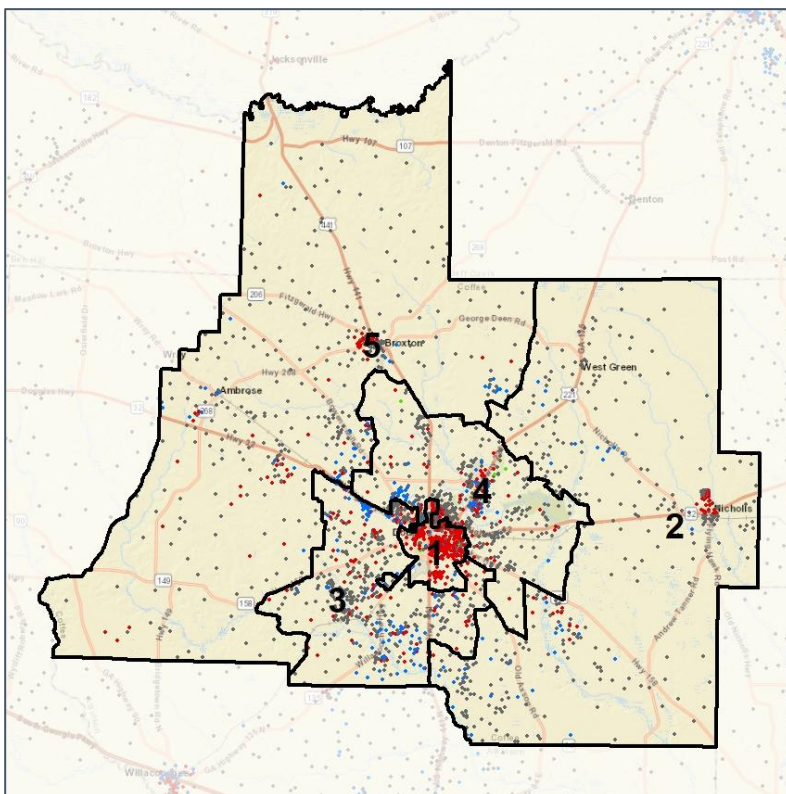


# Coffee Co. Commission & School Board

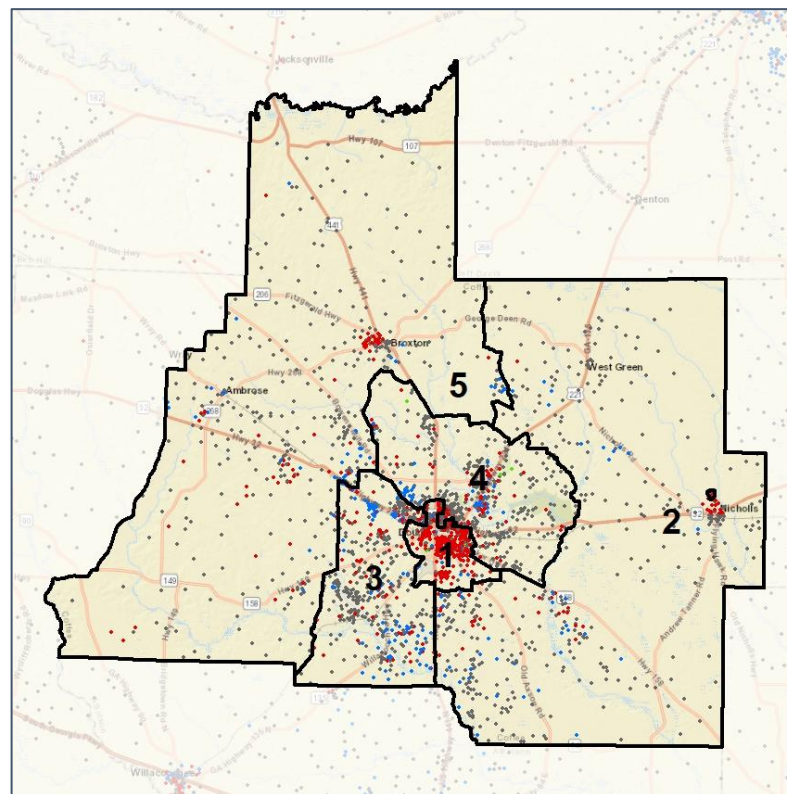
## Population Density by Race



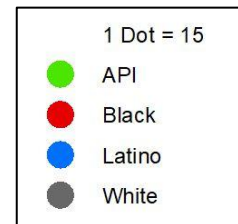
### 2012 Map



### 2022 Map\*



	1	2	3	4	5	1*	2*	3*	4*	5*	County
Population	7,388	9,298	9,515	8,881	8,010	8,144	8,158	8,136	8,154	8,118	43,092
API	55	39	85	115	19	63	43	86	99	20	313
% API	1%	0%	1%	1%	0%	1%	1%	1%	1%	0%	1%
Black	5,193	2,236	1,617	1,499	1,327	5,507	993	1,256	1,258	1,335	11,872
% Black	70%	24%	17%	17%	17%	68%	12%	15%	15%	16%	28%
Latino	636	811	1,778	1,146	1,059	716	948	1,656	1,021	1,047	5,430
% Latino	9%	9%	19%	13%	13%	9%	12%	20%	13%	13%	13%
Other	240	210	269	306	294	262	249	229	284	295	1,319
% Other	3%	2%	3%	3%	4%	3%	3%	3%	3%	4%	3%
White	1,264	6,002	5,766	5,815	5,311	1,596	5,925	4,909	5,492	5,421	24,158
% White	17%	65%	61%	65%	66%	20%	73%	60%	67%	67%	56%



Source:  
2020 Decennial Census  
2020 ACS 5-Year Dataset

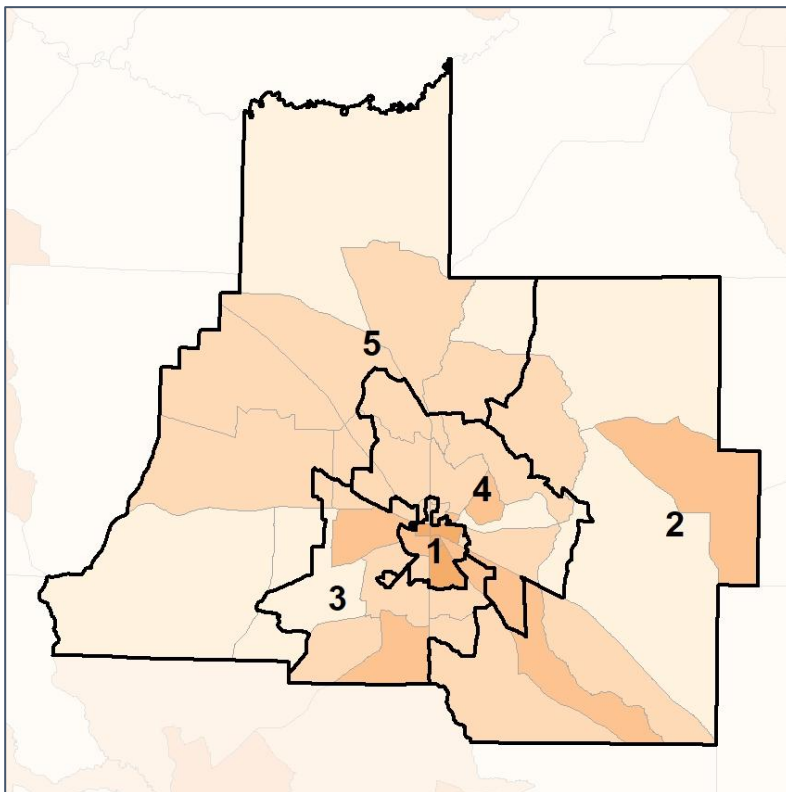


# Coffee Co. Commission & School Board

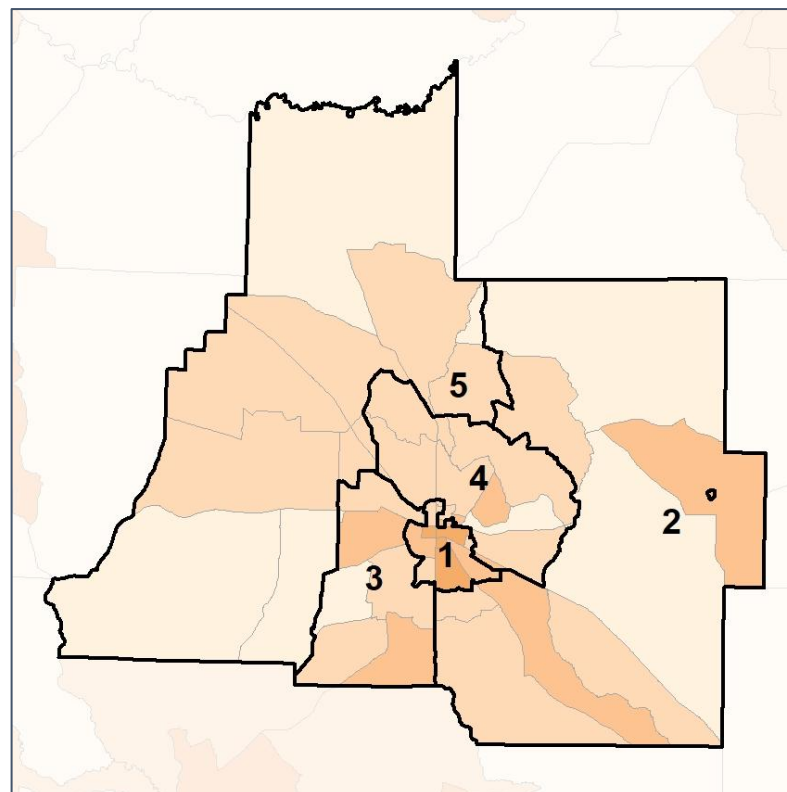
## % People of Color by Census Block Group



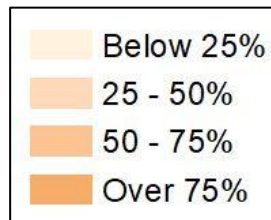
### 2012 Map



### 2022 Map\*



	1	2	3	4	5	1*	2*	3*	4*	5*	County
Population	7,388	9,298	9,515	8,881	8,010	8,144	8,158	8,136	8,154	8,118	43,092
API	55	39	85	115	19	63	43	86	99	20	313
% API	1%	0%	1%	1%	0%	1%	1%	1%	1%	0%	1%
Black	5,193	2,236	1,617	1,499	1,327	5,507	993	1,256	1,258	1,335	11,872
% Black	70%	24%	17%	17%	17%	68%	12%	15%	15%	16%	28%
Latino	636	811	1,778	1,146	1,059	716	948	1,656	1,021	1,047	5,430
% Latino	9%	9%	19%	13%	13%	9%	12%	20%	13%	13%	13%
Other	240	210	269	306	294	262	249	229	284	295	1,319
% Other	3%	2%	3%	3%	4%	3%	3%	3%	3%	4%	3%
White	1,264	6,002	5,766	5,815	5,311	1,596	5,925	4,909	5,492	5,421	24,158
% White	17%	65%	61%	65%	66%	20%	73%	60%	67%	67%	56%

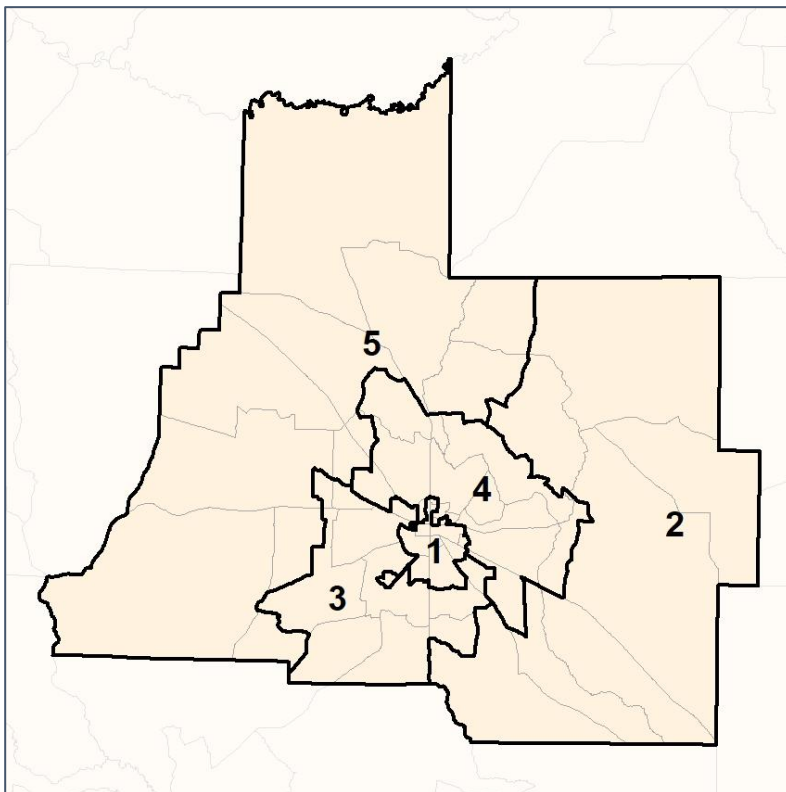


# Coffee Co. Commission & School Board

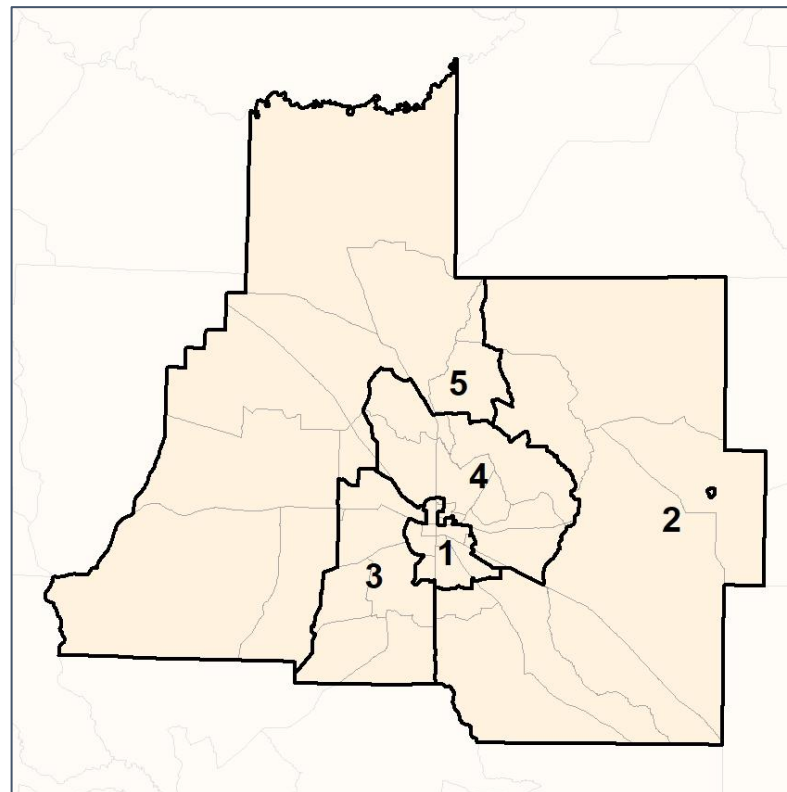
## % API by Census Block Group



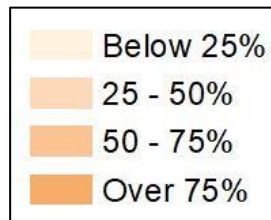
### 2012 Map



### 2022 Map\*



	1	2	3	4	5	1*	2*	3*	4*	5*	County
Population	7,388	9,298	9,515	8,881	8,010	8,144	8,158	8,136	8,154	8,118	43,092
API	55	39	85	115	19	63	43	86	99	20	313
% API	1%	0%	1%	1%	0%	1%	1%	1%	1%	0%	1%
Black	5,193	2,236	1,617	1,499	1,327	5,507	993	1,256	1,258	1,335	11,872
% Black	70%	24%	17%	17%	17%	68%	12%	15%	15%	16%	28%
Latino	636	811	1,778	1,146	1,059	716	948	1,656	1,021	1,047	5,430
% Latino	9%	9%	19%	13%	13%	9%	12%	20%	13%	13%	13%
Other	240	210	269	306	294	262	249	229	284	295	1,319
% Other	3%	2%	3%	3%	4%	3%	3%	3%	3%	4%	3%
White	1,264	6,002	5,766	5,815	5,311	1,596	5,925	4,909	5,492	5,421	24,158
% White	17%	65%	61%	65%	66%	20%	73%	60%	67%	67%	56%

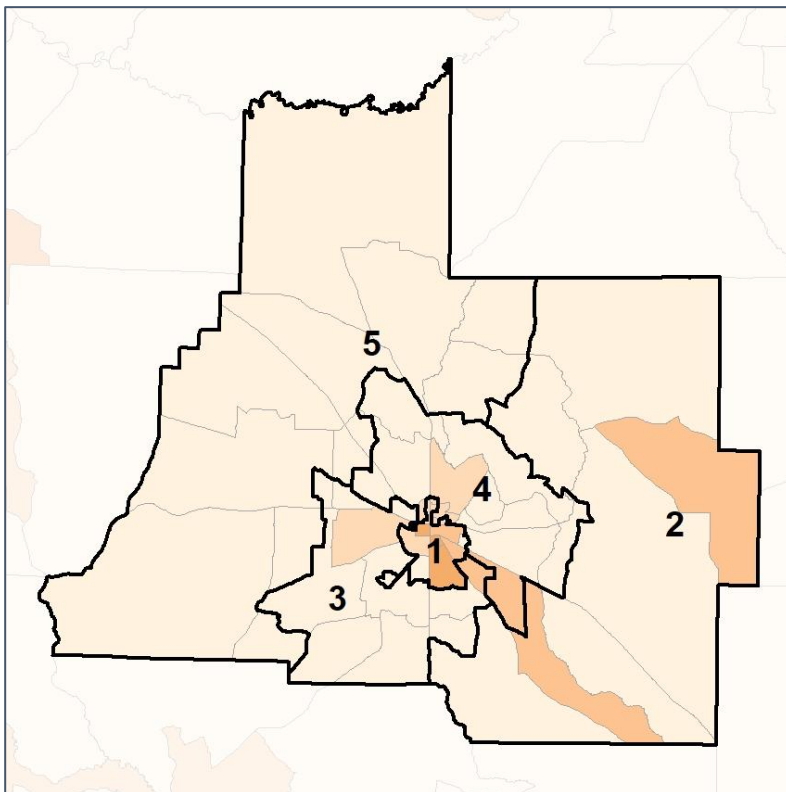


# Coffee Co. Commission & School Board

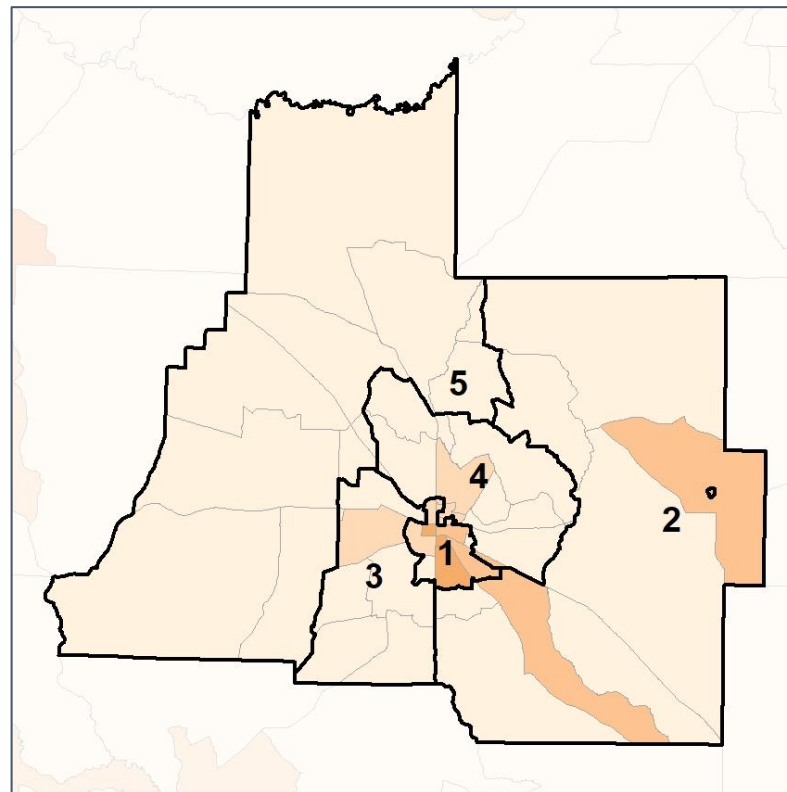
## % Black by Census Block Group



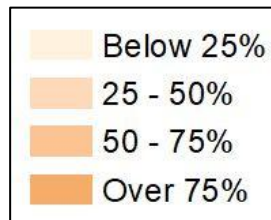
### 2012 Map



### 2022 Map\*



	1	2	3	4	5	1*	2*	3*	4*	5*	County
Population	7,388	9,298	9,515	8,881	8,010	8,144	8,158	8,136	8,154	8,118	43,092
API	55	39	85	115	19	63	43	86	99	20	313
% API	1%	0%	1%	1%	0%	1%	1%	1%	1%	0%	1%
Black	5,193	2,236	1,617	1,499	1,327	5,507	993	1,256	1,258	1,335	11,872
% Black	70%	24%	17%	17%	17%	68%	12%	15%	15%	16%	28%
Latino	636	811	1,778	1,146	1,059	716	948	1,656	1,021	1,047	5,430
% Latino	9%	9%	19%	13%	13%	9%	12%	20%	13%	13%	13%
Other	240	210	269	306	294	262	249	229	284	295	1,319
% Other	3%	2%	3%	3%	4%	3%	3%	3%	3%	4%	3%
White	1,264	6,002	5,766	5,815	5,311	1,596	5,925	4,909	5,492	5,421	24,158
% White	17%	65%	61%	65%	66%	20%	73%	60%	67%	67%	56%

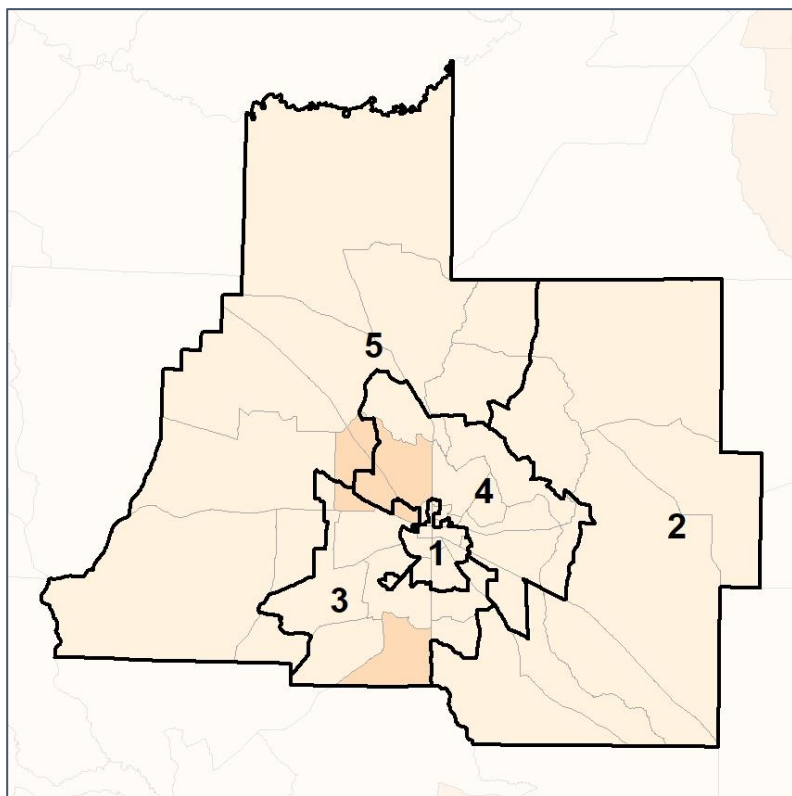


# Coffee Co. Commission & School Board

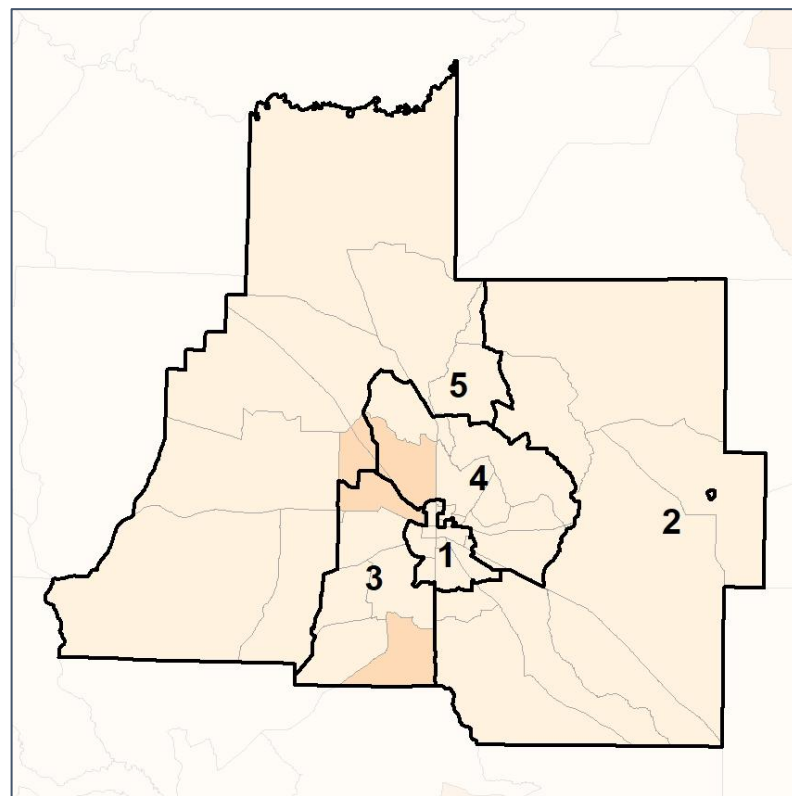
## % Latino by Census Block Group



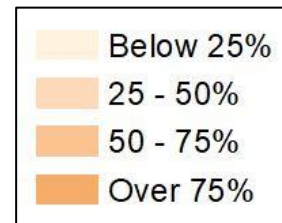
### 2012 Map



### 2022 Map\*



	1	2	3	4	5	1*	2*	3*	4*	5*	County
Population	7,388	9,298	9,515	8,881	8,010	8,144	8,158	8,136	8,154	8,118	43,092
API	55	39	85	115	19	63	43	86	99	20	313
% API	1%	0%	1%	1%	0%	1%	1%	1%	1%	0%	1%
Black	5,193	2,236	1,617	1,499	1,327	5,507	993	1,256	1,258	1,335	11,872
% Black	70%	24%	17%	17%	17%	68%	12%	15%	15%	16%	28%
Latino	636	811	1,778	1,146	1,059	716	948	1,656	1,021	1,047	5,430
% Latino	9%	9%	19%	13%	13%	9%	12%	20%	13%	13%	13%
Other	240	210	269	306	294	262	249	229	284	295	1,319
% Other	3%	2%	3%	3%	4%	3%	3%	3%	3%	4%	3%
White	1,264	6,002	5,766	5,815	5,311	1,596	5,925	4,909	5,492	5,421	24,158
% White	17%	65%	61%	65%	66%	20%	73%	60%	67%	67%	56%



Source:  
2020 Decennial Census  
2020 ACS 5-Year Dataset

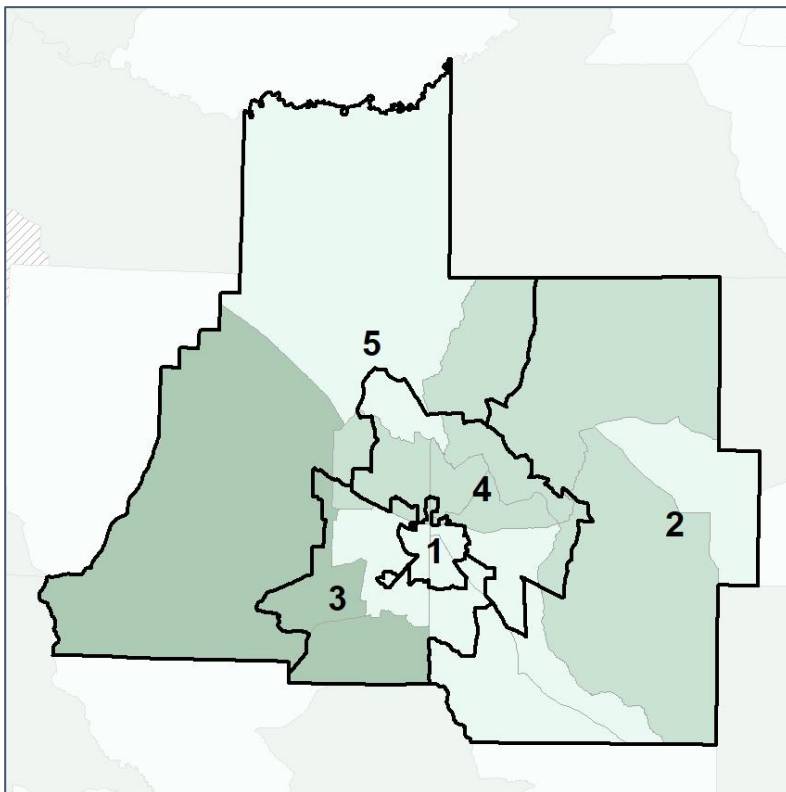


# Coffee Co. Commission & School Board

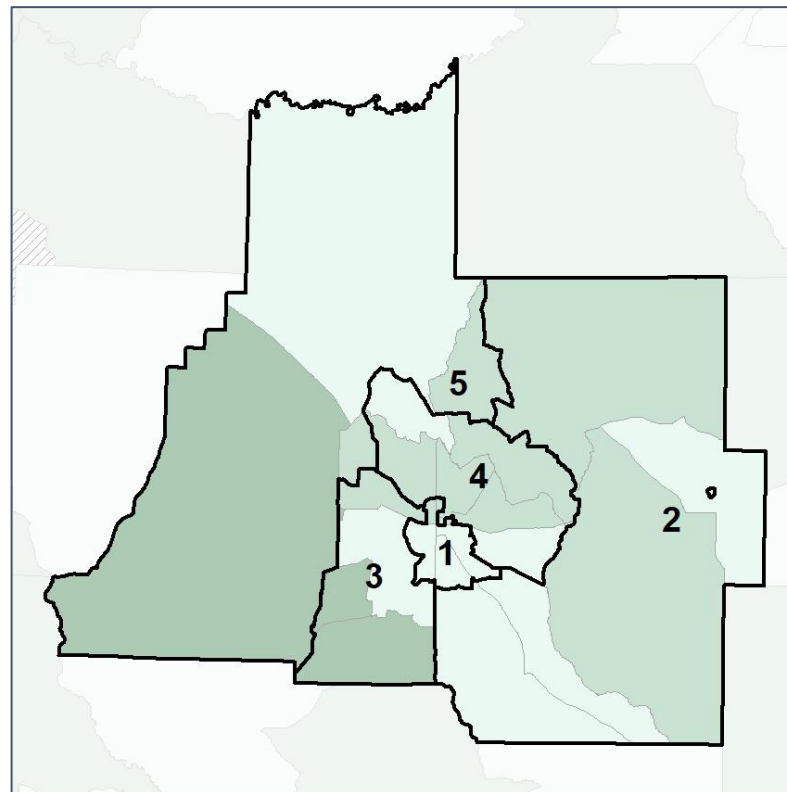
## Median Household Income by Census Tract



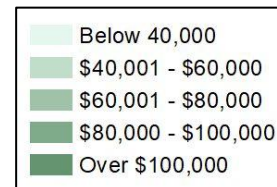
### 2012 Map



### 2022 Map\*



	1	2	3	4	5	1*	2*	3*	4*	5*	County
Population	7,388	9,298	9,515	8,881	8,010	8,144	8,158	8,136	8,154	8,118	43,092
% API	1%	0%	1%	1%	0%	1%	1%	1%	1%	0%	1%
% Black	70%	24%	17%	17%	17%	68%	12%	15%	15%	16%	28%
% Latino	9%	9%	19%	13%	13%	9%	12%	20%	13%	13%	13%
% Other	3%	2%	3%	3%	4%	3%	3%	3%	3%	4%	3%
% White	17%	65%	61%	65%	66%	20%	73%	60%	67%	67%	56%
Median Income	\$21,000	\$39,000	\$51,000	\$49,000	\$54,000	\$24,000	\$39,000	\$54,000	\$51,000	\$53,000	\$43,000
% Renter	71%	33%	28%	37%	25%	63%	32%	29%	38%	25%	35%
% Youth	18%	25%	30%	22%	20%	18%	25%	26%	23%	21%	23%

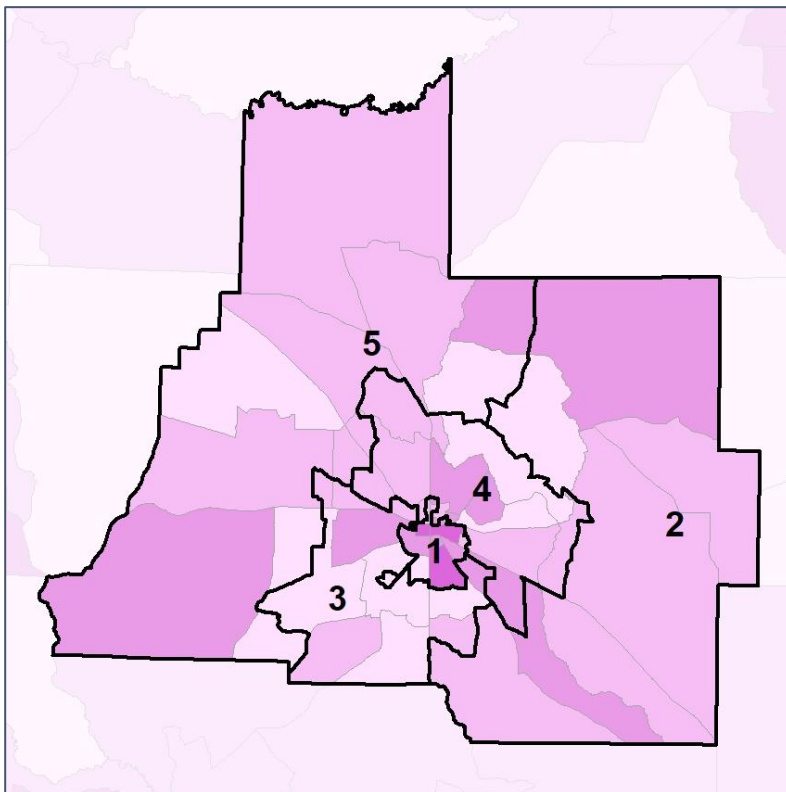


# Coffee Co. Commission & School Board

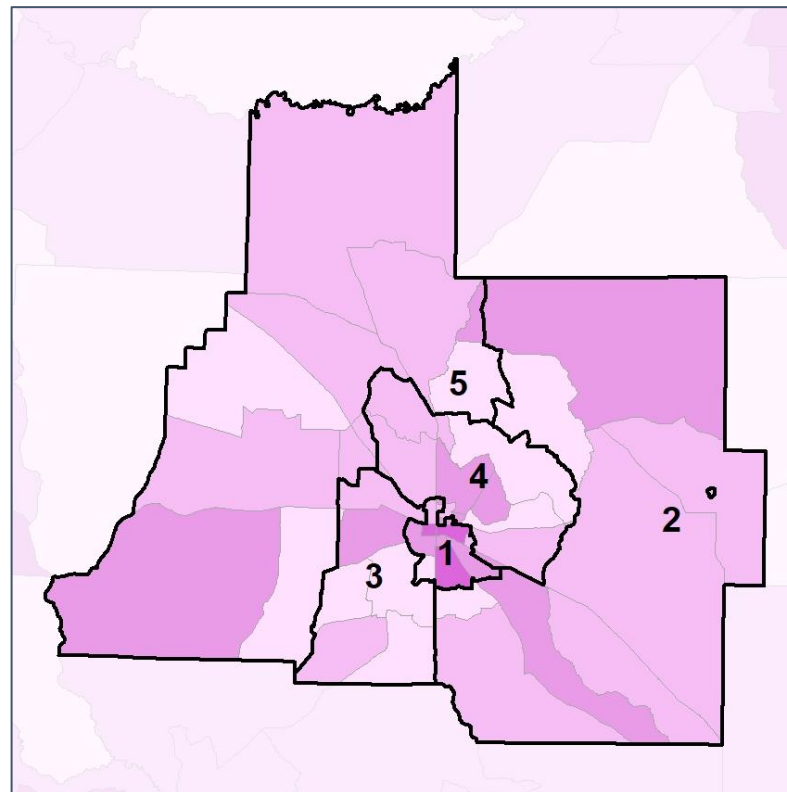
## % Renter by Census Block Group



### 2012 Map



### 2022 Map\*



	1	2	3	4	5	1*	2*	3*	4*	5*	County
Population	7,388	9,298	9,515	8,881	8,010	8,144	8,158	8,136	8,154	8,118	43,092
% API	1%	0%	1%	1%	0%	1%	1%	1%	1%	0%	1%
% Black	70%	24%	17%	17%	17%	68%	12%	15%	15%	16%	28%
% Latino	9%	9%	19%	13%	13%	9%	12%	20%	13%	13%	13%
% Other	3%	2%	3%	3%	4%	3%	3%	3%	3%	4%	3%
% White	17%	65%	61%	65%	66%	20%	73%	60%	67%	67%	56%
Median Income	\$21,000	\$39,000	\$51,000	\$49,000	\$54,000	\$24,000	\$39,000	\$54,000	\$51,000	\$53,000	\$43,000
% Renter	71%	33%	28%	37%	25%	63%	32%	29%	38%	25%	35%
% Youth	18%	25%	30%	22%	20%	18%	25%	26%	23%	21%	23%

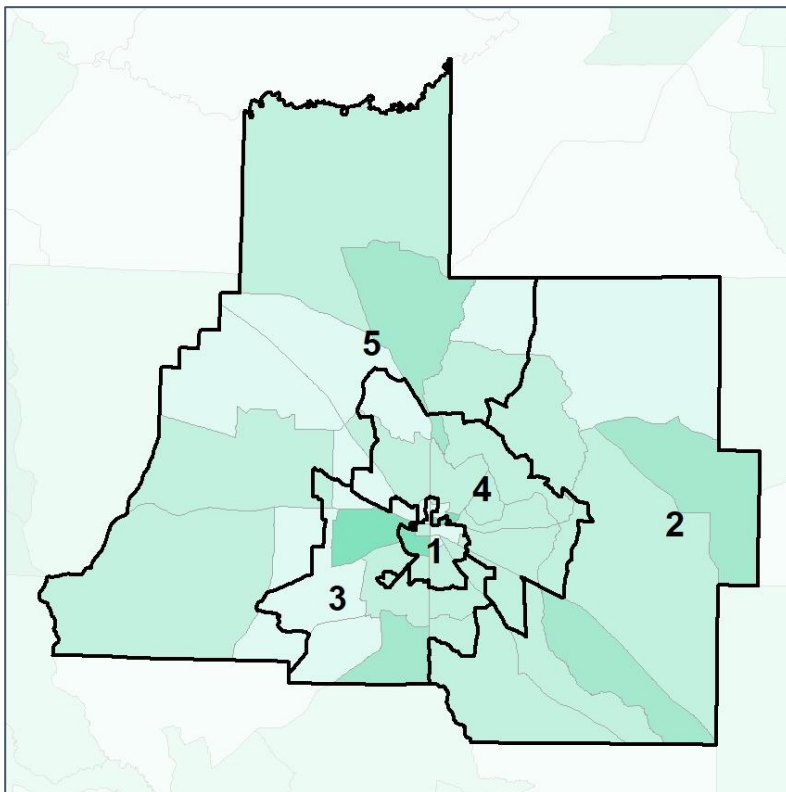


# Coffee Co. Commission & School Board

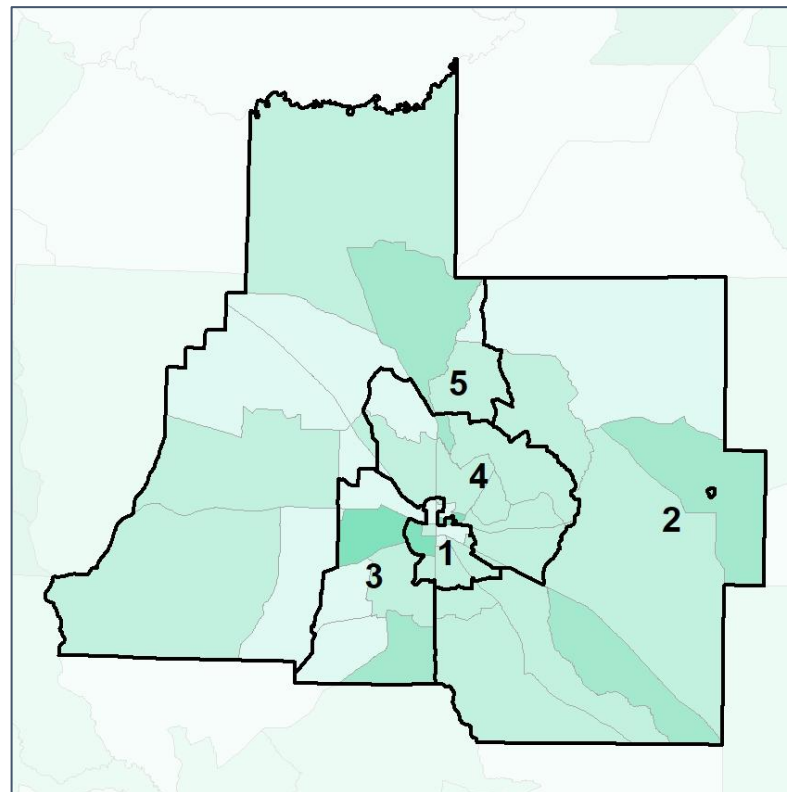
## % Youth (18-34) by Census Block Group



### 2012 Map



### 2022 Map\*



	1	2	3	4	5	1*	2*	3*	4*	5*	County
Population	7,388	9,298	9,515	8,881	8,010	8,144	8,158	8,136	8,154	8,118	43,092
% API	1%	0%	1%	1%	0%	1%	1%	1%	1%	0%	1%
% Black	70%	24%	17%	17%	17%	68%	12%	15%	15%	16%	28%
% Latino	9%	9%	19%	13%	13%	9%	12%	20%	13%	13%	13%
% Other	3%	2%	3%	3%	4%	3%	3%	3%	3%	4%	3%
% White	17%	65%	61%	65%	66%	20%	73%	60%	67%	67%	56%
Median Income	\$21,000	\$39,000	\$51,000	\$49,000	\$54,000	\$24,000	\$39,000	\$54,000	\$51,000	\$53,000	\$43,000
% Renter	71%	33%	28%	37%	25%	63%	32%	29%	38%	25%	35%
% Youth	18%	25%	30%	22%	20%	18%	25%	26%	23%	21%	23%

