



Demographic Overview

Racial Breakdown in Cobb County

Cobb County	2010	2020	% Change
Total Population	688,078	766,149	11%
AAPI	30,699	42,826	40%
Black	168,053	200,072	19%
Latino	84,330	111,240	32%
Other/Mixed Race	17,558	42,829	144%
POC	300,640	396,967	32%
White	387,438	369,182	-5%

*Note: The use of "Other" in these statistics combines those who identify as Native American, Mixed Race, and "Other" race





Population Gain

Change in Population in Georgia by County

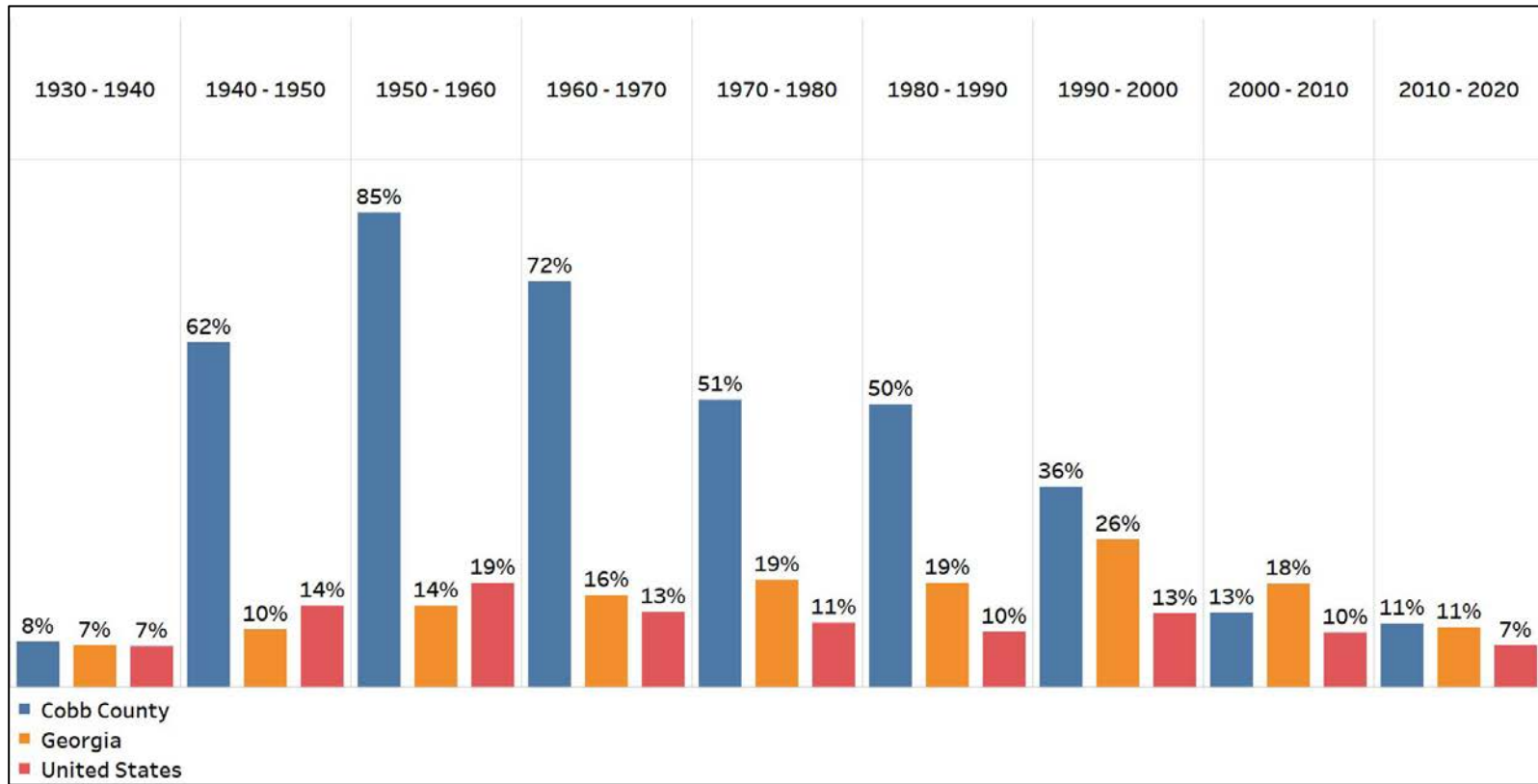


- Georgia is experiencing rapid population growth in the Atlanta, Augusta, and Savannah regions of the state



Population Gain

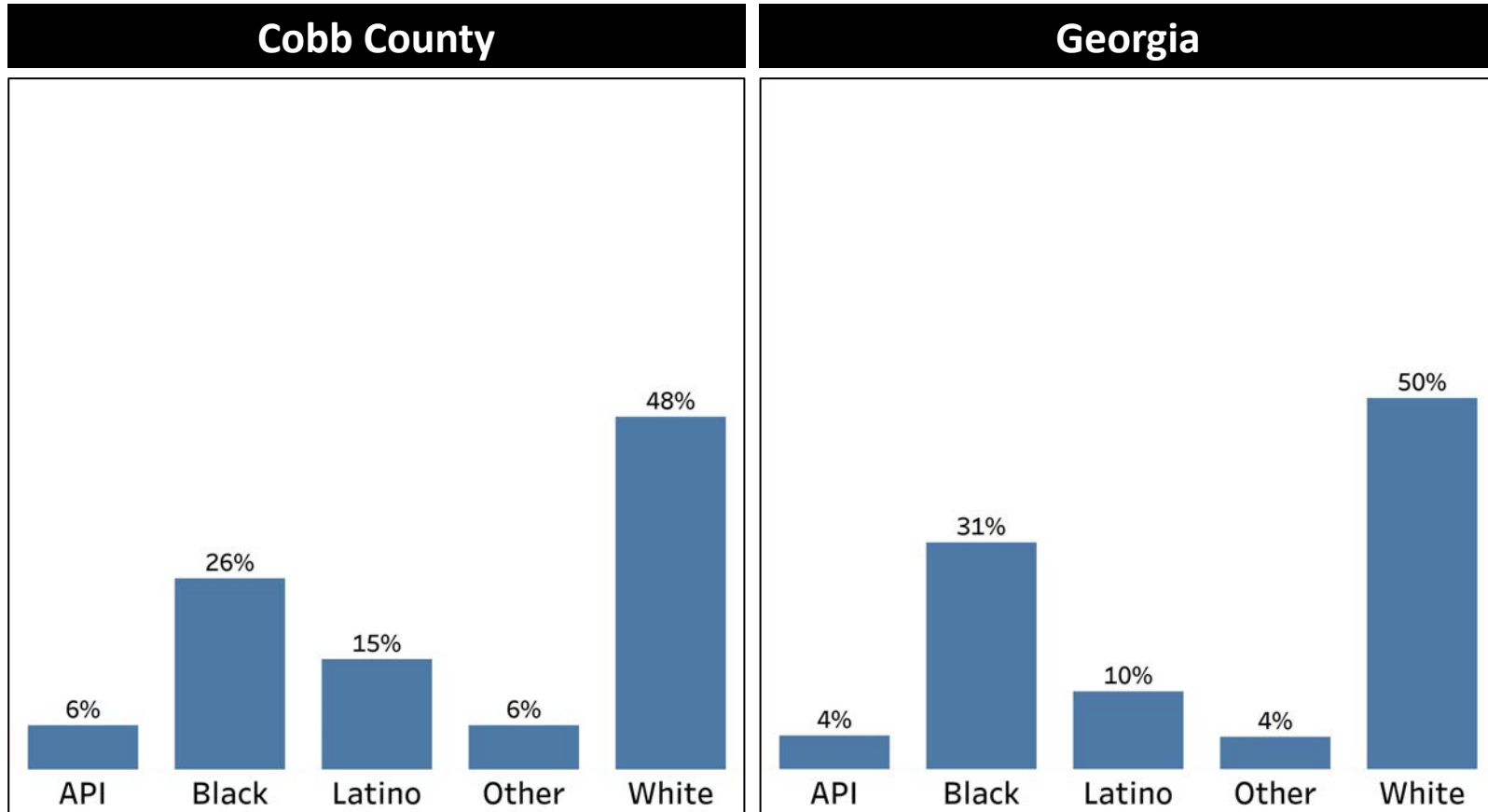
Change in Population by Decade



- Cobb County had booming population growth starting in the 1940s all the way through the 1990s
- In the 21st century, while Cobb has continued to grow, its growth rate has significantly declined

Demographics

Comparison between Cobb County and Georgia



- Cobb County is now a majority minority county, with about 53% of the population identifying as people of color
- The API, Latino, and Other populations have a higher percentage of the population in Cobb compared to Georgia overall

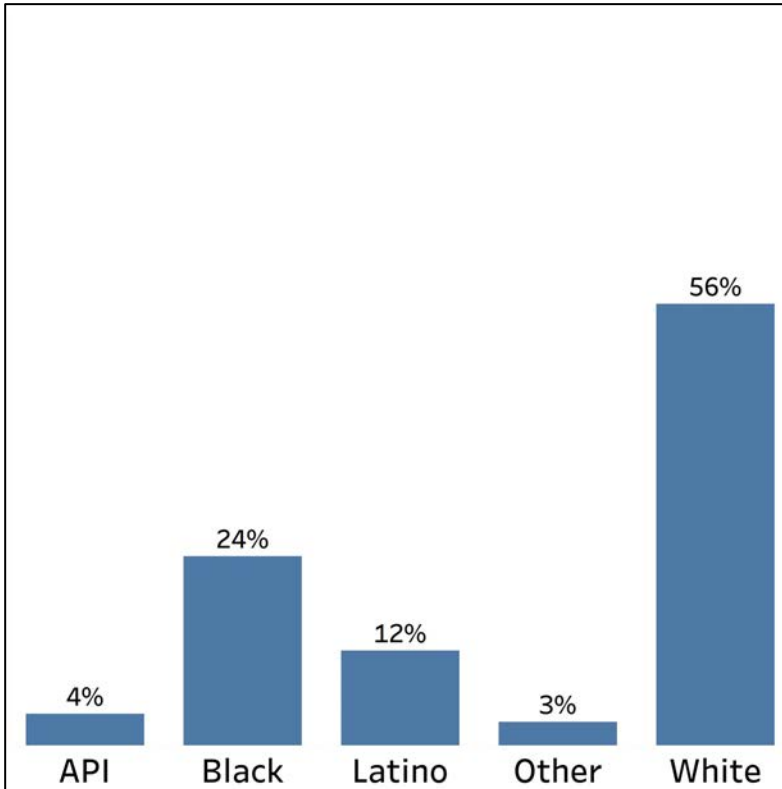


Demographics

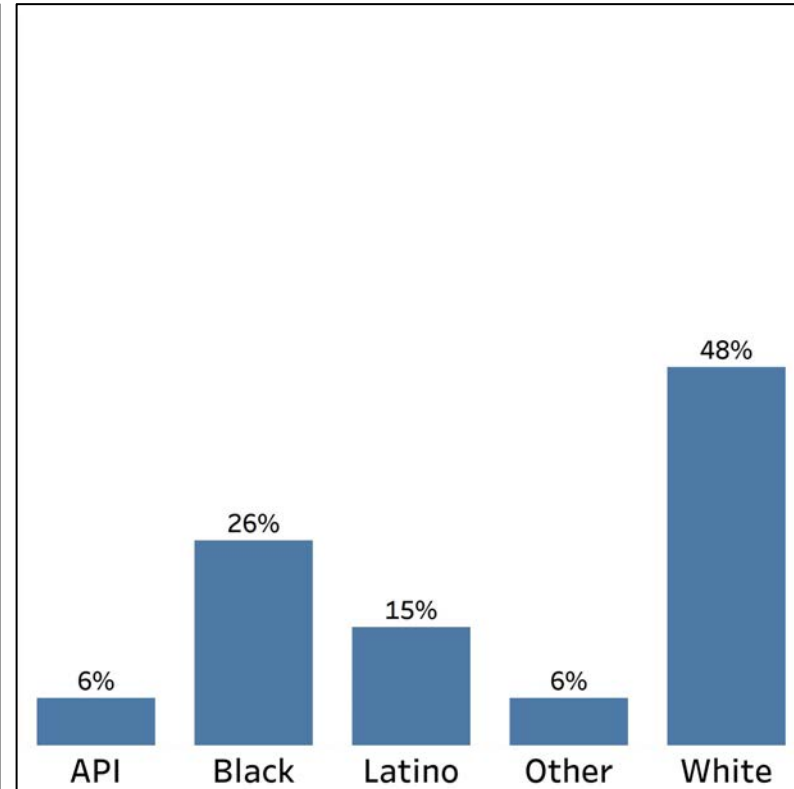
2010 vs 2020 Demographics in Cobb County



Cobb County 2010



Cobb County 2020



- Cobb County's share of the White population has significantly decreased in the past decade, making it no longer a majority White county
- All other demographic groups grew their shares, with the Other population doubling and the API population growing its share by 50%

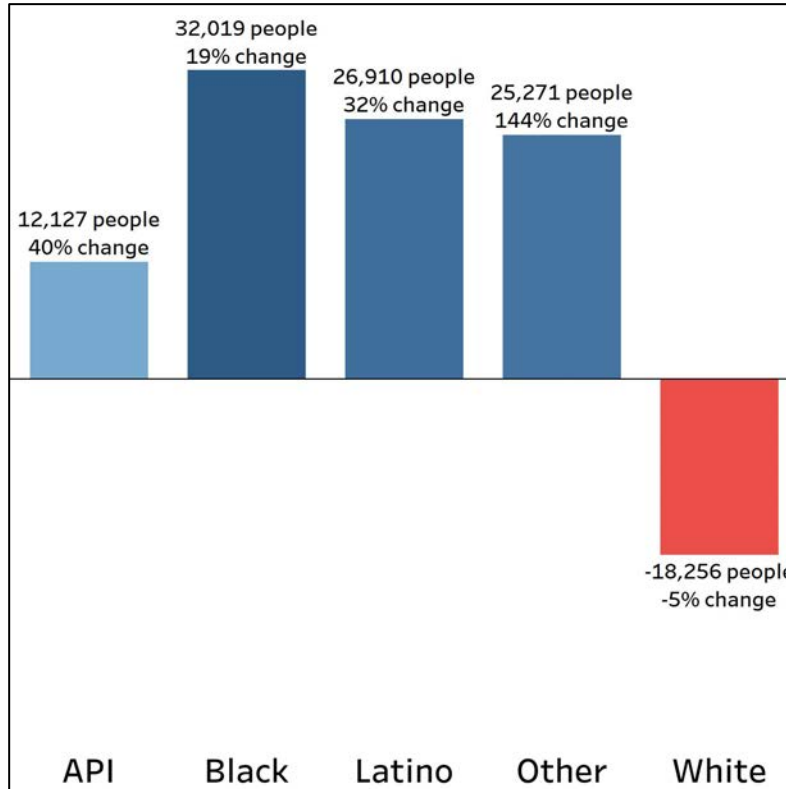


Demographics

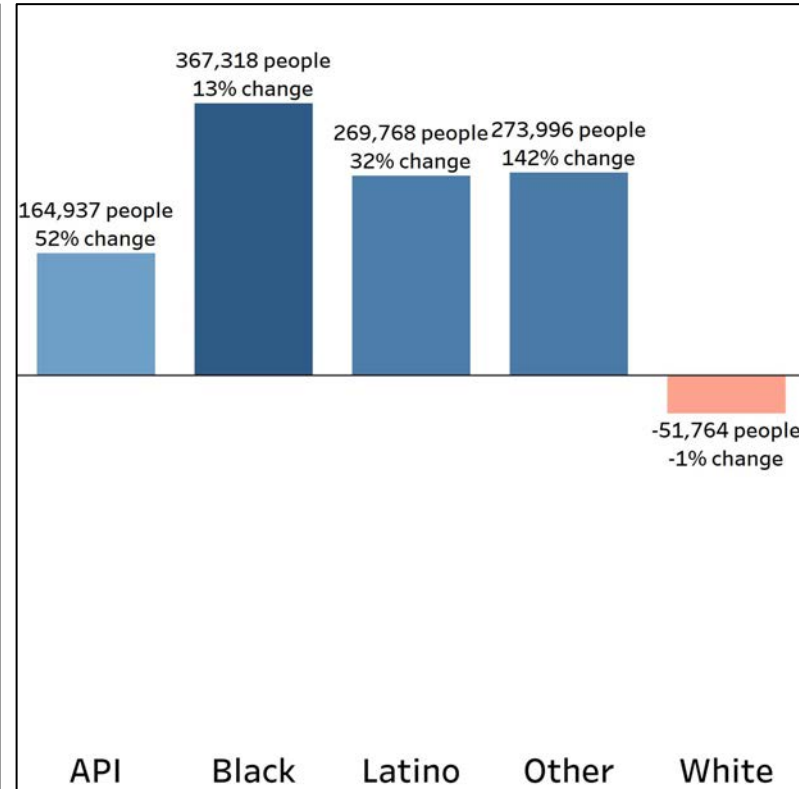
Population Change by Race (2020 - 2010)



Cobb County



Georgia



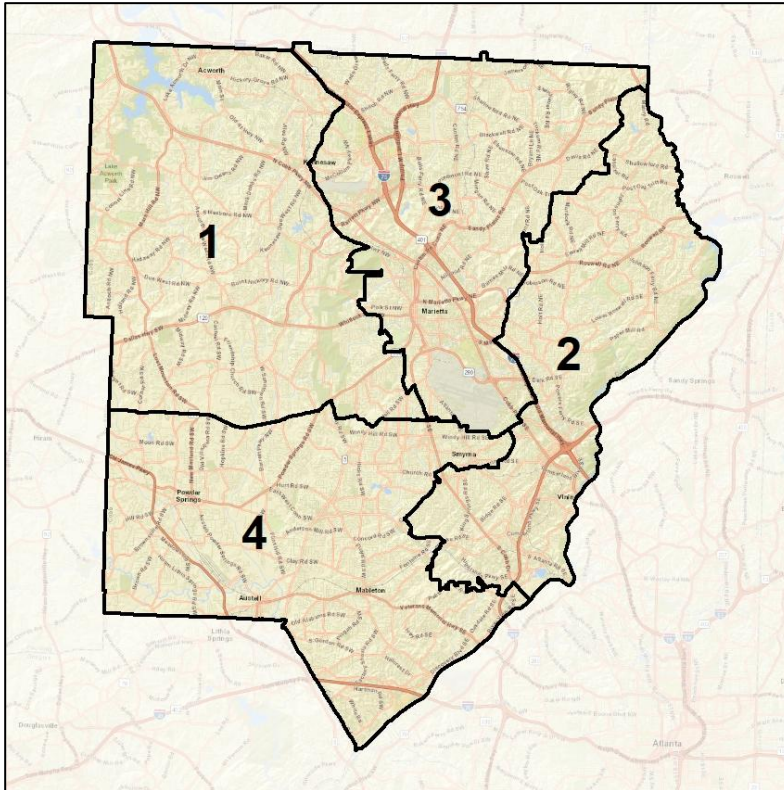
- Cobb County had significant decrease in the White population, which declined at a faster rate than in Georgia overall
- Meanwhile the growth in all other demographic groups were similar to their growth rates in Georgia overall



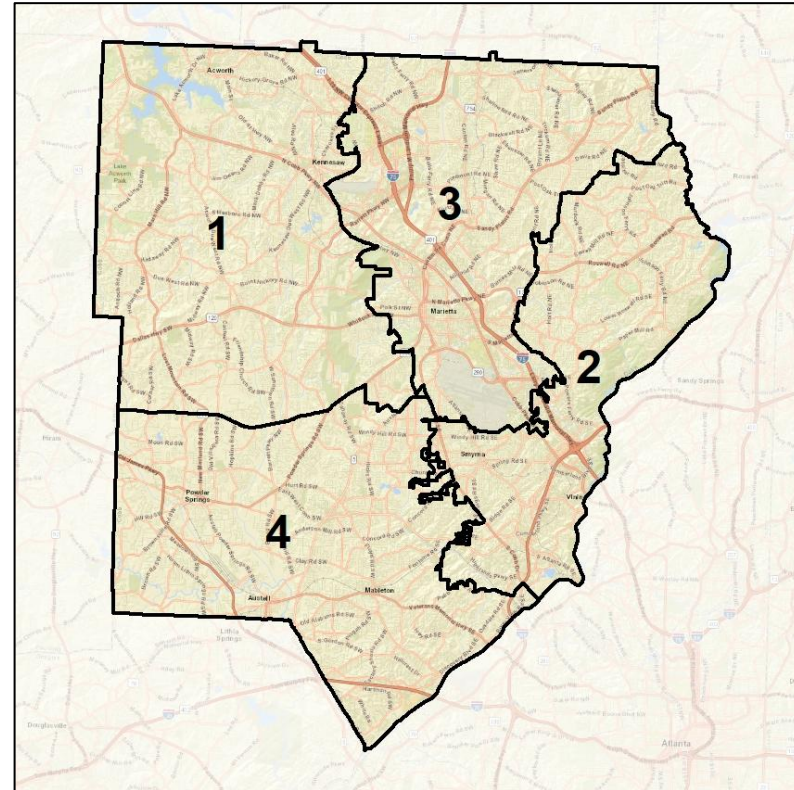
Cobb County Commission - Current Context



2012 Map



2022 Map*



	1	2	3	4	1*	2*	3*	4*	County
Population	188,245	195,698	188,004	194,202	190,095	192,590	190,781	192,683	766,149
API	4%	10%	6%	2%	4%	10%	6%	2%	6%
Black	20%	19%	19%	46%	20%	20%	19%	45%	26%
Latino	12%	8%	16%	22%	11%	9%	16%	22%	15%
Other	6%	6%	6%	4%	6%	6%	6%	4%	6%
White	58%	57%	53%	25%	59%	55%	54%	25%	48%
Population Gain	15,610	23,689	16,419	22,353	1,850	-3,108	2,777	-1,519	78,071
Population % Gain	9%	14%	10%	13%	1%	-2%	1%	-1%	11%
Net POC Gain	19,609	25,411	20,128	31,179	-1,827	3,305	-259	-1,219	96,327
Net POC % Gain	33%	43%	29%	27%	-2%	4%	0%	-1%	32%

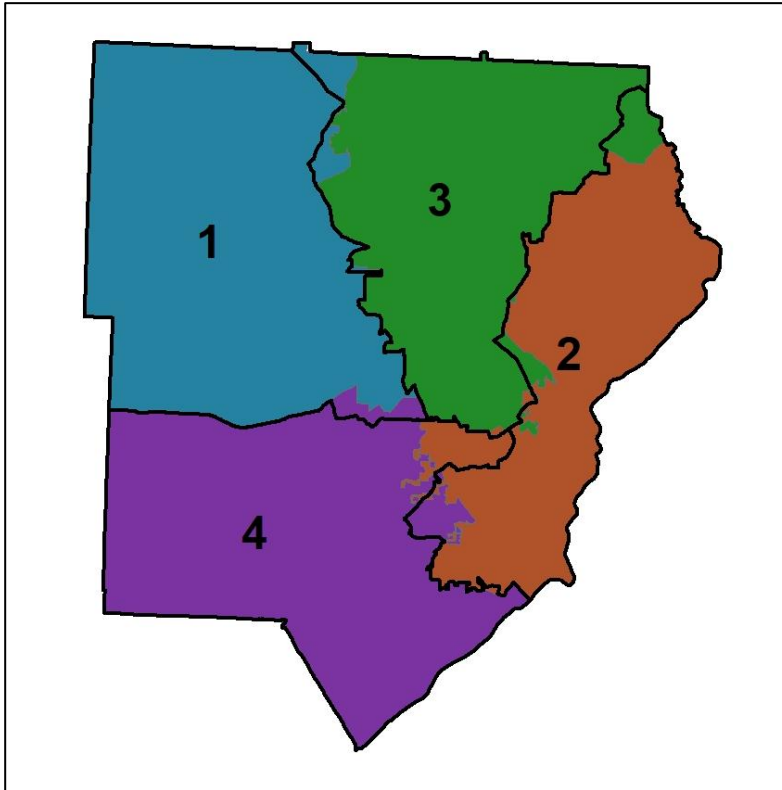


Source:
2020 Decennial Census
2020 ACS 5-Year Dataset

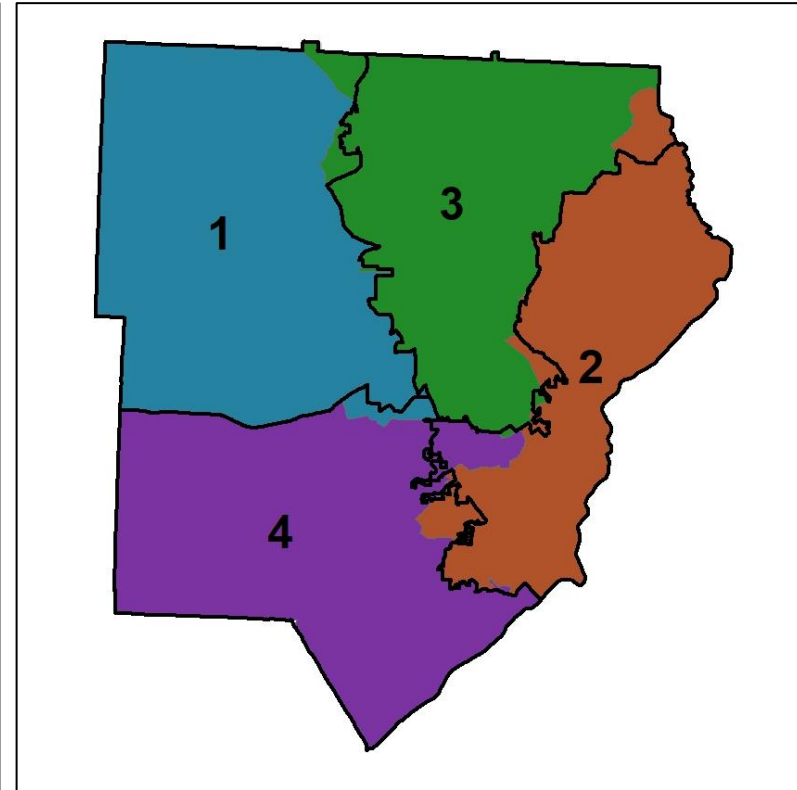
Cobb County Commission - Current Changes in Redistricting



2012 Map (2022 in Colors)



2022 Map* (2012 in Colors)



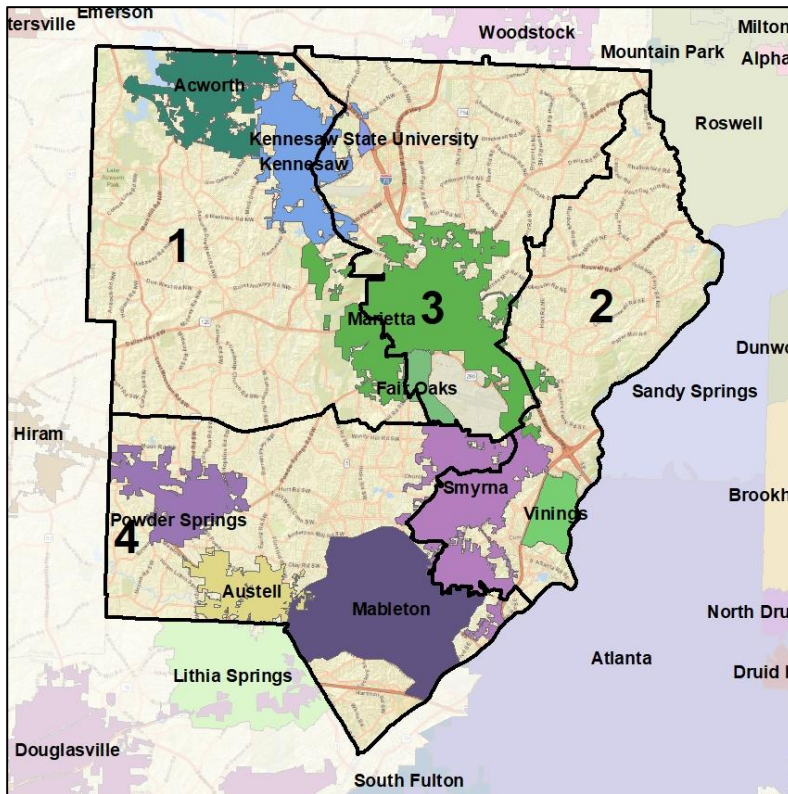
	1	2	3	4	1*	2*	3*	4*	County
Population	188,245	195,698	188,004	194,202	190,095	192,590	190,781	192,683	766,149
API	4%	10%	6%	2%	4%	10%	6%	2%	6%
Black	20%	19%	19%	46%	20%	20%	19%	45%	26%
Latino	12%	8%	16%	22%	11%	9%	16%	22%	15%
Other	6%	6%	6%	4%	6%	6%	6%	4%	6%
White	58%	57%	53%	25%	59%	55%	54%	25%	48%
Population Gain	15,610	23,689	16,419	22,353	1,850	-3,108	2,777	-1,519	78,071
Population % Gain	9%	14%	10%	13%	1%	-2%	1%	-1%	11%
Net POC Gain	19,609	25,411	20,128	31,179	-1,827	3,305	-259	-1,219	96,327
Net POC % Gain	33%	43%	29%	27%	-2%	4%	0%	-1%	32%



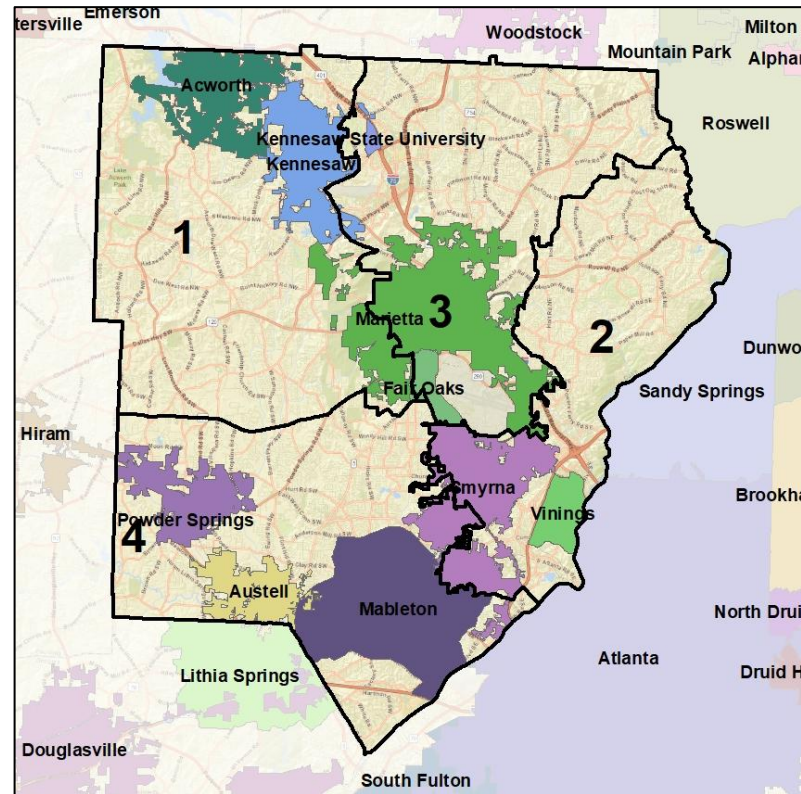
Cobb County Commission - Current Cities and Places



2012 Map



2022 Map*



	1	2	3	4	1*	2*	3*	4*	County
Population	188,245	195,698	188,004	194,202	190,095	192,590	190,781	192,683	766,149
API	4%	10%	6%	2%	4%	10%	6%	2%	6%
Black	20%	19%	19%	46%	20%	20%	19%	45%	26%
Latino	12%	8%	16%	22%	11%	9%	16%	22%	15%
Other	6%	6%	6%	4%	6%	6%	6%	4%	6%
White	58%	57%	53%	25%	59%	55%	54%	25%	48%
Population Gain	15,610	23,689	16,419	22,353	1,850	-3,108	2,777	-1,519	78,071
Population % Gain	9%	14%	10%	13%	1%	-2%	1%	-1%	11%
Net POC Gain	19,609	25,411	20,128	31,179	-1,827	3,305	-259	-1,219	96,327
Net POC % Gain	33%	43%	29%	27%	-2%	4%	0%	-1%	32%

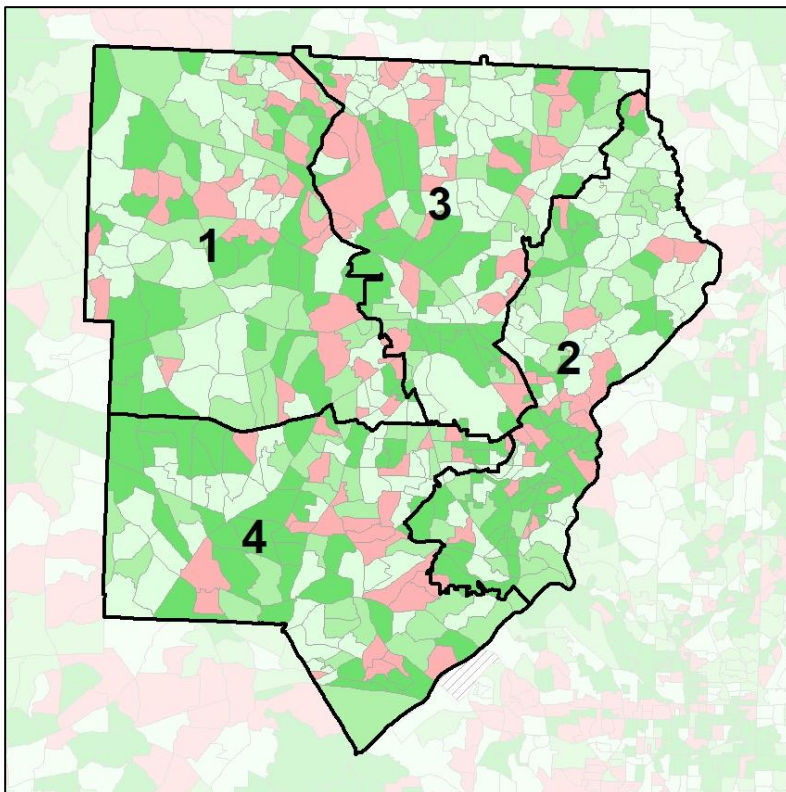


Cobb County Commission - Current

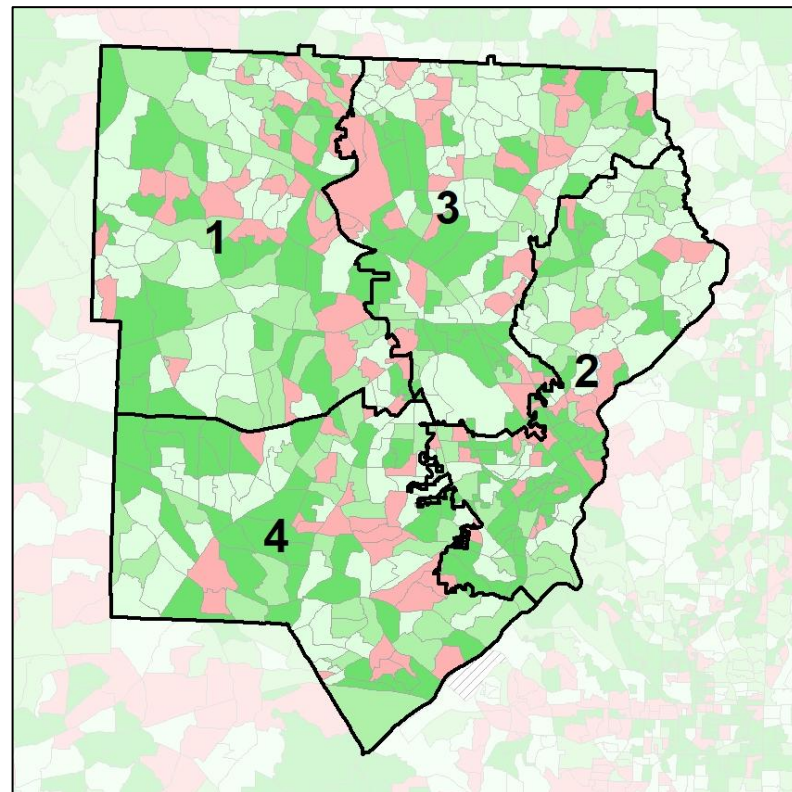
Net Gain in Population (2010 - 2020) by Census Block Group



2012 Map



2022 Map*



	1	2	3	4	1*	2*	3*	4*	County
Population	188,245	195,698	188,004	194,202	190,095	192,590	190,781	192,683	766,149
API	4%	10%	6%	2%	4%	10%	6%	2%	6%
Black	20%	19%	19%	46%	20%	20%	19%	45%	26%
Latino	12%	8%	16%	22%	11%	9%	16%	22%	15%
Other	6%	6%	6%	4%	6%	6%	6%	4%	6%
White	58%	57%	53%	25%	59%	55%	54%	25%	48%
Population Gain	15,610	23,689	16,419	22,353	1,850	-3,108	2,777	-1,519	78,071
Population % Gain	9%	14%	10%	13%	1%	-2%	1%	-1%	11%
Net POC Gain	19,609	25,411	20,128	31,179	-1,827	3,305	-259	-1,219	96,327
Net POC % Gain	33%	43%	29%	27%	-2%	4%	0%	-1%	32%

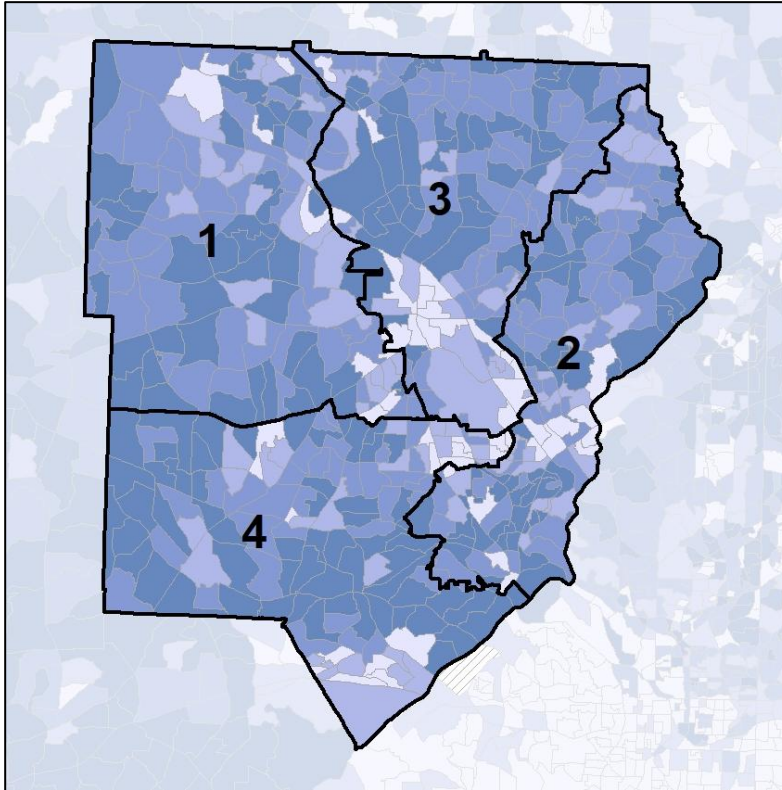


Cobb County Commission - Current

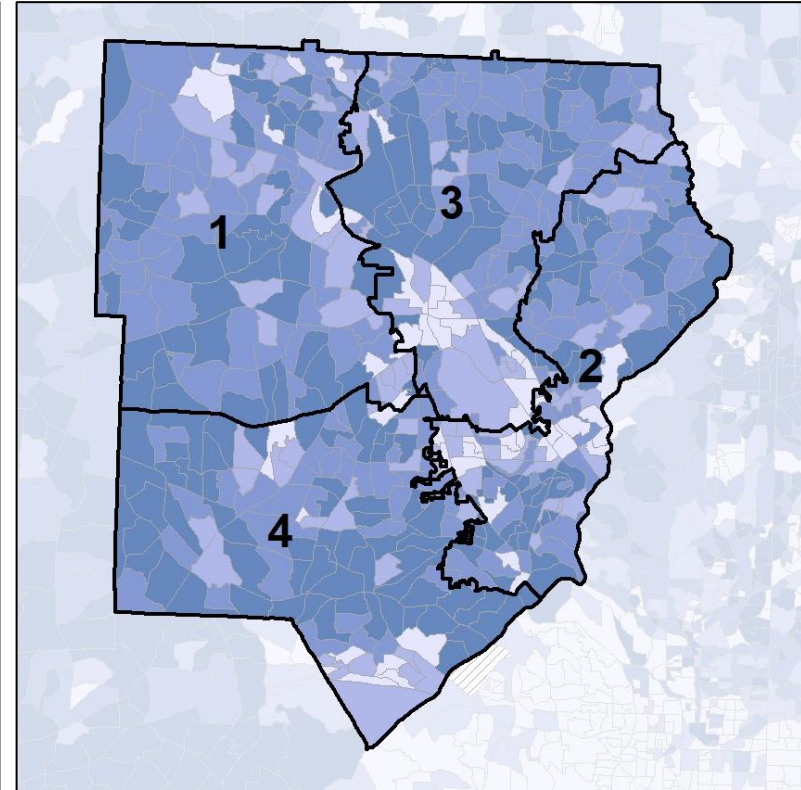
Net Gain in % POC (2020 - 2010) by Census Block Group



2012 Map



2022 Map*



	1	2	3	4	1*	2*	3*	4*	County
Population	188,245	195,698	188,004	194,202	190,095	192,590	190,781	192,683	766,149
API	4%	10%	6%	2%	4%	10%	6%	2%	6%
Black	20%	19%	19%	46%	20%	20%	19%	45%	26%
Latino	12%	8%	16%	22%	11%	9%	16%	22%	15%
Other	6%	6%	6%	4%	6%	6%	6%	4%	6%
White	58%	57%	53%	25%	59%	55%	54%	25%	48%
Population Gain	15,610	23,689	16,419	22,353	1,850	-3,108	2,777	-1,519	78,071
Population % Gain	9%	14%	10%	13%	1%	-2%	1%	-1%	11%
Net POC Gain	19,609	25,411	20,128	31,179	-1,827	3,305	-259	-1,219	96,327
Net POC % Gain	33%	43%	29%	27%	-2%	4%	0%	-1%	32%

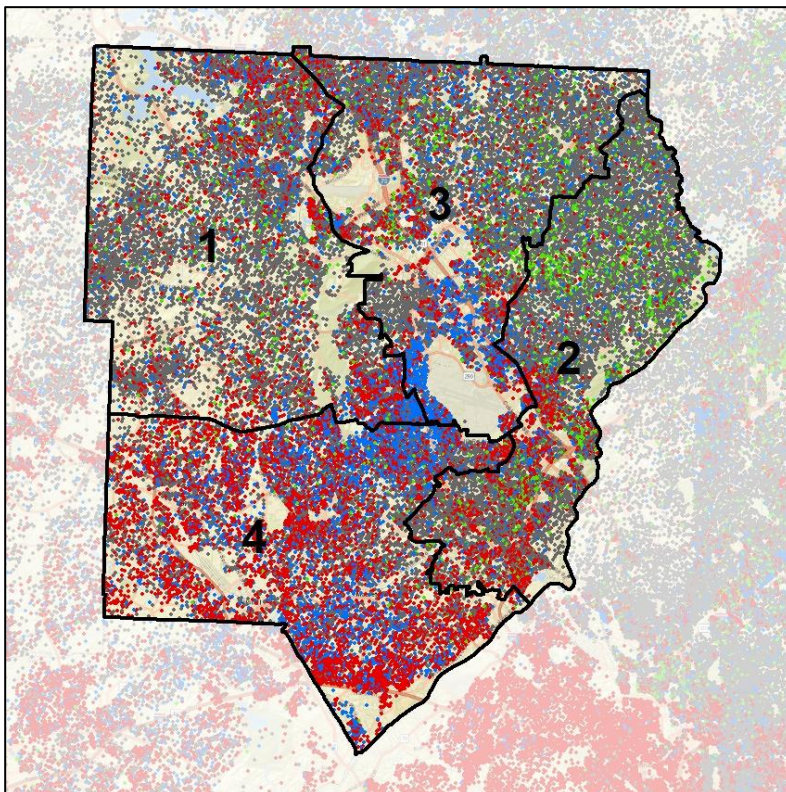


Cobb County Commission - Current

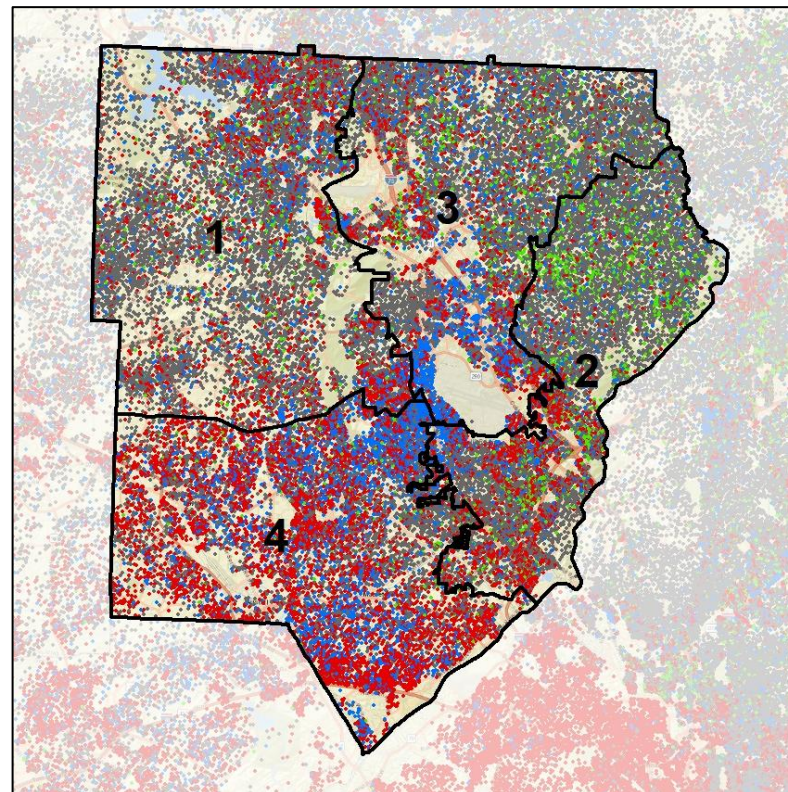
Population Density by Race



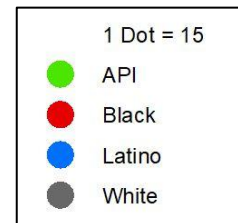
2012 Map



2022 Map*



	1	2	3	4	1*	2*	3*	4*	County
Population	188,245	195,698	188,004	194,202	190,095	192,590	190,781	192,683	766,149
API	7,127	20,278	10,605	4,816	7,466	19,860	11,028	4,472	42,826
% API	4%	10%	6%	2%	4%	10%	6%	2%	6%
Black	38,485	36,780	36,011	88,796	38,352	38,781	35,451	87,488	200,072
% Black	20%	19%	19%	46%	20%	20%	19%	45%	26%
Latino	23,279	15,214	30,215	42,532	20,849	17,665	29,620	43,106	111,240
% Latino	12%	8%	16%	22%	11%	9%	16%	22%	15%
Other	10,388	11,947	11,867	8,627	10,785	11,218	12,340	8,486	42,829
% Other	6%	6%	6%	4%	6%	6%	6%	4%	6%
White	108,966	111,479	99,306	49,431	112,643	105,066	102,342	49,131	369,182
% White	58%	57%	53%	25%	59%	55%	54%	25%	48%



Source:
2020 Decennial Census
2020 ACS 5-Year Dataset

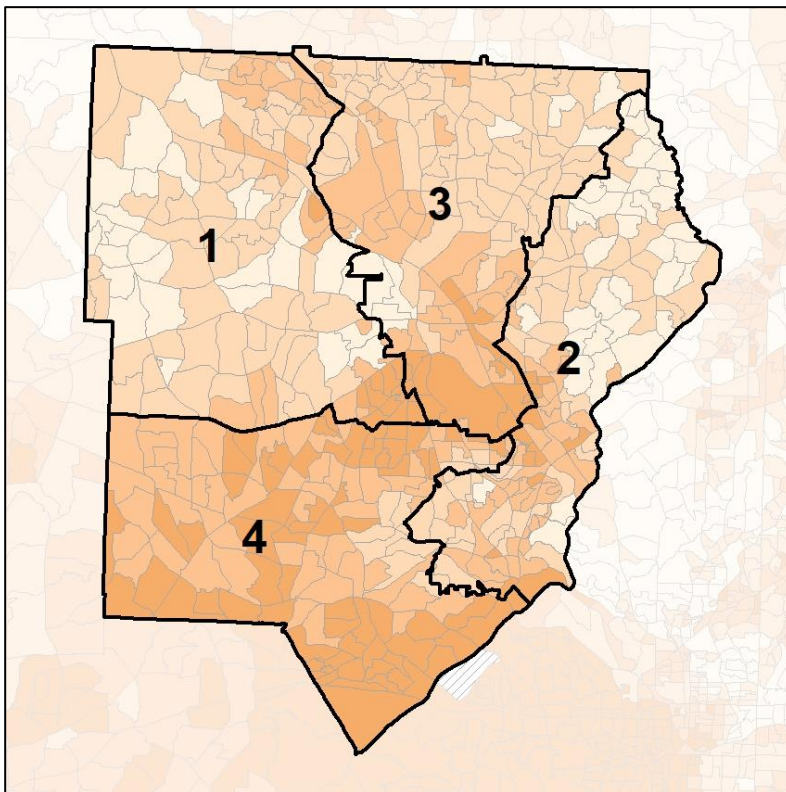


Cobb County Commission - Current

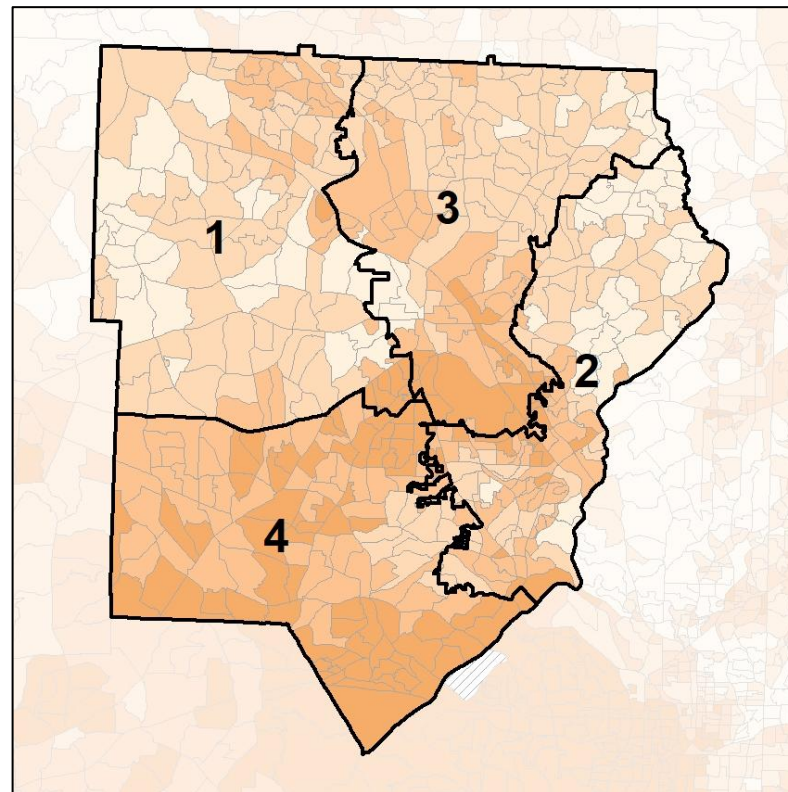
% People of Color by Census Block Group



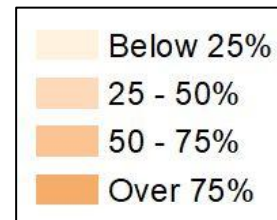
2012 Map



2022 Map*



	1	2	3	4	1*	2*	3*	4*	County
Population	188,245	195,698	188,004	194,202	190,095	192,590	190,781	192,683	766,149
API	7,127	20,278	10,605	4,816	7,466	19,860	11,028	4,472	42,826
% API	4%	10%	6%	2%	4%	10%	6%	2%	6%
Black	38,485	36,780	36,011	88,796	38,352	38,781	35,451	87,488	200,072
% Black	20%	19%	19%	46%	20%	20%	19%	45%	26%
Latino	23,279	15,214	30,215	42,532	20,849	17,665	29,620	43,106	111,240
% Latino	12%	8%	16%	22%	11%	9%	16%	22%	15%
Other	10,388	11,947	11,867	8,627	10,785	11,218	12,340	8,486	42,829
% Other	6%	6%	6%	4%	6%	6%	6%	4%	6%
White	108,966	111,479	99,306	49,431	112,643	105,066	102,342	49,131	369,182
% White	58%	57%	53%	25%	59%	55%	54%	25%	48%

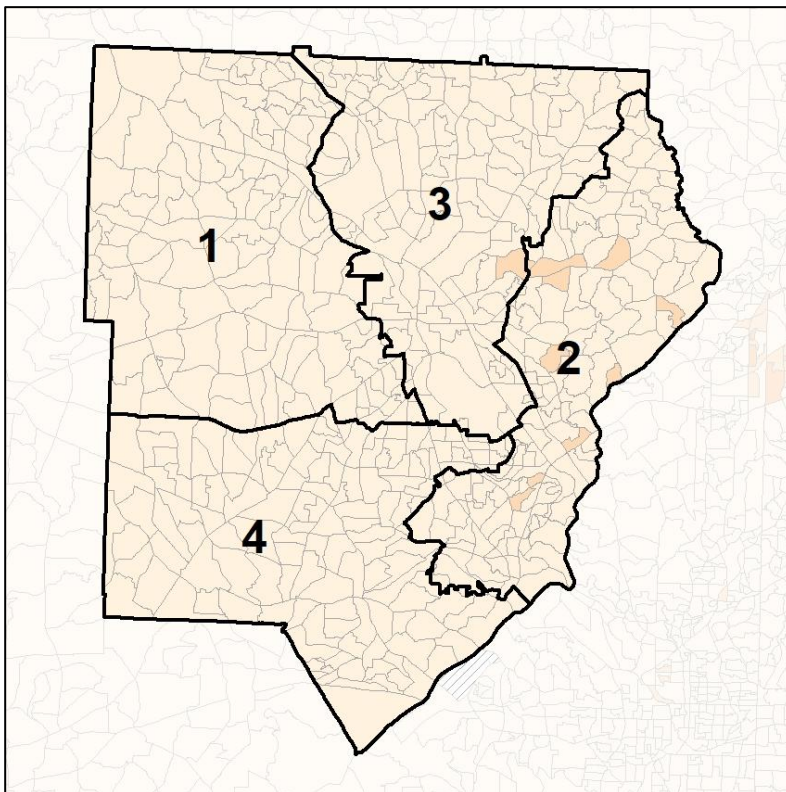


Cobb County Commission - Current

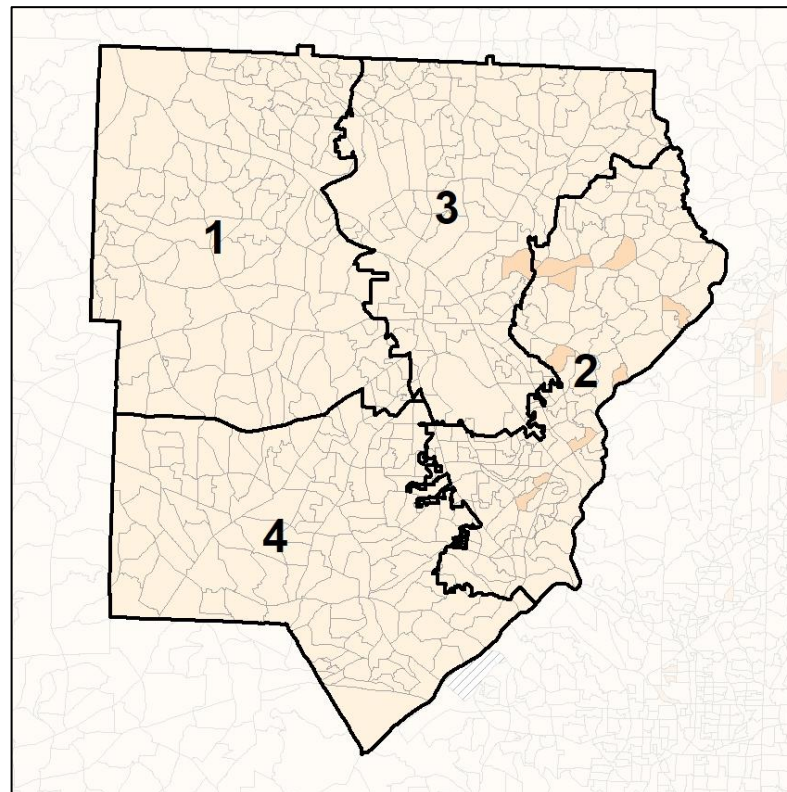
% API by Census Block Group



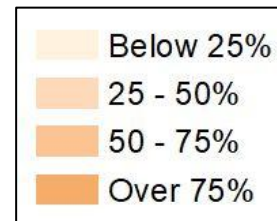
2012 Map



2022 Map*



	1	2	3	4	1*	2*	3*	4*	County
Population	188,245	195,698	188,004	194,202	190,095	192,590	190,781	192,683	766,149
API	7,127	20,278	10,605	4,816	7,466	19,860	11,028	4,472	42,826
% API	4%	10%	6%	2%	4%	10%	6%	2%	6%
Black	38,485	36,780	36,011	88,796	38,352	38,781	35,451	87,488	200,072
% Black	20%	19%	19%	46%	20%	20%	19%	45%	26%
Latino	23,279	15,214	30,215	42,532	20,849	17,665	29,620	43,106	111,240
% Latino	12%	8%	16%	22%	11%	9%	16%	22%	15%
Other	10,388	11,947	11,867	8,627	10,785	11,218	12,340	8,486	42,829
% Other	6%	6%	6%	4%	6%	6%	6%	4%	6%
White	108,966	111,479	99,306	49,431	112,643	105,066	102,342	49,131	369,182
% White	58%	57%	53%	25%	59%	55%	54%	25%	48%



Source:
2020 Decennial Census
2020 ACS 5-Year Dataset

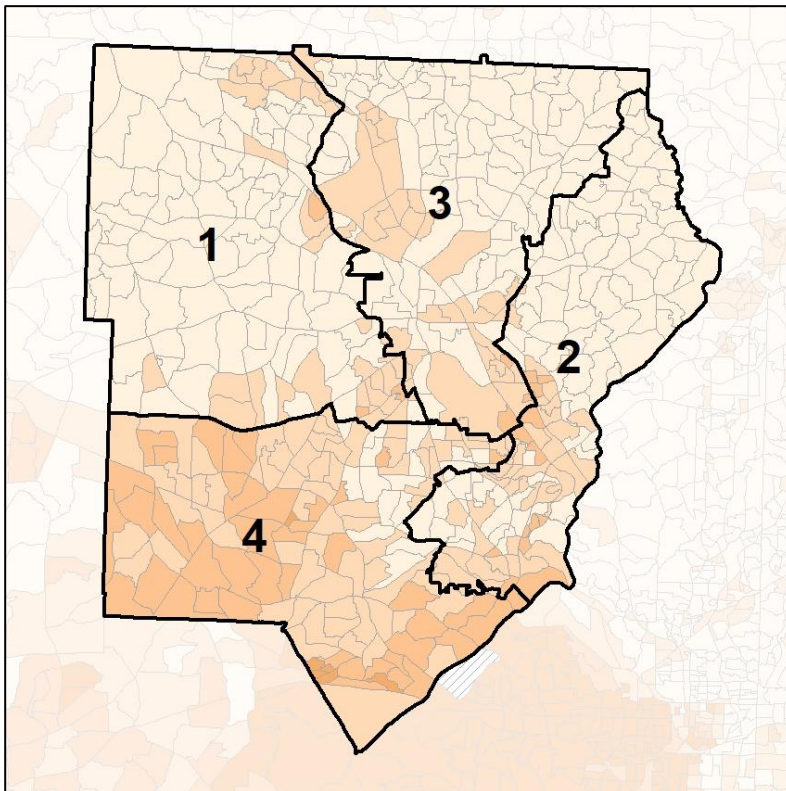


Cobb County Commission - Current

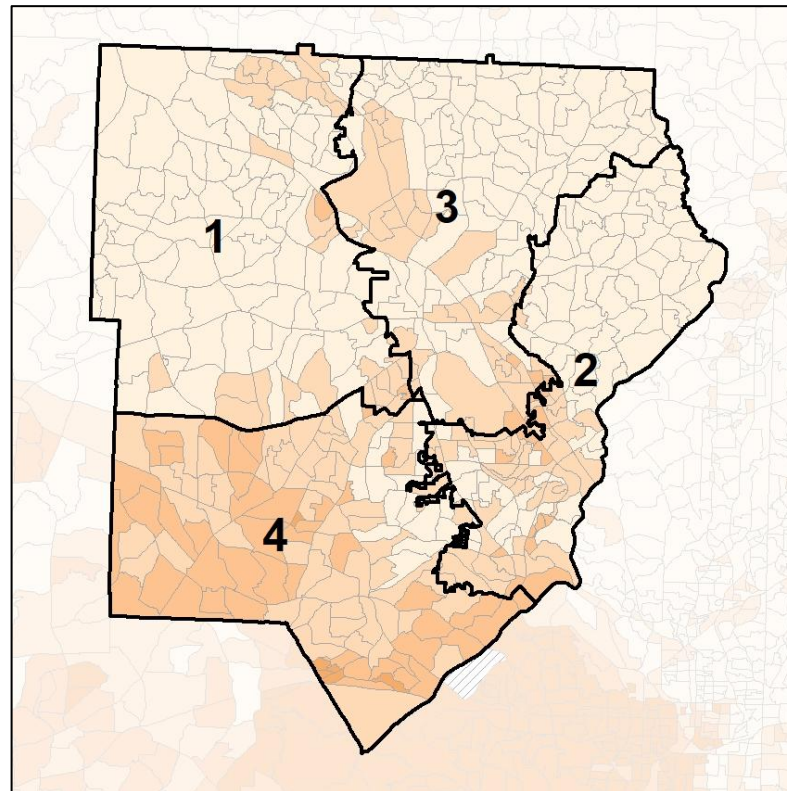
% Black by Census Block Group



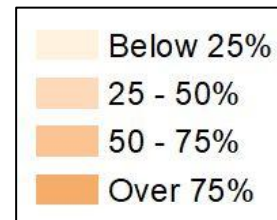
2012 Map



2022 Map*



	1	2	3	4	1*	2*	3*	4*	County
Population	188,245	195,698	188,004	194,202	190,095	192,590	190,781	192,683	766,149
API	7,127	20,278	10,605	4,816	7,466	19,860	11,028	4,472	42,826
% API	4%	10%	6%	2%	4%	10%	6%	2%	6%
Black	38,485	36,780	36,011	88,796	38,352	38,781	35,451	87,488	200,072
% Black	20%	19%	19%	46%	20%	20%	19%	45%	26%
Latino	23,279	15,214	30,215	42,532	20,849	17,665	29,620	43,106	111,240
% Latino	12%	8%	16%	22%	11%	9%	16%	22%	15%
Other	10,388	11,947	11,867	8,627	10,785	11,218	12,340	8,486	42,829
% Other	6%	6%	6%	4%	6%	6%	6%	4%	6%
White	108,966	111,479	99,306	49,431	112,643	105,066	102,342	49,131	369,182
% White	58%	57%	53%	25%	59%	55%	54%	25%	48%



Source:
2020 Decennial Census
2020 ACS 5-Year Dataset

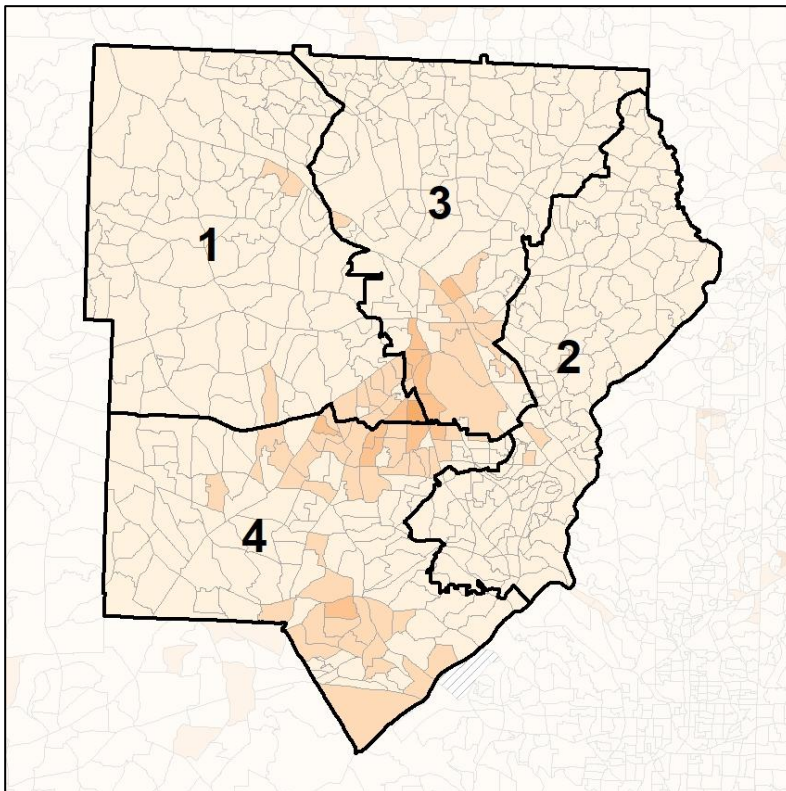


Cobb County Commission - Current

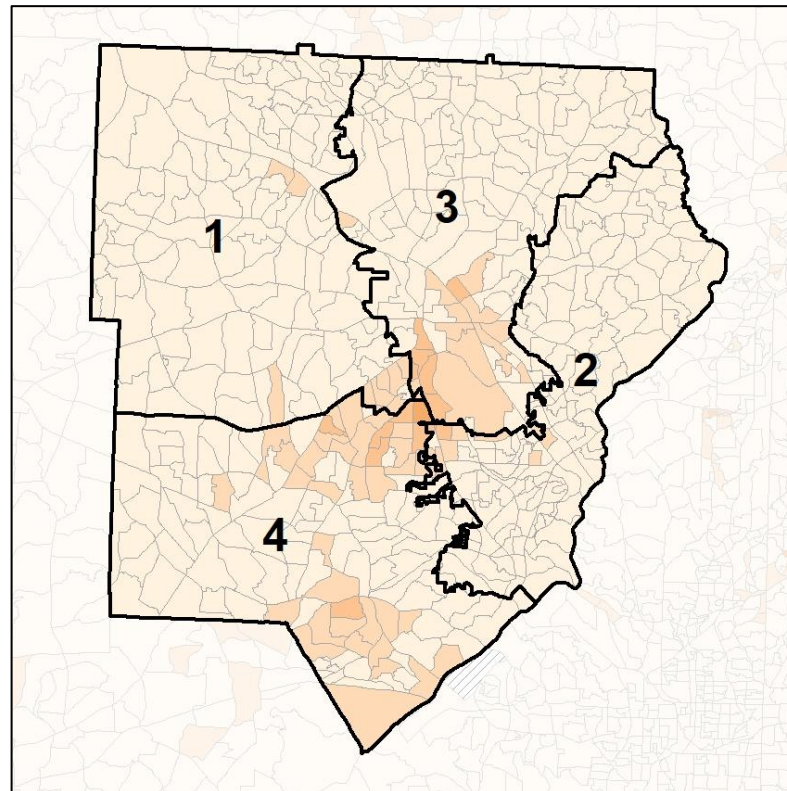
% Latino by Census Block Group



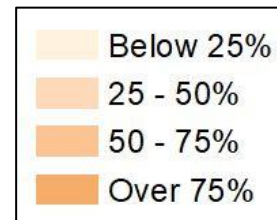
2012 Map



2022 Map*



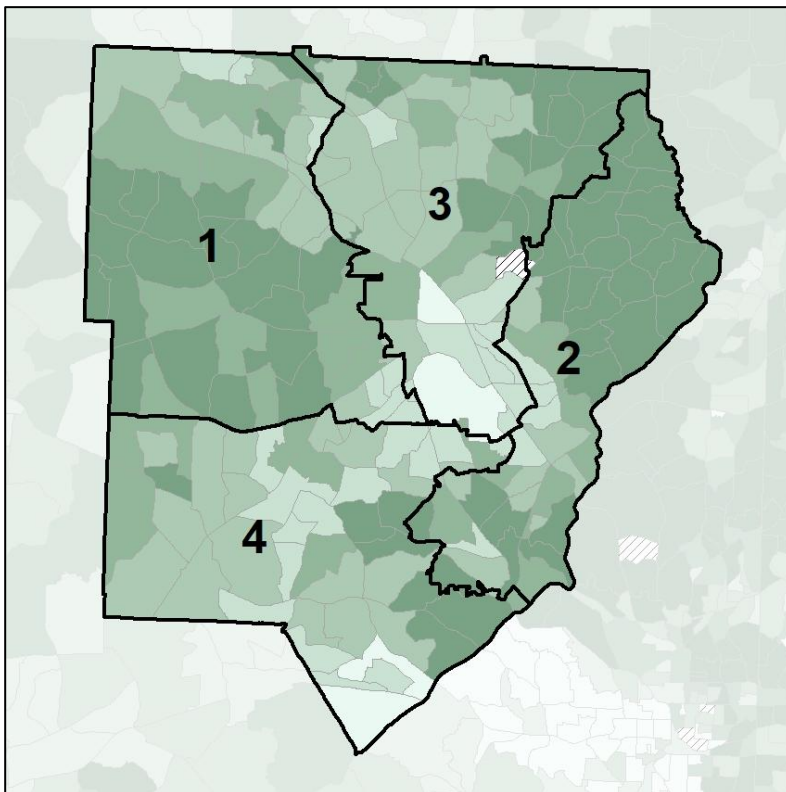
	1	2	3	4	1*	2*	3*	4*	County
Population	188,245	195,698	188,004	194,202	190,095	192,590	190,781	192,683	766,149
API	7,127	20,278	10,605	4,816	7,466	19,860	11,028	4,472	42,826
% API	4%	10%	6%	2%	4%	10%	6%	2%	6%
Black	38,485	36,780	36,011	88,796	38,352	38,781	35,451	87,488	200,072
% Black	20%	19%	19%	46%	20%	20%	19%	45%	26%
Latino	23,279	15,214	30,215	42,532	20,849	17,665	29,620	43,106	111,240
% Latino	12%	8%	16%	22%	11%	9%	16%	22%	15%
Other	10,388	11,947	11,867	8,627	10,785	11,218	12,340	8,486	42,829
% Other	6%	6%	6%	4%	6%	6%	6%	4%	6%
White	108,966	111,479	99,306	49,431	112,643	105,066	102,342	49,131	369,182
% White	58%	57%	53%	25%	59%	55%	54%	25%	48%



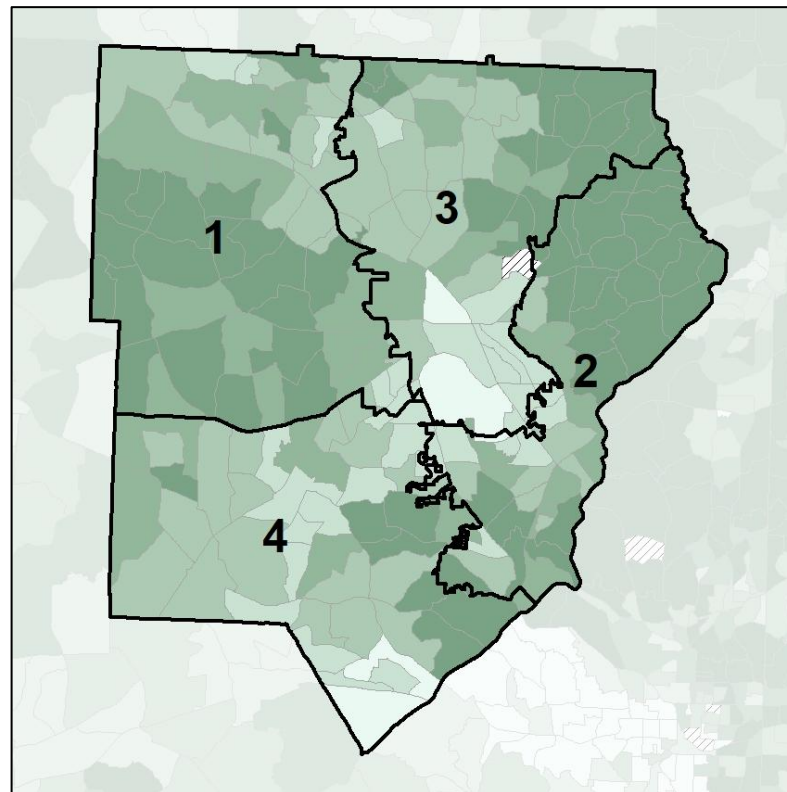
Cobb County Commission - Current Median Household Income by Census Tract



2012 Map



2022 Map*



	1	2	3	4	1*	2*	3*	4*	County
Population	188,245	195,698	188,004	194,202	190,095	192,590	190,781	192,683	766,149
% API	4%	10%	6%	2%	4%	10%	6%	2%	6%
% Black	20%	19%	19%	46%	20%	20%	19%	45%	26%
% Latino	12%	8%	16%	22%	11%	9%	16%	22%	15%
% Other	6%	6%	6%	4%	6%	6%	6%	4%	6%
% White	58%	57%	53%	25%	59%	55%	54%	25%	48%
Median Income	\$97,000	\$109,000	\$84,000	\$72,000	\$98,000	\$106,000	\$87,000	\$72,000	\$81,000
% Renter	22%	39%	39%	34%	21%	42%	38%	33%	34%
% Youth	19%	24%	28%	23%	20%	25%	28%	23%	24%

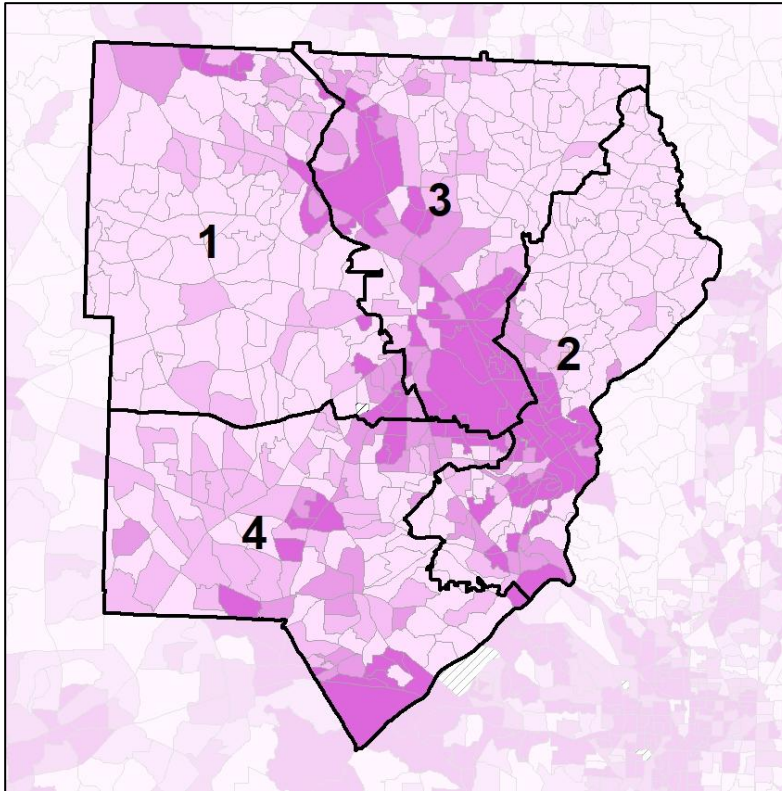


Cobb County Commission - Current

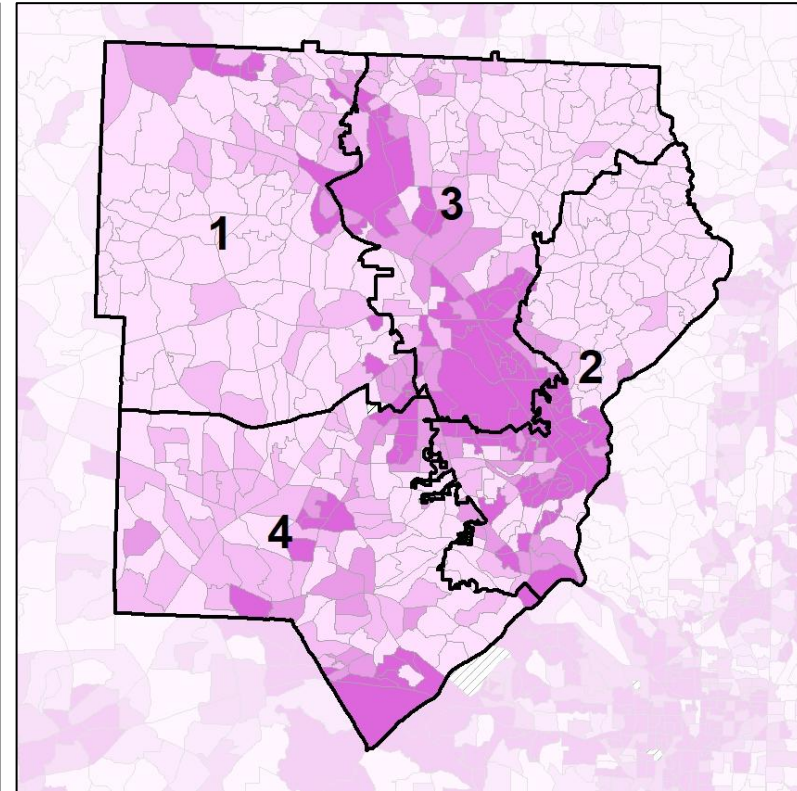
% Renter by Census Block Group



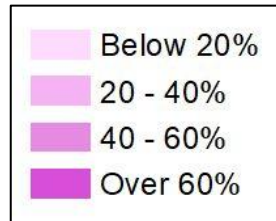
2012 Map



2022 Map*



	1	2	3	4	1*	2*	3*	4*	County
Population	188,245	195,698	188,004	194,202	190,095	192,590	190,781	192,683	766,149
% API	4%	10%	6%	2%	4%	10%	6%	2%	6%
% Black	20%	19%	19%	46%	20%	20%	19%	45%	26%
% Latino	12%	8%	16%	22%	11%	9%	16%	22%	15%
% Other	6%	6%	6%	4%	6%	6%	6%	4%	6%
% White	58%	57%	53%	25%	59%	55%	54%	25%	48%
Median Income	\$97,000	\$109,000	\$84,000	\$72,000	\$98,000	\$106,000	\$87,000	\$72,000	\$81,000
% Renter	22%	39%	39%	34%	21%	42%	38%	33%	34%
% Youth	19%	24%	28%	23%	20%	25%	28%	23%	24%

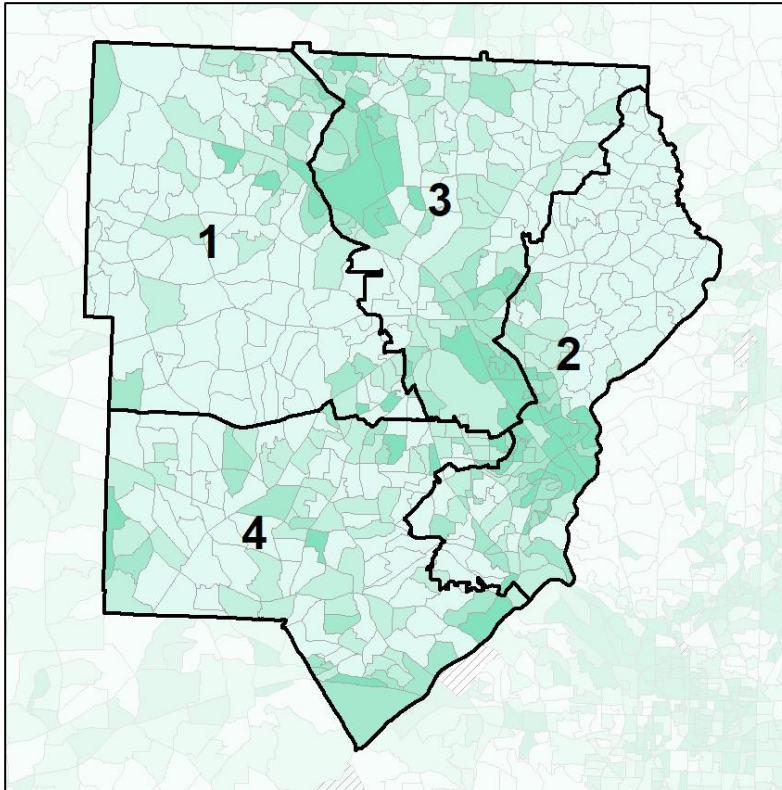


Cobb County Commission - Current

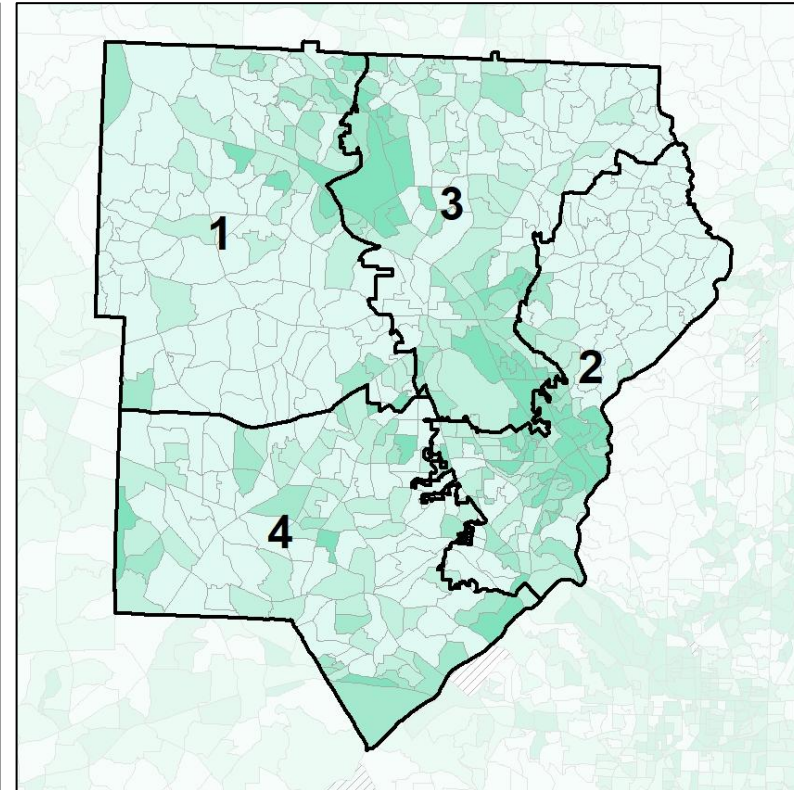
% Youth (18-34) by Census Block Group



2012 Map



2022 Map*



	1	2	3	4	1*	2*	3*	4*	County
Population	188,245	195,698	188,004	194,202	190,095	192,590	190,781	192,683	766,149
% API	4%	10%	6%	2%	4%	10%	6%	2%	6%
% Black	20%	19%	19%	46%	20%	20%	19%	45%	26%
% Latino	12%	8%	16%	22%	11%	9%	16%	22%	15%
% Other	6%	6%	6%	4%	6%	6%	6%	4%	6%
% White	58%	57%	53%	25%	59%	55%	54%	25%	48%
Median Income	\$97,000	\$109,000	\$84,000	\$72,000	\$98,000	\$106,000	\$87,000	\$72,000	\$81,000
% Renter	22%	39%	39%	34%	21%	42%	38%	33%	34%
% Youth	19%	24%	28%	23%	20%	25%	28%	23%	24%

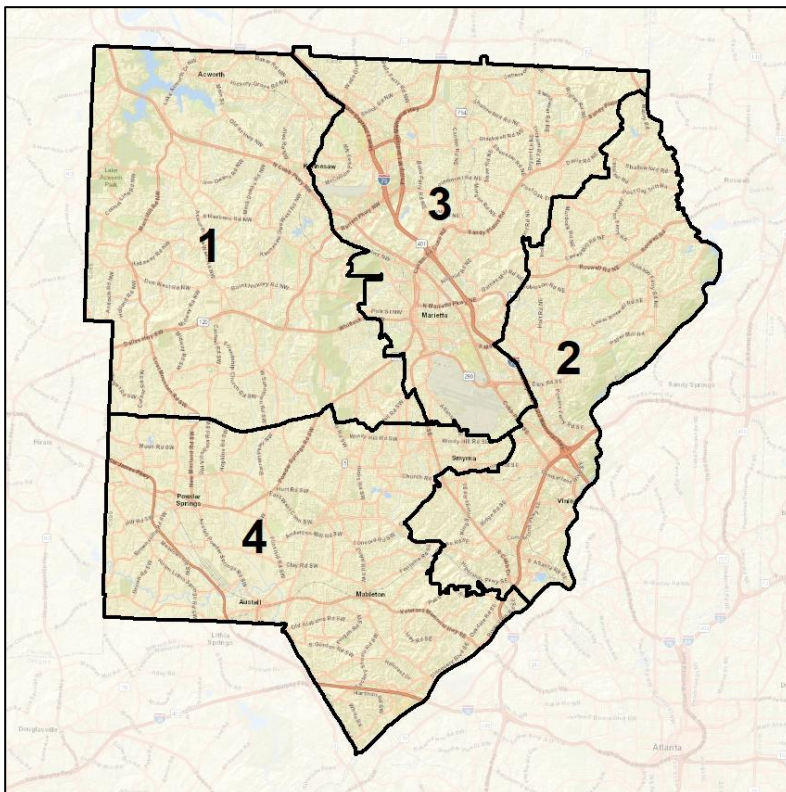


Cobb County Commission - Legislature

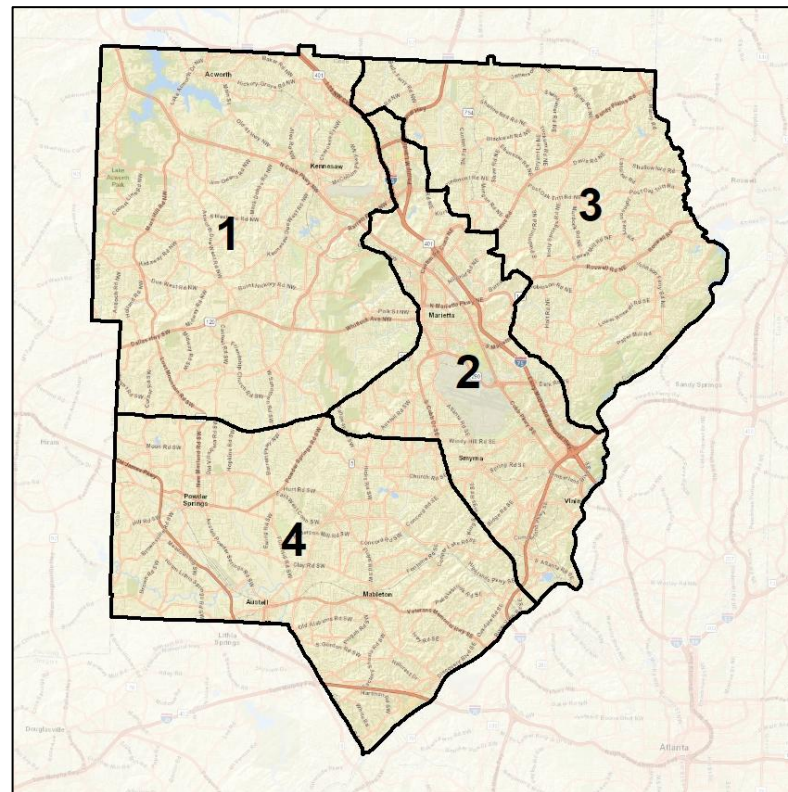
Context



2012 Map



2022 Map*



	1	2	3	4	1*	2*	3*	4*	County
Population	188,245	195,698	188,004	194,202	191,455	191,106	191,809	191,779	766,149
API	4%	10%	6%	2%	4%	6%	10%	3%	6%
Black	20%	19%	19%	46%	19%	31%	8%	46%	26%
Latino	12%	8%	16%	22%	10%	21%	8%	20%	15%
Other	6%	6%	6%	4%	6%	6%	6%	5%	6%
White	58%	57%	53%	25%	62%	36%	68%	27%	48%
Population Gain	15,610	23,689	16,419	22,353	3,210	-4,592	3,805	-2,423	78,071
Population % Gain	9%	14%	10%	13%	2%	-2%	2%	-1%	11%
Net POC Gain	19,609	25,411	20,128	31,179	-6,437	38,556	-27,305	-4,814	96,327
Net POC % Gain	33%	43%	29%	27%	-8%	46%	-31%	-3%	32%

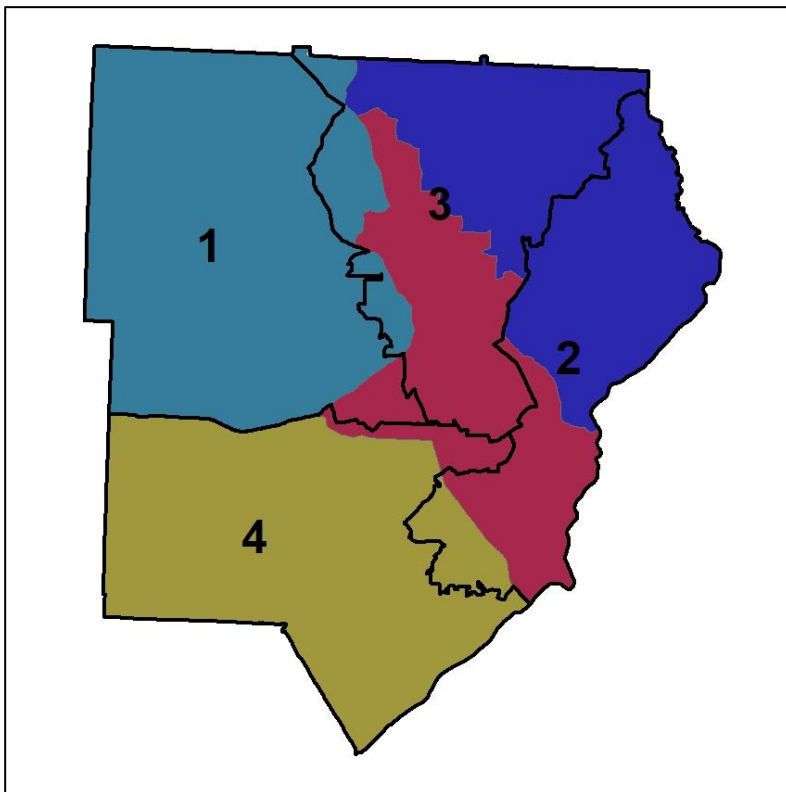


Cobb County Commission - Legislature

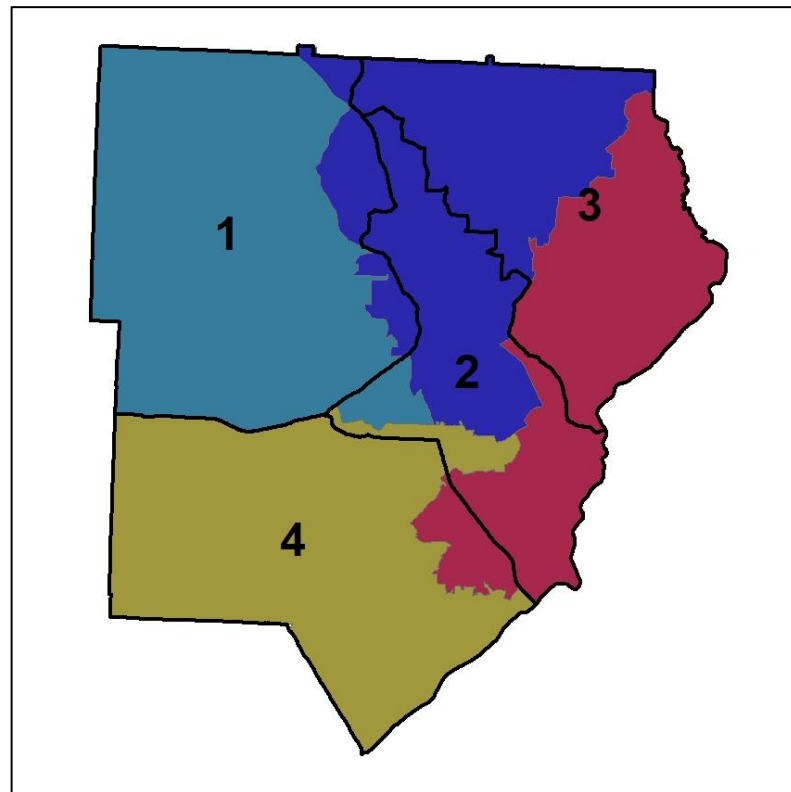
Changes in Redistricting



2012 Map (2022 in Colors)



2022 Map* (2012 in Colors)



	1	2	3	4	1*	2*	3*	4*	County
Population	188,245	195,698	188,004	194,202	191,455	191,106	191,809	191,779	766,149
API	4%	10%	6%	2%	4%	6%	10%	3%	6%
Black	20%	19%	19%	46%	19%	31%	8%	46%	26%
Latino	12%	8%	16%	22%	10%	21%	8%	20%	15%
Other	6%	6%	6%	4%	6%	6%	6%	5%	6%
White	58%	57%	53%	25%	62%	36%	68%	27%	48%
Population Gain	15,610	23,689	16,419	22,353	3,210	-4,592	3,805	-2,423	78,071
Population % Gain	9%	14%	10%	13%	2%	-2%	2%	-1%	11%
Net POC Gain	19,609	25,411	20,128	31,179	-6,437	38,556	-27,305	-4,814	96,327
Net POC % Gain	33%	43%	29%	27%	-8%	46%	-31%	-3%	32%

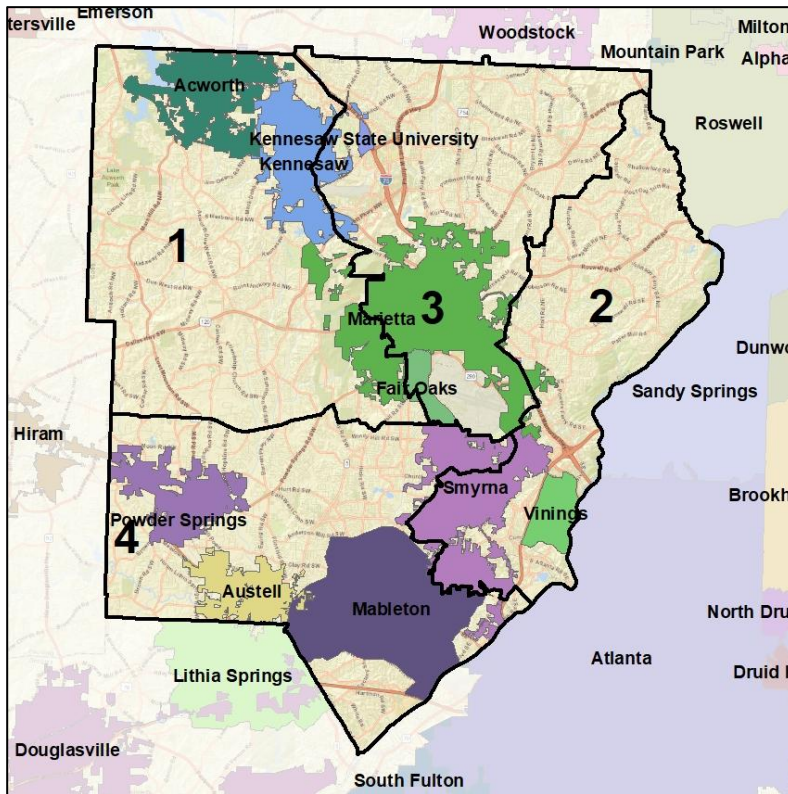


Cobb County Commission - Legislature

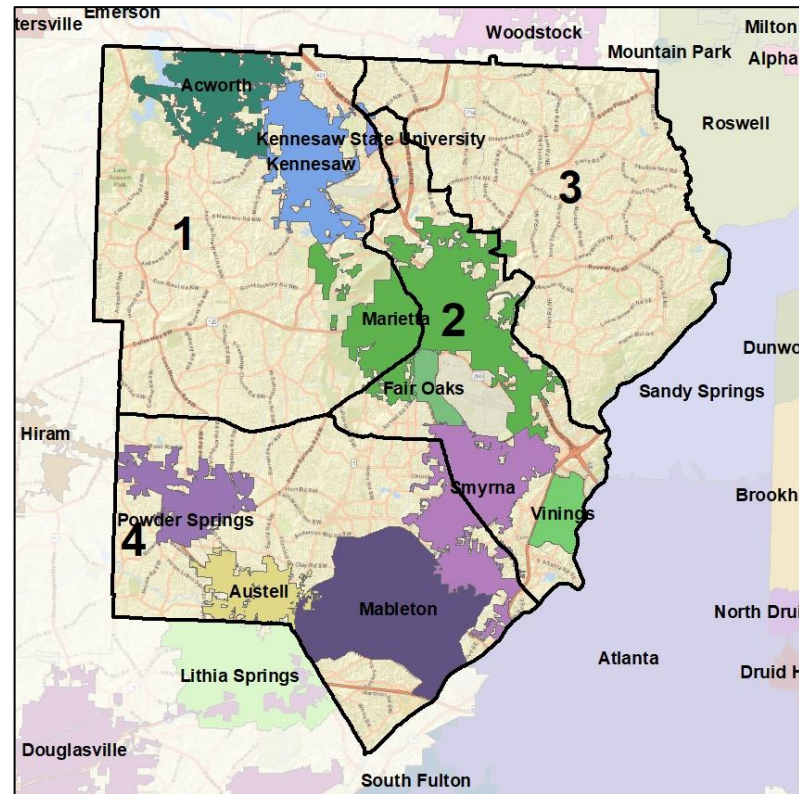
Cities and Places



2012 Map



2022 Map*



	1	2	3	4	1*	2*	3*	4*	County
Population	188,245	195,698	188,004	194,202	191,455	191,106	191,809	191,779	766,149
API	4%	10%	6%	2%	4%	6%	10%	3%	6%
Black	20%	19%	19%	46%	19%	31%	8%	46%	26%
Latino	12%	8%	16%	22%	10%	21%	8%	20%	15%
Other	6%	6%	6%	4%	6%	6%	6%	5%	6%
White	58%	57%	53%	25%	62%	36%	68%	27%	48%
Population Gain	15,610	23,689	16,419	22,353	3,210	-4,592	3,805	-2,423	78,071
Population % Gain	9%	14%	10%	13%	2%	-2%	2%	-1%	11%
Net POC Gain	19,609	25,411	20,128	31,179	-6,437	38,556	-27,305	-4,814	96,327
Net POC % Gain	33%	43%	29%	27%	-8%	46%	-31%	-3%	32%

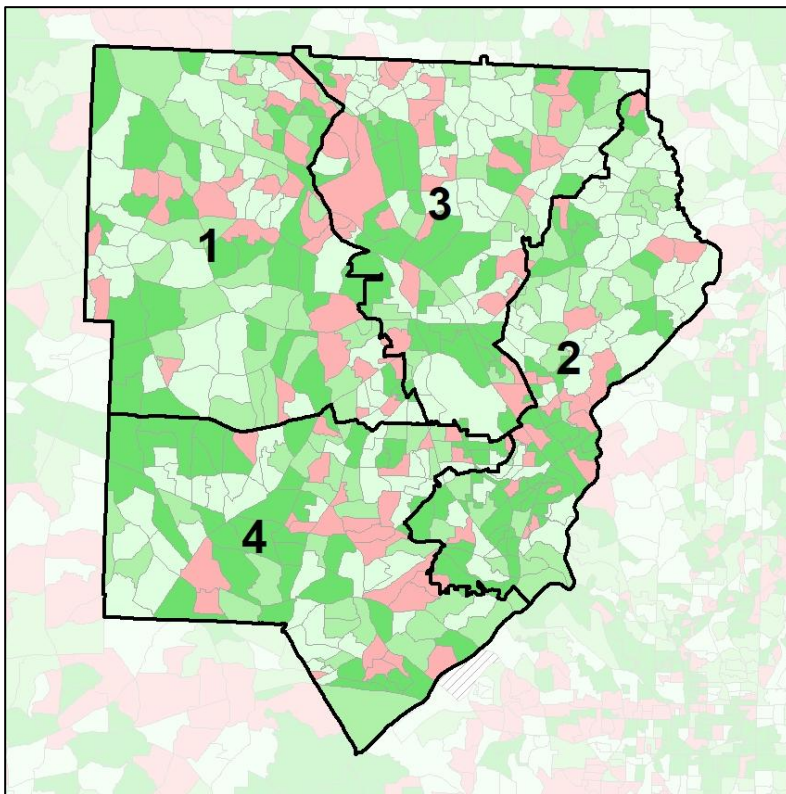


Cobb County Commission - Legislature

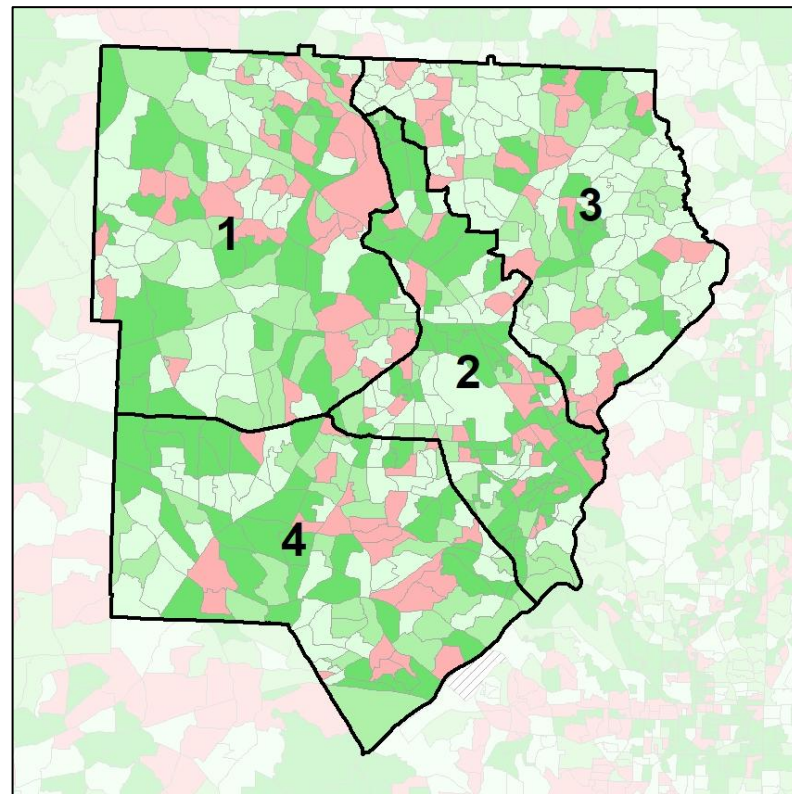
Net Gain in Population (2010 - 2020) by Census Block Group



2012 Map



2022 Map*



	1	2	3	4	1*	2*	3*	4*	County
Population	188,245	195,698	188,004	194,202	191,455	191,106	191,809	191,779	766,149
API	4%	10%	6%	2%	4%	6%	10%	3%	6%
Black	20%	19%	19%	46%	19%	31%	8%	46%	26%
Latino	12%	8%	16%	22%	10%	21%	8%	20%	15%
Other	6%	6%	6%	4%	6%	6%	6%	5%	6%
White	58%	57%	53%	25%	62%	36%	68%	27%	48%
Population Gain	15,610	23,689	16,419	22,353	3,210	-4,592	3,805	-2,423	78,071
Population % Gain	9%	14%	10%	13%	2%	-2%	2%	-1%	11%
Net POC Gain	19,609	25,411	20,128	31,179	-6,437	38,556	-27,305	-4,814	96,327
Net POC % Gain	33%	43%	29%	27%	-8%	46%	-31%	-3%	32%

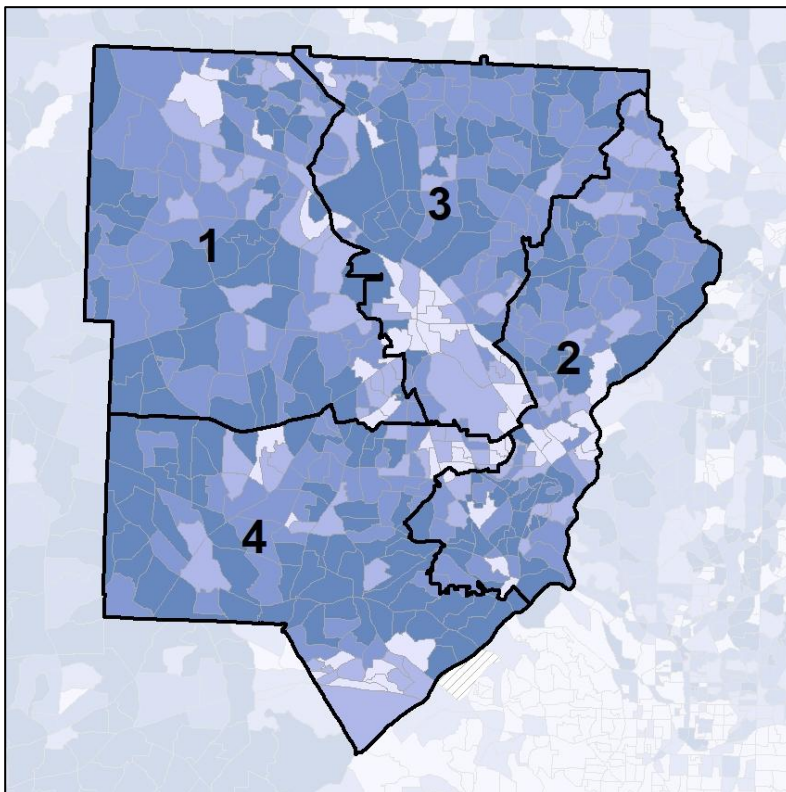


Cobb County Commission - Legislature

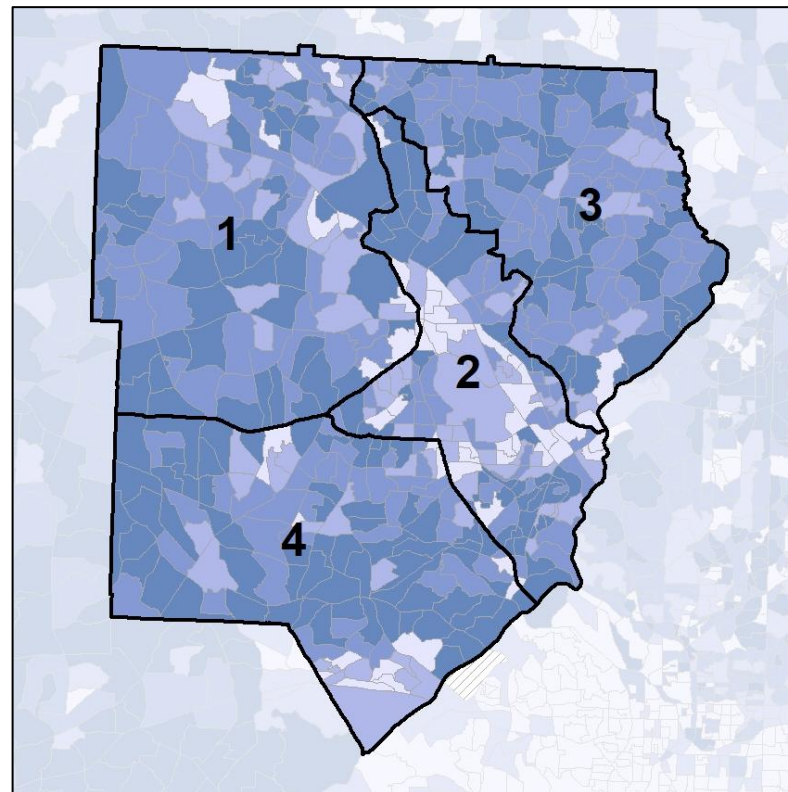
Net Gain in % POC (2020 - 2010) by Census Block Group



2012 Map



2022 Map*



	1	2	3	4	1*	2*	3*	4*	County
Population	188,245	195,698	188,004	194,202	191,455	191,106	191,809	191,779	766,149
API	4%	10%	6%	2%	4%	6%	10%	3%	6%
Black	20%	19%	19%	46%	19%	31%	8%	46%	26%
Latino	12%	8%	16%	22%	10%	21%	8%	20%	15%
Other	6%	6%	6%	4%	6%	6%	6%	5%	6%
White	58%	57%	53%	25%	62%	36%	68%	27%	48%
Population Gain	15,610	23,689	16,419	22,353	3,210	-4,592	3,805	-2,423	78,071
Population % Gain	9%	14%	10%	13%	2%	-2%	2%	-1%	11%
Net POC Gain	19,609	25,411	20,128	31,179	-6,437	38,556	-27,305	-4,814	96,327
Net POC % Gain	33%	43%	29%	27%	-8%	46%	-31%	-3%	32%

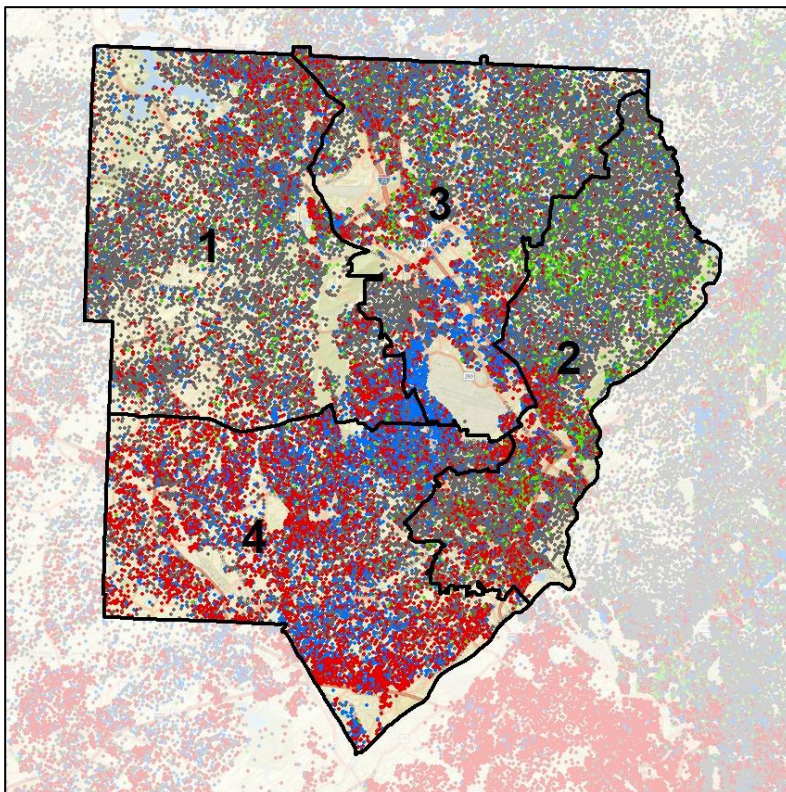


Cobb County Commission - Legislature

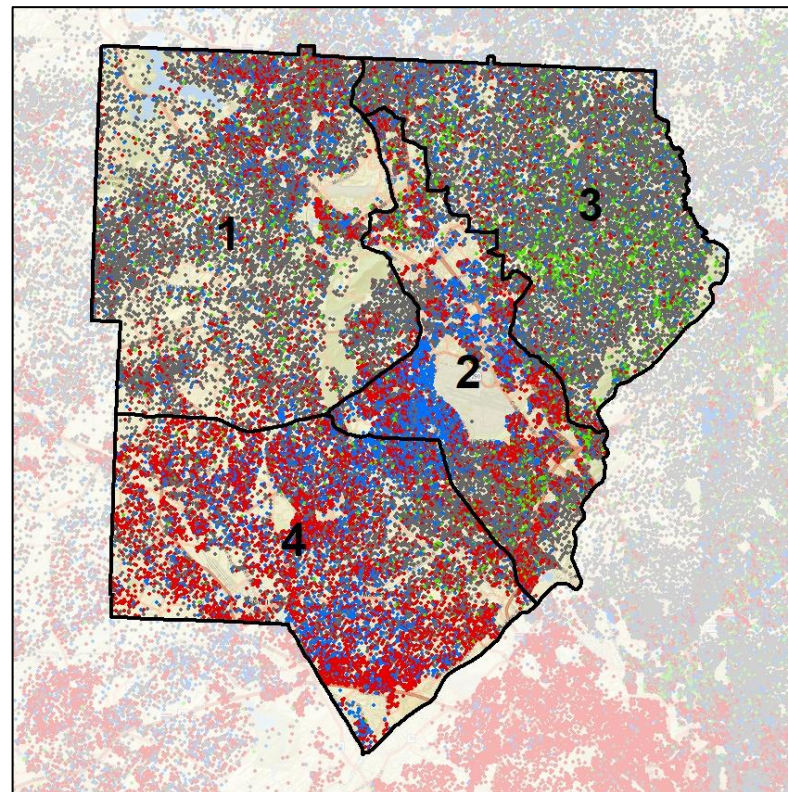
Population Density by Race



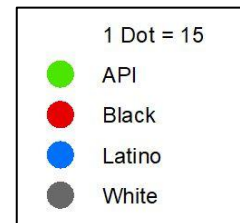
2012 Map



2022 Map*



	1	2	3	4	1*	2*	3*	4*	County
Population	188,245	195,698	188,004	194,202	191,455	191,106	191,809	191,779	766,149
API	7,127	20,278	10,605	4,816	7,540	11,772	18,360	5,154	42,826
% API	4%	10%	6%	2%	4%	6%	10%	3%	6%
Black	38,485	36,780	36,011	88,796	35,873	60,100	15,990	88,109	200,072
% Black	20%	19%	19%	46%	19%	31%	8%	46%	26%
Latino	23,279	15,214	30,215	42,532	18,587	39,520	15,182	37,951	111,240
% Latino	12%	8%	16%	22%	10%	21%	8%	20%	15%
Other	10,388	11,947	11,867	8,627	10,842	11,383	11,861	8,743	42,829
% Other	6%	6%	6%	4%	6%	6%	6%	5%	6%
White	108,966	111,479	99,306	49,431	118,613	68,331	130,416	51,822	369,182
% White	58%	57%	53%	25%	62%	36%	68%	27%	48%

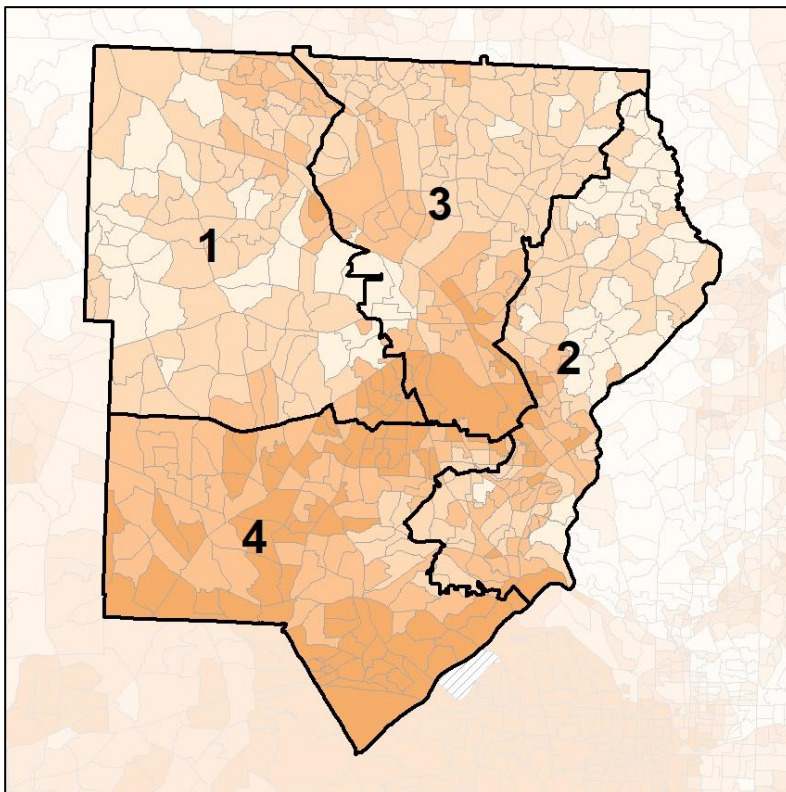


Cobb County Commission - Legislature

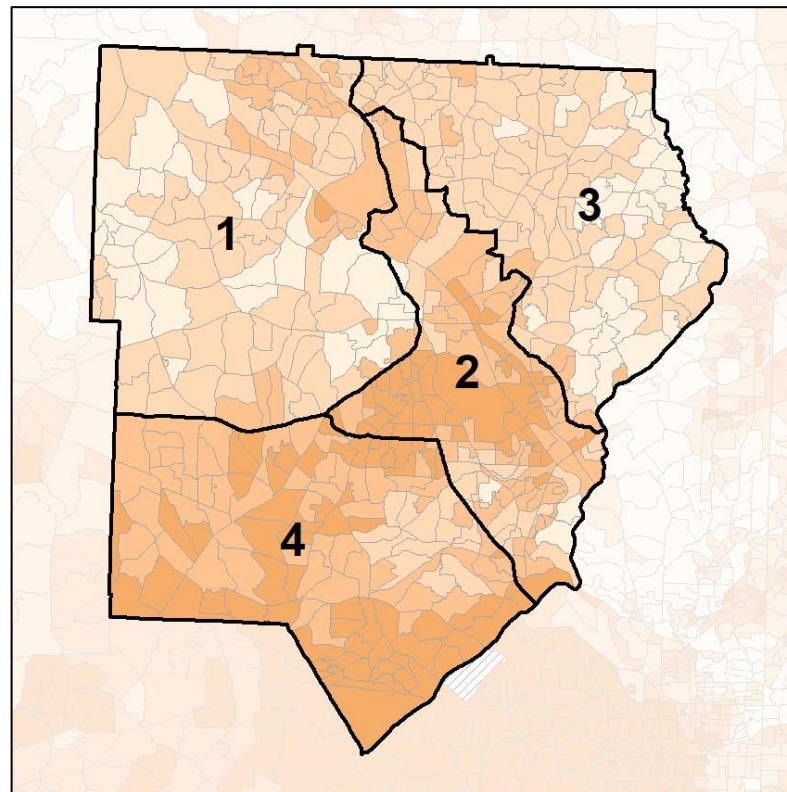
% People of Color by Census Block Group



2012 Map



2022 Map*



	1	2	3	4	1*	2*	3*	4*	County
Population	188,245	195,698	188,004	194,202	191,455	191,106	191,809	191,779	766,149
API	7,127	20,278	10,605	4,816	7,540	11,772	18,360	5,154	42,826
% API	4%	10%	6%	2%	4%	6%	10%	3%	6%
Black	38,485	36,780	36,011	88,796	35,873	60,100	15,990	88,109	200,072
% Black	20%	19%	19%	46%	19%	31%	8%	46%	26%
Latino	23,279	15,214	30,215	42,532	18,587	39,520	15,182	37,951	111,240
% Latino	12%	8%	16%	22%	10%	21%	8%	20%	15%
Other	10,388	11,947	11,867	8,627	10,842	11,383	11,861	8,743	42,829
% Other	6%	6%	6%	4%	6%	6%	6%	5%	6%
White	108,966	111,479	99,306	49,431	118,613	68,331	130,416	51,822	369,182
% White	58%	57%	53%	25%	62%	36%	68%	27%	48%

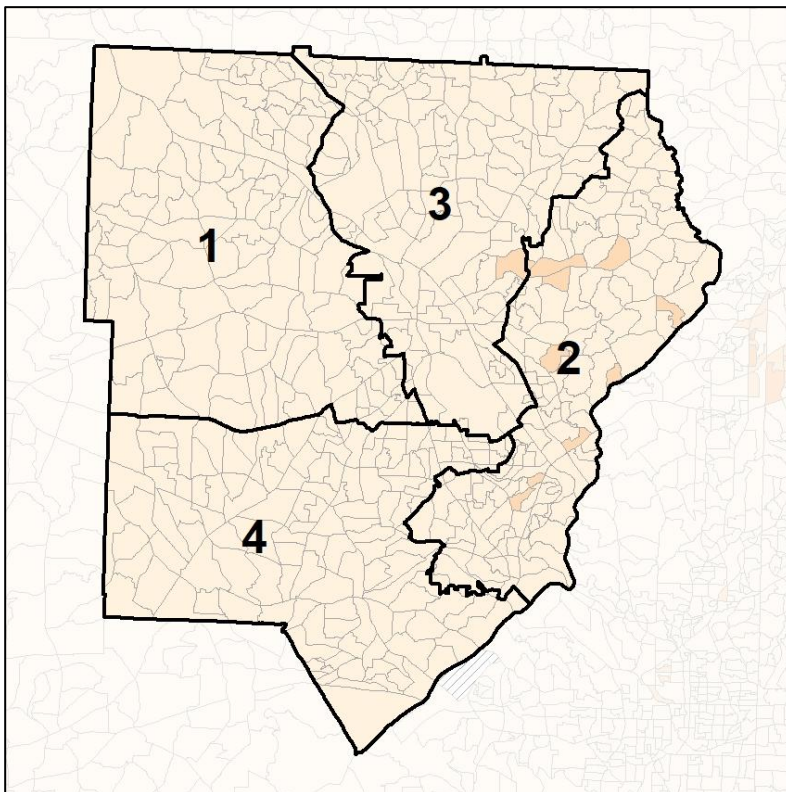


Cobb County Commission - Legislature

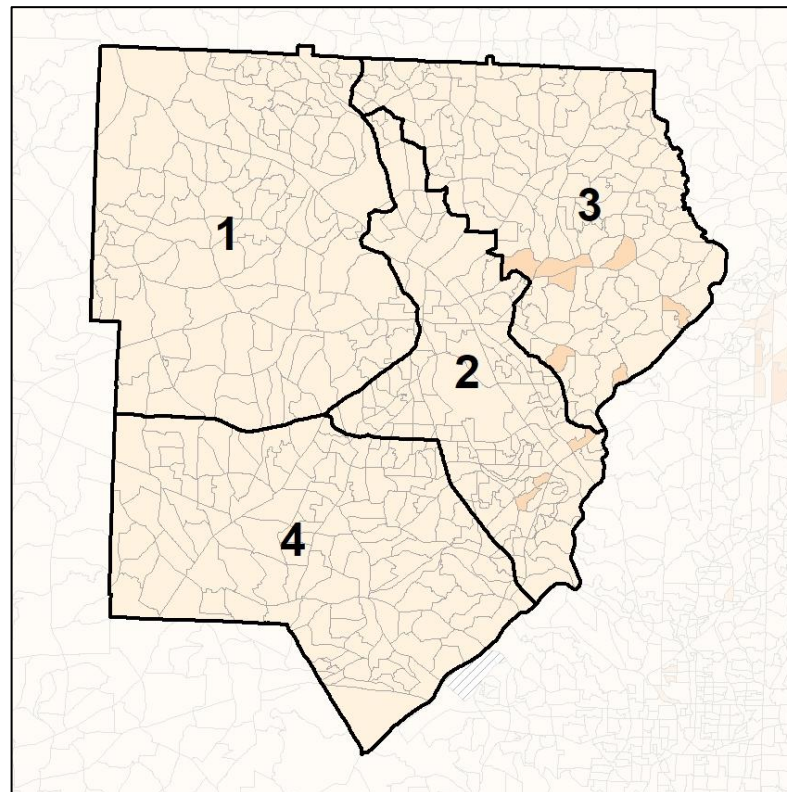
% API by Census Block Group



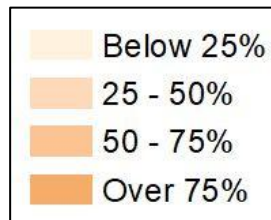
2012 Map



2022 Map*



	1	2	3	4	1*	2*	3*	4*	County
Population	188,245	195,698	188,004	194,202	191,455	191,106	191,809	191,779	766,149
API	7,127	20,278	10,605	4,816	7,540	11,772	18,360	5,154	42,826
% API	4%	10%	6%	2%	4%	6%	10%	3%	6%
Black	38,485	36,780	36,011	88,796	35,873	60,100	15,990	88,109	200,072
% Black	20%	19%	19%	46%	19%	31%	8%	46%	26%
Latino	23,279	15,214	30,215	42,532	18,587	39,520	15,182	37,951	111,240
% Latino	12%	8%	16%	22%	10%	21%	8%	20%	15%
Other	10,388	11,947	11,867	8,627	10,842	11,383	11,861	8,743	42,829
% Other	6%	6%	6%	4%	6%	6%	6%	5%	6%
White	108,966	111,479	99,306	49,431	118,613	68,331	130,416	51,822	369,182
% White	58%	57%	53%	25%	62%	36%	68%	27%	48%



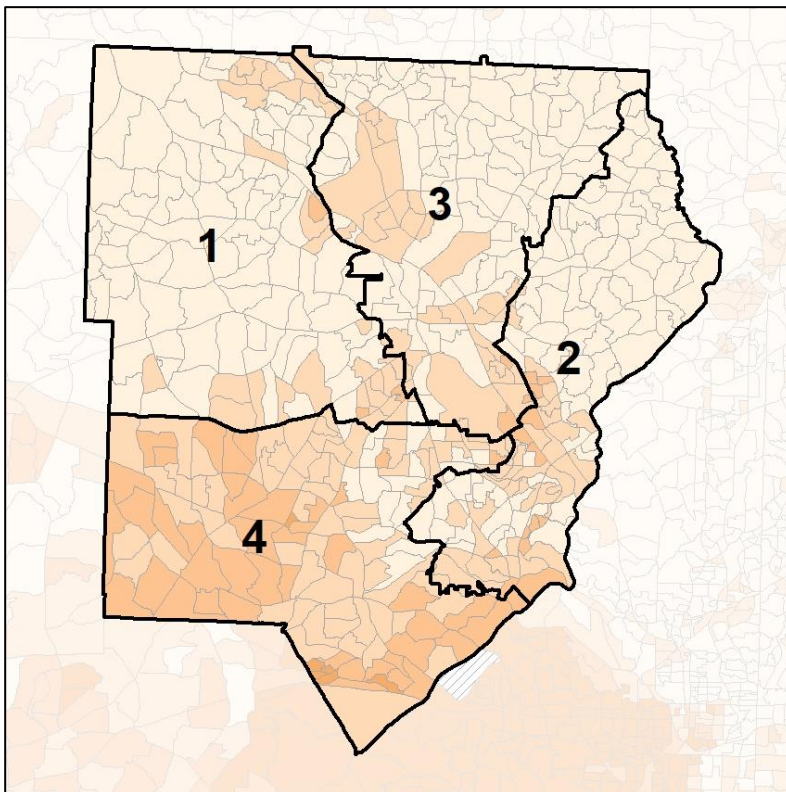
Source:
2020 Decennial Census
2020 ACS 5-Year Dataset

Cobb County Commission - Legislature

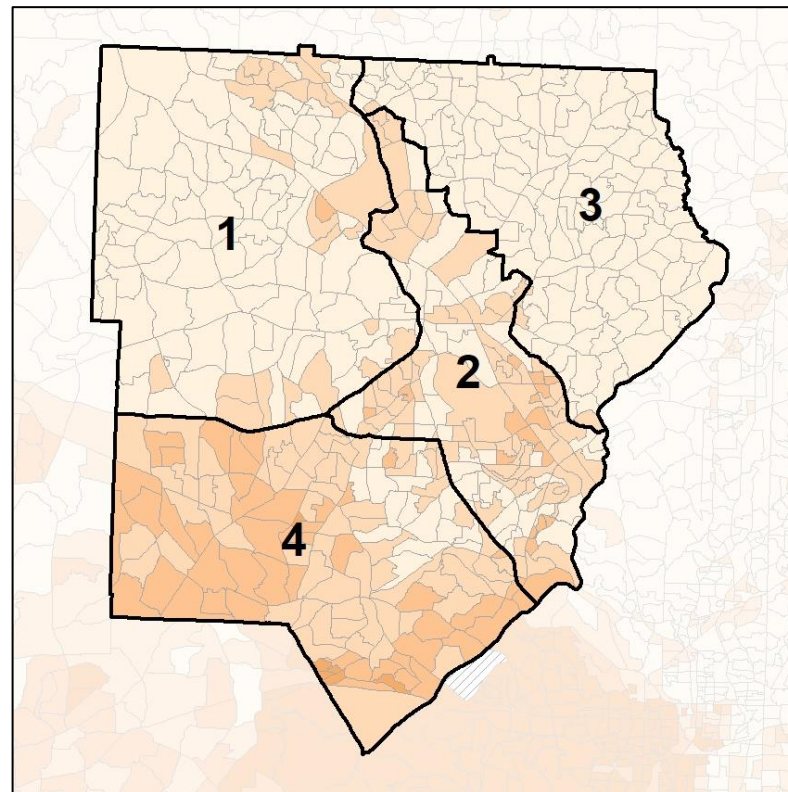
% Black by Census Block Group



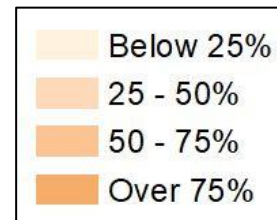
2012 Map



2022 Map*



	1	2	3	4	1*	2*	3*	4*	County
Population	188,245	195,698	188,004	194,202	191,455	191,106	191,809	191,779	766,149
API	7,127	20,278	10,605	4,816	7,540	11,772	18,360	5,154	42,826
% API	4%	10%	6%	2%	4%	6%	10%	3%	6%
Black	38,485	36,780	36,011	88,796	35,873	60,100	15,990	88,109	200,072
% Black	20%	19%	19%	46%	19%	31%	8%	46%	26%
Latino	23,279	15,214	30,215	42,532	18,587	39,520	15,182	37,951	111,240
% Latino	12%	8%	16%	22%	10%	21%	8%	20%	15%
Other	10,388	11,947	11,867	8,627	10,842	11,383	11,861	8,743	42,829
% Other	6%	6%	6%	4%	6%	6%	6%	5%	6%
White	108,966	111,479	99,306	49,431	118,613	68,331	130,416	51,822	369,182
% White	58%	57%	53%	25%	62%	36%	68%	27%	48%

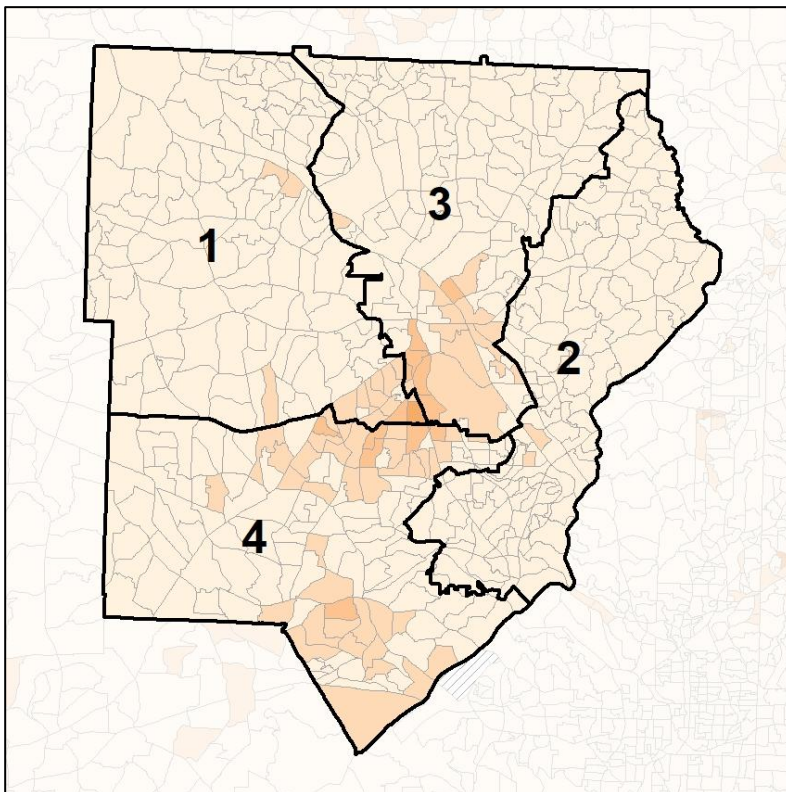


Cobb County Commission - Legislature

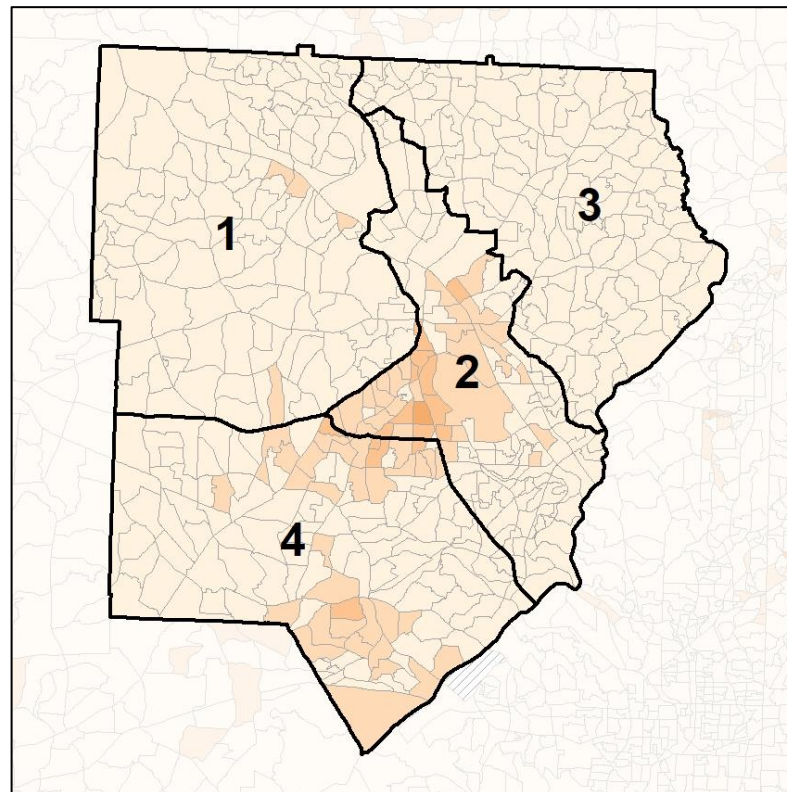
% Latino by Census Block Group



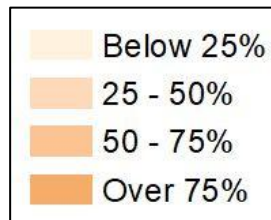
2012 Map



2022 Map*



	1	2	3	4	1*	2*	3*	4*	County
Population	188,245	195,698	188,004	194,202	191,455	191,106	191,809	191,779	766,149
API	7,127	20,278	10,605	4,816	7,540	11,772	18,360	5,154	42,826
% API	4%	10%	6%	2%	4%	6%	10%	3%	6%
Black	38,485	36,780	36,011	88,796	35,873	60,100	15,990	88,109	200,072
% Black	20%	19%	19%	46%	19%	31%	8%	46%	26%
Latino	23,279	15,214	30,215	42,532	18,587	39,520	15,182	37,951	111,240
% Latino	12%	8%	16%	22%	10%	21%	8%	20%	15%
Other	10,388	11,947	11,867	8,627	10,842	11,383	11,861	8,743	42,829
% Other	6%	6%	6%	4%	6%	6%	6%	5%	6%
White	108,966	111,479	99,306	49,431	118,613	68,331	130,416	51,822	369,182
% White	58%	57%	53%	25%	62%	36%	68%	27%	48%

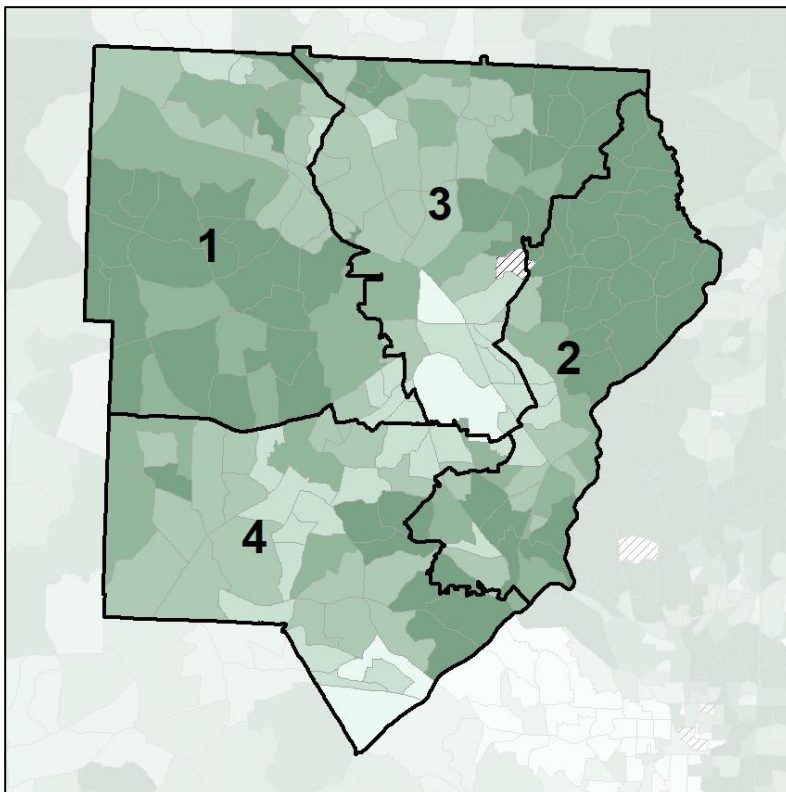


Cobb County Commission - Legislature

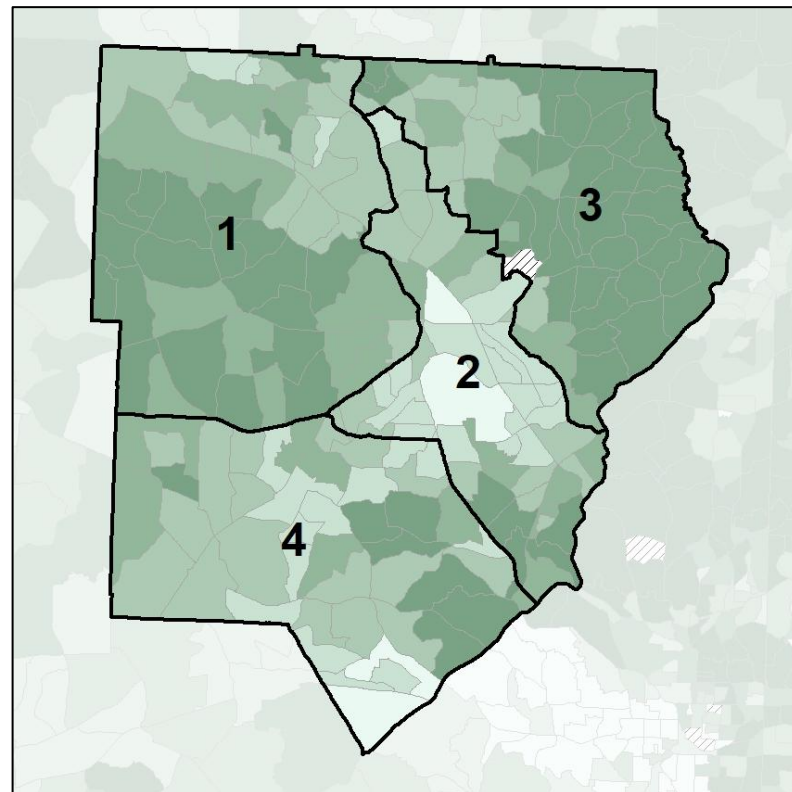
Median Household Income by Census Tract



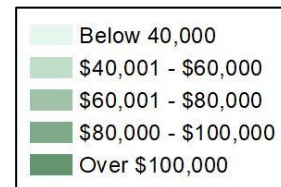
2012 Map



2022 Map*



	1	2	3	4	1*	2*	3*	4*	County
Population	188,245	195,698	188,004	194,202	191,455	191,106	191,809	191,779	766,149
% API	4%	10%	6%	2%	4%	6%	10%	3%	6%
% Black	20%	19%	19%	46%	19%	31%	8%	46%	26%
% Latino	12%	8%	16%	22%	10%	21%	8%	20%	15%
% Other	6%	6%	6%	4%	6%	6%	6%	5%	6%
% White	58%	57%	53%	25%	62%	36%	68%	27%	48%
Median Income	\$97,000	\$109,000	\$84,000	\$72,000	\$101,000	\$72,000	\$122,000	\$75,000	\$81,000
% Renter	22%	39%	39%	34%	21%	64%	14%	32%	34%
% Youth	19%	24%	28%	23%	21%	35%	16%	22%	24%

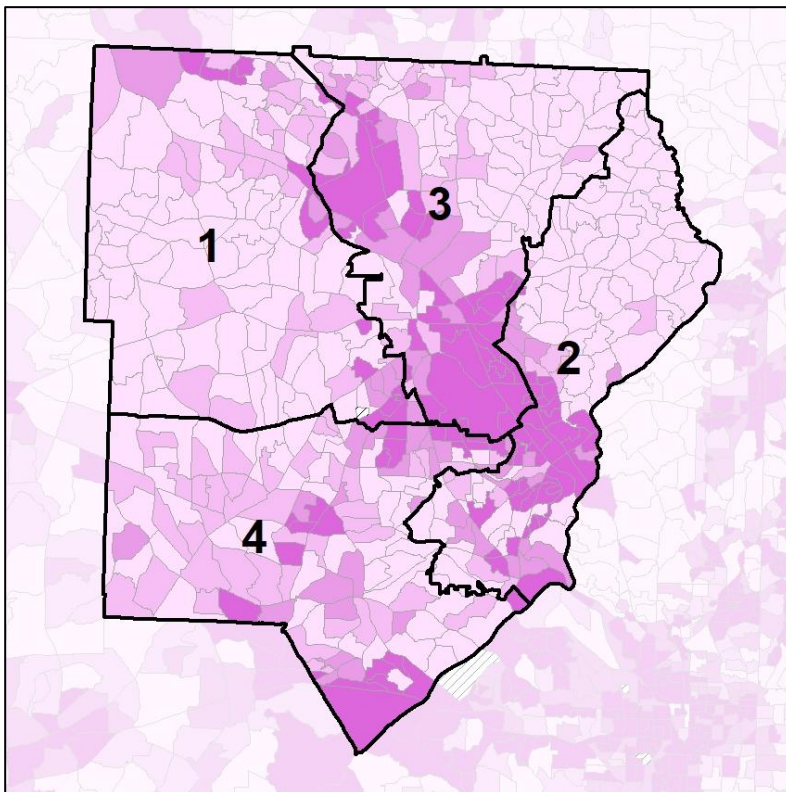


Cobb County Commission - Legislature

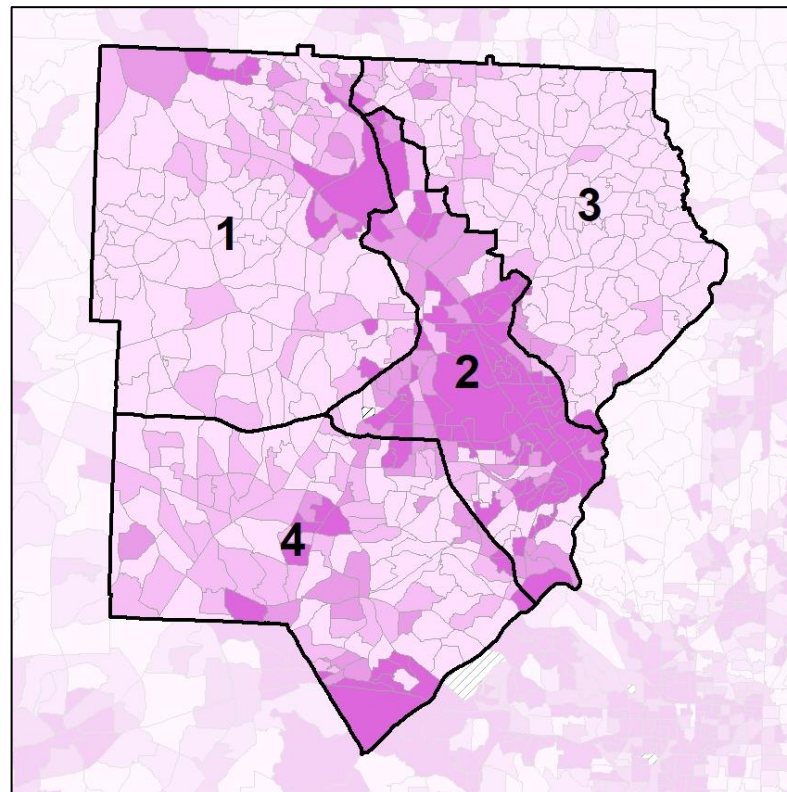
% Renter by Census Block Group



2012 Map



2022 Map*



	1	2	3	4	1*	2*	3*	4*	County
Population	188,245	195,698	188,004	194,202	191,455	191,106	191,809	191,779	766,149
% API	4%	10%	6%	2%	4%	6%	10%	3%	6%
% Black	20%	19%	19%	46%	19%	31%	8%	46%	26%
% Latino	12%	8%	16%	22%	10%	21%	8%	20%	15%
% Other	6%	6%	6%	4%	6%	6%	6%	5%	6%
% White	58%	57%	53%	25%	62%	36%	68%	27%	48%
Median Income	\$97,000	\$109,000	\$84,000	\$72,000	\$101,000	\$72,000	\$122,000	\$75,000	\$81,000
% Renter	22%	39%	39%	34%	21%	64%	14%	32%	34%
% Youth	19%	24%	28%	23%	21%	35%	16%	22%	24%

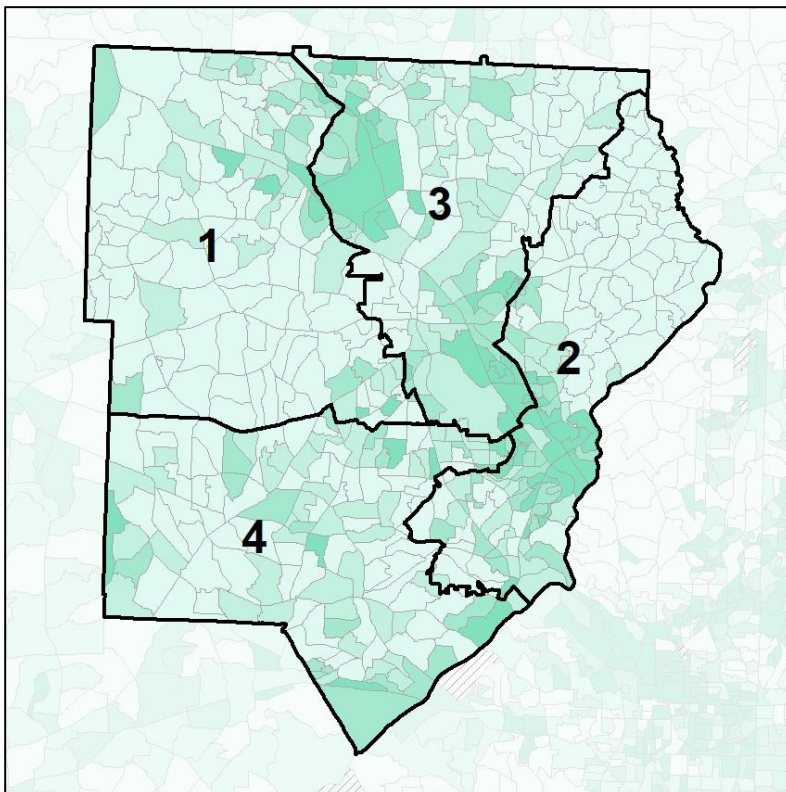


Cobb County Commission - Legislature

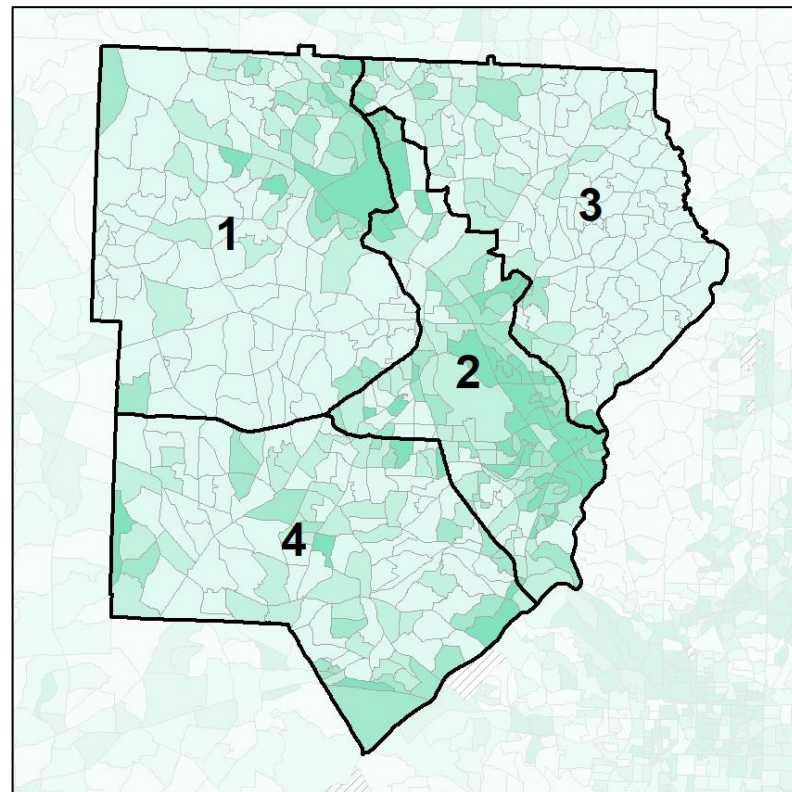
% Youth (18-34) by Census Block Group



2012 Map



2022 Map*



	1	2	3	4	1*	2*	3*	4*	County
Population	188,245	195,698	188,004	194,202	191,455	191,106	191,809	191,779	766,149
% API	4%	10%	6%	2%	4%	6%	10%	3%	6%
% Black	20%	19%	19%	46%	19%	31%	8%	46%	26%
% Latino	12%	8%	16%	22%	10%	21%	8%	20%	15%
% Other	6%	6%	6%	4%	6%	6%	6%	5%	6%
% White	58%	57%	53%	25%	62%	36%	68%	27%	48%
Median Income	\$97,000	\$109,000	\$84,000	\$72,000	\$101,000	\$72,000	\$122,000	\$75,000	\$81,000
% Renter	22%	39%	39%	34%	21%	64%	14%	32%	34%
% Youth	19%	24%	28%	23%	21%	35%	16%	22%	24%

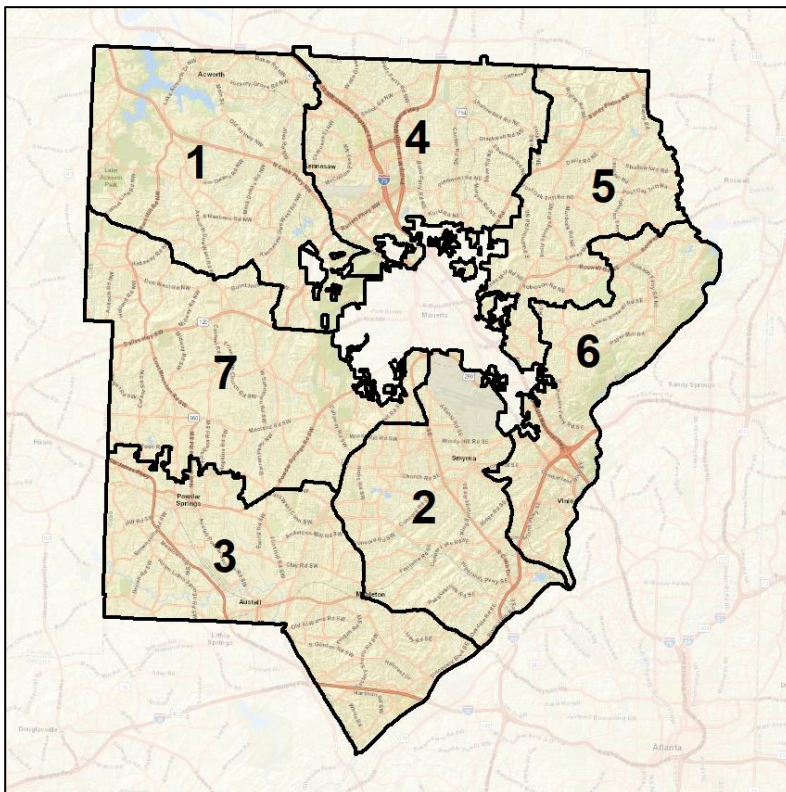


Cobb County School Board

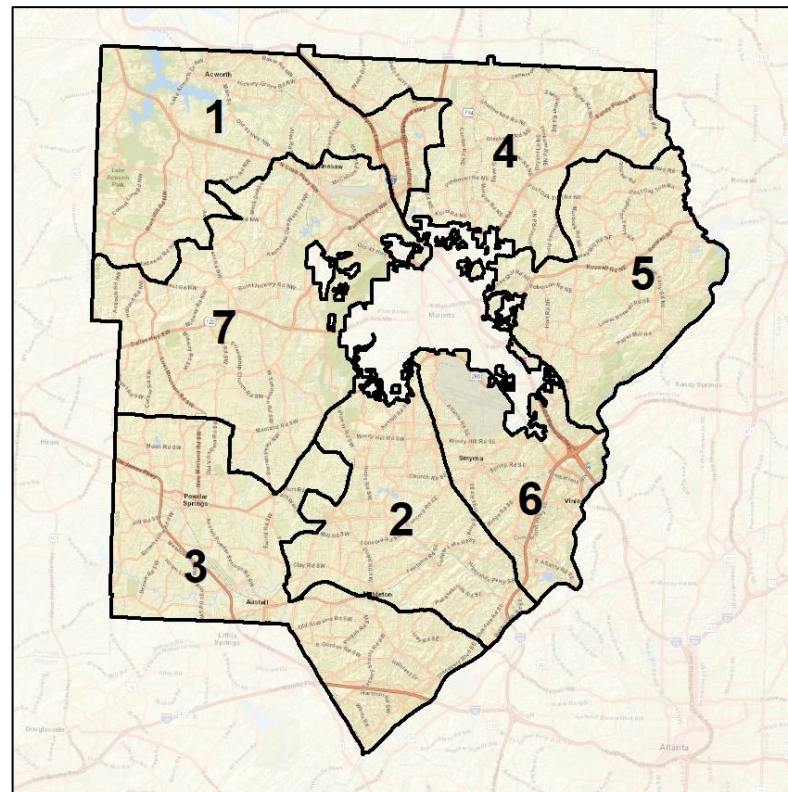
Context



2012 Map



2022 Map*



	1	2	3	4	5	6	7	1*	2*	3*	4*	5*	6*	7*	County
Population	98,480	100,850	103,515	99,419	97,199	104,884	100,988	100,065	101,039	100,795	101,291	100,701	101,242	100,044	766,149
API	5%	5%	1%	6%	9%	12%	3%	5%	4%	2%	7%	11%	8%	4%	6%
Black	19%	32%	54%	19%	9%	22%	26%	20%	35%	53%	11%	8%	32%	22%	26%
Latino	11%	19%	20%	11%	8%	9%	19%	11%	25%	20%	10%	8%	15%	10%	15%
Other	6%	5%	4%	7%	6%	6%	5%	6%	5%	4%	7%	6%	6%	6%	6%
White	60%	39%	20%	57%	67%	52%	48%	58%	32%	21%	66%	67%	39%	58%	48%
Population Gain	7,760	10,690	13,220	10,067	7,713	14,385	10,001	1,585	189	-2,720	1,872	3,502	-3,642	-944	78,071
Population % Gain	9%	12%	15%	11%	9%	16%	11%	2%	0%	-3%	2%	4%	-3%	-1%	11%
Net POC Gain	10,097	12,732	19,136	13,202	10,618	14,255	13,381	2,019	7,447	-2,678	-7,740	968	11,025	-11,160	96,327
Net POC % Gain	34%	26%	30%	45%	50%	40%	34%	5%	12%	-3%	-18%	3%	22%	-21%	32%



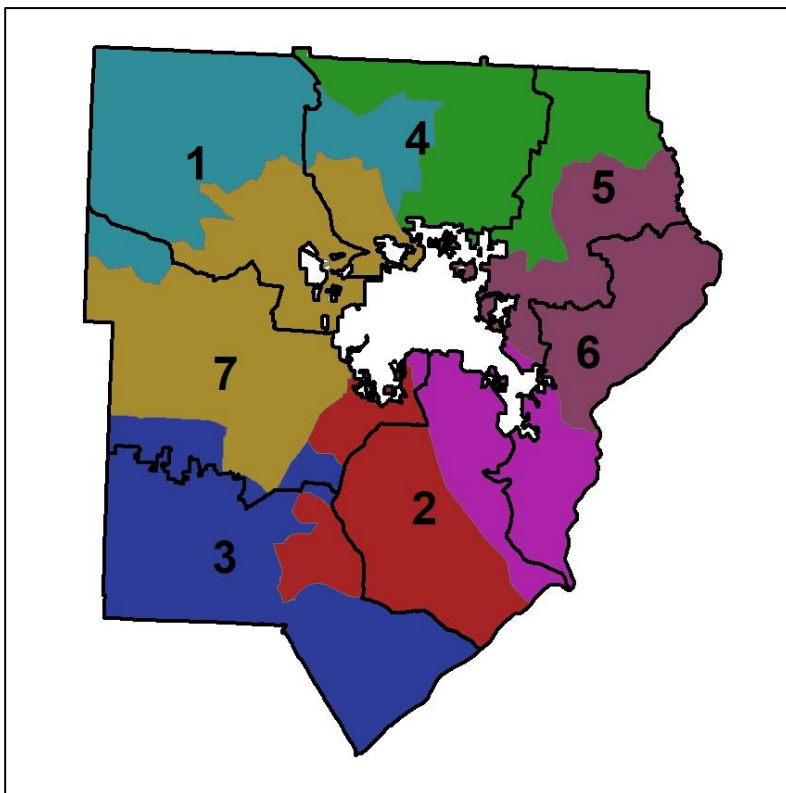
Source:
2020 Decennial Census
2020 ACS 5-Year Dataset

Cobb County School Board

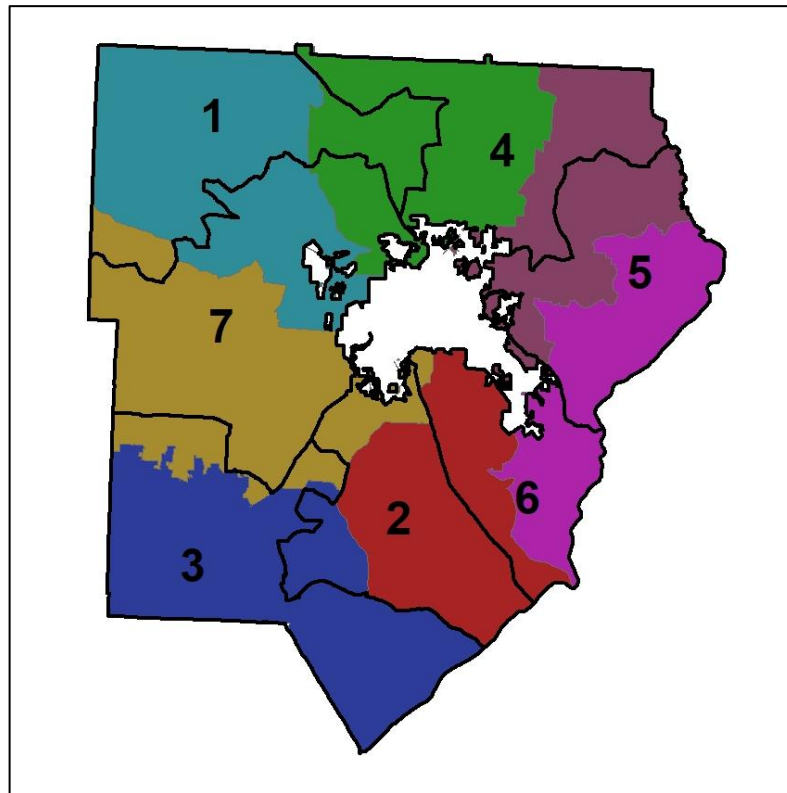
Changes in Redistricting



2012 Map (2022 in Colors)



2022 Map* (2012 in Colors)



	1	2	3	4	5	6	7	1*	2*	3*	4*	5*	6*	7*	County
Population	98,480	100,850	103,515	99,419	97,199	104,884	100,988	100,065	101,039	100,795	101,291	100,701	101,242	100,044	766,149
API	5%	5%	1%	6%	9%	12%	3%	5%	4%	2%	7%	11%	8%	4%	6%
Black	19%	32%	54%	19%	9%	22%	26%	20%	35%	53%	11%	8%	32%	22%	26%
Latino	11%	19%	20%	11%	8%	9%	19%	11%	25%	20%	10%	8%	15%	10%	15%
Other	6%	5%	4%	7%	6%	6%	5%	6%	5%	4%	7%	6%	6%	6%	6%
White	60%	39%	20%	57%	67%	52%	48%	58%	32%	21%	66%	67%	39%	58%	48%
Population Gain	7,760	10,690	13,220	10,067	7,713	14,385	10,001	1,585	189	-2,720	1,872	3,502	-3,642	-944	78,071
Population % Gain	9%	12%	15%	11%	9%	16%	11%	2%	0%	-3%	2%	4%	-3%	-1%	11%
Net POC Gain	10,097	12,732	19,136	13,202	10,618	14,255	13,381	2,019	7,447	-2,678	-7,740	968	11,025	-11,160	96,327
Net POC % Gain	34%	26%	30%	45%	50%	40%	34%	5%	12%	-3%	-18%	3%	22%	-21%	32%

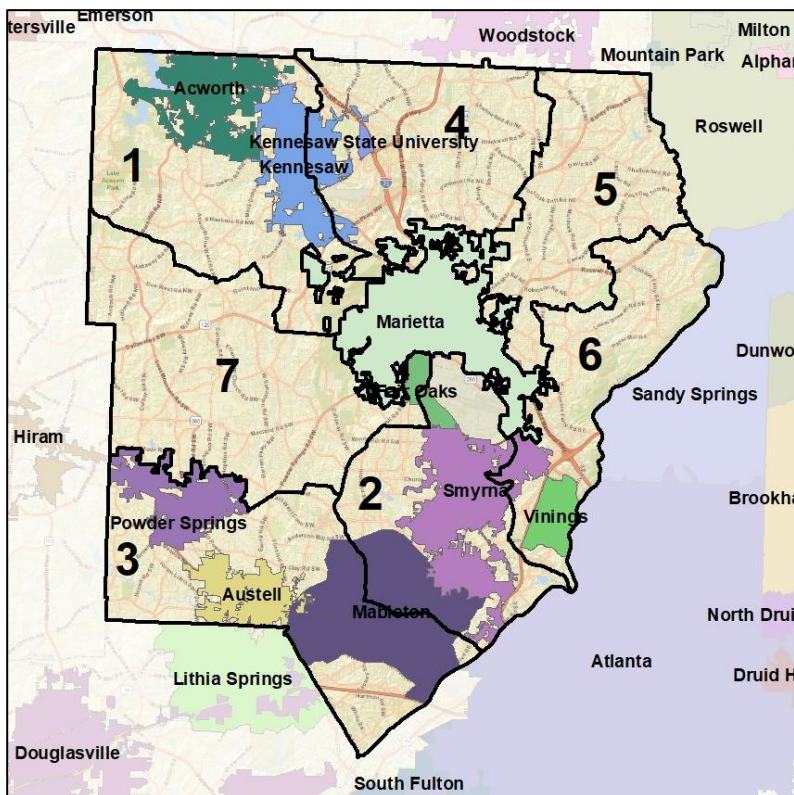


Cobb County School Board

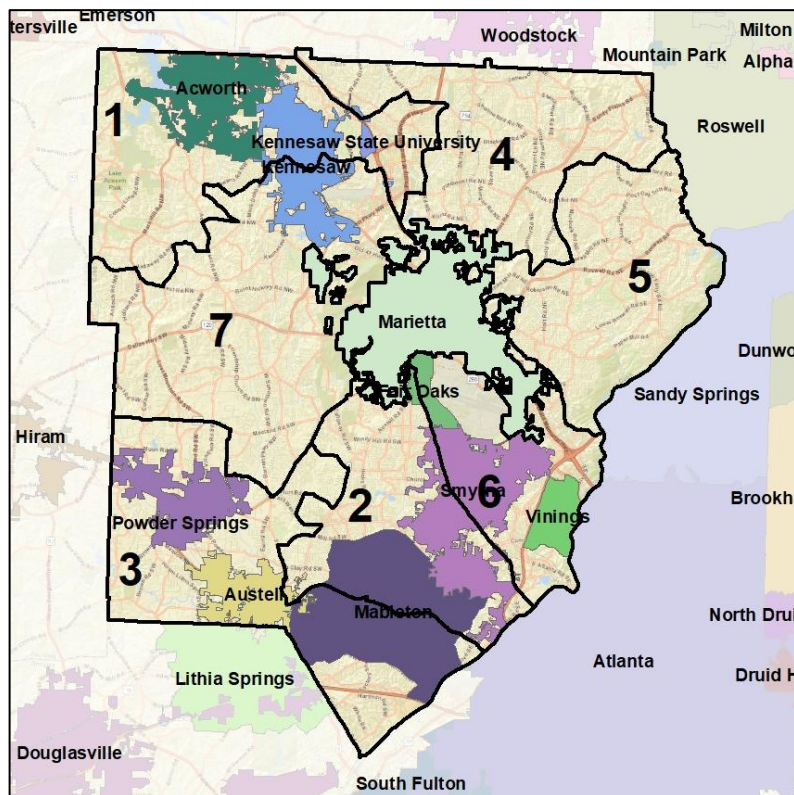
Cities and Places



2012 Map



2022 Map*



	1	2	3	4	5	6	7	1*	2*	3*	4*	5*	6*	7*	County
Population	98,480	100,850	103,515	99,419	97,199	104,884	100,988	100,065	101,039	100,795	101,291	100,701	101,242	100,044	766,149
API	5%	5%	1%	6%	9%	12%	3%	5%	4%	2%	7%	11%	8%	4%	6%
Black	19%	32%	54%	19%	9%	22%	26%	20%	35%	53%	11%	8%	32%	22%	26%
Latino	11%	19%	20%	11%	8%	9%	19%	11%	25%	20%	10%	8%	15%	10%	15%
Other	6%	5%	4%	7%	6%	6%	5%	6%	5%	4%	7%	6%	6%	6%	6%
White	60%	39%	20%	57%	67%	52%	48%	58%	32%	21%	66%	67%	39%	58%	48%
Population Gain	7,760	10,690	13,220	10,067	7,713	14,385	10,001	1,585	189	-2,720	1,872	3,502	-3,642	-944	78,071
Population % Gain	9%	12%	15%	11%	9%	16%	11%	2%	0%	-3%	2%	4%	-3%	-1%	11%
Net POC Gain	10,097	12,732	19,136	13,202	10,618	14,255	13,381	2,019	7,447	-2,678	-7,740	968	11,025	-11,160	96,327
Net POC % Gain	34%	26%	30%	45%	50%	40%	34%	5%	12%	-3%	-18%	3%	22%	-21%	32%



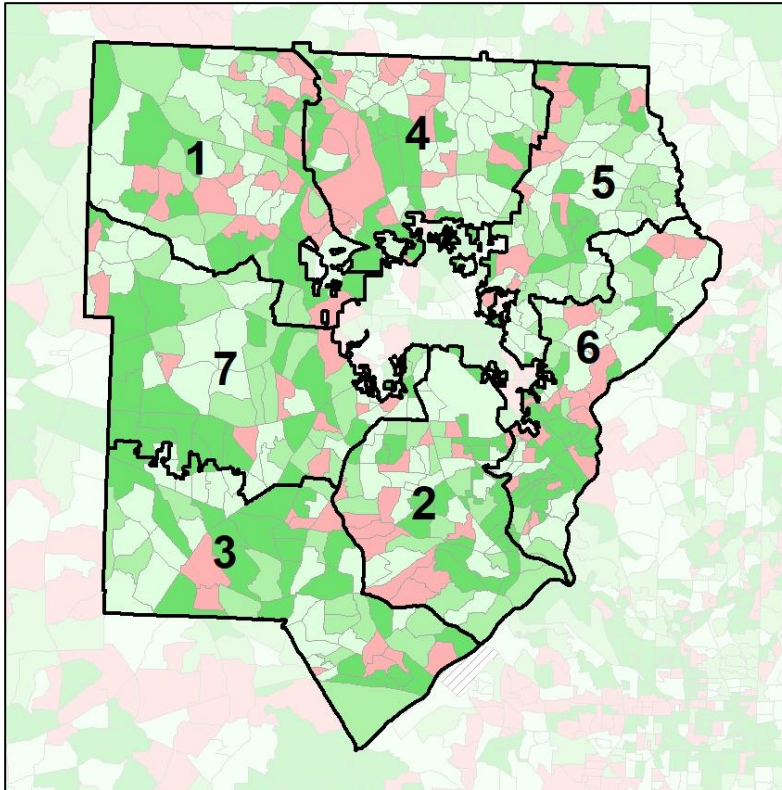
Source:
2020 Decennial Census
2020 ACS 5-Year Dataset

Cobb County School Board

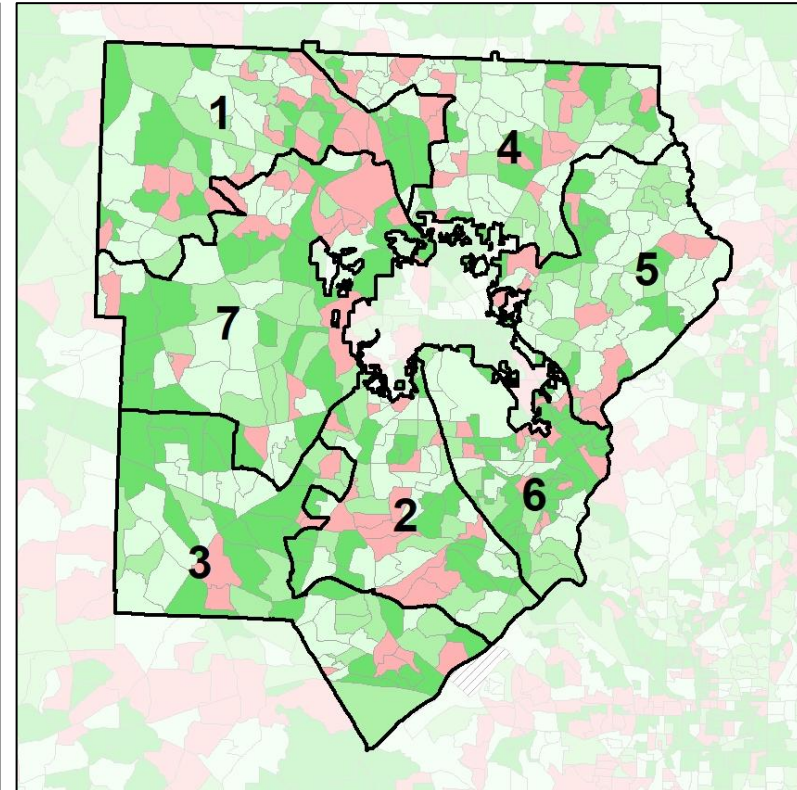
Net Gain in Population (2010 - 2020) by Census Block Group



2012 Map



2022 Map*



	1	2	3	4	5	6	7	1*	2*	3*	4*	5*	6*	7*	County
Population	98,480	100,850	103,515	99,419	97,199	104,884	100,988	100,065	101,039	100,795	101,291	100,701	101,242	100,044	766,149
API	5%	5%	1%	6%	9%	12%	3%	5%	4%	2%	7%	11%	8%	4%	6%
Black	19%	32%	54%	19%	9%	22%	26%	20%	35%	53%	11%	8%	32%	22%	26%
Latino	11%	19%	20%	11%	8%	9%	19%	11%	25%	20%	10%	8%	15%	10%	15%
Other	6%	5%	4%	7%	6%	6%	5%	6%	5%	4%	7%	6%	6%	6%	6%
White	60%	39%	20%	57%	67%	52%	48%	58%	32%	21%	66%	67%	39%	58%	48%
Population Gain	7,760	10,690	13,220	10,067	7,713	14,385	10,001	1,585	189	-2,720	1,872	3,502	-3,642	-944	78,071
Population % Gain	9%	12%	15%	11%	9%	16%	11%	2%	0%	-3%	2%	4%	-3%	-1%	11%
Net POC Gain	10,097	12,732	19,136	13,202	10,618	14,255	13,381	2,019	7,447	-2,678	-7,740	968	11,025	-11,160	96,327
Net POC % Gain	34%	26%	30%	45%	50%	40%	34%	5%	12%	-3%	-18%	3%	22%	-21%	32%

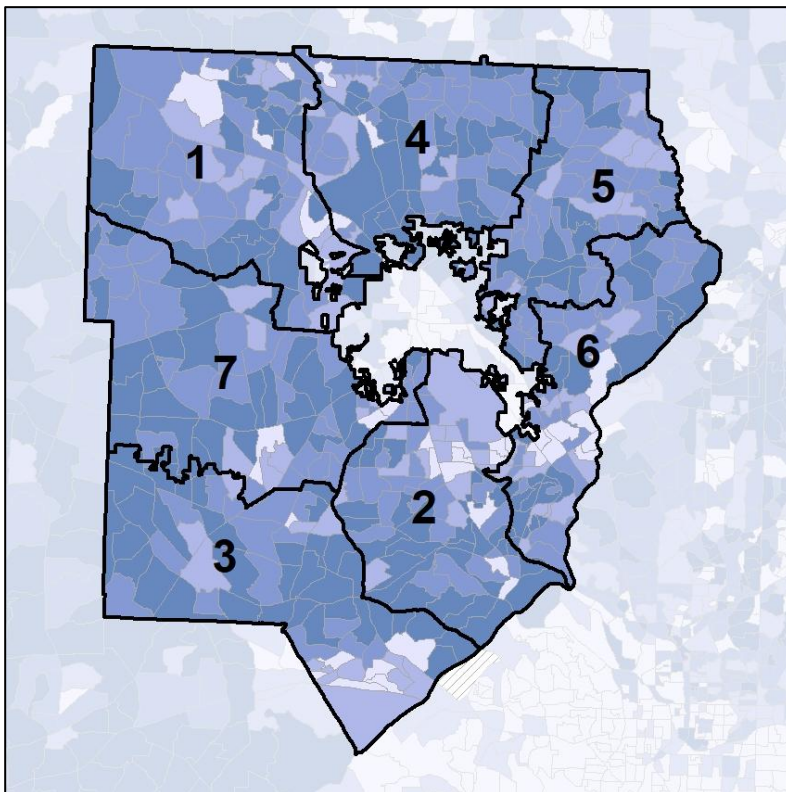


Cobb County School Board

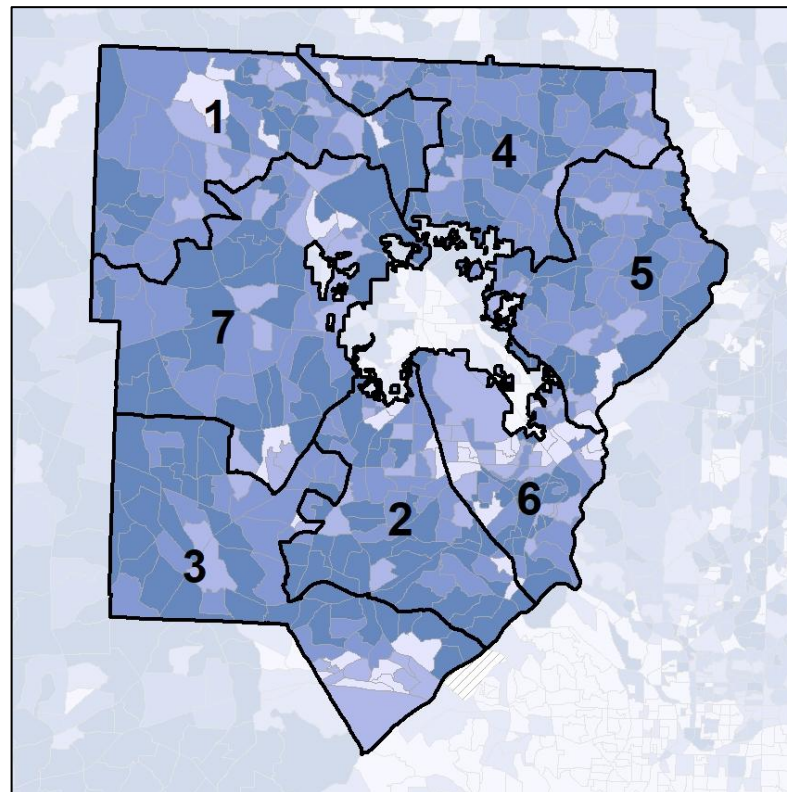
Net Gain in % POC (2020 - 2010) by Census Block Group



2012 Map



2022 Map*



	1	2	3	4	5	6	7	1*	2*	3*	4*	5*	6*	7*	County
Population	98,480	100,850	103,515	99,419	97,199	104,884	100,988	100,065	101,039	100,795	101,291	100,701	101,242	100,044	766,149
API	5%	5%	1%	6%	9%	12%	3%	5%	4%	2%	7%	11%	8%	4%	6%
Black	19%	32%	54%	19%	9%	22%	26%	20%	35%	53%	11%	8%	32%	22%	26%
Latino	11%	19%	20%	11%	8%	9%	19%	11%	25%	20%	10%	8%	15%	10%	15%
Other	6%	5%	4%	7%	6%	6%	5%	6%	5%	4%	7%	6%	6%	6%	6%
White	60%	39%	20%	57%	67%	52%	48%	58%	32%	21%	66%	67%	39%	58%	48%
Population Gain	7,760	10,690	13,220	10,067	7,713	14,385	10,001	1,585	189	-2,720	1,872	3,502	-3,642	-944	78,071
Population % Gain	9%	12%	15%	11%	9%	16%	11%	2%	0%	-3%	2%	4%	-3%	-1%	11%
Net POC Gain	10,097	12,732	19,136	13,202	10,618	14,255	13,381	2,019	7,447	-2,678	-7,740	968	11,025	-11,160	96,327
Net POC % Gain	34%	26%	30%	45%	50%	40%	34%	5%	12%	-3%	-18%	3%	22%	-21%	32%



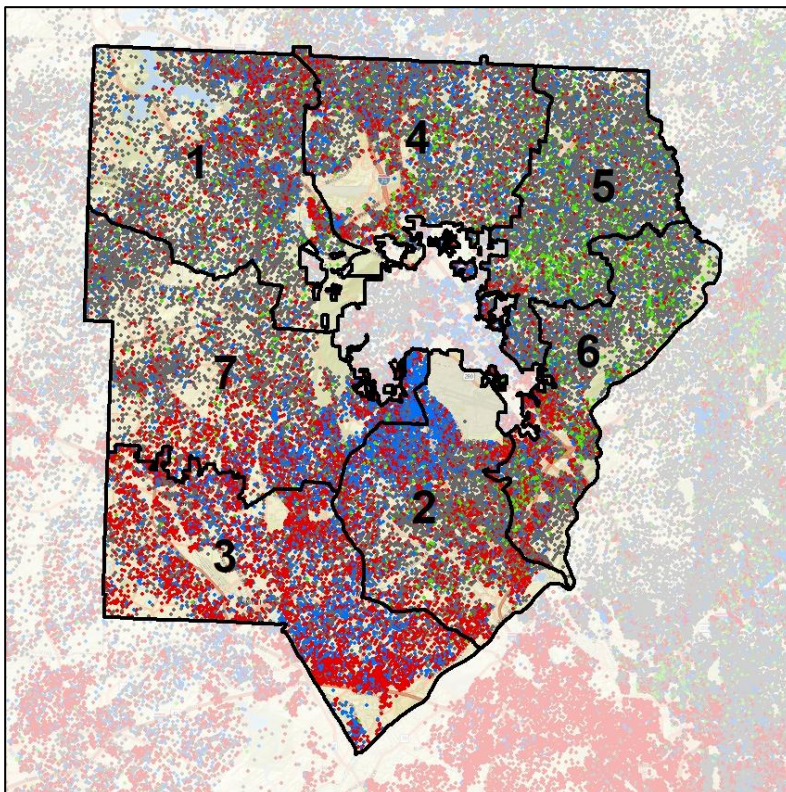
Source:
2020 Decennial Census
2020 ACS 5-Year Dataset

Cobb County School Board

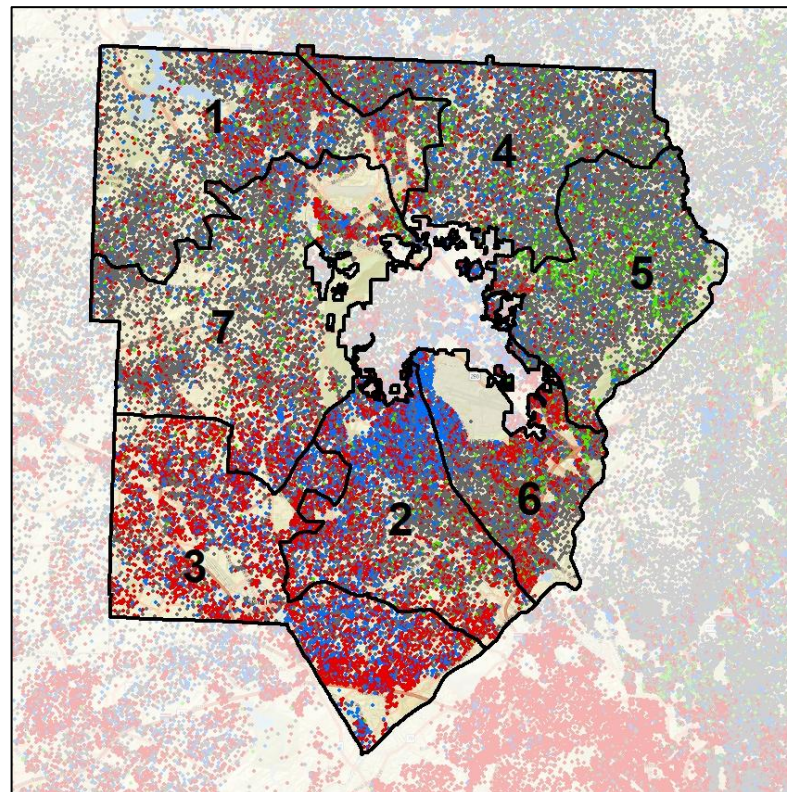
Population Density by Race



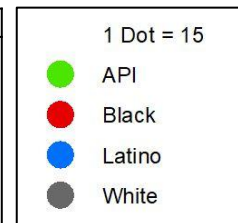
2012 Map



2022 Map*



	1	2	3	4	5	6	7	1*	2*	3*	4*	5*	6*	7*	County
Population	98,480	100,850	103,515	99,419	97,199	104,884	100,988	100,065	101,039	100,795	101,291	100,701	101,242	100,044	766,149
API	4,540	4,707	1,499	6,158	9,043	12,302	2,782	4,513	3,578	1,648	7,185	11,550	8,145	4,407	42,826
% API	5%	5%	1%	6%	9%	12%	3%	5%	4%	2%	7%	11%	8%	4%	6%
Black	18,581	32,288	55,988	18,450	8,643	22,637	25,969	20,293	35,633	53,770	11,316	7,831	31,948	21,717	200,072
% Black	19%	32%	54%	19%	9%	22%	26%	20%	35%	53%	11%	8%	32%	22%	26%
Latino	10,883	19,512	20,505	11,342	8,140	9,043	19,327	11,044	25,103	19,995	9,712	7,595	15,110	10,153	111,240
% Latino	11%	19%	20%	11%	8%	9%	19%	11%	25%	20%	10%	8%	15%	10%	15%
Other	5,783	5,030	4,461	6,678	6,200	6,305	4,928	5,956	4,670	4,362	6,675	6,018	6,109	5,569	42,829
% Other	6%	5%	4%	7%	6%	6%	5%	6%	5%	4%	7%	6%	6%	6%	6%
White	58,693	39,313	21,062	56,791	65,173	54,597	47,982	58,259	32,055	21,020	66,403	67,707	39,930	58,198	369,182
% White	60%	39%	20%	57%	67%	52%	48%	58%	32%	21%	66%	67%	39%	58%	48%



Source:
2020 Decennial Census
2020 ACS 5-Year Dataset

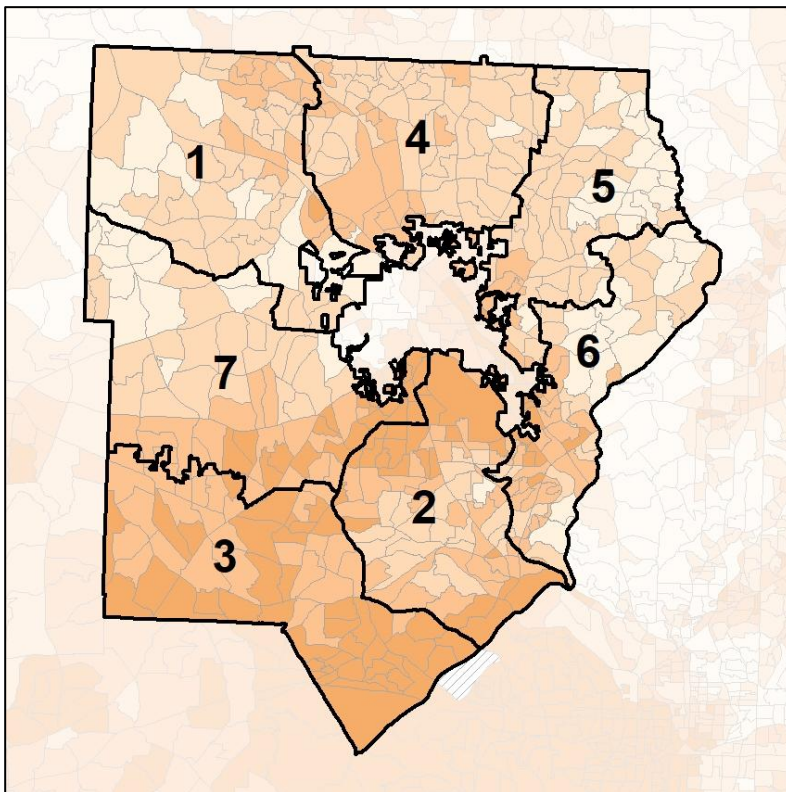


Cobb County School Board

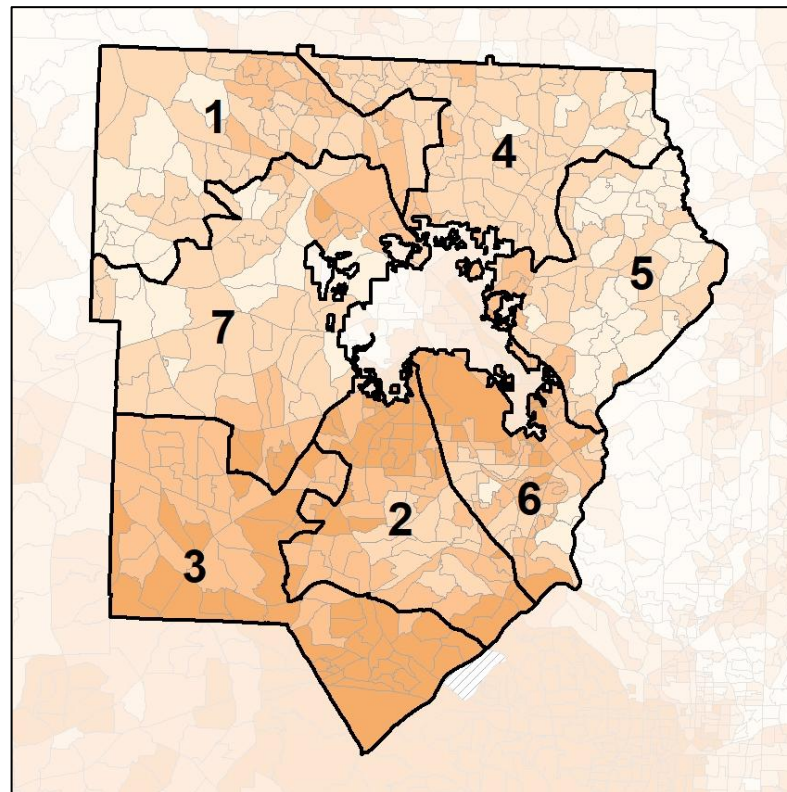
% People of Color by Census Block Group



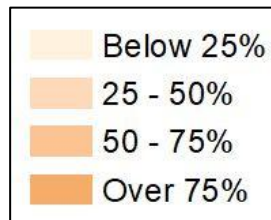
2012 Map



2022 Map*



	1	2	3	4	5	6	7	1*	2*	3*	4*	5*	6*	7*	County
Population	98,480	100,850	103,515	99,419	97,199	104,884	100,988	100,065	101,039	100,795	101,291	100,701	101,242	100,044	766,149
API	4,540	4,707	1,499	6,158	9,043	12,302	2,782	4,513	3,578	1,648	7,185	11,550	8,145	4,407	42,826
% API	5%	5%	1%	6%	9%	12%	3%	5%	4%	2%	7%	11%	8%	4%	6%
Black	18,581	32,288	55,988	18,450	8,643	22,637	25,969	20,293	35,633	53,770	11,316	7,831	31,948	21,717	200,072
% Black	19%	32%	54%	19%	9%	22%	26%	20%	35%	53%	11%	8%	32%	22%	26%
Latino	10,883	19,512	20,505	11,342	8,140	9,043	19,327	11,044	25,103	19,995	9,712	7,595	15,110	10,153	111,240
% Latino	11%	19%	20%	11%	8%	9%	19%	11%	25%	20%	10%	8%	15%	10%	15%
Other	5,783	5,030	4,461	6,678	6,200	6,305	4,928	5,956	4,670	4,362	6,675	6,018	6,109	5,569	42,829
% Other	6%	5%	4%	7%	6%	6%	5%	6%	5%	4%	7%	6%	6%	6%	6%
White	58,693	39,313	21,062	56,791	65,173	54,597	47,982	58,259	32,055	21,020	66,403	67,707	39,930	58,198	369,182
% White	60%	39%	20%	57%	67%	52%	48%	58%	32%	21%	66%	67%	39%	58%	48%



Source:
2020 Decennial Census
2020 ACS 5-Year Dataset

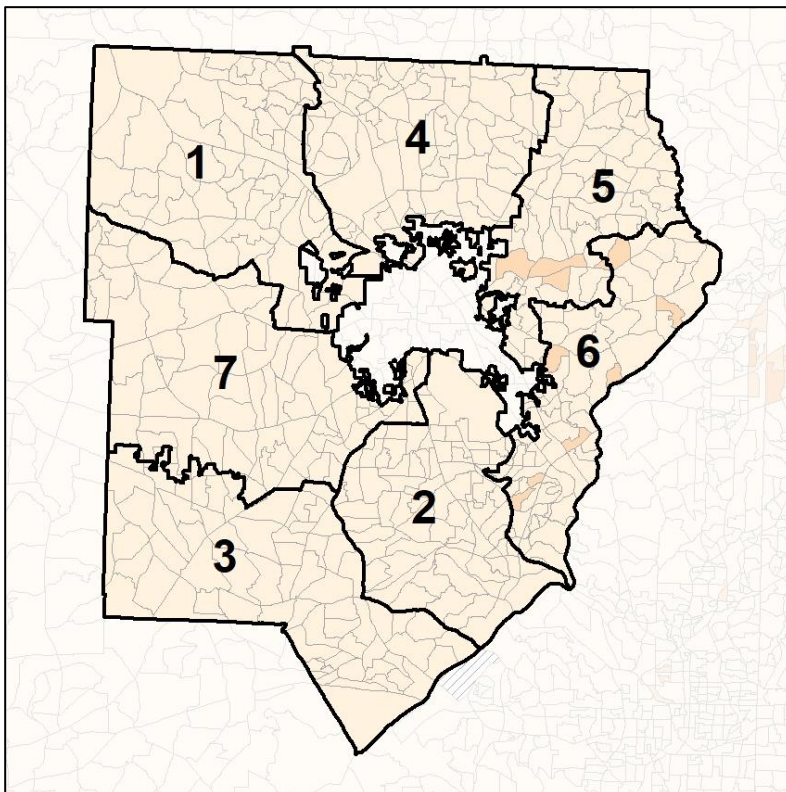


Cobb County School Board

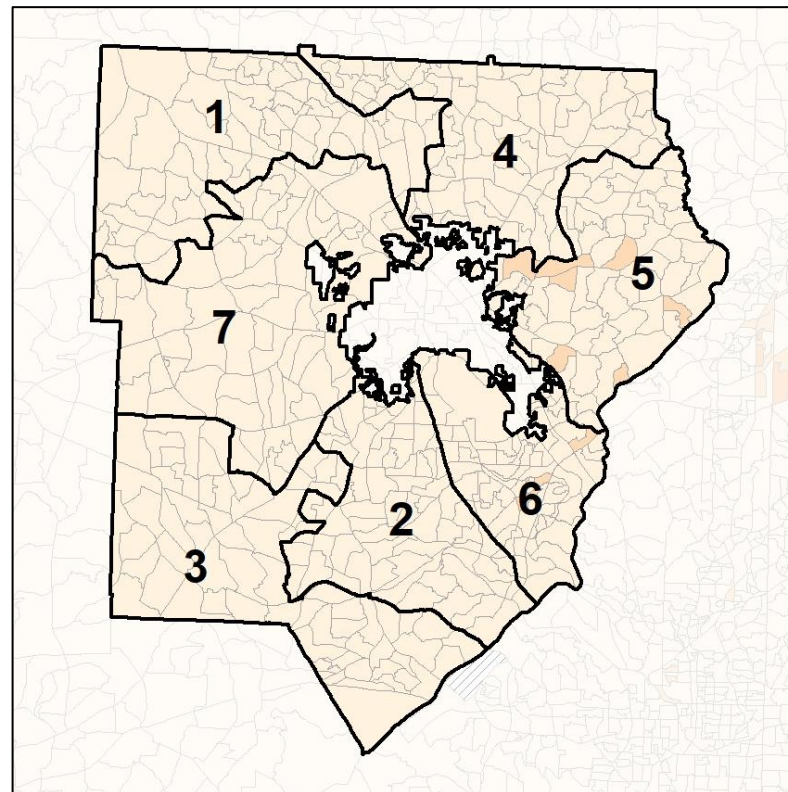
% API by Census Block Group



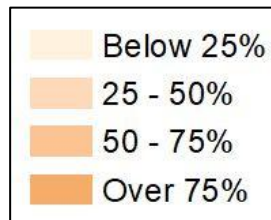
2012 Map



2022 Map*



	1	2	3	4	5	6	7	1*	2*	3*	4*	5*	6*	7*	County
Population	98,480	100,850	103,515	99,419	97,199	104,884	100,988	100,065	101,039	100,795	101,291	100,701	101,242	100,044	766,149
API	4,540	4,707	1,499	6,158	9,043	12,302	2,782	4,513	3,578	1,648	7,185	11,550	8,145	4,407	42,826
% API	5%	5%	1%	6%	9%	12%	3%	5%	4%	2%	7%	11%	8%	4%	6%
Black	18,581	32,288	55,988	18,450	8,643	22,637	25,969	20,293	35,633	53,770	11,316	7,831	31,948	21,717	200,072
% Black	19%	32%	54%	19%	9%	22%	26%	20%	35%	53%	11%	8%	32%	22%	26%
Latino	10,883	19,512	20,505	11,342	8,140	9,043	19,327	11,044	25,103	19,995	9,712	7,595	15,110	10,153	111,240
% Latino	11%	19%	20%	11%	8%	9%	19%	11%	25%	20%	10%	8%	15%	10%	15%
Other	5,783	5,030	4,461	6,678	6,200	6,305	4,928	5,956	4,670	4,362	6,675	6,018	6,109	5,569	42,829
% Other	6%	5%	4%	7%	6%	6%	5%	6%	5%	4%	7%	6%	6%	6%	6%
White	58,693	39,313	21,062	56,791	65,173	54,597	47,982	58,259	32,055	21,020	66,403	67,707	39,930	58,198	369,182
% White	60%	39%	20%	57%	67%	52%	48%	58%	32%	21%	66%	67%	39%	58%	48%

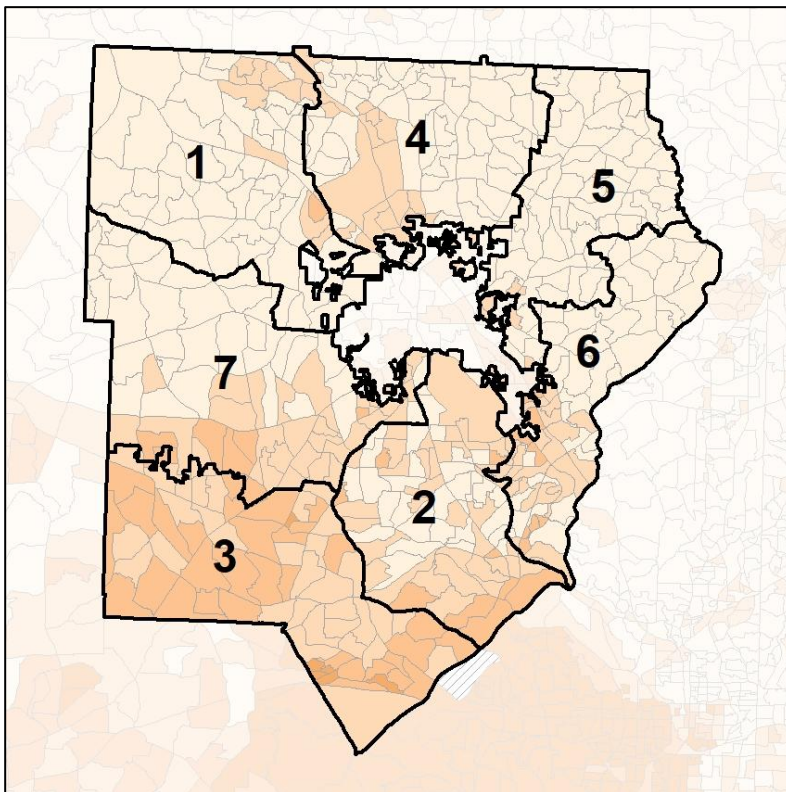


Cobb County School Board

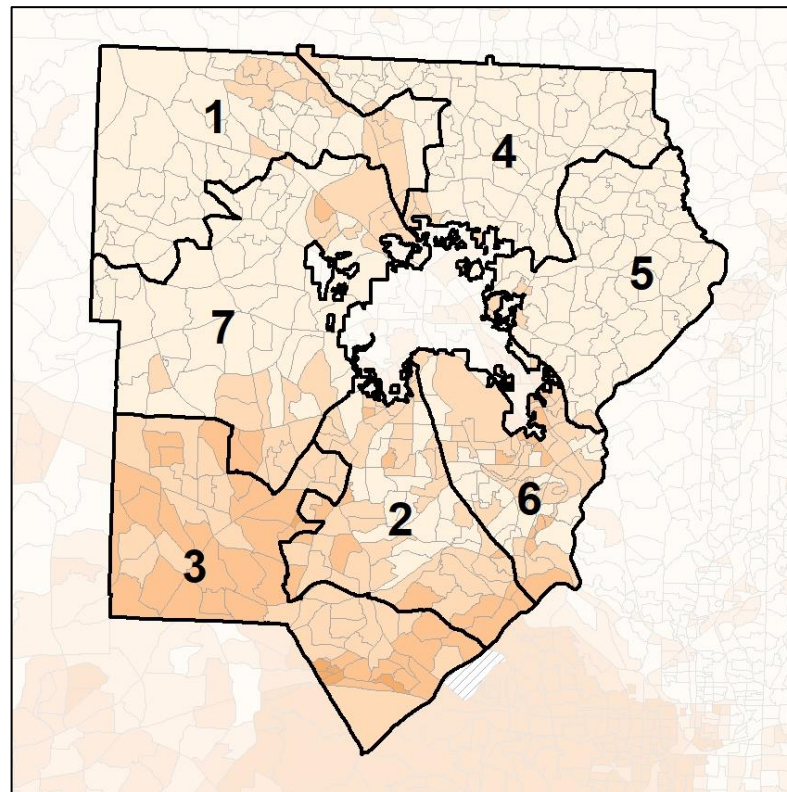
% Black by Census Block Group



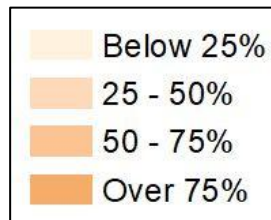
2012 Map



2022 Map*



	1	2	3	4	5	6	7	1*	2*	3*	4*	5*	6*	7*	County
Population	98,480	100,850	103,515	99,419	97,199	104,884	100,988	100,065	101,039	100,795	101,291	100,701	101,242	100,044	766,149
API	4,540	4,707	1,499	6,158	9,043	12,302	2,782	4,513	3,578	1,648	7,185	11,550	8,145	4,407	42,826
% API	5%	5%	1%	6%	9%	12%	3%	5%	4%	2%	7%	11%	8%	4%	6%
Black	18,581	32,288	55,988	18,450	8,643	22,637	25,969	20,293	35,633	53,770	11,316	7,831	31,948	21,717	200,072
% Black	19%	32%	54%	19%	9%	22%	26%	20%	35%	53%	11%	8%	32%	22%	26%
Latino	10,883	19,512	20,505	11,342	8,140	9,043	19,327	11,044	25,103	19,995	9,712	7,595	15,110	10,153	111,240
% Latino	11%	19%	20%	11%	8%	9%	19%	11%	25%	20%	10%	8%	15%	10%	15%
Other	5,783	5,030	4,461	6,678	6,200	6,305	4,928	5,956	4,670	4,362	6,675	6,018	6,109	5,569	42,829
% Other	6%	5%	4%	7%	6%	6%	5%	6%	5%	4%	7%	6%	6%	6%	6%
White	58,693	39,313	21,062	56,791	65,173	54,597	47,982	58,259	32,055	21,020	66,403	67,707	39,930	58,198	369,182
% White	60%	39%	20%	57%	67%	52%	48%	58%	32%	21%	66%	67%	39%	58%	48%

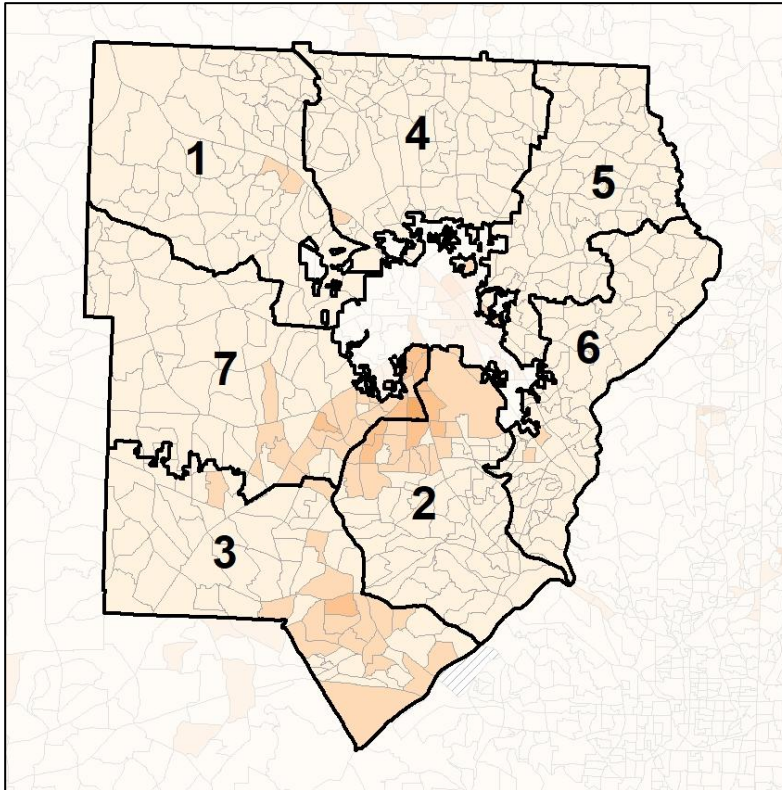


Cobb County School Board

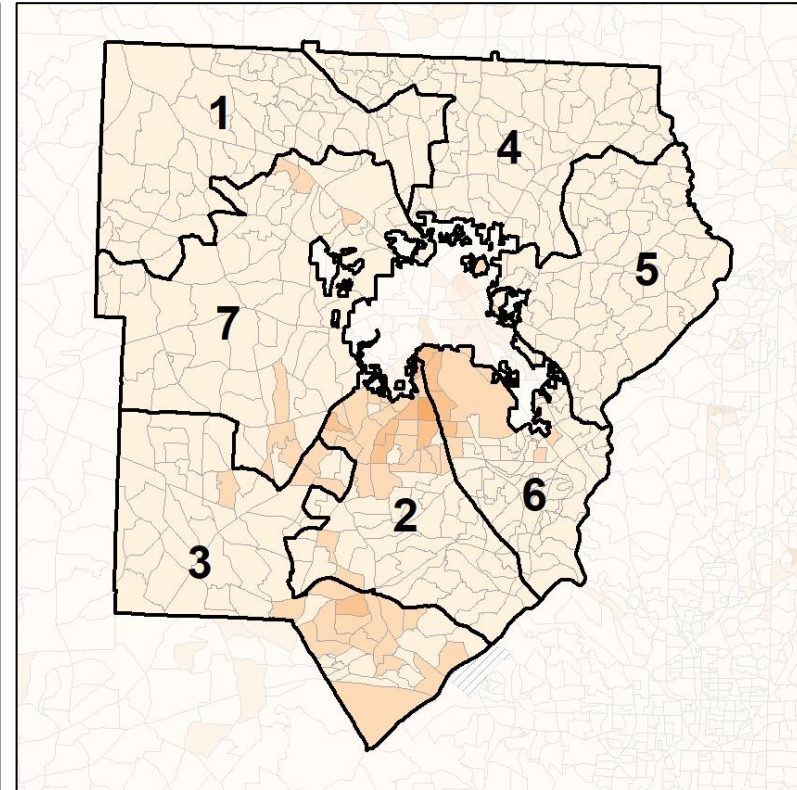
% Latino by Census Block Group



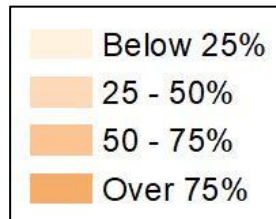
2012 Map



2022 Map*



	1	2	3	4	5	6	7	1*	2*	3*	4*	5*	6*	7*	County
Population	98,480	100,850	103,515	99,419	97,199	104,884	100,988	100,065	101,039	100,795	101,291	100,701	101,242	100,044	766,149
API	4,540	4,707	1,499	6,158	9,043	12,302	2,782	4,513	3,578	1,648	7,185	11,550	8,145	4,407	42,826
% API	5%	5%	1%	6%	9%	12%	3%	5%	4%	2%	7%	11%	8%	4%	6%
Black	18,581	32,288	55,988	18,450	8,643	22,637	25,969	20,293	35,633	53,770	11,316	7,831	31,948	21,717	200,072
% Black	19%	32%	54%	19%	9%	22%	26%	20%	35%	53%	11%	8%	32%	22%	26%
Latino	10,883	19,512	20,505	11,342	8,140	9,043	19,327	11,044	25,103	19,995	9,712	7,595	15,110	10,153	111,240
% Latino	11%	19%	20%	11%	8%	9%	19%	11%	25%	20%	10%	8%	15%	10%	15%
Other	5,783	5,030	4,461	6,678	6,200	6,305	4,928	5,956	4,670	4,362	6,675	6,018	6,109	5,569	42,829
% Other	6%	5%	4%	7%	6%	6%	5%	6%	5%	4%	7%	6%	6%	6%	6%
White	58,693	39,313	21,062	56,791	65,173	54,597	47,982	58,259	32,055	21,020	66,403	67,707	39,930	58,198	369,182
% White	60%	39%	20%	57%	67%	52%	48%	58%	32%	21%	66%	67%	39%	58%	48%



Source:
2020 Decennial Census
2020 ACS 5-Year Dataset

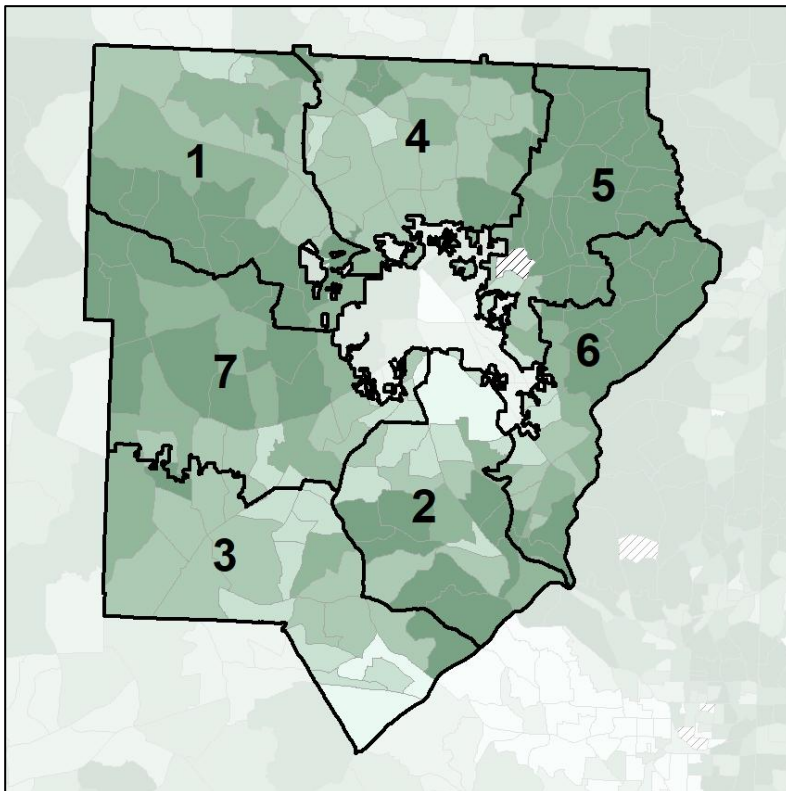


Cobb County School Board

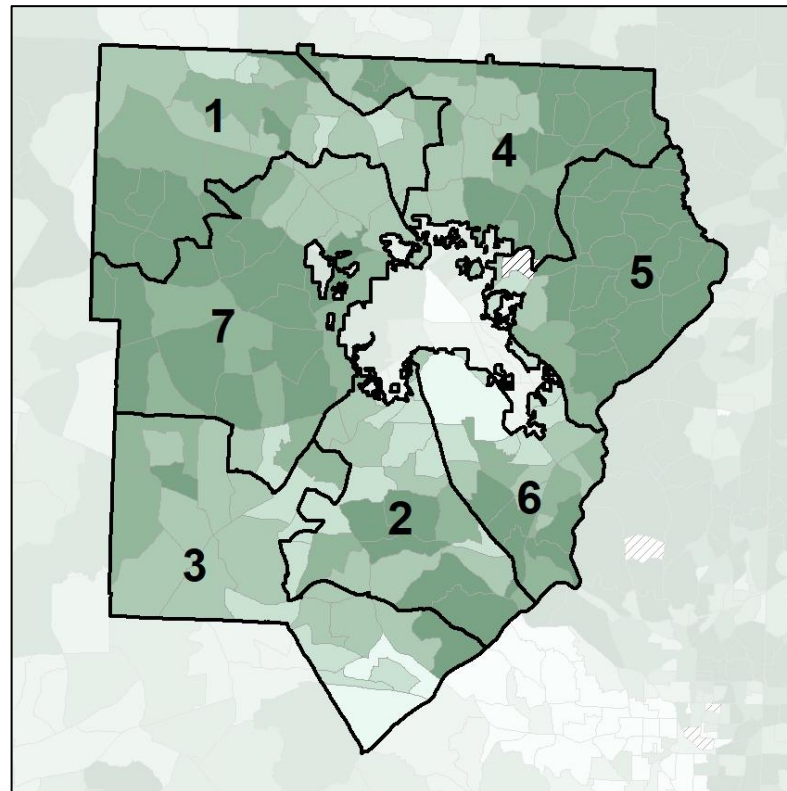
Median Household Income by Census Tract



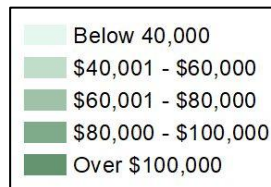
2012 Map



2022 Map*



	1	2	3	4	5	6	7	1*	2*	3*	4*	5*	6*	7*	County
Population	98,480	100,850	103,515	99,419	97,199	104,884	100,988	100,065	101,039	100,795	101,291	100,701	101,242	100,044	766,149
% API	5%	5%	1%	6%	9%	12%	3%	5%	4%	2%	7%	11%	8%	4%	6%
% Black	19%	32%	54%	19%	9%	22%	26%	20%	35%	53%	11%	8%	32%	22%	26%
% Latino	11%	19%	20%	11%	8%	9%	19%	11%	25%	20%	10%	8%	15%	10%	15%
% Other	6%	5%	4%	7%	6%	6%	5%	6%	5%	4%	7%	6%	6%	6%	6%
% White	60%	39%	20%	57%	67%	52%	48%	58%	32%	21%	66%	67%	39%	58%	48%
Median Income	\$97K	\$87K	\$67K	\$85K	\$122K	\$102K	\$94K	\$89K	\$77K	\$69K	\$108K	\$128K	\$84K	\$104K	\$81K
% Renter	21%	38%	36%	35%	19%	50%	20%	29%	37%	32%	17%	19%	63%	20%	34%
% Youth	20%	23%	24%	31%	16%	30%	19%	24%	23%	22%	19%	15%	36%	23%	24%

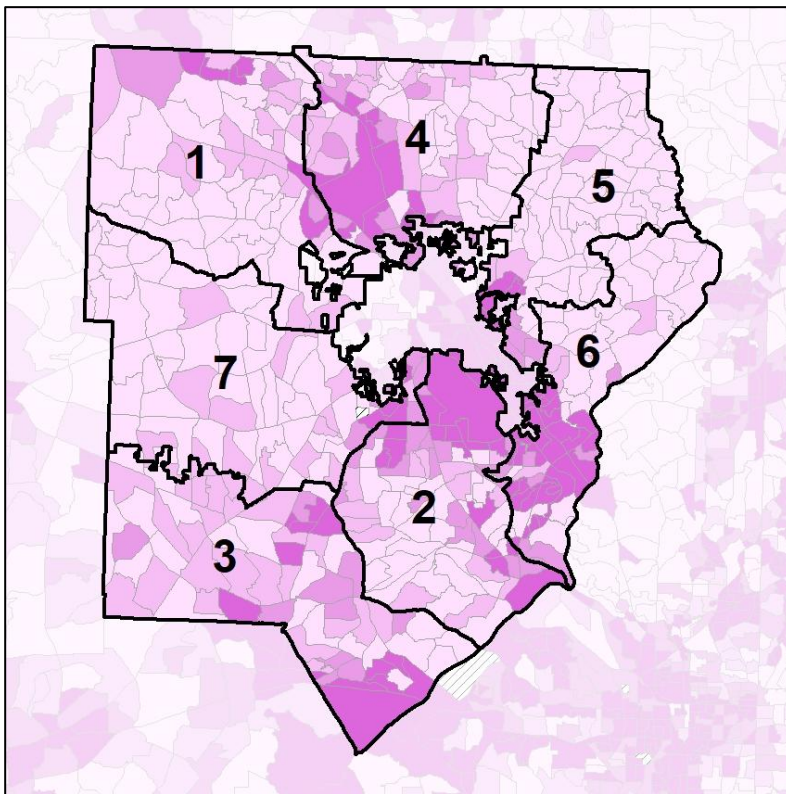


Cobb County School Board

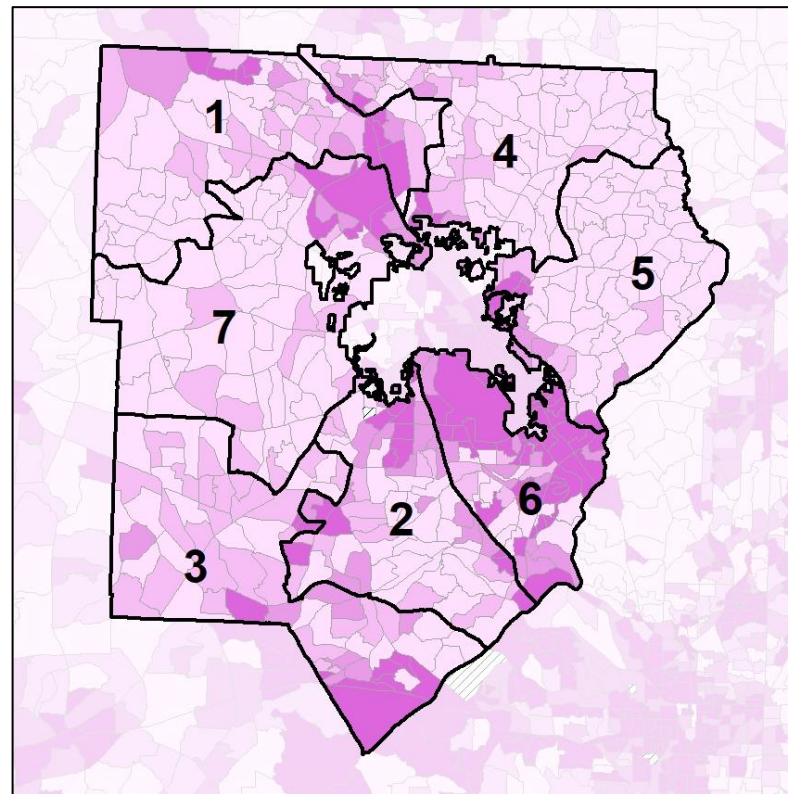
% Renter by Census Block Group



2012 Map



2022 Map*



	1	2	3	4	5	6	7	1*	2*	3*	4*	5*	6*	7*	County
Population	98,480	100,850	103,515	99,419	97,199	104,884	100,988	100,065	101,039	100,795	101,291	100,701	101,242	100,044	766,149
% API	5%	5%	1%	6%	9%	12%	3%	5%	4%	2%	7%	11%	8%	4%	6%
% Black	19%	32%	54%	19%	9%	22%	26%	20%	35%	53%	11%	8%	32%	22%	26%
% Latino	11%	19%	20%	11%	8%	9%	19%	11%	25%	20%	10%	8%	15%	10%	15%
% Other	6%	5%	4%	7%	6%	6%	5%	6%	5%	4%	7%	6%	6%	6%	6%
% White	60%	39%	20%	57%	67%	52%	48%	58%	32%	21%	66%	67%	39%	58%	48%
Median Income	\$97K	\$87K	\$67K	\$85K	\$122K	\$102K	\$94K	\$89K	\$77K	\$69K	\$108K	\$128K	\$84K	\$104K	\$81K
% Renter	21%	38%	36%	35%	19%	50%	20%	29%	37%	32%	17%	19%	63%	20%	34%
% Youth	20%	23%	24%	31%	16%	30%	19%	24%	23%	22%	19%	15%	36%	23%	24%

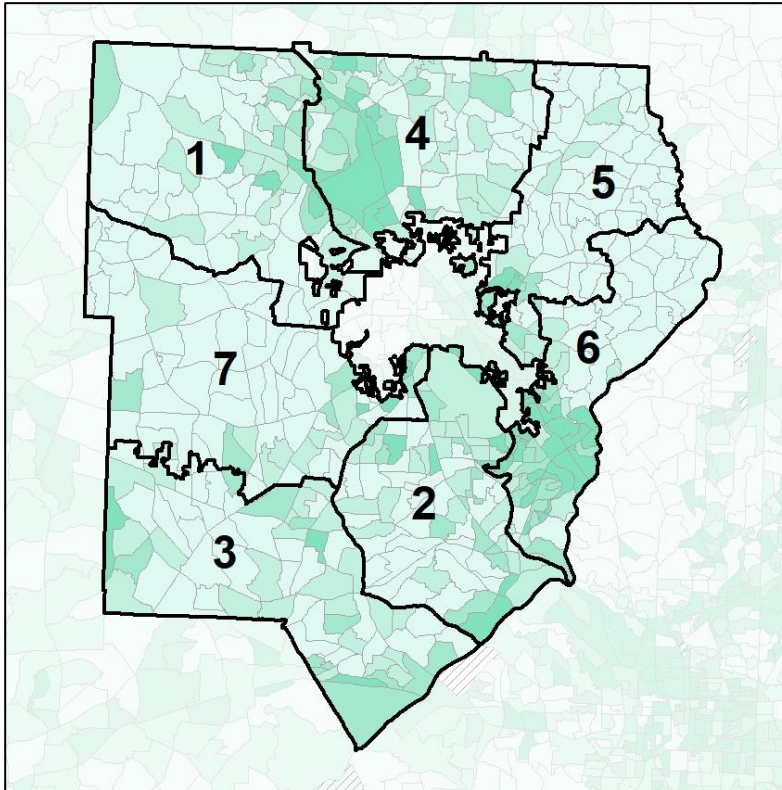


Cobb County School Board

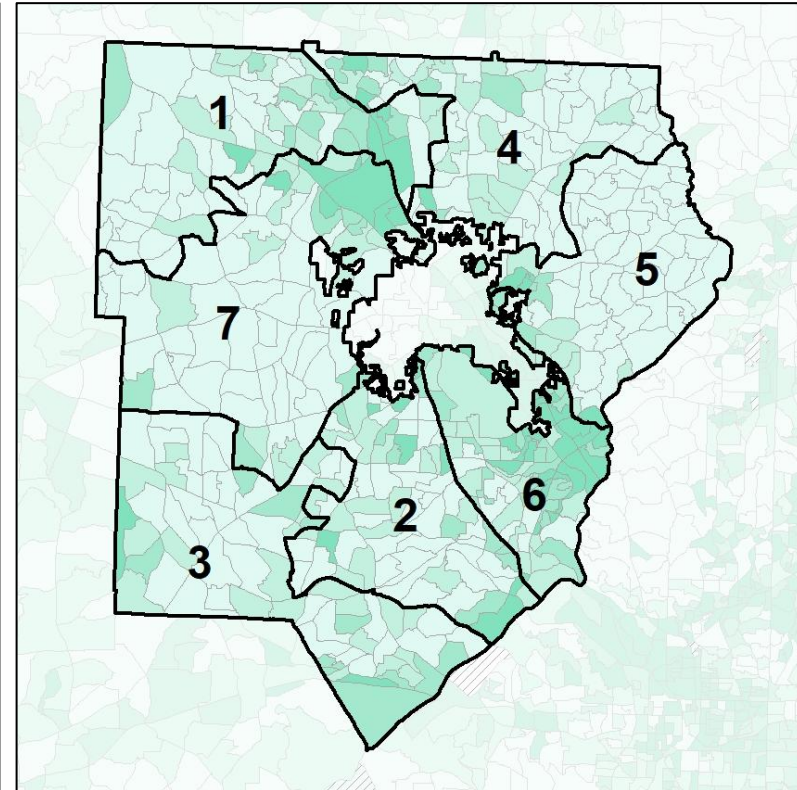
% Youth (18-34) by Census Block Group



2012 Map



2022 Map*



	1	2	3	4	5	6	7	1*	2*	3*	4*	5*	6*	7*	County
Population	98,480	100,850	103,515	99,419	97,199	104,884	100,988	100,065	101,039	100,795	101,291	100,701	101,242	100,044	766,149
% API	5%	5%	1%	6%	9%	12%	3%	5%	4%	2%	7%	11%	8%	4%	6%
% Black	19%	32%	54%	19%	9%	22%	26%	20%	35%	53%	11%	8%	32%	22%	26%
% Latino	11%	19%	20%	11%	8%	9%	19%	11%	25%	20%	10%	8%	15%	10%	15%
% Other	6%	5%	4%	7%	6%	6%	5%	6%	5%	4%	7%	6%	6%	6%	6%
% White	60%	39%	20%	57%	67%	52%	48%	58%	32%	21%	66%	67%	39%	58%	48%
Median Income	\$97K	\$87K	\$67K	\$85K	\$122K	\$102K	\$94K	\$89K	\$77K	\$69K	\$108K	\$128K	\$84K	\$104K	\$81K
% Renter	21%	38%	36%	35%	19%	50%	20%	29%	37%	32%	17%	19%	63%	20%	34%
% Youth	20%	23%	24%	31%	16%	30%	19%	24%	23%	22%	19%	15%	36%	23%	24%

