

Demographic Overview

Racial Breakdown in Clayton County



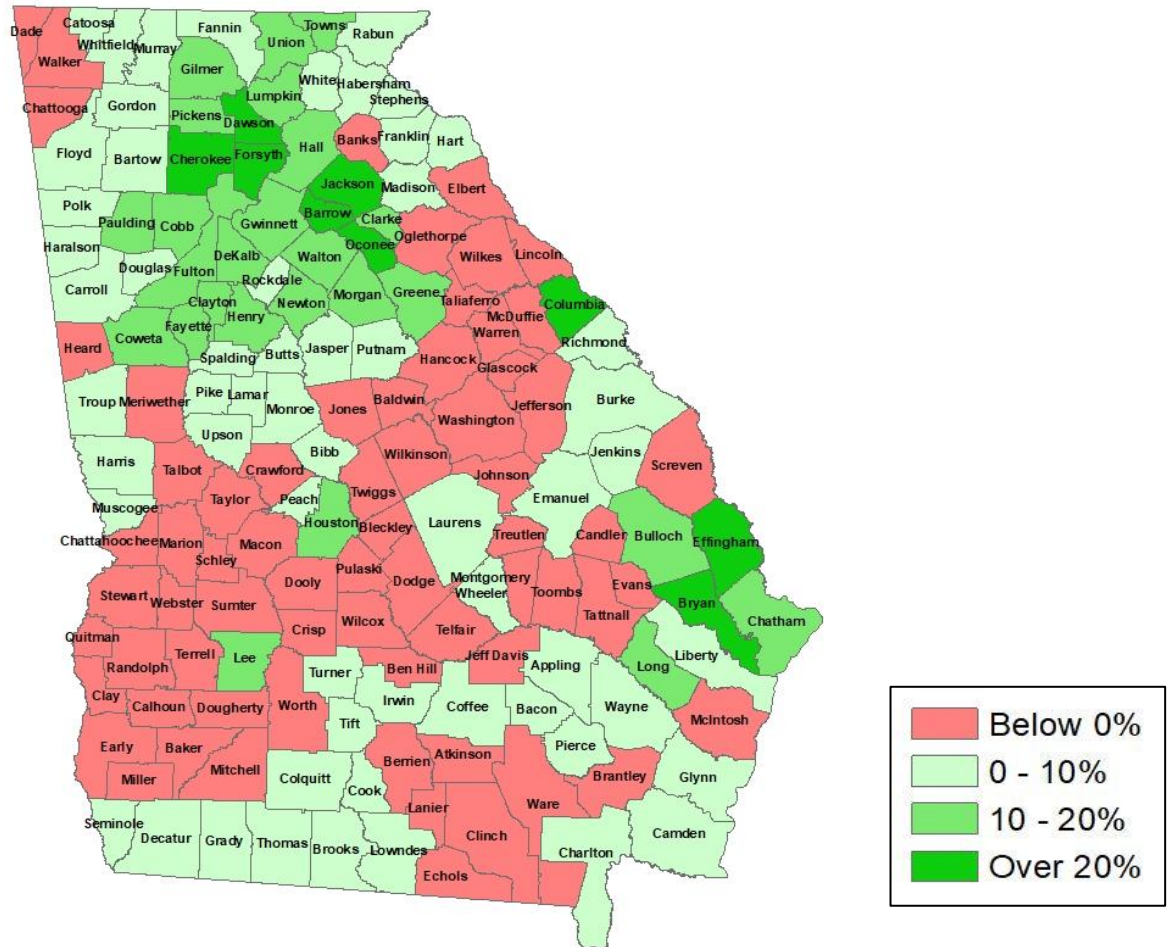
Clayton County	2010	2020	% Change
Total Population	259,424	297,595	15%
AAPI	12,942	13,610	5%
Black	169,020	205,301	21%
Latino	35,447	42,546	20%
Other/Mixed Race	5,405	10,236	89%
POC	222,814	271,693	22%
White	36,610	25,902	-29%





Population Gain

Change in Population in Georgia by County



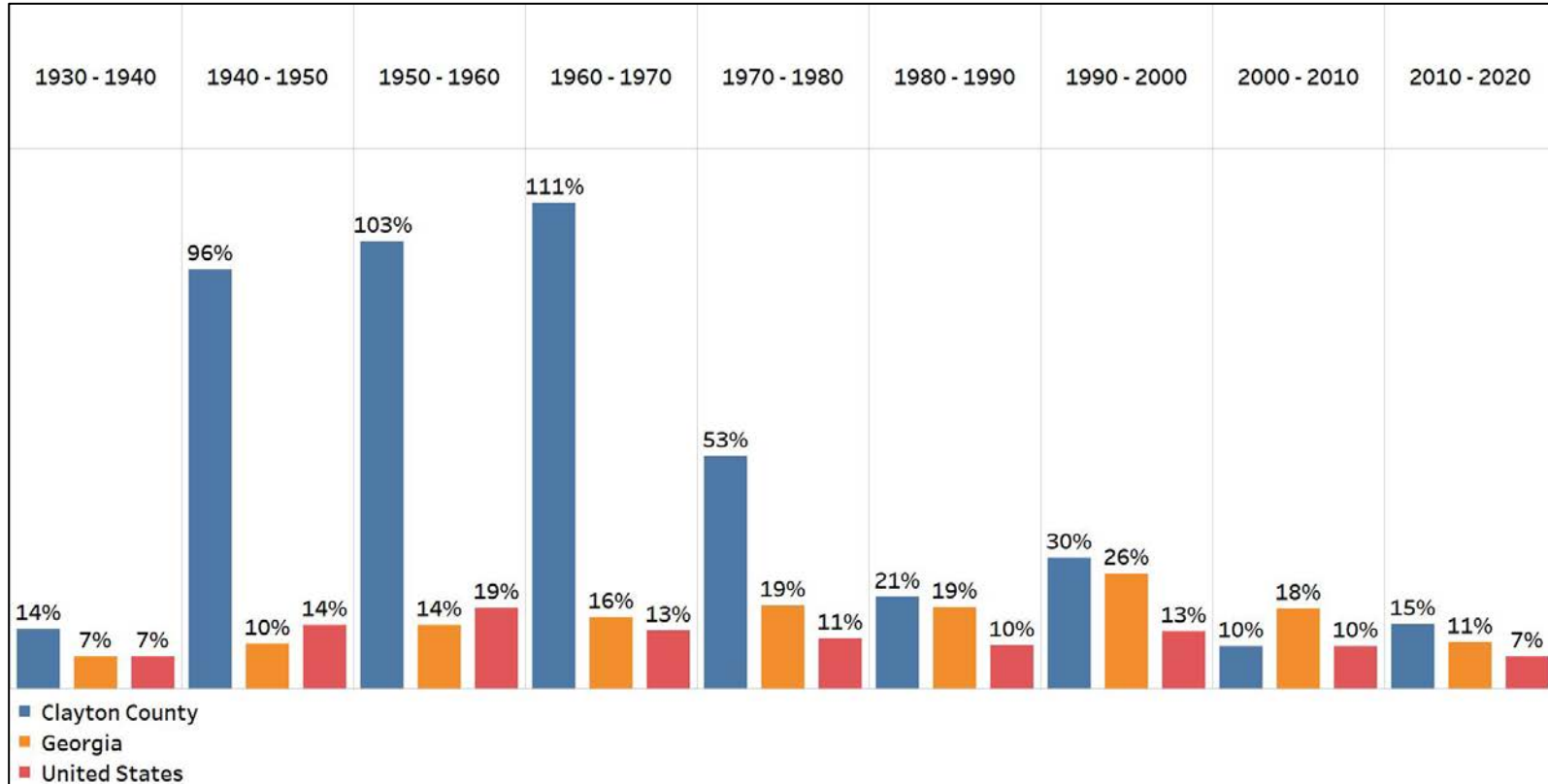
- Georgia is experiencing rapid population growth in the Atlanta, Augusta, and Savannah regions of the state





Population Gain

Change in Population by Decade



- Clayton County had a huge surge in population from 1940-1970, and since then has continued to significantly increase
- The last 2 decades' growth in population were the slowest decades of growth for Clayton since 1940, however the last decade's growth was still higher than Georgia's overall growth

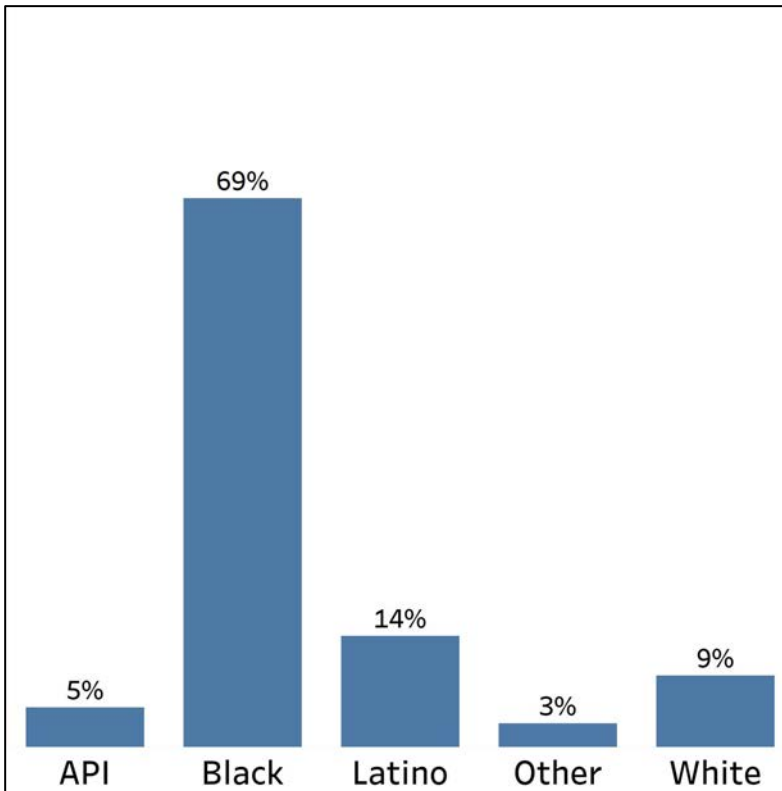


Demographics

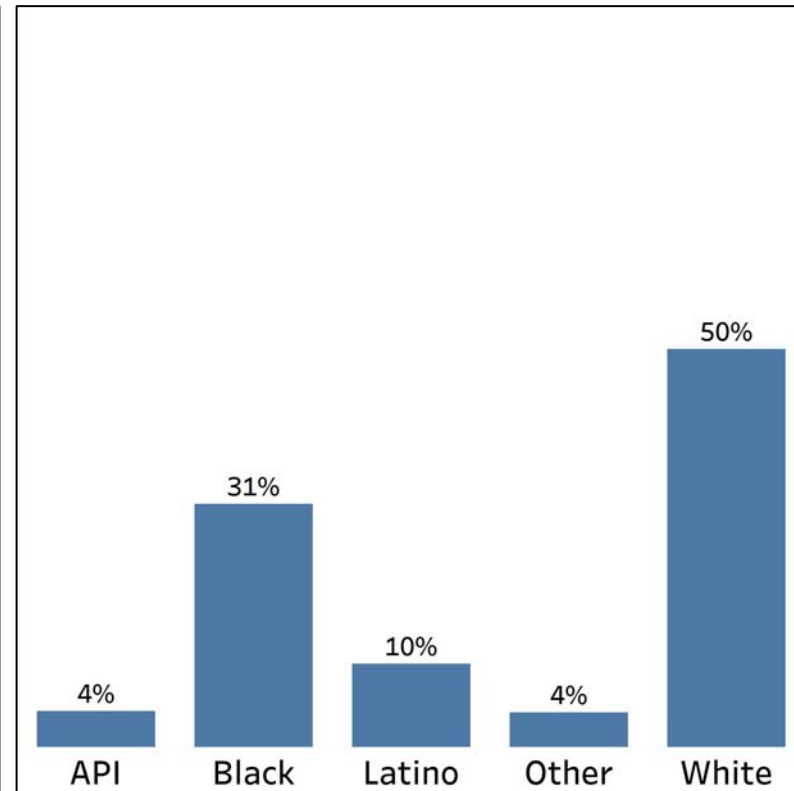
Comparison between Clayton County and Georgia



Clayton County



Georgia



- Clayton County is more than $\frac{2}{3}$ black, and also has a significant Latino community, with it being the second highest demographic group
- The API community also is significant, but both the Other and White populations' share is smaller in the county than in Georgia overall

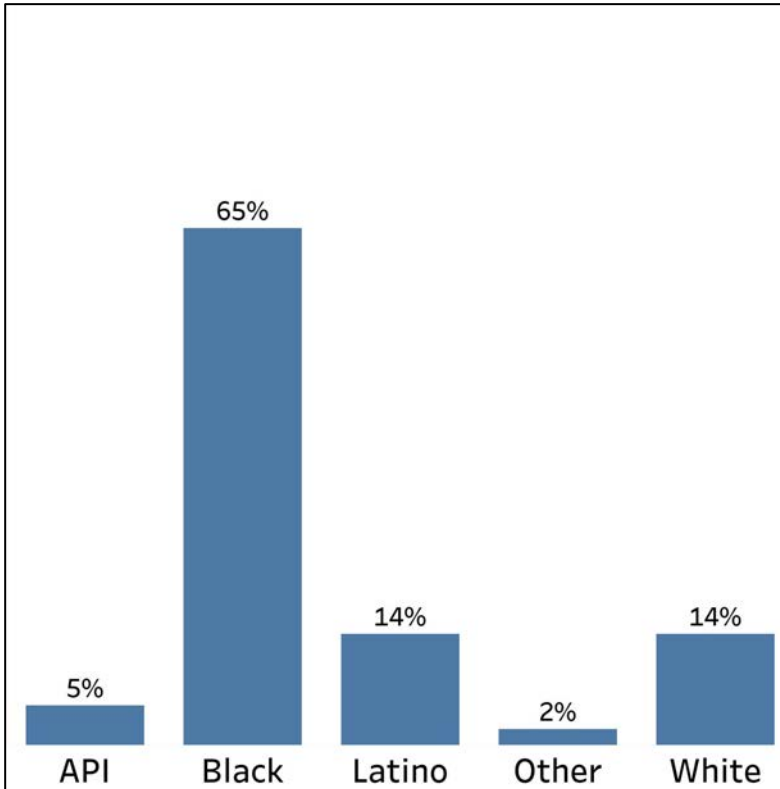


Demographics

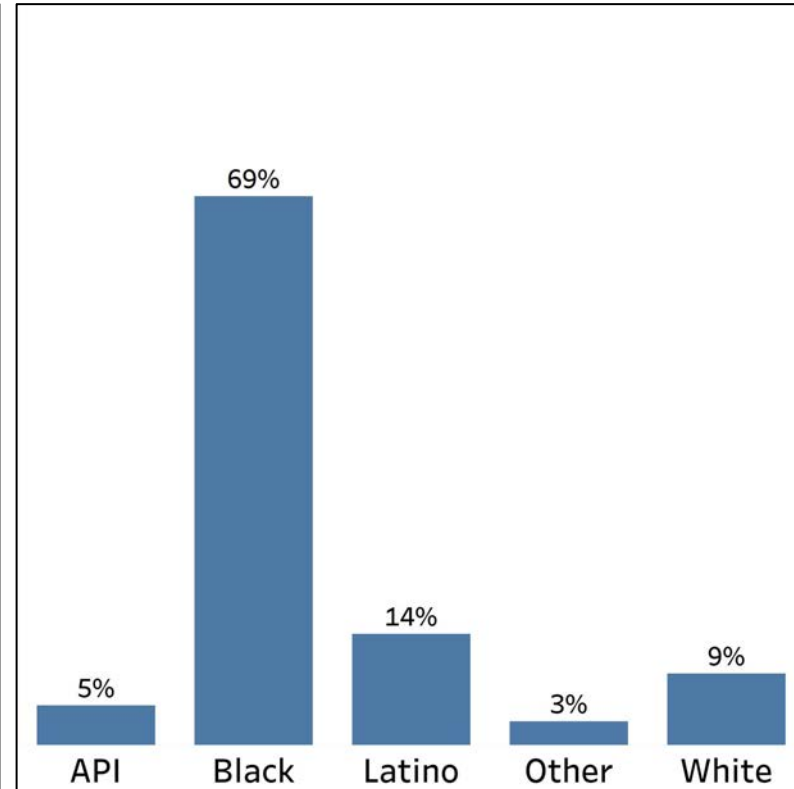
2010 vs 2020 Demographics in Clayton County



Clayton County 2010



Clayton County 2020



- Clayton County grew in its share of both the Black and Other populations
- Meanwhile, the share of the White population decreased significantly

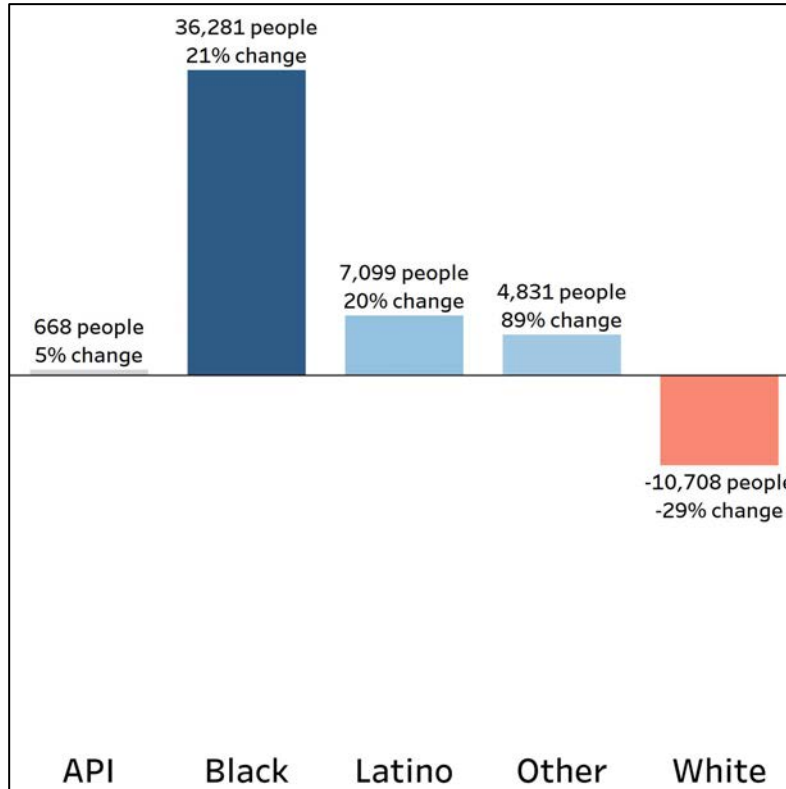


Demographics

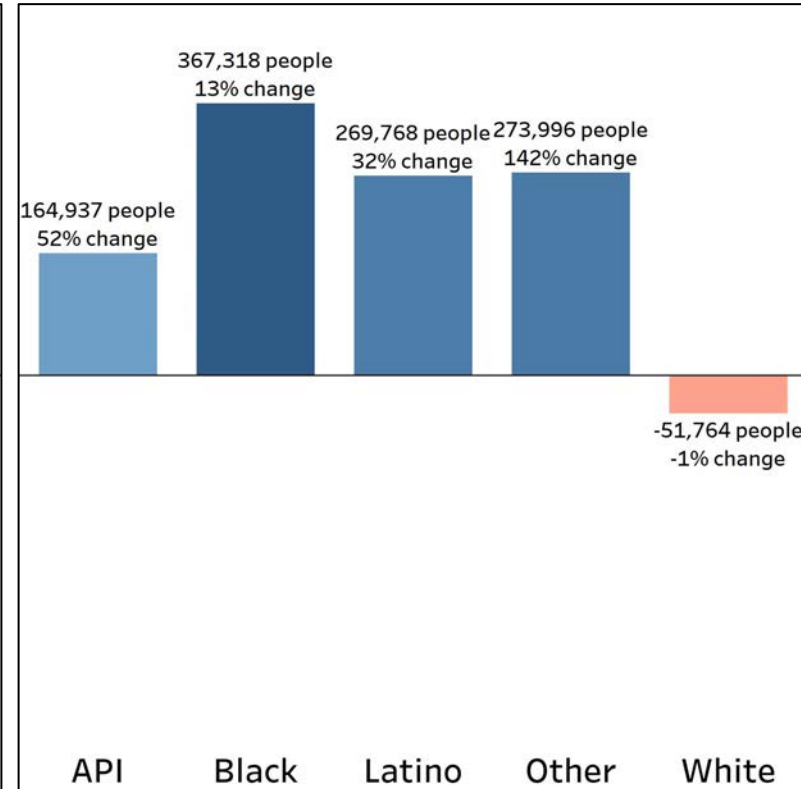
Population Change by Race (2020 - 2010)



Clayton County



Georgia



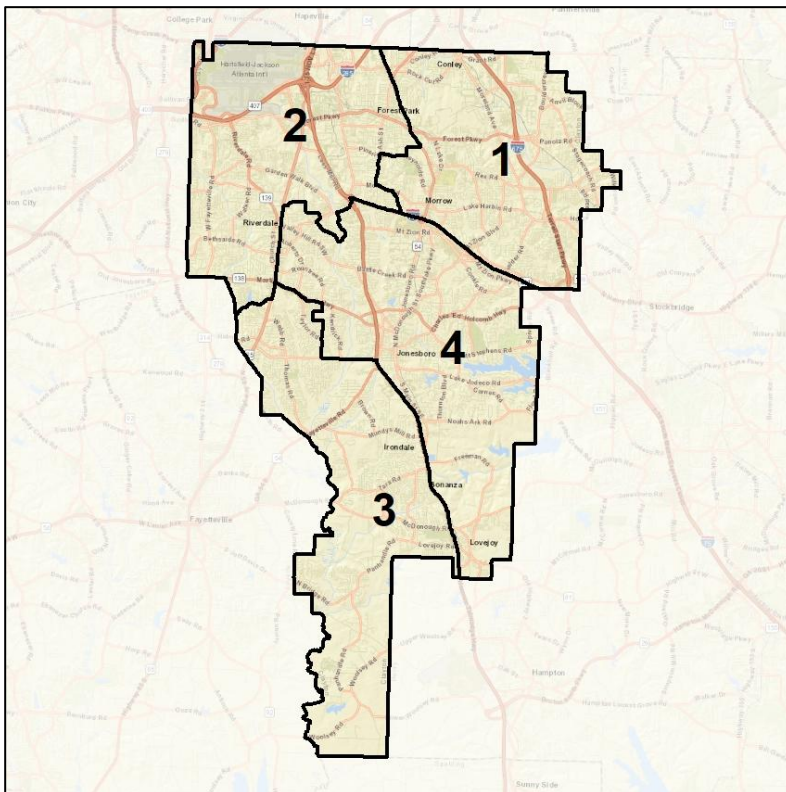
- Clayton County's Black population was the only group that grew at a higher rate than in Georgia overall
- The White population had much steeper decline in Clayton County than in Georgia overall

Clayton County Commission

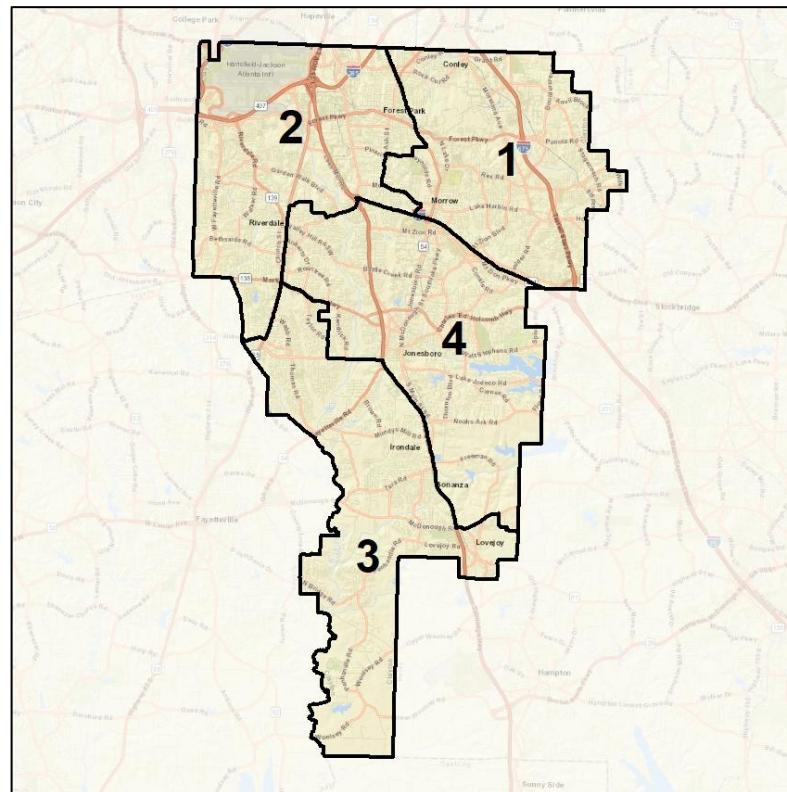
Context



2012 Map



2022 Map*



	1	2	3	4	1*	2*	3*	4*	County
Population	74,737	72,075	72,524	78,145	74,409	74,470	74,359	74,357	297,595
API	8%	4%	2%	4%	8%	4%	2%	4%	5%
Black	63%	72%	77%	65%	63%	72%	76%	65%	69%
Latino	17%	15%	11%	15%	17%	15%	10%	15%	14%
Other	3%	3%	4%	4%	3%	3%	4%	4%	3%
White	9%	6%	7%	12%	9%	6%	8%	12%	9%
Population Gain	9,339	7,767	9,736	11,215	-328	2,395	1,835	-3,788	38,171
Population % Gain	14%	12%	16%	17%	0%	3%	3%	-5%	15%
Net POC Gain	12,772	9,303	11,718	14,990	-287	2,305	1,047	-2,969	48,879
Net POC % Gain	23%	16%	21%	28%	0%	3%	2%	-4%	22%

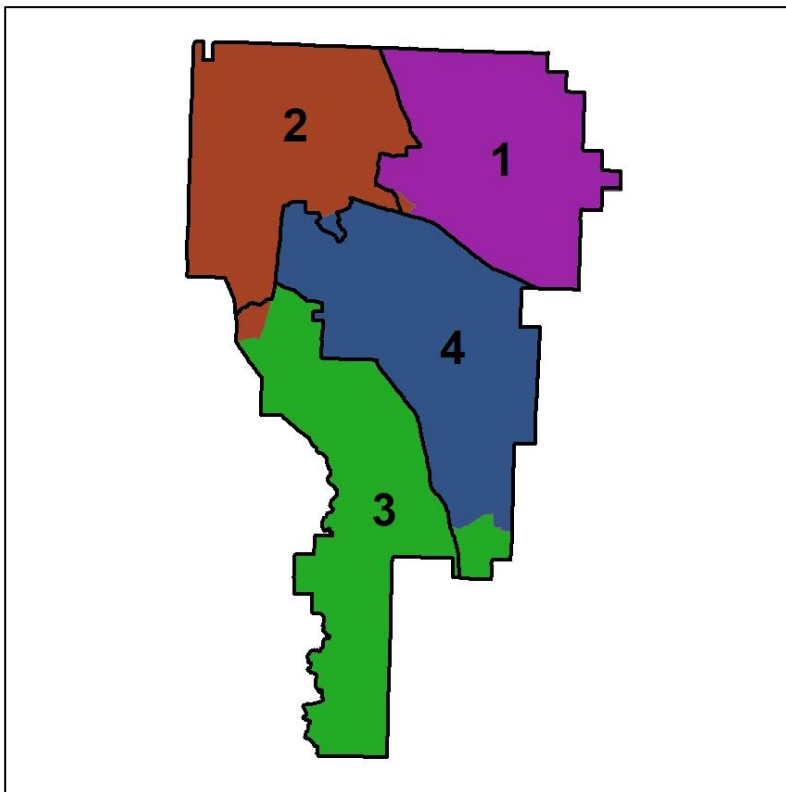


Clayton County Commission

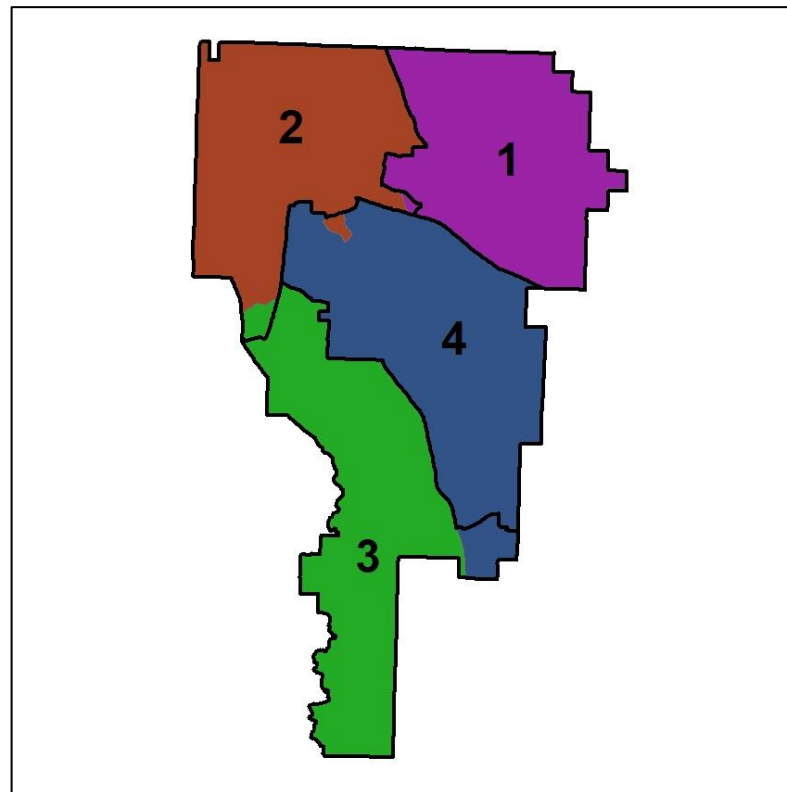
Changes in Redistricting



2012 Map (2022 in Colors)



2022 Map* (2012 in Colors)



	1	2	3	4	1*	2*	3*	4*	County
Population	74,737	72,075	72,524	78,145	74,409	74,470	74,359	74,357	297,595
API	8%	4%	2%	4%	8%	4%	2%	4%	5%
Black	63%	72%	77%	65%	63%	72%	76%	65%	69%
Latino	17%	15%	11%	15%	17%	15%	10%	15%	14%
Other	3%	3%	4%	4%	3%	3%	4%	4%	3%
White	9%	6%	7%	12%	9%	6%	8%	12%	9%
Population Gain	9,339	7,767	9,736	11,215	-328	2,395	1,835	-3,788	38,171
Population % Gain	14%	12%	16%	17%	0%	3%	3%	-5%	15%
Net POC Gain	12,772	9,303	11,718	14,990	-287	2,305	1,047	-2,969	48,879
Net POC % Gain	23%	16%	21%	28%	0%	3%	2%	-4%	22%

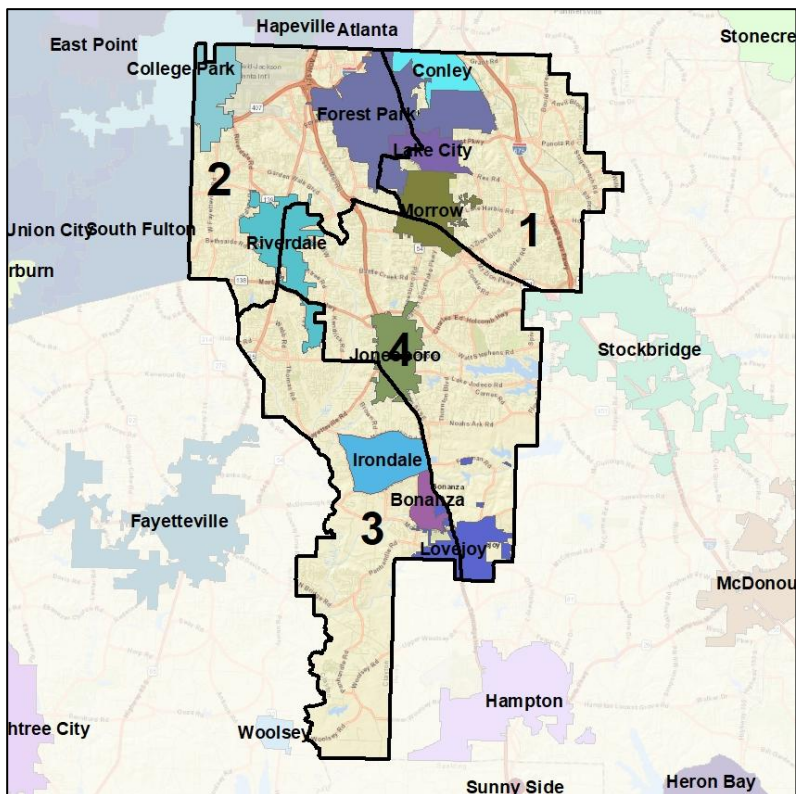


Clayton County Commission

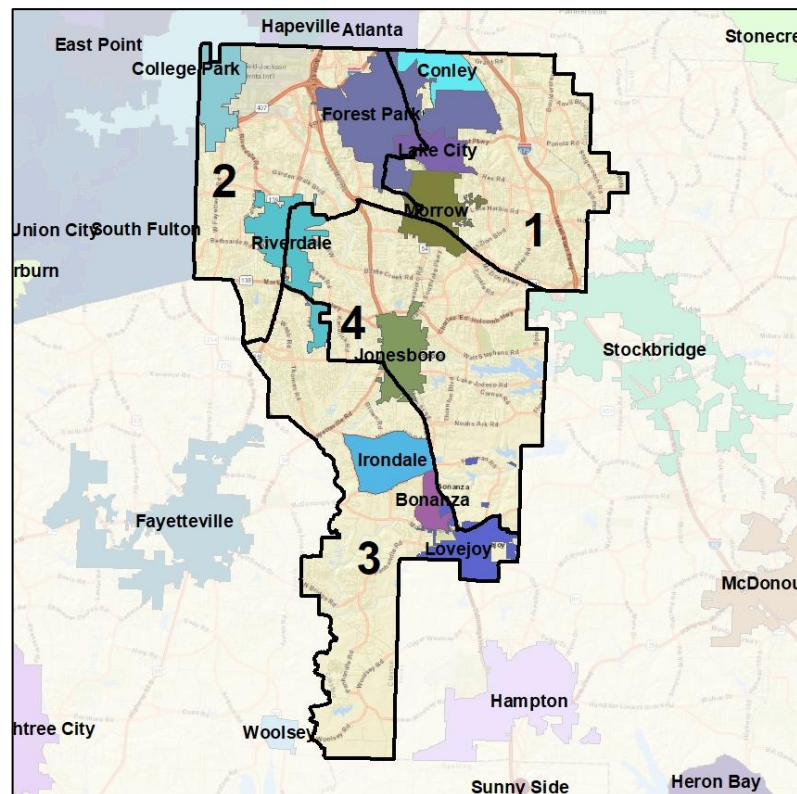
Cities and Places



2012 Map



2022 Map*



	1	2	3	4	1*	2*	3*	4*	County
Population	74,737	72,075	72,524	78,145	74,409	74,470	74,359	74,357	297,595
API	8%	4%	2%	4%	8%	4%	2%	4%	5%
Black	63%	72%	77%	65%	63%	72%	76%	65%	69%
Latino	17%	15%	11%	15%	17%	15%	10%	15%	14%
Other	3%	3%	4%	4%	3%	3%	4%	4%	3%
White	9%	6%	7%	12%	9%	6%	8%	12%	9%
Population Gain	9,339	7,767	9,736	11,215	-328	2,395	1,835	-3,788	38,171
Population % Gain	14%	12%	16%	17%	0%	3%	3%	-5%	15%
Net POC Gain	12,772	9,303	11,718	14,990	-287	2,305	1,047	-2,969	48,879
Net POC % Gain	23%	16%	21%	28%	0%	3%	2%	-4%	22%

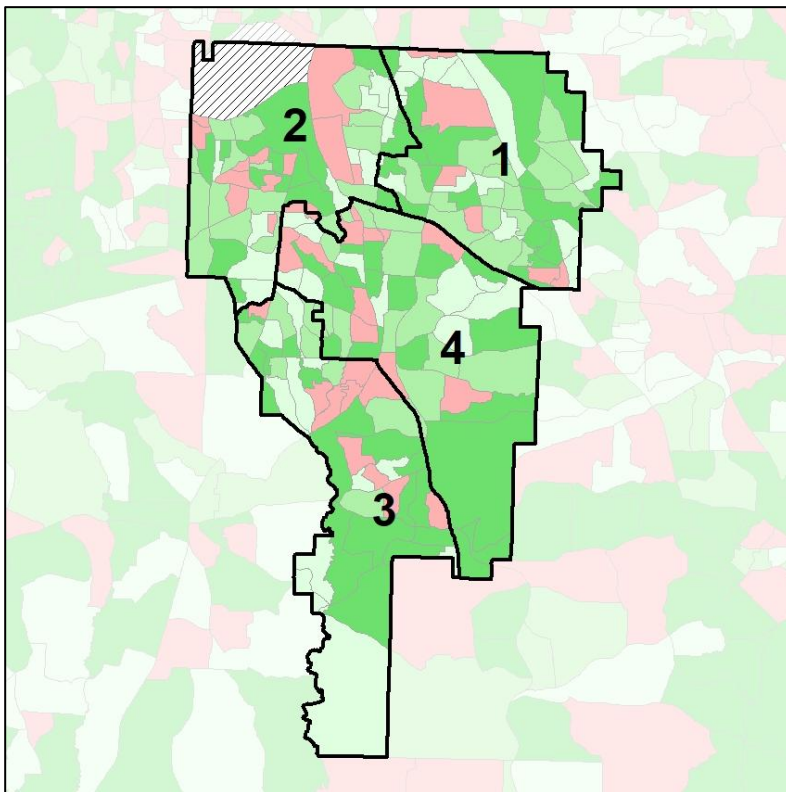


Clayton County Commission

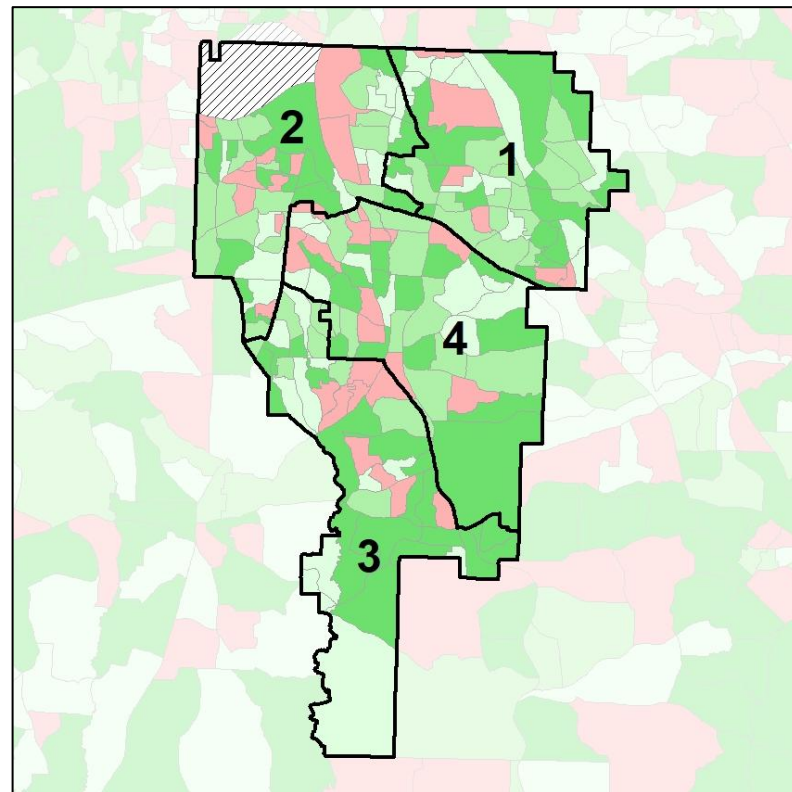
Net Gain in Population (2010 - 2020)



2012 Map



2022 Map*



	1	2	3	4	1*	2*	3*	4*	County
Population	74,737	72,075	72,524	78,145	74,409	74,470	74,359	74,357	297,595
API	8%	4%	2%	4%	8%	4%	2%	4%	5%
Black	63%	72%	77%	65%	63%	72%	76%	65%	69%
Latino	17%	15%	11%	15%	17%	15%	10%	15%	14%
Other	3%	3%	4%	4%	3%	3%	4%	4%	3%
White	9%	6%	7%	12%	9%	6%	8%	12%	9%
Population Gain	9,339	7,767	9,736	11,215	-328	2,395	1,835	-3,788	38,171
Population % Gain	14%	12%	16%	17%	0%	3%	3%	-5%	15%
Net POC Gain	12,772	9,303	11,718	14,990	-287	2,305	1,047	-2,969	48,879
Net POC % Gain	23%	16%	21%	28%	0%	3%	2%	-4%	22%

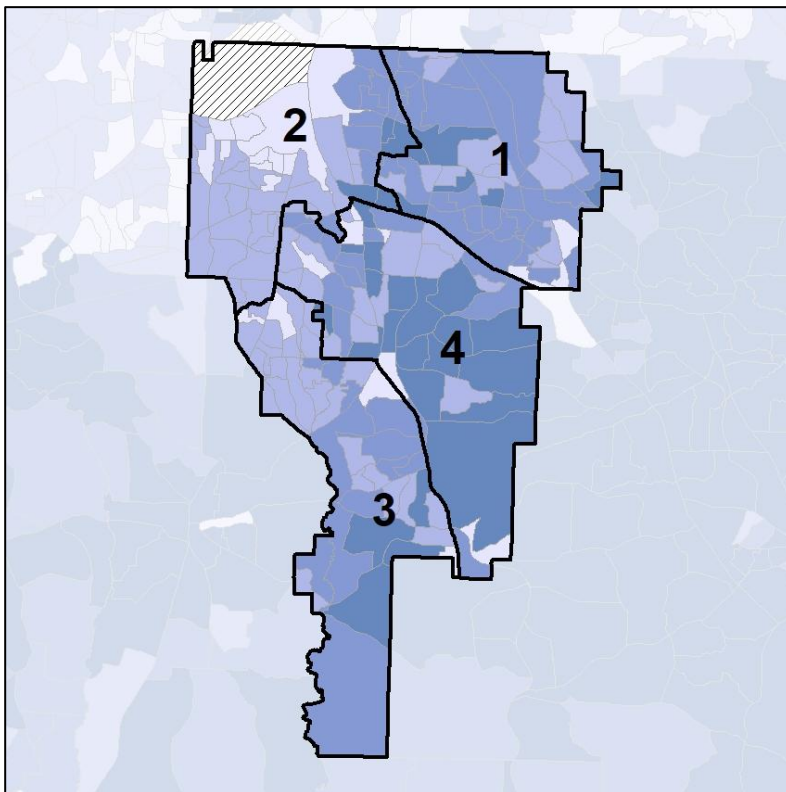


Clayton County Commission

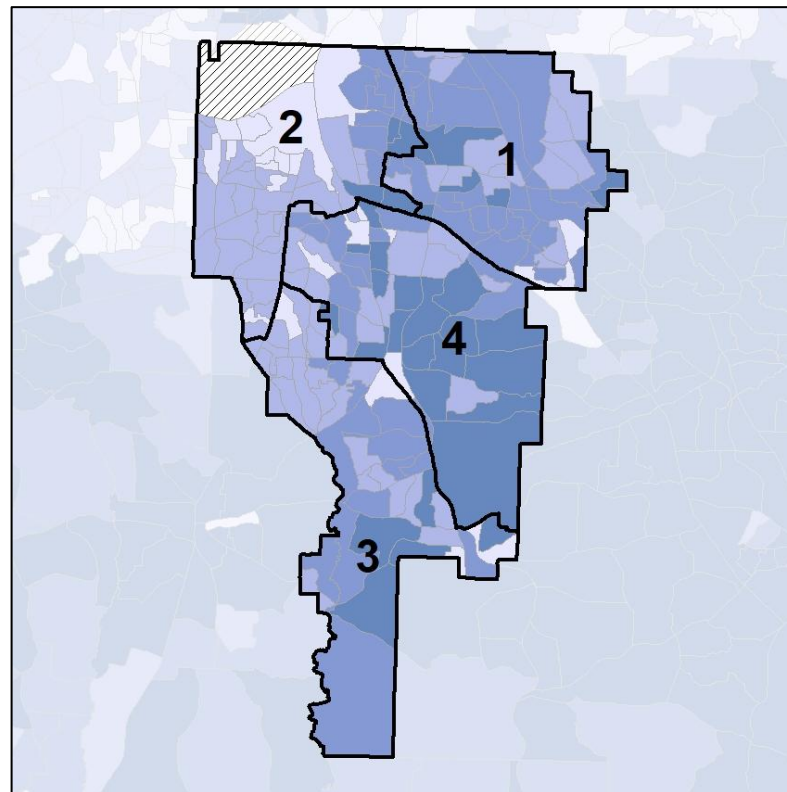
Net Gain in % POC (2020 - 2010) by Census Block Group



2012 Map



2022 Map*



	1	2	3	4	1*	2*	3*	4*	County
Population	74,737	72,075	72,524	78,145	74,409	74,470	74,359	74,357	297,595
API	8%	4%	2%	4%	8%	4%	2%	4%	5%
Black	63%	72%	77%	65%	63%	72%	76%	65%	69%
Latino	17%	15%	11%	15%	17%	15%	10%	15%	14%
Other	3%	3%	4%	4%	3%	3%	4%	4%	3%
White	9%	6%	7%	12%	9%	6%	8%	12%	9%
Population Gain	9,339	7,767	9,736	11,215	-328	2,395	1,835	-3,788	38,171
Population % Gain	14%	12%	16%	17%	0%	3%	3%	-5%	15%
Net POC Gain	12,772	9,303	11,718	14,990	-287	2,305	1,047	-2,969	48,879
Net POC % Gain	23%	16%	21%	28%	0%	3%	2%	-4%	22%

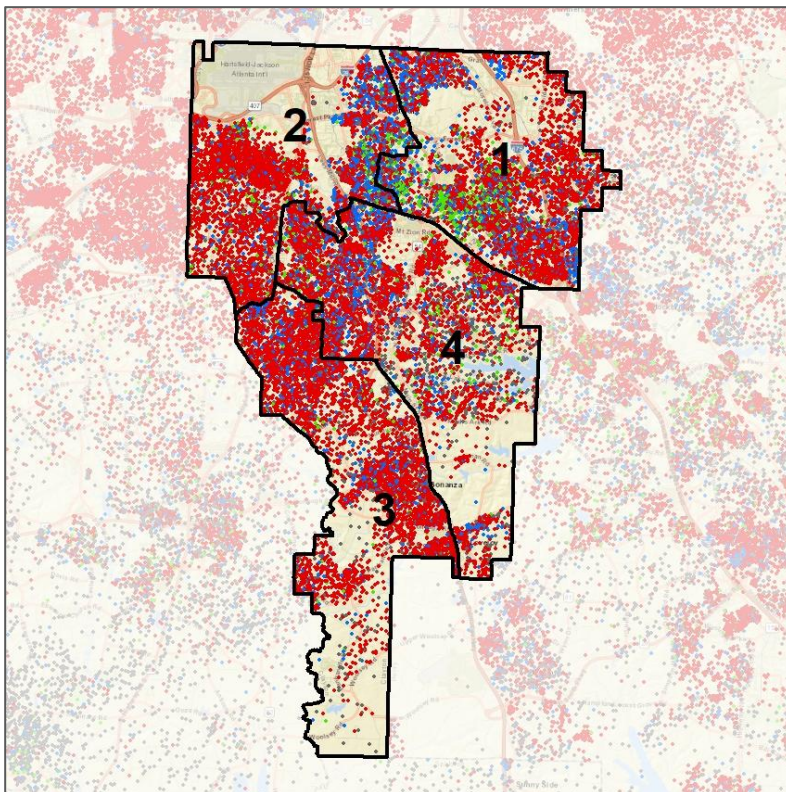


Clayton County Commission

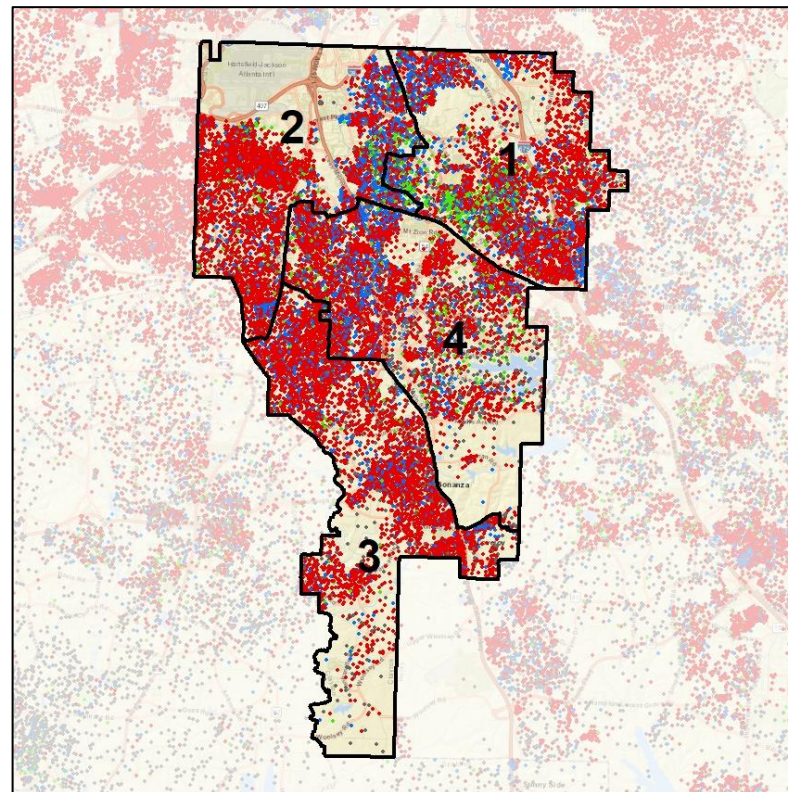
Population Density by Race



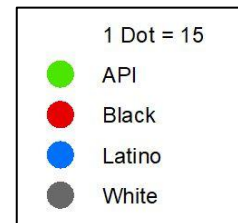
2012 Map



2022 Map*



	1	2	3	4	1*	2*	3*	4*	County
Population	74,737	72,075	72,524	78,145	74,409	74,470	74,359	74,357	297,595
API	6,165	2,958	1,429	3,045	6,068	3,035	1,434	3,073	13,610
% API	8%	4%	2%	4%	8%	4%	2%	4%	5%
Black	46,719	52,185	55,576	50,762	46,662	53,609	56,754	48,276	205,301
% Black	63%	72%	77%	65%	63%	72%	76%	65%	69%
Latino	12,605	10,632	7,669	11,636	12,464	11,371	7,430	11,281	42,546
% Latino	17%	15%	11%	15%	17%	15%	10%	15%	14%
Other	2,526	2,126	2,558	3,006	2,534	2,191	2,661	2,850	10,236
% Other	3%	3%	4%	4%	3%	3%	4%	4%	3%
White	6,722	4,174	5,292	9,696	6,681	4,264	6,080	8,877	25,902
% White	9%	6%	7%	12%	9%	6%	8%	12%	9%



Source:
2020 Decennial Census
2020 ACS 5-Year Dataset

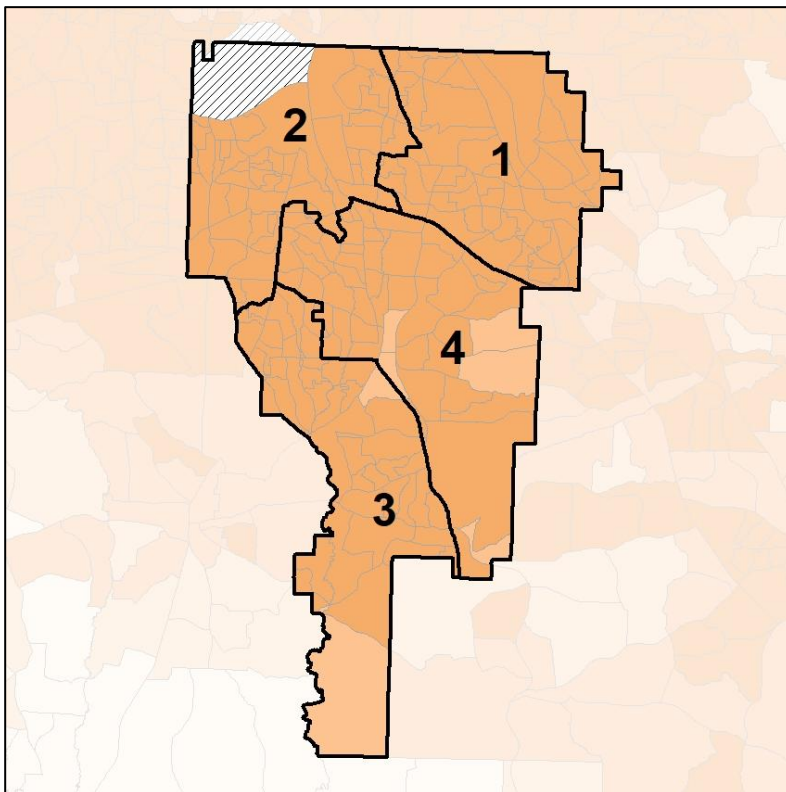


Clayton County Commission

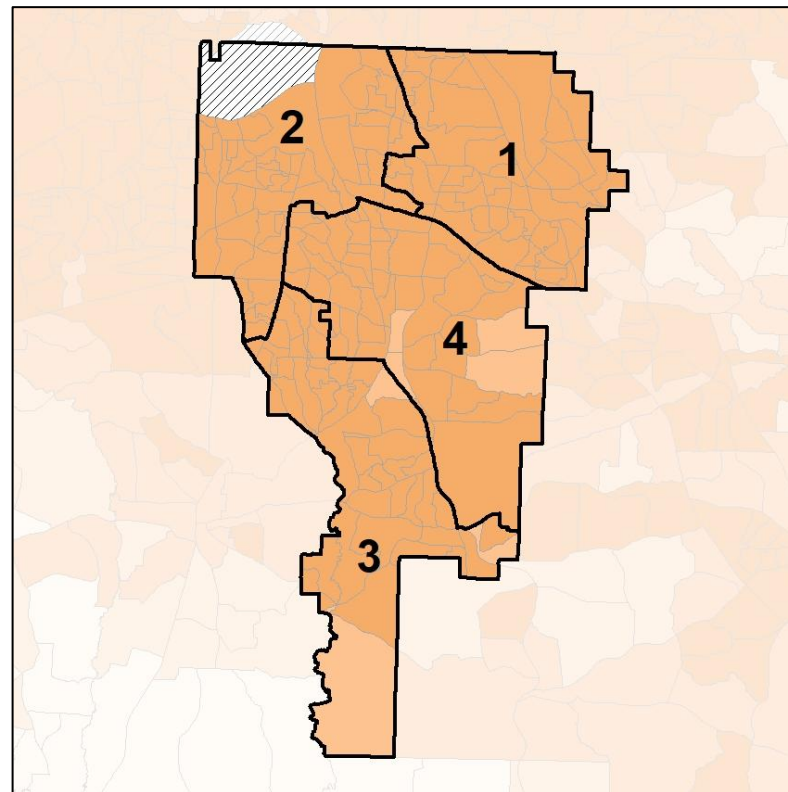
% People of Color by Census Block Group



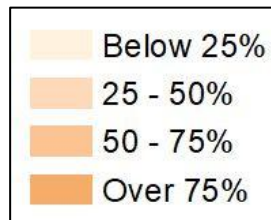
2012 Map



2022 Map*



	1	2	3	4	1*	2*	3*	4*	County
Population	74,737	72,075	72,524	78,145	74,409	74,470	74,359	74,357	297,595
API	6,165	2,958	1,429	3,045	6,068	3,035	1,434	3,073	13,610
% API	8%	4%	2%	4%	8%	4%	2%	4%	5%
Black	46,719	52,185	55,576	50,762	46,662	53,609	56,754	48,276	205,301
% Black	63%	72%	77%	65%	63%	72%	76%	65%	69%
Latino	12,605	10,632	7,669	11,636	12,464	11,371	7,430	11,281	42,546
% Latino	17%	15%	11%	15%	17%	15%	10%	15%	14%
Other	2,526	2,126	2,558	3,006	2,534	2,191	2,661	2,850	10,236
% Other	3%	3%	4%	4%	3%	3%	4%	4%	3%
White	6,722	4,174	5,292	9,696	6,681	4,264	6,080	8,877	25,902
% White	9%	6%	7%	12%	9%	6%	8%	12%	9%

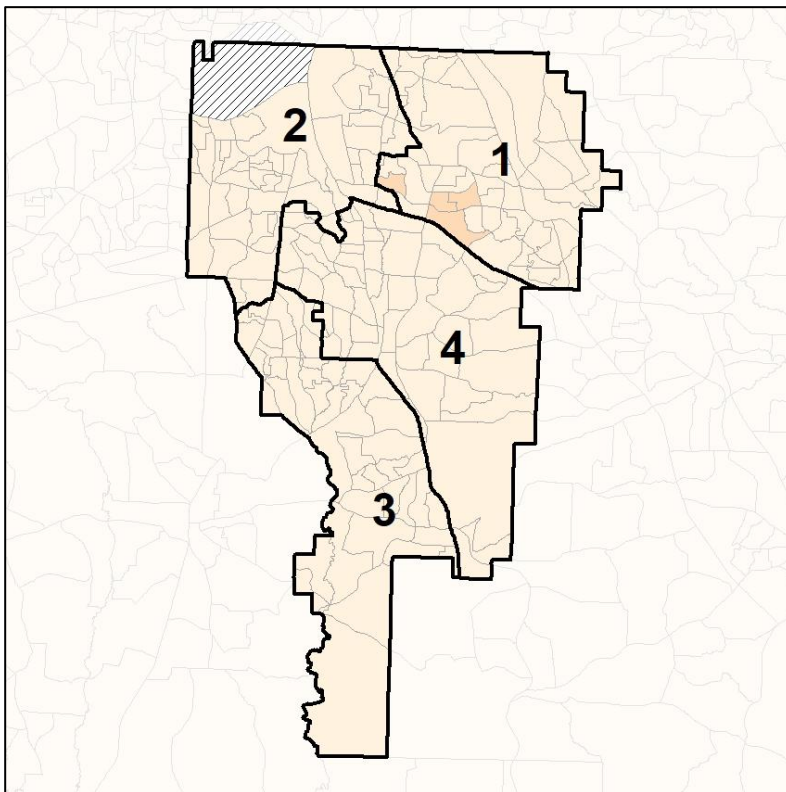


Clayton County Commission

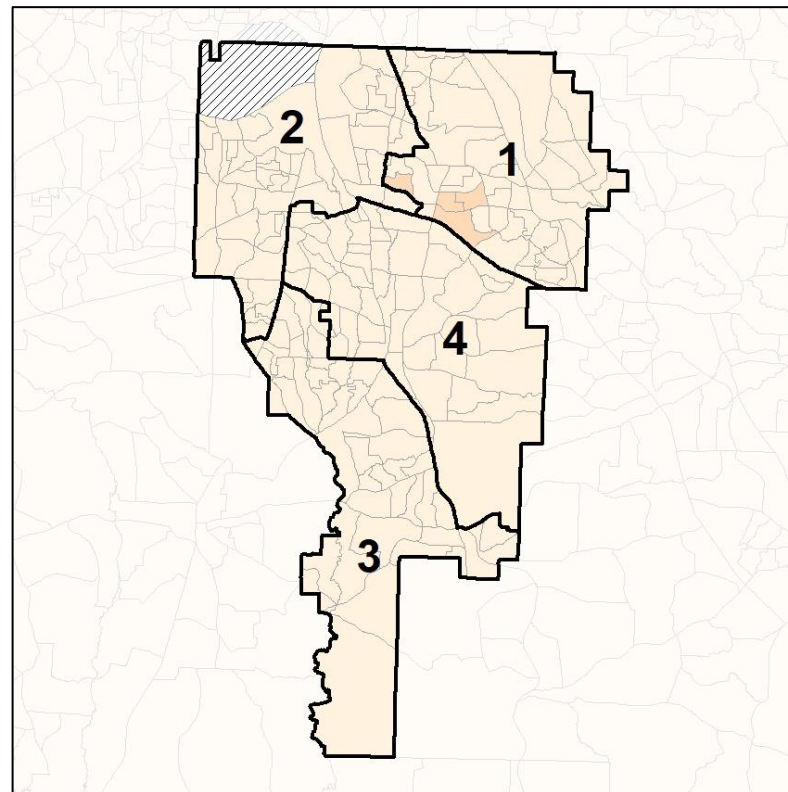
% API by Census Block Group



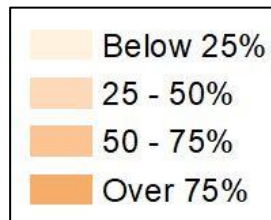
2012 Map



2022 Map*



	1	2	3	4	1*	2*	3*	4*	County
Population	74,737	72,075	72,524	78,145	74,409	74,470	74,359	74,357	297,595
API	6,165	2,958	1,429	3,045	6,068	3,035	1,434	3,073	13,610
% API	8%	4%	2%	4%	8%	4%	2%	4%	5%
Black	46,719	52,185	55,576	50,762	46,662	53,609	56,754	48,276	205,301
% Black	63%	72%	77%	65%	63%	72%	76%	65%	69%
Latino	12,605	10,632	7,669	11,636	12,464	11,371	7,430	11,281	42,546
% Latino	17%	15%	11%	15%	17%	15%	10%	15%	14%
Other	2,526	2,126	2,558	3,006	2,534	2,191	2,661	2,850	10,236
% Other	3%	3%	4%	4%	3%	3%	4%	4%	3%
White	6,722	4,174	5,292	9,696	6,681	4,264	6,080	8,877	25,902
% White	9%	6%	7%	12%	9%	6%	8%	12%	9%

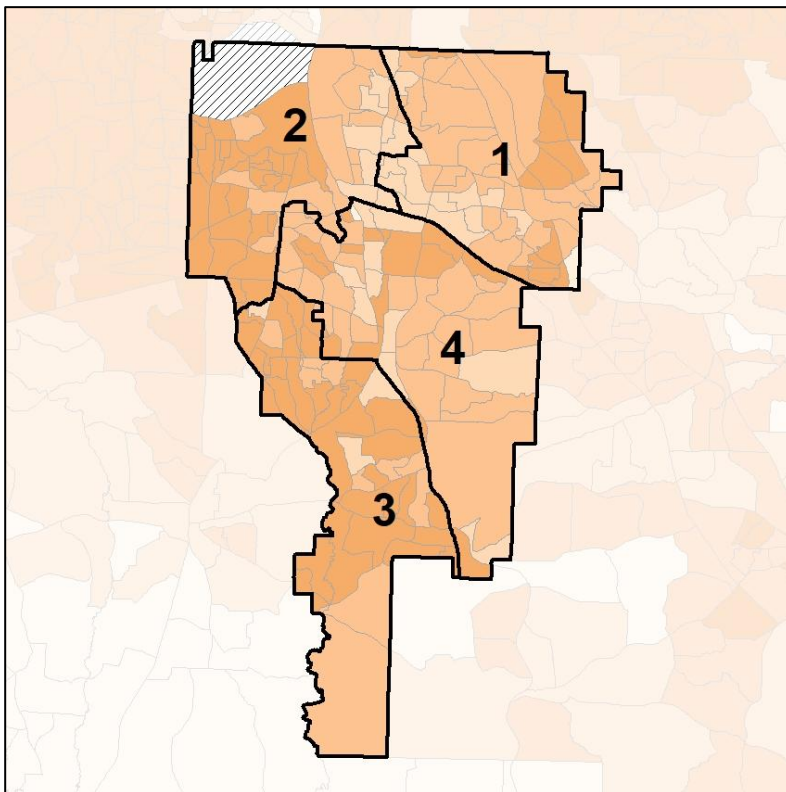


Clayton County Commission

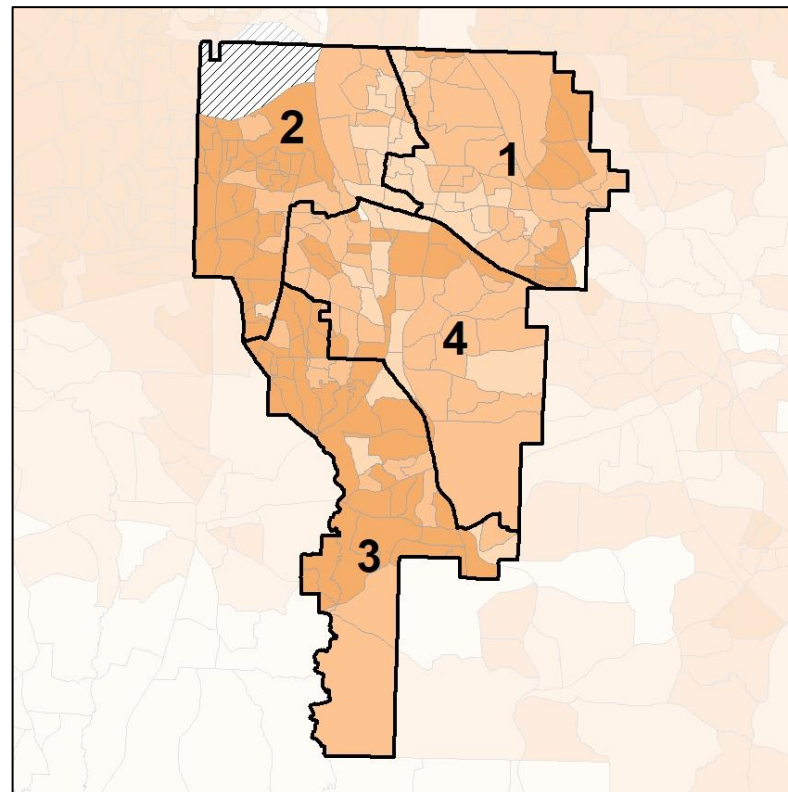
% Black by Census Block Group



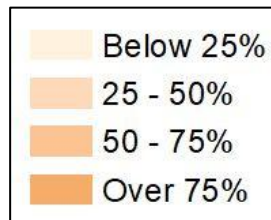
2012 Map



2022 Map*



	1	2	3	4	1*	2*	3*	4*	County
Population	74,737	72,075	72,524	78,145	74,409	74,470	74,359	74,357	297,595
API	6,165	2,958	1,429	3,045	6,068	3,035	1,434	3,073	13,610
% API	8%	4%	2%	4%	8%	4%	2%	4%	5%
Black	46,719	52,185	55,576	50,762	46,662	53,609	56,754	48,276	205,301
% Black	63%	72%	77%	65%	63%	72%	76%	65%	69%
Latino	12,605	10,632	7,669	11,636	12,464	11,371	7,430	11,281	42,546
% Latino	17%	15%	11%	15%	17%	15%	10%	15%	14%
Other	2,526	2,126	2,558	3,006	2,534	2,191	2,661	2,850	10,236
% Other	3%	3%	4%	4%	3%	3%	4%	4%	3%
White	6,722	4,174	5,292	9,696	6,681	4,264	6,080	8,877	25,902
% White	9%	6%	7%	12%	9%	6%	8%	12%	9%

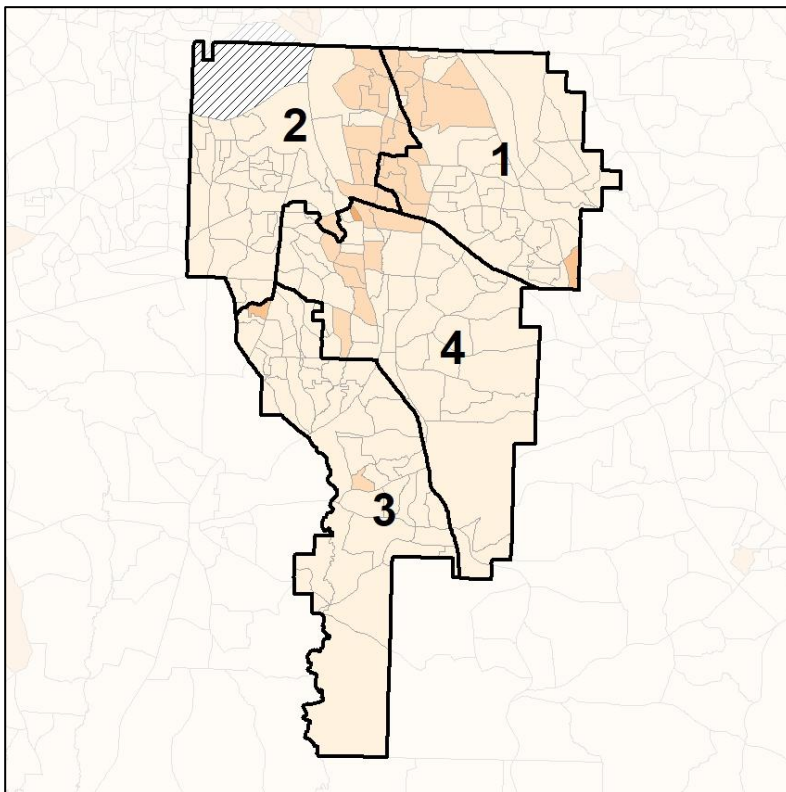


Clayton County Commission

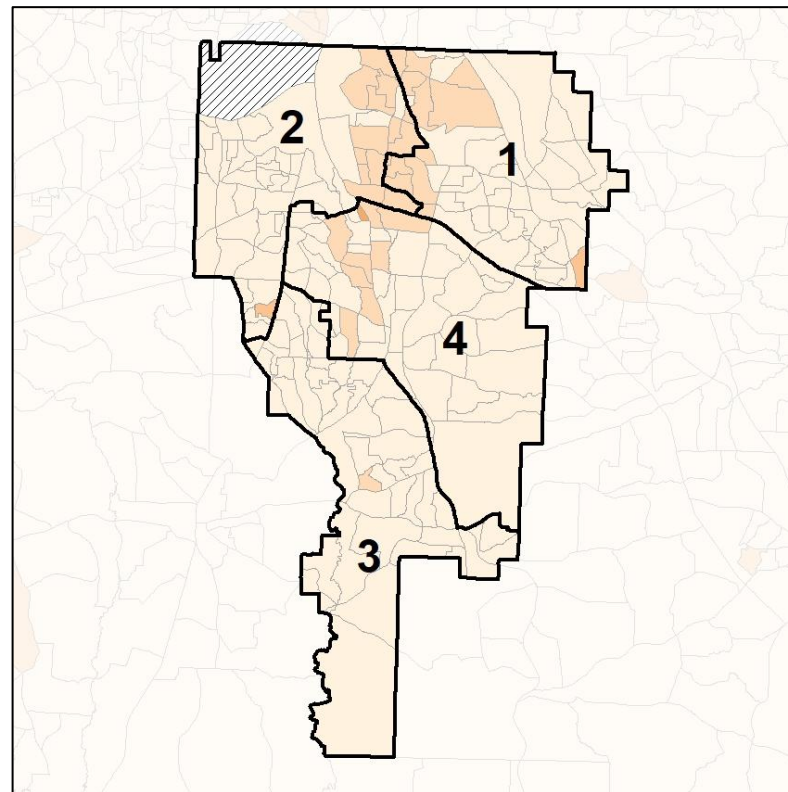
% Latino by Census Block Group



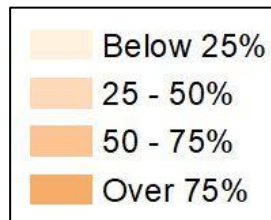
2012 Map



2022 Map*



	1	2	3	4	1*	2*	3*	4*	County
Population	74,737	72,075	72,524	78,145	74,409	74,470	74,359	74,357	297,595
API	6,165	2,958	1,429	3,045	6,068	3,035	1,434	3,073	13,610
% API	8%	4%	2%	4%	8%	4%	2%	4%	5%
Black	46,719	52,185	55,576	50,762	46,662	53,609	56,754	48,276	205,301
% Black	63%	72%	77%	65%	63%	72%	76%	65%	69%
Latino	12,605	10,632	7,669	11,636	12,464	11,371	7,430	11,281	42,546
% Latino	17%	15%	11%	15%	17%	15%	10%	15%	14%
Other	2,526	2,126	2,558	3,006	2,534	2,191	2,661	2,850	10,236
% Other	3%	3%	4%	4%	3%	3%	4%	4%	3%
White	6,722	4,174	5,292	9,696	6,681	4,264	6,080	8,877	25,902
% White	9%	6%	7%	12%	9%	6%	8%	12%	9%

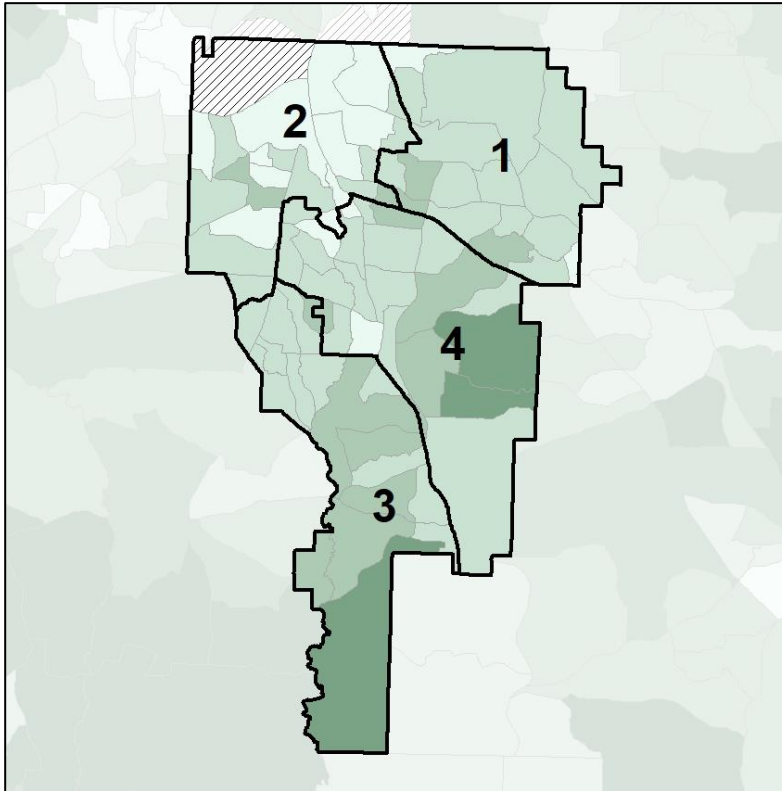


Clayton County Commission

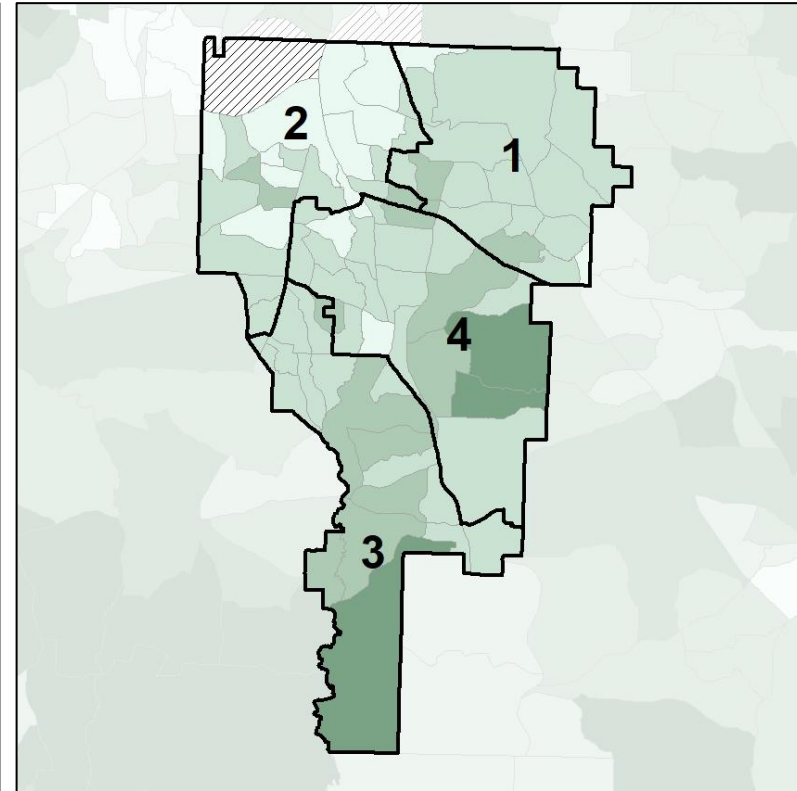
Median Household Income by Census Tract



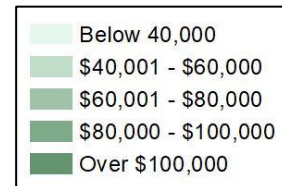
2012 Map



2022 Map*



	1	2	3	4	1*	2*	3*	4*	County
Population	74,737	72,075	72,524	78,145	74,409	74,470	74,359	74,357	297,595
% API	8%	4%	2%	4%	8%	4%	2%	4%	5%
% Black	63%	72%	77%	65%	63%	72%	76%	65%	69%
% Latino	17%	15%	11%	15%	17%	15%	10%	15%	14%
% Other	3%	3%	4%	4%	3%	3%	4%	4%	3%
% White	9%	6%	7%	12%	9%	6%	8%	12%	9%
Median Income	\$50,000	\$44,000	\$64,000	\$59,000	\$49,000	\$44,000	\$65,000	\$59,000	\$49,000
% Renter	41%	64%	37%	55%	41%	63%	35%	55%	50%
% Youth	24%	27%	25%	27%	24%	27%	25%	26%	26%

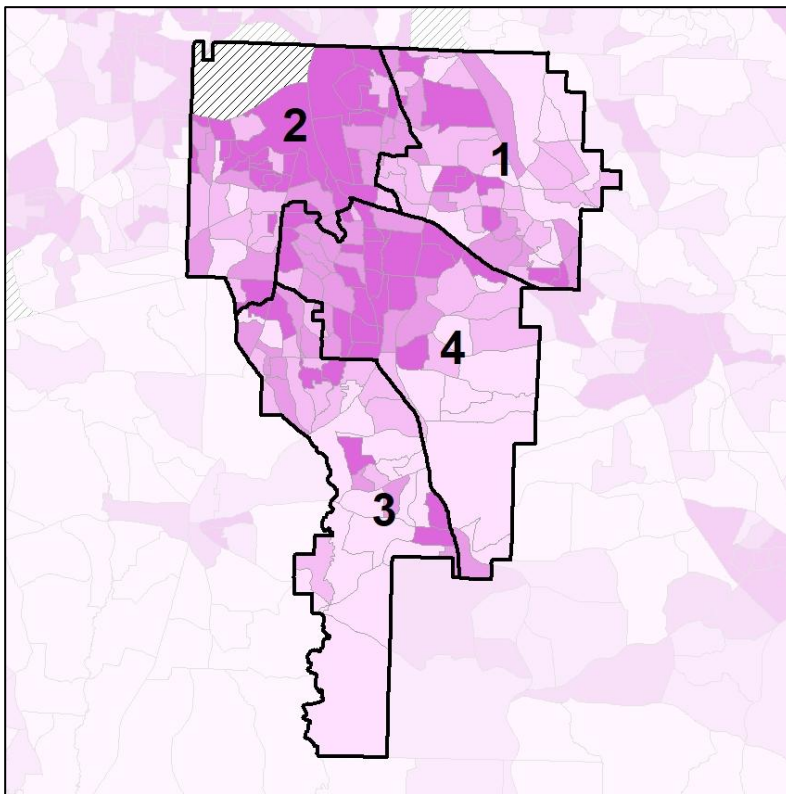


Clayton County Commission

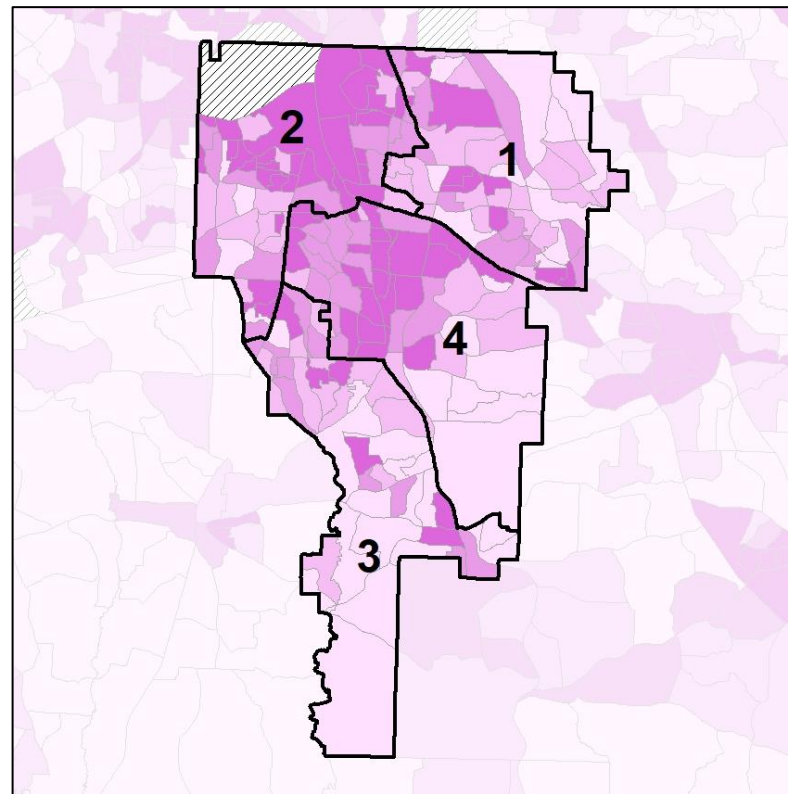
% Renter by Census Block Group



2012 Map



2022 Map*



	1	2	3	4	1*	2*	3*	4*	County
Population	74,737	72,075	72,524	78,145	74,409	74,470	74,359	74,357	297,595
% API	8%	4%	2%	4%	8%	4%	2%	4%	5%
% Black	63%	72%	77%	65%	63%	72%	76%	65%	69%
% Latino	17%	15%	11%	15%	17%	15%	10%	15%	14%
% Other	3%	3%	4%	4%	3%	3%	4%	4%	3%
% White	9%	6%	7%	12%	9%	6%	8%	12%	9%
Median Income	\$50,000	\$44,000	\$64,000	\$59,000	\$49,000	\$44,000	\$65,000	\$59,000	\$49,000
% Renter	41%	64%	37%	55%	41%	63%	35%	55%	50%
% Youth	24%	27%	25%	27%	24%	27%	25%	26%	26%

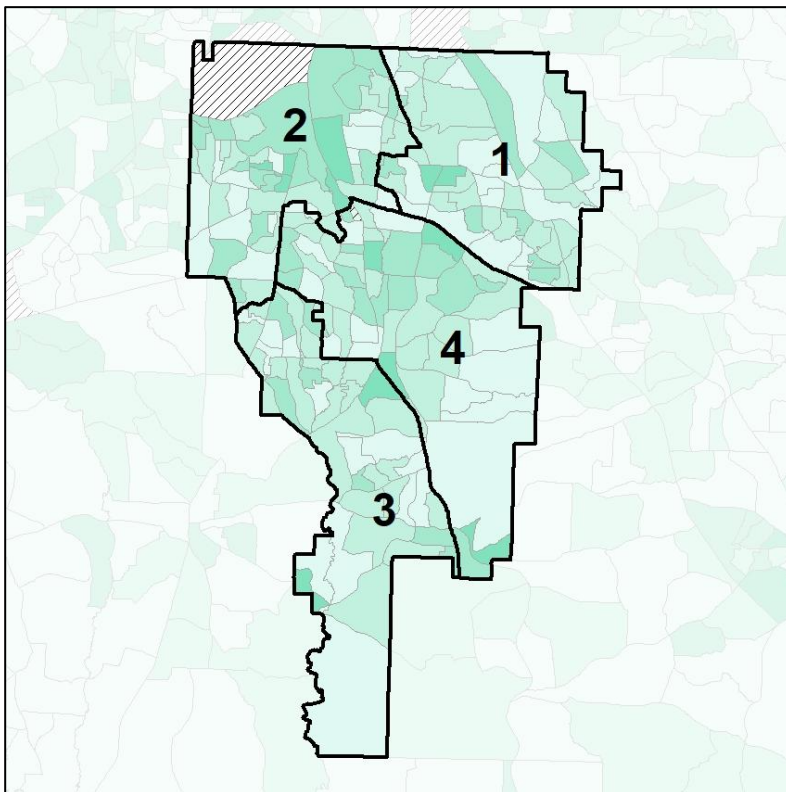


Clayton County Commission

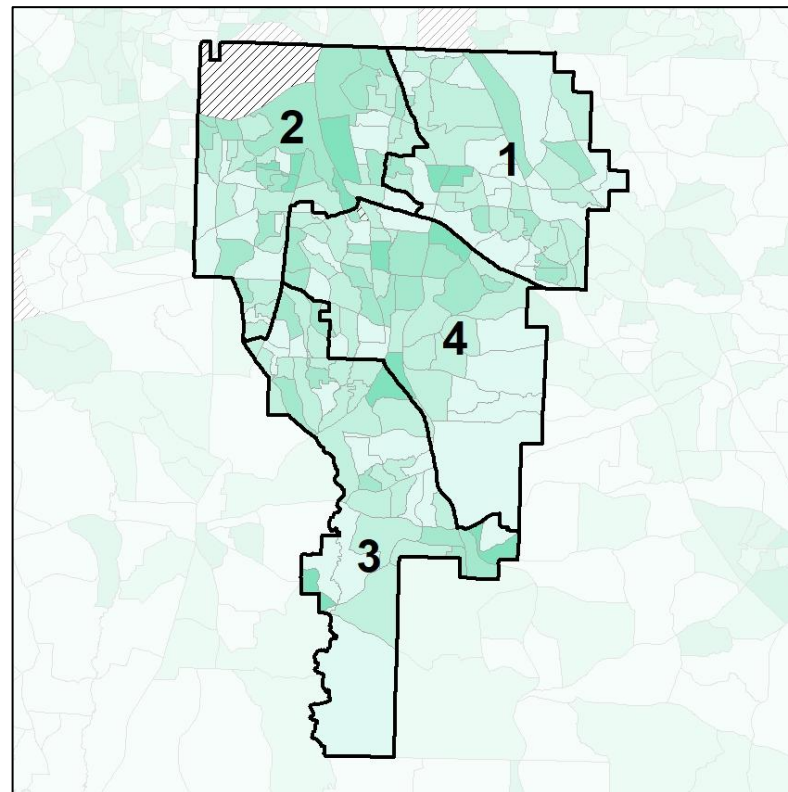
% Youth (18-34) by Census Block Group



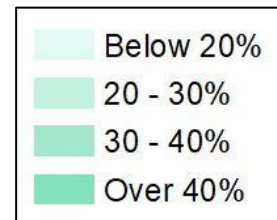
2012 Map



2022 Map*



	1	2	3	4	1*	2*	3*	4*	County
Population	74,737	72,075	72,524	78,145	74,409	74,470	74,359	74,357	297,595
% API	8%	4%	2%	4%	8%	4%	2%	4%	5%
% Black	63%	72%	77%	65%	63%	72%	76%	65%	69%
% Latino	17%	15%	11%	15%	17%	15%	10%	15%	14%
% Other	3%	3%	4%	4%	3%	3%	4%	4%	3%
% White	9%	6%	7%	12%	9%	6%	8%	12%	9%
Median Income	\$50,000	\$44,000	\$64,000	\$59,000	\$49,000	\$44,000	\$65,000	\$59,000	\$49,000
% Renter	41%	64%	37%	55%	41%	63%	35%	55%	50%
% Youth	24%	27%	25%	27%	24%	27%	25%	26%	26%

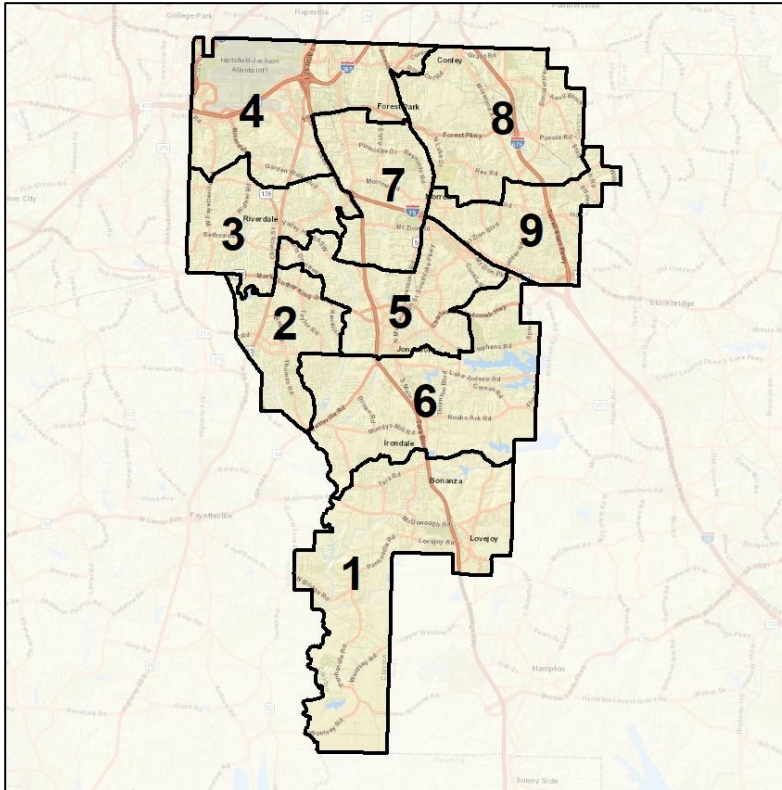


Clayton County School Board

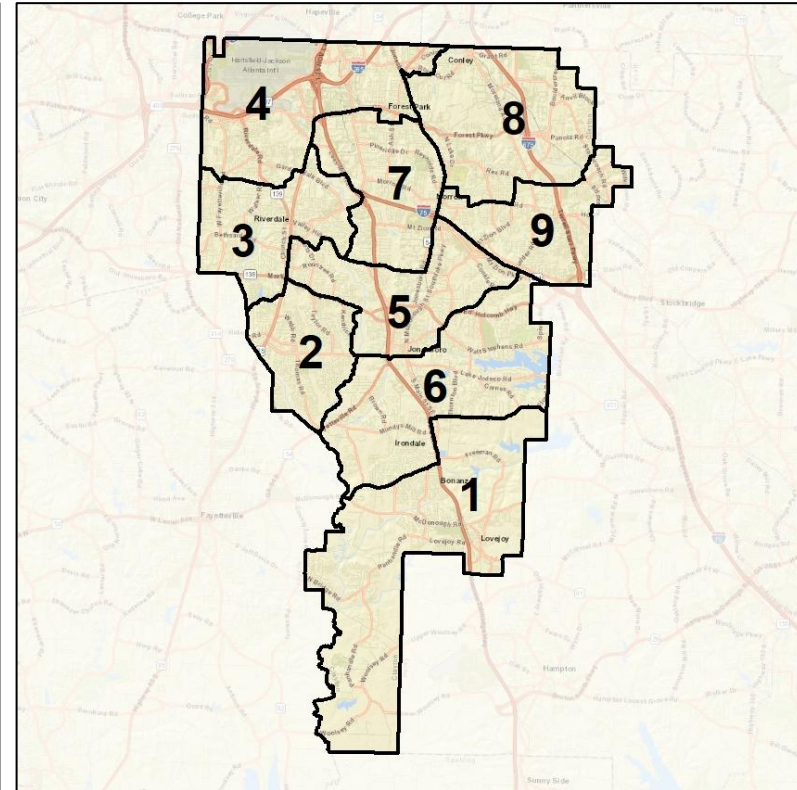
Context



2012 Map



2022 Map*



	1	2	3	4	5	6	7	8	9	1*	2*	3*	4*	5*	6*	7*	8*	9*	County
Population	37,295	32,335	31,357	34,599	33,667	31,372	30,843	33,589	32,424	32,613	32,812	33,051	33,507	32,800	33,186	33,499	33,250	32,877	297,595
API	1%	3%	4%	3%	4%	4%	8%	7%	8%	2%	2%	4%	3%	4%	4%	8%	7%	8%	5%
Black	75%	77%	76%	76%	68%	66%	51%	68%	63%	75%	76%	78%	76%	69%	64%	52%	68%	63%	69%
Latino	10%	12%	13%	13%	14%	10%	28%	14%	16%	9%	13%	11%	13%	13%	12%	29%	15%	15%	14%
Other	4%	3%	3%	3%	4%	4%	3%	3%	4%	4%	3%	3%	3%	4%	4%	3%	3%	4%	3%
White	10%	5%	5%	5%	10%	16%	10%	7%	10%	11%	6%	5%	5%	9%	16%	9%	7%	10%	9%
Population Gain	8,529	3,444	2,535	5,726	4,980	2,635	2,021	4,658	3,529	-4,682	477	1,694	-1,092	-867	1,814	2,656	-339	453	38,171
Population % Gain	30%	12%	9%	20%	17%	9%	7%	16%	12%	-13%	1%	5%	-3%	-3%	6%	9%	-1%	1%	15%
Net POC Gain	9,534	3,998	3,297	6,153	6,728	4,274	3,624	6,055	5,120	-4,450	326	1,667	-1,036	-435	1,386	2,542	-302	398	48,879
Net POC % Gain	40%	15%	12%	23%	29%	19%	15%	24%	21%	-13%	1%	6%	-3%	-1%	5%	9%	-1%	1%	22%

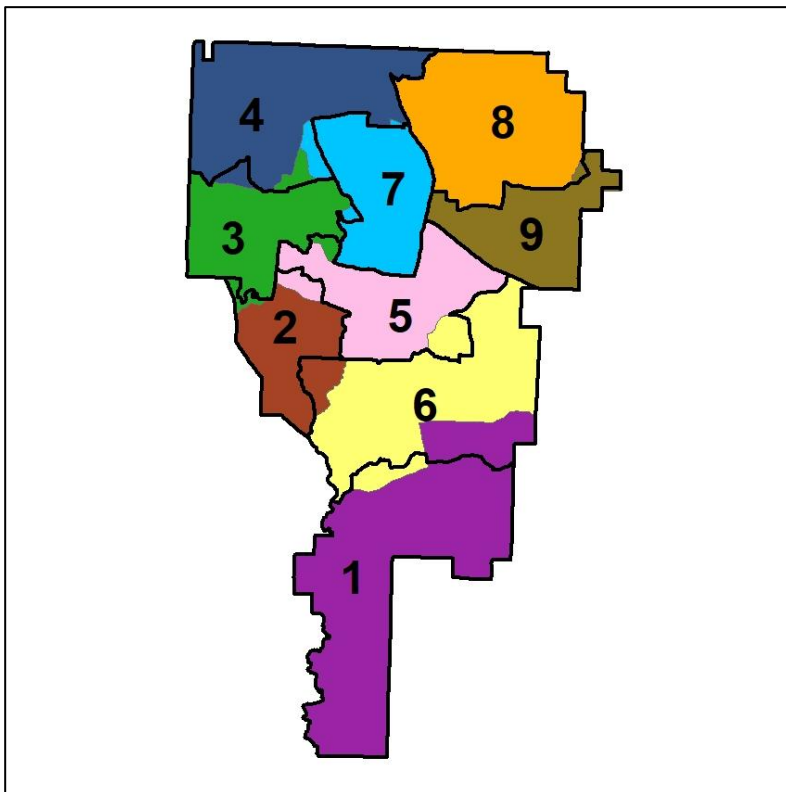


Clayton County School Board

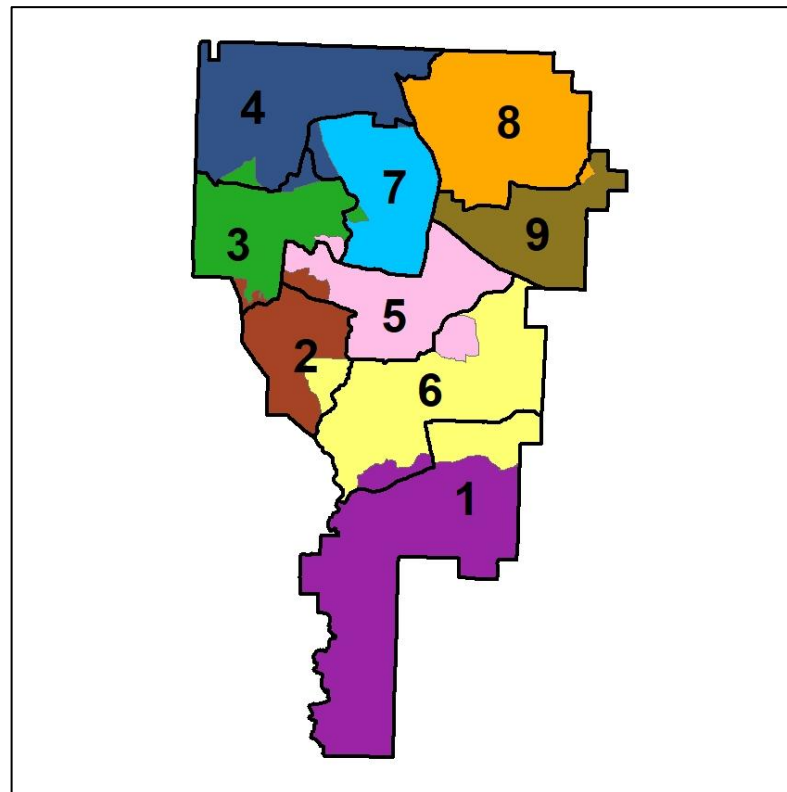
Changes in Redistricting



2012 Map (2022 in Colors)



2022 Map* (2012 in Colors)



	1	2	3	4	5	6	7	8	9	1*	2*	3*	4*	5*	6*	7*	8*	9*	County
Population	37,295	32,335	31,357	34,599	33,667	31,372	30,843	33,589	32,424	32,613	32,812	33,051	33,507	32,800	33,186	33,499	33,250	32,877	297,595
API	1%	3%	4%	3%	4%	4%	8%	7%	8%	2%	2%	4%	3%	4%	4%	8%	7%	8%	5%
Black	75%	77%	76%	76%	68%	66%	51%	68%	63%	75%	76%	78%	76%	69%	64%	52%	68%	63%	69%
Latino	10%	12%	13%	13%	14%	10%	28%	14%	16%	9%	13%	11%	13%	13%	12%	29%	15%	15%	14%
Other	4%	3%	3%	3%	4%	4%	3%	3%	4%	4%	3%	3%	3%	4%	4%	3%	3%	4%	3%
White	10%	5%	5%	5%	10%	16%	10%	7%	10%	11%	6%	5%	5%	9%	16%	9%	7%	10%	9%
Population Gain	8,529	3,444	2,535	5,726	4,980	2,635	2,021	4,658	3,529	-4,682	477	1,694	-1,092	-867	1,814	2,656	-339	453	38,171
Population % Gain	30%	12%	9%	20%	17%	9%	7%	16%	12%	-13%	1%	5%	-3%	-3%	6%	9%	-1%	1%	15%
Net POC Gain	9,534	3,998	3,297	6,153	6,728	4,274	3,624	6,055	5,120	-4,450	326	1,667	-1,036	-435	1,386	2,542	-302	398	48,879
Net POC % Gain	40%	15%	12%	23%	29%	19%	15%	24%	21%	-13%	1%	6%	-3%	-1%	5%	9%	-1%	1%	22%

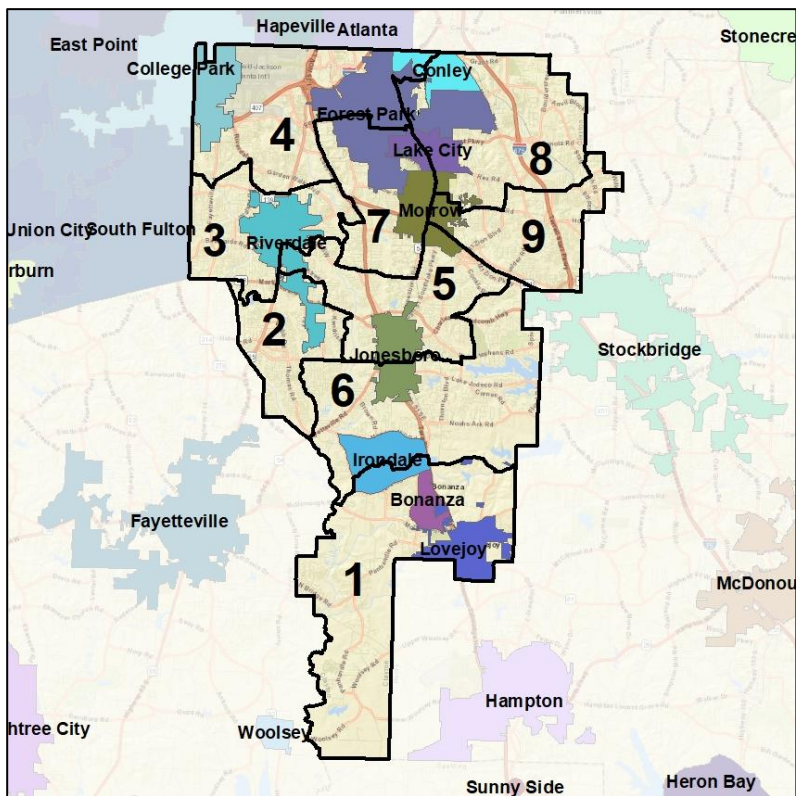


Clayton County School Board

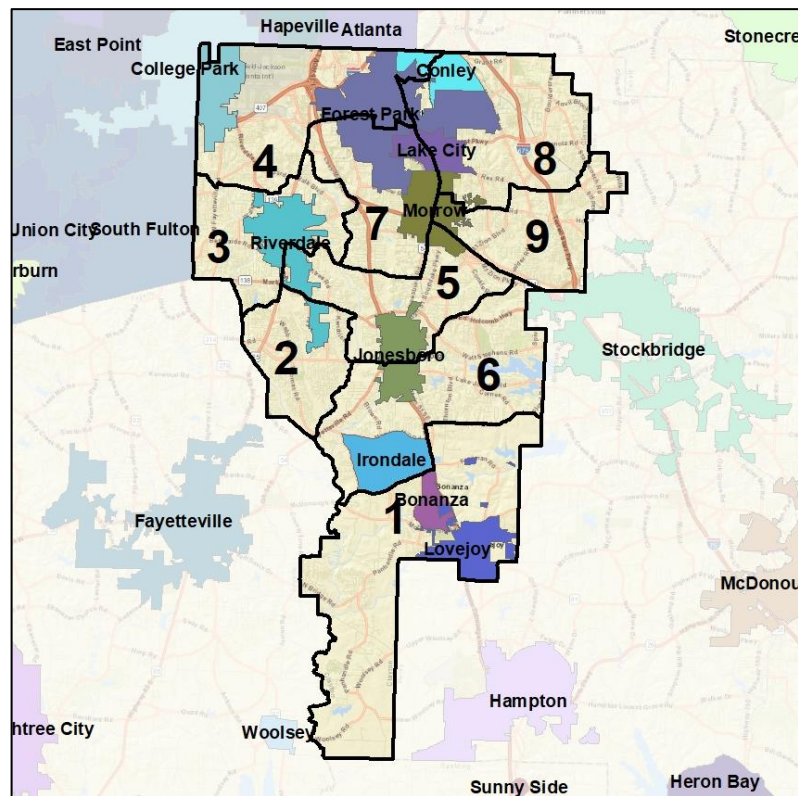
Cities and Places



2012 Map



2022 Map*



	1	2	3	4	5	6	7	8	9	1*	2*	3*	4*	5*	6*	7*	8*	9*	County
Population	37,295	32,335	31,357	34,599	33,667	31,372	30,843	33,589	32,424	32,613	32,812	33,051	33,507	32,800	33,186	33,499	33,250	32,877	297,595
API	1%	3%	4%	3%	4%	4%	8%	7%	8%	2%	2%	4%	3%	4%	4%	8%	7%	8%	5%
Black	75%	77%	76%	76%	68%	66%	51%	68%	63%	75%	76%	78%	76%	69%	64%	52%	68%	63%	69%
Latino	10%	12%	13%	13%	14%	10%	28%	14%	16%	9%	13%	11%	13%	13%	12%	29%	15%	15%	14%
Other	4%	3%	3%	3%	4%	4%	3%	3%	4%	4%	3%	3%	3%	4%	4%	3%	3%	4%	3%
White	10%	5%	5%	5%	10%	16%	10%	7%	10%	11%	6%	5%	5%	9%	16%	9%	7%	10%	9%
Population Gain	8,529	3,444	2,535	5,726	4,980	2,635	2,021	4,658	3,529	-4,682	477	1,694	-1,092	-867	1,814	2,656	-339	453	38,171
Population % Gain	30%	12%	9%	20%	17%	9%	7%	16%	12%	-13%	1%	5%	-3%	-3%	6%	9%	-1%	1%	15%
Net POC Gain	9,534	3,998	3,297	6,153	6,728	4,274	3,624	6,055	5,120	-4,450	326	1,667	-1,036	-435	1,386	2,542	-302	398	48,879
Net POC % Gain	40%	15%	12%	23%	29%	19%	15%	24%	21%	-13%	1%	6%	-3%	-1%	5%	9%	-1%	1%	22%



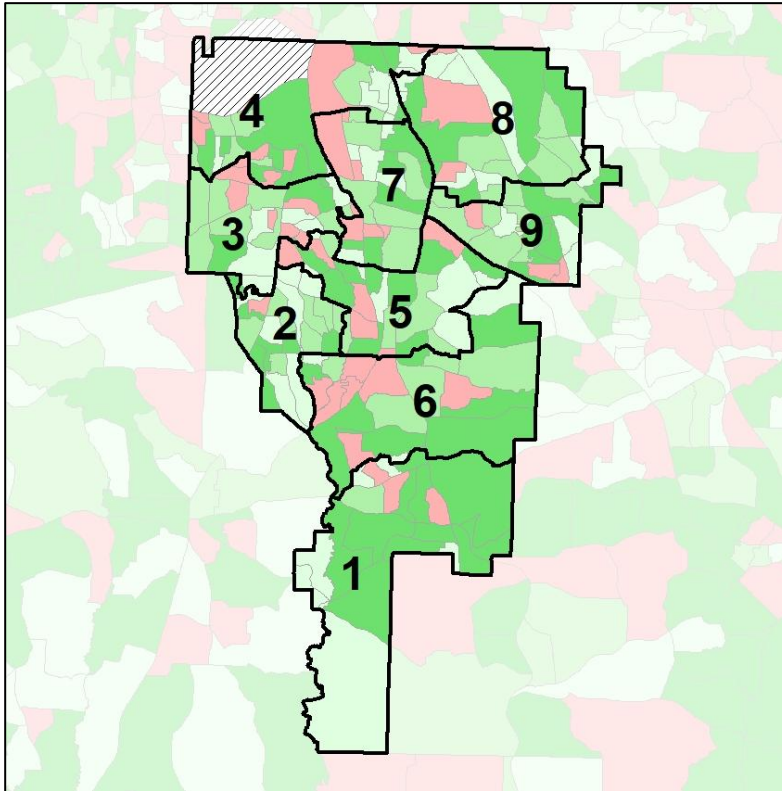
Source:
2020 Decennial Census
2020 ACS 5-Year Dataset

Clayton County School Board

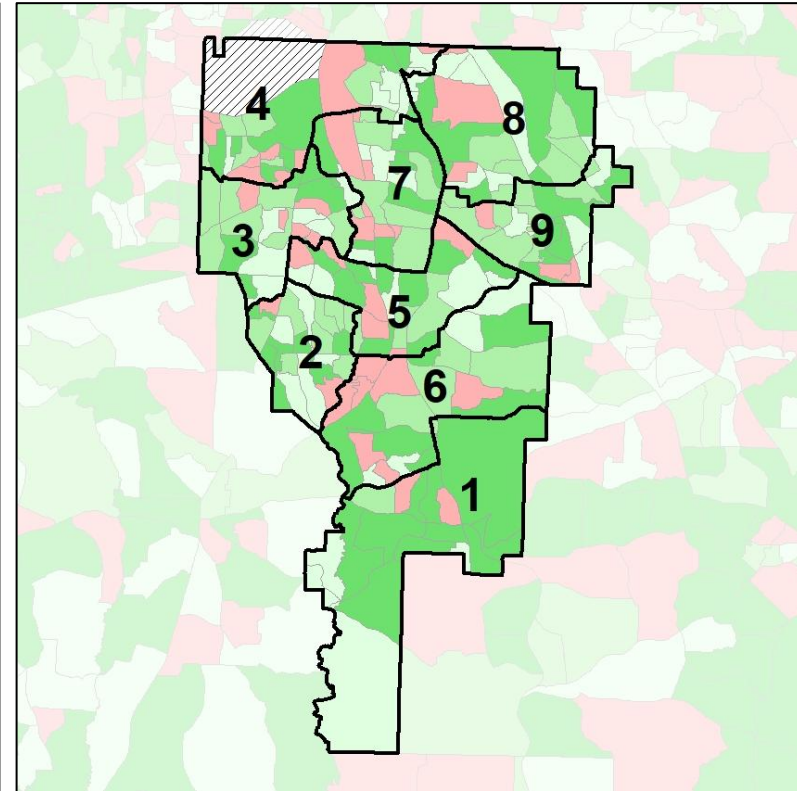
Net Gain in Population (2010 - 2020)



2012 Map



2022 Map*



	1	2	3	4	5	6	7	8	9	1*	2*	3*	4*	5*	6*	7*	8*	9*	County
Population	37,295	32,335	31,357	34,599	33,667	31,372	30,843	33,589	32,424	32,613	32,812	33,051	33,507	32,800	33,186	33,499	33,250	32,877	297,595
API	1%	3%	4%	3%	4%	4%	8%	7%	8%	2%	2%	4%	3%	4%	4%	8%	7%	8%	5%
Black	75%	77%	76%	76%	68%	66%	51%	68%	63%	75%	76%	78%	76%	69%	64%	52%	68%	63%	69%
Latino	10%	12%	13%	13%	14%	10%	28%	14%	16%	9%	13%	11%	13%	13%	12%	29%	15%	15%	14%
Other	4%	3%	3%	3%	4%	4%	3%	3%	4%	4%	3%	3%	3%	4%	4%	3%	3%	4%	3%
White	10%	5%	5%	5%	10%	16%	10%	7%	10%	11%	6%	5%	5%	9%	16%	9%	7%	10%	9%
Population Gain	8,529	3,444	2,535	5,726	4,980	2,635	2,021	4,658	3,529	-4,682	477	1,694	-1,092	-867	1,814	2,656	-339	453	38,171
Population % Gain	30%	12%	9%	20%	17%	9%	7%	16%	12%	-13%	1%	5%	-3%	-3%	6%	9%	-1%	1%	15%
Net POC Gain	9,534	3,998	3,297	6,153	6,728	4,274	3,624	6,055	5,120	-4,450	326	1,667	-1,036	-435	1,386	2,542	-302	398	48,879
Net POC % Gain	40%	15%	12%	23%	29%	19%	15%	24%	21%	-13%	1%	6%	-3%	-1%	5%	9%	-1%	1%	22%

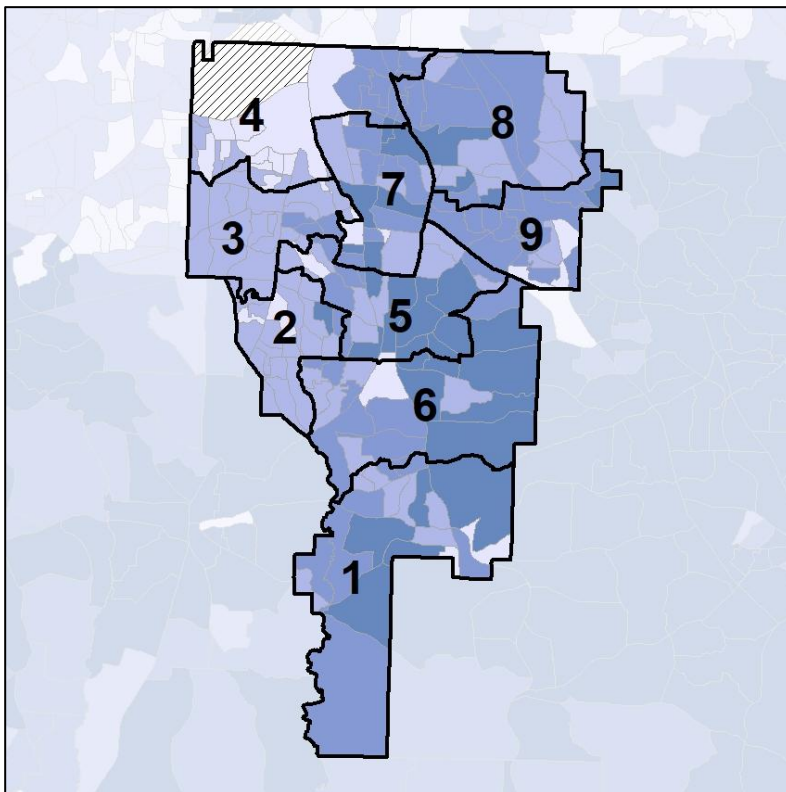


Clayton County School Board

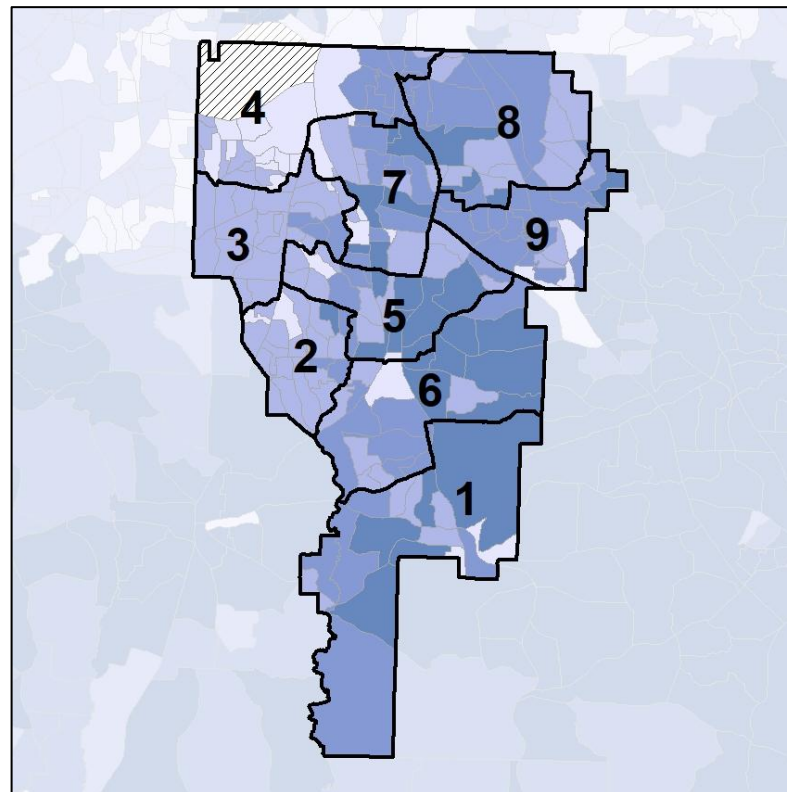
Net Gain in % POC (2020 - 2010) by Census Block Group



2012 Map



2022 Map*



	1	2	3	4	5	6	7	8	9	1*	2*	3*	4*	5*	6*	7*	8*	9*	County
Population	37,295	32,335	31,357	34,599	33,667	31,372	30,843	33,589	32,424	32,613	32,812	33,051	33,507	32,800	33,186	33,499	33,250	32,877	297,595
API	1%	3%	4%	3%	4%	4%	8%	7%	8%	2%	2%	4%	3%	4%	4%	8%	7%	8%	5%
Black	75%	77%	76%	76%	68%	66%	51%	68%	63%	75%	76%	78%	76%	69%	64%	52%	68%	63%	69%
Latino	10%	12%	13%	13%	14%	10%	28%	14%	16%	9%	13%	11%	13%	13%	12%	29%	15%	15%	14%
Other	4%	3%	3%	3%	4%	4%	3%	3%	4%	4%	3%	3%	3%	4%	4%	3%	3%	4%	3%
White	10%	5%	5%	5%	10%	16%	10%	7%	10%	11%	6%	5%	5%	9%	16%	9%	7%	10%	9%
Population Gain	8,529	3,444	2,535	5,726	4,980	2,635	2,021	4,658	3,529	-4,682	477	1,694	-1,092	-867	1,814	2,656	-339	453	38,171
Population % Gain	30%	12%	9%	20%	17%	9%	7%	16%	12%	-13%	1%	5%	-3%	-3%	6%	9%	-1%	1%	15%
Net POC Gain	9,534	3,998	3,297	6,153	6,728	4,274	3,624	6,055	5,120	-4,450	326	1,667	-1,036	-435	1,386	2,542	-302	398	48,879
Net POC % Gain	40%	15%	12%	23%	29%	19%	15%	24%	21%	-13%	1%	6%	-3%	-1%	5%	9%	-1%	1%	22%



Source:
2020 Decennial Census
2020 ACS 5-Year Dataset

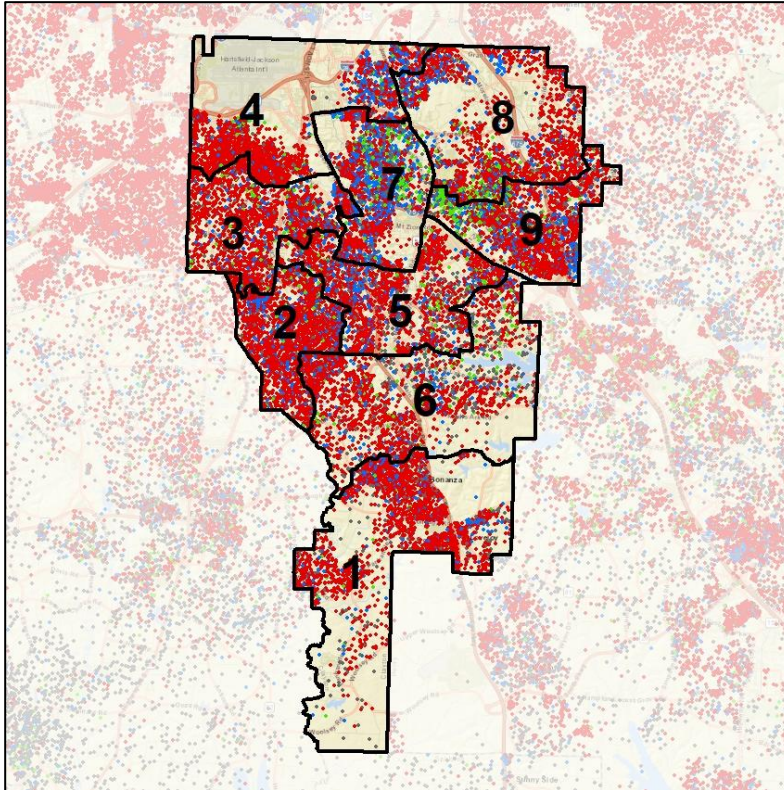


Clayton County School Board

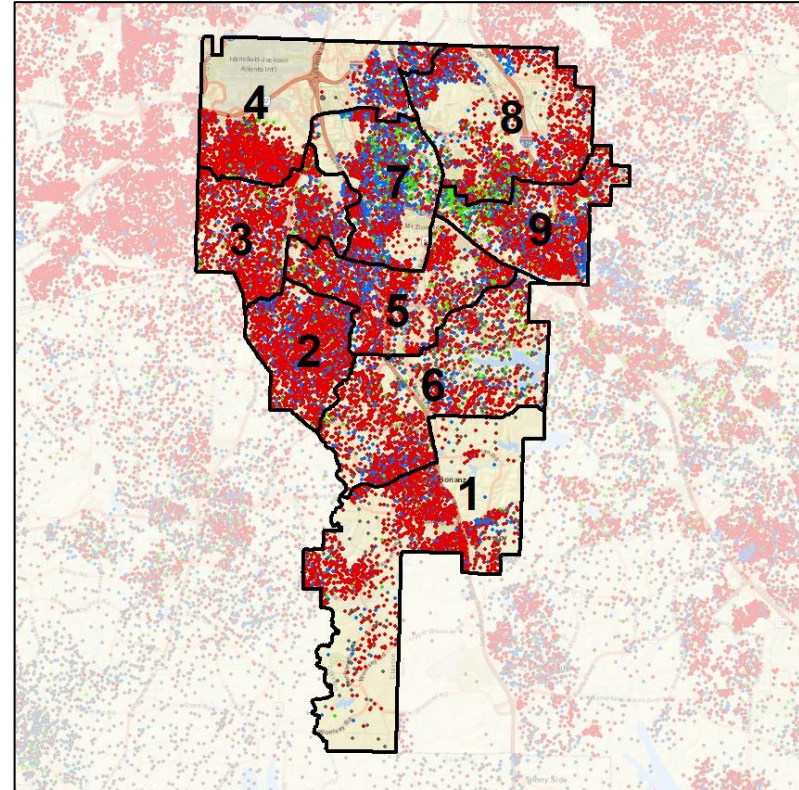
Population Density by Race



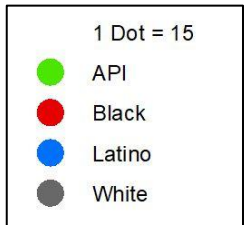
2012 Map



2022 Map*



	1	2	3	4	5	6	7	8	9	1*	2*	3*	4*	5*	6*	7*	8*	9*	County
Population	37,295	32,335	31,357	34,599	33,667	31,372	30,843	33,589	32,424	32,613	32,812	33,051	33,507	32,800	33,186	33,499	33,250	32,877	297,595
API	546	867	1,199	953	1,223	1,299	2,605	2,432	2,473	505	639	1,292	877	1,368	1,378	2,633	2,427	2,491	13,610
% API	1%	3%	4%	3%	4%	4%	8%	7%	8%	2%	2%	4%	3%	4%	4%	8%	7%	8%	5%
Black	27,820	24,769	23,706	26,338	22,907	20,700	15,737	22,788	20,477	24,492	24,960	25,712	25,510	22,655	21,315	17,333	22,511	20,813	205,301
% Black	75%	77%	76%	76%	68%	66%	51%	68%	63%	75%	76%	78%	76%	69%	64%	52%	68%	63%	69%
Latino	3,739	3,934	3,952	4,376	4,669	3,252	8,682	4,861	5,077	2,794	4,250	3,480	4,270	4,408	3,854	9,548	4,847	5,095	42,546
% Latino	10%	12%	13%	13%	14%	10%	28%	14%	16%	9%	13%	11%	13%	13%	12%	29%	15%	15%	14%
Other	1,371	1,091	960	1,083	1,421	1,165	852	1,131	1,142	1,235	1,138	1,000	1,057	1,354	1,255	904	1,125	1,168	10,236
% Other	4%	3%	3%	3%	4%	4%	3%	3%	4%	4%	3%	3%	3%	4%	4%	3%	3%	4%	3%
White	3,819	1,674	1,540	1,849	3,447	4,956	2,967	2,377	3,255	3,587	1,825	1,567	1,793	3,015	5,384	3,081	2,340	3,310	25,902
% White	10%	5%	5%	5%	10%	16%	10%	7%	10%	11%	6%	5%	5%	9%	16%	9%	7%	10%	9%



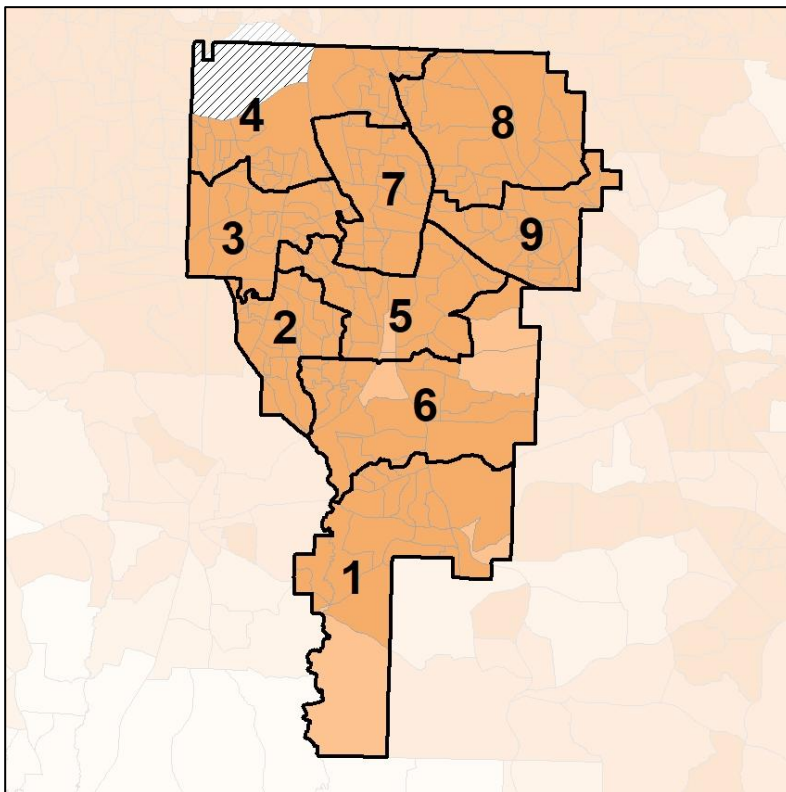
Source:
2020 Decennial Census
2020 ACS 5-Year Dataset

Clayton County School Board

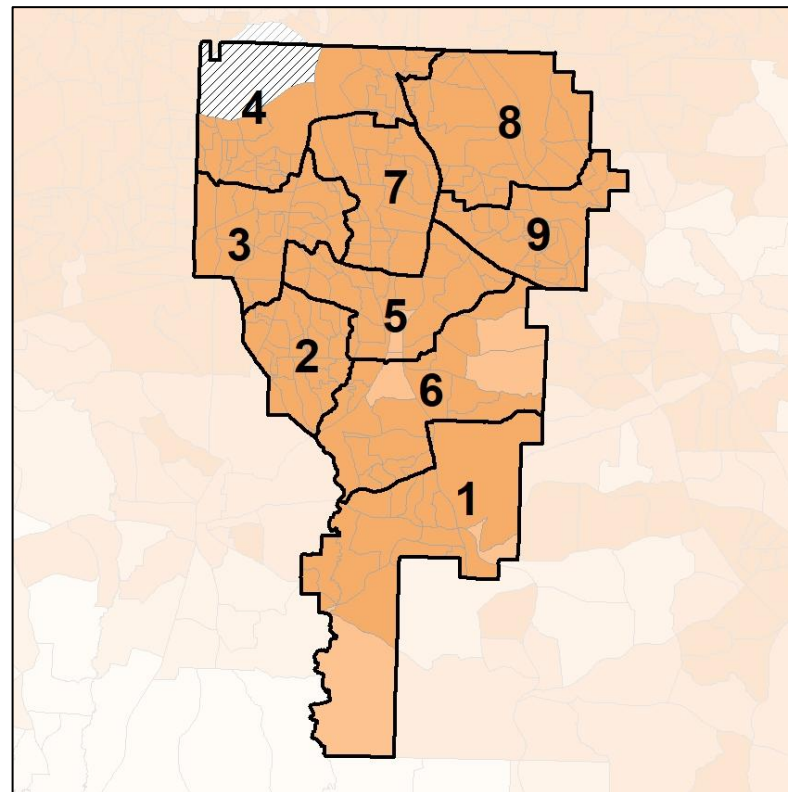
% People of Color by Census Block Group



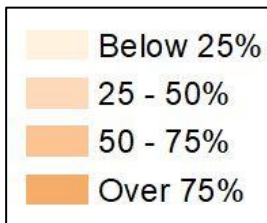
2012 Map



2022 Map*



	1	2	3	4	5	6	7	8	9	1*	2*	3*	4*	5*	6*	7*	8*	9*	County
Population	37,295	32,335	31,357	34,599	33,667	31,372	30,843	33,589	32,424	32,613	32,812	33,051	33,507	32,800	33,186	33,499	33,250	32,877	297,595
API	546	867	1,199	953	1,223	1,299	2,605	2,432	2,473	505	639	1,292	877	1,368	1,378	2,633	2,427	2,491	13,610
% API	1%	3%	4%	3%	4%	4%	8%	7%	8%	2%	2%	4%	3%	4%	4%	8%	7%	8%	5%
Black	27,820	24,769	23,706	26,338	22,907	20,700	15,737	22,788	20,477	24,492	24,960	25,712	25,510	22,655	21,315	17,333	22,511	20,813	205,301
% Black	75%	77%	76%	76%	68%	66%	51%	68%	63%	75%	76%	78%	76%	69%	64%	52%	68%	63%	69%
Latino	3,739	3,934	3,952	4,376	4,669	3,252	8,682	4,861	5,077	2,794	4,250	3,480	4,270	4,408	3,854	9,548	4,847	5,095	42,546
% Latino	10%	12%	13%	13%	14%	10%	28%	14%	16%	9%	13%	11%	13%	13%	12%	29%	15%	15%	14%
Other	1,371	1,091	960	1,083	1,421	1,165	852	1,131	1,142	1,235	1,138	1,000	1,057	1,354	1,255	904	1,125	1,168	10,236
% Other	4%	3%	3%	3%	4%	4%	3%	3%	4%	4%	3%	3%	3%	4%	4%	3%	3%	4%	3%
White	3,819	1,674	1,540	1,849	3,447	4,956	2,967	2,377	3,255	3,587	1,825	1,567	1,793	3,015	5,384	3,081	2,340	3,310	25,902
% White	10%	5%	5%	5%	10%	16%	10%	7%	10%	11%	6%	5%	5%	9%	16%	9%	7%	10%	9%



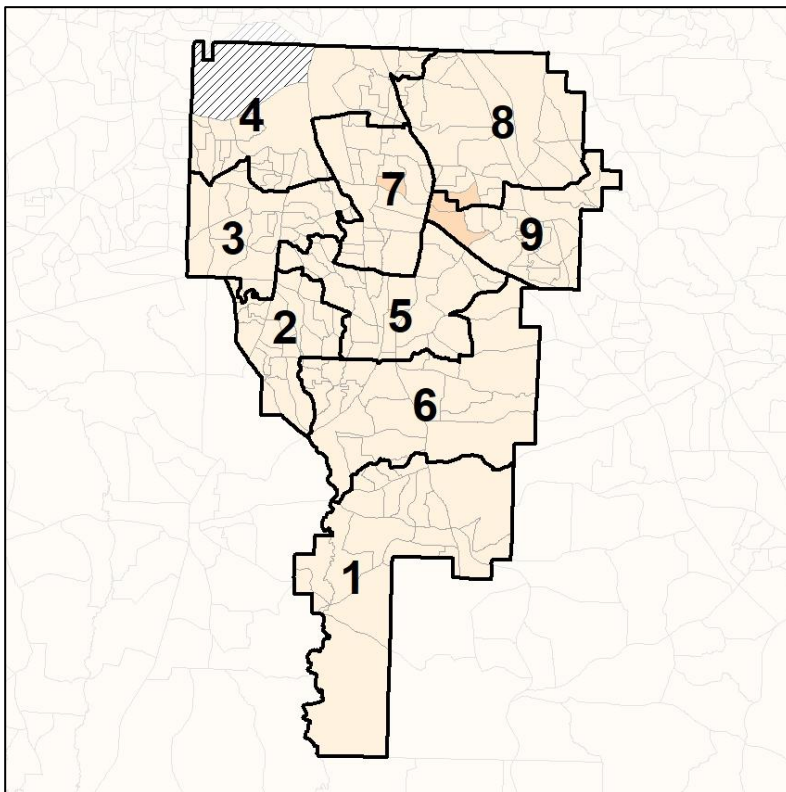
Source:
2020 Decennial Census
2020 ACS 5-Year Dataset

Clayton County School Board

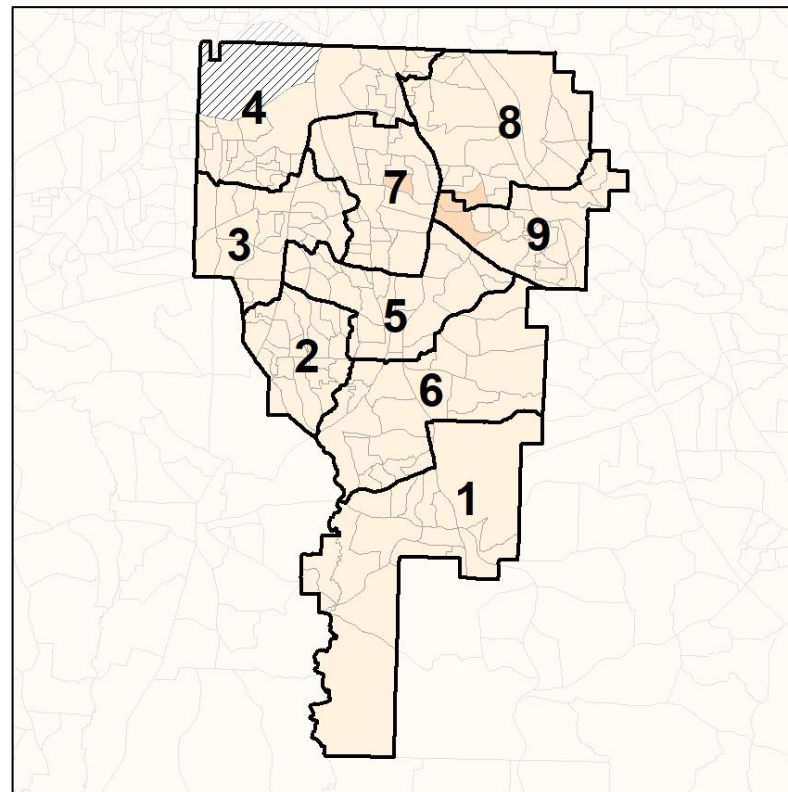
% API by Census Block Group



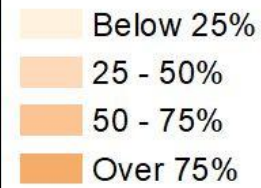
2012 Map



2022 Map*



	1	2	3	4	5	6	7	8	9	1*	2*	3*	4*	5*	6*	7*	8*	9*	County
Population	37,295	32,335	31,357	34,599	33,667	31,372	30,843	33,589	32,424	32,613	32,812	33,051	33,507	32,800	33,186	33,499	33,250	32,877	297,595
API	546	867	1,199	953	1,223	1,299	2,605	2,432	2,473	505	639	1,292	877	1,368	1,378	2,633	2,427	2,491	13,610
% API	1%	3%	4%	3%	4%	4%	8%	7%	8%	2%	2%	4%	3%	4%	4%	8%	7%	8%	5%
Black	27,820	24,769	23,706	26,338	22,907	20,700	15,737	22,788	20,477	24,492	24,960	25,712	25,510	22,655	21,315	17,333	22,511	20,813	205,301
% Black	75%	77%	76%	76%	68%	66%	51%	68%	63%	75%	76%	78%	76%	69%	64%	52%	68%	63%	69%
Latino	3,739	3,934	3,952	4,376	4,669	3,252	8,682	4,861	5,077	2,794	4,250	3,480	4,270	4,408	3,854	9,548	4,847	5,095	42,546
% Latino	10%	12%	13%	13%	14%	10%	28%	14%	16%	9%	13%	11%	13%	13%	12%	29%	15%	15%	14%
Other	1,371	1,091	960	1,083	1,421	1,165	852	1,131	1,142	1,235	1,138	1,000	1,057	1,354	1,255	904	1,125	1,168	10,236
% Other	4%	3%	3%	3%	4%	4%	3%	3%	4%	4%	3%	3%	3%	4%	4%	3%	3%	4%	3%
White	3,819	1,674	1,540	1,849	3,447	4,956	2,967	2,377	3,255	3,587	1,825	1,567	1,793	3,015	5,384	3,081	2,340	3,310	25,902
% White	10%	5%	5%	5%	10%	16%	10%	7%	10%	11%	6%	5%	5%	9%	16%	9%	7%	10%	9%



Source:
2020 Decennial Census
2020 ACS 5-Year Dataset

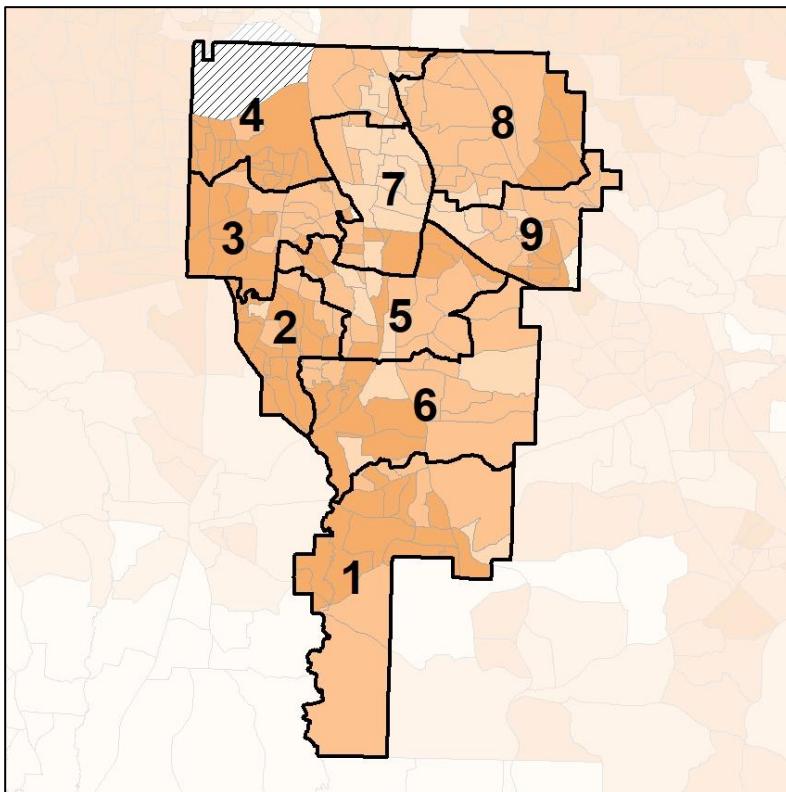


Clayton County School Board

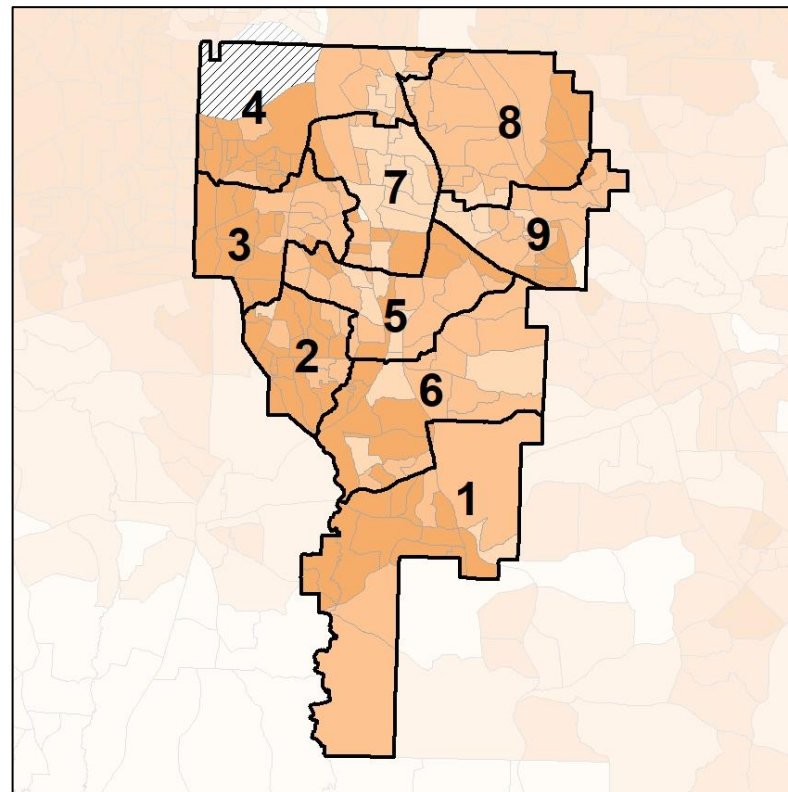
% Black by Census Block Group



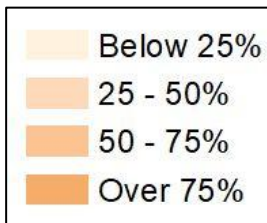
2012 Map



2022 Map*



	1	2	3	4	5	6	7	8	9	1*	2*	3*	4*	5*	6*	7*	8*	9*	County
Population	37,295	32,335	31,357	34,599	33,667	31,372	30,843	33,589	32,424	32,613	32,812	33,051	33,507	32,800	33,186	33,499	33,250	32,877	297,595
API	546	867	1,199	953	1,223	1,299	2,605	2,432	2,473	505	639	1,292	877	1,368	1,378	2,633	2,427	2,491	13,610
% API	1%	3%	4%	3%	4%	4%	8%	7%	8%	2%	2%	4%	3%	4%	4%	8%	7%	8%	5%
Black	27,820	24,769	23,706	26,338	22,907	20,700	15,737	22,788	20,477	24,492	24,960	25,712	25,510	22,655	21,315	17,333	22,511	20,813	205,301
% Black	75%	77%	76%	76%	68%	66%	51%	68%	63%	75%	76%	78%	76%	69%	64%	52%	68%	63%	69%
Latino	3,739	3,934	3,952	4,376	4,669	3,252	8,682	4,861	5,077	2,794	4,250	3,480	4,270	4,408	3,854	9,548	4,847	5,095	42,546
% Latino	10%	12%	13%	13%	14%	10%	28%	14%	16%	9%	13%	11%	13%	13%	12%	29%	15%	15%	14%
Other	1,371	1,091	960	1,083	1,421	1,165	852	1,131	1,142	1,235	1,138	1,000	1,057	1,354	1,255	904	1,125	1,168	10,236
% Other	4%	3%	3%	3%	4%	4%	3%	3%	4%	4%	3%	3%	3%	4%	4%	3%	3%	4%	3%
White	3,819	1,674	1,540	1,849	3,447	4,956	2,967	2,377	3,255	3,587	1,825	1,567	1,793	3,015	5,384	3,081	2,340	3,310	25,902
% White	10%	5%	5%	5%	10%	16%	10%	7%	10%	11%	6%	5%	5%	9%	16%	9%	7%	10%	9%

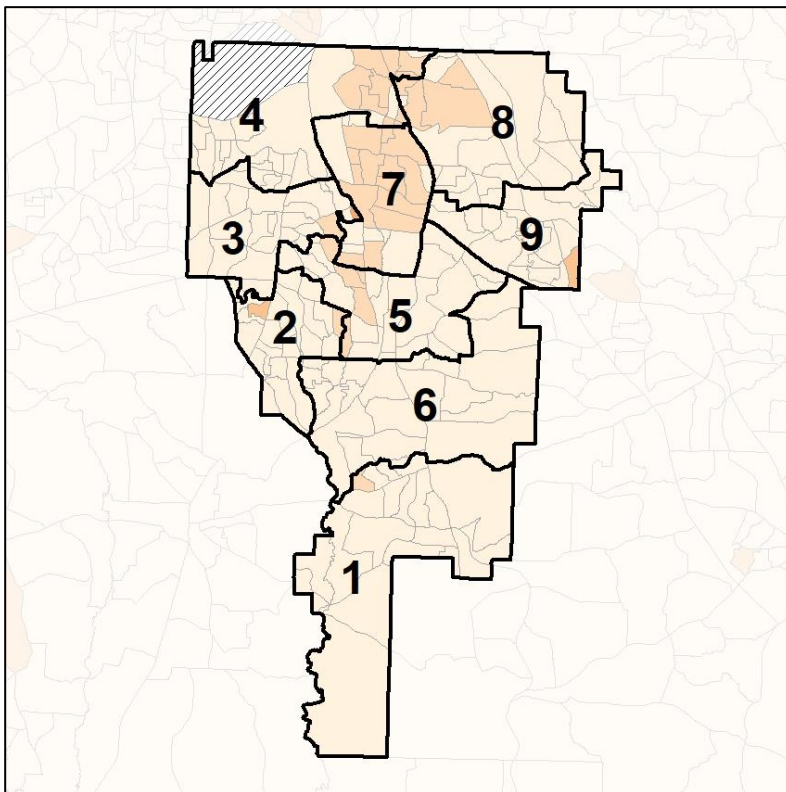


Clayton County School Board

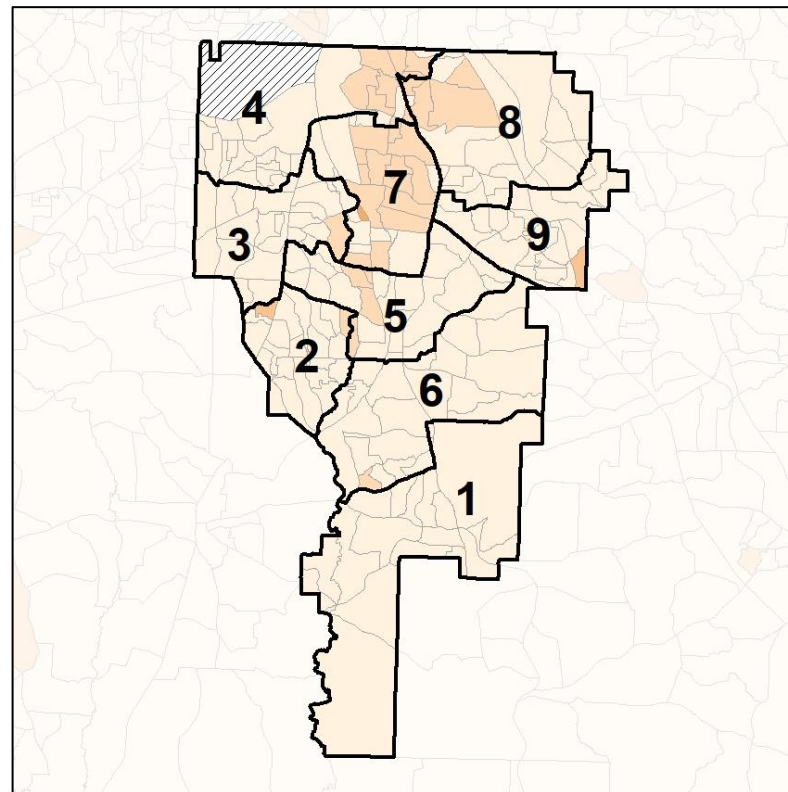
% Latino by Census Block Group



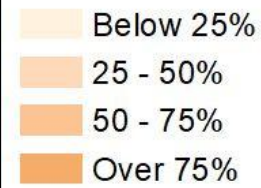
2012 Map



2022 Map*



	1	2	3	4	5	6	7	8	9	1*	2*	3*	4*	5*	6*	7*	8*	9*	County
Population	37,295	32,335	31,357	34,599	33,667	31,372	30,843	33,589	32,424	32,613	32,812	33,051	33,507	32,800	33,186	33,499	33,250	32,877	297,595
API	546	867	1,199	953	1,223	1,299	2,605	2,432	2,473	505	639	1,292	877	1,368	1,378	2,633	2,427	2,491	13,610
% API	1%	3%	4%	3%	4%	4%	8%	7%	8%	2%	2%	4%	3%	4%	4%	8%	7%	8%	5%
Black	27,820	24,769	23,706	26,338	22,907	20,700	15,737	22,788	20,477	24,492	24,960	25,712	25,510	22,655	21,315	17,333	22,511	20,813	205,301
% Black	75%	77%	76%	76%	68%	66%	51%	68%	63%	75%	76%	78%	76%	69%	64%	52%	68%	63%	69%
Latino	3,739	3,934	3,952	4,376	4,669	3,252	8,682	4,861	5,077	2,794	4,250	3,480	4,270	4,408	3,854	9,548	4,847	5,095	42,546
% Latino	10%	12%	13%	13%	14%	10%	28%	14%	16%	9%	13%	11%	13%	13%	12%	29%	15%	15%	14%
Other	1,371	1,091	960	1,083	1,421	1,165	852	1,131	1,142	1,235	1,138	1,000	1,057	1,354	1,255	904	1,125	1,168	10,236
% Other	4%	3%	3%	3%	4%	4%	3%	3%	4%	4%	3%	3%	3%	4%	4%	3%	3%	4%	3%
White	3,819	1,674	1,540	1,849	3,447	4,956	2,967	2,377	3,255	3,587	1,825	1,567	1,793	3,015	5,384	3,081	2,340	3,310	25,902
% White	10%	5%	5%	5%	10%	16%	10%	7%	10%	11%	6%	5%	5%	9%	16%	9%	7%	10%	9%

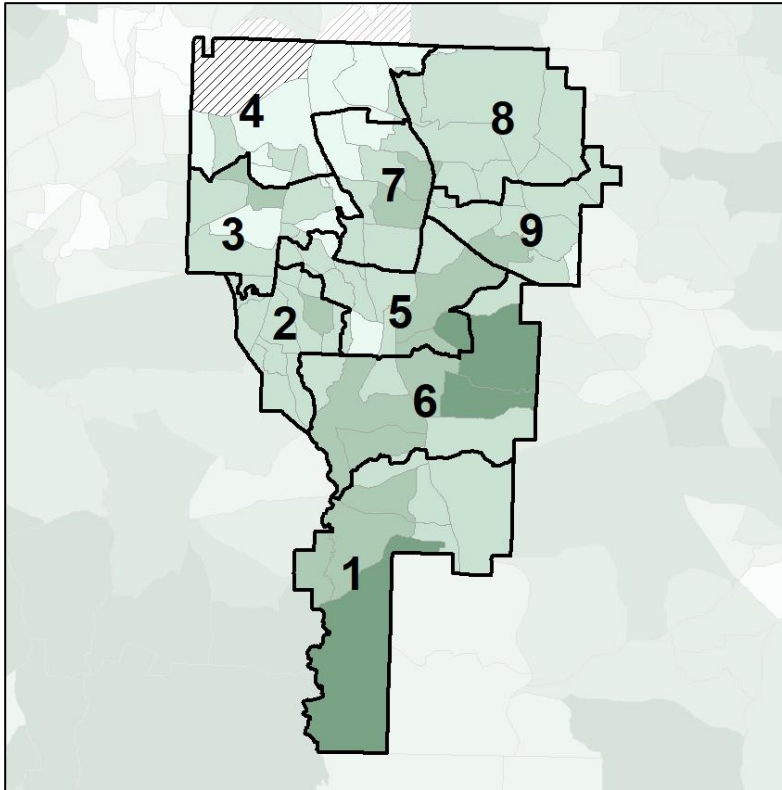


Clayton County School Board

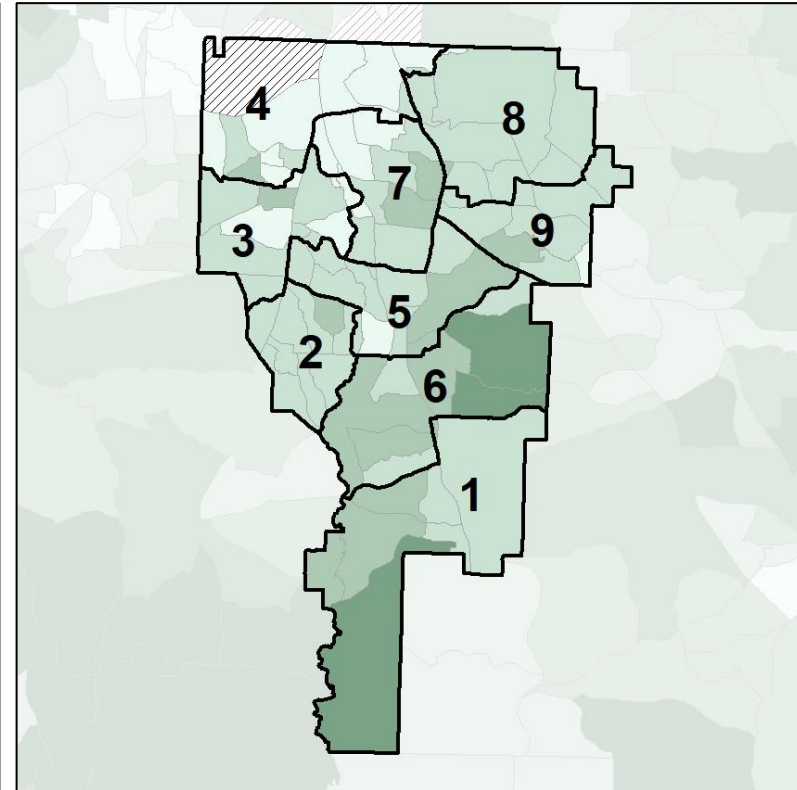
Median Household Income by Census Tract



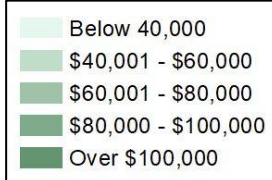
2012 Map



2022 Map*



	1	2	3	4	5	6	7	8	9	1*	2*	3*	4*	5*	6*	7*	8*	9*	County
Population	37,295	32,335	31,357	34,599	33,667	31,372	30,843	33,589	32,424	32,613	32,812	33,051	33,507	32,800	33,186	33,499	33,250	32,877	297,595
% API	1%	3%	4%	3%	4%	4%	8%	7%	8%	2%	2%	4%	3%	4%	4%	8%	7%	8%	5%
% Black	75%	77%	76%	76%	68%	66%	51%	68%	63%	75%	76%	78%	76%	69%	64%	52%	68%	63%	69%
% Latino	10%	12%	13%	13%	14%	10%	28%	14%	16%	9%	13%	11%	13%	13%	12%	29%	15%	15%	14%
% Other	4%	3%	3%	3%	4%	4%	3%	3%	4%	4%	3%	3%	3%	4%	4%	3%	3%	4%	3%
% White	10%	5%	5%	5%	10%	16%	10%	7%	10%	11%	6%	5%	5%	9%	16%	9%	7%	10%	9%
Median Income	\$73K	\$55K	\$50K	\$39K	\$56K	\$72K	\$44K	\$50K	\$49K	\$75K	\$54K	\$49K	\$41K	\$52K	\$76K	\$43K	\$50K	\$49K	\$49K
% Renter	28%	48%	51%	75%	61%	27%	67%	34%	48%	26%	50%	50%	73%	64%	20%	69%	34%	48%	50%
% Youth	24%	26%	24%	30%	28%	24%	28%	23%	23%	24%	26%	25%	29%	28%	23%	29%	23%	23%	26%



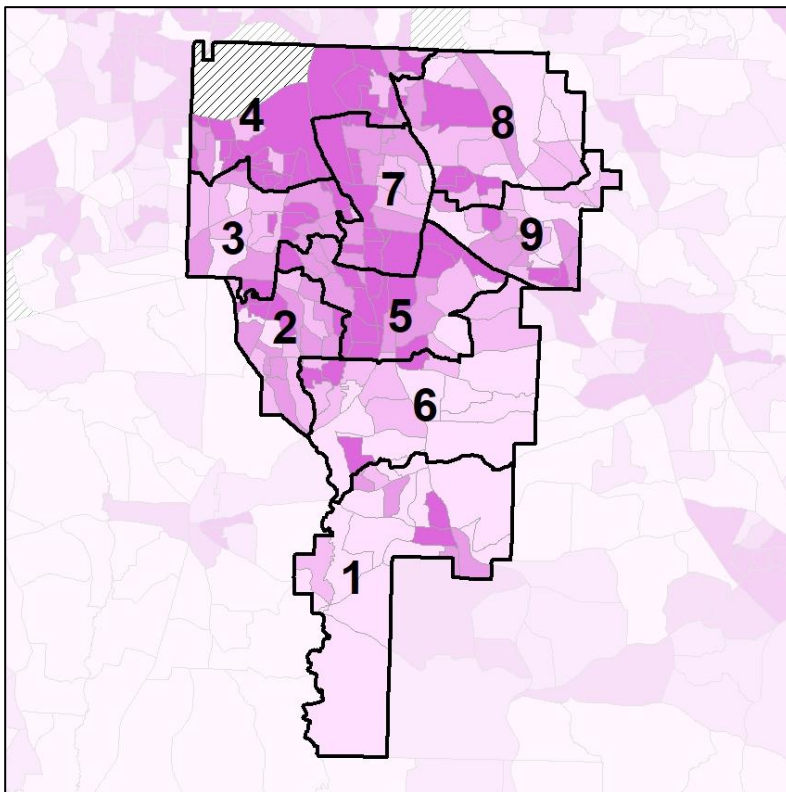
Source: 2020 Decennial Census 2020 ACS 5-Year Dataset

Clayton County School Board

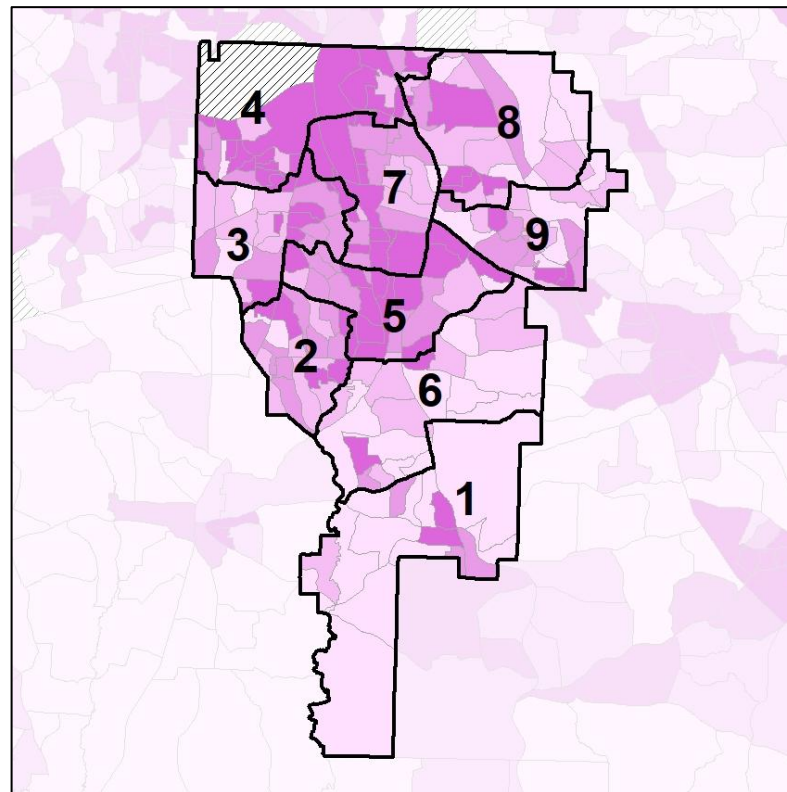
% Renter by Census Block Group



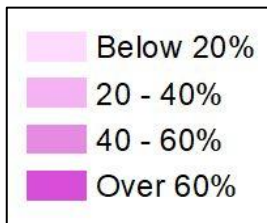
2012 Map



2022 Map*



	1	2	3	4	5	6	7	8	9	1*	2*	3*	4*	5*	6*	7*	8*	9*	County
Population	37,295	32,335	31,357	34,599	33,667	31,372	30,843	33,589	32,424	32,613	32,812	33,051	33,507	32,800	33,186	33,499	33,250	32,877	297,595
% API	1%	3%	4%	3%	4%	4%	8%	7%	8%	2%	2%	4%	3%	4%	4%	8%	7%	8%	5%
% Black	75%	77%	76%	76%	68%	66%	51%	68%	63%	75%	76%	78%	76%	69%	64%	52%	68%	63%	69%
% Latino	10%	12%	13%	13%	14%	10%	28%	14%	16%	9%	13%	11%	13%	13%	12%	29%	15%	15%	14%
% Other	4%	3%	3%	3%	4%	4%	3%	3%	4%	4%	3%	3%	3%	4%	4%	3%	3%	4%	3%
% White	10%	5%	5%	5%	10%	16%	10%	7%	10%	11%	6%	5%	5%	9%	16%	9%	7%	10%	9%
Median Income	\$73K	\$55K	\$50K	\$39K	\$56K	\$72K	\$44K	\$50K	\$49K	\$75K	\$54K	\$49K	\$41K	\$52K	\$76K	\$43K	\$50K	\$49K	\$49K
% Renter	28%	48%	51%	75%	61%	27%	67%	34%	48%	26%	50%	50%	73%	64%	20%	69%	34%	48%	50%
% Youth	24%	26%	24%	30%	28%	24%	28%	23%	23%	24%	26%	25%	29%	28%	23%	29%	23%	23%	26%



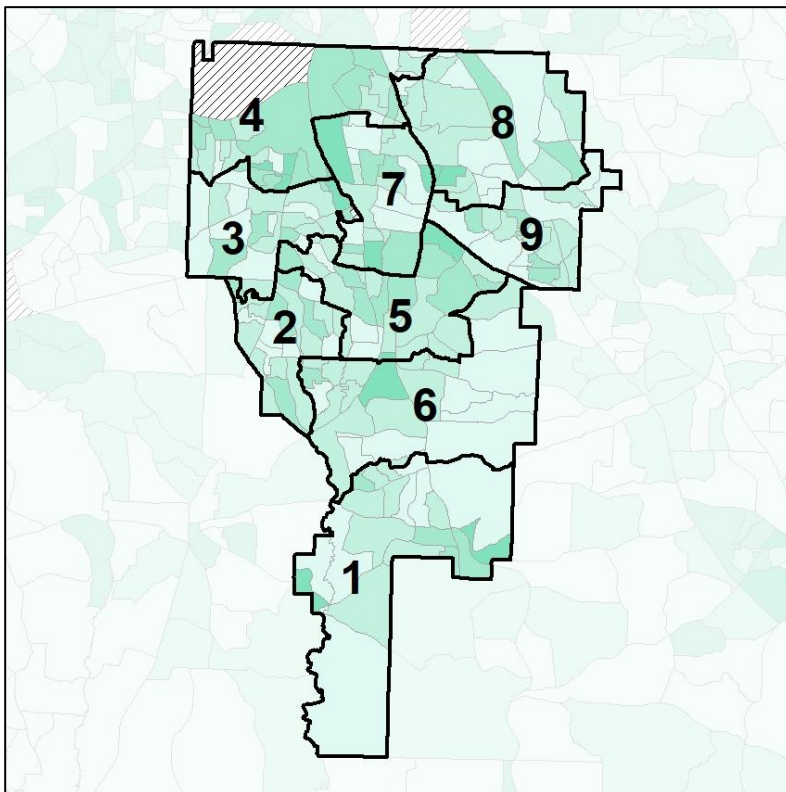
Source: 2020 Decennial Census 2020 ACS 5-Year Dataset

Clayton County School Board

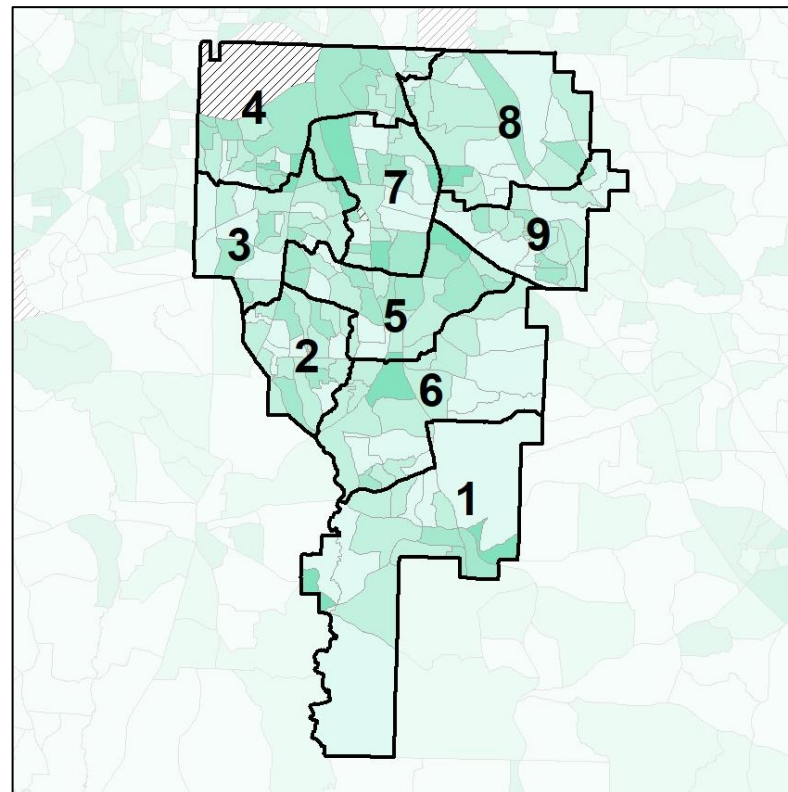
% Youth (18-34) by Census Block Group



2012 Map



2022 Map*



	1	2	3	4	5	6	7	8	9	1*	2*	3*	4*	5*	6*	7*	8*	9*	County
Population	37,295	32,335	31,357	34,599	33,667	31,372	30,843	33,589	32,424	32,613	32,812	33,051	33,507	32,800	33,186	33,499	33,250	32,877	297,595
% API	1%	3%	4%	3%	4%	4%	8%	7%	8%	2%	2%	4%	3%	4%	4%	8%	7%	8%	5%
% Black	75%	77%	76%	76%	68%	66%	51%	68%	63%	75%	76%	78%	76%	69%	64%	52%	68%	63%	69%
% Latino	10%	12%	13%	13%	14%	10%	28%	14%	16%	9%	13%	11%	13%	13%	12%	29%	15%	15%	14%
% Other	4%	3%	3%	3%	4%	4%	3%	3%	4%	4%	3%	3%	3%	4%	4%	3%	3%	4%	3%
% White	10%	5%	5%	5%	10%	16%	10%	7%	10%	11%	6%	5%	5%	9%	16%	9%	7%	10%	9%
Median Income	\$73K	\$55K	\$50K	\$39K	\$56K	\$72K	\$44K	\$50K	\$49K	\$75K	\$54K	\$49K	\$41K	\$52K	\$76K	\$43K	\$50K	\$49K	\$49K
% Renter	28%	48%	51%	75%	61%	27%	67%	34%	48%	26%	50%	50%	73%	64%	20%	69%	34%	48%	50%
% Youth	24%	26%	24%	30%	28%	24%	28%	23%	23%	24%	26%	25%	29%	28%	23%	29%	23%	23%	26%

