



Demographic Overview

Racial Breakdown in Cherokee County

Cherokee County	2010	2020	% Change
Total Population	214,346	266,620	24%
AAPI	3,568	5,529	55%
Black	11,633	17,326	49%
Latino	20,566	32,111	56%
Other/Mixed Race	4,336	13,787	218%
POC	40,103	68,753	71%
White	174,243	197,867	14%

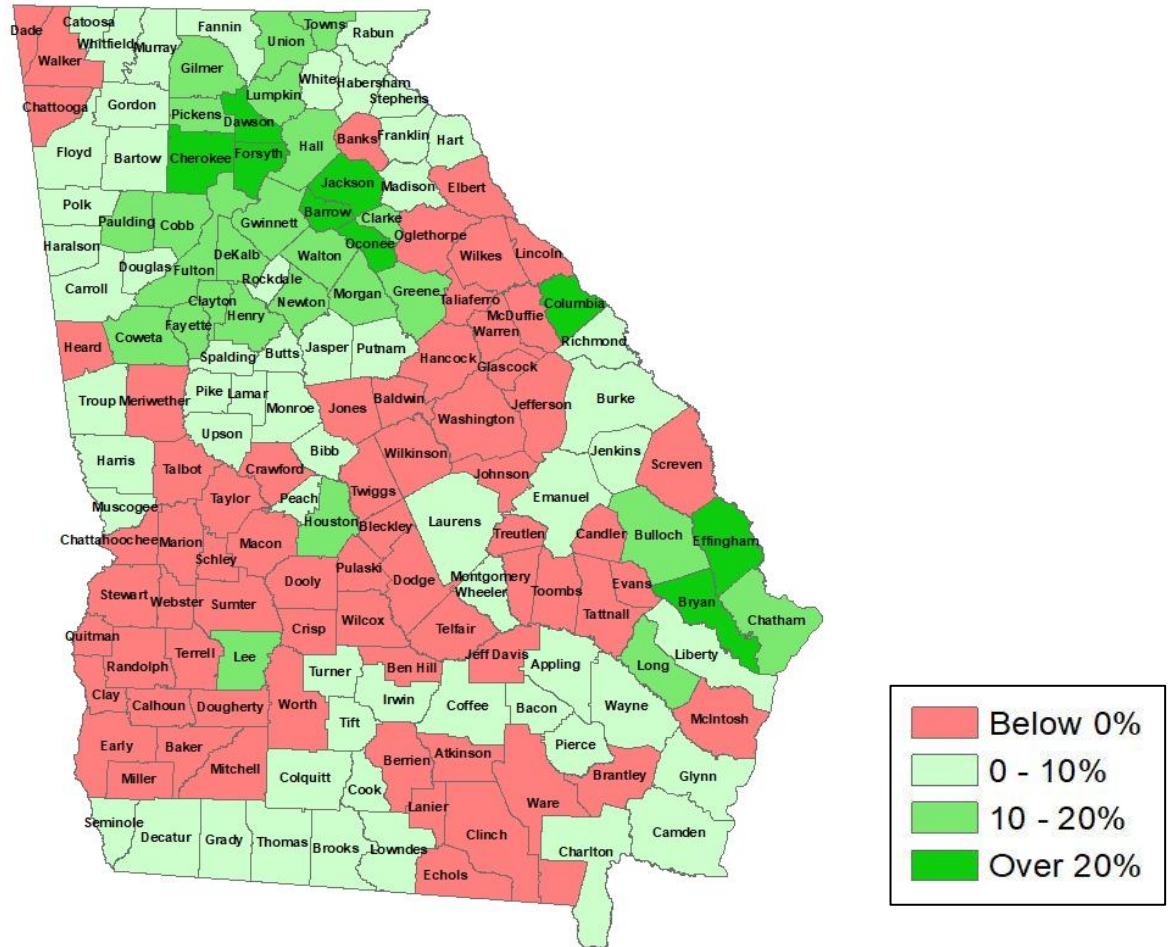
*Note: The use of "Other" in these statistics combines those who identify as Native American, Mixed Race, and "Other" race





Population Gain

Change in Population in Georgia by County



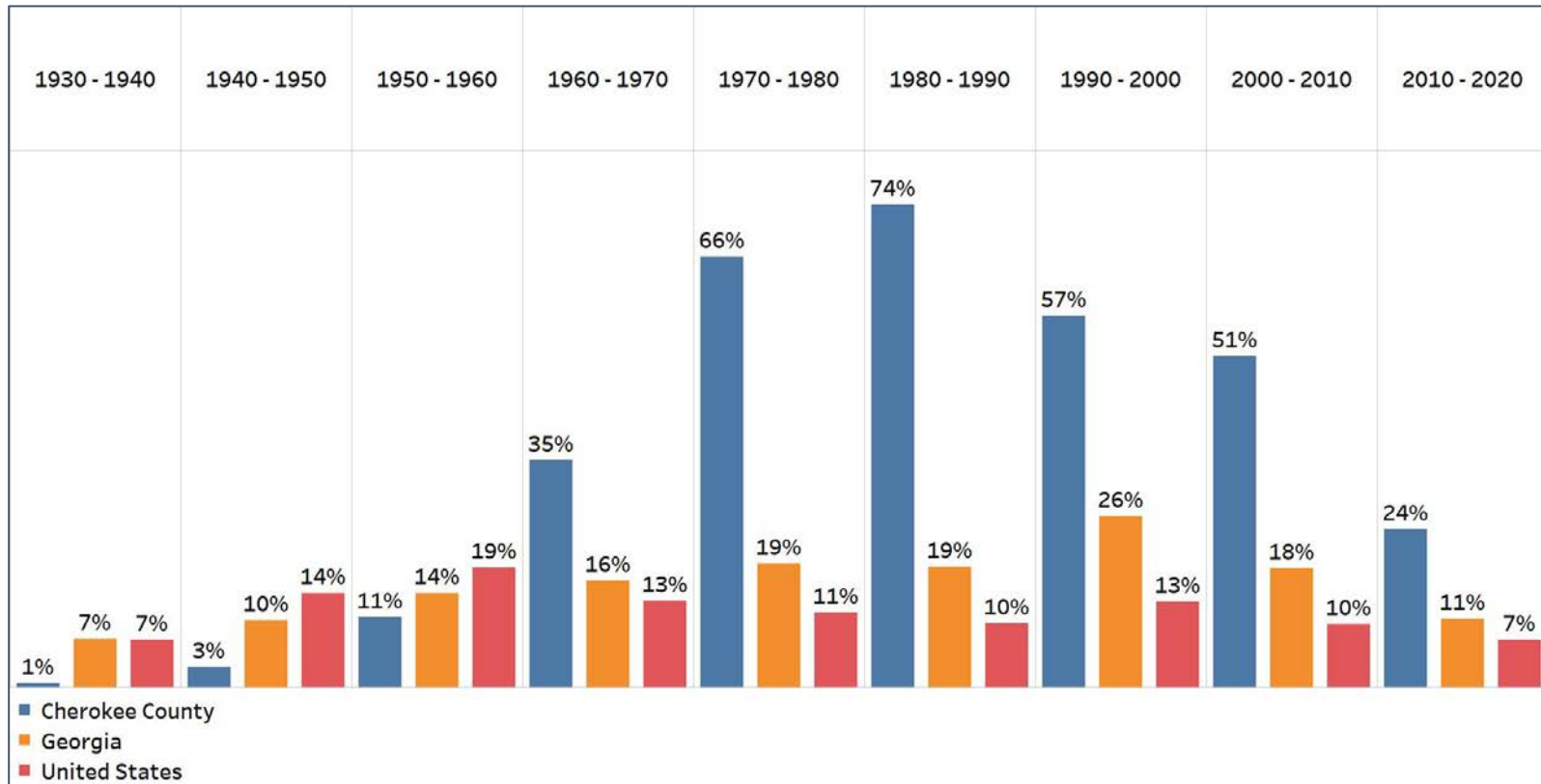
- Georgia is experiencing rapid population growth in the Atlanta, Augusta, and Savannah regions of the state





Population Gain

Change in Population by Decade

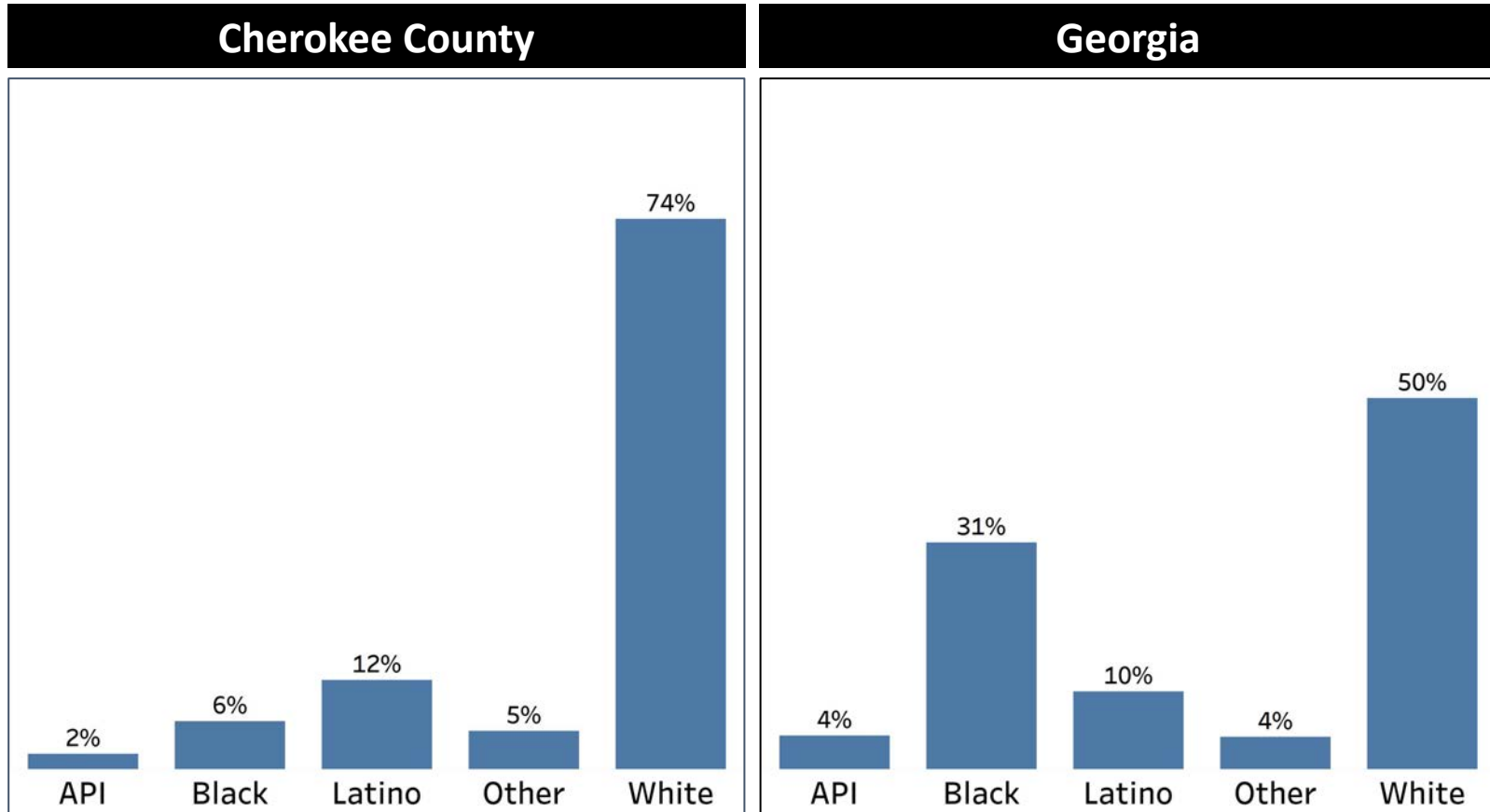


- Since 1960, Cherokee has had an exceptionally large population growth when compared to the statewide average
- Cherokee county's population growth has been at least double Georgia's population growth



Demographics

Comparison between Cherokee County and Georgia



- Cherokee County has a significantly higher white population when compared to the statewide average
- “Other,” APIs, Black, and latino population in Cherokee county compose about a quarter of the county’s population

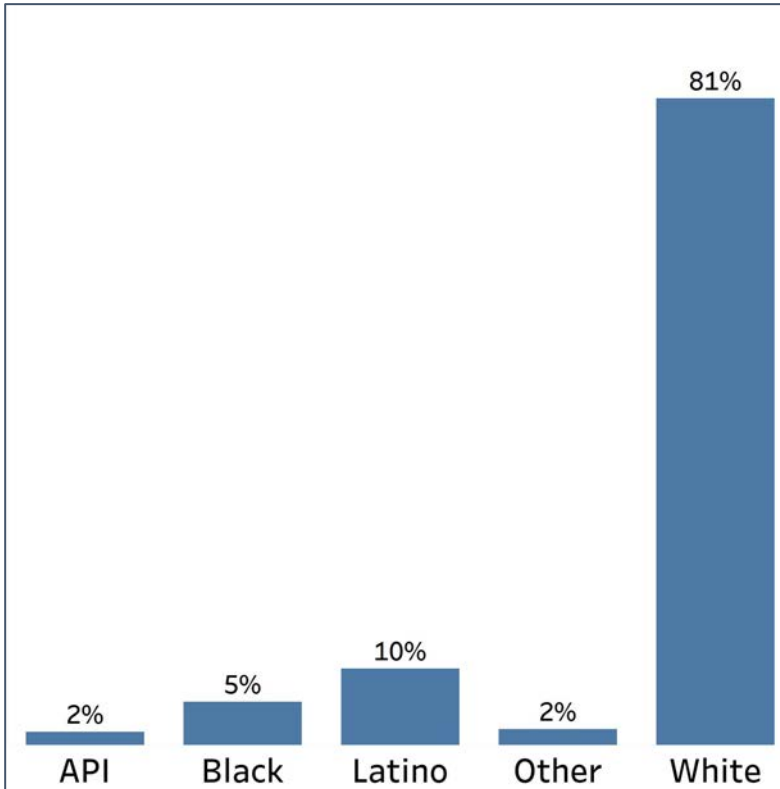


Demographics

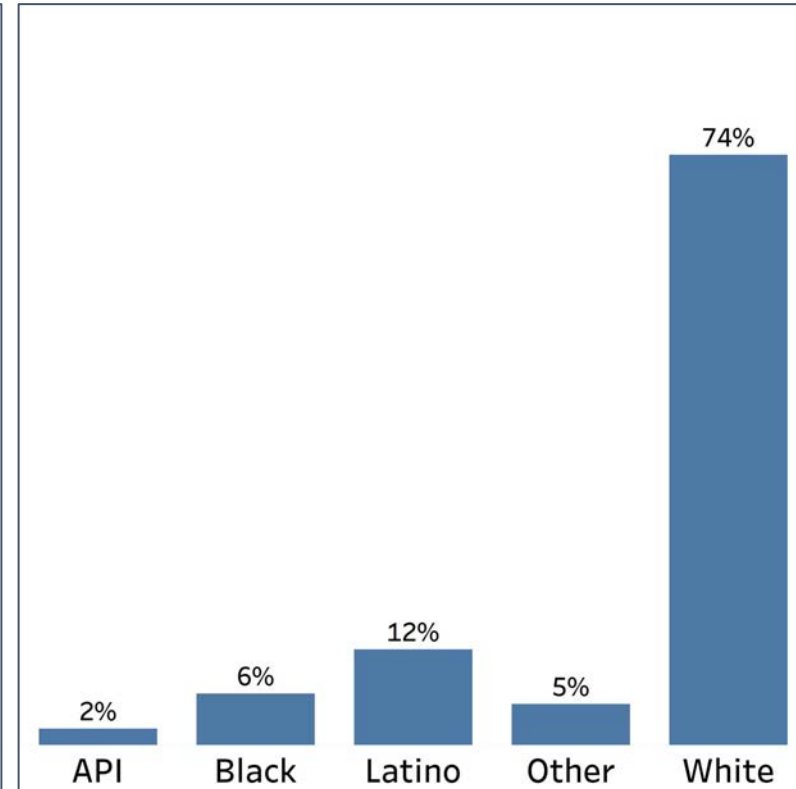
2010 vs 2020 Demographics in Cherokee County



Cherokee County 2010



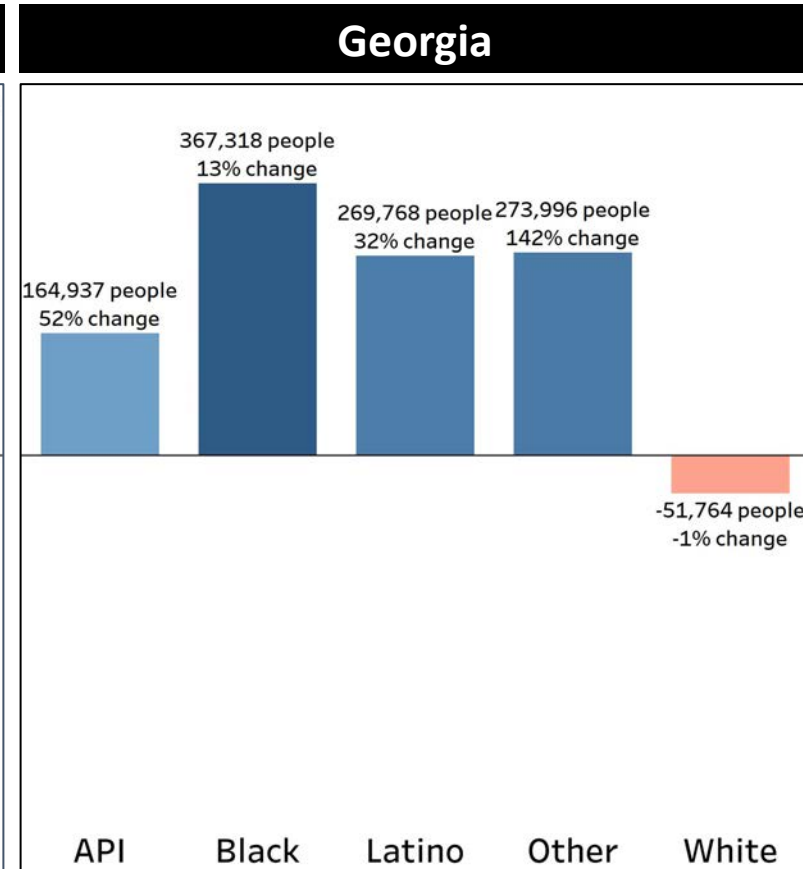
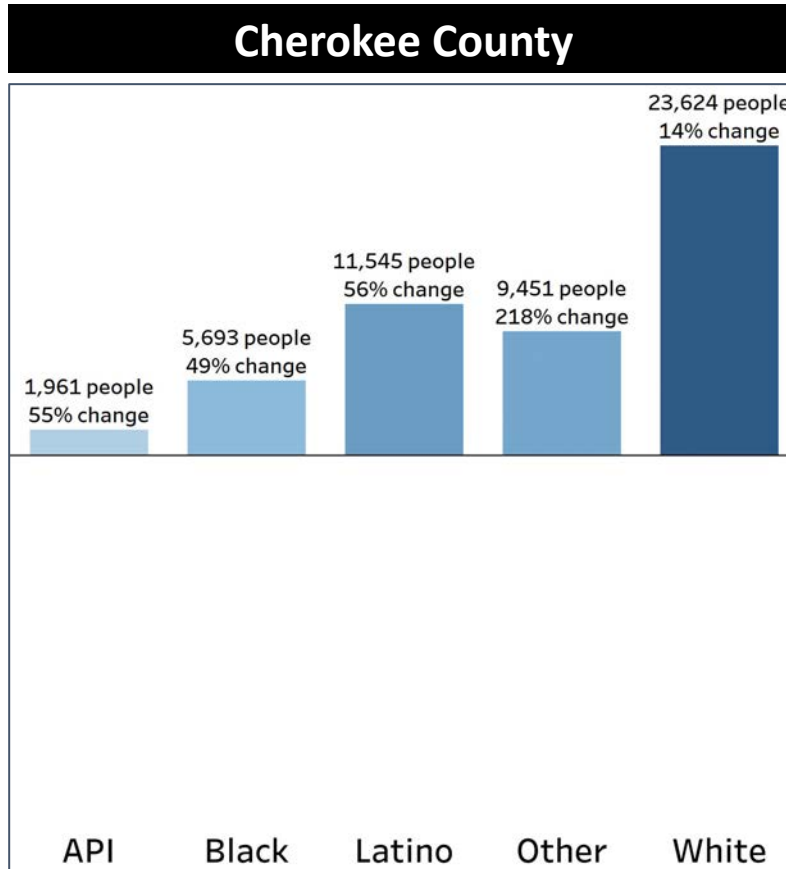
Cherokee County 2020



- Despite the White population of Cherokee County decreasing by 7%, it remains the majority
- Latino, and Black communities have increased in population.

Demographics

Population Change by Race (2020 - 2010)



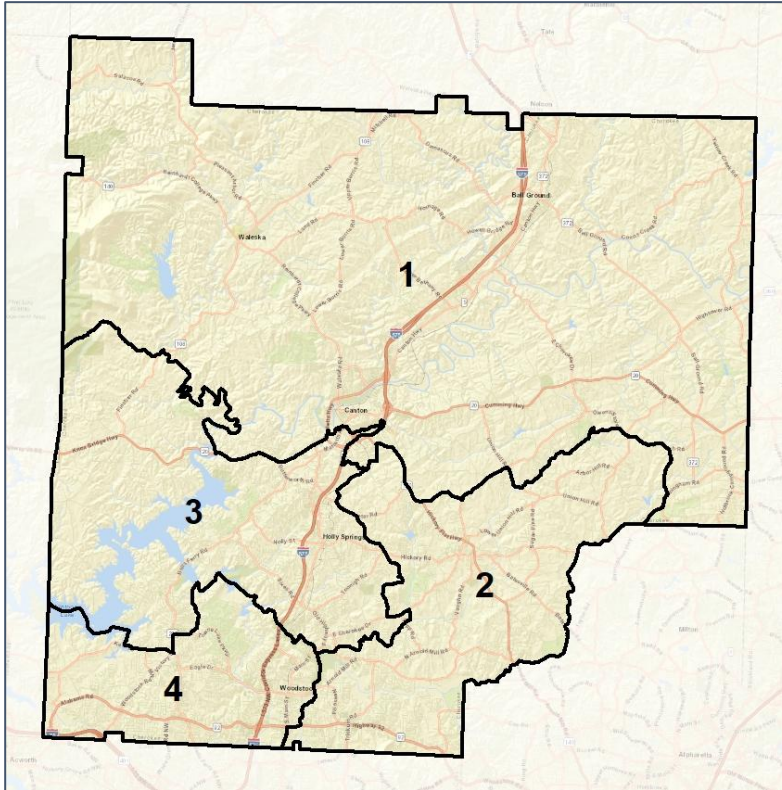
- Cherokee County is experiencing rapid population increase across all demographics when compared to the statewide average
- While the statewide average of White population decreased by 1%, Cherokee county's White population increased by 14%

Cherokee County Commission

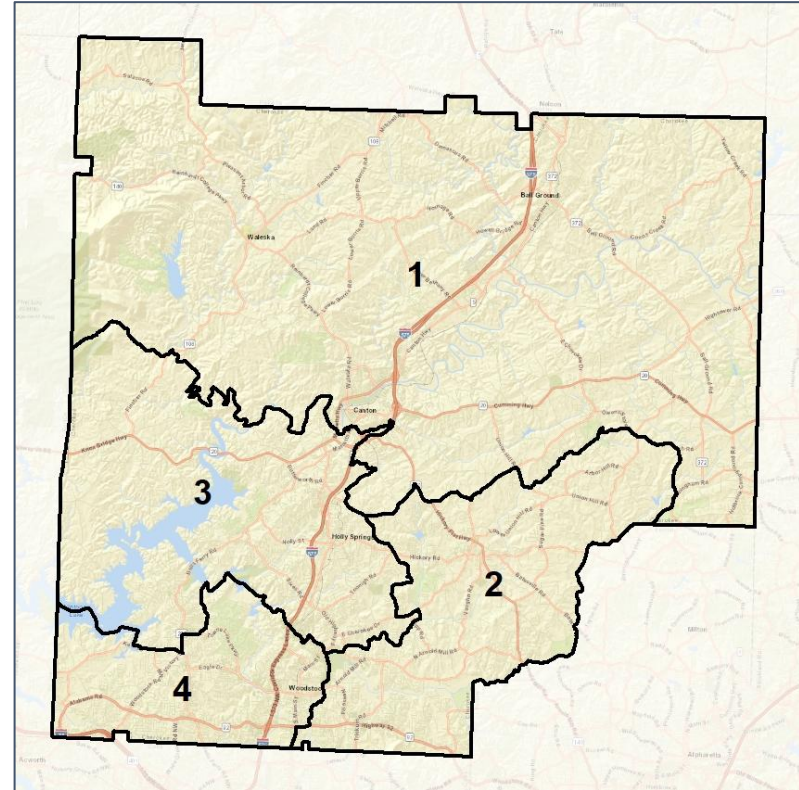
Context



2012 Map



2022 Map*



	1	2	3	4	1*	2*	3*	4*	County
Population	69,242	68,475	62,182	66,721	66,482	66,676	66,741	66,721	266,620
API	1%	3%	2%	3%	1%	3%	2%	3%	2%
Black	5%	5%	6%	11%	5%	5%	6%	11%	6%
Latino	11%	10%	13%	14%	12%	10%	12%	14%	12%
Other	5%	5%	5%	6%	4%	5%	5%	6%	5%
White	78%	77%	75%	67%	78%	77%	75%	67%	74%
Population Gain	*	*	*	*	-2,760	-1,799	4,559	0	*
Population % Gain	*	*	*	*	-4%	-3%	7%	0%	*
Net POC Gain	*	*	*	*	-577	-387	964	0	*
Net POC % Gain	*	*	*	*	-4%	-2%	6%	0%	*

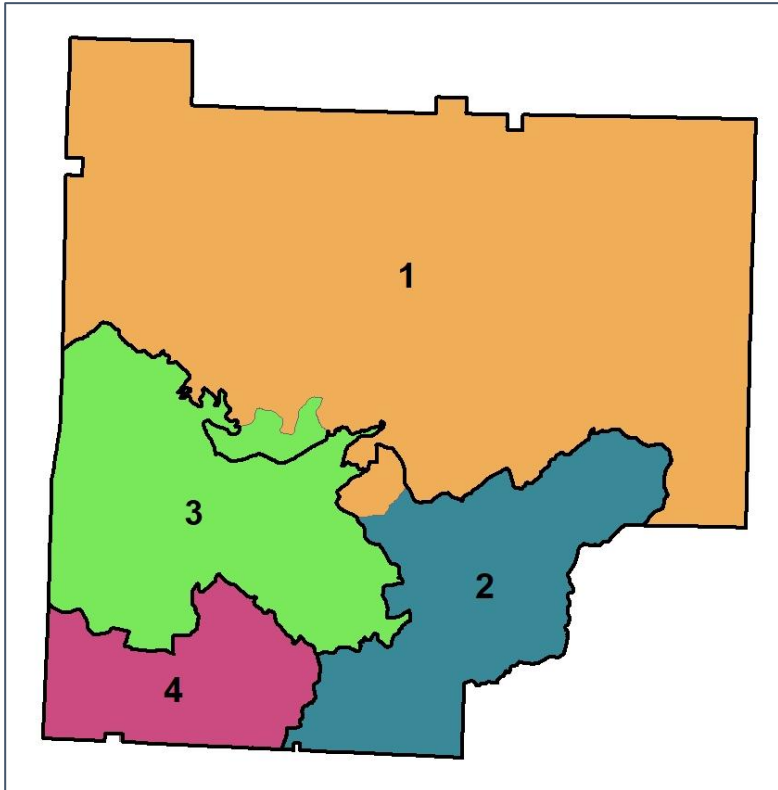


Cherokee County Commission

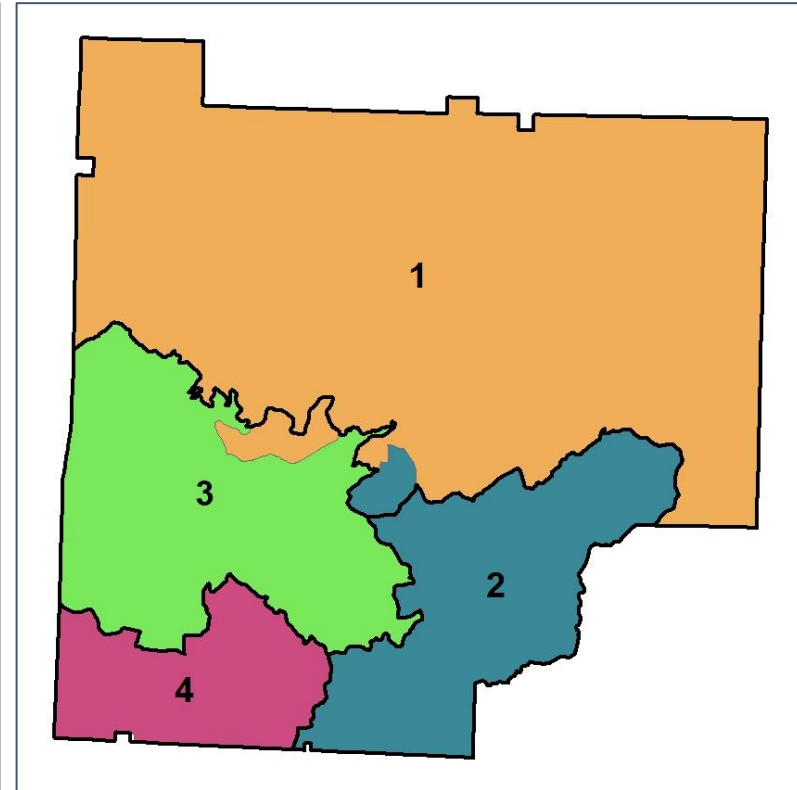
Changes in Redistricting



2012 Map (2022 in Colors)



2022 Map* (2012 in Colors)



	1	2	3	4	1*	2*	3*	4*	County
Population	69,242	68,475	62,182	66,721	66,482	66,676	66,741	66,721	266,620
API	1%	3%	2%	3%	1%	3%	2%	3%	2%
Black	5%	5%	6%	11%	5%	5%	6%	11%	6%
Latino	11%	10%	13%	14%	12%	10%	12%	14%	12%
Other	5%	5%	5%	6%	4%	5%	5%	6%	5%
White	78%	77%	75%	67%	78%	77%	75%	67%	74%
Population Gain	*	*	*	*	-2,760	-1,799	4,559	0	*
Population % Gain	*	*	*	*	-4%	-3%	7%	0%	*
Net POC Gain	*	*	*	*	-577	-387	964	0	*
Net POC % Gain	*	*	*	*	-4%	-2%	6%	0%	*

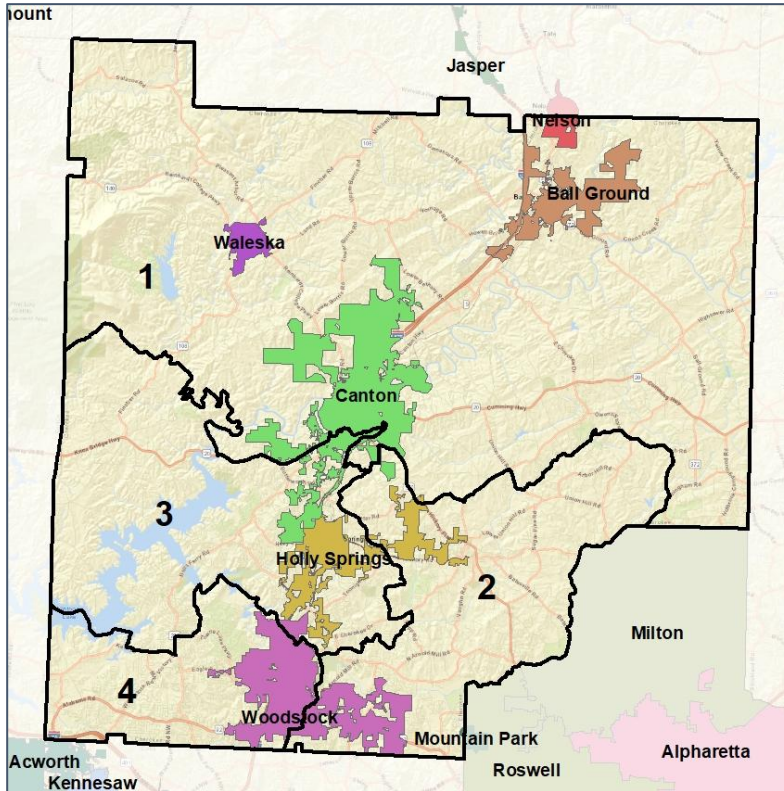


Cherokee County Commission

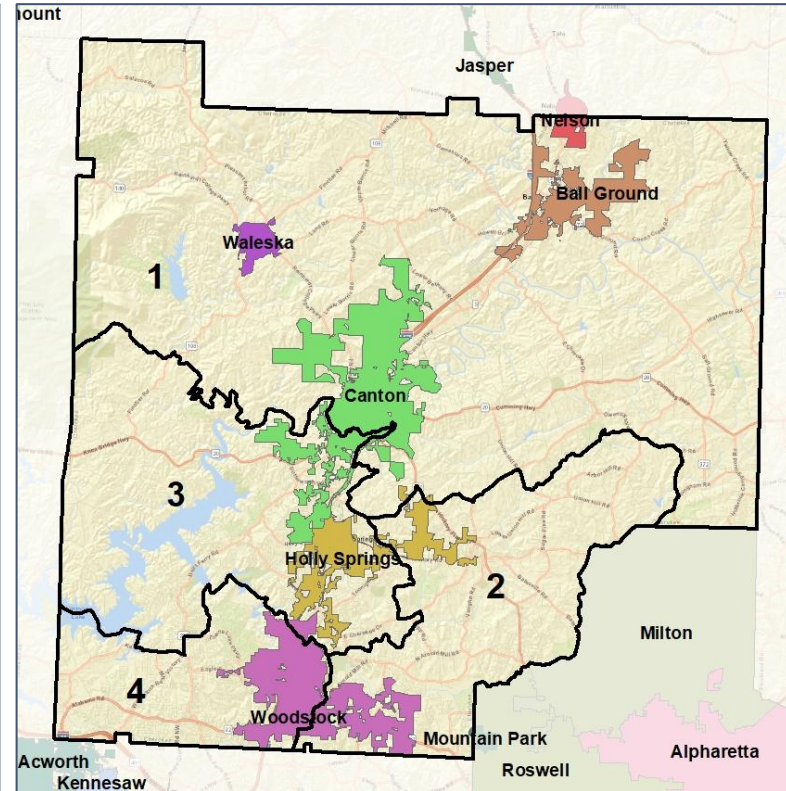
Cities and Places



2012 Map



2022 Map*



	1	2	3	4	1*	2*	3*	4*	County
Population	69,242	68,475	62,182	66,721	66,482	66,676	66,741	66,721	266,620
API	1%	3%	2%	3%	1%	3%	2%	3%	2%
Black	5%	5%	6%	11%	5%	5%	6%	11%	6%
Latino	11%	10%	13%	14%	12%	10%	12%	14%	12%
Other	5%	5%	5%	6%	4%	5%	5%	6%	5%
White	78%	77%	75%	67%	78%	77%	75%	67%	74%
Population Gain	*	*	*	*	-2,760	-1,799	4,559	0	*
Population % Gain	*	*	*	*	-4%	-3%	7%	0%	*
Net POC Gain	*	*	*	*	-577	-387	964	0	*
Net POC % Gain	*	*	*	*	-4%	-2%	6%	0%	*



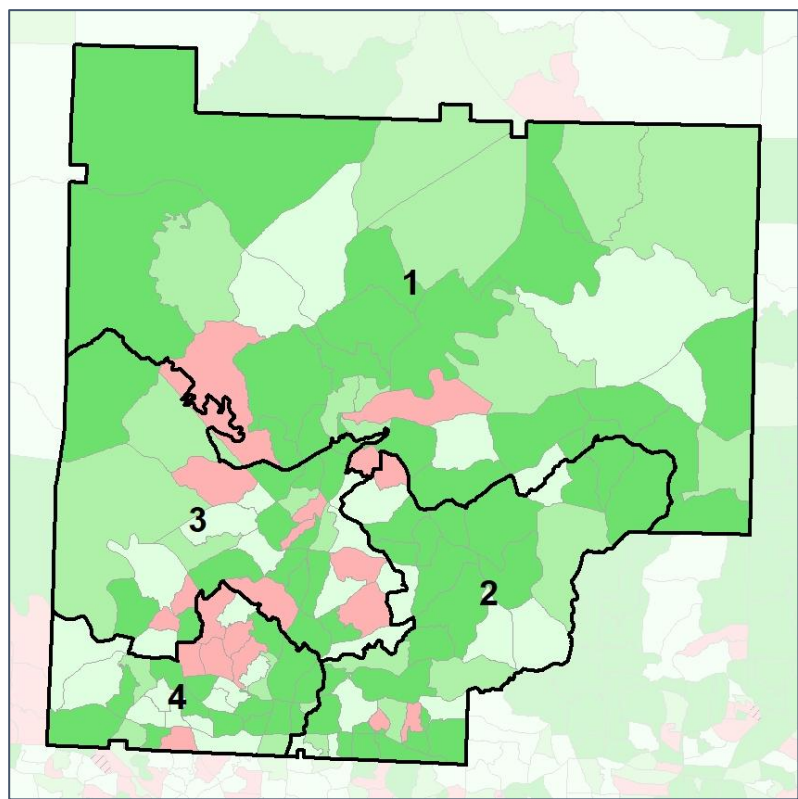
Source:
2020 Decennial Census
2020 ACS 5-Year Dataset

Cherokee County Commission

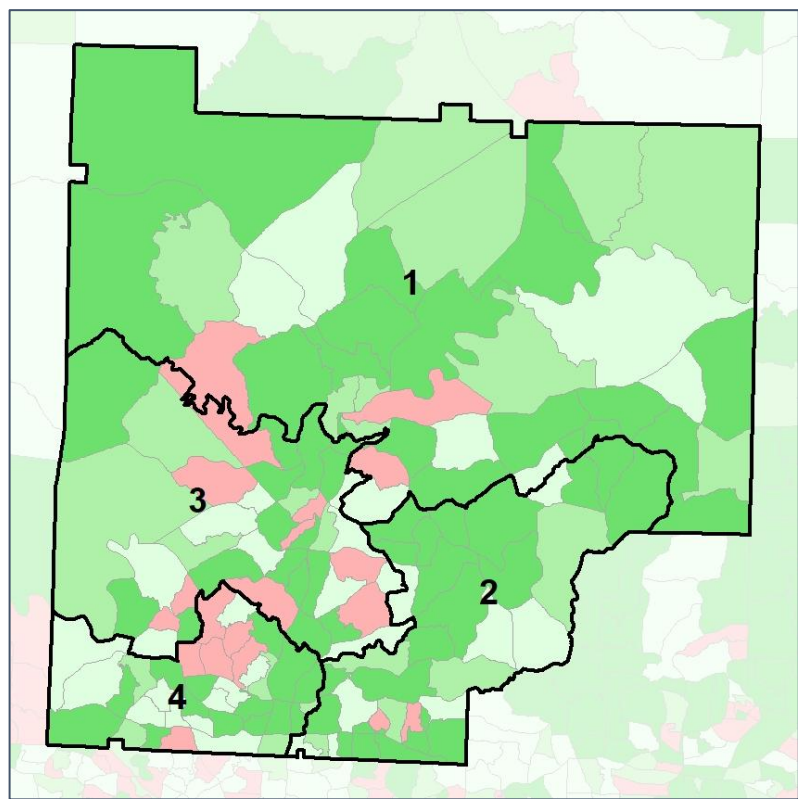
Net Gain in Population (2010 - 2020)



2012 Map



2022 Map*



	1	2	3	4	1*	2*	3*	4*	County
Population	69,242	68,475	62,182	66,721	66,482	66,676	66,741	66,721	266,620
API	1%	3%	2%	3%	1%	3%	2%	3%	2%
Black	5%	5%	6%	11%	5%	5%	6%	11%	6%
Latino	11%	10%	13%	14%	12%	10%	12%	14%	12%
Other	5%	5%	5%	6%	4%	5%	5%	6%	5%
White	78%	77%	75%	67%	78%	77%	75%	67%	74%
Population Gain	*	*	*	*	-2,760	-1,799	4,559	0	*
Population % Gain	*	*	*	*	-4%	-3%	7%	0%	*
Net POC Gain	*	*	*	*	-577	-387	964	0	*
Net POC % Gain	*	*	*	*	-4%	-2%	6%	0%	*



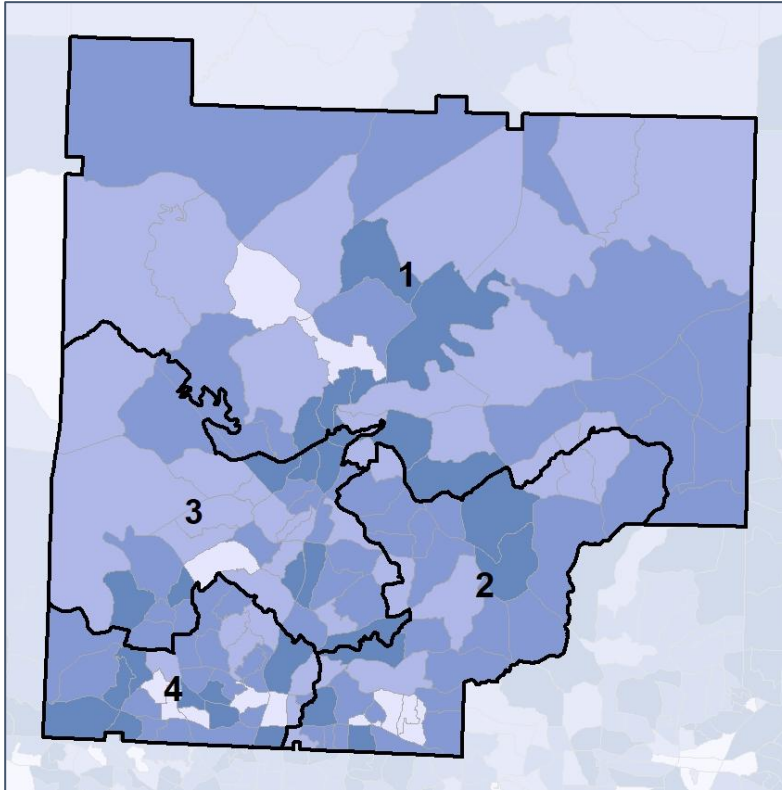
Source:
2020 Decennial Census
2020 ACS 5-Year Dataset

Cherokee County Commission

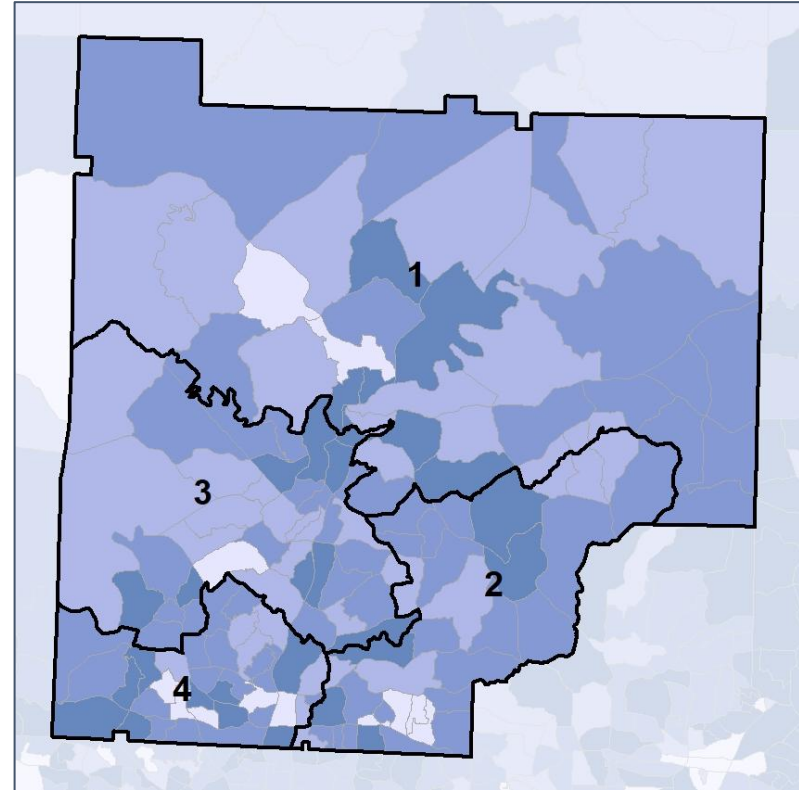
Net Gain in % POC (2020 - 2010) by Census Block Group



2012 Map



2022 Map*



	1	2	3	4	1*	2*	3*	4*	County
Population	69,242	68,475	62,182	66,721	66,482	66,676	66,741	66,721	266,620
API	1%	3%	2%	3%	1%	3%	2%	3%	2%
Black	5%	5%	6%	11%	5%	5%	6%	11%	6%
Latino	11%	10%	13%	14%	12%	10%	12%	14%	12%
Other	5%	5%	5%	6%	4%	5%	5%	6%	5%
White	78%	77%	75%	67%	78%	77%	75%	67%	74%
Population Gain	*	*	*	*	-2,760	-1,799	4,559	0	*
Population % Gain	*	*	*	*	-4%	-3%	7%	0%	*
Net POC Gain	*	*	*	*	-577	-387	964	0	*
Net POC % Gain	*	*	*	*	-4%	-2%	6%	0%	*

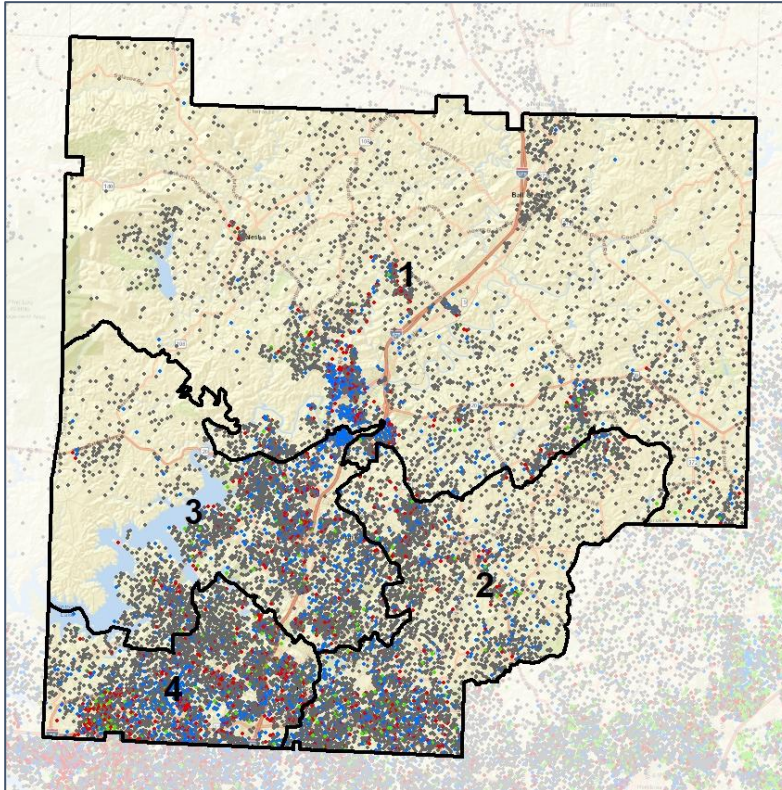


Cherokee County Commission

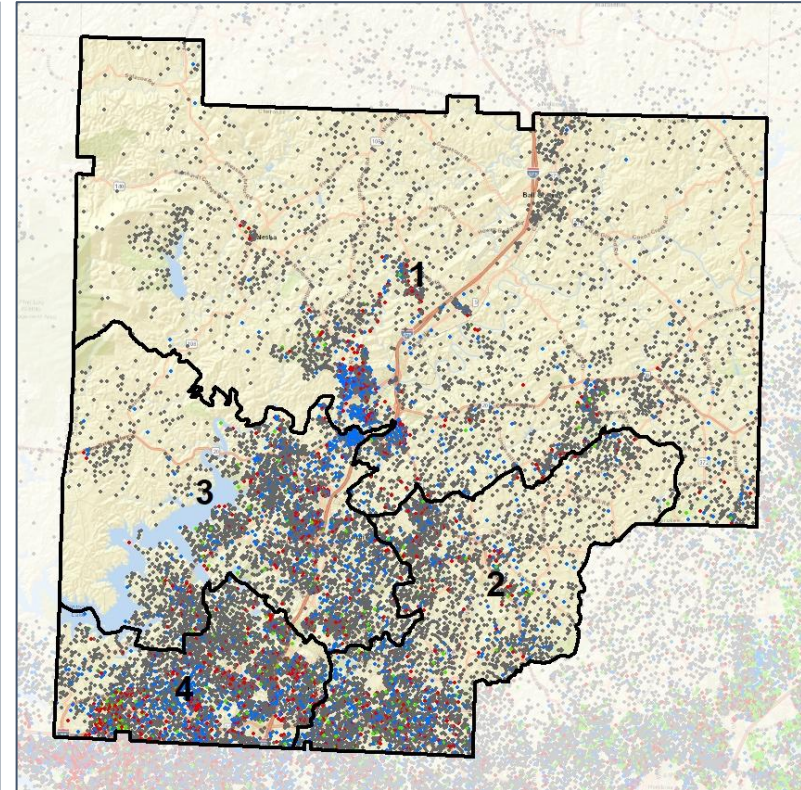
Population Density by Race



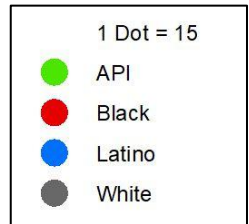
2012 Map



2022 Map*



	1	2	3	4	1*	2*	3*	4*	County
Population	69,242	68,475	62,182	66,721	66,482	66,676	66,741	66,721	266,620
API	639	1,859	1,027	2,004	578	1,850	1,097	2,004	5,529
% API	1%	3%	2%	3%	1%	3%	2%	3%	2%
Black	3,165	3,585	3,523	7,053	3,071	3,468	3,734	7,053	17,326
% Black	5%	5%	6%	11%	5%	5%	6%	11%	6%
Latino	7,914	6,966	7,828	9,403	7,710	6,779	8,219	9,403	32,111
% Latino	11%	10%	13%	14%	12%	10%	12%	14%	12%
Other	3,182	3,588	3,253	3,764	2,964	3,514	3,545	3,764	13,787
% Other	5%	5%	5%	6%	4%	5%	5%	6%	5%
White	54,342	52,477	46,551	44,497	52,159	51,065	50,146	44,497	197,867
% White	78%	77%	75%	67%	78%	77%	75%	67%	74%



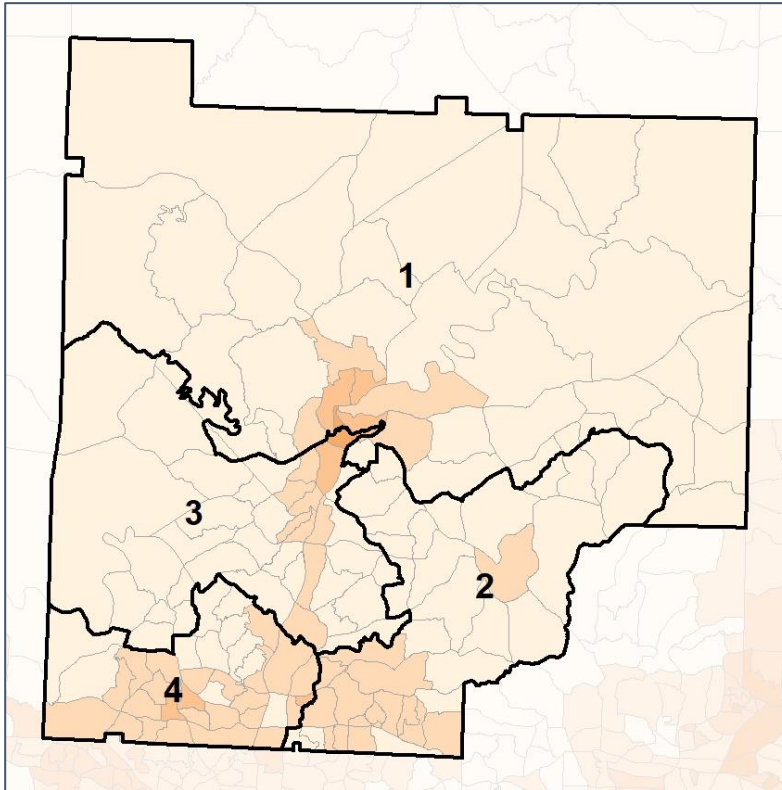
Source:
2020 Decennial Census
2020 ACS 5-Year Dataset

Cherokee County Commission

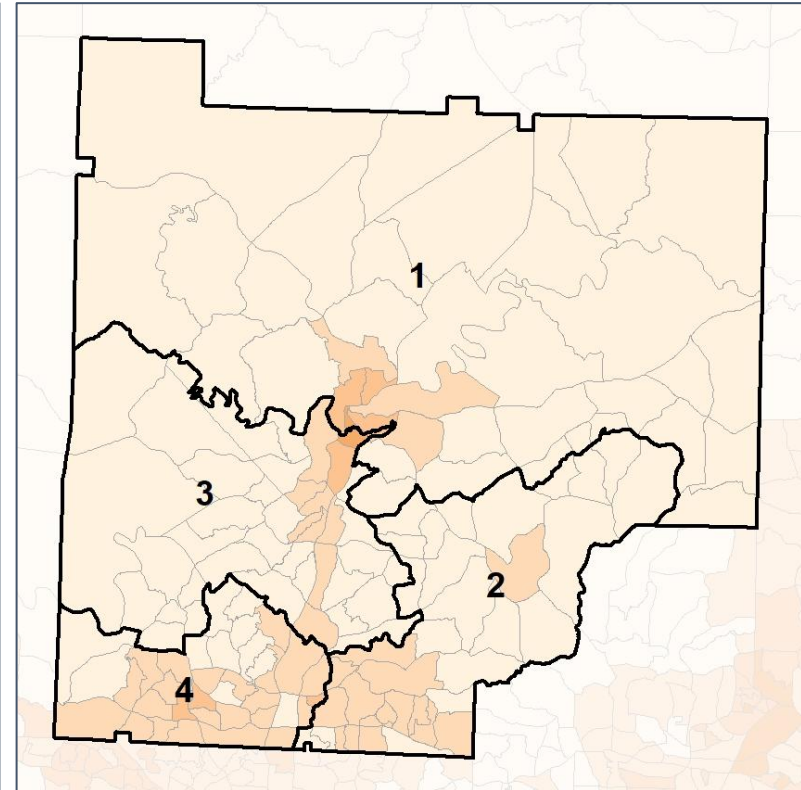
% People of Color by Census Block Group



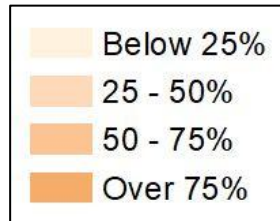
2012 Map



2022 Map*



	1	2	3	4	1*	2*	3*	4*	County
Population	69,242	68,475	62,182	66,721	66,482	66,676	66,741	66,721	266,620
API	639	1,859	1,027	2,004	578	1,850	1,097	2,004	5,529
% API	1%	3%	2%	3%	1%	3%	2%	3%	2%
Black	3,165	3,585	3,523	7,053	3,071	3,468	3,734	7,053	17,326
% Black	5%	5%	6%	11%	5%	5%	6%	11%	6%
Latino	7,914	6,966	7,828	9,403	7,710	6,779	8,219	9,403	32,111
% Latino	11%	10%	13%	14%	12%	10%	12%	14%	12%
Other	3,182	3,588	3,253	3,764	2,964	3,514	3,545	3,764	13,787
% Other	5%	5%	5%	6%	4%	5%	5%	6%	5%
White	54,342	52,477	46,551	44,497	52,159	51,065	50,146	44,497	197,867
% White	78%	77%	75%	67%	78%	77%	75%	67%	74%

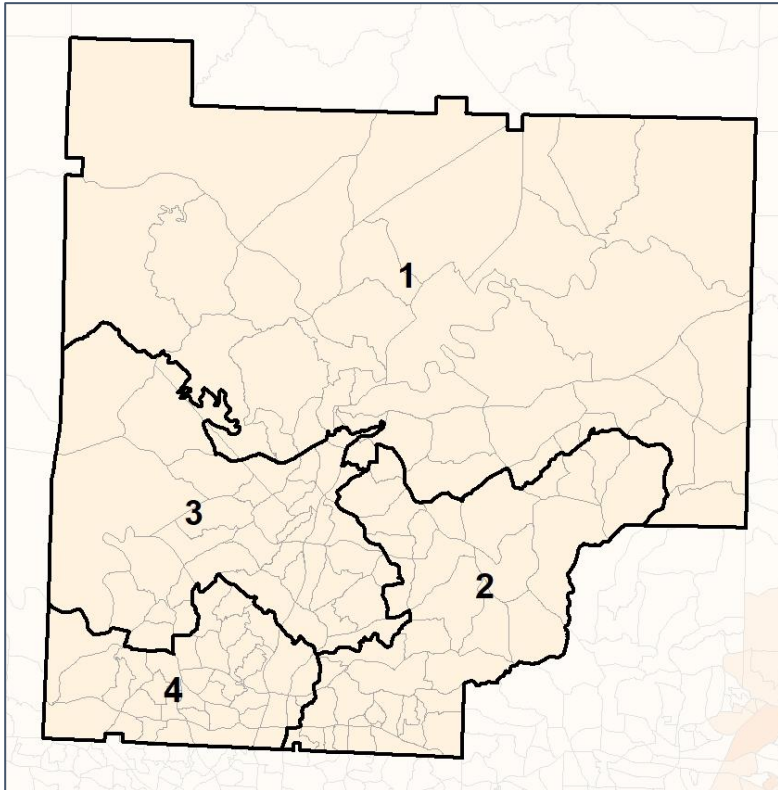


Cherokee County Commission

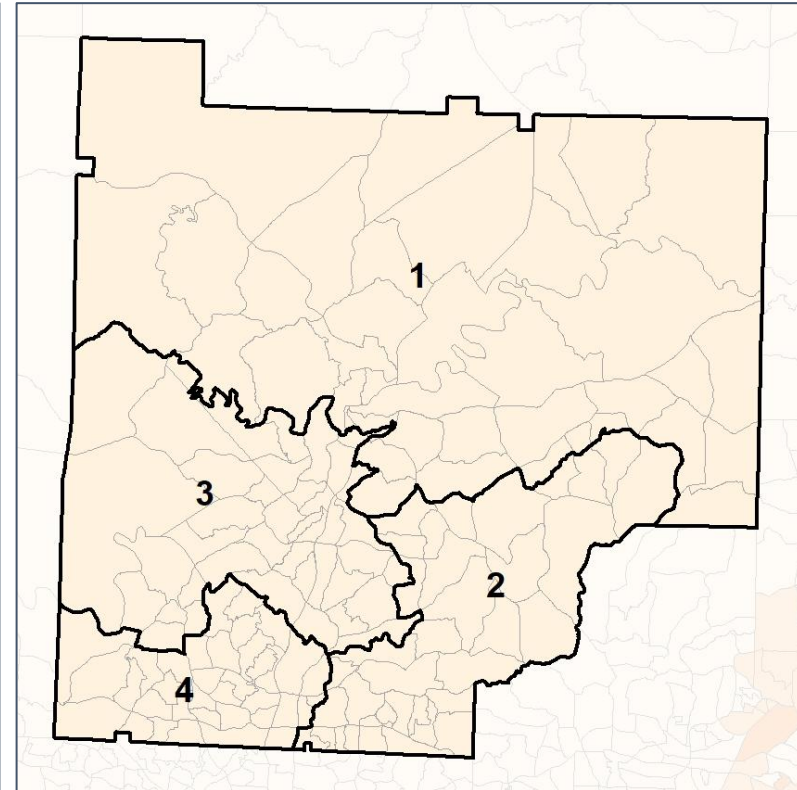
% API by Census Block Group



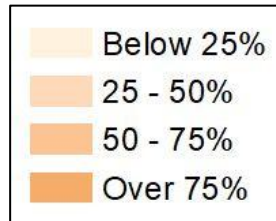
2012 Map



2022 Map*



	1	2	3	4	1*	2*	3*	4*	County
Population	69,242	68,475	62,182	66,721	66,482	66,676	66,741	66,721	266,620
API	639	1,859	1,027	2,004	578	1,850	1,097	2,004	5,529
% API	1%	3%	2%	3%	1%	3%	2%	3%	2%
Black	3,165	3,585	3,523	7,053	3,071	3,468	3,734	7,053	17,326
% Black	5%	5%	6%	11%	5%	5%	6%	11%	6%
Latino	7,914	6,966	7,828	9,403	7,710	6,779	8,219	9,403	32,111
% Latino	11%	10%	13%	14%	12%	10%	12%	14%	12%
Other	3,182	3,588	3,253	3,764	2,964	3,514	3,545	3,764	13,787
% Other	5%	5%	5%	6%	4%	5%	5%	6%	5%
White	54,342	52,477	46,551	44,497	52,159	51,065	50,146	44,497	197,867
% White	78%	77%	75%	67%	78%	77%	75%	67%	74%

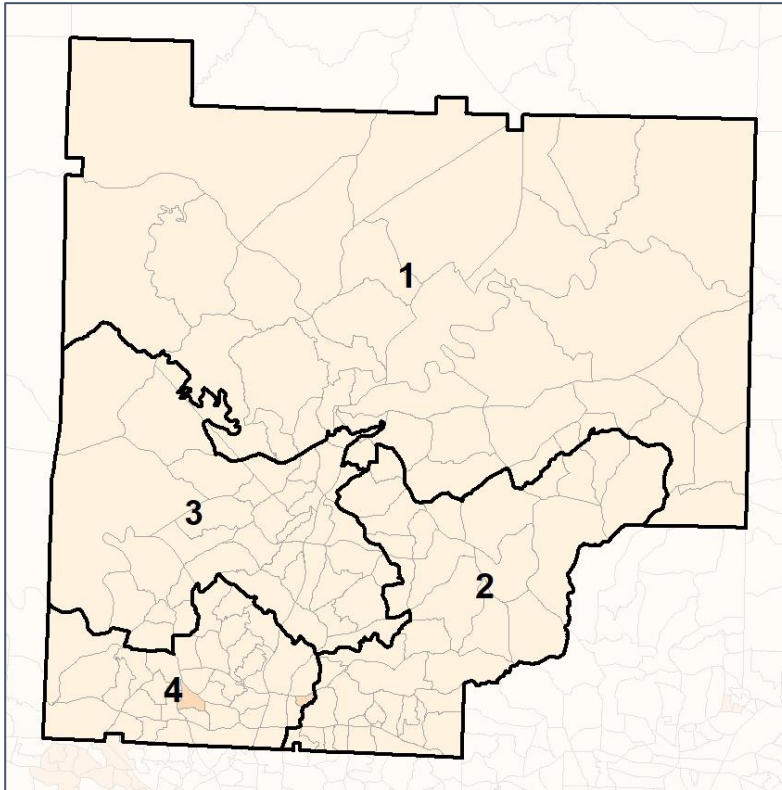


Cherokee County Commission

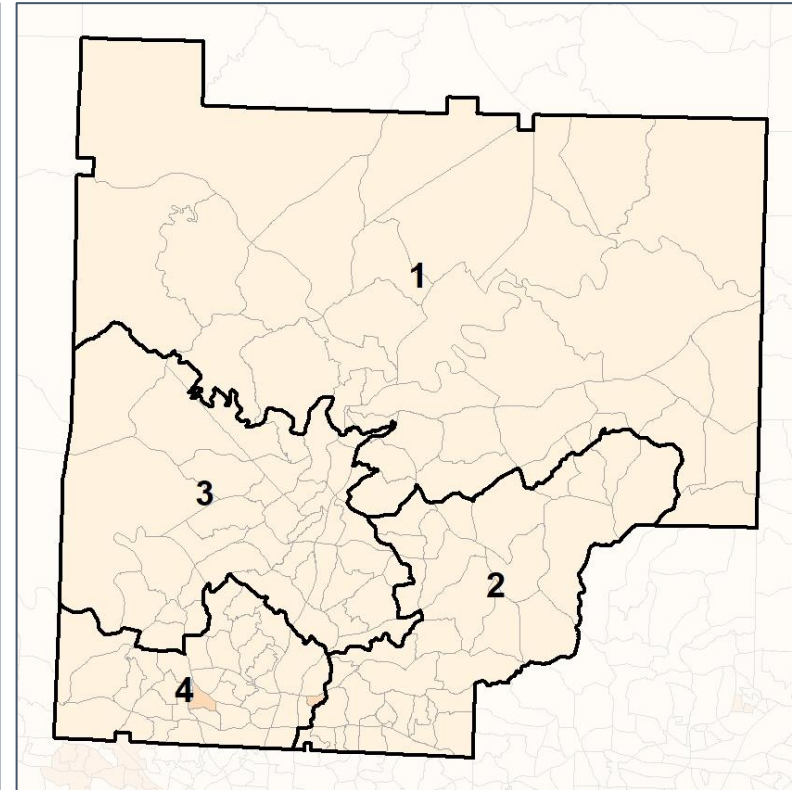
% Black by Census Block Group



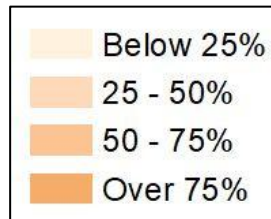
2012 Map



2022 Map*



	1	2	3	4	1*	2*	3*	4*	County
Population	69,242	68,475	62,182	66,721	66,482	66,676	66,741	66,721	266,620
API	639	1,859	1,027	2,004	578	1,850	1,097	2,004	5,529
% API	1%	3%	2%	3%	1%	3%	2%	3%	2%
Black	3,165	3,585	3,523	7,053	3,071	3,468	3,734	7,053	17,326
% Black	5%	5%	6%	11%	5%	5%	6%	11%	6%
Latino	7,914	6,966	7,828	9,403	7,710	6,779	8,219	9,403	32,111
% Latino	11%	10%	13%	14%	12%	10%	12%	14%	12%
Other	3,182	3,588	3,253	3,764	2,964	3,514	3,545	3,764	13,787
% Other	5%	5%	5%	6%	4%	5%	5%	6%	5%
White	54,342	52,477	46,551	44,497	52,159	51,065	50,146	44,497	197,867
% White	78%	77%	75%	67%	78%	77%	75%	67%	74%

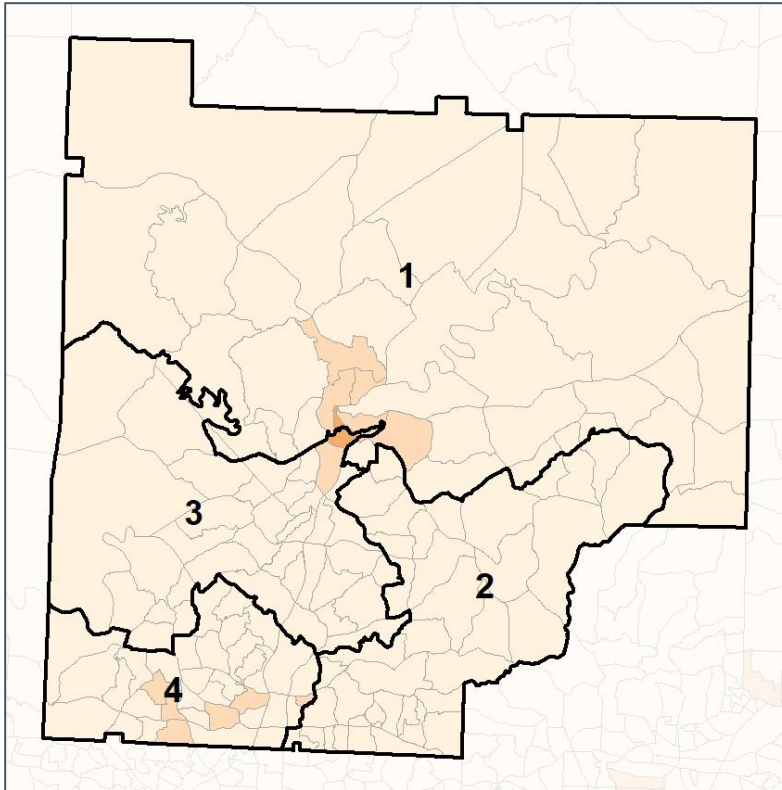


Cherokee County Commission

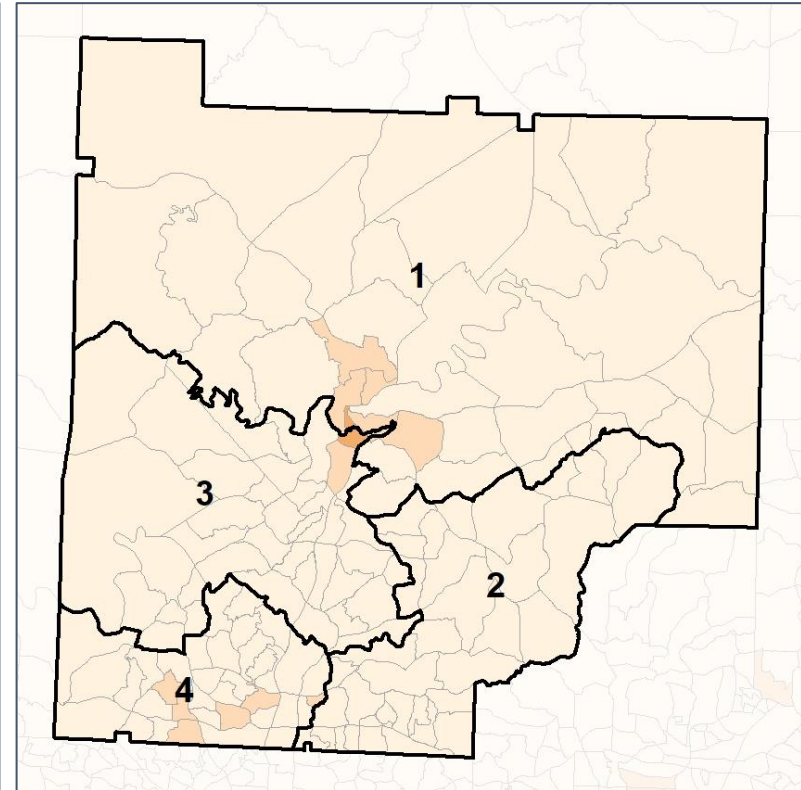
% Latino by Census Block Group



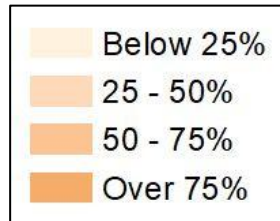
2012 Map



2022 Map*



	1	2	3	4	1*	2*	3*	4*	County
Population	69,242	68,475	62,182	66,721	66,482	66,676	66,741	66,721	266,620
API	639	1,859	1,027	2,004	578	1,850	1,097	2,004	5,529
% API	1%	3%	2%	3%	1%	3%	2%	3%	2%
Black	3,165	3,585	3,523	7,053	3,071	3,468	3,734	7,053	17,326
% Black	5%	5%	6%	11%	5%	5%	6%	11%	6%
Latino	7,914	6,966	7,828	9,403	7,710	6,779	8,219	9,403	32,111
% Latino	11%	10%	13%	14%	12%	10%	12%	14%	12%
Other	3,182	3,588	3,253	3,764	2,964	3,514	3,545	3,764	13,787
% Other	5%	5%	5%	6%	4%	5%	5%	6%	5%
White	54,342	52,477	46,551	44,497	52,159	51,065	50,146	44,497	197,867
% White	78%	77%	75%	67%	78%	77%	75%	67%	74%



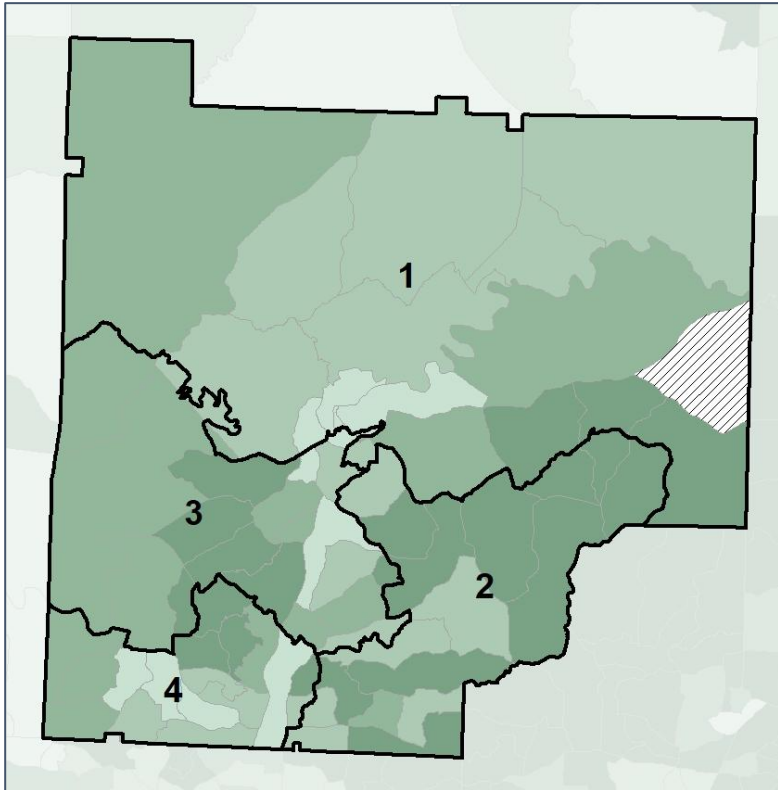
Source:
2020 Decennial Census
2020 ACS 5-Year Dataset

Cherokee County Commission

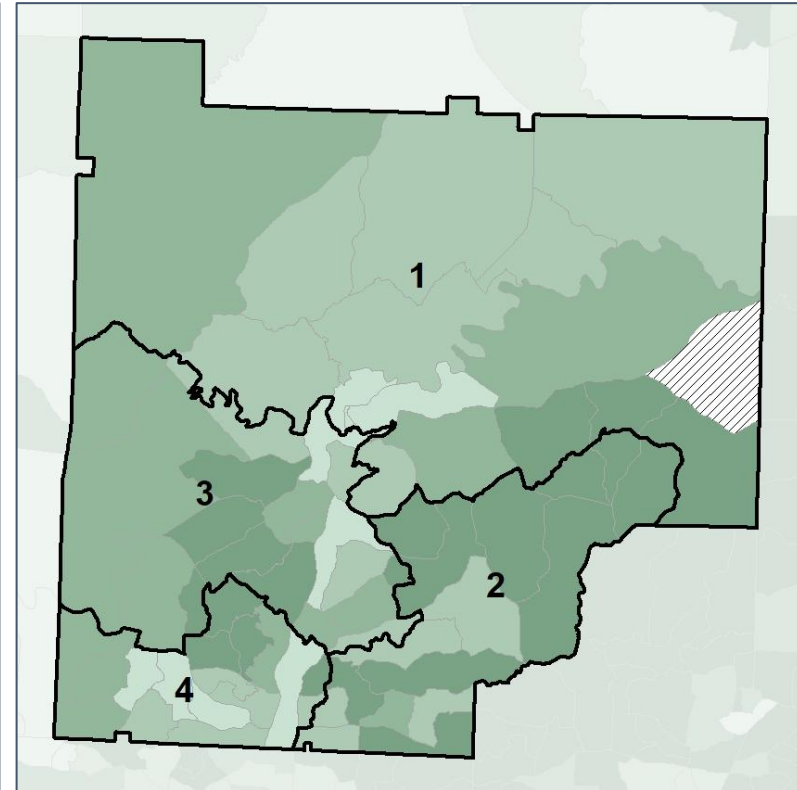
Median Household Income by Census Tract



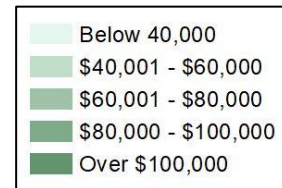
2012 Map



2022 Map*



	1	2	3	4	1*	2*	3*	4*	County
Population	69,242	68,475	62,182	66,721	66,482	66,676	66,741	66,721	266,620
% API	1%	3%	2%	3%	1%	3%	2%	3%	2%
% Black	5%	5%	6%	11%	5%	5%	6%	11%	6%
% Latino	11%	10%	13%	14%	12%	10%	12%	14%	12%
% Other	5%	5%	5%	6%	4%	5%	5%	6%	5%
% White	78%	77%	75%	67%	78%	77%	75%	67%	74%
Median Income	\$83,000	\$101,000	\$98,000	\$83,000	\$83,000	\$103,000	\$97,000	\$83,000	\$85,000
% Renter	21%	14%	28%	32%	23%	12%	27%	32%	24%
% Youth	19%	19%	19%	23%	20%	18%	19%	23%	20%

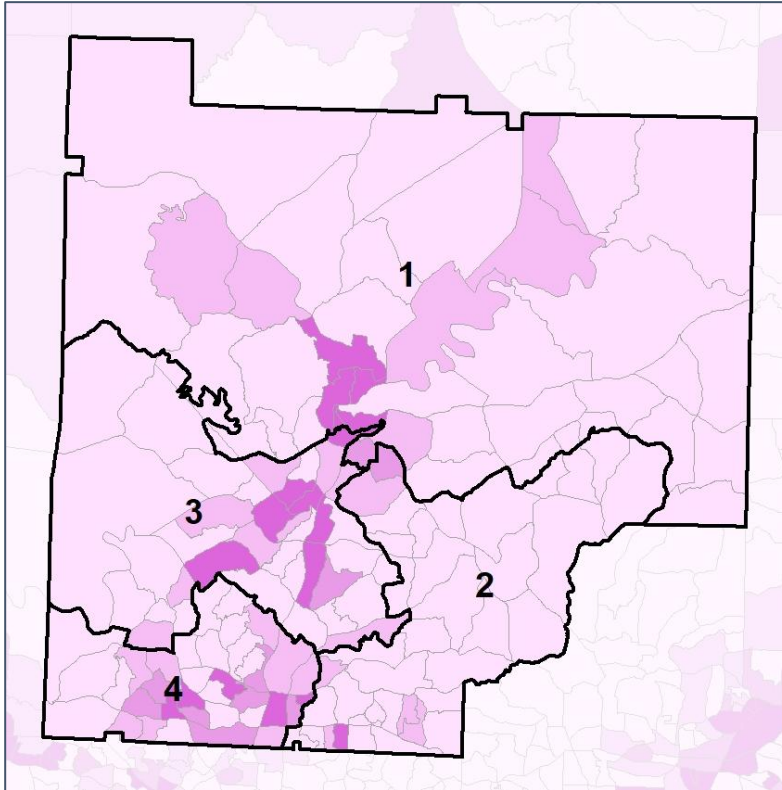


Cherokee County Commission

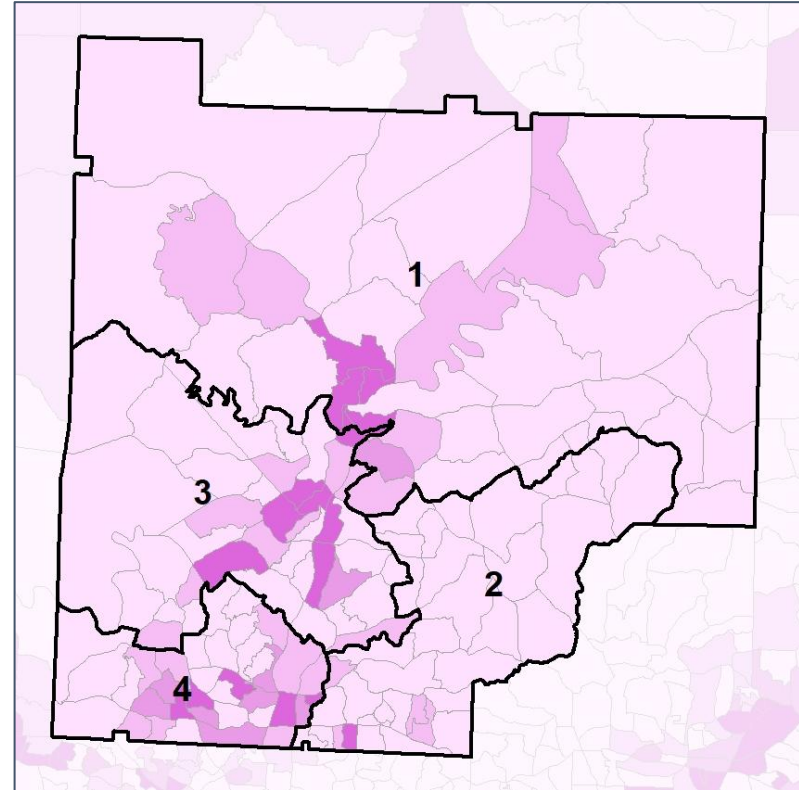
% Renter by Census Block Group



2012 Map



2022 Map*



	1	2	3	4	1*	2*	3*	4*	County
Population	69,242	68,475	62,182	66,721	66,482	66,676	66,741	66,721	266,620
% API	1%	3%	2%	3%	1%	3%	2%	3%	2%
% Black	5%	5%	6%	11%	5%	5%	6%	11%	6%
% Latino	11%	10%	13%	14%	12%	10%	12%	14%	12%
% Other	5%	5%	5%	6%	4%	5%	5%	6%	5%
% White	78%	77%	75%	67%	78%	77%	75%	67%	74%
Median Income	\$83,000	\$101,000	\$98,000	\$83,000	\$83,000	\$103,000	\$97,000	\$83,000	\$85,000
% Renter	21%	14%	28%	32%	23%	12%	27%	32%	24%
% Youth	19%	19%	19%	23%	20%	18%	19%	23%	20%

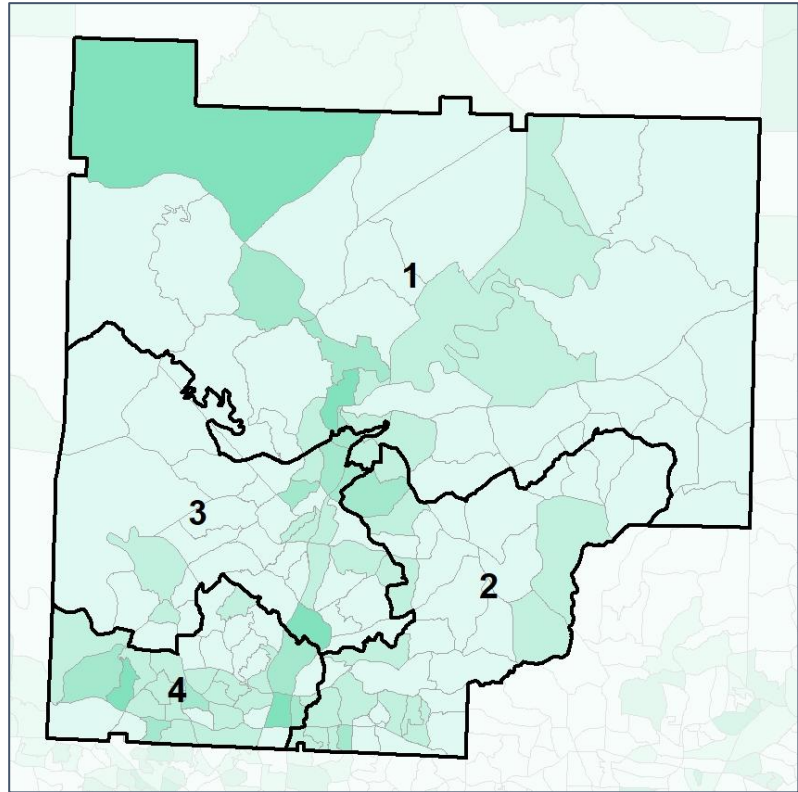


Cherokee County Commission

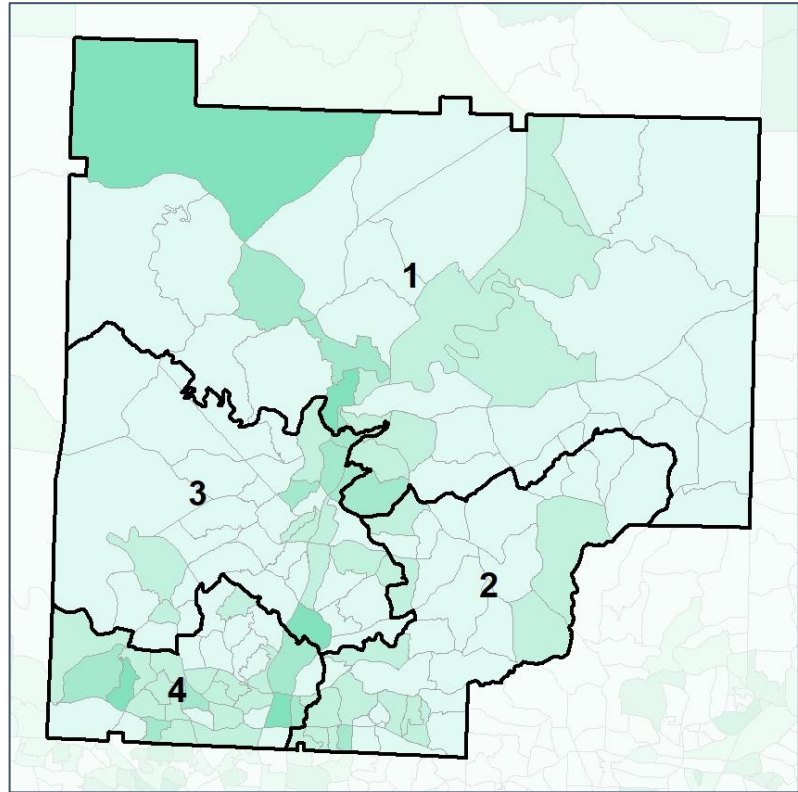
% Youth (18-34) by Census Block Group



2012 Map



2022 Map*



	1	2	3	4	1*	2*	3*	4*	County
Population	69,242	68,475	62,182	66,721	66,482	66,676	66,741	66,721	266,620
% API	1%	3%	2%	3%	1%	3%	2%	3%	2%
% Black	5%	5%	6%	11%	5%	5%	6%	11%	6%
% Latino	11%	10%	13%	14%	12%	10%	12%	14%	12%
% Other	5%	5%	5%	6%	4%	5%	5%	6%	5%
% White	78%	77%	75%	67%	78%	77%	75%	67%	74%
Median Income	\$83,000	\$101,000	\$98,000	\$83,000	\$83,000	\$103,000	\$97,000	\$83,000	\$85,000
% Renter	21%	14%	28%	32%	23%	12%	27%	32%	24%
% Youth	19%	19%	19%	23%	20%	18%	19%	23%	20%



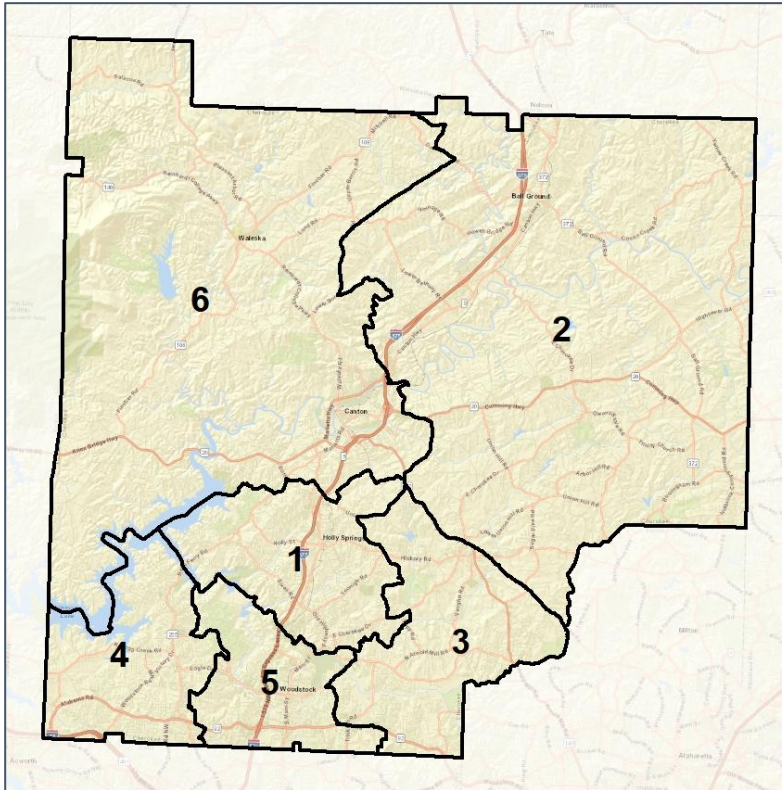
Source: 2020 Decennial Census 2020 ACS 5-Year Dataset

Cherokee County School Board

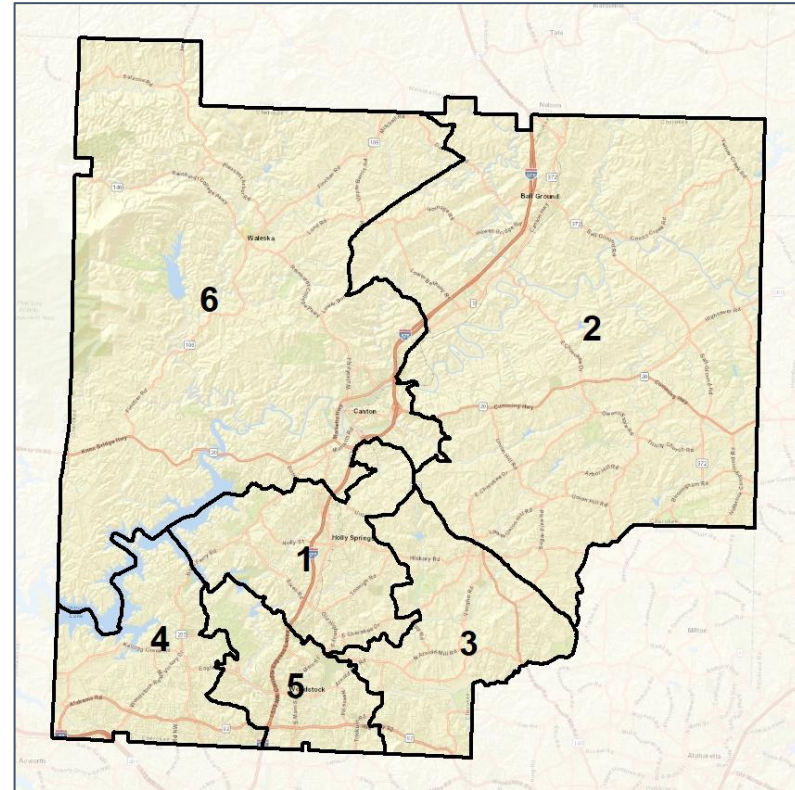
Context



2012 Map



2022 Map*



	1	2	3	4	5	6	1*	2*	3*	4*	5*	6*	County
Population	42,751	45,533	46,033	40,671	45,969	45,663	44,616	44,880	44,060	44,568	44,045	44,451	266,620
API	2%	1%	3%	3%	3%	1%	2%	1%	3%	3%	3%	1%	2%
Black	7%	3%	6%	10%	9%	6%	6%	3%	5%	10%	9%	6%	6%
Latino	10%	6%	10%	14%	12%	19%	10%	6%	10%	15%	12%	19%	12%
Other	5%	5%	5%	6%	5%	4%	5%	5%	5%	6%	6%	4%	5%
White	76%	85%	76%	67%	70%	70%	76%	86%	77%	67%	70%	70%	74%
Population Gain	*	*	*	*	*	*	1,865	-653	-1,973	3,897	-1,924	-1,212	*
Population % Gain	*	*	*	*	*	*	4%	-1%	-4%	10%	-4%	-3%	*
Net POC Gain	*	*	*	*	*	*	365	-213	-685	1,308	-623	-152	*
Net POC % Gain	*	*	*	*	*	*	4%	-3%	-6%	10%	-5%	-1%	*

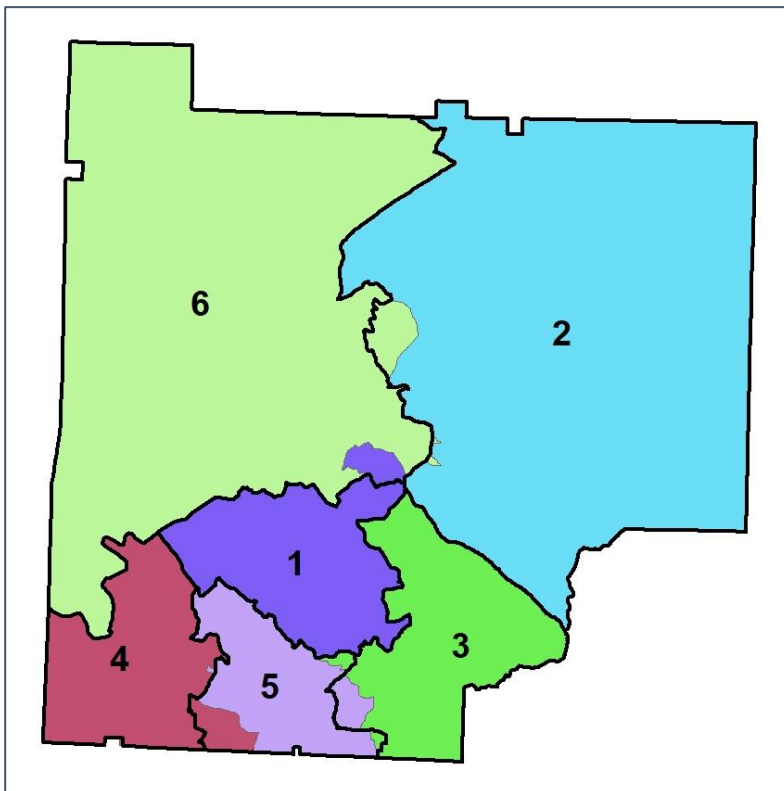


Cherokee County School Board

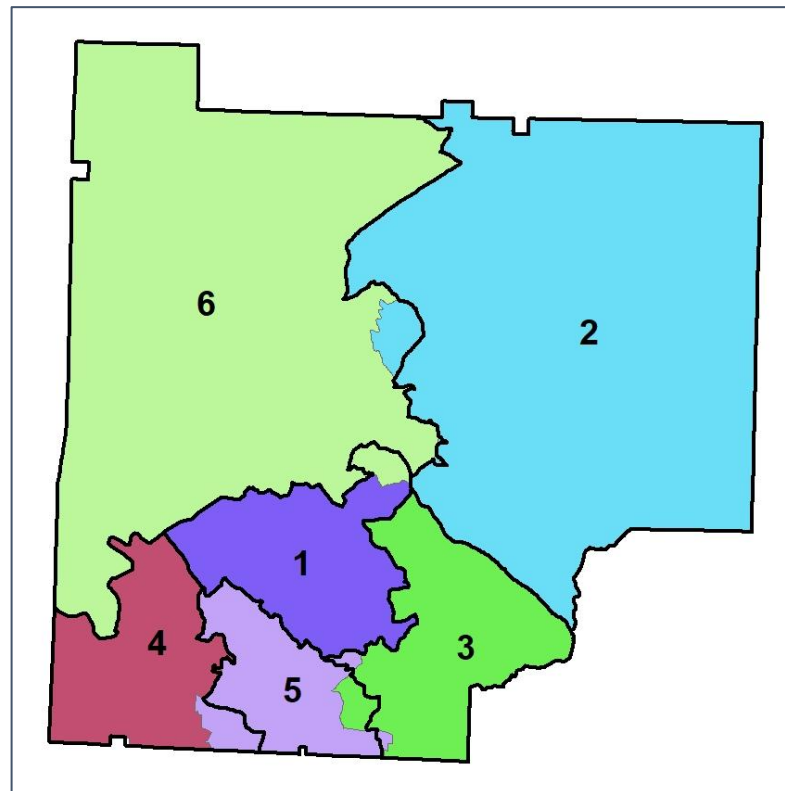
Changes in Redistricting



2012 Map (2022 in Colors)



2022 Map* (2012 in Colors)



	1	2	3	4	5	6	1*	2*	3*	4*	5*	6*	County
Population	42,751	45,533	46,033	40,671	45,969	45,663	44,616	44,880	44,060	44,568	44,045	44,451	266,620
API	2%	1%	3%	3%	3%	1%	2%	1%	3%	3%	3%	1%	2%
Black	7%	3%	6%	10%	9%	6%	6%	3%	5%	10%	9%	6%	6%
Latino	10%	6%	10%	14%	12%	19%	10%	6%	10%	15%	12%	19%	12%
Other	5%	5%	5%	6%	5%	4%	5%	5%	5%	6%	6%	4%	5%
White	76%	85%	76%	67%	70%	70%	76%	86%	77%	67%	70%	70%	74%
Population Gain	*	*	*	*	*	*	1,865	-653	-1,973	3,897	-1,924	-1,212	*
Population % Gain	*	*	*	*	*	*	4%	-1%	-4%	10%	-4%	-3%	*
Net POC Gain	*	*	*	*	*	*	365	-213	-685	1,308	-623	-152	*
Net POC % Gain	*	*	*	*	*	*	4%	-3%	-6%	10%	-5%	-1%	*

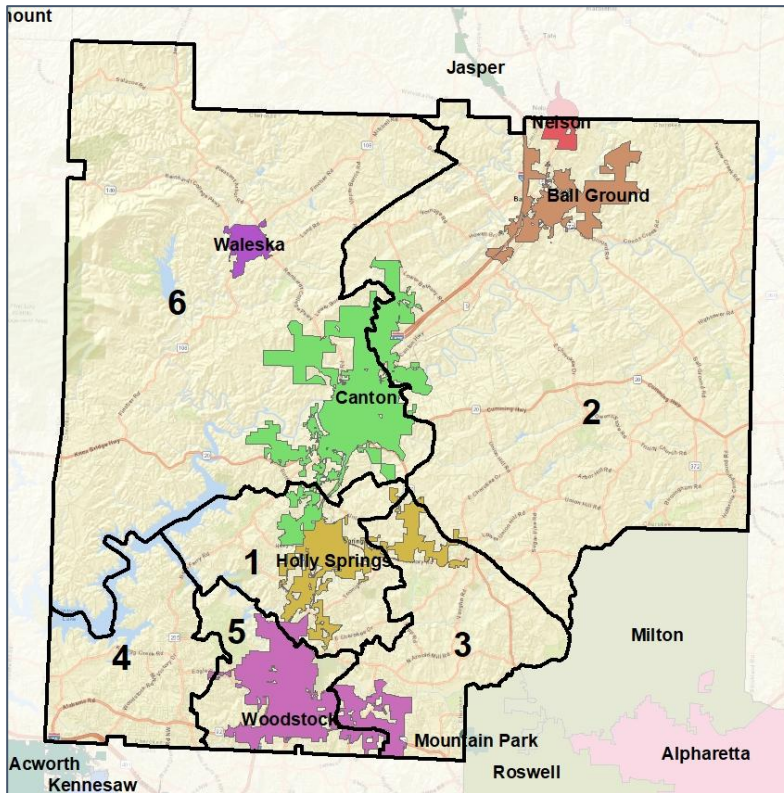


Cherokee County School Board

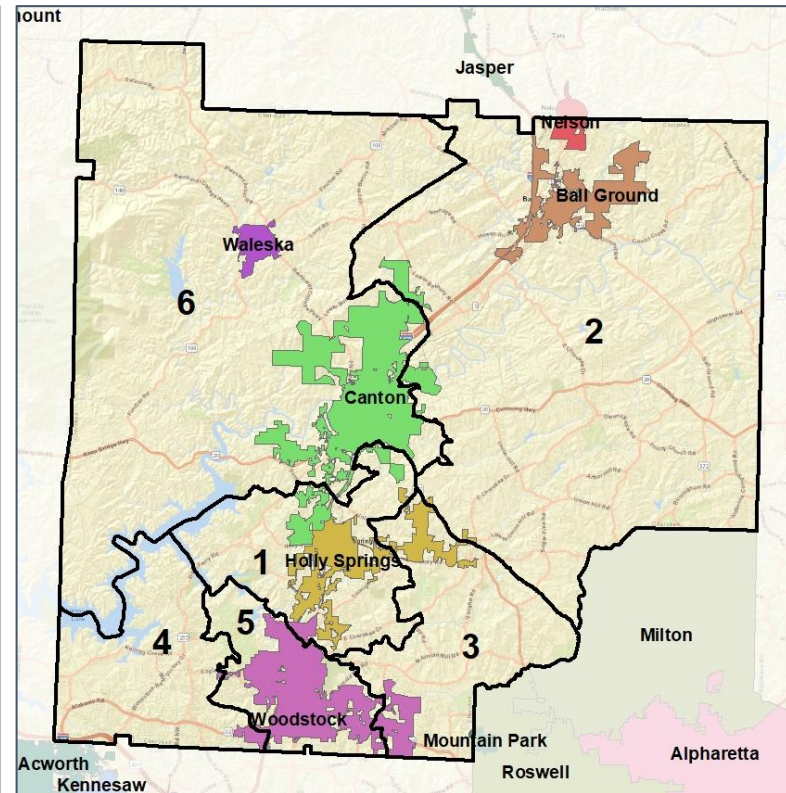
Cities and Places



2012 Map



2022 Map*



	1	2	3	4	5	6	1*	2*	3*	4*	5*	6*	County
Population	42,751	45,533	46,033	40,671	45,969	45,663	44,616	44,880	44,060	44,568	44,045	44,451	266,620
API	2%	1%	3%	3%	3%	1%	2%	1%	3%	3%	3%	1%	2%
Black	7%	3%	6%	10%	9%	6%	6%	3%	5%	10%	9%	6%	6%
Latino	10%	6%	10%	14%	12%	19%	10%	6%	10%	15%	12%	19%	12%
Other	5%	5%	5%	6%	5%	4%	5%	5%	5%	6%	6%	4%	5%
White	76%	85%	76%	67%	70%	70%	76%	86%	77%	67%	70%	70%	74%
Population Gain	*	*	*	*	*	*	1,865	-653	-1,973	3,897	-1,924	-1,212	*
Population % Gain	*	*	*	*	*	*	4%	-1%	-4%	10%	-4%	-3%	*
Net POC Gain	*	*	*	*	*	*	365	-213	-685	1,308	-623	-152	*
Net POC % Gain	*	*	*	*	*	*	4%	-3%	-6%	10%	-5%	-1%	*

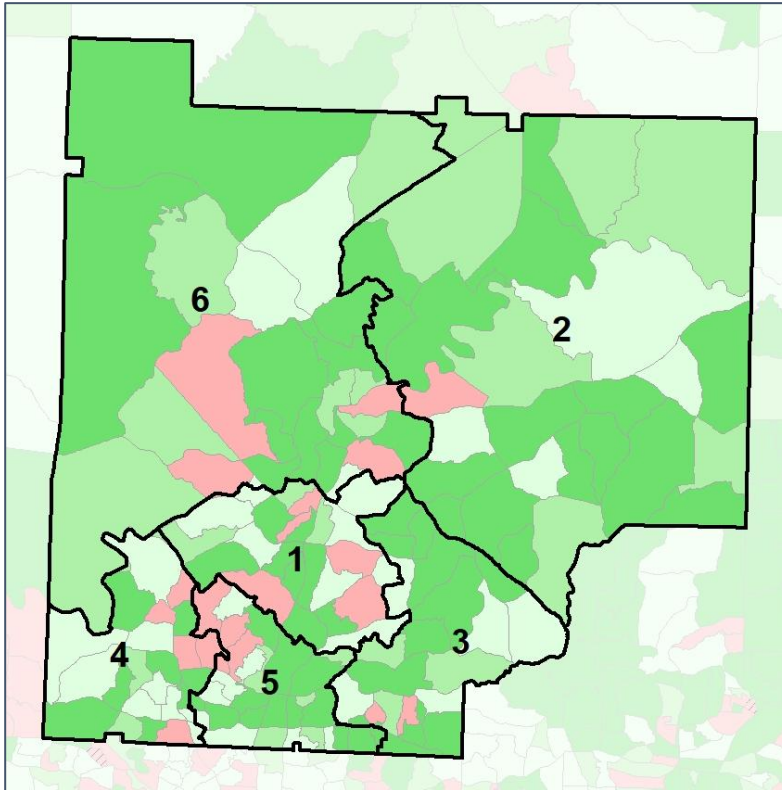


Cherokee County School Board

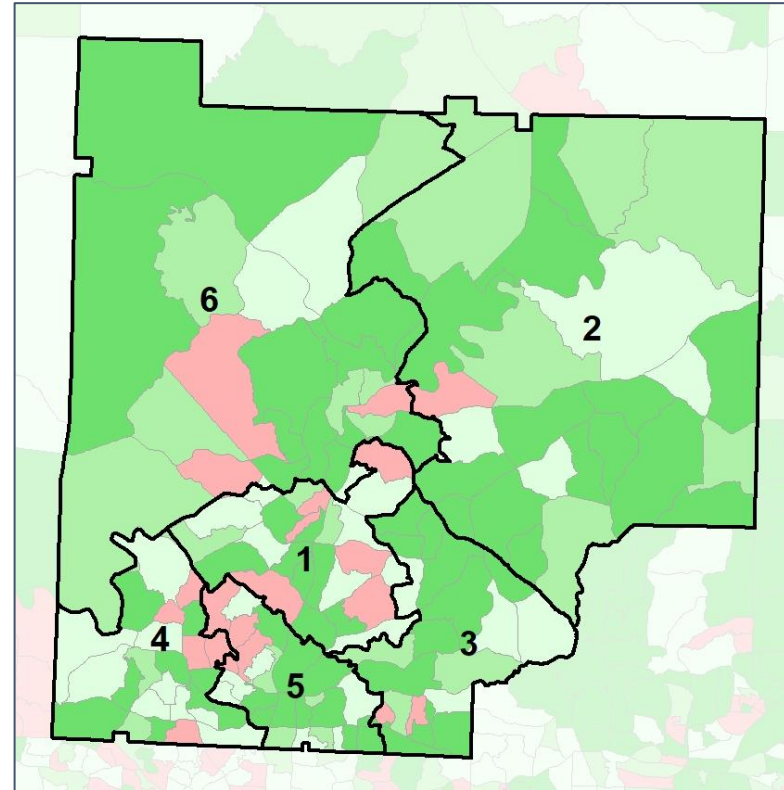
Net Gain in Population (2010 - 2020)



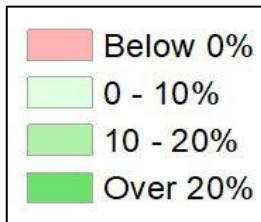
2012 Map



2022 Map*



	1	2	3	4	5	6	1*	2*	3*	4*	5*	6*	County
Population	42,751	45,533	46,033	40,671	45,969	45,663	44,616	44,880	44,060	44,568	44,045	44,451	266,620
API	2%	1%	3%	3%	3%	1%	2%	1%	3%	3%	3%	1%	2%
Black	7%	3%	6%	10%	9%	6%	6%	3%	5%	10%	9%	6%	6%
Latino	10%	6%	10%	14%	12%	19%	10%	6%	10%	15%	12%	19%	12%
Other	5%	5%	5%	6%	5%	4%	5%	5%	5%	6%	6%	4%	5%
White	76%	85%	76%	67%	70%	70%	76%	86%	77%	67%	70%	70%	74%
Population Gain	*	*	*	*	*	*	1,865	-653	-1,973	3,897	-1,924	-1,212	*
Population % Gain	*	*	*	*	*	*	4%	-1%	-4%	10%	-4%	-3%	*
Net POC Gain	*	*	*	*	*	*	365	-213	-685	1,308	-623	-152	*
Net POC % Gain	*	*	*	*	*	*	4%	-3%	-6%	10%	-5%	-1%	*



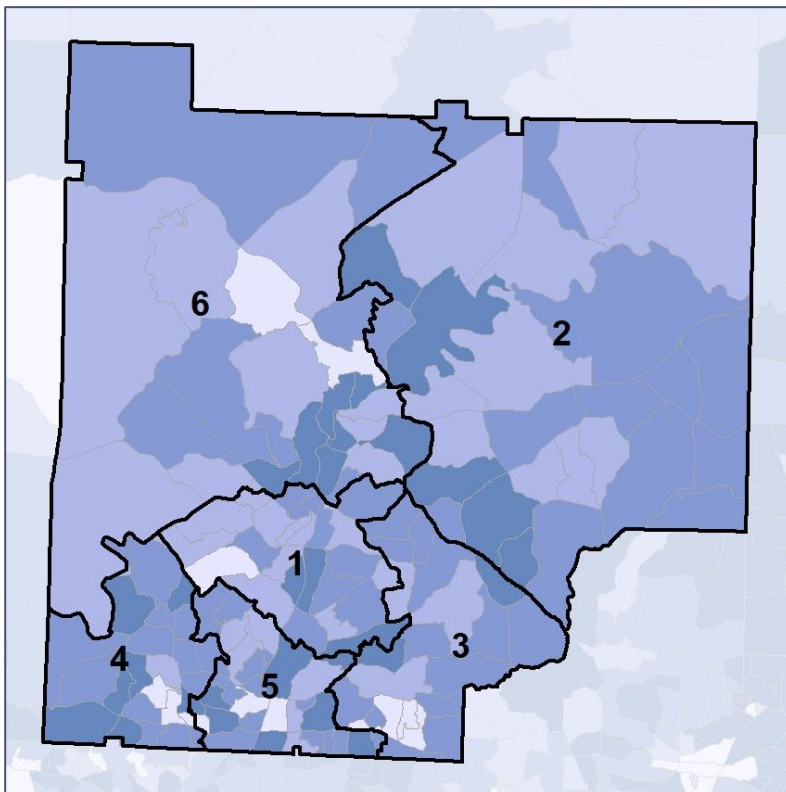
Source: 2020 Decennial Census 2020 ACS 5-Year Dataset

Cherokee County School Board

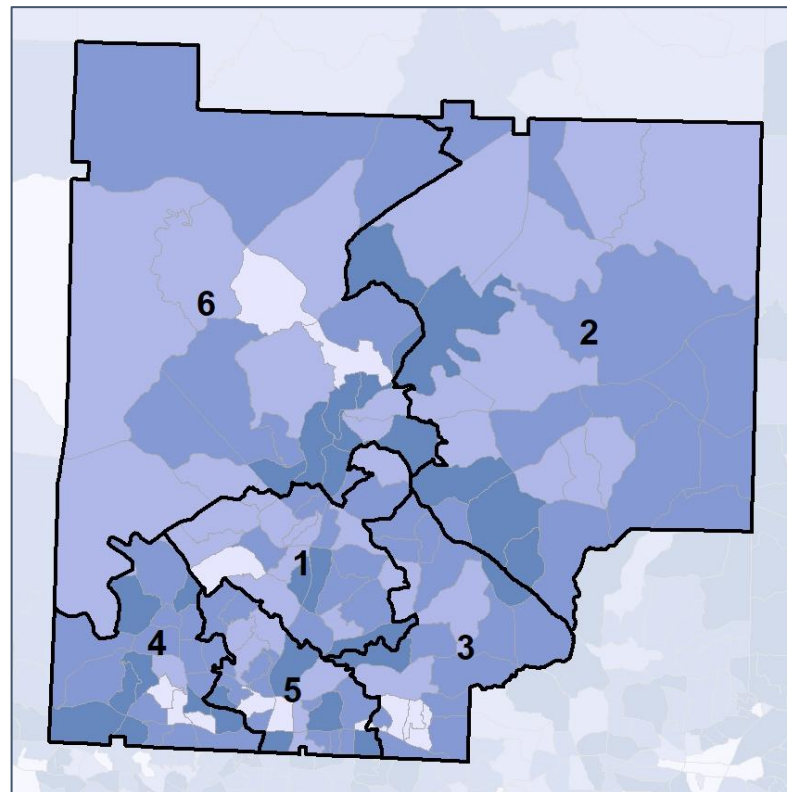
Net Gain in % POC (2020 - 2010) by Census Block Group



2012 Map



2022 Map*



	1	2	3	4	5	6	1*	2*	3*	4*	5*	6*	County
Population	42,751	45,533	46,033	40,671	45,969	45,663	44,616	44,880	44,060	44,568	44,045	44,451	266,620
API	2%	1%	3%	3%	3%	1%	2%	1%	3%	3%	3%	1%	2%
Black	7%	3%	6%	10%	9%	6%	6%	3%	5%	10%	9%	6%	6%
Latino	10%	6%	10%	14%	12%	19%	10%	6%	10%	15%	12%	19%	12%
Other	5%	5%	5%	6%	5%	4%	5%	5%	5%	6%	6%	4%	5%
White	76%	85%	76%	67%	70%	70%	76%	86%	77%	67%	70%	70%	74%
Population Gain	*	*	*	*	*	*	1,865	-653	-1,973	3,897	-1,924	-1,212	*
Population % Gain	*	*	*	*	*	*	4%	-1%	-4%	10%	-4%	-3%	*
Net POC Gain	*	*	*	*	*	*	365	-213	-685	1,308	-623	-152	*
Net POC % Gain	*	*	*	*	*	*	4%	-3%	-6%	10%	-5%	-1%	*

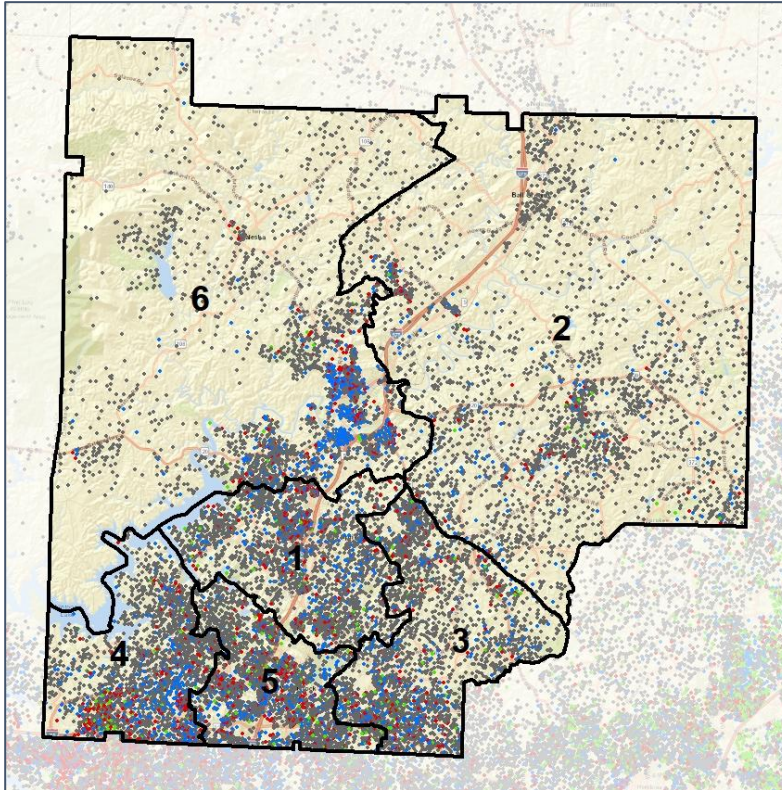


Cherokee County School Board

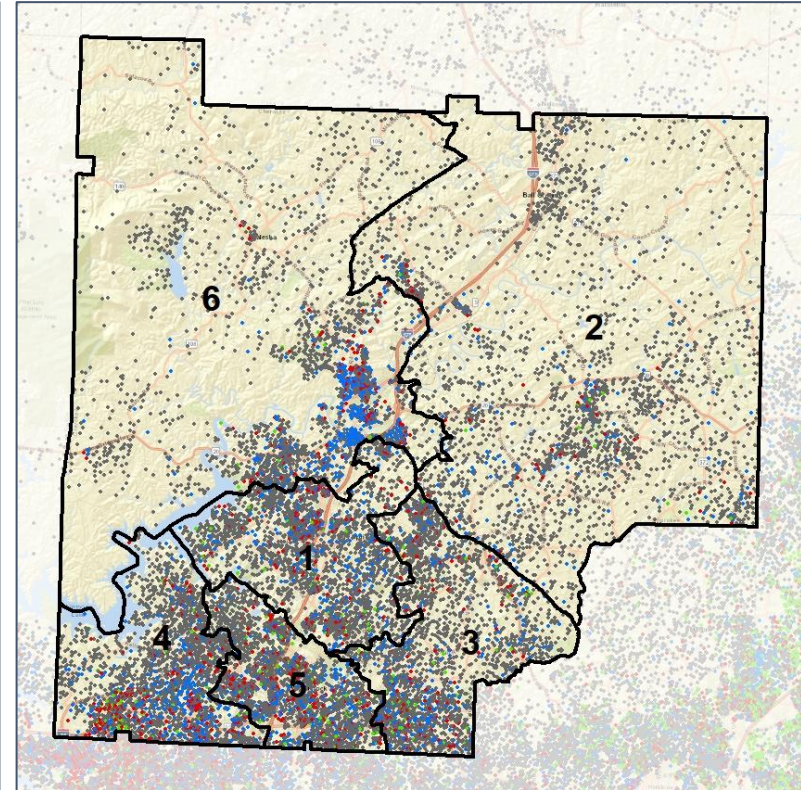
Population Density by Race



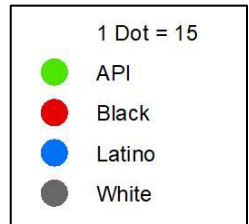
2012 Map



2022 Map*



	1	2	3	4	5	6	1*	2*	3*	4*	5*	6*	County
Population	42,751	45,533	46,033	40,671	45,969	45,663	44,616	44,880	44,060	44,568	44,045	44,451	266,620
API	768	476	1,260	1,227	1,369	429	778	465	1,204	1,310	1,342	430	5,529
% API	2%	1%	3%	3%	3%	1%	2%	1%	3%	3%	3%	1%	2%
Black	2,809	1,251	2,542	4,010	4,135	2,579	2,894	1,208	2,364	4,380	3,943	2,537	17,326
% Black	7%	3%	6%	10%	9%	6%	6%	3%	5%	10%	9%	6%	6%
Latino	4,356	2,820	4,659	5,878	5,716	8,682	4,550	2,707	4,347	6,553	5,353	8,601	32,111
% Latino	10%	6%	10%	14%	12%	19%	10%	6%	10%	15%	12%	19%	12%
Other	2,254	2,099	2,482	2,470	2,478	2,004	2,330	2,053	2,343	2,650	2,437	1,974	13,787
% Other	5%	5%	5%	6%	5%	4%	5%	5%	5%	6%	6%	4%	5%
White	32,564	38,887	35,090	27,086	32,271	31,969	34,064	38,447	33,802	29,675	30,970	30,909	197,867
% White	76%	85%	76%	67%	70%	70%	76%	86%	77%	67%	70%	70%	74%



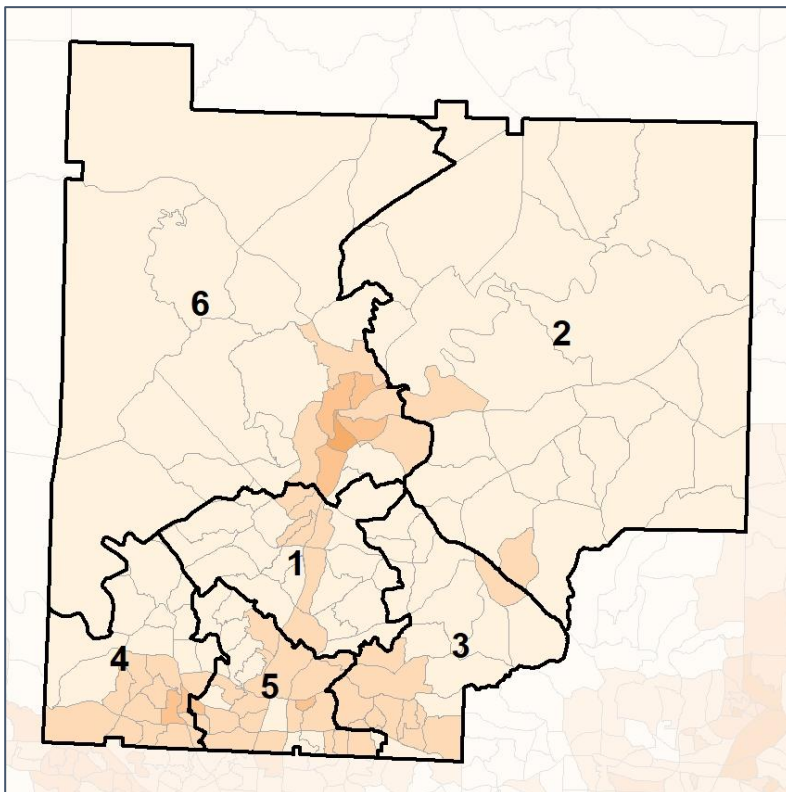
Source:
2020 Decennial Census
2020 ACS 5-Year Dataset

Cherokee County School Board

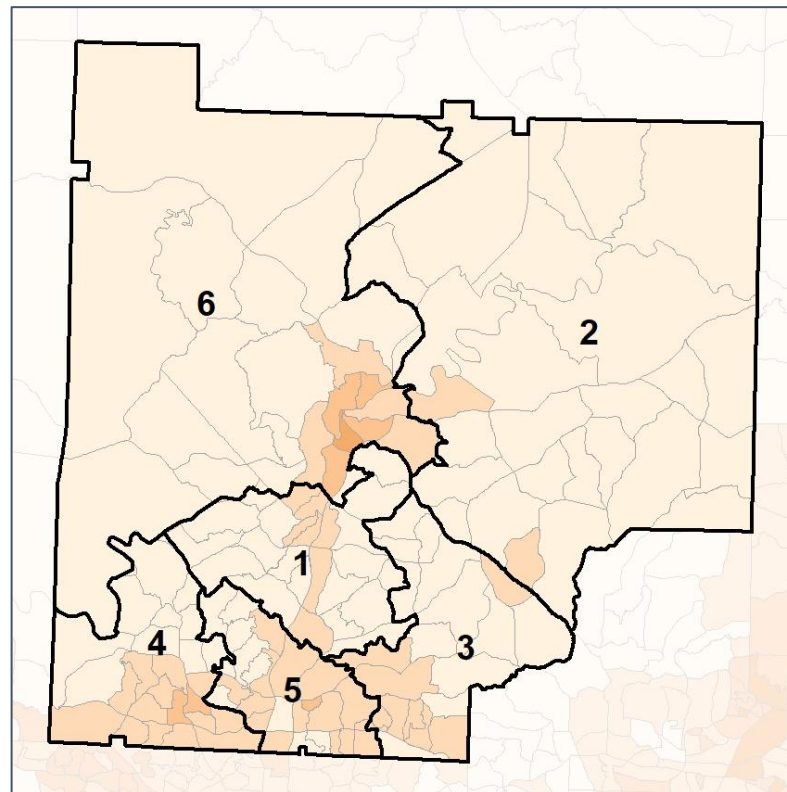
% People of Color by Census Block Group



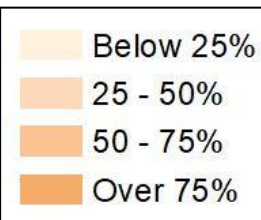
2012 Map



2022 Map*



	1	2	3	4	5	6	1*	2*	3*	4*	5*	6*	County
Population	42,751	45,533	46,033	40,671	45,969	45,663	44,616	44,880	44,060	44,568	44,045	44,451	266,620
API	768	476	1,260	1,227	1,369	429	778	465	1,204	1,310	1,342	430	5,529
% API	2%	1%	3%	3%	3%	1%	2%	1%	3%	3%	3%	1%	2%
Black	2,809	1,251	2,542	4,010	4,135	2,579	2,894	1,208	2,364	4,380	3,943	2,537	17,326
% Black	7%	3%	6%	10%	9%	6%	6%	3%	5%	10%	9%	6%	6%
Latino	4,356	2,820	4,659	5,878	5,716	8,682	4,550	2,707	4,347	6,553	5,353	8,601	32,111
% Latino	10%	6%	10%	14%	12%	19%	10%	6%	10%	15%	12%	19%	12%
Other	2,254	2,099	2,482	2,470	2,478	2,004	2,330	2,053	2,343	2,650	2,437	1,974	13,787
% Other	5%	5%	5%	6%	5%	4%	5%	5%	5%	6%	6%	4%	5%
White	32,564	38,887	35,090	27,086	32,271	31,969	34,064	38,447	33,802	29,675	30,970	30,909	197,867
% White	76%	85%	76%	67%	70%	70%	76%	86%	77%	67%	70%	70%	74%



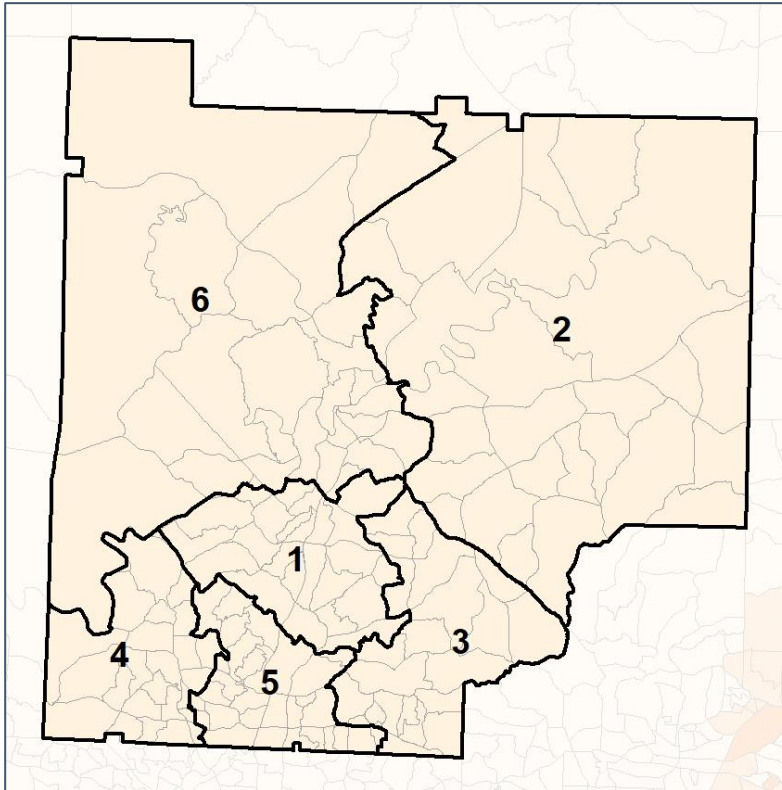
Source:
2020 Decennial Census
2020 ACS 5-Year Dataset

Cherokee County School Board

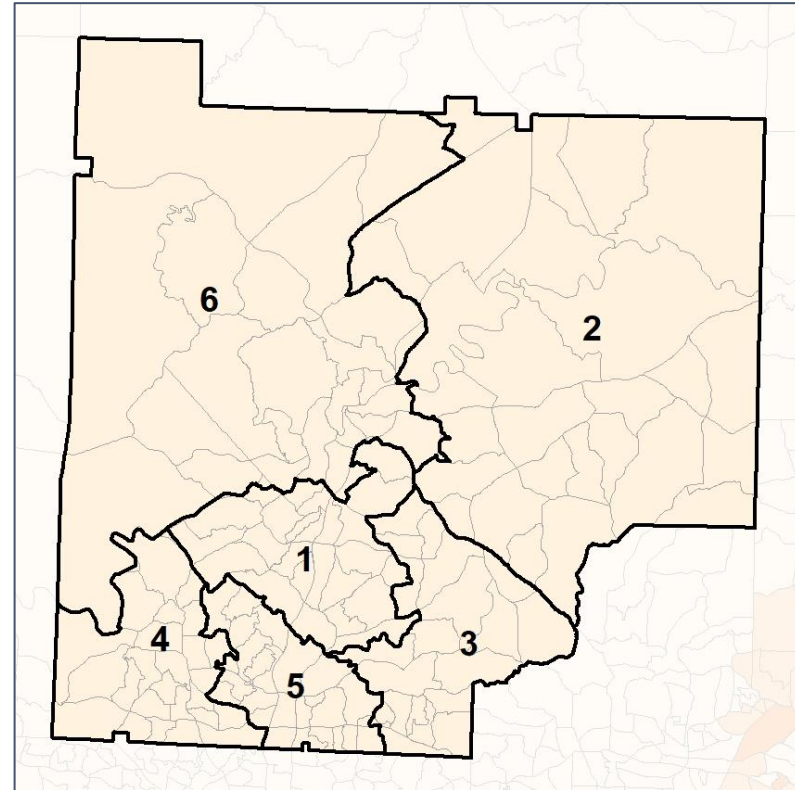
% API by Census Block Group



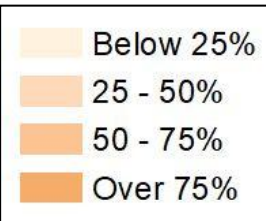
2012 Map



2022 Map*



	1	2	3	4	5	6	1*	2*	3*	4*	5*	6*	County
Population	42,751	45,533	46,033	40,671	45,969	45,663	44,616	44,880	44,060	44,568	44,045	44,451	266,620
API	768	476	1,260	1,227	1,369	429	778	465	1,204	1,310	1,342	430	5,529
% API	2%	1%	3%	3%	3%	1%	2%	1%	3%	3%	3%	1%	2%
Black	2,809	1,251	2,542	4,010	4,135	2,579	2,894	1,208	2,364	4,380	3,943	2,537	17,326
% Black	7%	3%	6%	10%	9%	6%	6%	3%	5%	10%	9%	6%	6%
Latino	4,356	2,820	4,659	5,878	5,716	8,682	4,550	2,707	4,347	6,553	5,353	8,601	32,111
% Latino	10%	6%	10%	14%	12%	19%	10%	6%	10%	15%	12%	19%	12%
Other	2,254	2,099	2,482	2,470	2,478	2,004	2,330	2,053	2,343	2,650	2,437	1,974	13,787
% Other	5%	5%	5%	6%	5%	4%	5%	5%	5%	6%	6%	4%	5%
White	32,564	38,887	35,090	27,086	32,271	31,969	34,064	38,447	33,802	29,675	30,970	30,909	197,867
% White	76%	85%	76%	67%	70%	70%	76%	86%	77%	67%	70%	70%	74%



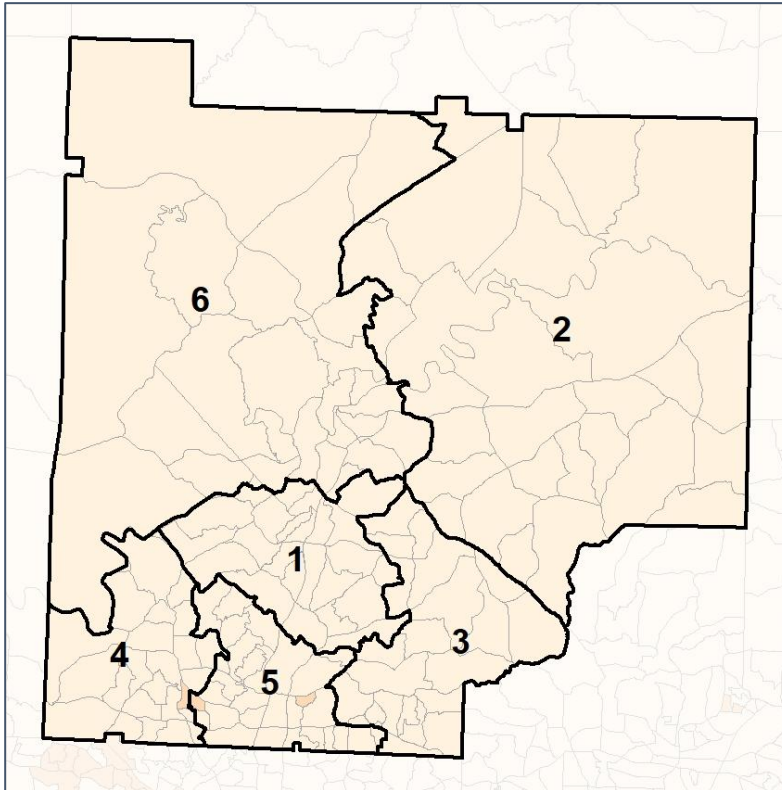
Source:
2020 Decennial Census
2020 ACS 5-Year Dataset

Cherokee County School Board

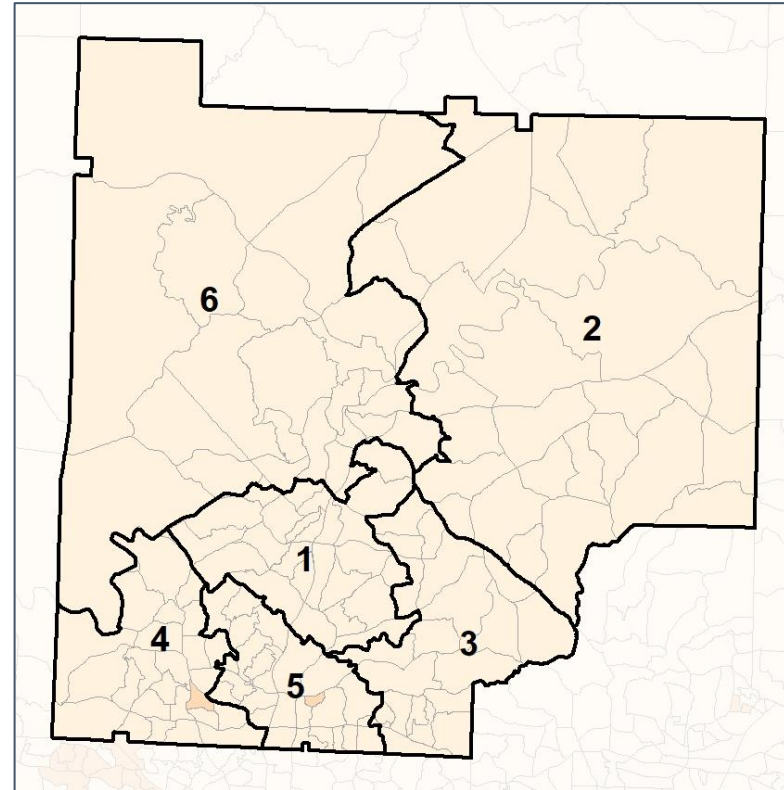
% Black by Census Block Group



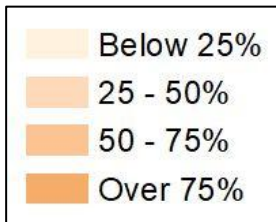
2012 Map



2022 Map*



	1	2	3	4	5	6	1*	2*	3*	4*	5*	6*	County
Population	42,751	45,533	46,033	40,671	45,969	45,663	44,616	44,880	44,060	44,568	44,045	44,451	266,620
API	768	476	1,260	1,227	1,369	429	778	465	1,204	1,310	1,342	430	5,529
% API	2%	1%	3%	3%	3%	1%	2%	1%	3%	3%	3%	1%	2%
Black	2,809	1,251	2,542	4,010	4,135	2,579	2,894	1,208	2,364	4,380	3,943	2,537	17,326
% Black	7%	3%	6%	10%	9%	6%	6%	3%	5%	10%	9%	6%	6%
Latino	4,356	2,820	4,659	5,878	5,716	8,682	4,550	2,707	4,347	6,553	5,353	8,601	32,111
% Latino	10%	6%	10%	14%	12%	19%	10%	6%	10%	15%	12%	19%	12%
Other	2,254	2,099	2,482	2,470	2,478	2,004	2,330	2,053	2,343	2,650	2,437	1,974	13,787
% Other	5%	5%	5%	6%	5%	4%	5%	5%	5%	6%	6%	4%	5%
White	32,564	38,887	35,090	27,086	32,271	31,969	34,064	38,447	33,802	29,675	30,970	30,909	197,867
% White	76%	85%	76%	67%	70%	70%	76%	86%	77%	67%	70%	70%	74%



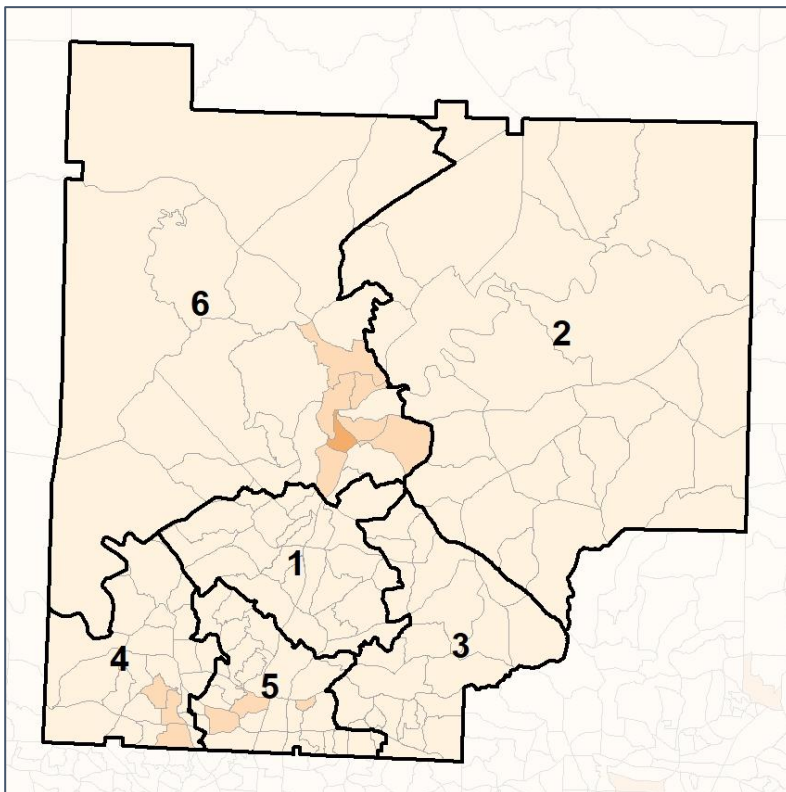
Source: 2020 Decennial Census 2020 ACS 5-Year Dataset

Cherokee County School Board

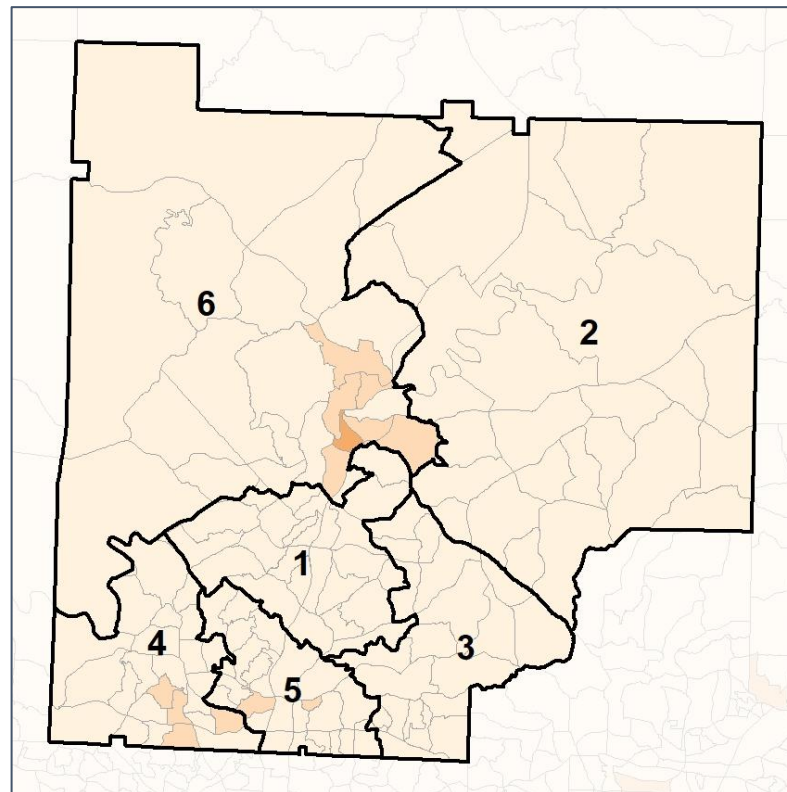
% Latino by Census Block Group



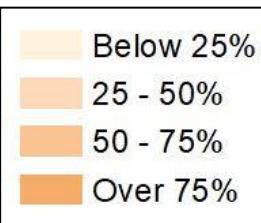
2012 Map



2022 Map*



	1	2	3	4	5	6	1*	2*	3*	4*	5*	6*	County
Population	42,751	45,533	46,033	40,671	45,969	45,663	44,616	44,880	44,060	44,568	44,045	44,451	266,620
API	768	476	1,260	1,227	1,369	429	778	465	1,204	1,310	1,342	430	5,529
% API	2%	1%	3%	3%	3%	1%	2%	1%	3%	3%	3%	1%	2%
Black	2,809	1,251	2,542	4,010	4,135	2,579	2,894	1,208	2,364	4,380	3,943	2,537	17,326
% Black	7%	3%	6%	10%	9%	6%	6%	3%	5%	10%	9%	6%	6%
Latino	4,356	2,820	4,659	5,878	5,716	8,682	4,550	2,707	4,347	6,553	5,353	8,601	32,111
% Latino	10%	6%	10%	14%	12%	19%	10%	6%	10%	15%	12%	19%	12%
Other	2,254	2,099	2,482	2,470	2,478	2,004	2,330	2,053	2,343	2,650	2,437	1,974	13,787
% Other	5%	5%	5%	6%	5%	4%	5%	5%	5%	6%	6%	4%	5%
White	32,564	38,887	35,090	27,086	32,271	31,969	34,064	38,447	33,802	29,675	30,970	30,909	197,867
% White	76%	85%	76%	67%	70%	70%	76%	86%	77%	67%	70%	70%	74%



Source:
2020 Decennial Census
2020 ACS 5-Year Dataset

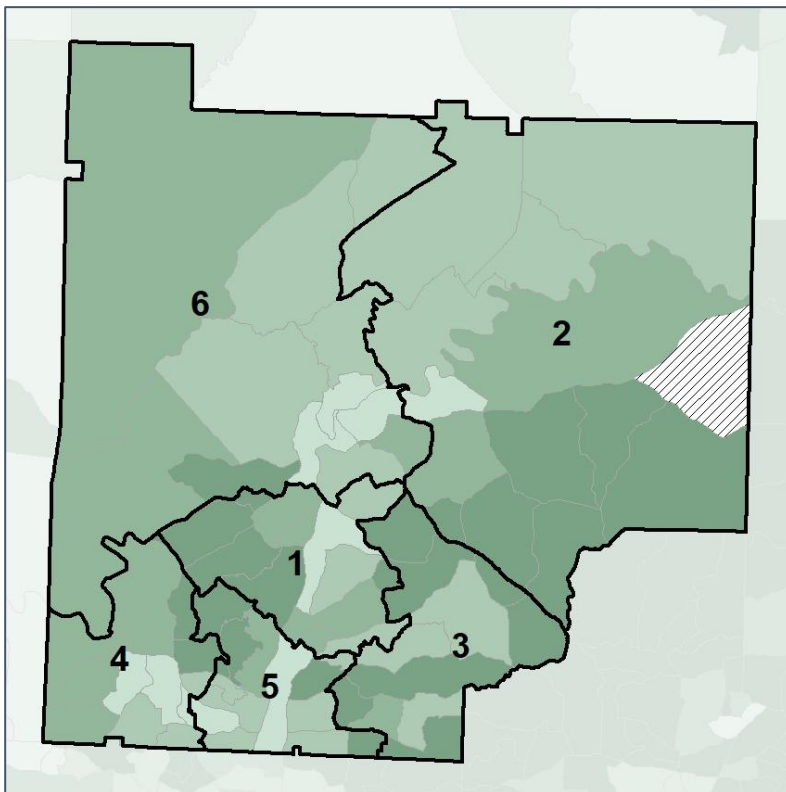


Cherokee County School Board

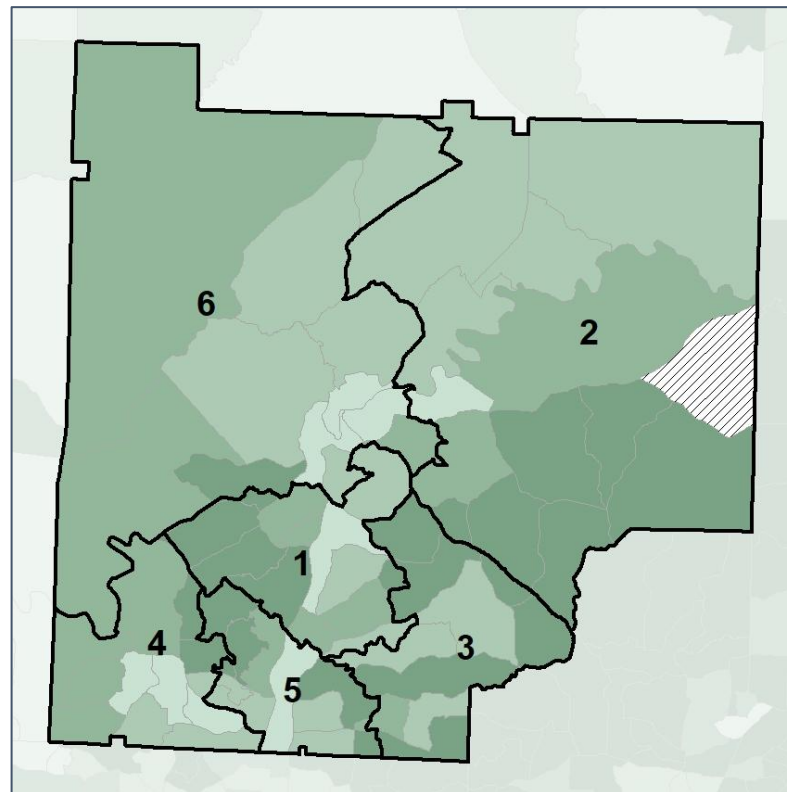
Median Household Income by Census Tract



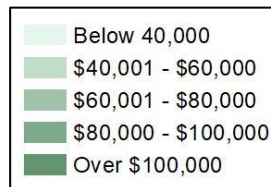
2012 Map



2022 Map*



	1	2	3	4	5	6	1*	2*	3*	4*	5*	6*	County
Population	42,751	45,533	46,033	40,671	45,969	45,663	44,616	44,880	44,060	44,568	44,045	44,451	266,620
% API	2%	1%	3%	3%	3%	1%	2%	1%	3%	3%	3%	1%	2%
% Black	7%	3%	6%	10%	9%	6%	6%	3%	5%	10%	9%	6%	6%
% Latino	10%	6%	10%	14%	12%	19%	10%	6%	10%	15%	12%	19%	12%
% Other	5%	5%	5%	6%	5%	4%	5%	5%	5%	6%	6%	4%	5%
% White	76%	85%	76%	67%	70%	70%	76%	86%	77%	67%	70%	70%	74%
Median Income	\$96K	\$104K	\$99K	\$90K	\$84K	\$71K	\$95K	\$104K	\$100K	\$90K	\$84K	\$71K	\$85K
% Renter	31%	8%	10%	23%	36%	34%	32%	8%	10%	25%	33%	33%	24%
% Youth	20%	15%	18%	23%	22%	22%	20%	15%	18%	23%	22%	22%	20%

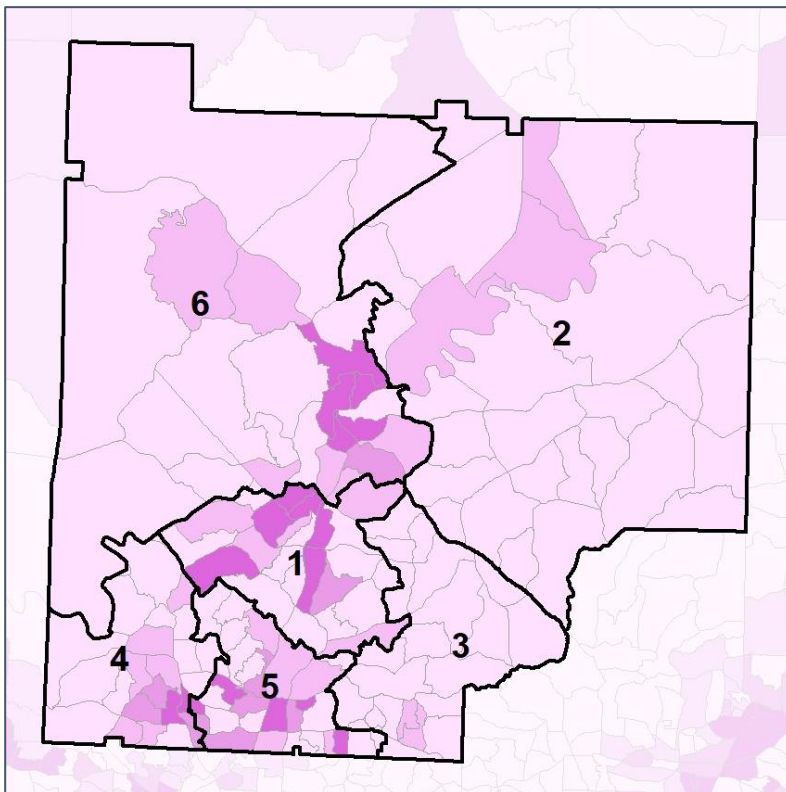


Cherokee County School Board

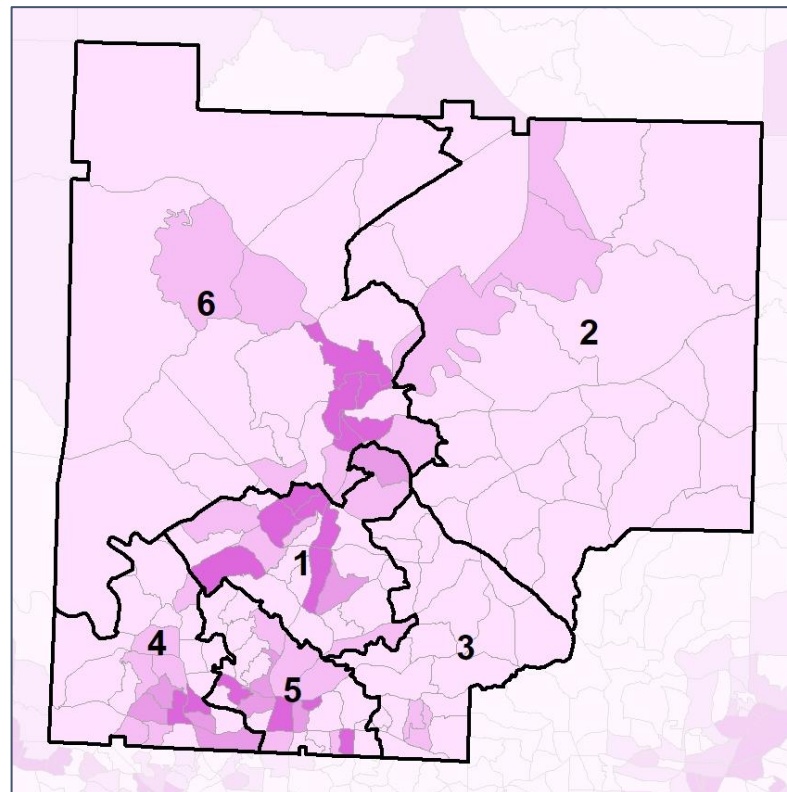
% Renter by Census Block Group



2012 Map



2022 Map*



	1	2	3	4	5	6	1*	2*	3*	4*	5*	6*	County
Population	42,751	45,533	46,033	40,671	45,969	45,663	44,616	44,880	44,060	44,568	44,045	44,451	266,620
% API	2%	1%	3%	3%	3%	1%	2%	1%	3%	3%	3%	1%	2%
% Black	7%	3%	6%	10%	9%	6%	6%	3%	5%	10%	9%	6%	6%
% Latino	10%	6%	10%	14%	12%	19%	10%	6%	10%	15%	12%	19%	12%
% Other	5%	5%	5%	6%	5%	4%	5%	5%	5%	6%	6%	4%	5%
% White	76%	85%	76%	67%	70%	70%	76%	86%	77%	67%	70%	70%	74%
Median Income	\$96K	\$104K	\$99K	\$90K	\$84K	\$71K	\$95K	\$104K	\$100K	\$90K	\$84K	\$71K	\$85K
% Renter	31%	8%	10%	23%	36%	34%	32%	8%	10%	25%	33%	33%	24%
% Youth	20%	15%	18%	23%	22%	22%	20%	15%	18%	23%	22%	22%	20%

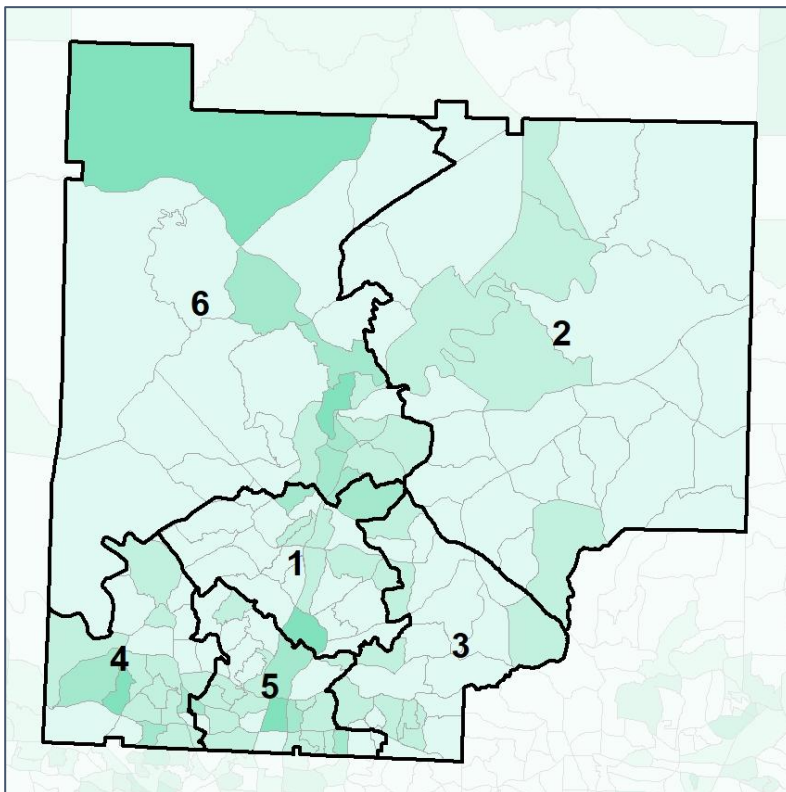


Cherokee County School Board

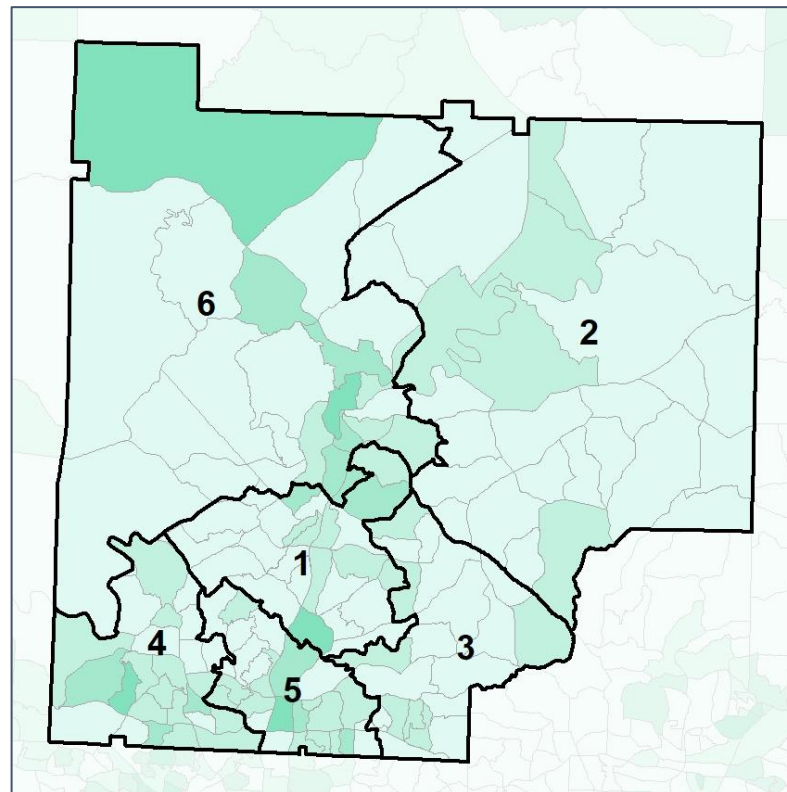
% Youth (18-34) by Census Block Group



2012 Map



2022 Map*



	1	2	3	4	5	6	1*	2*	3*	4*	5*	6*	County
Population	42,751	45,533	46,033	40,671	45,969	45,663	44,616	44,880	44,060	44,568	44,045	44,451	266,620
% API	2%	1%	3%	3%	3%	1%	2%	1%	3%	3%	3%	1%	2%
% Black	7%	3%	6%	10%	9%	6%	6%	3%	5%	10%	9%	6%	6%
% Latino	10%	6%	10%	14%	12%	19%	10%	6%	10%	15%	12%	19%	12%
% Other	5%	5%	5%	6%	5%	4%	5%	5%	5%	6%	6%	4%	5%
% White	76%	85%	76%	67%	70%	70%	76%	86%	77%	67%	70%	70%	74%
Median Income	\$96K	\$104K	\$99K	\$90K	\$84K	\$71K	\$95K	\$104K	\$100K	\$90K	\$84K	\$71K	\$85K
% Renter	31%	8%	10%	23%	36%	34%	32%	8%	10%	25%	33%	33%	24%
% Youth	20%	15%	18%	23%	22%	22%	20%	15%	18%	23%	22%	22%	20%

