



Demographic Overview

Racial Breakdown in Chatham County

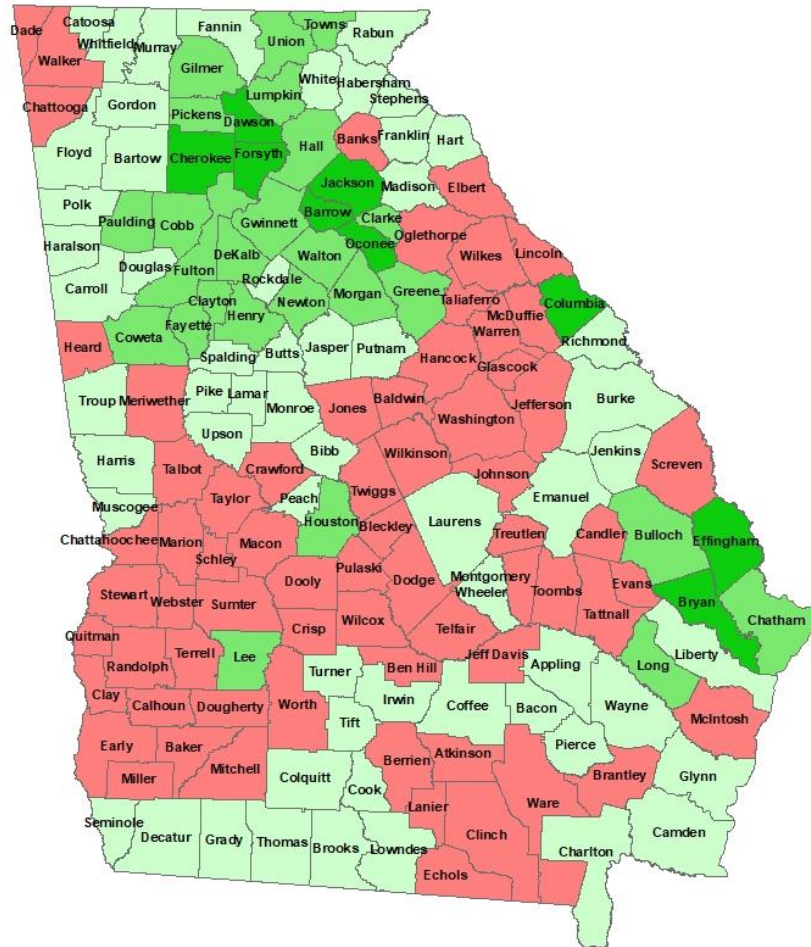
Chatham County	2010	2020	% Change
Total Population	265,128	295,291	11%
AAPI	6,453	11,028	71%
Black	105,274	108,011	3%
Latino	14,370	23,790	66%
Other/Mixed Race	5,539	13,029	135%
POC	131,636	155,858	18%
White	133,492	139,433	4%

*Note: The use of "Other" in these statistics combines those who identify as Native American, Mixed Race, and "Other" race



Population Gain

Change in Population in Georgia by County



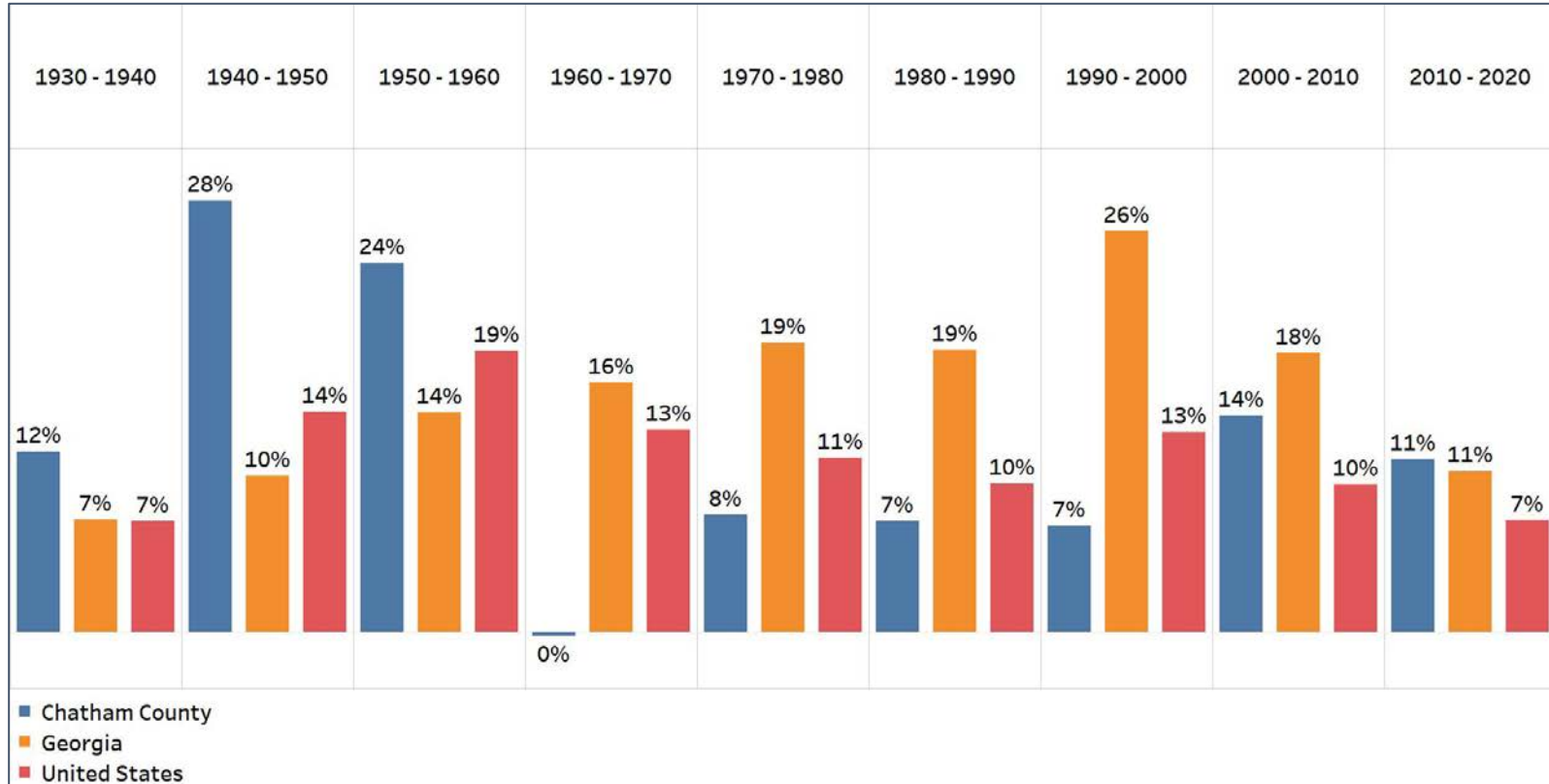
- Georgia is experience rapid population growth in the Atlanta, Augusta, and Savannah regions of the state





Population Gain

Change in Population by Decade

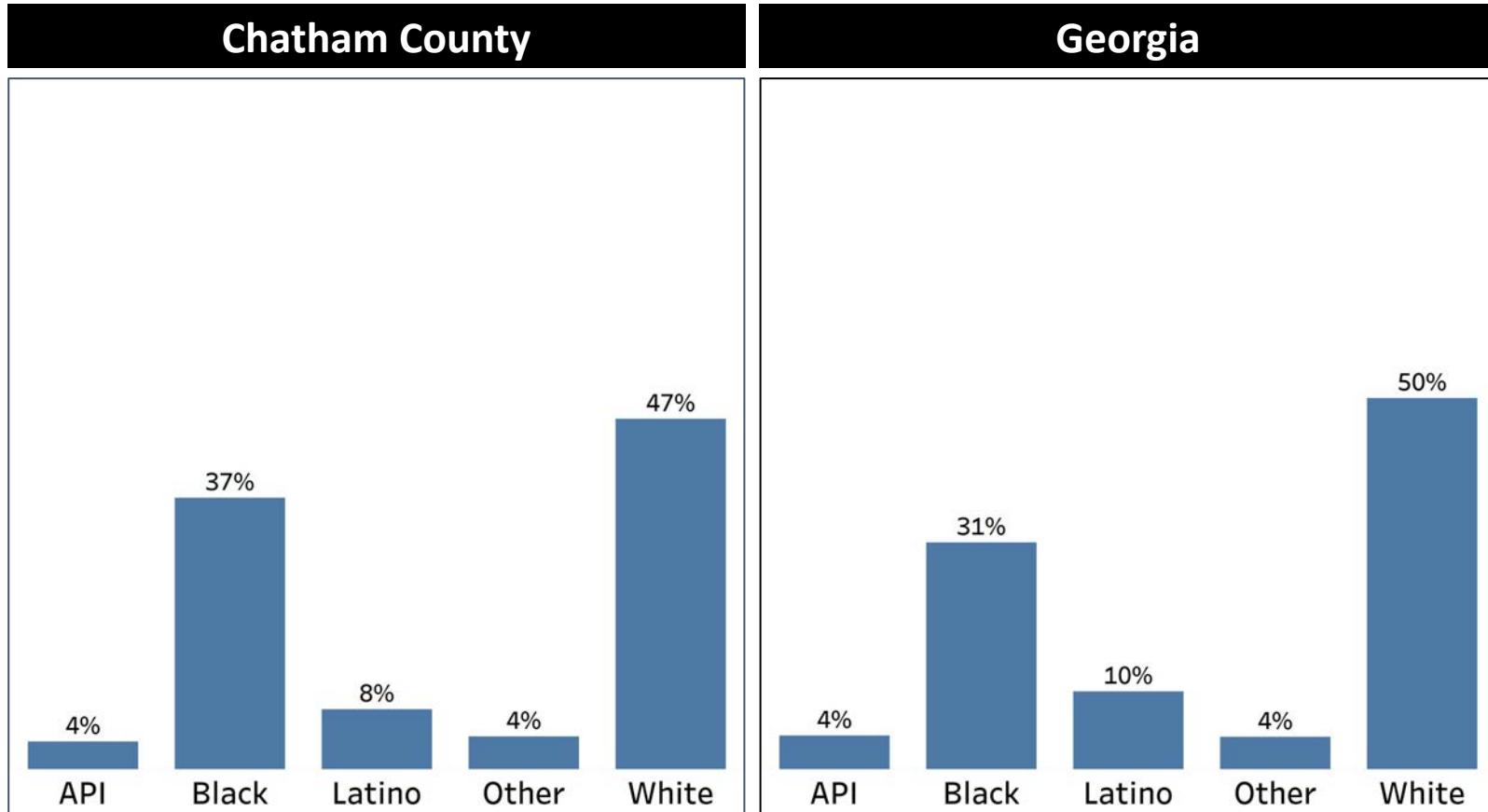


- Chatham County has continuously experienced population growth since 1930 with the exception being between 1960-1970
- Despite its population growth, Chatham county has not exceeded the statewide average since 1950



Demographics

Comparison between Chatham County and Georgia



- Chatham County has a slightly higher Black population when compared to the statewide average
- Chatham county's "Other" and APIs population reflects the statewide average

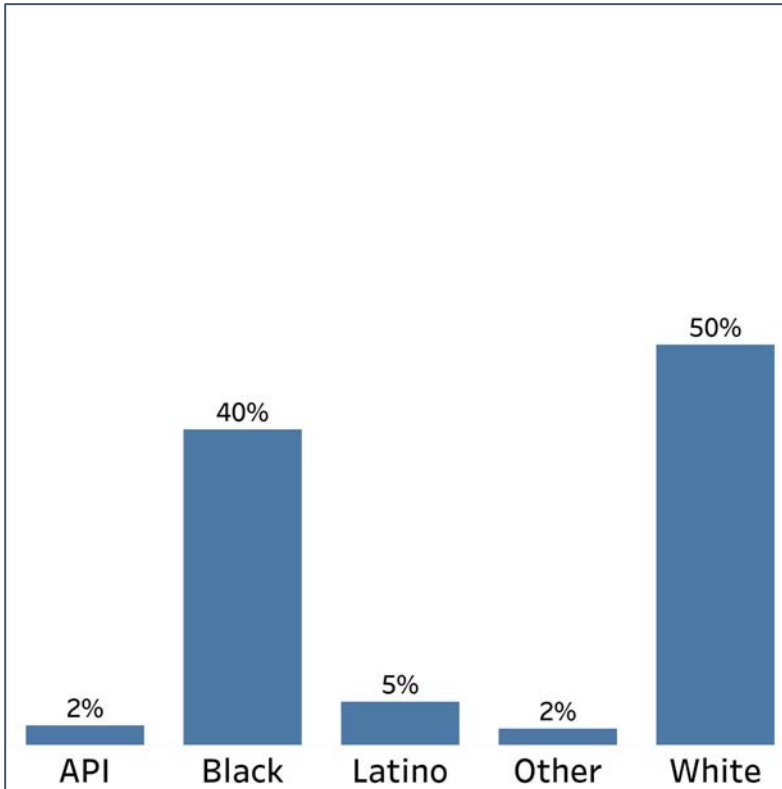


Demographics

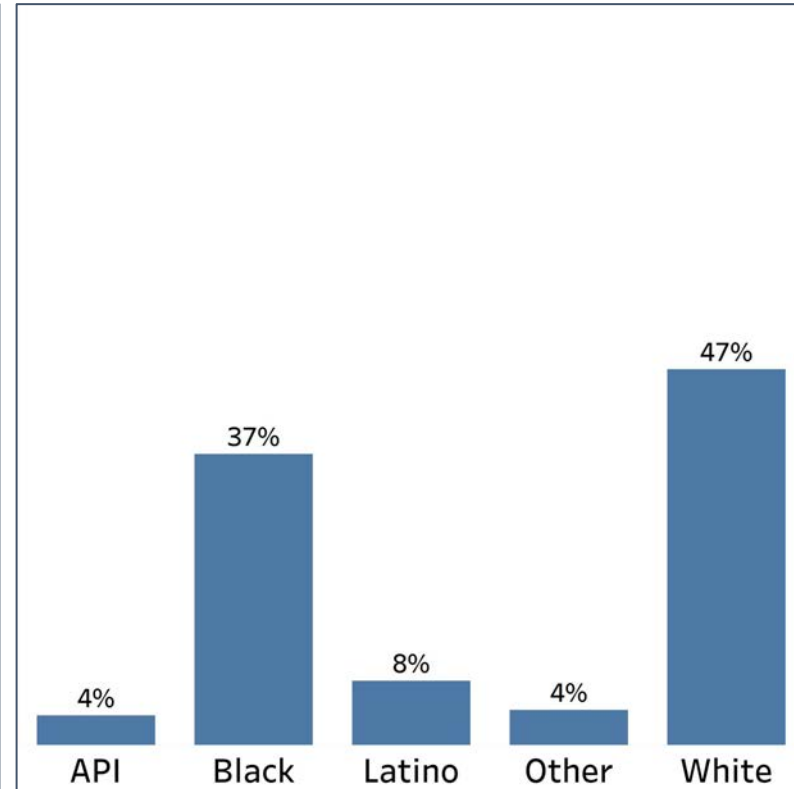
2010 vs 2020 Demographics in Chatham County



Chatham County 2010



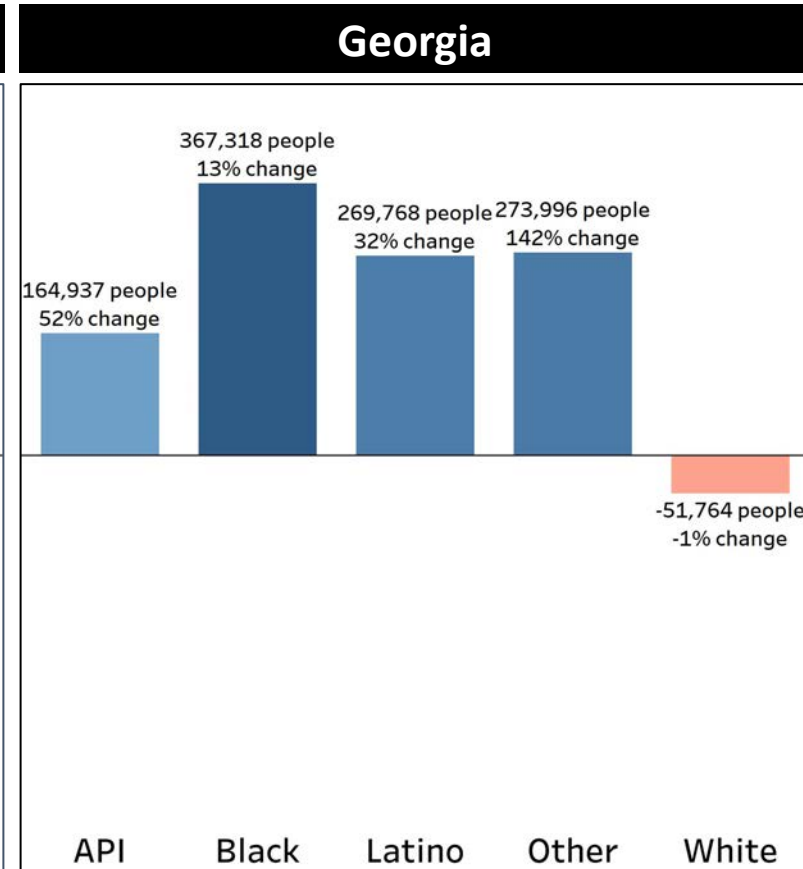
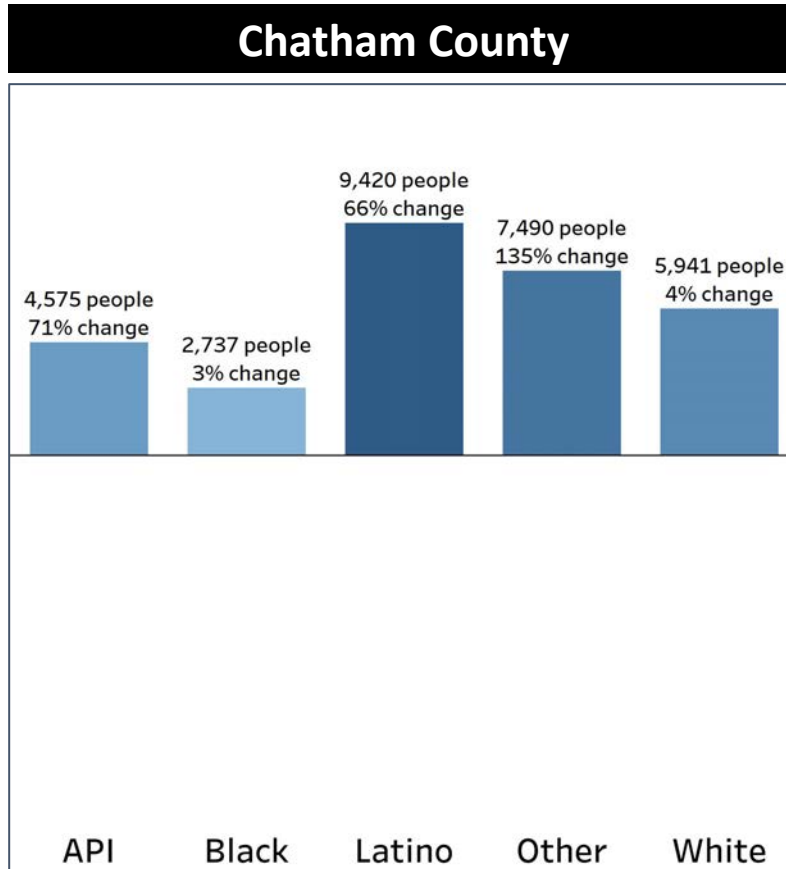
Chatham County 2020



- Whereas the Black population of Chatham County has decreased by 3%, the API, Latino, and Other demographics have increased in population
- Chatham county's White population has decreased by 3% since 2010

Demographics

Population Change by Race (2020 - 2010)



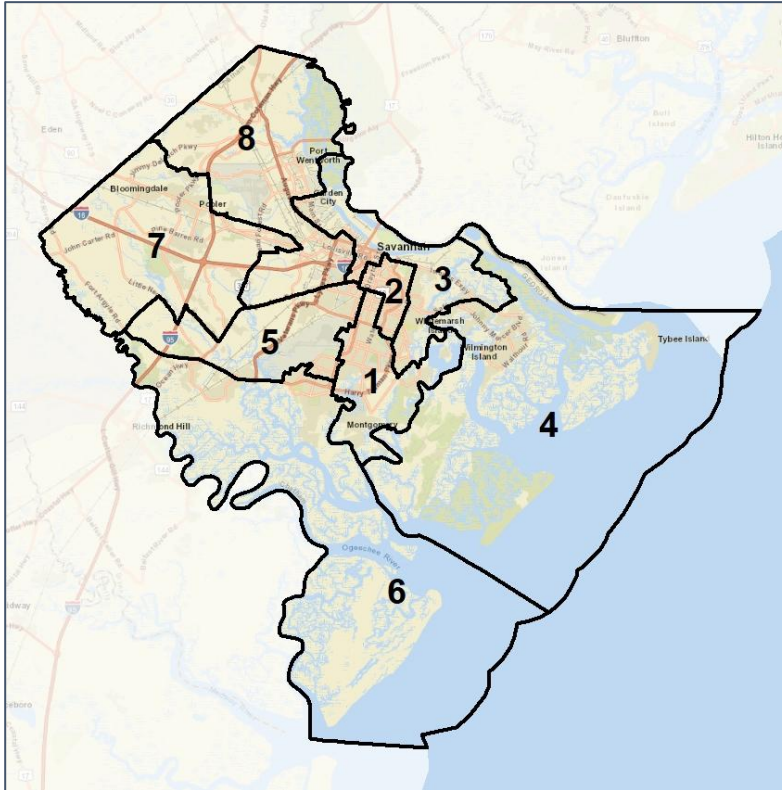
- Chatham County is experiencing rapid population gain in both API and Latino communities
- The Black population in Chatham grew at a lower rate than Georgia's state average

Chatham Co. Commission & School Board

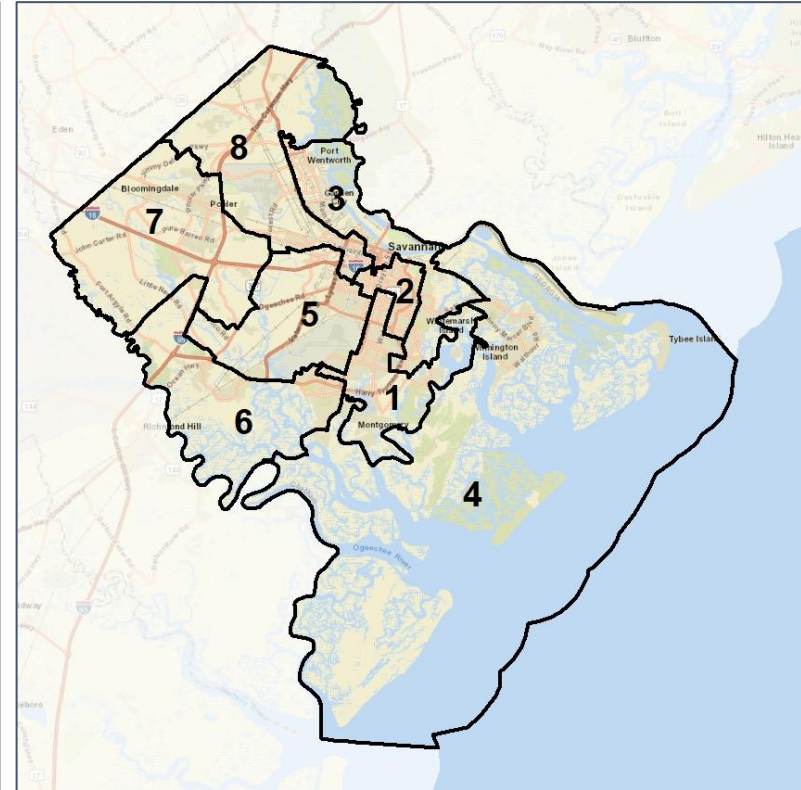
Context



2012 Map



2022 Map*



	1	2	3	4	5	6	7	8	1*	2*	3*	4*	5*	6*	7*	8*	County
Population	32,521	32,633	36,312	34,694	37,560	34,845	39,970	46,756	36,934	36,829	36,574	36,634	37,064	36,996	37,103	37,157	295,291
API	3%	3%	4%	3%	3%	5%	5%	4%	3%	3%	4%	3%	3%	5%	6%	3%	4%
Black	18%	51%	43%	3%	56%	37%	28%	51%	19%	55%	41%	4%	52%	39%	26%	56%	37%
Latino	8%	5%	7%	3%	10%	10%	9%	12%	8%	5%	7%	3%	14%	10%	9%	9%	8%
Other	5%	4%	3%	4%	4%	5%	5%	4%	5%	4%	3%	4%	4%	5%	5%	5%	4%
White	67%	37%	42%	87%	27%	43%	52%	30%	65%	34%	44%	86%	27%	40%	54%	28%	47%
Population Gain	*	*	*	*	*	*	*	*	4,413	4,196	262	1,940	-496	2,151	-2,867	-9,599	*
Population % Gain	*	*	*	*	*	*	*	*	14%	13%	1%	6%	-1%	6%	-7%	-21%	*
Net POC Gain	*	*	*	*	*	*	*	*	2,178	3,742	-331	750	-387	2,292	-2,162	-6,082	*
Net POC % Gain	*	*	*	*	*	*	*	*	20%	18%	-2%	17%	-1%	12%	-11%	-19%	*



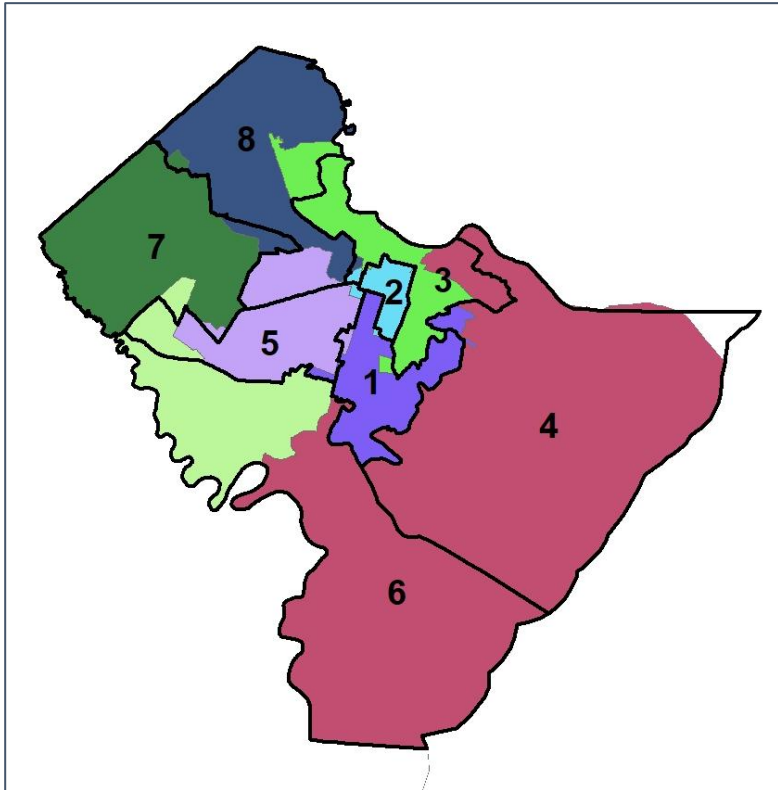
Source:
2020 Decennial Census
2020 ACS 5-Year Dataset

Chatham Co. Commission & School Board

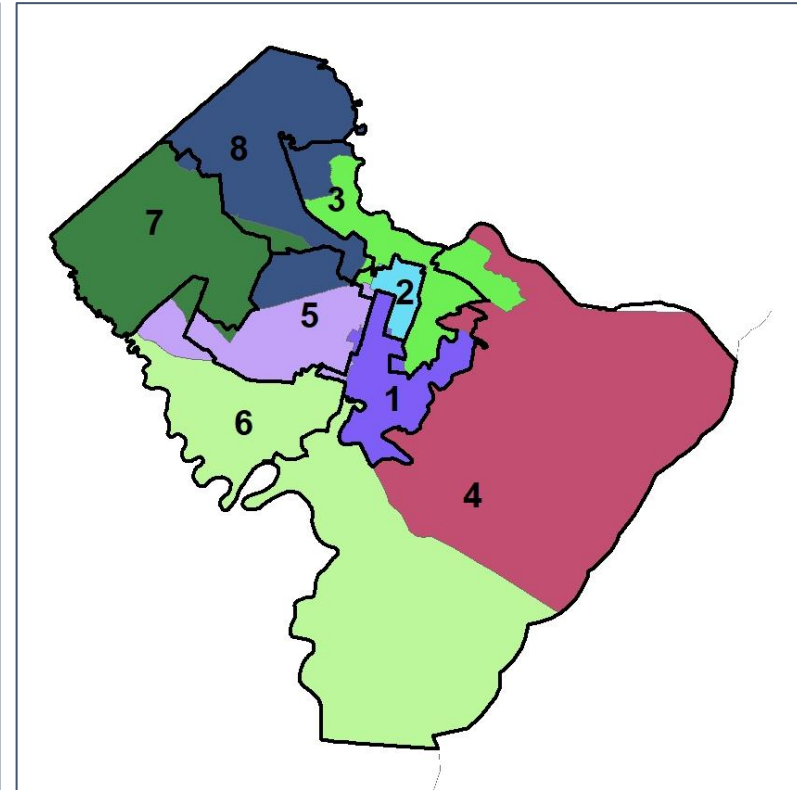
Changes in Redistricting



2012 Map (2022 in Colors)



2022 Map* (2012 in Colors)



	1	2	3	4	5	6	7	8	1*	2*	3*	4*	5*	6*	7*	8*	County
Population	32,521	32,633	36,312	34,694	37,560	34,845	39,970	46,756	36,934	36,829	36,574	36,634	37,064	36,996	37,103	37,157	295,291
API	3%	3%	4%	3%	3%	5%	5%	4%	3%	3%	4%	3%	3%	5%	6%	3%	4%
Black	18%	51%	43%	3%	56%	37%	28%	51%	19%	55%	41%	4%	52%	39%	26%	56%	37%
Latino	8%	5%	7%	3%	10%	10%	9%	12%	8%	5%	7%	3%	14%	10%	9%	9%	8%
Other	5%	4%	3%	4%	4%	5%	5%	4%	5%	4%	3%	4%	4%	5%	5%	5%	4%
White	67%	37%	42%	87%	27%	43%	52%	30%	65%	34%	44%	86%	27%	40%	54%	28%	47%
Population Gain	*	*	*	*	*	*	*	*	4,413	4,196	262	1,940	-496	2,151	-2,867	-9,599	*
Population % Gain	*	*	*	*	*	*	*	*	14%	13%	1%	6%	-1%	6%	-7%	-21%	*
Net POC Gain	*	*	*	*	*	*	*	*	2,178	3,742	-331	750	-387	2,292	-2,162	-6,082	*
Net POC % Gain	*	*	*	*	*	*	*	*	20%	18%	-2%	17%	-1%	12%	-11%	-19%	*

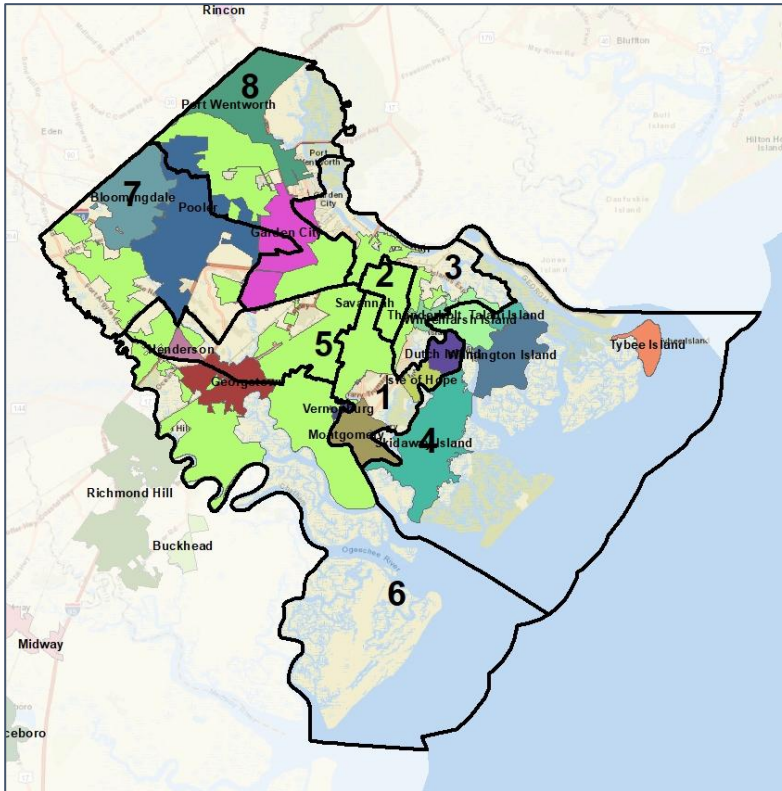


Chatham Co. Commission & School Board

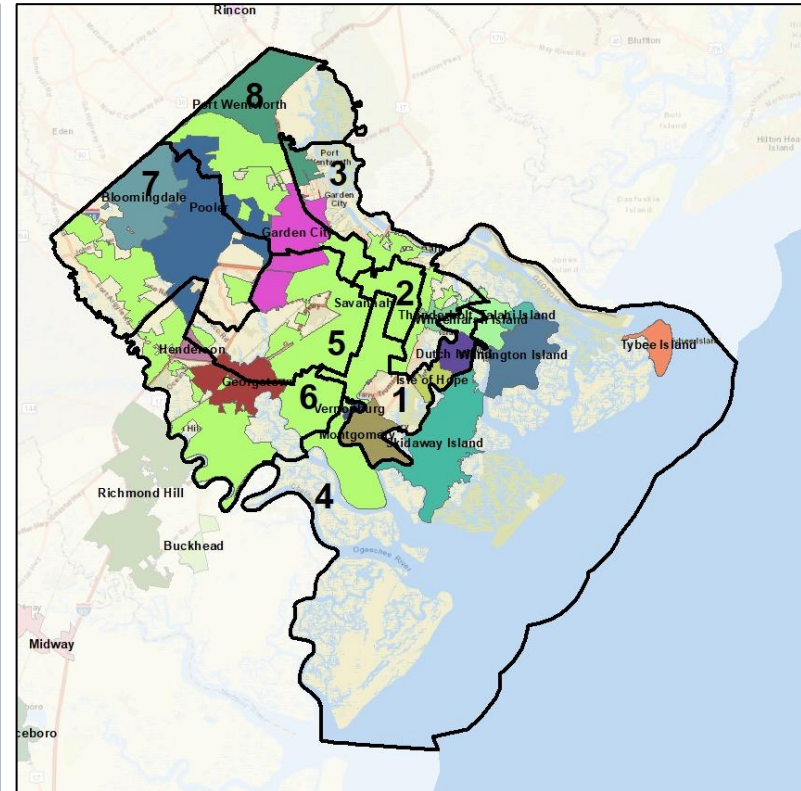
Cities and Places



2012 Map



2022 Map*



	1	2	3	4	5	6	7	8	1*	2*	3*	4*	5*	6*	7*	8*	County
Population	32,521	32,633	36,312	34,694	37,560	34,845	39,970	46,756	36,934	36,829	36,574	36,634	37,064	36,996	37,103	37,157	295,291
API	3%	3%	4%	3%	3%	5%	5%	4%	3%	3%	4%	3%	3%	5%	6%	3%	4%
Black	18%	51%	43%	3%	56%	37%	28%	51%	19%	55%	41%	4%	52%	39%	26%	56%	37%
Latino	8%	5%	7%	3%	10%	10%	9%	12%	8%	5%	7%	3%	14%	10%	9%	9%	8%
Other	5%	4%	3%	4%	4%	5%	5%	4%	5%	4%	3%	4%	4%	5%	5%	5%	4%
White	67%	37%	42%	87%	27%	43%	52%	30%	65%	34%	44%	86%	27%	40%	54%	28%	47%
Population Gain	*	*	*	*	*	*	*	*	4,413	4,196	262	1,940	-496	2,151	-2,867	-9,599	*
Population % Gain	*	*	*	*	*	*	*	*	14%	13%	1%	6%	-1%	6%	-7%	-21%	*
Net POC Gain	*	*	*	*	*	*	*	*	2,178	3,742	-331	750	-387	2,292	-2,162	-6,082	*
Net POC % Gain	*	*	*	*	*	*	*	*	20%	18%	-2%	17%	-1%	12%	-11%	-19%	*



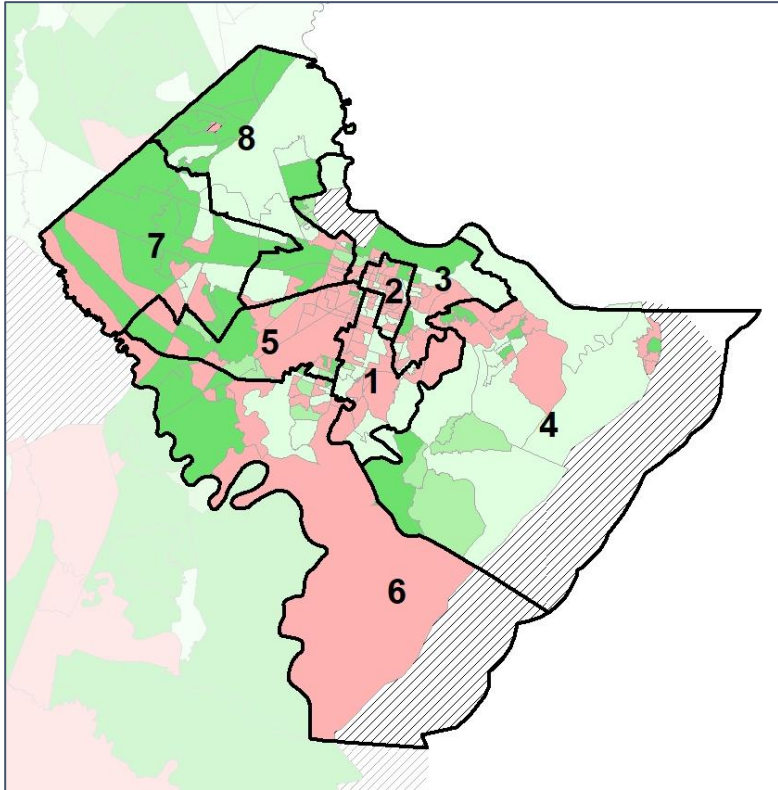
Source:
2020 Decennial Census
2020 ACS 5-Year Dataset

Chatham Co. Commission & School Board

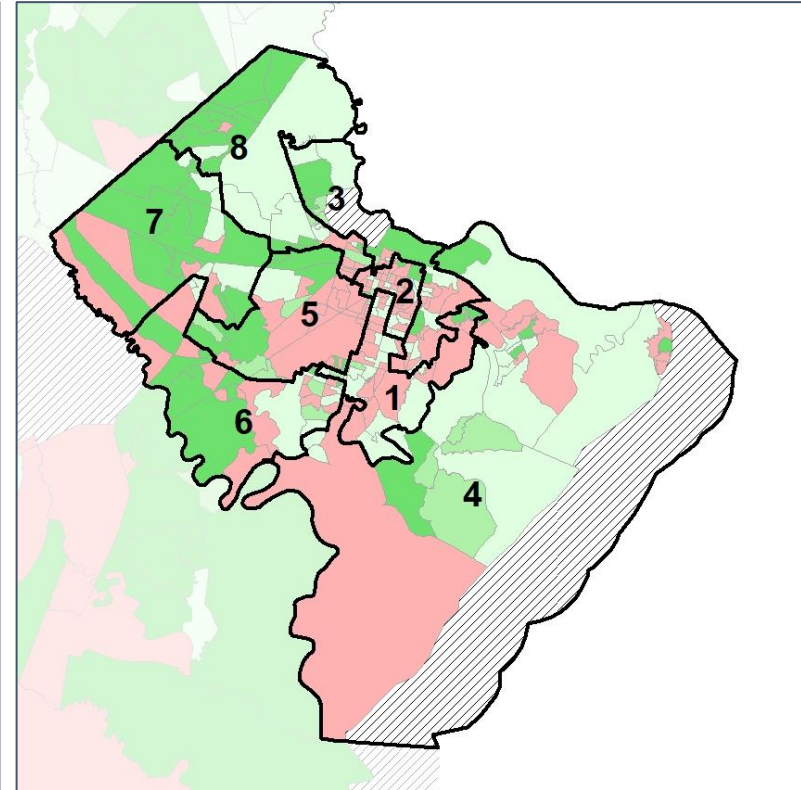
Net Gain in Population (2010 - 2020)



2012 Map



2022 Map*



	1	2	3	4	5	6	7	8	1*	2*	3*	4*	5*	6*	7*	8*	County
Population	32,521	32,633	36,312	34,694	37,560	34,845	39,970	46,756	36,934	36,829	36,574	36,634	37,064	36,996	37,103	37,157	295,291
API	3%	3%	4%	3%	3%	5%	5%	4%	3%	3%	4%	3%	3%	5%	6%	3%	4%
Black	18%	51%	43%	3%	56%	37%	28%	51%	19%	55%	41%	4%	52%	39%	26%	56%	37%
Latino	8%	5%	7%	3%	10%	10%	9%	12%	8%	5%	7%	3%	14%	10%	9%	9%	8%
Other	5%	4%	3%	4%	4%	5%	5%	4%	5%	4%	3%	4%	4%	5%	5%	5%	4%
White	67%	37%	42%	87%	27%	43%	52%	30%	65%	34%	44%	86%	27%	40%	54%	28%	47%
Population Gain	*	*	*	*	*	*	*	*	4,413	4,196	262	1,940	-496	2,151	-2,867	-9,599	*
Population % Gain	*	*	*	*	*	*	*	*	14%	13%	1%	6%	-1%	6%	-7%	-21%	*
Net POC Gain	*	*	*	*	*	*	*	*	2,178	3,742	-331	750	-387	2,292	-2,162	-6,082	*
Net POC % Gain	*	*	*	*	*	*	*	*	20%	18%	-2%	17%	-1%	12%	-11%	-19%	*



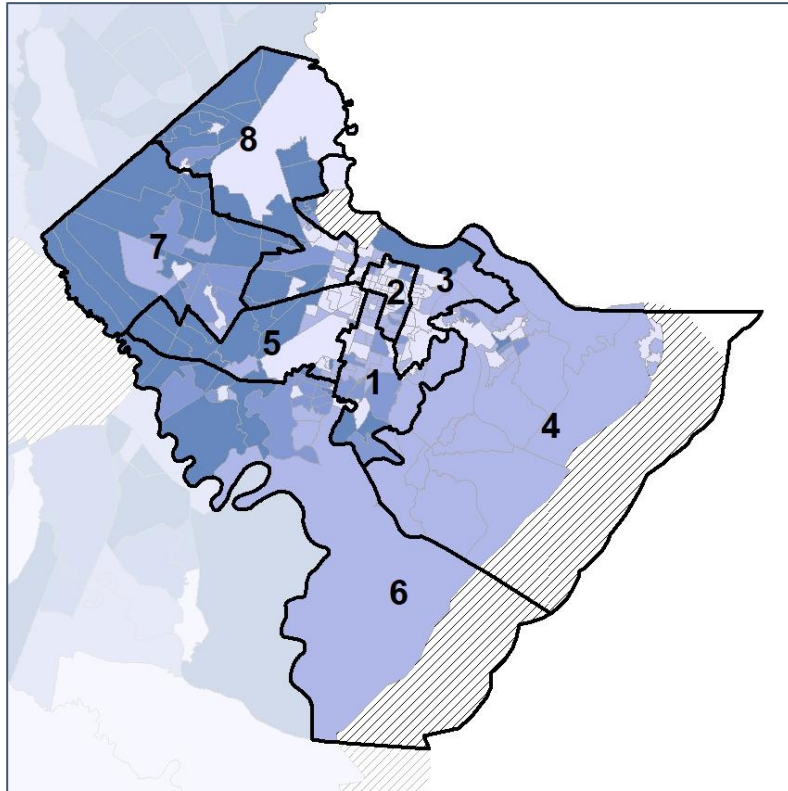
Source:
2020 Decennial Census
2020 ACS 5-Year Dataset

Chatham Co. Commission & School Board

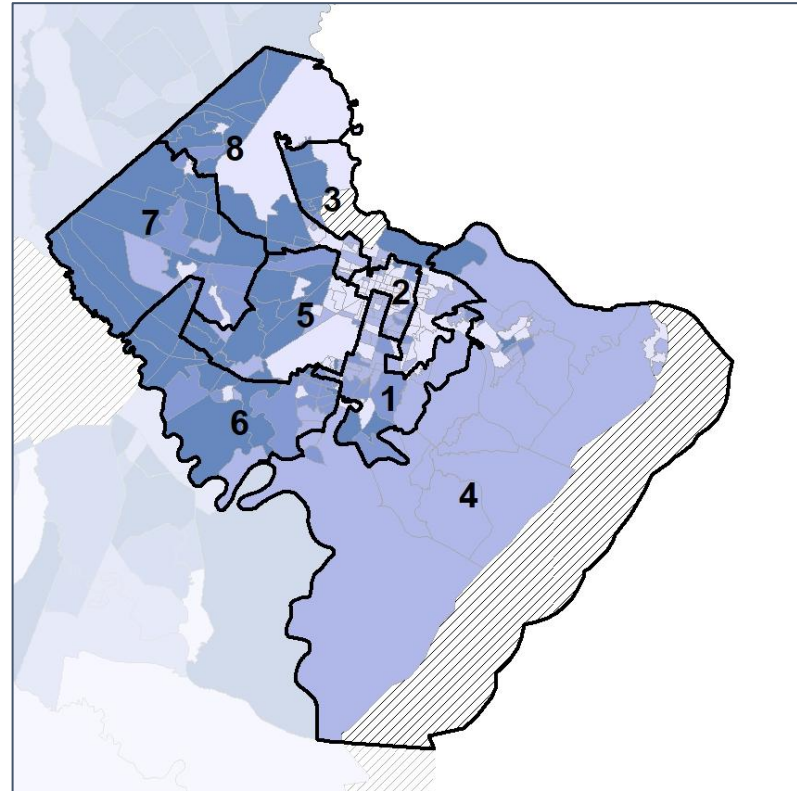
Net Gain in % POC (2020 - 2010) by Census Block Group



2012 Map



2022 Map*



	1	2	3	4	5	6	7	8	1*	2*	3*	4*	5*	6*	7*	8*	County
Population	32,521	32,633	36,312	34,694	37,560	34,845	39,970	46,756	36,934	36,829	36,574	36,634	37,064	36,996	37,103	37,157	295,291
API	3%	3%	4%	3%	3%	5%	5%	4%	3%	3%	4%	3%	3%	5%	6%	3%	4%
Black	18%	51%	43%	3%	56%	37%	28%	51%	19%	55%	41%	4%	52%	39%	26%	56%	37%
Latino	8%	5%	7%	3%	10%	10%	9%	12%	8%	5%	7%	3%	14%	10%	9%	9%	8%
Other	5%	4%	3%	4%	4%	5%	5%	4%	5%	4%	3%	4%	4%	5%	5%	5%	4%
White	67%	37%	42%	87%	27%	43%	52%	30%	65%	34%	44%	86%	27%	40%	54%	28%	47%
Population Gain	*	*	*	*	*	*	*	*	4,413	4,196	262	1,940	-496	2,151	-2,867	-9,599	*
Population % Gain	*	*	*	*	*	*	*	*	14%	13%	1%	6%	-1%	6%	-7%	-21%	*
Net POC Gain	*	*	*	*	*	*	*	*	2,178	3,742	-331	750	-387	2,292	-2,162	-6,082	*
Net POC % Gain	*	*	*	*	*	*	*	*	20%	18%	-2%	17%	-1%	12%	-11%	-19%	*

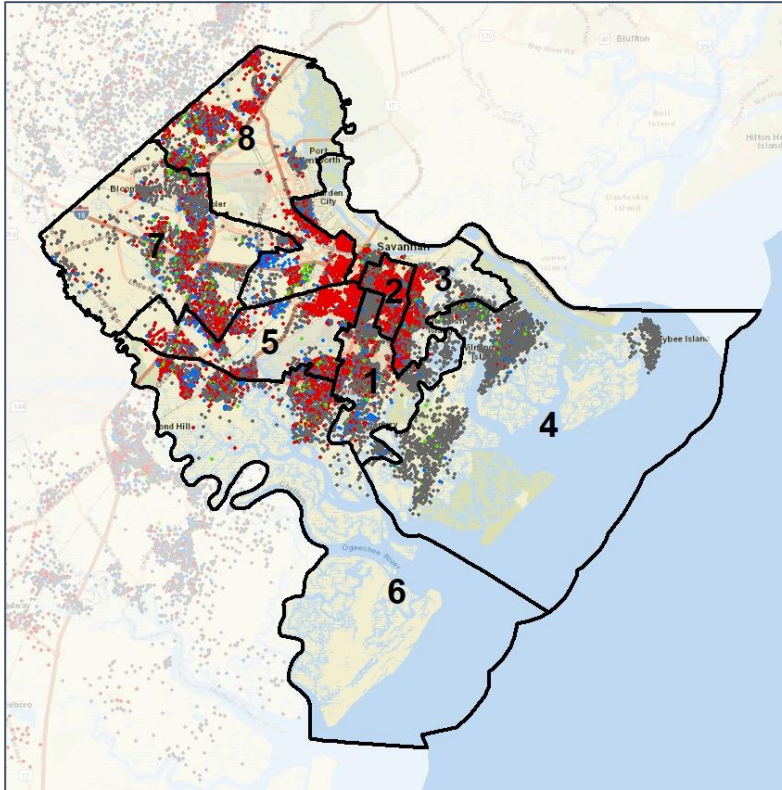


Chatham Co. Commission & School Board

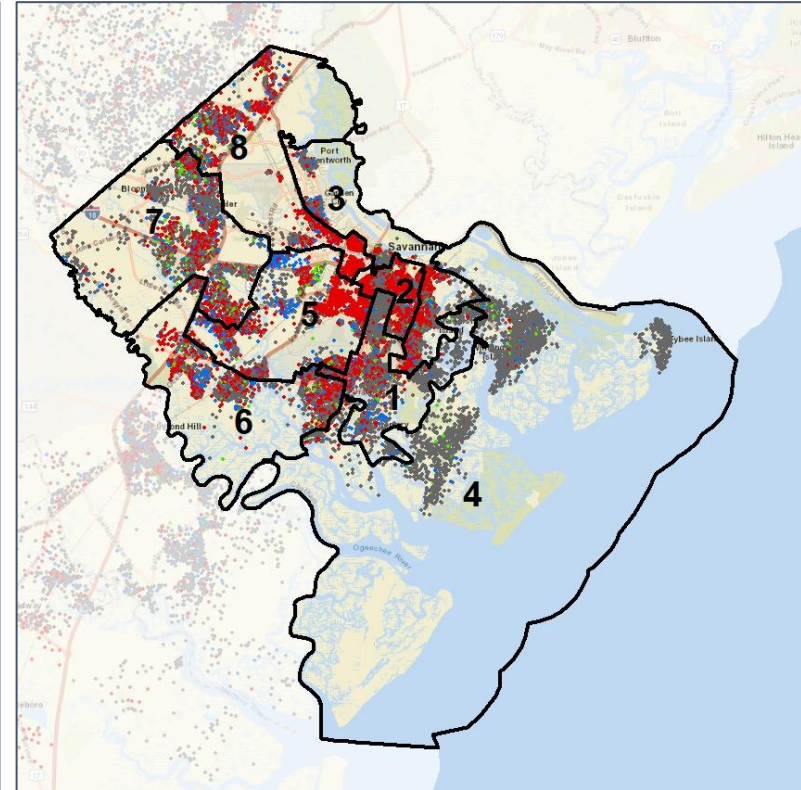
Population Density by Race



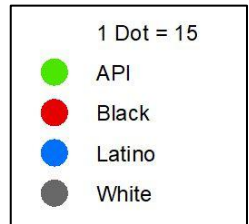
2012 Map



2022 Map*



	1	2	3	4	5	6	7	8	1*	2*	3*	4*	5*	6*	7*	8*	County
Population	32,521	32,633	36,312	34,694	37,560	34,845	39,970	46,756	36,934	36,829	36,574	36,634	37,064	36,996	37,103	37,157	295,291
API	971	935	1,569	1,119	991	1,679	2,046	1,718	1,204	1,051	1,522	1,096	1,160	1,827	2,077	1,091	11,028
% API	3%	3%	4%	3%	3%	5%	5%	4%	3%	3%	4%	3%	3%	5%	6%	3%	4%
Black	5,732	16,793	15,691	877	21,108	12,776	11,332	23,702	7,141	20,116	15,139	1,438	19,335	14,505	9,581	20,756	108,011
% Black	18%	51%	43%	3%	56%	37%	28%	51%	19%	55%	41%	4%	52%	39%	26%	56%	37%
Latino	2,639	1,542	2,445	1,063	3,697	3,398	3,627	5,379	2,966	1,714	2,656	1,154	5,078	3,718	3,307	3,197	23,790
% Latino	8%	5%	7%	3%	10%	10%	9%	12%	8%	5%	7%	3%	14%	10%	9%	9%	8%
Other	1,534	1,316	1,217	1,380	1,604	1,877	2,069	2,032	1,743	1,447	1,274	1,501	1,440	1,972	1,947	1,705	13,029
% Other	5%	4%	3%	4%	4%	5%	5%	4%	5%	4%	3%	4%	4%	5%	5%	5%	4%
White	21,645	12,047	15,390	30,255	10,160	15,115	20,896	13,925	23,880	12,501	15,983	31,445	10,051	14,974	20,191	10,408	139,433
% White	67%	37%	42%	87%	27%	43%	52%	30%	65%	34%	44%	86%	27%	40%	54%	28%	47%



Source:
2020 Decennial Census
2020 ACS 5-Year Dataset

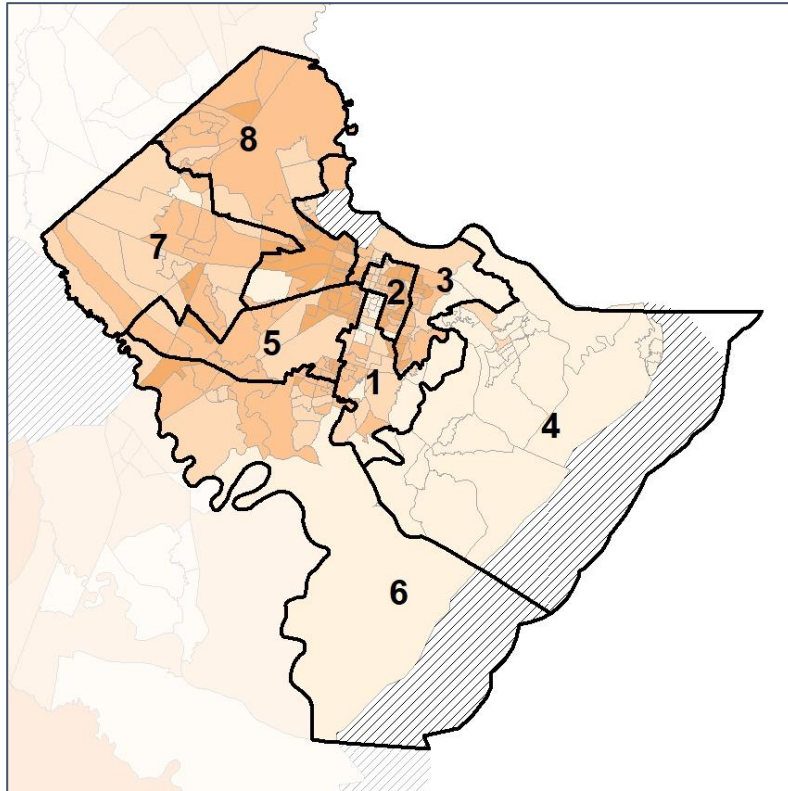


Chatham Co. Commission & School Board

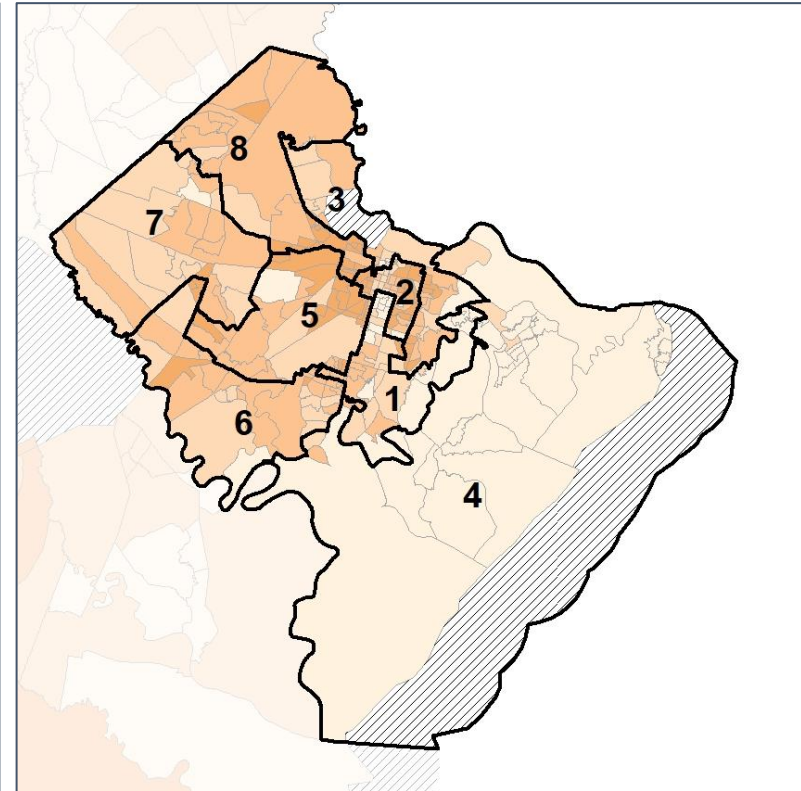
% People of Color by Census Block Group



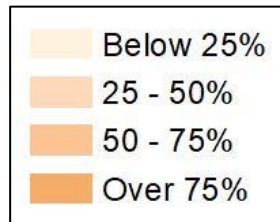
2012 Map



2022 Map*



	1	2	3	4	5	6	7	8	1*	2*	3*	4*	5*	6*	7*	8*	County
Population	32,521	32,633	36,312	34,694	37,560	34,845	39,970	46,756	36,934	36,829	36,574	36,634	37,064	36,996	37,103	37,157	295,291
API	971	935	1,569	1,119	991	1,679	2,046	1,718	1,204	1,051	1,522	1,096	1,160	1,827	2,077	1,091	11,028
% API	3%	3%	4%	3%	3%	5%	5%	4%	3%	3%	4%	3%	3%	5%	6%	3%	4%
Black	5,732	16,793	15,691	877	21,108	12,776	11,332	23,702	7,141	20,116	15,139	1,438	19,335	14,505	9,581	20,756	108,011
% Black	18%	51%	43%	3%	56%	37%	28%	51%	19%	55%	41%	4%	52%	39%	26%	56%	37%
Latino	2,639	1,542	2,445	1,063	3,697	3,398	3,627	5,379	2,966	1,714	2,656	1,154	5,078	3,718	3,307	3,197	23,790
% Latino	8%	5%	7%	3%	10%	10%	9%	12%	8%	5%	7%	3%	14%	10%	9%	9%	8%
Other	1,534	1,316	1,217	1,380	1,604	1,877	2,069	2,032	1,743	1,447	1,274	1,501	1,440	1,972	1,947	1,705	13,029
% Other	5%	4%	3%	4%	4%	5%	5%	4%	5%	4%	3%	4%	4%	5%	5%	5%	4%
White	21,645	12,047	15,390	30,255	10,160	15,115	20,896	13,925	23,880	12,501	15,983	31,445	10,051	14,974	20,191	10,408	139,433
% White	67%	37%	42%	87%	27%	43%	52%	30%	65%	34%	44%	86%	27%	40%	54%	28%	47%



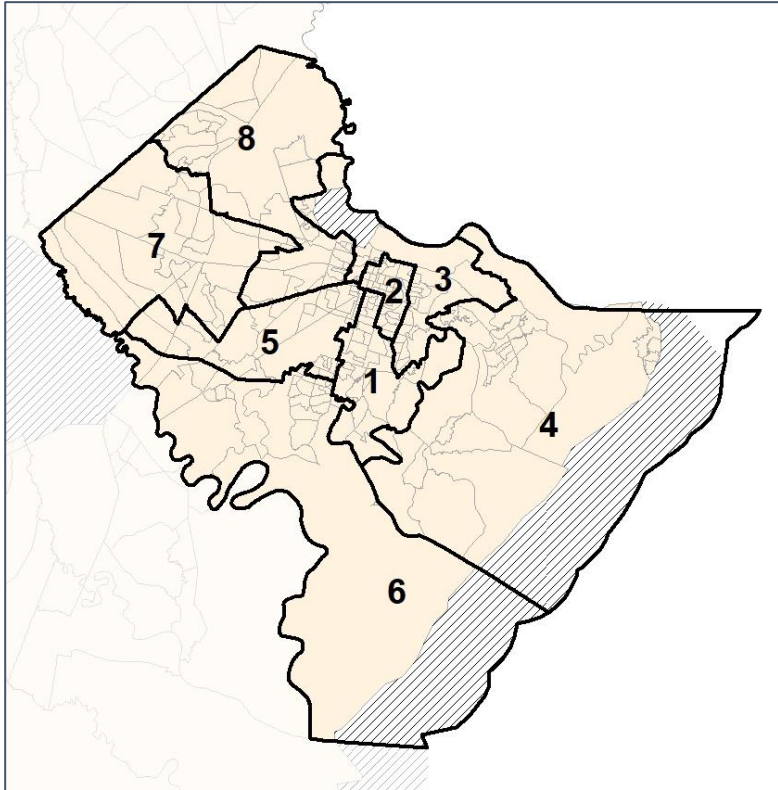
Source:
2020 Decennial Census
2020 ACS 5-Year Dataset

Chatham Co. Commission & School Board

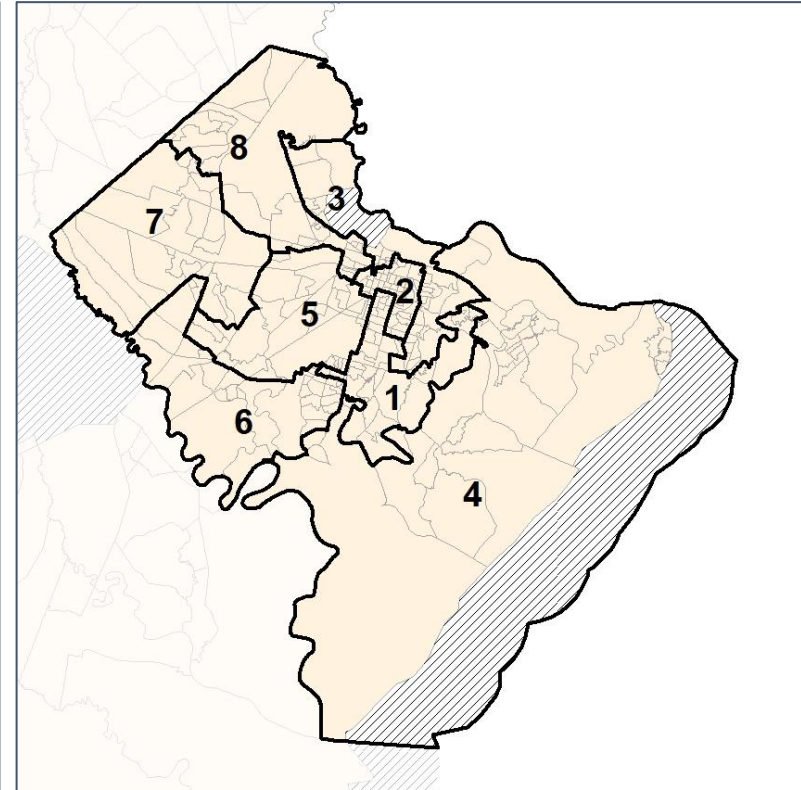
% API by Census Block Group



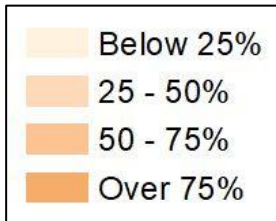
2012 Map



2022 Map*



	1	2	3	4	5	6	7	8	1*	2*	3*	4*	5*	6*	7*	8*	County
Population	32,521	32,633	36,312	34,694	37,560	34,845	39,970	46,756	36,934	36,829	36,574	36,634	37,064	36,996	37,103	37,157	295,291
API	971	935	1,569	1,119	991	1,679	2,046	1,718	1,204	1,051	1,522	1,096	1,160	1,827	2,077	1,091	11,028
% API	3%	3%	4%	3%	3%	5%	5%	4%	3%	3%	4%	3%	3%	5%	6%	3%	4%
Black	5,732	16,793	15,691	877	21,108	12,776	11,332	23,702	7,141	20,116	15,139	1,438	19,335	14,505	9,581	20,756	108,011
% Black	18%	51%	43%	3%	56%	37%	28%	51%	19%	55%	41%	4%	52%	39%	26%	56%	37%
Latino	2,639	1,542	2,445	1,063	3,697	3,398	3,627	5,379	2,966	1,714	2,656	1,154	5,078	3,718	3,307	3,197	23,790
% Latino	8%	5%	7%	3%	10%	10%	9%	12%	8%	5%	7%	3%	14%	10%	9%	9%	8%
Other	1,534	1,316	1,217	1,380	1,604	1,877	2,069	2,032	1,743	1,447	1,274	1,501	1,440	1,972	1,947	1,705	13,029
% Other	5%	4%	3%	4%	4%	5%	5%	4%	5%	4%	3%	4%	4%	5%	5%	5%	4%
White	21,645	12,047	15,390	30,255	10,160	15,115	20,896	13,925	23,880	12,501	15,983	31,445	10,051	14,974	20,191	10,408	139,433
% White	67%	37%	42%	87%	27%	43%	52%	30%	65%	34%	44%	86%	27%	40%	54%	28%	47%



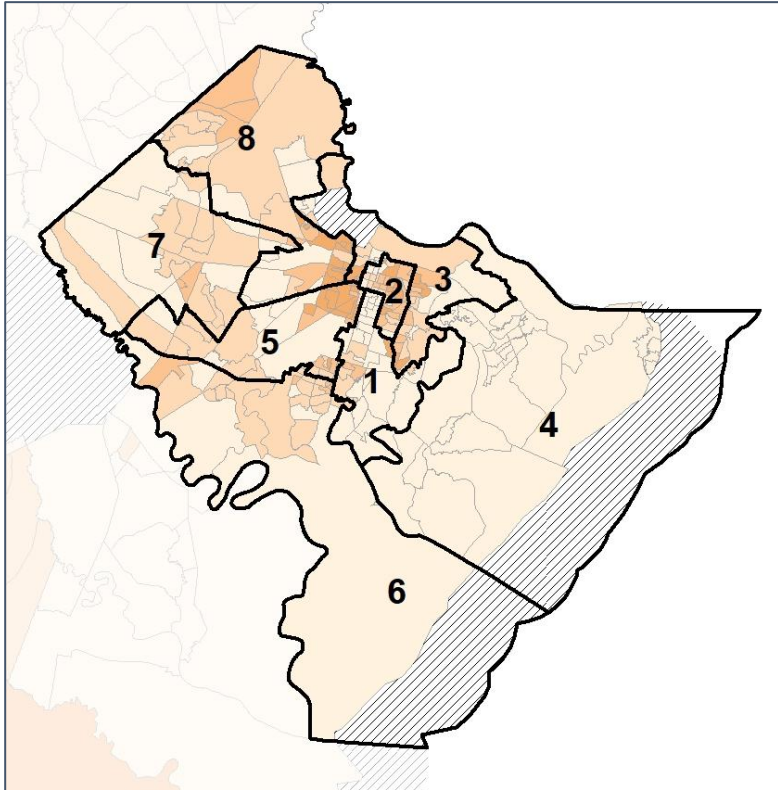
Source:
2020 Decennial Census
2020 ACS 5-Year Dataset

Chatham Co. Commission & School Board

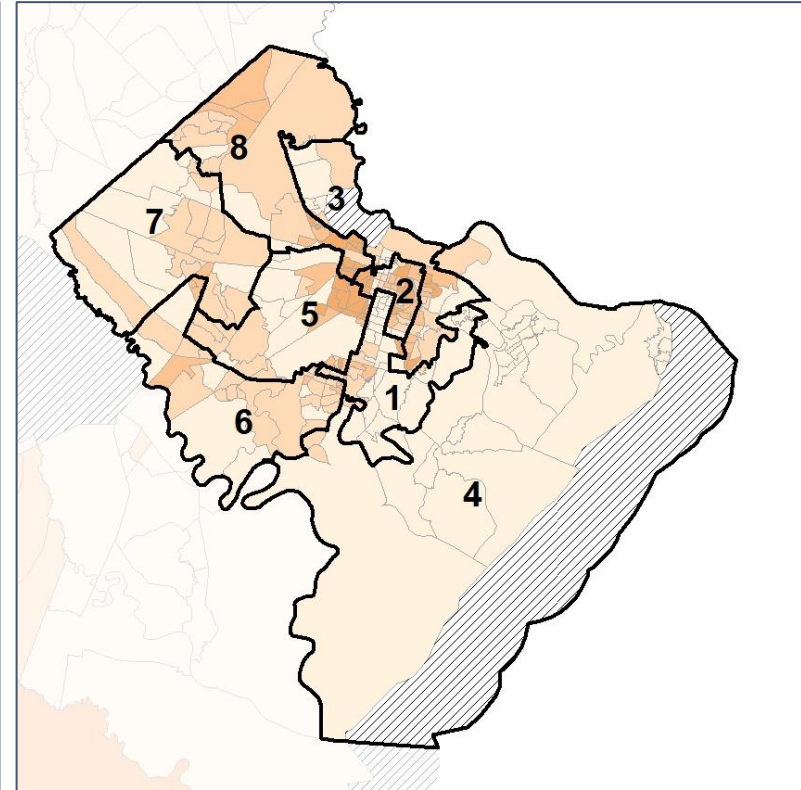
% Black by Census Block Group



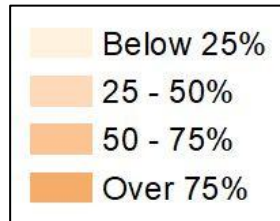
2012 Map



2022 Map*



	1	2	3	4	5	6	7	8	1*	2*	3*	4*	5*	6*	7*	8*	County
Population	32,521	32,633	36,312	34,694	37,560	34,845	39,970	46,756	36,934	36,829	36,574	36,634	37,064	36,996	37,103	37,157	295,291
API	971	935	1,569	1,119	991	1,679	2,046	1,718	1,204	1,051	1,522	1,096	1,160	1,827	2,077	1,091	11,028
% API	3%	3%	4%	3%	3%	5%	5%	4%	3%	3%	4%	3%	3%	5%	6%	3%	4%
Black	5,732	16,793	15,691	877	21,108	12,776	11,332	23,702	7,141	20,116	15,139	1,438	19,335	14,505	9,581	20,756	108,011
% Black	18%	51%	43%	3%	56%	37%	28%	51%	19%	55%	41%	4%	52%	39%	26%	56%	37%
Latino	2,639	1,542	2,445	1,063	3,697	3,398	3,627	5,379	2,966	1,714	2,656	1,154	5,078	3,718	3,307	3,197	23,790
% Latino	8%	5%	7%	3%	10%	10%	9%	12%	8%	5%	7%	3%	14%	10%	9%	9%	8%
Other	1,534	1,316	1,217	1,380	1,604	1,877	2,069	2,032	1,743	1,447	1,274	1,501	1,440	1,972	1,947	1,705	13,029
% Other	5%	4%	3%	4%	4%	5%	5%	4%	5%	4%	3%	4%	4%	5%	5%	5%	4%
White	21,645	12,047	15,390	30,255	10,160	15,115	20,896	13,925	23,880	12,501	15,983	31,445	10,051	14,974	20,191	10,408	139,433
% White	67%	37%	42%	87%	27%	43%	52%	30%	65%	34%	44%	86%	27%	40%	54%	28%	47%



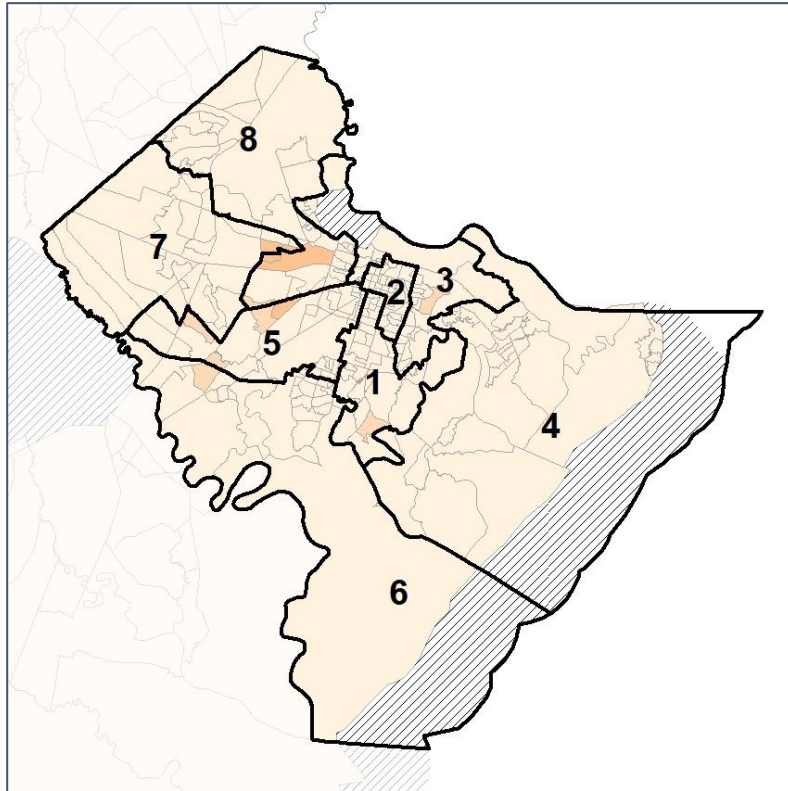
Source:
2020 Decennial Census
2020 ACS 5-Year Dataset

Chatham Co. Commission & School Board

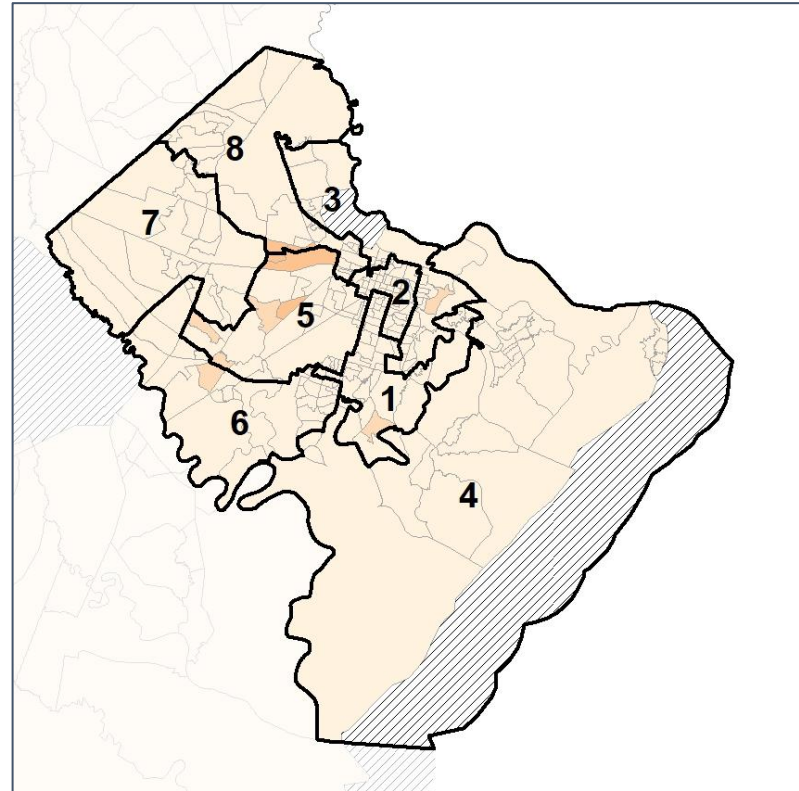
% Latino by Census Block Group



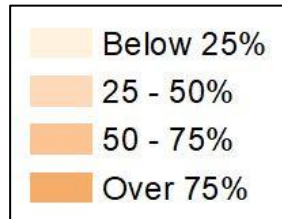
2012 Map



2022 Map*



	1	2	3	4	5	6	7	8	1*	2*	3*	4*	5*	6*	7*	8*	County
Population	32,521	32,633	36,312	34,694	37,560	34,845	39,970	46,756	36,934	36,829	36,574	36,634	37,064	36,996	37,103	37,157	295,291
API	971	935	1,569	1,119	991	1,679	2,046	1,718	1,204	1,051	1,522	1,096	1,160	1,827	2,077	1,091	11,028
% API	3%	3%	4%	3%	3%	5%	5%	4%	3%	3%	4%	3%	3%	5%	6%	3%	4%
Black	5,732	16,793	15,691	877	21,108	12,776	11,332	23,702	7,141	20,116	15,139	1,438	19,335	14,505	9,581	20,756	108,011
% Black	18%	51%	43%	3%	56%	37%	28%	51%	19%	55%	41%	4%	52%	39%	26%	56%	37%
Latino	2,639	1,542	2,445	1,063	3,697	3,398	3,627	5,379	2,966	1,714	2,656	1,154	5,078	3,718	3,307	3,197	23,790
% Latino	8%	5%	7%	3%	10%	10%	9%	12%	8%	5%	7%	3%	14%	10%	9%	9%	8%
Other	1,534	1,316	1,217	1,380	1,604	1,877	2,069	2,032	1,743	1,447	1,274	1,501	1,440	1,972	1,947	1,705	13,029
% Other	5%	4%	3%	4%	4%	5%	5%	4%	5%	4%	3%	4%	4%	5%	5%	5%	4%
White	21,645	12,047	15,390	30,255	10,160	15,115	20,896	13,925	23,880	12,501	15,983	31,445	10,051	14,974	20,191	10,408	139,433
% White	67%	37%	42%	87%	27%	43%	52%	30%	65%	34%	44%	86%	27%	40%	54%	28%	47%



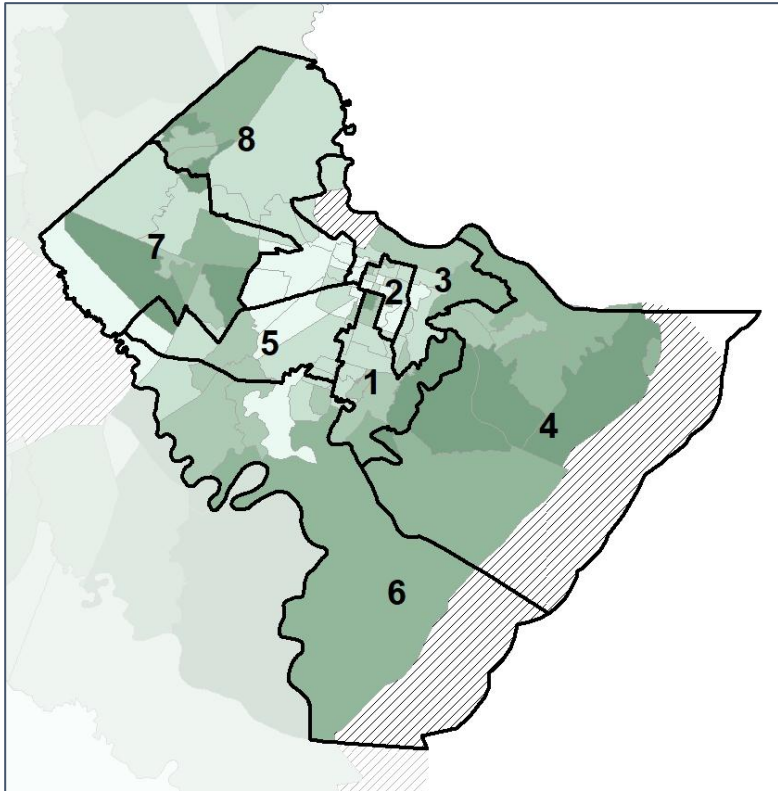
Source:
2020 Decennial Census
2020 ACS 5-Year Dataset

Chatham Co. Commission & School Board

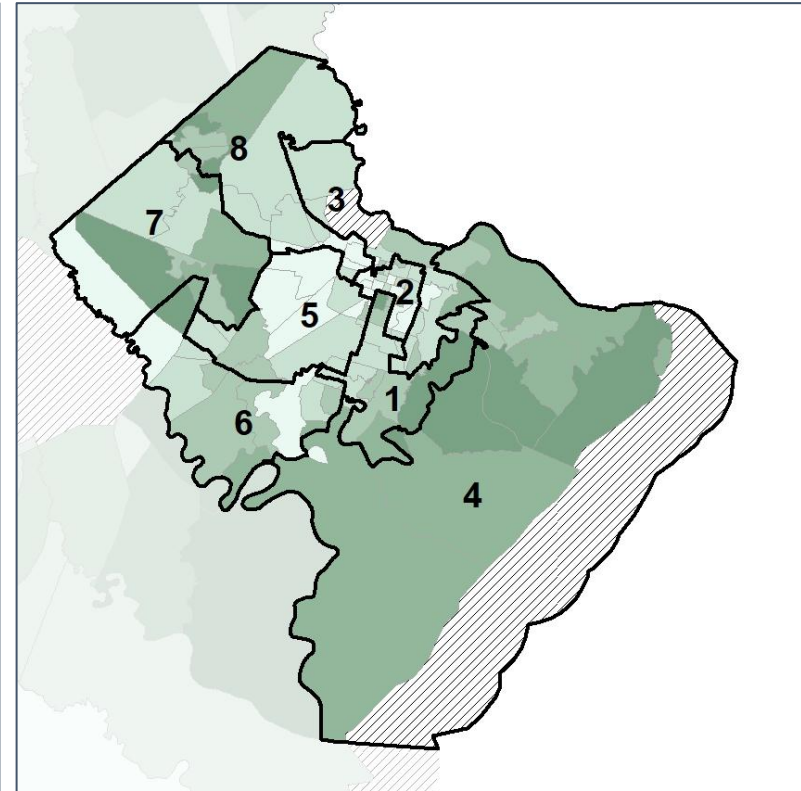
Median Household Income by Census Tract



2012 Map



2022 Map*



	1	2	3	4	5	6	7	8	1*	2*	3*	4*	5*	6*	7*	8*	County
Population	32,521	32,633	36,312	34,694	37,560	34,845	39,970	46,756	36,934	36,829	36,574	36,634	37,064	36,996	37,103	37,157	295,291
% API	3%	3%	4%	3%	3%	5%	5%	4%	3%	3%	4%	3%	3%	5%	6%	3%	4%
% Black	18%	51%	43%	3%	56%	37%	28%	51%	19%	55%	41%	4%	52%	39%	26%	56%	37%
% Latino	8%	5%	7%	3%	10%	10%	9%	12%	8%	5%	7%	3%	14%	10%	9%	9%	8%
% Other	5%	4%	3%	4%	4%	5%	5%	4%	5%	4%	3%	4%	4%	5%	5%	5%	4%
% White	67%	37%	42%	87%	27%	43%	52%	30%	65%	34%	44%	86%	27%	40%	54%	28%	47%
Median Income	\$73K	\$47K	\$49K	\$92K	\$49K	\$63K	\$84K	\$66K	\$73K	\$43K	\$50K	\$92K	\$48K	\$63K	\$87K	\$67K	\$58K
% Renter	38%	60%	50%	19%	55%	45%	41%	50%	41%	62%	48%	17%	58%	47%	37%	49%	44%
% Youth	26%	32%	31%	14%	29%	31%	24%	32%	27%	31%	31%	13%	31%	31%	22%	32%	27%



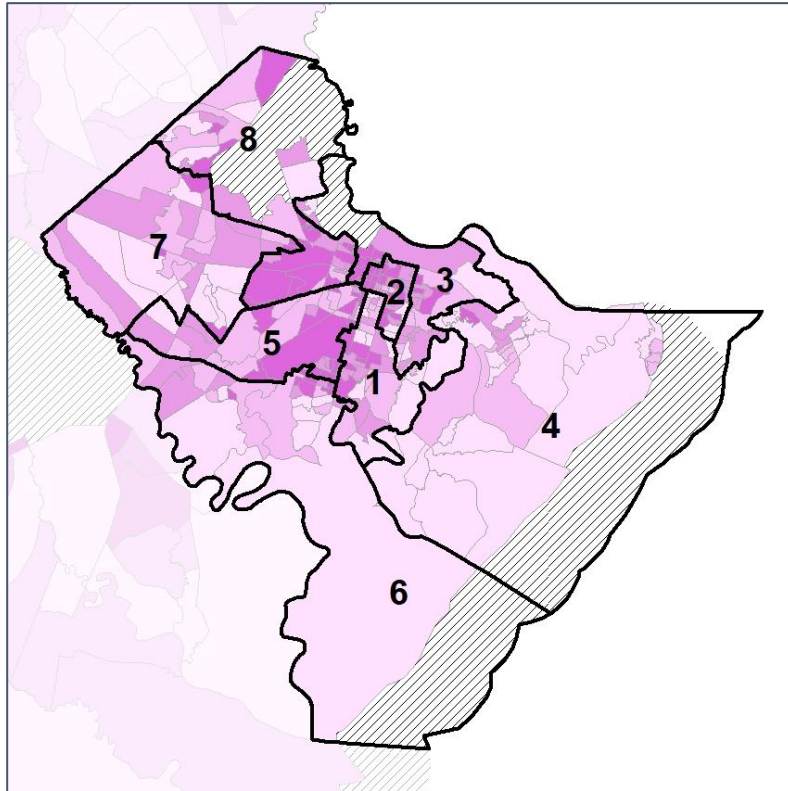
Source:
2020 Decennial Census
2020 ACS 5-Year Dataset

Chatham Co. Commission & School Board

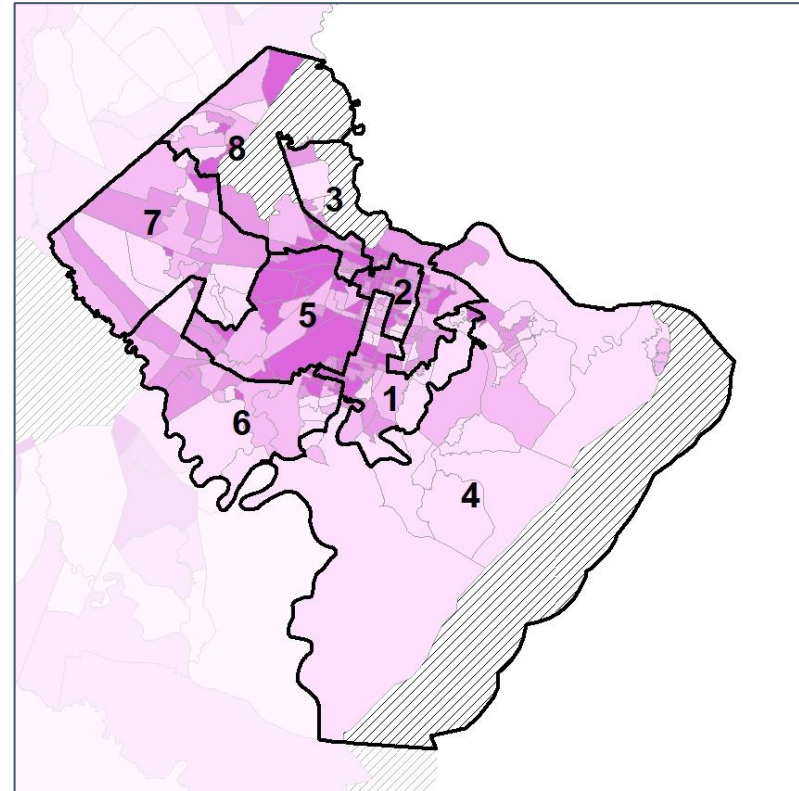
% Renter by Census Block Group



2012 Map



2022 Map*



	1	2	3	4	5	6	7	8	1*	2*	3*	4*	5*	6*	7*	8*	County
Population	32,521	32,633	36,312	34,694	37,560	34,845	39,970	46,756	36,934	36,829	36,574	36,634	37,064	36,996	37,103	37,157	295,291
% API	3%	3%	4%	3%	3%	5%	5%	4%	3%	3%	4%	3%	3%	5%	6%	3%	4%
% Black	18%	51%	43%	3%	56%	37%	28%	51%	19%	55%	41%	4%	52%	39%	26%	56%	37%
% Latino	8%	5%	7%	3%	10%	10%	9%	12%	8%	5%	7%	3%	14%	10%	9%	9%	8%
% Other	5%	4%	3%	4%	4%	5%	5%	4%	5%	4%	3%	4%	4%	5%	5%	5%	4%
% White	67%	37%	42%	87%	27%	43%	52%	30%	65%	34%	44%	86%	27%	40%	54%	28%	47%
Median Income	\$73K	\$47K	\$49K	\$92K	\$49K	\$63K	\$84K	\$66K	\$73K	\$43K	\$50K	\$92K	\$48K	\$63K	\$87K	\$67K	\$58K
% Renter	38%	60%	50%	19%	55%	45%	41%	50%	41%	62%	48%	17%	58%	47%	37%	49%	44%
% Youth	26%	32%	31%	14%	29%	31%	24%	32%	27%	31%	31%	13%	31%	31%	22%	32%	27%



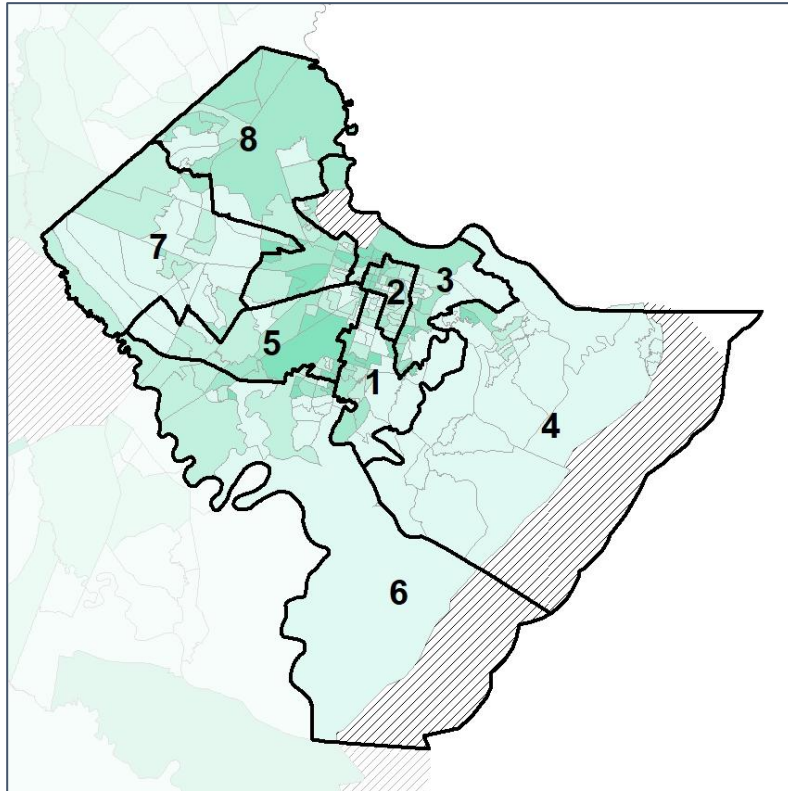
Source:
2020 Decennial Census
2020 ACS 5-Year Dataset

Chatham Co. Commission & School Board

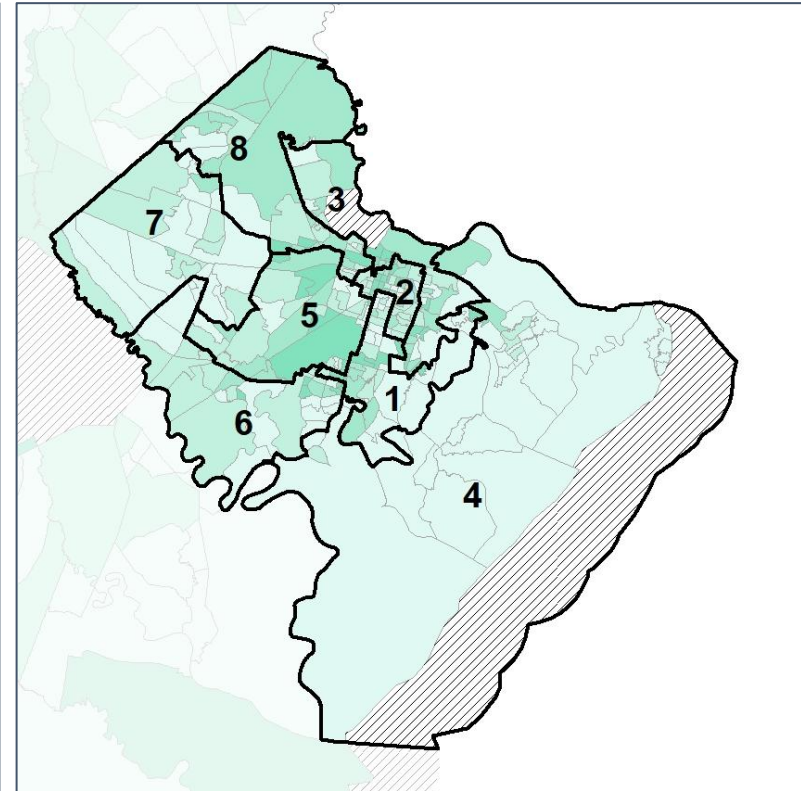
% Youth (18-34) by Census Block Group



2012 Map



2022 Map*



	1	2	3	4	5	6	7	8	1*	2*	3*	4*	5*	6*	7*	8*	County
Population	32,521	32,633	36,312	34,694	37,560	34,845	39,970	46,756	36,934	36,829	36,574	36,634	37,064	36,996	37,103	37,157	295,291
% API	3%	3%	4%	3%	3%	5%	5%	4%	3%	3%	4%	3%	3%	5%	6%	3%	4%
% Black	18%	51%	43%	3%	56%	37%	28%	51%	19%	55%	41%	4%	52%	39%	26%	56%	37%
% Latino	8%	5%	7%	3%	10%	10%	9%	12%	8%	5%	7%	3%	14%	10%	9%	9%	8%
% Other	5%	4%	3%	4%	4%	5%	5%	4%	5%	4%	3%	4%	4%	5%	5%	5%	4%
% White	67%	37%	42%	87%	27%	43%	52%	30%	65%	34%	44%	86%	27%	40%	54%	28%	47%
Median Income	\$73K	\$47K	\$49K	\$92K	\$49K	\$63K	\$84K	\$66K	\$73K	\$43K	\$50K	\$92K	\$48K	\$63K	\$87K	\$67K	\$58K
% Renter	38%	60%	50%	19%	55%	45%	41%	50%	41%	62%	48%	17%	58%	47%	37%	49%	44%
% Youth	26%	32%	31%	14%	29%	31%	24%	32%	27%	31%	31%	13%	31%	31%	22%	32%	27%



Source:
2020 Decennial Census
2020 ACS 5-Year Dataset