



# Demographic Overview

## Racial Breakdown in Catoosa County

Catoosa County	2010	2020	% Change
Total Population	63,942	67,872	6%
AAPI	792	1,109	40%
Black	1,356	1,808	33%
Latino	1,469	2,341	59%
Other/Mixed Race	1,176	3,334	184%
POC	4,793	8,592	79%
White	59,149	59,280	0%

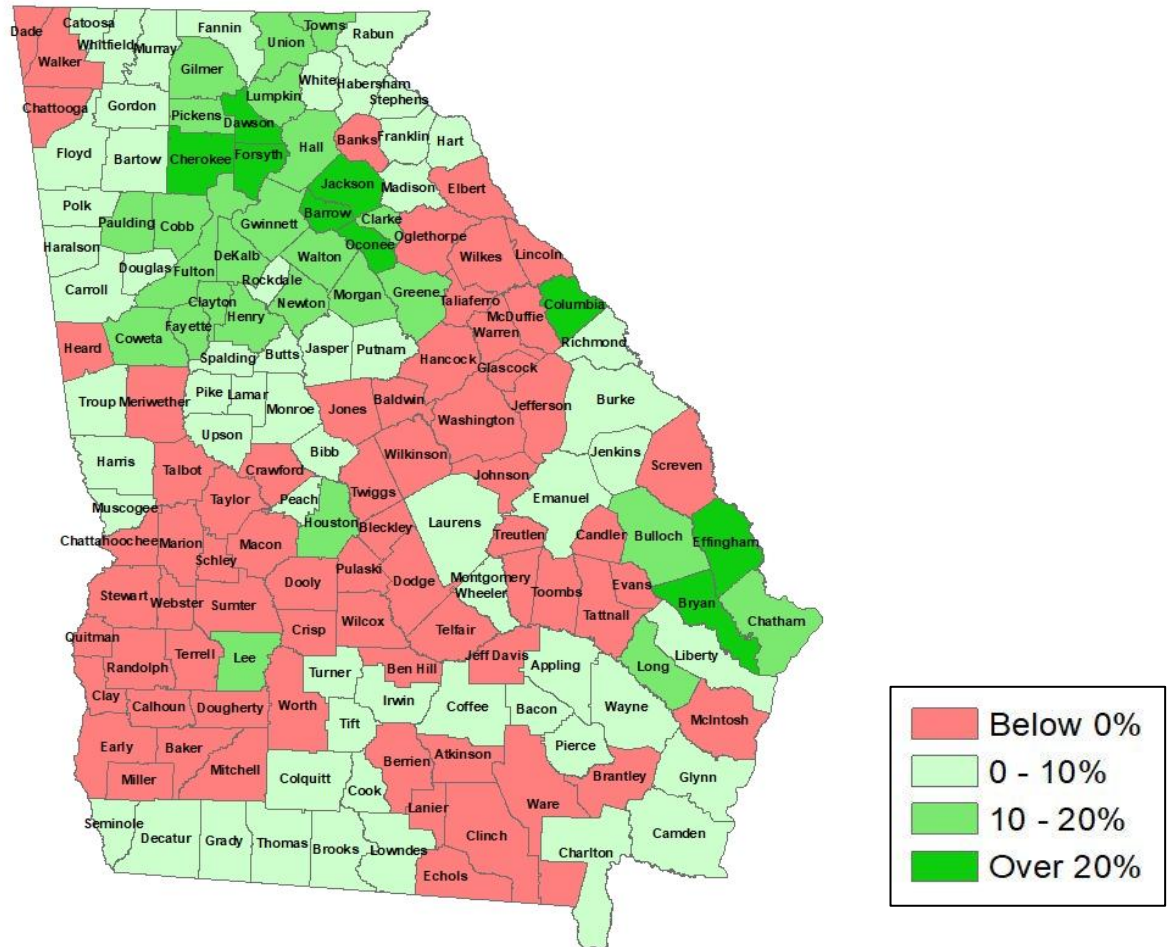
\*Note: The use of "Other" in these statistics combines those who identify as Native American, Mixed Race, and "Other" race





# Population Gain

## Change in Population in Georgia by County



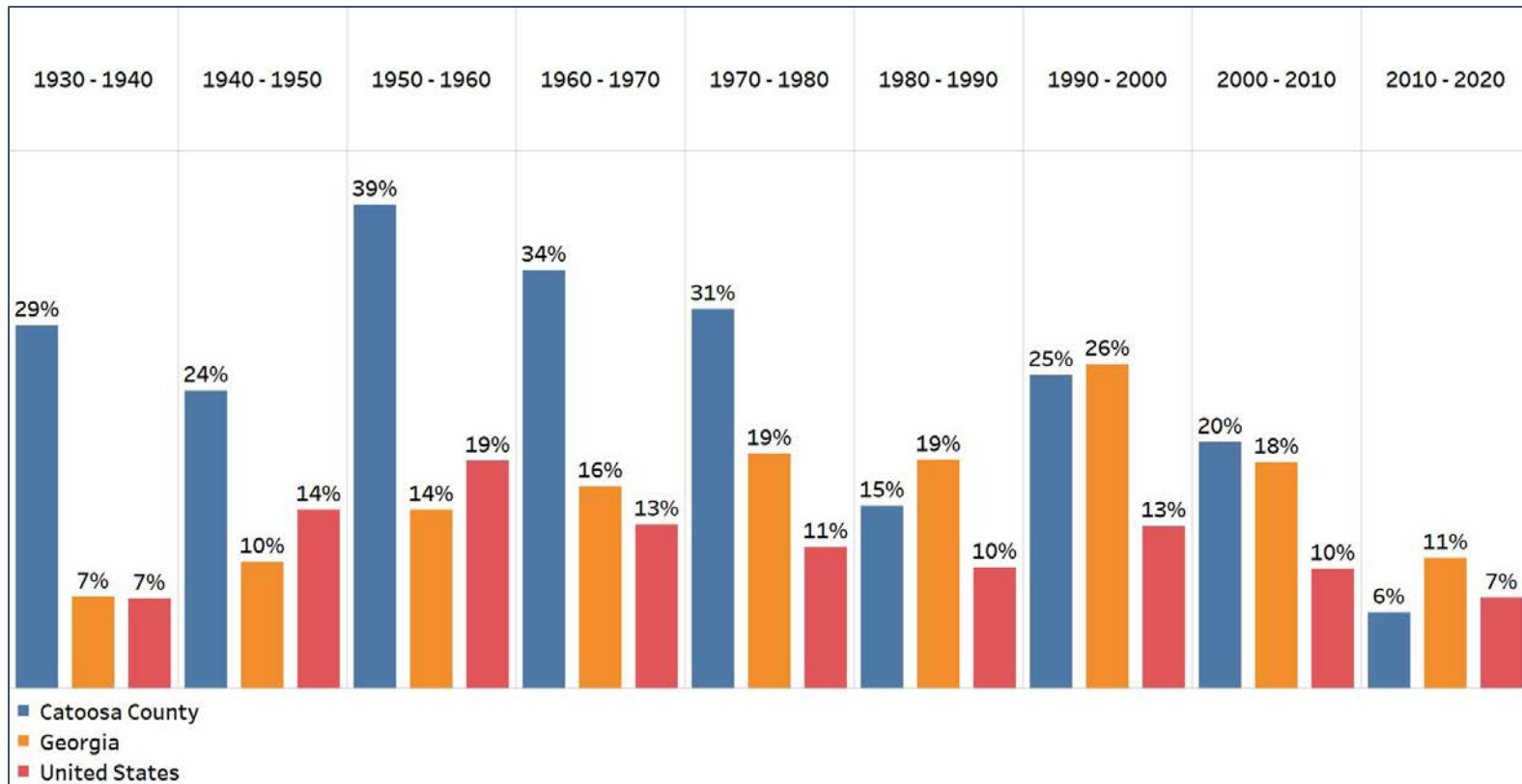
- Georgia is experiencing rapid population growth in the Atlanta, Augusta, and Savannah regions of the state





# Population Gain

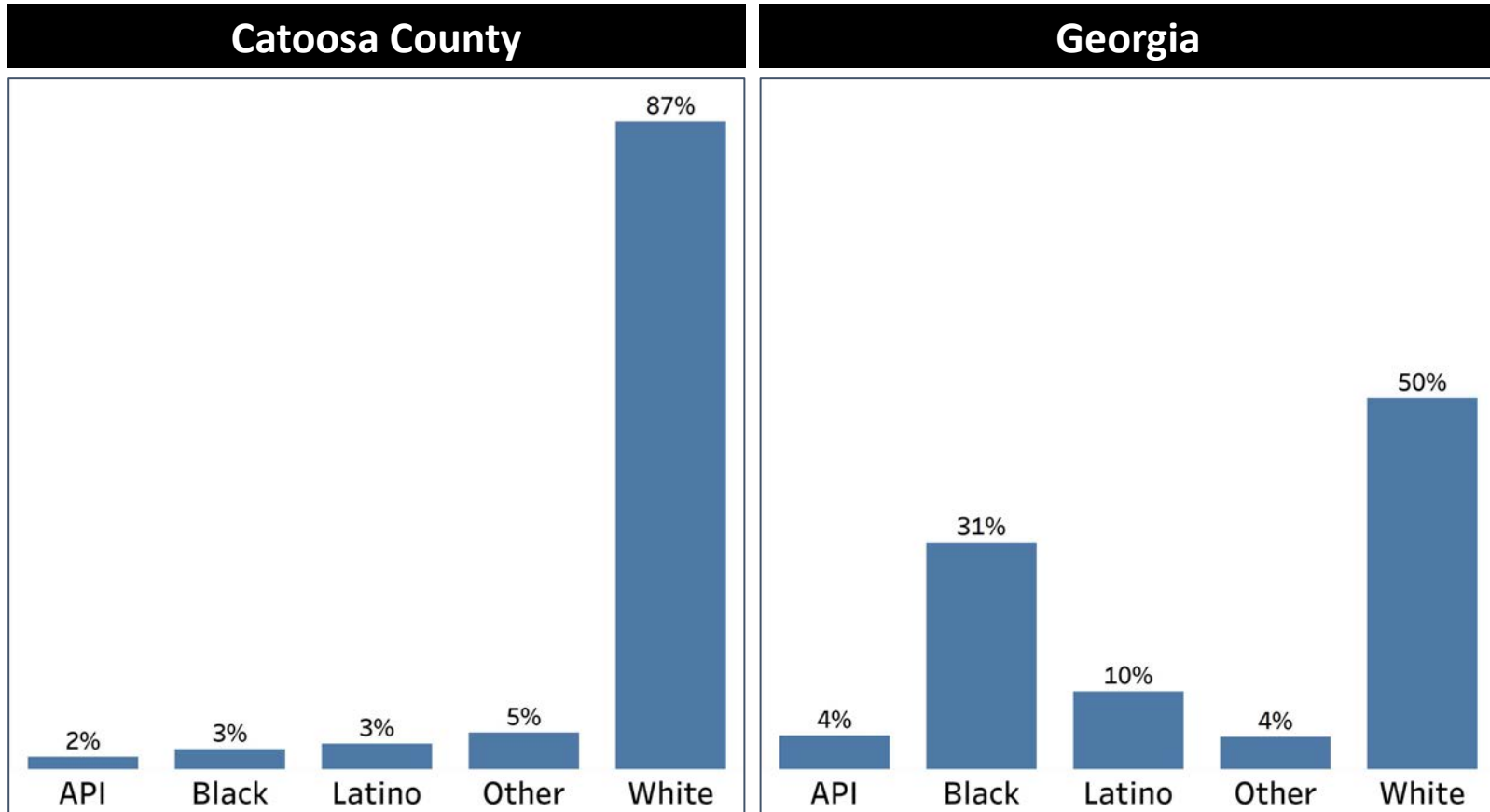
## Change in Population by Decade



- Catoosa County saw significant population growth throughout the last 90 years, surpassing Georgia's growth rate nearly every decade
- This growth only recently slowed down in the last decade, seeing only about half of the growth rate as Georgia overall

# Demographics

## Comparison between Catoosa County and Georgia



- Catoosa county has one of the highest proportion of white population in Georgia
- Communities of color only make up 13% of the population

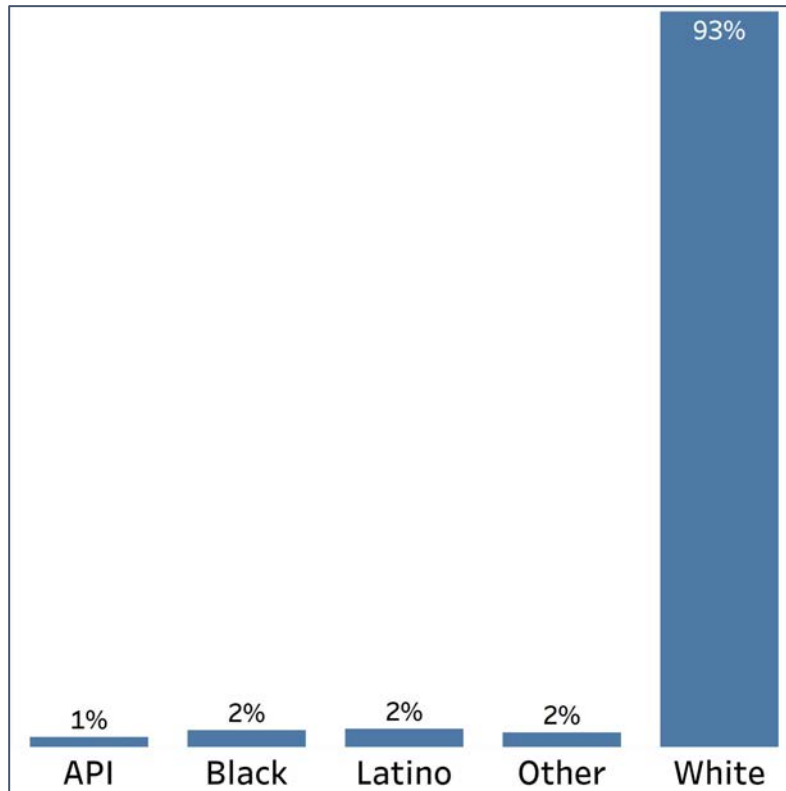


# Demographics

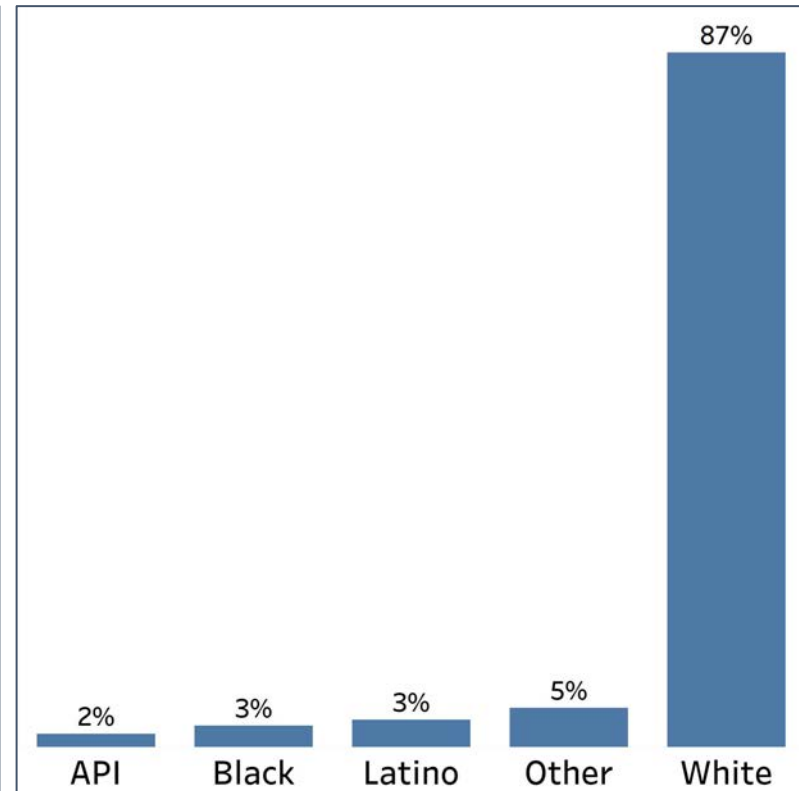
## 2010 vs 2020 Demographics in Catoosa County



Catoosa County 2010



Catoosa County 2020



- Despite the overwhelmingly white population, communities of color have grown in the county, with the Other demographic growing the most

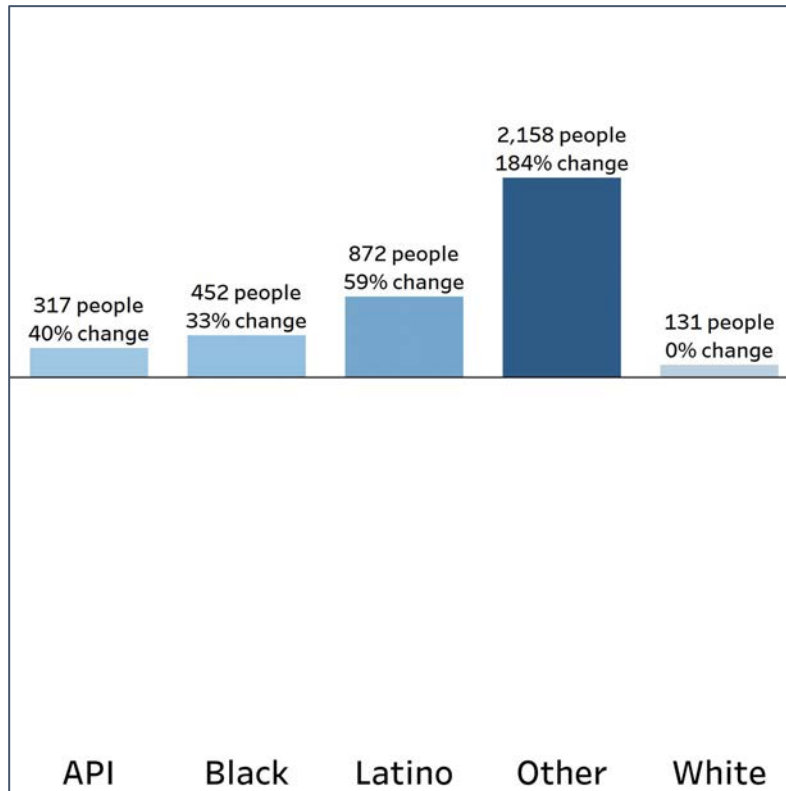


# Demographics

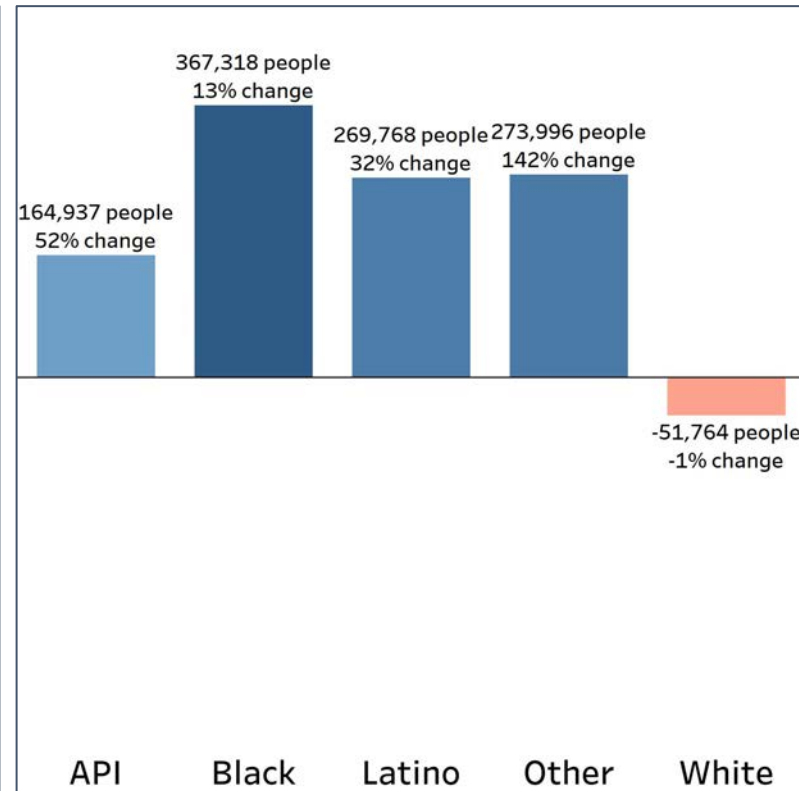
## Population Change by Race (2020 - 2010)



### Catoosa County



### Georgia



- Catoosa County has only seen an increase in all demographic groups
- The slowest growth was among the white population, with all other groups having higher growth rates than Georgia's overall growth rate (except for the API community)

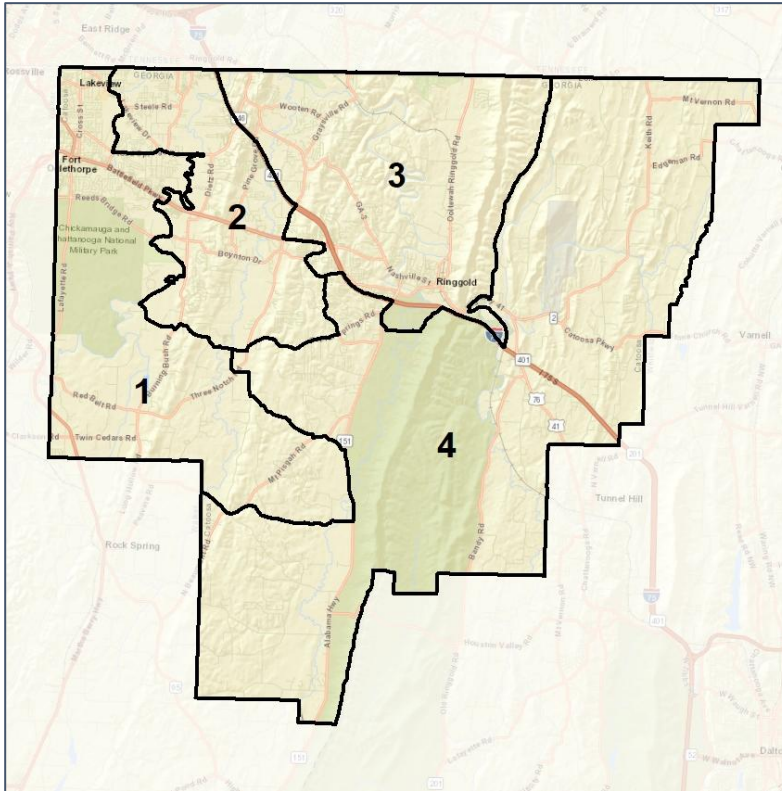


# Catoosa Co. Commission & School Board

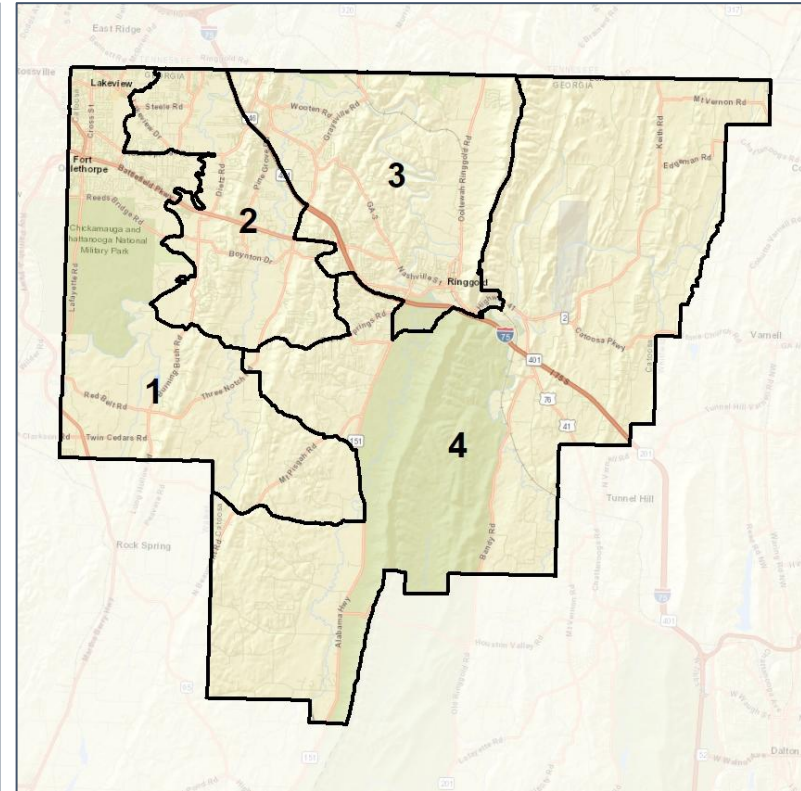
## Context



2012 Map



2022 Map\*



c	1	2	3	4	1*	2*	3*	4*	County
Population	16,358	17,471	17,346	16,697	17,005	16,824	17,148	16,895	67,872
API	2%	2%	1%	1%	2%	2%	1%	1%	2%
Black	4%	3%	3%	1%	3%	3%	3%	1%	3%
Latino	3%	4%	3%	3%	3%	4%	4%	3%	3%
Other	6%	4%	5%	5%	6%	4%	5%	5%	5%
White	86%	86%	87%	90%	86%	86%	87%	90%	87%
Population Gain	515	1,348	1,392	675	647	-647	-198	198	*
Population % Gain	3%	8%	9%	4%	4%	-4%	-1%	1%	*
Net POC Gain	951	1,110	1,006	732	94	-94	-15	15	*
Net POC % Gain	68%	83%	86%	82%	4%	-4%	-1%	1%	*

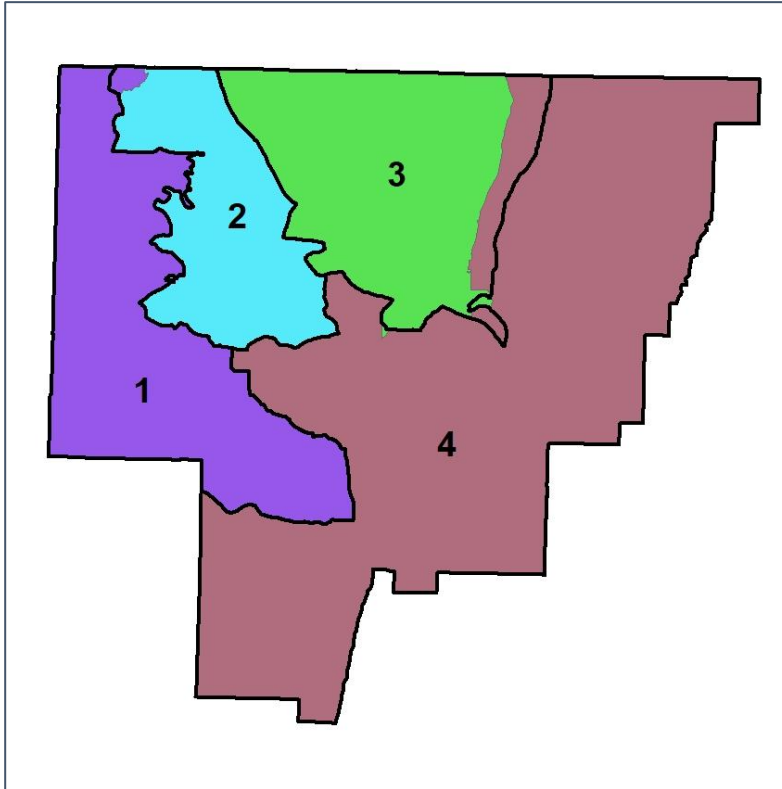


# Catoosa Co. Commission & School Board

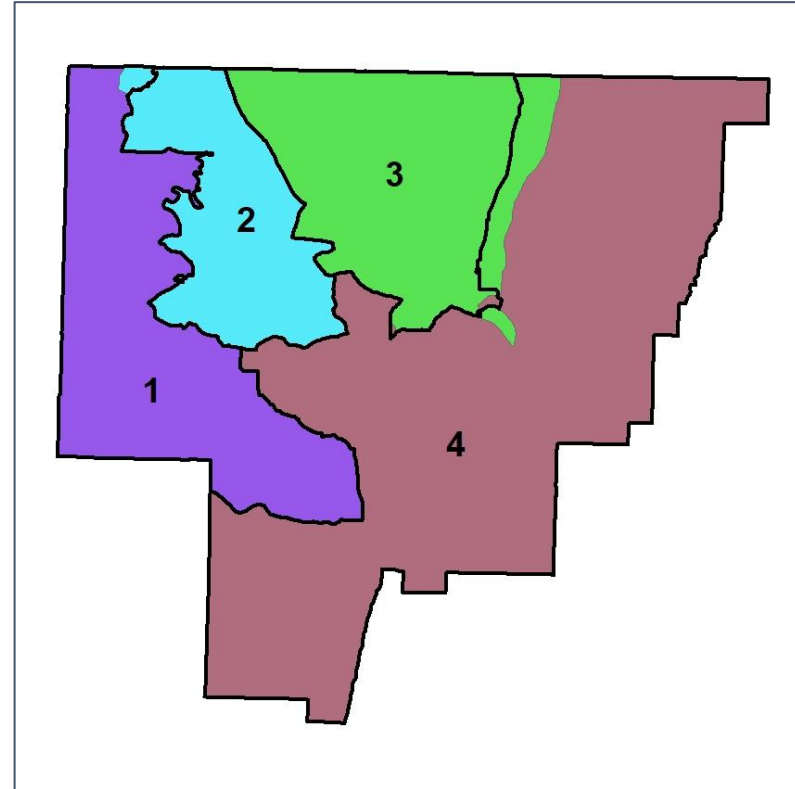
## Changes in Redistricting



**2012 Map (2022 in Colors)**



**2022 Map\* (2012 in Colors)**



	1	2	3	4	1*	2*	3*	4*	County
Population	16,358	17,471	17,346	16,697	17,005	16,824	17,148	16,895	67,872
API	2%	2%	1%	1%	2%	2%	1%	1%	2%
Black	4%	3%	3%	1%	3%	3%	3%	1%	3%
Latino	3%	4%	3%	3%	3%	4%	4%	3%	3%
Other	6%	4%	5%	5%	6%	4%	5%	5%	5%
White	86%	86%	87%	90%	86%	86%	87%	90%	87%
Population Gain	515	1,348	1,392	675	647	-647	-198	198	*
Population % Gain	3%	8%	9%	4%	4%	-4%	-1%	1%	*
Net POC Gain	951	1,110	1,006	732	94	-94	-15	15	*
Net POC % Gain	68%	83%	86%	82%	4%	-4%	-1%	1%	*



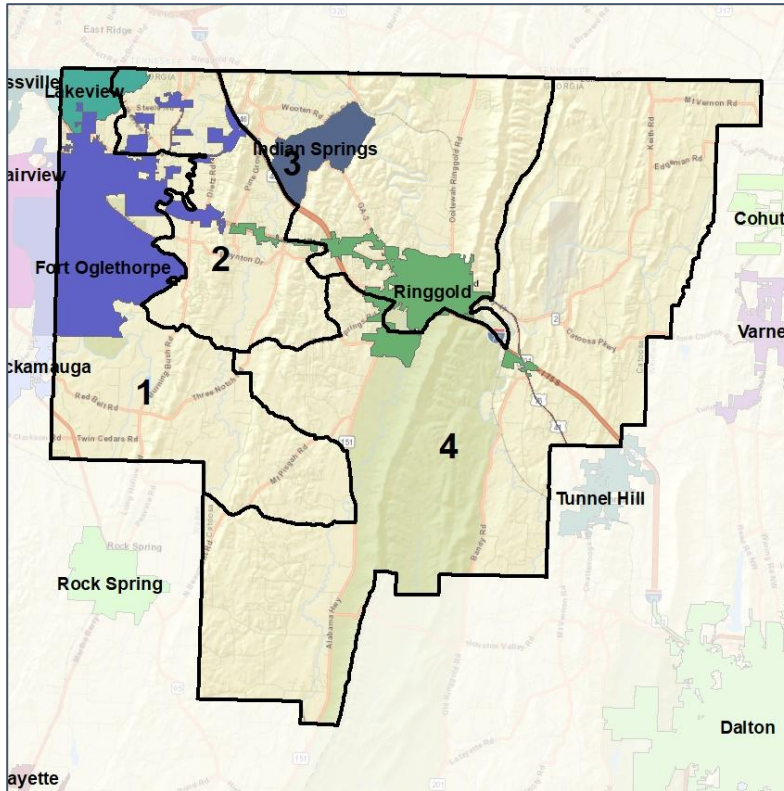


# Catoosa Co. Commission & School Board

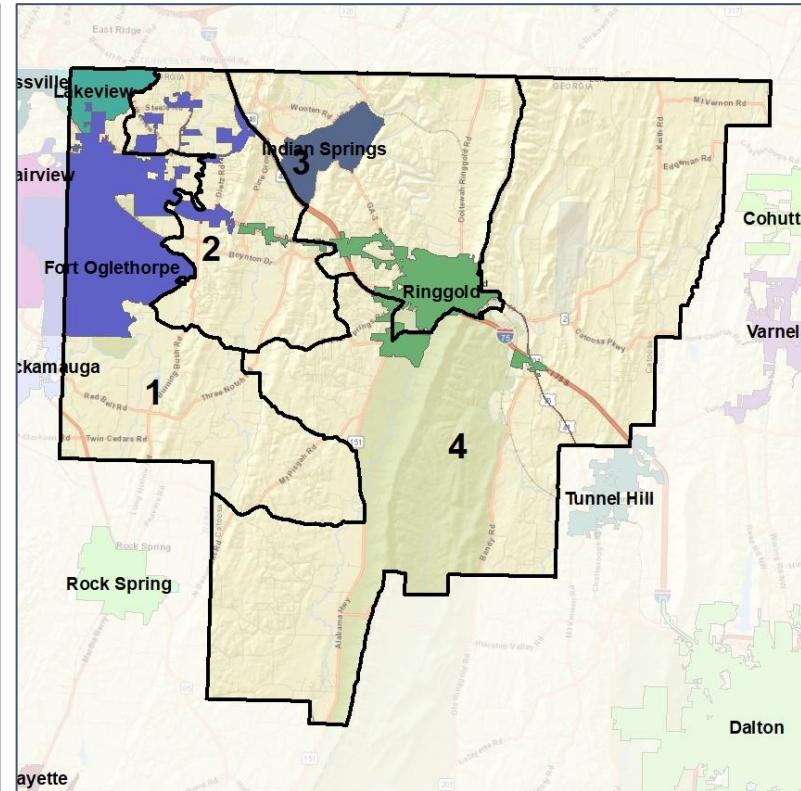
## Cities and Places



2012 Map



2022 Map\*



	1	2	3	4	1*	2*	3*	4*	County
Population	16,358	17,471	17,346	16,697	17,005	16,824	17,148	16,895	67,872
API	2%	2%	1%	1%	2%	2%	1%	1%	2%
Black	4%	3%	3%	1%	3%	3%	3%	1%	3%
Latino	3%	4%	3%	3%	3%	4%	4%	3%	3%
Other	6%	4%	5%	5%	6%	4%	5%	5%	5%
White	86%	86%	87%	90%	86%	86%	87%	90%	87%
Population Gain	515	1,348	1,392	675	647	-647	-198	198	*
Population % Gain	3%	8%	9%	4%	4%	-4%	-1%	1%	*
Net POC Gain	951	1,110	1,006	732	94	-94	-15	15	*
Net POC % Gain	68%	83%	86%	82%	4%	-4%	-1%	1%	*

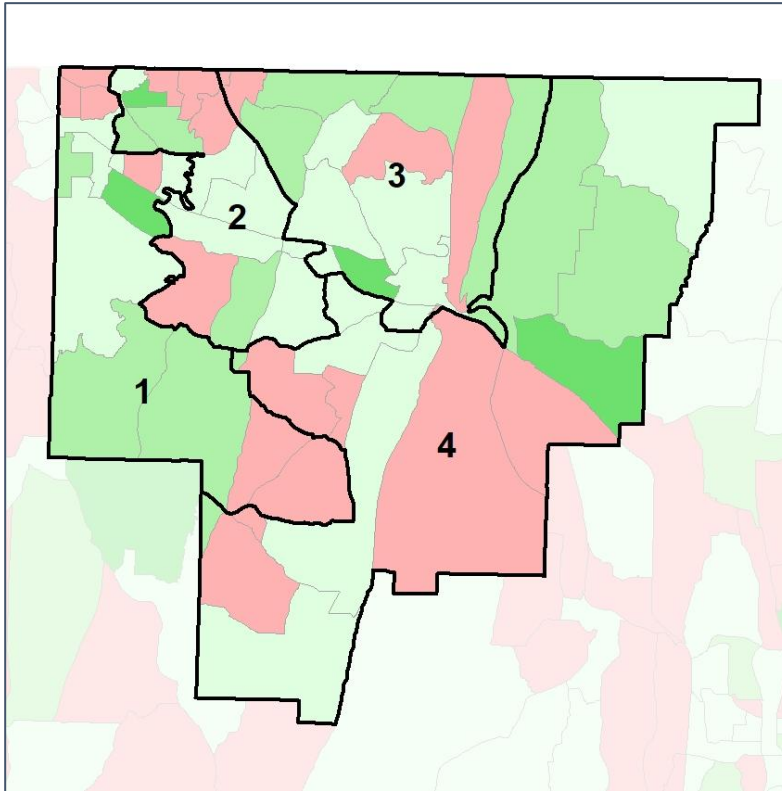


# Catoosa Co. Commission & School Board

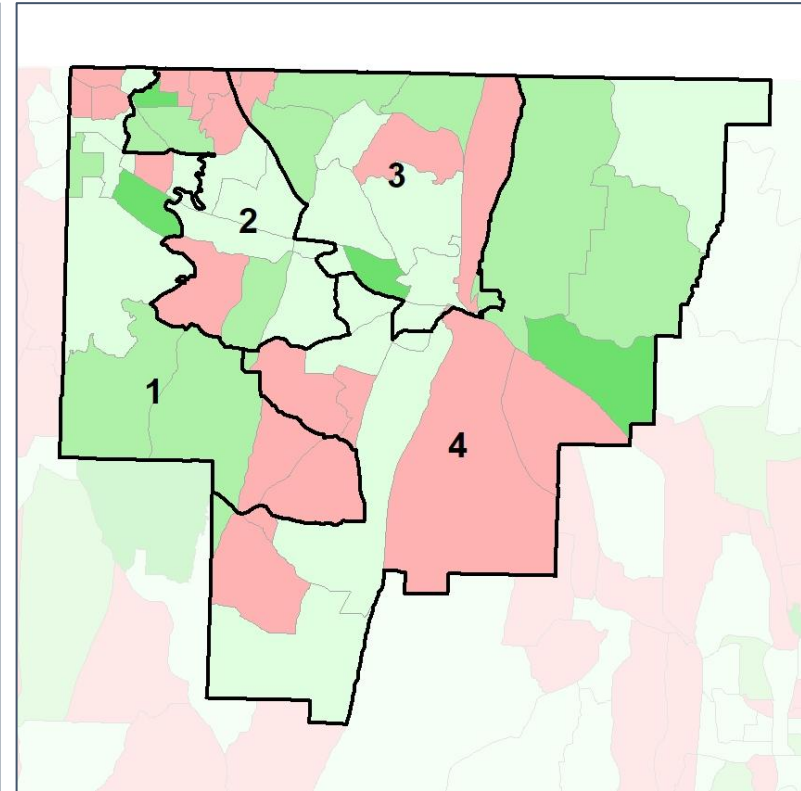
## Net Gain in Population (2010 - 2020)



2012 Map



2022 Map\*



	1	2	3	4	1*	2*	3*	4*	County
Population	16,358	17,471	17,346	16,697	17,005	16,824	17,148	16,895	67,872
API	2%	2%	1%	1%	2%	2%	1%	1%	2%
Black	4%	3%	3%	1%	3%	3%	3%	1%	3%
Latino	3%	4%	3%	3%	3%	4%	4%	3%	3%
Other	6%	4%	5%	5%	6%	4%	5%	5%	5%
White	86%	86%	87%	90%	86%	86%	87%	90%	87%
Population Gain	515	1,348	1,392	675	647	-647	-198	198	*
Population % Gain	3%	8%	9%	4%	4%	-4%	-1%	1%	*
Net POC Gain	951	1,110	1,006	732	94	-94	-15	15	*
Net POC % Gain	68%	83%	86%	82%	4%	-4%	-1%	1%	*

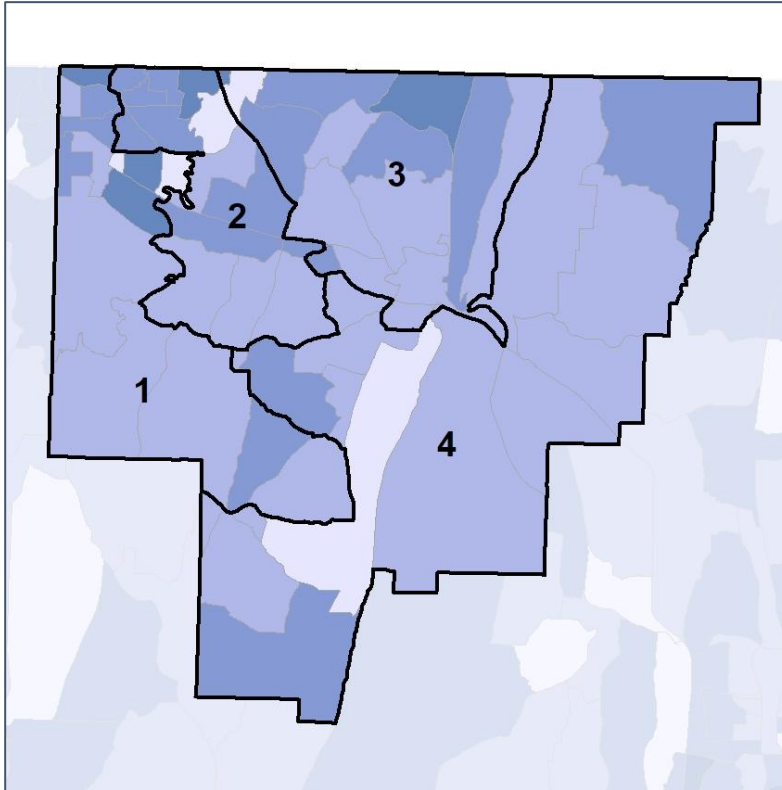


# Catoosa Co. Commission & School Board

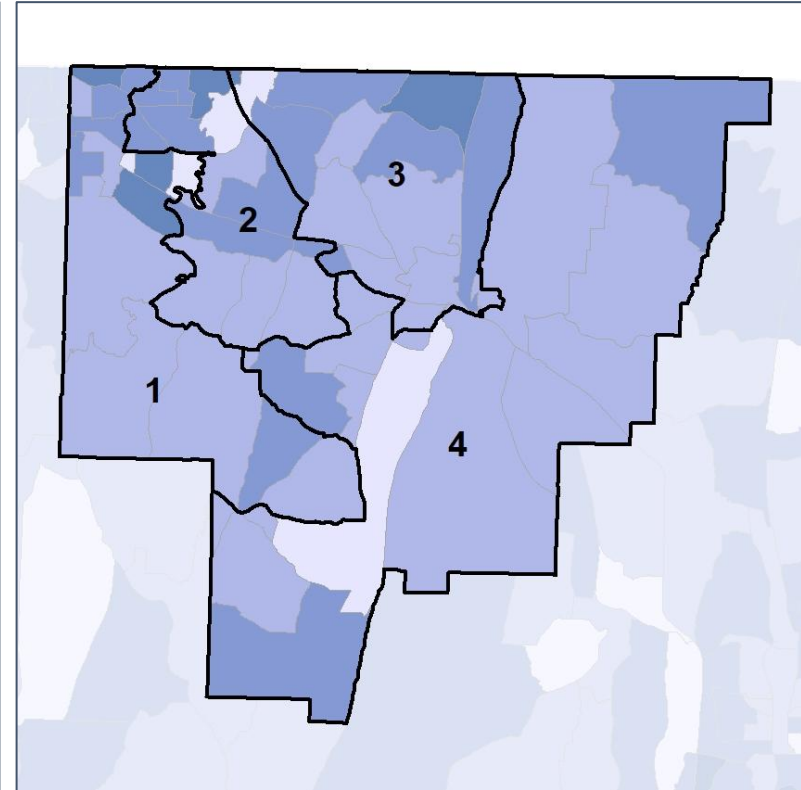
## Net Gain in % POC (2020 - 2010) by Census Block Group



2012 Map



2022 Map\*



	1	2	3	4	1*	2*	3*	4*	County
Population	16,358	17,471	17,346	16,697	17,005	16,824	17,148	16,895	67,872
API	2%	2%	1%	1%	2%	2%	1%	1%	2%
Black	4%	3%	3%	1%	3%	3%	3%	1%	3%
Latino	3%	4%	3%	3%	3%	4%	4%	3%	3%
Other	6%	4%	5%	5%	6%	4%	5%	5%	5%
White	86%	86%	87%	90%	86%	86%	87%	90%	87%
Population Gain	515	1,348	1,392	675	647	-647	-198	198	*
Population % Gain	3%	8%	9%	4%	4%	-4%	-1%	1%	*
Net POC Gain	951	1,110	1,006	732	94	-94	-15	15	*
Net POC % Gain	68%	83%	86%	82%	4%	-4%	-1%	1%	*

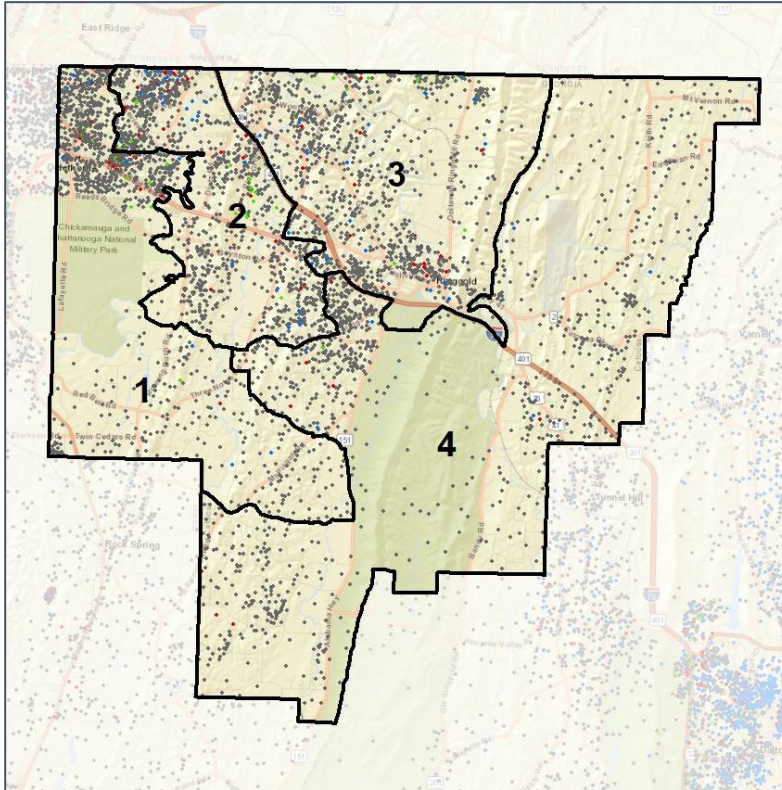


# Catoosa Co. Commission & School Board

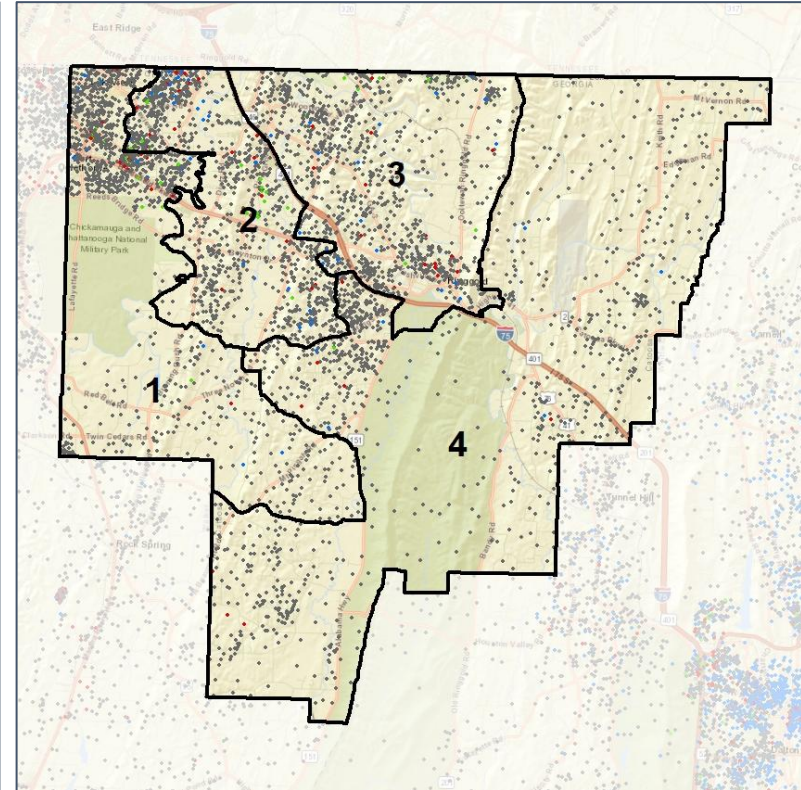
## Population Density by Race



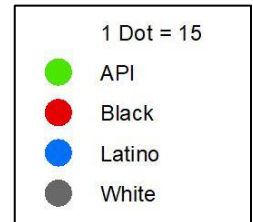
2012 Map



2022 Map\*



	1	2	3	4	1*	2*	3*	4*	County
Population	16,358	17,471	17,346	16,697	17,005	16,824	17,148	16,895	67,872
API	345	420	233	111	358	407	234	110	1,109
% API	2%	2%	1%	1%	2%	2%	1%	1%	2%
Black	581	525	463	239	592	514	462	240	1,808
% Black	4%	3%	3%	1%	3%	3%	3%	1%	3%
Latino	514	724	605	498	540	698	606	497	2,341
% Latino	3%	4%	3%	3%	3%	4%	4%	3%	3%
Other	901	779	876	778	945	735	860	794	3,334
% Other	6%	4%	5%	5%	6%	4%	5%	5%	5%
White	14,017	15,023	15,169	15,071	14,570	14,470	14,986	15,254	59,280
% White	86%	86%	87%	90%	86%	86%	87%	90%	87%

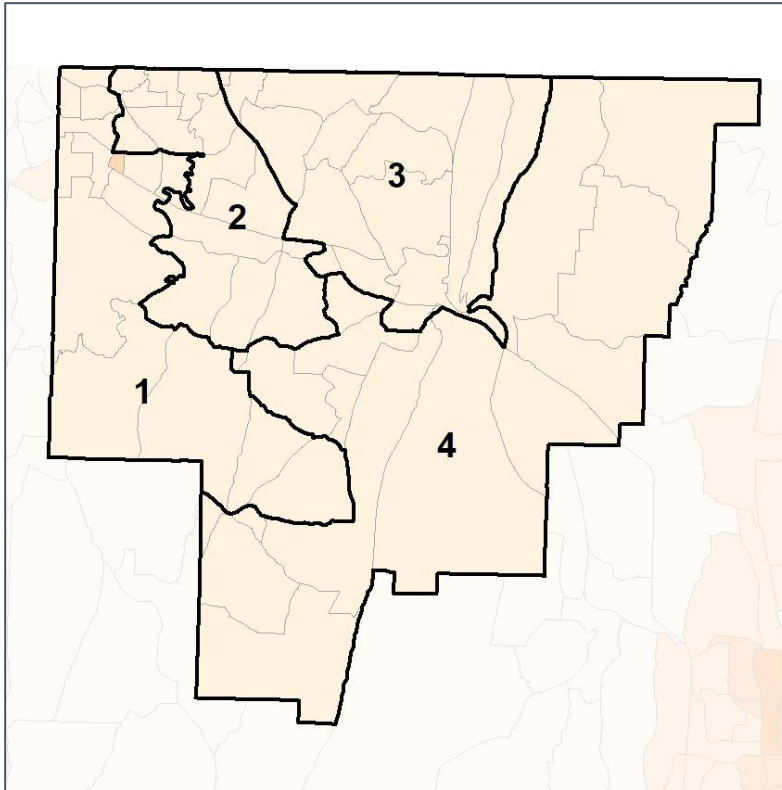


# Catoosa Co. Commission & School Board

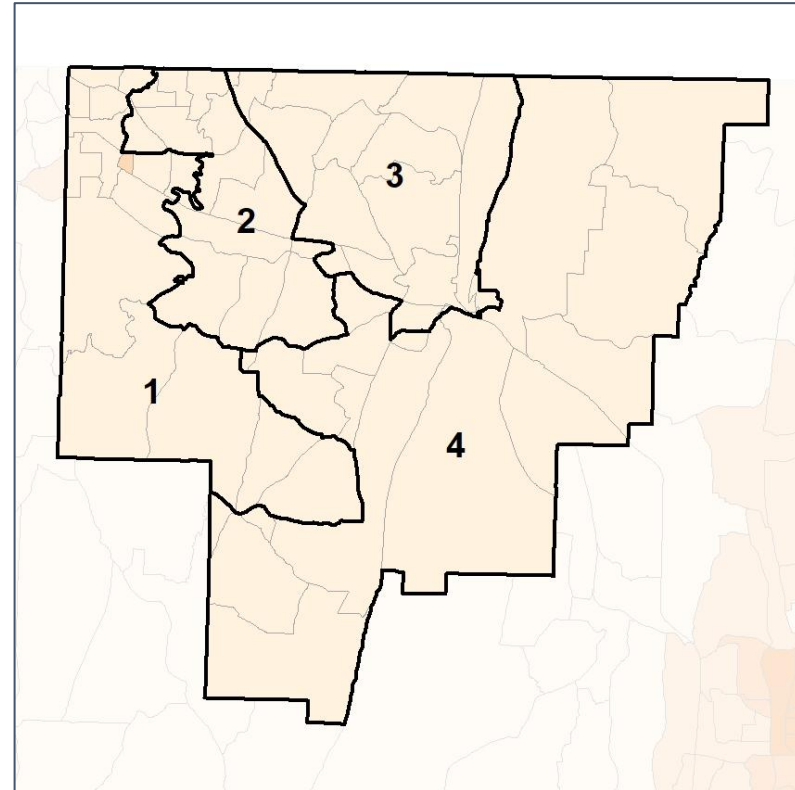
## % People of Color by Census Block Group



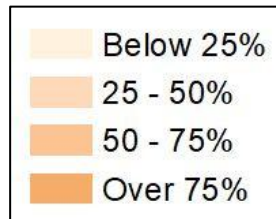
### 2012 Map



### 2022 Map\*



	1	2	3	4	1*	2*	3*	4*	County
Population	16,358	17,471	17,346	16,697	17,005	16,824	17,148	16,895	67,872
API	345	420	233	111	358	407	234	110	1,109
% API	2%	2%	1%	1%	2%	2%	1%	1%	2%
Black	581	525	463	239	592	514	462	240	1,808
% Black	4%	3%	3%	1%	3%	3%	3%	1%	3%
Latino	514	724	605	498	540	698	606	497	2,341
% Latino	3%	4%	3%	3%	3%	4%	4%	3%	3%
Other	901	779	876	778	945	735	860	794	3,334
% Other	6%	4%	5%	5%	6%	4%	5%	5%	5%
White	14,017	15,023	15,169	15,071	14,570	14,470	14,986	15,254	59,280
% White	86%	86%	87%	90%	86%	86%	87%	90%	87%

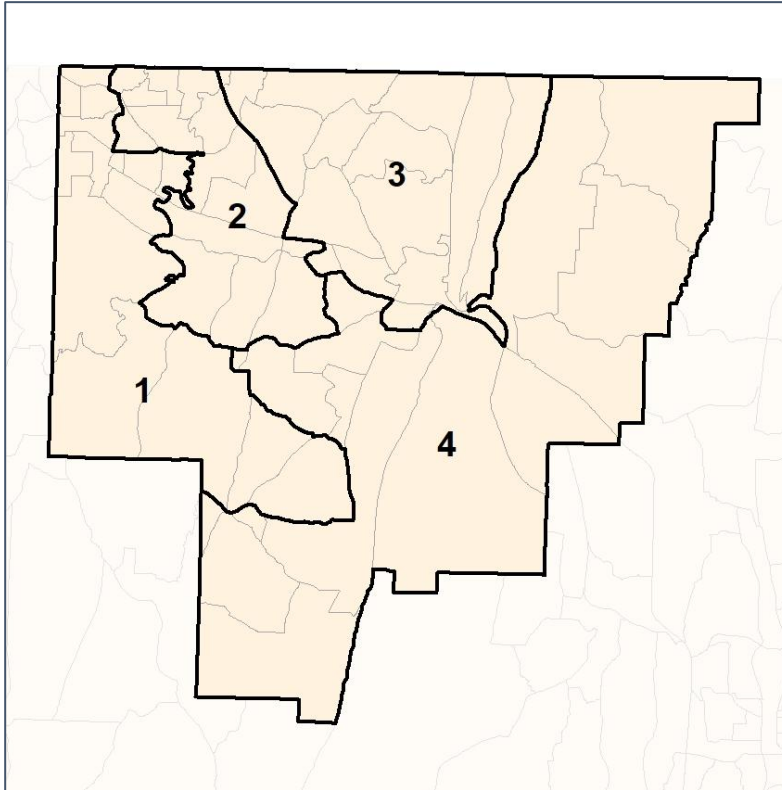


# Catoosa Co. Commission & School Board

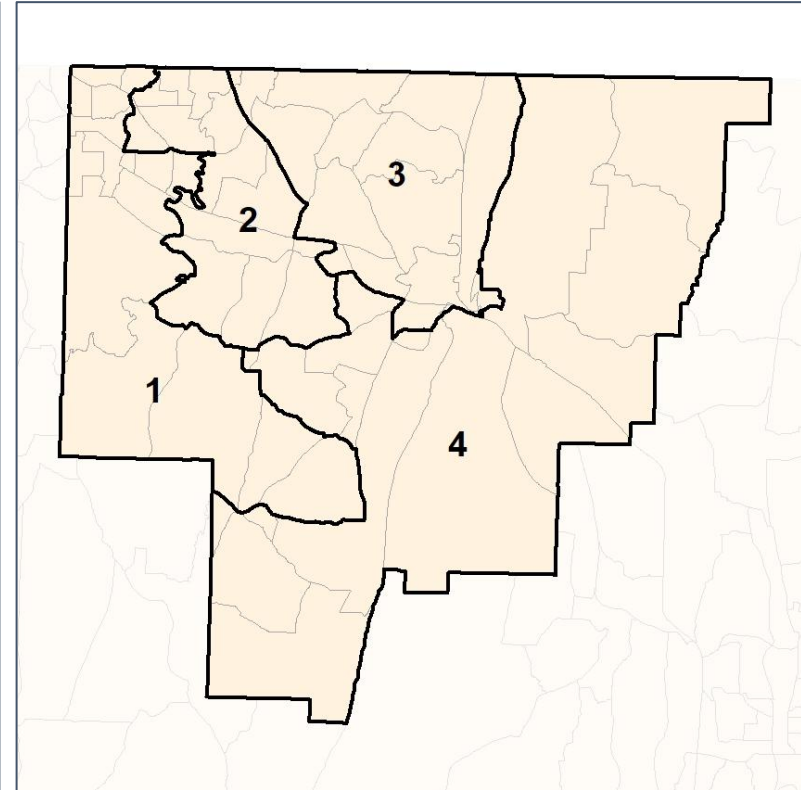
## % API by Census Block Group



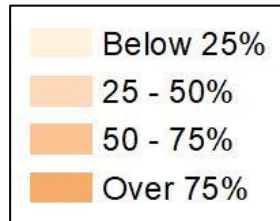
2012 Map



2022 Map\*



	1	2	3	4	1*	2*	3*	4*	County
Population	16,358	17,471	17,346	16,697	17,005	16,824	17,148	16,895	67,872
API	345	420	233	111	358	407	234	110	1,109
% API	2%	2%	1%	1%	2%	2%	1%	1%	2%
Black	581	525	463	239	592	514	462	240	1,808
% Black	4%	3%	3%	1%	3%	3%	3%	1%	3%
Latino	514	724	605	498	540	698	606	497	2,341
% Latino	3%	4%	3%	3%	3%	4%	4%	3%	3%
Other	901	779	876	778	945	735	860	794	3,334
% Other	6%	4%	5%	5%	6%	4%	5%	5%	5%
White	14,017	15,023	15,169	15,071	14,570	14,470	14,986	15,254	59,280
% White	86%	86%	87%	90%	86%	86%	87%	90%	87%

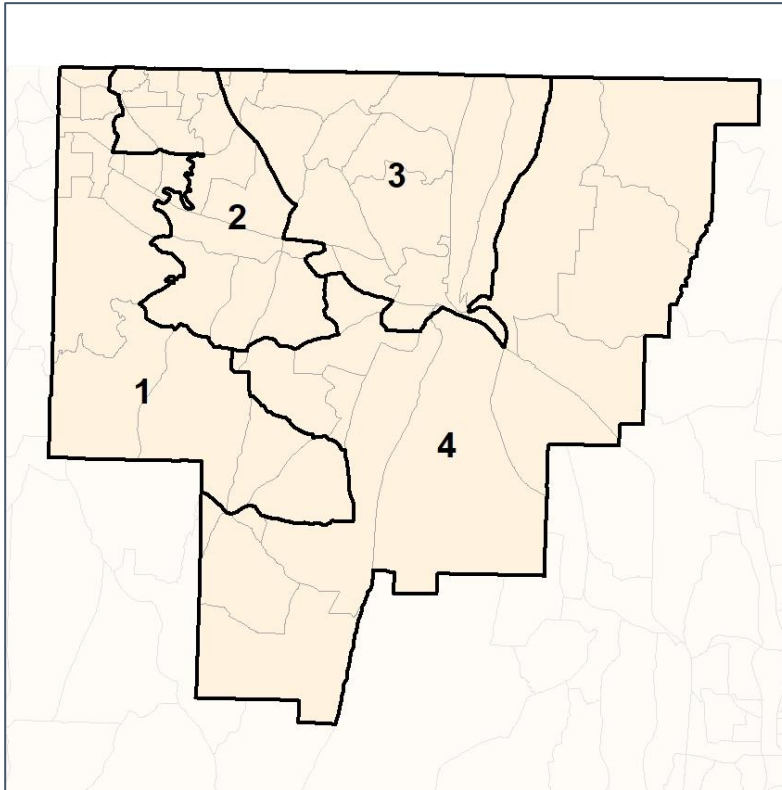


# Catoosa Co. Commission & School Board

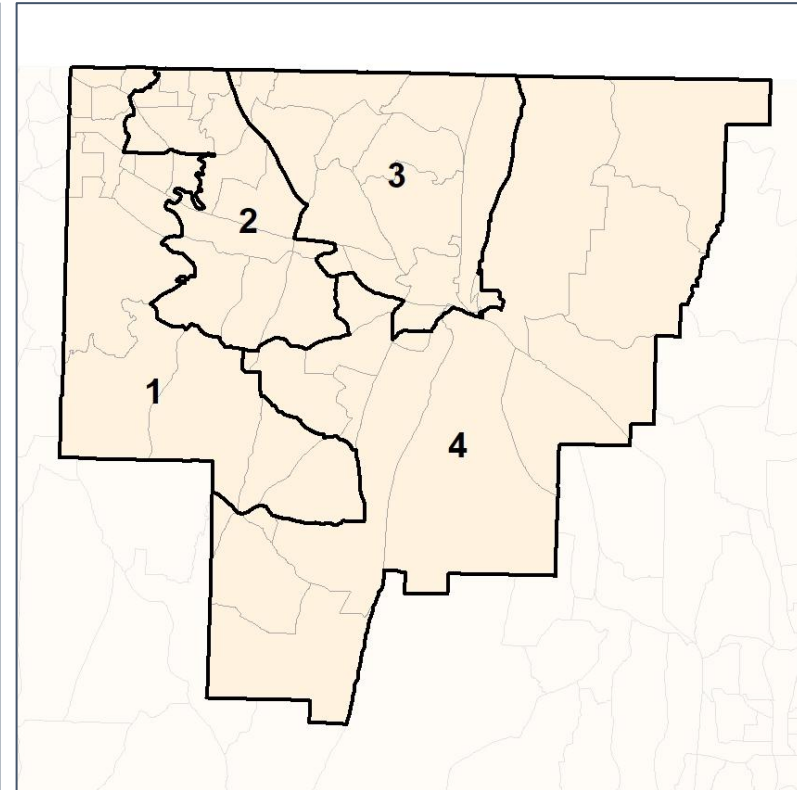
## % Black by Census Block Group



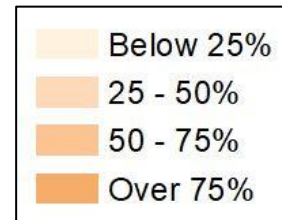
2012 Map



2022 Map\*



	1	2	3	4	1*	2*	3*	4*	County
Population	16,358	17,471	17,346	16,697	17,005	16,824	17,148	16,895	67,872
API	345	420	233	111	358	407	234	110	1,109
% API	2%	2%	1%	1%	2%	2%	1%	1%	2%
Black	581	525	463	239	592	514	462	240	1,808
% Black	4%	3%	3%	1%	3%	3%	3%	1%	3%
Latino	514	724	605	498	540	698	606	497	2,341
% Latino	3%	4%	3%	3%	3%	4%	4%	3%	3%
Other	901	779	876	778	945	735	860	794	3,334
% Other	6%	4%	5%	5%	6%	4%	5%	5%	5%
White	14,017	15,023	15,169	15,071	14,570	14,470	14,986	15,254	59,280
% White	86%	86%	87%	90%	86%	86%	87%	90%	87%

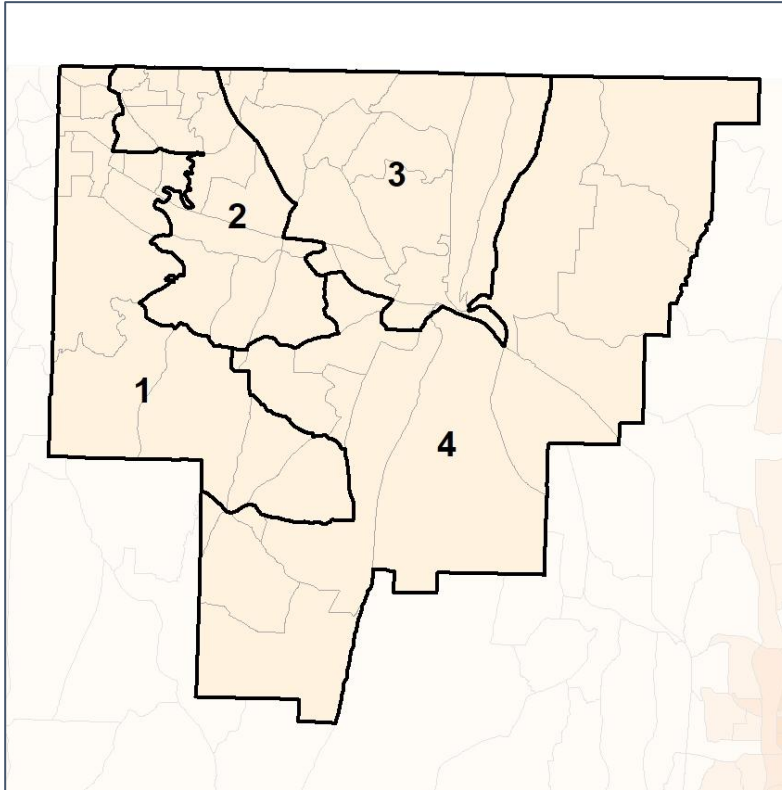


# Catoosa Co. Commission & School Board

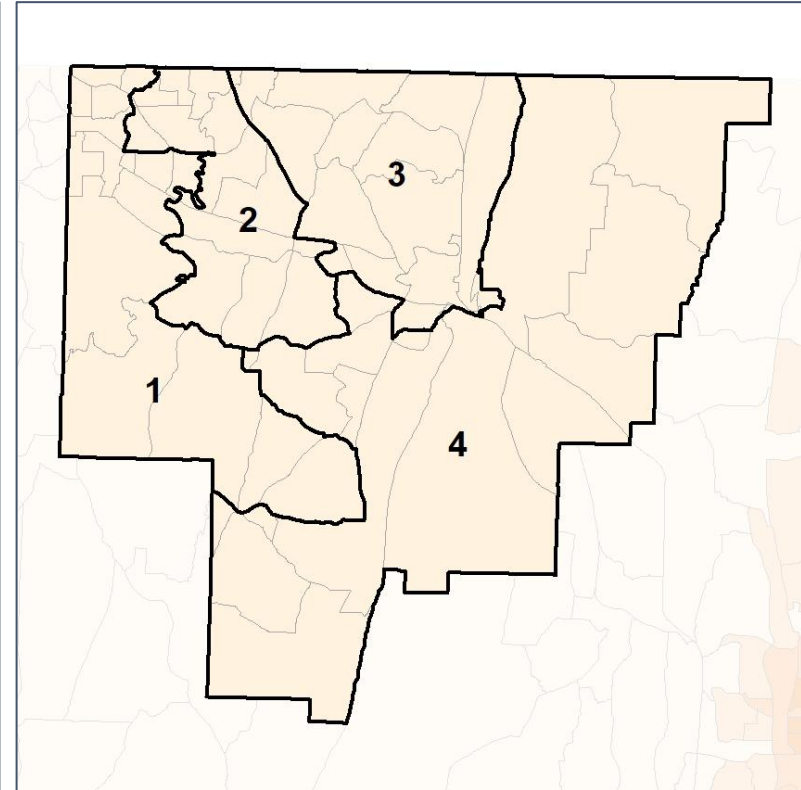
## % Latino by Census Block Group



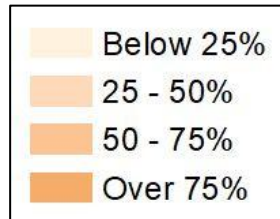
2012 Map



2022 Map\*



	1	2	3	4	1*	2*	3*	4*	County
Population	16,358	17,471	17,346	16,697	17,005	16,824	17,148	16,895	67,872
API	345	420	233	111	358	407	234	110	1,109
% API	2%	2%	1%	1%	2%	2%	1%	1%	2%
Black	581	525	463	239	592	514	462	240	1,808
% Black	4%	3%	3%	1%	3%	3%	3%	1%	3%
Latino	514	724	605	498	540	698	606	497	2,341
% Latino	3%	4%	3%	3%	3%	4%	4%	3%	3%
Other	901	779	876	778	945	735	860	794	3,334
% Other	6%	4%	5%	5%	6%	4%	5%	5%	5%
White	14,017	15,023	15,169	15,071	14,570	14,470	14,986	15,254	59,280
% White	86%	86%	87%	90%	86%	86%	87%	90%	87%



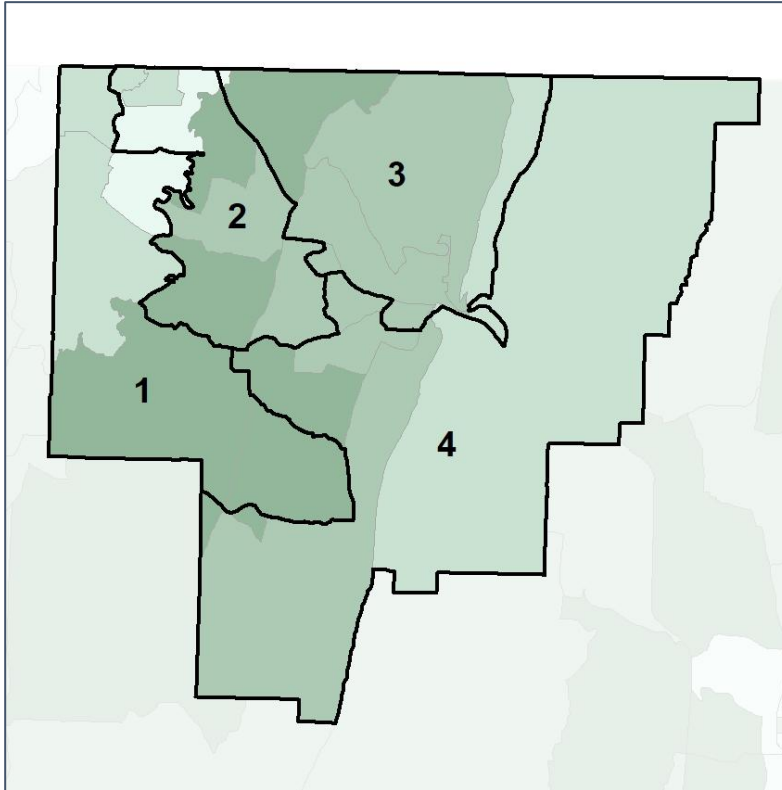


# Catoosa Co. Commission & School Board

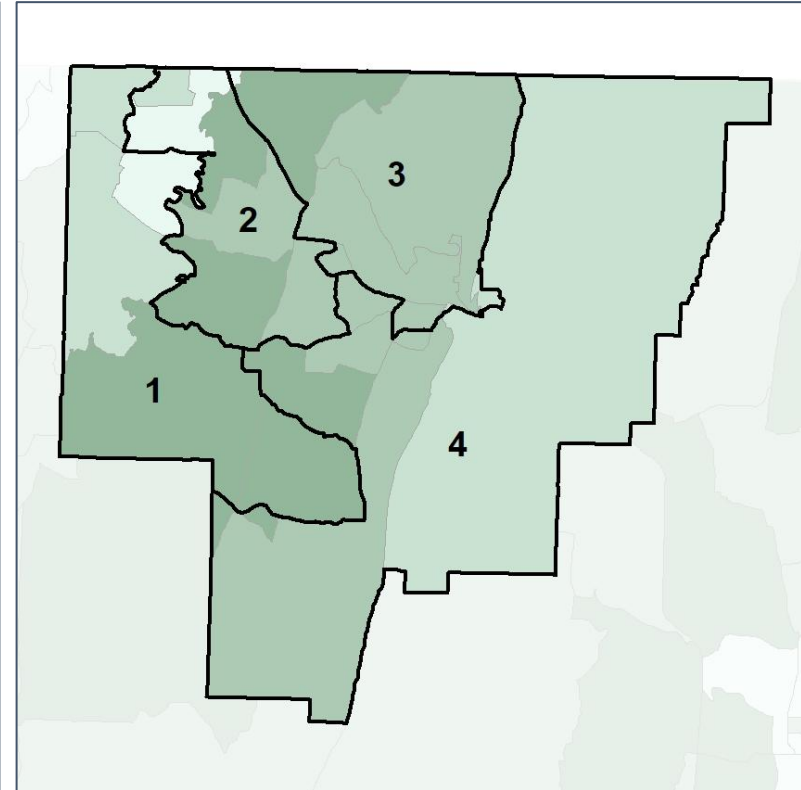
## Median Household Income by Census Tract



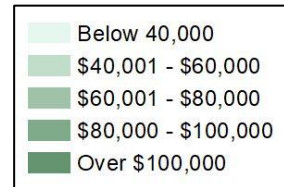
2012 Map



2022 Map\*



	1	2	3	4	1*	2*	3*	4*	County
Population	16,358	17,471	17,346	16,697	17,005	16,824	17,148	16,895	67,872
% API	2%	2%	1%	1%	2%	2%	1%	1%	2%
% Black	4%	3%	3%	1%	3%	3%	3%	1%	3%
% Latino	3%	4%	3%	3%	3%	4%	4%	3%	3%
% Other	6%	4%	5%	5%	6%	4%	5%	5%	5%
% White	86%	86%	87%	90%	86%	86%	87%	90%	87%
Median Income	\$58,000	\$67,000	\$71,000	\$57,000	\$59,000	\$66,000	\$71,000	\$57,000	\$59,000
% Renter	37%	19%	25%	19%	36%	19%	25%	19%	26%
% Youth	19%	21%	20%	21%	19%	22%	20%	21%	20%

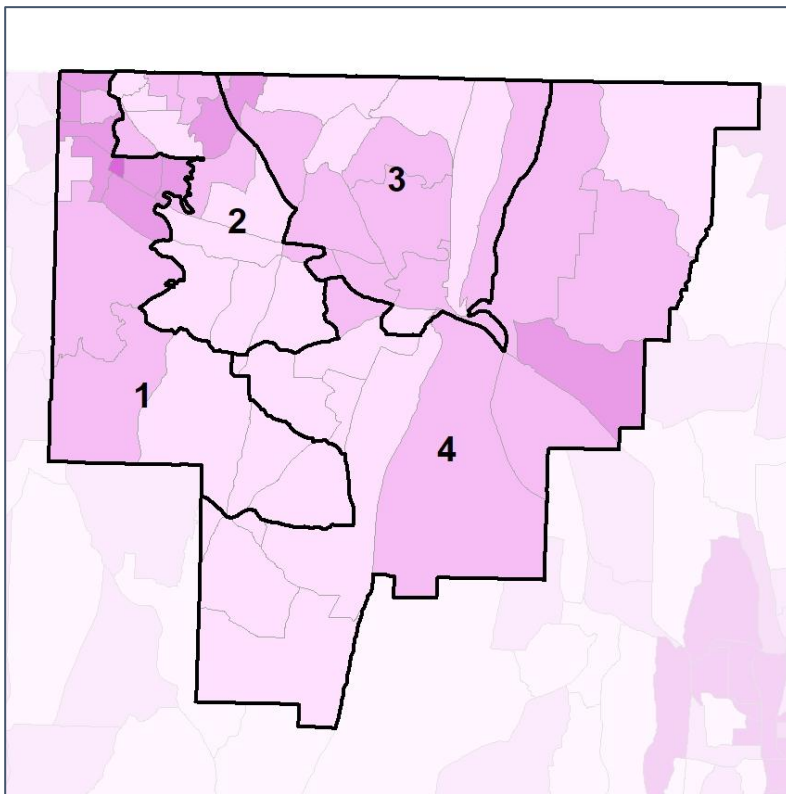


# Catoosa Co. Commission & School Board

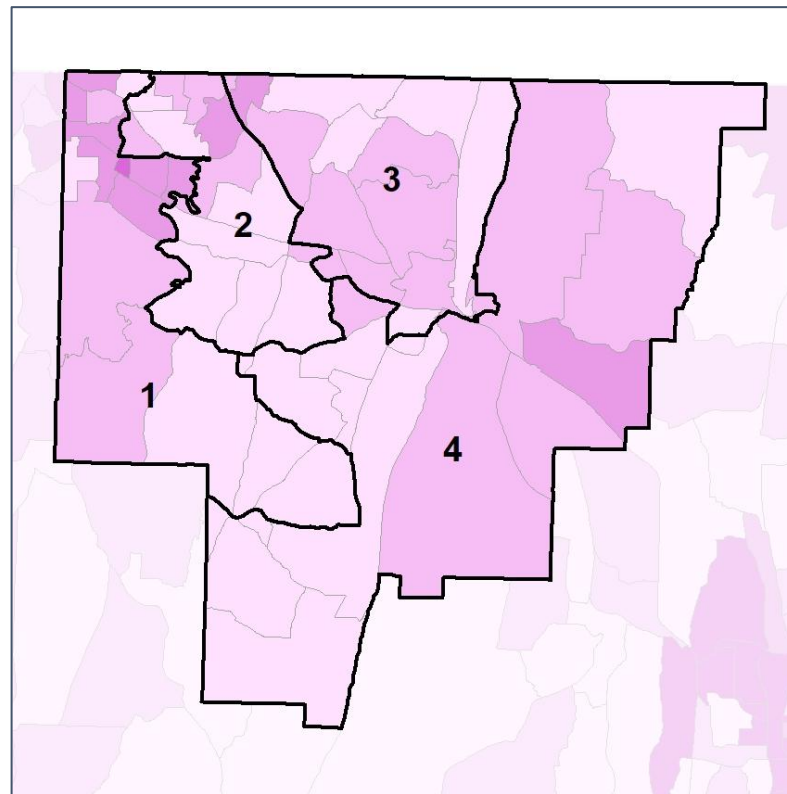
## % Renter by Census Block Group



### 2012 Map



### 2022 Map\*



	1	2	3	4	1*	2*	3*	4*	County
Population	16,358	17,471	17,346	16,697	17,005	16,824	17,148	16,895	67,872
% API	2%	2%	1%	1%	2%	2%	1%	1%	2%
% Black	4%	3%	3%	1%	3%	3%	3%	1%	3%
% Latino	3%	4%	3%	3%	3%	4%	4%	3%	3%
% Other	6%	4%	5%	5%	6%	4%	5%	5%	5%
% White	86%	86%	87%	90%	86%	86%	87%	90%	87%
Median Income	\$58,000	\$67,000	\$71,000	\$57,000	\$59,000	\$66,000	\$71,000	\$57,000	\$59,000
<b>% Renter</b>	<b>37%</b>	<b>19%</b>	<b>25%</b>	<b>19%</b>	<b>36%</b>	<b>19%</b>	<b>25%</b>	<b>19%</b>	<b>26%</b>
% Youth	19%	21%	20%	21%	19%	22%	20%	21%	20%

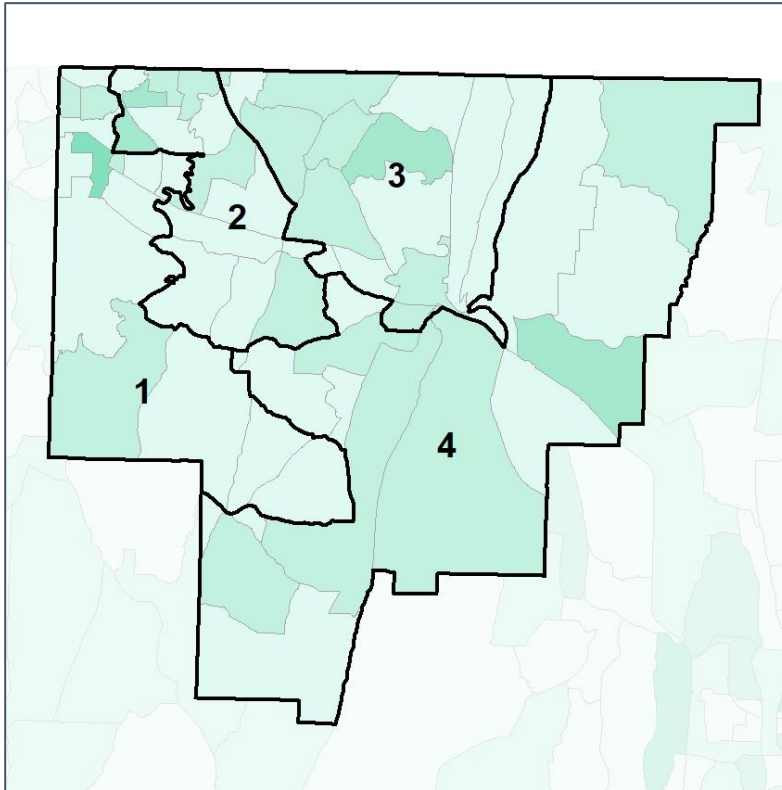


# Catoosa Co. Commission & School Board

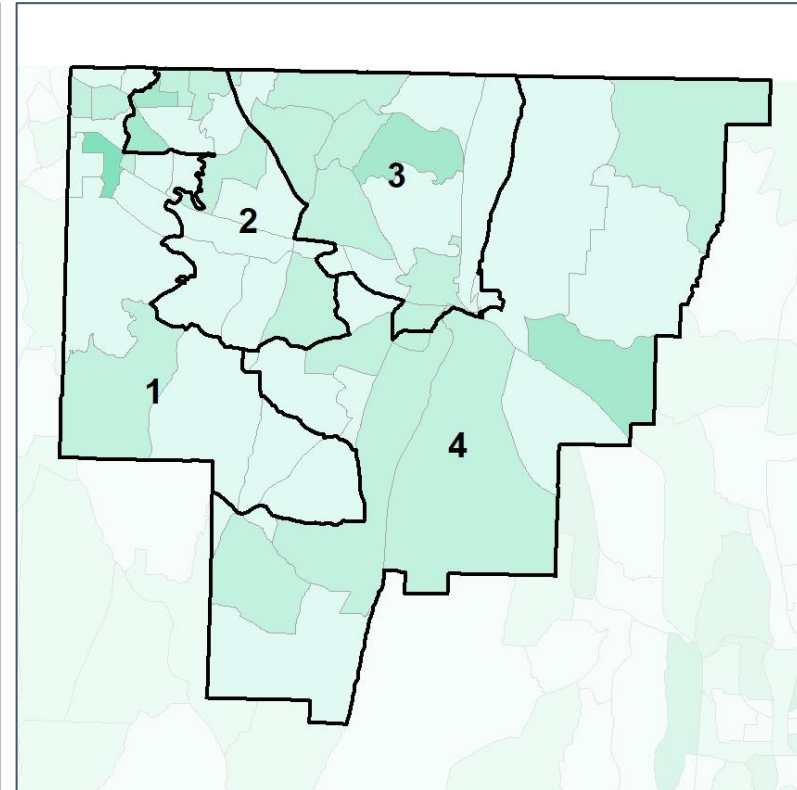
## % Youth (18-34) by Census Block Group



2012 Map



2022 Map\*



	1	2	3	4	1*	2*	3*	4*	County
Population	16,358	17,471	17,346	16,697	17,005	16,824	17,148	16,895	67,872
% API	2%	2%	1%	1%	2%	2%	1%	1%	2%
% Black	4%	3%	3%	1%	3%	3%	3%	1%	3%
% Latino	3%	4%	3%	3%	3%	4%	4%	3%	3%
% Other	6%	4%	5%	5%	6%	4%	5%	5%	5%
% White	86%	86%	87%	90%	86%	86%	87%	90%	87%
Median Income	\$58,000	\$67,000	\$71,000	\$57,000	\$59,000	\$66,000	\$71,000	\$57,000	\$59,000
% Renter	37%	19%	25%	19%	36%	19%	25%	19%	26%
% Youth	19%	21%	20%	21%	19%	22%	20%	21%	20%

