



Demographic Overview

Racial Breakdown in Carroll County

Carroll County	2010	2020	% Change
Total Population	110,527	119,148	8%
AAPI	855	1,125	32%
Black	19,862	21,781	10%
Latino	6,800	9,586	41%
Other/Mixed Race	2,479	5,931	139%
POC	29,996	38,423	28%
White	80,531	80,725	0%

*Note: The use of "Other" in these statistics combines those who identify as Native American, Mixed Race, and "Other" race





Population Gain

Change in Population in Georgia by County



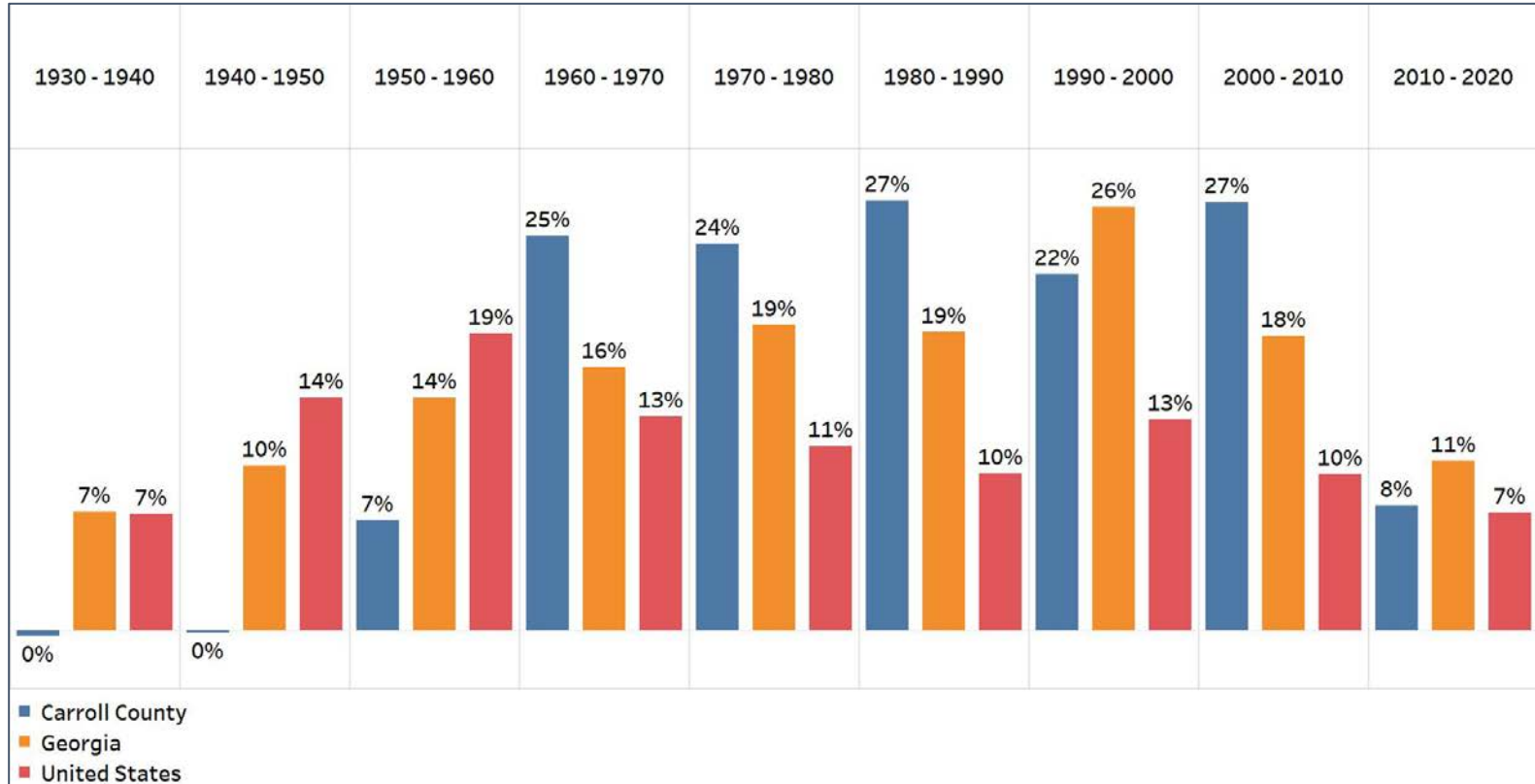
- Georgia is experiencing rapid population growth in the Atlanta, Augusta, and Savannah regions of the state





Population Gain

Change in Population by Decade

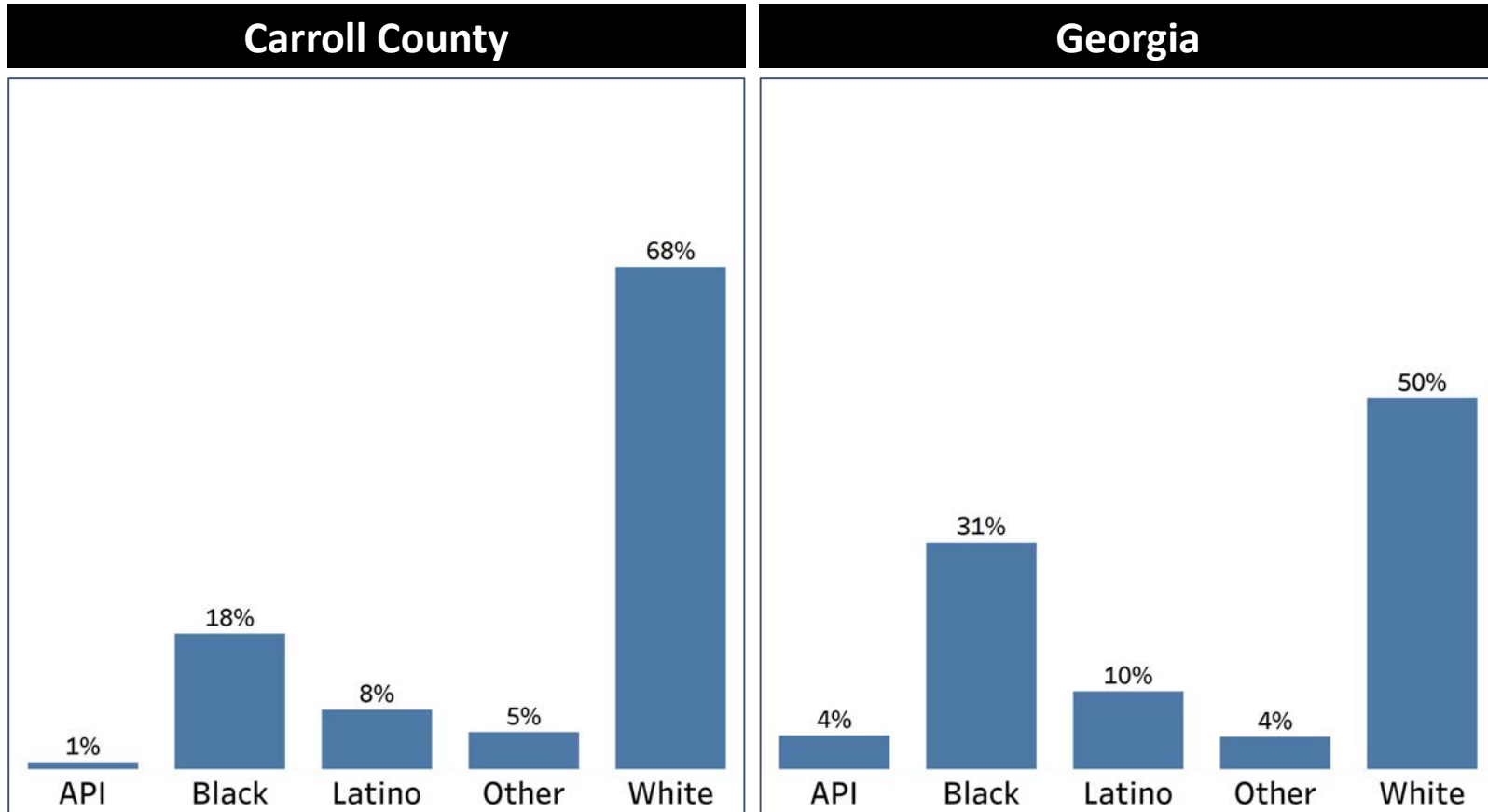


- Carroll County has seen population growth since 1950
- This growth had consistently been above Georgia's growth rate until this past decade



Demographics

Comparison between Carroll County and Georgia

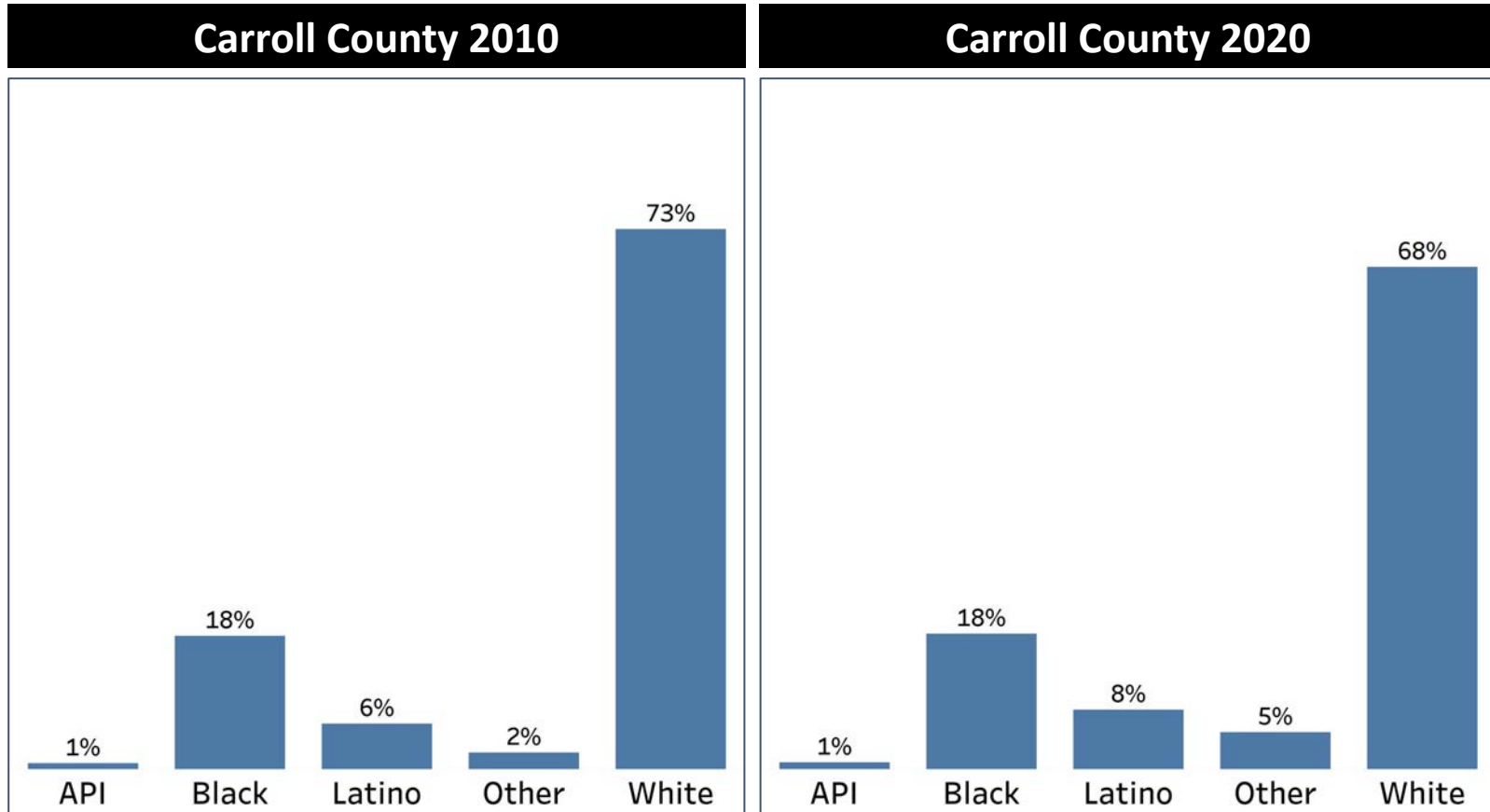


- Over $\frac{2}{3}$ of Carroll County's population is White, much higher than Georgia
- Every community of color has lower representation compared to Georgia, except for the Other population which is slightly higher



Demographics

2010 vs 2020 Demographics in Carroll County



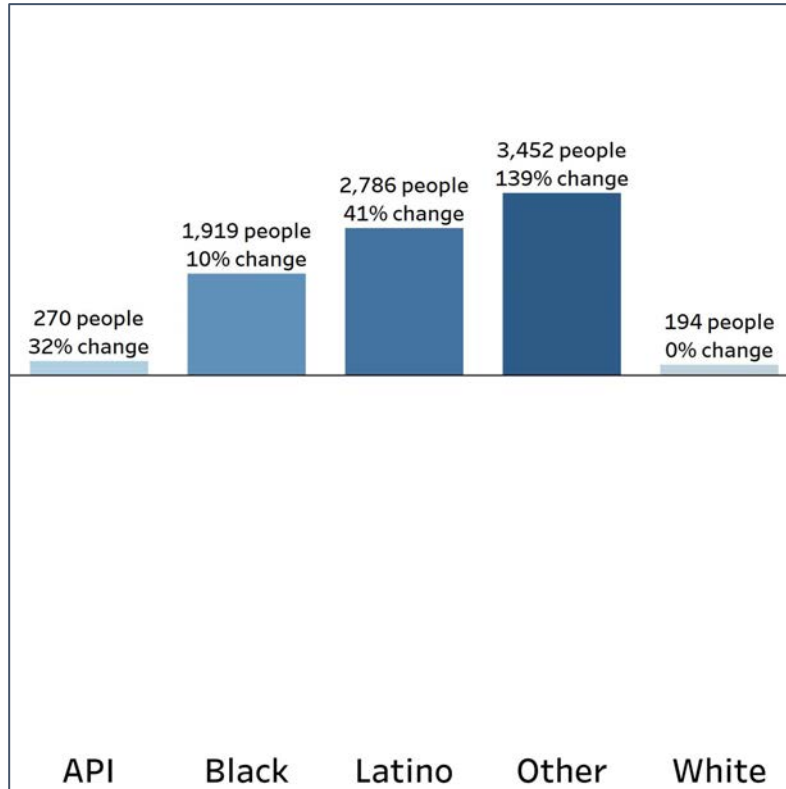
- Carroll County's share of White population has declined while both the Latino and Other populations have increased their representation in the county

Demographics

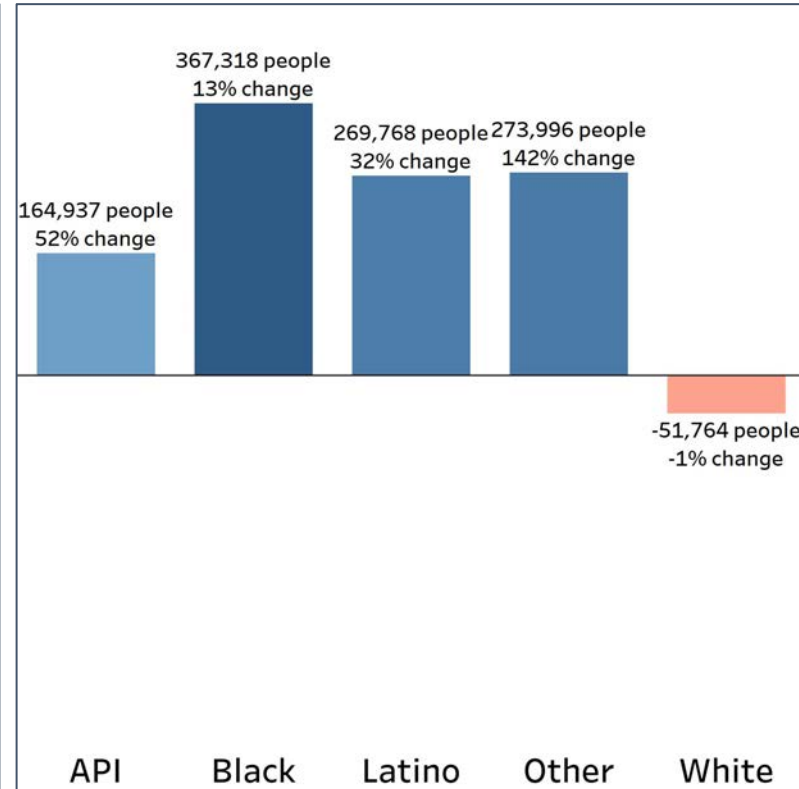
Population Change by Race (2020 - 2010)



Carroll County



Georgia



- Carroll County has seen growth in all demographic groups, and they are all growing at similar or higher rates than Georgia's overall growth rate
- The smallest increase was with the White population, but it is growth instead of decline that is being seen in Georgia overall

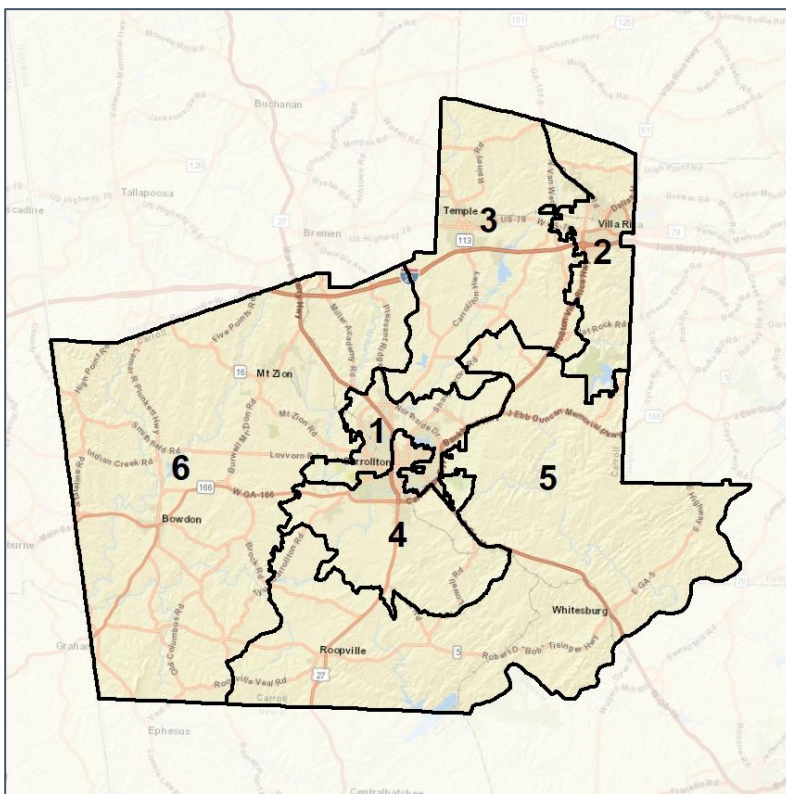


Carroll County Commission

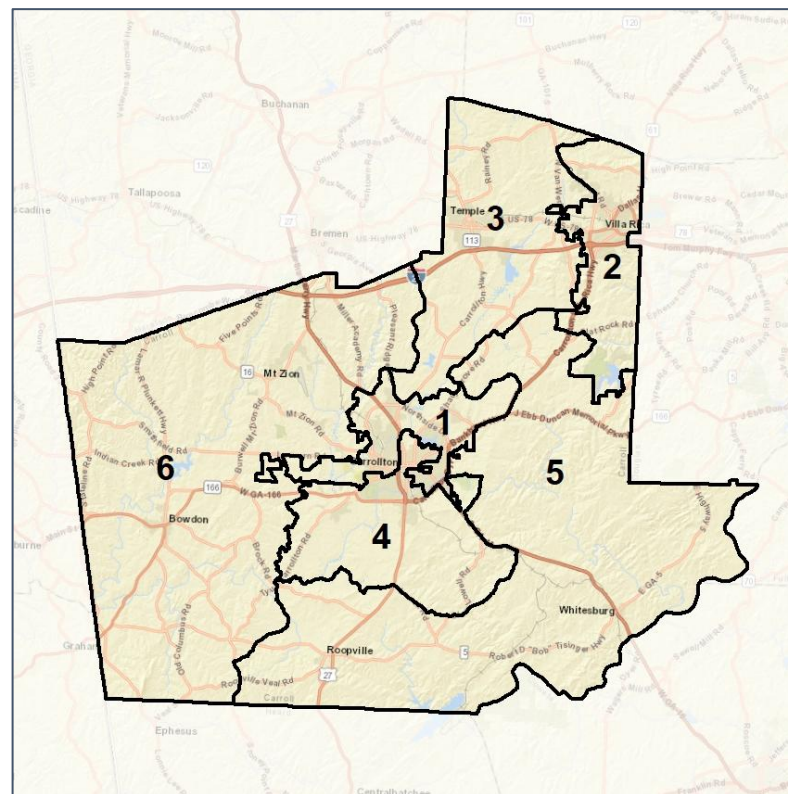
Context



2012 Map



2022 Map*



	1	2	3	4	5	6	1*	2*	3*	4*	5*	6*	County
Population	19,368	20,450	20,494	19,429	19,220	20,187	19,824	20,306	19,733	19,842	19,755	19,688	119,148
API	1%	1%	1%	1%	0%	1%	1%	1%	1%	1%	0%	1%	1%
Black	36%	24%	12%	19%	8%	12%	36%	24%	12%	18%	9%	11%	18%
Latino	17%	6%	5%	9%	5%	6%	17%	6%	5%	9%	6%	5%	8%
Other	5%	6%	6%	4%	5%	5%	4%	6%	6%	4%	5%	5%	5%
White	42%	63%	76%	67%	81%	77%	42%	63%	76%	68%	80%	79%	68%
Population Gain	750	2,025	1,884	1,209	903	1,850	456	-144	-761	413	535	-499	*
Population % Gain	4%	11%	10%	7%	5%	10%	2%	-1%	-4%	2%	3%	-2%	*
Net POC Gain	1,202	1,794	1,590	1,450	1,085	1,306	342	-24	-158	-94	304	-370	*
Net POC % Gain	12%	31%	49%	29%	42%	40%	3%	0%	-3%	-1%	8%	-8%	*

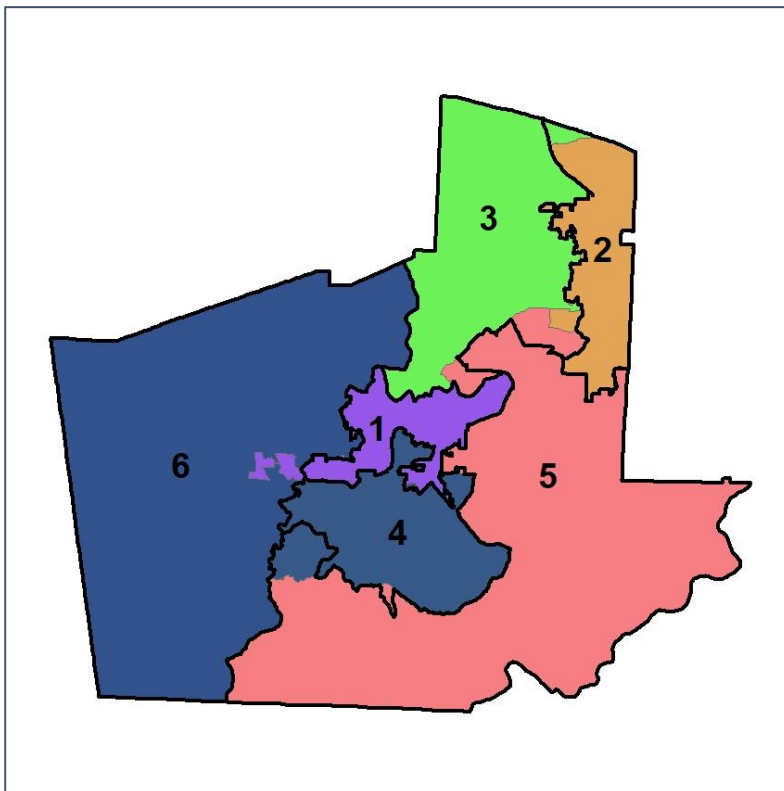


Carroll County Commission

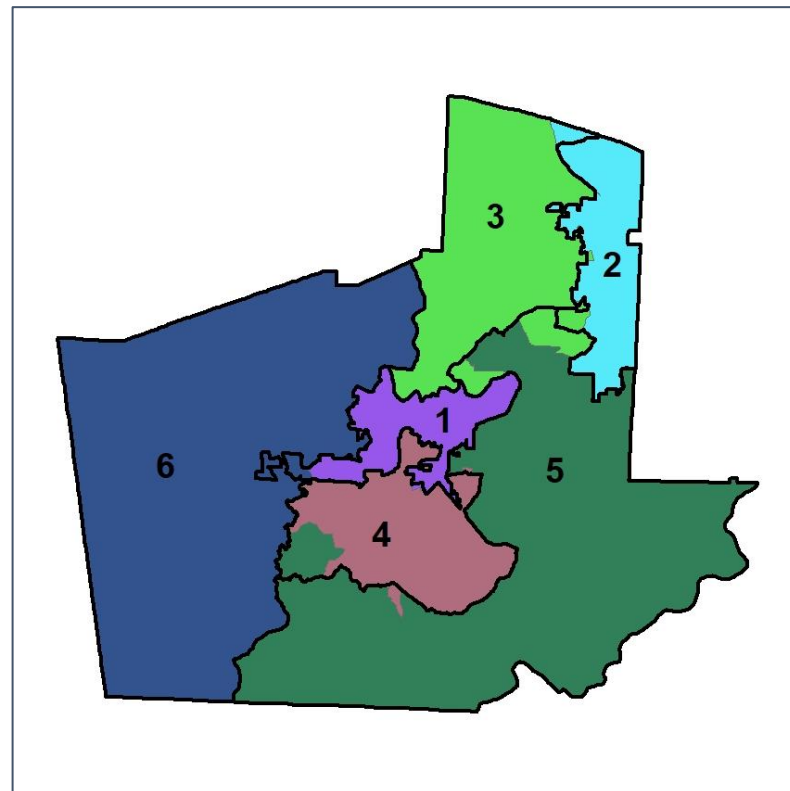
Changes in Redistricting



2012 Map (2022 in Colors)



2022 Map* (2012 in Colors)



	1	2	3	4	5	6	1*	2*	3*	4*	5*	6*	County
Population	19,368	20,450	20,494	19,429	19,220	20,187	19,824	20,306	19,733	19,842	19,755	19,688	119,148
API	1%	1%	1%	1%	0%	1%	1%	1%	1%	1%	0%	1%	1%
Black	36%	24%	12%	19%	8%	12%	36%	24%	12%	18%	9%	11%	18%
Latino	17%	6%	5%	9%	5%	6%	17%	6%	5%	9%	6%	5%	8%
Other	5%	6%	6%	4%	5%	5%	4%	6%	6%	4%	5%	5%	5%
White	42%	63%	76%	67%	81%	77%	42%	63%	76%	68%	80%	79%	68%
Population Gain	750	2,025	1,884	1,209	903	1,850	456	-144	-761	413	535	-499	*
Population % Gain	4%	11%	10%	7%	5%	10%	2%	-1%	-4%	2%	3%	-2%	*
Net POC Gain	1,202	1,794	1,590	1,450	1,085	1,306	342	-24	-158	-94	304	-370	*
Net POC % Gain	12%	31%	49%	29%	42%	40%	3%	0%	-3%	-1%	8%	-8%	*

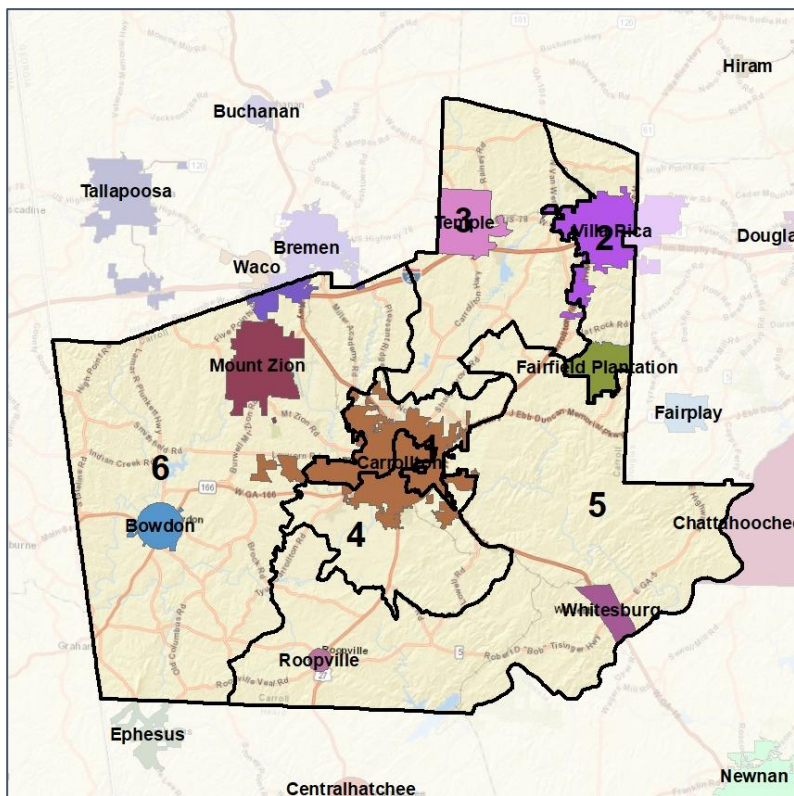


Carroll County Commission

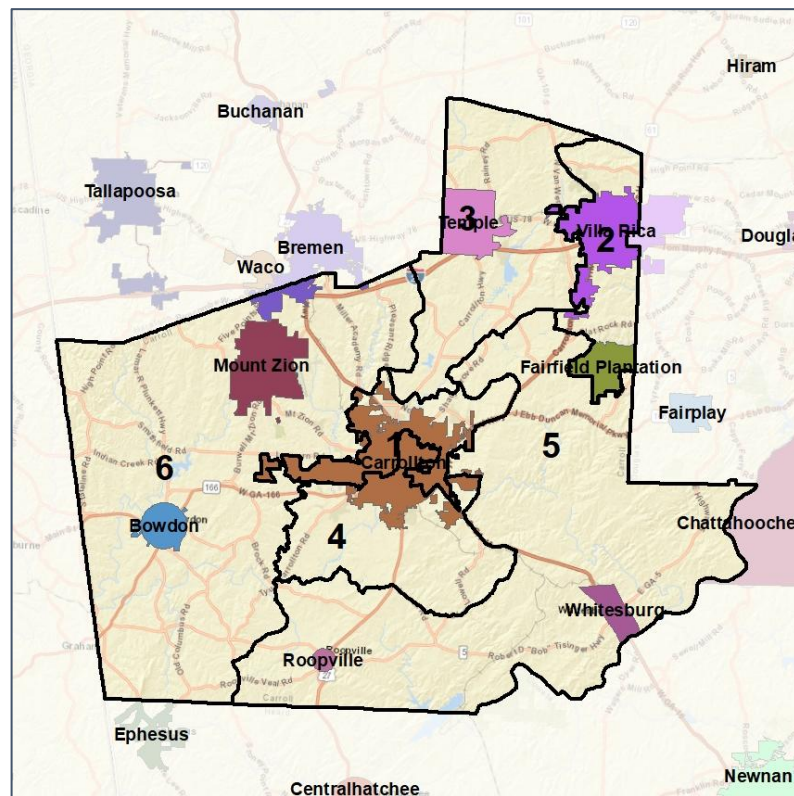
Cities and Places



2012 Map



2022 Map*



	1	2	3	4	5	6	1*	2*	3*	4*	5*	6*	County
Population	19,368	20,450	20,494	19,429	19,220	20,187	19,824	20,306	19,733	19,842	19,755	19,688	119,148
API	1%	1%	1%	1%	0%	1%	1%	1%	1%	1%	0%	1%	1%
Black	36%	24%	12%	19%	8%	12%	36%	24%	12%	18%	9%	11%	18%
Latino	17%	6%	5%	9%	5%	6%	17%	6%	5%	9%	6%	5%	8%
Other	5%	6%	6%	4%	5%	5%	4%	6%	6%	4%	5%	5%	5%
White	42%	63%	76%	67%	81%	77%	42%	63%	76%	68%	80%	79%	68%
Population Gain	750	2,025	1,884	1,209	903	1,850	456	-144	-761	413	535	-499	*
Population % Gain	4%	11%	10%	7%	5%	10%	2%	-1%	-4%	2%	3%	-2%	*
Net POC Gain	1,202	1,794	1,590	1,450	1,085	1,306	342	-24	-158	-94	304	-370	*
Net POC % Gain	12%	31%	49%	29%	42%	40%	3%	0%	-3%	-1%	8%	-8%	*



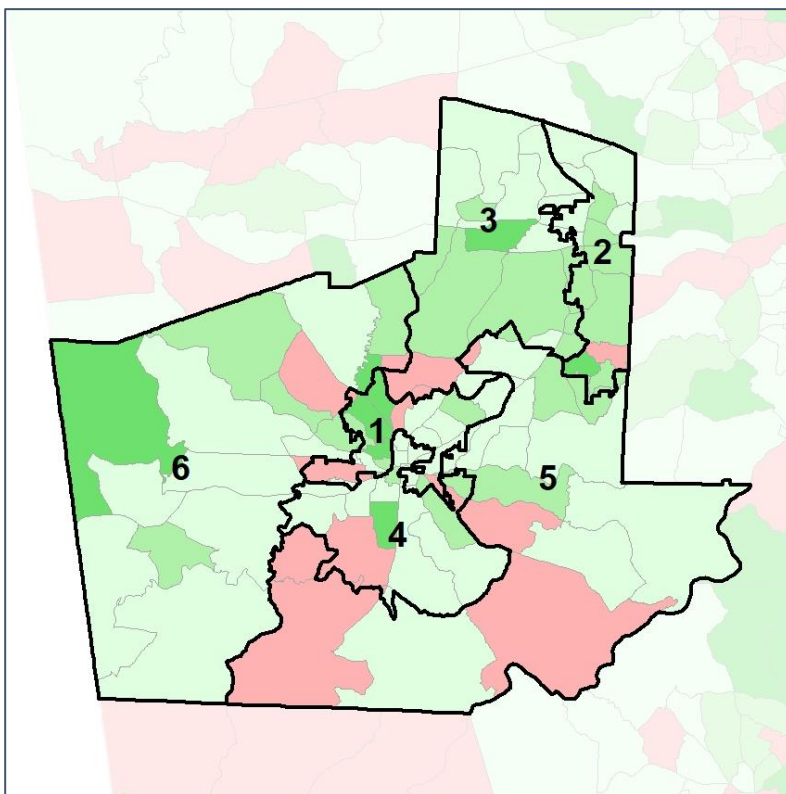
Source:
2020 Decennial Census
2020 ACS 5-Year Dataset

Carroll County Commission

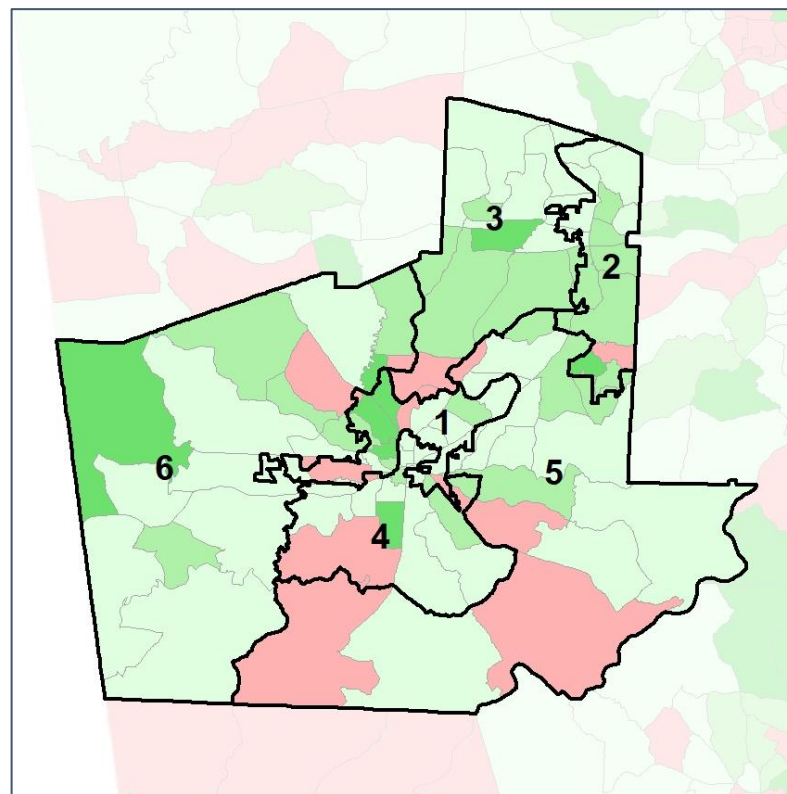
Net Gain in Population (2010 - 2020) by Census Block Group



2012 Map



2022 Map*



	1	2	3	4	5	6	1*	2*	3*	4*	5*	6*	County
Population	19,368	20,450	20,494	19,429	19,220	20,187	19,824	20,306	19,733	19,842	19,755	19,688	119,148
API	1%	1%	1%	1%	0%	1%	1%	1%	1%	1%	0%	1%	1%
Black	36%	24%	12%	19%	8%	12%	36%	24%	12%	18%	9%	11%	18%
Latino	17%	6%	5%	9%	5%	6%	17%	6%	5%	9%	6%	5%	8%
Other	5%	6%	6%	4%	5%	5%	4%	6%	6%	4%	5%	5%	5%
White	42%	63%	76%	67%	81%	77%	42%	63%	76%	68%	80%	79%	68%
Population Gain	750	2,025	1,884	1,209	903	1,850	456	-144	-761	413	535	-499	*
Population % Gain	4%	11%	10%	7%	5%	10%	2%	-1%	-4%	2%	3%	-2%	*
Net POC Gain	1,202	1,794	1,590	1,450	1,085	1,306	342	-24	-158	-94	304	-370	*
Net POC % Gain	12%	31%	49%	29%	42%	40%	3%	0%	-3%	-1%	8%	-8%	*

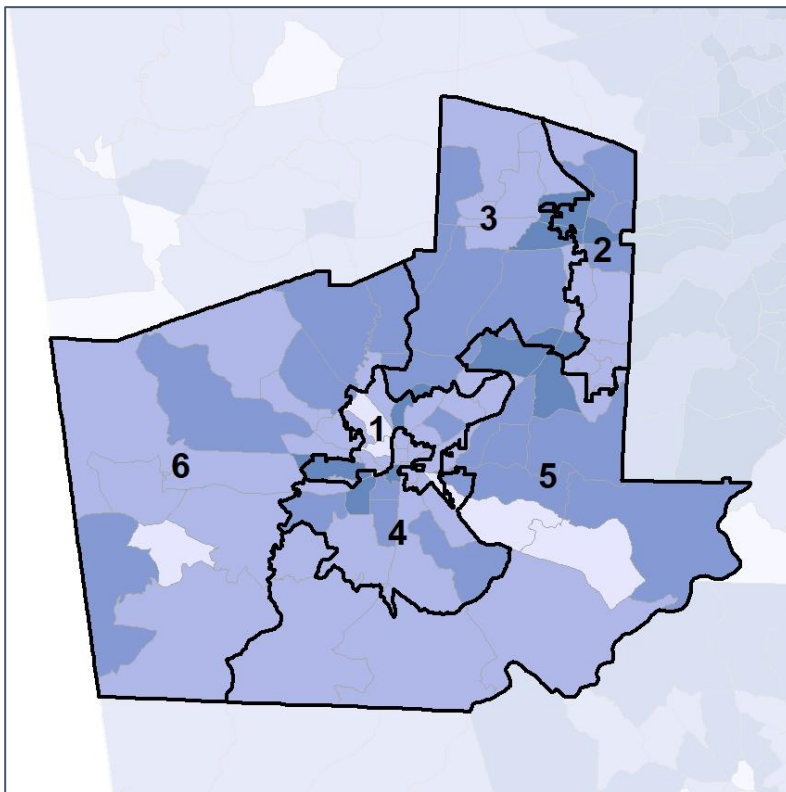


Carroll County Commission

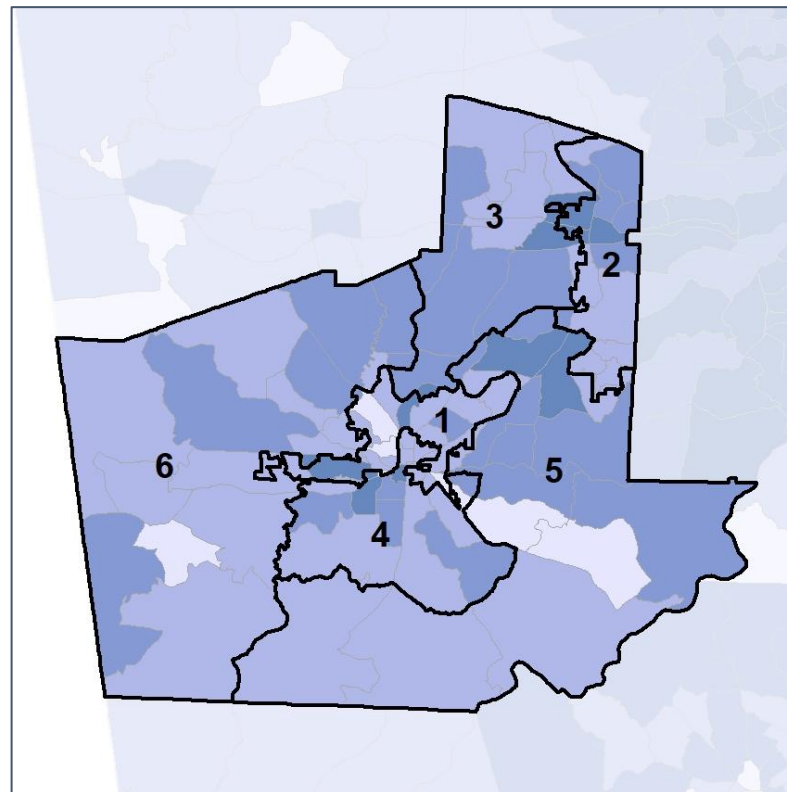
Net Gain in % POC (2020 - 2010) by Census Block Group



2012 Map



2022 Map*



	1	2	3	4	5	6	1*	2*	3*	4*	5*	6*	County
Population	19,368	20,450	20,494	19,429	19,220	20,187	19,824	20,306	19,733	19,842	19,755	19,688	119,148
API	1%	1%	1%	1%	0%	1%	1%	1%	1%	1%	0%	1%	1%
Black	36%	24%	12%	19%	8%	12%	36%	24%	12%	18%	9%	11%	18%
Latino	17%	6%	5%	9%	5%	6%	17%	6%	5%	9%	6%	5%	8%
Other	5%	6%	6%	4%	5%	5%	4%	6%	6%	4%	5%	5%	5%
White	42%	63%	76%	67%	81%	77%	42%	63%	76%	68%	80%	79%	68%
Population Gain	750	2,025	1,884	1,209	903	1,850	456	-144	-761	413	535	-499	*
Population % Gain	4%	11%	10%	7%	5%	10%	2%	-1%	-4%	2%	3%	-2%	*
Net POC Gain	1,202	1,794	1,590	1,450	1,085	1,306	342	-24	-158	-94	304	-370	*
Net POC % Gain	12%	31%	49%	29%	42%	40%	3%	0%	-3%	-1%	8%	-8%	*

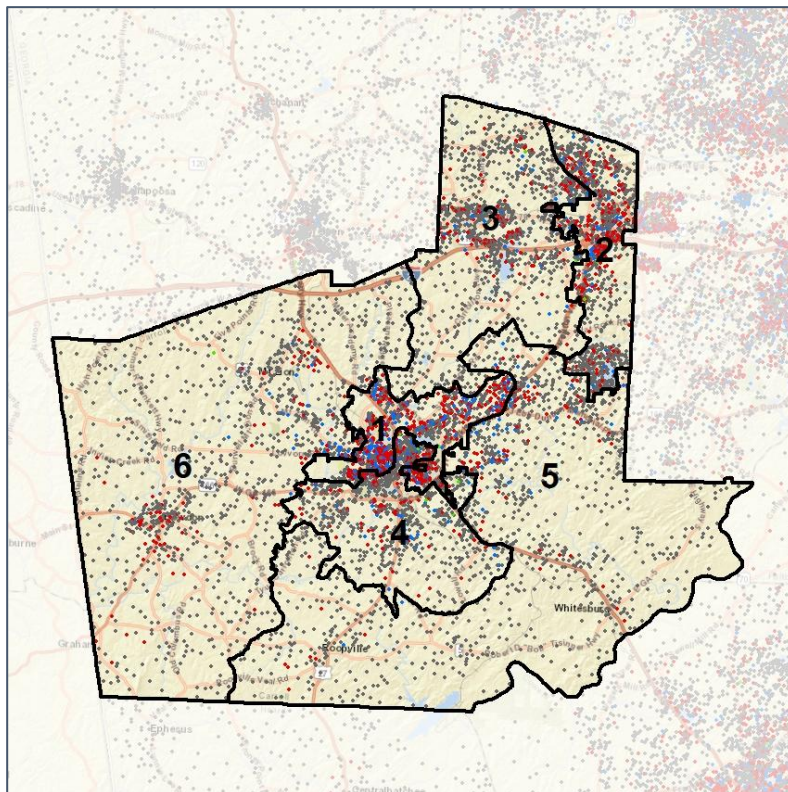


Carroll County Commission

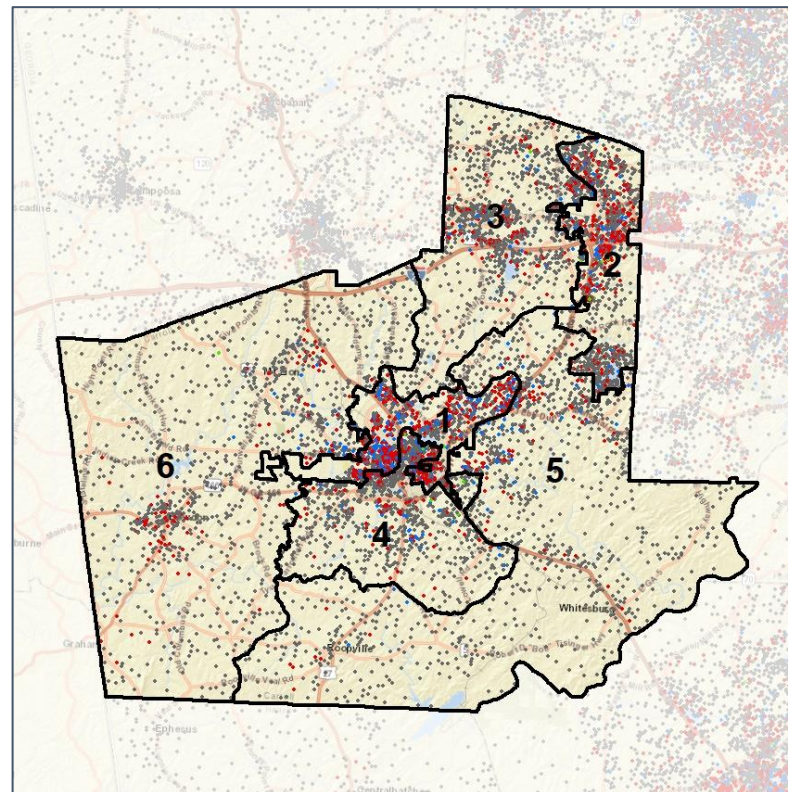
Population Density by Race



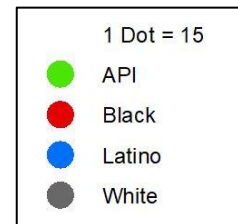
2012 Map



2022 Map*



	1	2	3	4	5	6	1*	2*	3*	4*	5*	6*	County
Population	19,368	20,450	20,494	19,429	19,220	20,187	19,824	20,306	19,733	19,842	19,755	19,688	119,148
API	227	234	190	278	82	114	221	232	185	290	85	112	1,125
% API	1%	1%	1%	1%	0%	1%	1%	1%	1%	1%	0%	1%	1%
Black	6,876	4,940	2,382	3,634	1,607	2,342	7,105	4,922	2,343	3,582	1,718	2,111	21,781
% Black	36%	24%	12%	19%	8%	12%	36%	24%	12%	18%	9%	11%	18%
Latino	3,256	1,274	1,113	1,763	1,042	1,138	3,371	1,272	1,066	1,695	1,169	1,013	9,586
% Latino	17%	6%	5%	9%	5%	6%	17%	6%	5%	9%	6%	5%	8%
Other	886	1,140	1,183	831	913	978	890	1,138	1,116	845	976	966	5,931
% Other	5%	6%	6%	4%	5%	5%	4%	6%	6%	4%	5%	5%	5%
White	8,123	12,862	15,626	12,923	15,576	15,615	8,237	12,742	15,023	13,430	15,807	15,486	80,725
% White	42%	63%	76%	67%	81%	77%	42%	63%	76%	68%	80%	79%	68%



Source:
2020 Decennial Census
2020 ACS 5-Year Dataset

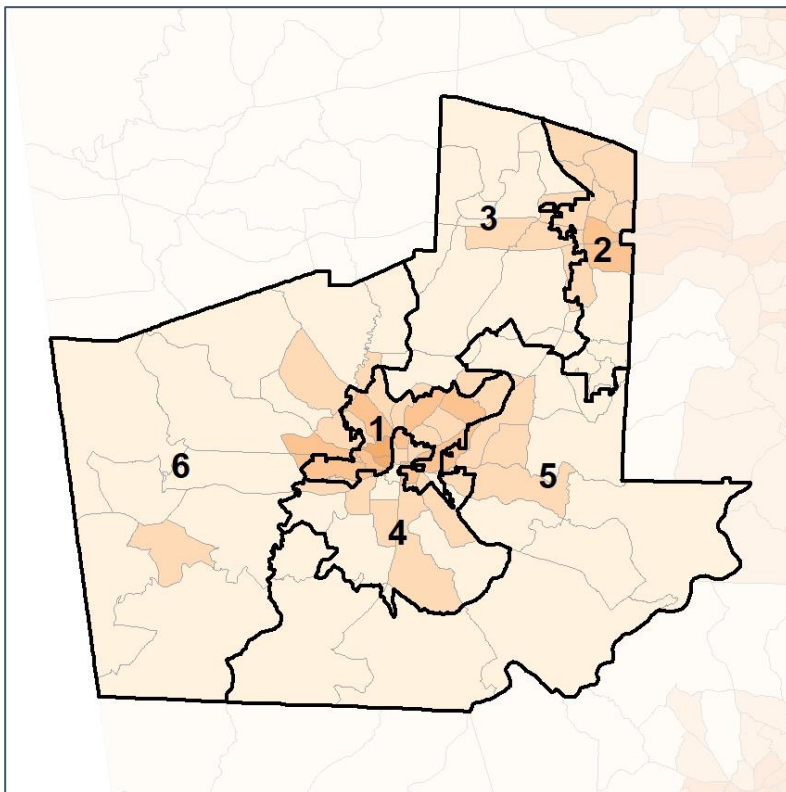


Carroll County Commission

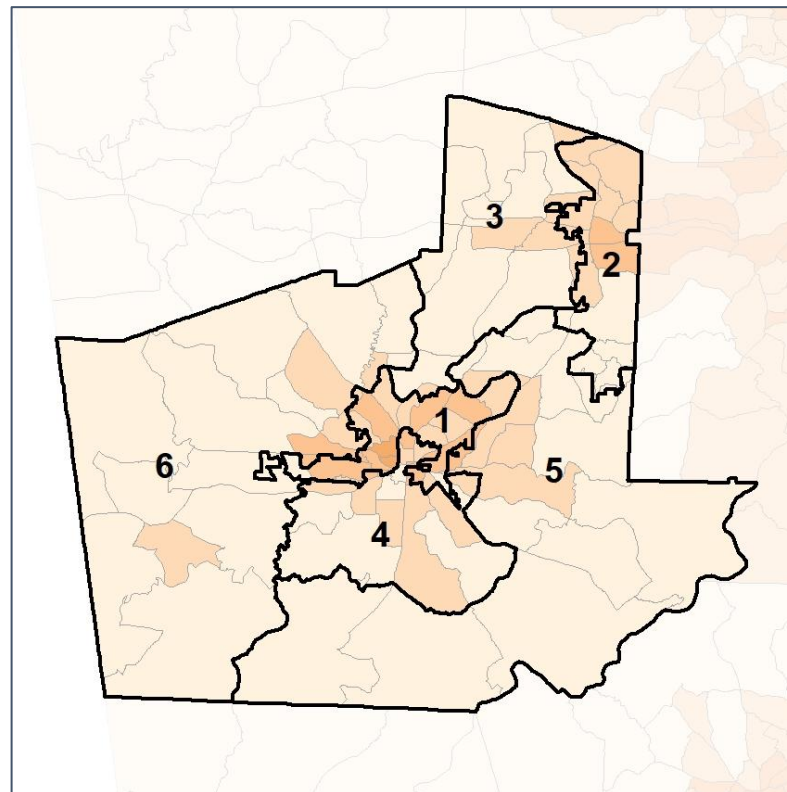
% People of Color by Census Block Group



2012 Map



2022 Map*



	1	2	3	4	5	6	1*	2*	3*	4*	5*	6*	County
Population	19,368	20,450	20,494	19,429	19,220	20,187	19,824	20,306	19,733	19,842	19,755	19,688	119,148
API	227	234	190	278	82	114	221	232	185	290	85	112	1,125
% API	1%	1%	1%	1%	0%	1%	1%	1%	1%	1%	0%	1%	1%
Black	6,876	4,940	2,382	3,634	1,607	2,342	7,105	4,922	2,343	3,582	1,718	2,111	21,781
% Black	36%	24%	12%	19%	8%	12%	36%	24%	12%	18%	9%	11%	18%
Latino	3,256	1,274	1,113	1,763	1,042	1,138	3,371	1,272	1,066	1,695	1,169	1,013	9,586
% Latino	17%	6%	5%	9%	5%	6%	17%	6%	5%	9%	6%	5%	8%
Other	886	1,140	1,183	831	913	978	890	1,138	1,116	845	976	966	5,931
% Other	5%	6%	6%	4%	5%	5%	4%	6%	6%	4%	5%	5%	5%
White	8,123	12,862	15,626	12,923	15,576	15,615	8,237	12,742	15,023	13,430	15,807	15,486	80,725
% White	42%	63%	76%	67%	81%	77%	42%	63%	76%	68%	80%	79%	68%



Source:
2020 Decennial Census
2020 ACS 5-Year Dataset

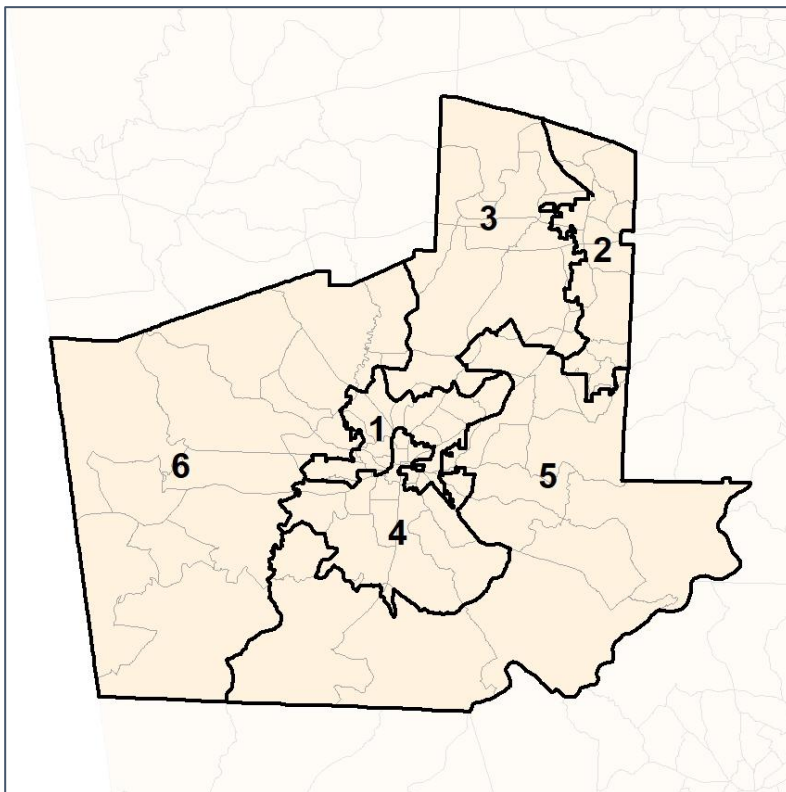


Carroll County Commission

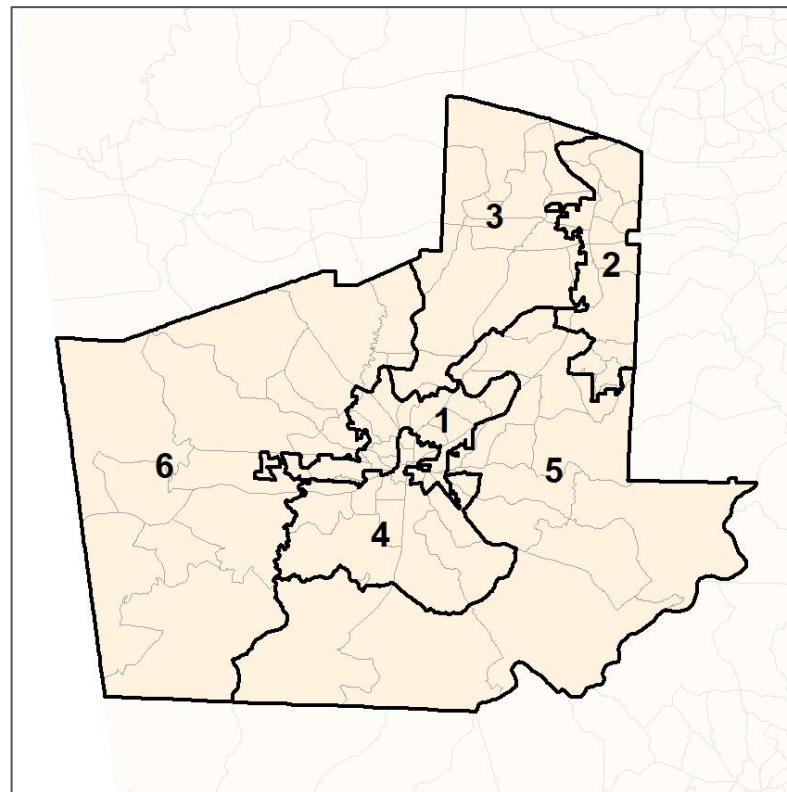
% API by Census Block Group



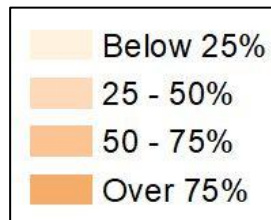
2012 Map



2022 Map*



	1	2	3	4	5	6	1*	2*	3*	4*	5*	6*	County
Population	19,368	20,450	20,494	19,429	19,220	20,187	19,824	20,306	19,733	19,842	19,755	19,688	119,148
API	227	234	190	278	82	114	221	232	185	290	85	112	1,125
% API	1%	1%	1%	1%	0%	1%	1%	1%	1%	1%	0%	1%	1%
Black	6,876	4,940	2,382	3,634	1,607	2,342	7,105	4,922	2,343	3,582	1,718	2,111	21,781
% Black	36%	24%	12%	19%	8%	12%	36%	24%	12%	18%	9%	11%	18%
Latino	3,256	1,274	1,113	1,763	1,042	1,138	3,371	1,272	1,066	1,695	1,169	1,013	9,586
% Latino	17%	6%	5%	9%	5%	6%	17%	6%	5%	9%	6%	5%	8%
Other	886	1,140	1,183	831	913	978	890	1,138	1,116	845	976	966	5,931
% Other	5%	6%	6%	4%	5%	5%	4%	6%	6%	4%	5%	5%	5%
White	8,123	12,862	15,626	12,923	15,576	15,615	8,237	12,742	15,023	13,430	15,807	15,486	80,725
% White	42%	63%	76%	67%	81%	77%	42%	63%	76%	68%	80%	79%	68%



Source:
2020 Decennial Census
2020 ACS 5-Year Dataset

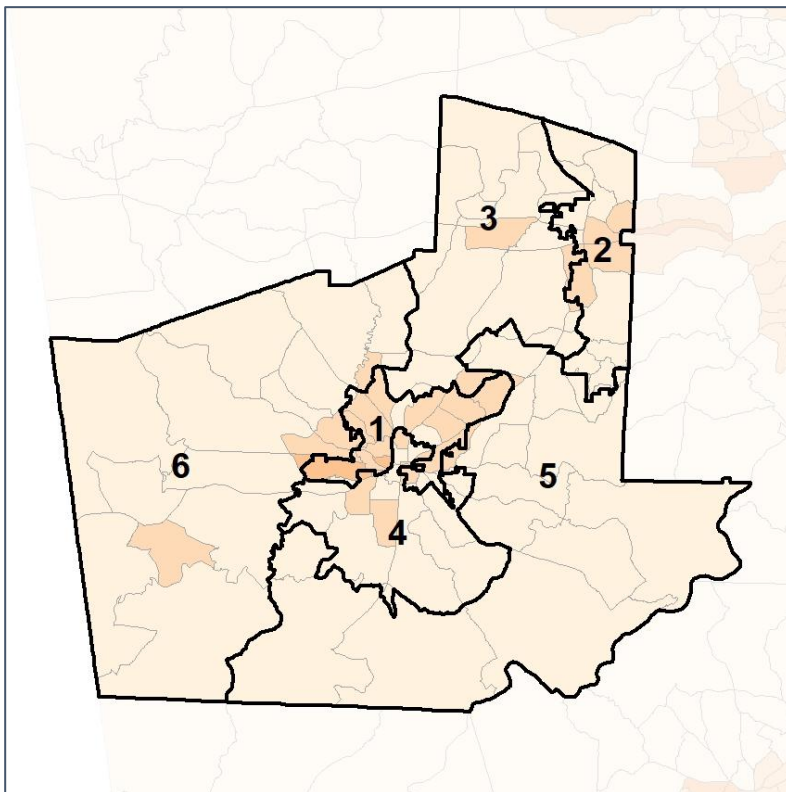


Carroll County Commission

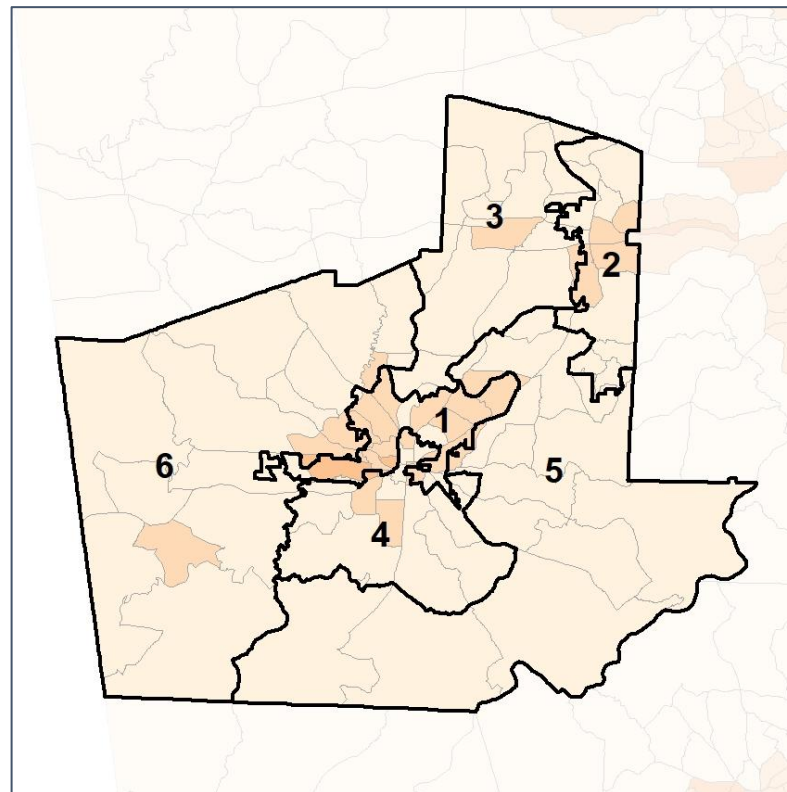
% Black by Census Block Group



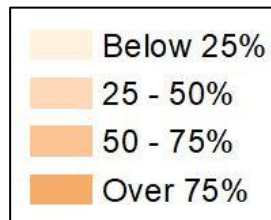
2012 Map



2022 Map*



	1	2	3	4	5	6	1*	2*	3*	4*	5*	6*	County
Population	19,368	20,450	20,494	19,429	19,220	20,187	19,824	20,306	19,733	19,842	19,755	19,688	119,148
API	227	234	190	278	82	114	221	232	185	290	85	112	1,125
% API	1%	1%	1%	1%	0%	1%	1%	1%	1%	1%	0%	1%	1%
Black	6,876	4,940	2,382	3,634	1,607	2,342	7,105	4,922	2,343	3,582	1,718	2,111	21,781
% Black	36%	24%	12%	19%	8%	12%	36%	24%	12%	18%	9%	11%	18%
Latino	3,256	1,274	1,113	1,763	1,042	1,138	3,371	1,272	1,066	1,695	1,169	1,013	9,586
% Latino	17%	6%	5%	9%	5%	6%	17%	6%	5%	9%	6%	5%	8%
Other	886	1,140	1,183	831	913	978	890	1,138	1,116	845	976	966	5,931
% Other	5%	6%	6%	4%	5%	5%	4%	6%	6%	4%	5%	5%	5%
White	8,123	12,862	15,626	12,923	15,576	15,615	8,237	12,742	15,023	13,430	15,807	15,486	80,725
% White	42%	63%	76%	67%	81%	77%	42%	63%	76%	68%	80%	79%	68%



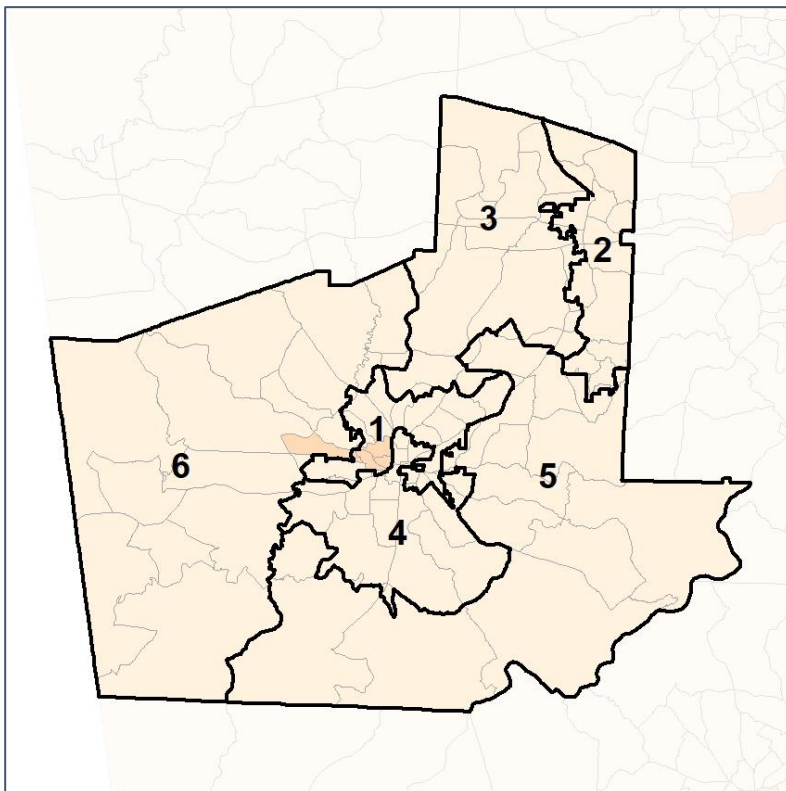
Source:
2020 Decennial Census
2020 ACS 5-Year Dataset

Carroll County Commission

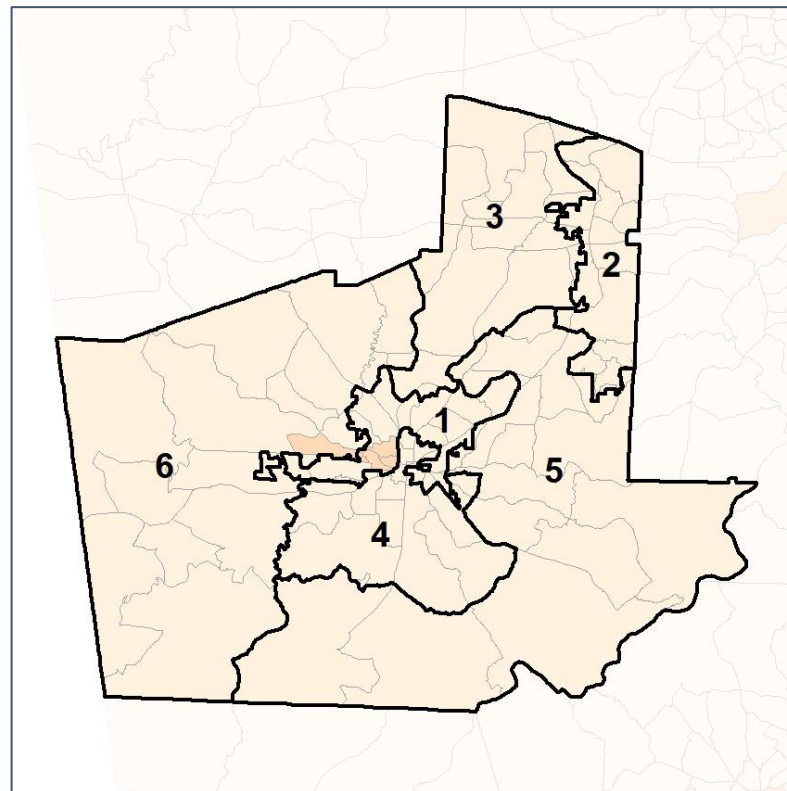
% Latino by Census Block Group



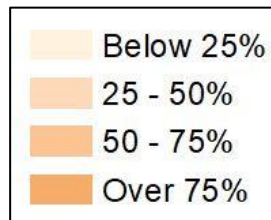
2012 Map



2022 Map*



	1	2	3	4	5	6	1*	2*	3*	4*	5*	6*	County
Population	19,368	20,450	20,494	19,429	19,220	20,187	19,824	20,306	19,733	19,842	19,755	19,688	119,148
API	227	234	190	278	82	114	221	232	185	290	85	112	1,125
% API	1%	1%	1%	1%	0%	1%	1%	1%	1%	1%	0%	1%	1%
Black	6,876	4,940	2,382	3,634	1,607	2,342	7,105	4,922	2,343	3,582	1,718	2,111	21,781
% Black	36%	24%	12%	19%	8%	12%	36%	24%	12%	18%	9%	11%	18%
Latino	3,256	1,274	1,113	1,763	1,042	1,138	3,371	1,272	1,066	1,695	1,169	1,013	9,586
% Latino	17%	6%	5%	9%	5%	6%	17%	6%	5%	9%	6%	5%	8%
Other	886	1,140	1,183	831	913	978	890	1,138	1,116	845	976	966	5,931
% Other	5%	6%	6%	4%	5%	5%	4%	6%	6%	4%	5%	5%	5%
White	8,123	12,862	15,626	12,923	15,576	15,615	8,237	12,742	15,023	13,430	15,807	15,486	80,725
% White	42%	63%	76%	67%	81%	77%	42%	63%	76%	68%	80%	79%	68%



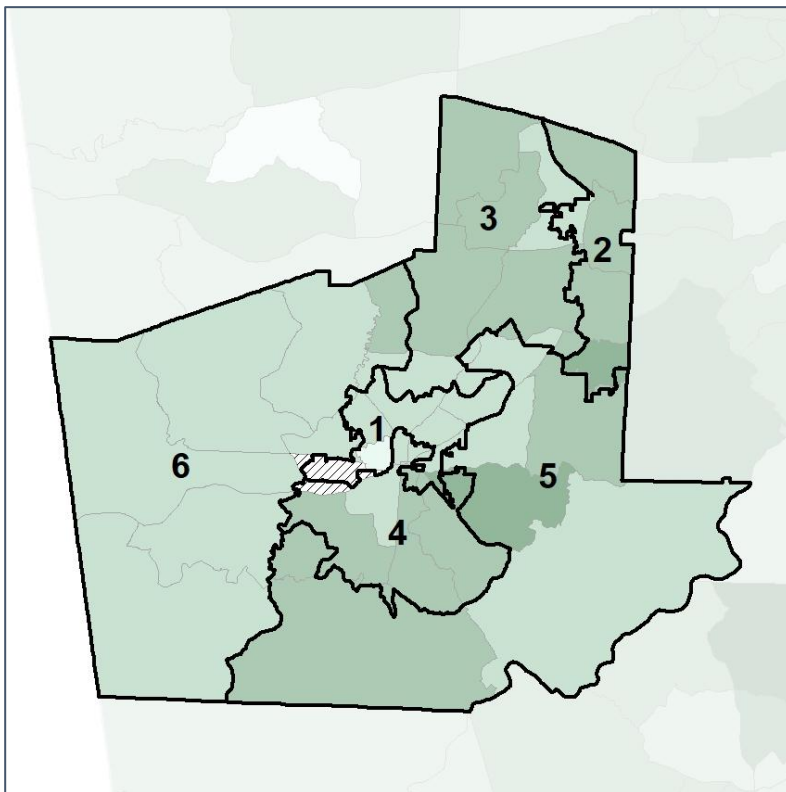
Source:
2020 Decennial Census
2020 ACS 5-Year Dataset

Carroll County Commission

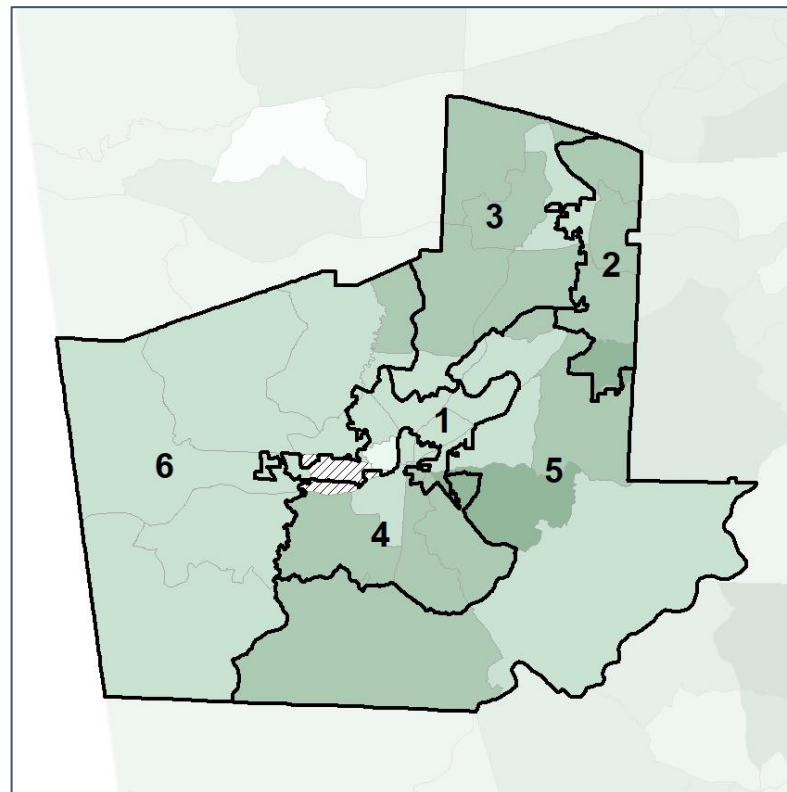
Median Household Income by Census Tract



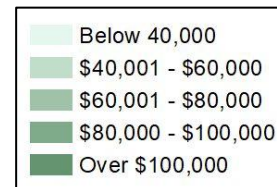
2012 Map



2022 Map*



	1	2	3	4	5	6	1*	2*	3*	4*	5*	6*	County
Population	19,368	20,450	20,494	19,429	19,220	20,187	19,824	20,306	19,733	19,842	19,755	19,688	119,148
% API	1%	1%	1%	1%	0%	1%	1%	1%	1%	1%	0%	1%	1%
% Black	36%	24%	12%	19%	8%	12%	36%	24%	12%	18%	9%	11%	18%
% Latino	17%	6%	5%	9%	5%	6%	17%	6%	5%	9%	6%	5%	8%
% Other	5%	6%	6%	4%	5%	5%	4%	6%	6%	4%	5%	5%	5%
% White	42%	63%	76%	67%	81%	77%	42%	63%	76%	68%	80%	79%	68%
Median Income	\$46,000	\$79,000	\$68,000	\$65,000	\$63,000	\$52,000	\$46,000	\$79,000	\$68,000	\$67,000	\$61,000	\$52,000	\$59,000
% Renter	53%	36%	18%	44%	16%	25%	53%	36%	18%	41%	16%	25%	31%
% Youth	38%	23%	25%	31%	21%	23%	38%	23%	25%	29%	22%	23%	26%

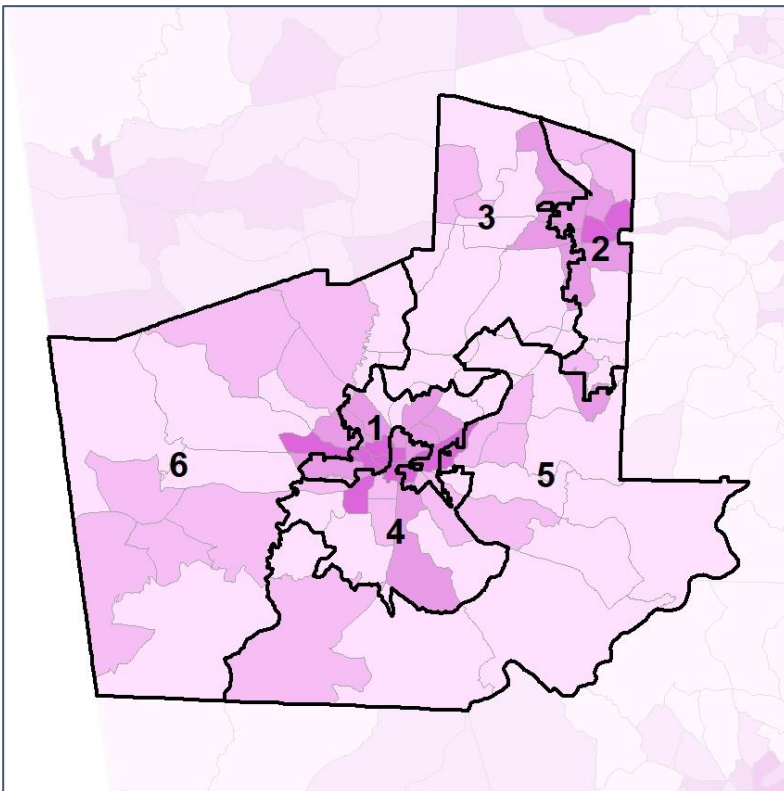


Carroll County Commission

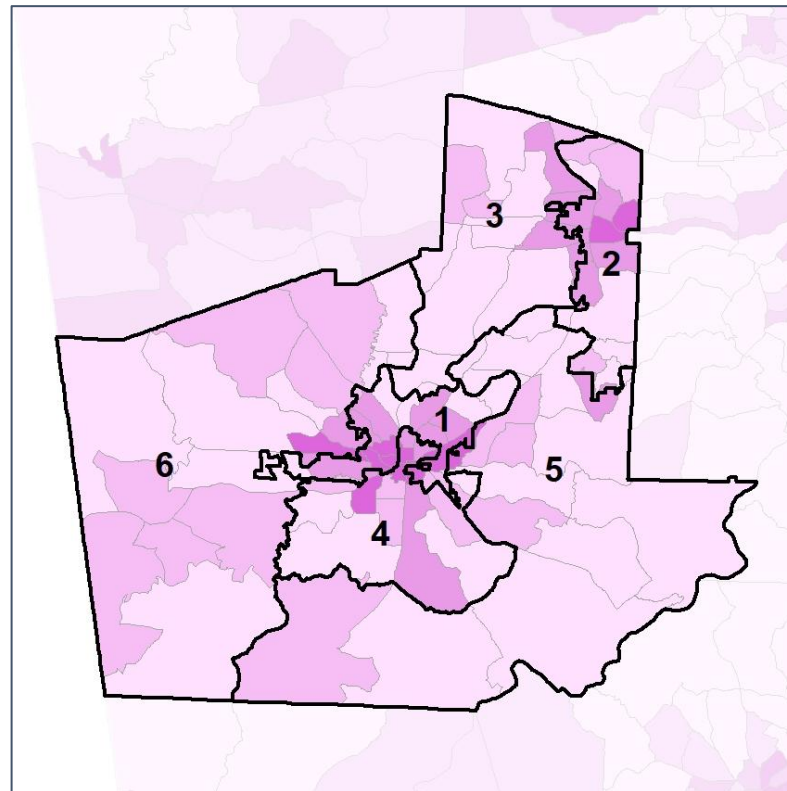
% Renter by Census Block Group



2012 Map



2022 Map*



	1	2	3	4	5	6	1*	2*	3*	4*	5*	6*	County
Population	19,368	20,450	20,494	19,429	19,220	20,187	19,824	20,306	19,733	19,842	19,755	19,688	119,148
% API	1%	1%	1%	1%	0%	1%	1%	1%	1%	1%	0%	1%	1%
% Black	36%	24%	12%	19%	8%	12%	36%	24%	12%	18%	9%	11%	18%
% Latino	17%	6%	5%	9%	5%	6%	17%	6%	5%	9%	6%	5%	8%
% Other	5%	6%	6%	4%	5%	5%	4%	6%	6%	4%	5%	5%	5%
% White	42%	63%	76%	67%	81%	77%	42%	63%	76%	68%	80%	79%	68%
Median Income	\$46,000	\$79,000	\$68,000	\$65,000	\$63,000	\$52,000	\$46,000	\$79,000	\$68,000	\$67,000	\$61,000	\$52,000	\$59,000
% Renter	53%	36%	18%	44%	16%	25%	53%	36%	18%	41%	16%	25%	31%
% Youth	38%	23%	25%	31%	21%	23%	38%	23%	25%	29%	22%	23%	26%

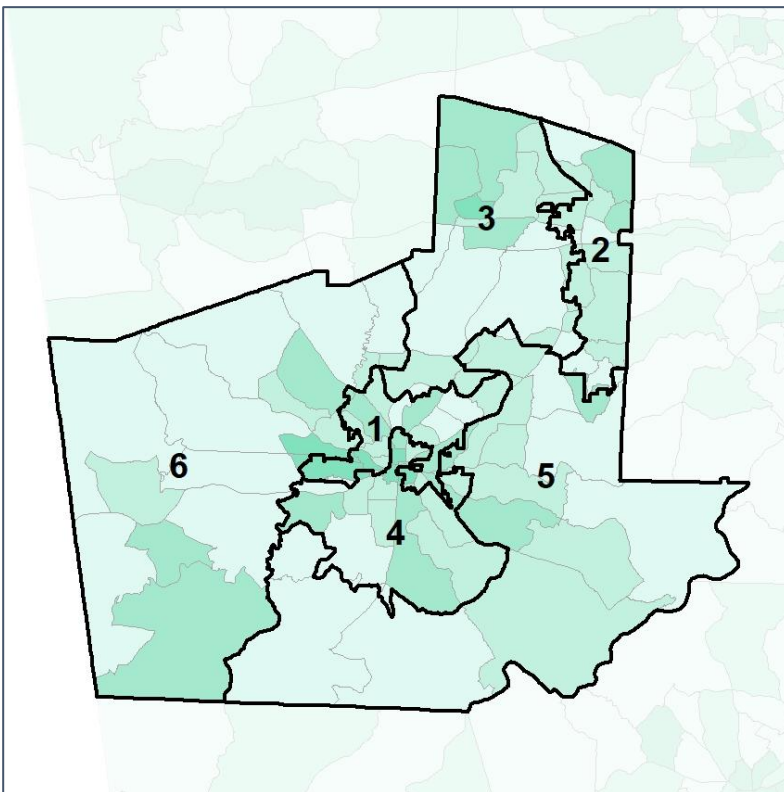


Carroll County Commission

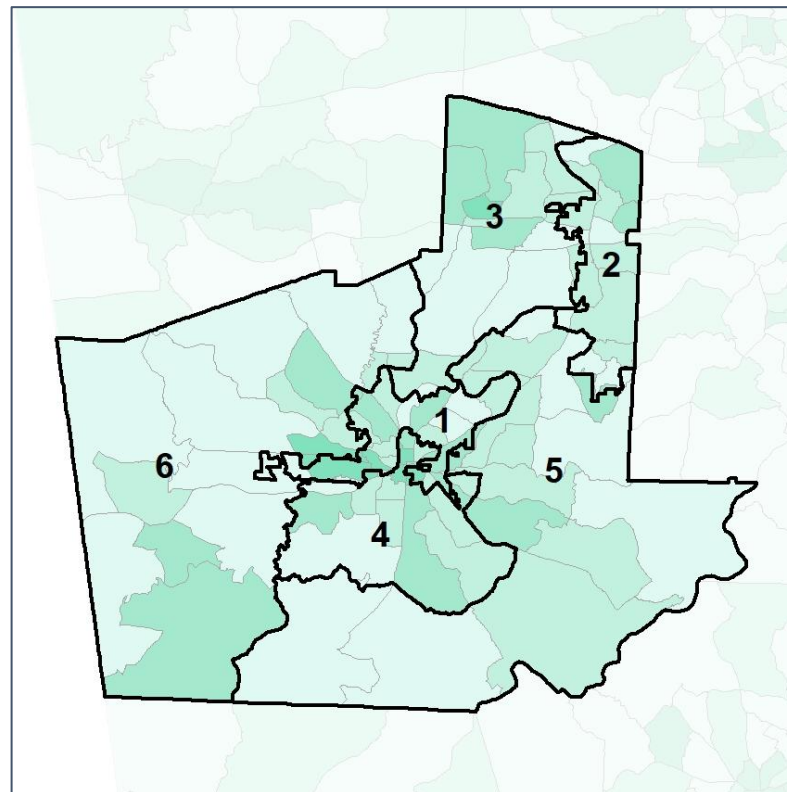
% Youth (18-34) by Census Block Group



2012 Map



2022 Map*



	1	2	3	4	5	6	1*	2*	3*	4*	5*	6*	County
Population	19,368	20,450	20,494	19,429	19,220	20,187	19,824	20,306	19,733	19,842	19,755	19,688	119,148
% API	1%	1%	1%	1%	0%	1%	1%	1%	1%	1%	0%	1%	1%
% Black	36%	24%	12%	19%	8%	12%	36%	24%	12%	18%	9%	11%	18%
% Latino	17%	6%	5%	9%	5%	6%	17%	6%	5%	9%	6%	5%	8%
% Other	5%	6%	6%	4%	5%	5%	4%	6%	6%	4%	5%	5%	5%
% White	42%	63%	76%	67%	81%	77%	42%	63%	76%	68%	80%	79%	68%
Median Income	\$46,000	\$79,000	\$68,000	\$65,000	\$63,000	\$52,000	\$46,000	\$79,000	\$68,000	\$67,000	\$61,000	\$52,000	\$59,000
% Renter	53%	36%	18%	44%	16%	25%	53%	36%	18%	41%	16%	25%	31%
% Youth	38%	23%	25%	31%	21%	23%	38%	23%	25%	29%	22%	23%	26%

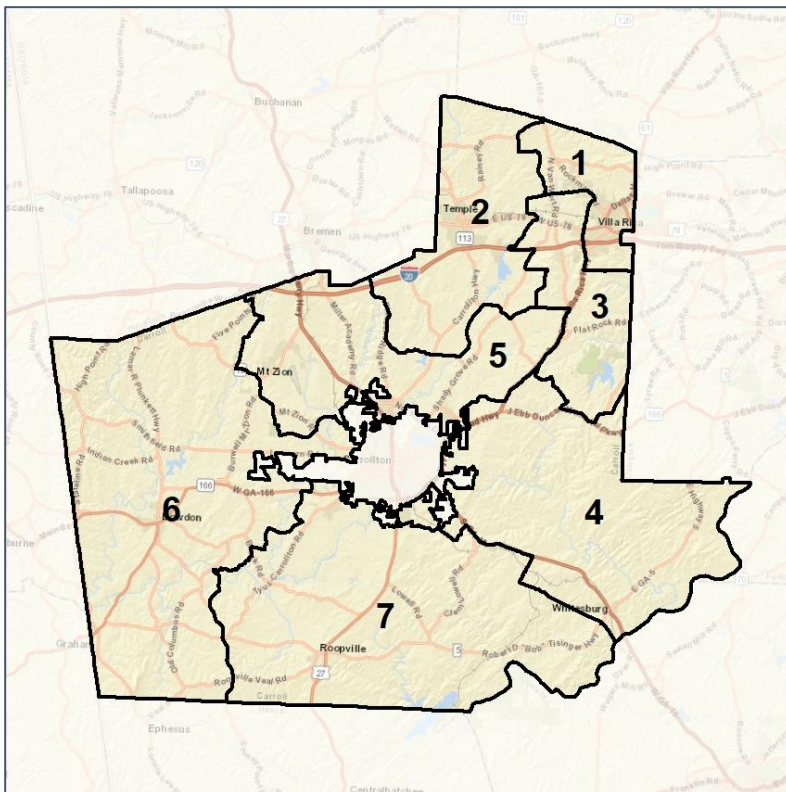


Carroll County School Board

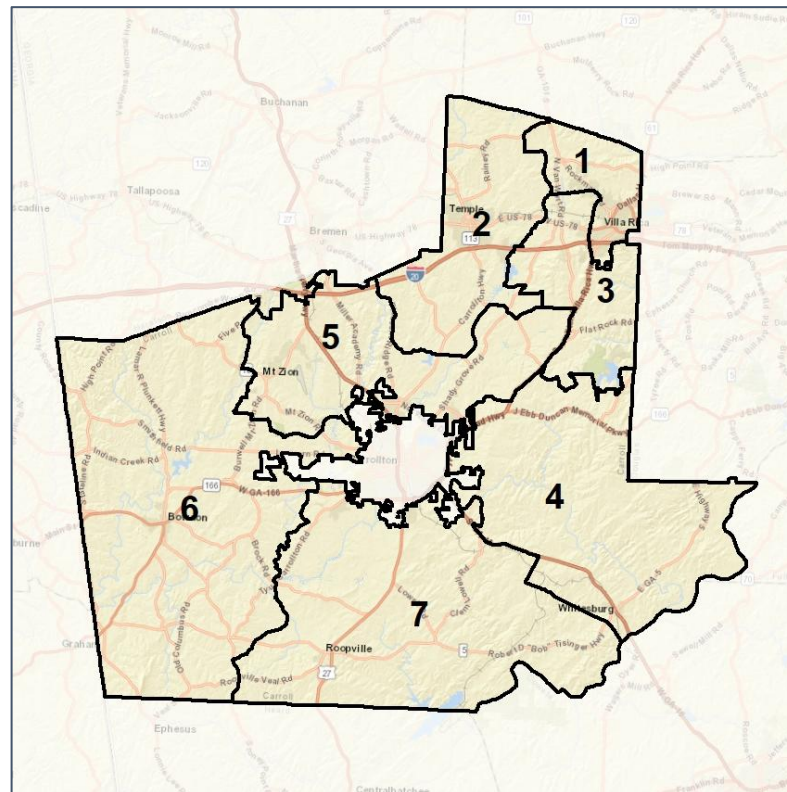
Context



2012 Map



2022 Map*



	1	2	3	4	5	6	7	1*	2*	3*	4*	5*	6*	7*	County
Population	13,640	13,954	13,627	13,103	12,710	12,981	12,330	13,296	13,217	13,087	13,179	13,089	13,175	13,302	119,148
API	1%	1%	1%	0%	0%	1%	1%	1%	1%	1%	0%	0%	1%	1%	1%
Black	27%	12%	15%	12%	17%	10%	7%	27%	12%	15%	12%	17%	10%	8%	18%
Latino	6%	5%	6%	7%	8%	6%	5%	6%	5%	6%	7%	8%	6%	5%	8%
Other	6%	6%	6%	5%	6%	5%	4%	6%	5%	6%	5%	6%	5%	4%	5%
White	60%	77%	72%	75%	68%	79%	83%	60%	77%	71%	75%	69%	79%	83%	68%
Population Gain	1,193	1,615	1,309	786	574	672	128	-344	-737	-540	76	379	194	972	*
Population % Gain	10%	13%	11%	6%	5%	5%	1%	-3%	-5%	-4%	1%	3%	1%	8%	*
Net POC Gain	1,387	1,065	981	781	920	351	386	-123	-176	-52	49	20	46	236	*
Net POC % Gain	34%	49%	35%	32%	29%	14%	23%	-2%	-5%	-1%	2%	0%	2%	12%	*

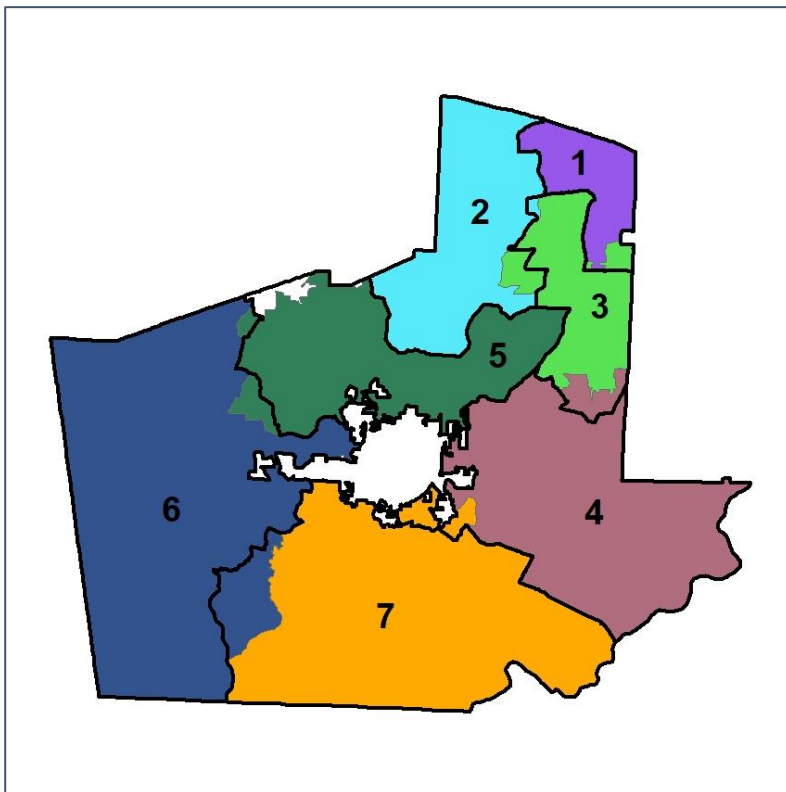


Carroll County School Board

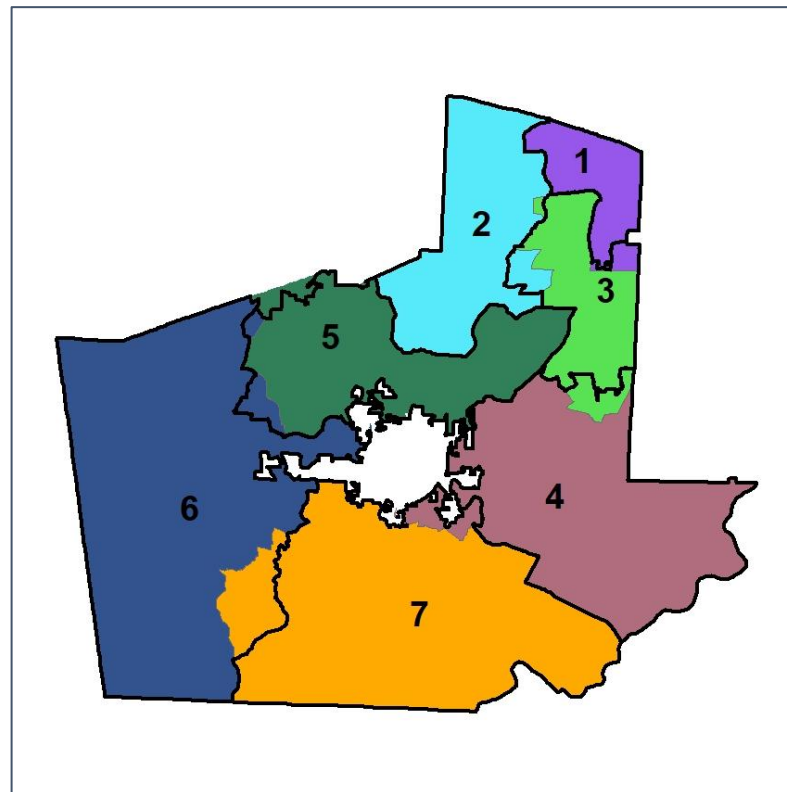
Changes in Redistricting



2012 Map (2022 in Colors)



2022 Map* (2012 in Colors)



	1	2	3	4	5	6	7	1*	2*	3*	4*	5*	6*	7*	County
Population	13,640	13,954	13,627	13,103	12,710	12,981	12,330	13,296	13,217	13,087	13,179	13,089	13,175	13,302	119,148
API	1%	1%	1%	0%	0%	1%	1%	1%	1%	1%	0%	0%	1%	1%	1%
Black	27%	12%	15%	12%	17%	10%	7%	27%	12%	15%	12%	17%	10%	8%	18%
Latino	6%	5%	6%	7%	8%	6%	5%	6%	5%	6%	7%	8%	6%	5%	8%
Other	6%	6%	6%	5%	6%	5%	4%	6%	5%	6%	5%	6%	5%	4%	5%
White	60%	77%	72%	75%	68%	79%	83%	60%	77%	71%	75%	69%	79%	83%	68%
Population Gain	1,193	1,615	1,309	786	574	672	128	-344	-737	-540	76	379	194	972	*
Population % Gain	10%	13%	11%	6%	5%	5%	1%	-3%	-5%	-4%	1%	3%	1%	8%	*
Net POC Gain	1,387	1,065	981	781	920	351	386	-123	-176	-52	49	20	46	236	*
Net POC % Gain	34%	49%	35%	32%	29%	14%	23%	-2%	-5%	-1%	2%	0%	2%	12%	*

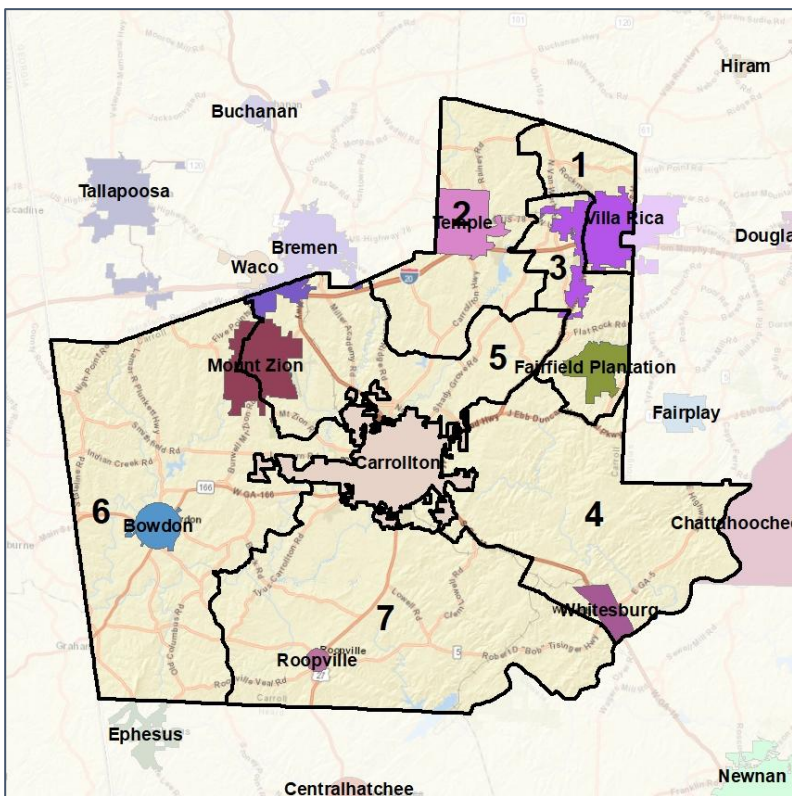


Carroll County School Board

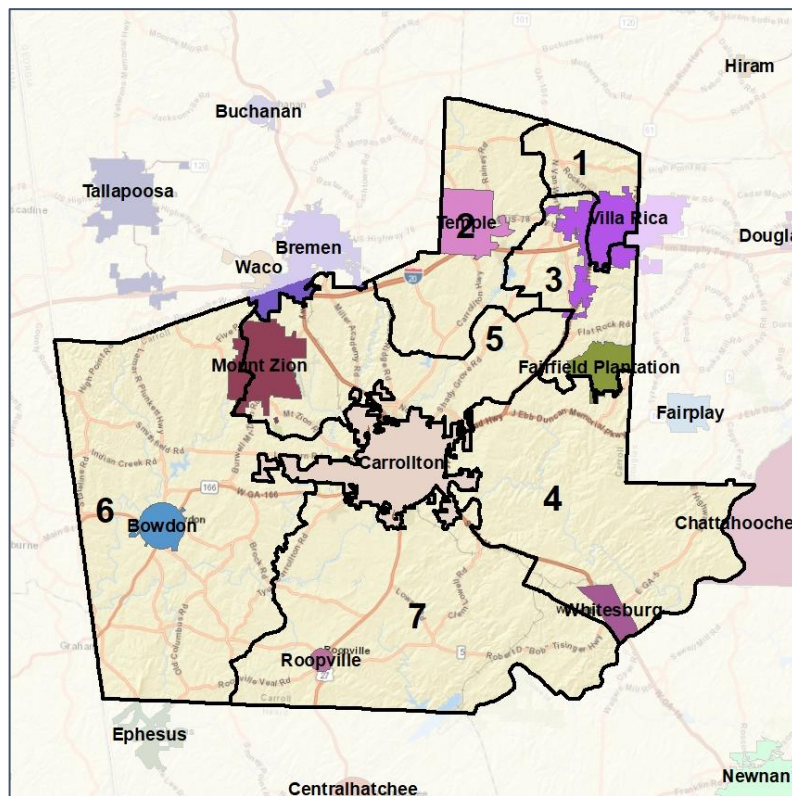
Cities and Places



2012 Map



2022 Map*



	1	2	3	4	5	6	7	1*	2*	3*	4*	5*	6*	7*	County
Population	13,640	13,954	13,627	13,103	12,710	12,981	12,330	13,296	13,217	13,087	13,179	13,089	13,175	13,302	119,148
API	1%	1%	1%	0%	0%	1%	1%	1%	1%	1%	0%	0%	1%	1%	1%
Black	27%	12%	15%	12%	17%	10%	7%	27%	12%	15%	12%	17%	10%	8%	18%
Latino	6%	5%	6%	7%	8%	6%	5%	6%	5%	6%	7%	8%	6%	5%	8%
Other	6%	6%	6%	5%	6%	5%	4%	6%	5%	6%	5%	6%	5%	4%	5%
White	60%	77%	72%	75%	68%	79%	83%	60%	77%	71%	75%	69%	79%	83%	68%
Population Gain	1,193	1,615	1,309	786	574	672	128	-344	-737	-540	76	379	194	972	*
Population % Gain	10%	13%	11%	6%	5%	5%	1%	-3%	-5%	-4%	1%	3%	1%	8%	*
Net POC Gain	1,387	1,065	981	781	920	351	386	-123	-176	-52	49	20	46	236	*
Net POC % Gain	34%	49%	35%	32%	29%	14%	23%	-2%	-5%	-1%	2%	0%	2%	12%	*



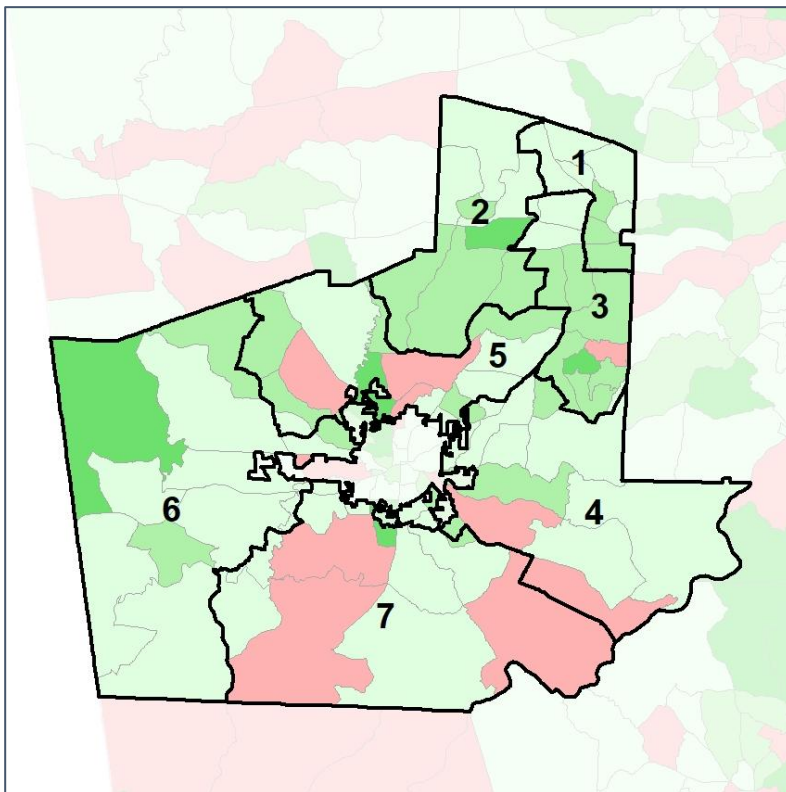
Source:
2020 Decennial Census
2020 ACS 5-Year Dataset

Carroll County School Board

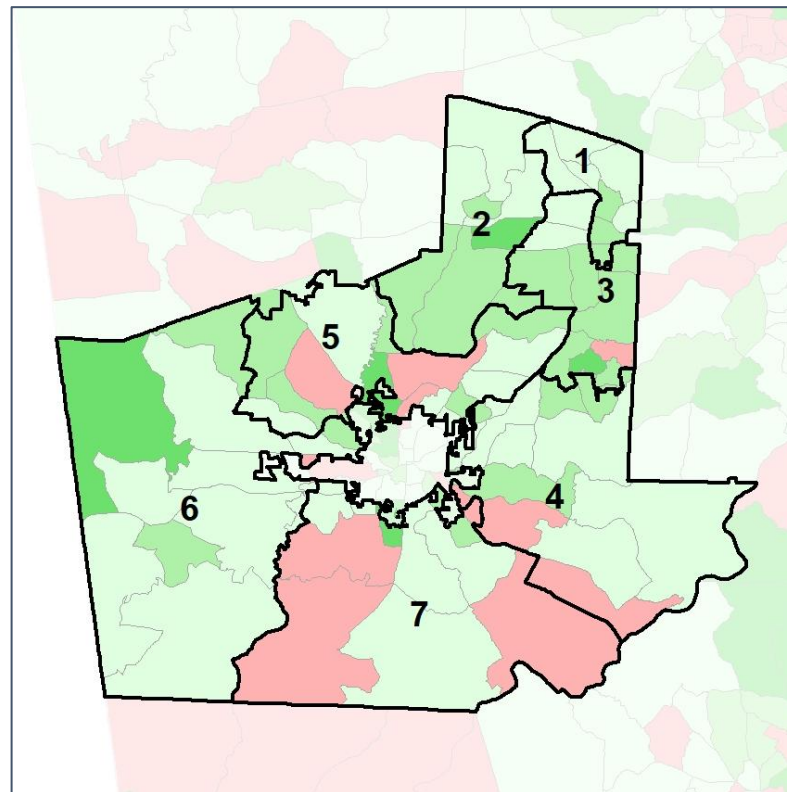
Net Gain in Population (2010 - 2020) by Census Block Group



2012 Map



2022 Map*



	1	2	3	4	5	6	7	1*	2*	3*	4*	5*	6*	7*	County
Population	13,640	13,954	13,627	13,103	12,710	12,981	12,330	13,296	13,217	13,087	13,179	13,089	13,175	13,302	119,148
API	1%	1%	1%	0%	0%	1%	1%	1%	1%	1%	0%	0%	1%	1%	1%
Black	27%	12%	15%	12%	17%	10%	7%	27%	12%	15%	12%	17%	10%	8%	18%
Latino	6%	5%	6%	7%	8%	6%	5%	6%	5%	6%	7%	8%	6%	5%	8%
Other	6%	6%	6%	5%	6%	5%	4%	6%	5%	6%	5%	6%	5%	4%	5%
White	60%	77%	72%	75%	68%	79%	83%	60%	77%	71%	75%	69%	79%	83%	68%
Population Gain	1,193	1,615	1,309	786	574	672	128	-344	-737	-540	76	379	194	972	*
Population % Gain	10%	13%	11%	6%	5%	5%	1%	-3%	-5%	-4%	1%	3%	1%	8%	*
Net POC Gain	1,387	1,065	981	781	920	351	386	-123	-176	-52	49	20	46	236	*
Net POC % Gain	34%	49%	35%	32%	29%	14%	23%	-2%	-5%	-1%	2%	0%	2%	12%	*

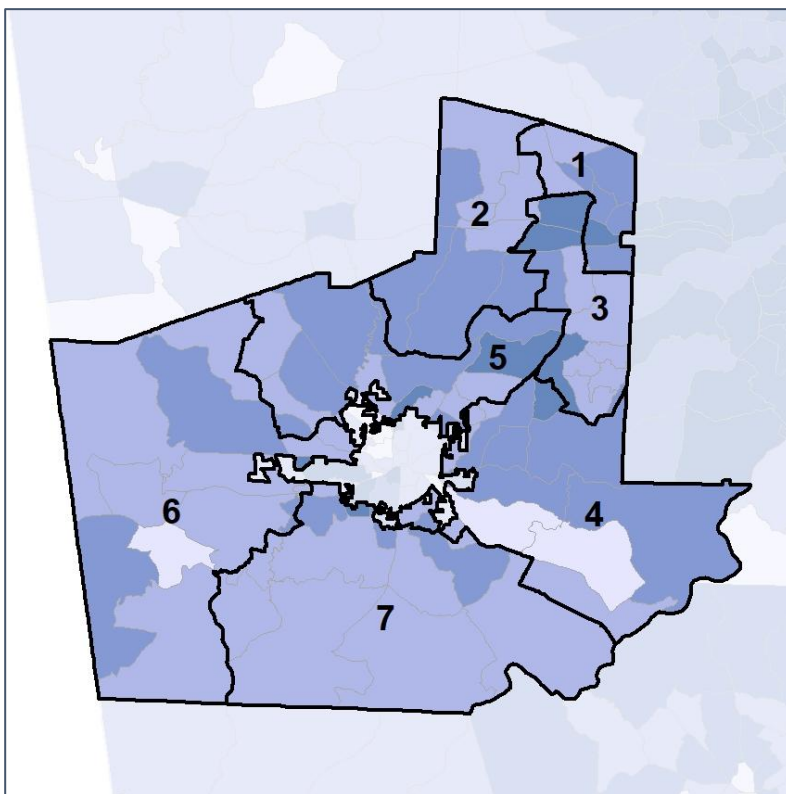


Carroll County School Board

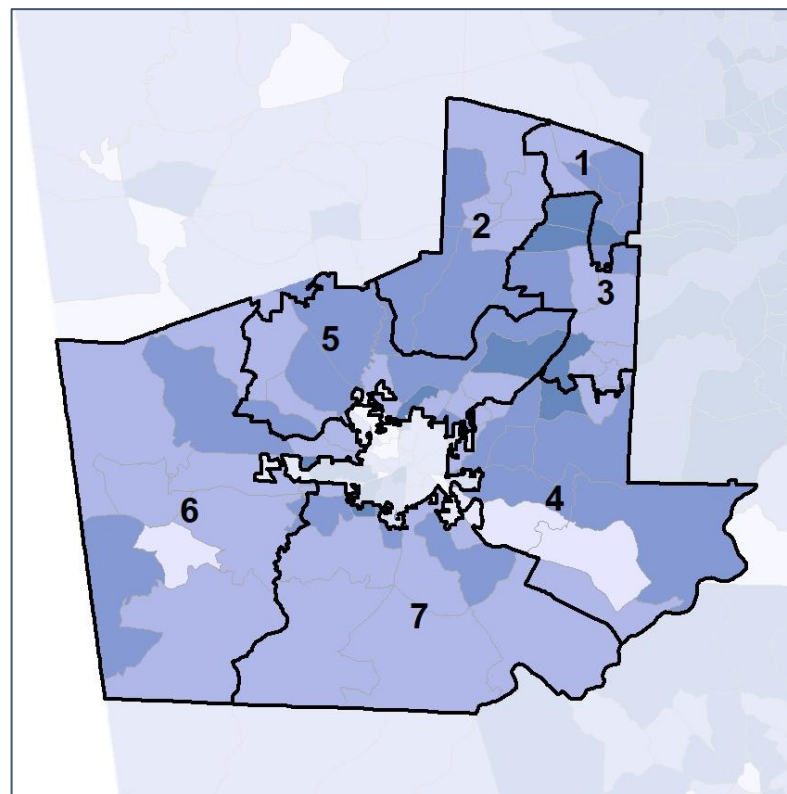
Net Gain in % POC (2020 - 2010) by Census Block Group



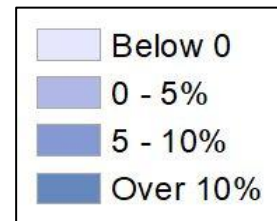
2012 Map



2022 Map*



	1	2	3	4	5	6	7	1*	2*	3*	4*	5*	6*	7*	County
Population	13,640	13,954	13,627	13,103	12,710	12,981	12,330	13,296	13,217	13,087	13,179	13,089	13,175	13,302	119,148
API	1%	1%	1%	0%	0%	1%	1%	1%	1%	1%	0%	0%	1%	1%	1%
Black	27%	12%	15%	12%	17%	10%	7%	27%	12%	15%	12%	17%	10%	8%	18%
Latino	6%	5%	6%	7%	8%	6%	5%	6%	5%	6%	7%	8%	6%	5%	8%
Other	6%	6%	6%	5%	6%	5%	4%	6%	5%	6%	5%	6%	5%	4%	5%
White	60%	77%	72%	75%	68%	79%	83%	60%	77%	71%	75%	69%	79%	83%	68%
Population Gain	1,193	1,615	1,309	786	574	672	128	-344	-737	-540	76	379	194	972	*
Population % Gain	10%	13%	11%	6%	5%	5%	1%	-3%	-5%	-4%	1%	3%	1%	8%	*
Net POC Gain	1,387	1,065	981	781	920	351	386	-123	-176	-52	49	20	46	236	*
Net POC % Gain	34%	49%	35%	32%	29%	14%	23%	-2%	-5%	-1%	2%	0%	2%	12%	*

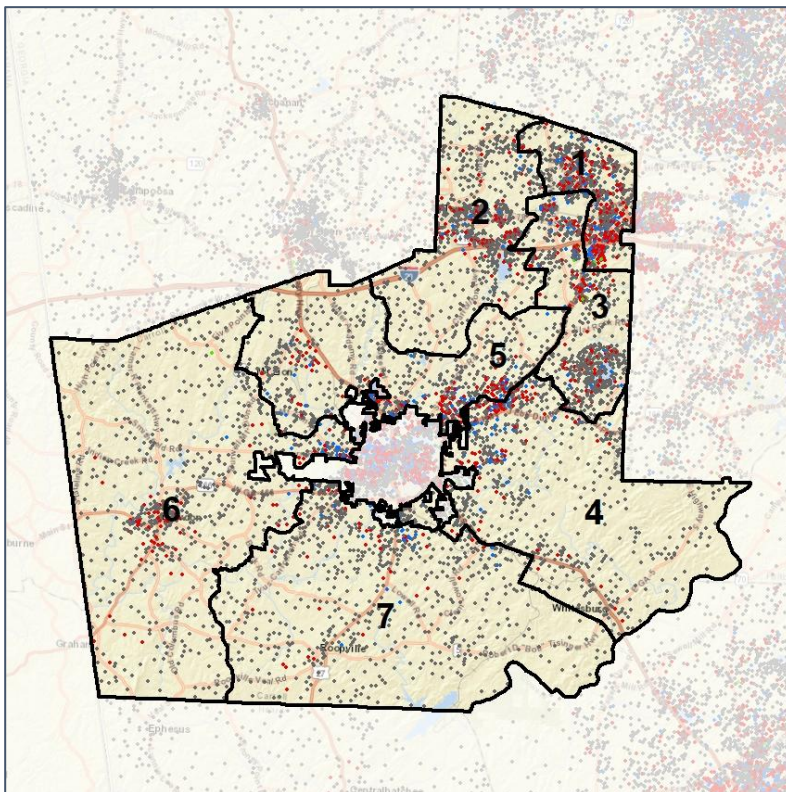


Carroll County School Board

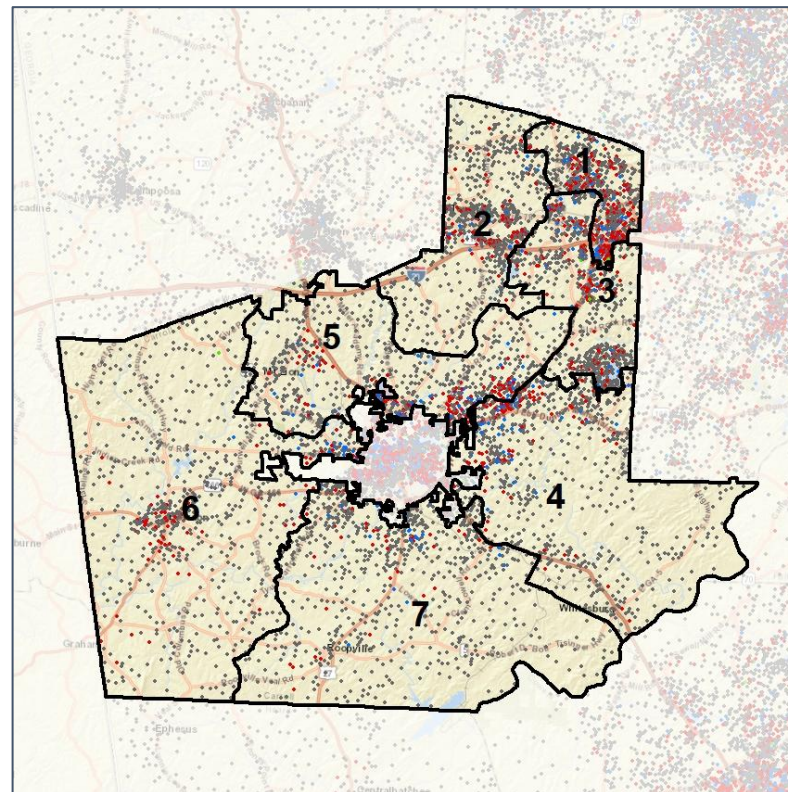
Population Density by Race



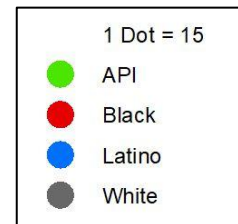
2012 Map



2022 Map*



	1	2	3	4	5	6	7	1*	2*	3*	4*	5*	6*	7*	County
Population	13,640	13,954	13,627	13,103	12,710	12,981	12,330	13,296	13,217	13,087	13,179	13,089	13,175	13,302	119,148
API	153	114	152	52	59	74	64	147	105	161	42	63	75	75	1,125
% API	1%	1%	1%	0%	0%	1%	1%	1%	1%	1%	0%	0%	1%	1%	1%
Black	3,628	1,682	2,066	1,614	2,179	1,326	905	3,567	1,627	2,027	1,645	2,182	1,346	1,006	21,781
% Black	27%	12%	15%	12%	17%	10%	7%	27%	12%	15%	12%	17%	10%	8%	18%
Latino	879	678	829	956	1,074	748	592	852	614	830	952	1,081	754	673	9,586
% Latino	6%	5%	6%	7%	8%	6%	5%	6%	5%	6%	7%	8%	6%	5%	8%
Other	807	772	753	620	736	626	475	778	724	730	652	742	645	518	5,931
% Other	6%	6%	6%	5%	6%	5%	4%	6%	5%	6%	5%	6%	5%	4%	5%
White	8,173	10,708	9,827	9,861	8,662	10,207	10,294	7,952	10,147	9,339	9,888	9,021	10,355	11,030	80,725
% White	60%	77%	72%	75%	68%	79%	83%	60%	77%	71%	75%	69%	79%	83%	68%



Source:
2020 Decennial Census
2020 ACS 5-Year Dataset

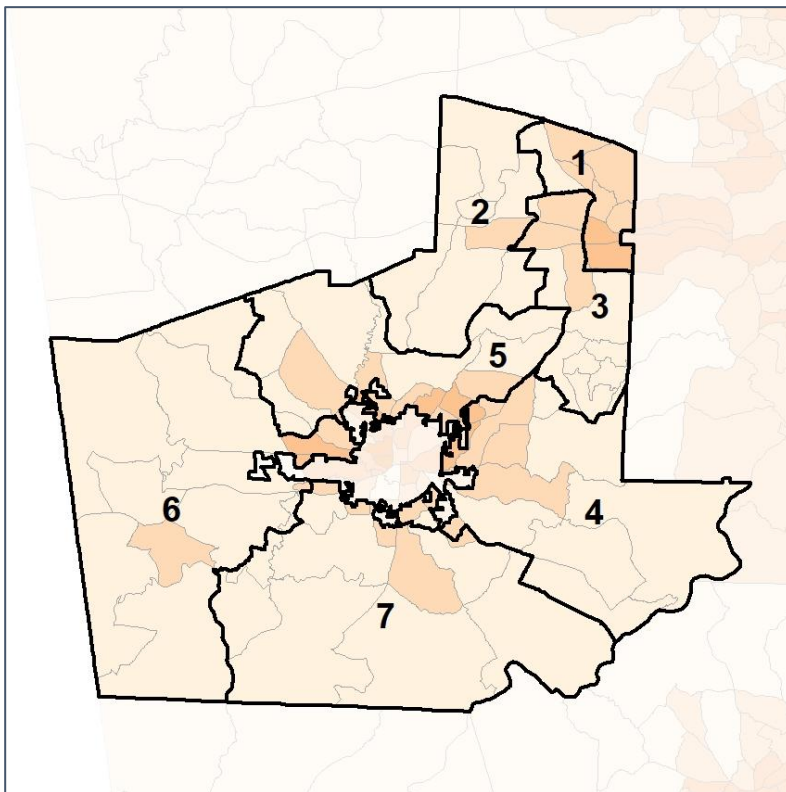


Carroll County School Board

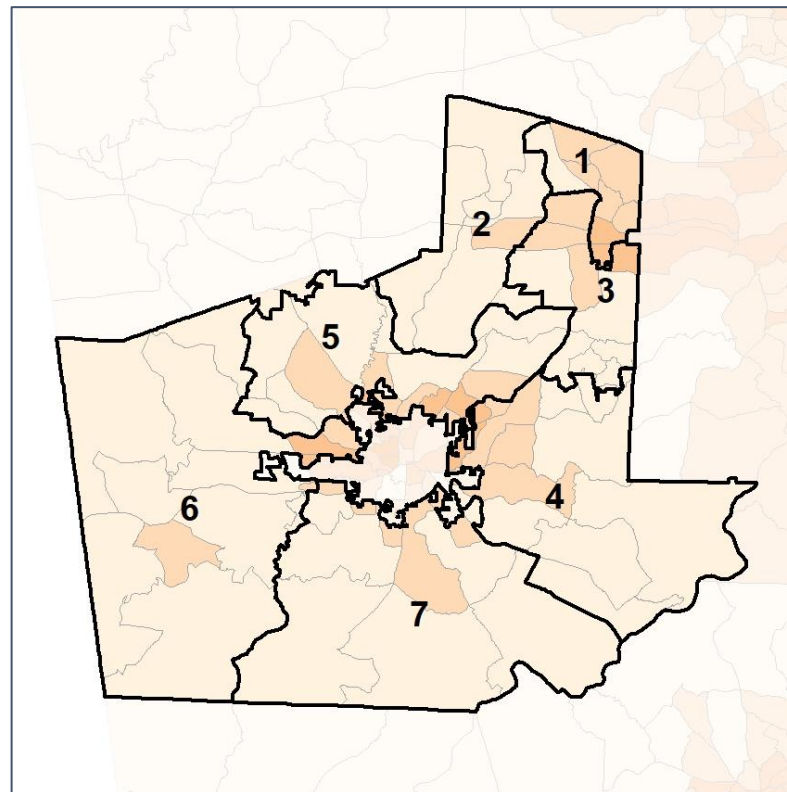
% People of Color by Census Block Group



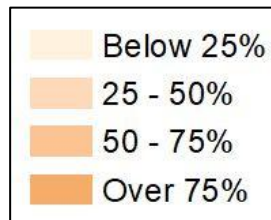
2012 Map



2022 Map*



	1	2	3	4	5	6	7	1*	2*	3*	4*	5*	6*	7*	County
Population	13,640	13,954	13,627	13,103	12,710	12,981	12,330	13,296	13,217	13,087	13,179	13,089	13,175	13,302	119,148
API	153	114	152	52	59	74	64	147	105	161	42	63	75	75	1,125
% API	1%	1%	1%	0%	0%	1%	1%	1%	1%	1%	0%	0%	1%	1%	1%
Black	3,628	1,682	2,066	1,614	2,179	1,326	905	3,567	1,627	2,027	1,645	2,182	1,346	1,006	21,781
% Black	27%	12%	15%	12%	17%	10%	7%	27%	12%	15%	12%	17%	10%	8%	18%
Latino	879	678	829	956	1,074	748	592	852	614	830	952	1,081	754	673	9,586
% Latino	6%	5%	6%	7%	8%	6%	5%	6%	5%	6%	7%	8%	6%	5%	8%
Other	807	772	753	620	736	626	475	778	724	730	652	742	645	518	5,931
% Other	6%	6%	6%	5%	6%	5%	4%	6%	5%	6%	5%	6%	5%	4%	5%
White	8,173	10,708	9,827	9,861	8,662	10,207	10,294	7,952	10,147	9,339	9,888	9,021	10,355	11,030	80,725
% White	60%	77%	72%	75%	68%	79%	83%	60%	77%	71%	75%	69%	79%	83%	68%



Source:
2020 Decennial Census
2020 ACS 5-Year Dataset

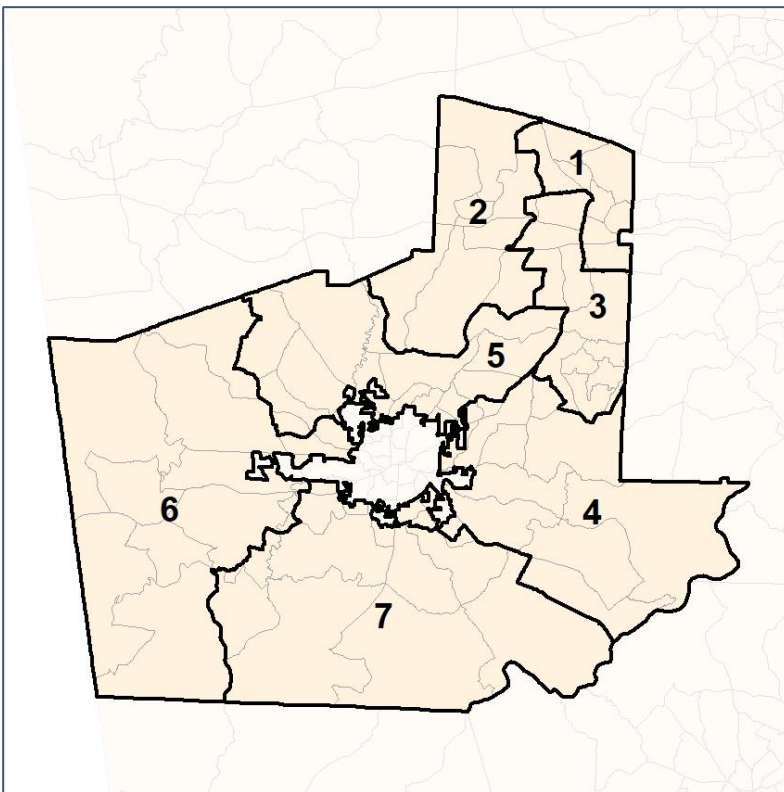


Carroll County School Board

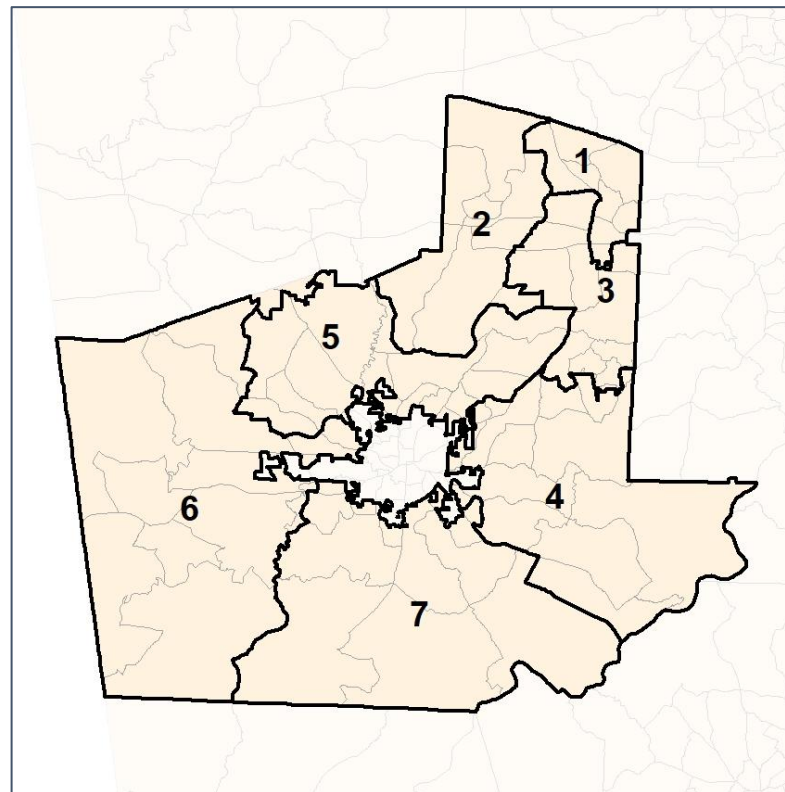
% API by Census Block Group



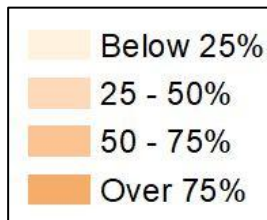
2012 Map



2022 Map*



	1	2	3	4	5	6	7	1*	2*	3*	4*	5*	6*	7*	County
Population	13,640	13,954	13,627	13,103	12,710	12,981	12,330	13,296	13,217	13,087	13,179	13,089	13,175	13,302	119,148
API	153	114	152	52	59	74	64	147	105	161	42	63	75	75	1,125
% API	1%	1%	1%	0%	0%	1%	1%	1%	1%	1%	0%	0%	1%	1%	1%
Black	3,628	1,682	2,066	1,614	2,179	1,326	905	3,567	1,627	2,027	1,645	2,182	1,346	1,006	21,781
% Black	27%	12%	15%	12%	17%	10%	7%	27%	12%	15%	12%	17%	10%	8%	18%
Latino	879	678	829	956	1,074	748	592	852	614	830	952	1,081	754	673	9,586
% Latino	6%	5%	6%	7%	8%	6%	5%	6%	5%	6%	7%	8%	6%	5%	8%
Other	807	772	753	620	736	626	475	778	724	730	652	742	645	518	5,931
% Other	6%	6%	6%	5%	6%	5%	4%	6%	5%	6%	5%	6%	5%	4%	5%
White	8,173	10,708	9,827	9,861	8,662	10,207	10,294	7,952	10,147	9,339	9,888	9,021	10,355	11,030	80,725
% White	60%	77%	72%	75%	68%	79%	83%	60%	77%	71%	75%	69%	79%	83%	68%



Source:
2020 Decennial Census
2020 ACS 5-Year Dataset

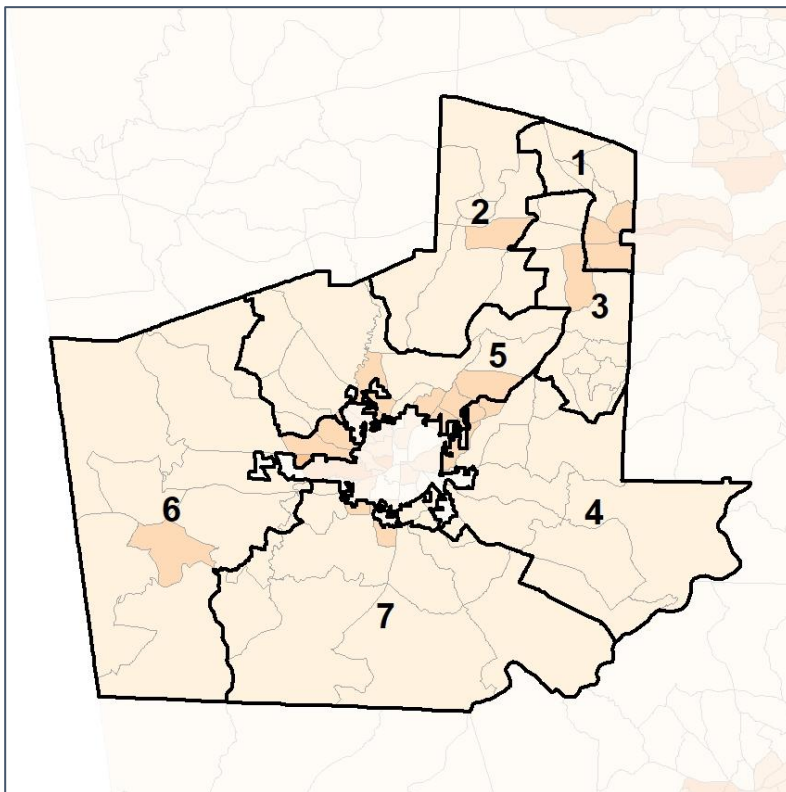


Carroll County School Board

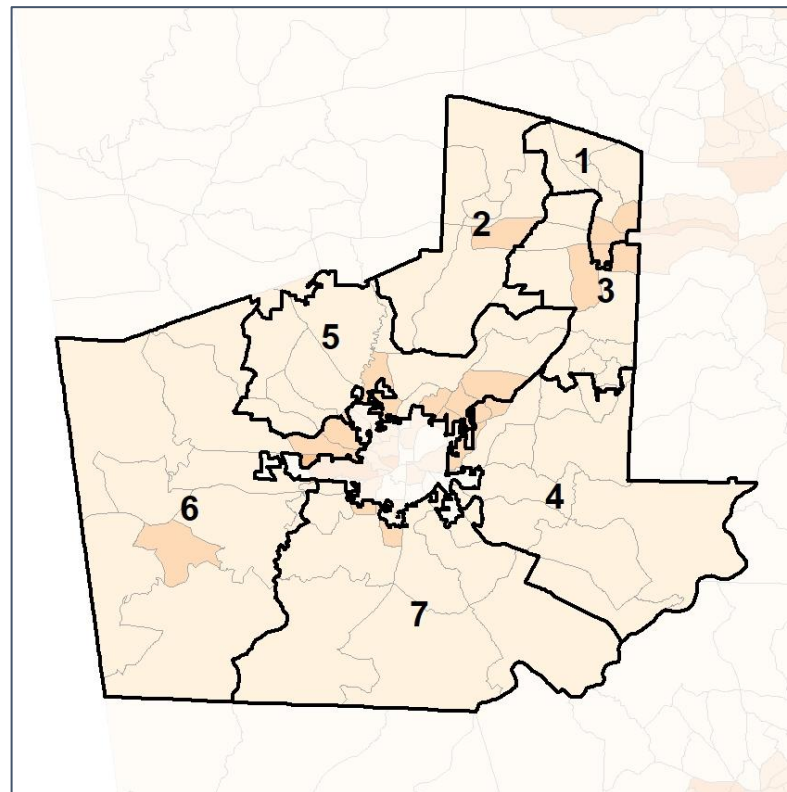
% Black by Census Block Group



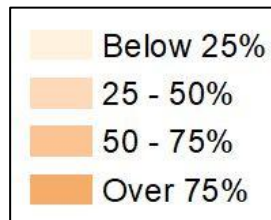
2012 Map



2022 Map*



	1	2	3	4	5	6	7	1*	2*	3*	4*	5*	6*	7*	County
Population	13,640	13,954	13,627	13,103	12,710	12,981	12,330	13,296	13,217	13,087	13,179	13,089	13,175	13,302	119,148
API	153	114	152	52	59	74	64	147	105	161	42	63	75	75	1,125
% API	1%	1%	1%	0%	0%	1%	1%	1%	1%	1%	0%	0%	1%	1%	1%
Black	3,628	1,682	2,066	1,614	2,179	1,326	905	3,567	1,627	2,027	1,645	2,182	1,346	1,006	21,781
% Black	27%	12%	15%	12%	17%	10%	7%	27%	12%	15%	12%	17%	10%	8%	18%
Latino	879	678	829	956	1,074	748	592	852	614	830	952	1,081	754	673	9,586
% Latino	6%	5%	6%	7%	8%	6%	5%	6%	5%	6%	7%	8%	6%	5%	8%
Other	807	772	753	620	736	626	475	778	724	730	652	742	645	518	5,931
% Other	6%	6%	6%	5%	6%	5%	4%	6%	5%	6%	5%	6%	5%	4%	5%
White	8,173	10,708	9,827	9,861	8,662	10,207	10,294	7,952	10,147	9,339	9,888	9,021	10,355	11,030	80,725
% White	60%	77%	72%	75%	68%	79%	83%	60%	77%	71%	75%	69%	79%	83%	68%



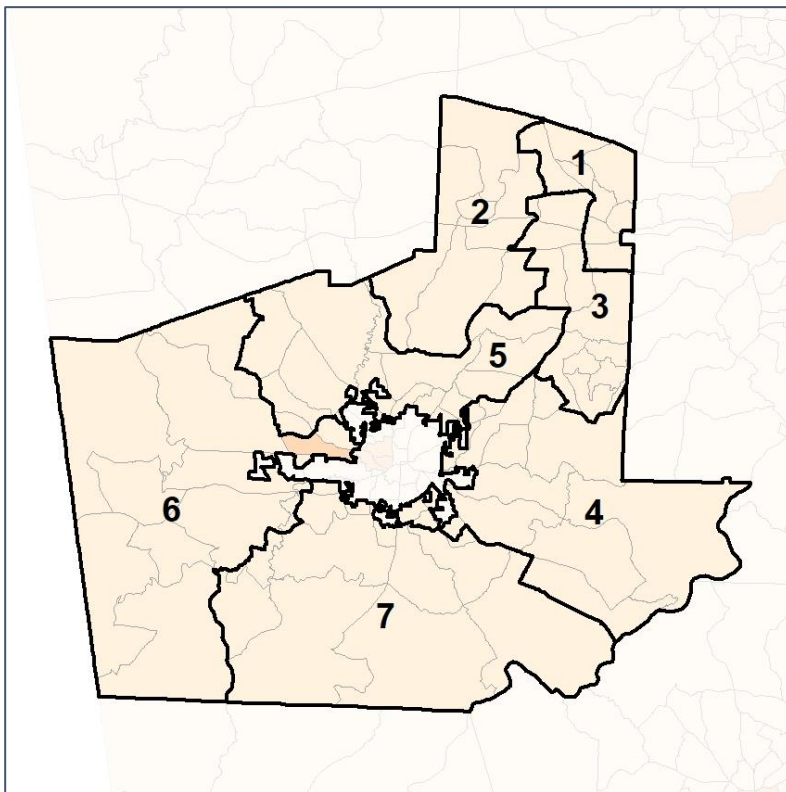
Source:
2020 Decennial Census
2020 ACS 5-Year Dataset

Carroll County School Board

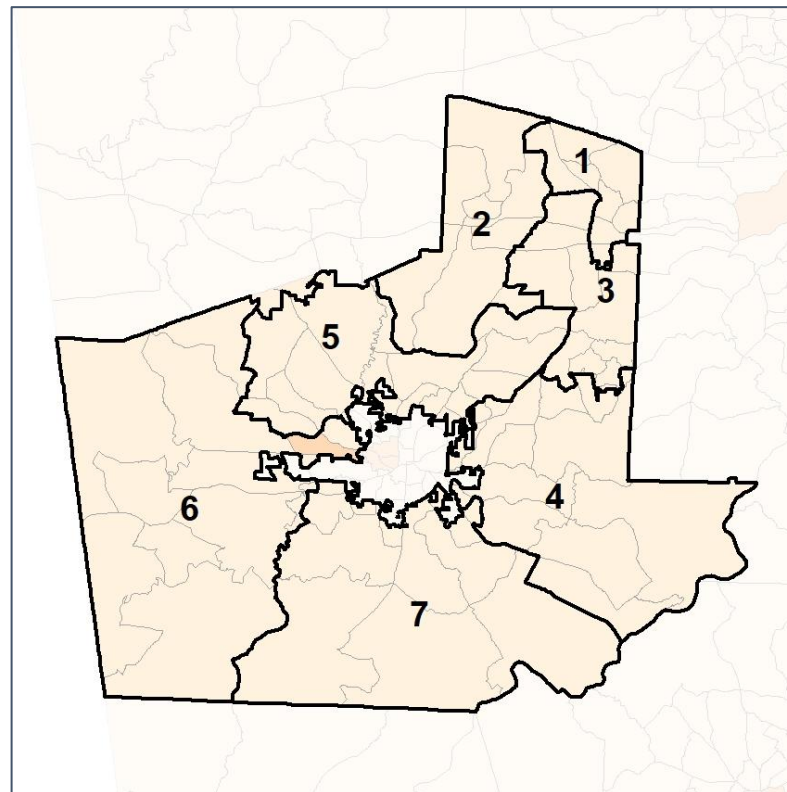
% Latino by Census Block Group



2012 Map



2022 Map*



	1	2	3	4	5	6	7	1*	2*	3*	4*	5*	6*	7*	County
Population	13,640	13,954	13,627	13,103	12,710	12,981	12,330	13,296	13,217	13,087	13,179	13,089	13,175	13,302	119,148
API	153	114	152	52	59	74	64	147	105	161	42	63	75	75	1,125
% API	1%	1%	1%	0%	0%	1%	1%	1%	1%	1%	0%	0%	1%	1%	1%
Black	3,628	1,682	2,066	1,614	2,179	1,326	905	3,567	1,627	2,027	1,645	2,182	1,346	1,006	21,781
% Black	27%	12%	15%	12%	17%	10%	7%	27%	12%	15%	12%	17%	10%	8%	18%
Latino	879	678	829	956	1,074	748	592	852	614	830	952	1,081	754	673	9,586
% Latino	6%	5%	6%	7%	8%	6%	5%	6%	5%	6%	7%	8%	6%	5%	8%
Other	807	772	753	620	736	626	475	778	724	730	652	742	645	518	5,931
% Other	6%	6%	6%	5%	6%	5%	4%	6%	5%	6%	5%	6%	5%	4%	5%
White	8,173	10,708	9,827	9,861	8,662	10,207	10,294	7,952	10,147	9,339	9,888	9,021	10,355	11,030	80,725
% White	60%	77%	72%	75%	68%	79%	83%	60%	77%	71%	75%	69%	79%	83%	68%

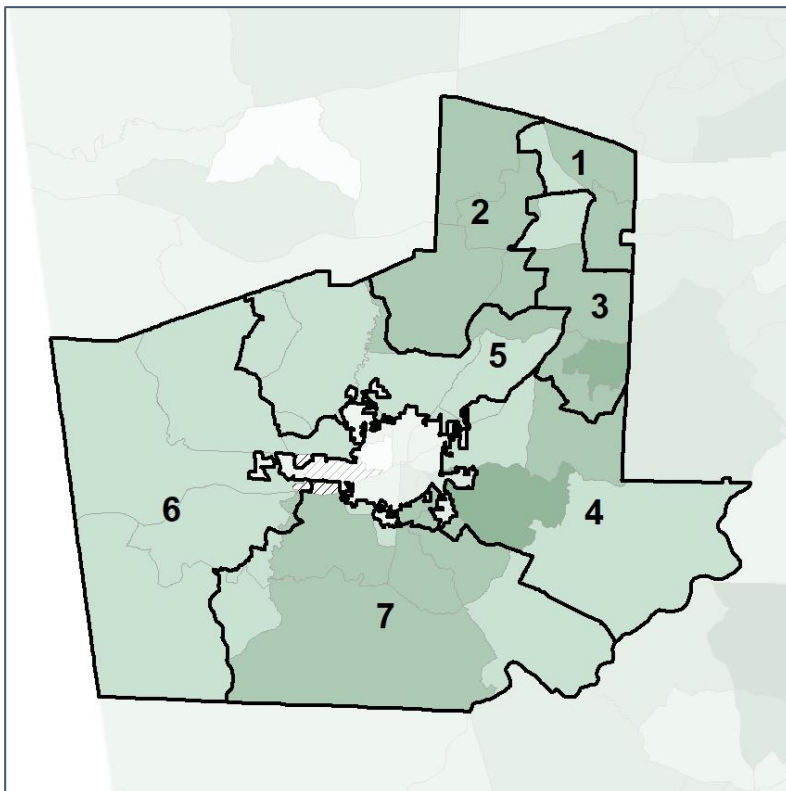


Carroll County School Board

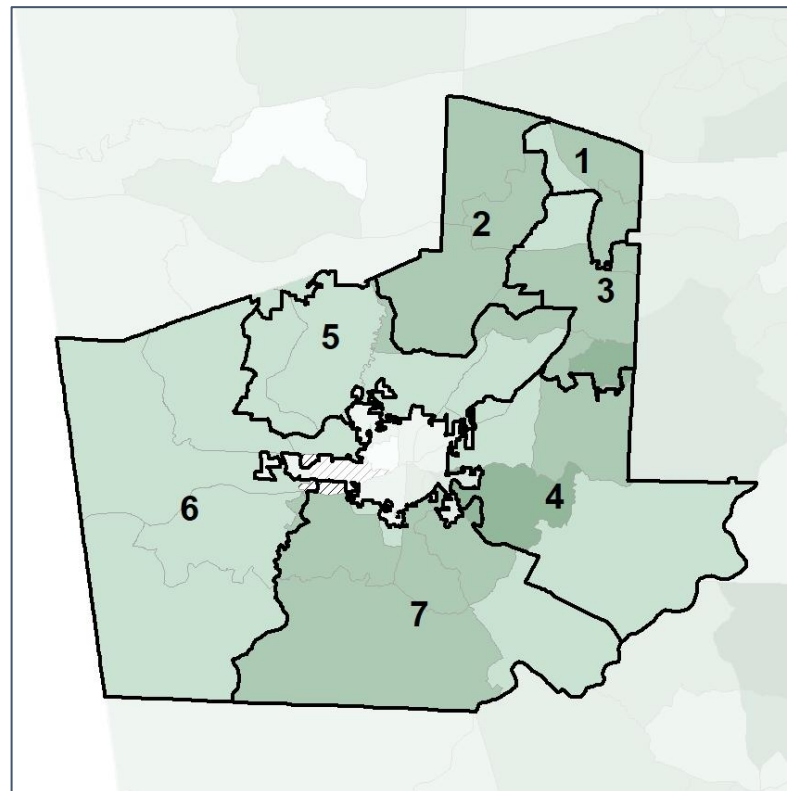
Median Household Income by Census Tract



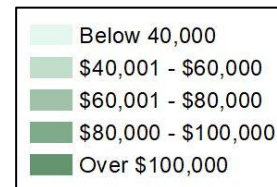
2012 Map



2022 Map*



	1	2	3	4	5	6	7	1*	2*	3*	4*	5*	6*	7*	County
Population	13,640	13,954	13,627	13,103	12,710	12,981	12,330	13,296	13,217	13,087	13,179	13,089	13,175	13,302	119,148
% API	1%	1%	1%	0%	0%	1%	1%	1%	1%	1%	0%	0%	1%	1%	1%
% Black	27%	12%	15%	12%	17%	10%	7%	27%	12%	15%	12%	17%	10%	8%	18%
% Latino	6%	5%	6%	7%	8%	6%	5%	6%	5%	6%	7%	8%	6%	5%	8%
% Other	6%	6%	6%	5%	6%	5%	4%	6%	5%	6%	5%	6%	5%	4%	5%
% White	60%	77%	72%	75%	68%	79%	83%	60%	77%	71%	75%	69%	79%	83%	68%
Median Income	\$72,000	\$69,000	\$78,000	\$64,000	\$53,000	\$51,000	\$66,000	\$73,000	\$69,000	\$76,000	\$64,000	\$53,000	\$51,000	\$66,000	\$59,000
% Renter	44%	14%	27%	17%	24%	26%	23%	44%	14%	29%	17%	24%	26%	23%	31%
% Youth	25%	24%	19%	24%	21%	24%	23%	26%	24%	19%	24%	21%	24%	23%	26%



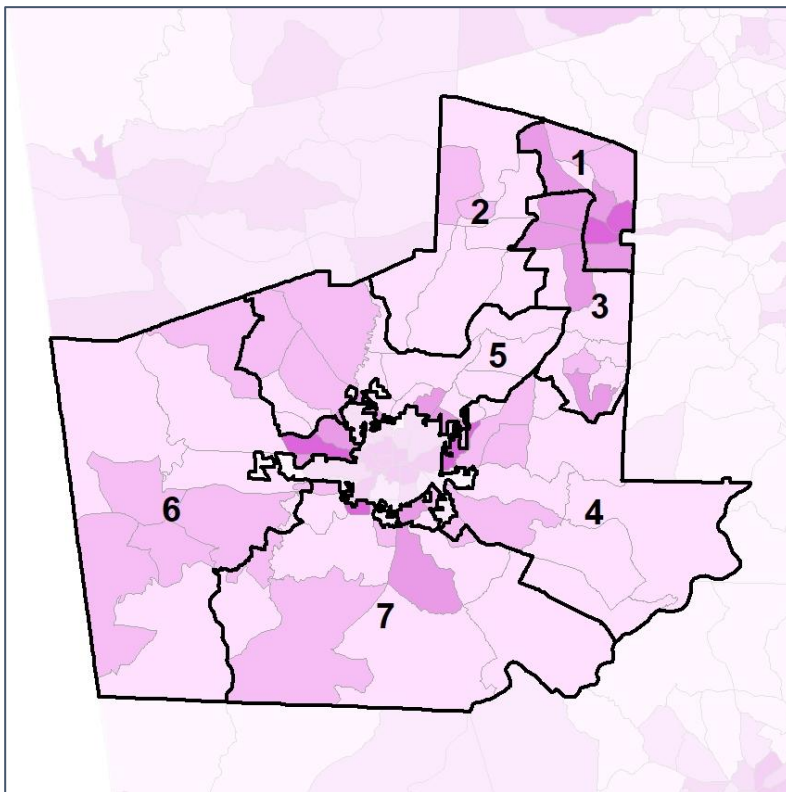
Source:
2020 Decennial Census
2020 ACS 5-Year Dataset

Carroll County School Board

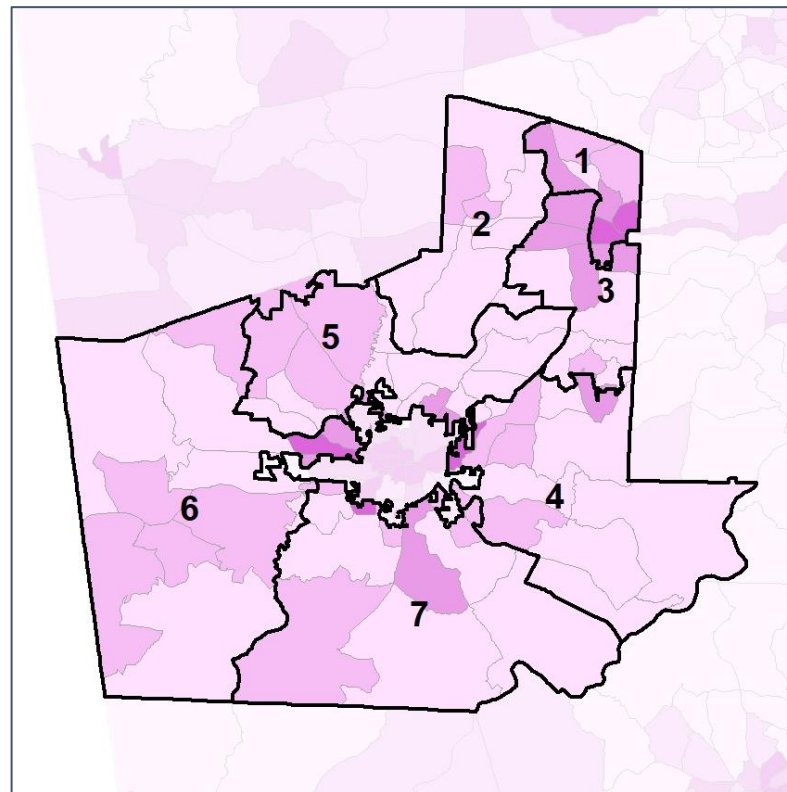
% Renter by Census Block Group



2012 Map



2022 Map*



	1	2	3	4	5	6	7	1*	2*	3*	4*	5*	6*	7*	County
Population	13,640	13,954	13,627	13,103	12,710	12,981	12,330	13,296	13,217	13,087	13,179	13,089	13,175	13,302	119,148
% API	1%	1%	1%	0%	0%	1%	1%	1%	1%	1%	0%	0%	1%	1%	1%
% Black	27%	12%	15%	12%	17%	10%	7%	27%	12%	15%	12%	17%	10%	8%	18%
% Latino	6%	5%	6%	7%	8%	6%	5%	6%	5%	6%	7%	8%	6%	5%	8%
% Other	6%	6%	6%	5%	6%	5%	4%	6%	5%	6%	5%	6%	5%	4%	5%
% White	60%	77%	72%	75%	68%	79%	83%	60%	77%	71%	75%	69%	79%	83%	68%
Median Income	\$72,000	\$69,000	\$78,000	\$64,000	\$53,000	\$51,000	\$66,000	\$73,000	\$69,000	\$76,000	\$64,000	\$53,000	\$51,000	\$66,000	\$59,000
% Renter	44%	14%	27%	17%	24%	26%	23%	44%	14%	29%	17%	24%	26%	23%	31%
% Youth	25%	24%	19%	24%	21%	24%	23%	26%	24%	19%	24%	21%	24%	23%	26%

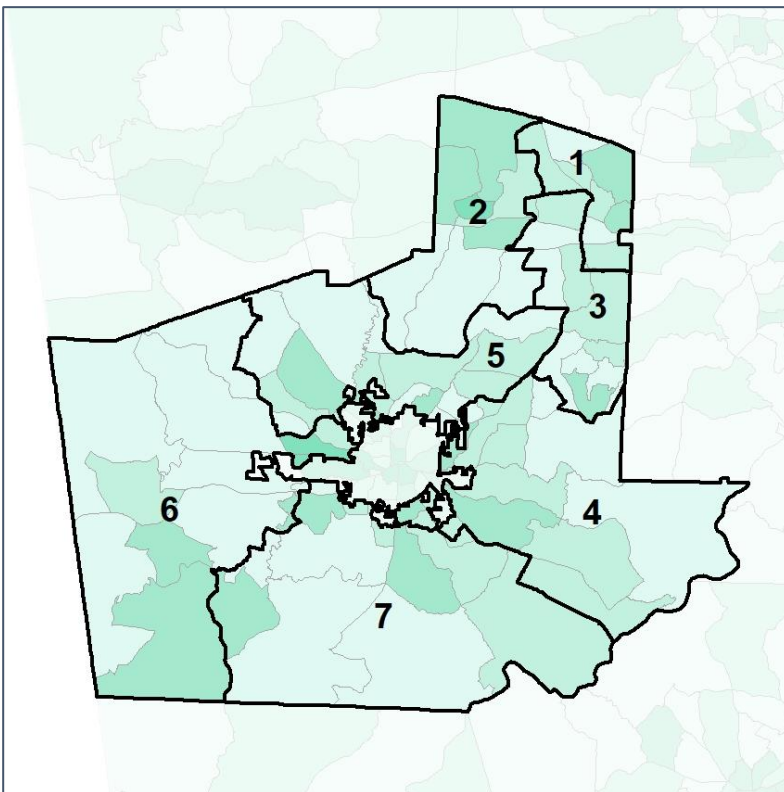


Carroll County School Board

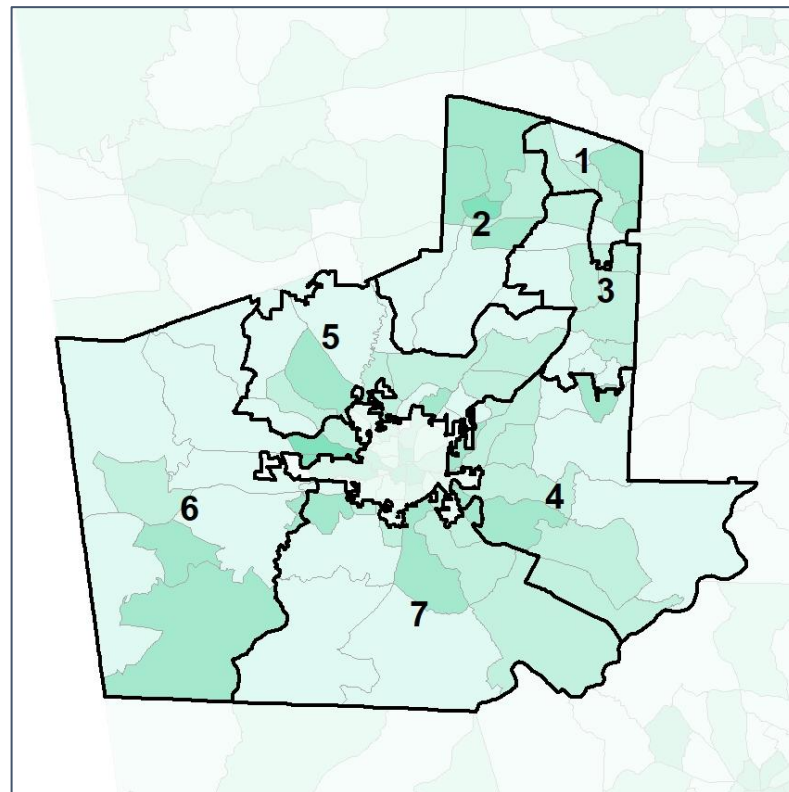
% Youth (18-34) by Census Block Group



2012 Map



2022 Map*



	1	2	3	4	5	6	7	1*	2*	3*	4*	5*	6*	7*	County
Population	13,640	13,954	13,627	13,103	12,710	12,981	12,330	13,296	13,217	13,087	13,179	13,089	13,175	13,302	119,148
% API	1%	1%	1%	0%	0%	1%	1%	1%	1%	1%	0%	0%	1%	1%	1%
% Black	27%	12%	15%	12%	17%	10%	7%	27%	12%	15%	12%	17%	10%	8%	18%
% Latino	6%	5%	6%	7%	8%	6%	5%	6%	5%	6%	7%	8%	6%	5%	8%
% Other	6%	6%	6%	5%	6%	5%	4%	6%	5%	6%	5%	6%	5%	4%	5%
% White	60%	77%	72%	75%	68%	79%	83%	60%	77%	71%	75%	69%	79%	83%	68%
Median Income	\$72,000	\$69,000	\$78,000	\$64,000	\$53,000	\$51,000	\$66,000	\$73,000	\$69,000	\$76,000	\$64,000	\$53,000	\$51,000	\$66,000	\$59,000
% Renter	44%	14%	27%	17%	24%	26%	23%	44%	14%	29%	17%	24%	26%	23%	31%
% Youth	25%	24%	19%	24%	21%	24%	23%	26%	24%	19%	24%	21%	24%	23%	26%

