



Demographic Overview

Racial Breakdown in Camden County

Camden County	2010	2020	% Change
Total Population	50,513	54,768	8%
AAPI	776	911	17%
Black	9,621	9,497	-1%
Latino	2,590	3,658	41%
Other/Mixed Race	1,549	3,499	126%
POC	14,536	17,565	21%
White	35,977	37,203	3%

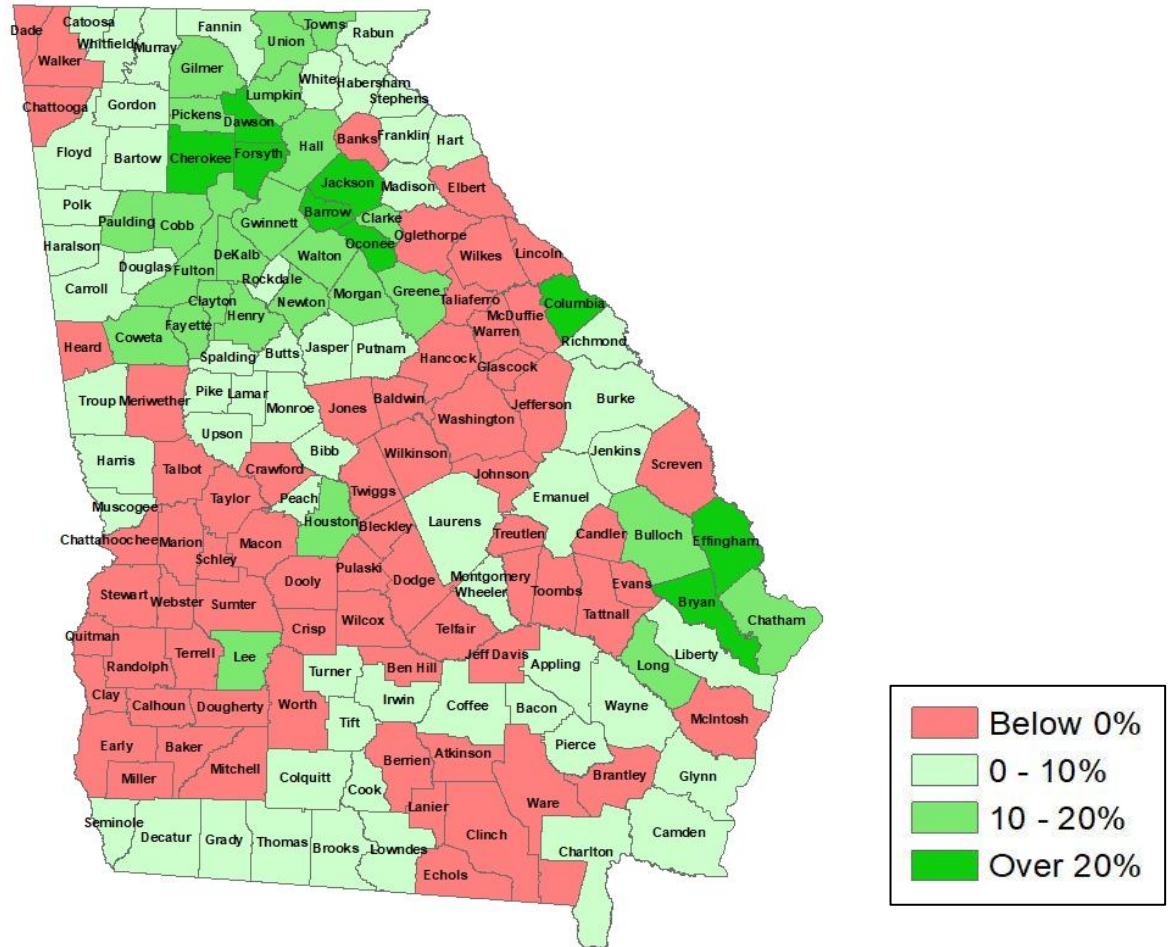
*Note: The use of "Other" in these statistics combines those who identify as Native American, Mixed Race, and "Other" race





Population Gain

Change in Population in Georgia by County



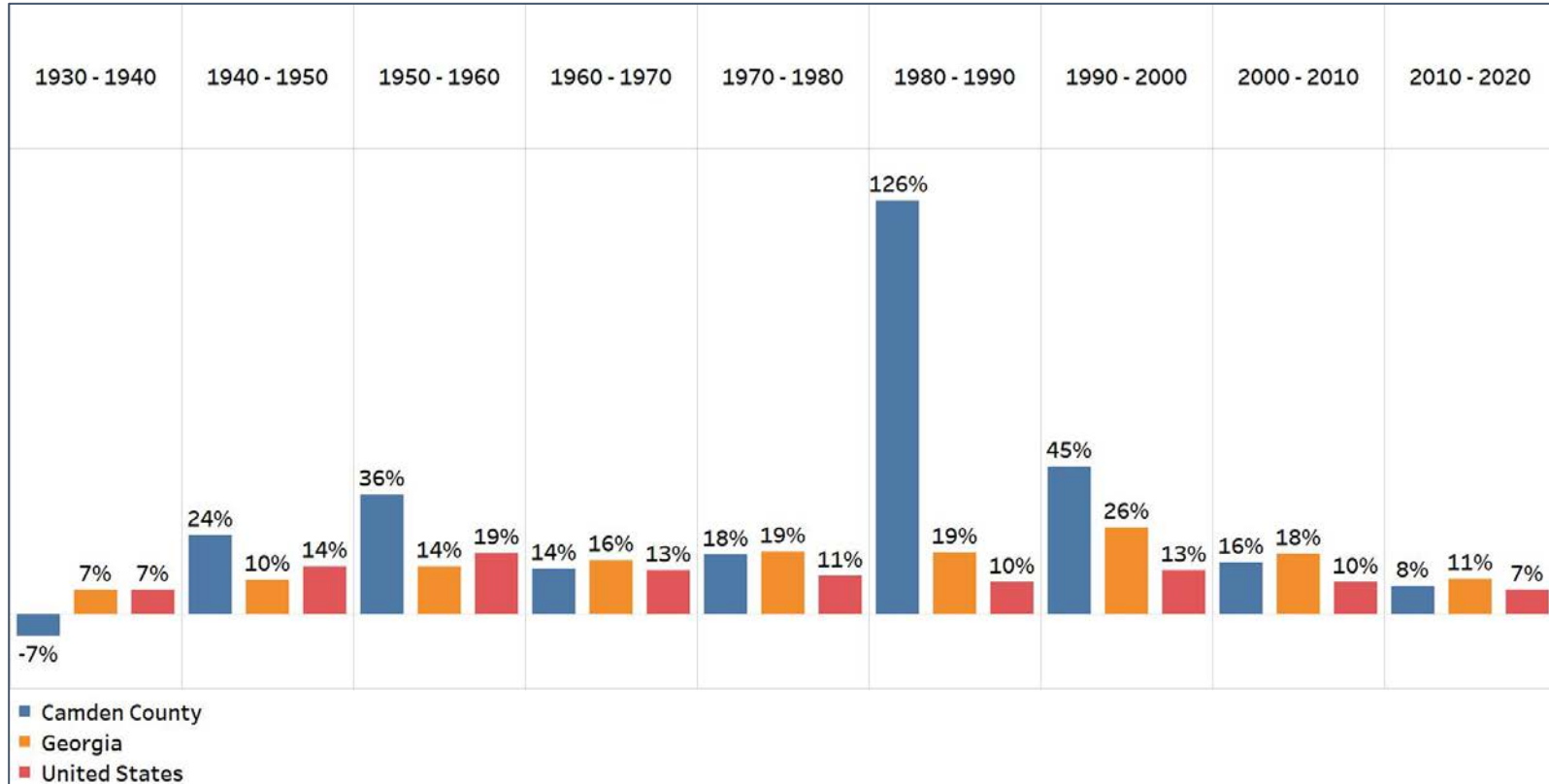
- Georgia is experiencing rapid population growth in the Atlanta, Augusta, and Savannah regions of the state





Population Gain

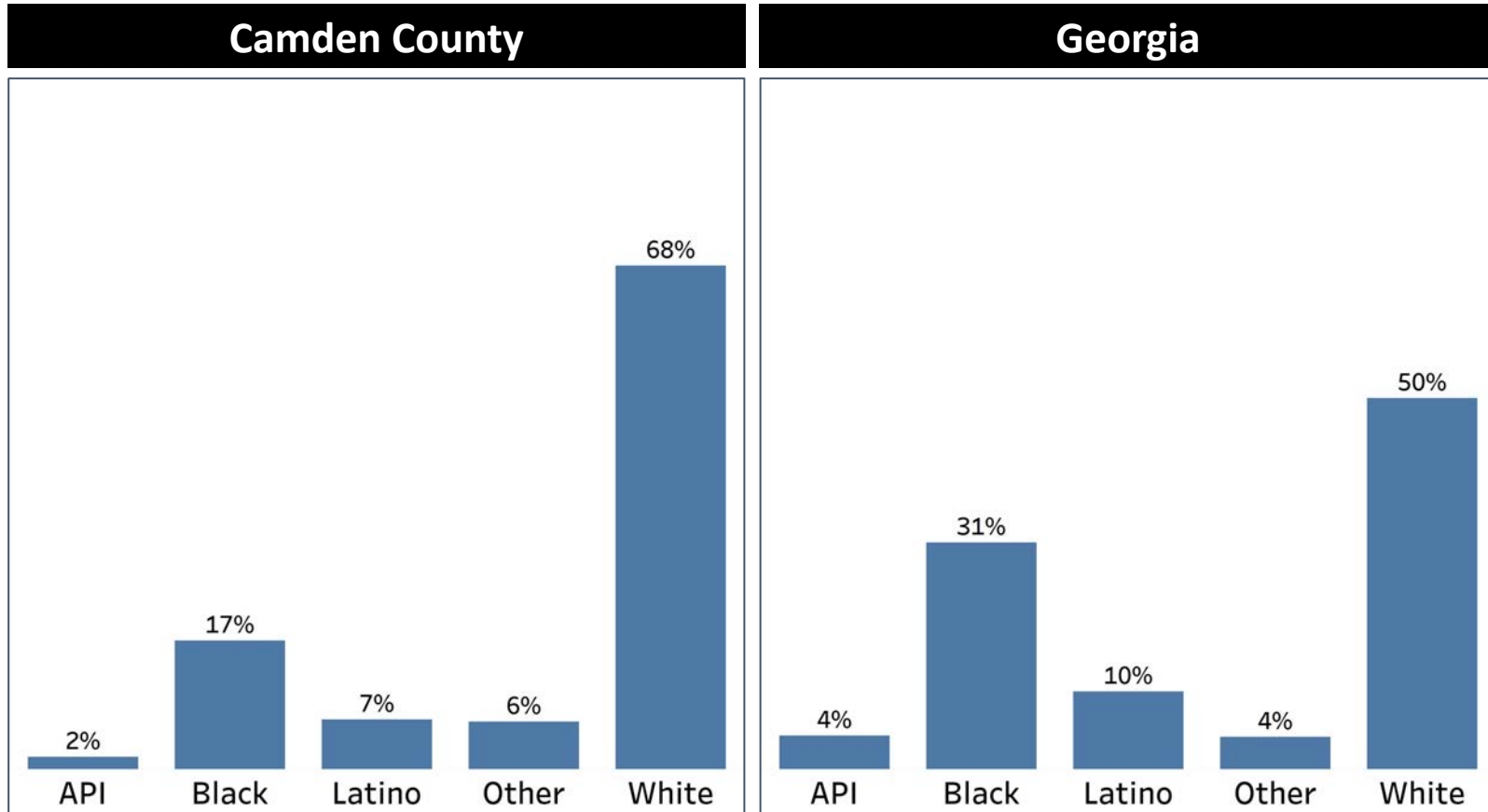
Change in Population by Decade



- Camden County has seen significant population growth since 1940, including an explosion in the population in the 1980's
- The growth has slowed in the last decade, but is still significant

Demographics

Comparison between Camden County and Georgia



- Camden County has a much higher White population compared to the overall share in Georgia
- All communities of color, with the exception of the Other population, have a much lower share of the population in Camden county compared to Georgia

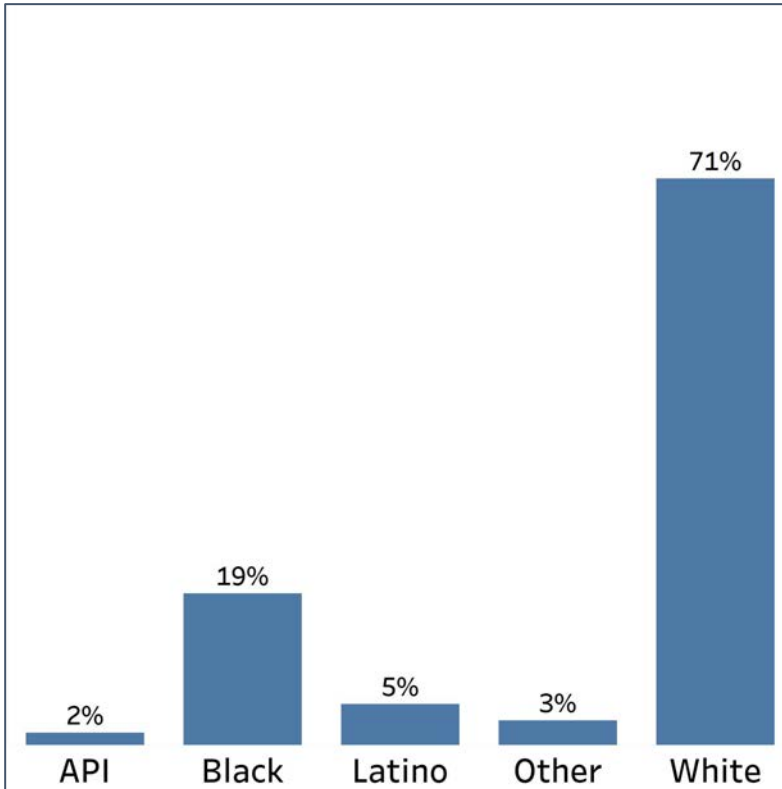


Demographics

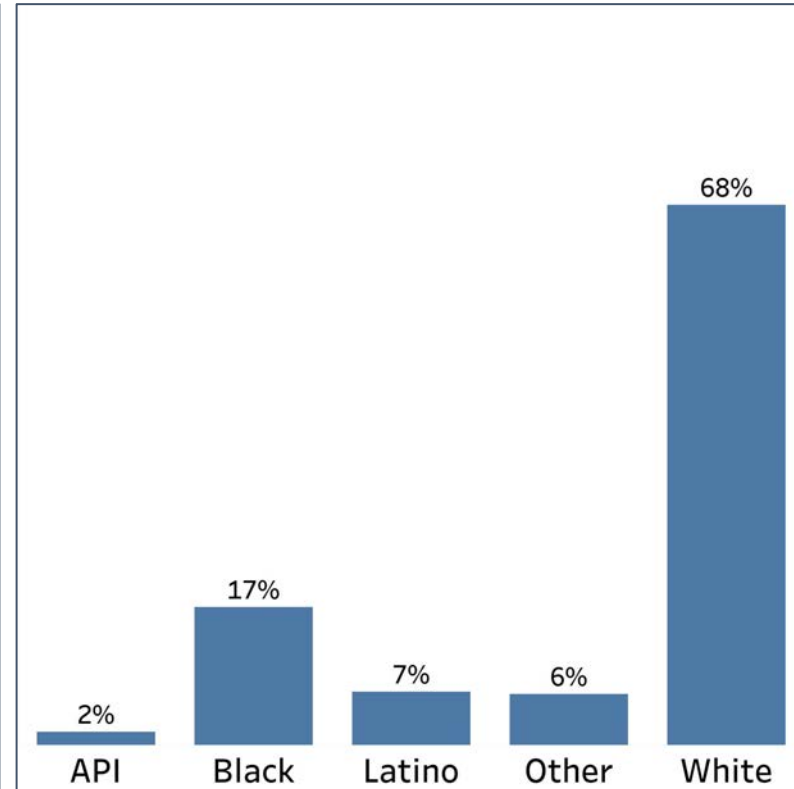
2010 vs 2020 Demographics in Camden County



Camden County 2010



Camden County 2020

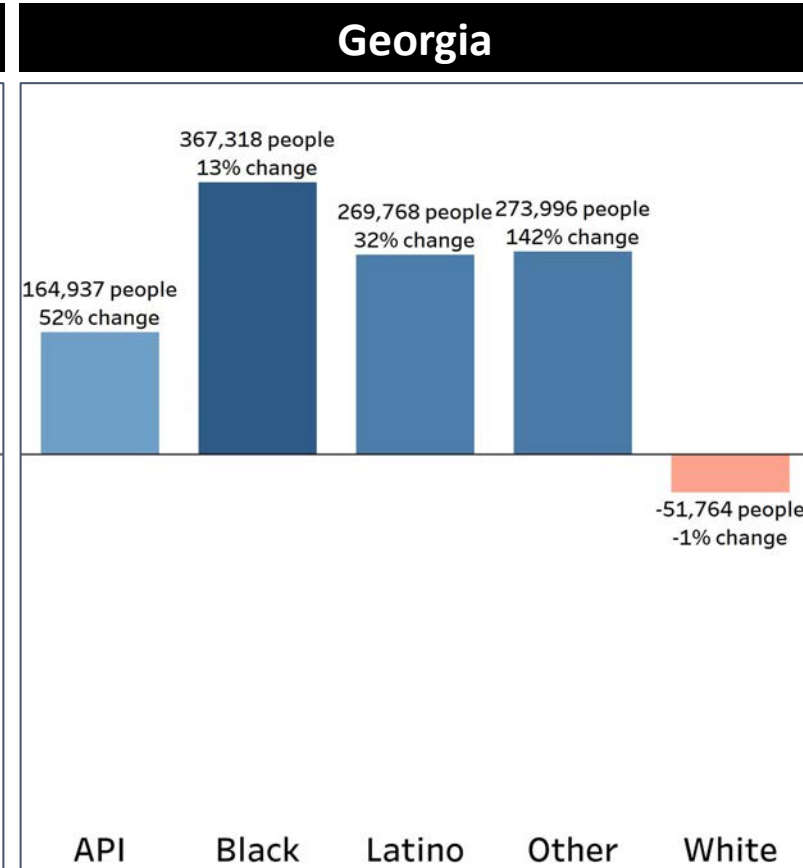
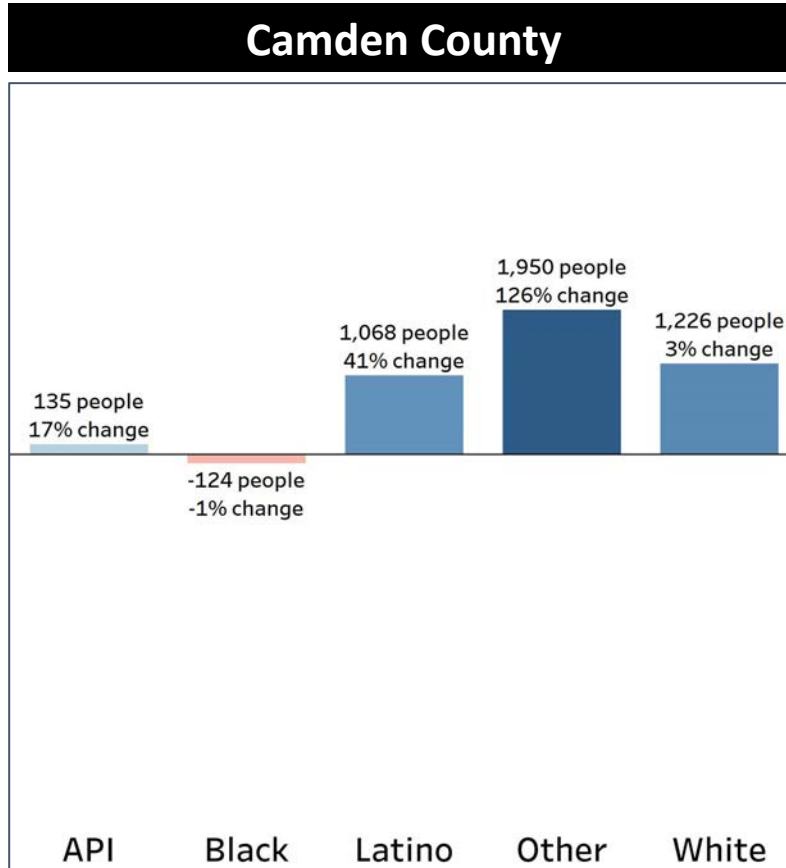


- Camden county has seen a small decline in the share of the White and Black populations while the Other and Latino communities have seen an increase



Demographics

Population Change by Race (2020 - 2010)



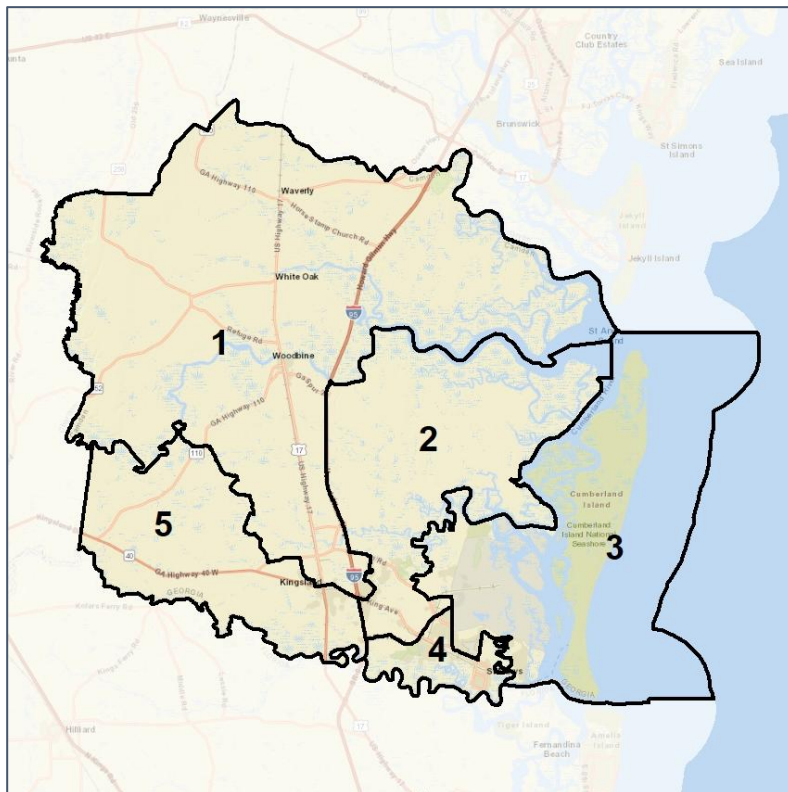
- Camden County has seen similar rates of growth in the Latino and Other populations as Georgia overall, while the White population has seen an increase instead of a decrease
- Meanwhile, the Black community declined in population instead of growing like the rest of Georgia

Camden Co. Commission & School Board

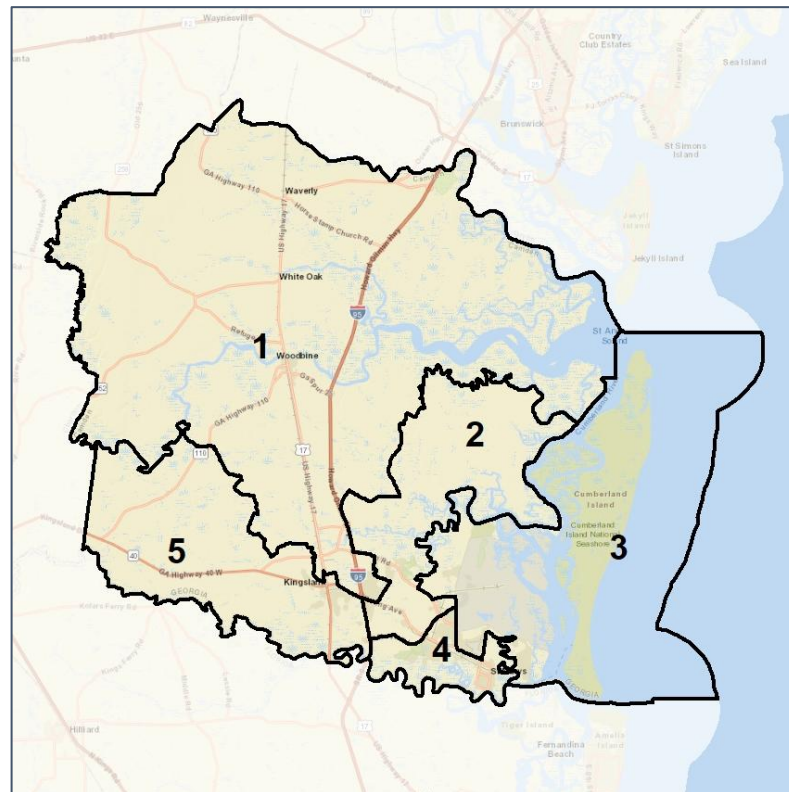
Context



2012 Map



2022 Map*



	1	2	3	4	5	1*	2*	3*	4*	5*	County
Population	9,754	12,580	11,022	10,977	10,435	10,984	10,886	11,022	10,977	10,899	54,768
API	1%	3%	2%	2%	1%	1%	3%	2%	2%	1%	2%
Black	25%	16%	15%	13%	18%	26%	15%	15%	13%	18%	17%
Latino	4%	7%	10%	6%	6%	4%	7%	10%	6%	6%	7%
Other	6%	7%	6%	6%	7%	6%	7%	6%	6%	7%	6%
White	65%	67%	67%	73%	67%	63%	70%	67%	73%	67%	68%
Population Gain	7	2,366	1,144	629	109	1,230	-1,694	0	0	464	*
Population % Gain	0%	23%	12%	6%	1%	13%	-13%	0%	0%	4%	*
Net POC Gain	66	1,255	641	489	578	670	-840	0	0	170	*
Net POC % Gain	2%	43%	22%	20%	20%	20%	-20%	0%	0%	5%	*

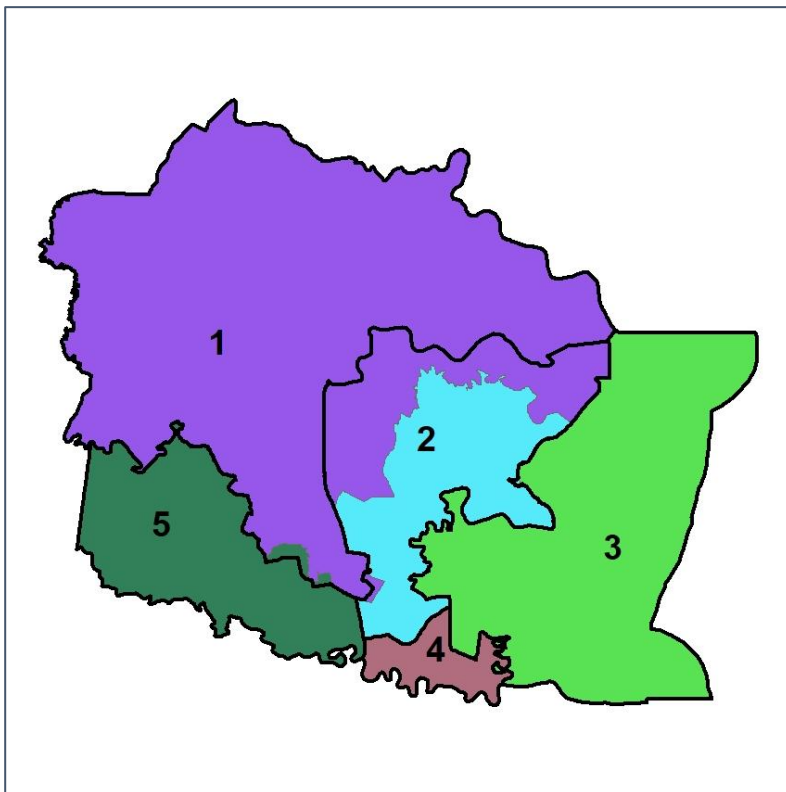


Camden Co. Commission & School Board

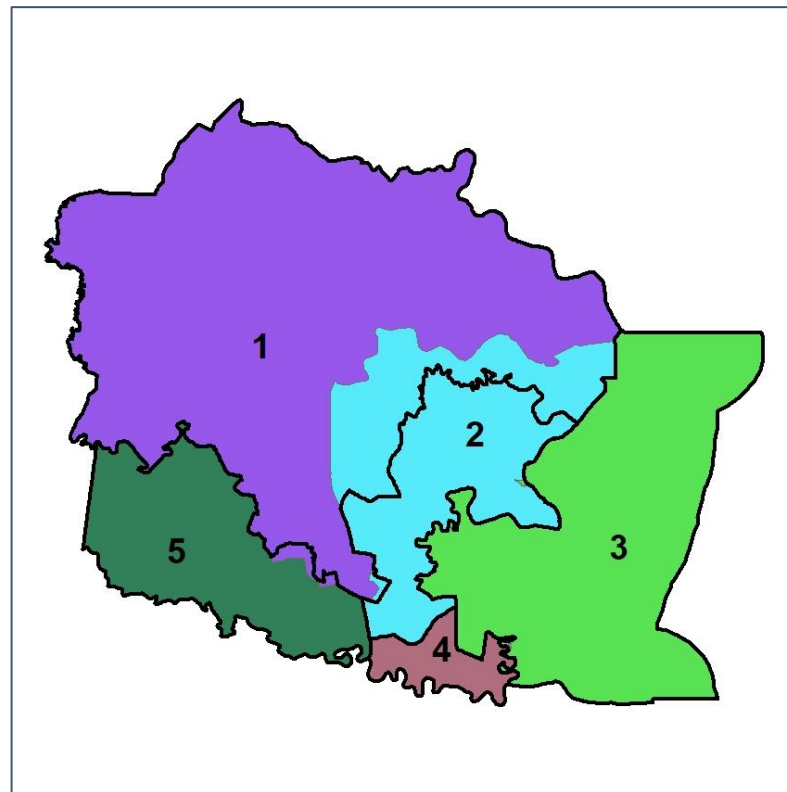
Changes in Redistricting



2012 Map (2022 in Colors)



2022 Map* (2012 in Colors)



	1	2	3	4	5	1*	2*	3*	4*	5*	County
Population	9,754	12,580	11,022	10,977	10,435	10,984	10,886	11,022	10,977	10,899	54,768
API	1%	3%	2%	2%	1%	1%	3%	2%	2%	1%	2%
Black	25%	16%	15%	13%	18%	26%	15%	15%	13%	18%	17%
Latino	4%	7%	10%	6%	6%	4%	7%	10%	6%	6%	7%
Other	6%	7%	6%	6%	7%	6%	7%	6%	6%	7%	6%
White	65%	67%	67%	73%	67%	63%	70%	67%	73%	67%	68%
Population Gain	7	2,366	1,144	629	109	1,230	-1,694	0	0	464	*
Population % Gain	0%	23%	12%	6%	1%	13%	-13%	0%	0%	4%	*
Net POC Gain	66	1,255	641	489	578	670	-840	0	0	170	*
Net POC % Gain	2%	43%	22%	20%	20%	20%	-20%	0%	0%	5%	*

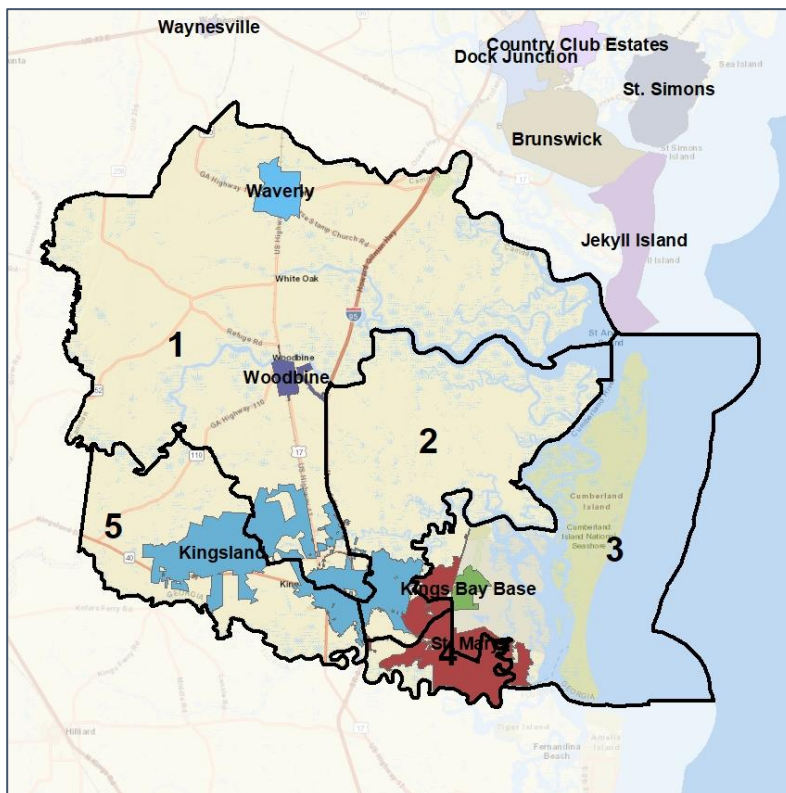


Camden Co. Commission & School Board

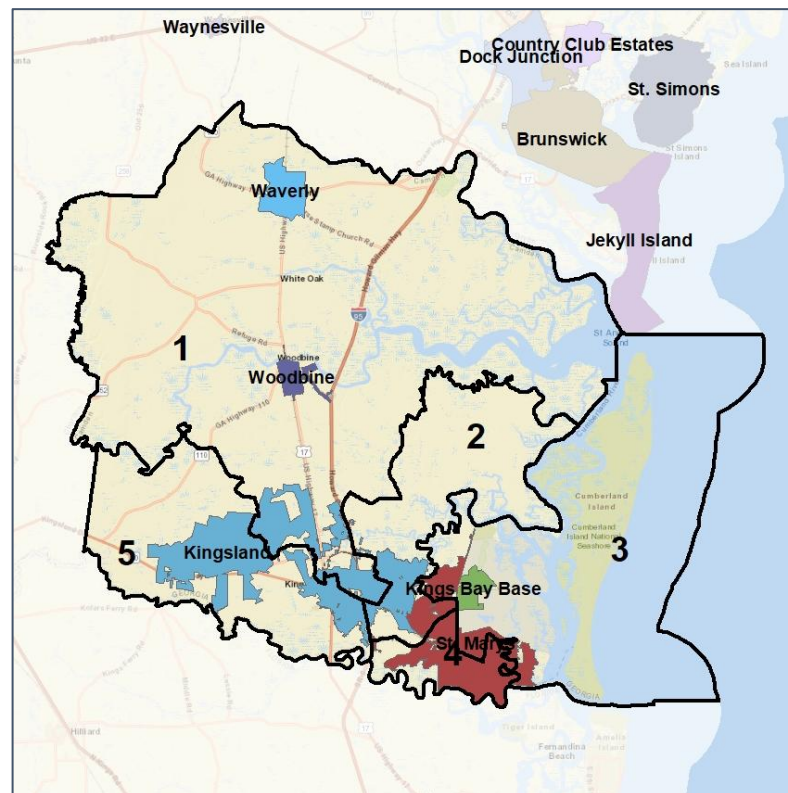
Cities and Places



2012 Map



2022 Map*



	1	2	3	4	5	1*	2*	3*	4*	5*	County
Population	9,754	12,580	11,022	10,977	10,435	10,984	10,886	11,022	10,977	10,899	54,768
API	1%	3%	2%	2%	1%	1%	3%	2%	2%	1%	2%
Black	25%	16%	15%	13%	18%	26%	15%	15%	13%	18%	17%
Latino	4%	7%	10%	6%	6%	4%	7%	10%	6%	6%	7%
Other	6%	7%	6%	6%	7%	6%	7%	6%	6%	7%	6%
White	65%	67%	67%	73%	67%	63%	70%	67%	73%	67%	68%
Population Gain	7	2,366	1,144	629	109	1,230	-1,694	0	0	464	*
Population % Gain	0%	23%	12%	6%	1%	13%	-13%	0%	0%	4%	*
Net POC Gain	66	1,255	641	489	578	670	-840	0	0	170	*
Net POC % Gain	2%	43%	22%	20%	20%	20%	-20%	0%	0%	5%	*

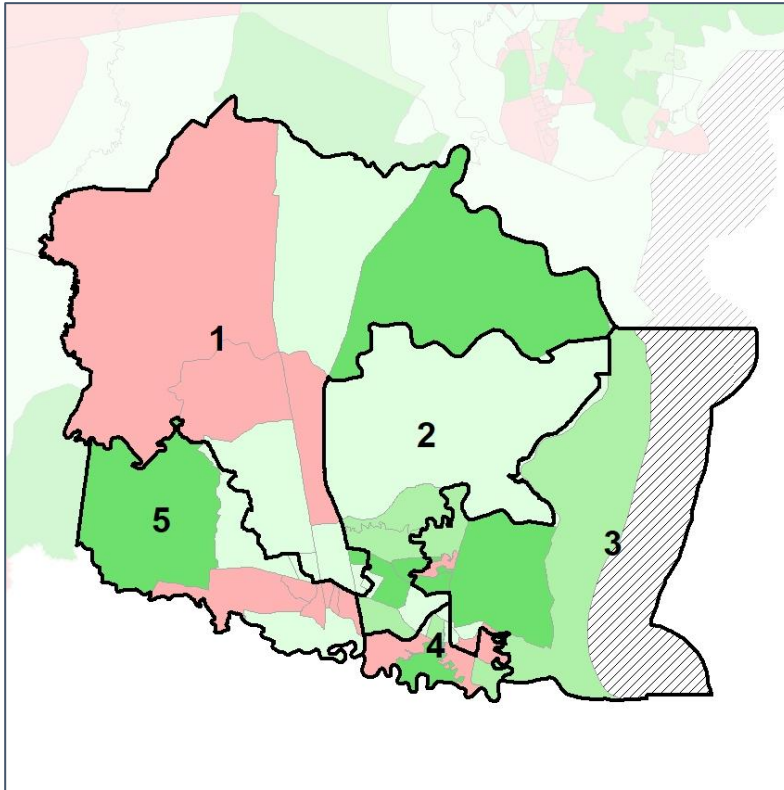


Camden Co. Commission & School Board

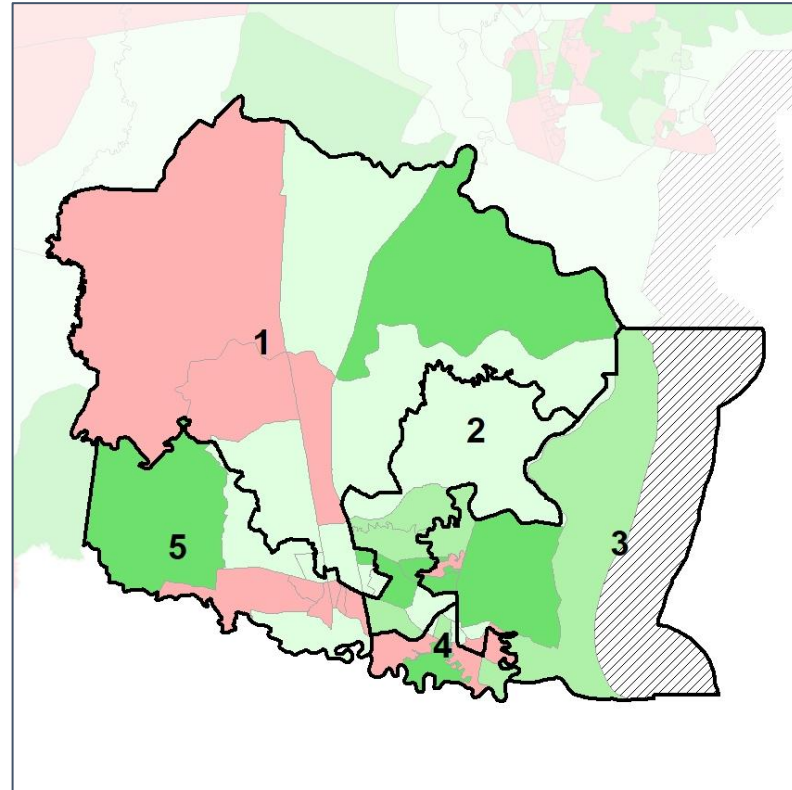
Net Gain in Population (2010 - 2020) by Census Block Group



2012 Map



2022 Map*



	1	2	3	4	5	1*	2*	3*	4*	5*	County
Population	9,754	12,580	11,022	10,977	10,435	10,984	10,886	11,022	10,977	10,899	54,768
API	1%	3%	2%	2%	1%	1%	3%	2%	2%	1%	2%
Black	25%	16%	15%	13%	18%	26%	15%	15%	13%	18%	17%
Latino	4%	7%	10%	6%	6%	4%	7%	10%	6%	6%	7%
Other	6%	7%	6%	6%	7%	6%	7%	6%	6%	7%	6%
White	65%	67%	67%	73%	67%	63%	70%	67%	73%	67%	68%
Population Gain	7	2,366	1,144	629	109	1,230	-1,694	0	0	464	*
Population % Gain	0%	23%	12%	6%	1%	13%	-13%	0%	0%	4%	*
Net POC Gain	66	1,255	641	489	578	670	-840	0	0	170	*
Net POC % Gain	2%	43%	22%	20%	20%	20%	-20%	0%	0%	5%	*

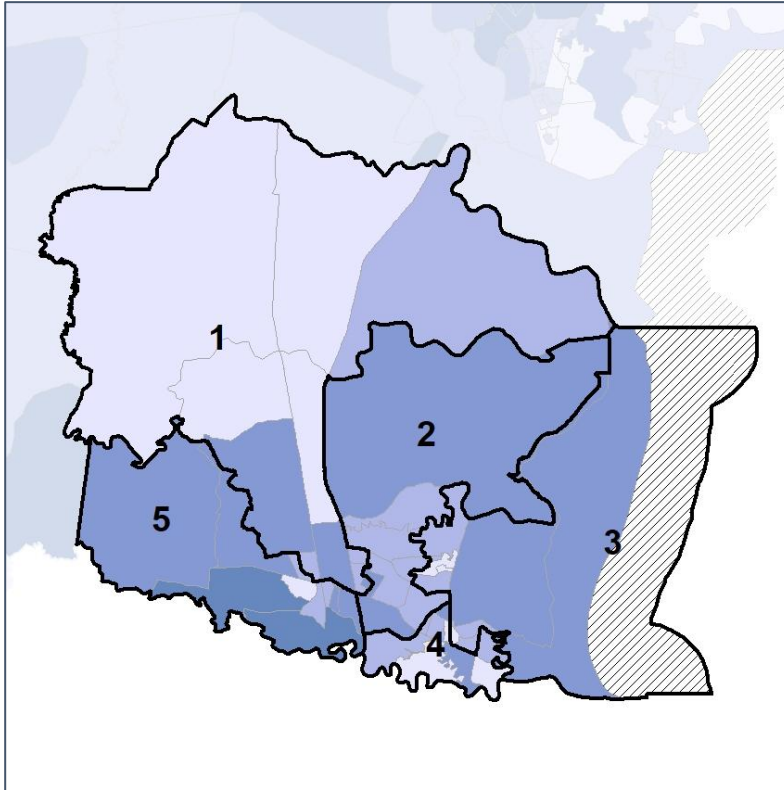


Camden Co. Commission & School Board

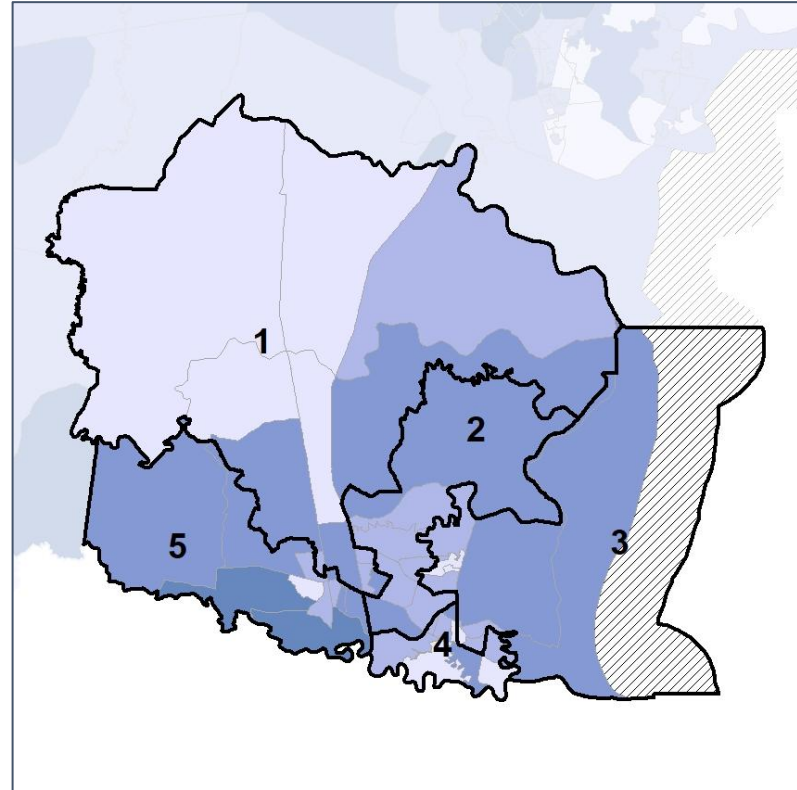
Net Gain in % POC (2020 - 2010) by Census Block Group



2012 Map



2022 Map*



	1	2	3	4	5	1*	2*	3*	4*	5*	County
Population	9,754	12,580	11,022	10,977	10,435	10,984	10,886	11,022	10,977	10,899	54,768
API	1%	3%	2%	2%	1%	1%	3%	2%	2%	1%	2%
Black	25%	16%	15%	13%	18%	26%	15%	15%	13%	18%	17%
Latino	4%	7%	10%	6%	6%	4%	7%	10%	6%	6%	7%
Other	6%	7%	6%	6%	7%	6%	7%	6%	6%	7%	6%
White	65%	67%	67%	73%	67%	63%	70%	67%	73%	67%	68%
Population Gain	7	2,366	1,144	629	109	1,230	-1,694	0	0	464	*
Population % Gain	0%	23%	12%	6%	1%	13%	-13%	0%	0%	4%	*
Net POC Gain	66	1,255	641	489	578	670	-840	0	0	170	*
Net POC % Gain	2%	43%	22%	20%	20%	20%	-20%	0%	0%	5%	*



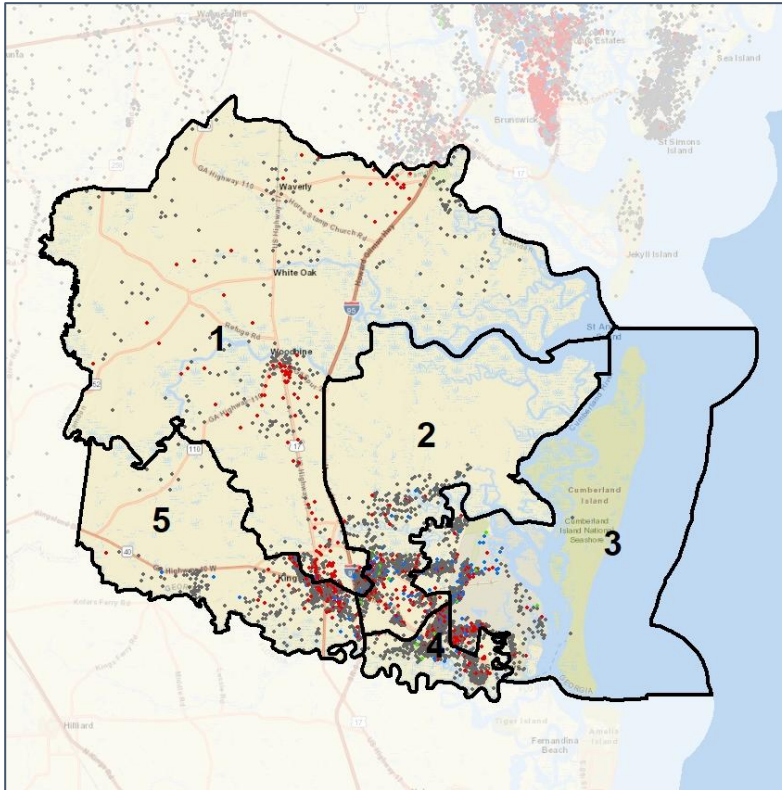
Source:
2020 Decennial Census
2020 ACS 5-Year Dataset

Camden Co. Commission & School Board

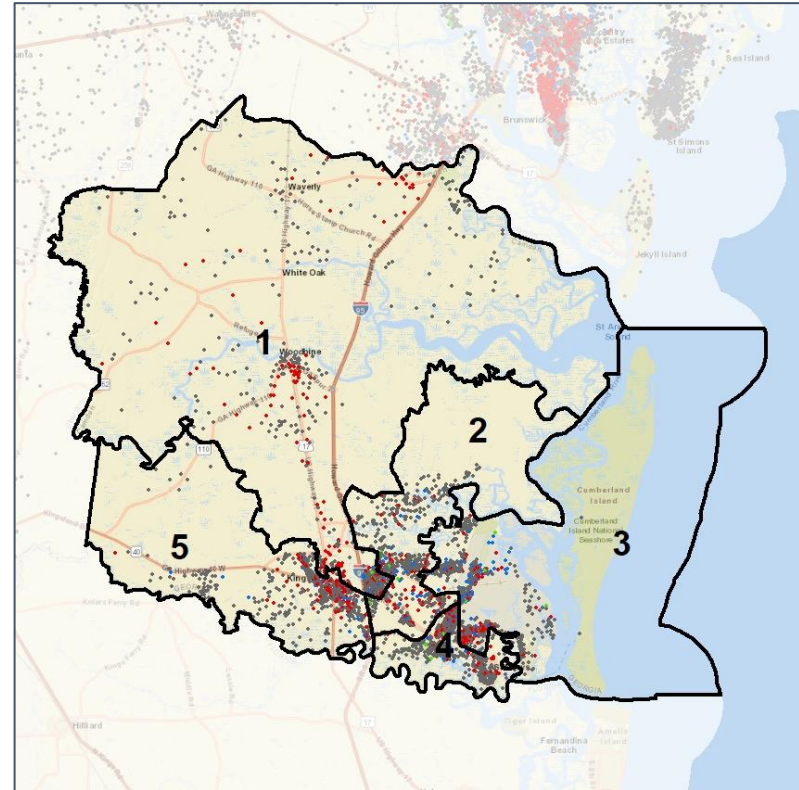
Population Density by Race



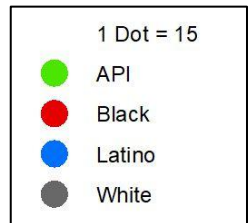
2012 Map



2022 Map*



	1	2	3	4	5	1*	2*	3*	4*	5*	County
Population	9,754	12,580	11,022	10,977	10,435	10,984	10,886	11,022	10,977	10,899	54,768
API	72	365	178	169	127	141	294	178	169	129	911
% API	1%	3%	2%	2%	1%	1%	3%	2%	2%	1%	2%
Black	2,430	2,072	1,699	1,411	1,885	2,809	1,587	1,699	1,411	1,991	9,497
% Black	25%	16%	15%	13%	18%	26%	15%	15%	13%	18%	17%
Latino	348	853	1,091	707	659	466	711	1,091	707	683	3,658
% Latino	4%	7%	10%	6%	6%	4%	7%	10%	6%	6%	7%
Other	583	861	638	668	749	687	719	638	668	787	3,499
% Other	6%	7%	6%	6%	7%	6%	7%	6%	6%	7%	6%
White	6,321	8,429	7,416	8,022	7,015	6,881	7,575	7,416	8,022	7,309	37,203
% White	65%	67%	67%	73%	67%	63%	70%	67%	73%	67%	68%



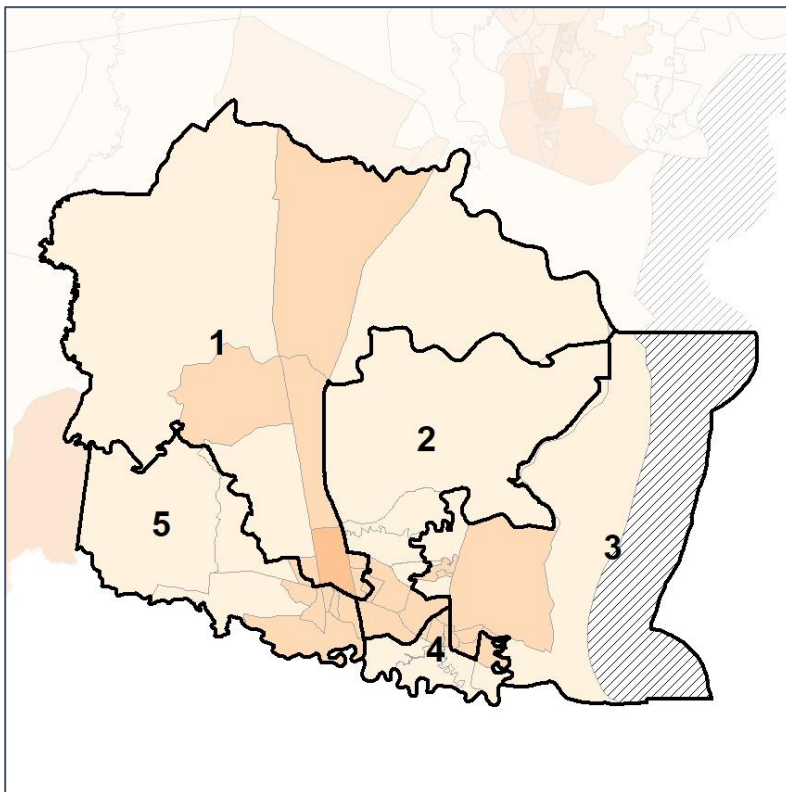
Source:
2020 Decennial Census
2020 ACS 5-Year Dataset

Camden Co. Commission & School Board

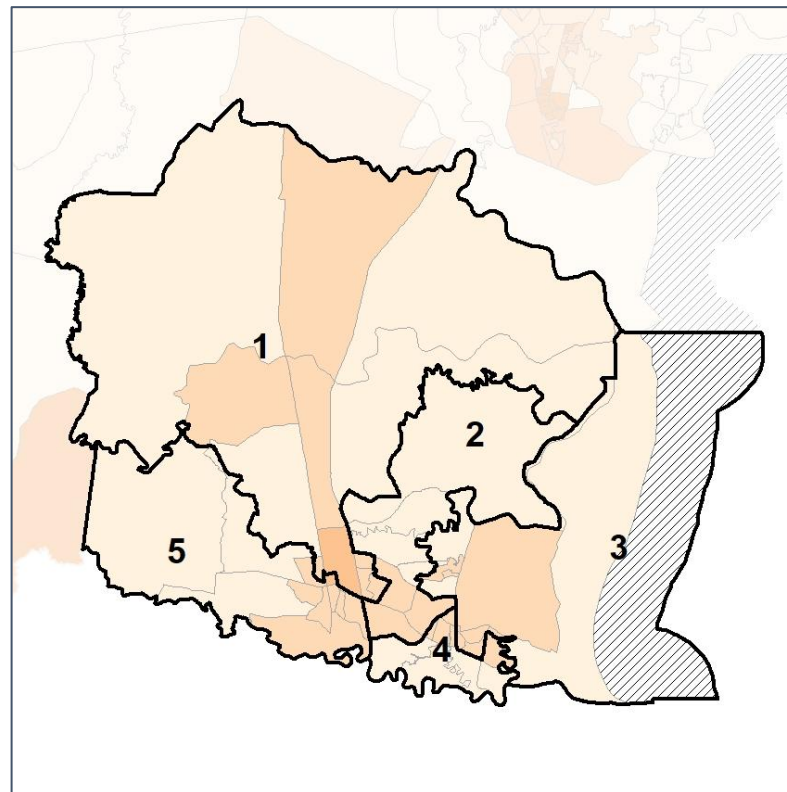
% People of Color by Census Block Group



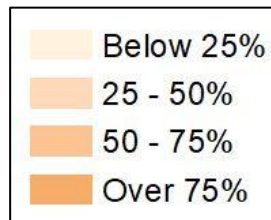
2012 Map



2022 Map*



	1	2	3	4	5	1*	2*	3*	4*	5*	County
Population	9,754	12,580	11,022	10,977	10,435	10,984	10,886	11,022	10,977	10,899	54,768
API	72	365	178	169	127	141	294	178	169	129	911
% API	1%	3%	2%	2%	1%	1%	3%	2%	2%	1%	2%
Black	2,430	2,072	1,699	1,411	1,885	2,809	1,587	1,699	1,411	1,991	9,497
% Black	25%	16%	15%	13%	18%	26%	15%	15%	13%	18%	17%
Latino	348	853	1,091	707	659	466	711	1,091	707	683	3,658
% Latino	4%	7%	10%	6%	6%	4%	7%	10%	6%	6%	7%
Other	583	861	638	668	749	687	719	638	668	787	3,499
% Other	6%	7%	6%	6%	7%	6%	7%	6%	6%	7%	6%
White	6,321	8,429	7,416	8,022	7,015	6,881	7,575	7,416	8,022	7,309	37,203
% White	65%	67%	67%	73%	67%	63%	70%	67%	73%	67%	68%



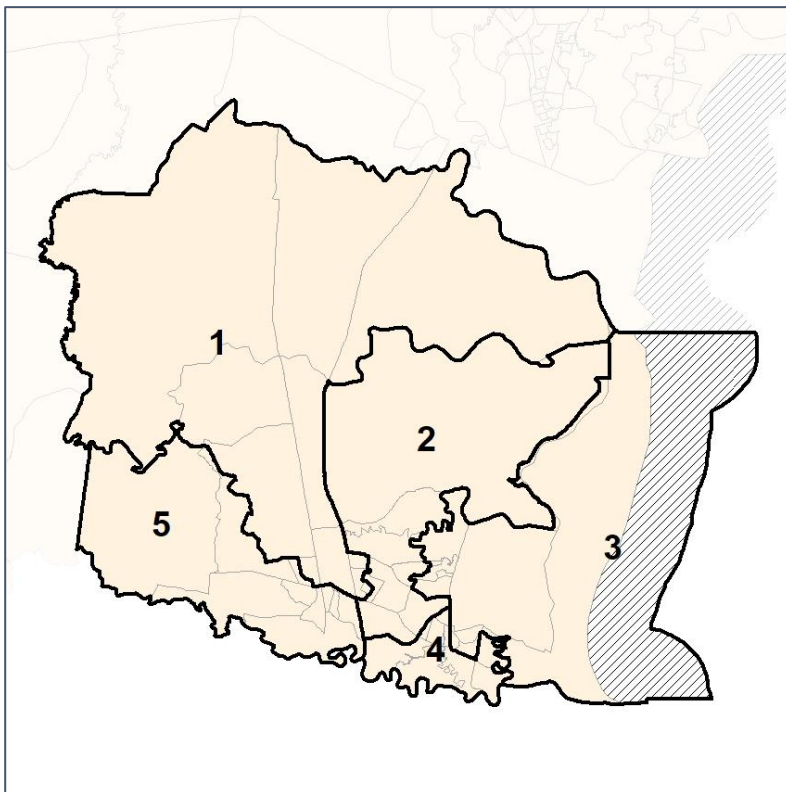
Source:
2020 Decennial Census
2020 ACS 5-Year Dataset

Camden Co. Commission & School Board

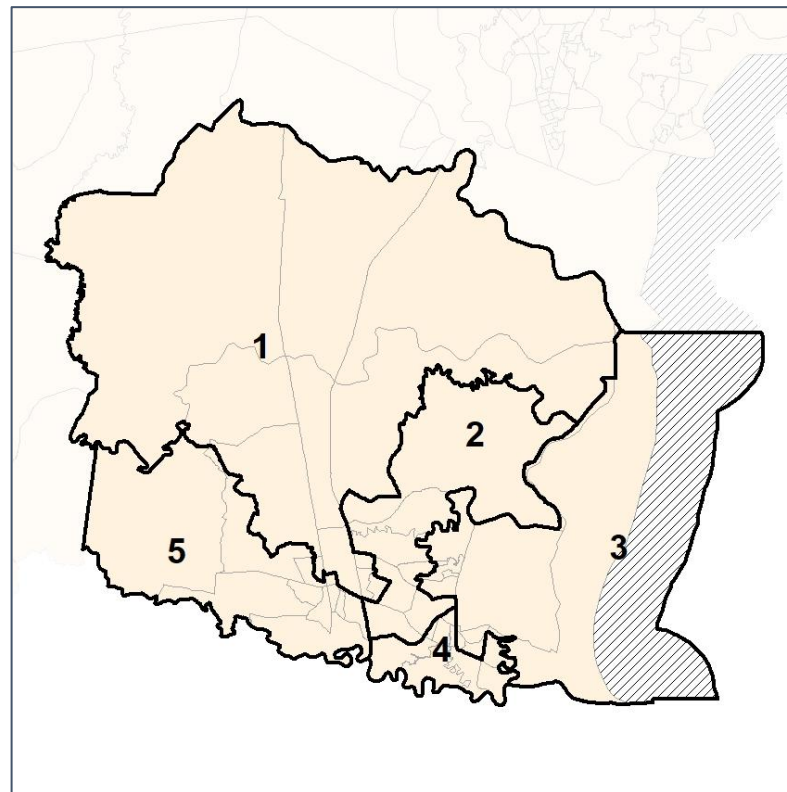
% API by Census Block Group



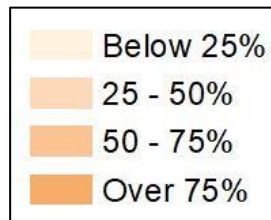
2012 Map



2022 Map*



	1	2	3	4	5	1*	2*	3*	4*	5*	County
Population	9,754	12,580	11,022	10,977	10,435	10,984	10,886	11,022	10,977	10,899	54,768
API	72	365	178	169	127	141	294	178	169	129	911
% API	1%	3%	2%	2%	1%	1%	3%	2%	2%	1%	2%
Black	2,430	2,072	1,699	1,411	1,885	2,809	1,587	1,699	1,411	1,991	9,497
% Black	25%	16%	15%	13%	18%	26%	15%	15%	13%	18%	17%
Latino	348	853	1,091	707	659	466	711	1,091	707	683	3,658
% Latino	4%	7%	10%	6%	6%	4%	7%	10%	6%	6%	7%
Other	583	861	638	668	749	687	719	638	668	787	3,499
% Other	6%	7%	6%	6%	7%	6%	7%	6%	6%	7%	6%
White	6,321	8,429	7,416	8,022	7,015	6,881	7,575	7,416	8,022	7,309	37,203
% White	65%	67%	67%	73%	67%	63%	70%	67%	73%	67%	68%



Source:
2020 Decennial Census
2020 ACS 5-Year Dataset

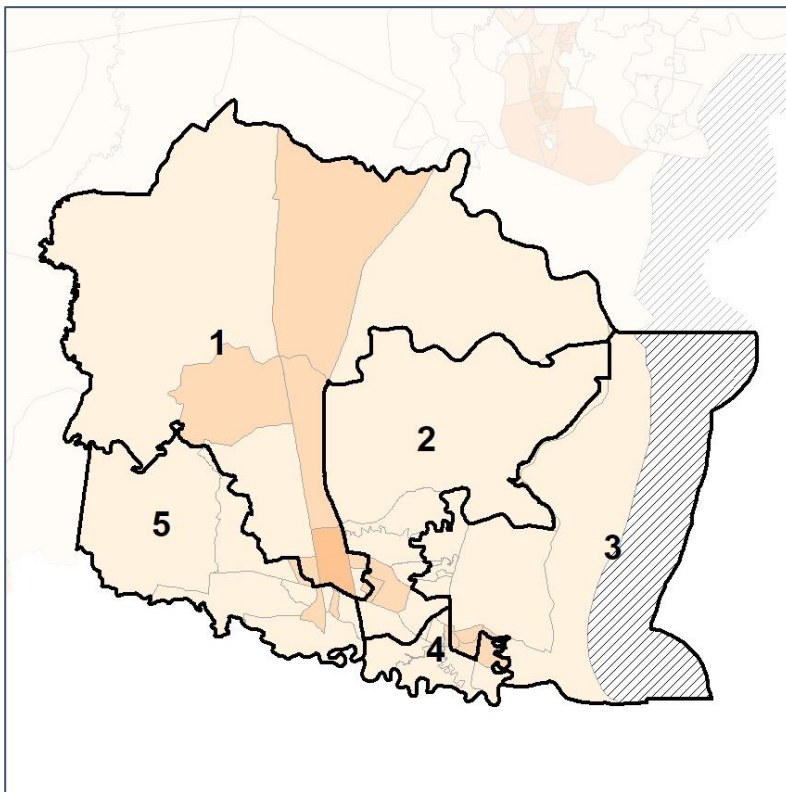


Camden Co. Commission & School Board

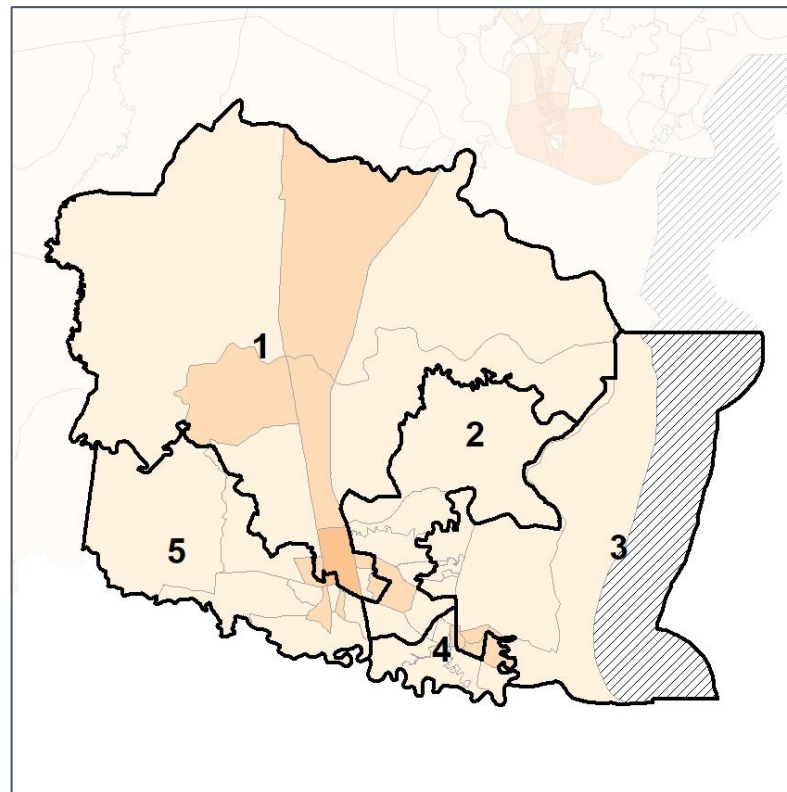
% Black by Census Block Group



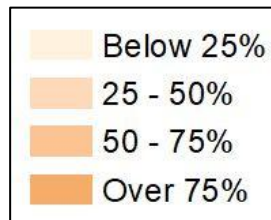
2012 Map



2022 Map*



	1	2	3	4	5	1*	2*	3*	4*	5*	County
Population	9,754	12,580	11,022	10,977	10,435	10,984	10,886	11,022	10,977	10,899	54,768
API	72	365	178	169	127	141	294	178	169	129	911
% API	1%	3%	2%	2%	1%	1%	3%	2%	2%	1%	2%
Black	2,430	2,072	1,699	1,411	1,885	2,809	1,587	1,699	1,411	1,991	9,497
% Black	25%	16%	15%	13%	18%	26%	15%	15%	13%	18%	17%
Latino	348	853	1,091	707	659	466	711	1,091	707	683	3,658
% Latino	4%	7%	10%	6%	6%	4%	7%	10%	6%	6%	7%
Other	583	861	638	668	749	687	719	638	668	787	3,499
% Other	6%	7%	6%	6%	7%	6%	7%	6%	6%	7%	6%
White	6,321	8,429	7,416	8,022	7,015	6,881	7,575	7,416	8,022	7,309	37,203
% White	65%	67%	67%	73%	67%	63%	70%	67%	73%	67%	68%



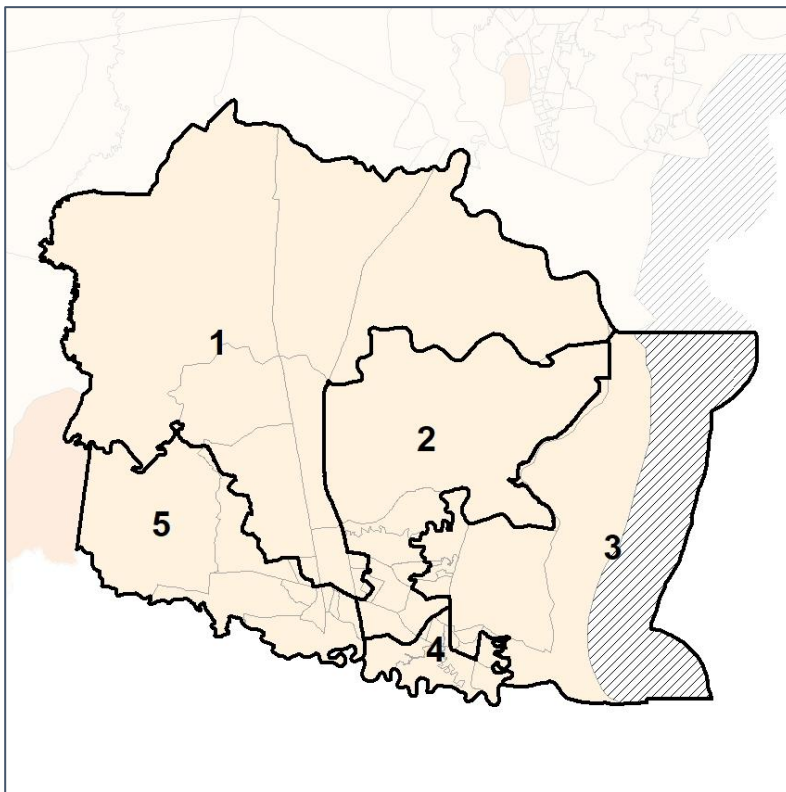
Source:
2020 Decennial Census
2020 ACS 5-Year Dataset

Camden Co. Commission & School Board

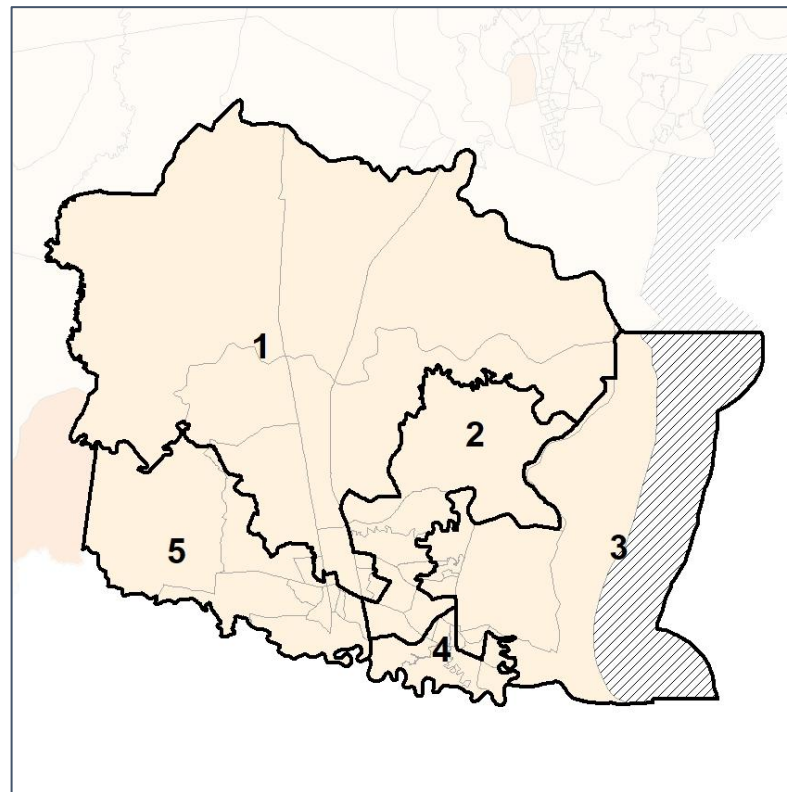
% Latino by Census Block Group



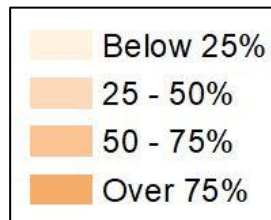
2012 Map



2022 Map*



	1	2	3	4	5	1*	2*	3*	4*	5*	County
Population	9,754	12,580	11,022	10,977	10,435	10,984	10,886	11,022	10,977	10,899	54,768
API	72	365	178	169	127	141	294	178	169	129	911
% API	1%	3%	2%	2%	1%	1%	3%	2%	2%	1%	2%
Black	2,430	2,072	1,699	1,411	1,885	2,809	1,587	1,699	1,411	1,991	9,497
% Black	25%	16%	15%	13%	18%	26%	15%	15%	13%	18%	17%
Latino	348	853	1,091	707	659	466	711	1,091	707	683	3,658
% Latino	4%	7%	10%	6%	6%	4%	7%	10%	6%	6%	7%
Other	583	861	638	668	749	687	719	638	668	787	3,499
% Other	6%	7%	6%	6%	7%	6%	7%	6%	6%	7%	6%
White	6,321	8,429	7,416	8,022	7,015	6,881	7,575	7,416	8,022	7,309	37,203
% White	65%	67%	67%	73%	67%	63%	70%	67%	73%	67%	68%



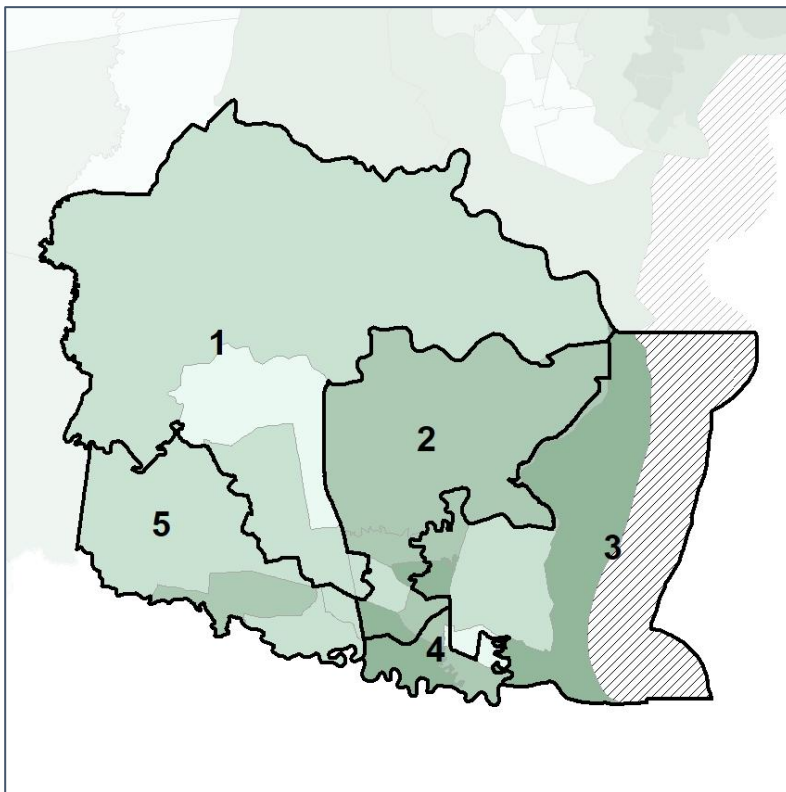
Source:
2020 Decennial Census
2020 ACS 5-Year Dataset

Camden Co. Commission & School Board

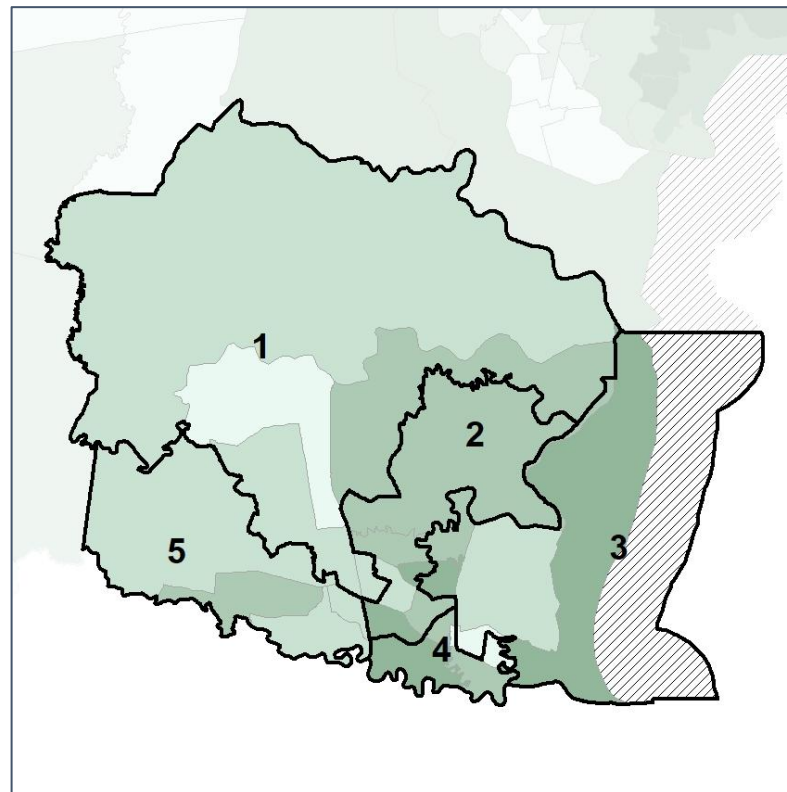
Median Household Income by Census Tract



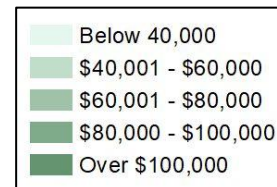
2012 Map



2022 Map*



	1	2	3	4	5	1*	2*	3*	4*	5*	County
Population	9,754	12,580	11,022	10,977	10,435	10,984	10,886	11,022	10,977	10,899	54,768
% API	1%	3%	2%	2%	1%	1%	3%	2%	2%	1%	2%
% Black	25%	16%	15%	13%	18%	26%	15%	15%	13%	18%	17%
% Latino	4%	7%	10%	6%	6%	4%	7%	10%	6%	6%	7%
% Other	6%	7%	6%	6%	7%	6%	7%	6%	6%	7%	6%
% White	65%	67%	67%	73%	67%	63%	70%	67%	73%	67%	68%
Median Income	\$52,000	\$61,000	\$68,000	\$77,000	\$54,000	\$50,000	\$67,000	\$68,000	\$77,000	\$55,000	\$61,000
% Renter	28%	41%	49%	39%	38%	32%	36%	49%	39%	36%	38%
% Youth	24%	25%	41%	23%	29%	26%	22%	41%	23%	28%	28%

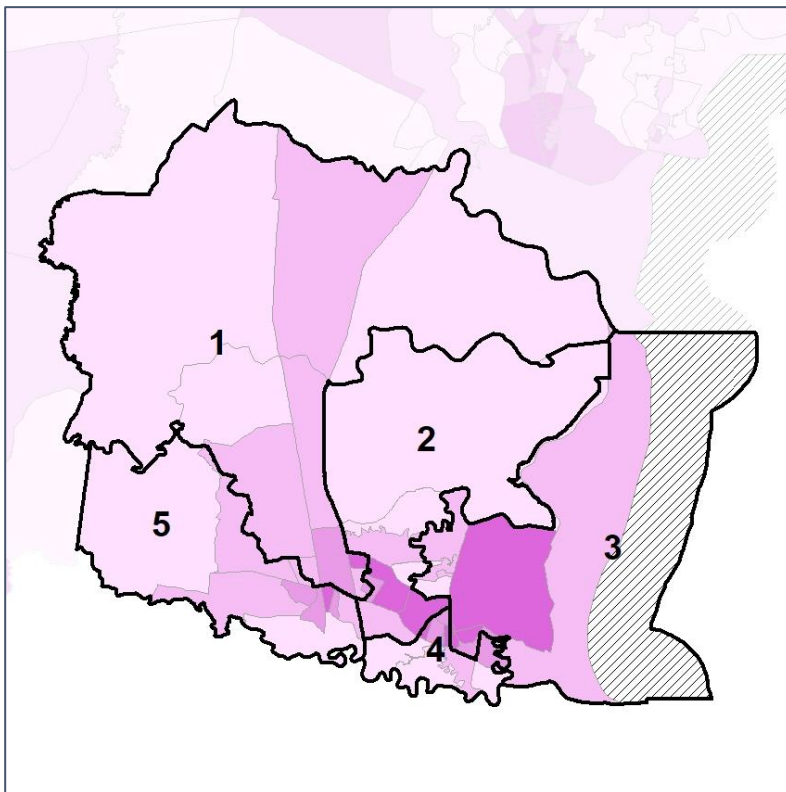


Camden Co. Commission & School Board

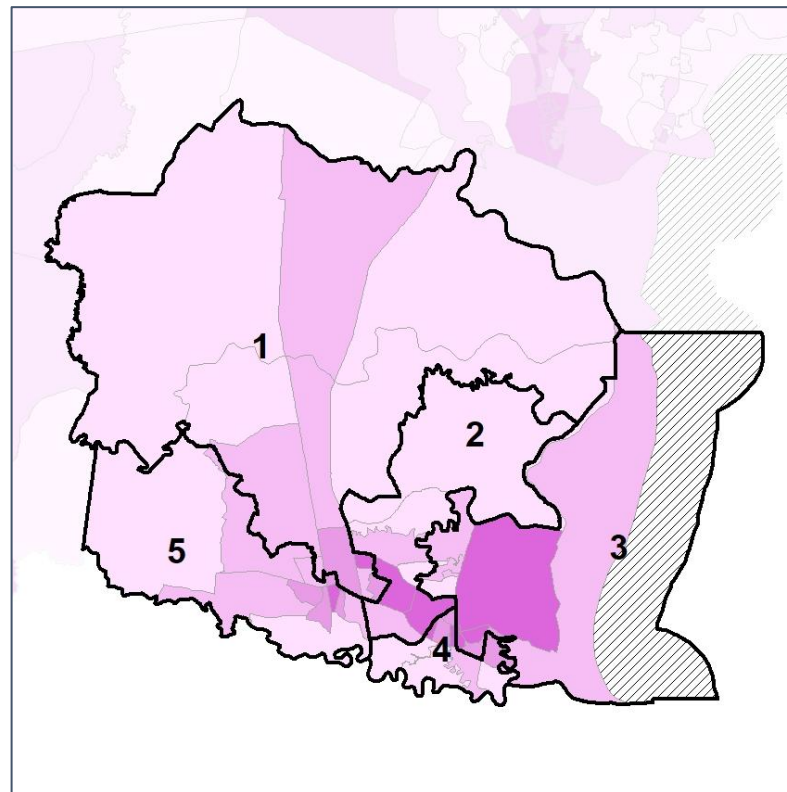
% Renter by Census Block Group



2012 Map



2022 Map*



	1	2	3	4	5	1*	2*	3*	4*	5*	County
Population	9,754	12,580	11,022	10,977	10,435	10,984	10,886	11,022	10,977	10,899	54,768
% API	1%	3%	2%	2%	1%	1%	3%	2%	2%	1%	2%
% Black	25%	16%	15%	13%	18%	26%	15%	15%	13%	18%	17%
% Latino	4%	7%	10%	6%	6%	4%	7%	10%	6%	6%	7%
% Other	6%	7%	6%	6%	7%	6%	7%	6%	6%	7%	6%
% White	65%	67%	67%	73%	67%	63%	70%	67%	73%	67%	68%
Median Income	\$52,000	\$61,000	\$68,000	\$77,000	\$54,000	\$50,000	\$67,000	\$68,000	\$77,000	\$55,000	\$61,000
% Renter	28%	41%	49%	39%	38%	32%	36%	49%	39%	36%	38%
% Youth	24%	25%	41%	23%	29%	26%	22%	41%	23%	28%	28%

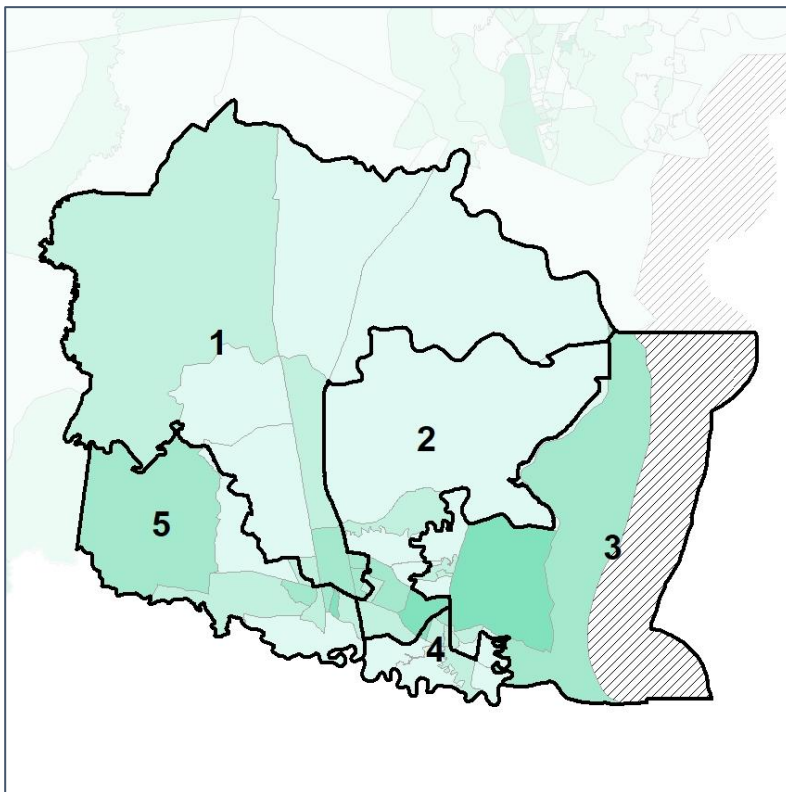


Camden Co. Commission & School Board

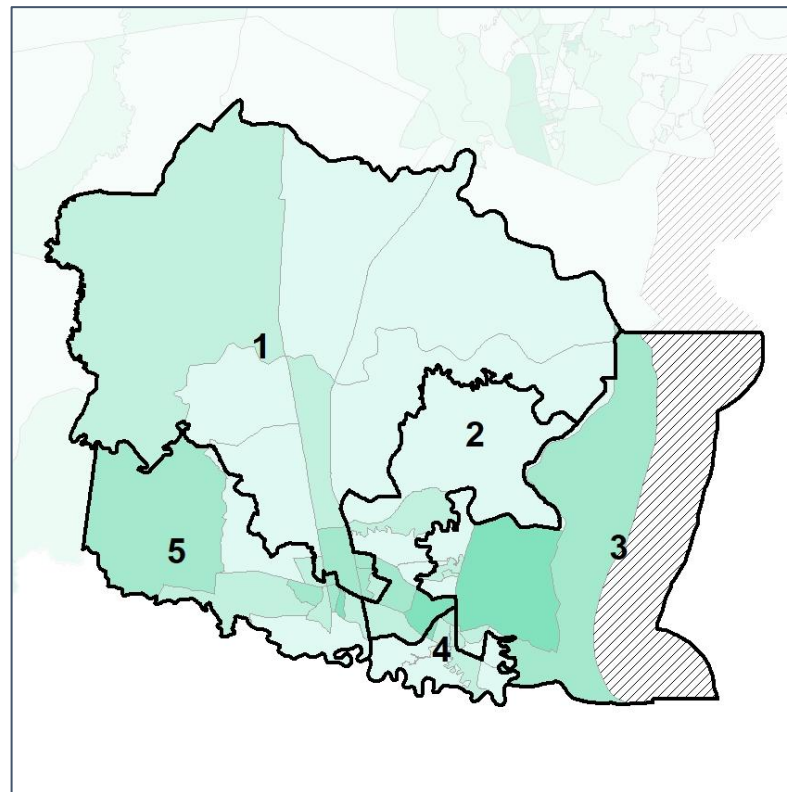
% Youth (18-34) by Census Block Group



2012 Map



2022 Map*



	1	2	3	4	5	1*	2*	3*	4*	5*	County
Population	9,754	12,580	11,022	10,977	10,435	10,984	10,886	11,022	10,977	10,899	54,768
% API	1%	3%	2%	2%	1%	1%	3%	2%	2%	1%	2%
% Black	25%	16%	15%	13%	18%	26%	15%	15%	13%	18%	17%
% Latino	4%	7%	10%	6%	6%	4%	7%	10%	6%	6%	7%
% Other	6%	7%	6%	6%	7%	6%	7%	6%	6%	7%	6%
% White	65%	67%	67%	73%	67%	63%	70%	67%	73%	67%	68%
Median Income	\$52,000	\$61,000	\$68,000	\$77,000	\$54,000	\$50,000	\$67,000	\$68,000	\$77,000	\$55,000	\$61,000
% Renter	28%	41%	49%	39%	38%	32%	36%	49%	39%	36%	38%
% Youth	24%	25%	41%	23%	29%	26%	22%	41%	23%	28%	28%



Source:
2020 Decennial Census
2020 ACS 5-Year Dataset