



Demographic Overview

Racial Breakdown in Butts County

Butts County	2010	2020	% Change
Total Population	23,655	25,434	8%
AAPI	103	111	8%
Black	6,431	6,808	6%
Latino	597	803	35%
Other/Mixed Race	324	1,084	235%
POC	7,455	8,806	18%
White	16,200	16,628	3%

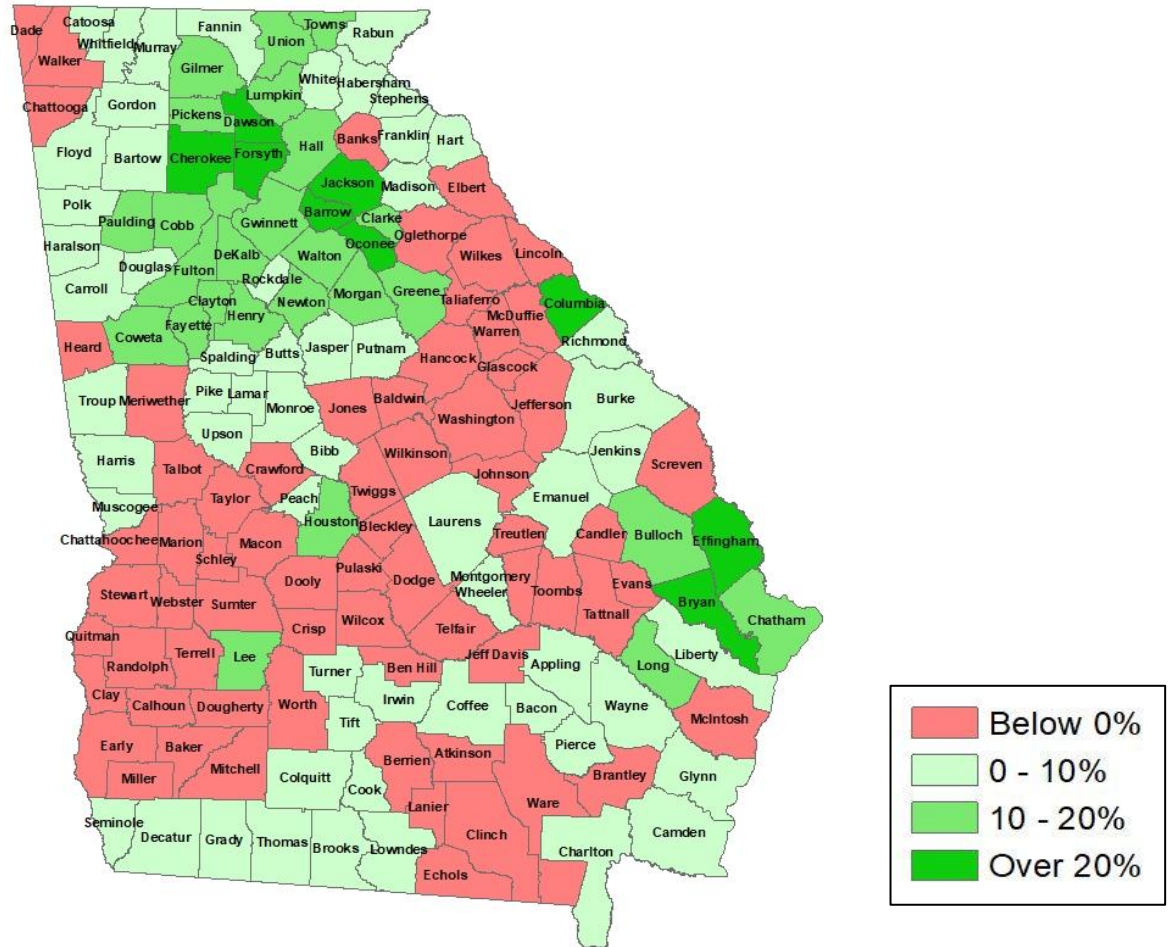
*Note: The use of "Other" in these statistics combines those who identify as Native American, Mixed Race, and "Other" race





Population Gain

Change in Population in Georgia by County

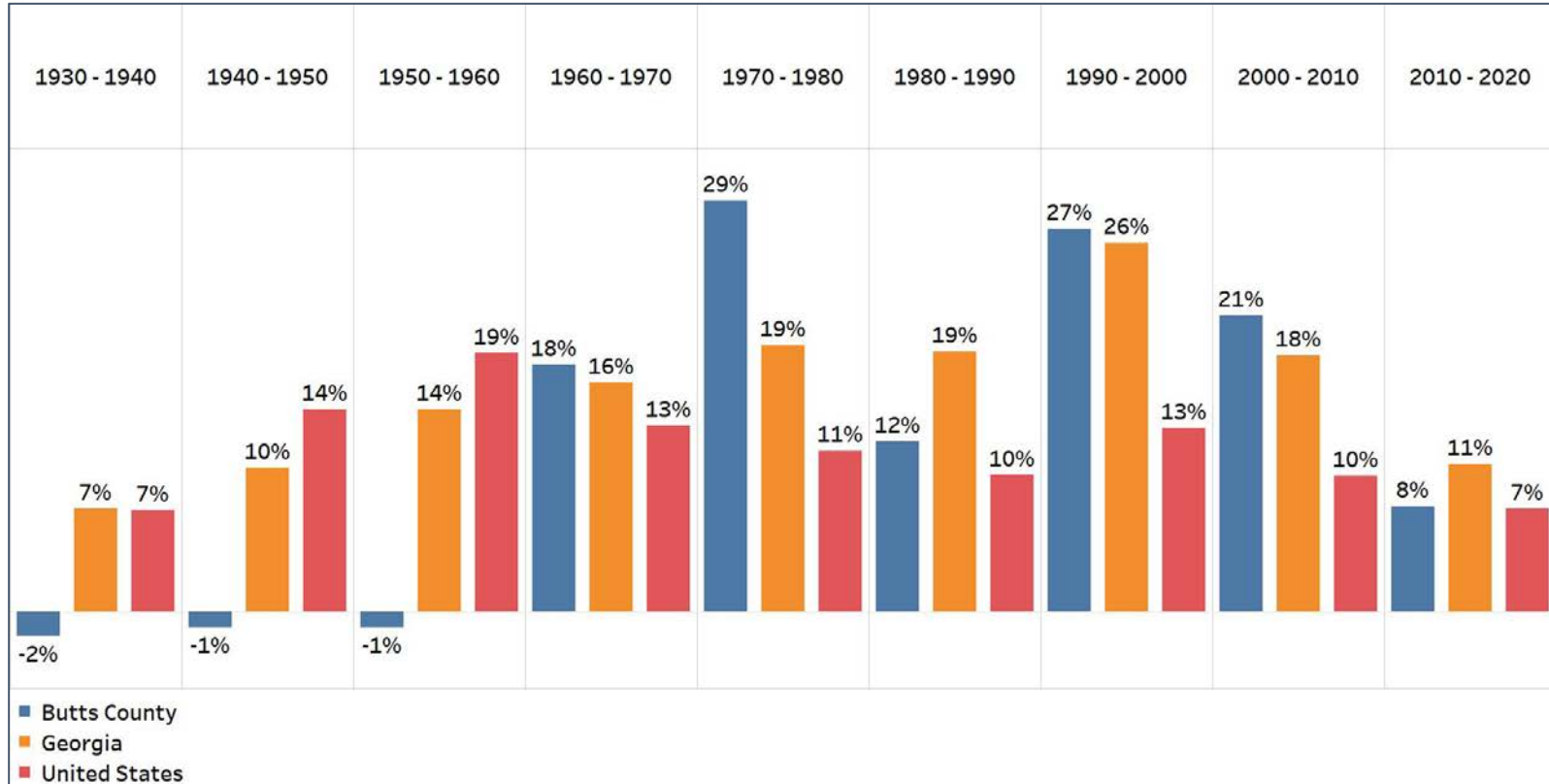


- Georgia is experiencing rapid population growth in the Atlanta, Augusta, and Savannah regions of the state



Population Gain

Change in Population by Decade

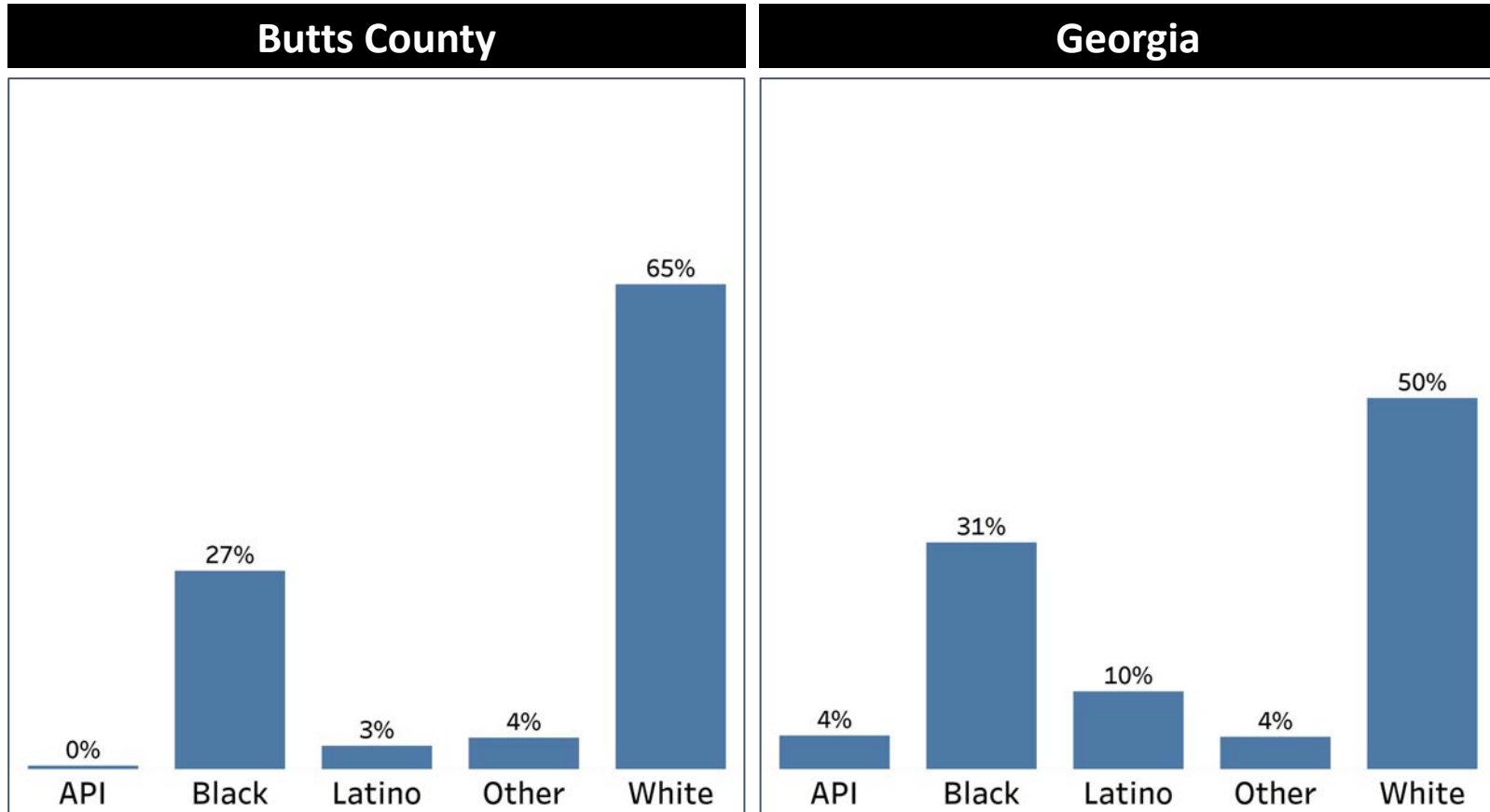


- Butts County had significant population growth from 1960-2010
- It's growth has slowed in the last decade, but is still close to Georgia's levels of growth



Demographics

Comparison between Butts County and Georgia



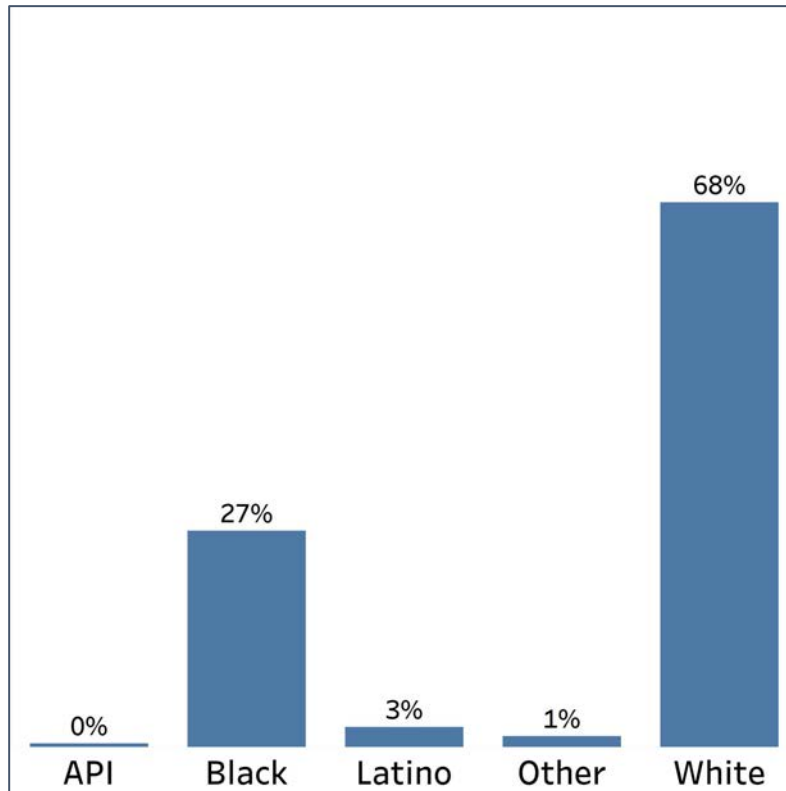
- The White community shares a much larger share of the population compared to Georgia overall, while the Black community is slightly lower
- Latino and API communities are a much smaller share of the population compared to Georgia overall

Demographics

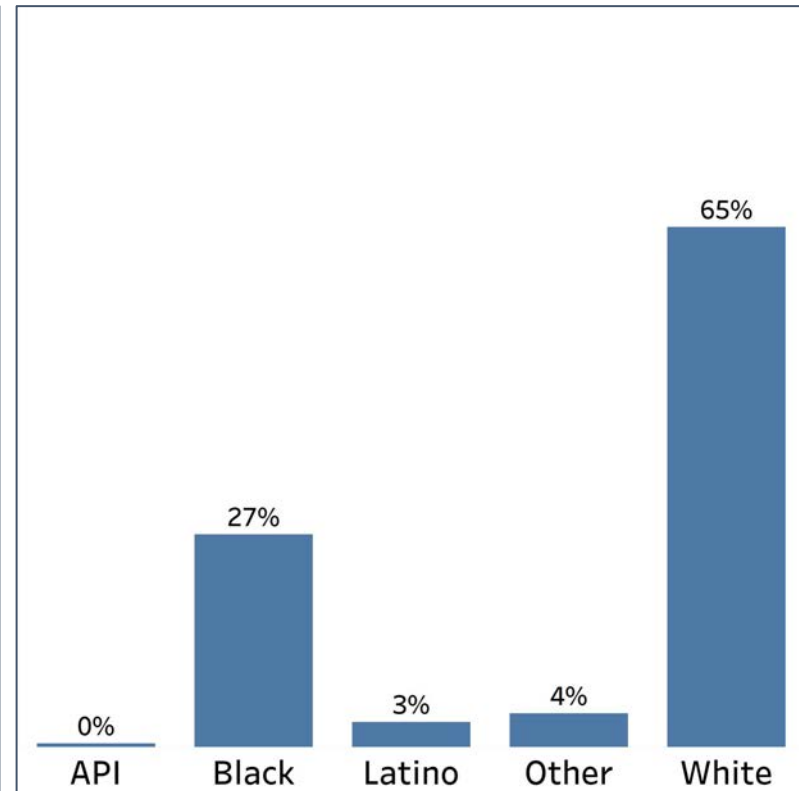
2010 vs 2020 Demographics in Butts County



Butts County 2010



Butts County 2020



- Butts County had a slight decline in the share of the White population, and that decline translated into an increase of the Other population

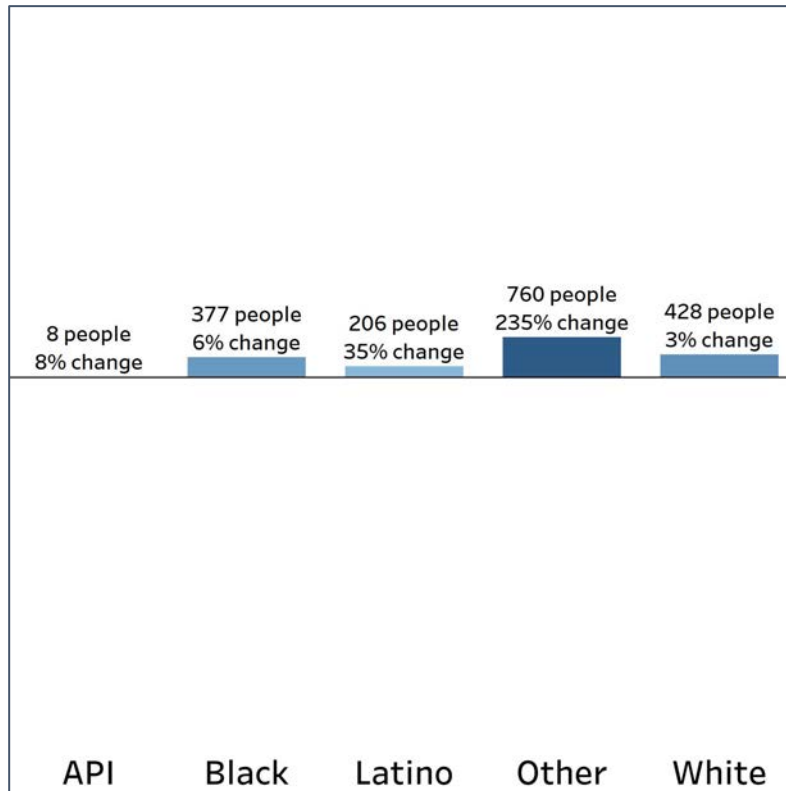


Demographics

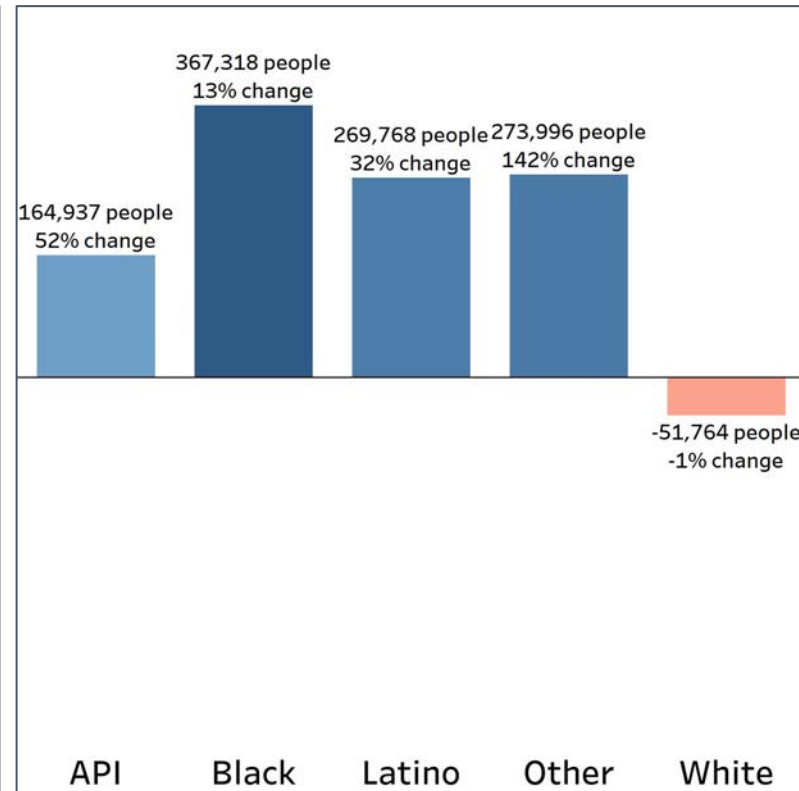
Population Change by Race (2020 - 2010)



Butts County



Georgia



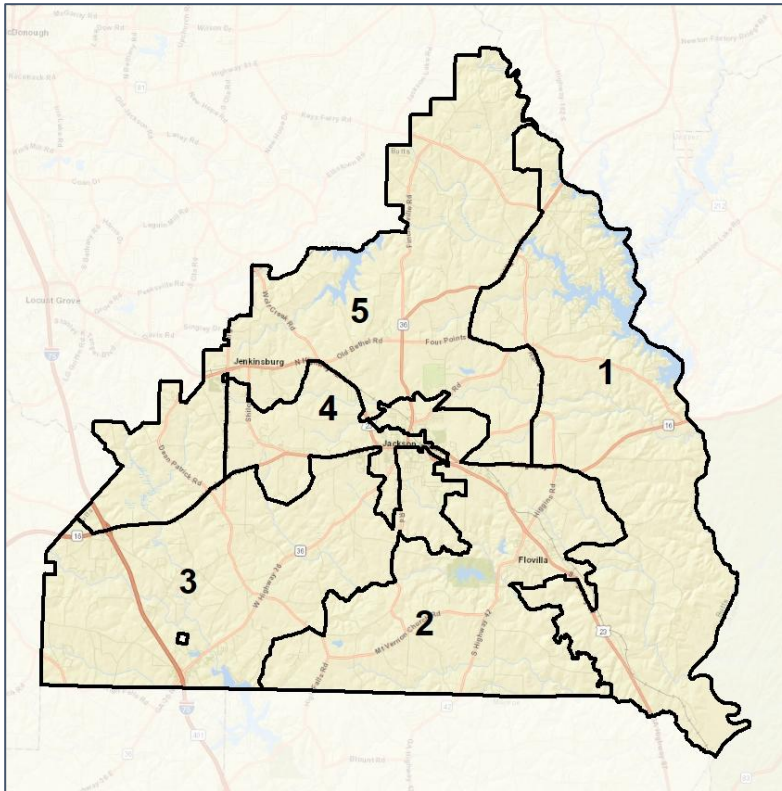
- Butts County has seen very minimal changes across all demographic groups except for the Other population, which had a significantly higher growth rate compared to the statewide rate
- The Latino population also saw a similar growth rate as Georgia overall

Butts Co. Commission & School Board

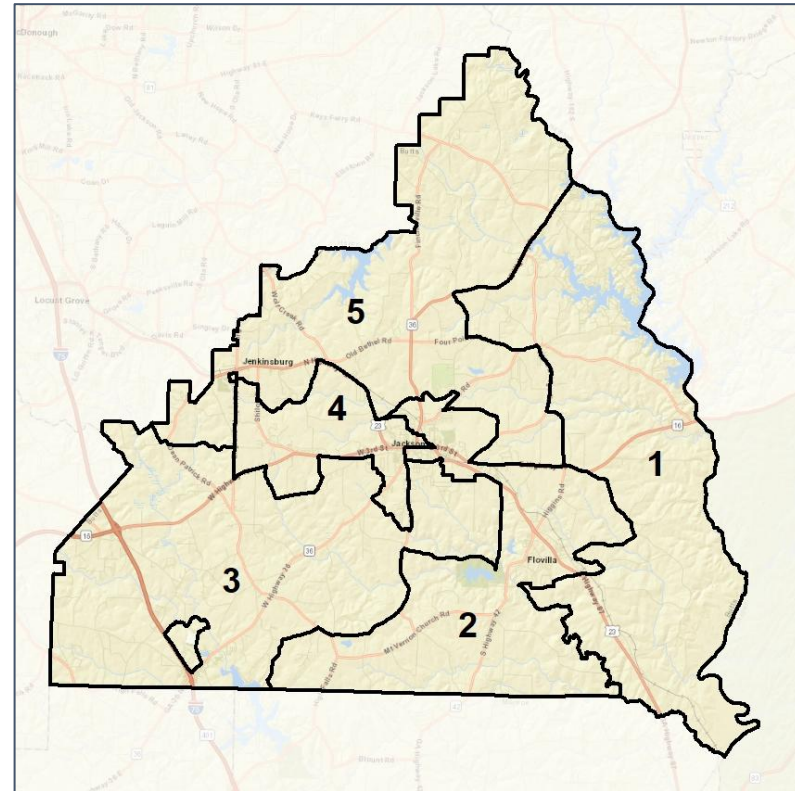
Context



2012 Map



2022 Map*



	1	2	3	4	5	1*	2*	3*	4*	5*	County
Population	4,904	4,567	7,254	4,170	4,539	4,601	4,577	4,636	4,602	4,532	25,434
API	0%	0%	1%	1%	1%	0%	0%	1%	0%	0%	0%
Black	6%	42%	27%	52%	11%	6%	39%	9%	54%	9%	27%
Latino	2%	3%	4%	3%	3%	2%	3%	5%	3%	3%	3%
Other	5%	3%	3%	4%	6%	5%	4%	5%	4%	6%	4%
White	87%	52%	65%	40%	79%	87%	54%	80%	39%	81%	65%
Population Gain	411	271	952	22	123	-303	10	-2,618	432	-7	*
Population % Gain	9%	6%	15%	1%	3%	-6%	0%	-36%	10%	0%	*
Net POC Gain	286	105	530	182	248	-53	-97	-1,597	307	-66	*
Net POC % Gain	4,905	4,568	7,255	4,171	4,540	4,602	4,578	4,637	4,603	-7%	*

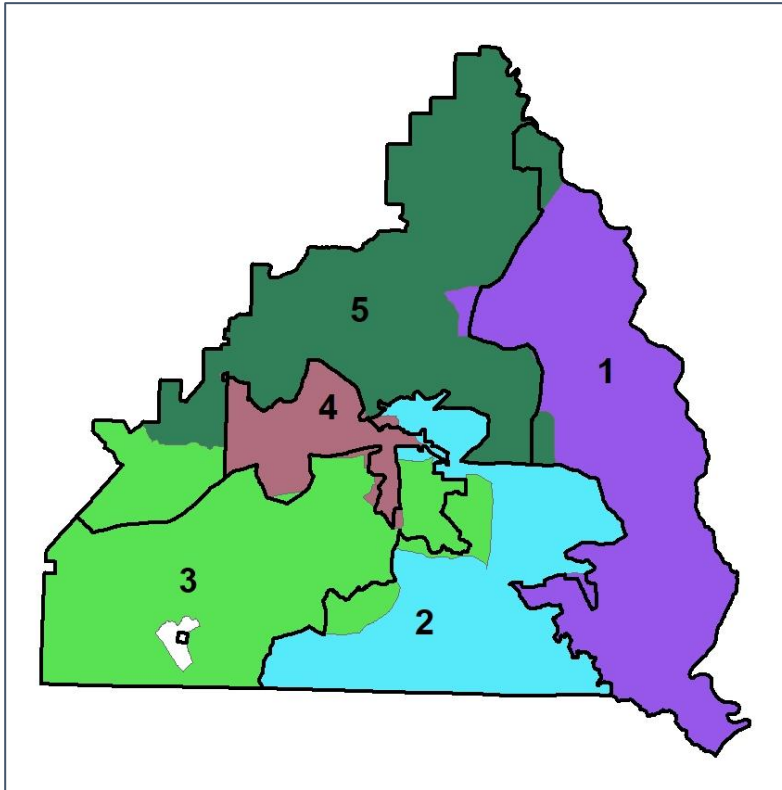


Butts Co. Commission & School Board

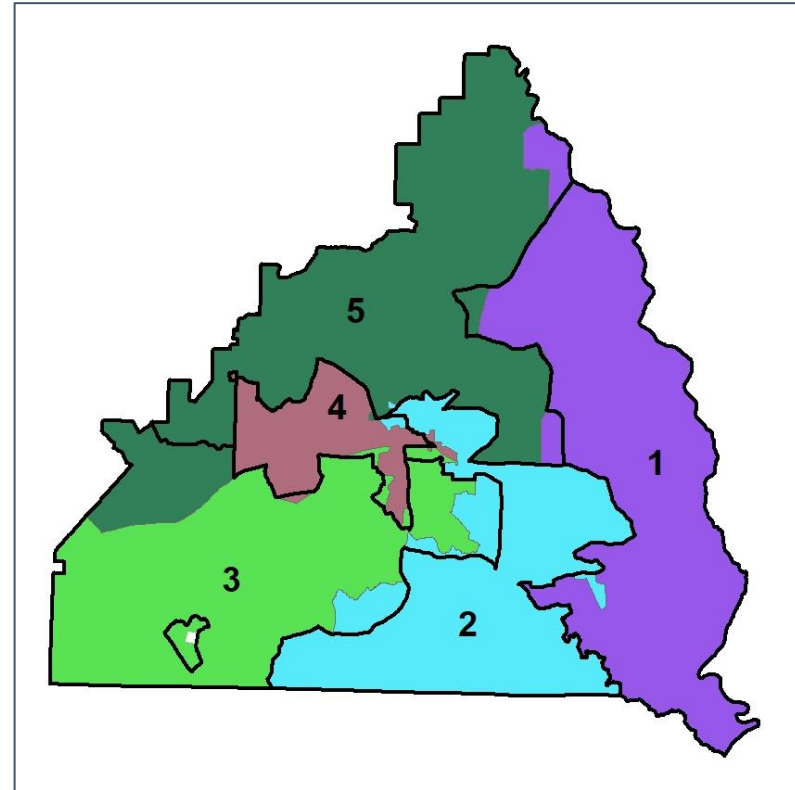
Changes in Redistricting



2012 Map (2022 in Colors)



2022 Map* (2012 in Colors)



	1	2	3	4	5	1*	2*	3*	4*	5*	County
Population	4,904	4,567	7,254	4,170	4,539	4,601	4,577	4,636	4,602	4,532	25,434
API	0%	0%	1%	1%	1%	0%	0%	1%	0%	0%	0%
Black	6%	42%	27%	52%	11%	6%	39%	9%	54%	9%	27%
Latino	2%	3%	4%	3%	3%	2%	3%	5%	3%	3%	3%
Other	5%	3%	3%	4%	6%	5%	4%	5%	4%	6%	4%
White	87%	52%	65%	40%	79%	87%	54%	80%	39%	81%	65%
Population Gain	411	271	952	22	123	-303	10	-2,618	432	-7	*
Population % Gain	9%	6%	15%	1%	3%	-6%	0%	-36%	10%	0%	*
Net POC Gain	286	105	530	182	248	-53	-97	-1,597	307	-66	*
Net POC % Gain	4,905	4,568	7,255	4,171	4,540	4,602	4,578	4,637	4,603	-7%	*

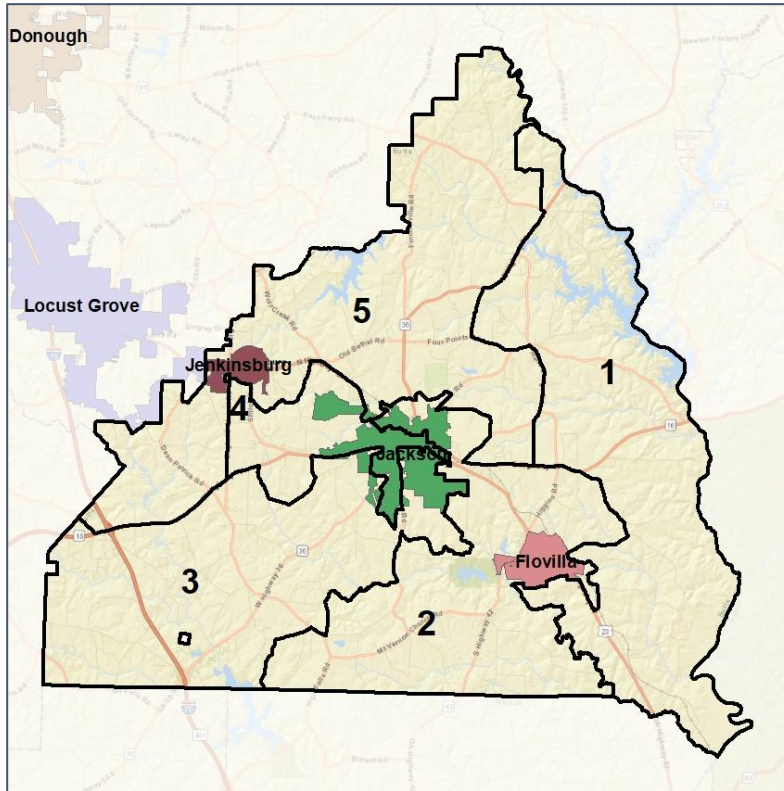


Butts Co. Commission & School Board

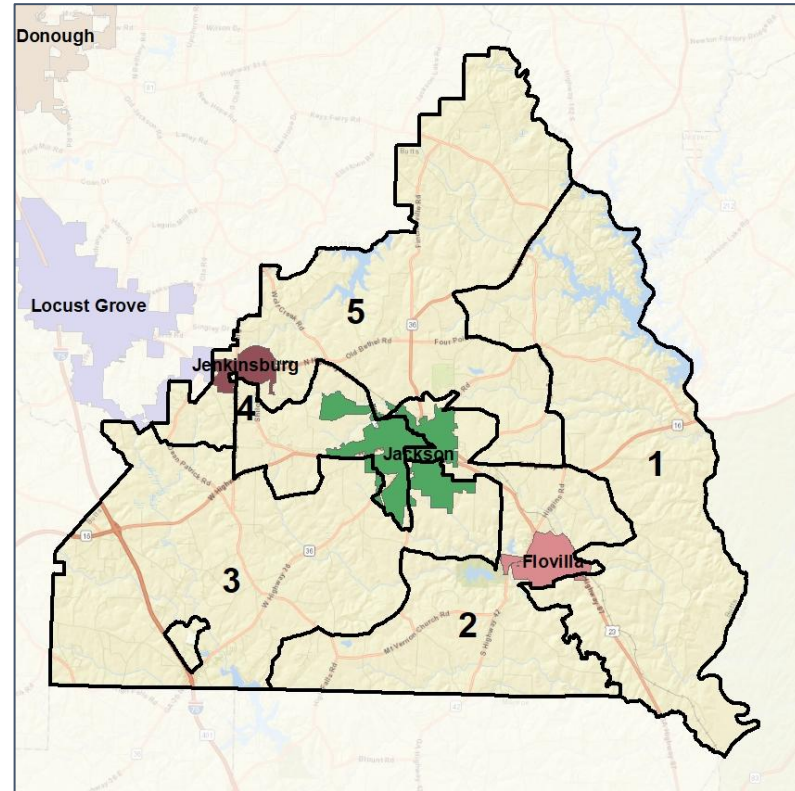
Cities and Places



2012 Map



2022 Map*



	1	2	3	4	5	1*	2*	3*	4*	5*	County
Population	4,904	4,567	7,254	4,170	4,539	4,601	4,577	4,636	4,602	4,532	25,434
API	0%	0%	1%	1%	1%	0%	0%	1%	0%	0%	0%
Black	6%	42%	27%	52%	11%	6%	39%	9%	54%	9%	27%
Latino	2%	3%	4%	3%	3%	2%	3%	5%	3%	3%	3%
Other	5%	3%	3%	4%	6%	5%	4%	5%	4%	6%	4%
White	87%	52%	65%	40%	79%	87%	54%	80%	39%	81%	65%
Population Gain	411	271	952	22	123	-303	10	-2,618	432	-7	*
Population % Gain	9%	6%	15%	1%	3%	-6%	0%	-36%	10%	0%	*
Net POC Gain	286	105	530	182	248	-53	-97	-1,597	307	-66	*
Net POC % Gain	4,905	4,568	7,255	4,171	4,540	4,602	4,578	4,637	4,603	-7%	*

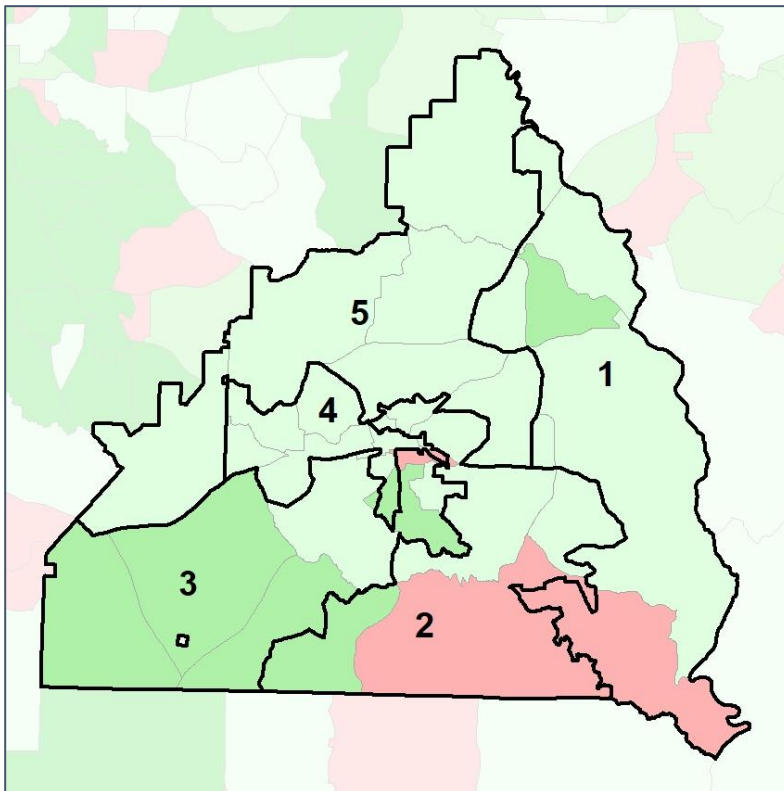


Butts Co. Commission & School Board

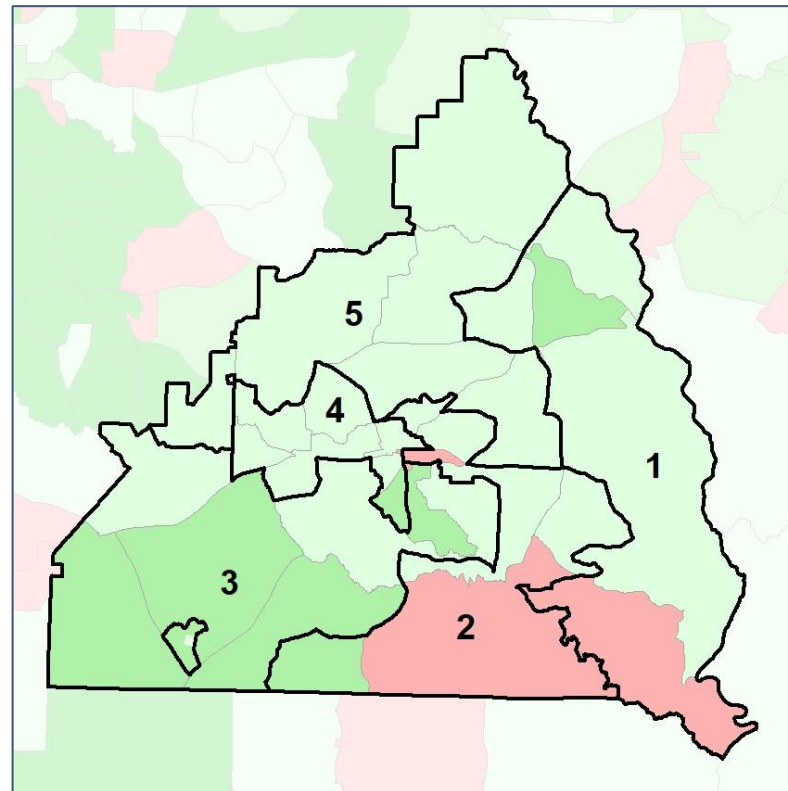
Net Gain in Population (2010 - 2020) by Census Block Group



2012 Map



2022 Map*



	1	2	3	4	5	1*	2*	3*	4*	5*	County
Population	4,904	4,567	7,254	4,170	4,539	4,601	4,577	4,636	4,602	4,532	25,434
API	0%	0%	1%	1%	1%	0%	0%	1%	0%	0%	0%
Black	6%	42%	27%	52%	11%	6%	39%	9%	54%	9%	27%
Latino	2%	3%	4%	3%	3%	2%	3%	5%	3%	3%	3%
Other	5%	3%	3%	4%	6%	5%	4%	5%	4%	6%	4%
White	87%	52%	65%	40%	79%	87%	54%	80%	39%	81%	65%
Population Gain	411	271	952	22	123	-303	10	-2,618	432	-7	*
Population % Gain	9%	6%	15%	1%	3%	-6%	0%	-36%	10%	0%	*
Net POC Gain	286	105	530	182	248	-53	-97	-1,597	307	-66	*
Net POC % Gain	4,905	4,568	7,255	4,171	4,540	4,602	4,578	4,637	4,603	-7%	*

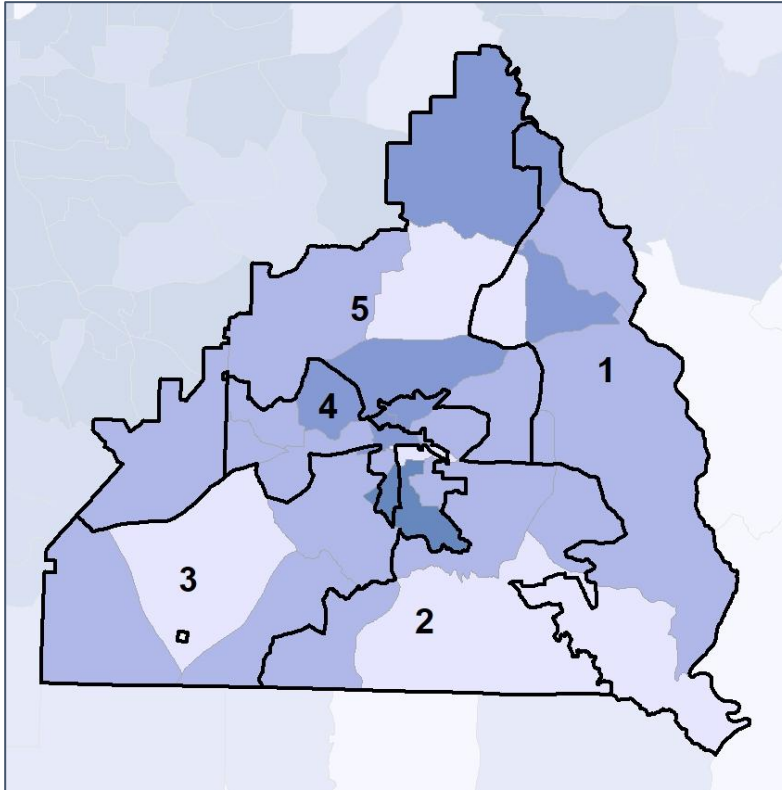


Butts Co. Commission & School Board

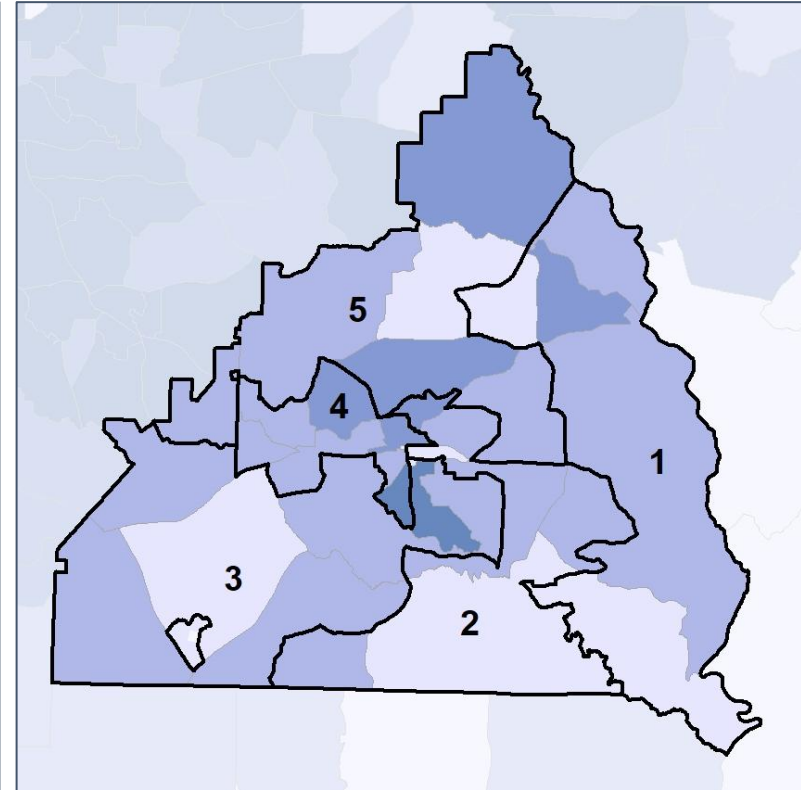
Net Gain in % POC (2020 - 2010) by Census Block Group



2012 Map



2022 Map*



	1	2	3	4	5	1*	2*	3*	4*	5*	County
Population	4,904	4,567	7,254	4,170	4,539	4,601	4,577	4,636	4,602	4,532	25,434
API	0%	0%	1%	1%	1%	0%	0%	1%	0%	0%	0%
Black	6%	42%	27%	52%	11%	6%	39%	9%	54%	9%	27%
Latino	2%	3%	4%	3%	3%	2%	3%	5%	3%	3%	3%
Other	5%	3%	3%	4%	6%	5%	4%	5%	4%	6%	4%
White	87%	52%	65%	40%	79%	87%	54%	80%	39%	81%	65%
Population Gain	411	271	952	22	123	-303	10	-2,618	432	-7	*
Population % Gain	9%	6%	15%	1%	3%	-6%	0%	-36%	10%	0%	*
Net POC Gain	286	105	530	182	248	-53	-97	-1,597	307	-66	*
Net POC % Gain	4,905	4,568	7,255	4,171	4,540	4,602	4,578	4,637	4,603	-7%	*

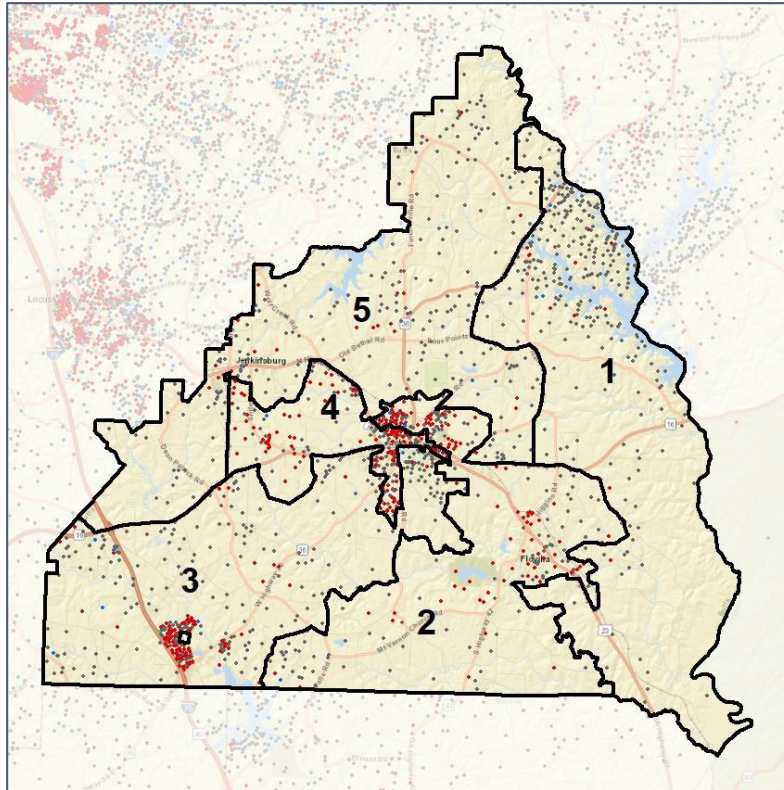


Butts Co. Commission & School Board

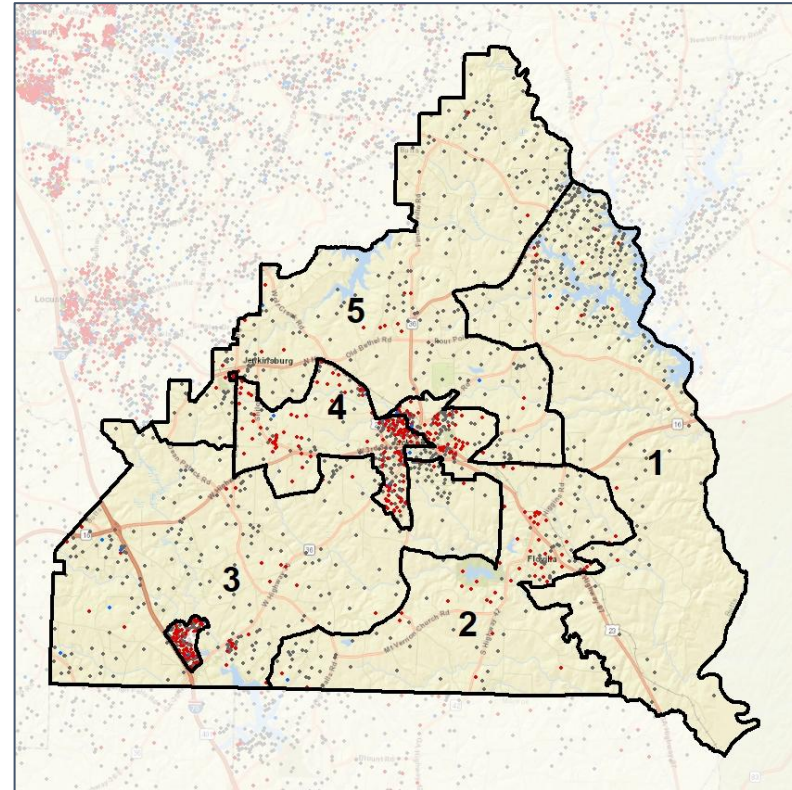
Population Density by Race



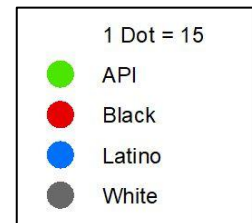
2012 Map



2022 Map*



	1	2	3	4	5	1*	2*	3*	4*	5*	County
Population	4,904	4,567	7,254	4,170	4,539	4,601	4,577	4,636	4,602	4,532	25,434
API	10	15	38	22	26	8	22	26	23	22	111
% API	0%	0%	1%	1%	1%	0%	0%	1%	0%	0%	0%
Black	276	1,911	1,954	2,171	496	271	1,779	433	2,463	424	6,808
% Black	6%	42%	27%	52%	11%	6%	39%	9%	54%	9%	27%
Latino	100	131	288	129	155	96	151	222	136	144	803
% Latino	2%	3%	4%	3%	3%	2%	3%	5%	3%	3%	3%
Other	250	156	241	174	263	208	164	243	181	284	1,084
% Other	5%	3%	3%	4%	6%	5%	4%	5%	4%	6%	4%
White	4,268	2,354	4,733	1,674	3,599	4,018	2,461	3,712	1,799	3,658	16,628
% White	87%	52%	65%	40%	79%	87%	54%	80%	39%	81%	65%



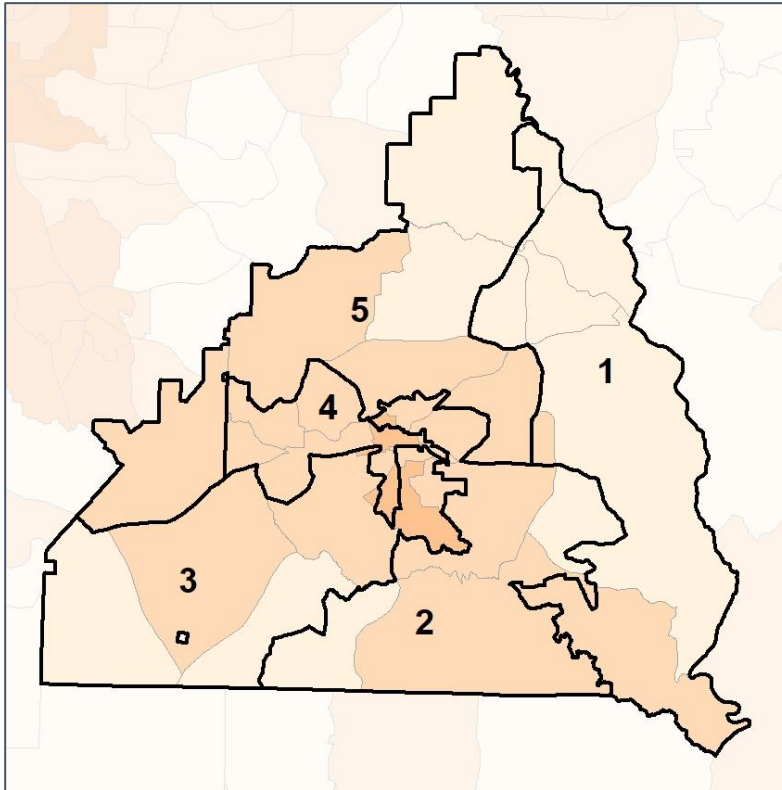
Source: 2020 Decennial Census 2020 ACS 5-Year Dataset

Butts Co. Commission & School Board

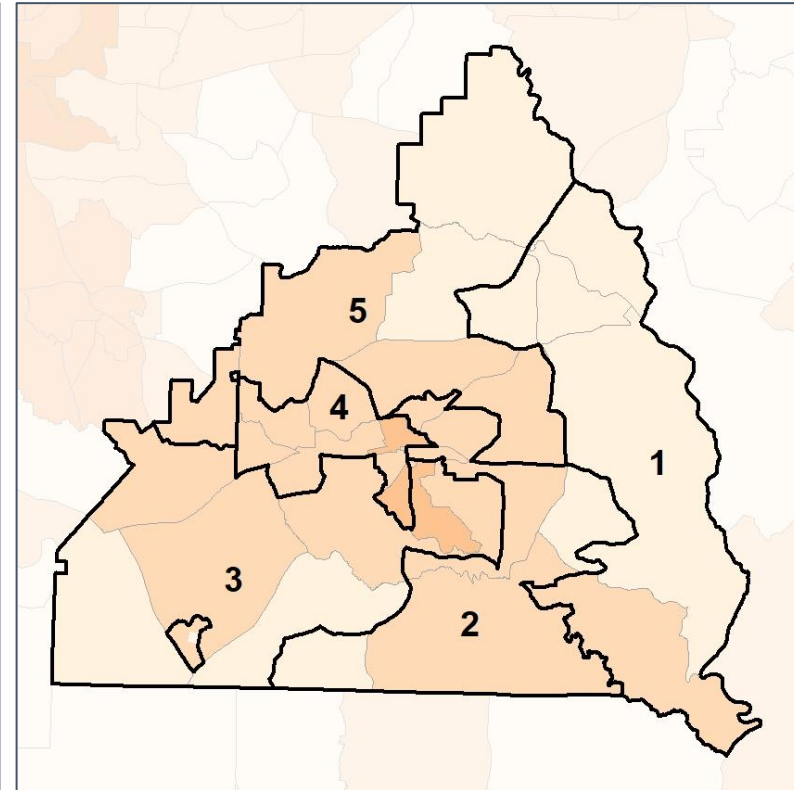
% People of Color by Census Block Group



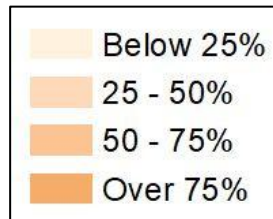
2012 Map



2022 Map*



	1	2	3	4	5	1*	2*	3*	4*	5*	County
Population	4,904	4,567	7,254	4,170	4,539	4,601	4,577	4,636	4,602	4,532	25,434
API	10	15	38	22	26	8	22	26	23	22	111
% API	0%	0%	1%	1%	1%	0%	0%	1%	0%	0%	0%
Black	276	1,911	1,954	2,171	496	271	1,779	433	2,463	424	6,808
% Black	6%	42%	27%	52%	11%	6%	39%	9%	54%	9%	27%
Latino	100	131	288	129	155	96	151	222	136	144	803
% Latino	2%	3%	4%	3%	3%	2%	3%	5%	3%	3%	3%
Other	250	156	241	174	263	208	164	243	181	284	1,084
% Other	5%	3%	3%	4%	6%	5%	4%	5%	4%	6%	4%
White	4,268	2,354	4,733	1,674	3,599	4,018	2,461	3,712	1,799	3,658	16,628
% White	87%	52%	65%	40%	79%	87%	54%	80%	39%	81%	65%



Source:
2020 Decennial Census
2020 ACS 5-Year Dataset

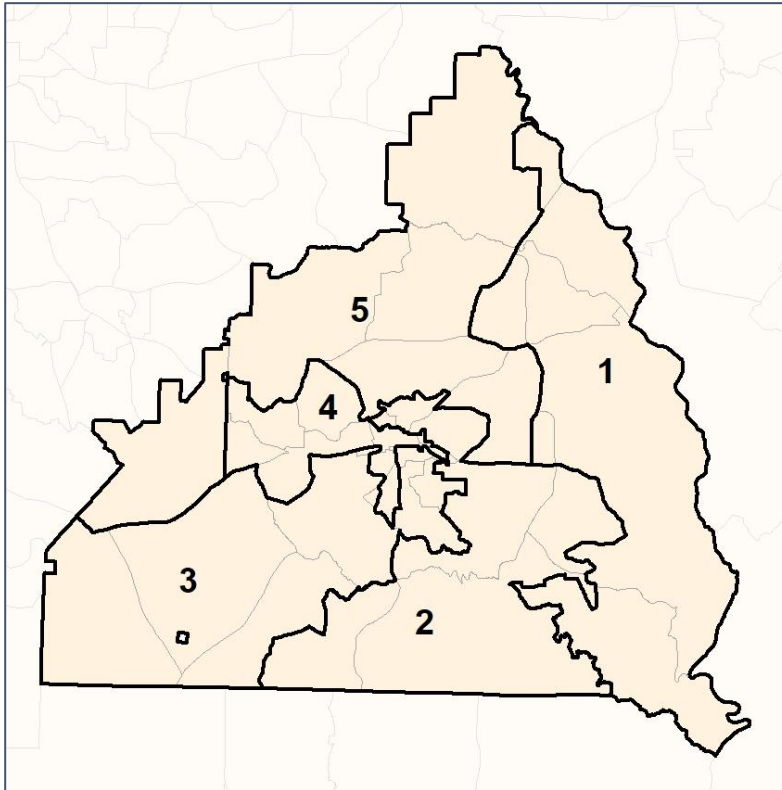


Butts Co. Commission & School Board

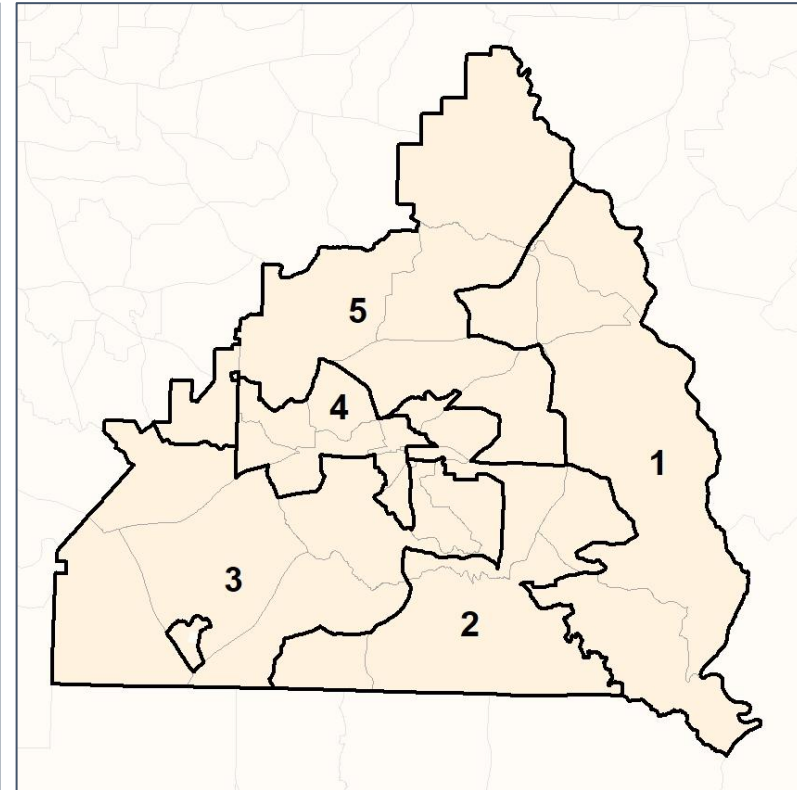
% API by Census Block Group



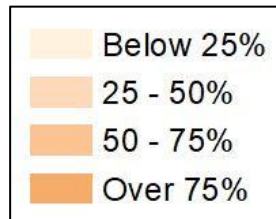
2012 Map



2022 Map*



	1	2	3	4	5	1*	2*	3*	4*	5*	County
Population	4,904	4,567	7,254	4,170	4,539	4,601	4,577	4,636	4,602	4,532	25,434
API	10	15	38	22	26	8	22	26	23	22	111
% API	0%	0%	1%	1%	1%	0%	0%	1%	0%	0%	0%
Black	276	1,911	1,954	2,171	496	271	1,779	433	2,463	424	6,808
% Black	6%	42%	27%	52%	11%	6%	39%	9%	54%	9%	27%
Latino	100	131	288	129	155	96	151	222	136	144	803
% Latino	2%	3%	4%	3%	3%	2%	3%	5%	3%	3%	3%
Other	250	156	241	174	263	208	164	243	181	284	1,084
% Other	5%	3%	3%	4%	6%	5%	4%	5%	4%	6%	4%
White	4,268	2,354	4,733	1,674	3,599	4,018	2,461	3,712	1,799	3,658	16,628
% White	87%	52%	65%	40%	79%	87%	54%	80%	39%	81%	65%



Source:
2020 Decennial Census
2020 ACS 5-Year Dataset

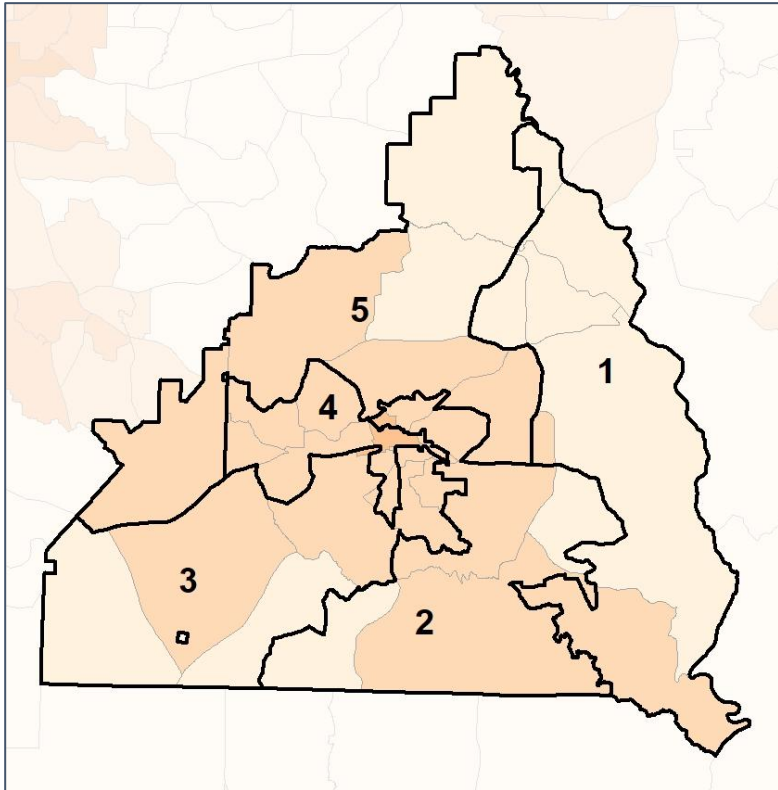


Butts Co. Commission & School Board

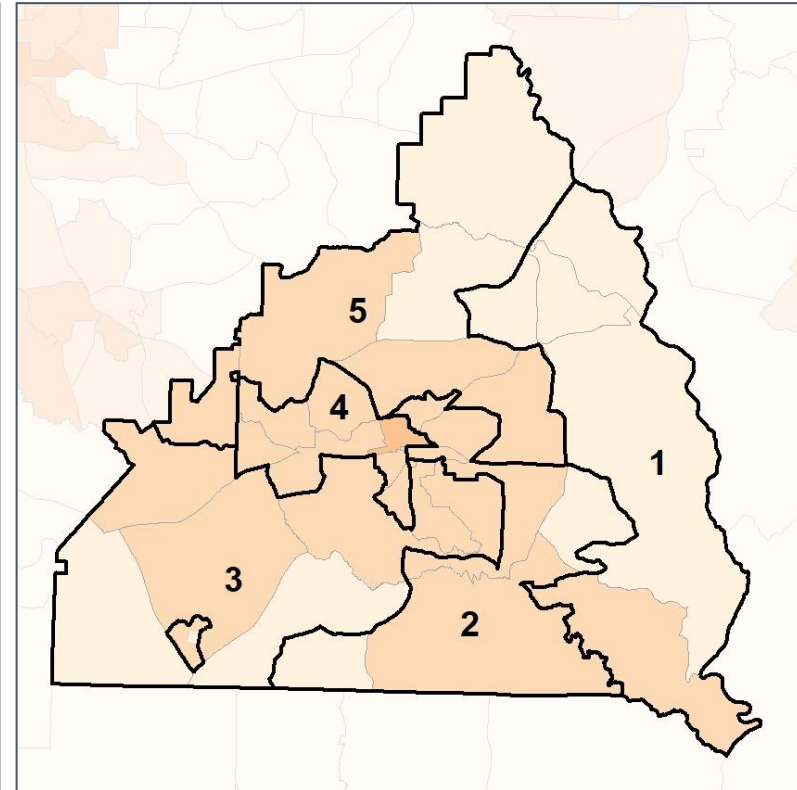
% Black by Census Block Group



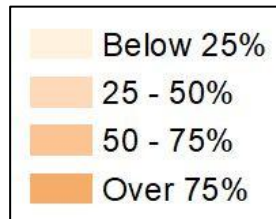
2012 Map



2022 Map*



	1	2	3	4	5	1*	2*	3*	4*	5*	County
Population	4,904	4,567	7,254	4,170	4,539	4,601	4,577	4,636	4,602	4,532	25,434
API	10	15	38	22	26	8	22	26	23	22	111
% API	0%	0%	1%	1%	1%	0%	0%	1%	0%	0%	0%
Black	276	1,911	1,954	2,171	496	271	1,779	433	2,463	424	6,808
% Black	6%	42%	27%	52%	11%	6%	39%	9%	54%	9%	27%
Latino	100	131	288	129	155	96	151	222	136	144	803
% Latino	2%	3%	4%	3%	3%	2%	3%	5%	3%	3%	3%
Other	250	156	241	174	263	208	164	243	181	284	1,084
% Other	5%	3%	3%	4%	6%	5%	4%	5%	4%	6%	4%
White	4,268	2,354	4,733	1,674	3,599	4,018	2,461	3,712	1,799	3,658	16,628
% White	87%	52%	65%	40%	79%	87%	54%	80%	39%	81%	65%



Source:
2020 Decennial Census
2020 ACS 5-Year Dataset

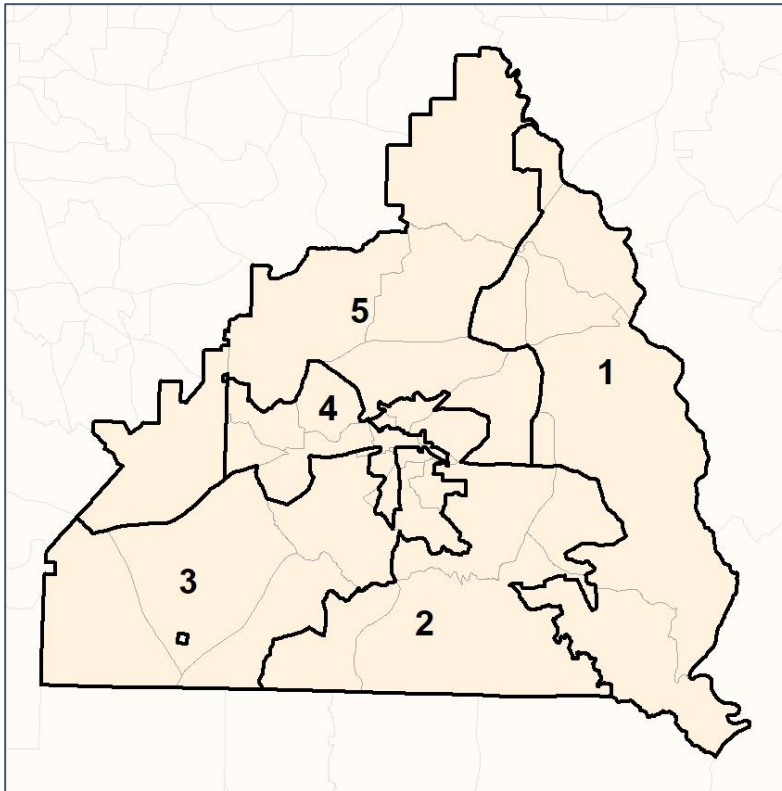


Butts Co. Commission & School Board

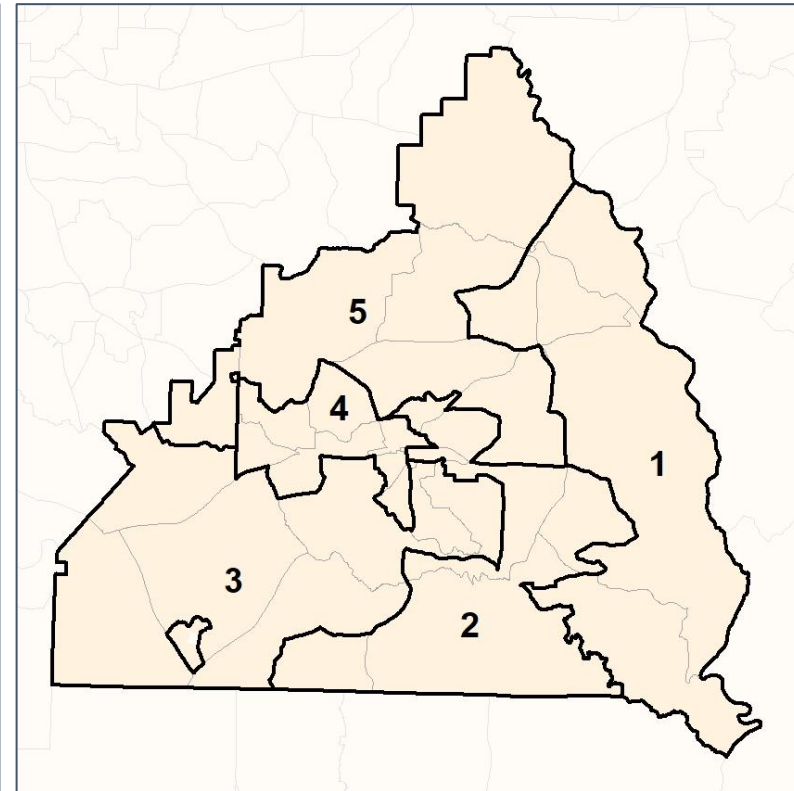
% Latino by Census Block Group



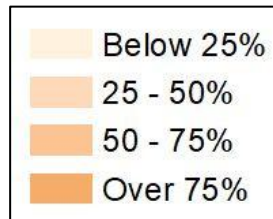
2012 Map



2022 Map*



	1	2	3	4	5	1*	2*	3*	4*	5*	County
Population	4,904	4,567	7,254	4,170	4,539	4,601	4,577	4,636	4,602	4,532	25,434
API	10	15	38	22	26	8	22	26	23	22	111
% API	0%	0%	1%	1%	1%	0%	0%	1%	0%	0%	0%
Black	276	1,911	1,954	2,171	496	271	1,779	433	2,463	424	6,808
% Black	6%	42%	27%	52%	11%	6%	39%	9%	54%	9%	27%
Latino	100	131	288	129	155	96	151	222	136	144	803
% Latino	2%	3%	4%	3%	3%	2%	3%	5%	3%	3%	3%
Other	250	156	241	174	263	208	164	243	181	284	1,084
% Other	5%	3%	3%	4%	6%	5%	4%	5%	4%	6%	4%
White	4,268	2,354	4,733	1,674	3,599	4,018	2,461	3,712	1,799	3,658	16,628
% White	87%	52%	65%	40%	79%	87%	54%	80%	39%	81%	65%



Source:
2020 Decennial Census
2020 ACS 5-Year Dataset

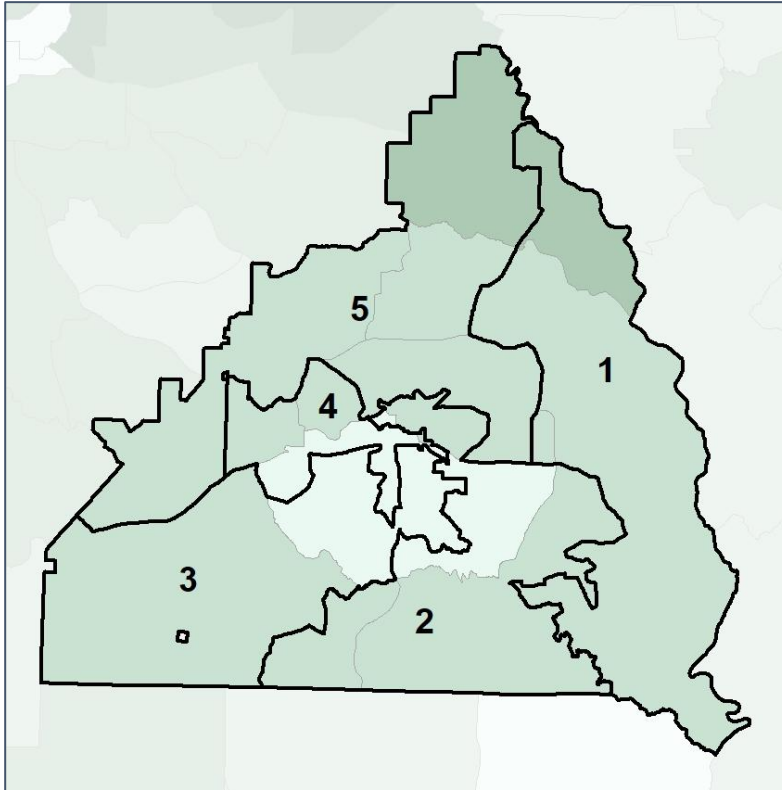


Butts Co. Commission & School Board

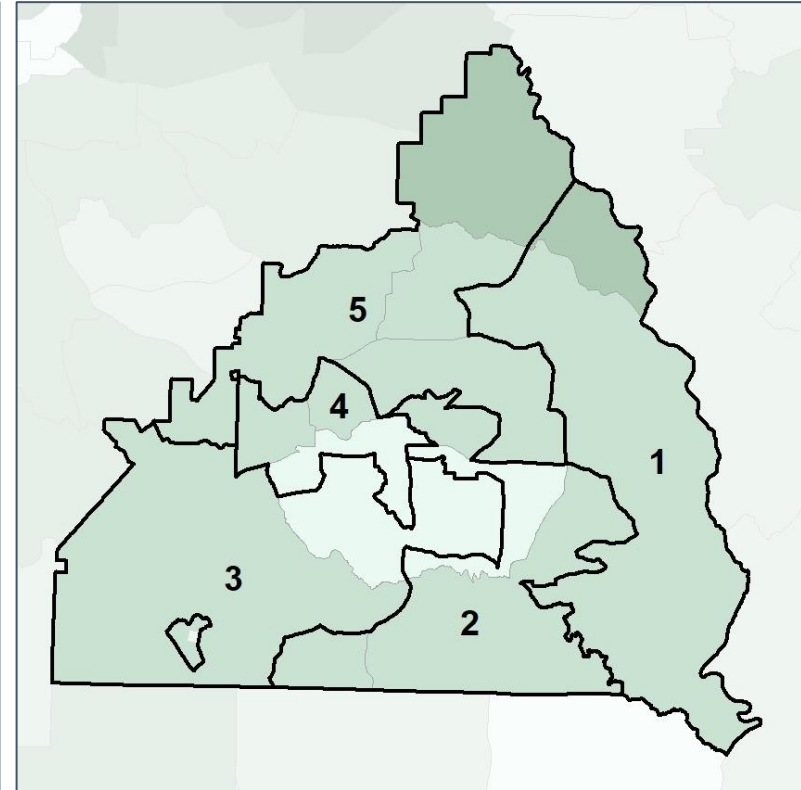
Median Household Income by Census Tract



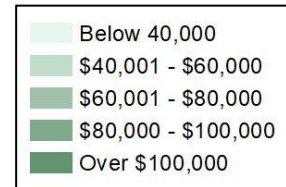
2012 Map



2022 Map*



	1	2	3	4	5	1*	2*	3*	4*	5*	County
Population	4,904	4,567	7,254	4,170	4,539	4,601	4,577	4,636	4,602	4,532	25,434
% API	0%	0%	1%	1%	1%	0%	0%	1%	0%	0%	0%
% Black	6%	42%	27%	52%	11%	6%	39%	9%	54%	9%	27%
% Latino	2%	3%	4%	3%	3%	2%	3%	5%	3%	3%	3%
% Other	5%	3%	3%	4%	6%	5%	4%	5%	4%	6%	4%
% White	87%	52%	65%	40%	79%	87%	54%	80%	39%	81%	65%
Median Income	\$58,000	\$46,000	\$56,000	\$42,000	\$57,000	\$61,000	\$43,000	\$63,000	\$42,000	\$55,000	\$48,000
% Renter	26%	45%	45%	26%	19%	23%	53%	34%	26%	19%	29%
% Youth	21%	23%	35%	14%	23%	24%	28%	33%	14%	19%	24%

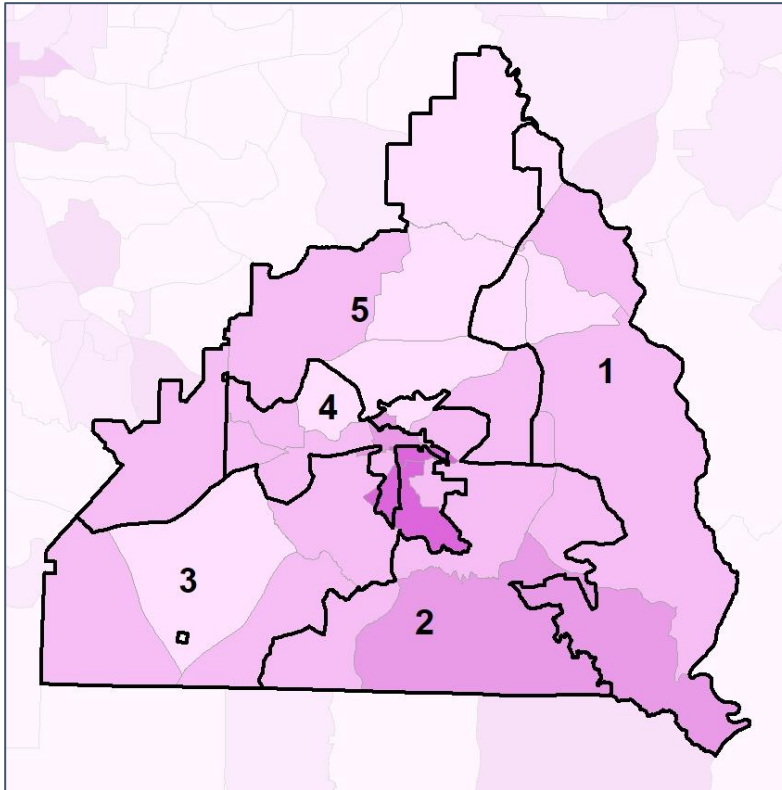


Butts Co. Commission & School Board

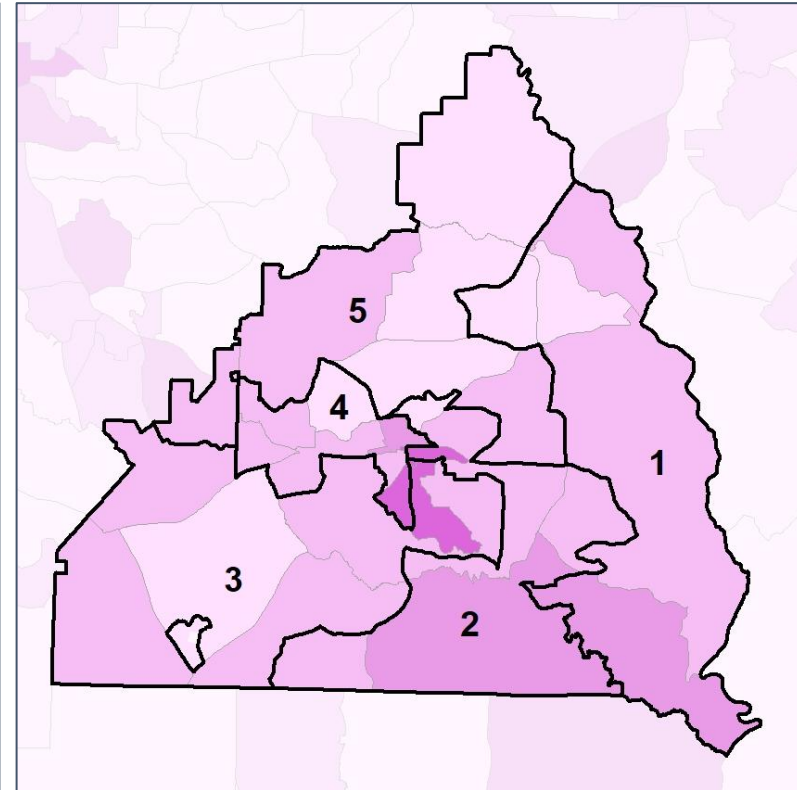
% Renter by Census Block Group



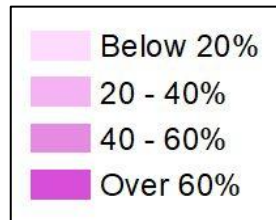
2012 Map



2022 Map*



	1	2	3	4	5	1*	2*	3*	4*	5*	County
Population	4,904	4,567	7,254	4,170	4,539	4,601	4,577	4,636	4,602	4,532	25,434
% API	0%	0%	1%	1%	1%	0%	0%	1%	0%	0%	0%
% Black	6%	42%	27%	52%	11%	6%	39%	9%	54%	9%	27%
% Latino	2%	3%	4%	3%	3%	2%	3%	5%	3%	3%	3%
% Other	5%	3%	3%	4%	6%	5%	4%	5%	4%	6%	4%
% White	87%	52%	65%	40%	79%	87%	54%	80%	39%	81%	65%
Median Income	\$58,000	\$46,000	\$56,000	\$42,000	\$57,000	\$61,000	\$43,000	\$63,000	\$42,000	\$55,000	\$48,000
% Renter	26%	45%	45%	26%	19%	23%	53%	34%	26%	19%	29%
% Youth	21%	23%	35%	14%	23%	24%	28%	33%	14%	19%	24%

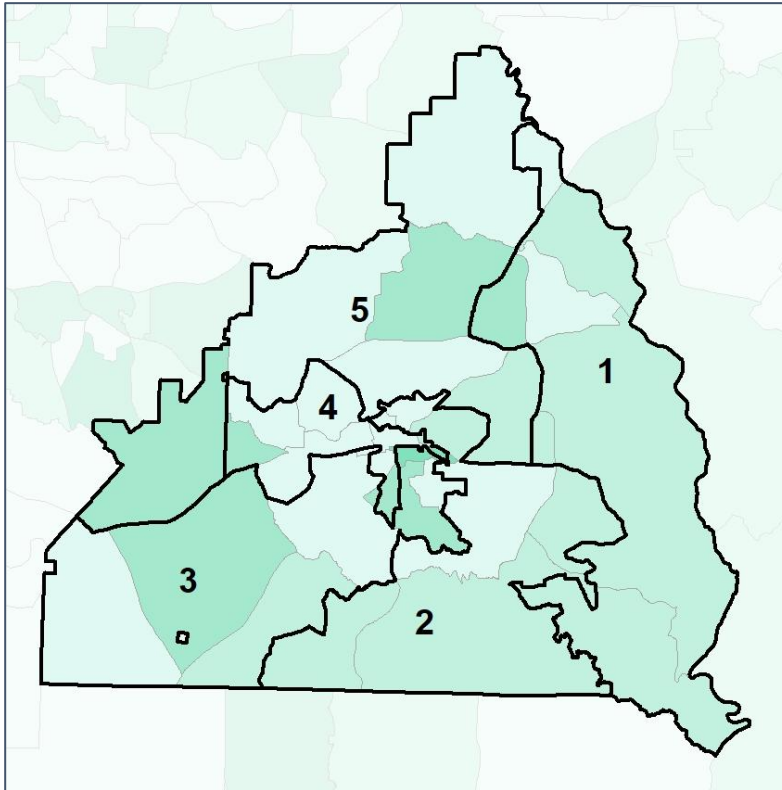


Butts Co. Commission & School Board

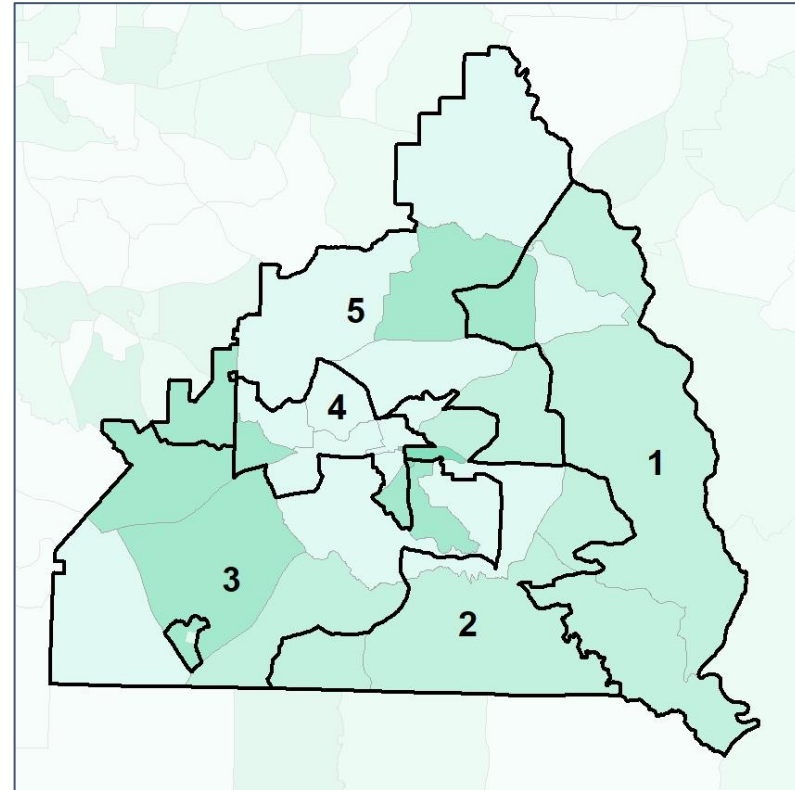
% Youth (18-34) by Census Block Group



2012 Map



2022 Map*



	1	2	3	4	5	1*	2*	3*	4*	5*	County
Population	4,904	4,567	7,254	4,170	4,539	4,601	4,577	4,636	4,602	4,532	25,434
% API	0%	0%	1%	1%	1%	0%	0%	1%	0%	0%	0%
% Black	6%	42%	27%	52%	11%	6%	39%	9%	54%	9%	27%
% Latino	2%	3%	4%	3%	3%	2%	3%	5%	3%	3%	3%
% Other	5%	3%	3%	4%	6%	5%	4%	5%	4%	6%	4%
% White	87%	52%	65%	40%	79%	87%	54%	80%	39%	81%	65%
Median Income	\$58,000	\$46,000	\$56,000	\$42,000	\$57,000	\$61,000	\$43,000	\$63,000	\$42,000	\$55,000	\$48,000
% Renter	26%	45%	45%	26%	19%	23%	53%	34%	26%	19%	29%
% Youth	21%	23%	35%	14%	23%	24%	28%	33%	14%	19%	24%

