



Demographic Overview

Racial Breakdown in Bryan County

Bryan County	2010	2020	% Change
Total Population	30,233	44,738	48%
AAPI	495	1,085	119%
Black	4,210	6,330	50%
Latino	1,336	3,269	145%
Other/Mixed Race	746	2,733	266%
POC	6,787	13,417	98%
White	23,446	31,321	34%

*Note: The use of "Other" in these statistics combines those who identify as Native American, Mixed Race, and "Other" race





Population Gain

Change in Population in Georgia by County

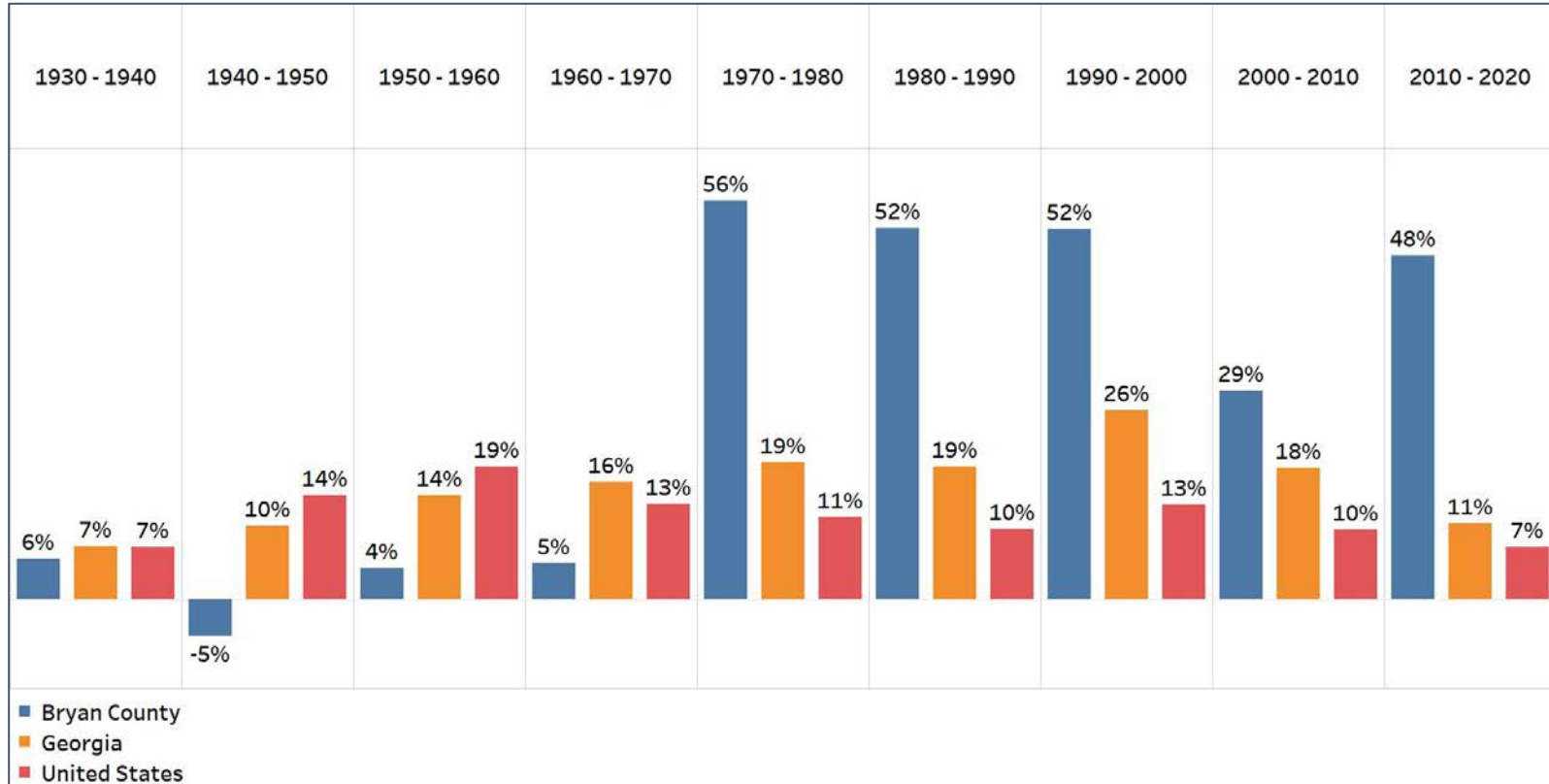


- Georgia is experiencing rapid population growth in the Atlanta, Augusta, and Savannah regions of the state



Population Gain

Change in Population by Decade

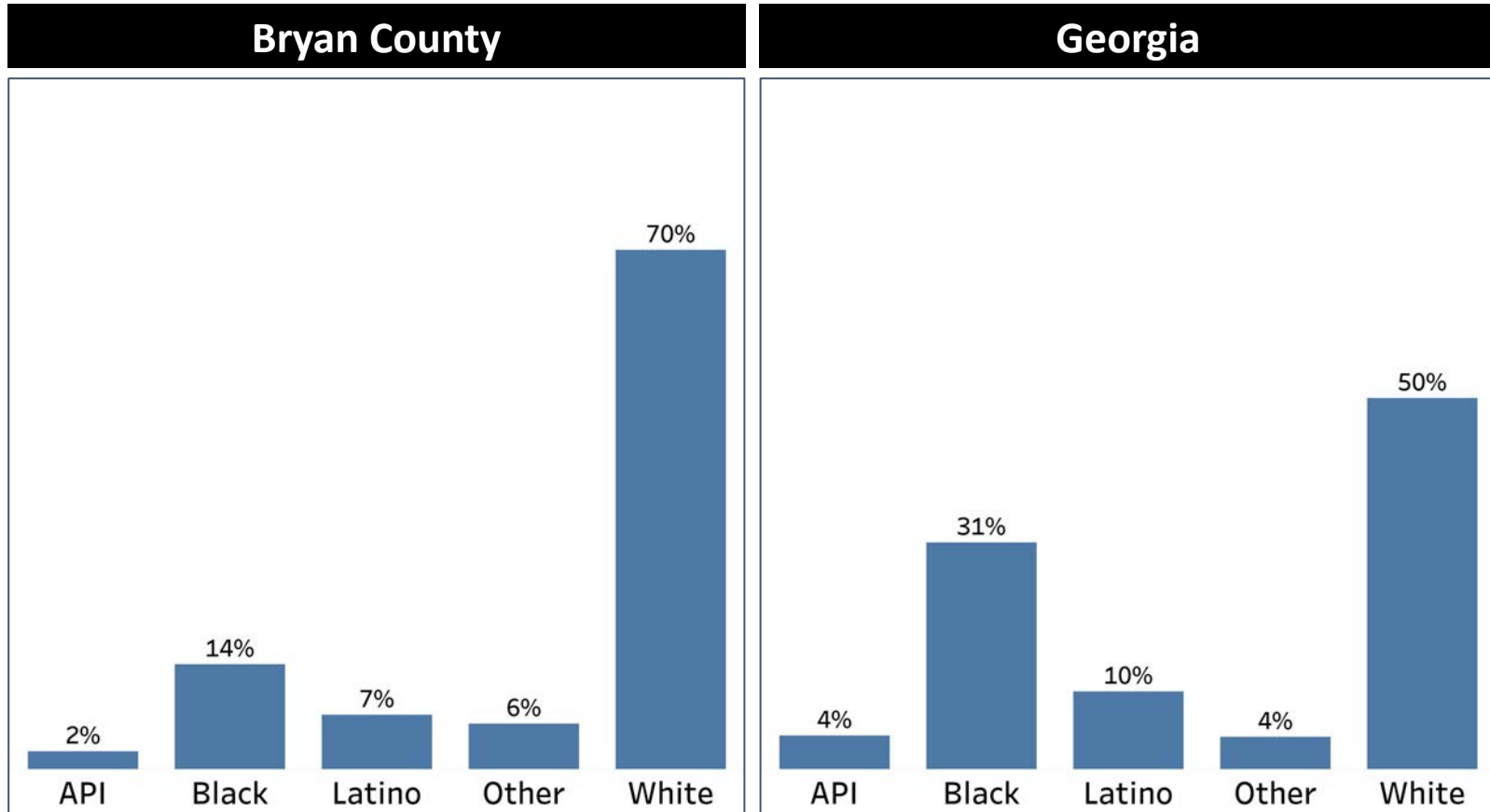


- Bryan County has seen an explosion in population since 1970
- Growth slowed from 2000-2010 but has returned to very high levels again in the last decade



Demographics

Comparison between Bryan County and Georgia



- Bryan County is overwhelmingly white and has a much smaller share of communities of color compared to Georgia overall
- The only exception is the Other population, which is higher than Georgia's overall share

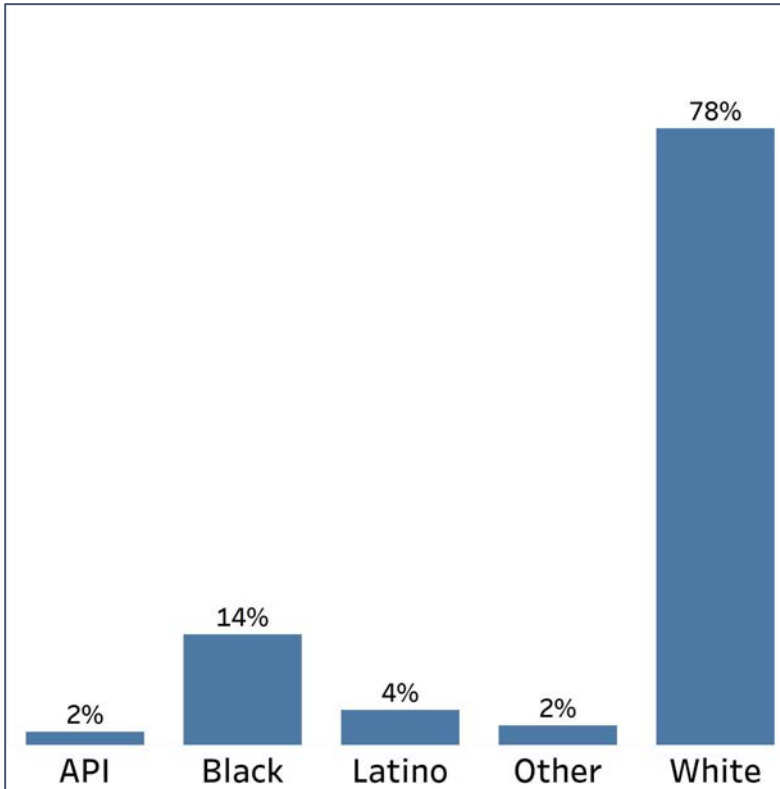


Demographics

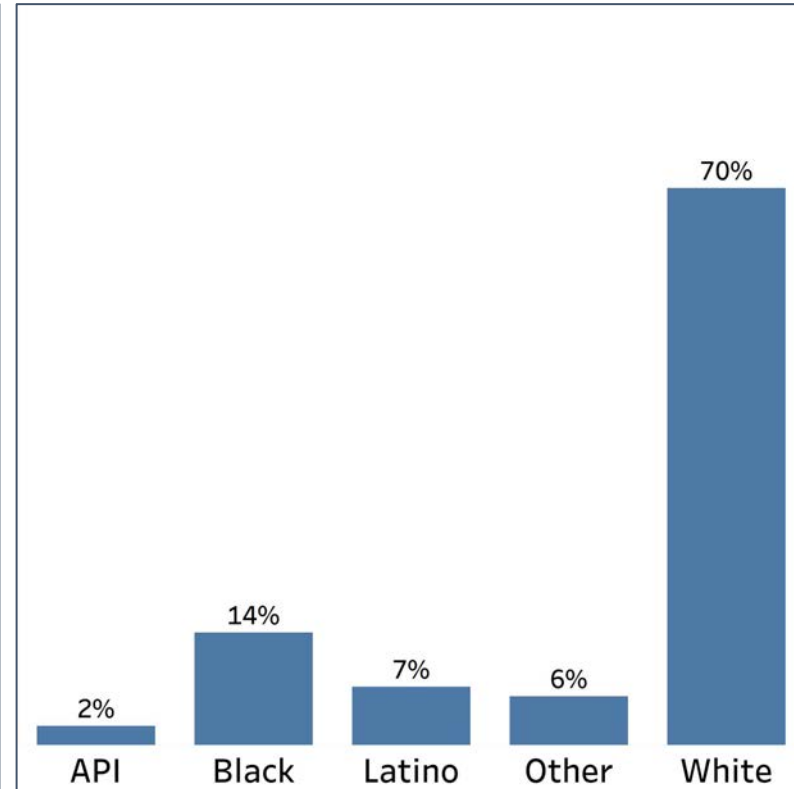
2010 vs 2020 Demographics in Bryan County



Bryan County 2010



Bryan County 2020

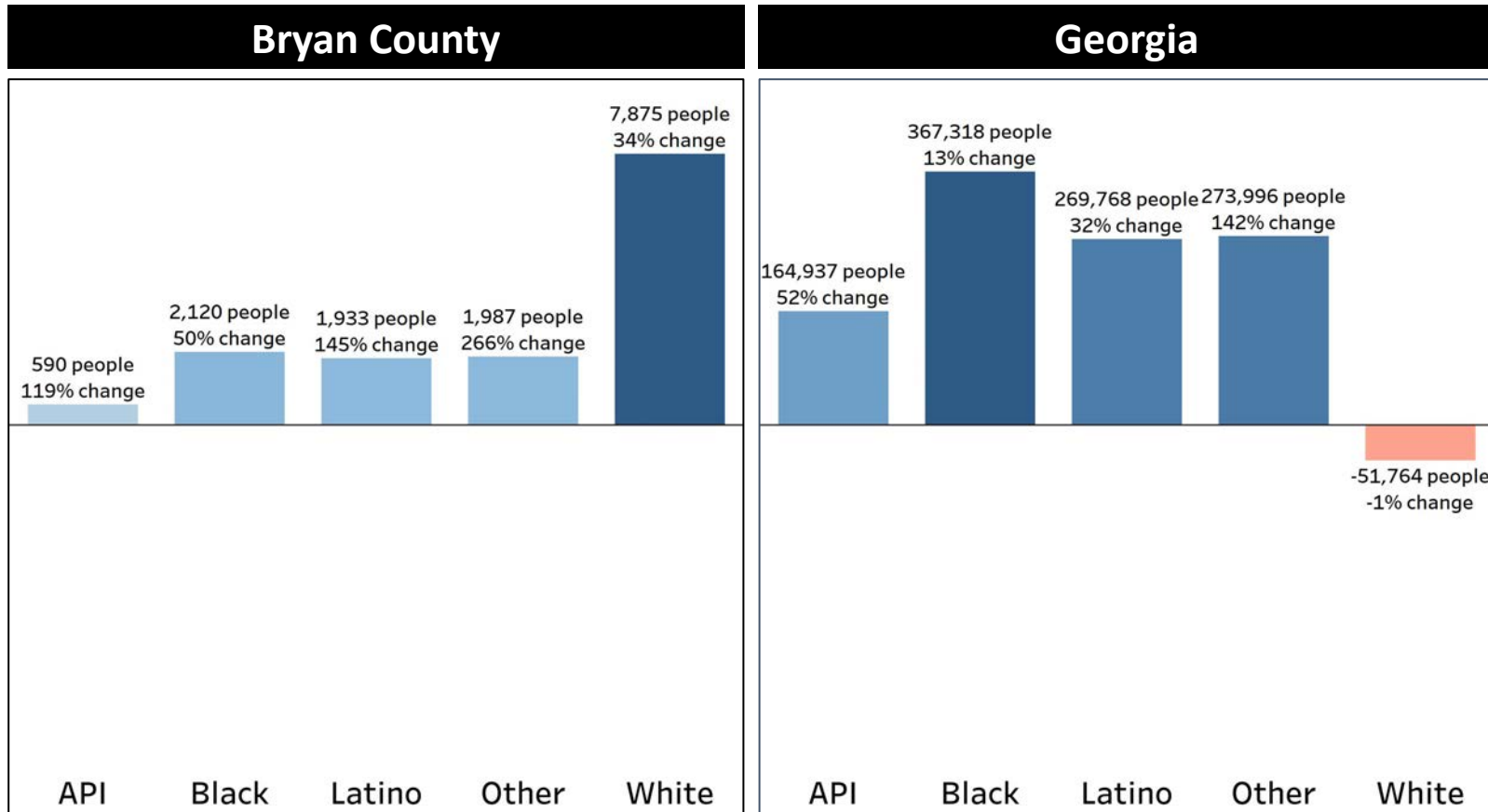


- Bryan County has seen a decline in the White population and an increase in the Latino and Other population
- Both the API and Black populations saw no significant change in the share of the population in the past decade



Demographics

Population Change by Race (2020 - 2010)



- Despite not seeing an increase in the share of the population, the White, Black, and API communities all saw growth rates significantly higher than Georgia overall
- The Latino and Other populations also saw significantly higher growth rates than Georgia overall

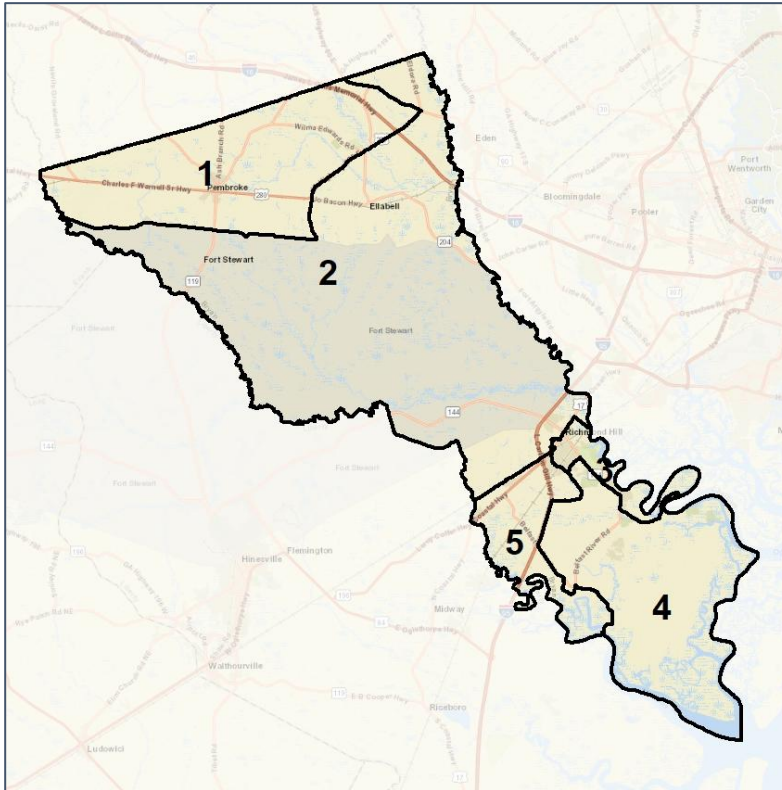


Bryan Co. Commission & School Board

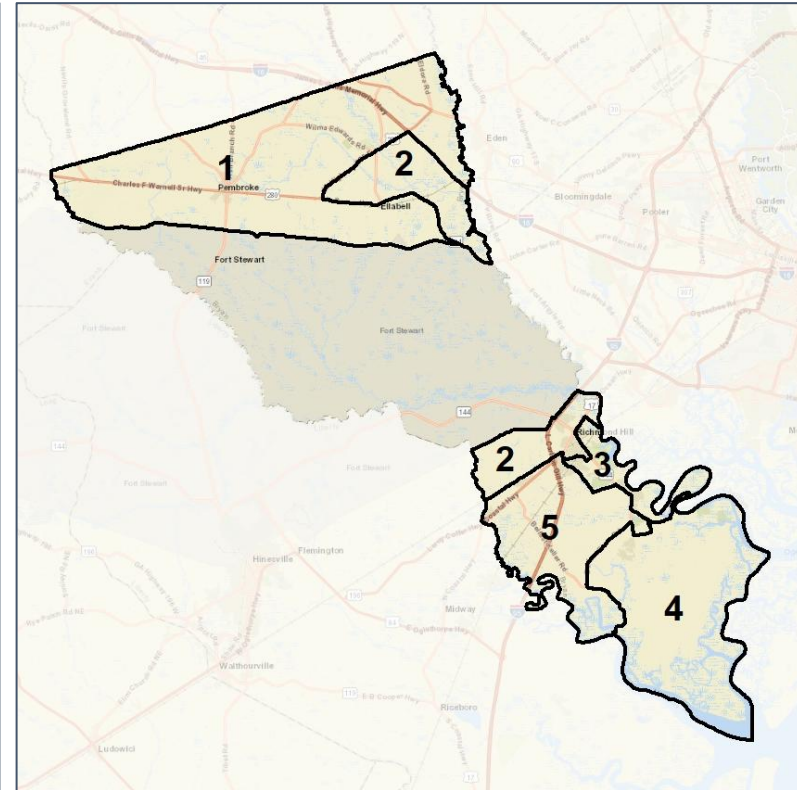
Context



2012 Map



2022 Map*



	1	2	3	4	5	1*	2*	3*	4*	5*	County
Population	6,945	7,037	9,054	14,977	6,725	8,825	9,028	9,013	9,046	8,826	44,738
API	1%	3%	3%	3%	2%	1%	4%	3%	2%	3%	2%
Black	20%	15%	15%	10%	15%	17%	18%	13%	7%	15%	14%
Latino	3%	5%	9%	8%	8%	3%	9%	9%	6%	9%	7%
Other	5%	6%	6%	7%	6%	5%	7%	6%	6%	6%	6%
White	71%	71%	66%	72%	69%	74%	62%	68%	80%	67%	70%
Population Gain	1,045	1,097	2,920	8,799	644	1,880	1,991	-41	-5,931	2,101	*
Population % Gain	18%	18%	48%	142%	11%	27%	28%	0%	-40%	31%	*
Net POC Gain	535	682	1,595	3,213	605	309	1,375	-143	-2,380	839	*
Net POC % Gain	36%	51%	110%	317%	40%	15%	68%	-5%	-56%	40%	*

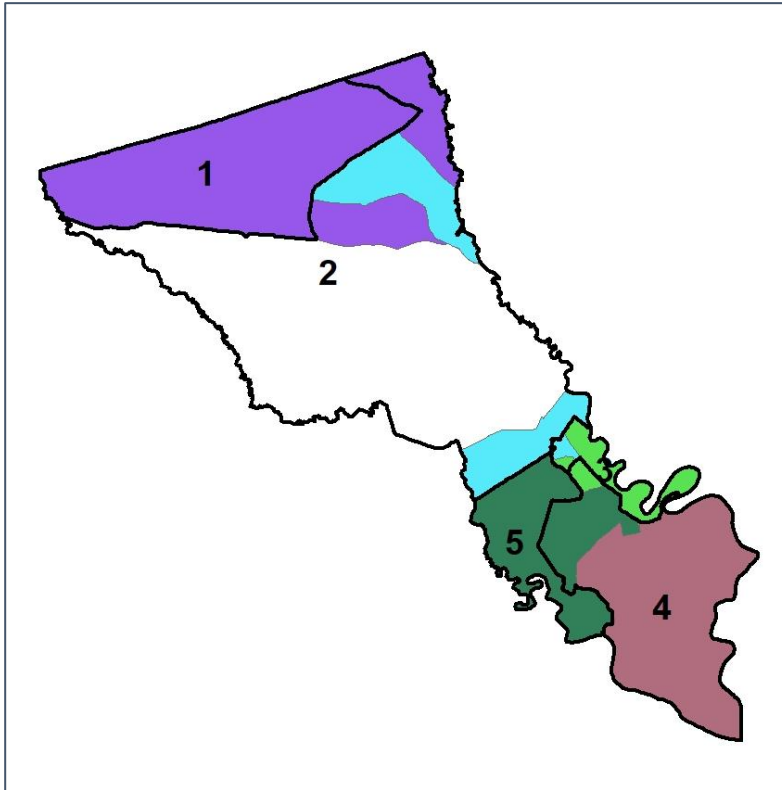


Bryan Co. Commission & School Board

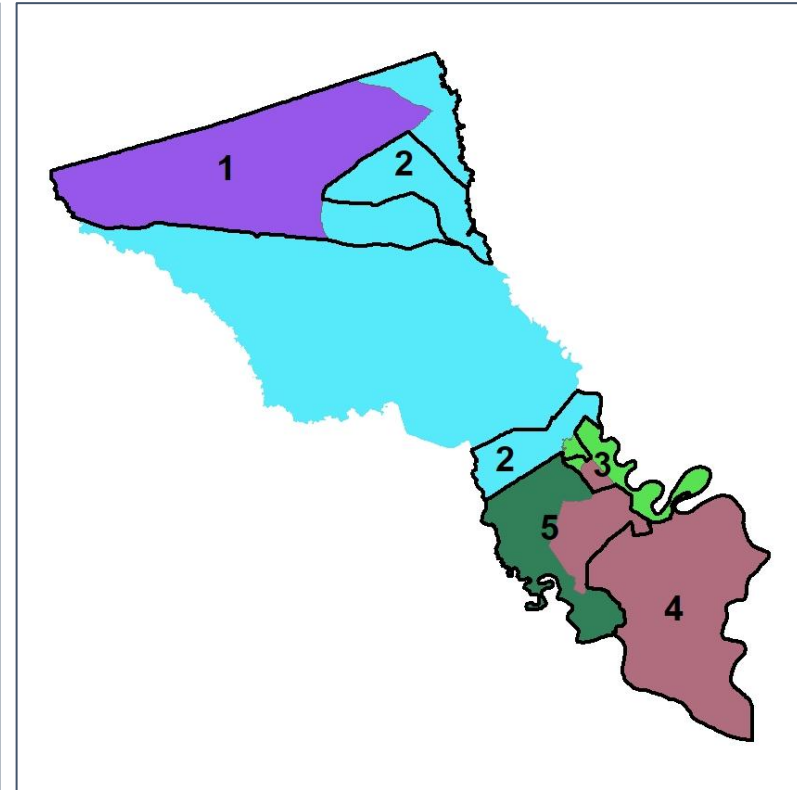
Changes in Redistricting



2012 Map (2022 in Colors)



2022 Map* (2012 in Colors)



	1	2	3	4	5	1*	2*	3*	4*	5*	County
Population	6,945	7,037	9,054	14,977	6,725	8,825	9,028	9,013	9,046	8,826	44,738
API	1%	3%	3%	3%	2%	1%	4%	3%	2%	3%	2%
Black	20%	15%	15%	10%	15%	17%	18%	13%	7%	15%	14%
Latino	3%	5%	9%	8%	8%	3%	9%	9%	6%	9%	7%
Other	5%	6%	6%	7%	6%	5%	7%	6%	6%	6%	6%
White	71%	71%	66%	72%	69%	74%	62%	68%	80%	67%	70%
Population Gain	1,045	1,097	2,920	8,799	644	1,880	1,991	-41	-5,931	2,101	*
Population % Gain	18%	18%	48%	142%	11%	27%	28%	0%	-40%	31%	*
Net POC Gain	535	682	1,595	3,213	605	309	1,375	-143	-2,380	839	*
Net POC % Gain	36%	51%	110%	317%	40%	15%	68%	-5%	-56%	40%	*

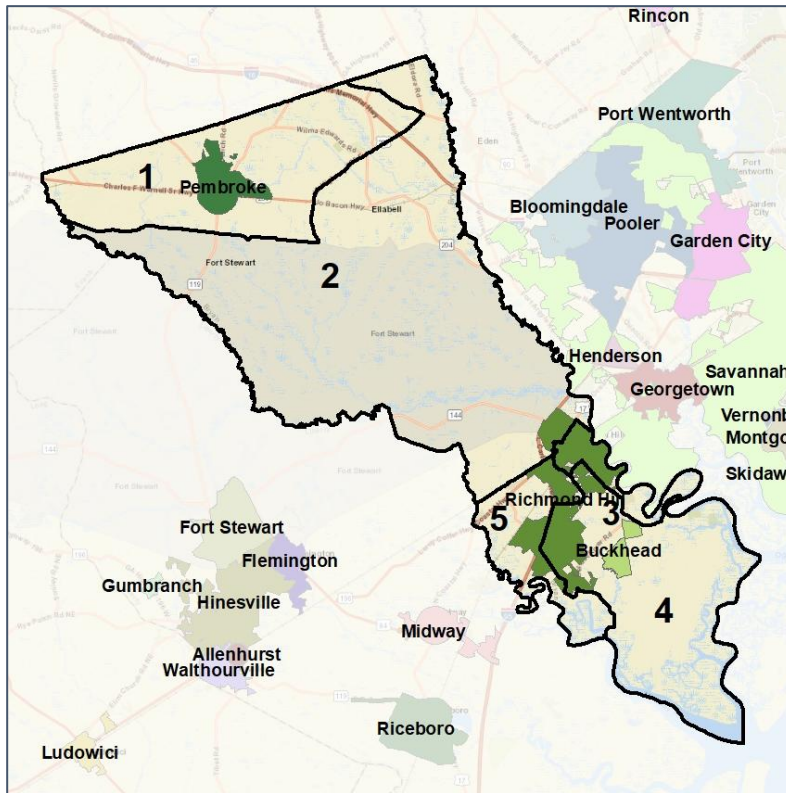


Bryan Co. Commission & School Board

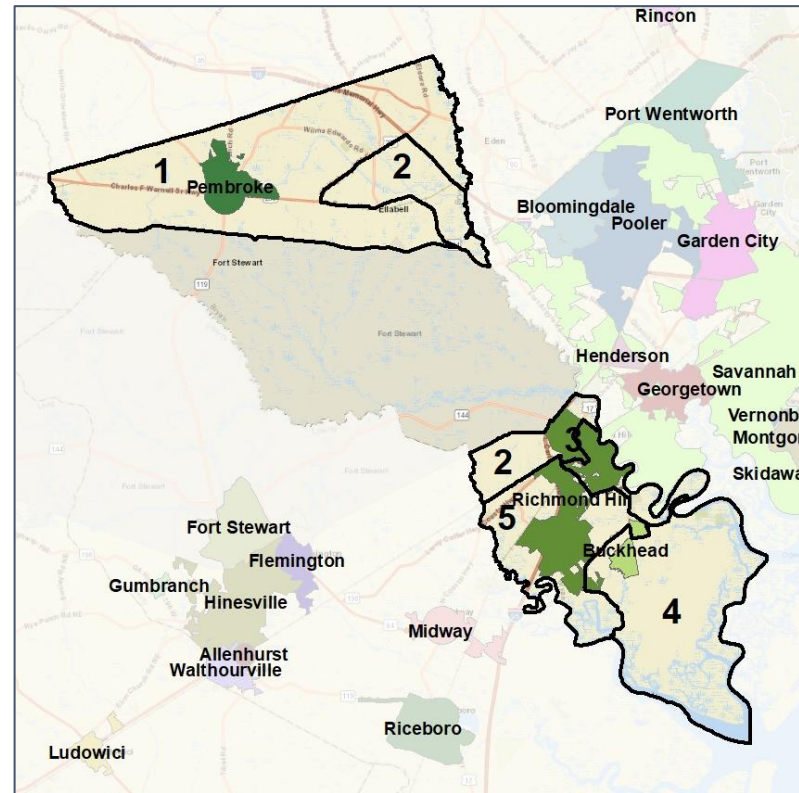
Cities and Places



2012 Map



2022 Map*



	1	2	3	4	5	1*	2*	3*	4*	5*	County
Population	6,945	7,037	9,054	14,977	6,725	8,825	9,028	9,013	9,046	8,826	44,738
API	1%	3%	3%	3%	2%	1%	4%	3%	2%	3%	2%
Black	20%	15%	15%	10%	15%	17%	18%	13%	7%	15%	14%
Latino	3%	5%	9%	8%	8%	3%	9%	9%	6%	9%	7%
Other	5%	6%	6%	7%	6%	5%	7%	6%	6%	6%	6%
White	71%	71%	66%	72%	69%	74%	62%	68%	80%	67%	70%
Population Gain	1,045	1,097	2,920	8,799	644	1,880	1,991	-41	-5,931	2,101	*
Population % Gain	18%	18%	48%	142%	11%	27%	28%	0%	-40%	31%	*
Net POC Gain	535	682	1,595	3,213	605	309	1,375	-143	-2,380	839	*
Net POC % Gain	36%	51%	110%	317%	40%	15%	68%	-5%	-56%	40%	*



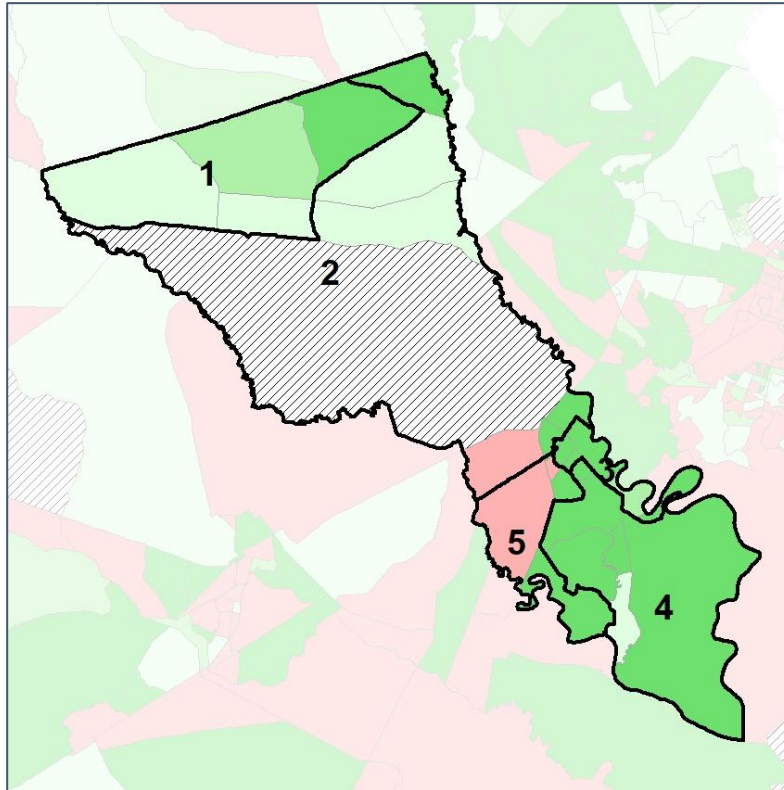
Source:
2020 Decennial Census
2020 ACS 5-Year Dataset

Bryan Co. Commission & School Board

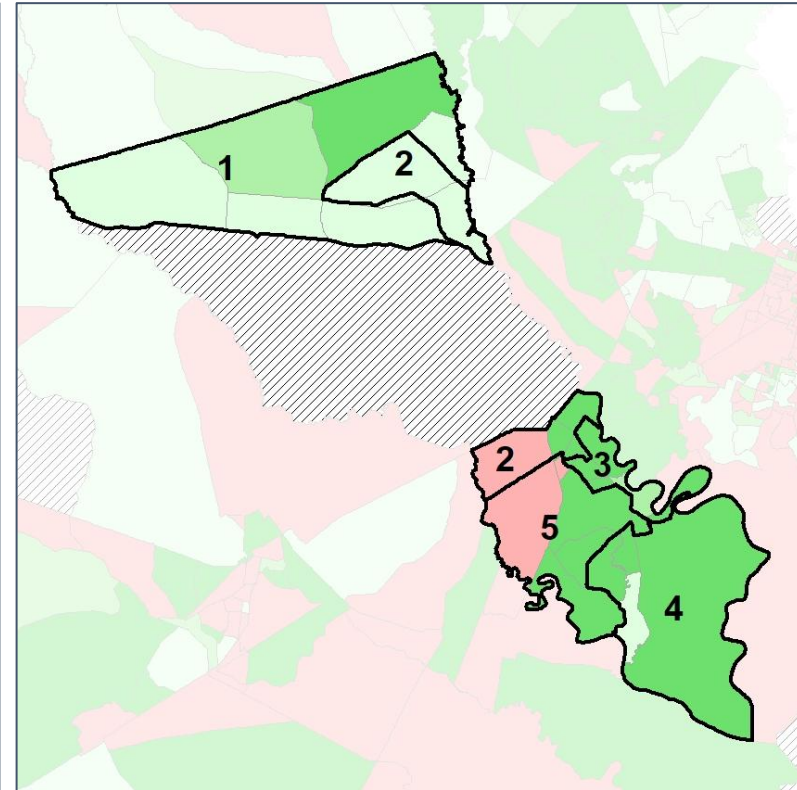
Net Gain in Population (2010 - 2020) by Census Block Group



2012 Map



2022 Map*



	1	2	3	4	5	1*	2*	3*	4*	5*	County
Population	6,945	7,037	9,054	14,977	6,725	8,825	9,028	9,013	9,046	8,826	44,738
API	1%	3%	3%	3%	2%	1%	4%	3%	2%	3%	2%
Black	20%	15%	15%	10%	15%	17%	18%	13%	7%	15%	14%
Latino	3%	5%	9%	8%	8%	3%	9%	9%	6%	9%	7%
Other	5%	6%	6%	7%	6%	5%	7%	6%	6%	6%	6%
White	71%	71%	66%	72%	69%	74%	62%	68%	80%	67%	70%
Population Gain	1,045	1,097	2,920	8,799	644	1,880	1,991	-41	-5,931	2,101	*
Population % Gain	18%	18%	48%	142%	11%	27%	28%	0%	-40%	31%	*
Net POC Gain	535	682	1,595	3,213	605	309	1,375	-143	-2,380	839	*
Net POC % Gain	36%	51%	110%	317%	40%	15%	68%	-5%	-56%	40%	*

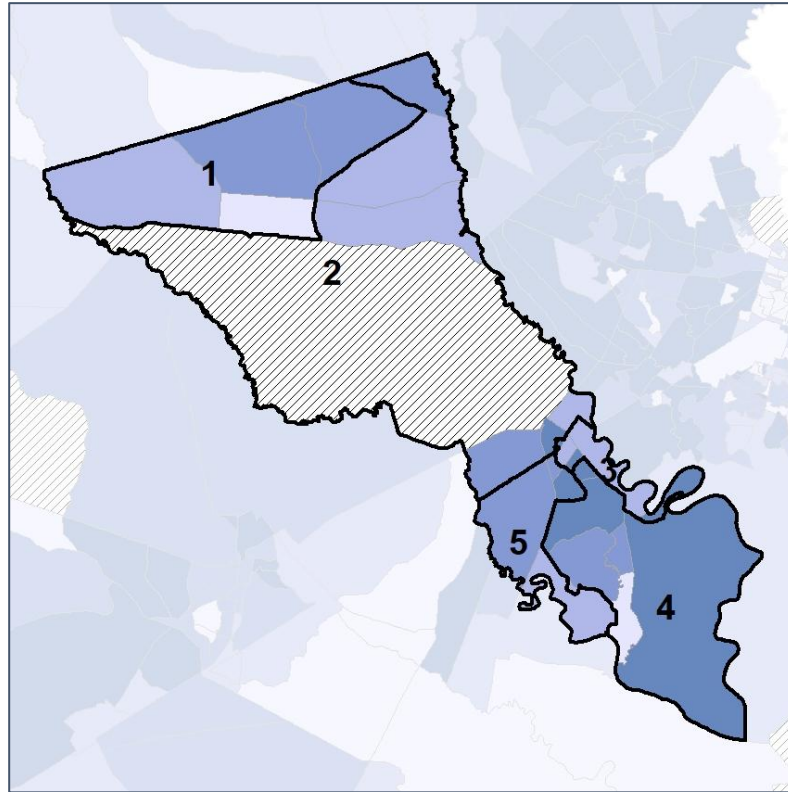


Bryan Co. Commission & School Board

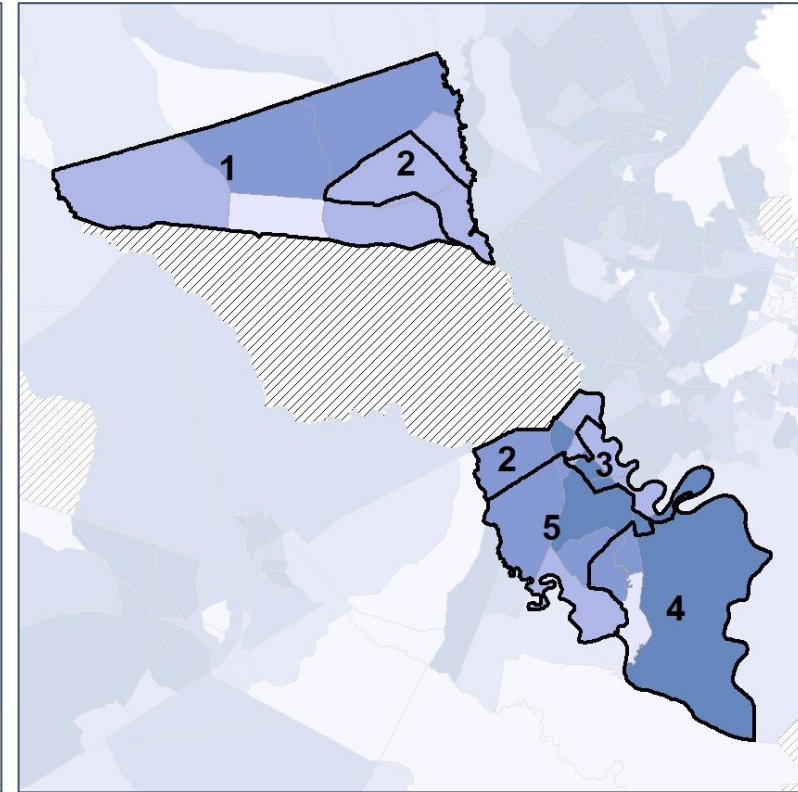
Net Gain in % POC (2020 - 2010) by Census Block Group



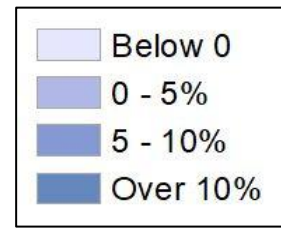
2012 Map



2022 Map*



	1	2	3	4	5	1*	2*	3*	4*	5*	County
Population	6,945	7,037	9,054	14,977	6,725	8,825	9,028	9,013	9,046	8,826	44,738
API	1%	3%	3%	3%	2%	1%	4%	3%	2%	3%	2%
Black	20%	15%	15%	10%	15%	17%	18%	13%	7%	15%	14%
Latino	3%	5%	9%	8%	8%	3%	9%	9%	6%	9%	7%
Other	5%	6%	6%	7%	6%	5%	7%	6%	6%	6%	6%
White	71%	71%	66%	72%	69%	74%	62%	68%	80%	67%	70%
Population Gain	1,045	1,097	2,920	8,799	644	1,880	1,991	-41	-5,931	2,101	*
Population % Gain	18%	18%	48%	142%	11%	27%	28%	0%	-40%	31%	*
Net POC Gain	535	682	1,595	3,213	605	309	1,375	-143	-2,380	839	*
Net POC % Gain	36%	51%	110%	317%	40%	15%	68%	-5%	-56%	40%	*



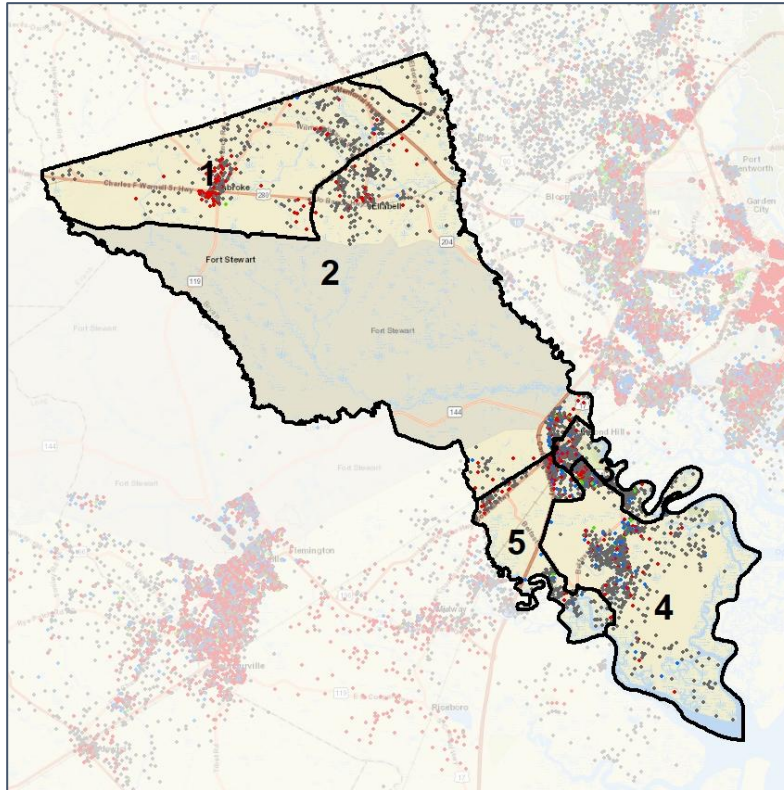
Source: 2020 Decennial Census 2020 ACS 5-Year Dataset

Bryan Co. Commission & School Board

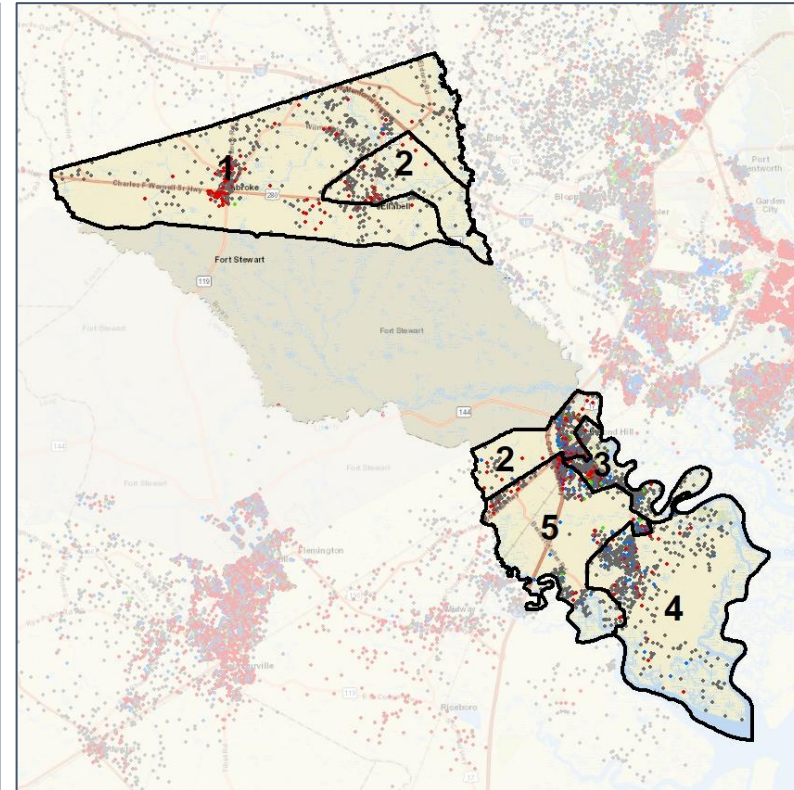
Population Density by Race



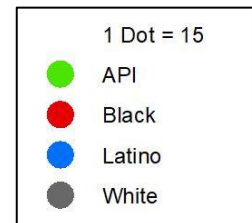
2012 Map



2022 Map*



	1	2	3	4	5	1*	2*	3*	4*	5*	County
Population	6,945	7,037	9,054	14,977	6,725	8,825	9,028	9,013	9,046	8,826	44,738
API	57	177	277	436	138	67	328	311	148	231	1,085
% API	1%	3%	3%	3%	2%	1%	4%	3%	2%	3%	2%
Black	1,375	1,047	1,347	1,544	1,017	1,501	1,645	1,183	647	1,354	6,330
% Black	20%	15%	15%	10%	15%	17%	18%	13%	7%	15%	14%
Latino	236	378	852	1,241	562	304	803	839	515	808	3,269
% Latino	3%	5%	9%	8%	8%	3%	9%	9%	6%	9%	7%
Other	352	421	569	1,007	384	457	622	569	538	547	2,733
% Other	5%	6%	6%	7%	6%	5%	7%	6%	6%	6%	6%
White	4,925	5,014	6,009	10,749	4,624	6,496	5,630	6,111	7,198	5,886	31,321
% White	71%	71%	66%	72%	69%	74%	62%	68%	80%	67%	70%



Source:
2020 Decennial Census
2020 ACS 5-Year Dataset

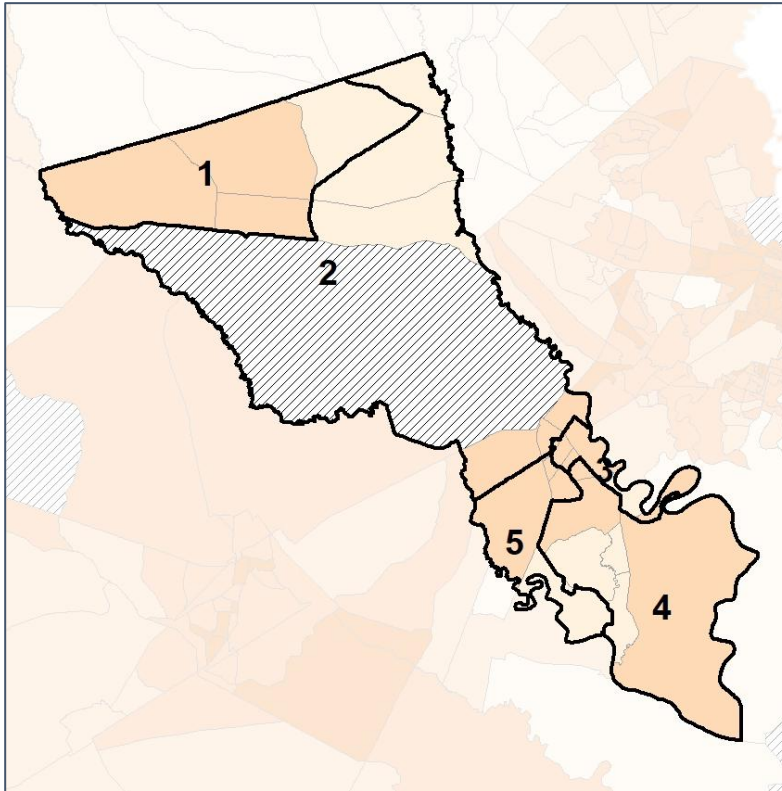


Bryan Co. Commission & School Board

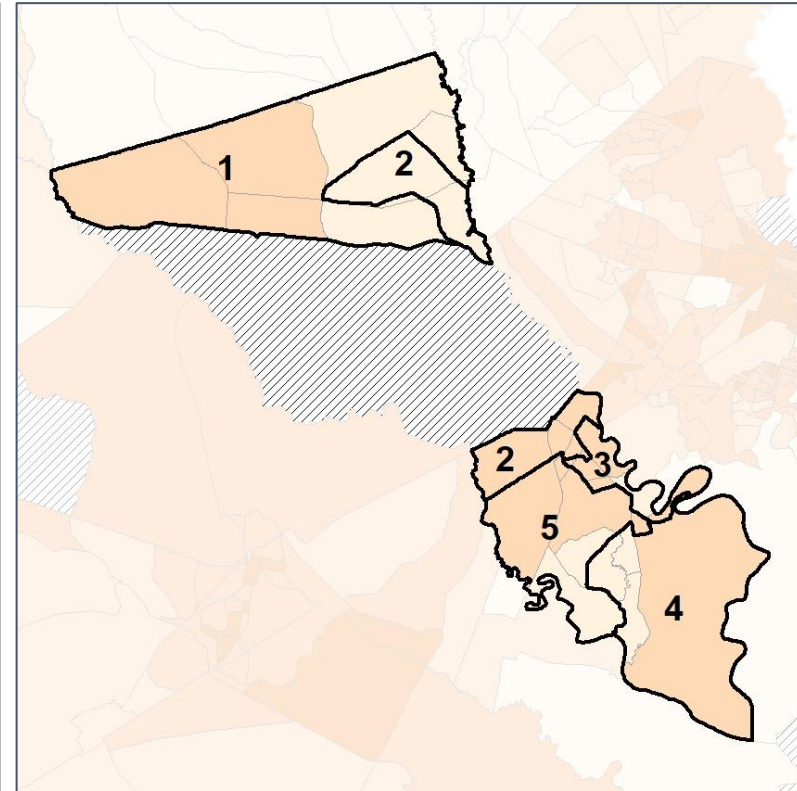
% People of Color by Census Block Group



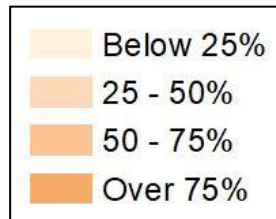
2012 Map



2022 Map*



	1	2	3	4	5	1*	2*	3*	4*	5*	County
Population	6,945	7,037	9,054	14,977	6,725	8,825	9,028	9,013	9,046	8,826	44,738
API	57	177	277	436	138	67	328	311	148	231	1,085
% API	1%	3%	3%	3%	2%	1%	4%	3%	2%	3%	2%
Black	1,375	1,047	1,347	1,544	1,017	1,501	1,645	1,183	647	1,354	6,330
% Black	20%	15%	15%	10%	15%	17%	18%	13%	7%	15%	14%
Latino	236	378	852	1,241	562	304	803	839	515	808	3,269
% Latino	3%	5%	9%	8%	8%	3%	9%	9%	6%	9%	7%
Other	352	421	569	1,007	384	457	622	569	538	547	2,733
% Other	5%	6%	6%	7%	6%	5%	7%	6%	6%	6%	6%
White	4,925	5,014	6,009	10,749	4,624	6,496	5,630	6,111	7,198	5,886	31,321
% White	71%	71%	66%	72%	69%	74%	62%	68%	80%	67%	70%



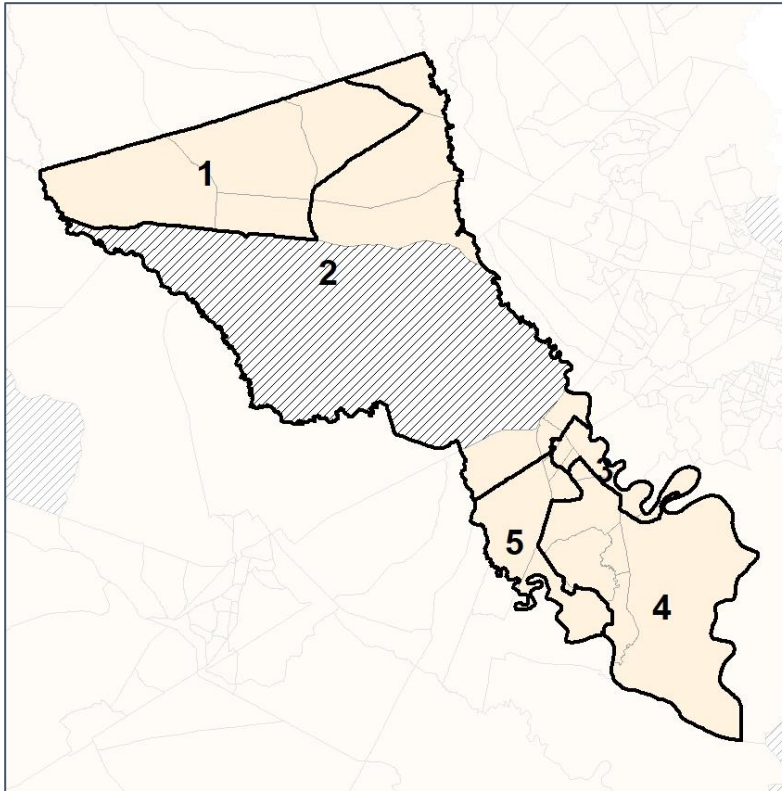
Source:
2020 Decennial Census
2020 ACS 5-Year Dataset

Bryan Co. Commission & School Board

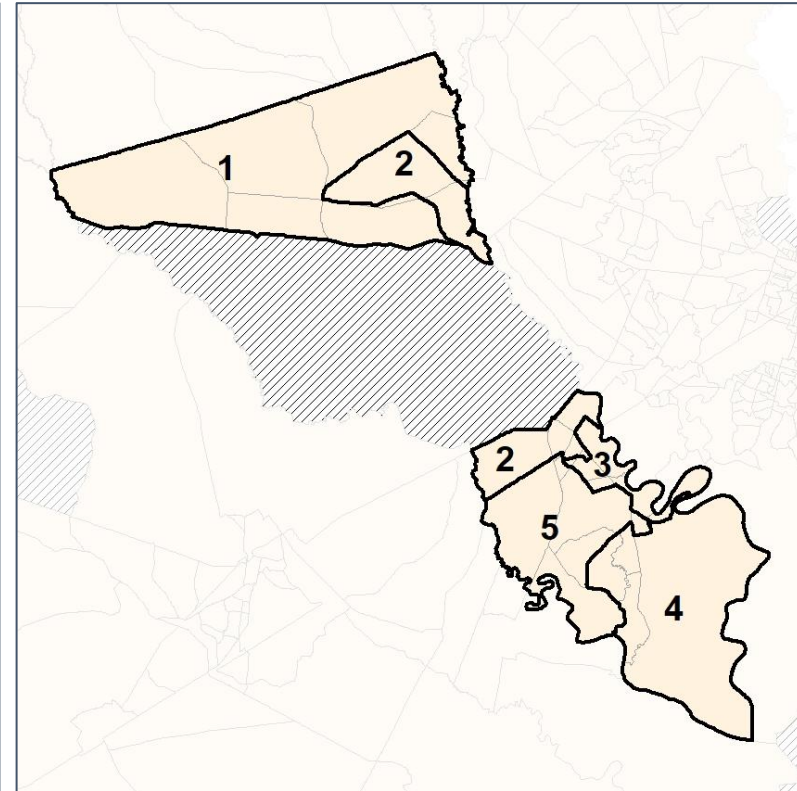
% API by Census Block Group



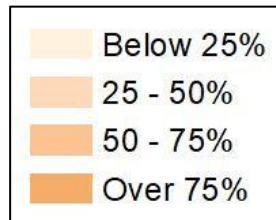
2012 Map



2022 Map*



	1	2	3	4	5	1*	2*	3*	4*	5*	County
Population	6,945	7,037	9,054	14,977	6,725	8,825	9,028	9,013	9,046	8,826	44,738
API	57	177	277	436	138	67	328	311	148	231	1,085
% API	1%	3%	3%	3%	2%	1%	4%	3%	2%	3%	2%
Black	1,375	1,047	1,347	1,544	1,017	1,501	1,645	1,183	647	1,354	6,330
% Black	20%	15%	15%	10%	15%	17%	18%	13%	7%	15%	14%
Latino	236	378	852	1,241	562	304	803	839	515	808	3,269
% Latino	3%	5%	9%	8%	8%	3%	9%	9%	6%	9%	7%
Other	352	421	569	1,007	384	457	622	569	538	547	2,733
% Other	5%	6%	6%	7%	6%	5%	7%	6%	6%	6%	6%
White	4,925	5,014	6,009	10,749	4,624	6,496	5,630	6,111	7,198	5,886	31,321
% White	71%	71%	66%	72%	69%	74%	62%	68%	80%	67%	70%

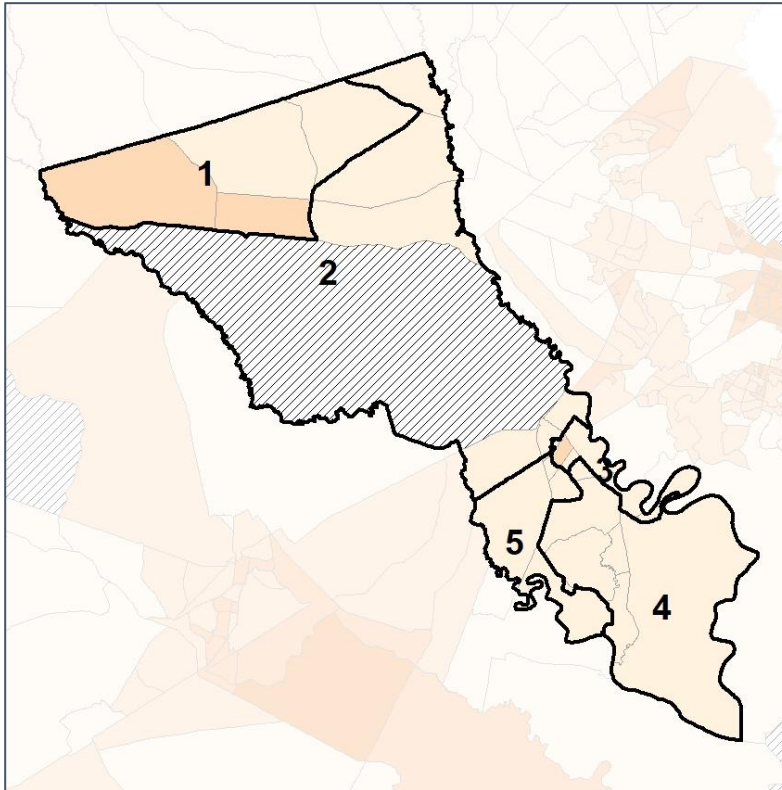


Bryan Co. Commission & School Board

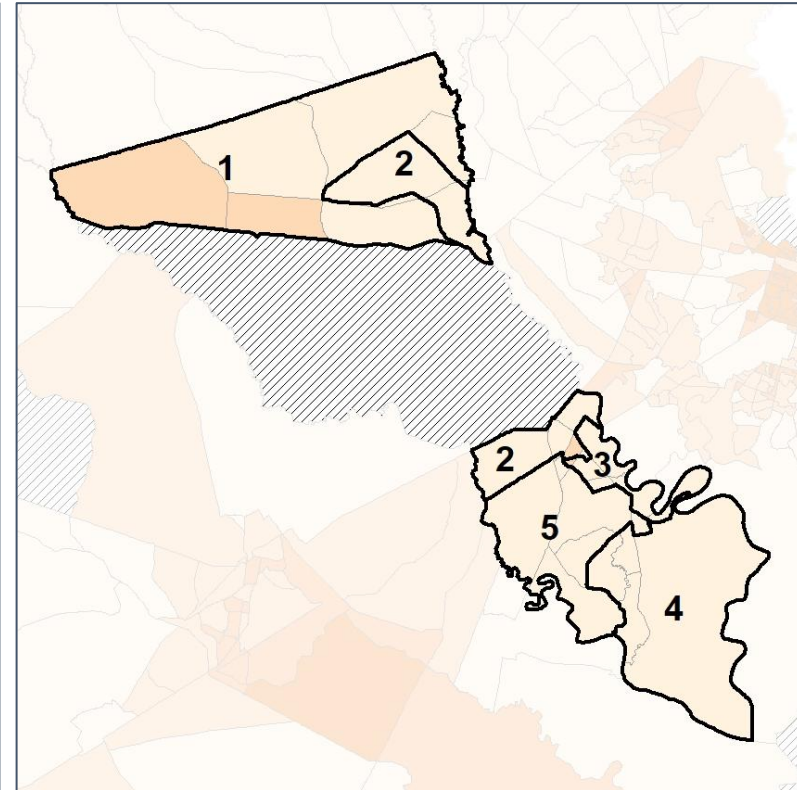
% Black by Census Block Group



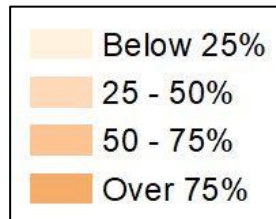
2012 Map



2022 Map*



	1	2	3	4	5	1*	2*	3*	4*	5*	County
Population	6,945	7,037	9,054	14,977	6,725	8,825	9,028	9,013	9,046	8,826	44,738
API	57	177	277	436	138	67	328	311	148	231	1,085
% API	1%	3%	3%	3%	2%	1%	4%	3%	2%	3%	2%
Black	1,375	1,047	1,347	1,544	1,017	1,501	1,645	1,183	647	1,354	6,330
% Black	20%	15%	15%	10%	15%	17%	18%	13%	7%	15%	14%
Latino	236	378	852	1,241	562	304	803	839	515	808	3,269
% Latino	3%	5%	9%	8%	8%	3%	9%	9%	6%	9%	7%
Other	352	421	569	1,007	384	457	622	569	538	547	2,733
% Other	5%	6%	6%	7%	6%	5%	7%	6%	6%	6%	6%
White	4,925	5,014	6,009	10,749	4,624	6,496	5,630	6,111	7,198	5,886	31,321
% White	71%	71%	66%	72%	69%	74%	62%	68%	80%	67%	70%

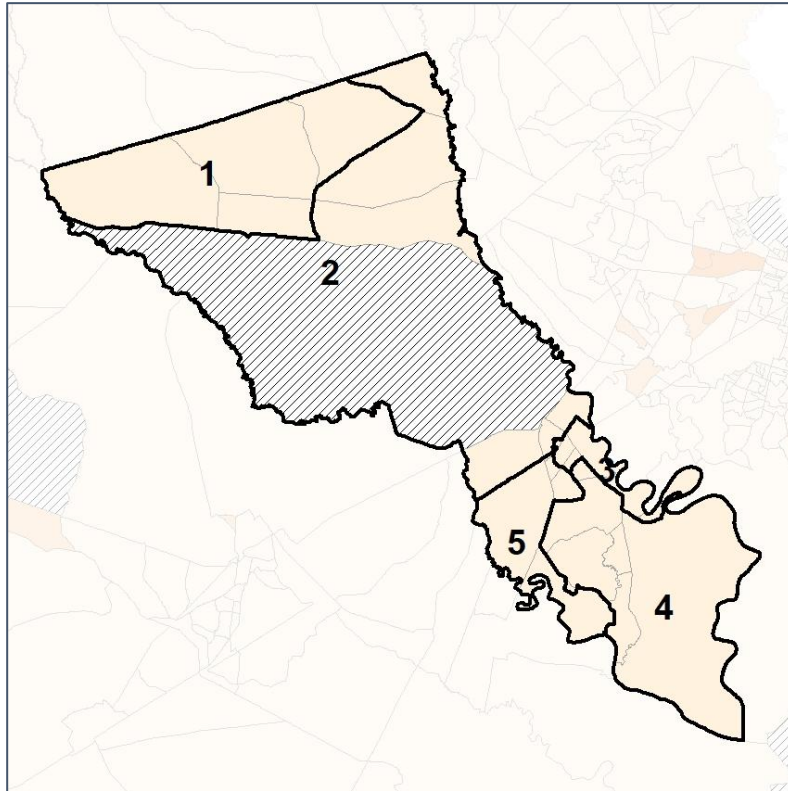


Bryan Co. Commission & School Board

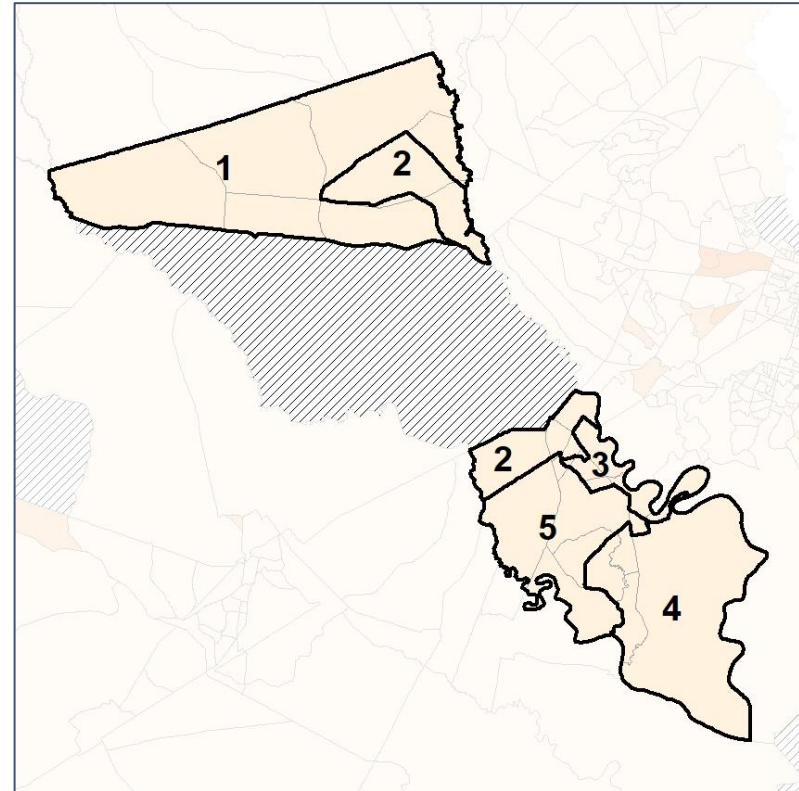
% Latino by Census Block Group



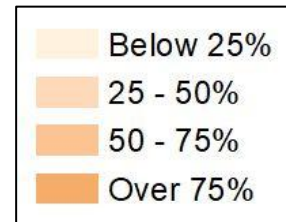
2012 Map



2022 Map*



	1	2	3	4	5	1*	2*	3*	4*	5*	County
Population	6,945	7,037	9,054	14,977	6,725	8,825	9,028	9,013	9,046	8,826	44,738
API	57	177	277	436	138	67	328	311	148	231	1,085
% API	1%	3%	3%	3%	2%	1%	4%	3%	2%	3%	2%
Black	1,375	1,047	1,347	1,544	1,017	1,501	1,645	1,183	647	1,354	6,330
% Black	20%	15%	15%	10%	15%	17%	18%	13%	7%	15%	14%
Latino	236	378	852	1,241	562	304	803	839	515	808	3,269
% Latino	3%	5%	9%	8%	8%	3%	9%	9%	6%	9%	7%
Other	352	421	569	1,007	384	457	622	569	538	547	2,733
% Other	5%	6%	6%	7%	6%	5%	7%	6%	6%	6%	6%
White	4,925	5,014	6,009	10,749	4,624	6,496	5,630	6,111	7,198	5,886	31,321
% White	71%	71%	66%	72%	69%	74%	62%	68%	80%	67%	70%



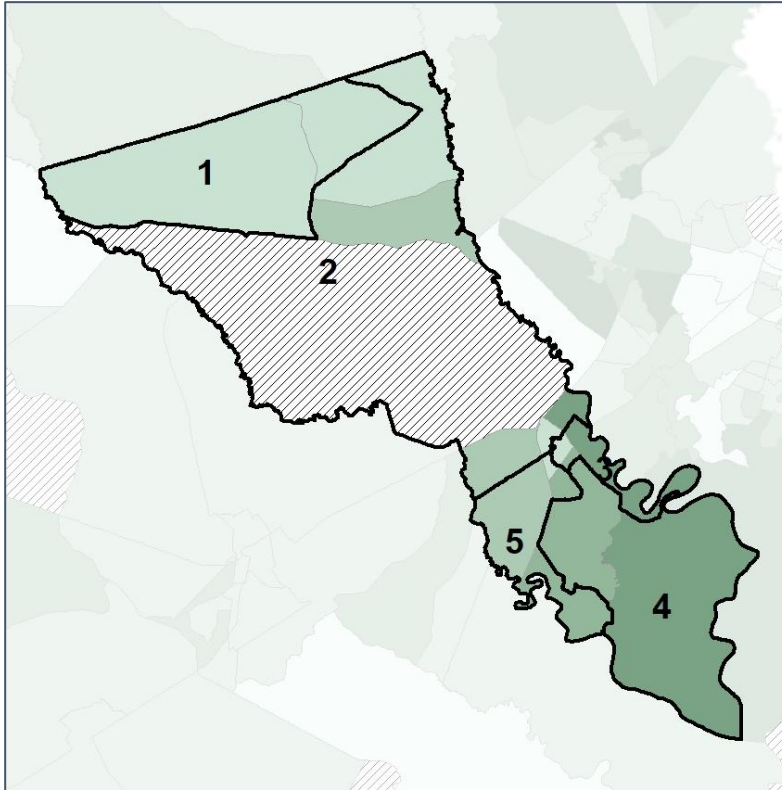
Source:
2020 Decennial Census
2020 ACS 5-Year Dataset

Bryan Co. Commission & School Board

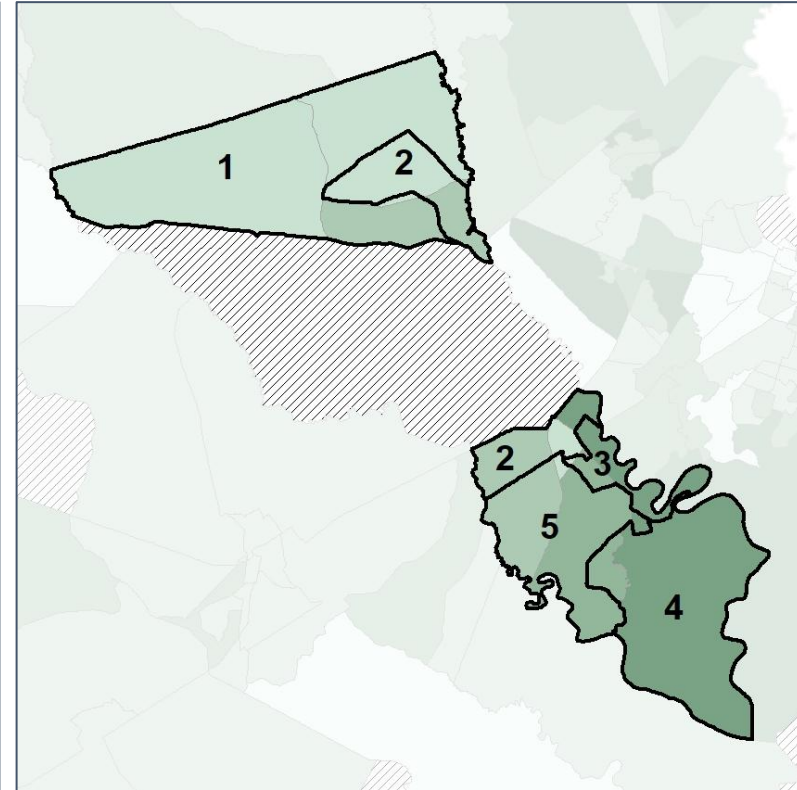
Median Household Income by Census Tract



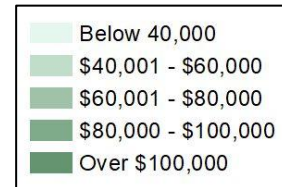
2012 Map



2022 Map*



	1	2	3	4	5	1*	2*	3*	4*	5*	County
Population	6,945	7,037	9,054	14,977	6,725	8,825	9,028	9,013	9,046	8,826	44,738
% API	1%	3%	3%	3%	2%	1%	4%	3%	2%	3%	2%
% Black	20%	15%	15%	10%	15%	17%	18%	13%	7%	15%	14%
% Latino	3%	5%	9%	8%	8%	3%	9%	9%	6%	9%	7%
% Other	5%	6%	6%	7%	6%	5%	7%	6%	6%	6%	6%
% White	71%	71%	66%	72%	69%	74%	62%	68%	80%	67%	70%
Median Income	\$56,000	\$62,000	\$93,000	\$107,000	\$68,000	\$60,000	\$53,000	\$100,000	\$122,000	\$74,000	\$76,000
% Renter	28%	35%	28%	27%	31%	27%	42%	33%	13%	33%	29%
% Youth	29%	26%	15%	19%	20%	30%	21%	16%	18%	21%	22%

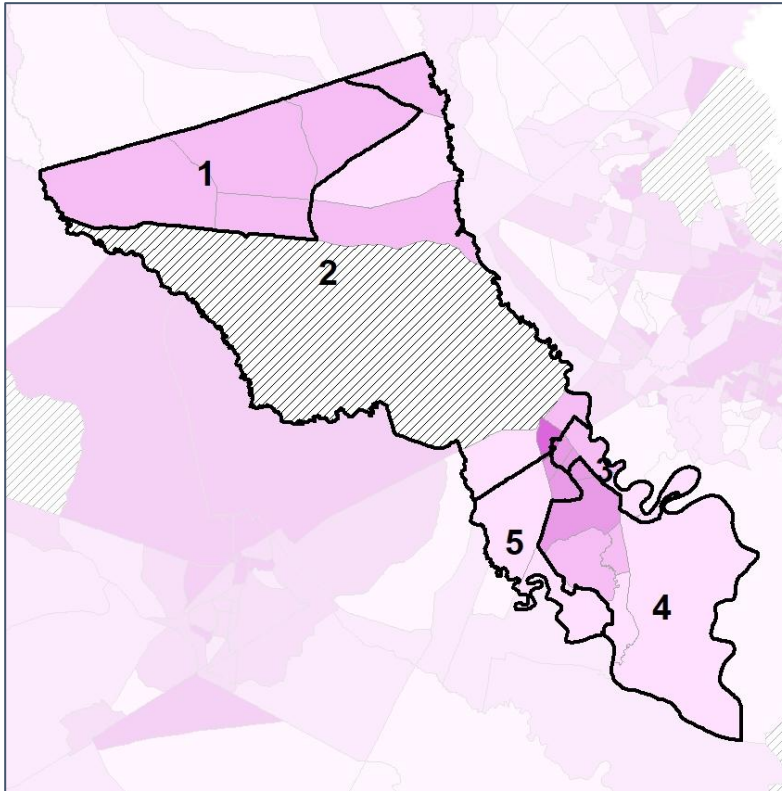


Bryan Co. Commission & School Board

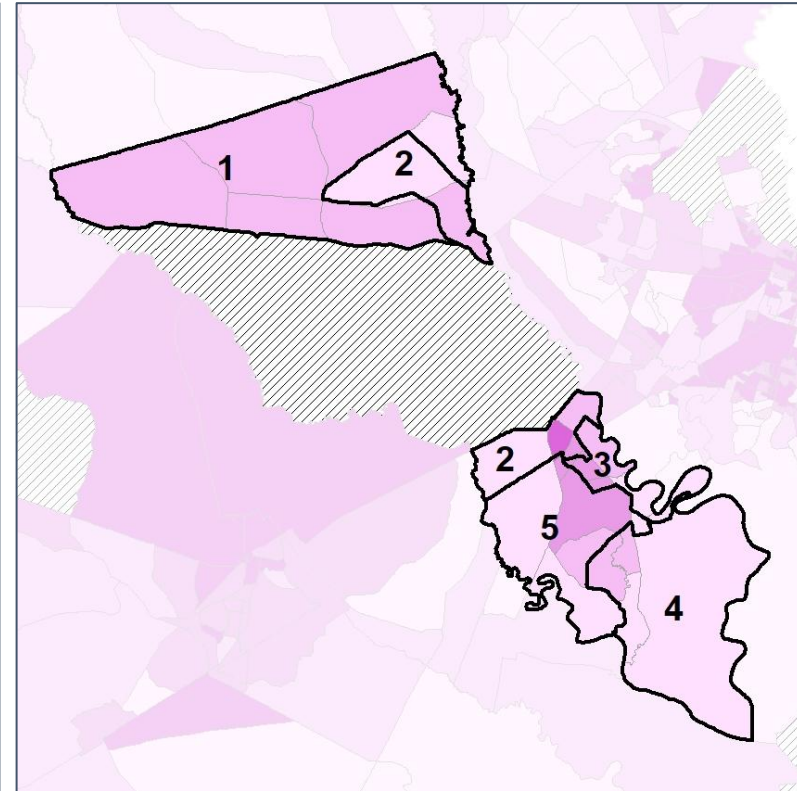
% Renter by Census Block Group



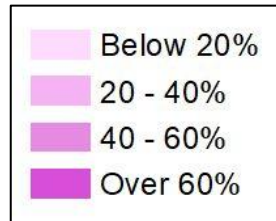
2012 Map



2022 Map*



	1	2	3	4	5	1*	2*	3*	4*	5*	County
Population	6,945	7,037	9,054	14,977	6,725	8,825	9,028	9,013	9,046	8,826	44,738
% API	1%	3%	3%	3%	2%	1%	4%	3%	2%	3%	2%
% Black	20%	15%	15%	10%	15%	17%	18%	13%	7%	15%	14%
% Latino	3%	5%	9%	8%	8%	3%	9%	9%	6%	9%	7%
% Other	5%	6%	6%	7%	6%	5%	7%	6%	6%	6%	6%
% White	71%	71%	66%	72%	69%	74%	62%	68%	80%	67%	70%
Median Income	\$56,000	\$62,000	\$93,000	\$107,000	\$68,000	\$60,000	\$53,000	\$100,000	\$122,000	\$74,000	\$76,000
% Renter	28%	35%	28%	27%	31%	27%	42%	33%	13%	33%	29%
% Youth	29%	26%	15%	19%	20%	30%	21%	16%	18%	21%	22%

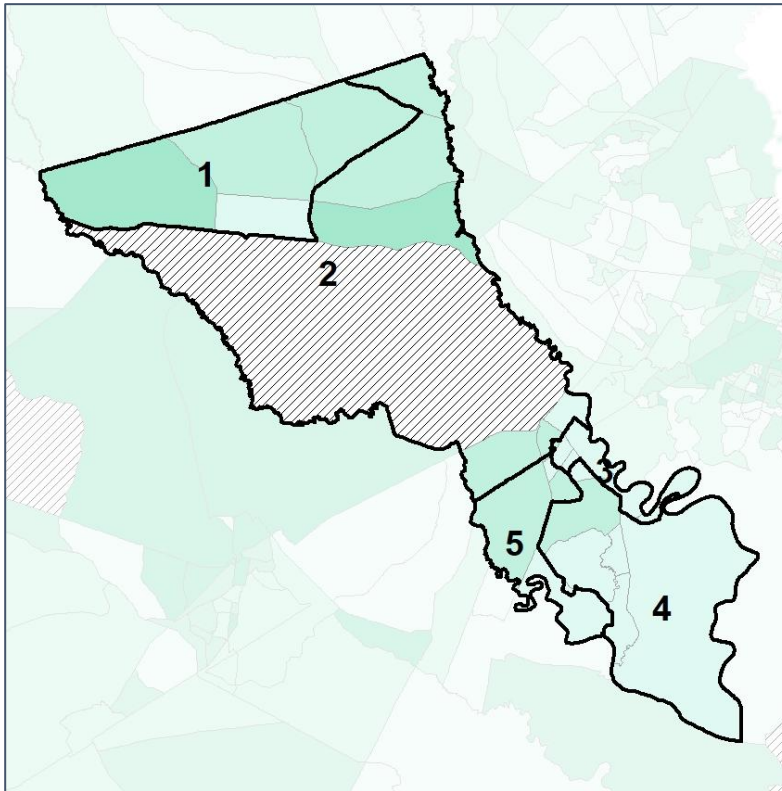


Bryan Co. Commission & School Board

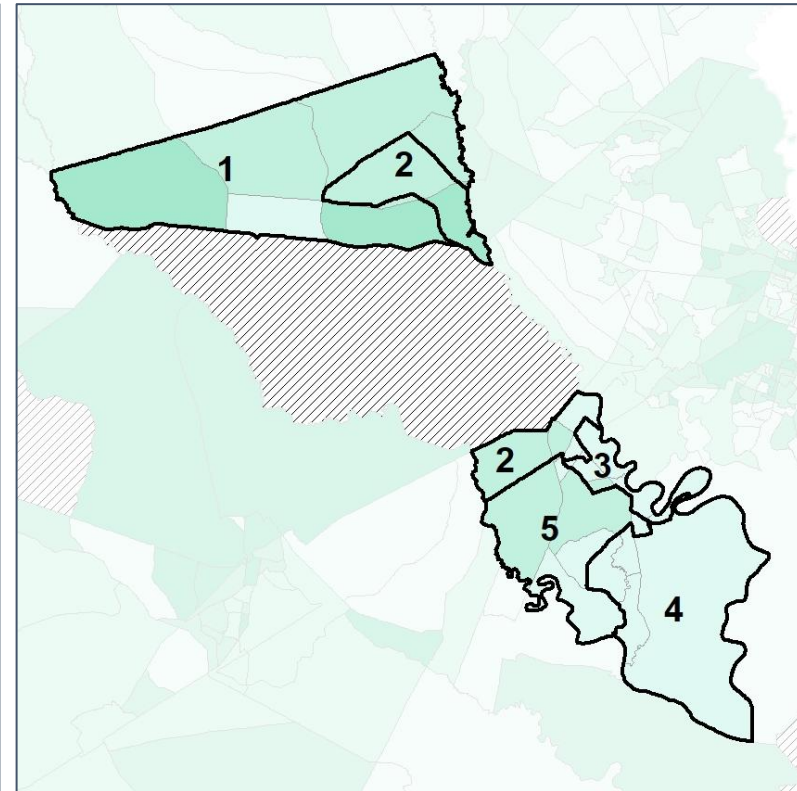
% Youth (18-34) by Census Block Group



2012 Map



2022 Map*



	1	2	3	4	5	1*	2*	3*	4*	5*	County
Population	6,945	7,037	9,054	14,977	6,725	8,825	9,028	9,013	9,046	8,826	44,738
% API	1%	3%	3%	3%	2%	1%	4%	3%	2%	3%	2%
% Black	20%	15%	15%	10%	15%	17%	18%	13%	7%	15%	14%
% Latino	3%	5%	9%	8%	8%	3%	9%	9%	6%	9%	7%
% Other	5%	6%	6%	7%	6%	5%	7%	6%	6%	6%	6%
% White	71%	71%	66%	72%	69%	74%	62%	68%	80%	67%	70%
Median Income	\$56,000	\$62,000	\$93,000	\$107,000	\$68,000	\$60,000	\$53,000	\$100,000	\$122,000	\$74,000	\$76,000
% Renter	28%	35%	28%	27%	31%	27%	42%	33%	13%	33%	29%
% Youth	29%	26%	15%	19%	20%	30%	21%	16%	18%	21%	22%

