

Demographic Overview

Racial Breakdown in Bartow County



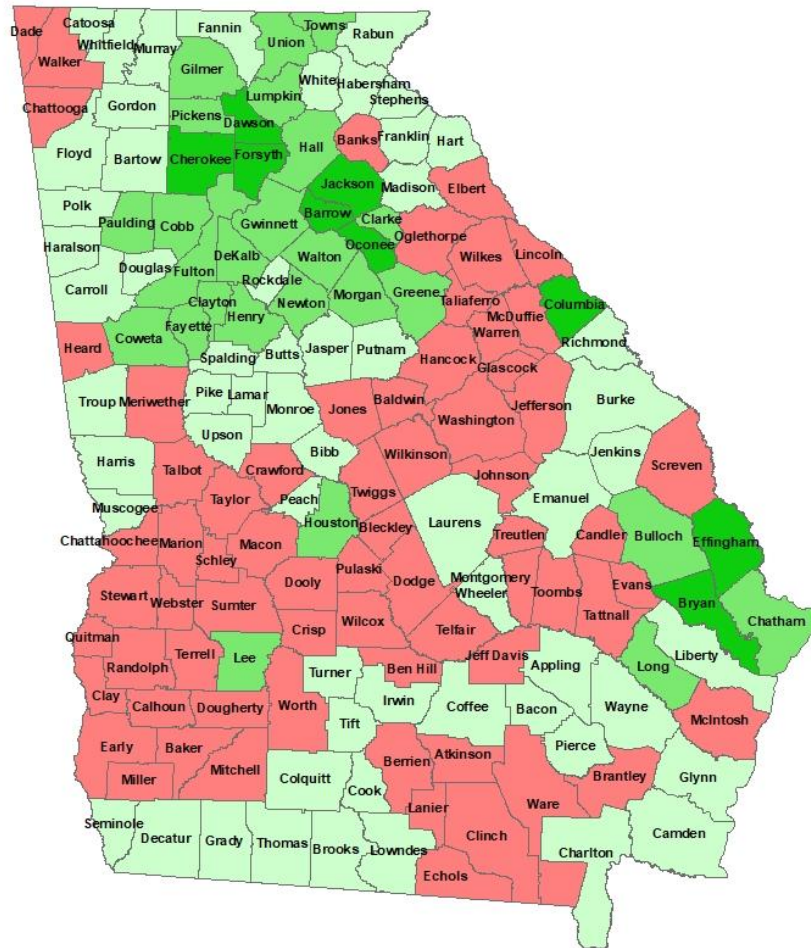
Bartow County	2010	2020	% Change
Total Population	100,157	108,901	9%
AAPI	759	1,209	59%
Black	10,024	11,309	13%
Latino	7,690	10,751	40%
Other/Mixed Race	1,881	5,473	191%
POC	20,354	28,742	41%
White	79,803	80,159	0%

*Note: The use of "Other" in these statistics combines those who identify as Native American, Mixed Race, and "Other" race



Population Gain

Change in Population in Georgia by County



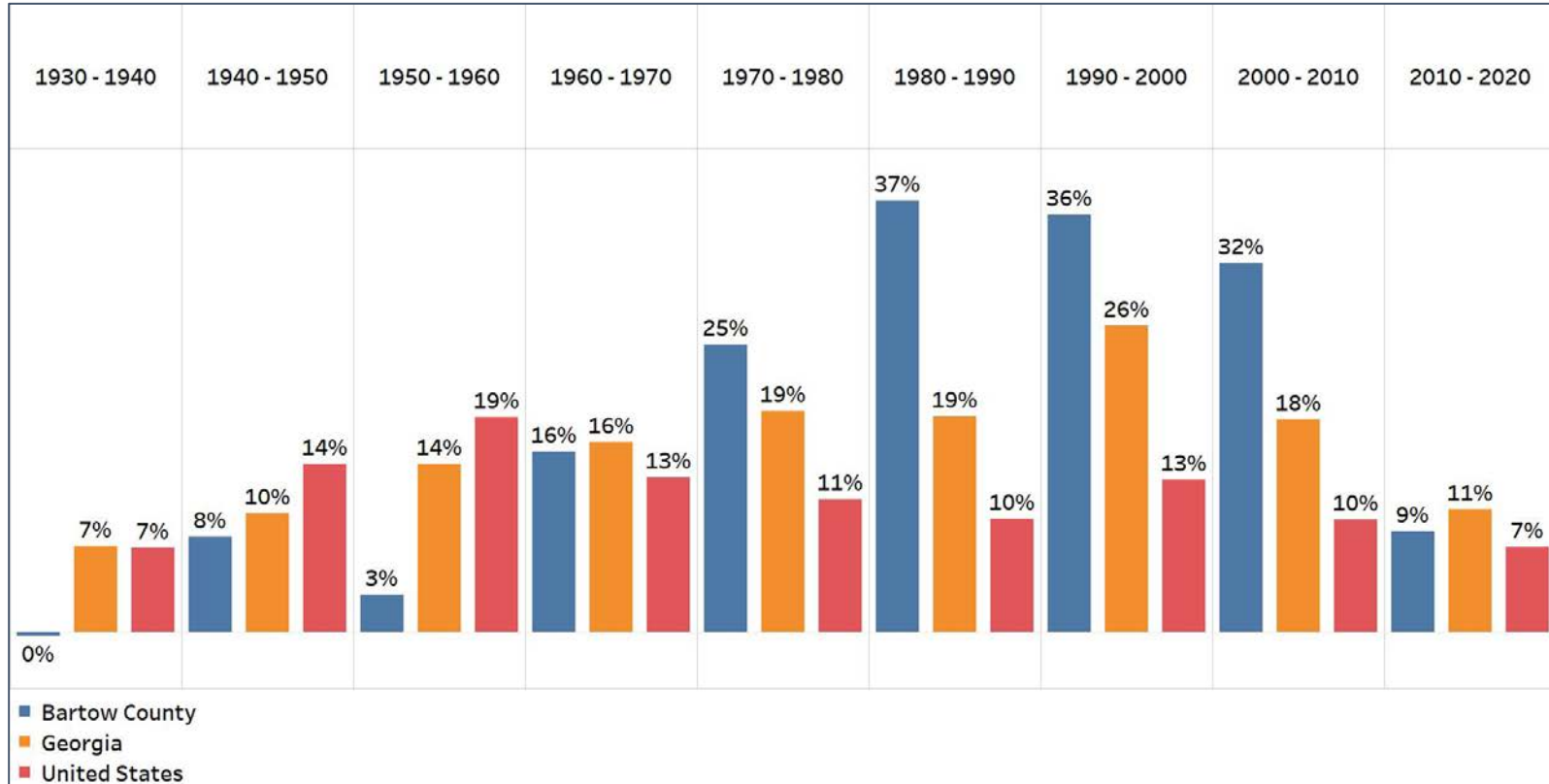
- Georgia is experience rapid population growth in the Atlanta, Augusta, and Savannah regions of the state





Population Gain

Change in Population by Decade



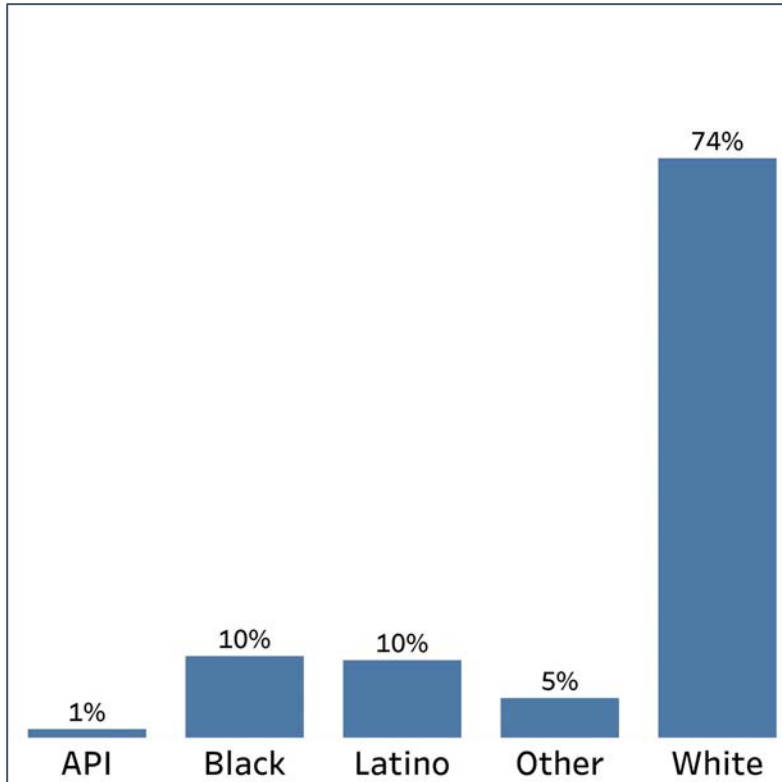
- Bartow County has seen population growth since 1940, and significantly increased above Georgia's growth rate starting in 1970
- In the last decade, it has continued to grow, but the growth rate was below Georgia's growth rate for the first time in 50 years

Demographics

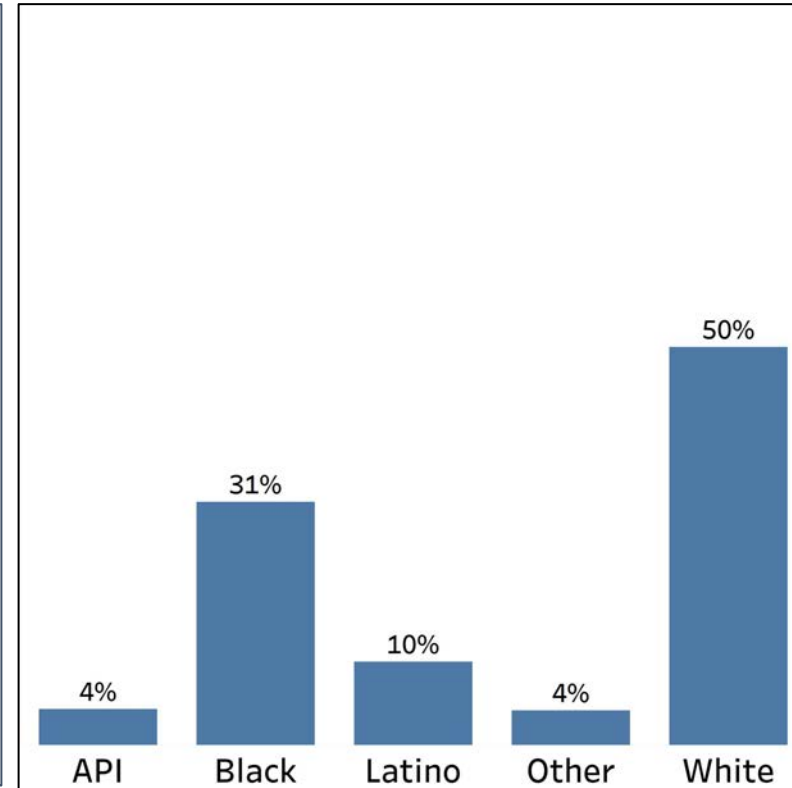
Comparison between Bartow County and Georgia



Bartow County



Georgia



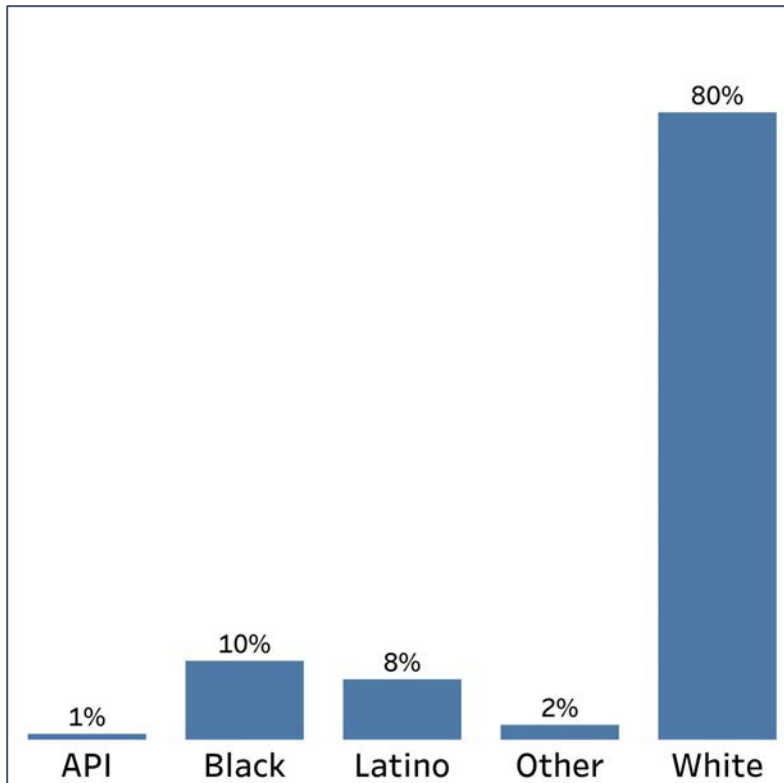
- Bartow county has a much higher white population than the overall share in Georgia
- Communities of color are much less represented compared to the rest of Georgia, with the exception of the Latino and Other communities

Demographics

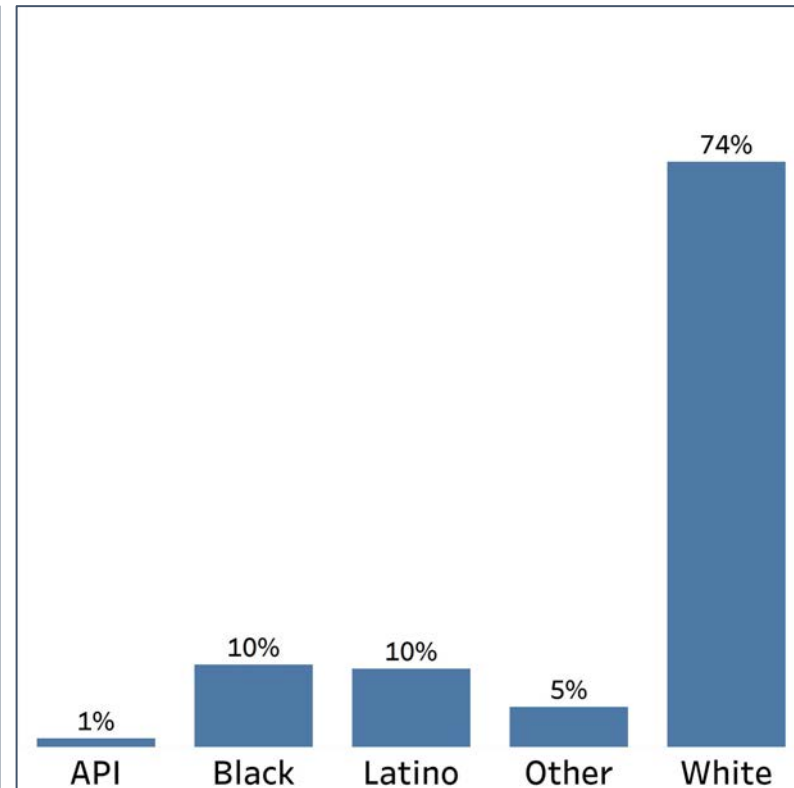
2010 vs 2020 Demographics in Bartow County



Bartow County 2010



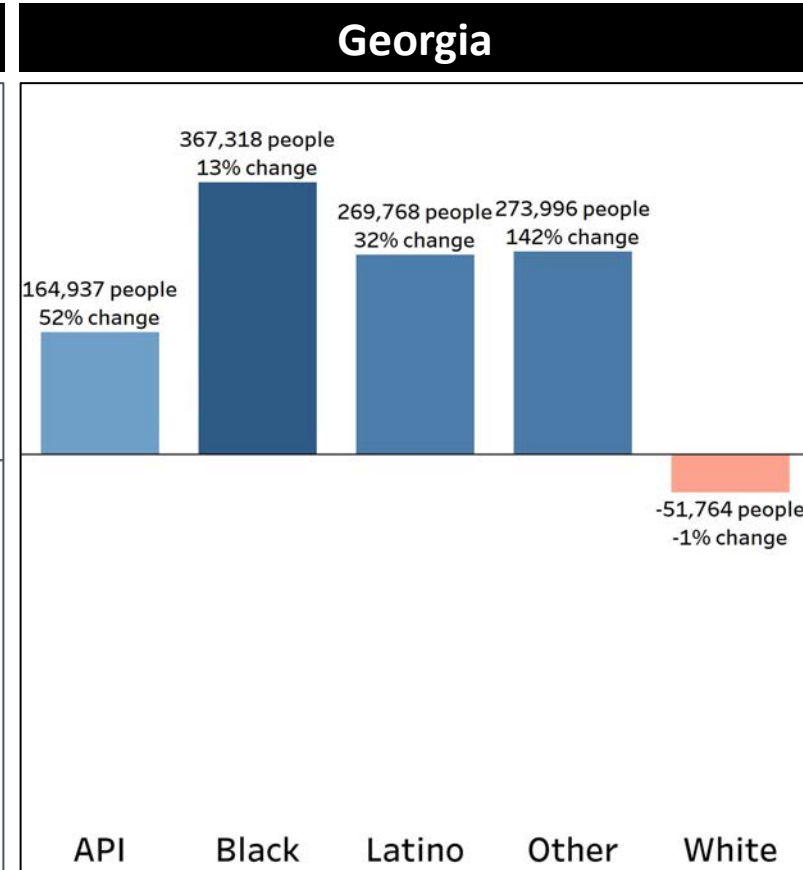
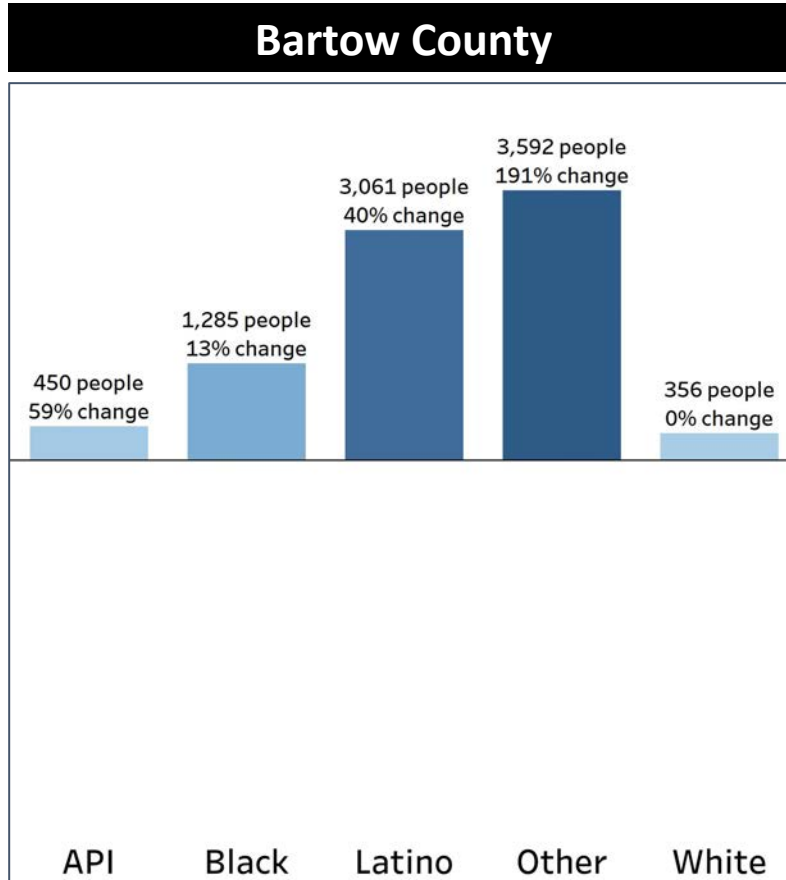
Bartow County 2020



- Bartow's white population has declined, and there has been an increase in the Latino and Other population
- However, both Black and API communities saw no significant increase in share of the population of the county

Demographics

Population Change by Race (2020 - 2010)



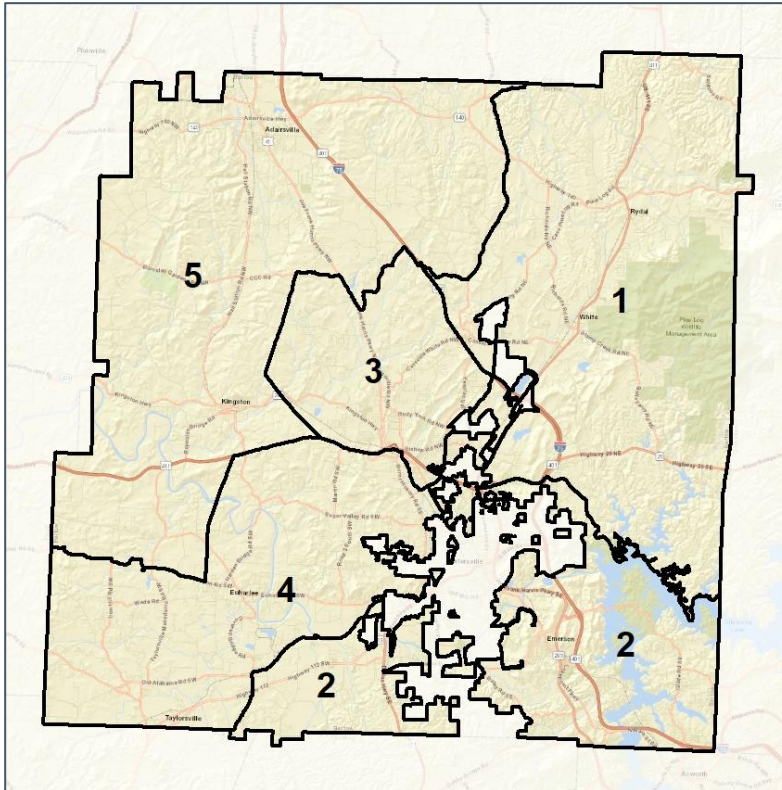
- All demographic groups saw an increase in population that equaled or exceeded the growth rate seen in Georgia overall
- However, the white population's growth was very minimal

Bartow School Board

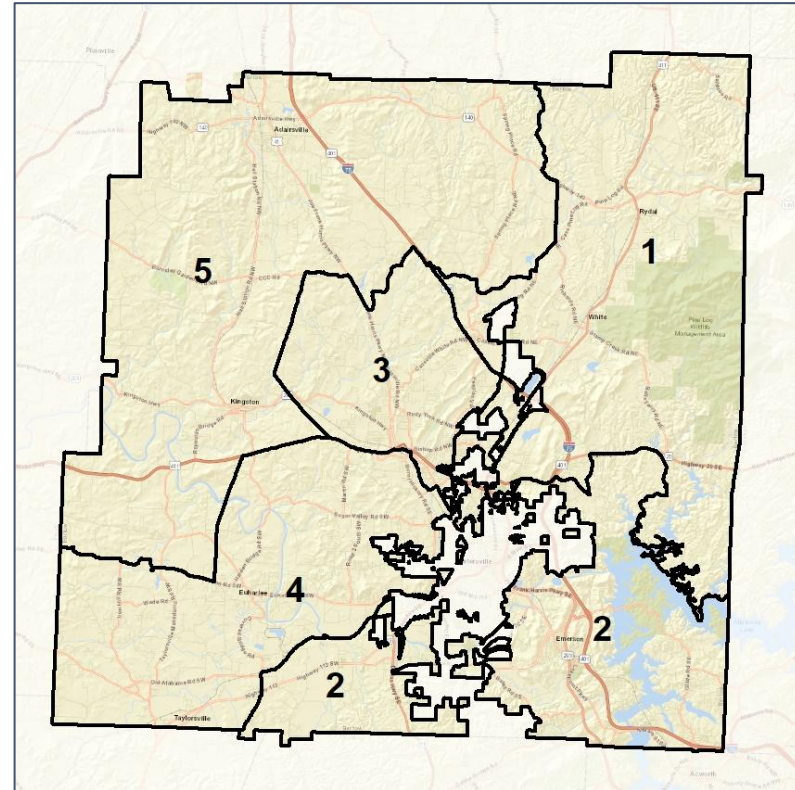
Context



2012 Map



2022 Map*



	1	2	3	4	5	1*	2*	3*	4*	5*	County
Population	18,424	16,797	16,628	17,283	16,454	17,159	17,052	17,046	17,297	17,160	108,901
API	1%	1%	1%	0%	1%	2%	1%	1%	0%	1%	1%
Black	9%	8%	9%	9%	6%	11%	6%	10%	9%	6%	10%
Latino	8%	12%	13%	7%	5%	8%	12%	12%	7%	5%	10%
Other	5%	5%	5%	5%	5%	5%	5%	5%	5%	5%	5%
White	77%	74%	72%	78%	83%	74%	76%	72%	78%	83%	74%
Population Gain	1,997	573	1,083	674	842	-1,265	255	418	14	706	*
Population % Gain	12%	4%	7%	4%	5%	-7%	2%	3%	0%	4%	*
Net POC Gain	1,537	1,759	1,349	783	1,053	162	-309	137	9	67	*
Net POC % Gain	56%	67%	40%	26%	58%	4%	-7%	3%	0%	2%	*

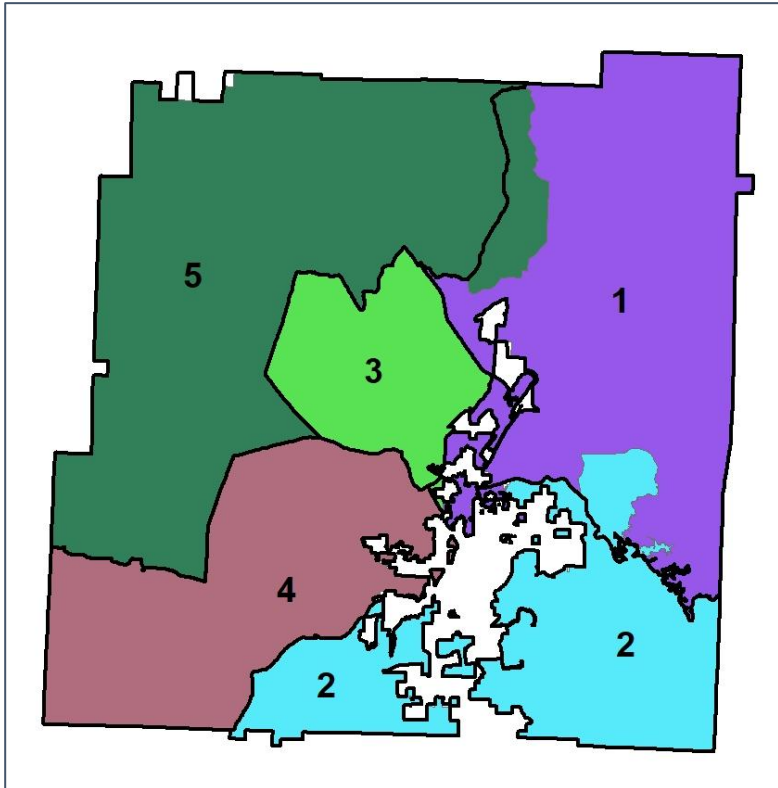


Bartow Co. Commission & School Board

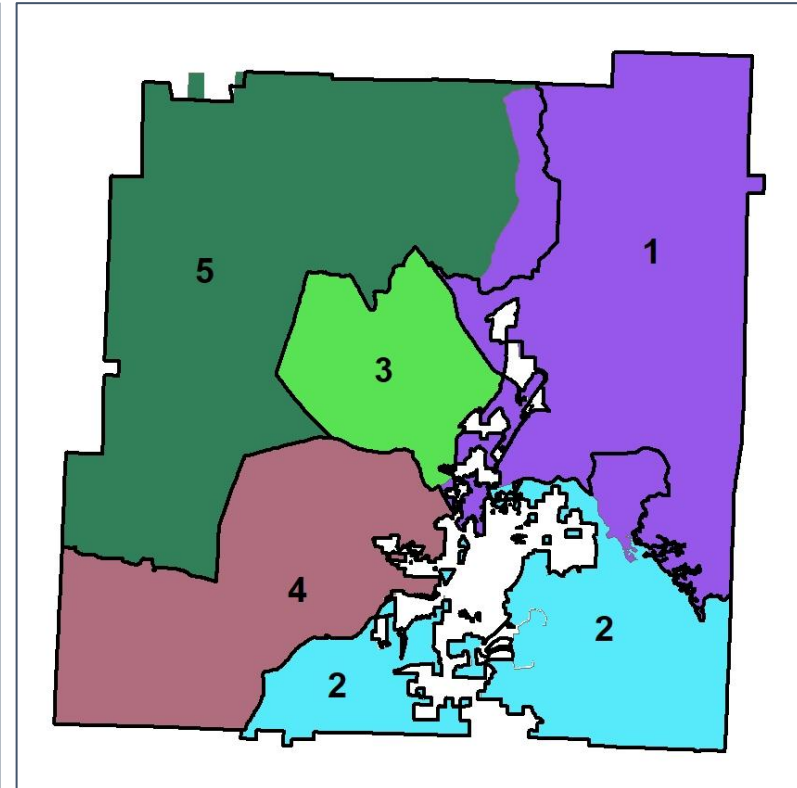
Changes in Redistricting



2012 Map (2022 in Colors)



2022 Map* (2012 in Colors)



	1	2	3	4	5	1*	2*	3*	4*	5*	County
Population	18,424	16,797	16,628	17,283	16,454	17,159	17,052	17,046	17,297	17,160	108,901
API	1%	1%	1%	0%	1%	2%	1%	1%	0%	1%	1%
Black	9%	8%	9%	9%	6%	11%	6%	10%	9%	6%	10%
Latino	8%	12%	13%	7%	5%	8%	12%	12%	7%	5%	10%
Other	5%	5%	5%	5%	5%	5%	5%	5%	5%	5%	5%
White	77%	74%	72%	78%	83%	74%	76%	72%	78%	83%	74%
Population Gain	1,997	573	1,083	674	842	-1,265	255	418	14	706	*
Population % Gain	12%	4%	7%	4%	5%	-7%	2%	3%	0%	4%	*
Net POC Gain	1,537	1,759	1,349	783	1,053	162	-309	137	9	67	*
Net POC % Gain	56%	67%	40%	26%	58%	4%	-7%	3%	0%	2%	*

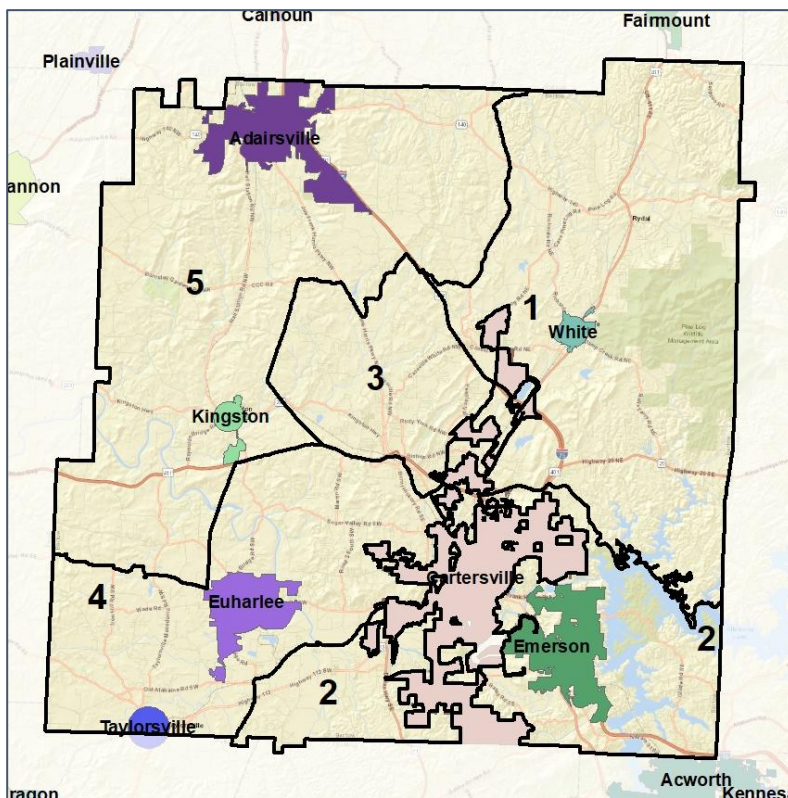


Bartow Co. Commission & School Board

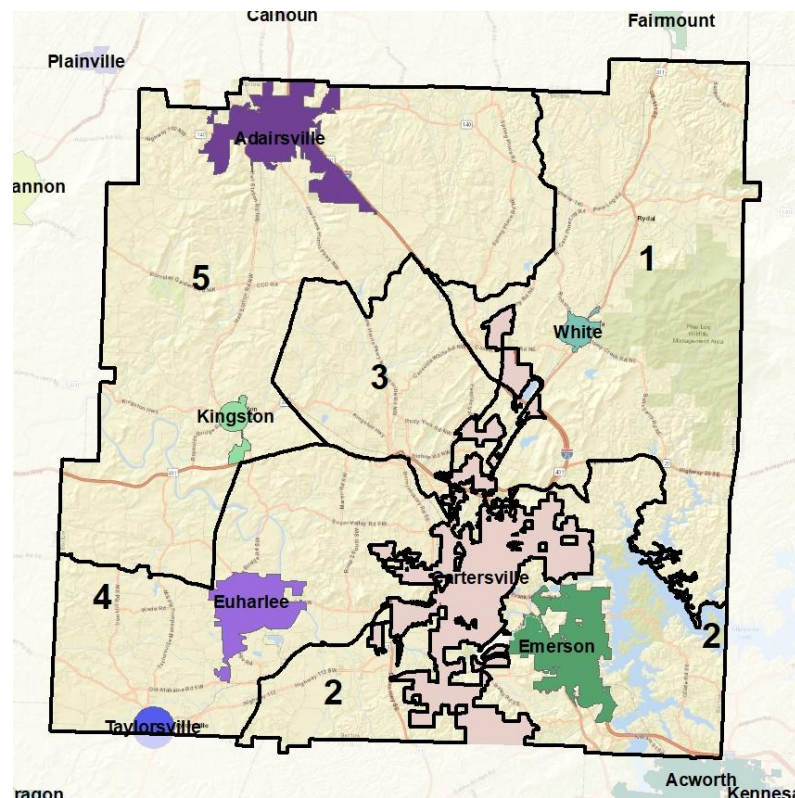
Cities and Places



2012 Map



2022 Map*



	1	2	3	4	5	1*	2*	3*	4*	5*	County
Population	18,424	16,797	16,628	17,283	16,454	17,159	17,052	17,046	17,297	17,160	108,901
API	1%	1%	1%	0%	1%	2%	1%	1%	0%	1%	1%
Black	9%	8%	9%	9%	6%	11%	6%	10%	9%	6%	10%
Latino	8%	12%	13%	7%	5%	8%	12%	12%	7%	5%	10%
Other	5%	5%	5%	5%	5%	5%	5%	5%	5%	5%	5%
White	77%	74%	72%	78%	83%	74%	76%	72%	78%	83%	74%
Population Gain	1,997	573	1,083	674	842	-1,265	255	418	14	706	*
Population % Gain	12%	4%	7%	4%	5%	-7%	2%	3%	0%	4%	*
Net POC Gain	1,537	1,759	1,349	783	1,053	162	-309	137	9	67	*
Net POC % Gain	56%	67%	40%	26%	58%	4%	-7%	3%	0%	2%	*

Source:
2020 Decennial Census
2020 ACS 5-Year Dataset

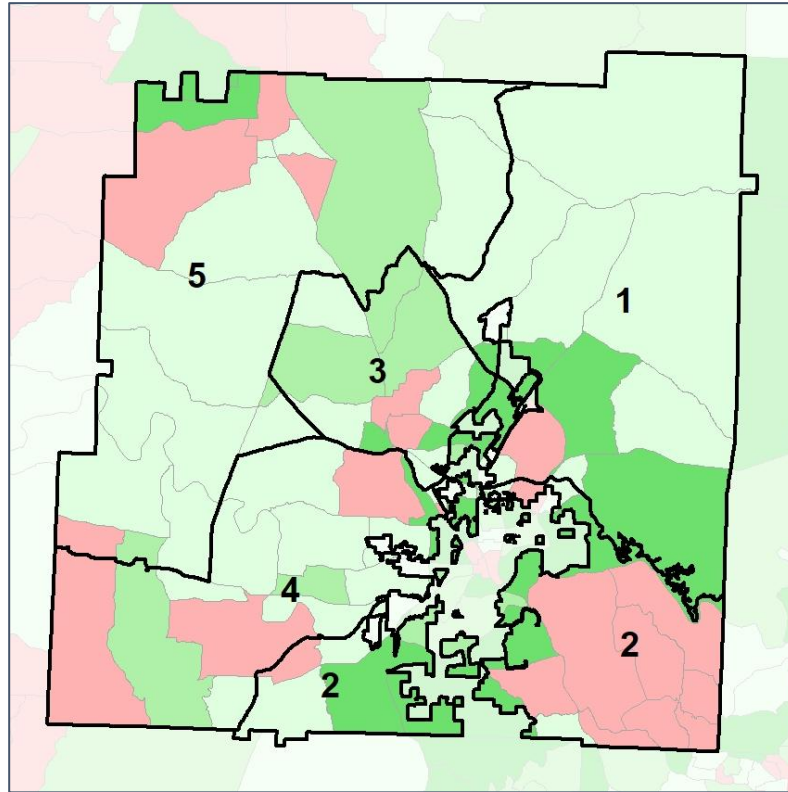


Bartow Co. Commission & School Board

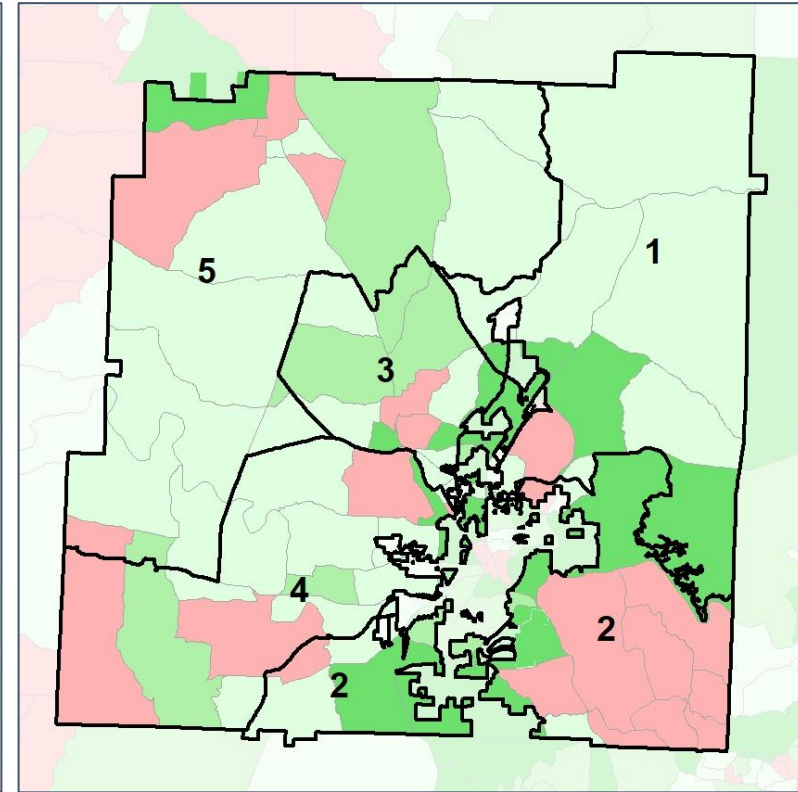
Net Gain in Population (2010 - 2020) by Census Block Group



2012 Map



2022 Map*



	1	2	3	4	5	1*	2*	3*	4*	5*	County
Population	18,424	16,797	16,628	17,283	16,454	17,159	17,052	17,046	17,297	17,160	108,901
API	1%	1%	1%	0%	1%	2%	1%	1%	0%	1%	1%
Black	9%	8%	9%	9%	6%	11%	6%	10%	9%	6%	10%
Latino	8%	12%	13%	7%	5%	8%	12%	12%	7%	5%	10%
Other	5%	5%	5%	5%	5%	5%	5%	5%	5%	5%	5%
White	77%	74%	72%	78%	83%	74%	76%	72%	78%	83%	74%
Population Gain	1,997	573	1,083	674	842	-1,265	255	418	14	706	*
Population % Gain	12%	4%	7%	4%	5%	-7%	2%	3%	0%	4%	*
Net POC Gain	1,537	1,759	1,349	783	1,053	162	-309	137	9	67	*
Net POC % Gain	56%	67%	40%	26%	58%	4%	-7%	3%	0%	2%	*



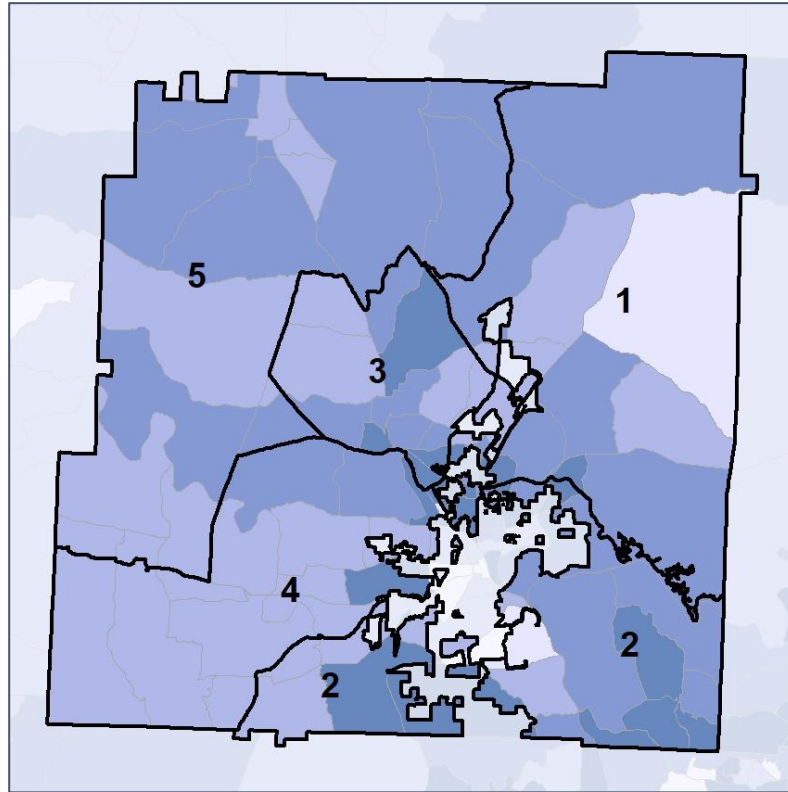
Source:
2020 Decennial Census
2020 ACS 5-Year Dataset

Barrow Co. Commission & School Board

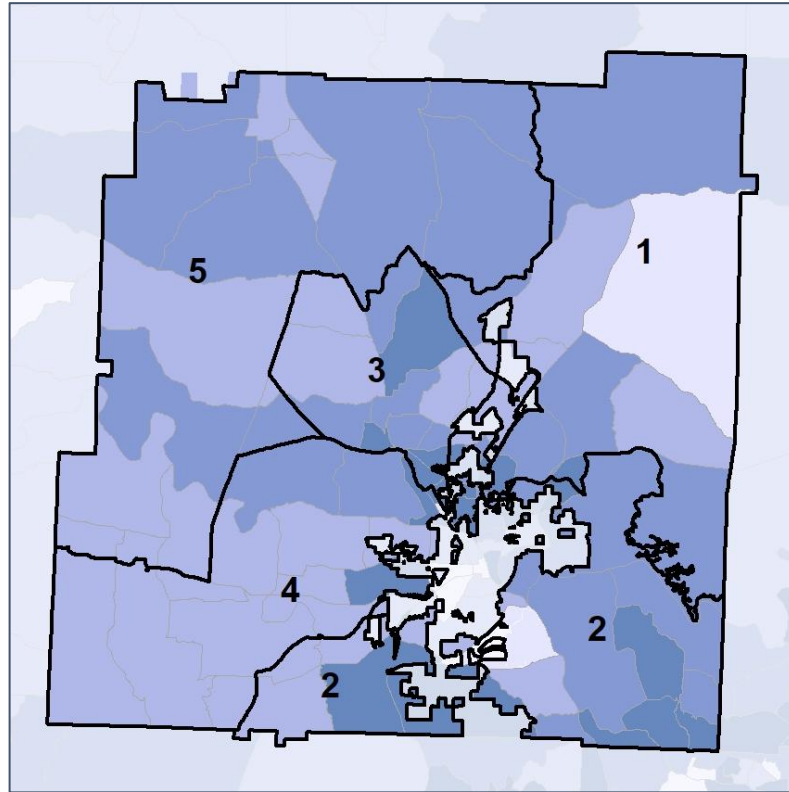
Net Gain in % POC (2020 - 2010) by Census Block Group



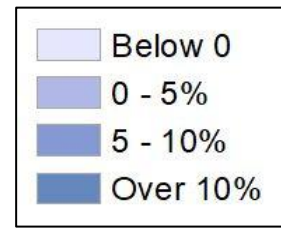
2012 Map



2022 Map*



	1	2	3	4	5	1*	2*	3*	4*	5*	County
Population	18,424	16,797	16,628	17,283	16,454	17,159	17,052	17,046	17,297	17,160	108,901
API	1%	1%	1%	0%	1%	2%	1%	1%	0%	1%	1%
Black	9%	8%	9%	9%	6%	11%	6%	10%	9%	6%	10%
Latino	8%	12%	13%	7%	5%	8%	12%	12%	7%	5%	10%
Other	5%	5%	5%	5%	5%	5%	5%	5%	5%	5%	5%
White	77%	74%	72%	78%	83%	74%	76%	72%	78%	83%	74%
Population Gain	1,997	573	1,083	674	842	-1,265	255	418	14	706	*
Population % Gain	12%	4%	7%	4%	5%	-7%	2%	3%	0%	4%	*
Net POC Gain	1,537	1,759	1,349	783	1,053	162	-309	137	9	67	*
Net POC % Gain	56%	67%	40%	26%	58%	4%	-7%	3%	0%	2%	*



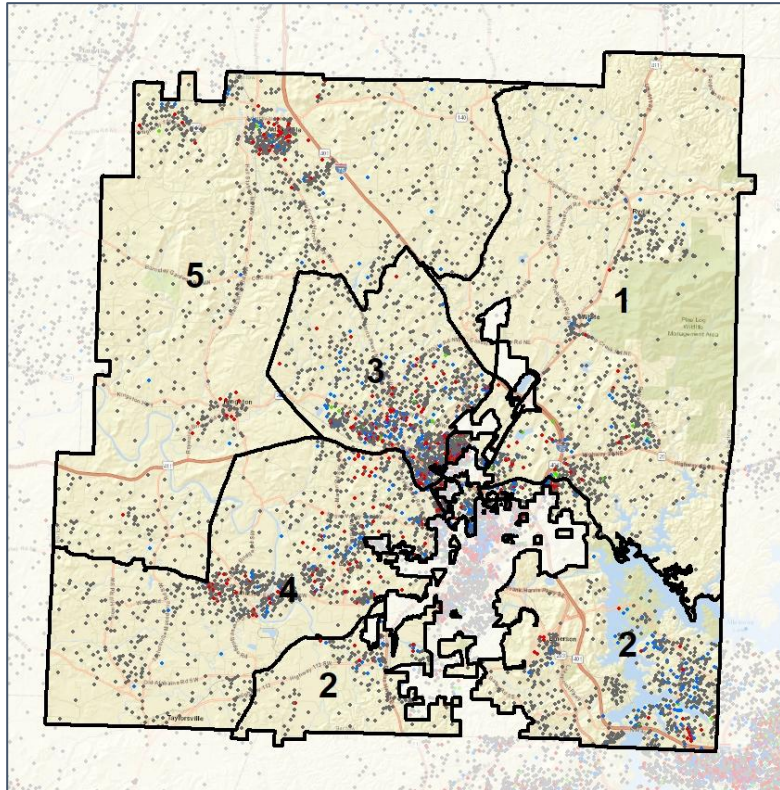
Source: 2020 Decennial Census 2020 ACS 5-Year Dataset

Bartow Co. Commission & School Board

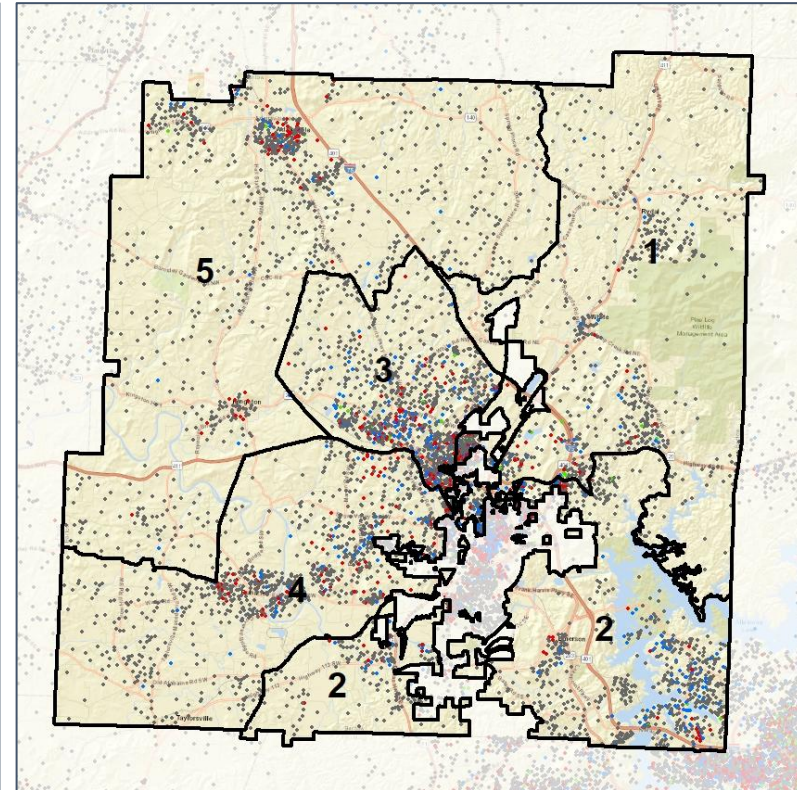
Population Density by Race



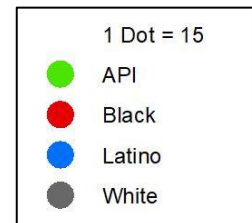
2012 Map



2022 Map*



	1	2	3	4	5	1*	2*	3*	4*	5*	County
Population	18,424	16,797	16,628	17,283	16,454	17,159	17,052	17,046	17,297	17,160	108,901
API	273	134	239	72	128	258	153	241	72	128	1,209
% API	1%	1%	1%	0%	1%	2%	1%	1%	0%	1%	1%
Black	1,720	1,295	1,536	1,573	1,027	1,886	1,026	1,645	1,576	1,032	11,309
% Black	9%	8%	9%	9%	6%	11%	6%	10%	9%	6%	10%
Latino	1,393	2,065	2,105	1,229	872	1,433	2,026	2,115	1,233	893	10,751
% Latino	8%	12%	13%	7%	5%	8%	12%	12%	7%	5%	10%
Other	907	903	827	948	851	878	883	843	950	892	5,473
% Other	5%	5%	5%	5%	5%	5%	5%	5%	5%	5%	5%
White	14,131	12,400	11,921	13,461	13,576	12,704	12,964	12,202	13,466	14,215	80,159
% White	77%	74%	72%	78%	83%	74%	76%	72%	78%	83%	74%



Source:
2020 Decennial Census
2020 ACS 5-Year Dataset

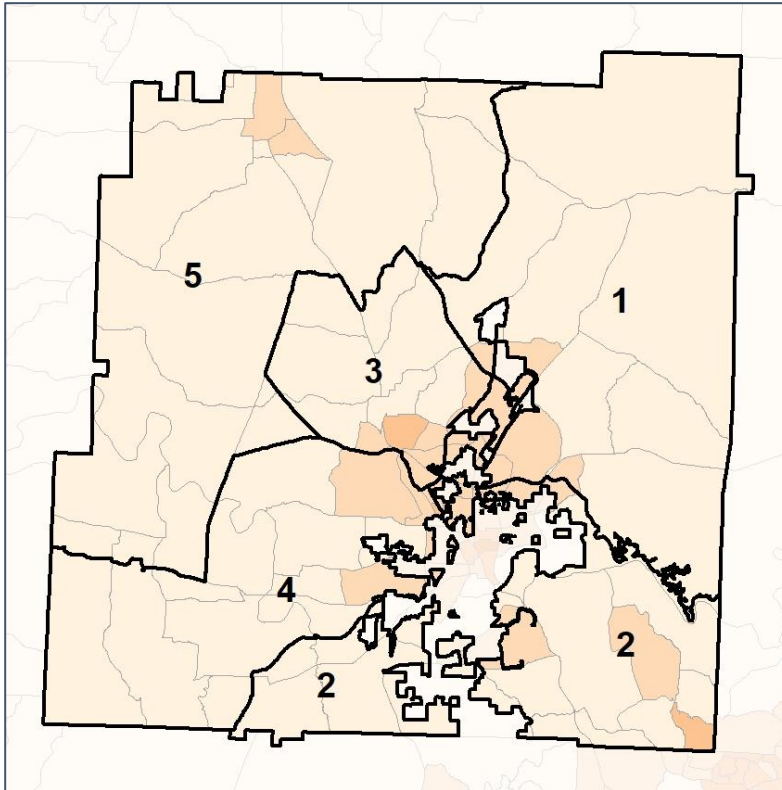


Bartow Co. Commission & School Board

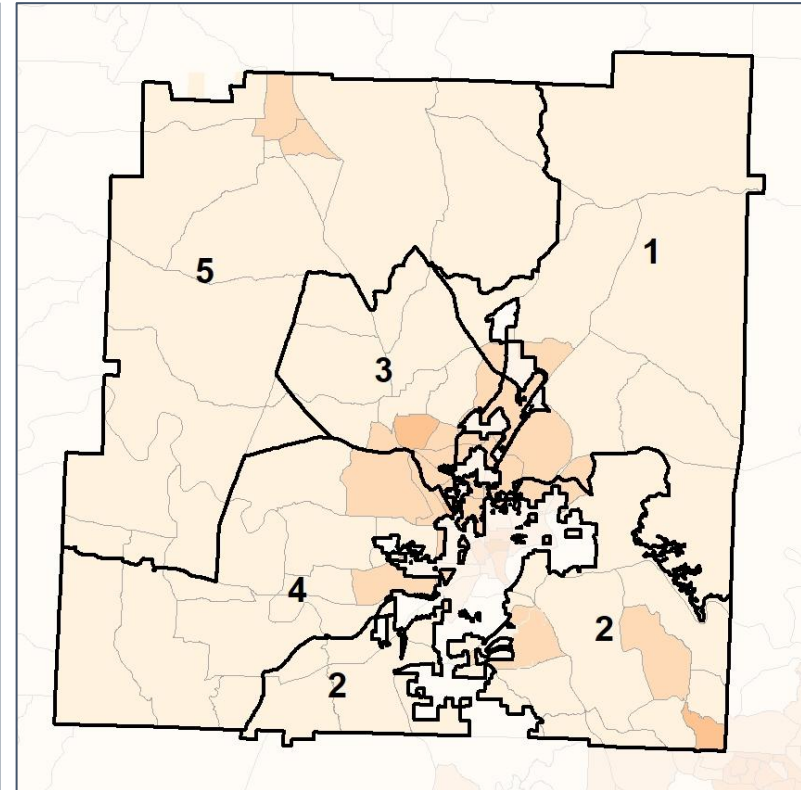
% People of Color by Census Block Group



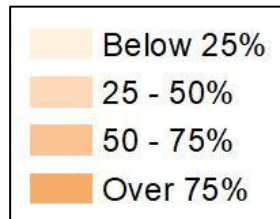
2012 Map



2022 Map*



	1	2	3	4	5	1*	2*	3*	4*	5*	County
Population	18,424	16,797	16,628	17,283	16,454	17,159	17,052	17,046	17,297	17,160	108,901
API	273	134	239	72	128	258	153	241	72	128	1,209
% API	1%	1%	1%	0%	1%	2%	1%	1%	0%	1%	1%
Black	1,720	1,295	1,536	1,573	1,027	1,886	1,026	1,645	1,576	1,032	11,309
% Black	9%	8%	9%	9%	6%	11%	6%	10%	9%	6%	10%
Latino	1,393	2,065	2,105	1,229	872	1,433	2,026	2,115	1,233	893	10,751
% Latino	8%	12%	13%	7%	5%	8%	12%	12%	7%	5%	10%
Other	907	903	827	948	851	878	883	843	950	892	5,473
% Other	5%	5%	5%	5%	5%	5%	5%	5%	5%	5%	5%
White	14,131	12,400	11,921	13,461	13,576	12,704	12,964	12,202	13,466	14,215	80,159
% White	77%	74%	72%	78%	83%	74%	76%	72%	78%	83%	74%



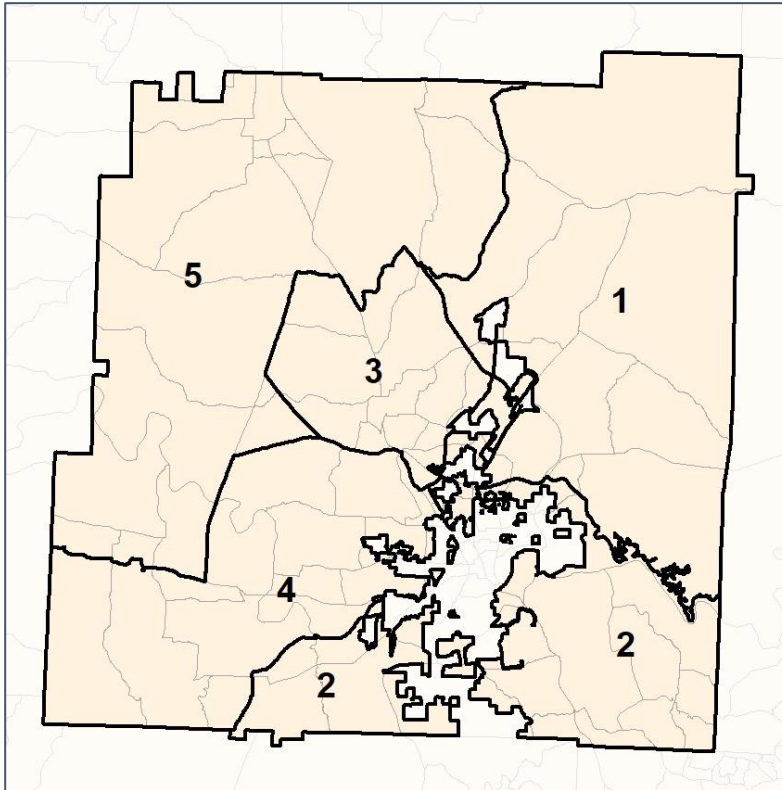
Source:
2020 Decennial Census
2020 ACS 5-Year Dataset

Bartow Co. Commission & School Board

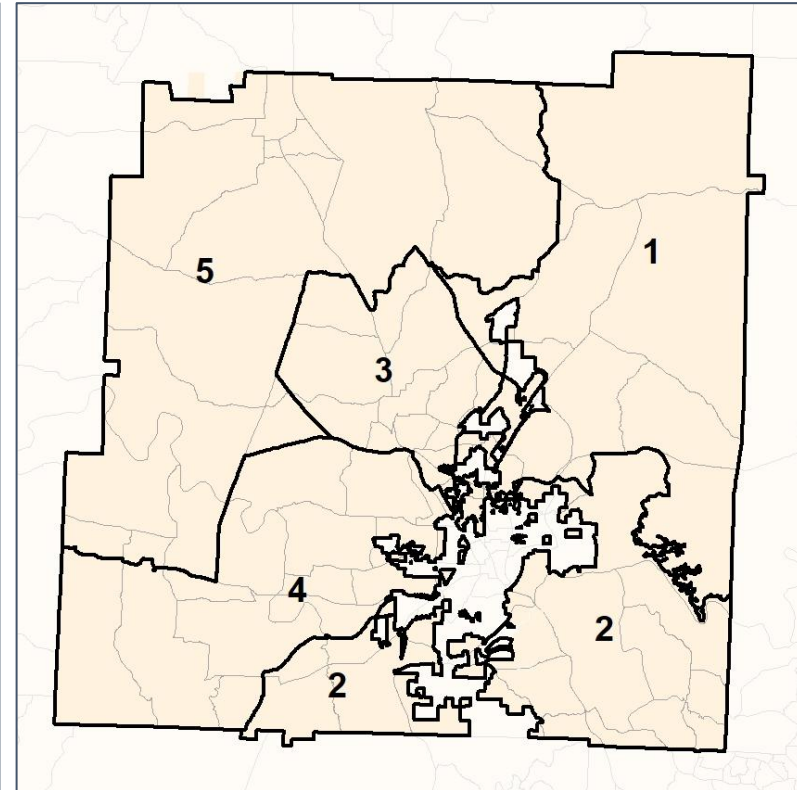
% API by Census Block Group



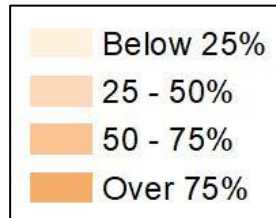
2012 Map



2022 Map*



	1	2	3	4	5	1*	2*	3*	4*	5*	County
Population	18,424	16,797	16,628	17,283	16,454	17,159	17,052	17,046	17,297	17,160	108,901
API	273	134	239	72	128	258	153	241	72	128	1,209
% API	1%	1%	1%	0%	1%	2%	1%	1%	0%	1%	1%
Black	1,720	1,295	1,536	1,573	1,027	1,886	1,026	1,645	1,576	1,032	11,309
% Black	9%	8%	9%	9%	6%	11%	6%	10%	9%	6%	10%
Latino	1,393	2,065	2,105	1,229	872	1,433	2,026	2,115	1,233	893	10,751
% Latino	8%	12%	13%	7%	5%	8%	12%	12%	7%	5%	10%
Other	907	903	827	948	851	878	883	843	950	892	5,473
% Other	5%	5%	5%	5%	5%	5%	5%	5%	5%	5%	5%
White	14,131	12,400	11,921	13,461	13,576	12,704	12,964	12,202	13,466	14,215	80,159
% White	77%	74%	72%	78%	83%	74%	76%	72%	78%	83%	74%



Source:
2020 Decennial Census
2020 ACS 5-Year Dataset

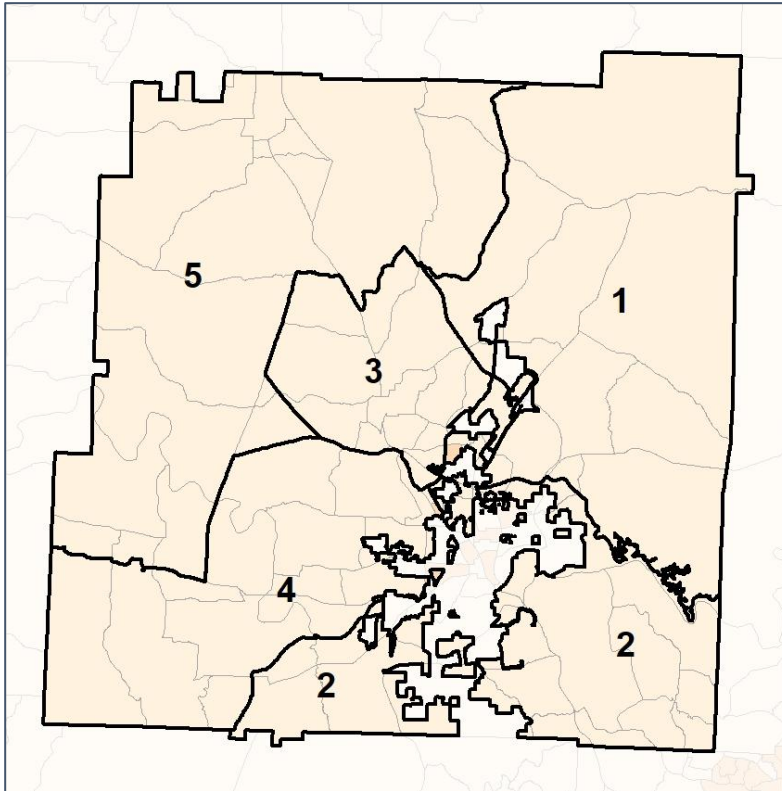


Bartow Co. Commission & School Board

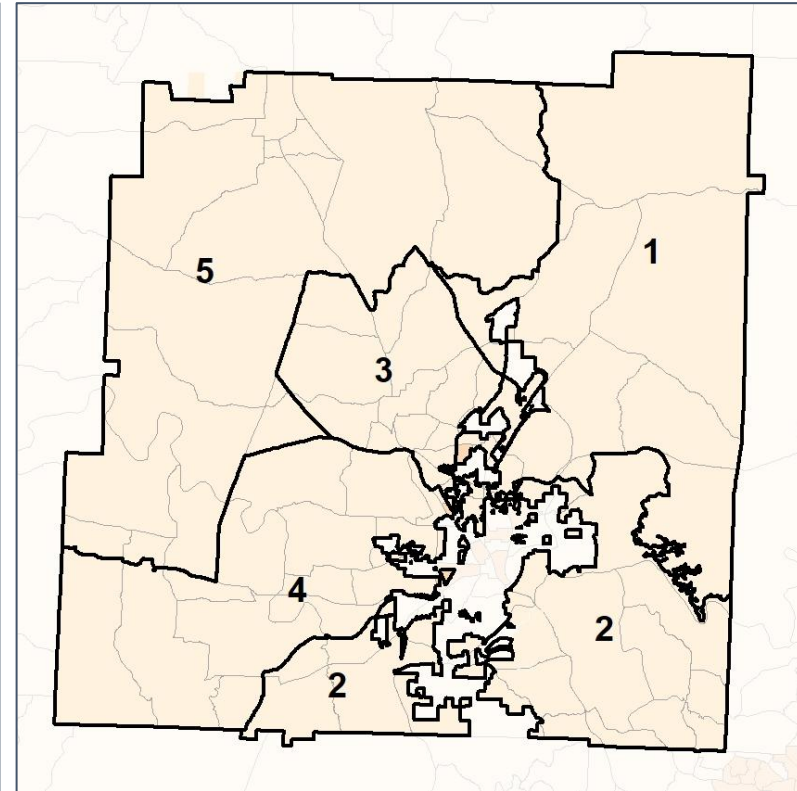
% Black by Census Block Group



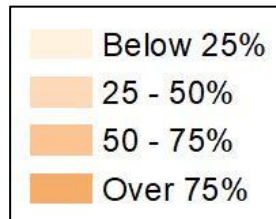
2012 Map



2022 Map*



	1	2	3	4	5	1*	2*	3*	4*	5*	County
Population	18,424	16,797	16,628	17,283	16,454	17,159	17,052	17,046	17,297	17,160	108,901
API	273	134	239	72	128	258	153	241	72	128	1,209
% API	1%	1%	1%	0%	1%	2%	1%	1%	0%	1%	1%
Black	1,720	1,295	1,536	1,573	1,027	1,886	1,026	1,645	1,576	1,032	11,309
% Black	9%	8%	9%	9%	6%	11%	6%	10%	9%	6%	10%
Latino	1,393	2,065	2,105	1,229	872	1,433	2,026	2,115	1,233	893	10,751
% Latino	8%	12%	13%	7%	5%	8%	12%	12%	7%	5%	10%
Other	907	903	827	948	851	878	883	843	950	892	5,473
% Other	5%	5%	5%	5%	5%	5%	5%	5%	5%	5%	5%
White	14,131	12,400	11,921	13,461	13,576	12,704	12,964	12,202	13,466	14,215	80,159
% White	77%	74%	72%	78%	83%	74%	76%	72%	78%	83%	74%



Source:
2020 Decennial Census
2020 ACS 5-Year Dataset

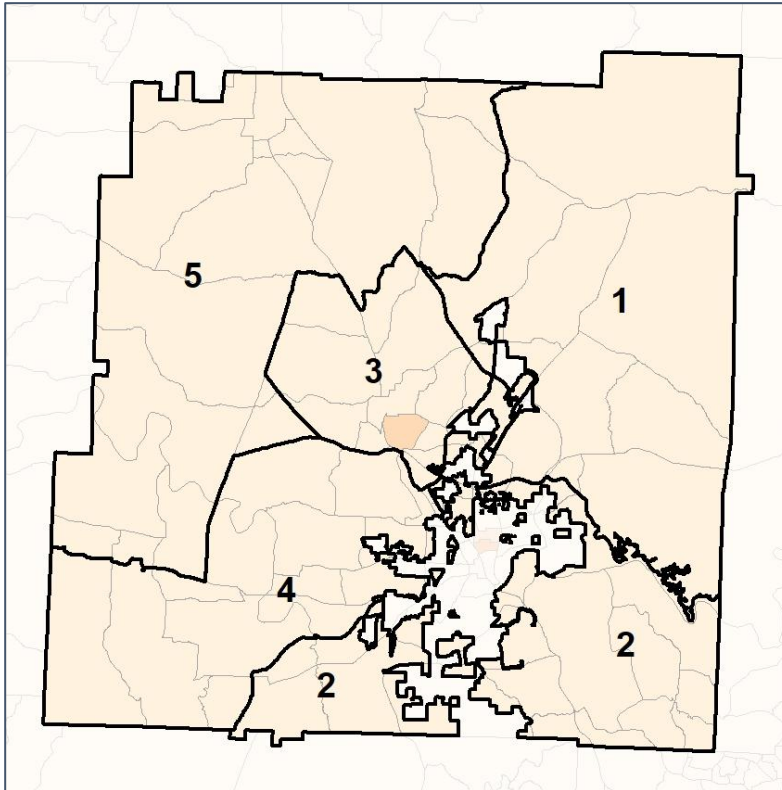


Bartow Co. Commission & School Board

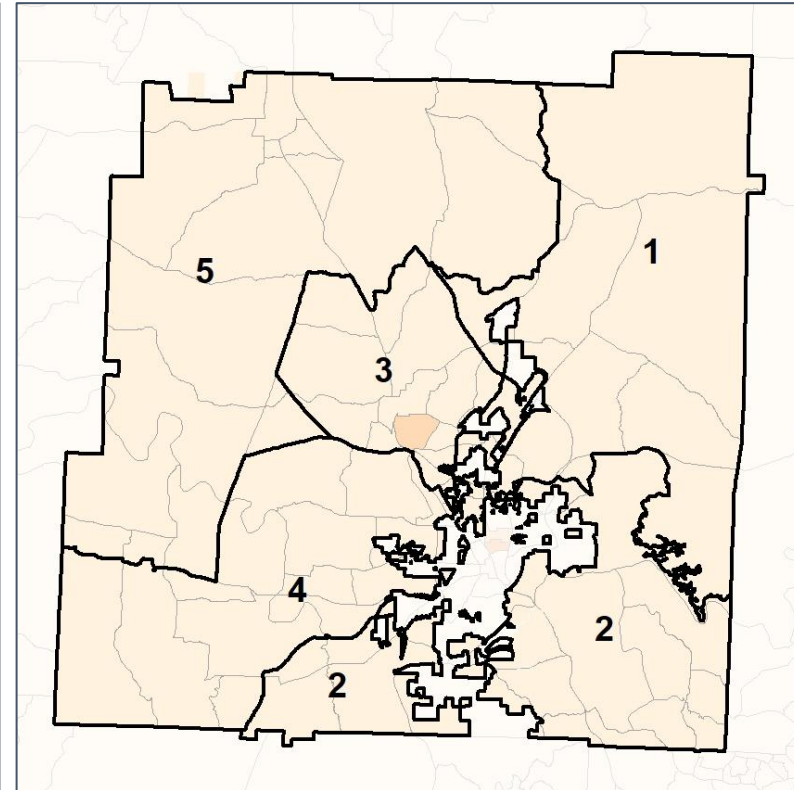
% Latino by Census Block Group



2012 Map



2022 Map*



	1	2	3	4	5	1*	2*	3*	4*	5*	County
Population	18,424	16,797	16,628	17,283	16,454	17,159	17,052	17,046	17,297	17,160	108,901
API	273	134	239	72	128	258	153	241	72	128	1,209
% API	1%	1%	1%	0%	1%	2%	1%	1%	0%	1%	1%
Black	1,720	1,295	1,536	1,573	1,027	1,886	1,026	1,645	1,576	1,032	11,309
% Black	9%	8%	9%	9%	6%	11%	6%	10%	9%	6%	10%
Latino	1,393	2,065	2,105	1,229	872	1,433	2,026	2,115	1,233	893	10,751
% Latino	8%	12%	13%	7%	5%	8%	12%	12%	7%	5%	10%
Other	907	903	827	948	851	878	883	843	950	892	5,473
% Other	5%	5%	5%	5%	5%	5%	5%	5%	5%	5%	5%
White	14,131	12,400	11,921	13,461	13,576	12,704	12,964	12,202	13,466	14,215	80,159
% White	77%	74%	72%	78%	83%	74%	76%	72%	78%	83%	74%



Source:
2020 Decennial Census
2020 ACS 5-Year Dataset

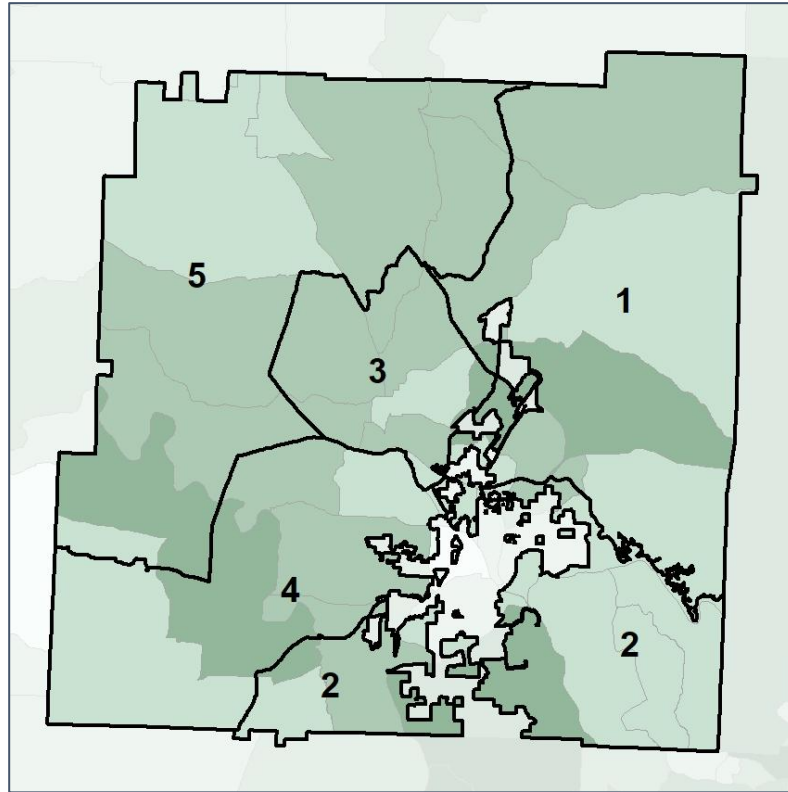


Bartow Co. Commission & School Board

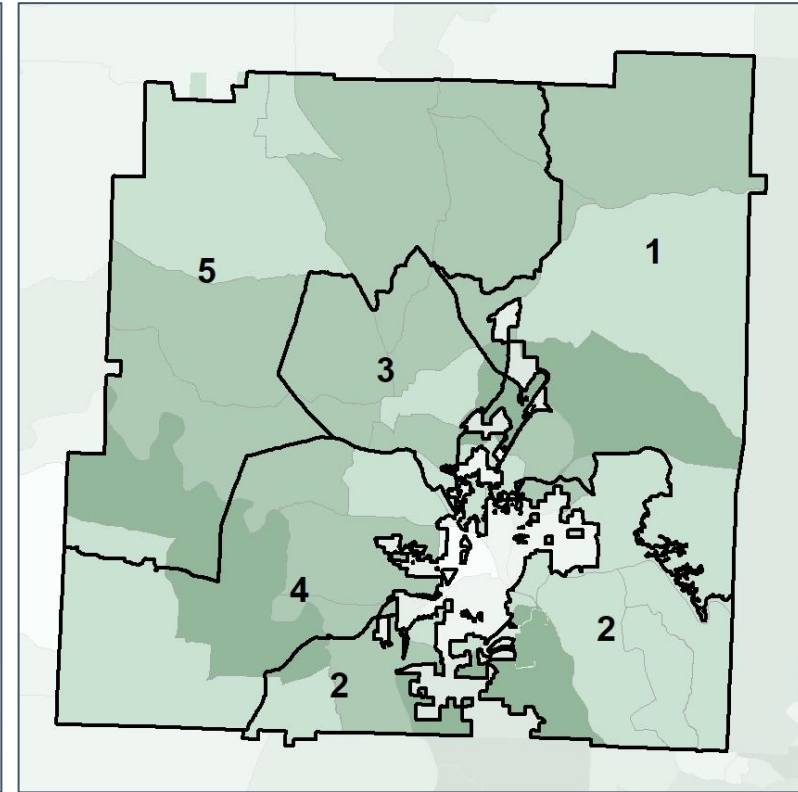
Median Household Income by Census Tract



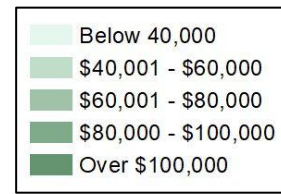
2012 Map



2022 Map*



	1	2	3	4	5	1*	2*	3*	4*	5*	County
Population	18,424	16,797	16,628	17,283	16,454	17,159	17,052	17,046	17,297	17,160	108,901
% API	1%	1%	1%	0%	1%	2%	1%	1%	0%	1%	1%
% Black	9%	8%	9%	9%	6%	11%	6%	10%	9%	6%	10%
% Latino	8%	12%	13%	7%	5%	8%	12%	12%	7%	5%	10%
% Other	5%	5%	5%	5%	5%	5%	5%	5%	5%	5%	5%
% White	77%	74%	72%	78%	83%	74%	76%	72%	78%	83%	74%
Median Income	\$72,000	\$63,000	\$65,000	\$70,000	\$60,000	\$72,000	\$63,000	\$65,000	\$70,000	\$60,000	\$61,000
% Renter	33%	32%	33%	19%	23%	33%	32%	33%	19%	23%	32%
% Youth	22%	22%	21%	21%	19%	22%	22%	21%	21%	19%	22%



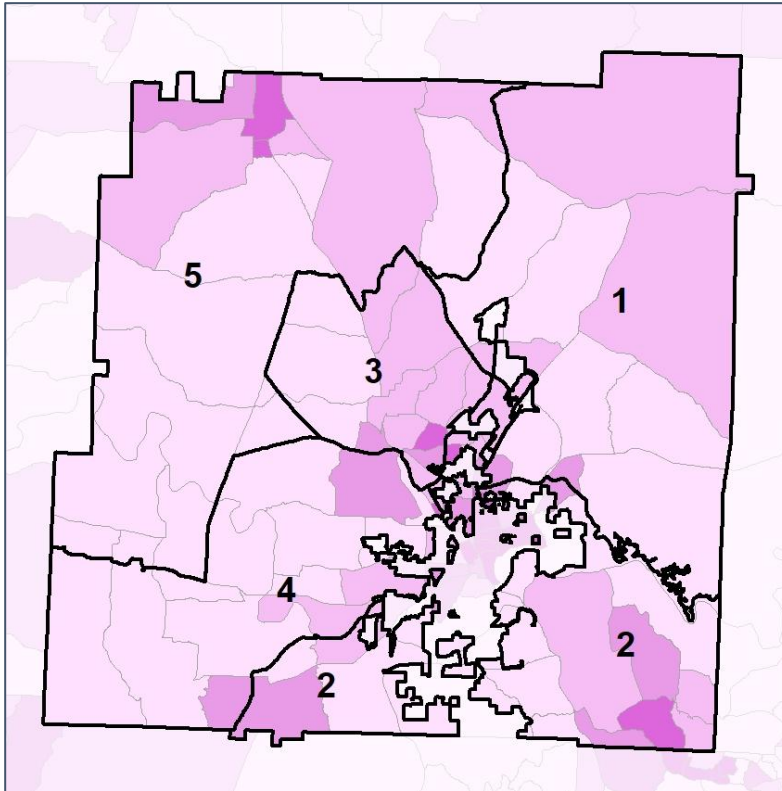
Source:
2020 Decennial Census
2020 ACS 5-Year Dataset

Barrow Co. Commission & School Board

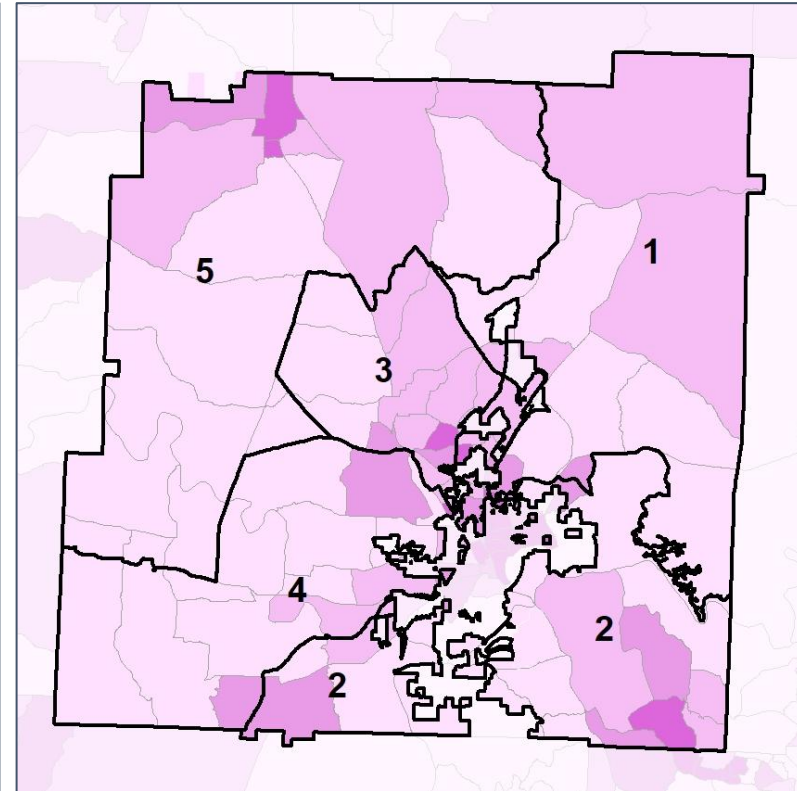
% Renter by Census Block Group



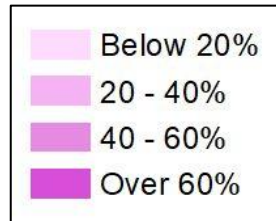
2012 Map



2022 Map*



	1	2	3	4	5	1*	2*	3*	4*	5*	County
Population	18,424	16,797	16,628	17,283	16,454	17,159	17,052	17,046	17,297	17,160	108,901
% API	1%	1%	1%	0%	1%	2%	1%	1%	0%	1%	1%
% Black	9%	8%	9%	9%	6%	11%	6%	10%	9%	6%	10%
% Latino	8%	12%	13%	7%	5%	8%	12%	12%	7%	5%	10%
% Other	5%	5%	5%	5%	5%	5%	5%	5%	5%	5%	5%
% White	77%	74%	72%	78%	83%	74%	76%	72%	78%	83%	74%
Median Income	\$72,000	\$63,000	\$65,000	\$70,000	\$60,000	\$72,000	\$63,000	\$65,000	\$70,000	\$60,000	\$61,000
% Renter	33%	32%	33%	19%	23%	33%	32%	33%	19%	23%	32%
% Youth	22%	22%	21%	21%	19%	22%	22%	21%	21%	19%	22%

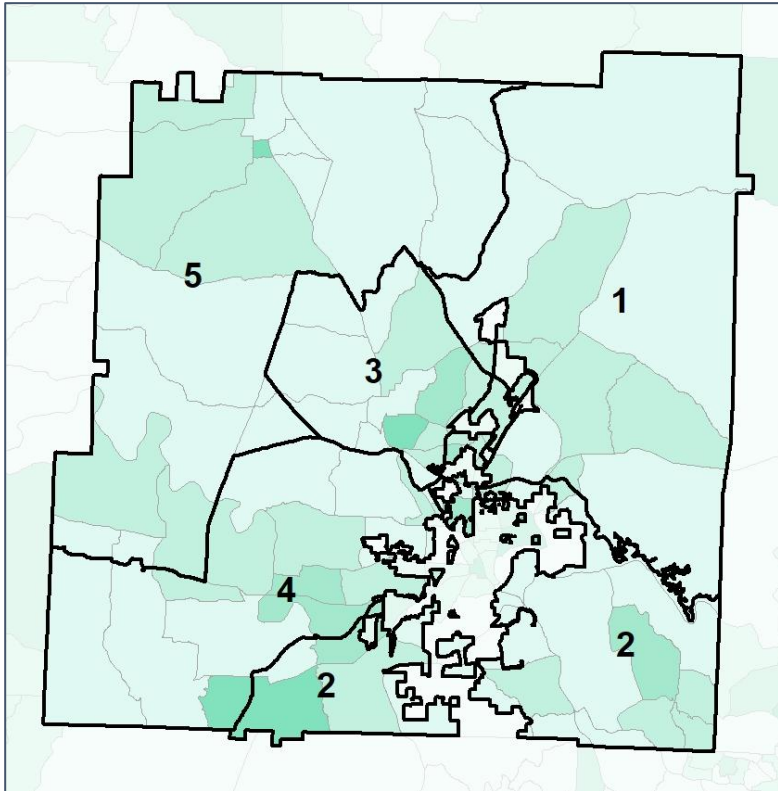


Bartow Co. Commission & School Board

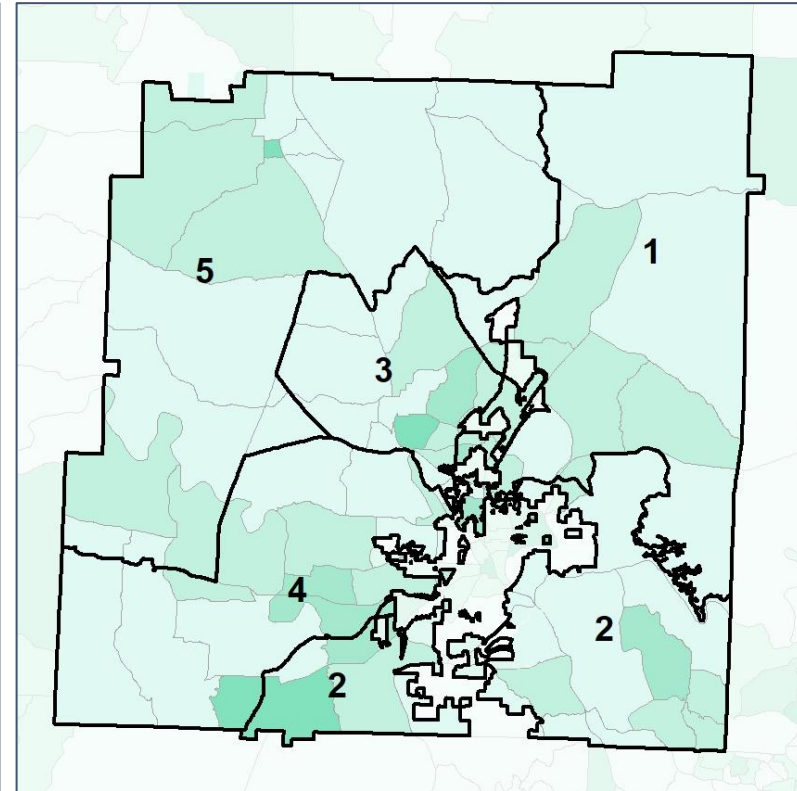
% Youth (18-34) by Census Block Group



2012 Map



2022 Map*



	1	2	3	4	5	1*	2*	3*	4*	5*	County
Population	18,424	16,797	16,628	17,283	16,454	17,159	17,052	17,046	17,297	17,160	108,901
% API	1%	1%	1%	0%	1%	2%	1%	1%	0%	1%	1%
% Black	9%	8%	9%	9%	6%	11%	6%	10%	9%	6%	10%
% Latino	8%	12%	13%	7%	5%	8%	12%	12%	7%	5%	10%
% Other	5%	5%	5%	5%	5%	5%	5%	5%	5%	5%	5%
% White	77%	74%	72%	78%	83%	74%	76%	72%	78%	83%	74%
Median Income	\$72,000	\$63,000	\$65,000	\$70,000	\$60,000	\$72,000	\$63,000	\$65,000	\$70,000	\$60,000	\$61,000
% Renter	33%	32%	33%	19%	23%	33%	32%	33%	19%	23%	32%
% Youth	22%	22%	21%	21%	19%	22%	22%	21%	21%	19%	22%

