

Demographic Overview

Racial Breakdown in Barrow County



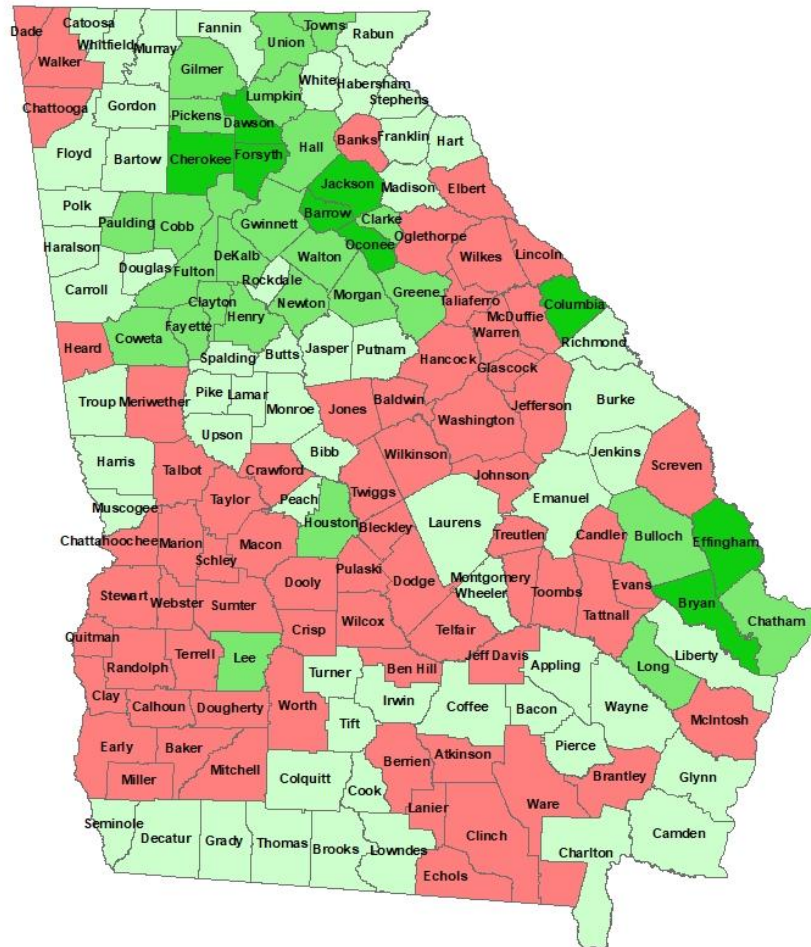
Barrow County	2010	2020	% Change
Total Population	69,367	83,505	20%
AAPI	2,387	3,250	36%
Black	7,769	10,141	31%
Latino	6,037	10,560	75%
Other/Mixed Race	1,438	3,972	176%
POC	17,631	27,923	58%
White	51,736	55,582	7%

*Note: The use of "Other" in these statistics combines those who identify as Native American, Mixed Race, and "Other" race



Population Gain

Change in Population in Georgia by County



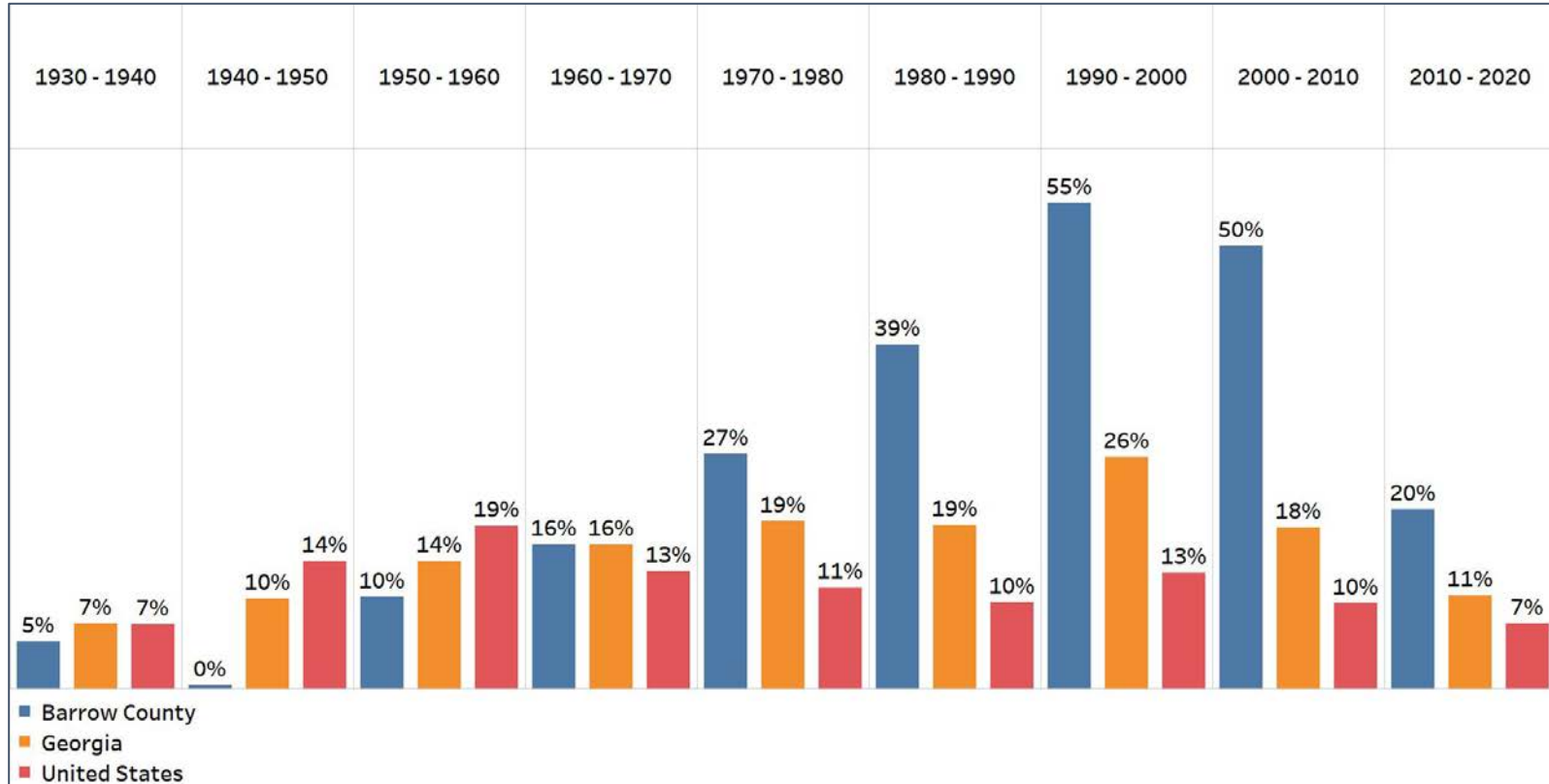
- Georgia is experience rapid population growth in the Atlanta, Augusta, and Savannah regions of the state





Population Gain

Change in Population by Decade



- Barrow County has seen consistent growth since 1950 and exploded in population starting in 1970
- This increase has slowed since its peak but it still seeing significant growth

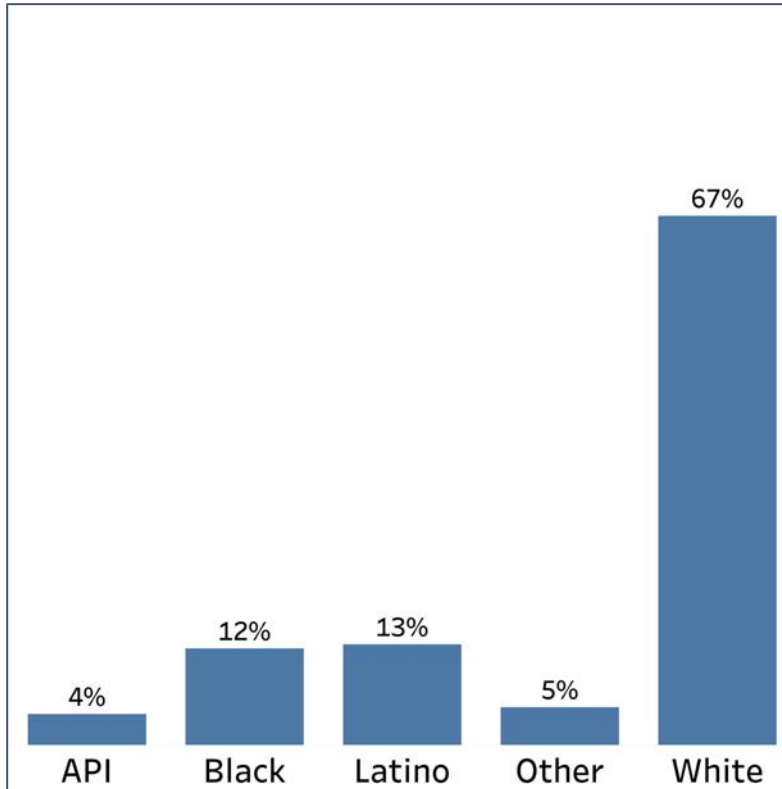


Demographics

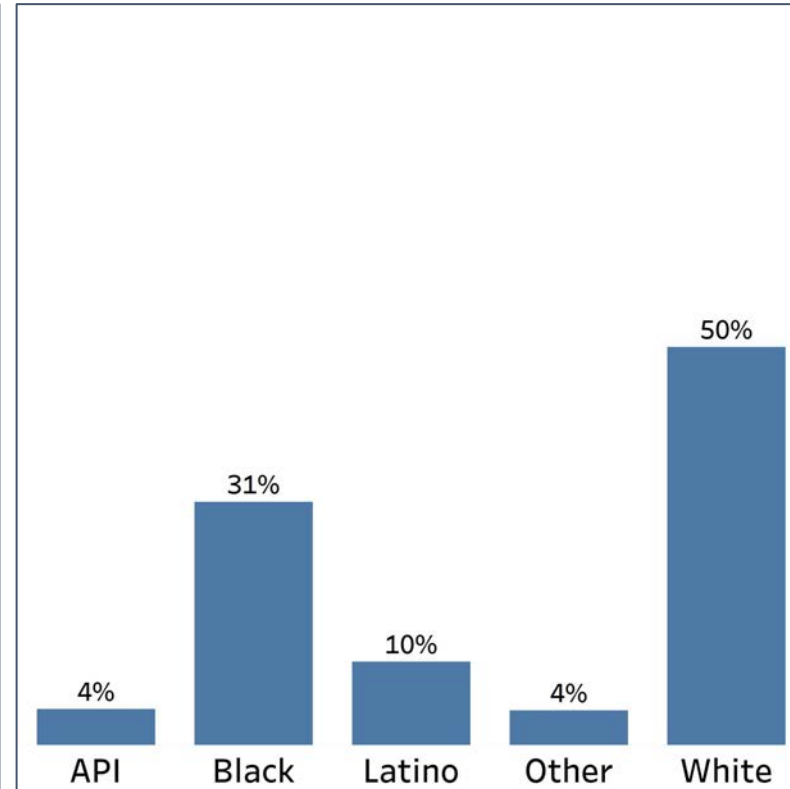
Comparison between Barrow County and Georgia



Barrow County



Georgia



- Barrow County is disproportionately white compared to the state of Georgia
- However, Latinos and Other make up a higher share of the population than in Georgia, and the API community has a similar share to Georgia

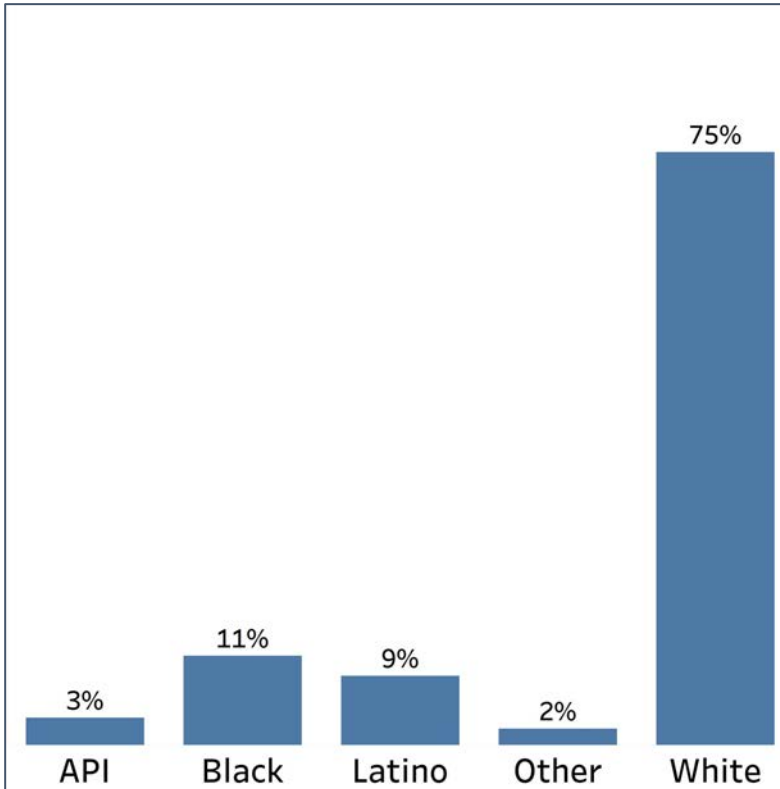


Demographics

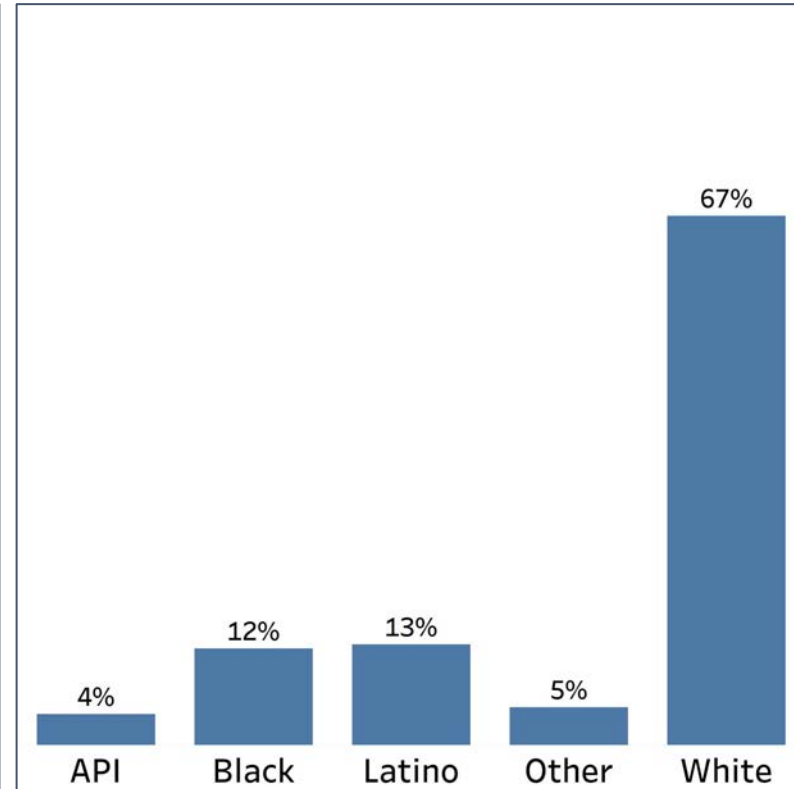
2010 vs 2020 Demographics in Barrow County



Barrow County 2010



Barrow County 2020

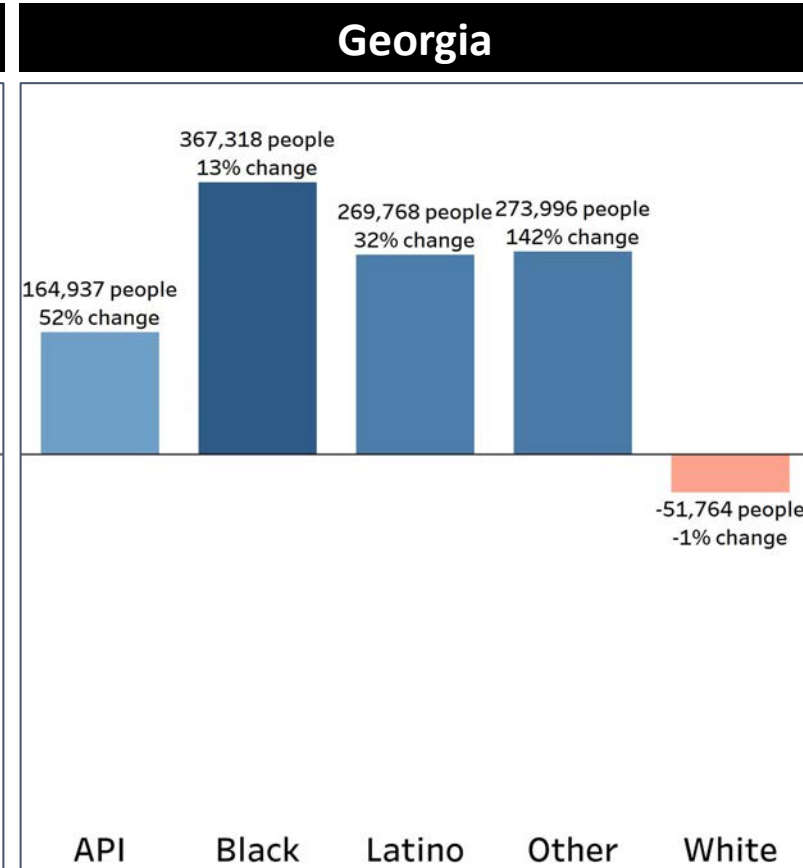
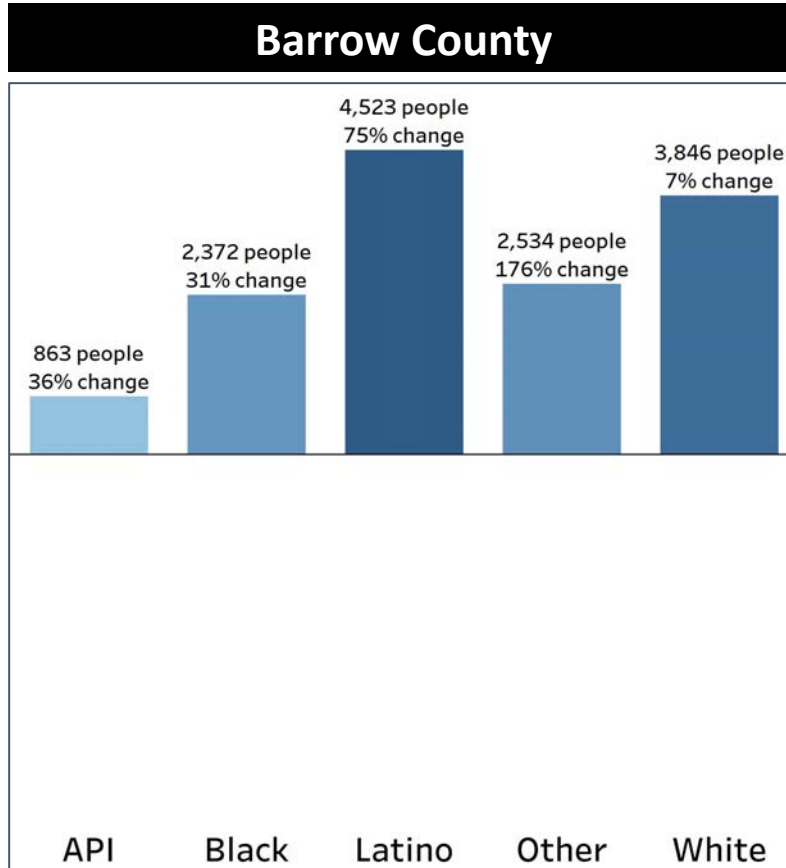


- Despite being majority white, Barrow county has seen growth in all communities of color, especially the Latino and Other communities



Demographics

Population Change by Race (2020 - 2010)



- Barrow County has seen an uptick in population for all demographic groups
- The growth in population for all demographic groups is higher than the overall growth in Georgia, except for the API community

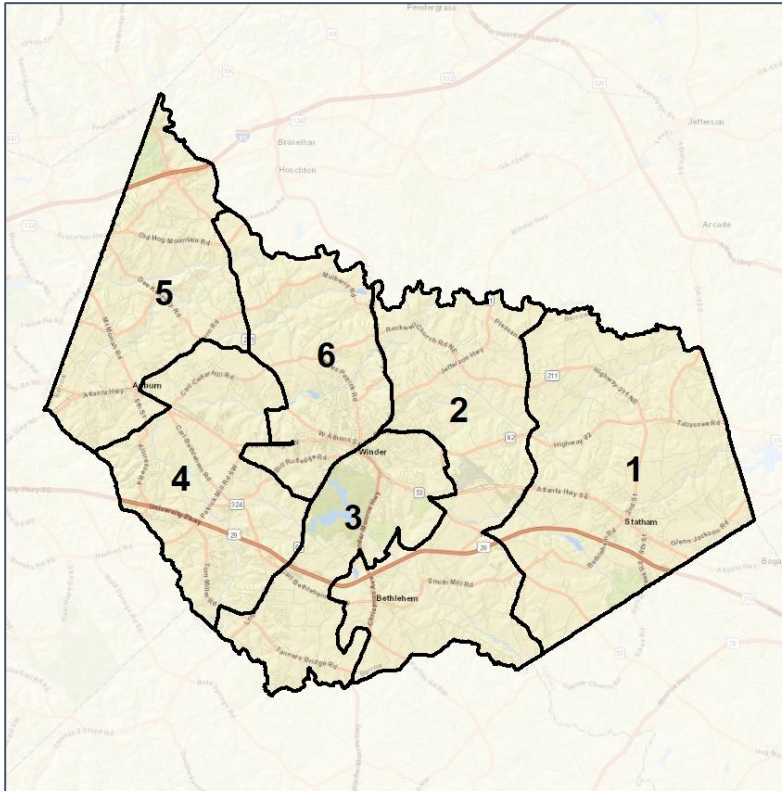


Barrow Co. Commission & School Board

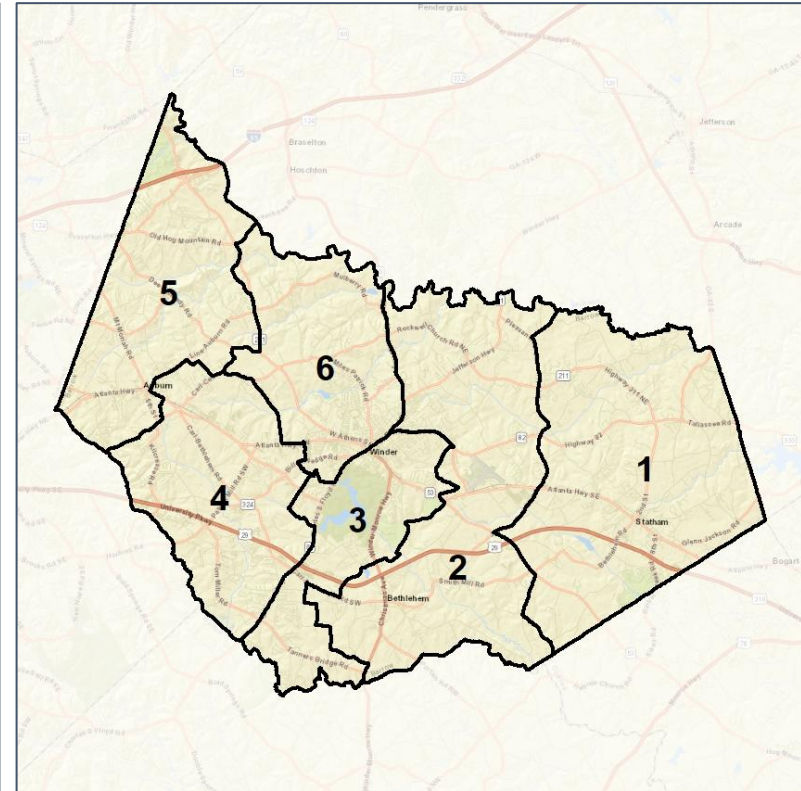
Context



2012 Map



2022 Map*



	1	2	3	4	5	6	1*	2*	3*	4*	5*	6**	County
Population	13,920	12,480	14,204	15,094	13,398	14,409	13,920	13,929	13,959	13,987	13,849	13,861	83,505
API	3%	3%	4%	4%	4%	4%	3%	4%	3%	5%	4%	4%	4%
Black	13%	7%	22%	12%	6%	12%	13%	8%	23%	12%	6%	11%	12%
Latino	10%	12%	15%	15%	12%	11%	10%	13%	15%	16%	12%	10%	13%
Other	4%	4%	5%	5%	5%	5%	4%	4%	5%	5%	5%	5%	5%
White	69%	73%	55%	64%	73%	67%	69%	72%	54%	63%	73%	69%	67%
Population Gain	2,363	994	2,569	3,452	1,683	3,077	0	1,449	-245	-1,107	451	-548	*
Population % Gain	20%	9%	22%	30%	14%	27%	0%	12%	-2%	-7%	3%	-4%	*
Net POC Gain	1,258	852	1,953	2,672	1,431	2,126	0	570	-63	-200	126	-433	*
Net POC % Gain	41%	34%	43%	96%	66%	82%	0%	17%	-1%	-4%	3%	-9%	*

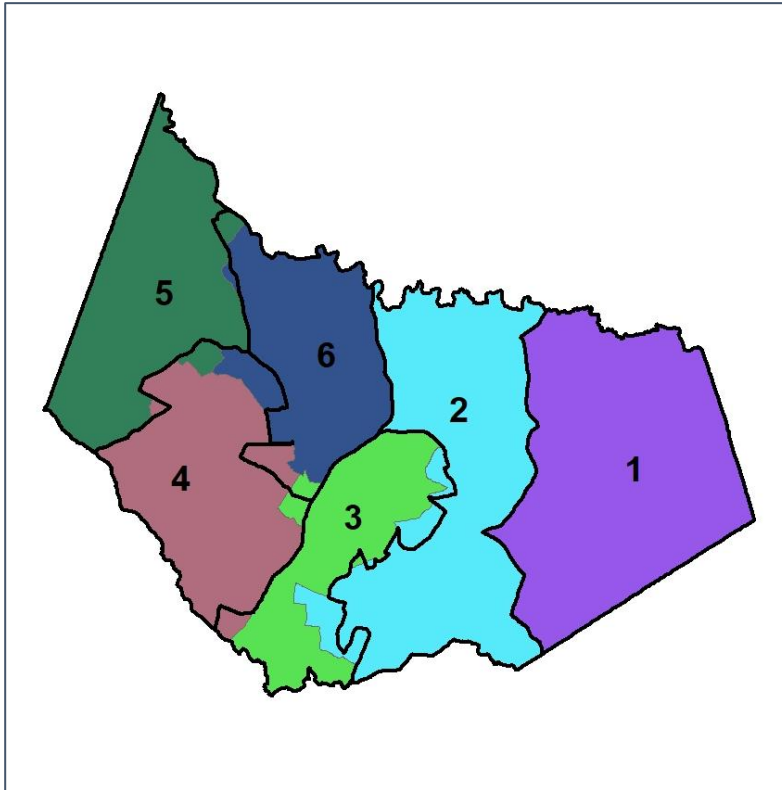


Barrow Co. Commission & School Board

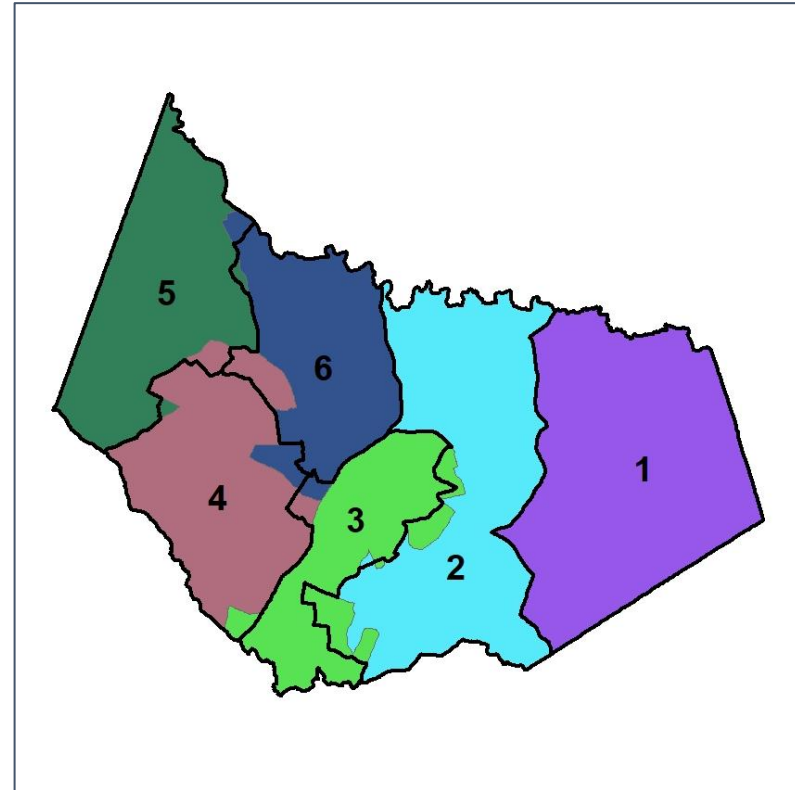
Changes in Redistricting



2012 Map (2022 in Colors)



2022 Map* (2012 in Colors)



	1	2	3	4	5	6	1*	2*	3*	4*	5*	6**	County
Population	13,920	12,480	14,204	15,094	13,398	14,409	13,920	13,929	13,959	13,987	13,849	13,861	83,505
API	3%	3%	4%	4%	4%	4%	3%	4%	3%	5%	4%	4%	4%
Black	13%	7%	22%	12%	6%	12%	13%	8%	23%	12%	6%	11%	12%
Latino	10%	12%	15%	15%	12%	11%	10%	13%	15%	16%	12%	10%	13%
Other	4%	4%	5%	5%	5%	5%	4%	4%	5%	5%	5%	5%	5%
White	69%	73%	55%	64%	73%	67%	69%	72%	54%	63%	73%	69%	67%
Population Gain	2,363	994	2,569	3,452	1,683	3,077	0	1,449	-245	-1,107	451	-548	*
Population % Gain	20%	9%	22%	30%	14%	27%	0%	12%	-2%	-7%	3%	-4%	*
Net POC Gain	1,258	852	1,953	2,672	1,431	2,126	0	570	-63	-200	126	-433	*
Net POC % Gain	41%	34%	43%	96%	66%	82%	0%	17%	-1%	-4%	3%	-9%	*

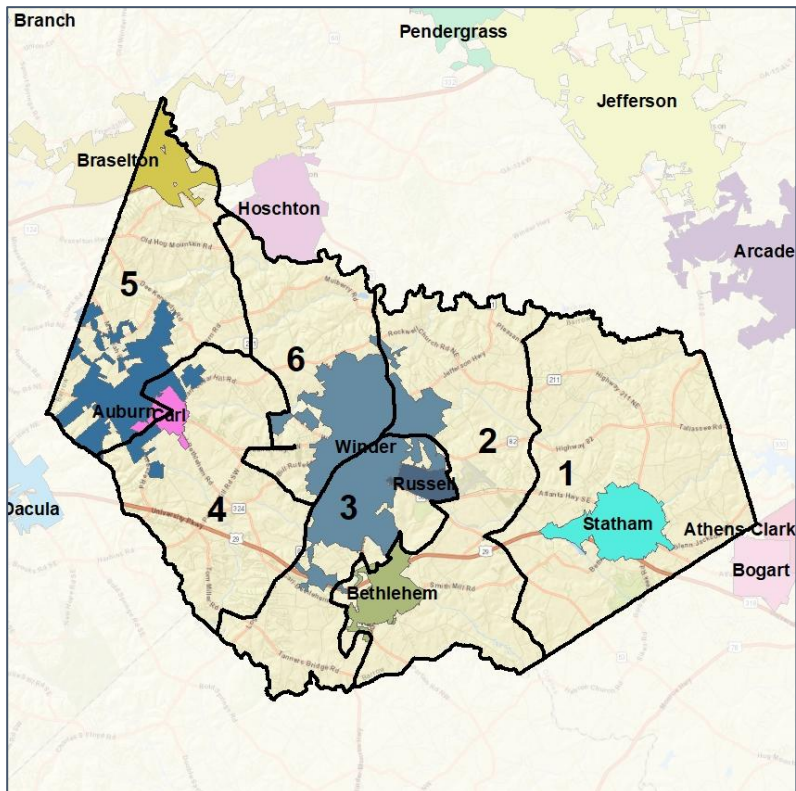


Barrow Co. Commission & School Board

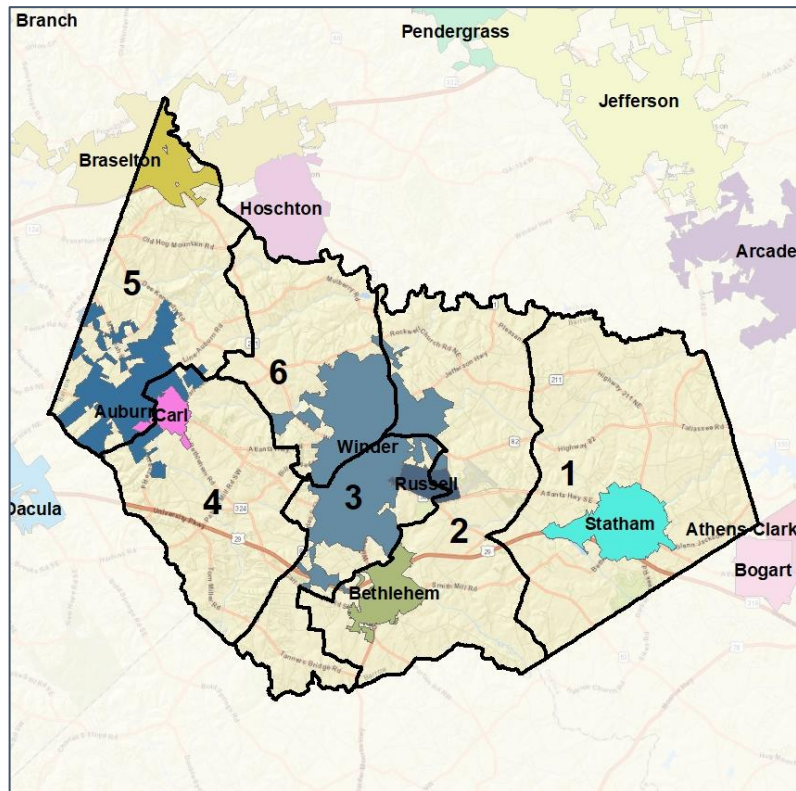
Cities and Places



2012 Map



2022 Map*



	1	2	3	4	5	6	1*	2*	3*	4*	5*	6**	County
Population	13,920	12,480	14,204	15,094	13,398	14,409	13,920	13,929	13,959	13,987	13,849	13,861	83,505
API	3%	3%	4%	4%	4%	4%	3%	4%	3%	5%	4%	4%	4%
Black	13%	7%	22%	12%	6%	12%	13%	8%	23%	12%	6%	11%	12%
Latino	10%	12%	15%	15%	12%	11%	10%	13%	15%	16%	12%	10%	13%
Other	4%	4%	5%	5%	5%	5%	4%	4%	5%	5%	5%	5%	5%
White	69%	73%	55%	64%	73%	67%	69%	72%	54%	63%	73%	69%	67%
Population Gain	2,363	994	2,569	3,452	1,683	3,077	0	1,449	-245	-1,107	451	-548	*
Population % Gain	20%	9%	22%	30%	14%	27%	0%	12%	-2%	-7%	3%	-4%	*
Net POC Gain	1,258	852	1,953	2,672	1,431	2,126	0	570	-63	-200	126	-433	*
Net POC % Gain	41%	34%	43%	96%	66%	82%	0%	17%	-1%	-4%	3%	-9%	*

Source:
2020 Decennial Census
2020 ACS 5-Year Dataset

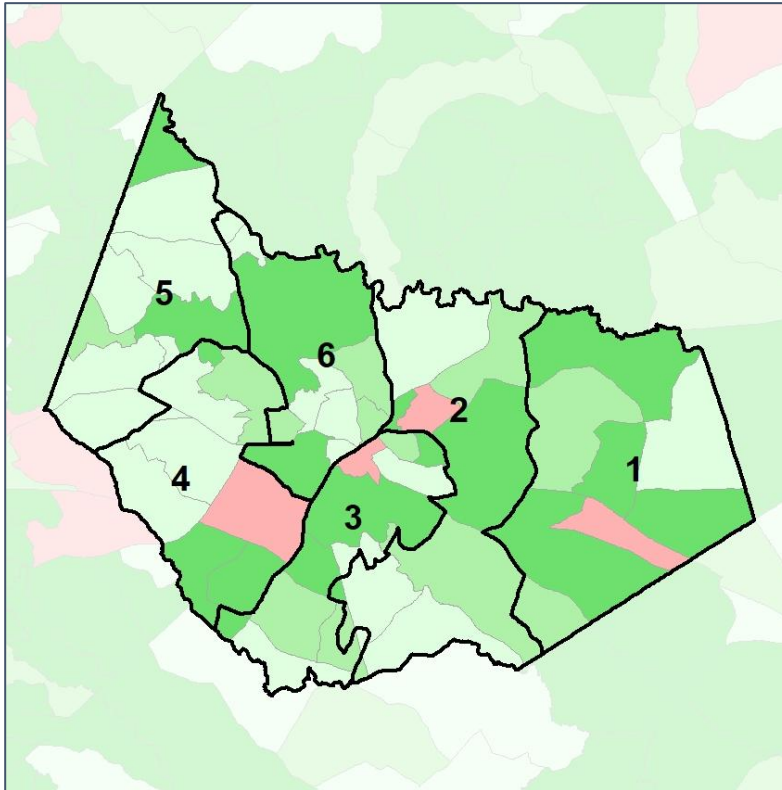


Barrow Co. Commission & School Board

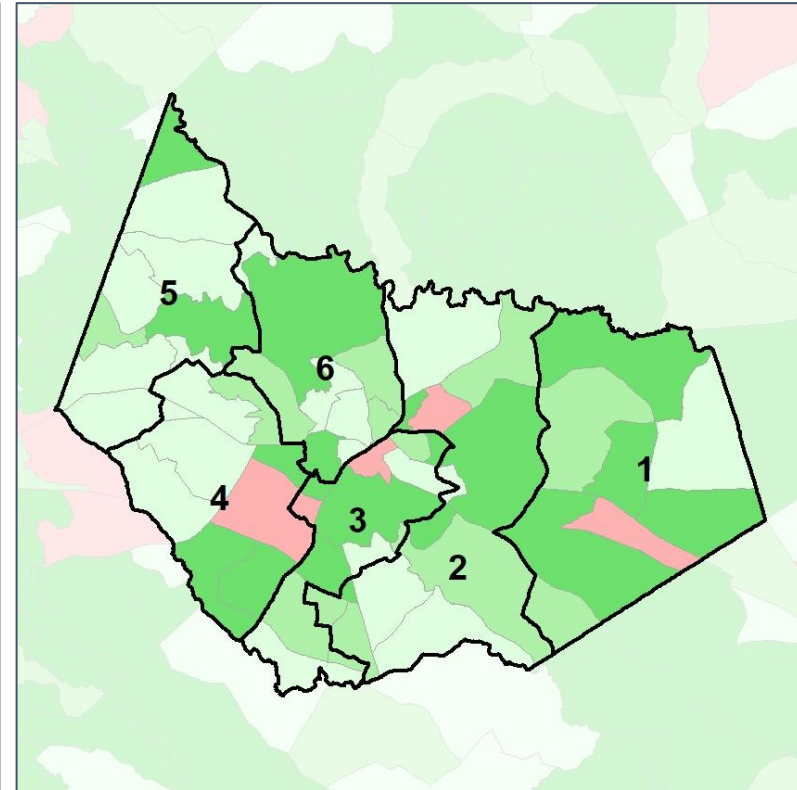
Net Gain in Population (2010 - 2020) by Census Block Group



2012 Map



2022 Map*



	1	2	3	4	5	6	1*	2*	3*	4*	5*	6**	County
Population	13,920	12,480	14,204	15,094	13,398	14,409	13,920	13,929	13,959	13,987	13,849	13,861	83,505
API	3%	3%	4%	4%	4%	4%	3%	4%	3%	5%	4%	4%	4%
Black	13%	7%	22%	12%	6%	12%	13%	8%	23%	12%	6%	11%	12%
Latino	10%	12%	15%	15%	12%	11%	10%	13%	15%	16%	12%	10%	13%
Other	4%	4%	5%	5%	5%	5%	4%	4%	5%	5%	5%	5%	5%
White	69%	73%	55%	64%	73%	67%	69%	72%	54%	63%	73%	69%	67%
Population Gain	2,363	994	2,569	3,452	1,683	3,077	0	1,449	-245	-1,107	451	-548	*
Population % Gain	20%	9%	22%	30%	14%	27%	0%	12%	-2%	-7%	3%	-4%	*
Net POC Gain	1,258	852	1,953	2,672	1,431	2,126	0	570	-63	-200	126	-433	*
Net POC % Gain	41%	34%	43%	96%	66%	82%	0%	17%	-1%	-4%	3%	-9%	*

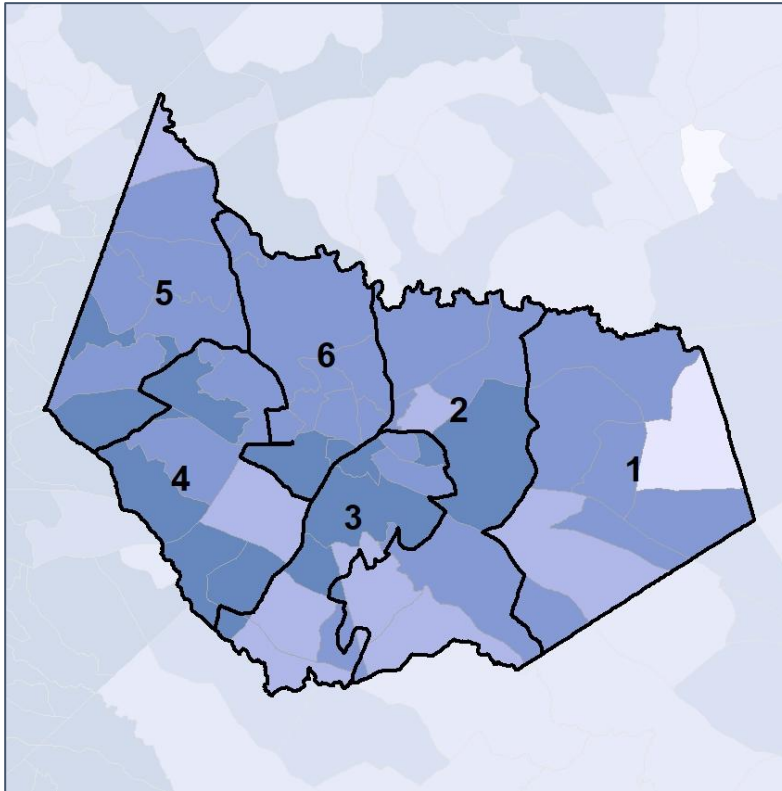


Barrow Co. Commission & School Board

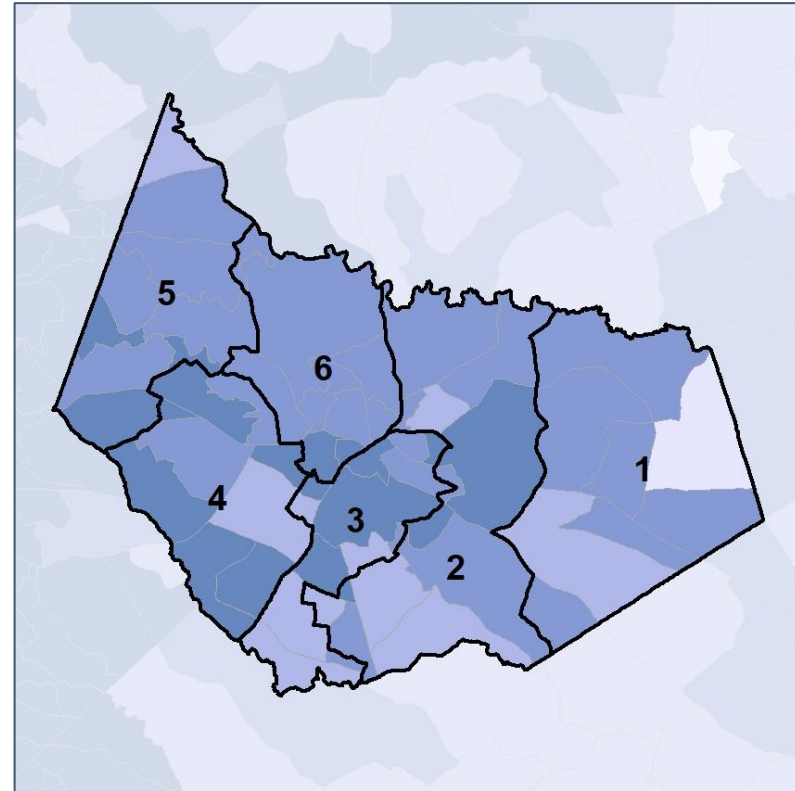
Net Gain in % POC (2020 - 2010) by Census Block Group



2012 Map



2022 Map*



	1	2	3	4	5	6	1*	2*	3*	4*	5*	6**	County
Population	13,920	12,480	14,204	15,094	13,398	14,409	13,920	13,929	13,959	13,987	13,849	13,861	83,505
API	3%	3%	4%	4%	4%	4%	3%	4%	3%	5%	4%	4%	4%
Black	13%	7%	22%	12%	6%	12%	13%	8%	23%	12%	6%	11%	12%
Latino	10%	12%	15%	15%	12%	11%	10%	13%	15%	16%	12%	10%	13%
Other	4%	4%	5%	5%	5%	5%	4%	4%	5%	5%	5%	5%	5%
White	69%	73%	55%	64%	73%	67%	69%	72%	54%	63%	73%	69%	67%
Population Gain	2,363	994	2,569	3,452	1,683	3,077	0	1,449	-245	-1,107	451	-548	*
Population % Gain	20%	9%	22%	30%	14%	27%	0%	12%	-2%	-7%	3%	-4%	*
Net POC Gain	1,258	852	1,953	2,672	1,431	2,126	0	570	-63	-200	126	-433	*
Net POC % Gain	41%	34%	43%	96%	66%	82%	0%	17%	-1%	-4%	3%	-9%	*



Source:
2020 Decennial Census
2020 ACS 5-Year Dataset

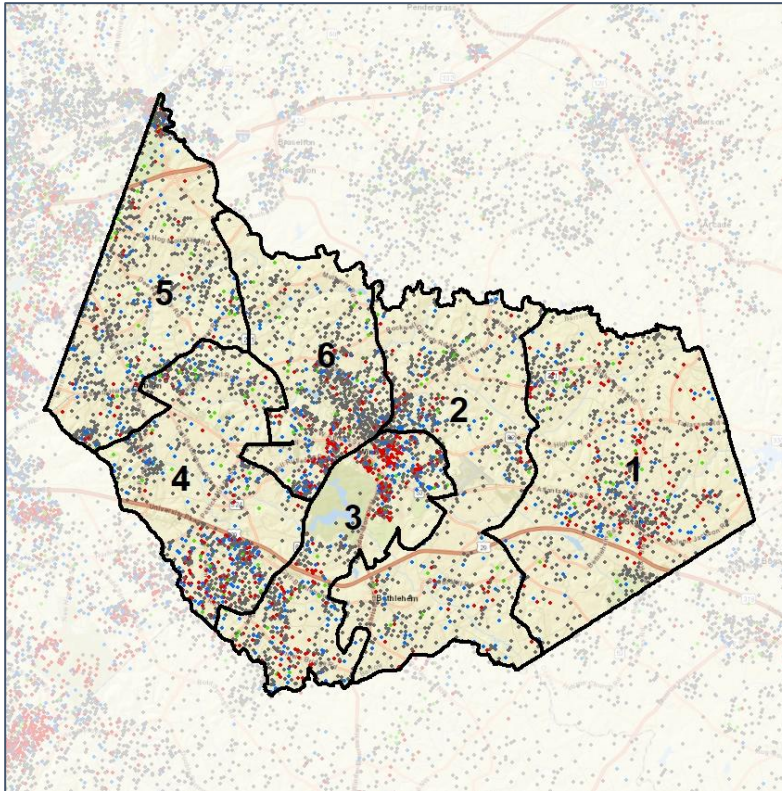


Barrow Co. Commission & School Board

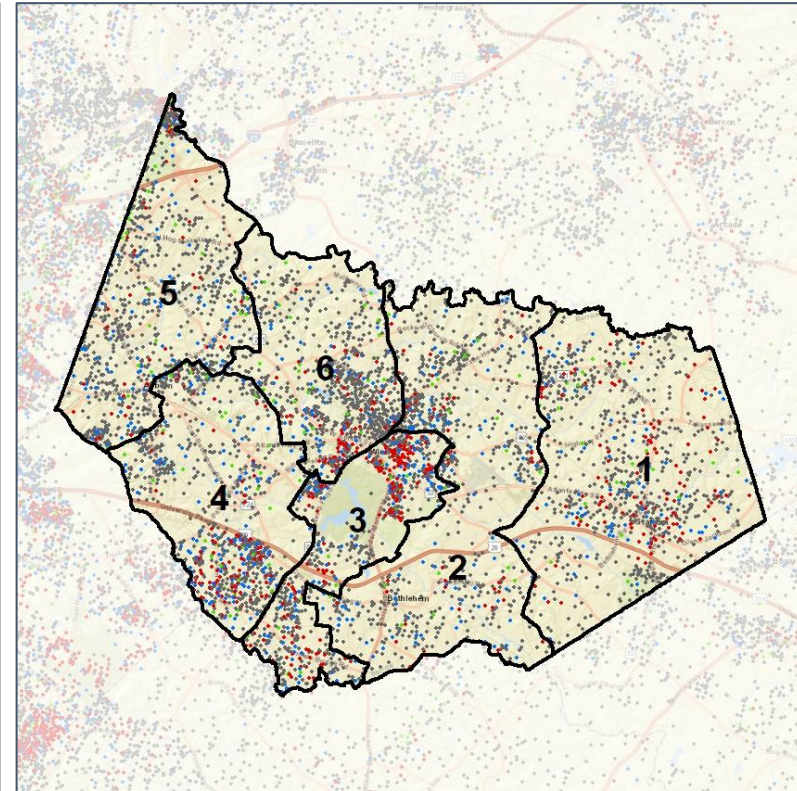
Population Density by Race



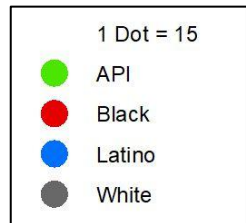
2012 Map



2022 Map*



	1	2	3	4	5	6	1*	2*	3*	4*	5*	6*	County
Population	13,920	12,480	14,204	15,094	13,398	14,409	13,920	13,929	13,959	13,987	13,849	13,861	83,505
API	484	411	499	671	588	597	484	501	415	645	600	605	3,250
% API	3%	3%	4%	4%	4%	4%	3%	4%	3%	5%	4%	4%	4%
Black	1,823	887	3,063	1,803	784	1,781	1,823	1,067	3,167	1,713	815	1,556	10,141
% Black	13%	7%	22%	12%	6%	12%	13%	8%	23%	12%	6%	11%	12%
Latino	1,405	1,548	2,173	2,271	1,559	1,604	1,405	1,791	2,100	2,191	1,621	1,452	10,560
% Latino	10%	12%	15%	15%	12%	11%	10%	13%	15%	16%	12%	10%	13%
Other	604	541	727	699	672	729	604	598	717	695	693	665	3,972
% Other	4%	4%	5%	5%	5%	5%	4%	4%	5%	5%	5%	5%	5%
White	9,604	9,093	7,742	9,650	9,795	9,698	9,604	9,972	7,560	8,743	10,120	9,583	55,582
% White	69%	73%	55%	64%	73%	67%	69%	72%	54%	63%	73%	69%	67%



Source:
2020 Decennial Census
2020 ACS 5-Year Dataset

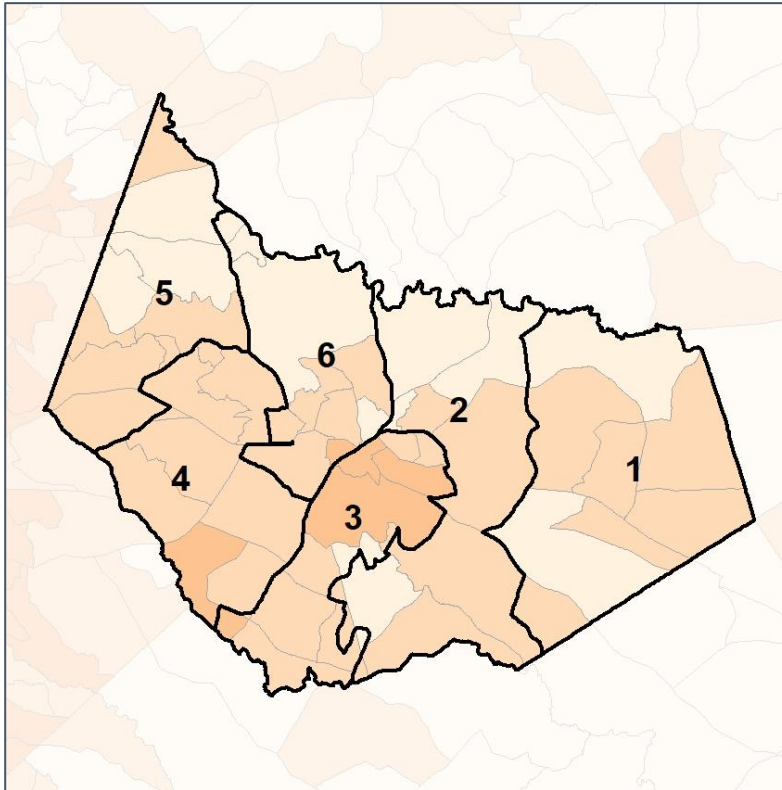


Barrow Co. Commission & School Board

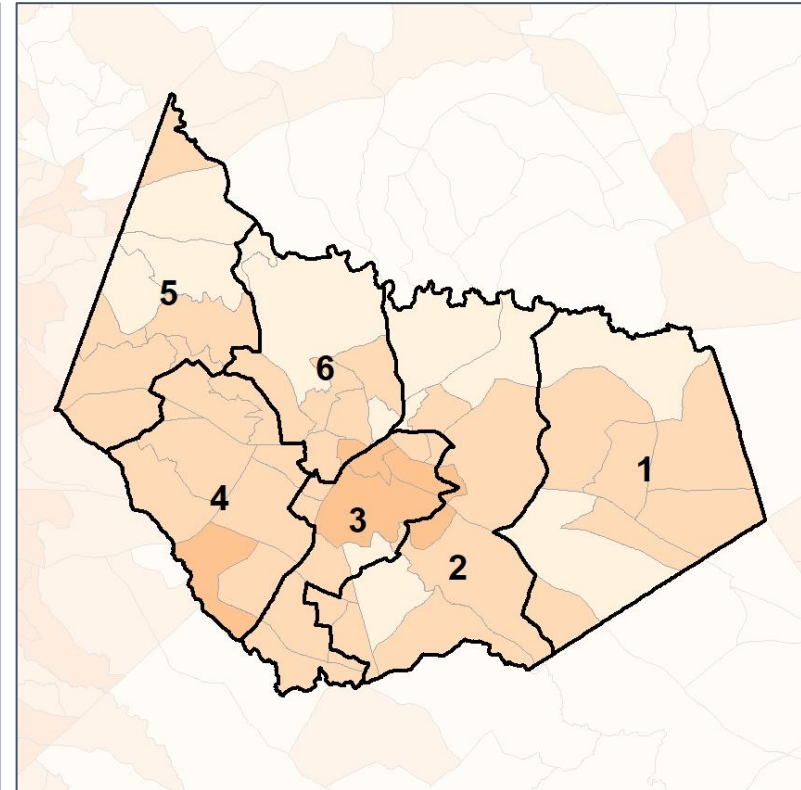
% People of Color by Census Block Group



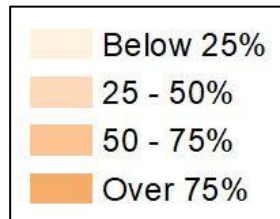
2012 Map



2022 Map*



	1	2	3	4	5	6	1*	2*	3*	4*	5*	6*	County
Population	13,920	12,480	14,204	15,094	13,398	14,409	13,920	13,929	13,959	13,987	13,849	13,861	83,505
API	484	411	499	671	588	597	484	501	415	645	600	605	3,250
% API	3%	3%	4%	4%	4%	4%	3%	4%	3%	5%	4%	4%	4%
Black	1,823	887	3,063	1,803	784	1,781	1,823	1,067	3,167	1,713	815	1,556	10,141
% Black	13%	7%	22%	12%	6%	12%	13%	8%	23%	12%	6%	11%	12%
Latino	1,405	1,548	2,173	2,271	1,559	1,604	1,405	1,791	2,100	2,191	1,621	1,452	10,560
% Latino	10%	12%	15%	15%	12%	11%	10%	13%	15%	16%	12%	10%	13%
Other	604	541	727	699	672	729	604	598	717	695	693	665	3,972
% Other	4%	4%	5%	5%	5%	5%	4%	4%	5%	5%	5%	5%	5%
White	9,604	9,093	7,742	9,650	9,795	9,698	9,604	9,972	7,560	8,743	10,120	9,583	55,582
% White	69%	73%	55%	64%	73%	67%	69%	72%	54%	63%	73%	69%	67%



Source:
2020 Decennial Census
2020 ACS 5-Year Dataset

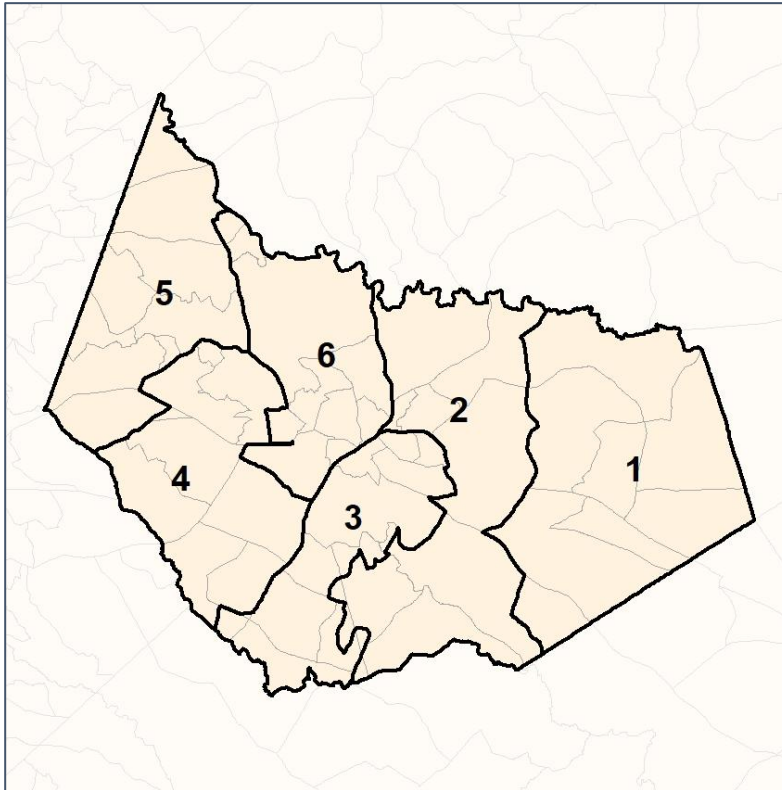


Barrow Co. Commission & School Board

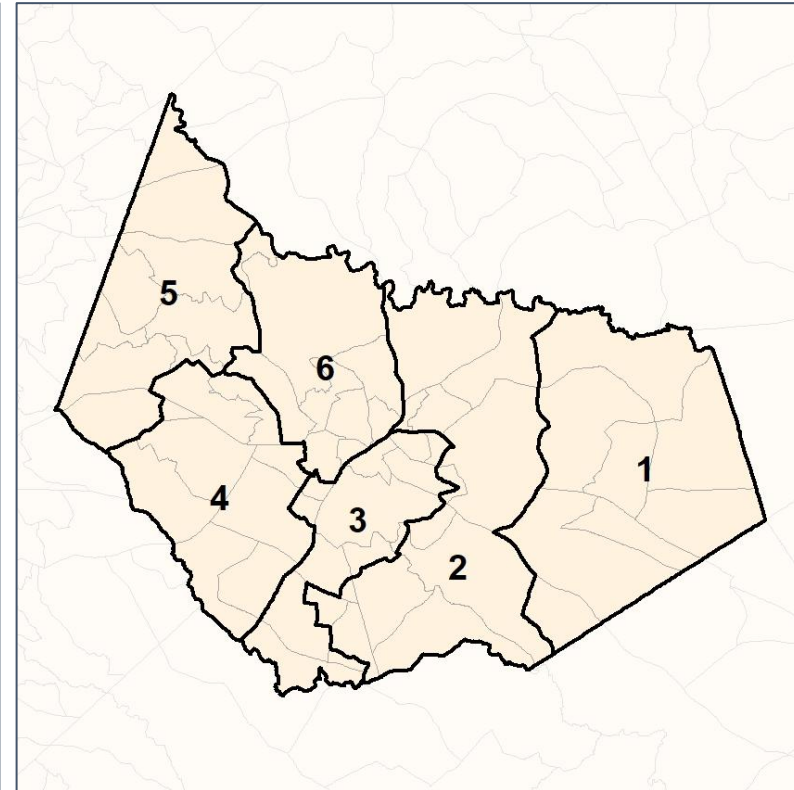
% API by Census Block Group



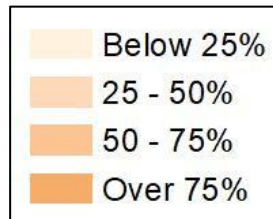
2012 Map



2022 Map*



	1	2	3	4	5	6	1*	2*	3*	4*	5*	6*	County
Population	13,920	12,480	14,204	15,094	13,398	14,409	13,920	13,929	13,959	13,987	13,849	13,861	83,505
API	484	411	499	671	588	597	484	501	415	645	600	605	3,250
% API	3%	3%	4%	4%	4%	4%	3%	4%	3%	5%	4%	4%	4%
Black	1,823	887	3,063	1,803	784	1,781	1,823	1,067	3,167	1,713	815	1,556	10,141
% Black	13%	7%	22%	12%	6%	12%	13%	8%	23%	12%	6%	11%	12%
Latino	1,405	1,548	2,173	2,271	1,559	1,604	1,405	1,791	2,100	2,191	1,621	1,452	10,560
% Latino	10%	12%	15%	15%	12%	11%	10%	13%	15%	16%	12%	10%	13%
Other	604	541	727	699	672	729	604	598	717	695	693	665	3,972
% Other	4%	4%	5%	5%	5%	5%	4%	4%	5%	5%	5%	5%	5%
White	9,604	9,093	7,742	9,650	9,795	9,698	9,604	9,972	7,560	8,743	10,120	9,583	55,582
% White	69%	73%	55%	64%	73%	67%	69%	72%	54%	63%	73%	69%	67%



Source:
2020 Decennial Census
2020 ACS 5-Year Dataset

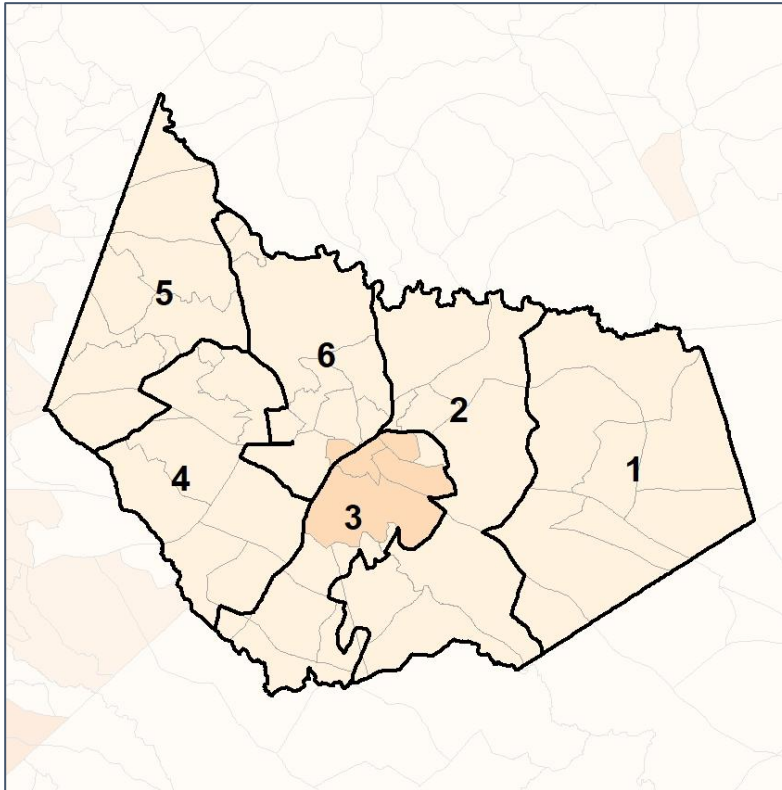


Barrow Co. Commission & School Board

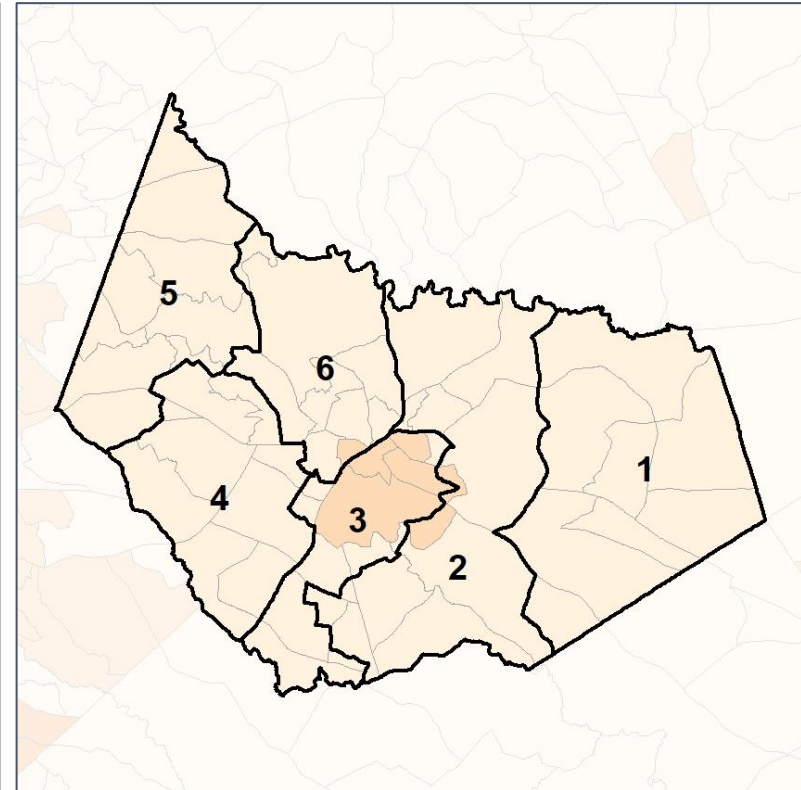
% Black by Census Block Group



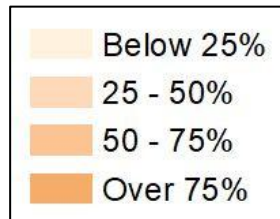
2012 Map



2022 Map*



	1	2	3	4	5	6	1*	2*	3*	4*	5*	6*	County
Population	13,920	12,480	14,204	15,094	13,398	14,409	13,920	13,929	13,959	13,987	13,849	13,861	83,505
API	484	411	499	671	588	597	484	501	415	645	600	605	3,250
% API	3%	3%	4%	4%	4%	4%	3%	4%	3%	5%	4%	4%	4%
Black	1,823	887	3,063	1,803	784	1,781	1,823	1,067	3,167	1,713	815	1,556	10,141
% Black	13%	7%	22%	12%	6%	12%	13%	8%	23%	12%	6%	11%	12%
Latino	1,405	1,548	2,173	2,271	1,559	1,604	1,405	1,791	2,100	2,191	1,621	1,452	10,560
% Latino	10%	12%	15%	15%	12%	11%	10%	13%	15%	16%	12%	10%	13%
Other	604	541	727	699	672	729	604	598	717	695	693	665	3,972
% Other	4%	4%	5%	5%	5%	5%	4%	4%	5%	5%	5%	5%	5%
White	9,604	9,093	7,742	9,650	9,795	9,698	9,604	9,972	7,560	8,743	10,120	9,583	55,582
% White	69%	73%	55%	64%	73%	67%	69%	72%	54%	63%	73%	69%	67%



Source:
2020 Decennial Census
2020 ACS 5-Year Dataset

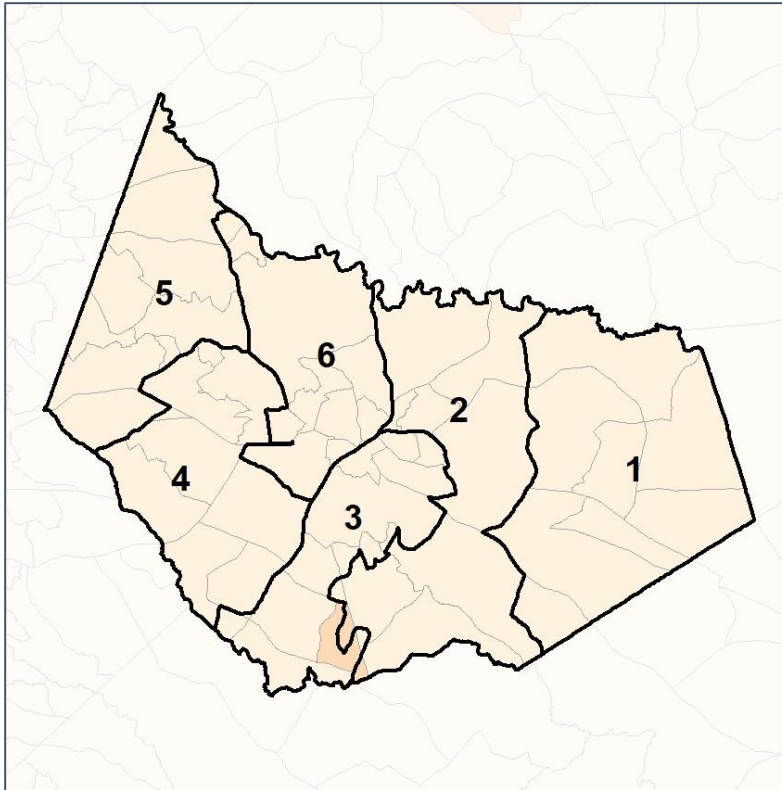


Barrow Co. Commission & School Board

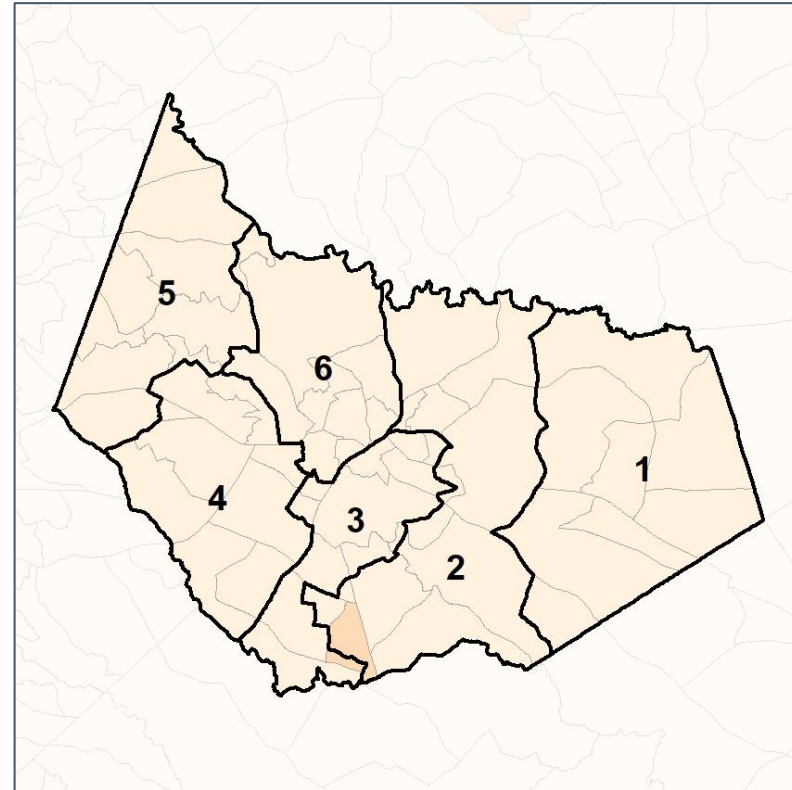
% Latino by Census Block Group



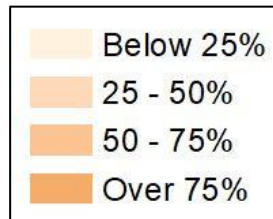
2012 Map



2022 Map*



	1	2	3	4	5	6	1*	2*	3*	4*	5*	6*	County
Population	13,920	12,480	14,204	15,094	13,398	14,409	13,920	13,929	13,959	13,987	13,849	13,861	83,505
API	484	411	499	671	588	597	484	501	415	645	600	605	3,250
% API	3%	3%	4%	4%	4%	4%	3%	4%	3%	5%	4%	4%	4%
Black	1,823	887	3,063	1,803	784	1,781	1,823	1,067	3,167	1,713	815	1,556	10,141
% Black	13%	7%	22%	12%	6%	12%	13%	8%	23%	12%	6%	11%	12%
Latino	1,405	1,548	2,173	2,271	1,559	1,604	1,405	1,791	2,100	2,191	1,621	1,452	10,560
% Latino	10%	12%	15%	15%	12%	11%	10%	13%	15%	16%	12%	10%	13%
Other	604	541	727	699	672	729	604	598	717	695	693	665	3,972
% Other	4%	4%	5%	5%	5%	5%	4%	4%	5%	5%	5%	5%	5%
White	9,604	9,093	7,742	9,650	9,795	9,698	9,604	9,972	7,560	8,743	10,120	9,583	55,582
% White	69%	73%	55%	64%	73%	67%	69%	72%	54%	63%	73%	69%	67%



Source:
2020 Decennial Census
2020 ACS 5-Year Dataset

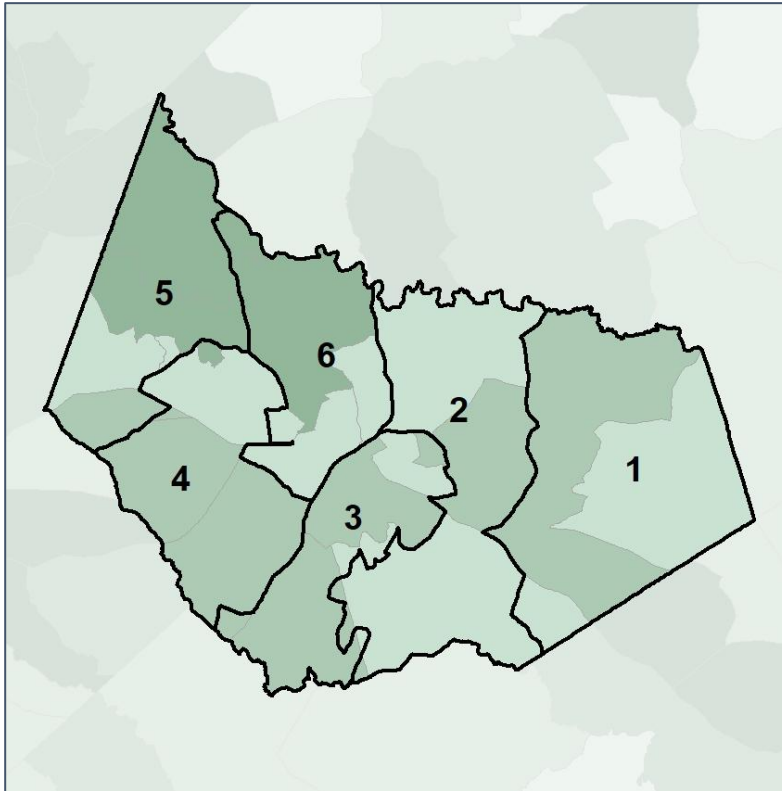


Barrow Co. Commission & School Board

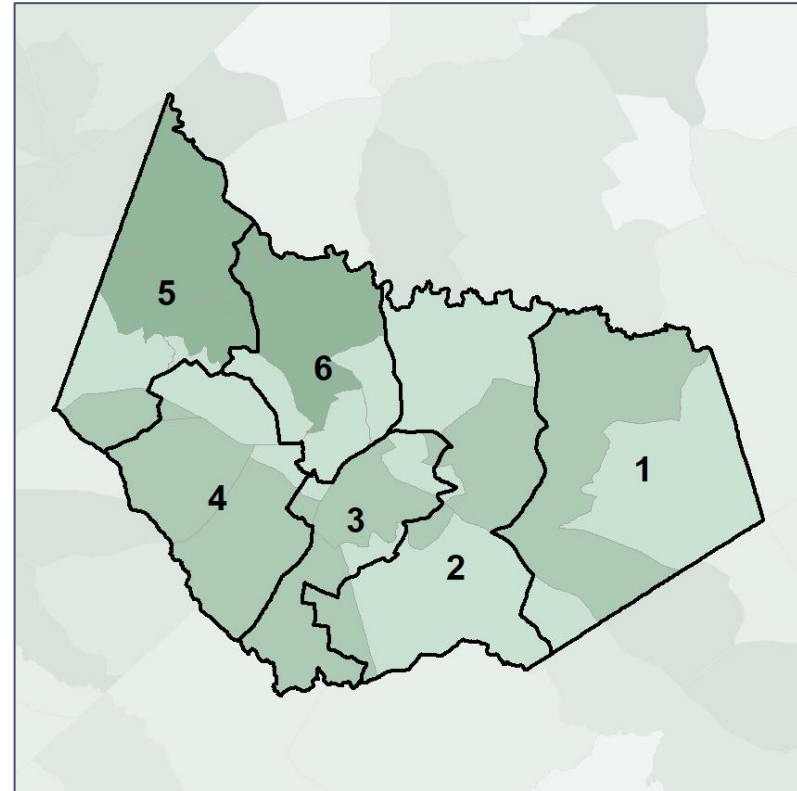
Median Household Income by Census Tract



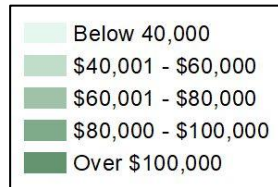
2012 Map



2022 Map*



	1	2	3	4	5	6	1*	2*	3*	4*	5*	6*	County
Population	13,920	12,480	14,204	15,094	13,398	14,409	13,920	13,929	13,959	13,987	13,849	13,861	83,505
% API	3%	3%	4%	4%	4%	4%	3%	4%	3%	5%	4%	4%	4%
% Black	13%	7%	22%	12%	6%	12%	13%	8%	23%	12%	6%	11%	12%
% Latino	10%	12%	15%	15%	12%	11%	10%	13%	15%	16%	12%	10%	13%
% Other	4%	4%	5%	5%	5%	5%	4%	4%	5%	5%	5%	5%	5%
% White	69%	73%	55%	64%	73%	67%	69%	72%	54%	63%	73%	69%	67%
Median Income	\$63,000	\$60,000	\$58,000	\$69,000	\$72,000	\$66,000	\$63,000	\$60,000	\$58,000	\$69,000	\$72,000	\$66,000	\$63,000
% Renter	23%	16%	33%	20%	21%	30%	23%	16%	33%	20%	21%	30%	23%
% Youth	27%	21%	22%	25%	22%	20%	27%	21%	22%	25%	22%	20%	23%

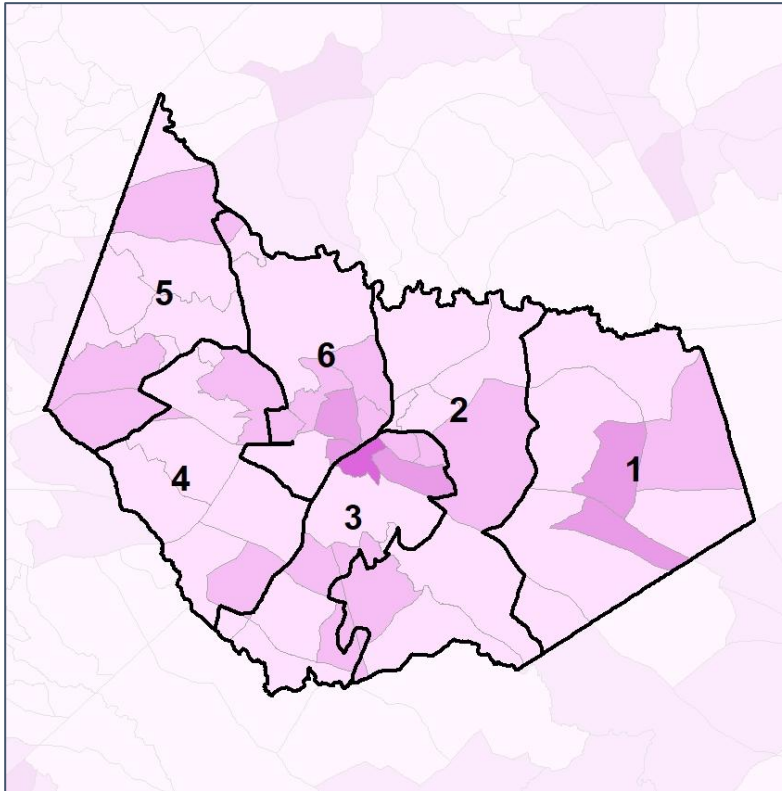


Barrow Co. Commission & School Board

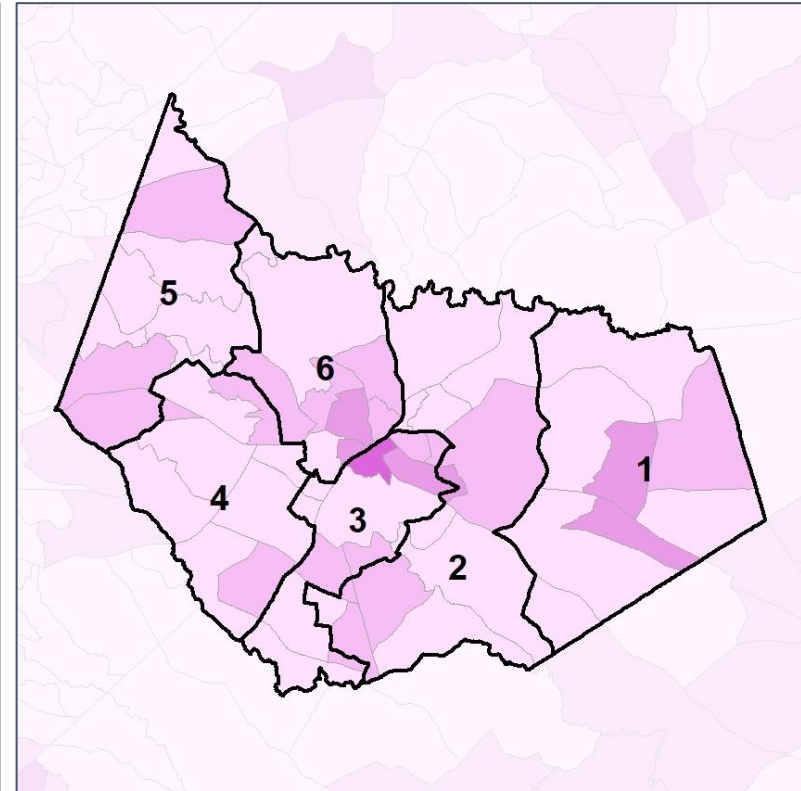
% Renter by Census Block Group



2012 Map



2022 Map*



	1	2	3	4	5	6	1*	2*	3*	4*	5*	6*	County
Population	13,920	12,480	14,204	15,094	13,398	14,409	13,920	13,929	13,959	13,987	13,849	13,861	83,505
% API	3%	3%	4%	4%	4%	4%	3%	4%	3%	5%	4%	4%	4%
% Black	13%	7%	22%	12%	6%	12%	13%	8%	23%	12%	6%	11%	12%
% Latino	10%	12%	15%	15%	12%	11%	10%	13%	15%	16%	12%	10%	13%
% Other	4%	4%	5%	5%	5%	5%	4%	4%	5%	5%	5%	5%	5%
% White	69%	73%	55%	64%	73%	67%	69%	72%	54%	63%	73%	69%	67%
Median Income	\$63,000	\$60,000	\$58,000	\$69,000	\$72,000	\$66,000	\$63,000	\$60,000	\$58,000	\$69,000	\$72,000	\$66,000	\$63,000
% Renter	23%	16%	33%	20%	21%	30%	23%	16%	33%	20%	21%	30%	23%
% Youth	27%	21%	22%	25%	22%	20%	27%	21%	22%	25%	22%	20%	23%

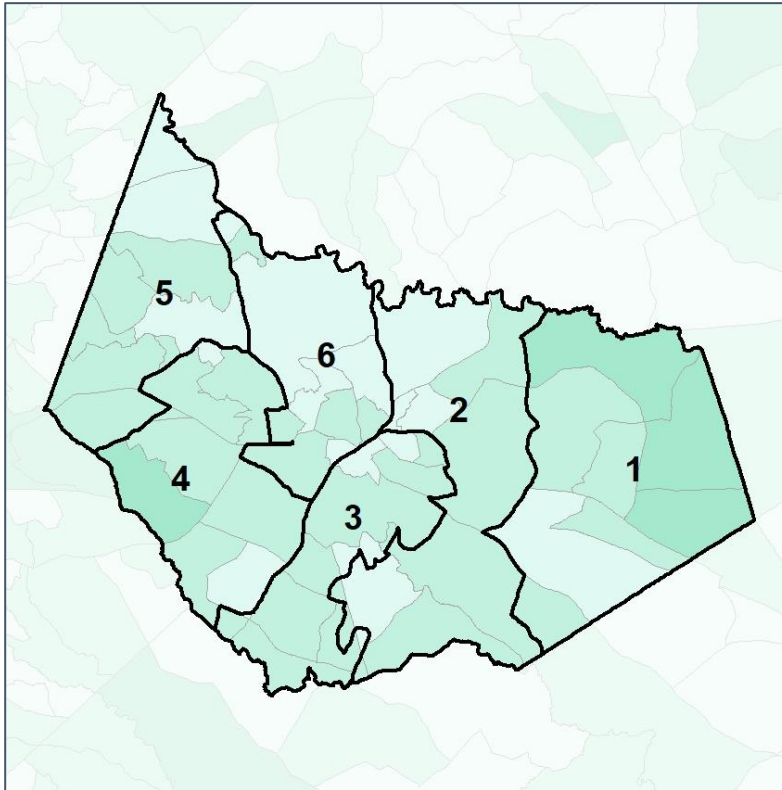


Barrow Co. Commission & School Board

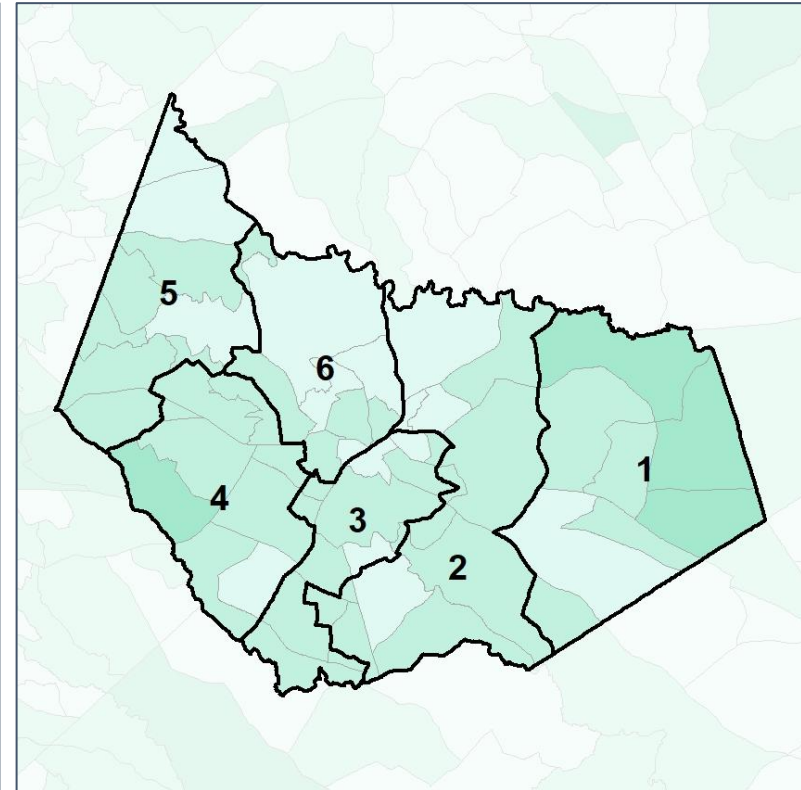
% Youth (18-34) by Census Block Group



2012 Map



2022 Map*



	1	2	3	4	5	6	1*	2*	3*	4*	5*	6*	County
Population	13,920	12,480	14,204	15,094	13,398	14,409	13,920	13,929	13,959	13,987	13,849	13,861	83,505
% API	3%	3%	4%	4%	4%	4%	3%	4%	3%	5%	4%	4%	4%
% Black	13%	7%	22%	12%	6%	12%	13%	8%	23%	12%	6%	11%	12%
% Latino	10%	12%	15%	15%	12%	11%	10%	13%	15%	16%	12%	10%	13%
% Other	4%	4%	5%	5%	5%	5%	4%	4%	5%	5%	5%	5%	5%
% White	69%	73%	55%	64%	73%	67%	69%	72%	54%	63%	73%	69%	67%
Median Income	\$63,000	\$60,000	\$58,000	\$69,000	\$72,000	\$66,000	\$63,000	\$60,000	\$58,000	\$69,000	\$72,000	\$66,000	\$63,000
% Renter	23%	16%	33%	20%	21%	30%	23%	16%	33%	20%	21%	30%	23%
% Youth	27%	21%	22%	25%	22%	20%	27%	21%	22%	25%	22%	20%	23%

