



Demographic Overview

Racial Breakdown in Baldwin County

Baldwin County	2010	2020	% Change
Total Population	45,720	43,799	-4%
AAPI	598	626	5%
Black	18,866	18,318	-3%
Latino	919	1,139	24%
Other/Mixed Race	633	1,284	103%
POC	21,016	21,367	2%
White	24,704	22,432	-9%

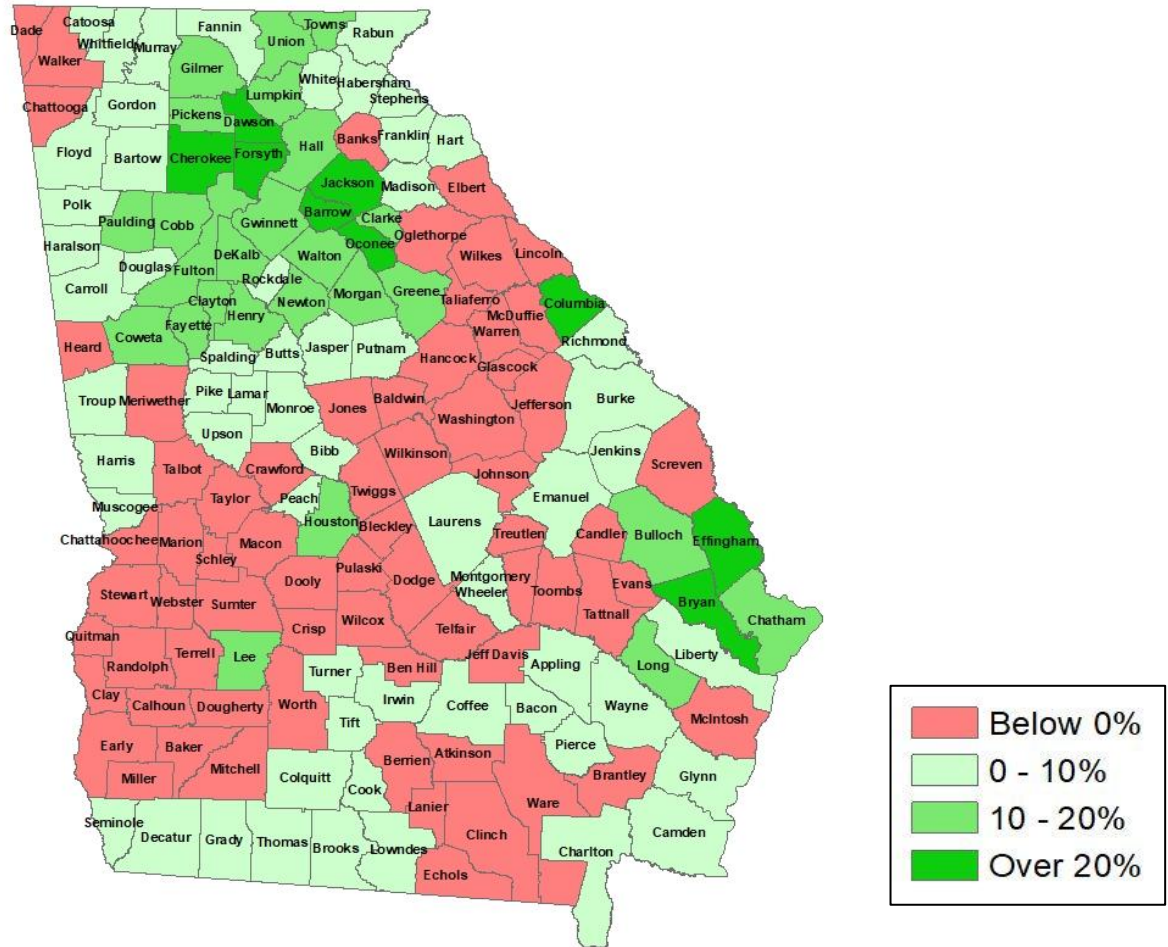
*Note: The use of "Other" in these statistics combines those who identify as Native American, Mixed Race, and "Other" race





Population Gain

Change in Population in Georgia by County



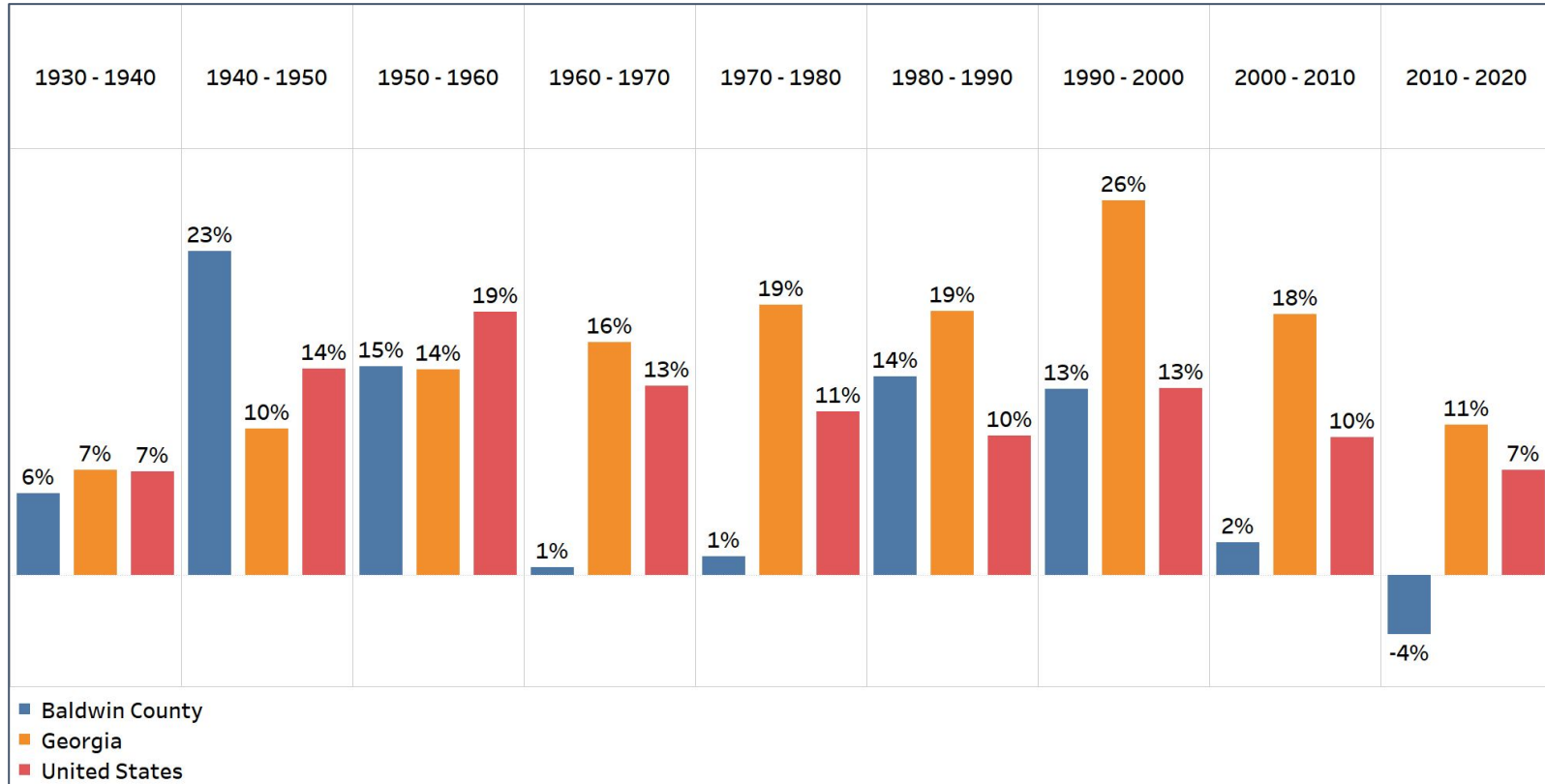
- Georgia is experiencing rapid population growth in the Atlanta, Augusta, and Savannah regions of the state





Population Gain

Change in Population by Decade

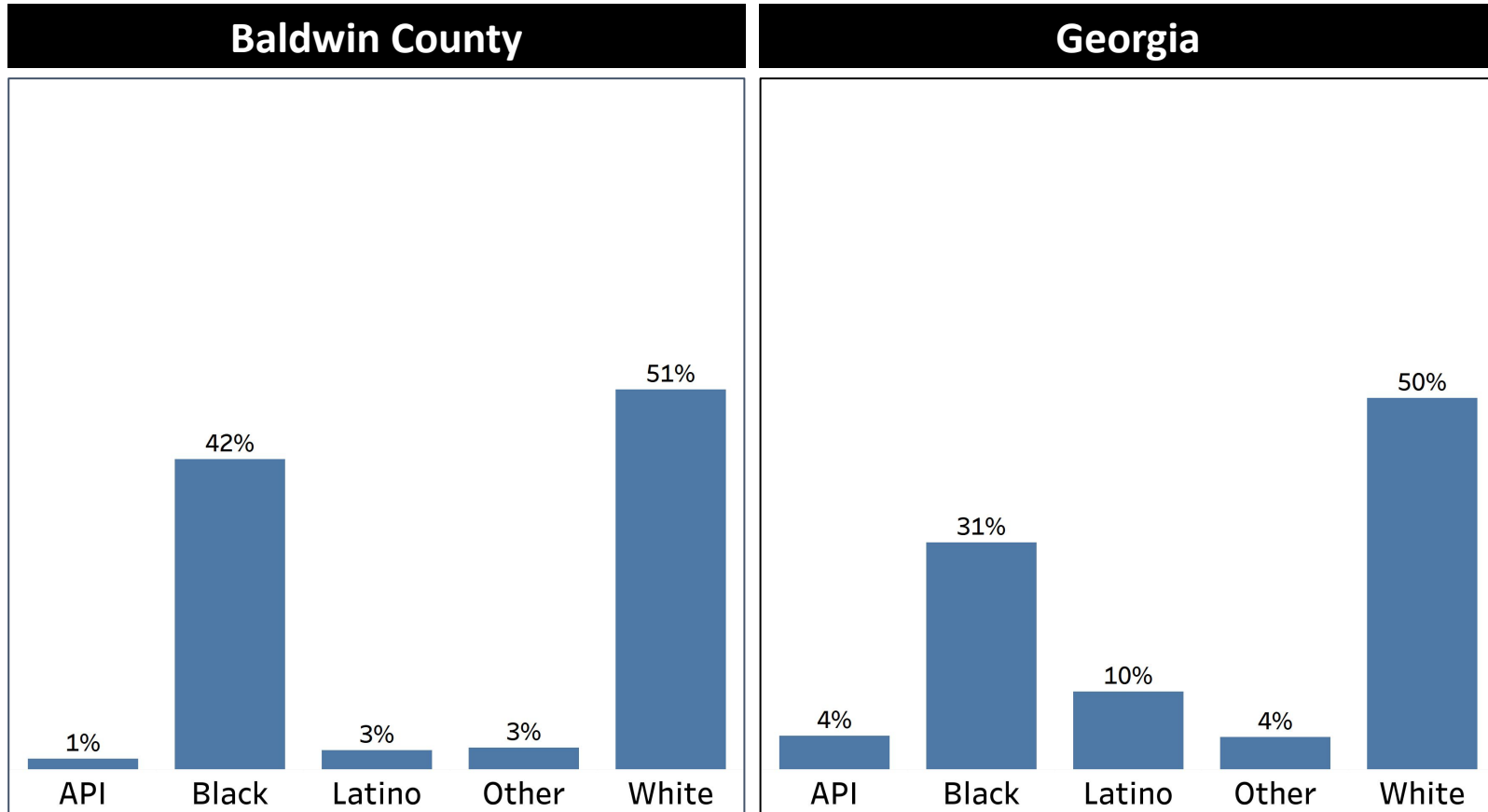


- Despite having population growth since 1930, Baldwin County experienced a decline in population between 2010-2020



Demographics

Comparison between Baldwin County and Georgia



- Baldwin County has a slightly higher Black population when compared to the statewide average
- Latinos and APIs makeup less than 5% of the share of population in Baldwin county

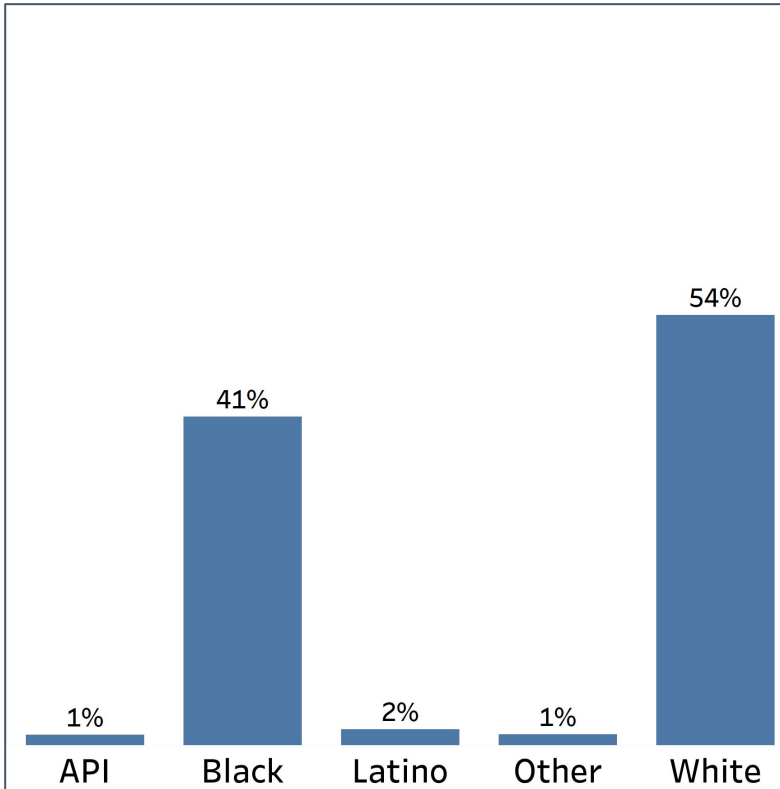


Demographics

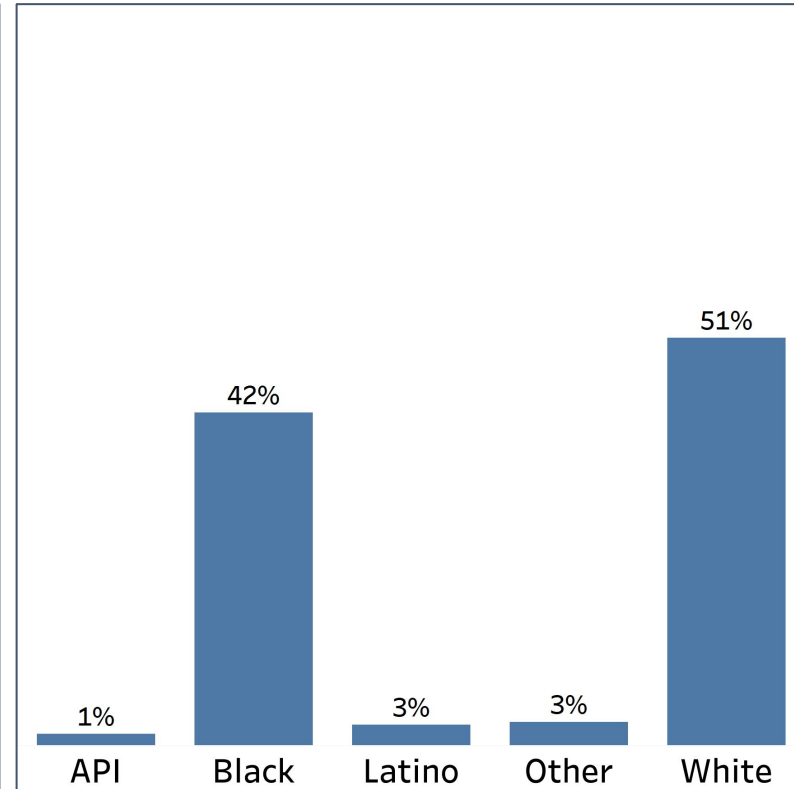
2010 vs 2020 Demographics in Baldwin County



Baldwin County 2010



Baldwin County 2020



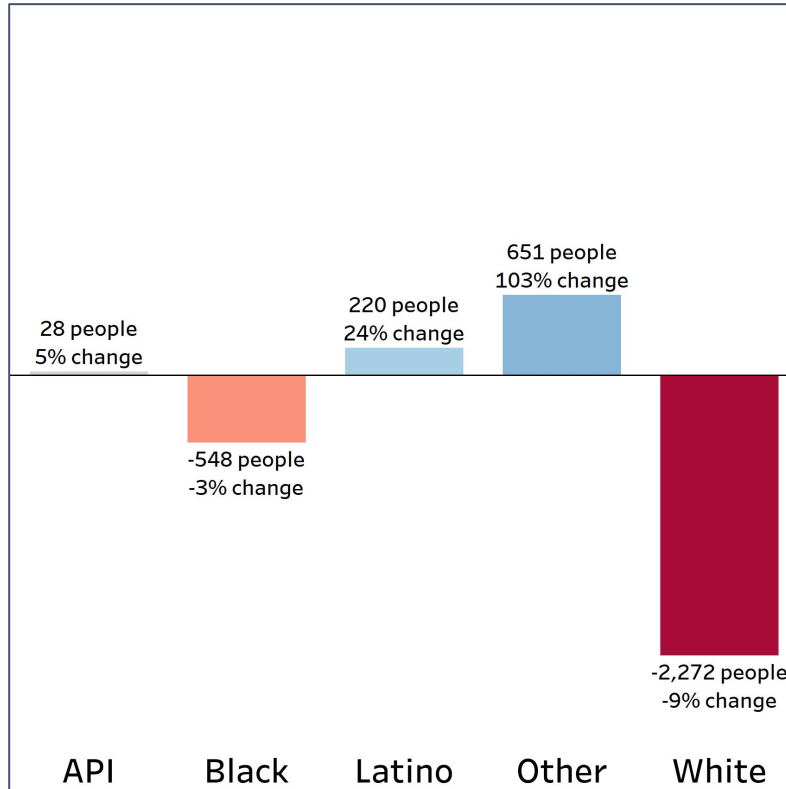
- Baldwin county's 2020 demographic reflects the 2010 census with Black and Latino population increasing by 1% over the decade
- The percentage of Baldwin county's White population has decreased by 3% since 2010

Demographics

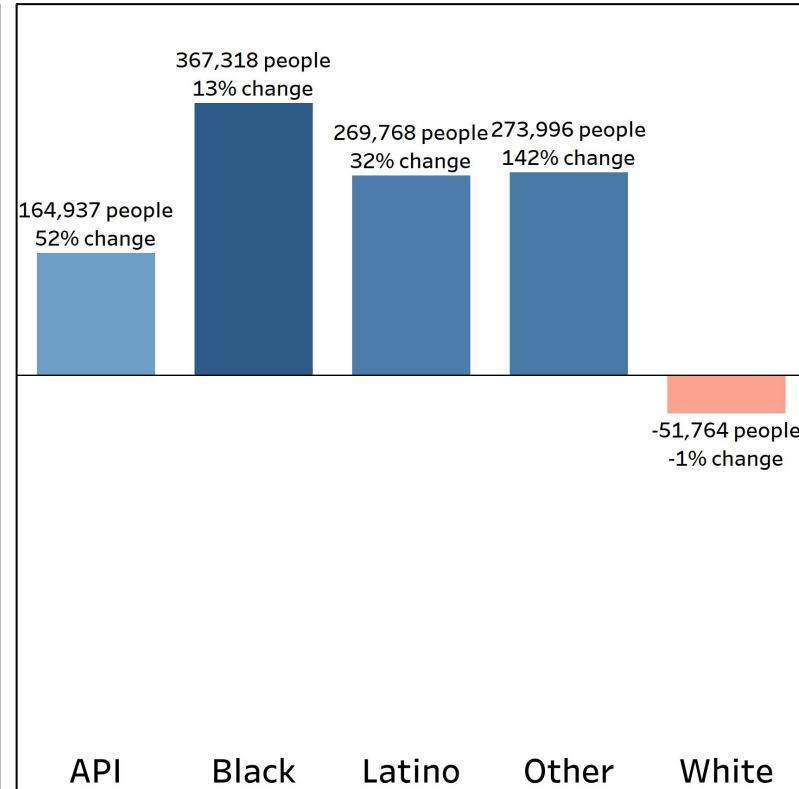
Population Change by Race (2020 - 2010)



Baldwin County



Georgia



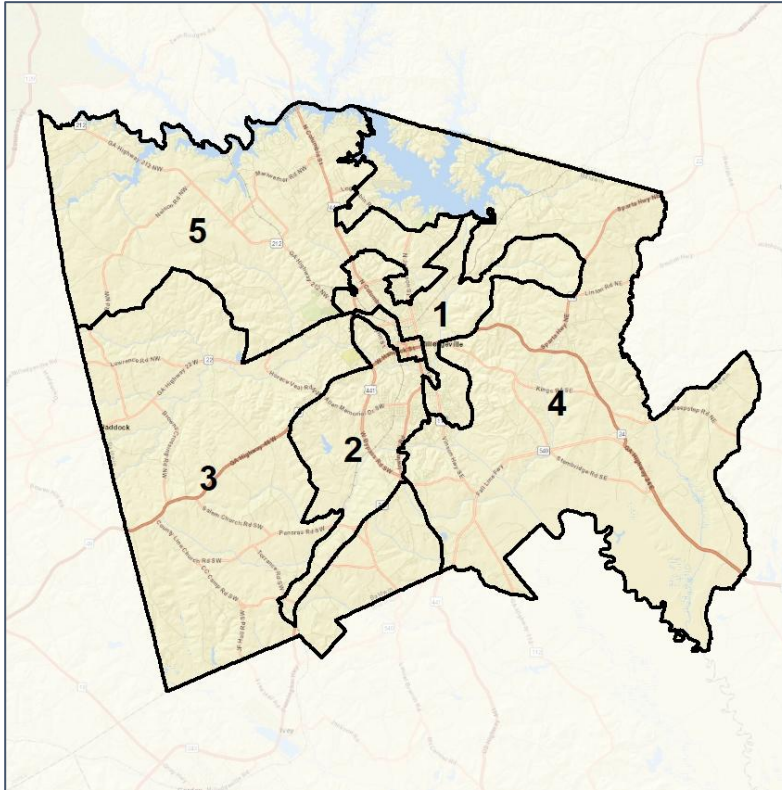
- Baldwin County is experiencing population loss in both Black and White communities
- Baldwin county's White population is declining at a faster rate relative to Georgia's statewide white population

Baldwin Co. Commission & School Board

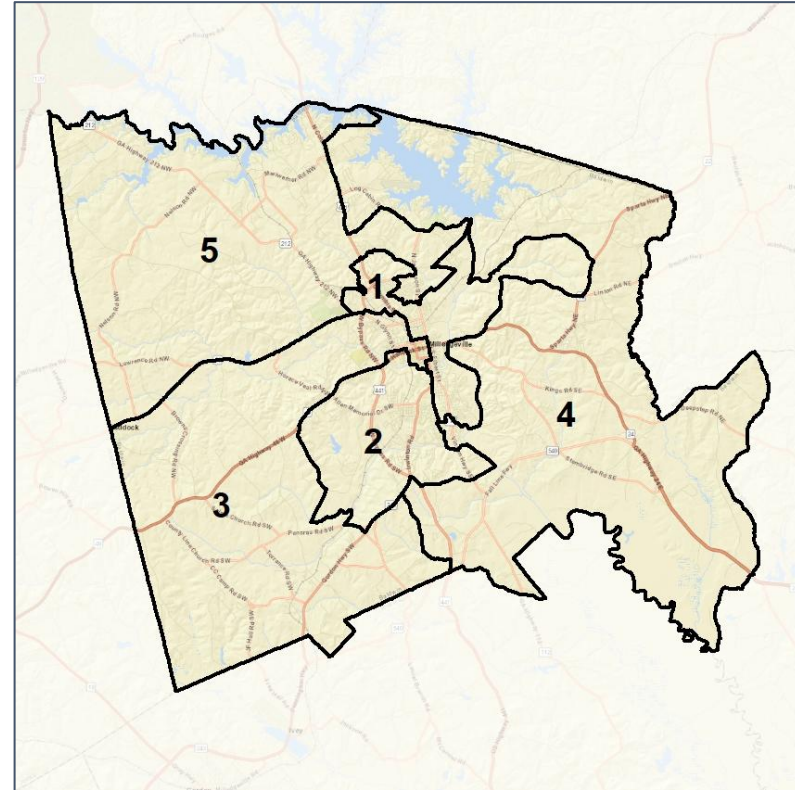
Context



2012 Map



2022 Map*



	1	2	3	4	5	1*	2*	3*	4*	5*	County
Population	8,419	7,899	8,285	9,890	9,295	8,748	8,759	8,798	8,748	8,746	43,799
API	2%	0%	1%	1%	3%	2%	0%	1%	2%	3%	1%
Black	62%	61%	23%	37%	29%	61%	63%	26%	29%	30%	42%
Latino	4%	2%	3%	1%	3%	4%	2%	3%	2%	3%	3%
Other	3%	3%	3%	2%	3%	3%	3%	3%	3%	3%	3%
White	30%	33%	70%	58%	62%	30%	33%	67%	65%	62%	51%
Population Gain	*	*	*	*	*	329	860	513	-1,142	-549	*
Population % Gain	*	*	*	*	*	4%	11%	6%	-12%	-6%	*
Net POC Gain	*	*	*	*	*	188	615	381	-1,030	-150	*
Net POC % Gain	*	*	*	*	*	3%	12%	15%	-25%	-4%	*

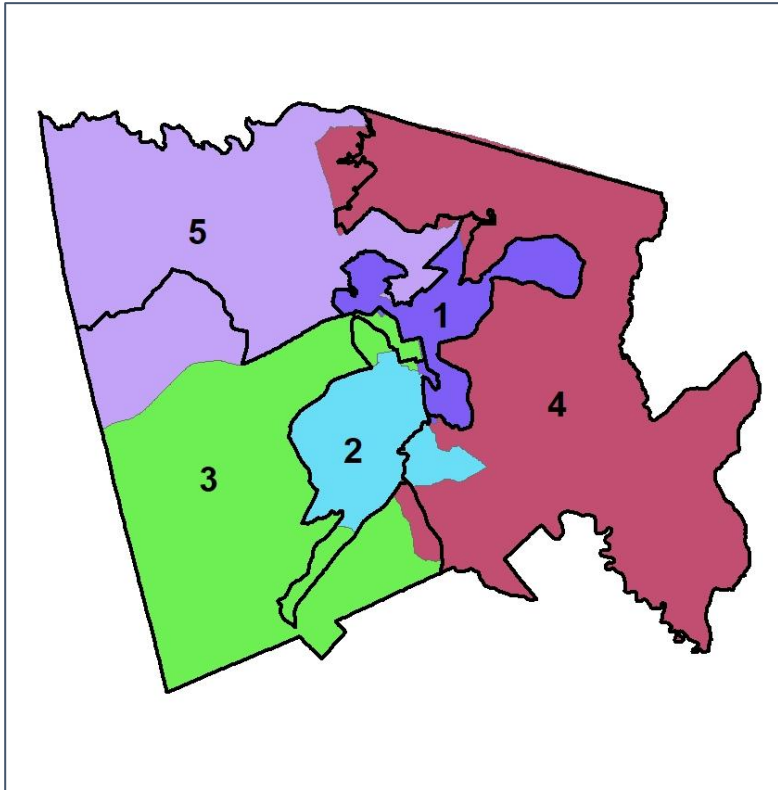


Baldwin Co. Commission & School Board

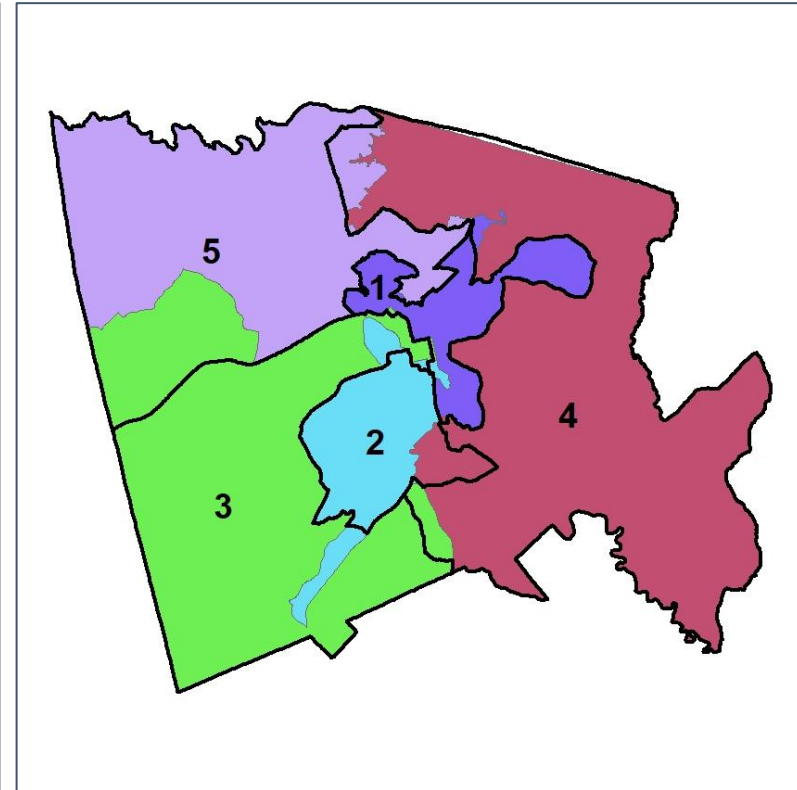
Changes in Redistricting



2012 Map (2022 in Colors)



2022 Map* (2012 Map in Colors)



	1	2	3	4	5	1*	2*	3*	4*	5*	County
Population	8,419	7,899	8,285	9,890	9,295	8,748	8,759	8,798	8,748	8,746	43,799
API	2%	0%	1%	1%	3%	2%	0%	1%	2%	3%	1%
Black	62%	61%	23%	37%	29%	61%	63%	26%	29%	30%	42%
Latino	4%	2%	3%	1%	3%	4%	2%	3%	2%	3%	3%
Other	3%	3%	3%	2%	3%	3%	3%	3%	3%	3%	3%
White	30%	33%	70%	58%	62%	30%	33%	67%	65%	62%	51%
Population Gain	*	*	*	*	*	329	860	513	-1,142	-549	*
Population % Gain	*	*	*	*	*	4%	11%	6%	-12%	-6%	*
Net POC Gain	*	*	*	*	*	188	615	381	-1,030	-150	*
Net POC % Gain	*	*	*	*	*	3%	12%	15%	-25%	-4%	*

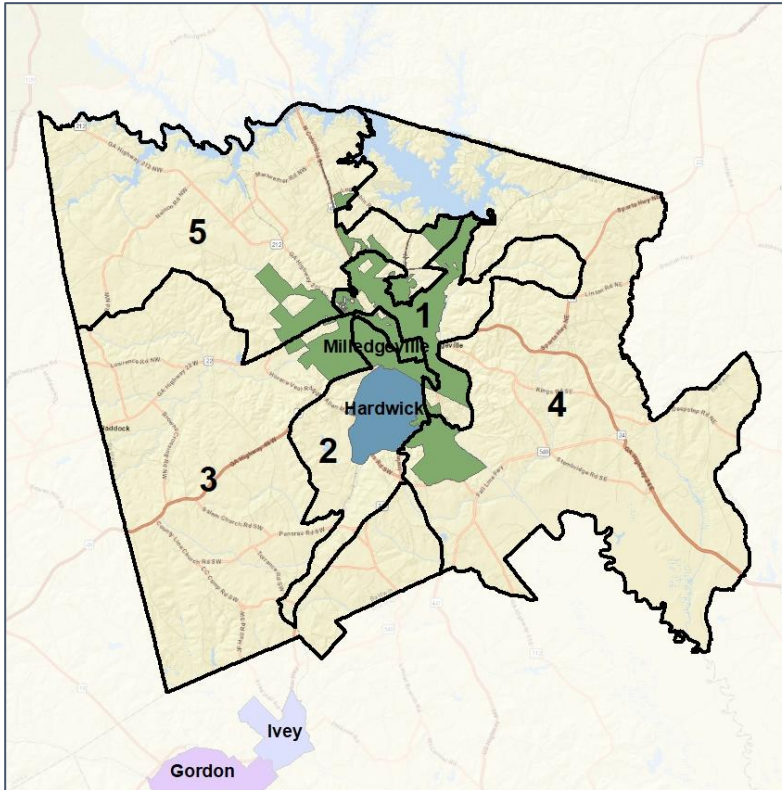


Baldwin Co. Commission & School Board

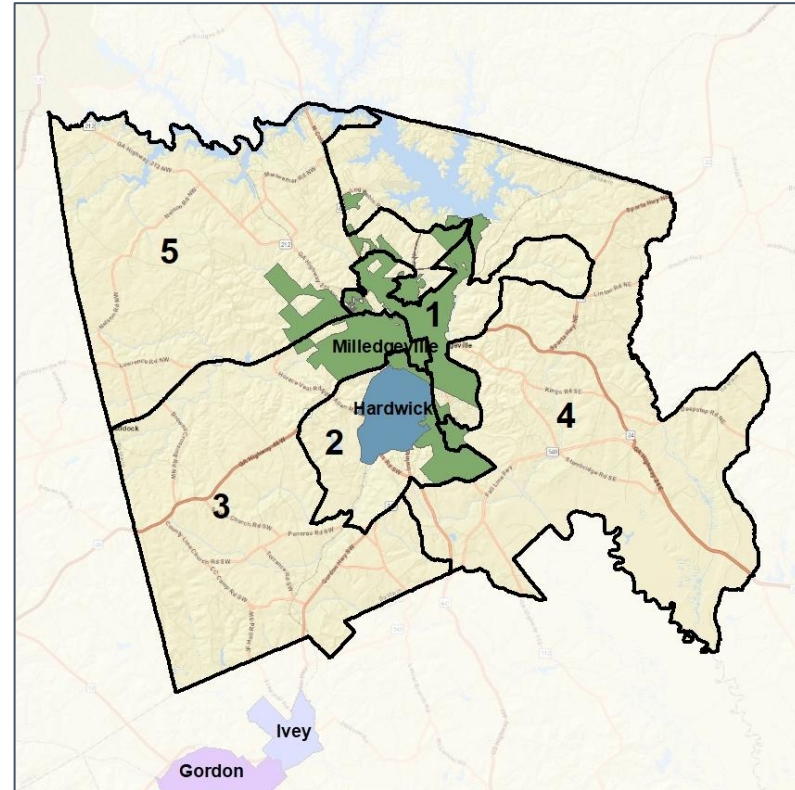
Cities and Places



2012 Map



2022 Map*



	1	2	3	4	5	1*	2*	3*	4*	5*	County
Population	8,419	7,899	8,285	9,890	9,295	8,748	8,759	8,798	8,748	8,746	43,799
API	2%	0%	1%	1%	3%	2%	0%	1%	2%	3%	1%
Black	62%	61%	23%	37%	29%	61%	63%	26%	29%	30%	42%
Latino	4%	2%	3%	1%	3%	4%	2%	3%	2%	3%	3%
Other	3%	3%	3%	2%	3%	3%	3%	3%	3%	3%	3%
White	30%	33%	70%	58%	62%	30%	33%	67%	65%	62%	51%
Population Gain	*	*	*	*	*	329	860	513	-1,142	-549	*
Population % Gain	*	*	*	*	*	4%	11%	6%	-12%	-6%	*
Net POC Gain	*	*	*	*	*	188	615	381	-1,030	-150	*
Net POC % Gain	*	*	*	*	*	3%	12%	15%	-25%	-4%	*

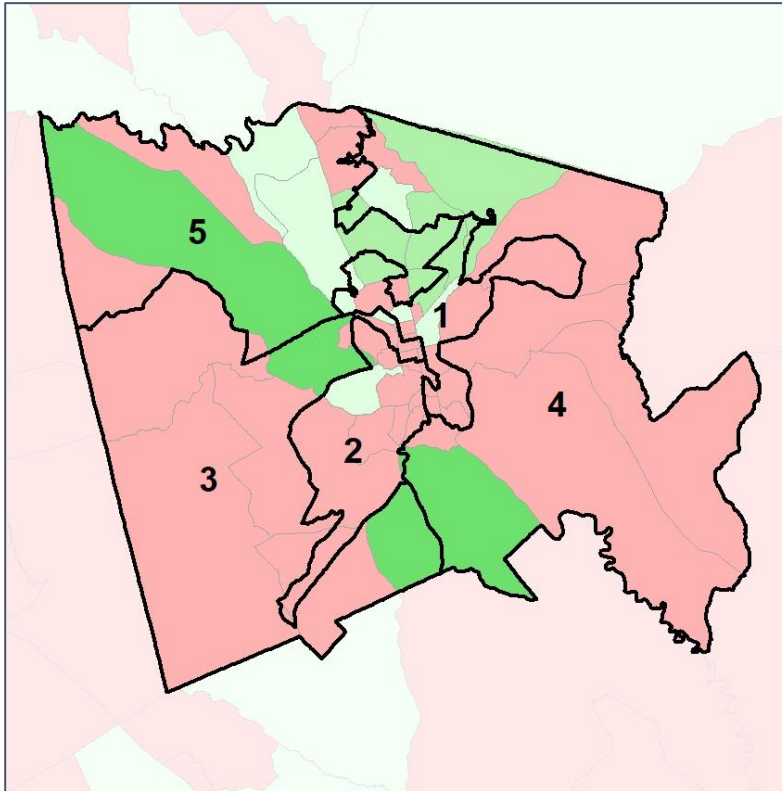


Baldwin Co. Commission & School Board

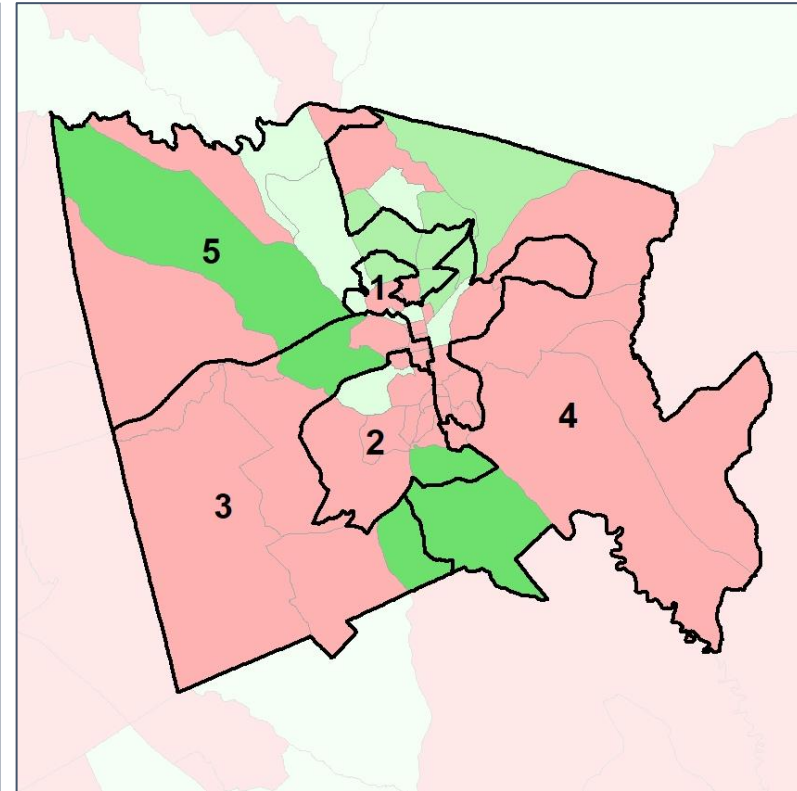
Net Gain in Population (2010 - 2020)



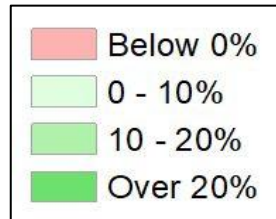
2012 Map



2022 Map*



	1	2	3	4	5	1*	2*	3*	4*	5*	County
Population	8,419	7,899	8,285	9,890	9,295	8,748	8,759	8,798	8,748	8,746	43,799
API	2%	0%	1%	1%	3%	2%	0%	1%	2%	3%	1%
Black	62%	61%	23%	37%	29%	61%	63%	26%	29%	30%	42%
Latino	4%	2%	3%	1%	3%	4%	2%	3%	2%	3%	3%
Other	3%	3%	3%	2%	3%	3%	3%	3%	3%	3%	3%
White	30%	33%	70%	58%	62%	30%	33%	67%	65%	62%	51%
Population Gain	*	*	*	*	*	329	860	513	-1,142	-549	*
Population % Gain	*	*	*	*	*	4%	11%	6%	-12%	-6%	*
Net POC Gain	*	*	*	*	*	188	615	381	-1,030	-150	*
Net POC % Gain	*	*	*	*	*	3%	12%	15%	-25%	-4%	*

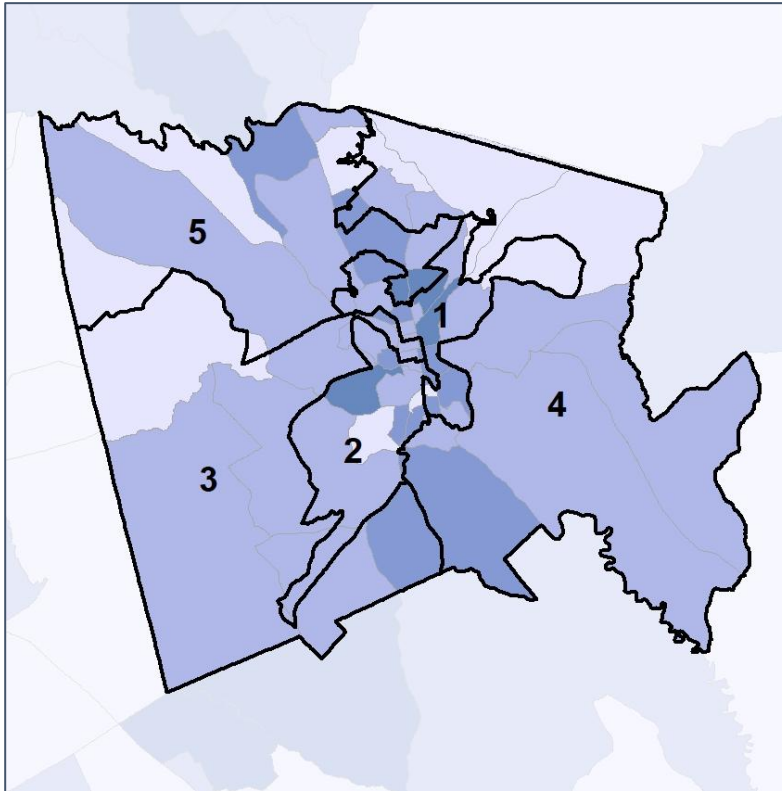


Baldwin Co. Commission & School Board

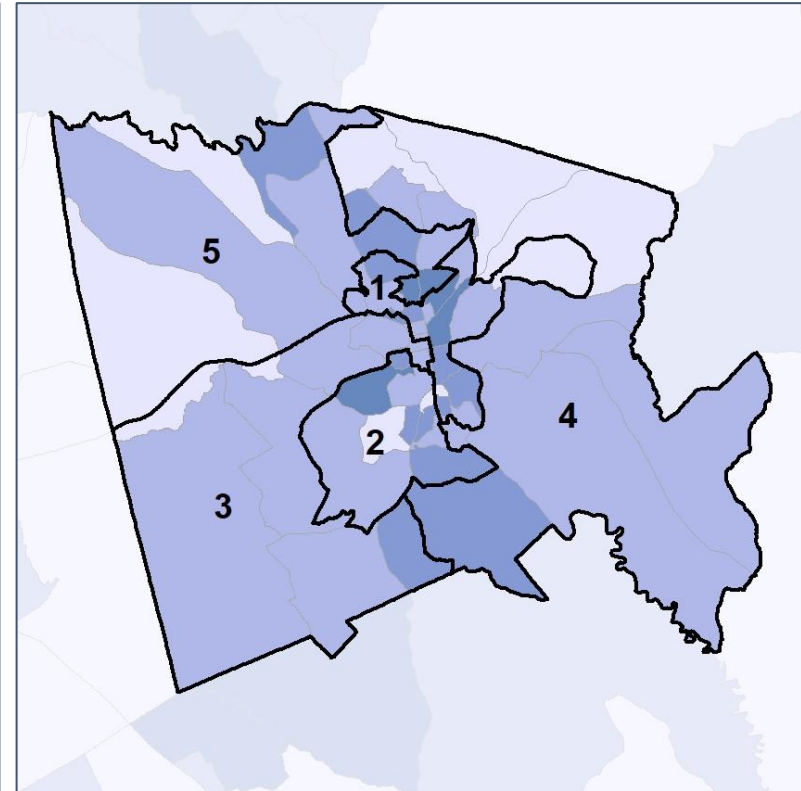
Net Gain in % POC (2020 - 2010) by Census Block Group



2012 Map



2022 Map*



	1	2	3	4	5	1*	2*	3*	4*	5*	County
Population	8,419	7,899	8,285	9,890	9,295	8,748	8,759	8,798	8,748	8,746	43,799
API	2%	0%	1%	1%	3%	2%	0%	1%	2%	3%	1%
Black	62%	61%	23%	37%	29%	61%	63%	26%	29%	30%	42%
Latino	4%	2%	3%	1%	3%	4%	2%	3%	2%	3%	3%
Other	3%	3%	3%	2%	3%	3%	3%	3%	3%	3%	3%
White	30%	33%	70%	58%	62%	30%	33%	67%	65%	62%	51%
Population Gain	*	*	*	*	*	329	860	513	-1,142	-549	*
Population % Gain	*	*	*	*	*	4%	11%	6%	-12%	-6%	*
Net POC Gain	*	*	*	*	*	188	615	381	-1,030	-150	*
Net POC % Gain	*	*	*	*	*	3%	12%	15%	-25%	-4%	*

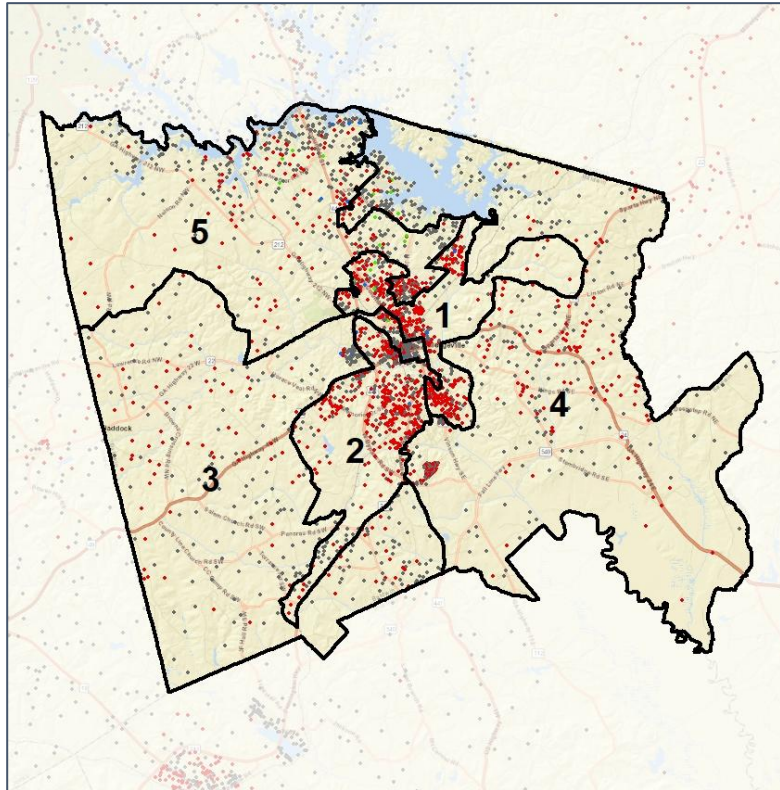


Baldwin Co. Commission & School Board

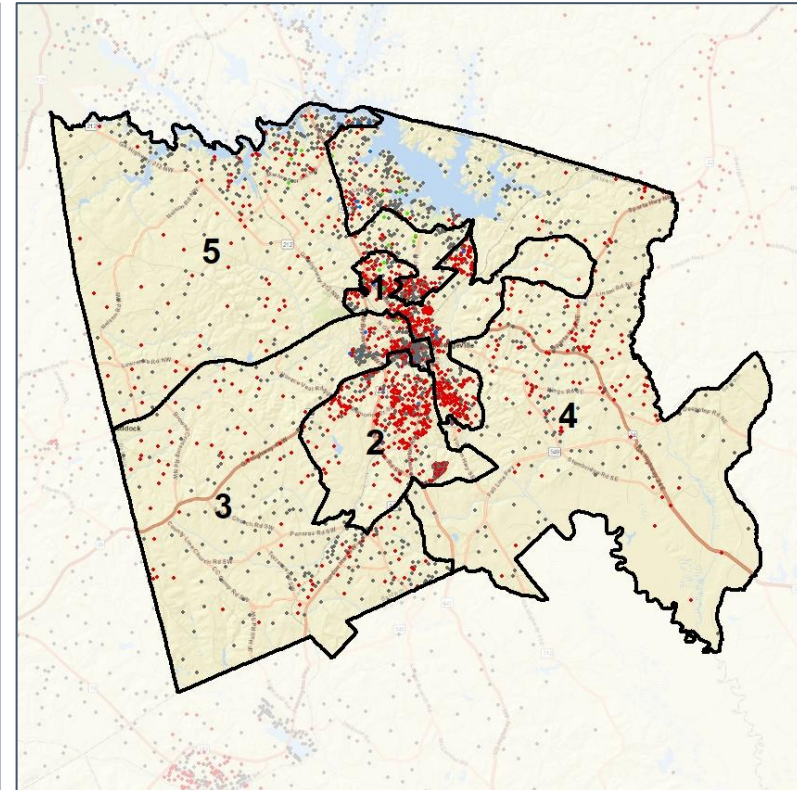
Population Density by Race



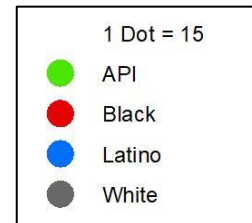
2012 Map



2022 Map*



	1	2	3	4	5	1*	2*	3*	4*	5*	County
Population	8,419	7,899	8,285	9,890	9,295	8,748	8,759	8,798	8,748	8,746	43,799
API	165	31	80	106	244	154	32	82	138	220	626
% API	2%	0%	1%	1%	3%	2%	0%	1%	2%	3%	1%
Black	5,197	4,832	1,924	3,650	2,714	5,371	5,478	2,311	2,524	2,634	18,318
% Black	62%	61%	23%	37%	29%	61%	63%	26%	29%	30%	42%
Latino	302	173	242	133	288	318	178	234	154	255	1,139
% Latino	4%	2%	3%	1%	3%	4%	2%	3%	2%	3%	3%
Other	267	259	275	230	251	276	222	275	273	238	1,284
% Other	3%	3%	3%	2%	3%	3%	3%	3%	3%	3%	3%
White	2,488	2,604	5,764	5,771	5,798	2,629	2,849	5,896	5,659	5,399	22,432
% White	30%	33%	70%	58%	62%	30%	33%	67%	65%	62%	51%



Source:
2020 Decennial Census
2020 ACS 5-Year Dataset

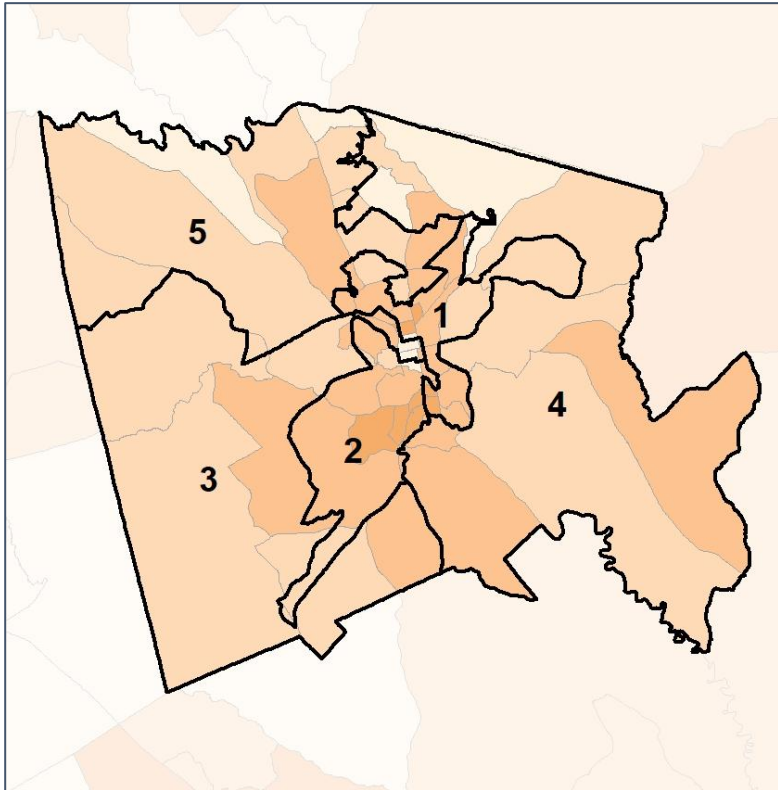


Baldwin Co. Commission & School Board

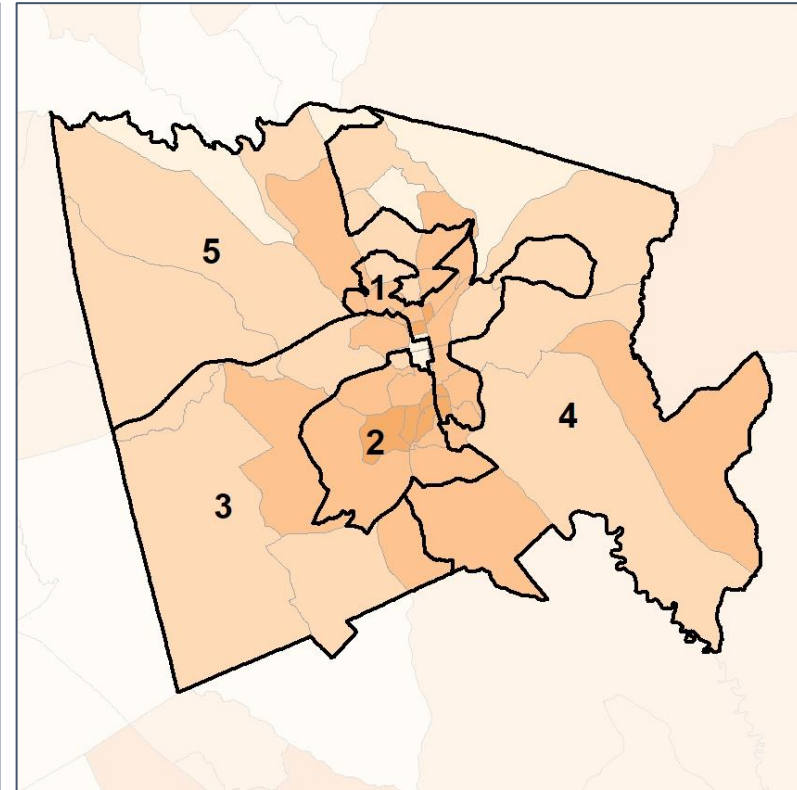
% People of Color by Census Block Group



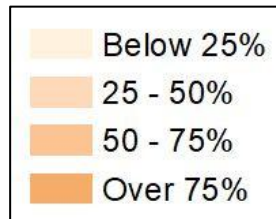
2012 Map



2022 Map*



	1	2	3	4	5	1*	2*	3*	4*	5*	County
Population	8,419	7,899	8,285	9,890	9,295	8,748	8,759	8,798	8,748	8,746	43,799
API	165	31	80	106	244	154	32	82	138	220	626
% API	2%	0%	1%	1%	3%	2%	0%	1%	2%	3%	1%
Black	5,197	4,832	1,924	3,650	2,714	5,371	5,478	2,311	2,524	2,634	18,318
% Black	62%	61%	23%	37%	29%	61%	63%	26%	29%	30%	42%
Latino	302	173	242	133	288	318	178	234	154	255	1,139
% Latino	4%	2%	3%	1%	3%	4%	2%	3%	2%	3%	3%
Other	267	259	275	230	251	276	222	275	273	238	1,284
% Other	3%	3%	3%	2%	3%	3%	3%	3%	3%	3%	3%
White	2,488	2,604	5,764	5,771	5,798	2,629	2,849	5,896	5,659	5,399	22,432
% White	30%	33%	70%	58%	62%	30%	33%	67%	65%	62%	51%



Source:
2020 Decennial Census
2020 ACS 5-Year Dataset

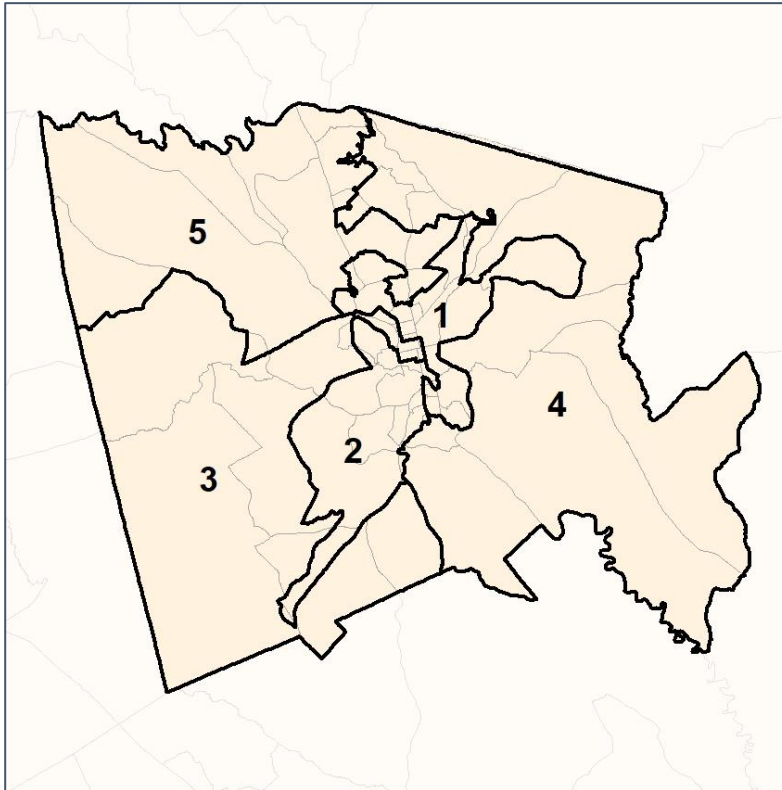


Baldwin Co. Commission & School Board

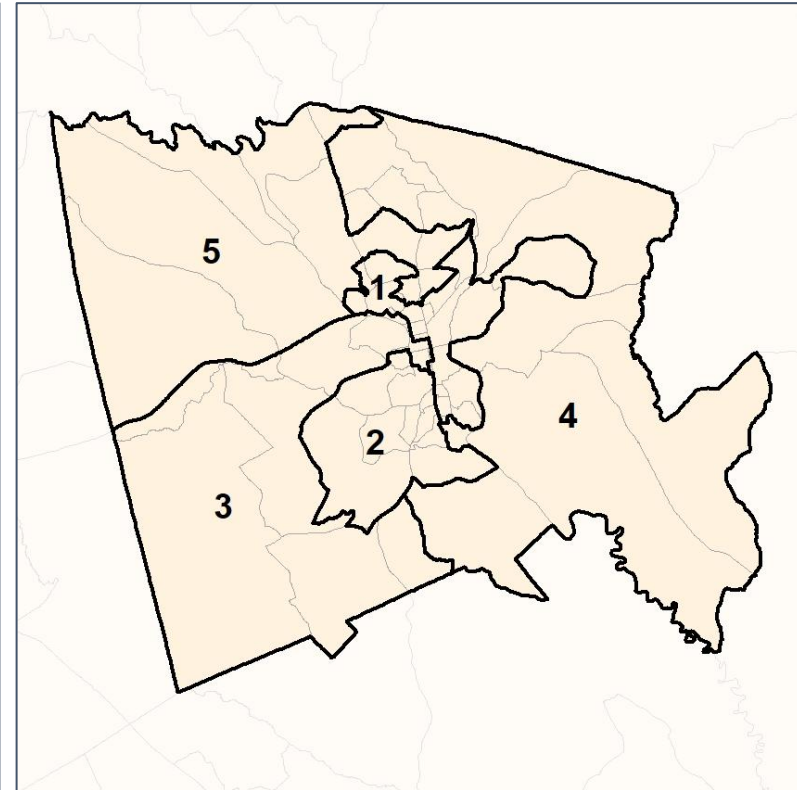
% API by Census Block Group



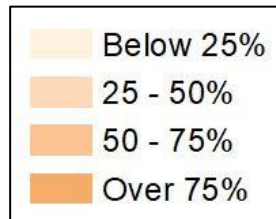
2012 Map



2022 Map*



	1	2	3	4	5	1*	2*	3*	4*	5*	County
Population	8,419	7,899	8,285	9,890	9,295	8,748	8,759	8,798	8,748	8,746	43,799
API	165	31	80	106	244	154	32	82	138	220	626
% API	2%	0%	1%	1%	3%	2%	0%	1%	2%	3%	1%
Black	5,197	4,832	1,924	3,650	2,714	5,371	5,478	2,311	2,524	2,634	18,318
% Black	62%	61%	23%	37%	29%	61%	63%	26%	29%	30%	42%
Latino	302	173	242	133	288	318	178	234	154	255	1,139
% Latino	4%	2%	3%	1%	3%	4%	2%	3%	2%	3%	3%
Other	267	259	275	230	251	276	222	275	273	238	1,284
% Other	3%	3%	3%	2%	3%	3%	3%	3%	3%	3%	3%
White	2,488	2,604	5,764	5,771	5,798	2,629	2,849	5,896	5,659	5,399	22,432
% White	30%	33%	70%	58%	62%	30%	33%	67%	65%	62%	51%

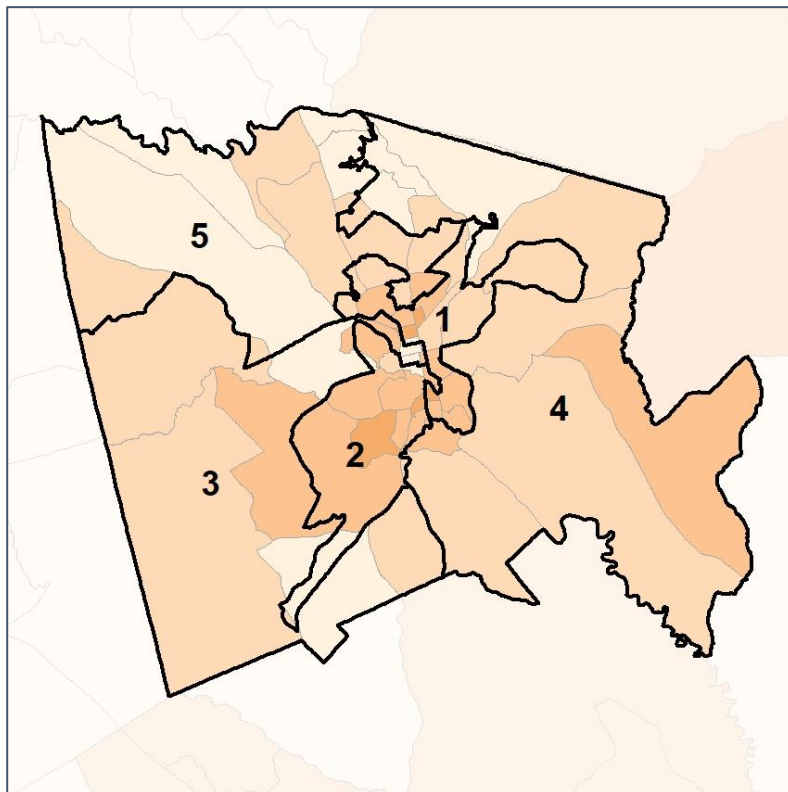


Baldwin Co. Commission & School Board

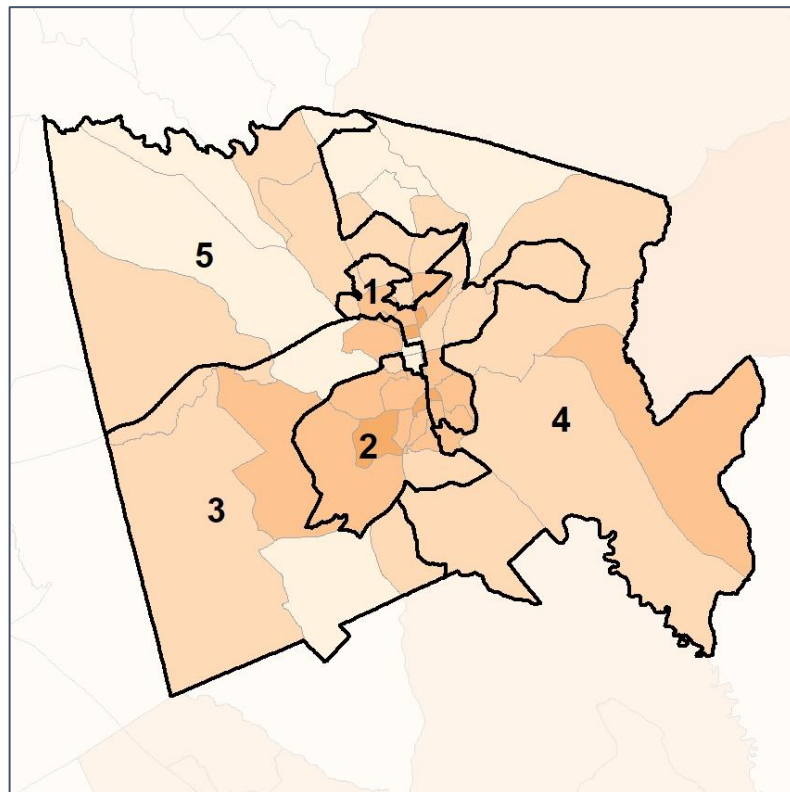
% Black by Census Block Group



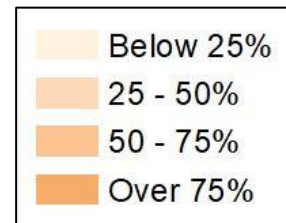
2012 Map



2022 Map*



	1	2	3	4	5	1*	2*	3*	4*	5*	County
Population	8,419	7,899	8,285	9,890	9,295	8,748	8,759	8,798	8,748	8,746	43,799
API	165	31	80	106	244	154	32	82	138	220	626
% API	2%	0%	1%	1%	3%	2%	0%	1%	2%	3%	1%
Black	5,197	4,832	1,924	3,650	2,714	5,371	5,478	2,311	2,524	2,634	18,318
% Black	62%	61%	23%	37%	29%	61%	63%	26%	29%	30%	42%
Latino	302	173	242	133	288	318	178	234	154	255	1,139
% Latino	4%	2%	3%	1%	3%	4%	2%	3%	2%	3%	3%
Other	267	259	275	230	251	276	222	275	273	238	1,284
% Other	3%	3%	3%	2%	3%	3%	3%	3%	3%	3%	3%
White	2,488	2,604	5,764	5,771	5,798	2,629	2,849	5,896	5,659	5,399	22,432
% White	30%	33%	70%	58%	62%	30%	33%	67%	65%	62%	51%



Source:
2020 Decennial Census
2020 ACS 5-Year Dataset

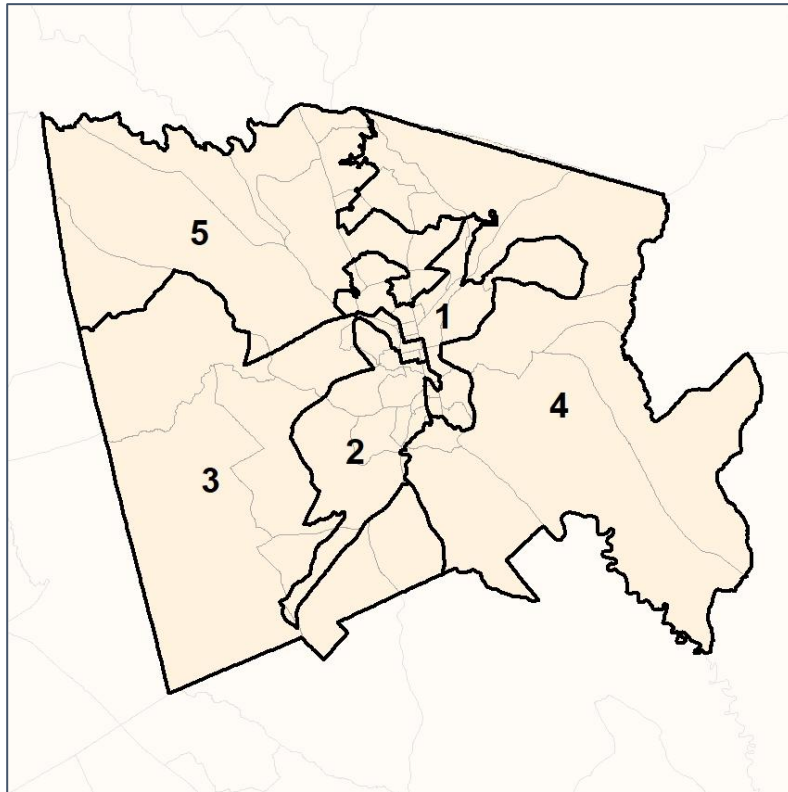


Baldwin Co. Commission & School Board

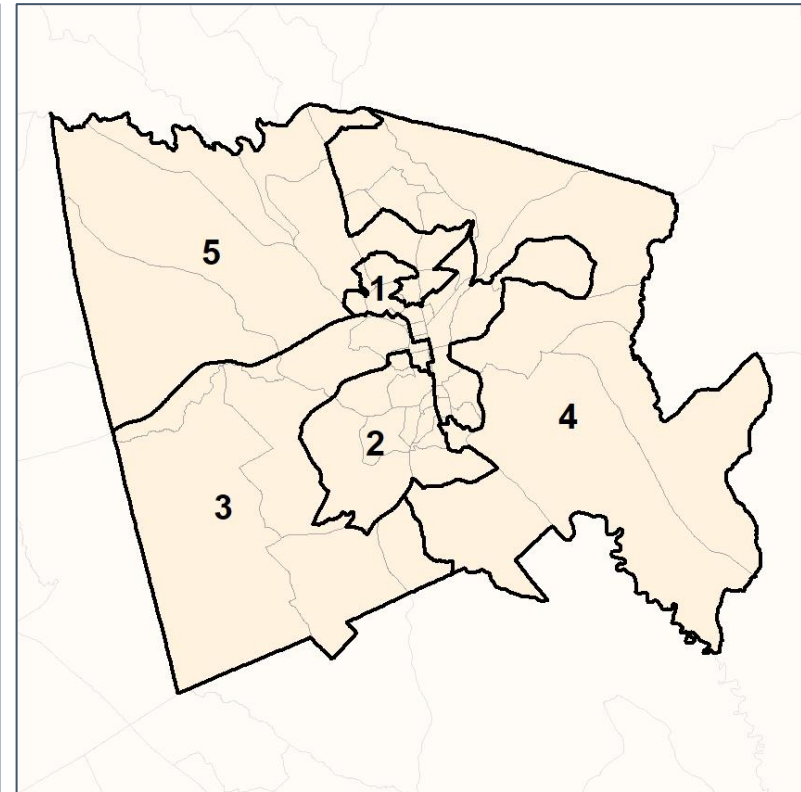
% Latino by Census Block Group



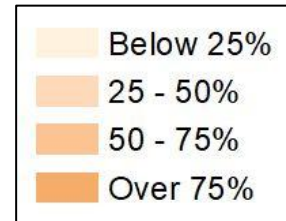
2012 Map



2022 Map*



	1	2	3	4	5	1*	2*	3*	4*	5*	County
Population	8,419	7,899	8,285	9,890	9,295	8,748	8,759	8,798	8,748	8,746	43,799
API	165	31	80	106	244	154	32	82	138	220	626
% API	2%	0%	1%	1%	3%	2%	0%	1%	2%	3%	1%
Black	5,197	4,832	1,924	3,650	2,714	5,371	5,478	2,311	2,524	2,634	18,318
% Black	62%	61%	23%	37%	29%	61%	63%	26%	29%	30%	42%
Latino	302	173	242	133	288	318	178	234	154	255	1,139
% Latino	4%	2%	3%	1%	3%	4%	2%	3%	2%	3%	3%
Other	267	259	275	230	251	276	222	275	273	238	1,284
% Other	3%	3%	3%	2%	3%	3%	3%	3%	3%	3%	3%
White	2,488	2,604	5,764	5,771	5,798	2,629	2,849	5,896	5,659	5,399	22,432
% White	30%	33%	70%	58%	62%	30%	33%	67%	65%	62%	51%

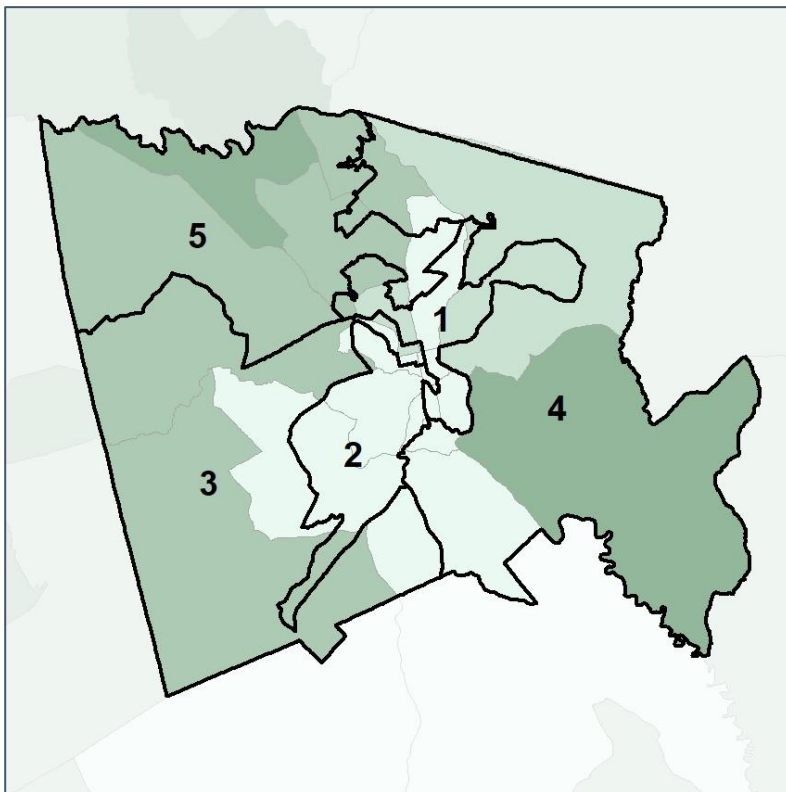


Baldwin Co. Commission & School Board

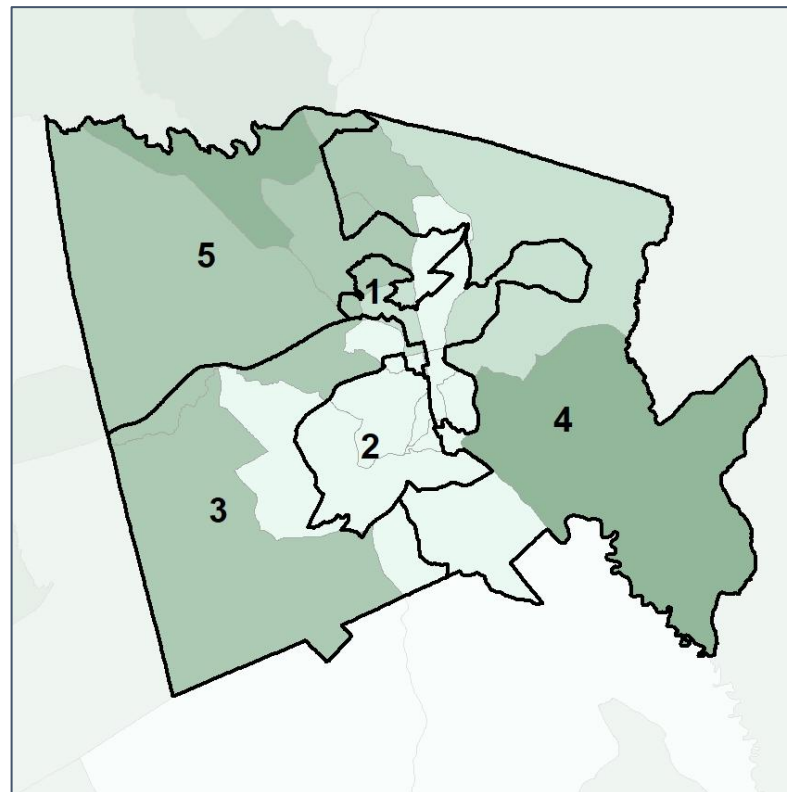
Median Household Income by Census Tract



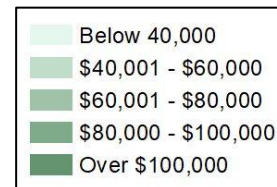
2012 Map



2022 Map*



	1	2	3	4	5	1*	2*	3*	4*	5*	County
Population	8,419	7,899	8,285	9,890	9,295	8,748	8,759	8,798	8,748	8,746	43,799
% API	2%	0%	1%	1%	3%	2%	0%	1%	2%	3%	1%
% Black	62%	61%	23%	37%	29%	61%	63%	26%	29%	30%	42%
% Latino	4%	2%	3%	1%	3%	4%	2%	3%	2%	3%	3%
% Other	3%	3%	3%	2%	3%	3%	3%	3%	3%	3%	3%
% White	30%	33%	70%	58%	62%	30%	33%	67%	65%	62%	51%
Median Income	\$36,000	\$29,000	\$42,000	\$72,000	\$69,000	\$36,000	\$29,000	\$39,000	\$71,000	\$69,000	\$46,000
% Renter	60%	59%	38%	22%	36%	60%	58%	46%	26%	33%	41%
% Youth	36%	35%	43%	20%	25%	36%	35%	46%	21%	25%	30%

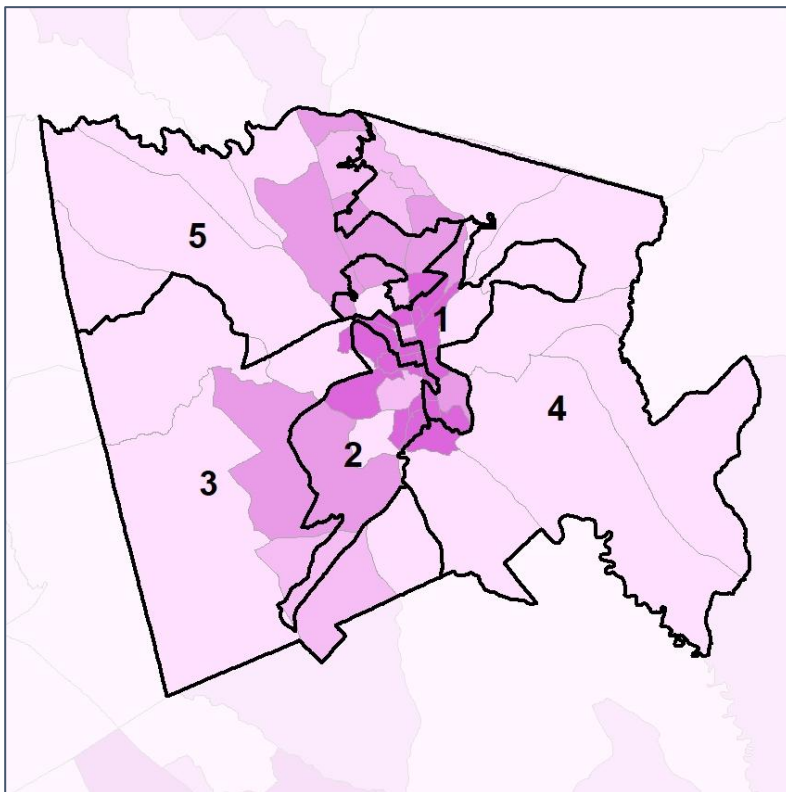


Baldwin Co. Commission & School Board

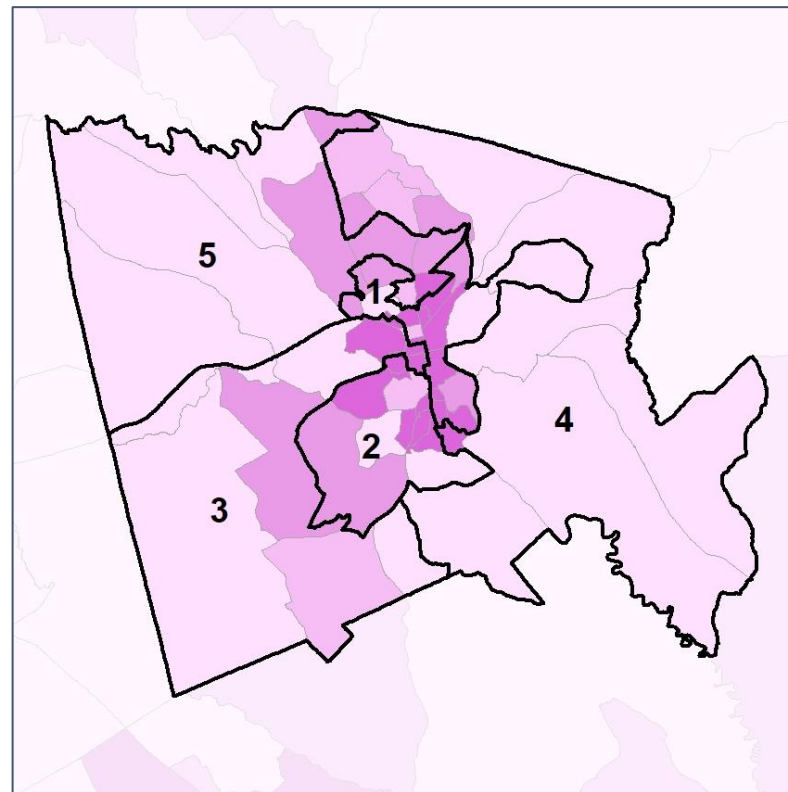
% Renter by Census Block Group



2012 Map



2022 Map*



	1	2	3	4	5	1*	2*	3*	4*	5*	County
Population	8,419	7,899	8,285	9,890	9,295	8,748	8,759	8,798	8,748	8,746	43,799
% API	2%	0%	1%	1%	3%	2%	0%	1%	2%	3%	1%
% Black	62%	61%	23%	37%	29%	61%	63%	26%	29%	30%	42%
% Latino	4%	2%	3%	1%	3%	4%	2%	3%	2%	3%	3%
% Other	3%	3%	3%	2%	3%	3%	3%	3%	3%	3%	3%
% White	30%	33%	70%	58%	62%	30%	33%	67%	65%	62%	51%
Median Income	\$36,000	\$29,000	\$42,000	\$72,000	\$69,000	\$36,000	\$29,000	\$39,000	\$71,000	\$69,000	\$46,000
% Renter	60%	59%	38%	22%	36%	60%	58%	46%	26%	33%	41%
% Youth	36%	35%	43%	20%	25%	36%	35%	46%	21%	25%	30%

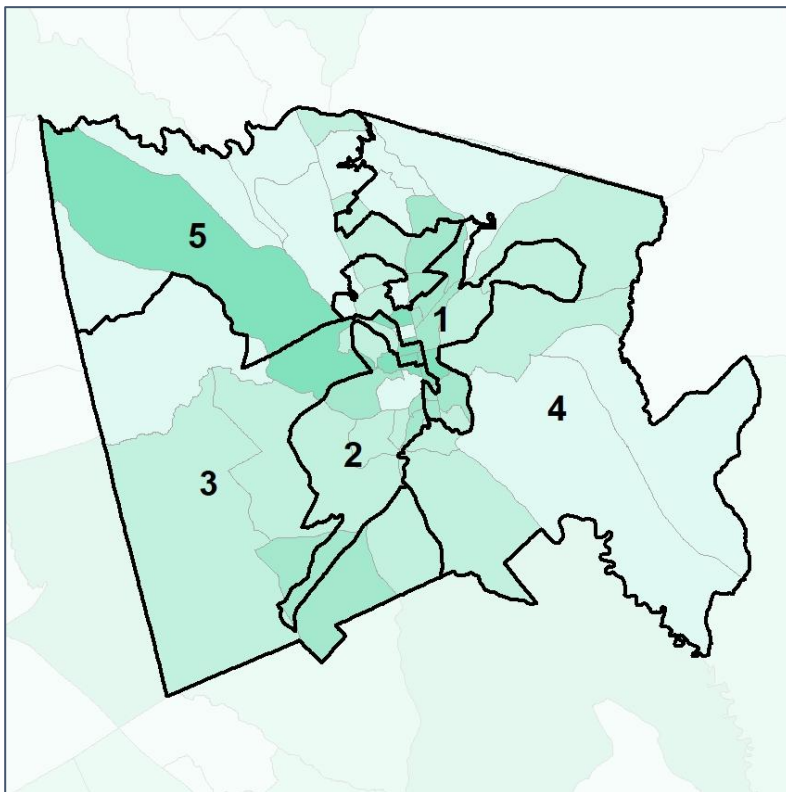


Baldwin Co. Commission & School Board

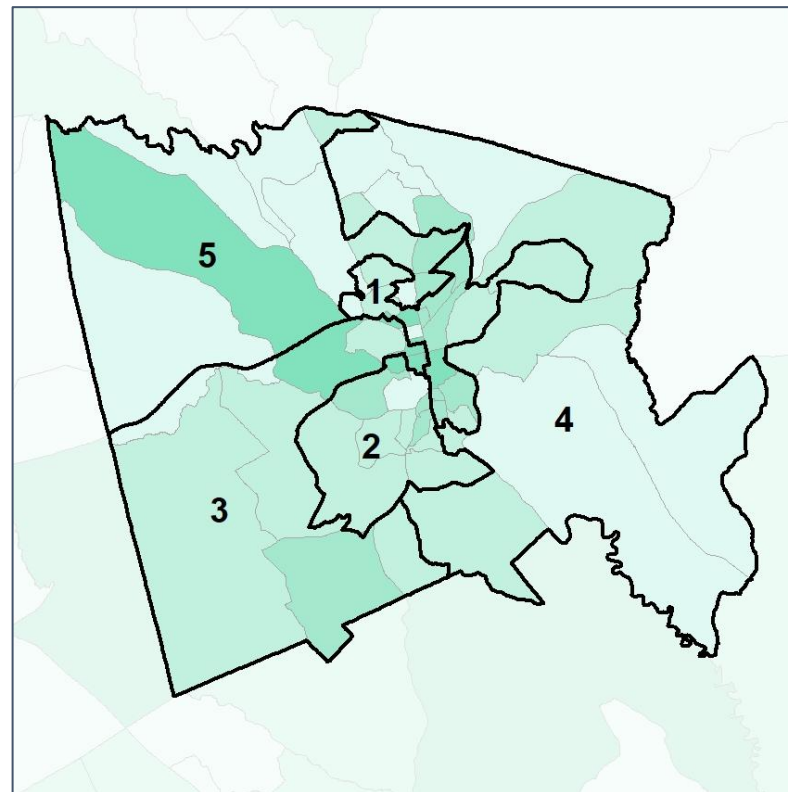
% Youth (18-34) by Census Block Group



2012 Map



2022 Map*



	1	2	3	4	5	1*	2*	3*	4*	5*	County
Population	8,419	7,899	8,285	9,890	9,295	8,748	8,759	8,798	8,748	8,746	43,799
% API	2%	0%	1%	1%	3%	2%	0%	1%	2%	3%	1%
% Black	62%	61%	23%	37%	29%	61%	63%	26%	29%	30%	42%
% Latino	4%	2%	3%	1%	3%	4%	2%	3%	2%	3%	3%
% Other	3%	3%	3%	2%	3%	3%	3%	3%	3%	3%	3%
% White	30%	33%	70%	58%	62%	30%	33%	67%	65%	62%	51%
Median Income	\$36,000	\$29,000	\$42,000	\$72,000	\$69,000	\$36,000	\$29,000	\$39,000	\$71,000	\$69,000	\$46,000
% Renter	60%	59%	38%	22%	36%	60%	58%	46%	26%	33%	41%
% Youth	36%	35%	43%	20%	25%	36%	35%	46%	21%	25%	30%

