



# Demographic Overview

## Racial Breakdown in Atkinson County

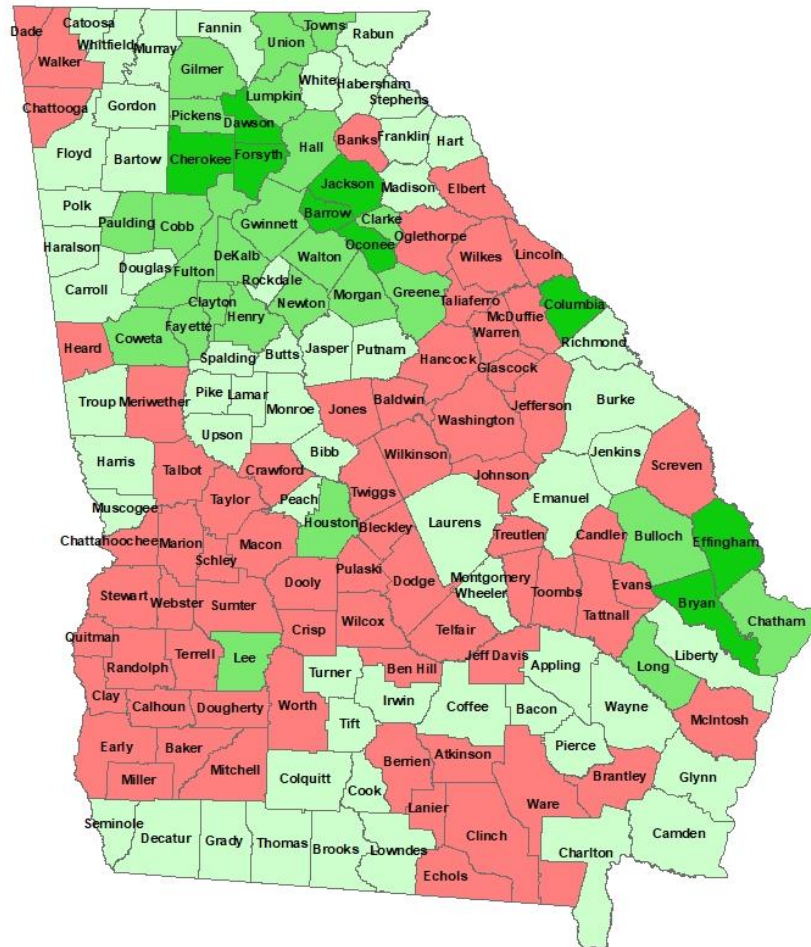
Atkinson County	2010	2020	% Change
Total Population	8,375	8,286	-1%
AAPI	31	16	-48%
Black	1,428	1,208	-15%
Latino	2,039	2,048	0%
Other/Mixed Race	101	213	111%
POC	3,599	3,485	-3%
White	4,776	4,801	1%

\*Note: The use of "Other" in these statistics combines those who identify as Native American, Mixed Race, and "Other" race



# Population Gain

## Change in Population in Georgia by County



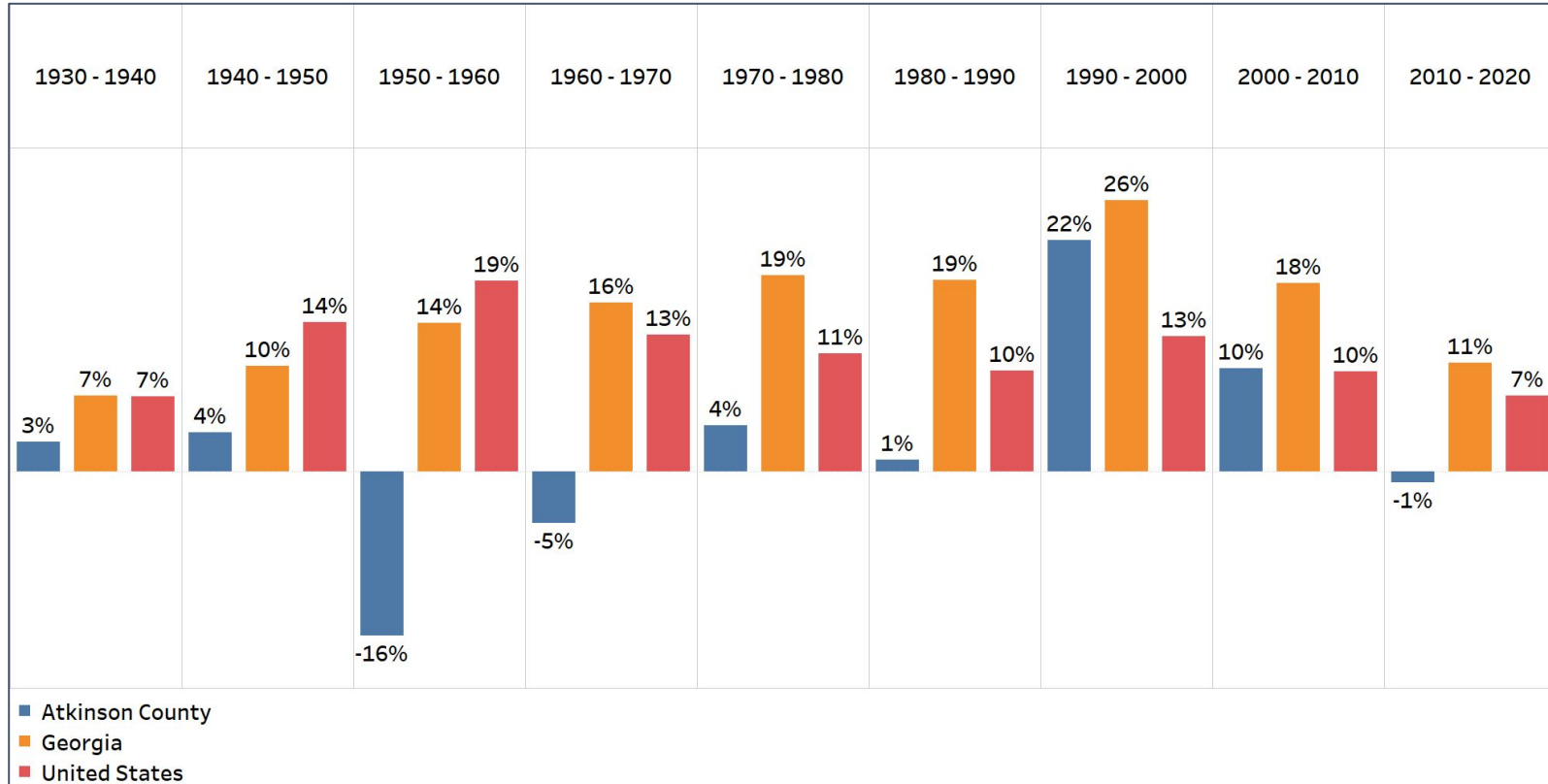
- Georgia is experiencing rapid population growth in the Atlanta, Augusta, and Savannah regions of the state





# Population Gain

## Change in Population by Decade



- Atkinson County has had major turbulence in population shifts in the past few decades, losing a good chunk of its population in 1950-1970, but then regaining much more from 1990-2010
- In the last decade, the population has remained steady, losing 1%, indicating another turn in population shift could occur

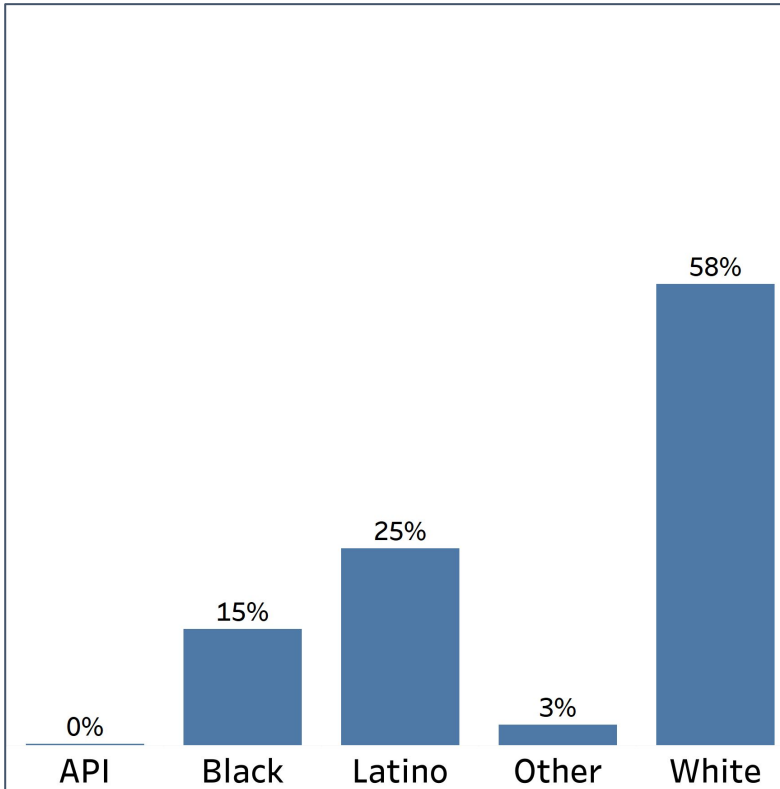


# Demographics

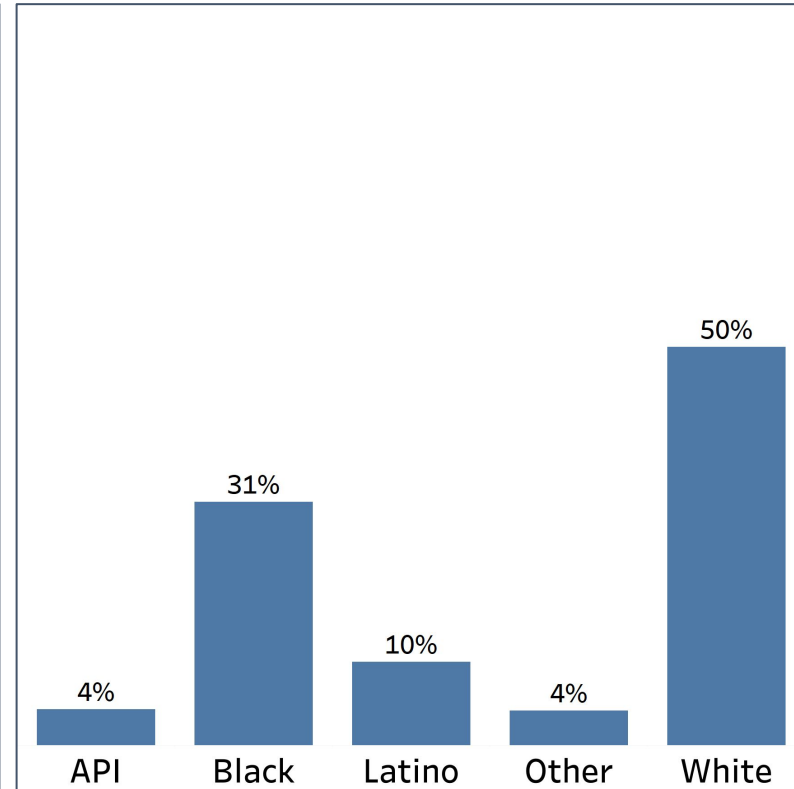
## Comparison between Atkinson County and Georgia



Atkinson County



Georgia



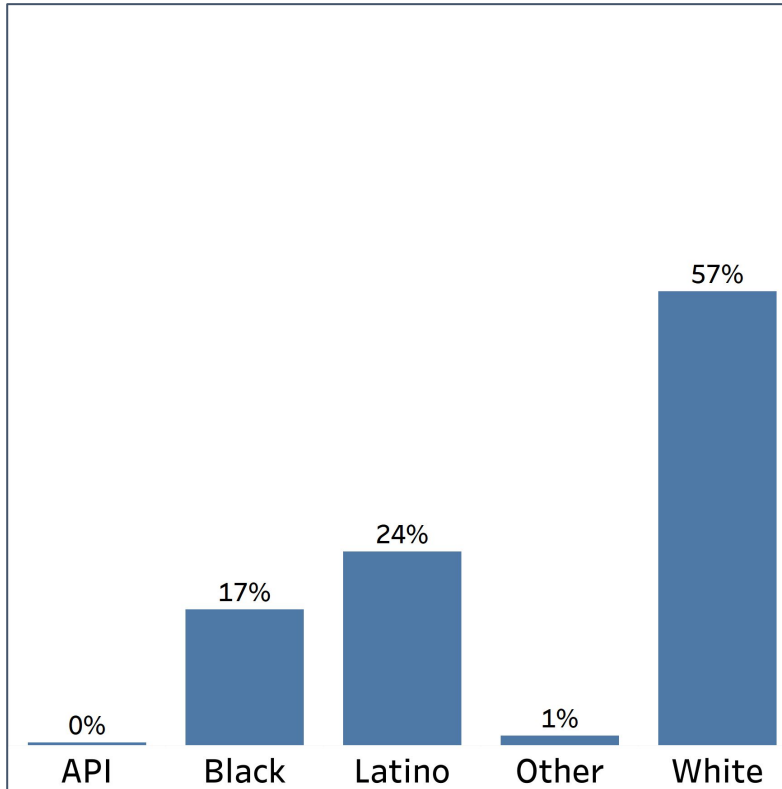
- Atkinson County's Black population is less than half of the statewide percentage, and there is close to zero members of the API community
- Latinos make up a quarter of the overall population in Atkinson county, much higher than the statewide population share

# Demographics

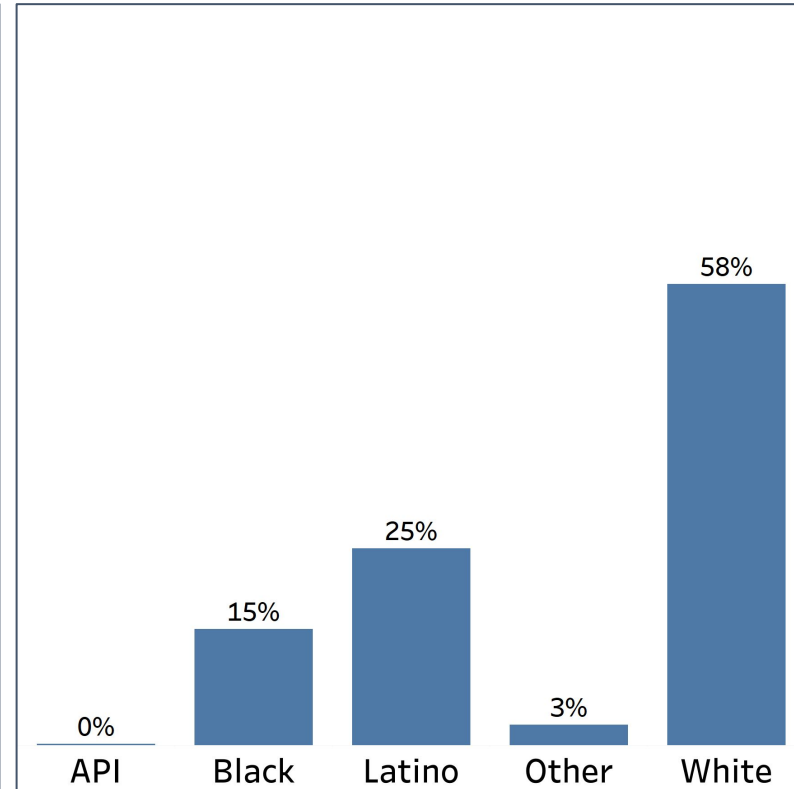
## 2010 vs 2020 Demographics in Atkinson County



Atkinson County 2010



Atkinson County 2020



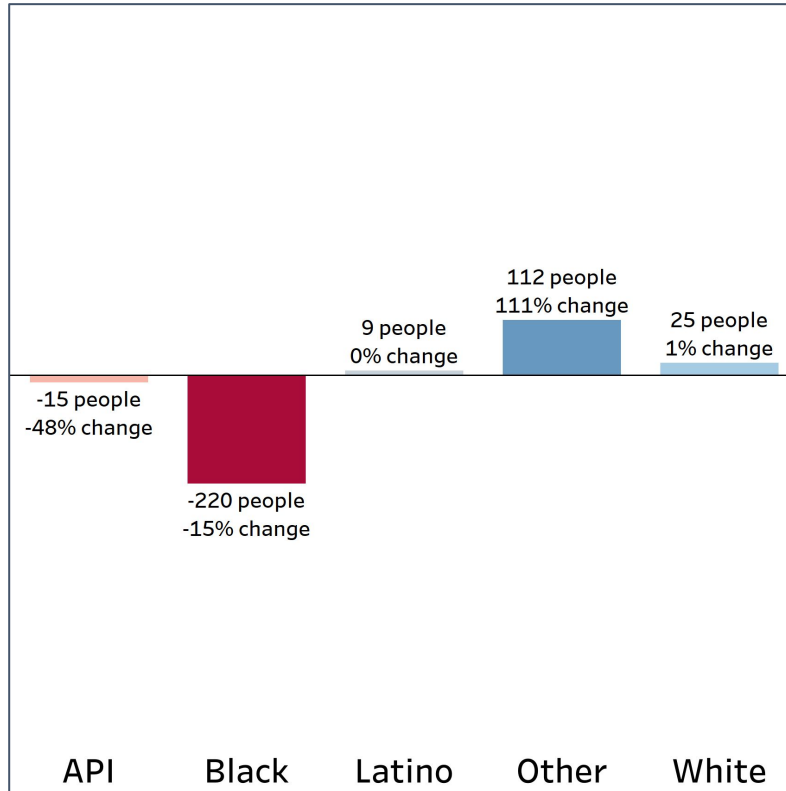
- Atkinson County lost some of its Black population, losing 2%
- The Latino, Other, and White populations all increased slightly, with the Other population having the biggest increase

# Demographics

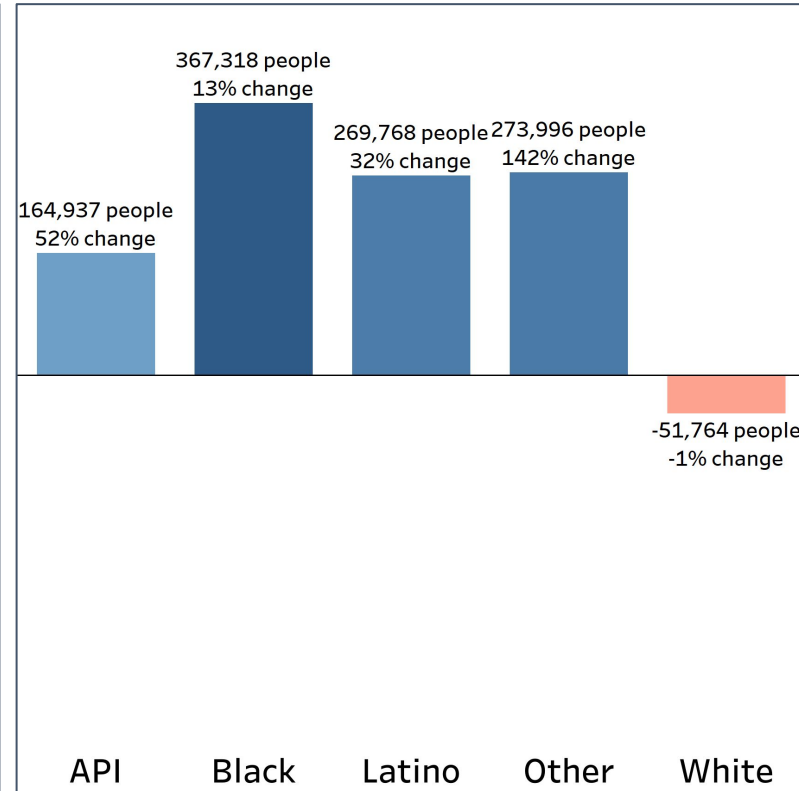
## Population Change by Race (2020 - 2010)



### Atkinson County



### Georgia



- Due to the overall loss in population, nearly all demographic groups had lower growth rates compared to the statewide rate
- The only exception is the white community, which slightly gained population, compared to Georgia overall losing people from the white community

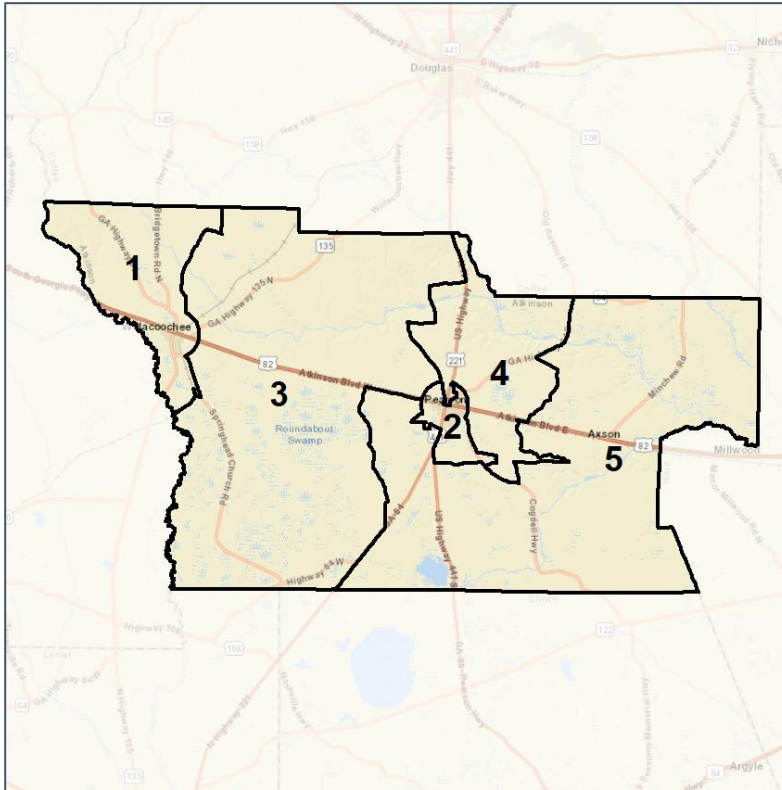


# Atkinson Co. Commission & School Board

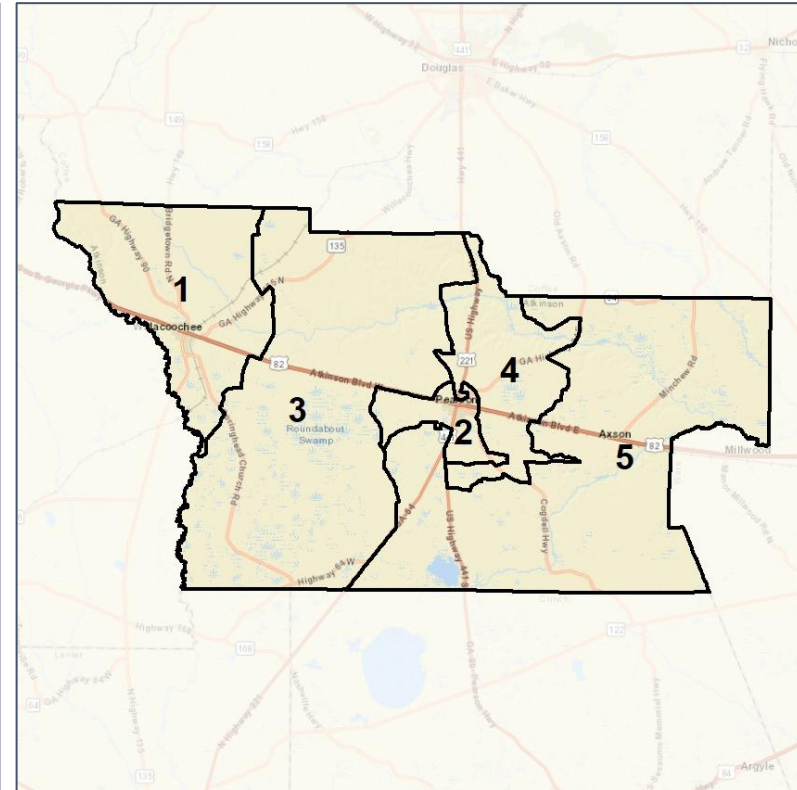
## Context



### 2012 Map



### 2022 Map\*



	1	2	3	4	5	1*	2*	3*	4*	5*	County
Population	1,488	1,491	1,795	1,666	1,846	1,662	1,668	1,666	1,644	1,646	8,286
API	0%	0%	0%	0%	0%	0%	0%	0%	0%	0%	0%
Black	30%	34%	5%	7%	3%	27%	32%	5%	8%	1%	15%
Latino	21%	31%	19%	33%	20%	20%	34%	20%	32%	17%	25%
Other	3%	3%	2%	3%	2%	3%	3%	2%	2%	2%	3%
White	47%	31%	73%	57%	75%	50%	31%	72%	58%	79%	58%
Population Gain	-195	-188	120	-3	177	174	177	-129	-22	-200	*
Population % Gain	-12%	-11%	7%	0%	11%	12%	12%	-7%	-1%	-11%	*
Net POC Gain	-91	-157	81	32	21	27	130	-16	-27	-114	*
Net POC % Gain	-10%	-13%	20%	5%	5%	3%	13%	-3%	-4%	-25%	*

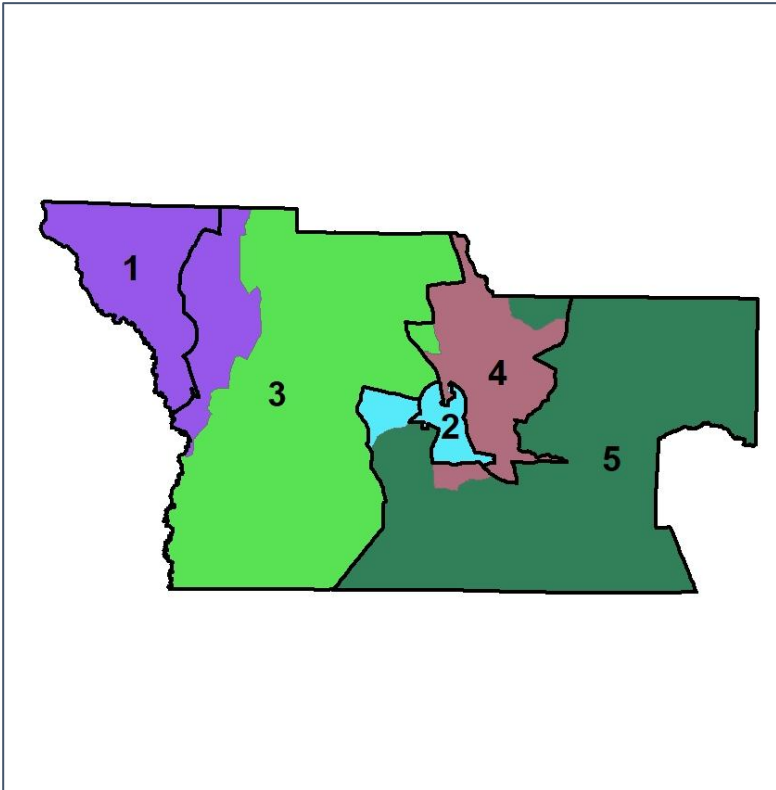


# Atkinson Co. Commission & School Board

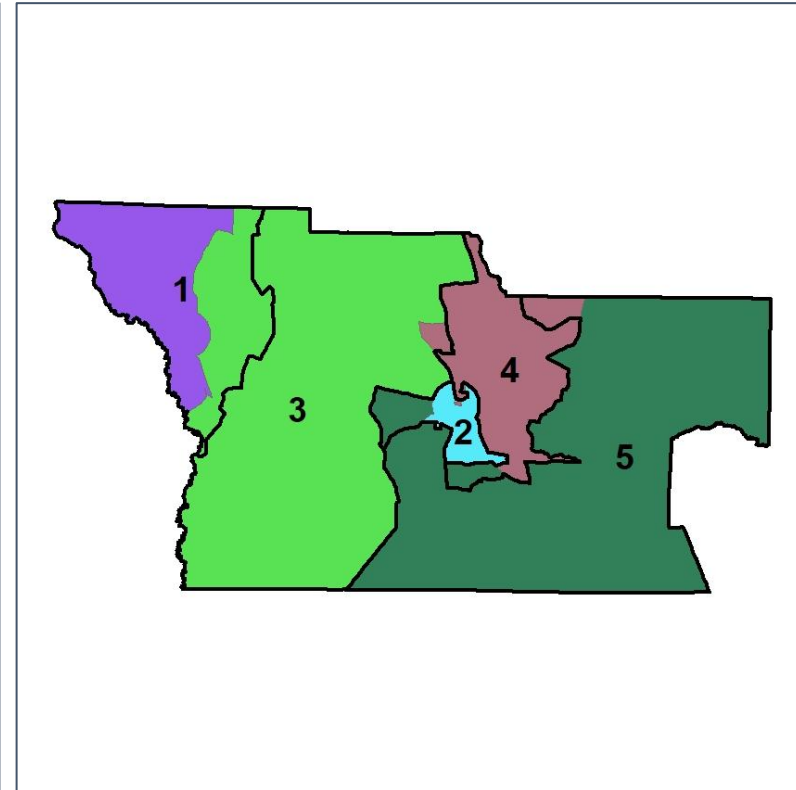
## Changes in Redistricting



**2012 Map (2022 in Colors)**



**2022 Map\* (2012 in Colors)**



	1	2	3	4	5	1*	2*	3*	4*	5*	County
Population	1,488	1,491	1,795	1,666	1,846	1,662	1,668	1,666	1,644	1,646	8,286
API	0%	0%	0%	0%	0%	0%	0%	0%	0%	0%	0%
Black	30%	34%	5%	7%	3%	27%	32%	5%	8%	1%	15%
Latino	21%	31%	19%	33%	20%	20%	34%	20%	32%	17%	25%
Other	3%	3%	2%	3%	2%	3%	3%	2%	2%	2%	3%
White	47%	31%	73%	57%	75%	50%	31%	72%	58%	79%	58%
Population Gain	-195	-188	120	-3	177	174	177	-129	-22	-200	*
Population % Gain	-12%	-11%	7%	0%	11%	12%	12%	-7%	-1%	-11%	*
Net POC Gain	-91	-157	81	32	21	27	130	-16	-27	-114	*
Net POC % Gain	-10%	-13%	20%	5%	5%	3%	13%	-3%	-4%	-25%	*



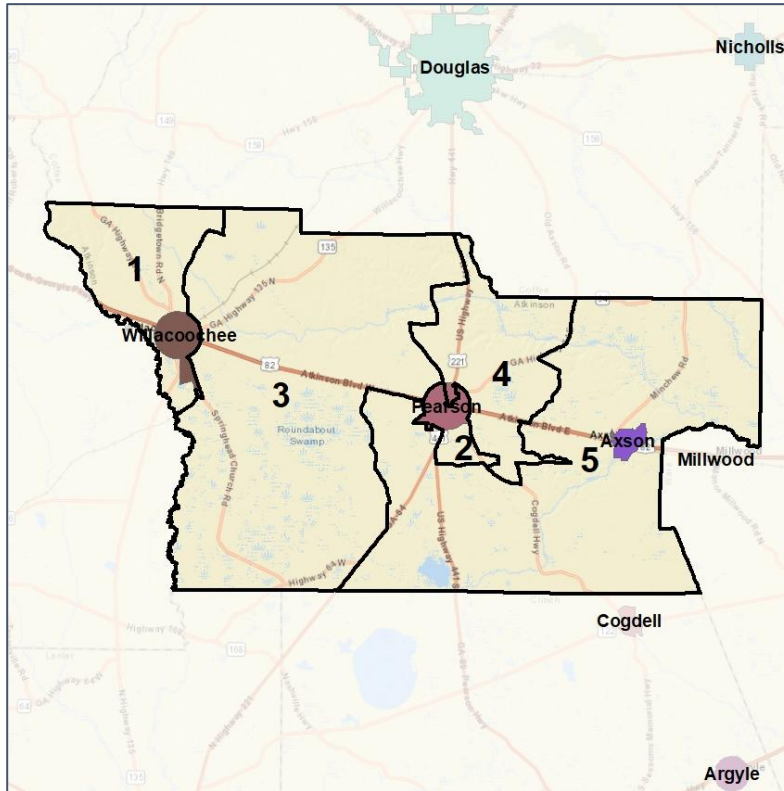


# Atkinson Co. Commission & School Board

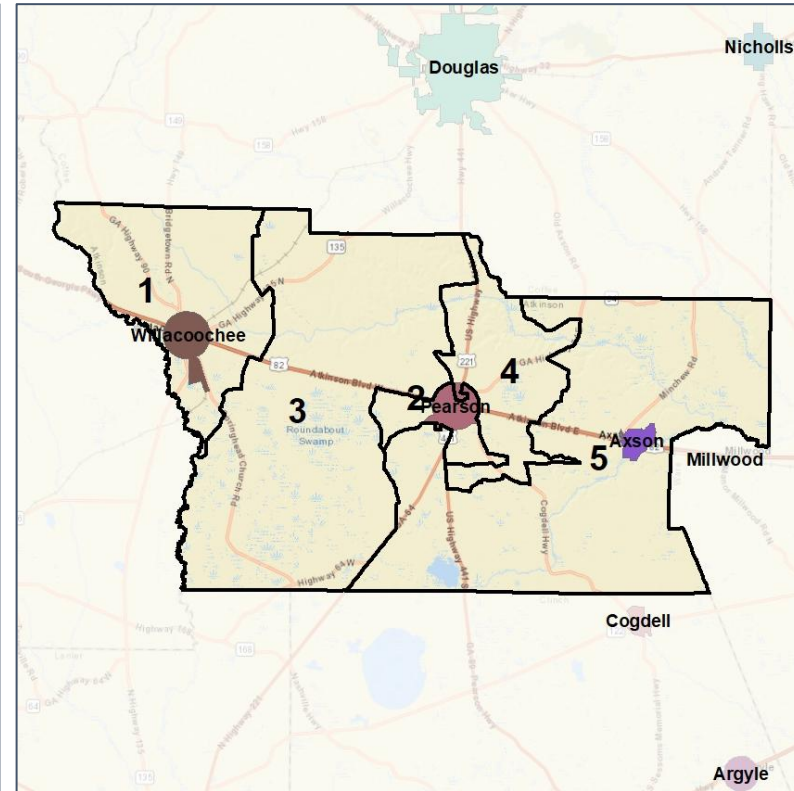
## Cities and Places



### 2012 Map



### 2022 Map\*



	1	2	3	4	5	1*	2*	3*	4*	5*	County
Population	1,488	1,491	1,795	1,666	1,846	1,662	1,668	1,666	1,644	1,646	8,286
API	0%	0%	0%	0%	0%	0%	0%	0%	0%	0%	0%
Black	30%	34%	5%	7%	3%	27%	32%	5%	8%	1%	15%
Latino	21%	31%	19%	33%	20%	20%	34%	20%	32%	17%	25%
Other	3%	3%	2%	3%	2%	3%	3%	2%	2%	2%	3%
White	47%	31%	73%	57%	75%	50%	31%	72%	58%	79%	58%
Population Gain	-195	-188	120	-3	177	174	177	-129	-22	-200	*
Population % Gain	-12%	-11%	7%	0%	11%	12%	12%	-7%	-1%	-11%	*
Net POC Gain	-91	-157	81	32	21	27	130	-16	-27	-114	*
Net POC % Gain	-10%	-13%	20%	5%	5%	3%	13%	-3%	-4%	-25%	*



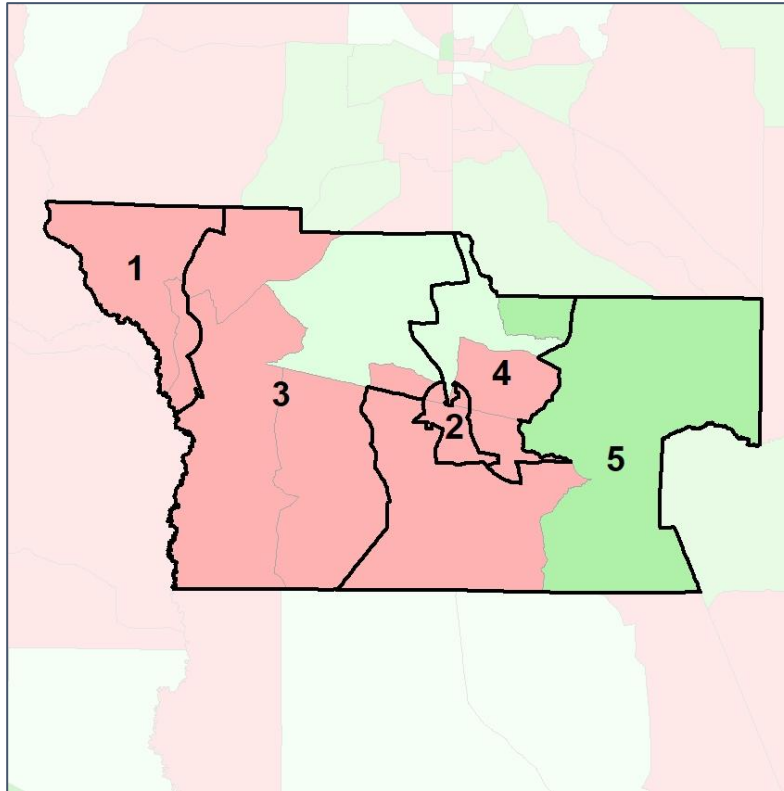
Source:  
2020 Decennial Census  
2020 ACS 5-Year Dataset

# Atkinson Co. Commission & School Board

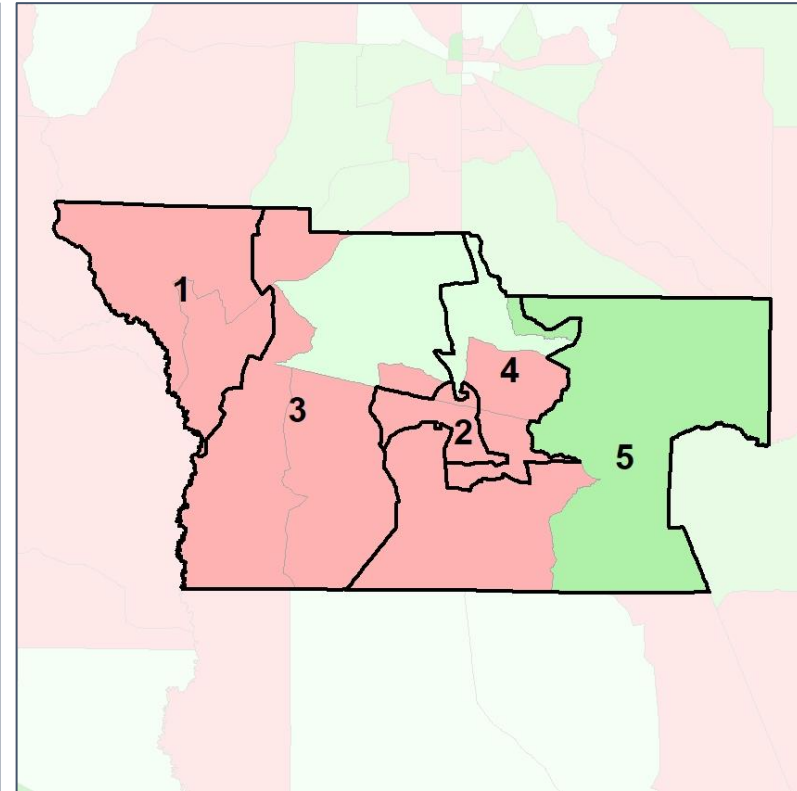
## Net Gain in Population (2010 - 2020) by Census Block Group



2012 Map



2022 Map\*



	1	2	3	4	5	1*	2*	3*	4*	5*	County
Population	1,488	1,491	1,795	1,666	1,846	1,662	1,668	1,666	1,644	1,646	8,286
API	0%	0%	0%	0%	0%	0%	0%	0%	0%	0%	0%
Black	30%	34%	5%	7%	3%	27%	32%	5%	8%	1%	15%
Latino	21%	31%	19%	33%	20%	20%	34%	20%	32%	17%	25%
Other	3%	3%	2%	3%	2%	3%	3%	2%	2%	2%	3%
White	47%	31%	73%	57%	75%	50%	31%	72%	58%	79%	58%
Population Gain	-195	-188	120	-3	177	174	177	-129	-22	-200	*
Population % Gain	-12%	-11%	7%	0%	11%	12%	12%	-7%	-1%	-11%	*
Net POC Gain	-91	-157	81	32	21	27	130	-16	-27	-114	*
Net POC % Gain	-10%	-13%	20%	5%	5%	3%	13%	-3%	-4%	-25%	*

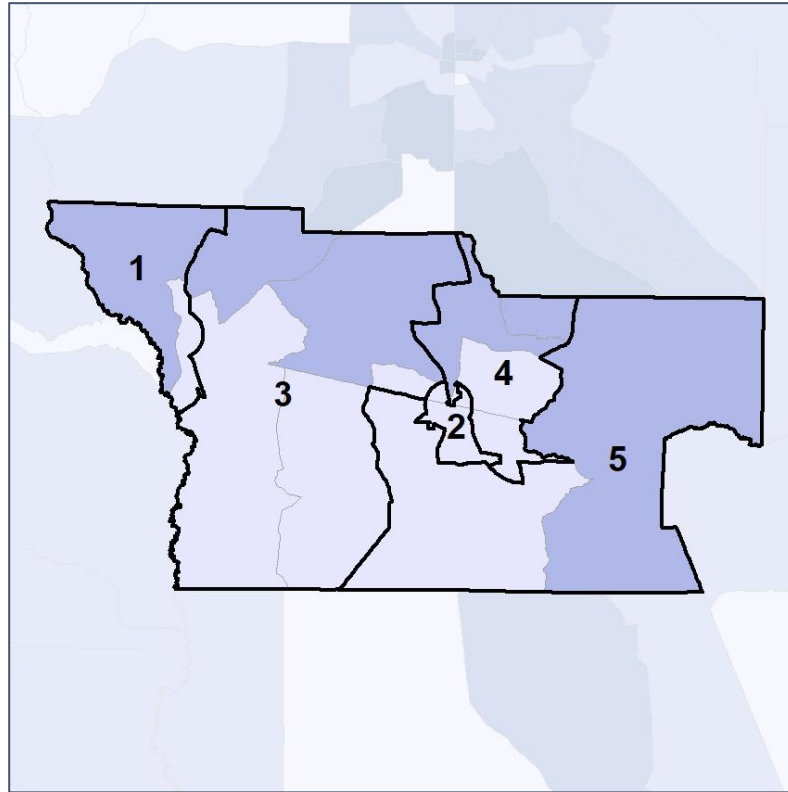


# Atkinson Co. Commission & School Board

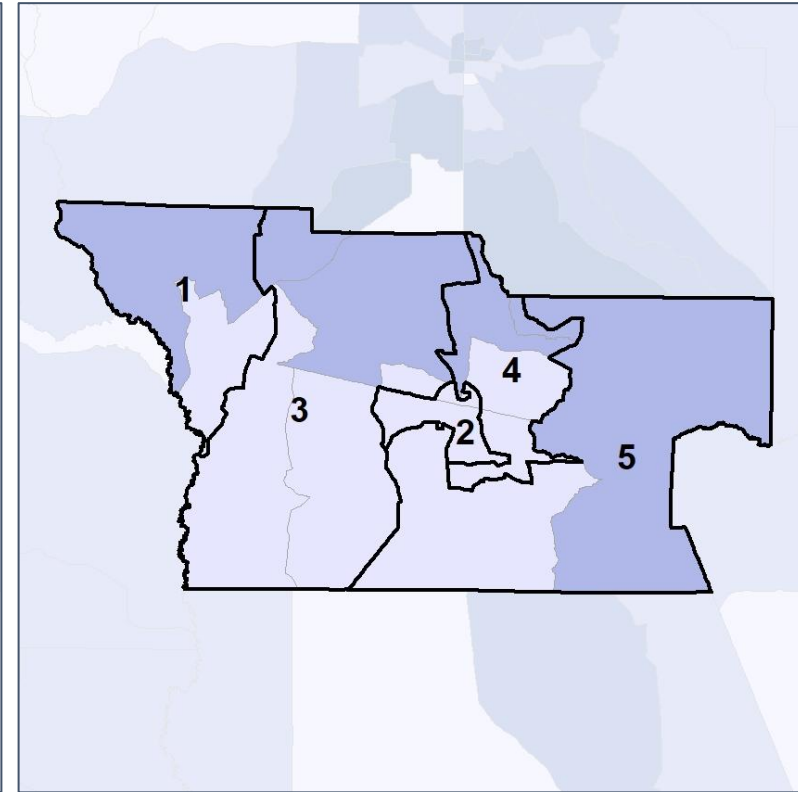
## Net Gain in % POC (2020 - 2010) by Census Block Group



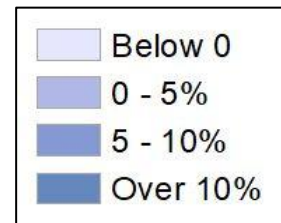
**2012 Map**



**2022 Map\***



	1	2	3	4	5	1*	2*	3*	4*	5*	County
Population	1,488	1,491	1,795	1,666	1,846	1,662	1,668	1,666	1,644	1,646	8,286
API	0%	0%	0%	0%	0%	0%	0%	0%	0%	0%	0%
Black	30%	34%	5%	7%	3%	27%	32%	5%	8%	1%	15%
Latino	21%	31%	19%	33%	20%	20%	34%	20%	32%	17%	25%
Other	3%	3%	2%	3%	2%	3%	3%	2%	2%	2%	3%
White	47%	31%	73%	57%	75%	50%	31%	72%	58%	79%	58%
Population Gain	-195	-188	120	-3	177	174	177	-129	-22	-200	*
Population % Gain	-12%	-11%	7%	0%	11%	12%	12%	-7%	-1%	-11%	*
Net POC Gain	-91	-157	81	32	21	27	130	-16	-27	-114	*
Net POC % Gain	-10%	-13%	20%	5%	5%	3%	13%	-3%	-4%	-25%	*



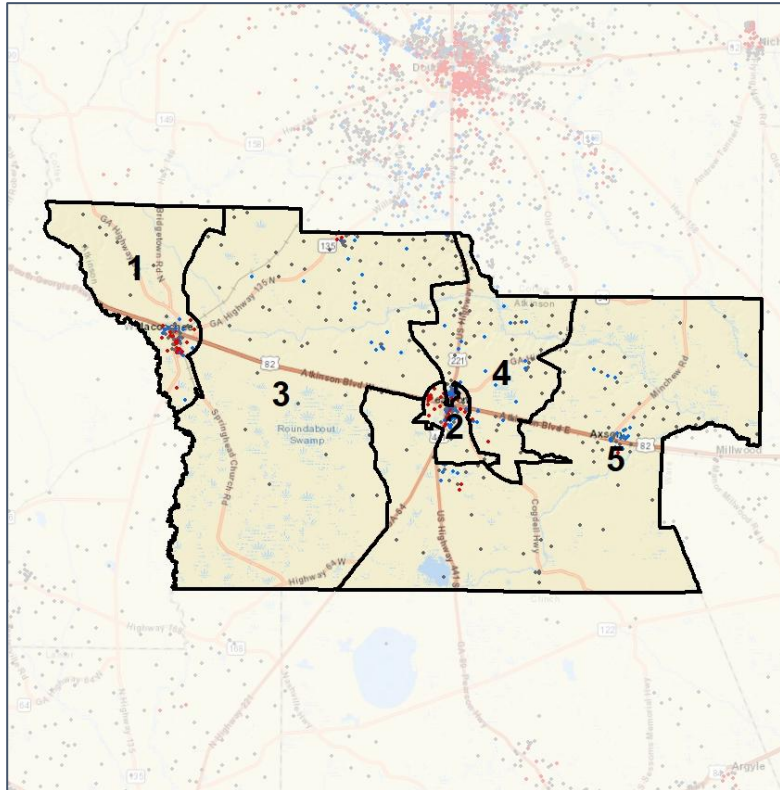
Source:  
2020 Decennial Census  
2020 ACS 5-Year Dataset

# Atkinson Co. Commission & School Board

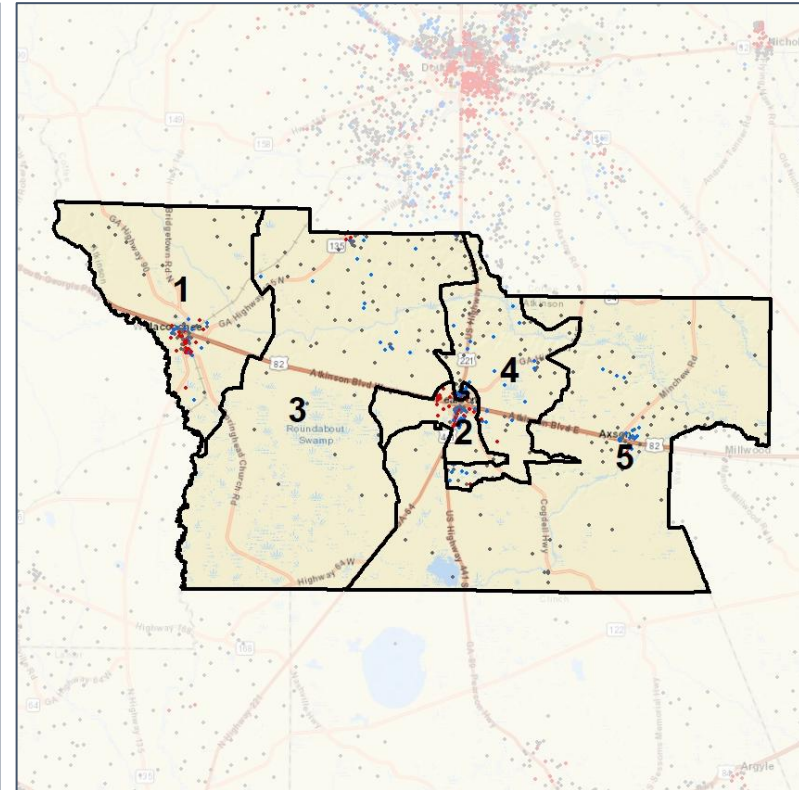
## Population Density by Race



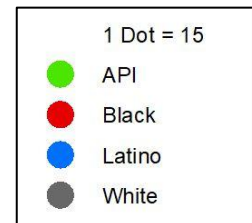
### 2012 Map



### 2022 Map\*



	1	2	3	4	5	1*	2*	3*	4*	5*	County
Population	1,488	1,491	1,795	1,666	1,846	1,662	1,668	1,666	1,644	1,646	8,286
API	2	4	1	6	3	2	7	1	3	3	16
% API	0%	0%	0%	0%	0%	0%	0%	0%	0%	0%	0%
Black	439	511	87	116	55	443	532	83	129	21	1,208
% Black	30%	34%	5%	7%	3%	27%	32%	5%	8%	1%	15%
Latino	316	463	348	556	365	334	564	337	527	286	2,048
% Latino	21%	31%	19%	33%	20%	20%	34%	20%	32%	17%	25%
Other	39	44	42	46	42	44	49	41	38	41	213
% Other	3%	3%	2%	3%	2%	3%	3%	2%	2%	2%	3%
White	692	469	1,317	942	1,381	839	516	1,204	947	1,295	4,801
% White	47%	31%	73%	57%	75%	50%	31%	72%	58%	79%	58%



Source:  
2020 Decennial Census  
2020 ACS 5-Year Dataset

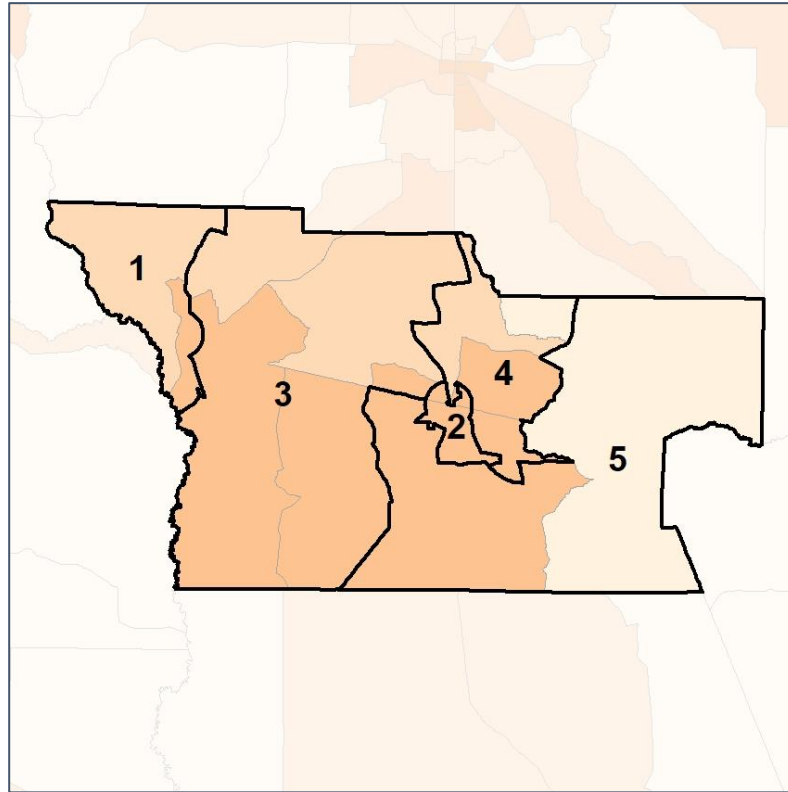


# Atkinson Co. Commission & School Board

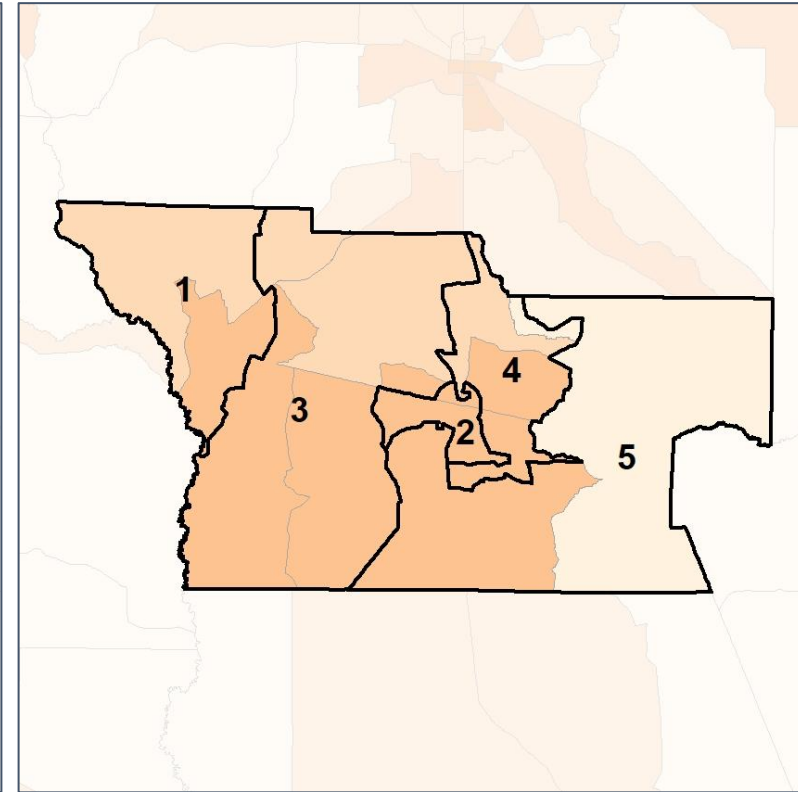
## % People of Color by Census Block Group



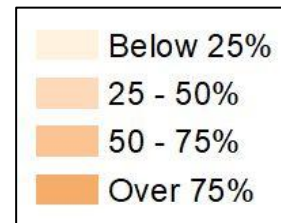
**2012 Map**



**2022 Map\***



	1	2	3	4	5	1*	2*	3*	4*	5*	County
Population	1,488	1,491	1,795	1,666	1,846	1,662	1,668	1,666	1,644	1,646	8,286
API	2	4	1	6	3	2	7	1	3	3	16
% API	0%	0%	0%	0%	0%	0%	0%	0%	0%	0%	0%
Black	439	511	87	116	55	443	532	83	129	21	1,208
% Black	30%	34%	5%	7%	3%	27%	32%	5%	8%	1%	15%
Latino	316	463	348	556	365	334	564	337	527	286	2,048
% Latino	21%	31%	19%	33%	20%	20%	34%	20%	32%	17%	25%
Other	39	44	42	46	42	44	49	41	38	41	213
% Other	3%	3%	2%	3%	2%	3%	3%	2%	2%	2%	3%
White	692	469	1,317	942	1,381	839	516	1,204	947	1,295	4,801
% White	47%	31%	73%	57%	75%	50%	31%	72%	58%	79%	58%



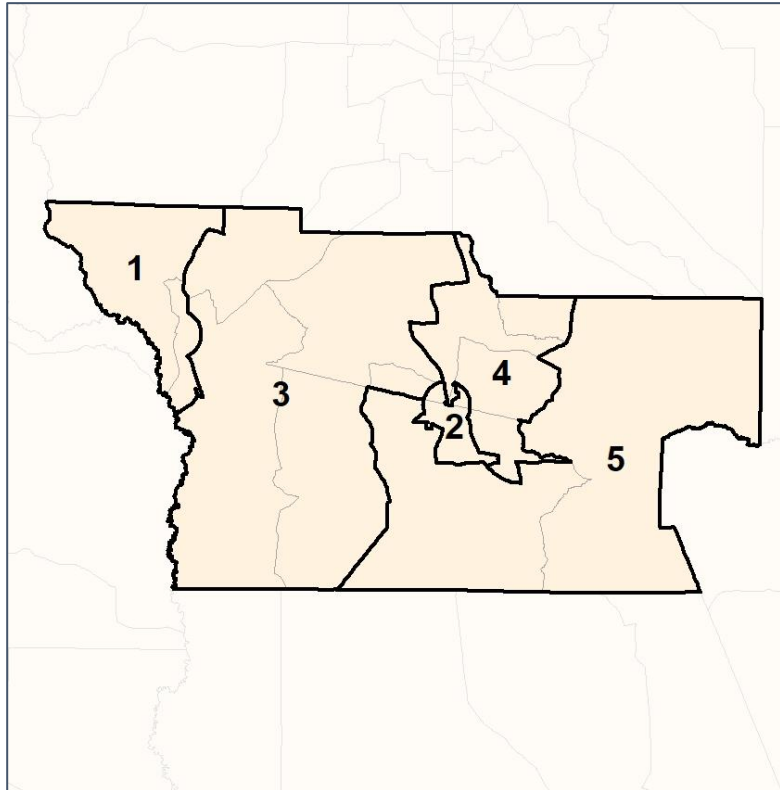
Source:  
2020 Decennial Census  
2020 ACS 5-Year Dataset

# Atkinson Co. Commission & School Board

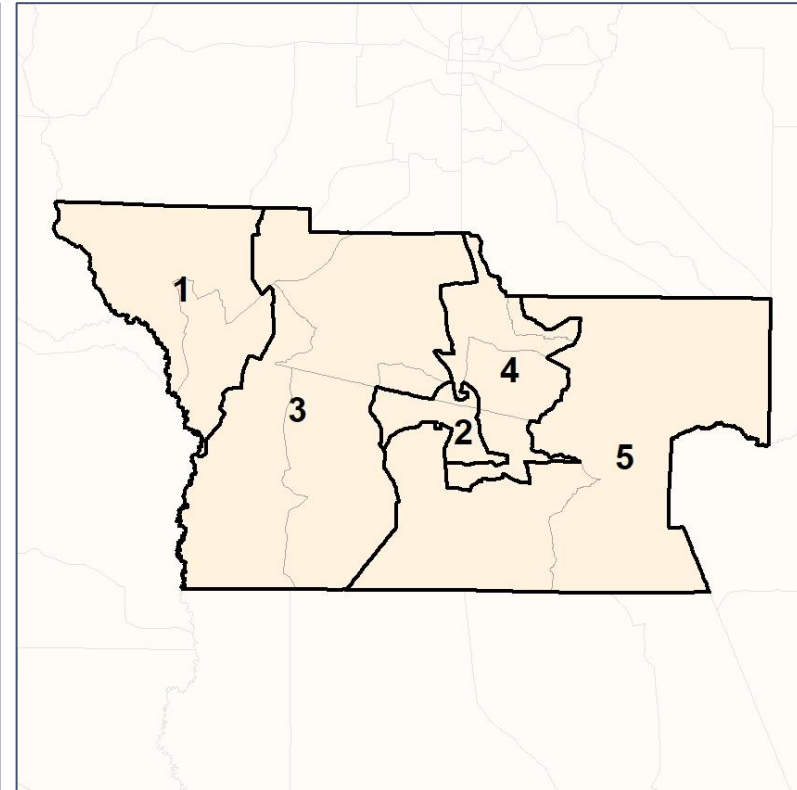
## % API by Census Block Group



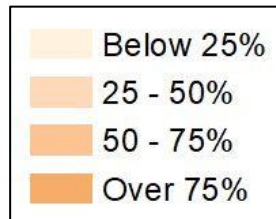
### 2012 Map



### 2022 Map\*



	1	2	3	4	5	1*	2*	3*	4*	5*	County
Population	1,488	1,491	1,795	1,666	1,846	1,662	1,668	1,666	1,644	1,646	8,286
API	2	4	1	6	3	2	7	1	3	3	16
% API	0%	0%	0%	0%	0%	0%	0%	0%	0%	0%	0%
Black	439	511	87	116	55	443	532	83	129	21	1,208
% Black	30%	34%	5%	7%	3%	27%	32%	5%	8%	1%	15%
Latino	316	463	348	556	365	334	564	337	527	286	2,048
% Latino	21%	31%	19%	33%	20%	20%	34%	20%	32%	17%	25%
Other	39	44	42	46	42	44	49	41	38	41	213
% Other	3%	3%	2%	3%	2%	3%	3%	2%	2%	2%	3%
White	692	469	1,317	942	1,381	839	516	1,204	947	1,295	4,801
% White	47%	31%	73%	57%	75%	50%	31%	72%	58%	79%	58%



Source:  
2020 Decennial Census  
2020 ACS 5-Year Dataset



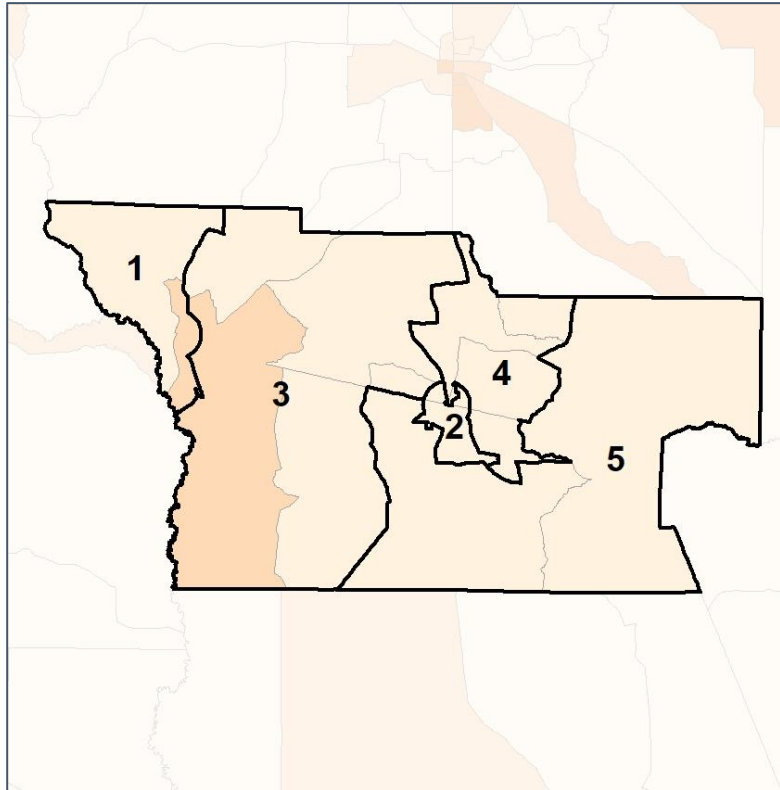


# Atkinson Co. Commission & School Board

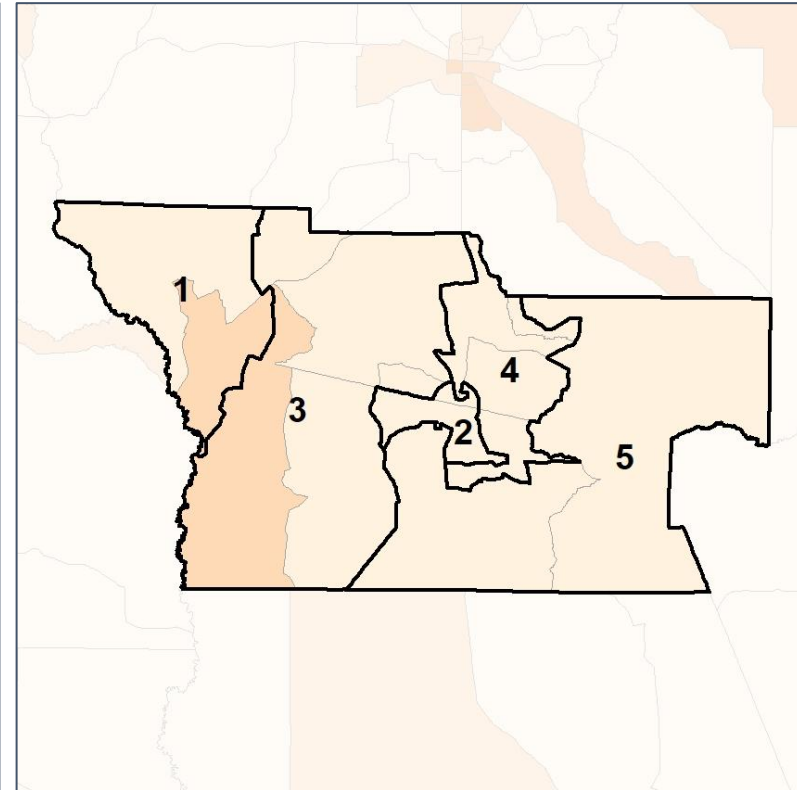
## % Black by Census Block Group



2012 Map



2022 Map\*



	1	2	3	4	5	1*	2*	3*	4*	5*	County
Population	1,488	1,491	1,795	1,666	1,846	1,662	1,668	1,666	1,644	1,646	8,286
API	2	4	1	6	3	2	7	1	3	3	16
% API	0%	0%	0%	0%	0%	0%	0%	0%	0%	0%	0%
Black	439	511	87	116	55	443	532	83	129	21	1,208
% Black	30%	34%	5%	7%	3%	27%	32%	5%	8%	1%	15%
Latino	316	463	348	556	365	334	564	337	527	286	2,048
% Latino	21%	31%	19%	33%	20%	20%	34%	20%	32%	17%	25%
Other	39	44	42	46	42	44	49	41	38	41	213
% Other	3%	3%	2%	3%	2%	3%	3%	2%	2%	2%	3%
White	692	469	1,317	942	1,381	839	516	1,204	947	1,295	4,801
% White	47%	31%	73%	57%	75%	50%	31%	72%	58%	79%	58%



Source:  
2020 Decennial Census  
2020 ACS 5-Year Dataset

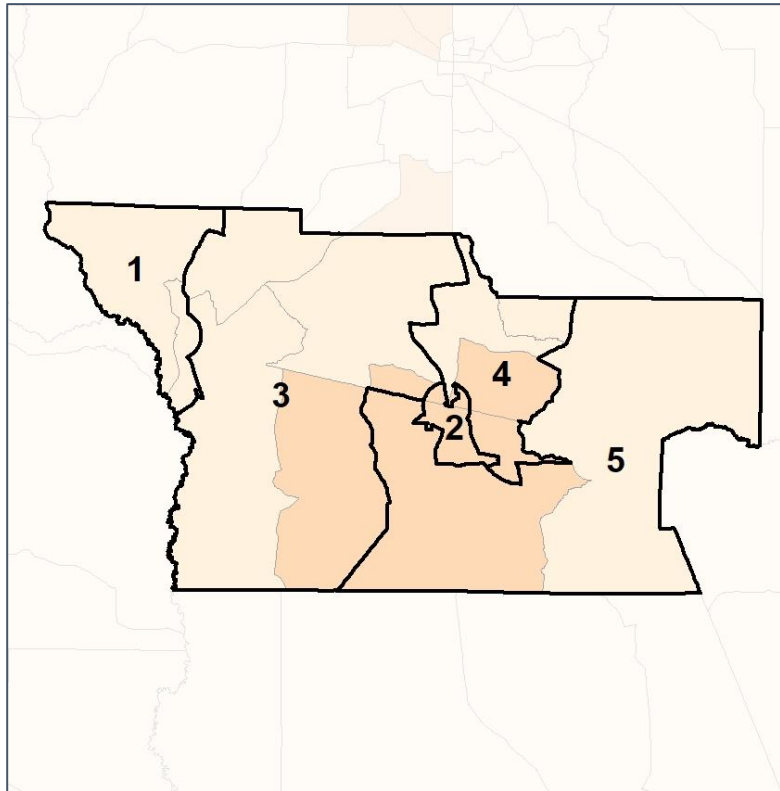


# Atkinson Co. Commission & School Board

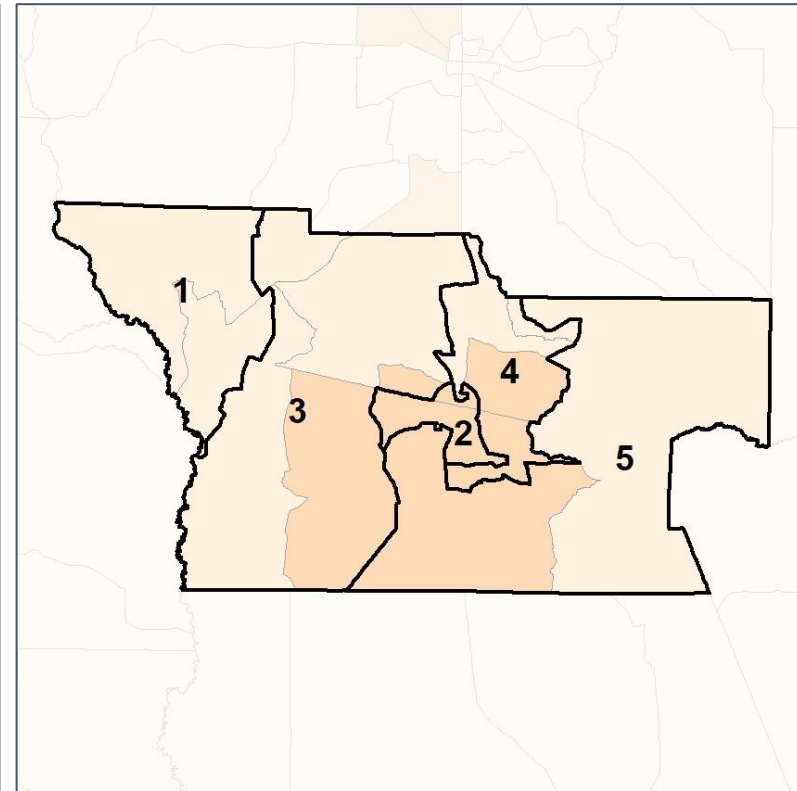
## % Latino by Census Block Group



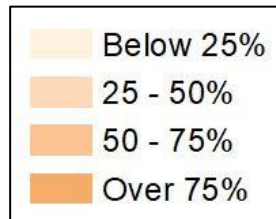
2012 Map



2022 Map\*



	1	2	3	4	5	1*	2*	3*	4*	5*	County
Population	1,488	1,491	1,795	1,666	1,846	1,662	1,668	1,666	1,644	1,646	8,286
API	2	4	1	6	3	2	7	1	3	3	16
% API	0%	0%	0%	0%	0%	0%	0%	0%	0%	0%	0%
Black	439	511	87	116	55	443	532	83	129	21	1,208
% Black	30%	34%	5%	7%	3%	27%	32%	5%	8%	1%	15%
Latino	316	463	348	556	365	334	564	337	527	286	2,048
% Latino	21%	31%	19%	33%	20%	20%	34%	20%	32%	17%	25%
Other	39	44	42	46	42	44	49	41	38	41	213
% Other	3%	3%	2%	3%	2%	3%	3%	2%	2%	2%	3%
White	692	469	1,317	942	1,381	839	516	1,204	947	1,295	4,801
% White	47%	31%	73%	57%	75%	50%	31%	72%	58%	79%	58%



Source:  
2020 Decennial Census  
2020 ACS 5-Year Dataset



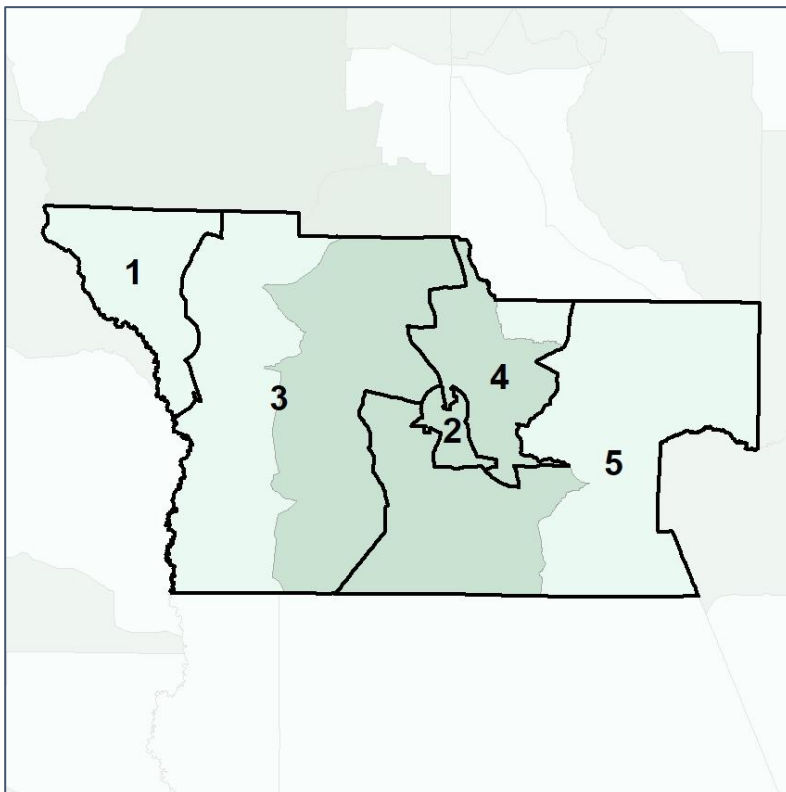


# Atkinson Co. Commission & School Board

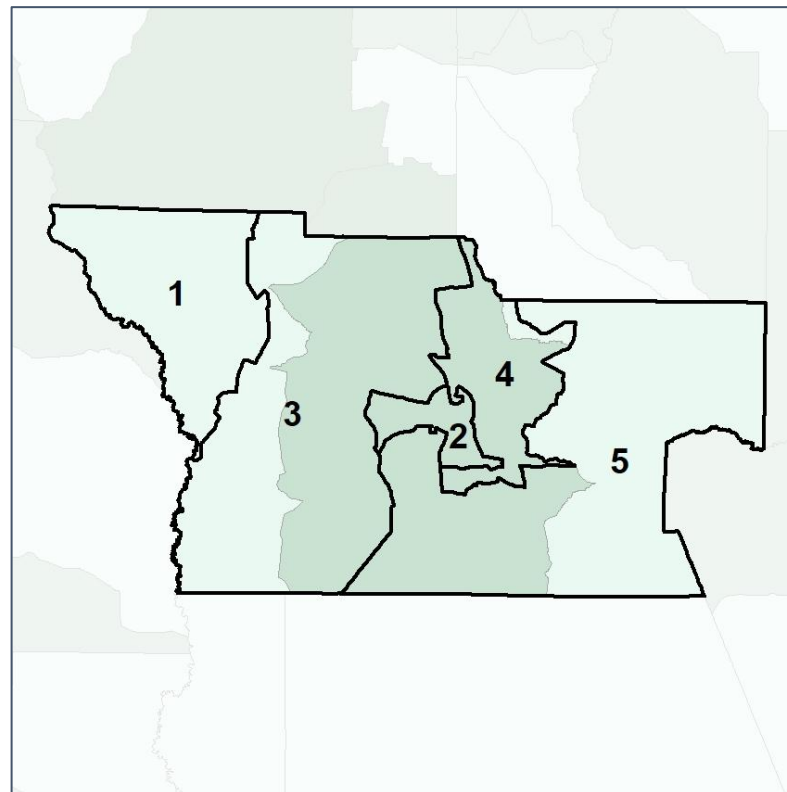
## Median Household Income by Census Tract



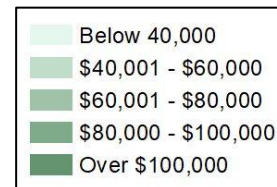
### 2012 Map



### 2022 Map\*



	1	2	3	4	5	1*	2*	3*	4*	5*	County
Population	1,488	1,491	1,795	1,666	1,846	1,662	1,668	1,666	1,644	1,646	8,286
% API	0%	0%	0%	0%	0%	0%	0%	0%	0%	0%	0%
% Black	30%	34%	5%	7%	3%	27%	32%	5%	8%	1%	15%
% Latino	21%	31%	19%	33%	20%	20%	34%	20%	32%	17%	25%
% Other	3%	3%	2%	3%	2%	3%	3%	2%	2%	2%	3%
% White	47%	31%	73%	57%	75%	50%	31%	72%	58%	79%	58%
Median Income	\$36,000	\$32,000	\$37,000	\$32,000	\$40,000	\$36,000	\$32,000	\$37,000	\$32,000	\$40,000	\$36,000
% Renter	37%	67%	31%	33%	22%	37%	33%	31%	33%	22%	29%
% Youth	18%	28%	23%	28%	22%	18%	28%	23%	28%	22%	22%

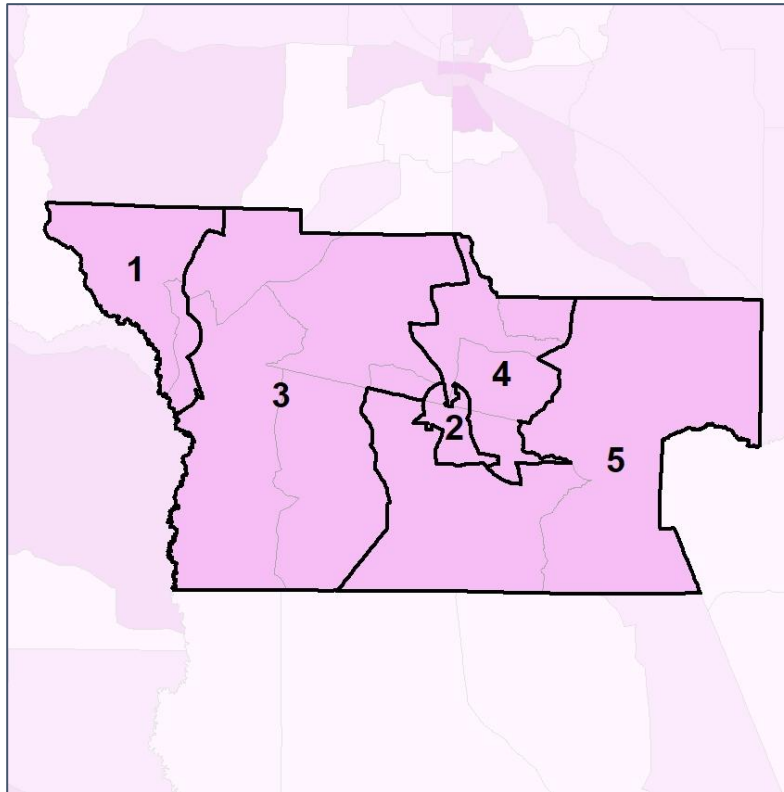


# Atkinson Co. Commission & School Board

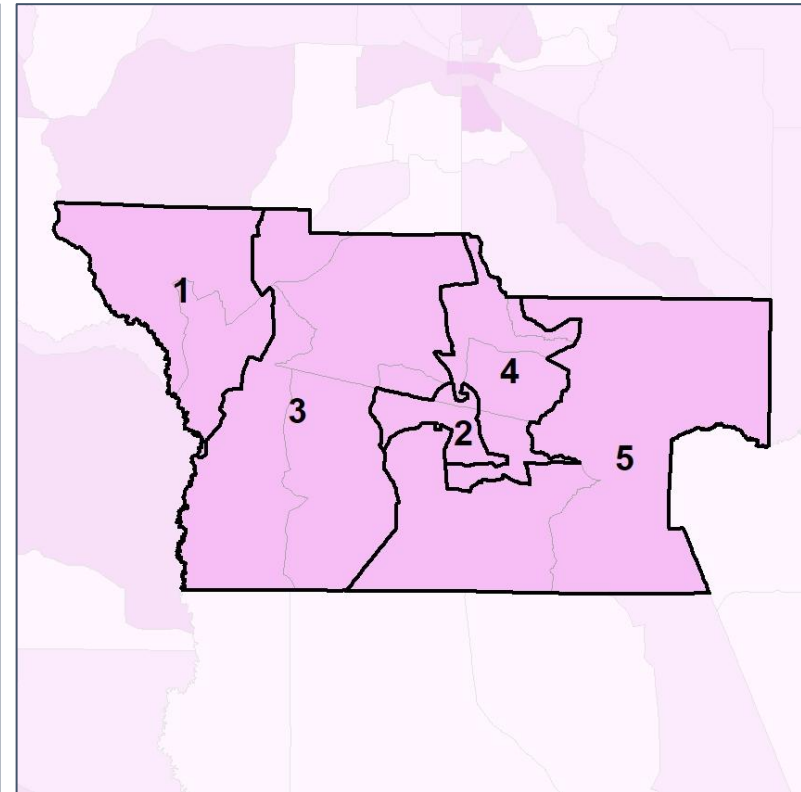
## % Renter by Census Block Group



2012 Map



2022 Map\*



	1	2	3	4	5	1*	2*	3*	4*	5*	County
Population	1,488	1,491	1,795	1,666	1,846	1,662	1,668	1,666	1,644	1,646	8,286
% API	0%	0%	0%	0%	0%	0%	0%	0%	0%	0%	0%
% Black	30%	34%	5%	7%	3%	27%	32%	5%	8%	1%	15%
% Latino	21%	31%	19%	33%	20%	20%	34%	20%	32%	17%	25%
% Other	3%	3%	2%	3%	2%	3%	3%	2%	2%	2%	3%
% White	47%	31%	73%	57%	75%	50%	31%	72%	58%	79%	58%
Median Income	\$36,000	\$32,000	\$37,000	\$32,000	\$40,000	\$36,000	\$32,000	\$37,000	\$32,000	\$40,000	\$36,000
% Renter	37%	67%	31%	33%	22%	37%	33%	31%	33%	22%	29%
% Youth	18%	28%	23%	28%	22%	18%	28%	23%	28%	22%	22%

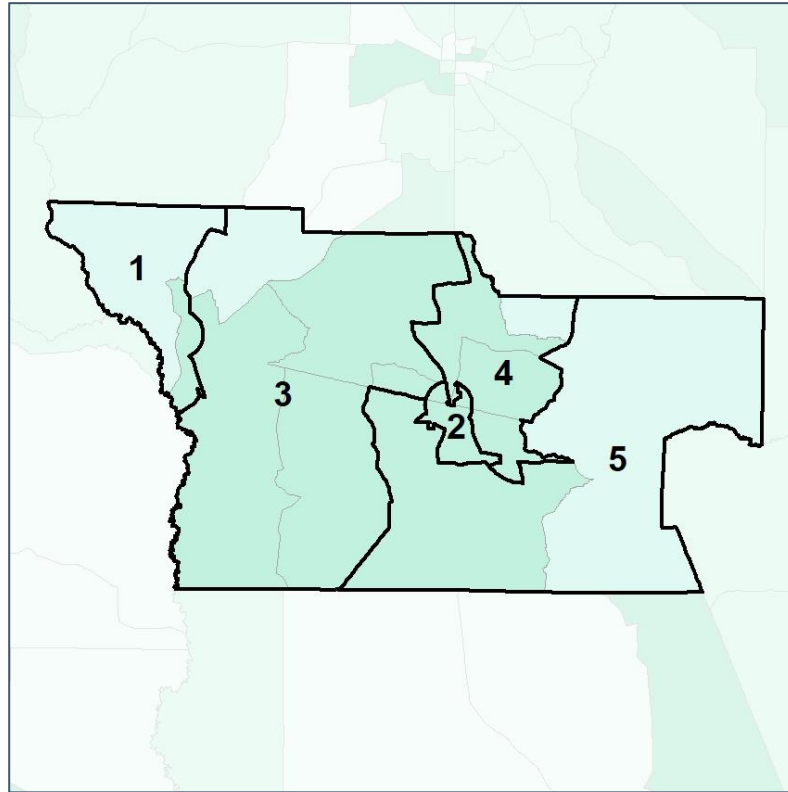


# Atkinson Co. Commission & School Board

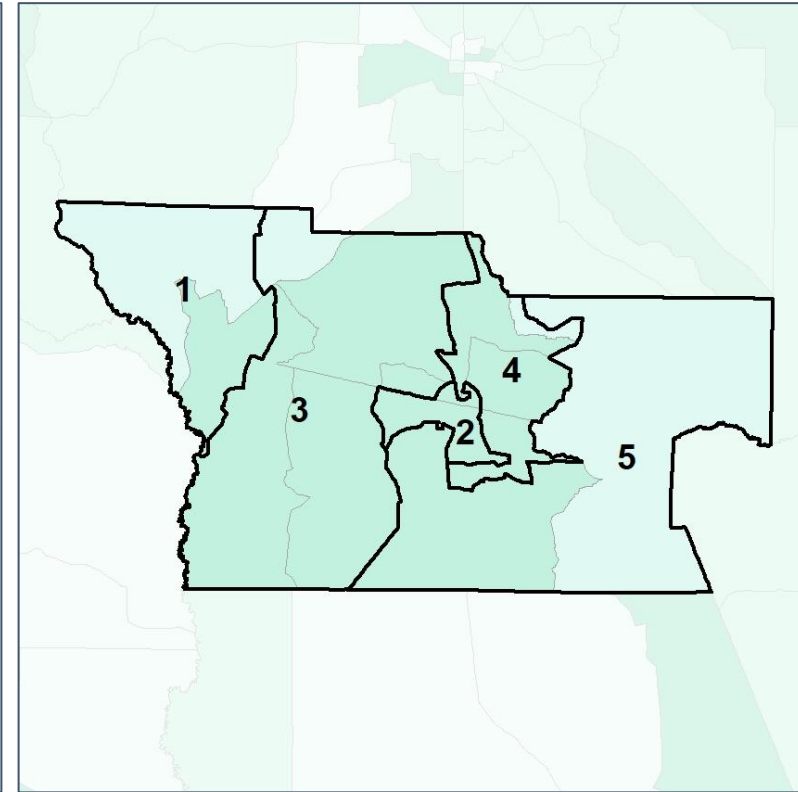
## % Youth (18-34) by Census Block Group



### 2012 Map



### 2022 Map\*



	1	2	3	4	5	1*	2*	3*	4*	5*	County
Population	1,488	1,491	1,795	1,666	1,846	1,662	1,668	1,666	1,644	1,646	8,286
% API	0%	0%	0%	0%	0%	0%	0%	0%	0%	0%	0%
% Black	30%	34%	5%	7%	3%	27%	32%	5%	8%	1%	15%
% Latino	21%	31%	19%	33%	20%	20%	34%	20%	32%	17%	25%
% Other	3%	3%	2%	3%	2%	3%	3%	2%	2%	2%	3%
% White	47%	31%	73%	57%	75%	50%	31%	72%	58%	79%	58%
Median Income	\$36,000	\$32,000	\$37,000	\$32,000	\$40,000	\$36,000	\$32,000	\$37,000	\$32,000	\$40,000	\$36,000
% Renter	37%	67%	31%	33%	22%	37%	33%	31%	33%	22%	29%
% Youth	18%	28%	23%	28%	22%	18%	28%	23%	28%	22%	22%



Source:  
2020 Decennial Census  
2020 ACS 5-Year Dataset